



U.S. Department of Homeland Security
United States Coast Guard

LOCAL NOTICE TO MARINERS

District: 14

Week: 06/24

February 07 2024
ISSUED BY:
Commander (dpw)
Fourteenth Coast Guard District
300 Ala Moana Boulevard, Room 9-220
Honolulu, HI 96850-4982
Telephone: (808) 535-3409
Email: D14-DG-PJ-dpw@uscg.mil
Website: https://www.navcen.uscg.gov/

Note:

Unless otherwise indicated, missing and destroyed structures are presumed to be in the immediate vicinity, possibly beneath the surface. Any life threatening or hazardous conditions including off station, missing, or inoperative aids to navigation should reported immediately to U.S. Coast Guard Sector Honolulu at (808) 842-2600 and U.S. Coast Guard Sector Forces Micronesia/Sector Guam at (671) 355-4822. Mariners should proceed with caution.

References:

Light List, Volume VI, Pacific Coast and Pacific Islands, 2024 Edition (COMDTPUB P16502.6).
U.S. Coast Pilot 10, Pacific Coast : Oregon, Washington, Hawaii, Pacific Islands 2023 (4th Edition). Coast Pilots, along with corrections, are ready for free download and weekly updates at www.nauticalcharts.noaa.gov/publications/coast-pilot/index.html.

Only Print-on-Demand (POD) bound copies are available for purchase; visit nauticalcharts.noaa.gov/publications/print-agents.html#coast-pilot.

Navigation information having been of immediate concern to the mariner, and promulgated by the following broadcasts, have been incorporated in this notice when still significant:

COMCOGARD SECTOR HONOLULU HI BNMs: 019-24 to 027-24
COMCOGARD SECTOR FORCES MICRONESIA/SECTOR GUAM BNMs: 036-24 to 044-24

ABBREVIATIONS

A through H

ADRIFT - Buoy Adrift
AICW - Atlantic Intracoastal Waterway
Al - Alternating
B - Buoy
BKW - Breakwater
bl - Blast
BNM - Broadcast Notice to Mariner
bu - Blue
C - Canadian
CHAN - Channel
CGD - Coast Guard District
C/O - Cut Off
CONT - Contour
CRK - Creek
CONST - Construction
DAYMK/Daymk - Daymark
DBN/Dbn - Daybeacon
DBD/DAYBD - Dayboard
DEFAC - Defaced
DEST - Destroyed
DISCON - Discontinued
DMGD/DAMGD - Damaged
ec - eclipse
EST - Established Aid
ev - every
EVAL - Evaluation
EXT - Extinguished
F - Fixed
fl - flash

I through O

I - Interrupted
ICW - Intracoastal Waterway
IMCH - Improper Characteristic
INL - Inlet
INOP - Not Operating
INT - Intensity
ISL - Islet
Iso - Isophase
kHz - Kilohertz
LAT - Latitude
LB - Lighted Buoy
LBB - Lighted Bell Buoy
LHB - Lighted Horn Buoy
LGB - Lighted Gong Buoy
LONG - Longitude
LNM - Local Notice to Mariners
LT - Light
LT CONT - Light Continuous
LTR - Letter
LWB - Lighted Whistle Buoy
LWP - Left Watching Properly
MHz - Megahertz
MISS/MSNG - Missing
Mo - Morse Code
MRASS - Marine Radio Activated Sound Signal
MSLD - Misleading
N/C - Not Charted
NGA - National Geospatial-Intelligence Agency
NO/NUM - Number

P through Z

PRIV - Private Aid
Q - Quick
R - Red
RACON - Radar Transponder Beacon
Ra ref - Radar reflector
RBN - Radio Beacon
REBUILT - Aid Rebuilt
RECOVERED - Aid Recovered
RED - Red Buoy
REFL - Reflective
RRL - Range Rear Light
RELIGHTED - Aid Relit
RELOC - Relocated
RESET ON STATION - Aid Reset on Station
RFL - Range Front Light
RIV - River
RRASS - Remote Radio Activated Sound Signal
s - seconds
SEC - Section
SHL - Shoaling
si - silent
SIG - Signal
SND - Sound
SPM - Single Point Mooring Buoy
SS - Sound Signal
STA - Station
STRUCT - Structure
St M - Statute Mile
TEMP - Temporary Aid Change

FI - Flashing
G - Green
GIWW - Gulf Intracoastal Waterway
HAZ - Hazard to Navigation
HBR - Harbor
HOR - Horizontal Clearance
HT - Height

NOS - National Ocean Service
NW - Notice Writer
OBSCU - Obscured
OBST - Obstruction
OBSTR - Obstruction
Oc - Occulting
ODAS - Anchored Oceanographic Data Buoy

TMK - Topmark
TRLB - Temporarily Replaced by Lighted Buoy
TRLT - Temporarily Replaced by Light
TRUB - Temporarily Replaced by Unlighted Buoy
USACE - Army Corps of Engineers
W - White
Y - Yellow

Additional Abbreviations Specific to this LNM Edition:

MSLD SIG - Misleading Signal

SECTION I - SPECIAL NOTICES

This section contains information of special concern to the Mariner.

2024 Light Lists are available on the USCG Navigation Center's website

2024 Light Lists are available on the USCG Navigation Center's website at:

Light Lists | Navigation Center (uscg.gov)

Coast Guard Light Lists are a means for communicating aids to navigation information to the maritime public. The last government printed Light Lists were the 2024 editions. While the Light Lists will no longer be available in government printed form, commercial reproductions may be available for purchase from maritime service providers. Local Notice to Mariners will continue to advise Light List corrections and NAVCEN will continue to publish a compilation of corrections. Complete versions of the 2024 Light Lists are updated weekly on the NAVCEN website and mariners should download applicable copies and updates as needed at: [Weekly Light Lists | Navigation Center \(uscg.gov\)](#)

A summary of 2024 Light List corrections are available at: [Light List Summary of Corrections | Navigation Center \(uscg.gov\)](#)

Guidance for use of electronic navigation publications onboard U.S. vessels can be found at:

http://www.uscg.mil/hq/cgvc/cvc/policy/policy_letters/543/CG-543_pol10-05.pdf

If the links above do not work, you should either copy and paste the links into your web browser or follow the LNM links from the Navigation Center LNM page. The Local Notice to Mariners, Light List, and Summary of Corrections are in Portable Document Format (PDF) and viewing them requires a PDF reader. PDF readers are readily available on the internet, generally free of charge.

If you have questions regarding this message, please contact the Navigation Center (use "LNMs, Charts, Chart Corrections, or Light Lists" as the subject from the pull down menu).

***** CANCELLATION OF NOAA PAPER AND RASTER NAUTICAL CHARTS *****

The National Oceanic and Atmospheric Administration (NOAA) is undertaking a multi-year program to end production and maintenance of its suite of over 1,000 traditional paper nautical charts and all associated raster chart products and services, including: Print-on-Demand (POD) paper nautical charts, Full-size chart PDF files, BookletChart™ PDF files, NOAA raster navigational charts (NOAA RNC®), the NOAA RNC tile service, and the online RNC viewer.

Six months notice of the intent to cancel a specific chart is provided in a "Last Edition" notice. The final cancellation of a chart is made in a "Canceled" notice. Both types of notices will appear in LNM Section IV, "Chart Correction." A comprehensive list of all canceled NOAA charts is available at: <http://www.charts.noaa.gov/MCD/Dole.shtml>.

Traditional paper nautical chart production is ending to enable the creation and maintenance of larger scale, more up-to-date, higher quality coverage of NOAA's electronic navigational chart (NOAA ENC®) product. This will significantly enhance the amount of charted detail available to mariners. More information about NOAA's program to sunset traditional paper charts is on the NOAA Coast Survey website at: <https://nauticalcharts.noaa.gov/charts/farewell-to-traditional-nautical-charts.html>

An online NOAA Custom Chart application at: <https://devgis.charttools.noaa.gov/pod> is available to create chart images from ENC data, which may then be printed. Notices to Mariners will not be issued for NOAA Custom Charts.

SAFETY NOTICE - NAVIGATIONAL RANGE AND SECTOR LIGHTS ON ELECTRONIC CHARTS (39/22)

The U.S. Coast Guard has become aware that the Range and Sector Light Characteristic labels are not displayed on Electronic Navigational Charts (ENCs) when used in an Electronic Chart Display and Information System (ECDIS) due to limitations of the S-52 ECDIS display specification. Mariners may query the ENC data directly within ECDIS or refer to the Light List for complete information on Range and Sector Light Characteristics.

PACIFIC OCEAN - HAZARD TO NAVIGATION - MARINE DEBRIS (07/12)

With the increase in ocean debris sightings along the coastlines of the Pacific Ocean, mariners are reminded to submit debris sighting reports to the National Oceanic and Atmospheric Administration (NOAA) Marine Debris Program at DisasterDebris@noaa.gov, and the University of Hawaii oceanographic research center at marinedebris@soest.hawaii.edu. For inshore sightings, please use the State of Hawaii <https://dlnr.hawaii.gov/dobor/reportmarinedebrishawaii/>.

HI ISLANDS - HAWAII - UNMANNED OPERATIONS (27/22)

Liquid Robotics (www.liquid-robotics.com) will be conducting continuous autonomous, unmanned maritime vehicle operations from September 25, 2023 through February 29, 2024 along the coastal waters of the main Hawaiian Islands using three uncrewed autonomous vehicles, SV3 Wave Gliders. Each vehicle will use a different distance from shore (1.5, 3 and 6 km). In addition to transit through the restricted area 334.1400 off of Ewa Beach, Hawaii, a single Wave Glider would be travelling along the course, the other 2 Wave Gliders on the mission will be well outside of the restricted area. The restrictions, will appear restricting mooring, anchoring or any bottom work.

Operations consist of scientific ocean data collection. Wave Glider carries no fuel, lubricants, or hydrocarbons, is wave powered, remotely attended from our Wave Glider Operations Center (WGOC), moving at speeds of typically 1kt, and designed to give way if encountered by a vessel. It is surfboard size, copper in color, with a contact plaque and mast extending 1 meter above the surface supporting a flag. Mariners are urged to transit the area with caution. For up-to-date information, mariners can contact Liquid Robotics Operations Center at +1 703 376 9300, or by email at support@liquid-robotics.com.

HI ISLANDS - HAWAII - HILO HARBOR - AIS TEMPORARY DEACTIVATION (07/19)

All mariners be advised the Coast Guard has temporarily deactivated AIS broadcasting for the following aids to navigation in the Hilo, HI area:

28035 Hilo Harbor Entrance Lighted Buoy 1 AIS: MMSI 993699986
28040 Hilo Harbor Breakwater Light AIS: MMSI 993699987
28055 Hilo Harbor Lighted Buoy 3 AIS: MMSI 993699985
28070 Hilo Harbor Lighted Buoy 4 AIS: MMSI 993699984

HI ISLANDS - HAWAII - ISAAC HALE PARK (02/19)

The waterway leading to Pohoiki Bay boat ramp at Isaac Hale Park is un-navigable due to shoaling and sand accumulation. All mariners are requested to use caution when transiting the channel leading up to the ramp. POC: DLNR DOBOR, Hawaii District (808) 327-3690 <https://dlnr.hawaii.gov/dobor/>

HI ISLANDS - HAWAII - WAILOA BASIN SHOALING (05/24)

There has been a report of increased shoaling at the entrance to Wailoa River. The shoaling is most severe between Wailoa Basin Channel Lights 1 and 2 (Light List numbers 28120 and 28125) and at low tides. All mariners are advised to use caution when transiting the channel. Reported by: Wailoa River and Reeds Bay Boating and Users Association

HI ISLANDS - MAUI - KAHULUI HARBOR DREDGE PROJECT (01/24)

Dredging Operations at the Kahului Harbor under contract by the US Army Corps of Engineers, Honolulu District. Our clamshell dredge, "DB Morty" will carry out dredging operations. The tug "Ocean Eagle" will serve as our tending tug during disposal operations. Support will also be supplied by the tender tug "Becky T" All equipment will monitor Channel 13, 14, and 80.

Our Dredging operations will commence on or about February 12th, 2024 and end on or about April 15, 2024. During this time we will be operating 24 hours / 7 days / week between the Kahului Harbor and Kahului Ocean Dredged Material Disposal Site (ODMDS) located at approximately 21 4' 30.6" and 156 28'49.5". Our Operations Manager Mr. Dennis Salyers can be reached at (415) 497-5289.

Mariners are advised to use extreme caution while transiting the dredge area. Request mariners to transit at their slowest safe speed to minimize wake when in the vicinity of a dredge and proceed with caution after passing arrangements have been made. In the event you have questions concerning our request for a Notice to Mariners, please contact me at (253) 820-5009.

The following buoys will be temporarily relocated starting late January 2024:

Kahului Harbor Buoy 5 (LLNR 28360)
Kahului Harbor Lighted Buoy 6 (LLNR 28365)
Kahului Harbor Lighted Buoy 8 (LLNR 28370)
Kahului Harbor Buoy 10 (LLNR 28375)
Kahului Harbor Lighted Buoy 12 (LLNR 28380)

HI ISLANDS - MAUI - KAUNAKAKAI HARBOR DREDGE PROJECT (05/24)

Dredging Operations at the Kaunakakai Harbor under contract by the US Army Corps of Engineers, Honolulu District. Our clamshell dredge, "DB Morty" will carry out dredging operations. The tug "Ocean Eagle" will serve as our tending tug during disposal operations. Support will also be supplied by the tender tug "Becky T" All equipment will monitor Channel 13, 14, and 80.

Our Dredging operations will commence on or about April 15, 2024 and end on or about May 30, 2024. During this time we will be operating 24 hours / 7 days / week between the Kahului Harbor and Kahului Ocean Dredged Material Disposal Site (ODMDS) located at approximately 21 4' 30.6" and 156 28'49.5". Our Operations Manager Mr. Dennis Salyers can be reached at (415) 497-5289.

Mariners are advised to use extreme caution while transiting the dredge area. Request mariners to transit at their slowest safe speed to minimize wake when in the vicinity of a dredge and proceed with caution after passing arrangements have been made. In the event you have questions concerning our request for a Notice to Mariners, please contact me at (253) 820-5009.

The following buoy will be relocated started January 2024:
Kaunakakai Harbor Buoy 5 (LNR 28625)

HI ISLANDS - MAUI - MALA WHARF SHOALING (32/22)

There has been a report of increased shoaling around Mala Wharf. At low tide, the Mala Wharf Boat Ramp also becomes dangerously shallow with waters less than 03 feet. All mariners are requested to use caution while loading and unloading at Mala Wharf Boat Ramp and when transiting the channel. POC: DLNR DOBOR, Maui District (808) 243-5824

HI ISLANDS - MAUI - MAALAEA HARBOR SHOALING

Report of shoaling within Maalaea Harbor, Maui. The shoaling berm, which runs parallel to the Southern seawall may pose a significant impact to the charted draft. All vessels transiting in and out of the harbor are advised to do so with caution.

HI ISLANDS - MAUI - LAHAINA HARBOR SHOALING (34/22)

There have been numerous reports of shoaling around Lahaina Harbor. All mariners are requested to transit the area with caution and report any observed changes in shoaling conditions to DLNR DOBOR at (808) 243-5824 and Marine Safety Team Maui at MSTMaui@uscg.mil

HI ISLANDS - OAHU - MAUNALUA BAY SHOALING (05/22)

There has been a report of increased shoaling in Maunalua Bay, between Maunalua Bay Daybeacon 1A (LLNR 28935) and Maunalua Bay Daybeacon 2 (LLNR 28940) when transiting to and from Hawaii Kai. At mean low tide, the Maunalua Bay Boat Ramp also becomes dangerously shallow. All mariners are requested to use caution while loading and unloading at Maunalua Bay Boat Ramp and when transiting the channel. POC: DLNR DOBOR at (808) 587-1966 / (808) 832-3520 or website listing : <https://dlnr.hawaii.gov/dobor/contact/>

EGS GROUP SUBSEA SURVEY OPERATIONS IN PACIFIC US WATERS AND HAWAIIAN ISLANDS (04/24)

The R/V Bold Explorer will be conducting an undersea telecommunications cable survey from February 2024 through March 2024 in US / Guam / Tinian marine waters along the red route: See Enclosure 6

Operation:

24/7 cable route survey operations including the stern deployment of a tethered sonar towfish at varying water depths to collect geophysical/bathymetric data for a proposed undersea cable. The maximum water depth of tow operations will be 1500 meters. The sonar sensor will be towed approx. 20-40 meters from the seafloor and up to 3 kilometers behind the vessel. The survey corridor is 500 meters centered on the survey centerline. Operations in water depths from 20m to 1500m will utilize an over the side towed sensor. Operations in water depths greater than 1500 meters will utilize hull mounted equipment.

Survey Ship: R/V "Bold Explorer" IMO 8835085, 68meters LOA

Call Sign: C6GJ2

Flag: Commonwealth of The Bahamas

VHF: Monitoring Channels 16 & 13.

Activity: Undersea Telecommunications Cable Route Survey

Location: Hawaii Federal/State Waters

Activity Period: February 2024 – March 2024

24 hr. Contact: Bridge VSAT PHONE: +1 929 481 5774

ISAT Phone: +870 776 114 988

BE MMSI: 311001260

E-mail: becaptain@egssurvey.com (Captain/Bridge) LOCATION

All vessels and fishing activity requested to maintain a 1 nautical mile (1nm) closest point of approach (CPA) - Limited maneuverability -

MARINA ISLANDS - GUAM - DIVING OPERATIONS (04/24)

PMI will be mobilizing Vessels and Material Barge(s) just in the vicinity of Naval Base GUAM to conduct repairs to Passive Water Barriers and Mooring system at Naval Station Guam. Marker Buoys will be in place during the duration of the project in the area of coordinates below. The proposed PMI project will consist of:

1. Mooring
13°26'33.50"N 144°39'53.25"E
2. Mooring
13°26'33.06"N 144°39'59.66"E

The proposed project will start on March 1, 2024 and lasting approximately 4 Weeks. A crane mounted barge and a material barge will be staged outside the channel to conduct scope of work during the hours of 7am to 7pm. Commercial Divers will post Alpha Dive flag during all diving operations. The channel will remain open and operational.

All Staged equipment shall have approved Navigational warning devices following Coast Guard rules and regulations. If activities need to be extended past March 31, 2024 an additional Notice shall be submitted.

If you should have any questions or concerns, please do not hesitate to contact us. POC: Christopher Berry (757) 431 - 7203

SECTION II - DISCREPANCIES

This section lists all reported and corrected discrepancies related to Aids to Navigation in this edition. A discrepancy is a change in the status of an aid to navigation that differs from what is published or charted.

DISCREPANCIES (FEDERAL AIDS)

LLNR	Aid Name	Status	Chart No.	BNM Ref.	LNM St	LNM End
28340	Kahului Harbor Entrance Range Front Light	LT IMCH	19340		33/23	
28390	Kauiki Head Light	LT IMCH	19320	SCC Hono 089-2:	20/23	
28405	Hanamanioa Point Light	DAYMK MISSING	19320	SCC 149-23	34/23	
28470	Lahaina Boat Basin Range Front Light	STRUCT DEST		SCC Hono 148-2:	33/23	
28475	Lahaina Boat Basin Range Rear Light	STRUCT DMGD		SCC Hono 147-2:	33/23	
28510	Hawea Point Light	DAYMK MISSING	19340		20/23	
28520	Pohakuloa Point Light	LT EXT	19340	SCC Hono 213-2:	45/21	
28700	Kaneohe Bay Channel Daybeacon 5	DAYMK IMCH	19359	SCC Hono 140-2:	31/23	
29265	Kalihi Channel Lighted Buoy 5	SINKING	19367	SCC Hono 018-2:	05/24	
29770	Nawiliwili Harbor Breakwater Light	LT EXT/DAYMK MISSING		SCC Hono 095-2:	38/22	
29865	Puolo Point Light	LT EXT	19380	SCC Hono 066-2:	17/23	
30185	Breakers Point Light	LT EXT		SCC Hono 011-2:	05/23	
30186	Taema Bank Lighted Buoy 1	OFF STA		SCC Hono 158-2:	37/23	
30745	Cabras Island Channel Light 4	REDUCED INT	81054	SCC Guam 087-2	10/23	
30751	Piti Channel Entrance Light 1	STRUCT DEST/HAZ NAV	81054	SCC Guam 195-2	22/23	
30752	Piti Channel Entrance Light 2	STRUCT DEST	81054	SCC Guam 212-2	22/23	
30811	Agat Harbor Entrance Lighted Buoy AG	BUOY DMGD	81048	SCC Guam 202-2	22/23	

DISCREPANCIES (FEDERAL AIDS) CORRECTED

LLNR	Aid Name	Status	Chart No.	BNM Ref.	LNM St	LNM End
------	----------	--------	-----------	----------	--------	---------

None

DISCREPANCIES (PRIVATE AIDS)

LLNR	Aid Name	Status	Chart No.	BNM Ref.	LNM St	LNM End
------	----------	--------	-----------	----------	--------	---------

28007.22	FAD Site WH1	MISSING	19320	SCC Hono 021-1: 18/15
28007.23	FAD Site V V - Kahaluu, Hawaii	MISSING	19004	SCC Hono 022- 06/24
28007.25	FAD Site F - Kailua Kona, Hawaii	OFF STA	19320	SCC Hono 194-2: 48/23
28007.29	FAD Site XX - Puako, Hawaii	MISSING	19320	SCC Hono 023- 06/24
28007.33	FAD Site DD - Opana Point, Maui	MISSING	19340	SCC Hono 008-2: 02/24
28007.42	FAD SITE MTBC 2	MISSING	19004	SCC Hono 030-2: 06/22
28008.19	FAD Site CC - Kaena Point, Lanai	MISSING	19340	SCC Hono 024- 06/24
28008.33	FAD Site P - Penguin Bank, Oahu	MISSING	19339	SCC Hono 165-2: 39/23
28008.35	FAD Site HH - Pearl Harbor, Oahu	MISSING	19340	SCC Hono 143-2: 49/22
28008.37	FAD Site BO - Barbers Point, Oahu	MISSING	19380	SCC Hono 025- 06/24
28009.01	FAD Site R - Makaha, Oahu	MISSING	19004	SCC Hono 026- 06/24
28009.09	FAD Site J - Wailalee, Oahu	MISSING	19380	SCC Hono 005-2: 02/24
28009.13	FAD Site BB - Moloaa, Kauai	MISSING	19380	SCC Hono 027- 06/24
28009.15	FAD Site DK - Anahola, Kauai	OFF STA	19004	SCC Hono 006-2: 02/24
28009.17	FAD Site WK - Wailua, Kauai	MISSING	19380	SCC Hono 153-2: 37/23
28009.23	FAD Site PP - Koloa, Kauai	MISSING	19380	43/23
28271	Kawaihae LT Draft Harbor Buoy 2	MISSING		SCC Hono 129-2: 29/23
28271.1	Kawaihae LT Draft Harbor Buoy 3	MISSING		SCC Hono 183-2: 44/23
28271.3	Kawaihae LT Draft Harbor Buoy 6	MISSING		SCC Hono 184-2: 44/23
28381.1	Kahului Boat Ramp Buoy 1	MISSING		SCC Hono 187-2: 30/20
28381.2	Kahului Boat Ramp Buoy 2	MISSING		SCC Hono 187-2: 30/20
28381.3	Kahului Boat Ramp Buoy 3	MISSING		SCC Hono 187-2: 30/20
28381.4	Kahului Boat Ramp Buoy 4	MISSING		SCC Hono 187-2: 30/20
28381.5	Kahului Boat Ramp Buoy 5	MISSING		SCC Hono 187-2: 30/20
28381.6	Kahului Boat Ramp Buoy 6	MISSING		SCC Hono 187-2: 30/20
28381.8	Kahului Boat Ramp Buoy 8	MISSING		SCC Hono 187-2: 30/20
28381.9	Kahului Boat Ramp Buoy 9	MISSING		SCC Hono 187-2: 30/20
28395	Hana Bay Daybeacon	DAYMK DMGD/STRUCT DMGD		SCC Hono 061-2: 18/22
28427	Maalaea Basin Channel Lighted Buoy 1	ADRIFT/LT EXT		SCC Hono 158-1: 22/18
28430	Maalaea Basin Channel Lighted Buoy 2	LT EXT		SCC Hono 017-2: 06/23
28480	Lahaina Boat Basin Lighted Buoy 3	MISSING		SCC Hono 177-1: 28/18
28495	Lahaina Boat Basin Lighted Buoy 6	OFF STA		SCC Hono 196-2: 48/23
28500	Lahaina Boat Basin Lighted Buoy 7	MISSING		SCC Hono 238-1: 46/18
28505	Lahaina Boat Basin Lighted Buoy 8	OFF STA		SCC Hono 169-2: 41/23
28507.5	Mala Channel Light 5	LT EXT		SCC Hono 283-2: 45/20
28507.6	Mala Channel Light 6	LT EXT		SCC Hono 284-2: 45/20
28524	PacIOOS Wave Lighted Buoy Lanai	MISSING	19340	46/23
28630	Kaunakakai Small Boat Harbor Buoy 1	SINKING		SCC Hono 223-2: 46/21
28674.04	WETS 4	MISSING	19359	SCC Hono 010-1: 02/18
28674.05	WETS 5	MISSING	19359	SCC Hono 011-1: 02/18
28895	Makai Channel Daybeacon 3	DAYMK MISSING	19358	SCC Hono 038-1: 11/19
28900	Makai Channel Daybeacon 4	MISSING	19358	SCC Hono 038-1: 11/19
29010	Maunaloa Bay Daybeacon 16	HAZ NAV/DAYMK DMGD	19358	SCC Hono 07/22
29105	Ala Wai Boat Harbor Channel Range Rear Light	LT EXT	19369	SCC Hono 162-2: 39/23
29105	Ala Wai Boat Harbor Channel Range Rear Light	Status Unreported	19369	39/23
29115	Ala Wai Boat Harbor Channel Buoy 4	OFF STA	19369	SCC Hono 079-2: 29/22
29125	Ala Wai Boat Harbor Channel Daybeacon 6	DAYMK DMGD	19369	SCC Hono 174-1: 27/18

29135	Ala Wai Boat Harbor Channel Daybeacon 8	DAYMK DMGD	19369	SCC Hono 175-1	27/18
29315	Keehi Lagoon Barge Turning Channel Range Front	REDUCED INT	19367	SCC Hono 312-2	52/20
29325	Keehi Lagoon Barge Turning Basin Buoy 2	OFF STA	19367	SCC Hono 085-1	16/12
29600	Barbers Point Anchorage Area Bravo Tank Terminal Lighted Buoy A	LT EXT	19362	SCC Hono 001-2	01/22
29656	West Beach Marina Light 2	LT EXT	19362	SCC Hono 266-1	40/17
29734.6	HOT site surface mooring buoy	OFF STA	19013	SCC Hono	29/22
29735	PacIOOS Wave Lighted Buoy Hanalei	MISSING	19380	SCC Hono 198-2	50/23
29900	Kikiaola Boat Harbor Range Front Light	DAYMK DMGD		SCC Hono 186-2	45/23
29901	Kikiaola Boat Harbor Range Rear Light	DAYMK DMGD		SCC Hono 187-2	45/23
30603	FAD Site "Cocos" - Guam	LT EXT	81048	SCC Guam 014-1	03/19
30612	FAD Site "FACPI 2" - Guam	MISSING	81048	SCC Guam 082-1	09/19
30624	FAD Site "Number 2" - Guam	OFF STA	81048	SCC Guam 146-1	12/14
30631	FAD Site "Number 3"	MISSING	81048	SCC Guam 083-1	09/19
30634	FAD Site "Number 4"	MISSING	81048	SCC Guam 011-1	03/19
30637.1	FAD Site GF1	MISSING	81048	SCC Guam 041-1	03/18
30640	FAD Site "Number 5"	LT EXT	81048	SCC Guam 607-1	47/18
30650	PacIOOS Wave Lighted Buoy Ritidian	MISSING	81048	SCC Guam 197-2	22/23
30787	Drydock Point West Entrance Daybeacon 1	DAYMK MISSING	81054	SCC Guam 707-1	44/17
30811.3	Agat Small Boat Harbor Light 3	LT EXT	81048	SCC Guam 178-1	18/19
30811.9	Agat Small Boat Harbor Daybeacon 9	DAYMK IMCH	81048	SCC Guam 092-1	07/18
30815	Mamaon Channel Lighted Buoy 1	OFF STA	81048	SCC Guam 718-1	45/17
30820	Mamaon Channel Lighted Buoy 2	OFF STA	81048	SCC Guam 506-1	39/18
30851.1	FAD Site EE - Rota	MISSING	81004	SCC Guam 195-2	20/22
30851.2	FAD Site DD - Rota	MISSING	81004	SCC Guam 303-1	30/19
30851.3	FAD Site DE - Rota	MISSING	81004	SCC Guam 084-2	10/23
30852.19	FAD Site II - Saipan	MISSING	81067	SCC Guam 083-2	10/23
30852.22	Fad Site LL - Saipan	MISSING	81067	SCC Guam 196-2	20/22
30913	Smiling Cove Lighted Buoy 1	MISSING	81076	SCC Guam 284-2	29/22

DISCREPANCIES (PRIVATE AIDS) CORRECTED

LLNR	Aid Name	Status	Chart No.	BNM Ref.	LNM St	LNM End
------	----------	--------	-----------	----------	--------	---------

None

PLATFORM DISCREPANCIES

Name	Status	Position	BNM Ref.	LNM St	LNM End
------	--------	----------	----------	--------	---------

None

PLATFORM DISCREPANCIES CORRECTED

Name	Status	Position	BNM Ref.	LNM St	LNM End
------	--------	----------	----------	--------	---------

None

SECTION III - TEMPORARY CHANGES and TEMPORARY CHANGES CORRECTED

This section contains temporary changes and corrections to Aids to Navigation for this edition. When charted aids are temporarily relocated for dredging, testing, evaluation, or marking an obstruction, a temporary correction shall be listed in Section IV giving the new position.

TEMPORARY CHANGES

LLNR	Aid Name	Status	Chart No.	BNM Ref.	LNM St	LNM End
28365	Kahului Harbor Lighted Buoy 6	RELOCATED FOR DREDGING		SCC hono 011-24	03/24	

28370	Kahului Harbor Lighted Buoy 8	DISCONTINUED FOR DREDGING	SCC Hono 014-24	03/24
28375	Kahului Harbor Buoy 10	RELOCATED FOR DREDGING	SCC Hono 012-24	03/24
28380	Kahului Harbor Lighted Buoy 12	RELOCATED FOR DREDGING	SCC Hono 013-24	03/24
28625	Kaunakakai Harbor Buoy 5	RELOCATED FOR DREDGING	SCC Hono 016-24	03/24
28935	Maunaloa Bay Daybeacon 1A	TRUB	19358	47/22
30740	Cabras Island Channel Junction Lighted Buoy A	TRLB	81054	25/23
30751	Piti Channel Entrance Light 1	TRUB	81054	SCC Guam 273-23 28/23

TEMPORARY CHANGES CORRECTED

LLNR	Aid Name	Status	Chart No.	BNM Ref.	LNLM St	LNLM End
------	----------	--------	-----------	----------	---------	----------

None

PLATFORM TEMPORARY CHANGES

Name	Status	Position	BNM Ref.	LNLM St	LNLM End
------	--------	----------	----------	---------	----------

None

PLATFORM TEMPORARY CHANGES CORRECTED

Name	Status	Position	BNM Ref.	LNLM St	LNLM End
------	--------	----------	----------	---------	----------

None

SECTION IV - CHART CORRECTIONS

This section contains corrections to federally and privately maintained Aids to Navigation, as well as NOS corrections.

This section contains corrective actions affecting chart(s). Corrections appear numerically by chart number, and pertain to that chart only. It is up to the mariner to decide which chart(s) are to be corrected. The following example explains individual elements of a typical chart correction.

Chart Number	Chart Edition	Edition Date	Last Local Notice to Mariners	Horizontal Datum Reference	Source of Correction	Current Local Notice to Mariners
12327	91st Ed.	19-APR-97	Last LNM: 26/97	NAD 83		27/97
Chart Title: NY-NJ-NEW YORK HARBOR - RARITAN RIVER						
Main Panel 2245 NEW YORK HARBOR						
(Temp) ADD	NATIONAL DOCK CHANNEL BUOY 3				CGD01	at 40-41-09.001N 074-02-48.001W
Corrective Action	Green can Object of Corrective Action				Position	

(Temp) indicates that the chart correction action is temporary in nature. Courses and bearings are given in degrees clockwise from 000 true. Bearings of light sectors are toward the light from seaward. The nominal range of lights is expressed in nautical miles (NM) unless otherwise noted.

19340 **27th Ed.** **01-MAR-08** **Last LNM: 04/15** **WGS 84** **06/24**

Chart Title: **Hawai'i to O'ahu**

Main Panel **2786 HAWAII TO OAHU**. Page/Side: **N/A**

(Temp) ADD	Kahului Harbor Buoy 10 Red Relocate Due to Dredge.			at 20-53-35.680N	156-28-20.184W
(Temp) ADD	Kahului Harbor Buoy 5 Green Relocate Due to Dredge			at 20-53-59.960N	156-28-17.476W
(Temp) ADD	Kahului Harbor Lighted Buoy 12 Red Relocate Due to Dredge. FI R 4s			at 20-53-39.479N	156-28-13.234W
(Temp) ADD	Kahului Harbor Lighted Buoy 12 Red Relocate Due to Dredge. FI R 4s			at 20-53-39.479N	156-28-13.234W

(Temp) ADD	Kahului Harbor Lighted Buoy 6 Red Relocate Due to Dredge. Q R	at 20-53-49.238N	156-28-29.029W
(Temp) ADD	Kaunakakai Harbor Buoy 5 Green Relocate Due to Dredge	at 21-04-59.780N	157-01-46.165W

19357 **25th Ed.** **01-MAR-13** **Last LNM: 47/21** **WGS 84** **06/24**

ChartTitle: Island of O'ahu;Barbers Point Harbor

Main Panel 2801 ISLAND OF OAHU. Page/Side: N/A

ADD	Lower Left of Chart: This is the Last Edition of this chart. It will be canceled on 31-Jul-24.	NOS --	--
LAST EDITION	No new editions of chart 19357 will be published. It will be canceled on 31-Jul-24. Comparable or larger scale Electronic Navigational Chart (ENC) coverage is available. See "Cancellation of NOAA Paper and Raster Nautical Charts" in Section I of this LNM for details. A list of all canceled NOAA charts is at https://www.charts.noaa.gov/MCD/Dole.shtml .	NOS --	--

19480 **9th Ed.** **01-MAY-07** **Last LNM: 38/11** **WGS 84** **06/24**

ChartTitle: Gambia Shoal to Kure Atoll including approaches to the Midway Islands

Main Panel 2825 GAMBIA SHOAL TO KURE ATOLL INCLUDING APPROACHES TO THE TERRITORY OF - MIDWAY. Page/Side: N/A

ADD	Lower Left of Chart: This is the Last Edition of this chart. It will be canceled on 31-Jul-24.	NOS --	--
LAST EDITION	No new editions of chart 19480 will be published. It will be canceled on 31-Jul-24. Comparable or larger scale Electronic Navigational Chart (ENC) coverage is available. See "Cancellation of NOAA Paper and Raster Nautical Charts" in Section I of this LNM for details. A list of all canceled NOAA charts is at https://www.charts.noaa.gov/MCD/Dole.shtml .	NOS --	--

81048 **10th Ed.** **01-FEB-06** **Last LNM: 50/13** **WGS 84** **06/24**

ChartTitle: Marianas Island of Guam Territory of Guam;Cocos Lagoon

Main Panel 2828 ISLAND OF GUAM TERRITORY OF GUAM. Page/Side: N/A

ADD	Lower Left of Chart: This is the Last Edition of this chart. It will be canceled on 31-Jul-24.	NOS --	--
LAST EDITION	No new editions of chart 81048 will be published. It will be canceled on 31-Jul-24. Comparable or larger scale Electronic Navigational Chart (ENC) coverage is available. See "Cancellation of NOAA Paper and Raster Nautical Charts" in Section I of this LNM for details. A list of all canceled NOAA charts is at https://www.charts.noaa.gov/MCD/Dole.shtml .	NOS --	--

81067 **9th Ed.** **01-FEB-09** **Last LNM: 17/12** **WGS 84** **06/24**

ChartTitle: Commonwealth of the Northern Mariana Islands Saipan and Tinian

Main Panel 2872 SAIPAN AND TINIAN. Page/Side: N/A

ADD	Lower Left of Chart: This is the Last Edition of this chart. It will be canceled on 31-Jul-24.	NOS --	--
LAST EDITION	No new editions of chart 81067 will be published. It will be canceled on 31-Jul-24. Comparable or larger scale Electronic Navigational Chart (ENC) coverage is available. See "Cancellation of NOAA Paper and Raster Nautical Charts" in Section I of this LNM for details. A list of all canceled NOAA charts is at https://www.charts.noaa.gov/MCD/Dole.shtml .	NOS --	--

OIL RIG MOVEMENT

Drill Rigs/Vessels Removed

<u>Latitude</u>	<u>Longitude</u>	<u>Block</u>	<u>Rigs/Vessel</u>	<u>Chart</u>	<u>Type</u>	<u>Status</u>
None						

Drill Rigs/Vessels Established

<u>Latitude</u>	<u>Longitude</u>	<u>Block</u>	<u>Rigs/Vessel</u>	<u>Chart</u>	<u>Type</u>	<u>Status</u>
None						

SECTION V - ADVANCE NOTICES

This section contains advance notice of approved projects, changes to aids to navigation, or upcoming temporary changes such as dredging, etc. Mariners are advised to use caution while transiting these areas.

SUMMARY OF ADVANCED APPROVED PROJECTS

Approved Project(s)
None

Project Date

Ref. LNM

Advance Notice(s)

APRA OUTER HARBOR - GUAM – CABRAS ISLAND CHANNEL LIGHT 4 (04/24)

Cabras Island Channel Light 4 (LLNR 30745) has been operating at reduced intensity with a nominal range of 5 nautical miles (previously 7 nautical miles) since March 2023. The Coast Guard is proposing to make this change permanent as the new lantern is far more efficient, safer to service and the aid has 3 lighted floating aids in the vicinity. The Coast Guard welcomes public comment on the proposal by 23 February 2024. Please contact the Fourteenth Coast Guard District, at (808) 535-3275, or via email at D14-DG-PJ-dpw@uscg.mil, to comment.

SECTION VI - PROPOSED CHANGES

Periodically, the Coast Guard evaluates its system of aids to navigation to determine whether the conditions for which the aids to navigation were established have changed. When changes occur, the feasibility of improving, relocating, replacing, or discontinuing aids are considered. This section contains notice(s) of non-approved, proposed projects open for comment. SPECIAL NOTE: Mariners are requested to respond in writing to the District office unless otherwise noted (see banner page for address).

PROPOSED WATERWAY PROJECTS OPEN FOR PUBLIC COMMENT

Proposed Project(s)
None

Closing

Docket No.

Ref. LNM

Proposed Change Notice(s)

HI ISLANDS - MAUI – LAHAINA BOAT BASIN RANGE FRONT AND REAR LIGHTS (04/24)

The Coast Guard is proposing to convert Lahaina Boat Basin Range Front Light (LLNR 28470) and Lahaina Boat Basin Range Rear Light (LLNR 28475) to lighted only 24 hours a day with no range board markings. Advances in LED Lantern technology allow the range lights to be visible in daytime and nighttime conditions to serve mariners navigation needs while making the aids more reliable and safer to service. The Coast Guard welcomes public comment on the proposal. Please contact the Fourteenth Coast Guard District, at (808) 535-3275, or via email at D14-DG-PJ-dpw@uscg.mil, to comment.

SECTION VII - GENERAL

This section contains information of general concern to the Mariners. Mariners are advised to use caution while transiting these areas.

PRIVATE AIDS TO NAVIGATION (01/08)

The term private aids to navigation (ATON) includes all marine aids to navigation operated in the navigable waters of the United States other than those operated by the Federal Government. Private ATON includes lighted structures and day beacons, lighted and unlighted buoys, RACONS and fog signals. Almost half of the aids to navigation established in the Fourteenth District are operated and maintained by private interests. These interests include private citizens, marina and yacht clubs, municipal and state governments, construction and dredging companies, research and non-profit organizations, beachfront associations, and large industrial concerns.

No person, public body or instrumentality not under the control of the Commandant, exclusive of the Armed Forces, shall establish and maintain, discontinue, change or transfer ownership of any aid to maritime navigation, without first obtaining permission to do so from the Commandant and the Army Corps of Engineers.

Owners contemplating establishing such buoys should review CFR 33 Part 66 and contact the appropriate authority, usually the Army Corps of Engineers, to determine what additional requirements may exist. Additionally, private aids on navigable waters regulated by the federal government require either a Coast Guard permit or Coast Guard letter of no objection. The application for a letter of no objection or for a permit, form CG-2554, can be obtained by emailing the Private ATON Manager at the email given below.

The Private ATON Manager provides applicants assistance in processing their paperwork. Federal regulations governing aids to navigation, copies of permits previously issued to the applicant, illustrations of standard markings, and lists of commercial ATON manufacturers are available. Questions and requests should be directed to:

Commander (dpw)
Fourteenth Coast Guard District
300 Ala Moana Boulevard, 9-220
Honolulu, HI 96850-4982
Attn: Private ATON Manager
Tel: (808) 535-3409 / 3408
Email: D14-DG-PJ-dpw@uscg.mil

U.S. Army Corps of Engineers

PRIVATE AIDS TO NAVIGATION (01/08)

Honolulu District
Building 230
Ft. Shafter, HI 96858-5440
Attn: CEPOH-EC-R
Phone: (808)-835-4004

Mariners are reminded that they have a responsibility to report discrepant private aids to the nearest Coast Guard unit. The failure of a mariner to report a discrepant aid to navigation may result in casualties to others. All aids to navigation in the Fourteenth District, both private and federally maintained, are user monitored. When owners receive discrepancy reports from the Coast Guard, they are obligated to take immediate action to correct the discrepancy. Owners are reminded of their responsibility for the proper operation and maintenance of their private aids to navigation. All classes of private aids to navigation shall be maintained in proper operating condition. They are subject to inspection by the Coast Guard at any time and without prior notice. The Coast Guard issues broadcast notice to mariners for reported discrepancies that remain in effect until the discrepancy is corrected or is published in the Local Notice to Mariners.

FISH AGGREGATING DEVICE (FAD) BUOY INFORMATION AND DISCREPANCIES (28/21)

The State of Hawaii has placed Fish Aggregating Devices (FADs) in the waters surrounding the main Hawaiian Islands. These buoys attract schools of tuna and other important pelagic fishes, such as dolphinfish (Mahimahi), wahoo (Ono) and billfish. FADs allow fishermen to easily locate and catch these species. The buoys are anchored using approximately 2.5 miles of mooring line which creates a very large swing circle. Mariners are advised that these buoys may maneuver anywhere from three to five miles from their charted positions.

Mariners requesting up to date information concerning Hawaiian Island's FAD Buoys, or reports of discrepancies, may either visit the Hawaii FAD web site at <http://www.himb.hawaii.edu/fads>, contact Mr. Warren Cortez at (808) 956-0684, or send written correspondence to:

Mr. Warren Cortez
Fish Aggregating Devices Program
965 N. Nimitz Hwy
Honolulu, HI 96817

Mariners requesting up to date information concerning Guam's FAD Buoys, or reports of discrepancies, may either visit the Guam FAD web site at www.dawr.guam.gov, contact Mr. Brent Tibbatts at Brent.Tibbatts@gmail.com 671.735.3955/56, or send written correspondence to:

Mr. Brent Tibbatts
Guam Department of Agriculture
Division of Aquatics and Wildlife Resources
163 Dairy Road
Mangilao, Guam 96913

NAVIGATION INTERNET SITES (33/05)

Chart Corrections: <http://nauticalcharts.noaa.gov/mcd/updates/index.htm>
Light List Corrections: <https://www.navcen.uscg.gov/index.php?pageName=lightLists>
Coast Pilot Corrections: <http://nauticalcharts.noaa.gov/nsd/cpdownload.htm>
NOAA Weather Buoy Sites: <http://www.ndbc.noaa.gov/Maps/rmd.shtml>
Hawaii Weather: <http://www.prh.noaa.gov/pr/hnl/>
Online Chart Viewer: <http://www.nauticalcharts.noaa.gov/mcd/OnLineViewer>

(For NOAA Print-on-Demand (POD) charts only)

NOAA and Coast Survey, in partnership with OceanGrafix, LLC, offer mariners official nautical charts that are continuously updated by NOAA cartographers up to the latest Notice to Mariners and to all Critical Safety Information known to the Coast Survey in advance of its publication in a Notice. From NOAA digital files, OceanGrafix prints corrected charts, to order, for sale to mariners through the OceanGrafix retail network. Produced and distributed by authority of NOAA, these charts meet all U.S. Coast Guard chart carriage requirements, including the requirements for updating (Titles 33 & 46 CFR). New Editions are available 2-8 weeks before their release as a traditional NOAA chart.

These new charts feature operational information for the commercial mariner, and education and safety information for the recreational boater. They have brighter colors and a higher contrast for better readability in various light conditions. They come either laminated or on water resistant paper.

POD charts are available through a POD chart agents at <http://OceanGrafix.com/>, 1-877-56CHART, or contact NOAA at <http://nauticalcharts.noaa.gov/pod/Pod.htm>. For questions contact NOAA at help@nauticalcharts.gov.

HI ISLANDS - U.S. DEPARTMENT OF HOMELAND SECURITY - DIVER SAFETY ADVISORY (25/09)

This advisory is issued to increase the safety of all open water and waterway users throughout the Hawaiian Islands and is issued in conjunction with the Department of Land and natural Resources (DLNR) pilot program focusing on diver safety.

Over the years there have been an increased number of reports of near misses between divers and waterborne crafts in Oahu, Maui and Hawaii. In most cases, these near misses have happened in near coastal waters and often when conditions were choppy.

The following suggested measures can help avoid near misses:
Become familiar with your transit route and destination area before heading out.
Remain vigilant of your surroundings and post extra lookouts in choppy waters and inclement weather.
Stay clear of federal Aids to Navigation and commercial delineated channels.
Use all appropriate sound and visual signals.
Postpone trips until the weather and sea conditions improve.

HI ISLANDS - U.S. DEPARTMENT OF HOMELAND SECURITY - DIVER SAFETY ADVISORY (25/09)

All open water and waterway users are also highly encouraged to visit the Coast Guard Sector Honolulu Homeport website for Safety and Security Zone information for the Hawaiian Islands at: <http://homeport.uscg.mil/> under the Honolulu Port Directory tab and Safety and Security section.

The most updated charts for the Hawaiian Islands can be found on the National Oceanic and Atmospheric Administration (NOAA) website: <http://www.prh.noaa.gov/pr/hnl> or <http://www.nauticalcharts.noaa.gov/mcd/OnLineViewer.html>.

Any and all life threatening or hazardous conditions including off station or missing buoys should be reported immediately to the U.S. Coast Guard at (808) 842-2600.

PACIFIC OCEAN - NATIONAL WILDLIFE REFUGE - RESTRICTED FOR ENTRY (22/11)

The U.S. Department of the Interior, Fish and Wildlife Service, National Wildlife Refuge System, Pacific Reefs National Wildlife Refuge Complex manages ten National Wildlife Refuges within the Fourteenth Coast Guard District. Eight of these Refuges, described below, consist of waters and submerged and emergent lands. The remaining two Refuges, the Marianas Arc of Fire and the Mariana Trench National Wildlife Refuges, consist only of submerged lands.

The waters and submerged and emergent lands of National Wildlife Refuges are subject to the regulations governing the National Wildlife Refuge System found in Parts 25-32 of Title 50, Code of Federal Regulations. Therefore, except as provided by international law, these areas are closed to all forms of entry, other than innocent passage, unless specifically authorized by a Special Use Permit issued by the U.S. Fish and Wildlife Service. Should you have any questions, please contact the Pacific Reefs National Wildlife Refuge Complex by emailing the Project Leader at Pacific_Reefs@fws.gov or by calling 808-792-9560.

Baker Island National Wildlife Refuge. This Refuge includes all of Baker Island approximately at Latitude 0-11-45 North and Longitude 176-28-45 West, together with its territorial waters extending outward 12 nautical miles (13.8 mi; 22.2 km) from the mean low water line of the island.

Howland Island National Wildlife Refuge. This Refuge includes all of Howland Island approximately at Latitude 0-48-30 North and Longitude 176-37 West, together with its territorial waters extending outward 12 nautical miles (13.8 mi; 22.2 km) from the mean low water line of the island.

Jarvis Island National Wildlife Refuge. This Refuge includes all of Jarvis Island approximately at Latitude 0-22-20 South and Longitude 160-00 West, together with its territorial waters extending outward 12 nautical miles (13.8 mi; 22.2 km) from the mean low water line of the island.

Johnston Atoll National Wildlife Refuge. This Refuge includes all of Johnston Atoll approximately at Latitude 16-44 North and Longitude 169-31 West, together with its territorial waters extending outward 12 nautical miles (13.8 mi; 22.2 km) from the mean low water line of the atoll. However, portions of the emergent land at Johnston Atoll are currently under the administrative jurisdiction of the Department of the Air Force, which controls all access to areas under its administrative jurisdiction.

Kingman Reef National Wildlife Refuge. This Refuge includes all of Kingman Reef approximately at Latitude 6-24-30 North and Longitude 162-23-30 West, together with its territorial waters extending outward 12 nautical miles (13.8 mi; 22.2 km) from the mean low water line of the reef.

Palmyra Atoll National Wildlife Refuge. This Refuge includes all of Palmyra Atoll approximately at Latitude 05-53 North and Longitude 162-05 West, together with its territorial waters extending outward 12 nautical miles (13.8 mi; 22.2 km) from the mean low water line of the atoll. However, portions of the emergent land at Palmyra Atoll are currently owned and managed as a nature preserve by The Nature Conservancy, which controls all access to areas under its ownership.

PACIFIC OCEAN - NATIONAL WILDLIFE REFUGE - RESTRICTED FOR ENTRY CONTINUED (22/11)

Rose Atoll National Wildlife Refuge. This Refuge includes all of Rose Atoll approximately at Latitude 14-32-45 South and Longitude 168-9-24 West, the seaward extent being the extreme low water line outside the perimeter reef except at the entrance channel where the boundary is a line extended between the extreme low water lines on each side of the entrance channel.

Wake Atoll National Wildlife Refuge. This Refuge includes all of Wake Atoll approximately at Latitude 19-18 North and Longitude 166-38 East, together with its territorial waters extending outward 12 nautical miles (13.8 mi; 22.2 km) from the mean low water line of the atoll. However, in accordance with Presidential Proclamation No. 8336, the emergent land at Wake Atoll is currently under the management of the Department of the Air Force, which controls all access to areas under its management.

HI ISLANDS - KAHŌ'OLAWĒ ISLAND RESERVE COMMISSION - NOTICE OF OPEN WATERS SCHEDULE (01/24)

Notice to Trollers: The dates below mark the Permitted Trolling Schedule in Zone B for January -- December 2024. Hawaii Administrative Rules (H.A.R) 13-261 requires that all vessels must register with the Kahō'olawē Island Reserve Commission (KIRC) before entering the Reserve to troll during designated Permitted Trolling dates. To register please contact Dean Tokishi at dean.tokishi@hawaii.gov 808-243-5022, visit Kahoolawe.hawaii.gov or pick up registration packet at the Division of Boating and Recreation.

12:01 a.m Saturdays to 11:59 p.m. Sundays as follows:

January 20 – 21 ; 27 – 28
February 03 – 04 ; 24 – 25
March 02 – 03 ; 30 – 31
April 13 – 14 ; 27 – 28
May 11 – 12 ; 18 – 19
June 08 – 09 ; 29 – 30
July 13 – 14 ; 27 – 28
August 03 – 04 ; 10 – 11
September 07 – 08 ; 28 – 29
October 12 – 13 ; 26 – 27
November 02 – 03 ; 16 – 17

HI ISLANDS - KAHO'OLAWA ISLAND RESERVE COMMISSION - NOTICE OF OPEN WATERS SCHEDULE (01/24)

December 14 – 15 ; 28 – 29

The Kaho'olawe Island Reserve (defined as the submerged lands and waters within two nautical miles of the island) is divided into two zones; Zones A and B. These zones are defined as:

Zone A: Includes the island of Kaho'olawe and all the submerged lands and waters between the shoreline of Kaho'olawe and the 30-fathom (180 ft.) depth which surrounds Kaho'olawe (HAR 13-261). Unauthorized entry into Zone A is prohibited at all times except in case of emergency.
Zone B: All waters and submerged lands between the 30-fathom (180 ft.) depth surrounding Kaho'olawe and two nautical miles from the shoreline of the island. Unauthorized entry into Zone B is prohibited at all times except for trolling as authorized by KIRC on the days stipulated by the Permitted Trolling Schedule as listed above or in case of emergency. Trollers must remain underway, making way at all times while in Zone B. ALL OTHER FISHING, OCEAN RECREATION, AND ANY OTHER ACTIVITIES ARE STRICTLY PROHIBITED.

WARNING! Kaho'olawe and its surrounding submerged lands and waters contain unknown quantities of unexploded ordnance which are hazardous to public health and safety.

(Authority: (H.R.S. §6K, H.A.R. §13-261)

See enclosure 2

HI ISLANDS - OAHU - KANEOHE BAY - MILITARY OPERATIONS (09/09)

Military amphibious and search and rescue operations may be underway at any time, day or night, within Kaneohe Bay in the vicinity of 21-26-06.83N/157-46-11.00W and 21-26-45.00N/157-46-55.00W (approximately .5 NM south of Mokapu Peninsula). Support surface craft will be equipped with appropriate day/night signals and markings and can be reached on VHF-Ch 82. In the interest of safety, it is requested that all vessels that use Sonar contact Water Front Operations on VHF-Ch 82A or by phone at (808) 257-2941 to avoid injury to divers that may be in the area.

HI ISLANDS - OAHU - KANEOHE BAY - PYRAMID ROCK - HAZARDOUS OPERATIONS (06/24)

The Pyramid Rock / Fort Hase / Kaneohe Bay Danger Zone is located in ocean waters as described by the below coordinates and is closed at all times to surface craft, swimmers, and divers, with the exception of authorized personnel. Mark B.J. Edmonson at mark.bj.edmonson@usmc.mil.

The Danger Zone is bounded by the following coordinates:

- 21-27.97°N / 157-45.78°W
- 21-29.88°N / 157-44.78°W
- 21-29.38°N / 157-43.68°W
- 21-27.47°N / 157-44.68°W

The following are hazardous operations to mariners for February 07, 2024 through February 13, 2024:

- 07 Feb N/A
- 08 Feb N/A
- 09 Feb N/A
- 10 Feb N/A
- 11 Feb N/A
- 12 Feb N/A
- 13 Feb N/A

See enclosure 1

HI ISLANDS - OAHU - KANEOHE BAY - ULUPAU CRATER WEAPONS DANGER ZONE - HAZARDOUS OPERATIONS (06/24)

All vessels/watercraft operating within the Mokapu Peninsula near the Ulupau Crater located on Marine Corps Base Hawaii shall vacate the danger zone at the best speed and by the most direct route.

Danger zone will include areas from (Zone 1 NE) 21°30'59.66"N /157°44'05.97"W to 21°29'16.58"N /157°40'30.19"W to (Zone 2 SE) 21°25'01.79"N/157°40'33.70"W to 21°27'11.84"N/157°43'53.83"W, forming a triangular figure.

The following are hazardous operations to mariners for February 07, 2024 through February 13, 2024:

- 07 Feb 0600 - 2300
- 08 Feb 0600 - 2300
- 09 Feb 0600 - 2300
- 10 Feb 0600 - 2300
- 11 Feb 0600 - 2300
- 12 Feb 0600 - 2300
- 13 Feb 0600 - 2300

- Zone 2 (SE Range)
- 07 Feb 0600 - 2300
- 08 Feb 0600 - 2300
- 09 Feb 0600 - 2300
- 10 Feb 0600 - 2300
- 11 Feb 0600 - 2300
- 12 Feb 0600 - 2300
- 13 Feb 0600 - 2300

HI ISLANDS - OAHU - KANEOHE BAY - ULUPAU CRATER WEAPONS DANGER ZONE - HAZARDOUS OPERATIONS (06/24)

See enclosure 1

HI ISLANDS - OAHU - WAIMANALO BAY - HAZARDOUS OPERATIONS (06/24)

The Waimanalo Bay Danger Zone is located in ocean waters as described by the below coordinates and is closed at all times to surface craft, swimmers, and divers, with the exception of authorized personnel. Mark B.J. Edmonson at mark.bj.edmonson@usmc.mil.

The Danger Zone is bounded by the following coordinates:

21-21'11"N / 157-42'16"W
21-21'10"N / 157-42'24"W
21-21'50"N / 157-42'34"W
21-21'49"N / 157-42'28"W

The following are hazardous operations to mariners for February 07, 2024 through February 13, 2024:

07 Feb 0000 - 2359
08 Feb 0000 - 2359
09 Feb 0000 - 1100
10 Feb N/A
11 Feb N/A
12 Feb N/A
13 Feb N/A

See enclosure 1

HI ISLANDS - OAHU - EWA BEACH - HAZARDOUS OPERATIONS (06/24)

The Puuloa Danger Zone is located in ocean waters as described by the below coordinates and is closed at all times to surface craft, swimmers, and divers, with the exception of authorized personnel. Mark B.J. Edmonson at mark.bj.edmonson@usmc.mil.

The Danger Zone is bounded by the following coordinates:

21-18-21N / 157-59-14W
21-18-11N / 158-00-17W
21-17-11N / 158-00-06W
21-17-22N / 157-59-03W

The following are hazardous operations to mariners for February 07, 2024 through February 13, 2024:

07 Feb 0700 - 1700
08 Feb 0700 - 1700
09 Feb 0700 - 1700
10 Feb N/A
11 Feb N/A
12 Feb 0700 - 1700
13 Feb 0700 - 1700

See enclosure 1

HI ISLANDS - SOUTH COAST OAHU - HAZARDOUS OPERATIONS - HOT AREAS (43/23)

FACSFAC Pearl Harbor established Special Operating Areas Four (SOA-4) as a permanent "HOT AREA" named "KAPU" on April 15, 1995. FACSFAC effective hours are 0700W to 2300W (Monday - Saturday from 1700Z - 0900Z) Monday - Friday, and on weekend's 0800W - 1600W (Weekends from 1800Z - 0200Z) or by request. Activities include intermittent naval gunnery exercises and airborne ordnance drops. "KAPU" is also designated as the emergency jettison area for aircraft with hung stores, etc. Hot area "KAPU" is bounded by the following coordinates 20-46N/158-16W, 20-42 N/158-04W, 20-13N/158-36W and 20-04N/158-11W. Scheduling authority is FACSFAC Pearl Harbor call-sign "HULA DANCER". "HULA DANCER" can be reached on primary 266.4/127.0 MHz, or secondary 336.8/132.4 MHz or telephone (808) 472-7333/7337 and may authorize transits through these areas on a case by-case basis.

HI ISLANDS - KAUAI - BARKING SANDS - PACIFIC MISSILE RANGE FACILITY HI AREA - HOT AREAS (43/23)

The following area is established as a safety zone during launch operations at PMRF, Kauai, Hawaii: The waters bounded by the following coordinates: (22°01.2' N, 159°47.3' W), (22°01.2' N, 159°50.7' W), (22°06.3' N, 159°50.7' W), (22°06.3' N, 159°44.8' W). (Datum: OHD) The above safety zone will be activated during launch operations at PMRF, Kauai, Hawaii. The Coast Guard will provide notice that the safety zone will be activated through published and broadcast local notice to mariners prior to scheduled launch dates. The area described of this section will be closed to all vessels and persons, except those vessels and persons authorized by the Commander, Fourteenth Coast Guard District, or the Captain of the Port (COTP) Honolulu, Hawaii, whenever Strategic Target System (STARS) vehicles are to be launched by the United States Government from the PMRF, Barking Sands, Kauai, Hawaii. The general regulations governing safety zones contained in 33 CFR 165.23 apply. Nomenclature changes to part 165 appear by USCG-2006-25556, 72 FR 36328, 36329 preview citation details, July 2, 2007 and by USCG-2018-1049, 84 FR 7813, Mar. 5, 2019.

HI ISLANDS - KAUAI - BARKING SANDS - PACIFIC MISSILE RANGE FACILITY HI AREA - HAZARDOUS OPERATIONS (06/24)

Intermittent missile firing operations are conducted by the Pacific Missile Range Facility (PMRF), Barking Sands, Kauai, in the Whiskey 188 (W-188) operating area. Operations are conducted periodically throughout each week in an area bound by the following coordinates:

22:00N/159:51W, 22:00N/160:00W, 22:04N/160:06W, 21:59.5N/160:21W, 22:05N/161:35W, 22:45N/161:25W, 22:56N/161:49W, 23:34N/161:18.6W, 23:57N/160:41W, 25:41N/161:36W, 26:00N/159:58W, 25:47N/158:15W, 23:54N/158:15W, 22:20N/159:09W, 22:21N/159:30W, 22:13N/159:42W, 22:00N/159:51W

Intermittent high power radar operations are conducted by PMRF at the following position: 22:03N/159:47W

Request all mariners remain at least one mile off the coastline between Kokole Point and Nohili Point.

Vessels may be requested to alter course due to firing operations and are requested to contact "Pacific Missile Range Facility" on VHF-Ch 16 prior to entering the above boundaries. If unable to contact the PMRF prior to entering or while in the warning area, relay messages through U.S. Coast Guard Honolulu. Vessels inbound and outbound for Hawaiian ports will create the least interference to firing operations as well as enhance vessel's safety by passing South of the Islands of Kauai and Niihau during the specified times. Federal law provides for civil penalties of \$40,000 and/or criminal penalties of 6 years in prison for each violation of the PMRF safety zone during the schedule of designated activity (33CFR 165.1406).

The following are hazardous operations to mariners for February 07, 2024 through February 14, 2024:

- 07 FEB NO HAZARDOUS OPERATIONS SCHEDULED.
- 08 FEB 0830 - 1400 320 NM SW of Niihau through 1060 NNE of Kauai.
- 09 FEB 0830 - 1400 320 NM SW of Niihau through 1060 NNE of Kauai.
- 10 FEB 0830 - 1400 320 NM SW of Niihau through 1060 NNE of Kauai.
- 11 FEB NO HAZARDOUS OPERATIONS SCHEDULED.
- 12 FEB NO HAZARDOUS OPERATIONS SCHEDULED.
- 13 FEB 0530 - 2400 Kaulakahi Channel and Nohili Point to 60 NM West through North.
- 14 FEB 0001 - 2400 Kaulakahi Channel and Nohili Point to 60 NM West through North.

MARINE EVENTS

This section contains information of general concern to the mariner. All event forms must be received no later than noon on Tuesday a week prior to the event. Mariners are advised to use caution while transiting these areas:

HI ISLANDS - OAHU - FIREWORKS (01/24)

Hawaii Explosives and Pyrotechnics, Inc. will be conducting a land fireworks display neighboring Duke Kahanamoku Beach on Fridays from 1915 - 2030 January 05, 2024 to December 28, 2024. Please require all vessels to observe the safety/fallout zone radius from the firing site. Vessels and spectators are advised to maintain a distance of at least 210 feet radius from the launch site.

Contact (808) 968-0600 for further information.

See Enclosure 5

HI ISLANDS - OAHU - FIREWORKS (06/24)

Hawaii Explosives and Pyrotechnics, Inc. will be conducting a barge fireworks display offshore Lanikuhonua Cultural Center from 1930 -2030 on February 15, 2024. Please require all vessels to observe the safety/fallout zone radius from the firing site. Vessels and spectators are advised to maintain a distance of at least 420 feet fallout zone from the launch site 21°20'18"N, 158°07'55"W.

Contact Charlene Pascual (808) 960-6833 for further information.

SECTION VIII - LIGHT LIST CORRECTIONS

An Asterisk *, indicates the column in which a correction has been made to new information

(1) No.	(2) Name and Location	(3) Position	(4) Characteristic	(5) Height	(6) Range	(7) Structure	(8) Remarks
------------	--------------------------	-----------------	-----------------------	---------------	--------------	------------------	----------------

None

PUBLICATION CORRECTIONS

None

ENCLOSURES

ENCLOSURE (1)

HI ISLANDS - OAHU - KANEOHE BAY HAZARDOUS OPERATIONS (18/07)

ENCLOSURE (2)

HI ISLANDS - KAHO`OLAWA ISLAND RESERVE COMMISSION - NOTICE OF OPEN WATERS SCHEDULE 2024 (01/24) see attachment doc

ENCLOSURE (5)

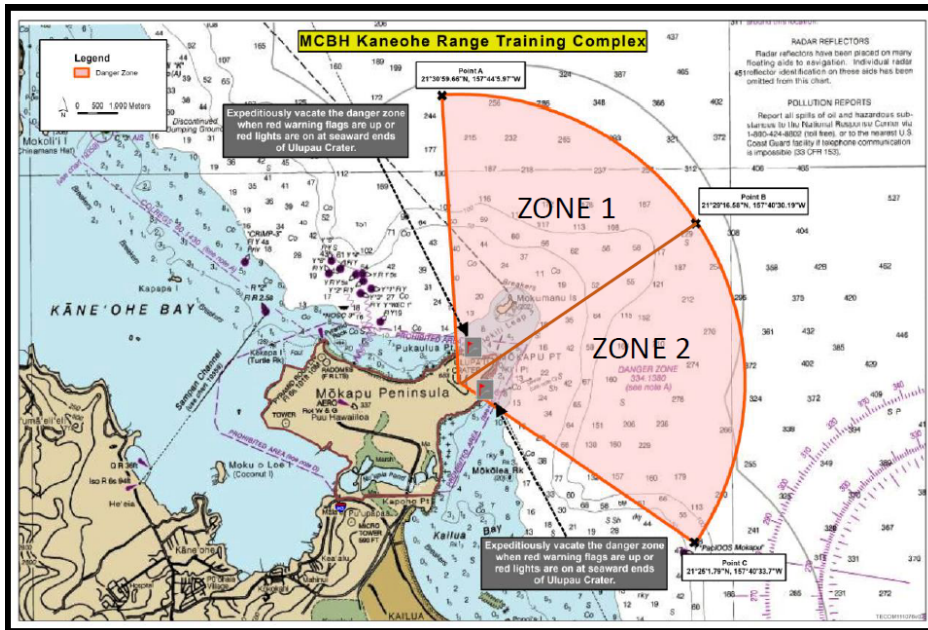
HI ISLANDS - OAHU - HONOLULU FIREWORKS 2024

ENCLOSURE (6) (04/24)

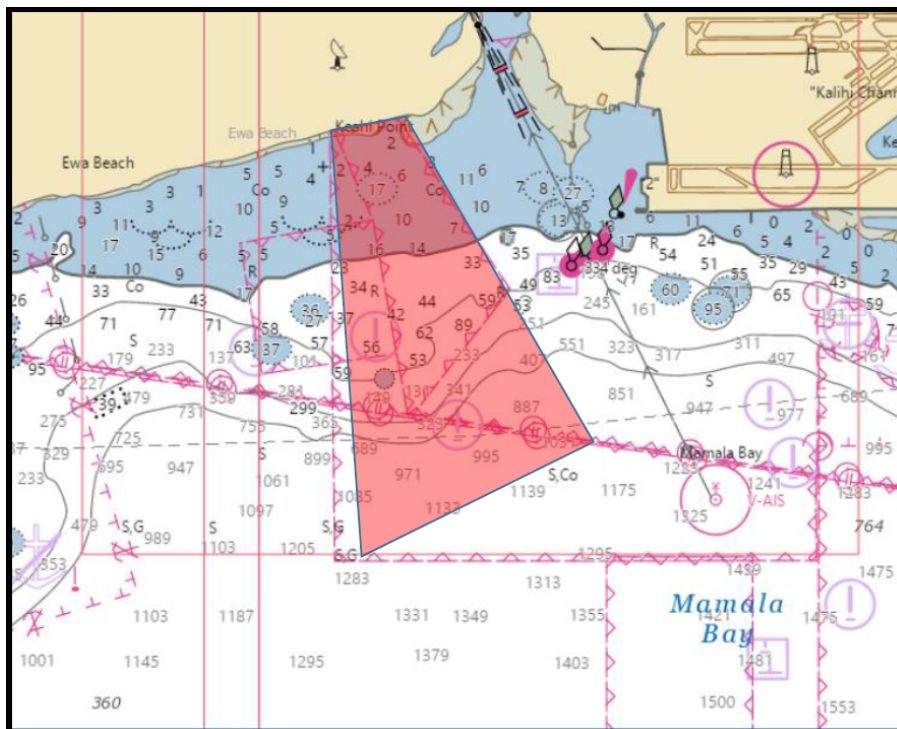
PACIFIC OCEAN - GUAM - SURVEY VESSEL

M. Day
Rear Admiral, U.S. Coast Guard
Commander, Fourteenth Coast Guard District

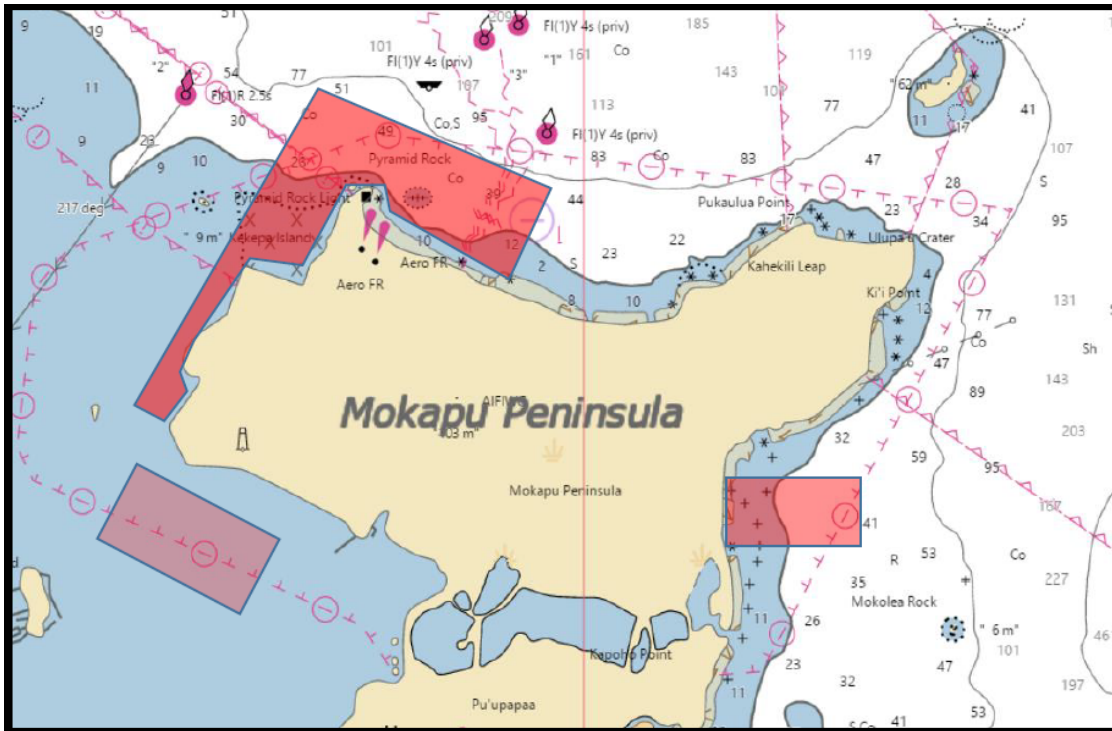
Mokapu Point



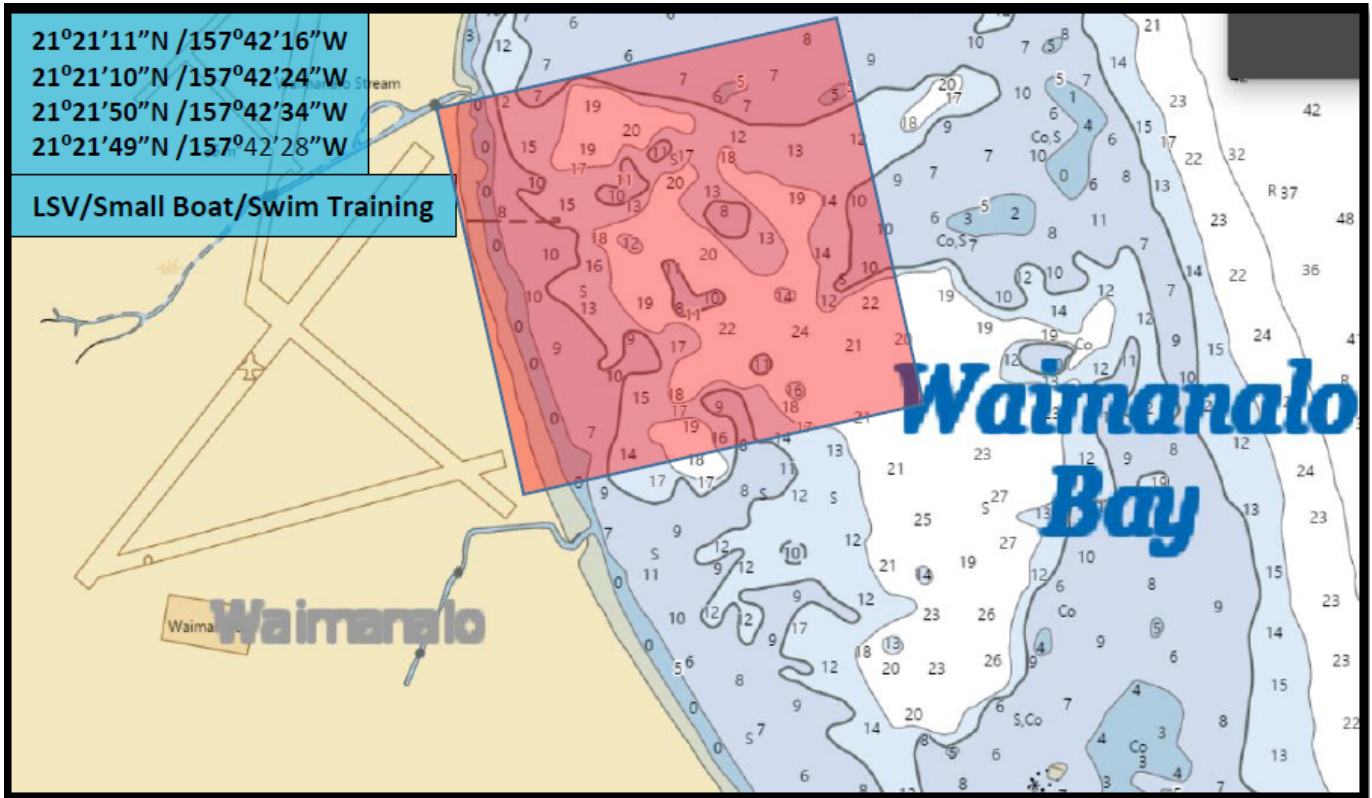
Ewa Beach



Pyramid Rock/Fort Hase/Kaneohe Bay



Waimanalo Bay





Sea 1000



SAUMALU MATAAFA
Acting Chairperson

DAWN N.S. CHANG
'ĀNELA EVANS
BENTON KEALII PANG, Ph.D
MICHELLE PESCAIA

Michael K. Nāho'opi'i
Executive Director

KŪKULU KE EA A KANALOA
KAHO'OLAWE ISLAND RESERVE COMMISSION
KŌMIKINA MĀLAMA KAHO'OLAWE

811 Kolu Street, Suite 201, Wailuku, HI 96793
Telephone (808) 243-5020 Fax (808) 243-5885
Website: <http://kahoolawe.hawaii.gov>

Notice of Permitted Trolling Schedule:
January-December 2024
Kaho'olawe Island Reserve
Zone B (> 30 fathoms)

Notice to Trollers: The dates below mark the Permitted Trolling Schedule in Zone B for January -- December 2024. **Hawaii Administrative Rules (H.A.R) 13-261 requires that all vessels must register with the Kaho'olawe Island Reserve Commission (KIRC) before entering the Reserve to troll during designated Permitted Trolling dates. To register please contact Dean Tokishi at dean.tokishi@hawaii.gov 808-243-5022, visit Kahoolawe.hawaii.gov or pick up registration packet at the Division of Boating and Recreation.**

12:01 a.m Saturdays to 11:59 p.m Sundays as follows:

January	20 -21; 27 - 28	July	13 -14; 27 - 28
February	03 -04; 24 - 25	August	03 -04; 10 - 11
March	02 -03; 30 - 31	September	07 -08; 28 - 29
April	13 -14; 27 - 28	October	12 -13; 26 - 27
May	11 -12; 18 - 19	November	02 -03; 16 - 17
June	08 -09; 29 - 30	December	14 -15; 28 - 29

The Kaho'olawe Island Reserve (defined as the submerged lands and waters within two nautical miles of the island) is divided into two zones; Zones A and B. These zones are defined as:

Zone A: Includes the island of Kaho'olawe and all the submerged lands and waters between the shoreline of Kaho'olawe and the 30-fathom (180 ft.) depth which surrounds Kaho'olawe (HAR 13-261). **Unauthorized entry into Zone A is prohibited at all times except in case of emergency.**

Zone B: All waters and submerged lands between the 30-fathom (180 ft.) depth surrounding Kaho'olawe and two nautical miles from the shoreline of the island. Unauthorized entry into Zone B is prohibited at all times except for trolling as authorized by KIRC on the days stipulated by the Permitted Trolling Schedule as listed above or in case of emergency. Trollers must remain underway, making way at all times while in Zone B. **ALL OTHER FISHING, OCEAN RECREATION, AND ANY OTHER ACTIVITIES ARE STRICTLY PROHIBITED.**

WARNING! Kaho'olawe and its surrounding submerged lands and waters contain unknown quantities of unexploded ordnance which are hazardous to public health and safety.

(Authority: (H.R.S. §6K, H.A.R. §13-261))

Hawaii Explosives & Pyrotechnics, Inc.

P.O. Box 1244
Keaau, HI 96749-1244
hepinc@hipyro.com



December 26, 2023

Commander 14th Coast Guard District (OAN)
PJKK Federal Building, Room 9-236
300 Ala Moana Blvd.
Honolulu, HI 96850-4982

Dear Commander:

Hawaii Explosives & Pyrotechnics, Inc. is requesting a "Notice to Mariners" for a land fireworks display on Duke Kahanamoku Beach. Please require all vessels to observe the safety zone radius. (Site Map Attached) Display specifics are as follows:

2024						2024					
January	5	12	19	26		July	5	12	19	26	
February	2	9	16	23		August	2	9	16	23	30
March	1	8	15	22	29	September	6	13	20	27	
April	5	12	19	26		October	4	11	18	25	
May	3	10	17	24	31	November	1	8	15	22	29
June	7	14	21	28		December	6	13	20	27	

Event: Friday Night Fireworks @ Hilton Hawaiian Village
Firing Site: Duke Kahanamoku Beach
Firing Times: 7:45 p.m. (October thru April) 8:00 p.m. (May thru September)
Firing Windows: 7:15 p.m. to 8:15 p.m. 7:30 p.m. to 8:30 p.m.
Safety Zone: 210' radius of firing site
Length of Display: 4 minutes

Should you have any questions, please feel free to contact me at our Big Island office at (808) 968-0600. Thank you for your assistance with this matter

Sincerely,

Paulette L Smith

Paulette L Smith
Permitting Specialist/Admin Assist

LOCATION

The R/V Bold Explorer will be conducting an undersea telecommunications cable survey in US / Guam & Northern Mariana Island coastal/marine waters along the red route below:

