

District 1	
LLNR	Aid Name
5/2290	Mount Desert Light
10/3195	Matinicus Rock Light
20/4925	Monhegan Island Light
35/5590	Seguin Light
40/6675	Halfway Rock Light
45/7480	Portland Lighted Whistle Buoy P
60/7520	Cape Elizabeth Light
65	Taylor Reef Buoy 3
70	Alden Rock Buoy 4
75	East Hue and Cry Rock Lighted Buoy 1 (NOAA 44007)
80	Old Anthony Lighted Whistle Buoy 2
85	Watts Ledge Bell Buoy 1
95	Wood Island Light
100	Hussey Rock Buoy 1HR
105/8100	Goat Island Light
115	Bibb Rock Buoy BR
120	Perkins Cove Lighted Bell Buoy PC
125	Cape Neddick Light
130	Boon Island Ledge Lighted Whistle Buoy 22A
155	Boon Island Light
160/8258	York Harbor Lighted Bell Buoy YH
165	Stones Rock Buoy 2SR
170	York Ledge Buoy YL
180	Murray Rock Buoy 2MR
185	West Sister Buoy 2
195	Kitts Rocks Lighted Whistle Buoy 2KR
200	Whaleback Light
205	Gunboat Shoal Lighted Bell Buoy 1
210	Foss Ledges Buoy 1A
215/8870	Rye Harbor Entrance Lighted Whistle Buoy RH
220	Appledore Ledge Buoy 2
225	Isles of Shoals Bell Buoy IS
230	Halfway Rock Buoy 4
235	Isles of Shoals Light
237	Cedar Island Ledge Isolated Dnager Buoy DC
240	Anderson Ledge Buoy 2
245	Little Boars Head Buoy 1C
255	Breaking Rocks Buoy 2
265/8990	Merrimack River Entrance Lighted Whistle Buoy MR
275	Flat Ground Bell Buoy 1
285	Dry Salvages Lighted Bell Buoy 1
295	Cape Ann Light
300	Oak Rock Buoy 2
310	Thacher Island Buoy 1

315	Londoner Rock Daybeacon
325	Salt Island ledge Buoy 4
330	Eastern Point Light
340	Eastern Point Lighted Whistle Buoy 2
350/9975	Bakers Island Light
355/10383	Newcomb Ledge Lighted Whistle Buoy 1
365	Great Pig Rocks Lighted Bell Buoy 4
385/10677	Boston Approach Lighted Buoy BG
390/10679	The Graves Light
410/10676	Boston Lighted Whistle Buoy B
420	Boston Approach Lighted Bell BF (NOAA 44013)
425/11340	Boston Light
435	Harding Ledge Lighted Bell Buoy 1HL
440	Minots Ledge Light
445	Davis Ledge Lighted Gong Buoy 1DL
455	Twenty-One Foot Lighted Buoy 21
460	Scituate Approach Lighted Gong Buoy SA
485	Race Point Light
500	Highland Light
520	Chatham Beach Lighted Whistle Buoy C
525	Chatham Light
545/13560	Nantucket (Great Point) Light
555	Sankaty Head Light
590	Squibnocket Lighted Bell Buoy 1
595	Squibnocket Shoal Buoy 2
600	Old Man Ledge Buoy 3
605	Lone Rock Buoy 5
620/15610	Gay Head Light
630/15985	Buzzards Bay Entrance Light
640	Block Island Southeast Light
660	Montauk Point Light
670/29035	Shinnecock Inlet Approach Lighted Whistle Buoy SH
675/29025	Shinnecock Light
685	Moriches Inlet Approach Lighted Whistle Buoy M
740	Fishing Grounds Obstruction Lighted Bell Buoy 5
742	Fishing Grounds Obstruction Shoal Buoy 6
755	New York Bight Dumping Ground Buoy OM
760/35015	Shrewsbury Rocks Lighted Buoy 1
840	West Quoddy Head Bell Buoy WQ
1040	West Quoddy Head Light
1045	Sail Rock Lighted Whistle Buoy 1
1050	Morton Ledge Buoy 2
1080	Little River Entrance Bell Buoy LR
1120	Libby Island Light
1125	Seak Cove Ledge Buoy 2
1390	Moose Peak Light
1510	Nash Island Lighted Whistle Buoy NI

1655	Narraguagus Bay Buoy NB
1730	Southeast Rock Lighted Whistle Buoy 6A
1735	Petit Manan Light
1765	Petit Manan East Bar Gong Buoy EB
1770	Petit Manan West Bar Bell Buoy WB
2045	Bakers Island Light
2295	Great Duck Island Light
2315	Long Island Lighted Gong Buoy LI
2340	Bass Harbor Head Bell Buoy EB
2345	Bass Harbor Head Gong Buoy WB
2415	Trumpet Island Bar Buoy TI
2500	Casco Passage Bell Buoy CP
2600	Flye Island Channel Bell Buoy FI
2760	Saddleback Island Bell Buoy SI
2825	Eggemoggin Eastern Bell Buoy EE
2925	Eggemoggin Lighted Bell Buoy EG
2990	Eggemoggin Reach Bell Buoy ER
3300	Penobscot Bay East Approach Lighted Whistle Buoy PBA
3302	Penobscot Bay Lighted Buoy WP
3325	Saddleback Ledge Light
3540	Castine Harbor Entrance Bell Buoy CH
3760	Heron Neck Light
4000	Fox Island Thorofare Lighted Bell Buoy FT
4035	Two Bush Island Lighted Whistle Buoy TBI
4050	West Penobscot Bay Entrance Lighted Gong Buoy PA
4120	West Penobscot Bay Entrance Lighted Gong Buoy PB
4275	Rockport Outer Bell Buoy RO
4335	Camden Harbor Bell Buoy CH
4435	Isleboro Island Lighted Bell Buoy II
4540	Two Bush Island Light
4740	Marshall Point Lighted Buoy MP
4745	Metinic Island Ledge Buoy MI
5145	Pemaquid Point Light
5150	New Harbor Lighted Bell Buoy NH
5255	Damariscotta River Approach Buoy 1
5260	Hypocrite Ledge Daybeacon H
5270	Hypocrite Ledge Lighted Bell Buoy HL
5405	Bantam Rock Lighted Bell Buoy 2BR
5410	The Motions Gong Buoy TM
5480	Cuckolds Bell Buoy 1C
5485	The Cuckolds Light
5585	Mile Ledge Lighted Bell Buoy 20ML
5595	Tom Rock Buoy 2TR
5620	Sheepscot River Entrance Lighted Buoy 2SR
6450	White Bull Lighted Gong Buoy WB
6800	Broad Sound Entrance Bell Buoy BS
7533	East Cod Ledge Lighted Buoy 1EC

7940	Saco River Approach Bell Buoy SA
8090	Old Prince Bell Buoy 2
8208	Wells Harbor Entrance Lighted Bell Buoy WH
8905	Outer Sunk Rocks Buoy 2
8920	Hampton Harbor Channel Approach Lighted Bell Buoy 2
9300	Plum Island Sound Entrance Lighted Buoy 2
9480	Essex Bay Entrance lighted Bell Buoy 1
9595	Annisquam River Entrance Lighted Bell Buoy AR
9810	Annisquam River South Entrance Buoy BC
10410	Tinkers Rock Gong Buoy TR
10520	Great Pig Rocks Buoy 6
10680	Boston North Channel Entrance Lighted Whistle Buoy NC
12325	New Inlet Bell Buoy NI
12545	Plymouth Light
13035	Mary Ann Rock Lighted Whistle Buoy 12
13040	Cape Cod Canal Approach Lighted Bell Buoy CC
13090	Barnstable Harbor Entrance Lighted Bell Buoy BH
13270	Wood End Light
13275	Long Point Light
13855	Stage Harbor Entrance Lighted Bell Buoy SH
14515	Hyannis Harbor Approach Lighted Bell Buoy HH
15135	Nantucket Bar Lighted Bell Buoy NB
15350	Muskeget Channel Lighted Whistle Buoy MC
16055	Buzzards Bay Midchannel Lighted Bell Buoy BB
16315	Cuttyhunk East Entrance Lighted Bell Buoy CH
17440	Westport Harbor Approach Lighted Bell Buoy WH
17575	Sakonnet River Entrance Lighted Whistle Buoy SR
17675	Narragansett Bay Entrance Lighted Whistle Buoy NB
19870	Montauk Harbor Entrance Lighted Whistle Buoy NB
20005	Lords Passage Lighted Whistle Buoy L
20015	Wicopasset Passage Bell Buoy W
21055	Silver Eel Pond Entrance Lighted Whistle Buoy SE
21080	Plum Island Lighted Whistle Buoy PI
21205	New Haven Harbor Lighted Whistle Buoy NH
24545	Bridgeport Harbor Channel Approach Lighted Whistle Buoy BH
26125	Port Jefferson Approach Lighted Whistle Buoy PJ
27730	Gardiners Bay South Entrance Lighted Bell Buoy S
27775	Threemile Harbor Entrance Lighted Bell Buoy TM
27960	Shelter Island Sound North Channel Lighted Whistle Buoy N
29110	Fire Island Inlet Lighted Whistle Buoy FI
30900	Jones Inlet Lighted Whistle Buoy JI
31495	East Rockaway Inlet Lighted Bell Buoy ER
34785	Ambrose Channel Lighted Whistle Buoy A
35085	Scotland Lighted Whistle Buoy S
District 5	
7/871	Shark River Inlet Lighted Whistle Buoy SI

10	Barnegat Lighted Buoy B
15	Barnegat Offshore Lighted Gong Buoy 2
25/875	Barnegat Inlet Outer Lighted Whistle Buoy BI
35/1100	Little Egg Inlet Outer Lighted Whistle Buoy LE
40	Brigantine Inlet Lighted Wreck Buoy WR2
60/1170	Absecon Inlet Lighted Buoy 1
70/1265	Great Egg Harbor Inlet Outer Lighted Whistle Buoy GE
75/1410	Townsend's Inlet Shoals Lighted Bell Buoy 4A
80	Ludlam Beach Buoy L
85	Avalon Shoal Lighted Buoy 2
90	Hereford Inlet Light
100	Five Fathom Bank Northeast Lighted Bell Buoy 2FB
105	Five Fathom Bank NW Lighted Gong Buoy 3FB
115	Five Fathom Bank South Lighted Buoy 4FB
120	Five Fathom Bank Lighted Buoy F
125	Five Fathom Bank Traffic Lane Lighted Buoy FA
130	Five Fathom Bank Traffic Lane Lighted Buoy FB
135/1435	Cape May Inlet Lighted Buoy 2CM
155	Cape May Light
160	McCrie Shoal Lighted Buoy 2MS
165	Delaware Lighted Buoy D
170	Delaware Traffic Lane Lighted Buoy DA
175	Delaware Traffic Lane Lighted Buoy DB
180	Delaware Traffic Lane Lighted Buoy DC
190/1490	Hen and Chickens Shoal Lighted Gong Buoy 1HC
195/4360	Indian River Inlet Lighted Buoy 1
210	Fenwick Shoal Lighted Buoy 1FS
240/4730	Ocean City Inlet Lighted Bell Buoy 2
250	Little Gull Bank Buoy LG
270	Winter Quarter Shoal Lighted Buoy 6
275	Assateague Light
285	Blackfish Bank Buoy 8A
290	Blackfish Bank Lighted Buoy 8
295	Turners Lump Buoy 2
300	Turners Lump Lighted Bell Buoy 2TL
305/6600	Wachapreague Inlet Lighted Whistle Buoy W
315	Parramore Bank Lighted Buoy 10
320/6700	Quinby Inlet Lighted Whistle Buoy Q
335	Hog Island Lighted Buoy 12
345	Cape Charles Lighted Buoy 14
347	Surface Gunnery Area 8 Lighted Buoy GA
348	Surface Gunnery Area 8 Lighted Buoy GB
349	Surface Gunnery Area 8 Lighted Buoy GC
350	Cape Charles Light
360	Chesapeake Light
365	USN SESEF Lighted Buoy A
370	Cape Henry Light

385	North Chesapeake Entrance Lighted Bell Buoy NCA
390	North Chesapeake Entrance Lighted Gong Buoy NCB
395	North Chesapeake Entrance Lighted Bell Buoy NCC
400	North Chesapeake Entrance Lighted Gong Buoy NCD
403	North Chesapeake Entrance Lighted Buoy NCE
405	Chesapeake Bay Entrance Lighted Whistle Buoy CH
410	Chesapeake Bay Southern Approach Lighted Whistle Buoy CB
495	USN SESEF Lighted Buoy B
500	Rudee Inlet Lighted Whistle Buoy RI
501	Rudee Inlet Entrance Lighted Buoy 1
503	Rudee Inlet Entrance Lighted Buoy 2
515	Dam Neck Disposal Area Lighted Buoy A
530	Dam Neck Firing Zone Lighted Buoy A
540	Dam Neck Firing Zone Lighted Buoy B
545	False Cape Lighted Buoy 4A
555	Currituck Beach Light
560	Currituck Lighted Buoy 6
565	Bodie Island Lighted Buoy 8
570	Navy Air Combat Maneuvering Range Tower Light A
575	Navy Air Combat Maneuvering Range Tower Light B
580	Navy Air Combat Maneuvering Range Tower Light C
585	Navy Air Combat Maneuvering Range Tower Light G
590	Bodie Island Light
600	Oregon Inlet Approach Lighted Whistle Buoy OI
620	Wimble Shoals Lighted Buoy 10
625	Cape Hatteras Light
630	Outer Diamond Shoals Buoy 2
640	Diamond Shoals Lighted Buoy 12
645/28625	Hatteras Inlet Light
650/28630	Hatteras Inlet Entrance Lighted Whistle Buoy HI
660	Ocracoke Light
665/28895	Ocracoke Inlet Entrance Lighted Whistle Buoy OC
670	Cape Lookout Light
680	Cape Lookout Shoals Lighted Buoy 2
685	Cape Lookout Lighted Buoy 14
690	Cape Lookout Shoals Lighted Buoy 4
695	Cape Lookout Shoals Lighted Buoy 6
705	Cape Lookout Shoals Lighted Buoy 8
710/29125	Cape Lookout Breakwater Lighted Buoy 2
720/29328	Beaufort Inlet Channel Lighted Whistle Buoy BM
730/29490	Bogue Inlet Entrance Lighted Whistle Buoy BI
790/29650	New River Inlet Lighted Whistle Buoy NR
795/29970	New Topsail Inlet Lighted Whistle Buoy NT
800/30145	Masonboro Inlet Lighted Whistle Buoy A
805/30260	Carolina Beach Inlet Entrance Lighted Whistle Buoy CB
810	Oak Island Light
820	Frying Pan Shoals Slough Approach Lighted Whistle Buoy SA

825	Frying Pan Shoals Slough Buoy 1
830	Frying Pan Shoals Slough Buoy 2
835	Frying Pan Shoals Lighted Buoy 16
845	Frying Pan Shoals Lighted Buoy 4FP
850	Frying Pan Shoals Lighted Buoy 6FP
860/30316	Cape Fear River Entrance Lighted Whistle Buoy CF
865/31005	Lockwoods Folly Inlet Lighted Whistle Buoy LW
870/31050	Shallotte Inlet Lighted Whistle Buoy SH
1175	Absecon Inlet Lighted Buoy 2
1485	Delaware Bay Approach Lighted Whistle Buoy CH
5270	Chincoteague Inlet Lighted Whistle Buoy CI
12820	Horseshoe Crossing Lighted Whistle Buoy HC
14057	Mobjack Bay Channel Buoy MB
22120	Chesconessex Creek Approach Buoy
23190	Big Thorofare West Appraoch Buoy BT
34931	Manasquan Inlet Lighted Bell Buoy 2M
District 7	
15	Little River Inlet Lighted Whistle Buoy LR
75/1760	Murrells Inlet Lighted Whistle Buoy MI
120	Georgetown Light
125/1865	Winyah Bay Lighted Whistle Buoy WB
135	City of Richmond Wreck Lighted Buoy WR2
140	East Bank Buoy 2EB
145	Hector Wreck Lighted Buoy WR4
155	Cape Romain Shoal Buoy 6CR
165	Bull Breakers Buoy 2BB
170	Bull Breakers Offshore Drill Mine Field Lighted Buoy 8
180	Rattlesnake Shoal Buoy 2
195	Charleston Light
200/2370	Charleston Entrance Lighted Buoy C
265/3855	North Edisto River Entrance Lighted Whistle Buoy 2NE
310/4075	Port Royal Sound Lighted Whistle Buoy P
340	Tybee Approach Lighted Buoy T
345/4540	Tybee Light
350/4530	Tybee Lighted Buoy T
355	Tybee Spoil Area Buoy A
360	Tybee Spoil Area Lighted Buoy B
435/5580	Wassaw Sound Lighted Buoy 2W
450/5790	St. Catherines Sound Lighted Buoy STC
455	Sapelo Sound Offshore Lighted Buoy S
490/5910	Doboy Sound Lighted Buoy D
510	Brunswick Lighted Buoy 2B
515/6030	St. Simons Lighted Buoy STS
518/6033	Brunswick Spoil Area Lighted Buoy C
520	St. Simons Light
525	Brunswick Spoil Area Buoy B

530	Brunswick Spoil Area Buoy A
550/6400	St. Andrew Sound Outer Entrance Buoy STA
560/6460	St. Marys Entrance Lighted Buoy STM
565	Amelia Island Light
570/7110	St. Johns Lighted Buoy STJ
575	St. Johns Light
585/9475	St Augustine Lighted Whistle Buoy STA
615/9515	Ponce de Leon Inlet Lighted Bell Buoy 2
620	Hetzel Shoal Lighted Buoy 8
625	Cape Canaveral Light
627	Cape Canaveral Danger Zone Buoy A
630	Cape Canaveral Danger Zone Buoy B
635	Cape Canaveral Danger Zone Buoy C
640	Cape Canaveral Danger Zone Buoy D
645	Southeast Outer Shoal Lighted Buoy 2
650	Southeast Shoal Lighted Buoy 4
660	Bethel Shoal Lighted Buoy 10
675/9815	Fort Pierce Inlet Lighted Buoy 2
680	Capron Shoal Buoy 10A
695	St. Lucie Shoal Lighted Buoy 12
710	St. Lucie Shoal Buoy 14
720/9995	St. Lucie Entrance Lighted Buoy 2
725	Jupiter Inlet Light
745/10175	Lake Worth Lighted Buoy LW
775	Hillsboro Inlet Entrance Light
780/10285	Hillsboro Inlet Entrance Lighted Buoy HI
800	Port Everglades Lighted Buoy PE
880	Miami Anchorage Buoy A
885	Miami Anchorage Buoy B
895/10455	Miami Lighted Buoy M
920	Fowey Rocks Light
925	Biscayne National Park North Lighted Buoy N
935	Pacific Reef Light
945.1	Carysfort Reef Light
950	Elbow Reef Light
960	Molasses Reef Light 10
970	Davis Reef Light 14
980	Alligator Reef Light
990	Tennessee Reef Light
995	Coffins Patch Light 20
1000	Sombrero Key Light
1005	Big Pine Shoal Light 22
1010	Looe Key Light 24
1015	American Shoal Light
1020	Pelican Shoal Light 26
1035	Stock Island Approach Channel Light 32
1040	Key West Entrance Lighted Whistle Buoy KW

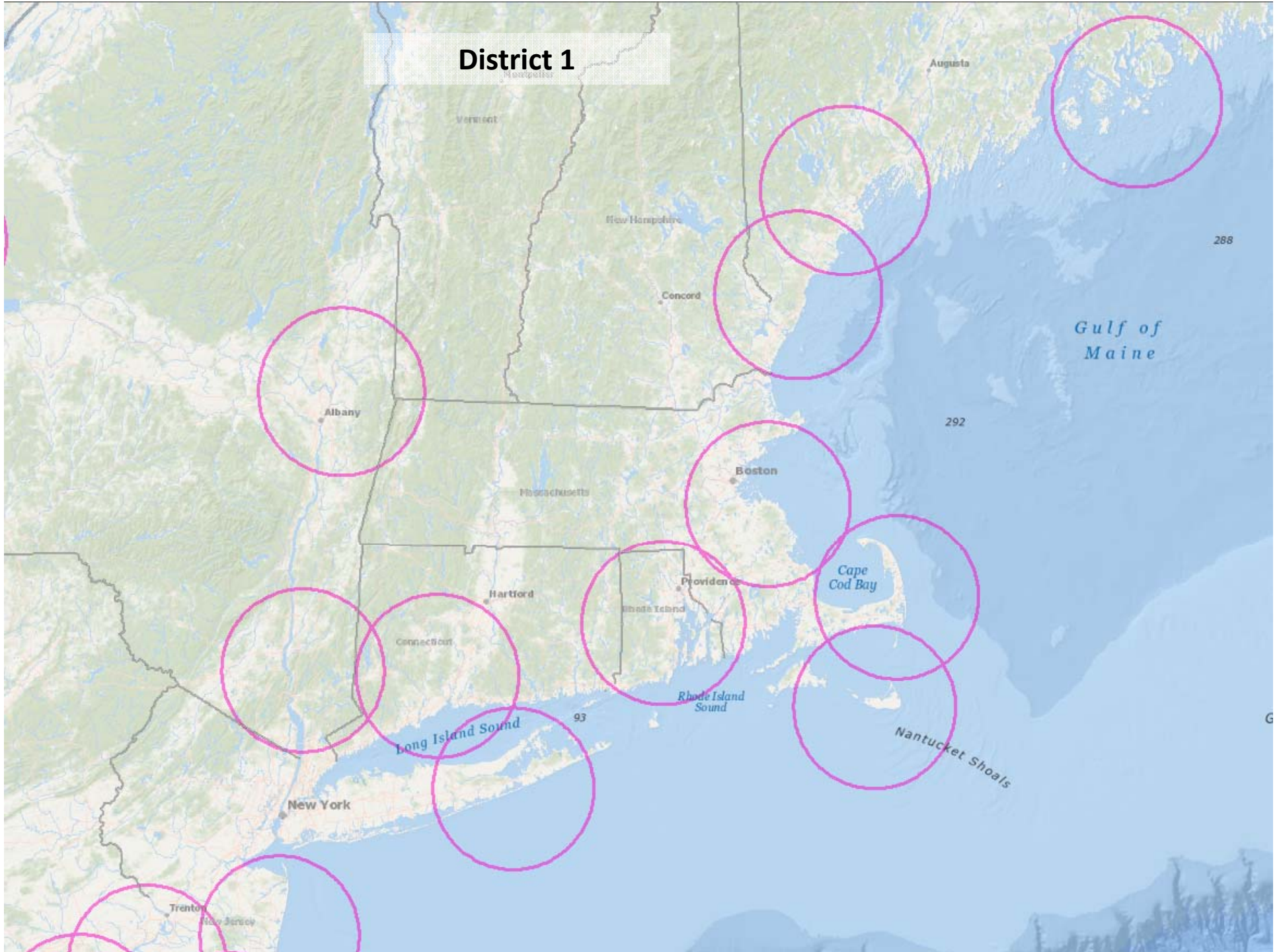
1070	Cosgrove Shoal Light
1080	Twenty Eight Foot Shoal Lighted Buoy 2
1085	Halmoon Shoal Light WR2
1090	Rebecca Shoal Light
1095	Dry Tortugas Light
1185	Pulaski Shoal Light
1190	New Ground Rocks Light
1195	Ellis Rock Light
1200	Smith Shoal Light
1205/15650	East Cape Light 2
1210	Northwest Cape Light 4
1215	Broad Creek Light 6
1220	Lostmans River Light 8
1225	Pavilion Key Light 10
1230	Cape Romano Shoals Light
1245	Sanibel Island Light
1310	Gasparilla Island Light
1325/21430	Venice Inlet Light 1
1345/21585	New Pass Entrance Light NP
1350/21755	Longboat Pass Approach Light LP
1370	Egmont Key Light
1385/21835	Southwest Channel Entrance Lighted Bell Buoy 1
1390/22225	Tampa Bay Lighted Buoy T
1400/25455	Pass-A-Grille Entrance Light PG
1425/25575	Johns Pass Light JP
1560/26110	Anclote Anchorage North Entrance Light 2
1565	St Martins Outer Shoal Light 10
1590/28365	Homosassa Bay Entrance Light 2
1605	Crystal River Lighted Buoy 2
1610	Cross Florida Barge Canal Approach Lighted Buoy 2
1615	Seahorse Reef Light
1620/29755	Cedar Keys Main Channel Light 1
1625/29920	Cedar Keys Northwest Channel Approach Light 2
1645/30360	Horseshoe Beach Approach Light 2
1660/30455	Steinhatchee River Light 1
5730	Ossabaw Sound Entrance Lighted Buoy OS
5835	Sapelo Sound Buoy S
7105	Nassau Sound Approach Buoy 6A
30715	Punta Borinquen Light
30720	Arecibo Light
31130	Boca De Cangrejos Lighted Buoy BC
31140	Punta Picua Lighted Buoy WR 2
31155	Cabo San Juan Light
31160	Las Cucarachas Light
31265	Isla Palominos Lighted Buoy 2
31800	Punta Tuna Light
31925	Isla Caja De Muertos Light

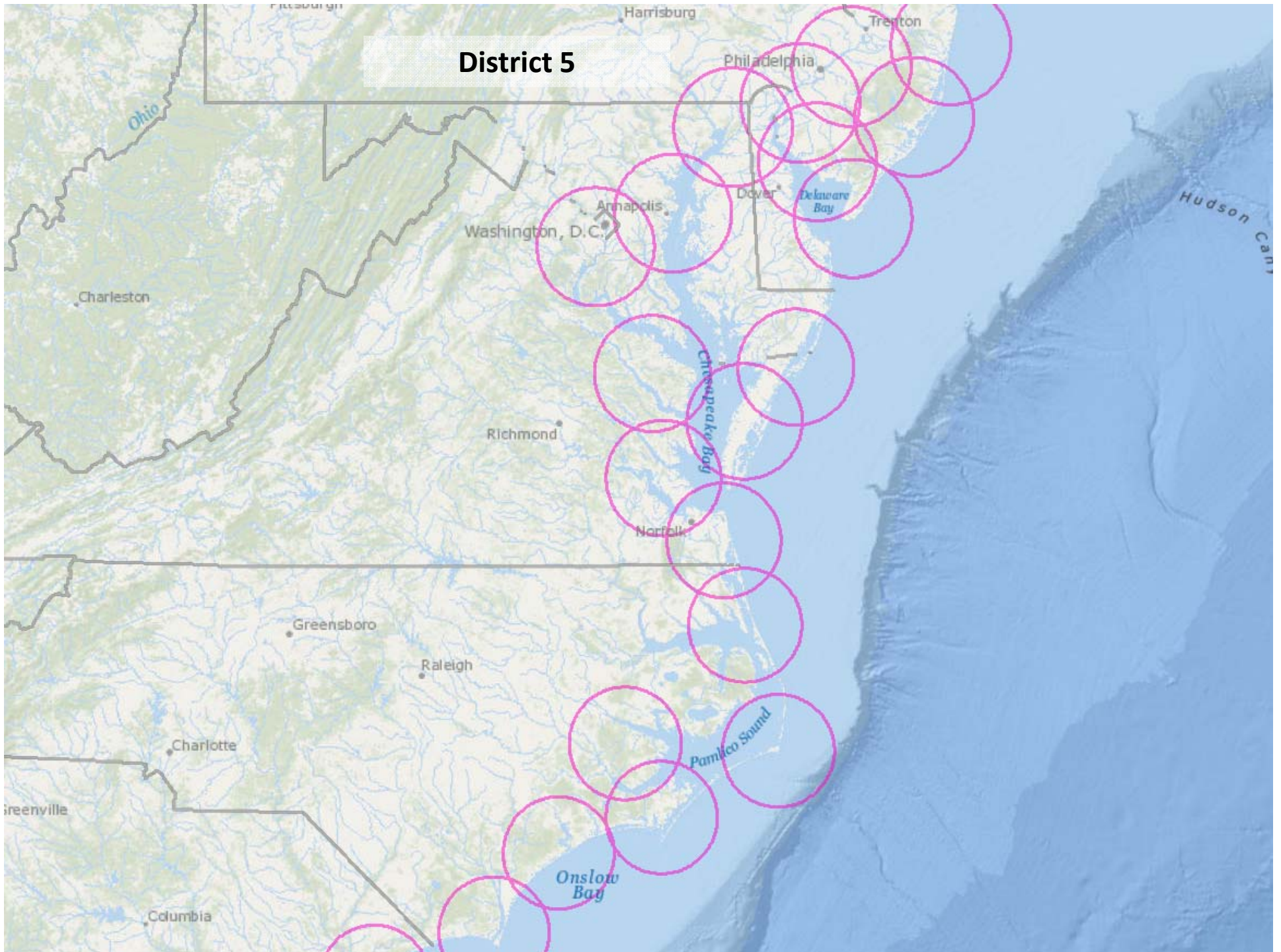
32400	Punta Higuero Light
32405	Aguadilla Jetty Light 1
32845	Hams Bluff Light
33055	Coakley Bay Light 1
33340	Southwest Cape Light
33345	Southwest Cape Shoal Buoy 2
District 8	
5	Ochlockonee Shoals Lighted Buoy 24
15	South Shoal Lighted Buoy 26
55/2520	Carrabelle Channel Lighted Buoy 2
85	Cape San Blas Shoal Inner Buoy 1
90	Cape San Blas Shoal Inner Buoy 3
95/3030	St Joseph Bay Light & Entrance A Range Rear Light
105	St Andrew Bay Entrance Lighted Buoy SA
125/4535	Choctawhatchee Bay Entrance Lighted Buoy CB
140/4715	Pensacola Light
145/4695	Pensacola Bay Entrance Lighted Buoy 1
150/4700	Pensacola Bay Entrance Lighted Buoy 2
165/5885	Perdido Pass Entrance Lighted Whistle Buoy PP
180/6095	Mobile Point Light
185/6075	Mobile Entrance Lighted Buoy M
310/7850	Horn Island Pass Lighted Buoy HI
320	Dog Keys Pass Lighted Buoy 1
335/9580	Ship Island Light
340/9575	Gulfport Ship Channel Lighted Buoy GP
375	Pass A Loutre North Pass Lighted Buoy 2
420/12740	Southwest Pass Entrance Light
430/12680	Southwest Pass Entrance Lighted Buoy SW
460/15715	Empire Waterway Entrance Lighted Buoy 1
615/16970	Belle Pass Entrance Lighted Buoy 2
680/17680	Cat Island Pass Lighted Buoy CI
730	Ship Shoal Obstruction Lights
855	Tiger Shoal Buoy 2
1010/21195	Calcasieu Channel Lighted Buoy CC
1025	Eighteen Ft Shoal Lighted Buoy 3
1030/20700	Mermentau Channel Entrance Lighted Buoy 2
1085/22300	Sabine Bank Channel Lighted Buoy SB
1095	Sabine Bank Light
1205	Galveston Entrance Precaution Area Wreck Lighted Buoy B
1210/23660	Galveston Bay Entrance Lighted Buoy GA
1215/23665	Galveston Bay Entrance Traffic Lane Lighted Buoy A
1220/23670	Galveston Bay Entrance Traffic Lane Lighted Buoy C
1225/23675	Galveston Bay Entrance Traffic Lane Lighted Buoy E
1230/23680	Galveston Bay Entrance Lighted Buoy GB
1245	Eaglescliff Wreck Lighted Buoy WR4
1260	Galveston Safety Wreck Lighted Buoy WR 4

1315/26905	Freeport Entrance Lighted Buoy FP
1330	Brazos Area Wreck Lighted Buoy WR2
1365/27100	Matagorda Ship Channel Approach Lighted Buoy MSC
1380/27050	Colorado River East Jetty Entrance Light 2
1385/27110	Matagorda Ship Channel Entrance Light
1392/27117	Matagorda Ship Channel Entrance Lighted Buoy MB
1420	Shoreline Ten Wreck Lighted Buoy WR2
1430/28135	Aransas Pass Entrance Lighted Buoy AP
1450/29455	Brazos Santiago Pass Entrance Lighted Buoy BS
1495	St Marks River Lighted Buoy SM

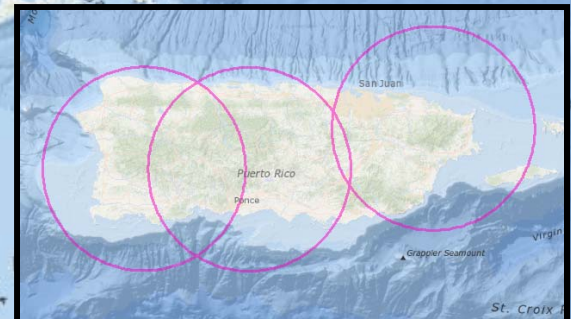
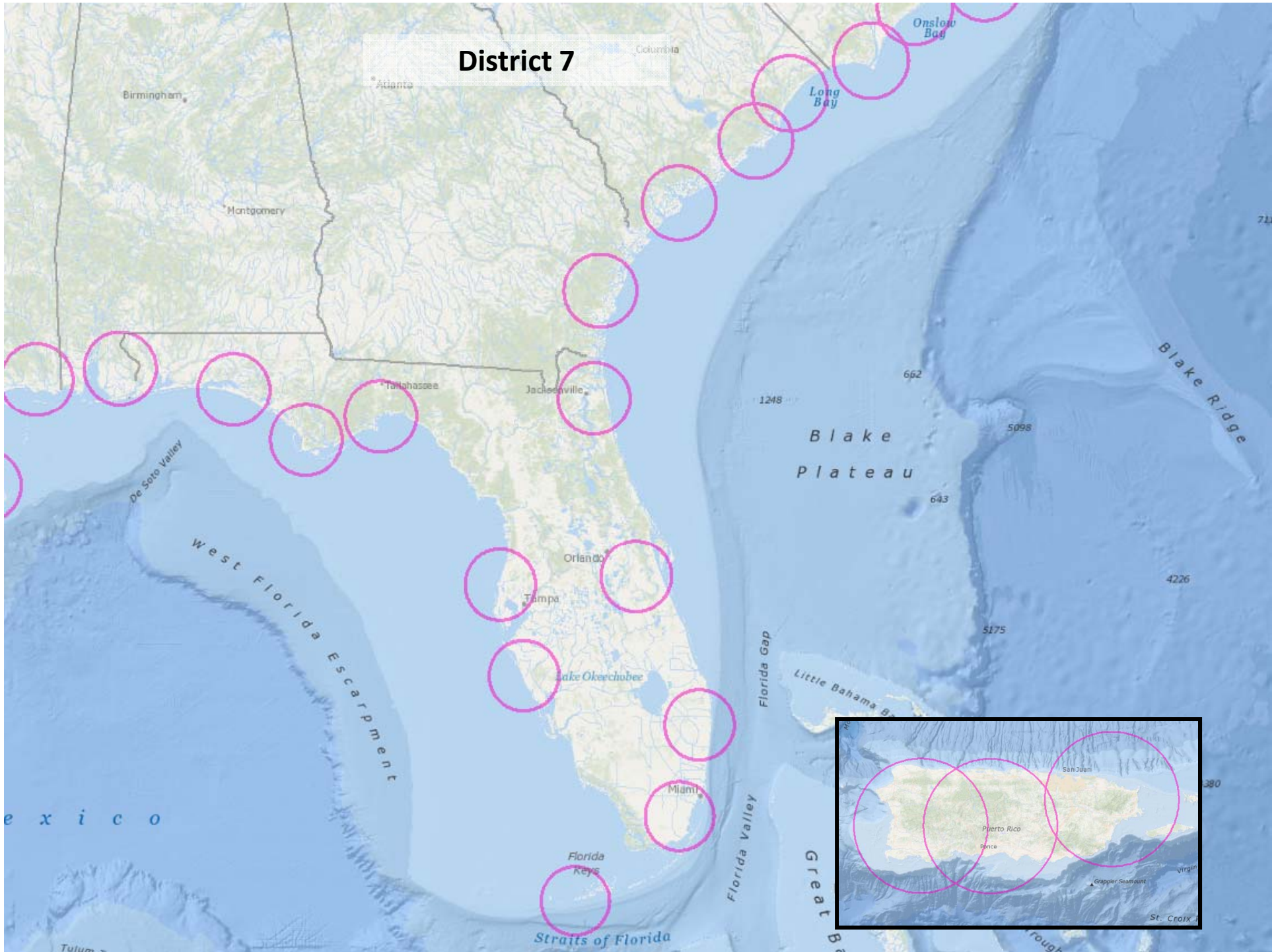
District 1		
LLNR	Aid Name	Short Name
45	Portland Lighted Whistle Buoy P	P
385	Boston Approach Lighted Buoy BG	BG
410	Boston Lighted Whistle Buoy B	B
460	Scituate Approach Lighted Gong Buoy SA	SA
670	Shinnecock Inlet Approach Lighted Whistle Buoy SH	SH
685	Moriches Inlet Approach Lighted Whistle Buoy M	M
3300	Penobscot Bay East Approach Lighted Whistle Buoy PBA	PBA
4050	West Penobscot Bay Entrance Lighted Gong Buoy PA	PA
10680	Boston North Channel Entrance Lighted Whistle Buoy NC	NC
13040	Cape Cod Canal Approach Lighted Bell Buoy CC	CC
17675	Narragansett Bay Entrance Lighted Whistle Buoy NB	NB
24545	Bridgeport Harbor Channel Approach Lighted Whistle Buoy BH	BH
26125	Port Jefferson Approach Lighted Whistle Buoy PJ	PJ
34785	Ambrose Channel Lighted Whistle Buoy A	A
District 5		
405	Chesapeake Bay Entrance Lighted Whistle Buoy CH	CH
410	Chesapeake Bay Southern Approach Lighted Whistle Buoy CB	CB
720	Beaufort Inlet Channel Lighted Whistle Buoy BM	BM
860	Cape Fear River Entrance Lighted Whistle Buoy CF	CF
1485	Delaware Bay Approach Lighted Whistle Buoy CH	CH
District 7		
125	Winyah Bay Lighted Whistle Buoy WB	WB
515	St. Simons Lighted Buoy STS	STS
560	St. Marys Entrance Lighted Buoy STM	STM
570	St. Johns Lighted Buoy STJ	STJ
627	Cape Canaveral Danger Zone Buoy A	A
720	St. Lucie Entrance Lighted Buoy 2	2
745	Lake Worth Lighted Buoy LW	LW
895	Miami Lighted Buoy M	M
1040	Key West Entrance Lighted Whistle Buoy KW	KW
1090	Rebecca Shoal Light (Abandoned)	RS
1185	Pulaski Shoal Light	PS
1390	Tampa Bay Lighted Buoy T	T
7105	Nassau Sound Approach Buoy 6A	6A
District 8		
105	St Andrew Bay Entrance Lighted Buoy SA	SA
165	Perdido Pass Entrance Lighted Buoy PP	PP
1230	Galveston Bay Entrance Lighted Buoy GB	GB
1315	Freeport Entrance Lighted Buoy FP	FP
1430	Aransas Pass Entrance Lighted Buoy AP	AP

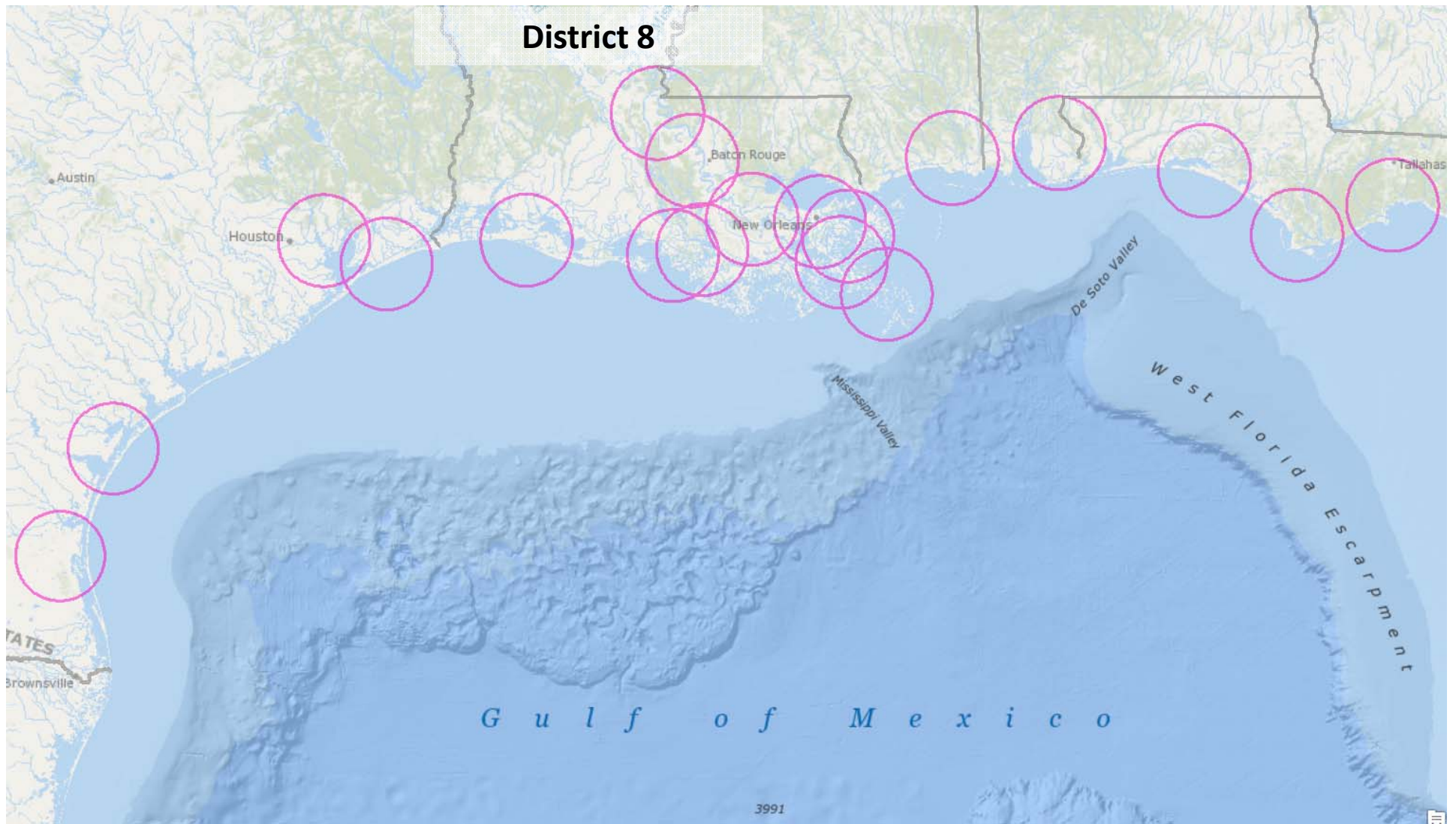
District 1





District 7





**Waterborne Commerce Data
2014**

Appomattox River, VA	
Transits	1
Tons (tens of thousands)	773

Baltimore Harbor, MD	
Transits	222
Tons (tens of thousands)	29375

Belfast Harbor	
Transits	3
Tons (tens of thousands)	120

Boston, MA	
Transits	466
Tons (tens of thousands)	48585

Bridgeport, CT	
Transits	12
Tons (tens of thousands)	3333

Brunswick Harbor, GA	
Transits	32
Tons (tens of thousands)	3250

Camden, NJ	
Transits	13
Tons (tens of thousands)	662

Canaveral, FL	
Transits	40
Tons (tens of thousands)	3146

Cape Cod, MA	
Transits	36
Tons (tens of thousands)	8035

Cape Fear, NC	
Transits	7
Tons (tens of thousands)	470

Charleston, SC	
Transits	240
Tons (tens of thousands)	19979

Chester Area, PA	
Transits	115
Tons (tens of thousands)	1535

Choptank River, MD	
Transits	2
Tons (tens of thousands)	127

Chowan River, NC	
Transits	4
Tons (tens of thousands)	347

Eastport Harbor, ME	
Transits	2
Tons (tens of thousands)	265

Edenton Harbor, NC	
Transits	1
Tons (tens of thousands)	45

Fall River Harbor, MA	
Transits	7
Tons (tens of thousands)	1352

Fernandina Harbor, FL	
Transits	33
Tons (tens of thousands)	293

Georgetown Harbor, SC	
Transits	5
Tons (tens of thousands)	482

Glen Cove, NY	
Transits	1
Tons (tens of thousands)	48

Hampton Roads, VA	
Transits	338
Tons (tens of thousands)	74382

Hempstead Harbor, NY	
Transits	5
Tons (tens of thousands)	842

Hoskins Creek, VA	
Transits	7
Tons (tens of thousands)	343

Jacksonville, FL	
Transits	273
Tons (tens of thousands)	17305

James River, VA	
Transits	11
Tons (tens of thousands)	1326

Key West, FL	
Transits	2
Tons (tens of thousands)	14

Marcus Hook, PA	
Transits	45
Tons (tens of thousands)	10696

Miami, FL	
Transits	232
Tons (tens of thousands)	7435

Mispillion River, DE	
Transits	2
Tons (tens of thousands)	9

Morehead City, NC	
Transits	31
Tons (tens of thousands)	2625

Nanticoke River, DE	
Transits	14
Tons (tens of thousands)	786

Nantucket Sound, MA	
Transits	8
Tons (tens of thousands)	22

New Bedford, MA	
Transits	11
Tons (tens of thousands)	250

New Castle, DE	
Transits	36
Tons (tens of thousands)	6282

New Haven, CT	
Transits	31
Tons (tens of thousands)	8693

New London, CT	
Transits	19
Tons (tens of thousands)	466

New York, NY	
Transits	2039
Tons (tens of thousands)	410486

Newport News, VA	
Transits	133
Tons (tens of thousands)	29784

Norfolk, VA	
Transits	328
Tons (tens of thousands)	48567

Norwalk, CT	
Transits	1
Tons (tens of thousands)	62

Onancock River, VA	
Transits	1
Tons (tens of thousands)	39

Palm Beach, FL	
Transits	145
Tons (tens of thousands)	2128

Pamlico River, NC	
Transits	4
Tons (tens of thousands)	814

Pamunkey River, PA	
Transits	5
Tons (tens of thousands)	97

Paulsboro, NJ	
Transits	55
Tons (tens of thousands)	17863

Penn Manor, PA	
Transits	26
Tons (tens of thousands)	3836

Penobscot River, ME	
Transits	2
Tons (tens of thousands)	31

Pocomoke River, MD	
Transits	2
Tons (tens of thousands)	361

Port Everglades, FL	
Transits	212
Tons (tens of thousands)	22432

Port Jefferson, NY	
Transits	8
Tons (tens of thousands)	1194

Portland Harbor, ME	
Transits	40
Tons (tens of thousands)	9657

Portsmouth Harbor, NH	
Transits	18
Tons (tens of thousands)	2312

Portsmouth, ME	
Transits	4
Tons (tens of thousands)	490

Providence Harbor, RI	
Transits	44
Tons (tens of thousands)	8069

Rappahanock River, VA	
Transits	17
Tons (tens of thousands)	387

Salem Harbor, MA	
Transits	3
Tons (tens of thousands)	62

Salem River, NJ	
Transits	11
Tons (tens of thousands)	24

Savannah, GA	
Transits	265
Tons (tens of thousands)	34357

Searsport Harbor, ME	
Transits	21
Tons (tens of thousands)	1798

Stamford, CT	
Transits	4
Tons (tens of thousands)	559

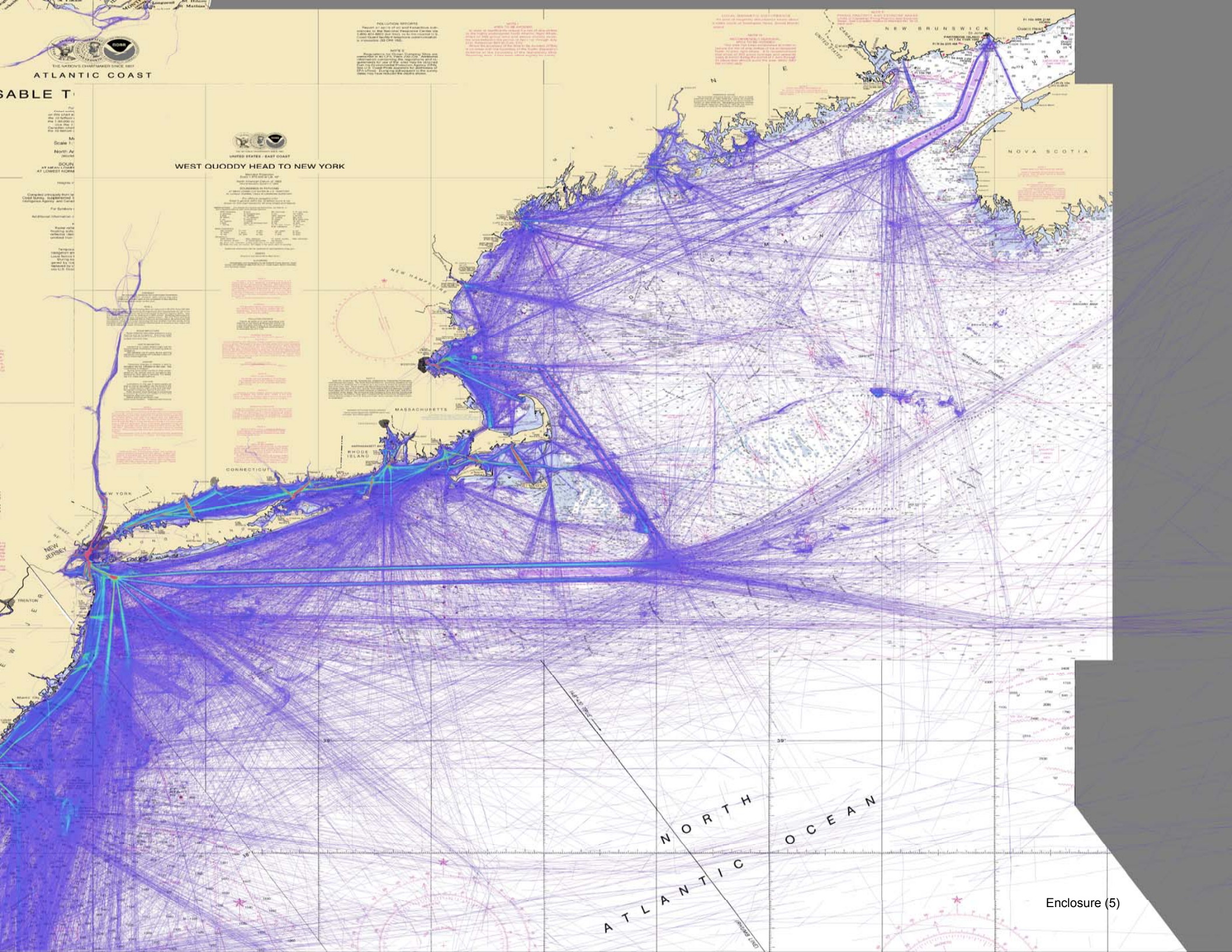
Vineyard Haven, MA	
Transits	8
Tons (tens of thousands)	56

Wicomico River, MD	
Transits	9
Tons (tens of thousands)	870

Wilmington, DE	
Transits	85
Tons (tens of thousands)	6949

Wilmington, NC	
Transits	315
Tons (tens of thousands)	12387

Woods Hole, MA	
Transits	7
Tons (tens of thousands)	63

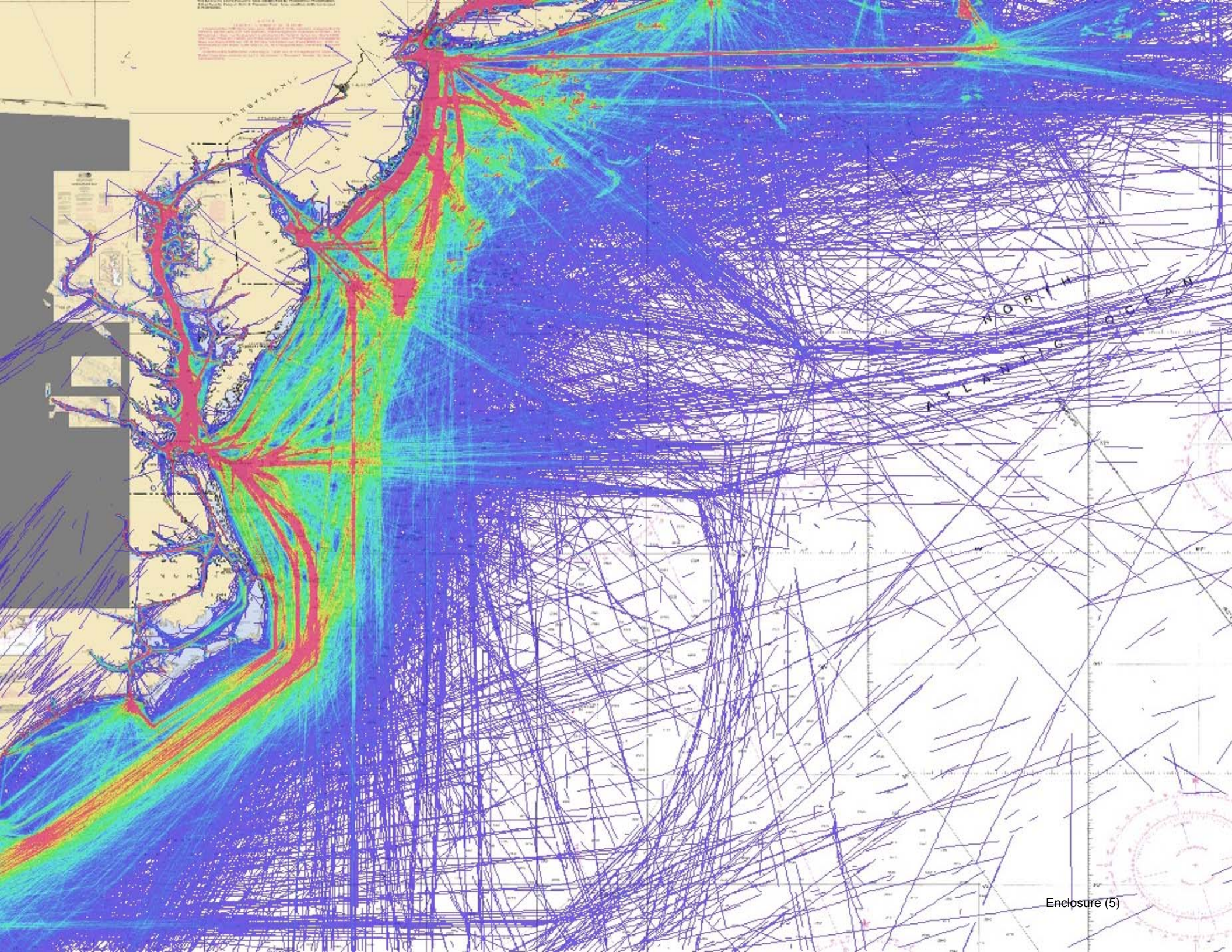


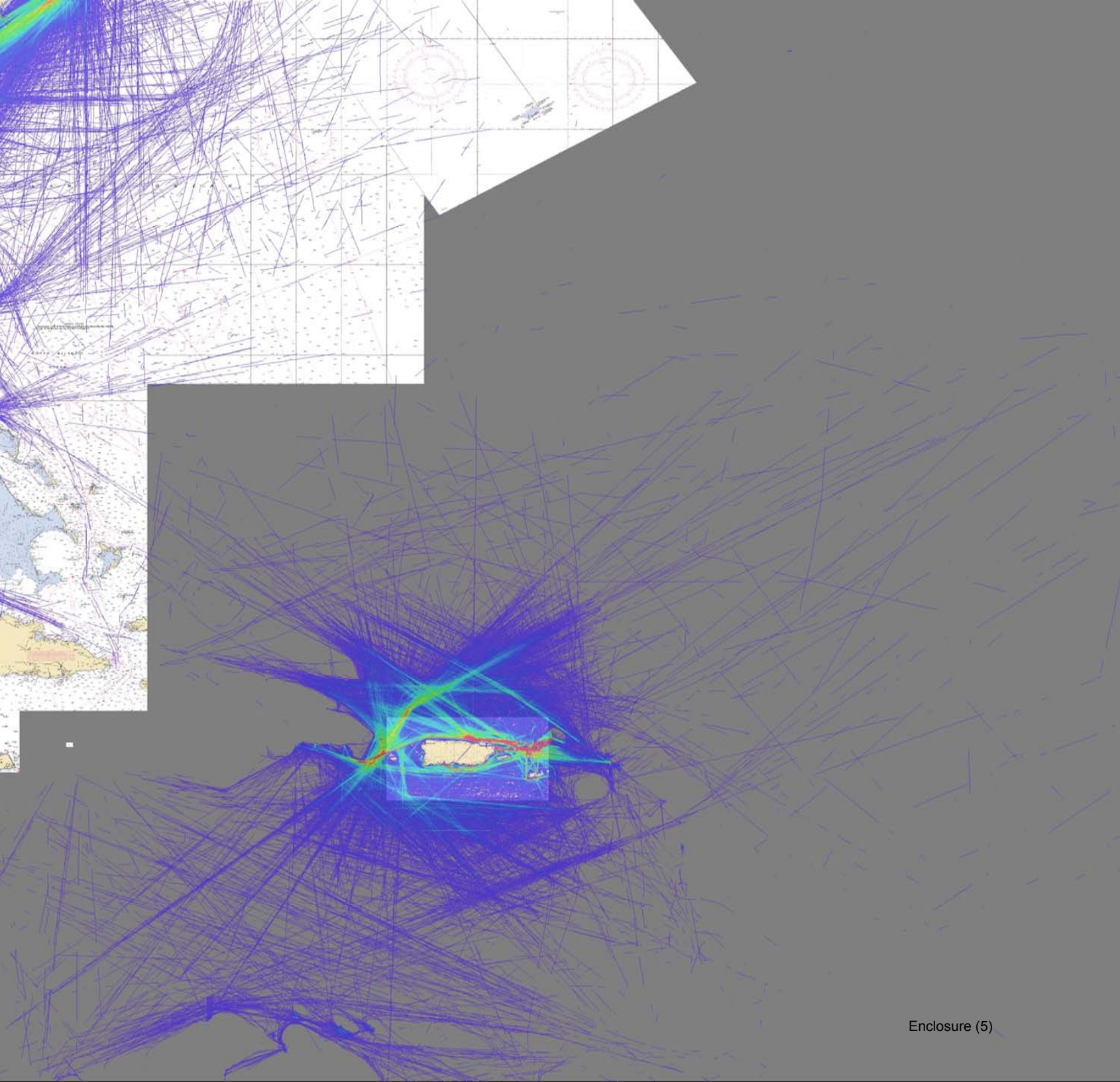
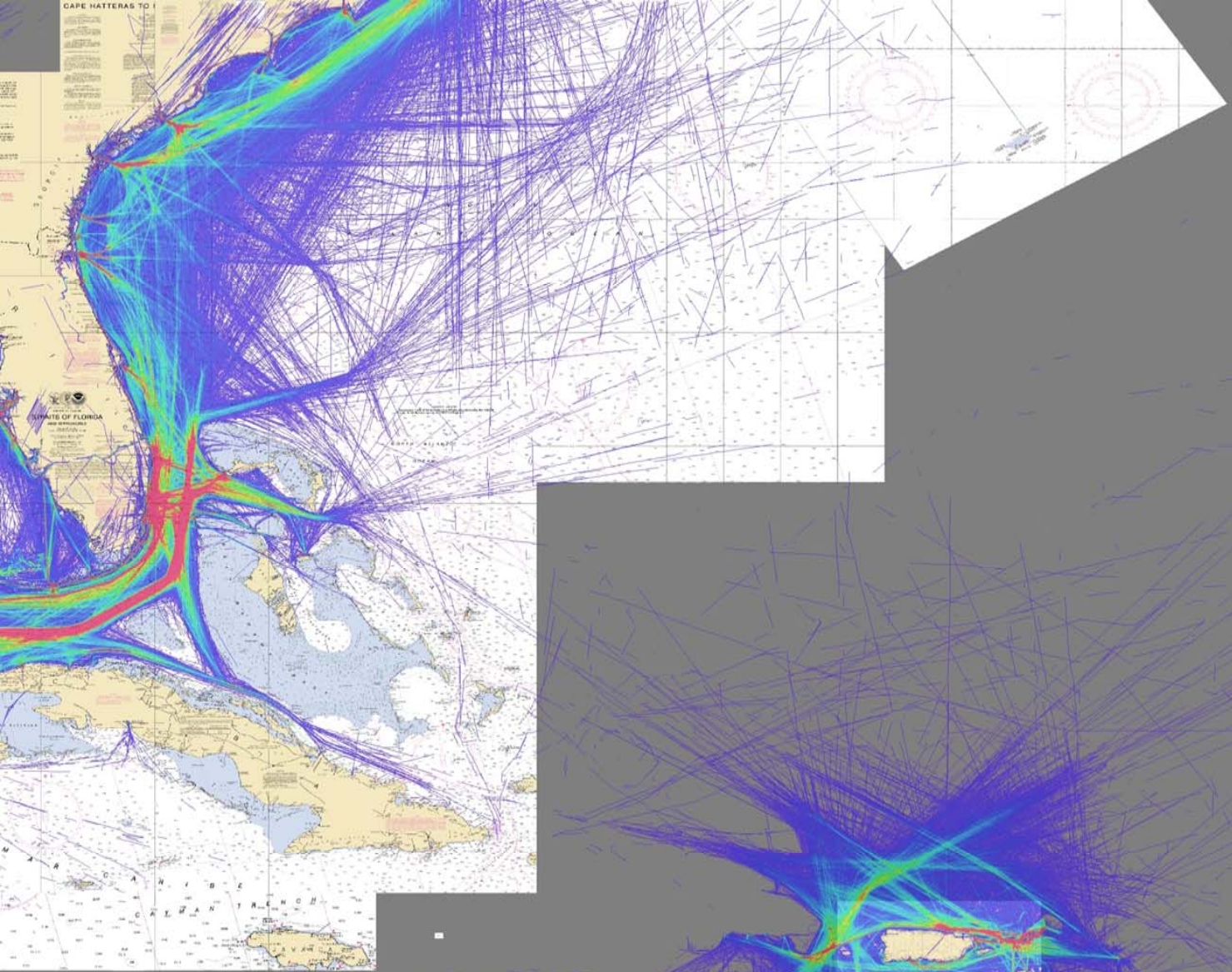
ATLANTIC COAST

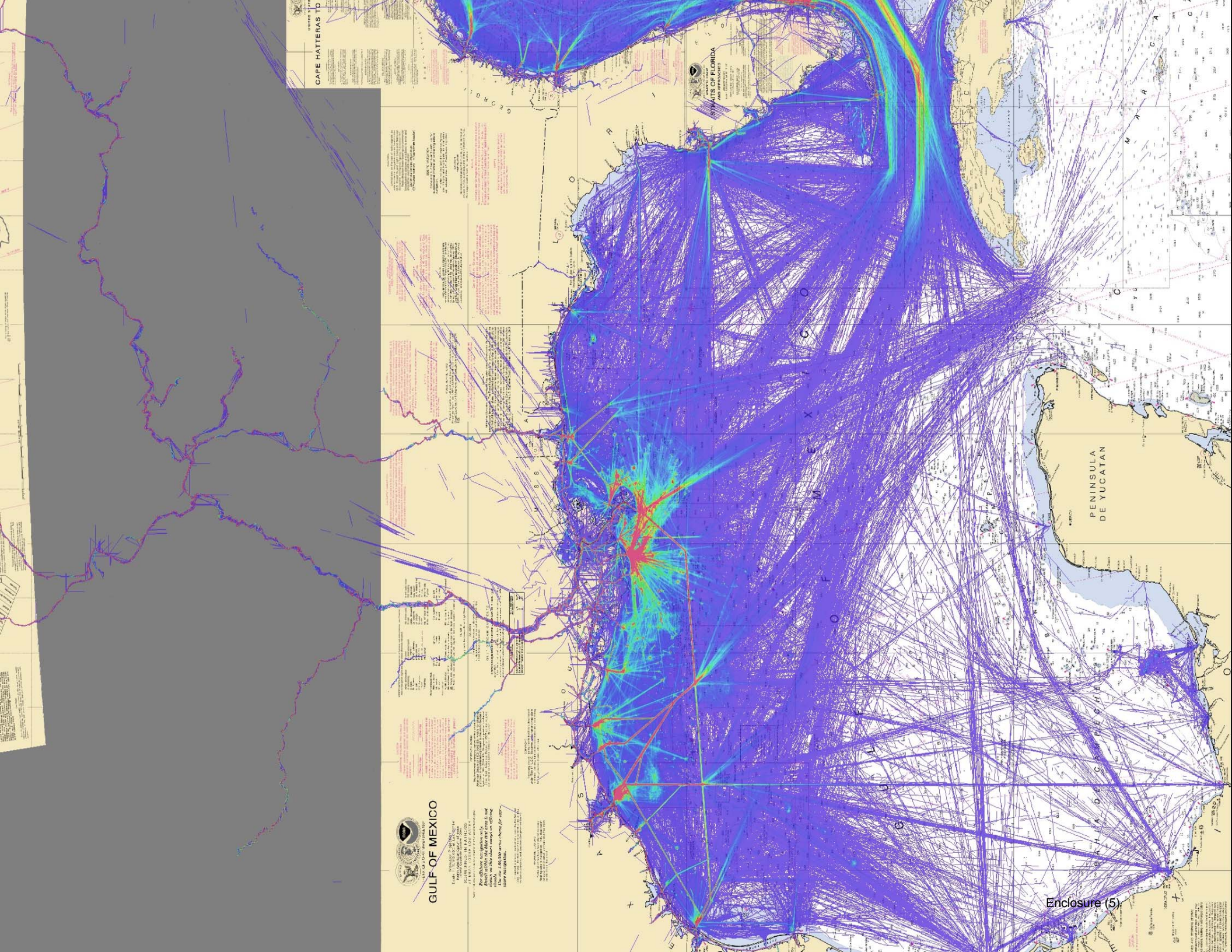
WEST QUODDY HEAD TO NEW YORK

NORTH ATLANTIC OCEAN

Enclosure (5)







CAPE HATTERAS TD
ADMINISTRATIVE

STATES OF FLORIDA
MARINE CHARTS

NOTES
1. This chart is based on the latest available information.
2. The soundings are in fathoms, unless otherwise indicated.
3. The depths are given in fathoms, unless otherwise indicated.
4. The heights of lights are in feet, unless otherwise indicated.
5. The bearings are true, unless otherwise indicated.
6. The distances are in miles, unless otherwise indicated.
7. The names of places are in italics, unless otherwise indicated.
8. The names of vessels are in italics, unless otherwise indicated.
9. The names of companies are in italics, unless otherwise indicated.
10. The names of individuals are in italics, unless otherwise indicated.

NOTES
1. This chart is based on the latest available information.
2. The soundings are in fathoms, unless otherwise indicated.
3. The depths are given in fathoms, unless otherwise indicated.
4. The heights of lights are in feet, unless otherwise indicated.
5. The bearings are true, unless otherwise indicated.
6. The distances are in miles, unless otherwise indicated.
7. The names of places are in italics, unless otherwise indicated.
8. The names of vessels are in italics, unless otherwise indicated.
9. The names of companies are in italics, unless otherwise indicated.
10. The names of individuals are in italics, unless otherwise indicated.

NOTES
1. This chart is based on the latest available information.
2. The soundings are in fathoms, unless otherwise indicated.
3. The depths are given in fathoms, unless otherwise indicated.
4. The heights of lights are in feet, unless otherwise indicated.
5. The bearings are true, unless otherwise indicated.
6. The distances are in miles, unless otherwise indicated.
7. The names of places are in italics, unless otherwise indicated.
8. The names of vessels are in italics, unless otherwise indicated.
9. The names of companies are in italics, unless otherwise indicated.
10. The names of individuals are in italics, unless otherwise indicated.

NOTES
1. This chart is based on the latest available information.
2. The soundings are in fathoms, unless otherwise indicated.
3. The depths are given in fathoms, unless otherwise indicated.
4. The heights of lights are in feet, unless otherwise indicated.
5. The bearings are true, unless otherwise indicated.
6. The distances are in miles, unless otherwise indicated.
7. The names of places are in italics, unless otherwise indicated.
8. The names of vessels are in italics, unless otherwise indicated.
9. The names of companies are in italics, unless otherwise indicated.
10. The names of individuals are in italics, unless otherwise indicated.

NOTES
1. This chart is based on the latest available information.
2. The soundings are in fathoms, unless otherwise indicated.
3. The depths are given in fathoms, unless otherwise indicated.
4. The heights of lights are in feet, unless otherwise indicated.
5. The bearings are true, unless otherwise indicated.
6. The distances are in miles, unless otherwise indicated.
7. The names of places are in italics, unless otherwise indicated.
8. The names of vessels are in italics, unless otherwise indicated.
9. The names of companies are in italics, unless otherwise indicated.
10. The names of individuals are in italics, unless otherwise indicated.



GULF OF MEXICO

Scale 1:50,000
For official navigation only.
Always use this chart in conjunction with other charts.
For the latest information, consult the appropriate notices to mariners.

Enclosure (5)

Seacoast WAMS User Feedback Form

1. What is your vessel type? (select one)

- Military
- Motor Vessel >300GRT
- Motor Vessel <300GRT
- Towing Vessel >26ft
- Towing Vessel <26ft
- Fishing Vessel
- Passenger Vessel
- Power Recreational Vessel
- Sailing Recreational Vessel

2. What is your position onboard the vessel? (select one)

- Owner
- Captain
- Pilot
- Mate
- Crew
- Port Captain
- Dispatcher

3. How long have you held this position? (select one)

- <1 year
- 1-5 years
- 5-10 years
- 10-20 years
- >20 years

4. What is the highest type of training/license that you hold? (select one)

- Master Unlimited
- Mate Unlimited
- Master 1600GRT
- Mate 1600GRT
- Master 500GRT
- Mate 500GRT

An agency may not conduct or sponsor, and a person is not required to respond to a collection of information unless it displays a valid OMB control number. The Coast Guard estimates that the average burden per response for this survey is 30 minutes, and submission is voluntary. You may submit any comments concerning the accuracy of this burden estimate or any suggestions for reducing the burden to: Commandant (CG-NAV), U.S. Coast Guard, 2703 Martin Luther King Jr. Ave SE, Washington, DC 20593-7000 or Office of Management and Budget, Paperwork Reduction Project (1601-0014), Washington, DC 20503.

- Master 200GRT
- Mate 200GRT
- Master 100GRT
- Mate 100GRT
- OUPV
- State issued license
- NASBLA Approved Boating Safety Courses
- USCG Auxiliary Safe Boating Courses
- U.S. Power Squadron Safe Boating Courses
- Unlicensed

5. What is your voyage type on the Seacoast Waterway? (select one)

- Transatlantic
- Coastal
- Local

6. What region(s) of the Seacoast Waterway do you routinely transit? (select all that apply)

- Northeast
- Mid-Atlantic
- Southeast
- Gulf

7. On average, how many days do you spend at sea per year? (select one)

- <30 days
- 30-90 days
- 90-180 days
- >180 days

8. What is your Primary means to determine your position? (select one)

- Global Navigation Satellite System (GPS)
- Radar
- Fathometer
- Pelorus
- Visual Bearings

9. What is your Secondary means to determine your position? (select one)

- Global Navigation Satellite System (GPS)
- Radar
- Fathometer
- Pelorus
- Visual Bearings

10. What navigation reference materials do you use onboard when transiting? (select all that apply)

- Light List
- Coast Pilot
- Navigation Rules

- Local Notice to Mariners (USCG)
- Weekly Notice to Mariners (NGA)
- Commercial Chart Book or Cruising Guide
- Commercial Navigation Applications

11. What navigation reference materials do you use for voyage planning? (*select all that apply*)

- Light List
- Coast Pilot
- Navigation Rules
- Local Notice to Mariners (USCG)
- Weekly Notice to Mariners (NGA)
- Commercial Chart Book or Cruising Guide
- Commercial Navigation Applications

12. What format do you prefer your navigation reference materials to be in? (*select one*)

- Electronic (Downloaded prior to getting u/w)
- Web-Based (Real-Time)
- CD
- Mobile Device (SMS/MMS Text)
- Mobile Device Application
- Paper

13. If you use electronic reference material, what format do you prefer? (*select one*)

- PDF
- XML
- KML (GIS)
- Shape File (GIS)
- Chart Overlay (ECDIS/ECS)
- I do not know

14. What depth of water do you consider to be Shoal Water? (*select one*)

- <12 ft
- 12-17ft
- 18-29ft
- 30-41ft
- 42-60ft
- >60ft

15. What is your (or your company's) preferred minimum safe distance to shoal water? (*select one*)

- <1NM
- 1-2NM
- 2-3NM
- 3-5NM
- >5NM

16. When making landfall requiring you to transit within your preferred minimum safe distance to shoal water how many watchstanders do you normally have on the bridge? (*select one*)

- 1
- 2
- 3
- >3

17. How many watchstanders do you normally have on watch when transiting outside your preferred minimum distance to shoal water? (*select one*)

- 1
- 2
- 3
- >3

18. While underway, what do you use as your primary means to verify your proximity to shoal water? (*select one*)

- GPS Position
- ECDIS/ECS Cross Track Error
- Radar Ranging to Landfall
- Radar Ranging to Shoal Buoy
- Radar Indexing
- Visual Distance estimation using geographic features
- Visual Distance estimation using ATON
- Depth Finder

19. At what distance do you need a visual indication of Landfall? (*select one*)

- <1NM
- 1-2NM
- 2-3NM
- 3-5NM
- 5-7NM
- 7-10NM
- >10NM

20. If you answered >10NM, please explain why you require a visual indication of Landfall at >10NM.

21. Do you need a visual indication of Shoal Water or Hazard? (*select one*)

- Yes
- No

22. At what distance do you need a visual indication of Shoal Water or Hazard? (*select one*)

- <1NM
- 1-2NM
- 2-3NM
- 3-5NM
- 5-7NM
- 7-10NM
- >10NM

23. If you answered >10NM, please explain why you require a visual indication of Shoal Water or Hazard at >10NM.

24. Do you need an audible (bell, whistle, gong) indication of Shoal Water or Hazard? (select one)

- Yes
- No

25. At what distance do you need an audible indication of Shoal Water or Hazard? (select one)

- <1NM
- 1-2NM
- >2NM

26. If you answered >2NM, please explain why you require an audio indication of Shoal Water or Hazard at >2NM.

27. Do you use RACONs

- Yes
- No

28. If you answered yes, please explain how and why.

29. What kind of communications equipment do you have onboard? (select all that apply)

- GMDSS (Global Maritime Distress and Safety System)

- HF SSB (High-Frequency Single Side Band)
- VHF Marine Band
- Mobile Device Application (i.e. smartphone, tablet)
- Mobile Device Web Browser
- Mobile Device SMS/MMS Text
- Internet 1-20NM offshore (Satellite)
- Internet >20NM offshore (Cellular)

30. While underway, how do you prefer to obtain weather information? (select one)

- GMDSS (Global Maritime Distress and Safety System)
- HF SSB (High-Frequency Single Side Band)
- VHF Marine Band
- Mobile Device Application (i.e. smartphone, tablet)
- Mobile Device Web Browser
- Mobile Device SMS/MMS Text
- Internet 1-20NM offshore (Satellite)
- Internet >20NM offshore (Cellular)

5-Year Discrepancy Data

All Discrepancies

St Dev	103.1734076	# Discrep	1085
Mean	36.7874808	>30 Days	270
Median	6.416666667	% >30 Days	24.88%
Upper Limit	1629		
Lower Limit	0.04		

Light Extinguished Discrepancies

St Dev	103.3927443	# Discrep	693
Mean	36.88626543	>30 Days	108
Median	6.416666667	% >30 Days	15.58%
Upper Limit	780.5	>30 Days w/RACON	7
Lower Limit	0.04	% >30 Day w/RACON	6.48%

RACON Discrepancies

St Dev	529.7925068	# Discrep	37
Mean	267.1232207	>30 Days	18
Median	36.83687312	% >30 Days	48.65%
Upper Limit	530		
Lower Limit	0.375		

Discrepancies by Type

Discrepancy Type	Number	Percentage of Overall
Light Extinguished	693	53.44%
Light Improper Characteristics	117	9.46%
Reduced Intensity	105	8.49%
Off Station	93	7.52%
Sound Signal Inoperable	78	6.31%
Missing	55	4.45%
RACON Inoperable	37	3.07%
Topmark Missing	24	1.94%