



## Marine Safety Information Bulletin Eleventh District

Commander  
U.S. Coast Guard District Eleven  
Coast Guard Island, Building 50-7  
Alameda, CA 94501

MSIB Number: 04-21  
Date: September 08, 2021  
Staff Symbol: dpw  
Phone: (510) 437 3801  
Email: PACPARS@USCG.MIL

---

### PORT ACCESS ROUTE STUDY: PACIFIC COAST (PAC-PARS)

This bulletin addresses the notice of study for the Pacific Coast Port Access Route Study.

The Coast Guard is conducting a Pacific Coast Port Access Route Study (PAC-PARS). The PAC-PARS will consider whether existing or additional routing measures are necessary to improve navigation safety due to factors such as planned or potential offshore development, current port capabilities and planned improvements, increased vessel traffic, existing and potential anchorage areas, changing vessel traffic patterns, effects of weather, or navigational difficulty. Vessel routing measures are implemented to reduce the risk of marine casualties. Examples of potential measures include traffic separation schemes, two-way routes, recommended tracks, deep-water routes, precautionary areas, and areas to be avoided. The recommendations of the study may subsequently be implemented through rulemakings or in accordance with international agreements. The primary areas of this study include: San Diego, CA, Los Angeles/Long Beach, CA, San Francisco, CA, Humboldt Bay, CA, Coos Bay, OR, Yaquina Bay, OR, Astoria, OR, Grays Harbor, WA, and Puget Sound, WA. Mariners are encouraged to participate in this study by submitting comments and input to the Federal Register.

The Notice of Study is available at Federal Register docket number USCG-2021-0345, the federal portal at <https://www.regulations.gov/>.

To submit your comment online, go to <https://www.regulations.gov>, and insert "USCG-2021-0345" in the "search box." Click "Search" and then click "Comment Now." We will consider all comments and material received on or before January 25, 2022.

For questions regarding this Marine Safety Information Bulletin or the study, email the PAC-PARS team at "PACPARS@USCG.MIL".

-uscg-



## Marine Safety Information Bulletin Eleventh District

Commander  
U.S. Coast Guard District Eleven  
Coast Guard Island, Building 50-7  
Alameda, CA 94501

MSIB Number: 01-22  
Date: March 01, 2022  
Staff Symbol: dpw  
Phone: (510) 437-3801  
Email: PACPARS@USCG.MIL

---

### Notice of Inquiry: Pacific Coast - Port Access Route Study (PAC-PARS)

In support of the PAC-PARS, USCG District Eleven has published a Notice of Inquiry (NOI) on the Federal Register to focus the study, improve information gathering, and expand public engagement. In it, the Coast Guard requests public comments regarding vessel traffic patterns in the regions near Point Mugu and south of the Channel Islands in the Pacific Missile Range, offshore San Francisco, and the Bureau of Ocean Energy Management (BOEM) Humboldt Bay and Morro Bay offshore Wind Energy Areas (WEAs) as outlined in the attached chart. The information generated from this NOI will be used to improve waterway operations and vessel movement along the California coast.

The PAC-PARS will determine whether vessel routes should be established, adjusted, and/or modified to improve navigation safety due to planned or potential uses, such as: offshore development, current port capabilities, planned port improvement projects, vessel traffic, anchorage areas, historical changes in vessel traffic patterns, weather, and navigation challenges. To improve timeliness and a whole of government approach, public comments and pertinent information collected from data analysis will be shared across government agencies on a continuous basis. Additionally, the Coast Guard is committed to maintaining open communication and transparency with all waterway users, especially during this study. Mariners are encouraged to provide answers to the questions included in the NOI and provide any additional information that should be considered regarding the four geographic focus areas.

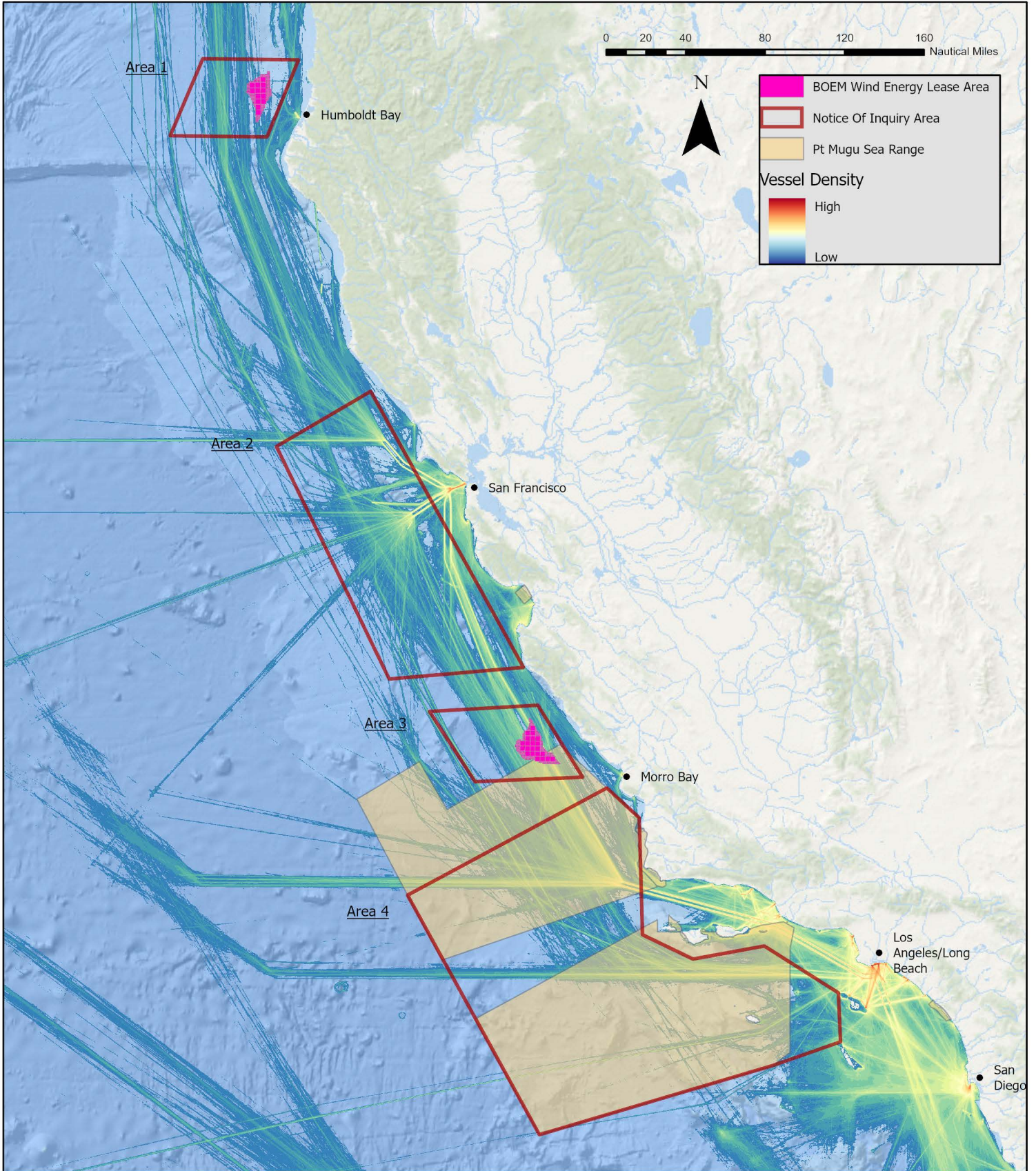
The Notice of Inquiry is available at Federal Register docket number USCG-2021-0345, at the federal portal: <https://www.regulations.gov/>.

Using the website above, you may submit comments identified by docket number USCG-2021-0345. See the “Public Participation and Request for Comments” portion of the SUPPLEMENTAL INFORMATION section for further instructions on submitting comments. We request all comments and material be submitted on or before May 26, 2022.

Following the NOI 90-day comment period, a draft PAC-PARS will be completed and published on the federal register, under the same docket number, for public review. The Notice of Study, NOI, and draft PAC-PARS provide multiple opportunities for public participation and keep with the Coast Guard’s commitment to maintaining open dialog and accessibility with the maritime community and public. The draft PAC-PARS is tentatively scheduled to be published before the end of 2022.

For questions regarding this Marine Safety Information Bulletin, the Notice of Inquiry, or the study, email the PAC-PARS team at [PACPARS@USCG.MIL](mailto:PACPARS@USCG.MIL).

-uscg-



# U.S. COAST GUARD PACIFIC COAST – PORT ACCESS ROUTE STUDY (PAC-PARS)

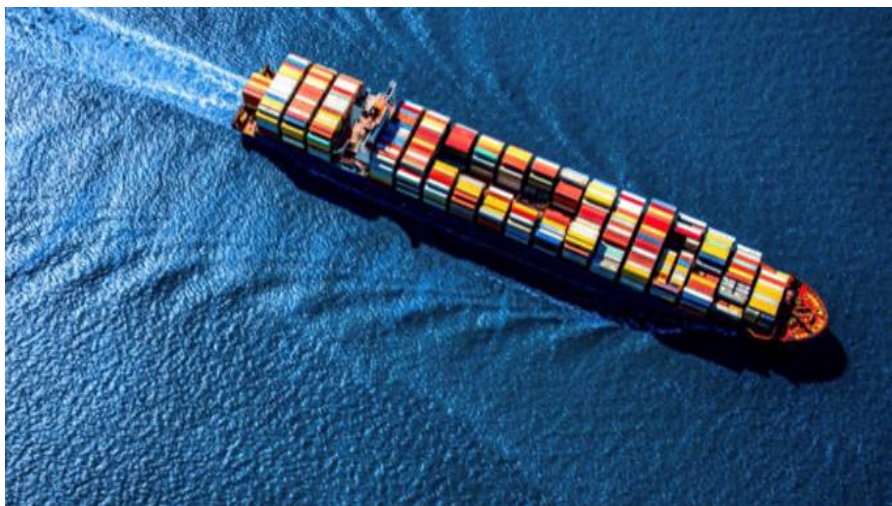
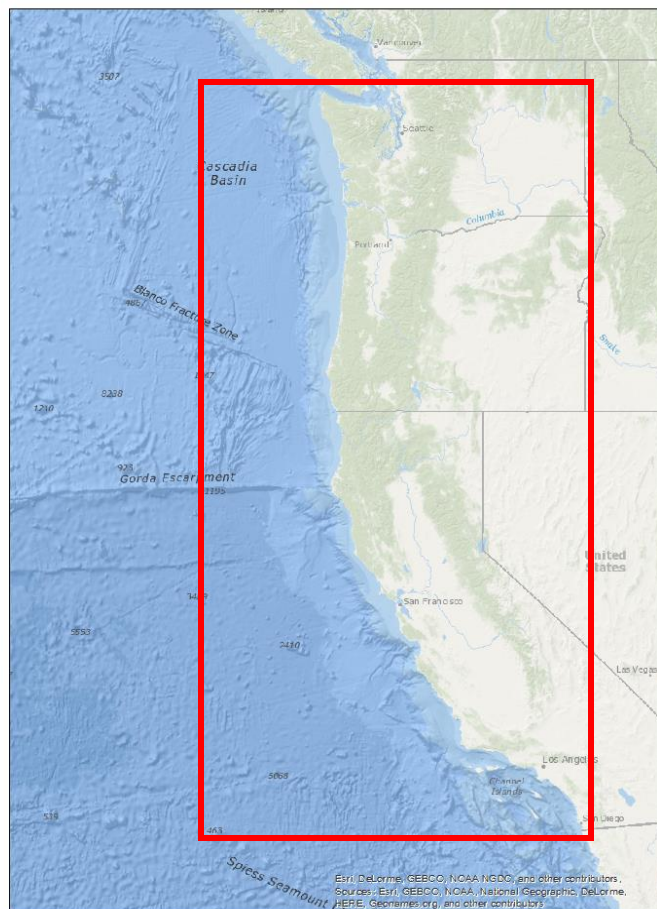
## What is the PAC-PARS?

The Pacific Port Access Route Study (PAC-PARS) will be the first comprehensive evaluation of maritime traffic patterns along the Pacific Coast bordering California, Oregon, and Washington.

Vessel traffic, offshore renewable energy, aquafarms, as well as commercial and government space launching activities are some of the maritime related changes occurring along the Pacific Coast.

The U.S. Coast Guard (USCG) is conducting this study to evaluate the usage of coastal waterways, including the navigational conditions for coastal and outer-continental shelf transits.

The study will provide a baseline to assist with future determinations regarding the suitability of waterways for current and future maritime activities and if existing routing measures are adequate.



Access to the study can be found by scanning the QR Code at the bottom of this flyer, or visit:

<https://www.regulations.gov>

And search the docket number:

**“USCG-2021-0345”**

Questions or concerns can be sent to:

**PACPARS@USCG.MIL**

**Please submit all official comments to the docket above. Comments and related material must be received on or before 25 January, 2022.**



U.S. Department of  
Homeland Security

United States  
Coast Guard



Commander  
United States Coast Guard  
Eleventh District

Coast Guard Isl Bld. 52  
Alameda, Ca 94501-5100  
Staff Symbol: (d)  
Phone: (510) 437-3968

August 20, 2021

Dear Concerned Parties,

Coast Guard Districts Eleven (D11) and Thirteen (D13) would like to invite you to participate in the inaugural Pacific Coast Port Access Route Study (PAC-PARS).

The areas of the study will incorporate all waters on the outer continental shelf to encompass all major routes adjacent to and within port entrances and traffic separation schemes for the entire Pacific Coast. The areas of study will include major ports such as: **San Diego, CA, Los Angeles/Long Beach, CA, San Francisco, CA, Humboldt Bay, CA, Coos Bay, OR, Yaquina Bay, OR, Astoria, OR, Grays Harbor, WA, and Seattle/Puget Sound, WA.**

The PAC-PARS intent is to analyze current and future demands of waterway usage to ensure safe navigation. Major goals of the study include: analyzing and quantifying historical vessel traffic densities, analyzing and quantifying historical marine incidents/casualties, collecting and analyzing public comment and concern, working with maritime and environmental partners to determine future waterway use, and finally make an informed recommendation based on data collected to maintain, amend, or create vessel routing measures.

The Notice of Study is published on the federal register under docket USCG-2021-0345, and found at: <https://www.regulations.gov/document/USCG-2021-0345-0001>. Future federal register notices for the PARS within D11 and D13 has been published and opened for comment. Comments and related material must be received on or before 25 January, 2022. Any scheduled public meeting hosted by the Coast Guard regarding this study will be published in the federal register. District representatives will periodically attend port Harbor Safety Committees to continue distributing notice and information on the study.

Please direct all official comments to the federal register linked above and questions or concerns to [PACPARS@uscg.mil](mailto:PACPARS@uscg.mil).

Sincerely,

A handwritten signature in blue ink, appearing to read "B. K. Penoyer", written over a large, stylized blue scribble.

B. K. PENOYER  
Rear Admiral, U.S. Coast Guard  
Eleventh Coast Guard District

***District Eleven (D11) and District Thirteen (D13) are collaboratively conducting a “Pacific Coast – Port Access Route Study” (PAC-PARS).***

**Public comment is critical to the Coast Guard’s effort to provide services in the final analysis of the PAC-PARS. Please see the links on the back of this pamphlet to submit your comment.**



**Harbor Safety Committees are a great opportunity to discuss waterway management practices with the Coast Guard.**



Access to the study can be found by scanning the QR Code at the bottom of this flyer, or visit:

<https://www.regulations.gov>

And search the docket number:

**“USCG-2021-0345”**

Questions or concerns can be sent to:

**PACPARS@USCG.MIL**

**Please submit all official comments to the docket above. Comments and related material must be received on or before 25 January, 2022.**

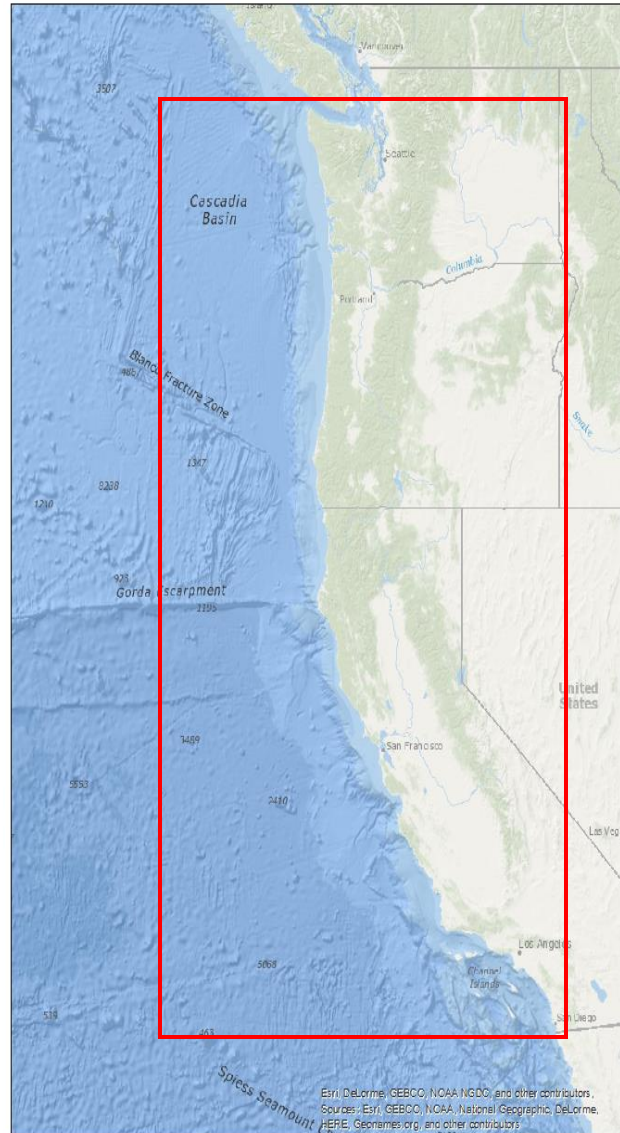
# **PACIFIC COAST PORT ACCESS ROUTE STUDY (PAC-PARS)**



## What is the Pacific Coast Port Access Route Study (PAC-PARS)?

The PAC-PARS is a study through the U.S. Coast Guard (USCG) to evaluate the usage of coastal waterways by vessel tracking data as well as the public's comment. The study is a required process to determine if current navigation protocols are adequate for existing and future traffic levels.

***The PAC-PARS will be the first comprehensive evaluation of all vessel traffic patterns that utilize the Pacific Coast waterways outside of California, Oregon, and Washington.***



## What is prompting the PAC-PARS study?

Vessel traffic, offshore renewable energy infrastructure, aquaculture, and commercial and government rocket testing are a few changes occurring along the West Coast. The USCG is conducting a study on navigational conditions for coastal and outer-continental shelf transits. The USCG wants to ensure that safe navigation can be maintained as development continues.

***The study will provide a baseline to assist with future determinations of waterway suitability for current and future waterway needs.***

## What areas are we looking into?

The primary ports of the Pacific Coast Port Access Route Study (PAC-PARS) are: San Diego, CA, Los Angeles/Long Beach, CA, San Francisco, CA, Humboldt Bay, CA, Coos Bay, OR, Yaquina Bay, OR, Astoria, OR, Grays Harbor, WA, and Puget Sound, WA.

U.S. Department of  
Homeland Security

United States  
Coast Guard



Commander  
United States Coast Guard  
Thirteenth District

915 2<sup>nd</sup> Ave, STE 3590  
Seattle, WA 98174  
Staff Symbol: d  
Phone: (206) 220-7090  
Fax: (206) 220-7092

August 20, 2021

Dear Concerned Parties,

Coast Guard Districts Eleven (D11) and Thirteen (D13) would like to invite you to participate in the inaugural Pacific Coast Port Access Route Study (PAC-PARS).

The areas of the study will incorporate all waters on the outer continental shelf to encompass all major routes adjacent to and within port entrances and traffic separation schemes for the entire Pacific Coast. The areas of study will include major ports such as: **San Diego, CA, Los Angeles/Long Beach, CA, San Francisco, CA, Humboldt Bay, CA, Coos Bay, OR, Yaquina Bay, OR, Astoria, OR, Grays Harbor, WA, and Seattle/Puget Sound, WA.**

The PAC-PARS intent is to analyze current and future demands of waterway usage to ensure safe navigation. Major goals of the study include: analyzing and quantifying historical vessel traffic densities, analyzing and quantifying historical marine incidents/casualties, collecting and analyzing public comment and concern, working with maritime and environmental partners to determine future waterway use, and finally make an informed recommendation based on data collected to maintain, amend, or create vessel routing measures.

The Notice of Study is published on the federal register under docket USCG-2021-0345, and found at: <https://www.regulations.gov/document/USCG-2021-0345-0001>. Future federal register notices for the PARS within D11 and D13 has been published and opened for comment. Comments and related material must be received on or before 25 January, 2022. Any scheduled public meeting hosted by the Coast Guard regarding this study will be published in the federal register. District representatives will periodically attend port Harbor Safety Committees to continue distributing notice and information on the study.

Please direct all official comments to the federal register linked above and questions or concerns to [PACPARS@uscg.mil](mailto:PACPARS@uscg.mil).

Sincerely,

A handwritten signature in blue ink that reads "M. W. Bouboulis".

M. W. BOUBOULIS  
Rear Admiral, U.S. Coast Guard  
Thirteenth Coast Guard District





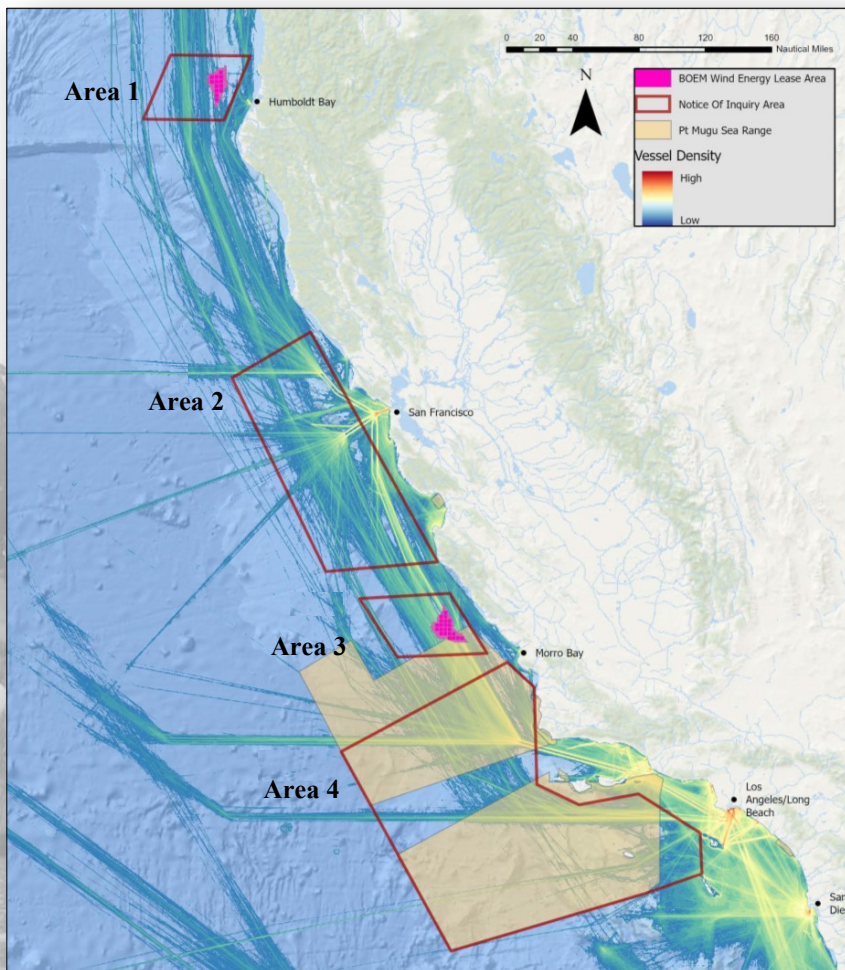
# U.S. COAST GUARD CALIFORNIA – VESSEL TRAFFIC ASSESSMENT

The U.S. Coast Guard is actively conducting a Pacific Coast - Port Access Route Study (PAC-PARS). USCG District Eleven has identified four areas of interest for further evaluation and have published a Notice of Inquiry (NOI) - Docket Number: **USCG-2021-0345**

- ▶ Area 1 - Bureau of Ocean Energy Management Humboldt Bay offshore Wind Energy Area
- ▶ Area 2 - The areas outside of the San Francisco Bay
- ▶ Area 3 - Bureau of Ocean Energy Management Morro Bay offshore Wind Energy Area
- ▶ Area 4 - Near Point Mugu and South of the Channel Islands in the Pacific Missile Area Range

District Eleven requests public comments regarding vessel traffic patterns and waterway uses in these areas. The information we receive will be used to make recommendations regarding maritime safety and the improvement of waterway operations and vessel movement along the California Coast. **These are a few of the questions to inspire dialogue that are included in the Notice of Inquiry:**

- > **Do you perceive increasing traffic density to cause increased navigational risk?**
- > **What improvements to waterway management would you like to see? If none, why?**
- > **What navigational hazards do vessels operating in the focus area face?**
- > **Do you think the CG should create designated fairways, traffic separation schemes for vessels, or exclusion/restricted areas around wind farms?**



The Notice of Inquiry and the full list of questions can be found by scanning this QR code:



or visit  
[www.regulations.gov](http://www.regulations.gov)  
& search docket number:  
**USCG-2021-0345**

Questions or concerns may be sent to:  
[PACPARS@uscg.mil](mailto:PACPARS@uscg.mil)

**Comments and related material must be received by 26 May, 2022**

**Following the NOI comment period, the Coast Guard aims to publish the draft results of study before the end of 2022**

