



**United States
Coast Guard**



Enterprise - GIS
V2.1 2011



& Authoritative Vessel Identification Service (AVIS)

Home Display

Start Presentation Presentation Edit Presentation Presentation Find

Directions Route Measure Find

Folder View Link Create

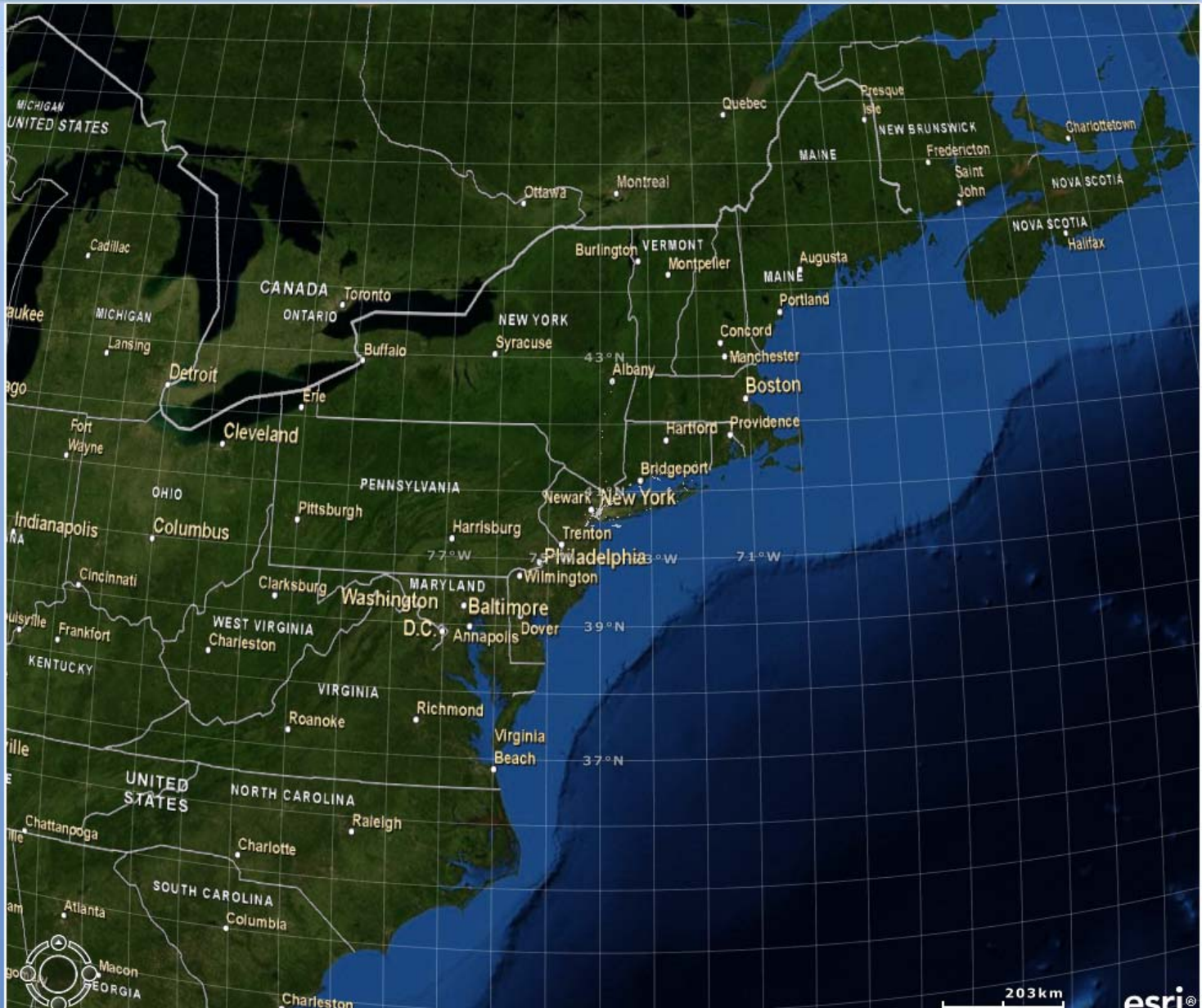
Point Line Area Arrow

Target Circle

Basemap Add Content Analysis Contents Window Map

Manage Layers Copy to Clipboard Zoom To 2D/3D

- Contents
- Operational Charts
 - NY_Harbor_Day_Ship_Weighted_2008_01-2011
 - services
 - E-GIS Vessel Tracks
 - Preconfigured Vessel Tracks
 - Global Satellite AIS
 - Basemap (Boundaries and Places)



Home Display Tools

Start Presentation Presentation Edit Presentation Presentation Find

Directions Route Measure Find

Folder View Link Create

Point Line Area Arrow

Target Circle Rectangle

Basemap Add Content Analysis Contents Window Map

Manage Layers Copy to Clipboard Zoom To 2D/3D

- Contents
- Operational Charts
 - NY_Harbor_Day_Ship_Weighted_2008_01-2011
 - services
 - USCG Sectors
 - Ports and Receivers
 - Vessels **←**
 - Real-Time Vessels
 - Vessels By Country
 - Vessels By District
 - Vessels By Type
 - Vessels By Industry
 - Disputed Vessels (MMSI)
 - Vessels By Discrepancy
 - Vessels and Bearings
 - Vessels - IFrame
 - Map Overlays
 - SANS Ports
 - E-GIS Vessel Tracks
 - Preconfigured Vessel Tracks
 - Global Satellite AIS
 - Basemap (Boundaries and Places)



UNCLASSIFIED

Home Display Tools

Start Presentation Edit Presentation Find Directions Route Measure Find

Folder View Link Create Point Line Area Target Circle Rectangle Arrow

Basemap Add Content Analysis Contents Window Map Manage Layers Copy to Clipboard Zoom To 2D/3D

- Contents
- Operational Charts
 - NY_Harbor_Day_Ship_Weighted_2008_01-2011
 - services
 - USCG Sectors
 - Ports and Receivers
 - Vessels
 - Real-Time Vessels
 - Vessels By Country
 - Vessels By District
 - Vessels By Type
 - Vessels By Industry
 - Disputed Vessels (MMSI)
 - Vessels By Discrepancy
 - Vessels and Bearings
 - Vessels - IFrame
 - Map Overlays
 - SANS Ports
 - E-GIS Vessel Tracks
 - Preconfigured Vessel Tracks
 - Global Satellite AIS
 - Basemap (Boundaries and Places)



Home Display Tools

Start Presentation Presentation Edit Presentation Presentation Find

Directions Route Measure Find

Folder View Link Create

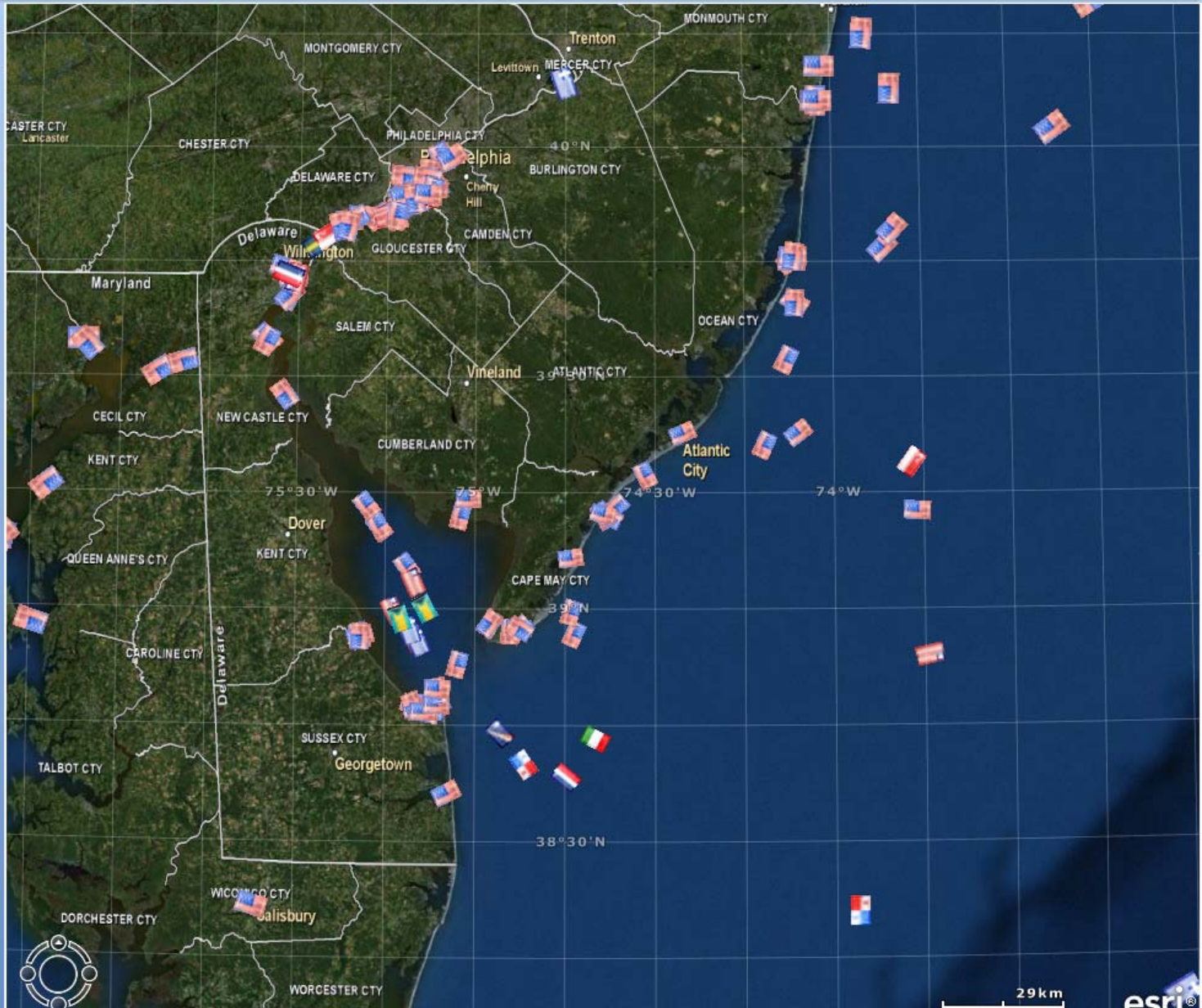
Point Line Area Arrow

Target Circle Rectangle

Basemap Add Content Analysis Contents Window Map

Manage Layers Copy to Clipboard Zoom To 2D/3D

- Contents
- Operational Charts
 - NY_Harbor_Day_Ship_Weighted_2008_01-2011
 - services
 - USCG Sectors
 - Ports and Receivers
 - Vessels
 - Real-Time Vessels
 - Vessels By Country
 - Vessels By District
 - Vessels By Type
 - Vessels By Industry
 - Disputed Vessels (MMSI)
 - Vessels By Discrepancy
 - Vessels and Bearings
 - Vessels - I-frame
 - Map Overlays
 - SANS Ports
 - E-GIS Vessel Tracks
 - Preconfigured Vessel Tracks
 - Global Satellite AIS
 - Basemap (Boundaries and Places)



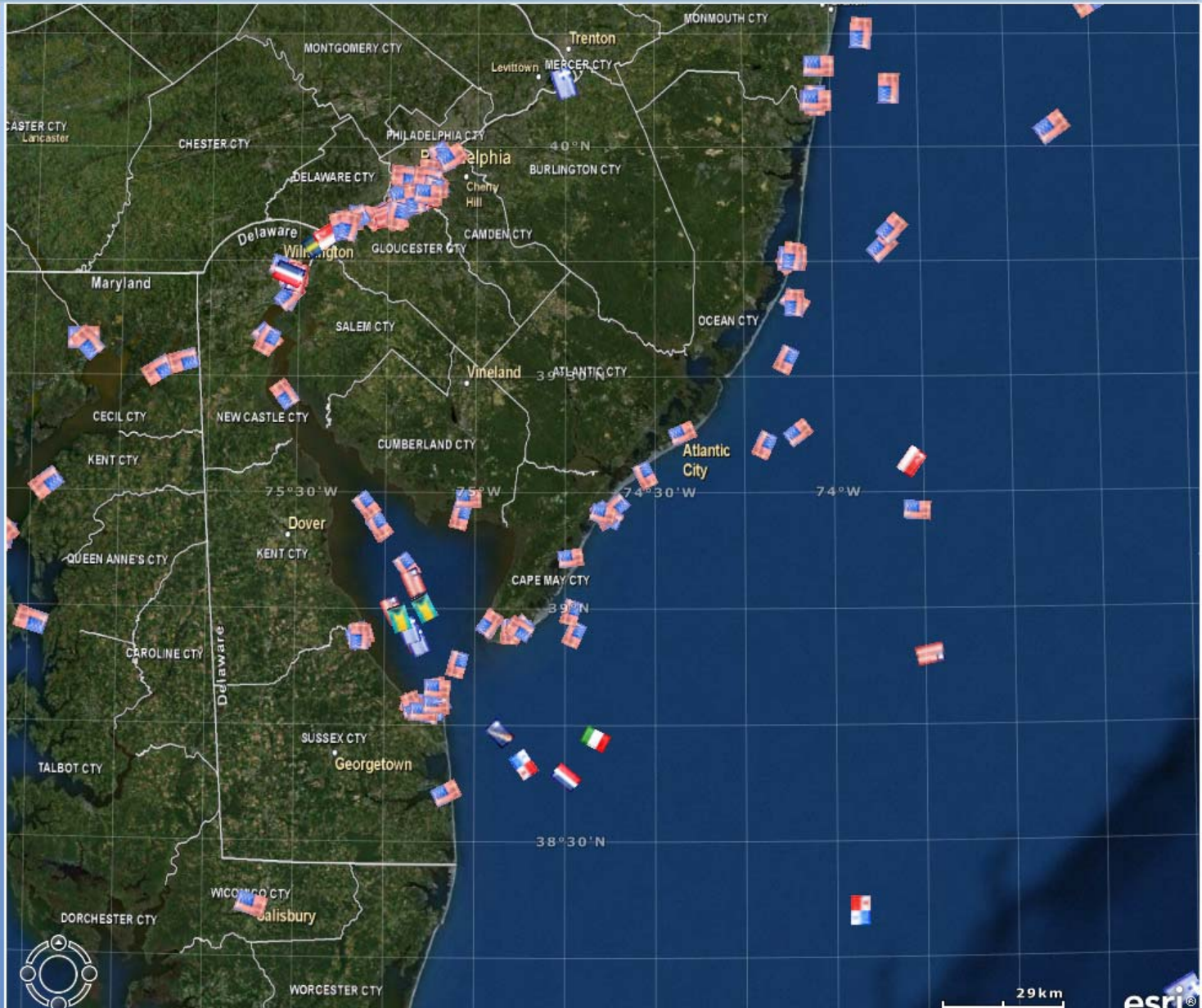
Home Display Tools

Start Presentation Edit Presentation Find Directions Route Measure Find

Folder View Link Create Point Line Area Arrow Target Circle Rectangle Arrow

Basemap Add Content Analysis Contents Window Map Manage Layers Copy to Clipboard Zoom To 2D/3D

- Contents
- Operational Charts
 - NY_Harbor_Day_Ship_Weighted_2008_01-2011
 - services
 - USCG Sectors
 - Ports and Receivers
 - Vessels
 - Real-Time Vessels
 - Vessels By Country
 - Vessels By District
 - Vessels By Type
 - Vessels By Industry
 - Disputed Vessels (MMSI)
 - Vessels By Discrepancy**
 - CLSN
 - CLSN/NAME
 - IMO
 - IMO/CLSN
 - IMO/CLSN/NAME
 - IMO/NAME
 - MMSI
 - MMSI/CLSN
 - MMSI/CLSN/NAME
 - MMSI/IMO
 - MMSI/IMO/CLSN
 - MMSI/IMO/CLSN/NAME
 - MMSI/IMO/NAME
 - MMSI/NAME
 - NAME
 - NONE
 - UNVALIDATED
 - Vessels and Bearings
 - Vessels - IFrame
 - Map Overlays
 - SANS Ports
 - E-GIS Vessel Tracks
 - Preconfigured Vessel Tracks
 - Global Satellite AIS
 - Basemap (Boundaries and Places)



Home Display Tools

Start Presentation Presentation Edit Presentation Presentation Find

Directions Route Measure Find

Folder View Link Create

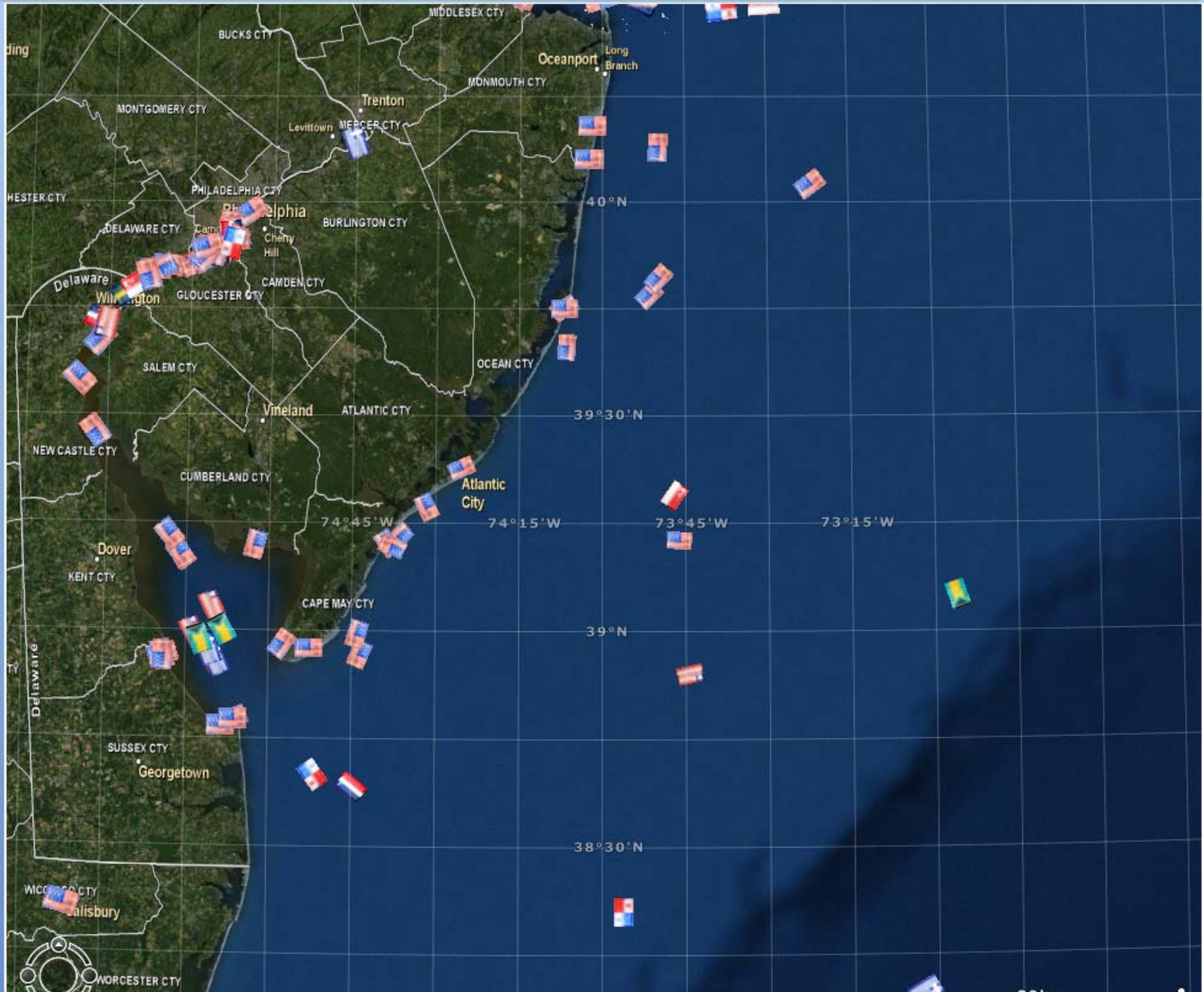
Point Line Area Arrow

Target Circle Rectangle

Basemap Add Content Analysis Contents Window Map

Manage Layers Copy to Clipboard Zoom To 2D/3D

- Contents
- Operational Charts
 - NY_Harbor_Day_Ship_Weighted_2008_01-2011
 - services
 - USCG Sectors
 - Ports and Receivers
 - Vessels
 - Real-Time Vessels
 - Vessels By Country
 - Vessels By District
 - Vessels By Type
 - Vessels By Industry
 - Disputed Vessels (MMSI)
 - Vessels By Discrepancy
 - CLSN
 - CLSN/NAME
 - IMO
 - IMO/CLSN
 - IMO/CLSN/NAME
 - IMO/NAME
 - MMSI
 - MMSI/CLSN
 - MMSI/CLSN/NAME
 - MMSI/IMO
 - MMSI/IMO/CLSN
 - MMSI/IMO/CLSN/NAME
 - MMSI/IMO/NAME
 - MMSI/NAME
 - NAME
 - NONE
 - UNVALIDATED
 - Vessels and Bearings
 - Vessels - IFrame
 - Map Overlays
 - SANS Ports
 - E-GIS Vessel Tracks
 - Preconfigured Vessel Tracks
 - Global Satellite AIS
 - Basemap (Boundaries and Places)



NORWEGIAN GEM



[VesselTrack: 1m | 3m | 6m](#)
[Show Voyage History](#)

	AIS	Verified
Name:	NORWEGIAN GEM	NORWEGIAN GEM
MMSI:	309951000	309951000
IMO Number:	9355733	9355733
Official Number:		
MISLE Vessel ID:		886049
Call Sign:	C6VG8	C6VG8
Ship Type:	Passenger Ship - No additional information	
Class Society:		DNV
Flag:	Bahamas	
Year Built:		
Length:	294	294.00
Beam:	32	37.50
Draft:	8.6	
Discrepancies:	NONE	
Report Time	2012-02-09T04:25:14-00:00	2010-11-12T15:28:53-00:00

Operator Information

NORWEGIAN CRUISE LINE	Passenger	Ocean Cruising
---------------------------------------	-----------	----------------

Navigation Information

Destination:	SAN JUAN	
ETA:	02111800	
Nav Status:	Under way using engine	
Speed (knots):	20.8	
Course:	161.1	
Heading:	160	



- NONE
- UNVALIDATED
- Vessels and Bearings
- Vessels - IFrame
- Map Overlays
- SANS Ports
- E-GIS Vessel Tracks
 - Preconfigured Vessel Tracks
 - Global Satellite AIS
- Basemap (Boundaries and Places)



Home Display Tools

Start Presentation Presentation Edit Presentation Edit Presentation Find Find

Directions Route Measure

Folder View Link

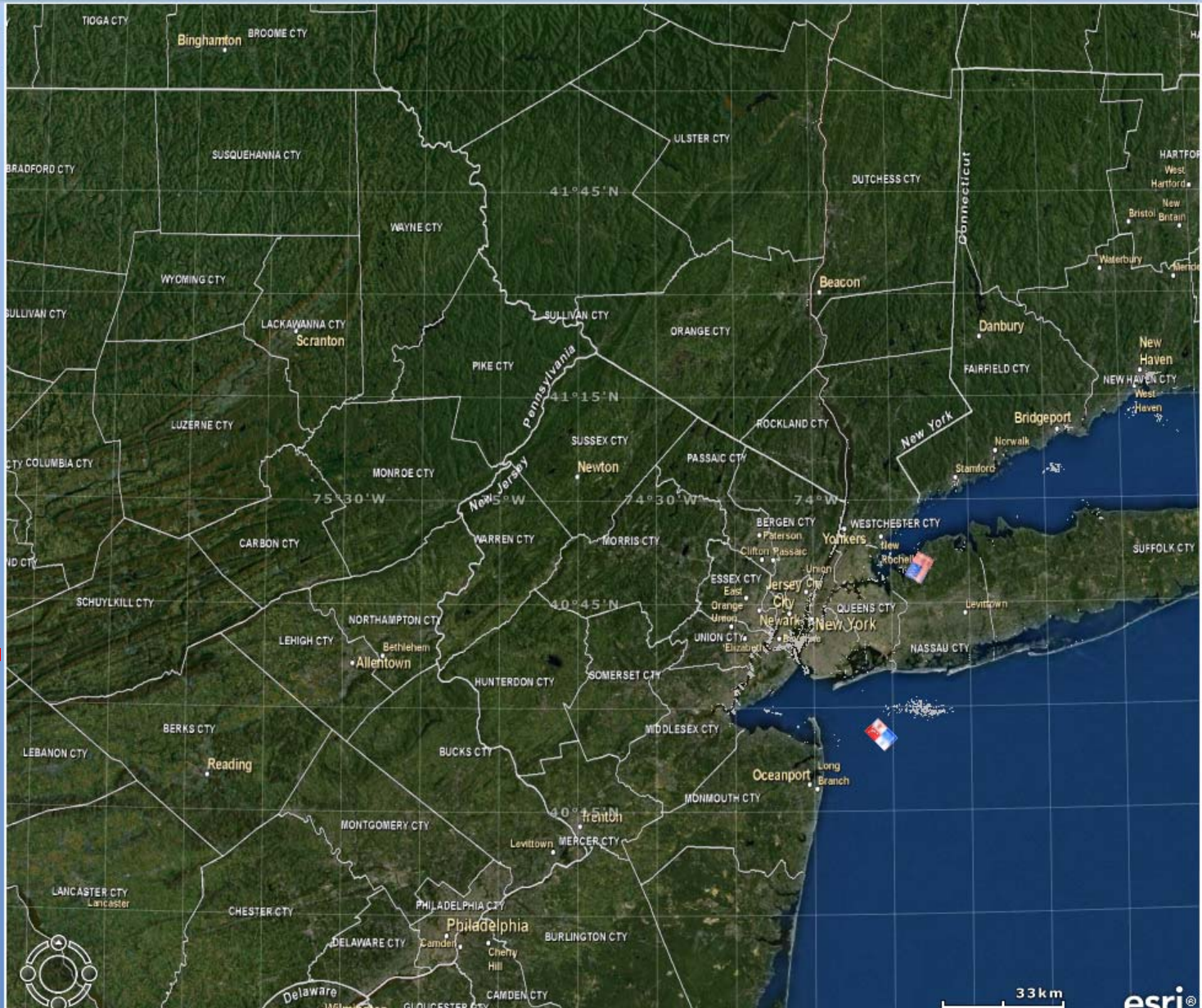
Point Line Area Target Circle Line Rectangle Area Arrow

Basemap Add Content Analysis Contents Window Map

Manage Layers Copy to Clipboard Zoom To 2D/3D

Contents

- Operational Charts
- NY_Harbor_Day_Ship_Weighted_2008_01-2011
- services
 - USCG Sectors
 - Ports and Receivers
 - Vessels
 - Real-Time Vessels
 - Vessels By Country
 - Vessels By District
 - Vessels By Type
 - Vessels By Industry
 - Disputed Vessels (MMSI)
 - Vessels By Discrepancy**
 - CLSN
 - CLSN/NAME
 - IMO
 - IMO/CLSN
 - IMO/CLSN/NAME
 - IMO/NAME
 - MMSI
 - MMSI/CLSN
 - MMSI/CLSN/NAME
 - MMSI/IMO
 - MMSI/IMO/CLSN
 - MMSI/IMO/CLSN/NAME**
 - MMSI/IMO/NAME
 - MMSI/NAME
 - NAME
 - NONE
 - UNVALIDATED
 - Vessels and Bearings
 - Vessels - Iframe
 - Map Overlays
 - SANS Ports
- E-GIS Vessel Tracks
 - Preconfigured Vessel Tracks
 - Global Satellite AIS
- Basemap (Boundaries and Places)



Home Display Tools

Start Presentation Presentation Edit Presentation Presentation Find Route Measure Find

Folder View Link Create Point Line Area Arrow Target Circle Rectangle

Basemap Add Content Analysis Contents Window Map

Manage Layers Copy to Clipboard Zoom To 2D/3D

Contents

DEBORAH QUINN

VesselTrack: [1m](#) | [3m](#) | [6m](#)
[Show Voyage History](#)

SANS Ports

E-GIS Vessel Tracks

- Preconfigured Vessel Tracks
- Global Satellite AIS

Basemap (Boundaries and Places)

DEBORAH QUINN

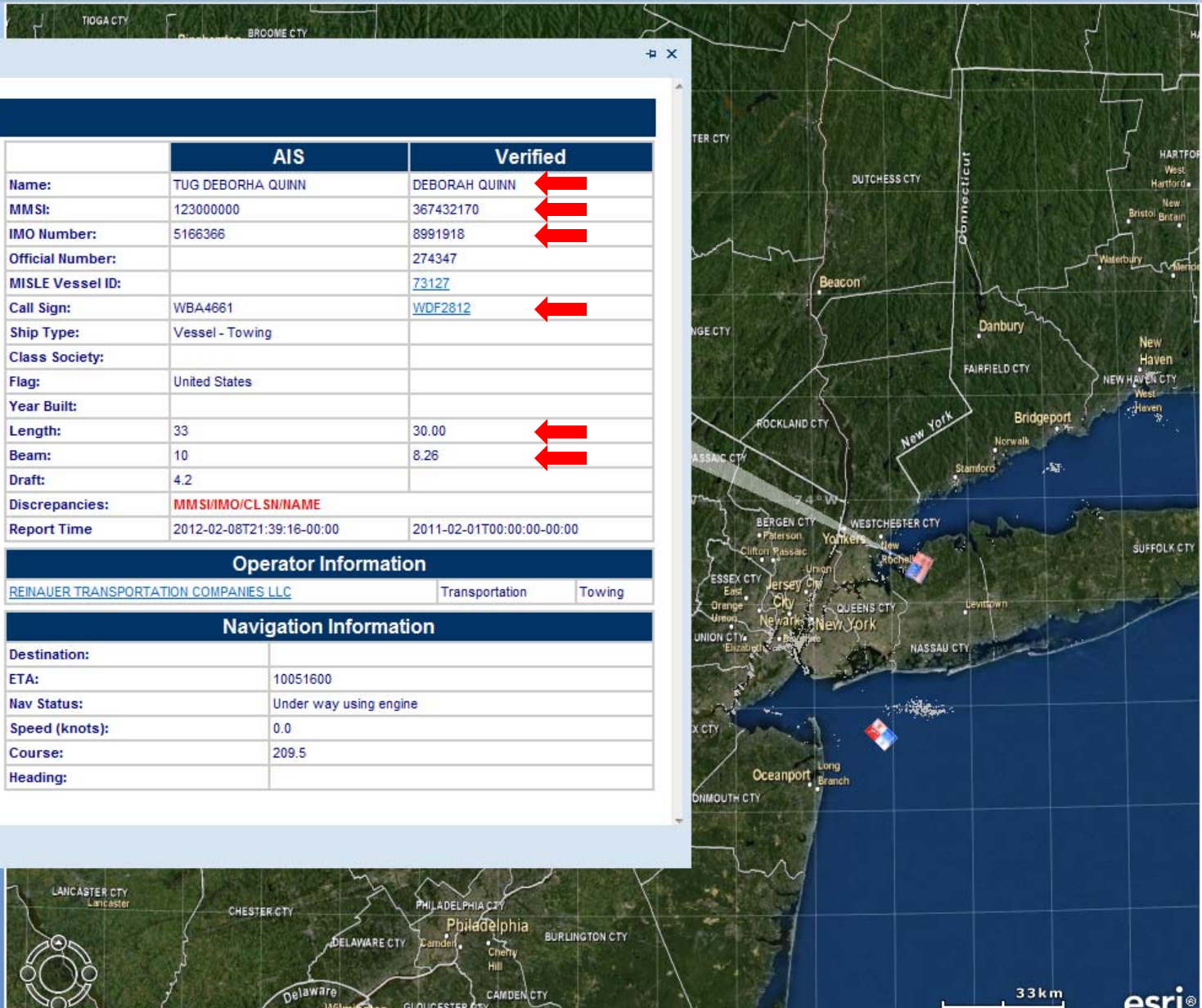
	AIS	Verified
Name:	TUG DEBORHA QUINN	DEBORAH QUINN
MMSI:	123000000	367432170
IMO Number:	5166366	8991918
Official Number:		274347
MISLE Vessel ID:		73127
Call Sign:	WBA4661	WDF2812
Ship Type:	Vessel - Towing	
Class Society:		
Flag:	United States	
Year Built:		
Length:	33	30.00
Beam:	10	8.26
Draft:	4.2	
Discrepancies:	MMSI/IMO/CLSN/NAME	
Report Time	2012-02-08T21:39:16-00:00	2011-02-01T00:00:00-00:00

Operator Information

REINAUER TRANSPORTATION COMPANIES LLC	Transportation	Towing
---	----------------	--------

Navigation Information

Destination:	
ETA:	10051600
Nav Status:	Under way using engine
Speed (knots):	0.0
Course:	209.5
Heading:	



Home Display Tools

Start Presentation Presentation Edit Presentation Presentation

Find Find

Directions Route Measure

Folder View Link

Create Point Line Area Arrow Target Circle Rectangle

Basemap Add Content Analysis

Contents Window Map

Manage Layers Copy to Clipboard Zoom To 2D/3D

Contents

YANKEE

YANKEE

	AIS	Verified
Name:	P/B YANKEE	YANKEE
MMSI:	355165250	367448070
IMO Number:	118307	0
Official Number:		1178307
MISLE Vessel ID:		794943
Call Sign:		WDF4108
Ship Type:	Not Available (default)	
Class Society:		
Flag:	Panama	
Year Built:		
Length:	0	17.00
Beam:	0	
Draft:	0.0	
Discrepancies:	MMSI/IMO/CLSN/NAME	
Report Time	2012-02-09T18:39:53-00:00	2011-02-01T00:00:00-00:00

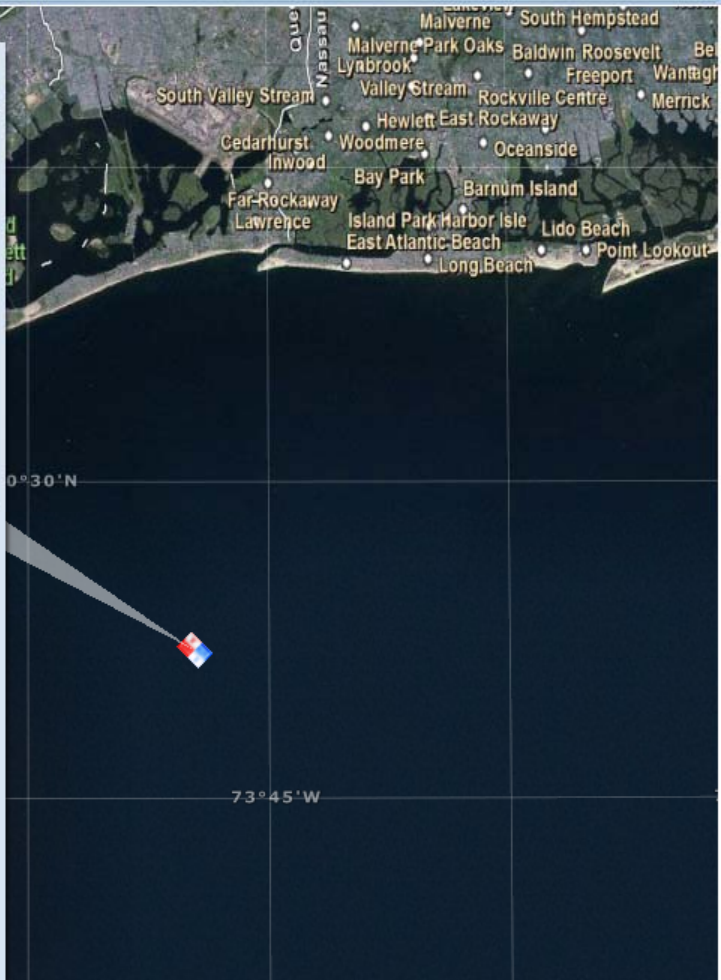
Operator Information

[UNITED NY SANDY HOOK PILOTS ASSOC](#) Navigation Pilotage

Navigation Information

Destination:	
ETA:	00000000
Nav Status:	Not defined (default)
Speed (knots):	1.3
Course:	135.4
Heading:	

VesselTrack: 1m | 3m | 6m
[Show Voyage History](#)



Map Overlays

SANS Ports

E-GIS Vessel Tracks

- Preconfigured Vessel Tracks
- Global Satellite AIS

Basemap (Boundaries and Places)

East Freehold, US Naval Weapons Station Earle, Oakhurst, Wanamassa, Asbury Park, Neptune, Ocean Grove, Bradley Beach

40°15'N

7 km

esri