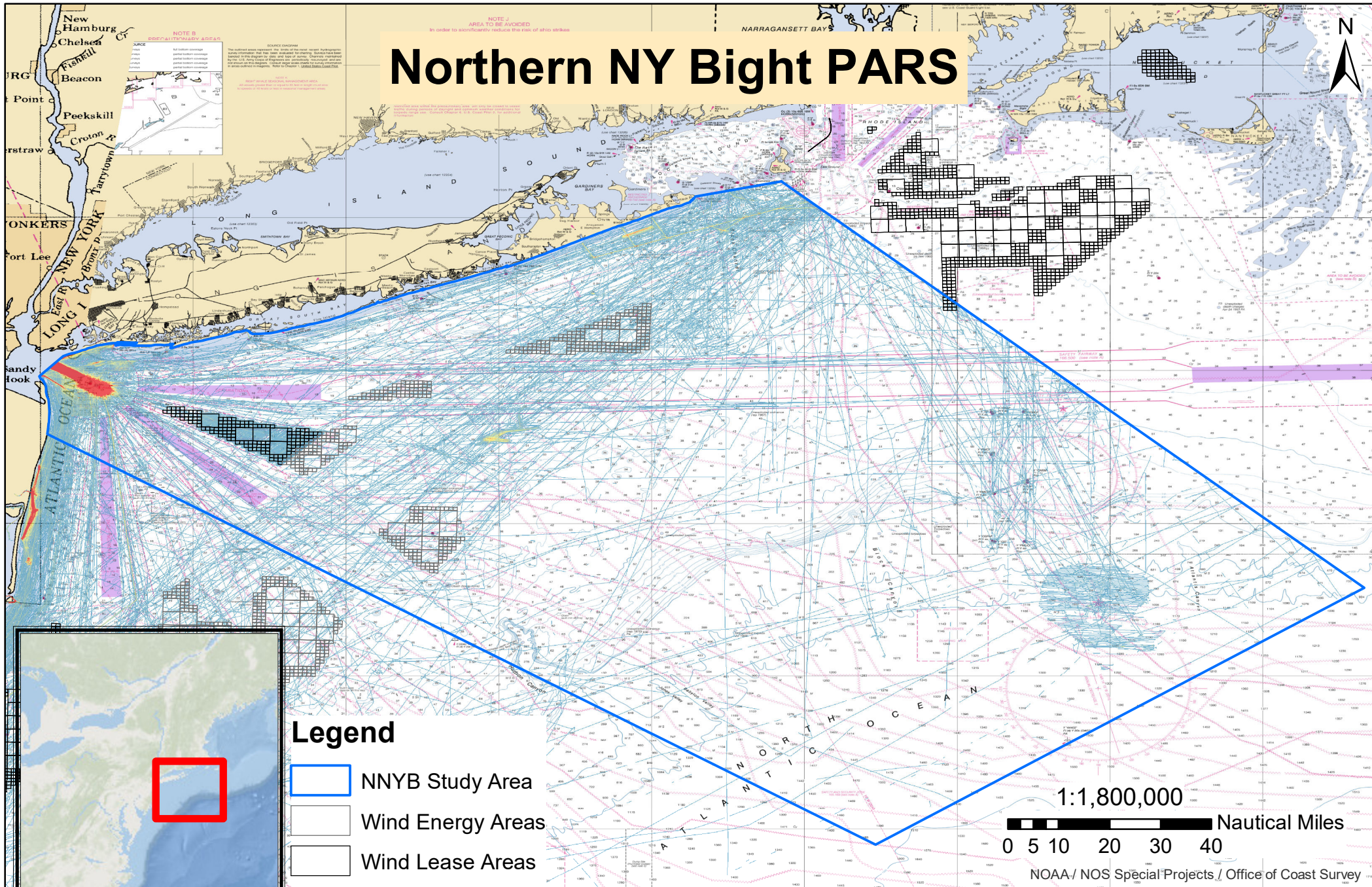


Northern NY Bight PARS



Legend

- NNYB Study Area
- Wind Energy Areas
- Wind Lease Areas

Other 2017

Value

- High Traffic Density
-
- Low Traffic Density

1:1,800,000

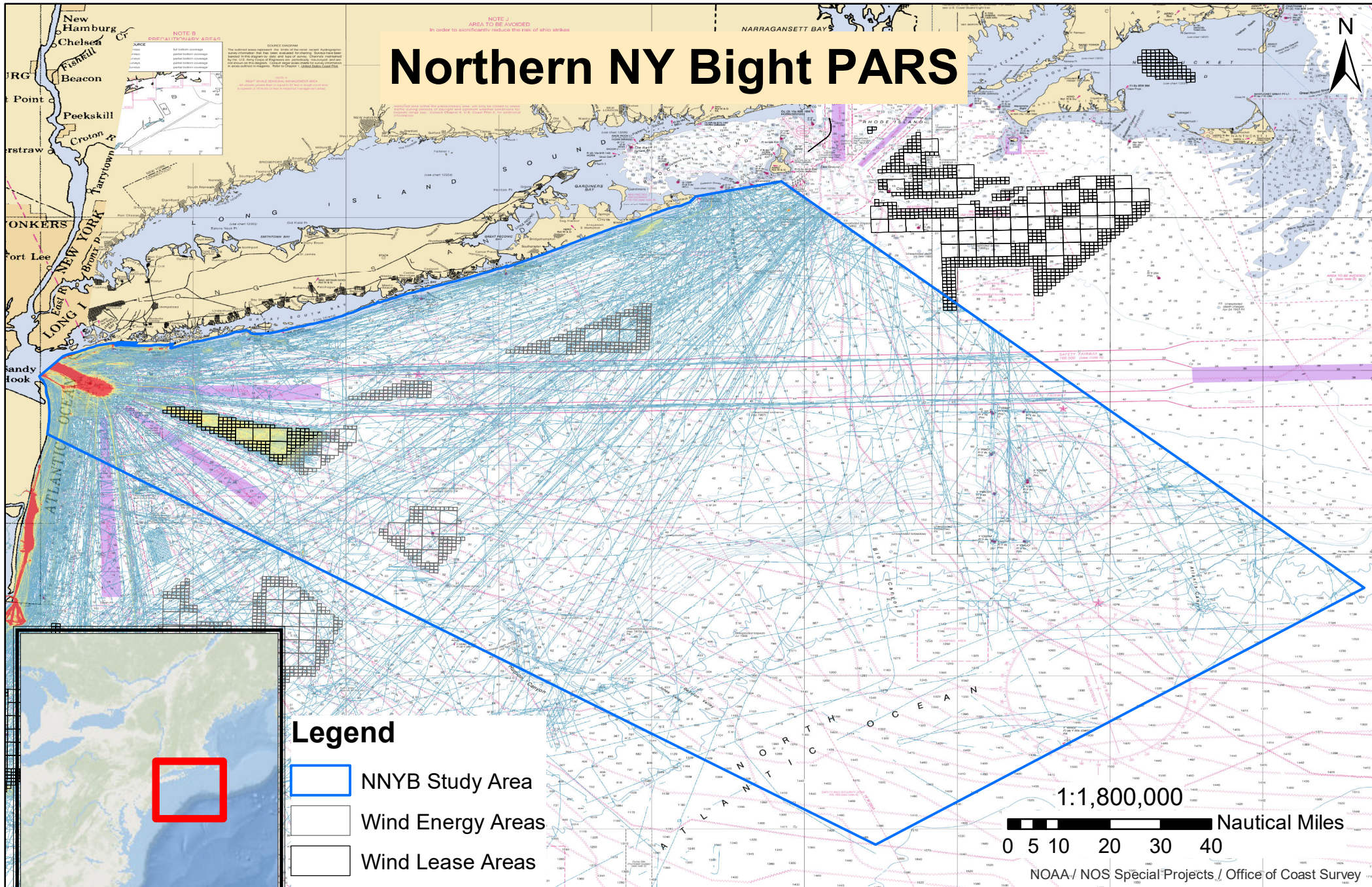
0 5 10 20 30 40 Nautical Miles

NOAA / NOS Special Projects / Office of Coast Survey

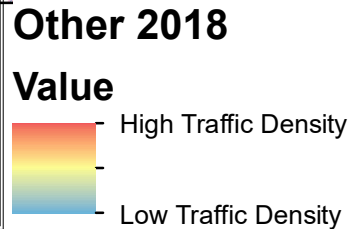
NOAA Chart 12300
 Data Source: NAIS
 Prepared by the USCG Navigation Center

Coordinate System: GCS WGS 1984
 Datum: WGS 1984
 Units: Degree

Northern NY Bight PARS



- Legend**
- NNYB Study Area
 - Wind Energy Areas
 - Wind Lease Areas



1:1,800,000

0 5 10 20 30 40 Nautical Miles

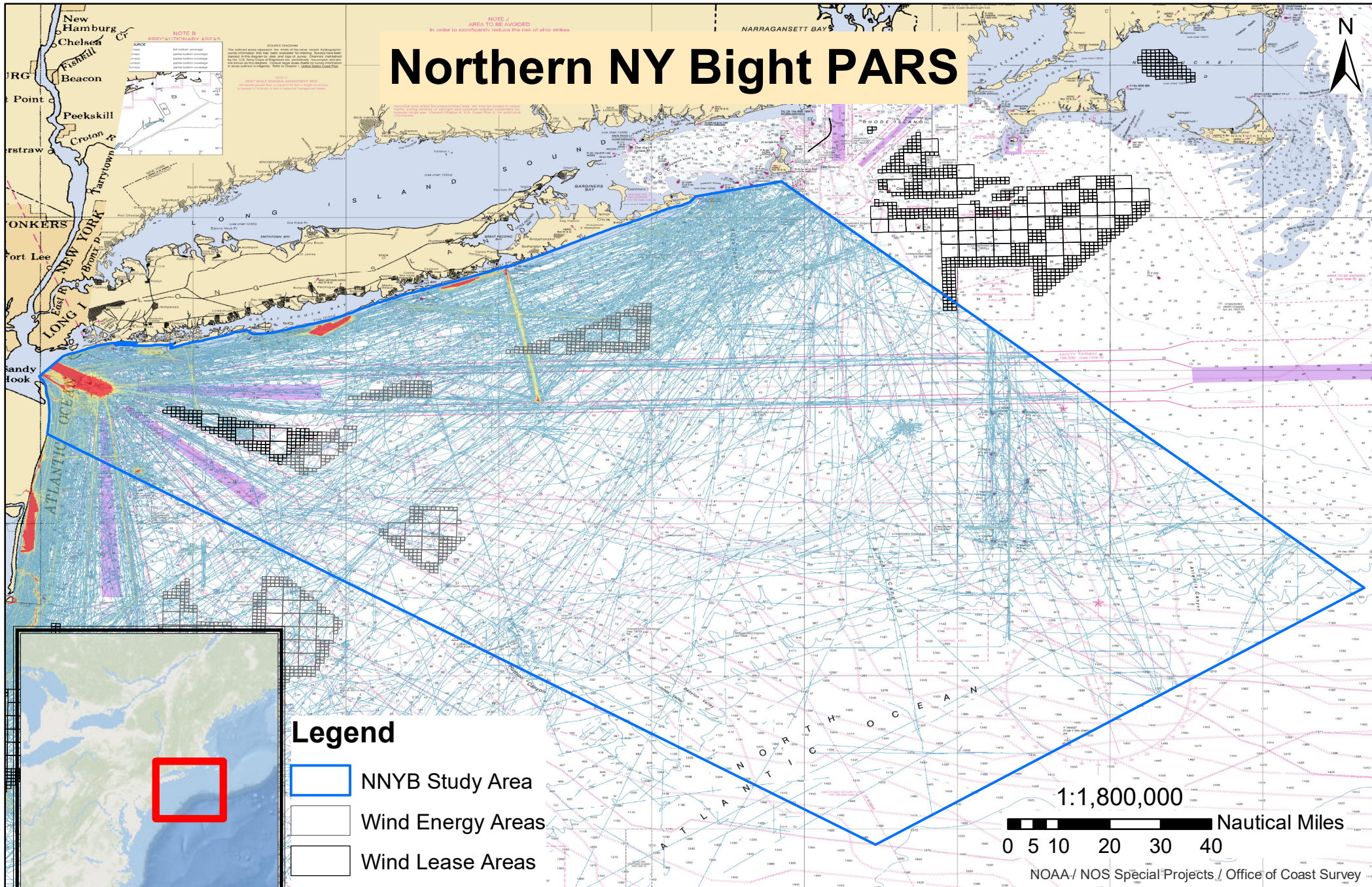
NOAA / NOS Special Projects / Office of Coast Survey

NOAA Chart 12300
 Data Source: NAIS
 Prepared by the USCG Navigation Center

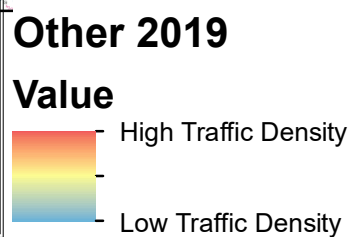
Coordinate System: GCS WGS 1984
 Datum: WGS 1984
 Units: Degree

Esri, Garmin, GEBCO, NOAA
 NGDC, and other contributors

Northern NY Bight PARS



- Legend**
- NNYB Study Area
 - Wind Energy Areas
 - Wind Lease Areas



1:1,800,000

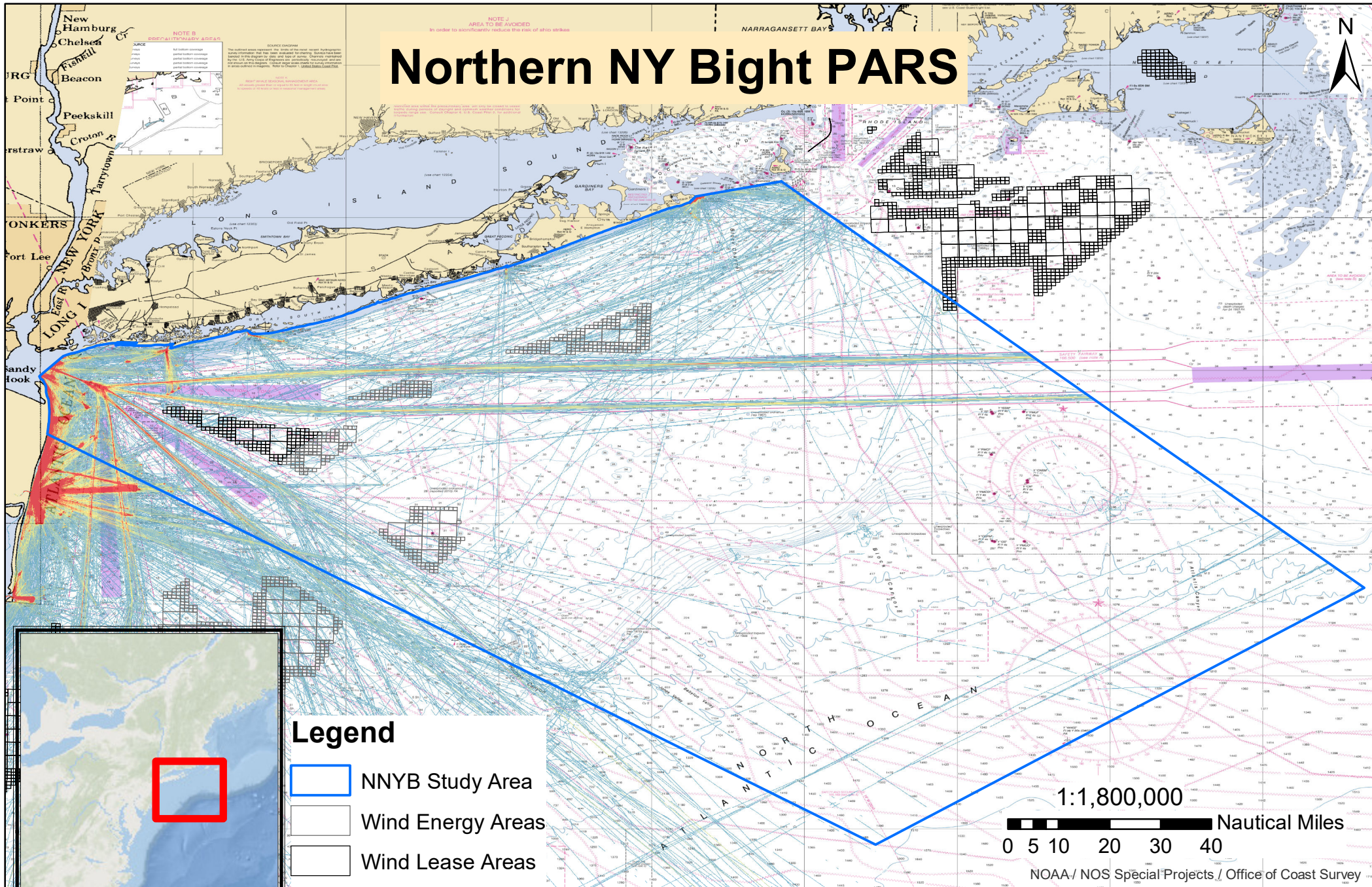
0 5 10 20 30 40 Nautical Miles

NOAA / NOS Special Projects / Office of Coast Survey

NOAA Chart 12300
Data Source: NAIS
Prepared by the USCG Navigation Center

Coordinate System: GCS WGS 1984
Datum: WGS 1984
Units: Degree

Northern NY Bight PARS



Legend

- NNYB Study Area
- Wind Energy Areas
- Wind Lease Areas

Passenger 2017

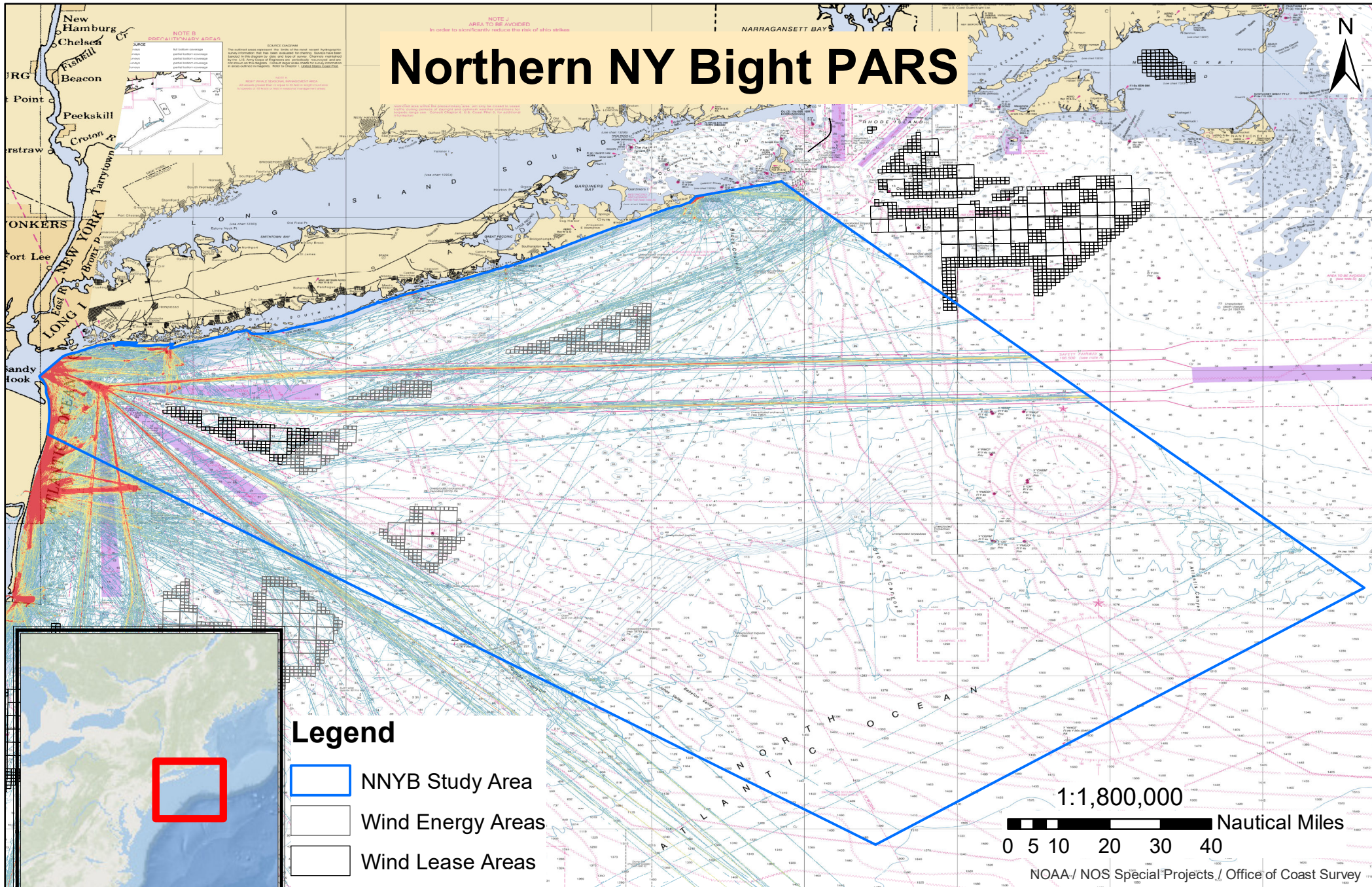
Value

- High Traffic Density
-
- Low Traffic Density

NOAA Chart 12300
 Data Source: NAIS
 Prepared by the USCG Navigation Center

Coordinate System: GCS WGS 1984
 Datum: WGS 1984
 Units: Degree

Northern NY Bight PARS



Legend

- NNYB Study Area
- Wind Energy Areas
- Wind Lease Areas

Passenger 2018

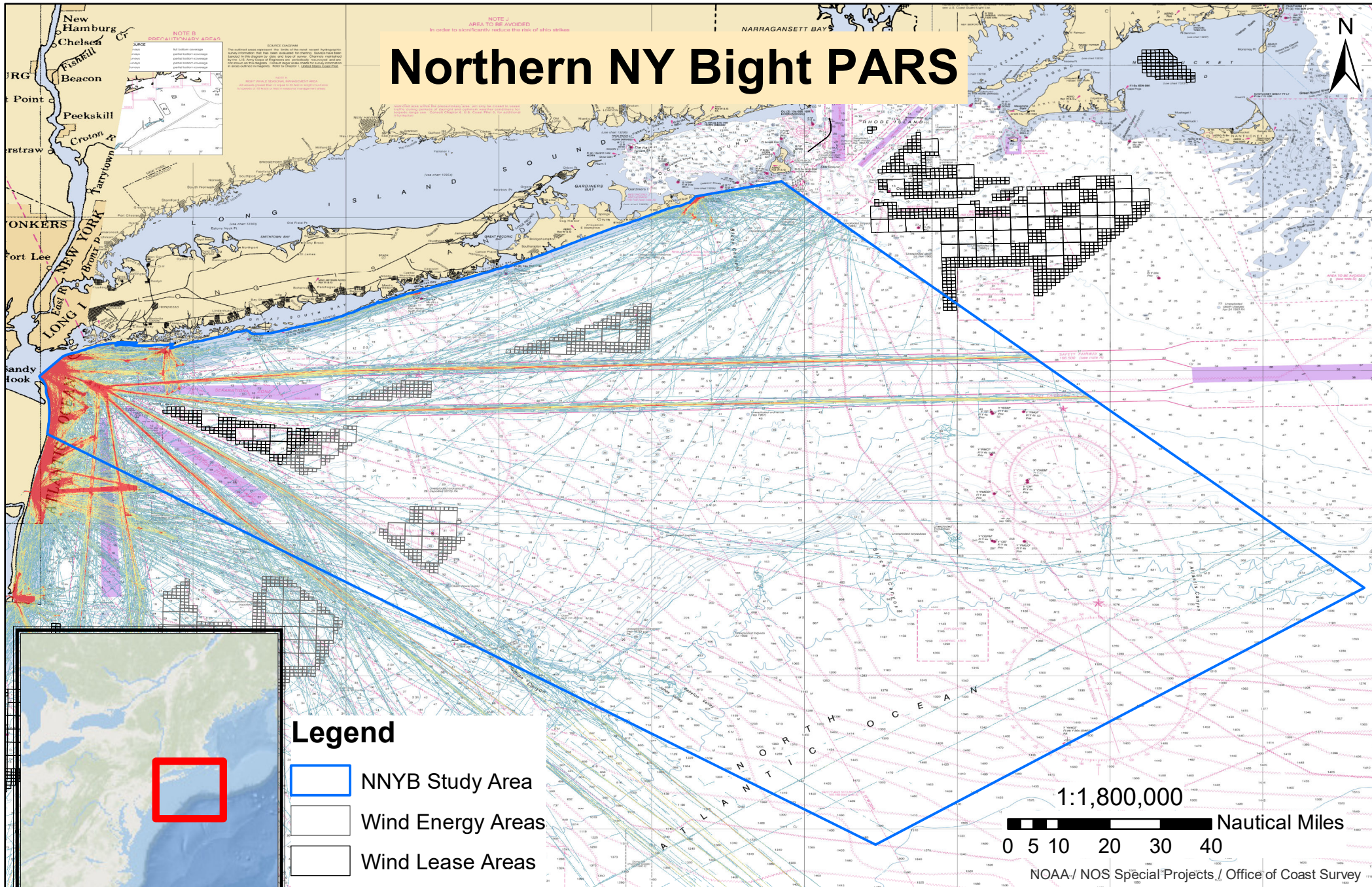
Value

- High Traffic Density
-
- Low Traffic Density

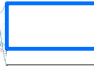
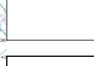

NOAA Chart 12300
 Data Source: NAIS
 Prepared by the USCG Navigation Center

Coordinate System: GCS WGS 1984
 Datum: WGS 1984
 Units: Degree

Northern NY Bight PARS






Legend

-  NNYB Study Area
-  Wind Energy Areas
-  Wind Lease Areas

Passenger 2019

Value

-  - High Traffic Density
-  -
-  - Low Traffic Density

NOAA Chart 12300
 Data Source: NAIS
 Prepared by the USCG Navigation Center

Coordinate System: GCS WGS 1984
 Datum: WGS 1984
 Units: Degree

Esri, Garmin, GEBCO, NOAA
 NGDC, and other contributors