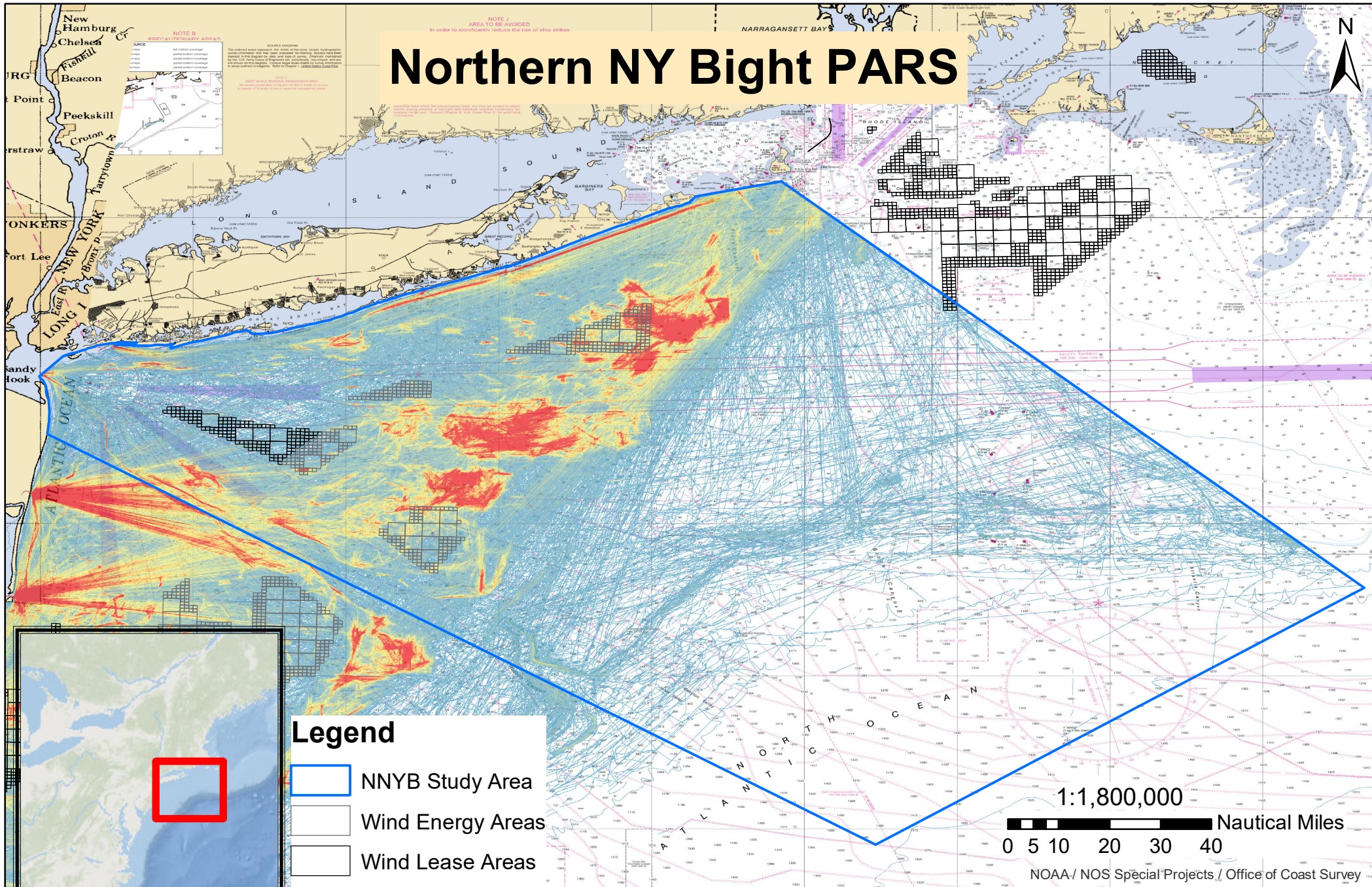


# Northern NY Bight PARS



**Legend**

- NNYB Study Area
- Wind Energy Areas
- Wind Lease Areas

**Fishing 2017**

**Value**

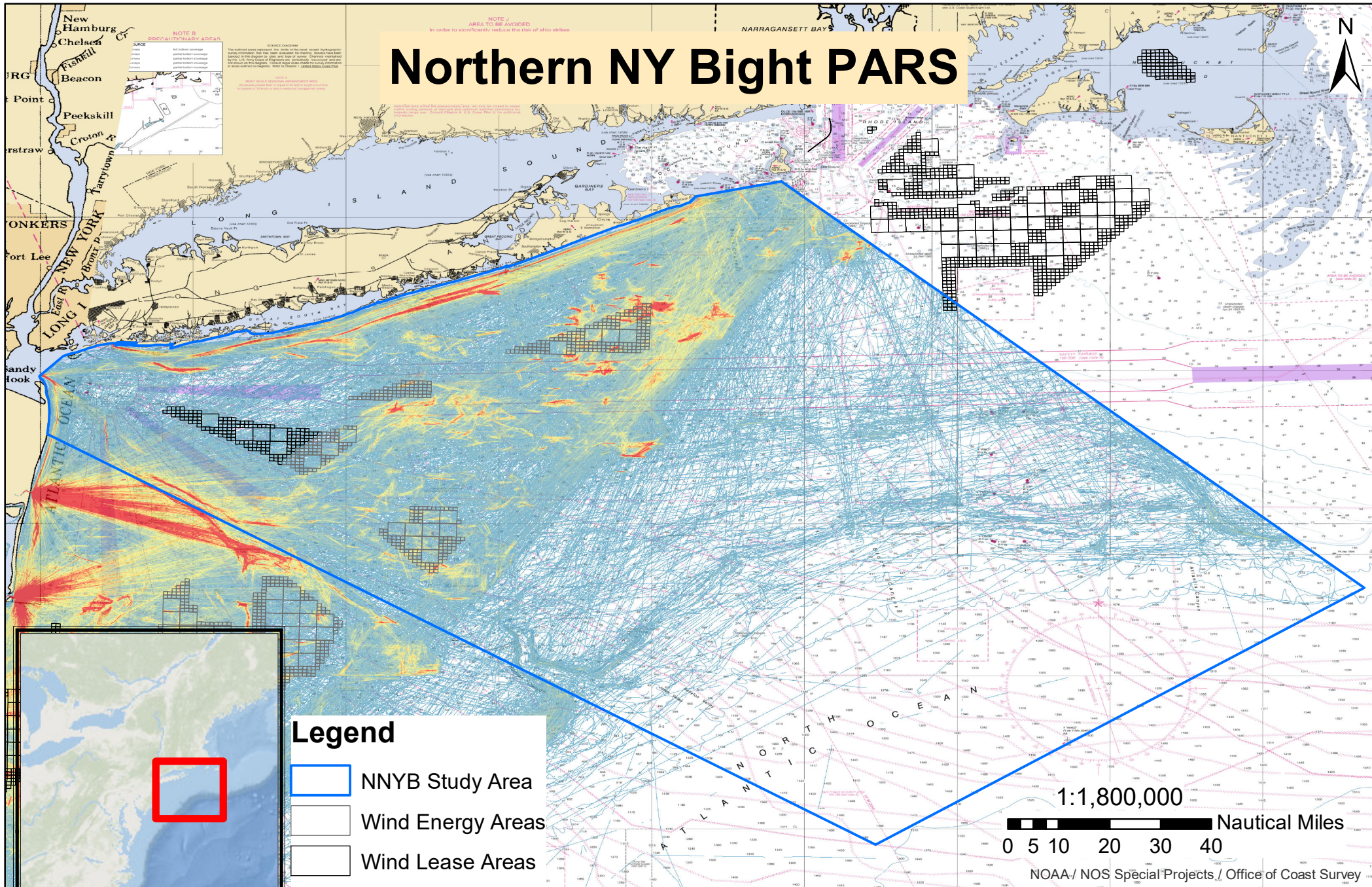
- High Traffic Density
- 
- Low Traffic Density

NOAA Chart 12300  
 Data Source: NAIS  
 Prepared by the USCG Navigation Center

Coordinate System: GCS WGS 1984  
 Datum: WGS 1984  
 Units: Degree



# Northern NY Bight PARS



NOAA Chart 12300  
Data Source: NAIS  
Prepared by the USCG Navigation Center

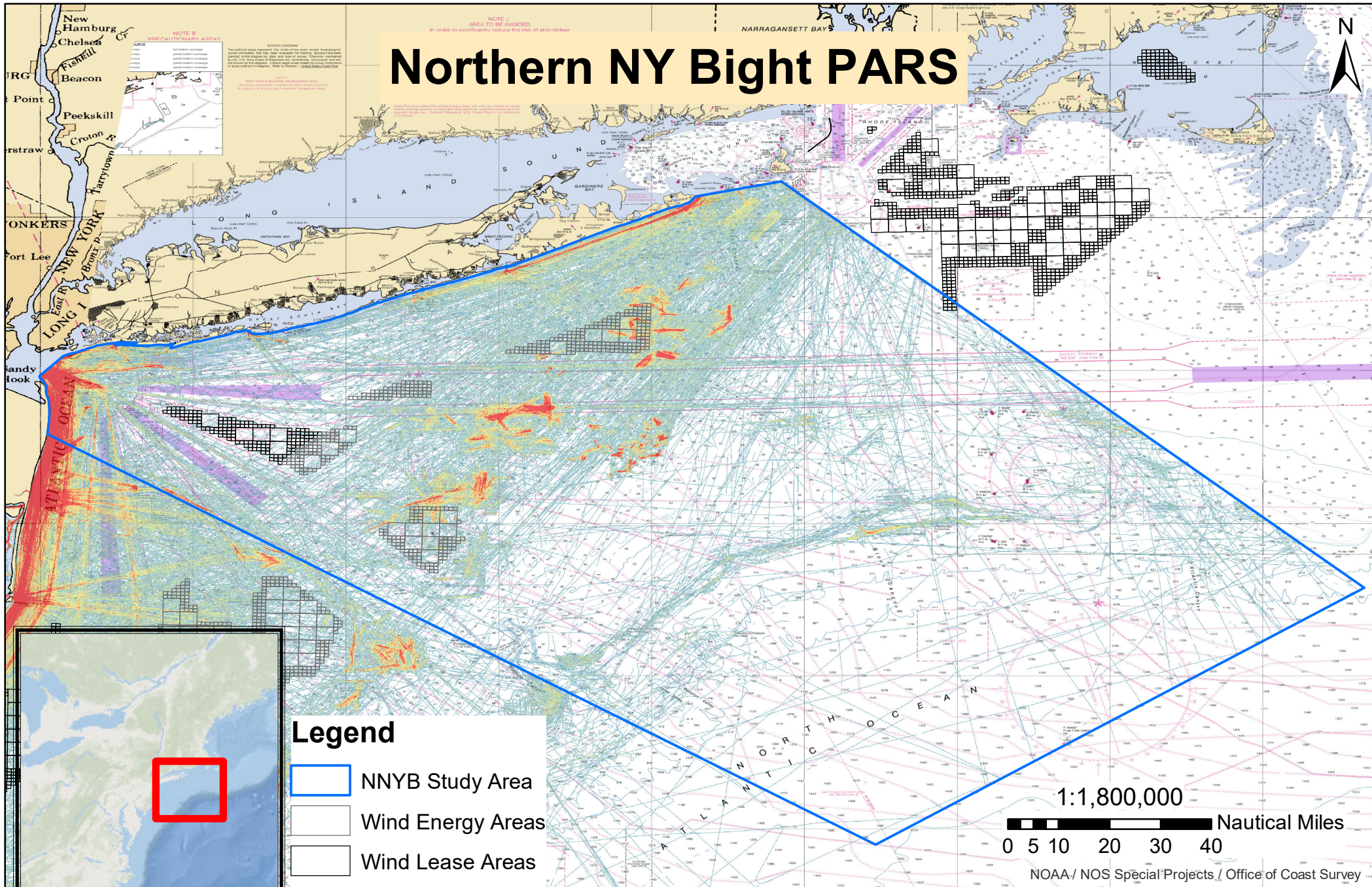
Coordinate System: GCS WGS 1984  
Datum: WGS 1984  
Units: Degree







# Northern NY Bight PARS



- Legend**
- NNYB Study Area
  - Wind Energy Areas
  - Wind Lease Areas

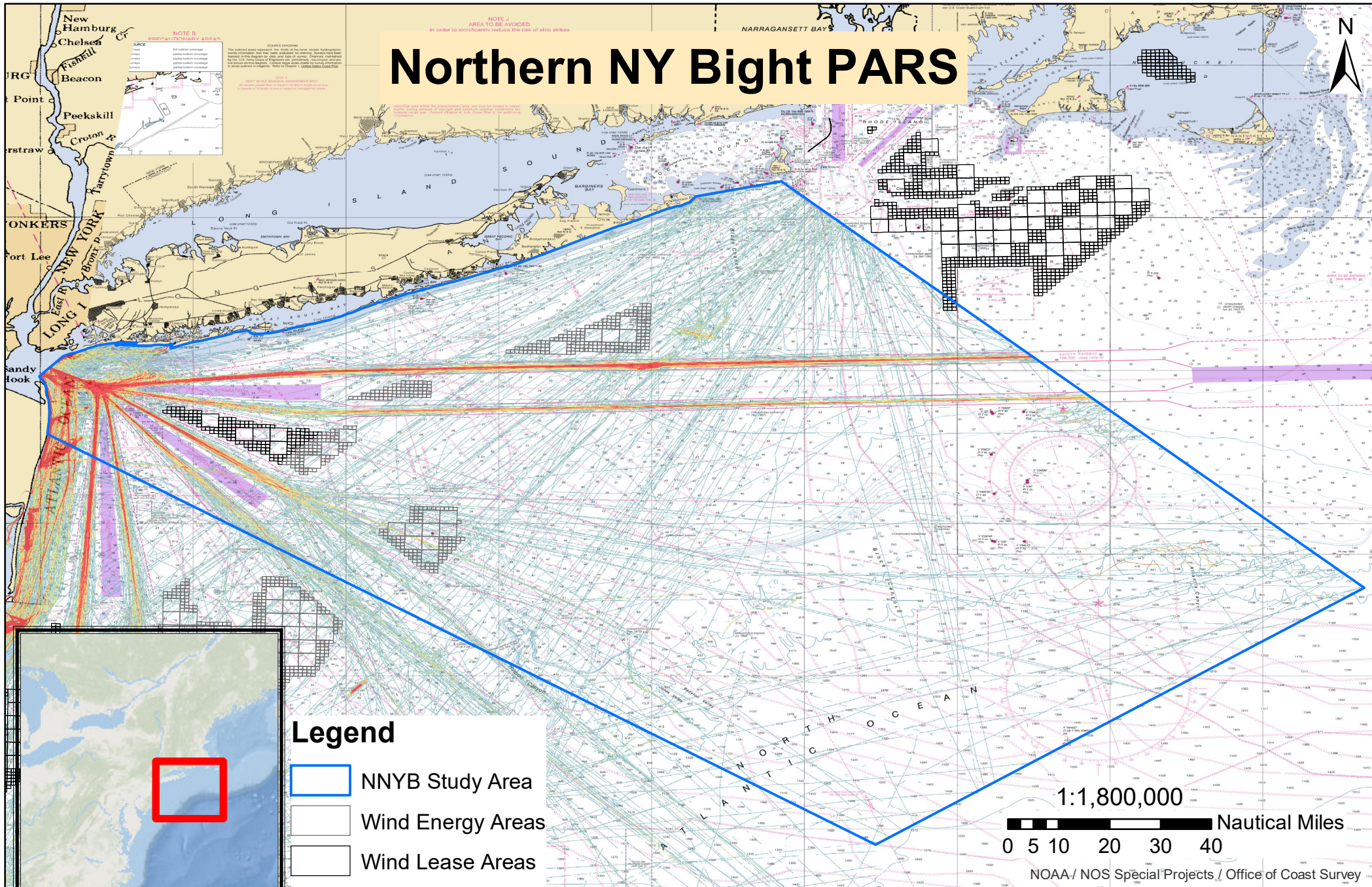
- Not Available 2017**
- Value**
- High Traffic Density
  - 
  - Low Traffic Density

NOAA Chart 12300  
Data Source: NAIS  
Prepared by the USCG Navigation Center

Coordinate System: GCS WGS 1984  
Datum: WGS 1984  
Units: Degree



# Northern NY Bight PARS



**Legend**

- NNYB Study Area
- Wind Energy Areas
- Wind Lease Areas

**Not Available 2018**

**Value**

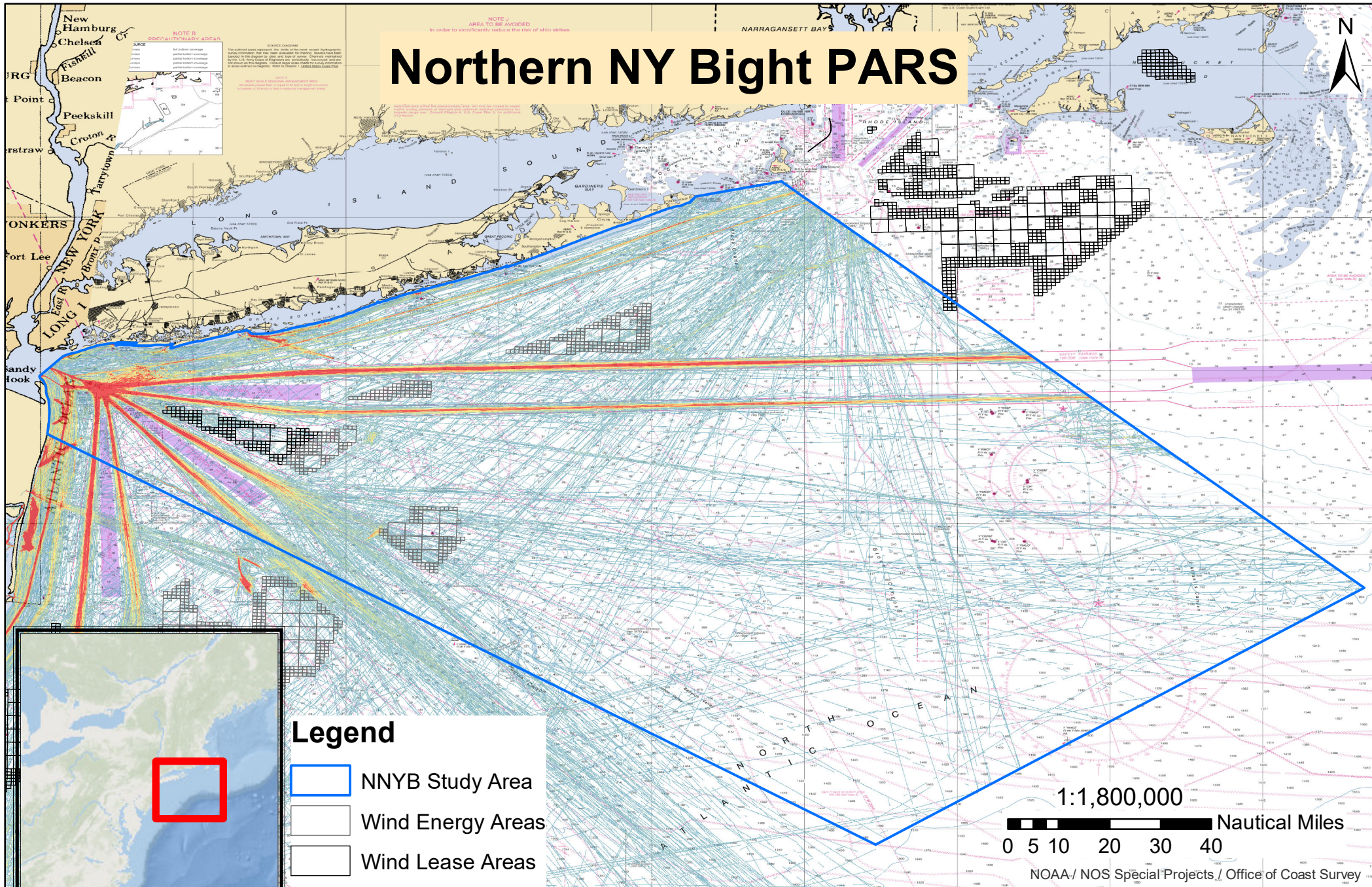
- High Traffic Density
- 
- 
- Low Traffic Density

NOAA Chart 12300  
 Data Source: NAIS  
 Prepared by the USCG Navigation Center

Coordinate System: GCS WGS 1984  
 Datum: WGS 1984  
 Units: Degree



# Northern NY Bight PARS



**Legend**

- NNYB Study Area
- Wind Energy Areas
- Wind Lease Areas

**Not Available 2019**

**Value**

- High Traffic Density
- 
- Low Traffic Density

NOAA Chart 12300  
 Data Source: NAIS  
 Prepared by the USCG Navigation Center

Coordinate System: GCS WGS 1984  
 Datum: WGS 1984  
 Units: Degree