



U.S. Department  
of Homeland Security  
**United States  
Coast Guard**

## LOCAL NOTICE TO MARINERS

**District 8 MRS**

**Week: 20/24**

### Mississippi River System

LIGHT LIST VOLUME V  
NOTICE NUMBER 20-24  
May 15, 2024

LIGHT LIST REFERENCE: COMDTPUB P16502.5, Vol V, 2024 Edition.

CONTENTS: Rivers are listed in alphabetical order and are included only when there is information to report.  
Broadcast Notice to Mariners Covered in this Edition

| Originating Unit               | Beginning BNM's | Ending BNM's    |
|--------------------------------|-----------------|-----------------|
| Sector Upper Mississippi River | 0049 - 24 (UM)  | 0050 - 24 (UM)  |
| Sector Lower Mississippi River | 0010 - 24 (LM)  | 0011 - 24 (LM)  |
| Sector Ohio Valley             | 0258 - 24 (OV)  | 0282 - 24 (OV)  |
| OB DWB                         | 0046 - 24 (DWB) | 0048 - 24 (DWB) |

COAST GUARD DISTRICT 8, WATERWAYS, (504) 671-2327, 7:00 a.m. until 3:30 p.m. (CST)

GENERAL LNM QUESTIONS, COMMENTS, OR SUGGESTIONS MAY BE E-MAILED TO: D8MarineInfo@uscg.mil  
COMMENTS REGARDING SECTION VI – PROPOSED CHANGES MAY ALSO BE EMAILED TO: LocalNoticeFeedback@uscg.mil  
NIS WATCHSTANDER PHONE (703) 313-5900, 24-HOURS A DAY

INTERNET ADDRESS <https://www.navcen.uscg.gov/>

MISSISSIPPI RIVER SYSTEM LNM VIA INTERNET <https://www.navcen.uscg.gov/>

MISSISSIPPI RIVER SYSTEM LIGHT LIST VIA INTERNET [https://www.navcen.uscg.gov/pdf/lightLists/LightList\\_V5\\_2024.pdf](https://www.navcen.uscg.gov/pdf/lightLists/LightList_V5_2024.pdf)

### ABBREVIATIONS

#### A through H

ADRIFT - Buoy Adrift  
AICW - Atlantic Intracoastal Waterway  
Al - Alternating  
B - Buoy  
BKW - Breakwater  
bl - Blast  
BNM - Broadcast Notice to Mariner  
bu - Blue  
C - Canadian  
CHAN - Channel  
CGD - Coast Guard District  
C/O - Cut Off  
CONT - Contour  
CRK - Creek  
CONST - Construction  
DAYMK/Daymk - Daymark  
DBN/Dbn - Daybeacon  
DBD/DAYBD - Dayboard  
DEFAC - Defaced  
DEST - Destroyed  
DISCON - Discontinued  
DMGD/DAMGD - Damaged  
ec - eclipse  
EST - Established Aid  
ev - every  
EVAL - Evaluation  
EXT - Extinguished  
F - Fixed  
fl - flash  
Fl - Flashing  
G - Green  
GIWW - Gulf Intracoastal Waterway  
HAZ - Hazard to Navigation  
HBR - Harbor  
HOR - Horizontal Clearance

#### I through O

I - Interrupted  
ICW - Intracoastal Waterway  
IMCH - Improper Characteristic  
INL - Inlet  
INOP - Not Operating  
INT - Intensity  
ISL - Islet  
Iso - Isophase  
kHz - Kilohertz  
LAT - Latitude  
LB - Lighted Buoy  
LBB - Lighted Bell Buoy  
LHB - Lighted Horn Buoy  
LGB - Lighted Gong Buoy  
LONG - Longitude  
LNM - Local Notice to Mariners  
LT - Light  
LT CONT - Light Continuous  
LTR - Letter  
LWB - Lighted Whistle Buoy  
LWP - Left Watching Properly  
MHz - Megahertz  
MISS/MSNG - Missing  
Mo - Morse Code  
MRASS - Marine Radio Activated Sound Signal  
MSLD - Misleading  
N/C - Not Charted  
NGA - National Geospatial-Intelligence Agency  
NO/NUM - Number  
NOS - National Ocean Service  
NW - Notice Writer  
OBSCU - Obscured  
OBST - Obstruction  
OBSTR - Obstruction  
Oc - Occulting

#### P through Z

PRIV - Private Aid  
Q - Quick  
R - Red  
RACON - Radar Transponder Beacon  
Ra ref - Radar reflector  
RBN - Radio Beacon  
REBUILT - Aid Rebuilt  
RECOVERED - Aid Recovered  
RED - Red Buoy  
REFL - Reflective  
RRL - Range Rear Light  
RELIGHTED - Aid Relit  
RELOC - Relocated  
RESET ON STATION - Aid Reset on Station  
RFL - Range Front Light  
RIV - River  
RRASS - Remote Radio Activated Sound Signal  
s - seconds  
SEC - Section  
SHL - Shoaling  
si - silent  
SIG - Signal  
SND - Sound  
SPM - Single Point Mooring Buoy  
SS - Sound Signal  
STA - Station  
STRUCT - Structure  
St M - Statute Mile  
TEMP - Temporary Aid Change  
TMK - Topmark  
TRLB - Temporarily Replaced by Lighted Buoy  
TRLT - Temporarily Replaced by Light  
TRUB - Temporarily Replaced by Unlighted Buoy  
USACE - Army Corps of Engineers  
W - White

**Additional Abbreviations Specific to this LNM Edition:**

RIAC - River Industry Action Committee  
MMSI - Mobile Maritime Service Identity  
AIS - Automatic Identification System  
ATON - Aids To Navigation  
COTP - Captain of The Port  
TRDBN - Temporarily Replaced by Daybeacon  
C.F.S. - Cubic Feet per Second  
CFR - Code of Federal Regulations  
IAW - In Accordance With  
H.P. - Horse Power  
MPH - Miles Per Hour  
TVA - Tennessee Valley Authority  
INC - Incorporated  
IENC - Inland Electronic Navigation Chart  
WAP - Waterway Action Plan  
MSIB - Marine Safety Information Bulletin  
L/D - Lock and Dam

---

**SECTION I - SPECIAL NOTICES**

This section contains information of special concern to the Mariner.

---

**DEPARTMENT OF HOMELAND SECURITY SUSPICIOUS ACTIVITY**

The Department of Homeland Security (DHS) encourages the maritime public to report information concerning suspicious activity to the local Federal Bureau of Investigation Joint Terrorism Task Force (JTTF) Office, [http://www.fbi.gov/about-us/investigate/terrorism/terrorism\\_jtfts](http://www.fbi.gov/about-us/investigate/terrorism/terrorism_jtfts), or to other appropriate authorities. The U.S. Coast Guard reminds the maritime industry that they may also report information concerning suspicious activity to the [www.AmericasWaterwayWatch.org](http://www.AmericasWaterwayWatch.org), the National Response Center (NRC) 1-800-424-8802 or 1-877-24WATCH.

LNLM: 02-19

**GPS TESTING**

At times, throughout our area of responsibility, multiple U.S. Government Agencies conduct GPS testing. These tests vary in duration, affected range from the test site and potential impact to the maritime user as they may affect systems that rely on GPS such as E-911, AIS and DSC. More information is available at the U.S. Coast Guard Navigation Center Website, <https://www.navcen.uscg.gov>. During these periods, GPS users are encouraged to report any GPS outages that they may experience, to the Navigation Information Service (NIS) by calling (703) 313-5900 or by using the NAVCEN Website to submit a GPS problem report.

LNLM: 07-19

**HIGH/LOW WATER FLOW CONDITIONS**

During periods of high/low water flow conditions on the Mississippi River System, Captains of the Port, will issue Safety Advisories for their specific areas of responsibility via Broadcast Notice to Mariners. Mariners are encouraged to monitor the Sector Broadcast Notice to Mariners to ensure they are receiving the most up-to-date information.

LNLM: 04-23

**SUNSET OF NOAA PRINTED CHARTS**

\*\*\*\* Cancellation of NOAA Paper and Raster Nautical Charts \*\*\*\*

The National Oceanic and Atmospheric Administration (NOAA) is undertaking a multi-year program to end production and maintenance of its suite of over 1,000 traditional paper nautical charts and all associated raster chart products and services, including: Print-on-Demand (POD) paper nautical charts, Full-size chart PDF files, BookletChart™ PDF files, NOAA raster navigational charts (NOAA RNC®), the NOAA RNC tile service, and the online RNC viewer.

Six months notice of the intent to cancel a specific chart is provided in a "Last Edition" notice. The final cancellation of a chart is made in a "Canceled" notice. Both types of notices will appear in LNM Section IV, "Chart Correction". Cancelled charts do not meet U.S. Coast Guard carriage requirements. A comprehensive list of all canceled NOAA charts is available at: <http://www.charts.noaa.gov/MCD/Dole.shtml>.

Traditional paper nautical chart production is ending to enable the creation and maintenance of larger scale, more up-to-date, higher quality coverage of NOAA's electronic navigational chart (NOAA ENC®) product. This will significantly enhance the amount of charted detail available to mariners. More information about NOAA's program to sunset traditional paper charts is on the NOAA Coast Survey website at: <https://nauticalcharts.noaa.gov/charts/farewell-to-traditional-nautical-charts.html>.

An online NOAA Custom Chart application at: <https://devgis.charttools.noaa.gov/pod> is available to create chart images from ENC data, which may then be printed. Notices to Mariners will not be issued for NOAA Custom Charts.

LNLM: 04-24

**OHIO RIVER - L/D CLOSURES**

Attached as an enclosure to this LNM, is USACE Louisville District Notice to Navigation 2024-001, 2024 scheduled lock outages.

LNLM: 15-24

**TENNESSEE RIVER/CUMBERLAND RIVER - MAY MARINE EVENTS/PLANNED RIVER CLOSURES**

Attached as an enclosure to this LNM is U.S. Coast Guard Marine Safety Detachment Nashville's notice of marine events and planned river closures for May.

LNM: 17-24

---

**SECTION II - DISCREPANCIES**

This section lists all reported and corrected discrepancies related to Aids to Navigation in this edition. A discrepancy is a change in the status of an aid to navigation that differs from what is published or charted.

---

**DISCREPANCIES (FEDERAL AIDS)**

| LLNR | Aid Name                  | Status              | Chart No. | BNM Ref. | LNM St | LNM End |
|------|---------------------------|---------------------|-----------|----------|--------|---------|
| 990  | Milligan Bend Light       | STRUCT DEST         |           | 0642LM   | 51/19  |         |
| 1010 | Webber Falls Jetty Light  | STRUCT DEST         |           | 0641LM   | 51/19  |         |
| 1020 | Bluff View Light          | STRUCT DEST         |           | 0640LM   | 51/19  |         |
| 1055 | Hisaw Bottom Light        | LT EXT              |           | 0196LM   | 40/18  |         |
| 1070 | Brier Creek Light         | STRUCT DEST         |           | 0205LM   | 31/15  |         |
| 1077 | Sandtown Bottom Light     | STRUCT DEST         |           | 0457LM   | 39/19  |         |
| 1200 | Black Rock Daybeacon      | STRUCT DEST         |           | 0379LM   | 35/19  |         |
| 1205 | Gans Light                | STRUCT DEST         |           | 0335LM   | 33/19  |         |
| 1213 | Non Lateral Mark 330.4    | STRUCT DEST         |           | 0087LM   | 05/16  |         |
| 1220 | Onion Creek Daybeacon     | STRUCT DMGD         |           | 0334LM   | 33/19  |         |
| 1223 | Non Lateral Mark 328.5    | STRUCT DMGD         |           | 0333LM   | 33/19  |         |
| 1225 | Tucker Lake Light         | STRUCT DEST         |           | 0332LM   | 33/19  |         |
| 1230 | Mcnabb Bottom Daybeacon   | STRUCT DEST         |           | 0332LM   | 33/19  |         |
| 1240 | Deadman Slough Light      | STRUCT DEST         |           | 0330LM   | 33/19  |         |
| 1255 | Wilson's Rock Light       | STRUCT DMGD         |           | 0380LM   | 35/19  |         |
| 1265 | Peno Point Daybeacon      | DAYMK DMGD          |           | 0580LM   | 47/19  |         |
| 1267 | Non Lateral Mark 313.9    | STRUCT DEST         |           | 0089LM   | 05/16  |         |
| 1315 | Garrison Creek Daybeacon  | DAYMK MISSING       |           | 0377LM   | 35/19  |         |
| 1360 | Crawford County Daybeacon | STRUCT DEST         |           | 0378LM   | 35/19  |         |
| 1365 | Jeffrey Light             | DAYMK MISSING       |           | 0376LM   | 35/19  |         |
| 1390 | Fort Chaffee Light        | STRUCT DEST         |           | 0579LM   | 47/19  |         |
| 1395 | Haroldton Light           | DAYMK MISSING       |           | 0578LM   | 47/19  |         |
| 1400 | New Haroldton Light       | STRUCT DEST         |           | 0574LM   | 47/19  |         |
| 1420 | Gun Club Lake Daybeacon   | DAYMK MISSING       |           | 0582LM   | 47/19  |         |
| 1427 | Big Creek Daybeacon       | DAYMK MISSING       |           | 0575LM   | 47/19  |         |
| 1430 | Arbuckle Island Light     | STRUCT DEST         |           | 0091LM   | 05/16  |         |
| 1435 | Clear Creek Light         | DAYMK MISSING       |           | 0584LM   | 41/19  |         |
| 1445 | Crooked Slough Light      | STRUCT DEST         |           | 0583LM   | 47/19  |         |
| 1455 | Mulberry River Daybeacon  | STRUCT DEST         |           | 0041UM   | 11/17  |         |
| 1510 | Moores Creek Light        | LT IMCH/STRUCT DMGD |           | 0394LM   | 44/16  |         |
| 1515 | Roseville Daybeacon       | DAYMK MISSING       |           | 0604LM   | 50/19  |         |
| 1520 | O'Kane Island Light       | LT IMCH/STRUCT DMGD |           | 0393LM   | 44/16  |         |
| 1525 | Alix Bottom Light         | STRUCT DEST         |           | 0605LM   | 50/19  |         |
| 1530 | County Line Daybeacon     | STRUCT DEST         |           | 0606LM   | 50/19  |         |
| 1532 | Non Lateral Mark 246.3    | DAYMK MISSING       |           | 0607LM   | 50/19  |         |
| 1562 | Non Lateral Mark 236.3    | DAYMK MISSING       |           | 0609LM   | 50/19  |         |

|      |                                   |                           |        |       |
|------|-----------------------------------|---------------------------|--------|-------|
| 1605 | Spadra Creek Light                | DAYMK IMCH/STRUCT DMGD    | 0007LM | 10/24 |
| 1615 | Dublin Daybeacon                  | STRUCT DEST               | 0610LM | 50/19 |
| 1650 | Bunker Hill Upper Daybeacon       | STRUCT DEST               | 0639LM | 51/19 |
| 1660 | Bunker Hill Lower Daybeacon       | STRUCT DEST               | 0643LM | 51/19 |
| 1695 | Dardanelle Reach Light            | DAYMK DMGD                | 0204LM | 31/15 |
| 1697 | Non Lateral Mark 201.4            | STRUCT DEST               | 0200LM | 41/18 |
| 1700 | Elberta Light                     | DAYMK MISSING             | 0611LM | 50/19 |
| 1708 | Non Lateral Mark 197.9            | STRUCT DEST               | 0052LM | 13/17 |
| 1715 | Hola Bend Cutoff Light            | DAYMK MISSING             | 0614LM | 50/19 |
| 1720 | Carden Bottoms Light              | DAYMK IMCH/STRUCT DMGD    | 0007LM | 10/24 |
| 1735 | Sweedeen Island Light             | LT EXT/DAYMK MISSING      | 0617LM | 50/19 |
| 1745 | Wilson Light                      | STRUCT DEST               | 0620LM | 50/19 |
| 1770 | Willow Bend Lower Daybeacon       | DAYMK MISSING             | 0621LM | 50/19 |
| 1795 | Louisburg Light                   | DAYMK IMCH/STRUCT DMGD    | 0007LM | 10/24 |
| 1798 | Non Lateral Mark 175.6            | DAYMK MISSING             | 0622LM | 50/19 |
| 1815 | Ellis Island Light                | STRUCT DEST               | 0630LM | 51/19 |
| 1845 | Stane Reach Upper Daybeacon       | DAYMK DMGD                | 0634LM | 51/19 |
| 1850 | Stane Reach Light                 | DAYMK DMGD                | 0635LM | 51/19 |
| 1860 | Cadron Creek Light                | DAYMK IMCH/STRUCT DMGD    | 0007LM | 10/24 |
| 1890 | Belk Corner Light                 | DAYMK MISSING/STRUCT DMGD | 0558LM | 45/19 |
| 1903 | Non Lateral Mark 150.9            | DAYMK MISSING             | 0560LM | 45/19 |
| 1915 | Bigelow Middle Daybeacon          | DAYMK DMGD                | 0563LM | 45/19 |
| 1920 | Bigelow Lower Light               | DAYMK MISSING             | 0538LM | 44/19 |
| 1930 | Tri County Light                  | STRUCT DEST               | 0370LM | 41/16 |
| 1948 | Non Lateral Mark 138.8            | DAYMK MISSING             | 0539LM | 44/19 |
| 1953 | Non Lateral Mark 137.6            | DAYMK MISSING             | 0540LM | 44/19 |
| 1960 | Palarm Light                      | DAYMK MISSING             | 0541LM | 44/19 |
| 1975 | Maumelle River Upper Daybeacon    | STRUCT DEST               | 0565LM | 45/19 |
| 2030 | Burns Park Light                  | STRUCT DEST               | 0514LM | 42/19 |
| 2143 | Non Lateral Mark 106.5            | DAYMK MISSING             | 0637LM | 51/19 |
| 2150 | Fourche Bayou Light               | DAYMK IMCH/STRUCT DMGD    | 0007LM | 10/24 |
| 2155 | Chenault Island Light             | DAYMK IMCH/STRUCT DMGD    | 0007LM | 10/24 |
| 2160 | Estes Place Light                 | DAYMK IMCH/STRUCT DMGD    | 0396LM | 44/16 |
| 2170 | Jim Brown Island Light            | DAYMK IMCH/STRUCT DMGD    | 0007LM | 10/24 |
| 2199 | Non Lateral Mark 92.0             | STRUCT DEST               | 0398LM | 44/16 |
| 2370 | Ste. Marie Bend Lower Daybeacon   | STRUCT DEST               | 0407LM | 45/16 |
| 2435 | Richland Bend Middle Daybeacon    | STRUCT DEST               | 0099LM | 16/18 |
| 2485 | Little Bayou Meto Lower Daybeacon | DAYMK DMGD                | 0094LM | 15/18 |
| 2498 | Cummins Bend Daybeacon            | STRUCT DEST               | 0103LM | 06/16 |
| 2540 | Sample Island Light               | STRUCT DEST               | 0106LM | 06/16 |
| 2550 | Sample Island Lower Light         | STRUCT DEST               | 0107LM | 06/16 |
| 2665 | Owens Lake Daybeacon              | DAYMK DMGD                | 0110LM | 06/16 |
| 3965 | Watkins Daybeacon                 | STRUCT DEST               | 0245OV | 19/17 |
| 4250 | Shammels Mound Landing Light      | STRUCT DEST               | 0010OV | 02/16 |
| 4285 | Saline Creek Light                | STRUCT DEST/TRUB          | 0221OV | 26/16 |
| 4315 | Pryors Creek Light                | STRUCT DEST               | 0030OV | 02/20 |
| 4340 | Devils Elbow Light                | STRUCT DEST               | 0306OV | 16/18 |
| 4365 | Bleidt Landing Light              | STRUCT DEST/TRUB          | 0137OV | 17/21 |
| 4390 | Crooked Creek Light               | STRUCT DEST/TRUB          | 0383OV | 36/16 |

|       |                              |                  |        |       |
|-------|------------------------------|------------------|--------|-------|
| 4425  | Commerce Landing Light       | STRUCT DEST      | 0520OV | 42/22 |
| 4450  | Big Eddy Light               | STRUCT DEST/TRUB | 0244OV | 17/24 |
| 4455  | Prison Farm Landing Light    | STRUCT DEST      | 0145OV | 17/21 |
| 4500  | Kuttawa Bar Light            | STRUCT DEST      | 0243OV | 12/18 |
| 4505  | Money Cliff Light            | STRUCT DEST      | 0364OV | 19/18 |
| 6810  | Halls Landing Daybeacon      | STRUCT DMGD      | 0024MI | 07/23 |
| 6885  | Lacon Light                  | STRUCT DEST      | 0261UM | 38/23 |
| 6905  | Woodyard Creek Light         | STRUCT DEST      | 0260UM | 38/23 |
| 6930  | Spring Branch Light          | STRUCT DEST      | 0262UM | 38/23 |
| 6985  | Sand Point Lower Light       | STRUCT DEST      | 0102UM | 20/22 |
| 6990  | Circle Light                 | STRUCT DMGD      | 0102UM | 20/22 |
| 6995  | Spring Bay Daybeacon         | STRUCT DEST      | 0102UM | 20/22 |
| 7035  | Drolls Point Light           | STRUCT DEST/TRLB | 0233UM | 23/20 |
| 7355  | Canton Landing Daybeacon     | STRUCT DEST      | 0015UM | 11/24 |
| 7510  | Otter Creek Daybeacon        | STRUCT DEST      | 0015UM | 11/24 |
| 7555  | Sangamon Chute Light         | STRUCT DEST      | 0015UM | 11/24 |
| 7585  | Frederick Light              | STRUCT DEST      | 0539UM | 29/19 |
| 7650  | Briggs Landing Light         | STRUCT DEST      | 0015UM | 12/24 |
| 7695  | Moores Island Light          | STRUCT DEST      | 0037UM | 12/22 |
| 7705  | Wilson Island Daybeacon      | DAYMK DMGD       | 0104UM | 18/21 |
| 7755  | Mcgees Creek Light           | STRUCT DEST      | 0015UM | 12/24 |
| 7850  | Florence Light               | LT EXT           | 0055UM | 14/22 |
| 9150  | Washita Point Light          | LT EXT           | 0395LM | 33/20 |
| 9185  | Preston Peninsula Light      | REDUCED INT      | 0420LM | 46/16 |
| 10185 | Cedar Point Light            | REDUCED INT      | 0031LM | 18/22 |
| 10195 | Dean Island Light            | REDUCED INT      | 0327LM | 33/19 |
| 10210 | Brandywine Chute Light       | REDUCED INT      | 0031LM | 18/22 |
| 10225 | Island 40 Foot Light         | STRUCT DEST      | 0232LM | 49/18 |
| 10540 | Harbert Point Light          | LT EXT           | 0256LM | 36/15 |
| 10545 | Stumpy Point Light           | STRUCT DEST      | 0249LM | 52/18 |
| 10625 | Delta Lower Light            | STRUCT DEST      | 0118LM | 06/16 |
| 10650 | Miller Point Light           | STRUCT DEST      | 0171LM | 14/16 |
| 10660 | Old Town Bend Foot Light     | STRUCT DEST      | 0253LM | 36/15 |
| 10685 | Robson Light                 | STRUCT DEST      | 0116LM | 06/16 |
| 10700 | Sunflower Cut-Off Foot Light | STRUCT DEST      | 0115LM | 06/16 |
| 10710 | Ludlow Bar Light             | DAYMK DMGD       | 0018LM | 04/18 |
| 10715 | Wood Cottage Light           | STRUCT DEST      | 0114LM | 06/16 |
| 10720 | Knowlton Light               | STRUCT DEST      | 0113LM | 06/16 |
| 10730 | Mason Landing Daybeacon      | STRUCT DEST      | 0172LM | 14/16 |
| 10815 | Riverton Middle Bar Light    | STRUCT DEST      | 0113LM | 21/18 |
| 10885 | Cypress Bend Light           | STRUCT DEST      | 0032LM | 07/18 |
| 10895 | Eutaw Bar Light              | STRUCT DEST      | 0365LM | 35/19 |
| 10905 | Mounds Crevasse Lower Light  | STRUCT DEST      | 0114LM | 21/18 |
| 10910 | Boliver Light                | STRUCT DEST      | 0069LM | 11/18 |
| 10955 | Miller Bend Light            | STRUCT DEST      | 0030LM | 06/18 |
| 10965 | La Grange Towhead Light      | STRUCT DEST      | 0367LM | 35/19 |
| 11050 | Vaucluse Bend Light          | STRUCT DEST      | 0028LM | 06/18 |
| 11070 | Anconia Point Light          | STRUCT DEST      | 0368LM | 35/19 |
| 11080 | Lakeport Light               | STRUCT DEST      | 0369LM | 35/19 |

|       |                                  |                     |        |       |
|-------|----------------------------------|---------------------|--------|-------|
| 11085 | Walnut Point Light               | STRUCT DEST         | 0370LM | 35/19 |
| 11125 | Corregidor Light                 | STRUCT DEST         | 0080LM | 05/16 |
| 11130 | Sarah Island Light               | STRUCT DEST         | 0371LM | 35/19 |
| 11170 | Stack Island Light               | STRUCT DEST         | 0372LM | 35/19 |
| 11180 | STACK ISLAND LOWER LIGHT         | STRUCT DEST         | 0373LM | 35/19 |
| 11195 | Chinaman Light                   | STRUCT DEST         | 0374LM | 35/19 |
| 11235 | Goodrich Light                   | STRUCT DEST         | 0082LM | 47/23 |
| 11245 | Willow Point Light               | DAYMK DMGD          | 0450LM | 38/19 |
| 11270 | Cabin Teele Light                | STRUCT DEST         | 0452LM | 38/19 |
| 11275 | Marshall Point Cut-Off Daybeacon | STRUCT DEST         | 0453LM | 38/19 |
| 11407 | Coggins Light                    | STRUCT DEST         | 0296LM | 29/16 |
| 11430 | Sargent Point Light              | LT IMCH/DAYMK DMGD  | 0465LM | 39/19 |
| 11455 | Buckridge Light                  | STRUCT DEST         | 0467LM | 39/19 |
| 11505 | Old Levee Light                  | LT IMCH/DAYMK DMGD  | 0470LM | 39/19 |
| 11520 | Ashland Light                    | LT IMCH/DAYMK DMGD  | 0471LM | 39/19 |
| 11530 | Hole In The Wall Light           | LT IMCH/REDUCED INT | 0472LM | 39/19 |
| 11680 | Bob Boles Light                  | STRUCT DEST         |        | 18/23 |
| 11700 | Fort Adams Light                 | STRUCT DEST         | 0402LM | 36/19 |
| 11795 | Morganza Crevasse Light          | STRUCT DEST         | 0400LM | 36/19 |
| 11835 | Bayou Sara Bend Light            | STRUCT DEST         | 0399LM | 36/19 |
| 11860 | Port Hudson Light                | STRUCT DEST         | 0581NO | 36/19 |
| 11940 | Ben Burman Light                 | STRUCT DEST         | 0549LM | 44/19 |
| 12470 | Strekfus Daybeacon               | STRUCT DEST         | 0293UM | 43/23 |
| 12600 | Smiths Landing Daybeacon         | STRUCT DEST         | 0293UM | 43/23 |
| 13165 | Lock 5A Light                    | STRUCT DEST/LT EXT  | 0270UM | 39/23 |
| 13180 | Winona Upper Light               | STRUCT DEST         | 0035UM | 16/24 |
| 13230 | Island 74 Light                  | STRUCT DEST/TRUB    | 0380UM | 34/20 |
| 13430 | Root River Upper Light           | STRUCT DEST/HAZ NAV | 0172UM | 20/20 |
| 13510 | Perry Ruby Light                 | STRUCT DEST         | 0061UM | 12/17 |
| 13720 | Crooked Slough Head Daybeacon    | STRUCT DEST/TRUB    | 0482UM | 26/19 |
| 13725 | Crooked Slough Head Light        | STRUCT DEST/TRUB    | 0482UM | 26/19 |
| 13765 | Island 158 Daybeacon             | STRUCT DEST         | 0271UM | 39/23 |
| 13895 | Clayton Daybeacon                | STRUCT DEST         | 0310UM | 43/22 |
| 13915 | Clayton Lower Daybeacon          | STRUCT DEST/TRUB    | 0240UM | 31/18 |
| 14010 | Cassville Upper Daybeacon        | STRUCT DEST         | 0546UM | 29/19 |
| 14030 | Cassville Lower Light            | STRUCT DEST         | 0546UM | 29/19 |
| 14105 | Maquoketa Island Light           | STRUCT DEST         | 0460UM | 25/19 |
| 14230 | Nine-Mile Island Light           | STRUCT DEST         | 0410LM | 36/17 |
| 14260 | Stone Slough Light               | STRUCT DEST         | 0454UM | 25/19 |
| 14275 | Fever River Light                | STRUCT DEST/TRUB    | 0485UM | 45/18 |
| 14295 | Pulaski Light                    | STRUCT DEST         | 0485UM | 45/18 |
| 14385 | Arnold Towhead Light             | STRUCT DEST         | 0449UM | 25/19 |
| 14445 | Sabula Lower Light               | STRUCT DEST         | 0446UM | 25/19 |
| 14460 | Smith Bay Light                  | STRUCT DEST         | 0048UM | 13/22 |
| 14475 | Elk River Light                  | DAYMK DMGD          | 0257LM | 31/21 |
| 14960 | Andalusia Island Light           | STRUCT DEST/TRUB    |        | 12/24 |
| 15170 | Edwards Island Upper Light       | STRUCT DEST/TRUB    | 0403UM | 26/16 |
| 15475 | Waggoner PT Lighted Buoy         | MISSING             | 0138UM | 26/23 |
| 16110 | Hastings Landing Daybeacon       | STRUCT DMGD         | 0282UM | 39/22 |

|       |                                   |             |        |       |
|-------|-----------------------------------|-------------|--------|-------|
| 16910 | Ste. Genevieve Island Light       | STRUCT DEST | 0557UM | 30/19 |
| 17970 | Fitzhugh Daybeacon                | STRUCT DEST | 0055UM | 19/23 |
| 17975 | Lower Blencoe Bend Daybeacon      | STRUCT DEST | 0055UM | 19/23 |
| 17985 | Wahle Daybeacon                   | STRUCT DEST | 0055UM | 19/23 |
| 18010 | Little Sioux Reach Daybeacon      | STRUCT DEST | 0279UM | 41/23 |
| 18025 | Bullard Bend Daybeacon            | STRUCT DEST | 0279UM | 41/23 |
| 18040 | Peterson Cut-Off Upper Daybeacon  | STRUCT DEST | 0279UM | 41/23 |
| 18055 | Sandy Point Daybeacon             | DAYMK IMCH  | 0279UM | 41/23 |
| 18065 | Tyson's Bend Daybeacon            | DAYMK IMCH  | 0279UM | 41/23 |
| 18140 | Dodds Daybeacon                   | DAYMK IMCH  | 0279UM | 41/23 |
| 18170 | Boyer River Daybeacon             | STRUCT DEST | 0279UM | 41/23 |
| 18185 | Pottawattamie Daybeacon           | DAYMK IMCH  | 0279UM | 41/23 |
| 18205 | Thornton Daybeacon                | DAYMK IMCH  | 0279UM | 41/23 |
| 18210 | Lower Pigeon Creek Bend Daybeacon | DAYMK IMCH  | 0279UM | 41/23 |
| 18270 | Council Bend Upper Daybeacon      | DAYMK IMCH  | 0279UM | 41/23 |
| 18320 | Omaha Bend Lower Daybeacon        | STRUCT DEST | 0279UM | 41/23 |
| 18325 | Gibson Bend Daybeacon             | DAYMK IMCH  | 0279UM | 41/23 |
| 18345 | Manawa Daybeacon                  | DAYMK IMCH  | 0279UM | 41/23 |
| 18380 | Bellevue Reach Daybeacon          | DAYMK IMCH  | 0279UM | 41/23 |
| 18385 | St Marys Daybeacon                | DAYMK IMCH  | 0279UM | 41/23 |
| 18390 | Bellevue Reach Lower Daybeacon    | DAYMK IMCH  | 0279UM | 41/23 |
| 18395 | St. Marys Lower Daybeacon         | DAYMK IMCH  | 0279UM | 41/23 |
| 18425 | Platte River Lower Daybeacon      | STRUCT DEST | 0279UM | 41/23 |
| 18430 | North Daybeacon                   | STRUCT DEST | 0279UM | 41/23 |
| 18435 | South Daybeacon                   | STRUCT DEST | 0279UM | 41/23 |
| 18440 | Pollock Daybeacon                 | STRUCT DEST | 0279UM | 41/23 |
| 18465 | Plattsmouth Daybeacon             | STRUCT DEST | 0279UM | 41/23 |
| 18470 | Tobacco Bend Daybeacon            | DAYMK IMCH  | 0279UM | 41/23 |
| 18480 | Rock Bluff Daybeacon              | STRUCT DEST | 0279UM | 41/23 |
| 18485 | King Hill Quarry Daybeacon        | STRUCT DEST | 0279UM | 41/23 |
| 18490 | Calumet Bend Daybeacon            | STRUCT DEST | 0279UM | 41/23 |
| 18495 | Auldon Bar Daybeacon              | STRUCT DEST | 0279UM | 41/23 |
| 18515 | Fremont County Daybeacon          | DAYMK IMCH  | 0279UM | 41/23 |
| 18520 | Jones Point Daybeacon             | STRUCT DEST | 0279UM | 41/23 |
| 18530 | Civil Bend Upper Daybeacon        | STRUCT DEST | 0279UM | 41/23 |
| 18580 | Nebraska Bend Daybeacon           | DAYMK IMCH  | 0279UM | 41/23 |
| 19120 | Burr Oak Daybeacon                | DAYMK IMCH  | 0279UM | 41/23 |
| 19125 | Dillon Creek Daybeacon            | DAYMK IMCH  | 0279UM | 41/23 |
| 19130 | Bon Ton Daybeacon                 | DAYMK IMCH  | 0279UM | 41/23 |
| 19135 | Cut-Off 52 Daybeacon              | DAYMK IMCH  | 0279UM | 41/23 |
| 19140 | Perry Daybeacon                   | DAYMK IMCH  | 0279UM | 41/23 |
| 19145 | St. Joseph Daybeacon              | DAYMK IMCH  | 0279UM | 41/23 |
| 19225 | Stoney Daybeacon                  | DAYMK IMCH  | 0279UM | 41/23 |
| 19230 | Geary Daybeacon                   | DAYMK IMCH  | 0279UM | 41/23 |
| 19240 | Doniphan Upper Daybeacon          | DAYMK IMCH  | 0279UM | 41/23 |
| 19245 | Doniphan Daybeacon                | DAYMK IMCH  | 0279UM | 41/23 |
| 19250 | Rushville Daybeacon               | STRUCT DEST | 0279UM | 41/23 |
| 19260 | Mud Lake Daybeacon                | DAYMK IMCH  | 0279UM | 41/23 |
| 19310 | Bean Lake Daybeacon               | DAYMK IMCH  | 0279UM | 41/23 |

|       |                                |                |        |       |
|-------|--------------------------------|----------------|--------|-------|
| 19320 | King Daybeacon                 | DAYMK IMCH     | 0279UM | 41/23 |
| 19325 | Oak Mills Daybeacon            | DAYMK IMCH     | 0279UM | 41/23 |
| 19330 | Platte County Daybeacon        | DAYMK IMCH     | 0279UM | 41/23 |
| 19340 | Jackson Daybeacon              | STRUCT DEST    | 0279UM | 41/23 |
| 19345 | Iatan Bend Daybeacon           | STRUCT DEST    | 0279UM | 41/23 |
| 19365 | Kickapoo Daybeacon             | DAYMK IMCH     | 0279UM | 41/23 |
| 19375 | Weston Daybeacon               | STRUCT DEST    | 0279UM | 41/23 |
| 19385 | Bee Creek Daybeacon            | STRUCT DEST    | 0279UM | 41/23 |
| 19390 | Fort Leavenworth Daybeacon     | DAYMK IMCH     | 0279UM | 41/23 |
| 19400 | Duck Lake Daybeacon            | DAYMK IMCH     | 0279UM | 41/23 |
| 19435 | Leavenworth Bend Daybeacon     | DAYMK IMCH     | 0279UM | 41/23 |
| 19450 | Delaware Daybeacon             | DAYMK IMCH     | 0279UM | 41/23 |
| 19455 | Pope Upper Daybeacon           | DAYMK IMCH     | 0279UM | 41/23 |
| 19470 | Pope Daybeacon                 | DAYMK IMCH     | 0279UM | 41/23 |
| 19485 | Waldrons Quarry Daybeacon      | DAYMK IMCH     | 0279UM | 41/23 |
| 19490 | Pomeroy Upper Daybeacon        | DAYMK IMCH     | 0279UM | 41/23 |
| 19520 | Burlington Daybeacon           | DAYMK IMCH     | 0279UM | 41/23 |
| 19525 | Big Eddy Creek Daybeacon       | DAYMK IMCH     | 0279UM | 41/23 |
| 19575 | Jersey Creek Daybeacon         | DAYMK IMCH     | 0279UM | 41/23 |
| 19650 | City Dump Daybeacon            | DAYMK IMCH     | 0279UM | 41/23 |
| 19690 | Randolph Bend Daybeacon        | DAYMK IMCH     | 0279UM | 41/23 |
| 19700 | Hawthorn Daybeacon             | DAYMK IMCH     | 0279UM | 41/23 |
| 19725 | Smoke Stack Daybeacon          | DAYMK IMCH     | 0279UM | 41/23 |
| 19730 | Courtney Daybeacon             | DAYMK IMCH     | 0279UM | 41/23 |
| 19740 | Liberty Daybeacon              | DAYMK IMCH     | 0279UM | 41/23 |
| 19745 | Eton Daybeacon                 | DAYMK IMCH     | 0279UM | 41/23 |
| 19790 | Clay County Daybeacon          | STRUCT DEST    | 0279UM | 41/23 |
| 19800 | Little Blue Daybeacon          | DAYMK IMCH     | 0279UM | 41/23 |
| 19810 | Jackass Daybeacon              | DAYMK IMCH     | 0279UM | 41/23 |
| 19815 | Jackass Lower Daybeacon        | DAYMK IMCH     | 0279UM | 41/23 |
| 20055 | Mische Daybeacon               | DAYMK IMCH     | 0279UM | 41/23 |
| 20060 | Bakers Bend Daybeacon          | DAYMK IMCH     | 0279UM | 41/23 |
| 20070 | Cranberry Daybeacon            | DAYMK IMCH     | 0279UM | 41/23 |
| 20085 | Tamerlane Bend Daybeacon       | DAYMK IMCH     | 0279UM | 41/23 |
| 20090 | Malta Bend Slough Daybeacon    | DAYMK IMCH     | 0279UM | 41/23 |
| 20165 | Harris Daybeacon               | DAYMK IMCH     | 0279UM | 41/23 |
| 20570 | Petite Saline Daybeacon        | DAYMK IMCH     | 0279UM | 41/23 |
| 20690 | Jefferson City Upper Daybeacon | DAYMK IMCH     | 0279UM | 41/23 |
| 25355 | Sciotoville Light              | LT EXT         | 0095OV | 11/23 |
| 26047 | Sunken Barge Lighted Buoy WR   | MISSING        | 0519OV | 51/21 |
| 26047 | Sunken Barge Lighted Buoy WR   | SINKING/LT EXT | 0199OV | 22/23 |
| 26355 | Patriot Bend Light             | LT EXT         | 0103OV | 10/24 |
| 26375 | Wileys Hollow Light            | LT EXT         | 0104OV | 10/24 |
| 26470 | Notch Lick Light               | STRUCT DEST    | 0210OV | 23/21 |
| 27090 | Wolf Creek Light               | LT EXT         | 0064OV | 05/22 |
| 27520 | Robert Mann Light              | STRUCT DEST    | 0269OV | 21/22 |
| 27540 | Water Works Light              | STRUCT DMGD    | 0179OV | 12/22 |
| 27610 | Harris Landing Light           | DAYMK MISSING  | 0095OV | 09/24 |
| 27715 | Diamond Island Upper Light     | LT EXT         | 0093OV | 09/24 |



|          |                                |                      |        |       |
|----------|--------------------------------|----------------------|--------|-------|
| 27855    | Graham Varble Light            | STRUCT DEST          | 0134OV | 17/21 |
| 27900    | Bowlesville Mine Light         | DAYMK MISSING        | 0094OV | 09/24 |
| 27935    | Dekoven Light                  | STRUCT DEST          | 0294OV | 23/22 |
| 29231.34 | Westdale Middle Daybeacon      | STRUCT DEST/TRUB     | 0121LM | 44/22 |
| 29241.25 | Smith Island Lower Daybeacon   | STRUCT DEST          | 0202LM | 26/21 |
| 29272    | Deloges Middle Daybeacon       | DAYMK IMCH           |        | 36/20 |
| 29467    | Hog Lake Daybeacon             | STRUCT DEST          |        | 36/20 |
| 29618    | Red River Entrance Light       | STRUCT DEST          |        | 37/20 |
| 29665    | Dry Cypress Daybeacon          | STRUCT DEST          |        | 37/20 |
| 29690    | Bayou Cocodrie Upper Daybeacon | STRUCT DEST          |        | 37/20 |
| 29695    | Bayou Cocodrie Daybeacon       | STRUCT DEST          |        | 37/20 |
| 29710    | Grassy Lake Daybeacon          | DAYMK MISSING        |        | 37/20 |
| 29725    | Alligator Bayou Daybeacon      | STRUCT DEST          | 0216LM | 33/17 |
| 29750    | Timber Lake Daybeacon          | STRUCT DEST          |        | 37/20 |
| 29755    | Naples Daybeacon               | STRUCT DEST          |        | 37/20 |
| 29775    | Three Rivers Junction Light    | STRUCT DEST          |        | 37/20 |
| 29780    | Barbre Daybeacon               | STRUCT DEST          |        | 37/20 |
| 29785    | Torras Daybeacon               | STRUCT DEST          |        | 37/20 |
| 29795    | Oak Grove Daybeacon            | STRUCT DEST          |        | 37/20 |
| 29845    | Houden Point Daybeacon         | STRUCT DEST          | 0255UM | 30/21 |
| 32140    | Chambers Daybeacon             | STRUCT DEST          | 0178OV | 11/13 |
| 32170    | Diamond Island Lower Daybeacon | STRUCT DEST          | 0177OV | 11/13 |
| 32190    | Savannah Bend Upper Daybeacon  | STRUCT DEST          | 0039OV | 04/23 |
| 32335    | Brodies Landing Light          | STRUCT DEST          | 0041OV | 04/23 |
| 32350    | Crooked Creek Light            | STRUCT DEST          | 0042OV | 04/23 |
| 32445    | Sales Light                    | TRUB/STRUCT DEST     | 0269OV | 19/14 |
| 32460    | Reynoldsburg Island Light      | STRUCT DEST/TRUB     | 0290OV | 15/18 |
| 32465    | Shirley Light                  | STRUCT DEST          | 0040OV | 04/23 |
| 32480    | Higgins Light                  | STRUCT DEST          | 0342OV | 27/15 |
| 32510    | Hurricane Creek Light          | STRUCT DEST          | 0043OV | 04/23 |
| 32530    | Standing Rock Upper Light      | STRUCT DEST          | 0658OV | 41/13 |
| 32570    | Fort Henry Light               | STRUCT DEST          | 0160OV | 19/21 |
| 32595    | Blood River Light              | STRUCT DEST/TRUB     | 0138OV | 17/21 |
| 32600    | Clyde Light                    | LT EXT               | 0581OV | 44/15 |
| 32605    | Newburg Light                  | STRUCT DEST          | 0362OV | 29/15 |
| 32710    | Twenty-One Mile Light          | STRUCT DEST          | 0108OV | 13/23 |
| 32715    | Chottes Creek Light            | STRUCT DEST          | 0107OV | 13/23 |
| 32750    | Haddock Ferry Light            | LT EXT/DAYMK MISSING | 0106OV | 13/23 |
| 32765    | Big Chain Light                | STRUCT DEST          | 0105OV | 13/23 |
| 32780    | Mud Creek Light                | STRUCT DEST          | 0036OV | 04/23 |
| 32825    | W. L. Berry Light              | STRUCT DEST          | 0110OV | 13/23 |

**DISCREPANCIES (FEDERAL AIDS) CORRECTED**

| LLNR | Aid Name | Status | Chart No. | BNM Ref. | LNM St | LNM End |
|------|----------|--------|-----------|----------|--------|---------|
|------|----------|--------|-----------|----------|--------|---------|

None

**DISCREPANCIES (PRIVATE AIDS)**

| LLNR | Aid Name | Status | Chart No. | BNM Ref. | LNM St | LNM End |
|------|----------|--------|-----------|----------|--------|---------|
|------|----------|--------|-----------|----------|--------|---------|

|       |   |                 |        |       |
|-------|---|-----------------|--------|-------|
| 1685  | Oakley Dock Light                               | LT EXT          | 0307LM | 44/14 |
| 1690  | Mobley Dock Light                               | LT EXT          | 0454LM | 48/13 |
| 2013  | City of Little Rock No Wake Buoy                | OFF STA         | 0015LM | 21/23 |
| 2100  | Oakley Light                                    | LT EXT          | 0520LM | 42/19 |
| 2337  | Island Harbor Marina Light                      | LT EXT          |        | 45/16 |
| 2340  | Century Tube Lights (2)                         | LT EXT          |        | 45/16 |
| 2400  | Pickett And Davison Lights (2)                  | LT EXT          | 0481LM | 50/13 |
| 3725  | Lakewood Marina Lights (4)                      | LT IMCH         | 0439OV | 34/15 |
| 3750  | Dupont Dock Lights (2)                          | OFF STA/LT EXT  | 0305OV | 26/15 |
| 3795  | Nashville Water Intake Lights (2)               | LT EXT          |        | 44/11 |
| 3805  | Holnam Dock Lights (2)                          | LT EXT          |        | 44/11 |
| 3815  | Kerr-Mcgee Dock Lights (2)                      | LT EXT          |        | 44/11 |
| 3820  | Cohen Terminal Lights (2)                       | LT EXT          |        | 44/11 |
| 3930  | Alcoa Chemical Dock Lights (2)                  | MSLD SIG/LT EXT | 0216OV | 14/10 |
| 3960  | Hunter Marine Transport Dock Lights (2)         | LT EXT          |        | 47/08 |
| 3995  | Riverview Marina Lights (2)                     | LT EXT          |        | 47/08 |
| 4055  | Clarksville Boat Club Dock Lights (2)           | LT EXT          | 0533OV | 34/12 |
| 6170  | Quantum Chemical Dock Lights (2)                | LT EXT          | 0436UM | 31/01 |
| 6650  | S. T. Services Terminal Lights (2)              | LT EXT          |        | 41/14 |
| 6695  | Continental Grain Company Light                 | LT EXT          |        | 41/14 |
| 7225  | Cargo Carriers Dock Lights (2)                  | LT EXT          |        | 25/08 |
| 7235  | Pekin Boat Club Breakwater Light                | LT EXT          |        | 05/16 |
| 7250  | Shell Dock Lights (2)                           | LT EXT          | 0123UM | 16/02 |
| 7255  | Adm Growmark Mooring Light                      | LT EXT          | 0122UM | 16/02 |
| 7260  | Sours Grain Tramway Light                       | LT EXT          | 0279UM | 21/03 |
| 7265  | Tomen Dock Light                                | LT EXT          |        | 25/08 |
| 7295  | Adm Growmark Mooring Lights (3)                 | LT EXT          | 0281UM | 21/03 |
| 7460  | Cargill Mooring Lights (2)                      | LT EXT          | 0284UM | 21/03 |
| 7620  | Cargill Dock Lights (2)                         | LT EXT          |        | 35/08 |
| 7725  | Cargill Terminal Lights (2)                     | LT IMCH         | 0171UM | 26/18 |
| 7730  | Public Service Co. Dock Lights (6)              | LT EXT          | 0119UM | 20/18 |
| 7730  | Public Service Co. Dock Lights (6)              | LT IMCH         | 0171UM | 26/18 |
| 7760  | Adm Growmark Grain Elevator Lights (2)          | LT IMCH         | 0171UM | 26/18 |
| 9440  | Black Dog Lights (5)                            | LT EXT          | 0185UM | 43/16 |
| 9475  | Pollution Control Station Light                 | LT EXT          | 0197UM | 31/23 |
| 9965  | Huffman Grain Light                             | STRUCT DEST     | 0131LM | 08/16 |
| 10300 | Cargill Dock Light                              | LT EXT          | 0361LM | 34/01 |
| 10390 | Peavey Lights (2)                               | LT EXT          | 0398LM | 36/02 |
| 10395 | Suburban Propane Dock Light                     | LT EXT          | 0396LM | 36/02 |
| 10415 | Western Tar Products Dock Light                 | LT EXT          | 0394LM | 36/02 |
| 11943 | Bear Industries Barge Dock Lights (4)           | LT EXT          | 0600NO | 30/17 |
| 11990 | Riverside Dock Lights (2)                       | LT EXT          | 0695UM | 40/01 |
| 12080 | University Dock Lights (3)                      | LT EXT          | 0696UM | 40/01 |
| 12215 | Koch Fuel Dock Lights (2)                       | LT EXT          |        | 35/16 |
| 12320 | Newport Terminal Lights (2)                     | LT EXT          |        | 35/16 |
| 12385 | Shiely Dock Lights (2)                          | LT IMCH         |        | 35/16 |
| 12712 | City of Red Wing Metering Station Special Light | MISSING         |        | 42/16 |

|       |  |                |        |       |
|-------|--|----------------|--------|-------|
| 12768 | Consolidated Grain and Barge Loading Dock Piling Lights (2)        | MISSING        |        | 42/16 |
| 12930 | Alma City Dock Light/Daymarks (3)                                  | MISSING        |        | 42/16 |
| 13405 | G. Heileman Brewery Dock Light                                     | MISSING        |        | 42/16 |
| 14756 | Isle Of Capri Casino Marina Daybeacon                              | MISSING        |        | 03/16 |
| 15345 | Koch Nitrogen Dock Light   | LT EXT         |        | 41/14 |
| 15425 | Hall Towing Light  | STRUCT DEST    | 0280UM | 25/20 |
| 15822 | Hannibal Intake Light  | LT EXT         | 0358UM | 32/20 |
| 16100 | Jersey County Grain Dock Lights (2)                                | LT EXT         |        | 19/16 |
| 16205 | Piasa Harbor Light   | LT EXT         | 0131UM | 22/15 |
| 16220 | Con-Agra Mooring Lights (2)  | LT EXT         |        | 21/16 |
| 16230 | Alton Marina Breakwater Lights (3)                                 | LT EXT         | 0131UM | 22/15 |
| 16265 | Amoco Dock Light   | STRUCT DEST    |        | 35/09 |
| 16280 | Amoco Dock Lights (4)  | LT EXT         |        | 35/09 |
| 16310 | Sioux City/New Orleans Terminal Light                              | STRUCT DEST    |        | 35/09 |
| 16380 | Western Dock Lights (9)  | LT IMCH        |        | 34/08 |
| 16390 | Adm-Growmark Dock Lights (4)                                       | LT EXT         | 0776UM | 44/01 |
| 16430 | Union Electric Coal Dock Lights (2)                                | LT EXT         | 0305UM | 34/08 |
| 16445 | Continental Cement Lights (2)                                      | LT EXT         | 0305UM | 34/08 |
| 16505 | Peavey Company Dock Lights (3)                                     | LT EXT         | 0305UM | 34/08 |
| 16530 | Cahokia Marine Terminal Lights (2)                                 | LT EXT         | 0305UM | 34/08 |
| 16540 | Slay Bulk Terminal Lights (2)                                      | LT EXT         | 0305UM | 34/08 |
| 16545 | Peavey Lights (3)  | LT EXT         | 0305UM | 34/08 |
| 16550 | Eagle Marine Industries Light                                      | LT IMCH        | 0305UM | 34/08 |
| 16560 | Phillips Pipeline Lights (2)                                       | LT EXT         | 0305UM | 34/08 |
| 16565 | Growmark Dock Lights (2)   | LT EXT         | 0305UM | 34/08 |
| 16575 | Eagle Marine Dock Lights (2)                                       | LT EXT         | 0305UM | 34/08 |
| 16600 | J.H. Collier Barge Mooring Lights (2)                              | LT EXT         | 0305UM | 34/08 |
| 16605 | Clark Oil Refining Dock Lights (4)                                 | LT EXT         | 0305UM | 34/08 |
| 16609 | Alcoa Foil Lights (2)  | LT EXT         | 0305UM | 34/08 |
| 16615 | Hci Chemtech Dock Lights (2)                                       | LT EXT         | 0305UM | 34/08 |
| 16617 | Semmaterials Terminal Lights (2)                                   | LT EXT         | 0305UM | 34/08 |
| 16630 | American Commercial Dock Lights (2)                                | LT EXT         | 0305UM | 34/08 |
| 16655 | Bussen Terminal Light  | LT EXT         | 0305UM | 34/08 |
| 18700 | Bunge Dock Lights (3)  | MISSING/LT EXT |        | 18/08 |
| 19185 | St. Joseph L & P Dock Light  | LT IMCH        |        | 17/08 |
| 19415 | Leavenworth Water Intake Lights (2)                                | LT EXT         | 0104UM | 39/07 |
| 19460 | Smoot Grain Dock Lights (2)  | LT EXT         | 0385UM | 39/07 |
| 19505 | Board Of Public Utilities Light                                    | LT EXT         | 0386UM | 39/07 |
| 19535 | Public Utilities Intake Lights (3)                                 | LT EXT         |        | 38/08 |
| 19660 | Continental Grain Dock Lights (4)                                  | LT EXT         | 0181UM | 24/08 |
| 19695 | Kansas City Power And Light Company Lights (2)                     | LT EXT         | 0181UM | 24/08 |
| 20870 | U.E. Callaway Intake Lights (2)                                    | LT EXT         | 0522UM | 52/20 |
| 22873 | Moon Township Municipal Authority Back Channel Outfall Danger Buoy | OFF STA        | 0108OV | 14/21 |
| 24005 | Bens Run Light   | LT EXT         |        | 03/20 |
| 24580 | Ohio Power Coal Dock Light   | LT EXT         | 0480OV | 44/21 |
| 25820 | Cargill Barge Loading Facility Light                               | LT EXT         | 0552OV | 40/09 |
| 26290 | Boone County Sand And Gravel Lights (2)                            | LT EXT         | 0769OV | 40/00 |

|       |   |         |        |       |
|-------|---|---------|--------|-------|
| 26833 | Transmontaige Dock Lights (2)                 | LT EXT  | 0286OV | 28/21 |
| 26860 | Dupont Chemical Lights (2)                    | LT EXT  | 0330OV | 17/18 |
| 27590 | Transmontaigne Dock Lights (4)                | LT EXT  |        | 40/21 |
| 29997 | Cityview at Riverwalk Dock Light              | LT EXT  | 0284OV | 28/23 |
| 32900 | Ergon Dock Lights (2)                         | LT IMCH |        | 17/13 |
|       | Alcosan-Mascaro Temporary Lighted Danger Buoy | MISSING |        | 24/22 |

**DISCREPANCIES (PRIVATE AIDS) CORRECTED**

| LLNR | Aid Name | Status | Chart No. | BNM Ref. | LNM St | LNM End |
|------|----------|--------|-----------|----------|--------|---------|
|------|----------|--------|-----------|----------|--------|---------|

None

**PLATFORM DISCREPANCIES**

| Name | Status | Position | BNM Ref. | LNM St | LNM End |
|------|--------|----------|----------|--------|---------|
|------|--------|----------|----------|--------|---------|

None

**PLATFORM DISCREPANCIES CORRECTED**

| Name | Status | Position | BNM Ref. | LNM St | LNM End |
|------|--------|----------|----------|--------|---------|
|------|--------|----------|----------|--------|---------|

None

**SECTION IV - CHART CORRECTIONS**

None

**SECTION V - ADVANCE NOTICES**

This section contains advance notice of approved projects, changes to aids to navigation, or upcoming temporary changes such as dredging, etc. Mariners are advised to use caution while transiting these areas.

**SUMMARY OF ADVANCED APPROVED PROJECTS**

| <u>Approved Project(s)</u> | <u>Project Date</u> | <u>Ref. LNM</u> |
|----------------------------|---------------------|-----------------|
|----------------------------|---------------------|-----------------|

None

**Advance Notice(s)**

**LOWER MISSISSIPPI RIVER**

The Coast Guard will make the following Aids to Navigation Changes after July 9, 2024:

- Discontinue Port Hudson Light (LLNR-11860) at mile 254.5, Left Descending Bank, in approximate position 30-38-30.980N/091-17-25.012W.
- Discontinue Profit Island Light (LLNR-11870) at mile 252.8, Left Descending Bank, in approximate position 30-36-40.110N/091-17-36.336W.
- Discontinue Devils Swamp Light (LLNR-11900) at mile 242.4, Left Descending Bank, in approximate position 30-31-30.983N/091-15-18.792W.
- Discontinue Allendale Light (LLNR-11915) at mile 239.9, Right Descending Bank, in approximate position 30-30-22.561N/091-17-14.939W.

LNM: 20/24

**LOWER MISSISSIPPI RIVER**

The Coast Guard will make the following Aids to Navigation Changes after July 9, 2024:

- Discontinue Bayou Sara Bend Light (LLNR-11835) at mile 264.8, Left Descending Bank, in approximate position 30-45-45.695N/091-22-39.079W.
- Discontinue Grave Yard Light (LLNR-11815) at mile 268.4, Right Descending Bank, in approximate position 30-44-21.016N/091-25-43.669W.
- Discontinue Red Store Light (LLNR-11810) at mile 269.5, Right Descending Bank, in approximate position 30-44-02.299N/091-26-40.517W.
- Discontinue Boies Point Light (LLNR-11800) at mile 275.5, Right Descending Bank, in approximate position 30-43-44.641N/091-32-19.223W.
- Discontinue Morganza Crevasse Light (LLNR-11795) at mile 277.2, Right Descending Bank, in approximate position 30-43-54.959N/091-34-23.052W.
- Discontinue New Texas Light (LLNR-11785) at mile 279.7, Right Descending Bank, in approximate position 30-45-31.316N/091-36-01.681W.

LNM: 20/24

**LOWER MISSISSIPPI RIVER**

The Coast Guard will make the following Aids to Navigation Changes after July 9, 2024:

- Discontinue Sebastapol Light (LLNR-11770) at mile 283.3, Left Descending Bank, in approximate position 30-46-53.170N/091-32-35.455W.
- Discontinue Greenwood Light (LLNR-11760) at mile 288.6, Left Descending Bank, in approximate position 30-51-19.494N/091-30-46.487W.
- Discontinue Ratcliff Light (LLNR-11755) at mile 289.8, Left Descending Bank, in approximate position 30-52-41.326N/091-30-47.718W.
- Discontinue Tunica Bluff Light (LLNR-11753) at mile 292.9, Left Descending Bank, in approximate position 30-54-51.239N/091-32-10.360W.

LNM: 20/24

**LOWER MISSISSIPPI RIVER**

The Coast Guard will make the following Aids to Navigation Changes after July 9, 2024:

Discontinue Smithland Lower Light (LLNR-11740) at mile 300.2, Right Descending Bank, in approximate position 30-56-25.004N/091-39-35.831W.  
Discontinue Lum Light (LLNR-11715) at mile 305.6, Right Descending Bank, in approximate position 31-00-25.625N/091-38-15.320W.  
Discontinue Langside Light (LLNR-11710) at mile 308.5, Left Descending Bank, in approximate position 31-00-52.463N/091-35-12.559W.  
Discontinue Wilkinson Light (LLNR-11705) at mile 310.0, Left Descending Bank, in approximate position 31-01-42.362N/091-33-58.882W.  
Discontinue Fort Adams Light (LLNR-11700) at mile 311.4, Left Descending Bank, in approximate position 31-03-03.838N/091-33-18.284W.  
Discontinue Black Hawk Light (LLNR-11685) at mile 318.3, Right Descending Bank, in approximate position 31-07-35.076N/091-37-48.158W.

LNM: 20/24

### LOWER MISSISSIPPI RIVER

The Coast Guard will make the following Aids to Navigation Changes after July 9, 2024:

Discontinue Bob Boles Light (LLNR-11680) at mile 321.8, Left Descending Bank, in approximate position 31-09-55.915N/091-35-25.642W.  
Discontinue Graham Bend Middle Light (LLNR-11660) at mile 330.0, Right Descending Bank, in approximate position 31-15-47.261N/091-39-14.479W.  
Discontinue Joe Pierce Light (LLNR-11650) at mile 333.0, Left Descending Bank, in approximate position 31-15-30.431N/091-36-12.244W.  
Discontinue Black Hills Light (LLNR-11645) at mile 337.7, Left Descending Bank, in approximate position 31-15-54.720N/091-31-23.880W.  
Discontinue Fairview Light (LLNR-11640) at mile 339.1, Right Descending Bank, in approximate position 31-17-23.914N/091-31-10.754W.

LNM: 20/24

### ARKANSAS RIVER

The Coast Guard will make the following Aids to Navigation Changes after July 9, 2024:

Discontinue Ste. Marie Bend Lower Daybeacon (LLNR-2370) at mile 70.2, Left Descending Bank, in approximate position 34-17-52.752N/091-56-04.167W.  
Discontinue Richland Bend Middle Daybeacon (LLNR-2435) at mile 55.8, Right Descending Bank, in approximate position 34-10-15.333N/091-46-16.659W.  
Discontinue Richland Bend Lower Daybeacon (LLNR-2440) at mile 55.4, Right Descending Bank, in approximate position 34-10-03.036N/091-45-47.837W.  
Discontinue Cooper Point Light (LLNR-2465) at mile 48.9, Left Descending Bank, in approximate position 34-09-12.181N/091-39-42.903W.  
Discontinue Kimbrough Light (LLNR-2475) at mile 46.7, Right Descending Bank, in approximate position 34-07-59.300N/091-37-57.460W.  
Discontinue Little Bayou Meto Lower Daybeacon (LLNR-2480) at mile 45.4, Left Descending Bank, in approximate position 34-07-46.458N/091-36-41.891W.  
Discontinue Cummins Bend Daybeacon (LLNR-2498) at mile 41.4, Right Descending Bank, in approximate position 34-05-08.210N/091-35-22.700W.  
Discontinue Sample Island Lower Light (LLNR-2540) at mile 32.7, Left Descending Bank, in approximate position 34-05-14.279N/091-28-01.798W.  
Discontinue Ross Ferry Light (LLNR-2570) at mile 24.3, Left Descending Bank, in approximate position 33-59-51.457N/091-24-05.719W.  
Discontinue Dandy Dans Daybeacon (LLNR-2582) at mile 22.5, Right Descending Bank, in approximate position 33-58-42.712N/091-23-00.140W.

LNM: 20/24

---

## SECTION VI - PROPOSED CHANGES

Periodically, the Coast Guard evaluates its system of aids to navigation to determine whether the conditions for which the aids to navigation were established have changed. When changes occur, the feasibility of improving, relocating, replacing, or discontinuing aids are considered. This section contains notice(s) of non-approved, proposed projects open for comment. SPECIAL NOTE: Mariners are requested to respond in writing to the District office unless otherwise noted (see banner page for address).

---

### PROPOSED WATERWAY PROJECTS OPEN FOR PUBLIC COMMENT

| <u>Proposed Project(s)</u> | <u>Closing</u> | <u>Docket No.</u> | <u>Ref. LNM</u> |
|----------------------------|----------------|-------------------|-----------------|
| None                       |                |                   |                 |

### Proposed Change Notice(s)

#### OHIO RIVER

The Coast Guard is proposing the following Aid to Navigation Change:

Discontinue Owens Island Light (LLNR-28180) at Mile 934.2, Left Descending Bank, in approximate position 37-05-02.700N/088-35-14.958W.  
Comments to be received by May 21, 2024. Please email comments regarding this proposal to: D08-SMB-District-LocalNoticeFeedback@uscg.mil.

LNM: 13/24

#### MISSOURI RIVER

The Coast Guard is proposing to discontinue the following Aids to Navigation, in approximate positions:

Floyd Bend Daybeacon (LLNR-17745), Mile 726.6, LDB, position 42-25-21.365N/096-23-49.573W.  
Dakota City Daybeacon (LLNR-17755), Mile 725.9, RDB, position 42-24-58.151N/096-24-33.812W.  
Upper Dakota Bend Daybeacon (LLNR-17760), Mile 723.6, RDB, position 42-23-05.599N/096-24-44.572W.  
Woodbury County Daybeacon (LLNR-17765), Mile 723.1, LDB, position 42-22-40.329N/096-24-27.257W.  
Lower Dakota Bend Daybeacon (LLNR-17770), Mile 722.3, LDB, position 42-22-01.996N/096-24-41.437W.  
Omadi Bend Daybeacon (LLNR-17775), Mile 721.9, RDB, position 42-21-34.976N/096-25-07.650W.  
Browsers Bend Upper Daybeacon (LLNR-17780), Mile 719.0, RDB, position 42-19-42.658N/096-23-36.635W.  
Browsers Bend Daybeacon (LLNR-17785), Mile 718.5, LDB, position 42-19-29.096N/096-22-51.859W.  
Snyder Bend Upper Daybeacon (LLNR-17790), Mile 716.8, LDB, position 42-18-12.135N/096-22-02.029W.  
Snyder Bend Daybeacon (LLNR-17795), Mile 715.9, RDB, position 42-17-25.016N/096-22-09.687W.  
Glovers Point Bend Upper Daybeacon (LLNR-17800), Mile 714.4, RDB, position 42-16-21.538N/096-21-06.277W.  
Glovers Point Bend Daybeacon (LLNR-17805), Mile 713.6, LDB, position 42-16-06.505N/096-20-19.867W.  
Winnebago Bend Upper Daybeacon (LLNR-17810), Mile 710.8, LDB, position 42-13-54.320N/096-20-23.450W.  
Winnebago Bend Daybeacon (LLNR-17815), Mile 709.9, RDB, position 42-13-37.656N/096-21-16.720W.  
Reservation Point Daybeacon (LLNR-17820), Mile 708.3, RDB, position 42-12-15.711N/096-21-25.218W.  
Hutchinson Daybeacon (LLNR-17825), Mile 707.4, LDB, position 42-11-49.792N/096-20-51.132W.

Don Byers Daybeacon (LLNR-17830), Mile 706.9, LDB, position 42-10-58.061N/096-20-48.923W.  
Bogle Daybeacon (LLNR-17835), Mile 706.1, RDB, position 42-10-30.745N/096-21-05.547W.  
Omaha Mission Bend Upper Daybeacon (LLNR-17840), Mile 704.2, RDB, position 42-09-14.334N/096-20-03.647W.  
Omaha Mission Bend Daybeacon (LLNR-17845), Mile 703.7, LDB, position 42-09-01.669N/096-19-19.694W.  
Omaha Mission Bend Lower Daybeacon (LLNR-17850), Mile 703.0, LDB, position 42-08-31.100N/096-18-54.052W.  
Thurston County Daybeacon (LLNR-17855), Mile 702.4, RDB, position 42-08-00.523N/096-18-46.586W.  
Blackbird Creek Daybeacon (LLNR-17860), Mile 701.0, RDB, position 42-07-31.134N/096-17-25.927W.  
Lower Monona Bend Daybeacon (LLNR-17865), Mile 700.5, LDB, position 42-07-30.136N/096-16-49.183W.  
Blackbird Bend Upper Daybeacon (LLNR-17870), Mile 697.7, LDB, position 42-05-14.073N/096-16-18.229W.  
Blackbird Bend Daybeacon (LLNR-17875), Mile 697.0, RDB, position 42-04-44.413N/096-16-45.321W.  
Tieville Bend Upper Daybeacon (LLNR-17880), Mile 693.8, RDB, position 42-02-17.303N/096-15-42.031W.  
Tieville Bend Daybeacon (LLNR-17885), Mile 693.2 LDB, position 42-02-08.088N/096-14-54.279W.  
Decatur Daybeacon (LLNR-17890), Mile 691.6, LDB, position 42-00-52.276N/096-14-15.480W.  
Decatur Lower Daybeacon (LLNR-17905), Mile 690.9, RDB, position 42-00-13.058N/096-14-37.949W.  
Pipe Line Daybeacon (LLNR-17910), Mile 689.1, RDB, position 41-59-38.466N/096-13-10.226W.  
Middle Decatur Bend Daybeacon (LLNR-17915), Mile 688.5, LDB, position 41-59-52.138N/096-12-32.043W.  
Toman Daybeacon (LLNR-17920) at mile 687.5, LDB, position 41-59-21.821N/096-11-18.826W.  
Lower Decatur Bend Daybeacon (LLNR-17925), Mile 686.9, RDB, position 41-58-52.700N/096-10-56.600W.  
Upper Louisville Bend Daybeacon (LLNR-17935), Mile 685.5, LDB, position 41-58-48.756N/096-09-23.437W.  
Lower Louisville Bend Daybeacon (LLNR-17940), Mile 683.7, LDB, position 41-57-29.515N/096-08-17.511W.  
Louisville Cut-Off Daybeacon (LLNR-17945), Mile 682.7, RDB, position 41-56-57.010N/096-08-44.026W.  
Carlson Daybeacon (LLNR-17950), Mile 681.8, RDB, position 41-56-02.436N/096-08-34.590W.  
Comments to be received by May 21, 2024. Please email comments regarding this proposal to: D08-SMB-District-LocalNoticeFeedback@uscg.mil

LNM: 13/24

---

## SECTION VII - GENERAL

This section contains information of general concern to the Mariners. Mariners are advised to use caution while transiting these areas.

---

### ALLEGHENY RIVER MILE 3.3 - AID TO NAVIGATION

A can buoy has been reported off station in the vicinity of Mile 3.3. Mariners are urged to transit the area with caution.

LNM: 05-24

### MILE 1.4 - THEATRICAL FILMING

The U.S. Coast Guard COTP Pittsburgh advises all mariners of filming on the 16th Street Bridge on May 15, 2024, in the vicinity of Mile 1.4. Filming will commence at 9:00 p.m. and will continue until midnight. A helicopter, with a spotlight, will be in the area for the duration of filming. Mariners are urged to exercise caution in the area. Mariners may contact the U.S. Coast Guard via VHF-FM Channel 16, for additional information.

LNM: 20-24

### MILE 0.9 - MILE 0.2 - FIREWORKS DISPLAY/SAFETY ZONE/RIVER CLOSURE

On May 24, 2024, from 8:30 p.m. until midnight, a fireworks display will be held between approximate Miles 0.9 and 0.2. The U.S. Coast Guard COTP Pittsburgh has established a Safety Zone closing the river for this event. Entry into this Safety Zone, during the event period, is prohibited unless otherwise authorized by the U.S. Coast Guard COTP Pittsburgh. Mariners may contact the U.S. Coast Guard via VHF-FM Channel 16, for additional information.

LNM: 20-24

### MILE 0.7 - AID TO NAVIGATION

A can buoy has been reported adrift in the vicinity of Mile 0.7. The buoy's last reported position was 50-feet below the 9th Street Bridge. Mariners are urged to transit the area with caution and at their slowest safe speed.

LNM: 20-24

### ARKANSAS RIVER MILE 118.2 - BRIDGE PROTECTION CELL DAMAGE

The upstream left descending pier protection cell at the Clinton Presidential Park Bridge in the vicinity of Mile 118.2, is damaged and leaning into the left descending bridge pier. Mariners are urged to exercise caution in the area. Mariners may contact the USACE Little Rock District Office, at (501) 324-5096 or via e-mail at: ceswl-op-om@usace.army.mil, for additional information.

LNM: 48-21

### CUMBERLAND RIVER MILE 190.4 - BRIDGE MAINTENANCE

Louisville and Nashville (CSX) Railroad Drawbridge; Vertical clearance is reduced by 4 feet due to installed containment system. The bridge remains fully operational. Mariners are advised to contact the bridge tender via VHF-FM Channel 16 or the maintenance supervisor, at (989) 717-3192, for additional information.

LNM: 35-22

### MILE 2.8 - BRIDGE CLEARANCE REDUCTION

Lucy Jefferson Lewis Memorial Bridge; The horizontal clearance through the bridge site has been reduced to 470 feet, due to both demolished bridge piers being in the water. The demolished bridge piers are both marked with buoys. Mariners are urged to exercise extreme caution while transiting the bridge site.

**MILE 2.8 - BRIDGE CLEARANCE REDUCTION**

LNM: 02-24

**GREEN RIVER  
MILE 94.8 - BRIDGE CLOSURE**

Paducah and Louisville Drawbridge; Due to vandalism of the wiring on the bridge, mariners are required to provide 3-hours advance notice, when requesting drawspan openings.

LNM: 50-23

**MILE 9.1 - AID TO NAVIGATION**

A can buoy has been reported off station near L/D 1, in the vicinity of Mile 9.1. Mariners are advised to transit the area with caution.

LNM: 20-24

**MILE 8.3 - BRIDGE OPERATION**

Louisville and Nashville Railroad Drawbridge; Construction is complete, and the drawbridge has returned to its normal operating schedule.

LNM: 19-24

**ILLINOIS WATERWAY  
MILE 288.7 - MILE 287.3 - BRIDGE REPAIRS**

Joliet Harbor Bridges; Due to ongoing bridge work, mariners are required to provide 1-hour advance notice, when requesting drawspan openings.

LNM: 19-20

**MILE 287.3 - BRIDGE MAINTENANCE**

McDonough Street Bridge; Due to cleaning and painting of the drawbridge, mariners are requested to provide a one-hour advance notice to the bridge operator for a bridge opening.

LNM: 26-23

**MILE 286.0 - SUBMERGED OBSTRUCTION**

A submerged obstruction has been reported in the Des Plains River, in the vicinity of Mile 286.0, on April 21, 2024. The submerged obstruction is reportedly not marked. Mariners are urged to use caution when transiting this area.

LNM: 17-24

**MILE 230.8 - MILE 230.4 - DREDGE OPERATION**

Continuing until further notice, M/V LASALLE is conducting dredging/strike removal operations between approximate Miles 230.8 and 230.4, LDB, Starved Rock Lower. Work will be conducted from 6:30 a.m. until 5:00 p.m., Monday through Thursday. M/V LASALLE will monitor VHF-FM Channel 14 or 82, and requests 30-minutes advance notice of passage. Mariners are urged to transit the area at their slowest safe speed to minimize their wake and proceed with caution after passing arrangements have been made.

LNM: 18-24

**MILE 189.1 - BRIDGE MAINTENANCE**

Continuing until further notice, bridge maintenance will be conducted on the Lacon Highway Bridge. Vertical clearance may be reduced by 30 feet, due to containment/work platform below the bridge deck. Mariners are urged to exercise caution while transiting under the bridge. Mariners may contact the Lacon Highway Bridge crew via VHF-FM Channel 13 or 16.

LNM: 31-23

**KANAWHA RIVER  
MILE 59.1 - MILE 58.1 - FIREWORKS DISPLAY/SAFETY ZONE/RIVER CLOSURE**

On May 24, 2024, commencing at 9:30 p.m., the Charleston Live on the Levee Memorial Day Celebration fireworks display will be held between approximate Miles 59.1 and Mile 58.1. The U.S. Coast Guard COTP Ohio Valley has established a Safety Zone closing the river for this event. Entry into this zone is prohibited to all vessels unless otherwise authorized by the U.S. Coast Guard or a designated representative. The Charleston Police and Fire Departments will monitor VHF-FM Channels 13 and 16. U.S. Coast Guard Sector Ohio Valley will monitor VHF-FM Channel 16. Mariners may contact U.S. Coast Guard Sector Ohio Valley, at (800) 253-7465, for additional information.

LNM: 20-24

**MILE 55.5 - BOOM PLACEMENT**

Continuing until December 5, 2024, Union Carbide Corporation South Charleston Facility will deploy a 75-foot by 50-foot sorbent boom alongside Blaine Island's south bank, in the vicinity of Mile 55.5. The boom will be in place 24-hours a day, 7-days a week and lighted accordingly. Mariners are urged to exercise caution in the area.

LNM: 17-24

**LOWER MISSISSIPPI RIVER  
MILE 734.7 - BRIDGE MAINTENANCE**

Memphis Highway Bridge; Due to maintenance on the bridge, a containment system is installed and will hang 2 feet below low steel following the contour of the bridge. Mariners are advised to transit the area with caution.

LNM: 17-23

**MILE 454.8 - SUBMERGED ROCK**

A submerged rock has been reported in the vicinity of Mile 454.8, on December 27, 2023. The submerged rock is reportedly not marked. Mariners are urged to transit this area with caution.

LNM: 01-24

**MILE 453.5 - SUBMERGED OBJECT**

**MILE 453.5 - SUBMERGED OBJECT**

A submerged object has been reported in the vicinity of Mile 453.5, RDB, on January 5, 2024. The submerged object is reportedly not marked. Mariners are urged to transit this area with caution.

LNM: 02-24

**UPPER MISSISSIPPI RIVER  
MILE 752.8 - L/D MAINTENANCE**

Continuing until June 1, 2024, construction on the L/D Nr. 4 lower guide wall end cell is being conducted. The contractor's floating plant will consist of the M/V CAPT. BOWIE, M/V CLIFFORD GALLEY, a helper boat and a 50X100 foot marine plant. The helper boat shall be alongside tows entering and exiting the lock, and when passing the construction area. The contractor's floating plant will monitor VHF-FM Channels 13, 14 and 16. Mariners shall be alert for and abide by instructions from the Lockmaster. Mariners may contact L/D Nr. 4 via VHF-FM Channel 14, or at (651) 290-5951, for further information.

LNM: 12-24

**MILE 723.8 - MILE 722.7 - DREDGE OPERATION**

Continuing until further notice, the support vessel M/V WELLS and the Dredge WADE will be conducting dredging operations between approximate Miles 723.8 and 722.7, below Winona Railroad Bridge. Work will be conducted from 6:30 a.m. until 5:00 p.m., Monday through Thursday. The support vessel M/V WELLS and the Dredge WADE will monitor VHF-FM Channel 13 or 80, and requests 30-minutes advance notice of passage. Mariners are urged to transit the area at their slowest safe speed and proceed with caution after passing arrangements have been made.

LNM: 18-24

**MILE 663.4 - BRIDGE CONSTRUCTION**

Lansing Bridge; Continuing until further notice, the channel will be reduced by 75 feet due to bridge construction. Work will be conducted from 6:00 a.m. to 5:30 p.m., daily. Work barges and equipment will be positioned on the RDB, to work on the pier of the new bridge. M/V JAMES FERRIS will be on scene and monitoring VHF-FM Channel 11. Mariners may also contact Larry Richardson at (815) 281-2084, or Aaron Rosenberry at (612) 282-0321, for further information.

LNM: 13-24

**MILE 482.9 - BRIDGE CLOSURE**

Rock Island Railroad and Highway Drawbridge; The bridge will be in the closed-to-navigation position from 8:30 a.m. until 11:00 a.m., June 8, 2024, in support of the Quad Cities Heart Walk.

LNM: 20-24

**MILE 383.7 - SUNKEN BARGE**

A sunken barge has been reported along the RDB, in the vicinity of Mile 383.7. The barge has been marked with two flashing lights until salvage operations can commence. Mariners are advised to favor the LDB and transit the area with caution.

LNM: 20-24

**MILE 379.6 - CHANNEL CONDITION**

Shoaling has been reported in the vicinity of Mile 379.6. The navigation channel has been reduced to approximately 200 feet. Temporary channel marker buoys have been placed in the area. Mariners are urged to exercise caution in the area.

LNM: 13-24

**MILE 273.4 - L/D CONDITION**

Due to critical construction on the dam, L/D Nr. 24, in vicinity of Mile 273.4, is experiencing stronger than normal outdraft conditions on the lower end of the lock. Construction will continue until further notice. Mariners should be alert for and abide by any special instructions issued by the lockmaster.

LNM: 18-24

**MILE 109.9 - BRIDGE CONSTRUCTION**

Chester Bridge; The right descending navigation span is blocked to river traffic for the next two years due to on-going construction of the new Chester Bridge, also the green navigation lights have been extinguished in that channel. Due to work at the center pier, mariners are advised to stay 100 feet off the center pier. Work is also ongoing upstream of the left descending navigation pier and at the edge of the channel. Mariners are advised to contact the M/V ANDREA or RUBY BELLE via VHF-FM Channel 13 or 16 prior to transiting the bridge.

LNM: 06-24

**MILE 1.3 - BRIDGE MAINTENANCE**

Cairo Bridge; Due to cleaning and painting on the bridge, a containment system is installed and will hang 4.5 feet below low steel and follows the contour of the bridge. Vertical clearance is reduced to 109.7 feet at 0.0 feet on the Cairo Gauge. Mariners are advised to transit the bridge with extreme caution.

LNM: 51-23

**MISSOURI RIVER  
MILE 366.2 - CHANNEL CONDITION**

Continuing until May 17, 2024, the navigation channel near Mile 366.2, in the vicinity of the Broadway Avenue Highway Bridge, will be blocked from 7:00 a.m. until 6:00 p.m., due to a work barge positioned in the navigation channel. The work barge can be moved during daylight hours with a 1-hour advance notice. Mariners may contact M/V LP WRIGHT via VHF-FM Channel 13 or 16, or at (816) 500-9675. If a nighttime opening is required, mariners must contact M/V LP WRIGHT no later than 2:00 p.m., on the day the opening is required. Mariners are urged to transit the area at their slowest safe speed to minimize their wake and proceed with caution after passing arrangements have been made.

LNM: 20-24

**MONONGAHELA RIVER  
MILE 33.5 - MILE 21.3 - SAFETY ADVISORY**



**MONONGAHELA RIVER**  
**MILE 33.5 - MILE 21.3 - SAFETY ADVISORY**

The U.S. Coast Guard COTP Pittsburgh advises mariners of multiple unmarked fishing reefs on both banks, extending 50 feet perpendicular to the shorelines, between approximate Miles 33.5 and 21.3. Mariners are urged to transit the area with caution.

LNM: 07-24

**MILE 32.37 - AID TO NAVIGATION**

A nun buoy has been reported submerged in the vicinity of the New Monongahela Highway Bridge, at Mile 32.37. Mariners are urged to exercise caution in the area.

LNM: 20-24

**MILE 24.0 - L/D DEMOLITION**

Commencing July 8, 2024, USACE contractors will begin the controlled demolition and removal of the dam at Monongahela River L/D Nr. 3. The controlled demolition will involve the use of explosives, which will restrict navigation activities in the vicinity of L/D Nr. 3. Preparatory work will begin in advance of this date, but the actual demolition will not begin until the week of July 8, 2024.

Preparatory work will include but not be limited to:

- a. Installing aids to navigation to notify river users of the restricted areas around the dam and that the use of the lock is required.
- b. The Braddock pool elevation will be raised to elevation 724.7 feet to facilitate the dam demolition and removal.
- c. Drilling in the dam to prepare for the actual explosive charges.

Following the initial demolition and breaching of the dam at Monongahela River L/D Nr. 3, L/D Nr. 3 will be closed to navigation for an estimated 3 to 12 days, depending on river conditions.

Following the 3-12 day L/D Nr. 3 closure:

- a. To reduce the risk of injury, death, and/or significant property damage, all river traffic will be required to use the lock until the dam is completely removed and the Corps of Engineers removes the restricted areas from the river. That is expected to occur in December 2024.
- b. It is expected that there will be weekly, short-term (less than 3-hours) navigation closures of L/D Nr. 3 while additional sections of the dam undergo controlled demolition.

LNM: 20-24

**MILE 1.0 - BRIDGE OBSTRUCTION**

Smithfield Bridge; A containment system is installed that hangs 1-foot below low steel and follows the contour of the bridge. Mariners are encouraged to transit the bridge with caution.

LNM: 18-24

**OHIO RIVER**

**MILE 6.0 - MILE 13.5 - SALVAGE OPERATION/CHANNEL CONDITION - UPDATE**

Salvage operations have been completed.

LNM: 20-24

**MILE 86.4 - AID TO NAVIGATION**

A nun buoy has been reported off station in the vicinity of Mile 86.4. Mariners are urged to transit the area with caution.

LNM: 06-24

**MILE 183.4 - BRIDGE LIGHTING**

Belpre-Parkersburg Highway Bridge; Decorative lights have been installed on the bridge. To activate the shut off for the decorative lights, use VHF-FM Channel 28 and key the microphone three times. The lights will be shut off for approximately 20 minutes.

LNM: 19-24

**MILE 279.2 - CHANNEL CONDITION**

Due to recent flooding and receding water levels on the Ohio River, shoal conditions exist in the lower approach channel at Robert C. Byrd L/D, in the vicinity of mile 279.2. Mariners are urged to check the channel depth surveys, monitor lower gauge readings and contact the lockmaster via VHF-FM Channel 13, for additional information. Attached as an enclosure to this LNM, is USACE Huntington District Notice to Navigation Interests 24-12, Robert C. Byrd L/D lower approach survey.

LNM: 18-24

**MILE 281.0 - MILE 282.5 - STONE BANK STABILIZATION**

Continuing until approximately June 15, 2024, Amherst Madison, a contractor for Nucor Steel is conducting stone bank stabilization and maintenance dredging, along the LDB, between approximate Miles 281.0 and 282.5. The contractor's floating plant will consist of the M/V BUS BROWN, 1 barge-mounted crane, one spud barge and two jumbo deck barges. Work will be conducted from 6:30 a.m. until 4:30 p.m., Monday through Friday. During non-working hours, the contractor's floating plant will be moored at the worksite and lighted accordingly. The contractor's floating plant will monitor VHF-FM Channels 13 and 16. Mariners are urged to transit the area at their slowest safe speed to minimize their wake and proceed with caution.

LNM: 09-24

**MILE 327.0 - MILE 329.0 - FIREWORKS DISPLAY**

On May 25, 2024, from 9:00 p.m. until 11:00 p.m., the Ironton Memorial Day Celebration fireworks display will be held at the Ironton boat ramp at Mile 327.8. Mariners are advised to avoid the area and transit near the LDB to avoid potentially hazardous conditions associated with the fireworks display. The Ironton Police and Fire Departments will monitor VHF-FM Channels 13 and 16. U.S. Coast Guard Sector Ohio Valley will monitor VHF-FM Channel 16. Mariners may contact U.S. Coast Guard Sector Ohio Valley, at (800) 253-7465, for more information.

LNM: 20-24

**MILE 531.5 - L/D CLOSURE**

Due to electrical upgrades, Markland L/D Main and Auxiliary chambers will be closed to navigation from 6:00 a.m. until 4:00 p.m., on May 15, 2024, resulting in a river closure. No traffic will pass through the locks during this period, and both lock chambers will be operational before and after the closure. Mariners may contact Markland L/D via VHF-FM Channel 13, or at (859) 567-7661, for further information.

LNM: 20-24

**MILE 531.5 - DREDGE OPERATION**

Commencing June 9, 2024, and continuing until June 19, 2024, Amherst Madison, a contractor for the USACE will conduct dredging operations in the vicinity of Mile 531.5, Markland L/D upper approach. The contractor's floating plant will consist of the M/V RELIANT, M/V LUCEDALE, a crane barge and two jumbo deck barges. Work will be conducted from 7:00 a.m. until 5:00 p.m., 7-days a week. The Main chamber will be utilized to lock all traffic. The placement area will be along the LDB immediately downstream of the locks, so the dredge will be adjacent to the navigation channel in that location during offloading. M/V RELIANT and M/V LUCEDALE will monitor VHF-FM Channel 13. Mariners are urged to transit the area at their slowest safe speed and proceed with caution after passing arrangements have been made.

LNM: 20-24

**MILE 604.1 - AIDS TO NAVIGATION**

Two nun buoys have been reported missing in the vicinity of Mile 604.1. Mariners are urged to transit this area with caution.

LNM: 13-24

**MILE 606.0 - PARTIALLY SUBMERGED BARGE**

A partially submerged barge has been reported in the vicinity of Mile 606.0, on March 12, 2024. The partially submerged barge is reportedly not marked. Mariners are urged to transit the area with caution, keep a proper look out and report any sightings to the U.S. Coast Guard Command Center via VHF-FM Channel 16, or by phone, at (502) 779-5425.

LNM: 12-24

**MILE 789.0 - MILE 791.3 - FACILITY CONSTRUCTION**

Continuing until approximately September 30, 2025, Meuth Construction Supply Inc., is constructing a facility adjacent to the navigation channel between approximate Miles 789.0 and 791.3, RDB. Sixteen tri-tie dolphins will be constructed to anchor barges along the riverbank. Construction for this facility will be performed from a floating plant. The contractor's floating plant will never extend more than 180 feet from the shoreline, at normal pool. The construction contractor will monitor VHF-FM Channel 7, 13 or 16. Mariners are urged to transit the area with caution.

LNM: 39-22

**MILE 794.0 - SUNK MOORING CELL**

A mooring cell has been reported sunk near TransMontaigne Terminal, in the vicinity of Mile 794.0, RDB, outside of the navigational channel, on April 30, 2024. The sunk mooring cell is reportedly not marked. Mariners are urged to exercise caution in the area.

LNM: 19-24

**MILE 918.5 - L/D CLOSURE**

The Smithland L/D Land Chamber will be closed intermittently through May 16, 2024, and again from May 20, 2024, through May 25, 2024. The closure is due to the Heavy Capacity Fleet performing preparatory work for miter gate repairs. Work will be conducted from 7:00 a.m. until 5:30 p.m., daily. All traffic will use the River Chamber during the closure. The Land Chamber will reopen at the conclusion of work, each day.

LNM: 19-24

**MILE 973.7 - SUNK ANCHOR BARGE**

An anchor barge has been reported sunk in the vicinity of Mile 973.7, LDB, on May 13, 2024. The anchor barge is reportedly not marked. Mariners are urged to proceed with caution, keep a sharp lookout and report any sighting to the nearest U.S. Coast Guard Unit, when transiting this area.

LNM: 20-24

**MILE 980.0 - GEOTECHNICAL SAMPLING OPERATION**

Commencing June 1, 2024, and continuing through September 30, 2024, the EBI Lift Boat DONALD OLSEN will be conducting geotechnical sampling operations in the vicinity of Mile 980.0, upstream of the Cairo Highway Bridge. Work will be conducted 24-hours a day, 7-days a week. The equipment will not impede traffic and will leave an approximately 800-foot wide navigable channel along the sailing line. EBI Lift Boat DONALD OLSEN will be jacked up out of the water, such that it will be unable to move from its location. EBI Lift Boat DONALD OLSEN will monitor VHF-FM Channels 13 and 16. Mariners are urged to transit the area at their slowest safe speed to minimize their wake and proceed with caution.

LNM: 19-24

**TENNESSEE RIVER**

**MILE 595.0 - AID TO NAVIGATION**

A can buoy has been reported off station in the vicinity of Mile 595.0. Mariners are urged to transit the area with caution.

LNM: 20-24

**MILE 488.5 - AID TO NAVIGATION**

A can buoy has been reported off station in the vicinity of Mile 488.5, on the RDB. Mariners are urged to transit the area with caution.

LNM: 19-24

**MILE 389.0 - AID TO NAVIGATION**

A can buoy has been reported off station and adrift in the vicinity of Mile 389.0. Mariners are urged to transit the area with caution.

LNM: 20-24

**MILE 309.6 - BRIDGE MAINTENANCE**

I-65 Highway Bridge; Due to maintenance work, vertical clearance may be reduced by 2 feet. Mariners are urged to exercise caution while transiting the bridge.

**MILE 309.6 - BRIDGE MAINTENANCE**

LNM: 11-24

**MILE 21.1 - BRIDGE MAINTENANCE**

I-24 Bridges; Due to cleaning and painting, there will be a containment tarp installed that will hang approximately 4 feet below low steel. Vertical clearance will be reduced to 83 feet above normal pool. Mariners are advised to transit the bridge with caution.

LNM: 04-24

---

---

**SECTION VIII - LIGHT LIST CORRECTIONS**

An Asterisk \*, indicates the column in which a correction has been made to new information

| (1)<br>No. | (2)<br>Name and Location   | (3)<br>Mile | (4)<br>Bank | (5)<br>Characteristic | (6)<br>Structure / Dayboard<br>Up<br>Down | (7)<br>Remarks  |
|------------|--|-------------|-------------|-----------------------|---|---|
| 24270      | <b>Belpre-Parkersburg Highway Bridge</b><br>Decorative lights on the bridge are energized from dusk to dawn. The decorative lights can be extinguished for 20-minutes by setting your VHF-FM radio to Channel 28 and rapidly clicking the mic 3 times when approaching the bridge. If mariners are unable to extinguish the decorative lights, they are advised to report this to U.S. Coast Guard Sector Ohio Valley at (502) 779-5422. | 183.4       |             |                       |   | CLEARANCES: Horizontal, 685.0 feet; vertical, 75.8 feet above pool at center, 72.8 feet above pool for center 485.0 feet of channel span. 20/24 |

\*

---

---

**ENCLOSURES**

**OHIO RIVER - L/D CLOSURES**

USACE Louisville District Notice to Navigation 2024-001, 2024 scheduled lock outages.

LNM: 15-24

**TENNESSEE RIVER/CUMBERLAND RIVER - MAY MARINE EVENTS/PLANNED RIVER CLOSURES**

U.S. Coast Guard Marine Safety Detachment Nashville notice of marine events and planned river closures for May.

LNM: 17-24

**MILE 279.2 - CHANNEL CONDITION**

USACE Huntington District Notice to Navigation Interests 24-12, Robert C. Byrd L/D lower approach survey.

LNM: 18-24

---

---

Commander, Eighth Coast Guard District  
Hale Boggs Federal Building, Room 1230  
500 Poydras Street, New Orleans, LA 70130-3310  
Telephone (504) 671-2327  
(Business Hours 7:00 a.m. - 3:30 p.m. Monday - Friday)  
(Nights, Weekends, Holidays) (855) 485-3727  
RDML Barata



US Army Corps  
of Engineers  
Louisville District

# Notice to Navigation Interests

Notice No. 2024-001

Date: January 16, 2024

<http://www.lrl.usace.army.mil/Missions/CivilWorks/Navigation/Notices.aspx>

---

In Reply Refer to: CELRL-OPT PO Box 59, Louisville, KY 40201 Telephone: 502-315-6694

---

*LOUISVILLE DISTRICT*

## CALENDAR YEAR 2024

### SCHEDULED LOCK OUTAGES

#### OHIO RIVER

Markland Locks and Dam (Ohio River Mile 531.5): The Primary (1,200 ft) Chamber will be closed **intermittently from 22 April through 7 June 2024** for the Heavy Capacity Fleet (HCF) to replace emergency gate wire rope. All traffic will use the Auxiliary (600 ft) Chamber during the closures.

Cannelton Locks and Dam (Ohio River Mile 720.7): The Auxiliary (600 ft) chamber will be closed **intermittently from 22 April through 7 June 2024** for the Heavy Capacity Fleet (HCF) to replace emergency gate wire rope. All traffic will use the Primary (1,200 ft) Chamber during the closures.

Smithland Locks and Dam (Ohio River Mile 918.5): The Land (1,200 ft) Chamber will be closed from **19 August through 8 November 2024** for repairs to the miter gates. All traffic will use the River (1,200 ft) Chamber during this time.

/s/

Shawn Kenney  
Chief, Technical Support Branch



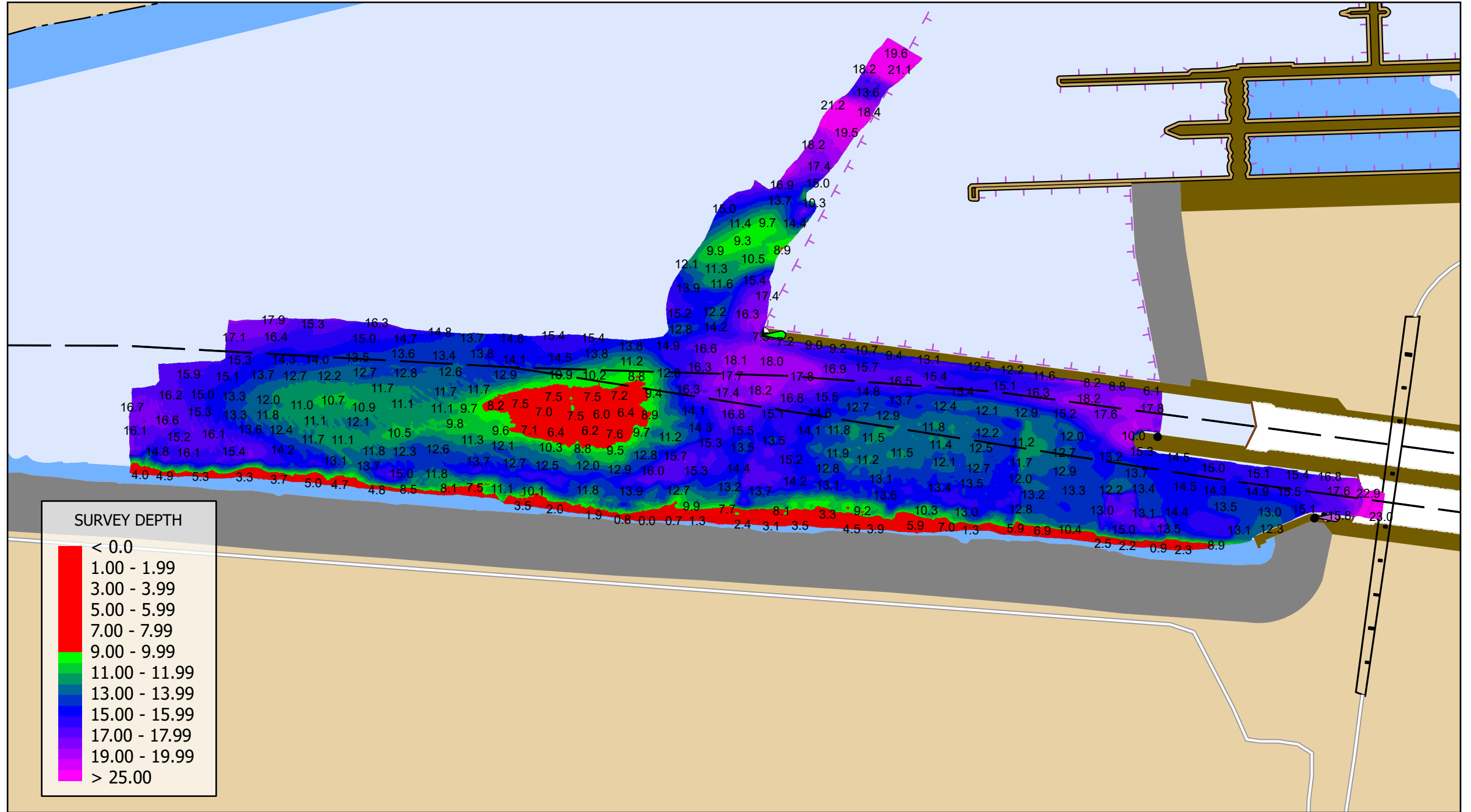
## May 2024 Marine Event Notification & Planned River Closures

| <u>Date</u> | <u>Event</u>                  | <u>Time</u> | <u>River/ Mile Marker</u> | <u>Waterway Closure (Yes/No)</u> |
|-------------|-------------------------------|-------------|---------------------------|----------------------------------|
| 04 May      | Nooga Loop                    | 0700-1600   | Tennessee/452-458         | No                               |
| 18 May      | EagleFest Fireworks           | 2100-2200   | Cumberland/90             | No                               |
| 19 May      | IRONMAN Chattanooga 70.3      | 0500-1100   | Tennessee/466             | Yes                              |
| 25 May      | Lenoir City Rockin' the Docks | 2200-2230   | Tennessee/601             | No                               |
| 31 May      | Guntersville Jet Ski Race     | 0700-2000   | Tennessee/358.5           | No                               |
|             |                               |             |                           |                                  |
|             |                               |             |                           |                                  |

For any questions or concerns regarding marine events or scheduled river closures please call Marine Safety Detachment Nashville at (615) 736-5421 or email the staff at [msdnashville@uscg.mil](mailto:msdnashville@uscg.mil).

# ROBERT C. BYRD LOCKS AND DAM - LOWER APPROACH

SURVEY PERFORMED 4/29/2024



U.S. ARMY CORPS OF ENGINEERS

HUNTINGTON DISTRICT

