



U.S. Department
of Homeland Security
**United States
Coast Guard**

LOCAL NOTICE TO MARINERS

District: 11

Week: 01/24

CORRESPONDENCE TO:
COMMANDER
DISTRICT ELEVEN (DPW)
COAST GUARD ISLAND BUILDING 50-2
ALAMEDA, CA 94501-5100

REFERENCES: COMDTPUB P16502.6, Light List Volume VI, 2017 Edition, U.S. Chart No.1 12th Edition, and Coast Pilot Volume 7 49th Edition. These publications, along with corrections, are available at: <https://nauticalcharts.noaa.gov/>

BROADCAST NOTICE TO MARINERS - Information concerning aids to navigation and waterway management promulgated through BNM HB-0014-23, SF-0192-23, LA-0002-24, and SD-0001-24 have been incorporated in this notice, or will continue if still significant.

ABBREVIATIONS

A through H

ADRIFT - Buoy Adrift
AICW - Atlantic Intracoastal Waterway
Al - Alternating
B - Buoy
BKW - Breakwater
bl - Blast
BNM - Broadcast Notice to Mariner
bu - Blue
C - Canadian
CHAN - Channel
CGD - Coast Guard District
C/O - Cut Off
CONT - Contour
CRK - Creek
CONST - Construction
DAYMK/Daymk - Daymark
DBN/Dbn - Daybeacon
DBD/DAYBD - Dayboard
DEFAC - Defaced
DEST - Destroyed
DISCON - Discontinued
DMGD/DAMGD - Damaged
ec - eclipse
EST - Established Aid
ev - every
EVAL - Evaluation
EXT - Extinguished
F - Fixed
fl - flash
Fl - Flashing
G - Green
GIWW - Gulf Intracoastal Waterway
HAZ - Hazard to Navigation
HBR - Harbor
HOR - Horizontal Clearance
HT - Height

I through O

I - Interrupted
ICW - Intracoastal Waterway
IMCH - Improper Characteristic
INL - Inlet
INOP - Not Operating
INT - Intensity
ISL - Islet
Iso - Isophase
kHz - Kilohertz
LAT - Latitude
LB - Lighted Buoy
LBB - Lighted Bell Buoy
LHB - Lighted Horn Buoy
LGB - Lighted Gong Buoy
LONG - Longitude
LNM - Local Notice to Mariners
LT - Light
LT CONT - Light Continuous
LTR - Letter
LWB - Lighted Whistle Buoy
LWP - Left Watching Properly
MHz - Megahertz
MISS/MSNG - Missing
Mo - Morse Code
MRASS - Marine Radio Activated Sound Signal
MSLD - Misleading
N/C - Not Charted
NGA - National Geospatial-Intelligence Agency
NO/NUM - Number
NOS - National Ocean Service
NW - Notice Writer
OBSCU - Obscured
OBST - Obstruction
OBSTR - Obstruction
Oc - Occulting
ODAS - Anchored Oceanographic Data Buoy

P through Z

PRIV - Private Aid
Q - Quick
R - Red
RACON - Radar Transponder Beacon
Ra ref - Radar reflector
RBN - Radio Beacon
REBUILT - Aid Rebuilt
RECOVERED - Aid Recovered
RED - Red Buoy
REFL - Reflective
RRL - Range Rear Light
RELIGHTED - Aid Relit
RELOC - Relocated
RESET ON STATION - Aid Reset on Station
RFL - Range Front Light
RIV - River
RRASS - Remote Radio Activated Sound Signal
s - seconds
SEC - Section
SHL - Shoaling
si - silent
SIG - Signal
SND - Sound
SPM - Single Point Mooring Buoy
SS - Sound Signal
STA - Station
STRUCT - Structure
St M - Statute Mile
TEMP - Temporary Aid Change
TMK - Topmark
TRLB - Temporarily Replaced by Lighted Buoy
TRLT - Temporarily Replaced by Light
TRUB - Temporarily Replaced by Unlighted Buoy
USACE - Army Corps of Engineers
W - White
Y - Yellow

Additional Abbreviations Specific to this LNM Edition: None

SECTION I - SPECIAL NOTICES

This section contains information of special concern to the Mariner.

SUBMITTING INFORMATION FOR PUBLICATION IN THE LOCAL NOTICE TO MARINERS

A complete set of guidelines with examples and contact information can be found at <http://www.pacificarea.uscg.mil/Our-Organization/District-11/Prevention-Division/LnmRequest/> or call Waterways Management Branch at 510-437-2929 or e-mail D11-SMB-D11-LNM@uscg.mil. Please provide all Local Notice to Mariners submissions 14 days prior to the start of operations

LNM: 17/21

BRIDGE INFORMATION- PROJECTS, DISCREPANCIES, CORRECTIONS & REGULATORY

For all bridge related issues, including lighting, operation, obstructions, construction, demolition, etc. contact the Eleventh Coast Guard District Bridge Administrator 24 hour cell phone at 510-219-4366. Flotsam may accumulate on and near bridge piers and abutments. Mariners should approach all bridges with caution. A vessel delay at a drawbridge may be reported to the District Bridge Administrator by telephone, or by using the [Delay_Report_11-2017.pdf](#) included in the Enclosures section of this Local Notice to Mariners.

BRIDGE INFORMATION-COMMUNICATIONS PROTOCOL-BENICIA/MARTINEZ UPRR BRIDGE- CARQUINEZ STRAIT

All mariners requiring a bridge lift at the Benicia-Martinez Union Pacific Railroad Bridge, mile 7.0, over the Carquinez Strait, California, should follow the protocol in the document entitled "Coordination of Communications for Union Pacific Railroad Lift Operations." Mariners can download a copy of the document by selecting the link BENICIA-MARTINEZ RR BRIDGE under the QUICK LINKS section at <https://www.pacificarea.uscg.mil/vtssf>.

CAUTION TO BE USED IN RELIANCE UPON AIDS TO NAVIGATION

The aids to navigation depicted on charts comprise a system of fixed and floating aids to navigation with varying degrees of reliability. Prudent mariners will not rely solely on any single aid to navigation, particularly a floating aid to navigation. With respect to buoys, the buoy symbol is used to indicate the approximate position of the buoy body and the sinker which secures the buoy to the seabed. The approximate position is used because of the practical limitations in positioning and maintaining buoys and their sinkers in precise geographical locations. These limitations include, but are not limited to, inherent imprecision in position fixing methods, prevailing atmospheric and sea conditions, slope of and the material making up the seabed, the fact that buoys are moored to sinkers by varying length of chain, and the fact that the buoy body and/or sinker positions are not under continuous surveillance, but are normally checked only during periodic maintenance visits which often occur more than a year apart. Due to the forces of nature, the position of the buoy body can be expected to shift inside and outside the charted symbol. The mariner is also cautioned that buoys may be extinguished or sound signals may not function as the result of natural causes, collisions, or other accidents. For the foregoing reasons, a prudent mariner must not rely completely upon the position or operation of floating aids to navigation, but will also utilize bearings from fixed objects and aids to navigation on shore. Furthermore, a vessel attempting to pass close aboard always risks collision with a yawing buoy or with the obstruction that the buoy marks.

NAVIGATION CENTER WEBSITE TRANSITION

The U.S. Coast Guard Navigation Center is going to transition the Navigation Center website to a new, enhanced version in the first quarter of 2022. As part of this transition, URLs will be updated across the site including URLs linked to PDFs. Therefore, once the transition is complete, legacy site URLs will no longer function, including bookmarked URLs and URLs used in automatic downloading of data and/or products. Outdated URLs will automatically redirect to the home page of the site, and from there you will be able to easily navigate to your preferred page.

Below are a few of the "old"/new URL pairs listed for your convenience. Please note that the new URLs will not be active until we launch the new website. Of course, once it is launched, the new URLs will be available for re-bookmarking. As a reminder, these are top level URLs that may contain additional links that you use.

This notice will be updated when the final launch date is determined and another notice will be issued to notify you when the site goes live. Questions/concerns may be directed to the NAVCENWebTEAM@uscg.mil.

Local Notices to Mariners (LNMs)

Current URLs: <https://www.navcen.uscg.gov/?pageName=lnmMain>

Replacement: <https://www.navcen.uscg.gov/local-notices-to-mariners-by-cg-district>

Light Lists Annual Publication

Current URLs: <https://navcen.uscg.gov/?pageName=lightLists>

Replacement: <https://www.navcen.uscg.gov/light-list-annual-publication>

Light List - Weekly

Current URLs: <https://navcen.uscg.gov/?pageName=lightListWeeklyUpdates>

Replacement: <https://www.navcen.uscg.gov/weekly-light-lists>

Light List - Corrections

Current URLs: <https://navcen.uscg.gov/?pageName=lightListCorrections>

Replacement: <https://www.navcen.uscg.gov/light-list-summary-of-corrections>

LNM: 06/22

SAFETY NOTICE - NAVIGATIONAL RANGE AND SECTOR LIGHTS ON ELECTRONIC CHARTS

"The U.S. Coast Guard has become aware that the Range and Sector Light Characteristic labels are not displayed on Electronic Navigational Charts (ENCs) when used in an Electronic Chart Display and Information System (ECDIS) due to limitations of the S-52 ECDIS display specification. Mariners may query the ENC data directly within ECDIS or refer to the Light List for complete information on Range and Sector Light Characteristics."

LNM: 39/22

SOUTHERN CALIFORNIA - CHANNEL ISLANDS - AREA TO BE AVOIDED (ATBA) ENLARGED

In November of 2022, the International Maritime Organization (IMO) issued an adopted amendment, which goes into effect June 1, 2023. The amendment describes changes to the existing Area To Be Avoided (ATBA) around the Channel Islands, CA. As a result of these changes, the Area To Be Avoided (ATBA) has been significantly increased in size. Please be advised that, per an agreement with the USCG Headquarters, NOAA cartographers used more accurate points expressed in degrees, minutes, seconds, and hundredths of seconds, rather than the derived IMO positions published in the IMO circular, which are slightly degraded in terms of accuracy. For details, please see Enclosure included in this Local Notice to Mariners.

Charts: 18020 18022 18700 18720 18724 18725 18728 18729 18740

LNM: 21/23

SOUTHERN CALIFORNIA-SAN DIEGO BAY-MINIMIZE WAKE

The Navy Port Operations Manager requests that vessels slow to 7 kts when a vessel is moored in restricted area (33 CFR 334.865) located on the northeast side of North Island at 32-42-57N 117-11-22W, between San Diego Channel Lighted Buoy 20 (LLNR 1710) and San Diego Channel Lighted Buoy 22 (LLNR 1830). For more details or comments contact LT Rodriguez at 619-545-3232, Rigoberto.rodriguez3@navy.mil.

Chart 18773

LNM: 10/22

SUBMITTING INFORMATION FOR PUBLICATION IN THE LOCAL NOTICE TO MARINERS

Coast Guard District Eleven Waterways upgrade to E-Mail capabilities. All future requests for article submission in the District Eleven Local Notice to Mariners are requested to be E-Mailed to D11-SMB-SMB-D11-LNM@uscg.mil at least two weeks prior to the operation. For more details or comments please contact District Eleven Waterways Management Branch at 510-437-2929 or e-mail D11-SMB-D11-LNM@uscg.mil. Coast Guard District Eleven requests all Local Notice to Mariners submissions be E-Mailed to our office at least 14 days prior to the start of operations for timely submittal and publication.

LNM: 17/21

SECTION II - DISCREPANCIES

This section lists all reported and corrected discrepancies related to Aids to Navigation in this edition. A discrepancy is a change in the status of an aid to navigation that differs from what is published or charted.

DISCREPANCIES (FEDERAL AIDS)

LLNR	Aid Name	Status	Chart No.	BNM Ref.	LNM St	LNM End
290	Point Pinos Light	LT EXT/TRLT	18685	SF-0192-23	01/24	
297	NOAA Environmental Lighted Buoy 46042	ADRIFT	18680	SF-0180-23	49/23	
300	Santa Cruz West Breakwater Light	LT EXT	18685	SF-0188-23	52/23	
330	Pillar Point Harbor Approach Lighted Buoy PP	DAYMK MISSING	18680	SF-0081-23	17/23	
365	Mile Rocks Light	LT EXT	18649	SF-0099-22	44/22	
490	Humboldt Bay Entrance Lighted Whistle Buoy HB	REDUCED INT	18620	HB-0013-23	46/23	
1493	San Diego Bay Approach Lighted Bell Buoy 4	LT IMCH	18772	SD-0074-22	41/22	
1535	Zuniga Jetty Light W	STRUCT DEST	18773	SD-0038-23	26/23	
1545	San Diego Bay Channel Lighted Buoy 8	OFF STA	18773	SD-0070-23	39/23	
1845	San Diego Bay Channel Lighted Buoy 26	LT EXT	18773	SD-0080-23	42/23	
2295	Oceanside Breakwater Light 1	DAYMK MISSING	18758	SD-0001-24	01/24	
2635	Ship Rock Light	LT EXT	18757	LA-0095-21	26/21	
2641	Isthmus Cove Harbor Reefs Light	STRUCT DMGD	18757	LA-0018-21	05/21	
2670	Santa Catalina Island West End Light	LT EXT	18757	LA-0113-19	34/19	
2810	Anaheim Bay Channel Buoy 7	OFF STA	18749	LA-0062-22	30/22	
3117	Los Angeles Main Channel Lighted Buoy 11	REDUCED INT	18749	LA-0105-21	28/21	
3132	Terminal Island Channel Lighted Buoy 1	STRUCT DMGD	18749	LA-0027-22	16/22	

3330	Redondo Beach West Jetty Light 3	STRUCT DEST	18744	LA-0021-23	09/23
3750	Santa Barbara Harbor Breakwater Light	SS INOP	18725	LA-0029-23	14/23
3772	Santa Barbara Harbor Lighted Buoy 6	OFF STA	18725	LA-0002-24	01/24
3780	Santa Barbara Harbor Lighted Buoy 8	OFF STA	18725	LA-0002-24	01/24
3785	Santa Barbara Harbor Lighted Buoy 11	OFF STA	18725	LA-0002-24	01/24
3790	Santa Barbara Harbor Lighted Buoy 10	OFF STA	18725	LA-0002-24	01/24
3792	Santa Barbara Harbor Lighted Buoy 12	OFF STA	18725	LA-0002-24	01/24
3855	Morro Bay Channel Lighted Buoy 4	LT EXT	18703	LA-0165-23	51/23
3970	Monterey Harbor Light 6	LT EXT	18685	SF-0166-23	46/23
3970	Monterey Harbor Light 6	SS INOP	18685	SF-0064-20	27/20
4085	Santa Cruz West Breakwater Light	LT EXT	18685	SF-0188-23	52/23
4130	Pillar Point Harbor Entrance Lighted Gong Buoy 1	SS INOP/STRUCT DMGD	18680	SF-0082-23	17/23
4245	Mile Rocks Light	LT EXT	18649	SF-0099-22	44/22
4315	Alcatraz Light	REDUCED INT	18650	SF-0151-23	41/23
4610	Oakland Outer Harbor Range B Front Light	DAYMK MISSING	18650	SF-0070-23	14/23
4625	Oakland Outer Harbor Range A Rear Light	LT EXT	18650	SF-0092-22	42/22
4655	Oakland Outer Harbor Light 13	MISSING/TRLB	18650	SF-0067-23	14/23
4680	Oakland Inner Harbor Light 10	MISSING/TRLB	18650	SF-0052-21	02/22
4684	Oakland Inner Harbor Turn Basin Light B	STRUCT DMGD/TRLB	18650	SF-0097-21	29/21
4740	San Leandro Bay Airport Channel Daybeacon 6	STRUCT DEST/TRUB	18650	SF-0033-22	15/22
4765	Alameda Naval Air Station Channel Light 5	LT EXT	18650	SF-0190-23	52/23
4770	Alameda Naval Air Station Channel Light 6	LT EXT	18650	SF-0191-23	52/23
4830	San Leandro Marina Channel Light 1	LT EXT/SS INOP		SF-0012-23	02/23
5225	Redwood Creek Light 11	STRUCT DEST/TRLB		SF-0148-23	41/23
5415	San Francisco Bay North Channel Lighted Bell Buoy 6	LT EXT	18650	SF-0186-23	51/23
5430	Berkeley Marina Channel Light 2	LT EXT	18650	SF-0086-22	40/22
5725	Richmond Harbor Channel Light 9	MISSING/TRLB	18649	SF-0098-22	43/22
5845	San Rafael Creek Light 3	STRUCT DEST	18653	SF-0109-23	48/23
5890	San Pablo Bay Preferred Channel Lighted Buoy E	MISSING	18654	SF-0152-23	42/23
6095	Mare Island Strait Light 2	STRUCT DMGD/TRLB	18655	SF-0152-20	49/20
6100	Mare Island Strait Light 3	STRUCT DEST/TRLB	18655	SF-0173-23	47/23
6240	Carquinez Strait Light 23	LT EXT	18656	SF-0008-23	02/23
6557	Suisun Bay Channel Light 24A	STRUCT DEST/TRLB	18656	SF-0134-23	36/23
6685	San Joaquin River Light 8	STRUCT DMGD/TRLB	18656	SF-0109-21	02/22
6830	San Joaquin River Light 39	STRUCT DMGD	18661	SF-0119-23	30/23
7210	Sacramento River Deep Water Ship Channel Light 10	MISSING/TRLB	18656	SF-0101-21	32/21
7230	Sacramento River Deep Water Ship Channel Light 14	MISSING/TRLB	18661	SF-0140-23	39/23
7235	Sacramento River Deep Water Ship Channel Light 15	MISSING/TRLB	18661	SF-0100-20	42/23
7240	Sacramento River Deep Water Ship Channel Light 16	STRUCT DEST/TRLB	18661	SF-0127-18	34/18
7260	Sacramento River Deep Water Ship Channel Light 20	MISSING/TRLB	18661	SF-0108-21	05/23
7810	Bodega Harbor Channel Light 6	STRUCT DMGD/TRLB		SF-0028-21	08/23

7815	Bodega Harbor Channel Daybeacon 7	STRUCT DEST/TRLB		SF-0046-23	08/23
8130	Humboldt Bay Entrance Lighted Whistle Buoy HB	REDUCED INT	18620	HB-0013-23	46/23
8195.1	Humboldt Bay Light 9	REDUCED INT/STRUCT DMGD	18620	HB-0014-23	01/24

DISCREPANCIES (FEDERAL AIDS) CORRECTED

LLNR	Aid Name	Status	Chart No.	BNM Ref.	LNM St	LNM End
------	----------	--------	-----------	----------	--------	---------

None

DISCREPANCIES (PRIVATE AIDS)

LLNR	Aid Name	Status	Chart No.	BNM Ref.	LNM St	LNM End
20	Ocean Beach Pier Fog Sound Signal	SS INOP	18765	SD-0002-19	05/19	
158	Scripps Waverider Lighted Research Buoy 092	OFF STA	18746		45/18	
505	Scripps Waverider Lighted Research Buoy 168	LT EXT	18620	HB-0003-22	14/22	
1665	Americas Cup Harbor Daybeacon 2	STRUCT DEST/TRUB	18773	SD-0001-22	02/22	
1720	Navy San Diego Bay Mooring Buoy 19	LT EXT	18773	SD-0079-23	42/23	
2056	Sweetwater Channel Light 6	STRUCT DEST	18773	SD-0087-22	47/22	
2070	Coronado Cays Channel Daybeacon 3	STRUCT DEST	18773	SD-0098-17	36/17	
2090	Coronado Cays Channel Light 7	STRUCT DEST/TRUB	18773	SD-0046-22	31/22	
2159.1	Chula Vista Channel Shoal Light B	STRUCT DEST	18773	SD-0021-23	14/23	
2288	Scripps Waverider Lighted Research Buoy 220	OFF STA	18765	SD-0041-20	30/20	
2289.1	Scripps Waverider Lighted Research Buoy 100	OFF STA	18765		22/20	
2289.4	Scripps "CORDC" Lighted Research Buoy	MISSING	18765		22/20	
2764.4	Catalina Sea Ranch SE Buoy	MISSING	18746	LA-0001-22	03/22	
2871	Long Beach Harbor Brusco Lighted Mooring Buoy	LT EXT	18749	LA-0009-21	03/21	
3339.2	REDONDO HARBOR LIGHT	LT EXT	18744	LA-0181-18	52/18	
3400	El Segundo NRG Energy Buoy 6ES	SINKING	18744	LA-0153-21	39/21	
3420	Hyperion Lighted Gong Buoy 10 ES	LT EXT	18744		16/20	
4401	Richardson Bay Daybeacon 8	DAYMK DMGD	18653		15/20	
4480	San Francisco Bay Anchorage 6 Lighted Mooring Buoy A	MISSING	18650		46/23	
4480.1	San Francisco Bay Anchorage 6 Lighted Mooring Buoy B	MISSING	18650		46/23	
4576	South Beach Harbor North Entrance Light 2	LT EXT	18650	SF-0047-21	11/21	
4577	South Beach Harbor North Entrance Light 1	LT EXT	18650	SF-0046-21	10/21	
4578	South Beach Harbor South Entrance Light 1	LT EXT	18650	SF-0091-20	33/20	
4827.1	San Francisco Bay Anchorage 9 Lighted Mooring Buoy A	LT EXT	18650	SF-0012-20	04/20	
4828.1	San Francisco Bay Anchorage 9 Lighted Mooring Buoy B	MISSING	18650		39/23	
5661	Southampton Shoal Outfall Lighted Buoy 1	SINKING/RAC INOP	18653	SF-0136-23	38/23	
5662	Southampton Shoal Outfall Lighted Buoy 2	LT EXT	18653	SF-0059-21	14/21	
5877.2	San Rafael Rock Quarry Mooring Buoy C	MISSING	18653		36/18	
6623	New York Slough Koch West Light	LT IMCH			39/18	
6624	New York Slough Koch East Light	LT EXT			39/18	
6645.5	Delta Diablo Outfall Lighted Buoy	LT EXT		SF-0005-22	02/22	
6677	Antioch Marina Entrance Light 1	LT IMCH	18656		18/23	

6678	Antioch Marina Entrance Light 2	LT IMCH	18656	39/23
8325	Pacific Gas and Electric Dike Light	LT EXT	HB-0009-21	20/21
8591.1	Lake Tahoe NASA-JPL Lighted Research Buoy TB2	Status Unreported		37/22

DISCREPANCIES (PRIVATE AIDS) CORRECTED

LLNR	Aid Name	Status	Chart No.	BNM Ref.	LNM St	LNM End
6363	Avon Turning Basin North Light	WATCHING PROPERLY	18658		39/23	

PLATFORM DISCREPANCIES

Name	Status	Position	BNM Ref.	LNM St	LNM End
------	--------	----------	----------	--------	---------

None

PLATFORM DISCREPANCIES CORRECTED

Name	Status	Position	BNM Ref.	LNM St	LNM End
------	--------	----------	----------	--------	---------

None

SECTION III - TEMPORARY CHANGES and TEMPORARY CHANGES CORRECTED

This section contains temporary changes and corrections to Aids to Navigation for this edition. When charted aids are temporarily relocated for dredging, testing, evaluation, or marking an obstruction, a temporary correction shall be listed in Section IV giving the new position.

TEMPORARY CHANGES

LLNR	Aid Name	Status	Chart No.	BNM Ref.	LNM St	LNM End
------	----------	--------	-----------	----------	--------	---------

None

TEMPORARY CHANGES CORRECTED

LLNR	Aid Name	Status	Chart No.	BNM Ref.	LNM St	LNM End
------	----------	--------	-----------	----------	--------	---------

None

PLATFORM TEMPORARY CHANGES

Name	Status	Position	BNM Ref.	LNM St	LNM End
------	--------	----------	----------	--------	---------

None

PLATFORM TEMPORARY CHANGES CORRECTED

Name	Status	Position	BNM Ref.	LNM St	LNM End
------	--------	----------	----------	--------	---------

None

SECTION IV - CHART CORRECTIONS

This section contains corrections to federally and privately maintained Aids to Navigation, as well as NOS corrections.

This section contains corrective actions affecting chart(s). Corrections appear numerically by chart number, and pertain to that chart only. It is up to the mariner to decide which chart(s) are to be corrected. The following example explains individual elements of a typical chart correction.

Chart Number	Chart Edition	Edition Date	Last Local Notice to Mariners	Horizontal Datum Reference	Source of Correction	Current Local Notice to Mariners
12327	91st Ed.	19-APR-97	Last LNM: 26/97	NAD 83		27/97
Chart Title: NY-NJ-NEW YORK HARBOR - RARITAN RIVER						
Main Panel 2245 NEW YORK HARBOR						
(Temp)	ADD	NATIONAL DOCK CHANNEL BUOY 3			CGD01	074-02-48.001W
Corrective Action	Green can	Object of Corrective Action			Position	

(Temp) indicates that the chart correction action is temporary in nature. Courses and bearings are given in degrees clockwise from 000 true. Bearings of light sectors are toward the light from seaward. The nominal range of lights is expressed in nautical miles (NM) unless otherwise noted.

18746 **40th Ed.** **01-JAN-17** **Last LNM: 10/21** **NAD 83** **01/24**

Chart Title: **San Pedro Channel; Dana Point Harbor**

Main Panel **1897 SAN PEDRO CHANNEL. Page/Side: A**

LAST EDITION No new editions of chart 18746 will be published. It will be canceled on 05-Jun-24. Comparable or larger scale Electronic Navigational Chart (ENC) coverage is available. See "Cancellation of NOAA Paper and Raster Nautical Charts" in Section I of this LNM for details. A list of all canceled NOAA charts is at <https://www.charts.noaa.gov/MCD/Dole.shtml>. NOS --

18765 **17th Ed.** **01-NOV-10** **Last LNM: 10/20** **NAD 83** **01/24**

Chart Title: **Approaches to San Diego Bay; Mission Bay**

Main Panel **1917 APPROACHES TO SAN DIEGO BAY. Page/Side: N/A**

LAST EDITION No new editions of chart 18765 will be published. It will be canceled on 05-Jun-24. Comparable or larger scale Electronic Navigational Chart (ENC) coverage is available. See "Cancellation of NOAA Paper and Raster Nautical Charts" in Section I of this LNM for details. A list of all canceled NOAA charts is at <https://www.charts.noaa.gov/MCD/Dole.shtml>. NOS --

18774 **12th Ed.** **01-JUL-11** **Last LNM: 10/21** **NAD 83** **01/24**

Chart Title: **Gulf of Santa Catalina; Delmar Boat Basin-Camp Pendleton**

Main Panel **1922 GULF OF SANTA CATALINA. Page/Side: N/A**

LAST EDITION No new editions of chart 18774 will be published. It will be canceled on 05-Jun-24. Comparable or larger scale Electronic Navigational Chart (ENC) coverage is available. See "Cancellation of NOAA Paper and Raster Nautical Charts" in Section I of this LNM for details. A list of all canceled NOAA charts is at <https://www.charts.noaa.gov/MCD/Dole.shtml>. NOS --

SECTION V - ADVANCE NOTICES

This section contains advance notice of approved projects, changes to aids to navigation, or upcoming temporary changes such as dredging, etc. Mariners are advised to use caution while transiting these areas.

SUMMARY OF ADVANCED APPROVED PROJECTS

<u>Approved Project(s)</u>	<u>Project Date</u>	<u>Ref. LNM</u>
None		

Advance Notice(s)

CALIFORNIA-SAN FRANCISCO TO SAN DIEGO-REMOVAL OF RACONS ON AIDS TO NAVIGATION

The U.S. Coast Guard will be removing the RACONS from aids to navigation located along the California Coast due to the consistent failure of the signals and that they are no longer considered necessary for safe navigation of the waterways. While there is no specific timeline for the removal of this equipment, it will be coordinated with servicing and discrepancy responses. The removal of the RACONS will be announced by Broadcast Notice to Mariners and published in the Local Notice to Mariners as Chart and Light List corrections. These aids to navigation are:

Harding Rock Lighted Buoy HR (LLNR 4330): 37-50-17.661N 122-26-45.579W

Los Angeles Approach Channel Lighted Whistle Buoy 3 (LLNR 3107): 33-41-16.012N 118-14-24.050W

Long Beach Channel Approach Lighted Whistle Buoy LB (LLNR 3010): 33-41-24.013N 118-11-01.050W

Mariners are requested to respond in writing to the Coast Guard District office with any comments on this change at D11-SMB-D11-LNM@uscg.mil.

Any discrepancy for these or other Aids to Navigation should continue to be reported to the closest US Coast Guard Sector.

Charts: 18007 18010 18022 18640 18649 18650 18680 18746 18749 18765 18772 LNM: 33/23

NORTHERN CALIFORNIA-SAN FRANCISCO-MILE ROCKS LIGHT

The U.S. Coast Guard will be permanently reducing Mile Rocks Light (LLNR 365) nominal range to 8 NM. The aid is in position 37-47-34.171N, 122-30-37.405W. Please direct questions, comments, or concerns no later than 31 January, 2024 to LTJG Samantha Hu at 206-827-3518 or Samantha.G.Koval@uscg.mil.

Charts: 18007 18010 18020 18022 18640 18649 18680

LNM: 49/23

SOUTHERN CALIFORNIA-LOS ANGELES-BUOY DISESTABLISHMENT

The U.S. Coast Guard is permanently disestablishing the Los Angeles East Basin Channel Buoy 4. The aid is in the approximate position: 33-46-21N, 118-14-55W. For more details or comments, contact no later than 3 January, 2024 to LTJG Samantha Hu at 206-827-3518 or Samantha.G.Koval@uscg.mil.

LNM: 45/23

SOUTHERN CALIFORNIA-SAN MATEO-SAN MATEO LIGHT DISESTABLISHMENT

The U.S. Coast Guard will be permanently disestablishing the San Mateo Point Light LLNR 80. The aid is in position: 33-23-18.241N, 117-35-44.642W. Direct any questions, comments, or feedback no later than 3 January, 2024 to LTJG Samantha Hu at (206) 827-3518 or Samantha.G.Koval@uscg.mil.

Charts: 18020 18022 18740 18744

LNM: 45/23

SECTION VI - PROPOSED CHANGES

Periodically, the Coast Guard evaluates its system of aids to navigation to determine whether the conditions for which the aids to navigation were established have changed. When changes occur, the feasibility of improving, relocating, replacing, or discontinuing aids are considered. This section contains notice(s) of non-approved, proposed projects open for comment. SPECIAL NOTE: Mariners are requested to respond in writing to the District office unless otherwise noted (see banner page for address).

PROPOSED WATERWAY PROJECTS OPEN FOR PUBLIC COMMENT

Proposed Project(s)

Closing

Docket No.

Ref. LNM

None

Proposed Change Notice(s)

CALIFORNIA-REPLACING SAFE WATER BUOYS WITH V-AIS- PROPOSED CHANGE

The U.S. Coast Guard is proposing to remove the following Safe Water Buoys and replace them with Virtual AIS (V-AIS) Aid to Navigation:

LLNR 360 - San Francisco Approach Lighted Whistle Buoy SF

LLNR 455 - Noyo Approach Lighted Whistle Buoy NA

LLNR 2435 - Newport Harbor Entrance Lighted Bell Buoy NWP

LLNR 3010 - Long Beach Channel Approach Lighted Whistle Buoy LB

LLNR 3840 - Morro Bay Approach Lighted Whistle Buoy MB

LLNR 490 - Humboldt Bay Entrance Lighted Whistle Buoy HB

LLNR 10 - San Diego Bay Approach Lighted Whistle Buoy SD

Direct any questions, comments, or feedback no later than January 24, 2024 to LTJG Samantha Hu at 206-827-3518 or Samantha.G.Koval@uscg.mil.

Charts: 18600 18620 18640 18680 18700 18720 18740

LNM: 48/23

NORTHERN CALIFORNIA-HUMBOLDT-SOUND SIGNAL DEVICE CHANGE

The U.S. Coast Guard is proposing to permanently discontinue the sound signal on the following Aids to Navigation:

Crescent City Harbor Lighted Whistle Buoy 2 (LLNR 545)

Crescent City Harbor Lighted Whistle Buoy 4 (LLNR 8365)

Humboldt Bay Lighted Bell Buoy 2 (LLNR 8135)

Turtle Rocks Bell Buoy 44 (LLNR 535)

Please direct questions, comments, or concerns no later than 31 January, 2024 to LTJG Samantha Hu at 510-437-2983 or Samantha.G.Koval@uscg.mil.

Charts: 18600 18620

LNM: 49/23

NORTHERN CALIFORNIA-SAN FRANCISCO-SOUND SIGNAL DEVICE CHANGE

The U.S. Coast Guard is proposing to permanently discontinue the sound signal on the following Aids to Navigation:

Alameda Naval Air Station Channel Entrance Lighted Bell Buoy 1 (LLNR 4745)

Alcatraz Lighted Bell Buoy AZ (LLNR 4310)

Pillar Point Harbor Entrance Lighted Bell Buoy 3 (LLNR 4140)

San Francisco Main Ship Channel Lighted Bell Buoy 7 (LLNR 4190)

Pillar Point Harbor Entrance Lighted Gong Buoy 1 (LLNR 4130)

Please direct questions, comments, or concerns no later than 31 January, 2024 to LTJG Samantha Hu at 510-437-2983 or Samantha.G.Koval@uscg.mil.

Charts: 18640 18680

LNM: 49/23

SOUTHERN CALIFORNIA-LOS ANGELES TO MORRO BAY-SOUND SIGNAL DEVICE CHANGE

The U.S. Coast Guard is proposing to permanently discontinue the sound signal on the following Aids to Navigation:

Ventura Marina Entrance Lighted Whistle Buoy 2V (LLNR 3675)

Mouse Rock Bell Buoy 3MR (LLNR 3955)

Please direct questions, comments, or concerns no later than 31 January, 2024 to LTJG Samantha Hu at 510-437-2983 or Samantha.G.Koval@uscg.mil.

Charts: 18700 18720 18740

LNM: 49/23

SECTION VII - GENERAL

This section contains information of general concern to the Mariners. Mariners are advised to use caution while transiting these areas.

ANNOUNCEMENT – U.S. Coast Pilot® 7 and U.S. Coast Pilot® -NEW EDITIONS-Spring 2023

PUBLICATION–National Oceanic Atmospheric Administration (NOAA) – U.S. Coast Pilot 7, Pacific Coast:

California, 55th Edition, 2023, has been issued and is ready for free download and weekly updates at

www.nauticalcharts.noaa.gov/publications/coast-pilot/index.html.

Only Print-on-Demand (POD) bound copies are available for purchase; visit nauticalcharts.noaa.gov/publications/print-agents.html#coast-pilot.

The 2023 Edition cancels the preceding 2022 Edition, and incorporates all previous corrections.

LNM: 22/23

ARIZONA/NEVADA-COLORADO RIVER-BRIDGE

NEW LAUGHLIN-BULLHEAD CITY BRIDGE- The new bridge, in approximate position 35-03-17N 114-36-45W, completely spans the waterway. Work continues Monday through Friday, 0630 to 1430. The center span of the bridge provides 30 ft of vertical clearance at ordinary high water and is lighted on the upstream and downstream sides with green center channel lights. The access pads on the Arizona and Nevada side have been removed. A temporary platform in the center span of the bridge reduces vertical clearance by 3'. For on-site conditions contact 702-455-6030 or 702-817-7088, or 702-286-0137. For further information contact the Coast Guard Bridge Office at 510- 437-3515.

LNM: 49/23

NORTHERN CALIFORNIA-ALCATRAZ ISLAND-MARINE CONSTRUCTION

Manson Construction Co. will be conducting marine construction to the wharf at Alcatraz Island at 37-49-36N 122-25-15W. Construction will begin on 23 January, 2023 and be completed on 04 October, 2025. During construction DB HAGAR will be utilizing divers during low tide. Tug WESTAR will be assisting DB HAGAR and monitoring VHF-FM Chan. 13 and 16. Mariners are requested to transit the area with caution. For more details or comments contact Matt Lehmann at 510-529-1583.

Chart 18653

LNM: 50/22

NORTHERN CALIFORNIA-CARQUINEZ STRAIT-BRIDGE

BENICIA-MARTINEZ (UP) RAIL BRIDGE-The westside north pier red fender light is extinguished. Estimated time of repair is unknown. For further information contact the Coast Guard Bridge Office by telephone at 510-437-3514 or by email at D11-SG-M-DPW-Bridges@uscg.mil.

Chart 18656

LNM: 47/23

NORTHERN CALIFORNIA-CHINA BASIN-BRIDGE

3RD STREET BRIDGE-The City of San Francisco is requesting to secure the drawspan of the bridge in the closed-to-navigation position from 8:00am to 3:15pm and from 4:30pm to 9:00pm on 13 January, 2024 for an event at Oracle Park. Comments concerning this proposed temporary schedule change will be received by the Coast Guard via email at D11-SG-M-DPW-Bridges@uscg.mil or telephone at 571-607-2207 through 2:00pm on 9 January, 2024.

Chart 18649

LNM: 01/24

NORTHERN CALIFORNIA-DELTA & RIVERS-AMERICAN RIVER-BRIDGE

CAPITAL CITY HWY (Route 51) BRIDGE-Caltrans is conducting rehabilitation of the bridge until 27 June, 2025. Work will be conducted during daylight hours, 7am to 5:30pm, Monday through Friday, and will include the use of barges, work boats, tugboats, turbidity curtains, and access piers. (See [AmRiv_SiltCurtain_BargeLocation.pdf](#) in the enclosure section.). During the workday, barges can be moved for the safety of navigation with one hour notice to the contractor via VHF-FM CH 16 or by cell at 916-532-8208. Mariners should contact the contractor before transiting the bridge to determine location of turbidity curtains. Barges will be unmanned and moored at their work locations overnight. Each corner of each barge will be lighted at night with steady burning red lights. At least 25 feet of horizontal clearance for navigation will be available at all times. Mariners are requested to transit the area with caution. For further information, contact the Coast Guard Bridge Office at 510-437-3461.

Chart 18662

LNM: 23/22

NORTHERN CALIFORNIA-DELTA & RIVERS-MIDDLE RIVER-BRIDGE

CA ROUTE 4-The downriver northeast dolphin has been partially removed, exposing the center steel pile of the dolphin. There is no protection around the steel pile. A red light is mounted atop the steel pile. Mariners are urged to transit the area with caution. For further information contact the Coast Guard Bridge Office at 510-437-3516.

Chart 18661

LNM: 44/23

NORTHERN CALIFORNIA-DELTA & RIVERS-NAPA RIVER-BRIDGE

HIGHWAY 37 BRIDGE-Repairs to the damaged east and west side fenders will take place Monday through Friday, during daylight hours, 01 Nov, 2023 through 01 May, 2024. The 188' X 60' crane barge "MORTY" or "KELSO" will be on-site along with the tug "PHYLLIS T" or "BECKY T" and will be moored, with anchors and spuds, in the channel span at various times, upstream and downstream of the bridge, temporarily reducing horizontal clearance of the bridge. During the workday, the barge can be moved for navigational safety if at least a two-hour notice is given to the tug via VHF-FM Channel 13, 14, or 16 or via cell phone at 415-686-9397. After normal working hours, the tug and barge will be moored off-site and the channel span of the bridge will be clear. After hours mariners can call 415-300-5336 or 415-686-3938 to report any discrepancies at the work site. For further information mariners can contact the Coast Guard Bridge Office at 510-437-3461.

Chart 18654

LNM: 42/23

NORTHERN CALIFORNIA-DELTA & RIVERS-OLD RIVER-BRIDGE

CA ROUTE 4 BRIDGE- Critical bridge rehabilitation is taking place 7:00am to 3:30pm Monday through Friday. Due to continued supply chain issues, Caltrans is anticipating a 30 April, 2024 time frame for project completion. The swing span WILL NOT open for the passage of vessels. In the closed position, the bridge provides 12' vertical clearance above mean high water. Vessels able to transit the bridge while closed can continue to do so at any time. For conditions at the work site, mariners can contact the contractor at 209-513-7309 or 415-375-5549; or Caltrans at 209-470-8835 or 209-465-0935. For further information, contact the Coast Guard Bridge Office at 510-437-3461.

Chart 18661

LNM: 41/23

NORTHERN CALIFORNIA-DELTA & RIVERS-PETALUMA RIVER-BRIDGE

BLACK POINT RAILROAD BRIDGE- The upstream northeast side fenders are damaged and may not offer adequate protection for the bridge or vessels. Mariners are urged to exercise caution when transiting through the bridge. Estimated time of repairs is unknown. For comments, contact the Coast Guard Bridge Office at (510) 437-3461.

Chart 18654

LNM: 28/23

NORTHERN CALIFORNIA-DELTA & RIVERS-PETALUMA RIVER-BRIDGE

HIGHWAY 37 BRIDGE- Caltrans will be conducting bridge fender repairs, utilizing an 90'x80' spudded barge moored outside the navigational channel on the east side, Monday-Friday, 6am-5pm, from 15 Dec, 2023 to 31 May, 2024. Mariners are urged to use caution when transiting the bridge. For a depiction of the damage and exact location, see HWY37FenderDamage.pdf in the enclosure section of this notice. For further information contact the Coast Guard Bridge Office at 510-437-3461.

Chart 18654

LNM: 50/23

NORTHERN CALIFORNIA-DELTA & RIVERS-SACRAMENTO RIVER-BRIDGE

REPLACEMENT BUTTE CITY BRIDGE- Replacement bridge construction continues Monday through Friday during daylight hours until 25 Sep, 2026. A temporary trestle, along with falsework, has been installed at the bridge site. A temporary navigation span during construction will be just west of the existing bridge's pivot pier, 435 feet west of new bridge abutment, and is lighting at night with a green center channel light on the upriver and downriver portion of the trestle. Red lights will mark low steel of the remaining spans of the trestle. A buoy line will be installed, pending Coast Guard approval, to guide vessels through the bridge construction area (see ButteConstructionLighting-BuoyLine.pdf enclosure at the end of this notice). The temporary navigation span will provide at least 32 feet of horizontal clearance and 14 feet of vertical clearance from ordinary high water to low steel of the temporary trestle. For on-scene conditions contact Golden State Bridge, Inc, at 415-720-6577 or 925-260-0403 or Caltrans at 530-941-8272 or 530-682-3931. For further information contact the Coast Guard Bridge Office at 510-437-3461.

LNM: 46/23

NORTHERN CALIFORNIA-DELTA & RIVERS-SACRAMENTO RIVER-BRIDGE

RIO VISTA BRIDGE-The upriver and downriver green center channel lights on the lift span are not operational. The center span channel lights show red in all positions, even when the span is in the fully open-to-navigation position. The bridgetender will be able to inform any vessel requesting an opening when the lift span is fully open. Estimated time of repair is unknown. For further information contact the Coast Guard Bridge Office at 510-437-3516.

Chart 18661

LNM: 49/22

NORTHERN CALIFORNIA-DELTA & RIVERS-SACRAMENTO RIVER-BRIDGE

RIO VISTA BRIDGE-The primary bridge controls have been replaced, tested and will be online beginning 3 pm on 26 Jan, 2024. At that time, the bridge will resume its normal operating schedule. The back up drive needs to be recalibrated, so starting at 7 am on 29 Jan, 2024 through 7 pm on 04 Mar, 2024, the drawspan of the bridge shall open on signal if at least 4-hours notice is given to the bridge tender at 707-374-2134. In addition, wire rope replacement will be starting at 7 pm on 04 Mar, 2024. Therefore, starting at 7 pm on 04 Mar, 2024 the drawspan of the bridge will operate as follows; Monday through Saturday, 7 pm to 7 am the following day, the bridge will be secured in the closed-to-navigation position for wire rope replacement and at all other times, the bridge will open on signal if at least 4-hours notice is given to the bridge tender at 707-374-2134. It is anticipated wire rope replacement will take at least 40 nights to complete, it may take longer, dependent on weather. To comment on the proposed upcoming changes in the operating schedule for the bridge email D11-SG-M-DPW-Bridges@uscg.mil or call 571-607-2207. For further information contact the Coast Guard Bridge Office at 510-437-3516.

Chart 18661

LNM: 01/24

NORTHERN CALIFORNIA-DELTA & RIVERS-SAN JOAQUIN RIVER-BRIDGE

CROWS LANDING ROAD BRIDGE- Replacement of the bridge is ongoing. Work is being conducted Monday through Friday 6am to 4pm until 30 June, 2024. A temporary bridge, with a removable span, is installed to facilitate construction. With the span removed, the temporary bridge will provide, at a minimum, 15ft of horizontal clearance. Temporary falsework has also been installed. The temporary falsework's navigation span will provide 16ft of vertical clearance at Ordinary High Water when the temporary bridge's removable span is removed. Upriver and downriver red channel margin lights and green center channel lights will mark the temporary navigation span at night. To view the temporary navigation span and lighting, see the TemporaryBridge_FalseworkLighting.pdf enclosure at the end of this notice. Mariners are requested to use extreme caution when transiting the work site. For conditions at the project site, mariners can contact the contractor at 916-869-8210. For further information contact the Coast Guard Bridge Office at 510-437-3461.

LNM: 46/23

NORTHERN CALIFORNIA-DELTA & RIVERS-THREE MILE SLOUGH-BRIDGE

THREE MILE SLOUGH BRIDGE- The lift span of the bridge will be secured in the closed-to-navigation position from 02 Jan, 2024 through 30 Jun,

NORTHERN CALIFORNIA-DELTA & RIVERS-THREE MILE SLOUGH-BRIDGE

2024, to conduct major mechanical and electrical rehabilitation. During the work, the lift span will not be able to open for the passage of vessels. In the closed position the bridge provides 12 feet of vertical clearance at mean high water. Vessels able to pass through the bridge while closed can continue to do so at any time. For further information contact the Coast Guard Bridge Office at 571-607-5820.

Chart 18661

LNM: 50/23

NORTHERN CALIFORNIA-DELTA & RIVERS-TURNER CUT-BRIDGE

ZUCKERMAN BROTHERS BRIDGE-The retractable span of the bridge is secured in the closed-to-navigation position due to mechanical and electrical issues. When closed the bridge provides 16 feet of vertical clearance at mean high water. Vessels able to transit the bridge while closed can continue to do so at any time. Estimated time of repair, unknown. For further information contact the Coast Guard Bridge Office at 510-467-3516.

Chart 18661

LNM: 25/23

NORTHERN CALIFORNIA-FORT BRAGG-BUOY DEPLOYMENT

Oneka Technologies will deploy two wave monitoring research buoys on 07 October, 2023 near Fort Bragg, CA with the characteristics of FI Y 2.5s at 39-26-38.26N 123-49-27.48W and 39-26-36.71N 123-49-23.20W. RV SCULLY will be deploying the buoys and will be monitoring VHF-FM Chan. 16. The buoys will be deployed until 10 July, 2025. Mariners are requested to transit the area with caution. For more details or comments contact Jeff Williams at 707-974-0917.

Chart 18620

LNM: 40/23

NORTHERN CALIFORNIA-LITTLE CONNECTION SLOUGH-SUBMERGED VESSEL

The Coast Guard received a report of a submerged 100' towing vessel on the Little Connection Slough at 38-03-29N 121-30-02W and is in approximately 10ft of water and partially visible above the waterline. Mariners are requested to transit the area with caution. For more details or comments contact USCG Sector San Francisco Waterways at 415-399-7443 or SFWaterways@uscg.mil

Chart 18661

LNM: 37/23

NORTHERN CALIFORNIA-MONTEREY BAY-BUOY DEPLOYMENT

Kinnetic Environmental has deployed two research buoys in Monterey Bay in support of Central Coast Long-Term Environmental Assessment Network (CCLEAN) program, in position:

36-53-29N 121-55-30W

36-42-40N 121-54-40W

Both buoys are 4 foot tall white cans with 2 orange retroreflective bands and an orange diamond marked "Warning" with the phone number 831-457-3950. Both buoys are lit at night with a yellow flashing light flashing once every 4 seconds. Due to the scientific equipment attached mariners are advised to stay clear. For further comments or details contact Greg Cotton at 831-239-6192.

Chart 18685

LNM: 43/23

NORTHERN CALIFORNIA-MONTEREY BAY-BUOY DEPLOYMENT

University of California Santa Barbara has deployed research Wave Buoy Station CDIP 266 in position 36-50-41N 121-49-28W with characteristics of a flashing yellow light every 5 seconds. Mariners are requested to transit the area with caution. For more details or comments contact University of California Santa Barbara at 858-534-3032 or admin@cdip.ucsb.edu.

Chart 18685

LNM: 17/23

NORTHERN CALIFORNIA-OAKLAND INNER HARBOR-BRIDGE

FRUITVALE AVE RAIL BRIDGE-The lift span of the rail bridge is kept in the partially opened position providing 80 feet of vertical clearance at mean high water. The lift span has been repaired and can be raised to its fully upon position upon request from the Fruitvale Highway bridge operator. When the lift span of the railroad bridge is in the partially open position and the bascule span of the adjacent highway bridge is in the closed position, the lift span will show two red 180-degree center span lights on the upstream and downstream lower edge of the span. When the bascule span of the highway bridge is in the fully opened position, the lift span of the railroad bridge will show two 360-degree green lights, providing a range for the centerline of the channel between both highway and railroad bridges. For further information contact the Coast Guard Bridge Office at 510-437-3516.

Chart 18649

LNM: 25/23

NORTHERN CALIFORNIA-OAKLAND-DREDGING OPERATIONS

Manson Construction Co. will be conducting dredge operations in the Oakland Inner and Outer Harbor at 37-48-15N 122-20-43W on 7 August, 2023 until 1 January, 2024. Operations will be conducted 24 hours a day, 7 days a week. Dredge DB NJORD, Tugboat PETER M, Tugboat JEFFERY M, Survey Boat WAHOO will be conducting operations and monitoring VHF-FM Chan. 13 & 16. Dredged materials will be disposed of at Montezuma upland disposal site. Mariners are requested to transit the area with caution. For more details or comments contact Alex Koleassar at 510-437-5836.

Chart 18649

LNM: 29/23

NORTHERN CALIFORNIA-OFFSHORE MONTEREY BAY-UNDERWATER OPERATIONS

Reef Check Foundation have deployed underwater equipment offshore Monterey Bay, CA within the following coordinates:

36-36-17N 121-52-46W

36-36-18N 121-52-49W

36-36-15N 121-52-50W

36-36-14N 121-52-46W

All equipment will be established until 24 Mar 24. Mariners are requested to transit the area with caution and avoid anchoring within the coordinates listed above. For more details or comments contact Dan Abbot at 510-684-7835.

Chart 18685

LNM: 12/21

NORTHERN CALIFORNIA-OFFSHORE MOSS LANDING-SCIENTIFIC OPERATIONS

The Monterey Bay Aquarium Research Institute (MBARI) will be conducting 24hrs a day autonomous, unmanned maritime vehicle operations of two Liquid Robotics, Inc. Wavegliders (www.liquidr.com), from 09 January, 2023 until 31 December, 2023. (MBARI) will deploy the vehicles in the vicinity of Moss Landing. Operations will be between 36-18-00N 122-58-59W and 37-12-00N 122-58-59W. Wave Glider carries no fuel, lubricants, or hydrocarbons, is wave powered, remotely attended from MBARI moving at speeds of 1kt, and designed to give way or part if encountered by a

NORTHERN CALIFORNIA-OFFSHORE MOSS LANDING-SCIENTIFIC OPERATIONS

vessel. It is approximately 8ft by 2ft (surfboard size), yellow/copper in color, with a contact plaque and mast extending 3ft above the water surface waving a flag. Mariners are requested to transit the area with caution. For more details or comments contact MBARI at 831-775-1700, waveglider@listserver.mbari.org, or Liquid Robotics 24/7 WGOE Operations at 888-574-4574, 1-408-636-4205.

Charts: 18680 18685

LNM: 02/23

NORTHERN CALIFORNIA-OFFSHORE PT MONTARA-SUVERY OPERATIONS

SAILDRONE, INC. in collaboration with NOAA's National Data Buoy Center (NDBC), is conducting surveys at 37-21-21N 122-52-51W with an Uncrewed Surface Vehicle (USV), called a "SAILDRONE EXPLORER". This vehicle will remain on station from 31 August, 2023 until 31 August, 2024. Sairdrones vehicles are 23 feet in length, orange in color, have a white all around light on top of the wing and are marked "SAILDRONE". The vehicle will have limited maneuverability during survey operations. Mariners are requested to remain greater than 500 meters away from the research equipment and to transit the area with caution. For more details or comments contact Sairdrones at 510-722-6070 or missioncontrol@sairdrones.com.

Charts: 18680 18700

LNM: 36/23

NORTHERN CALIFORNIA-OFFSHORE SAN FRANCISCO-SURVEY OPERATIONS

SAILDRONE, INC. is conducting oceanographic survey operations and will operate an Unmanned Surface Vehicles called Sairdrones Explorer and Sairdrones Voyager until 31 Mar. 2024. The operations will be conducted 0.8 nm South of General Anchorage 9 in San Francisco Bay and bounded by the following coordinates.

Area 1:

37-44-30N 122-18-46W

37-43-47N 122-17-53W

37-43-16N 122-18-26W

37-44-01N 122-19-22W

Area 2:

37-42-13N 122-18-26W

37-42-41N 122-17-19W

37-41-45N 122-16-34W

37-41-11N 122-17-45W

The Sairdrones Explorer is 23 feet long, 16 feet tall, painted orange with a white all-around light on top and marked SAILDRONE. The Sairdrones Voyager is 33 feet long, 21 feet tall and painted orange or gray with a tri-color light on top. Sairdrones will broadcast AIS and travel at a speed up to 5 knots. Mariners are requested to transit the area with caution. For more details or comments contact Sairdrones Mission Control at 510-722-6070 or missioncontrol@sairdrones.com.

Chart 18007

LNM: 51/23

NORTHERN CALIFORNIA-OFFSHORE SAN FRANCISCO-SURVEY OPERATIONS

SAILDRONE, INC. is conducting offshore oceanographic research and survey testing and will operate Unmanned Surface Vehicles (USV's) called SAILDRONE EXPLORER and SAILDRONE VOYAGER until 31 March, 2024 in the area between the eastbound traffic lane and southbound traffic lane extending out to the Pioneer Canyon Area. The operations will be conducted within the following coordinates.

37-40-09N 122-46-01W

37-39-34N 122-44-19W

37-13-12N 122-44-17W

37-25-36N 123-13-15W

The Sairdrones Explorer is 23 feet long, 16 feet tall, painted orange with a white all-around light on top and marked SAILDRONE. The Sairdrones Voyager is 33 feet long, 21 feet tall and painted orange or gray with a tri-color light on top. Sairdrones will broadcast AIS and travel at a speed up to 5 knots. Mariners are requested to transit the area with caution. For more details or comments contact Sairdrones Mission Control at 510-722-6060 or missioncontrol@sairdrones.com.

Chart 18007

LNM: 51/23

NORTHERN CALIFORNIA-OLD RIVER-HAZARD TO NAVIGATION

The Coast Guard has received a report of downed powerlines in Old River from Mandeville Island to Webb Tract. The downed powerlines have been cut by PG&E and remain laying on the bottom of Old River. Mariners are recommended to avoid anchoring in the area and transit the area with caution. For details or comments contact Coast Guard Sector San Francisco Waterways at 510-612-9729.

Chart 18661

LNM: 01/23

NORTHERN CALIFORNIA-OYSTER COVE MARINA-BUOY DEPLOYMENT

Kilroy Realty has deployed two buoys at the entrance to Oyster Cove Marina at

37-40-03.09N 122-23-13.04W

37-40-03.05N 122-23-12.61W

Both buoys are white 36" cylinders with orange retroreflective bands and an orange diamond marked "Danger Barrier Marina Closed". Both buoys are lit at night with a yellow flashing light flashing once every 4 seconds, Fl Y4s. Between the break wall and the pier there is a white line with small floats connected to both buoys. Mariners are advised to use caution in the area to avoid entanglement. For comments or details, contact Travis Lund at 510-419-2392.

Chart 18650

LNM: 48/23

NORTHERN CALIFORNIA-PACIFICA-BUOY DEPLOYMENT

Environmental Science Associates has deployed a private aid approximately 0.85 miles offshore of the Pacifica Municipal Pier at 37-37-5N 122-30-37W for the collection of wave and water level information from 7 September, 2023 to 8 August, 2024. A 23' North River dory boat will be monitoring VHF-FM Chan. 16. For more information or comments contact, Damien Kunz at 805-252-9895.

Chart 18680

LNM: 37/23

NORTHERN CALIFORNIA-SACRAMENTO RIVER-MARINE CONSTRUCTION

River Forum will be conducting construction of two fish restoration projects from 16 October, 2023 until 29 February, 2024 at the Shea Island Side

NORTHERN CALIFORNIA-SACRAMENTO RIVER-MARINE CONSTRUCTION

Channel Project and the Kapusta Island Side Channel Project. Heavy equipment will be used and navigating across the river between mile 287-290. Mariners are requested to transit the area with caution. For more details or comments, contact Aurelia Gonzalez at 951-296-7121.

Chart 18662

LNM: 41/23

NORTHERN CALIFORNIA-SACRAMENTO RIVER-REDUCED VERTICAL CLEARANCE

Overhead power cables upstream of Sacramento River at 38-03-54N 121-47-09W have a reported reduced vertical clearance to 119.5'.

LNM: 22/16

NORTHERN CALIFORNIA-SAN FRANCISCO BAY-BRIDGE

SAN MATEO-HAYWARD BRIDGE-Work continues on the causeway portion of the bridge, east of pier 38, 0700 to 1530, Monday through Friday, until 30 April, 2024. Various size barges will be used during the project, the largest being a 100' X 20' flexifloat barge. During the work day, barges will either be spudded down or tied to the bridge piers, no anchors or anchor line will be utilized. After regular working hours the unmanned barge will be left on-site. For the safety of navigation, the barges can be moved with one-hour advance notice. For conditions at the bridge mariners can contact Golden State Bridge, Inc., on VHF-FM Marine Radio Channels 13, 14, and 16 or by cell phone at 707-246-0725, 925-260-2104, or 925-382-7288. For more details or comments contact the Coast Guard Bridge Office at 510-437-3515.

LNM: 46/23

NORTHERN CALIFORNIA-SAN FRANCISCO BAY-BRIDGE

WEST SPAN SAN FRANCISCO/OAKLAND BAY BRIDGE-During periods of rain, the operation of the navigation lights and fog signals on the bridge are unreliable and may be extinguished. Investigations to determine the cause of the unreliability of the lights and signals, and plans to repair, are in the works. Mariners should exercise caution when transiting the bridge until the navigation lights and fog signals are once again reliable. Report outages of the navigation lights and the fog signals to the U.S. Coast Guard at 510-219-4366.

Chart 18650

LNM: 52/23

NORTHERN CALIFORNIA-SAN FRANCISCO BAY-BRIDGE

GOLDEN GATE BRIDGE-Four 54' temporary under deck platforms; two, 125' and 425' north of the south tower, and two, 1,475' and 2,100' south of the north tower have been installed at the bridge. The platform at 1,475' south of the north tower will be moved on 29 Nov, 2023 to 1,525' south of the north tower. Temporary platforms reduce vertical clearance at the bridge by no more than 14'. The bridge's maintenance travelers are in use during the project and will remain outboard of the furthest north and furthest south temporary platforms. The temporary platforms and maintenance travelers are lighted at night with all-round red lights (see PlatformLighting_GG_Bridge_14-Nov-23.pdf at the end of this notice). For navigational safety the maintenance travelers can be moved by contacting the Golden Gate Bridge at 415-923-2220. Work is being conducted Monday through Saturday, 0700-1700 and 2100-0500. For conditions at the bridge, mariners can contact the contractor at 415-716-0384. For more details or comments contact the Coast Guard Bridge Office at 510-437-3516.

Chart 18649

LNM: 46/23

NORTHERN CALIFORNIA-SAN FRANCISCO BAY-BRIDGE

WESTERN SPAN SAN FRANCISCO-OAKLAND BAY BRIDGE - Caltrans' contractor, Dutra, will continue work to stabilize pier protection at piers B, C, D, and E on the western span of the San Francisco/Oakland Bay Bridge. Work will be conducted 7-days a week, 6 am to 4:30 pm, 30 October, through 31 Jan, 2024. The 188' X 60' crane barge "MORTY" will be anchored at various locations during the work and will be monitoring VHF-FM Channels 13, 14, and 16. Barges, anchors and anchor lines will not impede the D-E shipping channel during the work. The barges will remain onscene, unmanned, during non-working hours. See SFOBBTemporaryBargeLocations.pdf in the enclosure section) for typical barge locations and limits of anchor lines. During the workday, the barge can be moved for the safety of navigation with two hours advanced notice. After working hours, the barge can be moved with six hours advanced notice. For information at the work site contact 510-867-4545; 707-318-1058 or 415-680-0788. For further information, contact the Coast Guard Bridge Office at 510-437-3515.

Chart 18650

LNM: 01/24

NORTHERN CALIFORNIA-SAN FRANCISCO BAY-BRIDGE

RICHMOND-SAN RAFAEL BRIDGE-Concrete/steel repairs and cleaning of the bridge continues. Work is being conducted Monday through Friday, 0500 to 1700, until 30 April, 2024. Temporary underdeck platforms have been installed from the western shore to pier 33 and between piers 43-46 reducing vertical clearance in each span by three feet. The upstream and downstream lower edge of each temporary platform is lighted at night with steady burning red lights (see R-SR_Bridge_Temp_Platform_Lighting.pdf at the end of this notice.) Two 160' X 50' barges and one 110' X 32' barge are being used to assist in the installation of the platforms and for the blasting and painting. One barge has been secured to pier 8 and will be left on-scene, overnight, unmanned. The outboard corners of the barge at pier 8 is lighted at night with steady red lights. Barge "37" and barge "32" can be contacted on VHF-FM Ch. 16, 13 and 14. At no time will the work impede the east or west navigation spans or their auxiliary spans. For conditions at the bridge, mariners can contact the contractor at 860-904-8787 or 443-847-6286. For further information concerning this project contact the Coast Guard Bridge Office at 510-437-3515.

Chart 18653

LNM: 46/23

NORTHERN CALIFORNIA-SAN FRANCISCO BAY-BRIDGE

SAN MATEO-HAYWARD BRIDGE-The painting of the steel towers continues. Work is being conducted Monday through Friday, 7am to 12am until 31 Jan, 2024. Temporary platforms will be installed around the base of piers 2 to 11 and 28-37, reducing horizontal clearance in each of those spans by 6 feet. Temporary underdeck work platforms will be installed in spans 12-18 and 21-27, reducing the vertical clearance by three feet. Tarpaulins will be used as containment around all pier columns. An Andersen under-bridge below-deck worker access vehicle will be used during the installation of the temporary containment and temporary platforms. At no time will in-water work be conducted in the main navigation span between piers 19-20, and mariners should this span at all times during this project. For conditions at the bridge, mariners can contact the contractor at 407-489-5386, 303-579-1383, or 910-279-3365. For further information contact the Coast Guard Bridge Office at 510-437-3515.

LNM: 01/24

NORTHERN CALIFORNIA-SAN FRANCISCO BAY-DETERIORATING CONCRETE PILINGS

Deteriorating concrete pilings above and below the waterline are present in the vicinity of the the south edge of Southampton Shoal Light (LLNR 5480). Mariners are requested to transit the area with caution. For more details or comments contact LT Miranda Brumbaugh at 510-437-2978 or Miranda.E.Brumbaugh@uscg.mil.

Chart 18649

NORTHERN CALIFORNIA-SAN FRANCISCO BAY-DETERIORATING CONCRETE PILINGS

LNM: 23/15

NORTHERN CALIFORNIA-SAN FRANCISCO BAY-METORLOGICAL MONITORING PLATFORM DEPLOYMENT

U.S. Geological Survey has deployed 7 shallow water platforms south of the San Mateo Bridge in the following positions:

- 37-36-23N 122-10-51W
- 37-34-37N 122-10-18W
- 37-35-20N 122-10-50W
- 37-35-21N 122-10-50W
- 37-35-23N 122-10-27W
- 37-35-26N 122-09-39W
- 37-35-30N 122-08-59W

These stations will remain until February 2024 and have a white flashing light. Mariners are requested to transit the area with caution. For further details or comments contact Tim Elfers at 831-460-7479.

Chart 18650

LNM: 33/23

NORTHERN CALIFORNIA-SAN LEANDRO BAY-BRIDGE

BAY FARM ISLAND HIGHWAY AND PEDESTRIAN BRIDGES-The pier protection system at the bridges have deteriorated and may not offer adequate protection for the bridges as well as vessels transiting the bridge. Mariners are urged to transit both bridges with caution. The bridge owner is in the process of designing a replacement pier protection system. For more details or comments contact the Coast Guard Bridge Office at 510-437-3514.

Chart 18649

LNM: 31/22

NORTHERN CALIFORNIA-SAN LORENZO RIVER-BRIDGE

LAUREL STREET BRIDGE- Work will resume for the installation of a new water conveyance pipeline. To conduct the work, a bucket truck on the bridge deck will be utilized to suspend a mobile platform from the side of the bridge, vertical clearance will be reduced by 6-feet. Work will take place Monday through Friday, 7:00am to 4:30pm, from 01 September, 2023 through 29 February, 2024. There will be no in-water work or equipment used during this project. Mariners are urged to use caution while transiting the bridge. For further information contact the Coast Guard Bridge Office at 510-437-3515.

Chart 18685

LNM: 50/23

NORTHERN CALIFORNIA-SAN PABLO BAY-BUOY DEPLOYMENT

US Army Corp of Engineers have deployed 3 meteorological recording stations in the San Pablo Bay area in the following coordinates:

- 38-04-32N 122-20-41W
- 38-01-51N 122-18-43W
- 37-52-39N 122-20-22W

For more details or comments contact Justin Yee at 415-503-6788.

Chart 18654

LNM: 31/23

NORTHERN CALIFORNIA-STEAMBOAT SLOUGH-SUBMERGED VESSEL

The Coast Guard received a report of a submerged 16' vessel north of Steamboat Slough at 38-11-21N 121-39-60W and is not visible from the waterline. Mariners are requested to transit the area with caution. For more details or comments contact USCG Sector San Francisco Waterways at 415-399-7443 or SFWaterways@uscg.mil.

Chart 18661

LNM: 44/23

NORTHERN CALIFORNIA-STOCKTON-SHOALING

Shoaling has been reported in the Stockton Deep Water Channel in the vicinity of Stockton Channel LT 48. Due to the depth restrictions San Francisco Bar Pilots have reduced the controlling depth to 28.1'. A Virtual AIS (V-AIS) Aid to Navigation has been placed in position 37°57.1N 121°20.2W to help with safe navigation in the area. For more details or comments contact USCG Sector San Francisco Waterways at 510-612-9729 or SFWaterways@uscg.mil.

Chart 18663

LNM: 25/23

NORTHERN CALIFORNIA-PILLAR POINT-BUOY DEPLOYMENT

Sofar Ocean has deployed a research buoy approximately 1.4nm West of Pillar Point CA, in position 37-30-00.90N 122-31-57.68W. The buoy is a 15" diameter yellow sphere with a yellow light flashing every 2.5 seconds, Fl Y2.5s. For further comments or details contact Ciara Dorsay at 941-961-8543.

Chart 18680

LNM: 50/23

SOUTHERN CALIFORNIA- PORT OF LOS ANGELES-DREDGING OPERATIONS

Manson Construction Co. will be conducting dredging operations from 18 December, 2023 until 1 March, 2024 at the Port of Los Angeles between Berth 74 and Berth 75. DB VALKYRIE, MANSON 59, Flat barge 59, Flat barge 61 and Flat barge 62 will be monitoring VHF-FM Chan. 16 & 67. Mariners are requested to transit the area with caution. For more details or comments contact Bryan Haynes at 562-762-5394.

Chart 18740

LNM: 50/23

SOUTHERN CALIFORNIA-ALAMITOS BAY-ANAHEIM BAY-WATERWAYS ANALYSIS AND MANAGEMENT SYSTEM (WAMS) STUDY

The Coast Guard is conducting a Waterways Analysis and Management System (WAMS) study of the Alamos Bay and Anaheim Bay. The study focuses on the area's aids to navigation system, waterborne commerce, marine casualty information, port/harbor resources, emergency response plans, routine and emergency communication capabilities, and future development projects. Furthermore, this study seeks to obtain data on the effectiveness of the system of Aids to Navigation, as well as other waterway safety concerns. Any interested company or individual wishing to provide comments or participate in a user survey may do so via link

at: https://www.research.net/tr/v1/te/akU_2BQc2vAhAsa_2B264x1g6_2FSdSvKedPmeZkblcZEtqvUOF4fdIMGSykQzIFe45e3PwTAIJaf2O8u7WSleU9Ia32C0ePhtbWzmUJd47YZmxEzJMC9kvjeOQVZhVnpxWU7Gp6JoUE5estfT1OU8W5dPImMQFgJluzp0fSgdhkXOjBsbLExm6jRtznWImOPWPaNhCe_2B4f3IhMwDcWMXQCPffiwZxlonjAblcNNAQoZhf9NUNgIPofdNI_2FsvWteLekyqq or contact LTJG Rubymar Sebastian at

SOUTHERN CALIFORNIA-ALAMITOS BAY-ANAHEIM BAY-WATERWAYS ANALYSIS AND MANAGEMENT SYSTEM (WAMS) STUDY

Rubymar.sebastianechevarria@uscg.mil or via phone at (571)-613-2930.

Chart 18749

LNM: 50/23

SOUTHERN CALIFORNIA-CAMP PENDELTON-BUOY DEPLOYMENT

Scripps Waverider CDIP Lighted Research Buoy 264 has been deployed 1.4 NM southwest of Red Beach, Camp Pendelton CA in position 33-17-23.8N 117-30-00.5W. The buoy is operated by Scripps Institute of Oceanography and is 3-foot diameter sphere with an attached telemetry whip antenna and a nighttime yellow color warning flashing light. The light timing sequence is a series of 5 flashes at 1-second intervals with a period of 20 seconds between each series. Visual range is one kilometer. The buoy is painted yellow and marked "Wave Buoy" with the phone number 858-534-3032. For further comments or details contact James Behrens at 858-534-3032.

Chart 18774

LNM: 43/23

SOUTHERN CALIFORNIA-CHANNEL ISLANDS HARBOR-BRIDGES

CHANNEL ISLANDS BLVD EAST (MANDALAY BAY) & CHANNEL ISLANDS BLVD WEST (EDISON CANAL) BRIDGES-Rehabilitation of the bridges will take place 7 am to 3:30 pm, Monday through Friday, 15 February, 2023 through 31 January, 2024. No in-water work will be conducted at the east bridge. At the west bridge two 5' X 20' X 10' flexi-floats will be employed and will be secured with two 35' spuds. The flexi-floats will reduce horizontal clearance in the channel by no more than 10 feet. 8' X 11' cofferdams will encase the bridge columns at each bent. Only one channel of the west bridge will be impacted at any one time. The ends of the cofferdams and each corner of each flexi-floats will be lighted at night with steady burning red lights (See Channel_Islands_Bridge_Rehab.pdf at the end of this article.) For the safety of navigation, the flexi-floats can be moved with a 30-minute advance notice to the contractor. Mariners are requested to approach the west bridge with caution and avoid the span of the bridge where work is being conducted. For further information contact the Coast Guard Bridge Office at 510-437-3516.

Chart 18725

LNM: 46/23

SOUTHERN CALIFORNIA-EL SEGUNDO-BUOY REPLACEMENT

Chevron has replaced a weather buoy in position 33-54-30N 118-27-09W with a similar yellow buoy with characteristics of a flashing yellow light every 3 seconds. Mariners are requested to transit the area with caution. For more details or comments contact Chevron at 310-615-5735 or cscsmstmm@chevron.com.

Chart 18744

LNM: 17/23

SOUTHERN CALIFORNIA-EL SEGUNDO-DIVING OPERATION

Aqueos will be conducting diving/ROV operations from 23 October, 2023 until 30 April, 2024 offshore Ventura. The DB SALTA VERDE (WDF9705) 185' LOA black hull with a crawler crane on deck, will be in a 4-point moor 24-hours per day and will be monitoring VHF-FM Chan. 16. Operations conducted during daylight hours. Two temporary mooring will be set, and locations have been added to the survey plot map. The surface buoy will have a beacon light for additional visual reference. Mariners are requested to transit the area with caution. For more details or comments contact Jason Smith at 805-205-3156.

Chart 18744

LNM: 45/23

SOUTHERN CALIFORNIA-LEUCADIA STATE BEACH-BUOY DEPLOYMENT

Scripps Waverider CDIP Lighted Research Buoy 262 has been deployed 0.7 NM west of Leucadia State Beach, Encinitas CA in position 33-03-43.5N 117-18-50.7W. The buoy is operated by Scripps Institute of Oceanography and is 3-foot diameter sphere with an attached telemetry whip antenna and a nighttime yellow color warning flashing light. The light timing sequence is a series of 5 flashes at 1-second intervals with a period of 20 seconds between each series. Visual range is one kilometer. The buoy is painted yellow and marked "Wave Buoy" with the phone number 858-534-3032. For further comments or details contact James Behrens at 858-534-3032.

Chart 18774

LNM: 43/23

SOUTHERN CALIFORNIA-LONG BEACH HARBOR-DREDGING OPERATIONS

Pacific Dredge & Construction will be conducting dredging operations in the Port of Long Beach Harbor from 12 December, 2023 until 15 January, 2024 at 33-46-08N 118-13-06W with off load at 33-46-03N 118-13-47W. DB PDC 180, TB PATRIOT, Harbor Boat CADET, and Scow PDC 2001 will be monitoring VHF-FM Chan. 6 & 16. Mariners are requested to transit the area with caution. For more details or comments contact Matt MacArthur at 951-541-6941.

Chart 18022

LNM: 50/23

SOUTHERN CALIFORNIA-LONG BEACH-MARINE CONSTRUCTION

GP POLB will be conducting marine construction from 27 November, 2023 until 30 May, 2024 at 33-46-10N 118-12-45W. DB VULCAN and DB VALKYRIE will be monitoring VHF-FM Chan. 13, 16 & 66. Mariners are requested to transit the area with caution. For more details or comments contact Bryan Haynes at 562-762-5394.

Chart 18749

LNM: 47/23

SOUTHERN CALIFORNIA-LONG BEACH-MARINE CONSTRUCTION

CPS Coastal Permits, Inc. will be conducting marine construction from 8-19 January, 2023 at Long Beach at 33-45-21N 118-07-28W. A small 17 foot barge will be installing a new floating dock and gangway platform. Vessels are requested to transit the area with caution. For more detail or comments contact Max Jackson at 714-732-6127.

Chart 18746

LNM: 52/23

SOUTHERN CALIFORNIA-LOS ANGELES/LONG BEACH HARBOR-BRIDGE

LONG BEACH INTERNATIONAL GATEWAY BRIDGE- Caltrans will be deploying the bridge's maintenance travelers, 7:00am to 2:30 pm, 7 days a week, from 17 October, 2023 until 31 January, 2024 for maintenance and repairs. When in use, the traveler reduces vertical clearance of the bridge by 20 feet. For the safety of navigation, the traveler can be moved with a 2-hour advance notice by calling 951-807-8776 or 573-718-6114. The maintenance traveler will be moved out of the channel and stowed after each workday. The Caltrans supervisors can be reached at 213-220-4011 and 213-793-9099. For more information contact the Coast Guard Bridge Office at 510-437-3516.

Chart 18749

LNM: 42/23

SOUTHERN CALIFORNIA-LOS ANGELES/LONG BEACH HARBOR-BRIDGE

VINCENT THOMAS BRIDGE-A 180 ft temporary maintenance platform continues to move west from the east tower. The platform reduces vertical clearance of the bridge by 5.5 ft. It is anticipated the temporary platform will arrive at the east edge of the shipping channel in summer of 2024. The upstream and downstream corners and every 50' along the upstream and downstream side of the platform is lighted at night with steady burning red lights (see V_Thomas_Platform_Lighting1.pdf at the end of this notice). Work will take place during daylight hours, Monday through Friday. For conditions at the bridge mariners can contact 213-479-4138, 213-479-1144 or 310-261-9552. For more details or comments contact the Coast Guard Bridge Office at 510-437-3516.

Chart 18749

LNM: 30/22

SOUTHERN CALIFORNIA-MARINA DEL REY-DREDGING OPERATIONS

HME Construction, Inc. will be conducting dredging operations from 27 December, 2023 until 1 April, 2024 at 33-57-34N 118-27-37W and 33-55-56N 118-26-39W along the mouth of the bay. D/V SEA HORSE and D/V TUG DOUGLAS will be monitoring VHF-FM Chan. 13 & 16. Mariners are requested transit the area with caution. For more details or comments contact Edgar Diaz at 360-695-4553.

Chart 18744

LNM: 51/23

SOUTHERN CALIFORNIA-MISSION BAY-MARINE EVENT

The Hanohano Outrigger Canoe Club will be sponsoring the Hanohano Ocean Challenge on 27 January, 2024 from 9:00 to 1:00pm. The race will consist of approximately 300 paddle boards and canoes racing in waves on two different courses. The short course will begin in Bonita Cove, transiting through Perez Cove to South Shores, proceeding north through Fisherman's Channel, finishing back at Bonita Cove. The long course will begin offshore north of Mission Beach Jetty, proceeding to Crystal Pier, and finishing in Bonita Cove. Mariners are requested to transit the area with caution. For more details or comments, contact Dan Van Dyck at 760-525-9109.

Chart 18765

LNM: 45/23

SOUTHERN CALIFORNIA-MORRO BAY-WIND ENERGY PROJECT

Equinor Wind US LLC, leaseholder for the Bureau of Ocean Energy Management Lease Area OCS-P 0563, has developed a Fisheries Communication Plan (FCP) which is available for public comment. The FCP overviews the plan for engagement with the region's fishing community during development of the Equinor California Offshore Wind Project. The FCP is available at www.equinorcalifornia.com. Comments on the plan, and any questions about the project, can be sent to Elizabeth Marchetti at emarc@equinor.com or 401-954-2902.

Chart 18700

LNM: 46/23

SOUTHERN CALIFORNIA-MORRO BAY-WIND ENERGY PROJECT

The Morro Bay Wind Energy Area includes the Even Keel Wind Project as one of the three leaseholders. EKW is providing their Final Fisheries Communication Plan that can be accessed at Even Keel Wind Project website <https://evenkeelwind.invenenergy.com/documents> this Plan is a living document that will continue to be updated as needed. Please provide any feedback on this plan via email to Laura.Casali@stantec.com.

Chart 18700

LNM: 44/23

SOUTHERN CALIFORNIA-NATIONAL CITY-MARINE CONSTRUCTION

R. E Staite will be conducting dredging operations and marine construction at the Austal USA facility located in National City, California at 32-39-29N 117-07-07W from 1 April, 2023 until 29 February, 2024. DB Point Loma, DB William F, DB Palomar and RES 180 along with multiple scows a survey boat and various deck barges will conduct operations. All vessels will be monitoring VHF-FM Chan. 16. All dredged material will be disposed of at LA-5 ocean disposal site. An Exclusion Zone (EZ) will be established for purposes of protection from munitions and explosives of concern (MEC) that may be disturbed within the project area. The EZ area will extend into the water in an arc and the size flex within the project area as the project progresses depending on the work activity. Work hours for the project are anticipated to be 24/7 during high production times. The EZ will extend into the water and may impact marine vessel traffic, swimmers and divers. Only authorized personnel will be allowed into the EZ. Mariners are requested to transit the area with caution. For more details or comments contact Erick Myers at 619-233-0178.

Chart 18773

LNM: 35/23

SOUTHERN CALIFORNIA-NEWPORT BAY-BRIDGE

PACIFIC COAST HIGHWAY BRIDGE-Maintenance will be conducted on the bridge Monday through Saturday, 6:30 am to 5 pm, 02 October, 2023 through 05 January, 2024. A barge will be moored between piers 3 and 4 to conduct the work. The barge will be left on-scene, unmanned, during non-working hours. For on-site conditions mariners can call 949-279-8502 or 949-501-5495 or 949-279-8742. For further information contact the Coast Guard Bridge Office at 571-607-2207.

Chart 18746

LNM: 39/23

SOUTHERN CALIFORNIA-OCEANSIDE-DREDGING OPERATIONS

Hopper Dredging will be conducting dredging operation offshore of Oceanside at 33-12-57N 117-25-25W with offload at San Clemente pump ashore buoy at 33-24-51N 117-37-33W from 16 December, 2023 until 18 January, 2024, 24 hours per day, 7 days per week. D/B HOPPER DREDGE, M/V JOHN M, and T/B TERRI L. BRUSCO will be monitoring VHF-FM Chan. 13, 16, 66 & 67. Mariners are requested to transit the area with caution. For more details or comments contact Colby Towle at 904-763-5405.

Chart 18774

LNM: 50/23

SOUTHERN CALIFORNIA-OFFSHORE MORRO BAY-FISHERIES COMMUNICATION PLAN AVAILABLE

Golden State Wind LLC, leaseholder for the Bureau of Ocean Energy Management Lease Area OCS-P 0564, has developed a Fisheries Communication Plan (FCP) which is available for public comment. The FCP overviews the plan for engagement with the region's fishing community during development of the Golden State Wind Project. The FCP is available at https://www.goldenstatewind.com/wp-content/uploads/2023/09/GSW_Fisheries-Comms-Plan_2023.08.23_clean_508-compressed.pdf Comments on the plan, and any questions about the project, can be sent to Rachel Mahler at rachel.mahler@oceanwinds.com or 805-680-8138.

Chart 18703

LNM: 45/23

SOUTHERN CALIFORNIA-OFFSHORE OCEANSIDE-DREDGING OPERATION

Manson Construction Co. will be conducting dredging operations from 15 December, 2023 until 14 January, 2024 7 days a week, 24 hours per day offshore Oceanside with pump-out operations onto San Clemente Beach to Renourish the shoreline at 33-12-57N 117-25-25W and 33-24-51N 117-37-33W. Dredge Bayport HOPPER DREDGE (WCZ4240), M/V JOHN M (WDC8571) and T/B TERRI L BRUSCO (WDC3034) will be monitoring VHF-FM

SOUTHERN CALIFORNIA-OFFSHORE OCEANSIDE-DREDGING OPERATION

Chan. 13 & 16, 66 & 67. A pump ahore buoy is attached to 400 feet of floating pipe attached to 2200 feet of submerged steel pipeline. Stand-up danger buoys are attached to the submerged pipeline at 150' intervals for the first 750' of submerged line extending offshore. Mariners are requested to transit the area with caution. For more details or comments contact Colby Towle at 904-763-4476.

Chart 18774

LNM: 48/23

SOUTHERN CALIFORNIA-OFFSHORE POINT LOMA-OCEANOGRAPHIC OPERATIONS

The Scripps Institution of Oceanography research will be conducting surface to floor oceanographic -mooring operations from 19 October, 2023 until 28 February, 2024 at 32-43-35N 117-43-35W. The moorings will extend 1 meter off the bottom in 100 meters of water. Mariners are requested to not disturb these Navy experiments and to avoid dragging in the area. During over-the-side operations, R/V ROBERT GORDON SPROUL will be restricted in ability to maneuver; all traffic requested to give a wide berth. R/V ROBERT GORDON SPROUL will monitor VHF-FM Chan. 13 & 16. Mariners are requested to transit the area with caution. For further comments or details contact sp-master@ucsd.edu or Heather Galiher at 858-226-8761.

Chart 18765

LNM: 42/23

SOUTHERN CALIFORNIA-OFFSHORE SURFSIDE-DREDGE OPERATIONS

Manson Construction Co. is conducting hydraulic maintenance dredging of Surfside, CA at 33-42-32N 118-06-17W, 24 hours a day from 27 November, 2023 until 28 February, 2024. Dredge HR MORRIS, DB FREYA, dredge tender PUP, dredge tender CUB, and survey boat RUSTLER will monitor VHF-FM Chan. 16 and 67. Material will be transported through floating pipeline, submerged pipeline, and shore pipeline to the disposal area at Surfside/Sunset Beach. Mariners are requested to transit the area with caution. For more details or comments contact Project Manager Max Oviedo at 206-619-7729.

Chart 18749

LNM: 46/23

SOUTHERN CALIFORNIA-OFFSHORE VENTURA-DIVING OPERATIONS

Aqueos will be conducting diving/ROV operations from 23 October, 2023 until 11 May, 2024 offshore Ventura. The DB SALTA VERDE (WDF9705) 185' LOA, a black hull with a crawler crane on deck and will be in a 4-point moor 24-hours per day and will be monitoring VHF-FM Chan. 16. Operations conducted during daylight hours. Two temporary mooring will be set. Mariners are requested to transit the area with caution. For more details or comments contact Jason Smith at 805-205-3156.

Chart 18725

LNM: 41/23

SOUTHERN CALIFORNIA-OFFSHORE VENTURA-MULTIBEAM SURVEY

Fugro USA Marine INC. will be conducting a bathymetric survey from 30 October, 2023 until 31 January, 2024 offshore Ventura withing the following coordinates:

- 34-15-36N 119-16-20W
- 34-15-33N 119-17-50W
- 34-14-18N 119-17-37W
- 34-14-20N 119-16-04W

M/V JULIE ANN will have limited maneuverability during operations and will be monitoring VHF-FM Chan. 16. Mariners are requested to transit the area with caution. For more details or comments, contact. Cindy Pratt at 805-650-7000.

Chart 18725

LNM: 42/23

SOUTHERN CALIFORNIA-OFFSHORE-HAZARDOUS OPERATIONS

There will be hazardous operations conducted in the Fleet Training Area Hot (FLETA HOT) until 1 January, 2025. Mariners are requested to transit the area with caution. For more details or comments contact Henry Rogel at 619-545-1757

A. HAZARDOUS OPERATIONS REQUEST (FLETA HOT):

(1) IN AREA BOUNDED BY:

- 32-33-00N 118-25-00W
- 32-35-00N 118-16-00W
- 32-35-00N 117-40-00W
- 31-55-00N 117-40-00W
- 31-55-00N 118-25-00W
- 32-33-00N 118-25-00W

TO POINT OF ORIGIN.

B. HAZARDOUS OPERATIONS REQUEST (SOAR):

(1) IN AREA BOUNDED BY:

- 32-52-42N 119-11-58W
- 33-08-04N 118-52-05W
- 33-08-04N 118-46-02W
- 33-03-52N 118-41-48W
- 33-02-32N 118-43-33W
- 32-58-53N 118-43-31W
- 32-47-40N 118-32-21W
- 32-36-55N 118-45-00W
- 32-36-55N 118-56-57W

TO POINT OF ORIGIN.

C. HAZARDOUS OPS REQUEST (SHOBA WITH BOTH EXTENSIONS):

(1) AREA BOUNDED BY FOLLOWING COORDS:

- 32-55-00 N 118-25-00 W
- 32-55-00 N 118-15-00 W
- 32-40-00 N 118-15-00 W
- 32-40-00 N 118-35-00 W
- 32-45-00 N 118-35-00 W

TO POINT OF ORIGIN.

D. HAZARDOUS OPERATIONS REQUEST (MOORED BUOYS IN PYRAMID COVE)

(1) IN AREA BOUNDED BY:

SOUTHERN CALIFORNIA-OFFSHORE-HAZARDOUS OPERATIONS

ANCHOR 1: 15FT, 32-47-38N 118-25-49W
ANCHOR 2: 15FT, 32-47-24N 118-25-12W
ANCHOR 3: 20FT, 32-47-36N 118-24-53W
ANCHOR 4: 20FT, 32-47-11N 118-25-26W
ANCHOR 5: 25FT, 32-47-19N 118-25-00W
ANCHOR 6: 30FT, 32-47-07N 118-24-51W
ANCHOR 7: 210FT, 32-47-24N 118-24-27W
ANCHOR 8: 170FT, 32-47-24N 118-25-59W
ANCHOR 9: 243FT, 32-47-19N 118-24-27W
ANCHOR 10: 227FT, 32-47-19N 118-25-59W
ANCHOR 11: 00FT, 32-47-45N 118-24-18W
ANCHOR 12: 00FT, 32-46-56N 118-24-18W
ANCHOR 13: 00FT, 32-46-56N 118-26-13W
ANCHOR 14: 00FT, 32-47-45N 118-26-13W.

Charts: 18700 18720 18740

LNM: 01/24

SOUTHERN CALIFORNIA-OXNARD-DOCK REPLACEMENT

Anchor QEA is conducting a dock replacement for Anacapa Isle Marina of Docks A through E, & G in Channel Islands Harbor, Oxnard, California at 34-10-22N, 119-13-37W from 1 June, 2023 until 13 March, 2024. Vessels will be monitoring VHF-FM Chan. 16. Mariners are requested to transit the area with caution. For more details or comments contact Armando Alonso at 805-814-4010.

Chart 18725

LNM: 20/23

SOUTHERN CALIFORNIA-PORT OF LONG BEACH-MARINE CONSTRUCTION

Manson Construction Co. is conducting marine construction at the Port of Long Beach, Berths D50-D-52 (Slip 5) from 27 November, 2023 until 1 March, 2024. DB VULCAN, DB VALKYRIE, FB 37 BARGE, and FB 61 BARGE will be monitoring VHF-FM Chan. 13, 67 & 68. Mariners are requested to transit the area with caution. For more details or comments contact Bryan Haynes at 562-762-5394.

Chart 18749

LNM: 47/23

SOUTHERN CALIFORNIA-PORT OF LOS ANGELES-MARINE CONSTRUCTION

The Port of Los Angeles will be conducting marine construction from 28 December, 2023 until 3 January, 2024 at 33-45-38N 118-15-40W, Berths 168, 177-182. T/B PATCONA II, T/B LARCONA, D/B VENTURA, D/B LONG BEACH, and D/B LOS ANGELES will be monitoring VHF-FM Chan. 13 & 65. Mariners are urged to transit at their slow safe speed to minimize wake, and proceed with caution after passing arrangements have been made. For more details or comments contact Alex Lopez at 909-270-6343.

Chart 18740

LNM: 50/23

SOUTHERN CALIFORNIA-SAN DIEGO BAY-BRIDGE

CORONADO BAY BRIDGE MAINTENANCE-Scaffolding installed between piers 11-12, 12-13, and 13-14, reduces vertical clearance by more than 8'. The upstream and downstream lower edges of the scaffolding are lighted at night with red lights. For more details or comments contact the Coast Guard Bridge Office at 510-437-3461.

Charts: 18772 18773

LNM: 13/20

SOUTHERN CALIFORNIA-SAN DIEGO BAY-MARINE CONSTRUCTION

Marathon Construction will be conducting marine construction at Naval Base Coronado from 4 January, 2024 until 31 March 2025 at 32-41-43N 117-13-51W. Mariners are requested to transit the area with caution. For more details or comments contact Dane Kost at 619-244-5522.

Chart 18765

LNM: 51/23

SOUTHERN CALIFORNIA-SAN DIEGO BAY-MARINE EVENT

The San Diego Yacht Club (SDYC) will sponsor the New Years Day Race on 01 January, 2024, from 11:00am to 4:30pm. The regatta will consist of 50 sailboats participating in a regatta in San Diego Bay, starting in vicinity of Harbor Island and finishing in vicinity of San Diego Bay Channel Lighted Buoy 17 (LLNR 1630). Mariners are requested to transit the area with caution. For more details or comments contact Jeff Johnson at 619-933-9922.

Chart 18773

LNM: 52/23

SOUTHERN CALIFORNIA-SAN DIEGO BAY-MARINE EVENT

The Cortez Racing Association (CRA) will be sponsoring the CRA Winter Regatta on 20 January, 2024 from 10:00am to 5:00pm. The regatta will consist of 40 sailboats starting near Harbor Island, proceeding to San Diego Bay Channel Lighted Buoy 16 (LLNR 1620), continuing to San Diego Bay Channel Lighted Buoy 28 (LLNR 1980), and finishing back at Harbor Island. Mariners are requested to transit the area with caution. For more details or comments, contact Dale Greaney at 760-470-1730.

Chart 18773

LNM: 48/23

SOUTHERN CALIFORNIA-SAN DIEGO-MARINE CONSTRUCTION

R.E. Staite Engineering Inc. will be conducting marine construction at MZB VOR Mission Bay Island in San Diego from 25 September, 2023 until 30 March, 2024 at 32-46-55N 117-13-30W. RES 180 Floating Crane Barge, RES 110 Material Barge, P/B JEANIE R, W/B JOHN DRAKE and skiffs will be monitoring VHF-FM Chan. 16. Mariners are requested to transit the area with caution. For more details or comments contact R.E. Staite Engineering, Inc. at 619-233-0178 or restaite@restaite.net.

Chart 18773

LNM: 37/23

SOUTHERN CALIFORNIA-SAN DIEGO-MARINE CONSTRUCTION

R.E. Staite Engineering Inc. will be conducting marine construction for the repair and replacement of the existing Pier 302 at Naval Base Pt. Loma from 2 January, 2024 until 2 January, 2025 at 32-42-08N 117-14-09W. DB WILLIAM F, PB JEANIE R, PB JOHN DRAKE, RES 180 Barge, spud/crane barge and support barge RES 110 will be monitoring VHF-FM Chan. 16. Mariners are requested to transit at their slowest safe speed to minimize wake transit the area with caution. For more details or comments contact Tory Wagoner at 619-629-9733 or restaite@restaite.net.

SOUTHERN CALIFORNIA-SAN DIEGO-MARINE CONSTRUCTION

Chart 18773

LNM: 50/23

SOUTHERN CALIFORNIA-SAN DIEGO-MARINE CONSTRUCTION

R.E. Staite Engineering Inc. will be conducting marine construction at Pier 160B (Finger A) at Naval Base Pt. Loma in San Diego from 4 December, 2023 until 31 January, 2024 at 32-42-12N 117-14-05W. A floating crane barge JEANIE R push boat, JOHN DRAKE work boat and skiffs will be performing construction operations. All vessels will be monitoring VHF-FM Chan. 16. Mariners are requested to transit at their slowest safe speed to minimize wake transit the area with caution. For more details or comments contact Tory Wagoner at 619-629-9733 or restaite@restaite.net.

Chart 18773

LNM: 45/23

SOUTHERN CALIFORNIA-SAN DIEGO-MARINE CONSTRUCTION

R.E. Staite Engineering Inc. will be conducting marine construction associated with a quaywall that is located between the Naval Base Point Loma Fluel Pier and Pier 122 in San Diego from 18 September, 2023 until 24 April, 2024 at 32-42-00N 117-14-19W. Vessels JEANIE R, flexi floats and various work boats will be monitoring VHF-FM Chan. 16. Mariners are requested to transit the area with caution. For more details or comments contact R.E. Staite Engineering, Inc. at 619-233-0178 or restaite@restaite.net.

Chart 18773

LNM: 37/23

SOUTHERN CALIFORNIA-SAN DIEGO-MARINE EVENT

The San Diego Yacht Club will be sponsoring the San Diego to Puerto Vallarta Race from 23 February until 2 March, 2024. 25 sailing vessels will be racing on a long-distance course starting near SD Buoy 17 at 32-42-20N 117-13-54 approximately 11 AM, proceeding out of the San Diego Bay Channel to open waters, and finishing in Puerto Vallarta, Mexico. Mariners are requested to transit the area with caution. For more details or comments, contact Jeff Johnson at 619-933-9922.

Chart 18773

LNM: 48/23

SOUTHERN CALIFORNIA-SAN DIEGO-MARINE EVENT

The San Diego Yacht Club will be sponsoring the One Design Weekend Monthly Series in Coronado Roads, CA. 25 sailing vessels will be racing on courses starting at approximately 32-38-41N 117-11-35W with courses oriented 1.5 nautical miles into the wind direction. Races will be held on 6-7 January, 3-4 February, 9-10 March, 27-28 April, 18-19 May, 8 June, 20 July, 10-11 August, 28-29 September, 12-13 October, 16-17 November, and 15 December, 2024, from 11:00am to 4:00pm each day. Mariners are requested to transit the area with caution. For more details or comments, contact Jeff Johnson at 619-933-9922.

Chart 18773

LNM: 48/23

SOUTHERN CALIFORNIA-SAN DIEGO-OCEANOGRAPHIC BUOY DEPLOYMENT

The City of San Diego Marine Biology Lab is conducting year-round monitoring with oceanographic buoys in the vicinity of the South Bay Ocean Outfall and Point Loma Ocean Outfall until December, 2024. Surface buoys are yellow and lighted equipped with AIS and run from ocean surface to ocean bottom. The Ocean Monitoring Program has two oceanographic moorings deployed at 32-40-12N 117-19-29W and 32-31-55N 117-11-13W. The M/V OCEANUS AND M/V MONITOR III when in the area will monitor VHF-FM Chan. 16. Mariners are requested to transit the area with caution. For more details or comments contact Adriano Feit at 619-758-2377 or 858-882-7055.

Charts: 18765 18772

LNM: 01/24

SOUTHERN CALIFORNIA-SAN DIEGO-OCEANOGRAPHIC SURVEY

The City of San Diego Marine Biology Lab is conducting year-round ocean monitoring sampling in the vicinity of the South Bay Ocean Outfall and Point Loma Ocean Outfall until 15 November, 2024. The Ocean Monitoring Program conducts trawl sampling, benthic sampling with a double Van Veen sediment grab, vertical CTD casts and horizontal tows with an undulating underwater vehicle, ROV surveys and multiple moorings are deployed in the region below. Ocean sampling will be conducted in an area bound by the following coordinates:

32-31-54N 117-11-11W
 32-32-10N 117-11-57W
 32-32-03N 117-12-06W
 32-32-33N 117-11-56W
 32-40-10N 117-19-22W
 32-40-04N 117-19-34W
 32-39-37N 117-19-32W
 32-39-56N 117-19-39W
 32-40-10N 117-16-55W

The M/V OCEANUS AND M/V MONITOR III when in the area will monitor VHF-FM Chan. 16. Mariners are requested to transit the area with caution. For more details or comments contact Adriano Feit at 619-758-2377 or 858-882-7055.

Charts: 18765 18772

LNM: 47/23

SOUTHERN CALIFORNIA-SAN DIEGO-ZUNIGA POINT-SUNKEN VESSEL

The Coast Guard has received a report of a sunken 25-foot sailing vessel near Zuniga Point at 32-39-48N 117-11-30W. Mariners are requested to transit the area with caution. For more details or comments, contact Coast Guard Sector San Diego at 619-278-7031.

Chart 18773

LNM: 49/23

SOUTHERN CALIFORNIA-SAN JOSE CREEK-GOLETA SLOUGH-BRIDGE

STATE ROUTE 217 HIGHWAY BRIDGE REPLACEMENT- Caltrans has cleared the waterway of in-water construction during the winter 2023-2024. The bird exclusion netting remains in placed at the bridge. For more information, contact the Coast Guard Bridge Office at 510-437-3461.

Chart 18720

LNM: 46/23

SOUTHERN CALIFORNIA-SAN MATEO PT.-BUOY DEPLOYMENT

A Waverider buoy has been deployed 5 NM southwest of San Mateo Pt. in position 33-20-11N 117-39-31W. The buoy was deployed on 26 May, 2023. The buoy is operated by Scripps Institute of Oceanography and is 3-foot diameter sphere with an attached telemetry whip antenna and a nighttime yellow color warning flashing light. The light timing sequence is a series of 5 flashes at 1-second intervals with a period of 20 seconds between each series. Visual range is one kilometer. The buoy is painted yellow and marked "Wave Buoy" with the phone number 858-534-3032. For

SOUTHERN CALIFORNIA-SAN MATEO PT.-BUOY DEPLOYMENT

further comments or details contact Vicki Kellis at 858-534-3032.

Chart 18774

LNM: 23/23

SOUTHERN CALIFORNIA-SAN NICHOLAS ISLAND-ATMOSPHERIC BUOY DEPLOYMENT

Naval Air Systems Command has deployed an atmospheric sampling buoy 1.5 miles Northeast of San Nicolas Island at 33-18-00N 119-30-55W. The yellow buoy Fl Y 3s, is 6 feet above the waterline and 2 feet in diameter. Mariners are requested to transit the area with caution. For more details or comments contact Kyle Edwards at 805-989-0672.

Chart 18720

LNM: 39/22

SOUTHERN CALIFORNIA-SAN NICHOLAS ISLAND-COMMERCIAL FISHING OPERATIONS

Ventura County Commercial Fishermen's Association member vessels will be operating within a 35 mile radius of San Nicholas Island between January 01, 2024 and June 15, 2024. Vessels can be expected in this area anytime wind and sea state is at a Beauford Scale of 4 or less. Gear will be marked with a flagged highflyer, radar reflector, lights and bouys. Please give a closest point of approach of 1/2 mile. Vessels can be contacted on VHF-FM Chan. 11 and 16. Mariners are requested to transit the area with caution. For more details and comments contact 805-448-4455.

Chart 18022

LNM: 42/23

SOUTHERN CALIFORNIA-SANTA BARBARA-AQUACULTURE ESTABLISHMENT

Ocean Rainforest will be establishing an Aquafarm, starting on 30 March, 2023, located 4.3 NM South of Santa Barbara. The site is bound within four yellow boundary marker buoys with a flashing yellow light every 2 seconds (Fl Y2s) in the following positions:

34-19-58.53N 119-42-45.72W

34-20-10.12N 119-42-45.72W

34-20-11.23N 119-42-07.24W

34-19-59.64N 119-42-07.92W

In line with the outer boundary buoys are small unlit floats that are marking the anchors associated with the Aquaculture area, the total buoys marking the anchors are 12 on the long axis of each side and 2 between the corner buoys on the short axis. Within the boundary markers will be 188 buoys/floats, see Enclosure AQUACULTURE ESTABLISHMENT.pdf enclosure below. The interior buoys of the aquaculture are in the shape of a rectangle with the outer edge marked with yellow buoys, every other buoy has a flashing yellow light flashing every 2 seconds (Fl Y2s). Within the rectangle are 135 small unlit floats marking the cultivation lines. Mariners are advised to remain clear of this area as entanglement with associated equipment may occur. Vessel DANNY C will be conducting the deployment and monitoring VHF-FM Chan. 7 and 16. For more details or comments contact Ocean Rainforest Inc at 805-722-9601 or eliza@oceanrainforest.com.

Charts: 18720 18725

LNM: 11/23

SOUTHERN CALIFORNIA-SANTA BARBARA-BUOY DELETION

Two buoys in the Santa Barbara Channel have been moved and renamed. Delete the following aids:

Santa Barbara Marker Lighted Buoy Fl(1)W 4s

34-24-24N 119-40-44W

Santa Barbara Intake Lighted Marker Buoy Fl(1)W 4s

34-24-25N 119-40-46W

Replaced with:

Santa Barbara Desal Intake Lighted Marker Buoy 1 Fl(1)W 4s

34-24-26.34N 119-40-46.98W

Santa Barbara Desal Intake Lighted Marker Buoy 1 Fl(1Y) 6s

34-24-36.05N 119-40-50.02W

For further information, mariners can contact the Coast Guard PATON office at 571-607-9967.

Chart 18725

LNM: 34/23

SOUTHERN CALIFORNIA-SANTA BARBARA-DREDGING OPERATIONS

Pacific Dredge & Construction will be conducting dredging operations in the Santa Barbara Harbor from 18 December, 2023 until 14 January, 2024 at 34-24-33N 119-41-03W. The D/B SANDPIPER (71' X 24') and A/B KATHLEEN (54' X 15') will be monitoring VHF-FM Chan. 6 and 16. Mariners are requested to transit the area with caution. For more details or comments contact Gary Foster at 805-331-2995.

Chart 18725

LNM: 49/23

SOUTHERN CALIFORNIA-VENTURA-MARINE CONSTRUCTION

Cushman Contracting Corp. will be conducting marine construction at the Ventura Pier from 21 December, 2023 until 30 March, 2024 at 34-16-32N 119-17-27W. All work will be above water on the pier. Mariners are requested to transit the area with caution. For more details or comments contact, Eric Barrera at 661-874-9644.

Chart 18725

LNM: 52/23

SOUTHERN CALIFORNIA-VENTURA-MARINE CONSTRUCTION

Abhe & Svoboda, Inc. will be conducting marine construction at the Ventura Pier from 6 November, 2023 until 12 February, 2024 at 34-16-32N 119-17-27W. All work will be above water on the pier. Mariners are requested to transit the area with caution. For more details or comments contact, Charles Taylor at 619-659-1320.

Chart 18725

LNM: 43/23

SECTION VIII - LIGHT LIST CORRECTIONS

An Asterisk *, indicates the column in which a correction has been made to new information

(1) No.	(2) Name and Location	(3) Position	(4) Characteristic	(5) Height	(6) Range	(7) Structure	(8) Remarks
------------	--------------------------	-----------------	-----------------------	---------------	--------------	------------------	----------------

None

PUBLICATION CORRECTIONS

None

ENCLOSURES

REPORT OF DELAY AT DRAWBRIDGE

[Delay_Report_11-2017.pdf](#)

Use link above to Report a Delay at a Drawbridge.

LNM: 06/07

SOUTHERN CALIFORNIA-PORTS OF LOS ANGELES/LONG BEACH-LA/LB HARBOR-BRIDGE

[V_Thomas_Platform_Lighting1.pdf](#)

See link above for platform lighting for Vincent Thomas Bridge.

LNM: 28/19

NORTHERN CALIFORNIA-DELTA & RIVERS-AMERICAN RIVER-BRIDGE

[AmRiv_SiltCurtain_BargeLocation.pdf](#)

CAPITAL CITY HWY (ROUTE 51) BRIDGE-See link above for barge and silt curtain locations.

LNM: 22/22

NORTHERN CALIFORNIA-SAN FRANCISCO BAY-BRIDGE

[PlatformLighting_GG_Bridge_14-Nov-23.pdf](#)

GOLDEN GATE BRIDGE-Temporary Platform Location and Lighting revised 14 Nov, 2023.

LNM: 46/23

NORTHERN CALIFORNIA-SAN FRANCISCO BAY-BRIDGE

[R-SR_Bridge_Temp_Platform_Lighting.pdf](#)

RICHMOND-SAN RAFAEL BRIDGE- See link above for temporary underdeck platform lighting for concrete and steel repairs.

LNM: 48/21

NORTHERN CALIFORNIA-DELTA & RIVERS-SACRAMENTO RIVER-BRIDGE

[ButteConstructionLightng-BuoyLine.pdf](#)

REPLACEMENT BUTTE CITY BRIDGE-See link above for temporary construction trestle and lighting and proposed buoy line..

LNM: 36/22

NORTHERN CALIFORNIA-SAN FRANCISCO BAY-BRIDGE

[SFOBBTemporaryBargeLocations.pdf](#)

WESTERN SPAN SAN FRANCISCO-OAKLAND BAY BRIDGE-See link above for location of anchored barges during fender repairs.

LNM: 39/23

SOUTHERN CALIFORNIA-SANTA BARBARA-AQUACULTURE ESTABLISHMENT

[AQUACULTURE ESTABLISHMENT.png](#)

see link above.

LNM: 03/23

SOUTHERN CALIFORNIA-CHANNEL ISLANDS HARBOR-BRIDGES

[Channel_Islands_Bridge_Rehab.pdf](#)

CHANNEL ISLANDS BLVD EAST (MANDALAY BAY) & CHANNEL ISLANDS BLVD WEST (EDISON CANAL) BRIDGES-Lighting diagram for cofferdams and flexi-floats.

LNM: 06/23

NORTHERN CALIFORNIA-DELTA & RIVERS-PETALUMA RIVER-BRIDGE

[HWY37FenderDamage.pdf](#)

HIGHWAY 37 BRIDGE-Open link above for location and depiction of fender damage.

LNM: 26/23

CALIFORNIA - SANTA BARBARA - TRAFFIC SEPARATION (TSS) EXTENDED

[TSS_Circ.78.pdf](#)
See link above.

LNLM: 21/23

SOUTHERN CALIFORNIA - CHANNEL ISLANDS - AREA TO BE AVOIDED (ATBA) ENLARGED

[ATBA_Circ.342.pdf](#)
See link above.

LNLM: 21/23

CALIFORNIA - SANTA BARBARA TSS AND CHANNEL ISLANDS ATBA GRAPHIC

[new-protections.jpg](#)
See link above.

LNLM: 21/23

NORTHERN CALIFORNIA-DELTA & RIVERS-SAN JOAQUIN RIVER-BRIDGE

[TemporaryBridge_FalseworkLighting.pdf](#)

CROWS LANDING REPLACEMENT-See link above for temporary falsework, temporary bridge, the temporary navigation channel during construction with navigation lighting plan.

LNLM: 36/22

THE LOCAL NOTICE TO MARINERS IS AVAILABLE ON THE WORLD WIDE WEB AT [HTTPS://WWW.NAVCEN.USCG.GOV](https://www.navcen.uscg.gov)

W. J. George, CDR
U.S. Coast Guard
Chief Waterways Management Branch

**U.S. COAST GUARD
REPORT OF DELAY AT DRAWBRIDGE
PER 33 CFR 117.5**

BRIDGE NAME: _____ DATE: _____

MILE : _____ WATERWAY: _____

1. Name/ Type of Vessel: _____ Direction of Travel : _____

2. Vessel Owner (Name): _____

(Address): _____

3. Name of Pilot (if applicable): _____

(Address): _____

4. Time vessel signaled for bridge opening: _____

5. Location of vessel when signal was given: _____

6. Time and location of vessel when delay began: _____

7. Method of signal for bridge opening: () Radio () Sound () Visual.

(If sound or visual signal was used, specify: _____)

8. Time bridge operator acknowledged signal: _____

9. Method of bridge operator acknowledgement: () Radio () Sound () Visual

(If sound or visual signal was used, specify: _____)

10. Did bridge operator acknowledgement indicate the bridge,

() Could be opened immediately?

() Could not be opened immediately?

11. If land traffic crossed the bridge:

Time land traffic started across the bridge _____

Time land traffic stopped crossing the bridge _____

Did land traffic stop on the bridge? _____

Duration land traffic stopped on the bridge _____

12. Time drawbridge opened for navigation _____

13. Additional comments:

I certify the above information is true to the best of my knowledge and understand this statement may be used by the U.S. Coast Guard in levying fines against the bridge owner.

Signature _____

Telephone _____

Mariners may complete and return to:

Commander (dpw)

Fax: (510) 437-5836

Email: Carl.T.Hausner@uscg.mil

Eleventh Coast Guard District

Coast Guard Island, Building 50-2

Alameda, CA 94501-5100

Attn: Bridge Office

Questions? Please contact: Carl Hausner, Bridge Administrator, Eleventh Coast Guard District

Office: (510) 437-3516

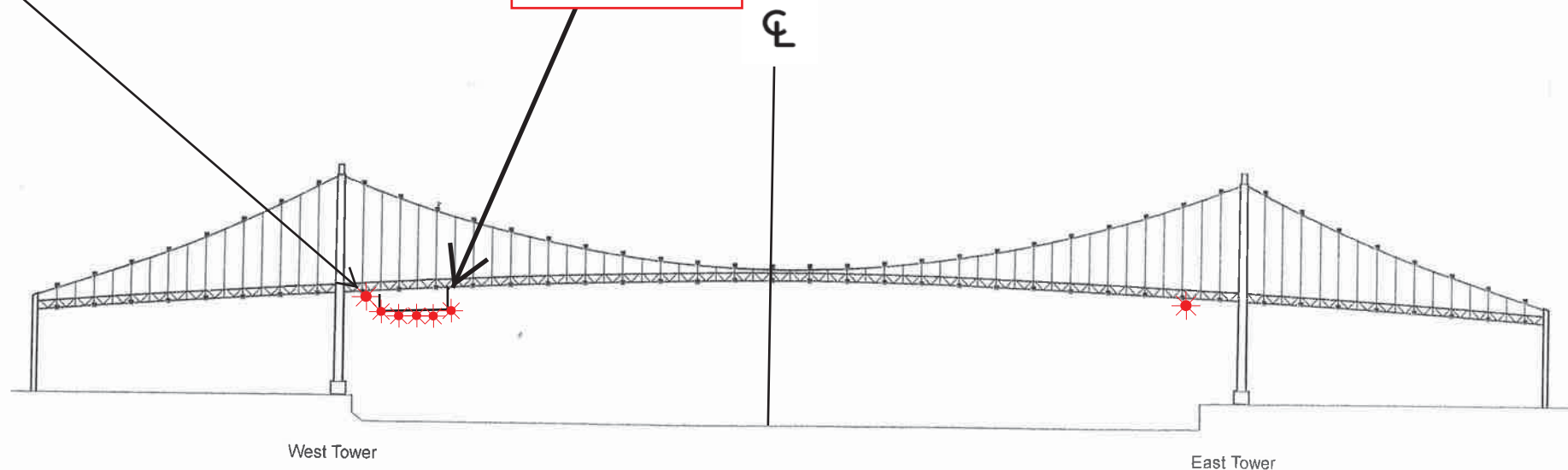
Cell: (510) 219-4366

Mariners are reminded not to require bridge openings for appurtenances nonessential to navigation, per 33 CFR 117.11

Vincent Thomas Highway Bridge
Mile 3.0
Los Angeles/Long Beach Harbor
Painting Project

West Channel Margin
Light

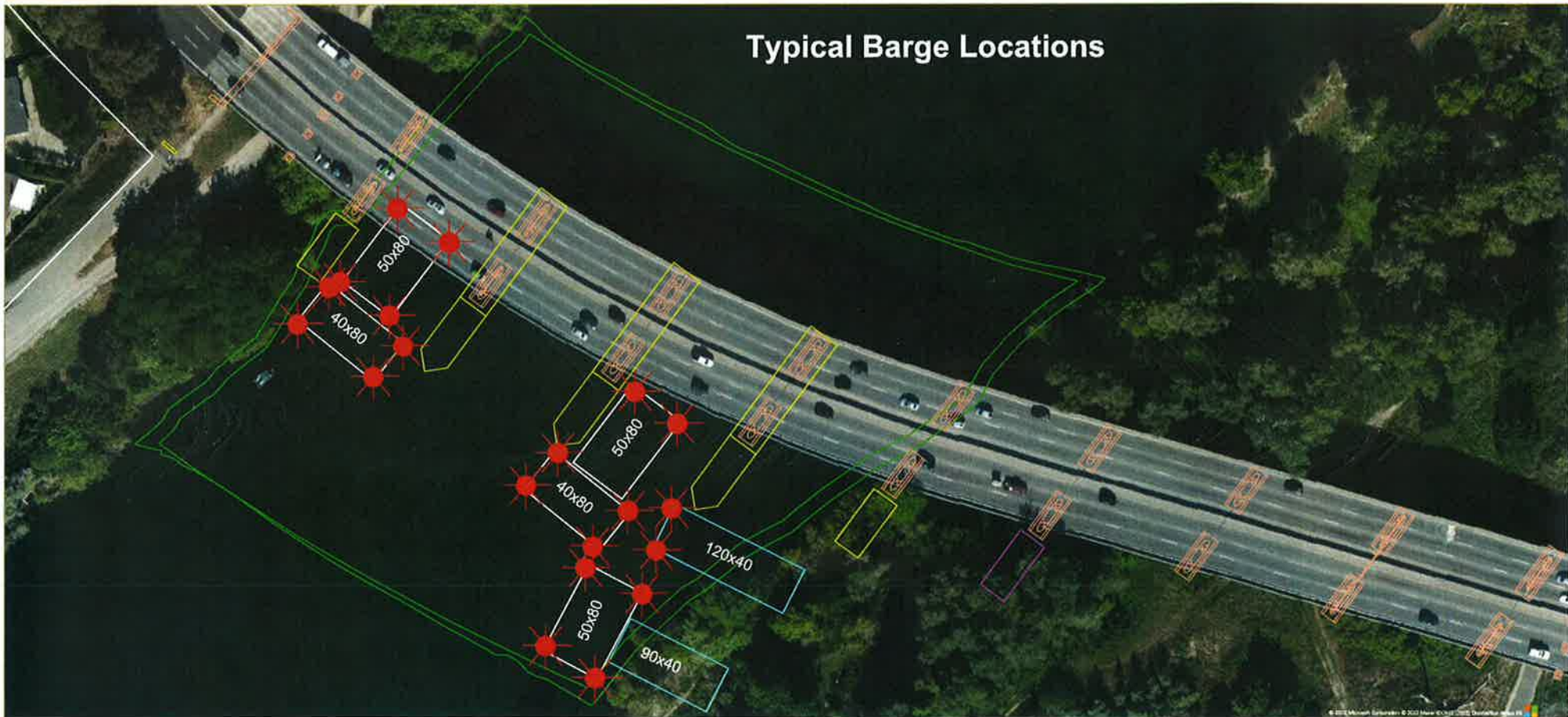
Below Low Steel
Platform. 5' 4"
reduction in
vertical clearance



A 180 foot long under deck temporary platform will reduce vertical clearance by 5' 4". Each corner and every 50 feet along the the upstream and downstream side of the platform will lighted at night with steady burning red lights visible at 2000 yards by approaching vessels. In a duration of 1-year the platform will progress from the western channel margin light to 250' west of the centerline of the bridge.

Rehabilitation and Modification Project Capital City (CA Route 51) Bridge, Mile 4.0, American River

Typical Barge Location and Typical Barge Lighting



Each corner of each barge is lighted at night with steady burning all-round red light, visible at 2,000 by approaching vessels. All vessels transiting the project area should use extreme caution. Turbidity curtains will be placed at different locations during the project. The next four diagrams show the proposed location of the curtains.



Capital City Bridge, Mile 4.0, American River
Turbidity Curtain Plan
Phase 1 Installation



Capital City Bridge, Mile 4.0, American River

Turbidity Curtain Plan
Phase 2 Installation



Capital City Bridge, Mile 4.0, American River

Turbidity Curtain Plan
Phase 3 Installation



Capital City Bridge, Mile 4.0, American River
Turbidity Curtain Plan
Phase 4 Installation

Temporary Access Platforms
Golden Gate Bridge, mile 2.5, San Francisco Bay
Revised 14 November 2023

South Tower

North Tower

Center Span

Center Span

Typical Platform Lighting

Approx. 125'

Approx. 425'

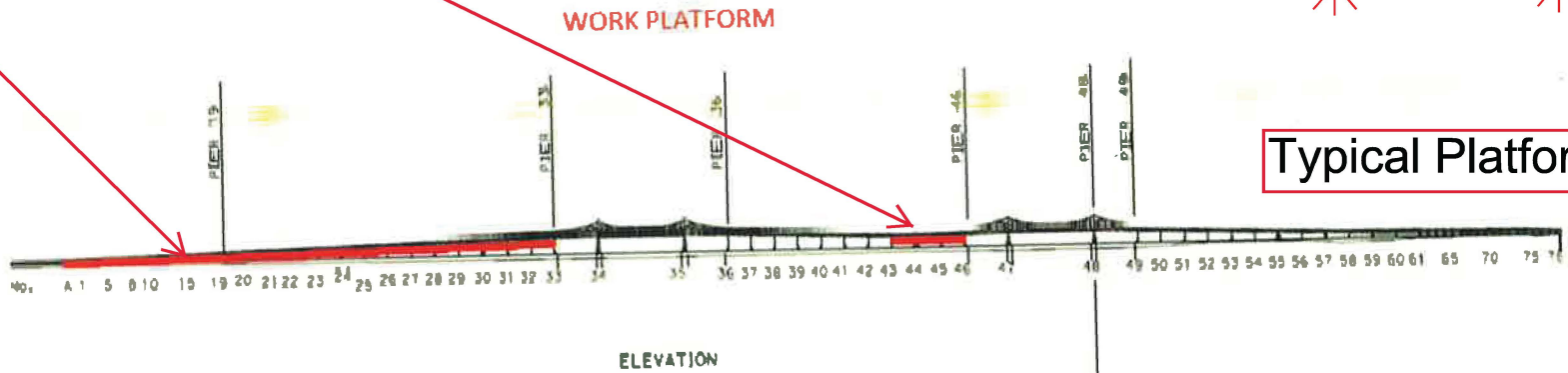
2100' Approx.

Approx. 1,525'

Four 54 ft wide temporary platforms are installed in the main span below low steel of the bridge, in relation to centerline of the span; two south of the north tower and two north of the south tower, reducing vertical clearance by no more than 14 feet. The upstream and downstream lower edges of the temporary platforms will be lighted at night with steady burning red lights visible at 2,000 yards by approaching vessels. The platform closest to the north tower is currently 1,475 feet from the tower. It will be moved to 1,525 feet from the tower on 29 Nov 23.

Painting and Structural Repairs Project
Richmond-San Rafael Bridge
Mile 13.0, San Francisco Bay

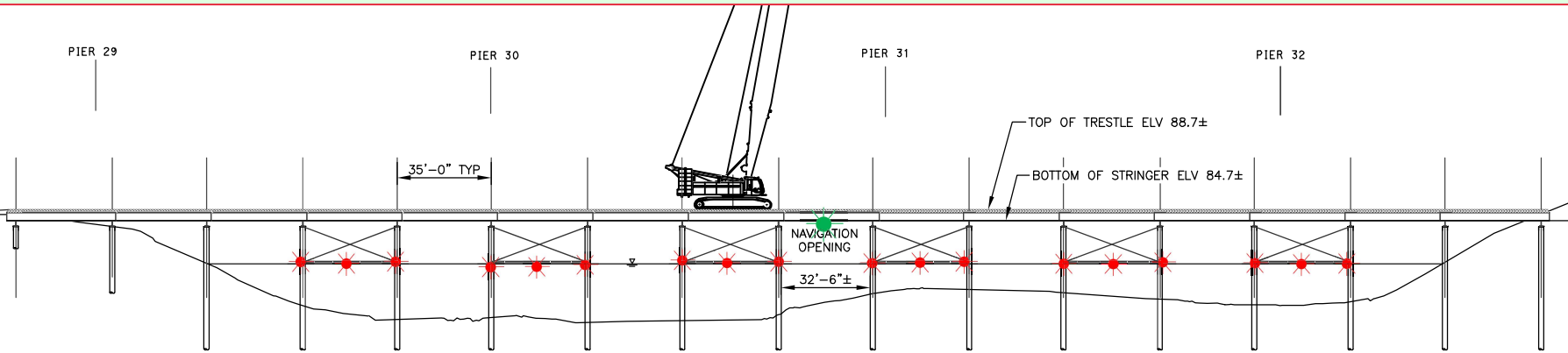
Temporary Underdeck Platforms




Typical Platform Lighting

The upstream and downstream lower edges of each temporary platform in each span are lighted at night with steady burning red lights to be seen at 2,000 yards by approaching vessels. Each platform reduces vertical clearance by no more than 3 feet.

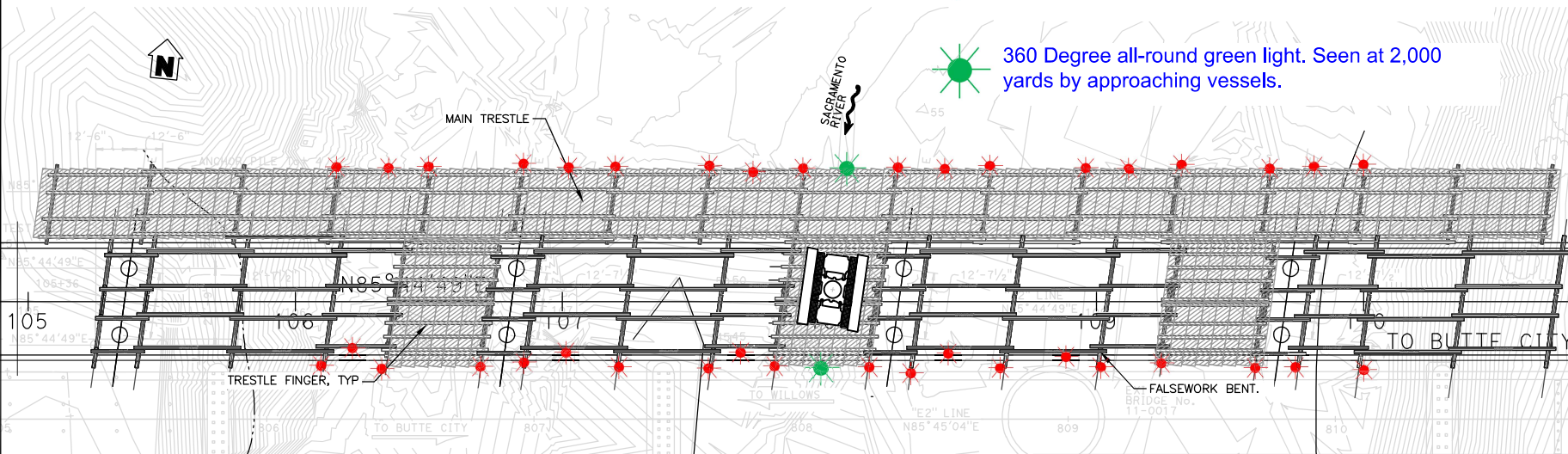
Butte City Bridge Replacement Project Sacramento River



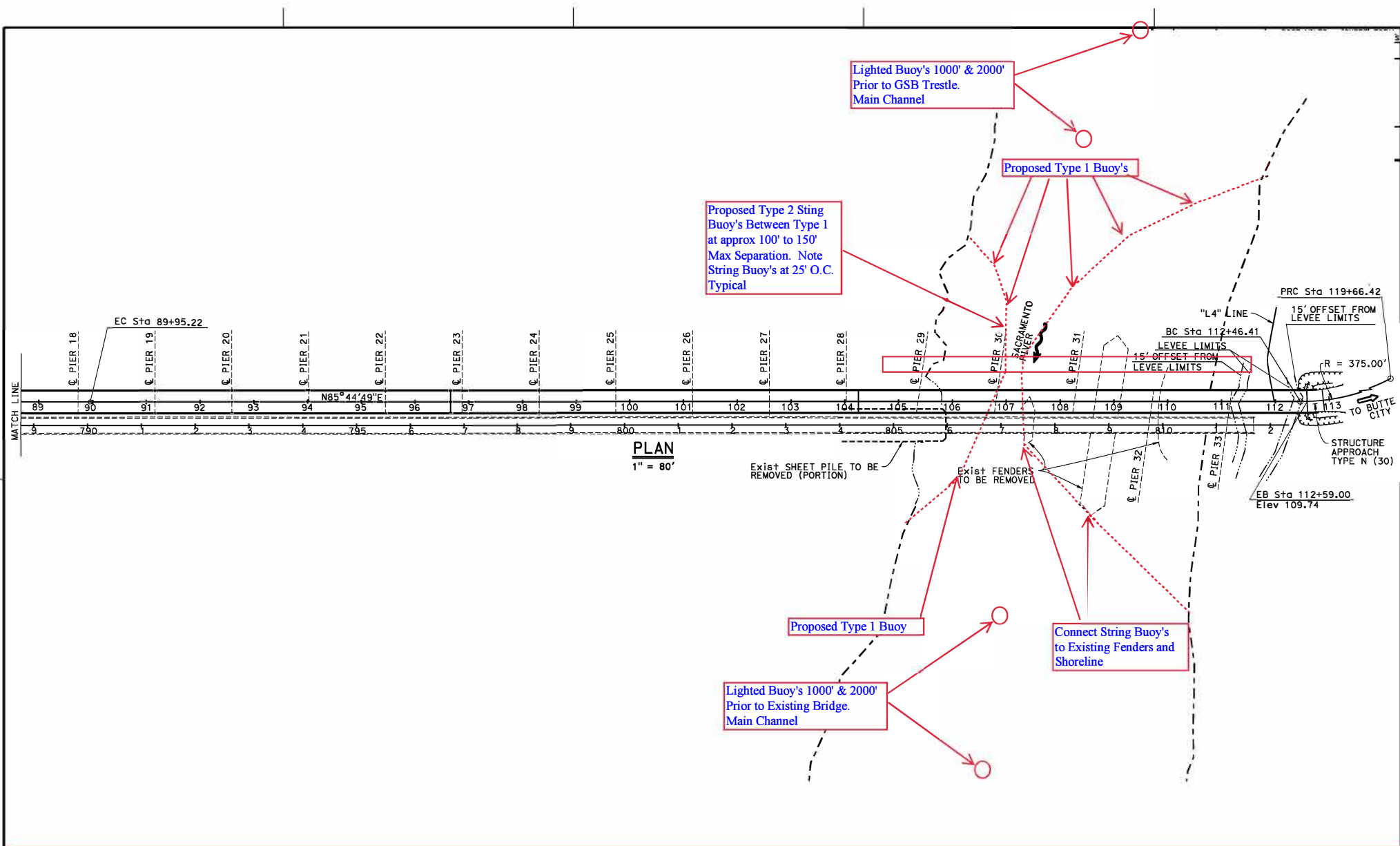
MAIN TRESTLE PROFILE
SCALE: 1:40

 360 Degree all-round red light. Seen at 2,000 yards by approaching vessels.

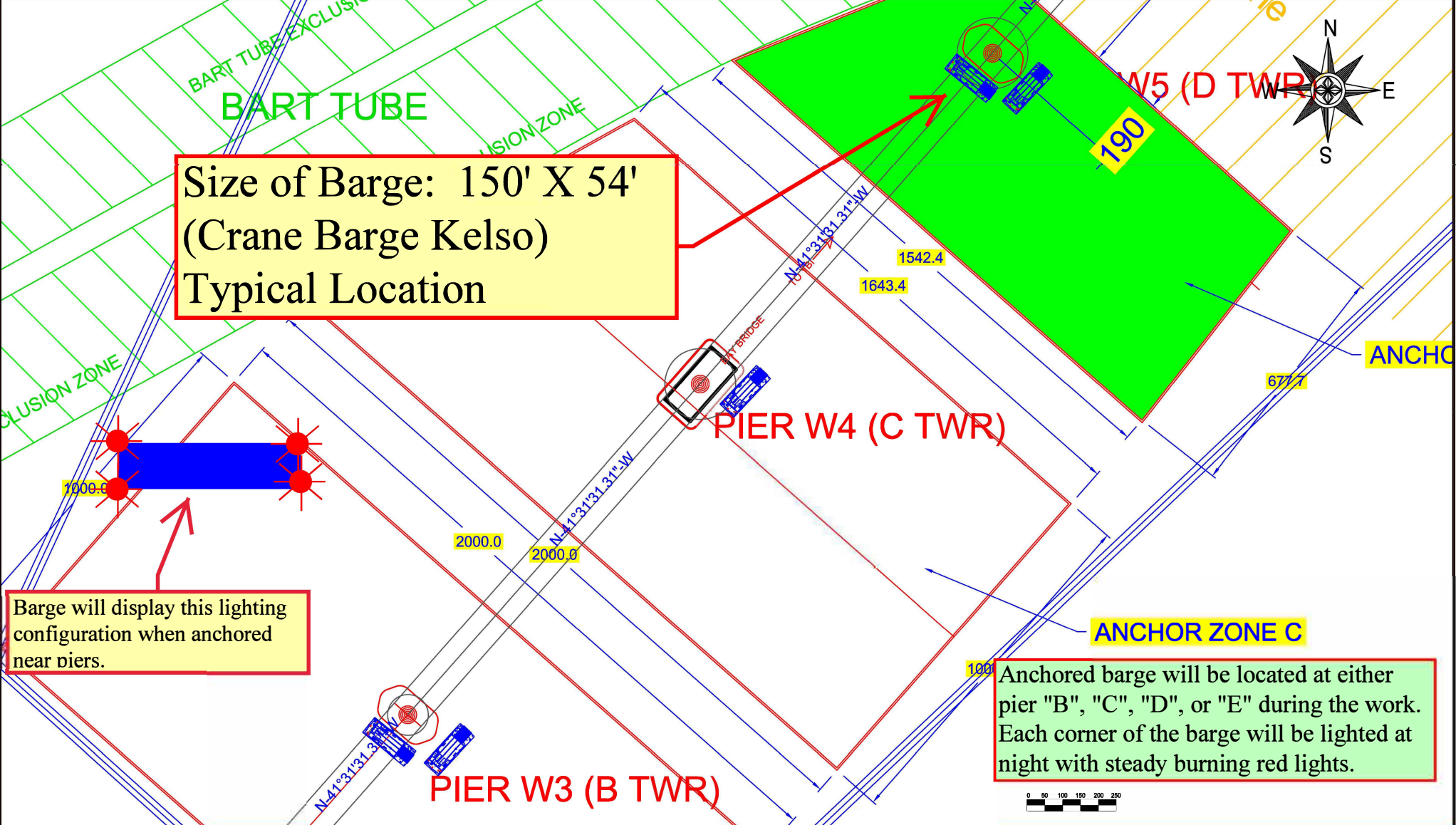
 360 Degree all-round green light. Seen at 2,000 yards by approaching vessels.



The upriver and downriver ends of the trestle piles and crossbeams are lighted at night with steady burning red lights. The upriver and downriver low steel of the temporary navigation span, in the center of the river, is lighted at night with steady burning green lights, which identifies the center of the temporary navigation span.



**Butte City Bridge Replacement Project, mile 169.7, Sacramento River
Proposed Buoy Line During Construction**



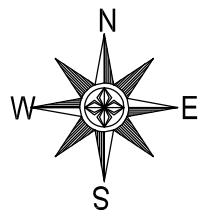
**Size of Barge: 150' X 54'
 (Crane Barge Kelso)
 Typical Location**

Barge will display this lighting configuration when anchored near piers.

Anchored barge will be located at either pier "B", "C", "D", or "E" during the work. Each corner of the barge will be lighted at night with steady burning red lights.

**Fender Repairs
 Western Span San Francisco Oakland Bay Bridge, mile 8.9, San Francisco Bay
 Temporary Impacts to Navigation Diagram**

Anchored barge will be located at either pier "B", "C", "D", or "E" during the work. Each corner of the barge will be lighted at night with steady burning red lights.

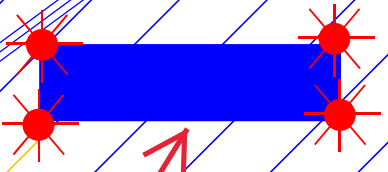


Size of Barge: 150' X 54'
(Crane Barge Kelso)
Typical Location

Shipping Lane

ANCHOR ZONE E WEST

ANCHOR ZONE E EAST



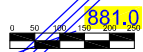
Barge will display this lighting configuration when anchored near piers.

D-E Outbound Shipping Lane
D-E Inbound Shipping Lane

ANCHOR W6 (E TWR)

285

870

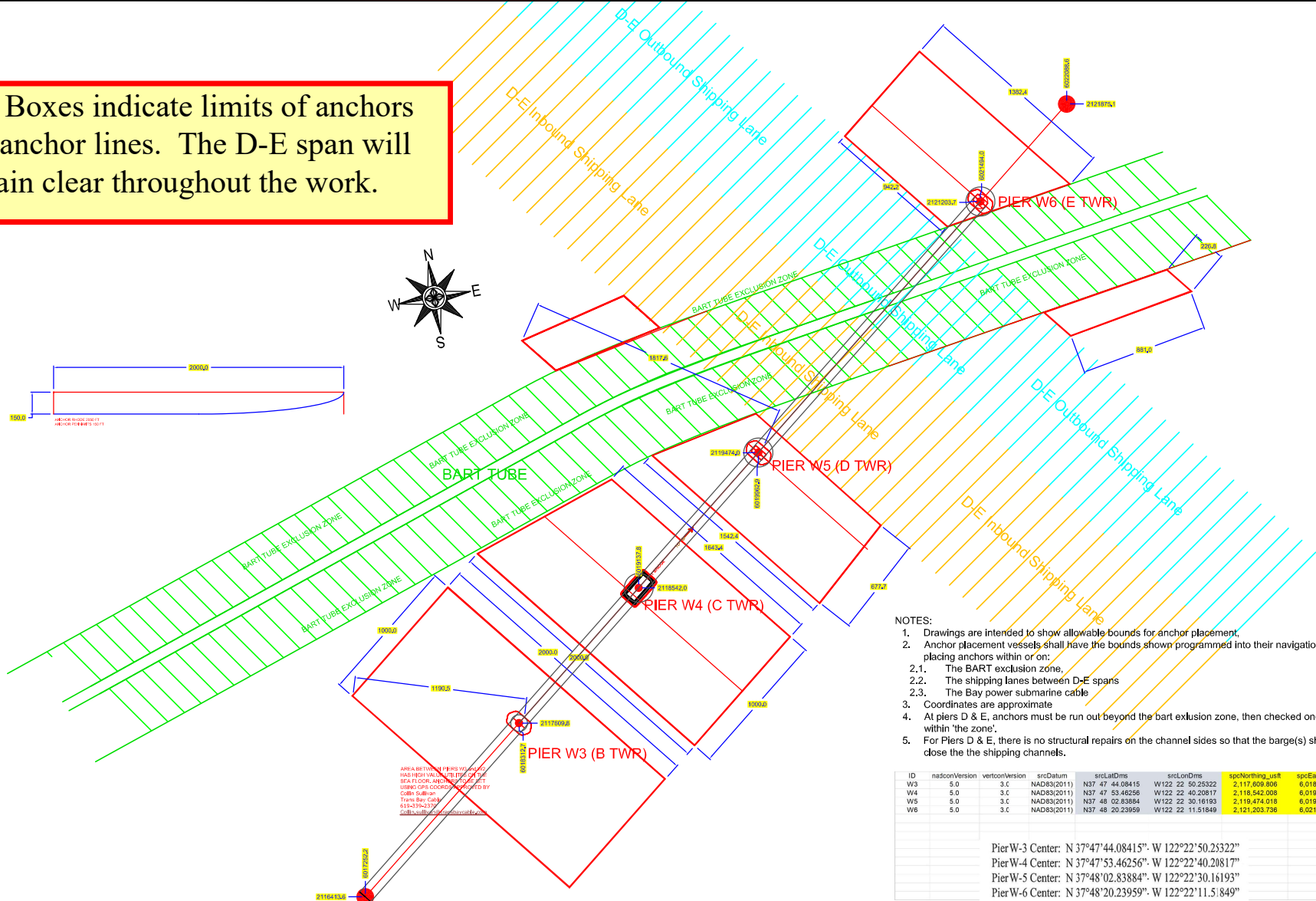
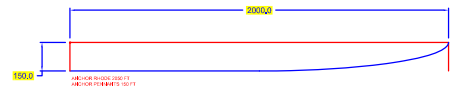


BART TUBE EXCLUSION ZONE

BART TUBE EXCLUSION ZONE

Fender Repairs
Western Span San Francisco Oakland Bay Bridge, mile 8.9, San Francisco Bay
Temporary Impacts to Navigation Diagram

Red Boxes indicate limits of anchors and anchor lines. The D-E span will remain clear throughout the work.



AREA BETWEEN PIERS W4 AND W5 HAS BEEN DESIGNATED AS A SEA FLOOR ANCHORAGE RESTRICTION ZONE (SARZ) AND IS CONTROLLED BY COLTS SULLIVAN
 Trans Bay Cable
 4250376327
 COLTSULLIVAN@TRANSBAYCABLE.COM

NOTES:

1. Drawings are intended to show allowable bounds for anchor placement.
2. Anchor placement vessels shall have the bounds shown programmed into their navigation systems in order to avoid placing anchors within or on:
 - 2.1. The BART exclusion zone,
 - 2.2. The shipping lanes between D-E spans
 - 2.3. The Bay power submarine cable
3. Coordinates are approximate
4. At piers D & E, anchors must be run out beyond the bart exclusion zone, then checked once set to ensure that they are not within 'the zone'.
5. For Piers D & E, there is no structural repairs on the channel sides so that the barge(s) should never need to moored close the the shipping channels.

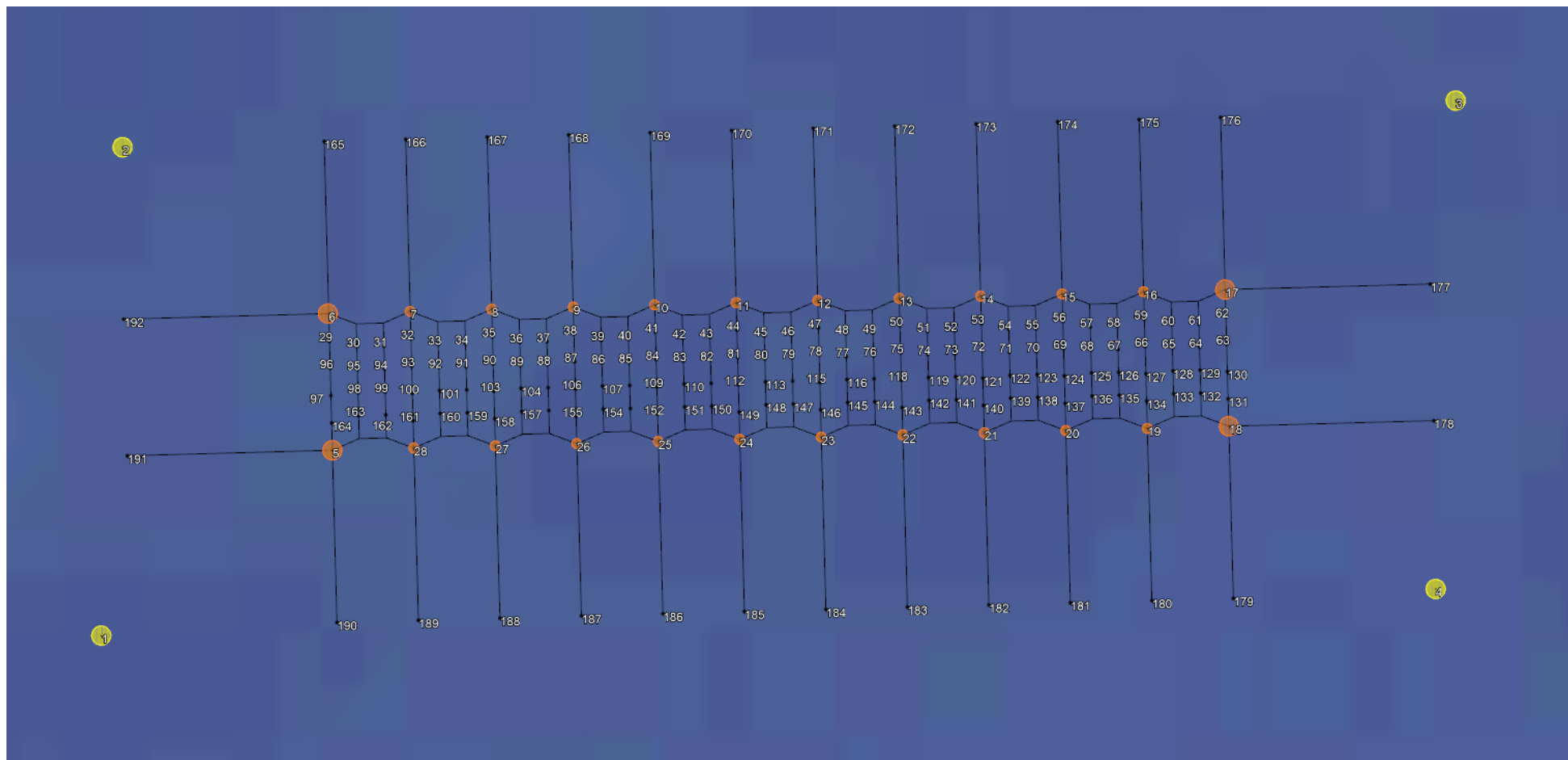
ID	nadsouVersion	vertconVersion	srcDatum	srcLatOrms	srcLonOrms	srcNorthing_usr1	srcEasting_usr1
W3	5.0	3.C	NAD83(2011)	N37 47 44.08415	W122 22 50.25322	2,117,609,808	6,018,512,651
W4	5.0	3.C	NAD83(2011)	N37 47 53.46256	W122 22 30.20817	2,116,542,008	6,019,137,752
W5	5.0	3.C	NAD83(2011)	N37 48 02.83884	W122 22 30.16193	2,119,474,018	6,019,962,888
W6	5.0	3.C	NAD83(2011)	N37 48 20.23959	W122 22 11.51848	2,121,203,736	6,021,493,997

Pier-W-3 Center: N 37°47'44.08415". W 122°22'50.25322"
 Pier-W-4 Center: N 37°47'53.46256". W 122°22'40.20817"
 Pier-W-5 Center: N 37°48'02.83884". W 122°22'30.16193"
 Pier-W-6 Center: N 37°48'20.23959". W 122°22'11.51849"

Fender Repairs

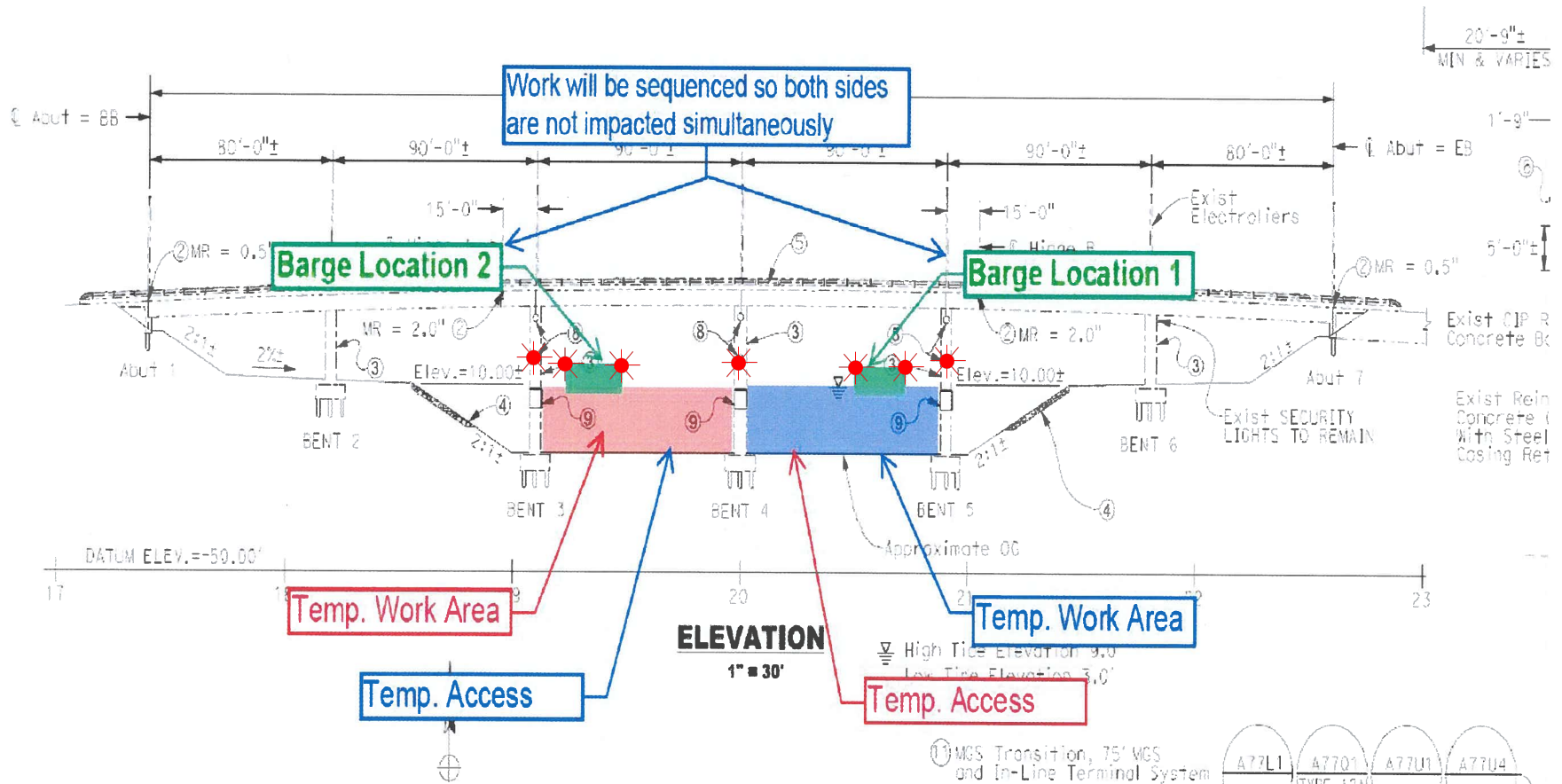
Western Span San Francisco Oakland Bay Bridge, mile 8.9, San Francisco Bay

Temporary Impacts to Navigation Diagram



Rehabilitation of the Channel Islands Blvd West Bridge (Edison Canal) over Channel Islands Harbor

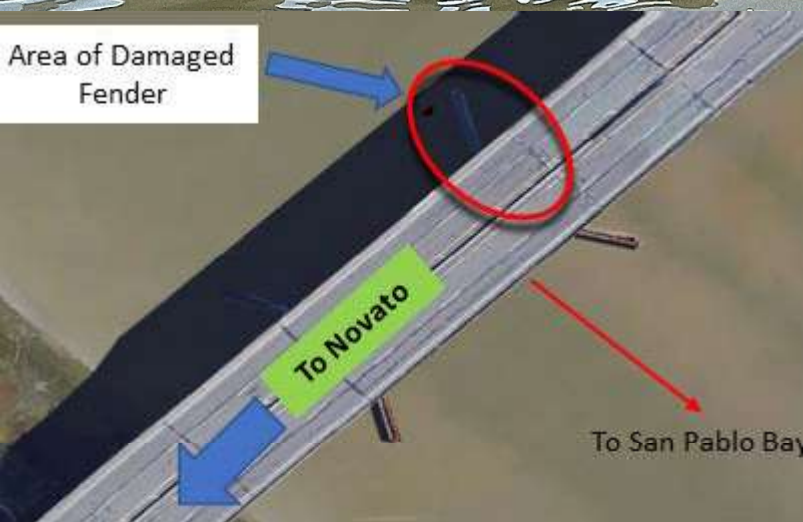
Flexi-Float and Cofferdam Lighting



The upstream and downstream ends of the temporary cofferdams and each corner of each flexi-float barge shall be lighted at night with steady burning red lights visible at 2,000 yards by approaching vessels. Only one span will be worked on at any one time, leaving the other span available for mariners.

Fender Damage

Highway 37 Bridge, mile 1.0, Petaluma River



Damaged upstream northwest fenders. Part of fender system encroaching 20-30 feet in main navigation span, unknown encroachment underwater. Mariners are urged to use extreme caution when transiting the bridge. The damaged system may not offer protection for vessels or the bridge is contact is made.

4 ALBERT EMBANKMENT
LONDON SE1 7SR
Telephone: +44 (0)20 7735 7611 Fax: +44 (0)20 7587 3210

COLREG.2/Circ.78
28 November 2022

TRAFFIC SEPARATION SCHEMES AND ASSOCIATED MEASURES

1 The Maritime Safety Committee, at its 106th session (2 to 11 November 2022), having considered the recommendation made by the Sub-Committee on Navigation, Communications and Search and Rescue at its ninth session (21 to 30 June 2022), and in accordance with the *Procedure for the adoption and amendment of traffic separation schemes, routing measures other than traffic separation schemes, including designation and substitution of archipelagic sea lanes, and ship reporting systems* (resolution A.858(20)), adopted traffic separation schemes and associated measures, as follows:

- .1 amended traffic separation schemes and associated measures *Approaches to the Chornomorsk, Odesa and Pivdennyi ports*, which replace the existing traffic separation schemes *Between the ports of Odessa and Ilichevsk* and *In the approaches to the ports of Odessa and Ilichevsk* (COLREG.2/Circ.14, paragraphs 1.1.2 and 1.1.3); and
- .2 amendments to the traffic separation scheme *In the Santa Barbara Channel* (COLREG.2/Circ.64, annex 6),

as set out in annexes 1 and 2, respectively.

2 Accordingly, the aforementioned traffic separation schemes and associated measures will be implemented at 0000 hours UTC on 1 June 2023.

ANNEX 2

**AMENDMENTS TO THE TRAFFIC SEPARATION SCHEME
"IN THE SANTA BARBARA CHANNEL"**

In the Santa Barbara Channel

(Reference charts: United States 18700, 2013 edition; 18720, 2020 edition; and 18721, 2009 edition.

Note: These charts are based on North American 1983 datum)

Part II

Between Point Conception and Point Arguello

The description of the traffic separation scheme in part II "Between Point Conception and Point Arguello" is replaced by the following:

(a) A separation zone is bounded by a line connecting the following geographical positions:

(1) 34°20'.84 N, 120°30'.28 W (13) 34°29'.15 N, 121°06'.94 W
(6) 34°19'.88 N, 120°30'.59 W (14) 34°28'.19 N, 121°07'.26 W

(b) A traffic lane for westbound traffic is established between the separation zone and a line connecting the following geographical positions:

(7) 34°21'.80 N, 120°29'.96 W (15) 34°30'.11 N, 121°06'.63 W

(c) A traffic lane for eastbound traffic is established between the separation zone and a line connecting the following geographical positions:

(12) 34°18'.92 N, 120°30'.91 W (16) 34°27'.23 N, 121°07'.57 W

4 ALBERT EMBANKMENT
LONDON SE1 7SR
Telephone: +44 (0)20 7735 7611 Fax: +44 (0)20 7587 3210

SN.1/Circ.342
28 November 2022

ROUTING MEASURES OTHER THAN TRAFFIC SEPARATION SCHEMES

1 The Maritime Safety Committee, at its 106th session (2 to 11 November 2022), having considered the recommendation made by the Sub-Committee on Navigation, Communications and Search and Rescue at its ninth session (21 to 30 June 2022), and in accordance with the *Procedure for the adoption and amendment of traffic separation schemes, routing measures other than traffic separation schemes, including designation and substitution of archipelagic sea lanes, and ship reporting systems* (resolution A.858(20)), adopted routing measures other than traffic separation schemes, as follows:

- .1 recommended route *Off the coast of Shio-no-Misaki*;
- .2 amendments to areas to be avoided *Off the California coast* (resolution A.711(17));
- .3 no anchoring area *In the southern portion of Pulley Ridge*; and
- .4 recommendation on navigation for containerships in the traffic separation schemes *Off Vlieland, Vlieland North and Vlieland Junction, Terschelling-German Bight, Off Friesland and German Bight western approach*,

as set out in annexes 1 to 4, respectively.

2 Accordingly, the aforementioned routing measures will be implemented at 0000 hours UTC on 1 June 2023.

ANNEX 2

AMENDMENTS TO AREAS TO BE AVOIDED "OFF THE CALIFORNIA COAST"

Off the California coast

(Reference charts: United States 18700, 2013 edition; 18720, 2020 edition; 18721, 2009 edition.

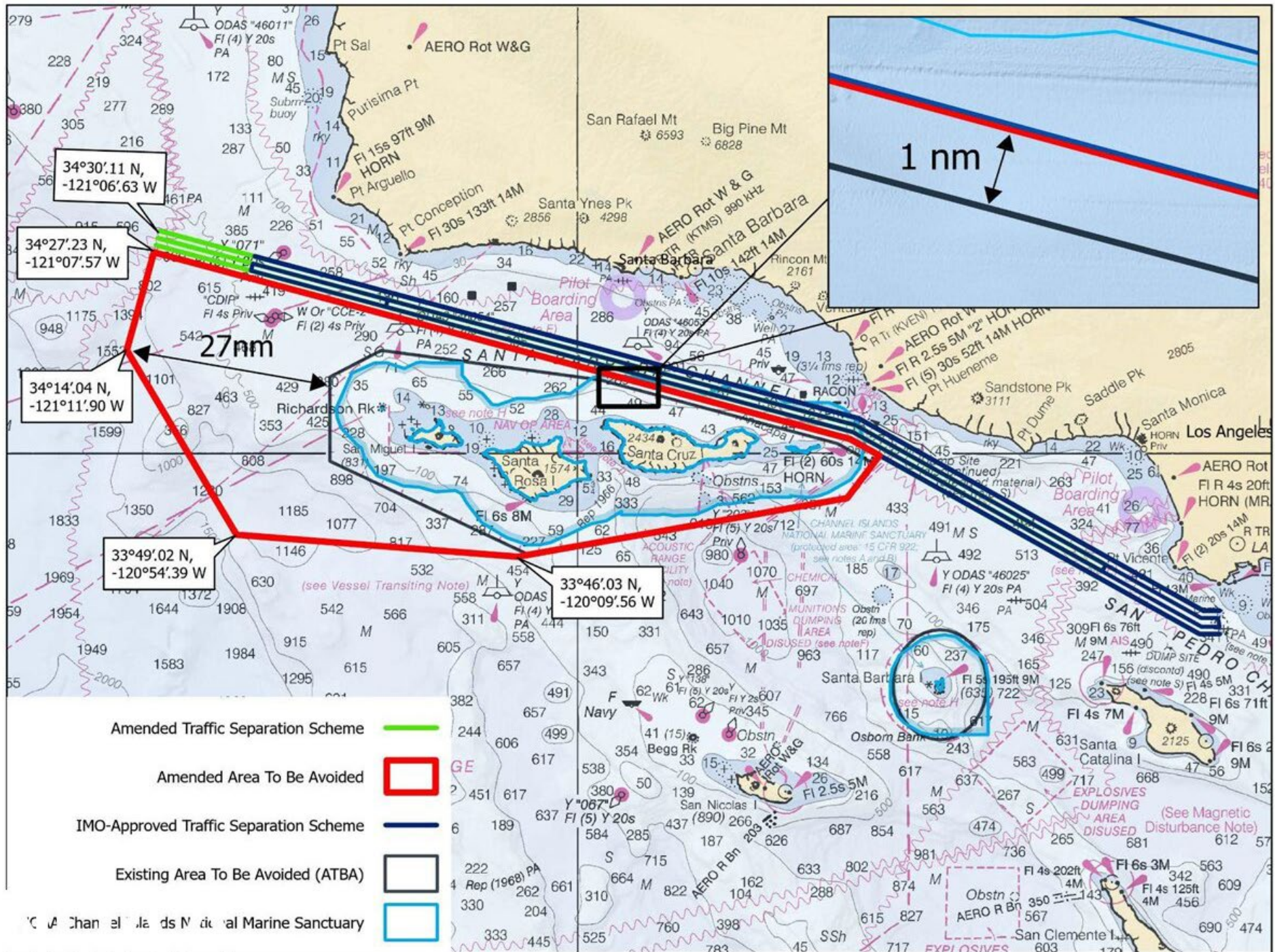
Note: These charts are based on North American 1983 datum.)

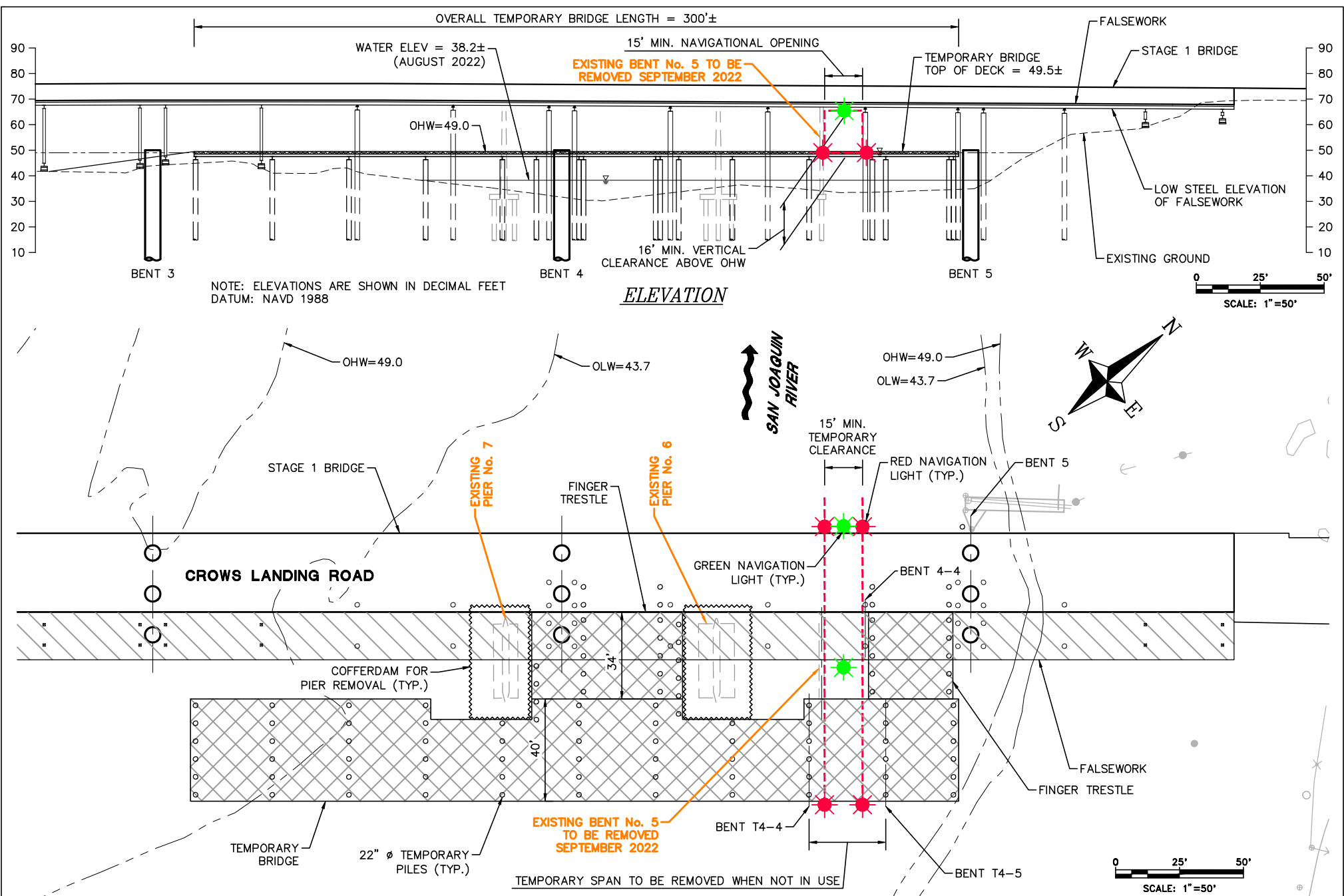
Description of the area to be avoided

- (a) **In the region of San Miguel, Santa Rosa, Santa Cruz and Anacapa Islands off the coast of southern California**

The existing area to be avoided is replaced by the area bounded by a line connecting the following geographical positions:

- (1) 34°27'.23 N, 121°07'.57 W
- (2) 34°02'.01 N, 119°16'.56 W
- (3) 33°59'.77 N, 119°11'.85 W
- (4) 33°54'.01 N, 119°16'.87 W
- (5) 33°46'.03 N, 120°09'.56 W
- (6) 33°49'.02 N, 120°54'.39 W
- (7) 34°14'.04 N, 121°11'.90 W





Temporary Navigation Lighting-Crows Landing Bridge Replacement Project - San Joaquin River

The temporary bridge, the replacement bridge and existing bridge will be lighted at night with two red lights marking the temporary navigation channel. The temporary falsework will be lighted, upriver and downriver, with green lights marking the center of the temporary navigation channel. During construction the temporary navigation channel will provide a horizontal clearance of 15 feet and a vertical clearance at Ordinary High Water of 16 feet.