



U.S. Department
of Homeland Security
**United States
Coast Guard**

LOCAL NOTICE TO MARINERS

District: 1

Week: 37/18

COASTAL WATERS FROM EASTPORT, MAINE TO SHREWSBURY, NEW JERSEY

NOTES:

- (1) Unless otherwise indicated, missing and destroyed structures are presumed to be in the immediate vicinity of assigned position. Mariners should proceed with caution.
- (2) The Local Notice to Mariners is a weekly edition.
- (3) Inquiries, published articles or Information: mail to: LNM@uscg.mil
- (4) The U.S. Coast Pilot supplements the navigational information shown on nautical charts.
- (5) The Coast Pilot, along with its corrections, are available online at <https://nauticalcharts.noaa.gov/publications/coast-pilot/index.html> .

The Local Notice to Mariners is available online at <https://www.navcen.uscg.gov/?pageName=lnmDistrict®ion=1>
 The updated 2017 Light List is available online at: <https://www.navcen.uscg.gov/?pageName=lightListWeeklyUpdates>
 Information on Private Aids to Navigation is available at: <http://www.usharbormaster.com/>
 Reports of Channel conditions can be found at the Army Corps of Engineers website at:
<http://www.nan.usace.army.mil/Missions/Navigation/ControllingDepthReports.aspx> .
 NOAA Tides and Currents can be found at: <http://tidesandcurrents.noaa.gov/> .

The United States Coast Guard Navigation Information Service (NIS), operated by the USCG Navigation Center, is staffed 24 hours a day, 7 days a week. The NIS provides information on the current operational status, effective policies, and general information for GPS and DGPS. The NIS also disseminates Safety Broadcasts (BNM), Local Notice to Mariners (LNM), and the latest Notice Advisory to Navstar Users (NANU). NANU notices can be obtained via email subscription through the USCG Navigation Center website: <http://cgls.uscg.mil/mailman/listinfo/nanu> . In addition, the NIS investigates all reports of degradation or loss of GPS, DGPS or AIS service. Users are encouraged to report all degradation or loss of radio navigation services to the NIS via any of the following: Phone: (703) 313-5900, mail to: tis-sg-nisws@uscg.mil, or on the internet at: <https://www.navcen.uscg.gov> .

PLEASE IMMEDIATELY REPORT DISCREPANCIES IN AIDS TO NAVIGATION TO THE NEAREST COAST GUARD UNIT

COMMANDER, FIRST COAST GUARD DISTRICT (dpw)
 408 Atlantic Avenue, Boston, Massachusetts 02110-3350
 Telephone: (617) 223-8356
 24 Hour FAX: (617) 223-8291
<http://www.uscg.mil/d1/prevention/Marineinfolegulations.asp>

All bearings are in degrees TRUE - All times are in Local Time unless otherwise noted.

ABBREVIATIONS

A through H

ADRIFT - Buoy Adrift
 AICW - Atlantic Intracoastal Waterway
 AI - Alternating
 B - Buoy
 BKW - Breakwater
 bl - Blast
 BNM - Broadcast Notice to Mariner
 bu - Blue
 C - Canadian
 CHAN - Channel
 CGD - Coast Guard District

I through O

I - Interrupted
 ICW - Intracoastal Waterway
 IMCH - Improper Characteristic
 INL - Inlet
 INOP - Not Operating
 INT - Intensity
 ISL - Islet
 Iso - Isophase
 kHz - Kilohertz
 LAT - Latitude
 LB - Lighted Buoy

P through Z

PRIV - Private Aid
 Q - Quick
 R - Red
 RACON - Radar Transponder Beacon
 Ra ref - Radar reflector
 RBN - Radio Beacon
 REBUILT - Aid Rebuilt
 RECOVERED - Aid Recovered
 RED - Red Buoy
 REFL - Reflective
 RRL - Range Rear Light

C/O - Cut Off	LBB - Lighted Bell Buoy	RELIGHTED - Aid Relit
CONT - Contour	LHB - Lighted Horn Buoy	RELOC - Relocated
CRK - Creek	LGB - Lighted Gong Buoy	RESET ON STATION - Aid Reset on Station
CONST - Construction	LONG - Longitude	RFL - Range Front Light
DAYMK/Daymk - Daymark	LNM - Local Notice to Mariners	RIV - River
DBN/Dbn - Daybeacon	LT - Light	RRASS - Remote Radio Activated Sound Signal
DBD/DAYBD - Dayboard	LT CONT - Light Continuous	s - seconds
DEFAC - Defaced	LTR - Letter	SEC - Section
DEST - Destroyed	LWB - Lighted Whistle Buoy	SHL - Shoaling
DISCON - Discontinued	LWP - Left Watching Properly	si - silent
DMGD/DAMGD - Damaged	MHz - Megahertz	SIG - Signal
ec - eclipse	MISS/MSNG - Missing	SND - Sound
EST - Established Aid	Mo - Morse Code	SPM - Single Point Mooring Buoy
ev - every	MRASS - Marine Radio Activated Sound Signal	SS - Sound Signal
EVAL - Evaluation	MSLD - Misleading	STA - Station
EXT - Extinguished	N/C - Not Charted	STRUCT - Structure
F - Fixed	NGA - National Geospatial-Intelligence Agency	St M - Statute Mile
fl - flash	NO/NUM - Number	TEMP - Temporary Aid Change
FI - Flashing	NOS - National Ocean Service	TMK - Topmark
G - Green	NW - Notice Writer	TRLB - Temporarily Replaced by Lighted Buoy
GIWW - Gulf Intracoastal Waterway	OBSCU - Obscured	TRLT - Temporarily Replaced by Light
HAZ - Hazard to Navigation	OBST - Obstruction	TRUB - Temporarily Replaced by Unlighted Buoy
HBR - Harbor	OBSTR - Obstruction	USACE - Army Corps of Engineers
HOR - Horizontal Clearance	Oc - Occulting	W - White
HT - Height	ODAS - Anchored Oceanographic Data Buoy	Y - Yellow

Additional Abbreviations Specific to this LNM Edition:

SNNE- U.S. Coast Guard Sector Northern New England
 SBOS- U.S. Coast Guard Sector Boston
 SENE- U.S. Coast Guard Sector Southeastern New England
 SLIS- U.S. Coast Guard Sector Long Island Sound
 SNEW- U.S. Coast Guard Sector New York

AIS - Automatic Identification System
 AtoN - Aids to Navigation
 LLNR - Light List Number
 NM - Nautical Mile

SECTION I - SPECIAL NOTICES

This section contains information of special concern to the Mariner.

MA – CAPE COD CANAL

Mariners are advised that all vessels 65 feet and over shall not enter the Cape Cod Canal until clearance has been obtained from the Marine Traffic Controller by radio. Vessels shall request clearance at least 15 minutes prior to entering the Cape Cod Canal at any point. The Cape Cod Canal, including approaches extends from 1.6 miles seaward of the Canal Breakwater Light (East Entrance Cape Cod Bay) through the land cut to Cleveland Ledge Light in Buzzards Bay approximately 4 miles southwest of Wings Neck. Vessels should contact with Cape Cod Canal Marine Traffic Control on VHF-FM channel 13. All vessels are required to maintain a radio guard on channel 13 during the entire passage. Speed limit is 10mph.

LNM 28/18

INMARSAT I-3 TO I-4 SATELLITE MIGRATION UPDATE (Revised 17/18)

Inmarsat has rescheduled the Inmarsat C services migration. The revised migration dates follow: Atlantic Ocean Region West (AORW) May 2018, Pacific Ocean Region (POR) July 2018, Atlantic Ocean Region East (AORE) September 2018, and Indian Ocean Region (IOR) October 2018. For further details on the satellite migration plan and new satellite footprints, consult Inmarsat at <https://www.inmarsat.com/i3-i4->

LNM 17/18

Notice of Arrival Requirements for Foreign Recreational Vessels and Yachts over 300 Gross Tons

As specified within Part 160, Subpart C, of Title 33 Code of Federal Regulations, foreign recreational vessels over 300 Gross Tons or greater than 300 tons per the International Tonnage Convention are required to file a Notice of Arrival with the National Vessel Movement Center prior

to arrival at a U.S. port or place of destination.

Vessel operators have expressed concern regarding how "Cruising Licenses," issued by Customs and Border Protection, relate to the Notice of Arrival requirements. While vessels that receive a Cruising License may have reduced reporting requirements to Customs as the vessel moves between Captain of the Port zones, Notice of Arrival requirements are unchanged. Failure to submit a complete and accurate Notice of Arrival, within the required timelines, may result in fines or other enforcement action.

Boundaries for the First Coast Guard District Captain of the Port zones can be found at 33 Code of Federal Regulations Part 3.05. Or at the link here: https://www.ecfr.gov/cgi-bin/text-idx?SID=07d09d74f246160f10d340bee84b6775&mc=true&node=sp33.1.3.3_105&rgn=div6

Procedures on how to submit a Notice of Arrival are available at the National Vessel Movement Center's website: <https://www.nvmc.uscg.gov/nvmc>

Questions regarding Notice of Arrival requirements within Coast Guard First District should be forwarded to the Inspections and Investigations Division at D01-SMB-D1-DPI@uscg.mil.

LNM 13/18

MARINER ALERT-SHIP/WHALE COLLISIONS

Collisions between vessels and whales are a threat to a number of endangered large whale species – most notably, the right whale. The United States has established measures to reduce this threat. A vessel speed restriction requires that vessels 65 feet or greater in length travel 10 knots or less in certain areas and on a rolling basis at certain times where endangered right whales may be present: :

<http://www.greateratlantic.fisheries.noaa.gov/protected/shipstrike/training/NOAA-RightWhalesCD.iso>. This rule applies within 20 nautical miles around all major ports and in other locations along the U.S. eastern seaboard. Temporary voluntary speed limits also may be imposed in other areas when an aggregation of three or more right whales is confirmed. In addition, ships 300 GT and greater are required to report their location and speed to a USCG shore station in certain prescribed areas:

https://www.greateratlantic.fisheries.noaa.gov/shipstrike/doc/guidelines%20placard_high.pdf. A computer-based interactive guide and training resource for mariners is available at: <http://www.greateratlantic.fisheries.noaa.gov/shipstrike/doc/mtr.html>. The guide provides information on endangered whales, recommended navigational actions when operating in whale habitat, a guide to reporting sightings of dead or injured right whales, and related information. Additional steps mariners can take to help reduce the chances of hitting a right whale can be found at: http://www.nero.noaa.gov/shipstrike/doc/guidelines%20placard_high.pdf.

LNM 17/18

NOTICE TO ALL PRIVATE BOATS AT SEA

United States laws and regulations require that ALL private boats arriving from a foreign port or place MUST report to the Bureau of Customs and Border Protection IMMEDIATELY upon their arrival into the United States. Every person entering the United States must be seen in person for immigration purposes by a Customs and Border Protection officer, except those participating in the I-68 -Canadian Border Boat Landing Program-. However, holders of form I-68 are still required to report their arrival into the United States to the Bureau of Customs and Border Protection. Masters and passengers must provide proof of citizenship or legal immigration status, and be in possession of a valid passport and visa, if required. Citizens of countries that are participants in the Visa Waiver Program are not eligible to seek admission to the United States under that program via private vessel. Once your boat is anchored or tied, you are considered to have entered the United States. No one may leave the vessel until Customs and Border Protection grants permission. The only exception to this requirement is to report arrival. In order to fulfill the requirement to immediately report a private boat arrival, the master of the vessel must contact the nearest Customs and Border Protection Office, or if the arrival occurs after business hours, the nearest 24 hour port of entry. Upon reporting, you may be required to proceed to a staffed port for inspection by Customs and Border Protection. Failure to comply with these requirements could result in serious criminal and civil penalties, including seizure of the boat. International mariners are urged to report any suspicious or illegal activity to the Bureau of Customs and Border Protection at 1-800-BE-ALERT.

LNM 13/18

NY/NJ – OPERATION CLEAR CHANNEL IN THE PORT OF NY/NJ

The Operation Clear Channel program is designed to educate boaters about the hazards of operating small vessels and personal watercraft in the confines of navigational channels used by larger commercial ships. Federal Navigation Rules, also known as the "Rules of the Road", address this safety concern by giving commercial vessels priority, or right-of-way, over smaller vessels when navigating in narrow channels. An average of 1,400 commercial vessels navigate the waters of the Port of NY/NJ every day and the masters of these vessels, while always on the lookout, cannot always see smaller vessels operating within the channels.

Recreational boaters should keep a sharp lookout and always be prepared to give way to ships constrained in their ability to maneuver, especially when operating within close proximity of a channel. U.S. Coast Guard units in New York and New Jersey actively promote boater awareness through vessel enforcement patrols and visits to local marinas. The U.S. Coast Guard focuses Operation Clear Channel efforts on high-traffic regions, such as Ambrose Channel, Sandy Hook Channel and Raritan Bay, but patrols all of New York Harbor in an effort to promote awareness. Mariners interested in increasing their knowledge of boating safety, including the "Rules of the Road", should consider a U.S. Coast

Guard Auxiliary boating safety course. Course information is available online at <http://www.cgaux.org> in the "Take a Boating This free online educational resource for safe boating in the Port of NY & NJ is a cooperative effort by the I BOAT NJ program through NJ DOT and U.S. Coast Guard Sector New York. The project contains a feature length 26 minute safety video describing the challenges of the multi user Port environment and 5 sub chapters: Paddlers, Motor Boaters, Sailors, Pilots and Operation Clear Channel. Its mission is to increase safety and awareness in the Port and its target is recreational boaters who transit and operate in the PortCourse" section, or by calling 1-800-336-BOAT. Further information can be found at <http://thesafeharbor.us/index.html> .

LNM 13/18

US NOTICE TO MARINERS (NTM)

The US Notice to Mariners provides timely marine safety information for the correction of all US Government navigation charts and publications from a wide variety of sources both foreign and domestic. To ensure the safety of life at sea, the information published in the Notice to Mariners is designed to provide for the correction of unclassified nautical charts, the Unclassified NGA/DLIS Catalog of Hydrographic Products, United States Coast Pilots, NGA List of Lights, USCG Light Lists, and other related nautical publications produced by NGA, NOS and the U.S. Coast Guard. The US Notice to Mariners will contain only those chart corrections of interest to ocean going vessels. It is available online at http://msi.nga.mil/NGAPortal/MSI.portal?nfpb=true&pageLabel=msi_portal_page_61 . NTM 01 – Special Paragraphs includes information on: America's Waterway Watch program asking those who work, live, or recreate on or near the water to be aware of suspicious activity, The Prudent Mariner and the use of floating Aids to Navigation, and Northern Right Whales.

LNM 13/18

SECTION II - DISCREPANCIES

This section lists all reported and corrected discrepancies related to Aids to Navigation in this edition. A discrepancy is a change in the status of an aid to navigation that differs from what is published or charted.

DISCREPANCIES (FEDERAL AIDS)

LLNR	Aid Name	Status	Chart No.	BNM Ref.	LNM St	LNM End
1105	Thornton Point Ledge Daybeacon 4	STRUCT DEST	13392	SNNE-0050-18	14/18	
1215	Little Breaking Ledge Lighted Gong Buoy 1	SS INOP	13326	SNNE-0088-18	22/18	
1770	Petit Manan West Bar Bell Buoy WB	SS INOP	13324	SNNE-0131-18	31/18	
3450	Porcupine Ledge Bell Buoy 3	SS INOP	13305	SNNE-0091-18	22/18	
3460	Eagle Island Gong Buoy 3A	SS INOP	13305	SNNE-0092-18	22/18	
4100	Drunkard Ledge Daybeacon	DAYMK IMCH	13308	SNNE-0037-18	11/18	
5790	Cross Point Lighted Buoy CP	LT IMCH	13296	None	28/17	
6055	Kennebec River Lighted Buoy 8	LT EXT	13295	None	30/18	
6450	White Bull Lighted Gong Buoy WB	SS INOP	13290	SNNE-0140-18	34/18	
6630	Elm Island Buoy 6	SINKING	13290	SNNE-0104-18	24/18	
6720	Merriconeag Sound Approach Daybeacon 10	DAYMK IMCH	13290	SNNE-0142-17	35/17	
6820	Stockman Island Daybeacon 2	DAYMK IMCH	13290	SNNE-0141-17	35/17	
7155	Hussey Sound Lighted Buoy 11	LT EXT	13292	SNNE-0143-18	35/18	
8085	Biddeford Pool Channel Buoy 10	SINKING	13287	SNNE-0137-18	34/18	
8155	Fishing Rock Daybeacon F	DAYMK MISSING	13286	SNNE-0050-17	19/17	
8750	Hicks Rock Daybeacon 2	DAYMK DMGD	13283	SNNE-0144-17	35/17	
10615	Black Marsh Channel Light 15	DAYMK IMCH	13275	SBOS-0085-18	17/18	
11715	Weymouth Fore River Channel Light 16	DAYMK MISSING	13270	SBOS-0114-17	47/17	
12185	Cohasset Channel Light 8	MISSING/DAYMK IMCH	13269	SBOS-0020-18	03/18	
12360	South River Buoy 2	OFF STA	13267	SBOS-0145-18	32/18	
13785	Handkerchief Shoal Buoy 2	OFF STA	13237	SENE-0363-18	36/18	
17780	Beavertail Light	SS INOP	13223	SENE-0324-18	34/18	
18005	Coddington Cove Breakwater Light 18	LT EXT	13223	SENE-0359-18	36/18	
19515	Point Judith Harbor Buoy 2	SINKING	13219	SENE-0364-18	37/18	
19825	Valiant Rock Lighted Whistle Buoy 11	RAC INOP	13212	SLIS-0252-18	34/18	
20245	Little Narragansett Bay Channel Buoy 16	MISSING	13214	SLIS-0267-08	37/18	

21400	Great Captain Island Light	REDUCED INT	12367	None	52/17
21650	Mattituck Breakwater Light MI	LT EXT	12358	SLIS-0265-18	36/18
22900	Connecticut River Range A Front Light 40	LT IMCH	12377	SLIS-0198-18	27/18
23455	Kelsey Point Breakwater Light	DAYMK MISSING	12374	SLIS-0230-18	31/18
24640	Bridgeport Harbor Channel Lighted Buoy 13	LT EXT	12369	SLIS-0155-18	22/18
25225	Stamford Harbor East Breakwater Light 4	LT EXT/DAYMK DMGD	12368	SLIS 226-18	22/18
25530	Byram Harbor Reef Buoy 4	OFF STA	12367	SLIS-0172-18	25/18
34210	Rockaway Inlet Lighted Bell Buoy 2	OFF STA/SS INOP	12402	SNEW-0393-18	32/18
36480	Raritan River Light 14	STRUCT DMGD	12332	SNEW-0365-17	29/17
37200	Claremont Terminal Channel Lighted Buoy 2	OFF STA	12334	SNEW-0532-18	32/18
38395	Hudson River Lighted Buoy 98	LT IMCH	12347	SNEW-0619-18	37/18
40100	Whipple Point Light	LT EXT	14784	SNNE-0111-18	26/18

DISCREPANCIES (FEDERAL AIDS) CORRECTED

LLNR	Aid Name	Status	Chart No.	BNM Ref.	LNM St	LNM End
330	Eastern Point Light	WATCHING PROPERLY	13281	SBOS-0160-18	37/18	37/18
4575	South Breaker Bell Buoy 2SB	WATCHING PROPERLY	13301	SNNE-0099-18	24/18	37/18
7565	Portland Head Light	WATCHING PROPERLY	13292	SNNE-0147-18	37/18	37/18
9010	Merrimack River Entrance South Jetty Light 5	WATCHING PROPERLY	13282	SBOS-0158-18	36/18	37/18
9295	Merrimack River Buoy 76	WATCHING PROPERLY	13274	SBOS-0148-18	35/18	37/18
21420	Matinecock Point Shoal Lighted Gong Buoy 21	WATCHING PROPERLY	12367	SLIS-0258-18	36/18	37/18
21840	Frank Ledge Buoy F	WATCHING PROPERLY	13213		34/18	37/18
22875	Connecticut River Buoy 33	WATCHING PROPERLY	12375	SLIS-0241-18	32/18	37/18
24510	Housatonic River Channel Buoy 40	WATCHING PROPERLY	12370	SLIS-0266-18	36/18	37/18
37365	Kill Van Kull Channel Buoy 21	WATCHING PROPERLY	12333	SNEW-0625-18	37/18	37/18

DISCREPANCIES (PRIVATE AIDS)

LLNR	Aid Name	Status	Chart No.	BNM Ref.	LNM St	LNM End
305	Thacher Island North Light	LT EXT	13279	SBOS-0101-16	48/16	
368	Neptune LNG Deepwater Port Lighted Buoy North A1	MISSING	13274	SBOS-0069-18	12/18	
368.2	Neptune LNG Deepwater Port Lighted Buoy South B1	OFF STA	13274	SBOS-0099-17	41/17	
369.5	Neptune LNG Deepwater Port Lighted Hazard Buoy	LT EXT	13275	SBOS-0103-17	42/16	
589	WHOI Research Light Tower	SS INOP	13233	SENE-0350-18	35/18	
1013.2	ORPC Cobscook Bay Lighted Buoy C	MISSING	13396	SNNE-0142-18	35/18	
7775	Mill Cove Daybeacon 8	MISSING	13292	None	15/18	
10135	Dion Yacht Yard Channel Daybeacon 1	DAYMK IMCH	13276	SBOS-0198-15	34/15	
10138	Dion Yacht Yard Channel Daybeacon 7	DAYMK IMCH	13276	SBOS-0199-15	34/15	
10138.1	Dion Yacht Yard Channel Daybeacon 8	DAYMK IMCH	13276	SBOS-0200-15	34/15	
10139	Dion Yacht Yard Channel Daybeacon 9	DAYMK IMCH	13276	SBOS-0201-15	34/15	
10140	Dion Yacht Yard Preferred Channel Daybeacon	DAYMK IMCH	13276	SBOS-0197-15	34/15	
10926	Fan Pier South Hazard Lighted Buoy	LT EXT	13272	SBOS-0084-15	12/15	
11119	Logan Airport Security Zone Buoy 9	OFF STA	13270	SBOS-0022-18	03/18	
11240	UMass Buoy 1	MISSING	13270	SBOS-0140-18	32/18	
11240.7	UMass Buoy 8	MISSING	13270	SBOS-0141-18	32/18	
11260	Dorchester Bay Basin Channel Buoy 1	DAYMK IMCH	13270	SBOS-0057-17	25/17	
11265	Dorchester Bay Basin Channel Buoy 2	DAYMK IMCH	13270	SBOS-0058-17	25/17	
11275	Dorchester Bay Basin Channel Buoy 4	DAYMK IMCH	13270	SBOS-0059-17	25/17	
11280	Dorchester Bay Basin Channel Buoy 5	DAYMK IMCH	13270	SBOS-0060-17	25/17	

11285	Dorchester Bay Basin Channel Buoy 6	DAYMK IMCH	13270	SBOS-0061-17	25/17
11411	Nantasket Roads DRC Lighted Hazard Buoy A	LT IMCH	13270	SBOS-0138-15	28/15
11411.1	Nantasket Roads DRC Lighted Hazard Buoy B	MISSING	13270	SBOS-0093-15	14/15
11411.2	Nantasket Roads DRC Lighted Hazard Buoy C	OFF STA/LT EXT	13270	SBOS-0094-15	10/15
11411.3	Nantasket Roads DRC Lighted Hazard Buoy D	MISSING	13270	SBOS-0064-17	25/17
11582	Spectacle Island Lighted No Wake Buoy C	SINKING	13270	SBOS-0028-18	03/18
12710	Duxbury Bay Beach Channel Buoy 10	OFF STA	13253	SBOS-0040-17	22/17
17026.1	Brant Island Cove Channel Lighted Buoy 1	OFF STA	13232	SENE-0307-18	33/18
17026.2	Brant Island Cove Channel Lighted Buoy 2	OFF STA	13232	SENE-0310-18	31/18
17026.4	Brant Island Cove Channel Lighted Buoy 4	OFF STA	13232	SENE-0311-18	31/18
17546	Westport Harbor Boat Ramp Entrance Buoy 2	OFF STA	13228	NONE	34/17
17548	Westport Harbor Boat Ramp Entrance Buoy 4	OFF STA	13228	NONE	34/17
17550.6	Westport River West Branch Channel Buoy 7	OFF STA	13228	SNNE-0220-17	34/17
17550.7	Westport River West Branch Channel Buoy 8	OFF STA	13228	NONE	34/17
17853	Newport Harbor North Channel Buoy 1	DAYMK IMCH	13223	SENE-0210-17	33/17
17853.3	Newport Harbor North Channel Buoy 4	DAYMK IMCH	13223	NONE	33/17
17910	Newport - Pell Bridge Racon	RAC IMCH	13223	SENE-0269-17	42/17
18062	Salt Water Farms Aquaculture Lighted Buoy A	LT IMCH	13223	NONE	34/17
18062.1	Salt Water Farms Aquaculture Lighted Buoy B	LT IMCH	13223	NONE	34/17
18062.2	Salt Water Farms Aquaculture Lighted Buoy C	LT IMCH	13223	NONE	34/17
18062.3	Salt Water Farms Aquaculture Lighted Buoy D	LT IMCH	13223	NONE	34/17
18195	Bristol Harbor Channel Daybeacon 6	DAYMK DMGD	13224	SENE-0280-17	45/17
18786	Mount Hope Bay Bridge Fog Signal	SS INOP	13224	SENE-0202-17	32/17
20531.1	Mystic River Fairway Channel Daybeacon 2	MISSING	13214	SLIS-0087-17	27/17
20531.3	Mystic River Fairway Channel Daybeacon 4	OFF STA	13214	SLIS-0087-17	27/17
20531.4	Mystic River Fairway Channel Daybeacon 5	MISSING	13214	SLIS-0087-17	27/17
21944	State Pier Light	LT IMCH	13213	SLIS-0153-17	40/17
22572	Old Saybrook North Cove Buoy 5	OFF STA	12375	SLIS-0002-18	01/18
24735	Ash Creek Lighted Buoy 1	OFF STA	12369	SLIS-0016-18	02/18
24740	Ash Creek Lighted Buoy 2	OFF STA	12369	SLIS-0016-18	02/18
24745	Ash Creek Lighted Buoy 3	OFF STA	12369	SLIS-0016-18	02/18
24750	Ash Creek Lighted Buoy 4	OFF STA	12369	SLIS-0016-18	02/18
24755	Ash Creek Lighted Buoy 5	OFF STA	12369	SLIS-0016-18	02/18
24760	Ash Creek Lighted Buoy 6	OFF STA	12369	SLIS-0016-18	02/18
25556.1	Tide Mill Yacht Basin Channel Buoy 1	OFF STA	12367	SLIS-0166-17	41/17
25556.2	Tide Mill Yacht Basin Channel Buoy 2	OFF STA	12367	SLIS-0166-17	41/17
25556.6	Tide Mill Yacht Basin Channel Buoy 8	OFF STA	12367	SLIS-0166-17	41/17
25559	Tide Mill Yacht Basin Channel Buoy 14	OFF STA	12367	SLIS-0166-17	41/17
26070	Mount Sinai Harbor Breakwater Light	LT EXT	12362	SLIS-0168-17	41/17
26075	Mount Sinai Harbor Lighted Buoy 3	OFF STA	12362	SLIS-0169-17	40/17
26085	Mount Sinai Harbor Buoy 4	OFF STA	12362	SLIS-0169-17	40/17
26090	Mount Sinai Harbor Buoy 7	OFF STA	12362	SLIS-0169-16	34/16
26110	Mount Sinai Harbor Buoy 10	OFF STA	12362	SLIS-0169-17	41/17

26115	Mount Sinai Harbor Buoy 12	OFF STA	12362	SLIS-0169-17	40/17
26625	Huntington Harbor Inner Buoy 3	OFF STA	12365	SLIS-0005-18	02/18
26895	Oyster Bay Harbor Channel Junction Lighted Buoy B	OFF STA	12365	SLIS-0143-18	20/18
29600	Fox Creek Channel Lighted Buoy 1	OFF STA	12352	SLIS-0234-18	32/18
29610	Fox Creek Channel Buoy 3	OFF STA	12352	SLIS-0236-18	32/18
35025	Highlands Light	LT EXT	12324	SNEW-0203-18	15/18
35560	Leonardo Channel Buoy 1	MISSING	12401	SNEW-0222-18	17/18
35575	Leonardo Channel Buoy 4	MISSING	12401	SNEW-0223-18	17/18
36665	Maurer North Range Front Light	LT EXT	12331	SNEW-0247-16	28/16
36670	Maurer North Range Rear Light	LT EXT	12327	SNEW-0247-16	28/16
36675	Maurer Rock Lighted Buoy A	OFF STA	12331	SNEW-0011-18	01/18
36680	Maurer Rock Lighted Buoy B	OFF STA	12331	SNEW-0012-18	03/18
36888	NYPD Buoy 1	MISSING	12334	SNEW-0474-18	28/18
36889	NYPD Buoy 2	MISSING	12334	SNEW-0474-18	28/18
37247.2	Liberty Island Security Zone Buoy LISZ3	LT EXT	12334	NONE	48/17
37374	Shooters Island South Channel Wreck Lighted Buoy WR1	MISSING	12333	SNEW-0147-17	15/17
37856	UWNY Pilot Intake Lighted Hazard Buoy	MISSING	12343	NONE	35/16
37931	Indian Point Security Zone Buoy A	OFF STA	12343	SNY-0591-18	35/18

DISCREPANCIES (PRIVATE AIDS) CORRECTED

LLNR	Aid Name	Status	Chart No.	BNM Ref.	LNM St	LNM End
21730	East End Oysters Aquaculture Lighted Buoy	DISCONTINUED	12354	SLIS-0197-16	40/16	37/18
29721	Great River Entrance Light 2	WATCHING PROPERLY	12352	SLIS-0128-17	35/17	37/18
29722	Brick Kiln Lighted Buoy 2	WATCHING PROPERLY	12352	SLIS-0239-17	35/17	37/18

PLATFORM DISCREPANCIES

Nam	Status	Position	BNM Ref.	LNM St	LNM End
-----	--------	----------	----------	--------	---------

None

PLATFORM DISCREPANCIES CORRECTED

Nam	Status	Position	BNM Ref.	LNM St	LNM End
-----	--------	----------	----------	--------	---------

None

SECTION III - TEMPORARY CHANGES and TEMPORARY CHANGES CORRECTED

This section contains temporary changes and corrections to Aids to Navigation for this edition. When charted aids are temporarily relocated for dredging, testing, evaluation, or marking an obstruction, a temporary correction shall be listed in Section IV giving the new position.

TEMPORARY CHANGES

LLNR	Aid Name	Status	Chart No.	BNM Ref.	LNM St	LNM End
368.2	Neptune LNG Deepwater Port Lighted Buoy South B1	DISCONTINUED	13274	NONE	49/16	
3300	Penobscot Bay East Approach Lighted Whistle Buoy PBA	DISCONTINUED	13303	SNNE-0070-17	22/17	
5970	Carleton Ledges Jetty Daybeacon 33	TRUB	13296	SNNE-0086-18	20/18	
9990	Whaleback Daybeacon 8	DISCONTINUED	13275	SBOS-0076-13	01/16	
10685	Boston North Channel Lighted Bell Buoy 2	RELOCATED FOR DREDGING	13270	None	35/18	
10690	Boston North Channel Lighted Buoy 3	RELOCATED FOR DREDGING	13270	None	35/18	
10815	President Roads Anchorage Gong Buoy A	RELOCATED FOR DREDGING	13272	None	35/18	
10820	President Roads Anchorage Lighted Buoy B	RELOCATED FOR DREDGING	13272	None	35/18	
10852	President Roads Anchorage Buoy C	RELOCATED FOR DREDGING	13272	None	35/18	

10855	President Roads Anchorage Lighted Buoy D	RELOCATED FOR DREDGING	13272	None	35/18
10897	Boston Main Channel Buoy 5A	TRLB	13272	None	35/18
11519	Peddocks Island Channel Lighted Buoy 4P	ESTABLISHED	13270	sbos-0138-18	31/18
13283	Provincetown Harbor Mooring Buoy E	TRUB	13249	NONE	14/18
14715	Southwest Rock Buoy 2SR	DISCONTINUED	13229	SENE-0002-18	01/18
20367	Pawcatuck River Channel Daybeacon 23	DISCONTINUED	13214	SLIS-0206-15	18/15
22940	Connecticut River Light 48	TRUB	12377	SLIS-0238-18	32/18
24775	Southport Harbor Channel Buoy 4	DISCONTINUED	12369	NONE	19/18
24835	Saugatuck River Buoy 8	TRUB	12368	SLIS-0242-18	32/18
24912.2	Longshore Channel Buoy 3	DISCONTINUED	12368	SLIS-0154-17	05/18
24912.3	Longshore Channel Buoy 4	DISCONTINUED	12368	SLIS-0175-18	05/18
24912.4	Longshore Channel Buoy 5	DISCONTINUED	12368	SLIS-0154-17	05/18
24912.5	Longshore Channel Buoy 6	DISCONTINUED	12368	SLIS-0154-17	05/18
24912.6	Longshore Channel Buoy 7	DISCONTINUED	12368	SLIS-0154-17	05/18
24912.7	Longshore Channel Buoy 8	DISCONTINUED	12368	SLIS-0154-17	05/18
27747	Out East Oysters Lighted Aquaculture Buoy A	DISCONTINUED	13209	NONE	35/17
27747.1	Out East Oysters Lighted Aquaculture Buoy B	DISCONTINUED	13209	NONE	35/17
27747.2	Out East Oysters Lighted Aquaculture Buoy C	DISCONTINUED	13209	NONE	35/17
27747.3	Out East Oysters Lighted Aquaculture Buoy D	DISCONTINUED	13209	NONE	35/17
30570	Quantuck Canal Daybeacon 9	TRUB	12352	SLIS-0079-18	10/18
30905	Jones Inlet Lighted Buoy 1	DISCONTINUED	12352	SLIS-0228-18	30/18
31040	Sloop Channel Light 8	RELOCATED	12352	NONE	14/18
31040	Sloop Channel Light 8	TRLB	12352	NONE	14/18
31050	Sloop Channel Daybeacon 10	TRUB	12352	SLIS-0109-18	14/08
34290	Rockaway Inlet West Channel Buoy 4	TRUB	12350	SNEW-0475-18	31/18
36335	Ward Point Secondary Channel Light W	DISCONTINUED	12331	SNEW-0250-18	19/18
36536	Raritan River Lighted Buoy 34	DISCONTINUED	12332	SNEW-0240-18	19/18
36537	Raritan River Lighted Buoy 35	DISCONTINUED	12332	SNEW-0240-18	19/18
36541	Raritan River Lighted Buoy 38	DISCONTINUED	12332	SNEW-0240-18	19/18
36543	Raritan River Lighted Buoy 41	DISCONTINUED	12332	SNEW-0240-18	19/18
36546	Raritan River Lighted Buoy 44	DISCONTINUED	12332	SNEW-0240-18	19/18
36547	Raritan River Lighted Buoy 45	DISCONTINUED	12332	SNEW-0240-18	19/18
36548	Raritan River Lighted Buoy 46	DISCONTINUED	12332	SNEW-0240-18	19/18
36549	Raritan River Lighted Buoy 47	DISCONTINUED	12332	SNEW-0240-18	19/18
36551	Raritan River Lighted Buoy 48	DISCONTINUED	12332	SNEW-0240-18	19/18
36553	Raritan River Lighted Buoy 50	DISCONTINUED	12332	SNEW-0240-18	19/18
36556	Raritan River Lighted Buoy 52	DISCONTINUED	12332	SNEW-0240-18	19/18
36557	Raritan River Lighted Buoy 53	DISCONTINUED	12332	SNEW-0240-18	19/18
36558	Raritan River Lighted Buoy 54	DISCONTINUED	12332	SNEW-0240-18	19/18
36559	Raritan River Lighted Buoy 55	DISCONTINUED	12332	SNEW-0240-18	19/18
36562	Raritan River Lighted Buoy 58	DISCONTINUED	12332	SNEW-0240-18	19/18
36563	Raritan River Lighted Buoy 59	DISCONTINUED	12332	SNEW-0240-18	19/18

36564	Raritan River Lighted Buoy 60	DISCONTINUED	12332	SNEW-0240-18	19/18
36565	Raritan River Lighted Buoy 62	DISCONTINUED	12332	SNEW-0240-18	19/18
36566	Raritan River Lighted Buoy 64	DISCONTINUED	12332	SNEW-0240-18	19/18
36567	Raritan River Lighted Buoy 65	DISCONTINUED	12332	SNEW-0240-18	19/18
36568	Raritan River Lighted Buoy 66	DISCONTINUED	12332	SNEW-0240-18	19/18
36569	Raritan River Lighted Buoy 67	DISCONTINUED	12332	LNM-0240-18	19/18
36570	Raritan River Lighted Buoy 69	DISCONTINUED	12332	SNEW-0240-18	19/18
36572	Raritan River Lighted Buoy 71	DISCONTINUED	12332	SNEW-0240-18	19/18
37170	Port Jersey Channel North Lighted Buoy 2	TRLB	12334	SNEW-0520-18	31/18
39455	Valcour East Shoal Buoy 26	TRUB	14782	NONE	27/18
	Annisquam River South Entrance Daybeacon	DISCONTINUED	13281	SBOS-0143-14	34/15
	Merrimack River Bar Guide Light	DISCONTINUED	13282	SBOS-0087-15	12/15
	Peddocks Island Channel Light 4P	DISCONTINUED	13270	SBOS-0082-18	16/18

TEMPORARY CHANGES CORRECTED

LLNR	Aid Name	Status	Chart No.	BNM Ref.	LNM St	LNM End
------	----------	--------	-----------	----------	--------	---------

None

PLATFORM TEMPORARY CHANGES

Nam	Status	Position	BNM Ref.	LNM St	LNM End
-----	--------	----------	----------	--------	---------

None

PLATFORM TEMPORARY CHANGES CORRECTED

Nam	Status	Position	BNM Ref.	LNM St	LNM End
-----	--------	----------	----------	--------	---------

None

SECTION IV - CHART CORRECTIONS

This section contains corrections to federally and privately maintained Aids to Navigation, as well as NOS corrections.

This section contains corrective actions affecting chart(s). Corrections appear numerically by chart number, and pertain to that chart only. It is up to the mariner to decide which chart(s) are to be corrected. The following example explains individual elements of a typical chart correction.

Chart Number	Chart Edition	Edition Date	Last Local Notice to Mariners	Horizontal Datum Reference	Source of Correction	Current Local Notice to Mariners
12327	91st Ed.	19-APR-97	Last LNM: 26/97	NAD 83		27/97
Chart Title: NY-NJ-NEW YORK HARBOR - RARITAN RIVER						
Main Panel 2245 NEW YORK HARBOR						
(Temp)	ADD	NATIONAL DOCK CHANNEL BUOY 3			CGD01	074-02-48.001W
	Green can				at 40-41-09.001N	
	Corrective Action	Object of Corrective Action			Position	

(Temp) indicates that the chart correction action is temporary in nature. Courses and bearings are given in degrees clockwise from 000 true. Bearings of light sectors are toward the light from seaward. The nominal range of lights is expressed in nautical miles (NM) unless otherwise noted.

13229 **33rd Ed.** **01-SEP-16** **Last LNM: 34/18** **NAD 83** **37/18**

Chart Title: South Coast of Cape Cod and Buzzards Bay

Inset 2124 ACUSHNET RIVER MA INSET 6. Page/Side: _01

CGD01

RELOCATE	New Bedford South Terminal Buoy 1	from 41-37-16.747N to 41-37-17.580N CGD01	070-54-46.430W 070-54-46.020W
RELOCATE	New Bedford South Terminal Buoy 3	from 41-37-15.069N to 41-37-15.960N CGD01	070-54-48.307W 070-54-46.860W
RELOCATE	New Bedford South Terminal Buoy 4	from 41-37-15.228N to 41-37-15.240N CGD01	070-54-49.365W 070-54-48.900W
RELOCATE	New Bedford South Terminal Buoy 5	from 41-37-14.038N to 41-37-14.940N	070-54-49.460W 070-54-48.300W

13232 **5th Ed.** **01-NOV-09** **Last LNM: 18/18** **NAD 83** **37/18**

ChartTitle: New Bedford Harbor and Approaches

Extension 2915 CONTINUATION OF APPONAGANSETT BAY. Page/Side: N/A

RELOCATE	New Bedford South Terminal Buoy 1	CGD01 from 41-37-16.747N to 41-37-17.580N	070-54-46.430W 070-54-46.020W
RELOCATE	New Bedford South Terminal Buoy 3	CGD01 from 41-37-15.069N to 41-37-15.960N	070-54-48.307W 070-54-46.860W
RELOCATE	New Bedford South Terminal Buoy 4	CGD01 from 41-37-15.228N to 41-37-15.240N	070-54-49.365W 070-54-48.900W
RELOCATE	New Bedford South Terminal Buoy 5	CGD01 from 41-37-14.038N to 41-37-14.940N	070-54-49.460W 070-54-48.300W

13253 **20th Ed.** **01-JUL-10** **Last LNM: 21/18** **NAD 83** **37/18**

ChartTitle: Harbors of Plymouth, Kingston and Duxbury; Green Harbor

Inset 2092 GREEN HARBOR MA. Page/Side: N/A

CHANGE	Depth Legend - Green Harbor; 1 1/2 FT JUN 2018 (NOS NW-28162)	NOS 42-04-57.090N	070-38-49.950W
CHANGE	Depth Legend - Green Harbor; 1 1/2 FT LEFT 25 FT JUN 2018 (NOS NW-)	NOS 42-04-43.630N	070-38-41.980W
CHANGE	Depth Legend - Green Harbor; 6 FT JUN 2018 (NOS NW-28162)	NOS 42-04-35.320N	070-38-35.430W

SECTION V - ADVANCE NOTICES

This section contains advance notice of approved projects, changes to aids to navigation, or upcoming temporary changes such as dredging, etc. Mariners are advised to use caution while transiting these areas.

SUMMARY OF ADVANCED APPROVED PROJECTS

<u>Approved Project(s)</u>	<u>Project Date</u>	<u>Ref. LNM</u>
None		

Advance Notice(s)

MA-BOSTON HARBOR AND APPROACHES-BOTON HARBOR

Dredging is being conducted in Boston Harbor from June 27, 2018 - October 25, 2021. The hours of operation will be 7 days a week, 24 hours a day. On scene will be the dredges FJ BELESIMO, DALE PYATT, AJ FOURNIER and PAULA LEE, dump scows EDDIE CARROLL, MIGHTY QUINN, JOE VERROCHI, MERC SHEVLIN, KURT SCHULTE, CK & DS 6 and surey/support vessel CAPE ELIZABETH that will be monitoring VHF channels 16, 13 and 67. Mariners are urged to transit at their slowest safe speed to minimize wake and proceed with caution after passing arrangements have been made.

In conjunction with the dredging operations Aids to Navigation (AtoN) in the dredging project area can be temporarily moved, changed, relocated or disestablished. Listen to Coast Guard Broadcast Notice to Mariners (BNM) on channel 22 VHF-FM for current changes to AtoN and listings in the Local Notice to Mariners.

Current changes to AtoN in the dredging area.

Boston North Channel Lighted Buoy 3 (LLNR 10690) Relocated
 President Roads Anchorage Gong Buoy A (LLNR 10815) Relocated
 President Roads Anchorage Lighted Buoy B (LLNR 10820) Relocated
 President Roads Anchorage Buoy C (LLNR 10852) Relocated
 President Roads Anchorage Lighted Buoy D (LLNR 10855) Relocated
 Boston Main Channel By 5A (LLNR 10897) Assigned hull removed and replaced with a smaller lighted aid, FI 2.5s (1s on and 2.5s off).

Mariners are urged to transit at their slowest safe speed to minimize wake and proceed with caution after passing arrangements have been made.

Charts: 13267 13270 13272

LNLM: 35/18

SECTION VI - PROPOSED CHANGES

Periodically, the Coast Guard evaluates its system of aids to navigation to determine whether the conditions for which the aids to navigation were established have changed. When changes occur, the feasibility of improving, relocating, replacing, or discontinuing aids are considered. This section contains notice(s) of non-approved, proposed projects open for comment. SPECIAL NOTE: Mariners are requested to respond in writing to the District office unless otherwise noted (see banner page for address).

PROPOSED WATERWAY PROJECTS OPEN FOR PUBLIC COMMENT

<u>Proposed Project(s)</u>	<u>Closing</u>	<u>Docket No.</u>	<u>Ref. LNM</u>
None			

Proposed Change Notice(s)

RI-NARRANSETT BAY (Chart 13221)-EAST PASSAGE

The U.S. Coast Guard is considering making the following changes to this waterway:

PERMANENTLY DISCONTINUE Beavertail Light (LLNR 17780) Sound Signal.

Interested Mariners are strongly encouraged to comment on this proposal in writing, either personally or through their organization. All comments will be carefully considered and are requested prior to 12 October 2018 to complete the process. In order to most effectively consider your feedback and improve the data collection, when responding to this proposal, please include size and type of vessel, recreational or commercial, and distance from aid that you start looking for it, and if and how you use the signal. Please do not call the Coast Guard via telephone or other means, only written responses to this proposal will be accepted. Refer to Project No. 01-18-035. E-mail can be sent to: D01-SMB-DPWPublicComments@uscg.mil .

Charts: 12300 13006 13218 13221 13223

LNLM: 34/18

MA-BOSTON HARBOR (CHART 13270)-PEDDOCKS ISLAND CHANNEL

The U.S. Coast Guard is considering making the following changes to Aids to Navigation to this waterway :

CHANGE Peddocks Island Channel Light 4P (LLNR 11519) (structure destroyed) to Peddocks Island Channel Lighted Buoy 4P (LLNR 11519):

Interested Mariners are strongly encouraged to comment on this proposal in writing, either personally or through their organization. All comments will be carefully considered and are requested prior to 21 September 2018 to complete the process. In order to most effectively consider your feedback and improve the data collection, when responding to this proposal, please include size and type of vessel, recreational or commercial, and distance from aid that you start looking for it, and if and how you use the signal. Please do not call the Coast Guard via telephone or other means, only written responses to this proposal will be accepted. Refer to Project No. 01-18-051. E-mail can be sent to: D01-SMB-DPWPublicComments@uscg.mil .

Chart 13270

LNLM: 31/18

MAINE-NEW BRUNSWICK-PASSAMAQUODDY BAY AND ST. CROIX RIVER (Chart 13398)-ST CROIX RIVER

The U.S. Coast Guard is considering making the following change to Aids to Navigation:

CHANGE St. Croix River Light (LLNR 950) remove the Light List remarks "Higher intensity beam towards Todds Point."

This proposal would incorporate the Light Emitting Diode (LED) technology.

Interested Mariners are strongly encouraged to comment on this proposal in writing, either personally or through their organization. All comments will be carefully considered and are requested prior to 21 September 2018 to complete the process. In order to most effectively consider your feedback and improve the data collection, when responding to this proposal, please include size and type of vessel, recreational or commercial, and distance from aid that you start looking for it, and if and how you use the signal. Please do not call the Coast Guard via telephone or other means, only written responses to this proposal will be accepted. Refer to Project No. 01-18-052. E-mail can be sent to: D01-SMB-DPWPublicComments@uscg.mil .

Chart 13398

LNLM: 31/18

SECTION VII - GENERAL

This section contains information of general concern to the Mariners. Mariners are advised to use caution while transiting these areas.

SUMMARY OF GENERAL PROJECTS STILL IN EFFECT

SUMMARY OF GENERAL PROJECTS STILL IN EFFECT

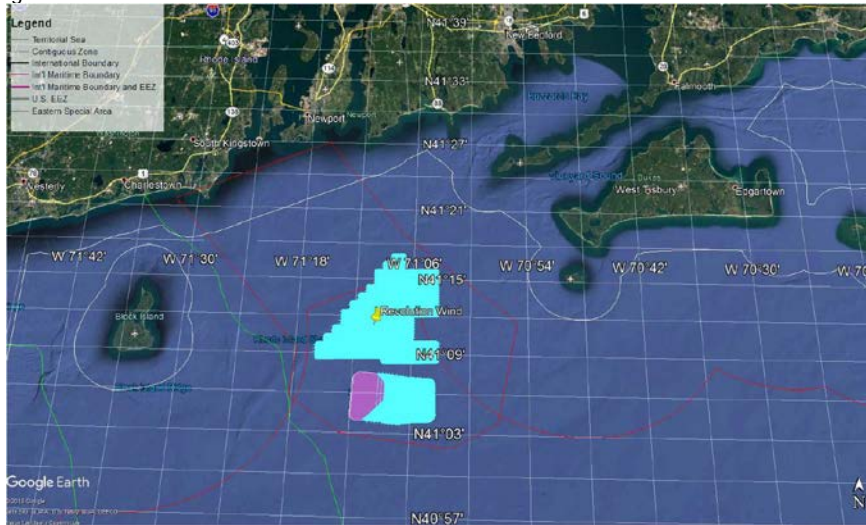
Enclosure

LNM: 32/18

MA & RI-OFFSHORE-APPROACHES TO NARRAGANSETT BAY AND BUZZARDS BAY

Fugro USA Marine Inc will be conducting Marine Remote Sensing with acoustic sources, i.e. multibeam bathymetry, magnetometer, high frequency subbottom profilers; core sampling, and bottom photography to map the seafloor and near-surface subbottom conditions (see diagram below). Offshore vessel operations are planned within an elongated area stretching between South Kingston, RI and Middletown, DE extending east 10 nautical miles south of Block Island, RI, and southern most limits 34 nautical miles south and east of South Kingston, RI. Vessel operations will be within the rectangle: South boundary; 41-05-54.00N West boundary 071-18-11.00W, North boundary; 41-24-27.00N, East boundary 071-04-44.00W. Work will be from 25 September through 15 December 2018, 24 hours a day, 7 days a week. On scene will be the Survey vessels R/V Fugro Enterprise, R/V Fugro Discovery and, M/V Megan Miller; operating multibeam bathymetry; side scan sonar; marine magnetometer, high frequency subbottom profiler, mid-range sparker sound source with 240-ft streamer; 16-foot vibracore; 16-ft cone penetrometer, Ponar grab sampler; Marine camera.. Average vessel speed will be 3.5 knots with towed sensors up to 800-feet behind vessel.

R/V Fugro Enterprise Call Sign - WDD-388; BRIDGE PHONE - 337-500-1608.
R/V Fugro Discovery Call Sign - 3EKE6, BRIDGE PHONE - +41 2367 6250.
M/V Megan Miller Call Sign - WCW9003 - BRIDGE PHONE 516-945-7007.
Vessels are requested to navigate with caution in this area.



Charts: 12300 13003 13006 13009 13200

LNM: 37/18

NY-HUDSON RIVER-CASTLETON, STOCKPORT, HUDSON

Great Lakes Dock and Dredge Company will be conducting dredging operations on the Hudson River in the vicinity of Castleton, Stockport and Hudson NY from 14 September – 1 November 2018, 24 hours a day, 7 days a week. Construction barges will be positioned adjacent to the existing timber dock. Equipment on scene will be Dredge Terrapin Island, Derrick 68, Deck Barge, Tug and survey vessel Calcasieu River and will be monitoring VHF-FM channels 13 and 16. For dredging and placement operations, mariners are urged to transit at their slowest safe speed to minimize wake and proceed with caution after passing arrangements have been made with the dredge.

LNM: 37/18

NY-HUDSON RIVER-PIER 26

Trevcon Construction Co. Inc will be conducting Marine demolition, pile driving, structural erection, boulder installation, dive work at Pier 26, Hudson River, NY in approximate position 40-43-17.191N, 074-0' 57.841W from 17 September 2018 – 31 May 2019, Monday to Friday from 6:00am to 3:00pm. Equipment on scene will 60' x 160' material barge, 75' x 250' crane barge. All moving of vessels to occur by tugboat; vessels will be moved rarely but at all times of day and night. Vessels are requested to navigate with caution in this area.

Chart 12335

LNM: 37/18

NY-MONTAUK-LAKE MONTAUK

H&L Contracting will be conducting dredging operations in the Lake Montauk Entrance Channel from 24 September – 25 November 2018, 24 hours a day, 7 days a week. Equipment on scene will be 16" pump dredge SCROD II, and 3 work boats MIKE, OLIVER and NIXON and will be monitoring VHF-FM channel 63. The dredge pipe will be marked and submerged for vessel passage. Dredge will move upon request. Mariners are urged to transit at their slowest safe speed to minimize wake and proceed with caution after passing arrangements have been made with the dredge.

Chart 13209

LNM: 37/18

MA-NY-NJ-ATLANTIC OCEAN-BASIN

Scripps Institution of Oceanography (SIO) will conduct continuous autonomous, unmanned maritime surface vehicle operations from Sept 10, 2018

MA-NY-NJ-ATLANTIC OCEAN-BASIN

through Oct 8, 2018 near the Pioneer Array between 40-40-00.0N and 39-00-00.0N and 071-50-00.0W and 069-40-00.0W (figure attached). Operations consist of scientific ocean data collection. Wave Glider carries no fuel, lubricants, or hydrocarbons, is wave powered, remotely attended from both SIO and at the Liquid Robotics Wave Glider Operations Center (WGOC), moving at speeds of typically 1kt, and designed to give way or part if encountered by a vessel. The vessels are surfboard size and yellow in color with several masts extending up to 1 meter above the surface mounted to scientific instruments. Mariners are urged to transit the area with caution. For up-to-date information, mariners can contact SIO at 858.534.2061 or Liquid Robotics Operations Center at 408.636.4205, or by email at support@liquidr.com.

Charts: 12300 13003 13006 13009

LNM: 36/18

NY-HARLEM RIVER

Marine borings are being done in Harlem River, East of P. S. 5, until September 26, 2018. The hours of operation will be Monday - Friday, 7:00 am - 5:00 pm. On scene is a barge and transport boat that are monitoring VHF-FM channels 13 and 16.

Chart 12342

LNM: 36/18

MA – VINEYARD SOUND - WRECKAGE

The Coast Guard has received a report of a mast and rigging marked with a white ball buoy and an orange marker strobe light located in position 41-27.177N 070-27.724W East of Martha's Vineyard. All mariners are requested to use caution while transiting the area.

Chart 13238

LNM: 35/18

MA-BOSTON HARBOR

Cashman-Dutra, The dredging contractor for Boston Harbor's deepening project, has placed two white 4 foot round unlighted mooring buoys on the west side of Long Island for mooring dump barges during the Boston Harbor dredging project. The mooring buoys have been set in the following positions; 42-19-44.4N 070-57-54.0W and 42-19-44.4N 070-57-46.8W. The mooring balls may or may not be occupied by dump barges. Mariners are advised to exercise extreme caution when navigating in this area.

Chart 13270

LNM: 35/18

NY-HUDSON RIVER-GEORGE WASHINGTON BRIDGE TO YONKERS

Simpson & Brown Marine Contractors will be conducting repairs to existing timber pile systems on the docks at American Sugar Refinery, Yonkers NY from 9 – 21 September 2018, Monday to Saturday from 6:00am to 2:30pm. Construction barges will be positioned adjacent to the existing timber dock. Equipment on scene will be S&B 20 a 185' x 45' steel crane barge with steel spud piles, S&B 6, a 110' x 30' steel material barge, and S&B 3 a 90' x 30' steel material barge. Vessels are requested to navigate with caution in this area.

Chart 12335

LNM: 35/18

NY-HUDSON RIVER-HAVERSTRAW BAY

NY Waterway Co. will be conducting a ferry dock replacement project in Haverstraw Bay in position 40-11-34.4N 073-57-29.10W from September 7 – 23 2018 from 9:00am to 5:00pm. Equipment on scene will be a waterside crane attended by a tugboat and can be hailed on 13 and 16 VHF-FM. Mariners are urged to use extreme caution and to transit at their slowest safe speed and proceed with caution in the immediate area.

Chart 12343

LNM: 35/18

NY-NEW YORK HARBOR-RED HOOK AND BAY RIDGE CHANNELS

Aqua Survey Inc. will be conducting sediment surveying from August 29 – September 14, 2018 in the Bay Ridge/Red Hook Federal Navigation channel. The hours of operation will be from 0800 – 1700 local time 7 days a week. On scene will be the Aqua Survey vessel R/V Edison. See list below for sampling locations. The R/V Edison will move on demand and can be hailed on Ch 16-VHF-FM. Mariners are urged to use extreme caution and to transit at their slowest safe speed and proceed with caution.

Bay Ridge Red Hook Channels

Location	Easting	Northing	Latitude	Longitude	Water Depth (ft)	Core length
1	979,803.3023	180,303.1217	40.66156598	74.01602756	29.9	7.1
2	980,160.8388	180,507.9170	40.66212827	74.01473899	23.7	13.3
3	979,877.4570	180,715.3448	40.66269748	74.01576055	23.7	13.3
4	979,809.4614	181,106.8072	40.66377192	74.01600589	24.8	12.2
5	980,178.1456	180,981.5966	40.66342842	74.0146769	24.2	12.8
6	980,516.1571	180,931.3778	40.66329073	74.01345852	27.0	10.0
7	980,630.1142	181,341.9640	40.66441775	74.01304798	27.4	9.6
8	980,948.6109	181,054.8591	40.66362983	74.01189981	30.3	6.7
9	981,362.1995	181,514.7673	40.66489232	74.01040923	29.2	7.8
10	981,624.4779	181,285.0527	40.66426189	74.00946375	26.0	11.0
11	980,034.6563	180,842.7845	40.66304735	74.01519401	23.6	13.4
12	979,935.7773	180,989.3743	40.66344965	74.01555051	23.7	13.3
13	979,944.8255	180,526.8213	40.66218005	74.0155176	23.6	13.4
14	980,400.9739	180,667.8163	40.66256726	74.01387354	26.6	10.4
15	980,216.3015	181,337.5855	40.66440555	74.01453958	26.4	10.6
16	980,910.4659	181,503.9539	40.66486248	74.01203753	23.9	13.1

Chart 12334

LNM: 35/18

SECTION VIII - LIGHT LIST CORRECTIONS

An Asterisk *, indicates the column in which a correction has been made to new information

(1) No.	(2) Name and Location	(3) Position	(4) Characteristic	(5) Height	(6) Range	(7) Structure	(8) Remarks
12770	Kingston Channel Buoy 2	41-59-31.400N 070-39-40.100W				Red nun.	Private aid. 37/18
		*					
12775	Kingston Channel Buoy 4	41-59-38.100N 070-39-53.000W				Red nun.	Private aid. 37/18
		*					
12780	Kingston Channel Buoy 6	41-59-45.900N 070-40-06.700W				Red nun.	Private aid. 37/18
		*					
12800	Kingston Channel Buoy 8	41-59-53.400N 070-40-23.000W				Red nun.	Private aid. 37/18
		*					
12805	Kingston Channel Buoy 10	41-59-55.100N 070-40-29.700W				Red nun.	Private aid. 37/18
		*					
12815	Kingston Channel Buoy 12	42-00-07.200N 070-40-37.600W				Red nun.	Private aid. 37/18
		*					
12820	Kingston Channel Buoy 14	42-00-13.500N 070-40-53.100W				Red nun.	Private aid. 37/18
		*					
12825	Kingston Channel Buoy 16	42-00-17.000N 070-41-00.530W				Red nun.	Private aid. 37/18
		*					
12830	Kingston Channel Buoy 18	42-00-18.800N 070-41-17.070W				Red nun.	Private aid. 37/18
		*					
12835	Kingston Channel Buoy 20	42-00-24.700N 070-41-29.700W				Red nun.	Private aid. 37/18
		*					
12840	Kingston Channel Buoy 22	42-00-27.100N 070-41-37.460W				Red nun.	Private aid. 37/18
		*					
12845	Kingston Channel Buoy 24	42-00-27.000N 070-41-45.600W				Red nun.	Private aid. 37/18
		*					
12850	Kingston Channel Buoy 26	42-00-23.500N 070-41-53.300W				Red nun.	Private aid. 37/18
		*					

SECTION VIII - LIGHT LIST CORRECTIONS (Continued)

(1) No.	(2) Name and Location	(3) Position	(4) Characteristic	(5) Height	(6) Range	(7) Structure	(8) Remarks
12855	Kingston Channel Buoy 28	42-00-20.200N 070-42-00.000W				Red nun.	Private aid. 37/18
		*					
12860	Kingston Channel Buoy 30	42-00-18.700N 070-42-07.500W				Red nun.	Private aid. 37/18
		*					
12865	Kingston Channel Buoy 32	42-00-12.800N 070-42-15.100W				Red nun.	Private aid. 37/18
		*					
12870	Kingston Channel Buoy 34	42-00-11.400N 070-42-20.800W				Red nun.	Private aid. 37/18
		*					
12875	Kingston Channel Buoy 36	42-00-13.500N 070-42-26.300W				Red nun.	Private aid. 37/18
		*					
12885	Kingston Channel Buoy 38	42-00-15.800N 070-42-30.100W				Red nun.	Private aid. 37/18
		*					
12890	Kingston Channel Buoy 40	42-00-16.100N 070-42-35.300W				Red nun.	Private aid. 37/18
		*					
12895	Kingston Channel Buoy 42	42-00-13.300N 070-42-36.800W				Red nun.	Private aid. 37/18
		*					
16926	New Bedford South Terminal Buoy 1	41-37-17.580N 070-54-46.020W				Green can.	Private aid. 37/18
		*					
16926.2	New Bedford South Terminal Buoy 3	41-37-15.960N 070-54-46.860W				Green can.	Private aid. 37/18
		*					
16926.3	New Bedford South Terminal Buoy 4	41-37-15.240N 070-54-48.900W				Red nun.	Private aid. 37/18
		*					
16926.4	New Bedford South Terminal Buoy 5	41-37-14.940N 070-54-48.300W				Green can.	Private aid. 37/18
		*					

PUBLICATION CORRECTIONS

None

ENCLOSURES

ENCLOSURE

Marine Events

ENCLOSURE

Bridge section

Andrew J. Tiongson
Rear Admiral, U.S. Coast Guard
Commander, First Coast Guard District

LOCATION	OPERATION	COMPLETION DATE	LNМ
CT-Bridgeport Harbor	Oceanographic study	10/31/2018	28/18
MA-Annisquam River	Shoaling	Until further notice	02/14
MA-Bass River	Shoaling	Until further notice	02/14
MA-Boston Harbor	Dredging	10/25/2018	24/18
MA-Cape Cod	Mooring work	9/13/2018	13/18
MA-Cape Cod Bay	Hazard to navigation	Until further notice	07/18
MA-Cape Cod Canal	Railroad Bridge Schedule	Until further notice	23/17
MA-Cape Cod Canal	Shoaling	Until further notice	29/17
MA-Cape Cod Canal	Vessel clearance	Until further notice	29/17
MA-Chatham Harbor	Shoaling	Until further notice	45/10
MA-Duxbury Harbor	Dredging	Until further notice	36/15
MA-East Falmouth	Shoaling	Until further notice	21/12
MA-Essex Bay	Shoaling	Until further notice	02/14
MA-Gloucester-Annisquam River	Shoaling	Until further notice	41/11
MA-Green Harbor (REVISED)	Shoaling	Until further notice	16/16
MA-Hyannis Hbr Entrance Channel	Shoaling	Until further notice	10/13
MA-Lynn Harbor	Shoaling	Until further notice	02/14
MA-Marshfield-New Inlet	Shoaling	Until further notice	15/16
MA-Martha's Vineyard	Oceanographic data collection	11/1/2018	26/18
MA-Martha's Vineyard-Muskeget	Soundings	Until further notice	42/12
MA-Merrimack River Entrance	Shoaling	Until further notice	02/14
MA-Merrimack River-Joppa Flat Area	Shoaling	Until further notice	02/14
MA-New Bedford-Hurricane Barrier	Repairs	Until further notice	45/14
MA-Newburyport Harbor/Plum Is Sound	Shoaling	Until further notice	21/11
MA-Nummet Channel	Shoaling	Until further notice	38/10
MA-Onset Channel	Vessel grounding	until further notice	06/17
MA-Plum Island Sound	Shoaling	Until further notice	02/14
MA-Plymouth Harbor	Shoaling	Until further notice	02/14
MA-South of Martha's Vineyard	Geophysical survey	10/14/2019	38/16
MA-Truro-Pamet Harbor	Shoaling	Until further notice	06/11
ME-Jonesport-Mosabec Reach	Regulated navigation area	1/31/2021	41/17
ME-Machias Bay	Demolition and removal of pier	3/9/2019	12/18
ME-Machias Bay-Cutler	US Navy Pier collapsed	Until further notice	02/15
ME-Mount Desert Rock	Research buoy deployment	10/18/2018	26/18
ME-Saco Bay-Scarborough Beach	Research buoy deployment	Until further notice	32/16
NH-Hampton Harbor	Shoaling	Until further notice	02/14
NH-Piscataqua River	Research Barge anchored	Until further notice	25/17
NJ/Arthur Kill	Charted rip rap of FDR Drive platform	Until further notice	09/18
NJ-Arthur Kill-Port Socony Reach	Rip rap	until further notice	47/17
NJ-Hackensack River	Sheetpile installation	3/1/2019	27/18
NJ-Jersey City-Hudson River	Pile driving & pier construction	9/28/2021	05/17
NJ-Lower Passaic to Newark Bay	Water Column Investigations	6/15/2019	25/18
NJ-Newark	Shoreline restoration work	12/1/2018	27/18
NY/NJ Raritan Bay	Submerged sailing vessel	Until further notice	48/17
NY/NJ-LI Sound-Sandy Hook	Geophysical survey operations	9/30/2018	16/18
NY-Brooklyn	Oyster restoration	9/30/2018	27/18
NY-Bush Terminal Park Lagoons	Oyster restorations	11/1/2020	41/17
NY-East River-Brooklyn Bridge Park	Oyster restoration	11/1/2020	41/17
NY-Fire Island	Beach fill work	Until further notice	39/15
NY-Fire Island	Shoaling	Until further notice	07/15
NY-Fire Island Reef, Hempstead Reef	Artificial reef enhancement	10/31/2018	17/18
NY-Fire Island to Twelve Reef	Artificial reef enhancement	12/2018	26/18
NY-Gowanus Canal	Environmental remediation	9/5/2018	13/18
NY-Hudson River	Debris removal	12/15/2018	28/18
NY-Hudson River	Bulkhead replacement	12/31/2018	29/18
NY-Hudson River	Lighted buoy installations	9/15/2018	27/14
NY-Hudson River-Port of Albany	Wharf reconstruction	1/31/2019	24/17
NY-Jamaica Bay	Oyster restoration	11/1/2020	41/17
NY-Long Beach (REVISED)	Hurricane/storm damage reduction	12/31/2018	29/18

NY-Moriches	Worse shoaling conditions	Until further notice	04/18
NY-Moriches Bay & Shinnecock Bay	Shoaling	Until further notice	39/16
NY-Newton Creek-English Kills	Floating containment boom	Until further notice	41/17
NY-Newtown Creek-English Kills	Bulkhead collapse	Until further notice	35/17
NY-Port Chester	Sunken barge	Until further notice	29/17
NY-Princess Bay-Lemon Creek Lagoon	Oyster restoration	Nov-20	41/17
NY-Sheepshead Bay	Low water at MLW	Until further notice	35/14
NY-Shinnecock Inlet Channel	Shoaling	Until further notice	02/16
NY-Smithtown Reef	Artificial reef enhancement	Aug-18	26/18
NY-Troy	Seawall stabilization	12/20/2020	26/18
RI-Narragansett Bay	Dredging	Until further notice	21/17
RI-Narragansett Bay	Vessel Exclusion zone marked with 23	Until further notice	21/17
RI-Providence	Providence River Bridge repairs	10/18/2018	21/18
RI-Sakonnet River	Water quality sensor buoys	10/31/2018	18/18
VT-Lake Champlain	Hydrodynamic research buoys estab	10/15/2018	21/18
VT-Lake Champlain	Buoy Deployment (4)	Until further notice	27/17
VT-Lake Champlain-ST Albans Bay	Water monitoring platform const.	12/31/2018	16/18

Sector Long Island Sound Marine Events (13SEP2018 – 19SEP2018)

Location	Date	Time	Event Name	Boats	Participating
Connecticut River, Essex, CT	13-Sep	1630- 2030	Ideal 18 Thursday Night Spinnaker Racing	8	8
South Bay, NY	13-Sep	1030- 2030	Babylon fall	51	50
Stamford, CT	14-Sep	1800- 1700	Sonar North Americans	50	200
Block Island Sound, Gardiner's Bay	14-Sep	0900- 1700	82nd Annual Off Soundings Fall Series	100	100
Amityville, NY	14-Sep	0830- 1700	Narrasketuck YC Mariner National Championships	21	21
Stonington, CT	15-Sep	1230- 1600	Stonington Harbor Yacht Club Fall Frostbite Series	25	42
South Bay, NY	15-Sep	1030- 2030	Bab/BS Invitational	51	50
Block Island Sound, Gardiner's Bay	15-Sep	0900- 1700	82nd Annual Off Soundings Fall Series	100	100
Amityville, NY	15-Sep	0830- 1700	Narrasketuck YC Mariner National Championships	21	21
Connecticut River, Essex, CT	15-Sep	0930- 1630	Essex YC / Essex Corinthian YC Team Race	8	8
Saugatuck River	15-Sep	0930- 1930	Navigators Series	23	15
Saugatuck River	15-Sep	1130- 1730	CP Saturday Racing	38	30
Norwalk, CT	15-Sep	1130- 1700	Lighthouse to Lighthouse Race	7	150
Stamford, CT	15-Sep	1800- 1700	Sonar North Americans	50	200
Amityville, NY	16-Sep	0830- 1700	Narrasketuck YC Mariner National Championships	21	21
Westhampton, NY	16-Sep	1130- 1800	Westhampton Yacht Squadron Fall Series	30	35
Stamford, CT	16-Sep	1800- 1700	Sonar North Americans	50	200
Stamford, CT	16-Sep	1130- 1730	Noroton Yacht Club Sunday Racing	30	75
Great South Bay, NY	16-Sep	1230- 1630	Babylon YC Regatta	20	20-50
Mystic River, CT	16-Sep	1630- 1430	Coastweeks Regatta	80	80
Connecticut River, Essex, CT	17-Sep	0930- 2030	Ideal 18 Monday Ladies Sailing Instruction	8	8
Stamford, CT	17-Sep	1800- 2000	Noroton Yacht Club Learn to Race	6	15
Connecticut River, Essex, CT	18-Sep	1630- 2030	Ideal 18 Tuesday Night Racing	8	8

South Bay, NY	18-Sep	1030-2030	BS Fall Invitational	51	50
Connecticut River, Essex, CT	19-Sep	1630-2030	Ideal 18 Wednesday Night Learn to Race	8	8
Shelter island Sound, NY	19-Sep	1700-1800	Breakwater Yacht Club Racing Series	15	90-120
Thames River, CT	19-Sep	1630-2030	Wednesday Night Race Series	20	20

UPPER NEW YORK BAY

(North of the Verrazano Bridge including Hudson River north to Whitehall Narrows, East River West of the Throgs Neck Bridge)

NY – UPPER NEW YORK BAY - Sailing Regatta

Mariners are advised that a regatta is scheduled to be held on the Upper New York Harbor in the vicinity of Governors Island, beginning **May 02, 2018 through October 27, 2018**. Races will occur on Tuesdays, Wednesdays, Thursdays from 6:00 p.m. to 9:00 p.m. and Saturdays from 12:00 p.m. to 5:00 p.m. Approximately 14 sailboats (24-26 feet in length) and a motorized support vessel will participate. Interested mariners may contact the Principal Race Officer on marine band radio channel 71 VHF-FM. Chart 12343 LNM 18/18 (CGD01)

NY – HUDSON RIVER – NEWBURGH - Sailing Regatta

Mariners are advised that a regatta is scheduled to be held on the Hudson River in the vicinity of Newburgh NY, beginning **May 13, 2018 through October 14, 2018**. Races will occur on Sundays from 1:30 p.m. to 4:00 p.m. approximately 30 sailboats (12-36 feet in length) will participate on short-distance courses. Interested mariners may contact the Principal Race Officer on marine band radio channel 72 VHF-FM. Chart 12343 LNM 19/18 (CGD01)

NY – UPPER NY BAY – Sailing Regatta

Mariners are advised that weekly regattas are scheduled to be held on the New York Harbor, south of the Morris Canal to the Statue of Liberty, beginning **May 9, 2018 and continuing until September 30, 2018**, between the hours of **6:30 p.m. to 8:00 p.m. on Wednesdays** throughout the time frame listed. Approximately 25 sailboats 26-40 feet in length will participate in short-distance courses. Interested mariners may contact the Principal Race Officer on marine band radio channel 69 VHF-FM. Chart 12335. LNM 19/18 (CGD1)

NY – HUDSON RIVER – NEWBURGH - Sailing Regatta

Mariners are advised that a regatta is scheduled to be held on the Hudson River in the vicinity of Newburgh NY, beginning **May 19, through October 13, 2018**. The race will occur on Saturdays from 1:30 p.m. to 4:00 p.m. approximately 30 sailboats (12-36 feet in length) will participate on short-distance courses. Interested mariners may contact the Principal Race Officer on marine band radio channel 72 VHF-FM. Chart 12343 LNM 20/18 (CGD01)

NY – HUDSON RIVER – NEWBURGH - Sailing Regatta

Mariners are advised that a regatta is scheduled to be held on the Hudson River in the vicinity of Newburgh NY, beginning **May 16, 2018 through October 10, 2018**. Races will occur on Wednesdays from 6:30 p.m. to 8:00 p.m. approximately 30 sailboats (12-36 feet in length) will participate on short-distance courses. Interested mariners may contact the Principal Race Officer on marine band radio channel 72 VHF-FM. Chart 12343 LNM 20/18 (CGD01)

NY/NJ – NEW YORK BAY – UPPER BAY - Sailing Regatta

Mariners are advised that a regatta is scheduled to be held in the Upper Bay of New York Harbor north of Ellis Island beginning **May 15, 2018 through October 16, 2018**. Races will occur on Tuesdays from 6:30 p.m. to 8:30 p.m. approximately 15 sailboats (24 feet in length) will participate on short-distance courses. Interested mariners may contact the Principal Race Officer on marine band radio channel 68 VHF-FM. Chart 12327, 12335 LNM 19/18 (CGD01)

NY/NJ – NEW YORK HARBOR – UPPER BAY - Sailing Regatta

Mariners are advised that a regatta is scheduled to be held in the Upper Bay of New York Harbor north of Ellis Island beginning **May 16, 2018 through October 17, 2018**. Races will occur on Wednesdays from 6:30 p.m. to 8:30 p.m. approximately 15 sailboats (24 feet in length) will participate on short-distance courses. Interested mariners may contact the Principal Race Officer on marine band radio channel 68 VHF-FM. Chart 12327, 12335 LNM 20/18 (CGD01)

NY/NJ – NEW YORK HARBOR – UPPER BAY - Sailing Regatta

Mariners are advised that a regatta is scheduled to be held in the Upper Bay of New York Harbor north of Ellis Island beginning **May 17, 2018 through October 18, 2018**. Races will occur on Thursdays from 6:30 p.m. to 8:30 p.m. approximately 20 sailboats (24 feet in length) will participate on short-distance courses. Interested mariners may contact the Principal Race Officer on marine band radio channel 68 VHF-FM. Chart 12327, 12335 LNM 20/18 (CGD01)

NY – UPPER NY BAY – Sailing Regatta

Mariners are advised that weekly regattas are scheduled to be held on the New York Harbor, south of the Morris Canal to the Statue of Liberty, beginning **May 09, 2018 and continuing until September 26, 2018**, between the hours of **6:30 p.m. and 8:00 p.m. on Wednesdays** weekly. Approximately 25 sailboats 26-40 feet in length will participate in short-distance courses. Interested mariners may contact the Principal Race Officer on marine band radio channel 69 VHF-FM. Chart 12327. LNM 19/18 (CGD1)

NY – HUDSON RIVER – UPPER NY HARBOR – Paddling Regatta

Mariners are advised that a paddling regatta is scheduled to be held in the Lower Hudson River and Upper New York harbor on **September 15, 2018, between 10:00 a.m. and 1:00 p.m.** Approximately 150 stand up paddle boards (10- 14 feet in length) will participate in a race that will begin in waves from North Cove Marina, circumnavigating Ellis and Liberty Islands before returning to the starting point in the Hudson River. Chart 12335 LNM 37/18 (CGD1)

NY – HUDSONS RIVER – WEST POINT-GARRISON NY – Swim

Mariners are advised that a swim event is scheduled for **September 13, 2018, from 6:00 a.m. to 9:00 a.m.** within the waters of Hudson River at the West Point Military Academy South Dock Marina to Garrison Landing, Garrison, NY. Approximately 70 participants will depart in one wave and swim east from the South Dock Marina in West Point one-half mile to Garrison Landing in Garrison, NY. Five vessels shall be assisting with this event. Interested mariners may contact the event organizers on VHF-FM channel 16. Chart 12348. LNM 37/18 (CGD1)

NY – HUDSON RIVER – POUGHKEEPSIE NY – Fireworks Display

Mariners are advised that a fireworks display is scheduled to be held on the Hudson River. The fireworks barge will be in approximate position 41°41'53.72" N, 073°56'32.48" W (NAD 83) near the Grandview located on Rinaldi Boulevard. The display is scheduled to occur between **9:00 p.m. and 10:00 p.m. on September 16, 2018**. Mariners are advised to remain a safe distance from the barge. Chart 12347. LNM 37/18 (CGD01)

NY – UPPER NY BAY- LIBERTY ISLAND – HUDSON RIVER – Swim

Mariners are advised that a swim is scheduled for **September 16, 2018 from 10:45 a.m. to 1:00 p.m.** approximately twenty swimmers will swim from the southern vicinity of the Statue of Liberty to South Cove Marina, Manhattan, NY. Participants will be assisted by power driven vessels and kayaks. Interested mariners may contact the safety coordinator on marine band radio channel 6 VHF-FM. Chart 12327, LNM 37/18 (CGD1)

NY – YONKERS - HUDSON RIVER – YONKERS-INWOOD – Swim

Mariners are advised that a swim is scheduled from **8:00 a.m. to 11:30 a.m. on September 16, 2018**. Approximately 200 swimmers will be assisted by various support craft starting from the JFK Marina in Yonkers to Dyckman Marina Boat Ramp, Inwood, NY. Participants of the 3rd Annual Spuyten Duyvil will swim a 10K course on the waters of the Hudson River near shore. Mariners are requested to exercise caution while transiting through the area. Chart 12343, 12345. LNM 37/18 (CGD1)

NY/NJ –Upper NY Bay - EAST RIVER - HUDSON RIVER - Other

Mariners are advised that a media display event aboard a 57 foot motor vessel is scheduled to run from **September 20th, 2018 through September 27th, 2018 from 4:00 p.m. to 11:30 p.m.** The event route will begin and end on Staten Island. The vessel will be moored at various times at Brookfield Place, and transit to the East River toward the Bronx, return along the East Side of Manhattan toward the Lower West Side of Manhattan and return to Staten Island. Interested mariners may contact the event sponsor on marine band radio channels 13 VHF-FM. Chart 12327, 12334, 12335 LNM 38/18 (CGD1)

NY – HUDSON RIVER - HARLEM RIVER – EAST RIVER - MANHATTAN – Rowing Regatta

Mariners are advised that a Rowing Event is scheduled to be held on the waters of the Hudson River, Harlem River and East River on **September 29, 2018, from 7:00 a.m. to 7:00 p.m.**, approximately 100 rowing gigs up to 25' feet in length will circumnavigate Manhattan, NY assisted by several motorized vessels. Interested mariners may contact the marine event coordinator on channel 69 VHF-FM. Chart 12335, 12339, 12342. LNM 39/18 (CGD1)

LOWER NEW YORK BAY

(South of the Verrazano Bridge, west of Arverne, Rockaway Beach)

NJ/NY – LOWER NY BAY – RARITAN BAY – Sailing Regatta

Mariners are advised that regattas are scheduled to be held on the Raritan Bay, in the vicinity of Round Shoal, North of Keyport Harbor, South of Seguine Point, East of Ward Point, beginning **May 02, 2018 and continuing until October 17, 2018**, between the hours of **5:00 p.m. and 9:00 p.m.** on various dates throughout the time frame listed. Approximately 35 sailboats 24-40 feet in length will participate in short-distance courses. Interested mariners may contact the Principal Race Officer on marine band radio channel 71 VHF-FM. Chart 12331. LNM 18/18 (CGD1)

LONG ISLAND SOUND

(East of Throgs Neck Bridge to west of Matinecock Point)

NEW JERSEY

(North of Long Branch)

For Sector New York Marine Events information, reference our web link: <http://homeport.uscg.mil/newyork> > Waterways Management > 02 Marine Events and Firework Displays or email D01-SMB-SecNY-SPW-MarineEvents@uscg.mil . Additional contacts at Sector New York: MST1 RJ Sampert, ronald.j.sampert@uscg.mil (718) 354-4197.