



U.S. Department  
of Homeland Security  
**United States  
Coast Guard**

---

## LOCAL NOTICE TO MARINERS

**District: 5**

**Week: 01/17**

COASTAL WATERS FROM SHREWSBURY RIVER, NEW JERSEY TO LITTLE RIVER, SOUTH CAROLINA

The Local Notice to Mariners contains all information relevant to the waterways within the Fifth Coast Guard District and is updated each Tuesday on the U.S. Coast Guard Navigation Center website at <http://www.navcen.uscg.gov/?pageName=lnmDistrict&region=5>.

If you have questions about the Fifth Coast Guard District Local Notice to Mariners (LNM), please contact:

COMMANDER  
FIFTH COAST GUARD DISTRICT (dpw)  
431 Crawford Street  
Portsmouth, Virginia 23704

or for correspondence and article requests:

[ward.b.posey@uscg.mil](mailto:ward.b.posey@uscg.mil), (757) 398-6229 or [matthew.e.kearney@uscg.mil](mailto:matthew.e.kearney@uscg.mil), at (757) 398-6552 or [CGD5Waterways@uscg.mil](mailto:CGD5Waterways@uscg.mil)

All bearings are in degrees TRUE - All times are in Local Time unless otherwise noted.

### AIDS TO NAVIGATION DISCREPANCY REPORTING

To report any Aids to Navigation discrepancies (missing, damaged, extinguished lights, off station), shoaling or hazards to navigation, discrepancies to bridge lighting, please contact the following 24 hour numbers:

1. For PA, NJ, DE waters, coastal and tributaries contact COGARD SECTOR DELAWARE BAY at (215) 271-4940.
2. For MD, DE in the Upper Chesapeake Bay and tributaries contact COGARD SECTOR MARYLAND NATIONAL CAPITAL REGION at (410) 576-2525.
3. For VA in Lower Chesapeake Bay below Smith Point Light and tributaries and VA, MD Eastern Shore Bay and coastal contact COGARD SECTOR HAMPTON ROADS at (757) 483-8567.
4. For NC waters, coastal and tributaries contact COGARD SECTOR NORTH CAROLINA at (910) 343-3882.

### REFERENCES

Light List: ATLANTIC COAST, VOLUME II, COMDTPUB P16502.2, 2016 Edition.  
U.S. Coast Pilot 3, Atlantic Coast: Sandy Hook, NJ to Cape Henry, VA, 2016 (49th) Edition.  
U.S. Coast Pilot 4, Atlantic Coast: Cape Henry, VA to Key West, FL, 2016 (48th) Edition.

### NAVIGATIONAL INTERNET SITES

2016 Light List/ Summary of Corrections.  
<http://www.navcen.uscg.gov/index.php?pageName=lightListCorrections>

Bridges Public Notice Website.  
<http://www.navcen.uscg.gov/?pageName=pnBridges>

NOAA Chart Corrections and Chart Viewer  
<http://www.nauticalcharts.noaa.gov>

Coast Pilots, along with corrections are available at  
<http://www.nauticalcharts.noaa.gov/nsd/cpdownload.htm>

D5 LNM Archived Back Issues  
<http://www.navcen.uscg.gov/?pageName=lnmDistrict&region=5>

Chesapeake Bay Weather Buoys  
<http://www.cbos.org>  
Tides, Currents, PORTS  
<http://www.tidesandcurrents.noaa.gov/>  
Weather  
<http://www.weather.gov/>

U.S. Army Corps of Engineers Wilmington District Survey Maps and Shoaling Surveys

---

## ABBREVIATIONS

### A through H

ADRIFT - Buoy Adrift  
AICW - Atlantic Intracoastal Waterway  
AI - Alternating  
B - Buoy  
BKW - Breakwater  
bl - Blast  
BNM - Broadcast Notice to Mariner  
bu - Blue  
C - Canadian  
CHAN - Channel  
CGD - Coast Guard District  
C/O - Cut Off  
CONT - Contour  
CRK - Creek  
CONST - Construction  
DAYMK/Daymk - Daymark  
DBN/Dbn - Daybeacon  
DBD/DAYBD - Dayboard  
DEFAC - Defaced  
DEST - Destroyed  
DISCON - Discontinued  
DMGD/DAMGD - Damaged  
ec - eclipse  
EST - Established Aid  
ev - every  
EVAL - Evaluation  
EXT - Extinguished  
F - Fixed  
fl - flash  
FI - Flashing  
G - Green  
GIWW - Gulf Intracoastal Waterway  
HAZ - Hazard to Navigation  
HBR - Harbor  
HOR - Horizontal Clearance  
HT - Height

### I through O

I - Interrupted  
ICW - Intracoastal Waterway  
IMCH - Improper Characteristic  
INL - Inlet  
INOP - Not Operating  
INT - Intensity  
ISL - Islet  
Iso - Isophase  
kHz - Kilohertz  
LAT - Latitude  
LB - Lighted Buoy  
LBB - Lighted Bell Buoy  
LHB - Lighted Horn Buoy  
LGB - Lighted Gong Buoy  
LONG - Longitude  
LNM - Local Notice to Mariners  
LT - Light  
LT CONT - Light Continuous  
LTR - Letter  
LWB - Lighted Whistle Buoy  
LWP - Left Watching Properly  
MHz - Megahertz  
MISS/MSNG - Missing  
Mo - Morse Code  
MRASS - Marine Radio Activated Sound Signal  
MSLD - Misleading  
N/C - Not Charted  
NGA - National Geospatial-Intelligence Agency  
NO/NUM - Number  
NOS - National Ocean Service  
NW - Notice Writer  
OBSCU - Obscured  
OBST - Obstruction  
OBSTR - Obstruction  
Oc - Occulting  
ODAS - Anchored Oceanographic Data Buoy

### P through Z

PRIV - Private Aid  
Q - Quick  
R - Red  
RACON - Radar Transponder Beacon  
Ra ref - Radar reflector  
RBN - Radio Beacon  
REBUILT - Aid Rebuilt  
RECOVERED - Aid Recovered  
RED - Red Buoy  
REFL - Reflective  
RRL - Range Rear Light  
RELIGHTED - Aid Relit  
RELOC - Relocated  
RESET ON STATION - Aid Reset on Station  
RFL - Range Front Light  
RIV - River  
RRASS - Remote Radio Activated Sound Signal  
s - seconds  
SEC - Section  
SHL - Shoaling  
si - silent  
SIG - Signal  
SND - Sound  
SPM - Single Point Mooring Buoy  
SS - Sound Signal  
STA - Station  
STRUCT - Structure  
St M - Statute Mile  
TEMP - Temporary Aid Change  
TMK - Topmark  
TRLB - Temporarily Replaced by Lighted Buoy  
TRLT - Temporarily Replaced by Light  
TRUB - Temporarily Replaced by Unlighted Buoy  
USACE - Army Corps of Engineers  
W - White  
Y - Yellow

**Additional Abbreviations Specific to this LNM Edition: None**

---

---

## SECTION I - SPECIAL NOTICES

This section contains information of special concern to the Mariner.

---

**\*\*\*\* FIFTH COAST GUARD DISTRICT LOCAL NOTICE TO MARINERS - NEW INFORMATION IN THE LOCAL NOTICE TO MARINERS \*\*\*\***

In an effort to bring attention to new or changed information in the Local Notice to Mariners (LNM) new and changed entries will be preceded and followed by four asterisks.

LNM: 25/16

**\*\*\*\*VA – JAMES RIVER – JAMES RIVER FLEET – FLARE EXERCISE\*\*\*\***

The Coast Guard will be conducting a flare exercise in the James River in the vicinity of the James River Fleet on 16 Jan 2017 with a backup day scheduled for 17 Jan, between the hours of 9:00 am and 4:00 pm. The Coast Guard will be monitoring VHF-FM channel 16. Mariners are requested to use caution when transiting the area. Contact ENS Saunders or CWO Jones at Coast Guard Sector Hampton Roads at 757-668-5555 with questions or concerns.

Chart 12248

LNM: 50/16

**\*\*\*\*US - ATLANTIC SEACOAST - ENDANGERED NORTH ATLANTIC RIGHT WHALES WARNING\*\*\*\***

Critically endangered right whales may be encountered in offshore and coastal waters. Right whales are slow moving and at risk of serious injury or death due to collisions with vessels. U.S. law (50 CFR 224.105) prohibits operating vessels 65 feet (19.8 m) or greater in excess of 10 knots in specific managed locations along the U.S. East Coast during times when right whales are likely to be present. Review NOAA's compliance guide for specific times, areas, and exceptions to this law. NOAA's updated Compliance guide for Right Whale Ship Strike Reduction Rule is located at:

[http://www.fisheries.noaa.gov/pr/pdfs/shipstrike/compliance\\_guide.pdf](http://www.fisheries.noaa.gov/pr/pdfs/shipstrike/compliance_guide.pdf)

Approaching or remaining within 500 yards of right whales is prohibited and is a violation of U.S. law. A minimum distance of 500 yards must be maintained from a sighted whale unless hazardous to the vessel or its occupants. The National Oceanic and Atmospheric Administration (NOAA) recommends that operators assume that any whale sighted is a right whale unless confirmed otherwise. NOAA also recommends speeds of 10 knots or less in areas used by right whales and outside of seasonally managed areas when consistent with safety of navigation. In the northeast, please report all right whale sightings, collisions, or entanglements to 866-755-NOAA, or to the Coast Guard via channel 16. WHALESNORTH Mandatory Ship Reporting Area is active year-round. For more information, consult the U.S. Coast Pilot. MSR arrival reports can be sent via TELEX number 48156090 or email to [rightwhale.msr@noaa.gov](mailto:rightwhale.msr@noaa.gov).

LNM: 43/16

**NC - HAZARDS OF NORTH CAROLINA COASTAL INLETS**

This notice is to notify mariners about accessing hazardous inlets, to heighten public awareness about the hazards that exist in and around the inlets, and to provide the mariner with available information. Mariners are advised that shoaling conditions exist at following North Carolina coastal inlets:

Oregon Inlet Hatteras Inlet

Ocracoke Inlet Barden Inlet

Beaufort Inlet Bogue Inlet

New River Inlet Topsail Inlet

Masonboro Inlet Carolina Beach Inlet

Lockwoods Folly Inlet Shallotte Inlet

Shoaling conditions increase the potential for groundings. These inlets are subject to continual and sometimes rapid environmental changes.

Mariners are highly encouraged to obtain the most recent U.S. Army Corps of Engineers Wilmington, North Carolina District hydrographic survey information, centerline waypoints and controlling depth at:

<http://www.saw.usace.army.mil/Missions/Navigation/HydrographicSurveys.aspx>

Mariners should use caution when navigating in these areas and passage through the inlets is not recommended without local knowledge of the area. The aids to navigation in these inlets may not be charted and may not be marking best water due to continually shifting shoals. Consult Local Notice to Mariners, 5th Coast Guard District for the latest positions and status of aids to navigation:

<http://www.navcen.uscg.gov/?pageName=InmDistrict&region=5>

To report any aids to navigation discrepancies (missing, damaged, off station, extinguished lights), shoaling, hazards to navigation, or discrepancies on bridge lighting, please contact Sector North Carolina Command Center (910) 343-2200.

LNM: 17/16

**CAUTION TO BE USED IN RELIANCE UPON AIDS TO NAVIGATION**

The aids to navigation depicted on charts comprise a system of fixed and floating aids with varying degrees of reliability. Therefore, prudent mariners will not rely solely on any single aid to navigation, particularly a floating aid. With respect to buoys, the buoy symbol is used to indicate the approximate position of the buoy body and the sinker, which secures the buoy to the seabed. The approximate position is used because of practical limitations in positioning and maintaining buoys and their sinkers in precise geographical locations. These limitations include, but are not limited to, inherent imprecision's in position fixing methods, prevailing atmospheric and sea conditions, the slope of and the material making up the seabed, the fact that buoys are moored to sinkers by varying lengths of chain, and the fact that buoy body and/or sinker positions are not under continuous surveillance but are normally checked only during periodic maintenance visits which often occur more than a year apart. The position of the buoy body can be expected to shift inside and outside the charting symbol due to the forces of nature. The mariner is also cautioned that buoys are liable to be carried away, shifted, capsized, sunk, etc. Lighted buoys may be extinguished or sound signals may not function as the result of ice, running ice or other natural causes, collisions, or other accidents. For the foregoing reasons, a prudent mariner must not rely completely upon the position or operation of floating aids to navigation, but will also utilize bearings from fixed objects and aids to navigation on shore. Further, a vessel attempting to pass close aboard always risks collision with a yawing buoy or with the obstruction the buoy marks.

LNM: 13/16

**INTERFERENCE WITH AIDS TO NAVIGATION**

U. S. Code, Title 14, Part I, Chapter 5, § 84

It shall be unlawful for any person, or public body, or instrumentality, excluding the armed forces, to remove, change the location of, obstruct, willfully damage, make fast to, or interfere with any aid to navigation established, installed, operated, or maintained by the Coast Guard pursuant to section 81 of this title, or with any aid to navigation lawfully maintained under authority granted by the Coast Guard pursuant to section 83 of this title, or to anchor any vessel in any of the navigable waters of the United States so as to obstruct or interfere with range lights maintained therein. Whoever violates the provisions of this section shall be guilty of a misdemeanor and shall be fined not more than

\$1,500 for each offense. Each day during which such violation shall continue shall be considered as a new offense.  
U. S. Code, Title 14, Part I, Chapter 5, § 84

LNM: 13/16

#### **NOAA PRODUCTION OF LITHOGRAPHIC**

Traditional printing of NOAA paper nautical charts was discontinued April 13, 2014. NOAA will continue to create and maintain other forms of nautical charts, including the increasingly popular Print on Demand (POD) charts, updated paper charts available from NOAA-certified printers. NOAA electronic navigational charts (NOAA ENC®) and raster navigational charts (NOAA RNC®), used in a variety of electronic charting systems, are also updated weekly and are available for free download from the Coast Survey website. For more information, please visit NOAA's Office of Coast Survey's homepage at <http://www.nauticalcharts.noaa.gov/>. The POD charts produced by NOAA's POD partners are, and will continue to be considered published by NOAA, and will meet all mandatory carriage requirements as specified by navigation safety regulations: 33 CFR 164.01 and 33CFR 164.33.

LNM: 13/16

#### **U.S. COAST GUARD AUXILIARY – PUBLIC EDUCATION CLASSES – FIND BY ZIPCODE**

The National Public Education Calendar Database provides a single, unified national database that holds and displays all public education courses taught by our various flotillas nationwide. In addition, a Zip Code search permits members of the general public to enter a Zip Code of interest, and find all public education courses being taught within a selected distance from that Zip Code.  
[http://www.cgaux.org/boatinged/class\\_finder/index.php](http://www.cgaux.org/boatinged/class_finder/index.php)

LNM: 20/14

#### **WESTERN ATLANTIC AND U.S. COASTAL WATERS - NORTH CAROLINA – SUNKEN MILITARY CRAFT ACT (SMCA) –PROHIBITION ON DISTURBING, REMOVING ARTIFACTS OR DAMAGING SUNKEN CRAFT**

All mariners are advised of the special protections provided to sunken military craft by the "Sunken Military Craft Act" (SMCA) (Public Law 108-375). Along the U.S. East Coast, and particularly off North Carolina, there are many sunken U.S. and foreign military craft. Sunken military craft may be the final resting places of military personnel who died in service to their country and are also important historical resources. One very notable example is the wreck of the USS MONITOR, off the NC Coast, also protected by the National Marine Sanctuaries Act. Under international and U.S. law, sunken foreign military craft, including those located in U.S. waters, remain the property of their respective country's government. Sovereign immune vessels, such as military crafts, are afforded protections under U.S. and international law. Included among these vessels are at least three known sunken German submarines (commonly called U-boats) located in waters off the North Carolina coast. These U-boats remain the property of the Federal Republic of Germany. In accordance with the SMCA, no person shall engage in or attempt to engage in any activity directed at a sunken military craft that disturbs, removes, or injures the sunken craft or the associated contents of the craft except as authorized by law. This includes, but is not limited to, the equipment, cargo, contents of the vessel, and the remains and personal effects of the crew and passengers. Mariners are urged to exercise due care when operating in the vicinity of military wrecks, as they can be damaged by both purposeful or inadvertent activities including anchoring, fishing, diving, and other marine activities. Special dangers, such as unexploded ordnance, may also be associated with sunken military craft, and should be considered when operating in these areas. Violations of the SMCA may subject individuals to penalties of up to \$100,000 and to liability for damages. Mariners who witness theft of material from, disturbance of, or damage to a sunken military craft are asked to report it to the nearest U.S. Coast Guard unit.

LNM: 45/09

#### **SAFETY NOTICE - NAVIGATIONAL RANGE STRUCTURES ON ELECTRONIC CHARTS**

The U.S. Coast Guard has become aware that Coast Guard information used to depict a rangeline on NOAA Electronic Navigational Charts (ENC) may not be of sufficient accuracy to accurately portray the rangeline on the ENC. Mariners are cautioned that the position of a rangeline as shown on an ENC may not reflect its true position.

LNM: 04/11

#### **USCG NAVIGATIONAL INFORMATION SERVICE (NIS)/USCG NAVIGATION CENTER**

The United States Coast Guard Navigational Information Service (NIS), operated by the USCG Navigation Center, is staffed 24 hours a day, 7 days a week. The NIS provides information on the current operational status, effective policies, and general information on GPS, DGPS, Navigational Rules, and maritime information. The NIS also disseminates Safety Broadcasts (BNM), Local Notice to Mariners (LNM), and the latest Notice Advisory to Navstar (NANU). These notices can also be obtained via-e-mail subscription through the USCG Navigation Center website (<http://www.navcen.uscg.gov/?pageName=gpsSubscribe>). In addition, the NIS investigates all reports of degradation or loss of GPS, DGPS and AIS service. Mariners are encouraged to report all degradation of radio navigation services to the NIS via any of the following: Phone: 703-313-5900, Email: [webmaster@navcen.uscg.mil](mailto:webmaster@navcen.uscg.mil) or on the World Wide Web at <http://www.navcen.uscg.gov>.

#### **BROADCAST NOTICES TO MARINERS**

Navigation information having been of immediate concern to the Mariner and promulgated by the following Broadcast Notices to Mariners (BNMs) have been incorporated in this notice when still significant at the date of this publication.  
CCGD5 (D5) - 601, 602, 603-16.

Sector Delaware Bay (DB) - 452, 455, 457, 460-16, 001-17.

Sector Maryland National Capital Region (MD) - 415-16, 418-16, 419-16, 420-16, 001-17, 002-17, 003-17 AND 004-17.

Sector Hampton Roads (HR) - 446-16, 445-16, 444-16, 443-16, 442-16, 441-16, 440-16.

Sector North Carolina (NC) - 731, 732, 740, 745, 748, 750, 751, 752, 753, 754-16, 001-17, 002-17, 003-17.

---

---

## SECTION II - DISCREPANCIES

This section lists all reported and corrected discrepancies related to Aids to Navigation in this edition. A discrepancy is a change in the status of an aid to navigation that differs from what is published or charted.

---

### DISCREPANCIES (FEDERAL AIDS)

LLNR	Aid Name	Status	Chart No.	BNM Ref.	LNM St	LNM End
130	Five Fathom Bank Traffic Lane Lighted Buoy FB	MISSING	12214	376DB	40/16	
225	Ocean City Inlet Jetty Light	SS INOP	12211	394MD	48/16	
270	Winter Quarter Shoal Lighted Buoy 6	MISSING	12201	331HR	38/16	
305	Wachapreague Inlet Lighted Whistle Buoy W	LT EXT	12210	385HR	42/16	
350	Cape Charles Light	LT EXT	12222	384HR	18/13	
400	North Chesapeake Entrance Lighted Gong Buoy NCD	LT EXT	12200	431HR	51/16	
403	North Chesapeake Entrance Lighted Buoy NCE	LT EXT	12200	433HR	51/16	
<b>490</b>	<b>Chesapeake Bay Southern Approach Lighted Buoy 16</b>	<b>LT EXT</b>	<b>12200</b>	<b>442HR</b>	<b>01/17</b>	
570	Navy Air Combat Maneuvering Range Tower Light A	LT EXT	12200	413NC	32/16	
585	Navy Air Combat Maneuvering Range Tower Light G	LT EXT	12200	407NC	27/12	
685	Cape Lookout Lighted Buoy 14	MISSING	11544	745NC	51/16	
1110	Little Egg Inlet Lighted Buoy 3	MISSING	12316	001DB	37/16	
<b>1275</b>	<b>Great Egg Harbor Inlet Lighted Buoy 2</b>	<b>LT EXT</b>	<b>12316</b>	<b>460DB</b>	<b>01/17</b>	
1970	Nantuxent Point Light	REDUCED INT	12304	394DB	42/16	
2050	Harbor Of Refuge North End Light 1	STRUCT DEST/TRLB	12216	601D5	52/16	
2055	Delaware Bay East Icebreaker Light 2	STRUCT DEST/LT EXT	12216	186DB	20/16	
2865	Pea Patch Island Spawn Daybeacon PPD	STRUCT DEST	12311	352DB	37/16	
2915	Pea Patch Island Dike Warning Light B	STRUCT DEST/HAZ NAV	12311	351DB	37/16	
3135	Marcus Hook Range Front Light	REDUCED INT	12312	444DB	32/16	
3290	Tinicum Range Rear Light	LT EXT	12313	168DB	19/16	
3820	Enterprise Lower Range Front Light	REDUCED INT	12314	141DB	15/16	
3845	Enterprise Upper Range Rear Light	REDUCED INT	12314	140DB	15/16	
4150	Kinkora Upper Range Rear Light	LT EXT	12314	616DB	47/15	
4210	White Hill Range Rear Light	LT EXT	12314	405DB	43/16	
4720	Ocean City Inlet Jetty Light	SS INOP	12211	394MD	48/16	
5205	Chincoteague Bay Daybeacon 26	STRUCT DEST/TRUB	12211	189MD	13/15	
5215	Chincoteague Bay Daybeacon 23	STRUCT DEST/TRUB	12211	190MD	13/15	
5477	Chincoteague Bay Daybeacon 16A	TRUB/STRUCT DEST	12211	223HR	11/15	
5495	Chincoteague Bay Daybeacon 23	STRUCT DEST/TRUB	12211	190MD	13/15	
5505	Chincoteague Bay Daybeacon 26	STRUCT DEST/TRUB	12211	189MD	13/15	
5755	Virginia Inside Passage Daybeacon 49	STRUCT DEST	12210	306HR	20/15	
5870	Virginia Inside Passage Daybeacon 82	STRUCT DEST/TRUB	12210	285HR	18/15	
5885	Virginia Inside Passage Light 87	STRUCT DEST/TRUB	12210	264HR	17/15	
5935	Virginia Inside Passage Daybeacon 103	STRUCT DEST/HAZ NAV/TRUB	12210	266HR	17/15	
5940	Virginia Inside Passage Daybeacon 105	STRUCT DEST/TRUB	12210	267HR	17/15	

5945	Virginia Inside Passage Daybeacon 106	STRUCT DEST/TRUB	12210	261HR	17/15
6115	Virginia Inside Passage Daybeacon 153	DAYMK MISSING	12210	056HR	07/15
6120	Virginia Inside Passage Daybeacon 154	DAYMK MISSING	12210	325HR	38/16
6137	Virginia Inside Passage Daybeacon 157B	DAYMK MISSING	12210	057HR	07/15
6145	Virginia Inside Passage Light 160	DAYMK MISSING	12210	058HR	07/15
6160	Virginia Inside Passage Daybeacon 163	STRUCT DEST	12210	226HR	14/15
6170	Virginia Inside Passage Daybeacon 165	DAYMK MISSING	12210	059HR	07/15
6180	Virginia Inside Passage Light 169	STRUCT DMGD	12210	060HR	07/15
6245	Virginia Inside Passage Light 191	DAYMK DMGD	12224	014HR	02/16
6280	Virginia Inside Passage Daybeacon 199	DAYMK MISSING	12224	014HR	02/16
6285	Virginia Inside Passage Daybeacon 199A	STRUCT DEST	12224	014HR	02/16
6320	Virginia Inside Passage Daybeacon 206	DAYMK MISSING	12221	014HR	02/16
6343	Virginia Inside Passage Daybeacon 211	STRUCT DEST	12224	014HR	02/16
6348	Virginia Inside Passage Daybeacon 213	MISSING	12224	014HR	02/16
6355	Virginia Inside Passage Light 215	LT EXT/DAYMK MISSING	12224	014HR	32/13
6375	Virginia Inside Passage Daybeacon 218	DAYMK MISSING	12224	014HR	02/16
6385	Virginia Inside Passage Daybeacon 219	STRUCT DEST	12224	014HR	02/16
6390	Virginia Inside Passage Daybeacon 221	DAYMK MISSING	12224	014HR	02/16
6415	Virginia Inside Passage Daybeacon 225	DAYMK MISSING	12224	014HR	02/16
6440	Virginia Inside Passage Light 232	DAYMK MISSING	12224	200HR	02/16
6485	Virginia Inside Passage Daybeacon 244	TRLB/STRUCT DEST	12224	339HR	44/12
6495	Virginia Inside Passage Daybeacon 245A	MISSING/TRUB	12224	420HR	22/15
6600	Wachapreague Inlet Lighted Whistle Buoy W	LT EXT	12210	385HR	42/16
6605	Wachapreague Inlet Buoy 1	OFF STA	12210	362HR	42/16
6610	Wachapreague Inlet Buoy 2	OFF STA	12210	363HR	42/16
6675	Wachapreague Channel Light 9	STRUCT DEST/TRLB	12210	337HR	08/15
6745	Virginia Inside Passage Light 160	DAYMK MISSING	12210	058HR	07/15
6750	Quinby Creek Light 1	DAYMK MISSING	12210	319HR	38/16
6755	Quinby Creek Daybeacon 2	DAYMK MISSING	12210	320HR	38/16
6760	Quinby Creek Light 3	DAYMK MISSING	12210	321HR	38/16
6766	Quinby Creek Buoy 5	MISSING	12210	218HR	23/13
6770	Quinby Creek Daybeacon 7	DAYMK MISSING	12210	322HR	38/16
6776	Quinby Creek Lighted Buoy 9	MISSING	12210	129HR	18/12
6780	Quinby Creek Light 11	MISSING/STRUCT DEST	12210	353HR	35/13
6855	Great Machipongo Inlet Daybeacon 13	TRLB/STRUCT DEST	12210	467HR	34/15
6920	Great Machipongo Channel Light 8	STRUCT DEST/TRLB	12210	159HR	22/16
6991	Sand Shoal Channel Daybeacon 3	STRUCT DEST/TRUB	12224	421HR	29/15
6992	Sand Shoal Channel Light 4	LT EXT/STRUCT DMGD	12224	016HR	02/16
6993	Sand Shoal Channel Daybeacon 5	STRUCT DEST/TRUB	12224	422HR	29/15
6994	Sand Shoal Channel Light 7	REDUCED INT	12210	140HR	21/16
<b>7290</b>	<b>Rappahannock Shoal Channel South Range Front Light</b>	<b>LT EXT</b>	<b>12226</b>	<b>444HR</b>	<b>01/17</b>
7480	Smith Point Light	LT EXT	12228	439HR	52/16
7750	Bloody Point Bar Light	LT EXT	12270	418MD	52/16
<b>8060</b>	<b>Craighill Channel Lighted Buoy 9</b>	<b>LT IMCH</b>	<b>12282</b>	<b>002MD</b>	<b>01/17</b>
<b>8070</b>	<b>Craighill Channel Lighted Buoy 11</b>	<b>LT EXT</b>	<b>12282</b>	<b>003MD</b>	<b>01/17</b>
<b>8077</b>	<b>Craighill Channel Lighted Buoy 13</b>	<b>LT EXT</b>	<b>12282</b>	<b>004MD</b>	<b>01/17</b>
8155	Brewerton Channel Range Rear Light	LT EXT	12281	303MD	35/16
<b>9110</b>	<b>Back Creek Channel Range Rear Light</b>	<b>LT EXT</b>	<b>12277</b>	<b>419MD</b>	<b>01/17</b>
<b>9285</b>	<b>Thimble Shoal Channel Lighted Buoy 15</b>	<b>LT EXT</b>	<b>12245</b>	<b>443HR</b>	<b>01/17</b>
9730	U.S. Navy Deperming Range Light	LT EXT	12253	355HR	41/16
9732	U.S. Navy Deperming Range Z-LOOP Platform Light South	LT EXT	12253	356HR	41/16

<b>10590</b>	<b>Willoughby Bay Channel Daybeacon 5</b>	<b>DAYMK MISSING</b>	<b>12245</b>	<b>446HR</b>	<b>01/17</b>
11025	Nansemond River Channel Light 5	STRUCT DEST/TRLB	12245	367HR	42/16
13760	Upper York River Channel Light 6	STRUCT DEST/TRLB	12243	402HR	45/16
15610	Hoskins Creek Range Rear Light	LT EXT	12237	269HR	31/16
17260	Wicomico River Warning Daybeacon	DAYMK MISSING	12286	323MD	24/15
21665	Nassawadox Creek Warning Daybeacon H	STRUCT DEST/HAZ NAV/TRUB	12226	074HR	12/16
21790	Nandua Creek Channel Warning Daybeacon F	DAYMK MISSING	12226	203HR	12/15
24760	Fishing Creek Daybeacon 2	STRUCT DEST/HAZ NAV/TRLB	12264	366MD	44/16
25931	Knapps Narrows West Channel Buoy 4	OFF STA	12266	377MD	46/16
27340	Bush River Wreck Light WR7	LT EXT	12274	313MD	36/16
28003	Oregon Inlet Lighted Buoy 6	LT EXT	12204	725HR	50/16
28640	Hatteras Inlet Lighted Buoy 1	MISSING	11555	530NC	36/16
29077	Big Foot Slough Channel Daybeacon 12	STRUCT DEST/TRUB	11550	751NC	51/16
29300	Harkers Island East Channel Light 10	TRLB/STRUCT DEST	11545	222NC	16/13
29430	Morehead City Channel Range Front Light	LT EXT	11547	037NC	05/16
29435	Morehead City Channel Range Rear Light	STRUCT DEST	11547	389NC	27/14
29500	Bogue Inlet Buoy 2	MISSING	11541	722NC	49/16
29516	Bogue Inlet Buoy 5A	MISSING	11541	732NC	36/16
29950	New River Channel Daybeacon 55	STRUCT DEST/TRUB	11542	724NC	49/16
30020	New Topsail Inlet Buoy 7	MISSING	11541	405NC	31/16
30025	New Topsail Inlet Buoy 8	OFF STA	11541	406NC	31/16
30270	Carolina Beach Inlet Buoy 2	OFF STA	11534	664NC	45/16
31015	Lockwoods Folly Inlet Buoy 2	OFF STA	11534	697NC	47/16
31025	Lockwoods Folly Inlet Buoy 4	MISSING	11534	679NC	46/16
31035	Lockwoods Folly Inlet Buoy 7	MISSING	11534	674NC	46/16
31047	Lockwoods Folly Inlet Buoy 12	OFF STA	11534	429NC	34/16
31135	Calabash Creek Daybeacon 7	STRUCT DEST/TRUB	11534	748NC	51/16
31170	Whale Head Bay Light 1	STRUCT DEST/TRLB	12204	553NC	18/15
31493	Albemarle Sound Warning Daybeacon D	STRUCT DEST	12205	677NC	46/16
32200	Buxton Harbor Light 2	REDUCED INT	11555	662NC	45/16
32221	Buxton Harbor Lighted Wreck Buoy WR8	LT EXT	11555	663NC	45/16
32325	Durant Point Daybeacon 4	STRUCT DEST	11555	671NC	48/16
32360	Bluff Shoal Light BI	REDUCED INT	11548	551NC	39/16
32475	Inner Middle Ground Light M	REDUCED INT	11548	598NC	42/16
32480	Upper Middle Ground Light UM	DAYMK MISSING	11548	616NC	43/16
32690	Swanquarter Bay Light 5	LT EXT	11548	706NC	48/16
<b>32925</b>	<b>Pungo Creek Light 3</b>	<b>LT EXT</b>	<b>11553</b>	<b>002NC</b>	<b>01/17</b>
34315	Trent River Daybeacon 20	TRLB/STRUCT DEST	11552	523NC	39/15
34455	Core Sound Light 19	STRUCT DEST/TRLB	11550	658NC	42/16
34520	Core Sound Light 24	DAYMK MISSING	11545	369NC	29/16
34595	Oyster Creek Daybeacon 3	STRUCT DEST/TRLB	11550	409NC	31/16
34870	Russell Slough Channel Daybeacon 14	TRUB	11541	731NC	50/16
35310	New Jersey Intracoastal Waterway Daybeacon 80	OFF STA/DAYMK MISSING/TRUB	12324	447DB	46/16
35310	New Jersey Intracoastal Waterway Daybeacon 80	STRUCT DMGD/TRLB	12324	080DB	04/16
35400	New Jersey Intracoastal Waterway Daybeacon 102	STRUCT DEST/TRLB	12316	034DB	18/15
36745	Cape May Harbor Light 8	STRUCT DEST/DAYMK MISSING	12317	303DB	31/16
38440	Russell Slough Junction Light RS	STRUCT DEST/TRLB	11541	385NC	12/16
38665	Money Island Channel Daybeacon 4	DAYMK MISSING	11547	NONENC	40/16
<b>38820</b>	<b>Peletier Creek Entrance Channel Daybeacon 1</b>	<b>STRUCT DEST</b>	<b>11541</b>	<b>003NC</b>	<b>01/17</b>
39223	Bogue Sound - New River Buoy 61A	OFF STA	11541	541NC	38/16

40235	Cape Fear River - Little River Buoy 48	OFF STA	11534	715NC	49/16
40340	Cape Fear River - Little River Buoy 81	OFF STA	11534	563NC	40/16

**DISCREPANCIES (FEDERAL AIDS) CORRECTED**

LLNR	Aid Name	Status	Chart No.	BNM Ref.	LNM St	LNM End
155	Cape May Light	RELIGHTED	12316	251DB	26/16	02/17
3270	Tinicum Island Range Lighted Buoy 2T	RELIGHTED	12312	461DB	01/17	01/17
4375	Indian River Inlet South Jetty Light 3	RELIGHTED	12216	453DB	01/17	01/17
27600	Susquehanna River Channel Lighted Buoy 3	RELIGHTED	12274	365MD	43/16	01/17
28715	South Ferry Terminal Lighted Buoy 7SF	WATCHING PROPERLY	11555	750NC	52/16	01/17
34807	Beaufort Harbor Channel Buoy 2A	RESET ON STATION	11547	755NC	01/17	01/17

**DISCREPANCIES (PRIVATE AIDS)**

LLNR	Aid Name	Status	Chart No.	BNM Ref.	LNM St	LNM End
9	Ocean Power Lighted Data Buoy A	MISSING	12323	585DB	49/13	
793.1	NC Artificial Fishing Reef Buoy AR360	OFF STA	11539	509NC	37/16	
793.6	NC Artificial Fishing Reef Buoy AR366	MISSING	11539	282NC	19/14	
819	NC Artificial Fishing Reef Buoy AR425	MISSING	11520	079NC	04/14	
1155	Marshelder Channel Buoy 3	MISSING	12316	250DB	26/16	
1690	Bidwell Creek Entrance Light 2	LT EXT	12304	NONEAC	37/06	
1960	Fortescue Creek Entrance Buoy 4	OFF STA	12304	NONEDB	17/13	
2035	Lewes Breakwater Front Light	LT EXT	12216	282DB	27/13	
2137	Bakers Channel Lighted Buoy 1B	BUOY DMGD/LT EXT	12216	592DB	44/15	
4346	Upper Delaware River Pipeline Outfall Buoy	MISSING	12314	129DB	18/12	
4875	Thorofare Channel Buoy 3	SINKING	12211	029DB	05/16	
4895	Thorofare Channel Buoy 8	BUOY DMGD	12211	285MD	32/16	
4900	Thorofare Channel Buoy 10	OFF STA	12211	121MD	09/15	
4925	Ocean Pines Yacht Club Light 2	LT EXT	12211	398MD	29/15	
4991.07	Little Assawoman Bay Daybeacon 6	STRUCT DEST	12211	341DB	35/16	
4991.08	Little Assawoman Bay Daybeacon 7	STRUCT DEST	12211	342DB	35/16	
4991.16	Little Assawoman Bay Daybeacon 15	DAYMK MISSING	12211	491HR	38/15	
4991.22	Little Assawoman Bay Daybeacon 21	STRUCT DMGD	12214	490HR	38/15	
5165	Chincoteague Bay State Boundary Line Buoy B	OFF STA/DAYMK IMCH	12211	024HR	04/14	
5175	Chincoteague Bay State Boundary Line Buoy D	DAYMK IMCH	12211	429HR	46/12	
5180	Chincoteague Bay State Boundary Line Buoy E	DAYMK IMCH	12211	430HR	46/12	
5185	Chincoteague Bay State Boundary Line Buoy F	MISSING	12211	431HR	46/12	
5190	Chincoteague Bay State Boundary Line Buoy G	DAYMK IMCH	12211	432HR	46/12	
5265	George Island Channel Daybeacon 8	DAYMK IMCH	12211	346HR	38/12	
5453	Coards Marsh Sanctuary Daybeacon A	STRUCT DEST	12211	433HR	46/12	
5453.1	Coards Marsh Sanctuary Daybeacon B	STRUCT DEST	12211	434HR	46/12	
5453.2	Coards Marsh Sanctuary Daybeacon C	STRUCT DEST	12211	435HR	46/12	
5457	Greenbackville Sanctuary Daybeacon A	STRUCT DEST	12211	476HR	43/11	
5457.1	Greenbackville Sanctuary Daybeacon B	DAYMK MISSING	12211	477HR	43/11	
7669	UMCES Lighted Data Buoy JI	MISSING	12264	439MD	36/14	
7837	UMCES Lighted Data Buoy CBB	OFF STA	12282	176MD	16/16	
7860	Bay Bridge Marina Light 5	LT EXT	12270	350MD	44/12	
9853	Elizabeth River Town Point Reach No Wake Buoy A	OFF STA	12253	328HR	35/14	
10125	Lynnhaven Roads Fishing Pier Lights (2)	MISSING	12254	319HR	31/13	
10186	Lynnhaven River Daybeacon 1LR	STRUCT DEST	12254	080HR	08/15	



10332.8	Lynnhaven River Eastern Branch Daybeacon 12	DAYMK MISSING	12222	432HR	51/16
10334	Lynnhaven River Eastern Branch Daybeacon 27	DAYMK MISSING	12222	162HR	23/16
10762.03	Lafayette River Northern Branch Daybeacon 3	DAYMK MISSING	12245	251HR	26/14
10762.1	Lafayette River Northern Branch Daybeacon 12	DAYMK MISSING	12245	252HR	26/14
10962	Hampton River Channel Buoy 22	DAYMK DMGD	12245	NONEHR	16/16
12692	James River Lighted Data Buoy A	OFF STA	12252	NONEHR	07/16
12692.1	James River Lighted Data Buoy B	OFF STA	12252	NONEHR	07/16
12870	Salt Ponds Light 6	STRUCT DMGD	12222	310HR	37/16
12873	Salt Ponds Daybeacon 6A	STRUCT DMGD	12222	294HR	36/16
12895	Salt Ponds Daybeacon 12	DAYMK DMGD	12222	NONED5	17/16
12950	Back River South Channel Daybeacon 2	STRUCT DEST	12238	332HR	24/13
12958	Back River South Channel Daybeacon 8	DAYMK MISSING	12238	193HR	12/15
13050	Harris River Approach Daybeacon 3	DAYMK MISSING	12238	036HR	06/12
13065	Harris River Approach Daybeacon 6	OFF STA/DAYMK DMGD	12238	037HR	06/12
14940	Windmill Point Marina Light 3	LT EXT	12235	348HR	23/12
15005	Broad Creek Northern Branch Daybeacon 1N	DAYMK DMGD	12235	234HR	24/13
15050	Broad Creek Northern Branch Daybeacon 12	DAYMK MISSING	12235	431HR	49/14
16275	Buzzards Point Daybeacon 3	DAYMK DMGD	12235	390HR	26/15
16555	Lake Conoy Warning Daybeacon A	MISSING	12233	251MD	19/10
16612	Coan River Marina Buoy 1	MISSING	12233	121MD	10/15
16613	Coan River Marina Buoy 2	MISSING	12233	121MD	10/15
16614	Coan River Marina Buoy 3	MISSING	12233	121MD	10/15
16853	Potomac River Sandy Point Lighted Data Buoy A	MISSING	12233	282MD	20/14
16962	Cabin Point Creek Daybeacon 1	STRUCT DEST/HAZ NAV	12285	225MD	25/16
16963	Cabin Point Creek Daybeacon 2	STRUCT DEST/HAZ NAV	12285	225MD	25/16
16971	Glebe Creek Daybeacon 1	STRUCT DEST/HAZ NAV	12285	224MD	25/16
16971.5	Glebe Creek Daybeacon 2	STRUCT DEST/HAZ NAV	12285	224MD	25/16
16972.5	Glebe Creek Daybeacon 4	STRUCT DEST/HAZ NAV	12285	224MD	25/16
17712	Potomac River Morgantown Lighted Mooring Buoy A	BUOY DMGD/LT EXT	12287	199MD	21/16
17845	Nanjemoy Creek Buoy 5	OFF STA	12288	497BA	45/15
18014	Aquia Creek Daybeacon 31	DAYMK IMCH	12288	422MD	34/14
18014.1	Aquia Creek Daybeacon 32	DAYMK DMGD	12288	NONEMD	34/14
18014.2	Aquia Creek Daybeacon 33	DAYMK IMCH	12288	423MD	34/14
18014.3	Aquia Creek Daybeacon 34	DAYMK DMGD	12288	424MD	34/14
18075	Possum Point Pier Light	LT EXT	12288	448MD	37/15
18170	Leesylvania Park Light 2	LT EXT	12288	449MD	37/15
18601.01	National Harbor Channel Light 3	STRUCT DEST/HAZ NAV	12289	144MD	12/16
18793.1	Tanner Creek Warning Daybeacon A	DAYMK MISSING	12233	179MD	23/13
18793.2	Tanner Creek Daybeacon 1	DAYMK MISSING	12233	178MD	23/13
18980	Mill Creek (Patuxent River) Buoy 11	OFF STA	12284	040MD	05/16
19125	Hellen Creek Buoy 1A	MISSING	12284	373MD	45/16
19152	Academy Of Natural Science Intake Light B	STRUCT DEST/HAZ NAV	12264	121MD	08/15
19512	West River Buoy 7	OFF STA	12270	271MD	32/16
19612	South River Warning Buoy A	MISSING	12270	039MD	06/13
19613	South River Warning Buoy B	MISSING	12270	040MD	06/13
20063	Severn River - Mill Creek Buoy 11	SINKING	12283	238BA	16/15
20210	Forked Creek Daybeacon 2	DAYMK MISSING	12282	240MD	18/14
21175	Fairfield Channel Buoy 2	MISSING	12281	036MD	08/12
21180	Fairfield Channel Buoy 4	MISSING	12281	037MD	08/12
21180	Fairfield Channel Buoy 4	OFF STA	12281	286MD	37/12

21185	Fairfield Channel Buoy 6	MISSING	12281	233MD	17/07
21362	North Locust Point Marine Terminal Pier 7 Warning Buoy A	MISSING	12281	569MD	01/15
22095	Onancock Creek -South Branch Buoy 1	OFF STA	12228	292MD	30/08
22430	Pocomoke Sound State Boundary Line Daybeacon H	STRUCT DEST/TRUB	12228	165MD	13/15
22440	Pocomoke Sound State Boundary Line Daybeacon K	STRUCT DEST/TRUB	12228	NONEMD	31/15
22985	Ward Creek Warning Daybeacon A	MISSING	12231	503MD	31/05
23315	Jones Creek Daybeacon 4	DAYMK MISSING	12231	402MD	44/08
23340	Jones Creek Daybeacon 12	DAYMK DMGD	12231	620MD	45/11
23670	Dorchester/Somerset County Line Marker DD	STRUCT DEST/TRUB	12231	166MD	13/15
23715	Dames Quarter Creek Channel Daybeacon 4	OFF STA/TRUB	12261	242MD	24/07
23720	Dames Quarter Creek Channel Daybeacon 5	STRUCT DEST/TRUB	12261	260MD	30/16
25010	Cambridge Municipal Yacht Basin Light 1	MISSING	12266	316MD	40/12
25015	Cambridge Municipal Yacht Basin Light 2	MISSING	12266	317MD	40/12
25020	Cambridge Channel Range Front Light	LT EXT	12268	420MD	46/08
25025	Cambridge Channel Range Rear Light	LT EXT/DAYMK DMGD	12268	418MD	46/08
25330	Pier Street Marina Daybeacon 1	STRUCT DEST/HAZ NAV	12266	157MD	20/13
25335	Pier Street Marina Daybeacon 2	STRUCT DEST/HAZ NAV	12266	168MD	21/13
25760	Upper Edge Creek Daybeacon 5	STRUCT DEST/HAZ NAV	12266	011MD	02/15
26030	Claiborne Channel Warning Daybeacon	STRUCT DEST	12270	NONEMD	08/16
26036	Claiborne Channel Buoy 5	MISSING	12266	NONEMD	08/16
26038	Claiborne Channel Buoy 6	MISSING	12270	093MD	08/16
26039	Claiborne Channel Warning Buoy A	MISSING	12270	094MD	08/16
26040	Claiborne Channel Warning Buoy B	MISSING	12270	NONEMD	08/16
26210	Oak Creek Buoy 3	MISSING	12270	092MD	08/16
26225	Oak Creek Warning Buoy	STRUCT DEST	12270	265MD	35/12
26275	Cox Creek Daybeacon 5	MISSING	12270	184MD	24/13
26990	Shallow Creek Daybeacon 9	DAYMK MISSING	12278	NONEMD	20/11
27230	Upper Gunpowder River Buoy 2	MISSING	12274	280MD	19/15
27240	Upper Gunpowder River Buoy 4	MISSING	12274	279MD	19/15
27245	Upper Gunpowder River Daybeacon 5	STRUCT DEST	12274	278MD	19/14
27250	Upper Gunpowder River Buoy 6	MISSING	12274	277MD	19/15
27255	Upper Gunpowder River Buoy 7	MISSING	12274	276MD	19/15
27265	Upper Gunpowder River Buoy 9	OFF STA	12274	275MD	19/15
27270	Upper Gunpowder River Buoy 10	OFF STA	12274	274MD	19/15
27280	Upper Gunpowder River Daybeacon 12	OFF STA	12274	273MD	19/15
27415	Fairlee Creek Buoy 8	OFF STA/BUOY DMGD	12278	361MD	28/14
27920	Upper Elk River Buoy 8	OFF STA	12274	127MD	16/13
27925	Upper Elk River Buoy 9	OFF STA	12274	128MD	16/13
30905	Wilmington Marine Center Daybeacon 6	DAYMK DMGD	11537	NONENC	05/16
30910	Wilmington Marine Center Daybeacon 7	DAYMK DMGD	11537	NONENC	05/16
31060	Shallotte Inlet Buoy 2	MISSING	11534	005NC	01/14
31087	Shallotte Inlet Buoy 9	MISSING	11534	317NC	23/13
32725.16	Swanquarter PPA Warning Daybeacon R	STRUCT DEST	11548	424NC	33/16
32725.23	Swanquarter PPA Warning Daybeacon X	STRUCT DEST	11548	089NC	09/16
32725.24	Swanquarter PPA Warning Daybeacon Y	STRUCT DEST	11548	NONENC	09/16
33427.5	Swan Point Warning Daybeacon B	DAYMK MISSING	11552	177NC	12/15
33428	Swan Point Warning Light C	DAYMK MISSING	11552	178NC	12/15
33428.5	Swan Point Warning Daybeacon D	DAYMK MISSING	11552	179NC	12/15
33597	Neuse River UNC Lighted Data Buoy A	MISSING	11544	447NC	35/16
35230	Manahawkin Bay Lower Warning Light	LT EXT	12324	371DB	32/13
35780	Absecon Waterway Upper Pier Light	LT IMCH	12316	521DB	38/14
35785	Absecon Waterway Lower Pier Light	LT IMCH	12316	522DB	38/14

36777.3	Cape May Village Daybeacon 4	STRUCT DEST	12316	556DB	41/15
	Asquith Creek Daybeacon 6	DAYMK IMCH	12282	520MD	45/14
	Back Creek-Severn River Buoy 8	MISSING	12283	310BA	36/16
	Back River Buoy 6	BUOY DMGD		263MD	33/13
	Beach Cove South Channel Daybeacon 8	MISSING	12216	NONEAC	10/06
	Cherrystone Artificial Reef Buoys	MISSING	12221	NONED5	24/05
	Cox Creek Channel Buoy 6 (Patapsco)	ADRIFT	12278	296MD	36/13
	Cox Creek Channel Buoy 7 (Patapsco)	ADRIFT	12278	297MD	36/13
	East Cod Creek Daybeacon 4	DAYMK MISSING	12233	120MD	21/12
	East Cod Creek Daybeacon 6	DAYMK DMGD	12285	318MD	26/09
	Fox Hill Channel Daybeacon 4	DAYMK DMGD	12238	173HR	23/12
	Fox Hill Channel Daybeacon 6	STRUCT DEST	12238	174HR	23/12
	Grassy Sound North Pier Light	MISSING	12316	0068AC	41/12
	Grassy Sound South Pier Light	MISSING	12316	0069AC	41/12
	Harris River Approach Daybeacon 10	DAYMK DMGD	12238	NONEHR	05/12
	Hunting Creek Miles River Buoy 2	BUOY DMGD	12270	228MD	25/16
	Indian River Bay Shellfish Excl. Buoy	MISSING	12216	NONEAC	08/12
	John's Creek Buoy 3	LT IMCH	12270	318HR	37/16
	Little Cove Point Warning Light C	STRUCT DEST	12264	286MD	36/13
	Old House Cove Warning Daybeacon A	MISSING	12231	0498MD	31/05
	Old House Cove Warning Daybeacon B	MISSING	12231	0499MD	31/05
	Old House Cove Warning Daybeacon C	MISSING	12231	0500MD	31/05
	Parramore Artificial Reef Buoy	MISSING	12210	0071ES	21/05
	Playtors Creek Dbn 3	STRUCT DEST	12266	186MD	18/16
	Shark Riv Is Ch By 1	MISSING		215DB	22/16
	Shark River Light 5	LT EXT		395DB	28/15
	Spriggs Pond Buoy 1	OFF STA		268MD	31/16
	St. Michaels Harbor Buoy 11	MISSING	12270	295MD	34/16
	St. Michaels Harbor Buoy 6	SINKING	12270	177MD	16/16
	Upper Seneca Creek Channel Buoy 2	OFF STA	12278	289MD	34/16
	Upper Tangier Sound County Range Marker F	STRUCT DEST	12231	155MD	14/16
	VIMS Clay Bank Lighted Data Buoy A	MISSING	12243	NONEHR	14/14
	VIMS Clay Bank Lighted Data Buoy B	MISSING	12243	NONEHR	14/14
	VIMS Clay Bank Lighted Data Buoy C	MISSING	12241	NONEHR	14/14
	Vims Water Qual Monitor Device (3)	MISSING		NONEHR	14/14
	Wachapreague Artificial Reef Buoys	MISSING	12210	0072ES	21/05
	Warehouse Creek Buoy 1 (South River)	MISSING	12270	244MD	28/16

#### DISCREPANCIES (PRIVATE AIDS) CORRECTED

LLNR	Aid Name	Status	Chart No.	BNM Ref.	LNM St	LNM End
	Irish Creek Buoy 3	RESET ON STATION	12266	208MD	23/16	01/17

#### PLATFORM DISCREPANCIES

Name	Status	Position	BNM Ref.	LNM St	LNM End
------	--------	----------	----------	--------	---------

None

#### PLATFORM DISCREPANCIES CORRECTED

Name	Status	Position	BNM Ref.	LNM St	LNM End
------	--------	----------	----------	--------	---------

None

### SECTION III - TEMPORARY CHANGES and TEMPORARY CHANGES CORRECTED

This section contains temporary changes and corrections to Aids to Navigation for this edition. When charted aids are temporarily relocated for dredging, testing, evaluation, or marking an obstruction, a temporary correction shall be listed in Section IV giving the

---

---

new position.

---

**TEMPORARY CHANGES**

LLNR	Aid Name	Status	Chart No.	BNM Ref.	LNM St	LNM End
1091	Oyster Creek Channel Buoy 38A	RELOCATED FOR DREDGING	12324	452D5	38/16	
1094	Oyster Creek Channel Buoy 39A	DISCONTINUED	12324	446D5	37/16	
6348	Virginia Inside Passage Daybeacon 213	TRUB	12224	NONED5	02/14	
7450	USN Aerial Gunnery Area Warning Daybeacon A	TRLB	12228	500BA	16/16	
8150	Brewerton Channel Range Front Light	RELOCATED	12281	181D5	14/15	
11897	James River Channel Lighted Buoy 27A	DISCONTINUED FOR DREDGING	12248	541D5	44/15	
11904	James River Channel Lighted Buoy 29A	DISCONTINUED FOR DREDGING	12248	541D5	44/15	
21510	Mud Creek Channel Daybeacon 1	DISCONTINUED FOR DREDGING	12224	271HR	17/15	
21515	Mud Creek Channel Daybeacon 2	TRUB	12224	221D5	18/15	
23510	Lower Thorofare Channel Light 6	TRDBN	12231	096D5	11/16	
28030	Oregon Inlet Buoy 14A	DISCONTINUED FOR DREDGING	12204	534D5	43/15	
28035	Oregon Inlet Buoy 15	DISCONTINUED FOR DREDGING	12204	012D5	03/16	
28669	Hatteras Inlet Buoy 9	DISCONTINUED	11555	269D5	21/15	
28670	Hatteras Inlet Buoy 9A	DISCONTINUED	11555	269D5	21/15	
28699.1	South Ferry Terminal Lighted Buoy 1SF	DISCONTINUED	11555	460D5	38/16	
28703	South Ferry Terminal Lighted Buoy 4SF	DISCONTINUED	11555	460D5	38/16	
28705	South Ferry Terminal Lighted Buoy 5SF	DISCONTINUED	11555	460D5	38/16	
28707	South Ferry Terminal Lighted Buoy 6SF	DISCONTINUED	11555	460D5	38/16	
28717	South Ferry Terminal Lighted Buoy 8SF	DISCONTINUED	11555	437D5	15/16	
28719	South Ferry Terminal Lighted Buoy 10SF	DISCONTINUED	11555	437D5	15/16	
28724	Hatteras Inlet Lighted Buoy 9B	DISCONTINUED	11555	269D5	21/15	
28726	Hatteras Inlet Lighted Buoy 10	DISCONTINUED	11555	269D5	21/15	
28726.1	Hatteras Inlet Buoy 10A	DISCONTINUED	11555	269D5	21/15	
28726.2	Hatteras Inlet Lighted Buoy 10B	DISCONTINUED	11555	269D5	21/15	
28729	Hatteras Inlet Lighted Buoy 11	DISCONTINUED	11555	269D5	21/15	
28730.1	Hatteras Inlet Channel Lighted Buoy 11A	DISCONTINUED	11555	297D5	27/14	
28730.15	Hatteras Inlet Channel Buoy 11AA	DISCONTINUED	11555	269D5	21/15	
28730.2	Hatteras Inlet Channel Lighted Buoy 11B	DISCONTINUED	11555	269D5	21/15	
28733	Hatteras Inlet Channel Lighted Buoy 12AA	DISCONTINUED	11555	269D5	21/15	
28733.1	Hatteras Inlet Channel Buoy 12B	DISCONTINUED	11555	269D5	21/15	
28733.2	Hatteras Inlet Channel Buoy 12C	DISCONTINUED	11555	269D5	21/15	
28735.2	Hatteras Inlet Channel Lighted Buoy 13	DISCONTINUED	11555	NONED5	23/15	
28955	Teaches Hole Channel Lighted Buoy 20	DISCONTINUED	11550	173D5	14/15	
29655	New River Inlet Buoy 1	DISCONTINUED	11541	067D5	06/15	
29660	New River Inlet Buoy 2	DISCONTINUED	11541	067D5	06/15	
29665	New River Inlet Buoy 3	DISCONTINUED	11541	491D5	43/14	
29670	New River Inlet Buoy 4	DISCONTINUED	11541	491D5	43/14	
29680	New River Inlet Buoy 6	DISCONTINUED	11541	491D5	43/14	

29700	New River Inlet Buoy 8	DISCONTINUED	11541	491D5	43/14
30355	Cape Fear River Entrance Channel Lighted Buoy 9	RELOCATED FOR DREDGING	11534	022D5	03/15
30360	Cape Fear River Entrance Channel Lighted Buoy 10	RELOCATED FOR DREDGING	11534	022D5	03/15
30370	Cape Fear River Entrance Channel Lighted Buoy 11	RELOCATED FOR DREDGING	11534	022D5	03/15
30373	Cape Fear River Entrance Channel Lighted Buoy 13	RELOCATED FOR DREDGING	11534	022D5	03/15
39548	New River - Cape Fear River Buoy 99A	DISCONTINUED FOR DREDGING	11541	595D5	51/16
39549	New River - Cape Fear River Buoy 99B	DISCONTINUED FOR DREDGING	11541	595D5	51/16
39549.1	New River - Cape Fear River Buoy 99C	DISCONTINUED FOR DREDGING	11541	595D5	51/16

**TEMPORARY CHANGES CORRECTED**

LLNR	Aid Name	Status	Chart No.	BNM Ref.	LNM St	LNM End
------	----------	--------	-----------	----------	--------	---------

None

**PLATFORM TEMPORARY CHANGES**

Name	Status	Position	BNM Ref.	LNM St	LNM End
------	--------	----------	----------	--------	---------

None

**PLATFORM TEMPORARY CHANGES CORRECTED**

Name	Status	Position	BNM Ref.	LNM St	LNM End
------	--------	----------	----------	--------	---------

None

**SECTION IV - CHART CORRECTIONS**

This section contains corrections to federally and privately maintained Aids to Navigation, as well as NOS corrections.

This section contains corrective actions affecting chart(s). Corrections appear numerically by chart number, and pertain to that chart only. It is up to the mariner to decide which chart(s) are to be corrected. The following example explains individual elements of a typical chart correction.

Chart Number	Chart Edition	Edition Date	Last Local Notice to Mariners	Horizontal Datum Reference	Source of Correction	Current Local Notice to Mariners
12327	91st Ed.	19-APR-97	Last LNM: 26/97	NAD 83		27/97
Chart Title: NY-NJ-NEW YORK HARBOR - RARITAN RIVER						
Main Panel 2245 NEW YORK HARBOR					CGD01	
(Temp) ADD	NATIONAL DOCK CHANNEL BUOY 3			at 40-41-09.001N	074-02-48.001W	
Corrective Action	Green can	Object of Corrective Action		Position		

(Temp) indicates that the chart correction action is temporary in nature. Courses and bearings are given in degrees clockwise from 000 true. Bearings of light sectors are toward the light from seaward. The nominal range of lights is expressed in nautical miles (NM) unless otherwise noted.

<b>11548</b>	<b>41st Ed.</b>	<b>01-SEP-12</b>	<b>Last LNM: 51/16</b>	<b>NAD 83</b>	<b>01/17</b>
Chart Title: Pamlico Sound Western Part					
<b>CHART NC- PAMLICO SOUND- WESTERN PART. Page/Side: N/A</b>					
CHANGE	Pungo River Wreck Light WR2 to Q R, 15FT, 4M, at			CGD05 at 35-25-18.424N	076-33-30.493W

<b>11553</b>	<b>30th Ed.</b>	<b>01-MAY-14</b>	<b>Last LNM: 51/16</b>	<b>NAD 83</b>	<b>01/17</b>
<i>ChartTitle: Intracoastal Waterway Albermarle Sound to Neuse River;Alligator River;Second Creek</i>					
<b>CHART NC-ICW-ALBEMARLE SOUND TO NEUSE RIVER. Page/Side: N/A</b>					
CHANGE	Pungo River Wreck Light WR2 to Q R, 15FT, 4M, at			CGD05 at 35-25-18.424N	076-33-30.493W
<b>12200</b>	<b>51st Ed.</b>	<b>01-MAY-14</b>	<b>Last LNM: 40/16</b>	<b>NAD 83</b>	<b>01/17</b>
<i>ChartTitle: Cape May to Cape Hatteras</i>					
<b>Main Panel 526 CAPE MAY TO CAPE HATTERAS. Page/Side: A</b>					
CHANGE	Cape May Light to FI W 15s, 165FT, 22M, at			CGD05 at 38-55-58.784N	074-57-37.379W
<b>12204</b>	<b>38th Ed.</b>	<b>01-DEC-12</b>	<b>Last LNM: 50/16</b>	<b>NAD 83</b>	<b>01/17</b>
<i>ChartTitle: Currituck Beach Light to Wimble Shoals</i>					
<b>Main Panel 527 CURRITUCK BEACH LT TO WIMBLE SHOALS. Page/Side: N/A</b>					
ADD	Wavebreak Warning Lights (3) W Or, Priv. FI R 2.5s			CGD05 at 35-45-17.305N	075-35-13.696W
<b>12205</b>	<b>34th Ed.</b>	<b>01-APR-14</b>	<b>Last LNM: 50/16</b>	<b>NAD 83</b>	<b>01/17</b>
<i>ChartTitle: Cape Henry to Pamlico Sound, Including Albemarle Sd.; Rudee Heights</i>					
<b>CHART VA-NC- CAPE HENRY TO PAMLICO SOUND (including ALBEMARLE SOUND). Page/Side: N/A</b>					
ADD	Wavebreak Warning Lights (3) W Or, Priv. FI R 2.5s			CGD05 at 35-45-17.305N	075-35-13.696W
<b>12210</b>	<b>41st Ed.</b>	<b>01-MAR-16</b>	<b>Last LNM: 50/16</b>	<b>NAD 83</b>	<b>01/17</b>
<i>ChartTitle: Chincoteague Inlet to Great Machipongo Inlet;Chincoteague Inlet</i>					
<b>CHART VA-CHINCOTEAGUE INLET TO GREAT MACHIPONGO INLET. Page/Side: N/A</b>					
CHANGE	Virginia Inside Passage Light 124 to FI R 4s, 15FT, 4M, at			CGD05 at 37-36-15.984N	075-40-27.636W
CHANGE	Virginia Inside Passage Light 94 to FI R 4s, 15FT, 4M, at			CGD05 at 37-40-32.508N	075-36-29.250W
<b>12214</b>	<b>49th Ed.</b>	<b>01-NOV-10</b>	<b>Last LNM: 52/16</b>	<b>NAD 83</b>	<b>01/17</b>
<i>ChartTitle: Cape May to Fenwick Island</i>					
<b>Main Panel 554 CAPE MAY TO FENWICK ISLAND. Page/Side: N/A</b>					
CHANGE	Cape May Light to FI W 15s, 165FT, 22M, at			CGD05 at 38-55-58.784N	074-57-37.379W
<b>12270</b>	<b>37th Ed.</b>	<b>01-DEC-15</b>	<b>Last LNM: 51/16</b>	<b>NAD 83</b>	<b>01/17</b>
<i>ChartTitle: Chesapeake Bay Eastern Bay and South River; Selby Bay</i>					
<b>CHART MD- CHESAPEAKE BAY: EASTERN BAY AND SOUTH RIVER. Page/Side: N/A</b>					
ADD	Sandy Point State Park Buoy 5 Green Can Priv.			CGD05 at 39-00-40.900N	076-24-11.000W
<b>12282</b>	<b>37th Ed.</b>	<b>01-MAY-15</b>	<b>Last LNM: 51/16</b>	<b>NAD 83</b>	<b>01/17</b>
<i>ChartTitle: Chesapeake Bay Severn and Magothy Rivers</i>					
<b>Main Panel 641 CHESAPEAKE BAY SEVERN AND MAGOTHY RIVERS. Page/Side: A</b>					
ADD	Sandy Point State Park Buoy 5 Green Can Priv.			CGD05 at 39-00-40.900N	076-24-11.000W
<b>12304</b>	<b>47th Ed.</b>	<b>01-OCT-14</b>	<b>Last LNM: 52/16</b>	<b>NAD 83</b>	<b>01/17</b>
<i>ChartTitle: Delaware Bay</i>					



In this regard, the Coast Guard is evaluating changes in aids to navigation as noted in the below articles. Users can provide feedback by filling out the District 5 Waterway Proposals data/feedback form, located at the NAVCEN D5 LNM website:  
[http://www.navcen.uscg.gov/pdf/Inms/D05%20LNM%202015%20Special%20Notice\\_Waterway\\_Proposal%20Feedback%20Form.pdf](http://www.navcen.uscg.gov/pdf/Inms/D05%20LNM%202015%20Special%20Notice_Waterway_Proposal%20Feedback%20Form.pdf)  
This section also includes Public Notices for proposed changes to the bridges within the Fifth Coast Guard with a request for comments as indicated.

LNM: 41/11

**MD – APPROACHES TO BALTIMORE HARBOR – PATAPSCO RIVER - PROPOSAL TO REDUCE THE NOMINAL RANGE OF WHITE ROCKS LIGHT**

The Coast Guard is soliciting comments on reducing the nominal range of White Rocks Light (LL 20370) from 7 nautical mile nominal range to 5 nautical mile nominal range. Interested Mariners and other stakeholders are strongly encouraged to comment on the potential impacts this proposal would have on navigational safety. You may provide feedback using the U. S. Coast Guard Fifth District Waterway Data Sheet, available online at

5th Coast Guard District Special Notice Waterway Feedback Form

All comments will be carefully considered and are requested prior to January 9, 2017 to be considered in the analysis. Refer to project number 05-18-018(D).

Send comments: [CGD5Waterways@uscg.mil](mailto:CGD5Waterways@uscg.mil) or mailed to:

U. S. Coast Guard Fifth District  
Waterways Management (dpw)  
431 Crawford Street, Room 100  
Portsmouth, VA 23704  
Attn: Albert Grimes

Chart 12278

LNM: 49/16

**VA – YORK RIVER - YORKTOWN TO WEST POINT – CEDARBUSH AND TIMBERNECK CREEKS PROPOSAL TO DISCONTINUE AIDS TO NAVIGATION**

Cedarbush and Timberneck Creeks have shoaled to depths of less than 3.5feet. As are result, the Coast Guard cannot reposition the Aids to Navigation in order to mark a defined navigable waterway. The Coast Guard is concerned that the aids in place may be misleading to the mariner, and could be more dangerous than having no aids to navigation on the waterway. Therefore, the Coast Guard is proposing discontinuing one (1) Cedarbush Creek aid and two (2) Timberneck Creek aids. The three fixed structures will be converted to non-lateral aids until they can be removed.

Aids to be discontinued and removed are:

Timberneck Creek Daybeacon 2 (LL 13765) 37 17 18.721N—76 32 06.168W

Timberneck Creek Daybeacon 3 (LL 13770) 37 17 27.487N—76 32 06.168W

Cedarbush Creek Daybeacon 2 (LL 13870) 37 18 38.533N—76 33 49.296W

Interested Mariners and other stakeholders are strongly encouraged to comment on the potential impacts this proposal would have on navigational safety. You may provide feedback using the U. S. Coast Guard Fifth District Waterway Data Sheet, available online at:

[http://www.navcen.uscg.gov/pdf/Inms/D05%20LNM%202015%20Special%20Notice\\_Waterway\\_Proposal%20Feedback%20Form.pdf](http://www.navcen.uscg.gov/pdf/Inms/D05%20LNM%202015%20Special%20Notice_Waterway_Proposal%20Feedback%20Form.pdf)

All comments will be carefully considered and are requested prior to January 9, 2017 to be considered in the analysis. Please reference project 05-17-017(D).

Send comments to [CGD5Waterways@uscg.mil](mailto:CGD5Waterways@uscg.mil), or mailed to:

U.S. Coast Guard Fifth District  
Waterways Management (dpw)  
431 Crawford Street, Room 100  
Portsmouth, VA 23704  
Attn: Albert Grimes

Chart 12243

LNM: 49/16

**NC – CAPE HATTERAS – HATTERAS INLET – DISCONTINUED AIDS TO NAVIGATION**

In September of 2015, the Coast Guard temporarily discontinued the following 16 floating aids across Hatteras Inlet due to severe shoaling. As a result of this severe shoaling the Coast Guard has been prevented from safely accessing and replacing these aids. Since these aids have been temporary discontinued over the past 18 months and severe shoaling continues in this waterway, the Coast Guard will now discontinue these 16 floating aids. The Coast Guard will continue to monitor this waterway's depths and evaluate reestablishing these aids as conditions allow.

Hatteras Inlet Buoy 9 (LLNR 28669)

Hatteras Inlet Buoy 9A (LLNR 28670)

Hatteras Inlet Lighted Buoy 9B (LLNR 28724)

Hatteras Inlet Lighted Buoy 10 (LLNR 28726)

Hatteras Inlet Lighted Buoy 10A (LLNR 28726.1)

Hatteras Inlet Lighted Buoy 10B (LLNR 28726.2)

Hatteras Inlet Lighted Buoy 11A (LLNR 28730.1)

Hatteras Inlet Lighted Buoy 11AA (LLNR 28730.15)

Hatteras Inlet Lighted Buoy 11 (LLNR 28729)

Hatteras Inlet Lighted Buoy 11B (LLNR 28730.2)

Hatteras Inlet Lighted Buoy 12AA (LLNR 28733)

Hatteras Inlet Lighted Buoy 12B (LLNR 28733.1)

Hatteras Inlet Lighted Buoy 12C (LLNR 28733.2)

Hatteras Inlet Lighted Buoy 13 (LLNR 28735.2)

South Ferry Terminal Lighted Buoy 8SF (LLNR 28717)



**\*\*\*\*NC – CAPE HATTERAS – WESTERN PART OF PAMLICO SOUND – BLUFF SHOAL LIGHT BL (LLNR 32360)\*\*\*\***

The Coast Guard is proposing to change Bluff Shoal Light BL (LLNR 32360) from Iso W 2s 40ft 6M to Fl 2.5s W 18ft 6M. The Coast Guard found the structure to be severely degraded, in jeopardy of failing over and must be rebuilt. Upon evaluation of the marine traffic patterns around Bluff Shoal, the Coast Guard concluded the height difference of 22ft would not mislead or distract local marine traffic and that the light characteristic will be changed to Fl W 2.5s to standardize the aid with other similar aids marking other shoal in the area. Interested Mariners and other stakeholders are strongly encouraged to comment on the potential impacts this proposal would have on navigational safety. You may provide feedback using the U.S. Coast Guard Fifth District Waterway Data Sheet, available online at: 5th Coast Guard District Special Notice Waterway Feedback Form.

All comments will be carefully considered and are requested prior to January 18, 2017, to be considered in the analysis. Refer to project number 05-17-025.

Send comments to ethan.j.coble@uscg.mil or CGD5Waterways@uscg.mil, or

U.S. Coast Guard Fifth District  
Waterways Management (dpw)

Attn: Ethan Coble

431 Crawford Street

Portsmouth, VA 23704

Charts: 11548 11555

LNM: 51/16

**\*\*\*\*NC – BEAUFORT INLET AND SOUTHERN CORE SOUND – RUSSELL SLOUGH – PROPOSED AID TO NAVIGATION CHANGES\*\*\*\***

The Coast Guard is proposing to discontinue Russell Slough Channel Daybeacon 14 (LLNR 34870) and relocated Russell Slough Channel Light 12 (LLNR 34865). After evaluation of the marine traffic patterns in Gallants Channel around Russell Slough Channel Light 12 and Russell Slough Channel Daybeacon 14, the Coast Guard concluded the daybeacon is not needed with the construction of the new US 17 fixed bridge approximately 300 yards south of its present position. The Coast Guard will relocate Russell Slough Channel Light 12 approximately 70 yards ESE to mark best water and aid in marking the turn of Gallants Channel. Interested Mariners and other stakeholders are strongly encouraged to comment on the potential impacts this proposal would have on navigational safety. You may provide feedback using the U.S. Coast Guard Fifth District Waterway Data Sheet, available online at: 5th Coast Guard District Special Notice Waterway Feedback Form.

All comments will be carefully considered and are requested prior to January 18, 2017, to be considered in the analysis. Refer to project number 05-17-026.

Send comments to ethan.j.coble@uscg.mil or CGD5Waterways@uscg.mil, or

U.S. Coast Guard Fifth District  
Waterways Management (dpw)

Attn: Ethan Coble

431 Crawford Street

Portsmouth, VA 23704

Charts: 11541 11545

LNM: 51/16

---

## SECTION VII - GENERAL

This section contains information of general concern to the Mariners. Mariners are advised to use caution while transiting these areas.

---

**VA – CHESAPEAKE BAY – CAPE CHARLES TO NORFOLK HARBOR - JOINT EXPEDITIONARY BASE LITTLE CREEK FORT STORY – LIVE FIRING**

Live firing is conducted continuously in Danger Zone 334.370, the area west of the south end of the Chesapeake Bay Bridge Tunnel, bounded by the following positions 36-55-24N 76-08-43W, 36-55-50N 76-08-37W, 36-57-16N 76-08-14W, 36-57-16N 76-08-14W, 36-56-58.5N 76-07-11W, 36-57-07N 76-07-44W. Firing is conducted Monday through Friday from 7:00 am to 8:00 pm. For questions or concerns about these operations you may contact Range Operations and Training Area, Mr. Assaf or Ms. Lawrence at 757-422-7103/7101.

Charts: 12222 12254

LNM: 19/16

**VA - WILLOUGHBY BAY - THIMBLE SHOAL CHANNEL - HELICOPTER AIRBORNE MINE COUNTERMEASURES OPERATIONS**

Helicopter Mine Countermeasures Squadron Fourteen (HM-14) routinely conducts airborne mine countermeasures (AMCM) operations utilizing the MH-53E helicopter at low altitudes over the following inland and coastal waterways:

- Willoughby Bay

- Thimble Shoal Channel from the Naval Station Norfolk piers to the Chesapeake Bay Bridge Tunnel.

- An area of the Chesapeake Bay, adjacent to the Thimble Shoal Channel from Thimble Shoal to the Chesapeake Bay bridge tunnel extending to the north four miles to form a four by seven mile rectangle.

During these operations, the aircraft will be operating at altitudes as low as seventy-five feet and will produce localized winds in excess of 125 miles per hour. Rotor wash produced winds pose a considerable hazard to vessels, especially sailing vessels. The devices the helicopters tow range in size and appearance from a large orange and white sled approximately the size of a pick up truck to slightly submerged steel pipes thirty feet in length, both of which have submerged cable extending well beyond the visible portion of the towed device. The Aircraft Commanders have been directed to exercise every effort to conflict and avoid surface vessels.

All mariners are requested to remain well clear of the helicopters, the towed devices, and the area extending directly behind the aircraft for four hundred yards. Do not approach or cross the area directly behind the towed device as a submerged hazard exists regardless of whether the

### VA - WILLOUGHBY BAY - THIMBLE SHOAL CHANNEL - HELICOPTER AIRBORNE MINE COUNTERMEASURES OPERATIONS

device is in motion or stationary.

These operations involve large naval helicopters at flight altitudes of 100 feet or less, towing surface and sub-surface devices at speeds up to 25 knots. Helicopters may be identified by a rotating amber position light on centerline of main hull flashing 90 times per minute. An area of hurricane-force winds exists within a 250-foot radius around these helicopters, sufficient to blow people and objects from exposed decks and capsize small craft. The towed devices may be completely invisible and include large cables on or just below the surface streaming up to 1200 feet behind the aircraft. AMCM helicopters will transit to and from the area described above in the following manner: Outboard from the seaplane ramp at the Norfolk Naval Air Station across Willoughby Bay to the main shipping channel, then easterly along the main channel to Buoy 21. From Buoy 21 either East, SE or SSE to the operating area. The return flight will follow the same path as the outbound flight. To minimize the potential for mishap, vessels are requested to remain well clear of these danger zones when AMCM operations are encountered.

Charts: 12200 12205 12221 12222 12245 12254

LNM: 01/16

### VA - VIRGINIA CAPES OPERATING AREA (VCOA) - PERMANENT MINE WARFARE TRAINING FIELDS

The U.S. Navy has established four permanent mine warfare training fields within the Virginia Capes Operating Areas. The bounding coordinates for each field are as follow:

AREA A: 37-09.0N 075-31.0W, 37-09.0N 075-34.7W, 37-12.0N 075-31.0W, 37-12.0N 075-34.7W.

AREA B: 36-29.0N 075-31.8W, 36-29.0N 075-35.5W, 36-26.0N 075-35.5W, 36-26.0N 075-31.8W.

AREA C: 36-29.0N 075-20.8W, 36-29.0N 075-24.5W, 36-26.0N 075-24.5W, 36-29.0N 075-20.8W.

AREA D: 36-46.5N 075-47.8W, 36-46.5N 075-46.5W, 36-47.5N 075-46.5W, 36-47.5N 075-47.8W.

Each area contains inert bottom and moored training mines that pose a potential hazard to dredging operations and trawler nets. All moored mines are placed at a minimum of 40 feet depth (MLLW) to preclude them as hazards to navigation.

Chart 12200

LNM: 01/16

### NC - NEW RIVER - FIRING EXERCISES

The Commanding General, Marine Corps Installations East-Marine Corps Base Camp Lejeune (MCIE-MCB CamLej), North Carolina, has advised that the area in the Atlantic Ocean between a point approximately 4.5 miles east of Bogue Inlet to a point approximately 10 miles southwest of New River Inlet, North Carolina, within the existing Danger Zone (depicted as 334.440) as shown on National Ocean Service Chart 11543, will be hazardous to navigation because of field firing exercises during the periods and times stated below. Firing will be up to 15 nautical miles seaward. Vessels are urged to avoid the above area during the periods. Mariners traveling in Atlantic Intracoastal Waterway through this area can expect a delays of about one to four hours during the below times. Range Control Boats, MCIE-MCB CamLej, North Carolina monitor Channel 16 VHF-FM and the working Channel 82 VHF-FM. Range Control can be reached by phone at 910-451-3064 or 4449.

The restricted areas in the New River, as shown on National Ocean Service chart 11542, that will be closed to navigation because of Stone Bay rifle range firing exercises during the following periods:

Stone Creek Sector 24 hours a day, daily.

Stone Bay Sector 24 hours a day, daily.

West of the 77 (deg) 26 (min) longitude line.

The restricted areas that may be closed to navigation because of firing exercises during the following periods:

Traps Bay Sector 24 hours a day, daily.

Courthouse Bay Sector 24 hours a day, daily.

Stone Bay Sector 24 hours a day, daily.

East of the 77 (deg) 26 (min) longitude line.

Grey Point Sector 24 hours a day, daily.

Farnell Bay Sector sunrise to sunset – daily.

Morgans Bay Sector sunrise to sunset – daily.

Jacksonville Sector sunrise to sunset – daily.

Due to unexploded ordnance on Browns Island and in the adjacent waterways and marsh areas, Browns Island is off limits to all unauthorized personnel. Vessels may transit the surrounding waters, however no vessel shall bottom fish or anchor.

Charts: 11541 11542 11543

LNM: 01/16

### VA - COASTAL - STATE MILITARY RESERVATION, CAMP PENDLETON, VIRGINIA BEACH - SMALL ARMS LIVE FIRE SCHEDULE

The Camp Pendleton State Military Reservation Live Fire Small Arms Range described as all of the waters seaward of the mean high water shore line within a sector between radial lines extending 13,500 yards seaward and bearing 070 degrees true and 150 degrees true, respectively, from a point on shore at 36- 48- 58.3N, 075- 57- 59.0W. All vessel operators are reminded to review Navigation Regulations as described in paragraph 334.380 of Chapter 2, of U.S. Coast Pilot 4, Atlantic Coast: Cape Henry to Key West (45th) Edition when operating south of the entrance to the Chesapeake Bay. Firing will take place only during daylight hours and red flags will be displayed at conspicuous locations on the beach at the facility. Vessels shall proceed through the area with caution and shall remain in the area no longer than necessary for transit.

LNM: 13/16

### DREDGING AND MARINE CONSTRUCTION CAUTIONS

Mariners are cautioned to stay clear of dredge, booster, floating (pontoon) and submerged pipelines, barges, derricks and operating wires associated with dredging and marine construction operations. Operators of vessels of all types should be aware that dredges and floating pipelines are held in place by cables, attached to anchors some distance away from the equipment. Buoys are attached to the anchors so that the anchors may be moved as the dredge advances and the location of the submerged pipelines are marked by buoys on each side of the channel. Mariners are cautioned to strictly comply with the Inland Rules of the Road when approaching, passing and leaving the area of operations, and remain a safe distance away from the dredge, booster, buoys, cables, pipeline, barges, derricks, wires and related equipment. Dredging projects are usually conducted twenty-four (24) hours a day seven (7) days a week. All fishnets, crabpots and structures in the general area must be removed prior to commencement of any work. A NO WAKE transit is requested of all vessels passing the dredge and if necessary to clarify a SAFE PASSAGE contact the dredge on the appropriate VHF-FM channels.

LNM: 01/16

**\*\*\*\*NJ – SHARK RIVER – CLOSURE FOR DREDGING\*\*\*\***

Mobile Dredging & Pumping Company will be extending the scheduled dredging project and will be conducting dredging in the shark river until to January 31, 2017. Dredging will start in the shark river at approximately 40-11-09N, 074-02-09W. Progress will proceed in an easterly direction for approximately 1,000 feet. Work will then continue near the southern limit of the Shark River Channel. The dredging will be performed by the dredge #D-40 and will be assisted by WB-24. The dredge and other associated vessel will be monitoring VHF-FM channels 6, 13, and 16. Mariners are advised to transit at their slowest safe speed to minimized wake and proceed with caution after passing arrangements have been made.

Chart 12324

LNLM: 01/17

**\*\*\*\*NJ – NJ INTRACOASTAL WATERWAY – MANASQUAN RIVER TO CAPE MAY CANAL – MANAHAWKIN BAY – BRIDGE CONSTRUCTION\*\*\*\***

A construction firm, on behalf of the New Jersey Department of Transportation, will continue marine construction in the vicinity of the existing and new Route 72 Bridges over Manahawkin Bay, at New Jersey Intracoastal Waterway mile 37.4, in Ship Bottom, Ocean County, NJ until May 2019. The new Route 72 Manahawkin Bridge has a vertical clearance of 55 feet above mean high water and a horizontal clearance of 100 feet between fender systems. In addition to bridge construction, marine construction operations include installation and removal of work trestles, caissons, cofferdams, bridge scaffolding and false work, as well as demolition of portions of the existing bridge not utilized in the new bridges. Vessels and barges will be used during marine construction and will monitor VHF-FM channel 13. Detailed project information and information concerning waterway closures will be provided via updated Local Notice to Mariners, Broadcast Notice to Mariners and Marine Safety Information Bulletins.

Chart 12324

LNLM: 01/17

**\*\*\*\*NJ – DELAWARE RIVER MILE 86.5 – DRP GIBBSTOWN LOGISTICS CENTER/DUPONT REPAUNO WORKS – DEMOLITION – TEST PILE OPERATIONS\*\*\*\***

From 2 Jan to 15 Mar 2017, Ramboll Environ and Delaware River Partners LLC will be demolishing the marine structures, piers, cells, walkway and ice breaker structures at the DRP Gibbstown Logistics Center/Dupont Repauno Works at mile 86.5 on the Delaware River. When demolition is substantially complete they will be driving test piles in the area. For question or additional information contact Laura at lgeorge@ramboll.com or 215-523-5603.

Chart 12312

LNLM: 01/17

**NJ – CAMDEN, NJ - NEWTON CREEK - GLOUCESTER TERMINAL PIER 7**

Due to a pier collapse at the Gloucester Terminal there is a potential for debris in the vicinity of Pier 7 on Newton Creek, in Camden NJ. Mariners should use caution when transiting the area.

Chart 12313

LNLM: 51/16

**PA/NJ – DELAWARE RIVER – PHILADELPHIA AND CAMDEN WATERFRONTS – SCHUYLKILL RIVER - BRIDGE MODIFICATION**

The purpose of this notice is to notify mariners, adjacent property owners, and government agencies that the Federal Highway Administration (FHWA) Harrisburg, PA, Pennsylvania Department of Transportation (PennDOT), and the City of Philadelphia, PA intend to modify or replace the existing CONRAIL Railroad Swing Bridge on the Schuylkill River, mile 5.5, in Philadelphia, PA to provide safe, recreational passage for cyclists and pedestrians to cross the river, while maintaining dependable access for maritime traffic traveling along the Schuylkill River. The existing bridge has a horizontal clearance of 75 feet (west draw) and 65 feet (east draw), vertical clearance of 22 feet above mean high water in the closed position and unlimited vertical clearance in the open position. Both the movable and fixed bridge replacement alternatives would have the same horizontal clearances as the existing bridge. The movable bridge replacement would have a vertical clearance of 26 feet above mean high water in the closed position and unlimited vertical clearance in the open position. The fixed bridge replacement would have a vertical clearance of 50 feet above mean high water. The PennDOT and City of Philadelphia, PA have identified the movable bridge replacement as their preferred alternative. The governing structures on the Schuylkill River are the CSX Philadelphia PA Tasker Railroad Bridge (B&O RR), mile 5.1, with a horizontal clearance of 57 feet, and the Grays Ferry Avenue Bridge, mile 5.5 (immediately upstream of the proposed bridge); with a vertical clearance of 50 feet above mean high water.

Comments on this proposal should be forwarded to the above address no later than January 20, 2016. A copy of Public Notice 5-1368, which describes the proposal in detail, can be obtained by calling (757) 398-6222 or by viewing at <http://www.navcen.uscg.gov/?pageName=pnBridges>

Chart 12312

LNLM: 51/16

**\*\*\*\*DE – DELAWARE RIVER – CHRISTINA RIVER – BRIDGE CONSTRUCTION\*\*\*\***

A construction firm, on behalf of the Delaware Department of Transportation, will be constructing a new pedestrian bridge across the Christina River, Wilmington, DE. Construction activities will begin on January 03, 2017, and are expected to finish on April 27, 2018. Workers will be on-scene from 7 a.m. to 4 p.m.; M-F. To facilitate the construction, a 41' barge and 2 work boats will be in and around the vicinity and will relocate from the navigable channel, upon request. The 41' barge will remain on-scene after work hours away from the navigational channel. Work vessels may be reached on VHF-FM channel 13. The project foreman can be reached at (302) 363-1093. Detailed project information and information concerning waterway closures will be provided via updated local notice to mariners and broadcast notice to mariners. Mariners are urged to use caution when transiting the area.

Chart 12311

LNLM: 52/16

**\*\*\*\*MD – CHESAPEAKE BAY – EASTERN BAY AND SOUTH RIVER – POPLAR ISLAND NARROWS – TEMPORARY MOORING BUOYS\*\*\*\***

From about Dec 27, 2016 until about Jan 1, 2018, Precon Marine will temporarily establish four mooring buoys approximately three quarters of a nautical mile east southeast of the northeast point of Poplar Island and on the west side of Poplar Island Narrows. The buoys will be white with blue bands, lit with slow flashing white lights, and rise 5 feet above the water surface.

Poplar Island Narrows Mooring Buoy A, 38-46-07N, 076-21-23W, FI W 2.5S

Poplar Island Narrows Mooring Buoy B, 38-46-10N, 076-21-10W, FI W 2.5S

Poplar Island Narrows Mooring Buoy C, 38-46-18N, 076-21-22W, FI W 2.5S

Poplar Island Narrows Mooring Buoy D, 38-46-21N, 076-21-10W, FI W 2.5S

**\*\*\*\*MD – CHESAPEAKE BAY – EASTERN BAY AND SOUTH RIVER – POPLAR ISLAND NARROWS – TEMPORARY MOORING BUOYS\*\*\*\***

Chart 12266

LNM: 50/16

**NJ – GREAT EGG HARBOR BAY - GARDEN STATE PARKWAY BRIDGE – DEMOLITION**

An engineering firm, on behalf of the New Jersey Turnpike Authority, will be performing a bridge demolition project at the Garden State Parkway (southbound) Bridge across the Great Egg Harbor Bay, at mile 3.5, between Beesley's Point and Somers Point, NJ, from November 1, 2016 until February 28, 2018, between 7 a.m. and 4 p.m., Monday through Saturday. A second work shift and 24-hour operations may be scheduled via separate notice and broadcast notice to mariners. The old Garden State Parkway (southbound) Bridge across Great Egg Harbor Bay will be demolished and removed from the waterway. One to three 40-foot wide barges will be placed in the navigation span from November 21, 2016, until January 15, 2017, limiting the approximate horizontal clearance through the navigation span to between 30 feet and 110 feet. Vessels and barges will be operating and working in the area and necessary waterway closures will be scheduled via separate notice and broadcast notice to mariners. A work trestle situated at the southwest end of the Garden State Parkway Bridge erected in 2013 in connection with the construction of the new southbound structures will be used for equipment staging and debris removal. Mariners should use extreme caution when transiting the area.

Chart 12316

LNM: 49/16

**\*\*\*\*NJ – DELAWARE BAY – FORTESCUE CREEK – DREDGING\*\*\*\***

Wickberg Marine Contracting (WMC), Inc. is currently in the process of mobilizing to commence maintenance dredging of Fortescue Creek in Downe Township, Cumberland County, New Jersey, and intends on commencing dredging operations on or about 07 Jan until 15 Apr 2017. Typically dredging operations will be conducted between the hours of 6:00 am and 6:00 pm; working earlier and later hours may occur on an as needed basis. WMC's personnel will monitor VHF Channels 16 and 13 and requests a minimum of forty-five (45) minutes of advanced notice if the channel is blocked so that there is sufficient time to safely relocate the anchors and move the dredge off of station. The dredge may also be contacted by calling 732-558-1479. For question contact Mr. Richard Wickberg at 732-558-1479 or Mr. Rioux at 908-295-6507 or trioux@riouxengineering.com.

Chart 12304

LNM: 01/17

**MD - CHESAPEAKE BAY - CHESAPEAKE BAY TO PINEY POINT - ST. JEROME CREEK - SHOALING**

Maryland Department of Natural Resources survey of the mouth of St. Jerome Creek indicates shoaling, to at least depth of 3.1feet MLLW, in the channel between St. Jerome Creek Light 4 (LLNR 18810), St. Jerome Creek Daybeacon 4A (LLNR 18812) and St. Jerome Creek Daybeacon 6 (LLNR 18815). Due to extensive shoaling in this Area, the channel width in the area of St. Jerome Daybeacon 4A (LLNR 18812) and Deep Point is reduced to approx 20 ft. Mariners are urged to use caution when transiting the area. MD-NCR BNM 415-16

Chart 12233

LNM: 52/16

**\*\*\*\*MD – CHESAPEAKE BAY – TANGIER SOUND - ARTIFICIAL REEF\*\*\*\***

Smith Brothers and the Maryland Artificial Reef Initiative will be deploying approximately 300 tons of concrete pipe at the Tangier Sound Artificial Reef Site. The material will be deployed via crane from a stationary barge over approximately three days between 1 and 31 Jan, weather permitting. While on site the artificial reef coordinator Michael Malpezzi can be reached via VHF Channel 16.

Corner points of Tangier Sound artificial reef site:

37 55.50' N / 75 56.62' W

37 55.08' N / 75 56.35' W

37 55.08' N / 75 56.90' W

Charts: 12228 12231

LNM: 01/17

**MD – CHESAPEAKE BAY – TREAD AVON RIVER – OYSTER BAR CREATION**

Corman Marine will be conducting operations for the US Army Corps of Engineers placing oyster shells to build Oyster Bars in the Tred Avon River. They will be placing shell at various locations between Pecks Point and Neck Point. Operations will start on 1 Dec 16 and are expected to continue until 31 Jan 17. Work will be conducted 7 days a week from 5:00 am to 7:00 pm. The equipment on the job will consist a crane barge, the 26' pushboat Amitty, and various deck barges delivering shell. For questions or additional information contact Captain Paul Lingle, General Superintendent, Corman Marine Construction, Inc., 301-343-5406 or plingle@cormanmarine.com.

Chart 12266

LNM: 47/16

**MD – CHESAPEAKE BAY – TRED AVON RIVER – TEMPORARY MOORING BUOY**

On or about December 1, 2016, Corman Marine will establish a temporary mooring buoy on the Tred Avon River, approximately 1000 yards north-northeast of the entrance to Town Creek. The mooring buoy will support work barges used for multiple oyster restoration projects on the Tred Avon River. The buoy will be white with a blue band and lit with a slow flashing white light when no vessel is moored to it. Corman Marine anticipates discontinuing the buoy on or about January 31, 2017.

Corman Marine Tred Avon Mooring Buoy A, approximate position 38-42-20N, 076-10-26W, FI W 4S.

Chart 12266

LNM: 48/16

**MD – CHESAPEAKE BAY - APPROACHES TO BALTIMORE HARBOR – LOVE POINT**

McLean Contracting will be deploying approximately 800 tons of concrete road barriers at the Love Point Artificial Reef Site. The material will be deployed via crane in the southeast quadrant of the site at a depth of 25-30 feet MLW.

Corner points of Love Point artificial reef site:

NW 39 04.21' N / 76 17.63' W

SW 39 03.95' N / 76 17.63' W

SE 39 03.95' N / 76 17.27' W

NE 39 04.21' N / 76 17.27' W

The deployment will take place over one day between December 20, 2016 and January 31, 2017, weather permitting. On the deployment day a

**MD – CHESAPEAKE BAY - APPROACHES TO BALTIMORE HARBOR – LOVE POINT**

tug and up to 3 barges carrying the crane and concrete will be spudded down on the site. Work is expected to last between 7:00 am and 5:00 pm. For questions please contact Michael Malpezzi, Artificial Reef Coordinator, MD DNR, 410-260-8290 or Michael.Malpezzi@Maryland.gov.

Charts: 12272 12278

LNM: 49/16

**MD – CHESAPEAKE BAY - APPROACHES TO BALTIMORE HARBOR – MIDDLE RIVER - COWPEN CREEK & DARK HEAD COVE – DREDGING AND MARINE CONSTRUCTION PROJECT**

Dredging and bulkhead installation operations are scheduled to continue in Cowpen Creek and Dark Head Cove (Martin Lagoon) until February 2017. The work includes the use of various cranes and scows on site, spudded in place at approximate position e 39.323 N, 076.429 W. During the project, a turbidity curtain is located within the navigable channel that will impede vessel access to Dark Head Creek. Interested mariners may contact the McLean Contracting Company vessel WB 29 via marine band radio on VHF-FM Channel 78. In addition to the dredging and bulkhead installation operations, Tetra Tech, Inc. has established three yellow lighted data buoys to monitor water quality during the Lockheed Martin Corp. project in Dark Head Cove & Cowpen Creek, which directly open into Dark Head Creek. The buoys will be removed upon completion, which is estimated to be April 2018, and are established as follows: Dark Head Creek Data Buoy A, approx position 39-19-19N, 076-25-44W FL Y 4s Dark Head Creek Data Buoy B, approx position 39-19-22N, 076-25-45W FL Y 4s Dark Head Creek Data Buoy C, approx position 39-19-24N, 076-25-42W FL Y 4s.

Chart 12278

LNM: 49/16

**VA – CHINCOTEAGUE INLET – SHOALING**

Following dredging of the Chincoteague Inlet Inner Federal Channel the Army Corps of Engineers is reporting shoaling to 5.2 feet MLW in the channel between Chincoteague Channel Lighted Buoy 26 (LLNR 5390) and Chincoteague Channel Lighted Buoy 30 (LLNR 5405) on the red side of the channel.

Charts: 12210 12211

LNM: 52/16

**VA – CHESAPEAKE BAY ENTRANCE – LYNNHAVEN INLET – BRIDGE DEMOLITION**

Starting January 3, 2016, McLean Contracting will begin demolition of the existing John A. Lesner Bridge on US 60 over the Lynnhaven Inlet in Virginia Beach. During demolition, McLean will periodically have barge mounted cranes and / or barges blocking a portion of the channel. Additionally, short term channel closures (two hours maximum) may be utilized if it is deemed unsafe to have marine traffic passing under the bridge during certain activities. In addition to staying in contact with the Virginia and Maryland Pilots Associations, McLean Contracting will be monitoring VHF channels 13 & 16 while work in or around the channel is occurring. This work is expected to last until early March.

Charts: 12222 12254

LNM: 51/16

**\*\*\*\*VA – CHESAPEAKE BAY – CAPE CHARLES TO NORFOLK HARBOR - JOINT EXPEDITIONARY BASE LITTLE CREEK FORT STORY – MILITARY OPERATIONS\*\*\*\***

\*\*\*\*VA – CHESAPEAKE BAY – CAPE CHARLES TO NORFOLK HARBOR - JOINT EXPEDITIONARY BASE LITTLE CREEK FORT STORY – MILITARY OPERATIONS\*\*\*\* 7.5

Military Operations will be conducted in the following areas during the dates and times listed. Operations may consist of swimmers in the water, small boat operations, parachute drops, helicopter air drops and recovery, blank firing.

Naval Anchorage Area A, 10 Jan, 9:00 am to 4:00 pm.

Naval Anchorage Area D, Restricted Area 334.310, 10 Jan, 9:00 am to 4:00 pm.

For questions or concerns about these operations you may contact Range Operations and Training Area, Mr. Assaf or Ms. Lawrence at 757-422-7103/7101.

Charts: 12222 12254

LNM: 01/17

**\*\*\*\*VA – HAMPTON ROADS – FORT MONROE – DIVING OPERATIONS\*\*\*\***

Precon Marine, Inc will be conducting Diving Operations in the vicinity of Fort Monroe, VA. in approximate position 36 59.968'N, 76 18.681'W, between Dec 29th, 2016 and Jan 16th, 2017. The crew boat Bay Surveyor will be on site and the divers will be inspecting the submarine cable in the vicinity. The crew boat Bay Surveyor will monitor and answer VHF-FM channels 13 and 16. For questions or concerns contact Tim Menzie at 757-777-2885, 757-545-4400 or TMenzie@PreconMarine.com. Mariners should use extreme caution and maintain a no wake speed when transiting this work area.

Chart 12245

LNM: 01/17

**VA – HAMPTON ROADS – CRANEY ISLAND – ATLANTIC OCEAN CHANNEL DREDGING**

Manson Construction Co will begin pipeline work to construct dikes extending eastward off Craney Island Dredged Material Management Area on 28 Dec 2016. Approximately 15 Jan 2017, the Hopper Dredge Glenn Edwards will begin dredging in the Atlantic Ocean Channel/Chesapeake Bay Southern Approach between Chesapeake Bay Southern Approach Lighted Buoy 2 (LLNR 420) and Chesapeake Bay Southern Approach Lighted Buoy 10 (LLNR 460) to provide material that will be pumped to the site from approximate position 36°54'19.80"N 76°20'32.19"W, along side of the Norfolk Harbor Channel. Dredging and disposal operations will be conducted 24 hours a day, seven days a week until 31 Mar 2017. The dredge may be contacted on VHF channels 13, 16, & 66. Contact Dave Howard, Operations Manager 941-315-1010 for more information.

Charts: 12222 12245

LNM: 52/16

**\*\*\*\*VA - NORFOLK HARBOR - ELIZABETH RIVER – BRIDGE MAINTENANCE\*\*\*\***

An engineering firm, on behalf of Virginia Department of Transportation, will be performing maintenance at I-64 High Rise Bridge over Elizabeth River, mile 7.1, in Chesapeake, VA. The maintenance will be conducted from Dec 30, 2016 to Aug 17, 2017; Monday through Saturday from 7 a.m. to 5 p.m. Repair and rehabilitation of the bridge will occur. A barge and work boats will be in and around the vicinity of the bridge. Maintenance personnel, equipment and vessels will relocate from the navigable channel, upon request. Work vessels may be reached on VHF-FM channel 13. The project foreman can be reached at (804) 520-9766. Mariners should notify the work foreman no less than one hour prior to navigating through the area and should use caution when transiting the area.

**\*\*\*\*VA - NORFOLK HARBOR - ELIZABETH RIVER – BRIDGE MAINTENANCE\*\*\*\***

Chart 12253

LNM: 01/17

**VA - ATLANTIC INTRACOASTAL WATERWAY - TEMPORARY CLOSURE AND LIMITATIONS TO GREAT BRIDGE LOCK - MILE MARKER 12.2**

The Great Bridge Lock, located in Chesapeake, Virginia, will be closed to navigation between the hours of 7:00 AM and 3:00 PM on the following dates:

Tuesday January 24, 2017 to Thursday January 26, 2017  
Tuesday January 31, 2017 to Thursday February 2, 2017  
Tuesday February 7, 2017 to Thursday February 9, 2017  
Tuesday February 14, 2017 to Thursday February 16, 2017

The Albemarle and Chesapeake Canal, Route 1 of the Atlantic Intracoastal Waterway, will be closed to through vessel traffic during the dates and periods specified above. Closure is required to facilitate diving operations to clean the valve chamber debris screens and inspect and install valve supports. Vessel operators may contact Mr. Joel Scussel at 757-201-7642 regarding the latest project conditions or the Albemarle and Chesapeake Canal closure. Lock and bridge operators will monitor Channel 13.

Charts: 12206 12253

LNM: 51/16

**VA – JAMES RIVER – JAMES RIVER FLEET – FLARE EXERCISE**

The Coast Guard will be conducting a flare exercise in the James River in the vicinity of the James River Fleet on 16 Jan 2017 with a backup day scheduled for 17 Jan, between the hours of 9:00 am and 4:00 pm. The Coast Guard will be monitoring VHF-FM channel 16. Mariners are requested to use caution when transiting the area. Contact ENS Saunders or CWO Jones at Coast Guard Sector Hampton Roads at 757-668-5555 with questions or concerns.

Chart 12248

LNM: 50/16

**VA - JAMES RIVER - NEWPORT NEWS TO JAMESTOWN ISLAND - BRIDGE MAINTENANCE**

An engineering firm, on behalf of Virginia Department of Transportation, will be performing maintenance on the fixed spans at the James River Bridge over James River, mile 5.0, in Newport News, VA. The maintenance will not affect operations of the movable span or restrict the height or width of the main navigational channel. Maintenance has already commenced and is scheduled to be completed June 30, 2017. The workers will be on-scene 24 hours; M-F. The project foreman can be reached at (804) 520-9766. Mariners should use caution when transiting the area.

Chart 12248

LNM: 52/16

**NC – SEACOAST – CAPE HATTERAS TO LITTLE RIVER INLET – TEMPORARY RESEARCH BUOY**

EcoH2O Innovations LLC established a research buoy approximately one nautical mile south southwest of the entrance to Masonboro Inlet and about 300 yards off the beach due to be discontinued in December. Instead, the buoy will be discontinued on or about April 1, 2017. The three-foot diameter buoy is white and blue with a slow flashing yellow light and is marked "SAROS."

Masonboro Island Research Buoy A FI Y 4S 34-09-56.2 N, 077-49-21.9 W

Chart 11520

LNM: 51/16

**NC – PAMLICO SOUND – OLD HOUSE CHANNEL – ESTABLISHMENT OF WAVE BREAK STRUCTURES AND ACCOMPANYING WARNING LIGHTS**

The North Carolina Department of Transportation will be establishing three wave break structures. These structures will be marked with daymarks and white, slow flashing warning lights.

Old House Channel Warning Light A, 36-45-17.3N, 075-35-13.7W, FI W 2.5S, NW on pile  
Old House Channel Warning Light B, 36-45-17.8N, 075-35-10.7W, FI W 2.5S, NW on pile  
Old House Channel Warning Light C, 36-45-17.1N, 075-35-07.8W, FI W 2.5S, NW on pile

Charts: 12204 12205

LNM: 43/16

**NC - OREGON INLET CHANNEL - HERBERT C. BONNER BRIDGE CONSTRUCTION & REPLACEMENT**

Construction activities for the replacement bridge began on March 7, 2016 and are expected to finish on August 30, 2019. Work will be on-going 24-hours per day, seven days a week. Detailed project information and information concerning waterway closures will be provided via updated local notice to mariners, broadcast notice to mariners and marine safety information bulletins. Tugs, crane barges, material barges, support vessels and crew boats will be operating or stationed in the vicinity of the existing and new bridge. Crane barges will be secured in place with four anchors connected by anchor wires to the corners of the barge. The anchor locations will be marked with yellow crown buoys within an approximate 500-ft radius of the crane barge. A work trestle/loading dock will be constructed approximately 200 yards south of the southeastern end of the existing Bonner Bridge, on the southwest side of South Point in Pamlico Sound, extending 150 feet southwesterly from the shoreline and terminate at approximately 35.766 N, 75.526 W. Running parallel to the dock will be a 245 foot breast-line comprised of eight 36-inch hollow pipe piles spaced fifty feet apart, to be used for mooring purposes. The breast-line will begin near shore and terminate at approximately 35.765N, 75.527 W. Each pile will be lit by a flashing white light. PCL Civil Constructors tugs and vessels will monitor VHF-FM channels 13 and 16 when work is in progress or vessels are operating in the area. The NCDOT Resident Engineer may be contacted at (252) 473-3637 and PCL Civil Constructors may be contacted at (252) 423-3093. Project information may be found at <http://www.ncdot.gov/projects/bonnerbridgereplace/>.

Chart 12205

LNM: 18/16

**\*\*\*\*NC – CAPE FEAR RIVER – BALD HEAD CHANNEL REACH 3 – BATTERY ISLAND AND SOUTHPORT CHANNELS – DREDGING\*\*\*\***

Weeks Marine Inc Dredges R.N. Weeks or B.E. Lindholm will be performing maintenance dredging in Bald Head Channel Reach 3, Battery Island Channel and Southport Channel until approximately 31 Jan 2017. Work will continue 24 hours a day, seven days a week. The dredges will monitor marine VHF channels 13 and 16. Mariners are urged to use extreme caution and transit the area at their slowest safe speed to create minimum wake after passing arrangements have been made. If you have any question or require additional information contact Miguel Cruz at (985) 875-2564, [macruz@weeksmarine.com](mailto:macruz@weeksmarine.com) or contact Project Manager on-site Dave McNeill (985) 237-5069, [dcmcneill@weeksmarine.com](mailto:dcmcneill@weeksmarine.com).

**NC – ATLANTIC INTRACOASTAL WATERWAY – NEW RIVER – CAPE FEAR RIVER – SHOALING**

The Coast Guard has received a report of severe shoaling IVO New River/Cape Fear River Buoy 121 (LLNR 39597). New River/Cape Fear River Buoy 121 has been relocated to mark best water. Buoys 121A and 122A have been added to improve safe navigation through Masons Inlet. The Coast Guard recommends no two-way traffic passing IVO Masons Inlet due to reduced channel width. The Coast Guard recommends a speed of bare steerageway due to severe shoaling and proceeding through and transiting on favorable tide conditions. Mariners are advised to exercise caution when transiting the area. NC BNM 740-16

**SECTION VIII - LIGHT LIST CORRECTIONS**

An Asterisk \*, indicates the column in which a correction has been made to new information

(1) No.	(2) Name and Location	(3) Position	(4) Characteristic	(5) Height	(6) Range	(7) Structure	(8) Remarks	
155	<b>Cape May Light</b>	38-55-58.784N 074-57-37.379W	FI W 15s	165	22	White tower, red cupola, two white dwellings nearby. 165	Structure Maintained by entity outside of U.S. Coast Guard.	01/17
					*			
5905	VIRGINIA INSIDE PASSAGE LIGHT 94	37-40-32.508N 075-36-29.250W	FIR 4s	15	4	TR on pile.		01/17
					*			
6005 6685	VIRGINIA INSIDE PASSAGE LIGHT 124	37-36-15.984N 075-40-27.636W	FIR 4s	15	4	TR on multi-pile structure.		01/17
					*			
6685 6005	VIRGINIA INSIDE PASSAGE LIGHT 124	37-36-15.984N 075-40-27.636W	FIR 4s	15	4	TR on multi-pile structure.		01/17
					*			
7925	Sandy Point State Park Buoy 5	39-00-40.900N 076-24-11.000W				Green can.	Private Aid.	01/17
*	*	*	*	*	*	*	*	
28237	WAVEBREAK WARNING LIGHTS (3)  Marks wavebreak structure.	35-45-17.305N 075-35-13.696W	FIR 2.5s			NW on pile worded DANGER.	Private Aid.	01/17
*	*	*	*	*	*	*	*	
32860 38135	PUNGO RIVER WRECK LIGHT WR2  5 yards, 245° from wreck.	35-25-18.424N 076-33-30.493W	Q R	15	4	TR-SY on pile.		01/17
					*			
38135 32860	PUNGO RIVER WRECK LIGHT WR2  5 yards, 245° from wreck.	35-25-18.424N 076-33-30.493W	Q R	15	4	TR-SY on pile.		01/17
					*			

**PUBLICATION CORRECTIONS**

None

---

---

## ENCLOSURES

---

### Enclosures

1. Summary of Shoaling.
  2. Summary of Bridge Regulations/Construction/Permits.
  3. Summary of Dredging and Construction.
  4. Summary of Marine Events.
  5. Summary of Coast Guard Sector Hampton Roads shoaling.
  6. Summary of Coast Guard Sector North Carolina shoaling.
  7. GLDD Mobilization, Absecon Inlet NJ.
  8. GLDD Mobilization, Cape May NJ.
- 
-



# **SUMMARY OF SHOALING REPORTED IN THE FIFTH COAST GUARD DISTRICT**

## **DELAWARE SHOALING**

### **DE- INDIAN RIVER BAY – SHOALING**

There has been a report of shoaling in Indian River Bay between Indian River Inlet Buoy 19 (LLNR 4435) and Middle Island West Channel Junction Lighted Buoy MI (LLNR 4436). Depths of 0.0 ft at times, during low tide, were reported.  
Chart 12216

## **NEW JERSEY SHOALING**

### **NJ - INTRACOASTAL WATERWAY- SANDY HOOK TO LITTLE EGG HARBOR - MANASQUAN - ATLANTIC CITY**

There has been a report of shoaling in the New Jersey Intracoastal Waterway within the channel boundaries in the vicinity of New Jersey Intracoastal Waterway Light 40 (LLNR 35125), to a depth of less than 4 feet 9 inches at mean low water. Ref LNM 05/16  
Chart 12312

### **NJ - INTRACOASTAL WATERWAY- LITTLE EGG HARBOR – CAPE MAY - MANASQUAN - ATLANTIC CITY**

Shoaling has been reported in the NJ Intracoastal Waterway (NJ-ICW) between NJ-ICW Daybeacon 159 (LLNR 35640) and NJ-ICW Buoy 161 (LLNR 35649).  
Chart 12316

## **PENNSYLVANIA SHOALING**

## **MARYLAND SHOALING**

### **MD - FENWICK ISLAND TO CHINCOTEAU INLET-OCEAN CITY INLET – SHOALING**

A USACE survey conducted on 18 Oct 16 has identified shoaling to a depth of 7 ft at MLLW between Ocean City Inlet Lighted Buoy 8 (LLNR 4745) and Ocean City Inlet Lighted Buoy 10 (LLNR 4750) and shoaling to a depth of 6 ft at MLLW between Ocean City Inlet Lighted Buoy 11 (LLNR 4755) and Ocean City Inlet Lighted Buoy 12 (LLNR 4757). Ref LNM 43/16, MD-NCR BNM 364-16  
Chart 12211

### **MD - FENWICK ISLAND TO CHINCOTEAGUE INLET - SINEPUXENT BAY – SHOALING** (Chart 12211)

Shoaling has been found in Sinepuxent Bay Channel in the following locations: Sinepuxent Bay Channel Daybeacon 11B (LLNR 5050), shoaling encroaches approximately 20 yds into the channel in a southwesterly direction. Water depths have been found as low as 2.5 ft during low tide. Between Sinepuxent Bay Channel Light 8 (LLNR 5020) and Sinepuxent Bay Channel Daybeacon 10 (LLNR 5035), shoaling encroaches approximately 15 yds into the channel in an easterly direction. Water depths have been found as low as 2 ft during low tide. Between Sinepuxent Bay Channel Buoy 33 (LLNR 5130) and Sinepuxent Bay Channel Daybeacon 35 (LLNR 5135) on the eastern side of the channel. Water depths have been found as low as 3 ft during low tide.  
Chart 12211

### **MD - CHESAPEAKE BAY - TANGIER SOUND - NORTHERN PART - RHODES POINT GUT CHANNEL**

There has been a report of shoaling in Rhodes Point gut channel within the channel boundaries between Rhodes Point Gut Channel Buoy 3 (LLNR 23000) and Rhodes Point Gut Channel Buoy 5 (LLNR 23005), to a depth of less than six feet at mean low water. Depth is reading approx one and a half feet. Ref MD BNM 278-16  
Chart 12228

### **\*\*\*\*MD - CHESAPEAKE BAY - CHESAPEAKE BAY TO PINEY POINT - ST. JEROME CREEK - SHOALING\*\*\*\***

Maryland DNR survey of the mouth of St. Jerome Creek indicates shoaling, to at least depth of 3.1feet MLLW, in the channel between St. Jerome Creek Light 4 (LLNR 18810), St. Jerome Creek Daybeacon 4A (LLNR 18812) and St. Jerome Creek Daybeacon 6 (LLNR 18815). The channel width in the area of St. Jerome Daybeacon 4A (LLNR 18812) and Deep Point is reduced to approx 20 ft. MD-NCR BNM 415-16, Ref LNM 52/16  
Chart 12233

### **MD/VA - POTOMAC RIVER - PINEY POINT TO LOWER CEDAR POINT - ST. CATHERINE SOUND LOWER ENTRANCE - SHOALING**

Shoaling exists in St. Catherine Sound Lower Entrance at the following locations: (1) off the northeastern tip of St. Catherine Island extending channel ward between position 38-14-17.586N, 076-47-15.562W and position 38-14-32.841N, 076-47-14.761W, and (2) in the vicinity of St. Catherine Sound Lower Entrance 4L (LLNR 17230). Ref LNM 44/16, CCGD5 BNM 524-16  
Chart 12286

### **MD – CHESAPEAKE BAY- CHESTER RIVER – KENT ISLAND NARROWS NORTH APPROACH**

Depths of less than 4 feet have been reported between Kent Island Narrows North Approach LT 4 (LLNR 26425) and Kent Island Narrows North Approach LT 6 (LLNR 26435) on the red side of the channel. Vessels transiting the Kent Island Narrows North Approach Channel should exercise caution. Ref LNM 05/16  
Chart 12272

## **VIRGINIA SHOALING**

### **\*\*\*\*VA – CHINCOTEAGUE INLET – SHOALING\*\*\*\***

Following dredging of the Chincoteague Inlet Inner Federal Channel the Army Corps of Engineers is reporting shoaling to 5.2 feet MLW in the channel between Chincoteague Channel Lighted Buoy 26 (LLNR 5390) and Chincoteague Channel Lighted Buoy 30 (LLNR 5405) on the red side of the channel. Chart 12210

### **VA – NANDUA CREEK**

Shoaling has been reported at the entrance to Nandua Creek to 2 feet. HR BNM 311-13  
Chart 12226

### **VA – VIRGINIA INSIDE PASSAGE (VIP)**

VIP Day beacon 107 (LLNR 5950) to VIP Day beacon 265 (LLNR 6580), Shoaling to less than 6ft MLW. HR BNM 106-16  
Quinby Creek Day beacon 7 (LLNR 6770) to Quinby Creek Light 13 (LLNR 6785), Shoaling to less than 6 ft MLW. HR BNM 104-16  
VIP Day beacon 244 (LLNR 6485), Shoaling to 1 foot. HR BNM 272-14  
Sand Shoal Channel Light 1 (LLNR 6990) to Sand Shoal Light 10 (LLNR 6996) LNM 24-13  
Oyster Creek Channel Junction Lighted Buoy OC (LLNR 7002/6447) to Oyster Creek Light 10 (LLNR 7025), Shoaling to less than 6ft MLW.  
HR BNM 107-16  
Chart 12210, 12224

### **\*\*\*\*VA - CHESAPEAKE BAY - LYNNHAVEN RIVER EASTERN BRANCH\*\*\*\***

Shoaling has been reported to a depth of 0-3ft at mean low water in the Lynnhaven River Eastern Branch in the vicinity of Lynnhaven River Eastern Branch Buoy 1ED (LLNR 10332)(Private Aid). Mariners are advised to transit the area with extreme caution. HR BNM 424-16

### **VA – CHESAPEAKE BAY – RAPPAHANNOCK RIVER ENTRANCE - MILFORD HAVEN EAST**

Shoaling has been reported to 3 feet between Milford Haven East Buoy 7 (LLNR 14593.5) and Milford Haven East Daybeacon 11 (LLNR 14605). HR BNM 030-15  
Chart 12235

### **VA – CHESAPEAKE BAY - MATTAWOMAN CREEK – SHOALING**

Shoaling has been Reported to a depth of 2-3ft at mean low water in the channel of Mattawoman Creek between Mattawoman Creek Light 1MC (LLNR 21580) and Mattawoman Creek Light 2 (LLNR 21585). Mariners are advised to transit the area with caution.  
Chart 12226

### **VA – HAMPTON ROADS - WILLOUGHBY BAY**

The USACE has reported shoaling in Willoughby Channel to 2.6 feet MLLW in the vicinity of Willoughby Channel Buoy 3 (LLNR 10583).  
Chart 12245

### **VA – CHESAPEAKE BAY – LYNNHAVEN INLET – LONG CREEK CHANNEL**

Shoaling to 2.4 feet has been reported in Long Creek Channel east of Long Creek Channel Day beacon 7 (LLNR 10167) in the vicinity of Pleasure House Point. HR BNM 293-14  
Chart 12254

### **VA/MD - POTOMAC RIVER - PINEY POINT TO LOWER CEDAR POINT - ST. CATHERINE SOUND LOWER ENTRANCE - SHOALING**

Shoaling exists in St. Catherine Sound Lower Entrance at the following locations: (1) off the northeastern tip of St. Catherine Island extending channel ward between position 38-14-17.586N, 076-47-15.562W and position 38-14-32.841N, 076-47-14.761W, and (2) in the vicinity of St. Catherine Sound Lower Entrance 4L (LLNR 17230). Ref LNM 44/16, CCGD5 BNM 524-16  
Chart 12286

### **VA – CHESAPEAKE BAY – MOBJACK BAY AND YORK RIVER ENTRANCE - HORN HARBOR**

Shoaling has been reported to 1-2 feet extending 50 yards channel ward from Horn Harbor Lighted Buoy 8 (LLNR 14487). HR BNM 182-15  
Chart 12238

### **VA – CHESAPEAKE BAY – YORKTOWN TO WEST POINT - QUEEN CREEK**

Shoaling to less the 3 feet has been reported in Queen Creek from Queen Creek Entrance Light 2QC (LLNR 13785) to Queen Creek Day beacon 10 (LLNR 13820). HR BNM 170-14  
Chart 12243

### **VA - RAPPAHANNOCK RIVER - CORROTOMAN RIVER TO FREDERICKSBURG – GREENVALE CREEK SHOALING**

An Army Corps of Engineers Survey of Greenvale Creek Channel indicates shoaling, to a least depth of 1.7 feet MLLW, across the channel from approximately 250 feet North-Northeast of Greenvale Channel Light 2 (LL 15305) continuing inbound for approximately 880 feet. Ref LNM 50/16  
Charts 12237

### **VA - POTOMAC RIVER - YEOCOMICO RIVER - SHOALING**

There has been a report of shoaling in the Yeocomico River within channel boundaries, located SE of South Yeocomico River Daybeacon 2 (LLNR 16830) to a depth of less than ten feet at mean low water. MD-NCR BNM 408-16, Ref LNM 50/16  
Chart 12233

## **NORTH CAROLINA SHOALING**

### **NC – PAMLICO SOUND BRANT ISLAND SHOAL – SHOALING**

Shoaling to 3 feet has been reported in the area of the southeast tip of the charted shoal in the vicinity of Brant Island Slue in approximate position 35-10.45N,076-23.05W.  
Chart 11548

**NC – EMERALD ISLE – SWANSBORO COAST GUARD CHANNEL**

Shoaling has been reported to 2.6' in the vicinity of Swansboro Coast Guard Channel Buoy 3A (LLNR 29608) and Swansboro Coast Guard Channel Light 5 (LLNR 29645). NC BNM 219-13  
Chart 11541

**NC – ICW - NEUSE RIVER TO MYRTLE GROVE SOUND - NEW RIVER – CAPE FEAR RIVER**

Shoaling to 2.6 feet has been reported in the vicinity of New River- Cape Fear River Buoy 99A (LLNR 39548). NC BNM 048-15  
Chart 11541

**NC - NEUSE RIVER TO MYRTLE GROVE SOUND – BOGUE INLET**

Shoaling to 4.5 feet has been reported in the vicinity of Bogue Inlet Lighted Buoy 1 (LLNR 29495), and Bogue Inlet Buoys 2 and 3 (LLNR 29500 and 29505). NC BNM 255-14  
Chart 11541

**NC – NEUSE RIVER TO MYRTLE GROVE SOUND - NEW RIVER – NEW RIVER INLET**

Shoaling has been reported to 2 feet in New River Inlet Channel. NC BNM 003-15  
Chart 11542

**NC – CURRITUCK BEACH LIGHT TO WIMBLE SHOALS – OREGON INLET**

Shoaling has been reported to 2 feet in Oregon Inlet Channel near the Bonner Bridge. NC BNM 642-14  
Chart 12204

**NC – NEUSE RIVER TO MYRTLE GROVE – BANKS SLOUGH CHANNEL**

Shoaling has been reported to 0.5 feet in Banks Slough Channel. NC BNM 658-14  
Chart 11541

**NC – CAPE HATTERAS – HATTERAS INLET**

Shoaling has been reported to 3.5 feet in Hatteras Inlet between Hatteras Inlet Channel Buoy 9 (LLNR 28669) and Hatteras Inlet Channel Buoy 12C (LLNR 28733.2). NC BNM 028-15, LNM 06-15  
Chart 11555

**NC – CAPE HATTERAS – SOUTH FERRY TERMINAL – SHOALING**

Shoaling has been reported to 2.6 feet in South Ferry terminal between South Ferry Terminal Lighted Buoy 1SF (LLNR 28699.1) and South Ferry terminal Light 7 (LLNR 28715). NC BNM 031-16, 069-16  
Chart 11555

**NC – ICW - NEUSE RIVER TO MYRTLE GROVE SOUND – BOGUE SOUND - NEW RIVER** (Chart 11541)

Shoaling to 3 feet has been reported in the vicinity of Bogue Sound - New River buoys 72A (LLNR 39300), 72B (LLNR 39303) and 74 (LLNR 39305). LNM 06-15  
Chart 11541

**NC – CAPE HATTERAS – HATTERAS INLET**

Shoaling has been reported to 5 feet in vicinity of Hatteras Inlet Channel Lighted Buoy 13A (LLNR 28735.3) and Hatteras Inlet Lighted Buoy 14 (LLNR 28735.6). NC BNM 340-15  
Chart 11555

**NC – CAPE HATTERS – BAREY SLOUGH**

The Coast Guard has received a report of shoaling in the vicinity of Barney Slough Channel Lighted Buoy 6 (LLNR 28722.3). Mariners are advised to transit the area with caution. NC BNM 713-16  
Chart 11555

**NC – ICW - NEUSE RIVER TO MYRTLE GROVE - RUSSELL SLOUGH**

Shoaling has been reported to 1 foot in vicinity of Russell Slough Day beacon 6A (LLNR 38467) NC BNM 344-15  
Chart 11541

**NC – CAPE HATTERAS – HATTERAS INLET – SOUTH FERRY TERMINAL**

Shoaling has been reported to 2.6 feet in South Ferry terminal between South Ferry Terminal Lighted Buoy 1SF (LLNR 28699.1) and South Ferry terminal Light 7 (LLNR 28715). NC BNM 031-16, 069-16

**NC - NEW RIVER - SHOALING**

The Coast Guard was able to partially reestablish New River Inlet with new aids to navigation, but due to continued shoaling to 4 ft at mean low water in the center of the channel, no further aids will be placed at this time. Mariners are advised to proceed with caution while transiting in the area.  
Chart 11542

**\*\*\*\*NC – ATLANTIC INTRACOASTAL WATERWAY – NEW RIVER – CAPE FEAR RIVER – SHOALING\*\*\*\***

The Coast Guard has received a report of severe shoaling IVO New River/Cape Fear River Buoy 121 (LLNR 39597). New River/Cape Fear River Buoy 121 has been relocated to mark best water. Buoys 121A and 122A have been added to improve safe navigation through Masons Inlet. The Coast Guard recommends no two-way traffic passing IVO Masons Inlet due to reduced channel width. NC BNM 740-16, Ref LNM 51/16  
Chart 11541

**NC – NEUSE RIVER TO MYRTLE GROVE SOUND – CAROLINA BEACH INLET**

Shoaling to 2.6 feet has been reported in Carolina Beach Inlet from Carolina Beach Inlet Buoy 1 (LLNR 30265) to Buoy 6 (LLNR 30290). NC BNM 659-15, 206-16  
Chart 11541

**NC – OCRACOKE INLET AND NORTHERN CORE SOUND – OCRACOKE INLET – BIG FOOT SLOUGH**

Shoaling has been reported in Big Foot Slough between Big Foot Slough Day beacon 10A (LLNR 29070) and Buoy 11 (LLNR 29070.3) NC BNM 657-15 Chart 11541

**NC - MOREHEAD CITY**

Shoaling has been reported to 10 feet between Buoys 16 – 17 and to 17 feet between buoys 13 and 15. NC BNM 036-16 Chart 11547

**\*\*\*\*NC - NEUSE RIVER TO MYRTLE GROVE SOUND – AICWW - NEW RIVER TO CAPE FEAR RIVER – BROWNS INLET\*\*\*\***

Shoaling has been reported in the AICWW near the intersection of Browns Inlet and the AICWW in the vicinity of New River – Cape Fear River Buoy 61A (LLNR 39223).

**NC - AICWW SHALLOTTE CROSSING – SHOALING**

An area of shoaling has been reported IVO of Buoy 81 (LLNR 40340) in the AICWW near Shallotte Crossing. There is a reported depth of 1.5ft at MLW. Mariners are urged to use caution when transiting this area. NC BNM 699-16 Chart 11534

**\*\*\*\*NC - NEUSE RIVER TO MYRTLE GROVE SOUND – AICWW - NEW RIVER TO CAPE FEAR RIVER – HOWARDS CREEK\*\*\*\***

Shoaling has been reported in the AICWW near the intersection of Howards Creek and the AICWW in the vicinity of New River – Cape Fear River Buoy 99A (LLNR 39548).

**NC - NEUSE RIVER TO MYRTLE GROVE SOUND – NEW RIVER TO CAPE FEAR RIVER**

An area of shoaling has been reported IVO of New River – Cape Fear River Buoy 121 (LLNR 39597) in the AICWW St M 280 near Mason Inlet Crossing. ACOE reported a depth of 2.2ft at MLW. Mariners are urged to use caution when transiting this area. NC BNM 357-16 Chart 11541

**NC – INTRACOASTAL WATERWAY - MYRTLE GROVE SOUND TO LITTLE RIVER**

Shoaling to 1 foot has been reported in the vicinity of Lockwoods Folly Inlet at Cape Fear River – Littler River Buoy 47 (LLNR 40225). NC BNM 256-16 Chart 11534

# SUMMARY OF BRIDGE PERMITS, REGULATIONS AND CONSTRUCTION IN THE FIFTH COAST GUARD DISTRICT

(Yellow indicates new item)

## **CURRENT PROJECTS**

### **Permits:**

#### **SECTOR MARYLAND-NATIONAL CAPITAL REGION**

- **Maryland** –  
Potomac River - Harry Nice Memorial Bridge – Fixed replacement bridge Preliminary Navigation Clearance Determination (PNCD) issued on November 10, 2016; vertical clearance of 106.5 feet above mean high water and a horizontal clearance of 250.
- **Washington DC**  
Anacostia River – Frederick Douglass Memorial/South Capitol Street (swing) Bridge – Fixed replacement bridge Preliminary Navigation Clearance Determination (PNCD) issued on December 8, 2015; vertical clearance of 42 feet above mean high water and a horizontal clearance of 150.
- **Virginia (Northern)**  
Potomac River - Harry Nice Memorial Bridge – Fixed replacement bridge Preliminary Navigation Clearance Determination (PNCD) issued on November 10, 2016; vertical clearance of 106.5 feet above mean high water and a horizontal clearance of 250.

#### **SECTOR DELAWARE BAY**

- **Delaware**  
Christina River - An application has been received by the Commander, Fifth District Coast Guard from Delaware Department of Transportation (DelDOT), for proposing construction of a new bridge across Christina River. The proposed bridge will provide a minimum vertical clearance of 14 feet, above mean high water, with a 150-foot wide navigable channel centered in Christina River.  
Raccoon Creek – US 130 (fixed) Bridge - proposed new fixed bridge structure to replace (lift) bridge. Permit 2-15-5 signed December 9, 2015.
- **Pennsylvania**  
Christina River - An application has been received by the Commander, Fifth District Coast Guard from Delaware Department of Transportation (DelDOT), for proposing construction of a new bridge across Christina River. The proposed bridge will provide a minimum vertical clearance of 14 feet, above mean high water, with a 150-foot wide navigable channel centered in Christina River.  
Schuylkill River – Schuylkill River Grays Ferry Pedestrian Bridge - The purpose of this notice is to notify mariners, adjacent property owners, and government agencies that the Federal Highway Administration (FHWA) Harrisburg, PA, Pennsylvania Department of Transportation (PennDOT), and the City of Philadelphia, PA intend to modify or replace the existing CONRAIL Railroad Swing Bridge on the Schuylkill River, mile 5.5, in Philadelphia, PA to provide safe, recreational passage for cyclists and pedestrians to cross the river, while maintaining dependable access for maritime traffic traveling along the Schuylkill River. The existing bridge has a horizontal clearance of 75 feet (west draw) and 65 feet (east draw), vertical clearance of 22 feet above mean high water in the closed position and unlimited vertical clearance in the open position. Both the movable and fixed bridge replacement alternatives would have the same horizontal clearances as the existing bridge. The movable bridge replacement would have a vertical clearance of 26 feet above mean high water in the closed position and unlimited vertical clearance in the open position. The fixed bridge replacement would have a vertical clearance of 50 feet above mean high water. The PennDOT and City of Philadelphia, PA have identified the movable bridge replacement as their preferred alternative. The governing structures on the Schuylkill River are the CSX Philadelphia PA Tasker Railroad Bridge (B&O RR), mile 5.1, with a horizontal clearance of 57 feet, and the Grays Ferry Avenue Bridge, mile 5.5 (immediately upstream of the proposed bridge); with a vertical clearance of 50 feet above mean high water.  
Comments on this proposal should be forwarded to the above address no later than **January 20, 2016**. A copy of **Public Notice 5-1368**, which describes the proposal in detail, can be obtained by calling (757) 398-6222 or by viewing at <http://www.navcen.uscg.gov/?pageName=pnBridges>.

#### **SECTOR HAMPTON ROADS**

- **Virginia (Southern)**  
AICW – Elizabeth River Southern Branch – I-64/High Rise Bridge – VDOT has proposed to replace the existing drawbridge with a new fixed bridge at essentially the same location. The replacement project will modify the existing vertical clearance of the bridge. The charted vertical clearance of the existing bascule bridge in the closed-to-navigation position is 65 feet above MHW with unlimited vertical clearance in the full open position. The proposed replacement will be a fixed bridge that will provide a vertical clearance of 100 feet above MHW. The current horizontal clearance of 125 feet will be maintained for the new fixed bridge.

#### **SECTOR NORTH CAROLINA**

- **North Carolina**  
Atlantic Intracoastal Waterway – NC 210/50 Bridge, Surf City, NC - proposed new fixed bridge structure to replace (swing) bridge. Permit 2-16-5 signed September 27, 2016.

### **Regulations:**

#### **SECTOR MARYLAND-NATIONAL CAPITAL REGION**

- **Washington, DC & Virginia (Northern)** – None

#### **SECTOR DELAWARE BAY**

- **Delaware** – None

- **New Jersey (Central & Southern)**  
NJICW – Barnegat Bay – SR37 (vertical-lift) Bridge – The CG is temporarily modifying the drawbridge operating schedule between December 1, 2015 and March 31, 2018. Over the span of two and half years, the drawbridge will be closed to navigation for three four-month closure periods in the winter months. Extensive replacement of parts and repairs to the bridge necessitate these closures.

- **Pennsylvania** – None
- SECTOR HAMPTON ROADS**

- **Virginia (Southern)** –
- SECTOR NORTH CAROLINA**

- **North Carolina** - None

**Construction, et al:**

**SECTOR MARYLAND-NATIONAL CAPITAL REGION**

- **Maryland**

Susquehanna River – US 40 & I-95/Hayden & Tydings (fixed) Bridges – Foundation and substructure repairs are in progress through 2016.

Susquehanna River – I-95 Millard E Tydings Memorial (fixed) Bridge – Cleaning, painting, and repairs are in progress through August 2017. During daylight hours Monday through Saturday a barge and crew boat will be working in various locations near the structure and a debris shield will be secured to the lower truss member throughout the bridge but will not affect navigational clearances.

Curtis Creek – I-695 Baltimore Beltway (fixed portions) Bridge – Painting work is scheduled to continue through the fall of 2016. To facilitate the work, a platform will reduce the available vertical clearance outside the channel to 49 feet above MHW.

Choptank River - MD 331/Dover (fixed) Bridge – Construction activities begun on September 16, 2014 and are expected to finish in November 2018. Detailed project information and information concerning the waterway closures will be provided via updated local notice to mariners, broadcast notice to mariners and marine safety information bulletins. Tugs, crane barges, and vessels are operating or stationed in the vicinity of the existing and new bridge. McLean Contracting Company's tugs and vessels are monitoring VHF-FM channel 13 when work is in progress or vessels are operating in the area. The MDSHA project engineer may be contacted at (816) 989-4019 and McLean Contracting Site Supervisor may be contacted at (443) 980-7633. Mariners should use extreme caution when transiting the area. Project Information may be found at: <http://apps.roads.maryland.gov/WebProjectLifeCycle/ProjectSchedule.aspx?projectno=TA392515>

Nanticoke River - MD 313 Bridge – Inspections will be performed from Monday, December 5, 2016, through Friday, December 30, 2016; M-F; from 7 a.m. to 6 p.m. A 25-foot dive craft will be used. The inspection vessel will relocate from the moveable span and navigable channel, upon request. The vessel may be reached on VHF-FM channel 13. The vessel foreman can be reached at (302) 250-6073. Mariners are requested to notify the project foreman at least five minutes prior to navigation through the area and should use caution when transiting the area.

Pocomoke River - US 13 Bridge Inspections will be performed from Monday, December 5, 2016, through Friday, December 30, 2016; M-F; from 7 a.m. to 6 p.m. A 25-foot dive craft will be used. This will be a movable operation not to impede vessel traffic. The inspection vessel will relocate from the moveable span and navigable channel, upon request. The vessel may be reached on VHF-FM channel 13. The vessel foreman can be reached at (302) 250-6073. Mariners are requested to notify the project foreman at least five minutes prior to navigation through the area and should use caution when transiting the area

- **Washington DC** –

Potomac River - Francis Scott Key (fixed) Bridge - DDOT has completed a design for rehabilitation. This work commenced in May 2015 and is scheduled to continue for two years (OOA May 2017). Most of the work has to do with repairing cracks on the concrete arches, floor beams, piers and abutments, and repairing some deterioration of the underside of the bridge deck.

Potomac River – Washington DC Long Bridge – Maintenance will be performed on the bridge between March 10, 2016 and March 28, 2017. There is no pier work or work over the navigational channel. Mariners should use extreme caution when transiting the area.

- **Virginia (Northern)** - None

**SECTOR DELAWARE BAY**

- **Delaware**

Christina River – Industrial Trail Track Bridge (new pedestrian bridge) - Construction activities will begin on January 03, 2017, and are expected to finish on April 27, 2018. Workers will be on-scene from 7 a.m. to 4 p.m.; M-F. To facilitate the construction, a 41' barge and 2 work boats will be in and around the vicinity and will relocate from the navigable channel, upon request. The 41' barge will remain on-scene after work hours away from the navigational channel. Work vessels may be reached on VHF-FM channel 13. The project foreman can be reached at (302) 363-1093. Detailed project information and information concerning waterway closures will be provided via updated local notice to mariners and broadcast notice to mariners. Mariners are urged to use caution when transiting the area.

- **New Jersey (Central & Southern)**

Delaware River – Commodore Barry (fixed) Bridge – To facilitate painting, work will continue until 2019. Work platforms will be installed 3 feet beneath the bridge in various locations reducing the vertical clearance to 178 ft. above mean high water at the edge of the navigable channel (187 ft. center of channel). Phase 1 – NJ approach girder and deck truss spans due completion in September 2016. Phase 2 – PA approach girder and deck truss spans, scheduled to commence fall of 2016. Phase 3 – Cantilever truss span, scheduled to commence in 2017 and conclude in 2019. Mariners should exercise caution.

Drag Channel & Great Egg Harbor Bay (GEHB) – Garden State Parkway (fixed) Bridges - Marine work consisting of several activities including but not limited to temporary cofferdam construction, superstructure erection and demolition are in progress through December 2018 for the replacement of the existing southbound bridges and rehabilitation of the

northbound bridges. In addition to replacing the southbound causeway, the project includes the demolition of the remaining portions of the Beesely's Point Bridge (US Route 9 over GEHB and Drag Channel). Daily hours of construction operations are Monday through Saturday from 7 a.m. to 5 p.m. with a second shift and 24-hour operations scheduled for specific activities. It is anticipated that closure or reduced horizontal clearance of the navigational channels will be required.

Great Egg Harbor Bay - Garden State Parkway (southbound) Bridge – Demolition of the old bridge will be performed from November 1, 2016 until February 28, 2018, between 7 a.m. and 4 p.m., Monday through Saturday. A second work shift and 24-hour operations may be scheduled via separate notice and broadcast notice to mariners. One to three 40-foot wide barges will be placed in the navigation span from November 21, 2016, until January 15, 2017, limiting the approximate horizontal clearance through the navigation span to between 30 feet and 110 feet. Vessels and barges will be operating and working in the area and necessary waterway closures will be scheduled via separate notice and broadcast notice to mariners. A work trestle situated at the southwest end of the Garden State Parkway Bridge erected in 2013 in connection with the construction of the new southbound structures will be used for equipment staging and debris removal. Mariners should use extreme caution when transiting the area.

Great Egg Harbor Bay - Garden State Parkway (Northbound) Bridge - Maintenance will be performed from November 1, 2016, until February 28, 2018, between 7 a.m. and 4 p.m., Monday through Saturday. A second work shift and 24-hour operations may be scheduled via separate notice and broadcast notice to mariners. Bridge work will include superstructure removal and replacement, deck repair and resurfacing, parapet replacement, substructure repairs, and fender replacement. A work platform extending approximately 2 feet below low steel of the bridge will be installed over the middle portion of the bridge, reducing the vertical clearance of the navigation span to approximately 48 feet. Vessels and barges will be operating and working in the area and necessary waterway closures will be scheduled via separate notice and broadcast notice to mariners. Mariners should use extreme caution when transiting the area.

Delaware River - Interstate 276/Delaware River Turnpike Bridge - Repainting and miscellaneous improvements will be performed from mid-November 2015 through December 31, 2017. All work on the bridge superstructure will be performed 7 am to 7 pm during the week and 6 am to 6 pm on the weekends. The overhead work will never occupy more than 55% of the channel and will reduce the vertical clearance by 5 ft. The construction company can be contacted at 856-429-3400. Mariners should use extreme caution when transiting the area.

Tuckahoe River - Route 50/State Highway Bridge - Mariners are advised of continued demolition work. The next stage of demolition work will include removal of the bridge superstructure, abutment walls, fender system and the bascule piers from 7:00 a.m. to 3:30 Monday through Friday, from September 2016 through January 2017. Mariners should adjust their transits accordingly.

Delaware River - Burlington-Bristol Bridge - Maintenance will be conducted between Wednesday, December 7, 2016, through Wednesday, April 19, 2017; M-F; from 7 a.m. to 7 p.m. and from 6 a.m. to 6 p.m. on weekends. Repair and rehabilitation of the bridge will require scaffolding to extend roughly five feet below the bridge outside of the navigable channel for the entirety of the maintenance period. Mariners should use caution when transiting the area.

Manahawkin Bay (NJICW) - Route 72 Bridges – Bridge construction continues until May 2019. The new Route 72 Manahawkin Bridge has a vertical clearance of 55 feet above mean high water and a horizontal clearance of 100 feet between fender systems. In addition to bridge construction, marine construction operations include installation and removal of work trestles, caissons and cofferdams, bridge scaffolding and false work, as well as demolition of portions of the existing bridge not utilized in the new bridges. Vessels and barges will be used during marine construction and will monitor VHF-FM channel 13. Detailed project information and information concerning waterway closures will be provided via updated local notice to mariners, broadcast notice to mariners and marine safety information bulletins. Mariners should use caution when transiting the area.

- **Pennsylvania –**

Delaware River – Walt Whitman Bridge (I-76) - Painting of the suspension spans and towers will be conducted from October 19, 2015 to March 31, 2018, between 7 a.m. and 5 p.m. daily. A work platform extending 3 feet beneath the lower portion of the bridge will be installed over the entire length of the bridge. The vertical clearance of the bridge will be reduced by 3 feet to approximately 136 feet above MHW. Mariners should use caution when transiting the area.

Delaware River - Interstate 276/Delaware River Turnpike Bridge - Repainting and miscellaneous improvements will be performed from mid-November 2015 through December 31, 2017. All work on the bridge superstructure will be performed 7 am to 7 pm during the week and 6 am to 6 pm on the weekends. The overhead work will never occupy more than 55% of the channel and will reduce the vertical clearance by 5 ft. The construction company can be contacted at 856-429-3400. Mariners should use extreme caution when transiting the area.

Delaware River - Burlington-Bristol Bridge - Maintenance will be conducted between Wednesday, December 7, 2016, through Wednesday, April 19, 2017; M-F; from 7 a.m. to 7 p.m. and from 6 a.m. to 6 p.m. on weekends. Repair and rehabilitation of the bridge will require scaffolding to extend roughly five feet below the bridge outside of the navigable channel for the entirety of the maintenance period. Mariners should use caution when transiting the area.

## SECTOR HAMPTON ROADS

- **Virginia (Southern)**

AICW – Elizabeth River Southern Branch – Dominion Blvd Replacement (fixed) Bridge Project – Contractors have installed the permanent beam and construction continues through March 2017. The fixed height is at 95 feet above MHW. The old steel (bascule) bridge spans have been completely removed.

Lynnhaven Inlet – US 60/John A. Lesner (fixed) Bridge – Work is in progress through June 2017 for a new replacement bridge at essentially the same location. The new bridge will have a vertical clearance of 45 feet above MHW, along with a horizontal clearance of 150 feet between face of the fenders. A dredge material placement site will be located southwest of the existing bridge, adjacent to the boat ramp facility and used as a staging area. The contractor will access the lay down and staging area via the waterway through a proposed temporary bulkhead.

Diascund Creek - Newport News Waterworks Pipeline bridge – Bridge maintenance will be conducted between July 1, 2016 and January 30, 2017; Monday-Friday; from 7 a.m. to 5 p.m. Repair and rehabilitation of the bridge will occur. A barge and work boats will be in and around the vicinity of the bridge. Maintenance personnel, equipment and vessels will

relocate from the navigable channel, upon request. Work vessels may be reached on VHF-FM channel 13. The project foreman can be reached at (757) 621-4930 or (757) 621-4932. Mariners should notify the work foreman no less than thirty minutes prior to navigating through the area and should use caution when transiting the area.

James River - SR 156 (Benjamin Harrison Memorial) Bridge - Maintenance will be conducted July 18, 2016 through February 28, 2017; Monday-Friday; from 9 a.m. to 4 p.m. and from 8 p.m. to 6 a.m. Maintenance personnel, equipment will relocate from the moveable span, upon request. The project foreman can be reached at (813) 613-4324 and VHF-FM channel 13. The bridge will have operating restrictions between July and September 2016 that will be published in a separate notice. Mariners should use caution when transiting the area.

Carter Creek - SR 3 (Route 200) bridge -Maintenance will be conducted September 19, 2016 through May 3, 2017; 24 hours a day; 7 days a week. The vertical clearance of the bridge will be reduced to approximately 17 feet above mean high water. A work platform will be attached to the underside of the bridge. Quick flashing red lights will be positioned to mark the bottom of the work platform used under the bridge. Legible signs will be erected on the existing fender system for awareness of reduced vertical clearance. Maintenance personnel, equipment will not be able to relocate from the navigable channel, upon request. The project foremen can be reached at (410) 299-0586 or (410) 913-4028 and may be reached on VHF-FM channel 13. Mariners should use caution when transiting the area.

Rappahannock River - US 360 (Downing Bridge) bridge - Maintenance will be conducted September 19, 2016 through May 3, 2017; 24 hours a day; 7 days a week. The vertical clearance of the bridge will be reduced to approximately 47 feet above mean high water. A work platform will be attached to the underside of the bridge. Quick flashing red lights will be positioned to mark the bottom of the work platform used under the bridge. Legible signs will be erected on the existing fender system for awareness of reduced vertical clearance. Maintenance personnel, equipment will not be able to relocate from the navigable channel, upon request. The project foremen can be reached at (410) 299-0586 or (410) 913-4028 and may be reached on VHF-FM channel 13. Mariners should use caution when transiting the area.

Rappahannock River - SR 3 (Robert O. Norris Jr.) bridge - Maintenance will be conducted between October 3, 2016 through November 2017; 24 hours a day; 7 days a week. A containment system will be installed over the entire length of the bridge extending 4 feet below low steel. The vertical clearance of the bridge will be reduced by 4 feet, to approximately 106 feet above mean high water. A work platform will be attached to the bridge. Maintenance personnel, equipment, two barges and work vessels will be in the vicinity of the bridge. Quick flashing red lights will be positioned no more than 10 feet apart and on all corners, to mark the bottom of the work platform used attached to the bridge. Work vessels may be reached on VHF-FM channel 13. The project foreman can be reached at (804) 577-0049 or (216) 235-3933. Mariners should use caution when transiting the area.

James River - James River Bridge - Maintenance has already commenced and is scheduled to be completed June 30, 2017. The workers will be on-scene 24 hours; M-F. The project foreman can be reached at (804) 520-9766. The maintenance will not affect operations of the movable span or restrict the height or width of the main navigational channel. Mariners should use caution when transiting the area.

Elizabeth River, Southern Branch - I-64 High Rise Bridge - Maintenance will be conducted from December 30, 2016 to August 17, 2017; Monday through Saturday from 7 a.m. to 5 p.m. Repair and rehabilitation of the bridge will occur. A barge and work boats will be in and around the vicinity of the bridge. Maintenance personnel, equipment and vessels will relocate from the navigable channel, upon request. Work vessels may be reached on VHF-FM channel 13. The project foreman can be reached at (804) 520-9766. Mariners should notify the work foreman no less than one hour prior to navigating through the area and should use caution when transiting the area.

## SECTOR NORTH CAROLINA

- **North Carolina**

Gallants (Beaufort) Channel – US 70/Grayden Paul (fixed) Bridge – Work is in progress through May 31, 2017 for construction of a high-level fixed bridge relocated between Radio Island and Michael J Field in Carteret County. When completed, the new high-level fixed bridge will have a vertical clearance of 65 feet above MWH, along with a horizontal clearance of 100 feet between pile bents. The construction operation will include in-water work involving pile driving, concrete placement, girder setting, and concrete deck installation with post tensioning. Tugboats and barges will be used and will monitor VHF channel 13 in the event that mariners need to contact the contractor. Waterway closures are being planned.

Cape Fear River – Wilmington Bypass (fixed) Bridge – Construction of new highway bridge in Brunswick and New Hanover Counties, NC. When completed, the Cape Fear River Bridge will have a vertical clearance of 64 feet at mean high water and a horizontal clearance of 160 feet. Work barges and structures will be located along the sides of the waterway through December 2016. The channel shall remain open to navigation.

Oregon Inlet - Herbert C. Bonner Bridge – Construction activities for the replacement bridge will begin on March 7, 2016 and are expected to finish on August 30, 2019. Work will be on-going 24-hours per day, seven days a week. Detailed project information and information concerning waterway closures will be provided via updated local notice to mariners, broadcast notice to mariners and marine safety information bulletins. Tugs, crane barges, material barges, support vessels and crew boats will be operating or stationed in the vicinity of the existing and new bridge. A work trestle/loading dock will be constructed approximately 200 yards south of the southeastern end of the existing Bonner Bridge, on the southwest side of South Point in Pamlico Sound, extending 150 feet southwesterly from the shoreline and terminate at approximately 35.766 N, 75.526 W. Running parallel to the dock will be a 245 foot breast-line comprised of eight 36-inch hollow pipe piles spaced fifty feet apart, to be used for mooring purposes. The breast-line will begin near shore and terminate at approximately 35.765N, 75.527 W. Each pile will be lit by a flashing white light. PCL Civil Constructors tugs and vessels will monitor VHF-FM channels 13 and 16 when work is in progress or vessels are operating in the area. The NCDOT Resident Engineer may be contacted at (252) 473-3637 and PCL Civil Constructors may be contacted at (252) 423-3093. Project information may be found at <http://www.ncdot.gov/projects/bonnerbridgereplace/>.

## FUTURE PROJECTS:

### Permits/Construction:

- **Maryland**

Potomac River - Theodore Roosevelt (fixed) Bridge - DDOT is conducting an investigation and assessment of the bridge,



which will be completed winter of 2015. They'll assess structural condition, needs for extended life cycle, and safety compliance improvements. Then will do a design analysis of alternatives with construction in the future (no date given).

- **Washington, DC** –  
Anacostia River – 11th Street Bridge Park – Proposed fixed pedestrian bridge park to be built on retained substructure of old 11<sup>th</sup> Street Bridge.
- **Virginia (Northern)** - None
- **Delaware** – None
- **New Jersey (Central & Southern)** - None
- **Pennsylvania** – None
- **Virginia (Southern)** – None
- **North Carolina**  
Mid-Currituck Sound (fixed) Bridge – Proposed new fixed structure in final review of the design.  
Perquimans River – US 17 business (fixed) Bridge – Proposed new fixed bridge structure to replace (swing) bridge in final review of the design and environmental package.  
Alligator River – US 64 (fixed) Bridge Proposed new fixed bridge structure to replace (swing) bridge in final review of the design and environmental package.  
Cape Fear River – Wilmington bypass south (fixed) Bridge Proposed new fixed bridge structure in review of the design and environmental package.  
Straits Waterway - Harkers Island Bridge – Proposed new fixed bridge structure to replace existing swing span bridge (Bridge No. 73).

**Regulations:**

- **Maryland** – None
- **Washington, DC** – None
- **Virginia (Northern)** – None
- **Delaware** – None
- **New Jersey (Central & Southern)** – None
- **Pennsylvania** –  
Delaware River – Conrail Railroad Bridge (Delair, NJ) – Remote Operation Test Deviation.  
Coast Guard currently evaluating incorporation of AIS into the bridge remote operations system.
- **Virginia (Southern)** - None
- **North Carolina** – None

# **SUMMARY OF DREDGING/MARINE CONSTRUCTION PROJECTS CURRENTLY IN PROGRESS**

## **DE - REHOBOTH BEACH AND DEWEY BEACH - BEACH NOURISHMENT**

Great Lakes Dredge & Dock Company, LLC will be placing approximately 424,000 cubic yards of sand on Dewey and Rehoboth Beaches between 15 Nov 16 and **15 Jan 17**. Material will be excavated from a designated borrow area using the dredges Dodge Island and Padre Island. Project Manager: Stuart Hilgendorf (443) 831-0785 [SHilgendorf@gldd.com](mailto:SHilgendorf@gldd.com), Project Engineer: Dan Ferguson (630) 209-1280 [DFerguson@gldd.com](mailto:DFerguson@gldd.com). Ref LNM 47/16 Chart 12216

## **DE/NJ – DELAWARE RIVER - TINICUM ISLAND, EDDYSTONE, CHESTER AND MARCUS HOOK RANGES - DREDGING AND ROCK REMOVAL - MAIN CHANNEL DEEPENING**

Great Lakes Dock and Dredge Company will be dredging and blasting between the Tinicum Range and Marcus Range until **15 March 2017**. For questions or comments contact Timothy J. Kremer, 630-750-5640, [TJKremer@gldd.com](mailto:TJKremer@gldd.com). Ref LNM 27/16 Chart 12312

## **PA – DELAWARE RIVER – MARCUS HOOK, PA – DOCK CONSTRUCTION**

Commerce Construction Corporation crane barge SAMSON will be performing dock construction work on the Sunoco logistics dock #1A in the Delaware River at the Marcus Hook industrial complex, Marcus Hook, PA. Work is expected to be completed on or about **30 June, 2017**. Ref LNM 05/16 Chart 12312

## **PA – DELAWARE RIVER – CRITICAL LIFT OPERATIONS**

Mariners are advised that the crane barge SAMSON will be conducting critical lift operations in the Delaware River, in Marcus Hook, PA from February until **30 June, 2017**. Ref LNM 08/16 Chart 12312

## **PA/NJ – DELAWARE RIVER – DREDGING OPERATIONS**

Charter Contracting will be performing mechanical dredging operations in the Delaware River, at GP Gypsum Corporation, in Camden, NJ from July 1, 2016 to **February 28, 2017**. A 48ft by 125ft deck barge with excavator and clamshell bucket, 2 hopper scows, 1 push boat, and 1 work boat will be in the vicinity. Ref LNM 26/16 Chart 12313

## **NJ – DELAWARE RIVER MILE 86.5 – DEMOLITION – TEST PILE OPERATIONS**

From 2 Jan to **15 Mar 2017**, Ramboll Environ and Delaware River Partners LLC will be demolishing the marine structures, piers, cells, walkway and ice breaker structures at the DRP Gibbstown Logistics Center/Dupont Repauno Works at mile 86.5 on the Delaware River. When demolition is substantially complete they will be driving test piles in the area. For question contact Laura at [lgeorge@ramboll.com](mailto:lgeorge@ramboll.com) or 215-523-5603. Ref LNM 07/17 Chart 12312

## **\*\*\*\*NJ – SHARK RIVER INLET ENTRANCE – DREDGING\*\*\*\***

The Army Corps of Engineers Dredge Currituck will be conducting dredging operations at the entrance of Shark River Inlet, in Belmar, NJ, from December 30, 2016 to **January 11, 2017**. At no time will the navigational channel be closed for vessel traffic. Vessels approaching the entrance are requested to contact the dredge Currituck for safe passing arrangements via VHF-FM channel 13 or 16. Ref LNM 50/16 Chart 12324

## **\*\*\*\*NJ – SHARK RIVER – CLOSURE FOR DREDGING\*\*\*\***

Mobile Dredging and Pumping and the New Jersey Department of Transportation, Office of Maritime Resources will close a portion of the Shark River Spur channel from Nov 28, 2016 until on or about **Jan 31, 2017**, in accordance with the schedule below. The portion of the channel to be closed to navigation during dredging operations will be from 40°11' 25"N, 74°2'13"W to 40°11' 41"N, 74° 02' 18"W. Mariners should also be advised that NJ State Aids to Navigation (ATON) will be removed for the duration of the project. Chart 12324

## **NJ – MANASQUAN RIVER- DREDGING**

Mariners are advised that Village Dock Contracting will be conducting dredging operations in Manasquan Inlet, Crabtown creek, Kingsbridge Channel, Wills Hole Thorofare, Wills Hole West Channel, and Lower Manasquan River from 14 Nov 2016 to **31 Jan 2017**. Dredge pipe will be located in multiple areas outside the channel and will be marked and lighted IAW Coast Guard regulations. Ref LNM 44/16 Chart 12324

## **NJ – LITTLE EGG HARBOR TO CAPE MAY – ABSECON INLET - MOBILIZATION**

Great Lakes Dredge and Dock will be conducting mobilization operations consisting of the retrieval and towing of floating steel pipeline from offshore areas of Long Beach Island to the staging areas in Absecon Inlet. This work will commence on 04 December 2016 and is expected to be complete by **15 January 2017**. The Derrick 70, Tender Boat Volunteer State, will be on site 7 days per week from 0700 to 1700. Ref LNM 49/16 Chart 12316

## **NJ – GREAT EGG HARBOR BAY – DRAG CHANNEL - BRIDGE CONSTRUCTION & DEMOLITION UPDATE**

Mariners are advised that marine work consisting of several activities including but not limited to temporary cofferdam construction, superstructure erection and demolition are in progress through **December 2018** for the replacement of the existing southbound bridges carrying the Garden State Parkway, and rehabilitation of the northbound bridges carrying the Garden State Parkway. Ref LNM 03/16 Chart 12316

## **NJ – GREAT EGG HARBOR INLET – GREAT EGG HARBOR – TUCKAHOE RIVER**

Mariners are advised of the continued demolition work at the Route 50/State Highway Bridge, at mile 8.0, across Tuckahoe River between Corbin City and Upper Township NJ. Demolition work will include removal of the bridge superstructure, abutment walls, fender system and the bascule piers, work will be conducted from 7:00 a.m. to 3:30 Monday through Friday until **January 2017**. Chart 12318

**NJ – GREAT CHANNEL - STONE HARBOR – DREDGING**

Stevenson Environmental Services will be conducting dredging operations in the Great Channel, in Stone Harbor, NJ from September 20, 2016 through **January 26, 2017**. Dredging will be located in the South Basin, Snug Harbor, Stone Harbor, Pleasure Bay, Carnival Bay, Sanctuary Bay, Paradise Bay, Stone Harbor Hole, and access channels. Dredging is being completed with a mechanical dredge, 24 hours a day, 7 days a week. Ref LNM 37/16 Chart 12316

**NJ – CAPE MAY - CAPE MAY INLET – MOBILIZATION**

Great Lakes Dredge and Dock will be conducting mobilization operations consisting of the retrieval and towing of floating steel pipeline from offshore areas of Long Beach Island to the staging area in Cape May Inlet. This work will commence on 02 December 2016 and is expected to be complete by **30 March 2017**. The Derrick MB1700, Bobby Barge, AB 104, Tug Pops, and Tug Maverick will be on site 24 hours per day, 7 days per week. All vessels will monitor VHF Channels 13 and 16. For more information or concerns contact Eric Mitchell 630-605-2158. Ref LNM 49/16 Chart 12317

**MD – CHOPTANK RIVER ROUTE 331 DOVER ROAD – BRIDGE REPLACEMENT** Chart 12268

McLean Contracting Corporation will commence construction a new bridge just south of the existing Dover Road Route 331 Bridge until **November 2017**. Ref LNM 39/14

**MD – CHESAPEAKE BAY - APPROACHES TO BALTIMORE HARBOR – MIDDLE RIVER - COWPEN CREEK & DARK HEAD COVE – DREDGING AND MARINE CONSTRUCTION PROJECT**

Dredging and bulkhead installation operations are scheduled to continue in Cowpen Creek and Dark Head Cove (Martin Lagoon) until February 2017. A turbidity curtain is located within the navigable channel that will impede vessel access to Dark Head Creek. Interested mariners may contact the McLean Contracting Company vessel WB 29 via marine band radio on VHF-FM Channel 78. Tetra Tech, Inc. has established three yellow lighted data buoys to monitor water quality during the Lockheed Martin Corp. project in Dark Head Cove & Cowpen Creek, which directly open into Dark Head Creek. Completion is estimated to be **April 2018**, Ref LNM 49/16 Chart 12278

**MD – CHESAPEAKE BAY – ROCKHOLD CREEK – DREDGING OPERATIONS**

Dredging operations are scheduled to occur in Rockhold Creek and Tracy's Creek at Deale, MD, from mid November to **28 February 2017**. The channel width will be restricted during this process. Mariners are urged to provide 6 hours advance notice for passage, and should contact vessel "BIG C TOO" via VHF-FM channels 13, 16 and 08. Project manager can be reached at (410) 507-0927, or (410) 507-0928. Ref LNM 42/16 Chart 12266

**DC – UPPER POTOMAC RIVER - WASHINGTON CHANNEL**

Dockside demolition/bulkhead repair until **December, 2020**. Ref: LNM 12/14 Chart 12289

**DC – POTOMAC RIVER - WASHINGTON HARBOR – FRANCIS SCOTT KEY BRIDGE – REPAIRS**

DC DOT repairs to the existing US-29/Francis Scott Key Bridge (also known as the Key Bridge), across the Potomac River at mile 113. Work will begin on September 20, 2016, Mondays through Fridays, from 7 a.m. to 5 p.m. The **two-year** rehabilitation project includes spalling and spot-repairing the concrete bridge piers, re-surfacing the bridge deck, and installing a fiberglass jacket at the footer of each pier. 40 ft x 80 ft deck barges will be positioned (spudded) next to the bridge piers, within the 200-ft wide span, at all times. Ref LNM 35/16 Chart 12289

**VA – CHINCOTEAGUE INLET TO GREAT MACHIPONGO INLET – QUINBY CREEK – DREDGING**

Cottrell Contracting Corporation of Chesapeake, Virginia advises that the Dredge Marion will be conducting dredging operations in the Quinby Creek Channel in Accomack County, Virginia, between Quinby Creek Buoy 7A (LLNR 6773) and Quinby Creek Light 13 (LLNR 6785), and into the Quinby Creek Turning Basin. The dredge will conduct operations from Dec 12, 2016 through **Jan 31, 2017**. Ref LNM 49/16 Chart 12210

**VA – HAMPTON ROADS – CRANEY ISLAND – ATLANTIC OCEAN CHANNEL DREDGING**

Manson Construction Co will be constructing dikes extending eastward off Craney Island Dredged Material Management Area. The Dredge Glenn Edwards will be dredging in the Atlantic Ocean Channel/Chesapeake Bay Southern Approach between Chesapeake Bay Southern Approach Lighted Buoy 2 (LLNR 420) and Lighted Buoy 10 (LLNR 460) to provide material that will be pumped to the site from approximate position 36°54'19.80"N 76°20'32.19"W, along side of the Norfolk Harbor Channel. Operations will be conducted 24 hours a day, 7 days a week until **31 Mar 2017**. Ref LNM 52/16 Chart 12245, 12222

**VA – CHESAPEAKE BAY ENTRANCE – LYNNHAVEN INLET – BRIDGE DEMOLITION**

Starting January 3, 2016, McLean Contracting will begin demolition of the existing John A. Lesner Bridge on US 60 over the Lynnhaven Inlet in Virginia Beach. Periodically barge mounted cranes and / or barges blocking will be blocking a portion of the channel. Short term channel closures (two hours maximum) may be utilized if it is deemed unsafe to have marine traffic passing under the bridge during certain activities. McLean Contracting will be monitoring VHF channels 13 & 16. This work is expected to last until early **Mar 2017**. Charts 12254, 12222

**VA - BACK RIVER – HAMPTON - LANGLEY AIR FORCE BASE FUEL PIER – DREDGING**

W3 Marine and the dredge MOBRO 112 will be conducting dredging operations at the Langley Fuel Pier in Back River starting on November 15, 2016 and continuing until **15 Feb 2017**. The dredge can be contacted on the VHF-FM channels 13 and 16. Ref LNM 44/16 Chart 12222

**VA – JAMES RIVER – HUNTINGTON PARK CHANNEL – DREDGING**

Salmons Inc will be conducting dredging for the City of Newport News in the Huntington Park Channel beginning 15 Dec 2016 and continuing 12 hours a day until **13 Feb 2017**. Contact Ronald Hurwitz for questions or concerns 757-426-6824. Ref LNM 50/16 Chart 12248

**VA – JAMES RIVER/NEWPORT NEWS SHIPBUILDING WATERFRONT**

Dredging – Dredge MOBRO 112 – **Until further notice**. Ref: LNM 14/14.  
Chart 12248

**VA – YORK RIVER – CHEATHAM ANNEX – DIVING AND CRANE OPERATIONS**

Precon Marine Inc. will be performing Diving and Crane operations from work boats, work platforms and a 60' by 120' barge at the "CAD A" pier located at the US Navy Base, Cheatham Annex from 31 October 2016 until **1 Nov 2017**. The onsite barge superintendent will monitor and answer VHF-FM channels 13 and 16, and can be reached at 757-754-0767. Ref LNM 43/16  
Chart 12241

**VA – CHESAPEAKE BAY – YORK RIVER – TEMPORARY MOORING BUOYS**

Corman Marine established twelve temporary mooring buoys on the York River to support the construction of a new outfall and diffuser for the Hampton Roads Sanitation District, Yorktown Water Treatment Plant. Ten of the buoys will be north of the York River Channel, south of Allens Island. Two buoys south of the channel will be located west of the northern entrance to Goodwin Thorofare Channel. Buoys are white with a blue band and outfitted with a slow flashing white light. Ref LNM 26/16  
Chart 12241

**VA – ATLANTIC INTRACOASTAL WATERWAY (AICW) – NORFOLK HARBOR TO ALBEMARLE SOUND**

Dominion Steel Bridge (Rt.17) Replacement; construction ongoing until **February, 2017**. Ref: LNM 07/13.  
Chart 12253

**VA – CHESAPEAKE BAY – ELIZABETH RIVER – MIDTOWN TUNNEL CONSTRUCTION**

SKW Constructors construction operations of new Midtown Tunnel, channel restrictions, temporary buoys established, barge traffic. **Until further notice**. Ref LNM 33/14, 33/15  
Chart 12253

**VA – LITTLE CREEK – PRETTY LAKE – DREDGING**

Salmons Inc will be conducting dredging operations for the City of Norfolk in Pretty Lake Channel, Norfolk VA from 16 Nov 2016 to **31 Jan 2017**, during the hours 7:00 am to 7:00pm. For questions or concerns Ronald Hurwitz at 757-426-6824. Ref LNM 45/16

**VA – YORK RIVER – CHEATHAM ANNEX – DIVING AND CRANE OPERATIONS**

Precon Marine Inc. will be performing Diving and Crane operations at the "CAD A" pier located at the US Navy Base, Cheatham Annex from 31 October 2016 until **1 Nov 2017**. The work will consist of installing concrete pile jackets with divers and pile driving operations with a floating crane. Make contact with Naval Station Yorktown prior to approaching the pier in approximate position , 37-17-39.61N, 076-35-10.37W. The onsite superintendent will monitor VHF-FM channels 13 and 16, and can be reached at 757-754-0767.  
Chart 12243, 12238

**VA/NC – CAPE HENRY TO PAMLICO SOUND – INCLUDING ALBEMARLE SOUND - BRIDGE CONSTRUCTION**

An engineering firm, on behalf of the North Carolina DOT, will be constructing a new bridge to replace the Herbert C. Bonner Bridge across the Oregon Inlet, at mile 0.9, Dare County, NC. Construction activities will begin on March 7, 2016 and are expected to finish on **Aug 30, 2019**. Ref LNM 09/16  
Chart 12205

**NC – GALLANTS CHANNEL – BRIDGE CONSTRUCTION**

Take caution and proceed slowly when approaching the construction site of the New Gallant's Channel Fixed Bridge, over the Gallants Channel in Beaufort, NC. All vessel traffic can expect delays and should adjust voyage plans accordingly. The Orion Marine Construction onsite work supervisor can be contacted on VHF channel 13 and telephone at (813) 334-0208. Ref LNM 12/16  
Chart 11545

**NC – MOREHEAD CITY INNER HARBOR – DREDGING**

Dredge Rockbridge will be dredging in Morehead City Inner Harbor, NC. Work will consist of dredging north of Morehead City Channel Lighted Buoys 23, 24, 25, 27, Bogue Sound DBN 1B, Morehead City Harbor Channel Junction Light MC, Morehead City Harbor Channel DBN 3, within Range C, the East, West & Northwest Legs adjacent to the NC State Port Authority. Work will continue from Nov 25, 2016 through **Mar 31, 2017**.  
Chart 11547

**NC – AICWW - TOP SAIL CREEK – HOWARD'S CHANNEL CROSSING – DREDGING**

Southwind Construction Corp. will be dredging in the Atlantic Intracoastal Waterway (AICWW) in the area of Topsail Creek and Howard's Channel Crossings, Pender County NC. The Dredge WILKO contacted on VHF-FM channel 13 and 16 and Cell 812-480-6761. Work will be conducted 7 days a week, 24 hours a day from 12 Dec 2016 to **17 Jan 2017**. For more questions contact Darrell Stewart, 812-867-7220. Ref LNM 50/16  
Chart 11541

**NC – CAPE FEAR RIVER – BALD HEAD CHANNEL REACH 3 – BATTERY ISLAND AND SOUTHPORT CHANNELS – DREDGING**

Weeks Marine Inc Dredges R.N. Weeks or B.E. Lindholm will be dredging in Bald Head Channel Reach 3, Battery Island Channel and Southport Channel until approximately 31 Jan 2017. If you have any question or require additional information contact Miguel Cruz at (985) 875-2564, [macruz@weeksmarine.com](mailto:macruz@weeksmarine.com) or contact Project Manager on-site Dave McNeill (985) 237-5069, [dcmcneill@weeksmarine.com](mailto:dcmcneill@weeksmarine.com). Ref LNM 01/17  
Chart 11541

**NC – CAPE FEAR RIVER – DREDGING**

Cottrell Contracting Corporation Dredge Lexington will be conducting dredging operations in the Cape Fear River, Wilmington, Brunswick County, NC north of Cape Fear River Lighted Buoy 58 (LLNR 30841) through the Cape Fear Memorial Bridge from 9 Nov 2016 to **21 Jan 2017**. Ref LNM 49/16  
Chart 11537

**NC – CAPE FEAR RIVER – MOTSU - DREDGING**

The Bucket dredge VIRGINIAN will commence dredging operations at the Military Ocean Terminal Sunny Point (MOTSU) on the Cape Fear River adjacent to Lower Midnight Channel on or about November 3, 2016. The project is expected to continue until **15 May 2017**. Ref LNM 44/16

Chart 11539, 11537

**NC – CAPE FEAR RIVER – HORSESHOE REACH - DREDGING**

The Bucket dredge ATLANTIC will commence dredging operations inside Horseshoe Reach on the Cape Fear River adjacent to Cape Fear River Channel Lighted Buoy 27 (LLNR 30550) on or about November 2, 2016. The project is expected to continue until approximately **15 May 2017** with the dredge eventually performing work inside Mid-River Shoals, Upper Big Island and Lower Lilliput Channels. Ref LNM 44/16  
Chart 11539, 11537

**NC – HOLDEN BEACH NOURISHMENT OPERATIONS**

Weeks Marine Inc. will be mobilizing support equipment in the vicinity of Lockwoods Folly Inlet, NC and continuing until approximately 20 Mar 17, pipeline and equipment will be anchored in the vicinity of Battery Island, near Southport, NC. The staging area will be located between the following approximate positions: 33°54'39.19"N/ 78° 0'56.21"W and 33°55'15.67"N/ 77°59'53.30"W. Continuing until approximately **5 Mar 17** the hopper dredges R.N. Weeks and/or B.E. Lindholm with attendant plant will be operating 8 nautical miles offshore of Holden Beach, NC. Ref LNM 46/16  
Chart 11534, 11536

**SUMMARY OF MARINE EVENTS AND FIREWORKS DISPLAYS**  
**IN THE FIFTH COAST GUARD DISTRICT**

No Marine Events or Fireworks Displays scheduled for this LNM period.



# WWM VIP SHOALING

**NOT TO BE USED  
FOR NAVIGATION**

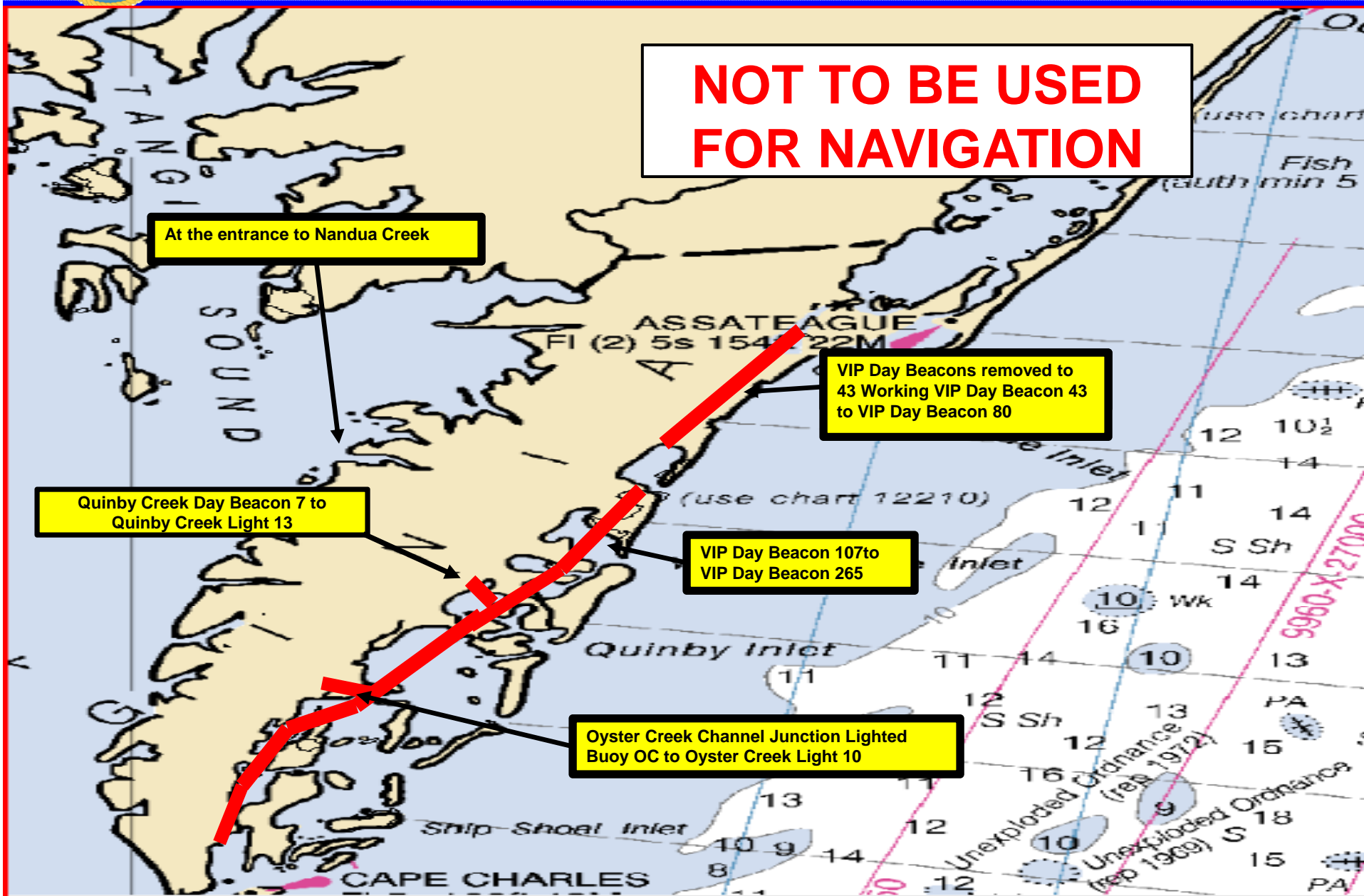
At the entrance to Nandua Creek

Quinby Creek Day Beacon 7 to  
Quinby Creek Light 13

VIP Day Beacons removed to  
43 Working VIP Day Beacon 43  
to VIP Day Beacon 80

VIP Day Beacon 107 to  
VIP Day Beacon 265

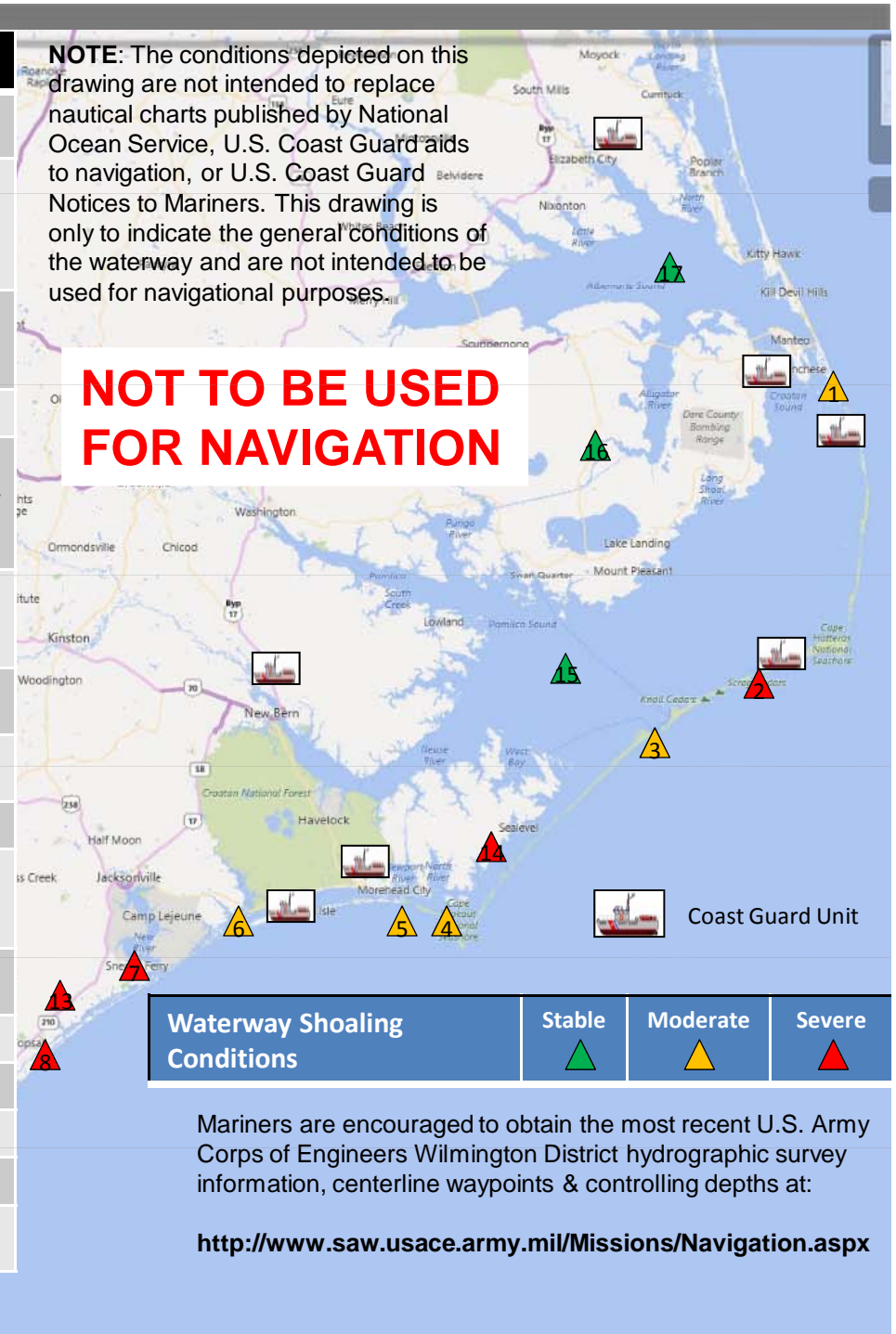
Oyster Creek Channel Junction Lighted  
Buoy OC to Oyster Creek Light 10



	Waterway	Depth	Notes
1	Oregon Inlet	<10'	BNM 642-14, areas around Bonner Bridge. No standard charted depth
2	Hatteras Inlet	< 7'	BNM 031-16, areas around South Ferry Terminal Channel 1SF & light 7; BNM 028-15, Hatteras Channel 9 to 12C. No standard charted depth.
3	Ocracoke Inlet	< 12'	Shifting shoals ITVO Bigfoot Slough Channel buoy 10 & 11. No standard charted depth.
4	Barden Inlet	< 12'	Shifting shoals. Chated depth 8'-23'.
5	Beaufort Inlet	<25'	BNM 036-16, Range A & Cutoff Channels buoys 16 & 17 and 13 to 15. Charted depth 35'. Dredging in process.
6	Bogue Inlet	<10'	Shifting shoals ITVO Bogue Inlet Channel buoy 1 & 2. No standard charted depth.
7	New River Inlet	< 10'	BNM 003-15, Shifting shoals. No standard charted depth.
8	New Topsail Inlet	<12'	Shifting shoals. No standard charted depth.
9	Masonboro Inlet	<12'	Shifting shoals. Charted depth 16'.
10	Carolina Beach Inlet	<12'	BNM 659-15/207-16, Inlet Channel Buoy 1 to 6. No standard charted depth.
11	Lockwoods Folly Inlet	<10'	Shifting shoals. No standard charted depth.
12	AICWW CFR - Little R	<12'	Unstable/shoaling in numerous areas
13	AICWW Beaufort - CFR	<12'	Unstable/shoaling in numerous areas
14	Core Sound	<12'	Significant shoaling
15	Pamlico Sound	<12'	Minimal shoaling
16	Albemarle & Currituck Sounds	<12'	Minimal shoaling

**NOTE:** The conditions depicted on this drawing are not intended to replace nautical charts published by National Ocean Service, U.S. Coast Guard aids to navigation, or U.S. Coast Guard Notices to Mariners. This drawing is only to indicate the general conditions of the waterway and are not intended to be used for navigational purposes.

**NOT TO BE USED FOR NAVIGATION**



**Waterway Shoaling Conditions**

Stable



Moderate



Severe



Mariners are encouraged to obtain the most recent U.S. Army Corps of Engineers Wilmington District hydrographic survey information, centerline waypoints & controlling depths at:

<http://www.saw.usace.army.mil/Missions/Navigation.aspx>