



U.S. Department
of Homeland Security
**United States
Coast Guard**

LOCAL NOTICE TO MARINERS

District: 9

Week: 08/17

Issued by: Commander (dpw)
Ninth Coast Guard District
1240 East Ninth Street,
Cleveland, OH 44199-2060
Telephone: (216) 902-6069

Direct questions about this LNM to the above address.

All distances in this publication are STATUTE MILES unless otherwise noted.

District Nine Internet Address <https://www.uscg.mil/d9/uscgd9.html>

District Nine Local Notice to Mariners email Address D09-DG-District-D9-LocalNoticetoMariners@uscg.mil

** Navigation Information Service watchstander, 24 hours a day at (703) 313-5900 ** **Internet Address** <https://www.navcen.uscg.gov/>

Light List Reference: Commandant Publication P16502.7, VOL VII, 2016 Edition

Coast Pilot Reference: 2016 U.S. Coast Pilot 6 Great Lakes 46th Edition

Coast Pilots, along with corrections are available at: <http://nauticalcharts.noaa.gov/nsd/cpdownload.htm>

The Local Notice to Mariners is available on the Internet at <https://www.navcen.uscg.gov/?pageName=lnmMain> You will also have links to other government agencies- web pages including the US Army Corps of Engineers and the National Ocean Service.

REPORT DISCREPANCIES IN AIDS TO NAVIGATION TO THE NEAREST COAST GUARD UNIT

The Ninth District and all Sector offices for their areas of responsibility issue a BROADCAST NOTICE TO MARINERS.

The following Broadcast Notice to Mariners have been incorporated into this week's Local Notice to Mariners:

Sector Buffalo, NY - B004-17 through B007-17

Ninth District - C024-17 through C028-17

Sector Detroit, MI - D014-17 through D014-17

Sector Lake Michigan, WI - M036-17 through M040-17

Sector Sault Ste Marie, MI - S022-17 through S023-17

The United States Coast Guard Navigation Information Service (NIS), operated by the USCG Navigation Center, is staffed 24 hours a day, 7 days a week. The NIS provides information on the current operational status, effective policies, and general information for GPS and DGPS. The

NIS also disseminates Safety Broadcasts (BNM), Local Notice to Mariners (LNM), and the latest Notice Advisory to Navstar Users (NANU). NANU notices can be obtained via email subscription through the USCG Navigation Center website: <https://cgls.uscg.mil/mailman/listinfo/nanu>. In addition, the NIS investigates all reports of degradation or loss of GPS, DGPS or AIS service. Users are encouraged to report all degradation or loss of radio navigation services to the NIS via any of the following: Phone: (703) 313-5900, mail to: webmaster@smtp.navcen.uscg.mil, or on the internet at: <https://www.navcen.uscg.gov>

ABBREVIATIONS

A through H

ADRIFT - Buoy Adrift
AICW - Atlantic Intracoastal Waterway
AI - Alternating
B - Buoy
BKW - Breakwater
bl - Blast
BNM - Broadcast Notice to Mariner
bu - Blue
C - Canadian
CHAN - Channel
CGD - Coast Guard District
C/O - Cut Off
CONT - Contour
CRK - Creek
CONST - Construction
DAYMK/Daymk - Daymark

I through O

I - Interrupted
ICW - Intracoastal Waterway
IMCH - Improper Characteristic
INL - Inlet
INOP - Not Operating
INT - Intensity
ISL - Islet
Iso - Isophase
kHz - Kilohertz
LAT - Latitude
LB - Lighted Buoy
LBB - Lighted Bell Buoy
LHB - Lighted Horn Buoy
LGB - Lighted Gong Buoy
LONG - Longitude
LNM - Local Notice to Mariners

P through Z

PRIV - Private Aid
Q - Quick
R - Red
RACON - Radar Transponder Beacon
Ra ref - Radar reflector
RBN - Radio Beacon
REBUILT - Aid Rebuilt
RECOVERED - Aid Recovered
RED - Red Buoy
REFL - Reflective
RRL - Range Rear Light
RELIGHTED - Aid Relit
RELOC - Relocated
RESET ON STATION - Aid Reset on Station
RFL - Range Front Light
RIV - River

DBN/Dbn - Daybeacon
 DBD/DAYBD - Dayboard
 DEFAC - Defaced
 DEST - Destroyed
 DISCON - Discontinued
 DMGD/DAMGD - Damaged
 ec - eclipse
 EST - Established Aid
 ev - every
 EVAL - Evaluation
 EXT - Extinguished
 F - Fixed
 fl - flash
 Fl - Flashing
 G - Green
 GIWW - Gulf Intracoastal Waterway
 HAZ - Hazard to Navigation
 HBR - Harbor
 HOR - Horizontal Clearance
 HT - Height

LT - Light
 LT CONT - Light Continuous
 LTR - Letter
 LWB - Lighted Whistle Buoy
 LWP - Left Watching Properly
 MHz - Megahertz
 MISS/MSNG - Missing
 Mo - Morse Code
 MRASS - Marine Radio Activated Sound Signal
 MSLD - Misleading
 N/C - Not Charted
 NGA - National Geospatial-Intelligence Agency
 NO/NUM - Number
 NOS - National Ocean Service
 NW - Notice Writer
 OBSCU - Obscured
 OBST - Obstruction
 OBSTR - Obstruction
 Oc - Occulting
 ODAS - Anchored Oceanographic Data Buoy

RRASS - Remote Radio Activated Sound Signal
 s - seconds
 SEC - Section
 SHL - Shoaling
 si - silent
 SIG - Signal
 SND - Sound
 SPM - Single Point Mooring Buoy
 SS - Sound Signal
 STA - Station
 STRUCT - Structure
 St M - Statute Mile
 TEMP - Temporary Aid Change
 TMK - Topmark
 TRLB - Temporarily Replaced by Lighted Buoy
 TRLT - Temporarily Replaced by Light
 TRUB - Temporarily Replaced by Unlighted Buoy
 USACE - Army Corps of Engineers
 W - White
 Y - Yellow

Additional Abbreviations Specific to this LNM Edition:

LIB - Lighted Ice Buoy

SECTION I - SPECIAL NOTICES

This section contains information of special concern to the Mariner.

CAUTION TO BE USED IN RELIANCE UPON AIDS TO NAVIGATION

The aids to navigation depicted on charts comprise a system of fixed and floating aids to navigation with varying degrees of reliability. Prudent mariners will not rely solely on any single aid to navigation, particularly a floating aid to navigation. With respect to buoys, the buoy symbol is used to indicate the approximate position of the buoy body and the sinker which secures the buoy to the seabed. The approximate position is used because of the practical limitations in positioning and maintaining buoys and their sinkers in precise geographical locations. These limitations include, but are not limited to, inherent imprecision in position fixing methods, prevailing atmospheric and sea conditions, slope of and the material making up the seabed, the fact that buoys are moored to sinkers by varying length of chain, and the fact that the buoy body and/or sinker positions are not under continuous surveillance, but are normally checked only during periodic maintenance visits which often occur more than a year apart. Due to the forces of nature, the position of the buoy body can be expected to shift inside and outside the charted symbol. The mariner is also cautioned that buoys may be extinguished or sound signals may not function as the result of ice, running ice, or other natural causes, collisions, or other accidents. For the foregoing reasons, a prudent mariner must not rely completely upon the position or operation of floating aids to navigation, but will also utilize bearings from fixed objects and aids to navigation on shore. Further, a vessel attempting to pass close aboard always risks collision with a yawing buoy or with the obstruction that the buoy marks.

LNM: 06/14

IMPORTANT SAFETY NOTICE ABOUT THE RELIABLE OPERATION OF ECDIS

Following an announcement by the International Maritime Organization (IMO) concerning potential display anomalies in some ECDIS systems, the International Hydrographic Organization (IHO) issued an ENC Data Presentation and Performance Check in October 2011. This check is intended to assist mariners and to help determine the extent of the anomalies. IHO has received reports from mariners confirming that a number of ECDIS fail to display some significant underwater features in the "Standard" display mode. For all significant objects to be visible to the mariner, these ECDIS must be operated in "Full display" or "All display" mode until a software upgrade is made available from the manufacturer. Mariners are strongly encouraged to use the IHO ENC Data Presentation and Performance Check issued through ENC service providers and also available directly from the IHO website (www.iho.int) to check the operation of their ECDIS and to determine whether their system is affected. IHO Circular Letter 33/2012 is available on the Coast Guard's Navigation Center website (<https://www.navcen.uscg.gov>) under the heading News and Notices.

LNM: 12/12

ZIKA VIRUS UPDATE

The U.S. Department of Transportation's Maritime Administration (MARAD) has issued MARAD Advisory 2016-03 on the Zika Virus and Impacts on Maritime Commerce. The Advisory can be found at <https://www.marad.dot.gov/newsroom/advisory/2016/marad-advisory-2016-03/>. U.S. flag operators are requested to forward this link to their ships by the most expeditious means.

LNM: 39/16

OPERATION TACONITE

Commander Coast Guard Sector Sault Ste Marie commenced operation TACONITE.

At the start of each voyage or transit, to enhance the coordination of ice breaking resources, COTP Sault Ste Marie directs all shipping companies to provide an estimated time of arrival for their vessels downbound to WHITEFISH POINT, upbound to DETOUR REEF LT, eastbound to LANSING SHOAL LT, westbound to ROUND ISLAND, or arriving or departing from any of the Western Superior ports and terminals.

Similarly, for vessels operating in LAKE MICHIGAN in the presence or ice, all shipping companies should provide an estimated time of arrival for vessels entering the STURGEON BAY SHIP CANAL, ROCK ISLAND PASSAGE or when arriving or departing ESCANABA, GREEN BAY, MARINETTE or any other ports and terminals within GREEN BAY.

Estimated time of arrivals MUST be received six (6) hours prior to a vessels arrival to any of these points or once a day by 1000 (eastern). Position reports may be filed with "SAULT TRAFFIC" either by LANDLINE: 906-635-3232, FAX: 906-635-3238, or EMAIL: SOOTFC@USCG.MIL.

A vessels ETA must be updated whenever the arrival time changes by more than six (6) hours. Mariners are asked to establish VHF Radio contact with the servicing Icebreaker on VHF-FM Channel 16 approximately one (1) hour before reaching the appropriate service area.

LNM: 51/16

WATERWAY CLOSURE - ST MARYS RIVER - Lake Nicolet To Munuscong Lake

Per 33 CFR 162.117 VTS St Mary's River will close the West Neebish Channel. Alternating one way traffic will be established in the Munuscong and Middle Neebish Channel's, effective 0800 local 19 Jan 2017.

LNM: 03/17

WATERWAY CLOSURE - LAKE MICHIGAN - De Tour Passage To Munuscong Lake

Per 33 CFR 162.117 VTS St Mary's River closed Pipe Island Passage to the East of Pipe Island Shoal and North of Pipe Island Twins. Pipe Island course is an alternating one way route, effective 1800 local 11 Jan 2017.

LNM: 03/17

WATERWAY CLOSURE - LAKE HURON - Straits Of Mackinac

Per 33 CFR 165.901 Captain of the port Sault Ste Marie closed the waters between Cheboygan, Michigan and Bois Blanc Island known as the South Channel, effective 1800 local 11 Jan 2017.

LNM: 03/17

WATERWAY CLOSURE - LAKE MICHIGAN - Grays Reef Passage

Per 33 CFR 165.901 Captain of the port Sault Ste Marie closed Greys Reef Passage, effective 1800 local 11 Jan 2017.

LNM: 03/17

OPERATION COAL SHOVEL

Commander U.S. Coast Guard Sector Detroit has commence Operation COAL SHOVEL. To enhance the coordination of ice breaking resources, Captain of the Port Detroit directs all shipping companies to provide an estimated time of arrival (ETA) for their vessels arriving or departing from any port or terminal within the Operation COAL SHOVEL area of responsibility (AOR).

The COAL SHOVEL AOR extends from the eastern extent of navigable waters of Lake Erie through the Detroit and St. Clair River system and north to include all navigable waters of Lake Huron south of 45 degrees, 20 minutes north latitude.

ETA reports must be received six (6) hours prior to vessel arrival or once a day by 1000 (eastern). This requirement may be met through submission of the Daily Vessel Movement Reports in electronic form via email to SecDetroitWWM@uscg.mil. Estimated time of arrivals must be updated whenever the arrival time deviates by more than 6 hours. ETA updates may be reported by telephone to the Sector Detroit Command Center at 313-568-9560.

LNM: 01/17

RANGE STRUCTURES

The U.S. Coast Guard has become aware that Coast Guard information used to depict a rangeline on NOAA Electronic Navigational Charts (ENC)

may not be of sufficient accuracy to accurately portray the rangeline on the ENC. Mariners are cautioned that the position of a rangeline as shown on an ENC may not reflect its true position.

LNM: 04/11

USACE NOTICE TO NAVIGATION INTERESTS

Current Federal Channel conditions, shoaling, and the most recent channel surveys are available at the following Army Corps of Engineers web sites:

Buffalo: <http://www.lrb.usace.army.mil/>

Detroit: <http://www.lre.usace.army.mil/>

Chicago: <http://www.lrc.usace.army.mil/>

Rock Island: <http://www.mvr.usace.army.mil/>

LNM: 28/12

THE DATES OF LATEST EDITIONS, NAUTICAL CHARTS AND MISCELLANEOUS MAPS

Up to date information on latest editions, nautical charts and miscellaneous maps can be found at the following web address:

<http://www.nauticalcharts.noaa.gov/>

LNM: 32/13

THE 2017 ELECTRONIC LIGHT LIST

The 2017 Light List is now available.

Coast Guard Light Lists are a means for communicating aids to navigation information to the maritime public. The last government printed Light Lists were the 2014 editions. While the Light Lists will no longer be available in government printed form, commercial reproductions may be available for purchase from maritime service providers. Local Notices to Mariners will continue to advertise Light List corrections and NAVCEN will continue to publish a compilation of corrections.

2017 Light Lists are available on the USCG Navigation Center's website at: <https://www.navcen.uscg.gov/?pageName=lightLists>

Complete versions of the 2017 Light Lists are updated weekly on the NAVCEN website and mariners should download applicable copies and updates as needed at: <https://www.navcen.uscg.gov/?pageName=lightListWeeklyUpdates>.

A summary of 2017 Light List corrections are available at: <https://www.navcen.uscg.gov/?pageName=lightListCorrections>

Guidance for use of electronic navigation publications onboard U.S. vessels can be found at:

http://www.uscg.mil/hq/cgcv/cvc/policy/policy_letters/543/CG-543_pol10-05.pdf

LNM: 04/17

USE OF ELECTRONIC CHARTS AND PUBLICATIONS IN LIEU OF PAPER CHARTS, MAPS, AND PUBLICATIONS

The U.S. Coast Guard has issued Navigation and Vessel Inspection Circular (NVIC) No. 01-16 which contains guidance on the use of electronic charts and publications in lieu of paper charts, maps, and publications. This guidance applies to U.S. flagged vessels subject to U.S. domestic chart, map, and publication carriage requirements contained in Titles 33 and 46 of the Code of Federal Regulations. The NVIC can be viewed at <https://www.uscg.mil/hq/cg5/nvic/default.asp> or <https://cgportal2.uscg.mil/library/directives/SitePages/Home.aspx>.

LNM: 06/16

GREAT LAKES - Great Lakes Water Levels

The expected water levels on the Great Lakes for February 24, 2017. Connecting Channels and the St. Lawrence River, given in inches above (+) or below (-) Low Water Datum (LWD). LWD is a plane of reference used on a navigation chart. It is also known as chart datum.

Great Lakes:

Lake Ontario +27, Lake Erie +37, Lake St. Clair +32, Lake Michigan-Huron +18, Lake Superior +8.

St. Lawrence River:

Above Long Sault Dam +41, Above Iroquois Dam +22, Ogdensburg +26, Alexandria Bay +27, Head of River at Cape Vincent +27.

Detroit River:

Lake Erie at Pelee Passage +37, Mouth of River at Gibraltar +37, Fort Wayne +37, Head of River above Belle Isle +33.

St. Clair River:

Mouth of River at St. Clair Flats +32, Algonac +34, St. Clair +27, Blue Water Bridge +25, Head of River at Fort Gratiot +20, Lake Huron

Approach Channel +18.

St. Marys River:

Mouth of River at Detour +18, West and Middle Neebish +18, Head of Little Rapids +23, U.S. Slip +24, Above Locks +9, Head of River at Point Iroquois +8.

Available water depth is determined for a location by adding (if +) or subtracting (if -) the amount from the above to the water depth shown on National Oceanic and Atmospheric Administration (NOAA) navigational charts. Caution: Depths so determined are representative of a still water surface elevation, disturbed by neither wind nor other causes. Depth, however, may be reduced or increased as much as several feet for short periods of time due to these disturbances, or when sections of channels develop shoals. Vessel masters should refer to the Local Notice to Mariners for extent of shoaling and scattered bedrock projections in all channels. For further information direct inquires to: Department of the Army, Detroit District Corps of Engineers P. O. Box 1027, Detroit, MI 48231, (313) 226-6443. Additional information can be found on the U.S. Army Corps of Engineers Information Center website at <http://www.lre.usace.army.mil/Missions/GreatLakesInformation/GreatLakesWaterLevels/WaterLevelForecast/ConnectingChannelsForecast.asp>

LNM: 08/17

VIRTUAL AIS ATON (VATON)

The following Virtual AIS ATON have been established:

LAKE ERIE - BUFFALO HARBOR - Chart 14833 VATON Buffalo in approximate position 42-50-08.639N / 078-55-25.922W

LAKE ERIE - TOLEDO HARBOR - Chart 14847

VATON Maumee in approximate position 41-50-07.946N / 083-10-10.530W

LNM: 07/17

LAKE ERIE – NY – Buffalo Ship Canal – Chart 14833

There is a steel I-beam protruding out of the water in approximate position 42-51.640N 078-52.100W. The steel I-beam is marked with a temporary white buoy FL W 4s.

LNM: 17/16

LAKE ST. CLAIR - Chart 14853

The following lighted buoys are off station outside the channel east of the main shipping channel and their position may continue to change due to shifting ice. . The buoys may be damaged and the lights may be extinguished. Mariners should use caution when transiting in the vicinity of the open lake waters east of the shipping channel in Lake St. Clair. For information on their latest approximate position see enclosure (6) of this Local Notice to Mariner publication.

Lake St. Clair Lighted Buoy "21" (LLNR 8515) Lake St. Clair Lighted Buoy "22" (LLNR 8520) Lake St. Clair Lighted Buoy "24" (LLNR 8530)

LNM: 07/17

LAKE HURON - Harrisville to Forty Mile Point - Chart 14864

Thunder Bay Traffic Lighted Bell Buoy "TB" (LLNR 11355) Has been turned on as a Synthetic AIS ATON. The AIS ATON symbol will continue to be transmitted during periods that the seasonal physical aid has been removed.

LNM: 50/16

LAKE HURON - Detour Passage to Waugoshance Point - Chart 14881

Cheboygan Traffic Lighted Bell Buoy (LLNR 12180) Has been turned on as a Synthetic AIS ATON. The AIS ATON symbol will continue to be transmitted during periods that the seasonal physical aid has been removed.

LNM: 50/16

LAKE MICHIGAN - Stony Lake to Point Betsie - Chart 14907

Due to reported shoaling in the entrance to Arcadia Lake, mariners are urged to stay North of the center of the channel. Contact Arcadia Harbormaster on VHF FM Channel 16 for further information. Mariners are requested to transit the area with caution.

LNM: 50/16

LAKE MICHIGAN - MI - Waugoshance Point to Seul Choix Point - Chart 14911

An uncharted object has been reported north of the LCA track lines east of Lansing Shoal in approximate position 45-54.647N 085-24.970W. The object appears to be 23-24 feet below the surface at low water datum.

LNM: 30/15

LAKE MICHIGAN - Upper Green Bay - Chart 14909

Baileys Harbor Entrance Lighted Bell Buoy (LLNR 21235) Has been turned on as a Synthetic AIS ATON. The AIS ATON symbol will continue to be transmitted during periods that the seasonal physical aid has been removed.

LNM: 50/16

LAKE MICHIGAN - IL – Calumet River – 14929 - Obstruction

An obstruction is protruding approximately 15 feet into the channel from the Morton Salt Dock at river mile 331.5 on the Calumet River. Mariners are advised to use caution and avoid transiting near the left descending wall.

LNM: 06/17

LAKE SUPERIOR - Big Bay Point to Redridge - Chart 14964

Copper Harbor Entrance Bell Buoy "CH" (LLNR 15180) Has been turned on as a Synthetic AIS ATON. The AIS ATON symbol will continue to be transmitted during periods that the seasonal physical aid has been removed.

LNM: 50/16

SECTION II - DISCREPANCIES

This section lists all reported and corrected discrepancies related to Aids to Navigation in this edition. A discrepancy is a change in the status of an aid to navigation that differs from what is published or charted.

DISCREPANCIES (FEDERAL AIDS)

| LLNR | Aid Name | Status | Chart No. | BNM Ref. | LNM St | LNM End |
|--------------|---|---|--------------|----------------|--------------|---------|
| 3410 | Dunkirk Light | LT IMCH/NIGHT LT BURNING DAY | 14823 | B007-17 | 08/17 | |
| 4625 | Sandusky Straight Channel Range Front Light | DAYMK MISSING | 14842 | D118-16 | 35/16 | |
| 6765 | Inner Light (C) | LT EXT | | B225-16 | 01/17 | |
| 7165 | Grosse Ile South Channel Range Front Light | LT EXT | 14853 | D003-17 | 04/17 | |
| 8425 | Lake St. Clair Buoy 3 | OFF STA | 14853 | D006-17 | 06/17 | |
| 8515 | Lake St. Clair Lighted Buoy 21 | OFF STA | 14853 | D163-16 | 51/16 | |
| 8520 | Lake St. Clair Lighted Buoy 22 | OFF STA | 14853 | D160-16 | 51/16 | |
| 8530 | Lake St. Clair Lighted Buoy 24 | OFF STA | 14853 | | 07/17 | |
| 8570 | Lake St. Clair Lighted Buoy 30 | OFF STA/MSLD SIG | 14853 | D013-17 | 07/17 | |
| 8595 | Pier Light X32/2 (C) | LT IMCH | | | 06/17 | |
| 9870 | Courtright Light (C) | LT EXT | | D074-16 | 23/16 | |
| 11770 | Fourteen Foot Shoal Buoy 3 | OFF STA | 14881 | S019-17 | 05/17 | |
| 12770 | De Tour Reef Light | LT EXT | 14880 | S022-17 | 06/17 | |
| 13280 | Middle Neebish South Range Rear Light | LT EXT | 14887 | S021-17 | 06/17 | |
| 13375 | Middle Neebish Light 62 | LT EXT | 14887 | S020-17 | 06/17 | |
| 13640 | Sawmill Point Lighted Buoy 23 | OFF STA | 14887 | S009-17 | 02/17 | |
| 13730 | West Neebish Channel (Downbound) Lighted Buoy 6 | MISSING | 14887 | S004-17 | 02/17 | |
| 14030 | Lake Nicolet Lighted Buoy 89 | OFF STA | 14883 | S017-17 | 05/17 | |
| 14190 | Bayfield Channel Lighted Buoy 110 | MISSING | 14884 | S023-17 | 08/17 | |
| 14390 | Brush Point Range Front Light | LT EXT | 14884 | S010-17 | 03/17 | |
| 15880 | Duluth Harbor Basin Lighted Buoy 3 | OFF STA | 14975 | S171-16 | 52/16 | |
| 20965 | Kewaunee Breakwater Light | LT IMCH | 14903 | M025-17 | 03/17 | |

DISCREPANCIES (FEDERAL AIDS) CORRECTED

| LLNR | Aid Name | Status | Chart No. | BNM Ref. | LNM St | LNM End |
|------|------------------------|-----------|-----------|----------|--------|---------|
| 2320 | Rochester Harbor Light | RELIGHTED | 14804 | | 08/17 | 08/17 |

DISCREPANCIES (PRIVATE AIDS)

| LLNR | Aid Name | Status | Chart No. | BNM Ref. | LNM St | LNM End |
|-------|--|-----------------------|-----------|----------|--------|---------|
| 4190 | Whiskey Island Marina Entrance Light 1 | LT IMCH/DAYMK MISSING | 14839 | B059-16 | 21/16 | |
| 4191 | Whiskey Island Marina Entrance Light 2 | DAYMK MISSING | 14839 | B060-16 | 21/16 | |
| 8695 | Grosse Point Club Harbor Entrance West Light | LT EXT | 14853 | D179-15 | 42/15 | |
| 19580 | Burns Harbor East Light | LT EXT | 14926 | | 30/16 | |
| 19610 | Gary Breakwater Light | LT EXT | 14926 | M521-16 | 51/16 | |
| 19750 | Hammond Marina Entrance Light 2 | LT EXT | 14926 | | 41/16 | |

DISCREPANCIES (PRIVATE AIDS) CORRECTED

| LLNR | Aid Name | Status | Chart No. | BNM Ref. | LNM St | LNM End |
|------|----------|--------|-----------|----------|--------|---------|
|------|----------|--------|-----------|----------|--------|---------|

None

PLATFORM DISCREPANCIES

| Name | Status | Position | BNM Ref. | LNM St | LNM End |
|------|--------|----------|----------|--------|---------|
|------|--------|----------|----------|--------|---------|

None

PLATFORM DISCREPANCIES CORRECTED

| Name | Status | Position | BNM Ref. | LNM St | LNM End |
|------|--------|----------|----------|--------|---------|
|------|--------|----------|----------|--------|---------|

None

SECTION III - TEMPORARY CHANGES and TEMPORARY CHANGES CORRECTED

This section contains temporary changes and corrections to Aids to Navigation for this edition. When charted aids are temporarily relocated for dredging, testing, evaluation, or marking an obstruction, a temporary correction shall be listed in Section IV giving the new position.

TEMPORARY CHANGES

| LLNR | Aid Name | Status | Chart No. | BNM Ref. | LNM St | LNM End |
|-------|---|-------------------|-----------|----------|--------|---------|
| 4451 | Vermilion Museum Lighthouse | DISCONTINUED | 14826 | B002-16 | 08/16 | |
| 6015 | Cooley Canal Front Range Light | DISCONTINUED | 14846 | | 11/16 | |
| 6016 | Cooley Canal Rear Range Light | DISCONTINUED | 14846 | | 11/16 | |
| 15260 | Gull Island Light | Reduced Intensity | 14973 | S085-16 | 39/16 | |
| 18450 | Manistee North Pierhead Light | Reduced Intensity | 14938 | M126-16 | 19/16 | |
| 18965 | Grand Haven South Pierhead Entrance Light | Reduced Intensity | 14933 | M443-16 | 40/16 | |
| 18975 | Grand Haven South Pierhead Inner Light | Reduced Intensity | 14933 | M443-16 | 40/16 | |
| 21940 | Menominee Pier Light 6 | DISCONTINUED | 14917 | M115-16 | 44/16 | |

TEMPORARY CHANGES CORRECTED

| LLNR | Aid Name | Status | Chart No. | BNM Ref. | LNM St | LNM End |
|------|----------|--------|-----------|----------|--------|---------|
|------|----------|--------|-----------|----------|--------|---------|

None

PLATFORM TEMPORARY CHANGES

| Name | Status | Position | BNM Ref. | LNM St | LNM End |
|------|--------|----------|----------|--------|---------|
|------|--------|----------|----------|--------|---------|

None

PLATFORM TEMPORARY CHANGES CORRECTED

| Name | Status | Position | BNM Ref. | LNM St | LNM End |
|------|--------|----------|----------|--------|---------|
|------|--------|----------|----------|--------|---------|

None

SECTION IV - CHART CORRECTIONS

This section contains corrections to federally and privately maintained Aids to Navigation, as well as NOS corrections.

This section contains corrective actions affecting chart(s). Corrections appear numerically by chart number, and pertain to that chart only. It is up to the mariner to decide which chart(s) are to be corrected. The following example explains individual elements of a typical chart correction.

| Chart Number | Chart Edition | Edition Date | Last Local Notice to Mariners | Horizontal Datum Reference | Source of Correction | Current Local Notice to Mariners |
|--|------------------------------|--------------|-------------------------------|----------------------------|----------------------|----------------------------------|
| 12327 | 91st Ed. | 19-APR-97 | Last LNM: 26/97 | NAD 83 | | 27/97 |
| Chart Title: NY-NJ-NEW YORK HARBOR - RARITAN RIVER | | | | | | |
| Main Panel 2245 NEW YORK HARBOR | | | | | CGD01 | |
| (Temp) ADD | NATIONAL DOCK CHANNEL BUOY 3 | | | | at 40-41-09.001N | 074-02-48.001W |
| | Green can | | | | | |
| Corrective Action | Object of Corrective Action | | | | Position | |

(Temp) indicates that the chart correction action is temporary in nature. Courses and bearings are given in degrees clockwise from 000 true.

Bearings of light sectors are toward the light from seaward. The nominal range of lights is expressed in nautical miles (NM) unless otherwise noted.

| | | | | | | |
|--|--|------------------|------------------------|---------------|---|----------------------------------|
| 14802 | 31st Ed. | 01-OCT-05 | Last LNM: 21/16 | NAD 83 | | 08/17 |
| <i>ChartTitle: Clayton to False Ducks Is.</i> | | | | | | |
| Main Panel 1113 LAKE ONTARIO . Page/Side: N/A | | | | | | |
| CHANGE | Depth Legend - Cape Vincent Harbor; 14 FT 2016 (NOS NW-26184) | | | | NOS 44-07-55.680N | 076-19-47.370W |
| 14826 | 28th Ed. | 01-SEP-10 | Last LNM: 08/17 | NAD 83 | | 08/17 |
| <i>ChartTitle: Moss Point to Vermilion;Beaver Creek;Vermilion Harbor;Rocky River</i> | | | | | | |
| Main Panel 1147 MOSS POINT TO VERMILION OHIO. Page/Side: N/A | | | | | | |
| RELOCATE | Gordon Park Boat Basin Light 1 | | | | CGD09 from 41-32-33.000N to 41-32-33.576N | 081-38-18.000W 081-38-17.514W |
| RELOCATE | Gordon Park Disposal Light A | | | | CGD09 from 41-32-33.000N to 41-32-52.812N | 081-38-02.000W 081-38-00.696W |
| 14839 | 38th Ed. | 01-MAY-15 | Last LNM: 08/17 | NAD 83 | | 08/17 |
| <i>ChartTitle: Cleveland Harbor, including lower Cuyahoga River</i> | | | | | | |
| Main Panel 1161 CLEVELAND HARBOR INCLUDING LOWER CUYAHOGA RIVER. Page/Side: A | | | | | | |
| RELOCATE | Gordon Park Boat Basin Light 1 | | | | CGD09 from 41-32-33.000N to 41-32-33.576N | 081-38-18.000W 081-38-17.514W |
| RELOCATE | Gordon Park Disposal Light A | | | | CGD09 from 41-32-33.000N to 41-32-52.812N | 081-38-02.000W 081-38-00.696W |
| 14846 | 15th Ed. | 01-JUN-16 | Last LNM: 51/16 | NAD 83 | | 08/17 |
| <i>ChartTitle: SMALL-CRAFT BOOK CHART - West End of Lake Erie from Perrysburg, OH., of the Maumee R. to Huron R., Mich., and Bar Pt., Ont. (book of 34 charts)</i> | | | | | | |
| Extension 1235 WEST END OF LAKE ERIE PAGE 23. Page/Side: _23 | | | | | | |
| CHANGE | Depth Legend - POINT MOUILLEE; 11 1/2 FT MAY 2016 (NOS NW-26173) | | | | NOS 42-00-25.330N | 083-11-01.240W |
| CHANGE | Depth Legend - POINT MOUILLEE; 13 FT APR 2016 (NOS NW-26173) | | | | NOS 42-00-52.550N | 083-10-47.600W |
| CHANGE | Depth Legend - POINT MOUILLEE; 16 1/2 FT APR 2016 (NOS NW-26173) | | | | NOS 42-00-45.520N | 083-10-50.430W |
| Extension 1236 WEST END OF LAKE ERIE PAGE 24. Page/Side: _24 | | | | | | |
| DELETE | Sounding in Feet; 11 (NOS NW-26173) | | | | NOS 42-00-58.770N | 083-10-46.350W |
| CHANGE | Depth Legend - POINT MOUILLEE; 13 FT APR 2016 (NOS NW-26173) | | | | NOS 42-00-52.550N | 083-10-47.600W |

| | | | |
|---|--|----------------------|----------------|
| CHANGE | Depth Legend - POINT MOUILLEE; 16 1/2 FT APR 2016 (NOS NW-26173) | NOS 42-00-45.520N | 083-10-50.430W |
| ADD | Sounding in Feet; 9 (NOS NW-26173) | NOS 42-00-57.280N | 083-10-41.780W |
| Unrelated 901 INDEX TO SHEETS OF WEST END OF LAKE ERIE. Page/Side: 1 | | | |
| CHANGE | tabulation - TOLEDO HARBOR CHANNEL DEPTHS http://ocsddata.ncd.noaa.gov/ntm/SupportImage.aspx?ItemID=270827 ; tabulation - TOLEDO HARBOR CHANNEL DEPTHS (NOS NW-26156) | NOS 41-44-30.000N | 083-31-00.000W |

14847 31st Ed. 01-FEB-05 Last LNM: 17/14 NAD 83 08/17

ChartTitle: Toledo Harbor;Entrance Channel to Harbor

Main Panel 1250 TOLEDO HARBOR OHIO. Page/Side: N/A

| | | | |
|--------|--|----------------------|----------------|
| CHANGE | tabulation - TOLEDO HARBOR CHANNEL DEPTHS http://ocsddata.ncd.noaa.gov/ntm/SupportImage.aspx?ItemID=270826 ; tabulation - TOLEDO HARBOR CHANNEL DEPTHS (NOS NW-26156) | NOS 41-41-33.000N | 083-31-24.000W |
|--------|--|----------------------|----------------|

14848 59th Ed. 01-AUG-16 Last LNM: 04/17 NAD 83 08/17

ChartTitle: Detroit River

Extension 1253 DETROIT RIVER MICHIGAN EXTENSION. Page/Side: A

| | | | |
|--------|--|----------------------|----------------|
| DELETE | Sounding in Feet; 11 (NOS NW-26173) | NOS 42-00-58.770N | 083-10-46.350W |
| CHANGE | Depth Legend - POINT MOUILLEE; 11 1/2 FT MAY 2016 (NOS NW-26173) | NOS 42-00-25.330N | 083-11-01.240W |
| CHANGE | Depth Legend - POINT MOUILLEE; 13 FT APR 2016 (NOS NW-26173) | NOS 42-00-52.550N | 083-10-47.600W |
| CHANGE | Depth Legend - POINT MOUILLEE; 16 1/2 FT APR 2016 (NOS NW-26173) | NOS 42-00-45.520N | 083-10-50.430W |
| ADD | Sounding in Feet; 9 (NOS NW-26173) | NOS 42-00-57.280N | 083-10-41.780W |

14901 16th Ed. 01-JUN-16 Last LNM: 08/17 NAD 83 08/17

ChartTitle: Lake Michigan (Mercator Projection)

Main Panel 1361 LAKE MICHIGAN. Page/Side: A

| | | | |
|--------|--|---------------------------|----------------|
| CHANGE | Detroit Harbor Entrance Light Characteristic to Fl W 4s 25ft 11 ST M HORN (MRASS) Ra Ref | CGD09 at 45-19-55.692N | 086-56-12.299W |
| CHANGE | Kenosha Light Characteristic to Iso R 6s 50ft 11 ST M HORN (MRASS) | CGD09 at 42-35-19.700N | 087-48-30.830W |
| CHANGE | Milwaukee Breakwater Light Characteristic to Fl R 10s 61ft 14 ST M HORN (MRASS) | CGD09 at 43-01-36.992N | 087-52-54.927W |
| CHANGE | Minneapolis Shoal Light Characteristic to Fl W 5s 82ft 15 ST M RACON (- -) HORN (MRASS) Racon: M (- -) | CGD09 at 45-34-53.326N | 086-59-55.377W |
| CHANGE | Port Washington Breakwater Light Characteristic to Fl R 6s 78ft 7 ST M HORN (MRASS) | CGD09 at 43-23-06.942N | 087-51-34.802W |
| CHANGE | Sheboygan Breakwater Light Characteristic to Fl R 4s 55ft 8 ST M HORN (MRASS) | CGD09 at 43-44-58.200N | 087-41-33.800W |
| CHANGE | Sturgeon Bay Ship Canal North Pierhead Light Characteristic to Fl R 2.5s 40ft 11 ST M HORN (MRASS) | CGD09 at 44-47-31.260N | 087-18-34.322W |

14902 30th Ed. 01-JUL-16 Last LNM: 08/17 NAD 83 08/17

ChartTitle: North end of Lake Michigan, including Green Bay

Main Panel 1362 NORTH END OF LAKE MICHIGAN INCLUDING GREEN BAY. Page/Side: A

| | | | |
|--------|---|---------------------------|----------------|
| CHANGE | Detroit Harbor Entrance Light Characteristic to Fl W 4s 25ft 11 ST M HORN (MRASS) Ra Ref | CGD09 at 45-19-55.692N | 086-56-12.299W |
|--------|---|---------------------------|----------------|

| | | | |
|---|---|---------------------------|----------------|
| CHANGE | Minneapolis Shoal Light Characteristic to FI W 5s 82ft 15 ST M RACON (- -) HORN (MRASS) Racon: M (--) | CGD09 at 45-34-53.326N | 086-59-55.377W |
| CHANGE | Sturgeon Bay Ship Canal North Pierhead Light Characteristic to FI R 2.5s 40ft 11 ST M HORN (MRASS) | CGD09 at 44-47-31.260N | 087-18-34.322W |
| 14903 | 25th Ed. 01-JUN-16 Last LNM: 08/17 NAD 83 | | 08/17 |
| <i>ChartTitle: Algoma to Sheboygan;Kewaunee;Two Rivers</i> | | | |
| Main Panel 1363 LAKE MICHIGAN-ALGOMA TO SHEBOYGAN. Page/Side: A | | | |
| CHANGE | Sheboygan Breakwater Light Characteristic to FI R 4s 55ft 8 ST M HORN (MRASS) | CGD09 at 43-44-58.200N | 087-41-33.800W |
| 14904 | 27th Ed. 01-DEC-12 Last LNM: 08/17 NAD 83 | | 08/17 |
| <i>ChartTitle: Port Washington to Waukegan;Kenosha;North Point Marina;Port Washington;Waukegan</i> | | | |
| CHART PORT WASHINGTON TO WAUKEGAN. Page/Side: N/A | | | |
| CHANGE | Kenosha Light Characteristic to Iso R 6s 50ft 11 ST M HORN (MRASS) | CGD09 at 42-35-19.700N | 087-48-30.830W |
| CHANGE | Milwaukee Breakwater Light Characteristic to FI R 10s 61ft 14 ST M HORN (MRASS) | CGD09 at 43-01-36.992N | 087-52-54.927W |
| Inset 1367 PORT WASHINGTON WISCONSIN. Page/Side: N/A | | | |
| CHANGE | Port Washington Breakwater Light Characteristic to FI R 6s 78ft 7 ST M HORN (MRASS) | CGD09 at 43-23-06.942N | 087-51-34.802W |
| Main Panel 1366 PORT WASHINGTON TO WAUKEGAN. Page/Side: N/A | | | |
| CHANGE | Port Washington Breakwater Light Characteristic to FI R 6s 78ft 7 ST M HORN (MRASS) | CGD09 at 43-23-06.942N | 087-51-34.802W |
| 14908 | 19th Ed. 01-JAN-16 Last LNM: 08/17 NAD 83 | | 08/17 |
| <i>ChartTitle: Dutch Johns Point to Fishery Point, including Big Bay de Noc and Little Bay de Noc;Manistique</i> | | | |
| Main Panel 1383 DUTCH JOHNS PT. TO FISHERY PT.. Page/Side: A | | | |
| CHANGE | Minneapolis Shoal Light Characteristic to FI W 5s 82ft 15 ST M RACON (- -) HORN (MRASS) Racon: M (--) | CGD09 at 45-34-53.326N | 086-59-55.377W |
| 14909 | 21st Ed. 01-FEB-16 Last LNM: 08/17 NAD 83 | | 08/17 |
| <i>ChartTitle: Upper Green Bay - Jackson Harbor and Detroit Harbor;Detroit Harbor;Jackson Harbor;Baileys Harbor</i> | | | |
| Inset 1387 DETROIT HARBOR WISCONSIN. Page/Side: A | | | |
| CHANGE | Detroit Harbor Entrance Light Characteristic to FI W 4s 25ft 11 ST M HORN (MRASS) Ra Ref | CGD09 at 45-19-55.692N | 086-56-12.299W |
| Main Panel 1385 UPPER GREEN BAY - MINNEAPOLIS SHOAL TO GREEN ISLAND. Page/Side: A | | | |
| CHANGE | Detroit Harbor Entrance Light Characteristic to FI W 4s 25ft 11 ST M HORN (MRASS) Ra Ref | CGD09 at 45-19-55.692N | 086-56-12.299W |
| CHANGE | Minneapolis Shoal Light Characteristic to FI W 5s 82ft 15 ST M RACON (- -) HORN (MRASS) Racon: M (--) | CGD09 at 45-34-53.326N | 086-59-55.377W |
| 14910 | 24th Ed. 01-JUN-16 Last LNM: 08/17 NAD 83 | | 08/17 |
| <i>ChartTitle: Lower Green Bay;Oconto Harbor;Algoma</i> | | | |
| Main Panel 1388 LOWER GREENBAY ALGOMA AND OCONTO. Page/Side: A | | | |
| CHANGE | Sturgeon Bay Ship Canal North Pierhead Light Characteristic to FI R 2.5s 40ft 11 ST M HORN (MRASS) | CGD09 at 44-47-31.260N | 087-18-34.322W |

ChartTitle: **Sturgeon Bay and Canal;Sturgeon Bay**

Main Panel 1444 STURGEON BAY AND CANAL LAKE MICHIGAN. Page/Side: A

| | | | |
|--------|---|---------------------------|----------------|
| CHANGE | Sturgeon Bay Ship Canal North Pierhead Light Characteristic to FI R 2.5s 40ft 11 ST M HORN (MRASS) | CGD09 at 44-47-31.260N | 087-18-34.322W |
|--------|---|---------------------------|----------------|

ChartTitle: **Manitowoc and Sheboygan**

Extension 1447 MANITOWOC AND SHEBOYGAN WISCONSIN SHEBOYGAN. Page/Side: A

| | | | |
|--------|--|---------------------------|----------------|
| CHANGE | Sheboygan Breakwater Light Characteristic to FI R 4s 55ft 8 ST M HORN (MRASS) | CGD09 at 43-44-58.200N | 087-41-33.800W |
|--------|--|---------------------------|----------------|

ChartTitle: **Milwaukee Harbor**

Main Panel 1448 MILWAUKEE HARBOR WISCONSIN. Page/Side: N/A

| | | | |
|--------|--|---------------------------|----------------|
| CHANGE | Milwaukee Breakwater Light Characteristic to FI R 10s 61ft 14 ST M HORN (MRASS) | CGD09 at 43-01-36.992N | 087-52-54.927W |
|--------|--|---------------------------|----------------|

SECTION V - ADVANCE NOTICES

This section contains advance notice of approved projects, changes to aids to navigation, or upcoming temporary changes such as dredging, etc. Mariners are advised to use caution while transiting these areas.

SUMMARY OF ADVANCED APPROVED PROJECTS

| | | |
|----------------------------|---------------------|-----------------|
| <u>Approved Project(s)</u> | <u>Project Date</u> | <u>Ref. LNM</u> |
| None | | |

Advance Notice(s)

LAKE MICHIGAN - WI - Upper Green Bay - Chart 14909

St. Martin Island Light (LLNR 21450) change the characteristic of the light from AL WR 10s to FI W 10s. The range would be reduced from 18 statute miles to 16 statute miles.

LNM: 31/14

LAKE MICHIGAN - MI - Holland Harbor - Chart 14932

Holland Harbor South Pierhead Light (LLNR 19295) change the characteristic from AL WR 10s to FI R 10s and reduce the range of the light from 17 statute miles to 15 statute miles.

LNM: 39/12

LAKE MICHIGAN - WI - Upper Green Bay - Chart 14909

Boyer Bluff Light (LLNR 21770) reduce the range of the light from 8 statute miles to 6 statute miles.
Eagle Bluff Light (LLNR 21825) reduce the range of the light from 7 statute miles to 6 statute miles.

LNM: 28/15

LAKE MICHIGAN - IL - Calumet River - Chart 14929

Calumet Harbor Breakwater South End Light (LLNR 19800) change the fog signal from operating continuously to "Fog Signal operates by keying microphone five times on VHF FM Channel 83A".

LNM: 48/15

SECTION VI - PROPOSED CHANGES

Periodically, the Coast Guard evaluates its system of aids to navigation to determine whether the conditions for which the aids to navigation were established have changed. When changes occur, the feasibility of improving, relocating, replacing, or discontinuing aids are considered. This section contains notice(s) of non-approved, proposed projects open for comment. SPECIAL NOTE: Mariners are requested to respond in writing to the District office unless otherwise noted (see banner page for address).

PROPOSED WATERWAY PROJECTS OPEN FOR PUBLIC COMMENT

| | | | |
|----------------------------|----------------|-------------------|-----------------|
| <u>Proposed Project(s)</u> | <u>Closing</u> | <u>Docket No.</u> | <u>Ref. LNM</u> |
| None | | | |

Proposed Change Notice(s)

ST LAWRENCE RIVER - Ile St. Regis To/A Croil Islands - Chart 1433(C)

St. Lawrence Seaway Buoy "19" (LLNR 125) permanently discontinue.

LNM: 25/16

LAKE ERIE - Maumee Bay - Chart 14847

Maumee Bay Entrance Lighted Buoy "1" (LLNR 6045) Replace the lighted buoy with an unlighted buoy as a winter mark from December 14 to April 7.

LNM: 42/16

ST. CLAIR RIVER - Chart - 14852

Russell Island Light (LLNR 9725) Change the characteristic of the light to FG eliminating the white and green sector. The range of the light will be 8 statute miles.

LNM: 39/16

LAKE HURON - Harrisville to Forty Mile Point - Chart 14864

Alpena Light (LLNR 11370) reduce the range of the light from 12 statute miles to 10 statute miles.

LNM: 39/16

LAKE MICHIGAN - Waugoshance Point to Seul Coix Point - Chart 14911

Boulder Reef Lighted Bell Buoy "1" (LLNR 21525) permanently change the seasonal decommissioning date from December 1 to November 14.

LNM: 39/16

LAKE MICHIGAN - Green Bay - Chart 14917

Menominee Pier Light "6" (LLNR 21940) change the characteristic to Fl R 6(1) and reduce the nominal range from 12 statute miles to 10 statute miles.

LNM: 46/16

LAKE MICHIGAN - LOWER GREEN BAY - Chart 14910

Sherwood Point Light (LLNR 22000) change the range of the light from 15 statute miles to 12 statute miles

LNM: 04/17

LAKE MICHIGAN - Algoma to Sheboygan - Chart 14903

Kewaunee Pier Head Light (LLNR 20955) reduce the range of the light from 15 statute miles to 11 statute miles. Permanently discontinue the fog signal.

Algoma Light (LLNR 20975) reduce the range of the light from 15 statute miles to 11 statute miles.

LNM: 52/16

ST. MARY'S RIVER - MUNUSCONG LAKE TO SAULT STE. MARIE - Chart 14883

Little Rapids Cut Lighted Buoy "98B" (LLNR 14105) Add synthetic AIS ATON to this aid during time that the ice boom is deployed.

LNM: 04/17

LAKE SUPERIOR - Duluth Harbor - Chart 14975

Duluth Harbor Breakwater Isolated Danger Buoy (LLNR 15840) Change the seasonally maintained dates from April 21 to December 1 to April 21 to October 15.

LNM: 50/16

For any comments or questions on these proposed changes please contact:

Mr. Doug Sharp of the Ninth District Aids to Navigation office at (216) 902-6070.

LNM: 30/13

SECTION VII - GENERAL

This section contains information of general concern to the Mariners. Mariners are advised to use caution while transiting these areas.

Waterways Analysis and Management System Study - 2017

The Coast Guard is conducting a Waterways Analysis and Management System Study on the following waterways during 2017. The study focuses on the area's aid to navigation system, waterborne commerce, marine casualty information, emergency response plans, routine and emergency communication capabilities, and future development projects. Any company or individual wishing to comment on the waterway reviews listed below is encouraged to contact the Coast Guard unit listed or email comments to william.d.sharp@uscg.mil. Any comments emailed will be forwarded to the appropriate unit for use in the WAMS project. A survey is attached to the Local Notice to Mariner and can be used to comment on these reviews or on any waterways located in the Great Lakes.

Sackets Harbor (LLNR 1755 - 2024.9)

Waterways Analysis and Management System Study - 2017

Oswego Harbor (LLNR 2025 - 2140)
Sodus Bay (LLNR 2145 - 2275)
Buffalo Black Rock Canal (LLNR 2665 - LLNR 3360)
Dunkirk Harbor (LLNR 3365 - LLNR 3492)
Commander
Sector Buffalo
1 Fuhrmann Blvd.
Buffalo, N.Y. 14203
(716) 843-9524

Cleveland Harbor (LLNR 3975 - LLNR 4260)
Lorain Harbor (LLNR 4265 - 4429)
Sandusky Harbor/Moseley Channel (LLNR 4560 - LLNR 5030)
Lake St. Clair Main Channel (LLNR 8400 - LLNR 8660)
Huron Harbor (LLNR 4430 - LLNR 5455)
Commanding Officer
USCGC Bristol Bay (WTGB 102)
110 Mt. Elliot Avenue
Detroit, Mi. 48207
(313) 568-9548

Munising/Grand Marais (LLNR 14550 - LLNR 14615)
Marquette (LLNR 14620 - LLNR 14720)
Boundary Waters / Lake of the Woods (LLNR 16925 - LLNR 17715)
Commander
Sector Sault Ste. Marie
337 Water St.
Sault Ste. Marie, Mi. 49783
(906) 635-3270

St. Joseph/Benton Harbor (LLNR 19515 - LLNR 19625)
Sheboygan Harbor (LLNR 20805 - LLNR 20840)
Manitowoc Harbor (LLNR 20842 - LLNR 20985)
Commander
U. S. Coast Guard Sector Lake Michigan
2420 South Lincoln Memorial Drive
Milwaukee, WI 53207
(414) 747-7188

Keweenaw Waterway (LLNR 14725 - LLNR 15250)
Duluth/Superior Harbors (LLNR 15595 - LLNR 16250)
Grand Traverse Bay (LLNR 17855 - LLNR 18366)
Commanding Officer
USCGC Alder (WLB 216)
1201 Minnesota Avenue
Duluth, Mn. 55802
(218) 529-3131

Straits of Mackinaw Eastern Section
(LLNR 11720 - LLNR 11775)
(LLNR 12175 - LLNR 12215)
(LLNR 12535 - LLNR 12650)
Burns Harbor (LLNR 19575 - LLNR 19625)
Commanding Officer
USCGC Mackinaw (WLBB 30)
632 Coast Guard Drive
Cheboygan, MI 49721
(231) 597-2030

LNM: 39/12

GREAT LAKES - Marine Events

Marine events such as races, parades, regattas, and fireworks displays are frequently held in the Great Lakes region. Advance information on specific events is contained in enclosure (2) of this publication. The public is reminded to listen to the local broadcast notice to mariners for the most up-to-date information on a marine event. Mariners are advised that some events may require temporary aids to navigation that are not displayed on a chart or in the Light List, and that they should exercise additional caution while operating in the vicinity of a scheduled marine event.

LNM: 24/13

NEW YORK CANAL SYSTEM – NY - Erie Canal - Chart 14786 – Bridge Maintenance

From February 1 through March 31, 2017 scaffolding will be installed under the Clarissa (Ford) Street Bridge E-156 over the Genesee River portion of the Erie Canal that hangs approximately 6 feet below low steel. Steady burning amber lights will mark the bottom and four corners of the scaffolding.

LNM: 01/17

LAKE ONTARIO – NY – Irondequoit Bay – Chart 14804 – Bridge Winter Schedule

The Seasonal Irondequoit Bay Outlet Bridge located at the mouth of Irondequoit Bay will be secured to masted navigation from November 1, 2016 through March 31, 2017. Vessels able to pass under the bridge without an opening may do so at any time.

LNM: 44/16

LAKE ONTARIO – NY –Rochester Harbor – Chart 14815 – Bridge Special Event

From 0730 to 1430 on September 17, 2017 the O'Rourke Bridge at Mile 1.25 over the Genesee River will be secured to masted navigation in conjunction with the Rochester Marathon. Vessels able to pass under the bridge without an opening may do so at any time.

LNM: 07/17

LAKE ERIE – NY – Niagara River – Chart 14822 – Bridge Maintenance

From July 10, 2016 through May 18, 2019 scaffolding that extends approximately 6 feet below low steel will be installed under the Peace Bridge at Mile 1.5 over the Black Rock Canal. Amber lights will mark the bottom and four corners of the scaffolding hanging below low steel. Scaffolding under the bridge over the Niagara River will remain above low steel.

LNM: 16/15

LAKE ERIE – NY – Buffalo Harbor – Chart 14833 – Bridge Maintenance

From May 29 through August 25, 2017 the Buffalo Creek Railroad Bridge at Mile 4.39 over the Buffalo River will be secured to masted navigation. Vessels able to pass under the bridge without an opening may do so at any time.

LNM: 04/17

LAKE ERIE – OH – Ashtabula Harbor – Chart 14836 – Bridge Winter Schedule

From December 24, 2016 through March 31, 2017 the Fifth Street Bridge at Mile 0.15 over the Ashtabula River will require a 12 hour advance notice for openings. Mariners should provide advance notice by calling: 440-576-2816 or 440-813-8229 or 440-536-2941 or 440-645-9041.

LNM: 51/16

LAKE ERIE – OH – Maumee River - Chart 14846 – Bridge Replacement

From July 1, 2015 through December 31, 2017, Bridge demolition and construction activities will be performed at the State Route 109 Bridge at Mile 44.4 over the Maumee River near Napoleon, Ohio. Mariners should use caution when transiting the area.

LNM: 20/14

LAKE ERIE – OH – Maumee River - Chart 14846 – Bridge Discrepancy

The Coast Guard has received a report that the lights on the CSX Railroad Bridge at Mile 11.38 over the Maumee River are extinguished.

LNM: 14/15

LAKE ERIE – OH – Maumee River – Chart 14846 – Bridge Maintenance

From 2359 on January 15 to 2359 on March 16, 2017 the Norfolk Southern Railroad Bridge at Mile 5.76 over the Maumee River will be secured to masted navigation. Vessels able to pass under the bridge without an opening may do so at any time.

LNM: 49/16

LAKE ERIE – OH – Cleveland Harbor – Chart 14839 – Bridge Maintenance

From January 20 through February 17, 2017 the Willow Avenue Bridge at Mile 1.02 over the Cuyahoga River Old River Channel will be secured to masted navigation for maintenance and will not be able to open for any vessel. Vessels able to pass under the bridge without an opening may do so at any time.

LNM: 44/16

LAKE ERIE – OH – Cleveland Harbor – Chart 14839 – Bridge Discrepancy

The Coast Guard has received a report that the fendering system for the Union Terminal Viaduct at Mile 1.89 over the Cuyahoga River has been destroyed. There are reports of debris from the fendering system floating in the river.

LNM: 47/16

LAKE ERIE – OH – Cleveland Harbor – Chart 14839 – Bridge Winter Hours

From 2200 on December 26, 2016 to 0600 March 13, 2017 the Center Street Bridge at Mile 1.39, the Columbus Street Bridge at Mile 1.93, and the West 3rd Street Bridge at Mile 3.69, all over the Cuyahoga River and the Willow Avenue Bridge at Mile 1.02 over the Cuyahoga – Old River Channel will require a 12-hour advance notice of arrival. Mariners should provide advance notice directly to the Carter Road Bridge Drawtender by calling 216-664-4767 or by email to rpliodzinkas@city.cleveland.oh.us or 216-857-7520.

LNM: 49/16

LAKE ERIE – OH – Cleveland Harbor – Chart 14839 – Bridge Special Event

LAKE ERIE – OH – Cleveland Harbor – Chart 14839 – Bridge Special Event

From 0700 to 0930 on May 21, 2017 the Columbus Road Bridge at Mile 1.93 over the Cuyahoga River will be secured to masted navigation in conjunction with the Rite-Aid Marathon. Vessels able to pass under the bridge without an opening may do so at any time.

LNM: 05/17

LAKE ERIE – OH – Rocky River – Chart 14826 – Bridge Maintenance

From January 1 through October 31, 2017 scaffolding that hangs approximately 10 feet below low steel will be installed under the Detroit Road Highway Bridge at Mile 0.7 over the Rocky River. Steady burning amber lights will mark the bottom and four corners of the scaffolding.

LNM: 01/17

LAKE ERIE – OH – Portage River – Chart 14842 – Bridge Maintenance

From October 16, 2017 through October 19, 2017 and again from October 23, 2017 through October 26, 2017 the Monroe Street Bridge at Mile 0.4 over the Portage River at Port Clinton, OH will have one bridge leaf secured to masted navigation and one leaf locked in the fully open to navigation position for the purpose of removing the bridge leaves. The bottom and four corners of the old bridge leaves will be marked with steady burning amber lights until they are completely removed from the waterway. From 0500 on December 1, 2017 to noon on April 1, 2018 the bridge will be secured to masted navigation for the installation of new bridge leaves. The bottom and four corners of the new bridge leaves will be marked with steady burning amber lights until the required permitted navigation lights can be installed. Vessels able to pass under the bridge without an opening may do so at any time.

LNM: 49/16

DETROIT RIVER - MI - Belle Isle - Chart 14848

The SS St. Claire a 200ft long 70ft wide ferry boat will be temporarily moored on the outside seawall of Harbor Hill Marina, Detroit River, North of Belle Isle. The SS St. Claire will eventually be move inside the marina permanently. The vessel will be lit at night. Mariners are requested to transit the area with caution.

LNM: 49/16

DETROIT RIVER – MI – River Rouge – Chart 14848 – Bridge Maintenance

From February 20 through March 18, 2017 between the hours of 0700 and 1900 daily the Fort Street Bridge at Mile 2.20 over the River Rouge will require a 4 hour advance notice for openings except from 0700 on March 13 through 0700 on March 15, 2017 when the bridge will be secured to masted navigation. Vessels should provide advance notice by calling : 313-842-4791. Vessels able to pass under the bridge without an opening may do so at any time.

LNM: 08/17

DETROIT RIVER – MI – Trenton Channel – Chart 14848

E.C. Korneffol Company will be conducting soil borings at the north end of the Trenton Channel west shoreline and west of point Hennepin from January 01, 2017 to May 31, 2017. Hours of operation will be 5 days a week from 0700 to 1900. Captain Keith will be monitoring channels 13 and 16. For further information contact Bruce Kresslern at 734-676-2131.

LNM: 06/17

DETROIT RIVER – MI – Trenton Channel – Chart 14848 – Bridge Winter Hours

From December 21, 2016 through March 15, 2017 the Grosse Ile Toll Bridge (Bridge Road) at mile 8.8, over Trenton Channel will require a 12 hour advance notice for openings. Vessels should provide advance notice by calling: 734-282-2914.

LNM: 51/16

DETROIT RIVER – MI – River Rouge – Chart 14854 – Bridge Maintenance

From February 4, 2017 through January 31, 2018 scaffolding that hangs approximately 3 feet below low steel will be installed under the Fisher Freeway I-75 Bridge at Mile 1.85 over the River Rouge. Steady burning amber lights will be installed on the bottom of the scaffolding to warn mariners of the temporary reduction in vertical clearance. Snooper trucks may also be used at the bridge. Spotters will warn of approaching vessels and move the man lifts to allow vessels to pass under the bridge.

LNM: 48/16

DETROIT RIVER – MI – River Rouge – Chart 14854 – Bridge Maintenance

From April 17 through April 21, 2017 between the hours of 0730 and 1730 daily the Conrail Railroad Bridge at Mile 1.48 over the River Rouge will be secured to masted navigation. From April 24 through April 28, 2017 between the hours of 0730 and 1530 daily the bridge will require a 4 hour advance notice. Advance notice should be provided directly to the drawtender on VHF-FM Marine Radio Channel 16 or by calling: 313-297-5425. Vessels able to pass under the bridge without an opening may do so at any time.

LNM: 06/17

ST CLAIR RIVER – MI – Port Huron – Chart 14865 – Bridge Winter Hours

From November 1, 2016 through April 1, 2017 all bridges over the Black River at Port Huron Michigan will require a 12 hour advance notice. Mariners should provide advance notice to all street bridges by calling: 810-984-9730 or 810-985-8115 and for railroad bridges call: 708-332-3160 or 877-333-7989 or 248-431-0673.

LNM: 45/16

LAKE HURON – MI – Alpena Harbor – Chart 14864 – Bridge Maintenance

From October 11, 2016 through June 10, 2017 the Second Avenue Highway Bridge at Mile 0.4 over the Thunder Bay River at Alpena, MI will be

LAKE HURON – MI – Alpena Harbor – Chart 14864 – Bridge Maintenance

rehabilitated. From October 11 through November 8, 2016 the bridge will require a 12-hour advance notice for openings. Mariners should provide advance notice by calling 989-464-3416. From November 9, 2016 through June 10, 2017 the bridge will be secured to masted navigation. Vessels able to pass under the bridge without an opening may do so at any time. From December 12, 2016 through February 3, 2017 scaffolding that extends approximately 3 feet below low steel will be installed under the bridge. Steady burning amber lights will be displayed on the bottom and four corners of the scaffolding. Periodically during this project a barge will be used at the bridge.

LNM: 50/16

LAKE MICHIGAN – WI – Sturgeon Bay Ship Canal – Chart 14919 – Bridge Operations

The Coast Guard is modifying the operating regulation that governs the Bayview (State Route 42/57) Bridge, Mile 3.0, Maple-Oregon Bridge, Mile 4.17, and Michigan Street Bridge, Mile 4.3, all over Sturgeon Bay Ship Canal in Sturgeon Bay, WI, to allow testing of the remote operation equipment for all three drawbridges. The operating schedules are not changing but the drawbridges will be remotely operated by a single tender stationed at the Maple-Oregon Bridge throughout the 2017 navigation season. The Coast Guard requests comments from all stakeholders on the safety and effectiveness of the remote operation arrangement. To view the interim rule, published in the Federal Register (33 FR 11151) on February 21, 2017 please visit: <https://www.gpo.gov/fdsys/pkg/FR-2017-02-21/html/2017-03346.htm>. Comments and related material must reach the Coast Guard on or before December 1, 2017. To submit comments go to <http://www.regulations.gov>, type [USCG-2017-0050] in the "SEARCH" box and click "SEARCH." Click on Open Docket Folder on the line associated with this rulemaking. If you have questions on this interim rule, call or e-mail Mr. Lee Soule, Bridge Management Specialist, Ninth Coast Guard District; telephone 216-902-6085, or email: Lee.D.Soule@uscg.mil

LNM: 05/17

LAKE MICHIGAN – IL – Chicago River – Chart 14927 – Bridge Maintenance

From October 23, 2015 through May 22, 2017 one leaf of the Lake Street Bridge at Mile 1.64, CORPS MILE 325.5, over the South Branch of the Chicago River will be secured to masted navigation.

LNM: 35/16

LAKE MICHIGAN – IL – Chicago River – Chart 14927 – Bridge Discrepancy

The Coast Guard has received a report that the dolphins near the location of the former Polk Street Bridge at Mile 2.16 over the South Branch of the Chicago River and the former Erie Street Bridge at Mile 2.21 over the North Branch of the Chicago River are a hazard to navigation.

LNM: 21/16

LAKE MICHIGAN – IL – Chicago River– Chart 14927 – Bridge Maintenance

From October 25 through February 15, 2017, between the hours of 0700 and 1530 Monday through Friday a 120 foot by 40 foot barge will be working under the LaSalle Street Bridge at Mile 1.29 (CORPS MILE 325.9) over the Main Branch of the Chicago River. The Barge will monitor VHF-FM Marine Channel 16 and will move to accommodate vessels if a 30 minute advance notice is provided.

LNM: 05/17

LAKE MICHIGAN – IL – Chicago River– Chart 14927 – Bridge Maintenance

February 6 through August 18, 2017, between the hours of 0700 and 1700 Monday through Friday a 125 foot by 35 foot barge will be working under the Clark Street Bridge at Mile 1.21 (CORPS MILE 326.0) over the Main Branch of the Chicago River. The Barge will monitor VHF-FM Marine Channel 16 and will move to accommodate vessels if a 1-hour advance notice is provided by calling 312-747-2470.

LNM: 05/17

LAKE MICHIGAN – IL – Chicago River – Chart 14927 – Bridge Maintenance

From March 1, 2016 through April 1, 2017, Monday through Saturday, 0700 to 1700 and 2200 to 0500 daily, a 120 foot by 55 foot or smaller barges will be working at the Adams Street Bridge at Mile 2.08, CORPS MILE 325.1, over the South Branch of the Chicago River. The barges will move if provided a 30 minute advance notice of arrival on VHF-FM Marine Channel 16 or by calling: 312-656-7636.

LNM: 01/17

LAKE MICHIGAN – IN – Indiana Harbor Canal – Chart 14927 – Bridge Inspection

On March 6, 2017 and March 7, 2017 between the hours of 0900 and 1700 divers will be inspecting the underwater portions of the Dickey Road Bridge at Mile 1.21 over the Indiana Harbor Canal. Spotters will warn of approaching vessels and move the divers to allow vessels to pass. A dive safety boat will monitor VHF-FM Marine Channel 16 to stay apprised of marine traffic.

LNM: 08/17

LAKE MICHIGAN – IL – Chicago River – Chart 14927 – Bridge Discrepancy

The Coast Guard has received a report that the following bridges over the Main, North, and South Branches of the Chicago River have lights showing improper characteristics, obstructed, missing, or lights that are extinguished:

Columbus Drive Bridge at Mile 0.67
Michigan Avenue Bridge at Mile 0.85
Grand Avenue Bridge at Mile 2.00

The Coast Guard has received a report that the following bridges over the Main, North, and South Branches of the Chicago River have lights showing improper characteristics, obstructed, missing, or lights that are extinguished:

Columbus Drive Bridge at Mile 0.67
Michigan Avenue Bridge at Mile 0.85
Grand Avenue Bridge at Mile 2.00

LAKE MICHIGAN – IL – Chicago River – Chart 14927 – Bridge Discrepancy

LNM: 05/17

LAKE MICHIGAN –IL – Chicago River – Chart 14928 – Bridge Maintenance

From December 5, 2016 through March 31, 2017 one leaf of the Michigan Avenue Bridge at Mile 0.85 (CORPS MILE 326.3) over the Main Branch of the Chicago River will be secured to masted navigation and will have scaffolding that hangs approximately 1 foot below low steel. The other bridge leaf will operate normally and be free of any scaffolding.

LNM: 40/16

LAKE MICHIGAN – WI – Menominee and Marinette Harbors – Chart 14917 – Bridge Maintenance

From January 1, 2018 through March 31, 2018 the Ogden Street Bridge at Mile 0.7 over the Menominee River will be secured to masted navigation. Vessels able to pass under the bridge without an opening may do so at any time. Scaffolding will be installed that extends approximately 6 feet below low steel of the bridge. Steady burning amber lights will mark the bottom and four corners of the scaffolding. Two 80 foot by 50 foot or smaller barges will be working under the bridge but during nonworking hours they will be moored outside of the navigation channel and lighted.

LNM: 46/16

LAKE MICHIGAN –WI – Milwaukee Harbor – Chart 14924 – Bridge Winter Hours

From November 20, 2016 through April 15, 2017 all city of Milwaukee operated bridges will require a 12 hour advance notice for openings. Mariners should provide advance notice to the Lead Bridge Operator on VHF-FM Marine Channel 16 or by calling: 414-286-2575.

LNM: 38/16

LAKE MICHIGAN –WI – Milwaukee Harbor – Chart 14924 – Bridge Winter Hours

From November 20, 2016 through April 15, 2017 the Canadian Pacific Railroad Bridges at Mile 1.05 over the Menomonee River and Mile 1.67 over the Burnham Canal will require a 12 hour advance notice for openings. Mariners should provide advance notice directly to the drawtender by calling: 414-389-3772 or 414-207-2779 or 414-389-3763.

LNM: 39/16

LAKE MICHIGAN – WI – Milwaukee Harbor – Chart 14924 – Bridge Marine Event

From 0700 to 1130 on June 4, 2017 the Broadway Street Bridge at Mile 0.79 over the Milwaukee River and the Kinnickinnic Avenue Bridge at Mile 1.67 over the Kinnickinnic River will be secured to masted navigation in conjunction with the Ride for the Arts event.

LNM: 02/17

LAKE MICHIGAN – WI – Milwaukee Harbor – Chart 14924 – Bridge Marine Event

From 0630 to 0830 on June 10, 2017 the Broadway Street Bridge at Mile 0.79 over the Milwaukee River and the Kinnickinnic Avenue Bridge at Mile 1.67 over the Kinnickinnic River will be secured to masted navigation in conjunction with the Summerfest Rock N' Sole Run event.

LNM: 02/17

LAKE MICHIGAN – WI – Milwaukee Harbor – Chart 14924 – Bridge Marine Event

From 2130 on June 28 to 0100 on June 29 all bridges from Mile 0.79 to Mile 1.46 over the Milwaukee River will be secured to recreational masted navigation in conjunction with the Big Bang Fireworks Event.

LNM: 02/17

LAKE MICHIGAN – WI – Milwaukee Harbor – Chart 14924 – Bridge Marine Event

From 2130 on June 29 to 0100 on June 30, 2017 all bridges from Mile 0.79 to Mile 1.46 over the Milwaukee River will be secured to recreational masted navigation in conjunction with the Summerfest Event.

LNM: 02/17

LAKE MICHIGAN – WI – Milwaukee Harbor – Chart 14924 – Bridge Marine Event

From 2130 on July 3 to 0100 on July 4, 2017 all bridges from Mile 0.79 to Mile 1.46 over the Milwaukee River will be secured to recreational masted navigation in conjunction with the US Bank Fireworks Event

LNM: 02/17

LAKE MICHIGAN – WI – Milwaukee Harbor – Chart 14924 – Bridge Marine Event

From 2300 to 0100 nightly from July 4 to July 9, 2017 all bridges from Mile 0.79 to Mile 1.46 over the Milwaukee River will be secured to recreational masted navigation in conjunction with the Second Summerfest Event.

LNM: 02/17

LAKE MICHIGAN – WI – Milwaukee Harbor – Chart 14924 – Bridge Marine Event

From 2200 to midnight, nightly from July 21 to July 23, 2017 the Broadway Street Bridge at Mile 0.79 and the Water Street Bridge at Mile 0.94, both over the Milwaukee River will be secured to masted navigation in conjunction with the Festa Italiana event.

LNM: 02/17

LAKE MICHIGAN – IN – Indiana Harbor, Chart 14929 – Bridge Underwater Hazard

The Coast Guard has received a report of an underwater obstruction near the position of the former Canal Street Bridge at Mile 1.88 over the Indiana Harbor Canal.

LAKE MICHIGAN – IN – Indiana Harbor, Chart 14929 – Bridge Underwater Hazard

LNM: 01/14

LAKE MICHIGAN – IN – East Chicago – 14926

A 30' x 120' spud barge will be positioned inside the breakwall at the East Chicago Marina in Lake County, IN from November 29, 2016 to May 29, 2017 for the removal and replacement of a floating dock system. The harbor and marina will remain fully closed for the duration of the project. 71.7

LNM: 48/16

LAKE MICHIGAN – IL – Calumet-Sag Channel – Chart 14929 – Bridge Maintenance

January 19 through May 1, 2017 scaffolding will be installed under one half of the Chatham Street Bridge at Mile 14.77 (CORPS MILE 318.3) over the Calumet -SAG Channel that extends approximately 4 feet below low steel. A 60 foot by 40 foot barge will be working under the scaffolding. During working hours the barge will monitor VHF-FM Marine Channel 16 and shall give way to all river traffic. During non-working hours the barge will be lighted and moored outside of the navigation channel.

LNM: 04/17

LAKE MICHIGAN – IL – Calumet River – Chart 14927 – Bridge Maintenance

From 0700 to 1700 on February 21, 2017 one leaf of the 100th Street Bridge at Mile 1.78 (CORPS MILE 331.4) over the Calumet River will be locked in the fully open to navigation position and the other leaf will be locked at open at approximately 50 degrees open. Mariners requiring amplifying clearance information should contact the drawtender directly on VHF-FM Marine Channel 16.

LNM: 08/17

LAKE MICHIGAN – WI – Lower Fox River – Chart 14918 – Bridge Maintenance

From July 15, 2016 through May 15, 2017 from 0630 to 1600 Monday through Friday two 40 foot by 40 foot barges will be working at the Walnut Street Bridge at Mile 1.81 and the Tilleman Memorial Bridge at Mile 2.27 both over the Fox River at Green Bay, WI. The barges will move to allow vessels to pass. The barges may be contacted on VHF-FM Marine Channel 16 or by calling: 262-422-4741 or 262-366-9558. From January 15, 2017 through March 31, 2017 both bridges will be secured to masted navigation. Vessels able to pass under the bridges without an opening may do so at any time.

LNM: 29/16

LAKE MICHIGAN – WI – Lower Fox River – Chart 14918 – Bridge Special Event

From 0800 to 1330 on May 21, 2017 the Main Street Bridge at Mile 1.58 over the Fox River will be secured to masted navigation in conjunction with the Green Bay Cellcom Marathon. Vessels able to pass under the bridge without an opening may do so at any time.

LNM: 07/17

LAKE MICHIGAN – WI – Fox River - Chart 14916 – Bridge Construction

From October 2, 2014 through November 30, 2018 an 80 foot by 50 foot and a 40 foot by 40 foot barge will be constructing the new State Highway 441 Little Lake Buttes des Morrts Bridge at Mile 36.0 over the Fox River at Menasha, WI. A 30 foot wide channel will be maintained through the main navigational draws. Amber lights will mark the low steel of both bridges and red lights will mark the cofferdams around the new piers. The barges will be lighted in accordance with the Navigation Rules.

LNM: 40/14

LAKE MICHIGAN – WI – Upper Fox River – Chart 14916 – Bridge Maintenance

From June 1, 2017 through September 28, 2018 scaffolding that hangs approximately 10 feet below low steel will be installed under the STH 441, Appleton Tri County Expressway at mile 28.06 over the Fox River at Appleton Wisconsin. Steady burning amber lights will warn mariners of the temporary reduction in clearance.

LNM: 45/16

LAKE MICHIGAN – WI – Upper Fox River – Chart 14916 – Bridge Special Event

The following bridges will be secured to masted navigation during the dates and times noted. Vessels able to pass under the bridges without an opening may do so at any time.

Oshkosh Marathon on April 30, 2017

Main Street Bridge at Mile 55.97 over the Fox River from 0600 to 1315.

Wisconsin Street Bridge at Mile 56.72 over the Fox River from 0645 to 1215.

Congress Avenue Bridge at Mile 58.01 from 0745 to 1230.

Race the Lake on Aug. 20, 2017.

Main Street Bridge at Mile 55.97 over the Fox River from 0600 to 0800.

Racine Street Bridge at Mile 37.91 over the Fox River from 0645 to 1000.

Winnebago County Triathlon on August 27, 2017

Wisconsin 116 Bridge at Mile 12 over the Wolf River at Winneconne from 0715 to 1100.

LNM: 45/16

LAKE MICHIGAN – MI – St Joseph and Benton Harbor– Chart 14930 – Bridge Winter Hours

From December 16, 2016 to February 28, 2017 the CSX Railroad Bridge at Mile 0.67 over the St Joseph River will require a 12-hour advance notice

LAKE MICHIGAN – MI – St Joseph and Benton Harbor– Chart 14930 – Bridge Winter Hours

of arrival. Mariners should provide advance notice by calling: 616-246-5600 or 616-246-5675.

LNM: 42/16

LAKE MICHIGAN – Muskegon Harbor - Chart 14934

MCM Marine, Inc. will commence dredging operations in the vicinity of Muskegon Harbor, MI, beginning on October 28, 2016 to May 1, 2017. Hours of operation are 24 hours a day, 7 days a week. Arthur J will monitor channels 79 and 16. Mariners are requested to reduce speed and use caution around dredging equipment, for further information contact Darwin J McCoy at 906-632-4316 or John Kuemin at 906-440-2570.

LNM: 44/16

LAKE MICHIGAN – MI – South Haven – Chart 14906 - Bridge Maintenance

From October 3, 2016 through June 30, 2017 four 62 foot by 51 foot barges will be working under the Blue Star Memorial Highway at mile 2.2 over the Black River at South Haven, MI. A 20 foot wide channel will be maintained for vessels to pass under the bridge.

LNM: 37/16

LAKE MICHIGAN – MI – Lake Charlevoix – Chart 14886 – Bridge Maintenance

From December 22, 2016 through March 31, 2017 the (US31) Bridge Street Bridge over the Pine River just below Round Lake will be secured to masted navigation. From January 13 through March 1, 2017 scaffolding that hangs approximately 6 feet below low steel will be installed under the bridge. Two barges will also be used under the bridge. The barges will be lighted and moored outside of the navigation channel during nonworking hours unless beset by ice.

LNM: 49/16

LAKE SUPERIOR – MI – St. Marys River – Chart 14884

Roen Salvage Company will commence repairs of the West Center Pier extending 300' W. of Railroad Bridge. Two 50' barges will be moored at the pier 24 hours per day. All fenders will be removed, divers will be working at the pier, avoid use of side thrusters. Coordinate movement with Soo Locks lockmaster. Work will continue into December 2016 as weather permits, then resume in April 2017. Tug Stephen M. Asher and Tug Charles Asher will monitor channels 7 and 14 (Soo Locks). For further information contact Don Sarter at 920-493-5322

LNM: 42/16

LAKE SUPERIOR – MI – Houghton Hancock – Chart 14972 – Bridge Maintenance

From March 16, 2017 through June 15, 2017, the U.S. 41 Bridge at Mile 16.0 over the Keweenaw Waterway in Houghton-Hancock, MI will be locked in the intermediate position providing approximately 35 feet of clearance at low water datum. The bridge will open fully on the hour, every hour except at 0800, noon, and 1700, excluding holidays and weekends when the bridge will open fully on the hour every hour for recreational vessels. The bridge will operate on signal for commercial vessels.

LNM: 43/15

LAKE SUPERIOR –MI –Little Girls Point – Chart 14966

Three large concrete erosion control structures have been reported dislodged due to flooding at Omans Creek Boat Launch on Little Girls Point, Michigan of Lake Superior. One structure is reported 10 yards from the shoreline and location of the other two is unknown. Mariners are advised to keep a close lookout and travel at slow speed.

LNM: 30/16

LAKE SUPERIOR –MN – Duluth-Superior Harbor – Chart 14975 – Bridge Maintenance

From January 22 through March 5, 2018 the Duluth Ship Canal Bridge at Mile 0.25 over the Duluth Ship Canal will be secured to masted navigation. Vessels able to pass under the bridge without an opening may do so at any time.

LNM: 40/16

LAKE SUPERIOR –MN – Duluth-Superior Harbor – Chart 14975 – Bridge Maintenance

From February 1 through May 12, 2017 the Minnesota Slip Bridge at the mouth of the Minnesota Slip will be secured to masted navigation. Vessels able to pass under the bridge without an opening may do so at any time.

LNM: 40/16

SECTION VIII - LIGHT LIST CORRECTIONS

An Asterisk *, indicates the column in which a correction has been made to new information

| (1) No. | (2) Name and Location | (3) Position | (4) Characteristic | (5) Height | (6) Range | (7) Structure | (8) Remarks |
|------------|-----------------------------------|---------------------------------|-----------------------|---------------|--------------|------------------|----------------|
| 2370 | OAK ORCHARD BREAKWATER LIGHT A | 43-22-28.240N 078-11-28.480W | Q W | 25 8 | 5 | NR on post. | 08/17 |

*

SECTION VIII - LIGHT LIST CORRECTIONS (Continued)

| (1) No. | (2) Name and Location | (3) Position | (4) Characteristic | (5) Height | (6) Range | (7) Structure | (8) Remarks |
|------------|-----------------------------------|---------------------------------|-----------------------|---------------|--------------|------------------|----------------|
| 4040 | GORDON PARK DISPOSAL LIGHT A | 41-32-52.812N 081-38-00.696W | Fl W 4s | 40 12 | 7 | NB on post. | 08/17 |
| | | * | | | | | |
| 4045 | GORDON PARK BOAT BASIN LIGHT 1 | 41-32-33.576N 081-38-17.514W | Fl G 2.5s | 40 12 | 4 | SG on post. | 08/17 |
| | | * | | | | | |

ENCLOSURES

(1) Summary of Dredging

[08-17 Summary Of Dredging.pdf](#)

Construction Operations in Effect

LNM: 14/14

(2) GREAT LAKES - General - Marine Events

[08-17 Marine Events.pdf](#)

Summary of Marine Events

LNM: 14/14

(3) WATERWAYS ANALYSIS AND MANAGEMENT SURVEY

[WAMS Doc.pdf](#) [AIS ATON Announcement II.pdf](#)

Great Lakes WAMS Questionnaire

LNM: 14/14

(4) BRIDGES

[Bridge Winter Hours.pdf](#)

Bridge Winter Hours

LNM: 07/17

(6) LAKE ST. CLAIR

[Enclosure 6.pdf](#)

Off Station Lighted Buoys Lake St. Clair

LNM: 07/17

J. E. RYAN, RADM
U. S. Coast Guard
Commander, Ninth Coast Guard District

SUMMARY OF DREDGING/CONSTRUCTION OPERATION IN EFFECT

The LNM column is where the entry originally appeared and where detailed information may be obtained. The dates listed are tentative.

| <u>LOCATION</u> | <u>LNM</u> | <u>SUBJECT</u> | <u>HOURS / DAYS</u> | <u>UNTIL</u> |
|--|------------|--------------------------|---------------------|-----------------------|
| <u>NEW YORK STATE BARGE CANAL</u> | | | | |
| Erie Canal, NY | 19/13 | DREDGING OPERATIONS | 24 HRS / 7 DAYS | 01 May 13 – TBD |
| Lockport, Brockport, and Fairport, NY | 19/13 | STABILIZATION OPERATIONS | 24 HRS / 7 DAYS | 01 May 13 – TBD |
| Buffalo River, NY | 34/14 | HABITAT RESTORATION | 24 HRS / 7 DAYS | 25 Aug 14 – TBD |
| <u>LAKE ONTARIO</u> | | | | |
| None Reported | | | | |
| <u>LAKE ERIE</u> | | | | |
| Cleveland, OH | 05/13 | CONSTRUCTION | 24 HRS / 7 DAYS | 29 Jan 13 – TBD |
| <u>DETROIT RIVER</u> | | | | |
| Detroit, MI | 33/14 | CONSTRUCTION | 24 HRS / 7 DAYS | 11 Aug 14- TBD |
| Grosse Isle, MI | 26/16 | SHOAL INSTALLATION | 24 HRS / 7 DAYS | 01 Jul 16 – 31 Dec 17 |
| <u>LAKE ST. CLAIR</u> | | | | |
| None Reported | | | | |
| <u>LAKE HURON</u> | | | | |
| None Reported | | | | |
| <u>STRAITS OF MACKINAC</u> | | | | |
| None Reported | | | | |
| <u>ST MARYS RIVER</u> | | | | |
| Sault Se Marie, MI | 42/16 | CONSTRUCTION | 24 HRS / 7 DAYS | 18 Oct 16 – 13 May 17 |
| <u>LAKE SUPERIOR</u> | | | | |
| Portage Lake, MI | 31/13 | SEDIMENT REMEDIATION | 24 HRS / 7 DAYS | 01 Sep 13 – TBD |
| <u>LAKE MICHIGAN</u> | | | | |

SUMMARY OF DREDGING/CONSTRUCTION OPERATION IN EFFECT

The LNM column is where the entry originally appeared and where detailed information may be obtained. The dates listed are tentative.

| <u>LOCATION</u> | <u>LNM</u> | <u>SUBJECT</u> | <u>HOURS / DAYS</u> | <u>UNTIL</u> |
|-------------------|------------|---------------------|---------------------|----------------------|
| Muskegon, MI | 44/16 | DREDGING OPERATIONS | 24 HRS/ 7 DAYS | 28 Oct 16- 01 May 17 |
| Calumet River, MI | 47/16 | CONSTRUCTION | 24 HRS/ 7 DAYS | 17 Aug 17 -01 Sep 17 |

GREAT LAKES - GENERAL – MARINE EVENTS – SAFETY ZONES – SECURITY ZONES

Events listed below are those events that may have accompanying special local regulations.

| <u>Location</u> | <u>LNМ</u> | <u>EVENTS</u> | <u>Dates</u> | <u>Time (Local)</u> | <u>POC or Sponsor</u> | <u>Number</u> |
|----------------------------|------------|---|-----------------------|---------------------|-----------------------|---------------|
| <u>LAKE ONTARIO</u> | | | | | | |
| Oneida Lake | 08/17 | 39 th Lions Club Walleye Derby | 06-May17 – 07 May 17 | 0005-1500 | Bruce Hull | 315-427-3670 |
| Genesee River | 08/17 | SMP Rochester River Challenge | 29 Apr 17 | 0730-1100 | Nicole Mau | 585-794-6193 |
| Genesee River(mouth) | 08/17 | Memorial DayFleet Review | 29 May 17 | 1450-1900 | Daniel Peck | 585-820-5799 |
| Genesee River(mouth) | 08/17 | Junior Sail Club | 19 Jun 17 – 18 Aug 17 | 0930-1600 | Daniel Peck | 585-820-5799 |

LAKE ERIE

NSTR

DETROIT RIVER, LAKE ST CLAIR, AND ST CLAIR RIVER

NSTR

LAKE HURON

NSTR

LAKE SUPERIOR

NSTR

ST MARYS RIVER

NSTR

STRAITS OF MACKINAC

NSTR

LAKE MICHIGAN

NSTR

Waterway Analysis and Management System Survey

Name of Waterway: _____

User Information

___ Commercial User

___ Recreational User

Number of years in the maritime industry or number of years using this waterway: _____

Number of transits in the waterway per year: _____

Number of night transits of waterway: _____

Seasonal Dates: Start: _____ End: _____

Name of Vessel: _____

Vessel Description: _____

Length: _____ Beam: _____ Draft: _____ Gross Tons: _____

Net Tons: _____ Bridge Height of Eye: _____

Cargo Carried: _____

Navigational tools used: (ECDIS/ECPINS, GPS, DGPS, VISUAL, RADAR) _____

What area do you believe is the most dangerous or difficult to navigate: _____

Are the floating aids to navigation (lighted and unlighted buoys) adequate for this waterway: _____

Are the fixed aids to navigation (lights, ranges, lighthouses, daybeacons) adequate for this waterway: _____

Are the year round and lighted ice buoys adequate: _____

Are there buoys that you feel should be changed to fixed aids to navigation?

Are there any buoys that could be eliminated from this waterway: _____

Are there any buoys with sound signals that the bell or gong could be removed:

Are there any areas that require additional aids to navigation in this waterway:

Do the nautical charts, Coast Pilot, and Light List meet your needs for this waterway: _____

Are there private Aids to Navigation that you find misleading or interfere with the current system in the waterway:

Any addition comments on this waterway: _____

Thank you for taking time to comment on this waterway. Your input as a mariner very valuable to the U. S. Coast Guard in evaluating waterways to make them safe and as easily navigable as possible. Please feel free to contact Mr. Doug Sharp at william.d.sharp@uscg.mil or (216) 902-6070 with any other questions or concerns about any aids to navigation in the Great Lakes. The survey can be mailed to:

Commander (dpw-2)
Ninth Coast Guard District
1240 East Ninth Street
Cleveland, Ohio 44199

U.S. Coast Guard to Test Automatic Identification System (AIS) Aids to Navigation (ATON)

In the near future, the U.S. Coast Guard and other authorized agencies and organizations (i.e., U.S. Army Corps of Engineers, Marine Exchange of Alaska) will begin transmitting AIS ATON messages and marine safety information via AIS for testing and evaluation. The exact content, location, and times of these broadcasts will be announced in future Local Notices to Mariners.

AIS is an internationally adopted radio communication protocol that enables the autonomous and continuous exchange of navigation safety related messages amongst vessels, lifeboats, aircraft, shore stations, and aids to navigation (AIS ATON). AIS ATON stations broadcast their presence, identity (9-digit Marine Mobile Service Identity (MMSI) number), position, and status at least every three minutes or as needed. These broadcasts can originate from an AIS station located on an existing physical aid to navigation (Real AIS ATON) or from another location (i.e., AIS Base Station). An AIS Base Station signal broadcasted to coincide with an existing physical aid to navigation is known as a Synthetic AIS ATON. An electronically charted, but non-existent as a physical aid to navigation, is identified as a Virtual AIS ATON. The latter two can be used to depict an existing aid to navigation that is off station or not watching properly or to convey an aid to navigation that has yet to be charted. All three variants can be received by any existing AIS mobile device, but they would require an external system for their portrayal (i.e., AIS message 21 capable ECDIS, ECS, radar, PC). How they are portrayed currently varies by manufacturer, but the future intention is for the portrayal to be in accordance with forthcoming International Standards (i.e., IEC 62288 (Ed. 2), IHO S-4 (Ed. 4.4.0)).

Mariners capable of receiving and displaying these test AIS messages are encouraged to provide feedback and report any anomalies to the USCG NAVCEN Website: <http://www.navcen.uscg.gov> | Contact Us Tab | Subject: AIS | Category: AIS Testing.

Example of Local Notice to Mariners Chart Corrections for AIS ATONs

Chart Correction for *Real AIS ATON*

| | | | | | | |
|--|-----------------|---|------------------------|---------------|----------------------|----------------|
| 12326 | 52nd Ed. | 01-JUNE-13 | Last LNM: 53/13 | NAD 83 | | LNM/14 |
| <i>Chart Title: Approaches to New York</i> | | | | | | |
| ADD | | Magenta circle AIS Chart No. 1: S17.2 to ABC Channel Lighted Whistle Buoy A and | | | CGD 40-27-27.991N | 073-50-12.228W |
| CHANGE | | Characteristic to RW "A" Mo (A) WHIS Racon (") AIS | | | | |






Chart Correction for *Synthetic AIS ATON*

| | | | | | | |
|---|-----------------|---|------------------------|---------------|----------------------|----------------|
| 18649 | 68th Ed. | 01-JUNE-13 | Last LNM: 52/13 | NAD 83 | | LNM/14 |
| <i>Chart Title: Entrance to San Francisco Bay</i> | | | | | | |
| ADD | | Magenta circle AIS Chart No. 1: S17.2 to ABC Approach Lighted Whistle Buoy AB and | | | CGD 37-44-59.749N | 122-41-33.940W |
| CHANGE | | Characteristic to RW "AB" Mo (A) WHIS Racon (-) AIS | | | | |

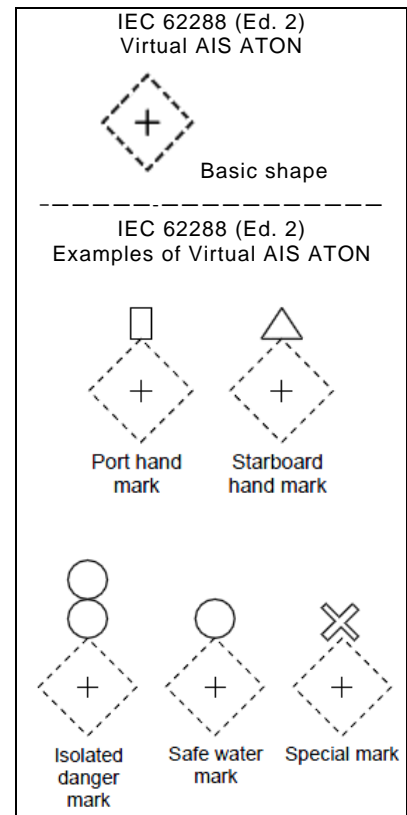
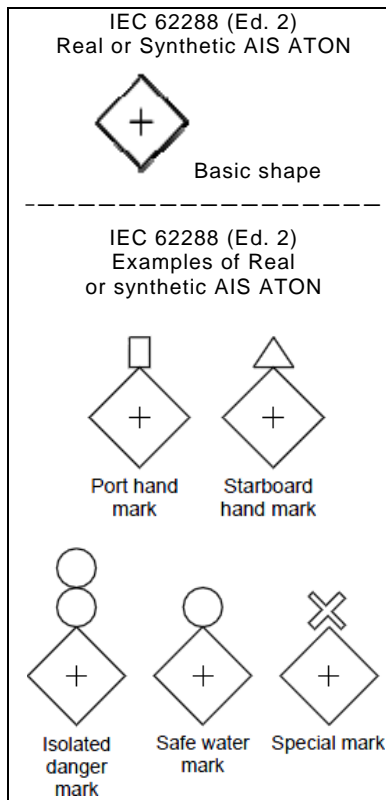
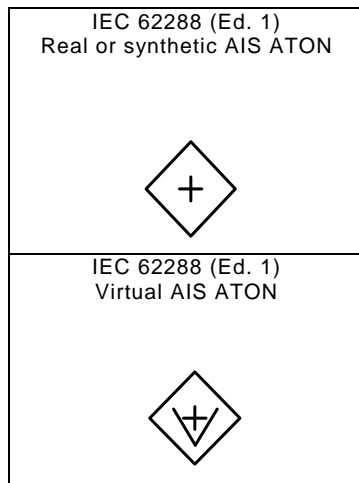
Chart Correction for *Virtual AIS ATON*

| | | | | | | |
|--|-----------------|---|------------------------|---------------|----------------------|----------------|
| 12314 | 33rd Ed. | 01-JUNE-12 | Last LNM: 51/13 | NAD 83 | | LNM/14 |
| <i>Chart Title: Delaware River Philadelphia to Trenton</i> | | | | | | |
| ADD | | ABC Railroad Bridge South Starboard V-AIS ATON Chart No. 1: S18.2 | | to | CGD 39-58-55.059N | 075-04-06.856W |
| ADD | | ABC Railroad Bridge South Port V-AIS ATON Chart No. 1: S18.2 | | to | 38-58-55.803N | 076-23-04.547W |

Virtual AIS ATON Symbology for Electronic Chart Display and Information System (ECDIS)

| | | |
|----------------------------|--|--|
| Port Lateral (IALA B) | A Virtual object marking the port side of a channel |  |
| Starboard Lateral (IALA B) | A Virtual object marking the starboard side of a channel |  |
| Isolated Danger | A Virtual object marking an isolated danger |  |
| Safe Water | A Virtual object marking safe water |  |
| Special Purpose | A Virtual object used to mark an area or feature referred to in nautical documents |  |

AIS ATON Symbology of the International Electrotechnical Commission (IEC) and International Maritime Organization (IMO)



Sorted by Chart Number

Authorized Winter Hours for Great Lakes Bridges
October 15, 2016 - April 30, 2017Enclosure 4
Last Updated: 05 JAN 2017

| Chart Number | Port Name | Bridge Name | Mile | Waterway | Start Date | End Date | Advance Notice | Primary Phone | Secondary Phone | Alternate Phone | Alternate Phone |
|--------------|--------------|-----------------|------|---------------|------------|----------|----------------|---------------|-----------------|-----------------|-----------------|
| 14815 | Rochester | O' Rorke | 1.2 | Genesee | 16-Dec | 31-Mar | 12-hours | 585-753-7720 | | | |
| 14832 | Black Rock | Ferry Street | 2.6 | Black Rock | 01-Dec | 14-Apr | 4-hours | 716-866-4323 | | | |
| 14832 | Black Rock | Canadian Natl | 3.8 | Black Rock | 41244 | 41013 | 4-hours | 416-580-3320 | 289-683-6000 | 905-788-7502 | |
| 14833 | Buffalo | Michigan Ave | 1.3 | Buffalo River | 16-Dec | 21-Mar | 04-hours | 716-866-4323 | | | |
| 14833 | Buffalo | Ohio St | 2.1 | Buffalo River | 16-Dec | 21-Mar | 04-hours | 716-866-4323 | | | |
| 14836 | Ashtabula | Fifth Street | 1.38 | Ashtabula | 41997 | 41727 | 12-hours | 440-576-2816 | 440-813-8229 | 440-536-2941 | 440-645-9041 |
| 14836 | Ashtabula | NS RR | 1.4 | Ashtabula | 40877 | 40634 | 24-hours | 440-992-2257 | | | |
| 14839 | Cleveland | Center St | 1.39 | Cuyahoga | 26-Dec | 13-Mar | 12-hours | 216-664-4767 | Note 4 | | 216-857-7520 |
| 14839 | Cleveland | Columbus | 1.93 | Cuyahoga | 26-Dec | 13-Mar | 12-hours | 216-664-4767 | Note 4 | | 216-857-7520 |
| 14839 | Cleveland | West 3rd St | 3.69 | Cuyahoga | 26-Dec | 13-Mar | 12-hours | 216-664-4767 | Note 4 | | 216-857-7520 |
| 14839 | Cleveland | Willow Ave | 1.02 | Cuyahoga Old | 26-Dec | 13-Mar | 12-hours | 216-664-4767 | Note 4 | See LNM 44/16 | 216-857-7520 |
| 14841 | Lorain | Erie Ave | 0.6 | Black River | 01-Jan | 40633 | 12-hours | VHF-FM 16 | 440-244-2137 | | |
| 14844 | Port Clinton | Monroe St | 0.4 | Portage River | 01-Dec | 30-Apr | 24-hours | 419-373-7053 | 419-409-0388 | 419-373-7050 | 419-373-7066 |
| 14844 | Port Clinton | Monroe St | 0.4 | Portage River | 01-Dec | 30-Apr | 24-hours | 419-409-0161 | 419-373-4483 | 419-409-0110 | 419-373-7050 |
| 14844 | Port Clinton | Monroe St | 0.4 | Portage River | 01-Dec | 30-Apr | 24-hours | 419-352-2481 | | | |
| 14844 | Port Clinton | NS RR | 1.5 | Portage River | 01-Dec | 30-Apr | 24-hours | 419-697-5077 | 313-323-5806 | | |
| 14844 | Port Clinton | NS RR | 1.5 | Portage River | 01-Nov | 01-Dec | Note 1 | 419-697-5077 | 313-323-5806 | | |
| 14844 | Sandusky | NS RR | 3.5 | Sandusky | 01-Dec | 31-Mar | 24-hours | 419-697-5077 | 313-323-5806 | | |
| 14844 | Sandusky | NS RR | 3.5 | Sandusky | 01-Nov | 01-Dec | Note 1 | 419-697-5077 | 313-323-5806 | | |
| 14846 | Toledo | CSX RR | 1.07 | Maumee | 21-Dec | 31-Dec | 04-hours | 419-729-4321 | 419-661-3057 | 904-359-7551 | |
| 14846 | Toledo | CSX RR | 1.07 | Maumee | 31-Dec | 31-Mar | 12-hours | 419-729-4321 | 419-661-3057 | 904-359-7551 | |
| 14846 | Toledo | W&LE | 1.8 | Maumee | 21-Dec | 31-Dec | 04-hours | 330-575-2919 | | | |
| 14846 | Toledo | W&LE | 1.8 | Maumee | 31-Dec | 31-Mar | 12-hours | 330-575-2919 | | | |
| 14846 | Toledo | Craig Mem | 3.3 | Maumee | 40898 | 40908 | 04-hours | 419-373-7053 | 419-409-0388 | 419-373-7050 | 419-373-7066 |
| 14846 | Toledo | Craig Mem | 3.3 | Maumee | 40544 | 40633 | 12-hours | 419-409-0161 | 419-373-4483 | 419-409-0110 | 419-373-7050 |
| 14846 | Toledo | Craig Mem | 3.3 | Maumee | 40544 | 40633 | 12-hours | 419-352-2481 | All 9 Numbers | for 4-hr or | 12-hr notice |
| 14846 | Toledo | MLK | 4.3 | Maumee | 40898 | 40908 | 04-hours | 419-936-3920 | 419-467-3644 | 419-467-3558 | |
| 14846 | Toledo | MLK | 4.3 | Maumee | 40544 | 40633 | 12-hours | 419-936-3920 | 419-467-3644 | 419-467-3558 | |
| 14846 | Toledo | NS RR | 5.76 | Maumee | 40898 | 40633 | 12-hours | 419-697-5077 | 313-323-5806 | | |
| 14848 | St. Clair | M29 | 0.1 | Pine River | 01-Dec | 31-Mar | 24-hours | 810-329-7121 | 810-329-5710 | | |
| 14848 | Detroit | Grosse Ile Free | 5.6 | Detroit River | 41623 | 41348 | 12-hours | 734-955-2172 | 888-762-3273 | 734-576-9607 | |
| 14848 | Detroit | Grosse Ile Toll | 8.8 | Detroit River | 41623 | 41348 | 12-hours | 734-282-2914 | | | |

Please report listing discrepancies to:
Lee Soule, Bridge Management Specialist9th Coast Guard District (dpb)
Cleveland, Ohiolee.d.soule@uscg.mil
ENCL (4) 216-902-6085

Sorted by Chart Number

Authorized Winter Hours for Great Lakes Bridges
October 15, 2016 - April 30, 2017

Enclosure 4

Last Updated: 05 JAN 2017

| | | | | | | | | | | | |
|-------|---------------|---------------|------|--------------|--------|--------|----------|--------------|--------------|--------------|---------------|
| 14864 | Alpena | 2nd Ave | 0.3 | Thunder Bay | 01-Jan | 31-Dec | 03-hours | 989-464-3416 | | | See LNM 23/16 |
| 14865 | Port Huron | Canadian Natl | 1.56 | Black River | 01-Dec | 31-Mar | 24-hours | 708-332-3160 | 877-333-7989 | 248-431-0673 | |
| 14865 | Port Huron | Military St | 0.3 | Black River | 01-Dec | 31-Mar | 24-hours | 810-985-8115 | | | |
| 14865 | Port Huron | Seventh St | 0.5 | Black River | 01-Dec | 31-Mar | 24-hours | 810-985-8115 | | | |
| 14865 | Port Huron | Tenth St | 0.9 | Black River | 01-Dec | 31-Mar | 24-hours | 810-985-8115 | | | |
| 14867 | Bay City | Lake State RR | 3.1 | Saginaw | 40909 | 40999 | 12-hours | 989-757-7570 | 989-387-3941 | | |
| 14867 | Bay City | Canadian Natl | 4.94 | Saginaw | 01-Jan | 31-Mar | 12-hours | 989-529-0952 | 989-529-0949 | | |
| 14867 | Bay City | Independence | 3.88 | Saginaw | 01-Jan | 31-Mar | 12-hours | 989-450-4975 | | | |
| 14867 | Bay City | Liberty | 4.99 | Saginaw | 01-Jan | 31-Mar | 12-hours | 989-450-4975 | | | |
| 14867 | Bay City | Veterans Mem | 5.6 | Saginaw | 01-Jan | 31-Mar | 12-hours | 616-558-1040 | 989-892-8389 | 989-671-1521 | |
| 14867 | Bay City | Lafayette | 6.78 | Saginaw | 01-Jan | 31-Mar | 12-hours | 616-558-1040 | 989-892-8389 | 989-671-1521 | |
| 14884 | SOO | Canadian Natl | | SOO LOCKS | Note 3 | Note 3 | Special | 906-635-4276 | 906-630-2203 | 920-579-6754 | |
| 14886 | Cheboygan | US23 | 0.9 | Cheboygan | 16-Nov | 31-Mar | 08-hours | 231-627-9414 | 231-238-7775 | | See LNM 40/15 |
| 14906 | South Haven | Dyckman Ave | 1.9 | Black River | 15-Oct | 30-Apr | 12-hours | 269-637-5151 | | | |
| 14916 | Gills Landing | Canadian Natl | 27.8 | Wolf River | 15-Oct | 15-Apr | 12-hours | 708-332-3893 | | | |
| 14916 | Winneconne | Winneconne | | Wolf River | 15-Oct | 15-Apr | 12-hours | 920-420-2146 | | | |
| 14916 | Manasha | HWY Bridges | xx | Fox River | 08-Oct | 26-Apr | 12-hours | 920-209-9564 | | | |
| 14916 | Oshkosh | Canadian Natl | 55.7 | Fox River | 08-Oct | 26-Apr | 12-hours | 708-332-3893 | | | |
| 14916 | Oshkosh | HWY Bridges | xx | Fox River | 08-Oct | 26-Apr | 12-hours | 920-420-2146 | | | |
| 14917 | Marinette | Ogden-First | 0.4 | Menominee | 01-May | 31-Oct | Note 2 | 715-923-0999 | | | |
| 14917 | Marinette | Ogden-First | 0.4 | Menominee | 01-Nov | 30-Apr | 12-hours | 715-923-0999 | | | |
| 14918 | Green Bay | Canadian Natl | 1.03 | Fox River | 01-Dec | 31-Mar | 12-hours | 920-572-0398 | 920-436-5902 | | |
| 14918 | Green Bay | Main Street | 1.58 | Fox River | 01-Dec | 31-Mar | 12-hours | 920-680-4376 | 920-680-1020 | | |
| 14918 | Green Bay | Walnut Street | 1.81 | Fox River | 01-Dec | 31-Mar | 12-hours | 920-448-3535 | 920-680-4376 | 920-680-1020 | See LNM 31/16 |
| 14918 | Green Bay | Tillman Mem. | 2.27 | Fox River | 01-Dec | 31-Mar | 12-hours | 920-448-3535 | 920-680-4376 | 920-680-1020 | See LNM 31/16 |
| 14918 | Green Bay | Canadian Natl | 3.31 | Fox River | 01-Dec | 31-Mar | 12-hours | 920-572-0398 | 920-436-5902 | | |
| 14919 | Sturgeon Bay | Bayview 42/57 | 3 | Sturgeon Bay | 01-Dec | 14-Mar | 12-hours | 920-746-0187 | | | |
| 14919 | Sturgeon Bay | Maple-Oregon | 4.17 | Sturgeon Bay | 01-Jan | 14-Mar | 12-hours | 920-746-0187 | | | |
| 14919 | Sturgeon Bay | Michigan St. | 4.3 | Sturgeon Bay | 01-Jan | 14-Mar | 12-hours | 920-746-0187 | | | |
| 14922 | Manitowoc | Eighth Street | 0.29 | Manitowoc | 01-Nov | 31-Mar | 12-hours | 920-686-6550 | 920-683-4470 | | |
| 14922 | Manitowoc | Tenth Street | 0.43 | Manitowoc | 01-Nov | 31-Mar | 12-hours | 920-686-6550 | 920-683-4470 | | |
| 14922 | Sheboygan | Eighth Street | 0.69 | Sheboygan | 01-Nov | 30-Apr | 12-hours | 920-980-3106 | 920-459-3440 | | |
| 14924 | Milwaukee | Broadway St | 0.79 | Milwaukee | 20-Nov | 15-Apr | 12-Hours | VHF-FM 16 | 414-286-2575 | | |
| 14924 | Milwaukee | Water St | 0.94 | Milwaukee | 20-Nov | 15-Apr | 12-Hours | VHF-FM 16 | 414-286-2575 | | |

Please report listing discrepancies to:
Lee Soule, Bridge Management Specialist

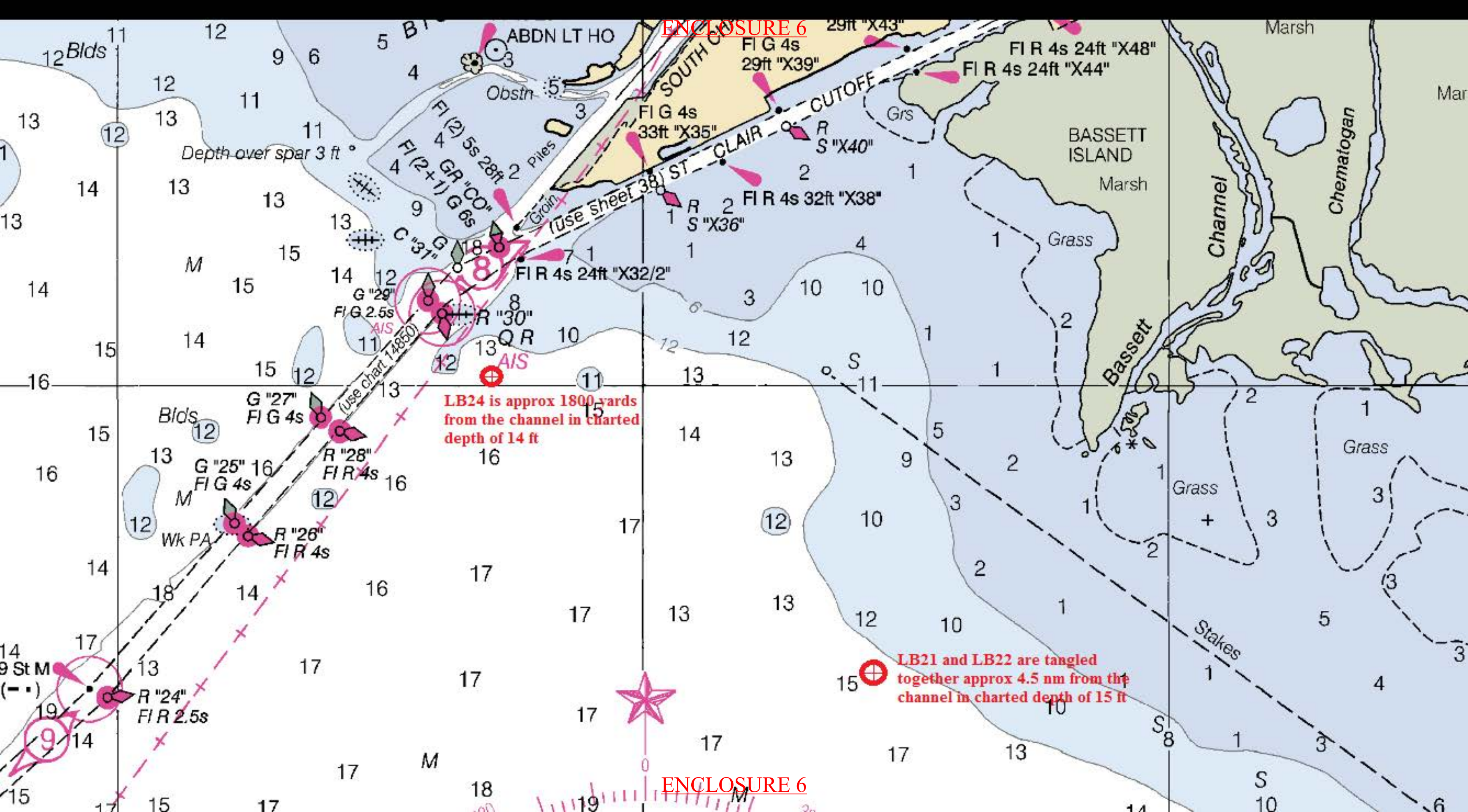
9th Coast Guard District (dpb)
Cleveland, Ohio

lee.d.soule@uscg.mil
ENCL (4) 216-902-6085

| | | | | | | | | | | | |
|--------|----------------|----------------|------|--------------|--------|--------|-----------|--------------|--------------|--------------|---------------|
| 14924 | Milwaukee | St. Paul Ave | 1.21 | Milwaukee | 20-Nov | 15-Apr | 12-Hours | VHF-FM 16 | 414-286-2575 | | |
| 14924 | Milwaukee | All City Owned | 1.28 | Milwaukee | 20-Nov | 15-Apr | 12-Hours | VHF-FM 16 | 414-286-2575 | | |
| 14924 | Milwaukee | Canadian Pac | 1.05 | Menominee | 20-Nov | 20-Apr | 12-Hours | 414-389-3772 | 414-207-2779 | 414-389-3763 | |
| 14924 | Milwaukee | Canadian Pac | 1.67 | Kinnickinnic | 20-Nov | 20-Apr | 12-Hours | 414-389-3772 | 414-207-2779 | 414-389-3763 | |
| 14924 | Milwaukee | All City Owned | 1.08 | Menominee | 20-Nov | 16-Apr | 12-Hours | VHF-FM 16 | 414-286-2575 | | |
| 14924 | Milwaukee | S. Eleventh St | 1.96 | Burnham | 25-Nov | 16-Apr | 12-Hours | VHF-FM 16 | 414-286-2575 | | |
| 14924 | Milwaukee | All City Owned | 1.67 | Kinnickinnic | 25-Nov | 16-Apr | 12-Hours | VHF-FM 16 | 414-286-2575 | | |
| 14925 | Racine | Main & State | | Root River | 01-Dec | 01-Apr | 2-Hours | 262-636-9126 | 262-770-7473 | | |
| 11-Nov | Michigan City | Franklin St | #### | Trail Creek | 01-Dec | 15-Mar | 12-hours | 219-362-6205 | | | |
| 14926 | Michigan City | Amtrak RR | 0.9 | Trail Creek | 01-Dec | 15-Mar | 12-hours | 269-208-0659 | 269-591-0474 | 269-591-0470 | 269-687-2201 |
| 14927 | Chicago | All City Owned | | Chicago | 01-Dec | 31-Mar | 48-hours* | 312-744-4200 | 312-747-2470 | 312-744-4280 | |
| 14929 | Indiana Harbor | Indianapolis | 2.59 | Ind Hbr C. | 02-Nov | 28-Mar | 12-hours | 219-851-1141 | 219-608-4272 | 219-851-3944 | 219-575-2707 |
| 14930 | St. Joe | CSX RR | 0.67 | St. Joe | 41259 | 40967 | 12-hours | 616-246-5600 | 616-246-5675 | | |
| 14930 | St. Joe | Blossomland | 0.9 | St. Joe | 16-Dec | 28-Feb | 12-hours | 269-983-5072 | 269-370-1870 | | |
| 14930 | St. Joe | Bicentennial | 1.3 | St. Joe | 16-Dec | 28-Feb | 12-hours | 269-926-2215 | 269-370-1870 | | |
| 14933 | Grand Haven | CSX RR | 2.8 | Grand River | 02-Dec | 15-Mar | 12-hours | 231-788-8392 | 616-293-0564 | | |
| 14933 | Grand Haven | US 31 | 2.9 | Grand River | 15-Dec | 15-Mar | 12-hours | 616-842-1994 | 616-847-3469 | 616-842-5400 | 616-690-6111 |
| 14938 | Manistee | Maple St | 1.1 | Manistee | 01-Nov | 30-Apr | 24-hours | 231-723-6241 | | | |
| 14938 | Manistee | US 31 | 1.4 | Manistee | 01-Nov | 30-Apr | 24-hours | 231-723-6241 | | | |
| 14938 | Manistee | CSX RR | 1.5 | Manistee | 01-Nov | 30-Apr | 24-hours | 231-723-6241 | 904-359-7551 | | |
| 14942 | Charlevoix | US 31 | 0.3 | Pine River | 01-Jan | 31-Mar | 12-hours | 231-499-8961 | 231-357-2377 | | |
| 14972 | Keweenaw | US 41 | 16 | Keweenaw | 14-Dec | 14-Apr | 12-hours | 906-482-7552 | | | See LNM 44/15 |
| 14975 | Duluth | Aerial | 0.25 | Ship Canal | 01-Jan | 15-Mar | 12-hours | 218-723-3387 | 218-343-0395 | | |
| 14975 | Duluth | BNSF\Grassy PT | 5.44 | St. Louis | 19-Dec | 01-Jan | 12-hours | 715-394-1259 | 715-394-1257 | | |
| 14975 | Duluth | BNSF\Grassy PT | 5.44 | St. Louis | 01-Jan | 15-Mar | 24-hours | 715-394-1259 | 715-394-1257 | | |
| 14998 | Rainer | Canadian Natl | 85 | Rainy River | 03-Nov | 30-Apr | 12-hours | 218-628-4788 | | | |

| | | | |
|--------|-----------------------------------|----------------|--|
| ***** | Hours not | requested yet | |
| | | | |
| Note 1 | 0800-1600 | Open On Signal | |
| Note 2 | 0700-2300 | Open On Signal | |
| Note 3 | See | 33 CFR 117.653 | |
| * | 12-Hours | Commercial | |
| Note 4 | rpliodzinkas@city.cleveland.oh.us | | |

ENCLOSURE 6



LB24 is approx 1800 yards from the channel in charted depth of 14 ft

LB21 and LB22 are tangled together approx 4.5 nm from the channel in charted depth of 15 ft

ENCLOSURE 6