



U.S. Department  
of Homeland Security  
**United States  
Coast Guard**

**LOCAL NOTICE TO MARINERS**

**District: 9**

**Week: 12/17**

Issued by: Commander (dpw)  
Ninth Coast Guard District  
1240 East Ninth Street,  
Cleveland, OH 44199-2060  
Telephone: (216) 902-6069

Direct questions about this LNM to the above address.

All distances in this publication are STATUTE MILES unless otherwise noted.

\*District Nine Internet Address\* <https://www.uscg.mil/d9/uscgd9.html>

\*District Nine Local Notice to Mariners email Address\* D09-DG-District-D9-LocalNoticetoMariners@uscg.mil

\*\* Navigation Information Service watchstander, 24 hours a day at (703) 313-5900 \*\* \*\*Internet Address\*\* <https://www.navcen.uscg.gov/>

Light List Reference: Commandant Publication P16502.7, VOL VII, 2016 Edition

Coast Pilot Reference: 2016 U.S. Coast Pilot 6 Great Lakes 46th Edition

Coast Pilots, along with corrections are available at: <http://nauticalcharts.noaa.gov/nsd/cpdownload.htm>

The Local Notice to Mariners is available on the Internet at <https://www.navcen.uscg.gov/?pageName=lnmMain> You will also have links to other government agencies- web pages including the US Army Corps of Engineers and the National Ocean Service.

**REPORT DISCREPANCIES IN AIDS TO NAVIGATION TO THE NEAREST COAST GUARD UNIT**

The Ninth District and all Sector offices for their areas of responsibility issue a BROADCAST NOTICE TO MARINERS.

The following Broadcast Notice to Mariners have been incorporated into this week's Local Notice to Mariners:

Sector Buffalo, NY - B009-17 through B017-17

Ninth District - C036-17 through C046-17

Sector Detroit, MI - D018-17 through D026-17

Sector Lake Michigan, WI - M067-17 through M074-17

Sector Sault Ste Marie, MI - S032-17 through S037-17

The United States Coast Guard Navigation Information Service (NIS), operated by the USCG Navigation Center, is staffed 24 hours a day, 7 days a week. The NIS provides information on the current operational status, effective policies, and general information for GPS and DGPS. The

NIS also disseminates Safety Broadcasts (BNM), Local Notice to Mariners (LNM), and the latest Notice Advisory to Navstar Users (NANU). NANU notices can be obtained via email subscription through the USCG Navigation Center website: <https://cgls.uscg.mil/mailman/listinfo/nanu>. In addition, the NIS investigates all reports of degradation or loss of GPS, DGPS or AIS service. Users are encouraged to report all degradation or loss of radio navigation services to the NIS via any of the following: Phone: (703) 313-5900, mail to: [webmaster@smtp.navcen.uscg.mil](mailto:webmaster@smtp.navcen.uscg.mil), or on the internet at: <https://www.navcen.uscg.gov>

**ABBREVIATIONS**

**A through H**

ADRIFT - Buoy Adrift  
AICW - Atlantic Intracoastal Waterway  
AI - Alternating  
B - Buoy  
BKW - Breakwater  
bl - Blast  
BNM - Broadcast Notice to Mariner  
bu - Blue  
C - Canadian  
CHAN - Channel  
CGD - Coast Guard District  
C/O - Cut Off  
CONT - Contour  
CRK - Creek  
CONST - Construction  
DAYMK/Daymk - Daymark

**I through O**

I - Interrupted  
ICW - Intracoastal Waterway  
IMCH - Improper Characteristic  
INL - Inlet  
INOP - Not Operating  
INT - Intensity  
ISL - Islet  
Iso - Isophase  
kHz - Kilohertz  
LAT - Latitude  
LB - Lighted Buoy  
LBB - Lighted Bell Buoy  
LHB - Lighted Horn Buoy  
LGB - Lighted Gong Buoy  
LONG - Longitude  
LNM - Local Notice to Mariners

**P through Z**

PRIV - Private Aid  
Q - Quick  
R - Red  
RACON - Radar Transponder Beacon  
Ra ref - Radar reflector  
RBN - Radio Beacon  
REBUILT - Aid Rebuilt  
RECOVERED - Aid Recovered  
RED - Red Buoy  
REFL - Reflective  
RRL - Range Rear Light  
RELIGHTED - Aid Relit  
RELOC - Relocated  
RESET ON STATION - Aid Reset on Station  
RFL - Range Front Light  
RIV - River

DBN/Dbn - Daybeacon  
 DBD/DAYBD - Dayboard  
 DEFAC - Defaced  
 DEST - Destroyed  
 DISCON - Discontinued  
 DMGD/DAMGD - Damaged  
 ec - eclipse  
 EST - Established Aid  
 ev - every  
 EVAL - Evaluation  
 EXT - Extinguished  
 F - Fixed  
 fl - flash  
 Fl - Flashing  
 G - Green  
 GIWW - Gulf Intracoastal Waterway  
 HAZ - Hazard to Navigation  
 HBR - Harbor  
 HOR - Horizontal Clearance  
 HT - Height

LT - Light  
 LT CONT - Light Continuous  
 LTR - Letter  
 LWB - Lighted Whistle Buoy  
 LWP - Left Watching Properly  
 MHz - Megahertz  
 MISS/MSNG - Missing  
 Mo - Morse Code  
 MRASS - Marine Radio Activated Sound Signal  
 MSLD - Misleading  
 N/C - Not Charted  
 NGA - National Geospatial-Intelligence Agency  
 NO/NUM - Number  
 NOS - National Ocean Service  
 NW - Notice Writer  
 OBSCU - Obscured  
 OBST - Obstruction  
 OBSTR - Obstruction  
 Oc - Occulting  
 ODAS - Anchored Oceanographic Data Buoy

RRASS - Remote Radio Activated Sound Signal  
 s - seconds  
 SEC - Section  
 SHL - Shoaling  
 si - silent  
 SIG - Signal  
 SND - Sound  
 SPM - Single Point Mooring Buoy  
 SS - Sound Signal  
 STA - Station  
 STRUCT - Structure  
 St M - Statute Mile  
 TEMP - Temporary Aid Change  
 TMK - Topmark  
 TRLB - Temporarily Replaced by Lighted Buoy  
 TRLT - Temporarily Replaced by Light  
 TRUB - Temporarily Replaced by Unlighted Buoy  
 USACE - Army Corps of Engineers  
 W - White  
 Y - Yellow

Additional Abbreviations Specific to this LNM Edition:

LIB - Lighted Ice Buoy

## SECTION I - SPECIAL NOTICES

This section contains information of special concern to the Mariner.

### CAUTION TO BE USED IN RELIANCE UPON AIDS TO NAVIGATION

The aids to navigation depicted on charts comprise a system of fixed and floating aids to navigation with varying degrees of reliability. Prudent mariners will not rely solely on any single aid to navigation, particularly a floating aid to navigation. With respect to buoys, the buoy symbol is used to indicate the approximate position of the buoy body and the sinker which secures the buoy to the seabed. The approximate position is used because of the practical limitations in positioning and maintaining buoys and their sinkers in precise geographical locations. These limitations include, but are not limited to, inherent imprecision in position fixing methods, prevailing atmospheric and sea conditions, slope of and the material making up the seabed, the fact that buoys are moored to sinkers by varying length of chain, and the fact that the buoy body and/or sinker positions are not under continuous surveillance, but are normally checked only during periodic maintenance visits which often occur more than a year apart. Due to the forces of nature, the position of the buoy body can be expected to shift inside and outside the charted symbol. The mariner is also cautioned that buoys may be extinguished or sound signals may not function as the result of ice, running ice, or other natural causes, collisions, or other accidents. For the foregoing reasons, a prudent mariner must not rely completely upon the position or operation of floating aids to navigation, but will also utilize bearings from fixed objects and aids to navigation on shore. Further, a vessel attempting to pass close aboard always risks collision with a yawing buoy or with the obstruction that the buoy marks.

LNM: 06/14

### IMPORTANT SAFETY NOTICE ABOUT THE RELIABLE OPERATION OF ECDIS

Following an announcement by the International Maritime Organization (IMO) concerning potential display anomalies in some ECDIS systems, the International Hydrographic Organization (IHO) issued an ENC Data Presentation and Performance Check in October 2011. This check is intended to assist mariners and to help determine the extent of the anomalies. IHO has received reports from mariners confirming that a number of ECDIS fail to display some significant underwater features in the "Standard" display mode. For all significant objects to be visible to the mariner, these ECDIS must be operated in "Full display" or "All display" mode until a software upgrade is made available from the manufacturer. Mariners are strongly encouraged to use the IHO ENC Data Presentation and Performance Check issued through ENC service providers and also available directly from the IHO website ([www.iho.int](http://www.iho.int)) to check the operation of their ECDIS and to determine whether their system is affected. IHO Circular Letter 33/2012 is available on the Coast Guard's Navigation Center website (<https://www.navcen.uscg.gov>) under the heading News and Notices.

LNM: 12/12

### ZIKA VIRUS UPDATE

The U.S. Department of Transportation's Maritime Administration (MARAD) has issued MARAD Advisory 2016-03 on the Zika Virus and Impacts on Maritime Commerce. The Advisory can be found at <https://www.marad.dot.gov/newsroom/advisory/2016/marad-advisory-2016-03/>. U.S. flag operators are requested to forward this link to their ships by the most expeditious means.

LNM: 39/16

### OPERATION TACONITE

Commander Coast Guard Sector Sault Ste Marie commenced operation TACONITE.

At the start of each voyage or transit, to enhance the coordination of ice breaking resources, COTP Sault Ste Marie directs all shipping companies to provide an estimated time of arrival for their vessels downbound to WHITEFISH POINT, upbound to DETOUR REEF LT, eastbound to LANSING SHOAL LT, westbound to ROUND ISLAND, or arriving or departing from any of the Western Superior ports and terminals.

Similarly, for vessels operating in LAKE MICHIGAN in the presence or ice, all shipping companies should provide an estimated time of arrival for vessels entering the STURGEON BAY SHIP CANAL, ROCK ISLAND PASSAGE or when arriving or departing ESCANABA, GREEN BAY, MARINETTE or any other ports and terminals within GREEN BAY.

Estimated time of arrivals MUST be received six (6) hours prior to a vessels arrival to any of these points or once a day by 1000 (eastern). Position reports may be filed with "SAULT TRAFFIC" either by LANDLINE: 906-635-3232, FAX: 906-635-3238, or EMAIL: SOOTFC@USCG.MIL.

A vessels ETA must be updated whenever the arrival time changes by more than six (6) hours. Mariners are asked to establish VHF Radio contact with the servicing Icebreaker on VHF-FM Channel 16 approximately one (1) hour before reaching the appropriate service area.

LNM: 51/16

**WATERWAY CLOSURE - ST MARYS RIVER - Lake Nicolet To Munuscong Lake**

Per 33 CFR 162.117 VTS St Mary's River will close the West Neebish Channel. Alternating one way traffic will be established in the Munuscong and Middle Neebish Channel's, effective 0800 local 19 Jan 2017.

LNM: 03/17

**WATERWAY CLOSURE - LAKE MICHIGAN - De Tour Passage To Munuscong Lake**

Per 33 CFR 162.117 VTS St Mary's River closed Pipe Island Passage to the East of Pipe Island Shoal and North of Pipe Island Twins. Pipe Island course is an alternating one way route, effective 1800 local 11 Jan 2017.

LNM: 03/17

**WATERWAY CLOSURE - LAKE HURON - Straits Of Mackinac**

Per 33 CFR 165.901 Captain of the port Sault Ste Marie closed the waters between Cheboygan, Michigan and Bois Blanc Island known as the South Channel, effective 1800 local 11 Jan 2017.

LNM: 03/17

**WATERWAY CLOSURE - LAKE MICHIGAN - Grays Reef Passage**

Per 33 CFR 165.901 Captain of the port Sault Ste Marie closed Greys Reef Passage, effective 1800 local 11 Jan 2017.

LNM: 03/17

**OPERATION COAL SHOVEL**

Commander U.S. Coast Guard Sector Detroit has commence Operation COAL SHOVEL. To enhance the coordination of ice breaking resources, Captain of the Port Detroit directs all shipping companies to provide an estimated time of arrival (ETA) for their vessels arriving or departing from any port or terminal within the Operation COAL SHOVEL area of responsibility (AOR).

The COAL SHOVEL AOR extends from the eastern extent of navigable waters of Lake Erie through the Detroit and St. Clair River system and north to include all navigable waters of Lake Huron south of 45 degrees, 20 minutes north latitude.

ETA reports must be received six (6) hours prior to vessel arrival or once a day by 1000 (eastern). This requirement may be met through submission of the Daily Vessel Movement Reports in electronic form via email to SecDetroitWWM@uscg.mil. Estimated time of arrivals must be updated whenever the arrival time deviates by more than 6 hours. ETA updates may be reported by telephone to the Sector Detroit Command Center at 313-568-9560.

LNM: 01/17

**RANGE STRUCTURES**

The U.S. Coast Guard has become aware that Coast Guard information used to depict a rangeline on NOAA Electronic Navigational Charts (ENC)

may not be of sufficient accuracy to accurately portray the rangeline on the ENC. Mariners are cautioned that the position of a rangeline as shown on an ENC may not reflect its true position.

LNM: 04/11

### **USACE NOTICE TO NAVIGATION INTERESTS**

Current Federal Channel conditions, shoaling, and the most recent channel surveys are available at the following Army Corps of Engineers web sites:

Buffalo: <http://www.lrb.usace.army.mil/>

Detroit: <http://www.lre.usace.army.mil/>

Chicago: <http://www.lrc.usace.army.mil/>

Rock Island: <http://www.mvr.usace.army.mil/>

LNM: 28/12

### **THE DATES OF LATEST EDITIONS, NAUTICAL CHARTS AND MISCELLANEOUS MAPS**

Up to date information on latest editions, nautical charts and miscellaneous maps can be found at the following web address:

<http://www.nauticalcharts.noaa.gov/>

LNM: 32/13

### **THE 2017 ELECTRONIC LIGHT LIST**

The 2017 Light List is now available.

Coast Guard Light Lists are a means for communicating aids to navigation information to the maritime public. The last government printed Light Lists were the 2014 editions. While the Light Lists will no longer be available in government printed form, commercial reproductions may be available for purchase from maritime service providers. Local Notices to Mariners will continue to advertise Light List corrections and NAVCEN will continue to publish a compilation of corrections.

2017 Light Lists are available on the USCG Navigation Center's website at: <https://www.navcen.uscg.gov/?pageName=lightLists>

Complete versions of the 2017 Light Lists are updated weekly on the NAVCEN website and mariners should download applicable copies and updates as needed at: <https://www.navcen.uscg.gov/?pageName=lightListWeeklyUpdates>.

A summary of 2017 Light List corrections are available at: <https://www.navcen.uscg.gov/?pageName=lightListCorrections>

Guidance for use of electronic navigation publications onboard U.S. vessels can be found at:

[http://www.uscg.mil/hq/cgcvc/cvc/policy/policy\\_letters/543/CG-543\\_pol10-05.pdf](http://www.uscg.mil/hq/cgcvc/cvc/policy/policy_letters/543/CG-543_pol10-05.pdf)

LNM: 04/17

### **USE OF ELECTRONIC CHARTS AND PUBLICATIONS IN LIEU OF PAPER CHARTS, MAPS, AND PUBLICATIONS**

The U.S. Coast Guard has issued Navigation and Vessel Inspection Circular (NVIC) No. 01-16 which contains guidance on the use of electronic charts and publications in lieu of paper charts, maps, and publications. This guidance applies to U.S. flagged vessels subject to U.S. domestic chart, map, and publication carriage requirements contained in Titles 33 and 46 of the Code of Federal Regulations. The NVIC can be viewed at <https://www.uscg.mil/hq/cg5/nvic/default.asp> or <https://cgportal2.uscg.mil/library/directives/SitePages/Home.aspx>.

LNM: 06/16

### **GREAT LAKES - Great Lakes Water Levels**

The expected water levels on the Great Lakes for March 24, 2017. Connecting Channels and the St. Lawrence River, given in inches above (+) or below (-) Low Water Datum (LWD). LWD is a plane of reference used on a navigation chart. It is also known as chart datum.

Great Lakes:

Lake Ontario +36, Lake Erie +38, Lake St. Clair +34 Lake Michigan-Huron +20, Lake Superior +6.

St Lawrence River:

Above Long Sault Dam +62, Above Iroquois Dam +48, Ogdensburg +45, Alexandria Bay +37, Head of River at Cape Vincent +36.

Detroit River:

Lake Erie at Pelee Passage +38, Mouth of River at Gibraltar +39, Fort Wayne +39, Head of River above Belle Isle +35.

St. Clair River:

Mouth of River at St. Clair Flats +34, Algonac +37, St. Clair +29, Blue Water Bridge +27, Head of River at Fort Gratiot +23, Lake Huron

Approach Channel +20.

St. Marys River:

Mouth of River at Detour +20, West and Middle Neebish +20, Head of Little Rapids +23, U.S. Slip +23, Above Locks +8, Head of River at Point Iroquois +6.

Available water depth is determined for a location by adding (if +) or subtracting (if -) the amount from the above to the water depth shown on National Oceanic and Atmospheric Administration (NOAA) navigational charts. Caution: Depths so determined are representative of a still water surface elevation, disturbed by neither wind nor other causes. Depth, however, may be reduced or increased as much as several feet for short periods of time due to these disturbances, or when sections of channels develop shoals. Vessel masters should refer to the Local Notice to Mariners for extent of shoaling and scattered bedrock projections in all channels. For further information direct inquires to: Department of the Army, Detroit District Corps of Engineers P. O. Box 1027, Detroit, MI 48231, (313) 226-6443. Additional information can be found on the U.S. Army Corps of Engineers Information Center website at <http://www.lre.usace.army.mil/Missions/GreatLakesInformation/GreatLakesWaterLevels/WaterLevelForecast/ConnectingChannelsForecast.asp>

LNM: 12/17

#### **VIRTUAL AIS ATON (VATON)**

The following Virtual AIS ATON have been established:

LAKE ERIE - BUFFALO HARBOR - Chart 14833 VATON Buffalo in approximate position 42-50-08.639N / 078-55-25.922W

LAKE ERIE - TOLEDO HARBOR - Chart 14847

VATON Maumee in approximate position 41-50-07.946N / 083-10-10.530W

LNM: 07/17

#### **LAKE ERIE – NY – Buffalo Ship Canal – Chart 14833**

There is a steel I-beam protruding out of the water in approximate position 42-51.640N 078-52.100W. The steel I-beam is marked with a temporary white buoy FL W 4s.

LNM: 17/16

#### **LAKE HURON - BAY PORT HARBOR / SAGINAW BAY - Chart 14863**

The following buoys located in Bay Port Harbor will not be commissioned as advertised in the Light List due to shoaling.

Bay Port Harbor Buoy "1" (LLNR 10386)

Bay Port Harbor Buoy "2" (LLNR 10386.1)

Bay Port Harbor Buoy "3" (LLNR 10387)

Bay Port Harbor Buoy "4" (LLNR 10387.1)

Bay Port Harbor Buoy "5" (LLNR 10388)

Bay Port Harbor Buoy "6" (LLNR 10388.1)

LNM: 12/17

#### **ILLINOIS RIVER - MARSEILLES**

A partially submerged pile of beams has been reported on the Right Descending Back near Mile Marker 247.8 in the Illinois River. All mariners are requested to transit the area with caution.

LNM: 10/17

#### **LAKE MICHIGAN - Stony Lake to Point Betsie - Chart 14907**

Due to reported shoaling in the entrance to Arcadia Lake, mariners are urged to stay North of the center of the channel. Contact Arcadia Harbormaster on VHF FM Channel 16 for further information. Mariners are requested to transit the area with caution.

LNM: 50/16

#### **LAKE MICHIGAN - MI - Waugoshance Point to Seul Choix Point - Chart 14911**

An uncharted object has been reported north of the LCA track lines east of Lansing Shoal in approximate position 45-54.647'N 085-24.970'W. The object appears to be 23-24 feet below the surface at low water datum.

LNM: 30/15

#### **LAKE MICHIGAN - Upper Green Bay - Chart 14909**

Baileys Harbor Entrance Lighted Bell Buoy (LLNR 21235) Has been turned on as a Synthetic AIS ATON. The AIS ATON symbol will continue to be transmitted during periods that the seasonal physical aid has been removed.

LNM: 50/16

**LAKE MICHIGAN - IL – Calumet River – 14929 - Obstruction**

An obstruction is protruding approximately 15 feet into the channel from the Morton Salt Dock at river mile 331.5 on the Calumet River. Mariners are advised to use caution and avoid transiting near the left descending wall.

LNM: 06/17

**LAKE MICHIGAN - GREEN BAY / LOWER FOX RIVER - Chart 14916**

The following buoys located in the Fox River will not be commissioned as advertised in the Light List due to dredging. Once dredging is complete the buoys will be placed on station.

- Green Bay City Buoy "2" (LLNR 22280)
- Green Bay City Buoy "4" (LLNR 22285)
- Green Bay City Buoy "6" (LLNR 22290)
- Green Bay City Buoy "7" (LLNR 22295)
- Green Bay City Buoy "8" (LLNR 22300)

LNM: 12/17

**LAKE MICHIGAN - LOWER GREEN BAY - Chart 14910**

Suamico Lighted Buoy "8" (LLNR 22060) will not be commissioned as advertised in the Light List due to shoaling. The buoys commissioning will be reevaluated upon completion of a survey of this waterway.

LNM: 12/17

**LAKE SUPERIOR - GRAND PORTAGE TO SHESHEEB POINT - Chart 14968**

Establish a prototype NOAA Weather Lighted Buoy "45T01" in position 48-02-10N / 087-44-30W. The characteristic of the light will be Fl (4)Y 20s with a 4 statute mile range. The buoys location will approximately 3 statute miles ESE of NOAA Buoy "45001" (LLNR 16880). The buoy will be seasonal from April 1 to November 1.

LNM: 12/17

---

---

**SECTION II - DISCREPANCIES**

This section lists all reported and corrected discrepancies related to Aids to Navigation in this edition. A discrepancy is a change in the status of an aid to navigation that differs from what is published or charted.

---

**DISCREPANCIES (FEDERAL AIDS)**

LLNR	Aid Name	Status	Chart No.	BNM Ref.	LNM St	LNM End
4625	Sandusky Straight Channel Range Front Light	DAYMK MISSING	14842	D118-16	35/16	
6765	Inner Light (C)	LT EXT		B225-16	01/17	
7165	Grosse Ile South Channel Range Front Light	LT EXT	14853	D003-17	04/17	
8400	Peche Island Range Front Light	RAC INOP	14853	D016-17	11/17	
8442	Grosse Pointe Dumping Grounds Buoy B	OFF STA	14853	D015-17	09/17	
8595	Pier Light X32/2 (C)	LT IMCH			06/17	
8880	St. Clair Shores Breakwater Daybeacon 1	MISSING	14853	D17-17	11/17	
<b>9725</b>	<b>Russell Island Light</b>	<b>DAYMK DMGD</b>	<b>14853</b>		<b>12/17</b>	
9870	Courtright Light (C)	LT EXT		D074-16	23/16	
11770	Fourteen Foot Shoal Buoy 3	OFF STA	14881	S019-17	05/17	
12590	Round Island Shoal Lighted Buoy 5	MISSING	14881	S025-17	09/17	
<b>12607</b>	<b>St. Ignace Coast Guard Slip Light</b>	<b>LT EXT/STRUCT DMGD</b>	<b>14881</b>	<b>S033-17</b>	<b>12/17</b>	
<b>12907</b>	<b>Lime Island Lighted Buoy 14</b>	<b>OFF STA</b>	<b>14882</b>	<b>S032-17</b>	<b>12/17</b>	
13280	Middle Neebish South Range Rear Light	LT EXT	14887	S021-17	06/17	
13640	Sawmill Point Lighted Buoy 23	OFF STA	14887	S009-17	02/17	
13730	West Neebish Channel (Downbound) Lighted Buoy 6	MISSING	14887	S004-17	02/17	
14030	Lake Nicolet Lighted Buoy 89	OFF STA	14883	S017-17	05/17	

14060	Little Rapids Cut Junction Lighted Buoy	OFF STA	14883	S035-17	12/17
14420	Round Island Lighted Buoy 25	OFF STA	14884	S034-17	12/17
20965	Kewaunee Breakwater Light	LT IMCH	14903	M025-17	03/17

**DISCREPANCIES (FEDERAL AIDS) CORRECTED**

LLNR	Aid Name	Status	Chart No.	BNM Ref.	LNM St	LNM End
6565	Monroe Harbor Range Rear Light	WATCHING PROPERLY	14846		12/17	12/17
9900	Stag Island Lower Lighted Buoy 55	WATCHING PROPERLY	14853		12/17	12/17
15905	Duluth Harbor Basin Lighted Buoy 5	WATCHING PROPERLY	14975		10/17	12/17

**DISCREPANCIES (PRIVATE AIDS)**

LLNR	Aid Name	Status	Chart No.	BNM Ref.	LNM St	LNM End
4190	Whiskey Island Marina Entrance Light 1	LT IMCH/DAYMK MISSING	14839	B059-16	21/16	
4191	Whiskey Island Marina Entrance Light 2	DAYMK MISSING	14839	B060-16	21/16	
8695	Grosse Point Club Harbor Entrance West Light	LT EXT	14853	D179-15	42/15	
19580	Burns Harbor East Light	LT EXT	14926		30/16	
19610	Gary Breakwater Light	LT EXT	14926	M521-16	51/16	
19750	Hammond Marina Entrance Light 2	LT EXT	14926		41/16	

**DISCREPANCIES (PRIVATE AIDS) CORRECTED**

LLNR	Aid Name	Status	Chart No.	BNM Ref.	LNM St	LNM End
------	----------	--------	-----------	----------	--------	---------

None

**PLATFORM DISCREPANCIES**

Name	Status	Position	BNM Ref.	LNM St	LNM End
------	--------	----------	----------	--------	---------

None

**PLATFORM DISCREPANCIES CORRECTED**

Name	Status	Position	BNM Ref.	LNM St	LNM End
------	--------	----------	----------	--------	---------

None

**SECTION III - TEMPORARY CHANGES and TEMPORARY CHANGES CORRECTED**

This section contains temporary changes and corrections to Aids to Navigation for this edition. When charted aids are temporarily relocated for dredging, testing, evaluation, or marking an obstruction, a temporary correction shall be listed in Section IV giving the new position.

**TEMPORARY CHANGES**

LLNR	Aid Name	Status	Chart No.	BNM Ref.	LNM St	LNM End
4451	Vermilion Museum Lighthouse	DISCONTINUED	14826	B002-16	08/16	
6015	Cooley Canal Front Range Light	DISCONTINUED	14846		11/16	
6016	Cooley Canal Rear Range Light	DISCONTINUED	14846		11/16	
15260	Gull Island Light	Reduced Intensity	14973	S085-16	39/16	
18450	Manistee North Pierhead Light	Reduced Intensity	14938	M126-16	19/16	
18965	Grand Haven South Pierhead Entrance Light	Reduced Intensity	14933	M443-16	40/16	
18975	Grand Haven South Pierhead Inner Light	Reduced Intensity	14933	M443-16	40/16	
21940	Menominee Pier Light 6	DISCONTINUED	14917	M115-16	44/16	

**TEMPORARY CHANGES CORRECTED**

LLNR	Aid Name	Status	Chart No.	BNM Ref.	LNM St	LNM End
------	----------	--------	-----------	----------	--------	---------

None

**PLATFORM TEMPORARY CHANGES**

Name	Status	Position	BNM Ref.	LNM St	LNM End
None					

**PLATFORM TEMPORARY CHANGES CORRECTED**

Name	Status	Position	BNM Ref.	LNM St	LNM End
None					

**SECTION IV - CHART CORRECTIONS**

This section contains corrections to federally and privately maintained Aids to Navigation, as well as NOS corrections.

This section contains corrective actions affecting chart(s). Corrections appear numerically by chart number, and pertain to that chart only. It is up to the mariner to decide which chart(s) are to be corrected. The following example explains individual elements of a typical chart correction.

Chart Number	Chart Edition	Edition Date	Last Local Notice to Mariners	Horizontal Datum Reference	Source of Correction	Current Local Notice to Mariners
12327	91st Ed.	19-APR-97	Last LNM: 26/97	NAD 83		27/97
Chart Title: NY-NJ-NEW YORK HARBOR - RARITAN RIVER						
Main Panel 2245 NEW YORK HARBOR					CGD01	
(Temp)	ADD	NATIONAL DOCK CHANNEL BUOY 3			at 40-41-09.001N	074-02-48.001W
		Green can				
	Corrective Action	Object of Corrective Action			Position	

(Temp) indicates that the chart correction action is temporary in nature. Courses and bearings are given in degrees clockwise from 000 true. Bearings of light sectors are toward the light from seaward. The nominal range of lights is expressed in nautical miles (NM) unless otherwise noted.

<b>14822</b>	<b>32nd Ed.</b>	<b>01-AUG-05</b>	<b>Last LNM: 12/17</b>	<b>NAD 83</b>		<b>12/17</b>
<i>Chart Title: Approaches to Niagara River and Welland Canal</i>						
<b>Main Panel 1135 NIAGARA RIVER AND WELLAND CANAL. Page/Side: N/A</b>						
	ADD	Buffalo Safe Water VAIS ADD Chart No. 1: S18.1 and Label VAIS			CGD09 at 42-50-08.639N	078-55-25.922W
<b>14823</b>	<b>31st Ed.</b>	<b>01-DEC-12</b>	<b>Last LNM: 12/17</b>	<b>NAD 83</b>		<b>12/17</b>
<i>Chart Title: Surgeon Point to Twentymile Creek; Dunkirk Harbor; Barcelona Harbor</i>						
<b>Inset 1137 DUNKIRK HARBOR NEW YORK INSET. Page/Side: A</b>						
	RELOCATE	Dunkirk Light			CGD09 from 42-29-37.580N to 42-29-38.022N	079-21-14.690W 079-21-14.118W
<b>Main Panel 1136 STURGEON POINT TO TWENTY MILE CREEK NEW YORK. Page/Side: A</b>						
	RELOCATE	Cattaraugus Creek North Breakwater Light 1			CGD09 from 42-34-16.000N to 42-34-18.804N	079-08-16.000W 079-08-17.808W
	RELOCATE	Cattaraugus Creek South Breakwater Light 2			CGD09 from 42-34-20.000N to 42-34-21.642N	079-08-21.000W 079-08-22.914W
	RELOCATE	Dunkirk Light			CGD09 from 42-29-37.580N to 42-29-38.022N	079-21-14.690W 079-21-14.118W
<b>14830</b>	<b>33rd Ed.</b>	<b>01-MAR-15</b>	<b>Last LNM: 12/17</b>	<b>NAD 83</b>		<b>12/17</b>
<i>Chart Title: West End of Lake Erie; Port Clinton Harbor; Monroe Harbor; Lorain to Detroit River; Vermilion</i>						
<b>Main Panel 1151 WEST END OF LAKE ERIE. Page/Side: A</b>						



	ADD	Maumee Safe Water VAIS ADD Chart No. 1:S18.1 and Label VAIS			CGD09 at 41-50-07.946N	083-10-10.530W
<b>14832</b>	<b>35th Ed.</b>	<b>01-MAR-13</b>	<b>Last LNM: 12/17</b>	<b>NAD 83</b>		<b>12/17</b>
<i>ChartTitle: Niagara Falls to Buffalo</i>						
<b>Main Panel 1156 UPPER NIAGARA RIVER. Page/Side: N/A</b>						
	ADD	Buffalo Safe Water VAIS ADD Chart No. 1: S18.1 and Label VAIS			CGD09 at 42-50-08.639N	078-55-25.922W
<b>14833</b>	<b>27th Ed.</b>	<b>01-DEC-12</b>	<b>Last LNM: 12/17</b>	<b>NAD 83</b>		<b>12/17</b>
<i>ChartTitle: Buffalo Harbor</i>						
<b>Main Panel 1157 BUFFALO HARBOR NEW YORK. Page/Side: N/A</b>						
	ADD	Buffalo Safe Water VAIS ADD Chart No. 1: S18.1 and Label VAIS			CGD09 at 42-50-08.639N	078-55-25.922W
<b>14839</b>	<b>38th Ed.</b>	<b>01-MAY-15</b>	<b>Last LNM: 12/17</b>	<b>NAD 83</b>		<b>12/17</b>
<i>ChartTitle: Cleveland Harbor, including lower Cuyahoga River</i>						
<b>Main Panel 1161 CLEVELAND HARBOR INCLUDING LOWER CUYAHOGA RIVER. Page/Side: A</b>						
	RELOCATE	Cleveland Harbor West Basin Channel Light 8			CGD09 from 41-29-44.900N to 41-29-45.312N	081-43-37.800W 081-43-37.476W
<b>14847</b>	<b>31st Ed.</b>	<b>01-FEB-05</b>	<b>Last LNM: 12/17</b>	<b>NAD 83</b>		<b>12/17</b>
<i>ChartTitle: Toledo Harbor;Entrance Channel to Harbor</i>						
<b>Extension 1251 TOLEDO HAVOR ENTRANCE CHANNEL. Page/Side: N/A</b>						
	ADD	Maumee Safe Water VAIS ADD Chart No. 1:S18.1 and Label VAIS			CGD09 at 41-50-07.946N	083-10-10.530W
<b>14961</b>	<b>13th Ed.</b>	<b>01-FEB-16</b>	<b>Last LNM: 12/17</b>	<b>NAD 83</b>		<b>12/17</b>
<i>ChartTitle: Lake Superior (Mercator Projection)</i>						
<b>Main Panel 1499 LAKE SUPERIOR. Page/Side: A</b>						
	ADD	NOAA Lighted Weather Buoy 45T01 Yellow Fl (4)Y 20s			CGD09 at 48-02-10.000N	087-44-30.000W

---

### SECTION V - ADVANCE NOTICES

This section contains advance notice of approved projects, changes to aids to navigation, or upcoming temporary changes such as dredging, etc. Mariners are advised to use caution while transiting these areas.

---

#### SUMMARY OF ADVANCED APPROVED PROJECTS

<u>Approved Project(s)</u>	<u>Project Date</u>	<u>Ref. LNM</u>
None		
<u>Advance Notice(s)</u>		
<b>LAKE ERIE - Maumee Bay - Chart 14847</b>		
Maumee Bay Entrance Lighted Buoy "1" (LLNR 6045) Replace the lighted buoy with an unlighted buoy as a winter mark from December 14 to April 7.		LNM: 12/17
<b>LAKE MICHIGAN - WI - Upper Green Bay - Chart 14909</b>		
St. Martin Island Light (LLNR 21450) change the characteristic of the light from AL WR 10s to Fl W 10s. The range would be reduced from 18 statute miles to 16 statute miles.		LNM: 31/14
<b>LAKE MICHIGAN - MI - Holland Harbor - Chart 14932</b>		
Holland Harbor South Pierhead Light (LLNR 19295) change the characteristic from AL WR 10s to Fl R 10s and reduce the range of the light from 17 statute miles to 15 statute miles.		LNM: 39/12

**LAKE MICHIGAN - WI - Upper Green Bay - Chart 14909**

Boyer Bluff Light (LLNR 21770) reduce the range of the light from 8 statute miles to 6 statute miles.  
Eagle Bluff Light (LLNR 21825) reduce the range of the light from 7 statute miles to 6 statute miles.

LNM: 28/15

**LAKE SUPERIOR - Duluth Harbor - Chart 14975**

Duluth Harbor Breakwater Isolated Danger Buoy (LLNR 15840) Change the seasonally maintained dates from April 21 to December 1 to April 21 to October 15.

LNM: 10/17

---

---

**SECTION VI - PROPOSED CHANGES**

Periodically, the Coast Guard evaluates its system of aids to navigation to determine whether the conditions for which the aids to navigation were established have changed. When changes occur, the feasibility of improving, relocating, replacing, or discontinuing aids are considered. This section contains notice(s) of non-approved, proposed projects open for comment. SPECIAL NOTE: Mariners are requested to respond in writing to the District office unless otherwise noted (see banner page for address).

---

**PROPOSED WATERWAY PROJECTS OPEN FOR PUBLIC COMMENT**

<u>Proposed Project(s)</u>	<u>Closing</u>	<u>Docket No.</u>	<u>Ref. LNM</u>
None			

Proposed Change Notice(s)

**ST LAWRENCE RIVER - Ile St. Regis To/A Croix Islands - Chart 1433(C)**

St. Lawrence Seaway Buoy "19" (LLNR 125) permanently discontinue.

LNM: 25/16

**ST. CLAIR RIVER - Chart - 14852**

Russell Island Light (LLNR 9725) Change the characteristic of the light to FG eliminating the white and green sector. The range of the light will be 8 statute miles.

LNM: 39/16

**LAKE HURON - Harrisville to Forty Mile Point - Chart 14864**

Alpena Light (LLNR 11370) reduce the range of the light from 12 statute miles to 10 statute miles.

LNM: 39/16

**LAKE HURON - HARBOR BEACH HARBOR - Chart 14862**

Due to shoaling the following changes to Federally maintained buoys in Harbor Beach below can be found on a chart in enclosure(6). These will be seasonal buoys maintained from 01 April to 01 November.

- Harbor Beach Buoy "3" (LLNR 10145) move east to approximate position 43-50-38.13N / 082-38-00.00W
- Harbor Beach Buoy "4" (LLNR 10150) change to a lighted buoy Fl R 2.5s and move east to approximate position 43-50-43.98N / 082-38-00.07W
- Harbor Beach Buoy "5" (LLNR 10155) move northeast to approximate position 43-50-58.69N / 082-38-22.32W
- Harbor Beach Buoy "6" (LLNR 10160) permanently discontinue
- Harbor Beach Buoy "7" (LLNR 10161) establish in approximate position 43-51-14.12N / 082-38-32.31W
- Harbor Beach Buoy "9" (LLNR 10162) establish in approximate position 43-51-19.39N / 082-38-40.98 W

Permanently discontinue the following lighted buoys in Harbor Beach Harbor:

- Harbor Beach Marina Lighted Buoy "1" (LLNR 10195)
- Harbor Beach Marina Lighted Buoy "3" (LLNR 10200)

LNM: 09/17

**LAKE MICHIGAN - Green Bay - Chart 14917**

Menominee Pier Light "6" (LLNR 21940) change the characteristic to Fl R 6(1) and reduce the nominal range from 12 statute miles to 10 statute miles.

LNM: 46/16

**LAKE MICHIGAN - LOWER GREEN BAY - Chart 14910**

Sherwood Point Light (LLNR 22000) change the range of the light from 15 statute miles to 12 statute miles

LNM: 04/17

**LAKE MICHIGAN - Algoma to Sheboygan - Chart 14903**

Kewaunee Pier Head Light (LLNR 20955) reduce the range of the light from 15 statute miles to 11 statute miles. Permanently discontinue the fog

signal.

Algoma Light (LLNR 20975) reduce the range of the light from 15 statute miles to 11 statute miles.

LNM: 52/16

**ST. MARY'S RIVER - MUNUSCONG LAKE TO SAULT STE. MARIE - Chart 14883**

Little Rapids Cut Lighted Buoy "98B" (LLNR 14105) Add synthetic AIS ATON to this aid during time that the ice boom is deployed.

LNM: 04/17

**For any comments or questions on these proposed changes please contact:**

Mr. Doug Sharp of the Ninth District Aids to Navigation office at (216) 902-6070.

LNM: 30/13

---

**SECTION VII - GENERAL**

This section contains information of general concern to the Mariners. Mariners are advised to use caution while transiting these areas.

---

**Waterways Analysis and Management System Study - 2017**

The Coast Guard is conducting a Waterways Analysis and Management System Study on the following waterways during 2017. The study focuses on the area's aid to navigation system, waterborne commerce, marine casualty information, emergency response plans, routine and emergency communication capabilities, and future development projects. Any company or individual wishing to comment on the waterway reviews listed below is encouraged to contact the Coast Guard unit listed or email comments to [william.d.sharp@uscg.mil](mailto:william.d.sharp@uscg.mil). Any comments emailed will be forwarded to the appropriate unit for use in the WAMS project. A survey is attached to the Local Notice to Mariner and can be used to comment on these reviews or on any waterways located in the Great Lakes.

Sackets Harbor (LLNR 1755 - 2024.9)  
Oswego Harbor (LLNR 2025 - 2140)  
Sodus Bay (LLNR 2145 -2275)  
Buffalo Black Rock Canal (LLNR 2665 - LLNR 3360)  
Dunkirk Harbor (LLNR 3365 - LLNR 3492)  
Commander  
Sector Buffalo  
1 Fuhrmann Blvd.  
Buffalo, N.Y. 14203  
(716) 843-9524

Cleveland Harbor (LLNR 3975 - LLNR 4260)  
Lorain Harbor (LLNR 4265 - 4429)  
Sandusky Harbor/Moseley Channel (LLNR 4560 - LLNR 5030)  
Lake St. Clair Main Channel (LLNR 8400 - LLNR 8660)  
Huron Harbor (LLNR 4430 - LLNR 5455)  
Commanding Officer  
USCGC Bristol Bay (WTGB 102)  
110 Mt. Elliot Avenue  
Detroit, Mi. 48207  
(313) 568-9548

Boundary Waters / Lake of the Woods (LLNR 16925 - LLNR 17715)  
Commander  
Sector Sault Ste. Marie  
337 Water St.  
Sault Ste. Marie, Mi. 49783  
(906) 635-3270

St. Joseph/Benton Harbor (LLNR 19515 - LLNR 19625)  
Sheboygan Harbor (LLNR 20805 - LLNR 20840)  
Manitowoc Harbor (LLNR 20842 - LLNR 20985)  
Commander  
U. S. Coast Guard Sector Lake Michigan  
2420 South Lincoln Memorial Drive  
Milwaukee, WI 53207  
(414) 747-7188

Duluth/Superior Harbors (LLNR 15595 - LLNR 16250)  
Grand Traverse Bay (LLNR 17855 - LLNR 18366)  
Commanding Officer

**Waterways Analysis and Management System Study - 2017**

USCGC Alder (WLB 216)  
1201 Minnesota Avenue  
Duluth, Mn. 55802  
(218) 529-3131

Straits of Mackinaw Eastern Section  
(LLNR 11720 - LLNR 11775)  
(LLNR 12175 - LLNR 12215)  
(LLNR 12535 - LLNR 12650)  
Burns Harbor (LLNR 19575 - LLNR 19625)  
Commanding Officer  
USCGC Mackinaw (WLBB 30)  
632 Coast Guard Drive  
Cheboygan, MI 49721  
(231) 597-2030

LNM: 10/17

**GREAT LAKES - Marine Events**

Marine events such as races, parades, regattas, and fireworks displays are frequently held in the Great Lakes region. Advance information on specific events is contained in enclosure (2) of this publication. The public is reminded to listen to the local broadcast notice to mariners for the most up-to-date information on a marine event. Mariners are advised that some events may require temporary aids to navigation that are not displayed on a chart or in the Light List, and that they should exercise additional caution while operating in the vicinity of a scheduled marine event.

LNM: 24/13

**NEW YORK CANAL SYSTEM – NY – Erie Canal – Chart 14786 – Bridge Maintenance**

From February 27 through April 29, 2017 scaffolding that hangs approximately 2 feet below low steel will be installed under the E74 Long Branch Road Bridge at Mile 168.0 over the Erie Canal at Liverpool, NY.

LNM: 09/17

**NEW YORK CANAL SYSTEM – NY – Erie Canal – Chart 14786 – Bridge Maintenance**

From April 1 through May 1, 2017 snoopers will be replacing the bearings on the E-85 State Route 38 Bridge at Mile 195 over the Erie Canal at Mentz, NY. Spotters will warn of approaching vessels and move the man lifts to allow vessels to pass.

LNM: 10/17

**NEW YORK CANAL SYSTEM – NY - Erie Canal - Chart 14786 – Bridge Maintenance**

From February 1 through March 31, 2017 scaffolding will be installed under the Clarissa (Ford) Street Bridge E-156 over the Genesee River portion of the Erie Canal that hangs approximately 6 feet below low steel. Steady burning amber lights will mark the bottom and four corners of the scaffolding.

LNM: 01/17

**LAKE ONTARIO – NY – Irondequoit Bay – Chart 14804 – Bridge Winter Schedule**

The Seasonal Irondequoit Bay Outlet Bridge located at the mouth of Irondequoit Bay will move to the open to navigation position on March 31, 2017 and remain open until November 1, 2017. Mariners should remain clear of the drawspan while it is in motion.

LNM: 10/17

**LAKE ONTARIO – NY –Rochester Harbor – Chart 14815 – Bridge Special Event**

From 0730 to 1430 on September 17, 2017 the O'Rourke Bridge at Mile 1.25 over the Genesee River will be secured to masted navigation in conjunction with the Rochester Marathon. Vessels able to pass under the bridge without an opening may do so at any time.

LNM: 07/17

**LAKE ERIE – NY – Niagara River – Chart 14822 – Bridge Maintenance**

From July 10, 2016 through May 18, 2019 scaffolding that extends approximately 6 feet below low steel will be installed under the Peace Bridge at Mile 1.5 over the Black Rock Canal. Amber lights will mark the bottom and four corners of the scaffolding hanging below low steel. Scaffolding under the bridge over the Niagara River will remain above low steel.

LNM: 16/15

**LAKE ERIE – NY – Buffalo Harbor – Chart 14833 – Bridge Maintenance**

From May 29 through August 25, 2017 the Buffalo Creek Railroad Bridge at Mile 4.39 over the Buffalo River will be secured to masted navigation. Vessels able to pass under the bridge without an opening may do so at any time.

LNM: 04/17

**LAKE ERIE – OH – Ashtabula Harbor – Chart 14836 – Bridge Winter Schedule**

From December 24, 2016 through March 31, 2017 the Fifth Street Bridge at Mile 0.15 over the Ashtabula River will require a 12 hour advance notice for openings. Mariners should provide advance notice by calling: 440-576-2816 or 440-813-8229 or 440-536-2941 or 440-645-9041.

**LAKE ERIE – OH – Ashtabula Harbor – Chart 14836 – Bridge Winter Schedule**

LNM: 51/16

**LAKE ERIE – OH – Maumee River - Chart 14846 – Bridge Replacement**

From July 1, 2015 through December 31, 2017, Bridge demolition and construction activities will be performed at the State Route 109 Bridge at Mile 44.4 over the Maumee River near Napoleon, Ohio. Mariners should use caution when transiting the area.

LNM: 20/14

**LAKE ERIE – OH – Maumee River - Chart 14846 – Bridge Discrepancy**

The Coast Guard has received a report that the lights on the CSX Railroad Bridge at Mile 11.38 over the Maumee River are extinguished.

LNM: 14/15

**LAKE ERIE – OH – Cleveland Harbor – Chart 14839 – Bridge Discrepancy**

The Coast Guard has received a report that the fendering system for the Union Terminal Viaduct at Mile 1.89 over the Cuyahoga River has been destroyed. There are reports of debris from the fendering system floating in the river.

LNM: 47/16

**LAKE ERIE – OH – Cleveland Harbor – Chart 14839 – Bridge Special Event**

From 0700 to 0930 on May 21, 2017 the Columbus Road Bridge at Mile 1.93 over the Cuyahoga River will be secured to masted navigation in conjunction with the Rite-Aid Marathon. Vessels able to pass under the bridge without and opening may do so at any time.

LNM: 05/17

**LAKE ERIE – OH – Cleveland Harbor – Chart 14839 – Bridge Maintenance**

From April 3, 2017 through April 7, 2107 between the hours of 0700 and 1700 the Columbus Road Bridge at Mile 1.93 over the Cuyahoga River will require a 1 hour advance notice for openings. Mariners should provide advance notice directly to the drawtender on VHF-FM Marine Channel 16 or by calling: 216-664-4767.

LNM: 12/17

**LAKE ERIE – OH – Rocky River – Chart 14826 – Bridge Maintenance**

From January 1 through October 31, 2017 scaffolding that hangs approximately 10 feet below low steel will be installed under the Detroit Road Highway Bridge at Mile 0.7 over the Rocky River. Steady burning amber lights will mark the bottom and four corners of the scaffolding.

LNM: 01/17

**LAKE ERIE – OH – Portage River – Chart 14842 – Bridge Maintenance**

From October 16, 2017 through October 19, 2017 and again from October 23, 2017 through October 26, 2017 the Monroe Street Bridge at Mile 0.4 over the Portage River at Port Clinton, OH will have one bridge leaf secured to masted navigation and one leaf locked in the fully open to navigation position for the purpose of removing the bridge leaves. The bottom and four corners of the old bridge leaves will be marked with steady burning amber lights until they are completely removed from the waterway. From 0500 on December 1, 2017 to noon on April 1, 2018 the bridge will be secured to masted navigation for the installation of new bridge leaves. The bottom and four corners of the new bridge leaves will be marked with steady burning amber lights until the required permitted navigation lights can be installed. Vessels able to pass under the bridge without an opening may do so at any time.

LNM: 49/16

**LAKE ERIE – OH – Huron Harbor – Chart 14843**

Ryba Marine, will be conducting Dredging operations in Huron Harbor. Operations will commence MARCH 15th, 2016 through April 30th, 2016 hours of operation are 24 hours a day and seven days a week. Vessels may contact Tug Kathy Lynn on marine VHF-FM Channel 13 or 16 and can be reached via mobile phone a (231) 420-4335. For further information contact Ralph W. Farver II at (231) 627-4333.

LNM: 10/17

**DETROIT RIVER - MI - Belle Isle - Chart 14848**

The SS St. Claire a 200ft long 70ft wide ferry boat will be temporally moored on the outside seawall of Harbor Hill Marina, Detroit River, North of Belle Isle. The SS St. Claire will eventually be move inside the marina permanently. The vessel will be lit at night. Mariners are requested to transit the area with caution.

LNM: 49/16

**DETROIT RIVER – MI – Trenton Channel – Chart 14848**

E.C. Korneffol Company will be conducting soil borings at the north end of the Trenton Channel west shoreline and west of point Hennepin from January 01, 2017 to May 31, 2017. Hours of operation will be 5 days a week from 0700 to 1900. Captain Keith will be monitoring channels 13 and 16. For futher information contact Bruce Kresslern at 734-676-2131.

LNM: 06/17

**DETROIT RIVER – MI – River Rouge – Chart 14854 – Bridge Maintenance**

From February 4, 2017 through January 31, 2018 scaffolding that hangs approximately 3 feet below low steel will be installed under the Fisher Freeway I-75 Bridge at Mile 1.85 over the River Rouge. Steady burning amber lights will be installed on the bottom of the scaffolding to warn mariners of the temporary reduction in vertical clearance. Snooper trucks may also be used at the bridge. Spotters will warn of approaching vessels and move the man lifts to allow vessels to pass under the bridge.

**DETROIT RIVER – MI – River Rouge – Chart 14854 – Bridge Maintenance**

LNM: 48/16

**DETROIT RIVER – MI – River Rouge – Chart 14854 – Bridge Maintenance**

From April 17 through April 21, 2017 between the hours of 0730 and 1730 daily the Conrail Railroad Bridge at Mile 1.48 over the River Rouge will be secured to masted navigation. From April 24 through April 28, 2017 between the hours of 0730 and 1530 daily the bridge will require a 4 hour advance notice. Advance notice should be provided directly to the drawtender on VHF-FM Marine Radio Channel 16 or by calling: 313-297-5425. Vessels able to pass under the bridge without an opening may do so at any time.

LNM: 06/17

**ST CLAIR RIVER – MI – Port Huron – Chart 14865 – Bridge Winter Hours**

From November 1, 2016 through April 1, 2017 all bridges over the Black River at Port Huron Michigan will require a 12 hour advance notice. Mariners should provide advance notice to all street bridges by calling: 810-984-9730 or 810-985-8115 and for railroad bridges call: 708-332-3160 or 877-333-7989 or 248-431-0673.

LNM: 45/16

**ST CLAIR RIVER – MI – Black River – Chart 14853 – Bridge Maintenance**

From November 15, 2017 through March 31, 2018 the 10th Street Bridge at Mile 0.94 over the Black River will be secured to masted navigation. Vessels able to pass under the bridge may do so at any time.

LNM: 11/17

**LAKE HURON – MI – Alpena Harbor – Chart 14864 – Bridge Maintenance**

From October 11, 2016 through June 10, 2017 the Second Avenue Highway Bridge at Mile 0.4 over the Thunder Bay River at Alpena, MI will be rehabilitated. From October 11 through November 8, 2016 the bridge will require a 12-hour advance notice for openings. Mariners should provide advance notice by calling 989-464-3416. From November 9, 2016 through June 10, 2017 the bridge will be secured to masted navigation. Vessels able to pass under the bridge without an opening may do so at any time. From December 12, 2016 through February 3, 2017 scaffolding that extends approximately 3 feet below low steel will be installed under the bridge. Steady burning amber lights will be displayed on the bottom and four corners of the scaffolding. Periodically during this project a barge will be used at the bridge.

LNM: 50/16

**LAKE HURON – MI – Saginaw River – Chart 14867 – Bridge Maintenance**

From 0700 on March 13 to 0700 March 25, 2017 the Veterans memorial Bridge at Mile 5.60 over the Saginaw River will be secured to masted navigation for emergency maintenance. Vessels able to pass under the bridge without an opening may do so at any time.

LNM: 10/17

**LAKE MICHIGAN – WI – Sturgeon Bay Ship Canal – Chart 14919 – Bridge Operations**

The Coast Guard is modifying the operating regulation that governs the Bayview (State Route 42/57) Bridge, Mile 3.0, Maple-Oregon Bridge, Mile 4.17, and Michigan Street Bridge, Mile 4.3, all over Sturgeon Bay Ship Canal in Sturgeon Bay, WI, to allow testing of the remote operation equipment for all three drawbridges. The operating schedules are not changing but the drawbridges will be remotely operated by a single tender stationed at the Maple-Oregon Bridge throughout the 2017 navigation season. The Coast Guard requests comments from all stakeholders on the safety and effectiveness of the remote operation arrangement. To view the interim rule, published in the Federal Register (33 FR 11151) on February 21, 2017 please visit: <https://www.gpo.gov/fdsys/pkg/FR-2017-02-21/html/2017-03346.htm>. Comments and related material must reach the Coast Guard on or before December 1, 2017. To submit comments go to <http://www.regulations.gov>, type [USCG-2017-0050] in the "SEARCH" box and click "SEARCH." Click on Open Docket Folder on the line associated with this rulemaking. If you have questions on this interim rule, call or e-mail Mr. Lee Soule, Bridge Management Specialist, Ninth Coast Guard District; telephone 216-902-6085, or email: Lee.D.Soule@uscg.mil

LNM: 05/17

**LAKE MICHIGAN – IL – Calumet-SAG River – Chart 14927 – Bridge Inspection**

From March 27 through April 7, 2017 between the hours of 0900 and 1600 Monday through Friday inspectors will use snoopers trucks under the 127th Street Bridge at Mile 18.81 (CORPS MILE 314.2) over the Calumet-SAG Channel. Spotters will warn of approaching vessels and move the man lift to allow vessels to pass.

LNM: 12/17

**LAKE MICHIGAN – IL – Chicago River – Chart 14927 – Bridge Maintenance**

From October 23, 2015 through May 22, 2017 one leaf of the Lake Street Bridge at Mile 1.64, CORPS MILE 325.5, over the South Branch of the Chicago River will be secured to masted navigation.

LNM: 35/16

**LAKE MICHIGAN – IL – Chicago River – Chart 14927 – Bridge Discrepancy**

The Coast Guard has received a report that the dolphins near the location of the former Polk Street Bridge at Mile 2.16 over the South Branch of the Chicago River and the former Erie Street Bridge at Mile 2.21 over the North Branch of the Chicago River are a hazard to navigation.

LNM: 21/16

**LAKE MICHIGAN – IL – Chicago River – Chart 14927 – Bridge Maintenance**

February 6 through August 18, 2017, between the hours of 0700 and 1700 Monday through Friday a 125 foot by 35 foot barge will be working under the Clark Street Bridge at Mile 1.21 (CORPS MILE 326.0) over the Main Branch of the Chicago River. The Barge will monitor VHF-FM Marine

**LAKE MICHIGAN – IL – Chicago River– Chart 14927 – Bridge Maintenance**

Channel 16 and will move to accommodate vessels if a 1-hour advance notice is provided by calling 312-747-2470.

LNM: 05/17

**LAKE MICHIGAN – IL – Chicago River – Chart 14927 – Bridge Maintenance**

From March 1, 2016 through May 1, 2017, Monday through Saturday, 0700 to 1700 and 2200 to 0500 daily, a 120 foot by 55 foot or smaller barges will be working at the Adams Street Bridge at Mile 2.08, CORPS MILE 325.1, over the South Branch of the Chicago River. The barges will move if provided a 30 minute advance notice of arrival on VHF-FM Marine Channel 16 or by calling: 708-560-1870 or 708-975-5597.

LNM: 12/17

**LAKE MICHIGAN – IL – Chicago River – Chart 14927 – Bridge Discrepancy**

The Coast Guard has received a report that the following bridges over the Main, North, and South Branches of the Chicago River have lights showing improper characteristics, obstructed, missing, or lights that are extinguished:

Michigan Avenue Bridge at Mile 0.85

Grand Avenue Bridge at Mile 2.00

LNM: 10/17

**LAKE MICHIGAN –IL – Chicago River – Chart 14928 – Bridge Maintenance**

From December 5, 2016 through March 31, 2017 one leaf of the Michigan Avenue Bridge at Mile 0.85 (CORPS MILE 326.3) over the Main Branch of the Chicago River will be secured to masted navigation and will have scaffolding that hangs approximately 1 foot below low steel. The other bridge leaf will operate normally and be free of any scaffolding.

LNM: 40/16

**LAKE MICHIGAN – IL – Chicago River – Chart 14927 – Bridge Maintenance**

From March 6 through April 3, 2017 between the hours of 0700 and 1600 Monday through Friday a 140 foot by 40 foot barge will be positioned under one end of the Madison Street Bridge at Mile 1.90 (CORPS MILE 325.3) over the South Branch of the Chicago River. The barge will move if a 30 minute advance notice is provided on VHF-FM Marine Channel 16.

LNM: 09/17

**LAKE MICHIGAN – IL - Chicago Sanitary and Ship Canal – Bridge Discrepancy**

The Coast Guard has received a report that the lights on the 135th Street Bridge at Mile 31.1 (CORPS MILE 296.1) over the Chicago Sanitary and Ship Canal are extinguished.

LNM: 12/17

**LAKE MICHIGAN - IL - Chicago River - Chart 14927 - Bridge Maintenance**

From March 23 through April 24, 2017, between the hours of 0700 to 1530, Monday through Friday a 120 foot by 40 foot barge will be working under one end of the South Ashland Avenue Bridge at Mile 5.57 (CORPS MILE 321.7) over the south Branch of the Chicago River. The barge will move if provided a 30 minute advance notice of arrival on VHF-FM Marine Channel 16.

LNM: 12/17

**LAKE MICHIGAN – IL – Chicago Sanitary and Ship Canal – Chart 14927 – Bridge Inspection**

On March 30 and March 31, 2017 between the hours of 0830 and 1400 each day, inspectors will use snooper trucks under the Lawndale I-171 Bridges at Mile 14.3 (CORPS MILE 313.0) over the Chicago sanitary and Ship Canal. Spotters will warn of approaching vessels and move the man lift to allow vessels to pass.

LNM: 12/17

**LAKE MICHIGAN – IL – Calumet River – Bridge Maintenance**

From March 27 through April 14, 2017 between the hours of 0700 and 1530, Monday through Friday the 92nd Street Bridge at Mile 0.76 (CORPS MILE 332.4) over the Calumet River will require a 30-minute advance notice for openings. Mariners should provide advance notice directly to the drawtender on VHF-FM Marine Channel 16.

LNM: 12/17

**LAKE MICHIGAN – WI – Menominee and Marinette Harbors – Chart 14917 – Bridge Maintenance**

From January 1, 2018 through March 31, 2018 the Ogden Street Bridge at Mile 0.7 over the Menominee River will be secured to masted navigation. Vessels able to pass under the bridge without an opening may do so at any time. Scaffolding will be installed that extends approximately 6 feet below low steel of the bridge. Steady burning amber lights will mark the bottom and four corners of the scaffolding. Two 80 foot by 50 foot or smaller barges will be working under the bridge but during nonworking hours they will be moored outside of the navigation channel and lighted.

LNM: 46/16

**LAKE MICHIGAN –WI – Milwaukee Harbor – Chart 14924 – Bridge Winter Hours**

From November 20, 2016 through April 15, 2017 all city of Milwaukee operated bridges will require a 12 hour advance notice for openings. Mariners should provide advance notice to the Lead Bridge Operator on VHF-FM Marine Channel 16 or by calling: 414-286-2575.

LNM: 38/16

**LAKE MICHIGAN – WI – Milwaukee Harbor – Chart 14924 – Bridge Winter Hours**

From November 20, 2016 through April 15, 2017 the Canadian Pacific Railroad Bridges at Mile 1.05 over the Menomonee River and Mile 1.67 over the Burnham Canal will require a 12 hour advance notice for openings. Mariners should provide advance notice directly to the drawtender by calling: 414-389-3772 or 414-207-2779 or 414-389-3763.

LNM: 39/16

**LAKE MICHIGAN – WI – Milwaukee Harbor – Chart 14924 – Bridge Marine Event**

From 0700 to 1130 on June 4, 2017 the Broadway Street Bridge at Mile 0.79 over the Milwaukee River and the Kinnickinnic Avenue Bridge at Mile 1.67 over the Kinnickinnic River will be secured to masted navigation in conjunction with the Ride for the Arts event.

LNM: 02/17

**LAKE MICHIGAN – WI – Milwaukee Harbor – Chart 14924 – Bridge Marine Event**

From 0630 to 0830 on June 10, 2017 the Broadway Street Bridge at Mile 0.79 over the Milwaukee River and the Kinnickinnic Avenue Bridge at Mile 1.67 over the Kinnickinnic River will be secured to masted navigation in conjunction with the Summerfest Rock N' Sole Run event.

LNM: 02/17

**LAKE MICHIGAN – WI – Milwaukee Harbor – Chart 14924 – Bridge Marine Event**

From 2130 on June 28 to 0100 on June 29 all bridges from Mile 0.79 to Mile 1.46 over the Milwaukee River will be secured to recreational masted navigation in conjunction with the Big Bang Fireworks Event.

LNM: 02/17

**LAKE MICHIGAN – WI – Milwaukee Harbor – Chart 14924 – Bridge Marine Event**

From 2130 on June 29 to 0100 on June 30, 2017 all bridges from Mile 0.79 to Mile 1.46 over the Milwaukee River will be secured to recreational masted navigation in conjunction with the Summerfest Event.

LNM: 02/17

**LAKE MICHIGAN – WI – Milwaukee Harbor – Chart 14924 – Bridge Marine Event**

From 2130 on July 3 to 0100 on July 4, 2017 all bridges from Mile 0.79 to Mile 1.46 over the Milwaukee River will be secured to recreational masted navigation in conjunction with the US Bank Fireworks Event

LNM: 02/17

**LAKE MICHIGAN – WI – Milwaukee Harbor – Chart 14924 – Bridge Marine Event**

From 2300 to 0100 nightly from July 4 to July 9, 2017 all bridges from Mile 0.79 to Mile 1.46 over the Milwaukee River will be secured to recreational masted navigation in conjunction with the Second Summerfest Event.

LNM: 02/17

**LAKE MICHIGAN – WI – Milwaukee Harbor – Chart 14924 – Bridge Marine Event**

From 2200 to midnight, nightly from July 21 to July 23, 2017 the Broadway Street Bridge at Mile 0.79 and the Water Street Bridge at Mile 0.94, both over the Milwaukee River will be secured to masted navigation in conjunction with the Festa Italiana event.

LNM: 02/17

**LAKE MICHIGAN – WI – Racine Harbor – Chart 14925 – Bridge Special Event**

on July 4, 2017, between the hours of 0745 and 1130 and again between the hours of 2130 and 2230 the Main Street Bridge at Mile 0.31 and the State Street Bridge at Mile 0.53, both over the Root River will be secured to masted navigation in conjunction with the City 4th of July Festival and fireworks.

LNM: 11/17

**LAKE MICHIGAN – IN – Indiana Harbor, Chart 14929 – Bridge Underwater Hazard**

The Coast Guard has received a report of an underwater obstruction near the position of the former Canal Street Bridge at Mile 1.88 over the Indiana Harbor Canal.

LNM: 01/14

**LAKE MICHIGAN – IN – East Chicago – 14926**

A 30' x 120' spud barge will be positioned inside the breakwall at the East Chicago Marina in Lake County, IN from November 29, 2016 to May 29, 2017 for the removal and replacement of a floating dock system. The harbor and marina will remain fully closed for the duration of the project.71.7

LNM: 48/16

**LAKE MICHIGAN – WI – Manitowoc Harbor – Chart 14922 – Bridge Maintenance**

April 17, 2017 through April 19, 2017 between the hours of 0800 and 1500 each day the Eighth Street Bridge at Mile 0.29 and the Tenth Street Bridge at Mile 0.43, both over the Manitowoc River will be secured to masted navigation for maintenance. Vessels able to pass under the bridge without an opening may do so at any time.

LNM: 12/17

**LAKE MICHIGAN – WI – Manitowoc Harbor – Chart 14922 – Bridge Special Event**



**LAKE MICHIGAN – WI – Manitowoc Harbor – Chart 14922 – Bridge Special Event**

On June 11, 2017 between the hours of 0700 and 1400 the Eighth Street Bridge at Mile 0.29 will be secured to masted navigation in conjunction with the HFM Boston Qualifier Marathon. Vessels able to pass under the bridge without an opening may do so at any time.

LNM: 12/17

**LAKE MICHIGAN – WI – Lower Fox River – Chart 14918 – Bridge Maintenance**

From July 15, 2016 through May 15, 2017 from 0630 to 1600 Monday through Friday two 40 foot by 40 foot barges will be working at the Walnut Street Bridge at Mile 1.81 and the Tillemans Memorial Bridge at Mile 2.27 both over the Fox River at Green Bay, WI. The barges will move to allow vessels to pass. The barges may be contacted on VHF-FM Marine Channel 16 or by calling: 262-422-4741 or 262-366-9558. From January 15, 2017 through March 31, 2017 both bridges will be secured to masted navigation. Vessels able to pass under the bridges without an opening may do so at any time.

LNM: 29/16

**LAKE MICHIGAN – WI – Lower Fox River – Chart 14918 – Bridge Special Event**

From 0800 to 1330 on May 21, 2017 the Main Street Bridge at Mile 1.58 over the Fox River will be secured to masted navigation in conjunction with the Green Bay Cellcom Marathon. Vessels able to pass under the bridge without an opening may do so at any time.

LNM: 07/17

**LAKE MICHIGAN – WI – FOX RIVER – Chart 14918**

Dredging operations on the Fox River in Green Bay will begin March 20, 2017 and continue until November 13, 2017. The Dredges "Mark Anthony," "Ottawa River," and "Ashtabula" will all work in the area immediately north of the Highway 172 Bridge extending to the area immediately south of the Interstate 43 Bridge. Dredges can be reached VIA VHF Channel 16. Operation will take place 24/7 0700 Monday thru 0700 Saturday. Equipment pipelines may be floating or submerged and are marked with appropriate buoys. All mariners are urged to transit these areas with extreme caution and pay close attention to the red and green channel marker buoys and floating construction zone signage. Questions or for further details, contact Coast Guard Sector Lake Michigan at (414) 747-7182 or VIA VHF Channel 16.

LNM: 12/17

**LAKE MICHIGAN – WI – Fox River - Chart 14916 – Bridge Construction**

From October 2, 2014 through November 30, 2018 an 80 foot by 50 foot and a 40 foot by 40 foot barge will be constructing the new State Highway 441 Little Lake Buttes des Morrens Bridge at Mile 36.0 over the Fox River at Menasha, WI. A 30 foot wide channel will be maintained through the main navigational draws. Amber lights will mark the low steel of both bridges and red lights will mark the cofferdams around the new piers. The barges will be lighted in accordance with the Navigation Rules.

LNM: 40/14

**LAKE MICHIGAN – WI – Upper Fox River – Chart 14916 – Bridge Maintenance**

From June 1, 2017 through September 28, 2018 scaffolding that hangs approximately 10 feet below low steel will be installed under the STH 441, Appleton Tri County Expressway at mile 28.06 over the Fox River at Appleton Wisconsin. Steady burning amber lights will warn mariners of the temporary reduction in clearance.

LNM: 45/16

**LAKE MICHIGAN – WI – Upper Fox River – Chart 14916 – Bridge Special Event**

The following bridges will be secured to masted navigation during the dates and times noted. Vessels able to pass under the bridges without an opening may do so at any time.

Oshkosh Marathon on April 30, 2017

Main Street Bridge at Mile 55.97 over the Fox River from 0600 to 1315.

Wisconsin Street Bridge at Mile 56.72 over the Fox River from 0645 to 1215.

Congress Avenue Bridge at Mile 58.01 from 0745 to 1230.

Race the Lake on Aug. 20, 2017.

Main Street Bridge at Mile 55.97 over the Fox River from 0600 to 0800.

Racine Street Bridge at Mile 37.91 over the Fox River from 0645 to 1000.

Winnebago County Triathlon on August 27, 2017

Wisconsin 116 Bridge at Mile 12 over the Wolf River at Winneconne from 0715 to 1100.

LNM: 45/16

**LAKE MICHIGAN – Muskegon Harbor - Chart 14934**

MCM Marine, Inc. will commence dredging operations in the vicinity of Muskegon Harbor, MI, beginning on October 28, 2016 to May 1, 2017. Hours of operation are 24 hours a day, 7 days a week. Arthur J will monitor channels 79 and 16. Mariners are requested to reduce speed and use caution around dredging equipment, for further information contact Darwin J McCoy at 906-632-4316 or John Kuemin at 906-440-2570.

LNM: 44/16

**LAKE MICHIGAN – MI – South Haven – Chart 14906 - Bridge Maintenance**

From October 3, 2016 through June 30, 2017 four 62 foot by 51 foot barges will be working under the Blue Star Memorial Highway at mile 2.2 over the Black River at South Haven, MI. A 20 foot wide channel will be maintained for vessels to pass under the bridge.

LNM: 37/16

**LAKE MICHIGAN – MI – Little Bay de Noc – Chart 14915 – Bridge Replacement**

From June 16, 2017 through August 31, 2019, the SR 2 Bridge immediately below the dam of the Escanaba River will be replaced. Contractors will build temporary causeways with amber lights spaced every 100 feet during the construction of the new bridge and the removal of the old bridge. A 50 foot opening will be maintained so vessels may pass through the construction area. The contractor will mark any temporary obstructions to navigation with amber lights.

LNM: 11/17

**LAKE MICHIGAN – MI – Lake Charlevoix – Chart 14886 – Bridge Maintenance**

From December 22, 2016 through March 31, 2017 the (US31) Bridge Street Bridge over the Pine River just below Round Lake will be secured to masted navigation. From January 13 through March 1, 2017 scaffolding that hangs approximately 6 feet below low steel will be installed under the bridge. Two barges will also be used under the bridge. The barges will be lighted and moored outside of the navigation channel during nonworking hours unless beset by ice.

LNM: 49/16

**LAKE SUPERIOR – MI – St. Marys River – Chart 14884**

Roen Salvage Company will commence repairs of the West Center Pier extending 300' W. of Railroad Bridge. Two 50' barges will be moored at the pier 24 hours per day. All fenders will be removed, divers will be working at the pier, avoid use of side thrusters. Coordinate movement with Soo Locks lockmaster. Work will continue into December 2016 as weather permits, then resume in April 2017. Tug Stephen M. Asher and Tug Charles Asher will monitor channels 7 and 14 (Soo Locks). For further information contact Don Sarter at 920-493-5322

LNM: 42/16

**LAKE SUPERIOR – MI – Houghton Hancock – Chart 14972 – Bridge Maintenance**

From March 16, 2017 through June 15, 2017, the U.S. 41 Bridge at Mile 16.0 over the Keweenaw Waterway in Houghton-Hancock, MI will be locked in the intermediate position providing approximately 35 feet of clearance at low water datum. The bridge will open fully on the hour, every hour except at 0800, noon, and 1700, excluding holidays and weekends when the bridge will open fully on the hour every hour for recreational vessels. The bridge will operate on signal for commercial vessels.

LNM: 43/15

**LAKE SUPERIOR –MI –Little Girls Point – Chart 14966**

Three large concrete erosion control structures have been reported dislodged due to flooding at Omans Creek Boat Launch on Little Girls Point, Michigan of Lake Superior. One structure is reported 10 yards from the shoreline and location of the other two is unknown. Mariners are advised to keep a close lookout and travel at slow speed.

LNM: 30/16

**LAKE SUPERIOR –MN – Duluth-Superior Harbor – Chart 14975 – Bridge Maintenance**

From January 22, 2018 through March 5, 2018 the Duluth Ship Canal Bridge at Mile 0.25 over the Duluth Ship Canal will be secured to masted navigation. Vessels able to pass under the bridge without an opening may do so at any time.

LNM: 10/17

**LAKE SUPERIOR –MN – Duluth-Superior Harbor – Chart 14975 – Bridge Maintenance**

From February 1 through May 12, 2017 the Minnesota Slip Bridge at the mouth of the Minnesota Slip will be secured to masted navigation. Vessels able to pass under the bridge without an opening may do so at any time.

LNM: 40/16

**SECTION VIII - LIGHT LIST CORRECTIONS**

An Asterisk \*, indicates the column in which a correction has been made to new information

(1) No.	(2) Name and Location	(3) Position	(4) Characteristic	(5) Height	(6) Range	(7) Structure	(8) Remarks
2665	Buffalo Safe Water VAIS	42-50-08.639N 078-55-25.922W					MMSI:993682100 12/17
*	*	*	*	*	*	*	*
3375	CATTARAUGUS CREEK NORTH BREAKWATER LIGHT 1	42-34-18.804N 079-08-17.808W	Fl G 2.5s	31 9	5	SG on pile.	12/17
3380	CATTARAUGUS CREEK SOUTH BREAKWATER LIGHT 2	42-34-21.642N 079-08-22.914W	Fl R 2.5s	31 9	4	TR on pile.	12/17
		*					

## SECTION VIII - LIGHT LIST CORRECTIONS (Continued)

(1) No.	(2) Name and Location	(3) Position	(4) Characteristic	(5) Height	(6) Range	(7) Structure	(8) Remarks	
3410	Dunkirk Light	42-29-38.022N 079-21-14.118W	Oc W 4s	82 25	16		12/17	
		*						
4233	CLEVELAND HARBOR WEST BASIN CHANNEL LIGHT 8	41-29-45.312N 081-43-37.476W	Fl R 6s	31 9	4	TR on post.	Light visible from 210° to 100°. 12/17	
		*						
6040	Maumee Safe Water VAIS	41-50-07.946N 083-10-10.530W					MMSI: 993682101 12/17	
		*						
* 16883	* NOAA Lighted Weather Buoy 45T01	* 48-02-10.000N 087-44-30.000W	* Fl (4)Y 20s	*	* 4	* Yellow disc-shaped hull with tripod mast.	* Maintained from Apr. 1 to Nov. 1. Aid maintained by National Oceanic and Atmospheric Administration.	12/17
*	*	*	*	*	*	*	*	

## ENCLOSURES

**(1) Summary of Dredging**[12-17 Summary Of Dredging.pdf](#)

Construction Operations in Effect

LNM: 14/14

**(2) GREAT LAKES - General - Marine Events**[12-17 Marine Events.pdf](#)

Summary of Marine Events

LNM: 14/14

**(3) WATERWAYS ANALYSIS AND MANAGEMENT SURVEY**[WAMS Doc.pdf](#)   [AIS ATON Announcement II.pdf](#)

Great Lakes WAMS Questionnaire

LNM: 14/14

**(4) BRIDGES**[Bridge Winter Hours.pdf](#)

Bridge Winter Hours

LNM: 07/17

**(5) HARBOR BEACH CHART**[Harbor Beach Chart.pdf](#)

Changes to Federally Maintained Buoys

LNM: 09/17

J. E. RYAN, RADM  
U. S. Coast Guard  
Commander, Ninth Coast Guard District

## SUMMARY OF DREDGING/CONSTRUCTION OPERATION IN EFFECT

The LNM column is where the entry originally appeared and where detailed information may be obtained. The dates listed are tentative.

<u>LOCATION</u>	<u>LNM</u>	<u>SUBJECT</u>	<u>HOURS / DAYS</u>	<u>UNTIL</u>
<b><u>BNEW YORK STATE BARGE CANAL</u></b>				
Erie Canal, NY	19/13	DREDGING OPERATIONS	24 HRS / 7 DAYS	01 May 13 – TBD
Lockport, Brockport, and Fairport, NY	19/13	STABILIZATION OPERATIONS	24 HRS / 7 DAYS	01 May 13 – TBD
Buffalo River, NY	34/14	HABITAT RESTORATION	24 HRS / 7 DAYS	25 Aug 14 – TBD
<b><u>LAKE ONTARIO</u></b>				
None Reported				
<b><u>LAKE ERIE</u></b>				
Cleveland, OH	05/13	CONSTRUCTION	24 HRS / 7 DAYS	29 Jan 13 – TBD
Huron , OH	10/17	DREDGING OPERATIONS	24HRS / 7 DAYS	15 Mar 17- 30 Apr 17
<b><u>DETROIT RIVER</u></b>				
Detroit, MI	33/14	CONSTRUCTION	24 HRS/ 7 DAYS	11 Aug 14- TBD
Grosse Isle, MI	26/16	SHOAL ISTALLATION	24 HRS / 7 DAYS	01 Jul 16 – 31 Dec 17
<b><u>LAKE ST. CLAIR</u></b>				
None Reported				
<b><u>LAKE HURON</u></b>				
None Reported				
<b><u>STRAITS OF MACKINAC</u></b>				
None Reported				
<b><u>ST MARYS RIVER</u></b>				
Sault Se Marie, MI	42/16	CONSTRUCTION	24 HRS / 7 DAYS	18 Oct 16 – 13 May 17
<b><u>LAKE SUPERIOR</u></b>				
Portage Lake, MI	31/13	SEDIMENT REMEDIATION	24 HRS / 7 DAYS	01 Sep 13 – TBD
<b><u>LAKE MICHIGAN</u></b>				

## SUMMARY OF DREDGING/CONSTRUCTION OPERATION IN EFFECT

The LNM column is where the entry originally appeared and where detailed information may be obtained. The dates listed are tentative.

<u>LOCATION</u>	<u>LNM</u>	<u>SUBJECT</u>	<u>HOURS / DAYS</u>	<u>UNTIL</u>
Muskegon, MI	44/16	DREDGING OPERATIONS	24 HRS/ 7 DAYS	28 Oct 16- 01 May 17
Calumet River, MI	47/16	CONSTRUCTION	24 HRS/ 7 DAYS	17 Aug 17 -01 Sep 17
Fox River	10/17	DREDGING	M-SAT/0700 – 1900	20 Mar 17 – 13 Nov 17

**GREAT LAKES - GENERAL – MARINE EVENTS – SAFETY ZONES – SECURITY ZONES**

Events listed below are those events that may have accompanying special local regulations.

<b>Location</b>	<b>LNМ</b>	<b>EVENTS</b>	<b>Dates</b>	<b>Time (Local)</b>	<b>POC or Sponsor</b>	<b>Number</b>
<b><u>LAKE ONTARIO</u></b>						
Oneida Lake	08/17	39 <sup>th</sup> Lions Club Walleye Derby	06-May17 – 07 May 17	0005-1500	Bruce Hull	315-427-3670
Genesee River	08/17	SMP Rochester River Challenge	29 Apr 17	0730-1100	Nicole Mau	585-794-6193
Genesee River(mouth)	08/17	Memorial DayFleet Review	29 May 17	1450-1900	Daniel Peck	585-820-5799
Genesee River(mouth)	08/17	Junior Sail Club	19 Jun 17 – 18 Aug 17	0930-1600	Daniel Peck	585-820-5799
Genesee River	11/17	High School Sailing Program	20 Mar 17–10 Nov 17	0800-1900	Liam Faudree	585-314-9760

**LAKE ERIE**

Buffalo, NY	11/17	BYC Creat Race	09 Jun 17 – 11 Jun 17	0900-1930	Timothy Hunt	716-440-7108
Buffalo, NY	11/17	Buffalo River Fest	17 Jun 17	1100-1500	Peg Overdorf	716-553-8350
Buffalo, NY	11/17	Buffalo Harbor Sailing Club Races	15 May 17 – 20 Sep 17	1800-2130	Thomas Hunt	716-570-2291

**DETROIT RIVER, LAKE ST CLAIR, AND ST CLAIR RIVER**

NSTR

**LAKE HURON**

NSTR

**LAKE SUPERIOR**

NSTR

**ST MARYS RIVER**

NSTR

**STRAITS OF MACKINAC**

NSTR

**LAKE MICHIGAN**

NSTR

## U.S. Coast Guard to Test Automatic Identification System (AIS) Aids to Navigation (ATON)

In the near future, the U.S. Coast Guard and other authorized agencies and organizations (i.e., U.S. Army Corps of Engineers, Marine Exchange of Alaska) will begin transmitting AIS ATON messages and marine safety information via AIS for testing and evaluation. The exact content, location, and times of these broadcasts will be announced in future Local Notices to Mariners.

AIS is an internationally adopted radio communication protocol that enables the autonomous and continuous exchange of navigation safety related messages amongst vessels, lifeboats, aircraft, shore stations, and aids to navigation (AIS ATON). AIS ATON stations broadcast their presence, identity (9-digit Marine Mobile Service Identity (MMSI) number), position, and status at least every three minutes or as needed. These broadcasts can originate from an AIS station located on an existing physical aid to navigation (Real AIS ATON) or from another location (i.e., AIS Base Station). An AIS Base Station signal broadcasted to coincide with an existing physical aid to navigation is known as a Synthetic AIS ATON. An electronically charted, but non-existent as a physical aid to navigation, is identified as a Virtual AIS ATON. The latter two can be used to depict an existing aid to navigation that is off station or not watching properly or to convey an aid to navigation that has yet to be charted. All three variants can be received by any existing AIS mobile device, but they would require an external system for their portrayal (i.e., AIS message 21 capable ECDIS, ECS, radar, PC). How they are portrayed currently varies by manufacturer, but the future intention is for the portrayal to be in accordance with forthcoming International Standards (i.e., IEC 62288 (Ed. 2), IHO S-4 (Ed. 4.4.0)).

Mariners capable of receiving and displaying these test AIS messages are encouraged to provide feedback and report any anomalies to the USCG NAVCEN Website: <http://www.navcen.uscg.gov> | Contact Us Tab | Subject: AIS | Category: AIS Testing.

---

### Example of Local Notice to Mariners Chart Corrections for AIS ATONs

#### Chart Correction for *Real AIS ATON*

<b>12326</b>	<b>52nd Ed.</b>	<b>01-JUNE-13</b>	<b>Last LNM: 53/13</b>	<b>NAD 83</b>		<b>LNM/14</b>
<i>Chart Title: Approaches to New York</i>						
ADD		Magenta circle AIS Chart No. 1: S17.2 to ABC Channel Lighted Whistle Buoy A and			CGD 40-27-27.991N	073-50-12.228W
CHANGE		Characteristic to RW "A" Mo (A) WHIS Racon ( " ) AIS				

#### Chart Correction for *Synthetic AIS ATON*






<b>18649</b>	<b>68th Ed.</b>	<b>01-JUNE-13</b>	<b>Last LNM: 52/13</b>	<b>NAD 83</b>		<b>LNM/14</b>
<i>Chart Title: Entrance to San Francisco Bay</i>						
ADD		Magenta circle AIS Chart No. 1: S17.2 to ABC Approach Lighted Whistle Buoy AB and			CGD 37-44-59.749N	122-41-33.940W
CHANGE		Characteristic to RW "AB" Mo (A) WHIS Racon ( - ) AIS				

#### Chart Correction for *Virtual AIS ATON*

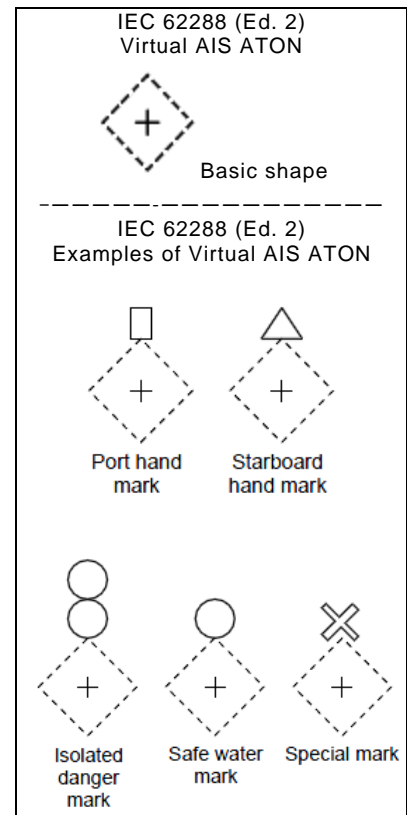
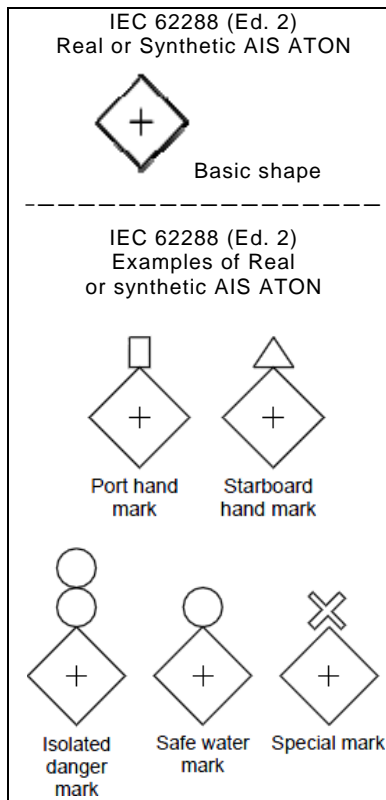
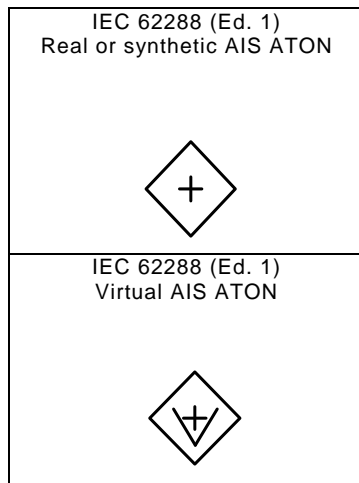
<b>12314</b>	<b>33rd Ed.</b>	<b>01-JUNE-12</b>	<b>Last LNM: 51/13</b>	<b>NAD 83</b>		<b>LNM/14</b>
<i>Chart Title: Delaware River Philadelphia to Trenton</i>						
ADD		ABC Railroad Bridge South Starboard V-AIS ATON Chart No. 1: S18.2		to	CGD 39-58-55.059N	075-04-06.856W
ADD		ABC Railroad Bridge South Port V-AIS ATON Chart No. 1: S18.2		to	38-58-55.803N	076-23-04.547W

---

## Virtual AIS ATON Symbology for Electronic Chart Display and Information System (ECDIS)

Port Lateral (IALA B)	A Virtual object marking the port side of a channel	
Starboard Lateral (IALA B)	A Virtual object marking the starboard side of a channel	
Isolated Danger	A Virtual object marking an isolated danger	
Safe Water	A Virtual object marking safe water	
Special Purpose	A Virtual object used to mark an area or feature referred to in nautical documents	

## AIS ATON Symbology of the International Electrotechnical Commission (IEC) and International Maritime Organization (IMO)





Waterway Analysis and Management System Survey

Name of Waterway: \_\_\_\_\_

User Information

\_\_\_ Commercial User

\_\_\_ Recreational User

Number of years in the maritime industry or number of years using this waterway: \_\_\_\_\_

Number of transits in the waterway per year: \_\_\_\_\_

Number of night transits of waterway: \_\_\_\_\_

Seasonal Dates: Start: \_\_\_\_\_ End: \_\_\_\_\_

Name of Vessel: \_\_\_\_\_

Vessel Description: \_\_\_\_\_

Length: \_\_\_\_\_ Beam: \_\_\_\_\_ Draft: \_\_\_\_\_ Gross Tons: \_\_\_\_\_

Net Tons: \_\_\_\_\_ Bridge Height of Eye: \_\_\_\_\_

Cargo Carried: \_\_\_\_\_

Navigational tools used: (ECDIS/ECPINS, GPS, DGPS, VISUAL, RADAR) \_\_\_\_\_

\_\_\_\_\_  
\_\_\_\_\_  
\_\_\_\_\_

What area do you believe is the most dangerous or difficult to navigate: \_\_\_\_\_

\_\_\_\_\_  
\_\_\_\_\_  
\_\_\_\_\_

Are the floating aids to navigation (lighted and unlighted buoys) adequate for this waterway: \_\_\_\_\_

\_\_\_\_\_

---

---

---

Are the fixed aids to navigation (lights, ranges, lighthouses, daybeacons) adequate for this waterway: \_\_\_\_\_

---

---

---

Are the year round and lighted ice buoys adequate: \_\_\_\_\_

---

---

---

Are there buoys that you feel should be changed to fixed aids to navigation?

---

---

---

---

Are there any buoys that could be eliminated from this waterway: \_\_\_\_\_

---

---

---

Are there any buoys with sound signals that the bell or gong could be removed:

---

---

---

Are there any areas that require additional aids to navigation in this waterway:

---

---

---

Do the nautical charts, Coast Pilot, and Light List meet your needs for this waterway: \_\_\_\_\_

---

---

---

Are there private Aids to Navigation that you find misleading or interfere with the current system in the waterway:

---

---

---

Any addition comments on this waterway: \_\_\_\_\_

---

---

---

---

Thank you for taking time to comment on this waterway. Your input as a mariner very valuable to the U. S. Coast Guard in evaluating waterways to make them safe and as easily navigable as possible. Please feel free to contact Mr. Doug Sharp at [william.d.sharp@uscg.mil](mailto:william.d.sharp@uscg.mil) or (216) 902-6070 with any other questions or concerns about any aids to navigation in the Great Lakes. The survey can be mailed to:

Commander (dpw-2)  
Ninth Coast Guard District  
1240 East Ninth Street  
Cleveland, Ohio 44199

---

Sorted by Chart Number

Authorized Winter Hours for Great Lakes Bridges  
October 15, 2016 - April 30, 2017Enclosure 4  
Last Updated: 05 JAN 2017

Chart Number	Port Name	Bridge Name	Mile	Waterway	Start Date	End Date	Advance Notice	Primary Phone	Secondary Phone	Alternate Phone	Alternate Phone
14815	Rochester	O' Rorke	1.2	Genesee	16-Dec	31-Mar	12-hours	585-753-7720			
14832	Black Rock	Ferry Street	2.6	Black Rock	01-Dec	14-Apr	4-hours	716-866-4323			
14832	Black Rock	Canadian Natl	3.8	Black Rock	41244	41013	4-hours	416-580-3320	289-683-6000	905-788-7502	
14833	Buffalo	Michigan Ave	1.3	Buffalo River	16-Dec	21-Mar	04-hours	716-866-4323			
14833	Buffalo	Ohio St	2.1	Buffalo River	16-Dec	21-Mar	04-hours	716-866-4323			
14836	Ashtabula	Fifth Street	1.38	Ashtabula	41997	41727	12-hours	440-576-2816	440-813-8229	440-536-2941	440-645-9041
14836	Ashtabula	NS RR	1.4	Ashtabula	40877	40634	24-hours	440-992-2257			
14839	Cleveland	Center St	1.39	Cuyahoga	26-Dec	13-Mar	12-hours	216-664-4767	Note 4		216-857-7520
14839	Cleveland	Columbus	1.93	Cuyahoga	26-Dec	13-Mar	12-hours	216-664-4767	Note 4		216-857-7520
14839	Cleveland	West 3rd St	3.69	Cuyahoga	26-Dec	13-Mar	12-hours	216-664-4767	Note 4		216-857-7520
14839	Cleveland	Willow Ave	1.02	Cuyahoga Old	26-Dec	13-Mar	12-hours	216-664-4767	Note 4	See LNM 44/16	216-857-7520
14841	Lorain	Erie Ave	0.6	Black River	01-Jan	40633	12-hours	VHF-FM 16	440-244-2137		
14844	Port Clinton	Monroe St	0.4	Portage River	01-Dec	30-Apr	24-hours	419-373-7053	419-409-0388	419-373-7050	419-373-7066
14844	Port Clinton	Monroe St	0.4	Portage River	01-Dec	30-Apr	24-hours	419-409-0161	419-373-4483	419-409-0110	419-373-7050
14844	Port Clinton	Monroe St	0.4	Portage River	01-Dec	30-Apr	24-hours	419-352-2481			
14844	Port Clinton	NS RR	1.5	Portage River	01-Dec	30-Apr	24-hours	419-697-5077	313-323-5806		
14844	Port Clinton	NS RR	1.5	Portage River	01-Nov	01-Dec	Note 1	419-697-5077	313-323-5806		
14844	Sandusky	NS RR	3.5	Sandusky	01-Dec	31-Mar	24-hours	419-697-5077	313-323-5806		
14844	Sandusky	NS RR	3.5	Sandusky	01-Nov	01-Dec	Note 1	419-697-5077	313-323-5806		
14846	Toledo	CSX RR	1.07	Maumee	21-Dec	31-Dec	04-hours	419-729-4321	419-661-3057	904-359-7551	
14846	Toledo	CSX RR	1.07	Maumee	31-Dec	31-Mar	12-hours	419-729-4321	419-661-3057	904-359-7551	
14846	Toledo	W&LE	1.8	Maumee	21-Dec	31-Dec	04-hours	330-575-2919			
14846	Toledo	W&LE	1.8	Maumee	31-Dec	31-Mar	12-hours	330-575-2919			
14846	Toledo	Craig Mem	3.3	Maumee	40898	40908	04-hours	419-373-7053	419-409-0388	419-373-7050	419-373-7066
14846	Toledo	Craig Mem	3.3	Maumee	40544	40633	12-hours	419-409-0161	419-373-4483	419-409-0110	419-373-7050
14846	Toledo	Craig Mem	3.3	Maumee	40544	40633	12-hours	419-352-2481	All 9 Numbers	for 4-hr or	12-hr notice
14846	Toledo	MLK	4.3	Maumee	40898	40908	04-hours	419-936-3920	419-467-3644	419-467-3558	
14846	Toledo	MLK	4.3	Maumee	40544	40633	12-hours	419-936-3920	419-467-3644	419-467-3558	
14846	Toledo	NS RR	5.76	Maumee	40898	40633	12-hours	419-697-5077	313-323-5806		
14848	St. Clair	M29	0.1	Pine River	01-Dec	31-Mar	24-hours	810-329-7121	810-329-5710		
14848	Detroit	Grosse Ile Free	5.6	Detroit River	41623	41348	12-hours	734-955-2172	888-762-3273	734-576-9607	
14848	Detroit	Grosse Ile Toll	8.8	Detroit River	41623	41348	12-hours	734-282-2914			

Please report listing discrepancies to:  
Lee Soule, Bridge Management Specialist9th Coast Guard District (dpb)  
Cleveland, Ohiolee.d.soule@uscg.mil  
ENCL (4) 216-902-6085

Sorted by Chart Number

Authorized Winter Hours for Great Lakes Bridges  
October 15, 2016 - April 30, 2017

Enclosure 4

Last Updated: 05 JAN 2017

14864	Alpena	2nd Ave	0.3	Thunder Bay	01-Jan	31-Dec	03-hours	989-464-3416			See LNM 23/16
14865	Port Huron	Canadian Natl	1.56	Black River	01-Dec	31-Mar	24-hours	708-332-3160	877-333-7989	248-431-0673	
14865	Port Huron	Military St	0.3	Black River	01-Dec	31-Mar	24-hours	810-985-8115			
14865	Port Huron	Seventh St	0.5	Black River	01-Dec	31-Mar	24-hours	810-985-8115			
14865	Port Huron	Tenth St	0.9	Black River	01-Dec	31-Mar	24-hours	810-985-8115			
14867	Bay City	Lake State RR	3.1	Saginaw	40909	40999	12-hours	989-757-7570	989-387-3941		
14867	Bay City	Canadian Natl	4.94	Saginaw	01-Jan	31-Mar	12-hours	989-529-0952	989-529-0949		
14867	Bay City	Independence	3.88	Saginaw	01-Jan	31-Mar	12-hours	989-450-4975			
14867	Bay City	Liberty	4.99	Saginaw	01-Jan	31-Mar	12-hours	989-450-4975			
14867	Bay City	Veterans Mem	5.6	Saginaw	01-Jan	31-Mar	12-hours	616-558-1040	989-892-8389	989-671-1521	
14867	Bay City	Lafayette	6.78	Saginaw	01-Jan	31-Mar	12-hours	616-558-1040	989-892-8389	989-671-1521	
14884	SOO	Canadian Natl		SOO LOCKS	Note 3	Note 3	Special	906-635-4276	906-630-2203	920-579-6754	
14886	Cheboygan	US23	0.9	Cheboygan	16-Nov	31-Mar	08-hours	231-627-9414	231-238-7775		See LNM 40/15
14906	South Haven	Dyckman Ave	1.9	Black River	15-Oct	30-Apr	12-hours	269-637-5151			
14916	Gills Landing	Canadian Natl	27.8	Wolf River	15-Oct	15-Apr	12-hours	708-332-3893			
14916	Winneconne	Winneconne		Wolf River	15-Oct	15-Apr	12-hours	920-420-2146			
14916	Manasha	HWY Bridges	xx	Fox River	08-Oct	26-Apr	12-hours	920-209-9564			
14916	Oshkosh	Canadian Natl	55.7	Fox River	08-Oct	26-Apr	12-hours	708-332-3893			
14916	Oshkosh	HWY Bridges	xx	Fox River	08-Oct	26-Apr	12-hours	920-420-2146			
14917	Marinette	Ogden-First	0.4	Menominee	01-May	31-Oct	Note 2	715-923-0999			
14917	Marinette	Ogden-First	0.4	Menominee	01-Nov	30-Apr	12-hours	715-923-0999			
14918	Green Bay	Canadian Natl	1.03	Fox River	01-Dec	31-Mar	12-hours	920-572-0398	920-436-5902		
14918	Green Bay	Main Street	1.58	Fox River	01-Dec	31-Mar	12-hours	920-680-4376	920-680-1020		
14918	Green Bay	Walnut Street	1.81	Fox River	01-Dec	31-Mar	12-hours	920-448-3535	920-680-4376	920-680-1020	See LNM 31/16
14918	Green Bay	Tillman Mem.	2.27	Fox River	01-Dec	31-Mar	12-hours	920-448-3535	920-680-4376	920-680-1020	See LNM 31/16
14918	Green Bay	Canadian Natl	3.31	Fox River	01-Dec	31-Mar	12-hours	920-572-0398	920-436-5902		
14919	Sturgeon Bay	Bayview 42/57	3	Sturgeon Bay	01-Dec	14-Mar	12-hours	920-746-0187			
14919	Sturgeon Bay	Maple-Oregon	4.17	Sturgeon Bay	01-Jan	14-Mar	12-hours	920-746-0187			
14919	Sturgeon Bay	Michigan St.	4.3	Sturgeon Bay	01-Jan	14-Mar	12-hours	920-746-0187			
14922	Manitowoc	Eighth Street	0.29	Manitowoc	01-Nov	31-Mar	12-hours	920-686-6550	920-683-4470		
14922	Manitowoc	Tenth Street	0.43	Manitowoc	01-Nov	31-Mar	12-hours	920-686-6550	920-683-4470		
14922	Sheboygan	Eighth Street	0.69	Sheboygan	01-Nov	30-Apr	12-hours	920-980-3106	920-459-3440		
14924	Milwaukee	Broadway St	0.79	Milwaukee	20-Nov	15-Apr	12-Hours	VHF-FM 16	414-286-2575		
14924	Milwaukee	Water St	0.94	Milwaukee	20-Nov	15-Apr	12-Hours	VHF-FM 16	414-286-2575		

Please report listing discrepancies to:  
Lee Soule, Bridge Management Specialist

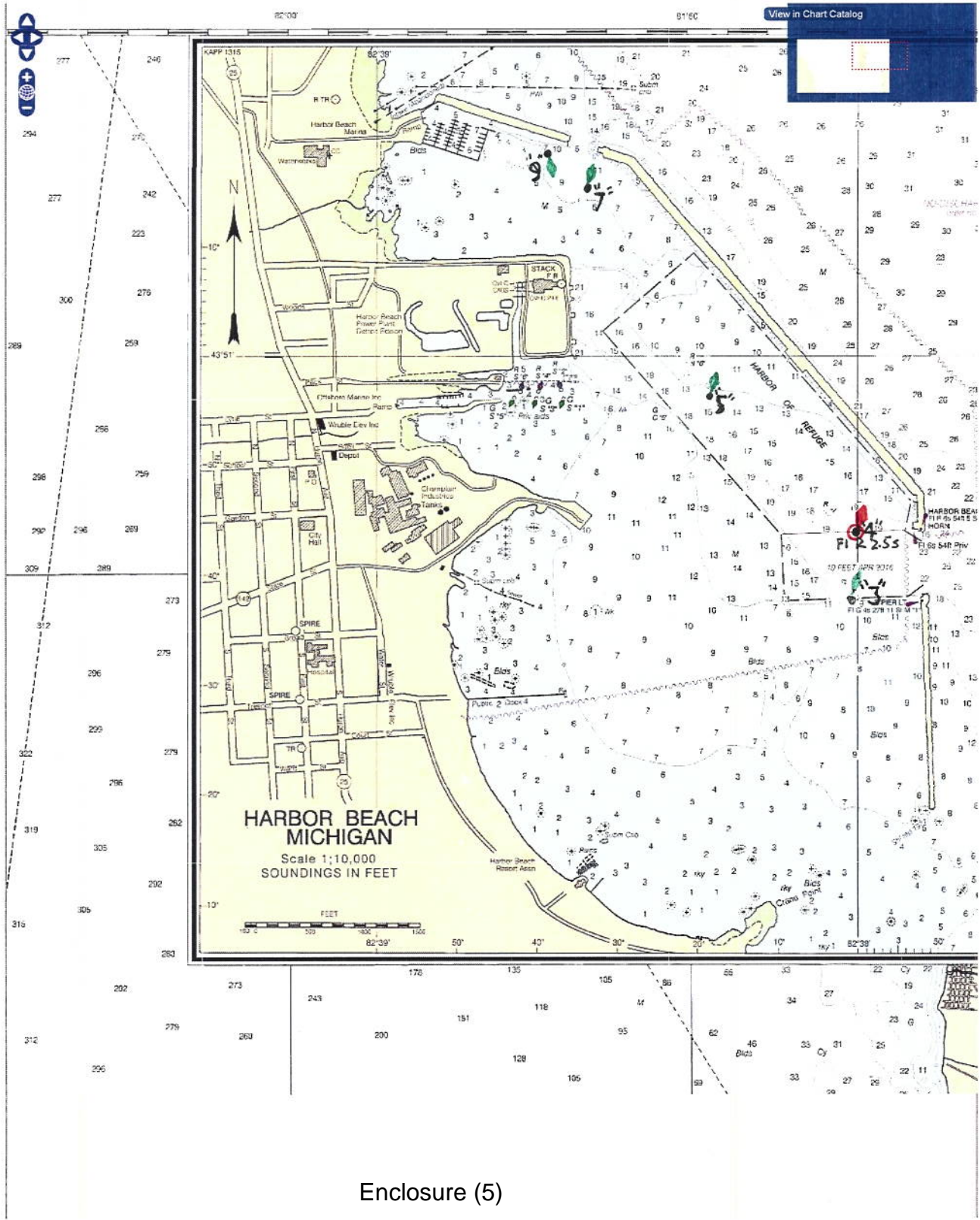
9th Coast Guard District (dpb)  
Cleveland, Ohio

lee.d.soule@uscg.mil  
ENCL (4) 216-902-6085

14924	Milwaukee	St. Paul Ave	1.21	Milwaukee	20-Nov	15-Apr	12-Hours	VHF-FM 16	414-286-2575		
14924	Milwaukee	All City Owned	1.28	Milwaukee	20-Nov	15-Apr	12-Hours	VHF-FM 16	414-286-2575		
14924	Milwaukee	Canadian Pac	1.05	Menominee	20-Nov	20-Apr	12-Hours	414-389-3772	414-207-2779	414-389-3763	
14924	Milwaukee	Canadian Pac	1.67	Kinnickinnic	20-Nov	20-Apr	12-Hours	414-389-3772	414-207-2779	414-389-3763	
14924	Milwaukee	All City Owned	1.08	Menominee	20-Nov	16-Apr	12-Hours	VHF-FM 16	414-286-2575		
14924	Milwaukee	S. Eleventh St	1.96	Burnham	25-Nov	16-Apr	12-Hours	VHF-FM 16	414-286-2575		
14924	Milwaukee	All City Owned	1.67	Kinnickinnic	25-Nov	16-Apr	12-Hours	VHF-FM 16	414-286-2575		
14925	Racine	Main & State		Root River	01-Dec	01-Apr	2-Hours	262-636-9126	262-770-7473		
11-Nov	Michigan City	Franklin St	####	Trail Creek	01-Dec	15-Mar	12-hours	219-362-6205			
14926	Michigan City	Amtrak RR	0.9	Trail Creek	01-Dec	15-Mar	12-hours	269-208-0659	269-591-0474	269-591-0470	269-687-2201
14927	Chicago	All City Owned		Chicago	01-Dec	31-Mar	48-hours*	312-744-4200	312-747-2470	312-744-4280	
14929	Indiana Harbor	Indianapolis	2.59	Ind Hbr C.	02-Nov	28-Mar	12-hours	219-851-1141	219-608-4272	219-851-3944	219-575-2707
14930	St. Joe	CSX RR	0.67	St. Joe	41259	40967	12-hours	616-246-5600	616-246-5675		
14930	St. Joe	Blossomland	0.9	St. Joe	16-Dec	28-Feb	12-hours	269-983-5072	269-370-1870		
14930	St. Joe	Bicentennial	1.3	St. Joe	16-Dec	28-Feb	12-hours	269-926-2215	269-370-1870		
14933	Grand Haven	CSX RR	2.8	Grand River	02-Dec	15-Mar	12-hours	231-788-8392	616-293-0564		
14933	Grand Haven	US 31	2.9	Grand River	15-Dec	15-Mar	12-hours	616-842-1994	616-847-3469	616-842-5400	616-690-6111
14938	Manistee	Maple St	1.1	Manistee	01-Nov	30-Apr	24-hours	231-723-6241			
14938	Manistee	US 31	1.4	Manistee	01-Nov	30-Apr	24-hours	231-723-6241			
14938	Manistee	CSX RR	1.5	Manistee	01-Nov	30-Apr	24-hours	231-723-6241	904-359-7551		
14942	Charlevoix	US 31	0.3	Pine River	01-Jan	31-Mar	12-hours	231-499-8961	231-357-2377		
14972	Keweenaw	US 41	16	Keweenaw	14-Dec	14-Apr	12-hours	906-482-7552			See LNM 44/15
14975	Duluth	Aerial	0.25	Ship Canal	01-Jan	15-Mar	12-hours	218-723-3387	218-343-0395		
14975	Duluth	BNSF\Grassy PT	5.44	St. Louis	19-Dec	01-Jan	12-hours	715-394-1259	715-394-1257		
14975	Duluth	BNSF\Grassy PT	5.44	St. Louis	01-Jan	15-Mar	24-hours	715-394-1259	715-394-1257		
14998	Rainer	Canadian Natl	85	Rainy River	03-Nov	30-Apr	12-hours	218-628-4788			

*****	Hours not	requested yet	
Note 1	0800-1600	Open On Signal	
Note 2	0700-2300	Open On Signal	
Note 3	See	33 CFR 117.653	
*	12-Hours	Commercial	
Note 4	rpliodzinkas@city.cleveland.oh.us		

Enclosure (5)



Enclosure (5)