



U.S. Department
of Homeland Security
**United States
Coast Guard**

LOCAL NOTICE TO MARINERS

District: 9

Week: 18/17

Issued by: Commander (dpw)
Ninth Coast Guard District
1240 East Ninth Street,
Cleveland, OH 44199-2060
Telephone: (216) 902-6069

Direct questions about this LNM to the above address.

All distances in this publication are STATUTE MILES unless otherwise noted.

District Nine Internet Address <https://www.uscg.mil/d9/uscgd9.html>

District Nine Local Notice to Mariners email Address D09-DG-District-D9-LocalNoticetoMariners@uscg.mil

** Navigation Information Service watchstander, 24 hours a day at (703) 313-5900 ** **Internet Address** <https://www.navcen.uscg.gov/>

Light List Reference: Commandant Publication P16502.7, VOL VII, 2016 Edition

Coast Pilot Reference: 2016 U.S. Coast Pilot 6 Great Lakes 46th Edition

Coast Pilots, along with corrections are available at: <http://nauticalcharts.noaa.gov/nsd/cpdownload.htm>

The Local Notice to Mariners is available on the Internet at <https://www.navcen.uscg.gov/?pageName=lnmMain> You will also have links to other government agencies- web pages including the US Army Corps of Engineers and the National Ocean Service.

REPORT DISCREPANCIES IN AIDS TO NAVIGATION TO THE NEAREST COAST GUARD UNIT

The Ninth District and all Sector offices for their areas of responsibility issue a BROADCAST NOTICE TO MARINERS.

The following Broadcast Notice to Mariners have been incorporated into this week's Local Notice to Mariners:

Sector Buffalo, NY - B050-17 through B053-17

Ninth District - C069-17 through C074-17

Sector Detroit, MI - D050-17 through D054-17

Sector Lake Michigan, WI - M115-17 through M128-17

Sector Sault Ste Marie, MI - S052-17 through S057-17

The United States Coast Guard Navigation Information Service (NIS), operated by the USCG Navigation Center, is staffed 24 hours a day, 7 days a week. The NIS provides information on the current operational status, effective policies, and general information for GPS and DGPS. The

NIS also disseminates Safety Broadcasts (BNM), Local Notice to Mariners (LNM), and the latest Notice Advisory to Navstar Users (NANU). NANU notices can be obtained via email subscription through the USCG Navigation Center website: <https://cgls.uscg.mil/mailman/listinfo/nanu> . In addition, the NIS investigates all reports of degradation or loss of GPS, DGPS or AIS service. Users are encouraged to report all degradation or loss of radio navigation services to the NIS via any of the following: Phone: (703) 313-5900, mail to: webmaster@smtp.navcen.uscg.mil, or on the internet at: <https://www.navcen.uscg.gov>

ABBREVIATIONS

A through H

ADRIFT - Buoy Adrift
AICW - Atlantic Intracoastal Waterway
AI - Alternating
B - Buoy
BKW - Breakwater
bl - Blast
BNM - Broadcast Notice to Mariner
bu - Blue
C - Canadian
CHAN - Channel
CGD - Coast Guard District
C/O - Cut Off
CONT - Contour
CRK - Creek
CONST - Construction
DAYMK/Daymk - Daymark

I through O

I - Interrupted
ICW - Intracoastal Waterway
IMCH - Improper Characteristic
INL - Inlet
INOP - Not Operating
INT - Intensity
ISL - Islet
Iso - Isophase
kHz - Kilohertz
LAT - Latitude
LB - Lighted Buoy
LBB - Lighted Bell Buoy
LHB - Lighted Horn Buoy
LGB - Lighted Gong Buoy
LONG - Longitude
LNM - Local Notice to Mariners

P through Z

PRIV - Private Aid
Q - Quick
R - Red
RACON - Radar Transponder Beacon
Ra ref - Radar reflector
RBN - Radio Beacon
REBUILT - Aid Rebuilt
RECOVERED - Aid Recovered
RED - Red Buoy
REFL - Reflective
RRL - Range Rear Light
RELIGHTED - Aid Relit
RELOC - Relocated
RESET ON STATION - Aid Reset on Station
RFL - Range Front Light
RIV - River

DBN/Dbn - Daybeacon
DBD/DAYBD - Dayboard
DEFAC - Defaced
DEST - Destroyed
DISCON - Discontinued
DMGD/DAMGD - Damaged
ec - eclipse
EST - Established Aid
ev - every
EVAL - Evaluation
EXT - Extinguished
F - Fixed
fl - flash
Fl - Flashing
G - Green
GIWW - Gulf Intracoastal Waterway
HAZ - Hazard to Navigation
HBR - Harbor
HOR - Horizontal Clearance
HT - Height

LT - Light
LT CONT - Light Continuous
LTR - Letter
LWB - Lighted Whistle Buoy
LWP - Left Watching Properly
MHz - Megahertz
MISS/MSNG - Missing
Mo - Morse Code
MRASS - Marine Radio Activated Sound Signal
MSLD - Misleading
N/C - Not Charted
NGA - National Geospatial-Intelligence Agency
NO/NUM - Number
NOS - National Ocean Service
NW - Notice Writer
OBSCU - Obscured
OBST - Obstruction
OBSTR - Obstruction
Oc - Occulting
ODAS - Anchored Oceanographic Data Buoy

RRASS - Remote Radio Activated Sound Signal
s - seconds
SEC - Section
SHL - Shoaling
si - silent
SIG - Signal
SND - Sound
SPM - Single Point Mooring Buoy
SS - Sound Signal
STA - Station
STRUCT - Structure
St M - Statute Mile
TEMP - Temporary Aid Change
TMK - Topmark
TRLB - Temporarily Replaced by Lighted Buoy
TRLT - Temporarily Replaced by Light
TRUB - Temporarily Replaced by Unlighted Buoy
USACE - Army Corps of Engineers
W - White
Y - Yellow

Additional Abbreviations Specific to this LNM Edition:

LIB - Lighted Ice Buoy

SECTION I - SPECIAL NOTICES

This section contains information of special concern to the Mariner.

CAUTION TO BE USED IN RELIANCE UPON AIDS TO NAVIGATION

The aids to navigation depicted on charts comprise a system of fixed and floating aids to navigation with varying degrees of reliability. Prudent mariners will not rely solely on any single aid to navigation, particularly a floating aid to navigation. With respect to buoys, the buoy symbol is used to indicate the approximate position of the buoy body and the sinker which secures the buoy to the seabed. The approximate position is used because of the practical limitations in positioning and maintaining buoys and their sinkers in precise geographical locations. These limitations include, but are not limited to, inherent imprecision in position fixing methods, prevailing atmospheric and sea conditions, slope of and the material making up the seabed, the fact that buoys are moored to sinkers by varying length of chain, and the fact that the buoy body and/or sinker positions are not under continuous surveillance, but are normally checked only during periodic maintenance visits which often occur more than a year apart. Due to the forces of nature, the position of the buoy body can be expected to shift inside and outside the charted symbol. The mariner is also cautioned that buoys may be extinguished or sound signals may not function as the result of ice, running ice, or other natural causes, collisions, or other accidents. For the foregoing reasons, a prudent mariner must not rely completely upon the position or operation of floating aids to navigation, but will also utilize bearings from fixed objects and aids to navigation on shore. Further, a vessel attempting to pass close aboard always risks collision with a yawing buoy or with the obstruction that the buoy marks.

LNM: 06/14

IMPORTANT SAFETY NOTICE ABOUT THE RELIABLE OPERATION OF ECDIS

Following an announcement by the International Maritime Organization (IMO) concerning potential display anomalies in some ECDIS systems, the International Hydrographic Organization (IHO) issued an ENC Data Presentation and Performance Check in October 2011. This check is intended to assist mariners and to help determine the extent of the anomalies. IHO has received reports from mariners confirming that a number of ECDIS fail to display some significant underwater features in the "Standard" display mode. For all significant objects to be visible to the mariner, these ECDIS must be operated in "Full display" or "All display" mode until a software upgrade is made available from the manufacturer. Mariners are strongly encouraged to use the IHO ENC Data Presentation and Performance Check issued through ENC service providers and also available directly from the IHO website (www.iho.int) to check the operation of their ECDIS and to determine whether their system is affected. IHO Circular Letter 33/2012 is available on the Coast Guard's Navigation Center website (<https://www.navcen.uscg.gov>) under the heading News and Notices.

LNM: 12/12

ZIKA VIRUS UPDATE

The U.S. Department of Transportation's Maritime Administration (MARAD) has issued MARAD Advisory 2016-03 on the Zika Virus and Impacts on Maritime Commerce. The Advisory can be found at <https://www.marad.dot.gov/newsroom/advisory/2016/marad-advisory-2016-03/>. U.S. flag operators are requested to forward this link to their ships by the most expeditious means.

LNM: 39/16

RANGE STRUCTURES

The U.S. Coast Guard has become aware that Coast Guard information used to depict a rangeline on NOAA Electronic Navigational Charts (ENC) may not be of sufficient accuracy to accurately portray the rangeline on the ENC. Mariners are cautioned that the position of a rangeline as shown on an ENC may not reflect its true position.

LNM: 04/11

USACE NOTICE TO NAVIGATION INTERESTS

Current Federal Channel conditions, shoaling, and the most recent channel surveys are available at the following Army Corps of Engineers web sites:

Buffalo: <http://www.lrb.usace.army.mil/>

Detroit: <http://www.lre.usace.army.mil/>

Chicago: <http://www.lrc.usace.army.mil/>

Rock Island: <http://www.mvr.usace.army.mil/>

LNM: 28/12

THE DATES OF LATEST EDITIONS, NAUTICAL CHARTS AND MISCELLANEOUS MAPS

Up to date information on latest editions, nautical charts and miscellaneous maps can be found at the following web address:

<http://www.nauticalcharts.noaa.gov/>

LNM: 32/13

THE 2017 ELECTRONIC LIGHT LIST

The 2017 Light List is now available.

Coast Guard Light Lists are a means for communicating aids to navigation information to the maritime public. The last government printed Light Lists were the 2014 editions. While the Light Lists will no longer be available in government printed form, commercial reproductions may be available for purchase from maritime service providers. Local Notices to Mariners will continue to advertise Light List corrections and NAVCEN will continue to publish a compilation of corrections.

2017 Light Lists are available on the USCG Navigation Center's website at: <https://www.navcen.uscg.gov/?pageName=lightLists>

Complete versions of the 2017 Light Lists are updated weekly on the NAVCEN website and mariners should download applicable copies and updates as needed at: <https://www.navcen.uscg.gov/?pageName=lightListWeeklyUpdates>.

A summary of 2017 Light List corrections are available at: <https://www.navcen.uscg.gov/?pageName=lightListCorrections>

Guidance for use of electronic navigation publications onboard U.S. vessels can be found at:

http://www.uscg.mil/hq/cgcv/cvc/policy/policy_letters/543/CG-543_pol10-05.pdf

LNM: 04/17

USE OF ELECTRONIC CHARTS AND PUBLICATIONS IN LIEU OF PAPER CHARTS, MAPS, AND PUBLICATIONS

The U.S. Coast Guard has issued Navigation and Vessel Inspection Circular (NVIC) No. 01-16 which contains guidance on the use of electronic charts and publications in lieu of paper charts, maps, and publications. This guidance applies to U.S. flagged vessels subject to U.S. domestic chart, map, and publication carriage requirements contained in Titles 33 and 46 of the Code of Federal Regulations. The NVIC can be viewed at <https://www.uscg.mil/hq/cg5/nvic/default.asp> or <https://cgportal2.uscg.mil/library/directives/SitePages/Home.aspx>.

LNM: 06/16

GREAT LAKES - Great Lakes Water Levels

The expected water levels on the Great Lakes for May 5, 2017. Connecting Channels and the St. Lawrence River, given in inches above (+) or below (-) Low Water Datum (LWD). LWD is a plane of reference used on a navigation chart. It is also known as chart datum.

Great Lakes:

Lake Ontario +54, Lake Erie +48, Lake St. Clair +42, Lake Michigan-Huron +28, Lake Superior +11.

St Lawrence River:

Above Long Sault Dam +59, Above Iroquois Dam +47, Ogdensburg +53, Alexandria Bay +52, Head of River at Cape Vincent +54.

Detroit River:

Lake Erie at Pelee Passage +48, Mouth of River at Gibraltar +48, Fort Wayne +47, Head of River above Belle Isle +43.

St. Clair River:

Mouth of River at St. Clair Flats +42, Algonac +45, St. Clair +36, Blue Water Bridge +35, Head of River at Fort Gratiot +31, Lake Huron Approach Channel +28.

St. Marys River:

Mouth of River at Detour +28, West and Middle Neebish +25, Head of Little Rapids +23, U.S. Slip +22, Above Locks +14, Head of River at Point Iroquois +11.

Available water depth is determined for a location by adding (if +) or subtracting (if -) the amount from the above to the water depth shown on National Oceanic and Atmospheric Administration (NOAA) navigational charts. Caution: Depths so determined are representative of a still water surface elevation, disturbed by neither wind nor other causes. Depth, however, may be reduced or increased as much as several feet for short periods of time due to these disturbances, or when sections of channels develop shoals. Vessel masters should refer to the Local Notice to Mariners for extent of shoaling and scattered bedrock projections in all channels. For further information direct inquires to: Department of the Army, Detroit District Corps of Engineers P. O. Box 1027, Detroit, MI 48231, (313) 226-6443. Additional information can be found on the U.S. Army Corps of Engineers Information Center website at <http://www.lre.usace.army.mil/Missions/GreatLakesInformation/GreatLakesWaterLevels/WaterLevelForecast/ConnectingChannelsForecast.asp>

LNM: 18/17

VIRTUAL AIS ATON (VATON)

The following Virtual AIS ATON have been established:

LAKE ERIE - BUFFALO HARBOR - Chart 14833 VATON Buffalo in approximate position 42-50-08.639N / 078-55-25.922W

LAKE ERIE - TOLEDO HARBOR - Chart 14847

VATON Maumee in approximate position 41-50-07.946N / 083-10-10.530W

LNM: 07/17

LAKE ERIE – NY – Buffalo Ship Canal – Chart 14833

There is a steel I-beam protruding out of the water in approximate position 42-51.640N 078-52.100W. The steel I-beam is marked with a temporary white buoy FL W 4s.

LNM: 17/16

ST CLAIR RIVER - Fort Gratiot to St. Clair Flats - Chart 14852

Water levels on the St. Clair River are above the long term average and pose an increased risk for property damage caused by wake. All vessels greater than 20 meters in length operating in normal displacement mode are reminded to abide by the speed limit of 10.4 knots between Fort Gratiot Light and St. Clair Flats Canal Light.

LNM: 16/17

ST CLAIR RIVER – Flats Canal - Chart 14852

There has been a report of a partially submerged 20 foot long sheet pile platform in the southwest corner of Gull Island in the vicinity of the St. Clair Flats Canal at approximate position 42-31.77N, 082-40.71W. All mariners are requested to transit the area with caution.

LNM: 18/17

LAKE HURON - Harbor Beach Harbor - Chart 14862

Due to shoaling the following changes to Federally maintained buoys in Harbor Beach below can be found on a chart in enclosure(6). These will be seasonal buoys maintained from 01 April to 01 November.

Harbor Beach Buoy "3" (LLNR 10145) move east to approximate position 43-50-38.13N / 082-38-00.00W

Harbor Beach Buoy "4": (LLNR 10150) change to a lighted buoy Fl R 2.5s and move east to approximate position 43-50-43.98N / 082-38-00.07W

Harbor Beach Buoy "5" (LLNR 10155) move northeast to approximate position 43-50-58.69N / 082-38-22.32W

Harbor Beach Buoy "6" (LLNR 10160) permanently discontinue

Harbor Beach Buoy "7" (LLNR 10161) establish in approximate position 43-51-14.12N / 082-38-32.31W

Harbor Beach Buoy "9" (LLNR 10162) establish in approximate position 43-51-19.39N / 082-38-40.98 W

Permanently discontinue the following lighted buoys in Harbor Beach Harbor:

Harbor Beach Marina Lighted Buoy "1" (LLNR 10195)

Harbor Beach Marina Lighted Buoy "3" (LLNR 10200)

LNM: 17/17

LAKE HURON - BAY PORT HARBOR / SAGINAW BAY - Chart 14863

The following buoys located in Bay Port Harbor will be permanently disestablished due to shoaling.

- Bay Port Harbor Buoy "1" (LLNR 10386)
- Bay Port Harbor Buoy "2" (LLNR 10386.1)
- Bay Port Harbor Buoy "3" (LLNR 10387)
- Bay Port Harbor Buoy "4" (LLNR 10387.1)
- Bay Port Harbor Buoy "5" (LLNR 10388)
- Bay Port Harbor Buoy "6" (LLNR 10388.1)

LNM: 12/17

ILLINOIS RIVER - MARSELLES

A partially submerged pile of beams has been reported on the right descending bank near Mile Marker 247.8 in the Illinois River. All mariners are requested to transit the area with caution.

LNM: 10/17

LAKE MICHIGAN - Stony Lake to Point Betsie - Chart 14907

Due to reported shoaling in the entrance to Arcadia Lake, mariners are urged to stay north of the center of the channel. Contact Arcadia Harbormaster on VHF FM Channel 16 for further information. Mariners are requested to transit the area with caution.

LNM: 50/16

LAKE MICHIGAN - MI - Waugoshance Point to Seul Choix Point - Chart 14911

An uncharted object has been reported north of the LCA track lines east of Lansing Shoal in approximate position 45-54.647°N 085-24.970°W. The object appears to be 23-24 feet below the surface at low water datum.

LNM: 30/15

LAKE MICHIGAN - Upper Green Bay - Chart 14909

Baileys Harbor Entrance Lighted Bell Buoy (LLNR 21235) Has been turned on as a Synthetic AIS ATON. The AIS ATON symbol will continue to be transmitted during periods that the seasonal physical aid has been removed.

LNM: 50/16

LAKE MICHIGAN - MI - Grand River - Chart 14931

Due to inclement weather a delay is anticipated in the commissioning of the following Aids-to-Navigation:

- Grand River Lighted Buoy "4" (LLNR 19005)
- Grand River Buoy "55" (LLNR 19190)
- Grand River Buoy "57" (LLNR 19195)
- Grand River Buoy "59" (LLNR 19200)
- Grand River Buoy "60" (LLNR 19205)
- Grand River Buoy "62" (LLNR 19210)
- Grand River Buoy "64" (LLNR 19215)
- Grand River Buoy "66" (LLNR 19220)
- Grand River Buoy "67" (LLNR 19225)
- Grand River Buoy "68" (LLNR 19230)
- Grand River Buoy "69" (LLNR 19235)
- Grand River Buoy "71" (LLNR 19240)
- Grand River Buoy "72" (LLNR 19245)
- Grand River Buoy "74" (LLNR 19250)
- Grand River Buoy "76" (LLNR 19255)
- Grand River Danger Buoy (LLNR 19260)

LNM: 15/17

LAKE MICHIGAN - IL – Calumet River – 14929 - Obstruction

An obstruction is protruding approximately 15 feet into the channel from the Morton Salt Dock at river mile 331.5 on the Calumet River. Mariners are advised to use caution and avoid transiting near the left descending wall.

LNM: 06/17

LAKE MICHIGAN - GREEN BAY / LOWER FOX RIVER - Chart 14916

The following buoys located in the Fox River will not be commissioned as advertised in the Light List due to dredging. Once dredging is complete

the buoys will be placed on station.

- Green Bay City Buoy "2" (LLNR 22280)
- Green Bay City Buoy "4" (LLNR 22285)
- Green Bay City Buoy "6" (LLNR 22290)
- Green Bay City Buoy "7" (LLNR 22295)
- Green Bay City Buoy "8" (LLNR 22300)

LNM: 12/17

LAKE MICHIGAN - LOWER GREEN BAY - Chart 14910

Suamico Lighted Buoy "8" (LLNR 22060) will not be commissioned as advertised in the Light List due to shoaling. The buoys commissioning will be reevaluated upon completion of a survey of this waterway.

LNM: 12/17

LAKE SUPERIOR - GRAND PORTAGE TO SHESHEEB POINT - Chart 14968

Establish a prototype NOAA Weather Lighted Buoy "45T01" in position 48-02-10N / 087-44-30W. The characteristic of the light will be Fl (4)Y 20s with a 4 statute mile range. The buoys location will approximately 3 statute miles ESE of NOAA Buoy "45001" (LLNR 16880). The buoy will be seasonal from April 1 to November 1.

LNM: 12/17

LAKE SUPERIOR - Keweenaw Waterway - Chart 14971

The Coast Guard has received a report of two vessels that sunk on the Keweenaw Waterway, MI, in vicinity of of the steel sheet pile wall on the west side of the channel at approximate location 46-59.307N, 088-26.189W. Mariners should proceed with caution in the area.

LNM: 15/17

SECTION II - DISCREPANCIES

This section lists all reported and corrected discrepancies related to Aids to Navigation in this edition. A discrepancy is a change in the status of an aid to navigation that differs from what is published or charted.

DISCREPANCIES (FEDERAL AIDS)

LLNR	Aid Name	Status	Chart No.	BNM Ref.	LNM St	LNM End
2090	Oswego Harbor Inner Buoy 1	OFF STA	14813	B022-17	13/17	
3770	Ashtabula Harbor Junction Lighted Buoy A	LT EXT	14836	B046-17	16/17	
4630	Sandusky Straight Channel Range Rear Light	DAYMK MISSING	14842	D051-17	18/17	
5375	Middle Harbor Shoal Lighted Buoy 1	LT EXT	14842	D053-17	18/17	
6765	Inner Light (C)	LT EXT		B225-16	01/17	
7165	Grosse Ile South Channel Range Front Light	LT EXT	14853	D003-17	04/17	
8400	Peche Island Range Front Light	RAC INOP	14853	D016-17	11/17	
8595	Pier Light X32/2 (C)	LT IMCH			06/17	
9725	Russell Island Light	DAYMK DMGD	14853	D023-17	12/17	
9870	Courtright Light (C)	LT EXT		D074-16	23/16	
11400	Alpena Channel Buoy 2	MISSING	14864	S056-17	18/17	
11770	Fourteen Foot Shoal Buoy 3	OFF STA	14881	S019-17	05/17	
12607	St. Ignace Coast Guard Slip Light	LT EXT/STRUCT DMGD	14881	S033-17	12/17	
13165	Sailors Encampment Channel Lighted Buoy 25	OFF STA	14887	S055-17	18/17	
13280	Middle Neebish South Range Rear Light	DAYMK MISSING	14887	S052-17	17/17	
13340	Middle Neebish Channel Light 58	DAYMK MISSING	14887	S059-17	18/17	
13475	West Neebish Channel (Downbound) Upper Range Rear Light	DAYMK MISSING	14887	S058-17	18/17	

14245	Vidal Shoals Channel Lighted Buoy 2	MISSING	14884	S050-17	17/17
14250	Vidal Shoals Channel Lighted Buoy 3	MISSING	14884	S051-17	17/17
20770	Port Washington Breakwater Light	SS INOP	14904	M126-17	18/17
22180	Green Bay Harbor Entrance Channel Range Front Light	DAYMK MISSING	14918	M098-17	15/17

DISCREPANCIES (FEDERAL AIDS) CORRECTED

LLNR	Aid Name	Status	Chart No.	BNM Ref.	LNM St	LNM End
490	St. Lawrence Seaway Lighted Buoy 77	WATCHING PROPERLY			14/17	18/17
565	St. Lawrence Seaway Lighted Buoy 87	WATCHING PROPERLY			14/17	18/17
590	St. Lawrence Seaway Lighted Buoy 91	WATCHING PROPERLY			14/17	18/17
615	St. Lawrence Seaway Lighted Buoy 93	WATCHING PROPERLY			14/17	18/17
655	St. Lawrence Seaway Lighted Buoy 99	WATCHING PROPERLY			14/17	18/17
665	St. Lawrence Seaway Lighted Buoy 101	WATCHING PROPERLY			14/17	18/17
675	St. Lawrence Seaway Lighted Buoy 103	WATCHING PROPERLY			14/17	18/17
1700	Cape Vincent Breakwater East End Light	WATCHING PROPERLY	14767		18/17	18/17
3870	Fairport Harbor West Breakwater Light	WATCHING PROPERLY	14837		17/17	18/17
4625	Sandusky Straight Channel Range Front Light	WATCHING PROPERLY	14842		35/16	18/17
13525	West Neebish Channel (Downbound) Lighted Buoy 46	WATCHING PROPERLY	14887		18/17	18/17
15565	Devils Island Light	RELIGHTED	14973		18/17	18/17
19800	Calumet Harbor Breakwater South End Light	RELIGHTED	14926		17/17	18/17

DISCREPANCIES (PRIVATE AIDS)

LLNR	Aid Name	Status	Chart No.	BNM Ref.	LNM St	LNM End
4190	Whiskey Island Marina Entrance Light 1	LT IMCH/DAYMK MISSING	14839	B059-16	21/16	
4191	Whiskey Island Marina Entrance Light 2	DAYMK MISSING	14839	B060-16	21/16	
8695	Grosse Point Club Harbor Entrance West Light	LT EXT	14853	D179-15	42/15	
20355	Zion Intake Lighted Buoy A	LT EXT	14904	M089-17	15/17	

DISCREPANCIES (PRIVATE AIDS) CORRECTED

LLNR	Aid Name	Status	Chart No.	BNM Ref.	LNM St	LNM End
------	----------	--------	-----------	----------	--------	---------

None

PLATFORM DISCREPANCIES

Name	Status	Position	BNM Ref.	LNM St	LNM End
------	--------	----------	----------	--------	---------

None

PLATFORM DISCREPANCIES CORRECTED

Name	Status	Position	BNM Ref.	LNM St	LNM End
------	--------	----------	----------	--------	---------

None

SECTION III - TEMPORARY CHANGES and TEMPORARY CHANGES CORRECTED

This section contains temporary changes and corrections to Aids to Navigation for this edition. When charted aids are temporarily relocated for dredging, testing, evaluation, or marking an obstruction, a temporary correction shall be listed in Section IV giving the new position.

TEMPORARY CHANGES

LLNR	Aid Name	Status	Chart No.	BNM Ref.	LNM St	LNM End
4451	Vermilion Museum Lighthouse	DISCONTINUED	14826	B002-16	08/16	
6015	Cooley Canal Front Range Light	DISCONTINUED	14846		11/16	

6016	Cooley Canal Rear Range Light	DISCONTINUED	14846		11/16
15260	Gull Island Light	Reduced Intensity	14973	S085-16	39/16
18450	Manistee North Pierhead Light	Reduced Intensity	14938	M126-16	19/16
18965	Grand Haven South Pierhead Entrance Light	Reduced Intensity	14933	M443-16	40/16
18975	Grand Haven South Pierhead Inner Light	Reduced Intensity	14933	M443-16	40/16
21940	Menominee Pier Light 6	DISCONTINUED	14917	M115-16	44/16

TEMPORARY CHANGES CORRECTED

LLNR	Aid Name	Status	Chart No.	BNM Ref.	LNM St	LNM End
------	----------	--------	-----------	----------	--------	---------

None

PLATFORM TEMPORARY CHANGES

Name	Status	Position	BNM Ref.	LNM St	LNM End
------	--------	----------	----------	--------	---------

None

PLATFORM TEMPORARY CHANGES CORRECTED

Name	Status	Position	BNM Ref.	LNM St	LNM End
------	--------	----------	----------	--------	---------

None

SECTION IV - CHART CORRECTIONS

This section contains corrections to federally and privately maintained Aids to Navigation, as well as NOS corrections.

This section contains corrective actions affecting chart(s). Corrections appear numerically by chart number, and pertain to that chart only. It is up to the mariner to decide which chart(s) are to be corrected. The following example explains individual elements of a typical chart correction.

Chart Number	Chart Edition	Edition Date	Last Local Notice to Mariners	Horizontal Datum Reference	Source of Correction	Current Local Notice to Mariners
12327	91st Ed.	19-APR-97	Last LNM: 26/97	NAD 83		27/97
Chart Title: NY-NJ-NEW YORK HARBOR - RARITAN RIVER						
Main Panel 2245 NEW YORK HARBOR					CGD01	
(Temp)	ADD	NATIONAL DOCK CHANNEL BUOY 3			at 40-41-09.001N	074-02-48.001W
		Green can				
Corrective Action		Object of Corrective Action			Position	

(Temp) indicates that the chart correction action is temporary in nature. Courses and bearings are given in degrees clockw ise from 000 true. Bearings of light sectors are tow ard the light from seaw ard. The nominal range of lights is expressed in nautical miles (NM) unless otherw ise noted.

14824	26th Ed.	01-OCT-03	Last LNM: 08/16	NAD 83		18/17
<i>ChartTitle: Sixteenmile Creek to Conneaut;Conneaut Harbor</i>						
Main Panel 1142 SIXTEEN MILE CREEK TO CONNEAUT. Page/Side: N/A						
CHANGE		tabulation - CONNEAUT HARBOR CHANNEL DEPTHS			NOS	
		http://ocsddata.ncd.noaa.gov/ntm/SupportImage.aspx?ItemID=272620 ;			41-55-53.000N	080-25-14.000W
		tabulation - CONNEAUT HARBOR CHANNEL DEPTHS (NOS NW-26289)				

14830	33rd Ed.	01-MAR-15	Last LNM: 12/17	NAD 83		18/17
<i>ChartTitle: West End of Lake Erie; Port Clinton Harbor; Monroe Harbor; Lorain to Detroit River; Vermilion</i>						
Main Panel 1151 WEST END OF LAKE ERIE. Page/Side: A						
CHANGE		Battle of Lake Erie Lighted Buoy to Fl W 6s			CGD09	
					at 41-44-50.000N	083-02-00.000W

SECTION V - ADVANCE NOTICES

This section contains advance notice of approved projects, changes to aids to navigation, or upcoming temporary changes such as dredging, etc. Mariners are advised to use caution while transiting these areas.

SUMMARY OF ADVANCED APPROVED PROJECTS

Approved Project(s)

None

Project Date

Ref. LNM

Advance Notice(s)

LAKE MICHIGAN - IL - Calumet River - Chart 14929

Calumet Harbor Breakwater South End Light (LLNR 19800) Reduce the range of the FI R 10s light from 14 statute miles to 12 statute miles and reduce the FI W 10s light from 17 statute miles to 13 statute miles. The rotating beacon will be replaced with more reliable LED lanterns. The fog signal will continue to operate by keying microphone five times on VHF-FM channel 83A.

LNM: 13/17

LAKE MICHIGAN - WI - Upper Green Bay - Chart 14909

St. Martin Island Light (LLNR 21450) change the characteristic of the light from AL WR 10s to FI W 10s. The range would be reduced from 18 statute miles to 16 statute miles.

LNM: 31/14

LAKE MICHIGAN - MI - Holland Harbor - Chart 14932

Holland Harbor South Pierhead Light (LLNR 19295) change the characteristic from AL WR 10s to FI R 10s and reduce the range of the light from 17 statute miles to 15 statute miles.

LNM: 39/12

LAKE MICHIGAN - WI - Upper Green Bay - Chart 14909

Boyer Bluff Light (LLNR 21770) reduce the range of the light from 8 statute miles to 6 statute miles.
Eagle Bluff Light (LLNR 21825) reduce the range of the light from 7 statute miles to 6 statute miles.

LNM: 28/15

LAKE SUPERIOR - Duluth Harbor - Chart 14975

Duluth Harbor Breakwater Isolated Danger Buoy (LLNR 15840) Change the seasonally maintained dates from April 21 to December 1 to April 21 to October 15.

LNM: 10/17

SECTION VI - PROPOSED CHANGES

Periodically, the Coast Guard evaluates its system of aids to navigation to determine whether the conditions for which the aids to navigation were established have changed. When changes occur, the feasibility of improving, relocating, replacing, or discontinuing aids are considered. This section contains notice(s) of non-approved, proposed projects open for comment. SPECIAL NOTE: Mariners are requested to respond in writing to the District office unless otherwise noted (see banner page for address).

PROPOSED WATERWAY PROJECTS OPEN FOR PUBLIC COMMENT

Proposed Project(s)

None

Closing

Docket No.

Ref. LNM

Proposed Change Notice(s)

ST LAWRENCE RIVER - Ile St. Regis To/A Croil Islands - Chart 1433(C)

St. Lawrence Seaway Buoy "19" (LLNR 125) permanently discontinue.

LNM: 25/16

ST. CLAIR RIVER - Chart - 14852

Russell Island Light (LLNR 9725) Change the characteristic of the light to FG eliminating the white and green sector. The range of the light will be 8 statute miles.

LNM: 39/16

LAKE HURON - Harrisville to Forty Mile Point - Chart 14864

Alpena Light (LLNR 11370) reduce the range of the light from 12 statute miles to 10 statute miles.

LNM: 39/16

LAKE MICHIGAN - Green Bay - Chart 14917

Menominee Pier Light "6" (LLNR 21940) change the characteristic to FI R 6(1) and reduce the nominal range from 12 statute miles to 10 statute miles.

LNM: 46/16

LAKE MICHIGAN - LOWER GREEN BAY - Chart 14910

Sherwood Point Light (LLNR 22000) change the range of the light from 15 statute miles to 12 statute miles

LNM: 04/17

LAKE MICHIGAN - Algoma to Sheboygan - Chart 14903

Kewaunee Pier Head Light (LLNR 20955) reduce the range of the light from 15 statute miles to 11 statute miles. Permanently discontinue the fog signal.

Algoma Light (LLNR 20975) reduce the range of the light from 15 statute miles to 11 statute miles.

LNM: 52/16

LAKE MICHIGAN - MILWAUKEE HARBOR - Chart 14924

Milwaukee Breakwater Light (LLNR 20635) Reduce the range of the light from 14 statute mile to 13 statute miles.

LNM: 13/17

ST. MARY'S RIVER - MUNUSCONG LAKE TO SAULT STE. MARIE - Chart 14883

Little Rapids Cut Lighted Buoy "98B" (LLNR 14105) Add synthetic AIS ATON to this aid during time that the ice boom is deployed.

LNM: 04/17

LAKE SUPERIOR - DULUTH AND SUPERIOR HARBORS - Chart 14975

Superior Entry South Breakwater Light (LLNR 15595) reduce the range from 22 statute mile to 15 statute miles.

LNM: 13/17

LAKE SUPERIOR - DULUTH AND SUPERIOR HARBORS - Chart 14975

Duluth Harbor South Breakwater Inner Light (LLNR 15860) reduce the range of the light from 18 statute miles to 16 statute miles.

LNM: 13/17

For any comments or questions on these proposed changes please contact:

Mr. Doug Sharp of the Ninth District Aids to Navigation office at (216) 902-6070.

LNM: 30/13

SECTION VII - GENERAL

This section contains information of general concern to the Mariners. Mariners are advised to use caution while transiting these areas.

Waterways Analysis and Management System Study - 2017

The Coast Guard is conducting a Waterways Analysis and Management System Study on the following waterways during 2017. The study focuses on the area's aid to navigation system, waterborne commerce, marine casualty information, emergency response plans, routine and emergency communication capabilities, and future development projects. Any company or individual wishing to comment on the waterway reviews listed below is encouraged to contact the Coast Guard unit listed or email comments to william.d.sharp@uscg.mil. Any comments emailed will be forwarded to the appropriate unit for use in the WAMS project. A survey is attached to the Local Notice to Mariner and can be used to comment on these reviews or on any waterways located in the Great Lakes.

Sackets Harbor (LLNR 1755 - 2024.9)
Oswego Harbor (LLNR 2025 - 2140)
Sodus Bay (LLNR 2145 -2275)
Buffalo Black Rock Canal (LLNR 2665 - LLNR 3360)
Dunkirk Harbor (LLNR 3365 - LLNR 3492)
Commander
Sector Buffalo
1 Fuhrmann Blvd.
Buffalo, N.Y. 14203
(716) 843-9524

Cleveland Harbor (LLNR 3975 - LLNR 4260)
Lorain Harbor (LLNR 4265 - 4429)
Sandusky Harbor/Moseley Channel (LLNR 4560 - LLNR 5030)
Lake St. Clair Main Channel (LLNR 8400 - LLNR 8660)
Huron Harbor (LLNR 4430 - LLNR 5455)
Commanding Officer
USCGC Bristol Bay (WTGB 102)
110 Mt. Elliot Avenue

Waterways Analysis and Management System Study - 2017

Detroit, Mi. 48207
(313) 568-9548

Boundary Waters / Lake of the Woods (LLNR 16925 - LLNR 17715)
Commander
Sector Sault Ste. Marie
337 Water St.
Sault Ste. Marie, Mi. 49783
(906) 635-3270

St. Joseph/Benton Harbor (LLNR 19515 - LLNR 19625)
Sheboygan Harbor (LLNR 20805 - LLNR 20840)
Manitowoc Harbor (LLNR 20842 - LLNR 20985)
Commander
U. S. Coast Guard Sector Lake Michigan
2420 South Lincoln Memorial Drive
Milwaukee, WI 53207
(414) 747-7188

Duluth/Superior Harbors (LLNR 15595 - LLNR 16250)
Grand Traverse Bay (LLNR 17855 - LLNR 18366)
Commanding Officer
USCGC Alder (WLB 216)
1201 Minnesota Avenue
Duluth, Mn. 55802
(218) 529-3131

Straits of Mackinaw Eastern Section
(LLNR 11720 - LLNR 11775)
(LLNR 12175 - LLNR 12215)
(LLNR 12535 - LLNR 12650)
Burns Harbor (LLNR 19575 - LLNR 19625)
Commanding Officer
USCGC Mackinaw (WLBB 30)
632 Coast Guard Drive
Cheboygan, MI 49721
(231) 597-2030

LNM: 10/17

GREAT LAKES - Marine Events

Marine events such as races, parades, regattas, and fireworks displays are frequently held in the Great Lakes region. Advance information on specific events is contained in enclosure (2) of this publication. The public is reminded to listen to the local broadcast notice to mariners for the most up-to-date information on a marine event. Mariners are advised that some events may require temporary aids to navigation that are not displayed on a chart or in the Light List, and that they should exercise additional caution while operating in the vicinity of a scheduled marine event.

LNM: 24/13

LAKE ONTARIO – NY –Rochester Harbor – Chart 14815 – Bridge Special Event

From 0730 to 1430 on September 17, 2017 the O'Rourke Bridge at Mile 1.25 over the Genesee River will be secured to masted navigation in conjunction with the Rochester Marathon. Vessels able to pass under the bridge without an opening may do so at any time.

LNM: 07/17

LAKE Ontario – NY – Braddock Bay – Chart 14805

The Wesson Group, LLC, will be conducting dredging operations in Braddock Bay beginning April 1, 2017 and continuing until September 1, 2017. Dredges can be reached VIA VHF Channel 16. Operation will take place 0700 thru 1900 Monday thru Friday. Hydraulic dredge and associated dredge lines will be present in Braddock Bay. Significant construction activity is expected during Spring and Summer months. All mariners are urged to transit these areas with extreme caution. Questions or for further details, contact Matt Schuler at (315) 525-7184.

LNM: 13/17

LAKE ERIE – NY – Niagara River – Chart 14822 – Bridge Maintenance

From July 10, 2016 through May 18, 2019 scaffolding that extends approximately 6 feet below low steel will be installed under the Peace Bridge at Mile 1.5 over the Black Rock Canal. Amber lights will mark the bottom and four corners of the scaffolding hanging below low steel. Scaffolding under the bridge over the Niagara River will remain above low steel.

LNM: 16/15

LAKE ERIE – NY – Buffalo Harbor – Chart 14833 – Bridge Maintenance

From May 29 through August 25, 2017 the Buffalo Creek Railroad Bridge at Mile 4.39 over the Buffalo River will be secured to masted navigation.

LAKE ERIE – NY – Buffalo Harbor – Chart 14833 – Bridge Maintenance

Vessels able to pass under the bridge without an opening may do so at any time.

LNM: 04/17

LAKE ERIE – Lorain Harbor - Chart 14841

Great Lakes Dock and Materials, LLC will commence repairs of the Muskegon breakwater beginning on April 15, 2017 to May 31, 2017. Hours of operation are 24 hours a day, 7 days a week. Barge Hanna Avery and Tug Fischer Hayden will monitor channels 07 and 16. Mariners are requested to reduce speed and use caution around the operation, for further information contact Joseph Bailey at 231-755-2225 or 231-206-1379.

LNM: 17/17

LAKE ERIE – OH – Maumee River - Chart 14846 – Bridge Replacement

From July 1, 2015 through December 31, 2017, Bridge demolition and construction activities will be performed at the State Route 109 Bridge at Mile 44.4 over the Maumee River near Napoleon, Ohio. Mariners should use caution when transiting the area.

LNM: 20/14

LAKE ERIE – OH – Maumee River - Chart 14846 – Bridge Discrepancy

The Coast Guard has received a report that the lights on the CSX Railroad Bridge at Mile 11.38 over the Maumee River are extinguished.

LNM: 14/15

LAKE ERIE – OH – Cleveland Harbor – Chart 14839 – Bridge Maintenance

From May 15 through September 30, 2017 scaffolding will be installed under the New Inner Belt Freeway Bridge at Mile 3.38 over the Cuyahoga River that extends approximately 5 feet below low steel.

LNM: 16/17

LAKE ERIE – OH – Cleveland Harbor – Chart 14839 – Bridge Discrepancy

The Coast Guard has received a report that the fendering system for the Union Terminal Viaduct at Mile 1.89 over the Cuyahoga River has been destroyed. There are reports of debris from the fendering system floating in the river.

LNM: 47/16

LAKE ERIE – OH – Cleveland Harbor – Chart 14839 – Bridge Special Event

From 0700 to 0930 on May 21, 2017 the Columbus Road Bridge at Mile 1.93 over the Cuyahoga River will be secured to masted navigation in conjunction with the Rite-Aid Marathon. Vessels able to pass under the bridge without an opening may do so at any time.

LNM: 05/17

LAKE ERIE – OH – Rocky River – Chart 14826 – Bridge Maintenance

From January 1 through October 31, 2017 scaffolding that hangs approximately 10 feet below low steel will be installed under the Detroit Road Highway Bridge at Mile 0.7 over the Rocky River. Steady burning amber lights will mark the bottom and four corners of the scaffolding.

LNM: 01/17

LAKE ERIE – OH – Portage River – Chart 14842 – Bridge Maintenance

From October 16, 2017 through October 19, 2017 and again from October 23, 2017 through October 26, 2017 the Monroe Street Bridge at Mile 0.4 over the Portage River at Port Clinton, OH will have one bridge leaf secured to masted navigation and one leaf locked in the fully open to navigation position for the purpose of removing the bridge leafs. The bottom and four corners of the old bridge leaves will be marked with steady burning amber lights until they are completely removed from the waterway. From 0500 on December 1, 2017 to noon on April 1, 2018 the bridge will be secured to masted navigation for the installation of new bridge leaves. The bottom and four corners of the new bridge leaves will be marked with steady burning amber lights until the required permitted navigation lights can be installed. Vessels able to pass under the bridge without an opening may do so at any time.

LNM: 49/16

DETROIT RIVER – MI – Chart 14848 – Availability of Public Notice

All interested parties are notified that a permit amendment application has been received by Commander, Ninth Coast Guard District, from the State of Michigan, for approval of location and plans for the construction of a fixed highway bridge over a navigable waterway of the United States.

WATERWAY AND LOCATION: Gordie Howe International Bridge, Mile 16.7, Detroit River, City of Detroit, in Wayne County, Michigan, and City of Windsor, Ontario Province, Canada.

CHARACTER OF WORK: Construction of a fixed highway bridge over Detroit River. The Coast Guard previously issued Bridge Permit P(1-14-9) for the proposed project on 30 May 2014. Condition #7 of Bridge Permit P(1-14-9) stated that Coast Guard approval of the project shall cease and be null and void unless construction of the bridge is commenced within three years and completed within five years after the date of this permit. As construction of the bridge related portions of the proposed project are not expected to start until 2018 the applicant is requesting an extension of time for the commencement and/or completion of construction activities related to the proposed bridge. This permit amendment application has been submitted as a design-build project. The location, alignment, and minimum navigation clearances remain unchanged from those previously approved on 30 May 2014 through Bridge Permit P(1-14-9).

MINIMUM NAVIGATIONAL CLEARANCES: The minimum vertical navigation clearances have been designated by the Coast Guard to be no less than

DETROIT RIVER – MI – Chart 14848 – Availability of Public Notice

133.0-feet at the shorelines and no less than 152.0-feet for the center mid-channel width of 100.0-feet. This permit amendment application has been submitted as a design-build project. For the actual proposed vertical navigation clearances visit the U.S. Coast Guard Navigation Center's web site: <http://www.navcen.uscg.gov/?pageName=pnBridges&Active=1®ion=9> . No bridge piers will be located in the Detroit River giving unlimited horizontal clearance between shorelines.

ENVIRONMENTAL CONSIDERATIONS: The Federal Highway Administration, the lead federal agency for purposes of the National Environmental Policy Act (NEPA), has reviewed and re-evaluated the Final Environmental Impact Statement and Record of Decision (ROD) approving the project on 17 January 2017.

FOR MORE INFORMATION INCLUDING INSTRUCTIONS ON PROVIDING COMMENTS: The complete public notice including a brief summary of project impacts, a map of the location, and plans for the proposed bridge can be viewed and printed from the U.S. Coast Guard Navigation Center's web site <http://www.navcen.uscg.gov/?pageName=pnBridges&Active=1®ion=9> , or by calling, emailing or mailing a request to the Coast Guard project manager, Mr. Blair Stanifer. He can be contacted by telephone at (216) 902-6086, by mail at Commander (dpb), Ninth Coast Guard District, 1240 E. 9th St., Cleveland, OH 44199, or by email at William.b.stanifer@uscg.mil . Comments received will be made part of the case record.

All federal, state and local agencies and public representatives are requested to submit an email address(s) to the project manager to obtain this public notice and announcements of future public notices from this office.

Interested parties are requested to express their views, in writing, on the proposed bridge project giving sufficient detail to establish a clear understanding of their reasons for support or opposition to the proposed work. Comments will be received for the record at the office of: Commander (dpb), Ninth Coast Guard District, 1240 E. 9th St, Cleveland, OH 44199, for a 30 day period from the date of the public notice.

Mariners are requested to comment on the proposed vertical and horizontal navigational clearances and any other navigational safety issues including the extent of nighttime navigation past the bridge site.

LNM: 14/17

DETROIT RIVER - MI - Belle Isle - Chart 14848

The SS St. Claire a 200ft long 70ft wide ferry boat will be temporally moored on the outside seawall of Harbor Hill Marina, Detroit River, North of Belle Isle. The SS St. Claire will eventually be move inside the marina permanently. The vessel will be lit at night. Mariners are requested to transit the area with caution.

LNM: 49/16

DETROIT RIVER – MI – Trenton Channel – Chart 14848

E.C. Korneffol Company will be conducting soil borings at the north end of the Trenton Channel west shoreline and west of point Hennepin from January 01, 2017 to May 31, 2017. Hours of operation will be 5 days a week from 0700 to 1900. Captain Keith will be monitoring channels 13 and 16. For futher information contact Bruce Kresslern at 734-676-2131.

LNM: 06/17

DETROIT RIVER – MI – River Rouge – Chart 14848 – Bridge Maintenance

From May 1 through May 27, 2017 between the hours of 0700 and 1730 Monday through Saturday the Fort Street Bridge at Mile 2.20 over the River Rouge will require a 4 hour advance notice for openings. Vessels should provide advance notice by calling: 313-842-4791.

LNM: 18/17

DETROIT RIVER – MI – River Rouge – Chart 14854 – Bridge Maintenance

From February 4, 2017 through January 31, 2018 scaffolding that hangs approximately 3 feet below low steel will be installed under the Fisher Freeway I-75 Bridge at Mile 1.85 over the River Rouge. Steady burning amber lights will be installed on the bottom of the scaffolding to warn mariners of the temporary reduction in vertical clearance. Snooper trucks may also be used at the bridge. Spotters will warn of approaching vessels and move the man lifts to allow vessels to pass under the bridge.

LNM: 48/16

DETROIT RIVER – MI – River Rouge – Chart 14854 – Bridge Schedule

from April 1, 2017 through September 1, 2017 the Delray Connecting Railroad Bascule Bridge at Mile 0.34 and the Delray Connecting Railroad Swing Bridge at Mile 0.80, both over the River Rouge Old Channel will require a 4-hour advance notice for openings. Mariners should provide advance notice directly to the drawtender on VHF-FM Marine channel 12 or by calling: 313-600-5643 or 313-498-5700 or 815-671-2194 or 248-789-9355.

LNM: 14/17

ST CLAIR RIVER – MI – Black River – Chart 14853 – Bridge Maintenance

From November 15, 2017 through March 31, 2018 the 10th Street Bridge at Mile 0.94 over the Black River will be secured to masted navigation. Vessels able to pass under the bridge may do so at any time.

LNM: 11/17

LAKE HURON – MI – Alpena Harbor – Chart 14864 – Bridge Maintenance

From October 11, 2016 through June 10, 2017 the Second Avenue Highway Bridge at Mile 0.4 over the Thunder Bay River at Alpena, MI will be rehabilitated. From October 11 through November 8, 2016 the bridge will require a 12-hour advance notice for openings. Mariners should provide

LAKE HURON – MI – Alpena Harbor – Chart 14864 – Bridge Maintenance

advance notice by calling 989-464-3416. From November 9, 2016 through June 10, 2017 the bridge will be secured to masted navigation. Vessels able to pass under the bridge without an opening may do so at any time. From December 12, 2016 through February 3, 2017 scaffolding that extends approximately 3 feet below low steel will be installed under the bridge. Steady burning amber lights will be displayed on the bottom and four corners of the scaffolding. Periodically during this project a barge will be used at the bridge.

LNM: 50/16

LAKE MICHIGAN – WI – Sturgeon Bay Ship Canal – Chart 14919 – Bridge Operations

The Coast Guard is modifying the operating regulation that governs the Bayview (State Route 42/57) Bridge, Mile 3.0, Maple-Oregon Bridge, Mile 4.17, and Michigan Street Bridge, Mile 4.3, all over Sturgeon Bay Ship Canal in Sturgeon Bay, WI, to allow testing of the remote operation equipment for all three drawbridges. The operating schedules are not changing but the drawbridges will be remotely operated by a single tender stationed at the Maple-Oregon Bridge throughout the 2017 navigation season. The Coast Guard requests comments from all stakeholders on the safety and effectiveness of the remote operation arrangement. To view the interim rule, published in the Federal Register (33 FR 11151) on February 21, 2017 please visit: <https://www.gpo.gov/fdsys/pkg/FR-2017-02-21/html/2017-03346.htm>. Comments and related material must reach the Coast Guard on or before December 1, 2017. To submit comments go to <http://www.regulations.gov>, type [USCG-2017-0050] in the "SEARCH" box and click "SEARCH." Click on Open Docket Folder on the line associated with this rulemaking. If you have questions on this interim rule, call or e-mail Mr. Lee Soule, Bridge Management Specialist, Ninth Coast Guard District; telephone 216-902-6085, or email: Lee.D.Soule@uscg.mil

LNM: 05/17

LAKE MICHIGAN – IL – Chicago River – Chart 14927 – Bridge Maintenance

From October 23, 2015 through May 22, 2017 one leaf of the Lake Street Bridge at Mile 1.64, CORPS MILE 325.5, over the South Branch of the Chicago River will be secured to masted navigation.

LNM: 35/16

LAKE MICHIGAN – IL – Chicago River – Chart 14927 – Bridge Discrepancy

The Coast Guard has received a report that the dolphins near the location of the former Polk Street Bridge at Mile 2.16 over the South Branch of the Chicago River and the former Erie Street Bridge at Mile 2.21 over the North Branch of the Chicago River are a hazard to navigation.

LNM: 21/16

LAKE MICHIGAN – IL – Chicago River– Chart 14927 – Bridge Maintenance

February 6 through August 18, 2017, between the hours of 0700 and 1700 Monday through Friday a 125 foot by 35 foot barge will be working under the Clark Street Bridge at Mile 1.21 (CORPS MILE 326.0) over the Main Branch of the Chicago River. The Barge will monitor VHF-FM Marine Channel 16 and will move to accommodate vessels if a 1-hour advance notice is provided by calling 312-747-2470.

LNM: 05/17

LAKE MICHIGAN – IL – Chicago River – Chart 14927 – Bridge Maintenance

From March 1, 2016 through June 1, 2017, Monday through Saturday, 0700 to 1700 and 2200 to 0500 daily, a 120 foot by 55 foot or smaller barges will be working at the Adams Street Bridge at Mile 2.08, CORPS MILE 325.1, over the South Branch of the Chicago River. The barges will move if provided a 30 minute advance notice of arrival on VHF-FM Marine Channel 16 or by calling: 708-560-1870 or 708-975-5597.

LNM: 17/17

LAKE MICHIGAN – IL – Chicago River – Chart 14927 – Bridge Discrepancy

The Coast Guard has received a report that the following bridges over the Main, North, and South Branches of the Chicago River have lights showing improper characteristics, obstructed, missing, or lights that are extinguished:

Michigan Avenue Bridge at Mile 0.85
Grand Avenue Bridge at Mile 2.00

LNM: 10/17

LAKE MICHIGAN – IL – Chicago River – Chart 14927 – Bridge Maintenance

From March 6 through June 12, 2017 between the hours of 0700 and 1600 Monday through Friday a 140 foot by 40 foot barge will be positioned under one end of the Madison Street Bridge at Mile 1.90 (CORPS MILE 325.3) over the South Branch of the Chicago River. The barge will move if a 30 minute advance notice is provided on VHF-FM Marine Channel 16.

LNM: 04/17

LAKE MICHIGAN - IL – Calumet-SAG Channel - Chart 14927 - Bridge Inspection

From May 9 through May 11, 2017 between the hours of 0800 and 1500 daily inspectors will use snoopers trucks under the Ashland Avenue Bridge at Mile 13.98 (CORPS MILE 319.0) over the Calumet-SAG Channel. Spotter will warn of approaching vessels and move the man lift to allow vessels to pass.

LNM: 18/17

LAKE MICHIGAN – Milwaukee River - Chart 14924

W.E. Energies will be conducting drilling operations at various places on the Milwaukee River from the confluence of the Kinnickinnic River and the Milwaukee River to the confluence of the Menominee River. The drilling will begin on 01 May 17 and conclude 19 May 17. The barge will be unable to make way for other vessels due to drilling operations. For further information, contact USCG Sector Lake Michigan at 414-747-7182

LAKE MICHIGAN – Milwaukee River - Chart 14924

LNM: 18/17

LAKE MICHIGAN – WI – Milwaukee Harbor – Chart 14924 – Bridge Maintenance

From April 17 through May 22, 2017 one leaf of the Water Street Bridge at Mile 0.94 over the Milwaukee River will be secured to masted navigation and the other leaf will remain operational. Scaffolding will be installed under the secured leaf that hangs approximately 5 feet below low steel.

LNM: 15/17

LAKE MICHIGAN – WI – Milwaukee Harbor – Chart 14924 – Bridge Marine Event

From 0700 to 1130 on June 4, 2017 the Broadway Street Bridge at Mile 0.79 over the Milwaukee River and the Kinnickinnic Avenue Bridge at Mile 1.67 over the Kinnickinnic River will be secured to masted navigation in conjunction with the Ride for the Arts event.

LNM: 02/17

LAKE MICHIGAN – WI – Milwaukee Harbor – Chart 14924 – Bridge Marine Event

From 0630 to 0830 on June 10, 2017 the Broadway Street Bridge at Mile 0.79 over the Milwaukee River and the Kinnickinnic Avenue Bridge at Mile 1.67 over the Kinnickinnic River will be secured to masted navigation in conjunction with the Summerfest Rock N' Sole Run event.

LNM: 02/17

LAKE MICHIGAN – WI – Milwaukee Harbor – Chart 14924 – Bridge Marine Event

From 2130 on June 28 to 0100 on June 29 all bridges from Mile 0.79 to Mile 1.46 over the Milwaukee River will be secured to recreational masted navigation in conjunction with the Big Bang Fireworks Event.

LNM: 02/17

LAKE MICHIGAN – WI – Milwaukee Harbor – Chart 14924 – Bridge Marine Event

From 2130 on June 29 to 0100 on June 30, 2017 all bridges from Mile 0.79 to Mile 1.46 over the Milwaukee River will be secured to recreational masted navigation in conjunction with the Summerfest Event.

LNM: 02/17

LAKE MICHIGAN – WI – Milwaukee Harbor – Chart 14924 – Bridge Marine Event

From 2130 on July 3 to 0100 on July 4, 2017 all bridges from Mile 0.79 to Mile 1.46 over the Milwaukee River will be secured to recreational masted navigation in conjunction with the US Bank Fireworks Event

LNM: 02/17

LAKE MICHIGAN – WI – Milwaukee Harbor – Chart 14924 – Bridge Marine Event

From 2300 to 0100 nightly from July 4 to July 9, 2017 all bridges from Mile 0.79 to Mile 1.46 over the Milwaukee River will be secured to recreational masted navigation in conjunction with the Second Summerfest Event.

LNM: 02/17

LAKE MICHIGAN – WI – Milwaukee Harbor – Chart 14924 – Bridge Marine Event

From 2200 to midnight, nightly from July 21 to July 23, 2017 the Broadway Street Bridge at Mile 0.79 and the Water Street Bridge at Mile 0.94, both over the Milwaukee River will be secured to masted navigation in conjunction with the Festa Italiana event.

LNM: 02/17

LAKE MICHIGAN – WI – Racine Harbor – Chart 14925 – Bridge Special Event

on July 4, 2017, between the hours of 0745 and 1130 and again between the hours of 2130 and 2230 the Main Street Bridge at Mile 0.31 and the State Street Bridge at Mile 0.53, both over the Root River will be secured to masted navigation in conjunction with the City 4th of July Festival and fireworks.

LNM: 11/17

LAKE MICHIGAN – IN – Indiana Harbor, Chart 14929 – Bridge Underwater Hazard

The Coast Guard has received a report of an underwater obstruction near the position of the former Canal Street Bridge at Mile 1.88 over the Indiana Harbor Canal.

LNM: 01/14

LAKE MICHIGAN – IN – East Chicago – 14926

A 30' x 120' spud barge will be positioned inside the breakwall at the East Chicago Marina in Lake County, IN from November 29, 2016 to May 29, 2017 for the removal and replacement of a floating dock system. The harbor and marina will remain fully closed for the duration of the project.71.7

LNM: 48/16

LAKE MICHIGAN – WI – Manitowoc Harbor – Chart 14922 – Bridge Special Event

On June 11, 2017 between the hours of 0700 and 1400 the Eighth Street Bridge at Mile 0.29 will be secured to masted navigation in conjunction with the HFM Boston Qualifier Marathon. Vessels able to pass under the bridge without an opening may do so at any time.

LNM: 12/17

LAKE MICHIGAN –WI – Lower Fox River – Chart 14918 – Bridge Maintenance

From May 1, 2018 through September 29, 2018 scaffolding will be installed under the Allouez and Ashwaubenon Bridge at Mile 5.02 over the Fox River that extends approximately 10 feet below low steel.

LNM: 16/17

LAKE MICHIGAN – WI – Lower Fox River – Chart 14918 – Bridge Maintenance

From July 15, 2016 through May 15, 2017 from 0630 to 1600 Monday through Friday two 40 foot by 40 foot barges will be working at the Walnut Street Bridge at Mile 1.81 and the Tillemans Memorial Bridge at Mile 2.27 both over the Fox River at Green Bay, WI. The barges will move to allow vessels to pass. The barges may be contacted on VHF-FM Marine Channel 16 or by calling: 262-422-4741 or 262-366-9558. From January 15, 2017 through March 31, 2017 both bridges will be secured to masted navigation. Vessels able to pass under the bridges without an opening may do so at any time.

LNM: 29/16

LAKE MICHIGAN – WI – Lower Fox River – Chart 14918 – Bridge Special Event

From 0800 to 1330 on May 21, 2017 the Main Street Bridge at Mile 1.58 over the Fox River will be secured to masted navigation in conjunction with the Green Bay Cellcom Marathon. Vessels able to pass under the bridge without an opening may do so at any time.

LNM: 07/17

LAKE MICHIGAN – WI – FOX RIVER – Chart 14918

Dredging operations on the Fox River in Green Bay will begin March 20, 2017 and continue until November 13, 2017. The Dredges "Mark Anthony," "Ottawa River," and "Ashtabula" will all work in the area immediately north of the Highway 172 Bridge extending to the area immediately south of the Interstate 43 Bridge. Dredges can be reached VIA VHF Channel 16. Operation will take place 24/7 0700 Monday thru 0700 Saturday. Equipment pipelines may be floating or submerged and are marked with appropriate buoys. All mariners are urged to transit these areas with extreme caution and pay close attention to the red and green channel marker buoys and floating construction zone signage. Questions or for further details, contact Coast Guard Sector Lake Michigan at (414) 747-7182 or VIA VHF Channel 16.

LNM: 12/17

LAKE MICHIGAN – WI – Fox River - Chart 14916 – Bridge Construction

From October 2, 2014 through November 30, 2018 an 80 foot by 50 foot and a 40 foot by 40 foot barge will be constructing the new State Highway 441 Little Lake Buttes des Morts Bridge at Mile 36.0 over the Fox River at Menasha, WI. A 30 foot wide channel will be maintained through the main navigational draws. Amber lights will mark the low steel of both bridges and red lights will mark the cofferdams around the new piers. The barges will be lighted in accordance with the Navigation Rules.

LNM: 40/14

LAKE MICHIGAN – WI – Upper Fox River – Chart 14916 – Bridge Maintenance

From June 1, 2017 through September 28, 2018 scaffolding that hangs approximately 10 feet below low steel will be installed under the STH 441, Appleton Tri County Expressway at mile 28.06 over the Fox River at Appleton Wisconsin. Steady burning amber lights will warn mariners of the temporary reduction in clearance.

LNM: 45/16

LAKE MICHIGAN – WI – Upper Fox River – Chart 14916 – Bridge Special Event

The following bridges will be secured to masted navigation during the dates and times noted. Vessels able to pass under the bridges without an opening may do so at any time.

Oshkosh Marathon on April 30, 2017

Main Street Bridge at Mile 55.97 over the Fox River from 0600 to 1315.

Wisconsin Street Bridge at Mile 56.72 over the Fox River from 0645 to 1215.

Congress Avenue Bridge at Mile 58.01 from 0745 to 1230.

Race the Lake on Aug. 20, 2017.

Main Street Bridge at Mile 55.97 over the Fox River from 0600 to 0800.

Racine Street Bridge at Mile 37.91 over the Fox River from 0645 to 1000.

Winnebago County Triathlon on August 27, 2017

Wisconsin 116 Bridge at Mile 12 over the Wolf River at Winneconne from 0715 to 1100.

LNM: 45/16

LAKE MICHIGAN –WI – Upper Fox River – Chart 14918 – Bridge Discrepancy

The Coast Guard has received a report that the Law Avenue Bridge at Mile 23.89 over the Fox River at Kaukauna Wisconsin is stuck in the closed position. Vessels able to pass under the bridge without an opening may do so at any time.

LNM: 17/17

LAKE MICHIGAN – Muskegon Harbor - Chart

Great Lakes Dock and Materials, LLC will commence repairs of the Lorain Harbor outer beginning on April 3, 2017 to May 31, 2017. Hours of operation are 24 hours a day, 7 days a week. Barge Jacquelyn and Tug Duluth will monitor channels 18 and 16. Mariners are requested to reduce speed and use caution around the operation, for further information contact Joseph Bailey at 231-755-2225 or 231-206-1379.

LNM: 17/17

LAKE MICHIGAN – MI – South Haven – Chart 14906 - Bridge Maintenance

From October 3, 2016 through June 30, 2017 four 62 foot by 51 foot barges will be working under the Blue Star Memorial Highway at mile 2.2 over the Black River at South Haven, MI. A 20 foot wide channel will be maintained for vessels to pass under the bridge.

LNM: 37/16

LAKE MICHIGAN –MI – Grand Haven – Chart 14933 – Bridge Special Event

From 2200 on July 4 to 0200 on July 5, 2017 the US 31 Bridge at Mile 2.89 over the Grand River will be secured to masted navigation in conjunction with the City's 4th of July Celebration. Vessels able to pass under the bridge without an opening may do so at any time.

LNM: 15/17

LAKE MICHIGAN –MI – Grand Haven – Chart 14933 – Bridge Special Event

From 2200 on August 5 to 0200 on August 6, 2017 the US 31 Bridge at Mile 2.89 over the Grand River will be secured to masted navigation in conjunction with the Coast Guard Day Celebration. Vessels able to pass under the bridge without an opening may do so at any time.

LNM: 15/17

LAKE MICHIGAN – MI – Little Bay de Noc – Chart 14915 – Bridge Replacement

From June 16, 2017 through August 31, 2019, the SR 2 Bridge immediately below the dam of the Escanaba River will be replaced. Contractors will build temporary causeways with amber lights spaced every 100 feet during the construction of the new bridge and the removal of the old bridge. A 50 foot opening will be maintained so vessels may pass through the construction area. The contractor will mark any temporary obstructions to navigation with amber lights.

LNM: 11/17

LAKE MICHIGAN –MI – St. Joseph and Benton Harbor – Chart 14933 – Bridge Special Event

From 1000 to 1600 on May 6, 2017 the Twin Cities Bicentennial Bridge at Mile 1.30 over the Saint Joseph River will be secured to masted navigation in conjunction with the Twin Cities Floral Parade and Run. Vessels able to pass under the bridge without an opening may do so at any time.

LNM: 15/17

LAKE MICHIGAN – MI – Muskegon Harbor – Chart 14934

M.C.M. Marine Inc , will be conducting dredging operations in Muskegon, MI. Operations will commence APR 1st 2017 thru May 15th, 2017. The hours of operation are 24 hours a day and seven days a week. Vessels navigating the area should first contact Dredge A.J & Tug Madison on VHF-FM Channel 16 & 79. For further information contact Darwin J. McCoy at (906) 632-4316.

LNM: 14/17

LAKE MICHIGAN - IL - WILMETTE HARBOR - Chart 14926

Dredging operations in Wilmette Harbor will begin April 10, and continue until pproximately May 10, 2017. A flat top dredge and hopper dredge will be working and can be reached via VHF channel 16. Operations will take place Monday through Friday from 8:00am to 5:00pm. All mariners are urged to transit the area with caution. Questions or for further details, contact Wilmette Harbormaster at (843) 251-4234.

LNM: 13/17

LAKE MICHIGAN - Des Plaines River

A coffer dam will be positioned along the right descending bank of the Des Plaines River at river mile 287 to replace the river wall in Joliet, IL from April 17, 2017 to September 29, 2017. Vessels are asked not to tie-off in this area and to transit at a no wake speed.

LNM: 15/17

LAKE SUPERIOR – MI – St. Marys River – Chart 14884

Roen Salvage Company will commence repairs of the West Center Pier extending 300' W. of Railroad Bridge. Two 50' barges will be moored at the pier 24 hours per day. All fenders will be removed, divers will be working at the pier, avoid use of side thrusters. Coordinate movement with Soo Locks lockmaster. Work will continue into December 2016 as weather permits, then resume in April 2017. Tug Stephen M. Asher and Tug Charles Asher will monitor channels 7 and 14 (Soo Locks). For further information contact Don Sarter at 920-493-5322

LNM: 42/16

LAKE SUPERIOR – MI – Houghton Hancock – Chart 14972 – Bridge Maintenance

From March 16, 2017 through June 15, 2017, the U.S. 41 Bridge at Mile 16.0 over the Keweenaw Waterway in Houghton-Hancock, MI will be locked in the intermediate position providing approximately 35 feet of clearance at low water datum. The bridge will open fully on the hour, every hour except at 0800, noon, and 1700, excluding holidays and weekends when the bridge will open fully on the hour every hour for recreational vessels. The bridge will operate on signal for commercial vessels.

LNM: 43/15

LAKE SUPERIOR –MI –Little Girls Point – Chart 14966

Three large concrete erosion control structures have been reported dislodged due to flooding at Omans Creek Boat Launch on Little Girls Point, Michigan of Lake Superior. One structure is reported 10 yards from the shoreline and location of the other two is unknown. Mariners are advised to keep a close lookout and travel at slow speed.

LNM: 30/16

LAKE SUPERIOR – Ashland - Chart 14974

JF Brennan will commence dredging 1000 feet off shore directly east of the Ashland City Marina and directly west of Kreher park boat launch peninsula which is adjacent to the city of Ashland, WI. Operations will commence April 17, 2017 to November 30; 2017 There will be five monitoring buoys on the north side of the break wall within 200 feet. Hours of operation are Monday to Saturday 0600-1800. Mariners are requested to reduce speed and use caution around the dredging operation, for further information contact Brennan Marine Dispatch on VHF ch 9 and 16 or 608-782-3670.

LNM: 17/17

LAKE SUPERIOR –MN – Duluth-Superior Harbor – Chart 14975 – Bridge Maintenance

From January 22, 2018 through March 5, 2018 the Duluth Ship Canal Bridge at Mile 0.25 over the Duluth Ship Canal will be secured to masted navigation. Vessels able to pass under the bridge without an opening may do so at any time.

LNM: 10/17

Duluth Superior Harbor – MN – St. Louis River – Chart 14975 – Bridge Regulation

The Coast Guard proposes to modify the regulations that govern the drawbridges over the St. Louis River at Duluth-Superior Harbor. This waterway borders Minnesota and Wisconsin and is listed under Minnesota as St. Louis River (Duluth-Superior Harbor) and under Wisconsin as Duluth-Superior Harbor (St. Louis River) in the CFR. This proposed rule would affect both regulations. The owner of the Burlington Northern Grassy Point Railroad Bridge at mile 5.44 requested the regulation be updated to include permanent winter operating schedule. This proposed rule would also align river mile numbers with the United States Coast Pilot and delete bridges from the regulations that have been removed from the waterway and make the regulation easier to read and less confusing to the mariner. To see the complete rule go to <http://www.regulations.gov>, type [USCG-2017-0212]. In the "SEARCH" box and click "SEARCH." Click on Open Docket Folder on the line associated with this rulemaking. If you have questions on this rule, call or email Mr. Lee D. Soule, Bridge Management Specialist, Ninth Coast Guard District; telephone 216-902-6085, email Lee.D.Soule@uscg.mil.

LNM: 17/17

LAKE SUPERIOR –MN – Duluth-Superior Harbor – Chart 14975 – Bridge Maintenance

From February 1 through May 12, 2017 the Minnesota Slip Bridge at the mouth of the Minnesota Slip will be secured to masted navigation. Vessels able to pass under the bridge without an opening may do so at any time.

LNM: 40/16

SECTION VIII - LIGHT LIST CORRECTIONS

An Asterisk *, indicates the column in which a correction has been made to new information

(1) No.	(2) Name and Location	(3) Position	(4) Characteristic	(5) Height	(6) Range	(7) Structure	(8) Remarks
5553	<i>Battle of Lake Erie Lighted Buoy</i>	41-44-50.000N 083-02-00.000W	Fl W 6s		5	Red buoy hull with a blue and white vertical tower.	Maintained from Apr. 7 to Nov. 1.
					*		*
6045	<i>Maumee Bay Entrance Lighted Buoy 1</i>	41-49-26.940N 083-11-27.380W	Q G		4	Green.	Replaced by can from Dec. 14 to Apr. 7. AIS MMSI: 993672199
							*

ENCLOSURES

(1) Summary of Dredging

[18-17 Summary Of Dredging.pdf](#)
Construction Operations in Effect

LNM: 14/14

(2) GREAT LAKES - General - Marine Events

[18-17 Marine Events.pdf](#)
Summary of Marine Events

LNM: 14/14

(3) WATERWAYS ANALYSIS AND MANAGEMENT SURVEY

[WAMS Doc.pdf](#) [AIS ATON Announcement II.pdf](#)
Great Lakes WAMS Questionnaire

LNM: 14/14

(4) BRIDGES

[33 CFR part 117.pdf](#)

Bridge Information

LNM: 07/17

(5) HARBOR BEACH CHART

[Harbor Beach Chart.pdf](#)

Changes to Federally Maintained Buoys

LNM: 09/17

J. E. RYAN, RADM
U. S. Coast Guard
Commander, Ninth Coast Guard District

SUMMARY OF DREDGING/CONSTRUCTION OPERATION IN EFFECT

The LNM column is where the entry originally appeared and where detailed information may be obtained. The dates listed are tentative.

<u>LOCATION</u>	<u>LNM</u>	<u>SUBJECT</u>	<u>HOURS / DAYS</u>	<u>UNTIL</u>
<u>BNEW YORK STATE BARGE CANAL</u>				
Erie Canal, NY	19/13	DREDGING OPERATIONS	24 HRS / 7 DAYS	01 May 13 – TBD
Lockport, Brockport, and Fairport, NY	19/13	STABILIZATION OPERATIONS	24 HRS / 7 DAYS	01 May 13 – TBD
Buffalo River, NY	34/14	HABITAT RESTORATION	24 HRS / 7 DAYS	25 Aug 14 – TBD
<u>LAKE ONTARIO</u>				
Braddock Bay, NY	13/17	DREDGING OPERATIONS	0700-1900/ 7 DAY	01Apr 17- 01Sep 17
<u>LAKE ERIE</u>				
Cleveland, OH	05/13	CONSTRUCTION	24 HRS / 7 DAYS	29 Jan 13 – TBD
Lorain, OH	15/17	LORAIN BREAKWATER REPAIR	24HRS / 7 DAYS	03-Apr 17 -31 May 17
<u>DETROIT RIVER</u>				
Detroit, MI	33/14	CONSTRUCTION	24 HRS/ 7 DAYS	11 Aug 14- TBD
Grosse Isle, MI	26/16	SHOAL ISTALLATION	24 HRS / 7 DAYS	01 Jul 16 – 31 Dec 17
<u>LAKE ST. CLAIR</u>				
None Reported				
<u>LAKE HURON</u>				
None Reported				
<u>STRAITS OF MACKINAC</u>				
None Reported				
<u>ST MARYS RIVER</u>				
Sault Se Marie, MI	42/16	CONSTRUCTION	24 HRS / 7 DAYS	18 Oct 16 – 13 May 17
<u>LAKE SUPERIOR</u>				
Portage Lake, MI	31/13	SEDIMENT REMEDIATION	24 HRS / 7 DAYS	01 Sep 13 – TBD
Ashland, WI	17/17	DREDGING	Mon-Sat 0600-1800	17 Apr 17 – 30 Nov 17

SUMMARY OF DREDGING/CONSTRUCTION OPERATION IN EFFECT

The LNM column is where the entry originally appeared and where detailed information may be obtained. The dates listed are tentative.

<u>LOCATION</u>	<u>LNM</u>	<u>SUBJECT</u>	<u>HOURS / DAYS</u>	<u>UNTIL</u>
<u>LAKE MICHIGAN</u>				
Calumet River, MI	47/16	CONSTRUCTION	24 HRS / 7 DAYS	17 Aug 17 -01 Sep 17
Fox River	10/17	DREDGING	M-SAT/0700 – 1900	20 Mar 17 – 13 Nov 17
Muskegon, MI	16/17	MUSKEGON BREAKWATER REPAIRS	24 HRS / 7 DAYS	15 Apr 17 – 31 May 17
Grand Haven, MI	16/17	CONSTRUCTION SOUTH PIER	0600-2000/7 DAYS	14 Apr 17 – 31 Dec 17
Calumet Harbor, IL	16/17	DREDGING	24 HRS / 7 DAYS	17 Apr 17 – 23 Jun 17

GREAT LAKES - GENERAL – MARINE EVENTS – SAFETY ZONES – SECURITY ZONES

Events listed below are those events that may have accompanying special local regulations.

Location	LNМ	EVENTS	Dates	Time (Local)	POC or Sponsor	Number
<u>LAKE ONTARIO</u>						
Oneida Lake	08/17	39 th Lions Club Walleye Derby	06-May17 – 07 May 17	0005-1500	Bruce Hull	315-427-3670
Genesee River(mouth)	08/17	Memorial DayFleet Review	29 May 17	1450-1900	Daniel Peck	585-820-5799
Genesee River(mouth)	08/17	Junior Sail Club	19 Jun 17 – 18 Aug 17	0930-1600	Daniel Peck	585-820-5799
Genesee River	11/17	High School Sailing Program	20 Mar 17–10 Nov 17	0800-1900	Liam Faudree	585-314-9760
St. Lawrence River	16/17	1000 Islands Charity Poker Run	15 Jul 17	1000-1700	Doug Tullock	435-640-0113
<u>LAKE ERIE</u>						
Buffalo, NY	11/17	BYC Creat Race	09 Jun 17 – 11 Jun 17	0900-1930	Timothy Hunt	716-440-7108
Buffalo, NY	11/17	Buffalo River Fest	17 Jun 17	1100-1500	Peg Overdorf	716-553-8350
Buffalo, NY	11/17	Buffalo Harbor Sailing Club Races	15 May 17 – 20 Sep 17	1800-2130	Thomas Hunt	716-570-2291
Tonawanda, NY	15/17	Western New York Poker Run	12-Aug 17	1030-1700	Anthony Scioli	716-510-9669
Buffalo Harbor, NY	16/17	Buffalo Harbor Sailing Club Parade	4 Jul 17	2030-2230	June Crawford	716-860-1445
Black Rock Canal , NY	17/17	John Bennet Regatta	7 May 17	0700-1600	Mike Schwartz	609-780-5561
Cleveland, OH	18/17	Cleveland Race Week	14 Jun 17 – 25 Jun 17	N/A	John Zelli	216-780-8993
Cleveland, OH	18/17	Cleveland Race Week	10 May 17 – 30 Oct 17	N/A	John Zelli	216-780-8993
Erie, NY	18/17	Bay Swim X	17 Jun 17	0900-1130	Patricia Davis	814-450-9526
<u>DETROIT RIVER, LAKE ST CLAIR, AND ST CLAIR RIVER</u>						
Detroit River, MI	17/17	Wy-Hi Rowing Regatta	06 May 17	0730-1700	Tracey Girard	313-568-9564
Detroit River, MI	17/17	Detroit Full Moon Tour (kayak)	9 Jun, 9 Jul, Aug 7, Sep 6	1900-2200	Tracey Girard	313-568-9564
<u>LAKE HURON</u>						
NSTR						
<u>LAKE SUPERIOR</u>						
NSTR						
<u>ST MARYS RIVER</u>						
NSTR						
<u>STRAITS OF MACKINAC</u>						
NSTR						
<u>LAKE MICHIGAN</u>						
Chicago, IL	15/17	Navy Pier Fireworks Display	27 May 17-2 Sep 17	2200-2245 every Sat	MSU Chicago	630-986-2155
Chicago, IL	15/17	Navy Pier Fireworks Display	31 May 17-30 Aug 17	2115-2200 every Wed	MSU Chicago	630-986-2155

GREAT LAKES - GENERAL – MARINE EVENTS – SAFETY ZONES – SECURITY ZONES

Events listed below are those events that may have accompanying special local regulations.

Chicago, IL	1717	Chicago Riverwalk Kick Off Pyro Display	20 May 17	1945-2015	MSU Chicago	630-986-2155
-------------	------	---	-----------	-----------	-------------	--------------

U.S. Coast Guard to Test Automatic Identification System (AIS) Aids to Navigation (ATON)

In the near future, the U.S. Coast Guard and other authorized agencies and organizations (i.e., U.S. Army Corps of Engineers, Marine Exchange of Alaska) will begin transmitting AIS ATON messages and marine safety information via AIS for testing and evaluation. The exact content, location, and times of these broadcasts will be announced in future Local Notices to Mariners.

AIS is an internationally adopted radio communication protocol that enables the autonomous and continuous exchange of navigation safety related messages amongst vessels, lifeboats, aircraft, shore stations, and aids to navigation (AIS ATON). AIS ATON stations broadcast their presence, identity (9-digit Marine Mobile Service Identity (MMSI) number), position, and status at least every three minutes or as needed. These broadcasts can originate from an AIS station located on an existing physical aid to navigation (Real AIS ATON) or from another location (i.e., AIS Base Station). An AIS Base Station signal broadcasted to coincide with an existing physical aid to navigation is known as a Synthetic AIS ATON. An electronically charted, but non-existent as a physical aid to navigation, is identified as a Virtual AIS ATON. The latter two can be used to depict an existing aid to navigation that is off station or not watching properly or to convey an aid to navigation that has yet to be charted. All three variants can be received by any existing AIS mobile device, but they would require an external system for their portrayal (i.e., AIS message 21 capable ECDIS, ECS, radar, PC). How they are portrayed currently varies by manufacturer, but the future intention is for the portrayal to be in accordance with forthcoming International Standards (i.e., IEC 62288 (Ed. 2), IHO S-4 (Ed. 4.4.0)).

Mariners capable of receiving and displaying these test AIS messages are encouraged to provide feedback and report any anomalies to the USCG NAVCEN Website: <http://www.navcen.uscg.gov> | Contact Us Tab | Subject: AIS | Category: AIS Testing.

Example of Local Notice to Mariners Chart Corrections for AIS ATONs

Chart Correction for *Real AIS ATON*

12326	52nd Ed.	01-JUNE-13	Last LNM: 53/13	NAD 83		LNM/14
<i>Chart Title: Approaches to New York</i>						
ADD		Magenta circle AIS Chart No. 1: S17.2 to ABC Channel Lighted Whistle Buoy A and			CGD 40-27-27.991N	073-50-12.228W
CHANGE		Characteristic to RW "A" Mo (A) WHIS Racon (") AIS				






Chart Correction for *Synthetic AIS ATON*

18649	68th Ed.	01-JUNE-13	Last LNM: 52/13	NAD 83		LNM/14
<i>Chart Title: Entrance to San Francisco Bay</i>						
ADD		Magenta circle AIS Chart No. 1: S17.2 to ABC Approach Lighted Whistle Buoy AB and			CGD 37-44-59.749N	122-41-33.940W
CHANGE		Characteristic to RW "AB" Mo (A) WHIS Racon (-) AIS				

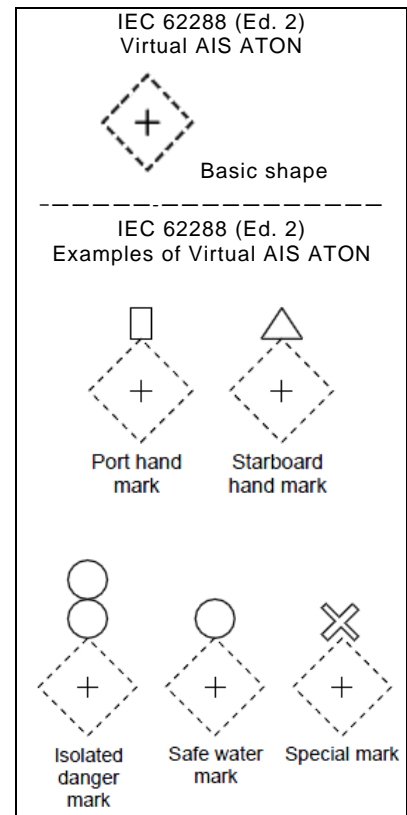
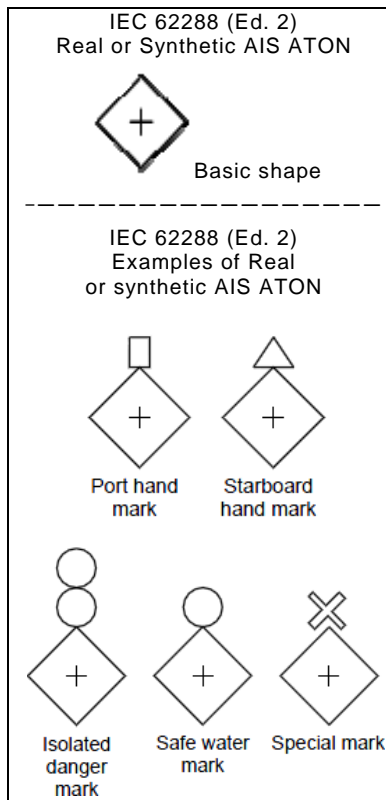
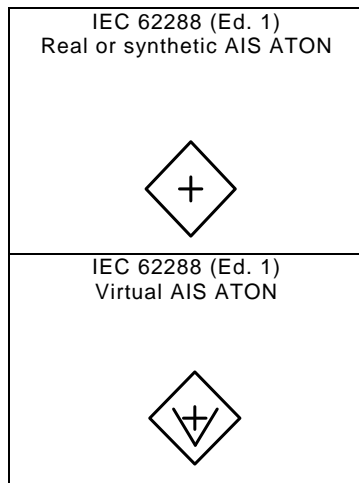
Chart Correction for *Virtual AIS ATON*

12314	33rd Ed.	01-JUNE-12	Last LNM: 51/13	NAD 83		LNM/14
<i>Chart Title: Delaware River Philadelphia to Trenton</i>						
ADD		ABC Railroad Bridge South Starboard V-AIS ATON Chart No. 1: S18.2		to	CGD 39-58-55.059N	075-04-06.856W
ADD		ABC Railroad Bridge South Port V-AIS ATON Chart No. 1: S18.2		to	38-58-55.803N	076-23-04.547W

Virtual AIS ATON Symbology for Electronic Chart Display and Information System (ECDIS)

Port Lateral (IALA B)	A Virtual object marking the port side of a channel	
Starboard Lateral (IALA B)	A Virtual object marking the starboard side of a channel	
Isolated Danger	A Virtual object marking an isolated danger	
Safe Water	A Virtual object marking safe water	
Special Purpose	A Virtual object used to mark an area or feature referred to in nautical documents	

AIS ATON Symbology of the International Electrotechnical Commission (IEC) and International Maritime Organization (IMO)



Waterway Analysis and Management System Survey

Name of Waterway: _____

User Information

___ Commercial User

___ Recreational User

Number of years in the maritime industry or number of years using this waterway: _____

Number of transits in the waterway per year: _____

Number of night transits of waterway: _____

Seasonal Dates: Start: _____ End: _____

Name of Vessel: _____

Vessel Description: _____

Length: _____ Beam: _____ Draft: _____ Gross Tons: _____

Net Tons: _____ Bridge Height of Eye: _____

Cargo Carried: _____

Navigational tools used: (ECDIS/ECPINS, GPS, DGPS, VISUAL, RADAR) _____

What area do you believe is the most dangerous or difficult to navigate: _____

Are the floating aids to navigation (lighted and unlighted buoys) adequate for this waterway: _____

Are the fixed aids to navigation (lights, ranges, lighthouses, daybeacons) adequate for this waterway: _____

Are the year round and lighted ice buoys adequate: _____

Are there buoys that you feel should be changed to fixed aids to navigation?

Are there any buoys that could be eliminated from this waterway: _____

Are there any buoys with sound signals that the bell or gong could be removed:

Are there any areas that require additional aids to navigation in this waterway:

Do the nautical charts, Coast Pilot, and Light List meet your needs for this waterway: _____

Are there private Aids to Navigation that you find misleading or interfere with the current system in the waterway:

Any addition comments on this waterway: _____

Thank you for taking time to comment on this waterway. Your input as a mariner very valuable to the U. S. Coast Guard in evaluating waterways to make them safe and as easily navigable as possible. Please feel free to contact Mr. Doug Sharp at william.d.sharp@uscg.mil or (216) 902-6070 with any other questions or concerns about any aids to navigation in the Great Lakes. The survey can be mailed to:

Commander (dpw-2)
Ninth Coast Guard District
1240 East Ninth Street
Cleveland, Ohio 44199

contact the Coast Guard Patrol Commander to obtain permission to do so. The Captain of the Port Detroit (COTP) or his on-scene representative may be contacted via VHF Channel 16 or at 313—568—9560. Vessel operators given permission to operate within the regulated area must comply with all directions given to them by the COTP or his on-scene representative.

(3) The “on-scene representative” of the COTP Detroit is any Coast Guard commissioned, warrant or petty officer or a Federal, State, or local law enforcement officer designated by or assisting the Captain of the Port Detroit to act on his behalf.

(4) Vessel operators shall contact the COTP Detroit or his on-scene representative to obtain permission to enter or operate within the special local regulation. The COTP Detroit or his on-scene representative may be contacted via VHF Channel 16 or at 313—568—9464. Vessel operators given permission to enter or operate in the regulated area must comply with all directions given to them by the COTP Detroit or his on-scene representative.

Dated: March 20, 2017.

Scott B. Lemasters,

Commander, U.S. Coast Guard, Captain of the Port Detroit.

[FR Doc. 2017-05945 Filed 3-24-17; 8:45 am]

BILLING CODE 9110-04-P

DEPARTMENT OF HOMELAND SECURITY

Coast Guard

33 CFR Part 100

[Docket No. USCG-2017-0094]

Special Local Regulation; Southern California Annual Marine Events for the San Diego Captain of the Port Zone—San Diego Crew Classic

AGENCY: Coast Guard, DHS.

ACTION: Notice of enforcement of regulation.

SUMMARY: The Coast Guard will enforce the San Diego Crew Classic special local regulations on the waters of Mission Bay, California from April 1, 2017 to April 2, 2017. These special local regulations are necessary to provide for the safety of the participants, crew, spectators, sponsor vessels, and general users of the waterway. During the enforcement period, persons and vessels are prohibited from anchoring, blocking, loitering, or impeding within this regulated area unless authorized by the Captain of the Port, or his designated representative.

DATES: The regulations in 33 CFR 100.1101 will be enforced from 7:00 a.m. through 7:00 p.m. from April 1, 2017 to April 2, 2017 for Item 3 in Table 1 of § 100.1101.

FOR FURTHER INFORMATION CONTACT: If you have questions about this publication of enforcement, call or email Lieutenant Robert Cole, Waterways Management, U.S. Coast Guard Sector San Diego, CA; telephone (619) 278-7656, email D11MarineEventsSD@uscg.mil.

SUPPLEMENTARY INFORMATION: The Coast Guard will enforce the special local regulations in 33 CFR 100.1101 for the San Diego Crew Classic in Mission Bay, CA in 33 CFR 100.1101, Table 1, Item 3 of that section from 7:00 a.m. until 7:00 p.m. on April 1, 2017 and April 2, 2017. This enforcement action is being taken to provide for the safety of life on navigable waterways during the event. The Coast Guard’s regulation for recurring marine events in the San Diego Captain of the Port Zone identifies the regulated entities and area for this event. Under the provisions of 33 CFR 100.1101, persons and vessels are prohibited from anchoring, blocking, loitering, or impeding within this regulated area unless authorized by the Captain of the Port, or his designated representative. The Coast Guard may be assisted by other Federal, State, or local law enforcement agencies in enforcing this regulation.

This document is issued under authority of 5 U.S.C. 552 (a) and 33 CFR 100.1101. In addition to this document in the **Federal Register**, the Coast Guard will provide the maritime community with advance notification of this enforcement period via the Local Notice to Mariners, Broadcast Notice to Mariners, and local advertising by the event sponsor.

If the Captain of the Port Sector San Diego or his designated representative determines that the regulated area need not be enforced for the full duration stated on this document, he or she may use a Broadcast Notice to Mariners or other communications coordinated with the event sponsor to grant general permission to enter the regulated area.

Dated: March 10, 2017.

J.R. Buzzella,

Captain, U.S. Coast Guard, Captain of the Port San Diego.

[FR Doc. 2017-06001 Filed 3-24-17; 8:45 am]

BILLING CODE 9110-04-P

DEPARTMENT OF HOMELAND SECURITY

Coast Guard

33 CFR Part 117

[Docket No. USCG-2016-0988]

RIN 1625-AA09

Drawbridge Operation Regulation; Detroit River (Trenton Channel), Grosse Ile, MI

AGENCY: Coast Guard, DHS.

ACTION: Final rule.

SUMMARY: The Coast Guard is modifying the operating schedule of the Grosse Ile Toll Bridge (Bridge Road) at mile 8.8, over Trenton Channel at Grosse Ile, MI by adding permanent winter hours to the current regulation for the waterway. A review of the current regulation was requested by the Grosse Ile Bridge Company, the owner of the Grosse Ile Toll Bridge (Bridge Road).

DATES: This rule is effective April 26, 2017.

ADDRESSES: To view documents mentioned in this preamble as being available in the docket, go to <http://www.regulations.gov>, type [USCG-2016-0988]. In the “SEARCH” box and click “SEARCH.” Click on Open Docket Folder on the line associated with this rulemaking.

FOR FURTHER INFORMATION CONTACT: If you have questions on this rule, call or email Mr. Lee D. Soule, Bridge Management Specialist, Ninth Coast Guard District; telephone 216-902-6085, email Lee.D.Soule@uscg.mil.

SUPPLEMENTARY INFORMATION:

I. Table of Abbreviations

CFR Code of Federal Regulations
 DHS Department of Homeland Security
 E.O. Executive order
 FR Federal Register
 NEPA National Environmental Policy Act of 1969
 NPRM Notice of proposed rulemaking
 RFA Regulatory Flexibility Act of 1980
 SNPRM Supplemental notice of proposed rulemaking
 Pub. L. Public Law
 § Section
 U.S.C. United States Code

II. Background Information and Regulatory History

On December 16, 2016, we published a notice of proposed rulemaking (NPRM) entitled, Drawbridge Operation Regulation; Detroit River (Trenton Channel), Grosse Ile, MI, in the **Federal Register** (81 FR 91086). We did not receive any comments on this proposed rule.

III. Legal Authority and Need for Rule

The Coast Guard is issuing this rule under the authority of 33 U.S.C. 499. The Grosse Ile Toll Bridge (Bridge Road) at mile 8.8, over Trenton Channel at Grosse Ile, MI is a center swing highway bridge that provides a vertical clearance of 10 feet and a horizontal clearance of 126 feet. The bridge provides a crossing between the mainland and Grosse Ile, an island in the Detroit River. The current regulation for Trenton Channel drawbridges (33 CFR 117.631) includes the operating schedules for the Grosse Ile Toll Bridge (Bridge Road) at mile 8.8 and the Wayne County Highway Bridge (Grosse Ile Parkway) Bridge at mile 5.6, both at Grosse Ile, MI. Only the Wayne County Highway Bridge currently has a permanent winter operating schedule that requires 12-hours advance notice from vessels to obtain a bridge opening from December 15 through March 15 each year. A review of the current operating schedule and regulation was requested by the Grosse Ile Bridge Company, owner of the Grosse Ile Toll Bridge (Bridge Road), to allow a permanent winter operating schedule that matches the Wayne County Highway Bridge.

Over the past two winter seasons, the commercial vessel traffic has been reduced significantly and waterway use through Grosse Ile Toll Bridge is equivalent to the volume and type of traffic that passes through the Wayne County Highway Bridge that has had permanent winter hours for approximately 10 years. Mariners will still be able to request bridge openings with 12-hours advance notice during times of light traffic volume on the river due to ice formation that typically prevents most vessel navigation in the channel from December 15 through March 15 each year. Additionally, Commander, Ninth Coast Guard District, has granted annual authorization to the owner/operator of the Grosse Ile Toll Bridge to assume the same schedule during the past 10 years under authority granted in 33 CFR 117.35.

IV. Discussion of Comments, Changes and the Final Rule

The Coast Guard provided a 30 day comment period in the **Federal Register** and solicited comments through the Ninth Coast Guard Local Notice to Mariners for the same 30 days and we did not receive any comments.

The Coast Guard is modifying the operating schedule of the Grosse Ile Toll Bridge (Bridge Road) at mile 8.8, over Trenton Channel at Grosse Ile, MI by adding permanent winter hours and 12-hours advance notice requirement to the

current regulation for the drawbridge. This rule will make the current regulation easier to understand by aligning the winter operating schedules and requirements for both drawbridges over the waterway from December 15 through March 15 each year. At all times both drawbridges over Trenton Channel will be required to open as soon as possible for public vessels of the United States, State or local government vessels used for public safety, and vessels in distress.

V. Regulatory Analyses

We developed this rule after considering numerous statutes and Executive Orders related to rulemaking. Below we summarize our analyses based on a number of these statutes and Executive Orders, and we discuss First Amendment rights of protesters.

A. Regulatory Planning and Review

Executive Orders 12866 and 13563 direct agencies to assess the costs and benefits of available regulatory alternatives and, if regulation is necessary, to select regulatory approaches that maximize net benefits. Executive Order 13563 emphasizes the importance of quantifying both costs and benefits, of reducing costs, of harmonizing rules, and of promoting flexibility. This rule has not been designated a “significant regulatory action,” under Executive Order 12866. Accordingly, it has not been reviewed by the Office of Management and Budget.

This regulatory action determination is based on the ability that vessels can still transit the bridge given advanced notice during the winter when ice typically prevents vessels from transiting the waterway and vessel traffic is at its lowest. Changing the current regulation will align drawbridge operating schedules throughout the waterway harmonizing the regulation and making it easier to understand for the mariners.

B. Impact on Small Entities

The Regulatory Flexibility Act of 1980 (RFA), 5 U.S.C. 601–612, as amended, requires federal agencies to consider the potential impact of regulations on small entities during rulemaking. The term “small entities” comprises small businesses, not-for-profit organizations that are independently owned and operated and are not dominant in their fields, and governmental jurisdictions with populations of less than 50,000. The Coast Guard did not receive any comments from the Small Business Administration on this rule. The Coast Guard certifies under 5 U.S.C. 605(b)

that this rule will not have a significant economic impact on a substantial number of small entities. While some owners or operators of vessels intending to transit the bridge may be small entities, for the reasons stated in section IV.A above this final rule would not have a significant economic impact on any vessel owner or operator because the bridge will open with advance notice.

Under section 213(a) of the Small Business Regulatory Enforcement Fairness Act of 1996 (Pub. L. 104–121), we want to assist small entities in understanding this rule. If the rule would affect your small business, organization, or governmental jurisdiction and you have questions concerning its provisions or options for compliance, please contact the person listed in the **FOR FURTHER INFORMATION CONTACT**, above. Small businesses may send comments on the actions of Federal employees who enforce, or otherwise determine compliance with, Federal regulations to the Small Business and Agriculture Regulatory Enforcement Ombudsman and the Regional Small Business Regulatory Fairness Boards. The Ombudsman evaluates these actions annually and rates each agency’s responsiveness to small business. If you wish to comment on actions by employees of the Coast Guard, call 1–888–REG–FAIR (1–888–734–3247). The Coast Guard will not retaliate against small entities that question or complain about this rule or any policy or action of the Coast Guard.

C. Collection of Information

This rule calls for no new collection of information under the Paperwork Reduction Act of 1995 (44 U.S.C. 3501–3520).

D. Federalism and Indian Tribal Government

A rule has implications for federalism under Executive Order 13132, Federalism, if it has a substantial direct effect on the States, on the relationship between the national government and the States, or on the distribution of power and responsibilities among the various levels of government. We have analyzed this rule under that Order and have determined that it is consistent with the fundamental federalism principles and preemption requirements described in Executive Order 13132.

Also, this rule does not have tribal implications under Executive Order 13175, Consultation and Coordination with Indian Tribal Governments, because it does not have a substantial direct effect on one or more Indian tribes, on the relationship between the

Federal Government and Indian tribes, or on the distribution of power and responsibilities between the Federal Government and Indian tribes.

E. Unfunded Mandates Reform Act

The Unfunded Mandates Reform Act of 1995 (2 U.S.C. 1531–1538) requires Federal agencies to assess the effects of their discretionary regulatory actions. In particular, the Act addresses actions that may result in the expenditure by a State, local, or tribal government, in the aggregate, or by the private sector of \$100,000,000 (adjusted for inflation) or more in any one year. Though this rule will not result in such an expenditure, we do discuss the effects of this rule elsewhere in this preamble.

F. Environment

We have analyzed this rule under Department of Homeland Security Management Directive 023–01 and Commandant Instruction M16475.ID, which guides the Coast Guard in complying with the National Environmental Policy Act of 1969 (NEPA) (42 U.S.C. 4321–4370f), and have made a determination that this action is one of a category of actions which do not individually or cumulatively have a significant effect on the human environment. This rule simply promulgates the operating regulations or procedures for drawbridges. This action is categorically excluded from further review, under figure 2–1, paragraph (32)(e), of the Instruction.

Under figure 2–1, paragraph (32)(e), of the Instruction, an environmental analysis checklist and a categorical exclusion determination are not required for this rule.

G. Protest Activities

The Coast Guard respects the First Amendment rights of protesters. Protesters are asked to contact the person listed in the **FOR FURTHER INFORMATION CONTACT** section to coordinate protest activities so that your message can be received without jeopardizing the safety or security of people, places or vessels.

List of Subjects in 33 CFR Part 117

Bridges.

For the reasons discussed in the preamble, the Coast Guard amends 33 CFR part 117 as follows:

PART 117—DRAWBRIDGE OPERATION REGULATIONS

■ 1. The authority citation for part 117 continues to read as follows:

Authority: 33 U.S.C. 499; 33 CFR 1.05–1; Department of Homeland Security Delegation No. 0170.1.

■ 2. In § 117.631, revise paragraph (a) to read as follows:

§ 117.631 Detroit River (Trenton Channel).

(a) The draw of the Grosse Ile Toll Bridge (Bridge Road), mile 8.8, at Grosse Ile, shall operate as follows:

(1) From March 16 through December 14—

(i) Between the hours of 7 a.m. and 11 p.m., seven days a week and holidays, the draw need open only from three minutes before to three minutes after the hour and half-hour for pleasure craft; for commercial vessels, during this period of time, the draw shall open on signal as soon as possible.

(ii) Between the hours of 11 p.m. and 7 a.m., the draw shall open on signal for pleasure craft and commercial vessels.

(2) From December 15 through March 15, no bridge tenders are required to be on duty at the bridge and the bridge shall open on signal if at least a twelve-hour advance notice is given.

* * * * *

Dated: March 10, 2017.

J.E. Ryan,

Rear Admiral, U.S. Coast Guard, Commander, Ninth Coast Guard District.

[FR Doc. 2017–05998 Filed 3–24–17; 8:45 am]

BILLING CODE 9110–04–P

DEPARTMENT OF HOMELAND SECURITY

Coast Guard

33 CFR Part 117

[Docket No. USCG–2017–0071]

Change Schedule Deviation Dates on Atchafalaya River, Morgan City, LA

AGENCY: Coast Guard, DHS.

ACTION: Notice of temporary deviation from drawbridge regulation; correction.

SUMMARY: The Coast Guard is correcting a regulation that appeared in the **Federal Register** of February 17, 2017. The document issued a temporary deviation from the operating schedule that governs the Morgan City Railroad Bridge across the Atchafalaya River (also known as Berwick Bay), mile 17.5 [Gulf Intracoastal Waterway (Morgan City-Port Allen Alternate Route), mile 0.3] in Morgan City, St. Mary Parish, Louisiana. The document had the incorrect dates in the **SUMMARY, DATES,** and **SUPPLEMENTARY INFORMATION** sections.

DATES: This corrected deviation is effective from 6 a.m. Thursday, April

20, 2017, through 9 p.m. on Friday, April 28, 2017.

FOR FURTHER INFORMATION CONTACT: If you have questions on this notice contact Donna Gagliano, Bridge Administration Branch, Coast Guard, telephone (504) 671–2128, email Donna.Gagliano@uscg.mil.

Correction

1. In the **Federal Register** of February 17, 2017 (82 FR 10960), in FR Doc. 2017–03186, on page 10960, in the second column, third and fourth paragraphs, correct the “Summary” and “Dates” sections by correcting the effective deviation dates to 6 a.m. Thursday, April 20, 2017, through 9 p.m. on Friday, April 28, 2017.

2. On the same page, in the third column, in the third paragraph, correct the **SUPPLEMENTARY INFORMATION** section to read:

“For the purposes of this deviation, the bridge will be allowed to remain in the closed-to-navigation position from 6 a.m. to 1 p.m. each day. From 1 p.m. until 2:30 p.m. the bridge will be opened for the passage of vessels. The bridge will again be closed-to-navigation from 2:30 p.m. to 9 p.m. This schedule will occur for two (2) separate two-day periods, on April 20 through 21, and on April 27 through April 28, 2017. At all other times the bridge will operate in accordance with 33 CFR 117.5.”

Dated: March 22, 2017.

Katia Kroutil,

Chief, Office of Regulations & Administrative Law, U.S. Coast Guard.

[FR Doc. 2017–05977 Filed 3–24–17; 8:45 am]

BILLING CODE 9110–04–P

DEPARTMENT OF HOMELAND SECURITY

Coast Guard

33 CFR Part 117

[Docket No. USCG–2017–0225]

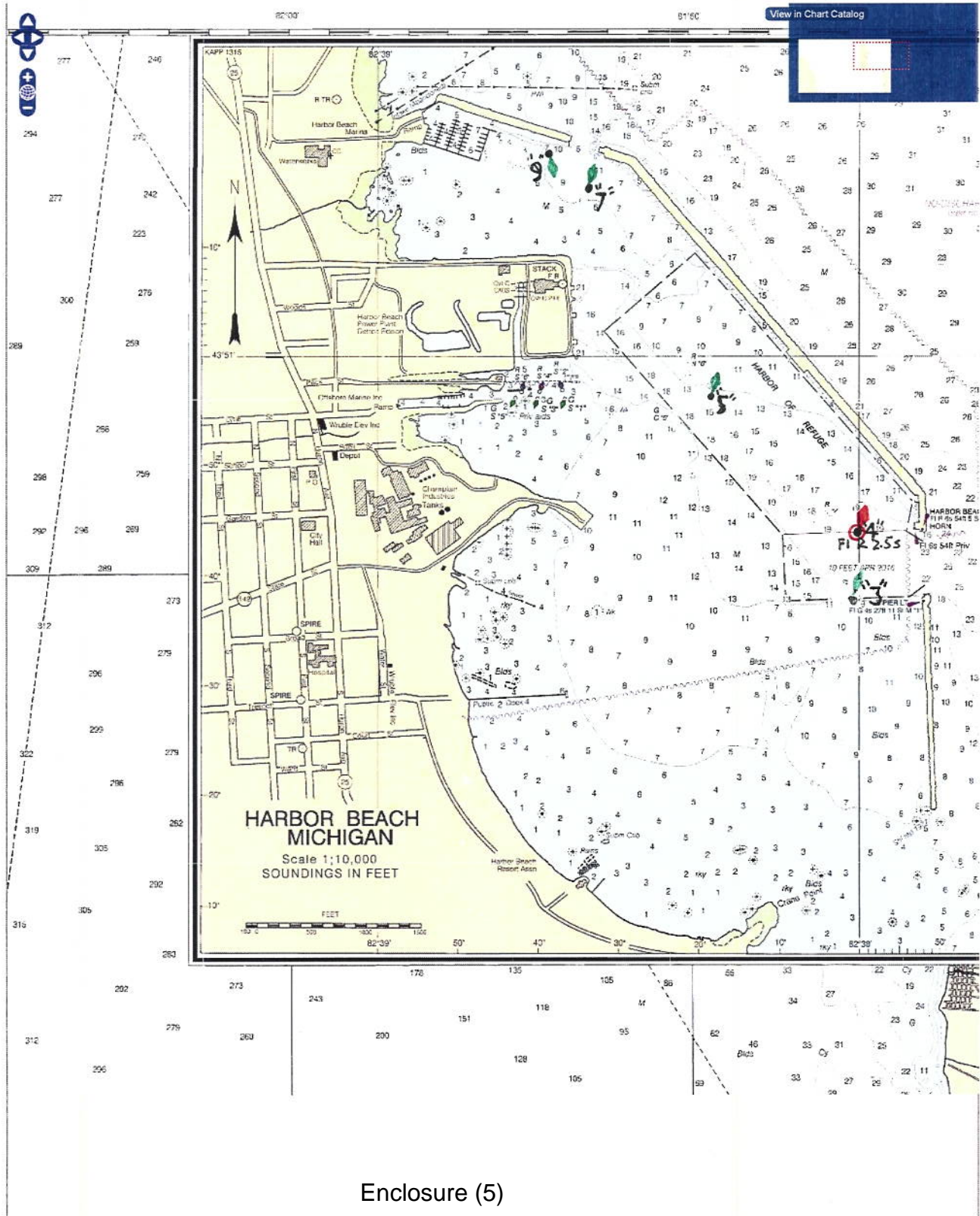
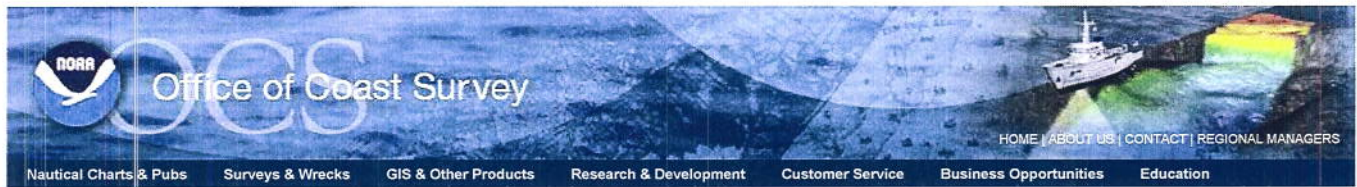
Drawbridge Operation Regulation; Curtis Creek, Baltimore, MD

AGENCY: Coast Guard, DHS.

ACTION: Notice of deviation from drawbridge regulation.

SUMMARY: The Coast Guard has issued a temporary deviation from the operating schedule that governs the I695 Bridge, at mile 1.0, across Curtis Creek, Baltimore, MD. This deviation is necessary to remove, repair, and replace the inner loop locking bar and couplings. This deviation allows the bridge to remain in the closed-to-navigation position.

Enclosure (5)



Enclosure (5)