



U.S. Department
of Homeland Security
**United States
Coast Guard**

LOCAL NOTICE TO MARINERS

District: 9

Week: 21/17

Issued by: Commander (dpw)
Ninth Coast Guard District
1240 East Ninth Street,
Cleveland, OH 44199-2060
Telephone: (216) 902-6069

Direct questions about this LNM to the above address.

All distances in this publication are STATUTE MILES unless otherwise noted.

District Nine Internet Address <https://www.uscg.mil/d9/uscgd9.html>

District Nine Local Notice to Mariners email Address D09-DG-District-D9-LocalNoticetoMariners@uscg.mil

** Navigation Information Service watchstander, 24 hours a day at (703) 313-5900 ** **Internet Address** <https://www.navcen.uscg.gov/>

Light List Reference: Commandant Publication P16502.7, VOL VII, 2016 Edition

Coast Pilot Reference: 2016 U.S. Coast Pilot 6 Great Lakes 46th Edition

Coast Pilots, along with corrections are available at: <http://nauticalcharts.noaa.gov/nsd/cpdownload.htm>

The Local Notice to Mariners is available on the Internet at <https://www.navcen.uscg.gov/?pageName=lnmMain> You will also have links to other government agencies- web pages including the US Army Corps of Engineers and the National Ocean Service.

REPORT DISCREPANCIES IN AIDS TO NAVIGATION TO THE NEAREST COAST GUARD UNIT

The Ninth District and all Sector offices for their areas of responsibility issue a BROADCAST NOTICE TO MARINERS.

The following Broadcast Notice to Mariners have been incorporated into this week's Local Notice to Mariners:

Sector Buffalo, NY - B067-17 through B075-17

Ninth District - C086-17 through C089-17

Sector Detroit, MI - D059-17 through D064-17

Sector Lake Michigan, WI - M147-17 through M158-17

Sector Sault Ste Marie, MI - S062-17 through S064-17

The United States Coast Guard Navigation Information Service (NIS), operated by the USCG Navigation Center, is staffed 24 hours a day, 7 days a week. The NIS provides information on the current operational status, effective policies, and general information for GPS and DGPS. The

NIS also disseminates Safety Broadcasts (BNM), Local Notice to Mariners (LNM), and the latest Notice Advisory to Navstar Users (NANU). NANU notices can be obtained via email subscription through the USCG Navigation Center website: <https://cgls.uscg.mil/mailman/listinfo/nanu>. In addition, the NIS investigates all reports of degradation or loss of GPS, DGPS or AIS service. Users are encouraged to report all degradation or loss of radio navigation services to the NIS via any of the following: Phone: (703) 313-5900, mail to: webmaster@smtp.navcen.uscg.mil, or on the internet at: <https://www.navcen.uscg.gov>

ABBREVIATIONS

A through H

ADRIFT - Buoy Adrift
AICW - Atlantic Intracoastal Waterway
AI - Alternating
B - Buoy
BKW - Breakwater
bl - Blast
BNM - Broadcast Notice to Mariner
bu - Blue
C - Canadian
CHAN - Channel
CGD - Coast Guard District
C/O - Cut Off
CONT - Contour
CRK - Creek
CONST - Construction
DAYMK/Daymk - Daymark

I through O

I - Interrupted
ICW - Intracoastal Waterway
IMCH - Improper Characteristic
INL - Inlet
INOP - Not Operating
INT - Intensity
ISL - Islet
Iso - Isophase
kHz - Kilohertz
LAT - Latitude
LB - Lighted Buoy
LBB - Lighted Bell Buoy
LHB - Lighted Horn Buoy
LGB - Lighted Gong Buoy
LONG - Longitude
LNM - Local Notice to Mariners

P through Z

PRIV - Private Aid
Q - Quick
R - Red
RACON - Radar Transponder Beacon
Ra ref - Radar reflector
RBN - Radio Beacon
REBUILT - Aid Rebuilt
RECOVERED - Aid Recovered
RED - Red Buoy
REFL - Reflective
RRL - Range Rear Light
RELIGHTED - Aid Relit
RELOC - Relocated
RESET ON STATION - Aid Reset on Station
RFL - Range Front Light
RIV - River

DBN/Dbn - Daybeacon
 DBD/DAYBD - Dayboard
 DEFAC - Defaced
 DEST - Destroyed
 DISCON - Discontinued
 DMGD/DAMGD - Damaged
 ec - eclipse
 EST - Established Aid
 ev - every
 EVAL - Evaluation
 EXT - Extinguished
 F - Fixed
 fl - flash
 Fl - Flashing
 G - Green
 GIWW - Gulf Intracoastal Waterway
 HAZ - Hazard to Navigation
 HBR - Harbor
 HOR - Horizontal Clearance
 HT - Height

LT - Light
 LT CONT - Light Continuous
 LTR - Letter
 LWB - Lighted Whistle Buoy
 LWP - Left Watching Properly
 MHz - Megahertz
 MISS/MSNG - Missing
 Mo - Morse Code
 MRASS - Marine Radio Activated Sound Signal
 MSLD - Misleading
 N/C - Not Charted
 NGA - National Geospatial-Intelligence Agency
 NO/NUM - Number
 NOS - National Ocean Service
 NW - Notice Writer
 OBSCU - Obscured
 OBST - Obstruction
 OBSTR - Obstruction
 Oc - Occulting
 ODAS - Anchored Oceanographic Data Buoy

RRASS - Remote Radio Activated Sound Signal
 s - seconds
 SEC - Section
 SHL - Shoaling
 si - silent
 SIG - Signal
 SND - Sound
 SPM - Single Point Mooring Buoy
 SS - Sound Signal
 STA - Station
 STRUCT - Structure
 St M - Statute Mile
 TEMP - Temporary Aid Change
 TMK - Topmark
 TRLB - Temporarily Replaced by Lighted Buoy
 TRLT - Temporarily Replaced by Light
 TRUB - Temporarily Replaced by Unlighted Buoy
 USACE - Army Corps of Engineers
 W - White
 Y - Yellow

Additional Abbreviations Specific to this LNM Edition:

LIB - Lighted Ice Buoy

SECTION I - SPECIAL NOTICES

This section contains information of special concern to the Mariner.

CAUTION TO BE USED IN RELIANCE UPON AIDS TO NAVIGATION

The aids to navigation depicted on charts comprise a system of fixed and floating aids to navigation with varying degrees of reliability. Prudent mariners will not rely solely on any single aid to navigation, particularly a floating aid to navigation. With respect to buoys, the buoy symbol is used to indicate the approximate position of the buoy body and the sinker which secures the buoy to the seabed. The approximate position is used because of the practical limitations in positioning and maintaining buoys and their sinkers in precise geographical locations. These limitations include, but are not limited to, inherent imprecision in position fixing methods, prevailing atmospheric and sea conditions, slope of and the material making up the seabed, the fact that buoys are moored to sinkers by varying length of chain, and the fact that the buoy body and/or sinker positions are not under continuous surveillance, but are normally checked only during periodic maintenance visits which often occur more than a year apart. Due to the forces of nature, the position of the buoy body can be expected to shift inside and outside the charted symbol. The mariner is also cautioned that buoys may be extinguished or sound signals may not function as the result of ice, running ice, or other natural causes, collisions, or other accidents. For the foregoing reasons, a prudent mariner must not rely completely upon the position or operation of floating aids to navigation, but will also utilize bearings from fixed objects and aids to navigation on shore. Further, a vessel attempting to pass close aboard always risks collision with a yawing buoy or with the obstruction that the buoy marks.

LNM: 06/14

IMPORTANT SAFETY NOTICE ABOUT THE RELIABLE OPERATION OF ECDIS

Following an announcement by the International Maritime Organization (IMO) concerning potential display anomalies in some ECDIS systems, the International Hydrographic Organization (IHO) issued an ENC Data Presentation and Performance Check in October 2011. This check is intended to assist mariners and to help determine the extent of the anomalies. IHO has received reports from mariners confirming that a number of ECDIS fail to display some significant underwater features in the "Standard" display mode. For all significant objects to be visible to the mariner, these ECDIS must be operated in "Full display" or "All display" mode until a software upgrade is made available from the manufacturer. Mariners are strongly encouraged to use the IHO ENC Data Presentation and Performance Check issued through ENC service providers and also available directly from the IHO website (www.iho.int) to check the operation of their ECDIS and to determine whether their system is affected. IHO Circular Letter 33/2012 is available on the Coast Guard's Navigation Center website (<https://www.navcen.uscg.gov>) under the heading News and Notices.

LNM: 12/12

ZIKA VIRUS UPDATE

The U.S. Department of Transportation's Maritime Administration (MARAD) has issued MARAD Advisory 2016-03 on the Zika Virus and Impacts on Maritime Commerce. The Advisory can be found at <https://www.marad.dot.gov/newsroom/advisory/2016/marad-advisory-2016-03/>. U.S. flag operators are requested to forward this link to their ships by the most expeditious means.

LNM: 39/16

RANGE STRUCTURES

The U.S. Coast Guard has become aware that Coast Guard information used to depict a rangeline on NOAA Electronic Navigational Charts (ENC) may not be of sufficient accuracy to accurately portray the rangeline on the ENC. Mariners are cautioned that the position of a rangeline as shown on an ENC may not reflect its true position.

LNM: 04/11

USACE NOTICE TO NAVIGATION INTERESTS

Current Federal Channel conditions, shoaling, and the most recent channel surveys are available at the following Army Corps of Engineers web sites:

Buffalo: <http://www.lrb.usace.army.mil/>
Detroit: <http://www.lre.usace.army.mil/>
Chicago: <http://www.lrc.usace.army.mil/>
Rock Island: <http://www.mvr.usace.army.mil/>

LNM: 28/12

THE DATES OF LATEST EDITIONS, NAUTICAL CHARTS AND MISCELLANEOUS MAPS

Up to date information on latest editions, nautical charts and miscellaneous maps can be found at the following web address:
<http://www.nauticalcharts.noaa.gov/>

LNM: 32/13

THE 2017 ELECTRONIC LIGHT LIST

The 2017 Light List is now available.

Coast Guard Light Lists are a means for communicating aids to navigation information to the maritime public. The last government printed Light Lists were the 2014 editions. While the Light Lists will no longer be available in government printed form, commercial reproductions may be available for purchase from maritime service providers. Local Notices to Mariners will continue to advertise Light List corrections and NAVCEN will continue to publish a compilation of corrections.

2017 Light Lists are available on the USCG Navigation Center's website at: <https://www.navcen.uscg.gov/?pageName=lightLists>

Complete versions of the 2017 Light Lists are updated weekly on the NAVCEN website and mariners should download applicable copies and updates as needed at: <https://www.navcen.uscg.gov/?pageName=lightListWeeklyUpdates>.

A summary of 2017 Light List corrections are available at: <https://www.navcen.uscg.gov/?pageName=lightListCorrections>

Guidance for use of electronic navigation publications onboard U.S. vessels can be found at:
http://www.uscg.mil/hq/cgcv/cvc/policy/policy_letters/543/CG-543_pol10-05.pdf

LNM: 04/17

USE OF ELECTRONIC CHARTS AND PUBLICATIONS IN LIEU OF PAPER CHARTS, MAPS, AND PUBLICATIONS

The U.S. Coast Guard has issued Navigation and Vessel Inspection Circular (NVIC) No. 01-16 which contains guidance on the use of electronic charts and publications in lieu of paper charts, maps, and publications. This guidance applies to U.S. flagged vessels subject to U.S. domestic chart, map, and publication carriage requirements contained in Titles 33 and 46 of the Code of Federal Regulations. The NVIC can be viewed at <https://www.uscg.mil/hq/cg5/nvic/default.asp> or <https://cgportal2.uscg.mil/library/directives/SitePages/Home.aspx>.

LNM: 06/16

GREAT LAKES - Great Lakes Water Levels

The expected water levels on the Great Lakes for May 26, 2017. Connecting Channels and the St. Lawrence River, given in inches above (+) or below (-) Low Water Datum (LWD). LWD is a plane of reference used on a navigation chart. It is also known as chart datum.

Great Lakes:

Lake Ontario +67, Lake Erie +51, Lake St. Clair +45, Lake Michigan-Huron +31, Lake Superior +14.

St Lawrence River:

Above Long Sault Dam +73, Above Iroquois Dam +66, Ogdensburg +65, Alexandria Bay +65, Head of River at Cape Vincent +67.

Detroit River:

Lake Erie at Pelee Passage +51, Mouth of River at Gibraltar +51, Fort Wayne +51, Head of River above Belle Isle +47.

St. Clair River:

Mouth of River at St. Clair Flats +45, Algonac +48, St. Clair +38, Blue Water Bridge +38, Head of River at Fort Gratiot +34, Lake Huron Approach Channel +31.

St. Marys River:

Mouth of River at Detour +31, West and Middle Neebish +27, Head of Little Rapids +25, U.S. Slip +22, Above Locks +18, Head of River at Point Iroquois +14.

Available water depth is determined for a location by adding (if +) or subtracting (if -) the amount from the above to the water depth shown on National Oceanic and Atmospheric Administration (NOAA) navigational charts. Caution: Depths so determined are representative of a still water surface elevation, disturbed by neither wind nor other causes. Depth, however, may be reduced or increased as much as several feet for short periods of time due to these disturbances, or when sections of channels develop shoals. Vessel masters should refer to the Local Notice to Mariners for extent of shoaling and scattered bedrock projections in all channels. For further information direct inquires to: Department of the Army, Detroit District Corps of Engineers P. O. Box 1027, Detroit, MI 48231, (313) 226-6443. Additional information can be found on the U.S. Army Corps of Engineers Information Center website at <http://www.lre.usace.army.mil/Missions/GreatLakesInformation/GreatLakesWaterLevels/WaterLevelForecast/ConnectingChannelsForecast.asp>

LNM: 21/17

VIRTUAL AIS ATON (VATON)

The following Virtual AIS ATON have been established:

LAKE ERIE - BUFFALO HARBOR - Chart 14833 VATON Buffalo in approximate position 42-50-08.639N / 078-55-25.922W

LAKE ERIE - TOLEDO HARBOR - Chart 14847

VATON Maumee in approximate position 41-50-07.946N / 083-10-10.530W

LNM: 07/17

LAKE ERIE – NY – Buffalo Ship Canal – Chart 14833

There is a steel I-beam protruding out of the water in approximate position 42-51.640N 078-52.100W. The steel I-beam is marked with a temporary white buoy FL W 4s.

LNM: 17/16

ST CLAIR RIVER - Fort Gratiot to St. Clair Flats - Chart 14852

Water levels on the St. Clair River are above the long term average and pose an increased risk for property damage caused by wake. All vessels greater than 20 meters in length operating in normal displacement mode are reminded to abide by the speed limit of 10.4 knots between Fort Gratiot Light and St. Clair Flats Canal Light.

LNM: 16/17

LAKE HURON - Harbor Beach Harbor - Chart 14862

Due to shoaling the following changes to Federally maintained buoys in Harbor Beach below can be found on a chart in enclosure(6). These will be seasonal buoys maintained from 01 April to 01 November.

Harbor Beach Buoy "3" (LLNR 10145) move east to approximate position 43-50-38.13N / 082-38-00.00W

Harbor Beach Buoy "4": (LLNR 10150) change to a lighted buoy FI R 2.5s and move east to approximate position 43-50-43.98N / 082-38-00.07W

Harbor Beach Buoy "5" (LLNR 10155) move northeast to approximate position 43-50-58.69N / 082-38-22.32W

Harbor Beach Buoy "6" (LLNR 10160) permanently discontinue

Harbor Beach Buoy "7" (LLNR 10161) establish in approximate position 43-51-14.12N / 082-38-32.31W

Harbor Beach Buoy "9" (LLNR 10162) establish in approximate position 43-51-19.39N / 082-38-40.98 W

Permanently discontinue the following lighted buoys in Harbor Beach Harbor:

Harbor Beach Marina Lighted Buoy "1" (LLNR 10195)

Harbor Beach Marina Lighted Buoy "3" (LLNR 10200)

LNM: 17/17

LAKE HURON - BAY PORT HARBOR / SAGINAW BAY - Chart 14863

The following buoys located in Bay Port Harbor will be permanently disestablished due to shoaling.

Bay Port Harbor Buoy "1" (LLNR 10386)

Bay Port Harbor Buoy "2" (LLNR 10386.1)
Bay Port Harbor Buoy "3" (LLNR 10387)
Bay Port Harbor Buoy "4" (LLNR 10387.1)
Bay Port Harbor Buoy "5" (LLNR 10388)
Bay Port Harbor Buoy "6" (LLNR 10388.1)

LNM: 12/17

ILLINOIS RIVER - MARSEILLES

A partially submerged pile of beams has been reported on the right descending bank near Mile Marker 247.8 in the Illinois River. All mariners are requested to transit the area with caution.

LNM: 10/17

LAKE MICHIGAN - Stony Lake to Point Betsie - Chart 14907

Due to reported shoaling in the entrance to Arcadia Lake, mariners are urged to stay north of the center of the channel. Contact Arcadia Harbormaster on VHF FM Channel 16 for further information. Mariners are requested to transit the area with caution.

LNM: 50/16

LAKE MICHIGAN - MI - Waugoshance Point to Seul Choix Point - Chart 14911

An uncharted object has been reported north of the LCA track lines east of Lansing Shoal in approximate position 45-54.647N 085-24.970W. The object appears to be 23-24 feet below the surface at low water datum.

LNM: 30/15

LAKE MICHIGAN - IL - Calumet River - 14929 - Obstruction

An obstruction is protruding approximately 15 feet into the channel from the Morton Salt Dock at river mile 331.5 on the Calumet River. Mariners are advised to use caution and avoid transiting near the left descending wall.

LNM: 06/17

LAKE MICHIGAN - GREEN BAY / LOWER FOX RIVER - Chart 14916

The following buoys located in the Fox River will not be commissioned as advertised in the Light List due to dredging. Once dredging is complete the buoys will be placed on station.

Green Bay City Buoy "2" (LLNR 22280)
Green Bay City Buoy "4" (LLNR 22285)
Green Bay City Buoy "6" (LLNR 22290)
Green Bay City Buoy "7" (LLNR 22295)
Green Bay City Buoy "8" (LLNR 22300)

LNM: 12/17

LAKE MICHIGAN - LOWER GREEN BAY - Chart 14910

Suamico Lighted Buoy "8" (LLNR 22060) will not be commissioned as advertised in the Light List due to shoaling. The buoys commissioning will be reevaluated upon completion of a survey of this waterway.

LNM: 12/17

LAKE SUPERIOR - GRAND PORTAGE TO SHESHEEB POINT - Chart 14968

Establish a prototype NOAA Weather Lighted Buoy "45T01" in position 48-02-10N / 087-44-30W. The characteristic of the light will be Fl (4)Y 20s with a 4 statute mile range. The buoys location will approximately 3 statute miles ESE of NOAA Buoy "45001" (LLNR 16880). The buoy will be seasonal from April 1 to November 1.

LNM: 12/17

LAKE SUPERIOR - Keweenaw Waterway - Chart 14971

The Coast Guard has received a report of two vessels that sunk on the Keweenaw Waterway, MI, in vicinity of the steel sheet pile wall on the west side of the channel at approximate location 46-59.307N, 088-26.189W. Mariners should proceed with caution in the area.

LNM: 15/17

SECTION II - DISCREPANCIES

This section lists all reported and corrected discrepancies related to Aids to Navigation in this edition. A discrepancy is a change in the status of an aid to navigation that differs from what is published or charted.

DISCREPANCIES (FEDERAL AIDS)

LLNR	Aid Name	Status	Chart No.	BNM Ref.	LNM St	LNM End
715	St. Lawrence Seaway Lighted Buoy 108 (C)	LT EXT		B071-17	21/17	
2975	Middle Reefs Lighted Buoy EU4 (C)	LT EXT	14833	B072-17	21/17	
3790	Ashtabula River Light 1	DAYMK DMGD	14836	B075-17	21/17	
4630	Sandusky Straight Channel Range Rear Light	DAYMK MISSING	14842	D051-17	18/17	
6765	Inner Light (C)	LT EXT		B225-16	01/17	
6785	Long Point Light (C)	REDUCED INT		B073-17	21/17	
7165	Grosse Ile South Channel Range Front Light	LT EXT	14853	D003-17	04/17	
8400	Peche Island Range Front Light	RAC INOP	14853	D016-17	11/17	
8595	Pier Light X32/2 (C)	LT IMCH			06/17	
9725	Russell Island Light	DAYMK DMGD	14853	D023-17	12/17	
9870	Courtright Light (C)	LT EXT		D074-16	23/16	
11255	Tawas Harbor Lighted Buoy 6	MISSING	14863	D058-17	20/17	
13340	Middle Neebish Channel Light 58	DAYMK MISSING	14887	S059-17	18/17	
14435	Birch Point Range Rear Light	REDUCED INT	14884	S063-17	21/17	
20770	Port Washington Breakwater Light	SS INOP	14904	M126-17	18/17	
22180	Green Bay Harbor Entrance Channel Range Front Light	DAYMK MISSING	14918	M098-17	15/17	
22185	Green Bay Harbor Entrance Channel Range Rear Light	DAYMK MISSING	14918	M149-17	21/17	

DISCREPANCIES (FEDERAL AIDS) CORRECTED

LLNR	Aid Name	Status	Chart No.	BNM Ref.	LNM St	LNM End
775	Sparrowhawk Point Leading Light	WATCHING PROPERLY			20/17	21/17
2030	Port Ontario Light 3	RELIGHTED	14803		20/17	21/17
2370	Oak Orchard Breakwater Light A	WATCHING PROPERLY	14805		21/17	21/17
3770	Ashtabula Harbor Junction Lighted Buoy A	WATCHING PROPERLY	14836		16/17	21/17
8850	Gaukler Shoal Lighted Buoy 1	WATCHING PROPERLY	14853		21/17	21/17
10560	Saginaw Bay Channel Range Rear Light	WATCHING PROPERLY	14867		21/17	21/17
11255	Tawas Harbor Lighted Buoy 6	WATCHING PROPERLY	14863		21/17	21/17
11770	Fourteen Foot Shoal Buoy 3	RESET ON STATION	14881		05/17	21/17
21355	Detroit Harbor Channel Buoy 6	RESET ON STATION	14909		19/17	21/17

DISCREPANCIES (PRIVATE AIDS)

LLNR	Aid Name	Status	Chart No.	BNM Ref.	LNM St	LNM End
2220	Pultneyville Yacht Club Light	STRUCT DEST	14814	B056-17	19/17	
4015	Northeast Yacht Club Outer Light	LT EXT	14826		19/17	
4190	Whiskey Island Marina Entrance Light 1	LT IMCH/DAYMK MISSING	14839	B059-16	21/16	
4191	Whiskey Island Marina Entrance Light 2	DAYMK MISSING	14839	B060-16	21/16	
7405	Metro Park Marina Lighted Buoy 1	OFF STA	14853	D064-17	21/17	
8875	Miller Memorial Light	LT EXT	14853		20/17	
14192	George Kemp Marina West Light	LT EXT	14884	S064-17	21/17	
20355	Zion Intake Lighted Buoy A	LT EXT	14904	M089-17	15/17	

DISCREPANCIES (PRIVATE AIDS) CORRECTED

LLNR	Aid Name	Status	Chart No.	BNM Ref.	LNM St	LNM End
------	----------	--------	-----------	----------	--------	---------

3625	Presque Isle Park Light 1	WATCHING PROPERLY	14835	20/17	21/17
3630	Presque Isle Park Light 2	WATCHING PROPERLY	14835	20/17	21/17
3635	Presque Isle Park Light 3	WATCHING PROPERLY	14835	20/17	21/17
3640	Presque Isle Park Light 4	WATCHING PROPERLY	14835	20/17	21/17
6395	Pier 75 Detached Breakwater Light F	RELIGHTED	14847	21/17	21/17
20386	Northpoint Marina Reef Obstruction Lighted Buoy A	WATCHING PROPERLY	14904	20/17	21/17
20387	Northpoint Marina Reef Obstruction Lighted Buoy B	WATCHING PROPERLY	14904	20/17	21/17
20388	Northpoint Marina Reef Obstruction Lighted Buoy C	WATCHING PROPERLY	14904	20/17	21/17

PLATFORM DISCREPANCIES

Name	Status	Position	BNM Ref.	LNM St	LNM End
None					

PLATFORM DISCREPANCIES CORRECTED

Name	Status	Position	BNM Ref.	LNM St	LNM End
None					

SECTION III - TEMPORARY CHANGES and TEMPORARY CHANGES CORRECTED

This section contains temporary changes and corrections to Aids to Navigation for this edition. When charted aids are temporarily relocated for dredging, testing, evaluation, or marking an obstruction, a temporary correction shall be listed in Section IV giving the new position.

TEMPORARY CHANGES

LLNR	Aid Name	Status	Chart No.	BNM Ref.	LNM St	LNM End
4451	Vermilion Museum Lighthouse	DISCONTINUED	14826	B002-16	08/16	
6015	Cooley Canal Front Range Light	DISCONTINUED	14846		11/16	
6016	Cooley Canal Rear Range Light	DISCONTINUED	14846		11/16	
12607	St. Ignace Coast Guard Slip Light	DISCONTINUED	14881	S033-17	12/17	
15260	Gull Island Light	Reduced Intensity	14973	S085-16	39/16	
18450	Manistee North Pierhead Light	Reduced Intensity	14938	M126-16	19/16	
18965	Grand Haven South Pierhead Entrance Light	Reduced Intensity	14933	M443-16	40/16	
18975	Grand Haven South Pierhead Inner Light	Reduced Intensity	14933	M443-16	40/16	
21940	Menominee Pier Light 6	DISCONTINUED	14917	M115-16	44/16	

TEMPORARY CHANGES CORRECTED

LLNR	Aid Name	Status	Chart No.	BNM Ref.	LNM St	LNM End
None						

PLATFORM TEMPORARY CHANGES

Name	Status	Position	BNM Ref.	LNM St	LNM End
None					

PLATFORM TEMPORARY CHANGES CORRECTED

Name	Status	Position	BNM Ref.	LNM St	LNM End
None					

SECTION IV - CHART CORRECTIONS

This section contains corrections to federally and privately maintained Aids to Navigation, as well as NOS corrections.

This section contains corrective actions affecting chart(s). Corrections appear numerically by chart number, and pertain to that chart only. It is up to the mariner to decide which chart(s) are to be corrected. The following example explains individual elements of a typical chart correction.

Chart Number	Chart Edition	Edition Date	Last Local Notice to Mariners	Horizontal Datum Reference	Source of Correction	Current Local Notice to Mariners
12327	91st Ed.	19-APR-97	Last LNM: 26/97	NAD 83		27/97
Chart Title: NY-NJ-NEW YORK HARBOR - RARITAN RIVER						
Main Panel 2245 NEW YORK HARBOR					CGD01	
(Temp) ADD	NATIONAL DOCK CHANNEL BUOY 3				at 40-41-09.001N	074-02-48.001W
	Green can					
Corrective Action	Object of Corrective Action				Position	

(Temp) indicates that the chart correction action is temporary in nature. Courses and bearings are given in degrees clockwise from 000 true. Bearings of light sectors are toward the light from seaward. The nominal range of lights is expressed in nautical miles (NM) unless otherwise noted.

Chart Number	Chart Edition	Edition Date	Last LNM	Horizontal Datum Reference	Source of Correction	Current Local Notice to Mariners
14843	24th Ed.	01-OCT-13	Last LNM: 02/16	NAD 83		21/17
Chart Title: Huron Harbor						
Main Panel 1207 HURON HARBOR LAKE. Page/Side: N/A						
CHANGE	Tabulation - HURON HARBOR CHANNEL DEPTHS				NOS	
	http://ocsddata.ncd.noaa.gov/ntm/SupportImage.aspx?ItemID=272940 ;				41-23-10.000N	082-32-39.000W
	Tabulation - HURON HARBOR CHANNEL DEPTHS (NOS NW-26338)					

Chart Number	Chart Edition	Edition Date	Last LNM	Horizontal Datum Reference	Source of Correction	Current Local Notice to Mariners
14909	21st Ed.	01-FEB-16	Last LNM: 21/17	NAD 83		21/17
Chart Title: Upper Green Bay - Jackson Harbor and Detroit Harbor; Detroit Harbor; Jackson Harbor; Baileys Harbor						
Inset 1387 DETROIT HARBOR WISCONSIN. Page/Side: A						
RELOCATE	Detroit Harbor Channel Buoy 10				CGD09	
					from 45-20-18.998N	086-56-09.905W
					to 45-20-20.362N	086-56-08.562W
RELOCATE	Detroit Harbor Channel Buoy 6				CGD09	
					from 45-20-03.797N	086-56-08.394W
					to 45-20-04.429N	086-56-07.849W
Main Panel 1385 UPPER GREEN BAY - MINNEAPOLIS SHOAL TO GREEN ISLAND. Page/Side: A						
RELOCATE	Detroit Harbor Channel Buoy 6				CGD09	
					from 45-20-03.797N	086-56-08.394W
					to 45-20-04.429N	086-56-07.849W

SECTION V - ADVANCE NOTICES

This section contains advance notice of approved projects, changes to aids to navigation, or upcoming temporary changes such as dredging, etc. Mariners are advised to use caution while transiting these areas.

SUMMARY OF ADVANCED APPROVED PROJECTS

Approved Project(s)	Project Date	Ref. LNM
None		

Advance Notice(s)

LAKE ST. CLAIR - Chart 14853

Lake St. Clair Lighted Buoy "7" (LLNR 8445) Change the lighted buoy from a year round lighted buoy to a seasonal lighted buoy replaced by can from December 21 to March 28.

LNM: 19/17

LAKE MICHIGAN - IL - Calumet River - Chart 14929

Calumet Harbor Breakwater South End Light (LLNR 19800) Reduce the range of the Fl R 10s light from 14 statute miles to 12 statute miles and reduce the Fl W 10s light from 17 statute miles to 13 statute miles. The rotating beacon will be replaced with more reliable LED lanterns. The fog signal will continue to operate by keying microphone five times on VHF-FM channel 83A.

LNM: 13/17

LAKE MICHIGAN - WI - Upper Green Bay - Chart 14909

St. Martin Island Light (LLNR 21450) change the characteristic of the light from AL WR 10s to FI W 10s. The range would be reduced from 18 statute miles to 16 statute miles.

LNM: 31/14

LAKE MICHIGAN - CHICAGO HARBOR - CHART 14924

Chicago Harbor Light (LLNR 19960) Increase the range of the light from 14 statute miles to 15 statute miles. Change the fog signal operation from continuous to user activated. Operate the fog signal by keying microphone five times on VHF-FM channel 83A.

LNM: 20/17

LAKE MICHIGAN - MI - Holland Harbor - Chart 14932

Holland Harbor South Pierhead Light (LLNR 19295) change the characteristic from AL WR 10s to FI R 10s and reduce the range of the light from 17 statute miles to 15 statute miles.

LNM: 39/12

LAKE MICHIGAN - WI - Upper Green Bay - Chart 14909

Boyer Bluff Light (LLNR 21770) reduce the range of the light from 8 statute miles to 6 statute miles.
Eagle Bluff Light (LLNR 21825) reduce the range of the light from 7 statute miles to 6 statute miles.

LNM: 28/15

SECTION VI - PROPOSED CHANGES

Periodically, the Coast Guard evaluates its system of aids to navigation to determine whether the conditions for which the aids to navigation were established have changed. When changes occur, the feasibility of improving, relocating, replacing, or discontinuing aids are considered. This section contains notice(s) of non-approved, proposed projects open for comment. SPECIAL NOTE: Mariners are requested to respond in writing to the District office unless otherwise noted (see banner page for address).

PROPOSED WATERWAY PROJECTS OPEN FOR PUBLIC COMMENT

<u>Proposed Project(s)</u>	<u>Closing</u>	<u>Docket No.</u>	<u>Ref. LNM</u>
None			

Proposed Change Notice(s)

ST LAWRENCE RIVER - Ile St. Regis To/A Croil Islands - Chart 1433(C)

St. Lawrence Seaway Buoy "19" (LLNR 125) permanently discontinue.

LNM: 25/16

ST. CLAIR RIVER - Chart - 14852

Russell Island Light (LLNR 9725) Change the characteristic of the light to FG eliminating the white and green sector. The range of the light will be 8 statute miles.

LNM: 39/16

LAKE HURON - Harrisville to Forty Mile Point - Chart 14864

Alpena Light (LLNR 11370) reduce the range of the light from 12 statute miles to 10 statute miles.

LNM: 39/16

LAKE MICHIGAN - UPPER GREEN BAY - CHART 14909

Hat Island South Shoal Buoy "HI" (LLNR 21850) Change the operation of this buoy from seasonal replaced by a can in the winter to seasonal not replaced maintained from April 21 to October 14.

LNM: 21/17

LAKE MICHIGAN - Green Bay - Chart 14917

Menominee Pier Light "6" (LLNR 21940) change the characteristic to FI R 6(1) and reduce the nominal range from 12 statute miles to 10 statute miles.

LNM: 46/16

LAKE MICHIGAN - LOWER GREEN BAY - Chart 14910

Sherwood Point Light (LLNR 22000) change the range of the light from 15 statute miles to 12 statute miles

LNM: 04/17

LAKE MICHIGAN - Algoma to Sheboygan - Chart 14903

Kewaunee Pier Head Light (LLNR 20955) reduce the range of the light from 15 statute miles to 11 statute miles. Permanently discontinue the fog signal.

Algoma Light (LLNR 20975) reduce the range of the light from 15 statute miles to 11 statute miles.

LNM: 52/16

LAKE MICHIGAN - MILWAUKEE HARBOR - Chart 14924

Milwaukee Breakwater Light (LLNR 20635) Reduce the range of the light from 14 statute mile to 13 statute miles.

LNM: 13/17

ST. MARY'S RIVER - MUNUSCONG LAKE TO SAULT STE. MARIE - Chart 14883

Little Rapids Cut Lighted Buoy "98B" (LLNR 14105) Add synthetic AIS ATON to this aid during time that the ice boom is deployed.

LNM: 04/17

LAKE SUPERIOR - DULUTH AND SUPERIOR HARBORS - Chart 14975

Superior Entry South Breakwater Light (LLNR 15595) reduce the range from 22 statute mile to 15 statute miles.

LNM: 13/17

LAKE SUPERIOR - DULUTH AND SUPERIOR HARBORS - Chart 14975

Duluth Harbor South Breakwater Inner Light (LLNR 15860) reduce the range of the light from 18 statute miles to 16 statute miles.

LNM: 13/17

For any comments or questions on these proposed changes please contact:

Mr. Doug Sharp of the Ninth District Aids to Navigation office at (216) 902-6070.

LNM: 30/13

SECTION VII - GENERAL

This section contains information of general concern to the Mariners. Mariners are advised to use caution while transiting these areas.

Waterways Analysis and Management System Study - 2017

The Coast Guard is conducting a Waterways Analysis and Management System Study on the following waterways during 2017. The study focuses on the area's aid to navigation system, waterborne commerce, marine casualty information, emergency response plans, routine and emergency communication capabilities, and future development projects. Any company or individual wishing to comment on the waterway reviews listed below is encouraged to contact the Coast Guard unit listed or email comments to william.d.sharp@uscg.mil. Any comments emailed will be forwarded to the appropriate unit for use in the WAMS project. A survey is attached to the Local Notice to Mariner and can be used to comment on these reviews or on any waterways located in the Great Lakes.

Cleveland Harbor (LLNR 3975 - LLNR 4260)
Lorain Harbor (LLNR 4265 - 4429)
Sandusky Harbor/Moseley Channel (LLNR 4560 - LLNR 5030)
Lake St. Clair Main Channel (LLNR 8400 - LLNR 8660)
Huron Harbor (LLNR 4430 - LLNR 5455)
Commanding Officer
USCGC Bristol Bay (WTGB 102)
110 Mt. Elliot Avenue
Detroit, Mi. 48207
(313) 568-9548

Boundary Waters / Lake of the Woods (LLNR 16925 - LLNR 17715)
Commander
Sector Sault Ste. Marie
337 Water St.
Sault Ste. Marie, Mi. 49783
(906) 635-3270

St. Joseph/Benton Harbor (LLNR 19515 - LLNR 19625)
Sheboygan Harbor (LLNR 20805 - LLNR 20840)
Manitowoc Harbor (LLNR 20842 - LLNR 20985)
Commander
U. S. Coast Guard Sector Lake Michigan
2420 South Lincoln Memorial Drive
Milwaukee, WI 53207
(414) 747-7188

Duluth/Superior Harbors (LLNR 15595 - LLNR 16250)
Grand Traverse Bay (LLNR 17855 - LLNR 18366)
Commanding Officer
USCGC Alder (WLB 216)

Waterways Analysis and Management System Study - 2017

1201 Minnesota Avenue
Duluth, Mn. 55802
(218) 529-3131

Straits of Mackinaw Eastern Section
(LLNR 11720 - LLNR 11775)
(LLNR 12175 - LLNR 12215)
(LLNR 12535 - LLNR 12650)
Burns Harbor (LLNR 19575 - LLNR 19625)
Commanding Officer
USCGC Mackinaw (WLBB 30)
632 Coast Guard Drive
Cheboygan, MI 49721
(231) 597-2030

LNM: 10/17

GREAT LAKES - Marine Events

Marine events such as races, parades, regattas, and fireworks displays are frequently held in the Great Lakes region. Advance information on specific events is contained in enclosure (2) of this publication. The public is reminded to listen to the local broadcast notice to mariners for the most up-to-date information on a marine event. Mariners are advised that some events may require temporary aids to navigation that are not displayed on a chart or in the Light List, and that they should exercise additional caution while operating in the vicinity of a scheduled marine event.

LNM: 24/13

LAKE ONTARIO – NY –Rochester Harbor – Chart 14815 – Bridge Special Event

From 0730 to 1430 on September 17, 2017 the O'Rourke Bridge at Mile 1.25 over the Genesee River will be secured to masted navigation in conjunction with the Rochester Marathon. Vessels able to pass under the bridge without an opening may do so at any time.

LNM: 07/17

LAKE Ontario – NY – Braddock Bay – Chart 14805

The Wesson Group, LLC, will be conducting dredging operations in Braddock Bay beginning April 1, 2017 and continuing until September 1, 2017. Dredges can be reached VIA VHF Channel 16. Operation will take place 0700 thru 1900 Monday thru Friday. Hydraulic dredge and associated dredge lines will be present in Braddock Bay. Significant construction activity is expected during Spring and Summer months. All mariners are urged to transit these areas with extreme caution. Questions or for further details, contact Matt Schuler at (315) 525-7184.

LNM: 13/17

LAKE ERIE – NY – Niagara River – Chart 14822 – Bridge Maintenance

From July 10, 2016 through May 18, 2019 scaffolding that extends approximately 6 feet below low steel will be installed under the Peace Bridge at Mile 1.5 over the Black Rock Canal. Amber lights will mark the bottom and four corners of the scaffolding hanging below low steel. Scaffolding under the bridge over the Niagara River will remain above low steel.

LNM: 16/15

LAKE ERIE – NY – Buffalo Harbor – Chart 14833 – Bridge Maintenance

From May 29 through August 25, 2017 the Buffalo Creek Railroad Bridge at Mile 4.39 over the Buffalo River will be secured to masted navigation. Vessels able to pass under the bridge without an opening may do so at any time.

LNM: 04/17

LAKE ERIE – Lorain Harbor - Chart 14841

Great Lakes Dock and Materials, LLC will commence repairs of the Muskegon breakwater beginning on April 15, 2017 to May 31, 2017. Hours of operation are 24 hours a day, 7 days a week. Barge Hanna Avery and Tug Fischer Hayden will monitor channels 07 and 16. Mariners are requested to reduce speed and use caution around the operation, for further information contact Joseph Bailey at 231-755-2225 or 231-206-1379.

LNM: 17/17

LAKE ERIE – OH – Maumee River - Chart 14846 – Bridge Replacement

From July 1, 2015 through December 31, 2017, Bridge demolition and construction activities will be performed at the State Route 109 Bridge at Mile 44.4 over the Maumee River near Napoleon, Ohio. Mariners should use caution when transiting the area.

LNM: 20/14

LAKE ERIE – OH – Maumee River - Chart 14846 – Bridge Discrepancy

The Coast Guard has received a report that the lights on the CSX Railroad Bridge at Mile 11.38 over the Maumee River are extinguished.

LNM: 14/15

LAKE ERIE – OH – Cleveland Harbor – Chart 14839 – Bridge Maintenance

From May 15 through September 30, 2017 scaffolding will be installed under the New Inner Belt Freeway Bridge at Mile 3.38 over the Cuyahoga

LAKE ERIE – OH – Cleveland Harbor – Chart 14839 – Bridge Maintenance

River that extends approximately 5 feet below low steel.

LNM: 16/17

LAKE ERIE – OH – Cleveland Harbor – Chart 14839 – Bridge Discrepancy

The Coast Guard has received a report that the fendering system for the Union Terminal Viaduct at Mile 1.89 over the Cuyahoga River has been destroyed. There are reports of debris from the fendering system floating in the river.

LNM: 47/16

LAKE ERIE – Cleveland Harbor - Chart 14839

Diversified Maintenance Systems will commence construction on the Cleveland Harbor Main Entrance Light in Cleveland, OH. Operations will begin at 0700 to 1600 Monday through Friday, from 08 May 17 to 15 Oct 17. The tug Eagle and various small craft will be in the vicinity and can be contacted on VHF channel 16. All mariners are requested to transit the area with caution maintain as little wake as possible. For further information, contact Dennis Hilsinger at 907-654-1700.

LNM: 19/17

LAKE ERIE – OH – Rocky River – Chart 14826 – Bridge Maintenance

From January 1 through October 31, 2017 scaffolding that hangs approximately 10 feet below low steel will be installed under the Detroit Road Highway Bridge at Mile 0.7 over the Rocky River. Steady burning amber lights will mark the bottom and four corners of the scaffolding.

LNM: 01/17

LAKE ERIE – OH – Portage River – Chart 14842 – Bridge Maintenance

From October 16, 2017 through October 19, 2017 and again from October 23, 2017 through October 26, 2017 the Monroe Street Bridge at Mile 0.4 over the Portage River at Port Clinton, OH will have one bridge leaf secured to masted navigation and one leaf locked in the fully open to navigation position for the purpose of removing the bridge leafs. The bottom and four corners of the old bridge leaves will be marked with steady burning amber lights until they are completely removed from the waterway. From 0500 on December 1, 2017 to noon on April 1, 2018 the bridge will be secured to masted navigation for the installation of new bridge leaves. The bottom and four corners of the new bridge leaves will be marked with steady burning amber lights until the required permitted navigation lights can be installed. Vessels able to pass under the bridge without an opening may do so at any time.

LNM: 49/16

LAKE ERIE – OH – Portage River – Chart 14844 – Bridge Maintenance

On July 9 and July 16, 2017 between the hours of 0700 and 2000 each day the Norfolk Southern Railroad Bridge at Mile 1.5 over the Portage River will be secured to masted navigation. Vessels able to pass under the bridge without an opening may do so at any time.

LNM: 19/17

LAKE ERIE – OH – Maumee River - Chart 14846 – Bridge Special Event

Between 0730 and 0930 on May 29, 2017 the Craig Memorial Bridge at Mile 3.30 over the Maumee River will be secured to masted navigation in conjunction with the WTOL River Run. Vessels able to pass under the bridge without an opening may do so at any time.

LNM: 20/17

DETROIT RIVER – MI – Trenton Channel – Chart 14848

E. C. Korneffol Company will be conducting soil borings at the north end of the Trenton Channel west shoreline and west of point Hennepin from January 01, 2017 to May 31, 2017. Hours of operation will be 5 days a week from 0700 to 1900. Captain Keith will be monitoring channels 13 and 16. For further information contact Bruce Kresslern at 734-676-2131.

LNM: 06/17

DETROIT RIVER – MI – River Rouge – Chart 14848 – Bridge Maintenance

From May 1 through May 27, 2017 between the hours of 0700 and 1730 Monday through Saturday the Fort Street Bridge at Mile 2.20 over the River Rouge will require a 4 hour advance notice for openings. Vessels should provide advance notice by calling: 313-842-4791.

LNM: 18/17

DETROIT RIVER – MI – River Rouge – Chart 14854 – Bridge Maintenance

From February 4, 2017 through January 31, 2018 scaffolding that hangs approximately 3 feet below low steel will be installed under the Fisher Freeway I-75 Bridge at Mile 1.85 over the River Rouge. Steady burning amber lights will be installed on the bottom of the scaffolding to warn mariners of the temporary reduction in vertical clearance. Snooper trucks may also be used at the bridge. Spotters will warn of approaching vessels and move the man lifts to allow vessels to pass under the bridge.

LNM: 48/16

DETROIT RIVER – MI – River Rouge – Chart 14848 – Bridge Maintenance

From May 31, 2017 through June 23, 2017 between the hours of 0700 and 1900, Monday through Friday the West Jefferson Avenue Bridge at Mile 1.10 over the River Rouge will require a 1 hour advance notice for openings. Mariners should provide advance notice directly to the drawtender or by calling: 616-638-4559 or 616-607-4546. A 120 foot by 50 foot barge will be working under the bridge and will move to accommodate vessels.

LNM: 20/17

DETROIT RIVER – MI – River Rouge – Chart 14854 – Bridge Schedule

from April 1, 2017 through September 1, 2017 the Delray Connecting Railroad Bascule Bridge at Mile 0.34 and the Delray Connecting Railroad Swing Bridge at Mile 0.80, both over the River Rouge Old Channel will require a 4-hour advance notice for openings. Mariners should provide advance notice directly to the drawtender on VHF-FM Marine channel 12 or by calling: 313-600-5643 or 313-498-5700 or 815-671-2194 or 248-789-9355.

LNM: 14/17

ST CLAIR RIVER – MI – Black River – Chart 14853 – Bridge Maintenance

From November 15, 2017 through March 31, 2018 the 10th Street Bridge at Mile 0.94 over the Black River will be secured to masted navigation. Vessels able to pass under the bridge may do so at any time.

LNM: 11/17

ST CLAIR RIVER – Flats Canal - Chart 14852

There has been a report of a partially submerged 20 foot long sheet pile platform in the southwest corner of Gull Island in the vicinity of the St. Clair Flats Canal at approximate position 42-31.77N, 082-40.71W. All mariners are requested to transit the area with caution.

LNM: 18/17

ST CLAIR RIVER – Flats Canal - Chart 14852

There as been a report of a 18 foot long steel beam sticking straight out of water 24 inches in diameter in position 42° 32.085'N 082° 40.044'W. The object is in 16 feet of water 40 yards off Seaway Island. All mariners are requested to transit the area with caution.

LNM: 21/17

LAKE HURON – MI – Alpena Harbor – Chart 14864 – Bridge Maintenance

From October 11, 2016 through June 10, 2017 the Second Avenue Highway Bridge at Mile 0.4 over the Thunder Bay River at Alpena, MI will be rehabilitated. From October 11 through November 8, 2016 the bridge will require a 12-hour advance notice for openings. Mariners should provide advance notice by calling 989-464-3416. From November 9, 2016 through June 10, 2017 the bridge will be secured to masted navigation. Vessels able to pass under the bridge without an opening may do so at any time. From December 12, 2016 through February 3, 2017 scaffolding that extends approximately 3 feet below low steel will be installed under the bridge. Steady burning amber lights will be displayed on the bottom and four corners of the scaffolding. Periodically during this project a barge will be used at the bridge.

LNM: 50/16

LAKE MICHIGAN – WI – Green Bay – Lower Fox River - Chart 14918 – Bridge Maintenance

From January 1, 2019 through March 31, 2019 scaffolding that hangs approximately 10 feet will be installed under the Allouez and Ashwaubenon Bridge at Mile 5.02 over the Fox River

LNM: 20/17

LAKE MICHIGAN – WI – Green Bay – Lower Fox River - Chart 14918 – Bridge Maintenance

From 0700 to 1700 on May 24 and May 25, 2017 the Main Street Bridge at Mile 1.58 over the Fox River will be secured to masted navigation. Vessels able to pass under the bridge without an opening may do so at any time.

LNM: 20/17

LAKE MICHIGAN – WI – Sturgeon Bay Ship Canal – Chart 14919 – Bridge Operations

The Coast Guard is modifying the operating regulation that governs the Bayview (State Route 42/57) Bridge, Mile 3.0, Maple-Oregon Bridge, Mile 4.17, and Michigan Street Bridge, Mile 4.3, all over Sturgeon Bay Ship Canal in Sturgeon Bay, WI, to allow testing of the remote operation equipment for all three drawbridges. The operating schedules are not changing but the drawbridges will be remotely operated by a single tender stationed at the Maple-Oregon Bridge throughout the 2017 navigation season. The Coast Guard requests comments from all stakeholders on the safety and effectiveness of the remote operation arrangement. To view the interim rule, published in the Federal Register (33 FR 11151) on February 21, 2017 please visit: <https://www.gpo.gov/fdsys/pkg/FR-2017-02-21/html/2017-03346.htm>. Comments and related material must reach the Coast Guard on or before December 1, 2017. To submit comments go to <http://www.regulations.gov>, type [USCG-2017-0050] in the "SEARCH" box and click "SEARCH." Click on Open Docket Folder on the line associated with this rulemaking. If you have questions on this interim rule, call or e-mail Mr. Lee Soule, Bridge Management Specialist, Ninth Coast Guard District; telephone 216-902-6085, or email: Lee.D.Soule@uscg.mil

LNM: 05/17

LAKE MICHIGAN – IL – Chicago River – Chart 14927 – Bridge Discrepancy

The Coast Guard has received a report that the dolphins near the location of the former Polk Street Bridge at Mile 2.16 over the South Branch of the Chicago River and the former Erie Street Bridge at Mile 2.21 over the North Branch of the Chicago River are a hazard to navigation.

LNM: 21/16

LAKE MICHIGAN – IL – Chicago River– Chart 14927 – Bridge Maintenance

February 6 through August 18, 2017, between the hours of 0700 and 1700 Monday through Friday a 125 foot by 35 foot barge will be working under the Clark Street Bridge at Mile 1.21 (CORPS MILE 326.0) over the Main Branch of the Chicago River. The Barge will monitor VHF-FM Marine Channel 16 and will move to accommodate vessels if a 1-hour advance notice is provided by calling 312-747-2470.

LNM: 05/17

LAKE MICHIGAN – IL – Chicago River – Chart 14927 – Bridge Maintenance

From March 1, 2016 through June 1, 2017, Monday through Saturday, 0700 to 1700 and 2200 to 0500 daily, a 120 foot by 55 foot or smaller barges will be working at the Adams Street Bridge at Mile 2.08, CORPS MILE 325.1, over the South Branch of the Chicago River. The barges will move if provided a 30 minute advance notice of arrival on VHF-FM Marine Channel 16 or by calling: 708-560-1870 or 708-975-5597.

LNM: 17/17

LAKE MICHIGAN –IL – Chicago River – Chart 14927 – Bridge Maintenance

From May 22 through June 26, 2017 between the hours of 0700 and 1500, Monday through Friday a 120 foot by 40 foot barge will be working under the South Loomis Street Bridge at Mile 5.29 (CORPS MILE 321.9) over the South Branch of the Chicago River. The barge will move if a 30 minute advance notice is provided directly to the barge on VHF-FM Marine Channel 16 or by calling the Loomis Street Bridge at: 312-747-2470.

LNM: 21/17

LAKE MICHIGAN – IL – Chicago River – Chart 14927 – Bridge Discrepancy

The Coast Guard has received a report that the following bridges over the Main, North, and South Branches of the Chicago River have lights showing improper characteristics, obstructed, missing, or lights that are extinguished:

Michigan Avenue Bridge at Mile 0.85

Grand Avenue Bridge at Mile 2.00

LNM: 10/17

LAKE MICHIGAN –IL – Chicago Sanitary and Ship Canal – Chart 14927 – Bridge Inspection

On May 31 and June 1, 2017 between the hours of 0900 and 1500 each day inspectors will use snooper trucks under the Lagrange Road (Justice) Bridges at Mile 17.9 (CORPS MILE 309.4) over the Chicago Sanitary and Ship Canal. Spotters will warn of approaching vessels and move the man lifts to allow vessels to pass. .

LNM: 20/17

LAKE MICHIGAN – IL - Chicago Sanitary and Ship Canal – Chart 14927

A pontoon boat will be collecting sediment samples on the Chicago Sanitary and Ship Canal between river mile 317.5 and the South Pulaski Highway Bridge at approximate river mile 318.5 from June 5, 2017 to July 24, 2017. During the hours of 6 a.m. to 6 p.m., vessels are requested to transit this area at a no wake speed in this area

LNM: 21/17

LAKE MICHIGAN – IL – Chicago River – Chart 14927 – Bridge Maintenance

From March 6 through June 12, 2017 between the hours of 0700 and 1600 Monday through Friday a 140 foot by 40 foot barge will be positioned under one end of the Madison Street Bridge at Mile 1.90 (CORPS MILE 325.3) over the South Branch of the Chicago River. The barge will move if a 30 minute advance notice is provided on VHF-FM Marine Channel 16.

LNM: 04/17

LAKE MICHIGAN –IL – Calumet River – Chart 14927 – Bridge Discrepancy

The 92nd Street Bridge at Mile 0.76 (CORPS MILE 332.4) over the Calumet River is experiencing electrical issues causing the bridge leaves to operate irregularly and open slower than normal. Mariners should wait until the bridge is in the fully open position or receive an all clear from the drawtender before passing through the bridge. The Estimated time of repair is mid-June.

LNM: 19/17

LAKE MICHIGAN –IL – Calumet-SAG Channel – Chart 14927 – Bridge Inspection

On June 7 and June 8, 2017 between the hours of 0800 and 1430 each day Inspectors will be working under the Southwest Highway (US-45) Bridge at Mile 22.25 (CORPS MILE 310.7) over the Calumet-SAG Channel. Spotters will warn of approaching vessels and move the man lift to allow vessels to pass.

LNM: 21/17

LAKE MICHIGAN – WI – Milwaukee Harbor – Chart 14924 – Bridge Marine Event

From 0700 to 1130 on June 4, 2017 the Broadway Street Bridge at Mile 0.79 over the Milwaukee River and the Kinnickinnic Avenue Bridge at Mile 1.67 over the Kinnickinnic River will be secured to masted navigation in conjunction with the Ride for the Arts event.

LNM: 02/17

LAKE MICHIGAN – WI – Milwaukee Harbor – Chart 14924 – Bridge Marine Event

From 0630 to 0830 on June 10, 2017 the Broadway Street Bridge at Mile 0.79 over the Milwaukee River and the Kinnickinnic Avenue Bridge at Mile 1.67 over the Kinnickinnic River will be secured to masted navigation in conjunction with the Summerfest Rock N' Sole Run event.

LNM: 02/17

LAKE MICHIGAN – WI – Milwaukee Harbor – Chart 14924 – Bridge Marine Event

From 2130 on June 28 to 0100 on June 29 all bridges from Mile 0.79 to Mile 1.46 over the Milwaukee River will be secured to recreational masted navigation in conjunction with the Big Bang Fireworks Event.

LNM: 02/17

LAKE MICHIGAN – WI – Milwaukee Harbor – Chart 14924 – Bridge Marine Event

From 2130 on June 29 to 0100 on June 30, 2017 all bridges from Mile 0.79 to Mile 1.46 over the Milwaukee River will be secured to recreational masted navigation in conjunction with the Summerfest Event.

LNM: 02/17

LAKE MICHIGAN – WI – Milwaukee Harbor – Chart 14924 – Bridge Marine Event

From 2130 on July 3 to 0100 on July 4, 2017 all bridges from Mile 0.79 to Mile 1.46 over the Milwaukee River will be secured to recreational masted navigation in conjunction with the US Bank Fireworks Event

LNM: 02/17

LAKE MICHIGAN – WI – Milwaukee Harbor – Chart 14924 – Bridge Marine Event

From 2300 to 0100 nightly from July 4 to July 9, 2017 all bridges from Mile 0.79 to Mile 1.46 over the Milwaukee River will be secured to recreational masted navigation in conjunction with the Second Summerfest Event.

LNM: 02/17

LAKE MICHIGAN – WI – Milwaukee Harbor – Chart 14924 – Bridge Marine Event

From 2200 to midnight, nightly from July 21 to July 23, 2017 the Broadway Street Bridge at Mile 0.79 and the Water Street Bridge at Mile 0.94, both over the Milwaukee River will be secured to masted navigation in conjunction with the Festa Italiana event.

LNM: 02/17

LAKE MICHIGAN – WI – Racine Harbor – Chart 14925 – Bridge Special Event

On July 4, 2017, between the hours of 0745 and 1130 and again between the hours of 2130 and 2230 the Main Street Bridge at Mile 0.31 and the State Street Bridge at Mile 0.53, both over the Root River will be secured to masted navigation in conjunction with the City 4th of July Festival and fireworks.

LNM: 11/17

LAKE MICHIGAN – WI – Milwaukee Harbor - Chart 14924 – Bridge Inspections

On May 26, 2017 from 0700 to 1500 divers will perform inspection on the Cherry Street Bridge at Mile 2.29 over the Milwaukee River and the Becher Street Bridge over the Kinnickinnic River. A dive boat will monitor VHF-FM Marine Channel 16 and utilize spotters to warn of approaching vessels and move the divers to allow vessels to pass.

LNM: 20/17

LAKE MICHIGAN – WI – Milwaukee Harbor - Chart 14924 – Bridge Maintenance

From May 22 through August 28, 2017 between the hours of 0600 and 1600 Monday through Friday, the North Plankinton Avenue Bridge at Mile 1.08 and the Muskego Avenue (Ember Lane) Bridge at Mile 1.95 both over the Menomonee River will only open one leaf for the passage of vessels unless a 4 hour advance notice is provided to the Michigan Street Bridge operator on VHF-FM Marine Channel 16 or by calling 414-286-2575 or 414-286-3450. A 40 foot by 40 foot barge may be used under each bridge. During non-working hours the barges will be moored outside of the navigation channel and lighted in accordance with the navigation rules.

LNM: 20/17

LAKE MICHIGAN – IN – Indiana Harbor, Chart 14929 – Bridge Underwater Hazard

The Coast Guard has received a report of an underwater obstruction near the position of the former Canal Street Bridge at Mile 1.88 over the Indiana Harbor Canal.

LNM: 01/14

LAKE MICHIGAN – IN – East Chicago – 14926

A 30' x 120' spud barge will be positioned inside the breakwall at the East Chicago Marina in Lake County, IN from November 29, 2016 to May 29, 2017 for the removal and replacement of a floating dock system. The harbor and marina will remain fully closed for the duration of the project.71.7

LNM: 48/16

LAKE MICHIGAN – WI – Manitowoc Harbor – Chart 14922 – Bridge Special Event

On June 11, 2017 between the hours of 0700 and 1400 the Eighth Street Bridge at Mile 0.29 will be secured to masted navigation in conjunction with the HFM Boston Qualifier Marathon. Vessels able to pass under the bridge without an opening may do so at any time.

LNM: 12/17

LAKE MICHIGAN – WI – Lower Fox River – Chart 14918 – Bridge Maintenance

From May 1, 2018 through September 29, 2018 scaffolding will be installed under the Allouez and Ashwaubenon Bridge at Mile 5.02 over the Fox River that extends approximately 10 feet below low steel.

LNM: 16/17

LAKE MICHIGAN – WI – FOX RIVER – Chart 14918

Dredging operations on the Fox River in Green Bay will begin March 20, 2017 and continue until November 13, 2017. The Dredges "Mark Anthony, Ottawa River and Ashtabula will all work in the area immediately north of the Highway 172 Bridge extending to the area immediately south of the Interstate 43 Bridge. Dredges can be reached VIA VHF Channel 16. Operation will take place 24/7 0700 Monday thru 0700 Saturday. Equipment pipelines may be floating or submerged and are marked with appropriate buoys. All mariners are urged to transit these areas with

LAKE MICHIGAN – WI – FOX RIVER – Chart 14918

extreme caution and Pay close attention to the red and green channel marker buoys and floating construction zone signage. Questions or for further details, contact Coast Guard Sector Lake Michigan at (414) 747-7182 or VIA VHF Channel 16.

LNM: 12/17

LAKE MICHIGAN – WI – Fox River - Chart 14916 – Bridge Construction

From October 2, 2014 through November 30, 2018 an 80 foot by 50 foot and a 40 foot by 40 foot barge will be constructing the new State Highway 441 Little Lake Buttes des Morrts Bridge at Mile 36.0 over the Fox River at Menasha, WI. A 30 foot wide channel will be maintained through the main navigational draws. Amber lights will mark the low steel of both bridges and red lights will mark the cofferdams around the new piers. The barges will be lighted in accordance with the Navigation Rules.

LNM: 40/14

LAKE MICHIGAN – WI – Upper Fox River – Chart 14916 – Bridge Maintenance

From June 1, 2017 through September 28, 2018 scaffolding that hangs approximately 10 feet below low steel will be installed under the STH 441, Appleton Tri County Expressway at mile 28.06 over the Fox River at Appleton Wisconsin. Steady burning amber lights will warn mariners of the temporary reduction in clearance.

LNM: 45/16

LAKE MICHIGAN – WI – Upper Fox River – Chart 14916 – Bridge Special Event

The following bridges will be secured to masted navigation during the dates and times noted. Vessels able to pass under the bridges without an opening may do so at any time.

Oshkosh Marathon on April 30, 2017

Main Street Bridge at Mile 55.97 over the Fox River from 0600 to 1315.

Wisconsin Street Bridge at Mile 56.72 over the Fox River from 0645 to 1215.

Congress Avenue Bridge at Mile 58.01 from 0745 to 1230.

Race the Lake on Aug. 20, 2017.

Main Street Bridge at Mile 55.97 over the Fox River from 0600 to 0800.

Racine Street Bridge at Mile 37.91 over the Fox River from 0645 to 1000.

Winnebago County Triathlon on August 27, 2017

Wisconsin 116 Bridge at Mile 12 over the Wolf River at Winneconne from 0715 to 1100.

LNM: 45/16

LAKE MICHIGAN –WI – Upper Fox River – Chart 14918 – Bridge Discrepancy

The Coast Guard has received a report that the Wisconsin Avenue (Veterans Memorial) Bridge at Mile 23.78 over the Fox River at Kaukauna Wisconsin is stuck in the closed position. Vessels able to pass under the bridge without an opening may do so at any time.

LNM: 17/17

LAKE MICHIGAN – Muskegon Harbor - Chart

Great Lakes Dock and Materials, LLC will commence repairs of the Lorain Harbor outer beginning on April 3, 2017 to May 31, 2017. Hours of operation are 24 hours a day, 7 days a week. Barge Jacquelyn and Tug Duluth will monitor channels 18 and 16. Mariners are requested to reduce speed and use caution around the operation, for further information contact Joseph Bailey at 231-755-2225 or 231-206-1379.

LNM: 17/17

LAKE MICHIGAN – MI – South Haven – Chart 14906 - Bridge Maintenance

From October 3, 2016 through June 30, 2017 four 62 foot by 51 foot barges will be working under the Blue Star Memorial Highway at mile 2.2 over the Black River at South Haven, MI. A 20 foot wide channel will be maintained for vessels to pass under the bridge.

LNM: 37/16

LAKE MICHIGAN –MI – Grand Haven – Chart 14933 – Bridge Special Event

From 2200 on July 4 to 0200 on July 5, 2017 the US 31 Bridge at Mile 2.89 over the Grand River will be secured to masted navigation in conjunction with the City's 4th of July Celebration. Vessels able to pass under the bridge without an opening may do so at any time.

LNM: 15/17

LAKE MICHIGAN –MI – Grand Haven – Chart 14933 – Bridge Special Event

From 2200 on August 5 to 0200 on August 6, 2017 the US 31 Bridge at Mile 2.89 over the Grand River will be secured to masted navigation in conjunction with the Coast Guard Day Celebration. Vessels able to pass under the bridge without an opening may do so at any time.

LNM: 15/17

LAKE MICHIGAN – MI – Little Bay de Noc – Chart 14915 – Bridge Replacement

From June 16, 2017 through August 31, 2019, the SR 2 Bridge immediately below the dam of the Escanaba River will be replaced. Contractors will build temporary causeways with amber lights spaced every 100 feet during the construction of the new bridge and the removal of the old bridge. A 50 foot opening will be maintained so vessels may pass through the construction area. The contractor will mark any temporary obstructions to navigation with amber lights.

LAKE MICHIGAN – MI – Little Bay de Noc – Chart 14915 – Bridge Replacement

LNM: 11/17

LAKE MICHIGAN - Des Plaines River

A coffer dam will be positioned along the right descending bank of the Des Plaines River at river mile 287 to replace the river wall in Joliet, IL from April 17, 2017 to September 29, 2017. Vessels are asked not to tie-off in this area and to transit at a no wake speed.

LNM: 15/17

LAKE SUPERIOR – MI – St. Marys River – Chart 14884

Roen Salvage Company will commence repairs of the West Center Pier extending 300' W. of Railroad Bridge. Two 50' barges will be moored at the pier 24 hours per day. All fenders will be removed, divers will be working at the pier, avoid use of side thrusters. Coordinate movement with Soo Locks lockmaster. Work will continue into December 2016 as weather permits, then resume in April 2017. Tug Stephen M. Asher and Tug Charles Asher will monitor channels 7 and 14 (Soo Locks). For further information contact Don Sarter at 920-493-5322

LNM: 42/16

LAKE SUPERIOR – MI – Houghton Hancock – Chart 14972 – Bridge Maintenance

From March 16, 2017 through June 15, 2017, the U.S. 41 Bridge at Mile 16.0 over the Keweenaw Waterway in Houghton-Hancock, MI will be locked in the intermediate position providing approximately 35 feet of clearance at low water datum. The bridge will open fully on the hour, every hour except at 0800, noon, and 1700, excluding holidays and weekends when the bridge will open fully on the hour every hour for recreational vessels. The bridge will operate on signal for commercial vessels.

LNM: 43/15

LAKE SUPERIOR –MI –Little Girls Point – Chart 14966

Three large concrete erosion control structures have been reported dislodged due to flooding at Omans Creek Boat Launch on Little Girls Point, Michigan of Lake Superior. One structure is reported 10 yards from the shoreline and location of the other two is unknown. Mariners are advised to keep a close lookout and travel at slow speed.

LNM: 30/16

LAKE SUPERIOR – Ashland - Chart 14974

JF Brennan will commence dredging 1000 feet off shore directly east of the Ashland City Marina and directly west of Kreher park boat launch peninsula which is adjacent to the city of Ashland, WI. Operations will commence April 17, 2017 to November 30, 2017. There will be five monitoring buoys on the north side of the break wall within 200 feet. Hours of operation are Monday to Saturday 0600-1800. Mariners are requested to reduce speed and use caution around the dredging operation, for further information contact Brennan Marine Dispatch on VHF ch 9 and 16 or 608-782-3670.

LNM: 17/17

LAKE SUPERIOR –MN – Duluth-Superior Harbor – Chart 14975 – Bridge Maintenance

From January 22, 2018 through March 5, 2018 the Duluth Ship Canal Bridge at Mile 0.25 over the Duluth Ship Canal will be secured to masted navigation. Vessels able to pass under the bridge without an opening may do so at any time.

LNM: 10/17

Duluth Superior Harbor – MN – St. Louis River – Chart 14975 – Bridge Regulation

The Coast Guard proposes to modify the regulations that govern the drawbridges over the St. Louis River at Duluth-Superior Harbor. This waterway borders Minnesota and Wisconsin and is listed under Minnesota as St. Louis River (Duluth-Superior Harbor) and under Wisconsin as Duluth-Superior Harbor (St. Louis River) in the CFR. This proposed rule would affect both regulations. The owner of the Burlington Northern Grassy Point Railroad Bridge at mile 5.44 requested the regulation be updated to include permanent winter operating schedule. This proposed rule would also align river mile numbers with the United States Coast Pilot and delete bridges from the regulations that have been removed from the waterway and make the regulation easier to read and less confusing to the mariner. To see the complete rule go to <http://www.regulations.gov>, type [USCG-2017-0212]. In the "SEARCH" box and click "SEARCH." Click on Open Docket Folder on the line associated with this rulemaking. If you have questions on this rule, call or email Mr. Lee D. Soule, Bridge Management Specialist, Ninth Coast Guard District; telephone 216-902-6085, email Lee.D.Soule@uscg.mil.

LNM: 17/17

SECTION VIII - LIGHT LIST CORRECTIONS

An Asterisk *, indicates the column in which a correction has been made to new information

(1) No.	(2) Name and Location	(3) Position	(4) Characteristic	(5) Height	(6) Range	(7) Structure	(8) Remarks
21355	Detroit Harbor Channel Buoy 6	45-20-04.429N 086-56-07.849W				Red nun.	21/17

*

SECTION VIII - LIGHT LIST CORRECTIONS (Continued)

(1) No.	(2) Name and Location	(3) Position	(4) Characteristic	(5) Height	(6) Range	(7) Structure	(8) Remarks
21370	Detroit Harbor Channel Buoy 10	45-20-20.362N 086-56-08.562W				Red nun.	21/17

*

ENCLOSURES

(1) Summary of Dredging[21-17 Summary Of Dredging.pdf](#)

Construction Operations in Effect

LNM: 14/14

(2) GREAT LAKES - General - Marine Events[21-17 Marine Events.pdf](#)

Summary of Marine Events

LNM: 14/14

(3) WATERWAYS ANALYSIS AND MANAGEMENT SURVEY[WAMS Doc.pdf](#) [AIS ATON Announcement II.pdf](#)

Great Lakes WAMS Questionnaire

LNM: 14/14

(4) BRIDGES

Bridge Information

LNM: 07/17

(5) HARBOR BEACH CHART[Harbor Beach Chart.pdf](#)

Changes to Federally Maintained Buoys

LNM: 09/17

J. E. RYAN, RADM
U. S. Coast Guard
Commander, Ninth Coast Guard District

SUMMARY OF DREDGING/CONSTRUCTION OPERATION IN EFFECT

The LNM column is where the entry originally appeared and where detailed information may be obtained. The dates listed are tentative.

<u>LOCATION</u>	<u>LNM</u>	<u>SUBJECT</u>	<u>HOURS / DAYS</u>	<u>UNTIL</u>
<u>NEW YORK STATE BARGE CANAL</u>				
Erie Canal, NY	19/13	DREDGING OPERATIONS	24 HRS / 7 DAYS	01 May 13 – TBD
Lockport, Brockport, and Fairport, NY	19/13	STABILIZATION OPERATIONS	24 HRS / 7 DAYS	01 May 13 – TBD
Buffalo River, NY	34/14	HABITAT RESTORATION	24 HRS / 7 DAYS	25 Aug 14 – TBD
<u>LAKE ONTARIO</u>				
Braddock Bay, NY	13/17	DREDGING OPERATIONS	0700-1900/ 7 DAY	01Apr 17- 01Sep 17
<u>LAKE ERIE</u>				
Cleveland, OH	05/13	CONSTRUCTION	24 HRS / 7 DAYS	29 Jan 13 – TBD
Lorain, OH	15/17	LORAIN BREAKWATER REPAIR	24HRS / 7 DAYS	03-Apr 17 -31 May 17
Cleveland, OH	19/17	CONSTRUCTION	Mon-Fri 0700-1600	08 May 17 – 15 Oct 17
<u>DETROIT RIVER</u>				
Detroit, MI	33/14	CONSTRUCTION	24 HRS/ 7 DAYS	11 Aug 14- TBD
Grosse Isle, MI	26/16	SHOAL INSTALLATION	24 HRS / 7 DAYS	01 Jul 16 – 31 Dec 17
Grosse Isle, MI	20/17	STONE PLACEMENT	0700-1900 / 7 DAYS	5 May 17 – 30 Nov 17
<u>LAKE ST. CLAIR</u>				
None Reported				
<u>LAKE HURON</u>				
None Reported				
<u>STRAITS OF MACKINAC</u>				
None Reported				
<u>ST MARYS RIVER</u>				

SUMMARY OF DREDGING/CONSTRUCTION OPERATION IN EFFECT

The LNM column is where the entry originally appeared and where detailed information may be obtained. The dates listed are tentative.

LOCATION	LNM	SUBJECT	HOURS / DAYS	UNTIL
Sault Se Marie, MI	42/16	CONSTRUCTION	24 HRS / 7 DAYS	18 Oct 16 – 13 May 17
<u>LAKE SUPERIOR</u>				
Portage Lake, MI	31/13	SEDIMENT REMEDIATION	24 HRS / 7 DAYS	01 Sep 13 – TBD
Ashland, WI	17/17	DREDGING	Mon-Sat 0600-1800	17 Apr 17 – 30 Nov 17
Marquette, MI	20/17	CONSTRUCTION	Mon-Sun 0800-1800	03 May – 31 May
<u>LAKE MICHIGAN</u>				
Calumet River, MI	47/16	CONSTRUCTION	24 HRS/ 7 DAYS	17 Aug 17 -01 Sep 17
Fox River	10/17	DREDGING	M-SAT/0700 – 1900	20 Mar 17 – 13 Nov 17
Muskegon, MI	16/17	MUSKEGON BREAKWATER REPAIRS	24 HRS / 7 DAYS	15 Apr 17 – 31 May 17
Grand Haven, MI	16/17	CONSTRUCTION SOUTH PIER	0600-2000/7 DAYS	14 Apr 17 – 31 Dec 17
Calumet Harbor, IL	16/17	DREDGING	24 HRS / 7 DAYS	17 Apr 17 – 23 Jun 17
Muskegon, MI	20/17	DREDGING	24 HRS / 7 DAYS	1 Apr 17 – 1 Jul 17

GREAT LAKES - GENERAL – MARINE EVENTS – SAFETY ZONES – SECURITY ZONES

Events listed below are those events that may have accompanying special local regulations.

Location	LNМ	EVENTS	Dates	Time (Local)	POC or Sponsor	Number
<u>LAKE ONTARIO</u>						
Genesee River(mouth)	08/17	Memorial DayFleet Review	29 May 17	1450-1900	Daniel Peck	585-820-5799
Genesee River(mouth)	08/17	Junior Sail Club	19 Jun 17 – 18 Aug 17	0930-1600	Daniel Peck	585-820-5799
Genesee River	11/17	High School Sailing Program	20 Mar 17–10 Nov 17	0800-1900	Liam Faudree	585-314-9760
St. Lawrence River	16/17	1000 Islands Charity Poker Run	15 Jul 17	1000-1700	Doug Tullock	435-640-0113
<u>LAKE ERIE</u>						
Buffalo, NY	11/17	BYC Creat Race	09 Jun 17 – 11 Jun 17	0900-1930	Timothy Hunt	716-440-7108
Buffalo, NY	11/17	Buffalo River Fest	17 Jun 17	1100-1500	Peg Overdorf	716-553-8350
Buffalo, NY	11/17	Buffalo Harbor Sailing Club Races	15 May 17 – 20 Sep 17	1800-2130	Thomas Hunt	716-570-2291
Tonawanda, NY	15/17	Western New York Poker Run	12-Aug 17	1030-1700	Anthony Scioli	716-510-9669
Buffalo Harbor, NY	16/17	Buffalo Harbor Sailing Club Parade	4 Jul 17	2030-2230	June Crawford	716-860-1445
Cleveland, OH	18/17	Cleveland Race Week	14 Jun 17 – 25 Jun 17	N/A	John Zelli	216-780-8993
Cleveland, OH	18/17	Cleveland Race Week	10 May 17 – 30 Oct 17	N/A	John Zelli	216-780-8993
Erie, NY	18/17	Bay Swim X	17 Jun 17	0900-1130	Patricia Davis	814-450-9526
Lorain, OH	21/17	Cabela’s Walleye Tournament	7 Jun 17 – 8 Jun 17	0700-1800	Edward Favre	440-244-1872
<u>DETROIT RIVER, LAKE ST CLAIR, AND ST CLAIR RIVER</u>						
Detroit River, MI	17/17	Detroit Full Moon Tour (kayak)	9 Jun, 9 Jul, Aug 7, Sep 6	1900-2200	Tracey Girard	313-568-9564
Lake St. Clair, MI	18/17	Lake Shore Sail Club Races	17 May, 21 May, 24May ,31 May	1200-2300	Tracey Girard	313-568-9564
Detroit River, MI	18/17	Pine Street Paddle	Summer	1800-2000	Tracey Girard	313-568-9564
Lake St. Clair, MI	18/17	Windsor Yacht Club Wed night series	17 May -27 Sep	1900-2200	Tracey Girard	313-568-9564
Lake St. Clair	20/17	Grosse Point Sail Club Showdown	May 23, 30 June 6, 13, 20, 27 July 11 Aug 1,8,15, 22, 29 Sept 5, 12, 19, 26,	Various	Tracey Girard	313-568-9564
Grosse Isle	21/17	WE Kayak Grosse Isle Paddle	June 6, 13, 20, 27 July 4, 11, 18, 25 Aug 1, 8, 15, 22, 29 Sept 5	1800-2000	Tracey Girard	313-568-9564
Detroit	21/17	Belle Isle Sea Kayak Paddle Club	May 25 June 1,8, 15, 22, 29 July 6, 13, 20, 27 Aug 3, 10, 17, 24, 31 Sept 7	1800-2000	Tracey Girard	313-568-9564
Detroit	21/17	BYC Thursday Night Series	May 25 June 1,8, 15, 22, 29, July 6, 13, 20, 27 Aug 3, 10, 17, 24, 31 Sept 7	1900-2100	Tracey Girard	313-568-9564
Grosse Isle	21/17	FYC Regatta Small Boat practice	May 25	1900-2100	Tracey Girard	313-568-9564
St. Clair Shores	21/17	Grosse Pointe War Memorial Red, White, blue gala	May 25	2130-2200	Tracey Girard	313-568-9564
Detroit	21/17	DYC Memorial Regatta	May 27	1030-1730	Tracey Girard	313-568-9564

GREAT LAKES - GENERAL – MARINE EVENTS – SAFETY ZONES – SECURITY ZONES

Events listed below are those events that may have accompanying special local regulations.

LAKE HURON

Tawas, MI	18/17	Tawas Bay Yacht Club Racing Events 2017	May-Oct Sat and Sun	1000-1700	Tracey Girard	313-568-9564
Saginaw Bay	20/17	Bay City YC Sailboat Racing Program	24 May 17	0900-2400	Tracey Girard	313-568-9564
Port Huron	21/17	PHYC - Windward Leeward Regattas	May 27, 28 Aug 26, 27	0900-1700	Tracey Girard	313-568-9564

LAKE SUPERIOR

NSTR

ST MARYS RIVER

NSTR

STRAITS OF MACKINAC

NSTR

LAKE MICHIGAN

Chicago, IL	15/17	Navy Pier Fireworks Display	27 May 17-2 Sep 17	2200-2245 every Sat	MSU Chicago	630-986-2155
Chicago, IL	15/17	Navy Pier Fireworks Display	31 May 17-30 Aug 17	2115-2200 every Wed	MSU Chicago	630-986-2155

Waterway Analysis and Management System Survey

Name of Waterway: _____

User Information

___ Commercial User

___ Recreational User

Number of years in the maritime industry or number of years using this waterway: _____

Number of transits in the waterway per year: _____

Number of night transits of waterway: _____

Seasonal Dates: Start: _____ End: _____

Name of Vessel: _____

Vessel Description: _____

Length: _____ Beam: _____ Draft: _____ Gross Tons: _____

Net Tons: _____ Bridge Height of Eye: _____

Cargo Carried: _____

Navigational tools used: (ECDIS/ECPINS, GPS, DGPS, VISUAL, RADAR) _____

What area do you believe is the most dangerous or difficult to navigate: _____

Are the floating aids to navigation (lighted and unlighted buoys) adequate for this waterway: _____

Are the fixed aids to navigation (lights, ranges, lighthouses, daybeacons) adequate for this waterway: _____

Are the year round and lighted ice buoys adequate: _____

Are there buoys that you feel should be changed to fixed aids to navigation?

Are there any buoys that could be eliminated from this waterway: _____

Are there any buoys with sound signals that the bell or gong could be removed:

Are there any areas that require additional aids to navigation in this waterway:

Do the nautical charts, Coast Pilot, and Light List meet your needs for this waterway: _____

Are there private Aids to Navigation that you find misleading or interfere with the current system in the waterway:

Any addition comments on this waterway: _____

Thank you for taking time to comment on this waterway. Your input as a mariner very valuable to the U. S. Coast Guard in evaluating waterways to make them safe and as easily navigable as possible. Please feel free to contact Mr. Doug Sharp at william.d.sharp@uscg.mil or (216) 902-6070 with any other questions or concerns about any aids to navigation in the Great Lakes. The survey can be mailed to:

Commander (dpw-2)
Ninth Coast Guard District
1240 East Ninth Street
Cleveland, Ohio 44199

U.S. Coast Guard to Test Automatic Identification System (AIS) Aids to Navigation (ATON)

In the near future, the U.S. Coast Guard and other authorized agencies and organizations (i.e., U.S. Army Corps of Engineers, Marine Exchange of Alaska) will begin transmitting AIS ATON messages and marine safety information via AIS for testing and evaluation. The exact content, location, and times of these broadcasts will be announced in future Local Notices to Mariners.

AIS is an internationally adopted radio communication protocol that enables the autonomous and continuous exchange of navigation safety related messages amongst vessels, lifeboats, aircraft, shore stations, and aids to navigation (AIS ATON). AIS ATON stations broadcast their presence, identity (9-digit Marine Mobile Service Identity (MMSI) number), position, and status at least every three minutes or as needed. These broadcasts can originate from an AIS station located on an existing physical aid to navigation (Real AIS ATON) or from another location (i.e., AIS Base Station). An AIS Base Station signal broadcasted to coincide with an existing physical aid to navigation is known as a Synthetic AIS ATON. An electronically charted, but non-existent as a physical aid to navigation, is identified as a Virtual AIS ATON. The latter two can be used to depict an existing aid to navigation that is off station or not watching properly or to convey an aid to navigation that has yet to be charted. All three variants can be received by any existing AIS mobile device, but they would require an external system for their portrayal (i.e., AIS message 21 capable ECDIS, ECS, radar, PC). How they are portrayed currently varies by manufacturer, but the future intention is for the portrayal to be in accordance with forthcoming International Standards (i.e., IEC 62288 (Ed. 2), IHO S-4 (Ed. 4.4.0)).

Mariners capable of receiving and displaying these test AIS messages are encouraged to provide feedback and report any anomalies to the USCG NAVCEN Website: <http://www.navcen.uscg.gov> | Contact Us Tab | Subject: AIS | Category: AIS Testing.

Example of Local Notice to Mariners Chart Corrections for AIS ATONs

Chart Correction for *Real AIS ATON*

12326	52nd Ed.	01-JUNE-13	Last LNM: 53/13	NAD 83		LNM/14
<i>Chart Title: Approaches to New York</i>						
ADD		Magenta circle AIS Chart No. 1: S17.2 to ABC Channel Lighted Whistle Buoy A and			CGD 40-27-27.991N	073-50-12.228W
CHANGE		Characteristic to RW "A" Mo (A) WHIS Racon (") AIS				






Chart Correction for *Synthetic AIS ATON*

18649	68th Ed.	01-JUNE-13	Last LNM: 52/13	NAD 83		LNM/14
<i>Chart Title: Entrance to San Francisco Bay</i>						
ADD		Magenta circle AIS Chart No. 1: S17.2 to ABC Approach Lighted Whistle Buoy AB and			CGD 37-44-59.749N	122-41-33.940W
CHANGE		Characteristic to RW "AB" Mo (A) WHIS Racon (-) AIS				

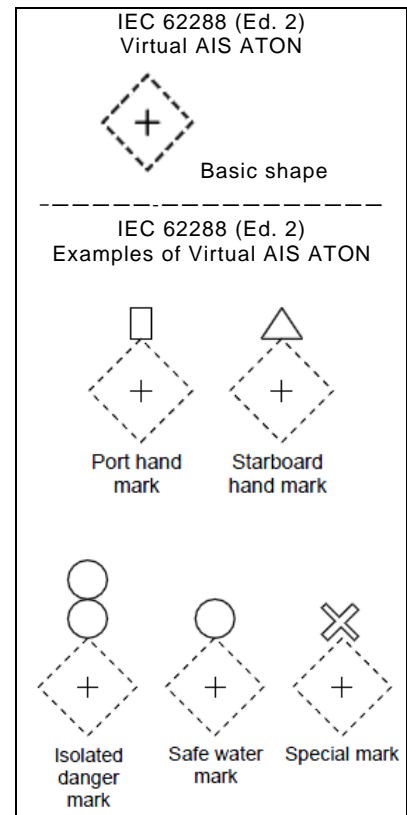
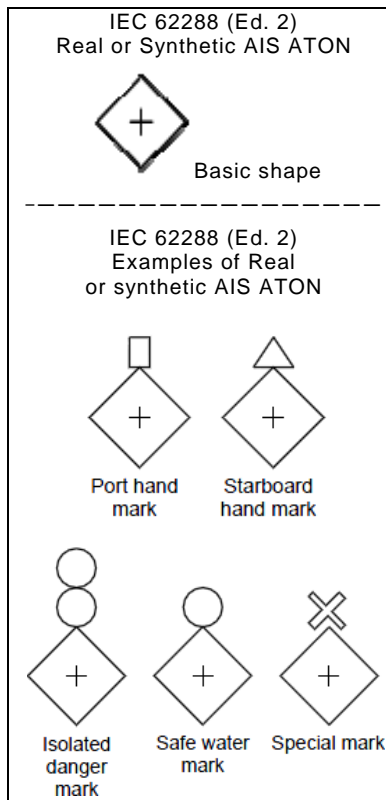
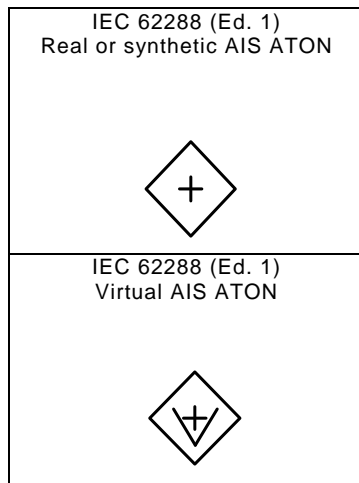
Chart Correction for *Virtual AIS ATON*

12314	33rd Ed.	01-JUNE-12	Last LNM: 51/13	NAD 83		LNM/14
<i>Chart Title: Delaware River Philadelphia to Trenton</i>						
ADD		ABC Railroad Bridge South Starboard V-AIS ATON Chart No. 1: S18.2		to	CGD 39-58-55.059N	075-04-06.856W
ADD		ABC Railroad Bridge South Port V-AIS ATON Chart No. 1: S18.2		to	38-58-55.803N	076-23-04.547W

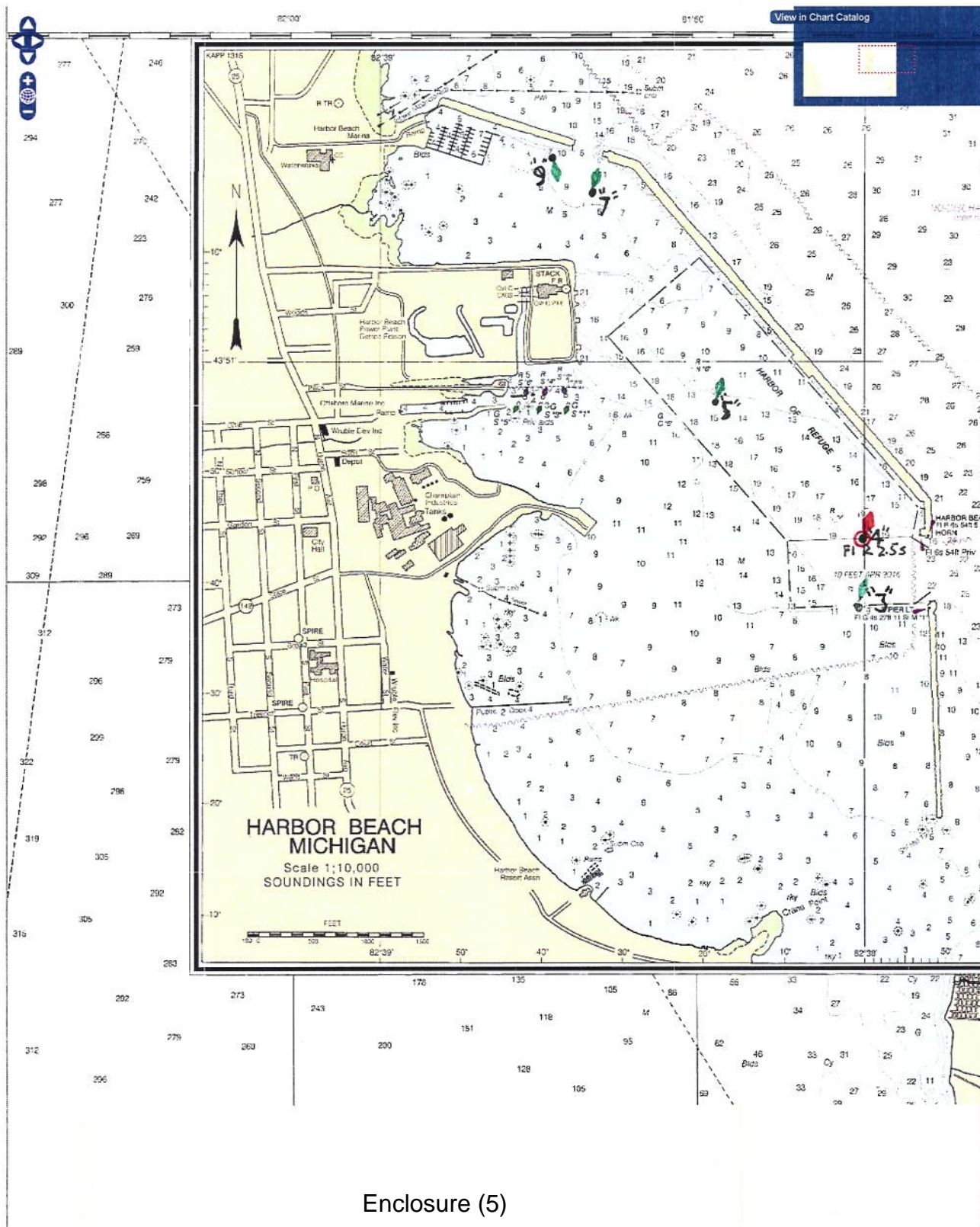
Virtual AIS ATON Symbology for Electronic Chart Display and Information System (ECDIS)

Port Lateral (IALA B)	A Virtual object marking the port side of a channel	
Starboard Lateral (IALA B)	A Virtual object marking the starboard side of a channel	
Isolated Danger	A Virtual object marking an isolated danger	
Safe Water	A Virtual object marking safe water	
Special Purpose	A Virtual object used to mark an area or feature referred to in nautical documents	

AIS ATON Symbology of the International Electrotechnical Commission (IEC) and International Maritime Organization (IMO)



Enclosure (5)



Enclosure (5)