



U.S. Department
of Homeland Security
**United States
Coast Guard**

LOCAL NOTICE TO MARINERS

District: 9

Week: 25/17

Issued by: Commander (dpw)
Ninth Coast Guard District
1240 East Ninth Street,
Cleveland, OH 44199-2060
Telephone: (216) 902-6069

Direct questions about this LNM to the above address.

All distances in this publication are STATUTE MILES unless otherwise noted.

District Nine Internet Address <https://www.uscg.mil/d9/uscgd9.html>

District Nine Local Notice to Mariners email Address D09-DG-District-D9-LocalNoticetoMariners@uscg.mil

** Navigation Information Service watchstander, 24 hours a day at (703) 313-5900 ** **Internet Address** <https://www.navcen.uscg.gov/>

Light List Reference: Commandant Publication P16502.7, VOL VII, 2016 Edition

Coast Pilot Reference: 2016 U.S. Coast Pilot 6 Great Lakes 46th Edition

Coast Pilots, along with corrections are available at: <http://nauticalcharts.noaa.gov/nsd/cpdownload.htm>

The Local Notice to Mariners is available on the Internet at <https://www.navcen.uscg.gov/?pageName=lnmMain> You will also have links to other government agencies- web pages including the US Army Corps of Engineers and the National Ocean Service.

REPORT DISCREPANCIES IN AIDS TO NAVIGATION TO THE NEAREST COAST GUARD UNIT

The Ninth District and all Sector offices for their areas of responsibility issue a BROADCAST NOTICE TO MARINERS.

The following Broadcast Notice to Mariners have been incorporated into this week's Local Notice to Mariners:

Sector Buffalo, NY - B090-17 through B092-17

Ninth District - C100-17 through C115-17

Sector Detroit, MI - D083-17 through D087-17

Sector Lake Michigan, WI - M190-17 through M209-17

Sector Sault Ste Marie, MI - S077-17 through S085-17

The United States Coast Guard Navigation Information Service (NIS), operated by the USCG Navigation Center, is staffed 24 hours a day, 7 days a week. The NIS provides information on the current operational status, effective policies, and general information for GPS and DGPS. The

NIS also disseminates Safety Broadcasts (BNM), Local Notice to Mariners (LNM), and the latest Notice Advisory to Navstar Users (NANU). NANU notices can be obtained via email subscription through the USCG Navigation Center website: <https://cgls.uscg.mil/mailman/listinfo/nanu>. In addition, the NIS investigates all reports of degradation or loss of GPS, DGPS or AIS service. Users are encouraged to report all degradation or loss of radio navigation services to the NIS via any of the following: Phone: (703) 313-5900, mail to: webmaster@smtp.navcen.uscg.mil, or on the internet at: <https://www.navcen.uscg.gov>

ABBREVIATIONS

A through H

ADRIFT - Buoy Adrift
AICW - Atlantic Intracoastal Waterway
AI - Alternating
B - Buoy
BKW - Breakwater
bl - Blast
BNM - Broadcast Notice to Mariner
bu - Blue
C - Canadian
CHAN - Channel
CGD - Coast Guard District
C/O - Cut Off
CONT - Contour
CRK - Creek
CONST - Construction
DAYMK/Daymk - Daymark

I through O

I - Interrupted
ICW - Intracoastal Waterway
IMCH - Improper Characteristic
INL - Inlet
INOP - Not Operating
INT - Intensity
ISL - Islet
Iso - Isophase
kHz - Kilohertz
LAT - Latitude
LB - Lighted Buoy
LBB - Lighted Bell Buoy
LHB - Lighted Horn Buoy
LGB - Lighted Gong Buoy
LONG - Longitude
LNM - Local Notice to Mariners

P through Z

PRIV - Private Aid
Q - Quick
R - Red
RACON - Radar Transponder Beacon
Ra ref - Radar reflector
RBN - Radio Beacon
REBUILT - Aid Rebuilt
RECOVERED - Aid Recovered
RED - Red Buoy
REFL - Reflective
RRL - Range Rear Light
RELIGHTED - Aid Relit
RELOC - Relocated
RESET ON STATION - Aid Reset on Station
RFL - Range Front Light
RIV - River

DBN/Dbn - Daybeacon
 DBD/DAYBD - Dayboard
 DEFAC - Defaced
 DEST - Destroyed
 DISCON - Discontinued
 DMGD/DAMGD - Damaged
 ec - eclipse
 EST - Established Aid
 ev - every
 EVAL - Evaluation
 EXT - Extinguished
 F - Fixed
 fl - flash
 Fl - Flashing
 G - Green
 GIWW - Gulf Intracoastal Waterway
 HAZ - Hazard to Navigation
 HBR - Harbor
 HOR - Horizontal Clearance
 HT - Height

LT - Light
 LT CONT - Light Continuous
 LTR - Letter
 LWB - Lighted Whistle Buoy
 LWP - Left Watching Properly
 MHz - Megahertz
 MISS/MSNG - Missing
 Mo - Morse Code
 MRASS - Marine Radio Activated Sound Signal
 MSLD - Misleading
 N/C - Not Charted
 NGA - National Geospatial-Intelligence Agency
 NO/NUM - Number
 NOS - National Ocean Service
 NW - Notice Writer
 OBSCU - Obscured
 OBST - Obstruction
 OBSTR - Obstruction
 Oc - Occulting
 ODAS - Anchored Oceanographic Data Buoy

RRASS - Remote Radio Activated Sound Signal
 s - seconds
 SEC - Section
 SHL - Shoaling
 si - silent
 SIG - Signal
 SND - Sound
 SPM - Single Point Mooring Buoy
 SS - Sound Signal
 STA - Station
 STRUCT - Structure
 St M - Statute Mile
 TEMP - Temporary Aid Change
 TMK - Topmark
 TRLB - Temporarily Replaced by Lighted Buoy
 TRLT - Temporarily Replaced by Light
 TRUB - Temporarily Replaced by Unlighted Buoy
 USACE - Army Corps of Engineers
 W - White
 Y - Yellow

Additional Abbreviations Specific to this LNM Edition:

LIB - Lighted Ice Buoy

SECTION I - SPECIAL NOTICES

This section contains information of special concern to the Mariner.

CAUTION TO BE USED IN RELIANCE UPON AIDS TO NAVIGATION

The aids to navigation depicted on charts comprise a system of fixed and floating aids to navigation with varying degrees of reliability. Prudent mariners will not rely solely on any single aid to navigation, particularly a floating aid to navigation. With respect to buoys, the buoy symbol is used to indicate the approximate position of the buoy body and the sinker which secures the buoy to the seabed. The approximate position is used because of the practical limitations in positioning and maintaining buoys and their sinkers in precise geographical locations. These limitations include, but are not limited to, inherent imprecision in position fixing methods, prevailing atmospheric and sea conditions, slope of and the material making up the seabed, the fact that buoys are moored to sinkers by varying length of chain, and the fact that the buoy body and/or sinker positions are not under continuous surveillance, but are normally checked only during periodic maintenance visits which often occur more than a year apart. Due to the forces of nature, the position of the buoy body can be expected to shift inside and outside the charted symbol. The mariner is also cautioned that buoys may be extinguished or sound signals may not function as the result of ice, running ice, or other natural causes, collisions, or other accidents. For the foregoing reasons, a prudent mariner must not rely completely upon the position or operation of floating aids to navigation, but will also utilize bearings from fixed objects and aids to navigation on shore. Further, a vessel attempting to pass close aboard always risks collision with a yawing buoy or with the obstruction that the buoy marks.

LNM: 06/14

IMPORTANT SAFETY NOTICE ABOUT THE RELIABLE OPERATION OF ECDIS

Following an announcement by the International Maritime Organization (IMO) concerning potential display anomalies in some ECDIS systems, the International Hydrographic Organization (IHO) issued an ENC Data Presentation and Performance Check in October 2011. This check is intended to assist mariners and to help determine the extent of the anomalies. IHO has received reports from mariners confirming that a number of ECDIS fail to display some significant underwater features in the "Standard" display mode. For all significant objects to be visible to the mariner, these ECDIS must be operated in "Full display" or "All display" mode until a software upgrade is made available from the manufacturer. Mariners are strongly encouraged to use the IHO ENC Data Presentation and Performance Check issued through ENC service providers and also available directly from the IHO website (www.iho.int) to check the operation of their ECDIS and to determine whether their system is affected. IHO Circular Letter 33/2012 is available on the Coast Guard's Navigation Center website (<https://www.navcen.uscg.gov>) under the heading News and Notices.

LNM: 12/12

ZIKA VIRUS UPDATE

The U.S. Department of Transportation's Maritime Administration (MARAD) has issued MARAD Advisory 2016-03 on the Zika Virus and Impacts on Maritime Commerce. The Advisory can be found at <https://www.marad.dot.gov/newsroom/advisory/2016/marad-advisory-2016-03/>. U.S. flag operators are requested to forward this link to their ships by the most expeditious means.

LNM: 39/16

RANGE STRUCTURES

The U.S. Coast Guard has become aware that Coast Guard information used to depict a rangeline on NOAA Electronic Navigational Charts (ENC) may not be of sufficient accuracy to accurately portray the rangeline on the ENC. Mariners are cautioned that the position of a rangeline as shown on an ENC may not reflect its true position.

LNM: 04/11

USACE NOTICE TO NAVIGATION INTERESTS

Current Federal Channel conditions, shoaling, and the most recent channel surveys are available at the following Army Corps of Engineers web sites:

Buffalo: <http://www.lrb.usace.army.mil/>

Detroit: <http://www.lre.usace.army.mil/>

Chicago: <http://www.lrc.usace.army.mil/>

Rock Island: <http://www.mvr.usace.army.mil/>

LNM: 28/12

THE DATES OF LATEST EDITIONS, NAUTICAL CHARTS AND MISCELLANEOUS MAPS

Up to date information on latest editions, nautical charts and miscellaneous maps can be found at the following web address:

<http://www.nauticalcharts.noaa.gov/>

LNM: 32/13

YOUNGSTOWN, NY DGPS SITE UNUSABLE TIME APPROVAL

An unusable time for Youngstown, NY DGPS site for preventive maintenance is authorized for the following Date/Time:

Primary: 27 JUNE 2017 1300Z - 1700Z 0900 - 1300 EST

Alternate : 29 JUNE 2017 1300Z - 1700Z 0900 - 1300 EST

LNM: 24/17

THE 2017 ELECTRONIC LIGHT LIST

The 2017 Light List is now available.

Coast Guard Light Lists are a means for communicating aids to navigation information to the maritime public. The last government printed Light Lists were the 2014 editions. While the Light Lists will no longer be available in government printed form, commercial reproductions may be available for purchase from maritime service providers. Local Notices to Mariners will continue to advertise Light List corrections and NAVCEN will continue to publish a compilation of corrections.

2017 Light Lists are available on the USCG Navigation Center's website at: <https://www.navcen.uscg.gov/?pageName=lightLists>

Complete versions of the 2017 Light Lists are updated weekly on the NAVCEN website and mariners should download applicable copies and updates as needed at: <https://www.navcen.uscg.gov/?pageName=lightListWeeklyUpdates>.

A summary of 2017 Light List corrections are available at: <https://www.navcen.uscg.gov/?pageName=lightListCorrections>

Guidance for use of electronic navigation publications onboard U.S. vessels can be found at:

http://www.uscg.mil/hq/cgcv/cvc/policy/policy_letters/543/CG-543_pol10-05.pdf

LNM: 04/17

USE OF ELECTRONIC CHARTS AND PUBLICATIONS IN LIEU OF PAPER CHARTS, MAPS, AND PUBLICATIONS

The U.S. Coast Guard has issued Navigation and Vessel Inspection Circular (NVIC) No. 01-16 which contains guidance on the use of electronic charts and publications in lieu of paper charts, maps, and publications. This guidance applies to U.S. flagged vessels subject to U.S. domestic chart, map, and publication carriage requirements contained in Titles 33 and 46 of the Code of Federal Regulations. The NVIC can be viewed at <https://www.uscg.mil/hq/cg5/nvic/default.asp> or <https://cgportal2.uscg.mil/library/directives/SitePages/Home.aspx>.

LNM: 06/16

GREAT LAKES - Great Lakes Water Levels

The expected water levels on the Great Lakes for Jun 23, 2017. Connecting Channels and the St. Lawrence River, given in inches above (+) or below (-) Low Water Datum (LWD). LWD is a plane of reference used on a navigation chart. It is also known as chart datum.

Great Lakes:

Lake Ontario +60, Lake Erie +52, Lake St. Clair +47, Lake Michigan-Huron +33, Lake Superior +18.

St Lawrence River:

Above Long Sault Dam +52, Above Iroquois Dam +50, Ogdensburg +54, Alexandria Bay +57 Head of River at Cape Vincent +60.

Detroit River:

Lake Erie at Pelee Passage +52, Mouth of River at Gibraltar +52, Fort Wayne +52, Head of River above Belle Isle +48.

St. Clair River:

Mouth of River at St. Clair Flats +47, Algonac +49, St. Clair +40, Blue Water Bridge +40, Head of River at Fort Gratiot +36, Lake Huron Approach Channel +33.

St. Marys River:

Mouth of River at Detour +33, West and Middle Neebish +30, Head of Little Rapids +27, U.S. Slip +26, Above Locks +21, Head of River at Point Iroquois +18.

Available water depth is determined for a location by adding (if +) or subtracting (if -) the amount from the above to the water depth shown on National Oceanic and Atmospheric Administration (NOAA) navigational charts. Caution: Depths so determined are representative of a still water surface elevation, disturbed by neither wind nor other causes. Depth, however, may be reduced or increased as much as several feet for short periods of time due to these disturbances, or when sections of channels develop shoals. Vessel masters should refer to the Local Notice to Mariners for extent of shoaling and scattered bedrock projections in all channels. For further information direct inquiries to: Department of the Army, Detroit District Corps of Engineers P. O. Box 1027, Detroit, MI 48231, (313) 226-6443. Additional information can be found on the U.S. Army Corps of Engineers Information Center website at

<http://www.lre.usace.army.mil/Missions/GreatLakesInformation/GreatLakesWaterLevels/WaterLevelForecast/ConnectingChannelsForecast.asp>

LNM: 25/17

LAKE ERIE – NY – Buffalo Ship Canal – Chart 14833

There is a steel I-beam protruding out of the water in approximate position 42-51.640N 078-52.100W. The steel I-beam is marked with a temporary white buoy FL W 4s.

LNM: 17/16

ST CLAIR RIVER - Fort Gratiot to St. Clair Flats - Chart 14852

Water levels on the St. Clair River are above the long term average and pose an increased risk for property damage caused by wake. All vessels greater than 20 meters in length operating in normal displacement mode are reminded to abide by the speed limit of 10.4 knots between Fort Gratiot Light and St. Clair Flats Canal Light.

LNM: 16/17

LAKE HURON - Harbor Beach Harbor - Chart 14862

Due to shoaling the following changes to Federally maintained buoys in Harbor Beach below can be found on a chart in enclosure(6). These will be seasonal buoys maintained from 01 April to 01 November.

Harbor Beach Buoy "3" (LLNR 10145) move east to approximate position 43-50-38.13N / 082-38-00.00W

Harbor Beach Buoy "4" (LLNR 10150) change to a lighted buoy FI R 2.5s and move east to approximate position 43-50-43.98N / 082-38-00.07W

Harbor Beach Buoy "5" (LLNR 10155) move northeast to approximate position 43-50-58.69N / 082-38-22.32W

Harbor Beach Buoy "6" (LLNR 10160) permanently discontinue

Harbor Beach Buoy "7" (LLNR 10161) establish in approximate position 43-51-14.12N / 082-38-32.31W

Harbor Beach Buoy "9" (LLNR 10162) establish in approximate position 43-51-19.39N / 082-38-40.98 W

Permanently discontinue the following lighted buoys in Harbor Beach Harbor:

Harbor Beach Marina Lighted Buoy "1" (LLNR 10195)

Harbor Beach Marina Lighted Buoy "3" (LLNR 10200)

LNM: 17/17

ILLINOIS RIVER - MARSEILLES

A partially submerged pile of beams has been reported on the right descending bank near Mile Marker 247.8 in the Illinois River. All mariners are requested to transit the area with caution.

LNM: 10/17

LAKE MICHIGAN - Stony Lake to Point Betsie - Chart 14907

Due to reported shoaling in the entrance to Arcadia Lake, mariners are urged to stay north of the center of the channel. Contact Arcadia Harbormaster on VHF FM Channel 16 for further information. Mariners are requested to transit the area with caution.

LNM: 50/16

LAKE MICHIGAN - MI - Waugoshance Point to Seul Choix Point - Chart 14911

An uncharted object has been reported north of the LCA track lines east of Lansing Shoal in approximate position 45-54.647°N 085-24.970°W. The object appears to be 23-24 feet below the surface at low water datum.

LNM: 30/15

LAKE MICHIGAN - IL – Calumet River – 14929 - Obstruction

An obstruction is protruding approximately 15 feet into the channel from the Morton Salt Dock at river mile 331.5 on the Calumet River. Mariners are advised to use caution and avoid transiting near the left descending wall.

LNM: 06/17

LAKE MICHIGAN - LOWER GREEN BAY - Chart 14910

Suamico Lighted Buoy "8" (LLNR 22060) will not be commissioned as advertised in the Light List due to shoaling. The buoys commissioning will be reevaluated upon completion of a survey of this waterway.

LNM: 12/17

SECTION II - DISCREPANCIES

This section lists all reported and corrected discrepancies related to Aids to Navigation in this edition. A discrepancy is a change in the status of an aid to navigation that differs from what is published or charted.

DISCREPANCIES (FEDERAL AIDS)

LLNR	Aid Name	Status	Chart No.	BNM Ref.	LNM St	LNM End
4630	Sandusky Straight Channel Range Rear Light	DAYMK MISSING	14842	D051-17	18/17	
4685	Sandusky Dock Channel Light 21	DAYMK MISSING	14845	D068-17	23/17	
6765	Inner Light (C)	LT EXT		B225-16	01/17	
8400	Peche Island Range Front Light	RAC INOP	14853	D016-17	11/17	
8410	Peche Island Range Rear Light	LT EXT	14853	D087-17	25/17	
8595	Pier Light X32/2 (C)	LT IMCH			06/17	
9725	Russell Island Light	DAYMK DMGD	14853	D023-17	12/17	
9870	Courtright Light (C)	LT EXT		D074-16	23/16	
13340	Middle Neebish Channel Light 58	DAYMK MISSING	14887	S059-17	18/17	
13680	West Neebish Channel (Downbound) Light 16	DAYMK IMCH	14887	S083-17	25/17	
14255	Vidal Shoals Channel Lighted Buoy 5	LT EXT	14884	S085-17	25/17	
14550	Grand Marais Harbor Of Refuge Outer Light	SS INOP	14962	S082-17	25/17	
15275	Michigan Island Light	LT EXT	14973	S084-17	25/17	
15705	Superior Front Channel Lighted Buoy 2	OFF STA	14975	S066-17	22/17	
20820	Sheboygan Breakwater Light	LT IMCH	14922	M186-17	24/17	
22180	Green Bay Harbor Entrance Channel Range Front Light	DAYMK MISSING	14918	M098-17	15/17	
22185	Green Bay Harbor Entrance Channel Range Rear Light	DAYMK MISSING	14918	M149-17	21/17	

DISCREPANCIES (FEDERAL AIDS) CORRECTED

LLNR	Aid Name	Status	Chart No.	BNM Ref.	LNM St	LNM End
765	St. Lawrence Seaway Light 114 (C)	WATCHING PROPERLY			25/17	25/17
7735	Fighting Island Channel South Light	WATCHING PROPERLY	14853		25/17	25/17
8535	St. Clair Flats Canal Range Front Light	RELIGHTED	14853		25/17	25/17
11240	Tawas Light	RELIGHTED	14863		25/17	25/17

14130	Little Rapids Cut Lighted Buoy 101	RELIGHTED	14884	25/17	25/17
14135	Little Rapids Cut Junction Lighted Buoy LR	RELIGHTED	14883	25/17	25/17
14150	Little Rapids Cut Lighted Buoy 104	RELIGHTED	14883	25/17	25/17
14925	Lake Linden Harbor Buoy 1	RESET ON STATION	14972	25/17	25/17

DISCREPANCIES (PRIVATE AIDS)

LLNR	Aid Name	Status	Chart No.	BNM Ref.	LNM St	LNM End
4190	Whiskey Island Marina Entrance Light 1	LT IMCH/DAYMK MISSING	14839	B059-16	21/16	
4191	Whiskey Island Marina Entrance Light 2	DAYMK MISSING	14839	B060-16	21/16	
4960	Sandusky Yacht Club Light 1	LT EXT	14842	D070-17	23/17	
4965	Sandusky Yacht Club Light 2	LT IMCH	14842	D070-17	23/17	
5260	Pleasant Pointe Southeast Pier Light	LT IMCH	14842	D070-17	23/17	
5280	Lakeside Marine Inc. Pierhead Light	LT IMCH	14842	D066-17	22/17	
5305	East Harbor Entrance Light 1	DAYMK MISSING	14842	D070-17	23/17	
5310	East Harbor Entrance Light 2	DAYMK MISSING	14842	D070-17	23/17	
5365	East Harbor State Park East Breakwater Light	LT IMCH	14842		22/17	
5370	East Harbor State Park West Breakwater Light	LT IMCH	14842		22/17	
5955	Wild Wings Marina Entrance Light 1	LT EXT	14846	D070-17	23/17	
5960	Wild Wings Marina Entrance Light 2	LT EXT	14846	D070-17	23/17	
7405	Metro Park Marina Lighted Buoy 1	OFF STA	14853	D064-17	21/17	
8875	Miller Memorial Light	LT EXT	14853		20/17	
14192	George Kemp Marina West Light	LT EXT	14884	S064-17	21/17	
18070	Harborage Marina West Entrance Light 2	LT EXT	14942	S076-17	24/17	
18825	Lakeshore Yacht Club Channel Lighted Buoy 2	LT EXT	14934	M196-17	25/17	
18881	Hartshorn Municipal Marina Lighted Buoy 1	OFF STA	14934		25/17	
18882	Hartshorn Municipal Marina Lighted Buoy 2	OFF STA	14934	M197-17	25/17	
18884	Hartshorn Municipal Marina Lighted Buoy 4	OFF STA	14934	M197-17	25/17	
20355	Zion Intake Lighted Buoy A	LT EXT	14904	M089-17	15/17	
20832	Sheboygan Marina Light 2	LT EXT	14922	M187-17	24/17	

DISCREPANCIES (PRIVATE AIDS) CORRECTED

LLNR	Aid Name	Status	Chart No.	BNM Ref.	LNM St	LNM End
2220	Pultneyville Yacht Club Light	REBUILT/REMAINS	14814		19/17	25/17
4015	Northeast Yacht Club Outer Light	RELIGHTED	14826		19/17	25/17
18820	Lakeshore Yacht Club Channel Lighted Buoy 1	WATCHING PROPERLY	14934		25/17	25/17

PLATFORM DISCREPANCIES

Name	Status	Position	BNM Ref.	LNM St	LNM End
None					

PLATFORM DISCREPANCIES CORRECTED

Name	Status	Position	BNM Ref.	LNM St	LNM End
None					

SECTION III - TEMPORARY CHANGES and TEMPORARY CHANGES CORRECTED

This section contains temporary changes and corrections to Aids to Navigation for this edition. When charted aids are temporarily relocated for dredging, testing, evaluation, or marking an obstruction, a temporary correction shall be listed in Section IV giving the new position.

TEMPORARY CHANGES

LLNR	Aid Name	Status	Chart No.	BNM Ref.	LNM St	LNM End
4451	Vermilion Museum Lighthouse	DISCONTINUED	14826	B002-16	08/16	
6015	Cooley Canal Front Range Light	DISCONTINUED	14846		11/16	
6016	Cooley Canal Rear Range Light	DISCONTINUED	14846		11/16	
12607	St. Ignace Coast Guard Slip Light	DISCONTINUED	14881	S033-17	12/17	
14435	Birch Point Range Rear Light	Reduced Intensity	14884		25/17	
15260	Gull Island Light	Reduced Intensity	14973	S085-16	39/16	
18450	Manistee North Pierhead Light	Reduced Intensity	14938	M126-16	19/16	
18965	Grand Haven South Pierhead Entrance Light	Reduced Intensity	14933	M443-16	40/16	
18975	Grand Haven South Pierhead Inner Light	Reduced Intensity	14933	M443-16	40/16	
21940	Menominee Pier Light 6	DISCONTINUED	14917	M115-16	44/16	

TEMPORARY CHANGES CORRECTED

LLNR	Aid Name	Status	Chart No.	BNM Ref.	LNM St	LNM End
------	----------	--------	-----------	----------	--------	---------

None

PLATFORM TEMPORARY CHANGES

Name	Status	Position	BNM Ref.	LNM St	LNM End
------	--------	----------	----------	--------	---------

None

PLATFORM TEMPORARY CHANGES CORRECTED

Name	Status	Position	BNM Ref.	LNM St	LNM End
------	--------	----------	----------	--------	---------

None

SECTION IV - CHART CORRECTIONS

None

SECTION V - ADVANCE NOTICES

This section contains advance notice of approved projects, changes to aids to navigation, or upcoming temporary changes such as dredging, etc. Mariners are advised to use caution while transiting these areas.

SUMMARY OF ADVANCED APPROVED PROJECTS

<u>Approved Project(s)</u>	<u>Project Date</u>	<u>Ref. LNM</u>
----------------------------	---------------------	-----------------

None

Advance Notice(s)**ST. CLAIR RIVER - Chart - 14852**

Russell Island Light (LLNR 9725) Change the characteristic of the light to FG eliminating the white and green sector. The range of the light will be 8 statute miles.

LNM: 39/16

LAKE HURON - Harrisville to Forty Mile Point - Chart 14864

Alpena Light (LLNR 11370) reduce the range of the light from 12 statute miles to 10 statute miles.

LNM: 39/16

LAKE MICHIGAN - LOWER GREEN BAY - Chart 14910

Sherwood Point Light (LLNR 22000) change the range of the light from 15 statute miles to 12 statute miles

LNM: 04/17

LAKE MICHIGAN - MILWAUKEE HARBOR - Chart 14924

Milwaukee Breakwater Light (LLNR 20635) Reduce the range of the light from 14 statute mile to 13 statute miles.

LNM: 13/17

LAKE MICHIGAN - IL - Calumet River - Chart 14929

Calumet Harbor Breakwater South End Light (LLNR 19800) Reduce the range of the FI R 10s light from 14 statute miles to 12 statute miles and reduce the FI W 10s light from 17 statute miles to 13 statute miles. The rotating beacon will be replaced with more reliable LED lanterns. The fog signal will continue to operate by keying microphone five times on VHF-FM channel 83A.

LNM: 13/17

LAKE MICHIGAN - WI - Upper Green Bay - Chart 14909

St. Martin Island Light (LLNR 21450) change the characteristic of the light from AL WR 10s to FI W 10s. The range would be reduced from 18 statute miles to 16 statute miles.

LNM: 31/14

LAKE MICHIGAN - CHICAGO HARBOR - CHART 14924

Chicago Harbor Light (LLNR 19960) Increase the range of the light from 14 statute miles to 15 statute miles. Change the fog signal operation from continuous to user activated. Operate the fog signal by keying microphone five times on VHF-FM channel 83A.

LNM: 20/17

LAKE MICHIGAN - MI - Holland Harbor - Chart 14932

Holland Harbor South Pierhead Light (LLNR 19295) change the characteristic from AL WR 10s to FI R 10s and reduce the range of the light from 17 statute miles to 15 statute miles.

LNM: 39/12

LAKE MICHIGAN - WI - Upper Green Bay - Chart 14909

Boyer Bluff Light (LLNR 21770) reduce the range of the light from 8 statute miles to 6 statute miles.
Eagle Bluff Light (LLNR 21825) reduce the range of the light from 7 statute miles to 6 statute miles.

LNM: 28/15

LAKE SUPERIOR - DULUTH AND SUPERIOR HARBORS - Chart 14975

Superior Entry South Breakwater Light (LLNR 15595) reduce the range from 22 statute mile to 15 statute miles.

LNM: 13/17

LAKE SUPERIOR - DULUTH AND SUPERIOR HARBORS - Chart 14975

Duluth Harbor South Breakwater Inner Light (LLNR 15860) reduce the range of the light from 18 statute miles to 16 statute miles.

LNM: 13/17

SECTION VI - PROPOSED CHANGES

Periodically, the Coast Guard evaluates its system of aids to navigation to determine whether the conditions for which the aids to navigation were established have changed. When changes occur, the feasibility of improving, relocating, replacing, or discontinuing aids are considered. This section contains notice(s) of non-approved, proposed projects open for comment. SPECIAL NOTE: Mariners are requested to respond in writing to the District office unless otherwise noted (see banner page for address).

PROPOSED WATERWAY PROJECTS OPEN FOR PUBLIC COMMENT

<u>Proposed Project(s)</u>	<u>Closing</u>	<u>Docket No.</u>	<u>Ref. LNM</u>
None			

Proposed Change Notice(s)

LAKE MICHIGAN - UPPER GREEN BAY - CHART 14909

Hat Island South Shoal Buoy "HI" (LLNR 21850) Change the operation of this buoy from seasonal replaced by a can in the winter to seasonal not replaced maintained from April 21 to October 14.

LNM: 21/17

LAKE MICHIGAN - Green Bay - Chart 14917

Menominee Pier Light "6" (LLNR 21940) change the characteristic to FI R 6(1) and reduce the nominal range from 12 statute miles to 10 statute miles.

LNM: 46/16

LAKE MICHIGAN - Algoma to Sheboygan - Chart 14903

Kewaunee Pier Head Light (LLNR 20955) reduce the range of the light from 15 statute miles to 11 statute miles. Permanently discontinue the fog signal.

Algoma Light (LLNR 20975) reduce the range of the light from 15 statute miles to 11 statute miles.

LNM: 52/16

LAKE MICHIGAN - DUTCH JOHNS POINT TO FISHERY POINT - Chart 14908

Fayette Lighted Bell Buoy "2" (LLNR 21590) permanently discontinue the buoy.

LNM: 24/17

ST. MARY'S RIVER - MUNUSCONG LAKE TO SAULT STE. MARIE - Chart 14883

Little Rapids Cut Lighted Buoy "98B" (LLNR 14105) Add synthetic AIS ATON to this aid during time that the ice boom is deployed.

LNM: 04/17

For any comments or questions on these proposed changes please contact:

Mr. Doug Sharp of the Ninth District Aids to Navigation office at (216) 902-6070.

LNM: 30/13

SECTION VII - GENERAL

This section contains information of general concern to the Mariners. Mariners are advised to use caution while transiting these areas.

Waterways Analysis and Management System Study - 2017

The Coast Guard is conducting a Waterways Analysis and Management System Study on the following waterways during 2017. The study focuses on the area's aid to navigation system, waterborne commerce, marine casualty information, emergency response plans, routine and emergency communication capabilities, and future development projects. Any company or individual wishing to comment on the waterway reviews listed below is encouraged to contact the Coast Guard unit listed or email comments to william.d.sharp@uscg.mil. Any comments emailed will be forwarded to the appropriate unit for use in the WAMS project. A survey is attached to the Local Notice to Mariner and can be used to comment on these reviews or on any waterways located in the Great Lakes.

Cleveland Harbor (LLNR 3975 - LLNR 4260)
Lorain Harbor (LLNR 4265 - 4429)
Sandusky Harbor/Moseley Channel (LLNR 4560 - LLNR 5030)
Lake St. Clair Main Channel (LLNR 8400 - LLNR 8660)
Huron Harbor (LLNR 4430 - LLNR 5455)
Commanding Officer
USCGC Bristol Bay (WTGB 102)
110 Mt. Elliot Avenue
Detroit, Mi. 48207
(313) 568-9548

Boundary Waters / Lake of the Woods (LLNR 16925 - LLNR 17715)
Commander
Sector Sault Ste. Marie
337 Water St.
Sault Ste. Marie, Mi. 49783
(906) 635-3270

St. Joseph/Benton Harbor (LLNR 19515 - LLNR 19625)
Sheboygan Harbor (LLNR 20805 - LLNR 20840)
Manitowoc Harbor (LLNR 20842 - LLNR 20985)
Commander
U. S. Coast Guard Sector Lake Michigan
2420 South Lincoln Memorial Drive
Milwaukee, WI 53207
(414) 747-7188

Duluth/Superior Harbors (LLNR 15595 - LLNR 16250)
Grand Traverse Bay (LLNR 17855 - LLNR 18366)
Commanding Officer
USCGC Alder (WLB 216)
1201 Minnesota Avenue
Duluth, Mn. 55802
(218) 529-3131

Waterways Analysis and Management System Study - 2017

Straits of Mackinaw Eastern Section
(LLNR 11720 - LLNR 11775)
(LLNR 12175 - LLNR 12215)
(LLNR 12535 - LLNR 12650)
Burns Harbor (LLNR 19575 - LLNR 19625)
Commanding Officer
USCGC Mackinaw (WLBB 30)
632 Coast Guard Drive
Cheboygan, MI 49721
(231) 597-2030

LNM: 10/17

GREAT LAKES - Marine Events

Marine events such as races, parades, regattas, and fireworks displays are frequently held in the Great Lakes region. Advance information on specific events is contained in enclosure (2) of this publication. The public is reminded to listen to the local broadcast notice to mariners for the most up-to-date information on a marine event. Mariners are advised that some events may require temporary aids to navigation that are not displayed on a chart or in the Light List, and that they should exercise additional caution while operating in the vicinity of a scheduled marine event.

LNM: 24/13

NEW YORK STATE CANAL SYSTEM – NY - Erie Canal – Chart 14786 – Bridge Maintenance

From June 12, 2017 through September 30, 2018 scaffolding will be installed on the pier faces of the John Glenn Boulevard Bridge (E-73a) at Mile 167.8 over the Erie Canal at Salina, NY that extends 12 feet out towards the center of channel. The scaffolding will have steady burning red lights to show the temporary reduction in horizontal clearance.

LNM: 23/17

NEW YORK STATE CANAL SYSTEM – NY - Erie Canal – Chart 14786 – Bridge Inspections

From June 8 to October 20, 2017, between the hours of 0700 and 1600 Monday through Friday, a 30foot by 20 foot inspection barge will be working under the bridges from Creagers Road (E-96) at Mile 218.9 to Marshall Road (E-212) at approximate Mile 313.6 over the Erie Canal. The barge will monitor VHF-FM Marine Channel 16 and will move to accommodate vessels.

LNM: 24/17

NEW YORK STATE CANAL SYSTEM – NY - Erie Canal – Chart 14786 – Bridge Inspections

From July 10 through October 20, 2017 between the hours of 0800 and 1500, Monday through Friday inspectors will utilize Snooper type vehicles under the following bridges over the Erie Canal:
The Long Pond Road Bridge (E170) at Mile 266.4
The Manitou Road Bridge (E172) at Mile 271.5
The Clinton Street Bridge (E108) at Mile 217.0
The Whitbeck Road Bridge (E113) at Mile 229.8
The Sweden Walker Bridge (E180) at Mile 277.1
The Ayrault Road (E130) at Mile 250.4
And the Turk Hill Road Bridge (E126) at Mile 247.5
Spotters will warn of approaching vessels and move the man lift to allow vessels to pass

LNM: 24/17

NEW YORK STATE CANAL SYSTEM - NY – Erie Canal – Chart 14786 – Bridge Inspection

On July 6, 2017 between the hours of 0800 and 1600 an inspection vessel will be working under the East Avenue Bridge (E110) at Mile 227.9 over the Erie Canal at Newark, NY. The inspection vessel will monitor VHF-FM Marine Channel 16 and will move if provided a 30 minute advance notice of arrival.

LNM: 25/17

LAKE ONTARIO – NY –Rochester Harbor – Chart 14815 – Bridge Special Event

From 0730 to 1430 on September 17, 2017 the O'Rourke Bridge at Mile 1.25 over the Genesee River will be secured to masted navigation in conjunction with the Rochester Marathon. Vessels able to pass under the bridge without an opening may do so at any time.

LNM: 07/17

LAKE Ontario – NY – Braddock Bay – Chart 14805

The Wesson Group, LLC, will be conducting dredging operations in Braddock Bay beginning April 1, 2017 and continuing until September 1, 2017. Dredges can be reached VIA VHF Channel 16. Operation will take place 0700 thru 1900 Monday thru Friday. Hydraulic dredge and associated dredge lines will be present in Braddock Bay. Significant construction activity is expected during Spring and Summer months. All mariners are urged to transit these areas with extreme caution. Questions or for further details, contact Matt Schuler at (315) 525-7184.

LNM: 13/17

LAKE ERIE – NY – Niagara River – Chart 14822 – Bridge Maintenance

LAKE ERIE – NY – Niagara River – Chart 14822 – Bridge Maintenance

From July 10, 2016 through May 18, 2019 scaffolding that extends approximately 6 feet below low steel will be installed under the Peace Bridge at Mile 1.5 over the Black Rock Canal. Amber lights will mark the bottom and four corners of the scaffolding hanging below low steel. Scaffolding under the bridge over the Niagara River will remain above low steel.

LNM: 16/15

LAKE ERIE – NY – Buffalo Harbor – Chart 14833 – Bridge Maintenance

From May 29 through September 30, 2017 the Buffalo Creek Railroad Bridge at Mile 4.39 over the Buffalo River will be secured to masted navigation. Vessels able to pass under the bridge without an opening may do so at any time.

LNM: 04/17

LAKE ERIE – OH – Maumee River - Chart 14846 – Bridge Replacement

From July 1, 2015 through December 31, 2017, Bridge demolition and construction activities will be performed at the State Route 109 Bridge at Mile 44.4 over the Maumee River near Napoleon, Ohio. Mariners should use caution when transiting the area.

LNM: 20/14

LAKE ERIE – OH – Maumee River - Chart 14846 – Bridge Discrepancy

The Coast Guard has received a report that the lights on the CSX Railroad Bridge at Mile 11.38 over the Maumee River are extinguished.

LNM: 14/15

LAKE ERIE – OH – Cleveland Harbor – Chart 14839 – Bridge Discrepancy

The Coast Guard has received a report of an underwater obstruction in the vicinity of the CSX Bridge at Mile 1.28 over the Cuyahoga River.

LNM: 24/17

LAKE ERIE – OH – Cleveland Harbor – Chart 14839 – Bridge Maintenance

From February 3 through February 24, 2018 the Willow Avenue Bridge at Mile 1.02 over the Cuyahoga River Old River Channel will be secured to masted navigation. Vessels able to pass under the bridge without an opening may do so at any time.

LNM: 23/17

LAKE ERIE – OH – Cleveland Harbor – Chart 14839 – Bridge Maintenance

From May 15 through September 30, 2017 scaffolding will be installed under the New Inner Belt Freeway Bridge at Mile 3.38 over the Cuyahoga River that extends approximately 5 feet below low steel.

LNM: 16/17

LAKE ERIE – OH – Cleveland Harbor – Chart 14839 – Bridge Discrepancy

The Coast Guard has received a report that the fendering system for the Union Terminal Viaduct at Mile 1.89 over the Cuyahoga River has been destroyed. There are reports of debris from the fendering system floating in the river.

LNM: 47/16

LAKE ERIE – Cleveland Harbor - Chart 14839

Diversified Maintenance Systems will commence construction on the Cleveland Harbor Main Entrance Light in Cleveland, OH. Operations will begin at 0700 to 1600 Monday through Friday, from 08 May 17 to 15 Oct 17. The tug Eagle and various small craft will be in the vicinity and can be contacted on VHF channel 16. All mariners are requested to transit the area with caution maintain as little wake as possible. For further information, contact Dennis Hilsinger at 907-654-1700.

LNM: 19/17

LAKE ERIE – OH – Rocky River – Chart 14826 – Bridge Maintenance

From January 1 through October 31, 2017 scaffolding that hangs approximately 10 feet below low steel will be installed under the Detroit Road Highway Bridge at Mile 0.7 over the Rocky River. Steady burning amber lights will mark the bottom and four corners of the scaffolding.

LNM: 01/17

LAKE ERIE – OH – Portage River – Chart 14842 – Bridge Maintenance

From October 16, 2017 through October 19, 2017 and again from October 23, 2017 through October 26, 2017 the Monroe Street Bridge at Mile 0.4 over the Portage River at Port Clinton, OH will have one bridge leaf secured to masted navigation and one leaf locked in the fully open to navigation position for the purpose of removing the bridge leaves. The bottom and four corners of the old bridge leaves will be marked with steady burning amber lights until they are completely removed from the waterway. From 0500 on December 1, 2017 to noon on April 1, 2018 the bridge will be secured to masted navigation for the installation of new bridge leaves. The bottom and four corners of the new bridge leaves will be marked with steady burning amber lights until the required permitted navigation lights can be installed. Vessels able to pass under the bridge without an opening may do so at any time.

LNM: 49/16

LAKE ERIE – OH – Portage River – Chart 14844 – Bridge Maintenance

On July 9 and July 16, 2017 between the hours of 0700 and 2000 each day the Norfolk Southern Railroad Bridge at Mile 1.5 over the Portage River will be secured to masted navigation. Vessels able to pass under the bridge without an opening may do so at any time.

LNM: 19/17

DETROIT RIVER – MI – River Rouge – Chart 14848 – Bridge Maintenance

From May 1 through July 8, 2017 between the hours of 0700 and 1730 Monday through Saturday the Fort Street Bridge at Mile 2.20 over the River Rouge will require a 4 hour advance notice for openings. Vessels should provide advance notice by calling: 313-842-4791.

LNM: 22/17

DETROIT RIVER – MI – River Rouge – Chart 14854 – Bridge Maintenance

From February 4, 2017 through January 31, 2018 scaffolding that hangs approximately 3 feet below low steel will be installed under the Fisher Freeway I-75 Bridge at Mile 1.85 over the River Rouge. Steady burning amber lights will be installed on the bottom of the scaffolding to warn mariners of the temporary reduction in vertical clearance. Snooper trucks may also be used at the bridge. Spotters will warn of approaching vessels and move the man lifts to allow vessels to pass under the bridge.

LNM: 48/16

DETROIT RIVER – MI – River Rouge – Chart 14848 – Bridge Maintenance

From May 31, 2017 through June 23, 2017 between the hours of 0700 and 1900, Monday through Friday the West Jefferson Avenue Bridge at Mile 1.10 over the River Rouge will require a 1 hour advance notice for openings. Mariners should provide advance notice directly to the drawtender or by calling: 616-638-4559 or 616-607-4546. A 120 foot by 50 foot barge will be working under the bridge and will move to accommodate vessels.

LNM: 20/17

DETROIT RIVER – MI – River Rouge – Chart 14854 – Bridge Schedule

from April 1, 2017 through September 1, 2017 the Delray Connecting Railroad Bascule Bridge at Mile 0.34 and the Delray Connecting Railroad Swing Bridge at Mile 0.80, both over the River Rouge Old Channel will require a 4-hour advance notice for openings. Mariners should provide advance notice directly to the drawtender on VHF-FM Marine channel 12 or by calling: 313-600-5643 or 313-498-5700 or 815-671-2194 or 248-789-9355.

LNM: 14/17

DETROIT RIVER – MI – Trenton Channel – Chart 14833 – Bridge Inspection

From June 27, 2017 through June 30, 2017 between the hours of 0800 and 2000 daily, divers will be inspecting the Grosse Ile Free Bridge at Mile 5.60 over the Detroit River Trenton Channel. A dive safety vessel will monitor VHF-FM Marine Channel 16 and spotters will warn of approaching vessels and move the divers to allow vessels to pass.

LNM: 24/17

ST CLAIR RIVER – MI – Pine River – Chart 14852 – Bridge Inspection

From July 17 through July 21, 2017 between the hours of 0800 and 1800 each day inspectors will use under bridge inspection vehicles on the Riverside Avenue (State Route 29) Bridge at just above the mouth of the Pine River. The bridge will require a 15-minute advance notice for openings except on July 18 and July 19 when the bridge will require a 3-hour advance notice for openings. Mariners should provide advance notice directly to the drawtender on VHF-FM Marine channel 16.

LNM: 24/17

ST CLAIR RIVER – MI – Black River – Chart 14853 – Bridge Maintenance

From November 15, 2017 through March 31, 2018 the 10th Street Bridge at Mile 0.94 over the Black River will be secured to masted navigation. Vessels able to pass under the bridge may do so at any time.

LNM: 11/17

ST CLAIR RIVER – Flats Canal - Chart 14852

There has been a report of a partially submerged 20 foot long sheet pile platform in the southwest corner of Gull Island in the vicinity of the St. Clair Flats Canal at approximate position 42-31.77N, 082-40.71W. All mariners are requested to transit the area with caution.

LNM: 18/17

ST CLAIR RIVER – Flats Canal - Chart 14852

There as been a report of a 18 foot long steel beam sticking straight out of water 24 inches in diameter in position 42° 32.085'N 082° 40.044'W. The object is in 16 feet of water 40 yards off Seaway Island. All mariners are requested to transit the area with caution.

LNM: 21/17

LAKE HURON – MI – Port Huron – Chart 14852 – Bridge Special Event

On July 19, 2017 between the hours of 1815 and 2100 the following bridges will be secured to masted navigation in conjunction with the Rotary Parade: the Military Street Bridge at Mile 0.33, 7th Street Bridge at Mile 0.50, and the 10th Street Bridge at Mile 0.94, all over the Black River.

LNM: 23/17

LAKE HURON – MI – Port Huron – Chart 14852 – Bridge Special Event

On July 22, 2017 between the hours of 0900 and noon and again from 2200 to 2300 the following bridges will operate on an intermittent schedule in conjunction with the Mackinac Race and the Lighted Boat Parade: the Military Street Bridge at Mile 0.33, 7th Street Bridge at Mile 0.50, and the 10th Street Bridge at Mile 0.94, all over the Black River.

LNM: 23/17

LAKE HURON –MI – Thunder Bay- Chart 14864

The U.S. Coast Guard has received a report of an uncharted Alpena weather buoy in Thunder Bay, MI in position 44-59.281N, 083-16.037W. The Buoy is a yellow foam buoy 3 meters above the water line, with a characteristic of a flashing yellow light every 4 seconds. All mariners are requested to transit the area with caution

LNM: 25/17

LAKE MICHIGAN – MI- Straits of Mackinac - Chart 14881

Kokosing Industrial, Inc – Durocher Marine Division will commence maintenance activities on utility pipelines. Operations will begin at 0700 to 1900 Monday through Sunday, from 08 Jun 17 to 30 Jun 17. The tug Champion will be in the vicinity conducting dive operations and can be contacted on VHF channel 13 and 16. All mariners are requested to transit the area with caution and maintain 1500 feet from the dive operations. For further information, contact Lee Barnhill at 989-464-6009.

LNM: 22/17

LAKE MICHIGAN – WI – Green Bay – Lower Fox River - Chart 14918 – Bridge Maintenance

From January 1, 2019 through March 31, 2019 scaffolding that hangs approximately 10 feet will be installed under the Allouez and Ashwaubenon Bridge at Mile 5.02 over the Fox River

LNM: 20/17

LAKE MICHIGAN – WI – Sturgeon Bay Ship Canal – Chart 14919 – Bridge Operations

The Coast Guard is modifying the operating regulation that governs the Bayview (State Route 42/57) Bridge, Mile 3.0, Maple-Oregon Bridge, Mile 4.17, and Michigan Street Bridge, Mile 4.3, all over Sturgeon Bay Ship Canal in Sturgeon Bay, WI, to allow testing of the remote operation equipment for all three drawbridges. The operating schedules are not changing but the drawbridges will be remotely operated by a single tender stationed at the Maple-Oregon Bridge throughout the 2017 navigation season. The Coast Guard requests comments from all stakeholders on the safety and effectiveness of the remote operation arrangement. To view the interim rule, published in the Federal Register (33 FR 11151) on February 21, 2017 please visit: <https://www.gpo.gov/fdsys/pkg/FR-2017-02-21/html/2017-03346.htm>. Comments and related material must reach the Coast Guard on or before December 1, 2017. To submit comments go to <http://www.regulations.gov>, type [USCG-2017-0050] in the "SEARCH" box and click "SEARCH." Click on Open Docket Folder on the line associated with this rulemaking. If you have questions on this interim rule, call or e-mail Mr. Lee Soule, Bridge Management Specialist, Ninth Coast Guard District; telephone 216-902-6085, or email: Lee.D.Soule@uscg.mil

LNM: 05/17

LAKE MICHIGAN – IL – Chicago River – Chart 14927 – Bridge Discrepancy

The Coast Guard has received a report that the dolphins near the location of the former Polk Street Bridge at Mile 2.16 over the South Branch of the Chicago River and the former Erie Street Bridge at Mile 2.21 over the North Branch of the Chicago River are a hazard to navigation.

LNM: 21/16

LAKE MICHIGAN – IL – Chicago River – Chart 14927 – Bridge Discrepancy

The Coast Guard has received a report of a 120 foot by 40 foot barge moored against the bulkhead of the Monroe Street Bridge at Mile 1.99 (CORPS MILE 325.2) over the South Branch of the Chicago River until July 7, 2017.

LNM: 24/17

LAKE MICHIGAN – IL – Chicago River– Chart 14927 – Bridge Maintenance

February 6 through August 18, 2017, between the hours of 0700 and 1700 Monday through Friday a 125 foot by 35 foot barge will be working under the Clark Street Bridge at Mile 1.21 (CORPS MILE 326.0) over the Main Branch of the Chicago River. The Barge will monitor VHF-FM Marine Channel 16 and will move to accommodate vessels if a 1-hour advance notice is provided by calling 312-747-2470.

LNM: 05/17

LAKE MICHIGAN –IL – Chicago River – Chart 14927 – Bridge Maintenance

From May 22 through June 26, 2017 between the hours of 0700 and 1500, Monday through Friday a 120 foot by 40 foot barge will be working under the South Loomis Street Bridge at Mile 5.29 (CORPS MILE 321.9) over the South Branch of the Chicago River. The barge will move if a 30 minute advance notice is provided directly to the barge on VHF-FM Marine Channel 16 or by calling the Loomis Street Bridge at: 312-747-2470.

LNM: 21/17

LAKE MICHIGAN – IL – Chicago River – Chart 14927 – Bridge Discrepancy

The Coast Guard has received a report that the following bridges over the Main, North, and South Branches of the Chicago River have lights showing improper characteristics, obstructed, missing, or lights that are extinguished:

Michigan Avenue Bridge at Mile 0.85
Grand Avenue Bridge at Mile 2.00

LNM: 10/17

LAKE MICHIGAN – IL - Chicago Sanitary and Ship Canal – Chart 14927

A pontoon boat will be collecting sediment samples on the Chicago Sanitary and Ship Canal between river mile 317.5 and the South Pulaski Highway Bridge at approximate river mile 318.5 from June 5, 2017 to July 24, 2017. During the hours of 6 a.m. to 6 p.m., vessels are requested to transit this area at a no wake speed in this area

LAKE MICHIGAN – IL - Chicago Sanitary and Ship Canal – Chart 14927

LNM: 21/17

LAKE MICHIGAN – IL – Chicago River – Chart 14927 – Bridge Maintenance

From October 23, 2015 through July 31, 2017 one leaf of the Lake Street Bridge at Mile 1.64, CORPS MILE 325.5, over the South Branch of the Chicago River will be secured to masted navigation.

LNM: 25/17

LAKE MICHIGAN - IL - Chicago River - Chart 14927 - Bridge Maintenance

From March 1, 2016 through July 1, 2017, Monday through Saturday, 0700 to 1700 and 2200 to 0500 daily, a 100 foot by 35 foot barge will be working at the Adams Street Bridge at Mile 2.08, CORPS MILE 325.1, over the South Branch of the Chicago River. The barges will move if provided a 30 minute advance notice of arrival on VHF-FM Marine Channel 16 or by calling: 708-560-1870 or 708-975-5597.

LNM: 23/17

LAKE MICHIGAN –IL – Calumet River – Chart 14927 – Bridge Discrepancy

The 92nd Street Bridge at Mile 0.76 (CORPS MILE 332.4) over the Calumet River is experiencing electrical issues causing the bridge leaves to operate irregularly and open slower than normal. Mariners should wait until the bridge is in the fully open position or receive an all clear from the drawtender before passing through the bridge. The Estimated time of repair is mid-June.

LNM: 19/17

LAKE MICHIGAN - IL – Calumet River – Chart 14927 – Bridge Maintenance

From 0800 to 1800 on June 28, 2017 the Norfolk southern Railroad Bridge at Mile 1.36 (CORPS MILE 331.8) over the Calumet River will be secured to masted navigation for maintenance. Vessels able to pass under the bridge without an opening may do so at any

LNM: 25/17

LAKE MICHIGAN - IL – Calumet-SAG Channel – Chart 14927 – Bridge Inspection

From June 21 through June 23, 2017 between the hours of 0800 and 1430 each day inspectors will use snooper trucks under the Southwest Highway (US-45) Bridge at Mile 22.25 (CORPS MILE 310.7) over the Calumet-SAG Channel. Spotters will warn of approaching vessels and move the man lift to allow vessels to pass.

LNM: 25/17

LAKE MICHIGAN – WI – Milwaukee Harbor – Chart 14924 – Bridge Marine Event

From 2130 on June 28 to 0100 on June 29 all bridges from Mile 0.79 to Mile 1.46 over the Milwaukee River will be secured to recreational masted navigation in conjunction with the Big Bang Fireworks Event.

LNM: 02/17

LAKE MICHIGAN – WI – Milwaukee Harbor – Chart 14924 – Bridge Marine Event

From 2130 on June 29 to 0100 on June 30, 2017 all bridges from Mile 0.79 to Mile 1.46 over the Milwaukee River will be secured to recreational masted navigation in conjunction with the Summerfest Event.

LNM: 02/17

LAKE MICHIGAN – WI – Milwaukee Harbor – Chart 14924 – Bridge Marine Event

From 2130 on July 3 to 0100 on July 4, 2017 all bridges from Mile 0.79 to Mile 1.46 over the Milwaukee River will be secured to recreational masted navigation in conjunction with the US Bank Fireworks Event

LNM: 02/17

LAKE MICHIGAN – WI – Milwaukee Harbor – Chart 14924 – Bridge Marine Event

From 2300 to 0100 nightly from July 4 to July 9, 2017 all bridges from Mile 0.79 to Mile 1.46 over the Milwaukee River will be secured to recreational masted navigation in conjunction with the Second Summerfest Event.

LNM: 02/17

LAKE MICHIGAN – WI – Milwaukee Harbor – Chart 14924 – Bridge Marine Event

From 2200 to midnight, nightly from July 21 to July 23, 2017 the Broadway Street Bridge at Mile 0.79 and the Water Street Bridge at Mile 0.94, both over the Milwaukee River will be secured to recreational masted navigation in conjunction with the Festa Italiana event.

LNM: 25/17

LAKE MICHIGAN – WI – Racine Harbor – Chart 14925 – Bridge Special Event

On July 4, 2017, between the hours of 0745 and 1130 and again between the hours of 2130 and 2230 the Main Street Bridge at Mile 0.31 and the State Street Bridge at Mile 0.53, both over the Root River will be secured to masted navigation in conjunction with the City 4th of July Festival and fireworks.

LNM: 11/17

LAKE MICHIGAN – WI – Milwaukee Harbor - Chart 14924 – Bridge Maintenance

From May 22 through August 28, 2017 between the hours of 0600 and 1600 Monday through Friday, the North Plankinton Avenue Bridge at Mile 1.08 and the Muskego Avenue (Ember Lane) Bridge at Mile 1.95 both over the Menomonee River will only open one leaf for the passage of vessels unless a 4 hour advance notice is provided to the Michigan Street Bridge operator on VHF-FM Marine Channel 16 or by calling 414-286-2575 or

LAKE MICHIGAN – WI – Milwaukee Harbor - Chart 14924 – Bridge Maintenance

414-286-3450. A 40 foot by 40 foot barge may be used under each bridge. During non-working hours the barges will be moored outside of the navigation channel and lighted in accordance with the navigation rules.

LNM: 20/17

LAKE MICHIGAN – WI – Milwaukee Harbor – Chart 14924 – Bridge Maintenance

From July 10 through November 19, 2017 one leaf of the South First Street Bridge at Mile 1.78 over the Kinnickinnic River will be secured to masted navigation while the other leaf remains operational. Scaffolding that extends approximately 3 feet below low steel will be installed under the secured leaf. An 80 foot by 50 foot barge will be used under the bridge and will move to accommodate vessel traffic. From November 20, 2017 through April 1, 2018 both leaves of the bridge will be secured to masted navigation and scaffolding will be installed under both leaves that extends approximately 3 feet below low steel.

LNM: 22/17

LAKE MICHIGAN – IN – Indiana Harbor, Chart 14929 – Bridge Underwater Hazard

The Coast Guard has received a report of an underwater obstruction near the position of the former Canal Street Bridge at Mile 1.88 over the Indiana Harbor Canal.

LNM: 01/14

LAKE MICHIGAN –WI – Lower Fox River – Chart 14918 – Bridge Maintenance

From May 1, 2018 through September 29, 2018 scaffolding will be installed under the Allouez and Ashwaubenon Bridge at Mile 5.02 over the Fox River that extends approximately 10 feet below low steel.

LNM: 16/17

LAKE MICHIGAN – WI – FOX RIVER – Chart 14918

Dredging operations on the Fox River in Green Bay will begin March 20, 2017 and continue until November 13, 2017. The Dredges "Mark Anthony, Ottawa River and Ashtabula will all work in the area immediately north of the Highway 172 Bridge extending to the area immediately south of the Interstate 43 Bridge. Dredges can be reached VIA VHF Channel 16. Operation will take place 24/7 0700 Monday thru 0700 Saturday. Equipment pipelines may be floating or submerged and are marked with appropriate buoys. All mariners are urged to transit these areas with extreme caution and pay close attention to the red and green channel marker buoys and floating construction zone signage. Questions or for further details, contact Coast Guard Sector Lake Michigan at (414) 747-7182 or VIA VHF Channel 16.

LNM: 12/17

LAKE MICHIGAN – WI – Fox River - Chart 14916 – Bridge Construction

From October 2, 2014 through November 30, 2018 an 80 foot by 50 foot and a 40 foot by 40 foot barge will be constructing the new State Highway 441 Little Lake Buttes des Morrts Bridge at Mile 36.0 over the Fox River at Menasha, WI. A 30 foot wide channel will be maintained through the main navigational draws. Amber lights will mark the low steel of both bridges and red lights will mark the cofferdams around the new piers. The barges will be lighted in accordance with the Navigation Rules.

LNM: 40/14

LAKE MICHIGAN – WI – Upper Fox River – Chart 14916 – Bridge Maintenance

From June 1, 2017 through September 28, 2018 scaffolding that hangs approximately 10 feet below low steel will be installed under the STH 441, Appleton Tri County Expressway at mile 28.06 over the Fox River at Appleton Wisconsin. Steady burning amber lights will warn mariners of the temporary reduction in clearance.

LNM: 45/16

LAKE MICHIGAN – WI – Upper Fox River – Chart 14916 – Bridge Special Event

The following bridges will be secured to masted navigation during the dates and times noted. Vessels able to pass under the bridges without an opening may do so at any time.

Race the Lake on Aug. 20, 2017.

Main Street Bridge at Mile 55.97 over the Fox River from 0600 to 0800.

Racine Street Bridge at Mile 37.91 over the Fox River from 0645 to 1000.

Winnebago County Triathlon on August 27, 2017

Wisconsin 116 Bridge at Mile 12 over the Wolf River at Winneconne from 0715 to 1100.

LNM: 45/16

LAKE MICHIGAN –WI – Upper Fox River – Chart 14918 – Bridge Discrepancy

The Coast Guard has received a report that the Wisconsin Avenue (Veterans Memorial) Bridge at Mile 23.78 over the Fox River at Kaukauna Wisconsin is stuck in the closed position. Vessels able to pass under the bridge without an opening may do so at any time.

LNM: 17/17

LAKE MICHIGAN – MI – South Haven – Chart 14906 - Bridge Maintenance

From October 3, 2016 through June 30, 2017 four 62 foot by 51 foot barges will be working under the Blue Star Memorial Highway at mile 2.2 over the Black River at South Haven, MI. A 20 foot wide channel will be maintained for vessels to pass under the bridge.

LNM: 37/16

LAKE MICHIGAN –MI – Grand Haven – Chart 14933 – Bridge Special Event

From 2200 on July 4 to 0200 on July 5, 2017 the US 31 Bridge at Mile 2.89 over the Grand River will be secured to masted navigation in conjunction with the City's 4th of July Celebration. Vessels able to pass under the bridge without an opening may do so at any time.

LNM: 15/17

LAKE MICHIGAN – MI – St Joseph – Benton Harbor – Chart 14930 – Bridge Special Event

From 2200 on July 4 to 0100 on July 5, 2017 the Blossomland M-63 Bridge at Mile 0.92 and the Twin Cities Bicentennial Bridge at Mile 1.30 both over the Saint Joseph River will be secured to masted navigation in conjunction with the City 4th of July fireworks. Vessels able to pass under the bridges without an opening may do so at any time.

LNM: 25/17

LAKE MICHIGAN –MI – Grand Haven – Chart 14933 – Bridge Special Event

From 2200 on August 5 to 0200 on August 6, 2017 the US 31 Bridge at Mile 2.89 over the Grand River will be secured to masted navigation in conjunction with the Coast Guard Day Celebration. Vessels able to pass under the bridge without an opening may do so at any time.

LNM: 15/17

LAKE MICHIGAN – MI – Little Bay de Noc – Chart 14915 – Bridge Replacement

From June 16, 2017 through August 31, 2019, the SR 2 Bridge immediately below the dam of the Escanaba River will be replaced. Contractors will build temporary causeways with amber lights spaced every 100 feet during the construction of the new bridge and the removal of the old bridge. A 50 foot opening will be maintained so vessels may pass through the construction area. The contractor will mark any temporary obstructions to navigation with amber lights.

LNM: 11/17

LAKE MICHIGAN - Des Plaines River

A coffer dam will be positioned along the right descending bank of the Des Plaines River at river mile 287 to replace the river wall in Joliet, IL from April 17, 2017 to September 29, 2017. Vessels are asked not to tie-off in this area and to transit at a no wake speed.

LNM: 15/17

LAKE SUPERIOR – MI – St. Marys River – Chart 14884

Roen Salvage Company will commence repairs of the West Center Pier extending 300' W. of Railroad Bridge. Two 50' barges will be moored at the pier 24 hours per day. All fenders will be removed, divers will be working at the pier, avoid use of side thrusters. Coordinate movement with Soo Locks lockmaster. Work will continue into December 2016 as weather permits, then resume in April 2017. Tug Stephen M. Asher and Tug Charles Asher will monitor channels 7 and 14 (Soo Locks). For further information contact Don Sarter at 920-493-5322

LNM: 42/16

LAKE SUPERIOR – MI - Marquette - Chart 14970

AECOM Technical Services of Michigan will be installing scientific measurement devices (monitoring wells) in Lake Superior at the MBLP Shiras Steam Plant in Marquette, MI. The monitoring wells will be set 20 feet into the lake sediments and constructed of 2-inch diameter stainless steel extending three (3) feet above the water surface. Each well will be protected by an 8-inch diameter steel casing driven five (5) feet into the sediments and extending three (3) feet above the water surface. The well installation will take place from June 26, 2017 to July 7, 2017. The work area will be enclosed with approximately 370 feet of silt curtain. Each monitoring well will be marked with a 5' x 0.75' navigation warning buoy slipped over the well casings. For further information, contact tom.flaminio@aecom.com or (906)226-4979.

LNM: 25/17

LAKE SUPERIOR –MI –Little Girls Point – Chart 14966

Three large concrete erosion control structures have been reported dislodged due to flooding at Omans Creek Boat Launch on Little Girls Point, Michigan of Lake Superior. One structure is reported 10 yards from the shoreline and location of the other two is unknown. Mariners are advised to keep a close lookout and travel at slow speed.

LNM: 30/16

LAKE SUPERIOR – Ashland - Chart 14974

JF Brennan will commence dredging 1000 feet off shore directly east of the Ashland City Marina and directly west of Kreher park boat launch peninsula which is adjacent to the city of Ashland, WI. Operations will commence April 17, 2017 to November 30, 2017 There will be five monitoring buoys on the north side of the break wall within 200 feet. Hours of operation are Monday to Saturday 0600-1800. Mariners are requested to reduce speed and use caution around the dredging operation, for further information contact Brennan Marine Dispatch on VHF ch 9 and 16 or 608-782-3670.

LNM: 17/17

LAKE SUPERIOR - MI – Keweenaw Waterway – Chart 14972 – Bridge Schedule

From June 20 through July 28, 2017 the U.S. 41 Bridge at Mile 16.0 over the Keweenaw Waterway will be placed in the intermediate position and provide full openings on the hour and half hour for recreational vessels; except on weekdays between 0800 and 0900, 1130 and 1230, and between 1630 and 1730 when the bridge need not open fully for the passage of recreational vessels. At all times the bridge will operate on signal for commercial vessels; Federal, State, and local government vessels used for public safety; vessels in distress; commercial vessels engaged in rescue or emergency salvage operations; and vessels seeking shelter from severe weather.

LNM: 25/17

LAKE SUPERIOR –MN – Duluth-Superior Harbor – Chart 14975 – Bridge Maintenance

From January 22, 2018 through March 5, 2018 the Duluth Ship Canal Bridge at Mile 0.25 over the Duluth Ship Canal will be secured to masted navigation. Vessels able to pass under the bridge without an opening may do so at any time.

LNM: 10/17

Duluth Superior Harbor – MN – St. Louis River – Chart 14975 – Bridge Regulation

The Coast Guard proposes to modify the regulations that govern the drawbridges over the St. Louis River at Duluth-Superior Harbor. This waterway borders Minnesota and Wisconsin and is listed under Minnesota as St. Louis River (Duluth-Superior Harbor) and under Wisconsin as Duluth-Superior Harbor (St. Louis River) in the CFR. This proposed rule would affect both regulations. The owner of the Burlington Northern Grassy Point Railroad Bridge at mile 5.44 requested the regulation be updated to include permanent winter operating schedule. This proposed rule would also align river mile numbers with the United States Coast Pilot and delete bridges from the regulations that have been removed from the waterway and make the regulation easier to read and less confusing to the mariner. To see the complete rule go to <http://www.regulations.gov> , type [USCG-2017-0212]. In the "SEARCH" box and click "SEARCH." Click on Open Docket Folder on the line associated with this rulemaking. If you have questions on this rule, call or email Mr. Lee D. Soule, Bridge Management Specialist, Ninth Coast Guard District; telephone 216-902-6085, email Lee.D.Soule@uscg.mil.

LNM: 17/17

SECTION VIII - LIGHT LIST CORRECTIONS

An Asterisk *, indicates the column in which a correction has been made to new information

(1) No.	(2) Name and Location	(3) Position	(4) Characteristic	(5) Height	(6) Range	(7) Structure	(8) Remarks
None							

ENCLOSURES

(1) Summary of Dredging

[25-17 Summary Of Dredging.pdf](#)

Construction Operations in Effect

LNM: 14/14

(2) GREAT LAKES - General - Marine Events

[25-17 Marine Events.pdf](#)

Summary of Marine Events

LNM: 14/14

(3) WATERWAYS ANALYSIS AND MANAGEMENT SURVEY

[WAMS Doc.pdf](#) [AIS ATON Announcement II.pdf](#)

Great Lakes WAMS Questionnaire

LNM: 14/14

(4) BRIDGES

Bridge Information

LNM: 07/17

(5) HARBOR BEACH CHART

[Harbor Beach Chart.pdf](#)

Changes to Federally Maintained Buoys

LNM: 09/17

J. E. RYAN, RADM
U. S. Coast Guard
Commander, Ninth Coast Guard District

SUMMARY OF DREDGING/CONSTRUCTION OPERATION IN EFFECT

The LNM column is where the entry originally appeared and where detailed information may be obtained. The dates listed are tentative.

LOCATION	LNM	SUBJECT	HOURS / DAYS	UNTIL	POC
<u>NEW YORK STATE BARGE CANAL</u>					
Erie Canal, NY	19/13	DREDGING OPERATIONS	24 HRS / 7 DAYS	01 May 13 – TBD	
Lockport, Brockport, and Fairport, NY	19/13	STABILIZATION OPERATIONS	24 HRS / 7 DAYS	01 May 13 – TBD	
Buffalo River, NY	34/14	HABITAT RESTORATION	24 HRS / 7 DAYS	25 Aug 14 – TBD	
<u>LAKE ONTARIO</u>					
Braddock Bay, NY	13/17	DREDGING OPERATIONS	0700-1900/ 7 DAY	01Apr 17- 01Sep 17	
<u>LAKE ERIE</u>					
Cleveland, OH	05/13	CONSTRUCTION	24 HRS / 7 DAYS	29 Jan 13 – TBD	
Cleveland, OH	19/17	CONSTRUCTION	Mon-Fri 0700-1600	08 May 17 – 15 Oct 17	
Fairport, OH	25/17	DREDGING	24 HRS / 7 DAYS	06 Jul 17 – 31 Jul 17	Kevin Holenbeck 734-502-3833
<u>DETROIT RIVER</u>					
Detroit, MI	33/14	CONSTRUCTION	24 HRS/ 7 DAYS	11 Aug 14- TBD	
Grosse Isle, MI	26/16	SHOAL INSTALLATION	24 HRS / 7 DAYS	01 Jul 16 – 31 Dec 17	
Grosse Isle, MI	20/17	STONE PLACEMENT	0700-1900 / 7 DAYS	5 May 17 – 30 Nov 17	
<u>LAKE ST. CLAIR</u>					
None Reported					
<u>LAKE HURON</u>					
None Reported					
<u>STRAITS OF MACKINAC</u>					
None Reported					
<u>ST MARYS RIVER</u>					

SUMMARY OF DREDGING/CONSTRUCTION OPERATION IN EFFECT

The LNM column is where the entry originally appeared and where detailed information may be obtained. The dates listed are tentative.

LOCATION	LNM	SUBJECT	HOURS / DAYS	UNTIL	POC
<u>LAKE SUPERIOR</u>					
Portage Lake, MI	31/13	SEDIMENT REMEDIATION	24 HRS / 7 DAYS	01 Sep 13 – TBD	
Ashland, WI	17/17	DREDGING	Mon-Sat 0600-1800	17 Apr 17 – 30 Nov 17	
Marquette, MI	25/17	Monitoring Wells	Daily	26 Jun 17 – 7 Jul 17	
<u>LAKE MICHIGAN</u>					
Calumet River, MI	47/16	CONSTRUCTION	24 HRS / 7 DAYS	17 Aug 17 -01 Sep 17	
Fox River	10/17	DREDGING	M-SAT/0700 – 1900	20 Mar 17 – 13 Nov 17	
Grand Haven, MI	16/17	CONSTRUCTION SOUTH PIER	0600-2000/7 DAYS	14 Apr 17 – 31 Dec 17	
Calumet Harbor, IL	16/17	DREDGING	24 HRS / 7 DAYS	17 Apr 17 – 23 Jun 17	
Muskegon, MI	20/17	DREDGING	24 HRS / 7 DAYS	1 Apr 17 – 1 Jul 17	
St Joseph Harbor	24/17	DREDGING	24 HRS / 7 DAYS	10 Jul 17 – 01 Aug 17	
Holland Harbor	24/17	DREDGING	24 HRS / 7 DAYS	12 Jun 17 – 9 Jul 17	

GREAT LAKES - GENERAL – MARINE EVENTS – SAFETY ZONES – SECURITY ZONES

Events listed below are those events that may have accompanying special local regulations.

Location	LNМ	EVENTS	Dates	Time (Local)	POC or Sponsor	Number
<u>LAKE ONTARIO</u>						
Genesee River(mouth)	08/17	Junior Sail Club	19 Jun 17 – 18 Aug 17	0930-1600	Daniel Peck	585-820-5799
Genesee River	11/17	High School Sailing Program	20 Mar 17–10 Nov 17	0800-1900	Liam Faudree	585-314-9760
St. Lawrence River	16/17	1000 Islands Charity Poker Run	15 Jul 17	1000-1700	Doug Tullock	435-640-0113
St. Lawrence River	22/17	Foundation for Community Betterment	22 Jul 17	0900-1100	Trevor Garlock	315-486-4900
Rochester, NY	22/17	Rochester Triathlon	26 Aug 17	0730-1130	Robert Smura	585-255-0029
Rochester, NY	24/17	Head of the Genesee Regatta	07 Oct 17-08 Oct 17	0800-1600	Tim Giavuilo	585-303-5934
Chippewa Bay, NY	24/17	Paddle for a Purpose	19 Aug 17	0800-1200	Erica Demick	315-486-9296
Alexandria Bay, NY	24/17	Bill Johnston’s Pirate Days	12 Jul 17&19 Aug 17	1400-1500	Keri Jobson	315-771-9531
Sturgeon Point, NY	25/17	Embrace the Challenge	19 Aug 17&20 Aug 17	0700-1700	Joshua Reid	519-761-7472
Hear Island, NY	25/17	Independence Day Fireworks	04 Jul 17	2100-2230	Allan LaValley	315-244-0235
<u>LAKE ERIE</u>						
Grand Island, NY	24/17	2017 Grand Island Poker Run	09 Sep 17 – 10 Sep 17	1000-1700	Anthony Scioli	716-510-9669
Buffalo, NY	11/17	Buffalo Harbor Sailing Club Races	15 May 17 – 20 Sep 17	1800-2130	Thomas Hunt	716-570-2291
Tonawanda, NY	15/17	Western New York Poker Run	12-Aug 17	1030-1700	Anthony Scioli	716-510-9669
Buffalo Harbor, NY	16/17	Buffalo Harbor Sailing Club Parade	4 Jul 17	2030-2230	June Crawford	716-860-1445
Cleveland, OH	18/17	Cleveland Race Week	14 Jun 17 – 25 Jun 17	N/A	John Zelli	216-780-8993
Cleveland, OH	18/17	Cleveland Race Week	10 May 17 – 30 Oct 17	N/A	John Zelli	216-780-8993
Erie, NY	18/17	Bay Swim X	17 Jun 17	0900-1130	Patricia Davis	814-450-9526
Henderson, NY	24/17	Incredoubleman Triathlon	09 Sep 17 – 10 Sep 17	0800-0930	Wayne Vanderpool	779-232-9874
Cleveland, OH	22/17	Grand River Sailing Club Regatta	26 Aug 17	0900-1600	Paul Mathews	440-289-5262
Buffalo, NY	22/17	Yacht Racing Union of the great lakes	30 Sep 17 – 01 Oct 17	0900-1700	Timothy Hunt	716- 440-7108
Buffalo, NY	22/17	Summer Soul at Canalside	24 Jun 17	1800-2230	Ron Brantley	716-818-8899
Buffalo, NY	22/17	Canalside Thursday Concert Series	15 Jun 17-17 Aug 17	1700-2200	Todd Clark	716-228-1771
Buffalo, NY	22/17	Alternative Buffalo Kerfuffle Concert	17 Jun 17	1200-2300	Samantha Ogrodnik	716-816-9540
Buffalo, NY	22/17	Kiss the Summer Hello Concert	18 Jun 17	1400-2200	Samantha Ogrodnik	716-816-9540
Buffalo, NY	22/17	Buffalo Paddle Bike Run	30 Jul 17	0700-1700	Justin Dahl	716-208-7716
Fairport Harbor, OH	23/17	Tall Ships Fairport Harbor	7 Jul17-10 Jul 17	0800-2000	Cecilia Duer	440-477-8367
Sandusky, OH	23/17	Sandusky Sailing Club Sunday Series	Sunday Weekly thru Oct 01	0830-1130	Jim Keane	419-366-8996
Sandusky, OH	23/17	Sandusky Sailing Club Sunday Series	Wed Weekly thru Sep 20	1800-2100	Jim Keane	419-366-8996
Luna Pier, MI	23/17	Catamaran Racing Association	17Jun 17-18 Jun 17	0900-1800	Ulrich Gollwitzer	248-840-1132
Cleveland, OH	23/17	Western Reserve Rowing Association	24 Jun 17	0800-1700	Michelle Fox	440-596-9305
Cleveland, OH	23/17	Western Reserve Rowing Association	12 Aug 17	0800-1700	Michelle Fox	440-596-9305
Buffalo, NY	24/17	Buffalo Float	06 Aug 17	1030-1300	Dean Gallagher	716-207-8007
Vermilion, OH	24/17	Festival of the Fish Fireworks	16 Jun 17	2145-2245	Doug Keith	440-320-6798
Long Point, ON	25/17	Swim Across Lake Erie	14 Jul 17-05 Aug 17	0500-2100	Josh Heynes	814-602-5504
Tonawanda Creek, NY	25/17	Canal Fest of the Tonawandas	16 Jul 17&23 Jul 17	1200-2300	Peter Chenier	716-812-6467
Cleveland, OH	25/17	Downtown Cleveland Alliance Display	04 Jul 17	2130-2300	Salvatore Lanara	440-221-4934
Fairport, OH	25/17	Fairport Harbor Mardi Gras Display	04 Jul 17	2115-2215	James Cardina	440-352-0806
Cleveland, OH	25/17	Cleveland Dragon Boat Festival	12 Aug 17	0800-1500	Lori Ashyk	216-213-4045
Sandusky, OH	25/17	Flying Scots National Regatta	25 Jun 17 – 29 Jun 17	0900-1600	Jim Keane	419-366-8996

GREAT LAKES - GENERAL – MARINE EVENTS – SAFETY ZONES – SECURITY ZONES

Events listed below are those events that may have accompanying special local regulations.

DETROIT RIVER, LAKE ST CLAIR, AND ST CLAIR RIVER

Detroit River, MI	17/17	Detroit Full Moon Tour (kayak)	9 Jul, Aug 7, Sep 6	1900-2200	Tracey Girard	313-568-9564
Lake St. Clair, MI	18/17	Lake Shore Sail Club Races	Jun 7 10 14 21 25 Jul 9 30 Aug 9 13 16 19 23 30 Sep 6 10 13 17 24 27	1200-2300	Tracey Girard	313-568-9564
Detroit River, MI	18/17	Pine Street Paddle	Summer	1800-2000	Tracey Girard	313-568-9564
Lake St. Clair, MI	18/17	Windsor Yacht Club Wed night series	17 May -27 Sep	1900-2200	Tracey Girard	313-568-9564
Lake St. Clair	20/17	Grosse Point Sail Club Showdown	May 23, 30 June 6, 13, 20, 27 July 11 Aug 1,8,15, 22, 29 Sept 5, 12, 19, 26,	Various	Tracey Girard	313-568-9564
Grosse Isle	21/17	WE Kayak Grosse Isle Paddle	June 6, 13, 20, 27 July 4, 11, 18, 25 Aug 1, 8, 15, 22, 29 Sept 5	1800-2000	Tracey Girard	313-568-9564
Detroit	21/17	Belle Isle Sea Kayak Paddle Club	May 25 June 1,8, 15, 22, 29 July 6, 13, 20, 27 Aug 3, 10, 17, 24, 31 Sep 7	1800-2000	Tracey Girard	313-568-9564
Detroit	21/17	BYC Thursday Night Series	June 1,8, 15, 22, 29 July 6, 13, 20, 27 Aug 3, 10, 17, 24, 31 Sept 7	1900-2100	Tracey Girard	313-568-9564
Port Huron, MI	22/17	Octogon Series Races 1-8	June ,4, 18, 25 Aug 6 Sept 10, 17, 24	1000-1800	Tracey Girard	313-568-9564
New Baltimore, MI	25/17	Bay-Rama FishFly Fireworks	22 Jun 17	2200-2230	Tracey Girard	313-568-9564
Detroit, MI	25/17	Ford Fireworks - Full River Closure	26 June 17	1800-2400	Tracey Girard	313-568-9564
Detroit, MI	25/17	Tuskegee Airman Airshow	23 June 17-26 June 17	1230-1730	Tracey Girard	313-568-9564
Grosse Isle, MI	25/17	Detroit Boat Club Regatta	24 Jun 17	1000-1600	Tracey Girard	313-568-9564
Detroit, MI	25/17	Motor City Triathlon	25 June 17	0730-0930	Tracey Girard	313-568-9564
Grosse Isle, MI	25/17	GPYC USODA Great Lakes Championship	24 Jun 17-25 Jun 17	0800-1700	Tracey Girard	313-568-9564
Trenton, MI	25/17	FLW LLC BLF Michigan Div. 1	24 June 17	0600-1400	Tracey Girard	313-568-9564

LAKE HURON

Tawas, MI	18/17	Tawas Bay Yacht Club Racing Events 2017	May-Oct Sat and Sun	1000-1700	Tracey Girard	313-568-9564
Port Huron	21/17	PHYC - Windward Leeward Regattas	Aug 26, 27	0900-1700	Tracey Girard	313-568-9564
Port Austin, MI	25/17	Port Austin Kayak Symposium	22 Jun 17-25 Jun 17	0800-1700	Tracey Girard	313-568-9564

GREAT LAKES - GENERAL – MARINE EVENTS – SAFETY ZONES – SECURITY ZONES

Events listed below are those events that may have accompanying special local regulations.

Bay City, MI	22/17	Bay City YC Sailboat Racing Program	Jun 7,11, 14, 18, 21,28 July 5,7, 12, 19, 26, Aug 2,9 12, 16, 23 26, 30 Sept 6, 9,13, 20 23, 24 Oct 1, 8	0900-2400	Tracey Girard	313-568-9564
Bay City, MI	25/17	Bay City Grand Prix (former River Roar)	23 Jun 17 – 25 Jun 17	1000-1900	Tracey Girard	313-568-9564

LAKE SUPERIOR

Ashland, WI	25/17	Ashland 4 th of July Fireworks	04JUL17	2130-2330	Mark Drolson	715-292-7264
Duluth, MN	25/17	Duluth Fourth Fest	04JUL17	2100-2320	Marnie Grondahl	218-730-4398
Bayfield, WI	25/17	City of Bayfield 4 th of July Fireworks	04JUL17	2100-2300	Billie Hoopman	715-779-5712
Superior, WI	25/17	Superior 4 th of July Fireworks	04JUL17	2130-2300	Tony Ramberg	218-289-2780
Two Harbors, MN	25/17	Two Harbors 4 th of July Fireworks	04JUL17	2130-2330	Maranda Pietila	218-834-5631
LaPointe, WI	25/17	LaPointe 4 th of July Fireworks	04JUL17	2130-2300	Paul Langseth	507-360-5884
Washburn, WI	25/17	Washburn Board Across the Bay	22JUL17	0730-1300	Mary Mcgrath	715-373-017
Two Harbors, MN	25/17	Two Harbors Kayak Festival	29JUL17	0800-1600	Lori Bergman	218-340-3905
LaPointe, WI	25/17	Point to LaPointe Swim in Madeline Island	29JUL17	0650-1030	Brittany Schmidt	715-779-5408
Superior, WI	25/17	Lake Superior Dragon Boat Festival Fireworks	25AUG17	2100-2230	David Sauer	218-491-6183
Duluth, MN	25/17	Superiorman Triathlon	27AUG17	0530-0930	Clint Agar	630-915-3914
Houghton, MI	25/17	Breakers to Bridge Paddle Festival	09SEP17	0830-1630	Jared Johnson	906-487-2970

ST MARYS RIVER

NSTR

STRAITS OF MACKINAC

NSTR

LAKE MICHIGAN

Chicago, IL	15/17	Navy Pier Fireworks Display	27 May 17-2 Sep 17	2200-2245 every Sat	MSU Chicago	630-986-2155
Chicago, IL	15/17	Navy Pier Fireworks Display	31 May 17-30 Aug 17	2115-2200 every Wed	MSU Chicago	630-986-2155
Chicago, IL	22/17	Chinatown Dragon Boat Race	24 June 17	0800-1700	MSU Chicago	630-986-2155
Chicago, IL	22/17	Navy Pier Fireworks Display	27 June	2045-2145	MSU Chicago	630-986-2155
Milwaukee, WI	25/17	South Shore Yacht Club	23 & 24 June 2017	1400-1730	Sector Lake Michigan –	414-747-7148
Oakwood Beach	22/17	Fireworks Display	24 June 17 -25 June 17	2145-2200	MSU Chicago	630-986-2155

GREAT LAKES - GENERAL – MARINE EVENTS – SAFETY ZONES – SECURITY ZONES

Events listed below are those events that may have accompanying special local regulations.

U.S. Coast Guard to Test Automatic Identification System (AIS) Aids to Navigation (ATON)

In the near future, the U.S. Coast Guard and other authorized agencies and organizations (i.e., U.S. Army Corps of Engineers, Marine Exchange of Alaska) will begin transmitting AIS ATON messages and marine safety information via AIS for testing and evaluation. The exact content, location, and times of these broadcasts will be announced in future Local Notices to Mariners.

AIS is an internationally adopted radio communication protocol that enables the autonomous and continuous exchange of navigation safety related messages amongst vessels, lifeboats, aircraft, shore stations, and aids to navigation (AIS ATON). AIS ATON stations broadcast their presence, identity (9-digit Marine Mobile Service Identity (MMSI) number), position, and status at least every three minutes or as needed. These broadcasts can originate from an AIS station located on an existing physical aid to navigation (Real AIS ATON) or from another location (i.e., AIS Base Station). An AIS Base Station signal broadcasted to coincide with an existing physical aid to navigation is known as a Synthetic AIS ATON. An electronically charted, but non-existent as a physical aid to navigation, is identified as a Virtual AIS ATON. The latter two can be used to depict an existing aid to navigation that is off station or not watching properly or to convey an aid to navigation that has yet to be charted. All three variants can be received by any existing AIS mobile device, but they would require an external system for their portrayal (i.e., AIS message 21 capable ECDIS, ECS, radar, PC). How they are portrayed currently varies by manufacturer, but the future intention is for the portrayal to be in accordance with forthcoming International Standards (i.e., IEC 62288 (Ed. 2), IHO S-4 (Ed. 4.4.0)).

Mariners capable of receiving and displaying these test AIS messages are encouraged to provide feedback and report any anomalies to the USCG NAVCEN Website: <http://www.navcen.uscg.gov> | Contact Us Tab | Subject: AIS | Category: AIS Testing.

Example of Local Notice to Mariners Chart Corrections for AIS ATONs

Chart Correction for *Real AIS ATON*

12326	52nd Ed.	01-JUNE-13	Last LNM: 53/13	NAD 83		LNM/14
<i>Chart Title: Approaches to New York</i>						
ADD		Magenta circle AIS Chart No. 1: S17.2 to ABC Channel Lighted Whistle Buoy A and			CGD 40-27-27.991N	073-50-12.228W
CHANGE		Characteristic to RW "A" Mo (A) WHIS Racon (") AIS				






Chart Correction for *Synthetic AIS ATON*

18649	68th Ed.	01-JUNE-13	Last LNM: 52/13	NAD 83		LNM/14
<i>Chart Title: Entrance to San Francisco Bay</i>						
ADD		Magenta circle AIS Chart No. 1: S17.2 to ABC Approach Lighted Whistle Buoy AB and			CGD 37-44-59.749N	122-41-33.940W
CHANGE		Characteristic to RW "AB" Mo (A) WHIS Racon (-) AIS				

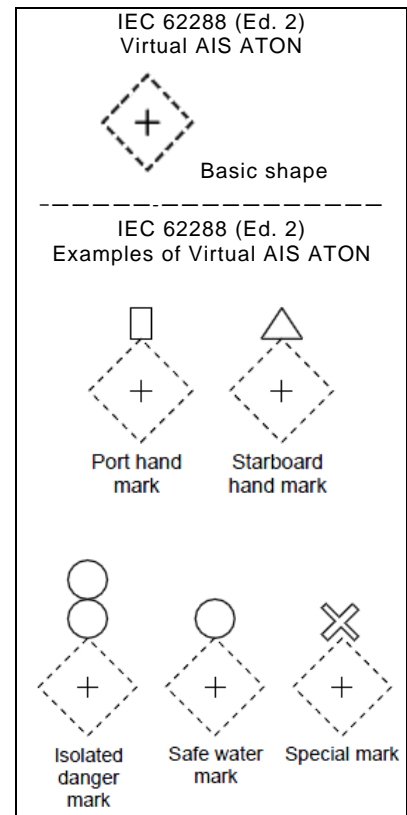
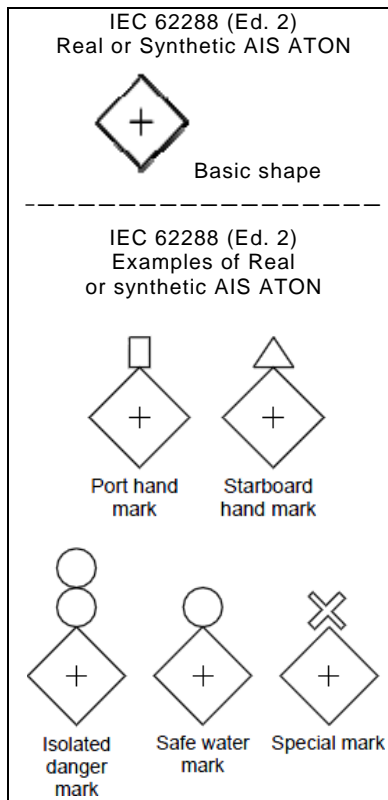
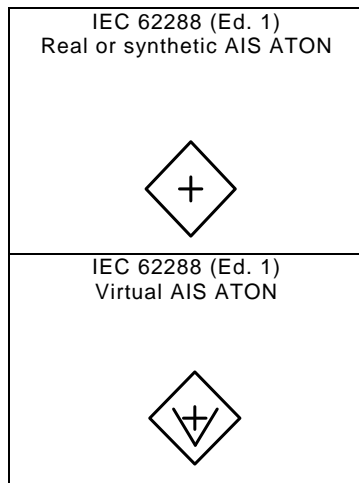
Chart Correction for *Virtual AIS ATON*

12314	33rd Ed.	01-JUNE-12	Last LNM: 51/13	NAD 83		LNM/14
<i>Chart Title: Delaware River Philadelphia to Trenton</i>						
ADD		ABC Railroad Bridge South Starboard V-AIS ATON Chart No. 1: S18.2		to	CGD 39-58-55.059N	075-04-06.856W
ADD		ABC Railroad Bridge South Port V-AIS ATON Chart No. 1: S18.2		to	38-58-55.803N	076-23-04.547W

Virtual AIS ATON Symbology for Electronic Chart Display and Information System (ECDIS)

Port Lateral (IALA B)	A Virtual object marking the port side of a channel	
Starboard Lateral (IALA B)	A Virtual object marking the starboard side of a channel	
Isolated Danger	A Virtual object marking an isolated danger	
Safe Water	A Virtual object marking safe water	
Special Purpose	A Virtual object used to mark an area or feature referred to in nautical documents	

AIS ATON Symbology of the International Electrotechnical Commission (IEC) and International Maritime Organization (IMO)



Waterway Analysis and Management System Survey

Name of Waterway: _____

User Information

___ Commercial User

___ Recreational User

Number of years in the maritime industry or number of years using this waterway: _____

Number of transits in the waterway per year: _____

Number of night transits of waterway: _____

Seasonal Dates: Start: _____ End: _____

Name of Vessel: _____

Vessel Description: _____

Length: _____ Beam: _____ Draft: _____ Gross Tons: _____

Net Tons: _____ Bridge Height of Eye: _____

Cargo Carried: _____

Navigational tools used: (ECDIS/ECPINS, GPS, DGPS, VISUAL, RADAR) _____

What area do you believe is the most dangerous or difficult to navigate: _____

Are the floating aids to navigation (lighted and unlighted buoys) adequate for this waterway: _____

Are the fixed aids to navigation (lights, ranges, lighthouses, daybeacons) adequate for this waterway: _____

Are the year round and lighted ice buoys adequate: _____

Are there buoys that you feel should be changed to fixed aids to navigation?

Are there any buoys that could be eliminated from this waterway: _____

Are there any buoys with sound signals that the bell or gong could be removed:

Are there any areas that require additional aids to navigation in this waterway:

Do the nautical charts, Coast Pilot, and Light List meet your needs for this waterway: _____

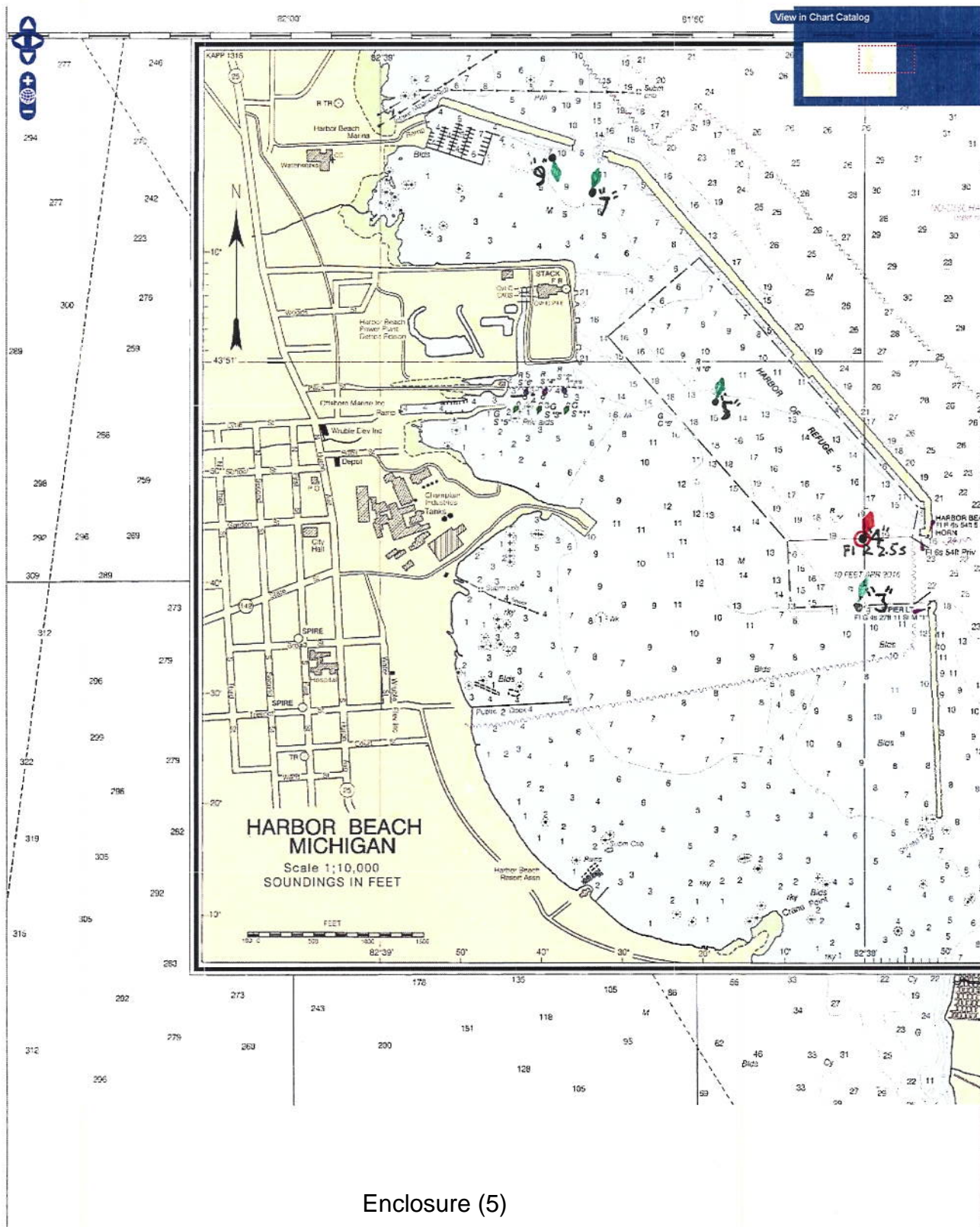
Are there private Aids to Navigation that you find misleading or interfere with the current system in the waterway:

Any addition comments on this waterway: _____

Thank you for taking time to comment on this waterway. Your input as a mariner very valuable to the U. S. Coast Guard in evaluating waterways to make them safe and as easily navigable as possible. Please feel free to contact Mr. Doug Sharp at william.d.sharp@uscg.mil or (216) 902-6070 with any other questions or concerns about any aids to navigation in the Great Lakes. The survey can be mailed to:

Commander (dpw-2)
Ninth Coast Guard District
1240 East Ninth Street
Cleveland, Ohio 44199

Enclosure (5)



Enclosure (5)