



U.S. Department
of Homeland Security
**United States
Coast Guard**

LOCAL NOTICE TO MARINERS

District: 9

Week: 37/17

Issued by: Commander (dpw)
Ninth Coast Guard District
1240 East Ninth Street,
Cleveland, OH 44199-2060
Telephone: (216) 902-6069

Direct questions about this LNM to the above address.

All distances in this publication are STATUTE MILES unless otherwise noted.

District Nine Internet Address <https://www.uscg.mil/d9/uscgd9.html>

District Nine Local Notice to Mariners email Address D09-DG-District-D9-LocalNoticetoMariners@uscg.mil

** Navigation Information Service watchstander, 24 hours a day at (703) 313-5900 ** **Internet Address** <https://www.navcen.uscg.gov/>

Light List Reference: Commandant Publication P16502.7, VOL VII, 2017 Edition

Coast Pilot Reference: 2017 U.S. Coast Pilot 6 Great Lakes 46th Edition

Coast Pilots, along with corrections are available at: <http://nauticalcharts.noaa.gov/nsd/cpdownload.htm>

The Local Notice to Mariners is available on the Internet at <https://www.navcen.uscg.gov/?pageName=lnmMain> You will also have links to other government agencies- web pages including the US Army Corps of Engineers and the National Ocean Service.

REPORT DISCREPANCIES IN AIDS TO NAVIGATION TO THE NEAREST COAST GUARD UNIT

The Ninth District and all Sector offices for their areas of responsibility issue a BROADCAST NOTICE TO MARINERS.

The following Broadcast Notice to Mariners have been incorporated into this week's Local Notice to Mariners:

Sector Buffalo, NY - B219-17 through B222-17

Ninth District - C176-17 through C181-17

Sector Detroit, MI - D129-17 through D130-17

Sector Lake Michigan, WI - M409-17 through M427-17

Sector Sault Ste Marie, MI - S109-17 through S113-17

The United States Coast Guard Navigation Information Service (NIS), operated by the USCG Navigation Center, is staffed 24 hours a day, 7 days a week. The NIS provides information on the current operational status, effective policies, and general information for GPS and DGPS. The

NIS also disseminates Safety Broadcasts (BNM), Local Notice to Mariners (LNM), and the latest Notice Advisory to Navstar Users (NANU). NANU notices can be obtained via email subscription through the USCG Navigation Center website: <https://cgls.uscg.mil/mailman/listinfo/nanu> . In addition, the NIS investigates all reports of degradation or loss of GPS, DGPS or AIS service. Users are encouraged to report all degradation or loss of radio navigation services to the NIS via any of the following: Phone: (703) 313-5900, mail to: webmaster@smtp.navcen.uscg.mil, or on the internet at: <https://www.navcen.uscg.gov>

ABBREVIATIONS

A through H

ADRIFT - Buoy Adrift
AICW - Atlantic Intracoastal Waterway
AI - Alternating
B - Buoy
BKW - Breakwater
bl - Blast
BNM - Broadcast Notice to Mariner
bu - Blue
C - Canadian
CHAN - Channel
CGD - Coast Guard District
C/O - Cut Off
CONT - Contour
CRK - Creek
CONST - Construction
DAYMK/Daymk - Daymark

I through O

I - Interrupted
ICW - Intracoastal Waterway
IMCH - Improper Characteristic
INL - Inlet
INOP - Not Operating
INT - Intensity
ISL - Islet
Iso - Isophase
kHz - Kilohertz
LAT - Latitude
LB - Lighted Buoy
LBB - Lighted Bell Buoy
LHB - Lighted Horn Buoy
LGB - Lighted Gong Buoy
LONG - Longitude
LNM - Local Notice to Mariners

P through Z

PRIV - Private Aid
Q - Quick
R - Red
RACON - Radar Transponder Beacon
Ra ref - Radar reflector
RBN - Radio Beacon
REBUILT - Aid Rebuilt
RECOVERED - Aid Recovered
RED - Red Buoy
REFL - Reflective
RRL - Range Rear Light
RELIGHTED - Aid Relit
RELOC - Relocated
RESET ON STATION - Aid Reset on Station
RFL - Range Front Light
RIV - River

DBN/Dbn - Daybeacon
 DBD/DAYBD - Dayboard
 DEFAC - Defaced
 DEST - Destroyed
 DISCON - Discontinued
 DMGD/DAMGD - Damaged
 ec - eclipse
 EST - Established Aid
 ev - every
 EVAL - Evaluation
 EXT - Extinguished
 F - Fixed
 fl - flash
 Fl - Flashing
 G - Green
 GIWW - Gulf Intracoastal Waterway
 HAZ - Hazard to Navigation
 HBR - Harbor
 HOR - Horizontal Clearance
 HT - Height

LT - Light
 LT CONT - Light Continuous
 LTR - Letter
 LWB - Lighted Whistle Buoy
 LWP - Left Watching Properly
 MHz - Megahertz
 MISS/MSNG - Missing
 Mo - Morse Code
 MRASS - Marine Radio Activated Sound Signal
 MSLD - Misleading
 N/C - Not Charted
 NGA - National Geospatial-Intelligence Agency
 NO/NUM - Number
 NOS - National Ocean Service
 NW - Notice Writer
 OBSCU - Obscured
 OBST - Obstruction
 OBSTR - Obstruction
 Oc - Occulting
 ODAS - Anchored Oceanographic Data Buoy

RRASS - Remote Radio Activated Sound Signal
 s - seconds
 SEC - Section
 SHL - Shoaling
 si - silent
 SIG - Signal
 SND - Sound
 SPM - Single Point Mooring Buoy
 SS - Sound Signal
 STA - Station
 STRUCT - Structure
 St M - Statute Mile
 TEMP - Temporary Aid Change
 TMK - Topmark
 TRLB - Temporarily Replaced by Lighted Buoy
 TRLT - Temporarily Replaced by Light
 TRUB - Temporarily Replaced by Unlighted Buoy
 USACE - Army Corps of Engineers
 W - White
 Y - Yellow

Additional Abbreviations Specific to this LNM Edition:

LIB - Lighted Ice Buoy

SECTION I - SPECIAL NOTICES

This section contains information of special concern to the Mariner.

CAUTION TO BE USED IN RELIANCE UPON AIDS TO NAVIGATION

The aids to navigation depicted on charts comprise a system of fixed and floating aids to navigation with varying degrees of reliability. Prudent mariners will not rely solely on any single aid to navigation, particularly a floating aid to navigation. With respect to buoys, the buoy symbol is used to indicate the approximate position of the buoy body and the sinker which secures the buoy to the seabed. The approximate position is used because of the practical limitations in positioning and maintaining buoys and their sinkers in precise geographical locations. These limitations include, but are not limited to, inherent imprecision in position fixing methods, prevailing atmospheric and sea conditions, slope of and the material making up the seabed, the fact that buoys are moored to sinkers by varying length of chain, and the fact that the buoy body and/or sinker positions are not under continuous surveillance, but are normally checked only during periodic maintenance visits which often occur more than a year apart. Due to the forces of nature, the position of the buoy body can be expected to shift inside and outside the charted symbol. The mariner is also cautioned that buoys may be extinguished or sound signals may not function as the result of ice, running ice, or other natural causes, collisions, or other accidents. For the foregoing reasons, a prudent mariner must not rely completely upon the position or operation of floating aids to navigation, but will also utilize bearings from fixed objects and aids to navigation on shore. Further, a vessel attempting to pass close aboard always risks collision with a yawing buoy or with the obstruction that the buoy marks.

LNM: 06/14

IMPORTANT SAFETY NOTICE ABOUT THE RELIABLE OPERATION OF ECDIS

Following an announcement by the International Maritime Organization (IMO) concerning potential display anomalies in some ECDIS systems, the International Hydrographic Organization (IHO) issued an ENC Data Presentation and Performance Check in October 2011. This check is intended to assist mariners and to help determine the extent of the anomalies. IHO has received reports from mariners confirming that a number of ECDIS fail to display some significant underwater features in the "Standard" display mode. For all significant objects to be visible to the mariner, these ECDIS must be operated in "Full display" or "All display" mode until a software upgrade is made available from the manufacturer. Mariners are strongly encouraged to use the IHO ENC Data Presentation and Performance Check issued through ENC service providers and also available directly from the IHO website (www.iho.int) to check the operation of their ECDIS and to determine whether their system is affected. IHO Circular Letter 33/2012 is available on the Coast Guard's Navigation Center website (<https://www.navcen.uscg.gov>) under the heading News and Notices.

LNM: 12/12

ZIKA VIRUS UPDATE

The U.S. Department of Transportation's Maritime Administration (MARAD) has issued MARAD Advisory 2016-03 on the Zika Virus and Impacts on Maritime Commerce. The Advisory can be found at <https://www.marad.dot.gov/newsroom/advisory/2016/marad-advisory-2016-03/>. U.S. flag operators are requested to forward this link to their ships by the most expeditious means.

LNM: 39/16

RANGE STRUCTURES

The U.S. Coast Guard has become aware that Coast Guard information used to depict a rangeline on NOAA Electronic Navigational Charts (ENC) may not be of sufficient accuracy to accurately portray the rangeline on the ENC. Mariners are cautioned that the position of a rangeline as shown on an ENC may not reflect its true position.

LNM: 04/11

USACE NOTICE TO NAVIGATION INTERESTS

Current Federal Channel conditions, shoaling, and the most recent channel surveys are available at the following Army Corps of Engineers web sites:

Buffalo: <http://www.lrb.usace.army.mil/>
Detroit: <http://www.lre.usace.army.mil/>
Chicago: <http://www.lrc.usace.army.mil/>
Rock Island: <http://www.mvr.usace.army.mil/>

LNM: 28/12

USE OF ELECTRONIC CHARTS AND PUBLICATIONS IN LIEU OF PAPER CHARTS, MAPS, AND PUBLICATIONS

The U.S. Coast Guard has issued Navigation and Vessel Inspection Circular (NVIC) No. 01-16 which contains guidance on the use of electronic charts and publications in lieu of paper charts, maps, and publications. This guidance applies to U.S. flagged vessels subject to U.S. domestic chart, map, and publication carriage requirements contained in Titles 33 and 46 of the Code of Federal Regulations. The NVIC can be viewed at <https://www.uscg.mil/hq/cg5/nvic/default.asp> or <https://cgportal2.uscg.mil/library/directives/SitePages/Home.aspx>.

LNM: 06/16

GREAT LAKES - Great Lakes Water Levels

The expected water levels on the Great Lakes for Sep 15, 2017. Connecting Channels and the St. Lawrence River, given in inches above (+) or below (-) Low Water Datum (LWD). LWD is a plane of reference used on a navigation chart. It is also known as chart datum.

Great Lakes:

Lake Ontario +38, Lake Erie +42, Lake St. Clair +45, Lake Michigan-Huron +36, Lake Superior +23.

St Lawrence River:

Above Long Sault Dam +27, Above Iroquois Dam +24, Ogdensburg +32, Alexandria Bay +35, Head of River at Cape Vincent +38.

Detroit River:

Lake Erie at Pelee Passage +42, Mouth of River at Gibraltar +43, Fort Wayne +48, Head of River above Belle Isle +45.

St. Clair River:

Mouth of River at St. Clair Flats +45, Algonac +48, St. Clair +40, Blue Water Bridge +42, Head of River at Fort Gratiot +38, Lake Huron Approach Channel +36.

St. Marys River:

Mouth of River at Detour +36, West and Middle Neebish +34, Head of Little Rapids +37, U.S. Slip +37, Above Locks +26, Head of River at Point Iroquois +23.

Available water depth is determined for a location by adding (if +) or subtracting (if -) the amount from the above to the water depth shown on National Oceanic and Atmospheric Administration (NOAA) navigational charts. Caution: Depths so determined are representative of a still water surface elevation, disturbed by neither wind nor other causes. Depth, however, may be reduced or increased as much as several feet for short periods of time due to these disturbances, or when sections of channels develop shoals. Vessel masters should refer to the Local Notice to Mariners for extent of shoaling and scattered bedrock projections in all channels. For further information direct inquires to: Department of the Army, Detroit District Corps of Engineers P. O. Box 1027, Detroit, MI 48231, (313) 226-6443. Additional information can be found on the U.S. Army Corps of Engineers Information Center website at

<http://www.lre.usace.army.mil/Missions/GreatLakesInformation/GreatLakesWaterLevels/WaterLevelForecast/ConnectingChannelsForecast.asp>

LNM: 37/17

LAKE ERIE – NY – Buffalo Ship Canal – Chart 14833

There is a steel I-beam protruding out of the water in approximate position 42-51.640N 078-52.100W. The steel I-beam is marked with a temporary white buoy FL W 4s.

LNM: 17/16

ST CLAIR RIVER - Fort Gratiot to St. Clair Flats - Chart 14852

Water levels on the St. Clair River are above the long term average and pose an increased risk for property damage caused by wake. All vessels greater than 20 meters in length operating in normal displacement mode are reminded to abide by the speed limit of 10.4 knots between Fort Gratiot Light and St. Clair Flats Canal Light.

LNM: 16/17

ILLINOIS RIVER - MARSELLES

A partially submerged pile of beams has been reported on the right descending bank near Mile Marker 247.8 in the Illinois River. All mariners are requested to transit the area with caution.

LNM: 10/17

SECTION I - SPECIAL NOTICES

The following lights will continue to operate at reduced intensity during construction repairs to the Pier.

Grand Haven South Pierhead Light (LLNR 18965) Grand Haven South Pierhead Inner Light (LLNR 18975)

LNM: 36/17

LAKE MICHIGAN - Stony Lake to Point Betsie - Chart 14907

Due to reported shoaling in the entrance to Arcadia Lake, mariners are urged to stay north of the center of the channel. Contact Arcadia Harbormaster on VHF FM Channel 16 for further information. Mariners are requested to transit the area with caution.

LNM: 50/16

LAKE MICHIGAN - MI - Waugoshance Point to Seul Choix Point - Chart 14911

An uncharted object has been reported north of the LCA track lines east of Lansing Shoal in approximate position 45-54.647°N 085-24.970°W. The object appears to be 23-24 feet below the surface at low water datum.

LNM: 30/15

LAKE MICHIGAN - IL - Calumet River - 14929 - Obstruction

An obstruction is protruding approximately 15 feet into the channel from the Morton Salt Dock at river mile 331.5 on the Calumet River. Mariners are advised to use caution and avoid transiting near the left descending wall.

LNM: 06/17

SECTION II - DISCREPANCIES

This section lists all reported and corrected discrepancies related to Aids to Navigation in this edition. A discrepancy is a change in the status of an aid to navigation that differs from what is published or charted.

DISCREPANCIES (FEDERAL AIDS)

LLNR	Aid Name	Status	Chart No.	BNM Ref.	LNM St	LNM End
680	St. Lawrence Seaway Lighted Buoy 104 (C)	MISSING/SINKING/TRLB		B099-17	26/17	
3770	Ashtabula Harbor Junction Lighted Buoy A	LT EXT	14836	B179-17	31/17	
4630	Sandusky Straight Channel Range Rear Light	DAYMK MISSING	14842	D051-17	18/17	
6170	Maumee Bay Lighted Buoy 25	LT EXT	14847	D126-17	34/17	
8410	Peche Island Range Rear Light	LT EXT	14853	D087-17	25/17	
9870	Courtright Light (C)	LT EXT		D074-16	23/16	
13340	Middle Neebish Channel Light 58	DAYMK IMCH	14887	S059-17	18/17	
13680	West Neebish Channel (Downbound) Light 16	DAYMK IMCH	14887	S083-17	25/17	
14580	Munising Range Rear Light	LT EXT	14969	S094-17	30/17	
15705	Superior Front Channel Lighted Buoy 2	OFF STA	14975	S066-17	22/17	
18710	Muskegon South Pierhead Light	LT EXT	14934	M426-17	37/17	
19445	Saugatuck South Pierhead Light	SS INOP	14906	M314-17	30/17	
22185	Green Bay Harbor Entrance Channel Range Rear Light	DAYMK MISSING	14918	M149-17	21/17	

DISCREPANCIES (FEDERAL AIDS) CORRECTED

LLNR	Aid Name	Status	Chart No.	BNM Ref.	LNM St	LNM End
2390	Oak Orchard Jetty Light 4	WATCHING PROPERLY	14805	B220-17	36/17	37/17

5405	West Harbor Access Channel Lighted Buoy 6	RELIGHTED	14842		36/17	37/17
6555	Bolles Harbor Range Rear Light	WATCHING PROPERLY	14846		36/17	37/17
13070	Munuscong Channel (Upbound) Lighted Buoy 9	WATCHING PROPERLY	14887		33/17	37/17
21635	Escanaba Light	WATCHING PROPERLY	14915		37/17	37/17

DISCREPANCIES (PRIVATE AIDS)

LLNR	Aid Name	Status	Chart No.	BNM Ref.	LNM St	LNM End
1865	Navy Point Marina Anchorage Lighted Buoy A	MISSING	14811		32/17	
1870	Navy Point Marina Anchorage Lighted Buoy B	MISSING	14811		32/17	
1875	Navy Point Marina Anchorage Lighted Buoy C	MISSING	14811		32/17	
1880	Navy Point Marina Anchorage Lighted Buoy D	MISSING	14811		32/17	
2056.1	Little Salmon River Buoy 3	MISSING			32/17	
2393	Golden State Park Entrance Light 3	LT EXT	14805		32/17	
2393	Golden State Park Entrance Light 3	LT EXT	14805	B180-17	32/17	
3940	Chagrin East Pier Light	LT EXT	14825		28/17	
4015	Northeast Yacht Club Outer Light	DAYMK DMGD	14826	B138-17	28/17	
4020	Northeast Yacht Club Inner Light	LT EXT	14826	B139-17	28/17	
4021	Newport Harbor Entrance Light 1	LT EXT	14826	B182-17	32/17	
4055	Gordon Park Boat Basin Entrance South Light	LT EXT	14839	B140-17	28/17	
4100	Forest City Yacht Club 4	MSLD SIG	14839	B141-17	28/17	
4385	U.S. Steel Corporation Mooring Cell Light	LT EXT	14841	B142-17	28/17	
4550	BGSU Sandusky Buoy	LT EXT	14845	D099-17	28/17	
11170.9	U.S. Gypsum Tramway Light I	LT EXT		D094-17	28/17	
11386	Lafarge Corporation Channel Range Front Light	LT IMCH	14864		36/17	
11525	Rockport Harbor Crib Light R	LT EXT	14869	S093-17	29/17	
12609.5	St. Ignace Marina Entrance Light 2	LT EXT	14881		36/17	
18647	GVSU AXYS Buoy	OFF STA	14906	M287-17	28/17	
18881	Hartshorn Municipal Marina Lighted Buoy 1	OFF STA	14934		25/17	
18882	Hartshorn Municipal Marina Lighted Buoy 2	OFF STA	14934	M197-17	25/17	
18884	Hartshorn Municipal Marina Lighted Buoy 4	OFF STA	14934	M197-17	25/17	
18935	Conservation Club Channel Lighted Buoy 3	OFF STA	14934	M303-17	29/17	
19615	Gary East Pierhead Light	LT EXT	14926		36/17	
19620	Gary West Pierhead Light	LT EXT	14926		36/17	
19710	American Oil Company Intake Buoy A	MISSING	14929		36/17	
19715	Whiting Lakefront Park Light A	LT EXT	14926		36/17	
19720	Whiting lakefront Park Light B	LT EXT	14926		36/17	
19752	Hammond Marina Lighted Obstruction Buoy AA	LT IMCH	14926		36/17	
19765	Hammond Marina Lighted Obstruction Buoy C	MISSING	14926		36/17	
19775	Nipsco Obstruction Buoy A	MISSING	14929		36/17	
20355	Zion Intake Lighted Buoy A	LT EXT	14904	M089-17	15/17	

DISCREPANCIES (PRIVATE AIDS) CORRECTED

LLNR	Aid Name	Status	Chart No.	BNM Ref.	LNM St	LNM End
5280	Lakeside Marine Inc. Pierhead Light	WATCHING PROPERLY	14842		22/17	37/17
5365	East Harbor State Park East Breakwater Light	WATCHING PROPERLY	14842		22/17	37/17

PLATFORM DISCREPANCIES

Name	Status	Position	BNM Ref.	LNM St	LNM End
None					

PLATFORM DISCREPANCIES CORRECTED

Name	Status	Position	BNM Ref.	LNM St	LNM End
None					

SECTION III - TEMPORARY CHANGES and TEMPORARY CHANGES CORRECTED

This section contains temporary changes and corrections to Aids to Navigation for this edition. When charted aids are temporarily relocated for dredging, testing, evaluation, or marking an obstruction, a temporary correction shall be listed in Section IV giving the new position.

TEMPORARY CHANGES

LLNR	Aid Name	Status	Chart No.	BNM Ref.	LNM St	LNM End
6015	Cooley Canal Front Range Light	DISCONTINUED	14846		11/16	
6016	Cooley Canal Rear Range Light	DISCONTINUED	14846		11/16	
12607	St. Ignace Coast Guard Slip Light	DISCONTINUED	14881	S033-17	12/17	
13615	West Neebish Channel (Downbound) Light 28	DISCONTINUED	14887	S098-17	31/17	37/17
14435	Birch Point Range Rear Light	Reduced Intensity	14884		25/17	
15260	Gull Island Light	Reduced Intensity	14973	S085-16	39/16	
20225	Wilmette Harbor Entrance Buoy 1	DISCONTINUED FOR DREDGING	14926		33/17	
20230	Wilmette Harbor Entrance Buoy 2	DISCONTINUED FOR DREDGING	14926		33/17	
21940	Menominee Pier Light 6	DISCONTINUED	14917	M115-16	44/16	

TEMPORARY CHANGES CORRECTED

LLNR	Aid Name	Status	Chart No.	BNM Ref.	LNM St	LNM End
None						

None

PLATFORM TEMPORARY CHANGES

Name	Status	Position	BNM Ref.	LNM St	LNM End
None					

None

PLATFORM TEMPORARY CHANGES CORRECTED

Name	Status	Position	BNM Ref.	LNM St	LNM End
None					

None

SECTION IV - CHART CORRECTIONS

This section contains corrections to federally and privately maintained Aids to Navigation, as well as NOS corrections.

This section contains corrective actions affecting chart(s). Corrections appear numerically by chart number, and pertain to that chart only. It is up to the mariner to decide which chart(s) are to be corrected. The following example explains individual elements of a typical chart correction.

Chart Number	Chart Edition	Edition Date	Last Local Notice to Mariners	Horizontal Datum Reference	Source of Correction	Current Local Notice to Mariners
12327	91st Ed.	19-APR-97	Last LNM: 26/97	NAD 83		27/97
Chart Title: NY-NJ-NEW YORK HARBOR - RARITAN RIVER						
Main Panel 2245 NEW YORK HARBOR					CGD01	
(Temp) ADD	NATIONAL DOCK CHANNEL BUOY 3				at 40-41-09.001N	074-02-48.001W
	Green can					
Corrective Action	Object of Corrective Action				Position	

(Temp) indicates that the chart correction action is temporary in nature. Courses and bearings are given in degrees clockwise from 000 true.

Bearings of light sectors are toward the light from seaward. The nominal range of lights is expressed in nautical miles (NM) unless otherwise noted.

14824	26th Ed.	01-OCT-03	Last LNM: 37/17	NAD 83		37/17
<i>Chart Title: Sixteenmile Creek to Conneaut; Conneaut Harbor</i>						
Inset 1143 CONNEAUT HARBOR OHIO. Page/Side: N/A						
RELOCATE	Conneaut Harbor Pier Light 3				CGD09 from 41-58-21.786N to 41-58-21.102N	080-32-59.757W 080-32-55.548W
14825	25th Ed.	01-JAN-06	Last LNM: 37/17	NAD 83		37/17
<i>Chart Title: Ashtabula to Chagrin River; Mentor Harbor; Chagrin River</i>						
Main Panel 1144 ASHTABULA TO CHAGRIN RIVER. Page/Side: N/A						
RELOCATE	Geneva On The Lake Light 1				CGD09 from 41-51-35.000N to 41-51-33.468N	080-58-24.000W 080-58-27.924W
14826	28th Ed.	01-SEP-10	Last LNM: 37/17	NAD 83		37/17
<i>Chart Title: Moss Point to Vermilion; Beaver Creek; Vermilion Harbor; Rocky River</i>						
CHART MOSSPOINT TO VERMILION. Page/Side: N/A						
RELOCATE	Lorain Harbor Light 1				CGD09 from 41-28-41.800N to 41-28-41.982N	082-11-16.900W 082-11-16.914W
Inset 1149 ROCKY RIVER OHIO INSET. Page/Side: N/A						
RELOCATE	Rocky River Light 1				CGD09 from 41-29-30.700N to 41-29-30.864N	081-50-19.300W 081-50-20.142W
Inset 1150 VERMILION OHIO INSET. Page/Side: N/A						
RELOCATE	Vermilion Breakwater Detached Light C				CGD09 from 41-25-44.100N to 41-25-44.322N	082-21-56.400W 082-21-55.938W
Main Panel 1147 MOSS POINT TO VERMILION OHIO. Page/Side: N/A						
RELOCATE	Cleveland Harbor Main Entrance Light 1				CGD09 from 41-30-36.550N to 41-30-36.528N	081-42-55.500W 081-42-55.716W
RELOCATE	Cleveland Harbor West Basin Channel Light 1				CGD09 from 41-29-45.900N to 41-29-46.110N	081-43-45.670W 081-43-45.264W
RELOCATE	Lakeview Park West Light				CGD09 from 41-27-49.000N to 41-27-49.271N	082-11-53.600W 082-11-52.975W
RELOCATE	Lorain Harbor Light 1				CGD09 from 41-28-41.800N to 41-28-41.982N	082-11-16.900W 082-11-16.914W

RELOCATE	Rocky River Light 1	from 41-29-30.700N to 41-29-30.864N CGD09	081-50-19.300W 081-50-20.142W
RELOCATE	Vermilion Breakwater Detached Light C	from 41-25-44.100N to 41-25-44.322N	082-21-56.400W 082-21-55.938W

14830 **33rd Ed.** **01-MAR-15** **Last LNM: 37/17** **NAD 83** **37/17**

ChartTitle: West End of Lake Erie; Port Clinton Harbor; Monroe Harbor; Lorain to Detroit River; Vermilion

Main Panel 1151 WEST END OF LAKE ERIE. Page/Side: A

RELOCATE	Vermilion Breakwater Detached Light C	CGD09 from 41-25-44.100N to 41-25-44.322N	082-21-56.400W 082-21-55.938W
----------	---------------------------------------	---	----------------------------------

14836 **28th Ed.** **01-NOV-13** **Last LNM: 37/17** **NAD 83** **37/17**

ChartTitle: Ashtabula Harbor

Main Panel 1159 ASHTABULA HARBOR OHIO. Page/Side: N/A

RELOCATE	Ashtabula Harbor Inner Breakwater Light 7	CGD09 from 41-54-43.064N to 41-54-43.236N	080-47-39.600W 080-47-38.352W
----------	---	---	----------------------------------

14839 **38th Ed.** **01-MAY-15** **Last LNM: 37/17** **NAD 83** **37/17**

ChartTitle: Cleveland Harbor, including lower Cuyahoga River

Main Panel 1161 CLEVELAND HARBOR INCLUDING LOWER CUYAHOGA RIVER. Page/Side: A

RELOCATE	Cleveland Harbor Light 3	CGD09 from 41-30-28.300N to 41-30-28.374N	081-42-48.050W 081-42-47.664W
RELOCATE	Cleveland Harbor Main Entrance Light 1	CGD09 from 41-30-36.550N to 41-30-36.528N	081-42-55.500W 081-42-55.716W
RELOCATE	Cleveland Harbor West Basin Channel Junction Light	CGD09 from 41-29-42.880N to 41-29-42.984N	081-43-42.520W 081-43-41.976W
RELOCATE	Cleveland Harbor West Basin Channel Light 1	CGD09 from 41-29-45.900N to 41-29-46.110N	081-43-45.670W 081-43-45.264W

14841 **30th Ed.** **01-MAY-15** **Last LNM: 37/17** **NAD 83** **37/17**

ChartTitle: Lorain Harbor

Main Panel 1162 LORAIN HARBOR OHIO. Page/Side: A

RELOCATE	Lakeview Park West Light	CGD09 from 41-27-49.000N to 41-27-49.271N	082-11-53.600W 082-11-52.975W
RELOCATE	Lorain Harbor Junction Light	CGD09 from 41-28-20.500N to 41-28-20.814N	082-10-57.300W 082-10-57.468W
RELOCATE	Lorain Harbor Light 1	CGD09 from 41-28-41.800N to 41-28-41.982N	082-11-16.900W 082-11-16.914W

SECTION V - ADVANCE NOTICES

This section contains advance notice of approved projects, changes to aids to navigation, or upcoming temporary changes such as dredging, etc. Mariners are advised to use caution while transiting these areas.

SUMMARY OF ADVANCED APPROVED PROJECTS

<u>Approved Project(s)</u>	<u>Project Date</u>	<u>Ref. LNM</u>
None		

Advance Notice(s)

ST. CLAIR RIVER - Chart - 14852

Russell Island Light (LLNR 9725) Change the characteristic of the light to FG eliminating the white and green sector. The range of the light will be 8 statute miles.

LNM: 39/16

LAKE HURON - Harrisville to Forty Mile Point - Chart 14864

Alpena Light (LLNR 11370) reduce the range of the light from 12 statute miles to 10 statute miles.

LNM: 39/16

LAKE MICHIGAN - UPPER GREEN BAY - CHART 14909

Hat Island South Shoal Buoy "HI" (LLNR 21850) Change the operation of this buoy from seasonal replaced by a can in the winter to seasonal not replaced maintained from April 21 to October 14.

LNM: 35/17

LAKE MICHIGAN - IL - Calumet River - Chart 14929

Calumet Harbor Breakwater South End Light (LLNR 19800) Reduce the range of the FI R 10s light from 14 statute miles to 12 statute miles and reduce the FI W 10s light from 17 statute miles to 13 statute miles. The rotating beacon will be replaced with more reliable LED lanterns. The fog signal will continue to operate by keying microphone five times on VHF-FM channel 83A.

LNM: 13/17

LAKE MICHIGAN - WI - Upper Green Bay - Chart 14909

St. Martin Island Light (LLNR 21450) change the characteristic of the light from AL WR 10s to FI W 10s. The range would be reduced from 18 statute miles to 16 statute miles.

LNM: 31/14

LAKE MICHIGAN - MI - Holland Harbor - Chart 14932

Holland Harbor South Pierhead Light (LLNR 19295) change the characteristic from AL WR 10s to FI R 10s and reduce the range of the light from 17 statute miles to 15 statute miles.

LNM: 39/12

LAKE SUPERIOR - DULUTH AND SUPERIOR HARBORS - Chart 14975

Superior Entry South Breakwater Light (LLNR 15595) reduce the range from 22 statute mile to 15 statute miles.

LNM: 13/17

LAKE SUPERIOR - DULUTH AND SUPERIOR HARBORS - Chart 14975

Duluth Harbor South Breakwater Inner Light (LLNR 15860) reduce the range of the light from 18 statute miles to 16 statute miles.

LNM: 13/17

SECTION VI - PROPOSED CHANGES

Periodically, the Coast Guard evaluates its system of aids to navigation to determine whether the conditions for which the aids to navigation were established have changed. When changes occur, the feasibility of improving, relocating, replacing, or discontinuing aids are considered. This section contains notice(s) of non-approved, proposed projects open for comment. SPECIAL NOTE: Mariners are requested to respond in writing to the District office unless otherwise noted (see banner page for address).

PROPOSED WATERWAY PROJECTS OPEN FOR PUBLIC COMMENT

<u>Proposed Project(s)</u>	<u>Closing</u>	<u>Docket No.</u>	<u>Ref. LNM</u>
None			

Proposed Change Notice(s)

LAKE MICHIGAN - UPPER GREEN BAY - Chart 14909

Establish a Virtual ATON Traffic Buoy in position 45-26-06.012N / 086-44-32.016W (southeast of the St. Martin Island Shoals where the LCA's intersect)

LAKE MICHIGAN - Green Bay - Chart 14917

Menominee Pier Light "6" (LLNR 21940) change the characteristic to FI R 6(1) and reduce the nominal range from 12 statute miles to 10 statute miles.

LNM: 46/16

LAKE MICHIGAN - Algoma to Sheboygan - Chart 14903

Kewaunee Pier Head Light (LLNR 20955) reduce the range of the light from 15 statute miles to 11 statute miles. Permanently discontinue the fog signal.

Algoma Light (LLNR 20975) reduce the range of the light from 15 statute miles to 11 statute miles.

LNM: 52/16

ST. MARY'S RIVER - MUNUSCONG LAKE TO SAULT STE. MARIE - Chart 14883

Little Rapids Cut Lighted Buoy "98B" (LLNR 14105) Add synthetic AIS ATON to this aid during time that the ice boom is deployed.

LNM: 04/17

ST. MARYS RIVER - ROUND ISLAND - Chart 14884

Establish a Virtual ATON Traffic Buoy in position 46-27-07.023N / 084-32-47.446W (position of the old discontinued physical traffic buoy)

LNM: 35/17

LAKE SUPERIOR - DULUTH - SUPERIOR HARBOR - Chart 14966

Superior Entry South Breakwater Light (LLNR 15595) change the fog signal operation to a user activated system. The mariner can energize the fog signal by keying the microphone five times on VHF-FM channel 83A.

Duluth Harbor South Breakwater Outer Light (LLNR 15845) change the fog signal operation to a user activated system. The mariner can energize the fog signal by keying the microphone five times on VHF-FM channel 83A.

LNM: 29/17

For any comments or questions on these proposed changes please contact:

Mr. Doug Sharp of the Ninth District Aids to Navigation office at (216) 902-6070.

LNM: 30/13

SECTION VII - GENERAL

This section contains information of general concern to the Mariners. Mariners are advised to use caution while transiting these areas.

Waterways Analysis and Management System Study - 2017

The Coast Guard is conducting a Waterways Analysis and Management System Study on the following waterways during 2017. The study focuses on the area's aid to navigation system, waterborne commerce, marine casualty information, emergency response plans, routine and emergency communication capabilities, and future development projects. Any company or individual wishing to comment on the waterway reviews listed below is encouraged to contact the Coast Guard unit listed or email comments to william.d.sharp@uscg.mil. Any comments emailed will be forwarded to the appropriate unit for use in the WAMS project. A survey is attached to the Local Notice to Mariner and can be used to comment on these reviews or on any waterways located in the Great Lakes.

Cleveland Harbor (LLNR 3975 - LLNR 4260)
Lorain Harbor (LLNR 4265 - 4429)
Sandusky Harbor/Moseley Channel (LLNR 4560 - LLNR 5030)
Lake St. Clair Main Channel (LLNR 8400 - LLNR 8660)
Huron Harbor (LLNR 4430 - LLNR 5455)
Commanding Officer
USCGC Bristol Bay (WTGB 102)
110 Mt. Elliot Avenue
Detroit, Mi. 48207
(313) 568-9548

St. Joseph/Benton Harbor (LLNR 19515 - LLNR 19625)
Sheboygan Harbor (LLNR 20805 - LLNR 20840)
Manitowoc Harbor (LLNR 20842 - LLNR 20985)
Commander
U. S. Coast Guard Sector Lake Michigan
2420 South Lincoln Memorial Drive
Milwaukee, WI 53207
(414) 747-7188

Duluth/Superior Harbors (LLNR 15595 - LLNR 16250)
Grand Traverse Bay (LLNR 17855 - LLNR 18366)
Commanding Officer
USCGC Alder (WLB 216)
1201 Minnesota Avenue
Duluth, Mn. 55802
(218) 529-3131

Straits of Mackinaw Eastern Section
(LLNR 11720 - LLNR 11775)
(LLNR 12175 - LLNR 12215)
(LLNR 12535 - LLNR 12650)
Burns Harbor (LLNR 19575 - LLNR 19625)
Commanding Officer

Waterways Analysis and Management System Study - 2017

USCGC Mackinaw (WLBB 30)
632 Coast Guard Drive
Cheboygan, MI 49721
(231) 597-2030

The U.S. Coast Guard has received a request to establish two designated anchorages in the Saint Lawrence Seaway: one near Carleton Island and one near Tibbets Point (see enclosed chartlets). To begin assessing the location suitability of the proposed anchorage sites we are soliciting waterway user input; specifically to identify potential effects of the proposal. To submit your concerns, issues, and/or constructive information; please email LT Jason Radcliffe at jason.a.radcliffe2@uscg.mil or call (216) 902-6060."

LNM: 10/17

GREAT LAKES - Marine Events

Marine events such as races, parades, regattas, and fireworks displays are frequently held in the Great Lakes region. Advance information on specific events is contained in enclosure (2) of this publication. The public is reminded to listen to the local broadcast notice to mariners for the most up-to-date information on a marine event. Mariners are advised that some events may require temporary aids to navigation that are not displayed on a chart or in the Light List, and that they should exercise additional caution while operating in the vicinity of a scheduled marine event.

LNM: 24/13

NEW YORK STATE CANAL SYSTEM – NY - Erie Canal – Chart 14786 – Bridge Maintenance

From June 12, 2017 through September 30, 2018 scaffolding will be installed on the pier faces of the John Glenn Boulevard Bridge (E-73a) at Mile 167.8 over the Erie Canal at Salina, NY that extends 12 feet out towards the center of channel. The scaffolding will have steady burning red lights to show the temporary reduction in horizontal clearance. Scaffolding that extends approximately 2 feet below low steel of the bridge will be installed under the bridge from July 27 through September 30, 2018. Steady burning amber lights will show the temporary reduction in vertical clearance.

LNM: 30/17

NEW YORK STATE CANAL SYSTEM – NY - Erie Canal – Chart 14786 – Bridge Inspections

From June 8 to October 20, 2017, between the hours of 0700 and 1600 Monday through Friday, a 30foot by 20 foot inspection barge will be working under the bridges from Creagers Road (E-96) at Mile 218.9 to Marshall Road (E-212) at approximate Mile 313.6 over the Erie Canal. The barge will monitor VHF-FM Marine Channel 16 and will move to accommodate vessels.

LNM: 24/17

NEW YORK STATE CANAL SYSTEM – NY - Erie Canal – Chart 14786 – Bridge Inspections

From July 10 through October 20, 2017 between the hours of 0800 and 1500, Monday through Friday inspectors will utilize Snooper type vehicles under the following bridges over the Erie Canal:

The Long Pond Road Bridge (E170) at Mile 266.4

The Manitou Road Bridge (E172) at Mile 271.5

The Clinton Street Bridge (E108) at Mile 217.0

The Whitbeck Road Bridge (E113) at Mile 229.8

The Sweden Walker Bridge (E180) at Mile 277.1

The Ayrault Road (E130) at Mile 250.4

And the Turk Hill Road Bridge (E126) at Mile 247.5

Spotters will warn of approaching vessels and move the man lift to allow vessels to pass

LNM: 24/17

NEW YORK STATE CANAL SYSTEM – NY - Erie Canal – Chart 14786 – Bridge Maintenance

From September 4 through November 11, 2017 workers will install a containment system that is tight up against the low steel of the Route 31 (E90) Bridge at Mile 201.0 over Erie Canal at Tyre, NY.

LNM: 32/17

NEW YORK STATE CANAL SYSTEM – NY - Cayuga Seneca Canal – Chart 14786 – Bridge Inspections

From September 5 through September 26, 2017 between the hours of 0800 and 1700 Monday through Friday inspectors will utilize a bridge inspection vessel(s) under the following bridges:

between the US 11, Brewerton Road Bridge (E-64) at Mile 150.58 and the CR 105, Armitage Road Bridge (E-92) at Mile 205.59 over the Erie Canal. The Culvert Street Bridge (O-4) at approximate Mile 26.2 and the Hinmansville Bridge(O-5) at Mile 17.2 over the Oswego Canal. The US 20/Freebridge Bridge (S-1) at Mile and the Bridge Street Bridge (S-7) at Mile 8.3 over the Cayuga Senecal Canal. The inspection vessels will monitor VHF-FM Marine Channel 16 and move to allow vessels to pass.

LNM: 35/17

NEW YORK STATE CANAL SYSTEM – NY - Erie Canal – Chart 14786 – Bridge Inspections

From September 18 through September 22, 2017 between the hours of 0800 and 1700 daily inspectors will utilize snooper trucks under the NY 370 Bridge at the entrance of Onondaga Lake at Mile 167.8, the 1-81 (E-63A) Bridge at Mile 150.7, and the State Route 481 (E-69A) Bridge at Mile 158.0, all over the Erie Canal, part of the New York Canal System. Spotters will warn inspectors of approaching vessels and move the man lift to

NEW YORK STATE CANAL SYSTEM – NY - Erie Canal – Chart 14786 – Bridge Inspections

allow vessels to pass.

LNM: 37/17

LAKE ONTARIO – NY –Rochester Harbor – Chart 14815 – Bridge Special Event

From 0730 to 1430 on September 17, 2017 the O'Rourke Bridge at Mile 1.25 over the Genesee River will be secured to masted navigation in conjunction with the Rochester Marathon. Vessels able to pass under the bridge without an opening may do so at any time.

LNM: 07/17

LAKE ERIE – NY – Niagara River – Chart 14822 – Bridge Maintenance

From July 10, 2016 through May 18, 2019 scaffolding that extends approximately 6 feet below low steel will be installed under the Peace Bridge at Mile 1.5 over the Black Rock Canal. Amber lights will mark the bottom and four corners of the scaffolding hanging below low steel. Scaffolding under the bridge over the Niagara River will remain above low steel.

LNM: 16/15

LAKE ERIE – NY – Buffalo Harbor – Chart 14833 – Bridge Maintenance

From May 29 through September 30, 2017 the Buffalo Creek Railroad Bridge at Mile 4.39 over the Buffalo River will be secured to masted navigation. Vessels able to pass under the bridge without an opening may do so at any time.

LNM: 04/17

LAKE ERIE – NY – Buffalo Harbor – Chart 14833 – Bridge Maintenance

From September 5 through November 10, 2017 workers will be installing scaffolding on the sides of the Buffalo Skyway Bridge at Mile 1.00 over the Buffalo River and At Mile 1.10 over Union Canal. The scaffolding will not extend below low steel of the bridge, but the contractor may use under bridge inspection vehicles under the bridge. Spotters will warn of approaching vessels and move the man lifts to allow vessels to pass.

LNM: 28/17

LAKE ERIE - OH - Ashtabula Harbor - Chart 14836

Kokosing Industrial, Inc. - Durocher Marine Division will be conducting Pipe extension for Cristal off Ashtabula Power plant C. MM- 142 barge will be working off spuds with the Tug Nancy Anne and monitoring Ch 13 and 16 . Construction operations will install pipe and anchors to extend the Cristal pipeline from 4,000 foot offshore to 5,500 foot offshore. Pleasure craft and passing vessels should remain a safe distance from the working areas of 1500+ feet.

LNM: 31/17

LAKE ERIE – OH – Maumee River - Chart 14846 – Bridge Replacement

From July 1, 2015 through December 31, 2017, Bridge demolition and construction activities will be performed at the State Route 109 Bridge at Mile 44.4 over the Maumee River near Napoleon, Ohio. Mariners should use caution when transiting the area.

LNM: 20/14

LAKE ERIE – OH – Maumee River - Chart 14846 – Bridge Discrepancy

The Coast Guard has received a report that the lights on the CSX Railroad Bridge at Mile 11.38 over the Maumee River are extinguished.

LNM: 14/15

LAKE ERIE – OH – Maumee River – Chart 14847 – Availability of Public Notice

All interested parties are notified that an application has been received by Commander, Ninth Coast Guard District, from the Ohio Department of Transportation (ODOT), for approval of location and plans for the construction of a fixed highway bridge over a navigable waterway of the United States. (Enclosure 3)

LNM: 37/17

LAKE ERIE – OH – Cleveland Harbor – Chart 14839 – Bridge Maintenance

From February 3 through February 24, 2018 the Willow Avenue Bridge at Mile 1.02 over the Cuyahoga River Old River Channel will be secured to masted navigation. Vessels able to pass under the bridge without an opening may do so at any time.

LNM: 23/17

LAKE ERIE – OH – Cleveland Harbor – Chart 14839 – Bridge Maintenance

From May 15 through September 30, 2017 scaffolding will be installed under the New Inner Belt Freeway Bridge at Mile 3.38 over the Cuyahoga River that extends approximately 5 feet below low steel.

LNM: 16/17

LAKE ERIE – OH – Cleveland Harbor – Chart 14839 – Bridge Discrepancy

The Coast Guard has received a report that the fendering system for the Union Terminal Viaduct at Mile 1.89 over the Cuyahoga River has been destroyed. There are reports of debris from the fendering system floating in the river.

LNM: 47/16

LAKE ERIE – Cleveland Harbor - Chart 14839

Diversified Maintenance Systems will commence construction on the Cleveland Harbor Main Entrance Light in Cleveland, OH. Operations will begin

LAKE ERIE – Cleveland Harbor - Chart 14839

at 0700 to 1600 Monday through Friday, from 08 May 17 to 15 Oct 17. The tug Eagle and various small craft will be in the vicinity and can be contacted on VHF channel 16. All mariners are requested to transit the area with caution maintain as little wake as possible. For further information, contact Dennis Hilsinger at 907-654-1700.

LNM: 19/17

LAKE ERIE – OH – Rocky River – Chart 14826 – Bridge Maintenance

From January 1 through October 31, 2017 scaffolding that hangs approximately 10 feet below low steel will be installed under the Detroit Road Highway Bridge at Mile 0.7 over the Rocky River. Steady burning amber lights will mark the bottom and four corners of the scaffolding.

LNM: 01/17

LAKE ERIE – OH – Portage River – Chart 14842 – Bridge Maintenance

From October 16, 2017 through October 19, 2017 and again from October 23, 2017 through October 26, 2017 the Monroe Street Bridge at Mile 0.4 over the Portage River at Port Clinton, OH will have one bridge leaf secured to masted navigation and one leaf locked in the fully open to navigation position for the purpose of removing the bridge leaves. The bottom and four corners of the old bridge leaves will be marked with steady burning amber lights until they are completely removed from the waterway. From 0500 on December 1, 2017 to noon on April 1, 2018 the bridge will be secured to masted navigation for the installation of new bridge leaves. The bottom and four corners of the new bridge leaves will be marked with steady burning amber lights until the required permitted navigation lights can be installed. Vessels able to pass under the bridge without an opening may do so at any time.

LNM: 49/16

DETROIT RIVER – MI – River Rouge – Chart 14854 – Bridge Maintenance

From February 4, 2017 through January 31, 2018 scaffolding that hangs approximately 3 feet below low steel will be installed under the Fisher Freeway I-75 Bridge at Mile 1.85 over the River Rouge. Steady burning amber lights will be installed on the bottom of the scaffolding to warn mariners of the temporary reduction in vertical clearance. Snooper trucks may also be used at the bridge. Spotters will warn of approaching vessels and move the man lifts to allow vessels to pass under the bridge.

LNM: 48/16

DETROIT RIVER – MI – River Rouge – Chart 14854 – Bridge Discrepancy

The Coast Guard has received a report that the lights on the ConRail Railroad Bridge at Mile 1.48 over the River Rouge are extinguished.

LNM: 33/17

DETROIT RIVER – MI – River Rouge – Chart 14848 – Bridge Maintenance

From September 18 through September 22, 2017 between the hours of 0700 and 1730 daily the Conrail Railroad Bridge at Mile 1.48 over the River Rouge will be secured to masted navigation. From September 25 through September 29 between the hours of 0700 and 1730 daily the bridge will require a 4-hour advance notice for openings. Mariners should provide advance notice directly to the drawtender on VHF-FM Marine Channel 16 or by calling 313-297-5425. Vessels able to pass under the bridge without an opening may do so at any time.

LNM: 30/17

ST CLAIR RIVER – MI – Black River – Chart 14853 – Bridge Maintenance

From November 15, 2017 through March 31, 2018 the 10th Street Bridge at Mile 0.94 over the Black River will be secured to masted navigation. Vessels able to pass under the bridge may do so at any time.

LNM: 11/17

ST CLAIR RIVER – Flats Canal - Chart 14852

There has been a report of a partially submerged 20 foot long sheet pile platform in the southwest corner of Gull Island in the vicinity of the St. Clair Flats Canal at approximate position 42-31.77N, 082-40.71W. All mariners are requested to transit the area with caution.

LNM: 18/17

ST CLAIR RIVER – Flats Canal - Chart 14852

There as been a report of a 18 foot long steel beam sticking straight out of water 24 inches in diameter in position 42° 32.085'N 082° 40.044'W. The object is in 16 feet of water 40 yards off Seaway Island. All mariners are requested to transit the area with caution.

LNM: 21/17

LAKE HURON – MI – Port Huron – Chart 14852 – Bridge Inspection

From September 11 through September 15, 2017 between the hours of 0700 and 1800 each day inspectors will use under bridge inspection vehicles on the Military Street Bridge at Mile 0.33 over the Black River. The bridge will require a 15-minute advance notice for openings except on September 12 and September 13 when the bridge will require a 3-hour advance notice for openings. Mariners should provide advance notice directly to the drawtender on VHF-FM Marine channel 16.

LNM: 26/17

LAKE HURON – MI – Saginaw River – Chart 14867 – Bridge Special Event

Between the hours of 0900 and noon on September 17, 2017 the Liberty Street Bridge at Mile 4.99 over the Saginaw River will be secured to masted navigation in conjunction with the City of Bay City Driathlon. Vessels able to pass under the bridge without an opening may do so at any time.

LAKE HURON – MI – Saginaw River – Chart 14867 – Bridge Special Event

LNM: 33/17

LAKE HURON – MI - Saginaw River – Chart 14867 - Bridge Maintenance

From 2130 on September 7 to 0100 on September 8, 2017, the Veterans Memorial Bridge at Mile 5.60 over the Saginaw River will be secured to masted navigation for emergency maintenance. Vessels able to pass under the bridge without an opening may do so at any time.

LNM: 36/17

LAKE MICHIGAN - MI - Straits of Mackinac - Chart 14881

Kokosing Industrial, Inc - Durocher Marine Division will commence maintenance activities for Utility Pipeline in the Straits of Mackinac from 07 Aug 2017-15 Sep 2017. Hours of operation are from 0700-1900 7 days a week. Kokosing-I barge will be working off an anchor spread with the Tug Champion as a platform for dive operations by Ballard Marine. Diving operations will be performing inspections and maintenance activities on the utilities lines at various locations across the line. Pleasure craft and passing vessels should remain a safe distance from the working areas of 1500+ feet. Tug Champion can be reached on VHF channels 13 and 16.

LNM: 32/17

LAKE MICHIGAN – WI – Sheboygan Harbor – Chart 14922 - Bridge Maintenance

From October 1, 2017 through April 28, 2018 the South Eighth Street Bridge at Mile 0.69 over the Sheboygan River will be rehabilitated. From October 1 through November 1 the bridge will require a 1 hour advance notice for openings. Mariners should provide advance notice directly to the drawtender on VHF-FM Marine channel 16 or by calling: 608-234-3856. Two 82' by 68' or smaller barges will be used under the bridge thought the project. From November 1, 2017 through April 28, 2018 the bridge will be secured to masted navigation. Vessels able to pass under the bridge without an opening may do so at any time; except, from November 1 through January 1 when a barge will be placed under the drawspan to paint the bridge.

LNM: 36/17

LAKE MICHIGAN – WI – Green Bay – Lower Fox River - Chart 14918 – Bridge Maintenance

From January 1, 2019 through March 31, 2019 scaffolding that hangs approximately 10 feet will be installed under the Allouez and Ashwaubenon Bridge at Mile 5.02 over the Fox River

LNM: 20/17

LAKE MICHIGAN – WI – Sturgeon Bay Ship Canal – Chart 14919 – Bridge Operations

The Coast Guard is modifying the operating regulation that governs the Bayview (State Route 42/57) Bridge, Mile 3.0, Maple-Oregon Bridge, Mile 4.17, and Michigan Street Bridge, Mile 4.3, all over Sturgeon Bay Ship Canal in Sturgeon Bay, WI, to allow testing of the remote operation equipment for all three drawbridges. The operating schedules are not changing but the drawbridges will be remotely operated by a single tender stationed at the Maple-Oregon Bridge throughout the 2017 navigation season. The Coast Guard requests comments from all stakeholders on the safety and effectiveness of the remote operation arrangement. To view the interim rule, published in the Federal Register (33 FR 11151) on February 21, 2017 please visit: <https://www.gpo.gov/fdsys/pkg/FR-2017-02-21/html/2017-03346.htm>. Comments and related material must reach the Coast Guard on or before December 1, 2017. To submit comments go to <http://www.regulations.gov>, type [USCG-2017-0050] in the "SEARCH" box and click "SEARCH." Click on Open Docket Folder on the line associated with this rulemaking. If you have questions on this interim rule, call or e-mail Mr. Lee Soule, Bridge Management Specialist, Ninth Coast Guard District; telephone 216-902-6085, or email: Lee.D.Soule@uscg.mil

LNM: 05/17

LAKE MICHIGAN – IL – Calumet-SAG Channel – Chart 14927 - Bridge Inspection

From September 6 through September 7, 2017 between the hours of 0800 and 1500 each day inspectors will utilize Snooper vehicles under the Kedzie Avenue Bridge at Mile 16.01 (CORPS MILE 317.0) over the Calumet-SAG Channel. Spotters will warn of approaching vessels and move the man lift to allow vessels to pass.

LNM: 35/17

LAKE MICHIGAN – IL - Chicago Sanitary and Ship Canal – Chart 14927 - Bridge Discrepancy

The Coast Guard has received a report that the lights on the following bridges over the Chicago Sanitary and Ship Canal are extinguished, damaged, or obstructed:

South Western Avenue at Mile 6.7 (CORPS MILE 320.6)
South California Avenue Bridge at Mile 7.3 (CORPS MILE 320.0)
South Kedzie Avenue Bridge at Mile 7.8 (CORPS MILE 319.5)
South Pulaski Bridge at Mile 8.9 (CORPS MILE 318.4)
BNSF Railroad Bridge at Mile 12.5 (CORPS MILE 314.8)
CSX Railroad Bridge at Mile 15.1 (CORPS MILE 312.3)

LNM: 36/17

LAKE MICHIGAN – IL - Chicago River – Chart 14927 - Bridge Inspection

From September 11 through September 15 on the Main Branch of the Chicago River and from September 18 through September 22, 2017 on the South Branch of the Chicago River between the hours of 0730 and 1800 daily a 110' by 35' barge will be conducting bridge inspections. The barge will move if a 1 hour advance notice is provided directly to the barge on VHF-FM Marine Channel 16 or by calling: 708-574-2324.

LNM: 36/17

LAKE MICHIGAN – IL - Chicago Sanitary and Ship Canal – Chart 14927 - Bridge Inspection

On September 25 and September 26, 2017 between the hours of 0730 and 1800 daily a 110' by 35 foot barge will be conducting bridge inspection under the South Cicero Avenue Bridge at Mile 10.0 (CORPS MILE 317.3) over the Chicago Sanitary and Ship Canal. The barge will move if a 1 hour advance notice is provided directly to the barge on VHF-FM Marine Channel 16 or by calling: 708-574-2324.

LNM: 36/17

LAKE MICHIGAN – MI – St Joseph – Benton Harbor – Chart 14927 - Bridge Maintenance

From December 1, 2019 through March 15, 2020 the Blossomland/M-63 Bridge at Mile 0.92 and the Twin Cities Bicentennial Bridge at Mile 1.30, both over the St. Joseph River will be secured to masted navigation. Vessels able to pass under the bridges without an opening may do so at any time.

LNM: 37/17

LAKE MICHIGAN – IL - CHICAGO RIVER – CHART 14927 - BRIDGE DISCREPANCY

The Coast Guard has received a report that the lights on the following bridges over the South Branch of the Chicago River are extinguished, damaged, or obstructed:

- Madison Street Bridge at Mile 1.90 (CORPS MILE 325.3)
- Harrison Street Bridge at Mile 2.44 (CORPS MILE 324.8)
- CSX Railroad Bridge at Mile 3.37 (CORPS MILE 323.9)

LNM: 33/17

LAKE MICHIGAN – IL - Chicago River – Chart 14927 - Bridge Inspection

From September 19 through October 9, 2017 between the hours of 0730 and 1800 daily a 110' by 35' barge will be conducting bridge inspections on the bridges over the North Branch of the Chicago River from Mile 1.81 (CORPS MILE 325.7) to Mile 7.30 (CORPS MILE 331.2) The barge will move if a 30 minute advance notice is provided directly to the barge on VHF-FM Marine Channel 16 or by calling: 708-574-2324.

LNM: 36/17

LAKE MICHIGAN – IL – Chicago River – Chart 14927 – Bridge Discrepancy

The Coast Guard has received a report that the dolphins near the location of the former Polk Street Bridge at Mile 2.16 over the South Branch of the Chicago River and the former Erie Street Bridge at Mile 2.21 over the North Branch of the Chicago River are a hazard to navigation.

LNM: 21/16

LAKE MICHIGAN – IL – Chicago River – Chart 14927 – Bridge Discrepancy

The Coast Guard has received a report of a 120 foot by 40 foot barge moored against the bulkhead of the Monroe Street Bridge at Mile 1.99 (CORPS MILE 325.2) over the South Branch of the Chicago River until July 21, 2017.

LNM: 24/17

LAKE MICHIGAN – IL – Chicago River– Chart 14927 – Bridge Maintenance

February 6 through September 30, 2017, between the hours of 0700 and 1700 Monday through Friday a 125 foot by 35 foot barge will be working under the Clark Street Bridge at Mile 1.21 (CORPS MILE 326.0) over the Main Branch of the Chicago River. The Barge will monitor VHF-FM Marine Channel 16 and will move to accommodate vessels if a 1-hour advance notice is provided by calling 312-747-2470.

LNM: 33/17

LAKE MICHIGAN – IL - Chicago River – Chart 14927 - Bridge Discrepancy

The Coast Guard has received a report that the lights on the following bridges over the Main Branch of the Chicago River are extinguished:

- Columbus Drive Bridge at Mile 0.67 (CORPS MILE 326.5)
- Michigan Avenue Bridge at Mile 0.85 (CORPS MILE 326.3)
- Clark Street Bridge at Mile 1.21 (CORPS MILE 326.0)
- La Salle Street Bridge at Mile 1.29 (CORPS MILE 325.9)
- Wells Street Bridge at Mile 1.37 (CORPS MILE 325.8)
- Franklin-Orleans Street Bridge at Mile 1.47 (CORPS MILE 325.7)

LNM: 37/17

LAKE MICHIGAN – IL – Chicago River – Chart 14927 – Bridge Discrepancy

The Coast Guard has received a report that the following bridges over the Main, North, and South Branches of the Chicago River have lights showing improper characteristics, obstructed, missing, or lights that are extinguished:

- Michigan Avenue Bridge at Mile 0.85
- Grand Avenue Bridge at Mile 2.00

LNM: 10/17

LAKE MICHIGAN – IL - Chicago River – Chart 14927 - Bridge Discrepancy

From August 24 through September 7, 2017 between the hours of 0700 and 1800 daily except Labor Day Weekend a 110' by 35' barge will be conducting bridge inspections under the 95th Street Bridge at Mile 1.09 (CORPS MILE 332.1), the 100th Street Bridge at Mile 1.78 (CORPS MILE 331.4), and the 106th Street Bridge at Mile 2.58 (CORPS MILE 330.6) all over the Calumet River. The barge will move if a 1 hour advance notice is

LAKE MICHIGAN – IL - Chicago River – Chart 14927 - Bridge Discrepancy

provided. Mariners should provide advance notice directly to the barge on VHF-FM Marine Channel 16 or by calling 708-574-2324.

LNM: 34/17

LAKE MICHIGAN – IL - Chicago River – Chart 14927 - Bridge Inspection

From August 28 through September 7, 2017 between the hours of 0600 and 1700 daily except Labor Day Weekend a 110' by 35' barge will be inspecting the bridges over the North Branch of the Chicago River from Mile 5.30 (CORPS MILE 329.1) to Mile 9.24 (CORPS MILE 333.4) . The barge will move if a 30 minute advance notice is provided directly to the barge on VHF-FM Marine Channel 16 or by calling: 630-217-8148.

LNM: 34/17

LAKE MICHIGAN – IL - Chicago River – Chart 14927 - Bridge Inspection

From August 24 through September 24, 2017 between the hours of 0700 to 1530, Monday through Friday a 120 foot by 40 foot barge will be working under the South Halstead Street Bridge at Mile 4.47 (CORPS MILE 322.8) over the South Branch of the Chicago River. The barge will move with a 30-minute advance notice. Mariners should provide advance notice directly to the barge on VHF-FM Marine Radio Channel 16.

LNM: 34/17

LAKE MICHIGAN - MI - Calumet Harbor - Chart 14924

Roen Salvage Company will be Dredging, Drilling, and Blasting in the vicinity of Calumet Harbor, MI from 01 Aug 2017 to 15 Dec 2017. For further information please see attached enclosure (5).

LNM: 30/17

LAKE MICHIGAN –IL – Calumet River – Chart 14927 – Bridge Discrepancy

The 92nd Street Bridge at Mile 0.76 (CORPS MILE 332.4) over the Calumet River is experiencing electrical issues causing the bridge leaves to operate irregularly and open slower than normal. Mariners should wait until the bridge is in the fully open position or receive an all clear from the drawtender before passing through the bridge. The Estimated time of repair is mid-June.

LNM: 19/17

LAKE MICHIGAN – IL – Little Calumet River – Chart 14927 - Bridge Inspection

On September 13 and September 14, 2017 between the hours of 0730 and 1800 each day a 110' by 35' barge will be under the Indiana Avenue Bridge at Mile 10.80 (CORPS MILE 322.3) over the Little Calumet River. The barge will move if a 30 minute advance notice is provided directly to the barge on VHF-FM Marine Channel 16 or by calling: 708-574-2324.

LNM: 36/17

LAKE MICHIGAN – IL – Calumet-SAG Channel – Chart 14927 - Bridge Discrepancy

The Coast Guard has received a report that the lights on the following bridges over the Calumet-SAG Channel are extinguished, damaged, or obstructed:

Grand Trunk Western Railroad Bridge at Mile 15.42 (CORPS MILE 317.8)

CSX Railroad Bridge at Mile 15.41 (CORPS MILE 317.8)

LNM: 32/17

LAKE MICHIGAN – IL - Calumet River – Chart 14927 - Bridge Maintenance

From 0700 to 1900 on September 15, 2017 one leaf of the 92nd Street Bridge at Mile 0.76 over the Calumet River will remain partially open at an approximate 45 degree angle. The other leaf will remain in the fully open position to allow crews to make emergency repairs to the bridge.

LNM: 37/17

LAKE MICHIGAN – IL - Calumet River – Chart 14927 - Bridge Inspection

On September 28, 2017 between the hours of 0700 and 1800 a 131' by 43' spud barge will be inspecting the Chicago Skyway Bridge at Mile 1.50 (CORPS MILE 331.7) over the Calumet River. The barge will move if provided a 30 minute advance notice is provided on VHF-FM Marine Radio Channel 16.

LNM: 37/17

LAKE MICHIGAN – MI – Milwaukee Harbor – Chart 14924 – Bridge Special Event

On October 15, 2017 between the hours of 0700 and noon the Broadway Street Bridge at Mile 0.79 over the Milwaukee River will be secured to masted navigation in conjunction with the Milwaukee Marathon. Vessels able to pass under the bridge without an opening may do so at any time.

LNM: 26/17

LAKE MICHIGAN – MI – Milwaukee Harbor – Chart 14924 – Bridge Special Event

On September 16, 2017 between the hours of 0900 and noon the Wisconsin Avenue Bridge at Mile 1.46 over the Milwaukee River will be secured to masted navigation in conjunction with the Briggs & Al's Run walk event. Vessels able to pass under the bridge without an opening may do so at any time.

LNM: 26/17

The Coast Guard has received a report that the lights on the following bridges over the Chicago Sanitary and Ship Canal are extinguished, damaged, or obstructed:

Bridge Discrepancy The Coast Guard has received a report that the center green lights on the St. Paul Avenue Bridge at Mile 1.21 over the

The Coast Guard has received a report that the lights on the following bridges over the Chicago Sanitary and Ship Canal are extinguished, damaged, or obstructed:

Milwaukee River are extinguished.

LNM: 36/17

LAKE MICHIGAN – WI – Milwaukee Harbor – Chart 14924 – Bridge Maintenance

From July 10 through November 19, 2017 one leaf of the South First Street Bridge at Mile 1.78 over the Kinnickinnic River will be secured to masted navigation while the other leaf remains operational. Scaffolding that extends approximately 3 feet below low steel will be installed under the secured leaf and that extends 3 feet past the center span. An 80 foot by 50 foot barge will be used under the bridge and will move to accommodate vessel traffic. From November 20, 2017 through April 1, 2018 both leaves of the bridge will be secured to masted navigation and scaffolding will be installed under both leaves that extends approximately 3 feet below low steel.

LNM: 32/17

LAKE MICHIGAN – WI – Milwaukee Harbor – Chart 14924 - Bridge Discrepancy

The Coast Guard has received a report that the center green lights on the St. Paul Avenue Bridge at Mile 1.21 over the Milwaukee River are extinguished.

LNM: 36/17

LAKE MICHIGAN – IN – Indiana Harbor, Chart 14929 – Bridge Underwater Hazard

The Coast Guard has received a report of an underwater obstruction near the position of the former Canal Street Bridge at Mile 1.88 over the Indiana Harbor Canal.

LNM: 01/14

LAKE MICHIGAN –WI – Lower Fox River – Chart 14918 – Bridge Maintenance

From May 1, 2018 through September 29, 2018 scaffolding will be installed under the Allouez and Ashwaubenon Bridge at Mile 5.02 over the Fox River that extends approximately 10 feet below low steel.

LNM: 16/17

LAKE MICHIGAN – WI – FOX RIVER – Chart 14918

Dredging operations on the Fox River in Green Bay will begin March 20, 2017 and continue until November 13, 2017. The Dredges "Mark Anthony, Ottawa River and Ashtabula will all work in the area immediately north of the Highway 172 Bridge extending to the area immediately south of the Interstate 43 Bridge. Dredges can be reached VIA VHF Channel 16. Operation will take place 24/7 0700 Monday thru 0700 Saturday. Equipment pipelines may be floating or submerged and are marked with appropriate buoys. All mariners are urged to transit these areas with extreme caution and pay close attention to the red and green channel marker buoys and floating construction zone signage. Questions or for further details, contact Coast Guard Sector Lake Michigan at (414) 747-7182 or VIA VHF Channel 16.

LNM: 12/17

LAKE MICHIGAN – WI – Fox River - Chart 14916 – Bridge Construction

From October 2, 2014 through November 30, 2018 an 80 foot by 50 foot and a 40 foot by 40 foot barge will be constructing the new State Highway 441 Little Lake Buttes des Mortts Bridge at Mile 36.0 over the Fox River at Menasha, WI. A 30 foot wide channel will be maintained through the main navigational draws. Amber lights will mark the low steel of both bridges and red lights will mark the cofferdams around the new piers. The barges will be lighted in accordance with the Navigation Rules.

LNM: 40/14

LAKE MICHIGAN – WI – Upper Fox River – Chart 14916 – Bridge Construction

From September 7, 2017 through July 15, 2018 between the hours of 0600 and 1600 Monday through Friday contractors will utilize five 80' by 50' or smaller barges during the construction of the Winneconne (STH 116) Bridge at Mile 2.43 over the Wolf River. A 20' navigation channel will be maintained throughout the project. Vessels should pass the construction activities at a safe speed.

LNM: 33/17

LAKE MICHIGAN – WI – Upper Fox River – Chart 14916 – Bridge Maintenance

From June 1, 2017 through September 28, 2018 scaffolding that hangs approximately 10 feet below low steel will be installed under the STH 441, Appleton Tri County Expressway at mile 28.06 over the Fox River at Appleton Wisconsin. Steady burning amber lights will warn mariners of the temporary reduction in clearance.

LNM: 45/16

LAKE MICHIGAN – WI – Upper Fox River – Chart 14916 – Bridge Special Event

The following bridges will be secured to masted navigation during the dates and times noted. Vessels able to pass under the bridges without an opening may do so at any time.

Race the Lake on Aug. 20, 2017.

Main Street Bridge at Mile 55.97 over the Fox River from 0600 to 0800.

Racine Street Bridge at Mile 37.91 over the Fox River from 0645 to 1000.

Winnebago County Triathlon on August 27, 2017

Wisconsin 116 Bridge at Mile 12 over the Wolf River at Winneconne from 0715 to 1100.

LAKE MICHIGAN – WI – Upper Fox River – Chart 14916 – Bridge Special Event

LNM: 45/16

LAKE MICHIGAN –WI – Upper Fox River – Chart 14918 – Bridge Discrepancy

The Coast Guard has received a report that the Wisconsin Avenue (Veterans Memorial) Bridge at Mile 23.78 over the Fox River at Kaukauna Wisconsin is stuck in the closed position. Vessels able to pass under the bridge without an opening may do so at any time.

LNM: 17/17

LAKE MICHIGAN - Des Plaines River

A coffer dam will be positioned along the right descending bank of the Des Plaines River at river mile 287 to replace the river wall in Joliet, IL from April 17, 2017 to September 29, 2017. Vessels are asked not to tie-off in this area and to transit at a no wake speed.

LNM: 15/17

LAKE SUPERIOR – MI – St. Marys River – Chart 14884

Roen Salvage Company will commence repairs of the West Center Pier extending 300' W. of Railroad Bridge. Two 50' barges will be moored at the pier 24 hours per day. All fenders will be removed, divers will be working at the pier, avoid use of side thrusters. Coordinate movement with Soo Locks lockmaster. Work will continue into December 2016 as weather permits, then resume in April 2017. Tug Stephen M. Asher and Tug Charles Asher will monitor channels 7 and 14 (Soo Locks). For further information contact Don Sarter at 920-493-5322

LNM: 42/16

ST MARYS RIVER – MI – SOO LOCKS – Chart 14887 - Bridge Inspection

On September 7, 2017 between the hours of 0800 and noon divers will be inspecting the underwater portions of the Canadian National Railroad Bridge over the North and South Canals of the St Mary's Falls Canal and Locks (SOO LOCKS). A dive boat will monitor VHF-FM Marine channels 16 and 14 and spotters will warn divers of approaching vessels and move the divers to allow vessels to pass.

LNM: 36/17

LAKE SUPERIOR – WI – LITTLE GIRL HARBOR TO SILVER BAY – Chart 14966

M.C.M. Marine Inc , will be conducting dredging operations in Port Wing Harbor, WI. Operations will commence AUG 30th 2017 thru Sep 30th, 2017. The hours of operation are 24 hours a day and seven days a week. Vessels navigating the area should first contact Dredge Louise on VHF-FM Channel 16 & 79. For further information contact Darwin J. McCoy at (906) 632-4316.

LNM: 35/17

LAKE SUPERIOR –MI –Little Girls Point – Chart 14966

Three large concrete erosion control structures have been reported dislodged due to flooding at Omans Creek Boat Launch on Little Girls Point, Michigan of Lake Superior. One structure is reported 10 yards from the shoreline and location of the other two is unknown. Mariners are advised to keep a close lookout and travel at slow speed.

LNM: 30/16

LAKE SUPERIOR – Ashland - Chart 14974

JF Brennan will commence dredging 1000 feet off shore directly east of the Ashland City Marina and directly west of Kreher park boat launch peninsula which is adjacent to the city of Ashland, WI. Operations will commence April 17, 2017 to November 30; 2017 There will be five monitoring buoys on the north side of the break wall within 200 feet. Hours of operation are Monday to Saturday 0600-1800. Mariners are requested to reduce speed and use caution around the dredging operation, for further information contact Brennan Marine Dispatch on VHF ch 9 and 16 or 608-782-3670.

LNM: 17/17

LAKE SUPERIOR – MN - Duluth Superior Harbor– Chart 14975 – Bridge Regulation

On July 21, 2017 the Coast Guard posted in the Federal Register a final rule to modify the regulations that govern the drawbridges over the St. Louis River at Duluth-Superior Harbor. This waterway borders Minnesota and Wisconsin and is listed under Minnesota as St. Louis River (Duluth-Superior Harbor) and under Wisconsin as Duluth-Superior Harbor (St. Louis River) in the CFR. This rule affects both regulations:

§ 117.669 St. Louis River (Duluth-Superior Harbor).

(a) The draw of the Burlington Northern Grassy Point railroad Bridge, mile 5.44, shall open on signal except that, from December 15 through March 15 the draw shall open if at least 12-hour notice is given.

(b) The draw of the Canadian National Combined Railroad and Highway Bridge, mile 13.91, need not be opened for the passage of vessels. The owner shall return the draw to operable condition within a reasonable time when notified by the District Commander to do so.

§ 117.1083 Duluth-Superior Harbor (St. Louis River).
See § 117.669 St. Louis River (Duluth-Superior Harbor), listed under Minnesota.

To see the complete rule see enclosure (4) or go to <http://www.regulations.gov> , type [USCG-2017-0212]. In the "SEARCH" box and click

LAKE SUPERIOR – MN - Duluth Superior Harbor– Chart 14975 – Bridge Regulation

“SEARCH.” Click on Open Docket Folder on the line associated with this rulemaking.

LNM: 30/17

LAKE SUPERIOR –MN – Duluth-Superior Harbor – Chart 14975 – Bridge Maintenance

From January 22, 2018 through March 5, 2018 the Duluth Ship Canal Bridge at Mile 0.25 over the Duluth Ship Canal will be secured to masted navigation. Vessels able to pass under the bridge without an opening may do so at any time.

LNM: 10/17

LAKE SUPERIOR – MN – Rainy River – Chart 14966 – Availability of Public Notice

All interested parties are notified that an application has been received by Commander, Ninth Coast Guard District, from the Minnesota Department of Transportation (MN-DOT), for approval of location and plans for the replacement of a fixed highway bridge over a navigable waterway of the United States. (Enclose 4)

LNM: 37/17

SECTION VIII - LIGHT LIST CORRECTIONS

An Asterisk *, indicates the column in which a correction has been made to new information

(1) No.	(2) Name and Location	(3) Position	(4) Characteristic	(5) Height	(6) Range	(7) Structure	(8) Remarks
3715	CONNAUT HARBOR PIER LIGHT 3	41-58-21.102N 080-32-55.548W	Fl G 2.5s	20 6	4	SG on post.	37/17
		*					
3775	ASHTABULA HARBOR INNER BREAKWATER LIGHT 7	41-54-43.236N 080-47-38.352W	Fl G 2.5s	34 10	7	SG on post	37/17
		*					
3825	GENEVA ON THE LAKE LIGHT 1	41-51-33.468N 080-58-27.924W	Fl G 2.5s	31 9	3	White cylindrical tower with green band.	37/17
		*					
4165	CLEVELAND HARBOR MAIN ENTRANCE LIGHT 1	41-30-36.528N 081-42-55.716W	Iso G 6s	39 12	7	Tower.	37/17
		*					
4170	CLEVELAND HARBOR LIGHT 3	41-30-28.374N 081-42-47.664W	Fl G 4s	29 9	4	SG on post.	37/17
		*					
4215	CLEVELAND HARBOR WEST BASIN CHANNEL LIGHT 1	41-29-46.110N 081-43-45.264W	Q G	31 9	6	SG on post.	Light visible from 255° to 200°. 37/17
		*					
4225	CLEVELAND HARBOR WEST BASIN CHANNEL JUNCTION LIGHT	41-29-42.984N 081-43-41.976W	Iso W 6s	21 6	W 3 G 3 R 3	JG on post.	White light visible from 123° to 133°. Red light visible from 114° to 122°. Green light visible from 134° to 140°. 37/17
		*					

SECTION VIII - LIGHT LIST CORRECTIONS (Continued)

(1) No.	(2) Name and Location	(3) Position	(4) Characteristic	(5) Height	(6) Range	(7) Structure	(8) Remarks
4245	ROCKY RIVER LIGHT 1	41-29-30.864N 081-50-20.142W	Fl G 2.5s	35 11	6	White cylindrical tower with green band.	37/17
		*					
4330	LORAIN HARBOR LIGHT 1	41-28-41.982N 082-11-16.914W	Fl G 2.5s	30 9	4	SG on post.	37/17
		*					
4380	LORAIN HARBOR JUNCTION LIGHT	41-28-20.814N 082-10-57.468W	Fl (2+1)G 6s	30 9	6	JG on post.	37/17
		*					
4390	LAKEVIEW PARK WEST LIGHT	41-27-49.271N 082-11-52.975W	Fl Y 2.5s	30 9	4	NY on post.	37/17
		*					
4440	VERMILION BREAKWATER DETACHED LIGHT C	41-25-44.322N 082-21-55.938W	Q W	25 8	4	NB on post.	37/17
		*					

ENCLOSURES

(1) Summary of Dredging

[37-17 Summary Of Dredging.pdf](#)

Construction Operations in Effect

LNM: 14/14

(2) GREAT LAKES - General - Marine Events

[37-17 Marine Events.pdf](#)

Summary of Marine Events

LNM: 14/14

(3) WATERWAYS ANALYSIS AND MANAGEMENT SURVEY

[WAMS Doc.pdf](#) [AIS ATON Announcement II.pdf](#) [Anchorage Visuals.pdf](#)

Great Lakes WAMS Questionnaire

LNM: 14/14

(4) BRIDGES

[Availability of Public Notice.pdf](#) [Availability of Public Notice 1.pdf](#)

Bridge Regulation

LNM: 07/17

(5) CALUMET HARBOR ROCK REMOVAL

[ENCLOSURE 5.pdf](#)

Roen Salvage Company Rock Removal

LNM: 30/17

J. M. Nunan, RDML
U. S. Coast Guard
Commander, Ninth Coast Guard District

SUMMARY OF DREDGING/CONSTRUCTION OPERATION IN EFFECT

The LNM column is where the entry originally appeared and where detailed information may be obtained. The dates listed are tentative.

<u>LOCATION</u>	<u>LNM</u>	<u>SUBJECT</u>	<u>HOURS / DAYS</u>	<u>UNTIL</u>	<u>POC</u>
<u>NEW YORK STATE BARGE CANAL</u>					
Erie Canal, NY	19/13	DREDGING OPERATIONS	24 HRS / 7 DAYS	01 May 13 – TBD	
Lockport, Brockport, and Fairport, NY	19/13	STABILIZATION OPERATIONS	24 HRS / 7 DAYS	01 May 13 – TBD	
Buffalo River, NY	34/14	HABITAT RESTORATION	24 HRS / 7 DAYS	25 Aug 14 – TBD	
<u>LAKE ONTARIO</u>					
None Reported					
<u>LAKE ERIE</u>					
Cleveland, OH	05/13	CONSTRUCTION	24 HRS / 7 DAYS	29 Jan 13 – TBD	
Cleveland, OH	19/17	CONSTRUCTION	Mon-Fri 0700-1600	08 May 17 – 15 Oct 17	
Ashtabula, OH	31/17	PIPE EXTENSION	0700-1900/7 DAYS	01-Aug-17-30_Nov_17	
<u>DETROIT RIVER</u>					
Detroit, MI	33/14	CONSTRUCTION	24 HRS/ 7 DAYS	11 Aug 14- TBD	
Grosse Isle, MI	26/16	SHOAL INSTALLATION	24 HRS / 7 DAYS	01 Jul 16 – 31 Dec 17	
Grosse Isle, MI	20/17	STONE PLACEMENT	0700-1900 / 7 DAYS	5 May 17 – 30 Nov 17	
<u>LAKE ST. CLAIR</u>					
None Reported					
<u>LAKE HURON</u>					
None Reported					
<u>STRAITS OF MACKINAC</u>					
Straits	32/17	PIPELINE MAINTENANCE	0700-1900 7 Days	07 Aug 17- 15 Sep 17	
<u>ST MARYS RIVER</u>					

SUMMARY OF DREDGING/CONSTRUCTION OPERATION IN EFFECT

The LNM column is where the entry originally appeared and where detailed information may be obtained. The dates listed are tentative.

<u>LOCATION</u>	<u>LNM</u>	<u>SUBJECT</u>	<u>HOURS / DAYS</u>	<u>UNTIL</u>	<u>POC</u>
<u>LAKE SUPERIOR</u>					
Portage Lake, MI	31/13	SEDIMENT REMEDIATION	24 HRS / 7 DAYS	01 Sep 13 – TBD	
Ashland, WI	17/17	DREDGING	Mon-Sat 0600-1800	17 Apr 17 – 30 Nov 17	
Port Wing Harbor, WI	35/17	DREDGING	24 HRS / 7 DAYS	30 Apr 17- 30 Sep 17	
<u>LAKE MICHIGAN</u>					
Fox River	10/17	DREDGING	M-SAT/0700 – 1900	20 Mar 17 – 13 Nov 17	
Grand Haven, MI	16/17	CONSTRUCTION SOUTH PIER	0600-2000/7 DAYS	14 Apr 17 – 31 Dec 17	
Calumet Harbor, MI	30/17	ROCK REMOVAL	24 HRS/ 7 DAYS	01 Aug 17 -15 Dec 17	
Commit					

GREAT LAKES - GENERAL – MARINE EVENTS – SAFETY ZONES – SECURITY ZONES

Events listed below are those events that may have accompanying special local regulations.

Location	LNM	Name of Event	Date	Time of Event	POC	POC Phone #
----------	-----	---------------	------	---------------	-----	-------------

LAKE ONTARIO

Genesee River	17-Nov	High School Sailing Program	20 Mar 17–10 Nov 17	0800-1900	Liam Faudree	585-314-9760
---------------	--------	-----------------------------	---------------------	-----------	--------------	--------------

LAKE ERIE

Buffalo, NY	17-Nov	Buffalo Harbor Sailing Club Races	15 May 17 – 20 Sep 17	1800-2130	Thomas Hunt	716-570-2291
Cleveland, OH	18/17	Cleveland Race Week	10 May 17 – 30 Oct 17	N/A	John Zelli	216-780-8993
Buffalo, NY	22/17	Yacht Racing Union of the great lakes	30 Sep 17 – 01 Oct 17	0900-1700	Timothy Hunt	716- 440-7108
Sandusky, OH	23/17	Sandusky Sailing Club Sunday Series	Sunday Weekly thru Oct 01	0830-1130	Jim Keane	419-366-8996
Sandusky, OH	23/17	Sandusky Sailing Club Wednesday Series	Wed Weekly thru Sep 20	1800-2100	Jim Keane	419-366-8996
Cleveland, OH	30/17	Head of the Cuyahoga	16-Sep-17	0645-1445	Kirk Lang	216-308-4183
Sandusky, OH	36/17	SSC Sunday Series	10-Sep-17	0830-1130	Jim Keane	419-3668996
Sandusky, OH	36/17	SSC Wednesday Series	13-Sep-17	0830-1130	Jim Keane	419-3668996
Sandusky, OH	36/17	Robby's Voice Regatta	16-Sep-17	0900-1700	Stephen L. Gast	330-960-1904
Sandusky, OH	36/17	Dragon & Bacon Fest	16-Sep-17	0800-1800	Victoria Kurt	419-202-0220
Sandusky, OH	36/17	Robby's Voice Regatta	17-Sep-17	0900-1700	Stephen L. Gast	330-960-1904
Sandusky, OH	36/17	SSC Sunday Series	17-Sep-17	0830-1130	Jim Keane	419-3668996
Sandusky, OH	36/17	SSC Wednesday Series	20-Sep-17	0830-1130	Jim Keane	419-3668996

DETROIT RIVER, LAKE ST CLAIR, AND ST CLAIR RIVER

Lake St. Clair, MI	18/17	Lake Shore Sail Club Races	30-Jul-17 Aug 9 13 16 19 23 30 Sep 6 10 13 17 24 27	1200-2300	Tracey Girard	313-568-9564
Detroit River, MI	18/17	Pine Street Paddle	Summer	1800-2000	Tracey Girard	313-568-9564
Lake St. Clair, MI	18/17	Windsor Yacht Club Wed night series	17 May -27 Sep Sept 5, 12, 19, 26,	1900-2200	Tracey Girard	313-568-9564
Port Huron, MI	22/17	Octogon Series Races 1-8	06-Aug Sept 10, 17, 24	1000-1800	Tracey Girard	313-568-9564

LAKE HURON

GREAT LAKES - GENERAL – MARINE EVENTS – SAFETY ZONES – SECURITY ZONES

Events listed below are those events that may have accompanying special local regulations.

Tawas, MI	18/17	Tawas Bay Yacht Club Racing Events 2017	May-Oct Sat and Sun	1000-1700	Tracey Girard	313-568-9564
Bay City, MI	22/17	Bay City YC Sailboat Racing Program	July 5,7, 12, 19, 26, Aug 2,9 12, 16, 23 26, 30 Sept 6, 9,13, 20 23, 24 01-Oct-08	0900-2400	Tracey Girard	313-568-9564

LAKE SUPERIOR

ST MARYS RIVER

NSTR

STRAITS OF MACKINAC

NSTR

LAKE MICHIGAN

Chicago, IL	15/17	Navy Pier Fireworks Display	27 May 17-2 Sep 17	2200-2245 every Sat	MSU Chicago	630-986-2155
Chicago, IL	15/17	Navy Pier Fireworks Display	31 May 17-30 Aug 17	2115-2200 every We	MSU Chicago	630-986-2155
Chicago, IL	35/17	Safety Zone, Tough Cup	30-Sep-17	0700-1400	MSU Chicago	630-986-2155
Morris, IL	35/17	Safety Zone, Grundy County Corn Festival Fireworks	30-Sep-17	2015-2125	MSU Chicago	630-986-2155
Chicago, IL	35/17	Safety Zone, World Match Race Tour - Chicago	26 Sep 17-1 Oct 17	0900-1700	MSU Chicago	630-986-2155

U.S. Coast Guard to Test Automatic Identification System (AIS) Aids to Navigation (ATON)

In the near future, the U.S. Coast Guard and other authorized agencies and organizations (i.e., U.S. Army Corps of Engineers, Marine Exchange of Alaska) will begin transmitting AIS ATON messages and marine safety information via AIS for testing and evaluation. The exact content, location, and times of these broadcasts will be announced in future Local Notices to Mariners.

AIS is an internationally adopted radio communication protocol that enables the autonomous and continuous exchange of navigation safety related messages amongst vessels, lifeboats, aircraft, shore stations, and aids to navigation (AIS ATON). AIS ATON stations broadcast their presence, identity (9-digit Marine Mobile Service Identity (MMSI) number), position, and status at least every three minutes or as needed. These broadcasts can originate from an AIS station located on an existing physical aid to navigation (Real AIS ATON) or from another location (i.e., AIS Base Station). An AIS Base Station signal broadcasted to coincide with an existing physical aid to navigation is known as a Synthetic AIS ATON. An electronically charted, but non-existent as a physical aid to navigation, is identified as a Virtual AIS ATON. The latter two can be used to depict an existing aid to navigation that is off station or not watching properly or to convey an aid to navigation that has yet to be charted. All three variants can be received by any existing AIS mobile device, but they would require an external system for their portrayal (i.e., AIS message 21 capable ECDIS, ECS, radar, PC). How they are portrayed currently varies by manufacturer, but the future intention is for the portrayal to be in accordance with forthcoming International Standards (i.e., IEC 62288 (Ed. 2), IHO S-4 (Ed. 4.4.0)).

Mariners capable of receiving and displaying these test AIS messages are encouraged to provide feedback and report any anomalies to the USCG NAVCEN Website: <http://www.navcen.uscg.gov> | Contact Us Tab | Subject: AIS | Category: AIS Testing.

Example of Local Notice to Mariners Chart Corrections for AIS ATONs

Chart Correction for *Real AIS ATON*

12326	52nd Ed.	01-JUNE-13	Last LNM: 53/13	NAD 83		LNM/14
<i>Chart Title: Approaches to New York</i>						
ADD		Magenta circle AIS Chart No. 1: S17.2 to ABC Channel Lighted Whistle Buoy A and			CGD 40-27-27.991N	073-50-12.228W
CHANGE		Characteristic to RW "A" Mo (A) WHIS Racon (") AIS				






Chart Correction for *Synthetic AIS ATON*

18649	68th Ed.	01-JUNE-13	Last LNM: 52/13	NAD 83		LNM/14
<i>Chart Title: Entrance to San Francisco Bay</i>						
ADD		Magenta circle AIS Chart No. 1: S17.2 to ABC Approach Lighted Whistle Buoy AB and			CGD 37-44-59.749N	122-41-33.940W
CHANGE		Characteristic to RW "AB" Mo (A) WHIS Racon (-) AIS				

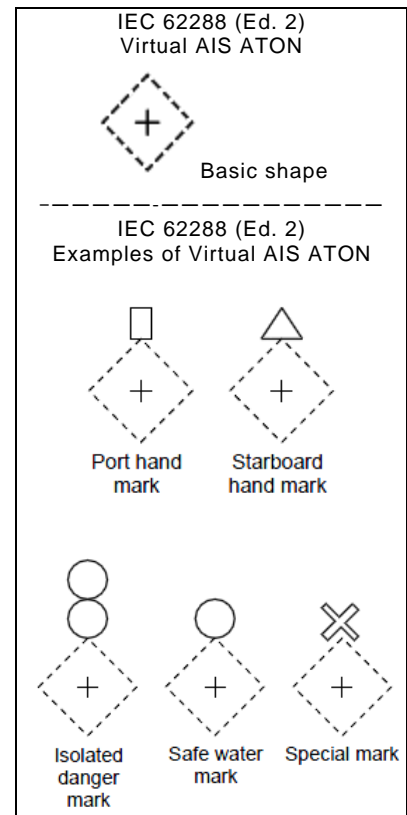
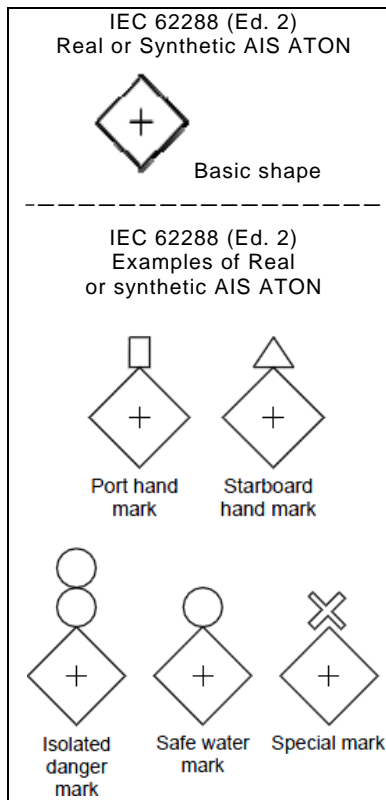
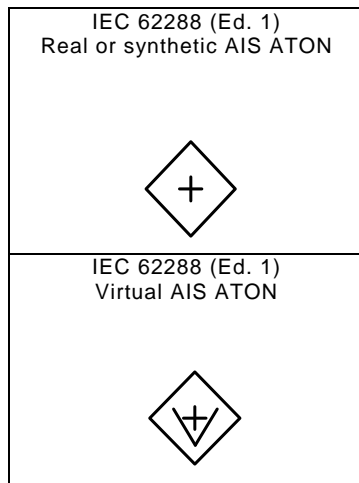
Chart Correction for *Virtual AIS ATON*

12314	33rd Ed.	01-JUNE-12	Last LNM: 51/13	NAD 83		LNM/14
<i>Chart Title: Delaware River Philadelphia to Trenton</i>						
ADD		ABC Railroad Bridge South Starboard V-AIS ATON Chart No. 1: S18.2		to	CGD 39-58-55.059N	075-04-06.856W
ADD		ABC Railroad Bridge South Port V-AIS ATON Chart No. 1: S18.2		to	38-58-55.803N	076-23-04.547W

Virtual AIS ATON Symbology for Electronic Chart Display and Information System (ECDIS)

Port Lateral (IALA B)	A Virtual object marking the port side of a channel	
Starboard Lateral (IALA B)	A Virtual object marking the starboard side of a channel	
Isolated Danger	A Virtual object marking an isolated danger	
Safe Water	A Virtual object marking safe water	
Special Purpose	A Virtual object used to mark an area or feature referred to in nautical documents	

AIS ATON Symbology of the International Electrotechnical Commission (IEC) and International Maritime Organization (IMO)



Waterway Analysis and Management System Survey

Name of Waterway: _____

User Information

___ Commercial User

___ Recreational User

Number of years in the maritime industry or number of years using this waterway: _____

Number of transits in the waterway per year: _____

Number of night transits of waterway: _____

Seasonal Dates: Start: _____ End: _____

Name of Vessel: _____

Vessel Description: _____

Length: _____ Beam: _____ Draft: _____ Gross Tons: _____

Net Tons: _____ Bridge Height of Eye: _____

Cargo Carried: _____

Navigational tools used: (ECDIS/ECPINS, GPS, DGPS, VISUAL, RADAR) _____

What area do you believe is the most dangerous or difficult to navigate: _____

Are the floating aids to navigation (lighted and unlighted buoys) adequate for this waterway:

Are the fixed aids to navigation (lights, ranges, lighthouses, daybeacons) adequate for this waterway: _____

Are the year round and lighted ice buoys adequate: _____

Are there buoys that you feel should be changed to fixed aids to navigation?

Are there any buoys that could be eliminated from this waterway: _____

Are there any buoys with sound signals that the bell or gong could be removed:

Are there any areas that require additional aids to navigation in this waterway:

Do the nautical charts, Coast Pilot, and Light List meet your needs for this waterway: _____

Are there private Aids to Navigation that you find misleading or interfere with the current system in the waterway:

Any addition comments on this waterway: _____

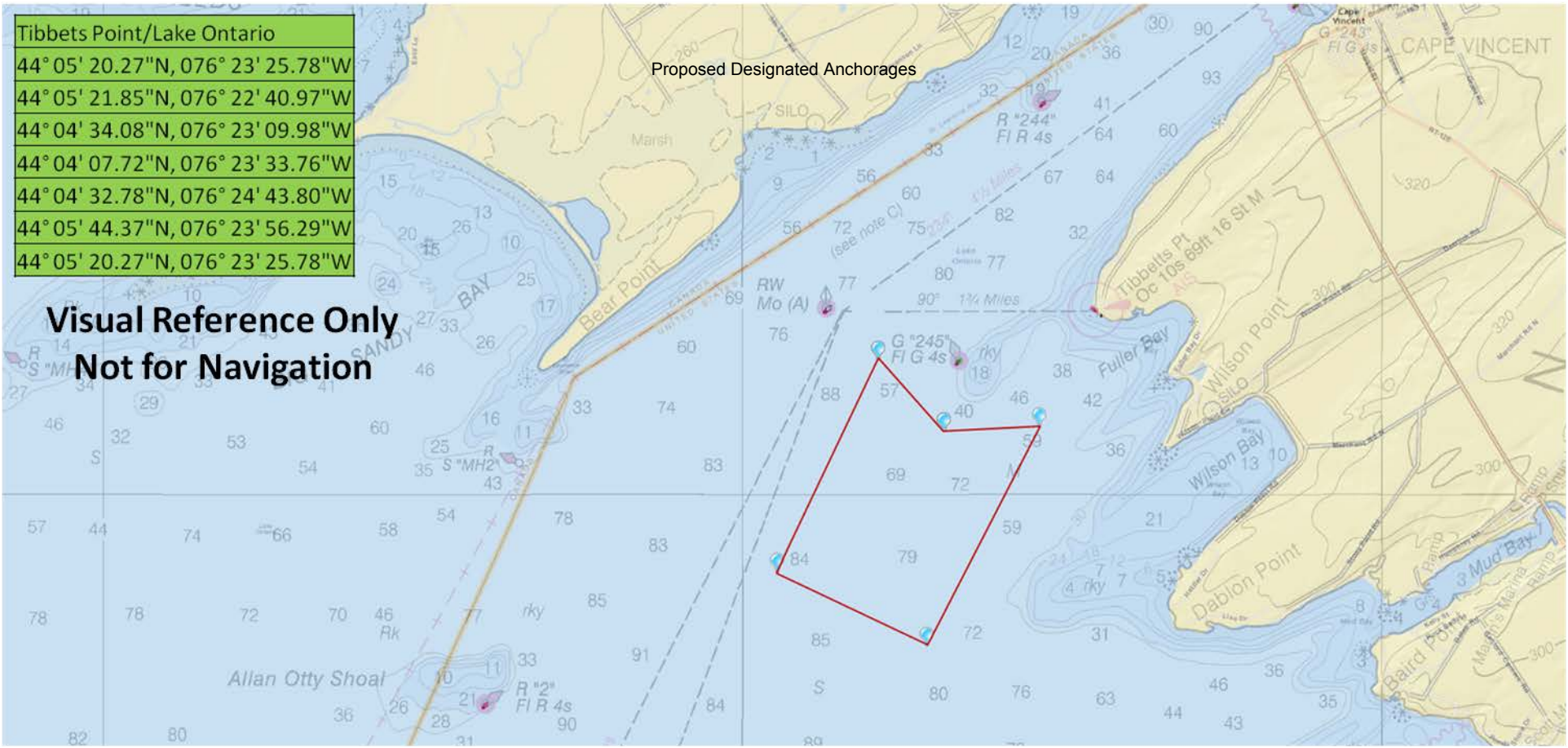
Thank you for taking time to comment on this waterway. Your input as a mariner very valuable to the U. S. Coast Guard in evaluating waterways to make them safe and as easily navigable as possible. Please feel free to contact Mr. Doug Sharp at william.d.sharp@uscg.mil or (216) 902-6070 with any other questions or concerns about any aids to navigation in the Great Lakes. The survey can be mailed to:

Commander (dpw-2)
Ninth Coast Guard District
1240 East Ninth Street
Cleveland, Ohio 44199

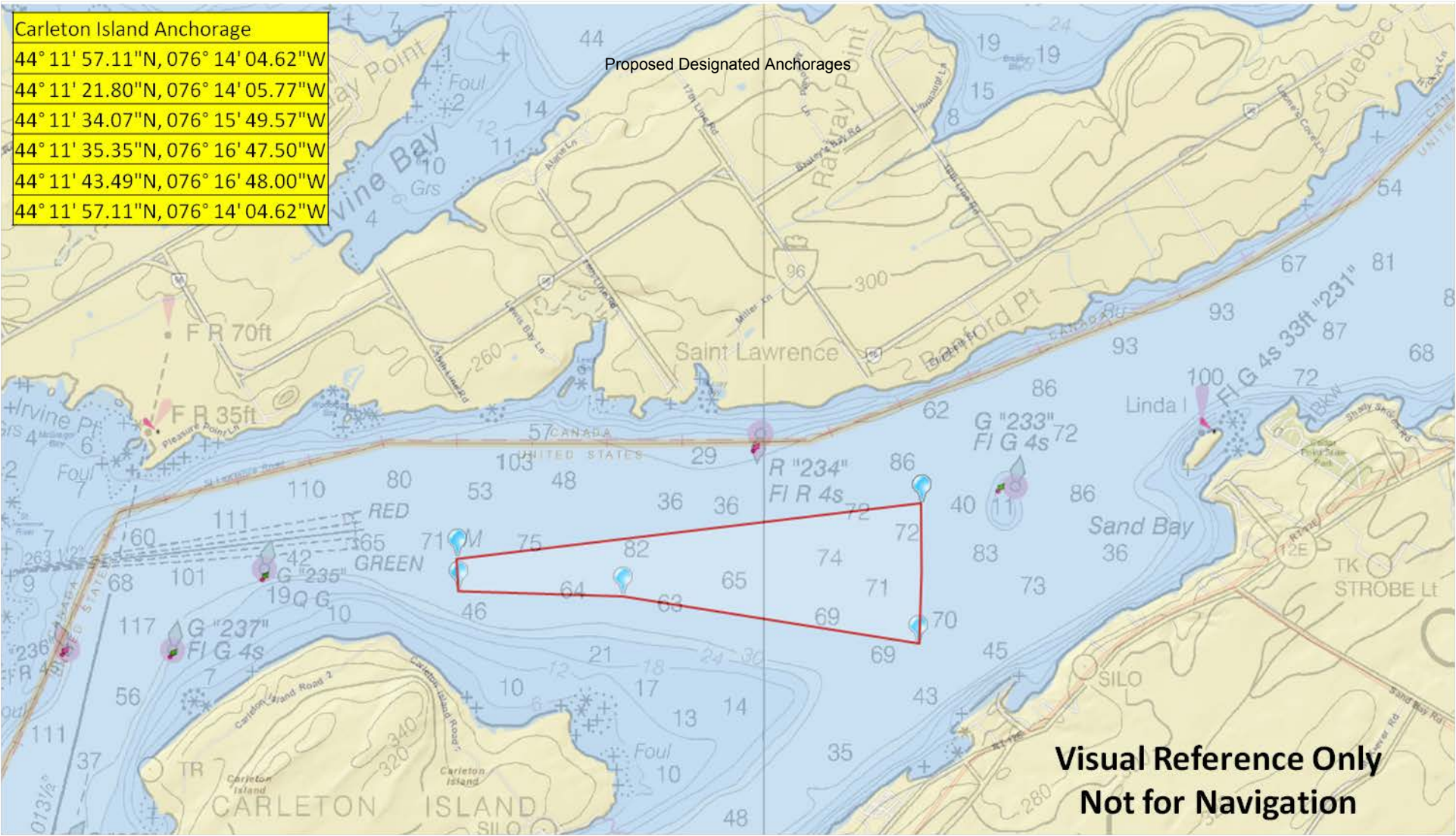
Tibbets Point/Lake Ontario
44° 05' 20.27"N, 076° 23' 25.78"W
44° 05' 21.85"N, 076° 22' 40.97"W
44° 04' 34.08"N, 076° 23' 09.98"W
44° 04' 07.72"N, 076° 23' 33.76"W
44° 04' 32.78"N, 076° 24' 43.80"W
44° 05' 44.37"N, 076° 23' 56.29"W
44° 05' 20.27"N, 076° 23' 25.78"W

**Visual Reference Only
Not for Navigation**

Proposed Designated Anchorages



Carleton Island Anchorage
44° 11' 57.11"N, 076° 14' 04.62"W
44° 11' 21.80"N, 076° 14' 05.77"W
44° 11' 34.07"N, 076° 15' 49.57"W
44° 11' 35.35"N, 076° 16' 47.50"W
44° 11' 43.49"N, 076° 16' 48.00"W
44° 11' 57.11"N, 076° 14' 04.62"W



**Visual Reference Only
Not for Navigation**

Availability of Public Notice Enclosure 3

All interested parties are notified that an application has been received by Commander, Ninth Coast Guard District, from the Ohio Department of Transportation (ODOT), for approval of location and plans for the construction of a fixed highway bridge over a navigable waterway of the United States.

WATERWAY AND LOCATION: I-75 (Michael V. DiSalle Bridge) fixed highway bridge, Mile 6.76 over Maumee River, City of Toledo, Lucas County, Ohio.

CHARACTER OF WORK: Replacement of the existing I-75 fixed highway bridge at mile 6.73 over the Maumee River with two fixed highway bridges at mile 6.76 over the Maumee River.

MINIMUM NAVIGATIONAL CLEARANCES:

<u>Proposed</u>	<u>Existing</u>
North Channel Horizontal: 158.0-feet between bridge piers, normal to the axis of the channel.	North Channel Horizontal: 110.0-feet between bridge piers, normal to the axis of the channel.
South Channel Horizontal: 158.0-feet of between bridge piers, normal to the axis of the channel.	South Channel Horizontal: 110.0-feet between bridge piers, normal to the axis of the channel.
North Channel Vertical: 48.9-feet at low steel; 49.7-feet at the center of the navigation channel (low steel).	North Channel Vertical: 45.0-feet at the center of the navigation channel (low steel).
South Channel Vertical: 52.1-feet at low steel; 52.6 feet at the center of the navigation channel (low steel).	South Channel Vertical: 45.0-feet at the center of the navigation channel (low steel).
All vertical clearances referenced to Low Water Datum, Lake Erie, Elevation 569.20, International Great Lakes Datum of 1985 (IGLD 85).	

ENVIRONMENTAL CONSIDERATIONS: Through a Memorandum of Agreement dated December 11, 2015, and executed by ODOT and Federal Highway Administration (FHWA), ODOT has been identified as the lead agency for purposes of the National Environmental Policy Act (NEPA). ODOT approved a Categorical Exclusion (CE) document for the proposed project on October 5, 2016.

FOR MORE INFORMATION INCLUDING INSTRUCTIONS ON PROVIDING COMMENTS: The complete public notice including a map of the location, and plans for the proposed bridge can be viewed and printed from the U.S. Coast Guard Navigation Center's web site <https://www.navcen.uscg.gov/D9BN> , or by calling, emailing or mailing a request to the Coast Guard project manager, Mr. Blair Stanifer. He can be contacted by telephone at (216) 902-6086, by mail at Commander (dpb), Ninth Coast Guard District, 1240 E. 9th St., Room 2047, Cleveland, OH 44199, or by email at William.b.stanifer@uscg.mil . Comments received will be made part of the case record.

Interested parties are requested to express their views, in writing, on the proposed bridge project giving sufficient detail to establish a clear understanding of their reasons for support or opposition to the proposed work. Comments will be received for the record at the office of: Commander (dpb), Ninth Coast Guard District, 1240 E. 9th St, Room 2047, Cleveland, OH 44199, for a 30 day period from the date of the public notice.

Mariners are requested to comment on the proposed vertical and horizontal navigational clearances and any other navigational safety issues including the extent of nighttime navigation past the bridge site.

Availability of Public Notice Enclosure 4

All interested parties are notified that an application has been received by Commander, Ninth Coast Guard District, from the Minnesota Department of Transportation (MN-DOT), for approval of location and plans for the replacement of a fixed highway bridge over a navigable waterway of the United States.

WATERWAY AND LOCATION: Minnesota Trunk Highway 72 fixed highway bridge (Baudette International Bridge), Mile 14.1 over Rainy River, between Town of Baudette, Lake of the Woods County, Minnesota and Town of Rainy River, Province of Ontario, Canada.

CHARACTER OF WORK: Replacement of the existing Minnesota Trunk Highway 72 fixed Highway Bridge at mile 14.1 over the Rainy River with a fixed highway bridge.

MINIMUM NAVIGATIONAL CLEARANCES:

	EXISTING		PROPOSED	
	USA	CANADA	USA	CANADA
HORIZONTAL	100.0-feet between bridge piers	100.0-feet between bridge piers	300-feet between bridge piers with 100-foot designated for the navigation channel.	300.0-feet between bridge piers with 100-foot designated for the navigation channel.
VERTICAL	32.64-Feet at center	32.64-feet at center	No less than 22.86-feet at low steel	No less than 21.49-feet at low steel.
Vertical clearances for the proposed bridge referenced to Low Water Datum, El. 1061.80, North American Vertical Datum of 1988 (NAVD88). Vertical clearances for the existing bridge were converted from Low Water Datum, El. 1093.23, North American Vertical Datum of 1929 (NAVD29) to NAVD88.				

ENVIRONMENTAL CONSIDERATIONS: Federal Highway Administration (FHWA) is the lead federal agency responsible for satisfying the National Environmental Policy Act (NEPA). A Final Environmental Assessment (EA) for the proposed project was approved by FHWA on January 30, 2017, but has not yet received a final NEPA classification. MN-DOT is currently preparing a Findings of Fact and Conclusion document requesting a Finding of No Significant Impact (FONSI) for the project from FHWA.

FOR MORE INFORMATION INCLUDING INSTRUCTIONS ON PROVIDING COMMENTS: The complete public notice including a map of the location, and plans for the proposed bridge can be viewed and printed from the U.S. Coast Guard Navigation Center’s web site <https://www.navcen.uscg.gov/D9BN>, or by calling, emailing or mailing a request to the Coast Guard project manager, Mr. Blair Stanifer. He can be contacted by telephone at (216) 902-6086, by mail at Commander (dpb), Ninth Coast Guard District, 1240 E. 9th St., Room 2047, Cleveland, OH 44199, or by email at William.b.stanifer@uscg.mil. Comments received will be made part of the case record.

Interested parties are requested to express their views, in writing, on the proposed bridge project giving sufficient detail to establish a clear understanding of their reasons for support or opposition to the proposed work. Comments will be received for the record at the office of: Commander (dpb), Ninth Coast Guard District, 1240 E. 9th St, Room 2047, Cleveland, OH 44199, for a 30 day period from the date of the public notice.

Mariners are requested to comment on the proposed vertical and horizontal navigational clearances and any other navigational safety issues including pier protection and the extent of nighttime navigation past the bridge site.

**NINTH DISTRICT LOCAL NOTICE TO MARINERS
GENERAL NOTICE ENTRY FORM**

1. NAME OF COMPANY: Roen Salvage Company

2. TYPE OF OPERATION: Rock Removal by Drilling, Blasting, and Dredging.

3. LOCATION: Calumet Harbor, IL

4. COMMENCE DATE: 08/01/17 COMPLETE DATE: 12/15/17

5. HOURS OF OPERATION: 0000 TO: 2400

6. DAYS OF OPERATION: Monday TO: Sunday

7. NAME OF CONTACT VESSEL: Tug Stephan Asher

8. VHF-FM CHANNELS MONITORED: 7 & 16

9. SPECIAL REQUIREMENTS/REMARKS:

An exclusion safety zone where blasted rock may be encountered above the normal channel bottom has been established by the U.S. Coast Guard. The exclusion zone known as safety zone one encompasses all waters bounded by a line drawn from the Calumet Harbor Entrance South Side Light at 41°44.1348'N, 087°30.3790'N then southwest to 41°43.8568'N, 087°30.6587'W then southeast to 41°43.5801'N, 087°30.2830'W then east to the Calumet Harbor Breakwater South End Light at 41°43.5619'N, 087°29.6016'W. The southerly boundary is marked with poles that have white day boards with orange markings that are topped with a white flashing light. At a distance of 500 feet southerly from safety zone one is the row of green U.S. Coast Guard navigation buoys. Vessels entering and exiting the harbor may use the 500 foot wide portion of the navigation channel between the safety zone one aids to navigation and the Green Navigation Buoys. Vessels are urged to operate at reduced speeds and avoid creating any wake that could affect the marine equipment working with explosives. Safety zone one will be enforced for the whole duration of the work being conducted, from August 1, 2017 through December 15, 2017.

Drilling, handling of explosives, blasting and rock excavation will be taking place in a smaller work zone located in safety zone one. Marine construction equipment will be present and the work area will be marked with signs indicating "DANGER EXPLOSIVES IN USE" and poles with flashing yellow lights.

The U.S. Coast Guard has established a second safety zone to be in effect for approximately 30 minutes when a blast is imminent. Safety zone two encompasses all waters of Lake Michigan within a 2000 foot radius from GPS position 41°43.6665'N, 087°30.3805'W. Safety zone two will close the Calumet Harbor channel for the 30 minutes when a blast is imminent. The U.S. Coast Guard will start a broadcast notice to mariners when safety zone two is being enforced. After the notification that safety zone two is being enforced, the blaster will signal with an air horn: WARNING SIGNAL- one minute series of long audible signals 5 minutes prior to the blast signal, BLAST SIGNAL- a series of short audible signals 1 minute before the blast, ALL CLEAR SIGNAL- a prolonged audible signal. When the U.S. Coast Guard has been notified that all is clear they will broadcast that safety zone two has been lifted. Safety zone two will be enforced intermittently as described above from August 1, 2017 through December 15, 2017. Two Roen Salvage Company patrol boats with flashing yellow lights will police the safety zone. If approached or hailed by these boats, respond to their direction.

10. FOR FURTHER INFORMATION, CONTACT: Thomas Drager

11. TELEPHONE #: 920-743-6533 Ext. 125

12. SIGNATURE: Thomas M Drager DATE: 07/05/17