



U.S. Department
of Homeland Security
**United States
Coast Guard**

LOCAL NOTICE TO MARINERS

District: 9

Week: 37/23

Issued by: Commander (dpw)
Ninth Coast Guard District
1240 East Ninth Street,
Cleveland, OH 44199-2060
Telephone: (216) 902-6069

Direct questions about this LNM to the above address.

All distances in this publication are STATUTE MILES unless otherwise noted.*

District Nine Internet Address <https://www.atlanticarea.uscg.mil/Our-Organization/District-9/>

District Nine Local Notice to Mariners email Address D09-DG-District-D9-LocalNoticetoMariners@uscg.mil

** Navigation Information Service watchstander, 24 hours a day at (703) 313-5900 ** **Internet Address** <https://www.navcen.uscg.gov/>

Light List Reference: Commandant Publication P16502.7, VOL VII, 2023 Edition

Coast Pilot Reference: 2022 U.S. Coast Pilot 6 Great Lakes 52nd Edition

Coast Pilots, along with corrections are available at: <https://nauticalcharts.noaa.gov/publications/coast-pilot/index.html>

The Local Notice to Mariners is available on the Internet at <https://www.navcen.uscg.gov/local-notices-to-mariners-by-cg-district> You will also have links to other government agencies- web pages including the US Army Corps of Engineers and the National Ocean Service.

REPORT DISCREPANCIES IN AIDS TO NAVIGATION TO THE NEAREST COAST GUARD UNIT

The Ninth District and all Sector offices for their areas of responsibility issue a BROADCAST NOTICE TO MARINERS.

The following Broadcast Notice to Mariners have been incorporated into this week's Local Notice to Mariners:

Sector Buffalo, NY - B205-23 through B206-23

Ninth District - C139-23 through C145-23

Sector Detroit, MI - D115-22 through D124-23

Sector Lake Michigan, WI - M261-23 through M265-23

Sector Sault Ste Marie, MI - S090-23 through S093-23

The United States Coast Guard Navigation Information Service (NIS), operated by the USCG Navigation Center, is staffed 24 hours a day, 7 days a week. The NIS provides information on the current operational status, effective policies, and general information for GPS and DGPS. The

NIS also disseminates Safety Broadcasts (BNM), Local Notice to Mariners (LNM), and the latest Notice Advisory to Navstar Users (NANU). NANU notices can be obtained via email subscription through the USCG Navigation Center website: <https://cgls.uscg.mil/mailman/listinfo/nanu>. In addition,

the NIS investigates all reports of degradation or loss of GPS, DGPS or AIS service. Users are encouraged to report all degradation or loss of radio navigation services to the NIS via any of the following: Phone: (703) 313-5900, mail to: webmaster@smtp.navcen.uscg.mil, or on the internet at: <https://www.navcen.uscg.gov>

ABBREVIATIONS

A through H

ADRIFT - Buoy Adrift
AICW - Atlantic Intracoastal Waterway
AI - Alternating
B - Buoy
BKW - Breakwater
bl - Blast
BNM - Broadcast Notice to Mariner
bu - Blue
C - Canadian
CHAN - Channel
CGD - Coast Guard District
C/O - Cut Off
CONT - Contour
CRK - Creek
CONST - Construction
DAYMK/Daymk - Daymark
DBN/Dbn - Daybeacon
DBD/DAYBD - Dayboard
DEFAC - Defaced
DEST - Destroyed

I through O

I - Interrupted
ICW - Intracoastal Waterway
IMCH - Improper Characteristic
INL - Inlet
INOP - Not Operating
INT - Intensity
ISL - Islet
Iso - Isophase
kHz - Kilohertz
LAT - Latitude
LB - Lighted Buoy
LBB - Lighted Bell Buoy
LHB - Lighted Horn Buoy
LGB - Lighted Gong Buoy
LONG - Longitude
LNM - Local Notice to Mariners
LT - Light
LT CONT - Light Continuous
LTR - Letter
LWB - Lighted Whistle Buoy

P through Z

PRIV - Private Aid
Q - Quick
R - Red
RACON - Radar Transponder Beacon
Ra ref - Radar reflector
RBN - Radio Beacon
REBUILT - Aid Rebuilt
RECOVERED - Aid Recovered
RED - Red Buoy
REFL - Reflective
RRL - Range Rear Light
RELIGHTED - Aid Relit
RELOC - Relocated
RESET ON STATION - Aid Reset on Station
RFL - Range Front Light
RIV - River
RRASS - Remote Radio Activated Sound Signal
s - seconds
SEC - Section
SHL - Shoaling

DISCON - Discontinued
DMGD/DAMGD - Damaged
ec - eclipse
EST - Established Aid
ev - every
EVAL - Evaluation
EXT - Extinguished
F - Fixed
fl - flash
Fl - Flashing
G - Green
GIWW - Gulf Intracoastal Waterway
HAZ - Hazard to Navigation
HBR - Harbor
HOR - Horizontal Clearance
HT - Height

LWP - Left Watching Properly
MHz - Megahertz
MISS/MSNG - Missing
Mo - Morse Code
MRASS - Marine Radio Activated Sound Signal
MSLD - Misleading
N/C - Not Charted
NGA - National Geospatial-Intelligence Agency
NO/NUM - Number
NOS - National Ocean Service
NW - Notice Writer
OBSCU - Obscured
OBST - Obstruction
OBSTR - Obstruction
Oc - Occulting
ODAS - Anchored Oceanographic Data Buoy

si - silent
SIG - Signal
SND - Sound
SPM - Single Point Mooring Buoy
SS - Sound Signal
STA - Station
STRUCT - Structure
St M - Statute Mile
TEMP - Temporary Aid Change
TMK - Topmark
TRLB - Temporarily Replaced by Lighted Buoy
TRLT - Temporarily Replaced by Light
TRUB - Temporarily Replaced by Unlighted Buoy
USACE - Army Corps of Engineers
W - White
Y - Yellow

Additional Abbreviations Specific to this LNM Edition:

LIB - Lighted Ice Buoy

SECTION I - SPECIAL NOTICES

This section contains information of special concern to the Mariner.

Cancellation of NOAA Paper and Raster Nautical Charts

The National Oceanic and Atmospheric Administration (NOAA) is undertaking a multi-year program to end production and maintenance of its suite of over 1,000 traditional paper nautical charts and all associated raster chart products and services, including: Print-on-Demand (POD) paper nautical charts, Full-size chart PDF files, BookletChart™ PDF files, NOAA raster navigational charts (NOAA RNC®), the NOAA RNC tile service, and the online RNC viewer.

Six months notice of the intent to cancel a specific chart is provided in a "Last Edition" notice. The final cancellation of a chart is made in a "Canceled" notice. Both types of notices will appear in LNM Section IV, "Chart Correction." A comprehensive list of all canceled NOAA charts is available at: <http://www.charts.noaa.gov/MCD/Dole.shtml>.

Traditional paper nautical chart production is ending to enable the creation and maintenance of larger scale, more up-to-date, higher quality coverage of NOAA's electronic navigational chart (NOAA ENC®) product. This will significantly enhance the amount of charted detail available to mariners. More information about NOAA's program to sunset traditional paper charts is on the NOAA Coast Survey website at: <https://nauticalcharts.noaa.gov/charts/farewell-to-traditional-nautical-charts.html>

An online NOAA Custom Chart application at: <https://devgis.charttools.noaa.gov/pod> is available to create chart images from ENC data, which may then be printed. Notices to Mariners will not be issued for NOAA Custom Charts.

LNM: 04/20

SAFETY NOTICE - NAVIGATIONAL RANGE AND SECTOR LIGHTS ON ELECTRONIC CHARTS

The U.S. Coast Guard has become aware that the Range and Sector Light Characteristic labels are not displayed on Electronic Navigational Charts (ENCs) when used in an Electronic Chart Display and Information System (ECDIS) due to limitations of the S-52 ECDIS display specification. Mariners may query the ENC data directly within ECDIS or refer to the Light List for complete information on Range and Sector Light Characteristics.

LNM: 39/22

2023 Light List

2023 Light Lists are now available on the USCG Navigation Center's website at: <https://www.navcen.uscg.gov/light-list-annual-publication>. Coast Guard Light Lists are a means for communicating aids to navigation information to the maritime public. Local Notice to Mariners will continue to advise Light List corrections and NAVCEN will continue to publish a compilation of corrections. Complete versions of the 2023 Light Lists are updated weekly on the NAVCEN website and mariners should download applicable copies and updates as needed at: <https://www.navcen.uscg.gov/weekly-light-lists>. A summary of weekly 2023 Light List corrections are available at: <https://www.navcen.uscg.gov/light-list-summary-of-corrections>.

LNM: 05/23

USACE NOTICE TO NAVIGATION INTERESTS

Current Federal Channel conditions, shoaling, and the most recent channel surveys are available at the following Army Corps of Engineers web sites:

Buffalo: <http://www.lrb.usace.army.mil/>
Detroit: <http://www.lre.usace.army.mil/>

Chicago: <http://www.lrc.usace.army.mil/>
Rock Island: <http://www.mvr.usace.army.mil/>
St. Paul: <https://www.mvp.usace.army.mil/>

LNM: 28/12

GREAT LAKES - Great Lakes Water Levels

See Enclosure 1

The current and four week expected water level table for the Great Lakes, Connecting Channels and the St. Lawrence River, will be published in Enclosure 1 following SECTION VIII - LIGHT LIST CORRECTIONS of the Local Notice to Mariner or by visiting the link below:

<https://www.lre.usace.army.mil/Missions/Great-Lakes-Information/Great-Lakes-Water-Levels/Water-Level-Forecast/Connecting-Channels-Forecast/>

LNM: 32/20

LAKE ERIE – Fairport Harbor – Chart 14829

The Coast Guard has established a virtual AIS aid to navigation at the entrance of Fairport Harbor to assist in identifying recent shoaling within the channel. The aid (MMSI: 993682815) is labeled W SHOAL 2 and identifies the encroachment of shoaling on the western side of the channel less than 18.5ft water depth. The aid is for reference only and is positioned based on most recent survey data, and does not account for periodic variations in the position of the shoal. Mariners are urged to use caution while transiting the area.

LNM: 21/23

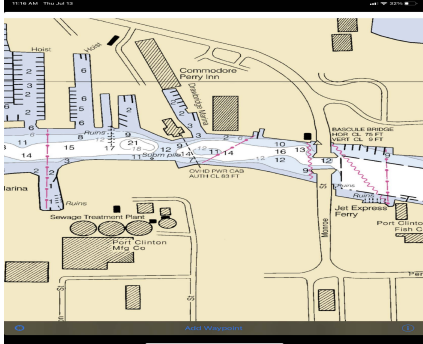
LAKE ERIE – OH – Lorain – Chart 14839

The Coast Guard will be temporarily disestablishing the light at Lorain Harbor Light 2 (LLNR 4335) for scheduled operations within the cupola from Monday the 25th of September until Monday, October 2nd. The structure will continue to be illuminated by floodlights throughout the period of disestablishment. Mariners are requested to use caution while transiting the area.

LNM: 37/23

LAKE ERIE – Portage River – Chart 14829

Low power lines have been reported in the Portage River west of the Monroe Street Bridge in the vicinity of the draw bridge marina. The power lines are lower than the charted height of 83 feet above the low water datum of 1985. All mariners are requested to use caution when transiting the area.



LNM: 29/23

ST. CLAIR RIVER - Flats Canal - Chart 14854

The Coast Guard has established three temporary danger buoys within the St. Clair Flats Canal, in the St. Clair River, to assist mariners in marking the partially submerged earthen dike along the southeast edge of the channel. The unlighted buoys will be evenly spaced along the dike, extending from the lower point of Seaway Island to the St. Clair Flats Danger Light (LLNR 9575). The buoy characteristics are white with orange in color and display the text "KEEP OUT" across the buoy body. The intent of the temporary project is to evaluate the effectiveness of the buoys in warning mariners of the dangers of leaving the marked channel and crossing over the submerged dike into the shallow flats east of the canal.

LNM: 21/23

ST. MARYS RIVER - American Canal - Chart 14884

Northeast Pierhead Light (LLNR 14205) The U. S. Army Corps of Engineers will be relocating this light to the top of their new camera tower. As soon as the position and height of the light's new location is confirmed it will be advertised in Section VIII - Light List Corrections of the LNM.

LNM: 10/21

LAKE MICHIGAN – Muskegon Channel – Chart 14906

The Coast Guard has established a pair of virtual AIS aids to navigation at the entrance of Muskegon Harbor to assist in identifying recent shoaling within the approaches. V-AIS (MMSI: 993682821) identifies the encroachment of shoaling on the northern side of the channel less than 25ft water depth. Similarly, V-AIS (MMSI: 993682842) identifies shoaling on the south side of the channel less than 25ft. The aids are for

reference only and are positioned based on most recent survey data and do not account for periodic variations in the position of the shoaling. Mariners are urged to use caution while transiting the area.

LNM: 24/23

LAKE SUPERIOR – Keweenaw – Chart 14972

Keweenaw Upper Entrance West Breakwater Light (LLNR 15115) was reported damaged and swept from its location on the breakwall. The approximately 20' metal tower is submerged in vicinity of the breakwater at an unknown position. All mariners are urged to use caution when transiting the area.

LNM: 12/23

LAKE SUPERIOR – Keweenaw and Isle Royale

The Coast Guard is experiencing a significant delay in the establishment of the seasonal floating aids in the Keweenaw Waterway and Isle Royale. The specific aids impacted by this delay are listed in Section II – Discrepancies of this notice. All mariners are urged to use caution in transiting these areas.

LNM: 22/23

LAKE SUPERIOR - Duluth Harbor

The Coast Guard is experiencing a significant delay in the establishment of the seasonal floating aids inside Duluth-Superior Harbor. The specific aids impacted by this delay are listed in Section II – Discrepancies of this notice. All mariners are urged to use caution in transiting these areas.

LNM: 19/23

SECTION II - DISCREPANCIES

This section lists all reported and corrected discrepancies related to Aids to Navigation in this edition. A discrepancy is a change in the status of an aid to navigation that differs from what is published or charted.

DISCREPANCIES (FEDERAL AIDS)

LLNR	Aid Name	Status	Chart No.	BNM Ref.	LNM St	LNM End
905	St. Lawrence Seaway Lighted Buoy 128	LT EXT		B206-23	37/23	
2725	Buffalo Coast Guard Slip Light	STRUCT DMGD		B187-22	01/23	
4475	Huron Harbor Light	SS INOP	14820	D110-23	35/23	
4505	Huron Harbor Light 8	DAYMK MISSING		D113-23	36/23	
4575	Moseley Channel Range Rear Light	DAYMK MISSING	14842	D095-23	32/23	
5670	Perry Memorial Monument Light	LT EXT	14842	D121-23	37/23	
6895	East Outer Channel Light 1E	SS INOP	14820	D002-23	01/23	
10575	Saginaw Bay Channel Lighted Buoy 2	LT EXT		D120-23	37/23	
10760	Essexville Range Front Light	LT EXT		D122-23	37/23	
10765	Essexville Range Rear Light	LT EXT		D123-23	37/23	
11250	Tawas Harbor Lighted Buoy 4	LT EXT		D124-23	37/23	
12890	Pipe Island Twins Lighted Buoy 3	LT IMCH		S084-23	35/23	
13475	West Neebish Channel (Downbound) Upper Range Rear Light	DAYMK MISSING			36/23	
13525	West Neebish Channel (Downbound) Lighted Buoy 46	REDUCED INT		S092-23	37/23	
13960	Upper Nicolet Range Rear Light	DAYMK MISSING		S064-23	26/23	
14050	Six Mile Point Range Rear Light	DAYMK MISSING		S079-23	10/21	
14710	Big Bay Point Buoy 1	MISSING			24/23	
14775	Keweenaw Waterway Lighted Buoy 1	MISSING			24/23	
14785	Keweenaw Waterway Lighted Buoy 4	MISSING			24/23	
14890	Keweenaw Waterway Lighted Buoy 27	MISSING		S061-23	24/23	
14900	Keweenaw Waterway Junction Lighted Buoy "KW"	MISSING			24/23	
14945	Keweenaw Waterway Lighted Buoy 31	TRUB			24/23	

14960	Keweenaw Waterway Lighted Buoy 35	MISSING		24/23
14975	Atlantic Point Lighted Buoy 37	MISSING		24/23
14990	Keweenaw Waterway Lighted Buoy 42	MISSING		24/23
15015	Keweenaw Waterway Lighted Buoy 49	TRUB		24/23
15025	Keweenaw Waterway Lighted Buoy 50	TRUB		24/23
15030	Keweenaw Waterway Lighted Buoy 51	TRUB		24/23
15080	Keweenaw Waterway Lighted Buoy 61	TRUB		24/23
15115	Keweenaw Upper Entrance West Breakwater Light	STRUCT DEST	S015-23	02/23
15155	Keweenaw Point Lighted Buoy 1	MISSING		24/23
15750	Superior Front Channel Lighted Buoy 1	TRUB		24/23
15765	Superior Front Channel Lighted Buoy 5	TRUB		24/23
15785	Superior Front Channel Lighted Buoy 9	TRUB		24/23
15845	Duluth Harbor South Breakwater Outer Light	REDUCED INT	14961 S090-23	36/23
15875	Duluth Harbor Basin Lighted Buoy 2	TRUB	S036-23	13/23
16180	St. Louis River Upper Channel Lighted Buoy 4	TRUB		24/23
16205	Minnesota Channel (Eastern Section) Lighted Buoy 6	TRUB		24/23
16210	Minnesota Channel (Eastern Section) Lighted Buoy 7	TRUB		24/23
16220	Minnesota Channel (Eastern Section) Lighted Buoy 9	TRUB		24/23
16225	Minnesota Channel (Eastern Section) Lighted Buoy 10	TRUB		24/23
16235	Minnesota Channel (Eastern Section) Lighted Buoy 14	MISSING		24/23
16240	Minnesota Channel (Eastern Section) Lighted Buoy 15	MISSING		24/23
16250	Minnesota Channel (Eastern Section) Lighted Buoy 19	MISSING		24/23
16650	Hat Point Lighted Bell Buoy 1	MISSING		24/23
16680	Cumberland Point Buoy 2	MISSING		24/23
16695	Siskiwit Bay Passage Lighted Buoy 2	MISSING		24/23
16705	Harlem Reef Buoy 2	MISSING		24/23
16715	Malone Bay Entrance Buoy 2	MISSING		24/23
16720	Malone Bay Entrance Buoy 3	MISSING		24/23
16725	Malone Bay Buoy 4	MISSING		24/23
16730	Malone Bay Buoy 5	MISSING		24/23
16770	Middle Island Passage Lighted Bell Buoy 2	TRUB		24/23
16825	Blake Point Five-Foot Shoal Buoy D	MISSING		24/23
17210	Canoe Channel Daybeacon 8	STRUCT DEST/TRUB		23/22
17550	Kabetogama Lake Warning Daybeacon	STRUCT DEST	S114-22	34/22
17810	Beaver Island Shoal Northeast End Lighted Buoy 1	MISSING		24/23
17830	St. James Harbor Buoy 6	MISSING		24/23
17835	St. James Harbor Buoy 7	MISSING		24/23
17840	St. James Harbor Buoy 8	MISSING		24/23
19240	Grand River Buoy 71	ADRIFT	M201-23	29/23
19310	Lake Macatawa Lighted Buoy 1	TRUB		24/23
19350	Lake Macatawa Lighted Buoy 6	TRUB		24/23
19385	Lake Macatawa Lighted Buoy 10	TRUB		24/23
19400	Lake Macatawa Lighted Buoy 14	TRUB		24/23
19410	Lake Macatawa Lighted Buoy 16	TRUB		24/23

19420	Lake Macatawa Lighted Buoy 19	TRUB			24/23
19790	Chicago Lake Front Northeast Shoal Lighted Buoy 2	RAC INOP	14905	M098-23	20/23
20430	Kenosha Breakwater Light	REDUCED INT	14904	M123-23	22/23
22180	Green Bay Harbor Entrance Channel Range Front Light	DAYMK DMGD		M327-22	24/21
22185	Green Bay Harbor Entrance Channel Range Rear Light	DAYMK MISSING		M157-23	44/20

DISCREPANCIES (FEDERAL AIDS) CORRECTED

LLNR	Aid Name	Status	Chart No.	BNM Ref.	LNM St	LNM End
585	Ogden Island Range Rear Light	WATCHING PROPERLY			35/23	37/23
1180	St. Lawrence Seaway Light 156	WATCHING PROPERLY			36/23	37/23
1400	Point Vivian Leading Light	WATCHING PROPERLY			36/23	37/23
3075	Grand Island Direction Light	WATCHING PROPERLY			30/23	37/23
6030	Toledo Harbor Light	RELIGHTED	14820		36/23	37/23
6235	Maumee Bay Lighted Buoy 38	RESET ON STATION	14846		36/23	37/23
6565	Monroe Harbor Range Rear Light	WATCHING PROPERLY	14846		33/23	37/23
14465	Point Iroquois Shoal Lighted Buoy 33	RELIGHTED			36/23	37/23
18270	Traverse City Breakwater Light	WATCHING PROPERLY	14902		37/23	37/23

DISCREPANCIES (PRIVATE AIDS)

LLNR	Aid Name	Status	Chart No.	BNM Ref.	LNM St	LNM End
90	Aluminum Foundry Water Intake Buoy	LT EXT	14761	B173-23	31/23	
2271	R. E. Ginna Nuclear Security Zone No Entry Buoy A	MISSING			28/23	
2271.1	R. E. Ginna Nuclear Security Zone No Entry Buoy B	MISSING		B144-23	28/23	
2396	Olcott Harbor Detached Breakwater East Light	LT EXT	14800	B189-23	34/23	
2740	Buffalo River Light 5	LT EXT			23/23	
3300	Niagara Falls Transmission Line Light C	LT EXT			26/23	
3305	Buckhorn Island Dike Light 1	LT EXT			26/23	
3310	Buckhorn Island Dike Light 2	LT EXT			26/23	
3325	Hooker Electrochemical Crib Light	LT EXT			26/23	
3330	Hooker Electrochemical Outfall Crib Light	LT EXT		B195-23	35/23	
3615	Presque Isle Park Range Front Light	Status Unreported		B129-23	27/23	
3620	Presque Isle Park Rear Range Light	LT EXT			34/23	
3725	Conneaut Boat Club West Light	LT EXT			26/23	
3910	Mentor Harbor Light 1	LT EXT		B196-23	35/23	
3930	Mentor Harbor Yacht Club Range Front Light	LT EXT		B118-23	26/23	
3935	Mentor Harbor Yacht Club Range Rear Light	LT EXT		B119-23	26/23	
3950	Chagrin West Pier Inner Light	LT EXT	14829	B120-23	26/23	
3975	Wildwood Park West Detached Breakwater Light	DAYMK MISSING			23/23	
4030	Cleveland Waterworks Intake Crib Light	SS INOP		B197-23	34/23	
4104	Bkl Regulated Navigation Area Light	LT EXT			23/23	
4150	North Coast Harbor Light 2	MISSING			28/23	
4190	Whiskey Island Marina Entrance Light 1	LT EXT			23/23	
5247	Johnson Island Light 1	LT EXT	14842	D007-23	11/23	
5950	Davis-Besse Nuclear Power Plant Obstruction Buoy	MISSING	14846		31/23	
12585	Old Round Island Point Light	LT EXT		S006-23	01/23	

19860	Filtration Plant Breakwater South End Light	LT EXT			16/23
19875	Jackson Park Outer Harbor Light 2	LT EXT	14905	M225-23	32/23
19931	Thirty-First Street Jetty Danger Lighted Buoy A	MISSING	14905		27/23
19932	Thirty-First Street Jetty Danger Lighted Buoy B	LT EXT	14905		27/23
19933	Thirty-First Street Jetty Danger Lighted Buoy C	LT EXT	14905		27/23
19956	Northerly Island Danger Lighted Buoy A	LT EXT			34/23
19956.1	Northerly Island Danger Lighted Buoy B	LT EXT			34/23
19956.2	Northerly Island Danger Lighted Buoy C	LT EXT			34/23
20387	Northpoint Marina Reef Obstruction Lighted Buoy B	MISSING	14904		26/23
20388	Northpoint Marina Reef Obstruction Lighted Buoy C	MISSING	14904		26/23
20389	Northpoint Marina Reef Obstruction Lighted Buoy D	MISSING	14904		26/23
20470	Racine Launch Basin Entrance Light	LT IMCH	14904		22/23
20490	Racine East Harbor Entrance Light 2	LT EXT	14904	M212-23	31/23
20500	Racine Harbor Light 5	LT EXT	14904	M174-23	27/23
20515	Racine Harbor Light 9	LT EXT		M175-23	27/23
20550	Racine Harbor Junction Light	LT EXT		M265-23	37/23
20729	South Shore Park Entrance Lighted Buoy 1	MISSING		M169-23	27/23
20730	South Shore Park Entrance Lighted Buoy 2	MISSING		M170-23	27/23
20755	Mickinley Marina Light 1	REDUCED INT			25/23

DISCREPANCIES (PRIVATE AIDS) CORRECTED

LLNR	Aid Name	Status	Chart No.	BNM Ref.	LNM St	LNM End
5305	East Harbor Entrance Light 1	WATCHING PROPERLY	14842		21/23	
20842	Manitowoc Intake East Light	WATCHING PROPERLY	14903		34/23	37/23

PLATFORM DISCREPANCIES

Name	Status	Position	BNM Ref.	LNM St	LNM End
------	--------	----------	----------	--------	---------

None

PLATFORM DISCREPANCIES CORRECTED

Name	Status	Position	BNM Ref.	LNM St	LNM End
------	--------	----------	----------	--------	---------

None

SECTION III - TEMPORARY CHANGES and TEMPORARY CHANGES CORRECTED

This section contains temporary changes and corrections to Aids to Navigation for this edition. When charted aids are temporarily relocated for dredging, testing, evaluation, or marking an obstruction, a temporary correction shall be listed in Section IV giving the new position.

TEMPORARY CHANGES

LLNR	Aid Name	Status	Chart No.	BNM Ref.	LNM St	LNM End
2105	Oswego Harbor West Channel Light 2	TRLB	14786		17/19	
2720	Buffalo Harbor North Entrance Light 7	DISCONTINUED			33/19	
8240	William Livingstone Memorial Light	Reduced Intensity	14853		33/21	
9690	Grande Pointe Light 23	TRLT	14853		47/20	
14540	Little Lake Harbor Light 2	DISCONTINUED FOR DREDGING	14961		47/22	
15220	Ontonagon Harbor East Breakwater Light	DISCONTINUED			02/22	

TEMPORARY CHANGES CORRECTED

LLNR	Aid Name	Status	Chart No.	BNM Ref.	LNM St	LNM End
------	----------	--------	-----------	----------	--------	---------

None

PLATFORM TEMPORARY CHANGES

Name	Status	Position	BNM Ref.	LNM St	LNM End
------	--------	----------	----------	--------	---------

None

PLATFORM TEMPORARY CHANGES CORRECTED

Name	Status	Position	BNM Ref.	LNM St	LNM End
------	--------	----------	----------	--------	---------

None

SECTION IV - CHART CORRECTIONS

This section contains corrections to federally and privately maintained Aids to Navigation, as well as NOS corrections.

This section contains corrective actions affecting chart(s). Corrections appear numerically by chart number, and pertain to that chart only. It is up to the mariner to decide which chart(s) are to be corrected. The following example explains individual elements of a typical chart correction.

Chart Number	Chart Edition	Edition Date	Last Local Notice to Mariners	Horizontal Datum Reference	Source of Correction	Current Local Notice to Mariners
12327	91st Ed.	19-APR-97	Last LNM: 26/97	NAD 83		27/97
Chart Title: NY-NJ-NEW YORK HARBOR - RARITAN RIVER						
Main Panel 2245 NEW YORK HARBOR					CGD01	
(Temp)	ADD	NATIONAL DOCK CHANNEL BUOY 3			at 40-41-09.001N	074-02-48.001W
	Green can					
Corrective Action	Object of Corrective Action				Position	

(Temp) indicates that the chart correction action is temporary in nature. Courses and bearings are given in degrees clockwise from 000 true. Bearings of light sectors are toward the light from seaward. The nominal range of lights is expressed in nautical miles (NM) unless otherwise noted.

12348 **34th Ed.** **01-JUN-10** **Last LNM: 38/20** **NAD 83** **37/23**

Chart Title: Hudson River Coxsackie to Troy

Main Panel 2223 HUDSON RIVER COXSACKIE TO TROY NY. Page/Side: N/A

LAST EDITION No new editions of chart 12348 will be published. It will be canceled on 31-Jan-24. Comparable or larger scale Electronic Navigational Chart (ENC) coverage is available. See "Cancellation of NOAA Paper and Raster Nautical Charts" in Section I of this LNM for details. A list of all canceled NOAA charts is at <https://www.charts.noaa.gov/MCD/Dole.shtml>.

NOS

--

--

14810 **6th Ed.** **01-JAN-15** **Last LNM: 16/17** **NAD 83** **37/23**

Chart Title: Olcott Harbor to Toronto; Olcott and Wilson Harbors

Main Panel 1004 OLCOTT NY TO TORONTO ONT. Page/Side: A

LAST EDITION No new editions of chart 14810 will be published. It will be canceled on 04-Oct-23. Comparable or larger scale Electronic Navigational Chart (ENC) coverage is available. See "Cancellation of NOAA Paper and Raster Nautical Charts" in Section I of this LNM for details. A list of all canceled NOAA charts is at <https://www.charts.noaa.gov/MCD/Dole.shtml>.

NOS

--

--

14828 **7th Ed.** **01-JUN-16** **Last LNM: 49/11** **NAD 83** **37/23**

Chart Title: Erie to Geneva

Main Panel 1364 ERIE TO GENEVA. Page/Side: A

LAST EDITION No new editions of chart 14828 will be published. It will be canceled on 04-Oct-23. Comparable or larger scale Electronic Navigational Chart (ENC) coverage is available. See "Cancellation of NOAA Paper and Raster Nautical Charts" in Section I of this LNM for details. A list of all canceled NOAA charts is at <https://www.charts.noaa.gov/MCD/Dole.shtml>.

NOS

--

--

14829	7th Ed.	01-MAY-15	Last LNM: 48/19	NAD 83	37/23
<i>ChartTitle: Geneva to Lorain; Beaver Creek; Rocky River; Mentor Harbor; Chagrin River</i>					
Main Panel 1572 GENEVA TO LORAIN. Page/Side: A					
				NOS	
LAST EDITION No new editions of chart 14829 will be published. It will be canceled on 04-Oct-23. Comparable or larger scale Electronic Navigational Chart (ENC) coverage is available. See "Cancellation of NOAA Paper and Raster Nautical Charts" in Section I of this LNM for details. A list of all canceled NOAA charts is at https://www.charts.noaa.gov/MCD/Dole.shtml .				--	--
14838	4th Ed.	01-APR-05	Last LNM: 43/14	NAD 83	37/23
<i>ChartTitle: Buffalo to Erie;Dunkirk;Barcelona Harbor</i>					
Main Panel 1139 BUFFALO TO ERIE. Page/Side: N/A					
				NOS	
LAST EDITION No new editions of chart 14838 will be published. It will be canceled on 04-Oct-23. Comparable or larger scale Electronic Navigational Chart (ENC) coverage is available. See "Cancellation of NOAA Paper and Raster Nautical Charts" in Section I of this LNM for details. A list of all canceled NOAA charts is at https://www.charts.noaa.gov/MCD/Dole.shtml .				--	--
14842	17th Ed.	01-NOV-18	Last LNM: 38/17	NAD 83	37/23
<i>ChartTitle: SMALL-CRAFT BOOK CHART - Port Clinton to Sandusky, including the Islands (book of 35 charts)</i>					
Main Panel 1163 SOUTH SHORE LAKE ERIE PORT CLINTON TO SANDUSKY 2 - -. Page/Side: -					
				NOS	
LAST EDITION No new editions of chart 14842 will be published. It will be canceled on 04-Oct-23. Comparable or larger scale Electronic Navigational Chart (ENC) coverage is available. See "Cancellation of NOAA Paper and Raster Nautical Charts" in Section I of this LNM for details. A list of all canceled NOAA charts is at https://www.charts.noaa.gov/MCD/Dole.shtml .				--	--
14844	34th Ed.	01-JUN-19	Last LNM: 27/18	NAD 83	37/23
<i>ChartTitle: Islands in Lake Erie;Put-In-Bay</i>					
Main Panel 1208 ISLANDS IN LAKE ERIE INCLUDING SANDUSKY BAY OHIO - -. Page/Side: -					
				NOS	
LAST EDITION No new editions of chart 14844 will be published. It will be canceled on 04-Oct-23. Comparable or larger scale Electronic Navigational Chart (ENC) coverage is available. See "Cancellation of NOAA Paper and Raster Nautical Charts" in Section I of this LNM for details. A list of all canceled NOAA charts is at https://www.charts.noaa.gov/MCD/Dole.shtml .				--	--
14846	16th Ed.	01-NOV-18	Last LNM: 38/18	NAD 83	37/23
<i>ChartTitle: SMALL-CRAFT BOOK CHART - West End of Lake Erie from Perrysburg, OH., of the Maumee R. to Huron R., Mich., and Bar Pt., Ont. (book of 34 charts)</i>					
Inset 1211 WEST END OF LAKE ERIE PAGE 2 - -. Page/Side: -					
				NOS	
LAST EDITION No new editions of chart 14846 will be published. It will be canceled on 04-Oct-23. Comparable or larger scale Electronic Navigational Chart (ENC) coverage is available. See "Cancellation of NOAA Paper and Raster Nautical Charts" in Section I of this LNM for details. A list of all canceled NOAA charts is at https://www.charts.noaa.gov/MCD/Dole.shtml .				--	--
14853	19th Ed.	01-OCT-18	Last LNM: 44/21	NAD 83	37/23
<i>ChartTitle: SMALL-CRAFT BOOK CHART - Detroit River, Lake St. Clair and St. Clair River (book of 47 charts)</i>					
Main Panel 1263 DETROIT RIVER - -. Page/Side: -					
				NOS	
LAST EDITION No new editions of chart 14853 will be published. It will be canceled on 04-Oct-23. Comparable or larger scale Electronic Navigational Chart (ENC) coverage is available. See "Cancellation of NOAA Paper and Raster Nautical Charts" in Section I of this LNM for details. A list of all canceled NOAA charts is at https://www.charts.noaa.gov/MCD/Dole.shtml .				--	--
14903	26th Ed.	01-AUG-20	Last LNM: 30/20	NAD 83	37/23
<i>ChartTitle: Algoma to Sheboygan;Kewaunee;Two Rivers</i>					
Main Panel 1363 LAKE MICHIGAN-ALGOMA TO SHEBOYGAN - -. Page/Side: -					
				NOS	
LAST EDITION No new editions of chart 14903 will be published. It will be canceled on 04-Oct-23. Comparable or larger scale Electronic Navigational Chart (ENC) coverage is available. See "Cancellation of NOAA Paper and Raster Nautical Charts" in Section I of this LNM for details. A list of all canceled NOAA charts is at https://www.charts.noaa.gov/MCD/Dole.shtml .				--	--
14904	28th Ed.	01-MAY-19	Last LNM: 46/21	NAD 83	37/23

Main Panel 1366 PORT WASHINGTON TO WAUKEGAN --. Page/Side: -

LAST EDITION No new editions of chart 14904 will be published. It will be canceled on 04-Oct-23. Comparable or larger scale Electronic Navigational Chart (ENC) coverage is available. See "Cancellation of NOAA Paper and Raster Nautical Charts" in Section I of this LNM for details. A list of all canceled NOAA charts is at <https://www.charts.noaa.gov/MCD/Dole.shtml>. NOS -- --

14905 34th Ed. 01-AUG-20 Last LNM: 46/21 NAD 83 37/23

ChartTitle: Waukegan to South Haven;Michigan City;Burns International Harbor;New Buffalo

Main Panel 1371 LK MICH WAUKEGAN ILL-SOUTH HAVEN MICH --. Page/Side: -

LAST EDITION No new editions of chart 14905 will be published. It will be canceled on 04-Oct-23. Comparable or larger scale Electronic Navigational Chart (ENC) coverage is available. See "Cancellation of NOAA Paper and Raster Nautical Charts" in Section I of this LNM for details. A list of all canceled NOAA charts is at <https://www.charts.noaa.gov/MCD/Dole.shtml>. NOS -- --

14906 25th Ed. 01-SEP-13 Last LNM: 28/16 NAD 83 37/23

ChartTitle: South Haven to Stony Lake;South Haven;Port Sheldon;Saugatuck Harbor

Main Panel 1375 LAKE MICHIGAN SOUTH HAVEN TO STONY LAKE. Page/Side: N/A

LAST EDITION No new editions of chart 14906 will be published. It will be canceled on 04-Oct-23. Comparable or larger scale Electronic Navigational Chart (ENC) coverage is available. See "Cancellation of NOAA Paper and Raster Nautical Charts" in Section I of this LNM for details. A list of all canceled NOAA charts is at <https://www.charts.noaa.gov/MCD/Dole.shtml>. NOS -- --

SECTION V - ADVANCE NOTICES

This section contains advance notice of approved projects, changes to aids to navigation, or upcoming temporary changes such as dredging, etc. Mariners are advised to use caution while transiting these areas.

SUMMARY OF ADVANCED APPROVED PROJECTS

Approved Project(s)
None

Project Date **Ref. LNM**

Advance Notice(s)

LAKE MICHIGAN -Kewaunee - Chart 14903

The Coast Guard is considering changing the operation of the sound signal on Kewaunee Shoal Light (LLNR 20965) from seasonally operating continuously April 1st to November 1st, to a Mariner Radio Activated Sound Signal (MRASS) year-round. The sound signal would be activated by keying the microphone five or more times on VHF FM channel 83A / 157.175MHz.

LNM: 16/23

LAKE MICHIGAN - Green Bay - Chart 14910

The Coast Guard is considering changing the operation of the sound signal on Peshtigo Reef Light (LLNR 21990) from seasonally operating continuously May 1st to October 20th, to a Mariner Radio Activated Sound Signal (MRASS) year-round. The sound signal would be activated by keying the microphone five or more times on VHF FM channel 83A / 157.175MHz.

LNM: 16/23

LAKE MICHIGAN – Waugoshance Point – Chart 14911

The Coast Guard is considering changing the operation of Garden Island Shoal Lighted Bell Buoy 1 (LLNR 21540) by eliminating the seasonal winter mark. The seasonal winter mark is routinely unreliable due to ice conditions and is often found off station or sunk during spring servicing.

LNM: 23/23

LAKE MICHIGAN – Waugoshance Point – Chart 14911

The Coast Guard is considering changing the operation of Ojibwa Island Shoal Buoy 1 (LLNR 21565) from permanent to seasonally relieved. The buoy is routinely unreliable due to ice conditions and is often found off station or sunk during spring servicing. The change would upgrade the seasonal buoy to a radar reflective can and significantly increase its radar detection range when on station.

LNM: 23/23

SECTION VI - PROPOSED CHANGES

Periodically, the Coast Guard evaluates its system of aids to navigation to determine whether the conditions for which the aids to navigation were established have changed. When changes occur, the feasibility of improving, relocating, replacing, or discontinuing aids are considered. This section contains notice(s) of non-approved, proposed projects open for comment. SPECIAL NOTE: Mariners are requested to respond in writing to the District office unless otherwise noted (see banner page for address).

PROPOSED WATERWAY PROJECTS OPEN FOR PUBLIC COMMENT

Proposed Project(s)

Closing

Docket No.

Ref. LNM

None

Proposed Change Notice(s)

LAKE ERIE – Toledo Harbor – CHART 14845

The Coast Guard is considering changing the operation of the sound signal on Toledo Harbor Light (LLNR 6030) from seasonally operating continuously April 1st to December 1st, to Mariner Radio Activated Sound Signal (MRASS) year-round. The sound signal would be activated by keying the microphone five or more times on VHF FM channel 83A / 157.175MHz.

LNM: 36/23

LAKE ERIE – Detroit – CHART 14854

The Coast Guard is considering changing the operation of the sound signal on Detroit River Light (LLNR 6885) from operating continuously, to Mariner Radio Activated Sound Signal (MRASS) year-round. The sound signal would be activated by keying the microphone five or more times on VHF FM channel 83A / 157.175MHz.

LNM: 36/23

For any comments or questions on these proposed changes please contact:

The Ninth District Aids to Navigation manager at Brian.D.Hawkins2@uscg.mil or call (216) 902-6070.

LNM: 30/13

SECTION VII - GENERAL

This section contains information of general concern to the Mariners. Mariners are advised to use caution while transiting these areas.

Waterways Analysis and Management System

The Ninth Coast Guard District will be reviewing the following waterways beginning in 2022. The study focuses primarily on aids to navigation in the waterway. Public comments are an important tool in this process so that we can provide the adequate markings and the right mix of signals to a waterway for safe navigation. Comments on the below listed waterways can be sent to Brian.D.Hawkins2@uscg.mil or by calling (216) 902-6070. You may also complete the survey attached to the Local Notice to Mariner and either email it or mail it to: Commander (dpw), Ninth Coast Guard District, 1240 East Ninth St., Cleveland, Ohio 44199.

Sackets Harbor
(LLNR 1755-2024.9)
Buffalo Harbor/Black Rock Canal
(LLNR 2665-3360)
Dunkirk Harbor
(LLNR 3365-3492)
Erie Harbor
(LLNR 3495-3696)
Conneaut Harbor
(LLNR 3700-3735)
Ashtabula Harbor
(LLNR 3740-3830)
Fairport Harbor
(LLNR 3835-3955)
Cleveland Harbor
(LLNR 3975-4260)
Huron Harbor
(LLNR 4430-5455)
Erie Islands
(LLNR 5520-6025)
Detroit River / East Outer Channel
(LLNR 6885-8270)
St. Clair Rec/Belle Isle Channel
(LLNR 8280-8396)
Lake St. Clair
(LLNR 8665-9300)
Anchor Bay
(LLNR 9305-9565)
Toledo / Maumee Channel
(LLNR 6030-6455)
Monroe Harbor
(LLNR 6460-6680)
St. Clair River / Huron Cut
(LLNR 9570-10090)
St. Mary's River
(LLNR 12765-13755)
Lake Nicolet / Bayfield Channel
(LLNR 13955-14192)
Keweenaw Waterway
(LLNR 14725-15250)

Waterways Analysis and Management System

Knife River / Two Harbors

(LLNR 16495-16580)

M.I.R.

(LLNR 11780-12170)

Marquette Harbor

(LLNR 14620-14720)

Apostle Islands

(LLNR 15255-15590)

LNLM: 09/20

GREAT LAKES - Marine Events

Marine events such as races, parades, regattas, and fireworks displays are frequently held in the Great Lakes region. Advance information on specific events is contained in enclosure (2) of this publication. The public is reminded to listen to the local broadcast notice to mariners for the most up-to-date information on a marine event. Mariners are advised that some events may require temporary aids to navigation that are not displayed on a chart or in the Light List, and that they should exercise additional caution while operating in the vicinity of a scheduled marine event.

LNLM: 24/13

LAKE ONTARIO – Henderson

From 21 Aug 2023 to 10 Sep 2023 the Caldwell Marine International will be removing an old power cable between the mainland and Stony Island at the coordinates listed below. This process may have to be done in two sections. 1 days (2 days depending on weather). CMI will lay a new power cable, and a fiber optic cable between the mainland and Stony Island. Hours of Operations 07:00 – 19:00 – 7 days a week. Seaway Marine Barge - will be restricted in their movement when on site. When cable is attached to the barge and workboats are deployed, all vessels will be restricted in their movements.

LNLM: 33/23

LAKE ONTARIO – Oswego Harbor – Chart 14813

From 16 July 2023 to 18 September 2023 Dean Marine and Excavating Inc will be conducting dredging operations in the Oswego Harbor. Hours of operation are 0700-1900 7 days a week. Andrew J, Megan J and Paige Noel can be contacted on VHF channels 7, 9 and 16. All mariners are requested to transit the area with caution.

LNLM: 12/23

LAKE ONTARIO – Oswego Harbor – Chart 14800

From 30 June 2023 to 31 October 2023 Dean Marine and Excavating, INC will be conducting construction and breakwall repair in the Oswego Harbor. Hours of operation are from 0630 to 1900 7 days a week. ST-911 Enduring Freedom can be contacted on VHF channel 16. All mariners are requested to transit the area with caution.

LNLM: 22/23

LAKE ONTARIO – Little Sodus Bay – Chart 14800

From 27 July 2023 to 18 Sep 2023 Dean Marine and Excavating INC will be dredging in the Little Sodus Bay Harbor. Hours of operation are from 0630 to 1930 Sunday to Monday. Megan J can be contacted on VHF channels 79 and 16. All mariners are requested to transit the area with caution.

LNLM: 22/23

LAKE ONTARIO – Little Sodus Bay – Chart 14800

There is an uncharted breakwall along the shore extending from the west side of Little Sodus Bay entrance to the boat ramp of West Barrier Bar County Park. The breakwall is unmarked and unlit. Visibility of the breakwall may be impacted due to high water. All mariners are requested to transit the area with caution.

LNLM: 19/23

LAKE ONTARIO – Rochester Harbor – Chart 14800

From 26 June 2023 to 15 Sep 2023 Great Lakes Dock and Material will be conducting pier repair in Charlotte NY. Hours of operation are 24 hours a day 7 days a week. Tug Duluth, Barge Jacquelyn, Barge Hannah Avery can be contacted on VHF 7 and 16. All mariners are requested to transit the area with caution.

LNLM: 26/23

LAKE ERIE - Buffalo River – Chart 14833

From 30 May 2023 to 30 September 2023 BIDCO Marine Group Inc will be conducting diving and pile driving operations in the Buffalo River in positions 42° 52' 25.536" N 78° 52' 37.8372" W and 42° 52' 19.272" N 78° 52' 23.2932" W. Hours of operations are from 0700 to 1530 Monday through Friday. Spud barges on scene can be contacted on VHF channel 16. All mariners are requested to transit the area with caution.

LNLM: 22/23

LAKE ERIE - Buffalo River – Chart 14833

From 14 Aug 2023 to 31 Oct 2023 BIDCO Marine Group Inc will be conducting Spud barge and equipment will be moored near the breakwater for dredging operations against the bulkhead operations in Buffalo Harbor, Black Rock Canal Entrance Channel in positions Latitude: 42°53'16.0"N Longitude: 78°53'28.1"W. Hours of operations are from 0700 to 1530 Monday through Friday. Spud barges on scene can be contacted on VHF channel 16. All mariners are requested to transit the area with caution.

LNLM: 33/23

LAKE ERIE - Buffalo – Chart 14838

LAKE ERIE - Buffalo – Chart 14838

From 1 July 2023 to 15 December 2023 Ryba Marine Construction will be conducting repairs to the Buffalo north breakwater. Hours of operation are 24 hours a day 7 days a week. Tug Thomas R. Morrish can be contacted on VHF channels 13 and 16. All mariners are requested to transit the area with caution.

LNM: 22/23

LAKE ERIE – OH - Ashtabula Harbor – Chart 14836

A submerged breakwater is being constructed in Ashtabula Harbor, to be connected to the existing East Breakwater. The submerged breakwater will be connected to the East Breakwater at the first angle point of the East Breakwater, as entering the harbor, from the lake. All elevations referenced are referred to Low Water Datum (LWD), IGLD 1985.

The center line of the submerged breakwater approximately follows the same azimuth as the first segment of the East Breakwater, in a south easterly direction, for approximately 1000', then slightly bends to the east for another two segments, for approximately 500'.

The first 1000' (Area "A") has a crest design height of -2.0' with a crest width of 9', and a footprint of approximately 150', with the next 100' transitioning to the dimensions in the next item.

The final 400 (Area "B") has a crest height of -5.0', with a crest width of 9', and a footprint of approximately 50'.

The coordinates, in decimal degrees, are as follows:

1. 41.918447801N 80.790362308W
2. 41.916367139N 80.788014301W
3. 41.916189406N 80.787730327W
4. 41.916026216N 80.787424318W
5. 41.915640784N 80.786454826W
6. 41.916242815N 80.783904852W

All mariners are requested to transit the area with caution.

LNM: 17/23

LAKE ERIE – Fairport Harbor – Chart 14829

Mariners are advised that Fairport Crew Club will hold a regatta on Saturday, September 23rds from 8:00 am to 5:00 pm. The event will start at the Kreag Rd. Park and will proceed east to Perinton Park. Approximately 100 paddlers will participate. Law enforcement and safety boats will be present to monitor the event. Race officials will monitor Marine Channel 13.

Boaters should reduce speed, stop all forward motion and proceed at a "No Wake" speed when approaching the event participants. Boaters are requested to check in with the safety launches at the far ends of the course for any special instructions. Ongoing race events will be broadcast on FRS channel 15 (462.55 MHz) and Amateur Radio frequency 146.55 MHz.

Details about the event can be found at https://www.regattacentral.com/regatta/?job_id=8533

LNM: 37/23

LAKE ERIE – Fairport Harbor – Chart 14829

The Army Corp of Engineers will be deploying new research buoys in the vicinity of Fairport Harbor in positions.

- A 41-710366N 81-383600W
- B 41-760039N 81-280720W
- C 41-764492N 81-247534W
- D 41-772914N 81-239151W
- E 41-780165N 81-242502W
- F 41-770848N 81-227184W
- G 41-775474N 81-212654W
- H 41-780889N 81-198304W
- I 41-800360N 81-154247W

All mariners are requested to transit the area with caution.

LNM: 17/23

LAKE ERIE – Cuyahoga River – Chart 14829

The Coast Guard has received a report of a fixed 5' wide section of steel bulkhead protruding into the Cuyahoga River in approximate position 41 29' 34"N, 081 41' 31"W. All mariners are requested to transit the area with caution.

LNM: 19/23

LAKE ERIE – Vermilion – Chart 14839

From 7 August 2023 to 4 Dec 2023 Mark Excavating and Trucking Inc will be conducting reconstruction of the West Pier in Vermilion OH. Hours of operation will be from sunrise to sunset Monday thru Friday. No vessels will be used and work will be performed adjacent to the existing west pier from the west side of the pier with excavators. All mariners are requested to transit the area with caution.

LNM: 28/23

LAKE ERIE – SANDUSKY HARBOR – CHART 14845

From 6 Sep 2023 to 10 Oct 2023 the King Company will be conducting hydraulic dredging in the Sandusky Harbor. Hours of operation are 24 hours a day 7 days a week. Dredge Buxton II can be contacted on VHF channels 16, 18 and 73. Dredging Sandusky Harbor From STA 220+00 to 135+00 (Upper Straight). Submerged pipe laying on the lake floor marked by orange round buoys every 500 feet. The (2) white buoys by the dredge indicate winch anchor locations. The material will be pumped hydraulically into the confined disposal facility off Cedar Point Dr. Main contact will be the Superintendent Joseph Martin. Cell# listed below. Our pipe pontoon will be floating in the Federal Channel limits during rough seas. It is bright

LAKE ERIE – SANDUSKY HARBOR – CHART 14845

yellow, 25'x8'x6' and has (2) flashing lights on each end that come on at night. For vessels requiring a lot of draft that will be crossing the lower straight. Please look for the red & green 49" buoys with red or green reflective tape on top for the safe area to cross the pipeline. The pipeline will subtract 18" of depth that your vessel's depth sounder will read. If going by the dredge, look out for the passing signal lights. Green = Passing side / Red = No Passing.

LNM: 35/23

LAKE ERIE – Monroe Harbor – CHART 14845

From 29 Aug 2023 to 15 Sep 2023 the King Company will be conducting hydraulic dredging in the Monroe Harbor. Hours of operation are 24 hours a day 7 days a week. Dredge Buxton II can be contacted on VHF channels 16, 18 and 73. Dredging the harbor in Monroe MI. Submerged pipe laying on the lake floor marked by orange round buoys every 500 feet. The disposal pipe is up to 18,000' long and will be pumped into a government owned containment area (CDF). The 18" HDPE pipe will come onto shore on the south end of Sterling State Park to make it's connection to the underground pipe to the CDF. Main contact will be the Superintendent Joseph Martin. Cell# listed below. Our pipe connection pontoon will be floating in the Federal channel during rough seas. It is bright yellow, 25'x8'x6' and has flashers on each end that come on at night.

LNM: 35/23

LAKE ERIE – Pentwater MI – CHART 14845

From 23 Aug 2023 to 22 Sep 2023 the King Company will be conducting hydraulic dredging in the Pentwater Harbor, MI. Hours of operation are 24 hours a day 7 days a week. Dredge Buxton II can be contacted on VHF channels 16, 18 and 73. Dredging Pentwater Outer channel. Submerged pipe laying on the lake floor marked by orange round buoys every 500 feet. (2) white buoys will be seen North and South of the dredge. The white buoys indicate winch anchor locations. Disposal area starts North of the pier 800' and runs for an additional 3,000'. Main contact will be the Superintendent Robert Lister. Cell# listed below. During rough seas our pipe pontoon will be floating outside of the channel. It is bright yellow, 25'x8'x6' and has (2) flashing lights on each end that come on at night. From 23 Aug 2023 to 22 Sep 2023 the King Company will be conducting hydraulic dredging in the Pentwater Harbor, MI. Hours of operation are 24 hours a day 7 days a week. Dredge Buxton II can be contacted on VHF channels 16, 18 and 73. Dredging Pentwater Outer channel. Submerged pipe laying on the lake floor marked by orange round buoys every 500 feet. (2) white buoys will be seen North and South of the dredge. The white buoys indicate winch anchor locations. Disposal area starts North of the pier 800' and runs for an additional 3,000'. Main contact will be the Superintendent Robert Lister. Cell# listed below. During rough seas our pipe pontoon will be floating outside of the channel. It is bright yellow, 25'x8'x6' and has (2) flashing lights on each end that come on at night.

LNM: 35/23

DETROIT RIVER– Detroit – Chart 14854

From 1 April 2023 to 1 November 2023 J.F. Brennan Co Inc will be installing turbidity curtain enclosures and material placement/capping in the Detroit River. Approximate upstream location of 42° 19' 16.76" N, 083° 03' 29.93" W. Approximate downstream location of 42° 19' 10.28" N, 083° 03' 54.59" W up to 225 feet off the shoreline. Hours of operation are from 0600-1800 7 days a week. M/V Shawondasse can be contacted on VHF channel 13. Work area inclosed with turbidity curtain anchored with 4" steel posts every 25 feet. All Marine work will be within this enclosure after mobilization of equipment. All mariners are requested to transit the area with caution.

LNM: 11/23

LAKE HURON – Grand Island – Chart 14860

On June 8, 2023 a wave monitoring buoy has been deployed 25 nautical miles north of Grand Island. in position 46° 58' 21.720" N, 86° 34' 5.520" W. Depth 160 meters.

The duration is as follows: Station instrumented seasonally May to October This buoy is to be maintained for USACE as part of the Coastal Data Information Program (CDIP). The wave buoy is a 3 foot diameter sphere with an attached telemetry whip antenna and a night time yellow color warning flashing light. The light timing sequence is a series of 5 flashes at 1-second intervals with a period of 20 seconds between each series. The buoy is painted yellow and marked "Wave Buoy" with the phone number 858- 534-3032.

LNM: 24/23

LAKE HURON – Lexington Harbor – Chart 14860

From 20 Aug 2023 to 30 Aug 2023 The King Company will be conducting hydraulic dredging. Hours of operation are 24 hours a day 7 days a week. Dredge Buxton II can be contacted on VHF channels 16, 18 and 73. Submerged pipe laying on the lake floor marked by orange round buoys every 500 feet. The (2) white buoys by the dredge indicate winch anchor locations. Disposal area starts south of the breakwater 225' and runs for an additional 500'. Main contact will be the Superintendent Joseph Martin. Cell# listed below. During rough seas our pipe pontoon will be floating outside of the channel. It is bright yellow, 25'x8'x6' and has (2) flashing lights on each end that come on at night. All mariners are requested to transit the area with caution.

LNM: 31/23

ST MARYS RIVER- Saint Mary's SOO Locks – Chart 14887

Kokosing-Alberici LLC will commence construction on the New Soo Lock Upstream Approach Walls April of 2021. Construction activities will be generally limited to the upstream north channel approach to the decommissioned Sabin and Davis Locks. Delivery by barge and boat of materials, equipment and crew will cross the upstream approach to the Soo Locks navigation channel throughout construction. Operations will commence from 25 Mar 21 to 15 Oct 23 Monday through Saturday 24 hours a day.

LNM: 09/21

ST MARYS RIVER – Sault Ste. Marie – Chart 14883

From 24 April 2023 to 30 September 2023 Roen Salvage Company will be conducting steel sheet pile construction at the Carbide Dock. Hours of operation are 0500-1900 7 days a week. Tug Stephen Asher can be contacted on VHF channels 7 and 16. All mariners are requested to transit the area with caution.

LNM: 12/23

LAKE MICHIGAN – Illinois River - Chart 14901

Shoaling has been reported between Jenkins Landing (MM 205) and Depue Lake (MM 210) on the Illinois River and at La Salle (MM 233) along the

LAKE MICHIGAN – Illinois River - Chart 14901

right descending bank. Dredging is scheduled to be after January 1, 2023. All mariners are urged to use caution when transiting the area. For further details, contact Sector Lake Michigan Command Center at (414) 747-7182.

LNM: 49/22

LAKE MICHIGAN – Waukegan – Chart 14904

From 15 May 2023 to 31 Oct 2023 Michels Construction will be performing Break Wall construction between North Point Marina and Waukegan harbor, along the shores of Illinois State Beach Park. Operations will be 24 hours a day, 7 days a week. Consisting of material barges, spud barges, and tugboats. There will be 2 anchor buoys roughly 3,000 ft offshore that will be lighted. Barges will be tied up on these anchors at all times. The First location of the anchors will be as follows: Anchor 1 - 42.25'49.14"N 87.47'35.73"W Anchor 2 - 42.25'22.01"N 87.47'35.49"W. These will be on locations from 5.15.23 to 12.1.23. Lighted Danger buoys will be placed along the work area where construction is taking place. Tug Ruth Lucille, Leona B, and Kimberly will be available on VHF channel 16.

LNM: 24/23

LAKE MICHIGAN – New Buffalo Harbor - Chart 14905

Shoaling has been reported near the middle of the channel immediately inside the break wall in New Buffalo Harbor, MI. The actual water depth is currently significantly below the charted depth. Mariners are urged to use caution when transiting the area. For further details, contact Sector Lake Michigan at (414) 747-7182 or VHF channel 16.

LNM: 15/22

LAKE MICHIGAN – Port Sheldon – Chart 14932

Shoaling has been reported near Pigeon Lake at the Port Sheldon entrance. The actual water depth is currently significantly below the charted depth. Mariners are urged to use caution when transiting the area. For further details, contact Sector Lake Michigan at (414) 747-7182 or VHF channel 16.

LNM: 15/23

LAKE MICHIGAN – Muskegon Channel – Chart 14906

The Coast Guard has received reports that the depths at the entrance to Muskegon Lake are less than the charted depths. All mariners are requested to transit the area with caution.

LNM: 17/23

LAKE MICHIGAN – Whihala Beach – Chart 14927

Whoazone has established a waterborne obstacle course at the Whihala Beach that will be in operation from 11 June 2023 to 26 August 2023. It is requested that all traffic remain outside the designated area and transit the area with caution. Contact Sector Lake Michigan at (414) 747-7182 or Whoazone general manager at (219)234-2615.

LNM: 17/23

LAKE MICHIGAN – Sheboygan River – Chart 14922

Shoaling has been reported in entrance of the Sheboygan River in the vicinity of 43-44.928N, 087-42.170W AND 43-44.936N, 087-42.110W. The actual water depth is currently significantly below the charted depth. Mariners are urged to use caution when transiting the area. For further details, contact Sector Lake Michigan at (414) 747-7182 or VHF channel 16.

LNM: 24/22

LAKE MICHIGAN – Sheboygan – Chart 14924

From 12 Aug 2023 to 31 Jan 2023 the Kokosing Industrial Inc will be conducting pipeline installation, dredging and diving operations at the Sheboygan Water Utility in Sheboygan, WI. Hours of operation from 0700 to 1900 7 days a week.. Tug Nancy Anne and Tug WM Boyd can be contacted on VHF channels 13 and 16. All mariners are requested to transit the area with caution

LNM: 33/23

LAKE MICHIGAN – Sheboygan - Chart 14903

From 5 May 2023 to 1 December 2023 Kokosing Industrial Inc will be conducting pipeline installation and dredging in Sheboygan WI. Hours of operations are from 0700 to 1900 with a possibility of 24 hour operations 7 days a week. Tug Nancy Anne can be contacted on VHF channels 13 and 16. Kokosing IV barge will be working on spuds with accompanying Tug Nancy Anne. Operations will be approximately 1.25 miles north of Sheboygan river entrance. Diving operations are present, nearby vessels maintain 500 foot CPA, minimum. Pleasure craft and passing vessels should remain a safe distance from the work at all times. Additional barges will be moored on anchor buoys inside the Sheboygan river breakwalls. All mariners are requested to transit the area with caution.

LNM: 18/23

LAKE MICHIGAN – Rawley Point – Chart 14902

On June 1, 2023 a wave monitoring buoy has been deployed 22 nautical miles ESE off Rawley Pt. in position 44° 03' 18.000" N, 87° 03' 0.000" W. Depth 145 meters.

The duration is as follows: Station instrumented seasonally May to October

This buoy is to be maintained for USACE as part of the Coastal Data Information Program (CDIP). The wave buoy is a 3 foot diameter sphere with an attached telemetry whip antenna and a night time yellow color warning flashing light. The light timing sequence is a series of 5 flashes at 1-second intervals with a period of 20 seconds between each series. The buoy is painted yellow and marked "Wave Buoy" with the phone number 858- 534-3032.

LNM: 23/23

WESTERN LAKE MICHIGAN

From 15 July 2023 to 15 October 2023 Ocean Surveys Inc will be conducting hydrographic survey for nautical chart updates. Hours of surveying will be 24 hours a day 7 days a week. M/V Northstar Challenger, R/V South Cove and R/V North Cove can be contacted on VHF channels 13 and 16. All mariners are requested to transit the area with caution.

WESTERN LAKE MICHIGAN

LNM: 28/23

LAKE MICHIGAN - Milwaukee - Chart 14924

J.F. Brennan company will be conducting construction operations on the south end of the confluence of the Milwaukee and Menomonee rivers. This work will take place daily from 7:00 am to 7:00 pm from March 27 to August 31, 2023. A turbidity barrier, small craft, and barges will be used throughout the project. this area will remain open to vessel traffic. please transit the area with caution. the project superintendent can be contacted at 920-205-7149 with any questions. All mariners are requested to transit the area with caution.

LNM: 13/23

LAKE MICHIGAN – Sheboygan – Chart 14924

From 6 July 2023 to 31 Jan 2024 Kokosing Industrial will be conducting pipeline installation dredging and diving. Hours of operation are 0700 to 1900 normally 7 days a week with a possibility of 24 hours when needed. Tug Nancy Anne and Tug WM Boyd can be contacted on VHF channels 13 and 16. Mooring buoys will be located 1500 ft due north of the Sheboygan Water Utility. All mariners are requested to transit the area with caution.

LNM: 28/23

LAKE MICHIGAN – Green Bay – Chart 14902

From 07 Sep 2023 to 31 Dec 2023 Roen Salvage Company will be conducting mooring dolphin installation and grudging at the Holcim Green Bay Terminal. Hours of operation are 24 hours a day 7 days a week. Tug David R Schanock can be contacted on VHF channels 7 and 16. All mariners are requested to transit the area with caution.

LNM: 30/23

LAKE MICHIGAN – Milwaukee Harbor – Chart 14924

The Coast Guard has commissioned three temporary red buoys in the Milwaukee River on the south side of the Broadway Street Bridge (MM 0.79) towards the decommissioned railroad swing bridge for dredging operations. The center buoy is lighted displaying a red quick flash. All mariners are requested to transit the area with caution. For further details, contact Sector Lake Michigan at (414) 747-7182 or VHF channel 16.

LNM: 25/23

LAKE MICHIGAN – Milwaukee - Chart 14924

From 15 August 2023 to 30 Sep 2023 Great Lakes Dock and Materials LLC will be conducting breakwater repair of south shore breakwater at the North section in Milwaukee. Hours of operation are 24 hours a day 7 days a week. Barge Justin Avery, Tug Defiance and Tug George F. Biley can be contacted on VHF channels 16 and 18. All mariners are requested to transit the area with caution.

LNM: 28/23

LAKE MICHIGAN – St. Joseph – Chart 14930

From 1 July 2023 to 15 Sep 2023 Great Lakes Dock and Materials will be performing maintenance dredging in the inner harbor of St. Joseph. Hours of operations are 24 hours a day 7 days a week. Dredge Justin Avery, Tug George F. Bailey and Tug Defiance can be contacted on VHF channels 16 and 18. All mariners are requested to transit the area with caution.

LNM: 12/23

LAKE MICHIGAN –St. Joseph River – Chart 14930

Shoaling has been reported near the entrance channel of the St. Joseph River approximately 500 ft west of the North Pierhead Light (LLNR 19515). The actual water depth may be several feet less than the charted depth. Mariners are urged to use caution when transiting the area. For further details, contact Sector Lake Michigan at (414)747-7182 or VHF channel 16.

LNM: 43/22

LAKE MICHIGAN – Ludington – Chart 14901

From 01 March 2023 to 01 October 2023 Under Water Construction will be conducting dive operations at the Ludington pump storage power plant. All mariners are requested to transit the area with caution. Contact Under Water Construction at (269)921-2390.

LNM: 17/23

LAKE MICHIGAN – Ludington – Chart 14901

From 19 July 2023 to 25 Sep 2023 Viking Marine Construction will be conducting hydraulic dredging in the Ludington Harbor. Hours of operation are 24 hours a day 7 days a week. Dredge AJ can be contacted on VHF channel 78. All mariners are requested to transit the area with caution.

LNM: 29/23

LAKE MICHIGAN – Chicago – Chart 14928

From 16 April 2023 to 01 September 2023 Roen Salvage Company will be conducting breakwater repair in Chicago Harbor. Hours of operation are 24 hours a day 7 days a week. Tug David Schanock can be contacted on VHF channels 7 and 16. All mariners are requested to transit the area with caution.

LNM: 12/23

LAKE SUPERIOR – Little Lake Harbor – Chart 14961

Shoaling has been reported in the entrance of Little Lake Harbor exceeding 5 feet above low water datum near the channel edges. Some cross sections of the channel are shoaled nearly the full width to 2 feet or more above low datum. The harbor should not be considered as a functional harbor or refuge. All mariners are requested to transit the area with caution.

LNM: 47/22

LAKE SUPERIOR – Duluth Harbor - Chart 14975

From 23 Aug 2023 to 5 Nov 2023 J.F. Brennan Company will be dredging in the Duluth-Superior Harbor (areas 3, 6, 8, 14 and 19). Hours of operation are 24 hours a day Monday through Saturday. M/V Glenn Green can be contacted on VHF channels 13 and 16. All mariners are requested to transit the area with caution.

LAKE SUPERIOR – MN – Spirit Lake – Chart 14975

From July 2022 to November 2023 J.F. Brennan Company, Inc will be conducting Hydraulic Dredging operations are to be conducted in this area, with a sunken dredge pipeline running north from near the Spirit Lake Marina to Hallett Dock #7 along the western shoreline of the St. Louis River. The pipeline will be demarcated with buoys along the entirety of the pipe, approximately every 500 FT. Floating booster pump platforms will be between Hallett Dock #7 and Spirit Lake Marina, with construction signage upstream and downstream of the work zone. The work zone will mainly be between Munger Landing and the island just to the east of the landing. Within the work zone, there will be several pieces of equipment along with floating dredge pipelines.

LNM: 26/22

SECTION VIII - LIGHT LIST CORRECTIONS

An Asterisk *, indicates the column in which a correction has been made to new information

(1) No.	(2) Name and Location	(3) Position	(4) Characteristic	(5) Height	(6) Range	(7) Structure	(8) Remarks	
2103	<i>Kokosing North Mooring</i>						Remove from list.	37/23
							*	
2103.1	<i>Kokosing South Mooring</i>						Remove from list.	37/23
							*	
2525	LEWISTON SKI JUMP LIGHT						Remove from list.	37/23
							*	
4240	CUYAHOGA RIVER ABUTMENT LIGHT						Remove from list.	37/23
							*	
5570	CAMP PATMOS LIGHT	41-37-01.000N 082-40-58.000W	Fl W 2s	11 3		Small lighthouse structure.	Maintained from May 30 to Sep. 1. Private Aid.	37/23
							*	
5585	KELLEYS ISLAND STATE PARK BREAKWATER LIGHT	41-37-00.000N 082-42-11.000W	Fl R 4s	20 6		TR on gray tower.	Private Aid.	37/23
							*	

ENCLOSURES**(1) LNM Section I - Special Notices**

1-Great Lakes Water Levels

LNM: 06/22

(2) LNM Section II - Discrepancies

N/A

LNM: 19/19

(3) LNM Section III - Temporary Changes and Temporary Changes Corrected

N/A

LNM: 19/19

(4) LNM Section IV - Chart Corrections

N/A

LNM: 19/19

(5) LNM Section V - Advance Notices

N/A

LNM: 19/19

(6) LNM Section VI - Proposed Changes

N/A

LNM: 19/19

(7) LNM Section VII - General

1-Marine Events

2-Current Ninth District Bridge Maintenance/Activities

3-Waterway Analysis and Management System Survey

LNM: 19/19

(8) LNM Section VIII - Light List Corrections

N/A

LNM: 19/19

J. P. Hickey, RADM
U. S. Coast Guard
Commander, Ninth Coast Guard District

GREAT LAKES, CONNECTING CHANNELS AND ST. LAWRENCE RIVER WATER LEVELS AND DEPTHS

Expected water levels on the Great Lakes, Connecting Channels and the St. Lawrence River are given in inches above (+,0) or below (-,0) Low-Water Datum (LWD,0). LWD is a plane of reference on a navigation chart, also known as Chart Datum. LWD elevations shown below are given in International Great Lakes Datum, 1985 (IGLD 1985,0).

	Forecast Point	Low Water Datum	Expected Levels (inches above or below Low Water Datum,0)				
			Current	Week 1	Week 2	Week 3	Week 4
		IGLD 1985	8-Sep	15-Sep	22-Sep	29-Sep	6-Oct
GREAT LAKES							
Lake Ontario		243.3	32	30	29	28	27
Lake Erie		569.2	43	42	40	39	37
Lake St. Clair		572.3	39	38	38	37	36
Lake Michigan-Huron		577.5	26	25	25	24	23
Lake Superior		601.1	18	18	17	17	16
ST. LAWRENCE RIVER							
Above Long Sault Dam	0	237.9	31	31	29	29	28
Above Iroquois Dam	1	240.3	25	24	22	21	20
Ogdensburg	2	242.4	32	30	28	28	26
Alexandria Bay	2.1	243.0	30	29	28	27	26
Head of river at Cape Vincent	3	243.3	32	30	29	28	27
DETROIT RIVER							
Lake Erie at Pelee Passage	4	569.2	43	42	40	39	37
Mouth of River at Gibraltar	5	569.5	43	42	40	39	37
Fort Wayne	5.1	571.1	43	42	42	41	40
Head of River above Belle Isle	6	572.0	40	39	39	38	37
ST. CLAIR RIVER							
Mouth of River at St. Clair Flats	7	572.3	39	38	38	37	36
Algonac	8	572.8	41	40	40	39	38
St. Clair	9	574.4	33	33	32	32	31
Blue Water Bridge	10	576.2	33	32	31	31	30
Head of River at Fort Gratiot	11	577.2	28	27	27	26	26
Lake Huron Approach Channel	12	577.5	26	25	25	24	23
ST. MARYS RIVER							
Mouth of River at Detour	13	577.5	26	25	25	24	23
West and Middle Neebish	14	577.8	25	24	24	23	22
Head of Little Rapids	15	578.4	27	26	26	25	24
U.S. Slip	16	578.7	27	26	26	25	24
Above Locks	17	600.4	20	19	19	19	18
Head of River at Point Iroquois	18	601.1	18	18	17	17	16

UNDERSTANDING THE FORECAST

Available water depth is determined for a location by adding (if+) or subtracting (if-) the amount from the above table to the appropriate channel depth shown in the profile Connecting Channel Depths Graphic or to water depths shown on National Oceanic and Atmospheric Administration (NOAA) navigational charts.

CAUTION

Depths so determined are representative of a still water surface elevation, disturbed by neither wind nor other causes. Depths, however, may be reduced or increased as much as several feet for short periods due to these disturbances, or when sections of channels develop shoals. Vessel masters should refer to "Local Notice to Mariners" for extent of shoaling and scattered bedrock projections in all channels. Ice conditions can have a dramatic impact on actual channel depth and can lead to large short-term water level fluctuations. Ice information can be found at the National Ice Center's website.

FOR FURTHER INFORMATION CONTACT:	FOR MORE INFORMATION VISIT:	WATER LEVEL INFORMATION SUPPLIED BY:
Detroit District Corps of Engineers	Detroit District Great Lakes Homepage	NOAA, National Ocean Service
477 Michigan Avenue	International Joint Commission	SSMC4, STATION 7523
Detroit MI, 48226	Great Lakes Information Network	1305 East-West Hwy
1-888-694-8318 ex. 1	NOAA Tides and Currents	Silver Spring, MD 20910-3233
email: hghpm@usace.army.mil	U.S. Coast Guard - District 9	(301) 713-2902

GREAT LAKES-MARINE EVENT-SAFETY ZONES-SECURITY ZONES

Events listed below are those events that may have accompanying special local regulations.

<u>Location</u>	<u>Name of Event</u>	<u>Date / Time</u>		<u>POC</u>	<u>Tel #</u>
<u>LAKE ONTARIO</u>					
Oswego, NY	Search for USGS Autonomous Underwater Vehicle	11Sep23-15Sep23	0000-0000	Petr Esselman	734-546-5698
Pheonix, NY	Village of Pheonix Locktoberfest Fireworks	30-Sep-23	2030-2200	Joy Bartucci	443-630-5833
Rochester, NY	Genesee Yacht Club Saturday Morning Racing	05/27/2023 - 10/07/2023	0900-1400	Kenny Fourspring	585-902-2183
Rochester, NY	Genesee Yacht Club Tuesday Night Racing	05/23/2023 - 09/19/2023	1800-2100	Kenny Fourspring	585-902-2183
Rochester, NY	RYC High School Sailing	9/5/2023 to 11/10/2023	0900/1700	Peter Mendick	585-342-5511
Liverpool, NY	Hobie Wave North American Championship	9/12/2023 to 9/16/2023	0600/1900	David Witmer	315-380-4230
Rochester, NY	RYC Match Race	9/21/2023 to 9/24/2023	0900/1700	Peter Mendick	585-342-5511
Rochester, NY	RYC J24 Corinthian National Championship	10/4/2023 to 10/8/2023	0900/1700	Peter Mendick	585-342-5511
Rochester, NY	Head of the Genessee Regatta	10/7/2023 to 10/8/2023	0600/1800	Liana Spencer	585-967-8683
<u>LAKE ERIE</u>					
Cleveland, OH	Head of the Cuyahoga Regatta	16 Sep 2023	0745-1715	Jen Forbes	216-308-4183
<u>DETROIT RIVER</u>					
<u>LAKE ST. CLAIR/St. Clair River</u>					
N/A					
<u>LAKE HURON</u>					
N/A					
<u>LAKE MICHIGAN & Green Bay</u>					
N/A					
<u>LAKE SUPERIOR</u>					
Duluth	Sailboat racing	19 Jul 2023-6 Sep 2023	1730-2030	Art Johnston	7153606629

CURRENT NINTH DISTRICT BRIDGE MAINTENANCE/ACTIVITIES

Local Notice to Mariner Week [37/23]

Note: Short-term bridge maintenance closures and various activities may only be published [through Broadcast Notice to Mariners](#) and may not be included [in the Local Notice to Mariners](#). Mariners should both *listen* to Broadcast Notice to Mariners (BNM) and *read* Coast Guard Local Notice to Mariners (LNM) available by clicking [HERE](#) for the most recent and complete marine information.

There is a Microsoft Teams meeting with the US Coast Guard, Mariners, and Bridge Owners being held on the last Wednesday of every month, and **YOU** are welcome to join in.

Join on your computer or mobile app

[Click here to join the meeting](#)

Or call in (audio only)

[+1 410-874-6742,,515305017#](#)

Phone Conference ID: 515 305 017#

PUBLIC NOTICES FOR 9th District BRIDGES: <https://www.navcen.uscg.gov/D9BN>

Please contact us with any questions or concerns:

Blair Stanifer	(216) 902-6086 or William.B.Stanifer@uscg.mil
Lee Soule	(517) 607-4154 or Lee.D.Soule@uscg.mil
Michael Walker	(216) 902-6087 or Michael.O.Walker2@uscg.mil
FAX:	(216) 902-6088

Commander (dpb)
Ninth Coast Guard District
1240 E. 9th St. Room 2047B
Cleveland, Ohio 44199-2001

NOTES:

FEDERAL REGULATIONS DOCKET STATUS

USCG-2023-0113 - FR - Cheboygan River – to Legal Review and Command Approval
USCG-2023-0183 - FR – River Rouge – to Legal Review and Command Approval
USCG-2023-0184 - FR – Maumee River – to Legal Review and Command Approval
USCG-2023-0185 - FR – Sandusky Bay – to Legal Review and Command Approval
USCG-2023-0186 - FR – Portage River – to Legal Review and Command Approval
USCG-2023-0187 - FR – Black River – to Legal Review and Command Approval
USCG-2023-0188 - FR – Cuyahoga River – to Legal Review and Command Approval
USCG-2023-0189 - FR – Ashtabula River – to Legal Review and Command Approval

GREAT LAKES REGION

GREAT LAKES, Drawbridge Delay Reports, Chart 14500

Mariners are requested to submit Reports of Drawbridge Signal/Operations Delays directly to the Ninth Coast Guard District Bridge Branch using the attached form. Reports of signal or drawbridge delays have been processed by Coast Guard Marine Safety Offices in recent years but will now be processed and traced by the Bridge Branch. Reports may be sent by mail, e-mail, or by fax. The mailing address and fax number are on the form. The updated form is printed and also attached on the last page of this list.

[08/05] [34/12]

ST. LAWRENCE SEAWAY

NY STATE CANAL SYSTEM

(Everything West of St. Johnsville, NY)

NY - NEW YORK STATE CANAL SYSTEM – Erie Canal – Chart 14786

From April 1, 2023, through **July 1, 2024**, snoopers will be working under the E-182 Main Street Bridge, mile 278.93, over the Erie Canal to rehabilitate the bridge in the fully open position. The permitted navigation lights will be removed and temporarily replaced with steady burning yellow lights on the bottom and four-corners of the drawspan. Spotters will warn of approaching vessels and move the man lift to allow vessels to pass.

[12/22]

NY - NEW YORK STATE CANAL SYSTEM – Erie Canal – Chart 14786

From May 15 through **September 15, 2023**, between the hours of 0730 and 1700, Monday through Friday a 35-foot Harcon Inspection Vessel will be working under the O4 Culvert Street at mile 2.19 over the Oswego Canal, the bridges between the E-60 Higginsville Rd Bridge, mile 126.04, and the E-92, Armitage Road Bridge, mile 205.59, over the Erie Canal, and the S1 US 20 Bridge at mile 2.97 and the S7 Bridge Street Bridge, mile 8.90 over the Cayuga Seneca Canal. The Harcon will monitor VHF-FM Marine Channel 16 and will move if provided a 15-min advance notice of arrival.

[17/23]

NY - NEW YORK STATE CANAL SYSTEM – Erie Canal – Chart 14786

From July 10 through **October 15, 2023**, between the hours of 0600 and 1800 Monday through Friday a 30-foot Harcon bridge inspection vessel will be inspecting all bridges from E96, Lyons-Mar Road Bridge at Mile 217.76 to the E212, Marshall Road Bridge at Mile 305.63. The Harcon will monitor VHF- FM marine channel 16 and will move with a 15-minute advance notice.

[27/23]

*******REVISED*******

NY - NEW YORK STATE CANAL SYSTEM - Erie Canal – Chart 14786

From August 4, 2023, through **October 31, 2023**, between the hours of 0900 and 1500, workers will be using

snooper trucks under the E32 State Route 167 Bridge at Mile 79.74 over the Erie Canal to perform scheduled maintenance. Spotters will warn of approaching vessels and move the man lift to allow vessels to pass.
[31/23] [34/23]

NY - NEW YORK STATE CANAL SYSTEM - Erie Canal – Chart 14786

From September 12, through **September 28, 2023**, between the hours of 0700 and 1500, Monday through Friday, a 30-foot by 48-foot barge will be inspecting all bridges from E220 Slayton Settlement Road Bridge at mile 312.54 to E241 Campbell Boulevard Bridge at mile 329.96 over the Erie Canal. The barge will monitor VHF-FM Marine Channel 16 and will move with a 30-minute advance notice.
[36/23]

LAKE ONTARIO

NY - LAKE ONTARIO – Rochester Harbor – Chart 14815

On **September 24, 2023**, between the hours of 0745 and 0930, the O'Rourke Bridge at Mile 1.25 over the Genesee River will be secured to masthead navigation in conjunction with the Rochester Marathon. Vessels able to pass under the bridge without an opening may do so at any time.
[08/23]

NY - LAKE ONTARIO – Rochester Harbor – Chart 14811

From September 11 through **October 1, 2023**, daily, works will be removing the PL49 Black River Pipeline Bridge at approximate Mile 8 over the Black River. Spotters will warn of approaching vessels and suspend overhead work until the river is clear.
[34/23]

LAKE ERIE - MAHONING RIVER - NIAGARA RIVER- ALLEGHENY RIVER

*****REVISED*****

OH - LAKE ERIE – Toledo Harbor – Chart 14847

From July 1, 2019, through **December 1, 2023**, a temporary causeway will be constructed between mile 6.73 and 6.76 for the construction of the new and demolition of the old Michael V. DiSalle Memorial (I-75) Bridge at Mile 6.73 over the Maumee River. The causeway will be marked with flashing yellow lights spaced approximately 10 meters apart with red over red lights marking the ends of the causeway. A 100-foot-wide channel will be provided for vessels to pass through the construction area. Mariners are encouraged to pass through the area at a slow speed.
[26/19] [21/20] [14/23] [37/23]

OH - LAKE ERIE – Toledo Harbor – Chart 14847

From September 18 through **September 22, 2023**, between the hours of 0800 and 1700 daily, inspectors will be using snooper vehicles at the Craig Memorial Bridge at Mile 3.30 over the Maumee River. The bridge will require a 30-minute advance notice except on Tuesday and Wednesday when a 3-hour advance notice will be required. Mariners should provide the advance notice directly to the drawtender on VHF-FM Marine Channel 16 or by calling 419-373-4306.
[24/23]

NY - LAKE ERIE – Buffalo Harbor – Chart 14833

The Coast Guard has received a report that scaffolding that hangs approximately 10-feet below low steel will be installed on the Canadian side of the Canadian National International Bridge at Mile 1.5 over the Niagara River from July 31, 2023, through **November 30, 2023**. The U.S. side will remain clear of any equipment.
[26/23]

NY - LAKE ERIE – Buffalo Harbor – Chart 14833

From January 1 through **March 31, 2024**, the Canadian National International Railroad Bridge at mile 3.8 over the Black Rock Canal will be secured to masted navigation for maintenance. Vessels able to pass under the bridge without an opening may do so at any time.

[30/23]

NY - LAKE ERIE – Buffalo Harbor – Chart 14833

From January 1 through **March 31, 2025**, the Canadian National International Railroad Bridge at mile 3.8 over the Black Rock Canal will be secured to masted navigation for maintenance. Vessels able to pass under the bridge without an opening may do so at any time.

[30/23]

OH - LAKE ERIE – Cleveland Harbor – Chart 14839

On **October 7, 2023**, between the hours of 0700 and 1400, the Carter Road Bridge at Mile 2.43 over the Cuyahoga River will be secured to masted navigation in conjunction with the Towpath Marathon. Vessels able to pass under the bridge without an opening may do so at any time.

[32/23]

NY - LAKE ERIE – Niagara River – Chart 14833

From August 28, 2023, through **July 26, 2026**, scaffolding that extends approximately 3-feet below low steel will be installed under the South Grand Island Bridge at Mile 3.40 and the North Grand Island Bridge at Mile 18, both over the Niagara River. A 16-foot by 32-foot materials barge and a 4-foot by 40-foot temporary dock will be used under the bridges.

[32/23]

OH - LAKE ERIE – Toledo Harbor – Chart 14846

On **September 17, 2023**, between the hours of 0930 and 1130, the Martin Luther King Jr. Memorial Bridge at Mile 4.30 over the Maumee River will be secured to masted navigation in conjunction with the Run for Pro Medica. Vessels able to pass under the bridge without an opening may do so at any time.

[34/23]

OH - LAKE ERIE – Cleveland Harbor – Chart 14839

On **September 14, 2023**, between the hours of 0700 and 1700, the Willow Avenue Bridge at Mile 1.02 over the Old River Channel of the Cuyahoga River, will require a 1-hour advance notice for openings. A snooper truck will be working under the bridge and spotters will warn of approaching vessels and move the manlift to vessels may pass.

[34/23]

OH - LAKE ERIE – Cleveland Harbor – Chart 14839

On **August 31, 2023**, between the hours of 0700 and 1700, the Carter Road Bridge at Mile 2.43 over the Cuyahoga River will require a 30-minute advance notice for openings because a snooper truck will be inspecting the bridge. Spotters will warn of approaching vessels and move the man lift for vessels that can pass under the bridge without an opening.

[34/23]

OH - LAKE ERIE – Cleveland Harbor – Chart 14839

On **September 19, 2023**, between the hours of 0800 and 1600 the North Coast Pedestrian Bridge at the entrance to Voinovich Park will require a 30-minute advance notice for openings. Mariners should provide advance notice directly to the drawtender on VHF-FM Marine Channel 16.

[36/23]

OH - LAKE ERIE – Otter Creek – Chart 14846

The Coast Guard has received a report that back fill extending approximately 14-feet has been added to the Norfolk Southern Railroad Bridge at mile 1.8 over Otter Creek. Steady burning red lights will warn mariners of the temporary reduction in horizontal clearance. The temporary reduction may last until **March 31, 2024**,

before permanent repairs can be made.

[36/23]

NY - LAKE ERIE – Buffalo Harbor – Chart 14833

From October 16 through **October 19, 2023**, between the hours of 0700 and 1500, daily, a 30-foot by 48-foot barge will be working under the West Ferry Street Bridge at Mile 2.6 and the Canadian National International Railroad Bridge at mile 3.8 over the Black Rock Canal. The bridges and the barge require a 30-minute advance notice of arrival from vessels to accommodate vessel traffic. Mariners should provide advance notice directly to the drawtender or barge on VHF-FM Marine Channel 16.

[36/23]

NY - LAKE ERIE – Buffalo Harbor – Chart 14833

On **October 11, 2023**, between the hours of 0700 and 1500, Monday through Friday, the Michigan Street Bridge at Mile 1.34 over the Buffalo River will require a 30-minute advance notice for openings while a 30-foot by 48-foot barge inspects the bridge. Advance notice should be provided directly to the drawtender.

[36/23]

DETROIT RIVER - LAKE ST. CLAIR - ST. CLAIR RIVER – RIVER ROUGE

*******REVISED*******

MI - DETROIT RIVER – Main Channel – Chart 14848

From November 1, 2022, through **August 30, 2024**, contractors will be constructing the Gordie Howe International Bridge at mile 16.7 over the Detroit River. No equipment will be placed in the water. Overhead work will have temporary steady burning yellow lights to mark new construction. A moving platform with quick flashing red lights and orange or red ball fenders on the bottom four corners with a safety net that hangs approximately 15-feet below low steel will be constructing the bridge. Mariners should avoid passing directly under the platform at any time. Snooper type vehicles will be utilized on the bridge throughout construction. Spotters will warn of approaching vessels and move the man lift to allow vessels to pass. When construction is completed and all equipment removed, the final vertical clearances for the bridge will be 152-feet for the center 100-feet of the navigation channel. No less than 137-feet of vertical clearance will be available at the channel limits. Vertical clearances are based on IGLD85.

[47/20] [07/22]

*******REVISED*******

MI - DETROIT RIVER – Belle Island – Chart 14848

From March 1, 2023, through **October 31, 2023**, between the hours of 0700 and 1900, Monday through Saturday, eight barges 150-feet by 60-feet or smaller will be working under the MacArthur Bridge at Mile 24.0 over the Detroit River. The barge under the navigation span will monitor VHF-FM Channel 16 and will move to accommodate vessels if a 15-minute advance notice is provided. For additional safety the barges will be equipped with flashing yellow lights one meter apart. The green navigation light in the drawspan occupied with equipment will be extinguished.

[37/22] [20/23]

MI - St. Clair River – Pine River – Chart 148

From October 23 through **October 27, 2023**, between the hours of 0800 and 1700 daily, inspectors will be using snooper vehicles at the Craig Memorial Bridge at Mile 3.30 over the Maumee River. The bridge will require a 30-minute advance notice except on Tuesday and Wednesday when a 3-hour advance notice will be required. Mariners should provide the advance notice directly to the drawtender on VHF-FM Marine Channel 16 or by calling 810-329-9420.

[24/23]

LAKE HURON

*****REVISED*****

MI - LAKE HURON – Saginaw River – Chart 14867

From April 24 through **December 1, 2023**, the Independence Street Bridge at Mile 3.88 over the Saginaw River will require a 2-hour advance notice for openings. Two barges 80-foot by 40-foot or smaller will be working under the bridge. The barges will move with a 2-hour advance notice. Mariners should provide advance notice for the bridge or barges by calling 608-425-0171.

[15/23] [34/23]

MI - LAKE HURON – Saginaw River – Chart 14867

From December 1, 2023, through **March 31, 2024**, the Independence Street Bridge at Mile 3.88, over the Saginaw River will be secured to masthead navigation. Vessels able to pass under the bridge without an opening may do so at any time. Two barges 80-foot by 40-foot or smaller will be working under the bridge. The barges will move with a 2-hour advance notice. Mariners should provide advance notice for the bridge or barges by calling 608-425-0171.

[17/23]

MI - LAKE HURON – Saginaw River – Chart 14867

From July 31, through **September 30, 2023**, between the hours of 0700 to 1900, Monday through Saturday the Liberty Street Bridge at Mile 4.99 over the Saginaw River will require a 2-hour advance notice for openings. Vessels should provide advance notice by calling 608-425-0171. A 60-foot by 40-foot barge will be working under the bridge and will move if a 2-hour advance notice is provided by calling 608-425-0171.

[29/23]

MI - LAKE HURON – Saginaw River – Chart 14867

from September 1 through **October 3, 2023**, between the hours of 0700 and 1800, Monday through Saturday, two 40-foot by 20-foot barges and two 80-foot by 60-foot barges will be repairing rip rap around the I-75 Bridge mile 14.61 over the Saginaw River. The barges will monitor VHF-FM Marine Channel 16 and move if a 1-hour advance notice is provided.

[30/23]

MI - LAKE HURON – Saginaw River – Chart 14867

October 3 through **October 15, 2023**, between the hours of 0700 and 1800, Monday through Saturday, two 40-foot by 20-foot barges and two 80-foot by 60-foot barges will be repairing rip rap around the I-675 Bridge mile 18.38 over the Saginaw River. The barges will monitor VHF-FM Marine Channel 16 and move if a 1-hour advance notice is provided.

[30/23]

STRAITS OF MACKINAC, SAINT MARY'S RIVER AND FALLS

LAKE MICHIGAN – EAST

*****REVISED*****

MI - LAKE MICHIGAN – Charlevoix Harbor – Chart 14942

From 0700 on January 1, 2024, through 0700 on **March 31, 2024**, the US 31 Bridge Street Bridge, over the Pine River will be secured to masthead navigation. Vessels able to pass under the bridge without an opening may do so at any time.

[32/22] [33/22]

*****REVISED*****

MI - LAKE MICHIGAN – Manistee Harbor – Chart 14938

From December 1, 2023, through **April 1, 2024**, the US 31 Bridge at Mile 1.4 over the Manistee River will be

secured to masthead navigation. Vessels able to pass under the bridge without an opening may do so at any time. From June 26 through December 1, 2023, between the hours of 0700 and 1930 Monday through Saturday, two 30-foot by 40-foot barges will be working under the bridge. The barges will move to accommodate large vessels with a 30-minute advance notice provided directly to the barge by calling 269-720-5424 or 269-941-3431. From December 1 through April 1, 2024, scaffolding that hangs approximately 4-feet below low steel will be installed under the bridge.

[25/23] [26/23]

LAKE MICHIGAN – MICHIGAN CITY & INDIANA HARBOR & GARY HARBOR

IL - LAKE MICHIGAN – Indiana Harbor – Chart 14927

From September 25 through **October 11, 2023**, between the hours of 2100 and 0500, Monday through Saturday, the Elgin, Joliet, and Eastern Railroad Bridge at Mile 0.68 over the Indiana Harbor Canal will be secured to masthead navigation. Vessels able to pass under the bridge without an opening may do so at any time.

[33/23]

IL - LAKE MICHIGAN – Michigan City – Chart 14926

From December 1, 2023, through March 15, 2024, the Franklin Street Bridge at Mile 0.50 over Trail Creek will be secured to masthead navigation. Vessels able to pass under the bridge without an opening may do so at any time.

[37/23]

LAKE MICHIGAN – CALUMET RIVER & LITTLE CALUMET RIVER

IL - LAKE MICHIGAN – Calumet Harbor – Chart 14927

From September 1 through **September 30, 2023**, between the hours of 0700 and 1800, daily, inspectors will utilize sniffer trucks under the Chicago Skyway Bridge at Mile 1.50 (CORPS MILE 331.7) over the Calumet River. Spotters will warn of approaching vessels and move the man lift so vessels can pass.

[28/23]

IL - LAKE MICHIGAN – Calumet Harbor – Chart 14927

From July 20 through **September 1, 2023**, between the hours of 0600 and 1800, Monday through Friday a 30-foot by 90-foot barge will be working under the Chicago Skyway Bridge at Mile 1.50 (CORPS MILE 331.7) over the Calumet River. The barge will monitor VHF-FM marine channel 16 and will move to accommodate vessel traffic.

[29/23]

IL - LAKE MICHIGAN – Calumet Harbor – Chart 14927

From August 21 through **September 1, 2023**, between the hours of 0700 and 1530, Monday through Friday the 92nd Street Bridge at Mile 0.76 (CORPS MILE 332.4) over Calumet River will require a 2-hour advance notice for 2-leaf operations. One leaf will operate on demand. Mariners should provide advance notice directly to the drawtender.

[32/23]

IL - LAKE MICHIGAN – Calumet Harbor – Chart 14927

From August 28, through **September 15, 2023**, between the hours of 0600 and 1800, Monday through Saturday, a 30-foot by 120-foot barge will be working under the Indiana Avenue Bridge at Mile 10.80 over the Little Calumet River. The TUG MEGHAN B will monitor VHF-FM Marine Channel 16 and move the barge with a 1-hour advance notice.

[34/23]

IL - LAKE MICHIGAN – Calumet Harbor – Chart 14927

From September 7, 2023, through **May 22, 2024**, scaffolding will be installed under the Indiana Avenue Bridge at Mile 10.80 (CORPS MILE 322.3) over the Little Calumet River that hangs approximately 1-foot below low

steel.
[34/23]

IL - LAKE MICHIGAN – Calumet Harbor – Chart 14927

On September 18 and September 19, 2023, between the hours of 0900 and 1500 each day, inspectors will utilize snoopers vehicles under the I-94 Bridge at Mile 8.59 (CORPS MILE 324.6.0) over the Little Calumet River. Spotters will warn of approaching vessels and move the man lift to allow vessels to pass.
[37/23]

IL - LAKE MICHIGAN – Calumet Harbor – Chart 14927

On September 15, 2023, between the hours of 0700 and 2000, 106th Street Bridge at Mile 2.58 (CORPS MILE 330.6) over the Calumet River will require a 1-hour advance notice to open both leaves. A 20-foot by 30-foot barge will be working under the bridge also. The barge will move with a 1-hour advance notice. Mariners should provide advance notice directly to the drawtender.
[37/23]

CHICAGO RIVER – MAIN RIVER CHANNEL, NORTH BRANCH, NORTH SHORE CHANNEL, AND SOUTH BRANCH AND SOUTH FORK OF SOUTH BRANCH

IL - LAKE MICHIGAN – Chicago Harbor – Chart 14927

From June 1, through **November 1, 2023**, the Dearborn Street Bridge at Mile 1.13 (CORPS MILE 326.1) over the Main Branch of the Chicago River will have one leaf secured to masthead navigation and an 80-foot by 20-foot barge under the bridge. The barge will move if a 1-hour advance notice is provided on VHF-FM Marine Radio Channel 16.
[21/23]

IL - LAKE MICHIGAN – Chicago Harbor – Chart 14927

From August 15 through **September 22, 2023**, between the hours of 0600 and 1800, daily a 30-foot Harcon Bridge inspection vessel will be working under all bridges over the Main Branch and South Branch to include the bridges of the North Branch up to the Belmont Avenue Bridge at Mile 6.76 (CORPS MILE 330.6) over the Chicago River Branches. The Harcon will monitor VHF-FM Marine Channel 16 and will move to accommodate vessels if a 15-minute advance notice is provided.

IL - LAKE MICHIGAN – Chicago Harbor – Chart 14927

From July 25 through **September 30, 2023**, between the hours of 0700 and 1900 Monday through Friday a 125-foot x 35-foot barge will be working under the Roosevelt Road Bridge at Mile 2.94 (CORPS MILE 324.3) over the South Branch of the Chicago River. The barge will move if a 1-hour advance notice is provided to the Chicago Bridge Desk or directly to the barge on VHF-FM Marine Channel 16.
[30/23]

CALUMET SAG CHANNEL

IL - LAKE MICHIGAN – Calumet-SAG Channel – Chart 14927

From May 1, through **November 1, 2023**, scaffolding that hangs approximately 6-feet below low steel will be installed under the Sag Highway Bridge at Mile 28.76 (CORPS MILE 304.2) over the Calumet-SAG Channel.
[03/23]

IL - LAKE MICHIGAN – Calumet-SAG Channel – Chart 14927

from September 21 through September 26, 2023, between the hours of 0800 and 1500 each day inspectors will utilize snoopers trucks under the Kedzie Avenue Bridge at Mile 16.01 (CORPS MILE 317.0) over the Calumet-SAG Channel. Spotters will warn of approaching vessels and move the man lift to allow vessels to pass.
[37/23]

IL - LAKE MICHIGAN – Calumet-SAG Channel – Chart 14927

From October 15 through December 15, 2023, scaffolding will be installed under the Southwest Highway Bridge at Mile 22.25 (CORPS MILE 310.7) over the Calumet-SAG Channel that hangs approximately 2-feet below low steel.
[37/23]

CHICAGO SANITARY AND SHIP CANAL, KANKAKEE RIVER & ROCK RIVER

(Lake Michigan to Mile 36.2/291.1)

IL - LAKE MICHIGAN – Chicago Sanitary and Ship Canal – Chart 14927

On September 13 and September 14, 2023, between the hours of 0900 and 1500 each day, inspectors will utilize Snooper type vehicles under the Lemont High Rise Bridge at Mile 26.7 (CORPS MILE 300.6) over the Sanitary and Ship Canal. Spotters will warn of approaching vessels and move the man lift to allow vessels to pass.
[37/23]

LAKE MICHIGAN – WEST

WI - LAKE MICHIGAN – Racine Harbor – Chart 14925

From December 1, 2023, through **April 1, 2024**, the State Street Bridge at Mile 0.53 over the Root River will be secured to masthead navigation and scaffolding that hangs approximately 4-feet below low steel will be installed under the bridge. Vessels that can safely pass under the bridge without an opening may do so at any time.
[43/22]

*****REVISED*****

WI - LAKE MICHIGAN – Milwaukee Harbor – Chart 14924

from May 1 through **November 30, 2023**, coffer dams will be installed around the piers of the Holton Street Bridge, mile 2.84, over the Milwaukee River that extend into the channel 5-feet on each side for a total reduction in horizontal clearance of 10-feet in total. Three barges 70-feet by 50-feet or smaller will be working under the bridge, A 20-foot channel will be maintained through the project but larger vessel may call 262-366-5121 and request the barges to move with a 2-hour advance notice.
[17/23] [33/23]

WI - LAKE MICHIGAN – Milwaukee Harbor – Chart 14924

On **October 1, 2023**, between the hours of 0630 and 0900 the Wisconsin Avenue Bridge at Mile 1.46 over the Milwaukee River will be secured to masthead navigation in conjunction with the Milwaukee Marathon. Vessels able to pass under bridge without an opening.
[31/23]

LAKE MICHIGAN – Sturgeon Bay Ship Canal – Green Bay – Fox River – Wolf River

WI - LAKE MICHIGAN – Fox River – Chart 14916

On **September 30, 2023**, between the hours of 0800 and 1000, the Racine Street Bridge at Mile 37.91 over the Fox River will be closed to masthead navigation in conjunction with the 43rd Annual Grunski Runski Marathon. Vessels able to pass under the bridge without an opening may do so at any time.
[20/23]

LAKE SUPERIOR

MN - LAKE SUPERIOR – Duluth Superior Harbor – Chart 14975

From July 5 through **November 15, 2023**, between the hours of 0800 and 2000, Monday through Friday three 32-foot by 120-foot or smaller barges will be drilling bore holes near the John A. Blatnik Bridge at Mile 2.74

over the St. Louis Bay and River just outside of the navigation channel. The barges will monitor VHF-FM Marine Channel 16.

[26/23]

MI - LAKE SUPERIOR – Keweenaw Waterway – Chart 14972

On **September 16, 2023**, between the hours of 1045 and Noon, the US 41 Bridge mile 16 over the Keweenaw Waterway will be secured to masthead navigation in the intermediate position in conjunction with the Parade of Nations Event. Vessels able to pass under the bridge without an opening may do so at any time.

[35/23]

MI - LAKE SUPERIOR – Keweenaw Waterway – Chart 14972

The Coast Guard is altering the operating schedule that governs the US41 Bridge, mile 16.0, over the Keweenaw Waterway between the towns of Houghton and Hancock, Michigan. We published in the Federal Register (88 FR 59799) a Final Rule that the draw of the U.S. 41 Bridge, mile 16, shall open on signal, except that: From April 15 through December 14, between the hours of 7 a.m. and 7 p.m. Monday through Friday, less Federal Holidays, the bridge shall open on signal from five minutes before to five minutes after the hour and half hour for vessels. Documented vessels over 300-feet shall not be held at the bridge but will be passed as soon as possible. From April 15 through December 14 between midnight and 4 a.m. daily, the draw shall be placed in the intermediate position and open on signal if at least 2 hours' notice is given. From December 15 through April 14 the draw shall open on signal if at least 12 hours' notice is given. You can view the complete docket go to <https://www.regulations.gov>. Type the docket number USCG-2022-0237 in the "SEARCH" box and click "SEARCH". In the Document Type column, select "Supporting & Related Material." To view the Federal Register entry, go to: [Federal Register :: Drawbridge Operation Regulation; Keweenaw Waterway, Between Houghton and Hancock, MI](#)

[36/23]

[RAINY LAKE, RAINY RIVER, LAKE OF THE WOODS, WISCONSIN RIVER, MISSISSIPPI RIVER, & RED RIVER OF THE NORTH](#)

(Revised 04/23) NINTH DISTRICT DRAWBRIDGE SIGNALS OR OPERATIONAL DELAYS FORM

TO: Commander (dpb)

Ninth Coast Guard District
1240 E. 9th Street – Room 2047b
Cleveland, Ohio 44199-2060
Phone: (216) 902-6087
Fax: (216) 902-6088

E-Mail: William.B.Stanifer@uscg.mil, Lee.D.Soule@uscg.mil, and Michael.O.Walker2@uscg.mil

DATE: _____

NOTE: Reports of Delay will be processed only when all items are fully addressed and reports submitted within 15 days of reported delay / difficulty. Attach additional sheets if necessary.

CONFIDENTIALITY: Please check here if you wish to keep names of vessels and persons confidential ☐

1. DATE OF DELAY: _____ 2. VESSEL NAME: _____ 3. ☐ INBOUND ☐ OUTBOUND

(***NOTE: You must provide the following from Coast Pilot 6.***)

4. BRIDGE NAME _____ 5. WATERWAY _____

6. MILE MARKER _____

7. WHAT TIME DID YOU ARRIVE AT THE BRIDGE? _____ 8. DID YOU SIGNAL FOR AN OPENING AT THAT TIME? ☐ Y ☐ N

9. HOW DID YOU SIGNAL? ☐ Sound signal (Whistle, horn, megaphone, hailer, etc.) _____

(Check all that apply) ☐ Visual signal (Flag or Light) _____

☐ Radio telephone (Specify Frequency) _____

10. WHEN DID THE BRIDGE REPLY? _____ 11. WHAT DID THE DRAWTENDER SAY? _____

12. DID YOU COMMUNICATE WITH THE BRIDGE AFTER YOUR ARRIVAL? PLEASE PROVIDE DETAILS INCLUDING TIMES, WHAT YOU SAID, AND WHAT THE BRIDGE SAID? _____

13. WHAT TIME DID THE BRIDGE OPEN? _____ 14. WHAT TIME DID YOU START THROUGH? _____

15. WHAT TIME DID YOU CLEAR? _____ 16. WHAT ACTIONS DID YOU TAKE WHILE YOU WAITED FOR THE BRIDGE TO OPEN (e.g. tie up, hold position, use thrusters, return to dock)? _____

17. DESCRIBE ANY WEATHER OR WATER CONDITIONS THAT AFFECTED MANUEVERABILITY WHILE YOU WAITED? _____

18. DESCRIBE WHETHER ANY PEDESTRIANS, VEHICLES, OR TRAINS WERE STOPPED ON THE BRIDGE OR CROSSING THE BRIDGE? PROVIDE AS MUCH DETAIL AS POSSIBLE. _____

19. PROVIDE ANY ADDITIONAL INFORMATION YOU THINK WOULD BE HELPFUL? _____

20. YOUR NAME, E-MAIL, PHONE NUMBER, AND ADDRESS: _____

SIGNATURE OF REPORTING SOURCE

NOTE: Reports of Delay will be processed only when all items are fully addressed and reports submitted within 15 days of reported delay / difficulty. Attach additional sheets if necessary.

This image shows a single sheet of white paper with horizontal ruling lines. The lines are evenly spaced and run across the width of the page. There are no margins, text, or other markings on the paper.

SIGNATURE OF REPORTING SOURCE

Summer 2023 Saildrone Ops on lakes Erie, Michigan, and Huron

Lake Erie mission

AIS identifier: "SD-1080"

MMSI: 338431586

Description: Bright orange Sailboat, with rigid sail, clearly marked with 'Saildrone'; remotely helmed from command centers in three locations around the world.

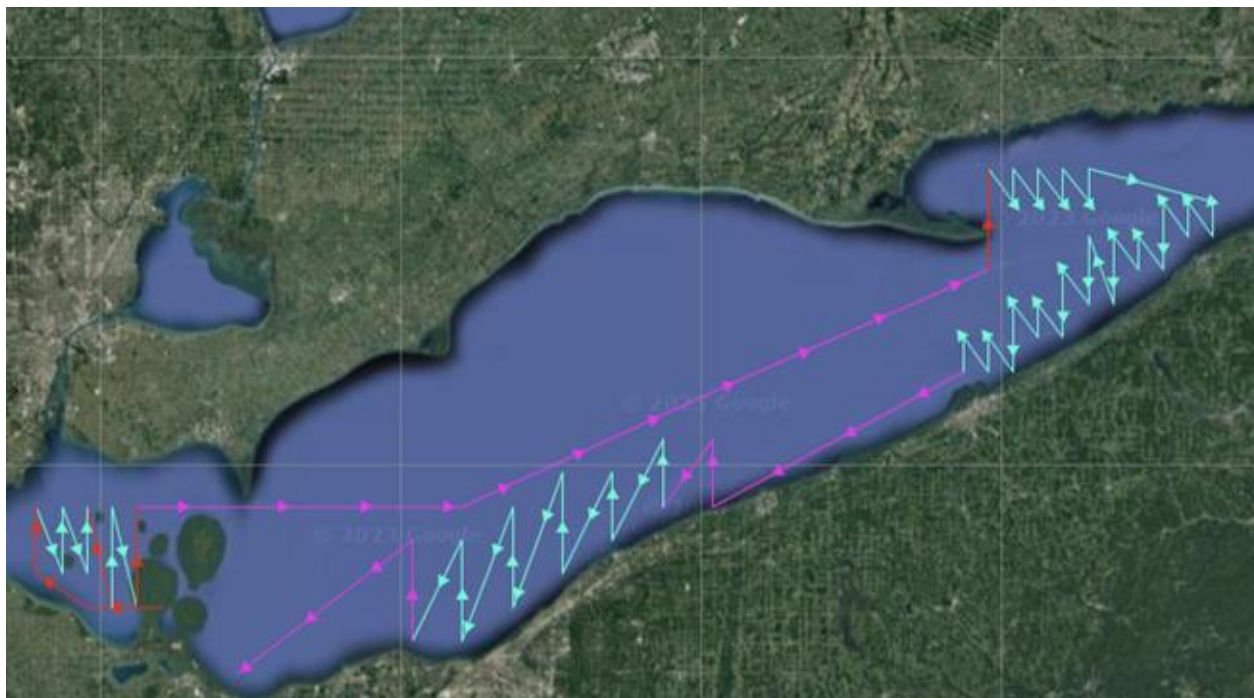
Deployment date (approx): 13 July 23

Deployment location: Erie, PA

USGS mission dates: 1 Aug 23 - 26 Sept 23

Average speed: ~2 kn

Mission description: Mission start in Western basin tracking HABS and fish densities, transit to eastern basin to study large cold water predators; finish mission in south central basin focused on fish densities relative to anoxia. Throughout mission, Saildrone and conventional research vessels (from USGS, OHDNR, and OMNRF) will meet to gather comparative data on fish densities in the same water on the same night. See map below.



Lake Michigan/Huron mission

AIS identifier: "SD-1084"

MMSI: 338431592

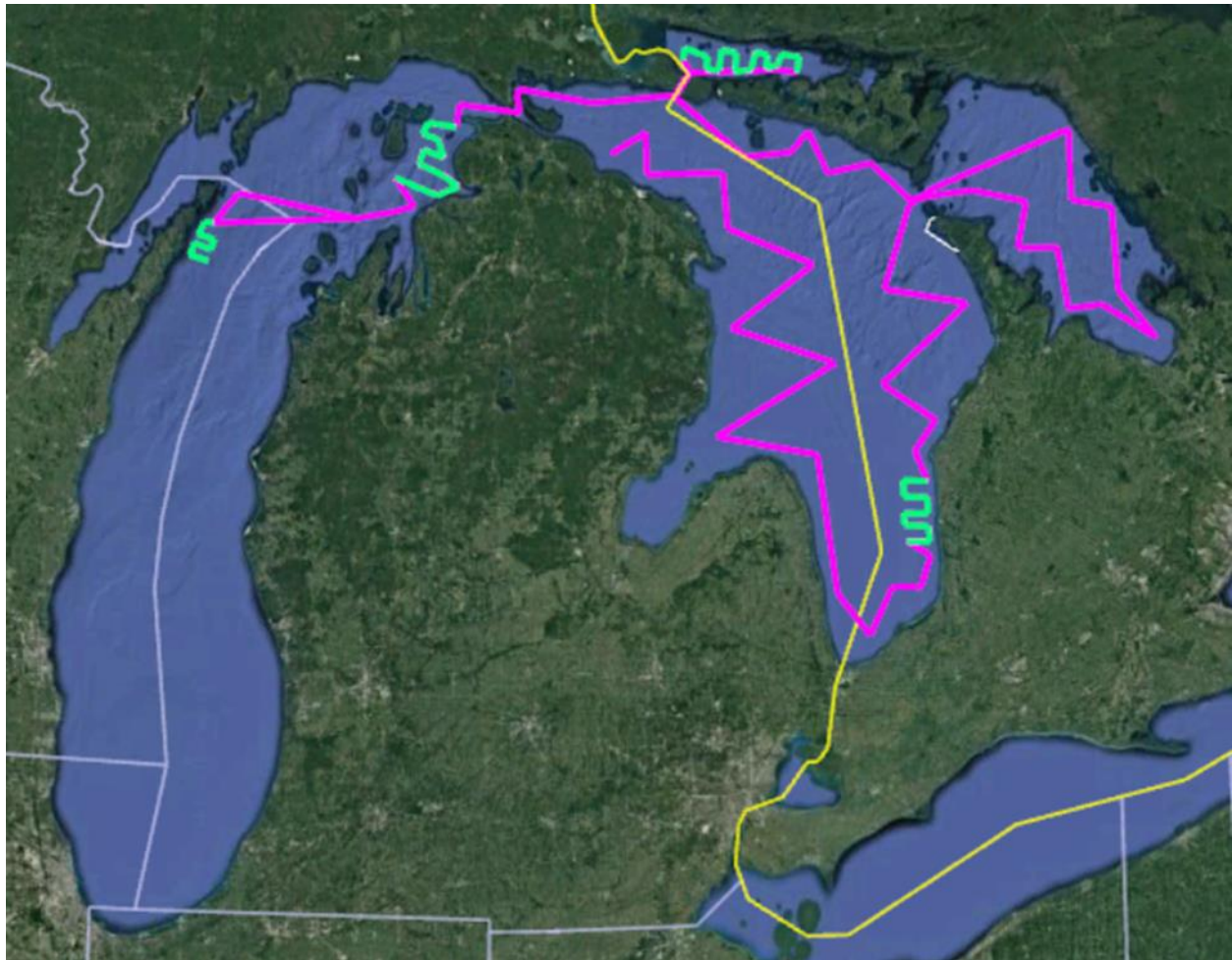
Deployment date (approx): 19 July 23

Deployment location: Charlevoix, MI

USGS mission dates: 1 Aug 23 - 26 Sept 23

Average speed: ~2 kn

Tentative mission description: [Subject to change due to ongoing staffing issues.] Deploy from Charlevoix and conduct coordinated sampling with partner vessels near the Door Peninsula and east of Beaver Island. Tow through the Straights around 10 August and complete lake-wide survey of Lake Huron including Canadian waters (North Channel, Georgian Bay, and main basin). SD-1080 will be towed in and out of the North Channel. Conduct coordinated sampling with vessels from USFWS, USGS, and MDNR opportunistically)



Waterway Analysis and Management System Survey

Name of Waterway: _____

User Information

___ Commercial User

___ Recreational User

Number of years in the maritime industry or number of years using this waterway: _____

Number of transits in the waterway per year: _____

Number of night transits of waterway: _____

Seasonal Dates: Start: _____ End: _____

Name of Vessel: _____

Vessel Description: _____

Length: _____ Beam: _____ Draft: _____ Gross Tons: _____

Net Tons: _____ Bridge Height of Eye: _____

Cargo Carried: _____

Navigational tools used: (ECDIS/ECPINS, GPS, DGPS, VISUAL, RADAR) _____

What area do you believe is the most dangerous or difficult to navigate: _____

Are the floating aids to navigation (lighted and unlighted buoys) adequate for this waterway: _____

Are the fixed aids to navigation (lights, ranges, lighthouses, daybeacons) adequate for this waterway: _____

Are the year round and lighted ice buoys adequate: _____

Are there buoys that you feel should be changed to fixed aids to navigation?

Are there any buoys that could be eliminated from this waterway: _____

Are there any buoys with sound signals that the bell or gong could be removed:

Are there any areas that require additional aids to navigation in this waterway:

Do the nautical charts, Coast Pilot, and Light List meet your needs for this waterway: _____

Are there private Aids to Navigation that you find misleading or interfere with the current system in the waterway:

Any addition comments on this waterway: _____

Thank you for taking time to comment on this waterway. Your input as a mariner very valuable to the U. S. Coast Guard in evaluating waterways to make them safe and as easily navigable as possible. Please feel free to contact D09-DG-District-D9-ATON-Support@uscg.mil with any other questions or concerns about any aids to navigation in the Great Lakes. The survey can be mailed to:

Commander (dpw-2)
Ninth Coast Guard District
1240 East Ninth Street
Cleveland, Ohio 44199
