



U.S. Department  
of Homeland Security  
**United States  
Coast Guard**

---

## LOCAL NOTICE TO MARINERS

**District: 9**

**Week: 52/23**

Issued by: Commander (dpw)  
Ninth Coast Guard District  
1240 East Ninth Street,  
Cleveland, OH 44199-2060  
Telephone: (571) 608-1683

Direct questions about this LNM to the above address.

All distances in this publication are STATUTE MILES unless otherwise noted.\*

\*District Nine Internet Address\* <https://www.atlanticarea.uscg.mil/Our-Organization/District-9/>

\*District Nine Local Notice to Mariners email Address\* [D09-DG-District-D9-LocalNoticetoMariners@uscg.mil](mailto:D09-DG-District-D9-LocalNoticetoMariners@uscg.mil)

\*\* Navigation Information Service watchstander, 24 hours a day at (703) 313-5900 \*\* \*\*Internet Address\*\* <https://www.navcen.uscg.gov/>

Light List Reference: Commandant Publication P16502.7, VOL VII, 2023 Edition

Coast Pilot Reference: 2022 U.S. Coast Pilot 6 Great Lakes 52nd Edition

Coast Pilots, along with corrections are available at: <https://nauticalcharts.noaa.gov/publications/coast-pilot/index.html>

The Local Notice to Mariners is available on the Internet at <https://www.navcen.uscg.gov/local-notices-to-mariners-by-cg-district> You will also have links to other government agencies- web pages including the US Army Corps of Engineers and the National Ocean Service.

### REPORT DISCREPANCIES IN AIDS TO NAVIGATION TO THE NEAREST COAST GUARD UNIT

The Ninth District and all Sector offices for their areas of responsibility issue a BROADCAST NOTICE TO MARINERS.

The following Broadcast Notice to Mariners have been incorporated into this week's Local Notice to Mariners:9

Sector Buffalo, NY - B247-23 through B250-23

Ninth District - C193-23 through C197-23

Sector Detroit, MI - D143-22 through D144-23

Sector Lake Michigan, WI - M301-23 through M306-23

Sector Sault Ste Marie, MI - S117-23 through S120-23

The United States Coast Guard Navigation Information Service (NIS), operated by the USCG Navigation Center, is staffed 24 hours a day, 7 days a week. The NIS provides information on the current operational status, effective policies, and general information for GPS and DGPS. The

NIS also disseminates Safety Broadcasts (BNM), Local Notice to Mariners (LNM), and the latest Notice Advisory to Navstar Users (NANU). NANU notices can be obtained via email subscription through the USCG Navigation Center website: <https://cgls.uscg.mil/mailman/listinfo/nanu>. In addition, the NIS investigates all reports of degradation or loss of GPS, DGPS or AIS service. Users are encouraged to report all degradation or loss of radio navigation services to the NIS via any of the following: Phone: (703) 313-5900, mail to: [webmaster@smtp.navcen.uscg.mil](mailto:webmaster@smtp.navcen.uscg.mil), or on the internet at: <https://www.navcen.uscg.gov>

---

## ABBREVIATIONS

---

### A through H

ADRIFT - Buoy Adrift  
AICW - Atlantic Intracoastal Waterway  
AI - Alternating  
B - Buoy  
BKW - Breakwater  
bl - Blast  
BNM - Broadcast Notice to Mariner  
bu - Blue  
C - Canadian  
CHAN - Channel  
CGD - Coast Guard District  
C/O - Cut Off  
CONT - Contour  
CRK - Creek  
CONST - Construction  
DAYMK/Daymk - Daymark  
DBN/Dbn - Daybeacon  
DBD/DAYBD - Dayboard  
DEFAC - Defaced  
DEST - Destroyed

### I through O

I - Interrupted  
ICW - Intracoastal Waterway  
IMCH - Improper Characteristic  
INL - Inlet  
INOP - Not Operating  
INT - Intensity  
ISL - Islet  
Iso - Isophase  
kHz - Kilohertz  
LAT - Latitude  
LB - Lighted Buoy  
LBB - Lighted Bell Buoy  
LHB - Lighted Horn Buoy  
LGB - Lighted Gong Buoy  
LONG - Longitude  
LNM - Local Notice to Mariners  
LT - Light  
LT CONT - Light Continuous  
LTR - Letter  
LWB - Lighted Whistle Buoy

### P through Z

PRIV - Private Aid  
Q - Quick  
R - Red  
RACON - Radar Transponder Beacon  
Ra ref - Radar reflector  
RBN - Radio Beacon  
REBUILT - Aid Rebuilt  
RECOVERED - Aid Recovered  
RED - Red Buoy  
REFL - Reflective  
RRL - Range Rear Light  
RELIGHTED - Aid Relit  
RELOC - Relocated  
RESET ON STATION - Aid Reset on Station  
RFL - Range Front Light  
RIV - River  
RRASS - Remote Radio Activated Sound Signal  
s - seconds  
SEC - Section  
SHL - Shoaling

DISCON - Discontinued  
DMGD/DAMGD - Damaged  
ec - eclipse  
EST - Established Aid  
ev - every  
EVAL - Evaluation  
EXT - Extinguished  
F - Fixed  
fl - flash  
Fl - Flashing  
G - Green  
GIWW - Gulf Intracoastal Waterway  
HAZ - Hazard to Navigation  
HBR - Harbor  
HOR - Horizontal Clearance  
HT - Height

LWP - Left Watching Properly  
MHz - Megahertz  
MISS/MSNG - Missing  
Mo - Morse Code  
MRASS - Marine Radio Activated Sound Signal  
MSLD - Misleading  
N/C - Not Charted  
NGA - National Geospatial-Intelligence Agency  
NO/NUM - Number  
NOS - National Ocean Service  
NW - Notice Writer  
OBSCU - Obscured  
OBST - Obstruction  
OBSTR - Obstruction  
Oc - Occulting  
ODAS - Anchored Oceanographic Data Buoy

si - silent  
SIG - Signal  
SND - Sound  
SPM - Single Point Mooring Buoy  
SS - Sound Signal  
STA - Station  
STRUCT - Structure  
St M - Statute Mile  
TEMP - Temporary Aid Change  
TMK - Topmark  
TRLB - Temporarily Replaced by Lighted Buoy  
TRLT - Temporarily Replaced by Light  
TRUB - Temporarily Replaced by Unlighted Buoy  
USACE - Army Corps of Engineers  
W - White  
Y - Yellow

**Additional Abbreviations Specific to this LNM Edition:**

LIB - Lighted Ice Buoy

---

**SECTION I - SPECIAL NOTICES**

This section contains information of special concern to the Mariner.

---

**Cancellation of NOAA Paper and Raster Nautical Charts**

The National Oceanic and Atmospheric Administration (NOAA) is undertaking a multi-year program to end production and maintenance of its suite of over 1,000 traditional paper nautical charts and all associated raster chart products and services, including: Print-on-Demand (POD) paper nautical charts, Full-size chart PDF files, BookletChart™ PDF files, NOAA raster navigational charts (NOAA RNC®), the NOAA RNC tile service, and the online RNC viewer.

Six months notice of the intent to cancel a specific chart is provided in a "Last Edition" notice. The final cancellation of a chart is made in a "Canceled" notice. Both types of notices will appear in LNM Section IV, "Chart Correction." A comprehensive list of all canceled NOAA charts is available at: <http://www.charts.noaa.gov/MCD/Dole.shtml>.

Traditional paper nautical chart production is ending to enable the creation and maintenance of larger scale, more up-to-date, higher quality coverage of NOAA's electronic navigational chart (NOAA ENC®) product. This will significantly enhance the amount of charted detail available to mariners. More information about NOAA's program to sunset traditional paper charts is on the NOAA Coast Survey website at: <https://nauticalcharts.noaa.gov/charts/farewell-to-traditional-nautical-charts.html>

An online NOAA Custom Chart application at: <https://devgis.charttools.noaa.gov/pod> is available to create chart images from ENC data, which may then be printed. Notices to Mariners will not be issued for NOAA Custom Charts.

LNM: 04/20

**SAFETY NOTICE - NAVIGATIONAL RANGE AND SECTOR LIGHTS ON ELECTRONIC CHARTS**

The U.S. Coast Guard has become aware that the Range and Sector Light Characteristic labels are not displayed on Electronic Navigational Charts (ENCs) when used in an Electronic Chart Display and Information System (ECDIS) due to limitations of the S-52 ECDIS display specification. Mariners may query the ENC data directly within ECDIS or refer to the Light List for complete information on Range and Sector Light Characteristics.

LNM: 39/22

**PUBLICATION OF NVIC 03-23 GUIDANCE ON NAVIGATIONAL SAFETY IN AND AROUND OFFSHORE RENEWABLE ENERGY INSTALLATIONS (OREI)**

The Coast Guard has published Navigation and Vessel Inspection Circular (NVIC) 03-23: Guidance on Navigational Safety In and Around Offshore Renewable Energy Installations (OREI) to highlight considerations when planning and undertaking voyages in the vicinity of offshore renewable energy installations (OREI) in U.S. waters. The prudent mariner should review and utilize this NVIC to make an informed risk assessment prior to navigating within or in the vicinity of an OREI. Important Maritime Safety Information (MSI) relating to OREIs is distributed by Local or Broadcast Notices to Mariners (LNM or BNM) promulgated by Coast Guard Districts. Marine Safety Information Bulletins (MSIB) released by the local Captain of the Port (COTP) may be issued to provide supplemental information. Interested parties should contact the Office of Navigation Systems at [CGNAV@uscg.mil](mailto:CGNAV@uscg.mil) with any questions or feedback.

LNM: 47/23

**2023 Light List**

2023 Light Lists are now available on the USCG Navigation Center's website at: <https://www.navcen.uscg.gov/light-list-annual-publication>. Coast Guard Light Lists are a means for communicating aids to navigation information to the maritime public. Local Notice to Mariners will continue to advise Light List corrections and NAVCEN will continue to publish a compilation of corrections. Complete versions of the 2023 Light Lists are updated weekly on the NAVCEN website and mariners should download applicable copies and updates as needed at:

<https://www.navcen.uscg.gov/weekly-light-lists>. A summary of weekly 2023 Light List corrections are available at:  
<https://www.navcen.uscg.gov/light-list-summary-of-corrections>.

LNM: 05/23

#### **USACE NOTICE TO NAVIGATION INTERESTS**

Current Federal Channel conditions, shoaling, and the most recent channel surveys are available at the following Army Corps of Engineers web sites:

Buffalo: <http://www.lrb.usace.army.mil/>  
Detroit: <http://www.lre.usace.army.mil/>  
Chicago: <http://www.lrc.usace.army.mil/>  
Rock Island: <http://www.mvr.usace.army.mil/>  
St. Paul: <https://www.mvp.usace.army.mil/>

LNM: 28/12

#### **GREAT LAKES - Great Lakes Water Levels**

See Enclosure 1

The current and four week expected water level table for the Great Lakes, Connecting Channels and the St. Lawrence River, will be published in Enclosure 1 following SECTION VIII - LIGHT LIST CORRECTIONS of the Local Notice to Mariner or by visiting the link below:

<https://www.lre.usace.army.mil/Missions/Great-Lakes-Information/Great-Lakes-Water-Levels/Water-Level-Forecast/Connecting-Channels-Forecast/>

LNM: 32/20

#### **ST. LAWRENCE SEAWAY - ATON Disestablishment**

The Coast Guard has been made aware that a number of the aids to navigation in the St. Lawrence Seaway will be seasonally disestablished prior to the extended closure date of January 5th. Portions of the waterway will no longer be lighted for nighttime navigation. Mariners should monitor the Seaway Notices and 2023 Seaway Closing Radio Messages for the most the most up to date information as determined by the Great Lakes St. Lawrence Seaway Development Corporation (GLS).

LNM: 51/23

#### **GREAT LAKES - NOAA Winter Data Buoys**

The National Oceanic and Atmospheric Administration, in coordination with the U.S. Coast Guard, has deployed a number of small winter data buoys at the permanent positions of the following weather buoys:

NOAA Lighted Weather Buoy 45003 (LLNR 11510), in Northern Lake Huron.  
NOAA Lighted Weather Buoy 45004 (LLNR 16850), in Eastern Lake Superior  
NOAA Lighted Weather Buoy 45007 (LLNR 20595), in Southern Lake Michigan

The yellow data buoys are 15" in diameter and exhibit a yellow flashing light (Fl Y 2.5s) with a visible range of just over one nautical mile. The data buoys will remain on station until the seasonal weather buoys are reestablished in the spring.

LNM: 50/23

#### **2023-2024 Icebreaking Operations**

The Coast Guard will be conducting icebreaking operations during the upcoming winter throughout the Great Lakes, connecting waterways, and adjacent rivers and harbors. Owners of vessels and structures which may be affected are advised to take precautions to protect their property.

LNM: 42/23

#### **LAKE ERIE – Fairport Harbor – Chart 14829**

The Coast Guard has established a virtual AIS aid to navigation at the entrance of Fairport Harbor to assist in identifying recent shoaling within the channel. The aid (MMSI: 993682815) is labeled W SHOAL 2 and identifies the encroachment of shoaling on the western side of the channel less than 18.5ft water depth. The aid is for reference only and is positioned based on most recent survey data, and does not account for periodic variations in the position of the shoal. Mariners are urged to use caution while transiting the area.

LNM: 21/23

#### **LAKE ERIE – Portage River – Chart 14829**

Low power lines have been reported in the Portage River west of the Monroe Street Bridge in the vicinity of the draw bridge marina. The power lines are lower than the charted height of 83 feet above the low water datum of 1985. All mariners are requested to use caution when transiting the area.

LNM: 29/23

#### **ST. MARYS RIVER - Lake Nicolet To Sault Ste. Marie- Chart 14884**

The U.S. Army Corps of Engineers has commissioned Little Rapids Cut Lighted Ice Buoy 98B (LLNR 14105). The buoy marks the upstream end of the ice boom in place on the eastern side of the St. Marys River. The available channel width for navigation is restricted to 385ft. Due to the channel restrictions, VTS St Marys River directs no meeting or overtaking in Little Rapids Cut from Light 98 (LLNR 14100) to Mission PT Obstruction LT C (LLNR 14145).

LNM: 46/23

**ST. MARYS RIVER - American Canal - Chart 14884**

Northeast Pierhead Light (LLNR 14205) The U. S. Army Corps of Engineers will be relocating this light to the top of their new camera tower. As soon as the position and height of the light's new location is confirmed it will be advertised in Section VIII - Light List Corrections of the LNM.

LNM: 10/21

**LAKE MICHIGAN – Muskegon Channel – Chart 14906**

The Coast Guard has established a pair of virtual AIS aids to navigation at the entrance of Muskegon Harbor to assist in identifying recent shoaling within the approaches. V-AIS (MMSI: 993682821) identifies the encroachment of shoaling on the northern side of the channel less than 25ft water depth. Similarly, V-AIS (MMSI: 993682842) identifies shoaling on the south side of the channel less than 25ft. The aids are for reference only and are positioned based on most recent survey data and do not account for periodic variations in the position of the shoaling. Mariners are urged to use caution while transiting the area.

LNM: 24/23

**LAKE SUPERIOR – Keweenaw – Chart 14972**

Keweenaw Upper Entrance West Breakwater Light (LLNR 15115) was reported damaged and swept from its location on the breakwall. The approximately 20' metal tower is submerged in vicinity of the breakwater at an unknown position. All mariners are urged to use caution when transiting the area.

LNM: 12/23

---

**SECTION II - DISCREPANCIES**

This section lists all reported and corrected discrepancies related to Aids to Navigation in this edition. A discrepancy is a change in the status of an aid to navigation that differs from what is published or charted.

---

**DISCREPANCIES (FEDERAL AIDS)**

LLNR	Aid Name	Status	Chart No.	BNM Ref.	LNM St	LNM End
2855	Black Rock Canal Light 15	LT EXT		B250-23	51/23	
3760	Ashtabula Harbor Entrance Light 2	REDUCED INT		B235-23	46/23	
4575	Moseley Channel Range Rear Light	DAYMK MISSING		D095-23	32/23	
9710	Russell Island Lighted Buoy 29	LT EXT		D143-23	51/23	
13475	West Neebish Channel (Downbound) Upper Range Rear Light	DAYMK MISSING			36/23	
13960	Upper Nicolet Range Rear Light	DAYMK MISSING		S064-23	26/23	
14050	Six Mile Point Range Rear Light	DAYMK MISSING		S079-23	10/21	
15115	Keweenaw Upper Entrance West Breakwater Light	STRUCT DEST		S015-23	02/23	
17210	Canoe Channel Daybeacon 8	STRUCT DEST/TRUB			23/22	
17550	Kabetogama Lake Warning Daybeacon	STRUCT DEST		S114-22	34/22	
<b>18720</b>	<b>Muskegon North Breakwater Light</b>	<b>LT EXT</b>		<b>M302-23</b>	<b>52/23</b>	
19790	Chicago Lake Front Northeast Shoal Lighted Buoy 2	RAC INOP		M098-23	20/23	
20430	Kenosha Breakwater Light	REDUCED INT		M123-23	22/23	
22180	Green Bay Harbor Entrance Channel Range Front Light	DAYMK DMGD		M327-22	24/21	
22185	Green Bay Harbor Entrance Channel Range Rear Light	DAYMK MISSING		M157-23	44/20	

**DISCREPANCIES (FEDERAL AIDS) CORRECTED**

LLNR	Aid Name	Status	Chart No.	BNM Ref.	LNM St	LNM End
6565	Monroe Harbor Range Rear Light	WATCHING PROPERLY			50/23	52/23

13030	Munuscong Channel (Upbound) Junction Light ML	RELIGHTED			52/23	52/23
13125	Sailors Encampment Channel Lighted Buoy 21	WATCHING PROPERLY			50/23	52/23
15770	Superior Front Channel Lighted Buoy 6	WATCHING PROPERLY			50/23	52/23
15790	Superior Front Channel Lighted Buoy 10	WATCHING PROPERLY			50/23	52/23
15805	Superior Front Channel Lighted Buoy 14	WATCHING PROPERLY			50/23	52/23
15820	Superior Front Channel Lighted Buoy 18	WATCHING PROPERLY			50/23	52/23
15855	Duluth Harbor North Pier Light	WATCHING PROPERLY			52/23	52/23

**DISCREPANCIES (PRIVATE AIDS)**

LLNR	Aid Name	Status	Chart No.	BNM Ref.	LNM St	LNM End
12585	Old Round Island Point Light	LT EXT		S006-23	01/23	

**DISCREPANCIES (PRIVATE AIDS) CORRECTED**

LLNR	Aid Name	Status	Chart No.	BNM Ref.	LNM St	LNM End
5305	East Harbor Entrance Light 1	WATCHING PROPERLY			21/23	

**PLATFORM DISCREPANCIES**

Name	Status	Position	BNM Ref.	LNM St	LNM End
------	--------	----------	----------	--------	---------

None

**PLATFORM DISCREPANCIES CORRECTED**

Name	Status	Position	BNM Ref.	LNM St	LNM End
------	--------	----------	----------	--------	---------

None

**SECTION III - TEMPORARY CHANGES and TEMPORARY CHANGES CORRECTED**

This section contains temporary changes and corrections to Aids to Navigation for this edition. When charted aids are temporarily relocated for dredging, testing, evaluation, or marking an obstruction, a temporary correction shall be listed in Section IV giving the new position.

**TEMPORARY CHANGES**

LLNR	Aid Name	Status	Chart No.	BNM Ref.	LNM St	LNM End
2105	Oswego Harbor West Channel Light 2	TRLB	14786		17/19	
8240	William Livingstone Memorial Light	Reduced Intensity			33/21	
9690	Grande Pointe Light 23	TRLT			47/20	
14540	Little Lake Harbor Light 2	DISCONTINUED FOR DREDGING	14961		47/22	
15220	Ontonagon Harbor East Breakwater Light	DISCONTINUED			02/22	
16963	Driftwood Point Light	DISCONTINUED			45/20	

**TEMPORARY CHANGES CORRECTED**

LLNR	Aid Name	Status	Chart No.	BNM Ref.	LNM St	LNM End
------	----------	--------	-----------	----------	--------	---------

None

**PLATFORM TEMPORARY CHANGES**

Name	Status	Position	BNM Ref.	LNM St	LNM End
------	--------	----------	----------	--------	---------

None

**PLATFORM TEMPORARY CHANGES CORRECTED**

Name	Status	Position	BNM Ref.	LNM St	LNM End
None					

## SECTION IV - CHART CORRECTIONS

This section contains corrections to federally and privately maintained Aids to Navigation, as well as NOS corrections. This section contains corrective actions affecting chart(s). Corrections appear numerically by chart number, and pertain to that chart only. It is up to the mariner to decide which chart(s) are to be corrected. The following example explains individual elements of a typical chart correction.

Chart Number	Chart Edition	Edition Date	Last Local Notice to Mariners	Horizontal Datum Reference	Source of Correction	Current Local Notice to Mariners
12327	91st Ed.	19-APR-97	Last LNM: 26/97	NAD 83		27/97
Chart Title: NY-NJ-NEW YORK HARBOR - RARITAN RIVER						
Main Panel 2245 NEW YORK HARBOR						
(Temp) ADD	NATIONAL DOCK CHANNEL BUOY 3				CGD01	074-02-48.001W
	Green can				at 40-41-09.001N	
Corrective Action	Object of Corrective Action		Position			

(Temp) indicates that the chart correction action is temporary in nature. Courses and bearings are given in degrees clockwise from 000 true. Bearings of light sectors are toward the light from seaward. The nominal range of lights is expressed in nautical miles (NM) unless otherwise noted.

**12348**      **34th Ed.**      **01-JUN-10**      **Last LNM: 38/20**      **NAD 83**      **52/23**

Chart Title: Hudson River Coxsackie to Troy

Main Panel 2223 HUDSON RIVER COXSACKIE TO TROY NY. Page/Side: N/A

LAST EDITION      No new editions of chart 12348 will be published. It will be canceled on 31-Jan-24. Comparable or larger scale Electronic Navigational Chart (ENC) coverage is available. See "Cancellation of NOAA Paper and Raster Nautical Charts" in Section I of this LNM for details. A list of all canceled NOAA charts is at <https://www.charts.noaa.gov/MCD/Dole.shtml>.

NOS

--

--

## SECTION V - ADVANCE NOTICES

This section contains advance notice of approved projects, changes to aids to navigation, or upcoming temporary changes such as dredging, etc. Mariners are advised to use caution while transiting these areas.

### SUMMARY OF ADVANCED APPROVED PROJECTS

**Approved Project(s)**

None

**Project Date**

**Ref. LNM**

**Advance Notice(s)**

**LAKE ERIE – Toledo Harbor – CHART 14845**

The Coast Guard will be changing the operation of the sound signal on Toledo Harbor Light (LLNR 6030) from seasonally operating continuously April 1st to December 1st, to Mariner Radio Activated Sound Signal (MRASS) year-round. The sound signal would be activated by keying the microphone five or more times on VHF FM channel 83A / 157.175MHz.

LNM: 50/23

**LAKE ERIE – Detroit – CHART 14854**

The Coast Guard will be changing the operation of the sound signal on Detroit River Light (LLNR 6885) from operating continuously, to Mariner Radio Activated Sound Signal (MRASS) year-round. The sound signal would be activated by keying the microphone five or more times on VHF FM channel 83A / 157.175MHz.

LNM: 50/23

## SECTION VI - PROPOSED CHANGES

Periodically, the Coast Guard evaluates its system of aids to navigation to determine whether the conditions for which the aids to navigation were established have changed. When changes occur, the feasibility of improving, relocating, replacing, or discontinuing aids are considered. This section contains notice(s) of non-approved, proposed projects open for comment. SPECIAL NOTE: Mariners are requested to respond in writing to the District office unless otherwise noted (see banner page for address).

### PROPOSED WATERWAY PROJECTS OPEN FOR PUBLIC COMMENT

**Proposed Project(s)**

None

**Closing**

**Docket No.**

**Ref. LNM**

**Proposed Change Notice(s)**

**ST CLAIR RIVER - St Clair Flats Canal**

The Coast Guard is considering permanently establishing three danger buoys within the St. Clair Flats Canal, in the St. Clair River, to assist mariners in marking the partially submerged earthen dike along the southeast edge of the channel. The lighted buoys will be evenly spaced along the dike, extending from the lower point of Seaway Island to the St. Clair Flats Danger Light (LLNR 9575). The buoy characteristics will be white and orange in color and display the text "DANGER ROCKS" across the buoy.

LNM: 46/23

**LAKE SUPERIOR - Ashland Harbor**

The Coast Guard is evaluating the permanent disestablishment of the following floating aids to navigation in the Ashland Harbor Western Channel in Ashland, WI.

Ashland Harbor Lighted Buoy 1 (LLNR 15355)  
Ashland Harbor Buoy 2 (LLNR 15360)  
Ashland Harbor Buoy 3 (LLNR 15365)  
Ashland Harbor Lighted Buoy 4 (LLNR 15370)  
Ashland Harbor Buoy 5 (LLNR 15375)

LNM: 46/23

**For any comments or questions on these proposed changes please contact:**

The Ninth District Aids to Navigation manager at Brian.D.Hawkins2@uscg.mil or call (206) 815-0913.

LNM: 30/13

---

**SECTION VII - GENERAL**

This section contains information of general concern to the Mariners. Mariners are advised to use caution while transiting these areas.

---

**Waterways Analysis and Management System**

The Ninth Coast Guard District is currently recategorizing regional waterways to prioritize areas that require more frequent review and analysis. These studies focus primarily on the aids to navigation in the waterway, and are set to resume in 2024. Selected waterways will be listed below. Public comments are an important tool in this process so that we can provide the adequate markings and the right mix of signals to a waterway for safe navigation. Comments on the listed waterways can be sent to Brian.D.Hawkins2@uscg.mil or by calling (206) 815-0913. You may also complete the survey attached to the Local Notice to Mariner and either email it or mail it to: Commander (dpw), Ninth Coast Guard District, 1240 East Ninth St., Cleveland, Ohio 44199.

LNM: 09/20

**GREAT LAKES - Marine Events**

Marine events such as races, parades, regattas, and fireworks displays are frequently held in the Great Lakes region. Advance information on specific events is contained in enclosure (2) of this publication. The public is reminded to listen to the local broadcast notice to mariners for the most up-to-date information on a marine event. Mariners are advised that some events may require temporary aids to navigation that are not displayed on a chart or in the Light List, and that they should exercise additional caution while operating in the vicinity of a scheduled marine event.

LNM: 24/13

**LAKE ONTARIO – Little Sodus Bay – Chart 14800**

There is an uncharted breakwall along the shore extending from the west side of Little Sodus Bay entrance to the boat ramp of West Barrier Bar County Park. The breakwall is unmarked and unlit. Visibility of the breakwall may be impacted due to high water. All mariners are requested to transit the area with caution.

LNM: 19/23

**LAKE ERIE - Buffalo – Chart 14838**

From 1 July 2023 to 15 December 2023 Ryba Marine Construction will be conducting repairs to the Buffalo north breakwater. Hours of operation are 24 hours a day 7 days a week. Tug Thomas R. Morrish can be contacted on VHF channels 13 and 16. All mariners are requested to transit the area with caution.

LNM: 22/23

**LAKE ERIE – OH - Ashtabula Harbor – Chart 14836**

A submerged breakwater is being constructed in Ashtabula Harbor, to be connected to the existing East Breakwater. The submerged breakwater will be connected to the East Breakwater at the first angle point of the East Breakwater, as entering the harbor, from the lake. All elevations referenced are referred to Low Water Datum (LWD), IGLD 1985.

The center line of the submerged breakwater approximately follows the same azimuth as the first segment of the East Breakwater, in a south easterly direction, for approximately 1000', then slightly bends to the east for another two segments, for approximately 500'.

The first 1000' (Area "A") has a crest design height of -2.0' with a crest width of 9', and a footprint of approximately 150', with the next 100' transitioning to the dimensions in the next item.

The final 400' (Area "B") has a crest height of -5.0', with a crest width of 9', and a footprint of approximately 50'.

The coordinates, in decimal degrees, are as follows:

1. 41.918447801N 80.790362308W

**LAKE ERIE – OH - Ashtabula Harbor – Chart 14836**

- 2. 41.916367139N 80.788014301W
- 3. 41.916189406N 80.787730327W
- 4. 41.916026216N 80.787424318W
- 5. 41.915640784N 80.786454826W
- 6. 41.916242815N 80.783904852W

All mariners are requested to transit the area with caution.

LNM: 17/23

**LAKE ERIE – OH - Ashtabula Harbor – Chart 14836**

From 17 November 2023 to 01 December 2024, Frontier Industrial Corp. will be deconstructing all of the old Ashtabula Power Plant's breakwater armor stone located at 2133 lake road east, Ashtabula, Ohio. Hours of operation are 0700 to 1900 normally 7 days a week, with a possibility of 24 hours when needed. Company representatives can be contact at 716-447-7587. A safety zone has been established for this project with a 350-yard radius safety zone centered on coordinates 41° 54'43" N, 080° 46'09" W (NAD83). This rule making can be found on the Federal Register's web site under Docket Number: USCG-2023-0662. All mariners are advised to proceed with extreme caution in the area.

LNM: 48/23

**LAKE ERIE – OH – Cleveland Harbor – Chart 14839**

The Great Lakes Construction Co. will be conducting bulkhead replacement operations in the Cuyahoga River in the vicinity of the Shelly Liquids Dock. A shoreside crane will be used to install new steel sheeting and a small in-water float will be used to facilitate waterside access. Operations are expected to commence on or around 27NOV23 and will conclude on or around 15MAR24. During work hours the on station crew will monitor VHF channel 16 from 0700- 1700 HRS M-F.

LNM: 47/23

**LAKE ERIE – Cuyahoga River – Chart 14839**

From 8 Jan 2024 to 1 Feb 2024 The Great Lakes Construction Co. will be conducting soil anchor drilling in conjunction with bulkhead replacement operations in the Cuyahoga River in the vicinity of the Shelly Liquids Dock. A 50 ft x 60 ft barge platform with UTV will be dockside to support drilling operations and waterside access. During work hours, the on station crew will monitor VHF channel 16 from 0700- 1700 HRS M-F. All mariners are requested to transit the area with caution.

LNM: 51/23

**LAKE ERIE – Cuyahoga River – Chart 14839**

From 03 Jan 2024 to 10 Jan 2024 The Great Lakes Construction Co. will be conducting barge assembly operations in the Cuyahoga River in the vicinity of the Allied Plant 76 Dock. A shoreside crane will be used to assemble sectional barges along the dock wall. Final size of barge unit will be 60 ft x 60 ft. An assist tug will also be on station to assist with barge construction and equipment loading operations. During work hours the on station crew will monitor VHF channel 16 from 0700- 1700 HRS M-F. All mariners are requested to transit the area with caution.

LNM: 51/23

**LAKE ERIE – Cleveland Harbor – Chart 14839**

Submerged obstructions were reported and confirmed in location 41° 29.380' N, 081° 41.906' W (NAD83) on the Cuyahoga river's left descending bank just east of the Columbus Road Bridge. The USACE completed a hydrological survey on 07 December 2023, which identified four obstructions on the river's bottom believed to be sections of steel corrugated bulkhead originating from a nearby retaining wall. The failed sections settled at the bottom of the river approximately 20 feet into the navigational channel and were measured to be between 18-21 feet from the water's surface. Marines may contact the Sector Eastern Great Lakes Command Center with any questions by phone at 716-843-9596. The most current USACE Hydrographic Survey data can be found on their website here: Buffalo District Maps and Charts (army.mil). All mariners are requested to transit the area with extreme caution.

LNM: 51/23

**LAKE HURON - Saginaw Bay – Chart 14860**

From 30 Oct 2023 to 15 Dec 2023 Great Lakes Dock and Materials will be conducting structure demo and rebuild at the NW shore of shelter and Channel Island in Saginaw Bay. Hours of operation are 24 hours a day 7 days a week. Barge Hanna Avery and Jacquelyn, Tug George F Bailey and Fischer Hayden can be contacted on VHF channels 16 and 18. All mariners are requested to transit the area with caution.

LNM: 41/23

**LAKE MICHIGAN – New Buffalo Harbor - Chart 14905**

Shoaling has been reported near the middle of the channel immediately inside the break wall in New Buffalo Harbor, MI. The actual water depth is currently significantly below the charted depth. Mariners are urged to use caution when transiting the area. For further details, contact Sector Lake Michigan at (414) 747-7182 or VHF channel 16.

LNM: 15/22

**LAKE MICHIGAN – Port Sheldon – Chart 14932**

Shoaling has been reported near Pigeon Lake at the Port Sheldon entrance. The actual water depth is currently significantly below the charted depth. Mariners are urged to use caution when transiting the area. For further details, contact Sector Lake Michigan at (414) 747-7182 or VHF channel 16.

LNM: 15/23

**LAKE MICHIGAN – Port Sheldon – Chart 14932**

From 01 Dec 2023 to 31 Dec 2023 the King Company will be Dredging the Port Sheldon channel. The submerged pipe is lying on the lake floor, marked by orange round buoys every 500 feet. (2) white buoys will be seen North and South of the dredge. The white buoys indicate winch anchor locations. The disposal area starts south of the channel 5,000' and runs for an additional 2,500' North. The main contact will be the Superintendent Joseph Martin. Cell # is listed below. During rough seas, our pipe pontoon will float inside the channel. It is bright yellow, 25'x8'x6' and has (2) flashing lights on each end that come on at night.



**LAKE MICHIGAN – Port Sheldon – Chart 14932**

LNM: 48/23

**LAKE MICHIGAN – Muskegon Channel – Chart 14906**

The Coast Guard has received reports that the depths at the entrance to Muskegon Lake are less than the charted depths. All mariners are requested to transit the area with caution.

LNM: 17/23

**LAKE MICHIGAN – Sheboygan River – Chart 14922**

Shoaling has been reported in entrance of the Sheboygan River in the vicinity of 43-44.928N, 087-42.170W AND 43-44.936N, 087-42.110W. The actual water depth is currently significantly below the charted depth. Mariners are urged to use caution when transiting the area. For further details, contact Sector Lake Michigan at (414) 747-7182 or VHF channel 16.

LNM: 24/22

**LAKE MICHIGAN – Sheboygan – Chart 14924**

From 12 Aug 2023 to 31 Jan 2024 the Kokosing Industrial Inc will be conducting pipeline installation, dredging and diving operations at the Sheboygan Water Utility in Sheboygan, WI. Hours of operation from 0700 to 1900 7 days a week. Tug Nancy Anne and Tug WM Boyd can be contacted on VHF channels 13 and 16. All mariners are requested to transit the area with caution.

LNM: 33/23

**LAKE MICHIGAN – Sheboygan – Chart 14924**

From 6 July 2023 to 31 Jan 2024 Kokosing Industrial will be conducting pipeline installation dredging and diving. Hours of operation are 0700 to 1900 normally 7 days a week with a possibility of 24 hours when needed. Tug Nancy Anne and Tug WM Boyd can be contacted on VHF channels 13 and 16. Mooring buoys will be located 1500 ft due north of the Sheboygan Water Utility. All mariners are requested to transit the area with caution.

LNM: 28/23

**LAKE MICHIGAN – Green Bay – Chart 14902**

From 07 Sep 2023 to 31 Dec 2023 Roen Salvage Company will be conducting mooring dolphin installation and grudging at the Holcim Green Bay Terminal. Hours of operation are 24 hours a day 7 days a week. Tug David R Schanock can be contacted on VHF channels 7 and 16. All mariners are requested to transit the area with caution.

LNM: 30/23

**LAKE MICHIGAN -Milwaukee Harbor – Chart 14902**

From 10 Nov 2023 to 30 Dec 2023 Great Lakes Dock and Material will be dredging in the main entrance and south entrance channels of Milwaukee Harbor. Hours of operation are 7 days a week 24 hours a day. Barge Justin Avery, Tug Defiance and Tug George F. Bailey can be contacted on VHF channels 16 and 18. All mariners are requested to transit the area with caution.

LNM: 45/23

**LAKE SUPERIOR – Little Lake Harbor – Chart 14961**

Shoaling has been reported in the entrance of Little Lake Harbor exceeding 5 feet above low water datum near the channel edges. Some cross sections of the channel are shoaled nearly the full width to 2 feet or more above low datum. The harbor should not be considered as a functional harbor or refuge. All mariners are requested to transit the area with caution.

LNM: 47/22

---

---

**SECTION VIII - LIGHT LIST CORRECTIONS**

An Asterisk \*, indicates the column in which a correction has been made to new information

(1) No.	(2) Name and Location	(3) Position	(4) Characteristic	(5) Height	(6) Range	(7) Structure	(8) Remarks
<b>None</b>							

---

---

**ENCLOSURES**

**(1) LNM Section I - Special Notices**

1-Great Lakes Water Levels

LNM: 06/22

**(2) LNM Section II - Discrepancies**

N/A

LNM: 19/19

**(3) LNM Section III - Temporary Changes and Temporary Changes Corrected**

N/A

LNM: 19/19

**(4) LNM Section IV - Chart Corrections**

N/A LNM: 19/19

**(5) LNM Section V - Advance Notices**

N/A LNM: 19/19

**(6) LNM Section VI - Proposed Changes**

N/A LNM: 19/19

**(7) LNM Section VII - General**

1-Marine Events

2-Current Ninth District Bridge Maintenance/Activities

3-Waterway Analysis and Management System Survey

LNM: 19/19

**(8) LNM Section VIII - Light List Corrections**

N/A LNM: 19/19

---

J. P. Hickey, RADM  
U. S. Coast Guard  
Commander, Ninth Coast Guard District

## GREAT LAKES, CONNECTING CHANNELS AND ST. LAWRENCE RIVER WATER LEVELS AND DEPTHS

Expected water levels on the Great Lakes, Connecting Channels and the St. Lawrence River are given in inches above (+,0) or below (-,0) Low-Water Datum (LWD,0). LWD is a plane of reference on a navigation chart, also known as Chart Datum. LWD elevations shown below are given in International Great Lakes Datum, 1985 (IGLD 1985,0).

	Forecast Point	Low Water Datum IGLD 1985	Expected Levels (inches above or below Low Water Datum,0)				
			Current	Week 1	Week 2	Week 3	Week 4
			22-Dec	29-Dec	5-Jan	12-Jan	19-Jan
<b>GREAT LAKES</b>							
Lake Ontario		243.3	13	13	13	13	13
Lake Erie		569.2	29	29	29	28	28
Lake St. Clair		572.3	26	26	26	26	27
Lake Michigan-Huron		577.5	15	15	14	14	14
Lake Superior		601.1	6	5	5	4	3
<b>ST. LAWRENCE RIVER</b>							
Above Long Sault Dam	0	237.9	20	15	16	18	20
Above Iroquois Dam	1	240.3	10	7	7	8	10
Ogdensburg	2	242.4	11	9	9	10	11
Alexandria Bay	2.1	243.0	13	13	12	12	13
Head of river at Cape Vincent	3	243.3	13	13	13	13	13
<b>DETROIT RIVER</b>							
Lake Erie at Pelee Passage	4	569.2	29	29	29	28	28
Mouth of River at Gibraltar	5	569.5	30	29	29	29	28
Fort Wayne	5.1	571.1	30	30	30	30	30
Head of River above Belle Isle	6	572.0	27	27	27	27	28
<b>ST. CLAIR RIVER</b>							
Mouth of River at St. Clair Flats	7	572.3	26	26	26	26	27
Algonac	8	572.8	29	29	29	29	29
St. Clair	9	574.4	24	24	23	23	23
Blue Water Bridge	10	576.2	21	21	21	21	21
Head of River at Fort Gratiot	11	577.2	18	17	17	17	16
Lake Huron Approach Channel	12	577.5	15	15	14	14	14
<b>ST. MARYS RIVER</b>							
Mouth of River at Detour	13	577.5	15	15	14	14	14
West and Middle Neebish	14	577.8	13	13	12	12	12
Head of Little Rapids	15	578.4	12	11	11	11	10
U.S. Slip	16	578.7	10	10	10	10	9
Above Locks	17	600.4	8	7	7	6	5
Head of River at Point Iroquois	18	601.1	6	5	5	4	3

### UNDERSTANDING THE FORECAST

Available water depth is determined for a location by adding (if+) or subtracting (if-) the amount from the above table to the appropriate channel depth shown in the profile Connecting Channel Depths Graphic or to water depths shown on National Oceanic and Atmospheric Administration (NOAA) navigational charts.

### CAUTION

Depths so determined are representative of a still water surface elevation, disturbed by neither wind nor other causes. Depths, however, may be reduced or increased as much as several feet for short periods due to these disturbances, or when sections of channels develop shoals. Vessel masters should refer to "Local Notice to Mariners" for extent of shoaling and scattered bedrock projections in all channels. Ice conditions can have a dramatic impact on actual channel depth and can lead to large short-term water level fluctuations. Ice information can be found at the National Ice Center's website.

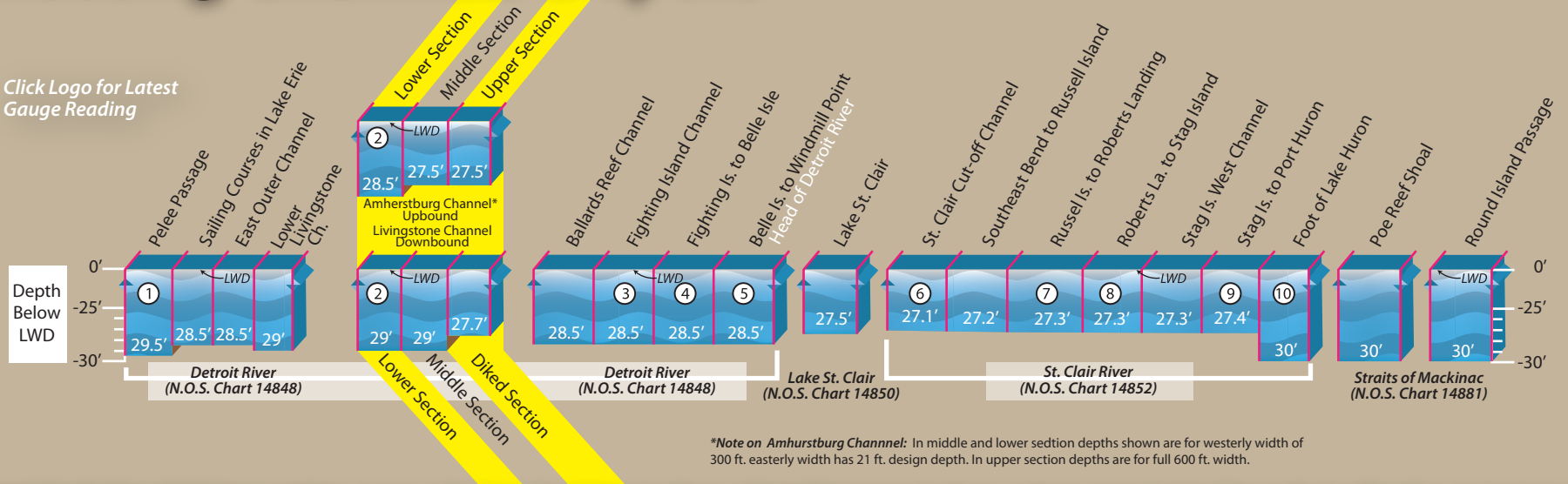
FOR FURTHER INFORMATION CONTACT:	FOR MORE INFORMATION VISIT:	WATER LEVEL INFORMATION SUPPLIED BY:
Detroit District Corps of Engineers	<a href="#">Detroit District Great Lakes Homepage</a>	NOAA, National Ocean Service
477 Michigan Avenue	<a href="#">International Joint Commission</a>	SSMC4, STATION 7523
Detroit MI, 48226	<a href="#">Great Lakes Information Network</a>	1305 East-West Hwy
1-888-694-8318 ex. 1	<a href="#">NOAA Tides and Currents</a>	Silver Spring, MD 20910-3233
email: hhpm@usace.army.mil	<a href="#">U.S. Coast Guard - District 9</a>	(301) 713-2902

# Connecting Channels Depths

## Detroit & St. Clair Rivers



Click Logo for Latest Gauge Reading



\*Note on Amherstburg Channel: In middle and lower section depths shown are for westerly width of 300 ft. easterly width has 21 ft. design depth. In upper section depths are for full 600 ft. width.

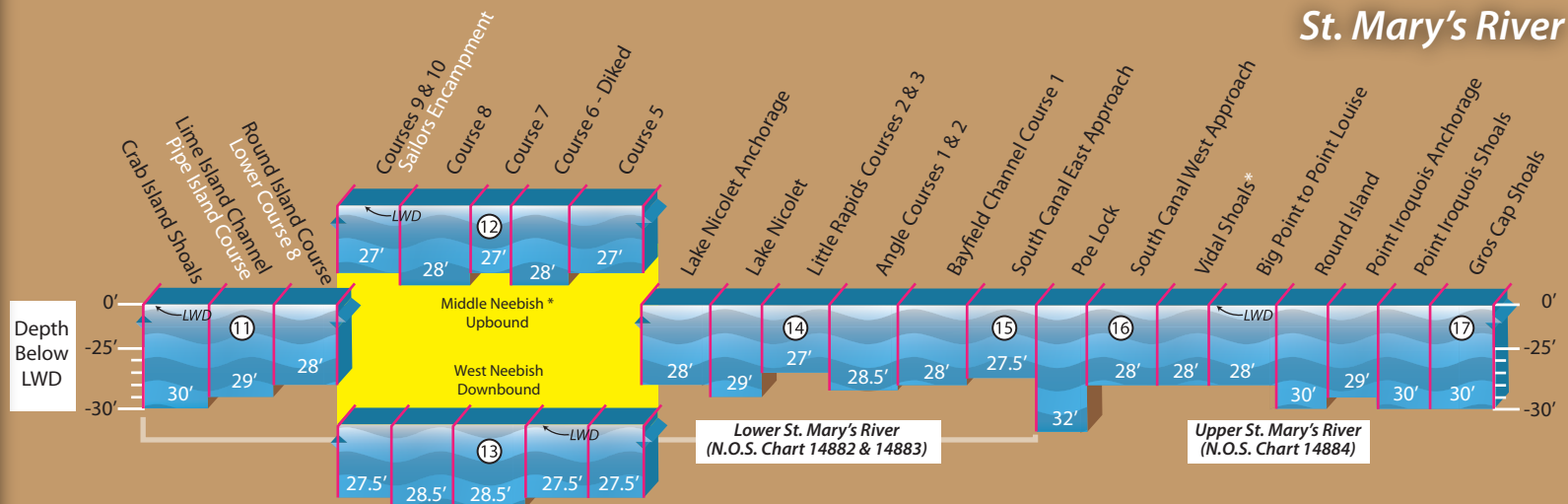
Detroit & St. Clair Rivers NOAA Gauge Locations: 1. Fermi, 2. Gibraltar, 3. Wyandotte, 4. Fort Wayne, 5. Windmill Point, 6. St. Clair Shores, 7. Algonac, 8. St. Clair State Police, 9. Mouth of Black River, 10. Fort Gratiot

**This Chart is for general information only.**

**Vessel masters should refer to Local Notice to Mariners for extent of shoaling and scattered bedrock projections in all channels.**

The connecting channels, as authorized, provide depths varying from 27 to 30 feet below Low Water Datum (LWD), depending on exposure of channel, hardness of bottom material and vessel squat in each reach. These depths are designed to permit maximum draft of 25'6" for lake vessels when the water level is at LWD. However, the individual vessel master should give further consideration to the characteristics peculiar to his vessel and to his individual clearance and safety requirements in determining the safe draft to which to load his vessel.

## St. Mary's River



\*Note on Middle Neebish: In courses 5, 6, 7, 8 & 9 depths shown are westerly width of 300 ft. in course 8 depth shown is for westerly width of 600 ft. In all courses easterly width has 21 ft. design depth.

\*Note on Vidal Shoals: For the entire channel length, a design depth of 29' exist from 500' South to 300' North of the channel centerline. What remains of the 1500' total channel width is at a 28' project depth.

St. Mary's River NOAA Gauge Locations: 11. De Tour Village, 12. West Neebish Is, 13. Rock Cut, 14. Little Rapids, 15. U.S. Slip, 16. S.W. Pier 17. Point Iroquois



**US Army Corps of Engineers®**  
Detroit District

## CURRENT NINTH DISTRICT BRIDGE MAINTENANCE/ACTIVITIES

### Local Notice to Mariner Week [50/23]

**Note:** Short-term bridge maintenance closures and various activities may only be published [through Broadcast Notice to Mariners](#) and may not be included [in the Local Notice to Mariners](#). Mariners should both *listen* to Broadcast Notice to Mariners (BNM) and *read* Coast Guard Local Notice to Mariners (LNM) available by clicking [HERE](#) for the most recent and complete marine information.

There is a Microsoft Teams meeting with the US Coast Guard, Mariners, and Bridge Owners being held on the last Wednesday of every month, and **YOU** are welcome to join in.

#### Join on your computer or mobile app

[Click here to join the meeting](#)

#### Or call in (audio only)

[+1 410-874-6742,,515305017#](#)

Phone Conference ID: 515 305 017#

PUBLIC NOTICES FOR 9th District BRIDGES: <https://www.navcen.uscg.gov/D9BN>

#### Please contact us with any questions or concerns:

Blair Stanifer (216) 902-6086 or [William.B.Stanifer@uscg.mil](mailto:William.B.Stanifer@uscg.mil)  
Lee Soule (216) 902-6085 or [Lee.D.Soule@uscg.mil](mailto:Lee.D.Soule@uscg.mil)  
Michael Walker (216) 902-6087 or [Michael.O.Walker2@uscg.mil](mailto:Michael.O.Walker2@uscg.mil)  
FAX: (216) 902-6088

Commander (dpb)  
Ninth Coast Guard District  
1240 E. 9th St. Room 2047B  
Cleveland, Ohio 44199-2001

#### NOTES:

For the rest of the month (due to the holidays) please remember to email [michael.o.walker2@uscg.mil](mailto:michael.o.walker2@uscg.mil) and [lee.d.soule@uscg.mil](mailto:lee.d.soule@uscg.mil) as we will be alternating our work days over the rest of December to cover for leave and liberty days.

The Anthony J. Celebrezze Federal Building (where the bridge office is located) will be closed on December 25<sup>th</sup> in observance of **Christmas Day**, a Federal Holiday; but, the District and Sector Command Centers will be open 24/7. If you have urgent bridge issues on these days call 216-902-6118 for the D9 Command Center who will contact one of us for you.

The Anthony J. Celebrezze Federal Building (where the bridge office is located) will be closed on January 1st in observance of **New Year's Day**, a Federal Holiday; but, the District and Sector Command Centers will be open 24/7. If you have urgent bridge issues on these days call 216-902-6118 for the D9 Command Center who will contact one of us for you.

#### FEDERAL REGULATIONS DOCKET STATUS

USCG-2023-0183 - FR – River Rouge – to Legal Review and Command Approval  
USCG-2023-0184 - FR – Maumee River – to Legal Review and Command Approval  
USCG-2023-0185 - FR – Sandusky Bay – to Legal Review and Command Approval  
USCG-2023-0186 - FR – Portage River – to Legal Review and Command Approval  
USCG-2023-0187 - FR – Black River – to Legal Review and Command Approval  
USCG-2023-0188 - FR – Cuyahoga River – to Legal Review and Command Approval  
USCG-2023-0189 - FR – Ashtabula River – to Legal Review and Command Approval  
USCG-2023-0912 – NPRM – Independence Bridge Rehab – to District Commander for approval

## GREAT LAKES REGION

### **GREAT LAKES, Drawbridge Delay Reports, Chart 14500**

Mariners are requested to submit Reports of Drawbridge Signal/Operations Delays directly to the Ninth Coast Guard District Bridge Branch using the attached form. Reports of signal or drawbridge delays have been processed by Coast Guard Marine Safety Offices in recent years but will now be processed and traced by the Bridge Branch. Reports may be sent by mail, e-mail, or by fax. The mailing address and fax number are on the form. The updated form is printed and attached on the last page of this list.

[08/05] [34/12]

## ST. LAWRENCE SEAWAY

### NY STATE CANAL SYSTEM

(Everything West of St. Johnsville, NY)

#### **NY - NEW YORK STATE CANAL SYSTEM – Erie Canal – Chart 14786**

From April 1, 2023, through **July 1, 2024**, snooper trucks will be working under the E-182 Main Street Bridge, mile 278.93, over the Erie Canal to rehabilitate the bridge in the fully open position. The permitted navigation lights will be removed and temporarily replaced with steady burning yellow lights on the bottom and four-corners of the drawspan. Spotters will warn of approaching vessels and move the man lift to allow vessels to pass.

[12/22]

#### **NY - NEW YORK STATE CANAL SYSTEM - Erie Canal – Chart 14786**

From March 15, 2024, through **January 31, 2025**, daily, contractors will utilize scaffolding and man lifts above low steel of the E144C I-390 Bridge at mile 258.65 and the E144D I-390 Bridge at mile 258.68 over the Erie Canal.

[42/23]

## LAKE ONTARIO

### LAKE ERIE - MAHONING RIVER - NIAGARA RIVER- ALLEGHENY RIVER

\*\*\*\*\*REVISED\*\*\*\*\*

#### **OH - LAKE ERIE – Toledo Harbor – Chart 14847**

From July 1, 2019, through **April 14, 2024**, a temporary causeway will be constructed between mile 6.73 and

6.76 for the construction of the new and demolition of the old Michael V. DiSalle Memorial (I-75) Bridge at Mile 6.73 over the Maumee River. The causeway will be marked with flashing yellow lights spaced approximately 10 meters apart with red over red lights marking the ends of the causeway. A 100-foot-wide channel will be provided for vessels to pass through the construction area. Mariners are encouraged to pass through the area at a slow speed.

[26/19] [21/20] [14/23] [37/23] [49/23]

**NY - LAKE ERIE – Buffalo Harbor – Chart 14833**

From January 1 through **March 31, 2024**, the Canadian National International Railroad Bridge at mile 3.8 over the Black Rock Canal will be secured to masted navigation for maintenance. Vessels able to pass under the bridge without an opening may do so at any time.

[30/23]

**NY - LAKE ERIE – Buffalo Harbor – Chart 14833**

From January 1 through **March 31, 2025**, the Canadian National International Railroad Bridge at mile 3.8 over the Black Rock Canal will be secured to masted navigation for maintenance. Vessels able to pass under the bridge without an opening may do so at any time.

[30/23]

**NY - LAKE ERIE – Niagara River – Chart 14833**

From August 28, 2023, through **July 26, 2026**, scaffolding that extends approximately 3-feet below low steel will be installed under the South Grand Island Bridge at Mile 3.40 and the North Grand Island Bridge at Mile 18, both over the Niagara River. A 16-foot by 32-foot materials barge and a 4-foot by 40-foot temporary dock will be used under the bridges.

[32/23]

**OH - LAKE ERIE – Otter Creek – Chart 14846**

The Coast Guard has received a report that back fill extending approximately 14-feet has been added to the Norfolk Southern Railroad Bridge at mile 1.8 over Otter Creek. Steady burning red lights will warn mariners of the temporary reduction in horizontal clearance. The temporary reduction may last until **March 31, 2024**, before permanent repairs can be made.

[36/23]

**OH - LAKE ERIE – Cuyahoga River – Chart 14839**

From June 1, 2024, through **September 30, 2026**, daily scaffolding will be installed under the I-490 Bridge at mile 4.79 over the Cuyahoga River that hangs approximately 4-feet below low steel. Snooper vehicles and manlifts will be used. Spotters will warn workers of approaching vessels and move the manlift to allow vessels to pass.

[43/23]

\*\*\*\*\*REVISED\*\*\*\*\*

**OH - LAKE ERIE – Toledo Harbor – Chart 14847**

From November 3 through **December 21, 2023**, the Martin Luther King Jr. Memorial Bridge at Mile 4.30 over the Maumee River will require a 2-hour advance notice for openings due to a destroyed traffic gate. Mariners should provide advance notice directly to the drawtender.

[45/23] [49/23]

**OH - LAKE ERIE – Cuyahoga River – Chart 14839**

From December 18, 2023, through **March 20, 2024**, all city of Cleveland operated bridges over the Cuyahoga River including the North Coast Harbor will require a 12-hour advance notice for openings. Mariners should provide advance notice directly to the Carter Road drawtender by calling 216-664-4767 or by email to [rscott@clevelandohio.gov](mailto:rscott@clevelandohio.gov).

[46/23]

## DETROIT RIVER - LAKE ST. CLAIR - ST. CLAIR RIVER – RIVER ROUGE

\*\*\*\*\*REVISED\*\*\*\*\*

### **MI - DETROIT RIVER – Main Channel – Chart 14848**

From November 1, 2022, through **August 30, 2024**, contractors will be constructing the Gordie Howe International Bridge at mile 16.7 over the Detroit River. No equipment will be placed in the water. Overhead work will have temporary steady burning yellow lights to mark new construction. A moving platform with quick flashing red lights and orange or red ball fenders on the bottom four corners with a safety net that hangs approximately 15-feet below low steel will be constructing the bridge. Mariners should avoid passing directly under the platform at any time. Snooper type vehicles will be utilized on the bridge throughout construction. Spotters will warn of approaching vessels and move the man lift to allow vessels to pass. When construction is completed and all equipment removed, the final vertical clearances for the bridge will be 152-feet for the center 100-feet of the navigation channel. No less than 137-feet of vertical clearance will be available at the channel limits. Vertical clearances are based on IGLD85.

[47/20] [07/22]

### **MI - DETROIT RIVER – Trenton Channel – Chart 14848**

From November 27 through **December 23, 2023**, the Grosse Ile Toll Bridge at Mile 8.80 over the Trenton Channel of the Detroit River will be secured to masted navigation. Vessels able to pass under the bridge without an opening may do so at any time. A 110-foot by 45-foot barge will be working under the bridge between the hours of 0700 to 1700, Monday through Saturday and will move if the drawtender is provided a 2-hour advance notice of arrival.

[45/23]

## LAKE HURON

### **MI - LAKE HURON – Saginaw River – Chart 14867**

From December 18, 2023, through **April 19, 2024**, the Independence Street Bridge at Mile 3.88, over the Saginaw River will be secured to masted navigation. Vessels able to pass under the bridge without an opening may do so at any time. Two barges 80-foot by 40-foot or smaller will be working under the bridge. The barges will move with a 2-hour advance notice. Mariners should provide advance notice for the barges by calling 608-425-0171.

[17/23] [47/23]

### **MI – LAKE HURON – Port Huron – Chart 14865**

From March 25 through **March 31, 2024**, the 7<sup>th</sup> Street Bridge at mile 0.50 over the Black River will be secured to masted navigation. Vessels able to pass under the bridge without an opening may do so at any time.

[49/23]

## LAKE MICHIGAN – EAST

\*\*\*\*\*REVISED\*\*\*\*\*

### **MI - LAKE MICHIGAN – Charlevoix Harbor – Chart 14942**

From 0700 on January 1, 2024, through 0700 on **March 31, 2024**, the US 31 Bridge Street Bridge, over the Pine River will be secured to masted navigation. Vessels able to pass under the bridge without an opening may do so at any time.

[32/22] [33/22]

\*\*\*\*\*REVISED\*\*\*\*\*

### **MI - LAKE MICHIGAN – Manistee Harbor – Chart 14938**

From December 1, 2023, through **April 1, 2024**, the US 31 Bridge at Mile 1.4 over the Manistee River will be secured to masted navigation. Vessels able to pass under the bridge without an opening may do so at any time.



From June 26 through December 1, 2023, between the hours of 0700 and 1930 Monday through Saturday, two 30-foot by 40-foot barges will be working under the bridge. The barges will move to accommodate large vessels with a 30-minute advance notice provided directly to the barge by calling 269-720-5424 or 269-941-3431. From December 1 through April 1, 2024, scaffolding that hangs approximately 4-feet below low steel will be installed under the bridge.

[25/23] [26/23]

### [LAKE MICHIGAN – MICHIGAN CITY & INDIANA HARBOR & GARY HARBOR](#)

#### **IL - LAKE MICHIGAN – Michigan City – Chart 14926**

From December 1, 2023, through **March 15, 2024**, the Franklin Street Bridge at Mile 0.50 over Trail Creek will be secured to masted navigation. Vessels able to pass under the bridge without an opening may do so at any time.

[37/23]

### [LAKE MICHIGAN – CALUMET RIVER & LITTLE CALUMET RIVER](#)

#### **IL - LAKE MICHIGAN – Calumet Harbor – Chart 14927**

From September 7, 2023, through **May 22, 2024**, scaffolding will be installed under the Indiana Avenue Bridge at Mile 10.80 (CORPS MILE 322.3) over the Little Calumet River that hangs approximately 1-foot below low steel.

[34/23]

#### **IL - LAKE MICHIGAN – Calumet Harbor – Chart 14927**

From November 17, 2023, through **December 22, 2023**, between the hours of 0600 and 1800, Monday through Friday, contractor will utilize a 30-foot by 90-foot barge under the Chicago Skyway Bridge at Mile 1.50 (CORPS MILE 331.7) over the Calumet River. The barge will monitor VHF-FM marine Channel 16 and will move to accommodate vessels if a 2-hour advance notice is provided.

[47/23]

#### **IL - LAKE MICHIGAN – Calumet Harbor – Chart 14927**

On **December 11 and again on December 14, 2023**, between the hours of 0900 and 1300, the 92<sup>nd</sup> Street Bridge at Mile 0.76 (CORPS MILE 332.4) over Calumet River will have one leaf secured to masted navigation while the other leaf works normally. Vessels able to pass under the bridge without an opening may do so at any time.

[49/23]

### [CHICAGO RIVER – MAIN RIVER CHANNEL, NORTH BRANCH, NORTH SHORE CHANNEL, AND SOUTH BRANCH AND SOUTH FORK OF SOUTH BRANCH](#)

#### **IL - LAKE MICHIGAN – Chicago Harbor – Chart 14927**

From October 16 through **January 15, 2023**, between the hours of 0700 and 1730 daily, a 125-foot by 35-foot barge will be working under the Michigan Street Bridge at Mile 0.85 (CORPS MILE 326.3) over the Main Branch of the Chicago River. The barge will monitor VHF-FM Marine Channel 16 and move if a 1-hour advance notice is provided.

[42/23]

#### **IL - LAKE MICHIGAN – Chicago Harbor – Chart 14927**

From November 20, 2023, through **February 16, 2023**, between the hours of 0600 and 1800 Monday through Friday an 80-foot by 20-foot barge will be working under the Division Street Bridge at Mile 2.99 (CORPS

MILE 326.8) over the North Branch Canal of the Chicago River. The barge will monitor VHF-FM Marine Channel 16 and move to accommodate vessels traffic with a 1-hour advance notice.

[43/23]

#### **IL - LAKE MICHIGAN – Chicago Harbor – Chart 14927**

On **December 8, 9, 15, and 16, 2023** between the hours of 2200 and 0600 each day, the Amtrak Railroad Bridge at Mile 3.44 (CORPS MILE 323.5) over the South Branch of the Chicago River will be secured to masted navigation. Vessels able to pass under the bridge without an opening may do so at any time.

[48/23]

#### **CALUMET SAG CHANNEL**

#### **IL - LAKE MICHIGAN – Calumet-SAG Channel – Chart 14927**

From October 15 through **December 15, 2023**, scaffolding will be installed under the Southwest Highway Bridge at Mile 22.25 (CORPS MILE 310.7) over the Calumet-SAG Channel that hangs approximately 2-feet below low steel.

[37/23]

#### **CHICAGO SANITARY AND SHIP CANAL, KANKAKEE RIVER & ROCK RIVER**

(Lake Michigan to Mile 36.2/291.1)

#### **IL - LAKE MICHIGAN – Chicago Sanitary and Ship Canal – Chart 14927**

From September 15, 2023, through **January 5, 2024**, between the hours of 0600 and 1600, Monday through Saturday, a 20-foot by 80-foot barge will be working under the South California Avenue Bridge at Mile 7.3 (CORPS MILE 320.0) over the Chicago Sanitary and Ship Canal. The barge will monitor VHF-Fm Marine Channel 16 and will move if a 1-hour advance notice is provided.

[38/23]

#### **LAKE MICHIGAN – WEST**

#### **WI - LAKE MICHIGAN – Racine Harbor – Chart 14925**

From December 1, 2023, through **April 1, 2024**, the State Street Bridge at Mile 0.53 over the Root River will be secured to masted navigation and scaffolding that hangs approximately 4-feet below low steel will be installed under the bridge. Vessels that can safely pass under the bridge without an opening may do so at any time.

[43/22]

\*\*\*\*\*REVISED\*\*\*\*\*

#### **WI - LAKE MICHIGAN – Milwaukee Harbor – Chart 14924**

from May 1 through **December 23, 2023**, two barges 70-feet by 50-feet or smaller will be working under the bridge, A 20-foot channel will be maintained through the project but larger vessel may call 262-366-5121 and request the barges to move with a 2-hour advance notice.

[17/23] [33/23] [49/23]

#### **LAKE MICHIGAN – Sturgeon Bay Ship Canal – Green Bay – Fox River – Wolf River**

#### **WI - LAKE MICHIGAN – Green Bay – Chart 14918**

From December 1, 2026, through **March 31, 2027**, the Tilleman Memorial Bridge at mile 2.27 over the Fox River will be secured to masted navigation. Vessels able to pass under the bridge without an opening may do so at any time.

[49/23]

#### **LAKE SUPERIOR**

**RAINY LAKE, RAINY RIVER, LAKE OF THE WOODS, WISCONSIN RIVER, MISSISSIPPI RIVER, & RED RIVER OF THE NORTH**

Sorted by Chart Number

## Authorized Winter Hours for Great Lakes Bridges

October 15, 2023 - April 30, 2024

Last Updated: 04 DEC 2023

Chart Number	Port Name	Bridge Name	Mile	Waterway	Start Date	End Date	Advance Notice	Primary Phone Number	Secondary Phone Number	Alternate Phone	Alternate Phone
14815	Rochester	O' Rorke	1.2	Genesee	16-Dec	31-Mar	12-hours	585-753-7750	585-753-7780		
14832	Black Rock	Ferry Street	2.6	Black Rock	1-Dec	14-Apr	4-hours	716-866-4323			
14832	Black Rock	Canadian Natl	3.8	Black Rock	1-Dec	14-Apr	4-hours	289-683-6000	905-788-7502	905-351-3708	416-580-3320
14833	Buffalo	Michigan Ave	1.3	Buffalo River	16-Dec	21-Mar	04-hours	716-866-4323			
14833	Buffalo	Ohio St	2.1	Buffalo River	16-Dec	21-Mar	04-hours	716-866-4323			
14836	Ashtabula	5th Street	1.4	Ashtabula	15-Dec	31-Mar	12-Hours	440-576-2816	440-813-8229	440-228-2168	440-645-9041
14839	Cleveland	All City Bridges		Cuyahoga	19-Dec	20-Mar	12-Hours	VHF-FM 16	216-664-4767	<a href="mailto:Rscott@clevelandohio.gov">Rscott@clevelandohio.gov</a>	
14836	Ashtabula	NS RR	1.4	Ashtabula	30-Nov	1-Apr	24-hours	800-214-3609	470-463-1001	404-520-4138	
14841	Lorain	Charles Berry	0.6	Black River	1-Jan	31-Mar	12-hours	VHF-FM 16	440-244-2137		
14844	Port Clinton	Monroe St	0.4	Portage River	1-Dec	30-Apr	24-hours	419-409-0147	419-373-7050		
14844	Port Clinton	NS RR	1.5	Portage River	1-Dec	30-Apr	24-hours	419-254-1539			
14844	Sandusky	NS RR	3.5	Sandusky	1-Dec	31-Mar	24-hours	419-254-1539			
14846	Toledo	CSX RR	1.07	Maumee	21-Dec	31-Dec	04-hours	419-729-4321	419-697-2307		
14846	Toledo	CSX RR	1.07	Maumee	31-Dec	31-Mar	12-hours	419-729-4321	419-697-2307		
14846	Toledo	W&LE	1.8	Maumee	21-Dec	31-Dec	04-hours	330-767-7211	330-767-7215		
14846	Toledo	W&LE	1.8	Maumee	31-Dec	31-Mar	12-hours	330-767-7211	330-767-7215		
14846	Toledo	Craig Mem	3.3	Maumee	21-Dec	31-Dec	04-hours	419-409-0147	419-373-7050		
14846	Toledo	MLK	4.3	Maumee	21-Dec	31-Dec	04-hours	419-467-3558	419-346-8653	567-970-0508	
14846	Toledo	MLK	4.3	Maumee	1-Jan	31-Mar	12-hours	419-467-3558	419-346-8653	567-970-0508	
14846	Toledo	NS RR	5.76	Maumee	21-Dec	31-Mar	12-hours	419-254-1539			
14848	St. Clair	M29	0.1	Pine River	1-Dec	31-Mar	24-hours	810-941-7819			
14848	Detroit	Grosse Ile Free	5.6	Detroit River	15-Dec	15-Mar	12-hours	734-955-2172	888-762-3273	313-737-9837	
14848	Detroit	Grosse Ile Toll	8.8	Detroit River	15-Dec	15-Mar	12-hours	734-282-2914			
14864	Alpena	2nd Ave	0.3	Thunder Bay	1-Jan	31-Dec	03-hours	989-464-3416			
14865	Port Huron	Canadian Natl	1.56	Black River	1-Nov	30-Apr	12-hours	708-332-3002	708-332-3160	810-240-6390	
14865	Port Huron	Military St	0.3	Black River	1-Nov	30-Apr	12-hours	810-984-9730	810-985-8115		

lee.d.soule@uscg.mil

216-902-6085

Sorted by Chart Number

Authorized Winter Hours for Great Lakes Bridges

October 15, 2023 - April 30, 2024

Last Updated: 04 DEC 2023

14865	Port Huron	Seventh St	0.5	Black River	1-Nov	30-Apr	12-hours	810-984-9730	810-985-8115		
14865	Port Huron	Tenth St	0.9	Black River	1-Nov	30-Apr	12-hours	810-984-9730	810-985-8115		
14867	Bay City	Lake State RR	3.1	Saginaw	1-Jan	31-Mar	12-hours	989-393-9815	989-387-3941	Emergency:	989-393-2988
14867	Bay City	Cen. Mich. RR	4.94	Saginaw	1-Jan	31-Mar	12-hours	989-274-1381	989-439-3251	989-717-0013	
14867	Bay City	Independence	3.88	Saginaw	1-Jan	31-Mar	12-hours	989-737-3793			
14867	Bay City	Liberty	4.99	Saginaw	1-Jan	31-Mar	12-hours	989-737-3793			
14867	Bay City	Veterans Mem	5.6	Saginaw	1-Jan	31-Mar	12-hours	989-737-3793			
14867	Bay City	Lafayette	6.78	Saginaw	1-Jan	31-Mar	12-hours	989-737-3793			
14884	SOO	Canadian Natl	1	SOO LOCKS	Special	Special	Special	708-332-3002	708-332-3160	920-539-2043	
14886	Cheboygan	US23	0.9	Cheboygan	1-Dec	31-Apr	12-hours	231-238-7775	231-420-1153	231-420-1157	
14906	South Haven	Dyckman Ave	1.9	Black River	15-Oct	30-Apr	12-hours	269-637-0737	269-637-5151		
14916	Gills Landing	Canadian Natl	27.8	Wolf River	15-Oct	15-Apr	12-hours	708-332-3002	708-332-3160	920-539-2043	
14916	Menasha	HWY Bridges	xx	Fox River	8-Oct	26-Apr	12-hours	920-209-4032			
14916	Oshkosh	Canadian Natl	55.72	Fox River	8-Oct	26-Apr	12-hours	708-332-3002	708-332-3160	920-539-2043	
14916	Oshkosh	HWY Bridges	xx	Fox River	8-Oct	26-Apr	12-hours	920-420-2146			
14917	Marinette	Ogden-First	0.4	Menominee	1-Nov	30-Apr	12-hours	715-923-0999			
14918	Green Bay	Fox Valley & Superior	1.03	Fox River	1-Dec	31-Mar	12-hours	414-750-5676			
14918	Green Bay	Main Street	1.58	Fox River	1-Dec	31-Mar	12-hours	920-655-0339	920-448-3321	920-764-2964	
14918	Green Bay	Walnut Street	1.81	Fox River	1-Dec	31-Mar	12-hours	920-655-0339	920-448-3321	920-764-2964	
14918	Green Bay	Tillman Mem.	2.27	Fox River	1-Dec	31-Mar	12-hours	920-655-0339	920-448-3321	920-764-2964	
14918	Green Bay	Fox Valley & Lake Superior	3.31	Fox River	1-Dec	31-Mar	12-hours	414-750-5676			
14919	Sturgeon Bay	Bayview 42/57	3	Sturgeon Bay	1-Dec	14-Mar	12-hours	920-746-0187	920-493-8518		
14919	Sturgeon Bay	Maple-Oregon	4.17	Sturgeon Bay	1-Jan	14-Mar	12-hours	920-746-0187	920-493-8518		
14919	Sturgeon Bay	Michigan St.	4.3	Sturgeon Bay	1-Jan	14-Mar	12-hours	920-746-0187	920-493-8518		
14922	Manitowoc	Eighth Street	0.29	Manitowoc	1-Nov	31-Mar	12-hours	920-686-6910	920-683-4470	920-374-0403	
14922	Manitowoc	Tenth Street	0.43	Manitowoc	1-Nov	31-Mar	12-hours	920-686-6910	920-683-4470	920-374-0403	
14922	Sheboygan	Eighth Street	0.69	Sheboygan	1-Nov	30-Apr	12-hours	920-207-9742			
14924	Milwaukee	All City Owned	1.28	Milwaukee	2-Nov	15-Apr	12-Hours	VHF-FM 16	414-286-2575	VHF-174-1411	

Sorted by Chart Number

Authorized Winter Hours for Great Lakes Bridges  
October 15, 2023 - April 30, 2024

Last Updated: 04 DEC 2023

14924	Milwaukee	Canadian Pac	1.05	Menominee	2-Nov	16-Apr	12-Hours	414-389-3772			
14924	Milwaukee	Canadian Pac	1.67	Kinnickinnic	2-Nov	16-Apr	12-Hours	414-389-3772			
14924	Milwaukee	All City Owned	1.08	Menominee	2-Nov	16-Apr	12-Hours	VHF-FM 16	414-286-2575	VHF-174-1411	
14924	Milwaukee	All City Owned	1.96	Burnham	2-Nov	16-Apr	12-Hours	VHF-FM 16	414-286-2575	VHF-174-1411	
14924	Milwaukee	All City Owned	1.67	Kinnickinnic	2-Nov	16-Apr	12-Hours	VHF-FM 16	414-286-2575	VHF-174-1411	
14925	Racine	Main	.31/.5	Root River	1-Dec	1-Apr	2-Hours	262-886-2300			
14925	Racine	State	0.53	Root River	16-Oct	30-Apr	2-Hours	262-886-2300			
14926	Michigan City	Franklin St	0.5	Trail Creek	1-Dec	15-Mar	12-hours	219-362-6205			
14926	Michigan City	Amtrak RR	0.9	Trail Creek	1-Dec	15-Mar	12-hours	517-581-3340	269-687-2205	312-656-9111	269-985-3680
14927	Chicago	All City Owned		Chicago	1-Dec	31-Mar	48- hours*	312-744-4200	312-747-2470	312-744-4280	
14929	Indiana Harbor	Indianapolis	2.59	Ind Hbr C.	1-Jan	31-Dec	12-hours	317-899-8690, Option 1			
14930	St. Joe	CSX RR	0.67	St. Joe	16-Dec	28-Feb	12-hours	260-409-4420			
14930	St. Joe	Blossomland	0.9	St. Joe	16-Dec	28-Feb	12-hours	231-884-5211			
14930	St. Joe	Bicentennial	1.3	St. Joe	16-Dec	28-Feb	12-hours	231-884-5211			
14933	Grand Haven	CSX RR	2.8	Grand River	2-Dec	15-Mar	12-hours	616-293-0564	231-830-7706		
14933	Grand Haven	US 31	2.9	Grand River	15-Dec	15-Mar	12-hours	989-233-1053			
14938	Manistee	Maple St	1.1	Manistee	1-Nov	30-Apr	24-hours	231-723-6241			
14938	Manistee	US 31	1.4	Manistee	1-Nov	30-Apr	24-hours	231-723-6241	SEE LNM	SEE LNM	SEE LNM
14938	Manistee	CSX RR	1.5	Manistee	1-Nov	30-Apr	24-hours	231-794-7679	616-293-0564		
14942	Charlevoix	Bridge Street	0.3	Pine River	1-Jan	31-Mar	12-hours	231-342-8713			
14972	Keweenaw	US 41	16	Keweenaw	14-Dec	14-Apr	12-hours	906-482-7552			
14975	Duluth	Aerial	0.25	Ship Canal	1-Jan	15-Mar	12-hours	218-723-3387	218-343-0395	218-194-0401	
14975	Duluth	BNSF\Grassy PT	5.44	St. Louis	15-Dec	15-Mar	12-hours	715-394-1259	715-394-1257	715-154-5451	
14998	Rainer	Canadian Natl	85	Rainy River	16-Oct	30-Apr	12-hours	708-332-3002	708-332-3160	218-348-5338	
								*****	Hours not	requested	
								Note 1	0800-1600	Open On Signal	
								Note 2	0700-2300	Open On Signal	

Sorted by Chart Number

Authorized Winter Hours for Great Lakes Bridges  
October 15, 2023 - April 30, 2024

Last Updated: 04 DEC 2023

*	12-Hours	Commercial
Special		See Lock
		Schedule
See LNM		Maintenance
		Scheduled
**	Cell Phone	You can TEXT

(Revised 04/23) NINTH DISTRICT DRAWBRIDGE SIGNALS OR OPERATIONAL DELAYS FORM

TO: Commander (dpb)  
Ninth Coast Guard District  
1240 E. 9<sup>th</sup> Street – Room 2047b  
Cleveland, Ohio 44199-2060  
Phone: (216) 902-6087  
Fax: (216) 902-6088  
E-Mail: [William.B.Stanifer@uscg.mil](mailto:William.B.Stanifer@uscg.mil), [Lee.D.Soule@uscg.mil](mailto:Lee.D.Soule@uscg.mil), and [Michael.O.Walker2@uscg.mil](mailto:Michael.O.Walker2@uscg.mil)

DATE: \_\_\_\_\_  
*NOTE: Reports of Delay will be processed only when all items are fully addressed and reports submitted within 15 days of reported delay / difficulty. Attach additional sheets if necessary.*

CONFIDENTIALITY: Please check here if you wish to keep names of vessels and persons confidential

1. DATE OF DELAY: \_\_\_\_\_ 2. VESSEL NAME: \_\_\_\_\_ 3.  INBOUND  OUTBOUND

(\*\*\*NOTE: You must provide the following from Coast Pilot 6.\*\*\*)

4. BRIDGE NAME \_\_\_\_\_ 5. WATERWAY \_\_\_\_\_

6. MILE MARKER \_\_\_\_\_

7. WHAT TIME DID YOU ARRIVE AT THE BRIDGE? \_\_\_\_\_ 8. DID YOU SIGNAL FOR AN OPENING AT THAT TIME?  Y  N

9. HOW DID YOU SIGNAL?  Sound signal (Whistle, horn, megaphone, hailer, etc.) \_\_\_\_\_

(Check all that apply)  Visual signal (Flag or Light) \_\_\_\_\_

Radio telephone (Specify Frequency) \_\_\_\_\_

10. WHEN DID THE BRIDGE REPLY? \_\_\_\_\_ 11. WHAT DID THE DRAWTENDER SAY? \_\_\_\_\_

12. DID YOU COMMUNICATE WITH THE BRIDGE AFTER YOUR ARRIVAL? PLEASE PROVIDE DETAILS INCLUDING TIMES, WHAT YOU SAID, AND WHAT THE BRIDGE SAID? \_\_\_\_\_

13. WHAT TIME DID THE BRIDGE OPEN? \_\_\_\_\_ 14. WHAT TIME DID YOU START THROUGH? \_\_\_\_\_

15. WHAT TIME DID YOU CLEAR? \_\_\_\_\_ 16. WHAT ACTIONS DID YOU TAKE WHILE YOU WAITED FOR THE BRIDGE TO OPEN (e.g. tie up, hold position, use thrusters, return to dock)? \_\_\_\_\_

17. DESCRIBE ANY WEATHER OR WATER CONDITIONS THAT AFFECTED MANUEVERABILITY WHILE YOU WAITED? \_\_\_\_\_

18. DESCRIBE WHETHER ANY PEDESTRIANS, VEHICLES, OR TRAINS WERE STOPPED ON THE BRIDGE OR CROSSING THE BRIDGE? PROVIDE AS MUCH DETAIL AS POSSIBLE. \_\_\_\_\_

19. PROVIDE ANY ADDITIONAL INFORMATION YOU THINK WOULD BE HELPFUL? \_\_\_\_\_

20. YOUR NAME, E-MAIL, PHONE NUMBER, AND ADDRESS: \_\_\_\_\_

\_\_\_\_\_  
SIGNATURE OF REPORTING SOURCE





(Revised 04/23) NINTH DISTRICT DRAWBRIDGE SIGNALS OR OPERATIONAL DELAYS FORM

TO: Commander (dpb)  
Ninth Coast Guard District  
1240 E. 9<sup>th</sup> Street – Room 2047b  
Cleveland, Ohio 44199-2060  
Phone: (216) 902-6087  
Fax: (216) 902-6088  
E-Mail: [William.B.Stanifer@uscg.mil](mailto:William.B.Stanifer@uscg.mil), [Lee.D.Soule@uscg.mil](mailto:Lee.D.Soule@uscg.mil), and [Michael.O.Walker2@uscg.mil](mailto:Michael.O.Walker2@uscg.mil)

DATE: \_\_\_\_\_  
*NOTE: Reports of Delay will be processed only when all items are fully addressed and reports submitted within 15 days of reported delay / difficulty. Attach additional sheets if necessary.*

CONFIDENTIALITY: Please check here if you wish to keep names of vessels and persons confidential

1. DATE OF DELAY: \_\_\_\_\_ 2. VESSEL NAME: \_\_\_\_\_ 3.  INBOUND  OUTBOUND

(\*\*\*NOTE: You must provide the following from Coast Pilot 6.\*\*\*)

4. BRIDGE NAME \_\_\_\_\_ 5. WATERWAY \_\_\_\_\_

6. MILE MARKER \_\_\_\_\_

7. WHAT TIME DID YOU ARRIVE AT THE BRIDGE? \_\_\_\_\_ 8. DID YOU SIGNAL FOR AN OPENING AT THAT TIME?  Y  N

9. HOW DID YOU SIGNAL?  Sound signal (Whistle, horn, megaphone, hailer, etc.) \_\_\_\_\_

(Check all that apply)  Visual signal (Flag or Light) \_\_\_\_\_

Radio telephone (Specify Frequency) \_\_\_\_\_

10. WHEN DID THE BRIDGE REPLY? \_\_\_\_\_ 11. WHAT DID THE DRAWTENDER SAY? \_\_\_\_\_

12. DID YOU COMMUNICATE WITH THE BRIDGE AFTER YOUR ARRIVAL? PLEASE PROVIDE DETAILS INCLUDING TIMES, WHAT YOU SAID, AND WHAT THE BRIDGE SAID? \_\_\_\_\_

13. WHAT TIME DID THE BRIDGE OPEN? \_\_\_\_\_ 14. WHAT TIME DID YOU START THROUGH? \_\_\_\_\_

15. WHAT TIME DID YOU CLEAR? \_\_\_\_\_ 16. WHAT ACTIONS DID YOU TAKE WHILE YOU WAITED FOR THE BRIDGE TO OPEN (e.g. tie up, hold position, use thrusters, return to dock)? \_\_\_\_\_

17. DESCRIBE ANY WEATHER OR WATER CONDITIONS THAT AFFECTED MANUEVERABILITY WHILE YOU WAITED? \_\_\_\_\_

18. DESCRIBE WHETHER ANY PEDESTRIANS, VEHICLES, OR TRAINS WERE STOPPED ON THE BRIDGE OR CROSSING THE BRIDGE? PROVIDE AS MUCH DETAIL AS POSSIBLE. \_\_\_\_\_

19. PROVIDE ANY ADDITIONAL INFORMATION YOU THINK WOULD BE HELPFUL? \_\_\_\_\_

20. YOUR NAME, E-MAIL, PHONE NUMBER, AND ADDRESS: \_\_\_\_\_

\_\_\_\_\_  
SIGNATURE OF REPORTING SOURCE



Sorted by Chart Number

## Authorized Winter Hours for Great Lakes Bridges

October 15, 2023 - April 30, 2024

Last Updated: 04 DEC 2023

Chart Number	Port Name	Bridge Name	Mile	Waterway	Start Date	End Date	Advance Notice	Primary Phone Number	Secondary Phone Number	Alternate Phone	Alternate Phone
14815	Rochester	O' Rorke	1.2	Genesee	16-Dec	31-Mar	12-hours	585-753-7750	585-753-7780		
14832	Black Rock	Ferry Street	2.6	Black Rock	1-Dec	14-Apr	4-hours	716-866-4323			
14832	Black Rock	Canadian Natl	3.8	Black Rock	1-Dec	14-Apr	4-hours	289-683-6000	905-788-7502	905-351-3708	416-580-3320
14833	Buffalo	Michigan Ave	1.3	Buffalo River	16-Dec	21-Mar	04-hours	716-866-4323			
14833	Buffalo	Ohio St	2.1	Buffalo River	16-Dec	21-Mar	04-hours	716-866-4323			
14836	Ashtabula	5th Street	1.4	Ashtabula	15-Dec	31-Mar	12-Hours	440-576-2816	440-813-8229	440-228-2168	440-645-9041
14839	Cleveland	All City Bridges		Cuyahoga	19-Dec	20-Mar	12-Hours	VHF-FM 16	216-664-4767	<a href="mailto:Rscott@clevelandohio.gov">Rscott@clevelandohio.gov</a>	
14836	Ashtabula	NS RR	1.4	Ashtabula	30-Nov	1-Apr	24-hours	800-214-3609	470-463-1001	404-520-4138	
14841	Lorain	Charles Berry	0.6	Black River	1-Jan	31-Mar	12-hours	VHF-FM 16	440-244-2137		
14844	Port Clinton	Monroe St	0.4	Portage River	1-Dec	30-Apr	24-hours	419-409-0147	419-373-7050		
14844	Port Clinton	NS RR	1.5	Portage River	1-Dec	30-Apr	24-hours	419-254-1539			
14844	Sandusky	NS RR	3.5	Sandusky	1-Dec	31-Mar	24-hours	419-254-1539			
14846	Toledo	CSX RR	1.07	Maumee	21-Dec	31-Dec	04-hours	419-729-4321	419-697-2307		
14846	Toledo	CSX RR	1.07	Maumee	31-Dec	31-Mar	12-hours	419-729-4321	419-697-2307		
14846	Toledo	W&LE	1.8	Maumee	21-Dec	31-Dec	04-hours	330-767-7211	330-767-7215		
14846	Toledo	W&LE	1.8	Maumee	31-Dec	31-Mar	12-hours	330-767-7211	330-767-7215		
14846	Toledo	Craig Mem	3.3	Maumee	21-Dec	31-Dec	04-hours	419-409-0147	419-373-7050		
14846	Toledo	MLK	4.3	Maumee	21-Dec	31-Dec	04-hours	419-467-3558	419-346-8653	567-970-0508	
14846	Toledo	MLK	4.3	Maumee	1-Jan	31-Mar	12-hours	419-467-3558	419-346-8653	567-970-0508	
14846	Toledo	NS RR	5.76	Maumee	21-Dec	31-Mar	12-hours	419-254-1539			
14848	St. Clair	M29	0.1	Pine River	1-Dec	31-Mar	24-hours	810-941-7819			
14848	Detroit	Grosse Ile Free	5.6	Detroit River	15-Dec	15-Mar	12-hours	734-955-2172	888-762-3273	313-737-9837	
14848	Detroit	Grosse Ile Toll	8.8	Detroit River	15-Dec	15-Mar	12-hours	734-282-2914			
14864	Alpena	2nd Ave	0.3	Thunder Bay	1-Jan	31-Dec	03-hours	989-464-3416			
14865	Port Huron	Canadian Natl	1.56	Black River	1-Nov	30-Apr	12-hours	708-332-3002	708-332-3160	810-240-6390	
14865	Port Huron	Military St	0.3	Black River	1-Nov	30-Apr	12-hours	810-984-9730	810-985-8115		

lee.d.soule@uscg.mil

216-902-6085

Sorted by Chart Number

## Authorized Winter Hours for Great Lakes Bridges

October 15, 2023 - April 30, 2024

Last Updated: 04 DEC 2023

14865	Port Huron	Seventh St	0.5	Black River	1-Nov	30-Apr	12-hours	810-984-9730	810-985-8115		
14865	Port Huron	Tenth St	0.9	Black River	1-Nov	30-Apr	12-hours	810-984-9730	810-985-8115		
14867	Bay City	Lake State RR	3.1	Saginaw	1-Jan	31-Mar	12-hours	989-393-9815	989-387-3941	Emergency:	989-393-2988
14867	Bay City	Cen. Mich. RR	4.94	Saginaw	1-Jan	31-Mar	12-hours	989-274-1381	989-439-3251	989-717-0013	
14867	Bay City	Independence	3.88	Saginaw	1-Jan	31-Mar	12-hours	989-737-3793			
14867	Bay City	Liberty	4.99	Saginaw	1-Jan	31-Mar	12-hours	989-737-3793			
14867	Bay City	Veterans Mem	5.6	Saginaw	1-Jan	31-Mar	12-hours	989-737-3793			
14867	Bay City	Lafayette	6.78	Saginaw	1-Jan	31-Mar	12-hours	989-737-3793			
14884	SOO	Canadian Natl	1	SOO LOCKS	Special	Special	Special	708-332-3002	708-332-3160	920-539-2043	
14886	Cheboygan	US23	0.9	Cheboygan	1-Dec	31-Apr	12-hours	231-238-7775	231-420-1153	231-420-1157	
14906	South Haven	Dyckman Ave	1.9	Black River	15-Oct	30-Apr	12-hours	269-637-0737	269-637-5151		
14916	Gills Landing	Canadian Natl	27.8	Wolf River	15-Oct	15-Apr	12-hours	708-332-3002	708-332-3160	920-539-2043	
14916	Menasha	HWY Bridges	xx	Fox River	8-Oct	26-Apr	12-hours	920-209-4032			
14916	Oshkosh	Canadian Natl	55.72	Fox River	8-Oct	26-Apr	12-hours	708-332-3002	708-332-3160	920-539-2043	
14916	Oshkosh	HWY Bridges	xx	Fox River	8-Oct	26-Apr	12-hours	920-420-2146			
14917	Marinette	Ogden-First	0.4	Menominee	1-Nov	30-Apr	12-hours	715-923-0999			
14918	Green Bay	Fox Valley & Superior	1.03	Fox River	1-Dec	31-Mar	12-hours	414-750-5676			
14918	Green Bay	Main Street	1.58	Fox River	1-Dec	31-Mar	12-hours	920-655-0339	920-448-3321	920-764-2964	
14918	Green Bay	Walnut Street	1.81	Fox River	1-Dec	31-Mar	12-hours	920-655-0339	920-448-3321	920-764-2964	
14918	Green Bay	Tillman Mem.	2.27	Fox River	1-Dec	31-Mar	12-hours	920-655-0339	920-448-3321	920-764-2964	
14918	Green Bay	Fox Valley & Lake Superior	3.31	Fox River	1-Dec	31-Mar	12-hours	414-750-5676			
14919	Sturgeon Bay	Bayview 42/57	3	Sturgeon Bay	1-Dec	14-Mar	12-hours	920-746-0187	920-493-8518		
14919	Sturgeon Bay	Maple-Oregon	4.17	Sturgeon Bay	1-Jan	14-Mar	12-hours	920-746-0187	920-493-8518		
14919	Sturgeon Bay	Michigan St.	4.3	Sturgeon Bay	1-Jan	14-Mar	12-hours	920-746-0187	920-493-8518		
14922	Manitowoc	Eighth Street	0.29	Manitowoc	1-Nov	31-Mar	12-hours	920-686-6910	920-683-4470	920-374-0403	
14922	Manitowoc	Tenth Street	0.43	Manitowoc	1-Nov	31-Mar	12-hours	920-686-6910	920-683-4470	920-374-0403	
14922	Sheboygan	Eighth Street	0.69	Sheboygan	1-Nov	30-Apr	12-hours	920-207-9742			
14924	Milwaukee	All City Owned	1.28	Milwaukee	2-Nov	15-Apr	12-Hours	VHF-FM 16	414-286-2575	VHF-174-1411	

lee.d.soule@uscg.mil

216-902-6085

Sorted by Chart Number

Authorized Winter Hours for Great Lakes Bridges  
October 15, 2023 - April 30, 2024

Last Updated: 04 DEC 2023

14924	Milwaukee	Canadian Pac	1.05	Menominee	2-Nov	16-Apr	12-Hours	414-389-3772			
14924	Milwaukee	Canadian Pac	1.67	Kinnickinnic	2-Nov	16-Apr	12-Hours	414-389-3772			
14924	Milwaukee	All City Owned	1.08	Menominee	2-Nov	16-Apr	12-Hours	VHF-FM 16	414-286-2575	VHF-174-1411	
14924	Milwaukee	All City Owned	1.96	Burnham	2-Nov	16-Apr	12-Hours	VHF-FM 16	414-286-2575	VHF-174-1411	
14924	Milwaukee	All City Owned	1.67	Kinnickinnic	2-Nov	16-Apr	12-Hours	VHF-FM 16	414-286-2575	VHF-174-1411	
14925	Racine	Main	.31/.5	Root River	1-Dec	1-Apr	2-Hours	262-886-2300			
14925	Racine	State	0.53	Root River	16-Oct	30-Apr	2-Hours	262-886-2300			
14926	Michigan City	Franklin St	0.5	Trail Creek	1-Dec	15-Mar	12-hours	219-362-6205			
14926	Michigan City	Amtrak RR	0.9	Trail Creek	1-Dec	15-Mar	12-hours	517-581-3340	269-687-2205	312-656-9111	269-985-3680
14927	Chicago	All City Owned		Chicago	1-Dec	31-Mar	48- hours*	312-744-4200	312-747-2470	312-744-4280	
14929	Indiana Harbor	Indianapolis	2.59	Ind Hbr C.	1-Jan	31-Dec	12-hours	317-899-8690, Option 1			
14930	St. Joe	CSX RR	0.67	St. Joe	16-Dec	28-Feb	12-hours	260-409-4420			
14930	St. Joe	Blossomland	0.9	St. Joe	16-Dec	28-Feb	12-hours	231-884-5211			
14930	St. Joe	Bicentennial	1.3	St. Joe	16-Dec	28-Feb	12-hours	231-884-5211			
14933	Grand Haven	CSX RR	2.8	Grand River	2-Dec	15-Mar	12-hours	616-293-0564	231-830-7706		
14933	Grand Haven	US 31	2.9	Grand River	15-Dec	15-Mar	12-hours	989-233-1053			
14938	Manistee	Maple St	1.1	Manistee	1-Nov	30-Apr	24-hours	231-723-6241			
14938	Manistee	US 31	1.4	Manistee	1-Nov	30-Apr	24-hours	231-723-6241	SEE LNM	SEE LNM	SEE LNM
14938	Manistee	CSX RR	1.5	Manistee	1-Nov	30-Apr	24-hours	231-794-7679	616-293-0564		
14942	Charlevoix	Bridge Street	0.3	Pine River	1-Jan	31-Mar	12-hours	231-342-8713			
14972	Keweenaw	US 41	16	Keweenaw	14-Dec	14-Apr	12-hours	906-482-7552			
14975	Duluth	Aerial	0.25	Ship Canal	1-Jan	15-Mar	12-hours	218-723-3387	218-343-0395	218-194-0401	
14975	Duluth	BNSF\Grassy PT	5.44	St. Louis	15-Dec	15-Mar	12-hours	715-394-1259	715-394-1257	715-154-5451	
14998	Rainer	Canadian Natl	85	Rainy River	16-Oct	30-Apr	12-hours	708-332-3002	708-332-3160	218-348-5338	
								*****	Hours not	requested	
								Note 1	0800-1600	Open On Signal	
								Note 2	0700-2300	Open On Signal	

Sorted by Chart Number

Authorized Winter Hours for Great Lakes Bridges  
October 15, 2023 - April 30, 2024

Last Updated: 04 DEC 2023

*	12-Hours	Commercial
Special		See Lock
		Schedule
See LNM		Maintenance
		Scheduled
**	Cell Phone	You can TEXT



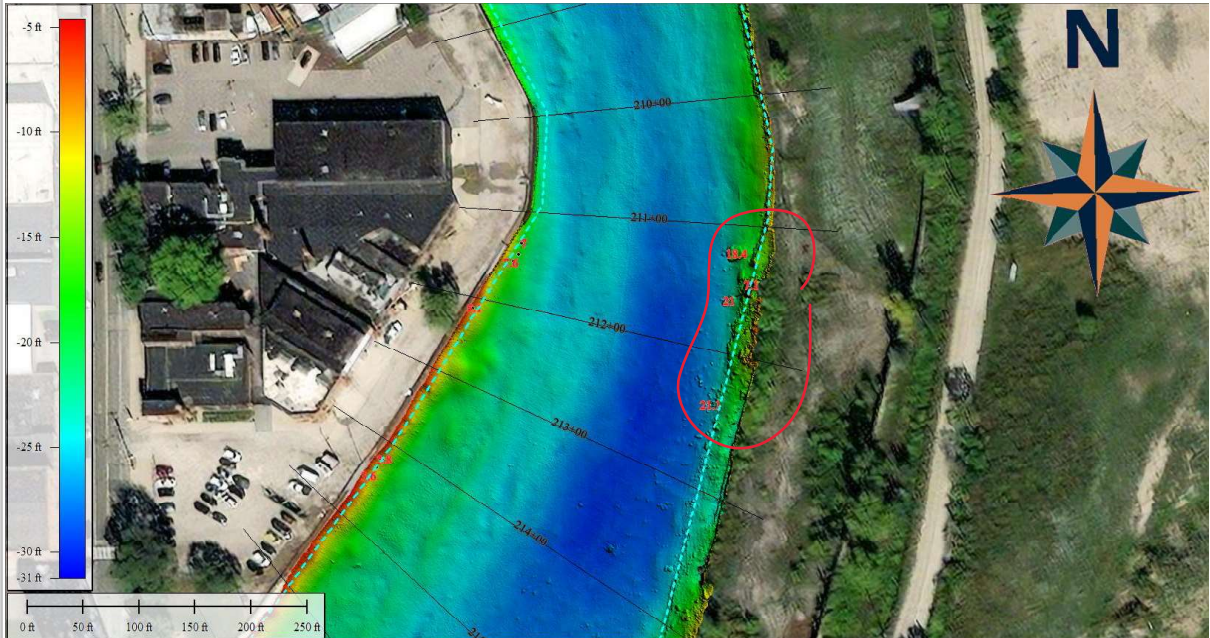
# CHANNEL OBSTRUCTION REPORT

## U.S. Army Corps of Engineers – Buffalo District

PROJECT NAME: Cuyahoga River  
DATE OBSERVED: 12/07/2023  
CREW: D. Banning, D. Bognar

OBJECT: Multiple unknown  
LATITUDE: 41° 29' 23.1785" N  
LONGITUDE: 81° 41' 54.1661" W

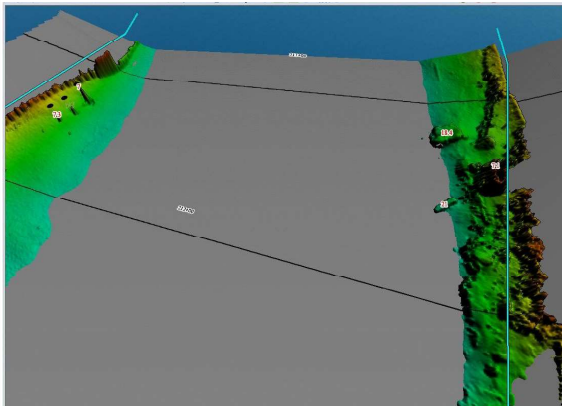
### SURVEY DATA



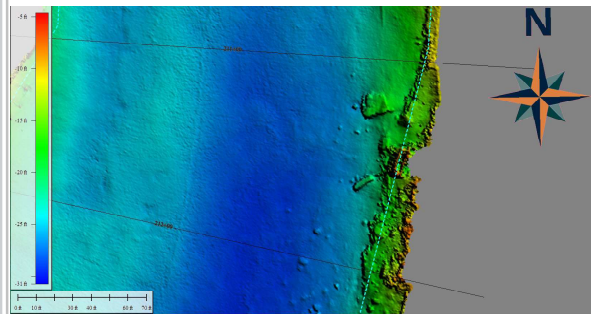
Multiple objects along easterly edge of Federal Channel between Sta. 211+00 & 213+00. Object Depths shown in red. Federal Channel shown in cyan.

View: NE down channel line

Hypack Channel View



3D view of channel bottom showing only areas that are shoaler than project depth of 23ft.



Close up view of area.



# Waterway Analysis and Management System Survey

Name of Waterway: \_\_\_\_\_

## User Information

\_\_\_ Commercial User

\_\_\_ Recreational User

Number of years in the maritime industry or number of years using this waterway: \_\_\_\_\_

Number of transits in the waterway per year: \_\_\_\_\_

Number of night transits of waterway: \_\_\_\_\_

Seasonal Dates: Start: \_\_\_\_\_ End: \_\_\_\_\_

Name of Vessel: \_\_\_\_\_

Vessel Description: \_\_\_\_\_

Length: \_\_\_\_\_ Beam: \_\_\_\_\_ Draft: \_\_\_\_\_ Gross Tons: \_\_\_\_\_

Net Tons: \_\_\_\_\_ Bridge Height of Eye: \_\_\_\_\_

Cargo Carried: \_\_\_\_\_

Navigational tools used: (ECDIS/ECPINS, GPS, DGPS, VISUAL, RADAR) \_\_\_\_\_  
\_\_\_\_\_  
\_\_\_\_\_

What area do you believe is the most dangerous or difficult to navigate: \_\_\_\_\_  
\_\_\_\_\_  
\_\_\_\_\_

Are the floating aids to navigation (lighted and unlighted buoys) adequate for this waterway: \_\_\_\_\_

\_\_\_\_\_

---

---

---

Are the fixed aids to navigation (lights, ranges, lighthouses, daybeacons) adequate for this waterway: \_\_\_\_\_

---

---

---

Are the year round and lighted ice buoys adequate: \_\_\_\_\_

---

---

---

Are there buoys that you feel should be changed to fixed aids to navigation?

---

---

---

---

---

---

Are there any buoys that could be eliminated from this waterway: \_\_\_\_\_

---

---

---

Are there any buoys with sound signals that the bell or gong could be removed:

---

---

---

Are there any areas that require additional aids to navigation in this waterway:

---

---

---

Do the nautical charts, Coast Pilot, and Light List meet your needs for this waterway: \_\_\_\_\_

---

---

---

Are there private Aids to Navigation that you find misleading or interfere with the current system in the waterway:

---

---

---

Any addition comments on this waterway: \_\_\_\_\_

---

---

---

---

Thank you for taking time to comment on this waterway. Your input as a mariner very valuable to the U. S. Coast Guard in evaluating waterways to make them safe and as easily navigable as possible. Please feel free to contact [D09-DG-District-D9-ATON-Support@uscg.mil](mailto:D09-DG-District-D9-ATON-Support@uscg.mil) with any other questions or concerns about any aids to navigation in the Great Lakes. The survey can be mailed to:

Commander (dpw-2)  
Ninth Coast Guard District  
1240 East Ninth Street  
Cleveland, Ohio 44199

---