



U.S. Department
of Homeland Security
**United States
Coast Guard**

LOCAL NOTICE TO MARINERS

District: 11

Week: 45/23

CORRESPONDENCE TO:
COMMANDER
DISTRICT ELEVEN (DPW)
COAST GUARD ISLAND BUILDING 50-2
ALAMEDA, CA 94501-5100

REFERENCES: COMDTPUB P16502.6, Light List Volume VI, 2017 Edition, U.S. Chart No.1 12th Edition, and Coast Pilot Volume 7 49th Edition. These publications, along with corrections, are available at: <https://nauticalcharts.noaa.gov/>

BROADCAST NOTICE TO MARINERS - Information concerning aids to navigation and waterway management promulgated through BNM HB-0012-23, SF-0160-23, LA-0139-23, and SD-0081-23 have been incorporated in this notice, or will continue if still significant.

SECTION I - SPECIAL NOTICES

This section contains information of special concern to the Mariner.

SUBMITTING INFORMATION FOR PUBLICATION IN THE LOCAL NOTICE TO MARINERS

A complete set of guidelines with examples and contact information can be found at <http://www.pacificarea.uscg.mil/Our-Organization/District-11/Prevention-Division/LnmRequest/> or call Waterways Management Branch at 510-437-2929 or e-mail D11-SMB-D11-LNM@uscg.mil. Please provide all Local Notice to Mariners submissions 14 days prior to the start of operations

LNM: 17/21

BRIDGE INFORMATION- PROJECTS, DISCREPANCIES, CORRECTIONS & REGULATORY

For all bridge related issues, including lighting, operation, obstructions, construction, demolition, etc. contact the Eleventh Coast Guard District Bridge Administrator 24 hour cell phone at 510-219-4366. Flotsam may accumulate on and near bridge piers and abutments. Mariners should approach all bridges with caution. A vessel delay at a drawbridge may be reported to the District Bridge Administrator by telephone, or by using the Delay_Report_11-2017.pdf included in the Enclosures section of this Local Notice to Mariners.

BRIDGE INFORMATION-COMMUNICATIONS PROTOCOL-BENICIA/MARTINEZ UPRR BRIDGE- CARQUINEZ STRAIT

All mariners requiring a bridge lift at the Benicia-Martinez Union Pacific Railroad Bridge, mile 7.0, over the Carquinez Strait, California, should follow the protocol in the document entitled "Coordination of Communications for Union Pacific Railroad Lift Operations." Mariners can download a copy of the document by selecting the link BENICIA-MARTINEZ RR BRIDGE under the QUICK LINKS section at <https://www.pacificarea.uscg.mil/vtssf>.

CALIFORNIA - SANTA BARBARA - TRAFFIC SEPARATION SCHEME (TSS) EXTENDED

In November of 2022, the International Maritime Organization (IMO) issued an adopted amendment, which goes into effect June 1, 2023. The amendment describes changes to the existing Traffic Separation Scheme (TSS) off Santa Barbara, CA. As a result of these changes, the Traffic Separation Scheme (TSS) has been extended westward. Please be advised that, per an agreement with the USCG Headquarters, NOAA cartographers used more accurate points expressed in degrees, minutes, seconds, and hundredths of seconds, rather than the derived IMO positions published in the IMO circular, which are slightly degraded in terms of accuracy. For details, please see Enclosure included in this Local Notice to Mariners.

Charts: 18020 18022 18700

LNM: 21/23

CALIFORNIA – CALIFORNIA COAST-VOLUNTARY VESSEL SPEED REDUCTION

NOAA, U.S. Coast Guard and the Environmental Protection Agency request that all vessels 300 gross registered tons (GRT) or larger reduce speeds to 10 knots or less when transiting in the Vessel Speed Reduction off of San Francisco, Monterey, and Southern California from 1 May, 2023 until 15 December, 2023 to protect endangered whales. (See 2023 NOAA USCG EPA VSR.pdf in the enclosure section) These areas contain populations of endangered blue, humpback, and fin whales that are federally protected under the Federal Endangered Species Act (16 USC 1538 et seq.), the Marine Mammal Protection Act (to protect endangered whales 16 USC 1361 et seq.), and the National Marine Sanctuaries Act (16 USC 1431 et seq.). Vessels already transiting south of the northern Channel Islands are also encouraged to transit outside of the Area To Be Avoided to reduce the overlap of ships and endangered whales. NOAA, USCG, and EPA request that vessels prioritize use of the western traffic lane of the San Francisco TSS when traveling in the San Francisco Offshore TSS. Vessels, including vessels under pilotage, may deviate from the speed and routing recommendations whenever necessary to maintain safe maneuvering. Please report any collisions with whales or any

observed injured or dead whales to the U.S. Coast Guard on VHF Channel 16. NOAA is asking for the public's help in tracking whales. Please report sightings through Whale Alert, a free application available at <http://westcoast.whalealert.org/>. For more information, contact Sean Hastings at (805) 705-1790 or email at sean.hastings@noaa.gov.

Charts: 18640 18680 18700 18720 18740

LNLM: 20/23

CAUTION TO BE USED IN RELIANCE UPON AIDS TO NAVIGATION

The aids to navigation depicted on charts comprise a system of fixed and floating aids to navigation with varying degrees of reliability. Prudent mariners will not rely solely on any single aid to navigation, particularly a floating aid to navigation. With respect to buoys, the buoy symbol is used to indicate the approximate position of the buoy body and the sinker which secures the buoy to the seabed. The approximate position is used because of the practical limitations in positioning and maintaining buoys and their sinkers in precise geographical locations. These limitations include, but are not limited to, inherent imprecision in position fixing methods, prevailing atmospheric and sea conditions, slope of and the material making up the seabed, the fact that buoys are moored to sinkers by varying length of chain, and the fact that the buoy body and/or sinker positions are not under continuous surveillance, but are normally checked only during periodic maintenance visits which often occur more than a year apart. Due to the forces of nature, the position of the buoy body can be expected to shift inside and outside the charted symbol. The mariner is also cautioned that buoys may be extinguished or sound signals may not function as the result of natural causes, collisions, or other accidents. For the foregoing reasons, a prudent mariner must not rely completely upon the position or operation of floating aids to navigation, but will also utilize bearings from fixed objects and aids to navigation on shore. Furthermore, a vessel attempting to pass close aboard always risks collision with a yawing buoy or with the obstruction that the buoy marks.

NAVIGATION CENTER WEBSITE TRANSITION

The U.S. Coast Guard Navigation Center is going to transition the Navigation Center website to a new, enhanced version in the first quarter of 2022. As part of this transition, URLs will be updated across the site including URLs linked to PDFs. Therefore, once the transition is complete, legacy site URLs will no longer function, including bookmarked URLs and URLs used in automatic downloading of data and/or products. Outdated URLs will automatically redirect to the home page of the site, and from there you will be able to easily navigate to your preferred page.

Below are a few of the "old"/new URL pairs listed for your convenience. Please note that the new URLs will not be active until we launch the new website. Of course, once it is launched, the new URLs will be available for re-bookmarking. As a reminder, these are top level URLs that may contain additional links that you use.

This notice will be updated when the final launch date is determined and another notice will be issued to notify you when the site goes live. Questions/concerns may be directed to the NAVZENWebTEAM@uscg.mil.

Local Notices to Mariners (LNMs)

Current URLs: <https://www.navcen.uscg.gov/?pageName=lnmMain>

Replacement: <https://www.navcen.uscg.gov/local-notices-to-mariners-by-cg-district>

Light Lists Annual Publication

Current URLs: <https://navcen.uscg.gov/?pageName=lightLists>

Replacement: <https://www.navcen.uscg.gov/light-list-annual-publication>

Light List - Weekly

Current URLs: <https://navcen.uscg.gov/?pageName=lightListWeeklyUpdates>

Replacement: <https://www.navcen.uscg.gov/weekly-light-lists>

Light List - Corrections

Current URLs: <https://navcen.uscg.gov/?pageName=lightListCorrections>

Replacement: <https://www.navcen.uscg.gov/light-list-summary-of-corrections>

LNLM: 06/22

NORTHERN CALIFORNIA-SAN FRANCISCO BAY-SEASONAL ESTABLISHMENT

The following Aids to Navigation sound signal has been seasonally established in accordance with Light List Volume VI, 2023.

San Pablo Bay Channel Light 15 (LLNR 5940)

East Brother Light (LLNR 5940)

For more details or comments contact Sector San Francisco at 415-399-7436.

Charts: 18649 18654 18655

LNLM: 42/23

NORTHERN CALIFORNIA-SAN FRANCISCO-MILE ROCKS LIGHT-REDUCED NOMINAL RANGE

Mile Rocks Light (LLNR 365) will have a temporarily reduced intensity of 5nm until further notice. Mariners are requested to transit the area with caution. For more details or comments contact LT Miranda Brumbaugh at 510-437-2978 or Miranda.E.Brumbaugh@uscg.mil.

Charts: 18007 18010 18020 18022 18640 18649 18680

LNLM: 16/19

SAFETY NOTICE - NAVIGATIONAL RANGE AND SECTOR LIGHTS ON ELECTRONIC CHARTS

"The U.S. Coast Guard has become aware that the Range and Sector Light Characteristic labels are not displayed on Electronic Navigational Charts (ENCs) when used in an Electronic Chart Display and Information System (ECDIS) due to limitations of the S-52 ECDIS display specification.

Mariners may query the ENC data directly within ECDIS or refer to the Light List for complete information on Range and Sector Light Characteristics."

LNM: 39/22

SOUTHERN CALIFORNIA - CHANNEL ISLANDS - AREA TO BE AVOIDED (ATBA) ENLARGED

In November of 2022, the International Maritime Organization (IMO) issued an adopted amendment, which goes into effect June 1, 2023. The amendment describes changes to the existing Area To Be Avoided (ATBA) around the Channel Islands, CA. As a result of these changes, the Area To Be Avoided (ATBA) has been significantly increased in size. Please be advised that, per an agreement with the USCG Headquarters, NOAA cartographers used more accurate points expressed in degrees, minutes, seconds, and hundredths of seconds, rather than the derived IMO positions published in the IMO circular, which are slightly degraded in terms of accuracy. For details, please see Enclosure included in this Local Notice to Mariners.

Charts: 18020 18022 18700 18720 18724 18725 18728 18729 18740

LNM: 21/23

SOUTHERN CALIFORNIA-SAN DIEGO BAY-MINIMIZE WAKE

The Navy Port Operations Manager requests that vessels slow to 7 kts when a vessel is moored in restricted area (33 CFR 334.865) located on the northeast side of North Island at 32-42-57N 117-11-22W, between San Diego Channel Lighted Buoy 20 (LLNR 1710) and San Diego Channel Lighted Buoy 22 (LLNR 1830). For more details or comments contact LT Rodriguez at 619-545-3232, Rigoberto.rodriguez3@navy.mil.

Chart 18773

LNM: 10/22

SUBMITTING INFORMATION FOR PUBLICATION IN THE LOCAL NOTICE TO MARINERS

Coast Guard District Eleven Waterways upgrade to E-Mail capabilities. All future requests for article submission in the District Eleven Local Notice to Mariners are requested to be E-Mailed to D11-SMB-SMB-D11-LNM@uscg.mil at least two weeks prior to the operation. For more details or comments please contact District Eleven Waterways Management Branch at 510-437-2929 or e-mail D11-SMB-D11-LNM@uscg.mil. Coast Guard District Eleven requests all Local Notice to Mariners submissions be E-Mailed to our office at least 14 days prior to the start of operations for timely submittal and publication.

LNM: 17/21

SECTION II - DISCREPANCIES

This section lists all reported and corrected discrepancies related to Aids to Navigation in this edition. A discrepancy is a change in the status of an aid to navigation that differs from what is published or charted.

DISCREPANCIES (FEDERAL AIDS)

| LLNR | Aid Name | Status | Chart No. | BNM Ref. | LNM St | LNM End |
|------|--|---------------|-----------|------------|--------|---------|
| 10 | San Diego Bay Approach Lighted Whistle Buoy SD | RAC INOP | 18772 | SD-0070-22 | 38/22 | |
| 125 | Long Beach Light | LT EXT | 18749 | LA-0148-20 | 49/20 | |
| 240 | Morro Bay West Breakwater Light | SS INOP | 18703 | LA-0125-23 | 43/23 | |
| 280 | Point Sur Light | LT EXT | 18680 | SF-0085-23 | 19/23 | |
| 330 | Pillar Point Harbor Approach Lighted Buoy PP | DAYMK MISSING | 18680 | SF-0081-23 | 17/23 | |
| 360 | San Francisco Approach Lighted Whistle Buoy SF | RAC INOP | 18649 | SF-0040-22 | 17/22 | |
| 365 | Mile Rocks Light | LT EXT | 18649 | SF-0099-22 | 44/22 | |
| 370 | Point Bonita Light | SS INOP | 18649 | SF-0132-23 | 36/23 | |
| 1485 | San Diego Bay Approach Lighted Whistle Buoy SD | RAC INOP | 18772 | SD-0070-22 | 38/22 | |
| 1493 | San Diego Bay Approach Lighted Bell Buoy 4 | LT IMCH | 18772 | SD-0074-22 | 41/22 | |
| 1535 | Zuniga Jetty Light W | STRUCT DEST | 18773 | SD-0038-23 | 26/23 | |
| 1545 | San Diego Bay Channel Lighted Buoy 8 | OFF STA | 18773 | SD-0070-23 | 39/23 | |
| 1845 | San Diego Bay Channel Lighted Buoy 26 | LT EXT | 18773 | SD-0080-23 | 42/23 | |
| 2635 | Ship Rock Light | LT EXT | 18757 | LA-0095-21 | 26/21 | |
| 2641 | Isthmus Cove Harbor Reefs Light | STRUCT DMGD | 18757 | LA-0018-21 | 05/21 | |
| 2670 | Santa Catalina Island West End Light | LT EXT | 18757 | LA-0113-19 | 34/19 | |
| 2810 | Anaheim Bay Channel Buoy 7 | OFF STA | 18749 | LA-0062-22 | 30/22 | |
| 3012 | Long Beach Light | LT EXT | 18749 | LA-0148-20 | 49/20 | |

| | | | | | |
|-------------|---|---------------------|--------------|-------------------|--------------|
| 3117 | Los Angeles Main Channel Lighted Buoy 11 | REDUCED INT | 18749 | LA-0105-21 | 28/21 |
| 3132 | Terminal Island Channel Lighted Buoy 1 | STRUCT DMGD | 18749 | LA-0027-22 | 16/22 |
| 3330 | Redondo Beach West Jetty Light 3 | STRUCT DEST | 18744 | LA-0021-23 | 09/23 |
| 3700 | Ventura Marina South Jetty Light 6 | SS INOP | 18725 | LA-0137-23 | 45/23 |
| 3750 | Santa Barbara Harbor Breakwater Light | SS INOP | 18725 | LA-0029-23 | 14/23 |
| 3835 | Morro Bay West Breakwater Light | SS INOP | 18703 | LA-0125-23 | 43/23 |
| 3877 | Morro Bay Rough Bar Warning Light | LT EXT | 18703 | LA-0027-23 | 12/23 |
| 3970 | Monterey Harbor Light 6 | SS INOP | 18685 | SF-0064-20 | 27/20 |
| 4130 | Pillar Point Harbor Entrance Lighted Gong Buoy 1 | SS INOP/STRUCT DMGD | 18680 | SF-0082-23 | 17/23 |
| 4220 | Point Bonita Light | SS INOP | 18649 | SF-0132-23 | 36/23 |
| 4245 | Mile Rocks Light | LT EXT | 18649 | SF-0099-22 | 44/22 |
| 4315 | Alcatraz Light | REDUCED INT | 18650 | SF-0151-23 | 41/23 |
| 4610 | Oakland Outer Harbor Range B Front Light | DAYMK MISSING | 18650 | SF-0070-23 | 14/23 |
| 4625 | Oakland Outer Harbor Range A Rear Light | LT EXT | 18650 | SF-0092-22 | 42/22 |
| 4655 | Oakland Outer Harbor Light 13 | MISSING/TRLB | 18650 | SF-0067-23 | 14/23 |
| 4680 | Oakland Inner Harbor Light 10 | MISSING/TRLB | 18650 | SF-0052-21 | 02/22 |
| 4684 | Oakland Inner Harbor Turn Basin Light B | STRUCT DMGD/TRLB | 18650 | SF-0097-21 | 29/21 |
| 4740 | San Leandro Bay Airport Channel Daybeacon 6 | STRUCT DEST/TRUB | 18650 | SF-0033-22 | 15/22 |
| 4765 | Alameda Naval Air Station Channel Light 5 | LT EXT | 18650 | SF-0159-23 | 45/23 |
| 4830 | San Leandro Marina Channel Light 1 | LT EXT/SS INOP | | SF-0012-23 | 02/23 |
| 4970 | San Bruno Shoal Channel Light 6 | LT EXT | | SF-0160-23 | 45/23 |
| 5225 | Redwood Creek Light 11 | STRUCT DEST/TRLB | | SF-0148-23 | 41/23 |
| 5430 | Berkeley Marina Channel Light 2 | LT EXT | 18650 | SF-0086-22 | 40/22 |
| 5725 | Richmond Harbor Channel Light 9 | MISSING/TRLB | 18649 | SF-0098-22 | 43/22 |
| 5845 | San Rafael Creek Light 3 | STRUCT DEST | 18653 | SF-0109-23 | 27/23 |
| 5890 | San Pablo Bay Preferred Channel Lighted Buoy E | MISSING | 18654 | SF-0152-23 | 42/23 |
| 6095 | Mare Island Strait Light 2 | STRUCT DMGD/TRLB | 18655 | SF-0152-20 | 49/20 |
| 6240 | Carquinez Strait Light 23 | LT EXT | 18656 | SF-0008-23 | 02/23 |
| 6557 | Suisun Bay Channel Light 24A | STRUCT DEST/TRLB | 18656 | SF-0134-23 | 36/23 |
| 6685 | San Joaquin River Light 8 | STRUCT DMGD/TRLB | 18656 | SF-0109-21 | 02/22 |
| 6830 | San Joaquin River Light 39 | STRUCT DMGD | 18661 | SF-0119-23 | 30/23 |
| 7210 | Sacramento River Deep Water Ship Channel Light 10 | MISSING/TRLB | 18656 | SF-0101-21 | 32/21 |
| 7230 | Sacramento River Deep Water Ship Channel Light 14 | MISSING/TRLB | 18661 | SF-0140-23 | 39/23 |
| 7235 | Sacramento River Deep Water Ship Channel Light 15 | MISSING/TRLB | 18661 | SF-0100-20 | 42/23 |
| 7240 | Sacramento River Deep Water Ship Channel Light 16 | STRUCT DEST/TRLB | 18661 | SF-0127-18 | 34/18 |
| 7260 | Sacramento River Deep Water Ship Channel Light 20 | MISSING/TRLB | 18661 | SF-0108-21 | 05/23 |
| 7810 | Bodega Harbor Channel Light 6 | STRUCT DMGD/TRLB | | SF-0028-21 | 08/23 |
| 7815 | Bodega Harbor Channel Daybeacon 7 | STRUCT DEST/TRLB | | SF-0046-23 | 08/23 |

DISCREPANCIES (FEDERAL AIDS) CORRECTED

| LLNR | Aid Name | Status | Chart No. | BNM Ref. | LNM St | LNM End |
|------|----------|--------|-----------|----------|--------|---------|
|------|----------|--------|-----------|----------|--------|---------|

None

DISCREPANCIES (PRIVATE AIDS)

| LLNR | Aid Name | Status | Chart No. | BNM Ref. | LNM St | LNM End |
|--------|--|-------------------|-----------|------------|--------|---------|
| 20 | Ocean Beach Pier Fog Sound Signal | SS INOP | 18765 | SD-0002-19 | 05/19 | |
| 158 | Scripps Waverider Lighted Research Buoy 092 | OFF STA | 18746 | | 45/18 | |
| 505 | Scripps Waverider Lighted Research Buoy 168 | LT EXT | 18620 | HB-0003-22 | 14/22 | |
| 1665 | Americas Cup Harbor Daybeacon 2 | STRUCT DEST/TRUB | 18773 | SD-0001-22 | 02/22 | |
| 1720 | Navy San Diego Bay Mooring Buoy 19 | LT EXT | 18773 | SD-0079-23 | 42/23 | |
| 2056 | Sweetwater Channel Light 6 | STRUCT DEST | 18773 | SD-0087-22 | 47/22 | |
| 2070 | Coronado Cays Channel Daybeacon 3 | STRUCT DEST | 18773 | SD-0098-17 | 36/17 | |
| 2090 | Coronado Cays Channel Light 7 | STRUCT DEST/TRUB | 18773 | SD-0046-22 | 31/22 | |
| 2159.1 | Chula Vista Channel Shoal Light B | STRUCT DEST | 18773 | SD-0021-23 | 14/23 | |
| 2288 | Scripps Waverider Lighted Research Buoy 220 | OFF STA | 18765 | SD-0041-20 | 30/20 | |
| 2289.1 | Scripps Waverider Lighted Research Buoy 100 | OFF STA | 18765 | | 22/20 | |
| 2289.4 | Scripps "CORDC" Lighted Research Buoy | MISSING | 18765 | | 22/20 | |
| 2764.4 | Catalina Sea Ranch SE Buoy | MISSING | 18746 | LA-0001-22 | 03/22 | |
| 2871 | Long Beach Harbor Brusco Lighted Mooring Buoy | LT EXT | 18749 | LA-0009-21 | 03/21 | |
| 3339.2 | REDONDO HARBOR LIGHT | LT EXT | 18744 | LA-0181-18 | 52/18 | |
| 3400 | El Segundo NRG Energy Buoy 6ES | SINKING | 18744 | LA-0153-21 | 39/21 | |
| 3420 | Hyperion Lighted Gong Buoy 10 ES | LT EXT | 18744 | | 16/20 | |
| 4401 | Richardson Bay Daybeacon 8 | DAYMK DMGD | 18653 | | 15/20 | |
| 4445 | San Francisco-Oakland Bay Bridge Pier D Fog Signal | SS INOP | 18650 | SF-0034-23 | 34/23 | |
| 4576 | South Beach Harbor North Entrance Light 2 | LT EXT | 18650 | SF-0047-21 | 11/21 | |
| 4577 | South Beach Harbor North Entrance Light 1 | LT EXT | 18650 | SF-0046-21 | 10/21 | |
| 4578 | South Beach Harbor South Entrance Light 1 | LT EXT | 18650 | SF-0091-20 | 33/20 | |
| 4827.1 | San Francisco Bay Anchorage 9 Lighted Mooring Buoy A | LT EXT | 18650 | SF-0012-20 | 04/20 | |
| 4828.1 | San Francisco Bay Anchorage 9 Lighted Mooring Buoy B | MISSING | 18650 | | 39/23 | |
| 5661 | Southampton Shoal Outfall Lighted Buoy 1 | SINKING/RAC INOP | 18653 | SF-0136-23 | 38/23 | |
| 5662 | Southampton Shoal Outfall Lighted Buoy 2 | LT EXT | 18653 | SF-0059-21 | 14/21 | |
| 5877.2 | San Rafael Rock Quarry Mooring Buoy C | MISSING | 18653 | | 36/18 | |
| 6623 | New York Slough Koch West Light | LT IMCH | | | 39/18 | |
| 6624 | New York Slough Koch East Light | LT EXT | | | 39/18 | |
| 6645.5 | Delta Diablo Outfall Lighted Buoy | LT EXT | | SF-0005-22 | 02/22 | |
| 6677 | Antioch Marina Entrance Light 1 | LT IMCH | 18656 | | 18/23 | |
| 6678 | Antioch Marina Entrance Light 2 | LT IMCH | 18656 | | 39/23 | |
| 8325 | Pacific Gas and Electric Dike Light | LT EXT | | HB-0009-21 | 20/21 | |
| 8591.1 | Lake Tahoe NASA-JPL Lighted Research Buoy TB2 | Status Unreported | | | 37/22 | |

DISCREPANCIES (PRIVATE AIDS) CORRECTED

| LLNR | Aid Name | Status | Chart No. | BNM Ref. | LNM St | LNM End |
|------|--------------------------------|-------------------|-----------|----------|--------|---------|
| 6363 | Avon Turning Basin North Light | WATCHING PROPERLY | 18658 | | 39/23 | |

PLATFORM DISCREPANCIES

| Name | Status | Position | BNM Ref. | LNM St | LNM End |
|------|--------|----------|----------|--------|---------|
|------|--------|----------|----------|--------|---------|

None

PLATFORM DISCREPANCIES CORRECTED

| Name | Status | Position | BNM Ref. | LNM St | LNM End |
|------|--------|----------|----------|--------|---------|
|------|--------|----------|----------|--------|---------|

None

SECTION III - TEMPORARY CHANGES and TEMPORARY CHANGES CORRECTED

This section contains temporary changes and corrections to Aids to Navigation for this edition. When charted aids are temporarily relocated for dredging, testing, evaluation, or marking an obstruction, a temporary correction shall be listed in Section IV giving the new position.

TEMPORARY CHANGES

| LLNR | Aid Name | Status | Chart No. | BNM Ref. | LNM St | LNM End |
|------|-----------------|-------------------|-----------|------------|--------|---------|
| 280 | Point Sur Light | Reduced Intensity | 18680 | SF-0105-20 | 35/20 | |

TEMPORARY CHANGES CORRECTED

| LLNR | Aid Name | Status | Chart No. | BNM Ref. | LNM St | LNM End |
|------|---------------------------------|--------------------|-----------|----------|--------|---------|
| 4945 | San Bruno Shoal Channel Light 1 | No Longer Required | | | 42/23 | 45/23 |
| 4965 | San Bruno Shoal Channel Light 5 | No Longer Required | | | 42/23 | 45/23 |

PLATFORM TEMPORARY CHANGES

| Name | Status | Position | BNM Ref. | LNM St | LNM End |
|------|--------|----------|----------|--------|---------|
|------|--------|----------|----------|--------|---------|

None

PLATFORM TEMPORARY CHANGES CORRECTED

| Name | Status | Position | BNM Ref. | LNM St | LNM End |
|------|--------|----------|----------|--------|---------|
|------|--------|----------|----------|--------|---------|

None

SECTION IV - CHART CORRECTIONS

None

SECTION V - ADVANCE NOTICES

This section contains advance notice of approved projects, changes to aids to navigation, or upcoming temporary changes such as dredging, etc. Mariners are advised to use caution while transiting these areas.

SUMMARY OF ADVANCED APPROVED PROJECTS

Approved Project(s)

None

Project Date

Ref. LNM

Advance Notice(s)

CALIFORNIA-SAN FRANCISCO TO SAN DIEGO-REMOVAL OF RACONS ON AIDS TO NAVIGATION

The U.S. Coast Guard will be removing the RACONS from aids to navigation located along the California Coast due to the consistent failure of the signals and that they are no longer considered necessary for safe navigation of the waterways. While there is no specific timeline for the removal of this equipment, it will be coordinated with servicing and discrepancy responses. The removal of the RACONS will be announced by Broadcast Notice to Mariners and published in the Local Notice to Mariners as Chart and Light List corrections. These aids to navigation are:

- Harding Rock Lighted Buoy HR (LLNR 4330): 37-50-17.661N 122-26-45.579W
- Los Angeles Approach Channel Lighted Whistle Buoy 3 (LLNR 3107): 33-41-16.012N 118-14-24.050W
- Long Beach Channel Approach Lighted Whistle Buoy LB (LLNR 3010): 33-41-24.013N 118-11-01.050W

Mariners are requested to respond in writing to the Coast Guard District office with any comments on this change at D11-SMB-D11-LNM@uscg.mil. Any discrepancy for these or other Aids to Navigation should continue to be reported to the closest US Coast Guard Sector.

Charts: 18007 18010 18022 18640 18649 18650 18680 18746 18749 18765 18772 LNM: 33/23

NORTHERN CALIFORNIA-SAN BRUNO-MARINER RADIO ACTIVATED SOUND SIGNAL

The U.S. Coast Guard will be installing a Mariner Radio Activated Sound Signal (MRASS) device on San Bruno Shoal Channel Light 1 (LLNR 4945). This device will allow the mariner to activate the installed sound signal by keying on a VHF-FM radio microphone six times at the designated frequency for the AtoN (83A). Please direct questions, comments, or concerns no later than 13 Dec 2023 to LTJG Samantha Hu at Samantha.G.Koval@uscg.mil or

SOUTHERN CALIFORNIA-LOS ANGELES-BUOY DISESTABLISHMENT

The U.S. Coast Guard is permanently disestablishing the Los Angeles East Basin Channel Buoy 4. The aid is in the approximate position: 33-46-21N, 118-14-55W. For more details or comments, contact no later than 3 January, 2024 to LTJG Samantha Hu at 206-827-3518 or Samantha.G.Koval@uscg.mil.

LNM: 45/23

SOUTHERN CALIFORNIA-SAN MATEO-SAN MATEO LIGHT DISESTABLISHMENT

The U.S. Coast Guard will be permanently disestablishing the San Mateo Point Light LLNR 80. The aid is in position: 33-23-18.241N, 117-35-44.642W. Direct any questions, comments, or feedback no later than 3 January, 2024 to LTJG Samantha Hu at (206) 827-3518 or Samantha.G.Koval@uscg.mil.

Charts: 18020 18022 18740 18744

LNM: 45/23

SOUTHERN CALIFORNIA-SANTA BARBARA-MARINER RADIO ACTIVATED SOUND SIGNAL

The U.S. Coast Guard will be installing a Mariner Radio Activated Sound Signal (MRASS) device on Santa Barbara Harbor Breakwater Light (LLNR 3750). This device will allow the mariner to activate the installed sound signal by keying on a VHF-FM radio microphone six times at the designated frequency for the AtoN (83A). Please direct questions, comments, or concerns no later than 27 December, 2023 to LTJG Samantha Hu at Samantha.G.Koval@uscg.mil or 206-827-3518.

Charts: 18720 18725

LNM: 44/23

SECTION VI - PROPOSED CHANGES

Periodically, the Coast Guard evaluates its system of aids to navigation to determine whether the conditions for which the aids to navigation were established have changed. When changes occur, the feasibility of improving, relocating, replacing, or discontinuing aids are considered. This section contains notice(s) of non-approved, proposed projects open for comment. SPECIAL NOTE: Mariners are requested to respond in writing to the District office unless otherwise noted (see banner page for address).

PROPOSED WATERWAY PROJECTS OPEN FOR PUBLIC COMMENT

Proposed Project(s)

Closing

Docket No.

Ref. LNM

None

Proposed Change Notice(s)

NORTHERN CALIFORNIA-SAN FRANCISCO-MILE ROCKS LIGHT

The U.S. Coast Guard is proposing to permanently reduce Mile Rocks Light (LLNR 365) nominal range to 8 NM. The aid is in position 37-47-34.171N, 122-30-37.405W. Please direct questions, comments, or concerns no later than 22 November, 2023 to LTJG Samantha Hu at 206-827-3518 or Samantha.G.Koval@uscg.mil.

Charts: 18007 18010 18020 18022 18640 18649 18680

LNM: 39/23

SECTION VII - GENERAL

This section contains information of general concern to the Mariners. Mariners are advised to use caution while transiting these areas.

ANNOUNCEMENT – U.S. Coast Pilot® 7 and U.S. Coast Pilot® -NEW EDITIONS-Spring 2023

PUBLICATION–National Oceanic Atmospheric Administration (NOAA) – U.S. Coast Pilot 7, Pacific Coast: California, 55th Edition, 2023, has been issued and is ready for free download and weekly updates at www.nauticalcharts.noaa.gov/publications/coast-pilot/index.html.

Only Print-on-Demand (POD) bound copies are available for purchase; visit nauticalcharts.noaa.gov/publications/print-agents.html#coast-pilot. The 2023 Edition cancels the preceding 2022 Edition, and incorporates all previous corrections.

LNM: 22/23

ARIZONA/NEVADA-COLORADO RIVER-BRIDGE

NEW LAUGHLIN-BULLHEAD CITY BRIDGE- Work continues on the construction of the new bridge in position 35-03-17N 114-36-45W. Work is being conducted Monday through Friday, 0630 to 1430. The bridge completely spans the river. The center of the navigation span provides 30 ft of vertical clearance at ordinary high water and the centerline is marked on the upstream and downstream sides with two green center channel lights. The access pads on the Arizona and Nevada side have been reduced exposing piers of the new bridge. The upriver and downriver ends of the piers, as well as the channel ward side of middle pier, and the upriver and downriver in-ward tip of the Nevada side access pad and the downriver inward tip of the Arizona side access pad are lit at night with steady burning red lights, visible at 2,000 yards by approaching vessels. A fourth red light will be installed on the northeast side of the river to mark the area to keep vessels out (see [RockAccessPad_Lighting02.pdf](#) at the end of this notice). Approximately 117 feet of horizontal clearance is provided in the center of the river during construction. For on-site conditions contact 702-455-6030 or 702-817-7088, or 702-286-0137. For further information contact the Coast Guard Bridge Office at 510- 437-3515.

LNM: 41/23

LOWER COLORADO RIVER-MARINE EVENT-PARKER, AZ

SCSC will be sponsoring the Blue Water Resort & Casino 77th Annual Thanksgiving Regatta event from 23-26 November, 2023 from 6:00am to 6:00pm daily. The event will involve approximately 75 participants racing on a closed course between Headgate Dam and The Blue Water Resort &

LOWER COLORADO RIVER-MARINE EVENT-PARKER, AZ

Casino. Mariners are requested to transit the area with caution. For more details or comments contact Ross Wallach at 310-318-4012.

LNM: 44/23

LOWER COLORADO RIVER-PARKER, AZ-MARINE EVENT

Seventy Point 8 LLC will be sponsoring the Another Dam Race paddle event on 10-11 November, 2023 from 7:00am until 1:00pm. The event will involve approximately 300 participants racing on a variety of paddle craft. 10 November, 2023, will consist of a sprint race in the vicinity of BlueWater Resort & Casino (BWRC). 11 November, 2023 will involve races starting at the BWRC, proceeding to the River Shore Resort & Motel (5 mile course) or Pirates Den (12 mile course), then returning to the BWRC. Mariners are requested to transit the area with caution. For more details or comments contact John Burns at 602-513-3067.

LNM: 43/23

LOWER COLORADO RIVER-PARKER-MARINE EVENT

The Arizona Dragboat Association (ADBA) will be sponsoring the 2023 Dragboat Finals powerboat races on 2-5 November, 2023 between 8:00am and 5:30pm. The event will involve approximately 100 participants racing on a 1000-foot course in the vicinity of BlueWater Resort & Casino. Mariners are requested to transit the area with caution. For more details or comments contact Jeremy Denny at 602-614-0560.

Chart 18765

LNM: 42/23

NORTHERN CALIFORNIA - SANTA CRUZ - WAVERIDER BUOY

A Waverider buoy has been deployed at 36-56-04N 122-02-02W near Santa Cruz, CA. The buoy will be used for wave measurements to aid the Coastal Data Information Program. For questions, contact Ross Timmerman at 619-818-8387.

Chart 18685

LNM: 33/22

NORTHERN CALIFORNIA -SAN FRANCISCO BAY- DEMOLITION

Silverado Contractors, Inc. will commence demolition in the San Francisco Bay, Point San Pablo at 37-57-48N 122-25-45W from 10 July, 2023 until 30 November, 2023 from 6:00am to 5:00pm. Spud Barge CB2, HITACHI 870 Excavator, LITTLE CINDY Material Barge Tec-36 Material Barge and Work Skiffs will be onsite to complete the demolition and monitoring VHF-FM CHAN. 71. Mariners are requested to transit the area with caution. For more information contact Matt Bramlett at 925-818-2324.

Chart 18653

LNM: 26/23

NORTHERN CALIFORNIA- PETALUMA RIVER- DIRECTIONAL DRILLING CONSTRUCTION OPERATIONS

Barnard Pipeline Inc will be conducting horizontal directional drilling operations below the Petaluma River to install a natural gas pipeline crossing near the City of Petaluma at 38-13-15N 122-35-47W. Operations will be conducted between 6-27 November, 2023 from 7:00am to 6:00pm, Monday through Saturday. Construction equipment will be staged on land above the adjacent shorelines. Mariners are requested to transit the area with caution. For more details or comments contact Lauren Liamsithisack at 925-786-1829.

Chart 18654

LNM: 43/23

NORTHERN CALIFORNIA- SACRAMENTO RIVER- LEVEE CONSTRUCTION

The Dutra Group will be conducting levee construction along the Sacramento River between Tower Bridge and Freeport Bridge in Sacramento from 1 July, 2023 until 30 November, 2023 during daylight hours. Crane Barge TM20, Crange Barge KELSO, and Crane Barge #1, along with a work boat and tug boat will be monitoring VHF-FM Chan. 9, 16 & 68. Mariners are requested to transit the area with caution. For more details or comments contact Scott Brooks at 707-333-5029.

Chart 18661

LNM: 21/23

NORTHERN CALIFORNIA- SACRAMENTO RIVER-MARINE CONSTRUCTION

The Dutra Group will be conducting marine construction south side of the Sacramento River bordering Brannan Island between River Mile 14.60 and 17.34, between the Sacramento River and Cache Slough River mouth to Ramos CFN in Isleton from 2 August, 2023 until 31 December, 2023. The Crane Barge 1 (50'x150') equipped with a 390' Long Reach Excavator along with a tugboat and miscellaneous small skiffs will be utilized on the project. The crane barge will be spudded at various locations during construction within the construction area. The material barge will be in transit from the San Rafael Rock Quarry. The material barges will be moored onsite while waiting to be offloaded or transported back to the quarry. The crane barge, as well as the workboats will mobilize from Dutra's Rio Vista Yard to the Sacramento River project site. Work will occur during daylight hours but towing of material supply barges and maneuvering of the spud barge outside of the construction area may continue at all hours. At the end of each shift, crane barges will be spudded in with flashers on all corners along with all other marine equipment. The Crane Barge crews will monitor VHF-FM CHAN. 9, 16 & 68A, or can be reached by calling 707-333-5029. The upstream and downstream corners of each barge will be lighted at night with steady burning red lights. Mariners are advised to use extreme caution while transiting the construction site. Mariners are urged to transit at their slowest safe speed to minimize wakes. For more details or comments contact William Ng at 707-231-6862.

LNM: 31/23

NORTHERN CALIFORNIA- SAN FRANCISCO BAY-GEOTECHNICAL DRILL TESTING

Gregg Drilling LLC will be conducting drilling operations from 5-14 November, 2023 near Hyde St. Pier at 37-48-36N 122-25-22W. The R/V QUIN DELTA will be on scene monitoring VHF-FM Chan. 13, 14 & 16. Mariners are requested to transit the area with caution. For further details or comments contact Captain Tim O'Donnell at 949-254-5190 or e-mail at BEARatSEA@gmail.com

Chart 18650

LNM: 43/23

NORTHERN CALIFORNIA- SAUSALITO- DREDGING OPERATIONS

Salt River Construction Corporation will be conducting dredging operations in the Richardson Bay Marina, Sausalito, County of Marin at 37-52-38N 122-30-11W on 31 July, 2023 through 30 November, 2023. The self-contained dredge/dump barges No. 1, No. 2, Tugboat "P CAY" (call sign WDM4874) and the Tugboat "SPRINGER" (call sign WDH5205) will be on the scene and monitoring VHF chan. 13, 14, & 78. There will be no temporary mooring piles or anchor balls placed by Salt River Construction outside the channel entrance of the Richardson Bay Marina. However, SRCC will be placing a 300' silt curtain/debris boom along the East side of the Marina, per Regulatory requirements. This boom will not affect navigation in the area. Mariners are requested to transit the area with caution. For details or comments contact Rick Moseley at 415-435-1024.

LNM: 29/23

NORTHERN CALIFORNIA-ALCATRAZ ISLAND-MARINE CONSTRUCTION

Manson Construction Co. will be conducting marine construction to the wharf at Alcatraz Island at 37-49-36N 122-25-15W. Construction will begin on 23 January, 2023 and be completed on 04 October, 2025. During construction DB HAGAR will be utilizing divers during low tide. Tug WESTAR will be assisting DB HAGAR and monitoring VHF-FM Chan. 13 and 16. Mariners are requested to transit the area with caution. For more details or comments contact Matt Lehmann at 510-529-1583.

Chart 18653

LNM: 50/22

NORTHERN CALIFORNIA-CACHE SLOUGH-MARINE CONSTRUCTION

The Dutra Group will be conducting marine construction along Hastings Island facing Cache Slough down to the Hastings Island Bridge. Construction will begin 29 August, 2023 until 31 December, 2023. CRANE BARGE 1 along with a tugboat and skiffs will be monitoring VHF-FM Chan. 9, 16 and 68A. A material barge will transit from the San Rafael Rock Quarry to the construction site. Mariners are requested to transit the area with caution. For more details or comments contact William Ng at 707-231-6862.

Charts: 18661 18664

LNM: 34/23

NORTHERN CALIFORNIA-CARQUINEZ STRAIT-BRIDGE

BENICIA-MARTINEZ (UP) RAIL BRIDGE-Wire rope replacement on the bridge will require the lift span of the bridge to be secured in the closed to navigation position from 8am to 4pm, 28 Nov 23 through 05 Dec 23. During this time the span will not be able to open in the event of an emergency. When closed the bridge provides 70' of vertical clearance at mean high water. The Coast Guard is accepting comments concerning this work by email at D11-SG-M-DPW-Bridges@uscg.mil or by telephone at 510-437-3516 through 14 Nov 23. For further details contact the Coast Guard Bridge Office at 510-219-4366.

Chart 18656

LNM: 44/23

NORTHERN CALIFORNIA-DELTA & RIVERS-AMERICAN RIVER-BRIDGE

CAPITAL CITY HWY (Route 51) BRIDGE-Caltrans is conducting rehabilitation of the bridge until 27 June, 2025. Work will be conducted during daylight hours, 7am to 5:30pm, Monday through Friday, and will include the use of barges, work boats, tugboats, turbidity curtains, and access piers. (See AmRiv_SiltCurtain_BargeLocation.pdf in the enclosure section.). During the workday, barges can be moved for the safety of navigation with one hour notice to the contractor via VHF-FM CH 16 or by cell at 916-532-8208. Mariners should contact the contractor before transiting the bridge to determine location of turbidity curtains. Barges will be unmanned and moored at their work locations overnight. Each corner of each barge will be lighted at night with steady burning red lights. At least 25 feet of horizontal clearance for navigation will be available at all times. Mariners are requested to transit the area with caution. For further information, contact the Coast Guard Bridge Office at 510-437-3461.

Chart 18662

LNM: 23/22

NORTHERN CALIFORNIA-DELTA & RIVERS-MIDDLE RIVER-BRIDGE

CA ROUTE 4-The downriver northeast dolphin has been partially removed, exposing the center steel pile of the dolphin. There is no protection around the steel pile. A red light will be mounted atop the steel pile within 2-3 weeks. Mariners are urged to transit the area with caution. For further information contact the Coast Guard Bridge Office at 510-437-3516.

Chart 18661

LNM: 44/23

NORTHERN CALIFORNIA-DELTA & RIVERS-NAPA RIVER-BRIDGE

MARE ISLAND CAUSEWAY BRIDGE-Currently the lift span of the bridge only provides 74 feet of vertical clearance at mean high water due to limit switch issues. Repairs are estimated to be complete on 30 November, 2023. For further information contact the Coast Guard Bridge Office at 510-437-3516.

Chart 18654

LNM: 43/23

NORTHERN CALIFORNIA-DELTA & RIVERS-NAPA RIVER-BRIDGE

HIGHWAY 37 BRIDGE-Repairs to the damaged east and west side fenders will take place Monday through Friday, during daylight hours, 01 Nov, 2023 through 01 May, 2024. The 188' X 60' crane barge "MORTY" or "KELSO" will be on-site along with the tug "PHYLLIS T" or "BECKY T" and will be moored, with anchors and spuds, in the channel span at various times, upstream and downstream of the bridge, temporarily reducing horizontal clearance of the bridge. During the workday, the barge can be moved for navigational safety if at least a two-hour notice is given to the tug via VHF-FM Channel 13, 14, or 16 or via cell phone at 415-686-9397. After normal working hours, the tug and barge will be moored off-site and the channel span of the bridge will be clear. After hours mariners can call 415-300-5336 or 415-686-3938 to report any discrepancies at the work site. For further information mariners can contact the Coast Guard Bridge Office at 510-437-3461.

Chart 18654

LNM: 42/23

NORTHERN CALIFORNIA-DELTA & RIVERS-OLD RIVER-BRIDGE

CA ROUTE 4 BRIDGE- Critical bridge rehabilitation is taking place 7:00am to 3:30pm Monday through Friday. Due to supply chain issues, Caltrans is anticipating a 30 January, 2024 time frame for project completion. The swing span WILL NOT open for the passage of vessels. In the closed position, the bridge provides 12' vertical clearance above mean high water. Vessels able to transit the bridge while closed can continue to do so at any time. For conditions at the work site, mariners can contact the contractor at 209-513-7309 or 415-375-5549; or Caltrans at 209-470-8835 or 209-465-0935. For further information, contact the Coast Guard Bridge Office at 510-437-3461.

Chart 18661

LNM: 41/23

NORTHERN CALIFORNIA-DELTA & RIVERS-PETALUMA RIVER-BRIDGE

BLACK POINT RAILROAD BRIDGE- The upstream northeast side fenders are damaged and may not offer adequate protection for the bridge or vessels. Mariners are urged to exercise caution when transiting through the bridge. Estimated time of repairs is unknown. For comments, contact the Coast Guard Bridge Office at (510) 437-3461.

Chart 18654

LNM: 28/23

NORTHERN CALIFORNIA-DELTA & RIVERS-PETALUMA RIVER-BRIDGE

HIGHWAY 37 BRIDGE-The upstream northwest fender on the bridge has been damaged and does not offer adequate protection for vessels or the bridge. The damaged fender encroaches 20-30 feet into the navigation channel. It is unknown if there is further encroachment beneath the waterline. The red light on the upstream portion of the fender and the axis light is extinguished. Estimated time of repair is unknown at this time. Mariners are urged to use caution when transiting the bridge. For a depiction of the damage and exact location, see HWY37FenderDamage.pdf in

NORTHERN CALIFORNIA-DELTA & RIVERS-PETALUMA RIVER-BRIDGE

the enclosure section of this notice. For further information contact the Coast Guard Bridge Office at 510-437-3516.

Chart 18654

LNM: 26/23

NORTHERN CALIFORNIA-DELTA & RIVERS-SACRAMENTO RIVER-BRIDGE

RIO VISTA BRIDGE-The upriver and downriver green center channel lights on the lift span are not operational. The center span channel lights show red in all positions, even when the span is in the fully open-to-navigation position. The bridgetender will be able to inform any vessel requesting an opening when the lift span is fully open. Estimated time of repair is unknown. For further information contact the Coast Guard Bridge Office at 510-437-3516.

Chart 18661

LNM: 49/22

NORTHERN CALIFORNIA-DELTA & RIVERS-SACRAMENTO RIVER-BRIDGE

REPLACEMENT BUTTE CITY BRIDGE- Replacement bridge construction continues Monday through Friday during daylight hours until 01 November, 2025. Installation of a temporary trestle has begun. Once trestle is in place, falsework will be installed. A temporary navigation span during construction will be just west of the existing bridge's pivot pier, 435 feet west of new bridge abutment, and is lighting at night with a green center channel light on the upriver and downriver portion of the trestle. Red lights will mark low steel of the remaining spans of the trestle. A buoy line will be installed, pending Coast Guard approval, to guide vessels through the bridge construction area (see ButteConstructionLighting-BuoyLine.pdf enclosure at the end of this notice). The temporary navigation span will provide at least 32 feet of horizontal clearance and 14 feet of vertical clearance from ordinary high water to low steel of the temporary trestle. For on-scene conditions contact Golden State Bridge, Inc, at 415-720-6577 or 925-260-0403 or Caltrans at 530-941-8272 or 530-682-3931. For further information contact the Coast Guard Bridge Office at 510-437-3461.

LNM: 42/22

NORTHERN CALIFORNIA-DELTA & RIVERS-SACRAMENTO RIVER-BRIDGE

RIO VISTA BRIDGE-The primary bridge controls have been replaced. To commission the newly replaced controls, the following temporary change to the operating schedule has been granted. From 6am on 28 Aug, 2023 until 6pm on 30 Jan, 2024, the lift span of the bridge will open on signal if at least a 4-hour notification is given to the drawtender at 707-374-2134. For further information contact the Coast Guard Bridge Office at 510-437-3516.

Chart 18661

LNM: 33/23

NORTHERN CALIFORNIA-DELTA & RIVERS-SAN JOAQUIN RIVER-BRIDGE

CROWS LANDING ROAD BRIDGE- Replacement of the bridge is ongoing. Work is being conducted Monday through Friday 6:00am to 4:00pm until 30 December, 2023. A temporary bridge, with a removable span, is installed to facilitate construction. With the span removed, the temporary bridge will provide, at a minimum, 15 feet of horizontal clearance. The span will be removed after normal working hours. Temporary falsework has also been installed. The temporary falsework's navigation span will provide 16 feet of vertical clearance at Ordinary High Water when the temporary bridge's removable span is removed. Upriver and downriver red channel margin lights and green center channel lights will mark the temporary navigation span at night. To view the temporary navigation span and lighting, see the TemporaryBridge_FalseworkLighting.pdf enclosure at the end of this notice. Mariners are requested to use extreme caution when transiting the work site. For conditions at the project site mariners can contact the contractor at 916-869-8210 or 559-593-5182. For further information contact the Coast Guard Bridge Office at 510-437-3461.

LNM: 36/22

NORTHERN CALIFORNIA-DELTA & RIVERS-SAN JOAQUIN RIVER-BRIDGE

STOCKTON VIADUCT (HWY 5) BRIDGE-AVALIABILITY OF PRELIMINARY PUBLIC NOTICE- The United States Coast Guard is soliciting public comments on a proposal by the California Department of Transportation (Caltrans) to replace the existing Stockton Viaduct (Highway 5) dual bridge. The General Bridge Act of 1946 requires approval of the location and plans for bridges over navigable waters of the United States, prior to commencing construction. This public notice allows the public to comment on the most restrictive navigational clearances being proposed. A Coast Guard Bridge Permit application has not yet been submitted but would be required for this project.

WATERWAY AND LOCATION: San Joaquin River, mile 41.1, at the City of Stockton, San Joaquin County, California. 37.953376, -121.309343

Preliminary Public Notice (11-162), dated October 24, 2023, contains a description of the proposed bridge replacement project including maps and bridge drawings detailing the most restrictive navigational clearance for all proposed alternatives. A preferred alternative has not been selected at this time. Interested parties may access Active Public Notices for Bridge Projects for the Eleventh Coast Guard District at the following website: <https://go.usa.gov/xJ8yw>. The public notice may also be obtained by calling the Eleventh Coast Guard District Bridge Office at (510) 437-3516; by writing to Commander (dpw), Eleventh Coast Guard District, Coast Guard Island, Bldg 50-2, Alameda, CA 94501-5100; by email request at D11-SG-M-dpw-Bridges@uscg.mil or by facsimile request at (510) 437-5836.

Mariners are requested to comment on the proposed bridge replacement project. Interested parties are requested to express their views in writing. Comments will be received for the record at the address to given in Preliminary Public Notice (11-162) through November 23, 2023.

Chart 18661

LNM: 43/23

NORTHERN CALIFORNIA-DELTA & RIVERS-TURNER CUT-BRIDGE

ZUCKERMAN BROTHERS BRIDGE-The retractable span of the bridge is secured in the closed-to-navigation position due to mechanical and electrical issues. When closed the bridge provides 16 feet of vertical clearance at mean high water. Vessels able to transit the bridge while closed can continue to do so at any time. Estimated time of repair, unknown. For further information contact the Coast Guard Bridge Office at 510-467-3516.

Chart 18661

LNM: 25/23

NORTHERN CALIFORNIA-EUREKA-DREDGING OPERATIONS

The Dutra Group will be conducting dredging operations from 9 October, 2023 to 15 November, 2023 24 hours a day, 7 days a week at Woodley Island Marina at 40-48-30N 124-09-46W. The clamshell dredge EXCAVATOR BARGE HORTON, tow tug JULIUS BRUSCO and 1 split hull scow will be monitoring VHF-FM Chan. 13 & 16. Mariners are requested to transit the area with caution. For more details or comments contact Nicholas Martin at 253-820-5009.

Chart 18620

LNM: 41/23

NORTHERN CALIFORNIA-GALLINAS CREEK

The Coast Guard is soliciting comments in relation to a request by PG&E to lower the existing power transmission lines at the mouth of Gallinas Creek, Marin County at 38-00-59N 122-30-06W. Mariners that sail on Gallinas Creek are requested to provide the air draft of their vessel, from the waterline to the top of the mast or appurtenance, whichever is higher, to the Coast Guard by the COB on 21 November, 2023. Comments can be submitted via email at D11-SG-M-DPW-Bridges@uscg.mil or via phone call at 510-437-3516.

Chart 18654

LNM: 43/23

NORTHERN CALIFORNIA-GOLF OF THE FARALLONES -BUOY DEPLOYMENT

SoFar Ocean Technologies will be testing a oceanographic buoy system a few miles offshore South Ocean Beach at 37-43-29N 122-33-12W, 37-43-58N 122-33-10W, 37-49-44N 122-33-09W, 37-43-46N 122-32-54W, 37-43-54N 122-32-52W until 15 December, 2023. A 19 Foot C-Dory (CF3571SX) will deploy a yellow buoy FI Y 2.5s to test an oceanographic buoy system. The C-Dory will be monitoring VHF-FM Chan. 16. Mariners are requested to transit the area with caution. For more details or comments contact Colin Browser at 206-972-7830.

Chart 18649

LNM: 26/23

NORTHERN CALIFORNIA-LITTLE CONNECTION SLOUGH-SUBMERGED VESSEL

The Coast Guard received a report of a submerged 100' towing vessel on the Little Connection Slough at 38-03-29N 121-30-02W and is in approximately 10ft of water and partially visible above the waterline. Mariners are requested to transit the area with caution. For more details or comments contact USCG Sector San Francisco Waterways at 415-399-7443 or SFWaterways@uscg.mil

Chart 18661

LNM: 37/23

NORTHERN CALIFORNIA-MIDDLE RIVER, OLD RIVER, GRANT LINE CANAL-MARINE CONSTRUCTION

The Department of Water Resources will remove three temporary agricultural barriers of the South Delta in the following positions:

Middle River Barrier 37-53-08N 121-28-56W

Old River Tracy Barrier 37-48-37N 121-32-34W

Grant Line Canal 37-49-11N 121-26-54

All in-water work will be completed by 23 November, 2023. Mariners are requested to transit the area with caution. For more details or comments contact Karen Tolentino at 916-820-7683 or karen.tolento@water.ca.gov.

Chart 18661

LNM: 42/23

NORTHERN CALIFORNIA-MONTEREY BAY-BUOY DEPLOYMENT

Kinnetic Environmental has deployed two research buoys in Monterey Bay in support of Central Coast Long-Term Environmental Assessment Network (CCLEAN) program, in position:

36-53-29N 121-55-30W

36-42-40N 121-54-40W

Both buoys are 4 foot tall white cans with 2 orange retroreflective bands and an orange diamond marked "Warning" with the phone number 831-457-3950. Both buoys are lit at night with a yellow flashing light flashing once every 4 seconds. Due to the scientific equipment attached mariners are advised to stay clear. For further comments or details contact Greg Cotton at 831-239-6192.

Chart 18685

LNM: 43/23

NORTHERN CALIFORNIA-MONTEZUMA SLOUGH-MARINE CONSTRUCTION

The Dutra Group will be conducting marine operations from 13-24 November, 2023 24 hours, 7 days a week at Montezuma Slough Saminity Structure in Solano County for the California Department of Water Resources (DWR) Stop Log Installation and Radial Gate Removal project at coordinates:

38-05-25N 121-53-08W

38-05-27N 121-53-03W

38-05-42N 121-53-15W

38-05-40N 121-53-21W

The EM1106 MORTY Barge with a 300-ton crawler crane, material barge, work boat, and miscellaneous work skiff will be utilized on this project and monitoring VHF-FM Chan. 9, 16 & 80. Mariners are requested to transit the area with caution and urged to transit at their slowest safe speed to minimize wake and proceed with caution. For more details or comments contact Jason Tse at 415-300-5336.

Chart 18656

LNM: 45/23

NORTHERN CALIFORNIA-NEW YORK SLOUGH, STOCKTON SHIP CHANNEL, SAN JOAQUIN RIVER- SURVEY

The Coast Guard is conducting a Waterways Analysis and Management System (WAMS) study of the New York Slough, Stockton Ship Channel, and the San Joaquin River from 19 September, 2023 to 15 November, 2023. The study focuses on the area's aids to navigation system, waterborne commerce, marine casualty information, port/harbor resources, emergency response plans, routine and emergency communication capabilities, and future development projects. Furthermore, this study seeks to obtain data on the effectiveness of the system of Aids to Navigation, as well as other waterway safety concerns. Any interested company or individual wishing to provide comments or participate in a user survey may do so via link at: <https://www.research.net/r/?sm=lak7zHWji8fS3RsOAC7yypatygyZP3uDavmz9anwvHjv4OAUU2KyrwOlqOGPmk8> or contact LTJG Rubymar Sebastian at Rubymar.sebastian@uscg.mil or via phone at (571)-613-2930.

Charts: 18658 18663

LNM: 38/23

NORTHERN CALIFORNIA-OAKLAND INNER HARBOR-BRIDGE

FRUITVALE AVE RAIL BRIDGE-The lift span of the rail bridge is kept in the partially opened position providing 80 feet of vertical clearance at mean high water. The lift span has been repaired and can be raised to its fully upon position upon request from the Fruitvale Highway bridge operator.

When the lift span of the railroad bridge is in the partially open position and the bascule span of the adjacent highway bridge is in the closed position, the lift span will show two red 180-degree center span lights on the upstream and downstream lower edge of the span. When the bascule span of the highway bridge is in the fully opened position, the lift span of the railroad bridge will show two 360-degree green lights, providing a range for the centerline of the channel between both highway and railroad bridges. For further information contact the Coast Guard Bridge Office at 510-437-3516.

Chart 18649

LNM: 25/23

NORTHERN CALIFORNIA-OAKLAND-DREDGING

The Dutra Group will be conducting dredging operations at the Port of Oakland Berths 22-26, 30, 32-33, 35, 37, 55-63, 67-68 from 15 August, 2023

NORTHERN CALIFORNIA-OAKLAND-DREDGING

until 30 November, 2023. DB 24, DB BEAVER, tow tugs HEIDI BRUSCO, BECKY T, and PHYLLIS T will be monitoring VHF-FM Chan. 13, 14, and 80. Mariners are requested to transit the area with caution. For more details or comments contact Dennis Salyers at 415-497-5289.

Chart 18650

LNM: 30/23

NORTHERN CALIFORNIA-OAKLAND-DREDGING OPERATIONS

Manson Construction Co. will be conducting dredge operations in the Oakland Inner and Outer Harbor at 37-48-15N 122-20-43W on 7 August, 2023 until 1 January, 2024. Operations will be conducted 24 hours a day, 7 days a week. Dredge DB NJORD, Tugboat PETER M, Tugboat JEFFERY M, Survey Boat WAHOO will be conducting operations and monitoring VHF-FM Chan. 13 & 16. Dredged materials will be disposed of at Montezuma upland disposal site. Mariners are requested to transit the area with caution. For more details or comments contact Alex Kolessar at 510-437-5836.

Chart 18649

LNM: 29/23

NORTHERN CALIFORNIA-OFFSHORE MONTEREY BAY-UNDERWATER OPERATIONS

Reef Check Foundation have deployed underwater equipment offshore Monterey Bay, CA within the following coordinates:

36-36-17N 121-52-46W

36-36-18N 121-52-49W

36-36-15N 121-52-50W

36-36-14N 121-52-46W

All equipment will be established until 24 Mar 24. Mariners are requested to transit the area with caution and avoid anchoring within the coordinates listed above. For more details or comments contact Dan Abbot at 510-684-7835.

Chart 18685

LNM: 12/21

NORTHERN CALIFORNIA-OFFSHORE MORRO BAY – FISHERIES COMMUNICATION PLAN AVAILABLE

Golden State Wind LLC, leaseholder for the Bureau of Ocean Energy Management Lease Area OCS-P 0564, has developed a Fisheries Communication Plan (FCP) which is available for public comment. The FCP overviews the plan for engagement with the region's fishing community during development of the Golden State Wind Project. The FCP is available at https://www.goldenstatewind.com/wp-content/uploads/2023/09/GSW_Fisheries-Comms-Plan_2023.08.23_clean_508-compressed.pdf Comments on the plan, and any questions about the project, can be sent to Rachel Mahler at rachel.mahler@oceanwinds.com or 805-680-8138.

Chart 18703

LNM: 45/23

NORTHERN CALIFORNIA-OFFSHORE MOSS LANDING-SCIENTIFIC OPERATIONS

The Monterey Bay Aquarium Research Institute (MBARI) will be conducting 24hrs a day autonomous, unmanned maritime vehicle operations of two Liquid Robotics, Inc. Wavegliders (www.liquidr.com), from 09 January, 2023 until 31 December, 2023. (MBARI) will deploy the vehicles in the vicinity of Moss Landing. Operations will be between 36-18-00N 122-58-59W and 37-12-00N 122-58-59W. Wave Glider carries no fuel, lubricants, or hydrocarbons, is wave powered, remotely attended from MBARI moving at speeds of 1kt, and designed to give way or part if encountered by a vessel. It is approximately 8ft by 2ft (surfboard size), yellow/copper in color, with a contact plaque and mast extending 3ft above the water surface supporting a flag. Mariners are requested to transit the area with caution. For more details or comments contact MBARI at 831-775-1700, waveglider@listserv.mbari.org, or Liquid Robotics 24/7 WGOE Operations at 888-574-4574, 1-408-636-4205.

Charts: 18680 18685

LNM: 02/23

NORTHERN CALIFORNIA-OFFSHORE PT MONTARA-SUVERY OPERATIONS

SAILDRONE, INC. in collaboration with NOAA's National Data Buoy Center (NDBC), is conducting surveys at 37-21-21N 122-52-51W with an Uncrewed Surface Vehicle (USV), called a "SAILDRONE EXPLORER". This vehicle will remain on station from 31 August, 2023 until 31 August, 2024. Saildrone vehicles are 23 feet in length, orange in color, have a white all around light on top of the wing and are marked "SAILDRONE". The vehicle will have limited maneuverability during survey operations. Mariners are requested to remain greater than 500 meters away from the research equipment and to transit the area with caution. For more details or comments contact Saildrone at 510-722-6070 or missioncontrol@saildrone.com.

Charts: 18680 18700

LNM: 36/23

NORTHERN CALIFORNIA-OFFSHORE SAN FRANCISCO-SURVEY OPERATIONS

SAILDRONE, INC. is conducting offshore oceanographic research and survey testing until 31 December, 2023. Five Unmanned Surface Vehicles called SAILDRONE VOYAGER in the area between the eastbound traffic lane and southbound traffic lane extending out to the Pioneer Canyon area:

37-40-01N 122-46-03W

37-39-18N 122-44-30W

37-11-06N 122-44-30W

37-21-48N 123-11-09W

Saildrone vehicles are 23 feet in length, 16 feet tall, painted orange with a white all around light on top and marked "SAILDRONE". The Saildrone Voyager is 33 feet long, 21 feet tall and painted orange or gray with a tri-color light on top. Saildrones will broadcast AIS and travel at a speed up to 5 knots. Mariners are requested to remain greater than 500 meters away from the research equipment and to transit the area with caution. For more details or comments contact Saildrone Mission Control at 510-722-6070 or missioncontrol@saildrone.com.

Chart 18007

LNM: 39/23

NORTHERN CALIFORNIA-OLD RIVER-HAZARD TO NAVIGATION

The Coast Guard has received a report of downed powerlines in Old River from Mandeville Island to Webb Tract. The downed powerlines have been cut by PG&E and remain laying on the bottom of Old River. Mariners are recommended to avoid anchoring in the area and transit the area with caution. For details or comments contact Coast Guard Sector San Francisco Waterways at 510-612-9729.

Chart 18661

LNM: 01/23

NORTHERN CALIFORNIA-PACIFICA-BUOY DEPLOYMENT

Environmental Science Associates has deployed a private aid approximately 0.85 miles offshore of the Pacifica Municipal Pier at 37-37-5N 122-30-37W for the collection of wave and water level information from 7 September, 2023 to 8 August, 2024. A 23' North River dory boat will be monitoring VHF-FM Chan. 16. For more information or comments contact, Damien Kunz at 805-252-9895.

Chart 18680

NORTHERN CALIFORNIA-PACIFICA-BUOY DEPLOYMENT

LNM: 37/23

NORTHERN CALIFORNIA-PITTSBURG MARINA-DREDGING OPERATIONS

The Dutra Group will be conducting dredging operations at the Pittsburg Marina from 18 September, 2023 until 30 November, 2023 from 6:00am to 9:00pm Monday through Saturday. Tow tug SARAH REED, tender tug SEA W and 3 split hull scows will be monitoring VHF-FM Chan. 13, 14, 80, 81 and 82. Mariners are requested to transit the area with caution. For more details or comments contact Dennis Salyers at 515-497-5289.

Chart 18656

LNM: 37/23

NORTHERN CALIFORNIA-PORT OF STOCKTON-MARINE CONSTRUCTION

Shimmick Construction will be conducting marine construction of the cellular floodwall between the Smith Canal and the Stockton Deep-Water Shipping Channel of the San Joaquin River in the vicinity of the Port of Stockton until 30 November, 2023. Operations will include dredging, pile driving, and backfilling operations. Nine (9) vessels will be involved during the construction window consisting of 1 derrick barge RINGER #2, 1 Flexifloat crane barge (G7718), 194 Tug, barge CMC 35, barge ST. NICHOLAS, and 4 skiff boats for personnel. All vessels will be monitoring VHF-FM Chan. 14. Mariners are requested to transit the area with caution. For more details or comments contact Grant Rose at 559-706-8159.

Chart 18663

LNM: 36/23

NORTHERN CALIFORNIA-RICHMOND-DREDGING

The Dutra Group will be conducting dredging operations at the Chevron Long Wharf Berths 1, 2, 3, 4, 5, 7, A and Barge way (B-1 and B-2) at 37-55-19N 122-24-40W from 10 August, 2023 until 30 December, 2023. DB 24, DB BEAVER, tow tugs HEIDI L., BECKY T, and PHYLLIS T. All vessels will be monitoring VHF-FM Chan. 13, 14, and 80A. Mariners are requested to transit the area with caution. For more details or comments contact Dennis Salyers at 415-497-5289.

Chart 18653

LNM: 30/23

NORTHERN CALIFORNIA-RICHMOND-DREDGING

The Dutra Group will be conducting dredging operations at Richmond Inner Harbor Channels at position 37-54-13N 122-21-45W from 1 July, 2023 until 30 November, 2023. DB 24, DB BEAVER, disposal tugs HEIDI L BRUSCO, ARTHUR BRUSCO, tender tug BECKY T, PHYLLIS T along with four split hull scows will conduct operations. All vessels will be monitoring VHF-FM Chan. 13, 14, and 80. All dredged material will be disposed of at SF-Deep Ocean Disposal Site or Montezuma Wetlands Restoration Project. Mariners are requested to transit the area with caution. For more details or comments contact Dennis Salyers at 415-497-5289.

Chart 18680

LNM: 26/23

NORTHERN CALIFORNIA-SACRAMENTO RIVER-MARINE CONSTRUCTION

River Forum will be conducting construction of two fish restoration projects from 16 October, 2023 until 29 February, 2024 at the Shea Island Side Channel Project and the Kapusta Island Side Channel Project. Heavy equipment will be used and navigating across the river between mile 287-290. Mariners are requested to transit the area with caution. For more details or comments, contact Aurelia Gonzalez at 951-296-7121.

Chart 18662

LNM: 41/23

NORTHERN CALIFORNIA-SACRAMENTO RIVER-REDUCED VERTICAL CLEARANCE

Overhead power cables upstream of Sacramento River at 38-03-54N 121-47-09W have a reported reduced vertical clearance to 119.5'.

LNM: 22/16

NORTHERN CALIFORNIA-SACRAMENTO RIVER-SAN JOAQUIN RIVER-GEOTECHNICAL DRILL TESTING

Gregg Drilling and Testing will be conducting Overwater Geotechnical Investigations on the Sacramento River at 38-23-43N 121-30-44W, the San Joaquin River to Mokelumne River between 38-12-48N 121-29-43W and 37-54-20N 121-29-57W. R/V QUIN DELTA will be conducting the operations and monitoring VHF-FM Chan. 13, 14 and 16. Mariners are requested to transit the area with caution. For more details or comments contact Captain Tim O'Donnell at 949-254-5190 or at BEARatSEA@gmail.com.

Charts: 18010 18661 18680

LNM: 36/22

NORTHERN CALIFORNIA-SAN FRANCISCO BAY- CABLE LAYING OPERATIONS

A-2-Sea Solutions Limited will be conducting cable laying operations from 9 October, 2023 to 30 November, 2023 between Brisbane and San

Leandro in the positions:

37-41-28N 122-23-51W

37-41-35N 122-10-28W

37-37-29N 122-08-50W

37-36-57N 122-21-03W

The workboats barge DB CALIFORNIA, pre-lay grapnel run THEORY, burial support vessel SV RETRIEVER, T/B BETTY L, dive support vessel THEORY, will be operating and laying cables. The DB CALIFORNIA will be secured by a 4-point anchor system, with anchor wires deployed up to 300m from the barge in all directions, anchors will be marked by yellow buoys and a white flashing light. All vessels will be monitoring VHF-FM Chan. 14 & 16. Mariners are requested to transit the area with caution. For more details or comments contact Christopher Briggs at 794-830-0909.

Chart 18680

LNM: 39/23

NORTHERN CALIFORNIA-SAN FRANCISCO BAY-BRIDGE

RICHMOND-SAN RAFAEL BRIDGE-Concrete/steel repairs and cleaning of the bridge continues. Work is being conducted Monday through Friday, 0500 to 1700, until 30 November, 2023. Temporary underdeck platforms have been installed from the western shore to pier 33 and between piers 43-46 reducing vertical clearance in each span by three feet. The upstream and downstream lower edge of each temporary platform is lighted at night with steady burning red lights (see R-SR_Bridge_Temp_Platform_Lighting.pdf at the end of this notice.) Two 160' X 50' barges and one 110' X 32' barge are being used to assist in the installation of the platforms and for the blasting and painting. One barge has been secured to pier 8 and will be left on-scene, overnight, unmanned. The outboard corners of the barge at pier 8 is lighted at night with steady red lights. Barge "37" and barge "32" can be contacted on VHF-FM Ch. 16, 13 and 14. At no time will the work impede the east or west navigation spans or their auxiliary spans. For conditions at the bridge, mariners can contact the contractor at 860-904-8787 or 443-847-6286. For further information concerning this project contact the Coast Guard Bridge Office at 510-437-3515.

Chart 18653

LNM: 21/23

NORTHERN CALIFORNIA-SAN FRANCISCO BAY-BRIDGE

SAN MATEO-HAYWARD BRIDGE-The painting of the steel towers continues. Work is being conducted Monday through Friday, 7am to 12am until June 2024. Temporary worker platforms will be installed around the base of piers 2 to 11 and 28-37, reducing horizontal clearance in each of those spans by 6 feet. Temporary underdeck work platforms will be installed in spans 12-18 and 21-27, reducing the vertical clearance by three feet. Tarpaulins will be used as containment around all pier columns. An Andersen under-bridge below-deck worker access vehicle will be used during the installation of the temporary containment and temporary platforms. At no time will in-water work be conducted in the main navigation span between piers 19-20, and mariners should this span at all times during this project. For conditions at the bridge, mariners can contact the contractor at 407-489-5386, 303-579-1383, or 910-279-3365. For further information contact the Coast Guard Bridge Office at 510-437-3515.

LNM: 46/22

NORTHERN CALIFORNIA-SAN FRANCISCO BAY-BRIDGE

SAN MATEO-HAYWARD BRIDGE-Work continues on the causeway portion of the bridge, east of pier 38, 0700 to 1530, Monday through Friday, until 28 Dec, 2023. Various size barges will be used during the project, the largest being a 100' X 20' flexifloat barge. During the work day, barges will either be spudded down or tied to the bridge piers, no anchors or anchor line will be utilized. After regular working hours the unmanned barge will be left on-site. For the safety of navigation, the barges can be moved with one-hour advance notice. For conditions at the bridge mariners can contact Golden State Bridge, Inc., on VHF-FM Marine Radio Channels 13, 14, and 16 or by cell phone at 707-246-0725, 925-260-2104, or 925-382-7288. For more details or comments contact the Coast Guard Bridge Office at 510-437-3515.

LNM: 20/22

NORTHERN CALIFORNIA-SAN FRANCISCO BAY-BRIDGE

GOLDEN GATE BRIDGE-Four 54' temporary under deck platforms; two, 75' and 425' north of the south tower, and two, 275' and 2,100' south of the north tower have been installed at the bridge. Temporary platforms reduce vertical clearance at the bridge by no more than 14'. The bridge's maintenance travelers are in use during the project and will remain outboard of the furthest north and furthest south temporary platforms. The temporary platforms and maintenance travelers are lighted at night with all-round red lights (see PlatformLighting_GG_Bridge_25May23.pdf at the end of this notice). For navigational safety the maintenance travelers can be moved by contacting the Golden Gate Bridge at 415-923-2220. Work is being conducted Monday through Saturday, 0700-1700 and 2100-0500. For conditions at the bridge, mariners can contact the contractor at 415-716-0384. For more details or comments contact the Coast Guard Bridge Office at 510-437-3516.

Chart 18649

LNM: 22/23

NORTHERN CALIFORNIA-SAN FRANCISCO BAY-BRIDGE

WESTERN SPAN SAN FRANCISCO-OAKLAND BAY BRIDGE- Caltrans' contractor, Dutra, will continue work to stabilize pier protection at piers B, C, D, and E on the western span of the San Francisco/Oakland Bay Bridge. Work will be conducted 7-days a week, 6 am to 4:30 pm, 30 October, through 29 December, 2023. The 188' X 60' crane barge "MORTY" will be anchored at various locations during the work and will be monitoring VHF-FM Channels 13, 14, and 16. Barges, anchors and anchor lines will not impede the D-E shipping channel during the work. The barges will remain on-scene, unmanned, during non-working hours. See (SFOBBTemporaryBargeLocations.pdf in the enclosure section) for typical barge locations and limits of anchor lines. During the workday, the barge can be moved for the safety of navigation with two hours advanced notice. After working hours, the barge can be moved with six hours advanced notice. For information at the work site contact 510-867-4545; 510-385-6756 or 415-680-0788. For further information, contact the Coast Guard Bridge Office at 510-437-3515.

Chart 18650

LNM: 42/23

NORTHERN CALIFORNIA-SAN FRANCISCO BAY-DETERIORATING CONCRETE PILINGS

Deteriorating concrete pilings above and below the waterline are present in the vicinity of the the south edge of Southampton Shoal Light (LLNR 5480). Mariners are requested to transit the area with caution. For more details or comments contact LT Miranda Brumbaugh at 510-437-2978 or Miranda.E.Brumbaugh@uscg.mil.

Chart 18649

LNM: 23/15

NORTHERN CALIFORNIA-SAN FRANCISCO BAY-METOROLOGICAL MONITORING PLATFORM DEPLOYMENT

U.S. Geological Survey has deployed 7 shallow water platforms south of the San Mateo Bridge in the following positions:

37-36-23N 122-10-51W

37-34-37N 122-10-18W

37-35-20N 122-10-50W

37-35-21N 122-10-50W

37-35-23N 122-10-27W

37-35-26N 122-09-39W

37-35-30N 122-08-59W

These stations will remain until February 2024 and have a white flashing light. Mariners are requested to transit the area with caution. For further details or comments contact Tim Elfers at 831-460-7479.

Chart 18650

LNM: 33/23

NORTHERN CALIFORNIA-SAN LEANDRO BAY-BRIDGE

BAY FARM ISLAND HIGHWAY AND PEDESTRIAN BRIDGES-The pier protection system at the bridges have deteriorated and may not offer adequate protection for the bridges as well as vessels transiting the bridge. Mariners are urged to transit both bridges with caution. The bridge owner is in the process of designing a replacement pier protection system. For more details or comments contact the Coast Guard Bridge Office at 510-437-3514.

Chart 18649

LNM: 31/22

NORTHERN CALIFORNIA-SAN LORENZO RIVER-BRIDGE

LAUREL STREET BRIDGE- Work will resume for the installation of a new water conveyance pipeline. To conduct the work, a bucket truck on the bridge deck will be utilized to suspend a mobile platform from the side of the bridge, vertical clearance will be reduced by 6-feet. Work will take place Monday through Friday, 7:00am to 4:30pm, from 01 September, 2023 through 8 December, 2023. There will be no in-water work or equipment used during this project. Mariners are urged to use caution while transiting the bridge. For further information contact the Coast Guard Bridge Office at 510-437-3515.

Chart 18685

LNM: 35/23

NORTHERN CALIFORNIA-SAN PABLO BAY-BUOY DEPLOYMENT

US Army Corp of Engineers have deployed 3 meteorological recording stations in the San Pablo Bay area in the following coordinates:

38-04-32N 122-20-41W

38-01-51N 122-18-43W

37-52-39N 122-20-22W

For more details or comments contact Justin Yee at 415-503-6788.

Chart 18654

LNM: 31/23

NORTHERN CALIFORNIA-SAN PABLO BAY-RODEO-DREDGE OPERATIONS

The Dutra Group will be conducting dredging operations of the Phillips 66 Marine Terminal in Rodeo, CA at 38-03-22N 122-15-49W from 15 August, 2023 until 30 November, 2023. DB 24, DB BEAVER, Tug HEIDI L BRUSCO or LASSEN, tender tug BECKY T along with PHYLLIS T will be monitoring VHF-FM Chan. 13, 14, and 80. All dredged materials will be disposed of at Montezuma Wetland (MWRP) and SF-9 disposal sites. Mariners are requested to transit the area with caution. For more details or comments contact Dennis Salyers at 415-497-5289.

Chart 18655

LNM: 33/23

NORTHERN CALIFORNIA-SAN PABLO BAY-TORMEY-MARINE CONSTRUCTION

The Dutra Group will be conducting marine construction to the Phillips 66 San Francisco Refinery located West of the Carquinez Bridge from 03 January, 2023 until 31 December, 2023, during daylight hours. Construction will be bounded by the following coordinates:

38-03-22N 122-15-52W

38-03-25N 122-15-33W

38-03-06N 122-15-34W

38-03-06N 122-15-39W

Crane barge 1, along with a work boat, will be conducting operations and monitoring VHF-FM Chan. 9, 16, and 77. Mariners are requested to transit the area with caution. For more details or comments contact Nicholas Dino at 707-389-0505.

Charts: 18654 18655

LNM: 51/22

NORTHERN CALIFORNIA-SAN RAFAEL CANAL-DREDGING OPERATIONS

Salt River Construction Corporation is conducting dredging operations in the San Rafael Canal at the Marina Vista Improvement Club at position 37-58-17N 122-29-43W from 19 June, 2023 through 30 November, 2023. The self-contained Dredge/dump barges No. 1 and No. 2 and the TB P CAY and TB SPRINGER will be monitoring VHF channels 13, 14, and 78. Mariners are requested to transit the area with caution. For more details or comments contact Rick Moseley at 415-435-1024.

Chart 18653

LNM: 25/23

NORTHERN CALIFORNIA-SAN RAFAEL CREEK- DREDGING OPERATIONS

Salt River Construction Corporation will be conducting dredging operations in the San Rafael Creek at the Newport Boating Association Homeowners at 37-58-08N 122-30-00W from 29 August, 2023 until 30 November, 2023. The self-contained dredge/dump barges No. 1 and No. 2, Tugboat "P CAY" and the Tugboat "SPRINGER" will be monitoring VHF-FM CHAN. 13, 14, & 78. There will be no temporary mooring piles or anchor balls placed by Salt River Construction outside the channel entrance of the Newport Boating Association Homeowners or the San Rafael Creek. Mariners are requested to transit the area with caution. For more details or information, contact Rick Moseley at 415-435-1024.

Chart 18653

LNM: 34/23

NORTHERN CALIFORNIA-SAN RAFAEL CREEK- DREDGING OPERATIONS

Salt River Construction Corporation will be conducting dredging operations in the San Rafael Creek at the Lowrie Yacht Harbor at 37-58-00N 122-30-27W from 28 August, 2023 until 30 November, 2023. The self-contained dredge/dump barges No. 1 and No. 2, Tugboat "P CAY" and the Tugboat "SPRINGER" will be monitoring VHF-FM CHAN. 13, 14, & 78. There will be no temporary mooring piles or anchor balls placed by Salt River Construction outside the channel entrance of the Lowrie Yacht Harbor or the San Rafael Creek. Mariners are requested to transit the area with caution. For more details or information, contact Rick Moseley at 415-435-1024.

Chart 18653

LNM: 33/23

NORTHERN CALIFORNIA-STEAMBOAT SLOUGH-SUBMERGED VESSEL

The Coast Guard received a report of a submerged 16' vessel north of Steamboat Slough at 38-11-21N 121-39-60W and is not visible from the waterline. Mariners are requested to transit the area with caution. For more details or comments contact USCG Sector San Francisco Waterways at 415-399-7443 or SFWaterways@uscg.mil.

Chart 18661

LNM: 44/23

NORTHERN CALIFORNIA-STOCKTON DEEP WATER SHIP CHANNEL-DREDGING OPERATIONS

Ross Island Sand & Gravel Co. will be conducting a maintenance dredging operation in the Stockton Deep Water Ship Channel from approximately 25 October through 30 November, 2023 under a contract with the U.S. Army Corps of Engineers. Hours of operation are 24 hours per day, 7 days per week. Dredge 8 will be dredging in the navigation channel starting in the vicinity of Bradford Island, River Mile 16.7 at 38-05-45N 121-39-35W and finishing up-stream off Venice Island, River Mile 27 at 38-03-16N 121-31-07. The submerged dredge pipe will come ashore at two places, the first is on Bradford Island at 38-04-09N 121-40-30W and the second is on Mandeville Island at 38-03-52N 121-33-42W. The dredge crew will be utilizing VHF-FM chan. 79, and monitoring VHF-FM Chan. 13 & 16. Mariners are requested to transit the area with caution. For more details or comments contact, Mr. Rod Olivat at 503-349-7436 or the dredge cell phone number at 503-349-7434.

Chart 18663

LNM: 44/23

NORTHERN CALIFORNIA-STOCKTON-SHOALING

Shoaling has been reported in the Stockton Deep Water Channel in the vicinity of Stockton Channel LT 48. Due to the depth restrictions San Francisco Bar Pilots have reduced the controlling depth to 28.1'. A Virtual AIS (V-AIS) Aid to Navigation has been placed in position 37°57.1N 121°20.2W to help with safe navigation in the area. For more details or comments contact USCG Sector San Francisco Waterways at 510-612-9729 or SFWaterways@uscg.mil.

Chart 18663

LNM: 25/23

NORTHERN CALIFORNIA-SUISUN BAY-DREDGE OPERATIONS

Camenzind Dredging Inc. will conduct dredge operations in Suisun Bay Channel, Bulls Head Channel, Roe Island Channel and New York Slough starting 30 August, 2023 until 30 November, 2023. DB 24, DB BEAVER, tug HEIDI BRUSCO, tug BECKY T and/or PHYLLIS T will be monitoring VHF-FM Chan. 13, 14, 80 and 81A. All dredged materials will be disposed of at the Montezuma Wetland (MWRP) and SF-16. Mariners are requested to transit the area with caution. For more details or comments contact Chris Milam at 415-218-6739.

Charts: 18656 18658

LNM: 35/23

NORTHERN CALIFORNIA-SUISUN BAY-DREDGING OPERATIONS

Pacific Dredge & Construction will be conducting dredging operations in the Suisun Bay Pier from 25 September, 2023 until 30 November, 2023 at 38-04-39N 122-05-52W. The D/B PDC (180' X 50'), H/B PACIFIC PATRIOT (64' X 26'), Scow "PDC 2001" (200' X 42') and Scow "PDC 2023" (200' X 42') will be in the area and monitoring VHF-FM Chan. 6 and 16. Mariners are requested to transit the area with caution. For more details or comments contact Gary Foster at 805-331-2995.

Chart 18656

LNM: 37/23

NORTHERN CALIFORNIA-VAN SICKLE ISLAND-MARINE OPERATIONS

The Dutra Group will be conducting marine operations from 18 September, 2023 to 30 November, 2023 during daylight hours but outside of the construction area may continue at all areas. The crane barge will be spudded in with flashers on all corners along with all other marine equipment. The Crane Barge Kelso (50'x150') equipped with an 895 Excavator along with a tugboat will be monitoring VHF-FM Chan.13, 146 & 67. Mariners are requested to transit the area with caution. For more details or comments contact Lucas Walker at 707-378-3822.

Chart 18656

LNM: 39/23

NOTHERN CALIFORNIA-ALAMEDA-MARINE CONSTRUCTION

Manson Construction Co. will be conducting marine construction from 23 October, 2023 until 22 December, 2023 from 6:00am to 5:00pm at the Alameda Weta Ferry Terminal. Derrick Barge DB HAGAR and the Manson Flat Barge 71 will be anchored at 37-47-28N 122-17-40W and will be monitoring VHF-FM Chan. 13 & 16. Mariners are requested to transit the area with caution. For more details or comments contact Conner Long at 510-766-6262.

Chart 18650

LNM: 41/23

NOTHERN CALIFORNIA-FORT BRAGG-BUOY DEPLOYMENT

Oneka Technologies will deploy two wave monitoring research buoys on 07 October, 2023 near Fort Bragg, CA with the characteristics of FI Y 2.5s at 39-26-38.26N 123-49-27.48W and 39-26-36.71N 123-49-23.20W. RV SCULLY will be deploying the buoys and will be monitoring VHF-FM Chan. 16. The buoys will be deployed until 10 July, 2025. Mariners are requested to transit the area with caution. For more details or comments contact Jeff Williams at 707-974-0917.

Chart 18620

LNM: 40/23

NOTHERN CALIFORNIA-MONTEREY BAY-BUOY DEPLOYMENT

University of California Santa Barbara has deployed research Wave Buoy Station CDIP 266 in position 36-50-41N 121-49-28W with characteristics of a flashing yellow light every 5 seconds. Mariners are requested to transit the area with caution. For more details or comments contact University of California Santa Barbara at 858-534-3032 or admin@cdip.ucsb.edu.

Chart 18685

LNM: 17/23

NOTHERN CALIFORNIA-MONTEREY POINT-BUOY DEPLOYMENT

US Naval Postgraduate School will be deploying 4 white lit research buoys with characteristics of a flashing yellow light every 2.5 seconds on 19 June, 2023 until 08 December, 2023 in the following positions:

- 36-36-28N 121-59-04W
- 36-36-22N 121-58-25W
- 36-36-21N 121-58-05W
- 36-37-26N 121-54-21W

R/V SANDCRAB will be conducting the operations and monitoring VHF-FM Chan. 16. Mariners are requested to transit the area with caution. For more details or comments contact Dr. Jamie MacMahan at 381-588-8727 or jhmacmah@nps.edu.

Chart 18685

LNM: 24/23

NOTHERN CALIFORNIA-SUISUN BAY-DREDGE OPERATIONS

Pacific Dredge & Construction, LLC will be conducting dredging operations at the Maritime Administration Suisun Bay Pier at 38-04-39N 122-05-52W from 4 October, 2023 until 30 November, 2023. Tug PACIFIC PATRIOT and two scows will be conducting operations 24 hours, 7 days a week. All vessels will be monitoring VHF-FM Chan. 13, 14 and 16. A temporary mooring which is a white cylinder with a blue strip and white all around light will be established at 38-05-30N 122-04-20W for the dredge barge and will be removed at the end of the dredging project. Mariners are requested to transit the area with caution. For more details or comments contact Matt MacArthur at 951-541-6941.

Chart 18658

LNM: 40/23

SAN DIEGO-OCEANOGRAPHIC SURVEY-OCEAN MONITORING

The City of San Diego Marine Biology Lab is conducting year-round ocean monitoring sampling in the vicinity of the South Bay Ocean Outfall and Point Loma Ocean Outfall. The Ocean Monitoring Program conducts trawl sampling, benthic sampling with a double Van Veen sediment grab, vertical CTD casts and horizontal tows with an undulating underwater vehicle, ROV surveys and multiple moorings are deployed in the region below. Ocean sampling will be conducted in an area bound by the following coordinates:

- 32-31-54N 117-11-11W
- 32-32-10N 117-11-57W
- 32-32-03N 117-12-06W
- 32-32-33N 117-11-56W
- 32-40-10N 117-19-22W
- 32-40-04N 117-19-34W
- 32-39-37N 117-19-32W
- 32-39-56N 117-19-39W
- 32-40-10N 117-16-55W

SAN DIEGO-OCEANOGRAPHIC SURVEY-OCEAN MONITORING

The M/V OCEANUS and M/V MONITOR III when in the area will monitor VHF-FM Chan. 16. Mariners are requested to transit the area with caution. For more details or comments contact Adriano Feit at 619-758-2377 or 858-882-7055.

Charts: 18765 18772

LNM: 43/21

SOUTHERN CALIFORNIA – BALBOA MARINA-MARINE CONSTRUCTION

Power Engineering Construction Co. will be performing dredging and pile driving operations from 12 June, 2023 through 15 December, 2023 in the vicinity of Balboa Marina, Newport Beach. Work is being conducted Monday through Friday 7:30am to 6:00pm at 33-36-57N 117-54-19W. Operations will be conducted with a long-reach excavator and an 80'x80'x7' derrick barge. The excavator will be staged on land and extend 20' into the bay. The barge will be spudded down and will not exceed the project limits, about 350' into the bay. All vessels and equipment on site will be monitoring VHF-FM CHAN. 67/16. Mariners are advised to use caution when transiting the area. For further comments or details contact Matt Dill at (510) 610-4633.

LNM: 22/23

SOUTHERN CALIFORNIA – OFFSHORE NEWPORT BEACH-OCEANOGRAPHIC OPERATIONS

The Scripps Institution of Oceanography research vessel ROBERT GORDON SPROUL (Call Sign WSQ-2674) will conduct surface to floor oceanographic operations 7-14 November, 2023 at:

33-15-00N 118-30-00W

33-45-00N 119-30-00W

34-16-26N 120-02-31W

The exact timing and location of each station will depend on operational concerns and weather conditions.

During over-the-side operations, vessel will be restricted in ability to maneuver; all traffic requested to give ROBERT GORDON SPROUL a wide berth. R/V ROBERT GORDON SPROUL will monitor VHF-FM Chan. 13 & 16. Mariners are requested to transit the area with caution. For further details or comments contact Heather Galihier at 858-226-8761.

Charts: 18720 18740

LNM: 44/23

SOUTHERN CALIFORNIA- ANAHEIM BAY- TEMPORARY BUOYS

The U.S. Coast Guard has established temporary Buoys in Anaheim Bay at the following locations.

Temp Buoy #9- FI G 4s

Position: 33-43-927N 118-05-981W

Temp Buoy #10 Q R

Position: 33-43-963N 118-05-818

Temp Buoy #11 FL G 4s

Position: 33-44-077N 118-05-862W

Temp Buoy #13 FI G 4s

Position: 33-44-211N 118-05-799W

For more details or comments contact LT Miranda Brumbaugh at 510-437-2978 or Miranda.E.Brumbaugh@uscg.mil.

Charts: 18746 18749

LNM: 29/22

SOUTHERN CALIFORNIA- MISSION BAY-MARINE EVENT

The Hanohano Outrigger Canoe Club will be sponsoring the Hanohano Ocean Challenge on 27 January, 2024 from 9:00 to 1:00pm. The race will consist of approximately 300 paddle boards and canoes racing in waves on two different courses. The short course will begin in Bonita Cove, transiting through Perez Cove to South Shores, proceeding north through Fisherman's Channel, finishing back at Bonita Cove. The long course will begin offshore north of Mission Beach Jetty, proceeding to Crystal Pier, and finishing in Bonita Cove. Mariners are requested to transit the area with caution. For more details or comments, contact Dan Van Dyck at 760-525-9109.

Chart 18765

LNM: 45/23

SOUTHERN CALIFORNIA- SAN DIEGO- MISSION BAY-MARINE EVENT

The Mission Bay Yacht Club will be sponsoring the annual Mission Bay Parade of Lights on 10 & 17 December, 2023 from 6:00pm to 8:00pm. The parade will consist of approximately 80 vessels, starting south of Fiesta Island, proceeding northwest to Sail Bay, then proceeding east to just south of De Anza Cove. A special local regulation will be enforced for this event from 5:30pm to 8:30pm. No vessels may enter into, transit through, or anchor within the event area unless authorized by the Captain of the Port or a designated representative during this time. For more details or comments, contact, Jason Proctor at 619-518-4455.

Chart 18765

LNM: 44/23

SOUTHERN CALIFORNIA-CAMP PENDELTON-BUOY DEPLOYMENT

Scripps Waverider CDIP Lighted Research Buoy 264 has been deployed 1.4 NM southwest of Red Beach, Camp Pendelton CA in position 33-17-23.8N 117-30-00.5W. The buoy is operated by Scripps Institute of Oceanography and is 3-foot diameter sphere with an attached telemetry whip antenna and a nighttime yellow color warning flashing light. The light timing sequence is a series of 5 flashes at 1-second intervals with a period of 20 seconds between each series. Visual range is one kilometer. The buoy is painted yellow and marked "Wave Buoy" with the phone number 858-534-3032. For further comments or details contact James Behrens at 858-534-3032.

Chart 18774

LNM: 43/23

SOUTHERN CALIFORNIA-CHANNEL ISLANDS HARBOR-BRIDGES

CHANNEL ISLANDS BLVD EAST (MANDALAY BAY) & CHANNEL ISLANDS BLVD WEST (EDISON CANAL) BRIDGES-Rehabilitation of the bridges will take place 7 am to 3:30 pm, Monday through Friday, 15 February, 2023 through 31 October, 2023. No in-water work will be conducted at the east bridge. At the west bridge two 5' X 20' X 10' flexi-floats will be employed and will be secured with two 35' spuds. The flexi-floats will reduce horizontal clearance in the channel by no more than 10 feet. 8' X 11'cofferdams will encase the bridge columns at each bent. Only one channel of the west bridge will be impacted at any one time. The ends of the cofferdams and each corner of each flexi-floats will be lighted at night with steady burning red lights (See Channel_Islands_Bridge_Rehab.pdf at the end of this article.) For the safety of navigation, the flexi-floats can be moved with a 30-minute advance notice to the contractor. Mariners are requested to approach the west bridge with caution and avoid the span of the bridge where work is being conducted. For further information contact the Coast Guard Bridge Office at 510-437-3516.

Chart 18725

LNM: 06/23

SOUTHERN CALIFORNIA-EL SEGUNDO-BUOY REPLACEMENT

Chevron has replaced a weather buoy in position 33-54-30N 118-27-09W with a similar yellow buoy with characteristics of a flashing yellow light every 3 seconds. Mariners are requested to transit the area with caution. For more details or comments contact Chevron at 310-615-5735 or cscsmmm@chevron.com.

Chart 18744

LNM: 17/23

SOUTHERN CALIFORNIA-EL SEGUNDO-DIVING OPERATION

Aqueos will be conducting diving/ROV operations from 23 October, 2023 until 30 April, 2024 offshore Ventura. The DB SALTA VERDE (WDF9705) 185' LOA black hull with a crawler crane on deck, will be in a 4-point moor 24-hours per day and will be monitoring VHF-FM Chan. 16. Operations conducted during daylight hours. Two temporary mooring will be set, and locations have been added to the survey plot map. The surface buoy will have a beacon light for additional visual reference. Mariners are requested to transit the area with caution. For more details or comments contact Jason Smith at 805-205-3156.

Chart 18744

LNM: 45/23

SOUTHERN CALIFORNIA-HUNTINGTON BEACH-MARINE CONSTRUCTION

CPS Coastal Permits, Inc. will be conducting marine construction from 13-24 November, 2023 at Huntington Beach at 33-43-37N 118-03-35W. Vessels are requested to transit the area with caution. For more detail or comments contact Max Jackson at 714-732-6127.

Chart 18746

LNM: 44/23

SOUTHERN CALIFORNIA-LEUCADIA STATE BEACH-BUOY DEPLOYMENT

Scripps Waverider CDIP Lighted Research Buoy 262 has been deployed 0.7 NM west of Leucadia State Beach, Encinitas CA in position 33-03-43.5N 117-18-50.7W. The buoy is operated by Scripps Institute of Oceanography and is 3-foot diameter sphere with an attached telemetry whip antenna and a nighttime yellow color warning flashing light. The light timing sequence is a series of 5 flashes at 1-second intervals with a period of 20 seconds between each series. Visual range is one kilometer. The buoy is painted yellow and marked "Wave Buoy" with the phone number 858-534-3032. For further comments or details contact James Behrens at 858-534-3032.

Chart 18774

LNM: 43/23

SOUTHERN CALIFORNIA-LONG BEACH HARBOR-MARINE CONSTRUCTION

Dutra Construction Company is conducting marine construction in the Port of Long Beach, CA at the Carnival Cruise Lines Wharf H, 7 days a week until end of December, 2023. The crane barge MORTY along with several smaller boats and a material barge will be monitoring VHF-FM CHAN. 13, 16 & 82. Mariners are requested to transit the area with caution. For more details or comments contact Andrew Hunt at 415-837-6640.

Chart 18749

LNM: 44/23

SOUTHERN CALIFORNIA-LOS ANGELES/LONG BEACH HARBOR-BRIDGE

LONG BEACH INTERNATIONAL GATEWAY BRIDGE- Caltrans will be deploying the bridge's maintenance travelers, 7:00am to 2:30 pm, 7 days a week, from 17 October, 2023 until 31 January, 2024 for maintenance and repairs. When in use, the traveler reduces vertical clearance of the bridge by 20 feet. For the safety of navigation, the traveler can be moved with a 2-hour advance notice by calling 951-807-8776 or 573-718-6114. The maintenance traveler will be moved out of the channel and stowed after each workday. The Caltrans supervisors can be reached at 213-220-4011 and 213-793-9099. For more information contact the Coast Guard Bridge Office at 510-437-3516.

Chart 18749

LNM: 42/23

SOUTHERN CALIFORNIA-LOS ANGELES/LONG BEACH HARBOR-BRIDGE

VINCENT THOMAS BRIDGE-A 180 ft temporary maintenance platform continues to move west from the east tower. The platform reduces vertical clearance of the bridge by 5.5 ft. It is anticipated the temporary platform will arrive at the east edge of the shipping channel in summer of 2024. The upstream and downstream corners and every 50' along the upstream and downstream side of the platform is lighted at night with steady burning red lights (see V_Thomas_Platform_Lighting1.pdf at the end of this notice). Work will take place during daylight hours, Monday through Friday. For conditions at the bridge mariners can contact 213-479-4138, 213-479-1144 or 310-261-9552. For more details or comments contact the Coast Guard Bridge Office at 510-437-3516.

Chart 18749

LNM: 30/22

SOUTHERN CALIFORNIA-MISSION BAY-MARINE EVENT

The San Diego Rowing Club will be sponsoring the San Diego Fall Classic rowing race on 12 November, 2023 from 6:00am until 1:00pm. The race will consist of approximately 400 participants on a course in Mission Bay, starting at South Shore Boat Launch, proceeding around the western side of Vacation Isle, and finishing at Crown Point Park. A warm-up course will also be utilized, starting at Crown Point Park, then proceeding south along the western edge of Fiesta Island to the race starting area near South Shore Boat Launch. Mariners are requested to transit the area with caution. For more details or comments contact Chris Callaghan at 858-352-8380.

Chart 18765

LNM: 43/23

SOUTHERN CALIFORNIA-MORRO BAY-WIND ENERGY PROJECT

The Morro Bay Wind Energy Area includes the Even Keel Wind Project as one of the three leaseholders. EKW is providing their Final Fisheries Communication Plan that can be accessed at Even Keel Wind Project website <https://evenkeelwind.invenenergy.com/documents> this Plan is a living document that will continue to be updated as needed. Please provide any feedback on this plan via email to Laura.Casali@stantec.com.

LNM: 44/23

SOUTHERN CALIFORNIA-NATIONAL CITY-MARINE CONSTRUCTION

R. E Staite will be conducting dredging operations and marine construction at the Austal USA facility located in National City, California at 32-39-29N 117-07-07W from 1 April, 2023 until 29 February, 2024. DB Point Loma, DB William F, DB Palomar and RES 180 along with multiple scows a survey boat and various deck barges will conduct operations. All vessels will be monitoring VHF-FM Chan. 16. All dredged material will be disposed of at LA-5 ocean disposal site. An Exclusion Zone (EZ) will be established for purposes of protection from munitions and explosives of concern (MEC) that may be disturbed within the project area. The EZ area will extend into the water in an arc and the size flex within the project area as the project progresses depending on the work activity. Work hours for the project are anticipated to be 24/7 during high production times. The EZ will extend into the water and may impact marine vessel traffic, swimmers and divers. Only authorized personnel will be allowed into the EZ. Mariners are requested to transit the area with caution. For more details or comments contact Erick Myers at 619-233-0178.

SOUTHERN CALIFORNIA-NATIONAL CITY-MARINE CONSTRUCTION

Chart 18773

LNM: 35/23

SOUTHERN CALIFORNIA-NEWPORT BAY-BRIDGE

PACIFIC COAST HIGHWAY BRIDGE-Maintenance will be conducted on the bridge Monday through Saturday, 6:30 am to 5 pm, 02 October, 2023 through 05 January, 2024. A barge will be moored between piers 3 and 4 to conduct the work. The barge will be left on-scene, unmanned, during non-working hours. For on-site conditions mariners can call 949-279-8502 or 949-501-5495 or 949-279-8742. For further information contact the Coast Guard Bridge Office at 571-607-2207.

Chart 18746

LNM: 39/23

SOUTHERN CALIFORNIA-OFFSHORE LOS ANGELES-IFASTRUCTURE MAINTENACE

SubCom, LLC and Gaeaquatic Ltd. Will be conducting subsea telecommunications infrastructure maintenance offshore Los Angeles from 23 October, 2023 until 11 November, 2023 during daylight hours at positions:

33-56-37N 118-27-23W

33-56-50N 118-27-21W

M/V ELIZABETH M will have limited maneuverability while conducting this operation and will be monitoring VHF-FM Chan. 13 & 16. Mariners are requested to transit the area with caution. For more details or comments, contact Daniel Marquis at 603-285-5248.

Chart 18740

LNM: 42/23

SOUTHERN CALIFORNIA-OFFSHORE POINT LOMA-OCEANOGRAPHIC OPERATIONS

The Scripps Institution of Oceanography research will be conducting surface to floor oceanographic -mooring operations from 19 October, 2023 until 28 February, 2024 at 32-43-35N 117-43-35W. The moorings will extend 1 meter off the bottom in 100 meters of water. Mariners are requested to not disturb these Navy experiments and to avoid dragging in the area. During over-the-side operations, R/V ROBERT GORDON SPROUL will be restricted in ability to maneuver; all traffic requested to give a wide berth. R/V ROBERT GORDON SPROUL will monitor VHF-FM Chan. 13 & 16. Mariners are requested to transit the area with caution. For further comments or details contact sp-master@ucsd.edu or Heather Galiher at 858-226-8761.

Chart 18765

LNM: 42/23

SOUTHERN CALIFORNIA-OFFSHORE SAN DIEGO-OCEANOGRAPHIC OPERATIONS

The Scripps Institution of Oceanography will be conducting a 24-hour surface to floor oceanographic operations from 4-19 November, 2023 at positions:

5 November, 2023

32-30-46N 118-12-49W

8-9 November, 2023

31-45-04N 121-18-56W

32-05-04N 120-38-19W

32-25-04N 119-57-33W

9 November, 2023

32-39-04N 119-28-56W

32-55-04N 118-56-07W

33-11-04N 118-23-13W

11-12 November, 2023

33-29-22N 119-19-08W

33-19-22N 119-39-47W

33-09-22N 120-00-24W

32-59-22N 120-20-58W

32-39-22N 121-02-00W

32-19-22N 121-42-52W

14 November, 2023

32-54-42N 122-07-42W

33-14-42N 121-26-34W

33-34-42N 120-45-15W

33-44-42N 120-24-33W

33-52-42N 120-07-57W

15 November, 2023

34-19-00N 120-48-08W

34-08-59N 121-09-00W

33-49-00N 121-50-34W

33-28-59N 122-32-00W

17 November, 2023

34-23-17N 122-14-45W

34-43-17N 121-32-53W

34-53-17N 121-11-53W

The exact timing and location of each station will depend on operational concerns and weather conditions. During over-the-side operations, vessel will be restricted in ability to maneuver; all traffic requested to give R/V SALLY RIDE a wide berth. R/V SALLY RIDE will monitor VHF-FM Chan. 13 & 16. Mariners are requested to transit the area with caution. For further details or comments contact vessel master at sr-master@ucsd.edu or Heather Galiher at 858-226-8761.

Chart 18022

LNM: 43/23

SOUTHERN CALIFORNIA-OFFSHORE VENTURA-DIVING OPERATIONS

Aqueos will be conducting diving/ROV operations from 23 October, 2023 until 30 April, 2024 offshore Ventura. The DB SALTA VERDE (WDF9705) 185' LOA, a black hull with a crawler crane on deck and will be in a 4-point moor 24-hours per day and will be monitoring VHF-FM Chan. 16. Operations conducted during daylight hours. Two temporary mooring will be set, and locations have been added to the survey plot map. The surface buoy will have a beacon light for additional visual reference. Mariners are requested to transit the area with caution. For more details or comments contact Jason Smith at 805-205-3156.

SOUTHERN CALIFORNIA-OFFSHORE VENTURA-DIVING OPERATIONS

Chart 18725

LNLM: 41/23

SOUTHERN CALIFORNIA-OFFSHORE VENTURA-MULTIBEAM SURVEY

Fugro USA Marine INC. will be conducting a bathymetric survey from 30 October, 2023 until 31 January, 2024 offshore Ventura withing the following coordinates:

- 34-15-36N 119-16-20W
- 34-15-33N 119-17-50W
- 34-14-18N 119-17-37W
- 34-14-20N 119-16-04W

M/V JULIE ANN will have limited maneuverability during operations and will be monitoring VHF-FM Chan. 16. Mariners are requested to transit the area with caution. For more details or comments, contact. Cindy Pratt at 805-650-7000.

Chart 18725

LNLM: 42/23

SOUTHERN CALIFORNIA-OFFSHORE-HAZARDOUS OPERATIONS

There will be hazardous operations conducted in the Fleet Training Area Hot (FLETA HOT) until 1 January, 2024. Mariners are requested to transit the area with caution. For more details or comments contact Darrel Rumsey at 619-545-1744

A. HAZARDOUS OPERATIONS REQUEST (FLETA HOT):

(1) IN AREA BOUNDED BY:

- 32-33-00N 118-25-00W
- 32-35-00N 118-16-00W
- 32-35-00N 117-4-000W
- 31-55-00N 117-40-00W
- 31-55-00N 118-25-00W
- 32-33-00N 118-25-00W

TO POINT OF ORIGIN.

B. HAZARDOUS OPERATIONS REQUEST (SOAR):

(1) IN AREA BOUNDED BY:

- 32-52-42N 119-11-58W
- 33-08-04N 118-52-05W
- 33-08-04N 118-46-02W
- 33-03-52N 118-41-48W
- 33-02-32N 118-43-33W
- 32-58-53N 118-43-31W
- 32-47-40N 118-32-21W
- 32-36-55N 118-45-00W
- 32-36-55N 118-56-57W

TO POINT OF ORIGIN.

C. HAZARDOUS OPS REQUEST (SHOBA WITH BOTH EXTENSIONS):

(1) AREA BOUNDED BY FOLLOWING COORDS:

- 32-55-00 N 118-25-00 W
- 32-55-00 N 118-15-00 W
- 32-40-00 N 118-15-00 W
- 32-40-00 N 118-35-00 W
- 32-45-00 N 118-35-00 W

TO POINT OF ORIGIN.

Charts: 18700 18720 18740

LNLM: 19/23

SOUTHERN CALIFORNIA-OXNARD-DOCK REPLACEMENT

Anchor QEA is conducting a dock replacement for Anacapa Isle Marina of Docks A through E, & G in Channel Islands Harbor, Oxnard, California at 34-10-22N, 119-13-37W from 1 June, 2023 until 13 March, 2024. Vessels will be monitoring VHF-FM Chan. 16. Mariners are requested to transit the area with caution. For more details or comments contact Armando Alonso at 805-814-4010.

Chart 18725

LNLM: 20/23

SOUTHERN CALIFORNIA-POINT CONCEPTION-NOAA BUOY DEPLOYMENT

NOAA's Pacific Marine Environmental Laboratory deployed a buoy 11 nautical miles due west of Point Conception, CA. at 34-27-31N 120-41-10W. The buoy named Harvest 22 has a yellow top with gray sides and a flashing amber light every 4 seconds. Mariners are advised to use due caution when transiting this area. For more details or comments contact Cabot Zucker at 425-477-9554.

LNLM: 13/22

SOUTHERN CALIFORNIA-PORT SAN LUIS-MARINE CONSTRUCTION

Cannolly-Pacific will conduct marine construction to the Port San Luis breakwater from 6:30am to 6:30pm from 10 April, 2023 until 31 December, 2023. DB LONG BEACH will use anchors to position itself along the breakwater. These anchor positions will be marked by round white anchor cans and FI W 2s. Tug PATCONA and Tug LARCONA will be assisting DB LONG BEACH. All vessels will be monitoring VHF-FM Chan. 13, 16, and 79a. Mariners are requested to transit the area with caution. For more details or comments contact Tobey Walker at 562-577-0730 or John Riley at 562-577-3602.

Chart 18720

LNLM: 15/23

SOUTHERN CALIFORNIA-PT. DUME TO PURISIMA POINT-US NAVY UNDERWATER OPERATIONS

The M/V INDEPENDENCE is conducting underwater operations off the coast of Southern California within 5 nautical miles of position 33-45-30N 118-56-00W from 6-10 November, 2023. Mariners are requested to transit the area with caution due to submerged gear. The M/V INDEPENDENCE will be monitoring VHF-FM Chan. 13 & 16 during these operations and has requested that mariners avoid transiting within 2 nautical miles of the operating area. For more details or comments contact Steve Canale at 360-434-8624.

Chart 18720

LNLM: 44/23

SOUTHERN CALIFORNIA-SAN DIEGO BAY- MARINE EVENT

The annual San Diego Bay Parade of Lights consists of 80 power, sail, and hand powered boats, participating in a boat parade from 5:30pm to 7:30pm on 10 & 17 December, 2023. The parade route will start near the west side of Shelter Island at position 32-42-24N 117-13-56W, proceed past Embarcadero to the Coronado Bay Bridge, cross the main shipping channel and finish in the vicinity of the U.S. Navy Carrier Basin. There is a Coast Guard Special Local Regulation being enforced for the event. Mariners are advised to avoid this area and use due caution when transiting outside this area. For more details or comments, contact Bill Edwards at 619-708-5047.

Chart 18765

LNM: 44/23

SOUTHERN CALIFORNIA-SAN DIEGO BAY-BRIDGE

CORONADO BAY BRIDGE MAINTENANCE-Scaffolding installed between piers 11-12, 12-13, and 13-14, reduces vertical clearance by more than 8'. The upstream and downstream lower edges of the scaffolding are lighted at night with red lights. For more details or comments contact the Coast Guard Bridge Office at 510-437-3461.

Charts: 18772 18773

LNM: 13/20

SOUTHERN CALIFORNIA-SAN DIEGO BAY-MARINE EVENT

The Cortez Racing Association (CRA) will sponsor the CRA Year End Regatta on 9 December, 2023 from 10:00am to 5:00pm. The regatta will consist of 40 sailboats starting near Harbor Island, proceeding to San Diego Bay Channel Lighted Buoy 16 (LLNR 1620), continuing to San Diego Bay Channel Lighted Buoy 28 (LLNR 1980), and finishing back at Harbor Island. Mariners are requested to transit the area with caution. For more details or comments, contact Dale Greaney at 760-470-1730.

Chart 18765

LNM: 44/23

SOUTHERN CALIFORNIA-SAN DIEGO BAY-MARINE EVENT

The Cortez Racing Association (CRA) will be sponsoring the CRA Fall Regatta on 11 November, 2023 from 10:00am until 5:00pm. The regatta will consist of 40 sailboats starting near Harbor Island, proceeding to San Diego Bay Channel Lighted Buoy 16 (LLNR 1620), continuing to San Diego Bay Channel Lighted Buoy 28 (LLNR 1980), and finishing back at Harbor Island. Mariners are requested to transit the area with caution. For more details or comments contact Dale Greaney at 760-470-1730.

Chart 18765

LNM: 42/23

SOUTHERN CALIFORNIA-SAN DIEGO BAY-MARINE EVENT

The Maritime Museum of San Diego will be sponsoring the Star of India sailing event on 11-12 November, 2023 from 9:00am until sunset each day. The event will involve the sailing vessel STAR OF INDIA (and tow), four escort vessels, as well as three other sailing vessels transiting from their berths at the Maritime Museum of San Diego, through the San Diego Bay Channel out to sea, then returning to the museum. Mariners are requested to transit the area with caution. For more details or comments contact John Merrill at 619-246-6691.

Chart 18773

LNM: 43/23

SOUTHERN CALIFORNIA-SAN DIEGO BAY-MARINE EVENT

The San Diego Fleet Week Association will be sponsoring the Fleet Week San Diego Veterans Day Boat Parade on 12 November, 2023 from 9:30am until 11:00am in San Diego Bay. The parade will consist of approximately 75 pleasure craft of various sizes, starting at the southern end of Shelter Island, proceeding northeast along the shoreline past Harbor Island, then southeast to the Tenth Avenue Marine Terminal, crossing the federal channel just before the Coronado Bridge, and then proceeding north to the Coronado Ferry Terminal. A special local regulation will be enforced for this event from 8:30am until 12:00pm, encompassing all navigable waters around the parade location. Mariners are requested to transit the area with caution. For more details or comments contact Lawrence Blumberg at 619-665-8807.

Chart 18773

LNM: 43/23

SOUTHERN CALIFORNIA-SAN DIEGO-MARINE CONSTRUCTION

R.E. Staite Engineering Inc. will be conducting marine construction at MZB VOR Mission Bay Island in San Diego from 25 September, 2023 until 30 March, 2024 at 32-46-55N 117-13-30W. RES 180 Floating Crane Barge, RES 110 Material Barge, P/B JEANIE R, W/B JOHN DRAKE and skiffs will be monitoring VHF-FM Chan. 16. Mariners are requested to transit the area with caution. For more details or comments contact R.E. Staite Engineering, Inc. at 619-233-0178 or restaite@restaite.net.

Chart 18773

LNM: 37/23

SOUTHERN CALIFORNIA-SAN DIEGO-MARINE CONSTRUCTION

R.E. Staite Engineering Inc. will be conducting marine construction associated with a quaywall that is located between the Naval Base Point Loam Fluel Pier and Pier 122 in San Diego from 18 September, 2023 until 24 April, 2024 at 32-42-00N 117-14-19W. Vessels JEANIE R, flexi floats and various work boats will be monitoring VHF-FM Chan. 16. Mariners are requested to transit the area with caution. For more details or comments contact R.E. Staite Engineering, Inc. at 619-233-0178 or restaite@restaite.net.

Chart 18773

LNM: 37/23

SOUTHERN CALIFORNIA-SAN DIEGO-MARINE CONSTRUCTION

R.E. Staite Engineering Inc. will be conducting marine construction at Pier 160B (Finger A) at Naval Base Pt. Loma in San Diego from 4 December, 2023 until 31 January, 2024 at 32-42-12N 117-14-05W. A floating crane barge JEANIE R push boat, JOHN DRAKE work boat and skiffs will be performing construction operations. All vessels will be monitoring VHF-FM Chan. 16. Mariners are requested to transit at their slowest safe speed to minimize wake transit the area with caution. For more details or comments contact Tory Wagoner at 619-629-9733 or restaite@restaite.net.

Chart 18773

LNM: 45/23

SOUTHERN CALIFORNIA-SAN DIEGO-MARINE CONSTRUCTION

R. E. Staite Engineering Inc. will conduct marine construction at the Continental Maritime of San Diego's Wharves 2 and 7 at 32-41-39N 117-08-58W. Construction will start 15 September, 2023 until 31 December, 2023. RES 150, crew boat JOHN DRAKE, Tug KILLEEN and push boat JENNIE R will be monitoring VHF-FM Chan. 16. Mariners are requested to transit the area with caution. For more details or comments contact Erick Myers at 619-233-0178.

Chart 18773

LNM: 35/23

SOUTHERN CALIFORNIA-SAN DIEGO-MARINE EVENT

SOUTHERN CALIFORNIA-SAN DIEGO-MARINE EVENT

The San Diego Yacht Club will be sponsoring the One Design Weekend Monthly Series on various dates throughout CY2023. The event is scheduled for September, 14-15 October, 11-12 November, and 9 December, 2023. The events will involve approximately 30 sailing vessels racing on a course in Coronado Roads, CA. The course will be centered at approximately 32-39-30N 117-11-40W and will extend southwest up to 1.2 nm. Mariners are requested to transit the area with caution. For more details or comments contact Jeff Johnson at 619-933-9922.

Chart 18773

LNM: 03/23

SOUTHERN CALIFORNIA-SAN JOSE CREEK-GOLETA SLOUGH-BRIDGE

STATE ROUTE 217 HIGHWAY BRIDGE- Caltrans has begun in-water construction for the bridge replacement project through 31 October, 2023. Mariners are requested to transit the area with caution. For more information, contact the Coast Guard Bridge Office at 510-4237-3461.

Chart 18720

LNM: 38/23

SOUTHERN CALIFORNIA-SAN MATEO PT. -BUOY DEPLOYMENT

A Waverider buoy has been deployed 5 NM southwest of San Mateo Pt. in position 33-20-11N 117-39-31W. The buoy was deployed on 26 May, 2023. The buoy is operated by Scripps Institute of Oceanography and is 3-foot diameter sphere with an attached telemetry whip antenna and a nighttime yellow color warning flashing light. The light timing sequence is a series of 5 flashes at 1-second intervals with a period of 20 seconds between each series. Visual range is one kilometer. The buoy is painted yellow and marked "Wave Buoy" with the phone number 858-534-3032. For further comments or details contact Vicki Kellis at 858-534-3032.

Chart 18774

LNM: 23/23

SOUTHERN CALIFORNIA-SAN NICHOLAS ISLAND-ATMOSPHERIC BUOY DEPLOYMENT

Naval Air Systems Command has deployed an atmospheric sampling buoy 1.5 miles Northeast of San Nicolas Island at 33-18-00N 119-30-55W. The yellow buoy FI Y 3s, is 6 feet above the waterline and 2 feet in diameter. Mariners are requested to transit the area with caution. For more details or comments contact Kyle Edwards at 805-989-0672.

Chart 18720

LNM: 39/22

SOUTHERN CALIFORNIA-SAN NICHOLAS ISLAND-COMMERCIAL FISHING OPERATIONS

Ventura County Commercial Fishermen's Association member vessels will be operating within a 35 mile radius of San Nicholas Island between January 01, 2024 and June 15, 2024. Vessels can be expected in this area anytime wind and sea state is at a Beauford Scale of 4 or less. Gear will be marked with a flagged highflyer, radar reflector, lights and bouys. Please give a closest point of approach of 1/2 mile. Vessels can be contacted on VHF-FM Chan. 11 and 16. Mariners are requested to transit the area with caution. For more details and comments contact 805-448-4455.

Chart 18022

LNM: 42/23

SOUTHERN CALIFORNIA-SANTA BARBARA-AQUACULTURE ESTABLISHMENT

Ocean Rainforest will be establishing an Aquafarm, starting on 30 March, 2023, located 4.3 NM South of Santa Barbara. The site is bound within four yellow boundary marker buoys with a flashing yellow light every 2 seconds (FI Y2s) in the following positions:

34-19-58.53N 119-42-45.72W

34-20-10.12N 119-42-45.72W

34-20-11.23N 119-42-07.24W

34-19-59.64N 119-42-07.92W

In line with the outer boundary buoys are small unlit floats that are marking the anchors associated with the Aquaculture area, the total buoys marking the anchors are 12 on the long axis of each side and 2 between the corner buoys on the short axis. Within the boundary markers will be 188 buoys/floats, see Enclosure AQUACULTURE ESTABLISHMENT.pdf enclosure below. The interior buoys of the aquaculture are in the shape of a rectangle with the outer edge marked with yellow buoys, every other buoy has a flashing yellow light flashing every 2 seconds (FI Y2s). Within the rectangle are 135 small unlit floats marking the cultivation lines. Mariners are advised to remain clear of this area as entanglement with associated equipment may occur. Vessel DANNY C will be conducting the deployment and monitoring VHF-FM Chan. 7 and 16. For more details or comments contact Ocean Rainforest Inc at 805-722-9601 or eliza@oceanrainforest.com.

Charts: 18720 18725

LNM: 11/23

SOUTHERN CALIFORNIA-SANTA BARBARA-BUOY DELETION

Two buoys in the Santa Barbara Channel have been moved and renamed. Delete the following aids:

Santa Barbara Marker Lighted Buoy FI(1)W 4s

34-24-24N 119-40-44W

Santa Barbara Intake Lighted Marker Buoy FI(1)W 4s

34-24-25N 119-40-46W

Replaced with:

Santa Barbara Desal Intake Lighted Marker Buoy 1 FI(1)W 4s

34-24-26.34N 119-40-46.98W

Santa Barbara Desal Intake Lighted Marker Buoy 1 FI(1Y) 6s

34-24-36.05N 119-40-50.02W

For further information, mariners can contact the Coast Guard PATON office at 571-607-9967.

Chart 18725

LNM: 34/23

SOUTHERN CALIFORNIA-VANDENBERG AFB-HAZARDOUS OPERATIONS

Hazardous operations will be conducted from Vandenberg AFB, CA for Western Range 2339 from 11:19pm on 11 November, 2023 until 1:23pm on 15 November, 2023. Hazardous operation areas are bounded by the following coordinates:

Hazard Area A:

34-44-00N 120-38-00W

34-44-00N 120-34-00W

34-40-00N 120-26-00W

34-23-00N 120-26-00W

34-02-00N 120-38-00W

34-02-00N 120-45-00W

34-35-00N 120-44-00W

SOUTHERN CALIFORNIA-VANDENBERG AFB-HAZARDOUS OPERATIONS

34-44-00N 120-38-00W

Hazard Area B:

31-26-00N 121-19-00W

29-51-00N 122-02-00W

29-16-00N 122-02-00W

29-20-00N 121-22-00W

30-02-00N 121-07-00W

31-25-00N 121-17-00W

31-26-00N 121-19-00W (CLOSING THE FIRST POINT)

Mariners are advised to remain clear of these areas for the duration of operations. For more details or comments contact Vandenberg AFB at 805-606-8825 or on VHF-FM Chan. 06 or 16.

Charts: 18680 18700 18720 18740

LNLM: 45/23

SOUTHERN CALIFORNIA-VENTURA-MARINE CONSTRUCTION

Abhe & Svoboda, Inc. will be conducting marine construction at the Ventura Pier from 6 November, 2023 until 12 February, 2024 at 34-16-32N 119-17-27W. All work will be above water on the pier. Mariners are requested to transit the area with caution. For more details or comments contact, Charles Taylor at 619-659-1320.

Chart 18725

LNLM: 43/23

SOUTHERN CALIFORNIA-WILMINGTON-PIER CONSTRUCTION

Jilk Heavy Construction Co. will be conducting pier construction at the Marine Oil Terminal Berth 167-169 in Willmington, CA. Operations will be conducted until 07 November, 2023 during daylight hours, Monday through Friday. Jilk Heavy Construction's 100'x110' Flexi-float mounted barge crane will be located at various points along berths 168-169 and berths 192-193 and will be moored with the use of spods. Alongside will be several 18' work skiffs at 33-45-20N 118-16-04W. All floating and land-based equipment will be monitoring VHF-FM Chan. 16. Mariners are requested to transit the area with caution. For more details or comments contact Joe Salgado at 310-505-0142 or Joe Carrico at 310-505-7346.

Chart 18749

LNLM: 27/23

SECTION VIII - LIGHT LIST CORRECTIONS

An Asterisk *, indicates the column in which a correction has been made to new information

| (1) No. | (2) Name and Location | (3) Position | (4) Characteristic | (5) Height | (6) Range | (7) Structure | (8) Remarks |
|------------|--------------------------|-----------------|-----------------------|---------------|--------------|------------------|----------------|
|------------|--------------------------|-----------------|-----------------------|---------------|--------------|------------------|----------------|

None

PUBLICATION CORRECTIONS

None

ENCLOSURES

REPORT OF DELAY AT DRAWBRIDGE

[Delay_Report_11-2017.pdf](#)

Use link above to Report a Delay at a Drawbridge.

LNLM: 06/07

NORTHERN CALIFORNIA-SAN FRANCISCO BAY-BRIDGE

[SFOBBTemporaryBargeLocations.pdf](#)

WESTERN SPAN SAN FRANCISCO-OAKLAND BAY BRIDGE-See link above for location of anchored barges during fender repairs.

LNLM: 39/23

NORTHERN CALIFORNIA-DELTA & RIVERS-AMERICAN RIVER-BRIDGE

[AmRiv_SiltCurtain_BargeLocation.pdf](#)

CAPITAL CITY HWY (ROUTE 51) BRIDGE-See link above for barge and silt curtain locations.

LNLM: 22/22

NORTHERN CALIFORNIA-SAN FRANCISCO BAY-BRIDGE

[PlatformLighting_GG_Bridge_25May23.pdf](#)

GOLDEN GATE BRIDGE-Temporary Platform Location and Lighting revised 25 May, 2023.

LNLM: 22/23

NORTHERN CALIFORNIA-SAN FRANCISCO BAY-BRIDGE

[R-SR_Bridge_Temp_Platform_Lighting.pdf](#)

RICHMOND-SAN RAFAEL BRIDGE- See link above for temporary underdeck platform lighting for concrete and steel repairs.

LNM: 48/21

NORTHERN CALIFORNIA-DELTA & RIVERS-SACRAMENTO RIVER-BRIDGE

[ButteConstructionLightng-BuoyLine.pdf](#)

REPLACEMENT BUTTE CITY BRIDGE-See link above for temporary construction trestle and lighting and proposed buoy line..

LNM: 36/22

NORTHERN CALIFORNIA-DELTA & RIVERS-SAN JOAQUIN RIVER-BRIDGE

[TemporaryBridge_FalseworkLighting.pdf](#)

CROWS LANDING REPLACEMENT-See link above for temporary falsework, temporary bridge, the temporary navigation channel during construction with navigation lighting plan.

LNM: 36/22

NEVADA-ARIZONA-COLORADO RIVER-BRIDGE

[RockAccessPad_Lighting02.pdf](#)

NEW LAUGHLIN-BULLHEAD CITY BRIDGE-See link above for temporary rock access pad and temporary bridge lighting.

LNM: 15/23

NORTHERN CALIFORNIA-MONTEREY BAY-SURVEY OPERATIONS

[MONTEREY BAY-SURVEY OPERATIONS.pdf](#)

see link above.

LNM: 04/23

SOUTHERN CALIFORNIA-SANTA BARBARA-AQUACULTURE ESTABLISHMENT

[AQUACULTURE ESTABLISHMENT.png](#)

see link above.

LNM: 03/23

SOUTHERN CALIFORNIA-CHANNEL ISLANDS HARBOR-BRIDGES

[Channel_Islands_Bridge_Rehab.pdf](#)

CHANNEL ISLANDS BLVD EAST (MANDALAY BAY) & CHANNEL ISLANDS BLVD WEST (EDISON CANAL) BRIDGES-Lighting diagram for cofferdams and flexi-floats.

LNM: 06/23

NORTHERN CALIFORNIA-DELTA & RIVERS-PETALUMA RIVER-BRIDGE

[HWY37FenderDamage.pdf](#)

HIGHWAY 37 BRIDGE-Open link above for location and depiction of fender damage.

LNM: 26/23

CALIFORNIA - SANTA BARBARA - TRAFFIC SEPARATION (TSS) EXTENDED

[TSS_Circ.78.pdf](#)

See link above.

LNM: 21/23

CALIFORNIA – CALIFORNIA COAST-VOLUNTARY VESSEL SPEED REDUCTION

[2023 NOAA USCG EPA VSR2.pdf](#)

See link above.

Charts: 18468 18640 18700 18720 18740

LNM: 20/23

SOUTHERN CALIFORNIA - CHANNEL ISLANDS - AREA TO BE AVOIDED (ATBA) ENLARGED

[ATBA_Circ.342.pdf](#)

See link above.

LNM: 21/23

CALIFORNIA - SANTA BARBARA TSS AND CHANNEL ISLANDS ATBA GRAPHIC

[new-protections.jpg](#)

See link above.

LNM: 21/23

NORTHERN CALIFORNIA-DELTA & RIVERS-MIDDLE RIVER-BRIDGE

[CART4_Barge_MiddleRiver.pdf](#)

CA ROUTE 4- See link above for barge location and lighting during dolphin replacement.

LNM: 40/23

SOUTHERN CALIFORNIA-PORTS OF LOS ANGELES/LONG BEACH-LA/LB HARBOR-BRIDGE

[V_Thomas_Platform_Lighting1.pdf](#)

See link above for platform lighting for Vincent Thomas Bridge.

LNM: 28/19

THE LOCAL NOTICE TO MARINERS IS AVAILABLE ON THE WORLD WIDE WEB AT [HTTPS://WWW.NAVCEN.USCG.GOV](https://www.navcen.uscg.gov)

W. J. George, CDR
U.S. Coast Guard
Chief Waterways Management Branch

**U.S. COAST GUARD
REPORT OF DELAY AT DRAWBRIDGE
PER 33 CFR 117.5**

BRIDGE NAME: _____ DATE: _____

MILE : _____ WATERWAY: _____

1. Name/ Type of Vessel: _____ Direction of Travel : _____

2. Vessel Owner (Name): _____

(Address): _____

3. Name of Pilot (if applicable): _____

(Address): _____

4. Time vessel signaled for bridge opening: _____

5. Location of vessel when signal was given: _____

6. Time and location of vessel when delay began: _____

7. Method of signal for bridge opening: () Radio () Sound () Visual.

(If sound or visual signal was used, specify: _____)

8. Time bridge operator acknowledged signal: _____

9. Method of bridge operator acknowledgement: () Radio () Sound () Visual

(If sound or visual signal was used, specify: _____)

10. Did bridge operator acknowledgement indicate the bridge,

() Could be opened immediately?

() Could not be opened immediately?

11. If land traffic crossed the bridge:

Time land traffic started across the bridge _____

Time land traffic stopped crossing the bridge _____

Did land traffic stop on the bridge? _____

Duration land traffic stopped on the bridge _____

12. Time drawbridge opened for navigation _____

13. Additional comments:

I certify the above information is true to the best of my knowledge and understand this statement may be used by the U.S. Coast Guard in levying fines against the bridge owner.

Signature _____

Telephone _____

Mariners may complete and return to:

Commander (dpw)

Fax: (510) 437-5836

Email: Carl.T.Hausner@uscg.mil

Eleventh Coast Guard District

Coast Guard Island, Building 50-2

Alameda, CA 94501-5100

Attn: Bridge Office

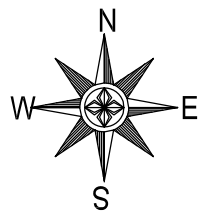
Questions? Please contact: Carl Hausner, Bridge Administrator, Eleventh Coast Guard District

Office: (510) 437-3516

Cell: (510) 219-4366

Mariners are reminded not to require bridge openings for appurtenances nonessential to navigation, per 33 CFR 117.11

Anchored barge will be located at either pier "B", "C", "D", or "E" during the work. Each corner of the barge will be lighted at night with steady burning red lights.

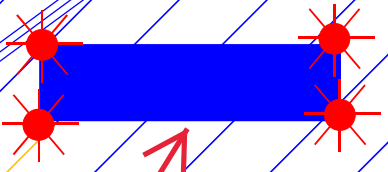


Size of Barge: 150' X 54'
(Crane Barge Kelso)
Typical Location

Shipping Lane

ANCHOR ZONE E WEST

ANCHOR ZONE E EAST



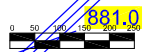
Barge will display this lighting configuration when anchored near piers.

D-E Outbound Shipping Lane
D-E Inbound Shipping Lane

ANCHOR W6 (E TWR)

285

870

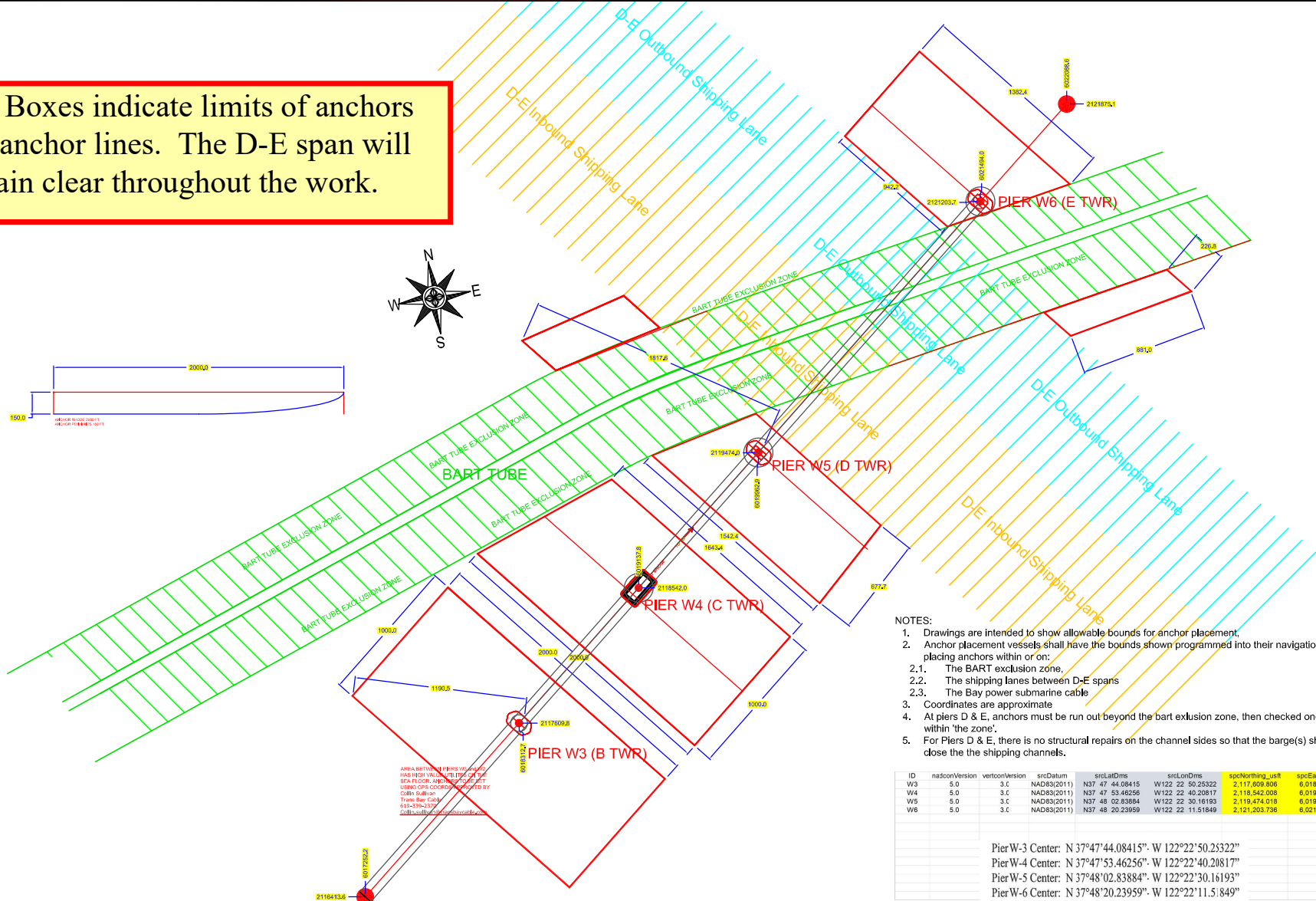
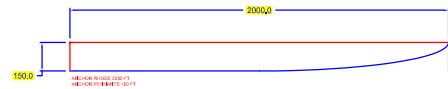


BART TUBE EXCLUSION ZONE

BART TUBE EXCLUSION ZONE

Fender Repairs
Western Span San Francisco Oakland Bay Bridge, mile 8.9, San Francisco Bay
Temporary Impacts to Navigation Diagram

Red Boxes indicate limits of anchors and anchor lines. The D-E span will remain clear throughout the work.



AREA BETWEEN PIERS W4 AND W5 HAS BEEN DESIGNATED AS A SEA FLOOR ANCHORAGE RESTRICTION ZONE (SARZ) BY THE CALIFORNIA DEPARTMENT OF BOAT SAFETY AND MARINE SAFETY. THIS AREA IS SUBJECT TO VARIOUS RESTRICTIONS AND REGULATIONS. CONTACT THE CALIFORNIA DEPARTMENT OF BOAT SAFETY AND MARINE SAFETY FOR MORE INFORMATION.

NOTES:

1. Drawings are intended to show allowable bounds for anchor placement.
2. Anchor placement vessels shall have the bounds shown programmed into their navigation systems in order to avoid placing anchors within or on:
 - 2.1. The BART exclusion zone,
 - 2.2. The shipping lanes between D-E spans
 - 2.3. The Bay power submarine cable
3. Coordinates are approximate
4. At piers D & E, anchors must be run out beyond the bart exclusion zone, then checked once set to ensure that they are not within 'the zone'.
5. For Piers D & E, there is no structural repairs on the channel sides so that the barge(s) should never need to moored close the the shipping channels.

| ID | nadsOnVersion | vertconVersion | srcDatum | srcLatOrms | srcLonOrms | srcNorthing_usr1 | srcEasting_usr1 |
|----|---------------|----------------|-------------|-----------------|------------------|------------------|-----------------|
| W3 | 5.0 | 3.C | NAD83(2011) | N37 47 44.08415 | W122 22 50.25322 | 2,117,609,808 | 6,018,512,651 |
| W4 | 5.0 | 3.C | NAD83(2011) | N37 47 53.46256 | W122 22 30.20817 | 2,116,542,008 | 6,019,137,752 |
| W5 | 5.0 | 3.C | NAD83(2011) | N37 48 02.83884 | W122 22 30.16193 | 2,119,474,018 | 6,019,962,888 |
| W6 | 5.0 | 3.C | NAD83(2011) | N37 48 20.23959 | W122 22 11.51848 | 2,121,203,736 | 6,021,493,997 |

Pier-W-3 Center: N 37°47'44.08415". W 122°22'50.25322"
 Pier-W-4 Center: N 37°47'53.46256". W 122°22'40.20817"
 Pier-W-5 Center: N 37°48'02.83884". W 122°22'30.16193"
 Pier-W-6 Center: N 37°48'20.23959". W 122°22'11.51849"

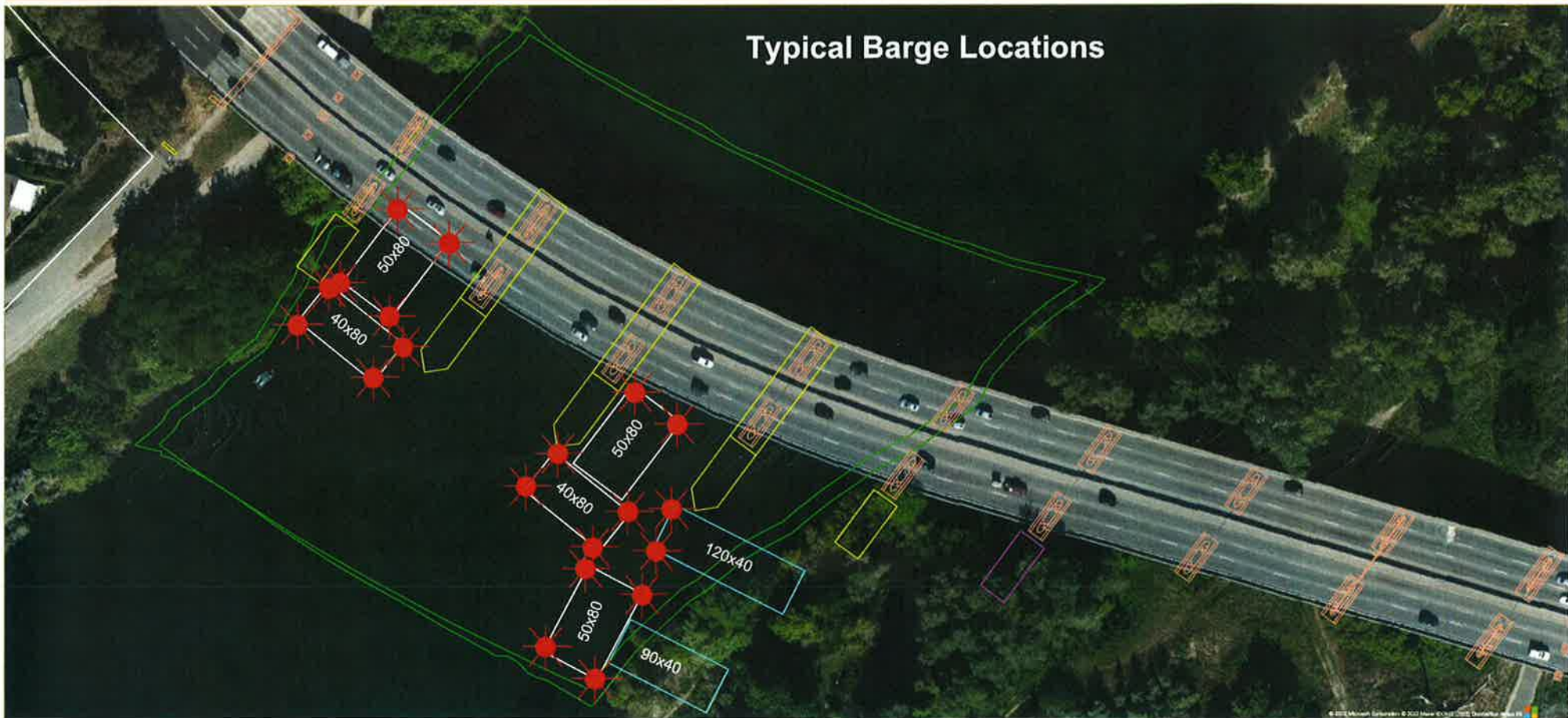
Fender Repairs

Western Span San Francisco Oakland Bay Bridge, mile 8.9, San Francisco Bay

Temporary Impacts to Navigation Diagram

Rehabilitation and Modification Project
Capital City (CA Route 51) Bridge, Mile 4.0, American River

Typical Barge Location and Typical Barge Lighting



Each corner of each barge is lighted at night with steady burning all-round red light, visible at 2,000 by approaching vessels. All vessels transiting the project area should use extreme caution. Turbidity curtains will be placed at different locations during the project. The next four diagrams show the proposed location of the curtains.

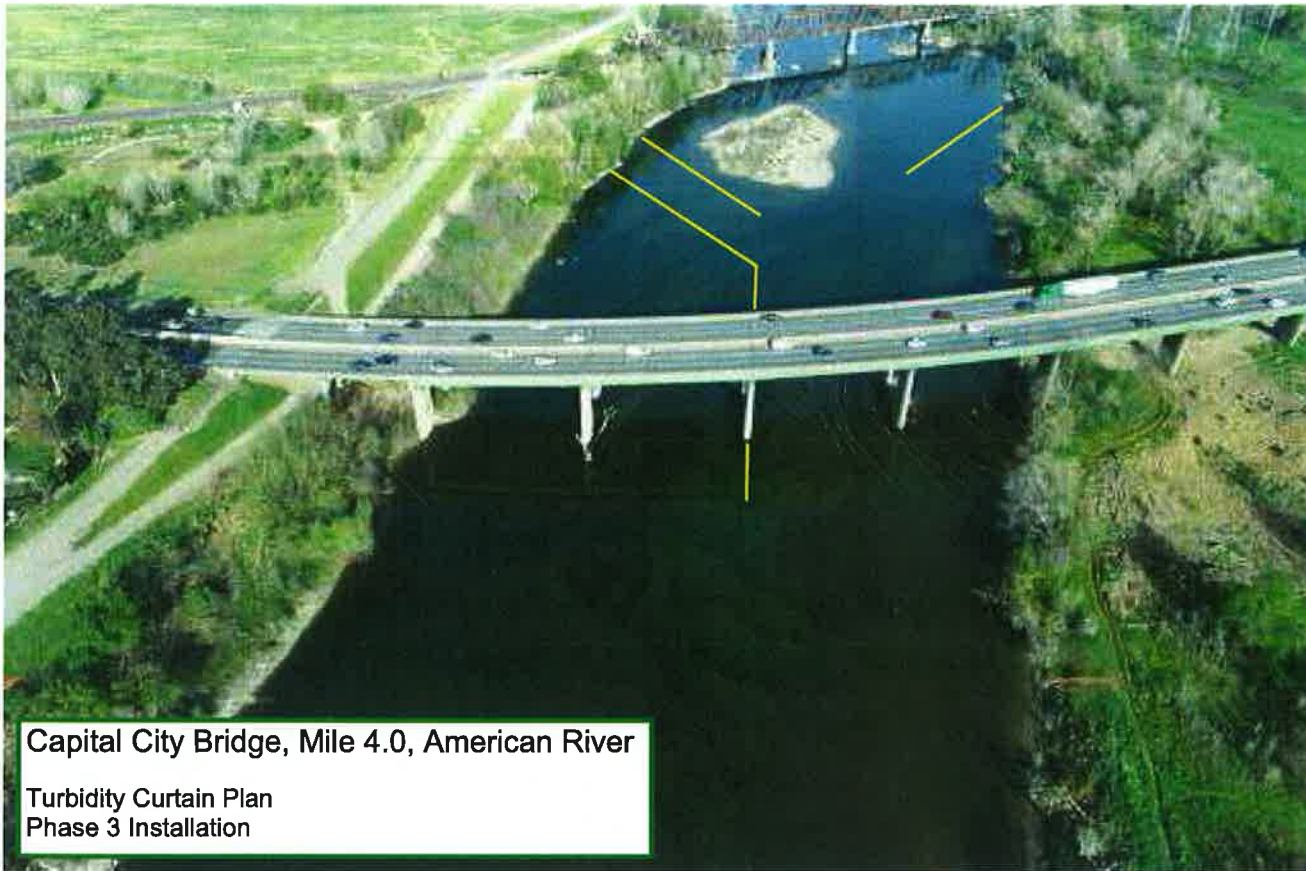


Capital City Bridge, Mile 4.0, American River
Turbidity Curtain Plan
Phase 1 Installation



Capital City Bridge, Mile 4.0, American River

Turbidity Curtain Plan
Phase 2 Installation



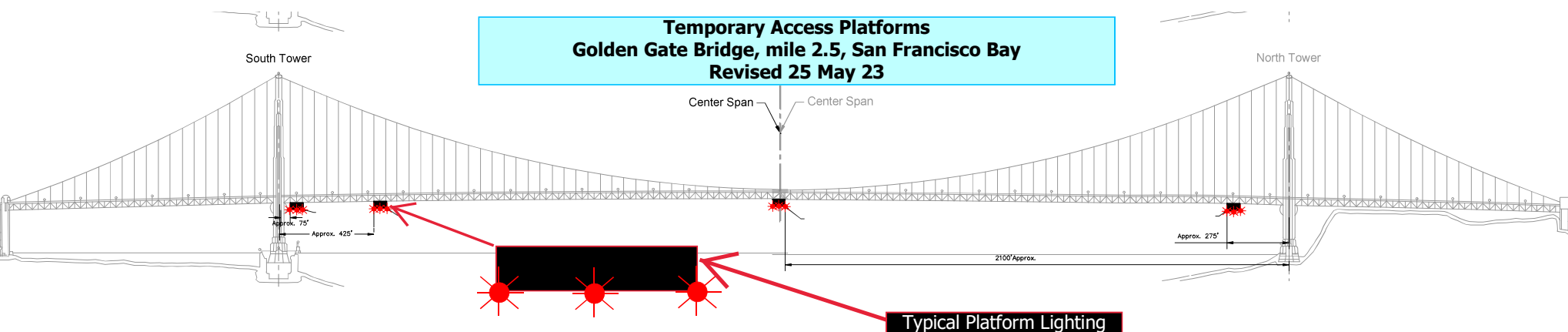
Capital City Bridge, Mile 4.0, American River
Turbidity Curtain Plan
Phase 3 Installation



Capital City Bridge, Mile 4.0, American River

Turbidity Curtain Plan
Phase 4 Installation

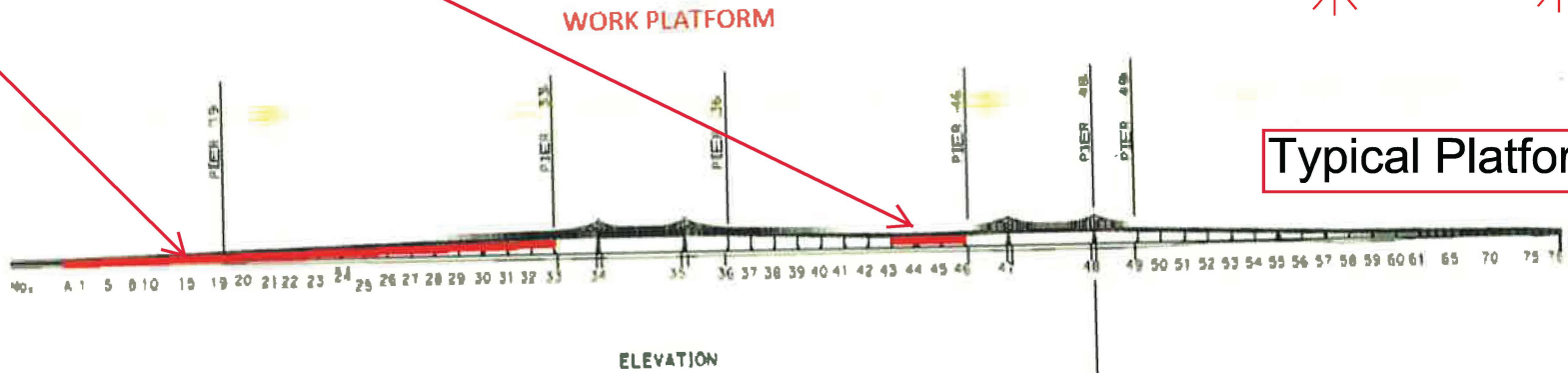
Temporary Access Platforms
Golden Gate Bridge, mile 2.5, San Francisco Bay
Revised 25 May 23



Four 54 ft wide temporary platforms are installed in the main span below low steel of the bridge, in relation to centerline of the span; two south of the north tower and two north of the south tower, reducing vertical clearance by no more than 14 feet. The upstream and downstream lower edges of the temporary platforms will be lighted at night with steady burning red lights visible at 2,000 yards by approaching vessels.

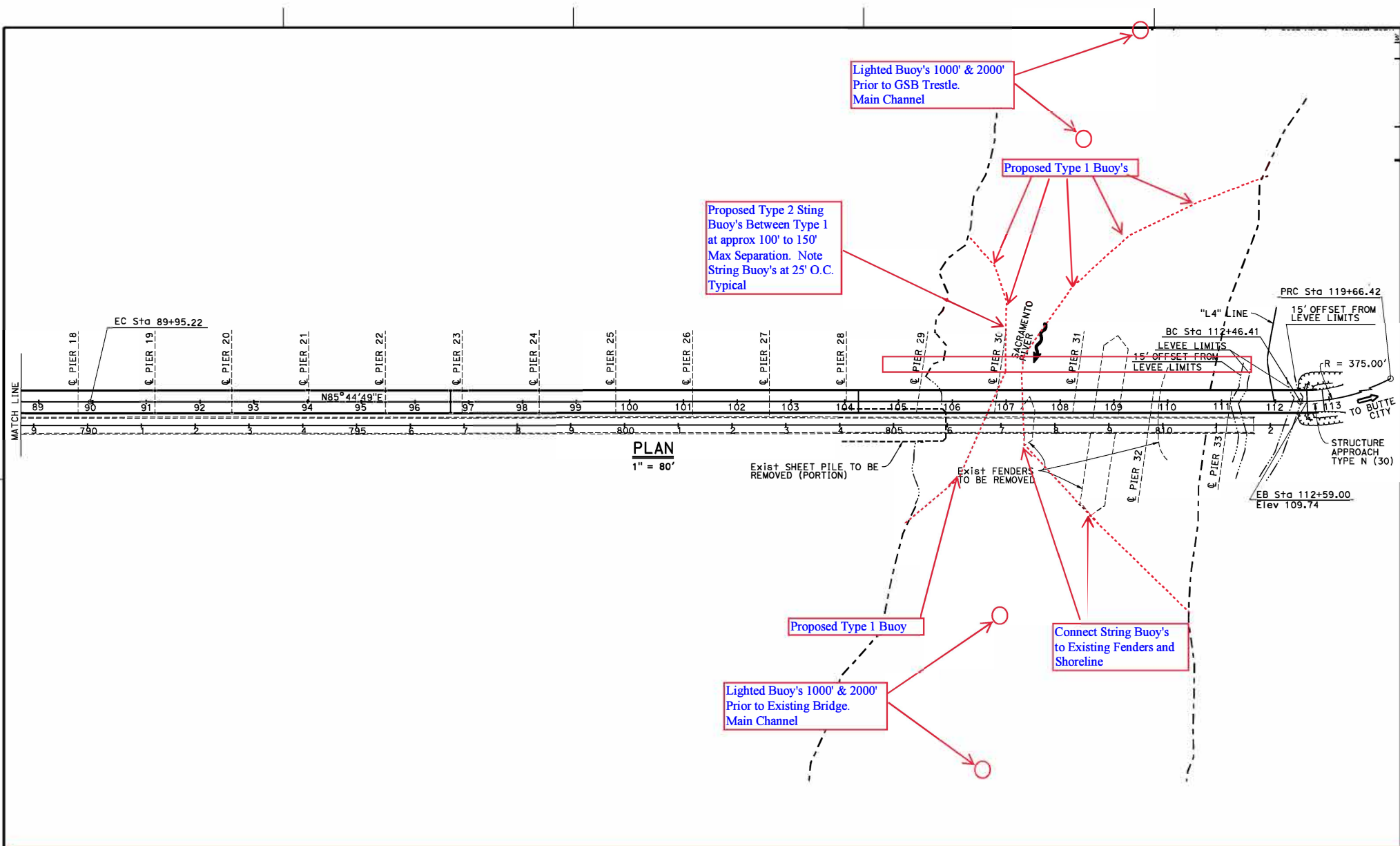
Painting and Structural Repairs Project
Richmond-San Rafael Bridge
Mile 13.0, San Francisco Bay

Temporary Underdeck Platforms

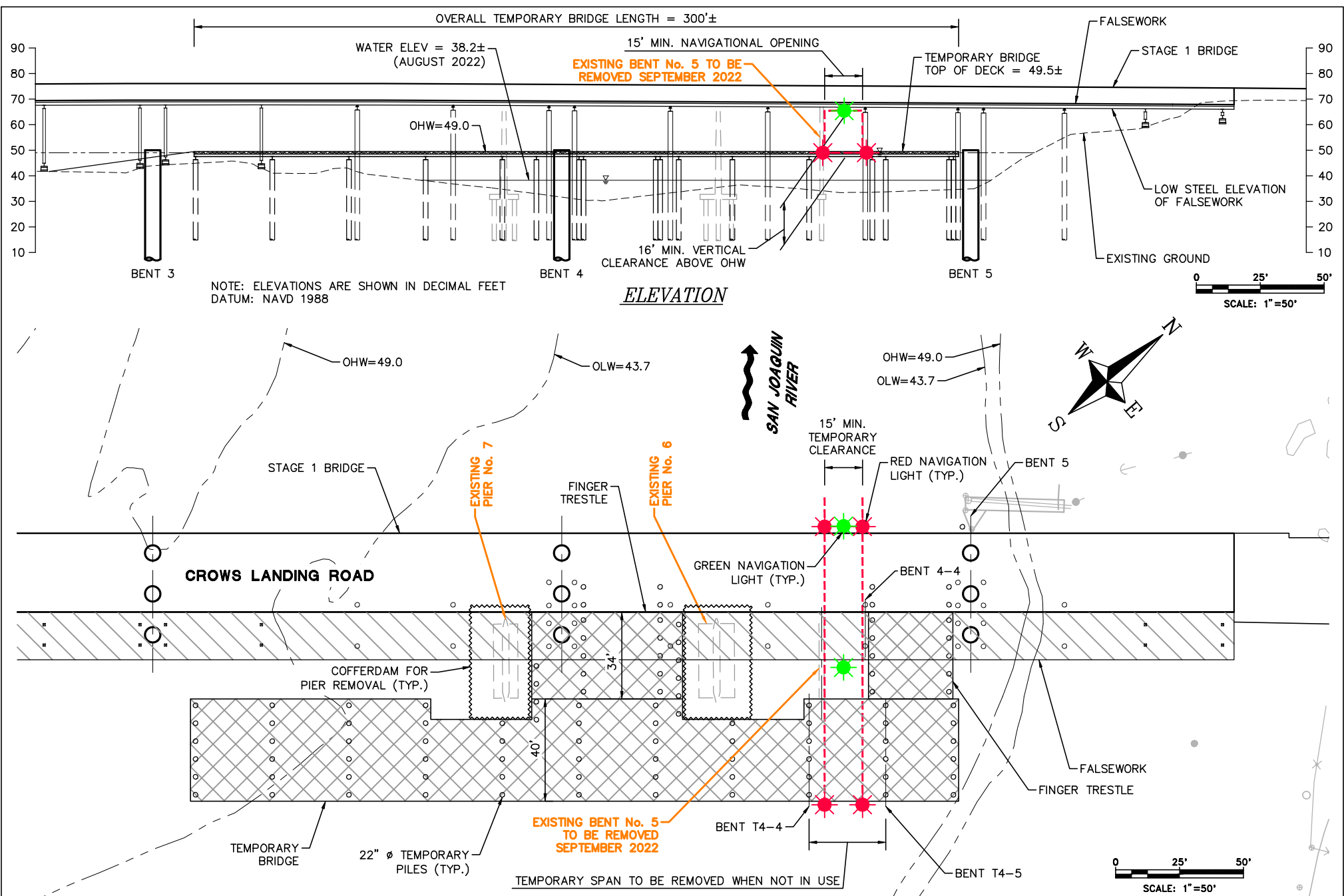


Typical Platform Lighting

The upstream and downstream lower edges of each temporary platform in each span are lighted at night with steady burning red lights to be seen at 2,000 yards by approaching vessels. Each platform reduces vertical clearance by no more than 3 feet.



**Butte City Bridge Replacement Project, mile 169.7, Sacramento River
Proposed Buoy Line During Construction**



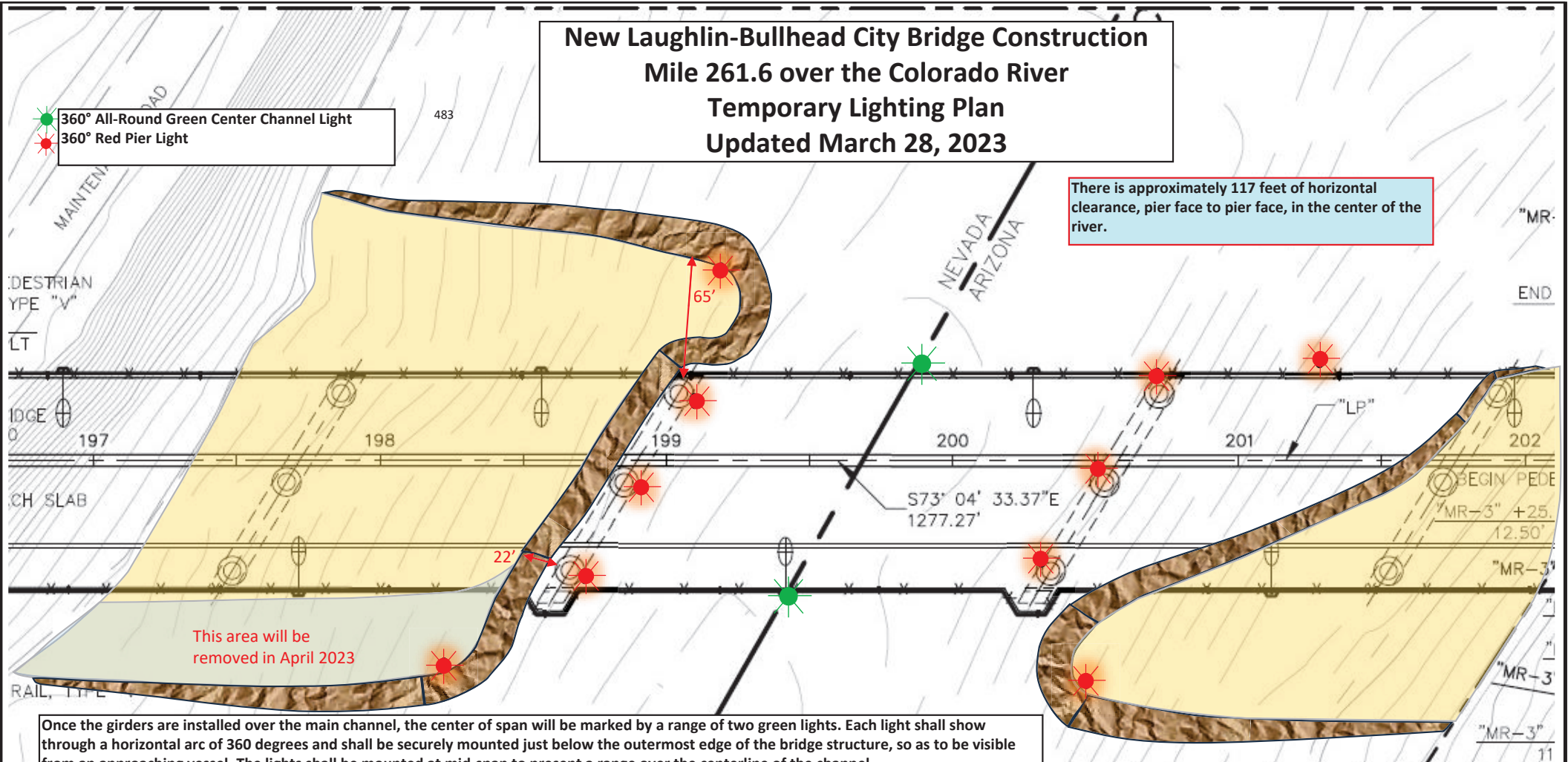
Temporary Navigation Lighting-Crows Landing Bridge Replacement Project - San Joaquin River

The temporary bridge, the replacement bridge and existing bridge will be lighted at night with two red lights marking the temporary navigation channel. The temporary falsework will be lighted, upriver and downriver, with green lights marking the center of the temporary navigation channel. During construction the temporary navigation channel will provide a horizontal clearance of 15 feet and a vertical clearance at Ordinary High Water of 16 feet.

New Laughlin-Bullhead City Bridge Construction Mile 261.6 over the Colorado River Temporary Lighting Plan Updated March 28, 2023

● 360° All-Round Green Center Channel Light
● 360° Red Pier Light

There is approximately 117 feet of horizontal clearance, pier face to pier face, in the center of the river.



Once the girders are installed over the main channel, the center of span will be marked by a range of two green lights. Each light shall show through a horizontal arc of 360 degrees and shall be securely mounted just below the outermost edge of the bridge structure, so as to be visible from an approaching vessel. The lights shall be mounted at mid-span to present a range over the centerline of the channel.

The exposed piers, as shown above, will be lit at night with steady burning red lights, visible at 2,000 yards by approaching vessels. The upriver and downriver in-ward tip of the Nevada side access pad and the downriver in-ward tip of the Arizona side access pad will be lit at night with steady burning red lights, visible at 2,000 yards by approaching vessels. A fourth red light will be installed on the northeast side of the river to mark the area to keep vessels out.

LAUGHLIN BRIDGE OVER COLORADO RIVER

ACCESS PAD MODIFICATIONS

By Greg Gentsch, P.E. March 28, 2023

RESEARCH EQUIPMENT IN WATER

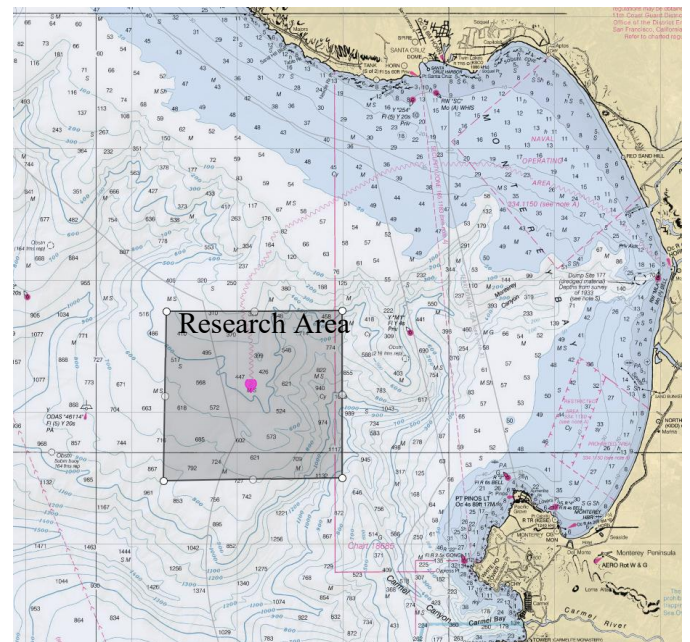
Monterey Bay
February 2023

SAILDRONE, INC. will operate an Unmanned Surface Vehicle called Saildrone conducting research in the Monterey Bay in the vicinity of position of 36° 42.7'N, 122° 11.2'W

VESSELS ARE REQUESTED TO TRANSIT THE AREA WITH CAUTION, AND REMAIN GREATER THAN 500 METERS AWAY FROM THE RESEARCH EQUIPMENT.

Saildrones are wind powered Unmanned Surface Vehicles that carry important oceanographic and fisheries acoustics research instrumentation and are controlled from shore through satellite communications.

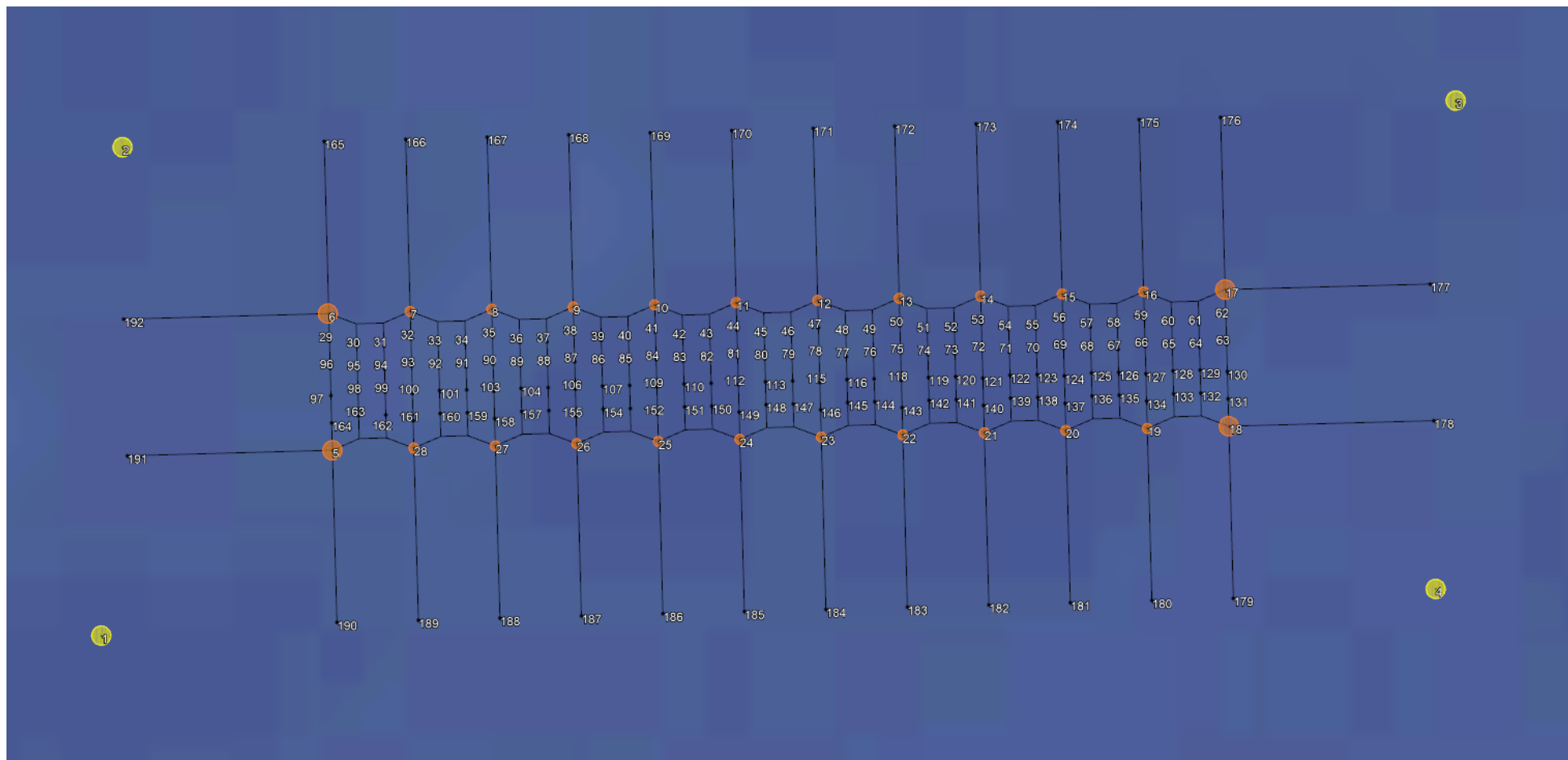
- **Color: Orange**
- **Light: white all-round light**
- **Radar Reflector: Yes**
- **Notation: "Saildrone"**
- **Length: 23 ft & Width: 2 ft**
- **Height: 16 ft above water line**
- **Draft: 6 ft, Avg. speed: 3 kts**
- **GPS / AIS / Cameras: Yes**



SAILDRONE MISSION CONTROL

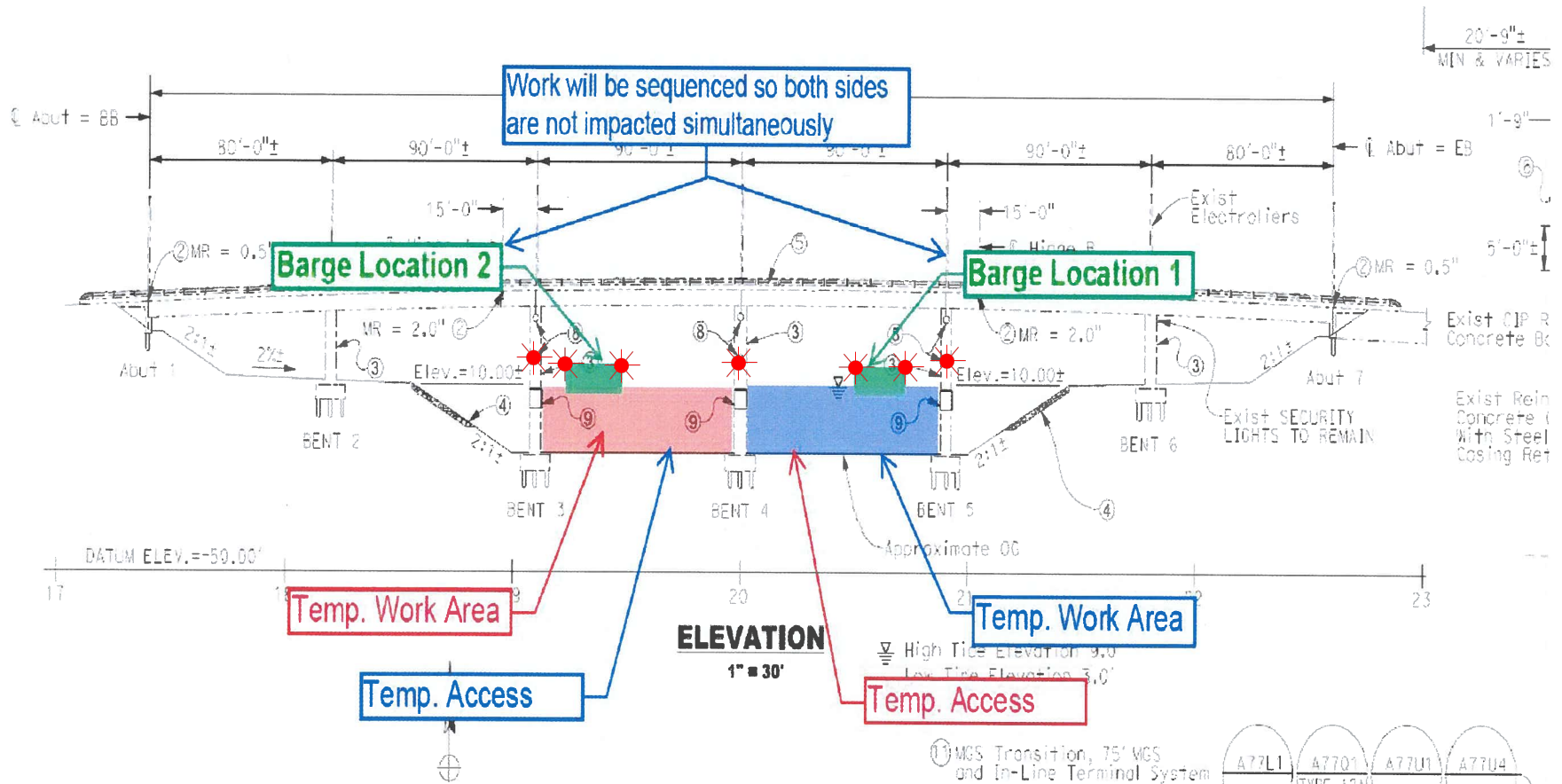
(510) 722-6070

missioncontrol@saildrone.com



Rehabilitation of the Channel Islands Blvd West Bridge (Edison Canal) over Channel Islands Harbor

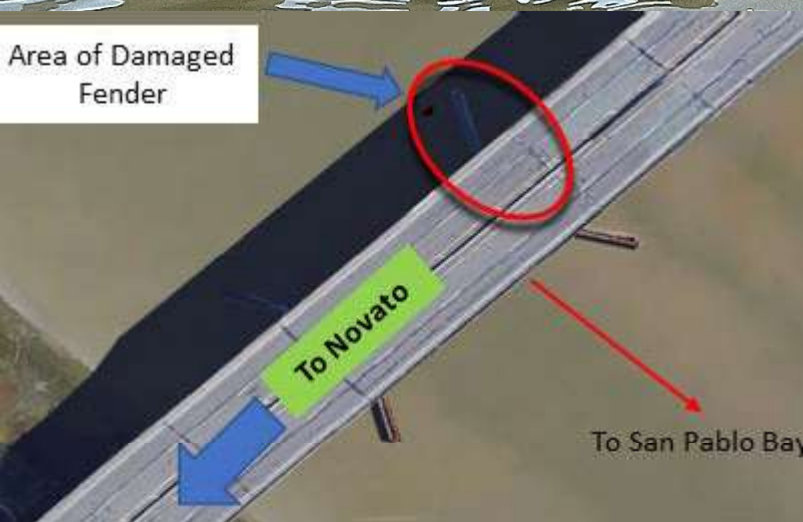
Flexi-Float and Cofferdam Lighting



The upstream and downstream ends of the temporary cofferdams and each corner of each flexi-float barge shall be lighted at night with steady burning red lights visible at 2,000 yards by approaching vessels. Only one span will be worked on at any one time, leaving the other span available for mariners.

Fender Damage

Highway 37 Bridge, mile 1.0, Petaluma River



Damaged upstream northwest fenders. Part of fender system encroaching 20-30 feet in main navigation span, unknown encroachment underwater. Mariners are urged to use extreme caution when transiting the bridge. The damaged system may not offer protection for vessels or the bridge is contact is made.

4 ALBERT EMBANKMENT
LONDON SE1 7SR
Telephone: +44 (0)20 7735 7611 Fax: +44 (0)20 7587 3210

COLREG.2/Circ.78
28 November 2022

TRAFFIC SEPARATION SCHEMES AND ASSOCIATED MEASURES

1 The Maritime Safety Committee, at its 106th session (2 to 11 November 2022), having considered the recommendation made by the Sub-Committee on Navigation, Communications and Search and Rescue at its ninth session (21 to 30 June 2022), and in accordance with the *Procedure for the adoption and amendment of traffic separation schemes, routing measures other than traffic separation schemes, including designation and substitution of archipelagic sea lanes, and ship reporting systems* (resolution A.858(20)), adopted traffic separation schemes and associated measures, as follows:

- .1 amended traffic separation schemes and associated measures *Approaches to the Chornomorsk, Odesa and Pivdennyi ports*, which replace the existing traffic separation schemes *Between the ports of Odessa and Ilichevsk* and *In the approaches to the ports of Odessa and Ilichevsk* (COLREG.2/Circ.14, paragraphs 1.1.2 and 1.1.3); and
- .2 amendments to the traffic separation scheme *In the Santa Barbara Channel* (COLREG.2/Circ.64, annex 6),

as set out in annexes 1 and 2, respectively.

2 Accordingly, the aforementioned traffic separation schemes and associated measures will be implemented at 0000 hours UTC on 1 June 2023.

ANNEX 2

**AMENDMENTS TO THE TRAFFIC SEPARATION SCHEME
"IN THE SANTA BARBARA CHANNEL"**

In the Santa Barbara Channel

(Reference charts: United States 18700, 2013 edition; 18720, 2020 edition; and 18721, 2009 edition.

Note: These charts are based on North American 1983 datum)

Part II

Between Point Conception and Point Arguello

The description of the traffic separation scheme in part II "Between Point Conception and Point Arguello" is replaced by the following:

- (a) A separation zone is bounded by a line connecting the following geographical positions:
- | | |
|-------------------------------|--------------------------------|
| (1) 34°20'.84 N, 120°30'.28 W | (13) 34°29'.15 N, 121°06'.94 W |
| (6) 34°19'.88 N, 120°30'.59 W | (14) 34°28'.19 N, 121°07'.26 W |
- (b) A traffic lane for westbound traffic is established between the separation zone and a line connecting the following geographical positions:
- | | |
|-------------------------------|--------------------------------|
| (7) 34°21'.80 N, 120°29'.96 W | (15) 34°30'.11 N, 121°06'.63 W |
|-------------------------------|--------------------------------|
- (c) A traffic lane for eastbound traffic is established between the separation zone and a line connecting the following geographical positions:
- | | |
|--------------------------------|--------------------------------|
| (12) 34°18'.92 N, 120°30'.91 W | (16) 34°27'.23 N, 121°07'.57 W |
|--------------------------------|--------------------------------|
-



To: All Mariners

April 10, 2023

The National Oceanic and Atmospheric Administration (NOAA), with support from the United States Coast Guard (USCG) and Environmental Protection Agency (EPA) is issuing a voluntary 10-knot Vessel Speed Reduction (VSR) request that goes into effect May 1 off of San Francisco, Monterey, and southern California; please see the attached charts. Large ships traveling at 10 knots or less give whales more time to move to avoid a strike, reduce the lethality of a strike should one occur, generate less harmful ocean noise and fewer air emissions. Thus, the goals of these voluntary VSR zones are to reduce the risk of fatal ship strikes to endangered blue, fin, and humpback whales, reduce ocean noise, and protect public health along the California coast. These whale species are protected under the Federal Endangered Species Act (16 U.S.C. 1538 et seq.), the Marine Mammal Protection Act (16 U.S.C. 1361 et seq.), and the National Marine Sanctuaries Act (16 U.S.C. 1431 et seq.). Any unauthorized take of whales, even if unintentional, by vessels transiting in U.S. waters violates federal statutes.

The voluntary VSR requests will be in effect May 1 to December 15, 2023 for all VSR zones off California, as shown in the attached charts. Note the expansion of the northern VSR zone throughout Monterey Bay National Marine Sanctuary, and the southern California VSR zone expansion to include recent International Maritime Organization modifications to the Santa Barbara Channel Traffic Separation Scheme (TSS) and Area To Be Avoided (ATBA). NOAA, USCG, and EPA request that all vessels 300 gross tons (GT) or larger reduce speeds to 10 knots when transiting within the designated VSR zones and prioritize use of the western traffic lane of the San Francisco TSS when traveling in the San Francisco Offshore TSS. Vessels may deviate from the speed and routing recommendations whenever necessary to maintain safe maneuvering.

We request your cooperation with the voluntary VSR requests to protect the health of coastal communities and whales that annually migrate to and through these zones to feed. All transits by vessels 300 GT or larger are analyzed by NOAA via Automatic Information System (AIS) data provided by USCG to assess the cooperation of your company along with industry as a whole.

NOAA, USCG, and EPA are committed to the long-term protection of nationally significant marine resources and public health by enhancing marine safety and environmental awareness in the maritime community. If you have questions, please contact Sean Hastings, 805-705-1790, sean.hastings@noaa.gov.

NOAA, USCG, and EPA commend your commitment to protecting endangered and threatened whales and protecting public health by cooperation with the 10 knot VSR requests and working towards a goal of 100% cooperation in 2023.

Handwritten signature of William J. Douros in blue ink.

William J. Douros, Regional Director
NOAA Office of National Marine Sanctuaries
West Coast Region

Handwritten signature of Scott M. Rumsey in blue ink.

Scott M. Rumsey, Acting Regional Administrator
NOAA National Marine Fisheries Service
West Coast Region

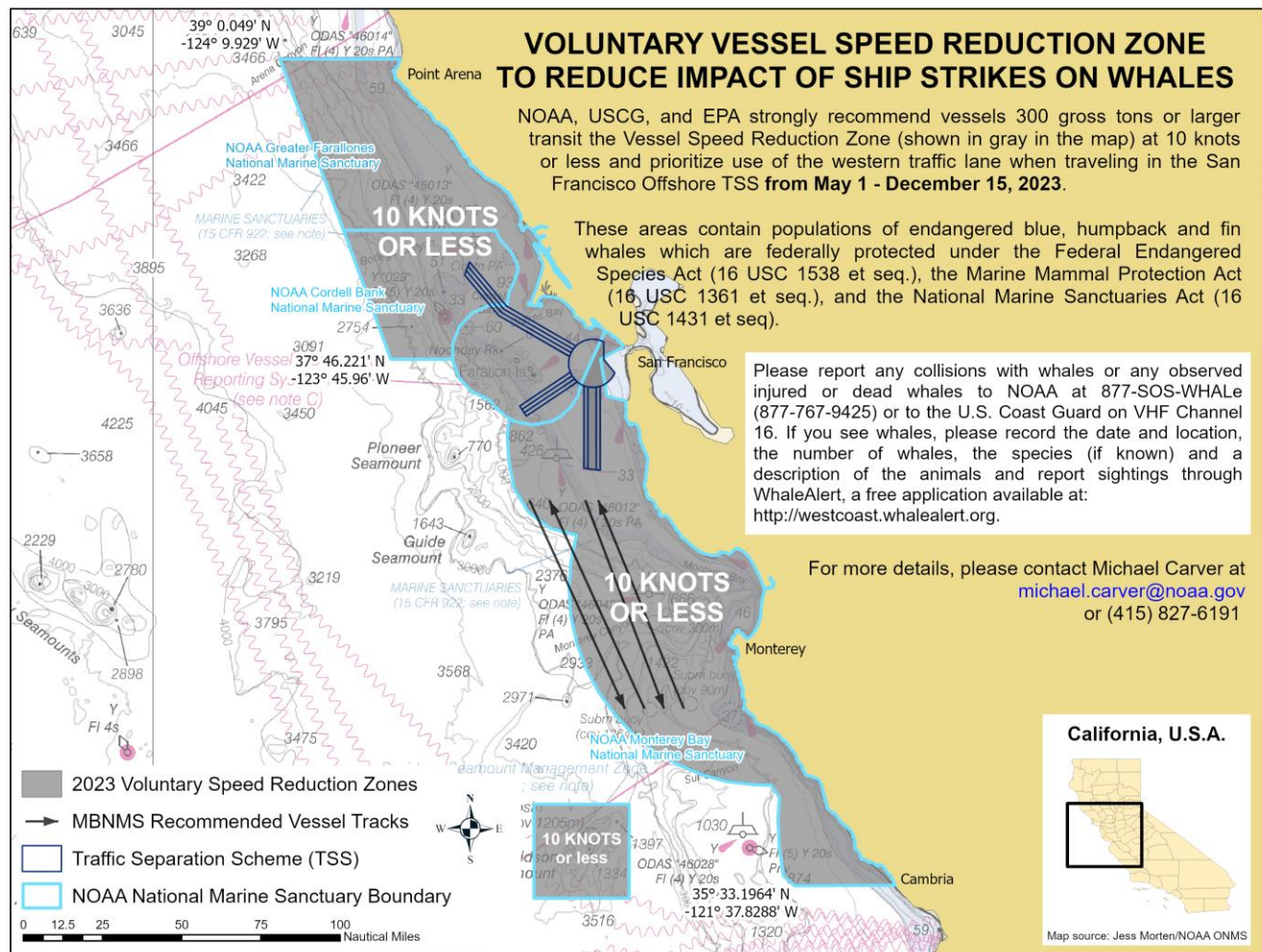
Handwritten signature of Andrew M. Sugimoto in blue ink.

Andrew M. Sugimoto, Rear Admiral
U.S. Coast Guard
District Eleven

Handwritten signature of Kerry Drake in blue ink.

Kerry Drake, Acting Regional Administrator
Environmental Protection Agency
Region 9

2023 Voluntary Vessel Speed Reduction Zones – San Francisco and Monterey Bay Region

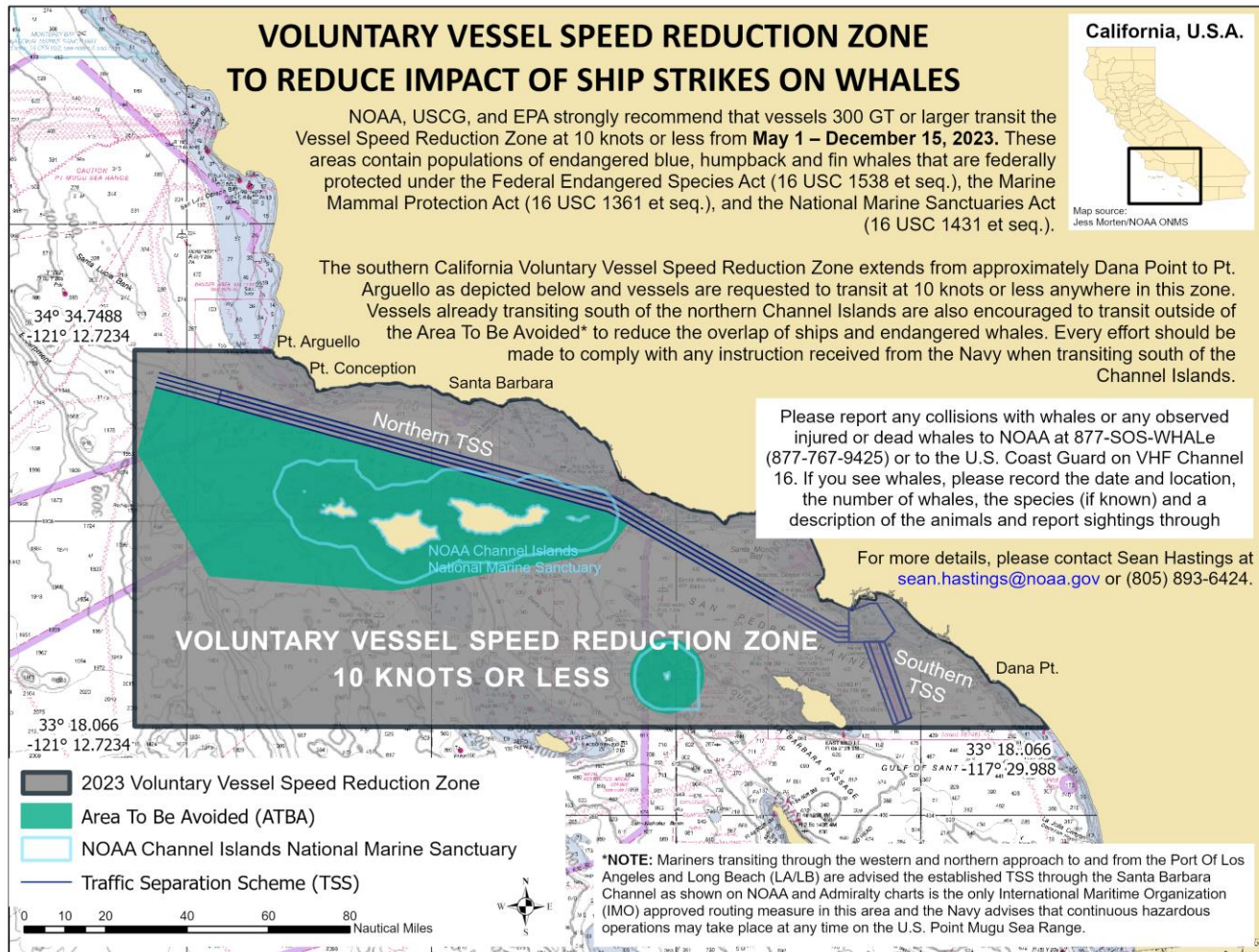


NOAA Chart 501

This map is not to be used for navigational purposes

20 APRIL 2023

2023 Voluntary Vessel Speed Reduction Zone – Southern California Region



NOAA Chart 18022

Chart not for navigational purposes.

27 MARCH 2023

4 ALBERT EMBANKMENT
LONDON SE1 7SR
Telephone: +44 (0)20 7735 7611 Fax: +44 (0)20 7587 3210

SN.1/Circ.342
28 November 2022

ROUTEING MEASURES OTHER THAN TRAFFIC SEPARATION SCHEMES

1 The Maritime Safety Committee, at its 106th session (2 to 11 November 2022), having considered the recommendation made by the Sub-Committee on Navigation, Communications and Search and Rescue at its ninth session (21 to 30 June 2022), and in accordance with the *Procedure for the adoption and amendment of traffic separation schemes, routeing measures other than traffic separation schemes, including designation and substitution of archipelagic sea lanes, and ship reporting systems* (resolution A.858(20)), adopted routeing measures other than traffic separation schemes, as follows:

- .1 recommended route *Off the coast of Shio-no-Misaki*;
- .2 amendments to areas to be avoided *Off the California coast* (resolution A.711(17));
- .3 no anchoring area *In the southern portion of Pulley Ridge*; and
- .4 recommendation on navigation for containerships in the traffic separation schemes *Off Vlieland, Vlieland North and Vlieland Junction, Terschelling-German Bight, Off Friesland and German Bight western approach*,

as set out in annexes 1 to 4, respectively.

2 Accordingly, the aforementioned routeing measures will be implemented at 0000 hours UTC on 1 June 2023.

ANNEX 2

AMENDMENTS TO AREAS TO BE AVOIDED "OFF THE CALIFORNIA COAST"

Off the California coast

(Reference charts: United States 18700, 2013 edition; 18720, 2020 edition; 18721, 2009 edition.

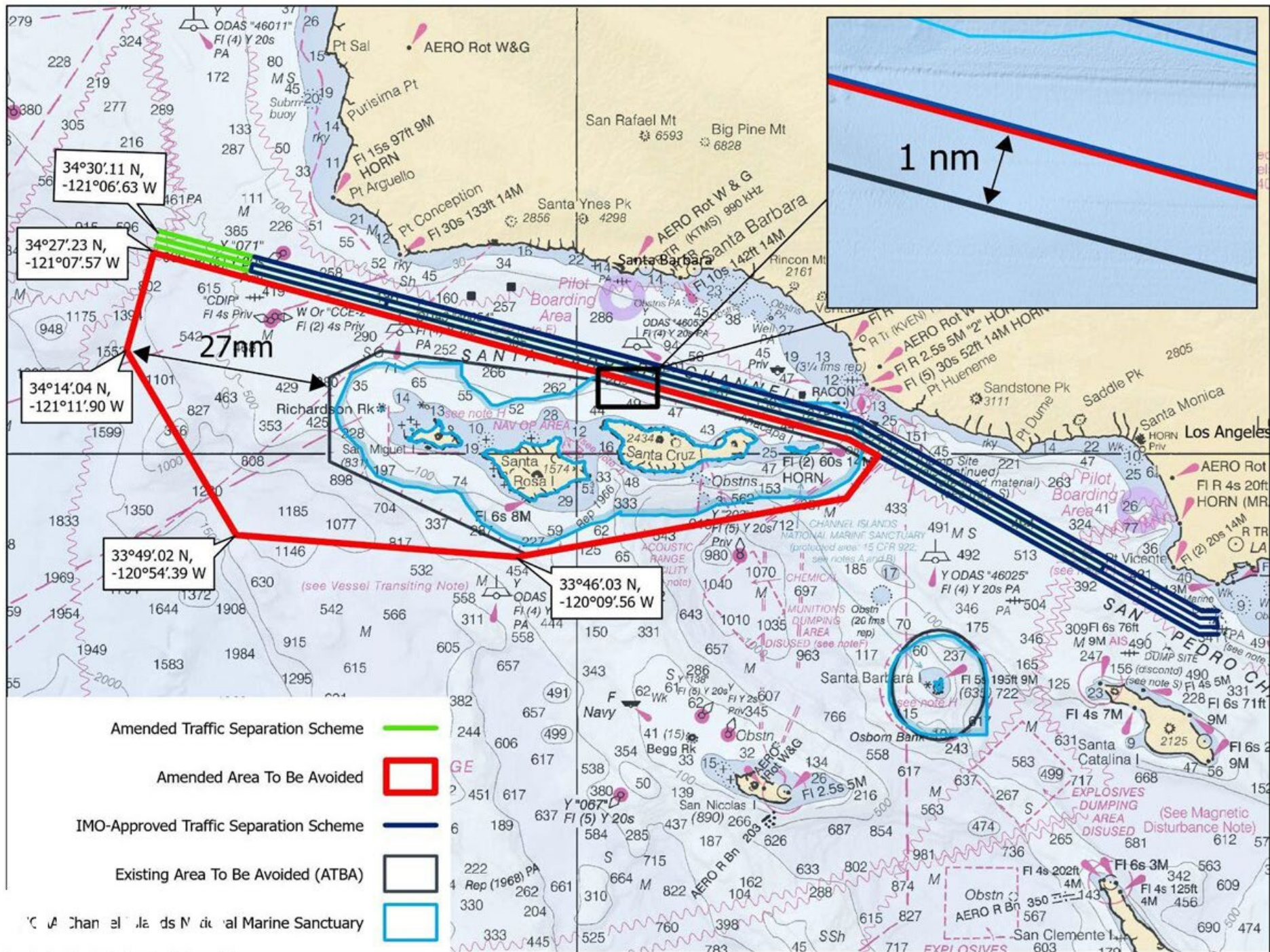
Note: These charts are based on North American 1983 datum.)

Description of the area to be avoided

- (a) **In the region of San Miguel, Santa Rosa, Santa Cruz and Anacapa Islands off the coast of southern California**

The existing area to be avoided is replaced by the area bounded by a line connecting the following geographical positions:

- (1) 34°27'.23 N, 121°07'.57 W
- (2) 34°02'.01 N, 119°16'.56 W
- (3) 33°59'.77 N, 119°11'.85 W
- (4) 33°54'.01 N, 119°16'.87 W
- (5) 33°46'.03 N, 120°09'.56 W
- (6) 33°49'.02 N, 120°54'.39 W
- (7) 34°14'.04 N, 121°11'.90 W



Dolphin Replacement Project
CA Route 4 Bridge, Mile 15.1, Middle River

Center of Channel

To Stockton

To Discovery Bay

52' x 112' Derrick Barge Vantage
(Approx location with 50' encroachment into
Eastern Channel)

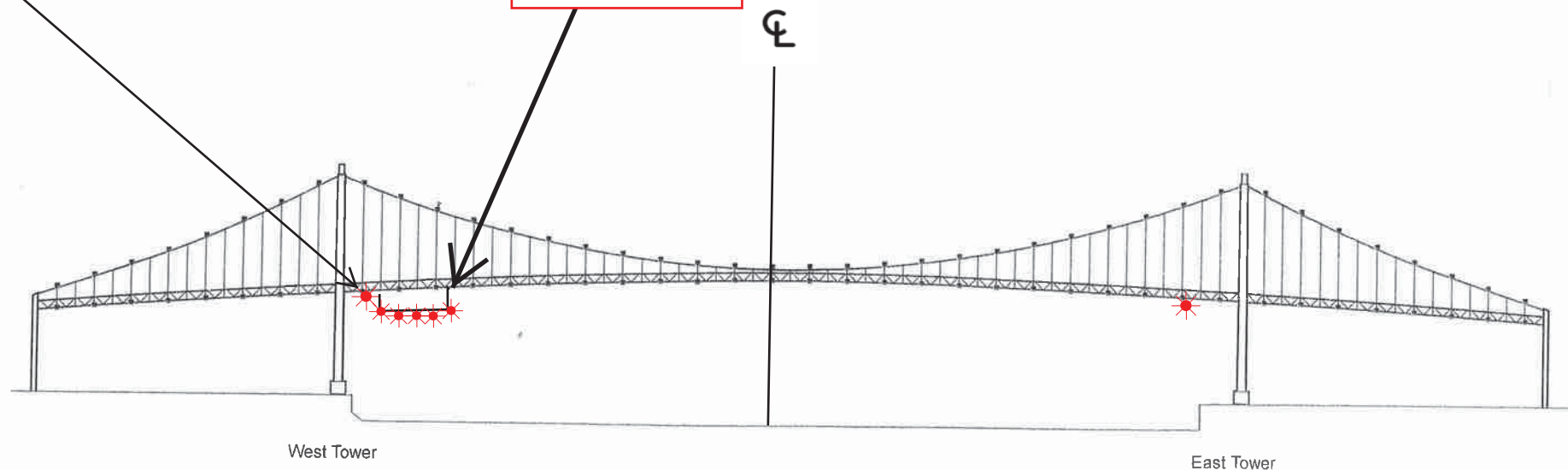
Enclosure (1)

The 112' X 52' derrick barge "VANTAGE" extends 50' into the channel on the eastern navigation channel. Each outboard corner of the barge is lit at night with steady all-round red lights seen at 2,000 yards from approaching vessels. Mariners are requested to transit the area with caution and use the western channel of the swing span if conditions allow.

Vincent Thomas Highway Bridge
Mile 3.0
Los Angeles/Long Beach Harbor
Painting Project

West Channel Margin
Light

Below Low Steel
Platform. 5' 4"
reduction in
vertical clearance



A 180 foot long under deck temporary platform will reduce vertical clearance by 5' 4". Each corner and every 50 feet along the the upstream and downstream side of the platform will lighted at night with steady burning red lights visible at 2000 yards by approaching vessels. In a duration of 1-year the platform will progress from the western channel margin light to 250' west of the centerline of the bridge.