



U.S. Department
of Homeland Security
**United States
Coast Guard**

LOCAL NOTICE TO MARINERS

District 8 MRS

Week: 16/22

Mississippi River System

LIGHT LIST VOLUME V
NOTICE NUMBER 16-22
April 20, 2022

LIGHT LIST REFERENCE: COMDTPUB P16502.5, Vol V, 2022 Edition.

CONTENTS: Rivers are listed in alphabetical order and are included only when there is information to report.
Broadcast Notice to Mariners Covered in this Edition

Originating Unit	Beginning BNM's	Ending BNM's
Sector Upper Mississippi River	0058 - 22 (UM)	0069 - 22 (UM)
Sector Lower Mississippi River	0023 - 22 (LM)	0027 - 22 (LM)
Sector Ohio Valley	0206 - 22 (OV)	0212 - 22 (OV)
OB DWB	0026 - 22 (DWB)	0030 - 22 (DWB)

COAST GUARD DISTRICT 8, WATERWAYS, (504) 671-2327, 7:00 a.m. until 3:30 p.m. (CST)
GENERAL LNM QUESTIONS, COMMENTS, OR SUGGESTIONS MAY BE E-MAILED TO: D8MarineInfo@uscg.mil
COMMENTS REGARDING SECTION VI – PROPOSED CHANGES MAY ALSO BE EMAILED TO: LocalNoticeFeedback@uscg.mil
NIS WATCHSTANDER PHONE (703) 313-5900 24-HOURS A DAY
INTERNET ADDRESS <https://www.navcen.uscg.gov/>
MISSISSIPPI RIVER SYSTEM LNM VIA INTERNET <https://www.navcen.uscg.gov/>
MISSISSIPPI RIVER SYSTEM LIGHT LIST VIA INTERNET https://www.navcen.uscg.gov/pdf/lightLists/LightList_V5_2022.pdf

ABBREVIATIONS

A through H

ADRIFT - Buoy Adrift
AICW - Atlantic Intracoastal Waterway
Al - Alternating
B - Buoy
BKW - Breakwater
bl - Blast
BNM - Broadcast Notice to Mariner
bu - Blue
C - Canadian
CHAN - Channel
CGD - Coast Guard District
C/O - Cut Off
CONT - Contour
CRK - Creek
CONST - Construction
DAYMK/Daymk - Daymark
DBN/Dbn - Daybeacon
DBD/DAYBD - Dayboard
DEFAC - Defaced
DEST - Destroyed
DISCON - Discontinued
DMGD/DAMGD - Damaged
ec - eclipse
EST - Established Aid
ev - every
EVAL - Evaluation
EXT - Extinguished
F - Fixed
fl - flash
Fl - Flashing
G - Green
GIWW - Gulf Intracoastal Waterway
HAZ - Hazard to Navigation
HBR - Harbor

I through O

I - Interrupted
ICW - Intracoastal Waterway
IMCH - Improper Characteristic
INL - Inlet
INOP - Not Operating
INT - Intensity
ISL - Islet
Iso - Isophase
kHz - Kilohertz
LAT - Latitude
LB - Lighted Buoy
LBB - Lighted Bell Buoy
LHB - Lighted Horn Buoy
LGB - Lighted Gong Buoy
LONG - Longitude
LNM - Local Notice to Mariners
LT - Light
LT CONT - Light Continuous
LTR - Letter
LWB - Lighted Whistle Buoy
LWP - Left Watching Properly
MHz - Megahertz
MISS/MSNG - Missing
Mo - Morse Code
MRASS - Marine Radio Activated Sound Signal
MSLD - Misleading
N/C - Not Charted
NGA - National Geospatial-Intelligence Agency
NO/NUM - Number
NOS - National Ocean Service
NW - Notice Writer
OBSCU - Obscured
OBST - Obstruction
OBSTR - Obstruction

P through Z

PRIV - Private Aid
Q - Quick
R - Red
RACON - Radar Transponder Beacon
Ra ref - Radar reflector
RBN - Radio Beacon
REBUILT - Aid Rebuilt
RECOVERED - Aid Recovered
RED - Red Buoy
REFL - Reflective
RRL - Range Rear Light
RELIGHTED - Aid Relit
RELOC - Relocated
RESET ON STATION - Aid Reset on Station
RFL - Range Front Light
RIV - River
RRASS - Remote Radio Activated Sound Signal
s - seconds
SEC - Section
SHL - Shoaling
si - silent
SIG - Signal
SND - Sound
SPM - Single Point Mooring Buoy
SS - Sound Signal
STA - Station
STRUCT - Structure
St M - Statute Mile
TEMP - Temporary Aid Change
TMK - Topmark
TRLB - Temporarily Replaced by Lighted Buoy
TRLT - Temporarily Replaced by Light
TRUB - Temporarily Replaced by Unlighted Buoy
USACE - Army Corps of Engineers

HOR - Horizontal Clearance
HT - Height

Oc - Occulting
ODAS - Anchored Oceanographic Data Buoy

W - White
Y - Yellow

Additional Abbreviations Specific to this LNM Edition:

RIAC - River Industry Action Committee
MMSI - Mobile Maritime Service Identity
AIS - Automatic Identification System
ATON - Aids To Navigation
COTP - Captain of The Port
TRDBN - Temporary Replaced by Daybeacon
C.F.S. - Cubic Feet per Second
CFR - Code of Federal Regulations
IAW - In Accordance With
h.p. - horse power
MPH - Miles Per Hour
TVA - Tennessee Valley Authority
INC - Incorporated
IENC - Inland Electronic Navigation Chart
WAP - Waterway Action Plan
MSIB - Marine Safety Information Bulletin

SECTION I - SPECIAL NOTICES

This section contains information of special concern to the Mariner.

DEPARTMENT OF HOMELAND SECURITY SUSPICIOUS ACTIVITY

The Department of Homeland Security (DHS) encourages the maritime public to report information concerning suspicious activity to the local Federal Bureau of Investigation Joint Terrorism Task Force (JTTF) Office, http://www.fbi.gov/about-us/investigate/terrorism/terrorism_jtfts, or to other appropriate authorities. The U.S. Coast Guard reminds the maritime industry that they may also report information concerning suspicious activity to the www.AmericasWaterwayWatch.org, the National Response Center (NRC) 1-800-424-8802 or 1-877-24WATCH.

LNM: 02-19

WESTERN RIVERS FLOATING AIDS TO NAVIGATION

The U.S. Coast Guard is responsible for placing and maintaining all aids to navigation. Buoys are set to mark project depths taking into consideration the prevailing river stages and obstructions. Buoy positions on the Inland Electronic Navigation Chart (IENC) are approximate, and subject to change depending on prevailing river stages and obstructions. Buoys should always be given as wide a berth in passing as possible, consistent with the length and width of the vessel or tow and the width of the bend or crossing.

Buoys should always be used with caution. They may be carried off position by high water, accumulation of drift, ice, or sunk by collision or other causes. In those circumstances buoy marks will remain on the IENC and indicate the last known position of the buoy. Presence of a buoy mark on the IENC does not necessarily mean a buoy will be physically on position. When buoys are missing they will be replaced as soon as possible.

LNM: 16-19

GPS TESTING

At times, throughout our area or responsibility, multiple U.S. Government Agencies conduct GPS testing. These tests vary in duration, affected range from the test site and potential impact to the maritime user as they may affect systems that rely on GPS such as E-911, AIS and DSC. More information is available at the U.S. Coast Guard Navigation Center Website, <https://www.navcen.uscg.gov>. During these periods, GPS users are encouraged to report any GPS outages that they may experience, to the Navigation Information Service (NIS) by calling (703) 313-5900 or by using the NAVCEN Website to submit a GPS problem report.

LNM: 07-19

USACE HUNTINGTON DISTRICT LOCKS - MAIL DELIVERY AND CREW CHANGE POLICIES

Attached as an enclosure to this LNM is a USACE Huntington District Notice to Navigation Interests 22-04, regarding mail delivery and crew change policies at navigation locks, for towboats.

LNM: 02-22

USACE HUNTINGTON DISTRICT - RESTRICTED AREAS AT NAVIGATION STRUCTURES

Attached as an enclosure to this LNM is a USACE Huntington District Notice to Navigation Interests 22-05, regarding restricted areas at navigation structures.

LNM: 02-22

ARKANSAS RIVER - USACE CHANNEL STATUS REPORTS - UPDATE

Attached as enclosures to this LNM, are USACE Arkansas River Channel Status Reports.

LNM: 16-22

SUNSET OF NOAA PRINTED CHARTS

**** Cancellation of NOAA Paper and Raster Nautical Charts ****

The National Oceanic and Atmospheric Administration (NOAA) is undertaking a multi-year program to end production and maintenance of its suite of over 1,000 traditional paper nautical charts and all associated raster chart products and services, including: Print-on-Demand (POD) paper nautical charts, Full-size chart PDF files, BookletChart™ PDF files, NOAA raster navigational charts (NOAA RNC®), the NOAA RNC tile service, and the online RNC viewer.

Six months notice of the intent to cancel a specific chart is provided in a "Last Edition" notice. The final cancellation of a chart is made in a "Canceled" notice. Both types of notices will appear in LNM Section IV, "Chart Correction". A comprehensive list of all canceled NOAA charts is available at: <http://www.charts.noaa.gov/MCD/Dole.shtml>.

Traditional paper nautical chart production is ending to enable the creation and maintenance of larger scale, more up-to-date, higher quality coverage of NOAA's electronic navigational chart (NOAA ENC®) product. This will significantly enhance the amount of charted detail available to mariners. More information about NOAA's program to sunset traditional paper charts is on the NOAA Coast Survey website at: <https://nauticalcharts.noaa.gov/charts/farewell-to-traditional-nautical-charts.html>.

An online NOAA Custom Chart application at: <https://devgis.charttools.noaa.gov/pod> is available to create chart images from ENC data, which may then be printed. Notices to Mariners will not be issued for NOAA Custom Charts.

LNM: 10-21

ILLINOIS WATERWAY - CHANNEL CONDITION/SAFETY ADVISORY - UPDATE

The following zones are in the high water watch phase in accordance with the Illinois Waterway Action Plan Annex:

- Copperas Creek (Mile 145.5 – Mile 129.0),
- Havana (Mile 128.9 – Mile 102.0),
- Beardstown (Mile 101.9 – Mile 80.3) and
- Meredosia (Mile 80.2 – Mile 50.0).

Mariners should exercise caution and minimize wake in all high water zones. The laying-up on saturated levees is prohibited. Mariners should be experienced in high water conditions and avoid downstreaming operations. Mariners should remain vigilant to an increase in debris and maneuver appropriately. Be aware that a buildup of debris in fleeting areas may have occurred and take appropriate action to prevent barge breakaways. Exercise caution in all passing/meeting situations as swift current may be present. Navigation buoys may have been dragged off station, so remain alert while transiting. Recreational traffic is discouraged.

LNM: 16-22

MISSOURI RIVER - CHANNEL CONDITION/SAFETY ADVISORY - UPDATE

The following areas are in the low water watch phase IAW the Western Rivers WAP Annex:

- Jefferson Reach (Mile 200.0 – Mile 100.0),
- Brunswick Reach (Mile 300.0 – Mile 200.0) and
- Kansas City Reach (Mile 400.0 – Mile 300.0).

Deep draft tows are advised to depart the area. All vessels SHALL transit these areas at a slow speed near fleeting areas, to minimize wake impact, due to the narrow channel width. Tow operators are advised to place the heaviest barges in the middle of the tow and identify fleeting areas in the event of a river closure. Mariners are requested to transit these areas with caution and contact U.S. Coast Guard Sector Upper Mississippi River via VHF-FM Channel 16, or at (314) 269-2332, or via e-mail at sumrwaterways@uscg.mil, to report shoaling, hazardous conditions or missing aids to navigation.

LNM: 16-22

CUMBERLAND RIVER - AIDS TO NAVIGATION

Multiple buoys have been reported not properly marking the channel between approximate Miles 80.0 and 30.0. Mariners are urged to exercise caution in the area.

LNM: 14-22

ARKANSAS RIVER - L/D'S CLOSURES/DIVE OPERATIONS

Attached as an enclosure to this LNM, is a USACE Tulsa District Notice to Navigation Interests 2022-2, regarding L/D's closures/dive operations.

LNM: 15-22

SECTION II - DISCREPANCIES

This section lists all reported and corrected discrepancies related to Aids to Navigation in this edition. A discrepancy is a change in the status of an aid to navigation that differs from what is published or charted.

DISCREPANCIES (FEDERAL AIDS)

LLNR	Aid Name	Status	Chart No.	BNM Ref.	LNM St	LNM End
185	Ross Island Light	LT EXT		0283OV	28/21	
225	Murphys Island Light	STRUCT DEST		0600OV	28/18	
280	Karns Island Upper Light	STRUCT DEST		0651OV	31/18	
990	Milligan Bend Light	STRUCT DEST		0642LM	51/19	
1010	Webber Falls Jetty Light	STRUCT DEST		0641LM	51/19	

1020	Bluff View Light	STRUCT DEST	0640LM	51/19
1055	Hisaw Bottom Light	LT EXT	0196LM	40/18
1070	Brier Creek Light	STRUCT DEST	0205LM	31/15
1077	Sandtown Bottom Light	STRUCT DEST	0457LM	39/19
1200	Black Rock Daybeacon	STRUCT DEST	0379LM	35/19
1205	Gans Light	STRUCT DEST	0335LM	33/19
1213	Non Lateral Mark 330.4	STRUCT DEST	0087LM	05/16
1220	Onion Creek Daybeacon	STRUCT DMGD	0334LM	33/19
1223	Non Lateral Mark 328.5	STRUCT DMGD	0333LM	33/19
1225	Tucker Lake Light	STRUCT DEST	0332LM	33/19
1230	Mcnabb Bottom Daybeacon	STRUCT DEST	0332LM	33/19
1240	Deadman Slough Light	STRUCT DEST	0330LM	33/19
1255	Wilsons Rock Light	STRUCT DMGD	0380LM	35/19
1265	Peno Point Daybeacon	DAYMK DMGD	0580LM	47/19
1267	Non Lateral Mark 313.9	STRUCT DEST	0089LM	05/16
1315	Garrison Creek Daybeacon	DAYMK MISSING	0377LM	35/19
1360	Crawford County Daybeacon	STRUCT DEST	0378LM	35/19
1365	Jeffrey Light	DAYMK MISSING	0376LM	35/19
1390	Fort Chaffee Light	STRUCT DEST	0579LM	47/19
1395	Haroldton Light	DAYMK MISSING	0578LM	47/19
1400	New Haroldton Light	STRUCT DEST	0574LM	47/19
1420	Gun Club Lake Daybeacon	DAYMK MISSING	0582LM	47/19
1427	Big Creek Daybeacon	DAYMK MISSING	0575LM	47/19
1430	Arbuckle Island Light	STRUCT DEST	0091LM	05/16
1435	Clear Creek Light	DAYMK MISSING	0584LM	41/19
1445	Crooked Slough Light	STRUCT DEST	0583LM	47/19
1455	Mulberry River Daybeacon	STRUCT DEST	0041UM	11/17
1510	Moores Creek Light	LT IMCH/STRUCT DMGD	0394LM	44/16
1515	Roseville Daybeacon	DAYMK MISSING	0604LM	50/19
1520	O'Kane Island Light	LT IMCH/STRUCT DMGD	0393LM	44/16
1525	Alix Bottom Light	STRUCT DEST	0605LM	50/19
1530	County Line Daybeacon	STRUCT DEST	0606LM	50/19
1532	Non Lateral Mark 246.3	DAYMK MISSING	0607LM	50/19
1535	Kalamazoo Light	DAYMK MISSING	0608LM	50/19
1562	Non Lateral Mark 236.3	DAYMK MISSING	0609LM	50/19
1615	Dublin Daybeacon	STRUCT DEST	0610LM	50/19
1650	Bunker Hill Upper Daybeacon	STRUCT DEST	0639LM	51/19
1660	Bunker Hill Lower Daybeacon	STRUCT DEST	0643LM	51/19
1695	Dardanelle Reach Light	DAYMK DMGD	0204LM	31/15
1697	Non Lateral Mark 201.4	STRUCT DEST	0200LM	41/18
1700	Elberta Light	DAYMK MISSING	0611LM	50/19
1705	Old Neely Daybeacon	DAYMK MISSING	0612LM	50/19
1708	Non Lateral Mark 197.9	STRUCT DEST	0052LM	13/17
1710	Point Bar Cutoff Light	DAYMK MISSING	0613LM	50/19
1715	Hola Bend Cutoff Light	DAYMK MISSING	0614LM	50/19
1725	Reeds Ferry Light	DAYMK MISSING	0615LM	50/19
1733	Non Lateral Mark 189.8	DAYMK MISSING	0616LM	50/19
1735	Sweeden Island Light	LT EXT/DAYMK MISSING	0617LM	50/19
1738	Non Lateral Mark 188.8	DAYMK MISSING	0618LM	50/19

1745	Wilson Light	STRUCT DEST	0620LM	50/19
1770	Willow Bend Lower Daybeacon	DAYMK MISSING	0621LM	50/19
1798	Non Lateral Mark 175.6	DAYMK MISSING	0622LM	50/19
1800	Point Remove Creek Light	DAYMK MISSING	0623LM	50/19
1815	Ellis Island Light	STRUCT DEST	0630LM	51/19
1817	Non Lateral Mark 171.2	DAYMK MISSING	0631LM	51/19
1830	Cypress Creek Light	LT IMCH/DAYMK DMGD	0632LM	51/19
1835	Morrilton Cutoff Light	DAYMK MISSING	0633LM	51/19
1845	Stane Reach Upper Daybeacon	DAYMK DMGD	0634LM	51/19
1850	Stane Reach Light	DAYMK DMGD	0635LM	51/19
1890	Belk Corner Light	DAYMK MISSING/STRUCT DMGD	0558LM	45/19
1903	Non Lateral Mark 150.9	DAYMK MISSING	0560LM	45/19
1910	Bigelow Light	DAYMK MISSING	0562LM	45/19
1915	Bigelow Middle Daybeacon	DAYMK DMGD	0563LM	45/19
1920	Bigelow Lower Light	DAYMK MISSING	0538LM	44/19
1930	Tri County Light	STRUCT DEST	0370LM	41/16
1940	Beaver Dam Creek Daybeacon	STRUCT DMGD	0636LM	51/19
1945	Devils Bend Light	LT IMCH	0212LM	43/18
1948	Non Lateral Mark 138.8	DAYMK MISSING	0539LM	44/19
1953	Non Lateral Mark 137.6	DAYMK MISSING	0540LM	44/19
1960	Palarm Light	DAYMK MISSING	0541LM	44/19
1975	Maumelle River Upper Daybeacon	STRUCT DEST	0565LM	45/19
1988	Non Lateral Mark 130.6	DAYMK MISSING	0542LM	44/19
2030	Burns Park Light	STRUCT DEST	0514LM	42/19
2045	Waterworks Bend Light	DAYMK DMGD	0515LM	42/19
2130	Willow Bar Light	LT EXT	0524LM	42/19
2143	Non Lateral Mark 106.5	DAYMK MISSING	0637LM	51/19
2160	Estes Place Light	DAYMK IMCH/STRUCT DMGD	0396LM	44/16
2199	Non Lateral Mark 92.0	STRUCT DEST	0398LM	44/16
2370	Ste. Marie Bend Lower Daybeacon	STRUCT DEST	0407LM	45/16
2435	Richland Bend Middle Daybeacon	STRUCT DEST	0099LM	16/18
2485	Little Bayou Meto Lower Daybeacon	DAYMK DMGD	0094LM	15/18
2498	Cummins Bend Daybeacon	STRUCT DEST	0103LM	06/16
2540	Sample Island Light	STRUCT DEST	0106LM	06/16
2550	Sample Island Lower Light	STRUCT DEST	0107LM	06/16
2665	Owens Lake Daybeacon	DAYMK DMGD	0110LM	06/16
2825	Miller Creek Daybeacon	STRUCT DEST	0346OV	18/18
3655	Cages Bend Light	STRUCT DEST	0660OV	38/19
3965	Watkins Daybeacon	STRUCT DEST	0245OV	19/17
4250	Shammels Mound Landing Light	STRUCT DEST	0010OV	02/16
4285	Saline Creek Light	STRUCT DEST/TRUB	0221OV	26/16
4315	Pryors Creek Light	STRUCT DEST	0030OV	02/20
4340	Devils Elbow Light	STRUCT DEST	0306OV	16/18
4365	Bleidt Landing Light	STRUCT DEST/TRUB	0137OV	17/21
4390	Crooked Creek Light	STRUCT DEST/TRUB	0383OV	36/16
4455	Prison Farm Landing Light	STRUCT DEST	0145OV	17/21
4500	Kuttawa Bar Light	STRUCT DEST	0243OV	12/18
4505	Money Cliff Light	STRUCT DEST	0364OV	19/18
7035	Drolls Point Light	STRUCT DEST/TRLB	0233UM	23/20

7525	Grand Island Foot Light	STRUCT DEST	0015UM	05/22
7565	Sugar Creek Light	STRUCT DEST	0526UM	51/20
7585	Frederick Light	STRUCT DEST	0539UM	29/19
7650	Briggs Landing Light	LT EXT/STRUCT DMGD	0890UM	51/19
7695	Moores Island Light	STRUCT DEST	0037UM	12/22
7705	Wilson Island Daybeacon	DAYMK DMGD	0104UM	18/21
7850	Florence Light	LT EXT	0055UM	14/22
8765	Midway Light	LT EXT	0454OV	41/21
8840	Nine Mile Creek Light	STRUCT DEST	0699OV	33/18
8857	Arbuckle Creek Light	STRUCT DEST/TRDBN		39/20
9150	Washita Point Light	LT EXT	0395LM	33/20
9185	Preston Peninsula Light	REDUCED INT	0420LM	46/16
9442	Black Dog Daybeacon	STRUCT DEST	0198UM	26/21
9456	Six Mile Cut Lower Daybeacon	STRUCT DEST	0518UM	47/18
9470	Four Mile Bend Cutoff Daybeacon	STRUCT DEST	0198UM	26/21
9535	Quaker Oats Light	STRUCT DEST	0043OV	06/16
9565	Putney Daybeacon	DAYMK DMGD	0768OV	52/19
9590	Iron Bank Light	LT EXT	0770OV	52/19
9630	Samuel Light	LT EXT	0771OV	52/19
9660	Osage Orange Daybeacon	DAYMK DMGD	0773OV	52/19
9663	Barker Daybeacon	DAYMK MISSING/STRUCT DMGD	0774OV	52/19
9665	French Point Light	STRUCT DEST	0775OV	52/19
9680	Island 8 Chute Upper Daybeacon	DAYMK MISSING/STRUCT DMGD	0787OV	52/19
9690	Milton Bell Light	LT EXT	0172OV	22/16
9695	Lester Light	STRUCT DEST	0777OV	52/19
9700	Island 10 Bar Light	LT EXT	0779OV	52/19
9707	Everest Landing Daybeacon	DAYMK MISSING/STRUCT DMGD	0780OV	52/19
9715	Groom Towhead Daybeacon	STRUCT DEST	0781OV	52/19
9725	Morrison Towhead Daybeacon	LT EXT	0788OV	52/19
9770	Nolan Daybeacon	DAYMK MISSING	0783OV	52/19
9780	Williams Point Daybeacon	DAYMK DMGD	0778OV	52/19
9790	Bixby Towhead Light	DAYMK MISSING	0786OV	52/19
9810	Merriwether Bend Light	LT EXT/DAYMK MISSING	0791OV	52/19
9825	Carey Upper Daybeacon	STRUCT DEST	0648LM	52/19
9830	Little Cypress Bend Light	LT EXT/DAYMK DMGD	0649LM	52/19
9845	Murphy Smith Upper Daybeacon	STRUCT DEST	0065LM	14/17
9860	Robinson Bayou Light	LT EXT	0650LM	52/19
9905	Blaker Towhead Light	LT EXT/DAYMK DMGD	0651LM	52/19
9910	Blaker Towhead Lower Light	LT EXT	0652LM	52/19
9980	Obion Bar Light	LT EXT/DAYMK MISSING	0653LM	52/19
10195	Dean Island Light	REDUCED INT	0327LM	33/19
10225	Island 40 Foot Light	STRUCT DEST	0232LM	49/18
10540	Harbert Point Light	LT EXT	0256LM	36/15
10545	Stumpy Point Light	STRUCT DEST	0249LM	52/18
10625	Delta Lower Light	STRUCT DEST	0118LM	06/16
10650	Miller Point Light	STRUCT DEST	0171LM	14/16
10660	Old Town Bend Foot Light	STRUCT DEST	0253LM	36/15
10685	Robson Light	STRUCT DEST	0116LM	06/16
10700	Sunflower Cut-Off Foot Light	STRUCT DEST	0115LM	06/16

10710	Ludlow Bar Light	DAYMK DMGD	0018LM	04/18
10715	Wood Cottage Light	STRUCT DEST	0114LM	06/16
10720	Knowlton Light	STRUCT DEST	0113LM	06/16
10730	Mason Landing Daybeacon	STRUCT DEST	0172LM	14/16
10815	Riverton Middle Bar Light	STRUCT DEST	0113LM	21/18
10885	Cypress Bend Light	STRUCT DEST	0032LM	07/18
10895	Eutaw Bar Light	STRUCT DEST	0365LM	35/19
10905	Mounds Crevasse Lower Light	STRUCT DEST	0114LM	21/18
10910	Boliver Light	STRUCT DEST	0069LM	11/18
10955	Miller Bend Light	STRUCT DEST	0030LM	06/18
10965	La Grange Towhead Light	STRUCT DEST	0367LM	35/19
11050	Vaucluse Bend Light	STRUCT DEST	0028LM	06/18
11070	Anconia Point Light	STRUCT DEST	0368LM	35/19
11080	Lakeport Light	STRUCT DEST	0369LM	35/19
11085	Walnut Point Light	STRUCT DEST	0370LM	35/19
11125	Corregidor Light	STRUCT DEST	0080LM	05/16
11130	Sarah Island Light	STRUCT DEST	0371LM	35/19
11170	Stack Island Light	STRUCT DEST	0372LM	35/19
11180	STACK ISLAND LOWER LIGHT	STRUCT DEST	0373LM	35/19
11195	Chinaman Light	STRUCT DEST	0374LM	35/19
11210	Fitler Point Daybeacon	STRUCT DEST	0170LM	28/17
11215	Seitz Light	STRUCT DEST	0448LM	38/19
11220	Cottonwood Bar Pointway Light	STRUCT DEST	0449LM	38/19
11245	Willow Point Light	DAYMK DMGD	0450LM	38/19
11250	Belle Island Corner Daybeacon	STRUCT DEST	0451LM	38/19
11270	Cabin Teele Light	STRUCT DEST	0452LM	38/19
11275	Marshall Point Cut-Off Daybeacon	STRUCT DEST	0453LM	38/19
11280	Joseph Henry Daybeacon	STRUCT DEST	0454LM	38/19
11407	Coggins Light	STRUCT DEST	0296LM	29/16
11415	Reid Bedford Point Light	STRUCT DEST	0463LM	39/19
11425	Diamond Light	STRUCT DEST	0464LM	39/19
11430	Sargent Point Light	LT IMCH/DAYMK DMGD	0465LM	39/19
11440	Cannon Point Light	STRUCT DEST	0294LM	41/17
11455	Buckridge Light	STRUCT DEST	0467LM	39/19
11470	Grand Gulf Island Light	STRUCT DEST	0468LM	39/19
11505	Old Levee Light	LT IMCH/DAYMK DMGD	0470LM	39/19
11520	Ashland Light	LT IMCH/DAYMK DMGD	0471LM	39/19
11530	Hole In The Wall Light	LT IMCH/REDUCED INT	0472LM	39/19
11540	Giles Bend Cut-Off Light	STRUCT DEST	0171LM	28/17
11700	Fort Adams Light	STRUCT DEST	0402LM	36/19
11795	Morganza Crevasse Light	STRUCT DEST	0400LM	36/19
11835	Bayou Sara Bend Light	STRUCT DEST	0399LM	36/19
11860	Port Hudson Light	STRUCT DEST	0581NOLA	36/19
11900	Devils Swamp Light	STRUCT DEST	0397LM	36/19
11940	Ben Burman Light	STRUCT DEST	0549LM	44/19
12677	Island 21 Daybeacon	STRUCT DEST	0503UM	27/19
13165	Lock 5A Light	LT EXT	0172UM	20/20
13230	Island 74 Light	STRUCT DEST/TRUB	0380UM	34/20
13430	Root River Upper Light	STRUCT DEST/HAZ NAV	0172UM	20/20

13510	Perry Ruby Light	STRUCT DEST	0061UM	12/17
13720	Crooked Slough Head Daybeacon	STRUCT DEST/TRUB	0482UM	26/19
13725	Crooked Slough Head Light	STRUCT DEST/TRUB	0482UM	26/19
13915	Clayton Lower Daybeacon	STRUCT DEST/TRUB	0240UM	31/18
14010	Cassville Upper Daybeacon	STRUCT DEST	0546UM	29/19
14030	Cassville Lower Light	STRUCT DEST	0546UM	29/19
14055	Milkmans Island Light	LT EXT	0172UM	20/20
14105	Maquoketa Island Light	STRUCT DEST	0460UM	25/19
14230	Nine-Mile Island Light	STRUCT DEST	0410LM	36/17
14260	Stone Slough Light	STRUCT DEST	0454UM	25/19
14275	Fever River Light	STRUCT DEST/TRUB	0485UM	45/18
14295	Pulaski Light	STRUCT DEST	0485UM	45/18
14385	Arnold Towhead Light	STRUCT DEST	0449UM	25/19
14445	Sabula Lower Light	STRUCT DEST	0446UM	25/19
14460	Smith Bay Light	STRUCT DEST	0048UM	13/22
14475	Elk River Light	DAYMK DMGD	0257LM	31/21
15170	Edwards Island Upper Light	STRUCT DEST/TRUB	0403UM	26/16
16350	Chain Of Rocks Canal Upper Entrance Light	STRUCT DEST	0231UM	29/21
16785	Lowry Light	STRUCT DEST	0026UM	10/22
16910	Ste. Genevieve Island Light	STRUCT DEST	0557UM	30/19
17000	Chester Prison Upper Light	STRUCT DEST	0026UM	10/22
18140	Dodds Daybeacon	DAYMK IMCH	0294UM	37/21
18170	Boyer River Daybeacon	DAYMK IMCH	0294UM	37/21
18250	Florence Bend Lower Daybeacon	DAYMK IMCH	0346UM	44/21
19375	Weston Daybeacon	STRUCT DEST	0106UM	18/21
20245	New Frankfort Daybeacon	DAYMK MISSING	0363UM	47/21
20250	Little Missouri Bend Daybeacon	STRUCT DEST	0363UM	47/21
21200	Tavern Rock Daybeacon	STRUCT DEST	0275UM	33/21
23285	Cluster Upper Light	STRUCT DEST	0721OV	34/18
24110	Old Lock No. 17 Lower Daybeacon	STRUCT DEST		39/20
26047	Sunken Barge Lighted Buoy WR	LT EXT	0519OV	51/21
26470	Notch Lick Light	STRUCT DEST	0210OV	23/21
27090	Wolf Creek Light	LT EXT	0064OV	05/22
27540	Water Works Light	STRUCT DMGD	0179OV	12/22
27855	Graham Varble Light	STRUCT DEST	0134OV	17/21
29241.25	Smith Island Lower Daybeacon	STRUCT DEST	0202LM	26/21
29256.65	Cadney Lower Daybeacon	DAYMK DMGD	0205LM	26/21
29272	Deloges Middle Daybeacon	DAYMK IMCH		36/20
29467	Hog Lake Daybeacon	STRUCT DEST		36/20
29618	Red River Entrance Light	STRUCT DEST		37/20
29665	Dry Cypress Daybeacon	STRUCT DEST		37/20
29690	Bayou Cocodrie Upper Daybeacon	STRUCT DEST		37/20
29695	Bayou Cocodrie Daybeacon	STRUCT DEST		37/20
29710	Grassy Lake Daybeacon	DAYMK MISSING		37/20
29725	Alligator Bayou Daybeacon	STRUCT DEST	0216LM	33/17
29750	Timber Lake Daybeacon	STRUCT DEST		37/20
29755	Naples Daybeacon	STRUCT DEST		37/20
29775	Three Rivers Junction Light	STRUCT DEST		37/20

29780	Barbre Daybeacon	STRUCT DEST		37/20
29785	Torras Daybeacon	STRUCT DEST		37/20
29795	Oak Grove Daybeacon	STRUCT DEST		37/20
29845	Houden Point Daybeacon	STRUCT DEST	0255UM	30/21
31995	Dry Creek Light	STRUCT DEST	0402OV	31/20
32140	Chambers Daybeacon	STRUCT DEST	0178OV	11/13
32170	Diamond Island Lower Daybeacon	STRUCT DEST	0177OV	11/13
32325	Condors Landing Light	STRUCT DEST	0127OV	09/20
32445	Sales Light	TRUB/STRUCT DEST	0269OV	19/14
32460	Reynoldsburg Island Light	STRUCT DEST/TRUB	0290OV	15/18
32480	Higgins Light	STRUCT DEST	0342OV	27/15
32530	Standing Rock Upper Light	STRUCT DEST	0658OV	41/13
32570	Fort Henry Light	STRUCT DEST	0160OV	19/21
32585	Pine Bluff Light	STRUCT DEST	0308OV	19/19
32595	Blood River Light	STRUCT DEST/TRUB	0138OV	17/21
32600	Clyde Light	LT EXT	0581OV	44/15
32605	Newburg Light	STRUCT DEST	0362OV	29/15
32650	West Entrance Canal Light	LT EXT	0994OV	50/18
32665	Grand Rivers Light	LT EXT	0993OV	50/18

DISCREPANCIES (FEDERAL AIDS) CORRECTED

LLNR	Aid Name	Status	Chart No.	BNM Ref.	LNM St	LNM End
14320	Capt Mike Ehrler Light	REBUILT/REMAINS			11/22	16/22

DISCREPANCIES (PRIVATE AIDS)

LLNR	Aid Name	Status	Chart No.	BNM Ref.	LNM St	LNM End
1685	Oakley Dock Light	LT EXT		0307-14 LM	44/14	
1690	Mobley Dock Light	LT EXT		0454-13 LM	48/13	
2100	Oakley Light	LT EXT		0520LM	42/19	
2337	Island Harbor Marina Light	LT EXT			45/16	
2340	Century Tube Lights (2)	LT EXT			45/16	
2400	Pickett And Davison Lights (2)	LT EXT		0481-13 LM	50/13	
3725	Lakewood Marina Lights (4)	LT IMCH		0439-15 OV	34/15	
3750	Dupont Dock Lights (2)	OFF STA/LT EXT		0305-15 OV	26/15	
3795	Nashville Water Intake Lights (2)	LT EXT			44/11	
3805	Holnam Dock Lights (2)	LT EXT			44/11	
3815	Kerr-Mcgee Dock Lights (2)	LT EXT			44/11	
3820	Cohen Terminal Lights (2)	LT EXT			44/11	
3930	Alcoa Chemical Dock Lights (2)	MSLD SIG/LT EXT		0216-10 OV	14/10	
3960	Hunter Marine Transport Dock Lights (2)	LT EXT			47/08	
3995	Riverview Marina Lights (2)	LT EXT			47/08	
4055	Clarksville Boat Club Dock Lights (2)	LT EXT		0533-12 OV	34/12	
4825	D.B. Wilson Station Lights (5)	LT EXT		510-21 OV	49/21	
6170	Quantum Chemical Dock Lights (2)	LT EXT		0436-01 UM	31/01	
6650	S. T. Services Terminal Lights (2)	LT EXT			41/14	
6695	Continental Grain Company Light	LT EXT			41/14	
7225	Cargo Carriers Dock Lights (2)	LT EXT			25/08	
7235	Pekin Boat Club Breakwater Light	LT EXT			05/16	

7250	Shell Dock Lights (2)	LT EXT	0123-02 UM	16/02
7255	Adm Growmark Mooring Light	LT EXT	0122-02 UM	16/02
7260	Sours Grain Tramway Light	LT EXT	0279-03 UM	21/03
7265	Tomen Dock Light	LT EXT		25/08
7295	Adm Growmark Mooring Lights (3)	LT EXT	0281-03 UM	21/03
7460	Cargill Mooring Lights (2)	LT EXT	0284-03 UM	21/03
7620	Cargill Dock Lights (2)	LT EXT		35/08
7725	Cargill Terminal Lights (2)	LT IMCH	0171-18 UM	26/18
7730	Public Service Co. Dock Lights (6)	LT EXT	0119-18 UM	20/18
7730	Public Service Co. Dock Lights (6)	LT IMCH	0171-18 UM	26/18
7760	Adm Growmark Grain Elevator Lights (2)	LT IMCH	0171-18 UM	26/18
9440	Black Dog Lights (5)	LT EXT		43/16
9965	Huffman Grain Light	STRUCT DEST	0131-16 LM	08/16
10300	Cargill Dock Light	LT EXT	0361-01 LM	34/01
10390	Peavey Lights (2)	LT EXT	0398-02 LM	36/02
10395	Suburban Propane Dock Light	LT EXT	0396-02 LM	36/02
10415	Western Tar Products Dock Light	LT EXT	0394-02 LM	36/02
11943	Bear Industries Barge Dock Lights (4)	LT EXT	0600-17 NO	30/17
11990	Riverside Dock Lights (2)	LT EXT	0695-01 UM	40/01
12080	University Dock Lights (3)	LT EXT	0696-01 UM	40/01
12215	Koch Fuel Dock Lights (2)	LT EXT		35/16
12320	Newport Terminal Lights (2)	LT EXT		35/16
12385	Shiely Dock Lights (2)	LT IMCH		35/16
12712	City of Red Wing Metering Station Special Light	MISSING		42/16
12768	Consolidated Grain and Barge Loading Dock Piling Lights (2)	MISSING		42/16
12930	Alma City Dock Light/Daymarks (3)	MISSING		42/16
13405	G. Heileman Brewery Dock Light	MISSING		42/16
14756	Isle Of Capri Casino Marina Daybeacon	MISSING		03/16
15345	Koch Nitrogen Dock Light	LT EXT		41/14
15415	Riverview Park Dock Light	LT EXT	0531-15 UM	49/15
15425	Hall Towing Light	STRUCT DEST	0280UM	25/20
15822	Hannibal Intake Light	LT EXT	0358-20 UM	32/20
16100	Jersey County Grain Dock Lights (2)	LT EXT		19/16
16205	Piasa Harbor Light	LT EXT	0131-15 UM	22/15
16220	Con-Agra Mooring Lights (2)	LT EXT		21/16
16230	Alton Marina Breakwater Lights (3)	LT EXT	0131-15 UM	22/15
16265	Amoco Dock Light	STRUCT DEST		35/09
16280	Amoco Dock Lights (4)	LT EXT		35/09
16310	Sioux City/New Orleans Terminal Light	STRUCT DEST		35/09
16380	Western Dock Lights (9)	LT IMCH		34/08
16390	Adm-Growmark Dock Lights (4)	LT EXT	0776-01 UM	44/01
16430	Union Electric Coal Dock Lights (2)	LT EXT	0305-08 UM	34/08
16445	Continental Cement Lights (2)	LT EXT	0305-08 UM	34/08
16505	Peavey Company Dock Lights (3)	LT EXT	0305-08 UM	34/08
16530	Cahokia Marine Terminal Lights (2)	LT EXT	0305-08 UM	34/08
16540	Slay Bulk Terminal Lights (2)	LT EXT	0305-08 UM	34/08
16545	Peavey Lights (3)	LT EXT	3305-08 UM	34/08
16550	Eagle Marine Industries Light	LT IMCH	0305-08 UM	34/08

16560	Phillips Pipeline Lights (2)	LT EXT	0305-08 UM	34/08
16565	Growmark Dock Lights (2)	LT EXT	0305-08 UM	34/08
16575	Eagle Marine Dock Lights (2)	LT EXT	0305-08 UM	34/08
16600	J.H. Collier Barge Mooring Lights (2)	LT EXT	0305-08 UM	34/08
16605	Clark Oil Refining Dock Lights (4)	LT EXT	0305-08 UM	34/08
16609	Alcoa Foil Lights (2)	LT EXT	0305-08 UM	34/08
16615	Hci Chemtech Dock Lights (2)	LT EXT	0305-08 UM	34/08
16617	Semmaterials Terminal Lights (2)	LT EXT	0305-08 UM	34/08
16630	American Commercial Dock Lights (2)	LT EXT	0305-08 UM	34/08
16655	Bussen Terminal Light	LT EXT	0305-08 UM	34/08
18700	Bunge Dock Lights (3)	MISSING/LT EXT		18/08
19185	St. Joseph L & P Dock Light	LT IMCH		17/08
19415	Leavenworth Water Intake Lights (2)	LT EXT	0104-07 UM	39/07
19460	Smoot Grain Dock Lights (2)	LT EXT	0385-07 UM	39/07
19505	Board Of Public Utilities Light	LT EXT	0386-07 UM	39/07
19535	Public Utilities Intake Lights (3)	LT EXT		38/08
19660	Continental Grain Dock Lights (4)	LT EXT	0181-08 UM	24/08
19695	Kansas City Power And Light Company Lights (2)	LT EXT	0181-08 UM	24/08
20870	U.E. Callaway Intake Lights (2)	LT EXT	0522-20 UM	52/20
22873	Moon Township Municipal Authority Back Channel Outfall Danger Buoy	OFF STA	0108-21 OV	14/21
24005	Bens Run Light	LT EXT		03/20
24580	Ohio Power Coal Dock Light	LT EXT	480-21 OV	44/21
25820	Cargill Barge Loading Facility Light	LT EXT	0552-09 OV	40/09
26290	Boone County Sand And Gravel Lights (2)	LT EXT	0769-00 OV	40/00
26833	Transmontaigne Dock Lights (2)	LT EXT	286-21 OV	28/21
26860	Dupont Chemical Lights (2)	LT EXT	0330-18 OV	17/18
27367	Transmontaigne Dock Light	LT EXT		40/21
27590	Transmontaigne Dock Lights (4)	LT EXT		40/21
32550	Paris Landing State Park Lights (2)	Status Unreported	0452-20 OV	38/20
32900	Ergon Dock Lights (2)	LT IMCH		17/13

DISCREPANCIES (PRIVATE AIDS) CORRECTED

LLNR	Aid Name	Status	Chart No.	BNM Ref.	LNM St	LNM End
------	----------	--------	-----------	----------	--------	---------

None

PLATFORM DISCREPANCIES

Name	Status	Position	BNM Ref.	LNM St	LNM End
------	--------	----------	----------	--------	---------

None

PLATFORM DISCREPANCIES CORRECTED

Name	Status	Position	BNM Ref.	LNM St	LNM End
------	--------	----------	----------	--------	---------

None

SECTION III - TEMPORARY CHANGES and TEMPORARY CHANGES CORRECTED

This section contains temporary changes and corrections to Aids to Navigation for this edition. When charted aids are temporarily relocated for dredging, testing, evaluation, or marking an obstruction, a temporary correction shall be listed in Section IV giving the new position.

TEMPORARY CHANGES

LLNR	Aid Name	Status	Chart No.	BNM Ref.	LNM St	LNM End
7015	Blue Creek Point Lower Lighted Buoy	TRUB		0379UM	51/21	
7030	Drolls Point Upper Lighted Buoy	TRUB		0379UM	51/21	
7040	Peoria Heights Lighted Buoy	TRUB		0379UM	51/21	
8540	Blaines Island Light	DISCONTINUED			39/20	
8840	Nine Mile Creek Light	DISCONTINUED			11/18	
10455	Armstrong Bar Light	RELOCATED			23/18	
11275	Marshall Point Cut-Off Daybeacon	TRDBN			49/16	
11280	Joseph Henry Daybeacon	TRDBN			49/16	
29880	Kinnikinnic River Daybeacon	DISCONTINUED			21/20	

TEMPORARY CHANGES CORRECTED

LLNR	Aid Name	Status	Chart No.	BNM Ref.	LNM St	LNM End
------	----------	--------	-----------	----------	--------	---------

None

PLATFORM TEMPORARY CHANGES

Name	Status	Position	BNM Ref.	LNM St	LNM End
------	--------	----------	----------	--------	---------

None

PLATFORM TEMPORARY CHANGES CORRECTED

Name	Status	Position	BNM Ref.	LNM St	LNM End
------	--------	----------	----------	--------	---------

None

SECTION V - ADVANCE NOTICES

This section contains advance notice of approved projects, changes to aids to navigation, or upcoming temporary changes such as dredging, etc. Mariners are advised to use caution while transiting these areas.

SUMMARY OF ADVANCED APPROVED PROJECTS

<u>Approved Project(s)</u>	<u>Project Date</u>	<u>Ref. LNM</u>
----------------------------	---------------------	-----------------

None

Advance Notice(s)

UPPER MISSISSIPPI RIVER

The Coast Guard will make the following change after May 10, 2022:
Change Milkman's Island Light (LLNR-14055) at mile 601.1, Right Descending Bank, in approximate position 42-40-31.947N/090-54-06.489W, showing FI G 4s, to Milkman's Island Daybeacon (LLNR-14055) CNG upstream, SG downstream on rock mound.

LNM: 11/22

SECTION VI - PROPOSED CHANGES

Periodically, the Coast Guard evaluates its system of aids to navigation to determine whether the conditions for which the aids to navigation were established have changed. When changes occur, the feasibility of improving, relocating, replacing, or discontinuing aids are considered. This section contains notice(s) of non-approved, proposed projects open for comment. SPECIAL NOTE: Mariners are requested to respond in writing to the District office unless otherwise noted (see banner page for address).

PROPOSED WATERWAY PROJECTS OPEN FOR PUBLIC COMMENT

<u>Proposed Project(s)</u>	<u>Closing</u>	<u>Docket No.</u>	<u>Ref. LNM</u>
----------------------------	----------------	-------------------	-----------------

None

Proposed Change Notice(s)

TENNESSEE RIVER

The Coast Guard proposes the following Aids to Navigation Changes:
Discontinue Kirby Light (LLNR-30055) at mile 639.8, Right Descending Bank, in approximate position 35-54-53.345N/083-58-57.373W.
Discontinue Williams Light (LLNR-30060) at mile 638.9, Left Descending Bank, in approximate position 35-54-07.789N/083-58-07.789W.
Discontinue Topside Daybeacon (LLNR-30070) at mile 636.9, Left Descending Bank, in approximate position 35-52-35.807N/083-57-48.133W.

Discontinue Mooney Light (LLNR-30085) at mile 633.9, Left Descending Bank, in approximant position 35-52-30.603N/084-00-27.466W.
Discontinue Post Oak Light (LLNR-30110) at mile 630.4, Left Descending Bank, in approximant position 35-51-13.373N/84-00-23.791W.
Discontinue Sinking Creek Light (LLNR-30135) at mile 627.3, Right Descending Bank, in approximate position 35-51-17.419N/084-02-35.864W.
Discontinue Taliaferro Light (LLNR-30215) at mile 614.8, Left Descending Bank, in approximant position 35-49-57.612N/084-08-02.928W.
Discontinue Coulter Shoals Light (LLNR-30245) at mile 608.3, Right Descending Bank, in approximate position 35-46-59.176N/084-10-33.129W.
Discontinue Donaldson Light (LLNR-30255) at mile 606.1, Left Descending Bank, in approximate position 35-45-30.867N/084-11-25.915W.
Comments to be received by May 31, 2022. Please email comments regarding this proposal to: D08-SMB-District-LocalNoticeFeedback@uscg.mil.

LNM: 14/22

TENNESSEE RIVER

The Coast Guard proposes the following Aids to Navigation Changes:

Discontinue Sugarlimb Light (LLNR-30320) at mile 596.1, Right Descending Bank, in approximant position 35-46-06.414N/084-18-38.572W.
Discontinue Rock Quarry Light (LLNR-30330) at mile 595.2, Right Descending Bank, in approximate position 35-45-12.340N/084-18-43.229W.
Discontinue Phillips Light (LLNR-30340) at mile 593.5, Left Descending Bank, in approximate position 35-43-59.044N/084-18-16.841W.
Discontinue Winding Shoals Light (LLNR-30345) at mile 592.8, Left Descending Bank, in approximate position 35-43-41.652N/084-19-06.727W.
Discontinue Bogart Light (LLNR-30415) at mile 583.1, Right Descending Bank, in approximate position 35-46-30.728N/084-23-45.155W.
Discontinue Wilson Light (LLNR-30445) at mile 577.7, Right Descending Bank, in approximate position 35-46-05.249N/084-26-25.983W.
Discontinue Point Rock Light (LLNR-30455) at mile 575.9, Right Descending Bank, in approximate position 35-47-14.188N/084-27-25.093W.
Discontinue Neegard Light (LLNR-30480) at mile 571.0, Right Descending Bank, in approximate position 35-50-04.528N/084-30-24.651W
Discontinue Turner Bar Light (LLNR-30545) at mile 561.0, Left Descending Bank, in approximate position 35-49-36.261N/084-36-25.585W.
Discontinue Shields Bar Light (LLNR-30550) at mile 558.2 Right Descending Bank, in approximant position 35-47-47.126N/084-37-11.428W.
Discontinue Martin Light (LLNR-30585) at mile 548.2, Right Descending Bank, in approximate position 35-45-37.023N/084-40-49.313W.
Discontinue Lucknow Daybeacon (LLNR-30630) at mile 535.6, Right Descending Bank, in approximant position 35-41-44.226N/084-46-11.428W.
Comments to be received by May 31, 2022. Please email comments regarding this proposal to: D08-SMB-District-LocalNoticeFeedback@uscg.mil.

LNM: 14/22

TENNESSEE RIVER

The Coast Guard proposes the following Aids to Navigation Changes:

Discontinue Watts Creek Light (LLNR-30675) at mile 528.5, Left Descending Bank, in approximate position 35-36-03.791N/084-46-30.863W.
Discontinue Lick Daybeacon (LLNR-30715) at mile 515.4, Left Descending Bank, in approximate position 35-30-38.408N/084-51-21.198W.
Discontinue Doughtys Bluff Light (LLNR-30785) at mile 497.0, Right Descending Bank, in approximant position 35-23-03.850N/085-01-53.700W.
Discontinue Sale Creek Light (LLNR-30810) at mile 495.2, Left Descending Bank, in approximate position 35-21-35.497N/085-02-30.691W.
Discontinue Cliff Bluff Light (LLNR-30815) at mile 492.3, Right Descending Bank, in approximant position 35-19-22.262N/085-03-36.597W.
Discontinue Denny Bluff Light (LLNR-30865) at mile 483.4, Left Descending Bank, in approximant position 35-12-40.783N/085-05-27.109W.
Discontinue Gann Bluff Lower Light (LLNR-30875) at mile 481.3, Right Descending Bank, in approximate position 35-12-02.421N/085-07-24.666W.
Discontinue Gladish Light (LLNR-30905) at mile 474.2, Left Descending Bank, in approximate position 35-07-41.786N/085-11-03.253W.
Comments to be received by May 31, 2022. Please email comments regarding this proposal to: D08-SMB-District-LocalNoticeFeedback@uscg.mil.

LNM: 14/22

TENNESSEE RIVER

The Coast Guard proposes the following Aids to Navigation Changes:

Discontinue Chickamauga Light (LLNR-30955) at mile 469.9, Right Descending Bank, in approximate position 35-06-12.409N/085-14-51.752W.
Discontinue Deep Ditch Light (LLNR-30985) at mile 467.6, Right Descending Bank, in approximate position 35-05-05.969N/085-16-41.144W.
Discontinue Signal Point Light (LLNR-31100) at mile 453.0, Right Descending Bank, in approximant position 35-06-46.555N/085-22-11.081W.
Discontinue Mongo Chute Daybeacon (LLNR-31125) at mile 449.9, left Descending Bank, in approximate position 35-06-33.540N/085-24-52.699W.
Discontinue The Pot Light (LLNR-31135) at mile 447.5, Left Descending Bank, in approximate position 35-05-23.700N/085-23-21.435W.
Discontinue Mcnabb Light (LLNR-31160) at mile 443.7, Right Descending Bank, in approximate position 35-03-28.175N/085-25-35.073W.
Discontinue Grants Light (LLNR-31180) at mile 440.5, Left Descending Bank, in approximant position 35-01-17.933N/085-27-02.069W.
Comments to be received by May 31, 2022. Please email comments regarding this proposal to: D08-SMB-District-LocalNoticeFeedback@uscg.mil.

LNM: 14/22

TENNESSEE RIVER

The Coast Guard proposes the following Aids to Navigation Changes:

Discontinue Long Hollow Branch Daybeacon (LLNR-31355) at mile 415.5, Left Descending Bank, in approximant position 34-58-18.966/085-41-39.127W.
Discontinue Widows Creek Daybeacon (LLNR-31375) at mile 407.6, left Descending Bank, in approximate position 34-52-50.733N/085-44-54.786W.
Discontinue Sublets Daybeacon (LLNR-31440) at mile 391.2, Left Descending Bank, in approximate position 34-41-48.459N/085-55-00.756W.
Discontinue Mccamy Light (LLNR-31490) at mile 373.2, Right Descending Bank, in approximant position 34-31-50.849N/086-08-35.775W.
Discontinue Siebold Branch Light (LLNR-31540) at mile 363.4, Left Descending Bank, in approximate position 34-24-55.162N/086-13-36.876W.
Discontinue Deposit Light (LLNR-31610) at mile 352.6, Right Descending Bank, in approximant position 34-25-43.248N/086-19-58.329W.
Discontinue Honeycomb Light (LLNR-31615) at mile 350.4, Right Descending Bank, in approximate position 34-25-32.560N/086-22-12.280W.
Comments to be received by May 31, 2022. Please email comments regarding this proposal to: D08-SMB-District-LocalNoticeFeedback@uscg.mil.

LNM: 14/22

TENNESSEE RIVER

The Coast Guard proposes the following Aids to Navigation Changes:

Discontinue Hobbs Light (LLNR-31635) at mile 334.3, Right Descending Bank, in approximate position 34-33-54.334N/086-33-12.685W.
Discontinue Lenox Springs Daybeacon (LLNR-31650) at mile 328.2, left Descending Bank, in approximate position 34-33-02.078N/086-38-19.933W.
Discontinue Indian Creek Daybeacon (LLNR-31660) at mile 322.4, Right Descending Bank, in approximant position 34-35-23.546N/086-42-39.570W.
Discontinue Cotaco Creek Daybeacon (LLNR-31665) at mile 318.5, Left Descending Bank, in approximant position 34-33-06.052N/086-45-26.451W.

Discontinue Leemon Slough Daybeacon (LLNR-31670) at mile 314.0, Left Descending Bank, in approximate position 34-33-10.551N/086-49-48.144W.
Discontinue Transmission Tower Light (LLNR-31680) at mile 307.6, Right Descending Bank, in approximate position 34-35-47.300N/086-56-05.263W.
Discontinue Wheeler Point Light (LLNR-31855) at mile 278.2, Left Descending Bank, in approximate position 34-47-13.833N/087-20-51.719W.
Comments to be received by May 31, 2022. Please email comments regarding this proposal to: D08-SMB-District-LocalNoticeFeedback@uscg.mil.
LNM: 14/22

TENNESSEE RIVER

The Coast Guard proposes the following Aids to Navigation Changes:
Discontinue Wilson Point Light (LLNR-31900) at mile 265.0, Left Descending Bank, in approximate position 34-49-19.884N/087-32-17.744W.
Discontinue Cypress Creek Lower Light (LLNR-31965) at mile 254.2, Right Descending Bank, in approximate position 35-30-38.408N/084-51-21.198W.
Discontinue Seven Mile Island Daybeacon (LLNR-31985) at mile 251.0, Right Descending Bank, in approximate position 34-44-39.473/087-44-49.031W.
Discontinue Paynes Light (LLNR-32075) at mile 222.7, Left Descending Bank, in approximate position 34-54-05.500/088-08-05.151W.
Discontinue Indian Creek Light (LLNR-32085) at mile 219.8, Left Descending Bank, in approximate position 34-56-10.884N/088-09-56.418W.
Discontinue Fraley Light (LLNR-32105) at mile 212.6, Left Descending Bank, in approximate position 35-01-52.866N/088-12-22.520W.
Discontinue Whites Lake Light (LLNR-32110) at mile 209.6, Right Descending Bank, in approximate position 35-04-27.566N/088-12-03.686W.
Discontinue Short Hollow Light (LLNR-32115) at mile 209.0, Right Descending Bank, in approximate position 35-04-37.627N/088-12-38.217W.
Comments to be received by May 31, 2022. Please email comments regarding this proposal to: D08-SMB-District-LocalNoticeFeedback@uscg.mil.
LNM: 14/22

SECTION VII - GENERAL

This section contains information of general concern to the Mariners. Mariners are advised to use caution while transiting these areas.

ALLEGHENY RIVER

MILE 7.7 - AID TO NAVIGATION/SAFETY ADVISORY

A nun buoy has been reported not properly marking the channel in the vicinity of Mile 7.7. Mariners are urged to transit the area with caution and at their slowest safe speed.

LNM: 08-22

MILE 0.6 - BRIDGE MAINTENANCE

Sixth Street Bridge; A containment system is installed below low steel and follows the contour of the bridge. Vertical clearance is reduced approximately 1-foot for the middle, 100 feet of the navigation span. Mariners are advised to transit the bridge with extreme caution.

LNM: 12-22

ARKANSAS RIVER

MILE 403.5 - MILE 401.5 - CHANNEL CONDITION/USACE SAILING INSTRUCTION

The USACE has reported a slight encroachment between approximate Miles 403.5 and 401.5, LDB, Chouteau Pool Nr. 17. The USACE recommends mariners favor the "green side", until further notice. Mariners are asked to check with L/D 17, for the latest information. Mariners may contact Mr. Brad Johnson, Navigation Operation Manager at (918) 687-4501, ext. 2 or Mr. Jacob Simpson, Navigation Field Engineer at (918) 669-7244, for additional information.

LNM: 16-22

MILE 401.4 - L/D GUARDWALL DAMAGE

The upstream guardwall, near the miter gate recess of the Chouteau L/D 18, in the vicinity of Mile 401.4, is damaged and the steel armor plate has been removed. The concrete is now fully exposed. Until repairs are made mariners are advised to stay to the guidewall side on the upstream portion. Mariners may check with L/D 17, for the latest information. Mariners may contact Mr. Brad Johnson, Navigation Manager at (918) 550-9026, or Mr. Jake Simpson, Navigation Engineer at (918) 430-4783, for additional information.

LNM: 11-22

MILE 176.9 - L/D CLOSURE

On April 27, 2022, from 7:00 a.m. until 7:00 p.m., the Arthur V. Ormond L/D (Nr. 9), in the vicinity of Mile 176.9, will be closed to navigation traffic for maintenance. If the work is completed ahead of schedule, the lock will reopen at that time. However, unforeseen problems could require additional time. Mariners may contact the USACE Little Rock District Office, at (501) 324-5096 or you may email ceswl-op-om@usace.army.mil, for additional information.

LNM: 15-22

MILE 155.9 - L/D CLOSURE

On April 26, 2022, from 7:00 a.m. until 7:00 p.m., the Toad Suck Ferry L/D (Nr. 8), in the vicinity of Mile 155.9, will be closed to navigation traffic for maintenance. If the work is completed ahead of schedule, the lock will reopen at that time. However, unforeseen problems could require additional time. Mariners may contact the USACE Little Rock District Office, at (501) 324-5096 or you may email ceswl-op-om@usace.army.mil, for additional information.

LNM: 15-22

MILE 125.4 - MILE 118.2 - CHANNEL CONDITION/REGULATED NAVIGATION AREA - UPDATE

River water flows have decreased. The Regulated Navigation Area, at Little Rock, Arkansas, from Mile 125.4 to Mile 118.2, has been cancelled.

LNM: 16-22

MILE 118.2 - BRIDGE PROTECTION CELL DAMAGE

The upstream left descending pier protection cell at the Clinton Presidential Park Bridge in the vicinity of Mile 118.2, is damaged and leaning into the left descending bridge pier. Mariners are urged to exercise caution in the area. Mariners may contact the USACE Little Rock District Office at (501) 324-5096 or via e-mail at: ceswl-op-om@usace.army.mil, for additional information.

LNM: 48-21

CUMBERLAND RIVER

MILE 149.0 - L/D RESTRICTIONS/CHANNEL CONDITION

Due to high flow conditions at the Cheatham L/D, in the vicinity of Mile 149.0, the L/D has limited tow configurations. Tows configurations have been limited to no greater length/width than would be 9 jumbo barges made up in a 3 by 3 configuration and will not exceed approximately 105 feet by 795 feet, overall, including the towboat. Only single lockage will be allowed. No barges on the hip and the tow must enter/exit the lock made up and may not be separated for multiple lockage until flow rates at the lock falls below 75,000 C.F.S.

LNM: 15-22

MILE 126.5 - BRIDGE REPAIR

Louisville and Nashville Railroad Drawbridge; Emergency Bridge Pier repair work is being conducted outside of the navigation channel, minimal impact to navigation is expected. Mariners may contact bridge tender or R. J. Corman Construction Team via VHF-FM Channel 13 or telephone (931) 980-4760, for more information.

LNM: 05-22

ILLINOIS WATERWAY

MILE 288.7 - MILE 287.3 - BRIDGE REPAIRS

Joliet Harbor Bridges; Due to ongoing bridge work, mariners are required to provide 1-hour advance notice, when requesting drawspan openings.

LNM: 19-20

MILE 286.0 - SOIL BORING OPERATION

Continuing until May 15, 2022, the USACE is conducting soil boring operations in the vicinity of Mile 286.0, Brandon Road L/D. A portion of the Des Plaines River will remain open for the duration of this project, but will be restricted in available width during active drilling. The M/V MARY ANN will be in the area during operations, will monitor VHF-FM Channel 16 and requests 2-hours advance notice of passage. Mariners may contact U.S. Coast Guard Sector Lake Michigan at (414) 747-7182, for additional information.

LNM: 13-22

MILE 286.0 - L/D CLOSURES/RESTRICTIONS

Commencing May 9, 2022 and continuing until August 14, 2022, from 6:00 a.m. until 6:00 p.m., each day, Brandon Road L/D in the vicinity of mile 286.0, will be closed. From 6:00 p.m. until 6:00 a.m., each day, during the same period, a 70-foot width restriction will be in place. Mariners are requested not to tie up along the guidewalls during this period. Mariners may contact Brandon L/D at (815) 744-1714, or via VHF-FM Channel 14, for additional information.

LNM: 16-22

MILE 151.2 - BRIDGE OPERATION

Pekin Railroad Drawbridge; Continuing until further notice, the bridge will be unattended and left in the open-to-navigation position. The bridge shall initiate the closing sequence for an approaching train by broadcasting the closure on VHF-FM Channel 16, 10-minutes prior to closure and immediately prior to closing. If no mariners respond to the broadcast, the operator of the bridge may begin the closing sequence. For additional information, mariners may contact Chad Toussaint, with Union Pacific Railroad at (979) 665-5541.

LNM: 18-20

KANAWHA RIVER

MILE 41.7 - BRIDGE CONSTRUCTION

Donald M. Legg Bridge; Due to construction, the navigation channel width is temporarily reduced to approximately 400 feet.

LNM: 15-22

LOWER MISSISSIPPI RIVER

MILE 304.0 - L/D RESTRICTIONS

Continuing until approximately July 31, 2022, tows are to enter the lock wall at a DEAD SLOW speed, tows will be restricted to a length no more than 1,100 feet and will line up along the floating guidewall before proceeding into the lock's chamber. Two line-handlers (with life vests) and bumpers are required when approaching and exiting the lock. Vessels must be moored by the bow and stern to the floating timberheads. The Lockmaster, Mr. Anthony T. Lindsly can be reached at (225) 492-3333, for up-to-date information. The point of contact at the USACE New Orleans Office is Russell Beauvais at (225) 492-2169.

LNM: 11-22

UPPER MISSISSIPPI RIVER

MILE 853.1 - BRIDGE WORK

Cedar Avenue Bridge; Pipeline work is being performed from a permanent catwalk under the roadway decking in the recess area above low steel. All work will cease when vessels approach and no impact to navigation is expected. Mariners may contact Centerpoint Energy via VHF-FM Channel 16 or at (612) 347-7122, for additional information.

LNM: 36-21

MILE 698.0 - CONSTRUCTION OPERATION

Continuing until approximately June 17, 2022, the J.F. Brennan Company Inc., is conducting construction operations in the vicinity of Mile 698.0, LDB, between the La Crosse Queen Dock and the Riverside Park. A 32-foot by 80-foot material barge will extend approximately 100 feet from the bank. Mariners may contact the project superintendent at (608) 799-2186, for additional information. Mariners are urged to transit the area with caution.

LNM: 12-22

MILE 495.4 - BRIDGE MAINTENANCE

I-80 Highway Bridge; Cleaning of the bridge will be performed April 15, 2022 until June 15, 2022. A snooper truck will be used for operations and will move for vessel traffic.

LNM: 15-22

MILE 482.9 - L/D DELAYS

On May 16, 2022, from 4:00 a.m. until 4:00 p.m., temporary delays may be experienced at L/D 15, in the vicinity of Mile 482.9.

LNM: 15-22

MILE 478.3 - BRIDGE REPAIRS

I-280 Bridge; The vertical clearance may be reduced by 3 feet, due to a safespan platform being utilized for repairs through November 30, 2022. Mariners may contact Kraemer North America at (608) 393-9743, for additional information.

LNM: 14-22

MILE 384.8 - MILE 367.2 - AIDS TO NAVIGATION

The following aids to navigation have been set for the navigation season. The unlighted buoys have been withdrawn: Dutchman Island Lighted Buoy (LLNR-15395), Mile 384.8, RDB, Sunken M/V John Paul Lighted Buoy, (LLNR-15435), Mile 78.4, LDB and Waggoner PT. Lighted Buoy (LLNR-15475), Mile 367.2, RDB.

LNM: 15-22

MILE 290.1 - MILE 289.4 - IENC CHART UPDATE

Attached as an enclosure to this LNM, is a USACE St. Louis District Notice to Navigation Interests 22-02, regarding dikes displayed on IENC Charts between approximate Miles 290.1 and 289.4.

LNM: 13-22

MILE 289.41 - CHANNEL CONDITION

Shoaling has been reported in the vicinity of Mile 289.41. Mariners are urged to transit the area with caution.

LNM: 12-22

MILE 179.2 - BRIDGE MAINTENANCE

Douglas MacArthur Bridge; Two suspended platforms are located in the center navigation span. Each platform measures 9 feet wide and hang 5 feet below low steel. One platform is located 60 feet channelward of the right descending pier and the other platform is located 120 feet channelward of the left descending pier. There are also 3 platforms located at various locations in the Illinois span. Mariners are urged to transit the bridge with caution.

LNM: 32-19

MILE 172.3 - MILE 172.0 - OVERHEAD HIGH WIRE OPERATIONS/SAFETY ZONE/INTERMITTENT RIVER CLOSURES

Continuing until approximately May 1, 2022, from 9:00 a.m. until 2:00 p.m., each day, weather permitting, Ameren Electrical Contractors are conducting high wire work and conductor removal/replacement operations in the vicinity of Mile 172.0. To facilitate these operations, the COTP Upper Mississippi River has issued a Safety Zone, extending between approximate Miles 172.3 and 172.0. Intermittent daily river closures are necessary to facilitate this operation. The time/duration of each closure will be dependent upon current conditions and the Safety Zone will be activated/deactivated each day and transmitted to mariners via VHF-FM Channel 16. Mariners may contact U.S. Coast Guard Sector Western Rivers, to request permission to transit this area. No vessel will be permitted to enter this Safety Zone, unless given permission by the COTP Upper Mississippi River.

LNM: 13-22

MISSOURI RIVER

MILE 397.6 - SUBMERGED OBSTRUCTIONS

Submerged obstructions have been reported in the vicinity of Mile 397.6, underneath the Leavenworth Highway Bridge, Alternate Span. Mariners are urged to exercise caution in the area.

LNM: 16-22

MILE 185.0 - BRIDGE MAINTENANCE

Rochepport Highway Bridge; A drill barge will be located channelward of the existing right descending pier and will reduce the horizontal clearance to 470 feet. Mariners are advised to transit the bridge with caution.

LNM: 16-22

MONONGAHELA RIVER

MILE 41.5 - CHANNEL CONDITION/SAFETY ADVISORY

The COTP Pittsburgh has issued the following Safety Advisory due to the gate opening at L/D 4, in the vicinity of Mile 41.5, being greater than 8 feet. Mariners are urged to exercise double locking through L/D 4.

LNM: 16-22

MILE 14.2 - MILE 11.3 - CHANNEL CONDITION/SAFETY ADVISORY - UPDATE

High water conditions have lessened. The COTP Pittsburg Safety Advisory has been cancelled.

LNM: 16-22

MILE 13.0 - MILE 10.0 - AIDS TO NAVIGATION

Three can buoys have been reported not properly marking the channel between approximate Miles 13.0 and 10.0, Braddock L/D. Mariners are urged to exercise caution in the area.

LNM: 09-22

OHIO RIVER

MILE 3.6 - TEMPORARY LIGHTED DANGER BUOYS

Mascaro Construction Co., LP., has installed 4 Temporary Lighted Danger Buoys with White flash characteristic Fl 2.5s, to mark a turbidity curtain around the perimeter of the construction area located at the Allegheny County Sanitary Authority (ALCOSAN), in the vicinity of Mile 3.6, RDB. The Temporary Lighted Danger Buoys were installed in the following approximate positions:

40-28-42.82N 080-02-51.39W,
40-28-47.97N 080-02-55.63W,
40-28-55.90N 080-03-03.99W and
40-29-00.91N 080-03-09.91W.

Any questions, inquiries or navigation safety concerns, should be directed to Mascaro Construction, Mr. Steve Senchesen, via telephone at (412) 321-4901 or email to ssenchesen@mascaroconstruction.com, or you may contact U.S. Coast Guard Sector Ohio Valley at (502) 779-5422 or via email at: STL-PF-SECOHVCommandCenter@uscg.mil. Mariners are advised to exercise caution in this vicinity and to completely avoid navigating outside of the navigable channel in the area.

LNM: 46-20

MILE 31.7 - MILE 44.5 - CHANNEL CONDITION/SAFETY ADVISORY - UPDATE

High water/flow conditions have lessened. The COTP Pittsburgh Safety Advisory for Montgomery L/D, in the vicinity of Mile 31.7, has been cancelled.

LNM: 16-22

MILE 86.0 - MILE 88.0 - AIDS TO NAVIGATION

Multiple buoys between approximate Miles 86.0 and 88.0, have been reported missing or not properly marking the channel. Mariners are urged to transit the area with caution.

LNM: 12-22

MILE 90.3 - BRIDGE MAINTENANCE

Wheeling Suspension Bridge; Continuing through June 2023, the vertical clearance may be reduced by 2 feet due to maintenance being performed on the bridge. For more information, mariners may contact West Virginia Department of Transportation, Ahmed Mongi, at (304) 553-3941 or Advantage Steel and Construction, Matt Oskin, at (724) 352-4842.

LNM: 11-22

MILE 279.2 - CHANNEL CONDITION

Due to recent flooding and receding waters, shoal conditions exist in the lower approach channel at the Robert C. Byrd L/D, in the vicinity of Mile 279.2. Attached as an enclosure to this LNM, is the latest survey of the area dated March 22, 2022. Mariners are urged to check the latest survey, monitor lower gauge readings and contact the lockmaster via VHF-FM Channel 13, for additional information.

LNM: 13-22

MILE 597.0 - MILE 607.0 - AIR SHOW/SPECIAL LOCAL REGULATION

On April 22, 2022, from 11:00 a.m. until 6:00 p.m., the Thunder Over Louisville Air Show Practice will take place between approximate Miles 597.0 and 607.0. The COTP Ohio Valley has established a Special Local Regulation for this event. No vessels will be allowed to transit this area without the permission of the COTP or a designated representative. A minimal wake zone will be in effect from Mile 597.0 to Mile 602.7, for this event. Anchorage is only permitted between Mile 597.0 and 602.7, from the Indiana Shoreline to the center of the river. For additional information, mariners may contact the event manager at (502) 572-3834.

LNM: 15-22

MILE 597.0 - MILE 607.0 - AIR SHOW/FIREWORKS DISPLAY/SPECIAL LOCAL REGULATION

On April 23, 2022, from noon until midnight, the Thunder Over Louisville Air Show and fireworks display will take place between approximate Miles 597.0 and 607.0. The COTP Ohio Valley has established a Special Local Regulation for this event. No vessels will be allowed to transit between Miles 602.7 and 607.0, without the permission of the COTP or a designated representative. A minimal wake zone will be in effect from Mile 597.0 to Mile 602.7, for this event. Anchorage is only permitted between Mile 597.0 and 602.7, from the Indiana Shoreline to the center of the river. For additional information mariners may contact the event manager at (502) 572-3834.

LNM: 15-22

MILE 603.5 - MARINE EVENT

On April 30, 2022, from 8:00 a.m. until 4:00 p.m., the Ken-Ducky Derby, a rubber duck race, will be held in the vicinity Mile 603.5. Mariners may contact the event sponsor at (502) 693-3621, for additional information. Mariners are urged to exercise caution in the area, during the event period.

LNM: 15-22

MILE 607.4 - MARINE EVENT

On April 22, 2022, from 10:00 a.m. until 11:00 a.m., the Earth Day Paddle will be held in the vicinity of Mile 607.4. This event will involve paddlers crossing the navigation channel. Mariners may contact the event sponsor at (502) 671-3595, for additional information. Mariners are urged to exercise caution in the area, during the event period.

LNM: 15-22

MILE 608.6 - BRIDGE MAINTENANCE

Sherman Minton Bridge; Cleaning and painting of the bridge will continue from 7:00 a.m. until 6:00 p.m., Monday through Saturday, until further notice. A containment system will hang 4 feet below low steel. Mariners should transit the bridge with caution.

LNM: 29-21

MILE 720.7 - L/D INTERMITTENT CLOSURES - UPDATE

Attached as an enclosure to this LNM is USACE Louisville District Notice to Navigation Interests 2022-009, regarding temporary closures at the Cannelton L/D, in the vicinity of Mile 720.7.

LNM: 16-22

MILE 939.9 - CHANNEL CONDITION

Due to the rising river elevations, the navigation lane over the bear traps and fixed weir, on the LDB, in the vicinity of Mile 939.9, will remain open until the Paducah Gauge is at or below 26.0 feet. The navigation lane will be marked with electronic buoys (AIS aids to navigation). Mariners are urged to review all applicable USACE Navigation Notices and charts, prior to transiting, and exercise caution in the area.

LNM: 16-22

MILE 964.6 - L/D RESTRICTIONS

Vessel traffic has been shifted to the navigation pass at the Olmsted L/D in the vicinity of Mile 964.6. The navigation lane width is approximately 900 feet, as marked with buoys. Down-bound tow maximum dimensions are 175 feet by 1,200 feet, including the towboat, with no more than 25 regulation barges and not to exceed 5 wide. No hip barges or other deviation that could degrade normal steerage characteristics are allowed for down-bound tows. Up-bound tow maximum dimensions are 140 feet by 1,600 feet including the towboat, with no more than 28 regulation barges and not to exceed 4 wide. Up-bound tows shall have adequate power to maintain speed. All mariners shall take direction from the Olmsted L/D Control Tower.

LNM: 15-22

TENNESSEE RIVER**MILE 567.5 - AID TO NAVIGATION**

A can buoy in the vicinity of Mile 567.5, has been reported not properly marking the channel. Mariners are urged to transit the area with caution.

LNM: 12-22

MILE 72.5 - TRANSMISSION TOWER REPAIR/DIVE OPERATIONS

Continuing until approximately December 16, 2022, the TVA is conducting transmission tower repairs in the vicinity of Mile 72.5. In conjunction with this operation, divers will be utilized. Work will be conducted from 7:00 a.m. until 6:00 p.m., Monday through Saturday. The floating plant will consist of the M/V RED WAGNER and 2 barges spud down around the towers. The TVA Police will have vessels on station during dive operations. The M/V RED WAGNER will monitor VHF-FM Channel 13 or 16. Mariners are urged to transit the area at their slowest safe speed to minimize their wake and proceed with caution. Mariners may contact the TVA, for additional information.

LNM: 14-22

SECTION VIII - LIGHT LIST CORRECTIONS

An Asterisk *, indicates the column in which a correction has been made to new information

(1) No.	(2) Name and Location	(3) Mile	(4) Bank	(5) Characteristic	(6) Structure / Dayboard Up Down	(7) Remarks
25825	CONTINENTAL BUILDING MOORING CELLS (4)	460	Left	Fl (2)R 6s		Private Aid. 16/22
*	*	*	*	*	*	*

ENCLOSURES**USACE Huntington District Notice to Navigation Interests 22-04**

Mail delivery and crew change policies at navigation locks, for towboats.

LNM: 02-22

USACE Huntington District Notice to Navigation Interests 22-05

Restricted areas at navigation structures.

LNM: 02-22

USACE Channel Status Reports - UPDATE

Arkansas River Channel Status Reports.

LNM: 16-22

USACE Tulsa District Notice to Navigation Interests 2022-2

L/D's closures/dive operations.

LNM: 15-22

USACE St. Louis District Notice to Navigation Interests 22-02

Dikes displayed on IENC Charts between approximate Miles 290.1 and 289.4.

LNM: 13-22

USACE Huntington District Notice to Navigation Interests 22-08

Channel survey, lower approach to Robert C. Byrd L/D.

LNM: 13-22

USACE Louisville District Notice to Navigation Interests 2022-009

Temporary closures at the Cannelton L/D.

LNM: 16-22

Commander, Eighth Coast Guard District
Hale Boggs Federal Building, Room 1230
500 Poydras Street, New Orleans, LA 70130-3310
Telephone (504) 671-2327
(Business Hours 7:00 a.m. - 3:30 p.m. Monday - Friday)
(Nights, Weekends, Holidays) (504) 589-6225
RADM Timme



**US Army Corps
of Engineers®**

HUNTINGTON DISTRICT
ATTN: CELRH-DE
502 8TH STREET
HUNTINGTON WV 25701-2070
[HTTP://WWW.LRH.USACE.ARMY.MIL/](http://www.lrh.usace.army.mil/)

NOTICE TO NAVIGATION INTERESTS

DATE: 01/11/2022
POC: Kent C. Browning
(304)399-5239

NOTICE NUMBER: 17709
LOCAL NUMBER: 22-04
WATERWAY: OHIO RIVER

EFFECTIVE: 01/09/2022 00:00 thru 01/09/2023 00:00 EST

**CREW CHANGE AND MAIL DELIVERY POLICIES FOR LRH DISTRICT
AT NAVIGATION LOCKS FOR TOWBOAT PERSONNEL**

The following policies are in effect for all navigation locks within the Huntington District.

Crew changes will be allowed only when security levels warrant. The following procedures will be used for crew changes: The towing companies must request permission from Lockmaster or designee for crew changes at least two (2) hours prior to requested changes. If given permission, the crew change will take place at high pool (when lock chamber is full). The crew change vehicle will remain outside the government facility gate until the motor vessel has arrived at the lock. All crew members must be in possession of a Transportation Worker Identification Credential (TWIC) card, with all other passengers having valid photo ID. A valid photo ID would be either a state-issued driver's license or a state - or federally-issued identification card. No assistance will be provided by government personnel nor personal contact will be made with government personnel. If unable to maintain social distancing, face masks will be required. Crew change vehicle will not be left on the government facility or unattended. Once the crew change vehicle leaves, all personnel will leave with the vehicle and not stay on the government facility.

No mail and/or packages will be accepted for any non-government personnel at any navigation lock. Also, stamped mail from boat crews will not be accepted by lock personnel for postal pickup. Personally delivered mail and/or packages will not be accepted by the lock personnel, nor shall items be stored at the locks for later pickup by towboat personnel. The only mail that will be accepted by the project will be stamped mail addressed to the towing company.

If a motor vessel needs parts or service for breakdown maintenance, they must request permission to deliver them to the project two (2) hours in advance. If the Regional Repair Fleet is working at a project, there will be no crew changes.

Until the Coronavirus pandemic is alleviated and restrictions are lifted, industry crew members and lock operators will utilize social distancing practices to prevent the possible spread of the Coronavirus.

//signed//

KENT C. BROWNING
Chief, Technical Support Branch



**US Army Corps
of Engineers®**

HUNTINGTON DISTRICT
ATTN: CELRH-DE
502 8TH STREET
HUNTINGTON WV 25701-2070
HTTP://WWW.LRH.USACE.ARMY.MIL/

NOTICE TO NAVIGATION INTERESTS

DATE: 01/11/2022
POC: Kent C. Browning
(304)399-5239

NOTICE NUMBER: 17710
LOCAL NUMBER: 22-05
WATERWAY: OHIO RIVER

EFFECTIVE: 01/09/2022 00:00 thru 01/09/2023 00:00 EST

**RESTRICTED AREAS AT NAVIGATION STRUCTURES
IN THE HUNTINGTON DISTRICT**

This Notice is applicable to the following Huntington District Corps of Engineers' Ohio River Locks and Dams: Captain Anthony Meldahl, Greenup, R.C. Byrd, Racine, Belleville, and Willow Island, and the following Kanawha River Locks and Dams: Winfield, Marmet, and London.

A number of accidents have occurred in the past when vessels, particularly small recreation/fishing craft, violated existing regulations and entered the "Restricted Areas" either above or below the navigation dams. These "Restricted Areas" are exceedingly dangerous and have been permanently declared restricted to all vessels except those on official business. Vessel operators who enter these "Restricted Areas" risk their lives and property and may interfere with required operation of the locks and dam.

The Huntington District has adopted a practice whereby as soon as river flow conditions permit each spring, "special purpose" buoys are placed in the river to physically mark the boundaries of the "Restricted Areas." These "special purpose" buoys have a white background with two reflective orange horizontal bands and a reflective orange cross enclosed within a diamond. The words "KEEP OUT" are lettered on each buoy. The buoys are placed above and below the dam to delineate the "Restricted Area" at each project. Signs are also in place adjacent to the buoy lines on the river wall of the lock and on the opposite riverbank. These signs and buoys are positioned to delineate areas where unpredictable currents flow upstream toward the dam on the surface. These currents create dangerously turbulent water and nearly always contain hidden undertows. Additional day marker signs with a reflective orange cross enclosed within a diamond having a white background are installed on the downstream side of the dam. The words "KEEP OUT" are lettered on each sign.

An additional hazard exists in the culvert valve discharge areas where water from the locks empties into the river. These areas are in the "Restricted Areas" and are marked by signs mounted on the riverside of the lock wall over the discharge areas reading "DANGER, TURBULENT WATER." The force of water issuing from these underwater discharges is extremely violent and can capsize vessels, especially small recreation/fishing craft. The releases are intermittent and can cause sudden changes in the character of the water surface. A long warning siren is sounded prior to each such discharge to alert all persons of the release of water. This is a totally different sound than the whistle to enter and leave the lock chamber.

Navigators must educate themselves to the boundaries of the "Restricted Areas" and stay clear at all times, even when buoys are off station. "Restricted Areas" are delineated on the current issue of the Navigation Charts.

The Federal regulations which control restricted areas are contained in the current issue of the "Blue Book" and are repeated here in part:

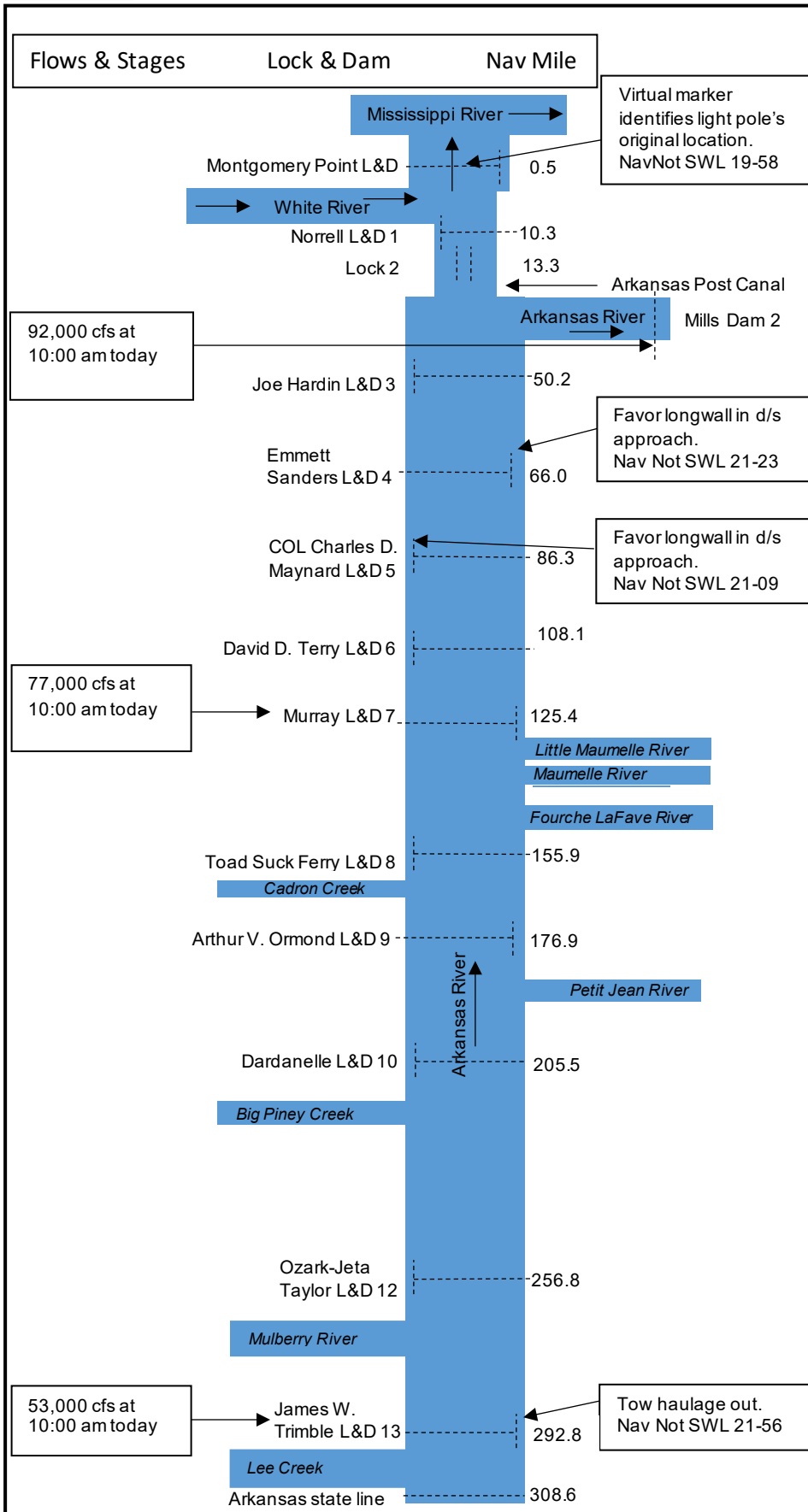
33 CFR 207.300 " (s) Restricted Areas at Lock and Dam. All waters immediately above and below each dam as posted by the respective District Engineers, are hereby designated as restricted areas. No vessel or other floating craft shall enter any such restricted areas at any time. The limits of the restricted areas at each dam will be determined by the responsible District Engineer and marked by signs and/or flashing red lights in conspicuous and appropriate places."

Lockmasters, their staff, and Corps Park Rangers will enforce these Federal regulations. The U. S. Coast Guard and local law enforcement officers may render assistance as appropriate. Violators may be subject to a citation requiring

appearance in Federal and/or State Court and upon conviction are subject to fine and / or imprisonment – (or both).

//signed//

KENT C. BROWNING
Chief, Technical Support Branch



At 10:00 am today:
 -Montgomery Point Tailwater was El. 138.49
 -Montgomery Point Headwater was El. 138.74
 -Norrell Lock Tailwater was El. 140.56
 -Differential between Norrell and Montgomery Point – 1.82 ft

Forecast for Apr 16:
 -Montgomery Point Tailwater - El. 139.4
 -Montgomery Point Headwater - El. 139.6
 -Norrell Lock Tailwater - El. 141.4
 -Differential between Norrell and Montg. Pt – 1.8 ft

Navigation Condition	Montgomery Point L&D	Norrell L&D
Vessels use the lock	TW < El. 115	TW < El. 143
Lock gates are pinned open; vessels pass thru the lock	N/A	TW > El. 143
Vessels use the navigation pass	TW > El. 115	TW > El. 155

*TW = Tailwater
Dredging Activities: None
Deviations: None
Groundings/Incidents: None reported.

Closures & Channel Conditions:
 NavNot SWL 22-13 – Lock Closures:
 Lock 8(Apr 26) & Lock 9(Apr 27); 7am-7pm.
 Work on hydraulic lines, associated with the miter gate operations.

NavNot SWL 22-04 – Closures: Lock 1 & 3. Lock 1 closures are for work related to new dewatering stoplog slots. Lock 3 closures are for the lock dewatering and preparatory inspections prior to the dewatering. See the original Nav Notice for specific dates, times and other details.

NavNot SWL 21-02 – I-30 bridge, right channel span closure. All vessels must use the left channel span only.

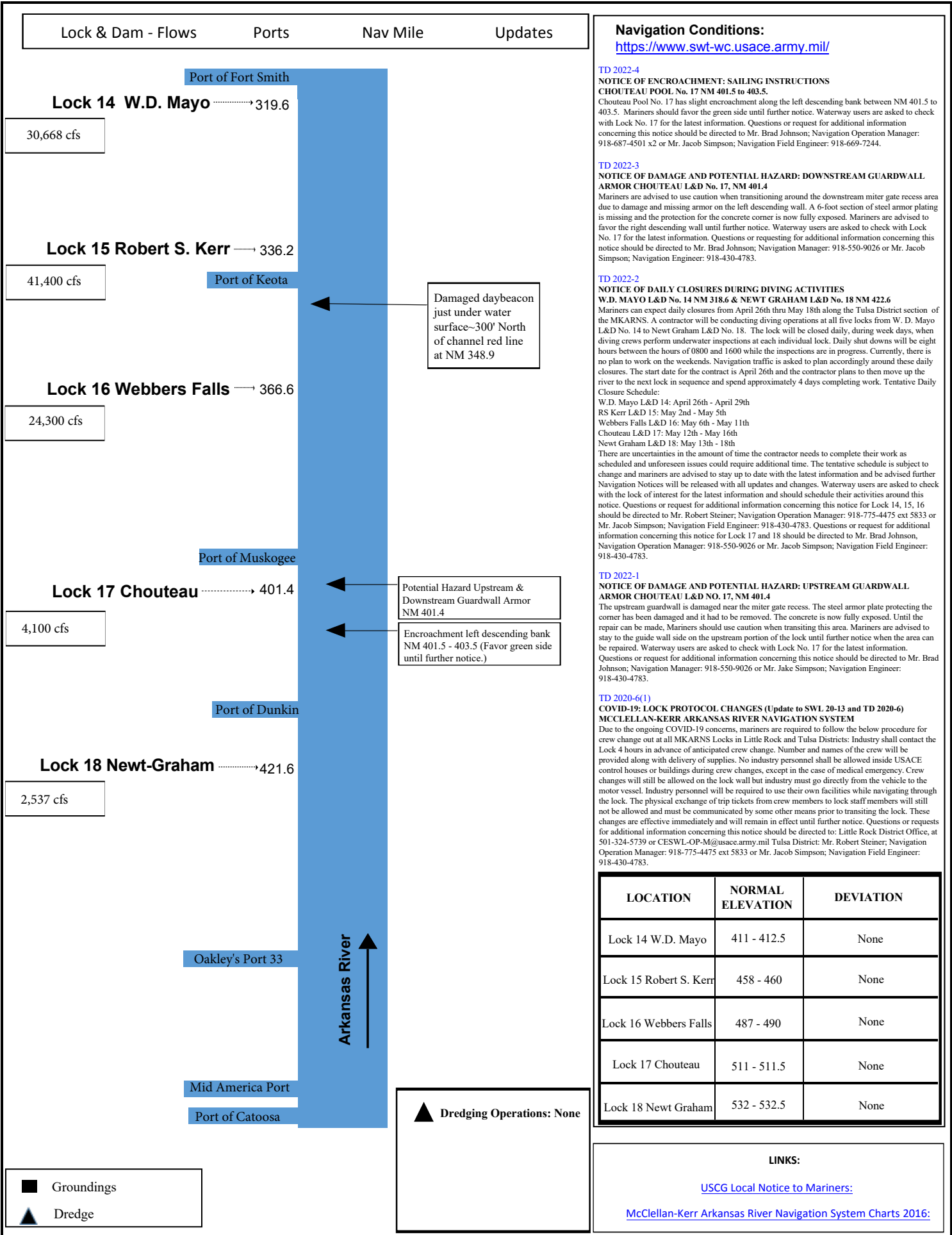
NavNot SWL 20-18 – COVID-19 update: industry shall contact lock 4 hours prior to crew changes; (see original notice or call lock for more details)

NavNot SWL 19-84 – Lock 10, down-bound tows must stop and orient themselves in a straight position prior to lockage & avoid contact with the lock walls in the vicinity of new stoplog slot cuts.

NavNot SWL 19-58 – Mont Pt, No passing in nav pass. Favor lock wall side of the nav pass, stay 75' from the lock wall poles.

- Bank Stabilization/ Rock work
- ★ Groundings
- ▲ Dredge

-Channel Status Reports: <http://www.sw.usace.army.mil/Missions/Navigation/>
 -Navigation conditions, river stages and 4-day flow forecast are available and updated daily at: <http://www.sw.usace.army.mil/Missions/WaterLevels/DailyReports.aspx>
 -Notices to Navigational Interests (NTNI): <http://ntinotices.usace.army.mil/>
 -USCG Local Notice to Mariners: <http://www.navcen.uscg.gov/?pageName=inmDistrict®ion=8&ext=g>
 -Channel Hydrographic Surveys: <http://navigation.usace.army.mil/Survey/Hydro>



Navigation Conditions:
<https://www.swt-wc.usace.army.mil/>

TD 2022-4
NOTICE OF ENCROACHMENT: SAILING INSTRUCTIONS
CHOUTEAU POOL No. 17 NM 401.5 to 403.5.
Chouteau Pool No. 17 has slight encroachment along the left descending bank between NM 401.5 to 403.5. Mariners should favor the green side until further notice. Waterway users are asked to check with Lock No. 17 for the latest information. Questions or request for additional information concerning this notice should be directed to Mr. Brad Johnson; Navigation Operation Manager: 918-687-4501 x2 or Mr. Jacob Simpson; Navigation Field Engineer: 918-669-7244.

TD 2022-3
NOTICE OF DAMAGE AND POTENTIAL HAZARD: DOWNSTREAM GUARDWALL ARMOR CHOUTEAU L&D No. 17, NM 401.4
Mariners are advised to use caution when transitioning around the downstream miter gate recess area due to damage and missing armor on the left descending wall. A 6-foot section of steel armor plating is missing and the protection for the concrete corner is now fully exposed. Mariners are advised to favor the right descending wall until further notice. Waterway users are asked to check with Lock No. 17 for the latest information. Questions or requesting for additional information concerning this notice should be directed to Mr. Brad Johnson; Navigation Manager: 918-550-9026 or Mr. Jacob Simpson; Navigation Engineer: 918-430-4783.

TD 2022-2
NOTICE OF DAILY CLOSURES DURING DIVING ACTIVITIES
W.D. MAYO L&D No. 14 NM 318.6 & NEWT GRAHAM L&D No. 18 NM 422.6
Mariners can expect daily closures from April 26th thru May 18th along the Tulsa District section of the MKARNs. A contractor will be conducting diving operations at all five locks from W. D. Mayo L&D No. 14 to Newt Graham L&D No. 18. The lock will be closed daily, during week days, when diving crews perform underwater inspections at each individual lock. Daily shut downs will be eight hours between the hours of 0800 and 1600 while the inspections are in progress. Currently, there is no plan to work on the weekends. Navigation traffic is asked to plan accordingly around these daily closures. The start date for the contract is April 26th and the contractor plans to then move up the river to the next lock in sequence and spend approximately 4 days completing work. Tentative Daily Closure Schedule:
W.D. Mayo L&D 14: April 26th - April 29th
RS Kerr L&D 15: May 2nd - May 5th
Webbers Falls L&D 16: May 6th - May 11th
Chouteau L&D 17: May 12th - May 16th
Newt Graham L&D 18: May 13th - 18th
There are uncertainties in the amount of time the contractor needs to complete their work as scheduled and unforeseen issues could require additional time. The tentative schedule is subject to change and mariners are advised to stay up to date with the latest information and be advised further Navigation Notices will be released with all updates and changes. Waterway users are asked to check with the lock of interest for the latest information and should schedule their activities around this notice. Questions or request for additional information concerning this notice for Lock 14, 15, 16 should be directed to Mr. Robert Steiner; Navigation Operation Manager: 918-775-4475 ext 5833 or Mr. Jacob Simpson; Navigation Field Engineer: 918-430-4783. Questions or request for additional information concerning this notice for Lock 17 and 18 should be directed to Mr. Brad Johnson; Navigation Operation Manager: 918-550-9026 or Mr. Jacob Simpson; Navigation Field Engineer: 918-430-4783.

TD 2022-1
NOTICE OF DAMAGE AND POTENTIAL HAZARD: UPSTREAM GUARDWALL ARMOR CHOUTEAU L&D No. 17, NM 401.4
The upstream guardwall is damaged near the miter gate recess. The steel armor plate protecting the corner has been damaged and it had to be removed. The concrete is now fully exposed. Until the repair can be made, Mariners should use caution when transiting this area. Mariners are advised to stay to the guide wall side on the upstream portion of the lock until further notice when the area can be repaired. Waterway users are asked to check with Lock No. 17 for the latest information. Questions or request for additional information concerning this notice should be directed to Mr. Brad Johnson; Navigation Operation Manager: 918-550-9026 or Mr. Jake Simpson; Navigation Engineer: 918-430-4783.

TD 2020-6(1)
COVID-19: LOCK PROTOCOL CHANGES (Update to SWL 20-13 and TD 2020-6)
MCCELLEAN-KERR ARKANSAS RIVER NAVIGATION SYSTEM
Due to the ongoing COVID-19 concerns, mariners are required to follow the below procedure for crew change out at all MKARNs Locks in Little Rock and Tulsa Districts: Industry shall contact the Lock 4 hours in advance of anticipated crew change. Number and names of the crew will be provided along with delivery of supplies. No industry personnel shall be allowed inside USACE control houses or buildings during crew changes, except in the case of medical emergency. Crew changes will still be allowed on the lock wall but industry must go directly from the vehicle to the motor vessel. Industry personnel will be required to use their own facilities while navigating through the lock. The physical exchange of trip tickets from crew members to lock staff members will still not be allowed and must be communicated by some other means prior to transiting the lock. These changes are effective immediately and will remain in effect until further notice. Questions or requests for additional information concerning this notice should be directed to: Little Rock District Office, at 501-324-5739 or CESWL-OP-M@usace.army.mil Tulsa District: Mr. Robert Steiner; Navigation Operation Manager: 918-775-4475 ext 5833 or Mr. Jacob Simpson; Navigation Field Engineer: 918-430-4783.

LOCATION	NORMAL ELEVATION	DEVIATION
Lock 14 W.D. Mayo	411 - 412.5	None
Lock 15 Robert S. Kerr	458 - 460	None
Lock 16 Webbers Falls	487 - 490	None
Lock 17 Chouteau	511 - 511.5	None
Lock 18 Newt Graham	532 - 532.5	None

LINKS:

[USCG Local Notice to Mariners:](#)

[McClellan-Kerr Arkansas River Navigation System Charts 2016:](#)



**US Army Corps
of Engineers®**

TULSA DISTRICT

ATTN: CESWT-DE
2488 E 81ST ST
TULSA OK 74137
HTTP://WWW.SWT.USACE.ARMY.MIL/

DATE: 4/8/2022

POC: Robert Steiner; Navigation Manager:
918-775-4475 ext 5833
Brad Johnson; Navigation Manager:
918-550-9026
Jacob Simpson; Navigation Engineer:
918-430-4783

NOTICE NUMBER: 19406

LOCAL NUMBER: TD 2022-2
WATERWAY: MC-KERR ARKANSAS
RIV NAV SYS

EFFECTIVE: 04/26/2022 08:00 thru
05/18/2022 16:00 CDT

NOTICE OF DAILY CLOSURES DURING DIVING ACTIVITIES
W.D. MAYO L&D No. 14, NM 318.6 to NEWT GRAHAM L&D No.18, NM 422.6

Mariners can expect daily closures from April 26th thru May 18th along the Tulsa District section of the MKARNS. A contractor will be conducting diving operations at all five locks from W. D. Mayo L&D No. 14 to Newt Graham L&D No. 18. The lock will be closed daily, during week days, when diving crews perform underwater inspections at each individual lock. Daily shut downs will be eight hours between the hours of 0800 and 1600 while the inspections are in progress. Currently, there is no plan to work on the weekends. Navigation traffic is asked to plan accordingly around these daily closures. The start date for the contract is April 26th at W.D. Mayo L&D 14 and diving operations could commence for up to 4 days until the 29th. The contractor plans to then move up the river to the next lock in sequence and spend approximately 4 days completing work.

Remaining Locks Tentative Daily Closure Schedule:

RS Kerr L&D 15: May 2nd - May 5th

Webbers Falls L&D 16: May 6th - May 11th

Chouteau L&D 17: May 12th - May 16th

Newt Graham L&D 18: May 13th - 18th

There are uncertainties in the amount of time the contractor needs to complete their work as scheduled and unforeseen issues could require additional time. The tentative schedule is subject to change and mariners are advised to stay up to date with the latest information and be advised further Navigation Notices will be released with all updates and changes. Waterway users are asked to check with the lock of interest for the latest information and should schedule their activities around this notice.

- Questions or request for additional information concerning this notice for Lock 14, 15, 16 should be directed to Mr. Robert Steiner; Navigation Operation Manager: 918-775-4475 ext 5833 or Mr. Jacob Simpson; Navigation Field Engineer: 918-430-4783.
- Questions or request for additional information concerning this notice for Lock 17 and 18 should be directed to Mr. Brad Johnson, Navigation Operation Manager: 918-550-9026 or Mr. Jacob Simpson; Navigation Field Engineer: 918-430-4783.

//signed//

Jeff Knack
Acting Chief, Operations Division

**US Army Corps
of Engineers®**

ST. LOUIS DISTRICT

DATE: 03/23/2022

NOTICE NUMBER: 19126

ATTN: CEMVS-DE

1222 SPRUCE STREET

POC: Lance Engle

LOCAL NUMBER: 22-02

ST. LOUIS MO 63103-2833

314-865-6343

WATERWAY: UPPER MISSISSIPPI

HTTP://WWW.MVS.USACE.ARMY.MIL/

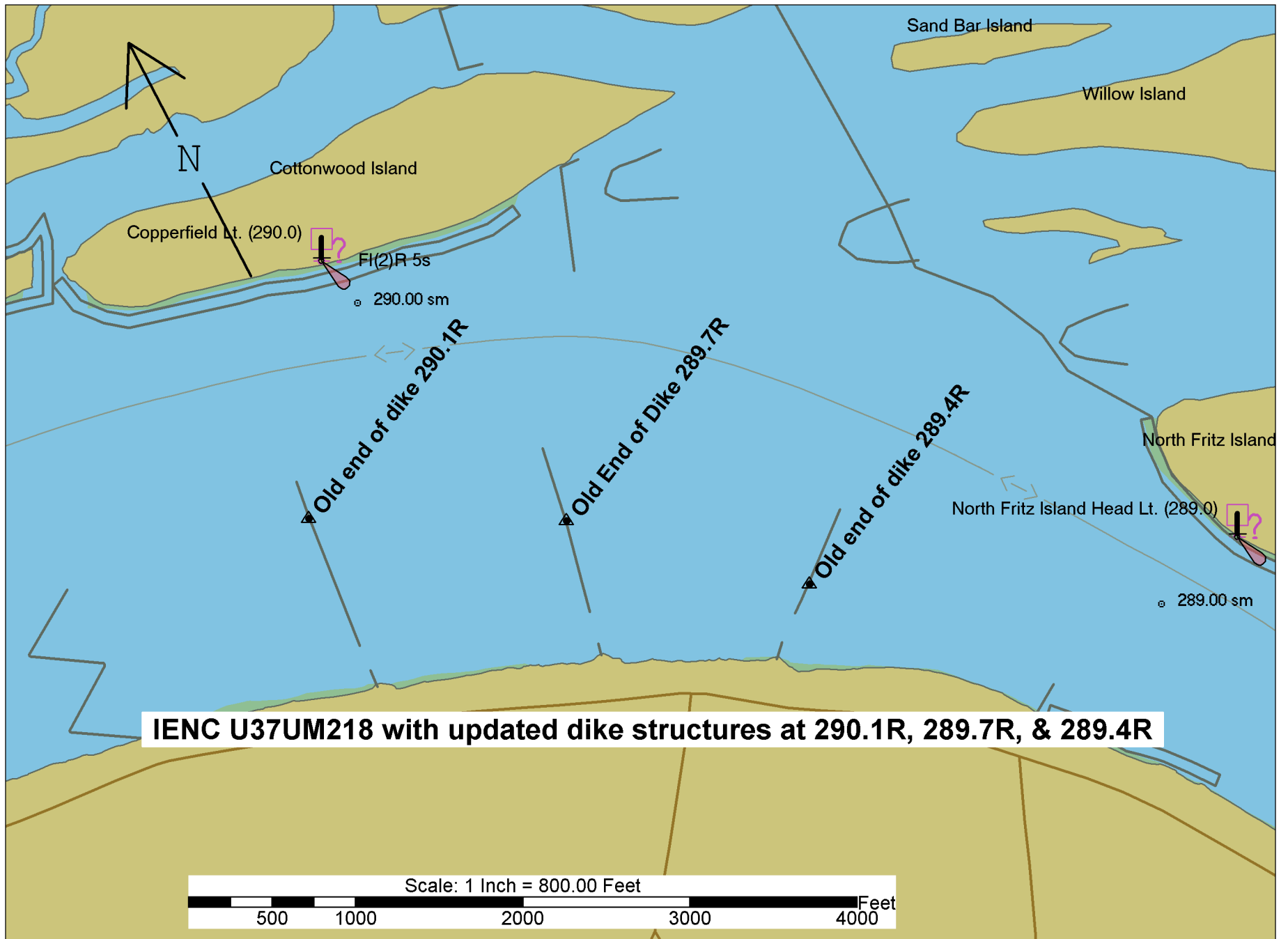
EFFECTIVE: 03/23/2022 00:00 thru 06/30/2022
23:59 CDT**NOTICE TO NAVIGATION INTERESTS****IENC Chart Update****Dikes 290.1R, 289.7R & 289.4R****Upper Mississippi River mile 290.1 - 289.4**

1. Dikes 290.1R, 289.7R, and 289.4R were found on a recent multibeam survey to be longer than previously shown on the Inland Electronic Navigation Chart (IENC). Dike 290.1R is extended 220-ft, dike 289.7R is extended 450-ft, and dike 289.4R is extended 475-ft towards the channel with less than 5-ft of water over these areas. The IENC has been updated to show the actual length of these structures.
2. The attached drawing shows the updated IENC chart with the old end of dike locations noted for comparison.
3. Mariners should update IENC U37UM218 on their electronic chart software.

FOR THE DISTRICT ENGINEER:

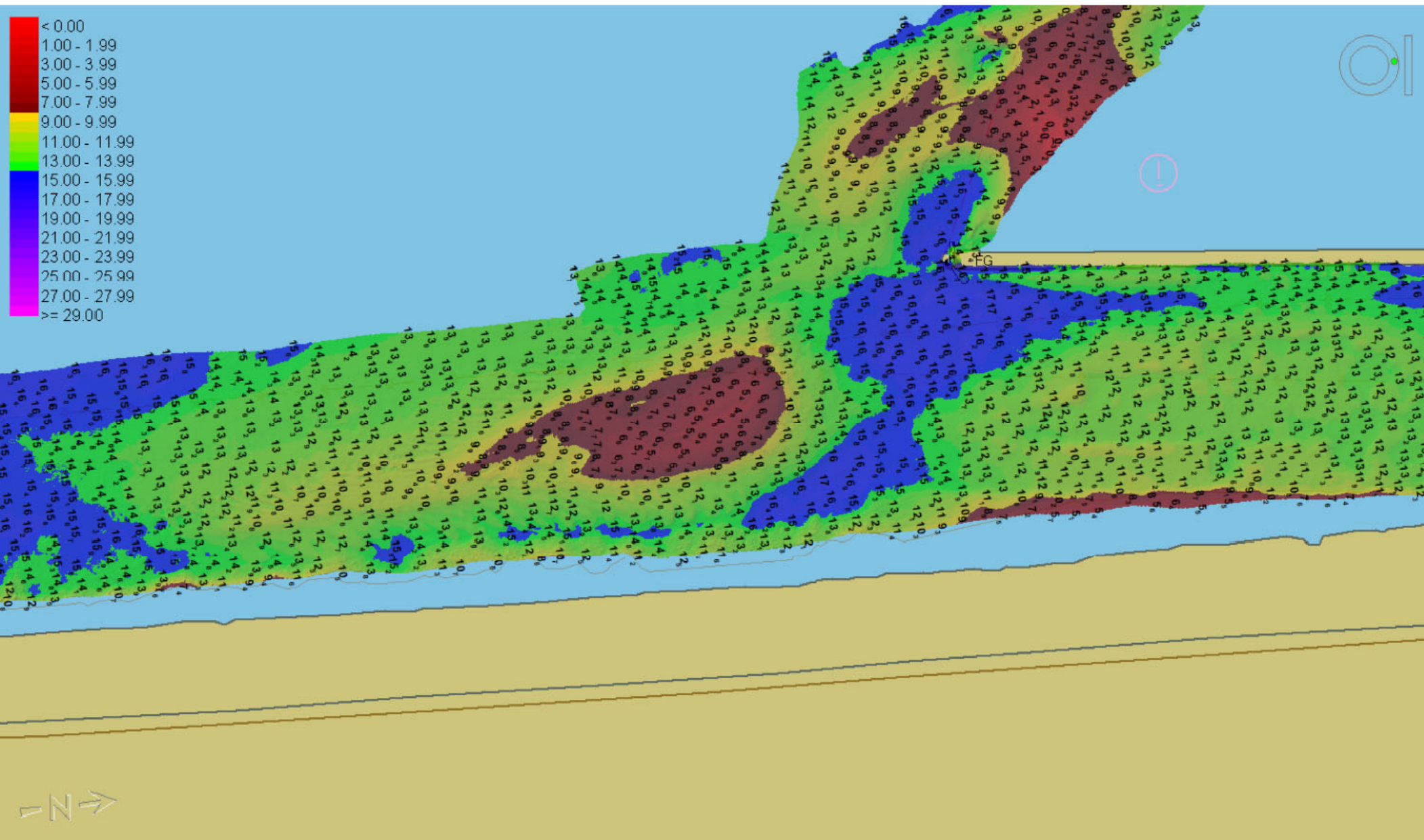
//signed//

Andrew C. Schimpf, P.E.
Rivers Project Manager



ROBERT C. BYRD LOCKS AND DAM, LOWER APPROACH

HYDROGRAPHIC SURVEY, PERFORMED ON 20220321



US ARMY CORPS OF ENGINEERS

HUNTINGTON DISTRICT



US Army Corps
of Engineers
Louisville District

Notice to Navigation Interests

Notice No. 2022-009

Date: April 14, 2022

<http://www.lrl.usace.army.mil/Missions/CivilWorks/Navigation/Notices.aspx>

In Reply Refer to: CELRL-OP-T PO Box 59, Louisville, KY 40201 Telephone: 502-315-6694

LOUISVILLE DISTRICT

REVISED CANNELTON LOCKS AND DAM

LOCK CHAMBER CLOSURES

OHIO RIVER MILE 720.7

REFERENCE:

Navigation Notice # 2022-001 dated January 19, 2022

Navigation Notice # 2022-003 dated January 24, 2022

Primary (1200 ft) Chamber intermittent closures: Over the next two weeks the primary (1200 ft) chamber will have additional 12-hour closures to support the ongoing floating mooring bitt track repair, as listed in the schedule below. These additional primary closures are necessary to prepare for the auxiliary chamber closure set to start 2 May 2022. The intermittent closures previously scheduled for May 2022 have been canceled. During these closures, all traffic will utilize the Auxiliary (600 ft) Chamber.

Tuesday April 19th - 12 HR

Wednesday April 20th - 12 HR

Thursday April 21st - 12 HR

Monday April 25th - 12 HR

Tuesday April 26th - 12 HR

Wednesday April 27th - 12 HR

Thursday April 28th - 12 HR

Auxiliary (600 ft) Chamber Closure: The Auxiliary (600 ft) Chamber will be closed from 2 May through 1 July 2022 to allow replacement of the anchor arms by a contractor in preparation for the Primary Chamber closure. During this closure, all traffic will utilize the Primary (1200 ft) Chamber.

Primary (1200 ft) Chamber Closure: The Primary (1200 ft) Chamber will be closed from 5 July through 11 November 2022 to allow replacement of the miter gates by the Heavy Capacity Fleet. During this closure, all traffic will utilize the Auxiliary (600 ft) Chamber.

/s/

Shawn Kenney

Ch. Technical Support Branch