



U.S. Department  
of Homeland Security  
**United States  
Coast Guard**

## LOCAL NOTICE TO MARINERS

**District 8 MRS**

**Week: 18/23**

### Mississippi River System

LIGHT LIST VOLUME V  
NOTICE NUMBER 18-23  
May 3, 2023

LIGHT LIST REFERENCE: COMDTPUB P16502.5, Vol V, 2023 Edition.

CONTENTS: Rivers are listed in alphabetical order and are included only when there is information to report.  
Broadcast Notice to Mariners Covered in this Edition

Originating Unit	Beginning BNM's	Ending BNM's
Sector Upper Mississippi River	0048 - 23 (UM)	0054 - 23 (UM)
Sector Lower Mississippi River	0009 - 23 (LM)	0010 - 23 (LM)
Sector Ohio Valley	0160 - 23 (OV)	0167 - 23 (OV)
OB DWB	0037 - 23 (DWB)	0041 - 23 (DWB)

COAST GUARD DISTRICT 8, WATERWAYS, (504) 671-2327, 7:00 a.m. until 3:30 p.m. (CST)  
GENERAL LNM QUESTIONS, COMMENTS, OR SUGGESTIONS MAY BE E-MAILED TO: D8MarineInfo@uscg.mil  
COMMENTS REGARDING SECTION VI – PROPOSED CHANGES MAY ALSO BE EMAILED TO: LocalNoticeFeedback@uscg.mil  
NIS WATCHSTANDER PHONE (703) 313-5900, 24-HOURS A DAY  
INTERNET ADDRESS <https://www.navcen.uscg.gov/>  
MISSISSIPPI RIVER SYSTEM LNM VIA INTERNET <https://www.navcen.uscg.gov/>  
MISSISSIPPI RIVER SYSTEM LIGHT LIST VIA INTERNET [https://www.navcen.uscg.gov/pdf/lightLists/LightList\\_V5\\_2023.pdf](https://www.navcen.uscg.gov/pdf/lightLists/LightList_V5_2023.pdf)

### ABBREVIATIONS

#### A through H

ADRIFT - Buoy Adrift  
AICW - Atlantic Intracoastal Waterway  
Al - Alternating  
B - Buoy  
BKW - Breakwater  
bl - Blast  
BNM - Broadcast Notice to Mariner  
bu - Blue  
C - Canadian  
CHAN - Channel  
CGD - Coast Guard District  
C/O - Cut Off  
CONT - Contour  
CRK - Creek  
CONST - Construction  
DAYMK/Daymk - Daymark  
DBN/Dbn - Daybeacon  
DBD/DAYBD - Dayboard  
DEFAC - Defaced  
DEST - Destroyed  
DISCON - Discontinued  
DMGD/DAMGD - Damaged  
ec - eclipse  
EST - Established Aid  
ev - every  
EVAL - Evaluation  
EXT - Extinguished  
F - Fixed  
fl - flash  
Fl - Flashing  
G - Green  
GIWW - Gulf Intracoastal Waterway  
HAZ - Hazard to Navigation  
HBR - Harbor

#### I through O

I - Interrupted  
ICW - Intracoastal Waterway  
IMCH - Improper Characteristic  
INL - Inlet  
INOP - Not Operating  
INT - Intensity  
ISL - Islet  
Iso - Isophase  
kHz - Kilohertz  
LAT - Latitude  
LB - Lighted Buoy  
LBB - Lighted Bell Buoy  
LHB - Lighted Horn Buoy  
LGB - Lighted Gong Buoy  
LONG - Longitude  
LNM - Local Notice to Mariners  
LT - Light  
LT CONT - Light Continuous  
LTR - Letter  
LWB - Lighted Whistle Buoy  
LWP - Left Watching Properly  
MHz - Megahertz  
MISS/MSNG - Missing  
Mo - Morse Code  
MRASS - Marine Radio Activated Sound Signal  
MSLD - Misleading  
N/C - Not Charted  
NGA - National Geospatial-Intelligence Agency  
NO/NUM - Number  
NOS - National Ocean Service  
NW - Notice Writer  
OBSCU - Obscured  
OBST - Obstruction  
OBSTR - Obstruction

#### P through Z

PRIV - Private Aid  
Q - Quick  
R - Red  
RACON - Radar Transponder Beacon  
Ra ref - Radar reflector  
RBN - Radio Beacon  
REBUILT - Aid Rebuilt  
RECOVERED - Aid Recovered  
RED - Red Buoy  
REFL - Reflective  
RRL - Range Rear Light  
RELIGHTED - Aid Relit  
RELOC - Relocated  
RESET ON STATION - Aid Reset on Station  
RFL - Range Front Light  
RIV - River  
RRASS - Remote Radio Activated Sound Signal  
s - seconds  
SEC - Section  
SHL - Shoaling  
si - silent  
SIG - Signal  
SND - Sound  
SPM - Single Point Mooring Buoy  
SS - Sound Signal  
STA - Station  
STRUCT - Structure  
St M - Statute Mile  
TEMP - Temporary Aid Change  
TMK - Topmark  
TRLB - Temporarily Replaced by Lighted Buoy  
TRLT - Temporarily Replaced by Light  
TRUB - Temporarily Replaced by Unlighted Buoy  
USACE - Army Corps of Engineers

HOR - Horizontal Clearance  
HT - Height

Oc - Occulting  
ODAS - Anchored Oceanographic Data Buoy

W - White  
Y - Yellow

**Additional Abbreviations Specific to this LNM Edition:**

RIAC - River Industry Action Committee  
MMSI - Mobile Maritime Service Identity  
AIS - Automatic Identification System  
ATON - Aids To Navigation  
COTP - Captain of The Port  
TRDBN - Temporary Replaced by Daybeacon  
C.F.S. - Cubic Feet per Second  
CFR - Code of Federal Regulations  
IAW - In Accordance With  
h.p. - horse power  
MPH - Miles Per Hour  
TVA - Tennessee Valley Authority  
INC - Incorporated  
IENC - Inland Electronic Navigation Chart  
WAP - Waterway Action Plan  
MSIB - Marine Safety Information Bulletin  
L/D - Lock and Dam

---

---

**SECTION I - SPECIAL NOTICES**

This section contains information of special concern to the Mariner.

---

**DEPARTMENT OF HOMELAND SECURITY SUSPICIOUS ACTIVITY**

The Department of Homeland Security (DHS) encourages the maritime public to report information concerning suspicious activity to the local Federal Bureau of Investigation Joint Terrorism Task Force (JTTF) Office, [http://www.fbi.gov/about-us/investigate/terrorism/terrorism\\_jtfts](http://www.fbi.gov/about-us/investigate/terrorism/terrorism_jtfts), or to other appropriate authorities. The U.S. Coast Guard reminds the maritime industry that they may also report information concerning suspicious activity to the [www.AmericasWaterwayWatch.org](http://www.AmericasWaterwayWatch.org), the National Response Center (NRC) 1-800-424-8802 or 1-877-24WATCH.

LNM: 02-19

**WESTERN RIVERS FLOATING AIDS TO NAVIGATION**

The U.S. Coast Guard is responsible for placing and maintaining all aids to navigation. Buoys are set to mark project depths taking into consideration the prevailing river stages and obstructions. Buoy positions on the Inland Electronic Navigation Chart (IENC) are approximate, and subject to change depending on prevailing river stages and obstructions.

Buoys should always be given as wide a berth in passing as possible, consistent with the length and width of the vessel or tow and the width of the bend or crossing.

Buoys should always be used with caution. They may be carried off position by high water, accumulation of drift, ice, or sunk by collision or other causes. In those circumstances buoy marks will remain on the IENC and indicate the last known position of the buoy. Presence of a buoy mark on the IENC does not necessarily mean a buoy will be physically on position. When buoys are missing they will be replaced as soon as possible.

LNM: 16-19

**GPS TESTING**

At times, throughout our area of responsibility, multiple U.S. Government Agencies conduct GPS testing. These tests vary in duration, affected range from the test site and potential impact to the maritime user as they may affect systems that rely on GPS such as E-911, AIS and DSC. More information is available at the U.S. Coast Guard Navigation Center Website, <https://www.navcen.uscg.gov>. During these periods, GPS users are encouraged to report any GPS outages that they may experience, to the Navigation Information Service (NIS) by calling (703) 313-5900 or by using the NAVCEN Website to submit a GPS problem report.

LNM: 07-19

**HIGH/LOW WATER FLOW CONDITIONS**

During periods of high/low water flow conditions on the Mississippi River System, Captains of the Port, will issue Safety Advisories for their specific areas of responsibility via Broadcast Notice to Mariners. Mariners are encouraged to monitor the Sector Broadcast Notice to Mariners to ensure they are receiving the most up-to-date information.

LNM: 04-23

**USACE HUNTINGTON DISTRICT - RESTRICTED AREAS AT NAVIGATION STRUCTURES**

Attached as an enclosure to this LNM is a USACE Huntington District Notice to Navigation Interests 22-33, regarding maintenance and repair operations.

LNM: 03-23

**ARKANSAS RIVER - USACE CHANNEL STATUS REPORTS**

Attached as enclosures to this LNM, are USACE Arkansas River Channel Status Reports.

LNM: 09-23

### SUNSET OF NOAA PRINTED CHARTS

\*\*\*\* Cancellation of NOAA Paper and Raster Nautical Charts \*\*\*\*

The National Oceanic and Atmospheric Administration (NOAA) is undertaking a multi-year program to end production and maintenance of its suite of over 1,000 traditional paper nautical charts and all associated raster chart products and services, including: Print-on-Demand (POD) paper nautical charts, Full-size chart PDF files, BookletChart™ PDF files, NOAA raster navigational charts (NOAA RNC®), the NOAA RNC tile service, and the online RNC viewer.

Six months notice of the intent to cancel a specific chart is provided in a "Last Edition" notice. The final cancellation of a chart is made in a "Canceled" notice. Both types of notices will appear in LNM Section IV, "Chart Correction". A comprehensive list of all canceled NOAA charts is available at: <http://www.charts.noaa.gov/MCD/Dole.shtml>.

Traditional paper nautical chart production is ending to enable the creation and maintenance of larger scale, more up-to-date, higher quality coverage of NOAA's electronic navigational chart (NOAA ENC®) product. This will significantly enhance the amount of charted detail available to mariners. More information about NOAA's program to sunset traditional paper charts is on the NOAA Coast Survey website at: <https://nauticalcharts.noaa.gov/charts/farewell-to-traditional-nautical-charts.html>.

An online NOAA Custom Chart application at: <https://devgis.charttools.noaa.gov/pod> is available to create chart images from ENC data, which may then be printed. Notices to Mariners will not be issued for NOAA Custom Charts.

LNM: 10-21

### UPPER MISSISSIPPI RIVER/ILLINOIS WATERWAY - BARGE/RAIL COLLISION RISK

Attached as an enclosure to this LNM is U.S. Coast Guard Sector Upper Mississippi River MSIB 08-21, regarding barge/rail collision risk on the Upper Mississippi River and Illinois Waterway.

LNM: 15-23

### SAFETY NOTICE - NAVIGATIONAL RANGE AND SECTOR LIGHTS ON NOAA ELECTRONIC CHARTS

The U.S. Coast Guard has become aware that the Range and Sector Light Characteristic labels are not displayed on Electronic Navigational Charts (ENCs) when used in an Electronic Chart Display and Information System (ECDIS), due to limitations of the S-52 ECDIS, display specification. Mariners may query the ENC data directly within ECDIS or refer to the Light List for complete information on Range and Sector Light Characteristics.

LNM: 39-22

---

## SECTION II - DISCREPANCIES

This section lists all reported and corrected discrepancies related to Aids to Navigation in this edition. A discrepancy is a change in the status of an aid to navigation that differs from what is published or charted.

---

### DISCREPANCIES (FEDERAL AIDS)

LLNR	Aid Name	Status	Chart No.	BNM Ref.	LNM St	LNM End
280	Karns Island Upper Light	STRUCT DEST		0651OV	31/18	
990	Milligan Bend Light	STRUCT DEST		0642LM	51/19	
1010	Webber Falls Jetty Light	STRUCT DEST		0641LM	51/19	
1020	Bluff View Light	STRUCT DEST		0640LM	51/19	
1055	Hisaw Bottom Light	LT EXT		0196LM	40/18	
1070	Brier Creek Light	STRUCT DEST		0205LM	31/15	
1077	Sandtown Bottom Light	STRUCT DEST		0457LM	39/19	
1200	Black Rock Daybeacon	STRUCT DEST		0379LM	35/19	
1205	Gans Light	STRUCT DEST		0335LM	33/19	
1213	Non Lateral Mark 330.4	STRUCT DEST		0087LM	05/16	
1220	Onion Creek Daybeacon	STRUCT DMGD		0334LM	33/19	
1223	Non Lateral Mark 328.5	STRUCT DMGD		0333LM	33/19	
1225	Tucker Lake Light	STRUCT DEST		0332LM	33/19	
1230	Mcnabb Bottom Daybeacon	STRUCT DEST		0332LM	33/19	
1240	Deadman Slough Light	STRUCT DEST		0330LM	33/19	
1255	Wilsons Rock Light	STRUCT DMGD		0380LM	35/19	
1265	Peno Point Daybeacon	DAYMK DMGD		0580LM	47/19	
1267	Non Lateral Mark 313.9	STRUCT DEST		0089LM	05/16	
1315	Garrison Creek Daybeacon	DAYMK MISSING		0377LM	35/19	

1360	Crawford County Daybeacon	STRUCT DEST	0378LM	35/19
1365	Jeffrey Light	DAYMK MISSING	0376LM	35/19
1390	Fort Chaffee Light	STRUCT DEST	0579LM	47/19
1395	Haroldton Light	DAYMK MISSING	0578LM	47/19
1400	New Haroldton Light	STRUCT DEST	0574LM	47/19
1420	Gun Club Lake Daybeacon	DAYMK MISSING	0582LM	47/19
1427	Big Creek Daybeacon	DAYMK MISSING	0575LM	47/19
1430	Arbuckle Island Light	STRUCT DEST	0091LM	05/16
1435	Clear Creek Light	DAYMK MISSING	0584LM	41/19
1445	Crooked Slough Light	STRUCT DEST	0583LM	47/19
1455	Mulberry River Daybeacon	STRUCT DEST	0041UM	11/17
1510	Moores Creek Light	LT IMCH/STRUCT DMGD	0394LM	44/16
1515	Roseville Daybeacon	DAYMK MISSING	0604LM	50/19
1520	O'Kane Island Light	LT IMCH/STRUCT DMGD	0393LM	44/16
1525	Alix Bottom Light	STRUCT DEST	0605LM	50/19
1530	County Line Daybeacon	STRUCT DEST	0606LM	50/19
1532	Non Lateral Mark 246.3	DAYMK MISSING	0607LM	50/19
1535	Kalamazoo Light	DAYMK MISSING	0608LM	50/19
1562	Non Lateral Mark 236.3	DAYMK MISSING	0609LM	50/19
1615	Dublin Daybeacon	STRUCT DEST	0610LM	50/19
1650	Bunker Hill Upper Daybeacon	STRUCT DEST	0639LM	51/19
1660	Bunker Hill Lower Daybeacon	STRUCT DEST	0643LM	51/19
1695	Dardanelle Reach Light	DAYMK DMGD	0204LM	31/15
1697	Non Lateral Mark 201.4	STRUCT DEST	0200LM	41/18
1700	Elberta Light	DAYMK MISSING	0611LM	50/19
1705	Old Neely Daybeacon	DAYMK MISSING	0612LM	50/19
1708	Non Lateral Mark 197.9	STRUCT DEST	0052LM	13/17
1710	Point Bar Cutoff Light	DAYMK MISSING	0613LM	50/19
1715	Hola Bend Cutoff Light	DAYMK MISSING	0614LM	50/19
1725	Reeds Ferry Light	DAYMK MISSING	0615LM	50/19
1733	Non Lateral Mark 189.8	DAYMK MISSING	0616LM	50/19
1735	Sweeden Island Light	LT EXT/DAYMK MISSING	0617LM	50/19
1738	Non Lateral Mark 188.8	DAYMK MISSING	0618LM	50/19
1745	Wilson Light	STRUCT DEST	0620LM	50/19
1770	Willow Bend Lower Daybeacon	DAYMK MISSING	0621LM	50/19
1798	Non Lateral Mark 175.6	DAYMK MISSING	0622LM	50/19
1800	Point Remove Creek Light	DAYMK MISSING	0623LM	50/19
1815	Ellis Island Light	STRUCT DEST	0630LM	51/19
1817	Non Lateral Mark 171.2	DAYMK MISSING	0631LM	51/19
1845	Stane Reach Upper Daybeacon	DAYMK DMGD	0634LM	51/19
1850	Stane Reach Light	DAYMK DMGD	0635LM	51/19
1890	Belk Corner Light	DAYMK MISSING/STRUCT DMGD	0558LM	45/19
1903	Non Lateral Mark 150.9	DAYMK MISSING	0560LM	45/19
1915	Bigelow Middle Daybeacon	DAYMK DMGD	0563LM	45/19
1920	Bigelow Lower Light	DAYMK MISSING	0538LM	44/19
1930	Tri County Light	STRUCT DEST	0370LM	41/16
1940	Beaver Dam Creek Daybeacon	STRUCT DMGD	0636LM	51/19
1948	Non Lateral Mark 138.8	DAYMK MISSING	0539LM	44/19
1953	Non Lateral Mark 137.6	DAYMK MISSING	0540LM	44/19

1960	Palarm Light	DAYMK MISSING	0541LM	44/19
1975	Maumelle River Upper Daybeacon	STRUCT DEST	0565LM	45/19
1988	Non Lateral Mark 130.6	DAYMK MISSING	0542LM	44/19
2030	Burns Park Light	STRUCT DEST	0514LM	42/19
2045	Waterworks Bend Light	DAYMK DMGD	0515LM	42/19
2130	Willow Bar Light	LT EXT	0524LM	42/19
2143	Non Lateral Mark 106.5	DAYMK MISSING	0637LM	51/19
2160	Estes Place Light	DAYMK IMCH/STRUCT DMGD	0396LM	44/16
2199	Non Lateral Mark 92.0	STRUCT DEST	0398LM	44/16
2370	Ste. Marie Bend Lower Daybeacon	STRUCT DEST	0407LM	45/16
2435	Richland Bend Middle Daybeacon	STRUCT DEST	0099LM	16/18
2485	Little Bayou Meto Lower Daybeacon	DAYMK DMGD	0094LM	15/18
2498	Cummins Bend Daybeacon	STRUCT DEST	0103LM	06/16
2540	Sample Island Light	STRUCT DEST	0106LM	06/16
2550	Sample Island Lower Light	STRUCT DEST	0107LM	06/16
2665	Owens Lake Daybeacon	DAYMK DMGD	0110LM	06/16
3655	Cages Bend Light	STRUCT DEST	0660OV	38/19
3965	Watkins Daybeacon	STRUCT DEST	0245OV	19/17
4250	Shammels Mound Landing Light	STRUCT DEST	0010OV	02/16
4285	Saline Creek Light	STRUCT DEST/TRUB	0221OV	26/16
4315	Pryors Creek Light	STRUCT DEST	0030OV	02/20
4340	Devils Elbow Light	STRUCT DEST	0306OV	16/18
4365	Bleidt Landing Light	STRUCT DEST/TRUB	0137OV	17/21
4390	Crooked Creek Light	STRUCT DEST/TRUB	0383OV	36/16
4425	Commerce Landing Light	STRUCT DEST	0520OV	42/22
4455	Prison Farm Landing Light	STRUCT DEST	0145OV	17/21
4500	Kuttawa Bar Light	STRUCT DEST	0243OV	12/18
4505	Money Cliff Light	STRUCT DEST	0364OV	19/18
6810	Halls Landing Daybeacon	STRUCT DMGD	0024MI	07/23
6985	Sand Point Lower Light	STRUCT DEST	0102UM	20/22
6990	Circle Light	STRUCT DMGD	0102UM	20/22
6995	Spring Bay Daybeacon	STRUCT DEST	0102UM	20/22
7035	Drolls Point Light	STRUCT DEST/TRLB	0233UM	23/20
7585	Frederick Light	STRUCT DEST	0539UM	29/19
7650	Briggs Landing Light	LT EXT/STRUCT DMGD	0890UM	51/19
7695	Moores Island Light	STRUCT DEST	0037UM	12/22
7705	Wilson Island Daybeacon	DAYMK DMGD	0104UM	18/21
7850	Florence Light	LT EXT	0055UM	14/22
8540	Blaines Island Light	STRUCT DEST	0320OV	25/22
8857	Arbuckle Creek Light	STRUCT DEST/TRDBN		39/20
9150	Washita Point Light	LT EXT	0395LM	33/20
9185	Preston Peninsula Light	REDUCED INT	0420LM	46/16
10185	Cedar Point Light	REDUCED INT	0031LM	18/22
10195	Dean Island Light	REDUCED INT	0327LM	33/19
10210	Brandywine Chute Light	REDUCED INT	0031LM	18/22
10225	Island 40 Foot Light	STRUCT DEST	0232LM	49/18
10540	Harbert Point Light	LT EXT	0256LM	36/15
10545	Stumpy Point Light	STRUCT DEST	0249LM	52/18
10625	Delta Lower Light	STRUCT DEST	0118LM	06/16

10650	Miller Point Light	STRUCT DEST	0171LM	14/16
10660	Old Town Bend Foot Light	STRUCT DEST	0253LM	36/15
10685	Robson Light	STRUCT DEST	0116LM	06/16
10700	Sunflower Cut-Off Foot Light	STRUCT DEST	0115LM	06/16
10710	Ludlow Bar Light	DAYMK DMGD	0018LM	04/18
10715	Wood Cottage Light	STRUCT DEST	0114LM	06/16
10720	Knowlton Light	STRUCT DEST	0113LM	06/16
10730	Mason Landing Daybeacon	STRUCT DEST	0172LM	14/16
10815	Riverton Middle Bar Light	STRUCT DEST	0113LM	21/18
10885	Cypress Bend Light	STRUCT DEST	0032LM	07/18
10895	Eutaw Bar Light	STRUCT DEST	0365LM	35/19
10905	Mounds Crevasse Lower Light	STRUCT DEST	0114LM	21/18
10910	Boliver Light	STRUCT DEST	0069LM	11/18
10955	Miller Bend Light	STRUCT DEST	0030LM	06/18
10965	La Grange Towhead Light	STRUCT DEST	0367LM	35/19
11050	Vaucluse Bend Light	STRUCT DEST	0028LM	06/18
11070	Anconia Point Light	STRUCT DEST	0368LM	35/19
11080	Lakeport Light	STRUCT DEST	0369LM	35/19
11085	Walnut Point Light	STRUCT DEST	0370LM	35/19
11125	Corregidor Light	STRUCT DEST	0080LM	05/16
11130	Sarah Island Light	STRUCT DEST	0371LM	35/19
11170	Stack Island Light	STRUCT DEST	0372LM	35/19
11180	STACK ISLAND LOWER LIGHT	STRUCT DEST	0373LM	35/19
11195	Chinaman Light	STRUCT DEST	0374LM	35/19
11210	Fitler Point Daybeacon	STRUCT DEST	0170LM	28/17
11215	Seitz Light	STRUCT DEST	0448LM	38/19
11220	Cottonwood Bar Pointway Light	STRUCT DEST	0449LM	38/19
11245	Willow Point Light	DAYMK DMGD	0450LM	38/19
11250	Belle Island Corner Daybeacon	STRUCT DEST	0451LM	38/19
11270	Cabin Teele Light	STRUCT DEST	0452LM	38/19
11275	Marshall Point Cut-Off Daybeacon	STRUCT DEST	0453LM	38/19
11280	Joseph Henry Daybeacon	STRUCT DEST	0454LM	38/19
11407	Coggins Light	STRUCT DEST	0296LM	29/16
11415	Reid Bedford Point Light	STRUCT DEST	0463LM	39/19
11425	Diamond Light	STRUCT DEST	0464LM	39/19
11430	Sargent Point Light	LT IMCH/DAYMK DMGD	0465LM	39/19
11440	Cannon Point Light	STRUCT DEST	0294LM	41/17
11455	Buckridge Light	STRUCT DEST	0467LM	39/19
11470	Grand Gulf Island Light	STRUCT DEST	0468LM	39/19
11505	Old Levee Light	LT IMCH/DAYMK DMGD	0470LM	39/19
11520	Ashland Light	LT IMCH/DAYMK DMGD	0471LM	39/19
11530	Hole In The Wall Light	LT IMCH/REDUCED INT	0472LM	39/19
11540	Giles Bend Cut-Off Light	STRUCT DEST	0171LM	28/17
<b>11680</b>	<b>Bob Boles Light</b>	<b>STRUCT DEST</b>		<b>18/23</b>
11700	Fort Adams Light	STRUCT DEST	0402LM	36/19
11795	Morganza Crevasse Light	STRUCT DEST	0400LM	36/19
11835	Bayou Sara Bend Light	STRUCT DEST	0399LM	36/19
11860	Port Hudson Light	STRUCT DEST	0581NO	36/19
11900	Devils Swamp Light	STRUCT DEST	0397LM	36/19

11940	Ben Burman Light	STRUCT DEST	0549LM	44/19
13165	Lock 5A Light	LT EXT	0172UM	20/20
13230	Island 74 Light	STRUCT DEST/TRUB	0380UM	34/20
13430	Root River Upper Light	STRUCT DEST/HAZ NAV	0172UM	20/20
13510	Perry Ruby Light	STRUCT DEST	0061UM	12/17
13535	Britts Landing Daybeacon	DAYMK DMGD/STRUCT DMGD	0310UM	42/22
13720	Crooked Slough Head Daybeacon	STRUCT DEST/TRUB	0482UM	26/19
13725	Crooked Slough Head Light	STRUCT DEST/TRUB	0482UM	26/19
13765	Island 158 Daybeacon	DAYMK DMGD	0310UM	43/22
13895	Clayton Daybeacon	STRUCT DEST	0310UM	43/22
13915	Clayton Lower Daybeacon	STRUCT DEST/TRUB	0240UM	31/18
14010	Cassville Upper Daybeacon	STRUCT DEST	0546UM	29/19
14030	Cassville Lower Light	STRUCT DEST	0546UM	29/19
14105	Maquoketa Island Light	STRUCT DEST	0460UM	25/19
14230	Nine-Mile Island Light	STRUCT DEST	0410LM	36/17
14260	Stone Slough Light	STRUCT DEST	0454UM	25/19
14275	Fever River Light	STRUCT DEST/TRUB	0485UM	45/18
14295	Pulaski Light	STRUCT DEST	0485UM	45/18
14385	Arnold Towhead Light	STRUCT DEST	0449UM	25/19
14445	Sabula Lower Light	STRUCT DEST	0446UM	25/19
14460	Smith Bay Light	STRUCT DEST	0048UM	13/22
14475	Elk River Light	DAYMK DMGD	0257LM	31/21
15170	Edwards Island Upper Light	STRUCT DEST/TRUB	0403UM	26/16
15785	Sny River Light	STRUCT DEST	0114UM	22/22
16065	Elswood Lower Light	STRUCT DEST	0030UM	16/23
16110	Hastings Landing Daybeacon	STRUCT DMGD	0282UM	39/22
16120	Cuivre Island Light	STRUCT DEST	0282UM	39/22
16200	Portage Des Sioux Light	LT EXT	0088UM	18/22
16910	Ste. Genevieve Island Light	STRUCT DEST	0557UM	30/19
23285	Cluster Upper Light	STRUCT DEST	0721OV	34/18
23355	Brown Island Foot Light	LT EXT	0027OV	03/23
24110	Old Lock No. 17 Lower Daybeacon	STRUCT DEST		39/20
25355	Sciotoville Light	LT EXT	0095OV	11/23
26047	Sunken Barge Lighted Buoy WR	MISSING	0519OV	51/21
26470	Notch Lick Light	STRUCT DEST	0210OV	23/21
27090	Wolf Creek Light	LT EXT	0064OV	05/22
27520	Robert Mann Light	STRUCT DEST	0269OV	21/22
27540	Water Works Light	STRUCT DMGD	0179OV	12/22
27855	Graham Varble Light	STRUCT DEST	0134OV	17/21
27935	Dekoven Light	STRUCT DEST	0294OV	23/22
29231.34	Westdale Middle Daybeacon	STRUCT DEST/TRUB	0121LM	44/22
29241.25	Smith Island Lower Daybeacon	STRUCT DEST	0202LM	26/21
29272	Deloges Middle Daybeacon	DAYMK IMCH		36/20
29467	Hog Lake Daybeacon	STRUCT DEST		36/20
29618	Red River Entrance Light	STRUCT DEST		37/20
29665	Dry Cypress Daybeacon	STRUCT DEST		37/20
29690	Bayou Cocodrie Upper Daybeacon	STRUCT DEST		37/20
29695	Bayou Cocodrie Daybeacon	STRUCT DEST		37/20
29710	Grassy Lake Daybeacon	DAYMK MISSING		37/20

29725	Alligator Bayou Daybeacon	STRUCT DEST	0216LM	33/17
29750	Timber Lake Daybeacon	STRUCT DEST		37/20
29755	Naples Daybeacon	STRUCT DEST		37/20
29775	Three Rivers Junction Light	STRUCT DEST		37/20
29780	Barbre Daybeacon	STRUCT DEST		37/20
29785	Torras Daybeacon	STRUCT DEST		37/20
29795	Oak Grove Daybeacon	STRUCT DEST		37/20
29845	Houden Point Daybeacon	STRUCT DEST	0255UM	30/21
31995	Dry Creek Light	STRUCT DEST	0402OV	31/20
32140	Chambers Daybeacon	STRUCT DEST	0178OV	11/13
32170	Diamond Island Lower Daybeacon	STRUCT DEST	0177OV	11/13
32190	Savannah Bend Upper Daybeacon	STRUCT DEST	0039OV	04/23
32335	Brodies Landing Light	STRUCT DEST	0041OV	04/23
32350	Crooked Creek Light	STRUCT DEST	0042OV	04/23
32445	Sales Light	TRUB/STRUCT DEST	0269OV	19/14
32460	Reynoldsburg Island Light	STRUCT DEST/TRUB	0290OV	15/18
32465	Shirley Light	STRUCT DEST	0040OV	04/23
32480	Higgins Light	STRUCT DEST	0342OV	27/15
32510	Hurricane Creek Light	STRUCT DEST	0043OV	04/23
32530	Standing Rock Upper Light	STRUCT DEST	0658OV	41/13
32570	Fort Henry Light	STRUCT DEST	0160OV	19/21
32595	Blood River Light	STRUCT DEST/TRUB	0138OV	17/21
32600	Clyde Light	LT EXT	0581OV	44/15
32605	Newburg Light	STRUCT DEST	0362OV	29/15
32710	Twenty-One Mile Light	STRUCT DEST	0108OV	13/23
32715	Chottes Creek Light	STRUCT DEST	0107OV	13/23
32750	Haddock Ferry Light	LT EXT/DAYMK MISSING	0106OV	13/23
32765	Big Chain Light	STRUCT DEST	0105OV	13/23
32780	Mud Creek Light	STRUCT DEST	0036OV	04/23
32825	W. L. Berry Light	STRUCT DEST	0110OV	13/23

**DISCREPANCIES (FEDERAL AIDS) CORRECTED**

LLNR	Aid Name	Status	Chart No.	BNM Ref.	LNM St	LNM End
------	----------	--------	-----------	----------	--------	---------

None

**DISCREPANCIES (PRIVATE AIDS)**

LLNR	Aid Name	Status	Chart No.	BNM Ref.	LNM St	LNM End
1685	Oakley Dock Light	LT EXT		0307LM	44/14	
1690	Mobley Dock Light	LT EXT		0454LM	48/13	
2100	Oakley Light	LT EXT		0520LM	42/19	
2337	Island Harbor Marina Light	LT EXT			45/16	
2340	Century Tube Lights (2)	LT EXT			45/16	
2400	Pickett And Davison Lights (2)	LT EXT		0481LM	50/13	
3725	Lakewood Marina Lights (4)	LT IMCH		0439OV	34/15	
3750	Dupont Dock Lights (2)	OFF STA/LT EXT		0305OV	26/15	
3795	Nashville Water Intake Lights (2)	LT EXT			44/11	
3805	Holnam Dock Lights (2)	LT EXT			44/11	
3815	Kerr-Mcgee Dock Lights (2)	LT EXT			44/11	



3820	Cohen Terminal Lights (2)	LT EXT		44/11
3930	Alcoa Chemical Dock Lights (2)	MSLD SIG/LT EXT	0216OV	14/10
3960	Hunter Marine Transport Dock Lights (2)	LT EXT		47/08
3995	Riverview Marina Lights (2)	LT EXT		47/08
4055	Clarksville Boat Club Dock Lights (2)	LT EXT	0533OV	34/12
6170	Quantum Chemical Dock Lights (2)	LT EXT	0436UM	31/01
6650	S. T. Services Terminal Lights (2)	LT EXT		41/14
6695	Continental Grain Company Light	LT EXT		41/14
7225	Cargo Carriers Dock Lights (2)	LT EXT		25/08
7235	Pekin Boat Club Breakwater Light	LT EXT		05/16
7250	Shell Dock Lights (2)	LT EXT	0123UM	16/02
7255	Adm Growmark Mooring Light	LT EXT	0122UM	16/02
7260	Sours Grain Tramway Light	LT EXT	0279UM	21/03
7265	Tomen Dock Light	LT EXT		25/08
7295	Adm Growmark Mooring Lights (3)	LT EXT	0281UM	21/03
7460	Cargill Mooring Lights (2)	LT EXT	0284UM	21/03
7620	Cargill Dock Lights (2)	LT EXT		35/08
7725	Cargill Terminal Lights (2)	LT IMCH	0171UM	26/18
7730	Public Service Co. Dock Lights (6)	LT EXT	0119UM	20/18
7730	Public Service Co. Dock Lights (6)	LT IMCH	0171UM	26/18
7760	Adm Growmark Grain Elevator Lights (2)	LT IMCH	0171UM	26/18
9440	Black Dog Lights (5)	LT EXT		43/16
9965	Huffman Grain Light	STRUCT DEST	0131LM	08/16
10300	Cargill Dock Light	LT EXT	0361LM	34/01
10390	Peavey Lights (2)	LT EXT	0398LM	36/02
10395	Suburban Propane Dock Light	LT EXT	0396LM	36/02
10415	Western Tar Products Dock Light	LT EXT	0394LM	36/02
11943	Bear Industries Barge Dock Lights (4)	LT EXT	0600NO	30/17
11990	Riverside Dock Lights (2)	LT EXT	0695UM	40/01
12080	University Dock Lights (3)	LT EXT	0696UM	40/01
12215	Koch Fuel Dock Lights (2)	LT EXT		35/16
12320	Newport Terminal Lights (2)	LT EXT		35/16
12385	Shiely Dock Lights (2)	LT IMCH		35/16
12712	City of Red Wing Metering Station Special Light	MISSING		42/16
12768	Consolidated Grain and Barge Loading Dock Piling Lights (2)	MISSING		42/16
12930	Alma City Dock Light/Daymarks (3)	MISSING		42/16
13405	G. Heileman Brewery Dock Light	MISSING		42/16
14756	Isle Of Capri Casino Marina Daybeacon	MISSING		03/16
15345	Koch Nitrogen Dock Light	LT EXT		41/14
15415	Riverview Park Dock Light	LT EXT	0531UM	49/15
15425	Hall Towing Light	STRUCT DEST	0280UM	25/20
15822	Hannibal Intake Light	LT EXT	0358UM	32/20
16100	Jersey County Grain Dock Lights (2)	LT EXT		19/16
16205	Piasa Harbor Light	LT EXT	0131UM	22/15
16220	Con-Agra Mooring Lights (2)	LT EXT		21/16
16230	Alton Marina Breakwater Lights (3)	LT EXT	0131UM	22/15
16265	Amoco Dock Light	STRUCT DEST		35/09

16280	Amoco Dock Lights (4)	LT EXT			35/09
16310	Sioux City/New Orleans Terminal Light	STRUCT DEST			35/09
16380	Western Dock Lights (9)	LT IMCH			34/08
16390	Adm-Growmark Dock Lights (4)	LT EXT	0776UM		44/01
16430	Union Electric Coal Dock Lights (2)	LT EXT	0305UM		34/08
16445	Continental Cement Lights (2)	LT EXT	0305UM		34/08
16505	Peavey Company Dock Lights (3)	LT EXT	0305UM		34/08
16530	Cahokia Marine Terminal Lights (2)	LT EXT	0305UM		34/08
16540	Slay Bulk Terminal Lights (2)	LT EXT	0305UM		34/08
16545	Peavey Lights (3)	LT EXT	0305UM		34/08
16550	Eagle Marine Industries Light	LT IMCH	0305UM		34/08
16560	Phillips Pipeline Lights (2)	LT EXT	0305UM		34/08
16565	Growmark Dock Lights (2)	LT EXT	0305UM		34/08
16575	Eagle Marine Dock Lights (2)	LT EXT	0305UM		34/08
16600	J.H. Collier Barge Mooring Lights (2)	LT EXT	0305UM		34/08
16605	Clark Oil Refining Dock Lights (4)	LT EXT	0305UM		34/08
16609	Alcoa Foil Lights (2)	LT EXT	0305UM		34/08
16615	Hci Chemtech Dock Lights (2)	LT EXT	0305UM		34/08
16617	Semmaterials Terminal Lights (2)	LT EXT	0305UM		34/08
16630	American Commercial Dock Lights (2)	LT EXT	0305UM		34/08
16655	Bussen Terminal Light	LT EXT	0305UM		34/08
18700	Bunge Dock Lights (3)	MISSING/LT EXT			18/08
19185	St. Joseph L & P Dock Light	LT IMCH			17/08
19415	Leavenworth Water Intake Lights (2)	LT EXT	0104UM		39/07
19460	Smoot Grain Dock Lights (2)	LT EXT	0385UM		39/07
19505	Board Of Public Utilities Light	LT EXT	0386UM		39/07
19535	Public Utilities Intake Lights (3)	LT EXT			38/08
19660	Continental Grain Dock Lights (4)	LT EXT	0181UM		24/08
19695	Kansas City Power And Light Company Lights (2)	LT EXT	0181UM		24/08
20870	U.E. Callaway Intake Lights (2)	LT EXT	0522UM		52/20
22873	Moon Township Municipal Authority Back Channel Outfall Danger Buoy	OFF STA	0108OV		14/21
24005	Bens Run Light	LT EXT			03/20
24580	Ohio Power Coal Dock Light	LT EXT	0480OV		44/21
25820	Cargill Barge Loading Facility Light	LT EXT	0552OV		40/09
26290	Boone County Sand And Gravel Lights (2)	LT EXT	0769OV		40/00
26833	Transmontaige Dock Lights (2)	LT EXT	0286OV		28/21
26860	Dupont Chemical Lights (2)	LT EXT	0330OV		17/18
27590	Transmontaigne Dock Lights (4)	LT EXT			40/21
32900	Ergon Dock Lights (2)	LT IMCH			17/13
	Alcosan-Mascaro Temporary Lighted Danger Buoy	MISSING			24/22

**DISCREPANCIES (PRIVATE AIDS) CORRECTED**

LLNR	Aid Name	Status	Chart No.	BNM Ref.	LNM St	LNM End
------	----------	--------	-----------	----------	--------	---------

None

**PLATFORM DISCREPANCIES**

Name	Status	Position	BNM Ref.	LNM St	LNM End
------	--------	----------	----------	--------	---------

None

**PLATFORM DISCREPANCIES CORRECTED**

Name	Status	Position	BNM Ref.	LNM St	LNM End
------	--------	----------	----------	--------	---------

None

**SECTION III - TEMPORARY CHANGES and TEMPORARY CHANGES CORRECTED**

This section contains temporary changes and corrections to Aids to Navigation for this edition. When charted aids are temporarily relocated for dredging, testing, evaluation, or marking an obstruction, a temporary correction shall be listed in Section IV giving the new position.

**TEMPORARY CHANGES**

LLNR	Aid Name	Status	Chart No.	BNM Ref.	LNM St	LNM End
7015	Blue Creek Point Lower Lighted Buoy	TRUB		0379UM	51/21	
7030	Drolls Point Upper Lighted Buoy	TRUB		0379UM	51/21	
7040	Peoria Heights Lighted Buoy	TRUB		0379UM	51/21	
8540	Blaines Island Light	DISCONTINUED			39/20	
10455	Armstrong Bar Light	RELOCATED			23/18	
11275	Marshall Point Cut-Off Daybeacon	TRDBN			49/16	
11280	Joseph Henry Daybeacon	TRDBN			49/16	
29880	Kinnikinnic River Daybeacon	DISCONTINUED			21/20	

**TEMPORARY CHANGES CORRECTED**

LLNR	Aid Name	Status	Chart No.	BNM Ref.	LNM St	LNM End
------	----------	--------	-----------	----------	--------	---------

None

**PLATFORM TEMPORARY CHANGES**

Name	Status	Position	BNM Ref.	LNM St	LNM End
------	--------	----------	----------	--------	---------

None

**PLATFORM TEMPORARY CHANGES CORRECTED**

Name	Status	Position	BNM Ref.	LNM St	LNM End
------	--------	----------	----------	--------	---------

None

**SECTION V - ADVANCE NOTICES**

This section contains advance notice of approved projects, changes to aids to navigation, or upcoming temporary changes such as dredging, etc. Mariners are advised to use caution while transiting these areas.

**SUMMARY OF ADVANCED APPROVED PROJECTS**

**Approved Project(s)**

Project Date      Ref. LNM

None

**Advance Notice(s)**

**TENNESSEE RIVER**

The Coast Guard will be making the following Aid to Navigation change after May 9, 2023:  
Discontinue Dry Creek Light (LLNR-31995) at mile 248.2, Left Descending Bank in approximate position 34-43-49.342N/087-47-35.364W.  
LNM: 11/23

---

---

## SECTION VI - PROPOSED CHANGES

Periodically, the Coast Guard evaluates its system of aids to navigation to determine whether the conditions for which the aids to navigation were established have changed. When changes occur, the feasibility of improving, relocating, replacing, or discontinuing aids are considered. This section contains notice(s) of non-approved, proposed projects open for comment. SPECIAL NOTE: Mariners are requested to respond in writing to the District office unless otherwise noted (see banner page for address).

---

### PROPOSED WATERWAY PROJECTS OPEN FOR PUBLIC COMMENT

#### Proposed Project(s)

None

#### Closing

#### Docket No.

#### Ref. LNM

#### Proposed Change Notice(s)

##### **ALLEGHENY RIVER**

The Coast Guard is proposing the following Aid to Navigation change:

Discontinue Karns Island Upper Light (LLNR-280) at mile 27.4, Right Descending Bank, in approximate position 40-39-09.171N 079-41-32.511W. Comments to be received by May 9, 2023. Please email comments regarding this proposal to: D08-SMB-District-LocalNoticeFeedback@uscg.mil.

LNM: 11/23

##### **OHIO RIVER**

The Coast Guard is proposing the following Aid to Navigation change:

Discontinue Old Lock No. 17 Lower Daybeacon (LLNR- 24110) at mile 167.6, Right Descending Bank, in approximate position 39-21-58.421N 081-23-57.062W. Comments to be received by May 9, 2023. Please email comments regarding this proposal to: D08-SMB-District-LocalNoticeFeedback@uscg.mil.

LNM: 11/23

---

---

## SECTION VII - GENERAL

This section contains information of general concern to the Mariners. Mariners are advised to use caution while transiting these areas.

---

##### **ALLEGHENY RIVER**

##### **MILE 0.6 - BRIDGE MAINTENANCE**

Sixth Street Bridge; A containment system is installed below low steel and follows the contour of the bridge. Vertical clearance is reduced approximately 1-foot for the middle, 100 feet of the navigation span. A work barge will be located outside of the navigation channel and will not affect navigation. Mariners are advised to transit the bridge with extreme caution.

LNM: 38-22

##### **ARKANSAS RIVER**

##### **MILE 336.2 - L/D DAMAGE**

Until further notice mariners are advised to use caution when transitioning in the Robert S. Kerr L/D Nr. 15 chamber, due to recent damage to the recess armor on the right descending wall, at approximately the 50-foot mark. A large section of steel armor plating is hanging down and protruding into the chamber, and the concrete corner is exposed. Mariners are urged to favor the left descending wall. Mariners may contact the L/D, for the latest information. Mariners may contact the USACE Tulsa District Mr. Robert Steiner, Navigation Operation Manager, at (918) 775-4475, ext. 5833 or Mr. Jake Simpson, Navigation Field Engineer, at (918) 430-4783, for additional information.

LNM: 16-23

##### **MILE 319.6 - L/D DELAY**

Continuing until further notice, from 7:00 a.m., until 5:00 p.m., each day, mariners may expect a delay, at WD Mayo L/D Nr. 14, as a salvage crew removes a damaged cell adjacent to the upstream lock approach channel. Mariners are advised to stay up-to-date with the latest information. Waterway users are asked to check with L/D Nr. 14, for the latest information and should schedule their activities around this notice. Mariners may contact Mr. Robert Steiner, Navigation Operation Manager at (918) 775-4475 ext. 5833 or Mr. Jacob Simpson, Navigation Field Engineer at (918) 430-4783, for additional information.

LNM: 07-23

##### **MILE 300.4 - BRIDGE MAINTENANCE**

Continuing until further notice, concrete and deck repairs will be conducted on the I-64 Bridge. All vessels are directed to use the main navigation channel. Mariners may contact the I-64 Bridge crew on VHF-FM Channel 13 or 16, for further information.

LNM: 13-23

##### **MILE 299.6 - BRIDGE MAINTENANCE**

Continuing until further notice, concrete and deck repairs will be conducted on the I-540 Bridge. All vessels are directed to use the main navigation channel. Mariners may contact the I-540 Bridge crew on VHF-FM Channel 13 or 16, for further information.

LNM: 13-23

##### **MILE 118.2 - BRIDGE PROTECTION CELL DAMAGE**

The upstream left descending pier protection cell at the Clinton Presidential Park Bridge in the vicinity of Mile 118.2, is damaged and leaning into the left descending bridge pier. Mariners are urged to exercise caution in the area. Mariners may contact the USACE Little Rock District Office at (501) 324-5096 or via e-mail at: ceswl-op-om@usace.army.mil, for additional information.

LNM: 48-21

##### **CUMBERLAND RIVER**

**CUMBERLAND RIVER  
MILE 211.5 - AID TO NAVIGATION**

A red buoy has been reported missing in the vicinity of Mile 211.5. Mariners are urged to exercise caution in the area.

LNM: 17-23

**MILE 190.4 - BRIDGE MAINTENANCE**

Louisville and Nashville (CSX) Railroad Drawbridge; Vertical clearance is reduced by 4 feet due to installed containment system. The bridge remains fully operational. Mariners are advised to contact bridge tender via VHF-FM Channel 16 or maintenance supervisor at telephone (989) 717-3192, for additional information.

LNM: 35-22

**GREEN RIVER  
MILE 8.3 - BRIDGE OPERATION**

Louisville and Nashville Railroad Drawbridge; The bridge will be unattended and left in the open-to-navigation position. Mariners will be notified when the bridge is back in operation.

LNM: 20-22

**ILLINOIS WATERWAY  
MILE 288.7 - MILE 287.3 - BRIDGE REPAIRS**

Joliet Harbor Bridges; Due to ongoing bridge work, mariners are required to provide 1-hour advance notice, when requesting drawspan openings.

LNM: 19-20

**MILE 151.2 - BRIDGE OPERATION**

Pekin Railroad Drawbridge; Continuing until further notice, the bridge will be unattended and left in the open-to-navigation position. The bridge shall initiate the closing sequence for an approaching train by broadcasting the closure on VHF-FM Channel 16, 10-minutes prior to closure and immediately prior to closing. If no mariners respond to the broadcast, the operator of the bridge may begin the closing sequence. For additional information, mariners may contact Joe Ballou, with Union Pacific Railroad at (708) 990-8513.

LNM: 34-22

**MILE 151.2 - BRIDGE CONDITION**

Pekin Railroad Drawbridge: The downstream, right descending sheerfence is missing. Mariners are urged to transit the bridge with caution.

LNM: 17-23

**LOWER MISSISSIPPI RIVER  
MILE 934.0 - SUNKEN BARGE - UPDATE**

Salvage operations are being conducted on a previously reported sunk barge, at Mile 934.0, outside of the main shipping lane, on the east side of Wolf Island Bar. Mariners are urged to use extreme caution when transiting this area.

LNM: 18-23

**MILE 734.7 - BRIDGE MAINTENANCE**

Memphis Highway Bridge: Due to maintenance on the bridge, a containment system is installed and will hang 2 feet below low steel following the contour of the bridge. Mariners are advised to transit the area with caution.

LNM: 17-23

**MILE 230.0 - MILE 228.5 - BRIDGE FENDER SYSTEM REPLACEMENT**

Continuing until approximately August 2, 2023, work to replace the bridge fender system on the I-10 Bridge, left descending pier of the center span, in the vicinity of Mile 229.3, is being conducted. Work will be conducted Monday through Saturday, from 6:00 a.m. until 7:00 p.m. Mariners are urged to transit between Mile 230.0 and 228.5, at their slowest safe speed to minimize their wake and proceed with caution. Mariners may contact Ryan Finnie via VHF-FM Channel 21 or at (321) 501-3936, for additional information.

LNM: 31-22

**UPPER MISSISSIPPI  
MILE 495.4 - BRIDGE MAINTENANCE**

I-80 Highway Bridge; Vertical Clearance may be reduced due to snoopers trucks conducting an inspection of the bridge. The inspection will be conducted Monday through Friday, from 7:00 a.m. until 4:30 p.m., until May 12, 2023. Mariners may contact the inspection team via VHF-FM Channel 16, or by cell phone at (217) 416-8787, for additional information.

LNM: 18-23

**MILE 482.1 - BRIDGE MAINTENANCE**

Centennial Highway Bridge: Continuing until June 1, 2023, work to replace the existing roller bearings on top of the piers will be conducted. Work will be conducted from 7:00 a.m. until 5:30 p.m., Monday through Saturday. Mariners are urged to transit the area with caution.

LNM: 17-23

**MILE 168.6 - BRIDGE MAINTENANCE**

Jefferson Barracks Dual Bridge; Due to a containment system installed below low steel, vertical clearance has been reduced to 84 feet. Mariners are advised to transit the bridge with caution.

LNM: 17-22

**MILE 25.0 - DEMOLITION OPERATION**

COTP Pittsburgh advises all mariners of a land-based demolition in the vicinity of Mile 25.0. Operations will be conducted on May 12, 2023, from 11:45 a.m. until 12:15 p.m. Mariners are urged to transit the area with caution.

LNM: 18-23

**MONONGAHELA RIVER  
MILE 0.8 - BRIDGE MAINTENANCE**

Smithfield Bridge; A containment system is installed and will hang approximately 1.5 feet, below low steel, following the contour of the bridge.

LNM: 33-22

**OHIO RIVER  
MILE 90.3 - BRIDGE MAINTENANCE**

Wheeling Suspension Bridge; Continuing through June 2023, the vertical clearance may be reduced by 2 feet due to maintenance being performed on the bridge. For more information, mariners may contact West Virginia Department of Transportation, Ahmed Mongi, at (304) 553-3941 or Advantage Steel and Construction, Matt Oskin, at (724) 352-4842.

LNM: 11-22

**MILE 265.0 - AID TO NAVIGATION**

A red buoy has been reported beneath the southern, non-navigable span of the Kanawha and Michigan Railroad Bridge. Mariners are urged to transit the area with caution.

LNM: 17-23

**MILE 308.8 - BRIDGE MAINTENANCE**

Sixth Street Bridge: Due to cleaning and painting of the bridge, a containment system is installed and will hang 4-feet below low steel and follows the contour of the bridge. Vertical clearance is reduced to 70.4 feet above normal pool. Mariners are advised to transit the bridge with extreme caution.

LNM: 17-23

**MILE 350.2 - SOIL BORING OPERATION**

Continuing until June 30, 2023, M/V THE CAROLINE will be conducting geotechnical soil boring operations in the vicinity of Mile 350.2. Work will be conducted 24-hours a day, 7-days a week. During non-working hours, the floating plant will be moored at the worksite and lighted accordingly. The contractor's floating plant will monitor VHF-FM Channel 13, 16 or 65. Mariners are urged to pass at the slowest safe speed to minimize wake and proceed with caution after passing arrangements have been made.

LNM: 11-23

**MILE 487.0 - MILE 489.0 - AERIAL LINE CROSSING**

The COTP Ohio Valley advises all mariners of intermittent aerial line crossings, continuing until May 15, 2023. Crossings will be conducted daily from 6:30 a.m. until 6:30 p.m. Mariners are reminded to maintain a proper lookout and transit the area with caution. Mariners may contact the event sponsor at (513) 287-1041, for additional information.

LNM: 18-23

**MILE 595.9 - MILE 604.3 - MARINE EVENT/SPECIAL LOCAL REGULATION/RIVER CLOSURE**

On May 3, 2023, from 5:30 p.m. until 8:30 p.m., The Great Steamboat Race will be held between approximate Miles 595.9 and 604.3. The COTP Ohio Valley has established a Special Local Regulation closing the river for this event. Vessels are prohibited from transiting this area during the event period, unless specifically authorized by the COTP Ohio Valley. Mariners may contact the event sponsor at (502) 817-4565, for additional information.

LNM: 17-23

**MILE 604.1 - AIDS TO NAVIGATION**

Two nun buoys have been reported missing in the vicinity of Mile 604.1. Mariners are urged to transit this area with caution.

LNM: 08-23

**MILE 604.4 - BRIDGE MAINTENANCE**

LIRC Railroad Bridge: Commencing May 15, 2023, and continuing until May 19, 2023, vertical clearance may be reduced due to snooper trucks conducting an inspection of the bridge. The inspection will be conducted daily from 6:30 a.m. until 6:30 p.m. A safety boat will be on scene monitoring VHF-FM Channel 16. Mariners are requested to transit the area at their slowest safe speed to minimize their wake and proceed with caution.

LNM: 18-23

**MILE 606.8 - L/D CLOSURE**

Commencing May 15, 2023, and continuing until June 15, 2023, the north chamber at McAlpine L/D, in the vicinity of Mile 606.8, will be closed to navigation for repairs. All vessel traffic will utilize the south chamber, during this closure.

LNM: 18-23

**MILE 608.6 - BRIDGE MAINTENANCE**

Sherman Minton Bridge; Cleaning and painting of the bridge will continue from 7:00 a.m. until 6:00 p.m., Monday through Saturday, until further notice. A containment system will hang 4 feet below low steel. Mariners should transit the bridge with caution.

LNM: 29-21

**MILE 789.0 - MILE 791.3 - FACILITY CONSTRUCTION**

Continuing until approximately September 30, 2025, Meuth Construction Supply Inc., is constructing a facility adjacent to the navigation channel between approximate Miles 789.0 and 791.3, RDB. Sixteen tri-tie dolphins will be constructed to anchor barges along the riverbank. Construction for this facility will be performed from a floating plant. The contractor's floating plant will never extend more than 180 feet from the shoreline, at normal pool. The construction contractor will monitor VHF-FM Channel 7, 13 or 16. Mariners are urged to transit the area with caution.

LNM: 39-22

**MILE 846.0 - L/D CLOSURE**

**MILE 846.0 - L/D CLOSURE**

Continuing until August 20, 2023, the John T. Myers L/D (1,200-foot chamber) in the vicinity of Mile 846.0, is closed intermittently for replacement of the floating mooring bitt tracks. This duration represents the contract period leading to the scheduled closures described below. Intermittent closures may occur up to 4-hours each day. Up to two 12-hour closures may occur in a 7-day period to facilitate work. The Auxiliary (600-foot chamber) will be open to navigation traffic any time the primary chamber is closed for work on the floating mooring bitts. The Auxiliary (600-foot chamber) will be closed from August 21, 2023 through September 10, 2023, to allow miter gate repairs and prep for the primary chamber closure by the Heavy Capacity Fleet. The primary (1,200-foot chamber) will be closed from September 11, 2023 through November 17, 2023, to allow miter gate rehab by the Heavy Capacity Fleet.

LNM: 05-23

**MILE 918.5 - L/D CLOSURE**

Commencing September 22, 2023 and continuing until October 21, 2023, the Smithland L/D land chamber, in the vicinity of Mile 918.5, will be closed for the replacement of the land chamber miter gate machinery by the Light Capacity Fleet. The river chamber will be closed from October 22, 2023, through November 20, 2023, for the replacement of the river chamber miter gate machinery by the Light Capacity Fleet.

LNM: 05-23

**TENNESSEE RIVER**

**MILE 22.0 - MILE 18.0 - DIVE OPERATION**

Continuing until May 5, 2023, dive operations will be conducted from Mile 22.0 to Mile 18.0. Operations will be conducted daily from 7:00 a.m. until 5:00 p.m. MAINSTREAM DIVE BOAT #3 will be monitoring VHF-FM Channels 13 and 16. Mariners are requested to give the dive boat a wide berth and transit the area with caution.

LNM: 18-23

---

---

**SECTION VIII - LIGHT LIST CORRECTIONS**

An Asterisk \*, indicates the column in which a correction has been made to new information

(1) No.	(2) Name and Location	(3) Mile	(4) Bank	(5) Characteristic	(6) Structure / Dayboard Up Down	(7) Remarks
<b>None</b>						

---

---

**ENCLOSURES**

**USACE Huntington District - Restricted Areas at Navigation Structures**

USACE Huntington District Notice to Navigation Interests 22-33, regarding maintenance and repair operations.

LNM: 03-23

**USACE Channel Status Reports**

Arkansas River Channel Status Reports.

LNM: 09-23

**UPPER MISSISSIPPI RIVER/ILLINOIS WATERWAY - BARGE/RAIL COLLISION RISK**

Sector Upper Mississippi River MSIB 08-21.

LNM: 15-23

---

---

Commander, Eighth Coast Guard District  
Hale Boggs Federal Building, Room 1230  
500 Poydras Street, New Orleans, LA 70130-3310  
Telephone (504) 671-2327  
(Business Hours 7:00 a.m. - 3:30 p.m. Monday - Friday)  
(Nights, Weekends, Holidays) (504) 589-6225  
RADM Timme



**US Army Corps  
of Engineers®**

HUNTINGTON DISTRICT

ATTN: CELRH-DE  
502 8TH STREET  
HUNTINGTON WV 25701-2070  
HTTP://WWW.LRH.USACE.ARMY.MIL/

**NOTICE TO NAVIGATION INTERESTS**

**DATE:** 12/29/2022

**POC:** Kent C.  
Browning  
(304) 399-5239

**NOTICE NUMBER:** 201731  
**LOCAL NUMBER:** 22-33  
**WATERWAY:** KANAWHA RIVER  
OHIO RIVER

**EFFECTIVE:** 01/01/2023 07:00 thru 09/15/2023  
15:30

**TENTATIVE MAINTENANCE SCHEDULE FOR 2023**

**HUNTINGTON DISTRICT**

It is anticipated that major maintenance and repairs will be performed at the following locations during calendar year 2023. This notice may require periodic revision. It is given so that industrial and recreational waterway users may have a general knowledge of the lock outages and can plan their operations accordingly. Factors which may affect this schedule are the delivery of materials, repairs required but not anticipated, emergency repairs as a result of accidents, and funding.

<b><u>PROJECT</u></b>	<b><u>REPAIRS</u></b>	<b><u>DATES</u></b>	<b><u>REMARKS</u></b>
Belleville L&D	Filling and Emptying System Repairs	30 Jan - 26 Feb	Auxiliary Chamber Closure with Intermittent Closures to the Primary Chamber
Racine L&D	Miter Gate Machinery Repairs	30 Jan - 25 Feb	Auxiliary Chamber Closure
Racine L&D	Miter Gate Machinery Repairs	26 Feb - 12 Mar	Primary Chamber Closure
Greenup L&D	Filling System Repairs	13 Mar - 12 Apr	Primary Chamber Closure
Meldahl L&D	Dewatering for Miter Gate Inspection and Repairs	17 Apr - 04 Aug	Auxiliary Chamber Closure
Winfield L&D	Dam Gate Repairs	10 Jul - 15 Sep	No Closures

All interested parties should review the maintenance schedule for impact. Additional notices furnishing specific information and operating requirements for repairs resulting in major delays will be published prior to commencing the work items listed.

//signed//

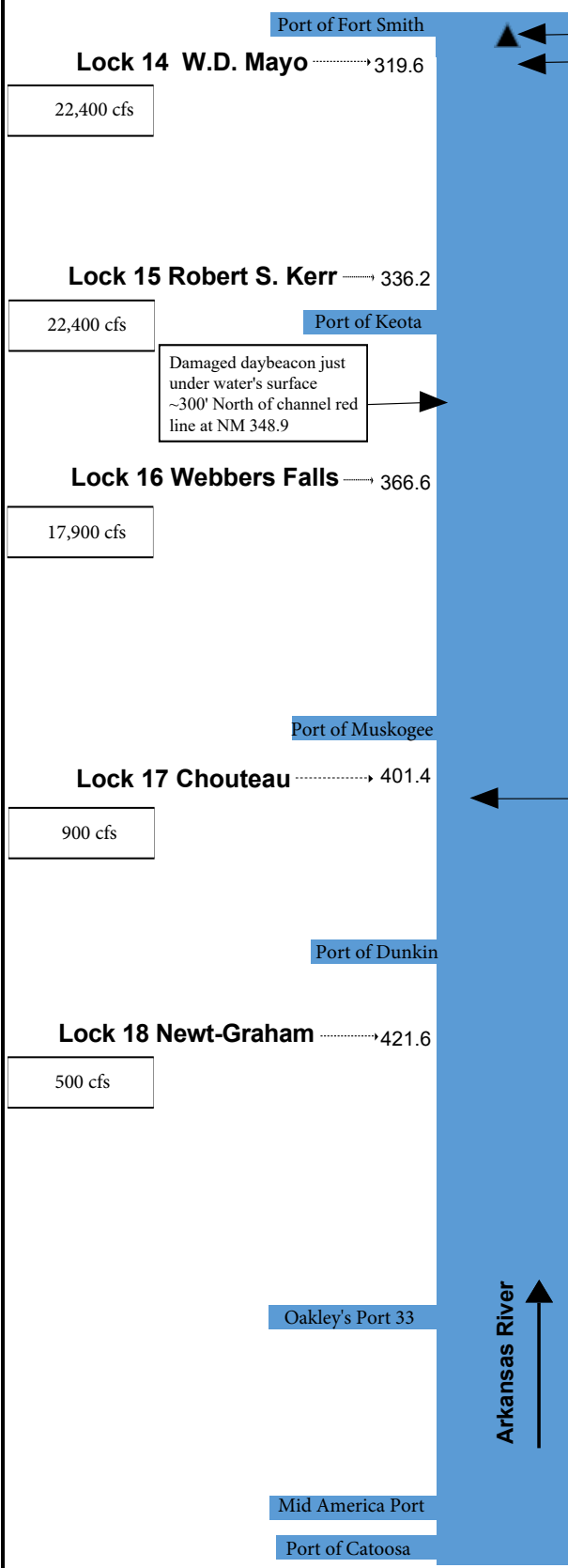
KENT C. BROWNING  
Chief, Technical Support Branch





Lock & Dam - Flows	Ports	Nav Mile	Updates
--------------------	-------	----------	---------

**Navigation Conditions:**  
<https://www.swt-wc.usace.army.mil/>



Dredging operations should start by the end of this week.

**Caution:** NM 319.6 Salvage Crews scheduled to remove damaged cell on upstream approach beginning 20 Feb until further notice.

**TD 2023-3 NOTICE OF SCHEDULED DEMOLITION & RIVER CLOSURE HIGHWAY 62 BRIDGE NM 392.5**  
Pool No. 16 NM 392.5 will be closed to Navigation traffic from 8:00 a.m. to 7:00 p.m. March 9th, 2023, to allow for demolition and removal of bridge girders from eastbound Highway 62 Bridge. The Oklahoma Department of Transportation Contractor will be detonating and dropping the span into the river. The contractor will have 10 consecutive hours from detonation at 9:00 a.m. to completely sweep and clear the navigation channel. Not less than one hour prior to and during the detonation of explosives, the Contractor will have flagmen to warn river traffic before blasting. Flagmen shall be stationed in radio equipped boats approximately one-half mile upstream and downstream of the bridge to warn approaching river traffic of the impending action and obstructions in the river. The closure listed above is scheduled to reopen to Navigation traffic as stated, but unforeseen problems could require additional time to complete operations. Waterway users are asked to check with Lock No. 16 for the latest information and should schedule their activities accordingly. Questions or request for additional information concerning this notice should be directed to Mr. Robert Steiner; Navigation Operations Manager: 918-687-4501 or Mr. Rodney Beard; Navigation Project Manager: 918-775-4475 ext 5890.

**TD 2023-2 NOTICE OF POTENTIAL DELAYS WD MAYO L&D No. 14 NM 319.6** Mariners may expect a delay from 0700 to 1700 beginning 20 February 2023 at WD Mayo L&D 14 as a salvage crew removes a damaged cell adjacent to the upstream lock approach channel. Due to the nature of the work, the crew does not have a completion date and this Navigation Notice will remain in effect until further notice. Mariners are advised to stay up to date with the latest information. Waterway users are asked to check with Lock 14 for the latest information and should schedule their activities around this notice. Questions or request for additional information concerning this notice for Lock 14 should be directed to Mr. Robert Steiner Navigation Operation Manager: 918-775-4475 ext 5833 or Mr. Jacob Simpson; Navigation Field Engineer: 918-430-4783.

**TD 2023-1 NOTICE OF SCHEDULED LOCK CLOSURE WEBBERS FALLS L&D No. 16 NM 633.6**  
Webbers Falls Lock 16 will be closed to navigation traffic for one week from September 11th - September 17th, 2023. Crews will be dewatering the downstream center post receiver inspection. The Lock closure will begin at 0700 on September 11 and continue until 1700 on September 17. Navigation traffic is asked to plan accordingly around this closure.  
**Lock Closure dates: Sep 11 – Sep 17, 2023**  
As maintenance crews prepare the work site, intermittent delays of four or more hours should be expected several days preceding the above Lock closure. All work is expected to be completed as scheduled. However, unforeseen issues could require additional time. Waterway users are asked to check with Lock 16 for the latest information and should schedule their activities around this notice. Questions or request for additional information concerning this notice for Lock 16 should be directed to Mr. Robert Steiner Navigation Operation Manager: 918-775-4475 ext 5833 or Mr. Jacob Simpson; Navigation Field Engineer: 918-430-4783.

**TD 2022-20 NOTICE OF DEMOLITION ACTIVITIES POOL No. 16 NM 392.5**  
Mariners are advised to proceed with caution when navigating NM 392.5 due to the demolition of the Highway 62 bridge. Possible overhead falling hazards will exist as the ODOT contractor removes bridge components. Vessel traffic is advised to check navigation conditions by hailing M/V Karl R on CH 16, 30 minutes out. The demolition will continue until further notice and mariners are advised to stay up to date with the latest information. Further Navigation Notices will be released with updates, changes and/or more information. Questions or request for additional information concerning this notice should be directed to Mr. Robert Steiner Navigation Operation Manager: 918-775-4475 ext 5833 or Mr. Jacob Simpson; Navigation Field Engineer: 918-430-4783.

**TD 2022-18 NOTICE TO NAVIGATION WD MAYO L&D No. 14 NM 319.6**  
Waterway users are asked to proceed with caution when transiting on the upstream side of WD Mayo L&D 14 until further notice. The most upstream protection cell is severely damaged and now barely visible above the water line. Questions or request for additional information concerning this notice should be directed to Mr. Robert Steiner Navigation Operation Manager: 918-775-4475 ext 5833 or Mr. Jacob Simpson; Navigation Field Engineer: 918-430-4783.

**TD 2022-1 NOTICE OF DAMAGE AND POTENTIAL HAZARD: UPSTREAM GUARDWALL ARMOR CHOUTEAU L&D NO. 17, NM 401.4**  
The upstream guardwall is damaged near the miter gate recess. The steel armor plate protecting the corner has been damaged and it had to be removed. The concrete is now fully exposed. Until the repair can be made, Mariners should use caution when transiting this area. Mariners are advised to stay to the guide wall side on the upstream portion of the lock until further notice when the area can be repaired. Waterway users are asked to check with Lock No. 17 for the latest information. Questions or request for additional information concerning this notice should be directed to Mr. Brad Johnson; Navigation Manager: 918-550-9026 or Mr. Jake Simpson; Navigation Engineer: 918-430-4783.

LOCATION	NORMAL ELEVATION	DEVIATION
Lock 14 W.D. Mayo	411 - 412.5	None
Lock 15 Robert S. Kerr	458 - 460	None
Lock 16 Webbers Falls	487 - 490	None
Lock 17 Chouteau	511 - 511.5	None
Lock 18 Newt Graham	532 - 532.5	Holding pool at .4" above normal

■ Groundings  
▲ Dredge

▲ **Dredging Operations:**  
Below Lock 14 NM 319.4

[USCG Local Notice to Mariners:](#)  
[McClellan-Kerr Arkansas River Navigation System Charts 2016:](#)



# U.S. COAST GUARD

## Sector Upper Mississippi River



November 22, 2021

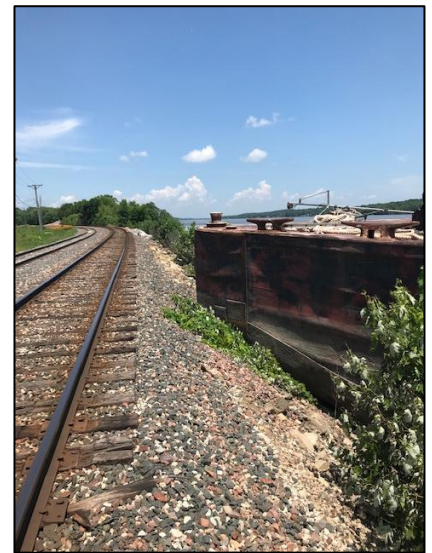
### Marine Safety Information Bulletin # 08-21

*This bulletin is used purely for informational purposes to assist the maritime community within the Sector Upper Mississippi River Area of Responsibility. Its purpose is to advise relevant parties of emerging information and situations that may impact our Marine Transportation System as well as to facilitate cooperation among the involved parties regarding actions that we may be taking and/or that you may need to employ in the interest of safety/security.*

### Barge/Rail Collision Risk

This bulletin is in effect from November 22, 2021 until cancelled by the Captain of the Port.

Sector Upper Mississippi River (UMR) received multiple reports of barges encroaching on railroad right of ways (tracks, rail beds) in 2019. This was further documented in Sector UMR MSIB 01-20 and the Waterway Action Plan (WAP). Approximately 45 known areas on the UMR and Illinois River pose a risk for barge/rail collisions due to the close proximity between the rail right of ways and the river bank. Where rails are located near the river's edge, vessels are able to push in to an extent that part of the vessel/tow is in dangerous proximity to the rail. Barge encroachment poses a serious risk to both vessels, trains, crews, the environment, and nearby communities. On November 14, 2021, during normal water conditions, an incident between rail and barge resulted in a train derailment, oil spill, and damage to rail and vessel equipment.



This risk can be mitigated by vessel operators being vigilant when selecting where they push vessels into the river bank during all water conditions. The approximately 45 known areas of concern (see attached consolidated graphic) are marked with caution areas on both printed and electronic versions of the Inland River Electronic Navigation Charts (IENC). These caution areas are accompanied by a warning noting the risk of collision between trains and vessels, and/or rail bed embankment erosion due to the close proximity between the railroad tracks and the waterway.

**Sector UMR urges all vessel operators to review the IENC and the WAP for their intended operating areas to identify river bank locations to avoid pushing in at, as well as other potential hazards, as part of their voyage planning procedures prior to operation.**

Operators are reminded that Title 33 Code of Federal Regulations (CFR) § 207.300(m)(2)(ii) directly prohibits the mooring of craft directly to railroad tracks or the riverbank in vicinity of railroad tracks. Violation of this regulation can result in enforcement action being taken against the operator's Merchant Mariner Credential as well as a civil penalty against the operating company.

To receive the latest information, mariners should monitor marine VHF channels 14 and 16, and the Sector UMR Port Directory at [https://homeport.uscg.mil/port-directory/upper-mississippi-river-\(st-louis\)](https://homeport.uscg.mil/port-directory/upper-mississippi-river-(st-louis)) for this and other MSIBs and port advisories. Hazardous conditions and marine casualties should immediately be reported to the Western Rivers Command Center via VHF channel 16 or by phone at (314) 269-2332 or (314) 269-2463 – these numbers are continuously monitored 24 hours a day. Questions about this MSIB may be directed to the Waterways Management staff at [sumrwaterways@uscg.mil](mailto:sumrwaterways@uscg.mil).

Sincerely,

A handwritten signature in blue ink, appearing to read "Richard M. Scott", with a large, sweeping flourish extending to the right.

R.M. SCOTT  
Captain of the Port  
U.S. Coast Guard

# IENC Rail Road Caution Areas



Mile Marker 497.8

IENC Rail Road Caution Areas Sourced from U.S. Army Engineer District, Rock Island.



 IENC RR Caution Areas