



U.S. Department
of Homeland Security
**United States
Coast Guard**

LOCAL NOTICE TO MARINERS

District 8 MRS

Week: 20/23

Mississippi River System

LIGHT LIST VOLUME V
NOTICE NUMBER 20-23
May 17, 2023

LIGHT LIST REFERENCE: COMDTPUB P16502.5, Vol V, 2023 Edition.

CONTENTS: Rivers are listed in alphabetical order and are included only when there is information to report.

Broadcast Notice to Mariners Covered in this Edition

| Originating Unit | Beginning BNM's | Ending BNM's |
|--------------------------------|-----------------|-----------------|
| Sector Upper Mississippi River | 0055 - 23 (UM) | 0065 - 23 (UM) |
| Sector Lower Mississippi River | 0013 - 23 (LM) | 0017 - 23 (LM) |
| Sector Ohio Valley | 0182 - 23 (OV) | 0186 - 23 (OV) |
| OB DWB | 0045 - 23 (DWB) | 0046 - 23 (DWB) |

COAST GUARD DISTRICT 8, WATERWAYS, (504) 671-2327, 7:00 a.m. until 3:30 p.m. (CST)

GENERAL LNM QUESTIONS, COMMENTS, OR SUGGESTIONS MAY BE E-MAILED TO: D8MarineInfo@uscg.mil

COMMENTS REGARDING SECTION VI – PROPOSED CHANGES MAY ALSO BE EMAILED TO: LocalNoticeFeedback@uscg.mil

NIS WATCHSTANDER PHONE (703) 313-5900, 24-HOURS A DAY

INTERNET ADDRESS <https://www.navcen.uscg.gov/>

MISSISSIPPI RIVER SYSTEM LNM VIA INTERNET <https://www.navcen.uscg.gov/>

MISSISSIPPI RIVER SYSTEM LIGHT LIST VIA INTERNET https://www.navcen.uscg.gov/pdf/lightLists/LightList_V5_2023.pdf

ABBREVIATIONS

A through H

ADRIFT - Buoy Adrift
AICW - Atlantic Intracoastal Waterway
Al - Alternating
B - Buoy
BKW - Breakwater
bl - Blast
BNM - Broadcast Notice to Mariner
bu - Blue
C - Canadian
CHAN - Channel
CGD - Coast Guard District
C/O - Cut Off
CONT - Contour
CRK - Creek
CONST - Construction
DAYMK/Daymk - Daymark
DBN/Dbn - Daybeacon
DBD/DAYBD - Dayboard
DEFAC - Defaced
DEST - Destroyed
DISCON - Discontinued
DMGD/DAMGD - Damaged
ec - eclipse
EST - Established Aid
ev - every
EVAL - Evaluation
EXT - Extinguished
F - Fixed
fl - flash
Fl - Flashing
G - Green
GIWW - Gulf Intracoastal Waterway
HAZ - Hazard to Navigation
HBR - Harbor

I through O

I - Interrupted
ICW - Intracoastal Waterway
IMCH - Improper Characteristic
INL - Inlet
INOP - Not Operating
INT - Intensity
ISL - Islet
Iso - Isophase
kHz - Kilohertz
LAT - Latitude
LB - Lighted Buoy
LBB - Lighted Bell Buoy
LHB - Lighted Horn Buoy
LGB - Lighted Gong Buoy
LONG - Longitude
LNM - Local Notice to Mariners
LT - Light
LT CONT - Light Continuous
LTR - Letter
LWB - Lighted Whistle Buoy
LWP - Left Watching Properly
MHz - Megahertz
MISS/MSNG - Missing
Mo - Morse Code
MRASS - Marine Radio Activated Sound Signal
MSLD - Misleading
N/C - Not Charted
NGA - National Geospatial-Intelligence Agency
NO/NUM - Number
NOS - National Ocean Service
NW - Notice Writer
OBSCU - Obscured
OBST - Obstruction
OBSTR - Obstruction

P through Z

PRIV - Private Aid
Q - Quick
R - Red
RACON - Radar Transponder Beacon
Ra ref - Radar reflector
RBN - Radio Beacon
REBUILT - Aid Rebuilt
RECOVERED - Aid Recovered
RED - Red Buoy
REFL - Reflective
RRL - Range Rear Light
RELIGHTED - Aid Relit
RELOC - Relocated
RESET ON STATION - Aid Reset on Station
RFL - Range Front Light
RIV - River
RRASS - Remote Radio Activated Sound Signal
s - seconds
SEC - Section
SHL - Shoaling
si - silent
SIG - Signal
SND - Sound
SPM - Single Point Mooring Buoy
SS - Sound Signal
STA - Station
STRUCT - Structure
St M - Statute Mile
TEMP - Temporary Aid Change
TMK - Topmark
TRLB - Temporarily Replaced by Lighted Buoy
TRLT - Temporarily Replaced by Light
TRUB - Temporarily Replaced by Unlighted Buoy
USACE - Army Corps of Engineers

HOR - Horizontal Clearance
HT - Height

Oc - Occulting
ODAS - Anchored Oceanographic Data Buoy

W - White
Y - Yellow

Additional Abbreviations Specific to this LNM Edition:

RIAC - River Industry Action Committee
MMSI - Mobile Maritime Service Identity
AIS - Automatic Identification System
ATON - Aids To Navigation
COTP - Captain of The Port
TRDBN - Temporary Replaced by Daybeacon
C.F.S. - Cubic Feet per Second
CFR - Code of Federal Regulations
IAW - In Accordance With
h.p. - horse power
MPH - Miles Per Hour
TVA - Tennessee Valley Authority
INC - Incorporated
IENC - Inland Electronic Navigation Chart
WAP - Waterway Action Plan
MSIB - Marine Safety Information Bulletin
L/D - Lock and Dam

SECTION I - SPECIAL NOTICES

This section contains information of special concern to the Mariner.

DEPARTMENT OF HOMELAND SECURITY SUSPICIOUS ACTIVITY

The Department of Homeland Security (DHS) encourages the maritime public to report information concerning suspicious activity to the local Federal Bureau of Investigation Joint Terrorism Task Force (JTTF) Office, http://www.fbi.gov/about-us/investigate/terrorism/terrorism_jtfts, or to other appropriate authorities. The U.S. Coast Guard reminds the maritime industry that they may also report information concerning suspicious activity to the www.AmericasWaterwayWatch.org, the National Response Center (NRC) 1-800-424-8802 or 1-877-24WATCH.

LNM: 02-19

WESTERN RIVERS FLOATING AIDS TO NAVIGATION

The U.S. Coast Guard is responsible for placing and maintaining all aids to navigation. Buoys are set to mark project depths taking into consideration the prevailing river stages and obstructions. Buoy positions on the Inland Electronic Navigation Chart (IENC) are approximate, and subject to change depending on prevailing river stages and obstructions.

Buoys should always be given as wide a berth in passing as possible, consistent with the length and width of the vessel or tow and the width of the bend or crossing.

Buoys should always be used with caution. They may be carried off position by high water, accumulation of drift, ice, or sunk by collision or other causes. In those circumstances buoy marks will remain on the IENC and indicate the last known position of the buoy. Presence of a buoy mark on the IENC does not necessarily mean a buoy will be physically on position. When buoys are missing they will be replaced as soon as possible.

LNM: 16-19

GPS TESTING

At times, throughout our area of responsibility, multiple U.S. Government Agencies conduct GPS testing. These tests vary in duration, affected range from the test site and potential impact to the maritime user as they may affect systems that rely on GPS such as E-911, AIS and DSC. More information is available at the U.S. Coast Guard Navigation Center Website, <https://www.navcen.uscg.gov>. During these periods, GPS users are encouraged to report any GPS outages that they may experience, to the Navigation Information Service (NIS) by calling (703) 313-5900 or by using the NAVCEN Website to submit a GPS problem report.

LNM: 07-19

HIGH/LOW WATER FLOW CONDITIONS

During periods of high/low water flow conditions on the Mississippi River System, Captains of the Port, will issue Safety Advisories for their specific areas of responsibility via Broadcast Notice to Mariners. Mariners are encouraged to monitor the Sector Broadcast Notice to Mariners to ensure they are receiving the most up-to-date information.

LNM: 04-23

USACE HUNTINGTON DISTRICT - RESTRICTED AREAS AT NAVIGATION STRUCTURES

Attached as an enclosure to this LNM is a USACE Huntington District Notice to Navigation Interests 22-33, regarding maintenance and repair operations.

LNM: 03-23

ARKANSAS RIVER - USACE CHANNEL STATUS REPORTS

Attached as enclosures to this LNM, are USACE Arkansas River Channel Status Reports.

LNM: 09-23

SUNSET OF NOAA PRINTED CHARTS

**** Cancellation of NOAA Paper and Raster Nautical Charts ****

The National Oceanic and Atmospheric Administration (NOAA) is undertaking a multi-year program to end production and maintenance of its suite of over 1,000 traditional paper nautical charts and all associated raster chart products and services, including: Print-on-Demand (POD) paper nautical charts, Full-size chart PDF files, BookletChart™ PDF files, NOAA raster navigational charts (NOAA RNC®), the NOAA RNC tile service, and the online RNC viewer.

Six months notice of the intent to cancel a specific chart is provided in a "Last Edition" notice. The final cancellation of a chart is made in a "Canceled" notice. Both types of notices will appear in LNM Section IV, "Chart Correction". A comprehensive list of all canceled NOAA charts is available at: <http://www.charts.noaa.gov/MCD/Dole.shtml>.

Traditional paper nautical chart production is ending to enable the creation and maintenance of larger scale, more up-to-date, higher quality coverage of NOAA's electronic navigational chart (NOAA ENC®) product. This will significantly enhance the amount of charted detail available to mariners. More information about NOAA's program to sunset traditional paper charts is on the NOAA Coast Survey website at: <https://nauticalcharts.noaa.gov/charts/farewell-to-traditional-nautical-charts.html>.

An online NOAA Custom Chart application at: <https://devgis.charttools.noaa.gov/pod> is available to create chart images from ENC data, which may then be printed. Notices to Mariners will not be issued for NOAA Custom Charts.

LNM: 10-21

UPPER MISSISSIPPI RIVER/ILLINOIS WATERWAY - BARGE/RAIL COLLISION RISK

Attached as an enclosure to this LNM is U.S. Coast Guard Sector Upper Mississippi River MSIB 08-21, regarding barge/rail collision risk on the Upper Mississippi River and Illinois Waterway.

LNM: 15-23

SAFETY NOTICE - NAVIGATIONAL RANGE AND SECTOR LIGHTS ON NOAA ELECTRONIC CHARTS

The U.S. Coast Guard has become aware that the Range and Sector Light Characteristic labels are not displayed on Electronic Navigational Charts (ENCs) when used in an Electronic Chart Display and Information System (ECDIS), due to limitations of the S-52 ECDIS, display specification. Mariners may query the ENC data directly within ECDIS or refer to the Light List for complete information on Range and Sector Light Characteristics.

LNM: 39-22

SECTION II - DISCREPANCIES

This section lists all reported and corrected discrepancies related to Aids to Navigation in this edition. A discrepancy is a change in the status of an aid to navigation that differs from what is published or charted.

DISCREPANCIES (FEDERAL AIDS)

| LLNR | Aid Name | Status | Chart No. | BNM Ref. | LNM St | LNM End |
|------|--------------------------|---------------|-----------|----------|--------|---------|
| 280 | Karns Island Upper Light | STRUCT DEST | | 0651OV | 31/18 | |
| 990 | Milligan Bend Light | STRUCT DEST | | 0642LM | 51/19 | |
| 1010 | Webber Falls Jetty Light | STRUCT DEST | | 0641LM | 51/19 | |
| 1020 | Bluff View Light | STRUCT DEST | | 0640LM | 51/19 | |
| 1055 | Hisaw Bottom Light | LT EXT | | 0196LM | 40/18 | |
| 1070 | Brier Creek Light | STRUCT DEST | | 0205LM | 31/15 | |
| 1077 | Sandtown Bottom Light | STRUCT DEST | | 0457LM | 39/19 | |
| 1200 | Black Rock Daybeacon | STRUCT DEST | | 0379LM | 35/19 | |
| 1205 | Gans Light | STRUCT DEST | | 0335LM | 33/19 | |
| 1213 | Non Lateral Mark 330.4 | STRUCT DEST | | 0087LM | 05/16 | |
| 1220 | Onion Creek Daybeacon | STRUCT DMGD | | 0334LM | 33/19 | |
| 1223 | Non Lateral Mark 328.5 | STRUCT DMGD | | 0333LM | 33/19 | |
| 1225 | Tucker Lake Light | STRUCT DEST | | 0332LM | 33/19 | |
| 1230 | Mcnabb Bottom Daybeacon | STRUCT DEST | | 0332LM | 33/19 | |
| 1240 | Deadman Slough Light | STRUCT DEST | | 0330LM | 33/19 | |
| 1255 | Wilsons Rock Light | STRUCT DMGD | | 0380LM | 35/19 | |
| 1265 | Peno Point Daybeacon | DAYMK DMGD | | 0580LM | 47/19 | |
| 1267 | Non Lateral Mark 313.9 | STRUCT DEST | | 0089LM | 05/16 | |
| 1315 | Garrison Creek Daybeacon | DAYMK MISSING | | 0377LM | 35/19 | |

| | | | | |
|------|-----------------------------|---------------------------|--------|-------|
| 1360 | Crawford County Daybeacon | STRUCT DEST | 0378LM | 35/19 |
| 1365 | Jeffrey Light | DAYMK MISSING | 0376LM | 35/19 |
| 1390 | Fort Chaffee Light | STRUCT DEST | 0579LM | 47/19 |
| 1395 | Haroldton Light | DAYMK MISSING | 0578LM | 47/19 |
| 1400 | New Haroldton Light | STRUCT DEST | 0574LM | 47/19 |
| 1420 | Gun Club Lake Daybeacon | DAYMK MISSING | 0582LM | 47/19 |
| 1427 | Big Creek Daybeacon | DAYMK MISSING | 0575LM | 47/19 |
| 1430 | Arbuckle Island Light | STRUCT DEST | 0091LM | 05/16 |
| 1435 | Clear Creek Light | DAYMK MISSING | 0584LM | 41/19 |
| 1445 | Crooked Slough Light | STRUCT DEST | 0583LM | 47/19 |
| 1455 | Mulberry River Daybeacon | STRUCT DEST | 0041UM | 11/17 |
| 1510 | Moores Creek Light | LT IMCH/STRUCT DMGD | 0394LM | 44/16 |
| 1515 | Roseville Daybeacon | DAYMK MISSING | 0604LM | 50/19 |
| 1520 | O'Kane Island Light | LT IMCH/STRUCT DMGD | 0393LM | 44/16 |
| 1525 | Alix Bottom Light | STRUCT DEST | 0605LM | 50/19 |
| 1530 | County Line Daybeacon | STRUCT DEST | 0606LM | 50/19 |
| 1532 | Non Lateral Mark 246.3 | DAYMK MISSING | 0607LM | 50/19 |
| 1535 | Kalamazoo Light | DAYMK MISSING | 0608LM | 50/19 |
| 1562 | Non Lateral Mark 236.3 | DAYMK MISSING | 0609LM | 50/19 |
| 1615 | Dublin Daybeacon | STRUCT DEST | 0610LM | 50/19 |
| 1650 | Bunker Hill Upper Daybeacon | STRUCT DEST | 0639LM | 51/19 |
| 1660 | Bunker Hill Lower Daybeacon | STRUCT DEST | 0643LM | 51/19 |
| 1695 | Dardanelle Reach Light | DAYMK DMGD | 0204LM | 31/15 |
| 1697 | Non Lateral Mark 201.4 | STRUCT DEST | 0200LM | 41/18 |
| 1700 | Elberta Light | DAYMK MISSING | 0611LM | 50/19 |
| 1705 | Old Neely Daybeacon | DAYMK MISSING | 0612LM | 50/19 |
| 1708 | Non Lateral Mark 197.9 | STRUCT DEST | 0052LM | 13/17 |
| 1710 | Point Bar Cutoff Light | DAYMK MISSING | 0613LM | 50/19 |
| 1715 | Hola Bend Cutoff Light | DAYMK MISSING | 0614LM | 50/19 |
| 1725 | Reeds Ferry Light | DAYMK MISSING | 0615LM | 50/19 |
| 1733 | Non Lateral Mark 189.8 | DAYMK MISSING | 0616LM | 50/19 |
| 1735 | Sweeden Island Light | LT EXT/DAYMK MISSING | 0617LM | 50/19 |
| 1738 | Non Lateral Mark 188.8 | DAYMK MISSING | 0618LM | 50/19 |
| 1745 | Wilson Light | STRUCT DEST | 0620LM | 50/19 |
| 1770 | Willow Bend Lower Daybeacon | DAYMK MISSING | 0621LM | 50/19 |
| 1798 | Non Lateral Mark 175.6 | DAYMK MISSING | 0622LM | 50/19 |
| 1800 | Point Remove Creek Light | DAYMK MISSING | 0623LM | 50/19 |
| 1815 | Ellis Island Light | STRUCT DEST | 0630LM | 51/19 |
| 1817 | Non Lateral Mark 171.2 | DAYMK MISSING | 0631LM | 51/19 |
| 1845 | Stane Reach Upper Daybeacon | DAYMK DMGD | 0634LM | 51/19 |
| 1850 | Stane Reach Light | DAYMK DMGD | 0635LM | 51/19 |
| 1890 | Belk Corner Light | DAYMK MISSING/STRUCT DMGD | 0558LM | 45/19 |
| 1903 | Non Lateral Mark 150.9 | DAYMK MISSING | 0560LM | 45/19 |
| 1915 | Bigelow Middle Daybeacon | DAYMK DMGD | 0563LM | 45/19 |
| 1920 | Bigelow Lower Light | DAYMK MISSING | 0538LM | 44/19 |
| 1930 | Tri County Light | STRUCT DEST | 0370LM | 41/16 |
| 1940 | Beaver Dam Creek Daybeacon | STRUCT DMGD | 0636LM | 51/19 |
| 1948 | Non Lateral Mark 138.8 | DAYMK MISSING | 0539LM | 44/19 |
| 1953 | Non Lateral Mark 137.6 | DAYMK MISSING | 0540LM | 44/19 |

| | | | | |
|-------|-----------------------------------|------------------------|--------|-------|
| 1960 | Palarm Light | DAYMK MISSING | 0541LM | 44/19 |
| 1975 | Maumelle River Upper Daybeacon | STRUCT DEST | 0565LM | 45/19 |
| 1988 | Non Lateral Mark 130.6 | DAYMK MISSING | 0542LM | 44/19 |
| 2030 | Burns Park Light | STRUCT DEST | 0514LM | 42/19 |
| 2045 | Waterworks Bend Light | DAYMK DMGD | 0515LM | 42/19 |
| 2130 | Willow Bar Light | LT EXT | 0524LM | 42/19 |
| 2143 | Non Lateral Mark 106.5 | DAYMK MISSING | 0637LM | 51/19 |
| 2160 | Estes Place Light | DAYMK IMCH/STRUCT DMGD | 0396LM | 44/16 |
| 2199 | Non Lateral Mark 92.0 | STRUCT DEST | 0398LM | 44/16 |
| 2370 | Ste. Marie Bend Lower Daybeacon | STRUCT DEST | 0407LM | 45/16 |
| 2435 | Richland Bend Middle Daybeacon | STRUCT DEST | 0099LM | 16/18 |
| 2485 | Little Bayou Meto Lower Daybeacon | DAYMK DMGD | 0094LM | 15/18 |
| 2498 | Cummins Bend Daybeacon | STRUCT DEST | 0103LM | 06/16 |
| 2540 | Sample Island Light | STRUCT DEST | 0106LM | 06/16 |
| 2550 | Sample Island Lower Light | STRUCT DEST | 0107LM | 06/16 |
| 2665 | Owens Lake Daybeacon | DAYMK DMGD | 0110LM | 06/16 |
| 3655 | Cages Bend Light | STRUCT DEST | 0660OV | 38/19 |
| 3965 | Watkins Daybeacon | STRUCT DEST | 0245OV | 19/17 |
| 4250 | Shammels Mound Landing Light | STRUCT DEST | 0010OV | 02/16 |
| 4285 | Saline Creek Light | STRUCT DEST/TRUB | 0221OV | 26/16 |
| 4315 | Pryors Creek Light | STRUCT DEST | 0030OV | 02/20 |
| 4340 | Devils Elbow Light | STRUCT DEST | 0306OV | 16/18 |
| 4365 | Bleidt Landing Light | STRUCT DEST/TRUB | 0137OV | 17/21 |
| 4390 | Crooked Creek Light | STRUCT DEST/TRUB | 0383OV | 36/16 |
| 4425 | Commerce Landing Light | STRUCT DEST | 0520OV | 42/22 |
| 4455 | Prison Farm Landing Light | STRUCT DEST | 0145OV | 17/21 |
| 4500 | Kuttawa Bar Light | STRUCT DEST | 0243OV | 12/18 |
| 4505 | Money Cliff Light | STRUCT DEST | 0364OV | 19/18 |
| 6810 | Halls Landing Daybeacon | STRUCT DMGD | 0024MI | 07/23 |
| 6985 | Sand Point Lower Light | STRUCT DEST | 0102UM | 20/22 |
| 6990 | Circle Light | STRUCT DMGD | 0102UM | 20/22 |
| 6995 | Spring Bay Daybeacon | STRUCT DEST | 0102UM | 20/22 |
| 7035 | Drolls Point Light | STRUCT DEST/TRLB | 0233UM | 23/20 |
| 7585 | Frederick Light | STRUCT DEST | 0539UM | 29/19 |
| 7650 | Briggs Landing Light | LT EXT/STRUCT DMGD | 0890UM | 51/19 |
| 7695 | Moore's Island Light | STRUCT DEST | 0037UM | 12/22 |
| 7705 | Wilson Island Daybeacon | DAYMK DMGD | 0104UM | 18/21 |
| 7850 | Florence Light | LT EXT | 0055UM | 14/22 |
| 9150 | Washita Point Light | LT EXT | 0395LM | 33/20 |
| 9185 | Preston Peninsula Light | REDUCED INT | 0420LM | 46/16 |
| 10185 | Cedar Point Light | REDUCED INT | 0031LM | 18/22 |
| 10195 | Dean Island Light | REDUCED INT | 0327LM | 33/19 |
| 10210 | Brandywine Chute Light | REDUCED INT | 0031LM | 18/22 |
| 10225 | Island 40 Foot Light | STRUCT DEST | 0232LM | 49/18 |
| 10540 | Harbert Point Light | LT EXT | 0256LM | 36/15 |
| 10545 | Stumpy Point Light | STRUCT DEST | 0249LM | 52/18 |
| 10625 | Delta Lower Light | STRUCT DEST | 0118LM | 06/16 |
| 10650 | Miller Point Light | STRUCT DEST | 0171LM | 14/16 |
| 10660 | Old Town Bend Foot Light | STRUCT DEST | 0253LM | 36/15 |

| | | | | |
|-------|----------------------------------|---------------------|--------|-------|
| 10685 | Robson Light | STRUCT DEST | 0116LM | 06/16 |
| 10700 | Sunflower Cut-Off Foot Light | STRUCT DEST | 0115LM | 06/16 |
| 10710 | Ludlow Bar Light | DAYMK DMGD | 0018LM | 04/18 |
| 10715 | Wood Cottage Light | STRUCT DEST | 0114LM | 06/16 |
| 10720 | Knowlton Light | STRUCT DEST | 0113LM | 06/16 |
| 10730 | Mason Landing Daybeacon | STRUCT DEST | 0172LM | 14/16 |
| 10815 | Riverton Middle Bar Light | STRUCT DEST | 0113LM | 21/18 |
| 10885 | Cypress Bend Light | STRUCT DEST | 0032LM | 07/18 |
| 10895 | Eutaw Bar Light | STRUCT DEST | 0365LM | 35/19 |
| 10905 | Mounds Crevasse Lower Light | STRUCT DEST | 0114LM | 21/18 |
| 10910 | Boliver Light | STRUCT DEST | 0069LM | 11/18 |
| 10955 | Miller Bend Light | STRUCT DEST | 0030LM | 06/18 |
| 10965 | La Grange Towhead Light | STRUCT DEST | 0367LM | 35/19 |
| 11050 | Vaucluse Bend Light | STRUCT DEST | 0028LM | 06/18 |
| 11070 | Anconia Point Light | STRUCT DEST | 0368LM | 35/19 |
| 11080 | Lakeport Light | STRUCT DEST | 0369LM | 35/19 |
| 11085 | Walnut Point Light | STRUCT DEST | 0370LM | 35/19 |
| 11125 | Corregidor Light | STRUCT DEST | 0080LM | 05/16 |
| 11130 | Sarah Island Light | STRUCT DEST | 0371LM | 35/19 |
| 11170 | Stack Island Light | STRUCT DEST | 0372LM | 35/19 |
| 11180 | STACK ISLAND LOWER LIGHT | STRUCT DEST | 0373LM | 35/19 |
| 11195 | Chinaman Light | STRUCT DEST | 0374LM | 35/19 |
| 11210 | Fitler Point Daybeacon | STRUCT DEST | 0170LM | 28/17 |
| 11215 | Seitz Light | STRUCT DEST | 0448LM | 38/19 |
| 11220 | Cottonwood Bar Pointway Light | STRUCT DEST | 0449LM | 38/19 |
| 11245 | Willow Point Light | DAYMK DMGD | 0450LM | 38/19 |
| 11250 | Belle Island Corner Daybeacon | STRUCT DEST | 0451LM | 38/19 |
| 11270 | Cabin Teele Light | STRUCT DEST | 0452LM | 38/19 |
| 11275 | Marshall Point Cut-Off Daybeacon | STRUCT DEST | 0453LM | 38/19 |
| 11280 | Joseph Henry Daybeacon | STRUCT DEST | 0454LM | 38/19 |
| 11407 | Coggins Light | STRUCT DEST | 0296LM | 29/16 |
| 11415 | Reid Bedford Point Light | STRUCT DEST | 0463LM | 39/19 |
| 11425 | Diamond Light | STRUCT DEST | 0464LM | 39/19 |
| 11430 | Sargent Point Light | LT IMCH/DAYMK DMGD | 0465LM | 39/19 |
| 11440 | Cannon Point Light | STRUCT DEST | 0294LM | 41/17 |
| 11455 | Buckridge Light | STRUCT DEST | 0467LM | 39/19 |
| 11470 | Grand Gulf Island Light | STRUCT DEST | 0468LM | 39/19 |
| 11505 | Old Levee Light | LT IMCH/DAYMK DMGD | 0470LM | 39/19 |
| 11520 | Ashland Light | LT IMCH/DAYMK DMGD | 0471LM | 39/19 |
| 11530 | Hole In The Wall Light | LT IMCH/REDUCED INT | 0472LM | 39/19 |
| 11540 | Giles Bend Cut-Off Light | STRUCT DEST | 0171LM | 28/17 |
| 11680 | Bob Boles Light | STRUCT DEST | | 18/23 |
| 11700 | Fort Adams Light | STRUCT DEST | 0402LM | 36/19 |
| 11795 | Morganza Crevasse Light | STRUCT DEST | 0400LM | 36/19 |
| 11835 | Bayou Sara Bend Light | STRUCT DEST | 0399LM | 36/19 |
| 11860 | Port Hudson Light | STRUCT DEST | 0581NO | 36/19 |
| 11900 | Devils Swamp Light | STRUCT DEST | 0397LM | 36/19 |
| 11940 | Ben Burman Light | STRUCT DEST | 0549LM | 44/19 |
| 13165 | Lock 5A Light | LT EXT | 0172UM | 20/20 |

| | | | | |
|--------------|---------------------------------|------------------------|--------|--------------|
| 13230 | Island 74 Light | STRUCT DEST/TRUB | 0380UM | 34/20 |
| 13430 | Root River Upper Light | STRUCT DEST/HAZ NAV | 0172UM | 20/20 |
| 13510 | Perry Ruby Light | STRUCT DEST | 0061UM | 12/17 |
| 13535 | Britts Landing Daybeacon | DAYMK DMGD/STRUCT DMGD | 0310UM | 42/22 |
| 13720 | Crooked Slough Head Daybeacon | STRUCT DEST/TRUB | 0482UM | 26/19 |
| 13725 | Crooked Slough Head Light | STRUCT DEST/TRUB | 0482UM | 26/19 |
| 13765 | Island 158 Daybeacon | DAYMK DMGD | 0310UM | 43/22 |
| 13895 | Clayton Daybeacon | STRUCT DEST | 0310UM | 43/22 |
| 13915 | Clayton Lower Daybeacon | STRUCT DEST/TRUB | 0240UM | 31/18 |
| 14010 | Cassville Upper Daybeacon | STRUCT DEST | 0546UM | 29/19 |
| 14030 | Cassville Lower Light | STRUCT DEST | 0546UM | 29/19 |
| 14105 | Maquoketa Island Light | STRUCT DEST | 0460UM | 25/19 |
| 14230 | Nine-Mile Island Light | STRUCT DEST | 0410LM | 36/17 |
| 14260 | Stone Slough Light | STRUCT DEST | 0454UM | 25/19 |
| 14275 | Fever River Light | STRUCT DEST/TRUB | 0485UM | 45/18 |
| 14295 | Pulaski Light | STRUCT DEST | 0485UM | 45/18 |
| 14385 | Arnold Towhead Light | STRUCT DEST | 0449UM | 25/19 |
| 14445 | Sabula Lower Light | STRUCT DEST | 0446UM | 25/19 |
| 14460 | Smith Bay Light | STRUCT DEST | 0048UM | 13/22 |
| 14475 | Elk River Light | DAYMK DMGD | 0257LM | 31/21 |
| 15170 | Edwards Island Upper Light | STRUCT DEST/TRUB | 0403UM | 26/16 |
| 15785 | Sny River Light | STRUCT DEST | 0114UM | 22/22 |
| 16065 | Elswood Lower Light | STRUCT DEST | 0030UM | 16/23 |
| 16110 | Hastings Landing Daybeacon | STRUCT DMGD | 0282UM | 39/22 |
| 16120 | Cuivre Island Light | STRUCT DEST | 0282UM | 39/22 |
| 16200 | Portage Des Sioux Light | LT EXT | 0088UM | 18/22 |
| 16910 | Ste. Genevieve Island Light | STRUCT DEST | 0557UM | 30/19 |
| 17970 | Fitzhugh Daybeacon | STRUCT DEST | 0055UM | 19/23 |
| 17975 | Lower Blencoe Bend Daybeacon | STRUCT DEST | 0055UM | 19/23 |
| 17985 | Wahle Daybeacon | STRUCT DEST | 0055UM | 19/23 |
| 23285 | Cluster Upper Light | STRUCT DEST | 0721OV | 34/18 |
| 23330 | Brown Island Light | STRUCT DEST | | 20/23 |
| 24110 | Old Lock No. 17 Lower Daybeacon | STRUCT DEST | | 39/20 |
| 25355 | Sciotoville Light | LT EXT | 0095OV | 11/23 |
| 26047 | Sunken Barge Lighted Buoy WR | MISSING | 0519OV | 51/21 |
| 26470 | Notch Lick Light | STRUCT DEST | 0210OV | 23/21 |
| 27090 | Wolf Creek Light | LT EXT | 0064OV | 05/22 |
| 27520 | Robert Mann Light | STRUCT DEST | 0269OV | 21/22 |
| 27540 | Water Works Light | STRUCT DMGD | 0179OV | 12/22 |
| 27855 | Graham Varble Light | STRUCT DEST | 0134OV | 17/21 |
| 27935 | Dekoven Light | STRUCT DEST | 0294OV | 23/22 |
| 29231.34 | Westdale Middle Daybeacon | STRUCT DEST/TRUB | 0121LM | 44/22 |
| 29241.25 | Smith Island Lower Daybeacon | STRUCT DEST | 0202LM | 26/21 |
| 29272 | Deloges Middle Daybeacon | DAYMK IMCH | | 36/20 |
| 29467 | Hog Lake Daybeacon | STRUCT DEST | | 36/20 |
| 29618 | Red River Entrance Light | STRUCT DEST | | 37/20 |
| 29665 | Dry Cypress Daybeacon | STRUCT DEST | | 37/20 |
| 29690 | Bayou Cocodrie Upper Daybeacon | STRUCT DEST | | 37/20 |
| 29695 | Bayou Cocodrie Daybeacon | STRUCT DEST | | 37/20 |

| | | | | |
|-------|--------------------------------|----------------------|--------|-------|
| 29710 | Grassy Lake Daybeacon | DAYMK MISSING | | 37/20 |
| 29725 | Alligator Bayou Daybeacon | STRUCT DEST | 0216LM | 33/17 |
| 29750 | Timber Lake Daybeacon | STRUCT DEST | | 37/20 |
| 29755 | Naples Daybeacon | STRUCT DEST | | 37/20 |
| 29775 | Three Rivers Junction Light | STRUCT DEST | | 37/20 |
| 29780 | Barbre Daybeacon | STRUCT DEST | | 37/20 |
| 29785 | Torras Daybeacon | STRUCT DEST | | 37/20 |
| 29795 | Oak Grove Daybeacon | STRUCT DEST | | 37/20 |
| 29845 | Houden Point Daybeacon | STRUCT DEST | 0255UM | 30/21 |
| 31995 | Dry Creek Light | STRUCT DEST | 0402OV | 31/20 |
| 32140 | Chambers Daybeacon | STRUCT DEST | 0178OV | 11/13 |
| 32170 | Diamond Island Lower Daybeacon | STRUCT DEST | 0177OV | 11/13 |
| 32190 | Savannah Bend Upper Daybeacon | STRUCT DEST | 0039OV | 04/23 |
| 32335 | Brodies Landing Light | STRUCT DEST | 0041OV | 04/23 |
| 32350 | Crooked Creek Light | STRUCT DEST | 0042OV | 04/23 |
| 32445 | Sales Light | TRUB/STRUCT DEST | 0269OV | 19/14 |
| 32460 | Reynoldsburg Island Light | STRUCT DEST/TRUB | 0290OV | 15/18 |
| 32465 | Shirley Light | STRUCT DEST | 0040OV | 04/23 |
| 32480 | Higgins Light | STRUCT DEST | 0342OV | 27/15 |
| 32510 | Hurricane Creek Light | STRUCT DEST | 0043OV | 04/23 |
| 32530 | Standing Rock Upper Light | STRUCT DEST | 0658OV | 41/13 |
| 32570 | Fort Henry Light | STRUCT DEST | 0160OV | 19/21 |
| 32595 | Blood River Light | STRUCT DEST/TRUB | 0138OV | 17/21 |
| 32600 | Clyde Light | LT EXT | 0581OV | 44/15 |
| 32605 | Newburg Light | STRUCT DEST | 0362OV | 29/15 |
| 32710 | Twenty-One Mile Light | STRUCT DEST | 0108OV | 13/23 |
| 32715 | Chottes Creek Light | STRUCT DEST | 0107OV | 13/23 |
| 32750 | Haddock Ferry Light | LT EXT/DAYMK MISSING | 0106OV | 13/23 |
| 32765 | Big Chain Light | STRUCT DEST | 0105OV | 13/23 |
| 32780 | Mud Creek Light | STRUCT DEST | 0036OV | 04/23 |
| 32825 | W. L. Berry Light | STRUCT DEST | 0110OV | 13/23 |

DISCREPANCIES (FEDERAL AIDS) CORRECTED

| LLNR | Aid Name | Status | Chart No. | BNM Ref. | LNM St | LNM End |
|------|----------|--------|-----------|----------|--------|---------|
|------|----------|--------|-----------|----------|--------|---------|

None

DISCREPANCIES (PRIVATE AIDS)

| LLNR | Aid Name | Status | Chart No. | BNM Ref. | LNM St | LNM End |
|------|-----------------------------------|----------------|-----------|----------|--------|---------|
| 1685 | Oakley Dock Light | LT EXT | | 0307LM | 44/14 | |
| 1690 | Mobley Dock Light | LT EXT | | 0454LM | 48/13 | |
| 2100 | Oakley Light | LT EXT | | 0520LM | 42/19 | |
| 2337 | Island Harbor Marina Light | LT EXT | | | 45/16 | |
| 2340 | Century Tube Lights (2) | LT EXT | | | 45/16 | |
| 2400 | Pickett And Davison Lights (2) | LT EXT | | 0481LM | 50/13 | |
| 3725 | Lakewood Marina Lights (4) | LT IMCH | | 0439OV | 34/15 | |
| 3750 | Dupont Dock Lights (2) | OFF STA/LT EXT | | 0305OV | 26/15 | |
| 3795 | Nashville Water Intake Lights (2) | LT EXT | | | 44/11 | |
| 3805 | Holnam Dock Lights (2) | LT EXT | | | 44/11 | |
| 3815 | Kerr-Mcgee Dock Lights (2) | LT EXT | | | 44/11 | |

| | | | | |
|-------|---|-----------------|--------|-------|
| 3820 | Cohen Terminal Lights (2) | LT EXT | | 44/11 |
| 3930 | Alcoa Chemical Dock Lights (2) | MSLD SIG/LT EXT | 0216OV | 14/10 |
| 3960 | Hunter Marine Transport Dock Lights (2) | LT EXT | | 47/08 |
| 3995 | Riverview Marina Lights (2) | LT EXT | | 47/08 |
| 4055 | Clarksville Boat Club Dock Lights (2) | LT EXT | 0533OV | 34/12 |
| 6170 | Quantum Chemical Dock Lights (2) | LT EXT | 0436UM | 31/01 |
| 6650 | S. T. Services Terminal Lights (2) | LT EXT | | 41/14 |
| 6695 | Continental Grain Company Light | LT EXT | | 41/14 |
| 7225 | Cargo Carriers Dock Lights (2) | LT EXT | | 25/08 |
| 7235 | Pekin Boat Club Breakwater Light | LT EXT | | 05/16 |
| 7250 | Shell Dock Lights (2) | LT EXT | 0123UM | 16/02 |
| 7255 | Adm Growmark Mooring Light | LT EXT | 0122UM | 16/02 |
| 7260 | Sours Grain Tramway Light | LT EXT | 0279UM | 21/03 |
| 7265 | Tomen Dock Light | LT EXT | | 25/08 |
| 7295 | Adm Growmark Mooring Lights (3) | LT EXT | 0281UM | 21/03 |
| 7460 | Cargill Mooring Lights (2) | LT EXT | 0284UM | 21/03 |
| 7620 | Cargill Dock Lights (2) | LT EXT | | 35/08 |
| 7725 | Cargill Terminal Lights (2) | LT IMCH | 0171UM | 26/18 |
| 7730 | Public Service Co. Dock Lights (6) | LT EXT | 0119UM | 20/18 |
| 7730 | Public Service Co. Dock Lights (6) | LT IMCH | 0171UM | 26/18 |
| 7760 | Adm Growmark Grain Elevator Lights (2) | LT IMCH | 0171UM | 26/18 |
| 9440 | Black Dog Lights (5) | LT EXT | | 43/16 |
| 9965 | Huffman Grain Light | STRUCT DEST | 0131LM | 08/16 |
| 10300 | Cargill Dock Light | LT EXT | 0361LM | 34/01 |
| 10390 | Peavey Lights (2) | LT EXT | 0398LM | 36/02 |
| 10395 | Suburban Propane Dock Light | LT EXT | 0396LM | 36/02 |
| 10415 | Western Tar Products Dock Light | LT EXT | 0394LM | 36/02 |
| 11943 | Bear Industries Barge Dock Lights (4) | LT EXT | 0600NO | 30/17 |
| 11990 | Riverside Dock Lights (2) | LT EXT | 0695UM | 40/01 |
| 12080 | University Dock Lights (3) | LT EXT | 0696UM | 40/01 |
| 12215 | Koch Fuel Dock Lights (2) | LT EXT | | 35/16 |
| 12320 | Newport Terminal Lights (2) | LT EXT | | 35/16 |
| 12385 | Shiely Dock Lights (2) | LT IMCH | | 35/16 |
| 12712 | City of Red Wing Metering Station Special Light | MISSING | | 42/16 |
| 12768 | Consolidated Grain and Barge Loading Dock Piling Lights (2) | MISSING | | 42/16 |
| 12930 | Alma City Dock Light/Daymarks (3) | MISSING | | 42/16 |
| 13405 | G. Heileman Brewery Dock Light | MISSING | | 42/16 |
| 14756 | Isle Of Capri Casino Marina Daybeacon | MISSING | | 03/16 |
| 15345 | Koch Nitrogen Dock Light | LT EXT | | 41/14 |
| 15425 | Hall Towing Light | STRUCT DEST | 0280UM | 25/20 |
| 15822 | Hannibal Intake Light | LT EXT | 0358UM | 32/20 |
| 16100 | Jersey County Grain Dock Lights (2) | LT EXT | | 19/16 |
| 16205 | Piasa Harbor Light | LT EXT | 0131UM | 22/15 |
| 16220 | Con-Agra Mooring Lights (2) | LT EXT | | 21/16 |
| 16230 | Alton Marina Breakwater Lights (3) | LT EXT | 0131UM | 22/15 |
| 16265 | Amoco Dock Light | STRUCT DEST | | 35/09 |
| 16280 | Amoco Dock Lights (4) | LT EXT | | 35/09 |

| | | | | |
|-------|--|----------------|--------|-------|
| 16310 | Sioux City/New Orleans Terminal Light | STRUCT DEST | | 35/09 |
| 16380 | Western Dock Lights (9) | LT IMCH | | 34/08 |
| 16390 | Adm-Growmark Dock Lights (4) | LT EXT | 0776UM | 44/01 |
| 16430 | Union Electric Coal Dock Lights (2) | LT EXT | 0305UM | 34/08 |
| 16445 | Continental Cement Lights (2) | LT EXT | 0305UM | 34/08 |
| 16505 | Peavey Company Dock Lights (3) | LT EXT | 0305UM | 34/08 |
| 16530 | Cahokia Marine Terminal Lights (2) | LT EXT | 0305UM | 34/08 |
| 16540 | Slay Bulk Terminal Lights (2) | LT EXT | 0305UM | 34/08 |
| 16545 | Peavey Lights (3) | LT EXT | 0305UM | 34/08 |
| 16550 | Eagle Marine Industries Light | LT IMCH | 0305UM | 34/08 |
| 16560 | Phillips Pipeline Lights (2) | LT EXT | 0305UM | 34/08 |
| 16565 | Growmark Dock Lights (2) | LT EXT | 0305UM | 34/08 |
| 16575 | Eagle Marine Dock Lights (2) | LT EXT | 0305UM | 34/08 |
| 16600 | J.H. Collier Barge Mooring Lights (2) | LT EXT | 0305UM | 34/08 |
| 16605 | Clark Oil Refining Dock Lights (4) | LT EXT | 0305UM | 34/08 |
| 16609 | Alcoa Foil Lights (2) | LT EXT | 0305UM | 34/08 |
| 16615 | Hci Chemtech Dock Lights (2) | LT EXT | 0305UM | 34/08 |
| 16617 | Semmaterials Terminal Lights (2) | LT EXT | 0305UM | 34/08 |
| 16630 | American Commercial Dock Lights (2) | LT EXT | 0305UM | 34/08 |
| 16655 | Bussen Terminal Light | LT EXT | 0305UM | 34/08 |
| 18700 | Bunge Dock Lights (3) | MISSING/LT EXT | | 18/08 |
| 19185 | St. Joseph L & P Dock Light | LT IMCH | | 17/08 |
| 19415 | Leavenworth Water Intake Lights (2) | LT EXT | 0104UM | 39/07 |
| 19460 | Smoot Grain Dock Lights (2) | LT EXT | 0385UM | 39/07 |
| 19505 | Board Of Public Utilities Light | LT EXT | 0386UM | 39/07 |
| 19535 | Public Utilities Intake Lights (3) | LT EXT | | 38/08 |
| 19660 | Continental Grain Dock Lights (4) | LT EXT | 0181UM | 24/08 |
| 19695 | Kansas City Power And Light Company Lights (2) | LT EXT | 0181UM | 24/08 |
| 20870 | U.E. Callaway Intake Lights (2) | LT EXT | 0522UM | 52/20 |
| 22873 | Moon Township Municipal Authority Back Channel Outfall Danger Buoy | OFF STA | 0108OV | 14/21 |
| 24005 | Bens Run Light | LT EXT | | 03/20 |
| 24580 | Ohio Power Coal Dock Light | LT EXT | 0480OV | 44/21 |
| 25820 | Cargill Barge Loading Facility Light | LT EXT | 0552OV | 40/09 |
| 26290 | Boone County Sand And Gravel Lights (2) | LT EXT | 0769OV | 40/00 |
| 26833 | Transmontaige Dock Lights (2) | LT EXT | 0286OV | 28/21 |
| 26860 | Dupont Chemical Lights (2) | LT EXT | 0330OV | 17/18 |
| 27590 | Transmontaigne Dock Lights (4) | LT EXT | | 40/21 |
| 32900 | Ergon Dock Lights (2) | LT IMCH | | 17/13 |
| | Alcosan-Mascaro Temporary Lighted Danger Buoy | MISSING | | 24/22 |

DISCREPANCIES (PRIVATE AIDS) CORRECTED

| LLNR | Aid Name | Status | Chart No. | BNM Ref. | LNM St | LNM End |
|-------|---------------------------|-------------------|-----------|----------|--------|---------|
| 15415 | Riverview Park Dock Light | WATCHING PROPERLY | | | 49/15 | 20/23 |

PLATFORM DISCREPANCIES

| Name | Status | Position | BNM Ref. | LNM St | LNM End |
|------|--------|----------|----------|--------|---------|
| None | | | | | |

PLATFORM DISCREPANCIES CORRECTED

| Name | Status | Position | BNM Ref. | LNM St | LNM End |
|------|--------|----------|----------|--------|---------|
| None | | | | | |

SECTION III - TEMPORARY CHANGES and TEMPORARY CHANGES CORRECTED

This section contains temporary changes and corrections to Aids to Navigation for this edition. When charted aids are temporarily relocated for dredging, testing, evaluation, or marking an obstruction, a temporary correction shall be listed in Section IV giving the new position.

TEMPORARY CHANGES

| LLNR | Aid Name | Status | Chart No. | BNM Ref. | LNM St | LNM End |
|-------|-------------------------------------|--------------|-----------|----------|--------|---------|
| 7015 | Blue Creek Point Lower Lighted Buoy | TRUB | | 0379UM | 51/21 | |
| 7030 | Drolls Point Upper Lighted Buoy | TRUB | | 0379UM | 51/21 | |
| 7040 | Peoria Heights Lighted Buoy | TRUB | | 0379UM | 51/21 | |
| 10455 | Armstrong Bar Light | RELOCATED | | | 23/18 | |
| 11275 | Marshall Point Cut-Off Daybeacon | TRDBN | | | 49/16 | |
| 11280 | Joseph Henry Daybeacon | TRDBN | | | 49/16 | |
| 29880 | Kinnikinnic River Daybeacon | DISCONTINUED | | | 21/20 | |

TEMPORARY CHANGES CORRECTED

| LLNR | Aid Name | Status | Chart No. | BNM Ref. | LNM St | LNM End |
|------|----------|--------|-----------|----------|--------|---------|
|------|----------|--------|-----------|----------|--------|---------|

None

PLATFORM TEMPORARY CHANGES

| Name | Status | Position | BNM Ref. | LNM St | LNM End |
|------|--------|----------|----------|--------|---------|
|------|--------|----------|----------|--------|---------|

None

PLATFORM TEMPORARY CHANGES CORRECTED

| Name | Status | Position | BNM Ref. | LNM St | LNM End |
|------|--------|----------|----------|--------|---------|
|------|--------|----------|----------|--------|---------|

None

SECTION V - ADVANCE NOTICES

This section contains advance notice of approved projects, changes to aids to navigation, or upcoming temporary changes such as dredging, etc. Mariners are advised to use caution while transiting these areas.

SUMMARY OF ADVANCED APPROVED PROJECTS

| <u>Approved Project(s)</u> | <u>Project Date</u> | <u>Ref. LNM</u> |
|-----------------------------------|----------------------------|------------------------|
| None | | |

Advance Notice(s)
None

SECTION VI - PROPOSED CHANGES

Periodically, the Coast Guard evaluates its system of aids to navigation to determine whether the conditions for which the aids to navigation were established have changed. When changes occur, the feasibility of improving, relocating, replacing, or discontinuing aids are considered. This section contains notice(s) of non-approved, proposed projects open for comment. SPECIAL NOTE: Mariners are requested to respond in writing to the District office unless otherwise noted (see banner page for address).

PROPOSED WATERWAY PROJECTS OPEN FOR PUBLIC COMMENT

| <u>Proposed Project(s)</u> | <u>Closing</u> | <u>Docket No.</u> | <u>Ref. LNM</u> |
|-----------------------------------|-----------------------|--------------------------|------------------------|
| None | | | |

SECTION VII - GENERAL

This section contains information of general concern to the Mariners. Mariners are advised to use caution while transiting these areas.

ALLEGHENY RIVER**MILE 0.8 - MILE 0.25 - DRONE SHOW/SAFETY ZONE/RIVER CLOSURE**

On May 19, 2023, from 9:30 p.m. until 11:00 p.m., a Drone Light Show will be held between approximate Mile 0.8 and Mile 0.25. The COTP Pittsburgh has established a Safety Zone closing the river for this event. Entry into this Safety Zone, during the event period, is prohibited unless otherwise authorized by the COTP Pittsburgh. Mariners may contact the U.S. Coast Guard via VHF-FM Channel 16, for additional information.

LNM: 19-23

MILE 0.6 - BRIDGE MAINTENANCE

Sixth Street Bridge; A containment system is installed below low steel and follows the contour of the bridge. Vertical clearance is reduced approximately 1-foot for the middle, 100 feet of the navigation span. A work barge will be located outside of the navigation channel and will not affect navigation. Mariners are advised to transit the bridge with extreme caution.

LNM: 38-22

ARKANSAS RIVER**MILE 336.2 - L/D DAMAGE**

Until further notice mariners are advised to use caution when transitioning in the Robert S. Kerr L/D Nr. 15 chamber, due to recent damage to the recess armor on the right descending wall, at approximately the 50-foot mark. A large section of steel armor plating is hanging down and protruding into the chamber, and the concrete corner is exposed. Mariners are urged to favor the left descending wall. Mariners may contact the L/D, for the latest information. Mariners may contact the USACE Tulsa District Mr. Robert Steiner, Navigation Operation Manager, at (918) 775-4475, ext. 5833 or Mr. Jake Simpson, Navigation Field Engineer, at (918) 430-4783, for additional information.

LNM: 16-23

MILE 300.4 - BRIDGE MAINTENANCE

Continuing until further notice, concrete and deck repairs will be conducted on the I-64 Bridge. All vessels are directed to use the main navigation channel. Mariners may contact the I-64 Bridge crew on VHF-FM Channel 13 or 16, for further information.

LNM: 13-23

MILE 299.6 - BRIDGE MAINTENANCE

Continuing until further notice, concrete and deck repairs will be conducted on the I-540 Bridge. All vessels are directed to use the main navigation channel. Mariners may contact the I-540 Bridge crew on VHF-FM Channel 13 or 16, for further information.

LNM: 13-23

MILE 126.5 - AIDS TO NAVIGATION

Multiple buoys have been reported off station in the vicinity of Mile 126.5, near the mouth of Little Maumelle River. Mariners are urged to transit the area with caution.

LNM: 20-23

MILE 118.2 - BRIDGE PROTECTION CELL DAMAGE

The upstream left descending pier protection cell at the Clinton Presidential Park Bridge in the vicinity of Mile 118.2, is damaged and leaning into the left descending bridge pier. Mariners are urged to exercise caution in the area. Mariners may contact the USACE Little Rock District Office at (501) 324-5096 or via e-mail at: ceswl-op-om@usace.army.mil, for additional information.

LNM: 48-21

CUMBERLAND RIVER**MILE 190.4 - BRIDGE MAINTENANCE**

Louisville and Nashville (CSX) Railroad Drawbridge; Vertical clearance is reduced by 4 feet due to installed containment system. The bridge remains fully operational. Mariners are advised to contact bridge tender via VHF-FM Channel 16 or maintenance supervisor at telephone (989) 717-3192, for additional information.

LNM: 35-22

GREEN RIVER**MILE 8.3 - BRIDGE OPERATION**

Louisville and Nashville Railroad Drawbridge; The bridge will be unattended and left in the open-to-navigation position. Mariners will be notified when the bridge is back in operation.

LNM: 20-22

ILLINOIS WATERWAY**MILE 288.7 - MILE 287.3 - BRIDGE REPAIRS**

Joliet Harbor Bridges; Due to ongoing bridge work, mariners are required to provide 1-hour advance notice, when requesting drawspan openings.

LNM: 19-20

MILE 282.5 - BRIDGE CONSTRUCTION

Houbult Road Bridge; Construction has been completed. Horizontal clearance is 423.0 feet and vertical clearance is 58.0 feet.

MILE 282.5 - BRIDGE CONSTRUCTION

LNM: 20-23

MILE 254.1 - PIER DAMAGE

Chessie Railroad Drawbridge: The left descending pier has broken timbers at the waterline. Mariners are urged to transit the area with caution.

LNM: 19-23

MILE 151.2 - BRIDGE OPERATION

Pekin Railroad Drawbridge; Continuing until further notice, the bridge will be unattended and left in the open-to-navigation position. The bridge shall initiate the closing sequence for an approaching train by broadcasting the closure on VHF-FM Channel 16, 10-minutes prior to closure and immediately prior to closing. If no mariners respond to the broadcast, the operator of the bridge may begin the closing sequence. For additional information, mariners may contact Joe Ballou, with Union Pacific Railroad at (708) 990-8513.

LNM: 34-22

MILE 151.2 - BRIDGE CONDITION

Pekin Railroad Drawbridge: The downstream, right descending sheerfence is missing. Mariners are urged to transit the bridge with caution.

LNM: 17-23

KANAWHA RIVER**MILE 59.1 - MILE 58.1 - FIREWORKS DISPLAY**

On May 27, 2023, commencing at 9:30 p.m., the Charleston Live on the Levee Memorial Day Celebration fireworks display will be held near the Haddad Riverfront Park between approximate Miles 59.1 and 58.1. Mariners are advised to exercise caution in the area to avoid potentially hazardous conditions associated with the fireworks display. The Charleston Police and Fire Departments will monitor VHF-FM Channels 13 and 16. U.S. Coast Guard Sector Ohio Valley will monitor VHF-FM Channel 16. Mariners may contact Sector Ohio Valley at (800) 253-7465, for additional information.

LNM: 20-23

MILE 44.0 - MILE 43.0 - FIREWORKS DISPLAY

On May 27, 2023, commencing at 9:30 p.m., the Nitro City Park Memorial Day Celebration fireworks display will be held between approximate Miles 44.0 and 43.0. Mariners are advised to exercise caution in the area to avoid potentially hazardous conditions associated with the fireworks display. The Nitro Police and Fire Departments will monitor VHF-FM Channels 13 and 16. U.S. Coast Guard Sector Ohio Valley will monitor VHF-FM Channel 16. Mariners may contact Sector Ohio Valley at (800) 253-7465, for additional information.

LNM: 20-23

LOWER MISSISSIPPI RIVER**MILE 934.0 - MILE 930.0 - STONE REVETMENT OPERATION**

Continuing until July 9, 2023, the M/V KACIE LUHR will be conducting stone revetment operations from Mile 934.0 to Mile 930.0. There will be daily river closures for southbound traffic from 7:00 a.m. until 6:00 p.m. Southbound traffic from the Upper Mississippi River shall check into the queue at Mile 7.5, or from the Ohio River at Mile 977.7. Northbound traffic shall check into the queue at Lower Mississippi River Mile 921.0. The M/V KACIE LUHR may be contacted via VHF-FM Channels 13, 16 or 72, or by phone at (573) 803-7931 for queue arrangements. Mariners are advised to transit with caution and transit at the slowest safe speed once passing arrangements have been made.

LNM: 19-23

MILE 740.0 - MILE 725.0 - AIDS TO NAVIGATION

Multiple buoys have been reported missing from Mile 740.0 to Mile 725.0. Mariners are advised to transit the area with caution.

LNM: 20-23

MILE 734.7 - BRIDGE MAINTENANCE

Memphis Highway Bridge: Due to maintenance on the bridge, a containment system is installed and will hang 2 feet below low steel following the contour of the bridge. Mariners are advised to transit the area with caution.

LNM: 17-23

MILE 230.0 - MILE 228.5 - BRIDGE FENDER SYSTEM REPLACEMENT

Continuing until approximately August 2, 2023, work to replace the bridge fender system on the I-10 Bridge, left descending pier of the center span, in the vicinity of Mile 229.3, is being conducted. Work will be conducted Monday through Saturday, from 6:00 a.m. until 7:00 p.m. Mariners are urged to transit between Mile 230.0 and 228.5, at their slowest safe speed to minimize their wake and proceed with caution. Mariners may contact Ryan Finnie via VHF-FM Channel 21 or at (321) 501-3936, for additional information.

LNM: 31-22

UPPER MISSISSIPPI RIVER**MILE 818.8 - DREDGE OPERATION**

Continuing until further notice, the M/V BRENNEN MARINE, is conducting dredging operations in the vicinity of Mile 818.8. Work will be conducted from 7:00 a.m. until 7:00 p.m., Monday through Friday. The M/V BRENNEN MARINE will monitor VHF-FM Channel 12 and requests 30-minutes advance notice of passage. Mariners are urged to transit the area at their slowest safe speed to minimize their wake and proceed with caution after passing arrangements have been made.

LNM: 20-23

MILE 759.0 - DREDGE OPERATION

Continuing until further notice, the M/V ANGELA K., is conducting dredging operations in the vicinity of Mile 759.0. Work will be conducted from 7:00 a.m. until 7:00 p.m., Monday through Friday. The M/V ANGELA K., will monitor VHF-FM Channels 12 and 16, and requests 30-minutes advance notice of passage. Mariners are urged to transit the area at their slowest safe speed to minimize their wake and proceed with caution after passing arrangements have been made.

LNM: 20-23

MILE 581.0 - MILE 577.0 - AIDS TO NAVIGATION

Multiple buoys have been reported missing from Mile 581.0 to Mile 577.0. Mariners are advised to transit the area with caution.

LNM: 20-23

MILE 482.1 - BRIDGE MAINTENANCE

Centennial Highway Bridge: Continuing until June 1, 2023, work to replace the existing roller bearings on top of the piers will be conducted. Work will be conducted from 7:00 a.m. until 5:30 p.m., Monday through Saturday. Mariners are urged to transit the area with caution.

LNM: 17-23

MILE 168.6 - BRIDGE MAINTENANCE

Jefferson Barracks Dual Bridge; Due to a containment system installed below low steel, vertical clearance has been reduced to 84 feet. Mariners are advised to transit the bridge with caution.

LNM: 17-22

MONONGAHELA RIVER**MILE 90.8 - MILE 89.8 - MARINE EVENT/RIVER CLOSURE**

The Captain of the Port Pittsburgh advises all mariners of a boat race on May 27, 2023, and May 28, 2023, from Mile 90.8 to Mile 89.8. The boat race will be held from 8:00 a.m. until 8:00 p.m., each day. Vessels will be allowed to transit the area from 9:30 a.m. until 11:30 a.m., and from 4:00 p.m. until 6:00 p.m. The event organizer may be contacted via VHF-FM Channel 13. The U.S. Coast Guard may be contacted via VHF-FM Channel 16.

LNM: 20-23

MILE 55.1 - BRIDGE OBSTRUCTION

West Brownsville Junction Bridge: A wire has been reported to be hanging down on the left descending channel side, that extends to the river. Mariners are advised to keep a sharp lookout and transit with caution.

LNM: 20-23

MILE 0.8 - BRIDGE MAINTENANCE

Smithfield Bridge; A containment system is installed and will hang approximately 1.5 feet, below low steel, following the contour of the bridge.

LNM: 33-22

OHIO RIVER**MILE 0.0 - MILE 0.3 - SKY DIVING DISPLAY/SAFETY ZONE/RIVER CLOSURE**

On May 25, 2023, and May 26, 2023, from 7:00 a.m. until 1:00 p.m. each day, the Red Bull Skydiving Display will be held between approximate Miles 0.0 and 0.3 on the Ohio River, Miles 0.0 and 0.3 on the Monongahela River, and Miles 0.0 and 0.3 on the Allegheny River. The Captaining of the Port Pittsburgh established a Safety Zone closing the river to facilitate this event. No persons or vessels will be allowed to transit the area without the permission of the U.S. Coast Guard. Marine Safety Unit Pittsburgh may be reached via VHF-FM Channel 16.

LNM: 20-23

MILE 4.5 - PARTIALLY SUBMERGED VESSEL - UPDATE

The partially submerged catamaran at Mile 4.5, has been salvaged.

LNM: 20-23

MILE 90.3 - BRIDGE MAINTENANCE

Wheeling Suspension Bridge; Continuing through June 2023, the vertical clearance may be reduced by 2 feet due to maintenance being performed on the bridge. For more information, mariners may contact West Virginia Department of Transportation, Ahmed Mongi, at (304) 553-3941 or Advantage Steel and Construction, Matt Oskin, at (724) 352-4842.

LNM: 11-22

MILE 308.8 - BRIDGE MAINTENANCE

Sixth Street Bridge: Due to cleaning and painting of the bridge, a containment system is installed and will hang 4-feet below low steel and follows the contour of the bridge. Vertical clearance is reduced to 70.4 feet above normal pool. Mariners are advised to transit the bridge with extreme caution.

LNM: 17-23

MILE 314.5 - MOORING CELL REPAIRS

Continuing until approximately June 2, 2023, Amherst Madison will be conducting mooring cell repairs for the SunCoke Energy Ceredo Plant, at Mile 314.5, LDB. The floating plant will consist of the M/V FLORENCE T., one barge mounted crane, and one deck barge. Work will be conducted from 6:30 a.m. until 4:30 p.m., Monday through Friday. M/V FLORENCE T. will be monitoring VHF-FM Channels 13 and 16. During non-working hours, the floating plant will be moored at the worksite and lighted accordingly. Mariners are urged to transit the area at their slowest safe speed to minimize their wake and proceed with caution.

LNM: 19-23

MILE 327.0 - MILE 329.0 - FIREWORKS DISPLAY

On May 27, 2023, commencing at 9:30 p.m., the Ironton Memorial Day Celebration fireworks display will be held at the Ironton boat ramp at Mile 328.0. Mariners are advised to exercise caution in the area to avoid potentially hazardous conditions associated with the fireworks display. The Ironton Police and Fire Departments will monitor VHF-FM Channels 13 and 16. U.S. Coast Guard Sector Ohio Valley will monitor VHF-FM Channel 16. Mariners may contact Sector Ohio Valley at (800) 253-7465, for additional information.

LNM: 20-23

MILE 350.2 - SOIL BORING OPERATION

Continuing until June 30, 2023, M/V THE CAROLINE will be conducting geotechnical soil boring operations in the vicinity of Mile 350.2. Work will be

MILE 350.2 - SOIL BORING OPERATION

conducted 24-hours a day, 7-days a week. During non-working hours, the floating plant will be moored at the worksite and lighted accordingly. The contractor's floating plant will monitor VHF-FM Channel 13, 16 or 65. Mariners are urged to pass at the slowest safe speed to minimize wake and proceed with caution after passing arrangements have been made.

LNM: 11-23

MILE 603.5 - AIDS TO NAVIGATION

Two nun buoys have been reported missing near the head of Portland Canal, in the vicinity of Mile 603.5. Mariners are urged to transit this area with caution.

LNM: 20-23

MILE 604.1 - AIDS TO NAVIGATION

Two nun buoys have been reported missing in the vicinity of Mile 604.1. Mariners are urged to transit this area with caution.

LNM: 08-23

MILE 604.4 - BRIDGE MAINTENANCE

LIRC Railroad Bridge: Continuing until May 19, 2023, vertical clearance may be reduced due to snooper trucks conducting an inspection of the bridge. The inspection will be conducted daily from 6:30 a.m. until 6:30 p.m. A safety boat will be on scene monitoring VHF-FM Channel 16. Mariners are requested to transit the area at their slowest safe speed to minimize their wake and proceed with caution.

LNM: 18-23

MILE 606.8 - L/D CLOSURE

Continuing until June 15, 2023, the north chamber at McAlpine L/D, in the vicinity of Mile 606.8, will be closed to navigation for repairs. All vessel traffic will utilize the south chamber, during this closure.

LNM: 18-23

MILE 608.6 - BRIDGE MAINTENANCE

Sherman Minton Bridge; Cleaning and painting of the bridge will continue from 7:00 a.m. until 6:00 p.m., Monday through Saturday, until further notice. A containment system will hang 4 feet below low steel. Mariners should transit the bridge with caution.

LNM: 29-21

MILE 757.0 - DRONE SHOW

On May 17, 2023, and May 19, 2023, from 8:30 p.m. until 9:30 p.m., a Drone Light Show display will be conducted in the vicinity of Mile 757.0, near the Owensboro downtown riverfront. Mariners are advised to transit the area with caution.

LNM: 19-23

MILE 789.0 - MILE 791.3 - FACILITY CONSTRUCTION

Continuing until approximately September 30, 2025, Meuth Construction Supply Inc., is constructing a facility adjacent to the navigation channel between approximate Miles 789.0 and 791.3, RDB. Sixteen tri-tie dolphins will be constructed to anchor barges along the riverbank. Construction for this facility will be performed from a floating plant. The contractor's floating plant will never extend more than 180 feet from the shoreline, at normal pool. The construction contractor will monitor VHF-FM Channel 7, 13 or 16. Mariners are urged to transit the area with caution.

LNM: 39-22

MILE 846.0 - L/D CLOSURE

Continuing until August 20, 2023, the John T. Myers L/D (1,200-foot chamber) in the vicinity of Mile 846.0, is closed intermittently for replacement of the floating mooring bitt tracks. This duration represents the contract period leading to the scheduled closures described below. Intermittent closures may occur up to 4-hours each day. Up to two 12-hour closures may occur in a 7-day period to facilitate work. The Auxiliary (600-foot chamber) will be open to navigation traffic any time the primary chamber is closed for work on the floating mooring bitts. The Auxiliary (600-foot chamber) will be closed from August 21, 2023 through September 10, 2023, to allow miter gate repairs and prep for the primary chamber closure by the Heavy Capacity Fleet. The primary (1,200-foot chamber) will be closed from September 11, 2023 through November 17, 2023, to allow miter gate rehab by the Heavy Capacity Fleet.

LNM: 05-23

MILE 918.5 - L/D CLOSURE

Commencing September 22, 2023 and continuing until October 21, 2023, the Smithland L/D land chamber, in the vicinity of Mile 918.5, will be closed for the replacement of the land chamber miter gate machinery by the Light Capacity Fleet. The river chamber will be closed from October 22, 2023, through November 20, 2023, for the replacement of the river chamber miter gate machinery by the Light Capacity Fleet.

LNM: 05-23

ST. CROIX RIVER**MILE 4.3 - AIDS TO NAVIGATION**

Multiple buoys have been reported missing in the vicinity of Mile 4.3. Mariners are urged to transit the area with caution.

LNM: 20-23

TENNESSEE RIVER**MILE 27.0 - AID TO NAVIGATION**

An uncharted red and white buoy has been reported adrift in Little Bear Creek, in the vicinity of Mile 27.0. Mariners are urged to transit the area with caution.

LNM: 20-23

SECTION VIII - LIGHT LIST CORRECTIONS

An Asterisk *, indicates the column in which a correction has been made to new information

| (1) No. | (2) Name and Location | (3) Mile | (4) Bank | (5) Characteristic | (6) Structure / Dayboard Up Down | | (7) Remarks |
|------------|--------------------------|-------------|-------------|-----------------------|---|----|----------------|
| 23350 | BROWN ISLAND LOWER LIGHT | 63.1 | Left | Fl (2)R 5s | TR | TR | 20/23 |

* * * * * *

ENCLOSURES**USACE Huntington District - Restricted Areas at Navigation Structures**

USACE Huntington District Notice to Navigation Interests 22-33, regarding maintenance and repair operations.

LNM: 03-23

USACE Channel Status Reports

Arkansas River Channel Status Reports.

LNM: 09-23

UPPER MISSISSIPPI RIVER/ILLINOIS WATERWAY - BARGE/RAIL COLLISION RISK

Sector Upper Mississippi River MSIB 08-21.

LNM: 15-23

Commander, Eighth Coast Guard District
Hale Boggs Federal Building, Room 1230
500 Poydras Street, New Orleans, LA 70130-3310
Telephone (504) 671-2327
(Business Hours 7:00 a.m. - 3:30 p.m. Monday - Friday)
(Nights, Weekends, Holidays) (504) 589-6225
RADM Timme



**US Army Corps
of Engineers®**

HUNTINGTON DISTRICT

DATE: 12/29/2022

NOTICE NUMBER: 201731

ATTN: CELRH-DE
502 8TH STREET
HUNTINGTON WV 25701-2070
HTTP://WWW.LRH.USACE.ARMY.MIL/

POC: Kent C.
Browning
(304) 399-5239

LOCAL NUMBER: 22-33
WATERWAY: KANAWHA RIVER
OHIO RIVER

EFFECTIVE: 01/01/2023 07:00 thru 09/15/2023
15:30

TENTATIVE MAINTENANCE SCHEDULE FOR 2023

HUNTINGTON DISTRICT

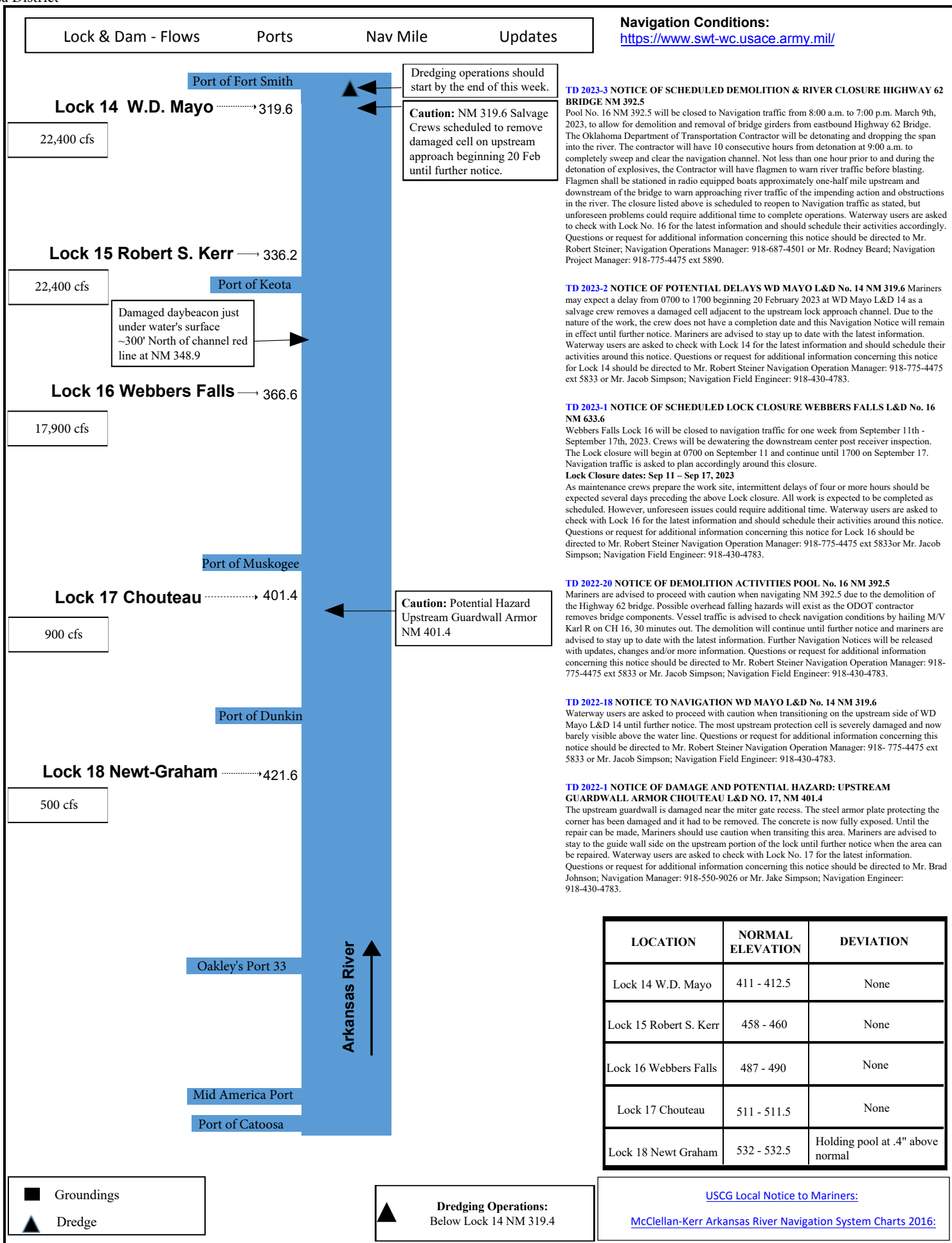
It is anticipated that major maintenance and repairs will be performed at the following locations during calendar year 2023. This notice may require periodic revision. It is given so that industrial and recreational waterway users may have a general knowledge of the lock outages and can plan their operations accordingly. Factors which may affect this schedule are the delivery of materials, repairs required but not anticipated, emergency repairs as a result of accidents, and funding.

| <u>PROJECT</u> | <u>REPAIRS</u> | <u>DATES</u> | <u>REMARKS</u> |
|-----------------------|--|---------------------|---|
| Belleville L&D | Filling and Emptying System Repairs | 30 Jan - 26 Feb | Auxiliary Chamber Closure with Intermittent Closures to the Primary Chamber |
| Racine L&D | Miter Gate Machinery Repairs | 30 Jan - 25 Feb | Auxiliary Chamber Closure |
| Racine L&D | Miter Gate Machinery Repairs | 26 Feb - 12 Mar | Primary Chamber Closure |
| Greenup L&D | Filling System Repairs | 13 Mar - 12 Apr | Primary Chamber Closure |
| Meldahl L&D | Dewatering for Miter Gate Inspection and Repairs | 17 Apr - 04 Aug | Auxiliary Chamber Closure |
| Winfield L&D | Dam Gate Repairs | 10 Jul - 15 Sep | No Closures |

All interested parties should review the maintenance schedule for impact. Additional notices furnishing specific information and operating requirements for repairs resulting in major delays will be published prior to commencing the work items listed.

//signed//

KENT C. BROWNING
Chief, Technical Support Branch





U.S. COAST GUARD

Sector Upper Mississippi River



November 22, 2021

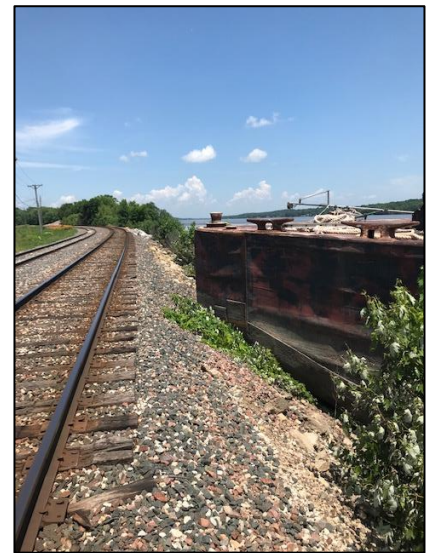
Marine Safety Information Bulletin # 08-21

This bulletin is used purely for informational purposes to assist the maritime community within the Sector Upper Mississippi River Area of Responsibility. Its purpose is to advise relevant parties of emerging information and situations that may impact our Marine Transportation System as well as to facilitate cooperation among the involved parties regarding actions that we may be taking and/or that you may need to employ in the interest of safety/security.

Barge/Rail Collision Risk

This bulletin is in effect from November 22, 2021 until cancelled by the Captain of the Port.

Sector Upper Mississippi River (UMR) received multiple reports of barges encroaching on railroad right of ways (tracks, rail beds) in 2019. This was further documented in Sector UMR MSIB 01-20 and the Waterway Action Plan (WAP). Approximately 45 known areas on the UMR and Illinois River pose a risk for barge/rail collisions due to the close proximity between the rail right of ways and the river bank. Where rails are located near the river's edge, vessels are able to push in to an extent that part of the vessel/tow is in dangerous proximity to the rail. Barge encroachment poses a serious risk to both vessels, trains, crews, the environment, and nearby communities. On November 14, 2021, during normal water conditions, an incident between rail and barge resulted in a train derailment, oil spill, and damage to rail and vessel equipment.



This risk can be mitigated by vessel operators being vigilant when selecting where they push vessels into the river bank during all water conditions. The approximately 45 known areas of concern (see attached consolidated graphic) are marked with caution areas on both printed and electronic versions of the Inland River Electronic Navigation Charts (IENC). These caution areas are accompanied by a warning noting the risk of collision between trains and vessels, and/or rail bed embankment erosion due to the close proximity between the railroad tracks and the waterway.

Sector UMR urges all vessel operators to review the IENC and the WAP for their intended operating areas to identify river bank locations to avoid pushing in at, as well as other potential hazards, as part of their voyage planning procedures prior to operation.

Operators are reminded that Title 33 Code of Federal Regulations (CFR) § 207.300(m)(2)(ii) directly prohibits the mooring of craft directly to railroad tracks or the riverbank in vicinity of railroad tracks. Violation of this regulation can result in enforcement action being taken against the operator's Merchant Mariner Credential as well as a civil penalty against the operating company.

To receive the latest information, mariners should monitor marine VHF channels 14 and 16, and the Sector UMR Port Directory at [https://homeport.uscg.mil/port-directory/upper-mississippi-river-\(st-louis\)](https://homeport.uscg.mil/port-directory/upper-mississippi-river-(st-louis)) for this and other MSIBs and port advisories. Hazardous conditions and marine casualties should immediately be reported to the Western Rivers Command Center via VHF channel 16 or by phone at (314) 269-2332 or (314) 269-2463 – these numbers are continuously monitored 24 hours a day. Questions about this MSIB may be directed to the Waterways Management staff at sumrwaterways@uscg.mil.

Sincerely,

A handwritten signature in blue ink, appearing to read "Richard Scott", with a stylized flourish at the end.

R.M. SCOTT
Captain of the Port
U.S. Coast Guard

IENC Rail Road Cauton Areas



Mile Marker 497.8

IENC Rail Road Cauton Areas Sourced from U.S. Army Engineer District, Rock Island.



 IENC RR Cauton Areas