



U.S. Department
of Homeland Security
**United States
Coast Guard**

LOCAL NOTICE TO MARINERS

District 8 MRS

Week: 23/23

Mississippi River System

LIGHT LIST VOLUME V
NOTICE NUMBER 23-23
June 7, 2023

LIGHT LIST REFERENCE: COMDTPUB P16502.5, Vol V, 2023 Edition.

CONTENTS: Rivers are listed in alphabetical order and are included only when there is information to report.

Broadcast Notice to Mariners Covered in this Edition

Originating Unit	Beginning BNM's	Ending BNM's
Sector Upper Mississippi River	0086 - 23 (UM)	0097 - 23 (UM)
Sector Lower Mississippi River	0017 - 23 (LM)	0022 - 23 (LM)
Sector Ohio Valley	0208 - 23 (OV)	0215 - 23 (OV)
OB DWB	0049 - 23 (DWB)	0051 - 23 (DWB)

COAST GUARD DISTRICT 8, WATERWAYS, (504) 671-2327, 7:00 a.m. until 3:30 p.m. (CST)

GENERAL LNM QUESTIONS, COMMENTS, OR SUGGESTIONS MAY BE E-MAILED TO: D8MarineInfo@uscg.mil

COMMENTS REGARDING SECTION VI – PROPOSED CHANGES MAY ALSO BE EMAILED TO: LocalNoticeFeedback@uscg.mil

NIS WATCHSTANDER PHONE (703) 313-5900, 24-HOURS A DAY

INTERNET ADDRESS <https://www.navcen.uscg.gov/>

MISSISSIPPI RIVER SYSTEM LNM VIA INTERNET <https://www.navcen.uscg.gov/>

MISSISSIPPI RIVER SYSTEM LIGHT LIST VIA INTERNET https://www.navcen.uscg.gov/pdf/lightLists/LightList_V5_2023.pdf

ABBREVIATIONS

A through H

ADRIFT - Buoy Adrift
AICW - Atlantic Intracoastal Waterway
Al - Alternating
B - Buoy
BKW - Breakwater
bl - Blast
BNM - Broadcast Notice to Mariner
bu - Blue
C - Canadian
CHAN - Channel
CGD - Coast Guard District
C/O - Cut Off
CONT - Contour
CRK - Creek
CONST - Construction
DAYMK/Daymk - Daymark
DBN/Dbn - Daybeacon
DBD/DAYBD - Dayboard
DEFAC - Defaced
DEST - Destroyed
DISCON - Discontinued
DMGD/DAMGD - Damaged
ec - eclipse
EST - Established Aid
ev - every
EVAL - Evaluation
EXT - Extinguished
F - Fixed
fl - flash
Fl - Flashing
G - Green
GIWW - Gulf Intracoastal Waterway
HAZ - Hazard to Navigation
HBR - Harbor

I through O

I - Interrupted
ICW - Intracoastal Waterway
IMCH - Improper Characteristic
INL - Inlet
INOP - Not Operating
INT - Intensity
ISL - Islet
Iso - Isophase
kHz - Kilohertz
LAT - Latitude
LB - Lighted Buoy
LBB - Lighted Bell Buoy
LHB - Lighted Horn Buoy
LGB - Lighted Gong Buoy
LONG - Longitude
LNM - Local Notice to Mariners
LT - Light
LT CONT - Light Continuous
LTR - Letter
LWB - Lighted Whistle Buoy
LWP - Left Watching Properly
MHz - Megahertz
MISS/MSNG - Missing
Mo - Morse Code
MRASS - Marine Radio Activated Sound Signal
MSLD - Misleading
N/C - Not Charted
NGA - National Geospatial-Intelligence Agency
NO/NUM - Number
NOS - National Ocean Service
NW - Notice Writer
OBSCU - Obscured
OBST - Obstruction
OBSTR - Obstruction

P through Z

PRIV - Private Aid
Q - Quick
R - Red
RACON - Radar Transponder Beacon
Ra ref - Radar reflector
RBN - Radio Beacon
REBUILT - Aid Rebuilt
RECOVERED - Aid Recovered
RED - Red Buoy
REFL - Reflective
RRL - Range Rear Light
RELIGHTED - Aid Relit
RELOC - Relocated
RESET ON STATION - Aid Reset on Station
RFL - Range Front Light
RIV - River
RRASS - Remote Radio Activated Sound Signal
s - seconds
SEC - Section
SHL - Shoaling
si - silent
SIG - Signal
SND - Sound
SPM - Single Point Mooring Buoy
SS - Sound Signal
STA - Station
STRUCT - Structure
St M - Statute Mile
TEMP - Temporary Aid Change
TMK - Topmark
TRLB - Temporarily Replaced by Lighted Buoy
TRLT - Temporarily Replaced by Light
TRUB - Temporarily Replaced by Unlighted Buoy
USACE - Army Corps of Engineers

HOR - Horizontal Clearance
HT - Height

Oc - Occulting
ODAS - Anchored Oceanographic Data Buoy

W - White
Y - Yellow

Additional Abbreviations Specific to this LNM Edition:

RIAC - River Industry Action Committee
MMSI - Mobile Maritime Service Identity
AIS - Automatic Identification System
ATON - Aids To Navigation
COTP - Captain of The Port
TRDBN - Temporary Replaced by Daybeacon
C.F.S. - Cubic Feet per Second
CFR - Code of Federal Regulations
IAW - In Accordance With
h.p. - horse power
MPH - Miles Per Hour
TVA - Tennessee Valley Authority
INC - Incorporated
IENC - Inland Electronic Navigation Chart
WAP - Waterway Action Plan
MSIB - Marine Safety Information Bulletin
L/D - Lock and Dam

SECTION I - SPECIAL NOTICES

This section contains information of special concern to the Mariner.

DEPARTMENT OF HOMELAND SECURITY SUSPICIOUS ACTIVITY

The Department of Homeland Security (DHS) encourages the maritime public to report information concerning suspicious activity to the local Federal Bureau of Investigation Joint Terrorism Task Force (JTTF) Office, http://www.fbi.gov/about-us/investigate/terrorism/terrorism_jtfts, or to other appropriate authorities. The U.S. Coast Guard reminds the maritime industry that they may also report information concerning suspicious activity to the www.AmericasWaterwayWatch.org, the National Response Center (NRC) 1-800-424-8802 or 1-877-24WATCH.

LNM: 02-19

WESTERN RIVERS FLOATING AIDS TO NAVIGATION

The U.S. Coast Guard is responsible for placing and maintaining all aids to navigation. Buoys are set to mark project depths taking into consideration the prevailing river stages and obstructions. Buoy positions on the Inland Electronic Navigation Chart (IENC) are approximate, and subject to change depending on prevailing river stages and obstructions.

Buoys should always be given as wide a berth in passing as possible, consistent with the length and width of the vessel or tow and the width of the bend or crossing.

Buoys should always be used with caution. They may be carried off position by high water, accumulation of drift, ice, or sunk by collision or other causes. In those circumstances buoy marks will remain on the IENC and indicate the last known position of the buoy. Presence of a buoy mark on the IENC does not necessarily mean a buoy will be physically on position. When buoys are missing they will be replaced as soon as possible.

LNM: 16-19

GPS TESTING

At times, throughout our area of responsibility, multiple U.S. Government Agencies conduct GPS testing. These tests vary in duration, affected range from the test site and potential impact to the maritime user as they may affect systems that rely on GPS such as E-911, AIS and DSC. More information is available at the U.S. Coast Guard Navigation Center Website, <https://www.navcen.uscg.gov>. During these periods, GPS users are encouraged to report any GPS outages that they may experience, to the Navigation Information Service (NIS) by calling (703) 313-5900 or by using the NAVCEN Website to submit a GPS problem report.

LNM: 07-19

HIGH/LOW WATER FLOW CONDITIONS

During periods of high/low water flow conditions on the Mississippi River System, Captains of the Port, will issue Safety Advisories for their specific areas of responsibility via Broadcast Notice to Mariners. Mariners are encouraged to monitor the Sector Broadcast Notice to Mariners to ensure they are receiving the most up-to-date information.

LNM: 04-23

USACE HUNTINGTON DISTRICT - RESTRICTED AREAS AT NAVIGATION STRUCTURES

Attached as an enclosure to this LNM is a USACE Huntington District Notice to Navigation Interests 23-09, regarding maintenance and repair operations.

LNM: 03-23

ARKANSAS RIVER - USACE CHANNEL STATUS REPORTS

Attached as enclosures to this LNM, are USACE Arkansas River Channel Status Reports.

LNM: 09-23

SUNSET OF NOAA PRINTED CHARTS

**** Cancellation of NOAA Paper and Raster Nautical Charts ****

The National Oceanic and Atmospheric Administration (NOAA) is undertaking a multi-year program to end production and maintenance of its suite of over 1,000 traditional paper nautical charts and all associated raster chart products and services, including: Print-on-Demand (POD) paper nautical charts, Full-size chart PDF files, BookletChart™ PDF files, NOAA raster navigational charts (NOAA RNC®), the NOAA RNC tile service, and the online RNC viewer.

Six months notice of the intent to cancel a specific chart is provided in a "Last Edition" notice. The final cancellation of a chart is made in a "Canceled" notice. Both types of notices will appear in LNM Section IV, "Chart Correction". A comprehensive list of all canceled NOAA charts is available at: <http://www.charts.noaa.gov/MCD/Dole.shtml>.

Traditional paper nautical chart production is ending to enable the creation and maintenance of larger scale, more up-to-date, higher quality coverage of NOAA's electronic navigational chart (NOAA ENC®) product. This will significantly enhance the amount of charted detail available to mariners. More information about NOAA's program to sunset traditional paper charts is on the NOAA Coast Survey website at: <https://nauticalcharts.noaa.gov/charts/farewell-to-traditional-nautical-charts.html>.

An online NOAA Custom Chart application at: <https://devgis.charttools.noaa.gov/pod> is available to create chart images from ENC data, which may then be printed. Notices to Mariners will not be issued for NOAA Custom Charts.

LNM: 10-21

UPPER MISSISSIPPI RIVER/ILLINOIS WATERWAY - BARGE/RAIL COLLISION RISK

Attached as an enclosure to this LNM is U.S. Coast Guard Sector Upper Mississippi River MSIB 08-21, regarding barge/rail collision risk on the Upper Mississippi River and Illinois Waterway.

LNM: 15-23

SAFETY NOTICE - NAVIGATIONAL RANGE AND SECTOR LIGHTS ON NOAA ELECTRONIC CHARTS

The U.S. Coast Guard has become aware that the Range and Sector Light Characteristic labels are not displayed on Electronic Navigational Charts (ENCs) when used in an Electronic Chart Display and Information System (ECDIS), due to limitations of the S-52 ECDIS, display specification. Mariners may query the ENC data directly within ECDIS or refer to the Light List for complete information on Range and Sector Light Characteristics.

LNM: 39-22

SECTION II - DISCREPANCIES

This section lists all reported and corrected discrepancies related to Aids to Navigation in this edition. A discrepancy is a change in the status of an aid to navigation that differs from what is published or charted.

DISCREPANCIES (FEDERAL AIDS)

LLNR	Aid Name	Status	Chart No.	BNM Ref.	LNM St	LNM End
280	Karns Island Upper Light	STRUCT DEST		0651OV	31/18	
990	Milligan Bend Light	STRUCT DEST		0642LM	51/19	
1010	Webber Falls Jetty Light	STRUCT DEST		0641LM	51/19	
1020	Bluff View Light	STRUCT DEST		0640LM	51/19	
1055	Hisaw Bottom Light	LT EXT		0196LM	40/18	
1070	Brier Creek Light	STRUCT DEST		0205LM	31/15	
1077	Sandtown Bottom Light	STRUCT DEST		0457LM	39/19	
1200	Black Rock Daybeacon	STRUCT DEST		0379LM	35/19	
1205	Gans Light	STRUCT DEST		0335LM	33/19	
1213	Non Lateral Mark 330.4	STRUCT DEST		0087LM	05/16	
1220	Onion Creek Daybeacon	STRUCT DMGD		0334LM	33/19	
1223	Non Lateral Mark 328.5	STRUCT DMGD		0333LM	33/19	
1225	Tucker Lake Light	STRUCT DEST		0332LM	33/19	
1230	Mcnabb Bottom Daybeacon	STRUCT DEST		0332LM	33/19	
1240	Deadman Slough Light	STRUCT DEST		0330LM	33/19	
1255	Wilsons Rock Light	STRUCT DMGD		0380LM	35/19	
1265	Peno Point Daybeacon	DAYMK DMGD		0580LM	47/19	
1267	Non Lateral Mark 313.9	STRUCT DEST		0089LM	05/16	
1315	Garrison Creek Daybeacon	DAYMK MISSING		0377LM	35/19	

1360	Crawford County Daybeacon	STRUCT DEST	0378LM	35/19
1365	Jeffrey Light	DAYMK MISSING	0376LM	35/19
1390	Fort Chaffee Light	STRUCT DEST	0579LM	47/19
1395	Haroldton Light	DAYMK MISSING	0578LM	47/19
1400	New Haroldton Light	STRUCT DEST	0574LM	47/19
1420	Gun Club Lake Daybeacon	DAYMK MISSING	0582LM	47/19
1427	Big Creek Daybeacon	DAYMK MISSING	0575LM	47/19
1430	Arbuckle Island Light	STRUCT DEST	0091LM	05/16
1435	Clear Creek Light	DAYMK MISSING	0584LM	41/19
1445	Crooked Slough Light	STRUCT DEST	0583LM	47/19
1455	Mulberry River Daybeacon	STRUCT DEST	0041UM	11/17
1510	Moores Creek Light	LT IMCH/STRUCT DMGD	0394LM	44/16
1515	Roseville Daybeacon	DAYMK MISSING	0604LM	50/19
1520	O'Kane Island Light	LT IMCH/STRUCT DMGD	0393LM	44/16
1525	Alix Bottom Light	STRUCT DEST	0605LM	50/19
1530	County Line Daybeacon	STRUCT DEST	0606LM	50/19
1532	Non Lateral Mark 246.3	DAYMK MISSING	0607LM	50/19
1535	Kalamazoo Light	DAYMK MISSING	0608LM	50/19
1562	Non Lateral Mark 236.3	DAYMK MISSING	0609LM	50/19
1615	Dublin Daybeacon	STRUCT DEST	0610LM	50/19
1650	Bunker Hill Upper Daybeacon	STRUCT DEST	0639LM	51/19
1660	Bunker Hill Lower Daybeacon	STRUCT DEST	0643LM	51/19
1695	Dardanelle Reach Light	DAYMK DMGD	0204LM	31/15
1697	Non Lateral Mark 201.4	STRUCT DEST	0200LM	41/18
1700	Elberta Light	DAYMK MISSING	0611LM	50/19
1705	Old Neely Daybeacon	DAYMK MISSING	0612LM	50/19
1708	Non Lateral Mark 197.9	STRUCT DEST	0052LM	13/17
1710	Point Bar Cutoff Light	DAYMK MISSING	0613LM	50/19
1715	Hola Bend Cutoff Light	DAYMK MISSING	0614LM	50/19
1725	Reeds Ferry Light	DAYMK MISSING	0615LM	50/19
1733	Non Lateral Mark 189.8	DAYMK MISSING	0616LM	50/19
1735	Sweeden Island Light	LT EXT/DAYMK MISSING	0617LM	50/19
1738	Non Lateral Mark 188.8	DAYMK MISSING	0618LM	50/19
1745	Wilson Light	STRUCT DEST	0620LM	50/19
1770	Willow Bend Lower Daybeacon	DAYMK MISSING	0621LM	50/19
1798	Non Lateral Mark 175.6	DAYMK MISSING	0622LM	50/19
1800	Point Remove Creek Light	DAYMK MISSING	0623LM	50/19
1815	Ellis Island Light	STRUCT DEST	0630LM	51/19
1817	Non Lateral Mark 171.2	DAYMK MISSING	0631LM	51/19
1845	Stane Reach Upper Daybeacon	DAYMK DMGD	0634LM	51/19
1850	Stane Reach Light	DAYMK DMGD	0635LM	51/19
1890	Belk Corner Light	DAYMK MISSING/STRUCT DMGD	0558LM	45/19
1903	Non Lateral Mark 150.9	DAYMK MISSING	0560LM	45/19
1915	Bigelow Middle Daybeacon	DAYMK DMGD	0563LM	45/19
1920	Bigelow Lower Light	DAYMK MISSING	0538LM	44/19
1930	Tri County Light	STRUCT DEST	0370LM	41/16
1940	Beaver Dam Creek Daybeacon	STRUCT DMGD	0636LM	51/19
1948	Non Lateral Mark 138.8	DAYMK MISSING	0539LM	44/19
1953	Non Lateral Mark 137.6	DAYMK MISSING	0540LM	44/19

1960	Palarm Light	DAYMK MISSING	0541LM	44/19
1975	Maumelle River Upper Daybeacon	STRUCT DEST	0565LM	45/19
1988	Non Lateral Mark 130.6	DAYMK MISSING	0542LM	44/19
2030	Burns Park Light	STRUCT DEST	0514LM	42/19
2045	Waterworks Bend Light	DAYMK DMGD	0515LM	42/19
2130	Willow Bar Light	LT EXT	0524LM	42/19
2143	Non Lateral Mark 106.5	DAYMK MISSING	0637LM	51/19
2160	Estes Place Light	DAYMK IMCH/STRUCT DMGD	0396LM	44/16
2199	Non Lateral Mark 92.0	STRUCT DEST	0398LM	44/16
2370	Ste. Marie Bend Lower Daybeacon	STRUCT DEST	0407LM	45/16
2435	Richland Bend Middle Daybeacon	STRUCT DEST	0099LM	16/18
2485	Little Bayou Meto Lower Daybeacon	DAYMK DMGD	0094LM	15/18
2498	Cummins Bend Daybeacon	STRUCT DEST	0103LM	06/16
2540	Sample Island Light	STRUCT DEST	0106LM	06/16
2550	Sample Island Lower Light	STRUCT DEST	0107LM	06/16
2665	Owens Lake Daybeacon	DAYMK DMGD	0110LM	06/16
3655	Cages Bend Light	STRUCT DEST	0660OV	38/19
3680	Lindsley Island Lower Light	LT EXT	0193OV	22/23
3965	Watkins Daybeacon	STRUCT DEST	0245OV	19/17
4250	Shammels Mound Landing Light	STRUCT DEST	0010OV	02/16
4285	Saline Creek Light	STRUCT DEST/TRUB	0221OV	26/16
4315	Pryors Creek Light	STRUCT DEST	0030OV	02/20
4340	Devils Elbow Light	STRUCT DEST	0306OV	16/18
4365	Bleidt Landing Light	STRUCT DEST/TRUB	0137OV	17/21
4390	Crooked Creek Light	STRUCT DEST/TRUB	0383OV	36/16
4425	Commerce Landing Light	STRUCT DEST	0520OV	42/22
4455	Prison Farm Landing Light	STRUCT DEST	0145OV	17/21
4500	Kuttawa Bar Light	STRUCT DEST	0243OV	12/18
4505	Money Cliff Light	STRUCT DEST	0364OV	19/18
6810	Halls Landing Daybeacon	STRUCT DMGD	0024MI	07/23
6985	Sand Point Lower Light	STRUCT DEST	0102UM	20/22
6990	Circle Light	STRUCT DMGD	0102UM	20/22
6995	Spring Bay Daybeacon	STRUCT DEST	0102UM	20/22
7035	Drolls Point Light	STRUCT DEST/TRLB	0233UM	23/20
7585	Frederick Light	STRUCT DEST	0539UM	29/19
7650	Briggs Landing Light	LT EXT/STRUCT DMGD	0890UM	51/19
7695	Moores Island Light	STRUCT DEST	0037UM	12/22
7705	Wilson Island Daybeacon	DAYMK DMGD	0104UM	18/21
7850	Florence Light	LT EXT	0055UM	14/22
9150	Washita Point Light	LT EXT	0395LM	33/20
9185	Preston Peninsula Light	REDUCED INT	0420LM	46/16
10185	Cedar Point Light	REDUCED INT	0031LM	18/22
10195	Dean Island Light	REDUCED INT	0327LM	33/19
10210	Brandywine Chute Light	REDUCED INT	0031LM	18/22
10225	Island 40 Foot Light	STRUCT DEST	0232LM	49/18
10540	Harbert Point Light	LT EXT	0256LM	36/15
10545	Stumpy Point Light	STRUCT DEST	0249LM	52/18
10625	Delta Lower Light	STRUCT DEST	0118LM	06/16
10650	Miller Point Light	STRUCT DEST	0171LM	14/16

10660	Old Town Bend Foot Light	STRUCT DEST	0253LM	36/15
10685	Robson Light	STRUCT DEST	0116LM	06/16
10700	Sunflower Cut-Off Foot Light	STRUCT DEST	0115LM	06/16
10710	Ludlow Bar Light	DAYMK DMGD	0018LM	04/18
10715	Wood Cottage Light	STRUCT DEST	0114LM	06/16
10720	Knowlton Light	STRUCT DEST	0113LM	06/16
10730	Mason Landing Daybeacon	STRUCT DEST	0172LM	14/16
10815	Riverton Middle Bar Light	STRUCT DEST	0113LM	21/18
10885	Cypress Bend Light	STRUCT DEST	0032LM	07/18
10895	Eutaw Bar Light	STRUCT DEST	0365LM	35/19
10905	Mounds Crevasse Lower Light	STRUCT DEST	0114LM	21/18
10910	Boliver Light	STRUCT DEST	0069LM	11/18
10955	Miller Bend Light	STRUCT DEST	0030LM	06/18
10965	La Grange Towhead Light	STRUCT DEST	0367LM	35/19
11050	Vaucluse Bend Light	STRUCT DEST	0028LM	06/18
11070	Anconia Point Light	STRUCT DEST	0368LM	35/19
11080	Lakeport Light	STRUCT DEST	0369LM	35/19
11085	Walnut Point Light	STRUCT DEST	0370LM	35/19
11125	Corregidor Light	STRUCT DEST	0080LM	05/16
11130	Sarah Island Light	STRUCT DEST	0371LM	35/19
11170	Stack Island Light	STRUCT DEST	0372LM	35/19
11180	STACK ISLAND LOWER LIGHT	STRUCT DEST	0373LM	35/19
11195	Chinaman Light	STRUCT DEST	0374LM	35/19
11210	Fitler Point Daybeacon	STRUCT DEST	0170LM	28/17
11215	Seitz Light	STRUCT DEST	0448LM	38/19
11220	Cottonwood Bar Pointway Light	STRUCT DEST	0449LM	38/19
11245	Willow Point Light	DAYMK DMGD	0450LM	38/19
11250	Belle Island Corner Daybeacon	STRUCT DEST	0451LM	38/19
11270	Cabin Teele Light	STRUCT DEST	0452LM	38/19
11275	Marshall Point Cut-Off Daybeacon	STRUCT DEST	0453LM	38/19
11280	Joseph Henry Daybeacon	STRUCT DEST	0454LM	38/19
11407	Coggins Light	STRUCT DEST	0296LM	29/16
11415	Reid Bedford Point Light	STRUCT DEST	0463LM	39/19
11425	Diamond Light	STRUCT DEST	0464LM	39/19
11430	Sargent Point Light	LT IMCH/DAYMK DMGD	0465LM	39/19
11440	Cannon Point Light	STRUCT DEST	0294LM	41/17
11455	Buckridge Light	STRUCT DEST	0467LM	39/19
11470	Grand Gulf Island Light	STRUCT DEST	0468LM	39/19
11505	Old Levee Light	LT IMCH/DAYMK DMGD	0470LM	39/19
11520	Ashland Light	LT IMCH/DAYMK DMGD	0471LM	39/19
11530	Hole In The Wall Light	LT IMCH/REDUCED INT	0472LM	39/19
11540	Giles Bend Cut-Off Light	STRUCT DEST	0171LM	28/17
11680	Bob Boles Light	STRUCT DEST		18/23
11700	Fort Adams Light	STRUCT DEST	0402LM	36/19
11795	Morganza Crevasse Light	STRUCT DEST	0400LM	36/19
11835	Bayou Sara Bend Light	STRUCT DEST	0399LM	36/19
11860	Port Hudson Light	STRUCT DEST	0581NO	36/19
11900	Devils Swamp Light	STRUCT DEST	0397LM	36/19
11940	Ben Burman Light	STRUCT DEST	0549LM	44/19

13165	Lock 5A Light	LT EXT	0172UM	20/20
13230	Island 74 Light	STRUCT DEST/TRUB	0380UM	34/20
13430	Root River Upper Light	STRUCT DEST/HAZ NAV	0172UM	20/20
13510	Perry Ruby Light	STRUCT DEST	0061UM	12/17
13535	Britts Landing Daybeacon	DAYMK DMGD/STRUCT DMGD	0310UM	42/22
13720	Crooked Slough Head Daybeacon	STRUCT DEST/TRUB	0482UM	26/19
13725	Crooked Slough Head Light	STRUCT DEST/TRUB	0482UM	26/19
13765	Island 158 Daybeacon	DAYMK DMGD	0310UM	43/22
13895	Clayton Daybeacon	STRUCT DEST	0310UM	43/22
13915	Clayton Lower Daybeacon	STRUCT DEST/TRUB	0240UM	31/18
14010	Cassville Upper Daybeacon	STRUCT DEST	0546UM	29/19
14030	Cassville Lower Light	STRUCT DEST	0546UM	29/19
14105	Maquoketa Island Light	STRUCT DEST	0460UM	25/19
14230	Nine-Mile Island Light	STRUCT DEST	0410LM	36/17
14260	Stone Slough Light	STRUCT DEST	0454UM	25/19
14275	Fever River Light	STRUCT DEST/TRUB	0485UM	45/18
14295	Pulaski Light	STRUCT DEST	0485UM	45/18
14385	Arnold Towhead Light	STRUCT DEST	0449UM	25/19
14445	Sabula Lower Light	STRUCT DEST	0446UM	25/19
14460	Smith Bay Light	STRUCT DEST	0048UM	13/22
14475	Elk River Light	DAYMK DMGD	0257LM	31/21
14610	Adams Island Light	STRUCT DEST	0074UM	21/23
14980	Hershey Chute Upper Light	STRUCT DEST	0074UM	21/23
15170	Edwards Island Upper Light	STRUCT DEST/TRUB	0403UM	26/16
15240	Benton Island Light	STRUCT DEST	0073UM	21/23
15785	Sny River Light	STRUCT DEST	0114UM	22/22
16065	Elswood Lower Light	STRUCT DEST	0030UM	16/23
16110	Hastings Landing Daybeacon	STRUCT DMGD	0282UM	39/22
16120	Cuivre Island Light	STRUCT DEST	0282UM	39/22
16200	Portage Des Sioux Light	LT EXT	0088UM	18/22
16910	Ste. Genevieve Island Light	STRUCT DEST	0557UM	30/19
17970	Fitzhugh Daybeacon	STRUCT DEST	0055UM	19/23
17975	Lower Blencoe Bend Daybeacon	STRUCT DEST	0055UM	19/23
17985	Wahle Daybeacon	STRUCT DEST	0055UM	19/23
23285	Cluster Upper Light	STRUCT DEST	0721OV	34/18
23330	Brown Island Light	STRUCT DEST		20/23
24110	Old Lock No. 17 Lower Daybeacon	STRUCT DEST		39/20
25355	Sciotoville Light	LT EXT	0095OV	11/23
26047	Sunken Barge Lighted Buoy WR	MISSING	0519OV	51/21
26047	Sunken Barge Lighted Buoy WR	SINKING/LT EXT	0199OV	22/23
26470	Notch Lick Light	STRUCT DEST	0210OV	23/21
27090	Wolf Creek Light	LT EXT	0064OV	05/22
27520	Robert Mann Light	STRUCT DEST	0269OV	21/22
27540	Water Works Light	STRUCT DMGD	0179OV	12/22
27855	Graham Varble Light	STRUCT DEST	0134OV	17/21
27935	Dekoven Light	STRUCT DEST	0294OV	23/22
29231.34	Westdale Middle Daybeacon	STRUCT DEST/TRUB	0121LM	44/22
29241.25	Smith Island Lower Daybeacon	STRUCT DEST	0202LM	26/21
29272	Deloges Middle Daybeacon	DAYMK IMCH		36/20

29467	Hog Lake Daybeacon	STRUCT DEST		36/20
29618	Red River Entrance Light	STRUCT DEST		37/20
29665	Dry Cypress Daybeacon	STRUCT DEST		37/20
29690	Bayou Cocodrie Upper Daybeacon	STRUCT DEST		37/20
29695	Bayou Cocodrie Daybeacon	STRUCT DEST		37/20
29710	Grassy Lake Daybeacon	DAYMK MISSING		37/20
29725	Alligator Bayou Daybeacon	STRUCT DEST	0216LM	33/17
29750	Timber Lake Daybeacon	STRUCT DEST		37/20
29755	Naples Daybeacon	STRUCT DEST		37/20
29775	Three Rivers Junction Light	STRUCT DEST		37/20
29780	Barbre Daybeacon	STRUCT DEST		37/20
29785	Torras Daybeacon	STRUCT DEST		37/20
29795	Oak Grove Daybeacon	STRUCT DEST		37/20
29845	Houden Point Daybeacon	STRUCT DEST	0255UM	30/21
31995	Dry Creek Light	STRUCT DEST	0402OV	31/20
32140	Chambers Daybeacon	STRUCT DEST	0178OV	11/13
32170	Diamond Island Lower Daybeacon	STRUCT DEST	0177OV	11/13
32190	Savannah Bend Upper Daybeacon	STRUCT DEST	0039OV	04/23
32335	Brodies Landing Light	STRUCT DEST	0041OV	04/23
32350	Crooked Creek Light	STRUCT DEST	0042OV	04/23
32445	Sales Light	TRUB/STRUCT DEST	0269OV	19/14
32460	Reynoldsburg Island Light	STRUCT DEST/TRUB	0290OV	15/18
32465	Shirley Light	STRUCT DEST	0040OV	04/23
32480	Higgins Light	STRUCT DEST	0342OV	27/15
32510	Hurricane Creek Light	STRUCT DEST	0043OV	04/23
32530	Standing Rock Upper Light	STRUCT DEST	0658OV	41/13
32570	Fort Henry Light	STRUCT DEST	0160OV	19/21
32595	Blood River Light	STRUCT DEST/TRUB	0138OV	17/21
32600	Clyde Light	LT EXT	0581OV	44/15
32605	Newburg Light	STRUCT DEST	0362OV	29/15
32710	Twenty-One Mile Light	STRUCT DEST	0108OV	13/23
32715	Chottes Creek Light	STRUCT DEST	0107OV	13/23
32750	Haddock Ferry Light	LT EXT/DAYMK MISSING	0106OV	13/23
32765	Big Chain Light	STRUCT DEST	0105OV	13/23
32780	Mud Creek Light	STRUCT DEST	0036OV	04/23
32825	W. L. Berry Light	STRUCT DEST	0110OV	13/23

DISCREPANCIES (FEDERAL AIDS) CORRECTED

LLNR	Aid Name	Status	Chart No.	BNM Ref.	LNM St	LNM End
------	----------	--------	-----------	----------	--------	---------

None

DISCREPANCIES (PRIVATE AIDS)

LLNR	Aid Name	Status	Chart No.	BNM Ref.	LNM St	LNM End
1685	Oakley Dock Light	LT EXT		0307LM	44/14	
1690	Mobley Dock Light	LT EXT		0454LM	48/13	
2013	City of Little Rock No Wake Buoy	OFF STA		0015LM	21/23	
2100	Oakley Light	LT EXT		0520LM	42/19	
2337	Island Harbor Marina Light	LT EXT			45/16	

2340	Century Tube Lights (2)	LT EXT		45/16
2400	Pickett And Davison Lights (2)	LT EXT	0481LM	50/13
3725	Lakewood Marina Lights (4)	LT IMCH	0439OV	34/15
3750	Dupont Dock Lights (2)	OFF STA/LT EXT	0305OV	26/15
3795	Nashville Water Intake Lights (2)	LT EXT		44/11
3805	Holnam Dock Lights (2)	LT EXT		44/11
3815	Kerr-Mcgee Dock Lights (2)	LT EXT		44/11
3820	Cohen Terminal Lights (2)	LT EXT		44/11
3930	Alcoa Chemical Dock Lights (2)	MSLD SIG/LT EXT	0216OV	14/10
3960	Hunter Marine Transport Dock Lights (2)	LT EXT		47/08
3995	Riverview Marina Lights (2)	LT EXT		47/08
4055	Clarksville Boat Club Dock Lights (2)	LT EXT	0533OV	34/12
6170	Quantum Chemical Dock Lights (2)	LT EXT	0436UM	31/01
6650	S. T. Services Terminal Lights (2)	LT EXT		41/14
6695	Continental Grain Company Light	LT EXT		41/14
7225	Cargo Carriers Dock Lights (2)	LT EXT		25/08
7235	Pekin Boat Club Breakwater Light	LT EXT		05/16
7250	Shell Dock Lights (2)	LT EXT	0123UM	16/02
7255	Adm Growmark Mooring Light	LT EXT	0122UM	16/02
7260	Sours Grain Tramway Light	LT EXT	0279UM	21/03
7265	Tomen Dock Light	LT EXT		25/08
7295	Adm Growmark Mooring Lights (3)	LT EXT	0281UM	21/03
7460	Cargill Mooring Lights (2)	LT EXT	0284UM	21/03
7620	Cargill Dock Lights (2)	LT EXT		35/08
7725	Cargill Terminal Lights (2)	LT IMCH	0171UM	26/18
7730	Public Service Co. Dock Lights (6)	LT EXT	0119UM	20/18
7730	Public Service Co. Dock Lights (6)	LT IMCH	0171UM	26/18
7760	Adm Growmark Grain Elevator Lights (2)	LT IMCH	0171UM	26/18
9440	Black Dog Lights (5)	LT EXT		43/16
9965	Huffman Grain Light	STRUCT DEST	0131LM	08/16
10300	Cargill Dock Light	LT EXT	0361LM	34/01
10390	Peavey Lights (2)	LT EXT	0398LM	36/02
10395	Suburban Propane Dock Light	LT EXT	0396LM	36/02
10415	Western Tar Products Dock Light	LT EXT	0394LM	36/02
11943	Bear Industries Barge Dock Lights (4)	LT EXT	0600NO	30/17
11990	Riverside Dock Lights (2)	LT EXT	0695UM	40/01
12080	University Dock Lights (3)	LT EXT	0696UM	40/01
12215	Koch Fuel Dock Lights (2)	LT EXT		35/16
12320	Newport Terminal Lights (2)	LT EXT		35/16
12385	Shiely Dock Lights (2)	LT IMCH		35/16
12712	City of Red Wing Metering Station Special Light	MISSING		42/16
12768	Consolidated Grain and Barge Loading Dock Piling Lights (2)	MISSING		42/16
12930	Alma City Dock Light/Daymarks (3)	MISSING		42/16
13405	G. Heileman Brewery Dock Light	MISSING		42/16
14756	Isle Of Capri Casino Marina Daybeacon	MISSING		03/16
15345	Koch Nitrogen Dock Light	LT EXT		41/14
15425	Hall Towing Light	STRUCT DEST	0280UM	25/20

15822	Hannibal Intake Light	LT EXT	0358UM	32/20
16100	Jersey County Grain Dock Lights (2)	LT EXT		19/16
16205	Piasa Harbor Light	LT EXT	0131UM	22/15
16220	Con-Agra Mooring Lights (2)	LT EXT		21/16
16230	Alton Marina Breakwater Lights (3)	LT EXT	0131UM	22/15
16265	Amoco Dock Light	STRUCT DEST		35/09
16280	Amoco Dock Lights (4)	LT EXT		35/09
16310	Sioux City/New Orleans Terminal Light	STRUCT DEST		35/09
16380	Western Dock Lights (9)	LT IMCH		34/08
16390	Adm-Growmark Dock Lights (4)	LT EXT	0776UM	44/01
16430	Union Electric Coal Dock Lights (2)	LT EXT	0305UM	34/08
16445	Continental Cement Lights (2)	LT EXT	0305UM	34/08
16505	Peavey Company Dock Lights (3)	LT EXT	0305UM	34/08
16530	Cahokia Marine Terminal Lights (2)	LT EXT	0305UM	34/08
16540	Slay Bulk Terminal Lights (2)	LT EXT	0305UM	34/08
16545	Peavey Lights (3)	LT EXT	0305UM	34/08
16550	Eagle Marine Industries Light	LT IMCH	0305UM	34/08
16560	Phillips Pipeline Lights (2)	LT EXT	0305UM	34/08
16565	Growmark Dock Lights (2)	LT EXT	0305UM	34/08
16575	Eagle Marine Dock Lights (2)	LT EXT	0305UM	34/08
16600	J.H. Collier Barge Mooring Lights (2)	LT EXT	0305UM	34/08
16605	Clark Oil Refining Dock Lights (4)	LT EXT	0305UM	34/08
16609	Alcoa Foil Lights (2)	LT EXT	0305UM	34/08
16615	Hci Chemtech Dock Lights (2)	LT EXT	0305UM	34/08
16617	Semmaterials Terminal Lights (2)	LT EXT	0305UM	34/08
16630	American Commercial Dock Lights (2)	LT EXT	0305UM	34/08
16655	Bussen Terminal Light	LT EXT	0305UM	34/08
18700	Bunge Dock Lights (3)	MISSING/LT EXT		18/08
19185	St. Joseph L & P Dock Light	LT IMCH		17/08
19415	Leavenworth Water Intake Lights (2)	LT EXT	0104UM	39/07
19460	Smoot Grain Dock Lights (2)	LT EXT	0385UM	39/07
19505	Board Of Public Utilities Light	LT EXT	0386UM	39/07
19535	Public Utilities Intake Lights (3)	LT EXT		38/08
19660	Continental Grain Dock Lights (4)	LT EXT	0181UM	24/08
19695	Kansas City Power And Light Company Lights (2)	LT EXT	0181UM	24/08
20870	U.E. Callaway Intake Lights (2)	LT EXT	0522UM	52/20
22873	Moon Township Municipal Authority Back Channel Outfall Danger Buoy	OFF STA	0108OV	14/21
24005	Bens Run Light	LT EXT		03/20
24580	Ohio Power Coal Dock Light	LT EXT	0480OV	44/21
25820	Cargill Barge Loading Facility Light	LT EXT	0552OV	40/09
26290	Boone County Sand And Gravel Lights (2)	LT EXT	0769OV	40/00
26833	Transmontaige Dock Lights (2)	LT EXT	0286OV	28/21
26860	Dupont Chemical Lights (2)	LT EXT	0330OV	17/18
27590	Transmontaigne Dock Lights (4)	LT EXT		40/21
32900	Ergon Dock Lights (2)	LT IMCH		17/13
	Alcosan-Mascaro Temporary Lighted Danger Buoy	MISSING		24/22

DISCREPANCIES (PRIVATE AIDS) CORRECTED

LLNR	Aid Name	Status	Chart No.	BNM Ref.	LNM St	LNM End
------	----------	--------	-----------	----------	--------	---------

None

PLATFORM DISCREPANCIES

Name	Status	Position	BNM Ref.	LNM St	LNM End
------	--------	----------	----------	--------	---------

None

PLATFORM DISCREPANCIES CORRECTED

Name	Status	Position	BNM Ref.	LNM St	LNM End
------	--------	----------	----------	--------	---------

None

SECTION III - TEMPORARY CHANGES and TEMPORARY CHANGES CORRECTED

This section contains temporary changes and corrections to Aids to Navigation for this edition. When charted aids are temporarily relocated for dredging, testing, evaluation, or marking an obstruction, a temporary correction shall be listed in Section IV giving the new position.

TEMPORARY CHANGES

LLNR	Aid Name	Status	Chart No.	BNM Ref.	LNM St	LNM End
7015	Blue Creek Point Lower Lighted Buoy	TRUB		0379UM	51/21	
7030	Drolls Point Upper Lighted Buoy	TRUB		0379UM	51/21	
7040	Peoria Heights Lighted Buoy	TRUB		0379UM	51/21	
10455	Armstrong Bar Light	RELOCATED			23/18	
11275	Marshall Point Cut-Off Daybeacon	TRDBN			49/16	
11280	Joseph Henry Daybeacon	TRDBN			49/16	
29880	Kinnikinnic River Daybeacon	DISCONTINUED			21/20	

TEMPORARY CHANGES CORRECTED

LLNR	Aid Name	Status	Chart No.	BNM Ref.	LNM St	LNM End
------	----------	--------	-----------	----------	--------	---------

None

PLATFORM TEMPORARY CHANGES

Name	Status	Position	BNM Ref.	LNM St	LNM End
------	--------	----------	----------	--------	---------

None

PLATFORM TEMPORARY CHANGES CORRECTED

Name	Status	Position	BNM Ref.	LNM St	LNM End
------	--------	----------	----------	--------	---------

None

SECTION V - ADVANCE NOTICES

This section contains advance notice of approved projects, changes to aids to navigation, or upcoming temporary changes such as dredging, etc. Mariners are advised to use caution while transiting these areas.

SUMMARY OF ADVANCED APPROVED PROJECTS**Approved Project(s)****Project Date****Ref. LNM**

None

Advance Notice(s)

None

SECTION VI - PROPOSED CHANGES

Periodically, the Coast Guard evaluates its system of aids to navigation to determine whether the conditions for which the aids to navigation were established have changed. When changes occur, the feasibility of improving, relocating, replacing, or discontinuing aids are considered. This section contains notice(s) of non-approved, proposed projects open for comment. SPECIAL NOTE: Mariners are requested to respond in writing to the District office unless otherwise noted (see banner page for address).

PROPOSED WATERWAY PROJECTS OPEN FOR PUBLIC COMMENT

Proposed Project(s)

None

Closing

Docket No.

Ref. LNM

Proposed Change Notice(s)

OHIO RIVER

The Coast Guard proposes the following Aid to Navigation Change:

Discontinue Cluster Upper Light (LLNR-23285) at Mile 51.1, Right Descending Bank, in approximate position 40-33-55.001N/080-39-21.266W.

Comments to be received by July 18, 2023. Please email comments regarding this proposal to: D08-SMB-District-LocalNoticeFeedback@uscg.mil.

LNM: 21/23

LOWER MISSISSIPPI RIVER

The Coast Guard proposes the following Aids to Navigation Changes:

Discontinue Giles Bend Cut-Off Light (LLNR-11540) at Mile 367.7, Left Descending Bank, in approximate position 31-37-04.908N/091-23-48.764W.

Discontinue Natchez Beam Light (LLNR-11550) at Mile 364.8, Left Descending Bank, in approximate position 31-34-33.467N/091-24-04.561W.

Comments to be received by August 1, 2023. Please email comments regarding this proposal to: D08-SMB-District-LocalNoticeFeedback@uscg.mil.

LNM: 23/23

LOWER MISSISSIPPI RIVER

The Coast Guard proposes the following Aids to Navigation Changes:

Discontinue Cannon Point Light (LLNR-11440) at Mile 418.3, Left Descending Bank, in approximate position 32-07-19.909N/091-03-20.120W.

Discontinue Grand Gulf Island Light (LLNR-11470) at Mile 404.9, Left Descending Bank, in approximate position 31-59-46.907N/091-05-04.546W.

Comments to be received by August 1, 2023. Please email comments regarding this proposal to: D08-SMB-District-LocalNoticeFeedback@uscg.mil.

LNM: 23/23

LOWER MISSISSIPPI RIVER

The Coast Guard proposes the following Aids to Navigation Changes:

Discontinue Hart Light (LLNR-11495) at Mile 389.8, Left Descending Bank, in approximate position 31-51-34.798N/091-14-50.572W.

Comments to be received by August 1, 2023. Please email comments regarding this proposal to: D08-SMB-District-LocalNoticeFeedback@uscg.mil.

LNM: 23/23

LOWER MISSISSIPPI RIVER

The Coast Guard proposes the following Aids to Navigation Changes:

Discontinue Belle Island Corner Daybeacon (LLNR-11250) at Mile 458.6, Left Descending Bank, in approximate position 32-30-41.486N/091-06-21.974W.

Discontinue Rosehill Light (LLNR-11260) at Mile 454.8, Right Descending Bank, in approximate position 32-27-39.071N/091-06-08.644W.

Discontinue Milliken Bend Daybeacon (LLNR-11265) at Mile 452.6, Right Descending Bank, in approximate position 32-26-25.620N/091-04-18.876W.

Discontinue Joseph Henry Daybeacon (LLNR-11280) at Mile 445.2, Left Descending Bank, in approximate position 32-22-45.044N/090-59-47.378W.

Comments to be received by August 1, 2023. Please email comments regarding this proposal to: D08-SMB-District-LocalNoticeFeedback@uscg.mil.

LNM: 23/23

LOWER MISSISSIPPI RIVER

The Coast Guard proposes the following Aids to Navigation Changes:

Discontinue Newtown Bend Light (LLNR-11435) at mile 420.1, Left Descending Bank, in approximate position 32-07-06.640N/091-01-09.422W.

Discontinue Diamond Light (LLNR-11425) at mile 424.0, Right Descending Bank, in approximate position 32-10-18.847N/091-00-19.058W.

Discontinue Reid Bedford Point Light (LLNR-11415) at mile 427.5, Right Descending Bank, in approximate position 32-13-14.221N/090-59-15.140W.

Discontinue Kings Point Light (LLNR-11300) at mile 439.8, Left Descending Bank, in approximate position 32-21-02.178N/090-56-45.550W.

Comments to be received by August 1, 2023. Please email comments regarding this proposal to: D08-SMB-District-LocalNoticeFeedback@uscg.mil.

LNM: 23/23

SECTION VII - GENERAL

This section contains information of general concern to the Mariners. Mariners are advised to use caution while transiting these areas.

ALLEGHENY RIVER

MILE 41.0 - FIREWORK DISPLAY

The U.S. Coast Guard COTP Pittsburgh advises all mariners of a land-based fireworks display on June 17, 2023, from 10:00 p.m. until 10:45 p.m., for

**ALLEGHENY RIVER
MILE 41.0 - FIREWORK DISPLAY**

the Ford City Renaissance Festival. Mariners are urged to exercise caution in the area, during the event period. U.S. Coast Guard Sector Ohio Valley will monitor VHF-FM Channel 16.

LNM: 23-23

MILE 0.9 - MILE 0.2 - FIREWORKS DISPLAY/SAFETY ZONE/RIVER CLOSURE

On June 9, 2023, from 8:00 p.m. until midnight, a fireworks display will be held between approximate Miles 0.9 and Mile 0.2. U.S. Coast Guard COTP Pittsburgh has established a Safety Zone closing the river for this event. Entry into this Safety Zone, during the event period, is prohibited unless otherwise authorized by the U.S. Coast Guard COTP Pittsburgh. Mariners may contact the U.S. Coast Guard via VHF-FM Channel 16, for additional information.

LNM: 22-23

MILE 0.6 - BRIDGE MAINTENANCE

Sixth Street Bridge; A containment system is installed below low steel and follows the contour of the bridge. Vertical clearance is reduced approximately 1-foot for the middle, 100 feet of the navigation span. A work barge will be located outside of the navigation channel and will not affect navigation. Mariners are advised to transit the bridge with extreme caution.

LNM: 38-22

**ARKANSAS RIVER
MILE 300.4 - BRIDGE MAINTENANCE**

Continuing until further notice, concrete and deck repairs will be conducted on the I-64 Bridge. All vessels are directed to use the main navigation channel. Mariners may contact the I-64 Bridge crew on VHF-FM Channel 13 or 16, for further information.

LNM: 13-23

MILE 299.6 - BRIDGE MAINTENANCE

Continuing until further notice, concrete and deck repairs will be conducted on the I-540 Bridge. All vessels are directed to use the main navigation channel. Mariners may contact the I-540 Bridge crew on VHF-FM Channel 13 or 16, for further information.

LNM: 13-23

MILE 144.8 - MILE 131.2 - AIDS TO NAVIGATION

Multiple buoys have been reported off station from Mile 144.8 to Mile 131.2. Mariners are urged to transit the area with caution.

LNM: 23-23

MILE 126.5 - AIDS TO NAVIGATION

Multiple buoys have been reported off station in the vicinity of Mile 126.5, near the mouth of Little Maumelle River. Mariners are urged to transit the area with caution.

LNM: 20-23

MILE 118.2 - BRIDGE PROTECTION CELL DAMAGE

The upstream left descending pier protection cell at the Clinton Presidential Park Bridge in the vicinity of Mile 118.2, is damaged and leaning into the left descending bridge pier. Mariners are urged to exercise caution in the area. Mariners may contact the USACE Little Rock District Office at (501) 324-5096 or via e-mail at: ceswl-op-om@usace.army.mil, for additional information.

LNM: 48-21

**CUMBERLAND RIVER
MILE 190.4 - BRIDGE MAINTENANCE**

Louisville and Nashville (CSX) Railroad Drawbridge; Vertical clearance is reduced by 4 feet due to installed containment system. The bridge remains fully operational. Mariners are advised to contact bridge tender via VHF-FM Channel 16 or maintenance supervisor at telephone (989) 717-3192, for additional information.

LNM: 35-22

MILE 55.0 - AID TO NAVIGATION

A partially submerged buoy with a PFD attached has been reported in the vicinity of Mile 55.0. Mariners are urged to transit the area with caution.

LNM: 23-23

MILE 33.0 - AID TO NAVIGATION

A partially submerged nun buoy has been reported in the vicinity of Mile 40.0, near Davenport Bay. Mariners are urged to transit the area with caution.

LNM: 22-23

**GREEN RIVER
MILE 8.3 - BRIDGE OPERATION**

Louisville and Nashville Railroad Drawbridge; The bridge will be unattended and left in the open-to-navigation position. Mariners will be notified when the bridge is back in operation.

LNM: 20-22

**ILLINOIS WATERWAY
MILE 288.7 - MILE 287.3 - BRIDGE REPAIRS**

Joliet Harbor Bridges; Due to ongoing bridge work, mariners are required to provide 1-hour advance notice, when requesting drawspan openings.

LNM: 19-20

MILE 254.1 - PIER DAMAGE

Chessie Railroad Drawbridge; The left descending pier has broken timbers at the waterline. Mariners are urged to transit the area with caution.

LNLM: 19-23

MILE 222.8 - BRIDGE MAINTENANCE

Peru Highway Bridge; Continuing until June 9, 2023, bridge inspections will be conducted from 7:00 a.m. to 4:30 p.m., daily. Vertical clearance may be reduced, due to snooper trucks hanging below the bridge deck. Mariners are urged to exercise caution while transiting under the bridge. Mariners may contact the inspection personnel via cell phone at (217) 416-8787.

LNLM: 23-23

MILE 152.9 - BRIDGE MAINTENANCE

Pekin Highway Bridge; Continuing until June 16, 2023, bridge inspections will be conducted from 7:00 a.m. to 5:00 p.m., daily. Vertical clearance may be reduced, due to snooper trucks hanging below the bridge deck. Mariners are urged to exercise caution while transiting under the bridge. Mariners may contact the inspection personnel via cell phone at (312) 798-0268.

LNLM: 23-23

MILE 151.2 - BRIDGE OPERATION

Pekin Railroad Drawbridge; Continuing until further notice, the bridge will be unattended and left in the open-to-navigation position. The bridge shall initiate the closing sequence for an approaching train by broadcasting the closure on VHF-FM Channel 16, 10-minutes prior to closure and immediately prior to closing. If no mariners respond to the broadcast, the operator of the bridge may begin the closing sequence. For additional information, mariners may contact Joe Ballou, with Union Pacific Railroad at (708) 990-8513.

LNLM: 34-22

MILE 151.2 - BRIDGE CONDITION

Pekin Railroad Drawbridge; Continuing until July 1, 2023, sheerface repairs will be conducted from 7:00 a.m. until 5:30 p.m., Monday through Saturday. Mariners are requested to give 30-minutes advance notice prior to transiting the bridge. Mariners may contact the M/V KEN MANNING via VHF-FM Channels 13 or 16, for additional information. Mariners are urged to transit the area with caution.

LNLM: 21-23

LOWER MISSISSIPPI RIVER**MILE 934.0 - MILE 930.0 - STONE REVETMENT OPERATION**

Continuing until July 9, 2023, the M/V KACIE LUHR will be conducting stone revetment operations from Mile 934.0 to Mile 930.0. There will be daily river closures for southbound traffic from 7:00 a.m. until 6:00 p.m. Southbound traffic from the Upper Mississippi River shall check into the queue at Mile 7.5, or from the Ohio River at Mile 977.7. Northbound traffic shall check into the queue at Lower Mississippi River Mile 921.0. The M/V KACIE LUHR may be contacted via VHF-FM Channels 13, 16 or 72, or by phone at (573) 803-7931 for queue arrangements. Mariners are advised to transit with caution and transit at the slowest safe speed once passing arrangements have been made.

LNLM: 19-23

MILE 779.0 - CHANNEL CONDITION

Shoaling has been reported in the vicinity of Mile 779.0. Mariners are urged to exercise caution in the area.

LNLM: 23-23

MILE 740.0 - MILE 725.0 - AIDS TO NAVIGATION

Multiple buoys have been reported missing from Mile 740.0 to Mile 725.0. Mariners are advised to transit the area with caution.

LNLM: 20-23

MILE 734.7 - BRIDGE MAINTENANCE

Memphis Highway Bridge; Due to maintenance on the bridge, a containment system is installed and will hang 2 feet below low steel following the contour of the bridge. Mariners are advised to transit the area with caution.

LNLM: 17-23

MILE 230.0 - MILE 228.5 - BRIDGE FENDER SYSTEM REPLACEMENT

Continuing until approximately August 2, 2023, work to replace the bridge fender system on the I-10 Bridge, left descending pier of the center span, in the vicinity of Mile 229.3, is being conducted. Work will be conducted Monday through Saturday, from 6:00 a.m. until 7:00 p.m. Mariners are urged to transit between Mile 230.0 and 228.5, at their slowest safe speed to minimize their wake and proceed with caution. Mariners may contact Ryan Finnie via VHF-FM Channel 21 or at (321) 501-3936, for additional information.

LNLM: 31-22

UPPER MISSISSIPPI RIVER**MILE 835.6 - AID TO NAVIGATION**

A submerged buoy has been reported in the vicinity of Pigs Eye Bridge, Mile 835.6, RDB. Mariners are urged to exercise caution in the area.

LNLM: 23-23

MILE 823.5 - DREDGE OPERATION

Continuing until further notice, the M/V BRAND MARIE, is conducting dredging operations in the vicinity of Mile 823.5. Work will be conducted from 7:00 a.m. until 7:00 p.m., Monday through Friday. The M/V BRAND MARIE will monitor VHF-FM Channel 12 and requests 30-minutes advance notice of passage. Mariners are urged to transit the area at their slowest safe speed to minimize their wake and proceed with caution after passing arrangements have been made.

LNLM: 23-23

MILE 818.8 - DREDGE OPERATION

Continuing until further notice, the M/V BRENNEN MARINE, is conducting dredging operations in the vicinity of Mile 818.8. Work will be conducted

MILE 818.8 - DREDGE OPERATION

from 7:00 a.m. until 7:00 p.m., Monday through Friday. The M/V BRENNEN MARINE will monitor VHF-FM Channel 12 and requests 30-minutes advance notice of passage. Mariners are urged to transit the area at their slowest safe speed to minimize their wake and proceed with caution after passing arrangements have been made.

LNM: 20-23

MILE 800.3 - CHANNEL CONDITION

Shoaling has been reported in the vicinity of Mile 800.3. Mariners are urged to transit the area with caution.

LNM: 23-23

MILE 762.8 - MILE 762.4 - CHANNEL CONDITION

Due to extreme shoaling, the channel from Mile 762.8 to Mile 762.4, is impassable to vessels drafting more than 9 feet. Vessels drafting less than 9 feet, transit the area at your discretion and use the safest navigational speed to minimize the risk of grounding.

LNM: 23-23

MILE 762.0 - DREDGE OPERATION

Continuing until further notice, the DREDGE ANGELA K., is conducting dredging operations in the vicinity of Mile 762.0. Work will be conducted from 7:00 a.m. until 7:00 p.m., Monday through Friday. DREDGE ANGELA K. will monitor VHF-FM Channels 12 and 13, and requests 30-minutes advance notice of passage. Mariners are urged to transit the area at their slowest safe speed to minimize their wake and proceed with caution after passing arrangements have been made.

LNM: 23-23

MILE 754.5 - MILE 754.0 - CHANNEL CONDITION

Shoaling has been reported between Mile 754.5 and Mile 754.0. Mariners are urged to exercise caution in the area.

LNM: 22-23

MILE 720.9 - MILE 720.1 - DREDGE OPERATION

Continuing until June 19, 2023, the Dredge WADE will be conducting dredging operations between approximate Miles 720.9 and 720.1. Work will be conducted from 6:00 a.m. until 6:00 p.m., daily. The support vessel M/V WELLS and the Dredge WADE will monitor VHF-FM Channel 13 or 80, and requests 30-minutes advance notice of passage. Mariners are urged to transit the area at their slowest safe speed and proceed with caution after passing arrangements have been made.

LNM: 21-23

MILE 702.9 - SOIL BORING OPERATIONS

Continuing until further notice, Tug BARBARA B. will be conducting soil boring operations at approximate Mile 702.9, RDB. Operations will be conducted, daily from 7:00 a.m. until 7:00 p.m. Tug BARBARA B. will be onsite and manned during operating hours and will monitor VHF-FM Channels 13 and 16. Tug BARBARA B. and spud barge will be moored at the worksite, unmanned and lighted accordingly during non-working hours.

LNM: 23-23

MILE 604.6 - CHANNEL CONDITION

Cross-channel shoaling has been reported in the vicinity of Mile 604.6. Mariners are urged to exercise caution in the area.

LNM: 21-23

MILE 581.0 - MILE 577.0 - AIDS TO NAVIGATION

Multiple buoys have been reported missing from Mile 581.0 to Mile 577.0. Mariners are advised to transit the area with caution.

LNM: 20-23

MILE 471.9 - DREDGE OPERATION

Continuing until further notice, the Dredge GOETZ is conducting dredging operations in the vicinity of Mile 471.9. Work will be conducted 24-hours a day, 7-days a week. The Dredge GOETZ utilizes floating pontoon pipelines, anchor lines, small tenders and skiffs, in support of operations. The Dredge GOETZ will monitor VHF-FM Channel 14, 16 or 82, and requests 30-minutes advance notice of passage. Mariners are urged to transit the area at their slowest safe speed to minimize their wake and proceed with caution after passing arrangements have been made.

LNM: 22-23

MILE 345.1 - CHANNEL CONDITION

Shoaling has been reported in the channel in the vicinity of Mile 345.1. Mariners are urged to exercise caution in the area.

LNM: 23-23

MILE 168.6 - BRIDGE MAINTENANCE

Jefferson Barracks Dual Bridge; Due to a containment system installed below low steel, vertical clearance has been reduced to 84 feet. Mariners are advised to transit the bridge with caution.

LNM: 17-22

MISSOURI RIVER**MILE 362.3 - BRIDGE MAINTENANCE**

Chouteau Bridge; Horizontal clearance may be reduced to 300 feet due to scour repairs. Mariners may contact Newt Marine Services at (563) 557-1855, for further information.

LNM: 22-23

MILE 42.0 - MILE 41.0 - ROCK SHELF

A rock shelf has been reported downstream of the Weldon Springs Bridge, between Mile 42.0 and Mile 41.0, LDB. The rock shelf is not marked.

MILE 42.0 - MILE 41.0 - ROCK SHELF

Mariners are urged to exercise caution when transiting this area. For further information, mariners may contact U.S. Coast Guard Western Rivers Command Center, at (314) 269-2332.

LSN: 22-23

MONONGAHELA RIVER**MILE 1.5 - BRIDGE OBSTRUCTION**

South Tenth Street Bridge; A hanging channel marker has been reported. Mariners are urged to exercise caution in the area.

LSN: 23-23

MILE 0.8 - BRIDGE MAINTENANCE

Smithfield Bridge; A containment system is installed and will hang approximately 1.5 feet, below low steel, following the contour of the bridge.

LSN: 33-22

OHIO RIVER**MILE 74.5 - MILE 75.0 - MARINE EVENT**

On June 11, 2023, there will be a Rubber Duck Derby from Mile 74.5 to 75.0, near Wellsburg, WV, from 5:00 p.m. to 7:00 p.m. Mariners are urged to exercise caution and transit the area at their slowest safe speed to minimize their wake, during the event period. U.S. Coast Guard Sector Ohio Valley may be contacted via VHF-FM Channel 16, for further information.

LSN: 22-23

MILE 90.3 - BRIDGE MAINTENANCE

Wheeling Suspension Bridge; Continuing through June 2023, the vertical clearance may be reduced by 2 feet due to maintenance being performed on the bridge. For more information, mariners may contact West Virginia Department of Transportation, Ahmed Mongi, at (304) 553-3941 or Advantage Steel and Construction, Matt Oskin, at (724) 352-4842.

LSN: 11-22

MILE 242.0 - MILE 265.0 - MARINE EVENT/SAFETY ZONE

On June 17, 2023, from 6:00 a.m. until 4:00 p.m., the first annual Race on the OYO will be held between approximate Miles 242.0 and 265.0. The U.S. Coast Guard COTP Ohio Valley has established a Safety Zone for this event within a 100-yard radius of any paddle craft. Entry into this zone during the event period is prohibited to all vessels unless specifically authorized by the U.S. Coast Guard COTP Ohio Valley or a designated representative. The city of New Haven, Racine, Syracuse, Pomeroy and Point Pleasant Police and Fire Departments will be monitoring VHF-FM Channels 13 and 16. U.S. Coast Guard Sector Ohio Valley will be monitoring VHF-FM Channel 16.

LSN: 23-23

MILE 308.8 - BRIDGE MAINTENANCE

Sixth Street Bridge; Due to cleaning and painting of the bridge, a containment system is installed and will hang 4-feet below low steel and follows the contour of the bridge. Vertical clearance is reduced to 70.4 feet above normal pool. Mariners are advised to transit the bridge with extreme caution.

LSN: 17-23

MILE 350.2 - SOIL BORING OPERATION

Continuing until June 30, 2023, M/V THE CAROLINE will be conducting geotechnical soil boring operations in the vicinity of Mile 350.2. Work will be conducted 24-hours a day, 7-days a week. During non-working hours, the floating plant will be moored at the worksite and lighted accordingly. The contractor's floating plant will monitor VHF-FM Channel 13, 16 or 65. Mariners are urged to pass at the slowest safe speed to minimize wake and proceed with caution after passing arrangements have been made.

LSN: 11-23

MILE 473.7 - AID TO NAVIGATION

Sunken Barge Lighted Buoy WR (LLNR-26047) has been reported extinguished and partially submerged in the vicinity of Mile 473.7, RDB, around the bend at Ludlow, KY. Mariners are urged to exercise caution in the area.

LSN: 22-23

MILE 531.5 - L/D CLOSURE

Due to maintenance, Markland L/D Main (1,200 ft) chamber will be closed to navigation during daylight hours on June 7, 2023. The Auxiliary (600 ft) chamber will be closed to navigation from June 8, 2023, through June 11, 2023.

LSN: 23-23

MILE 603.5 - AIDS TO NAVIGATION

Two nun buoys have been reported missing near the head of Portland Canal, in the vicinity of Mile 603.5. Mariners are urged to transit this area with caution.

LSN: 20-23

MILE 604.1 - AIDS TO NAVIGATION

Two nun buoys have been reported missing in the vicinity of Mile 604.1. Mariners are urged to transit this area with caution.

LSN: 08-23

MILE 606.8 - L/D CLOSURE

Continuing until June 15, 2023, the north chamber at McAlpine L/D, in the vicinity of Mile 606.8, will be closed to navigation for repairs. All vessel traffic will utilize the south chamber, during this closure.

LSN: 18-23

MILE 608.6 - BRIDGE MAINTENANCE

Sherman Minton Bridge; Cleaning and painting of the bridge will continue from 7:00 a.m. until 6:00 p.m., Monday through Saturday, until further notice. A containment system will hang 4 feet below low steel. Mariners should transit the bridge with caution.

LNM: 29-21

MILE 789.0 - MILE 791.3 - FACILITY CONSTRUCTION

Continuing until approximately September 30, 2025, Meuth Construction Supply Inc., is constructing a facility adjacent to the navigation channel between approximate Miles 789.0 and 791.3, RDB. Sixteen tri-tie dolphins will be constructed to anchor barges along the riverbank. Construction for this facility will be performed from a floating plant. The contractor's floating plant will never extend more than 180 feet from the shoreline, at normal pool. The construction contractor will monitor VHF-FM Channel 7, 13 or 16. Mariners are urged to transit the area with caution.

LNM: 39-22

MILE 846.0 - L/D CLOSURE

Continuing until August 20, 2023, the John T. Myers L/D (1,200-foot chamber) in the vicinity of Mile 846.0, is closed intermittently for replacement of the floating mooring bitt tracks. This duration represents the contract period leading to the scheduled closures described below. Intermittent closures may occur up to 4-hours each day. Up to two 12-hour closures may occur in a 7-day period to facilitate work. The Auxiliary (600-foot chamber) will be open to navigation traffic any time the primary chamber is closed for work on the floating mooring bitts. The Auxiliary (600-foot chamber) will be closed from August 21, 2023 through September 10, 2023, to allow miter gate repairs and prep for the primary chamber closure by the Heavy Capacity Fleet. The primary (1,200-foot chamber) will be closed from September 11, 2023 through November 17, 2023, to allow miter gate rehab by the Heavy Capacity Fleet.

LNM: 05-23

MILE 918.5 - L/D CLOSURE

Commencing September 22, 2023 and continuing until October 21, 2023, the Smithland L/D land chamber, in the vicinity of Mile 918.5, will be closed for the replacement of the land chamber miter gate machinery by the Light Capacity Fleet. The river chamber will be closed from October 22, 2023, through November 20, 2023, for the replacement of the river chamber miter gate machinery by the Light Capacity Fleet.

LNM: 05-23

ST. CROIX RIVER**MILE 12.0 - MILE 11.0 - AID TO NAVIGATION**

A missing nun buoy has been reported from Mile 12.0 to Mile 11.0. Mariners are urged to transit the area with caution.

LNM: 23-23

MILE 4.3 - AIDS TO NAVIGATION

Multiple buoys have been reported missing in the vicinity of Mile 4.3. Mariners are urged to transit the area with caution.

LNM: 20-23

TENNESSEE RIVER**MILE 616.0 - MARINE EVENT**

Continuing until July 30, 2023, the CSC Sail Camp is being held in the vicinity of Mile 616.0, Concord Cove. Mariners may contact the event sponsor at (865) 599-0820, for additional information. Mariners are urged to exercise caution in the area during the event periods.

LNM: 23-23

SECTION VIII - LIGHT LIST CORRECTIONS

An Asterisk *, indicates the column in which a correction has been made to new information

(1) No.	(2) Name and Location	(3) Mile	(4) Bank	(5) Characteristic	(6) Structure / Dayboard Up Down	(7) Remarks
28205	Irvin Cobb Bridge	937.3				CLEARANCES: Horizontal, 23/23 Kentucky span, 700.0 feet, Illinois span, 502.2 feet; vertical, both spans, 94.0 feet, for distance of 500.0 feet from Illinois pier, all above pool stage 299.6 feet Ohio River Datum.
						*
28220	I-24 Highway Bridge	940.8				CLEARANCES: Horizontal, 23/23 Illinois span, 616.3 feet, Kentucky span, 716.0 feet; vertical, Illinois span, 66.2 feet, Kentucky span, 84.5 feet, all above pool stage 299.0 feet Ohio River Datum.
						*

SECTION VIII - LIGHT LIST CORRECTIONS (Continued)

(1) No.	(2) Name and Location	(3) Mile	(4) Bank	(5) Characteristic	(6) Structure / Dayboard Up Down	(7) Remarks
28250	Paducah and Illinois Railroad Bridge	944.1				CLEARANCES: Horizontal, 23/23 center span, 536.6 feet, alternate Illinois span, 535.4 feet, Kentucky span 701.7 feet; vertical, center span, 90.3 feet, alternate Illinois span, 88.4 feet, Kentucky span 91.3 feet, all above pool stage 298.4 feet Ohio River Datum.

*

ENCLOSURES

USACE Huntington District - Restricted Areas at Navigation Structures

USACE Huntington District Notice to Navigation Interests 23-09, regarding maintenance and repair operations.

LNM: 03-23

USACE Channel Status Reports

Arkansas River Channel Status Reports.

LNM: 09-23

UPPER MISSISSIPPI RIVER/ILLINOIS WATERWAY - BARGE/RAIL COLLISION RISK

Sector Upper Mississippi River MSIB 08-21.

LNM: 15-23

Commander, Eighth Coast Guard District
Hale Boggs Federal Building, Room 1230
500 Poydras Street, New Orleans, LA 70130-3310
Telephone (504) 671-2327
(Business Hours 7:00 a.m. - 3:30 p.m. Monday - Friday)
(Nights, Weekends, Holidays) (855) 485-3727
RADM Timme



**US Army Corps
of Engineers®**

HUNTINGTON DISTRICT

DATE: 03/02/2023

NOTICE NUMBER: 201731-2

LOCAL NUMBER: 23-09

WATERWAY: KANAWHA RIVER
OHIO RIVER

ATTN: CELRH-DE
502 8TH STREET
HUNTINGTON WV 25701-2070
HTTP://WWW.LRH.USACE.ARMY.MIL/

POC: Kent C.
Browning
(304) 399-5239

EFFECTIVE: 01/01/2023 07:00 thru 09/15/2023
15:30

REVISION TO NOTICE TO NAVIGATION 23-08

TENTATIVE MAINTENANCE SCHEDULE FOR 2023

HUNTINGTON DISTRICT

Reference Notice to Navigation Interests 23-08, dated 1 March 2023. To clarify and confirm, the repairs starting on 6 March 2023 at Meldahl Locks and Dam, Ohio River, mile 436.2 are on the auxiliary chamber. Also, the repairs starting on 5 July, 2023 at Greenup Locks and Dam, Ohio River, mile 341.0 are on the primary chamber.

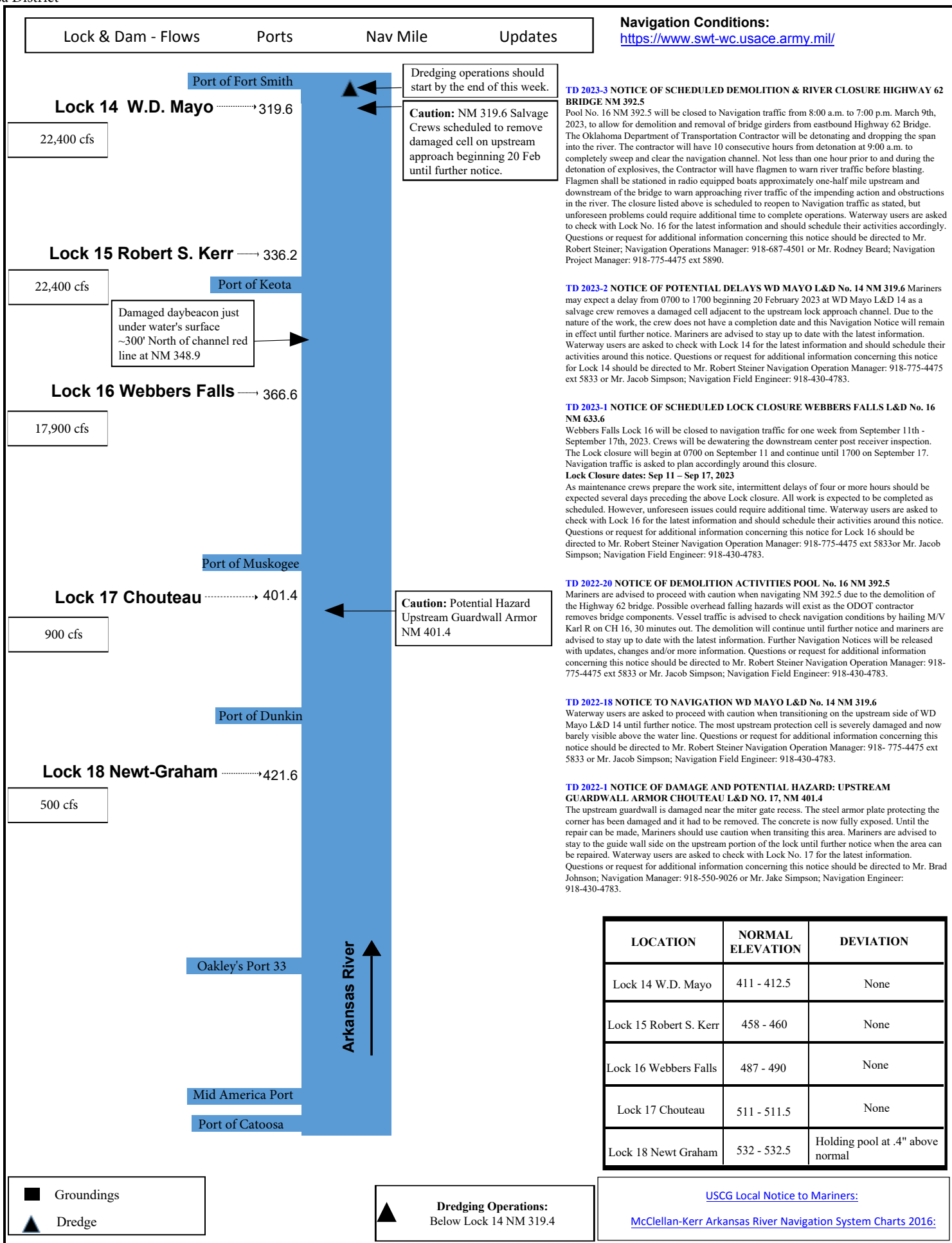
The below schedule has been adjusted. All other pertinent information remains the same.

<u>PROJECT</u>	<u>REPAIRS</u>	<u>DATES</u>	<u>REMARKS</u>
Racine L&D	Miter Gate Machinery Repairs	26 Feb - 03 Mar	Primary Chamber Closure
Meldahl L&D	Filling System Repairs	06 Mar - 30 Jun	Auxiliary Chamber Closure
Greenup L&D	Dewatering for Miter Gate Inspection and Repairs	05 Jul - 14 Aug	Primary Chamber Closure
Winfield L&D	Dam Gate Repairs	10 Jul - 15 Sep	No Closures

All interested parties should review the maintenance schedule for impact. Additional notices furnishing specific information and operating requirements for repairs resulting in major delays will be published prior to commencing the work items listed.

//signed//

KENT C. BROWNING
Chief, Technical Support Branch



LOCATION	NORMAL ELEVATION	DEVIATION
Lock 14 W.D. Mayo	411 - 412.5	None
Lock 15 Robert S. Kerr	458 - 460	None
Lock 16 Webbers Falls	487 - 490	None
Lock 17 Chouteau	511 - 511.5	None
Lock 18 Newt Graham	532 - 532.5	Holding pool at .4" above normal



U.S. COAST GUARD

Sector Upper Mississippi River



November 22, 2021

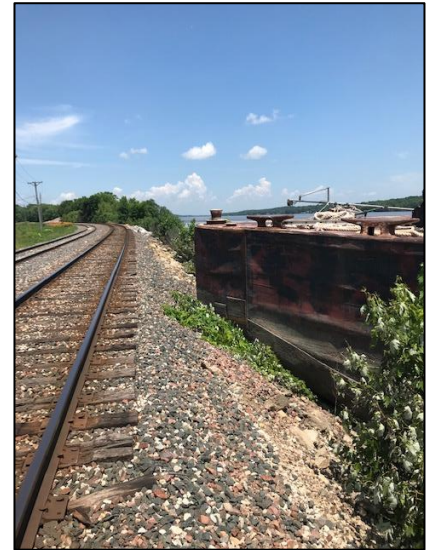
Marine Safety Information Bulletin # 08-21

This bulletin is used purely for informational purposes to assist the maritime community within the Sector Upper Mississippi River Area of Responsibility. Its purpose is to advise relevant parties of emerging information and situations that may impact our Marine Transportation System as well as to facilitate cooperation among the involved parties regarding actions that we may be taking and/or that you may need to employ in the interest of safety/security.

Barge/Rail Collision Risk

This bulletin is in effect from November 22, 2021 until cancelled by the Captain of the Port.

Sector Upper Mississippi River (UMR) received multiple reports of barges encroaching on railroad right of ways (tracks, rail beds) in 2019. This was further documented in Sector UMR MSIB 01-20 and the Waterway Action Plan (WAP). Approximately 45 known areas on the UMR and Illinois River pose a risk for barge/rail collisions due to the close proximity between the rail right of ways and the river bank. Where rails are located near the river's edge, vessels are able to push in to an extent that part of the vessel/tow is in dangerous proximity to the rail. Barge encroachment poses a serious risk to both vessels, trains, crews, the environment, and nearby communities. On November 14, 2021, during normal water conditions, an incident between rail and barge resulted in a train derailment, oil spill, and damage to rail and vessel equipment.



This risk can be mitigated by vessel operators being vigilant when selecting where they push vessels into the river bank during all water conditions. The approximately 45 known areas of concern (see attached consolidated graphic) are marked with caution areas on both printed and electronic versions of the Inland River Electronic Navigation Charts (IENC). These caution areas are accompanied by a warning noting the risk of collision between trains and vessels, and/or rail bed embankment erosion due to the close proximity between the railroad tracks and the waterway.

Sector UMR urges all vessel operators to review the IENC and the WAP for their intended operating areas to identify river bank locations to avoid pushing in at, as well as other potential hazards, as part of their voyage planning procedures prior to operation.

Operators are reminded that Title 33 Code of Federal Regulations (CFR) § 207.300(m)(2)(ii) directly prohibits the mooring of craft directly to railroad tracks or the riverbank in vicinity of railroad tracks. Violation of this regulation can result in enforcement action being taken against the operator's Merchant Mariner Credential as well as a civil penalty against the operating company.

To receive the latest information, mariners should monitor marine VHF channels 14 and 16, and the Sector UMR Port Directory at [https://homeport.uscg.mil/port-directory/upper-mississippi-river-\(st-louis\)](https://homeport.uscg.mil/port-directory/upper-mississippi-river-(st-louis)) for this and other MSIBs and port advisories. Hazardous conditions and marine casualties should immediately be reported to the Western Rivers Command Center via VHF channel 16 or by phone at (314) 269-2332 or (314) 269-2463 – these numbers are continuously monitored 24 hours a day. Questions about this MSIB may be directed to the Waterways Management staff at sumrwaterways@uscg.mil.

Sincerely,

A handwritten signature in blue ink, appearing to read "Richard Scott", with a stylized flourish at the end.

R.M. SCOTT
Captain of the Port
U.S. Coast Guard

IENC Rail Road Cauton Areas



Mile Marker 497.8

IENC Rail Road Cauton Areas Sourced from U.S. Army Engineer District, Rock Island.



 IENC RR Cauton Areas