



U.S. Department  
of Homeland Security  
**United States  
Coast Guard**

## LOCAL NOTICE TO MARINERS

**District 8 MRS**

**Week: 26/22**

### Mississippi River System

LIGHT LIST VOLUME V  
NOTICE NUMBER 26-22  
June 29, 2022

LIGHT LIST REFERENCE: COMDTPUB P16502.5, Vol V, 2022 Edition.

CONTENTS: Rivers are listed in alphabetical order and are included only when there is information to report.

Broadcast Notice to Mariners Covered in this Edition

Originating Unit	Beginning BNM's	Ending BNM's
Sector Upper Mississippi River	0145 - 22 (UM)	0154 - 22 (UM)
Sector Lower Mississippi River	0045 - 22 (LM)	0049 - 22 (LM)
Sector Ohio Valley	0323 - 22 (OV)	0328 - 22 (OV)
OB DWB	0054 - 22 (DWB)	0058 - 22 (DWB)

COAST GUARD DISTRICT 8, WATERWAYS, (504) 671-2327, 7:00 a.m. until 3:30 p.m. (CST)

GENERAL LNM QUESTIONS, COMMENTS, OR SUGGESTIONS MAY BE E-MAILED TO: D8MarineInfo@uscg.mil

COMMENTS REGARDING SECTION VI – PROPOSED CHANGES MAY ALSO BE EMAILED TO: LocalNoticeFeedback@uscg.mil

NIS WATCHSTANDER PHONE (703) 313-5900, 24-HOURS A DAY

INTERNET ADDRESS <https://www.navcen.uscg.gov/>

MISSISSIPPI RIVER SYSTEM LNM VIA INTERNET <https://www.navcen.uscg.gov/>

MISSISSIPPI RIVER SYSTEM LIGHT LIST VIA INTERNET [https://www.navcen.uscg.gov/pdf/lightLists/LightList\\_V5\\_2022.pdf](https://www.navcen.uscg.gov/pdf/lightLists/LightList_V5_2022.pdf)

#### ABBREVIATIONS

##### A through H

ADRIFT - Buoy Adrift  
AICW - Atlantic Intracoastal Waterway  
Al - Alternating  
B - Buoy  
BKW - Breakwater  
bl - Blast  
BNM - Broadcast Notice to Mariner  
bu - Blue  
C - Canadian  
CHAN - Channel  
CGD - Coast Guard District  
C/O - Cut Off  
CONT - Contour  
CRK - Creek  
CONST - Construction  
DAYMK/Daymk - Daymark  
DBN/Dbn - Daybeacon  
DBD/DAYBD - Dayboard  
DEFAC - Defaced  
DEST - Destroyed  
DISCON - Discontinued  
DMGD/DAMGD - Damaged  
ec - eclipse  
EST - Established Aid  
ev - every  
EVAL - Evaluation  
EXT - Extinguished  
F - Fixed  
fl - flash  
Fl - Flashing  
G - Green  
GIWW - Gulf Intracoastal Waterway  
HAZ - Hazard to Navigation  
HBR - Harbor

##### I through O

I - Interrupted  
ICW - Intracoastal Waterway  
IMCH - Improper Characteristic  
INL - Inlet  
INOP - Not Operating  
INT - Intensity  
ISL - Islet  
Iso - Isophase  
kHz - Kilohertz  
LAT - Latitude  
LB - Lighted Buoy  
LBB - Lighted Bell Buoy  
LHB - Lighted Horn Buoy  
LGB - Lighted Gong Buoy  
LONG - Longitude  
LNM - Local Notice to Mariners  
LT - Light  
LT CONT - Light Continuous  
LTR - Letter  
LWB - Lighted Whistle Buoy  
LWP - Left Watching Properly  
MHz - Megahertz  
MISS/MSNG - Missing  
Mo - Morse Code  
MRASS - Marine Radio Activated Sound Signal  
MSLD - Misleading  
N/C - Not Charted  
NGA - National Geospatial-Intelligence Agency  
NO/NUM - Number  
NOS - National Ocean Service  
NW - Notice Writer  
OBSCU - Obscured  
OBST - Obstruction  
OBSTR - Obstruction

##### P through Z

PRIV - Private Aid  
Q - Quick  
R - Red  
RACON - Radar Transponder Beacon  
Ra ref - Radar reflector  
RBN - Radio Beacon  
REBUILT - Aid Rebuilt  
RECOVERED - Aid Recovered  
RED - Red Buoy  
REFL - Reflective  
RRL - Range Rear Light  
RELIGHTED - Aid Relit  
RELOC - Relocated  
RESET ON STATION - Aid Reset on Station  
RFL - Range Front Light  
RIV - River  
RRASS - Remote Radio Activated Sound Signal  
s - seconds  
SEC - Section  
SHL - Shoaling  
si - silent  
SIG - Signal  
SND - Sound  
SPM - Single Point Mooring Buoy  
SS - Sound Signal  
STA - Station  
STRUCT - Structure  
St M - Statute Mile  
TEMP - Temporary Aid Change  
TMK - Topmark  
TRLB - Temporarily Replaced by Lighted Buoy  
TRLT - Temporarily Replaced by Light  
TRUB - Temporarily Replaced by Unlighted Buoy  
USACE - Army Corps of Engineers

HOR - Horizontal Clearance  
HT - Height

Oc - Occulting  
ODAS - Anchored Oceanographic Data Buoy

W - White  
Y - Yellow

#### **Additional Abbreviations Specific to this LNM Edition:**

RIAC - River Industry Action Committee  
MMSI - Mobile Maritime Service Identity  
AIS - Automatic Identification System  
ATON - Aids To Navigation  
COTP - Captain of The Port  
TRDBN - Temporary Replaced by Daybeacon  
C.F.S. - Cubic Feet per Second  
CFR - Code of Federal Regulations  
IAW - In Accordance With  
h.p. - horse power  
MPH - Miles Per Hour  
TVA - Tennessee Valley Authority  
INC - Incorporated  
IENC - Inland Electronic Navigation Chart  
WAP - Waterway Action Plan  
MSIB - Marine Safety Information Bulletin

---

### **SECTION I - SPECIAL NOTICES**

This section contains information of special concern to the Mariner.

---

#### **DEPARTMENT OF HOMELAND SECURITY SUSPICIOUS ACTIVITY**

The Department of Homeland Security (DHS) encourages the maritime public to report information concerning suspicious activity to the local Federal Bureau of Investigation Joint Terrorism Task Force (JTTF) Office, [http://www.fbi.gov/about-us/investigate/terrorism/terrorism\\_jtfts](http://www.fbi.gov/about-us/investigate/terrorism/terrorism_jtfts), or to other appropriate authorities. The U.S. Coast Guard reminds the maritime industry that they may also report information concerning suspicious activity to the [www.AmericasWaterwayWatch.org](http://www.AmericasWaterwayWatch.org), the National Response Center (NRC) 1-800-424-8802 or 1-877-24WATCH.

LNM: 02-19

#### **WESTERN RIVERS FLOATING AIDS TO NAVIGATION**

The U.S. Coast Guard is responsible for placing and maintaining all aids to navigation. Buoys are set to mark project depths taking into consideration the prevailing river stages and obstructions. Buoy positions on the Inland Electronic Navigation Chart (IENC) are approximate, and subject to change depending on prevailing river stages and obstructions.

Buoys should always be given as wide a berth in passing as possible, consistent with the length and width of the vessel or tow and the width of the bend or crossing.

Buoys should always be used with caution. They may be carried off position by high water, accumulation of drift, ice, or sunk by collision or other causes. In those circumstances buoy marks will remain on the IENC and indicate the last known position of the buoy. Presence of a buoy mark on the IENC does not necessarily mean a buoy will be physically on position. When buoys are missing they will be replaced as soon as possible.

LNM: 16-19

#### **GPS TESTING**

At times, throughout our area of responsibility, multiple U.S. Government Agencies conduct GPS testing. These tests vary in duration, affected range from the test site and potential impact to the maritime user as they may affect systems that rely on GPS such as E-911, AIS and DSC. More information is available at the U.S. Coast Guard Navigation Center Website, <https://www.navcen.uscg.gov>. During these periods, GPS users are encouraged to report any GPS outages that they may experience, to the Navigation Information Service (NIS) by calling (703) 313-5900 or by using the NAVCEN Website to submit a GPS problem report.

LNM: 07-19

#### **ARKANSAS RIVER - USACE CHANNEL STATUS REPORTS - UPDATE**

Attached as enclosures to this LNM, are USACE Arkansas River Channel Status Reports.

LNM: 26-22

#### **SUNSET OF NOAA PRINTED CHARTS**

\*\*\*\* Cancellation of NOAA Paper and Raster Nautical Charts \*\*\*\*

The National Oceanic and Atmospheric Administration (NOAA) is undertaking a multi-year program to end production and maintenance of its suite of over 1,000 traditional paper nautical charts and all associated raster chart products and services, including: Print-on-Demand (POD) paper nautical charts, Full-size chart PDF files, BookletChart™ PDF files, NOAA raster navigational charts (NOAA RNC®), the NOAA RNC tile service, and the online RNC viewer.

Six months notice of the intent to cancel a specific chart is provided in a "Last Edition" notice. The final cancellation of a chart is made in a "Canceled" notice. Both types of notices will appear in LNM Section IV, "Chart Correction". A comprehensive list of all canceled NOAA charts is available at: <http://www.charts.noaa.gov/MCD/Dole.shtml>.

Traditional paper nautical chart production is ending to enable the creation and maintenance of larger scale, more up-to-date, higher quality coverage of NOAA's electronic navigational chart (NOAA ENC®) product. This will significantly enhance the amount of charted detail available to mariners. More information about NOAA's program to sunset traditional paper charts is on the NOAA Coast Survey website at:

<https://nauticalcharts.noaa.gov/charts/farewell-to-traditional-nautical-charts.html>.

An online NOAA Custom Chart application at: <https://devgis.charttools.noaa.gov/pod> is available to create chart images from ENC data, which may then be printed. Notices to Mariners will not be issued for NOAA Custom Charts.

LNM: 10-21

#### ILLINOIS WATERWAY - CHANNEL CONDITION/SAFETY ADVISORY

The following area is in the low water watch phase IAW the Western Rivers WAP Annex:

Grafton (Mile 9.9 – Mile 0.0).

Deep draft tows are advised to depart the area. Vessels shall transit this area at their slowest safe speed near fleeting areas to minimize impact due to the narrow channel width. Tow operators are advised to place the heaviest barges in the middle of the tow and identify fleeting areas in the event of a river closure. Mariners are requested to transit the area with caution and contact U.S. Coast Guard Sector Upper Mississippi River via VHF-FM Channel 16, telephone at (314) 269-2332, or email at <mailto:sumrwaterways@uscg.mil>, to report shoaling, hazardous conditions or missing aids to navigation.

LNM: 26-22

#### OHIO RIVER - L/D'S CLOSURES/MAINTENANCE

Attached as an enclosure to this LNM, is a USACE Huntington District Notice to Navigation Interests 22-09, regarding L/D's closures/maintenance operations.

LNM: 17-22

#### UPPER MISSISSIPPI RIVER - AIDS TO NAVIGATION

Multiple can and nun buoys have been reported not properly marking the channel between approximate Miles 631.0 and 379.4. Mariners are urged to exercise caution in the area.

LNM: 24-22

---

## SECTION II - DISCREPANCIES

This section lists all reported and corrected discrepancies related to Aids to Navigation in this edition. A discrepancy is a change in the status of an aid to navigation that differs from what is published or charted.

---

#### DISCREPANCIES (FEDERAL AIDS)

LLNR	Aid Name	Status	Chart No.	BNM Ref.	LNM St	LNM End
280	Karns Island Upper Light	STRUCT DEST		0651OV	31/18	
990	Milligan Bend Light	STRUCT DEST		0642LM	51/19	
1010	Webber Falls Jetty Light	STRUCT DEST		0641LM	51/19	
1020	Bluff View Light	STRUCT DEST		0640LM	51/19	
1055	Hisaw Bottom Light	LT EXT		0196LM	40/18	
1070	Brier Creek Light	STRUCT DEST		0205LM	31/15	
1077	Sandtown Bottom Light	STRUCT DEST		0457LM	39/19	
1200	Black Rock Daybeacon	STRUCT DEST		0379LM	35/19	
1205	Gans Light	STRUCT DEST		0335LM	33/19	
1213	Non Lateral Mark 330.4	STRUCT DEST		0087LM	05/16	
1220	Onion Creek Daybeacon	STRUCT DMGD		0334LM	33/19	
1223	Non Lateral Mark 328.5	STRUCT DMGD		0333LM	33/19	
1225	Tucker Lake Light	STRUCT DEST		0332LM	33/19	
1230	Mcnabb Bottom Daybeacon	STRUCT DEST		0332LM	33/19	
1240	Deadman Slough Light	STRUCT DEST		0330LM	33/19	
1255	Wilsons Rock Light	STRUCT DMGD		0380LM	35/19	
1265	Peno Point Daybeacon	DAYMK DMGD		0580LM	47/19	
1267	Non Lateral Mark 313.9	STRUCT DEST		0089LM	05/16	
1315	Garrison Creek Daybeacon	DAYMK MISSING		0377LM	35/19	
1360	Crawford County Daybeacon	STRUCT DEST		0378LM	35/19	
1365	Jeffrey Light	DAYMK MISSING		0376LM	35/19	
1390	Fort Chaffee Light	STRUCT DEST		0579LM	47/19	

1395	Haroldton Light	DAYMK MISSING	0578LM	47/19
1400	New Haroldton Light	STRUCT DEST	0574LM	47/19
1420	Gun Club Lake Daybeacon	DAYMK MISSING	0582LM	47/19
1427	Big Creek Daybeacon	DAYMK MISSING	0575LM	47/19
1430	Arbuckle Island Light	STRUCT DEST	0091LM	05/16
1435	Clear Creek Light	DAYMK MISSING	0584LM	41/19
1445	Crooked Slough Light	STRUCT DEST	0583LM	47/19
1455	Mulberry River Daybeacon	STRUCT DEST	0041UM	11/17
1510	Moores Creek Light	LT IMCH/STRUCT DMGD	0394LM	44/16
1515	Roseville Daybeacon	DAYMK MISSING	0604LM	50/19
1520	O'Kane Island Light	LT IMCH/STRUCT DMGD	0393LM	44/16
1525	Alix Bottom Light	STRUCT DEST	0605LM	50/19
1530	County Line Daybeacon	STRUCT DEST	0606LM	50/19
1532	Non Lateral Mark 246.3	DAYMK MISSING	0607LM	50/19
1535	Kalamazoo Light	DAYMK MISSING	0608LM	50/19
1562	Non Lateral Mark 236.3	DAYMK MISSING	0609LM	50/19
1615	Dublin Daybeacon	STRUCT DEST	0610LM	50/19
1650	Bunker Hill Upper Daybeacon	STRUCT DEST	0639LM	51/19
1660	Bunker Hill Lower Daybeacon	STRUCT DEST	0643LM	51/19
1695	Dardanelle Reach Light	DAYMK DMGD	0204LM	31/15
1697	Non Lateral Mark 201.4	STRUCT DEST	0200LM	41/18
1700	Elberta Light	DAYMK MISSING	0611LM	50/19
1705	Old Neely Daybeacon	DAYMK MISSING	0612LM	50/19
1708	Non Lateral Mark 197.9	STRUCT DEST	0052LM	13/17
1710	Point Bar Cutoff Light	DAYMK MISSING	0613LM	50/19
1715	Hola Bend Cutoff Light	DAYMK MISSING	0614LM	50/19
1725	Reeds Ferry Light	DAYMK MISSING	0615LM	50/19
1733	Non Lateral Mark 189.8	DAYMK MISSING	0616LM	50/19
1735	Sweeden Island Light	LT EXT/DAYMK MISSING	0617LM	50/19
1738	Non Lateral Mark 188.8	DAYMK MISSING	0618LM	50/19
1745	Wilson Light	STRUCT DEST	0620LM	50/19
1770	Willow Bend Lower Daybeacon	DAYMK MISSING	0621LM	50/19
1798	Non Lateral Mark 175.6	DAYMK MISSING	0622LM	50/19
1800	Point Remove Creek Light	DAYMK MISSING	0623LM	50/19
1815	Ellis Island Light	STRUCT DEST	0630LM	51/19
1817	Non Lateral Mark 171.2	DAYMK MISSING	0631LM	51/19
1845	Stane Reach Upper Daybeacon	DAYMK DMGD	0634LM	51/19
1850	Stane Reach Light	DAYMK DMGD	0635LM	51/19
1890	Belk Corner Light	DAYMK MISSING/STRUCT DMGD	0558LM	45/19
1903	Non Lateral Mark 150.9	DAYMK MISSING	0560LM	45/19
1915	Bigelow Middle Daybeacon	DAYMK DMGD	0563LM	45/19
1920	Bigelow Lower Light	DAYMK MISSING	0538LM	44/19
1930	Tri County Light	STRUCT DEST	0370LM	41/16
1940	Beaver Dam Creek Daybeacon	STRUCT DMGD	0636LM	51/19
1948	Non Lateral Mark 138.8	DAYMK MISSING	0539LM	44/19
1953	Non Lateral Mark 137.6	DAYMK MISSING	0540LM	44/19
1960	Palarm Light	DAYMK MISSING	0541LM	44/19
1975	Maumelle River Upper Daybeacon	STRUCT DEST	0565LM	45/19
1988	Non Lateral Mark 130.6	DAYMK MISSING	0542LM	44/19

2030	Burns Park Light	STRUCT DEST	0514LM	42/19
2045	Waterworks Bend Light	DAYMK DMGD	0515LM	42/19
2130	Willow Bar Light	LT EXT	0524LM	42/19
2143	Non Lateral Mark 106.5	DAYMK MISSING	0637LM	51/19
2160	Estes Place Light	DAYMK IMCH/STRUCT DMGD	0396LM	44/16
2199	Non Lateral Mark 92.0	STRUCT DEST	0398LM	44/16
2370	Ste. Marie Bend Lower Daybeacon	STRUCT DEST	0407LM	45/16
2435	Richland Bend Middle Daybeacon	STRUCT DEST	0099LM	16/18
2485	Little Bayou Meto Lower Daybeacon	DAYMK DMGD	0094LM	15/18
2498	Cummins Bend Daybeacon	STRUCT DEST	0103LM	06/16
2540	Sample Island Light	STRUCT DEST	0106LM	06/16
2550	Sample Island Lower Light	STRUCT DEST	0107LM	06/16
2665	Owens Lake Daybeacon	DAYMK DMGD	0110LM	06/16
2825	Miller Creek Daybeacon	STRUCT DEST	0346OV	18/18
3195	Young Creek Daybeacon	DAYMK DMGD	0293OV	22/22
3655	Cages Bend Light	STRUCT DEST	0660OV	38/19
3965	Watkins Daybeacon	STRUCT DEST	0245OV	19/17
4250	Shammels Mound Landing Light	STRUCT DEST	0010OV	02/16
4285	Saline Creek Light	STRUCT DEST/TRUB	0221OV	26/16
4315	Pryors Creek Light	STRUCT DEST	0030OV	02/20
4340	Devils Elbow Light	STRUCT DEST	0306OV	16/18
4365	Bleidt Landing Light	STRUCT DEST/TRUB	0137OV	17/21
4390	Crooked Creek Light	STRUCT DEST/TRUB	0383OV	36/16
4455	Prison Farm Landing Light	STRUCT DEST	0145OV	17/21
4500	Kuttawa Bar Light	STRUCT DEST	0243OV	12/18
4505	Money Cliff Light	STRUCT DEST	0364OV	19/18
6985	Sand Point Lower Light	STRUCT DEST	0102UM	20/22
6990	Circle Light	STRUCT DMGD	0102UM	20/22
6995	Spring Bay Daybeacon	STRUCT DEST	0102um	20/22
7035	Drolls Point Light	STRUCT DEST/TRLB	0233UM	23/20
7525	Grand Island Foot Light	STRUCT DEST	0015UM	05/22
7565	Sugar Creek Light	STRUCT DEST	0526UM	51/20
7585	Frederick Light	STRUCT DEST	0539UM	29/19
7650	Briggs Landing Light	LT EXT/STRUCT DMGD	0890UM	51/19
7695	Moores Island Light	STRUCT DEST	0037UM	12/22
7705	Wilson Island Daybeacon	DAYMK DMGD	0104UM	18/21
7850	Florence Light	LT EXT	0055UM	14/22
8540	Blaines Island Light	STRUCT DEST	0320OV	25/22
8765	Midway Light	LT EXT	0454OV	41/21
8840	Nine Mile Creek Light	STRUCT DEST	0699OV	33/18
8857	Arbuckle Creek Light	STRUCT DEST/TRDBN		39/20
9150	Washita Point Light	LT EXT	0395LM	33/20
9185	Preston Peninsula Light	REDUCED INT	0420LM	46/16
9442	Black Dog Daybeacon	STRUCT DEST	0198UM	26/21
9456	Six Mile Cut Lower Daybeacon	STRUCT DEST	0518UM	47/18
9470	Four Mile Bend Cutoff Daybeacon	STRUCT DEST	0198UM	26/21
9535	Quaker Oats Light	STRUCT DEST	0043OV	06/16
9565	Putney Daybeacon	DAYMK DMGD	0768OV	52/19
9590	Iron Bank Light	LT EXT	0770OV	52/19

9630	Samuel Light	LT EXT	0771OV	52/19
9660	Osage Orange Daybeacon	DAYMK DMGD	0773OV	52/19
9663	Barker Daybeacon	DAYMK MISSING/STRUCT DMGD	0774OV	52/19
9665	French Point Light	STRUCT DEST	0775OV	52/19
9680	Island 8 Chute Upper Daybeacon	DAYMK MISSING/STRUCT DMGD	0787OV	52/19
9690	Milton Bell Light	LT EXT	0172OV	22/16
9695	Lester Light	STRUCT DEST	0777OV	52/19
9700	Island 10 Bar Light	LT EXT	0779OV	52/19
9707	Everest Landing Daybeacon	DAYMK MISSING/STRUCT DMGD	0780OV	52/19
9715	Groom Towhead Daybeacon	STRUCT DEST	0781OV	52/19
9725	Morrison Towhead Daybeacon	LT EXT	0788OV	52/19
9770	Nolan Daybeacon	DAYMK MISSING	0783OV	52/19
9780	Williams Point Daybeacon	DAYMK DMGD	0778OV	52/19
9790	Bixby Towhead Light	DAYMK MISSING	0786OV	52/19
9810	Merriwether Bend Light	LT EXT/DAYMK MISSING	0791OV	52/19
9825	Carey Upper Daybeacon	STRUCT DEST	0648LM	52/19
9830	Little Cypress Bend Light	LT EXT/DAYMK DMGD	0649LM	52/19
9845	Murphy Smith Upper Daybeacon	STRUCT DEST	0065LM	14/17
9860	Robinson Bayou Light	LT EXT	0650LM	52/19
9905	Blaker Towhead Light	LT EXT/DAYMK DMGD	0651LM	52/19
9910	Blaker Towhead Lower Light	LT EXT	0652LM	52/19
9980	Obion Bar Light	LT EXT/DAYMK MISSING	0653LM	52/19
10185	Cedar Point Light	REDUCED INT	0031LM	18/22
10195	Dean Island Light	REDUCED INT	0327LM	33/19
10210	Brandywine Chute Light	REDUCED INT	0031LM	18/22
10225	Island 40 Foot Light	STRUCT DEST	0232LM	49/18
10540	Harbert Point Light	LT EXT	0256LM	36/15
10545	Stumpy Point Light	STRUCT DEST	0249LM	52/18
10625	Delta Lower Light	STRUCT DEST	0118LM	06/16
10650	Miller Point Light	STRUCT DEST	0171LM	14/16
10660	Old Town Bend Foot Light	STRUCT DEST	0253LM	36/15
10685	Robson Light	STRUCT DEST	0116LM	06/16
10700	Sunflower Cut-Off Foot Light	STRUCT DEST	0115LM	06/16
10710	Ludlow Bar Light	DAYMK DMGD	0018LM	04/18
10715	Wood Cottage Light	STRUCT DEST	0114LM	06/16
10720	Knowlton Light	STRUCT DEST	0113LM	06/16
10730	Mason Landing Daybeacon	STRUCT DEST	0172LM	14/16
10815	Riverton Middle Bar Light	STRUCT DEST	0113LM	21/18
10885	Cypress Bend Light	STRUCT DEST	0032LM	07/18
10895	Eutaw Bar Light	STRUCT DEST	0365LM	35/19
10905	Mounds Crevasse Lower Light	STRUCT DEST	0114LM	21/18
10910	Boliver Light	STRUCT DEST	0069LM	11/18
10955	Miller Bend Light	STRUCT DEST	0030LM	06/18
10965	La Grange Towhead Light	STRUCT DEST	0367LM	35/19
11050	Vaucluse Bend Light	STRUCT DEST	0028LM	06/18
11070	Anconia Point Light	STRUCT DEST	0368LM	35/19
11080	Lakeport Light	STRUCT DEST	0369LM	35/19
11085	Walnut Point Light	STRUCT DEST	0370LM	35/19
11125	Corregidor Light	STRUCT DEST	0080LM	05/16

11130	Sarah Island Light	STRUCT DEST	0371LM	35/19
11170	Stack Island Light	STRUCT DEST	0372LM	35/19
11180	STACK ISLAND LOWER LIGHT	STRUCT DEST	0373LM	35/19
11195	Chinaman Light	STRUCT DEST	0374LM	35/19
11210	Fitler Point Daybeacon	STRUCT DEST	0170LM	28/17
11215	Seitz Light	STRUCT DEST	0448LM	38/19
11220	Cottonwood Bar Pointway Light	STRUCT DEST	0449LM	38/19
11245	Willow Point Light	DAYMK DMGD	0450LM	38/19
11250	Belle Island Corner Daybeacon	STRUCT DEST	0451LM	38/19
11270	Cabin Teele Light	STRUCT DEST	0452LM	38/19
11275	Marshall Point Cut-Off Daybeacon	STRUCT DEST	0453LM	38/19
11280	Joseph Henry Daybeacon	STRUCT DEST	0454LM	38/19
11407	Coggins Light	STRUCT DEST	0296LM	29/16
11415	Reid Bedford Point Light	STRUCT DEST	0463LM	39/19
11425	Diamond Light	STRUCT DEST	0464LM	39/19
11430	Sargent Point Light	LT IMCH/DAYMK DMGD	0465LM	39/19
11440	Cannon Point Light	STRUCT DEST	0294LM	41/17
11455	Buckridge Light	STRUCT DEST	0467LM	39/19
11470	Grand Gulf Island Light	STRUCT DEST	0468LM	39/19
11505	Old Levee Light	LT IMCH/DAYMK DMGD	0470LM	39/19
11520	Ashland Light	LT IMCH/DAYMK DMGD	0471LM	39/19
11530	Hole In The Wall Light	LT IMCH/REDUCED INT	0472LM	39/19
11540	Giles Bend Cut-Off Light	STRUCT DEST	0171LM	28/17
11700	Fort Adams Light	STRUCT DEST	0402LM	36/19
11795	Morganza Crevasse Light	STRUCT DEST	0400LM	36/19
11835	Bayou Sara Bend Light	STRUCT DEST	0399LM	36/19
11860	Port Hudson Light	STRUCT DEST	0581NOLA	36/19
11900	Devils Swamp Light	STRUCT DEST	0397LM	36/19
11940	Ben Burman Light	STRUCT DEST	0549LM	44/19
12677	Island 21 Daybeacon	STRUCT DEST	0503UM	27/19
13165	Lock 5A Light	LT EXT	0172UM	20/20
13230	Island 74 Light	STRUCT DEST/TRUB	0380UM	34/20
13430	Root River Upper Light	STRUCT DEST/HAZ NAV	0172UM	20/20
13510	Perry Ruby Light	STRUCT DEST	0061UM	12/17
13720	Crooked Slough Head Daybeacon	STRUCT DEST/TRUB	0482UM	26/19
13725	Crooked Slough Head Light	STRUCT DEST/TRUB	0482UM	26/19
13915	Clayton Lower Daybeacon	STRUCT DEST/TRUB	0240UM	31/18
13970	Swift Slough Upper Daybeacon	DAYMK DMGD	0108UM	20/22
14010	Cassville Upper Daybeacon	STRUCT DEST	0546UM	29/19
14030	Cassville Lower Light	STRUCT DEST	0546UM	29/19
14055	Milkmans Island Light	LT EXT	0172UM	20/20
14105	Maquoketa Island Light	STRUCT DEST	0460UM	25/19
14230	Nine-Mile Island Light	STRUCT DEST	0410LM	36/17
14260	Stone Slough Light	STRUCT DEST	0454UM	25/19
14275	Fever River Light	STRUCT DEST/TRUB	0485UM	45/18
14295	Pulaski Light	STRUCT DEST	0485UM	45/18
14385	Arnold Towhead Light	STRUCT DEST	0449UM	25/19
14445	Sabula Lower Light	STRUCT DEST	0446UM	25/19
14460	Smith Bay Light	STRUCT DEST	0048UM	13/22

14475	Elk River Light	DAYMK DMGD	0257LM	31/21
15170	Edwards Island Upper Light	STRUCT DEST/TRUB	0403UM	26/16
15785	Sny River Light	STRUCT DEST	0114UM	22/22
16200	Portage Des Sioux Light	LT EXT	0088UM	18/22
16785	Lowry Light	STRUCT DEST	0026UM	10/22
16910	Ste. Genevieve Island Light	STRUCT DEST	0557UM	30/19
17000	Chester Prison Upper Light	STRUCT DEST	0026UM	10/22
18140	Dodds Daybeacon	DAYMK IMCH	0294UM	37/21
18170	Boyer River Daybeacon	DAYMK IMCH	0294UM	37/21
18250	Florence Bend Lower Daybeacon	DAYMK IMCH	0346UM	44/21
19375	Weston Daybeacon	STRUCT DEST	0106UM	18/21
20245	New Frankfort Daybeacon	DAYMK MISSING	0363UM	47/21
20250	Little Missouri Bend Daybeacon	STRUCT DEST	0363UM	47/21
21200	Tavern Rock Daybeacon	STRUCT DEST	0275UM	33/21
23285	Cluster Upper Light	STRUCT DEST	0721OV	34/18
24110	Old Lock No. 17 Lower Daybeacon	STRUCT DEST		39/20
26047	Sunken Barge Lighted Buoy WR	MISSING	0519OV	51/21
26470	Notch Lick Light	STRUCT DEST	0210OV	23/21
27090	Wolf Creek Light	LT EXT	0064OV	05/22
27520	Robert Mann Light	STRUCT DEST	0269OV	21/22
27540	Water Works Light	STRUCT DMGD	0179OV	12/22
27855	Graham Varble Light	STRUCT DEST	0134OV	17/21
27935	Dekoven Light	STRUCT DEST	0294OV	23/22
29241.25	Smith Island Lower Daybeacon	STRUCT DEST	0202LM	26/21
29256.65	Cadney Lower Daybeacon	DAYMK DMGD	0205LM	26/21
29272	Deloges Middle Daybeacon	DAYMK IMCH		36/20
29467	Hog Lake Daybeacon	STRUCT DEST		36/20
29618	Red River Entrance Light	STRUCT DEST		37/20
29665	Dry Cypress Daybeacon	STRUCT DEST		37/20
29690	Bayou Cocodrie Upper Daybeacon	STRUCT DEST		37/20
29695	Bayou Cocodrie Daybeacon	STRUCT DEST		37/20
29710	Grassy Lake Daybeacon	DAYMK MISSING		37/20
29725	Alligator Bayou Daybeacon	STRUCT DEST	0216LM	33/17
29750	Timber Lake Daybeacon	STRUCT DEST		37/20
29755	Naples Daybeacon	STRUCT DEST		37/20
29775	Three Rivers Junction Light	STRUCT DEST		37/20
29780	Barbre Daybeacon	STRUCT DEST		37/20
29785	Torras Daybeacon	STRUCT DEST		37/20
29795	Oak Grove Daybeacon	STRUCT DEST		37/20
29845	Houden Point Daybeacon	STRUCT DEST	0255UM	30/21
31275	Stevenson Daybeacon	DAYMK IMCH	0260OV	19/22
31995	Dry Creek Light	STRUCT DEST	0402OV	31/20
32140	Chambers Daybeacon	STRUCT DEST	0178OV	11/13
32170	Diamond Island Lower Daybeacon	STRUCT DEST	0177OV	11/13
32325	Condors Landing Light	STRUCT DEST	0127OV	09/20
32445	Sales Light	TRUB/STRUCT DEST	0269OV	19/14
32460	Reynoldsburg Island Light	STRUCT DEST/TRUB	0290OV	15/18
32480	Higgins Light	STRUCT DEST	0342OV	27/15
32530	Standing Rock Upper Light	STRUCT DEST	0658OV	41/13



32570	Fort Henry Light	STRUCT DEST	0160OV	19/21
32585	Pine Bluff Light	STRUCT DEST	0308OV	19/19
32595	Blood River Light	STRUCT DEST/TRUB	0138OV	17/21
32600	Clyde Light	LT EXT	0581OV	44/15
32605	Newburg Light	STRUCT DEST	0362OV	29/15
32650	West Entrance Canal Light	LT EXT	0994OV	50/18
32665	Grand Rivers Light	LT EXT	0993OV	50/18

#### DISCREPANCIES (FEDERAL AIDS) CORRECTED

LLNR	Aid Name	Status	Chart No.	BNM Ref.	LNM St	LNM End
------	----------	--------	-----------	----------	--------	---------

None

#### DISCREPANCIES (PRIVATE AIDS)

LLNR	Aid Name	Status	Chart No.	BNM Ref.	LNM St	LNM End
1685	Oakley Dock Light	LT EXT		0307-14 LM	44/14	
1690	Mobley Dock Light	LT EXT		0454-13 LM	48/13	
2100	Oakley Light	LT EXT		0520LM	42/19	
2337	Island Harbor Marina Light	LT EXT			45/16	
2340	Century Tube Lights (2)	LT EXT			45/16	
2400	Pickett And Davison Lights (2)	LT EXT		0481-13 LM	50/13	
3725	Lakewood Marina Lights (4)	LT IMCH		0439-15 OV	34/15	
3750	Dupont Dock Lights (2)	OFF STA/LT EXT		0305-15 OV	26/15	
3795	Nashville Water Intake Lights (2)	LT EXT			44/11	
3805	Holnam Dock Lights (2)	LT EXT			44/11	
3815	Kerr-Mcgee Dock Lights (2)	LT EXT			44/11	
3820	Cohen Terminal Lights (2)	LT EXT			44/11	
3930	Alcoa Chemical Dock Lights (2)	MSLD SIG/LT EXT		0216-10 OV	14/10	
3960	Hunter Marine Transport Dock Lights (2)	LT EXT			47/08	
3995	Riverview Marina Lights (2)	LT EXT			47/08	
4055	Clarksville Boat Club Dock Lights (2)	LT EXT		0533-12 OV	34/12	
6170	Quantum Chemical Dock Lights (2)	LT EXT		0436-01 UM	31/01	
6650	S. T. Services Terminal Lights (2)	LT EXT			41/14	
6695	Continental Grain Company Light	LT EXT			41/14	
7225	Cargo Carriers Dock Lights (2)	LT EXT			25/08	
7235	Pekin Boat Club Breakwater Light	LT EXT			05/16	
7250	Shell Dock Lights (2)	LT EXT		0123-02 UM	16/02	
7255	Adm Growmark Mooring Light	LT EXT		0122-02 UM	16/02	
7260	Sours Grain Tramway Light	LT EXT		0279-03 UM	21/03	
7265	Tomen Dock Light	LT EXT			25/08	
7295	Adm Growmark Mooring Lights (3)	LT EXT		0281-03 UM	21/03	
7460	Cargill Mooring Lights (2)	LT EXT		0284-03 UM	21/03	
7620	Cargill Dock Lights (2)	LT EXT			35/08	
7725	Cargill Terminal Lights (2)	LT IMCH		0171-18 UM	26/18	
7730	Public Service Co. Dock Lights (6)	LT EXT		0119-18 UM	20/18	
7730	Public Service Co. Dock Lights (6)	LT IMCH		0171-18 UM	26/18	
7760	Adm Growmark Grain Elevator Lights (2)	LT IMCH		0171-18 UM	26/18	
9440	Black Dog Lights (5)	LT EXT			43/16	
9965	Huffman Grain Light	STRUCT DEST		0131-16 LM	08/16	

10300	Cargill Dock Light	LT EXT	0361-01 LM	34/01
10390	Peavey Lights (2)	LT EXT	0398-02 LM	36/02
10395	Suburban Propane Dock Light	LT EXT	0396-02 LM	36/02
10415	Western Tar Products Dock Light	LT EXT	0394-02 LM	36/02
11943	Bear Industries Barge Dock Lights (4)	LT EXT	0600-17 NO	30/17
11990	Riverside Dock Lights (2)	LT EXT	0695-01 UM	40/01
12080	University Dock Lights (3)	LT EXT	0696-01 UM	40/01
12215	Koch Fuel Dock Lights (2)	LT EXT		35/16
12320	Newport Terminal Lights (2)	LT EXT		35/16
12385	Shiely Dock Lights (2)	LT IMCH		35/16
12712	City of Red Wing Metering Station Special Light	MISSING		42/16
12768	Consolidated Grain and Barge Loading Dock Piling Lights (2)	MISSING		42/16
12930	Alma City Dock Light/Daymarks (3)	MISSING		42/16
13405	G. Heileman Brewery Dock Light	MISSING		42/16
14756	Isle Of Capri Casino Marina Daybeacon	MISSING		03/16
15345	Koch Nitrogen Dock Light	LT EXT		41/14
15415	Riverview Park Dock Light	LT EXT	0531-15 UM	49/15
15425	Hall Towing Light	STRUCT DEST	0280UM	25/20
15822	Hannibal Intake Light	LT EXT	0358-20 UM	32/20
16100	Jersey County Grain Dock Lights (2)	LT EXT		19/16
16205	Piasa Harbor Light	LT EXT	0131-15 UM	22/15
16220	Con-Agra Mooring Lights (2)	LT EXT		21/16
16230	Alton Marina Breakwater Lights (3)	LT EXT	0131-15 UM	22/15
16265	Amoco Dock Light	STRUCT DEST		35/09
16280	Amoco Dock Lights (4)	LT EXT		35/09
16310	Sioux City/New Orleans Terminal Light	STRUCT DEST		35/09
16380	Western Dock Lights (9)	LT IMCH		34/08
16390	Adm-Growmark Dock Lights (4)	LT EXT	0776-01 UM	44/01
16430	Union Electric Coal Dock Lights (2)	LT EXT	0305-08 UM	34/08
16445	Continental Cement Lights (2)	LT EXT	0305-08 UM	34/08
16505	Peavey Company Dock Lights (3)	LT EXT	0305-08 UM	34/08
16530	Cahokia Marine Terminal Lights (2)	LT EXT	0305-08 UM	34/08
16540	Slay Bulk Terminal Lights (2)	LT EXT	0305-08 UM	34/08
16545	Peavey Lights (3)	LT EXT	3305-08 UM	34/08
16550	Eagle Marine Industries Light	LT IMCH	0305-08 UM	34/08
16560	Phillips Pipeline Lights (2)	LT EXT	0305-08 UM	34/08
16565	Growmark Dock Lights (2)	LT EXT	0305-08 UM	34/08
16575	Eagle Marine Dock Lights (2)	LT EXT	0305-08 UM	34/08
16600	J.H. Collier Barge Mooring Lights (2)	LT EXT	0305-08 UM	34/08
16605	Clark Oil Refining Dock Lights (4)	LT EXT	0305-08 UM	34/08
16609	Alcoa Foil Lights (2)	LT EXT	0305-08 UM	34/08
16615	Hci Chemtech Dock Lights (2)	LT EXT	0305-08 UM	34/08
16617	Semmaterials Terminal Lights (2)	LT EXT	0305-08 UM	34/08
16630	American Commercial Dock Lights (2)	LT EXT	0305-08 UM	34/08
16655	Bussen Terminal Light	LT EXT	0305-08 UM	34/08
18700	Bunge Dock Lights (3)	MISSING/LT EXT		18/08
19185	St. Joseph L & P Dock Light	LT IMCH		17/08
19415	Leavenworth Water Intake Lights (2)	LT EXT	0104-07 UM	39/07

19460	Smoot Grain Dock Lights (2)	LT EXT	0385-07 UM	39/07
19505	Board Of Public Utilities Light	LT EXT	0386-07 UM	39/07
19535	Public Utilities Intake Lights (3)	LT EXT		38/08
19660	Continental Grain Dock Lights (4)	LT EXT	0181-08 UM	24/08
19695	Kansas City Power And Light Company Lights (2)	LT EXT	0181-08 UM	24/08
20870	U.E. Callaway Intake Lights (2)	LT EXT	0522-20 UM	52/20
21965	Hill Top Energy Lighted Danger Buoy	MISSING		24/22
22873	Moon Township Municipal Authority Back Channel Outfall Danger Buoy	OFF STA	0108-21 OV	14/21
24005	Bens Run Light	LT EXT		03/20
24580	Ohio Power Coal Dock Light	LT EXT	480-21 OV	44/21
25820	Cargill Barge Loading Facility Light	LT EXT	0552-09 OV	40/09
26290	Boone County Sand And Gravel Lights (2)	LT EXT	0769-00 OV	40/00
26833	Transmontaige Dock Lights (2)	LT EXT	286-21 OV	28/21
26860	Dupont Chemical Lights (2)	LT EXT	0330-18 OV	17/18
27367	Transmontaigne Dock Light	LT EXT		40/21
27590	Transmontaigne Dock Lights (4)	LT EXT		40/21
32550	Paris Landing State Park Lights (2)	Status Unreported	0452-20 OV	38/20
32900	Ergon Dock Lights (2)	LT IMCH		17/13
	Alcosan-Mascaro Temporary Lighted Danger Buoy	MISSING		24/22

#### DISCREPANCIES (PRIVATE AIDS) CORRECTED

LLNR	Aid Name	Status	Chart No.	BNM Ref.	LNM St	LNM End
------	----------	--------	-----------	----------	--------	---------

None

#### PLATFORM DISCREPANCIES

Name	Status	Position	BNM Ref.	LNM St	LNM End
------	--------	----------	----------	--------	---------

None

#### PLATFORM DISCREPANCIES CORRECTED

Name	Status	Position	BNM Ref.	LNM St	LNM End
------	--------	----------	----------	--------	---------

None

### SECTION III - TEMPORARY CHANGES and TEMPORARY CHANGES CORRECTED

This section contains temporary changes and corrections to Aids to Navigation for this edition. When charted aids are temporarily relocated for dredging, testing, evaluation, or marking an obstruction, a temporary correction shall be listed in Section IV giving the new position.

#### TEMPORARY CHANGES

LLNR	Aid Name	Status	Chart No.	BNM Ref.	LNM St	LNM End
7015	Blue Creek Point Lower Lighted Buoy	TRUB		0379UM	51/21	
7030	Drolls Point Upper Lighted Buoy	TRUB		0379UM	51/21	
7040	Peoria Heights Lighted Buoy	TRUB		0379UM	51/21	
8540	Blaines Island Light	DISCONTINUED			39/20	
8840	Nine Mile Creek Light	DISCONTINUED			11/18	
10455	Armstrong Bar Light	RELOCATED			23/18	
11275	Marshall Point Cut-Off Daybeacon	TRDBN			49/16	
11280	Joseph Henry Daybeacon	TRDBN			49/16	
29880	Kinnikinnic River Daybeacon	DISCONTINUED			21/20	

**TEMPORARY CHANGES CORRECTED**

LLNR	Aid Name	Status	Chart No.	BNM Ref.	LNM St	LNM End
None						

**PLATFORM TEMPORARY CHANGES**

Name	Status	Position	BNM Ref.	LNM St	LNM End
None					

**PLATFORM TEMPORARY CHANGES CORRECTED**

Name	Status	Position	BNM Ref.	LNM St	LNM End
None					

**SECTION V - ADVANCE NOTICES**

This section contains advance notice of approved projects, changes to aids to navigation, or upcoming temporary changes such as dredging, etc. Mariners are advised to use caution while transiting these areas.

**SUMMARY OF ADVANCED APPROVED PROJECTS**

<u>Approved Project(s)</u>	<u>Project Date</u>	<u>Ref. LNM</u>
None		

**Advance Notice(s)****UPPER MISSISSIPPI RIVER**

The Coast Guard will make the following Aid to Navigation Change after July 26, 2022:

Discontinue Sabula Lower Light (LLNR-14445) at mile 533.6, Right Descending Bank, in approximate position 42-02-34.260N/090-10-02.383W.  
LNM: 22/22

**SECTION VI - PROPOSED CHANGES**

Periodically, the Coast Guard evaluates its system of aids to navigation to determine whether the conditions for which the aids to navigation were established have changed. When changes occur, the feasibility of improving, relocating, replacing, or discontinuing aids are considered. This section contains notice(s) of non-approved, proposed projects open for comment. SPECIAL NOTE: Mariners are requested to respond in writing to the District office unless otherwise noted (see banner page for address).

**PROPOSED WATERWAY PROJECTS OPEN FOR PUBLIC COMMENT**

<u>Proposed Project(s)</u>	<u>Closing</u>	<u>Docket No.</u>	<u>Ref. LNM</u>
None			

**Proposed Change Notice(s)****UPPER MISSISSIPPI RIVER**

The Coast Guard proposes the following Aids to Navigation Changes:

Discontinue Blocks Light (LLNR-17035) at mile 107.9, Right Descending Bank, in approximate position 37-52-55.085N/089-48-40.612W.

Discontinue Mansker Light (LLNR-17065) at mile 104.0, Left Descending Bank, in approximate position 37-51-39.110N/089-44-45.071W.

Discontinue Anchor Light (LLNR-17075) at mile 101.8, Right Descending Bank, in approximate position 37-49-41.614N/089-43-43.882W.

Discontinue Bishop Light (LLNR-17080) at mile 100.9, Right Descending Bank, in approximate position 37-49-16.352N/089-43-05.268W.

Discontinue Liberty Island Light (LLNR-17090) at mile 99.1, Left Descending Bank, in approximate position 37-48-49.201N/089-41-09.503W.

Discontinue Wagners Daybeacon (LLNR-17100) at mile 97.4, Left Descending Bank, in approximate position 37-47-32.032N/089-39-34.358W.

Discontinue Seventy-Six Towhead Light (LLNR-17135) at mile 91.0, Left Descending Bank, in approximate position 37-43-57.209N/089-37-13.858W.

Discontinue Cumberland Rock Daybeacon (LLNR-17145) at mile 87.2, Right Descending Bank, in approximate position 37-42-10.580N/089-33-33.631W.

Discontinue Fountain Bluff Bar Daybeacon (LLNR-17155) at mile 84.0, Left Descending Bank, in approximate position 37-41-19.007N/089-30-33.826W.

Discontinue Fountain Bluff Daybeacon (LLNR-17160) at mile 82.8, Left Descending Bank, in approximate position 37-40-19.690N/089-30-46.188W.

Comments to be received by July 5, 2022. Please email comments regarding this proposal to: D08-SMB-District-LocalNoticeFeedback@uscg.mil.

LNM: 19/22

**UPPER MISSISSIPPI RIVER**

The Coast Guard proposes the following Aids to Navigation Changes:

Discontinue Wittenburg Light (LLNR-17170) at mile 81.9, Right Descending Bank, in approximate position 37-39-25.945N/089-31-13.732W.

Discontinue Tucker Point Daybeacon (LLNR-17180) at mile 81.1, Right Descending Bank, in approximate position 37-38-54.021N/089-31-11.699W.

Discontinue Tower Rock Daybeacon (LLNR-17195) at mile 80.8, Right Descending Bank, in approximate position 37-38-30.041N/089-31-13.955W.

Discontinue Birmingham Light (LLNR-17230) at mile 76.8, Right Descending Bank, in approximate position 37-35-24.569N/089-31-25.036W  
Discontinue Hines Daybeacon (LLNR-17235) at mile 73.7, Right Descending Bank, in approximate position 37-32-42.871N/089-31-21.306W.  
Discontinue hanging Dog Bluff Light (LLNR-17240) at mile 71.6, Right Descending Bank, in approximate position 37-31-03.878N/089-30-22.356W.  
Discontinue Teatable Light (LLNR-17245) at mile 68.7, Right Descending Bank, in approximate position 37-28-45.358N/089-29-07.624W.  
Discontinue Moccasin Springs Light (LLNR-17250) at mile 67.2, Right Descending Bank, in approximate position 37-27-56.020N/089-28-25.237W.  
Discontinue Bee Bar Light (LLNR-17265) at mile 65.8, Left Descending Bank, in approximate position 37-26-54.704N/089-26-40.960W.  
Comments to be received by July 5, 2022. Please email comments regarding this proposal to: D08-SMB-District-LocalNoticeFeedback@uscg.mil.

LNM: 19/22

#### UPPER MISSISSIPPI RIVER

The Coast Guard proposes the following Aids to Navigation Changes:

Discontinue Shepard Point Daybeacon (LLNR-17270) at mile 63.3, Right Descending Bank, in approximate position 37-25-05.009N/089-26-03.581W.  
Discontinue Hamburg Daybeacon (LLNR-17275) at mile 61.7, Right Descending Bank, in approximate position 37-23-35.138N/089-25-00.073W.  
Discontinue Dusky Bar Daybeacon (LLNR-17285) at mile 60.0, Left Descending Bank, in approximate position 37-22-18.030N/089-25-12.986W.  
Discontinue Cape Rock Daybeacon (LLNR-17315) at mile 54.1, Right Descending Bank, in approximate position 37-19-41.124N/089-29-43.282W.  
Discontinue Cape La Croix Daybeacon (LLNR-17380) at mile 48.5, Right Descending Bank, in approximate position 37-14-59.431N/089-30-33.984W.  
Discontinue Dorrity Creek Light (LLNR-17410) at mile 44.5, Right Descending Bank, in approximate position 37-13-48.029N/089-28-03.857W.  
Discontinue Grand Chain Light (LLNR-17435) at mile 43.0, Right Descending Bank, in approximate position 37-12-17.561N/089-28-04.026W.  
Discontinue Uncle Joe Light (LLNR-17445) at mile 42.0, Right Descending Bank, in approximate position 37-11-30.926N/089-27-48.208W.  
Discontinue Burnham Island Light (LLNR-17470) at mile 39.0, Left Descending Bank, in approximate position 37-09-18.263N/089-25-55.679W.  
Discontinue Powers Island Daybeacon (LLNR-17480) at mile 36.0, Right Descending Bank, in approximate position 37-06-57.031N/089-24-25.499W.

Comments to be received by July 5, 2022. Please email comments regarding this proposal to: D08-SMB-District-LocalNoticeFeedback@uscg.mil.

LNM: 19/22

#### UPPER MISSISSIPPI RIVER

The Coast Guard proposes the following Aids to Navigation Changes:

Discontinue Price Daybeacon (LLNR-17515) at mile 29.9, Right Descending Bank, in approximate position 37-02-25.140N/089-22-54.463W.  
Discontinue Brooks Point Light (LLNR-17535) at mile 25.8, Left Descending Bank, in approximate position 37-00-51.466N/089-18-49.136W.  
Discontinue Thompson Light (LLNR-17565) at mile 19.8, Right Descending Bank, in approximate position 37-01-55.088N/089-16-00.804W.  
Discontinue Beech Ridge Daybeacon (LLNR-17610) at mile 12.8, Left Descending Bank, in approximate position 37-05-12.901N/089-15-42.113W.  
Discontinue Hurricane Daybeacon (LLNR-17620) at mile 10.7, Right Descending Bank, in approximate position 37-03-19.832N/089-14-54.913W.  
Discontinue Elk Island Light (LLNR-17625) at mile 8.7, Right Descending Bank, in approximate position 37-01-56.809N/089-14-03.415W.  
Discontinue Stevenson Daybeacon (LLNR-17645) at mile 4.6, Right Descending Bank, in approximate position 36-58-54.462N/089-11-49.520W.  
Comments to be received by July 5, 2022. Please email comments regarding this proposal to: D08-SMB-District-LocalNoticeFeedback@uscg.mil.

LNM: 19/22

#### OHIO RIVER

The Coast Guard proposes the following Aids to Navigation Changes:

Discontinue Cumberland Bar Light (LLNR-28150) at mile 925.5, Left Descending Bank, in approximate position 37-04-53.926N/088-26-47.962W.  
Discontinue Brick House Light (LLNR-28155) at mile 926.7, Left Descending Bank, in approximate position 37-03-56.610N/088-27-54.385W.  
Discontinue Kinkaid Upper Light (LLNR-28167) at mile 930.4, Left Descending Bank, in approximate position 37-03-22.320N/088-31-32.700W.  
Discontinue Kinkaid Landing Light (LLNR-28170) at mile 934.2, Left Descending Bank, in approximate position 37-04-31.177N/088-33-24.732W.  
Discontinue Belgrade Light (LLNR-28225) at mile 941.0, Right Descending Bank, in approximate position 37-08-25.415N/088-41-20.648W.  
Discontinue Sharps Bar Lower Light (LLNR-28285) at mile 956.5, Right Descending Bank, in approximate position 37-13-48.760N/088-56-24.472W.

Discontinue Future City Light (LLNR-28345) at mile 976.5, Right Descending Bank, in approximate position 37-02-31.744N/089-10-55.769W.

Comments to be received by July 05, 2022. Please email comments regarding this proposal to: D08-SMB-District-LocalNoticeFeedback@uscg.mil.

LNM: 19/22

#### MISSOURI RIVER

To ensure compliance with the U.S. Aids to Navigation System on the Western Rivers System the Coast Guard is proposing the following Aid to Navigation change:

Rename Squaw Bend Daybeacon (LLNR-18950) at mile 490.8, Left Descending Bank, in approximate position 40-00-41.788N/095-18-45.376W to Maiden Bend Daybeacon (LLNR-18950) at mile 490.8, Left Descending Bank, in approximate position 40-00-41.788N/095-18-45.376W. Comments to be received by July 26, 2022. Please email comments regarding this proposal to: D08-SMB-District-LocalNoticeFeedback@uscg.mil.

LNM: 22/22

#### LOWER MISSISSIPPI RIVER

The Coast Guard proposes the following Aid to Navigation Change:

Discontinue Cypress Bend Light (LLNR-10885) at mile 568.8, Right Descending Bank, in approximate position 33-40-04.897N/091-13-46.139W.

Comments to be received by July 26, 2022. Please email comments regarding this proposal to: D08-SMB-District-LocalNoticeFeedback@uscg.mil.

LNM: 22/22

#### MISSOURI RIVER

The Coast Guard is proposing the following Aids to Navigation Changes:

Change Bellefontaine Light (LLNR-21400) at mile 8.6, Left Descending Bank, in approximate position 38-50-48.942N/090-14-26.442W, showing FI (2)R 5s, to Bellefontaine Daybeacon (LLNR-21400) CNR upstream, TR downstream.

Change Weldon Springs Light (LLNR-21250) at mile 43.1, Left Descending Bank, in approximate position 38-41-35.982N/090-38-54.342W, showing FI (2)R 5s, to Weldon Springs Daybeacon (LLNR-21250) CNR upstream, TR downstream.

Change Parsons Light (LLNR-21205) at mile 50.8, Left Descending Bank, in approximate position 38-37-44.603N/090-45-07.799W, showing FI (2)R 5s, to Parsons Daybeacon (LLNR-21205) CNR upstream, CNR downstream.

Change Hancock Light (LLNR-21155) at mile 59.9, Left Descending Bank, in approximate position 38-33-21.478N/090-52-25.884W, showing FI (2)R 5s, to Hancock Daybeacon (LLNR-21155) CNR upstream, CNR downstream.  
Change Berheimere Light (LLNR-21025) at mile 87.6, Left Descending Bank, in approximate position 38-40-49.722N/090-16-25.989W, showing FI (2)R 5s, to Berheimere Daybeacon (LLNR-21025) CNR upstream, CNR downstream.  
Change Warren County Light (LLNR-20995) at mile 95, Left Descending Bank, in approximate position 38-42.25.057N/091-23-02.397W, showing FI (2)R 5s, to Warren County Daybeacon (LLNR-20995) CNR upstream, CNR downstream.  
Change Hermann Lower Light (LLNR-20985) at mile 97, Left Descending Bank, in approximate position 38-42-43.413N/090-25-22.305W, showing FI (2)R 5s, to Hermann Daybeacon (LLNR-20985) CNR upstream, CNR downstream.  
Change Mcgirks Middle Light (LLNR-20950) at mile 100.7, Left Descending Bank, in approximate position 38-42-00.365N/090-29-25.238W, showing FI (2)R 5s, to Mcgirks Daybeacon (LLNR-20950) TR upstream, CNR downstream.  
Change Osage River Upper Light (LLNR-20775) at mile 130.0, Right Descending Bank, in approximate position 38-35-41.094N/091-56-34.092W, showing FI G 4s, to Osage River Upper Daybeacon (LLNR-20775) SG upstream, CNG downstream.  
Change Dry Creek Light (LLNR-20750) at mile 135.1, Left Descending Bank, in approximate position 38-33-59.376N/092-01-35.040W, showing FI (2)R 5s, to Dry Creek Daybeacon (LLNR-20750) CNR upstream, CNR downstream.  
Change Rocheport Bend Light (LLNR-20540) at mile 184.1, Right Descending Bank, in approximate position 38-56-56.292N/092-32-11.418W, showing FI G 4s, to Rocheport Daybeacon (LLNR-20540) CNG upstream, CNG downstream.  
Change Hurricane Creek Light (LLNR-20340) at mile 225.5, Left Descending Bank, in approximate position 39-12-40.230N/092-51-07.566W, showing FI (2)R 5s, to Hurricane Creek Daybeacon (LLNR-20340) TR upstream, TR downstream.  
Change Glasgow Light (LLNR-20310) at mile 227.0, Left Descending Bank, in approximate position 39-14-00.974N/092-50-52.136W, showing FI (2)R 5s, to Glasgow Daybeacon (LLNR-20310) TR upstream, TR downstream.  
Change Scarlett Light (LLNR-20160) at mile 262.0, Right Descending Bank, in approximate position 39-20-00.704N/093-12-58.938W, showing FI G 4s, to Scarlett Daybeacon (LLNR-20160) SG upstream, CNG downstream.  
Change Sibley Light (LLNR-19820) at mile 336.7, Right Descending Bank, in approximate position 39-10-52.682N/094-11-15.727W, showing FI G 4s, to Sibley Daybeacon (LLNR-19820) CNG upstream, SG downstream.  
Change Griffith Light (LLNR-19600) at mile 366.5, Right Descending Bank, in approximate position 39-06-30.814N/094-35-46.140W, showing FI G 4s, to Griffith Daybeacon (LLNR-19600) SG upstream, SG downstream.  
Comments to be received by August 2, 2022. Please email comments regarding this proposal to: D08-SMB-District-LocalNoticeFeedback@uscg.mil.

LNM: 23/22

#### **KANAWHA RIVER**

The Coast Guard is proposing the following Aids to Navigation Changes:

Discontinue Nine Mile Creek Light (LLNR-8840) at mile 8.1, Left Descending Bank, in approximate position 38-46-47.689N/082-01-01.387W.  
Discontinue Maupin Landing Light (LLNR-8815) at mile 14.6, Right Descending Bank, in approximate position 38-42-45.620N/081-56-56.673W.  
Discontinue Little Guano Creek Daybeacon (LLNR-8710) at mile 33.6, Right Descending Bank, in approximate position 38-32-29.868N/081-52-27.667W.

Discontinue Stewarts Light (LLNR-8690) at mile 38.1, Left Descending Bank, in approximate position 38-29-09.641N/081-50-01.088W.

Discontinue Wright Light (LLNR-8625) at mile 44.4, Left Descending Bank, in approximate position 38-24-33.153N/081-51-01.815W.

Comments to be received by August 2, 2022. Please email comments regarding this proposal to: D08-SMB-District-LocalNoticeFeedback@uscg.mil.

LNM: 23/22

#### **ALLEGHENY RIVER**

The Coast Guard is proposing the following Aid to Navigation Change:

Discontinue Karns Island Light (LLNR-285) at mile 26.7, Left Descending Bank, in approximate position 40-38-32.018N/079-41-12.966W.

Comments to be received by August 2, 2022. Please email comments regarding this proposal to: D08-SMB-District-LocalNoticeFeedback@uscg.mil.

LNM: 23/22

---

## **SECTION VII - GENERAL**

This section contains information of general concern to the Mariners. Mariners are advised to use caution while transiting these areas.

#### **ALLEGHENY RIVER**

##### **MILE 24.0 - MILE 20.0 - AIDS TO NAVIGATION**

Multiple can and nun buoys have been reported riding low in the water, between approximate Miles 24.0 and 20.0, below L/D 4. Mariners are urged to exercise caution in the area.

LNM: 23-22

##### **MILE 0.6 - BRIDGE MAINTENANCE**

Sixth Street Bridge; A containment system is installed below low steel and follows the contour of the bridge. Vertical clearance is reduced approximately 1-foot for the middle, 100 feet of the navigation span. Mariners are advised to transit the bridge with extreme caution.

LNM: 12-22

##### **MILE 0.5 - MILE 0.0 - FIREWORKS DISPLAY/SAFETY ZONE/RIVER CLOSURE**

On July 4, 2022, from 8:30 p.m. until 10:30 p.m., the Pittsburgh Fireworks Display will be held between approximate Miles 0.5 and 0.0. The COTP Pittsburgh has established a Safety Zone closing the river for this event for this event. No person or vessel may enter this zone unless authorized by the COTP Pittsburgh.

LNM: 26-22

#### **ARKANSAS RIVER**

##### **MILE 401.4 - L/D GUARDWALL DAMAGE**

**ARKANSAS RIVER****MILE 401.4 - L/D GUARDWALL DAMAGE**

The upstream guardwall, near the miter gate recess of the Chouteau L/D 18, in the vicinity of Mile 401.4, is damaged and the steel armor plate has been removed. The concrete is now fully exposed. Until repairs are made mariners are advised to stay to the guidewall side on the upstream portion. Mariners may check with L/D 17, for the latest information. Mariners may contact Mr. Brad Johnson, Navigation Manager at (918) 550-9026, or Mr. Jake Simpson, Navigation Engineer at (918) 430-4783, for additional information.

LNM: 11-22

**MILE 354.5 - CHANNEL CONDITION**

Shoaling has been reported in the vicinity of Mile 354.5. Mariners are urged to exercise caution in the area.

LNM: 25-22

**MILE 348.0 - MILE 347.6 - CHANNEL CONDITION/USACE SAILING INSTRUCTIONS**

Shoaling has been reported between approximate Miles 348.0 and 347.6. The USACE has issued "sailing instructions" for mariners to "favor the green line" in the area. Mariners may contact the USACE Tulsa District, Mr. Robert Steiner, Navigation Operation Manager at (918) 775-4475, ext. 5833 or Mr. Jake Simpson, Navigation Field Engineer at (918) 430-4783, for additional information.

LNM: 24-22

**MILE 347.1 - MILE 346.6 - CHANNEL CONDITION/USACE SAILING INSTRUCTIONS**

Shoaling has been reported between approximate Miles 347.1 and 346.6. The USACE has issued "sailing instructions" for mariners to "run the centerline" in the area. Mariners may contact the USACE Tulsa District, Mr. Robert Steiner, Navigation Operation Manager at (918) 775-4475, ext. 5833 or Mr. Jake Simpson, Navigation Field Engineer at (918) 430-4783, for additional information.

LNM: 24-22

**MILE 222.4 - MILE 221.4 - CHANNEL CONDITION/USACE SAILING INSTRUCTIONS**

Shoaling has been reported between approximate Mile 222.4 and 221.7. The USACE advises up-bound and down-bound tows to "run the green line" in this area. Shoaling has been reported in the vicinity of Mile 221.4. The USACE advises up-bound and down-bound tows to "run the red line" in this area. Mariners may contact the USACE Little Rock District Office at (501) 324-5096, or via email at: ceswl-op-om@usace.army.mil, for additional information.

LNM: 21-22

**MILE 178.7 - CHANNEL CONDITION**

Shoaling has been reported in the vicinity of Mile 178.7. Mariners are urged to exercise caution in the area.

LNM: 25-22

**MILE 118.2 - BRIDGE PROTECTION CELL DAMAGE**

The upstream left descending pier protection cell at the Clinton Presidential Park Bridge in the vicinity of Mile 118.2, is damaged and leaning into the left descending bridge pier. Mariners are urged to exercise caution in the area. Mariners may contact the USACE Little Rock District Office at (501) 324-5096 or via e-mail at: ceswl-op-om@usace.army.mil, for additional information.

LNM: 48-21

**MILE 86.3 - CHANNEL CONDITION/USACE SAILING INSTRUCTION**

Shoaling has been reported in the vicinity of Mile 86.3, Colonel Charles D. Maynard L/D Nr. 5. The USACE advises mariners to favor the long wall, in the downstream approach, both up-bound and down-bound. Mariners may contact the USACE Little Rock District Office at (501) 324-5096 or via e-mail at ceswl-op-om@usace.army.mil, for additional information.

LNM: 26-22

**MILE 50.2****MILE 10.3 - L/D'S CLOSURES/RESTRICTIONS**

Attached as enclosures to this LNM are USACE Little Rock District Navigation Notices 22-21 and 22-23, regarding L/D closures/restrictions for the Joe Hardin L/D (Nr. 3), in the vicinity of Mile 50.2 and for the Norrell L/D (Nr. 1), in the vicinity of Mile 10.3. Mariners may contact the USACE Little Rock District Office, at (501) 324-5096 or via e-mail at ceswl-op-om@usace.army.mil, for additional information.

LNM: 24-22

**BIG SANDY RIVER****MILE 9.0 - MILE 0.0 - DREDGE OPERATION**

Continuing until approximately August 13, 2022, Amherst Madison, contractor for the USACE, will conduct dredging operations between approximate Miles 9.0 and 0.0. Dredging will begin in the vicinity of the mouth and proceed to other upstream locations ending at Mile 9.0. Disposal operations will take place at an approved site located on the Ohio River, near the RDB, between approximate Miles 321.0 and 322.0. The contractor's floating plant will consist of the M/V MILTON, M/V BUS BROWN, 2 barge mounted cranes, and 6 material barges. The M/V MILTON will be in the vicinity of the dredge site and should be contacted for passing arrangements via VHF-FM Channel 13. The M/V BUS BROWN will be used to transport the material barges between the dredge site and the disposal area and will be monitoring VHF-FM Channel 13. Work will be conducted Monday through Saturday, from 6:00 a.m. until midnight. During non-working hours, the contractors floating plant will be moored at the worksite and lighted accordingly. Mariners are urged to transit the area at their slowest safe speed to minimize their wake and proceed with caution after passing arrangements have been made.

LNM: 24-22

**CUMBERLAND RIVER****MILE 250.0 - MILE 247.0 - AIDS TO NAVIGATION**

Multiple buoys have been reported not properly marking the channel between approximate Miles 250.0 and 247.0. Mariners are urged to exercise caution in the area.

LNM: 19-22

**GREEN RIVER****MILE 63.1 - CHANNEL CONDITION/AIDS TO NAVIGATION**

A buildup of sediment has been reported in the vicinity of Mile 63.1, L/D Nr. 2. The lower approach has been marked with virtual buoys. Attached as an enclosure is USACE Louisville District 2022-013 chartlet of the area depicting the virtual buoy locations. Mariners should make note of conditions, exercise caution when transiting the area, and take all directions from the lock operator.

LNM: 24-22

**MILE 8.3 - BRIDGE OPERATION**

Louisville and Nashville Railroad Drawbridge; The bridge will be unattended and left in the open-to-navigation position. Mariners will be notified when the bridge is back in operation.

LNM: 20-22

**ILLINOIS WATERWAY****MILE 288.7 - MILE 287.3 - BRIDGE REPAIRS**

Joliet Harbor Bridges; Due to ongoing bridge work, mariners are required to provide 1-hour advance notice, when requesting drawspan openings.

LNM: 19-20

**MILE 286.0 - L/D CLOSURES/RESTRICTIONS**

Continuing until August 14, 2022, from 6:00 a.m. until 6:00 p.m., each day, Brandon Road L/D in the vicinity of Mile 286.0, will be closed. From 6:00 p.m. until 6:00 a.m., each day, during the same period, a 70-foot width restriction will be in place. The tow haulage units will be out of operation during this period and helper boats will be needed for pulling cuts. Mariners are requested not to tie up along the guide walls during this period. Mariners may contact Brandon L/D at (815) 744-1714, or via VHF-FM Channel 14, for additional information.

LNM: 18-22

**MILE 286.0 - L/D RESTRICTION**

Commencing 7:00 p.m., July 3, 2022 and continuing until 12:30 a.m., July 4, 2022, only recreational traffic will be locked through the Brandon Road L/D, in the vicinity of Mile 286.0, due to the Fourth of July celebration at Joliet, IL. Commercial traffic will resume locking after 12:30 a.m., July 4, 2022. Mariners are urged to exercise caution in the area.

LNM: 25-22

**MILE 241.6 - MILE 241.5 - DREDGE OPERATION - UPDATE**

The M/V LaSALLE has completed dredging operations/strike removal between approximate Miles 241.6 and 241.5, LDB, Bulls Island.

LNM: 26-22

**MILE 230.7 - MILE 230.5 - DREDGE OPERATION**

Continuing until further notice, the M/V LaSALLE is conducting dredging operations/strike removal between approximate Miles 230.7 and 230.5, LDB, Starved Rock Lower. Work will be conducted from 6:00 a.m. until 6:00 p.m., each day. The M/V LaSALLE will monitor VHF-FM Channel 14 or 82 and requests 30-minutes advance notice of passage. Mariners are urged to transit the area at their slowest safe speed to minimize their wake and proceed with caution after passing arrangements have been made.

LNM: 26-22

**MILE 174.9 - SUBMERGED OBSTRUCTION**

A submerged rock pile has been reported in the vicinity of Mile 174.9, RDB, inside the navigation channel, east of Circle Light (LLNR-6980). Mariners are urged to exercise caution in the area.

LNM: 26-22

**MILE 174.9 - CHANNEL CONDITION**

Shoaling has been reported in the vicinity of Mile 174.9. Mariners are urged to transit the area with caution.

LNM: 25-22

**MILE 158.5 - CHANNEL CONDITION**

Shoaling has been reported in the vicinity of Mile 158.5, mid-channel. Mariners are urged to transit the area with caution.

LNM: 25-22

**MILE 157.7 - INVASIVE CARP DETERRENCE**

Attached as an enclosure to this LNM, is USACE Rock Island District Notice to Navigation Interests 22-200975, regarding the installation and testing of invasive carp deterrence measures.

LNM: 26-22

**MILE 151.2 - BRIDGE OPERATION**

Pekin Railroad Drawbridge; Continuing until further notice, the bridge will be unattended and left in the open-to-navigation position. The bridge shall initiate the closing sequence for an approaching train by broadcasting the closure on VHF-FM Channel 16, 10-minutes prior to closure and immediately prior to closing. If no mariners respond to the broadcast, the operator of the bridge may begin the closing sequence. For additional information, mariners may contact Chad Toussaint, with Union Pacific Railroad at (979) 665-5541.

LNM: 18-20

**MILE 91.0 - AIDS TO NAVIGATION**

Multiple nun buoys have been reported missing in the vicinity of Mile 91.0. Mariners are urged to exercise caution in the area.

LNM: 23-22

**KANAWHA RIVER****MILE 59.0 - MILE 58.0 - FIREWORKS DISPLAY/SAFETY ZONE/RIVER CLOSURE**



**KANAWHA RIVER****MILE 59.0 - MILE 58.0 - FIREWORKS DISPLAY/SAFETY ZONE/RIVER CLOSURE**

On July 2 and 4, 2022, from 9:00 p.m. until 10:00 p.m., both days, the Charleston Sternwheel Regatta Fireworks Show will be held between approximate Miles 59.0 and 58.0. The COTP Ohio Valley has established a Safety Zone closing the river for this event. Entry into this zone is prohibited to all vessels unless otherwise authorized by the U.S. Coast Guard or a designated representative. The City of Charleston Police and Fire Departments will monitor VHF-FM Channel 16.

LNM: 26-22

**MILE 59.0 - MILE 58.0 - REGATTA/SAFETY ZONE/RIVER CLOSURE**

On July 2 and 3, 2022, from 11:30 a.m. until 3:30 p.m., both days, the Charleston Sternwheel Regatta will be held between approximate Miles 59.0 and 58.0. The COTP Ohio Valley has established a Safety Zone closing the river for this event. Entry into this zone is prohibited to all vessels unless otherwise authorized by the U.S. Coast Guard.

LNM: 26-22

**LOWER MISSISSIPPI RIVER****MILE 858.0 - MILE 857.0 - CHANNEL CONDITION**

Shoaling has been reported between approximate Miles 858.0 and 857.0, along the can buoy line. Mariners are urged to transit the area with caution.

LNM: 26-22

**MILE 785.6 - CHANNEL CONDITION**

Shoaling has been reported in the vicinity of Mile 785.6. Mariners are urged to exercise caution in the area.

LNM: 24-22

**MILE 769.5 - CHANNEL CONDITION**

Shoaling has been reported in the vicinity of Mile 769.5. Mariners are urged to exercise caution in the area.

LNM: 25-22

**MILE 545.0 - CHANNEL CONDITION**

Shoaling has been reported in the vicinity of Mile 545.0. Mariners are urged to exercise caution in the area.

LNM: 25-22

**MILE 304.0 - L/D RESTRICTIONS**

Continuing until approximately July 31, 2022, tows are to enter the lock wall at a DEAD SLOW speed, tows will be restricted to a length no more than 1,100 feet and will line up along the floating guidewall before proceeding into the lock's chamber. Two line-handlers (with life vests) and bumpers are required when approaching and exiting the lock. Vessels must be moored by the bow and stern to the floating timberheads. The Lockmaster, Mr. Anthony T. Lindsly can be reached at (225) 492-3333, for up-to-date information. The point of contact at the USACE New Orleans Office is Russell Beauvais at (225) 492-2169.

LNM: 11-22

**MILE 219.0 - DREDGE OPERATION - UPDATE**

Continuing until approximately September 30, 2022, the Dustpan Dredge HURLEY is conducting dredging operations at Deep Draft Crossings from Baton Rouge to New Orleans. The Dustpan Dredge HURLEY is currently in the vicinity of Mile 219.0, Sardine Point. Work will be conducted 24-hours a day, 7-days a week. The Dustpan Dredge HURLEY will monitor VHF-FM Channel 16 or 67 and will give way to vessel traffic. Mariners are urged to transit the area at their slowest safe speed to minimize their wake and proceed with caution after passing arrangements have been made. Mariners may contact the USACE New Orleans District Michelle Kornick, at (504) 862-1842 or Heather Jennings, at (504) 862-1253, for additional information.

LNM: 26-22

**UPPER MISSISSIPPI RIVER****MILE 801.8 - DREDGE OPERATION**

Continuing until further notice, the M/V BRAND MARIE is conducting dredging operations in the vicinity of Mile 801.8. Work will be conducted from 7:00 a.m. until 7:00 p.m., Monday through Friday. The M/V BRAND MARIE will monitor VHF-FM Channel 12 and requests 30-minutes advance notice of passage. Mariners are urged to transit the area at their slowest safe speed to minimize their wake and proceed with caution after passing arrangements have been made.

LNM: 26-22

**MILE 800.4 - CHANNEL CONDITION**

Shoaling has been reported in the vicinity of Mile 800.4. Mariners are urged to transit the area with caution.

LNM: 25-22

**MILE 797.0 - CHANNEL CONDITION**

Shoaling has been reported in the vicinity of Mile 797.0. Mariners are urged to transit the area with caution.

LNM: 25-22

**MILE 790.0 - AID TO NAVIGATION**

A diving can buoy has been reported in the vicinity of Mile 790.0. Mariners are urged to exercise caution in the area.

LNM: 24-22

**MILE 786.2 - CHANNEL CONDITION**

Shoaling has been reported in the vicinity of Mile 786.2. Mariners are urged to transit the area with caution.

LNM: 25-22

**MILE 785.0 - CHANNEL CONDITION**

Shoaling has been reported in the vicinity of Mile 785.0. Mariners are urged to transit the area with caution.

LNM: 25-22

**MILE 769.5 - CHANNEL CONDITION**

Shoaling has been reported in the vicinity of Mile 769.5. Mariners are urged to exercise caution in the area.

LNM: 24-22

**MILE 757.0 - MILE 756.0 - DREDGE OPERATION**

Continuing until further notice the M/V WADE, is conducting dredging/strike removal operations between approximate Miles 757.0 and 756.0. Work will be conducted from 7:00 a.m. until 7:00 p.m., Monday through Friday. The M/V WADE will monitor VHF-FM Channel 13 or 80 and requests 30-minutes advance notice of passage. Mariners are urged to transit the area at their slowest safe speed to minimize their wake and proceed with caution after passing arrangements have been made.

LNM: 25-22

**MILE 728.5 - L/D CLOSURES**

L/D Nr. 5A, in the vicinity of Mile 728.5, will be closed on July 26 and 28, 2022, from 7:00 a.m. until 7:00 p.m., each day, for repairs. These closures should allow adequate time to complete work, as long as no significant issues are encountered. Towboat operators are requested NOT to tie up on the guidewalls during these closure periods. Mariners may contact the L/D via VHF-FM Channel 14 or at (651) 290-5071, for additional information.

LNM: 23-22

**MILE 723.3 - DREDGE OPERATION**

Continuing until further notice, the M/V ANGELA K., is conducting dredging operations in the vicinity of Mile 723.3. Work will be conducted from 7:00 a.m. until 7:00 p.m., Monday through Friday. The M/V ANGELA K., will monitor VHF-FM Channel 12 or 13, or phone at (651) 890-2256, and requests 30-minutes advance notice of passage. Mariners are urged to exercise caution in the area.

LNM: 25-22

**MILE 720.3 - MILE 665.2 - AIDS TO NAVIGATION**

Multiple buoys have been reported missing between approximate Miles 720.3 and 665.2:

Mile 720.3, can buoys,  
Mile 709.7, can buoys,  
Mile 707.3, nun buoys,  
Mile 704.7, nun buoys,  
Mile 678.3, nun buoys,  
Mile 677.2, nun buoys and  
Mile 665.2, nun buoys. Mariners are urged to exercise caution in the area.

LNM: 24-22

**MILE 698.5 - MILE 697.5 - FIREWORKS DISPLAYS/MARINE EVENTS/SAFETY ZONE/RIVER CLOSURE**

Commencing June 30, 2022 and continuing until July 5, 2022, multiple fireworks displays and marine events will be held between approximate Miles 698.5 and 697.5. The COTP Upper Mississippi River has established Safety Zones closing the river for these events.

On June 30, 2022, from 10:00 p.m. until 10:30 p.m., a fireworks display will be held.

On July 2, 2022, from 5:00 p.m. until 5:30 p.m., a water ski show will be held.

On July 3, 2022, from 5:00 p.m. until 7:00 p.m., 2 water ski shows will be held.

On July 4, 2022, from 2:00 p.m. until 3:30 p.m., and again from 6:00 p.m. until 7:00 p.m., water ski shows will be held.

On July 4, 2022, from 10:00 p.m. until 11:00 p.m., a fireworks display will be held.

Mariners will be unable to transit this area during these event periods.

LNM: 26-22

**MILE 589.7 - CHANNEL CONDITION**

Shoaling has been reported in the vicinity of Mile 589.7. Mariners are urged to exercise caution in the area.

LNM: 24-22

**MILE 503.8 - MILE 503.4 - DREDGE OPERATION - UPDATE**

The M/V ROCK ISLAND or the M/V MOLINE has completed dredge operations/strike removal between approximate Miles 503.8 and 503.4, Steamboat.

LNM: 26-22

**MILE 486.0 - MILE 484.0 - MARINE EVENT**

Continuing until October 31, 2022, from 9:00 a.m. until 8:00 p.m., each Saturday, the Lake Davenport Sailing Club will hold marine events between approximate Miles 486.0 and 484.0. These events will consist of approximately 24 sailing vessels participating in open sailing events. Mariners are urged to exercise caution in the area during the event periods.

LNM: 19-22

**MILE 482.9 - MILE 482.6 - DREDGE OPERATION**

Continuing until further notice, the M/V ROCK ISLAND or the M/V MOLINE is conducting dredge operations/strike removal between approximate Miles 482.9 and 482.6, L/D Nr. 15, Lower. Work will be conducted from 7:00 a.m. until 5:30 p.m., 7-days a week. The M/V ROCK ISLAND or the M/V MOLINE will monitor VHF-FM Channel 13, 14, 16 or 82 and requests 30-minutes advance notice of passage. Mariners are urged to transit the area at their slowest safe speed to minimize their wake and proceed with caution after passing arrangements have been made.

LNM: 26-22

**MILE 478.3 - BRIDGE REPAIRS**

**MILE 478.3 - BRIDGE REPAIRS**

I-280 Bridge; Due to high water, the safespan is being raised to within 1 foot of low steel approximately 45 feet, each side of the center green light. Mariners are advised to transit the bridge with extreme caution. Mariners may contact Kraemer North America at (608) 393-9743, for additional information.

LNM: 17-22

**MILE 457.5 - CHANNEL CONDITION**

Shoaling has been reported in the vicinity of Mile 457.5. Mariners are urged to transit the area with caution.

LNM: 25-22

**MILE 418.7 - MILE 414.6 - DREDGE OPERATION**

Continuing until further notice, the M/V LAURA K., or the M/V CLEE is conducting dredging operations/strike removal between approximate Miles 415.1 and 414.6, Oquawka Bend. Work will be conducted from 6:00 a.m. until 6:00 p.m., 7-days a week. Dredge spoils placement will be in open water between approximate Miles 418.7 and 417.8. The M/V LAURA K., or the M/V CLEE will monitor VHF-FM Channel 7 or 13 and requests 30-minutes advance notice of passage. Mariners are urged to transit the area at their slowest safe speed to minimize their wake and proceed with caution after passing arrangements have been made.

LNM: 26-22

**MILE 332.0 - MILE 331.3 - DREDGE OPERATION**

Continuing until further notice, the M/V CLINTON or the M/V DAVENPORT is conducting dredging operations/strike removal between approximate Miles 332.0 and 331.3, Hogback Island. Work will be conducted from 7:00 a.m. until 5:30 p.m., 7-days a week. The M/V CLINTON or the M/V DAVENPORT will monitor VHF-FM Channel 13, 14, 16 or 82 and requests 30-minutes advance notice of passage. Mariners are urged to transit the area at their slowest safe speed to minimize their wake and proceed with caution after passing arrangements have been made.

LNM: 25-22

**MILE 289.4 - CHANNEL CONDITION**

Shoaling has been reported in the vicinity of Mile 289.4. Mariners are urged to transit the area with caution.

LNM: 21-22

**MILE 282.0 - SUBMERGED OBSTRUCTION**

A submerged obstruction has been reported in the vicinity of Mile 282.0, possibly protruding from the Louisiana Railroad Bridge protection cell, LDB, Illinois side landing. Mariners are urged to exercise caution in the area.

LNM: 22-22

**MILE 274.8 - MILE 274.5 - CHANNEL CONDITION**

Shoaling has been reported between approximate Miles 274.8 and 274.5, along the can buoy line. A shoal with 8 feet minimum depth exists approximately 80 feet, right of the sailing line. Southbound tows are recommended to favor the left side of the sailing line, until safely past the harbor in the area. Mariners are urged to transit the area with caution.

LNM: 25-22

**MILE 217.5 - CHANNEL CONDITION**

The USACE has reported shoaling in the vicinity of Mile 217.5, mid-channel. Mariners are urged to exercise caution in the area.

LNM: 26-22

**MILE 186.6 - BRIDGE MAINTENANCE**

Jefferson Barracks Dual Bridge; Due to a containment system installed below low steel, vertical clearance has been reduced to 84 feet. Mariners are advised to transit the bridge with caution.

LNM: 17-22

**MISSOURI RIVER****MILE 638.5 - MILE 627.4 - STONE PLACEMENT****MILE 626.6 - MILE 624.8 - DREDGE OPERATION**

Continuing until October 8, 2022, stone placement will be conducted between approximate Miles 638.5 and 627.4. Simultaneously, dredging operations will be conducted between approximate Miles 626.6 and 624.8. Work will be conducted during daylight hours, each day, for both operations. The M/V MICHELLE M., will monitor VHF-FM Channel 10 or (920) 579-2642 and requests a 1-hour advance notice of passage. Mariners are urged to transit the area at their slowest safe speed to minimize their wake and proceed with caution, after passing arrangements have been made.

LNM: 18-22

**MILE 397.6 - SUBMERGED OBSTRUCTIONS**

Submerged obstructions have been reported in the vicinity of Mile 397.6, underneath the Leavenworth Highway Bridge, Alternate Span. Mariners are urged to exercise caution in the area.

LNM: 16-22

**MILE 366.1 - DREDGE OPERATION**

Continuing until approximately July 5, 2022, the M/V CAPTAIN STREIS is conducting dredging operations in the vicinity of Mile 366.1. Work will be conducted during daylight hours, Monday through Friday. The M/V CAPTAIN STREIS will monitor VHF-FM Channel 13, 16 or 17 and request 30-minutes advance notice of passage. Mariners are urged to transit the area at their slowest safe speed to minimize their wake and proceed with caution after passing arrangements have been made.

LNM: 25-22

**MILE 185.0 - BRIDGE MAINTENANCE**

**MILE 185.0 - BRIDGE MAINTENANCE**

Rochepoint Highway Bridge; A drill barge will be located channelward of the existing right descending pier and will reduce the horizontal clearance to 470 feet. Mariners are advised to transit the bridge with caution.

LNM: 16-22

**MONONGAHELA RIVER****MILE 33.0 - MILE 32.0 - FIREWORKS DISPLAY/SAFETY ZONE/RIVER CLOSURE**

On July 4, 2021, from 6:00 p.m. until 11:00 p.m., a Fireworks Display will be held between approximate Miles 33.0 and 32.0. The COTP Pittsburgh has established a Safety Zone closing the river for this event. Persons and vessels will not be allowed to transit this area without the permission of the U.S. Coast Guard.

LNM: 26-22

**MILE 0.5 - MILE 0.0 - FIREWORKS DISPLAY/SAFETY ZONE/RIVER CLOSURE**

On July 4, 2022, from 8:30 p.m. until 10:30 p.m., the Pittsburgh Fireworks Display will be held between approximate Miles 0.5 and 0.0. The COTP Pittsburgh has established a Safety Zone closing the river for this event. No person or vessel may enter this zone unless authorized by the COTP Pittsburgh.

LNM: 26-22

**OHIO RIVER****MILE 0.0 - MILE 0.5 - FIREWORKS DISPLAY/SAFETY ZONE/RIVER CLOSURE**

On July 4, 2022, from 8:30 p.m. until 10:30 p.m., the Pittsburgh Fireworks Display will be held between approximate Miles 0.0 and 0.5. The COTP Pittsburgh has established a Safety Zone closing the river for this event. No person or vessel may enter this zone unless authorized by the COTP Pittsburgh.

LNM: 26-22

**MILE 42.0 - MILE 44.0 - FIREWORKS DISPLAY/SAFETY ZONE/RIVER CLOSURE**

On July 4, 2022, from 9:30 p.m. until 11:00 p.m., the Chester, WV., Fireworks Display will be held between approximate Miles 42.0 and 44.0. The COTP Pittsburgh has established a Safety Zone closing the river for this event. Persons and vessels will not be allowed to transit this area without the permission of the U.S. Coast Guard.

LNM: 26-22

**MILE 67.5 - MILE 68.5 - FIREWORKS DISPLAY/SAFETY ZONE/RIVER CLOSURE**

On July 4, 2022, from 8:45 p.m. until 11:00 p.m., the City of Steubenville 4th of July Fireworks Display will be held between approximate Miles 67.5 and 68.5. The COTP Pittsburgh has issued a Safety Zone closing the river for this event. Entry of vessels or persons into this zone, during the event period, is prohibited unless granted by COTP Pittsburgh.

LNM: 26-22

**MILE 90.3 - BRIDGE MAINTENANCE**

Wheeling Suspension Bridge; Continuing through June 2023, the vertical clearance may be reduced by 2 feet due to maintenance being performed on the bridge. For more information, mariners may contact West Virginia Department of Transportation, Ahmed Mongi, at (304) 553-3941 or Advantage Steel and Construction, Matt Oskin, at (724) 352-4842.

LNM: 11-22

**MILE 183.4 - BRIDGE REPAIR**

Belpre-Parkersburg Highway Bridge; Rehabilitation of the eastern most pier located outside of the navigation span is ongoing with 2 material barges located next to the pier, to collect removed concrete. The barges will remain in place during non-work hours and be lighted according to regulations. Work on this pier will continue through September 2022.

LNM: 26-22

**MILE 251.5 - MILE 252.5 - FIREWORKS DISPLAY/SAFETY ZONE/RIVER CLOSURE**

On July 4, 2022, from 9:30 p.m. until 10:30 p.m., the Middleport Independence Day Fireworks Show will be held between approximate Miles 251.5 and 252.5. The COTP Ohio Valley has established a Safety Zone closing the river for this event. Entry into this zone is prohibited to all vessels unless authorized by the U.S. Coast Guard or a designated representative. The Middleport Police and Fire Departments will monitor VHF-FM Channel 13 or 16.

LNM: 26-22

**MILE 269.5 - MILE 270.5 - FIREWORKS DISPLAY/SAFETY ZONE/RIVER CLOSURE**

On July 4, 2022, from 9:45 p.m. until 10:45 p.m., the Gallia County Chamber of Commerce Fireworks Show will be held between approximate Miles 269.5 and 270.5. The COTP Ohio Valley has established a Safety Zone closing the river for this event. Entry into this zone is prohibited to all vessels unless otherwise authorized by the U.S. Coast Guard or a designated representative. The Point Pleasant Volunteer Fire Department will be monitoring VHF-FM Channel 13 or 16, during this event.

LNM: 26-22

**MILE 335.2 - MILE 336.2 - FIREWORKS DISPLAY/SAFETY ZONE/RIVER CLOSURE**

On July 2, 2022, from 9:30 p.m. until 10:30 p.m., the Greenup City Fireworks Show will be held between approximate Miles 335.2 and 336.2. The COTP Ohio Valley has established a Safety Zone closing the river for this event. Entry into this zone is prohibited to all vessels unless otherwise authorized by the U.S. Coast Guard or a designated representative. The City of Greenup Police and Fire Departments will monitor VHF-FM Channel 13 or 16.

LNM: 26-22

**MILE 307.0 - MILE 308.0 - FIREWORKS DISPLAY/SAFETY ZONE/RIVER CLOSURE**

On July 1, 2022, from 9:45 p.m. until 10:45 p.m., the Dawg Dazzle Fireworks Display will be held between approximate Miles 307.0 and 308.0. The COTP Ohio Valley has established a Safety Zone closing the river for this event. Entry into this zone is prohibited to all vessels unless otherwise

**MILE 307.0 - MILE 308.0 - FIREWORKS DISPLAY/SAFETY ZONE/RIVER CLOSURE**

authorized by the U.S. Coast Guard or a designated representative. The City of Huntington Police Department and Fire Department, will monitor VHF-FM Channel 13 or 16.

LNM: 26-22

**MILE 317.0 - MILE 318.0 - FIREWORKS DISPLAY/SAFETY ZONE/RIVER CLOSURE**

On July 2, 2022, from 9:30 p.m. until 10:30 p.m., the Southpoint, Ohio Fireworks Show will be held between approximate Miles 317.0 and 318.0. The COTP Ohio Valley has established a Safety Zone closing the river for this event. Entry into this zone is prohibited to all vessels unless otherwise authorized by the U.S. Coast Guard or a designated representative. The City of Southpoint Police Department and Fire Department, will monitor VHF-FM Channel 13 or 16.

LNM: 26-22

**MILE 322.0 - MILE 323.0 - FIREWORKS DISPLAY/SAFETY ZONE/RIVER CLOSURE**

On July 4, 2022, from 10:00 p.m. until 11:00 p.m., the Summer Motion Fireworks Show will be held between approximate Miles 322.0 and 323.0. The COTP Ohio Valley has established a Safety Zone closing the river for this event. Entry into this zone is prohibited to all vessels unless otherwise authorized by the U.S. Coast Guard or a designated representative. The City of Ashland Police Department and Fire Department, will monitor VHF-FM Channel 13 or 16.

LNM: 26-22

**MILE 555.0 - MILE 560.0 - MARINE EVENT/SPECIAL LOCAL REGULATION/RIVER CLOSURE**

On July 1 and 3, 2022, from 5:30 a.m. until 6:30 p.m., both days, and on July 2, 2022, from 5:30 a.m. until 10:30 p.m., the Madison Regatta will be held between approximate Miles 555.0 and 560.0. The COTP Ohio Valley has established a Special Local Regulation closing the river for this event. Vessels are prohibited from transiting this area during the event period, unless specifically authorized by the COTP Ohio Valley or the on-scene patrol commander. Mariners may contact the event manager at (812) 701-5045, for additional information.

LNM: 25-22

**MILE 596.0 - MILE 597.0 - MARINE EVENT**

Continuing until October 19, 2022, from 5:30 p.m. until 9:00 p.m., each Wednesday, the Derby City Sailboat Race will be held between approximate Miles 596.0 and 597.0. Mariners may contact the event sponsor at (502) 592-5149, for additional information. Mariners are urged to exercise caution in the area, during the event periods.

LNM: 23-22

**MILE 602.5 - MILE 603.5 - FIREWORKS DISPLAY/SAFETY ZONE/RIVER CLOSURE**

On July 4, 2022, from 9:30 p.m. until 10:30 p.m., the Louisville Waterfront Fourth of July Fireworks Display will be held between approximate Miles 602.5 and 603.5, Louisville, KY. The COTP Ohio Valley has established a Safety Zone closing the river for this event. Vessels are prohibited from transiting the area during the event period. Mariners may contact the event manager at (502) 594-0835, for additional information.

LNM: 25-22

**MILE 607.0 - MILE 609.0 - FIREWORKS DISPLAY/SAFETY ZONE/RIVER CLOSURE**

On July 3, 2022, from 9:00 p.m. until 10:30 p.m., the Riverfront Independence Day Celebration Fireworks Display will be held between approximate Miles 607.0 and 609.0, New Albany, IN. The COTP Ohio Valley has established a Safety Zone closing the river for this event. Vessels are prohibited from transiting the area during the event period. Mariners may contact the event manager at (502) 554-8053, for additional information.

LNM: 25-22

**MILE 607.5 - DREDGE OPERATION**

Continuing until approximately July 5, 2022, Luhrs Bros., Inc., Dredge BILL HOLMAN, is conducting dredging operations in the lower approach at McAlpine L/D. Work will be conducted 24-hours a day, 7-days a week. During this period, the Dredge BILL HOLMAN will be in the navigation channel and the disposal pipeline may be crossing the navigation channel, requiring the disposal pipeline to be opened for passing traffic. Contact the Dredge BILL HOLMAN via VHF-FM Channel 13, for passing instructions. The North Chamber will be utilized to lock all traffic up-bound and down-bound. Mariners are urged to transit the area at their slowest safe speed to minimize their wake and proceed with caution after passing arrangements have been made.

LNM: 26-22

**MILE 608.6 - BRIDGE MAINTENANCE**

Sherman Minton Bridge; Cleaning and painting of the bridge will continue from 7:00 a.m. until 6:00 p.m., Monday through Saturday, until further notice. A containment system will hang 4 feet below low steel. Mariners should transit the bridge with caution.

LNM: 29-21

**MILE 618.5 - MILE 619.5 - FIREWORKS DISPLAY/SAFETY ZONE/RIVER CLOSURE**

On July 2, 2022, from 10:00 p.m. until 10:30 p.m., the Riverview Independence Festival Fireworks Display will be held between approximate Miles 618.5 and 619.5, Louisville Kentucky. The COTP Ohio Valley has established a Safety Zone closing the river for this event. Vessels are prohibited from transiting the area during the event period. Mariners may contact the event manager at (502) 625-5330, for additional information.

LNM: 25-22

**MILE 719.0 - MILE 725.0 - MARINE EVENT/SPECIAL LOCAL REGULATION/RIVER CLOSURE**

On July 2, 2022, from 10:00 a.m. until 2:00 p.m., the 2022 Paddle Event will be held between approximate Miles 719.0 and 725.0. The COTP Ohio Valley has established a Special Local Regulation closing the river for this event. Vessels are prohibited from transiting this area unless specifically authorized by the COTP Ohio Valley. Mariners may contact the event manager at (812) 549-3540, for additional information.

LNM: 25-22

**MILE 755.0 - MILE 759.0 - FIREWORKS DISPLAY/SAFETY ZONE/RIVER CLOSURE**

On July 4, 2022, from 9:00 p.m. until 10:00 p.m., the All American 4th of July Fireworks Display will be held between approximate Miles 755.0 and

**MILE 755.0 - MILE 759.0 - FIREWORKS DISPLAY/SAFETY ZONE/RIVER CLOSURE**

759.0, Owensboro, KY. The COTP Ohio Valley has established a Safety Zone closing the river for this event. Vessels are prohibited from transiting this area during the event. Mariners may contact the event manager at (270) 687-8350, for additional information.

LNM: 25-22

**MILE 792.0 - MILE 794.0 - FIREWORKS DISPLAY/SAFETY ZONE/RIVER CLOSURE**

On July 4, 2022, from 9:00 p.m. until 10:00 p.m., the Evansville 4th of July Fireworks Display will be held between approximate Miles 792.0 and 794.0, Evansville, IN. The COTP Ohio Valley has established a Safety Zone for this event. Vessels are prohibited from transiting this area during the event. Mariners may contact the event manager at (812) 686-1896, for additional information.

LNM: 25-22

**MILE 924.0 - MILE 927.0 - CHANNEL CONDITION/AIDS TO NAVIGATION**

Shoaling has been reported between approximate Miles 924.0 and 927.0, LDB, Kentucky side. Attached as enclosures to this LNM, are USACE Louisville District Notice to Navigation Interests 2022-016 and 2 associated chartlets of the area. Mariners are urged to exercise caution in the area.

LNM: 25-22

**MILE 962.6 - DEMOLITION BLASTING/TRAFFIC RESTRICTIONS/NAVIGATION LANE CHANGE**

Attached as enclosures to this LNM, are USACE Louisville District Notice to Navigation Interest 2022-15, regarding demolition blasting, traffic restrictions and navigation lane changes at L/D 53, in the vicinity of Mile 962.6.

LNM: 25-22

**MILE 964.6 - CHANNEL CONDITIONS/L/D RESTRICTIONS**

The wickets at Olmsted L/D, in the vicinity of Mile 964.6, are being raised, due to receding river elevations. Navigation traffic will transition to the lock chambers as wicket raising activities progress beyond the starter wickets. Down-bound tow maximum dimensions are 108 feet by 1,200 feet, including the towboat, with no more than 15 regulation barges and not to exceed 3 wide. No hip barges or other deviation that could degrade normal steerage characteristics are allowed for down-bound tows. Up-bound tow maximum dimensions are 108 feet by 1,200 feet including the towboat, with no more than 16 regulation barges and not to exceed 3 wide. All mariners shall take direction from the Olmsted L/D Control Tower.

LNM: 25-22

**MILE 973.2 - DOCK REPAIR**

Continuing until approximately July 1, 2022, from 7:00 a.m. until 5:30 p.m., each day, dock repair operations are being conducted in the vicinity of Mile 973.2, RDB. Mariners are urged to transit the area at their slowest safe speed to minimize their wake and proceed with caution. Mariners may contact the M/V JIM BURNS via VHF-FM Channel 16 or 68, for additional information.

LNM: 18-22

**ST. CROIX RIVER****MILE 6.5 - CHANNEL CONDITION**

Shoaling has been reported in the vicinity of Mile 6.5, at the mouth of the Kinnickinnic River. Buoys in the area may not properly mark the channel or be missing/diving. Debris and snags may be present in the area. Mariners are advised to transit the area with caution and at their slowest safe speed.

LNM: 17-22

**TENNESSEE-TOMBIGBEE WATERWAY****MILE 418.8 - BAY SPRINGS LAKE - FIREWORKS DISPLAY**

On July 3, 2022, shortly after dark, a fireworks display will be held in the vicinity of Mile 418.8, Bay Springs Lake, Mackey's Point. Mariners are urged to exercise caution in the area.

LNM: 26-22

**MILE 391.0 - FIREWORKS DISPLAY**

On July 1, 2022, shortly after dark, the City of Fulton, MS., will hold a fireworks celebration in the vicinity of Mile 391.0, Fulton Walking Trail. Mariners are urged to exercise caution in the area.

LNM: 26-22

**MILE 217.0 - MILE 214.0 - FIREWORKS DISPLAY**

On July 4, 2022, from 8:00 p.m. until 10:00 p.m., the Freedom on the River fireworks display will be held between approximate Miles 217.0 and 214.0, upstream of Demopolis Lock. Marine police will be monitoring vessel traffic, however, traffic will not be required to stop. Mariners are urged to exercise caution in the area, during the event period. Mariners may contact Mr. David Lyons, Demopolis Chamber of Commerce at (334) 289-0270 or Mr. Anthony Perkins, BWT/Alabama-Coosa Project Management Office, at (205) 752-3571, for additional information.

LNM: 25-22

**MILE 213.2 - L/D RESTRICTION**

Continuing until approximately July 22, 2022, the Demopolis L/D, in the vicinity of Mile 213.2, will have a locking restriction in place. No locking of red flag barges will be conducted between 6:00 a.m. and 4:30 p.m., Monday through Saturday. Mariners may contact Mr. Chad Brumelow, BWT/Alabama-Coosa Project Management Office at (205) 752-3571, for additional information.

LNM: 22-22

**MILE 216.0 - MILE 214.5 - MARINE EVENT**

On July 9, 2022, from 11:00 a.m. until 5:00 p.m., and on July 10, 2022, from 12:30 p.m. until 5:00 p.m., the Demopolis Parks and Recreation will sponsor the Rumble on the River Boat Race between approximate Miles 216.0 and 214.5, Demopolis City Landing. Marine police will monitor traffic during the time of the event; however, traffic will not be required to stop. Mariners are urged to exercise caution when transiting this area. Mariners may contact Ms. Jennifer Sager at (334) 654-7100, for additional information.

**MILE 216.0 - MILE 214.5 - MARINE EVENT**

LNM: 26-22

**MILE 213.2 - L/D CLOSURE**

Continuing until 4:30 p.m., June 30, 2022, the Demopolis L/D, in the vicinity of Mile 213.2, will be closed for maintenance. Mariners may contact Chad Brumelow, at the USACE BW&T/AL-Coosa Management Office at (205) 752-3571, for additional information.

LNM: 26-22

**TENNESSEE RIVER****MILE 616.0 - MARINE EVENT**

Continuing until July 10, 2022, each weekend the CSC Sail Camp is being held in the vicinity of Mile 616.0, Concord Cove. Mariners may contact the event sponsor at (865) 599-0820, for additional information. Mariners are urged to exercise caution in the area during the event periods.

LNM: 23-22

**MILE 72.5 - TRANSMISSION TOWER REPAIR/DIVE OPERATIONS**

Continuing until approximately December 16, 2022, the TVA is conducting transmission tower repairs in the vicinity of Mile 72.5. In conjunction with this operation, divers will be utilized. Work will be conducted from 7:00 a.m. until 6:00 p.m., Monday through Saturday. The floating plant will consist of the M/V RED WAGNER and 2 barges spud down around the towers. The TVA Police will have vessels on station during dive operations. The M/V RED WAGNER will monitor VHF-FM Channel 13 or 16. Mariners are urged to transit the area at their slowest safe speed to minimize their wake and proceed with caution. Mariners may contact the TVA, for additional information.

LNM: 14-22

**MILE 22.4 - INTERMITTENT L/D CLOSURES**

Continuing until July 1, 2022, from 6:00 a.m. until 6:00 p.m., each day, the Kentucky L/D, in the vicinity of Mile 22.4, will close intermittently for maintenance. Mariners may contact the L/D via VHF-FM Channel 14 or at (270) 362-4226, for additional information.

LNM: 25-22

**SECTION VIII - LIGHT LIST CORRECTIONS**

An Asterisk \*, indicates the column in which a correction has been made to new information

(1) No.	(2) Name and Location	(3) Mile	(4) Bank	(5) Characteristic	(6) Structure / Dayboard Up Down	(7) Remarks
3005	<b>Holt Island Daybeacon</b>					Remove from list. 26/22 *
3006	<b>Holt Island Lower Daybeacon</b>					Remove from list. 26/22 *
3020	<b>Scarboro Daybeacon</b>					Remove from list. 26/22 *
3075	<b>Gallaher Bend Lower Daybeacon</b>					Remove from list. 26/22 *

**ENCLOSURES****USACE Little Rock District Navigation Notices 22-21 and 22-23**

L/D's closures/restrictions.

LNM: 24-22

**USACE Louisville District 2022-013 Chartlet**

Virtual buoy locations.

LNM: 24-22

**USACE Channel Status Reports - UPDATE**

Arkansas River Channel Status Reports.

LNM: 26-22

**USACE Rock Island District Notice to Navigation Interests 22-200975**

Installation and testing of invasive carp deterrence measures.

LNM: 26-22

**USACE Huntington District Notice to Navigation Interests 22-09**

L/D's closures/maintenance operations.

LNM: 17-22

**USACE Louisville District Notice to Navigation Interest 2022-15**

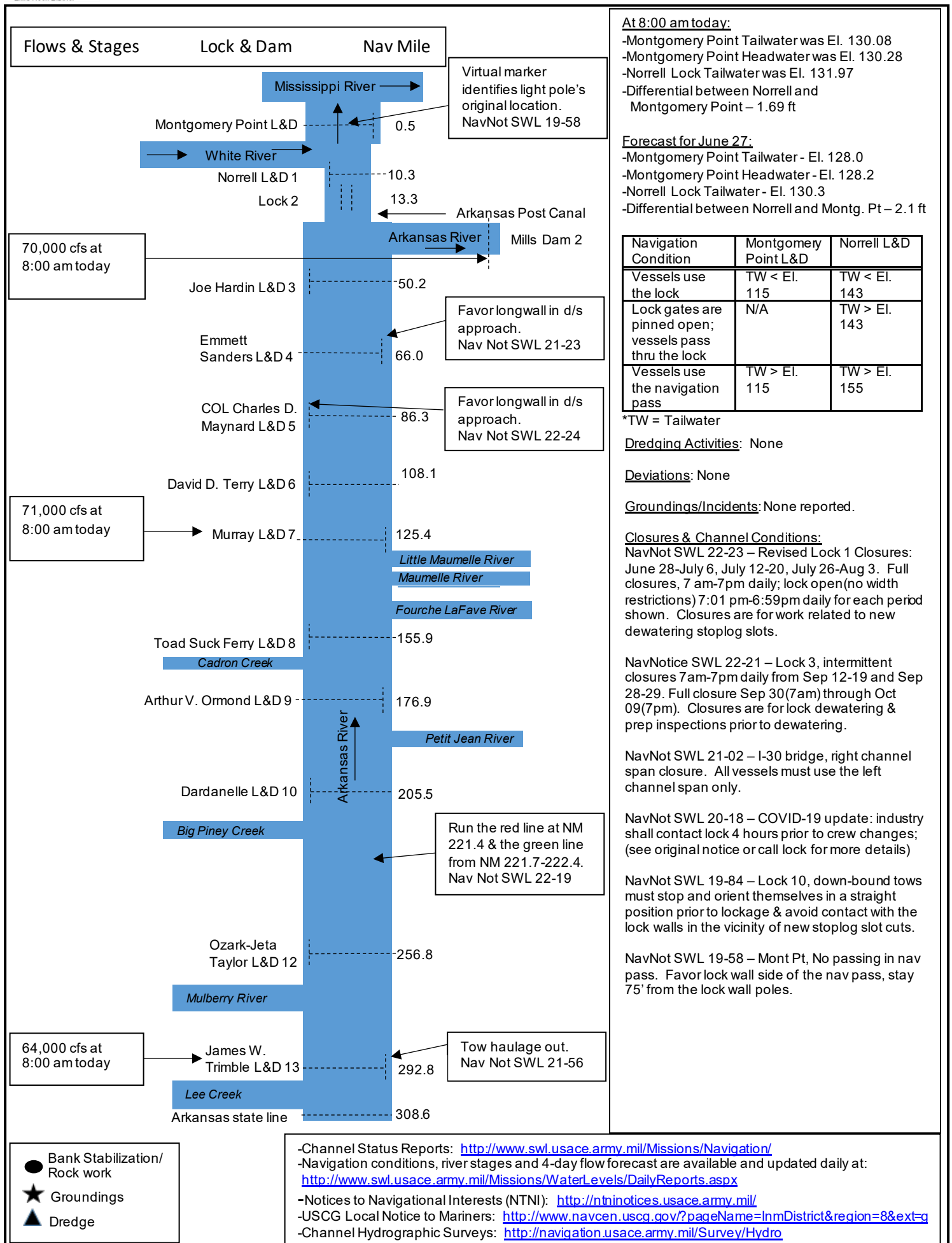
Demolition blasting, traffic restrictions and navigation lane changes at L/D 53.

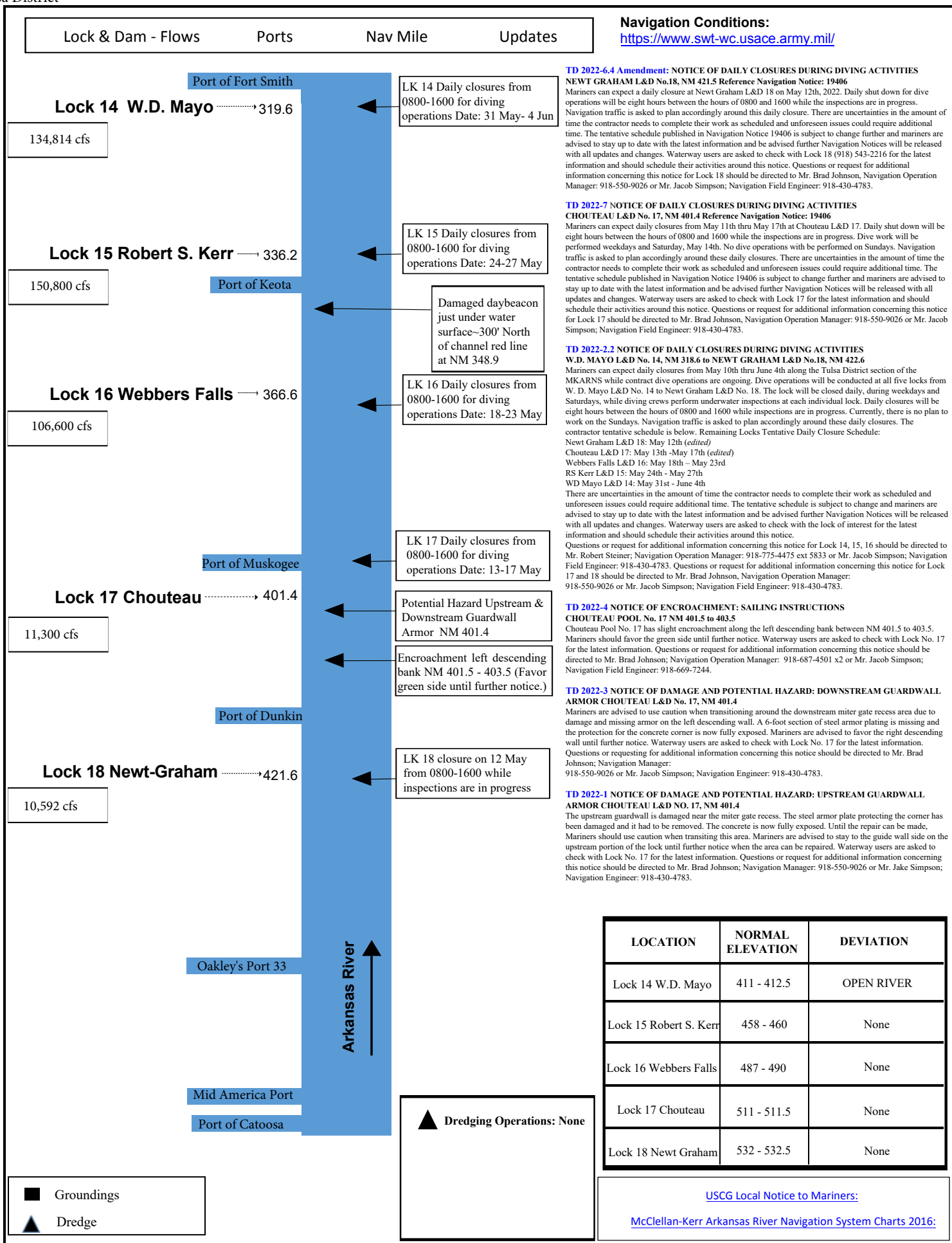
LNM: 25-22

---

Commander, Eighth Coast Guard District  
Hale Boggs Federal Building, Room 1230  
500 Poydras Street, New Orleans, LA 70130-3310  
Telephone (504) 671-2327  
(Business Hours 7:00 a.m. - 3:30 p.m. Monday - Friday)  
(Nights, Weekends, Holidays) (504) 589-6225  
RADM Timme









**US Army Corps  
of Engineers®**

HUNTINGTON DISTRICT

ATTN: CELRH-DE  
502 8TH STREET  
HUNTINGTON WV 25701-2070  
HTTP://WWW.LRH.USACE.ARMY.MIL/

DATE: 04/21/2022

POC: KENT C.  
BROWNING,  
(304) 399-5239

NOTICE NUMBER: 19307

LOCAL NUMBER: 22-09

WATERWAY: OHIO RIVER

EFFECTIVE: 04/04/2022 08:59 thru 12/31/2022  
00:00 EDT

**REVISION TO NOTICE TO NAVIGATION INTERESTS 22-06**

**TENTATIVE MAINTENANCE SCHEDULE FOR 2022**

**HUNTINGTON DISTRICT**

Reference Notice to Navigation Interests 22-06, dated 04 March 2022. The following is specific information supplementing the tentative maintenance schedule for 2022

Starting on 30 April 2022, repairs will begin on the main lock chamber at Belleville Locks and Dam, Ohio River, mile 203.9. These repair activities will require the closure of the main chamber. In addition to the main chamber being closed, the auxiliary chamber will be closed on 02 May 2022 to 04 May 2022, and 22 June 2022 to 24 June 2022. Resulting in a total river closure on these dates.

Starting on 02 May 2022, repairs will begin on the main lock chamber at Greenup Locks and Dam, Ohio River, mile 341.0. These repair activities will require the closure of the main chamber. The auxiliary chamber will be available for lockage during this timeframe.

Mariners are urged to contact the lockmaster via marine channel 13 for more information.

All other pertinent information remains the same.

**For your convenience, the following is from Notice to Navigation Interests 22-06:**

It is anticipated that major maintenance and repairs will be performed at the following locations during calendar year 2022. This notice may require periodic revision. It is given so that industrial and recreational waterway users may have a general knowledge of the lock outages and can plan their operations accordingly. Factors which may affect this schedule are the delivery of materials, repairs required but not anticipated, emergency repairs as a result of accidents, and funding.

<b><u>PROJECT</u></b>	<b><u>REPAIRS</u></b>	<b><u>DATES</u></b>	<b><u>REMARKS</u></b>
Belleville L&D	Repair Upper Main Chamber Miter Gates and Filling and Emptying Culvert System Wire Rope Replacements	2 May - 24 Jun	Main Chamber Closure
Greenup L&D	Upstream Main Chamber Miter Gate Repairs and River Wall Filling System Culvert Valve Repair	1 May - 29 Jun	Main Chamber Closure
Winfield L&D	Dam Roller Gate #1 Apron and Side Seal Repairs	19 Aug - 21 Oct	No Closure

All interested parties should review the maintenance schedule for impact. Additional notices furnishing specific information and operating requirements for repairs resulting in major delays will be published prior to commencing the work items listed.

//signed//

KENT C. BROWNING,  
Chief, Technical Support Branch



U.S. Army Corps  
of Engineers  
Little Rock District

---

## **NAVIGATION NOTICE**    Number SWL 22-21

---

**McClellan-Kerr Arkansas River Navigation System**

---

**May 25, 2022**

---

**In Reply Refer to:** CESWL-OP  
P. O. Box 867  
Little Rock, AR. 72203-0867  
PH. 501-324-5739

---

### **REMINDER – SCHEDULED LOCK CLOSURES NORRELL LOCK (No. 1) NM 10.3 JOE HARDIN LOCK (No. 3) NM 50.2 MCCLELLAN-KERR ARKANSAS RIVER NAVIGATION SYSTEM**

As previously noted in Nav Notice SWL 22-04, closures are scheduled for Norrell Lock (No. 1) NM 10.3 and Joe Hardin Lock (No. 3) NM 50.2 during the dates and times indicated below.

The closures at Lock 1 are for installing temporary cofferboxes, concrete saw-cutting of the lock walls and other work related to the new dewatering stoplog slots near the upstream and downstream miter gates. Tow width restrictions will be in place as indicated below and no lockages will be allowed outside the specified times.

The closures at Lock 3 are for the lock dewatering and preparatory inspections prior to the dewatering.

Mariners are advised to contact the locks prior to arrival, for specific instructions on how to proceed for safe lockage. During this time, the Lock 1 tow haulage system will not be available.

#### Lock 1

June 1 – June 11: Limited width(70' max) lockages only, 7 a.m. – 7 p.m. daily

June 22 – July 21: Limited width(70' max) lockages only, 7 p.m. – 7 a.m. daily

Aug 01 – Aug 10: Full closure, no lockages from 7 a.m.(Aug 01) – 7 p.m.(Aug 10)

Aug 21 – Sep 19: Limited width(70' max) lockages only, 7 p.m. – 7 a.m. daily

Lock 3

Sep 12 - 19: Intermittent closures, 7 a.m. – 7 p.m. daily

Sep 28 – 29: Intermittent closures, 7 a.m. – 7 p.m. daily

Sep 30 – Oct 09: Full closure, no lockages from 7 a.m.(Sep 30) – 7 p.m.(Oct 09)

Lock 1

Sep 30 – Oct 09: Full closure, no lockages from 7 a.m(Sep 30) – 7 p.m.(Oct 09)

Oct 20 – Nov 18: Limited width(70' max) lockages only, 7 p.m. – 7 a.m. daily

Nov 29 – Dec 23: Limited width(70' max) lockages only, 7 p.m. – 7 a.m. daily

Jan 03 – Jan 31: Limited width(70' max) lockages only, 7 p.m. – 7 a.m. daily

Questions or requests for additional information concerning this notice should be directed to the Little Rock District Office, at (501) 324-5096 or you may email [CESWL-OP-OM@usace.army.mil](mailto:CESWL-OP-OM@usace.army.mil).

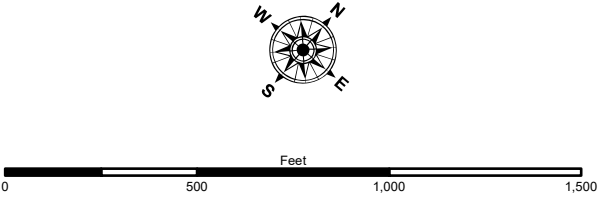
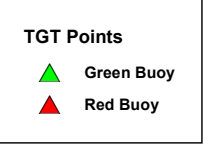
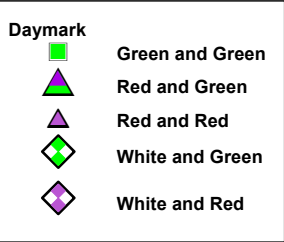
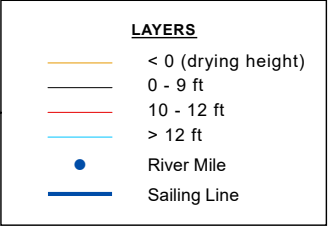
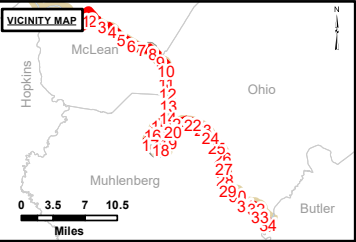
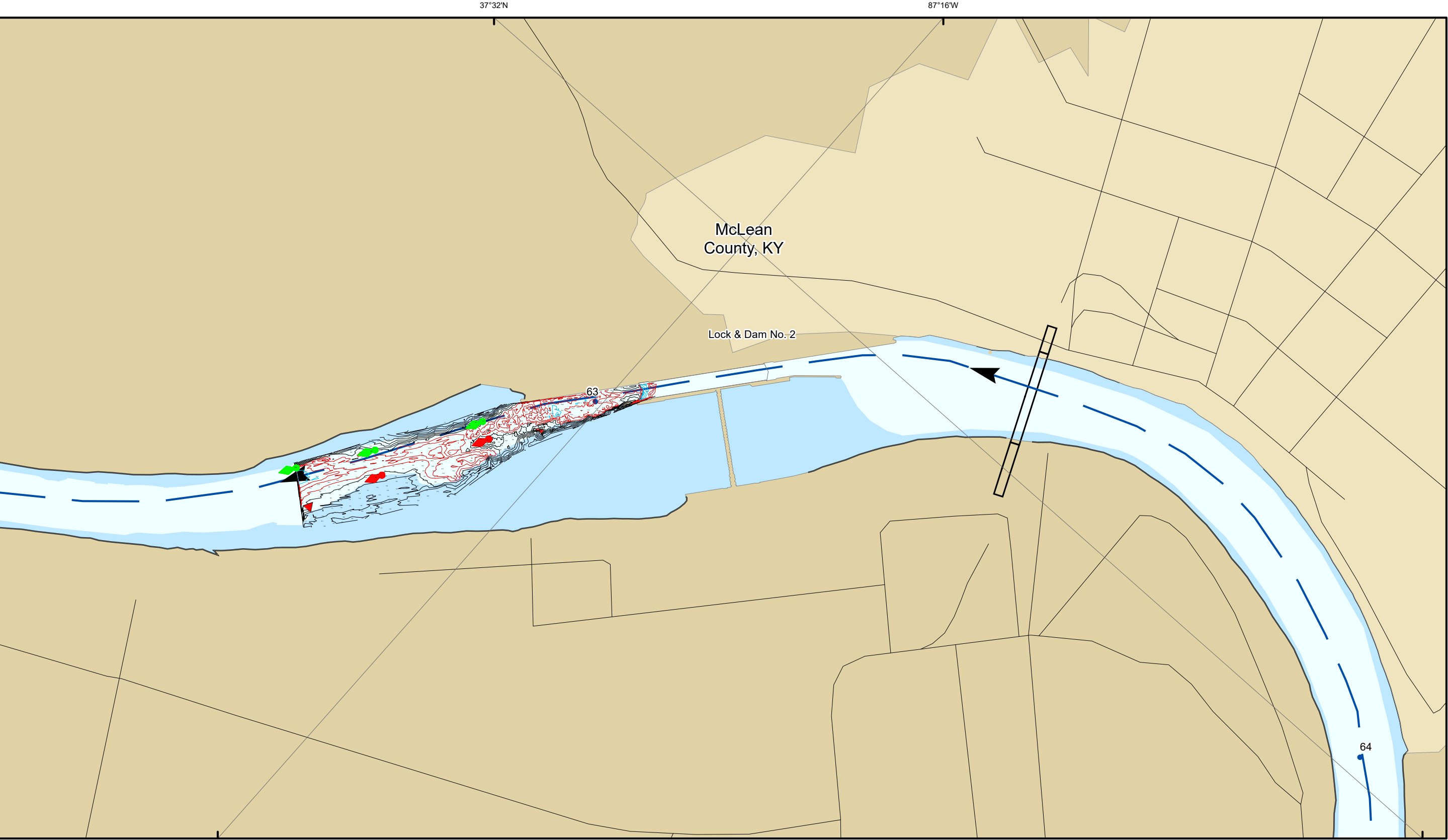
Christopher B. Roark  
Chief, Operations Division



## McClellan-Kerr Arkansas River Navigation System

**In Reply Refer to:** CESWL-OP  
P. O. Box 867  
Little Rock, AR. 72203-0867  
PH. 501-324-5739

Christopher B. Roark  
Chief, Operations Division



**NOTES:**  
Horizontal Coordinate System:  
North American Datum of 1983 (NAD83), projected to the State Plane Coordinate System (SPCS), Kentucky South Zone. Distance units in U.S. Survey Feet.  
Vertical Datum:  
Soundings are shown in feet and indicate depths below the Ohio River Datum.  
The information depicted on this map represents the results of a survey conducted on the date indicated and can only be considered to represent the general condition existing at that time.  
The location of navigation aids are based on and provided by the U.S. Coast Guard.



**DISCLAIMER:** The United States Government furnishes no warranty, expressed or implied, for the accuracy or completeness of the information and the data furnished. The United States shall be liable for damages only for negligence of its personnel or employees in the performance of their duties. The recipient may not transfer these data to others without obtaining the permission of the U.S. Army Corps of Engineers.  
**DISTRIBUTION LIMITATION:** The data presented in this report are for informational purposes only. They are not to be used for navigation or other purposes. The data are not to be used for any purpose other than that for which they were collected. The data are not to be used for any purpose other than that for which they were collected.

U.S. ARMY CORPS OF ENGINEERS LOUISVILLE DISTRICT		
Surveyed By	_____	_____
Reviewed By	_____	_____
Checked By	_____	_____

**Survey Information**  
LOCK2\_POOL\_GREEN\_RIVER  
GR\_LD\_GR2\_20220607\_CS\_62\_64\_SORT  
07 June 2022

**Pool Reach Number**  
1 of 34



## NOTICE TO NAVIGATION INTERESTS

ROCK ISLAND DISTRICT

DATE: 06/22/2022

NOTICE NUMBER: 200975

ATTN: CEMVR-DE

LOCAL NUMBER: IW 22-200975

CLOCK TOWER BLDG. - RODMAN AVE POC: Collin Moratz

WTRWY/CHNL: ILLINOIS WATERWAY

ROCK ISLAND IL 61299

309-794-5573

LOCK(S): IL 07

[HTTP://WWW.MVR.USACE.ARMY.MIL/](http://WWW.MVR.USACE.ARMY.MIL/)

EFFECTIVE: 08/16/2022 06:00 thru 10/07/2022 17:00

---

**TESTING – INVASIVE CARP DETERRENCE**  
**ILLINOIS WATERWAY**  
**PEORIA LOCK AND DAM, RM 157.7**

The U.S. Army Corps of Engineers, Rock Island District (District), and the Engineer Research and Development Center (ERDC) are planning to test invasive carp deterrence technology at the Peoria Lock and Dam on the Illinois River, River Mile 157.7. Work is planned for 16 AUG 2022 through 18 AUG 2022 from 06:00-18:00 hrs. for installation, and from 29 AUG 2022 thru 07 OCT 2022, Mon-Tue and Thu-Fri (07:00-11:00 hrs. & 13:00-17:00 hrs.) for deterrence efficacy and navigation safety testing. Navigation will be closed during installation and while testing is conducted. These timeframes are subject to change based upon river conditions.

**\*\*Towboat operators are requested NOT to tie up on the guidewalls during installation and testing.\*\***

Testing includes fish removal efficacy testing and navigation safety testing, both of which would occur on each of 70 total runs over an approximate 40-day period. Test runs consist of driving a loaded six-barge tow, with juvenile invasive carp placed for entrainment in a box-rake junction, over a bubbler array in the downstream lock approach. Runs with and without the bubbler running would occur to provide a control to measure the bubbler effect. Quantitative safety variables of interest include speed, yaw, and lateral movement of the barge resulting from the continuous release of air from the air line. Carp removal testing includes counting remaining fish entrained in the box-rake junction and measuring flow velocities in the junction gap. The study would be conducted mainly during daylight hours when the wicket gates are up (impounding water in the Peoria Pool). The purpose of the test is to evaluate fish removal efficacy and navigation safety when using bubbles to remove small invasive carp from the rake-box junction of a barge tow.

This action involves the temporary installation of an anchored air hose and bubbler array in the downstream lock approach channel (see map, Enclosure 1). The air hose will be attached to a series of anchors and the bubbler array will be anchored by weight of the frame to hold it in place (modeled using a safety factor of seven). It is approximately 210 feet long with a series of nozzles spaced 8 feet apart that will release air to create a column of bubbles along the length of the array. Air will be fed through a hose from a diesel-powered air compressor located on the Peoria Lock and Dam Project grounds. The hose would be routed from the surface around the end of the lower guidewall to avoid interference with navigation. Weights will hold the hose to the bottom between the guidewall and the bubbler array. The air hose and metal frames would be removed following completion of the study, on or before 07 OCT 2022.

//signed//

Jon A. Klingman

Chief, Channel Maintenance Section Operations Division





US Army Corps  
of Engineers  
Louisville District

# Notice to Navigation Interests

Notice No. 2022 – 016

Date: June 21, 2022

<http://www.lrl.usace.army.mil/Missions/CivilWorks/Navigation/Notices.aspx>

---

In Reply Refer to: CELRL-OPT PO Box 59, Louisville, KY 40201 Telephone: 502-315-6694

---

*LOUISVILLE DISTRICT*

## OHIO RIVER

### ALTERNATE NAVIGATION CHANNEL

#### RIVER MILES 924-927

Ohio River Miles 924-927: The navigation channel between Ohio River Miles 926 and 927 has shoaling which has resulted in vessel groundings in the past week.

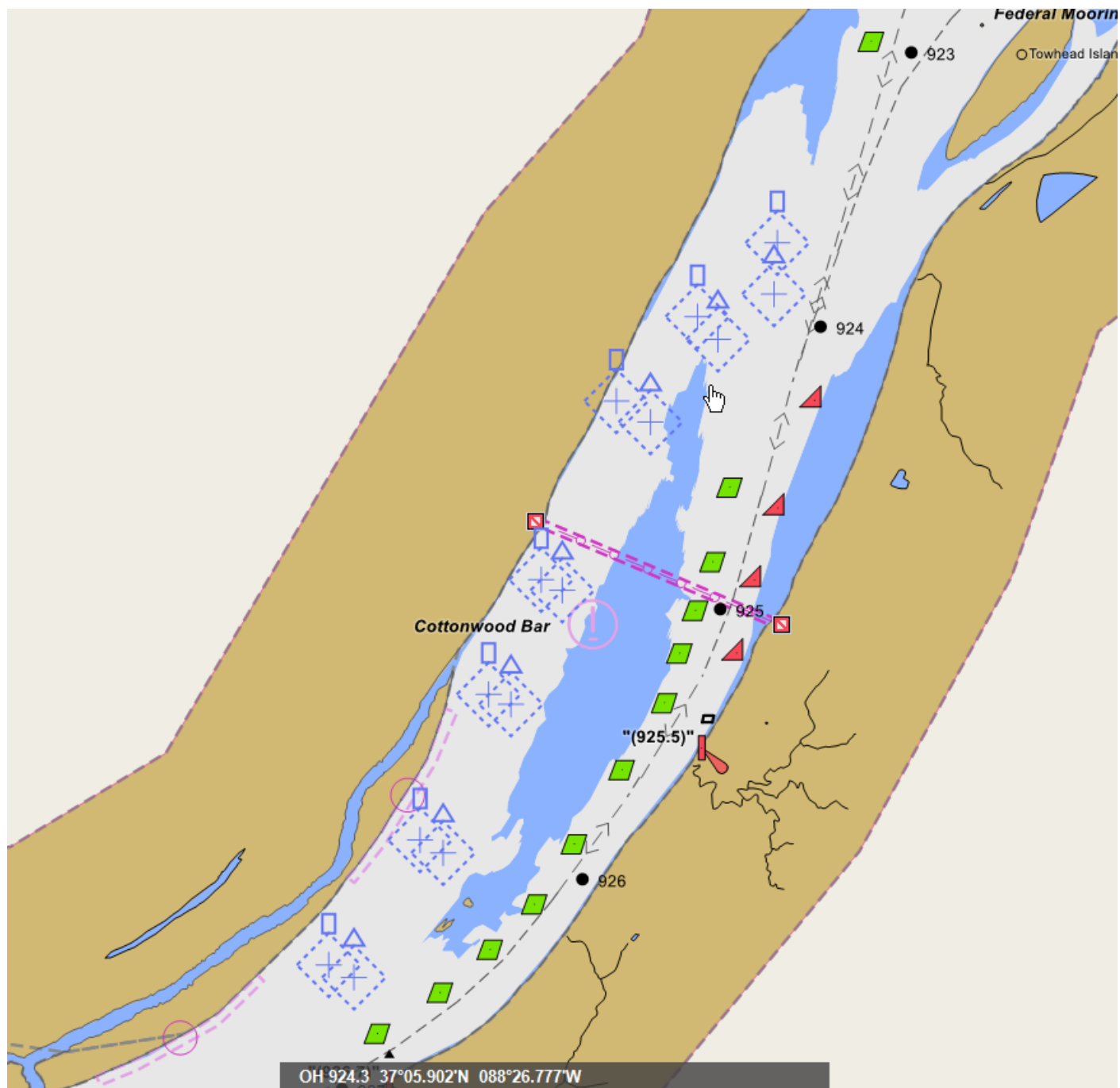
The physical buoys on the main navigation channel have been moved toward the left descending bank, as shown in the attached file titled “Notice 2022-016 OH\_LD\_OLM\_20220621\_CS\_924\_927\_SORT.pdf”. This attachment also shows channel depths. Furthermore, this attachment shows channel depths and locations of physical buoys for an alternate navigation channel between Ohio River Miles 924 and 927 along the Illinois side of the river. The depths in this drawing correspond to a Smithland Locks and Dam lower gage of 12.0, and represent conditions found during surveys performed on 21 June 2022.

The alternate navigation channel has also been marked with AIS ATON’s (electronic buoys). The attached file titled “Notice 2022-016 AIS Buoy Mile 924-927\_RosePoint.pdf” shows how these electronic buoys appear on RosePoint.

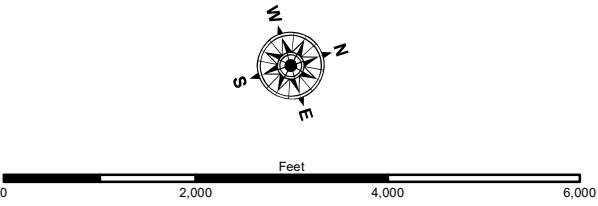
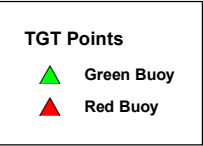
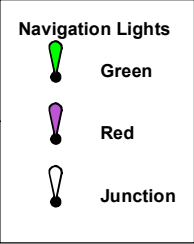
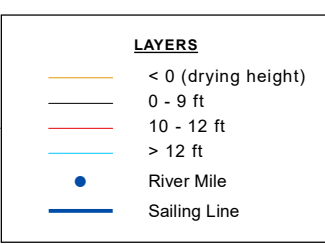
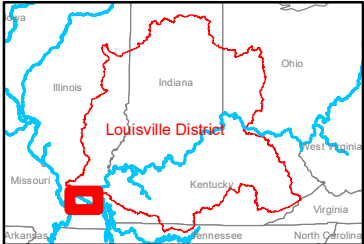
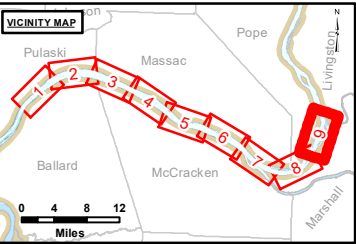
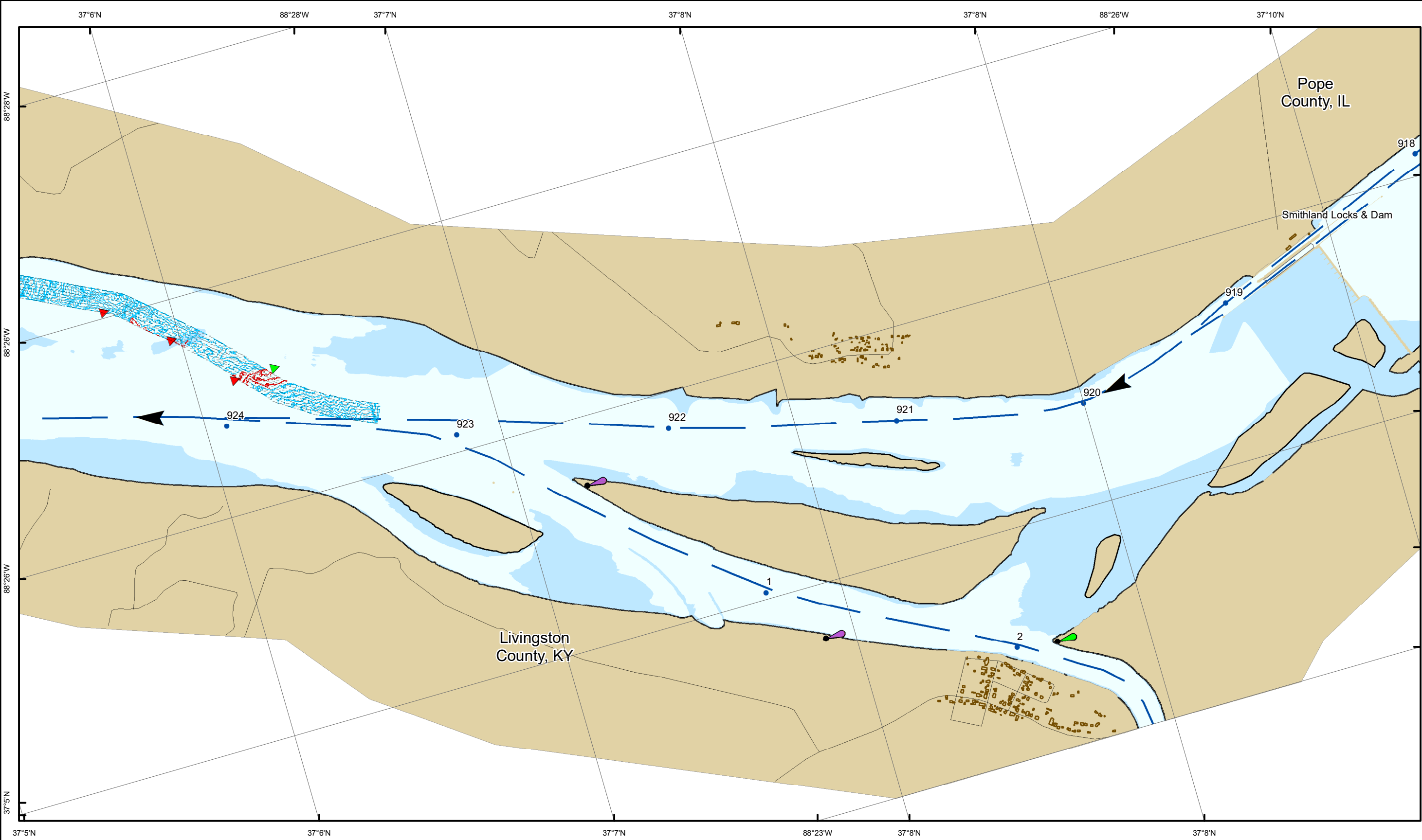
Mariners should make note of conditions and exercise caution when transiting the area.

/s/

Shawn Kenney  
Ch. Technical Support Branch







**NOTES:**  
Horizontal Coordinate System:  
North American Datum of 1983 (NAD83), projected to the  
State Plane Coordinate System (SPCS), Kentucky South Zone.  
Distance units in U.S. Survey Feet.

Vertical Datum:  
Soundings are shown in feet and indicate depths below the  
project pool of 295 (Olmsted upper 16), 300 (Paducah 13.7)  
and 302 (Smithland Lower 12)

The information depicted on this map represents the results of  
a survey conducted on the date indicated and can only be  
considered to represent the general condition existing at that time.

The location of navigation aids are based on and provided  
by the U.S. Coast Guard.



Distribution Liability: The data presented by this map is for informational purposes only and is not intended for navigation. The user is responsible for the accuracy and reliability of the data. The data is not to be used for any purpose other than the intended purpose. The data is not to be used for any purpose other than the intended purpose. The data is not to be used for any purpose other than the intended purpose.

U.S. ARMY CORPS OF ENGINEERS LOUISVILLE DISTRICT		
Surveyed By	Plotted By	Checked By
_____	_____	_____
_____	_____	_____

**Survey Information**  
OLMSTED\_POOL\_OHIO\_RIVER  
OH\_LD\_OLM\_20220621\_CS\_924\_927\_SORT  
21 June 2022

**Pool Reach Number 9 of 9**



**US Army Corps  
of Engineers**  
Louisville District

# Notice to Navigation Interests

Notice No. 2022-015

Date: June 20, 2022

<http://www.lrl.usace.army.mil/Missions/CivilWorks/Navigation/Notices.aspx>

---

In Reply Refer to: CELRL-OPT PO Box 59, Louisville, KY 40201 Telephone: 502-315-6694

---

*LOUISVILLE DISTRICT*

## **LOCKS AND DAM 53**

## **TRAFFIC RESTRICTIONS AND NAVIGATION LANE CHANGE FOR DEMOLITION BLASTING**

## **OHIO RIVER**

The Corps of Engineers' contractor, CJ Mahan, will be working on the demolition of Locks and Dam 53 (Ohio River Mile 962.6) for the entire low water season of 2022. Explosives will be used for the demolition. Blasting will begin on or after 21 June 2022 and is expected to take place during periods when the river stage is below 26 feet on the Olmsted Locks and Dam Headwater gage. A blast may take place up to once every day (Monday – Saturday), conditions permitting. It will be necessary to close the river to traffic around L&D 53 while the contractor is in the process of loading the explosives and detonating the blast. These closures are expected to be 4 hours or less and will typically occur between 1000 and 1400 Central Time. The plan is to conduct the blast at approximately 1200 noon Central Time, after all vessels and personnel have cleared the blast area. A US Coast Guard safety zone will be enforced during loading and blasting activities. The exact details for each day that blasting will occur will be broadcast by the US Coast Guard in a Broadcast Notice to Mariners. Blasting is estimated to end late August 2022.

During this time, vessels will take all direction of the Olmsted Locks and Dam Control Tower.

Northbound vessels will be stopped at Olmsted Locks and Dam (Ohio River Mile 964.6) and southbound vessels at Ohio River Mile 961 upstream of L&D 53 so that there will be no vessels in the vicinity of L&D 53 when the blast is scheduled to occur. CJ Mahan will be operating 1 patrol boat upstream of L&D 53 when wickets are raised at Olmsted L&D and 2 patrol boats when wickets are lowered at Olmsted L&D. See attached drawing for the blasting safety zone. Once the blast has been completed and the all clear issued, the traffic will be released.

In the event that a misfire occurs, and the closure will extend beyond 4 hours, an immediate email notification will be sent out to industry representatives notifying them. A second email notification will be sent as soon as the misfire is cleared and traffic is released.

The navigation lane at L&D 53 (Ohio River Mile 962.6) will be approximately 850 feet in the center of the Navigation Pass to facilitate demolition activities as shown in the attached drawing.

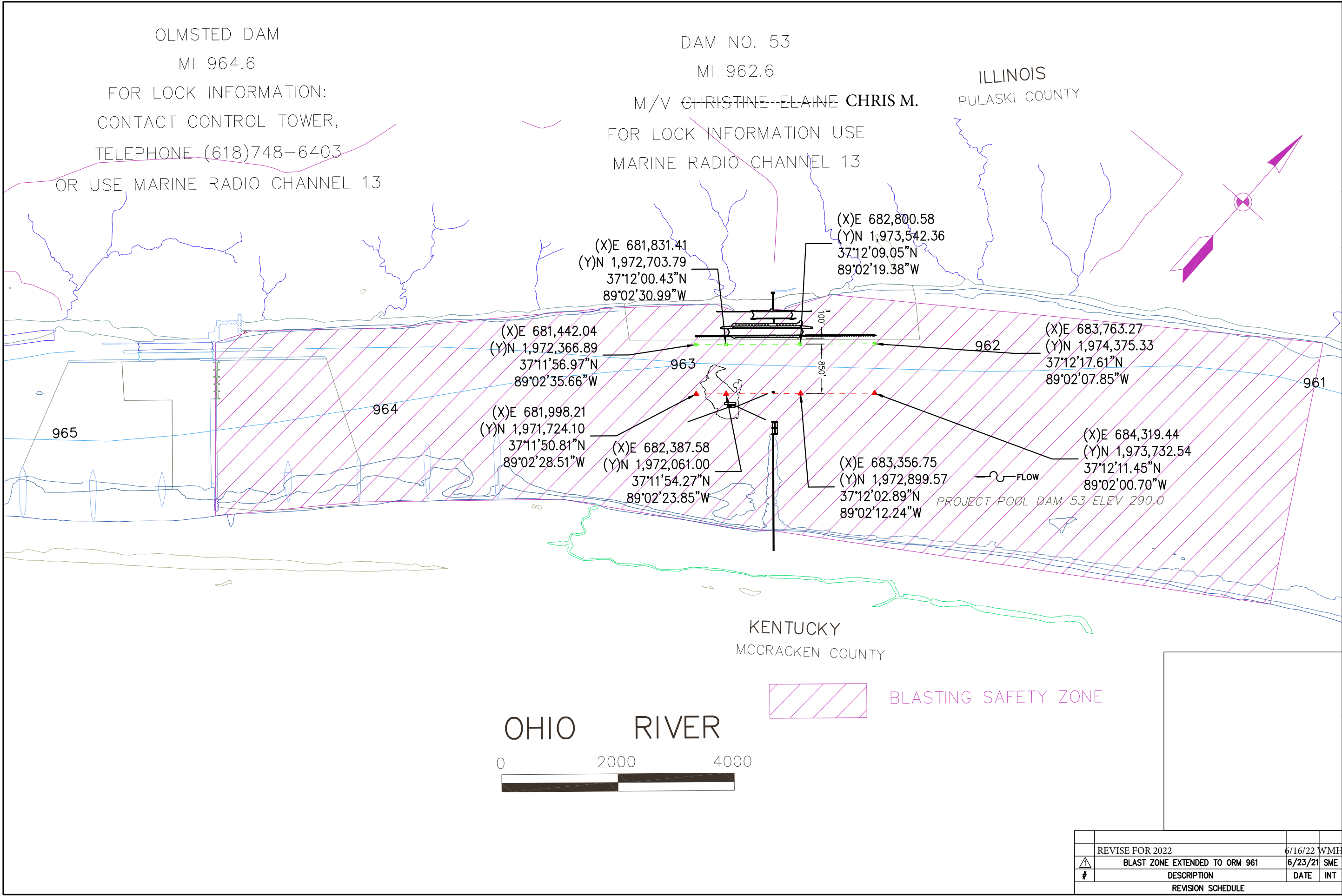
All mariners must exercise caution when transiting. The contractor's vessel M/V Chris M. will be working in the area and can be reached on Marine Radio Channel 13.

/s/

Shawn Kenney  
Ch. Technical Support Branch



ISSUE DATE: 6/23/2021 Nav Chart\_R1.dwg



**C.J. Mahan**  
Construction Company  
250 N. Hartford Ave. - Columbus - Ohio - 43222

SCALE

REVIEWED

DATE

DRAWN

SME

DATE

10/20/20

NAVIGATION CHART  
LOCKS AND DAM 53 DEMOLITION - PHASE 2

W912QR-20-C-0031

C-20-0010

	REVISE FOR 2022	6/16/22	WME
⚠	BLAST ZONE EXTENDED TO ORM 961	6/23/21	SME
#	DESCRIPTION	DATE	INT
REVISION SCHEDULE			

1/1