



U.S. Department  
of Homeland Security  
**United States  
Coast Guard**

## LOCAL NOTICE TO MARINERS

**District 8 MRS**

**Week: 29/23**

### Mississippi River System

LIGHT LIST VOLUME V  
NOTICE NUMBER 29-23  
July 19, 2023

LIGHT LIST REFERENCE: COMDTPUB P16502.5, Vol V, 2023 Edition.

CONTENTS: Rivers are listed in alphabetical order and are included only when there is information to report.

Broadcast Notice to Mariners Covered in this Edition

Originating Unit	Beginning BNM's	Ending BNM's
Sector Upper Mississippi River	0155 - 23 (UM)	0161 - 23 (UM)
Sector Lower Mississippi River	0037 - 23 (LM)	0042 - 23 (LM)
Sector Ohio Valley	0289 - 23 (OV)	0295 - 23 (OV)
OB DWB	0070 - 23 (DWB)	0071 - 23 (DWB)

COAST GUARD DISTRICT 8, WATERWAYS, (504) 671-2327, 7:00 a.m. until 3:30 p.m. (CST)

GENERAL LNM QUESTIONS, COMMENTS, OR SUGGESTIONS MAY BE E-MAILED TO: D8MarineInfo@uscg.mil  
COMMENTS REGARDING SECTION VI – PROPOSED CHANGES MAY ALSO BE EMAILED TO: LocalNoticeFeedback@uscg.mil  
NIS WATCHSTANDER PHONE (703) 313-5900, 24-HOURS A DAY

INTERNET ADDRESS <https://www.navcen.uscg.gov/>

MISSISSIPPI RIVER SYSTEM LNM VIA INTERNET <https://www.navcen.uscg.gov/>

MISSISSIPPI RIVER SYSTEM LIGHT LIST VIA INTERNET [https://www.navcen.uscg.gov/pdf/lightLists/LightList\\_V5\\_2023.pdf](https://www.navcen.uscg.gov/pdf/lightLists/LightList_V5_2023.pdf)

#### ABBREVIATIONS

##### A through H

ADRIFT - Buoy Adrift  
AICW - Atlantic Intracoastal Waterway  
Al - Alternating  
B - Buoy  
BKW - Breakwater  
bl - Blast  
BNM - Broadcast Notice to Mariner  
bu - Blue  
C - Canadian  
CHAN - Channel  
CGD - Coast Guard District  
C/O - Cut Off  
CONT - Contour  
CRK - Creek  
CONST - Construction  
DAYMK/Daymk - Daymark  
DBN/Dbn - Daybeacon  
DBD/DAYBD - Dayboard  
DEFAC - Defaced  
DEST - Destroyed  
DISCON - Discontinued  
DMGD/DAMGD - Damaged  
ec - eclipse  
EST - Established Aid  
ev - every  
EVAL - Evaluation  
EXT - Extinguished  
F - Fixed  
fl - flash  
Fl - Flashing  
G - Green  
GIWW - Gulf Intracoastal Waterway  
HAZ - Hazard to Navigation  
HBR - Harbor  
HOR - Horizontal Clearance

##### I through O

I - Interrupted  
ICW - Intracoastal Waterway  
IMCH - Improper Characteristic  
INL - Inlet  
INOP - Not Operating  
INT - Intensity  
ISL - Islet  
Iso - Isophase  
kHz - Kilohertz  
LAT - Latitude  
LB - Lighted Buoy  
LBB - Lighted Bell Buoy  
LHB - Lighted Horn Buoy  
LGB - Lighted Gong Buoy  
LONG - Longitude  
LNM - Local Notice to Mariners  
LT - Light  
LT CONT - Light Continuous  
LTR - Letter  
LWB - Lighted Whistle Buoy  
LWP - Left Watching Properly  
MHz - Megahertz  
MISS/MSNG - Missing  
Mo - Morse Code  
MRASS - Marine Radio Activated Sound Signal  
MSLD - Misleading  
N/C - Not Charted  
NGA - National Geospatial-Intelligence Agency  
NO/NUM - Number  
NOS - National Ocean Service  
NW - Notice Writer  
OBSCU - Obscured  
OBST - Obstruction  
OBSTR - Obstruction  
Oc - Occulting

##### P through Z

PRIV - Private Aid  
Q - Quick  
R - Red  
RACON - Radar Transponder Beacon  
Ra ref - Radar reflector  
RBN - Radio Beacon  
REBUILT - Aid Rebuilt  
RECOVERED - Aid Recovered  
RED - Red Buoy  
REFL - Reflective  
RRL - Range Rear Light  
RELIGHTED - Aid Relit  
RELOC - Relocated  
RESET ON STATION - Aid Reset on Station  
RFL - Range Front Light  
RIV - River  
RRASS - Remote Radio Activated Sound Signal  
s - seconds  
SEC - Section  
SHL - Shoaling  
si - silent  
SIG - Signal  
SND - Sound  
SPM - Single Point Mooring Buoy  
SS - Sound Signal  
STA - Station  
STRUCT - Structure  
St M - Statute Mile  
TEMP - Temporary Aid Change  
TMK - Topmark  
TRLB - Temporarily Replaced by Lighted Buoy  
TRLT - Temporarily Replaced by Light  
TRUB - Temporarily Replaced by Unlighted Buoy  
USACE - Army Corps of Engineers  
W - White

**Additional Abbreviations Specific to this LNM Edition:**

RIAC - River Industry Action Committee  
MMSI - Mobile Maritime Service Identity  
AIS - Automatic Identification System  
ATON - Aids To Navigation  
COTP - Captain of The Port  
TRDBN - Temporary Replaced by Daybeacon  
C.F.S. - Cubic Feet per Second  
CFR - Code of Federal Regulations  
IAW - In Accordance With  
h.p. - horse power  
MPH - Miles Per Hour  
TVA - Tennessee Valley Authority  
INC - Incorporated  
IENC - Inland Electronic Navigation Chart  
WAP - Waterway Action Plan  
MSIB - Marine Safety Information Bulletin  
L/D - Lock and Dam

---

**SECTION I - SPECIAL NOTICES**

This section contains information of special concern to the Mariner.

---

**DEPARTMENT OF HOMELAND SECURITY SUSPICIOUS ACTIVITY**

The Department of Homeland Security (DHS) encourages the maritime public to report information concerning suspicious activity to the local Federal Bureau of Investigation Joint Terrorism Task Force (JTTF) Office, [http://www.fbi.gov/about-us/investigate/terrorism/terrorism\\_jtfs](http://www.fbi.gov/about-us/investigate/terrorism/terrorism_jtfs), or to other appropriate authorities. The U.S. Coast Guard reminds the maritime industry that they may also report information concerning suspicious activity to the [www.AmericasWaterwayWatch.org](http://www.AmericasWaterwayWatch.org), the National Response Center (NRC) 1-800-424-8802 or 1-877-24WATCH.

LNM: 02-19

**WESTERN RIVERS FLOATING AIDS TO NAVIGATION**

The U.S. Coast Guard is responsible for placing and maintaining all aids to navigation. Buoys are set to mark project depths taking into consideration the prevailing river stages and obstructions. Buoy positions on the Inland Electronic Navigation Chart (IENC) are approximate, and subject to change depending on prevailing river stages and obstructions.

Buoys should always be given as wide a berth in passing as possible, consistent with the length and width of the vessel or tow and the width of the bend or crossing.

Buoys should always be used with caution. They may be carried off position by high water, accumulation of drift, ice, or sunk by collision or other causes. In those circumstances buoy marks will remain on the IENC and indicate the last known position of the buoy. Presence of a buoy mark on the IENC does not necessarily mean a buoy will be physically on position. When buoys are missing they will be replaced as soon as possible.

LNM: 16-19

**GPS TESTING**

At times, throughout our area of responsibility, multiple U.S. Government Agencies conduct GPS testing. These tests vary in duration, affected range from the test site and potential impact to the maritime user as they may affect systems that rely on GPS such as E-911, AIS and DSC. More information is available at the U.S. Coast Guard Navigation Center Website, <https://www.navcen.uscg.gov>. During these periods, GPS users are encouraged to report any GPS outages that they may experience, to the Navigation Information Service (NIS) by calling (703) 313-5900 or by using the NAVCEN Website to submit a GPS problem report.

LNM: 07-19

**HIGH/LOW WATER FLOW CONDITIONS**

During periods of high/low water flow conditions on the Mississippi River System, Captains of the Port, will issue Safety Advisories for their specific areas of responsibility via Broadcast Notice to Mariners. Mariners are encouraged to monitor the Sector Broadcast Notice to Mariners to ensure they are receiving the most up-to-date information.

LNM: 04-23

**USACE HUNTINGTON DISTRICT - RESTRICTED AREAS AT NAVIGATION STRUCTURES**

Attached as an enclosure to this LNM is a USACE Huntington District Notice to Navigation Interests 23-09, regarding maintenance and repair operations.

LNM: 03-23

**ARKANSAS RIVER - USACE CHANNEL STATUS REPORTS**

Attached as enclosures to this LNM, are USACE Arkansas River Channel Status Reports.

LNM: 09-23

**UPPER MISSISSIPPI RIVER - JULY MARINE EVENTS/PLANNED RIVER CLOSURES**

Attached as an enclosure to this LNM is U.S. Coast Guard Sector Upper Mississippi MSIB 02-23, July notice of marine events and planned river closures.

LNM: 26-23

#### **SUNSET OF NOAA PRINTED CHARTS**

\*\*\*\* Cancellation of NOAA Paper and Raster Nautical Charts \*\*\*\*

The National Oceanic and Atmospheric Administration (NOAA) is undertaking a multi-year program to end production and maintenance of its suite of over 1,000 traditional paper nautical charts and all associated raster chart products and services, including: Print-on-Demand (POD) paper nautical charts, Full-size chart PDF files, BookletChart™ PDF files, NOAA raster navigational charts (NOAA RNC®), the NOAA RNC tile service, and the online RNC viewer.

Six months notice of the intent to cancel a specific chart is provided in a "Last Edition" notice. The final cancellation of a chart is made in a "Canceled" notice. Both types of notices will appear in LNM Section IV, "Chart Correction". A comprehensive list of all canceled NOAA charts is available at: <http://www.charts.noaa.gov/MCD/Dole.shtml>.

Traditional paper nautical chart production is ending to enable the creation and maintenance of larger scale, more up-to-date, higher quality coverage of NOAA's electronic navigational chart (NOAA ENC®) product. This will significantly enhance the amount of charted detail available to mariners. More information about NOAA's program to sunset traditional paper charts is on the NOAA Coast Survey website at: <https://nauticalcharts.noaa.gov/charts/farewell-to-traditional-nautical-charts.html>.

An online NOAA Custom Chart application at: <https://devgis.charttools.noaa.gov/pod> is available to create chart images from ENC data, which may then be printed. Notices to Mariners will not be issued for NOAA Custom Charts.

LNM: 10-21

#### **LOWER MISSISSIPPI RIVER - CHANNEL CONDITION/SAFETY ADVISORY**

The U.S. Coast Guard COTP Lower Mississippi River has issued a low water Safety Advisory between approximate Miles 869.0 and 303.0. The USACE maintained depths and widths, may not be attainable on all buoy lines. It is recommended that mariners monitor all gauge readings, for safe navigation. The U.S. Coast Guard COTP Lower Mississippi River with the concurrence of the Lower Mississippi River Committee, recommend the following limits for tows:

Transiting between Miles 869.0 and 303.0.

Drafts no greater than 10 feet and

Barges to be configured no more than 6 wide.

Barges currently in the system, with drafts greater than the advised depths, should be placed as near to the center of the tow as possible.

Mariners are requested to contact U.S. Coast Guard Sector Western Rivers Command Center via VHF-FM Channel 16 or at (866) 777-2784, to report areas of shoaling, hazardous conditions or missing aids to navigation.

LNM: 29-23

#### **LOWER MISSISSIPPI RIVER - CHANNEL CONDITION/SAFETY ADVISORY**

The U.S. Coast Guard COTP Lower Mississippi River with the concurrence of the Lower Mississippi River Committee, has placed a tow restriction from Mile 782.0 to Mile 777.0. All southbound tows are restricted to no more than 20 barges, after daylight hours. Mariners are requested to contact U.S. Coast Guard Sector Western Rivers Command Center via VHF-FM Channel 16 or at (866) 777-2784, to report areas of shoaling, hazardous conditions or missing aids to navigation.

LNM: 29-23

#### **UPPER MISSISSIPPI RIVER/ILLINOIS WATERWAY - BARGE/RAIL COLLISION RISK**

Attached as an enclosure to this LNM is U.S. Coast Guard Sector Upper Mississippi River MSIB 08-21, regarding barge/rail collision risk on the Upper Mississippi River and Illinois Waterway.

LNM: 15-23

---

## **SECTION II - DISCREPANCIES**

This section lists all reported and corrected discrepancies related to Aids to Navigation in this edition. A discrepancy is a change in the status of an aid to navigation that differs from what is published or charted.

---

### **DISCREPANCIES (FEDERAL AIDS)**

LLNR	Aid Name	Status	Chart No.	BNM Ref.	LNM St	LNM End
280	Karns Island Upper Light	STRUCT DEST		0651OV	31/18	
990	Milligan Bend Light	STRUCT DEST		0642LM	51/19	
1010	Webber Falls Jetty Light	STRUCT DEST		0641LM	51/19	
1020	Bluff View Light	STRUCT DEST		0640LM	51/19	
1055	Hisaw Bottom Light	LT EXT		0196LM	40/18	

1070	Brier Creek Light	STRUCT DEST	0205LM	31/15
1077	Sandtown Bottom Light	STRUCT DEST	0457LM	39/19
1200	Black Rock Daybeacon	STRUCT DEST	0379LM	35/19
1205	Gans Light	STRUCT DEST	0335LM	33/19
1213	Non Lateral Mark 330.4	STRUCT DEST	0087LM	05/16
1220	Onion Creek Daybeacon	STRUCT DMGD	0334LM	33/19
1223	Non Lateral Mark 328.5	STRUCT DMGD	0333LM	33/19
1225	Tucker Lake Light	STRUCT DEST	0332LM	33/19
1230	Mcnabb Bottom Daybeacon	STRUCT DEST	0332LM	33/19
1240	Deadman Slough Light	STRUCT DEST	0330LM	33/19
1255	Wilsons Rock Light	STRUCT DMGD	0380LM	35/19
1265	Peno Point Daybeacon	DAYMK DMGD	0580LM	47/19
1267	Non Lateral Mark 313.9	STRUCT DEST	0089LM	05/16
1315	Garrison Creek Daybeacon	DAYMK MISSING	0377LM	35/19
1360	Crawford County Daybeacon	STRUCT DEST	0378LM	35/19
1365	Jeffrey Light	DAYMK MISSING	0376LM	35/19
1390	Fort Chaffee Light	STRUCT DEST	0579LM	47/19
1395	Haroldton Light	DAYMK MISSING	0578LM	47/19
1400	New Haroldton Light	STRUCT DEST	0574LM	47/19
1420	Gun Club Lake Daybeacon	DAYMK MISSING	0582LM	47/19
1427	Big Creek Daybeacon	DAYMK MISSING	0575LM	47/19
1430	Arbuckle Island Light	STRUCT DEST	0091LM	05/16
1435	Clear Creek Light	DAYMK MISSING	0584LM	41/19
1445	Crooked Slough Light	STRUCT DEST	0583LM	47/19
1455	Mulberry River Daybeacon	STRUCT DEST	0041UM	11/17
1510	Moore's Creek Light	LT IMCH/STRUCT DMGD	0394LM	44/16
1515	Roseville Daybeacon	DAYMK MISSING	0604LM	50/19
1520	O'Kane Island Light	LT IMCH/STRUCT DMGD	0393LM	44/16
1525	Alix Bottom Light	STRUCT DEST	0605LM	50/19
1530	County Line Daybeacon	STRUCT DEST	0606LM	50/19
1532	Non Lateral Mark 246.3	DAYMK MISSING	0607LM	50/19
1535	Kalamazoo Light	DAYMK MISSING	0608LM	50/19
1562	Non Lateral Mark 236.3	DAYMK MISSING	0609LM	50/19
1615	Dublin Daybeacon	STRUCT DEST	0610LM	50/19
1650	Bunker Hill Upper Daybeacon	STRUCT DEST	0639LM	51/19
1660	Bunker Hill Lower Daybeacon	STRUCT DEST	0643LM	51/19
1695	Dardanelle Reach Light	DAYMK DMGD	0204LM	31/15
1697	Non Lateral Mark 201.4	STRUCT DEST	0200LM	41/18
1700	Elberta Light	DAYMK MISSING	0611LM	50/19
1705	Old Neely Daybeacon	DAYMK MISSING	0612LM	50/19
1708	Non Lateral Mark 197.9	STRUCT DEST	0052LM	13/17
1710	Point Bar Cutoff Light	DAYMK MISSING	0613LM	50/19
1715	Hola Bend Cutoff Light	DAYMK MISSING	0614LM	50/19
1725	Reeds Ferry Light	DAYMK MISSING	0615LM	50/19
1733	Non Lateral Mark 189.8	DAYMK MISSING	0616LM	50/19
1735	Sweeden Island Light	LT EXT/DAYMK MISSING	0617LM	50/19
1738	Non Lateral Mark 188.8	DAYMK MISSING	0618LM	50/19
1745	Wilson Light	STRUCT DEST	0620LM	50/19
1770	Willow Bend Lower Daybeacon	DAYMK MISSING	0621LM	50/19

1798	Non Lateral Mark 175.6	DAYMK MISSING	0622LM	50/19
1800	Point Remove Creek Light	DAYMK MISSING	0623LM	50/19
1815	Ellis Island Light	STRUCT DEST	0630LM	51/19
1817	Non Lateral Mark 171.2	DAYMK MISSING	0631LM	51/19
1845	Stane Reach Upper Daybeacon	DAYMK DMGD	0634LM	51/19
1850	Stane Reach Light	DAYMK DMGD	0635LM	51/19
1890	Belk Corner Light	DAYMK MISSING/STRUCT DMGD	0558LM	45/19
1903	Non Lateral Mark 150.9	DAYMK MISSING	0560LM	45/19
1915	Bigelow Middle Daybeacon	DAYMK DMGD	0563LM	45/19
1920	Bigelow Lower Light	DAYMK MISSING	0538LM	44/19
1930	Tri County Light	STRUCT DEST	0370LM	41/16
1940	Beaver Dam Creek Daybeacon	STRUCT DMGD	0636LM	51/19
1948	Non Lateral Mark 138.8	DAYMK MISSING	0539LM	44/19
1953	Non Lateral Mark 137.6	DAYMK MISSING	0540LM	44/19
1960	Palarm Light	DAYMK MISSING	0541LM	44/19
1975	Maumelle River Upper Daybeacon	STRUCT DEST	0565LM	45/19
1988	Non Lateral Mark 130.6	DAYMK MISSING	0542LM	44/19
2030	Burns Park Light	STRUCT DEST	0514LM	42/19
2045	Waterworks Bend Light	DAYMK DMGD	0515LM	42/19
2130	Willow Bar Light	LT EXT	0524LM	42/19
2143	Non Lateral Mark 106.5	DAYMK MISSING	0637LM	51/19
2160	Estes Place Light	DAYMK IMCH/STRUCT DMGD	0396LM	44/16
2199	Non Lateral Mark 92.0	STRUCT DEST	0398LM	44/16
2370	Ste. Marie Bend Lower Daybeacon	STRUCT DEST	0407LM	45/16
2435	Richland Bend Middle Daybeacon	STRUCT DEST	0099LM	16/18
2485	Little Bayou Meto Lower Daybeacon	DAYMK DMGD	0094LM	15/18
2498	Cummins Bend Daybeacon	STRUCT DEST	0103LM	06/16
2540	Sample Island Light	STRUCT DEST	0106LM	06/16
2550	Sample Island Lower Light	STRUCT DEST	0107LM	06/16
2665	Owens Lake Daybeacon	DAYMK DMGD	0110LM	06/16
3655	Cages Bend Light	STRUCT DEST	0660OV	38/19
3680	Lindsley Island Lower Light	LT EXT	0193OV	22/23
3965	Watkins Daybeacon	STRUCT DEST	0245OV	19/17
4250	Shammels Mound Landing Light	STRUCT DEST	0010OV	02/16
4285	Saline Creek Light	STRUCT DEST/TRUB	0221OV	26/16
4315	Pryors Creek Light	STRUCT DEST	0030OV	02/20
4340	Devils Elbow Light	STRUCT DEST	0306OV	16/18
4365	Bleidt Landing Light	STRUCT DEST/TRUB	0137OV	17/21
4390	Crooked Creek Light	STRUCT DEST/TRUB	0383OV	36/16
4425	Commerce Landing Light	STRUCT DEST	0520OV	42/22
4455	Prison Farm Landing Light	STRUCT DEST	0145OV	17/21
4500	Kuttawa Bar Light	STRUCT DEST	0243OV	12/18
4505	Money Cliff Light	STRUCT DEST	0364OV	19/18
6810	Halls Landing Daybeacon	STRUCT DMGD	0024MI	07/23
6985	Sand Point Lower Light	STRUCT DEST	0102UM	20/22
6990	Circle Light	STRUCT DMGD	0102UM	20/22
6995	Spring Bay Daybeacon	STRUCT DEST	0102UM	20/22
7035	Drolls Point Light	STRUCT DEST/TRLB	0233UM	23/20
7585	Frederick Light	STRUCT DEST	0539UM	29/19

7650	Briggs Landing Light	LT EXT/STRUCT DMGD	0890UM	51/19
7695	Moore's Island Light	STRUCT DEST	0037UM	12/22
7705	Wilson Island Daybeacon	DAYMK DMGD	0104UM	18/21
7850	Florence Light	LT EXT	0055UM	14/22
9150	Washita Point Light	LT EXT	0395LM	33/20
9185	Preston Peninsula Light	REDUCED INT	0420LM	46/16
10185	Cedar Point Light	REDUCED INT	0031LM	18/22
10195	Dean Island Light	REDUCED INT	0327LM	33/19
10210	Brandywine Chute Light	REDUCED INT	0031LM	18/22
10225	Island 40 Foot Light	STRUCT DEST	0232LM	49/18
10540	Harbert Point Light	LT EXT	0256LM	36/15
10545	Stumpy Point Light	STRUCT DEST	0249LM	52/18
10625	Delta Lower Light	STRUCT DEST	0118LM	06/16
10650	Miller Point Light	STRUCT DEST	0171LM	14/16
10660	Old Town Bend Foot Light	STRUCT DEST	0253LM	36/15
10685	Robson Light	STRUCT DEST	0116LM	06/16
10700	Sunflower Cut-Off Foot Light	STRUCT DEST	0115LM	06/16
10710	Ludlow Bar Light	DAYMK DMGD	0018LM	04/18
10715	Wood Cottage Light	STRUCT DEST	0114LM	06/16
10720	Knowlton Light	STRUCT DEST	0113LM	06/16
10730	Mason Landing Daybeacon	STRUCT DEST	0172LM	14/16
10815	Riverton Middle Bar Light	STRUCT DEST	0113LM	21/18
10885	Cypress Bend Light	STRUCT DEST	0032LM	07/18
10895	Eutaw Bar Light	STRUCT DEST	0365LM	35/19
10905	Mounds Crevasse Lower Light	STRUCT DEST	0114LM	21/18
10910	Boliver Light	STRUCT DEST	0069LM	11/18
10955	Miller Bend Light	STRUCT DEST	0030LM	06/18
10965	La Grange Towhead Light	STRUCT DEST	0367LM	35/19
11050	Vaucluse Bend Light	STRUCT DEST	0028LM	06/18
11070	Anconia Point Light	STRUCT DEST	0368LM	35/19
11080	Lakeport Light	STRUCT DEST	0369LM	35/19
11085	Walnut Point Light	STRUCT DEST	0370LM	35/19
11125	Corregidor Light	STRUCT DEST	0080LM	05/16
11130	Sarah Island Light	STRUCT DEST	0371LM	35/19
11170	Stack Island Light	STRUCT DEST	0372LM	35/19
11180	STACK ISLAND LOWER LIGHT	STRUCT DEST	0373LM	35/19
11195	Chinaman Light	STRUCT DEST	0374LM	35/19
11210	Fitler Point Daybeacon	STRUCT DEST	0170LM	28/17
11215	Seitz Light	STRUCT DEST	0448LM	38/19
11220	Cottonwood Bar Pointway Light	STRUCT DEST	0449LM	38/19
11245	Willow Point Light	DAYMK DMGD	0450LM	38/19
11250	Belle Island Corner Daybeacon	STRUCT DEST	0451LM	38/19
11270	Cabin Teele Light	STRUCT DEST	0452LM	38/19
11275	Marshall Point Cut-Off Daybeacon	STRUCT DEST	0453LM	38/19
11280	Joseph Henry Daybeacon	STRUCT DEST	0454LM	38/19
11407	Coggins Light	STRUCT DEST	0296LM	29/16
11415	Reid Bedford Point Light	STRUCT DEST	0463LM	39/19
11425	Diamond Light	STRUCT DEST	0464LM	39/19
11430	Sargent Point Light	LT IMCH/DAYMK DMGD	0465LM	39/19

11440	Cannon Point Light	STRUCT DEST	0294LM	41/17
11455	Buckridge Light	STRUCT DEST	0467LM	39/19
11470	Grand Gulf Island Light	STRUCT DEST	0468LM	39/19
11505	Old Levee Light	LT IMCH/DAYMK DMGD	0470LM	39/19
11520	Ashland Light	LT IMCH/DAYMK DMGD	0471LM	39/19
11530	Hole In The Wall Light	LT IMCH/REDUCED INT	0472LM	39/19
11540	Giles Bend Cut-Off Light	STRUCT DEST	0171LM	28/17
11680	Bob Boles Light	STRUCT DEST		18/23
11700	Fort Adams Light	STRUCT DEST	0402LM	36/19
11795	Morganza Crevasse Light	STRUCT DEST	0400LM	36/19
11835	Bayou Sara Bend Light	STRUCT DEST	0399LM	36/19
11860	Port Hudson Light	STRUCT DEST	0581NO	36/19
11940	Ben Burman Light	STRUCT DEST	0549LM	44/19
13165	Lock 5A Light	LT EXT	0172UM	20/20
13230	Island 74 Light	STRUCT DEST/TRUB	0380UM	34/20
13430	Root River Upper Light	STRUCT DEST/HAZ NAV	0172UM	20/20
13510	Perry Ruby Light	STRUCT DEST	0061UM	12/17
13535	Britts Landing Daybeacon	DAYMK DMGD/STRUCT DMGD	0310UM	42/22
13720	Crooked Slough Head Daybeacon	STRUCT DEST/TRUB	0482UM	26/19
13725	Crooked Slough Head Light	STRUCT DEST/TRUB	0482UM	26/19
13765	Island 158 Daybeacon	DAYMK DMGD	0310UM	43/22
13895	Clayton Daybeacon	STRUCT DEST	0310UM	43/22
13915	Clayton Lower Daybeacon	STRUCT DEST/TRUB	0240UM	31/18
14010	Cassville Upper Daybeacon	STRUCT DEST	0546UM	29/19
14030	Cassville Lower Light	STRUCT DEST	0546UM	29/19
14105	Maquoketa Island Light	STRUCT DEST	0460UM	25/19
14230	Nine-Mile Island Light	STRUCT DEST	0410LM	36/17
14260	Stone Slough Light	STRUCT DEST	0454UM	25/19
14275	Fever River Light	STRUCT DEST/TRUB	0485UM	45/18
14295	Pulaski Light	STRUCT DEST	0485UM	45/18
14385	Arnold Towhead Light	STRUCT DEST	0449UM	25/19
14445	Sabula Lower Light	STRUCT DEST	0446UM	25/19
14460	Smith Bay Light	STRUCT DEST	0048UM	13/22
14475	Elk River Light	DAYMK DMGD	0257LM	31/21
14610	Adams Island Light	STRUCT DEST	0074UM	21/23
14980	Hershey Chute Upper Light	STRUCT DEST	0074UM	21/23
15170	Edwards Island Upper Light	STRUCT DEST/TRUB	0403UM	26/16
15240	Benton Island Light	STRUCT DEST	0073UM	21/23
15475	Waggoner PT Lighted Buoy	MISSING	0138UM	26/23
15785	Sny River Light	STRUCT DEST	0114UM	22/22
16065	Elswood Lower Light	STRUCT DEST	0030UM	16/23
16110	Hastings Landing Daybeacon	STRUCT DMGD	0282UM	39/22
16120	Cuivre Island Light	STRUCT DEST	0282UM	39/22
16200	Portage Des Sioux Light	LT EXT	0088UM	18/22
16910	Ste. Genevieve Island Light	STRUCT DEST	0557UM	30/19
17970	Fitzhugh Daybeacon	STRUCT DEST	0055UM	19/23
17975	Lower Blencoe Bend Daybeacon	STRUCT DEST	0055UM	19/23
17985	Wahle Daybeacon	STRUCT DEST	0055UM	19/23
23285	Cluster Upper Light	STRUCT DEST	0721OV	34/18

23330	Brown Island Light	STRUCT DEST		20/23
24110	Old Lock No. 17 Lower Daybeacon	STRUCT DEST		39/20
25355	Sciotoville Light	LT EXT	0095OV	11/23
26047	Sunken Barge Lighted Buoy WR	MISSING	0519OV	51/21
26047	Sunken Barge Lighted Buoy WR	SINKING/LT EXT	0199OV	22/23
26470	Notch Lick Light	STRUCT DEST	0210OV	23/21
27090	Wolf Creek Light	LT EXT	0064OV	05/22
27520	Robert Mann Light	STRUCT DEST	0269OV	21/22
27540	Water Works Light	STRUCT DMGD	0179OV	12/22
27855	Graham Varble Light	STRUCT DEST	0134OV	17/21
27935	Dekoven Light	STRUCT DEST	0294OV	23/22
29231.34	Westdale Middle Daybeacon	STRUCT DEST/TRUB	0121LM	44/22
29241.25	Smith Island Lower Daybeacon	STRUCT DEST	0202LM	26/21
29272	Deloges Middle Daybeacon	DAYMK IMCH		36/20
29467	Hog Lake Daybeacon	STRUCT DEST		36/20
29618	Red River Entrance Light	STRUCT DEST		37/20
29665	Dry Cypress Daybeacon	STRUCT DEST		37/20
29690	Bayou Cocodrie Upper Daybeacon	STRUCT DEST		37/20
29695	Bayou Cocodrie Daybeacon	STRUCT DEST		37/20
29710	Grassy Lake Daybeacon	DAYMK MISSING		37/20
29725	Alligator Bayou Daybeacon	STRUCT DEST	0216LM	33/17
29750	Timber Lake Daybeacon	STRUCT DEST		37/20
29755	Naples Daybeacon	STRUCT DEST		37/20
29775	Three Rivers Junction Light	STRUCT DEST		37/20
29780	Barbre Daybeacon	STRUCT DEST		37/20
29785	Torras Daybeacon	STRUCT DEST		37/20
29795	Oak Grove Daybeacon	STRUCT DEST		37/20
29845	Houden Point Daybeacon	STRUCT DEST	0255UM	30/21
31995	Dry Creek Light	STRUCT DEST	0402OV	31/20
32140	Chambers Daybeacon	STRUCT DEST	0178OV	11/13
32170	Diamond Island Lower Daybeacon	STRUCT DEST	0177OV	11/13
32190	Savannah Bend Upper Daybeacon	STRUCT DEST	0039OV	04/23
32335	Brodies Landing Light	STRUCT DEST	0041OV	04/23
32350	Crooked Creek Light	STRUCT DEST	0042OV	04/23
32445	Sales Light	TRUB/STRUCT DEST	0269OV	19/14
32460	Reynoldsburg Island Light	STRUCT DEST/TRUB	0290OV	15/18
32465	Shirley Light	STRUCT DEST	0040OV	04/23
32480	Higgins Light	STRUCT DEST	0342OV	27/15
32510	Hurricane Creek Light	STRUCT DEST	0043OV	04/23
32530	Standing Rock Upper Light	STRUCT DEST	0658OV	41/13
32570	Fort Henry Light	STRUCT DEST	0160OV	19/21
32595	Blood River Light	STRUCT DEST/TRUB	0138OV	17/21
32600	Clyde Light	LT EXT	0581OV	44/15
32605	Newburg Light	STRUCT DEST	0362OV	29/15
32710	Twenty-One Mile Light	STRUCT DEST	0108OV	13/23
32715	Chottes Creek Light	STRUCT DEST	0107OV	13/23
32750	Haddock Ferry Light	LT EXT/DAYMK MISSING	0106OV	13/23
32765	Big Chain Light	STRUCT DEST	0105OV	13/23
32780	Mud Creek Light	STRUCT DEST	0036OV	04/23



**DISCREPANCIES (FEDERAL AIDS) CORRECTED**

LLNR	Aid Name	Status	Chart No.	BNM Ref.	LNM St	LNM End
------	----------	--------	-----------	----------	--------	---------

None

**DISCREPANCIES (PRIVATE AIDS)**

LLNR	Aid Name	Status	Chart No.	BNM Ref.	LNM St	LNM End
1685	Oakley Dock Light	LT EXT		0307LM	44/14	
1690	Mobley Dock Light	LT EXT		0454LM	48/13	
2013	City of Little Rock No Wake Buoy	OFF STA		0015LM	21/23	
2100	Oakley Light	LT EXT		0520LM	42/19	
2337	Island Harbor Marina Light	LT EXT			45/16	
2340	Century Tube Lights (2)	LT EXT			45/16	
2400	Pickett And Davison Lights (2)	LT EXT		0481LM	50/13	
3725	Lakewood Marina Lights (4)	LT IMCH		0439OV	34/15	
3750	Dupont Dock Lights (2)	OFF STA/LT EXT		0305OV	26/15	
3795	Nashville Water Intake Lights (2)	LT EXT			44/11	
3805	Holnam Dock Lights (2)	LT EXT			44/11	
3815	Kerr-Mcgee Dock Lights (2)	LT EXT			44/11	
3820	Cohen Terminal Lights (2)	LT EXT			44/11	
3930	Alcoa Chemical Dock Lights (2)	MSLD SIG/LT EXT		0216OV	14/10	
3960	Hunter Marine Transport Dock Lights (2)	LT EXT			47/08	
3995	Riverview Marina Lights (2)	LT EXT			47/08	
4055	Clarksville Boat Club Dock Lights (2)	LT EXT		0533OV	34/12	
6170	Quantum Chemical Dock Lights (2)	LT EXT		0436UM	31/01	
6650	S. T. Services Terminal Lights (2)	LT EXT			41/14	
6695	Continental Grain Company Light	LT EXT			41/14	
7225	Cargo Carriers Dock Lights (2)	LT EXT			25/08	
7235	Pekin Boat Club Breakwater Light	LT EXT			05/16	
7250	Shell Dock Lights (2)	LT EXT		0123UM	16/02	
7255	Adm Growmark Mooring Light	LT EXT		0122UM	16/02	
7260	Sours Grain Tramway Light	LT EXT		0279UM	21/03	
7265	Tomen Dock Light	LT EXT			25/08	
7295	Adm Growmark Mooring Lights (3)	LT EXT		0281UM	21/03	
7460	Cargill Mooring Lights (2)	LT EXT		0284UM	21/03	
7620	Cargill Dock Lights (2)	LT EXT			35/08	
7725	Cargill Terminal Lights (2)	LT IMCH		0171UM	26/18	
7730	Public Service Co. Dock Lights (6)	LT EXT		0119UM	20/18	
7730	Public Service Co. Dock Lights (6)	LT IMCH		0171UM	26/18	
7760	Adm Growmark Grain Elevator Lights (2)	LT IMCH		0171UM	26/18	
9440	Black Dog Lights (5)	LT EXT			43/16	
9965	Huffman Grain Light	STRUCT DEST		0131LM	08/16	
10300	Cargill Dock Light	LT EXT		0361LM	34/01	
10390	Peavey Lights (2)	LT EXT		0398LM	36/02	
10395	Suburban Propane Dock Light	LT EXT		0396LM	36/02	
10415	Western Tar Products Dock Light	LT EXT		0394LM	36/02	
11943	Bear Industries Barge Dock Lights (4)	LT EXT		0600NO	30/17	

11990	Riverside Dock Lights (2)	LT EXT	0695UM	40/01
12080	University Dock Lights (3)	LT EXT	0696UM	40/01
12215	Koch Fuel Dock Lights (2)	LT EXT		35/16
12320	Newport Terminal Lights (2)	LT EXT		35/16
12385	Shiely Dock Lights (2)	LT IMCH		35/16
12712	City of Red Wing Metering Station Special Light	MISSING		42/16
12768	Consolidated Grain and Barge Loading Dock Piling Lights (2)	MISSING		42/16
12930	Alma City Dock Light/Daymarks (3)	MISSING		42/16
13405	G. Heileman Brewery Dock Light	MISSING		42/16
14756	Isle Of Capri Casino Marina Daybeacon	MISSING		03/16
15345	Koch Nitrogen Dock Light	LT EXT		41/14
15425	Hall Towing Light	STRUCT DEST	0280UM	25/20
15822	Hannibal Intake Light	LT EXT	0358UM	32/20
16100	Jersey County Grain Dock Lights (2)	LT EXT		19/16
16205	Piasa Harbor Light	LT EXT	0131UM	22/15
16220	Con-Agra Mooring Lights (2)	LT EXT		21/16
16230	Alton Marina Breakwater Lights (3)	LT EXT	0131UM	22/15
16265	Amoco Dock Light	STRUCT DEST		35/09
16280	Amoco Dock Lights (4)	LT EXT		35/09
16310	Sioux City/New Orleans Terminal Light	STRUCT DEST		35/09
16380	Western Dock Lights (9)	LT IMCH		34/08
16390	Adm-Growmark Dock Lights (4)	LT EXT	0776UM	44/01
16430	Union Electric Coal Dock Lights (2)	LT EXT	0305UM	34/08
16445	Continental Cement Lights (2)	LT EXT	0305UM	34/08
16505	Peavey Company Dock Lights (3)	LT EXT	0305UM	34/08
16530	Cahokia Marine Terminal Lights (2)	LT EXT	0305UM	34/08
16540	Slay Bulk Terminal Lights (2)	LT EXT	0305UM	34/08
16545	Peavey Lights (3)	LT EXT	0305UM	34/08
16550	Eagle Marine Industries Light	LT IMCH	0305UM	34/08
16560	Phillips Pipeline Lights (2)	LT EXT	0305UM	34/08
16565	Growmark Dock Lights (2)	LT EXT	0305UM	34/08
16575	Eagle Marine Dock Lights (2)	LT EXT	0305UM	34/08
16600	J.H. Collier Barge Mooring Lights (2)	LT EXT	0305UM	34/08
16605	Clark Oil Refining Dock Lights (4)	LT EXT	0305UM	34/08
16609	Alcoa Foil Lights (2)	LT EXT	0305UM	34/08
16615	Hci Chemtech Dock Lights (2)	LT EXT	0305UM	34/08
16617	Semmaterials Terminal Lights (2)	LT EXT	0305UM	34/08
16630	American Commercial Dock Lights (2)	LT EXT	0305UM	34/08
16655	Bussen Terminal Light	LT EXT	0305UM	34/08
18700	Bunge Dock Lights (3)	MISSING/LT EXT		18/08
19185	St. Joseph L & P Dock Light	LT IMCH		17/08
19415	Leavenworth Water Intake Lights (2)	LT EXT	0104UM	39/07
19460	Smoot Grain Dock Lights (2)	LT EXT	0385UM	39/07
19505	Board Of Public Utilities Light	LT EXT	0386UM	39/07
19535	Public Utilities Intake Lights (3)	LT EXT		38/08
19660	Continental Grain Dock Lights (4)	LT EXT	0181UM	24/08
19695	Kansas City Power And Light Company Lights (2)	LT EXT	0181UM	24/08
20870	U.E. Callaway Intake Lights (2)	LT EXT	0522UM	52/20

22873	Moon Township Municipal Authority Back Channel Outfall Danger Buoy	OFF STA	0108OV	14/21
24005	Bens Run Light	LT EXT		03/20
24580	Ohio Power Coal Dock Light	LT EXT	0480OV	44/21
25820	Cargill Barge Loading Facility Light	LT EXT	0552OV	40/09
26290	Boone County Sand And Gravel Lights (2)	LT EXT	0769OV	40/00
26833	Transmontaige Dock Lights (2)	LT EXT	0286OV	28/21
26860	Dupont Chemical Lights (2)	LT EXT	0330OV	17/18
27590	Transmontaigne Dock Lights (4)	LT EXT		40/21
29997	Cityview at Riverwalk Dock Light	LT EXT	0284OV	28/23
32900	Ergon Dock Lights (2)	LT IMCH		17/13
	Alcosan-Mascaro Temporary Lighted Danger Buoy	MISSING		24/22

#### DISCREPANCIES (PRIVATE AIDS) CORRECTED

LLNR	Aid Name	Status	Chart No.	BNM Ref.	LNM St	LNM End
------	----------	--------	-----------	----------	--------	---------

None

#### PLATFORM DISCREPANCIES

Name	Status	Position	BNM Ref.	LNM St	LNM End
------	--------	----------	----------	--------	---------

None

#### PLATFORM DISCREPANCIES CORRECTED

Name	Status	Position	BNM Ref.	LNM St	LNM End
------	--------	----------	----------	--------	---------

None

### SECTION III - TEMPORARY CHANGES and TEMPORARY CHANGES CORRECTED

This section contains temporary changes and corrections to Aids to Navigation for this edition. When charted aids are temporarily relocated for dredging, testing, evaluation, or marking an obstruction, a temporary correction shall be listed in Section IV giving the new position.

#### TEMPORARY CHANGES

LLNR	Aid Name	Status	Chart No.	BNM Ref.	LNM St	LNM End
7015	Blue Creek Point Lower Lighted Buoy	TRUB		0379UM	51/21	
7030	Drolls Point Upper Lighted Buoy	TRUB		0379UM	51/21	
7040	Peoria Heights Lighted Buoy	TRUB		0379UM	51/21	
10455	Armstrong Bar Light	RELOCATED			23/18	
11275	Marshall Point Cut-Off Daybeacon	TRDBN			49/16	
11280	Joseph Henry Daybeacon	TRDBN			49/16	
29880	Kinnikinnic River Daybeacon	DISCONTINUED			21/20	

#### TEMPORARY CHANGES CORRECTED

LLNR	Aid Name	Status	Chart No.	BNM Ref.	LNM St	LNM End
------	----------	--------	-----------	----------	--------	---------

None

#### PLATFORM TEMPORARY CHANGES

Name	Status	Position	BNM Ref.	LNM St	LNM End
------	--------	----------	----------	--------	---------

None

#### PLATFORM TEMPORARY CHANGES CORRECTED

Name	Status	Position	BNM Ref.	LNK St	LNK End
None					

**SECTION V - ADVANCE NOTICES**

This section contains advance notice of approved projects, changes to aids to navigation, or upcoming temporary changes such as dredging, etc. Mariners are advised to use caution while transiting these areas.

**SUMMARY OF ADVANCED APPROVED PROJECTS**

<u>Approved Project(s)</u>	<u>Project Date</u>	<u>Ref. LNK</u>
None		
<u>Advance Notice(s)</u>		
None		

**SECTION VI - PROPOSED CHANGES**

Periodically, the Coast Guard evaluates its system of aids to navigation to determine whether the conditions for which the aids to navigation were established have changed. When changes occur, the feasibility of improving, relocating, replacing, or discontinuing aids are considered. This section contains notice(s) of non-approved, proposed projects open for comment. SPECIAL NOTE: Mariners are requested to respond in writing to the District office unless otherwise noted (see banner page for address).

**PROPOSED WATERWAY PROJECTS OPEN FOR PUBLIC COMMENT**

<u>Proposed Project(s)</u>	<u>Closing</u>	<u>Docket No.</u>	<u>Ref. LNK</u>
None			

**Proposed Change Notice(s)**

**LOWER MISSISSIPPI RIVER**

The Coast Guard proposes the following Aids to Navigation Changes:  
 Discontinue Giles Bend Cut-Off Light (LLNR-11540) at Mile 367.7, Left Descending Bank, in approximate position 31-37-04.908N/091-23-48.764W.  
 Discontinue Natchez Beam Light (LLNR-11550) at Mile 364.8, Left Descending Bank, in approximate position 31-34-33.467N/091-24-04.561W.  
 Comments to be received by August 1, 2023. Please email comments regarding this proposal to: D08-SMB-District-LocalNoticeFeedback@uscg.mil.

LNK: 23/23

**LOWER MISSISSIPPI RIVER**

The Coast Guard proposes the following Aids to Navigation Changes:  
 Discontinue Cannon Point Light (LLNR-11440) at Mile 418.3, Left Descending Bank, in approximate position 32-07-19.909N/091-03-20.120W.  
 Discontinue Grand Gulf Island Light (LLNR-11470) at Mile 404.9, Left Descending Bank, in approximate position 31-59-46.907N/091-05-04.546W.  
 Comments to be received by August 1, 2023. Please email comments regarding this proposal to: D08-SMB-District-LocalNoticeFeedback@uscg.mil.

LNK: 23/23

**LOWER MISSISSIPPI RIVER**

The Coast Guard proposes the following Aids to Navigation Changes:  
 Discontinue Hart Light (LLNR-11495) at Mile 389.8, Left Descending Bank, in approximate position 31-51-34.798N/091-14-50.572W.  
 Comments to be received by August 1, 2023. Please email comments regarding this proposal to: D08-SMB-District-LocalNoticeFeedback@uscg.mil.

LNK: 23/23

**LOWER MISSISSIPPI RIVER**

The Coast Guard proposes the following Aids to Navigation Changes:  
 Discontinue Belle Island Corner Daybeacon (LLNR-11250) at Mile 458.6, Left Descending Bank, in approximate position 32-30-41.486N/091-06-21.974W.  
 Discontinue Rosehill Light (LLNR-11260) at Mile 454.8, Right Descending Bank, in approximate position 32-27-39.071N/091-06-08.644W.  
 Discontinue Milliken Bend Daybeacon (LLNR-11265) at Mile 452.6, Right Descending Bank, in approximate position 32-26-25.620N/091-04-18.876W.  
 Discontinue Joseph Henry Daybeacon (LLNR-11280) at Mile 445.2, Left Descending Bank, in approximate position 32-22-45.044N/090-59-47.378W.  
 Comments to be received by August 1, 2023. Please email comments regarding this proposal to: D08-SMB-District-LocalNoticeFeedback@uscg.mil.

LNK: 23/23

**LOWER MISSISSIPPI RIVER**

The Coast Guard proposes the following Aids to Navigation Changes:  
 Discontinue Newtown Bend Light (LLNR-11435) at mile 420.1, Left Descending Bank, in approximate position 32-07-06.640N/091-01-09.422W.  
 Discontinue Diamond Light (LLNR-11425) at mile 424.0, Right Descending Bank, in approximate position 32-10-18.847N/091-00-19.058W.  
 Discontinue Reid Bedford Point Light (LLNR-11415) at mile 427.5, Right Descending Bank, in approximate position 32-13-14.221N/090-59-

15.140W.

Discontinue Kings Point Light (LLNR-11300) at mile 439.8, Left Descending Bank, in approximate position 32-21-02.178N/090-56-45.550W. Comments to be received by August 1, 2023. Please email comments regarding this proposal to: D08-SMB-District-LocalNoticeFeedback@uscg.mil.

LNM: 23/23

#### **LOWER MISSISSIPPI RIVER**

The Coast Guard proposes the following Aids to Navigation Changes:

Discontinue Gold Dust Bar Light (LLNR-10065) at Mile 793.4, Left Descending Bank, in approximate position 35-44-25.300N/089-50-21.400W. Discontinue Island 30 Lower Daybeacon (LLNR-10100) at Mile 785.0, Right Descending Bank, in approximate position 35-40-51.700N/089-56-46.400W.

Discontinue Howard Daybeacon (LLNR-10175) at Mile 763.7, Right Descending Bank, in approximate position 35-29-48.228N/090-01-08.796W.

Discontinue Brandywine Chute Upper Daybeacon (LLNR-10205) at Mile 752.7, Left Descending Bank, in approximate position 35-22-13.080N/090-04-31.908W.

Discontinue Sycamore Chute Daybeacon (LLNR-10240) at Mile 740.3, Left Descending Bank, in approximate position 35-12-13.392N/090-03-33.876W.

Discontinue Star Landing Daybeacon (LLNR-10475) at Mile 707.2, Left Descending Bank, in approximate position 34-54-09.972N/090-14-39.552W.

Discontinue Peters Daybeacon (LLNR-10500) at Mile 692.0, Right Descending Bank, in approximate position 34-48-04.032N/090-28-40.908W.

Discontinue Mhoon Bend Daybeacon (LLNR-10515) at Mile 683.4, Left Descending Bank, in approximate position 34-43-29.442N/090-30-55.256W.

Comments to be received by August 15, 2023. Please email comments regarding this proposal to: D08-SMB-District-LocalNoticeFeedback@uscg.mil.

LNM: 25/23

---

### **SECTION VII - GENERAL**

This section contains information of general concern to the Mariners. Mariners are advised to use caution while transiting these areas.

---

#### **ALLEGHENY RIVER**

##### **MILE 0.6 - BRIDGE MAINTENANCE**

Sixth Street Bridge; A containment system is installed below low steel and follows the contour of the bridge. Vertical clearance is reduced approximately 1-foot for the middle, 100 feet of the navigation span. A work barge will be located outside of the navigation channel and will not affect navigation. Mariners are advised to transit the bridge with extreme caution.

LNM: 38-22

#### **ARKANSAS RIVER**

##### **MILE 319.6 - L/D DELAY**

Commencing July 24, 2023, and continuing through July 27, 2023, mariners may expect a delay at WD Mayo L/D Nr. 14, as workers conduct inspections. Work will be conducted daily, from 7:00 a.m. until 5:30 p.m. Mariners are advised to contact L/D Nr. 14, for the latest information and should schedule their activities around this notice. Mariners may contact Mr. Robert Steiner, Navigation Operation Manager, at (918) 775-4475 ext. 5833 or Mr. Jacob Simpson, Navigation Field Engineer, at (918) 430-4783, for additional information.

LNM: 29-23

##### **MILE 300.4 - BRIDGE MAINTENANCE**

Continuing until further notice, concrete and deck repairs will be conducted on the I-64 Bridge. All vessels are directed to use the main navigation channel. Mariners may contact the I-64 Bridge crew on VHF-FM Channel 13 or 16, for further information.

LNM: 13-23

##### **MILE 299.6 - BRIDGE MAINTENANCE**

Continuing until further notice, concrete and deck repairs will be conducted on the I-540 Bridge. All vessels are directed to use the main navigation channel. Mariners may contact the I-540 Bridge crew on VHF-FM Channel 13 or 16, for further information.

LNM: 13-23

##### **MILE 144.8 - MILE 131.2 - AIDS TO NAVIGATION**

Multiple buoys have been reported off station from Mile 144.8 to Mile 131.2. Mariners are urged to transit the area with caution.

LNM: 23-23

##### **MILE 118.2 - BRIDGE PROTECTION CELL DAMAGE**

The upstream left descending pier protection cell at the Clinton Presidential Park Bridge in the vicinity of Mile 118.2, is damaged and leaning into the left descending bridge pier. Mariners are urged to exercise caution in the area. Mariners may contact the USACE Little Rock District Office at (501) 324-5096 or via e-mail at: ceswl-op-om@usace.army.mil, for additional information.

LNM: 48-21

#### **BIG SANDY RIVER**

##### **MILE 9.0 - MILE 0.0 - DREDGE OPERATION**

Continuing until approximately August 20, 2023, channel maintenance dredging is being conducted from Mile 9.0 to Mile 0.0. Dredging will begin at the mouth, Mile 0.0, and proceed to upstream locations ending at Mile 9.0. Operations will take place from 6:00 a.m. to midnight, Monday through Saturday. Disposal operations will take place at an approved site located on the Ohio River, between approximate Mile 321.0 and Mile 322.0, RDB. The contractor's floating plant consists of the M/V FLORENCE T., M/V BUS BROWN, two barge mounted cranes and six material barges. During non-working hours, the contractor's floating plant will be moored at the worksite and lighted accordingly. The M/V BUS BROWN will be used to transport material barges between the dredge site and the disposal area. The M/V FLORENCE T., will operate in the vicinity of the dredge site and should be contacted for passing arrangements. On-scene vessels will monitor VHF-FM Channel 13. Mariners are urged to transit at their slowest safe speed

**BIG SANDY RIVER  
MILE 9.0 - MILE 0.0 - DREDGE OPERATION**

to minimize wake and proceed with caution after passing arrangements have been made.

LNM: 25-23

**CUMBERLAND RIVER  
MILE 190.4 - BRIDGE MAINTENANCE**

Louisville and Nashville (CSX) Railroad Drawbridge; Vertical clearance is reduced by 4 feet due to installed containment system. The bridge remains fully operational. Mariners are advised to contact bridge tender via VHF-FM Channel 16 or maintenance supervisor at telephone (989) 717-3192, for additional information.

LNM: 35-22

**MILE 124.7 - PIPE CONSTRUCTION**

Continuing until July 31, 2023, Southern Marine Construction Company will be conducting drilling operations for pipe removal and installation at Mile 124.7. Work will be conducted during daylight hours, 7-days a week. The M/V LOW BID TOO will monitor VHF-FM Channel 13. During non-working hours, the contractor's floating plant will be moored at the worksite and lighted accordingly. Mariners may contact the USACE at (615) 736-5656, for additional information. Mariners are urged to exercise caution in the area.

LNM: 26-23

**GREEN RIVER  
MILE 8.3 - BRIDGE OPERATION**

Louisville and Nashville Railroad Drawbridge; The bridge will be unattended and left in the open-to-navigation position. Mariners will be notified when the bridge is back in operation.

LNM: 20-22

**ILLINOIS WATERWAY  
MILE 288.7 - MILE 287.3 - BRIDGE REPAIRS**

Joliet Harbor Bridges; Due to ongoing bridge work, mariners are required to provide 1-hour advance notice, when requesting drawspan openings.

LNM: 19-20

**MILE 287.3 - BRIDGE MAINTENANCE**

McDonough Street Bridge; Due to cleaning and painting of the drawbridge, mariners are requested to provide a one-hour advance notice to the bridge operator for a bridge opening.

LNM: 26-23

**MILE 254.1 - PIER DAMAGE**

Chessie Railroad Drawbridge; The left descending pier has broken timbers at the waterline. Mariners are urged to transit the area with caution.

LNM: 19-23

**MILE 189.1 - BRIDGE MAINTENANCE**

Continuing until further notice, bridge maintenance will be conducted on the Lacon Highway Bridge. Vertical clearance may be reduced by up to 3-feet, due to a containment/work platform below the bridge deck. Mariners are urged to exercise caution while transiting under the bridge. Mariners may contact the Lacon Highway Bridge crew via VHF-FM Channel 13 or 16.

LNM: 12-23

**MILE 151.2 - BRIDGE OPERATION**

Pekin Railroad Drawbridge; Continuing until further notice, the bridge will be unattended and left in the open-to-navigation position. The bridge shall initiate the closing sequence for an approaching train by broadcasting the closure on VHF-FM Channel 16, 10-minutes prior to closure and immediately prior to closing. If no mariners respond to the broadcast, the operator of the bridge may begin the closing sequence. For additional information, mariners may contact Joe Ballou, with Union Pacific Railroad at (708) 990-8513.

LNM: 34-22

**MILE 147.2 - MILE 146.2 - DREDGE OPERATION**

Continuing until further notice, the M/V SUNNY D., is conducting dredging operations from approximate Mile 147.2 to Mile 146.2. Work will be conducted 24-hours a day, Monday through Friday. The M/V SUNNY D., will monitor VHF-FM Channels 7 and 13, and requests 30-minutes advance notice of passage. Mariners are urged to transit the area at their slowest safe speed to minimize their wake and proceed with caution after passing arrangements have been made.

LNM: 25-23

**MILE 120.6 - CHANNEL CONDITION**

Shoaling has been reported in the vicinity of Mile 120.6. Mariners are urged to exercise caution in the area.

LNM: 25-23

**LOWER MISSISSIPPI RIVER  
MILE 925.3 - MILE 924.4 - CHANNEL CONDITION**

Mariners are advised of a channel reduction at Mile 924.8. The channel width has been reduced to 622 feet and marked with nun buoys. Mariners are to utilize a one-way traffic pattern while transiting from Mile 925.3 to Mile 924.4.

LNM: 28-23

**MILE 884.0 - MILE 882.0 - TRANSIT INSTRUCTION**

Continuing until further notice, mariners are advised of pump installations being conducted at the New Madrid Power Station intake structures. Mariners are urged to transit at their slowest safe speed to minimize wake from Mile 884.0 to Mile 882.0.

**MILE 884.0 - MILE 882.0 - TRANSIT INSTRUCTION**

LNM: 28-23

**MILE 734.7 - BRIDGE MAINTENANCE**

Memphis Highway Bridge; Due to maintenance on the bridge, a containment system is installed and will hang 2 feet below low steel following the contour of the bridge. Mariners are advised to transit the area with caution.

LNM: 17-23

**MILE 593.1 - AID TO NAVIGATION**

A can buoy has been reported missing in the vicinity of Mile 593.1. Mariners are urged to exercise caution in the area.

LNM: 28-23

**MILE 540.6 - AID TO NAVIGATION**

A nun buoy has been reported missing in the vicinity of Mile 540.6. Mariners are urged to exercise caution in the area.

LNM: 28-23

**MILE 530.0 - MILE 526.0 - DREDGE OPERATION**

Continuing until further notice, the Dredge JADWIN is conducting dredging operations from Mile 530.0 to Mile 526.0. Work will be conducted 24-hours a day, 7-days a week. When dredging, removed material is pumped through a pontoon pipeline, which may be crossing the channel, and is placed outside of the navigation channel. Mariners should be on the lookout for tender boats, barges, small survey boats, and pipeline when transiting the dredge area. Mariners are requested to contact the Dredge JADWIN prior to transiting via VHF-FM Channel 13, or at (601) 618-2157, to make passing arrangements. Mariners are urged transit the area at their slowest safe speed to minimize their wake and proceed with caution after passing arrangements have been made.

LNM: 29-23

**MILE 528.0 - MILE 527.0 - CHANNEL CONDITION**

Shoaling has been reported from Mile 528.0 to Mile 527.0. Automatic Identification System (AIS) aids to navigation are being broadcasted in the area. Mariners are urged to exercise caution in the area.

LNM: 27-23

**MILE 230.0 - MILE 228.5 - BRIDGE FENDER SYSTEM REPLACEMENT**

Continuing until approximately August 2, 2023, work to replace the bridge fender system on the I-10 Bridge, left descending pier of the center span, in the vicinity of Mile 229.3, is being conducted. Work will be conducted Monday through Saturday, from 6:00 a.m. until 7:00 p.m. Mariners are urged to transit between Mile 230.0 and 228.5, at their slowest safe speed to minimize their wake and proceed with caution. Mariners may contact Ryan Finnie via VHF-FM Channel 21 or at (321) 501-3936, for additional information.

LNM: 31-22

**UPPER MISSISSIPPI RIVER****MILE 821.2 - DREDGE OPERATION**

Continuing until further notice, the M/V MARGARET D., is conducting dredging operations in the vicinity of Mile 821.2. Work will be conducted from 7:00 a.m. until 7:00 p.m., Monday through Friday. The M/V MARGARET D., will monitor VHF-FM Channel 12 and requests 30-minutes advance notice of passage. Mariners are urged to transit the area at their slowest safe speed to minimize their wake and proceed with caution after passing arrangements have been made.

LNM: 28-23

**MILE 785.3 - CHANNEL CONDITION**

Shoaling has been reported in the vicinity of Mile 785.3, RDB. Mariners are urged to transit the area with caution.

LNM: 29-23

**MILE 748.5 - DREDGE OPERATION**

Continuing until further notice, the Dredge GOETZ is conducting dredging operations in the vicinity of Mile 748.5. Operations will be conducted 24-hours a day, 7-days a week. Dredge GOETZ will monitor VHF-FM Channel 13 and requests 30-minutes advance notice of passage. Mariners are urged to transit the area at their slowest safe speed to minimize their wake and proceed with caution after passing arrangements have been made.

LNM: 29-23

**MILE 732.0 - MILE 731.6 - DREDGE OPERATION**

Continuing until August 18, 2023, the support vessel M/V WELLS and the Dredge WADE will be conducting dredging operations between approximate Miles 732.0 and 731.6, below the Winona Railroad Bridge. Work will be conducted from 6:00 a.m. until 6:00 p.m., Monday through Friday. The support vessel M/V WELLS and the Dredge WADE will monitor VHF-FM Channel 13 or 80 and requests 30-minutes advance notice of passage. Mariners are urged to transit the area at their slowest safe speed and proceed with caution after passing arrangements have been made.

LNM: 29-23

**MILE 713.9 - CHANNEL CONDITION**

Shoaling has been reported in the vicinity of Mile 713.9. Mariners are urged to transit with caution and use the slowest safe speed to minimize risk of grounding. Mariners may contact U.S. Coast Guard Western Rivers Command Center at (314) 269-2332, for additional information.

LNM: 27-23

**MILE 699.8 - BRIDGE REPAIR**

La Crosse Railroad Drawbridge; J.F. Brennan Company is conducting construction operations on the La Crosse Railroad Drawbridge, left descending span, extending from the upper protection cell to the turnstile. A marine plant will be onsite, and fleeted below the bridge, outside the navigation

**MILE 699.8 - BRIDGE REPAIR**

channel along the left descending side after hours. The M/V SABULA will monitor VHF-FM Channels 13 or 16, and requests 30-minutes advance notice of passage to move equipment out of the navigation channel. Mariners are urged to transit the area at their slowest safe speed to reduce wake and proceed with caution after passing arrangements have been made.

LNM: 28-23

**MILE 660.5 - MILE 659.5 - SHORESIDE DEMOLITION/SAFETY ZONE**

The U.S. Coast Guard COTP Upper Mississippi River will enact a Safety Zone between approximate Miles 660.5 and 659.5, while demolition work is being conducted at the Lansing Power Plant, on July 22, 2023, and August 5, 2023. The Safety Zone will be activated and deactivated by marine radio broadcast from the Western Rivers Command Center. The Safety Zones are scheduled to be in effect for approximately 30-minutes to an hour in the morning on each date. There is a possibility that the dates and time will need to be adjusted due to weather. Mariners may contact the Western Rivers Command center at (314) 269-2332, for additional information.

LNM: 29-23

**MILE 643.5 - MILE 643.2 - DREDGE OPERATION**

Continuing until further notice, M/V SCARLET RIVER and M/V CAPTAIN NEWT will be conducting dredging operations from Mile 643.5 to 643.2. Work will be conducted from 6:00 a.m. until 6:30 p.m., Monday through Friday. M/V SCARLET RIVER and M/V CAPTAIN NEWT will monitor VHF-FM Channel 13, 14 or 16 and requests 30-minutes advance notice of passage. Mariners are urged to transit the area at their slowest safe speed to minimize their wake and proceed with caution after passing arrangements have been made.

LNM: 29-23

**MILE 640.9 - MILE 640.6 - SUBMERGED BUOY**

A submerged buoy has been reported at approximate Mile 640.7, LDB. The submerged buoy is reportedly not marked. Mariners are urged to exercise caution when transiting this area. For further information, mariners may contact U.S. Coast Guard Western Rivers Command Center, at (314) 269-2332.

LNM: 28-23

**MILE 503.8 - MILE 503.2 - DREDGE OPERATION**

Continuing until further notice, M/V DALE is conducting dredging operations from Mile 503.8 to Mile 503.2. Work will be conducted 7-days a week, from 6:00 a.m. until 6:00 p.m. M/V DALE will monitor VHF-FM Channel 7 or 12, and requests 30-minutes advance notice of passage. Mariners are urged to transit the area at their slowest safe speed to minimize their wake and proceed with caution after passing arrangements have been made.

LNM: 29-23

**MILE 485.0 - MILE 484.0 - CHANNEL CONDITION**

A partially submerged water intake pipe has been reported on the LDB, between Mile 485.0 and Mile 484.0. Mariners are urged to exercise caution in the area.

LNM: 28-23

**MILE 482.1 - BRIDGE MAINTENANCE**

Centennial Highway Bridge: Continuing until July 26, 2023, bridge inspections will be conducted from 8:00 a.m. to 4:00 p.m., daily. Vertical clearance may be reduced, due to snooper trucks hanging below the bridge deck. Mariners are urged to exercise caution while transiting under the bridge. Mariners may contact the inspection personnel via cell phone at (312) 798-0268.

LNM: 29-23

**MILE 481.4 - AID TO NAVIGATION**

A nun buoy has been reported missing in the vicinity of Mile 481.4, near the Crescent Railroad Bridge. Mariners are urged to transit the area with caution.

LNM: 28-23

**MILE 433.0 - AID TO NAVIGATION**

A submerged can buoy has been reported in the vicinity of Mile 433.0, across from the New London, IL boat ramp. Mariners are urged to exercise caution in the area.

LNM: 27-23

**MILE 397.3 - MILE 396.7 - DREDGE OPERATION**

Continuing until further notice, the M/V ROCK ISLAND or the M/V MOLINE is conducting dredging operations between approximate Miles 397.3 and 396.7. Work will be conducted from 7:00 a.m. until 5:30 p.m., 7-days a week. The M/V ROCK ISLAND or the M/V MOLINE will monitor VHF-FM Channels 13, 14, 16 or 82 and requests 30-minutes advance notice of passage. Mariners are urged to transit the area at their slowest safe speed to minimize their wake and proceed with caution after passing arrangements have been made.

LNM: 28-23

**MILE 256.0 - MILE 254.0 - CHANNEL CONDITION**

Channel surveys indicate shoaling between Mile 256.0 and Mile 254.0. The channel has been reduced in width to 200 feet, favoring the red buoy line. All vessels transiting between Mile 256.0 and Mile 254.0 must do so using one-way traffic. Mariners should use caution in the area and transit at their slowest safe speed to reduce the risk of grounding.

LNM: 25-23

**MILE 241.5 - MILE 241.0 - DREDGE OPERATION**

Continuing until further notice, M/V DAVENPORT and M/V BETTENDORF are conducting dredging operations from Mile 241.5 to Mile 241.0, Lock 25 Lower. Work will be conducted from 7:00 a.m. until 5:30 p.m., 7-days a week. M/V DAVENPORT and M/V BETTENDORF will monitor VHF-FM Channels 13, 14, 16 or 82, and requests 30-minutes advance notice of passage. Mariners are urged to transit the area at their slowest safe speed



**MILE 241.5 - MILE 241.0 - DREDGE OPERATION**

to minimize their wake and proceed with caution after passing arrangements have been made.

LNM: 28-23

**MILE 179.2 - BRIDGE MAINTENANCE**

Douglas MacArthur Bridge; Vertical clearance may be reduced by 6 feet, due to hanging scaffolding for bridge repairs. Mariners are urged to transit the bridge with caution.

LNM: 27-23

**MILE 171.2 - CHANNEL CONDITION**

Shoaling has been reported in the channel, in the vicinity of Mile 171.2, across from Notre Dame Fleet #2. Mariners are urged to exercise caution in the area.

LNM: 25-23

**MILE 170.0 - DREDGE OPERATION**

Continuing until further notice, the Dredge POTTER is conducting dredging operations in the vicinity of Mile 170.0. Work will be conducted 24-hours a day, 7-days a week. The Dredge POTTER will monitor VHF-FM Channel 13 and requests 30-minutes advance notice of passing. Mariners are urged to transit the area at their slowest safe speed and proceed with caution after passing arrangements have been made.

LNM: 29-23

**MILE 168.6 - BRIDGE MAINTENANCE**

Jefferson Barracks Dual Bridge; Due to a containment system installed below low steel, vertical clearance has been reduced to 84 feet. Mariners are advised to transit the bridge with caution.

LNM: 17-22

**MILE 41.5 - CHANNEL CONDITION**

Shoaling has been reported in the vicinity of Mile 41.5, LDB, extending approximately 300 feet past the red buoy line. Mariners are advised to implement a one-way traffic pattern and favor the RDB, while transiting the area.

LNM: 28-23

**MILE 15.7 - CHANNEL CONDITION**

Shoaling has been reported in the vicinity of Mile 15.7, RDB, extending approximately 400 feet past the green buoy line. Mariners are advised to favor the LDB, while transiting the area.

LNM: 27-23

**MISSOURI RIVER****MILE 362.3 - BRIDGE MAINTENANCE**

Chouteau Bridge; Horizontal clearance may be reduced to 300 feet due to scour repairs. Mariners may contact Newt Marine Services at (563) 557-1855, for further information.

LNM: 28-23

**MILE 308.8 - BRIDGE MAINTENANCE**

Sixth Street Bridge; Due to cleaning and painting of the bridge, a containment system is installed and will hang 4 feet below low steel and follows the contour of the bridge. Vertical clearance is reduced to 70.4 feet above normal pool. Mariners are advised to transit the bridge with extreme caution.

LNM: 17-23

**OHIO RIVER****MILE 397.0 - MILE 409.0 - MARINE EVENT**

On July 29, 2023, from 9:00 a.m. until 3:00 p.m., the M2M Paddlefest kayak race will be held between approximate Miles 397.0 and 409.0. Participants in the event will be located along the right descending bank. The U.S. Coast Guard Sector Ohio Valley will monitor VHF-FM Channel 16 and can be contacted at (800) 253-7465, for additional information. Mariners are advised to exercise caution when transiting the area.

LNM: 29-23

**MILE 473.7 - AID TO NAVIGATION**

Sunken Barge Lighted Buoy WR (LLNR-26047) has been reported extinguished and partially submerged in the vicinity of Mile 473.7, RDB, around the bend at Ludlow, KY. Mariners are urged to exercise caution in the area.

LNM: 22-23

**MILE 532.0 - DREDGE OPERATION**

Luhr Bros. Inc., will conduct dredging operations in the Markland L/D lower approach. The contractor's floating plant will consist of the Dredge BILL HOLMAN, M/V's LENARD, BUDDY, and ROBERT T., a shop barge, a spill barge, and floating pipeline sections. Work will be conducted 24-hours a day, 7-days a week. While dredging, the dredge pipeline may cross the navigation channel, requiring the pipeline to be opened to pass traffic. The River Chamber (1,200 foot) will be utilized to lock all traffic. Dredge BILL HOLMAN and M/V's LENARD and BUDDY will monitor VHF-FM Channel 13. Mariners are urged to transit the area at their slowest safe speed and proceed with caution after passing arrangements have been made.

LNM: 29-23

**MILE 608.6 - BRIDGE MAINTENANCE**

Sherman Minton Bridge; Cleaning and painting of the bridge will continue from 7:00 a.m. until 6:00 p.m., Monday through Saturday, until further notice. A containment system will hang 4 feet below low steel. Mariners should transit the bridge with caution.

LNM: 29-21

**MILE 744.5 - RIVER CELL REPLACEMENT**

Continuing until September 15, 2023, Richard Goettle Inc., will be replacing existing river cells 31 and 32 at the AEP Rockport Power Plant. Work will be conducted from 7:00 a.m. until 6:00 p.m., Monday through Saturday. The contractor's floating plant will consist of one spud barge, two flat barges and one hopper barge. On-scene vessels will monitor VHF-FM Channels 66 and 67. Mariners are requested to transit the area at their slowest safe speed to minimize their wake and proceed with caution.

LNM: 25-23

**MILE 789.0 - MILE 791.3 - FACILITY CONSTRUCTION**

Continuing until approximately September 30, 2025, Meuth Construction Supply Inc., is constructing a facility adjacent to the navigation channel between approximate Miles 789.0 and 791.3, RDB. Sixteen tri-tie dolphins will be constructed to anchor barges along the riverbank. Construction for this facility will be performed from a floating plant. The contractor's floating plant will never extend more than 180 feet from the shoreline, at normal pool. The construction contractor will monitor VHF-FM Channel 7, 13 or 16. Mariners are urged to transit the area with caution.

LNM: 39-22

**MILE 846.0 - L/D CLOSURE**

Continuing until August 17, 2023, the John T. Myers L/D Primary (1,200-foot chamber) in the vicinity of Mile 846.0, will be closed every Tuesday and Thursday, for up to 12-hours a day, during daylight hours only. Unscheduled intermittent closures may occur on additional days, for up to 4-hours. Closures are necessary for the replacement of the floating mooring bitt tracks. All traffic will pass through the Auxiliary (600-foot chamber) during these closures. The Auxiliary (600-foot chamber) is scheduled to close from August 21, 2023 through September 10, 2023, to allow miter gate repairs and prep for the primary chamber closure by the Heavy Capacity Fleet. The primary (1,200-foot chamber) is scheduled to close from September 11, 2023 through November 17, 2023, to allow miter gate rehab by the Heavy Capacity Fleet.

LNM: 25-23

**MILE 858.0 - CHANNEL CONDITION**

Shoaling has been reported in the vicinity of Mile 858.0. Mariners are urged to exercise caution in the area.

LNM: 25-23

**MILE 918.5 - L/D CLOSURE**

Commencing September 22, 2023 and continuing until October 21, 2023, the Smithland L/D land chamber, in the vicinity of Mile 918.5, will be closed for the replacement of the land chamber miter gate machinery by the Light Capacity Fleet. The river chamber will be closed from October 22, 2023, through November 20, 2023, for the replacement of the river chamber miter gate machinery by the Light Capacity Fleet.

LNM: 05-23

**TENNESSEE-TOMBIGBEE WATERWAY****MILE 353.0 - DREDGE OPERATION**

Continuing until further notice, the Inland Dredging Company Dredge AMERICA is conducting dredging operations in the vicinity of Mile 353.0, Columbus Lake. Work will be conducted 24-hours a day, 7-days a week. Dredge spoils will be placed in upland disposal site C-19. The Dredge AMERICA will monitor VHF-FM Channel 16. Mariners are urged to transit the area at their slowest safe speed to minimize their wake and proceed with caution after passing arrangements have been made. Mariners may Mr. Roger Wilson, Jr., or Joshua Brown, USACE Tennessee-Tombigbee Project Management Office at (662) 245-5500, for additional information.

LNM: 27-23

**TENNESSEE RIVER****MILE 616.0 - MARINE EVENT**

Continuing until July 30, 2023, the CSC Sail Camp is being held in the vicinity of Mile 616.0, Concord Cove. Mariners may contact the event sponsor at (865) 599-0820, for additional information. Mariners are urged to exercise caution in the area during the event periods.

LNM: 23-23

**MILE 544.0 - AID TO NAVIGATION**

A nun buoy has been reported to be off station in the vicinity of Mile 544.0, LDB. Mariners are urged to transit the area with caution.

LNM: 29-23

**WHITE RIVER****MILE 10.0 - MILE 9.8 - CHANNEL CONDITION**

Shoaling has been reported between approximate Miles 10.0 and 9.8, RDB. Mariners are urged to favor the LDB and exercise caution in the area.

LNM: 28-23

**MILE 4.5 - DREDGE OPERATION**

Continuing until further notice, the Dredge SANDPIPER is conducting dredge operations in the vicinity of Mile 4.5. The Dredge SANDPIPER will monitor VHF-FM Channel 16 or 79, and requests 30-minutes advance notice of passage. Mariners are urged to transit the area at their slowest safe speed to minimize their wake and proceed with caution after passing arrangements have been made.

LNM: 29-23

**SECTION VIII - LIGHT LIST CORRECTIONS**

An Asterisk \*, indicates the column in which a correction has been made to new information

(1) No.	(2) Name and Location	(3) Mile	(4) Bank	(5) Characteristic	(6) Structure / Dayboard Up Down	(7) Remarks
------------	--------------------------	-------------	-------------	-----------------------	---	----------------

None

---

---

## ENCLOSURES

---

### **USACE Huntington District - Restricted Areas at Navigation Structures**

USACE Huntington District Notice to Navigation Interests 23-09, regarding maintenance and repair operations.

LNM: 03-23

### **USACE Channel Status Reports**

Arkansas River Channel Status Reports.

LNM: 09-23

### **UPPER MISSISSIPPI RIVER - JULY MARINE EVENTS**

U.S. Coast Guard Sector Upper Mississippi MSIB 02-23

LNM: 26-23

### **UPPER MISSISSIPPI RIVER/ILLINOIS WATERWAY - BARGE/RAIL COLLISION RISK**

Sector Upper Mississippi River MSIB 08-21.

LNM: 15-23

---

---

Commander, Eighth Coast Guard District  
Hale Boggs Federal Building, Room 1230  
500 Poydras Street, New Orleans, LA 70130-3310  
Telephone (504) 671-2327  
(Business Hours 7:00 a.m. - 3:30 p.m. Monday - Friday)  
(Nights, Weekends, Holidays) (855) 485-3727  
RDML Barata



**US Army Corps  
of Engineers®**

HUNTINGTON DISTRICT

**DATE:** 06/28/2023

**NOTICE NUMBER:** 201731-3

**LOCAL NUMBER:** 23-18

**WATERWAY:** KANAWHA RIVER  
OHIO RIVER

ATTN: CELRH-DE  
502 8TH STREET  
HUNTINGTON WV 25701-2070  
HTTP://WWW.LRH.USACE.ARMY.MIL/

**POC:** Kent C.  
Browning  
(304) 399-5239

**EFFECTIVE:** 01/01/2023 07:00 thru 09/30/2023  
15:30

---

**REVISION TO NOTICE TO NAVIGATION 23-09**

**TENTATIVE MAINTENANCE SCHEDULE FOR 2023**

**HUNTINGTON DISTRICT**

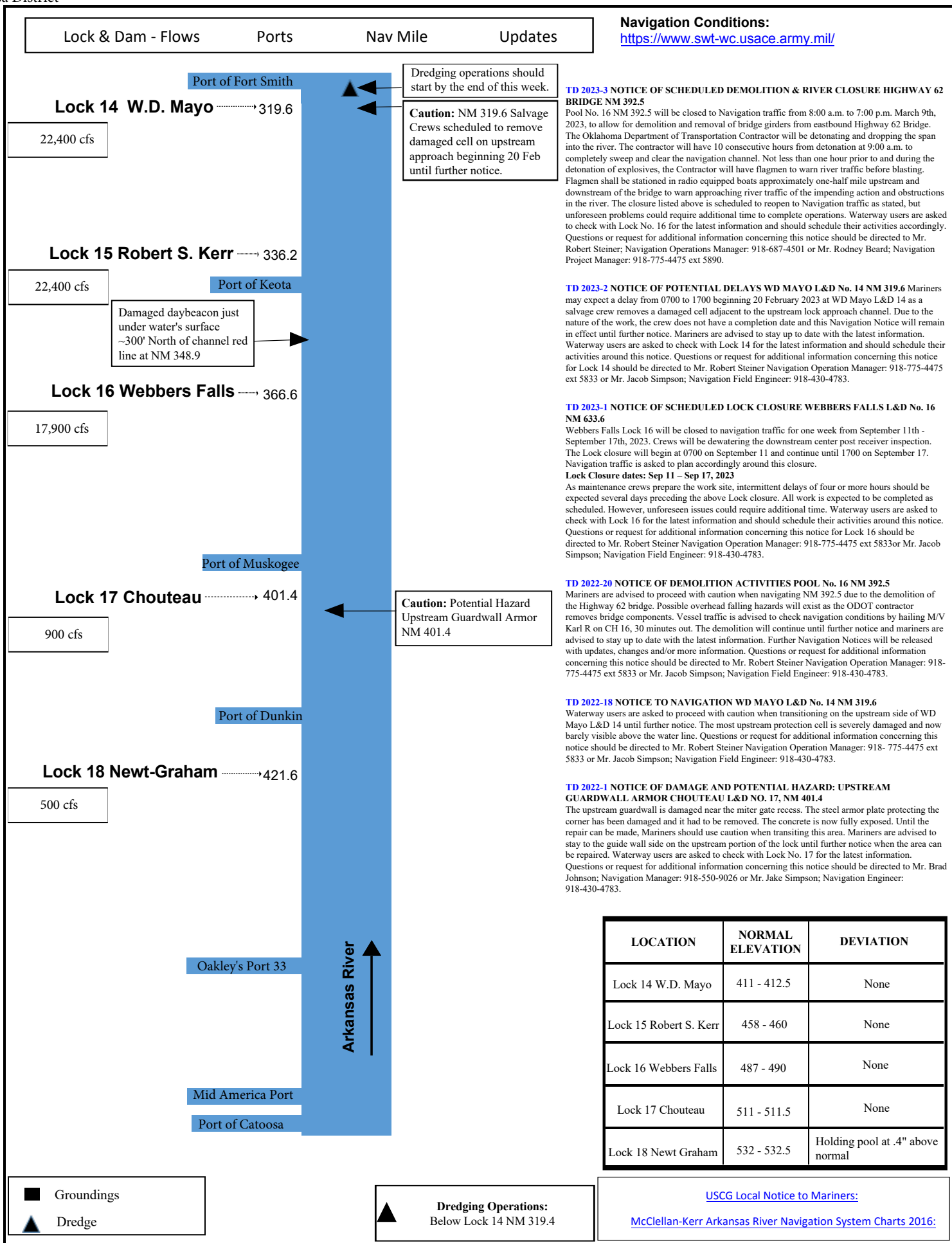
Reference Notice to Navigation Interests 23-09, dated 2 March 2023. The schedule has been adjusted and is shown below. All other pertinent information remains the same.

<b><u>PROJECT</u></b>	<b><u>REPAIRS</u></b>	<b><u>DATES</u></b>	<b><u>REMARKS</u></b>
Meldahl L&D	Dewatering for Miter Gate Repairs	06 Mar - 15 Aug	Auxiliary Chamber Closure
Greenup L&D	Filling System Repairs	05 Jul - 15 Aug	Intermittent Primary Chamber Closure
Winfield L&D	Dam Gate Repairs	10 Jul - 29 Sep	No Closures

All interested parties should review the maintenance schedule for impact. Additional notices furnishing specific information and operating requirements for repairs resulting in major delays will be published prior to commencing the work items listed.

//signed//

KENT C. BROWNING  
Chief, Technical Support Branch





# Marine Safety Information Bulletin

U.S. Coast Guard  
Sector Upper Mississippi River  
1222 Spruce Street Ste. 7.103  
St. Louis, MO 63103

MSIB Number: 02-23  
Date: June 26, 2023  
Contact: LCDR Richard Cherkauer  
Phone: (314) 269-2560  
E-mail: Richard.G.Cherkauer@uscg.mil

*This bulletin is used purely for informational purposes to assist the maritime community within the Sector Upper Mississippi River (SUMR) Area of Responsibility. Its purpose is to advise relevant parties of emerging information and situations that may impact our Marine Transportation System as well as facilitate cooperation among the involved parties regarding actions that we may be taking and/or that you may need to employ in the interest of safety/security.*

## July 2023 Notice of Marine Events and Planned River Closures

The Coast Guard received applications for the following events occurring during the month of July 2023. Each closure will also be broadcast via VHF Channel 16. These events are listed below:

Lake of the Ozarks				
Date	Event	Event Duration	Location (mile marker)	Waterway Closure (Yes/No)
01 July	Red Oaks Resort Fireworks	9:30PM - 10:30PM	Standing Rock Cove	No
01, 08, 15, 29 July	Celebration Cruises Fireworks	8:45PM - 10:15PM	.5 to 1	Yes
04 July	Tan Tar A Resort Fireworks	8:45PM – 9:45PM	26.2 to 58.8	Yes
04 July	Lodge of the Four Seasons	8:45PM – 10:30PM	14.2 to 13.8	Yes
08 July	Jordan Salisbury Fireworks	9PM – 9:30PM	IVO mm 7	No
15 July	Aquapalooza Lake of the Ozarks	11AM – 6PM	Captain Rons 34.5	Yes
St. Croix River				
02 July	Hudson Booster Days Celebration	10PM – 10:30PM	17.2 to 16.8	Yes
04 July	City of Stillwater MN July 4 <sup>th</sup> Fireworks	10PM - 10:30PM	23-23.4	Yes
Upper Mississippi River and Tributaries				
Every Sun, Sat, Wed	Lake Davenport Sailing 21	9AM – 7:30PM	493.2 to 482.9	No
01 July	Stars and Stripes Fireworks	9PM – 11:30PM	Pool 10 Guttenberg, IA	Yes
01 July	Independence Day Celebration	9PM – 11PM	635.7-632.2	Yes
01 July	Riverfest – Water Skiing	1PM – 2 PM	697.5 to 698.5	Yes
01 July	Riverfest – Water Skiing	6PM – 7PM	697.5 to 698.5	Yes
01 July	Riverfest-Venitian Parade of Lights	9:55PM - 10:30PM	697.5 to 698.5	
01 July	Stars and Stripes	9PM – 11PM	614 to 615.5	Yes
01 July	Independence Day Celebration	9PM - 11PM	635.7 to 634.2	Yes
02 July	Bellevue Heritage Days	9:30PM - 10:30PM	Below L&D 12	Yes
02 July	Ski Bellevue Water Ski Show	4PM – 6PM	SOUTH OF L&D 12	No

02 July	Ski Bellevue WaterSki Show	4PM – 6PM	Pool 13 just south of Lock 12	No
02 July	Bellevue Heritage Days	9:30PM – 10:30PM	557 to 558	Yes
02 July	Riverfest – Water Sking	6PM – 7PM	697.5 to 698.5	Yes
03 July	Radio Dubuque Air Show and Fireworks	6PM - 10:30PM	581.2 to 581	Yes
03 July	Red, White, and Boom!	9:30PM - 11PM	Davenport, IA	Yes
03 July	City of Alton Fireworks Spectacular	9PM - 10PM	203 to 202.5	Yes
04 July	Fair St. Louis Fireworks Show	9PM - 10:30PM	180 to 179.2	Yes
04 July	Riverfest Fireworks	9:55PM - 10:30PM	697.5 to 698.5	Yes
13, 14 July	US Anglers Choice	6:30AM – 5:30 PM	Pools 7,8,9 and tributaries	No
15 July	Ski Bellevue WaterSki Show	4PM – 6PM	Pool 13 just south of Lock 12	No
22 July	Aquatennial Fireworks	10PM – 10:30PM	854.2 to 853.2	Yes
26 July	3 Rivers Run	7AM – 6 PM	From the Missouri river putting in at Mari del Osa to the Arch in St. Louis.	No
Illinois River				
04 July	Red, White, and Boom!	9PM - 10PM	162.5 to 162.1	Yes
Missouri River				
03 July	4 <sup>th</sup> of July Freedomfest	9PM - 10:30PM	Hermann, MO	Yes
04 July	Sugar Creek Missouri 4 <sup>th</sup> of July Celebration	9:30PM - 9:45PM	Sugar Creek, MO East of Liberty Bend Bridge	No
04 July	City of St. Charles Riverfest Fireworks	8:30PM - 10:30PM	28.8 to 28.2	Yes
04 July	Salute to America	9PM - 10PM	144 to 143	Yes
04 July	Parkville 4 <sup>th</sup> of July Celebration	9:30PM - 10:30PM	378 to 377.5	Yes
08 July	Missouri River Freedom Race	8AM - 5PM	Lamine River to Jefferson City	No
26 July	3 Rivers Run	7AM – 6 PM	Missouri river Mari del Osa to the Arch in St. Louis.	No

To receive the latest information, monitor marine VHF channels 14 and 16, the SUMR Port Directory at [https://homeport.uscg.mil/port-directory/upper-mississippi-river-\(st-louis\)](https://homeport.uscg.mil/port-directory/upper-mississippi-river-(st-louis)). Questions may be directed to the Western Rivers Command Center at (314) 269-2332 or (314) 269-2463 – these numbers are continuously monitored. Or contact the Waterways Management staff at [SUMRwaterways@uscg.mil](mailto:SUMRwaterways@uscg.mil).

Sincerely,



R. G. Cherkauer  
Chief, Waterways Management Division  
U. S. Coast Guard  
By Direction



# U.S. COAST GUARD

## Sector Upper Mississippi River



November 22, 2021

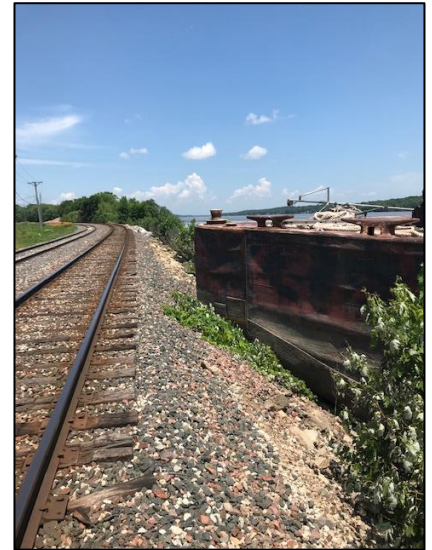
### Marine Safety Information Bulletin # 08-21

*This bulletin is used purely for informational purposes to assist the maritime community within the Sector Upper Mississippi River Area of Responsibility. Its purpose is to advise relevant parties of emerging information and situations that may impact our Marine Transportation System as well as to facilitate cooperation among the involved parties regarding actions that we may be taking and/or that you may need to employ in the interest of safety/security.*

#### Barge/Rail Collision Risk

This bulletin is in effect from November 22, 2021 until cancelled by the Captain of the Port.

Sector Upper Mississippi River (UMR) received multiple reports of barges encroaching on railroad right of ways (tracks, rail beds) in 2019. This was further documented in Sector UMR MSIB 01-20 and the Waterway Action Plan (WAP). Approximately 45 known areas on the UMR and Illinois River pose a risk for barge/rail collisions due to the close proximity between the rail right of ways and the river bank. Where rails are located near the river's edge, vessels are able to push in to an extent that part of the vessel/tow is in dangerous proximity to the rail. Barge encroachment poses a serious risk to both vessels, trains, crews, the environment, and nearby communities. On November 14, 2021, during normal water conditions, an incident between rail and barge resulted in a train derailment, oil spill, and damage to rail and vessel equipment.



This risk can be mitigated by vessel operators being vigilant when selecting where they push vessels into the river bank during all water conditions. The approximately 45 known areas of concern (see attached consolidated graphic) are marked with caution areas on both printed and electronic versions of the Inland River Electronic Navigation Charts (IENC). These caution areas are accompanied by a warning noting the risk of collision between trains and vessels, and/or rail bed embankment erosion due to the close proximity between the railroad tracks and the waterway.

**Sector UMR urges all vessel operators to review the IENC and the WAP for their intended operating areas to identify river bank locations to avoid pushing in at, as well as other potential hazards, as part of their voyage planning procedures prior to operation.**

Operators are reminded that Title 33 Code of Federal Regulations (CFR) § 207.300(m)(2)(ii) directly prohibits the mooring of craft directly to railroad tracks or the riverbank in vicinity of railroad tracks. Violation of this regulation can result in enforcement action being taken against the operator's Merchant Mariner Credential as well as a civil penalty against the operating company.



To receive the latest information, mariners should monitor marine VHF channels 14 and 16, and the Sector UMR Port Directory at [https://homeport.uscg.mil/port-directory/upper-mississippi-river-\(st-louis\)](https://homeport.uscg.mil/port-directory/upper-mississippi-river-(st-louis)) for this and other MSIBs and port advisories. Hazardous conditions and marine casualties should immediately be reported to the Western Rivers Command Center via VHF channel 16 or by phone at (314) 269-2332 or (314) 269-2463 – these numbers are continuously monitored 24 hours a day. Questions about this MSIB may be directed to the Waterways Management staff at [sumrwaterways@uscg.mil](mailto:sumrwaterways@uscg.mil).

Sincerely,

A handwritten signature in blue ink, appearing to read "Richard Scott", with a stylized flourish at the end.

R.M. SCOTT  
Captain of the Port  
U.S. Coast Guard



## IENC Rail Road Caution Areas



Mile Marker 497.8

IENC Rail Road Caution Areas Sourced from U.S. Army Engineer District, Rock Island.



 IENC RR Caution Areas