



U.S. Department
of Homeland Security
**United States
Coast Guard**

LOCAL NOTICE TO MARINERS

District 8 MRS

Week: 30/22

Mississippi River System

LIGHT LIST VOLUME V
NOTICE NUMBER 30-22
July 27, 2022

LIGHT LIST REFERENCE: COMDTPUB P16502.5, Vol V, 2022 Edition.

CONTENTS: Rivers are listed in alphabetical order and are included only when there is information to report.

Broadcast Notice to Mariners Covered in this Edition

Originating Unit	Beginning BNM's	Ending BNM's
Sector Upper Mississippi River	0167 - 22 (UM)	0192 - 22 (UM)
Sector Lower Mississippi River	0059 - 22 (LM)	0059 - 22 (LM)
Sector Ohio Valley	0349 - 22 (OV)	0354 - 22 (OV)
OB DWB	0068 - 22 (DWB)	0069 - 22 (DWB)

COAST GUARD DISTRICT 8, WATERWAYS, (504) 671-2327, 7:00 a.m. until 3:30 p.m. (CST)

GENERAL LNM QUESTIONS, COMMENTS, OR SUGGESTIONS MAY BE E-MAILED TO: D8MarineInfo@uscg.mil

COMMENTS REGARDING SECTION VI – PROPOSED CHANGES MAY ALSO BE EMAILED TO: LocalNoticeFeedback@uscg.mil

NIS WATCHSTANDER PHONE (703) 313-5900, 24-HOURS A DAY

INTERNET ADDRESS <https://www.navcen.uscg.gov/>

MISSISSIPPI RIVER SYSTEM LNM VIA INTERNET <https://www.navcen.uscg.gov/>

MISSISSIPPI RIVER SYSTEM LIGHT LIST VIA INTERNET https://www.navcen.uscg.gov/pdf/lightLists/LightList_V5_2022.pdf

ABBREVIATIONS

A through H

ADRIFT - Buoy Adrift
AICW - Atlantic Intracoastal Waterway
Al - Alternating
B - Buoy
BKW - Breakwater
bl - Blast
BNM - Broadcast Notice to Mariner
bu - Blue
C - Canadian
CHAN - Channel
CGD - Coast Guard District
C/O - Cut Off
CONT - Contour
CRK - Creek
CONST - Construction
DAYMK/Daymk - Daymark
DBN/Dbn - Daybeacon
DBD/DAYBD - Dayboard
DEFAC - Defaced
DEST - Destroyed
DISCON - Discontinued
DMGD/DAMGD - Damaged
ec - eclipse
EST - Established Aid
ev - every
EVAL - Evaluation
EXT - Extinguished
F - Fixed
fl - flash
Fl - Flashing
G - Green
GIWW - Gulf Intracoastal Waterway
HAZ - Hazard to Navigation
HBR - Harbor

I through O

I - Interrupted
ICW - Intracoastal Waterway
IMCH - Improper Characteristic
INL - Inlet
INOP - Not Operating
INT - Intensity
ISL - Islet
Iso - Isophase
kHz - Kilohertz
LAT - Latitude
LB - Lighted Buoy
LBB - Lighted Bell Buoy
LHB - Lighted Horn Buoy
LGB - Lighted Gong Buoy
LONG - Longitude
LNM - Local Notice to Mariners
LT - Light
LT CONT - Light Continuous
LTR - Letter
LWB - Lighted Whistle Buoy
LWP - Left Watching Properly
MHz - Megahertz
MISS/MSNG - Missing
Mo - Morse Code
MRASS - Marine Radio Activated Sound Signal
MSLD - Misleading
N/C - Not Charted
NGA - National Geospatial-Intelligence Agency
NO/NUM - Number
NOS - National Ocean Service
NW - Notice Writer
OBSCU - Obscured
OBST - Obstruction
OBSTR - Obstruction

P through Z

PRIV - Private Aid
Q - Quick
R - Red
RACON - Radar Transponder Beacon
Ra ref - Radar reflector
RBN - Radio Beacon
REBUILT - Aid Rebuilt
RECOVERED - Aid Recovered
RED - Red Buoy
REFL - Reflective
RRL - Range Rear Light
RELIGHTED - Aid Relit
RELOC - Relocated
RESET ON STATION - Aid Reset on Station
RFL - Range Front Light
RIV - River
RRASS - Remote Radio Activated Sound Signal
s - seconds
SEC - Section
SHL - Shoaling
si - silent
SIG - Signal
SND - Sound
SPM - Single Point Mooring Buoy
SS - Sound Signal
STA - Station
STRUCT - Structure
St M - Statute Mile
TEMP - Temporary Aid Change
TMK - Topmark
TRLB - Temporarily Replaced by Lighted Buoy
TRLT - Temporarily Replaced by Light
TRUB - Temporarily Replaced by Unlighted Buoy
USACE - Army Corps of Engineers

HOR - Horizontal Clearance
HT - Height

Oc - Occulting
ODAS - Anchored Oceanographic Data Buoy

W - White
Y - Yellow

Additional Abbreviations Specific to this LNM Edition:

RIAC - River Industry Action Committee
MMSI - Mobile Maritime Service Identity
AIS - Automatic Identification System
ATON - Aids To Navigation
COTP - Captain of The Port
TRDBN - Temporary Replaced by Daybeacon
C.F.S. - Cubic Feet per Second
CFR - Code of Federal Regulations
IAW - In Accordance With
h.p. - horse power
MPH - Miles Per Hour
TVA - Tennessee Valley Authority
INC - Incorporated
IENC - Inland Electronic Navigation Chart
WAP - Waterway Action Plan
MSIB - Marine Safety Information Bulletin

SECTION I - SPECIAL NOTICES

This section contains information of special concern to the Mariner.

DEPARTMENT OF HOMELAND SECURITY SUSPICIOUS ACTIVITY

The Department of Homeland Security (DHS) encourages the maritime public to report information concerning suspicious activity to the local Federal Bureau of Investigation Joint Terrorism Task Force (JTTF) Office, http://www.fbi.gov/about-us/investigate/terrorism/terrorism_jtfts, or to other appropriate authorities. The U.S. Coast Guard reminds the maritime industry that they may also report information concerning suspicious activity to the www.AmericasWaterwayWatch.org, the National Response Center (NRC) 1-800-424-8802 or 1-877-24WATCH.

LNM: 02-19

WESTERN RIVERS FLOATING AIDS TO NAVIGATION

The U.S. Coast Guard is responsible for placing and maintaining all aids to navigation. Buoys are set to mark project depths taking into consideration the prevailing river stages and obstructions. Buoy positions on the Inland Electronic Navigation Chart (IENC) are approximate, and subject to change depending on prevailing river stages and obstructions.

Buoys should always be given as wide a berth in passing as possible, consistent with the length and width of the vessel or tow and the width of the bend or crossing.

Buoys should always be used with caution. They may be carried off position by high water, accumulation of drift, ice, or sunk by collision or other causes. In those circumstances buoy marks will remain on the IENC and indicate the last known position of the buoy. Presence of a buoy mark on the IENC does not necessarily mean a buoy will be physically on position. When buoys are missing they will be replaced as soon as possible.

LNM: 16-19

GPS TESTING

At times, throughout our area of responsibility, multiple U.S. Government Agencies conduct GPS testing. These tests vary in duration, affected range from the test site and potential impact to the maritime user as they may affect systems that rely on GPS such as E-911, AIS and DSC. More information is available at the U.S. Coast Guard Navigation Center Website, <https://www.navcen.uscg.gov>. During these periods, GPS users are encouraged to report any GPS outages that they may experience, to the Navigation Information Service (NIS) by calling (703) 313-5900 or by using the NAVCEN Website to submit a GPS problem report.

LNM: 07-19

ARKANSAS RIVER - USACE CHANNEL STATUS REPORTS - UPDATE

Attached as enclosures to this LNM, are USACE Arkansas River Channel Status Reports.

LNM: 30-22

SUNSET OF NOAA PRINTED CHARTS

**** Cancellation of NOAA Paper and Raster Nautical Charts ****

The National Oceanic and Atmospheric Administration (NOAA) is undertaking a multi-year program to end production and maintenance of its suite of over 1,000 traditional paper nautical charts and all associated raster chart products and services, including: Print-on-Demand (POD) paper nautical charts, Full-size chart PDF files, BookletChart™ PDF files, NOAA raster navigational charts (NOAA RNC®), the NOAA RNC tile service, and the online RNC viewer.

Six months notice of the intent to cancel a specific chart is provided in a "Last Edition" notice. The final cancellation of a chart is made in a "Canceled" notice. Both types of notices will appear in LNM Section IV, "Chart Correction". A comprehensive list of all canceled NOAA charts is available at: <http://www.charts.noaa.gov/MCD/Dole.shtml>.

Traditional paper nautical chart production is ending to enable the creation and maintenance of larger scale, more up-to-date, higher quality coverage of NOAA's electronic navigational chart (NOAA ENC®) product. This will significantly enhance the amount of charted detail available to mariners. More information about NOAA's program to sunset traditional paper charts is on the NOAA Coast Survey website at:

<https://nauticalcharts.noaa.gov/charts/farewell-to-traditional-nautical-charts.html>.

An online NOAA Custom Chart application at: <https://devgis.charttools.noaa.gov/pod> is available to create chart images from ENC data, which may then be printed. Notices to Mariners will not be issued for NOAA Custom Charts.

LNM: 10-21

LOWER MISSISSIPPI RIVER - CHANNEL CONDITION/SAFETY ADVISORY

The COTP Lower Mississippi River has issued a low water Safety Advisory between approximate Miles 869.0 and 303.0. The USACE maintained depths and widths, may not be attainable on all buoy lines. It is recommended that mariners monitor all gauge readings, for safe navigation. The COTP Lower Mississippi River with the concurrence of the Lower Mississippi River Committee, recommend the following limits for southbound tows:

Transiting between Miles 869.0 and 585.0.

Drafts no greater than 11 feet and

Barges to be configured no more than 7 wide.

Transiting between Miles 585.0 and 303.0.

Drafts no greater than 11 feet 6 inches and

Barges to be configured no more than 7 wide.

All barges that are currently in the system with drafts greater than the advised depths shall be placed on inboard strings. Mariners are requested to contact U.S. Coast Guard Sector Western Rivers Command Center via VHF-FM Channel 16 or at (866) 777-2784, to report areas of shoaling, hazardous conditions or missing aids to navigation.

LNM: 28-22

ILLINOIS WATERWAY - CHANNEL CONDITION/SAFETY ADVISORY - UPDATE

The following areas are in the low water watch phase IAW the Western Rivers WAP Annex:

Hardon (Mile 49.9 – Mile 10.0) and

Grafton (Mile 9.9 – Mile 0.0).

Deep draft tows are advised to depart the area. Vessels shall transit this area at their slowest safe speed near fleeting areas to minimize impact due to the narrow channel width. Tow operators are advised to place the heaviest barges in the middle of the tow and identify fleeting areas in the event of a river closure. Mariners are requested to transit the area with caution and contact U.S. Coast Guard Sector Upper Mississippi River via VHF-FM Channel 16, telephone at (314) 269-2332, or email at <mailto:sumrwaterways@uscg.mil>, to report shoaling, hazardous conditions or missing aids to navigation.

LNM: 30-22

MISSOURI RIVER - CHANNEL CONDITION/SAFETY ADVISORY

The following areas are in the low water watch phase IAW the Western Rivers WAP Annex:

Jefferson Reach (Mile 200.0 – Mile 100.0) and

Washington Reach (Mile 100.0 – Mile 0.0).

Deep draft tows are advised to depart the area. All vessels SHALL transit these areas at a slow speed near fleeting areas, to minimize wake impact, due to the narrow channel width. Tow operators are advised to place the heaviest barges in the middle of the tow and identify fleeting areas in the event of a river closure. Mariners are requested to transit these areas with caution and contact U.S. Coast Guard Sector Upper Mississippi River via VHF-FM Channel 16, or at (314) 269-2332, or via e-mail at sumrwaterways@uscg.mil, to report shoaling, hazardous conditions or missing aids to navigation.

LNM: 30-22

UPPER MISSISSIPPI RIVER - AIDS TO NAVIGATION

Multiple can and nun buoys have been reported not properly marking the channel between approximate Miles 631.0 and 379.4. Mariners are urged to exercise caution in the area.

LNM: 24-22

UPPER MISSISSIPPI RIVER - ILLINOIS WATERWAY - MISSOURI RIVER - MARINE EVENTS/FIREWORKS DISPLAYS

Attached as an enclosure to this LNM is U.S. Coast Guard Sector Upper Mississippi River MSIB 08-22, regarding marine events/fireworks displays on the Upper Mississippi River, Illinois Waterway and Missouri River.

LNM: 27-22

LOWER MISSISSIPPI RIVER - SOUTHWEST PASS WEST JETTY - COLREGS UPDATE

The Code of Federal Regulations section number 33 CFR 80.825c, is being updated to reflect a change in a line drawn from position 28-57-42.0N 089-22-18.0W to position 28-51-24.0N 089-24-30.0W; thence to position 28-52-39.0N 089-27-06.0W; thence to the seaward extremity of the Southwest Pass West Jetty located at position 28-54-31.959N 089-26-07.455W.

LNM: 30-22

UPPER MISSISSIPPI RIVER - USACE PROPOSAL TO ESTABLISH MOORING FACILITIES

Attached as an enclosure to this LNM, is USACE Rock Island District Notice to Navigation Interests MR 22-201120, requesting input from waterway users regarding placement of USACE Mooring Facilities. The review period is from August 1, 2022 until August 31, 2022.

LNM: 30-22

SECTION II - DISCREPANCIES

This section lists all reported and corrected discrepancies related to Aids to Navigation in this edition. A discrepancy is a change in the status of an aid to navigation that differs from what is published or charted.

DISCREPANCIES (FEDERAL AIDS)

LLNR	Aid Name	Status	Chart No.	BNM Ref.	LNM St	LNM End
280	Karns Island Upper Light	STRUCT DEST		0651OV	31/18	
990	Milligan Bend Light	STRUCT DEST		0642LM	51/19	
1010	Webber Falls Jetty Light	STRUCT DEST		0641LM	51/19	
1020	Bluff View Light	STRUCT DEST		0640LM	51/19	
1055	Hisaw Bottom Light	LT EXT		0196LM	40/18	
1070	Brier Creek Light	STRUCT DEST		0205LM	31/15	
1077	Sandtown Bottom Light	STRUCT DEST		0457LM	39/19	
1200	Black Rock Daybeacon	STRUCT DEST		0379LM	35/19	
1205	Gans Light	STRUCT DEST		0335LM	33/19	
1213	Non Lateral Mark 330.4	STRUCT DEST		0087LM	05/16	
1220	Onion Creek Daybeacon	STRUCT DMGD		0334LM	33/19	
1223	Non Lateral Mark 328.5	STRUCT DMGD		0333LM	33/19	
1225	Tucker Lake Light	STRUCT DEST		0332LM	33/19	
1230	Mcnabb Bottom Daybeacon	STRUCT DEST		0332LM	33/19	
1240	Deadman Slough Light	STRUCT DEST		0330LM	33/19	
1255	Wilsons Rock Light	STRUCT DMGD		0380LM	35/19	
1265	Peno Point Daybeacon	DAYMK DMGD		0580LM	47/19	
1267	Non Lateral Mark 313.9	STRUCT DEST		0089LM	05/16	
1315	Garrison Creek Daybeacon	DAYMK MISSING		0377LM	35/19	
1360	Crawford County Daybeacon	STRUCT DEST		0378LM	35/19	
1365	Jeffrey Light	DAYMK MISSING		0376LM	35/19	
1390	Fort Chaffee Light	STRUCT DEST		0579LM	47/19	
1395	Haroldton Light	DAYMK MISSING		0578LM	47/19	
1400	New Haroldton Light	STRUCT DEST		0574LM	47/19	
1420	Gun Club Lake Daybeacon	DAYMK MISSING		0582LM	47/19	
1427	Big Creek Daybeacon	DAYMK MISSING		0575LM	47/19	
1430	Arbuckle Island Light	STRUCT DEST		0091LM	05/16	
1435	Clear Creek Light	DAYMK MISSING		0584LM	41/19	
1445	Crooked Slough Light	STRUCT DEST		0583LM	47/19	
1455	Mulberry River Daybeacon	STRUCT DEST		0041UM	11/17	
1510	Moore's Creek Light	LT IMCH/STRUCT DMGD		0394LM	44/16	
1515	Roseville Daybeacon	DAYMK MISSING		0604LM	50/19	
1520	O'Kane Island Light	LT IMCH/STRUCT DMGD		0393LM	44/16	
1525	Alix Bottom Light	STRUCT DEST		0605LM	50/19	
1530	County Line Daybeacon	STRUCT DEST		0606LM	50/19	
1532	Non Lateral Mark 246.3	DAYMK MISSING		0607LM	50/19	
1535	Kalamazoo Light	DAYMK MISSING		0608LM	50/19	
1562	Non Lateral Mark 236.3	DAYMK MISSING		0609LM	50/19	
1615	Dublin Daybeacon	STRUCT DEST		0610LM	50/19	
1650	Bunker Hill Upper Daybeacon	STRUCT DEST		0639LM	51/19	
1660	Bunker Hill Lower Daybeacon	STRUCT DEST		0643LM	51/19	
1695	Dardanelle Reach Light	DAYMK DMGD		0204LM	31/15	
1697	Non Lateral Mark 201.4	STRUCT DEST		0200LM	41/18	

1700	Elberta Light	DAYMK MISSING	0611LM	50/19
1705	Old Neely Daybeacon	DAYMK MISSING	0612LM	50/19
1708	Non Lateral Mark 197.9	STRUCT DEST	0052LM	13/17
1710	Point Bar Cutoff Light	DAYMK MISSING	0613LM	50/19
1715	Hola Bend Cutoff Light	DAYMK MISSING	0614LM	50/19
1725	Reeds Ferry Light	DAYMK MISSING	0615LM	50/19
1733	Non Lateral Mark 189.8	DAYMK MISSING	0616LM	50/19
1735	Sweeden Island Light	LT EXT/DAYMK MISSING	0617LM	50/19
1738	Non Lateral Mark 188.8	DAYMK MISSING	0618LM	50/19
1745	Wilson Light	STRUCT DEST	0620LM	50/19
1770	Willow Bend Lower Daybeacon	DAYMK MISSING	0621LM	50/19
1798	Non Lateral Mark 175.6	DAYMK MISSING	0622LM	50/19
1800	Point Remove Creek Light	DAYMK MISSING	0623LM	50/19
1815	Ellis Island Light	STRUCT DEST	0630LM	51/19
1817	Non Lateral Mark 171.2	DAYMK MISSING	0631LM	51/19
1845	Stane Reach Upper Daybeacon	DAYMK DMGD	0634LM	51/19
1850	Stane Reach Light	DAYMK DMGD	0635LM	51/19
1890	Belk Corner Light	DAYMK MISSING/STRUCT DMGD	0558LM	45/19
1903	Non Lateral Mark 150.9	DAYMK MISSING	0560LM	45/19
1915	Bigelow Middle Daybeacon	DAYMK DMGD	0563LM	45/19
1920	Bigelow Lower Light	DAYMK MISSING	0538LM	44/19
1930	Tri County Light	STRUCT DEST	0370LM	41/16
1940	Beaver Dam Creek Daybeacon	STRUCT DMGD	0636LM	51/19
1948	Non Lateral Mark 138.8	DAYMK MISSING	0539LM	44/19
1953	Non Lateral Mark 137.6	DAYMK MISSING	0540LM	44/19
1960	Palarm Light	DAYMK MISSING	0541LM	44/19
1975	Maumelle River Upper Daybeacon	STRUCT DEST	0565LM	45/19
1988	Non Lateral Mark 130.6	DAYMK MISSING	0542LM	44/19
2030	Burns Park Light	STRUCT DEST	0514LM	42/19
2045	Waterworks Bend Light	DAYMK DMGD	0515LM	42/19
2130	Willow Bar Light	LT EXT	0524LM	42/19
2143	Non Lateral Mark 106.5	DAYMK MISSING	0637LM	51/19
2160	Estes Place Light	DAYMK IMCH/STRUCT DMGD	0396LM	44/16
2199	Non Lateral Mark 92.0	STRUCT DEST	0398LM	44/16
2370	Ste. Marie Bend Lower Daybeacon	STRUCT DEST	0407LM	45/16
2435	Richland Bend Middle Daybeacon	STRUCT DEST	0099LM	16/18
2485	Little Bayou Meto Lower Daybeacon	DAYMK DMGD	0094LM	15/18
2498	Cummins Bend Daybeacon	STRUCT DEST	0103LM	06/16
2540	Sample Island Light	STRUCT DEST	0106LM	06/16
2550	Sample Island Lower Light	STRUCT DEST	0107LM	06/16
2665	Owens Lake Daybeacon	DAYMK DMGD	0110LM	06/16
2825	Miller Creek Daybeacon	STRUCT DEST	0346OV	18/18
3195	Young Creek Daybeacon	DAYMK DMGD	0293OV	22/22
3655	Cages Bend Light	STRUCT DEST	0660OV	38/19
3965	Watkins Daybeacon	STRUCT DEST	0245OV	19/17
4250	Shammels Mound Landing Light	STRUCT DEST	0010OV	02/16
4285	Saline Creek Light	STRUCT DEST/TRUB	0221OV	26/16
4315	Pryors Creek Light	STRUCT DEST	0030OV	02/20
4340	Devils Elbow Light	STRUCT DEST	0306OV	16/18

4365	Bleidt Landing Light	STRUCT DEST/TRUB	0137OV	17/21
4390	Crooked Creek Light	STRUCT DEST/TRUB	0383OV	36/16
4455	Prison Farm Landing Light	STRUCT DEST	0145OV	17/21
4500	Kuttawa Bar Light	STRUCT DEST	0243OV	12/18
4505	Money Cliff Light	STRUCT DEST	0364OV	19/18
6985	Sand Point Lower Light	STRUCT DEST	0102UM	20/22
6990	Circle Light	STRUCT DMGD	0102UM	20/22
6995	Spring Bay Daybeacon	STRUCT DEST	0102um	20/22
7035	Drolls Point Light	STRUCT DEST/TRLB	0233UM	23/20
7525	Grand Island Foot Light	STRUCT DEST	0015UM	05/22
7565	Sugar Creek Light	STRUCT DEST	0526UM	51/20
7585	Frederick Light	STRUCT DEST	0539UM	29/19
7650	Briggs Landing Light	LT EXT/STRUCT DMGD	0890UM	51/19
7695	Moore's Island Light	STRUCT DEST	0037UM	12/22
7705	Wilson Island Daybeacon	DAYMK DMGD	0104UM	18/21
7850	Florence Light	LT EXT	0055UM	14/22
8540	Blaines Island Light	STRUCT DEST	0320OV	25/22
8765	Midway Light	LT EXT	0454OV	41/21
8840	Nine Mile Creek Light	STRUCT DEST	0699OV	33/18
8857	Arbuckle Creek Light	STRUCT DEST/TRDBN		39/20
9150	Washita Point Light	LT EXT	0395LM	33/20
9185	Preston Peninsula Light	REDUCED INT	0420LM	46/16
9442	Black Dog Daybeacon	STRUCT DEST	0198UM	26/21
9456	Six Mile Cut Lower Daybeacon	STRUCT DEST	0518UM	47/18
9470	Four Mile Bend Cutoff Daybeacon	STRUCT DEST	0198UM	26/21
9535	Quaker Oats Light	STRUCT DEST	0043OV	06/16
9565	Putney Daybeacon	DAYMK DMGD	0768OV	52/19
9590	Iron Bank Light	LT EXT	0770OV	52/19
9630	Samuel Light	LT EXT	0771OV	52/19
9660	Osage Orange Daybeacon	DAYMK DMGD	0773OV	52/19
9663	Barker Daybeacon	DAYMK MISSING/STRUCT DMGD	0774OV	52/19
9665	French Point Light	STRUCT DEST	0775OV	52/19
9680	Island 8 Chute Upper Daybeacon	DAYMK MISSING/STRUCT DMGD	0787OV	52/19
9690	Milton Bell Light	LT EXT	0172OV	22/16
9695	Lester Light	STRUCT DEST	0777OV	52/19
9700	Island 10 Bar Light	LT EXT	0779OV	52/19
9707	Everest Landing Daybeacon	DAYMK MISSING/STRUCT DMGD	0780OV	52/19
9715	Groom Towhead Daybeacon	STRUCT DEST	0781OV	52/19
9725	Morrison Towhead Daybeacon	LT EXT	0788OV	52/19
9770	Nolan Daybeacon	DAYMK MISSING	0783OV	52/19
9780	Williams Point Daybeacon	DAYMK DMGD	0778OV	52/19
9790	Bixby Towhead Light	DAYMK MISSING	0786OV	52/19
9810	Merriwether Bend Light	LT EXT/DAYMK MISSING	0791OV	52/19
9825	Carey Upper Daybeacon	STRUCT DEST	0648LM	52/19
9830	Little Cypress Bend Light	LT EXT/DAYMK DMGD	0649LM	52/19
9845	Murphy Smith Upper Daybeacon	STRUCT DEST	0065LM	14/17
9860	Robinson Bayou Light	LT EXT	0650LM	52/19
9905	Blaker Towhead Light	LT EXT/DAYMK DMGD	0651LM	52/19
9910	Blaker Towhead Lower Light	LT EXT	0652LM	52/19

9980	Obion Bar Light	LT EXT/DAYMK MISSING	0653LM	52/19
10185	Cedar Point Light	REDUCED INT	0031LM	18/22
10195	Dean Island Light	REDUCED INT	0327LM	33/19
10210	Brandywine Chute Light	REDUCED INT	0031LM	18/22
10225	Island 40 Foot Light	STRUCT DEST	0232LM	49/18
10540	Harbert Point Light	LT EXT	0256LM	36/15
10545	Stumpy Point Light	STRUCT DEST	0249LM	52/18
10625	Delta Lower Light	STRUCT DEST	0118LM	06/16
10650	Miller Point Light	STRUCT DEST	0171LM	14/16
10660	Old Town Bend Foot Light	STRUCT DEST	0253LM	36/15
10685	Robson Light	STRUCT DEST	0116LM	06/16
10700	Sunflower Cut-Off Foot Light	STRUCT DEST	0115LM	06/16
10710	Ludlow Bar Light	DAYMK DMGD	0018LM	04/18
10715	Wood Cottage Light	STRUCT DEST	0114LM	06/16
10720	Knowlton Light	STRUCT DEST	0113LM	06/16
10730	Mason Landing Daybeacon	STRUCT DEST	0172LM	14/16
10815	Riverton Middle Bar Light	STRUCT DEST	0113LM	21/18
10885	Cypress Bend Light	STRUCT DEST	0032LM	07/18
10895	Eutaw Bar Light	STRUCT DEST	0365LM	35/19
10905	Mounds Crevasse Lower Light	STRUCT DEST	0114LM	21/18
10910	Boliver Light	STRUCT DEST	0069LM	11/18
10955	Miller Bend Light	STRUCT DEST	0030LM	06/18
10965	La Grange Towhead Light	STRUCT DEST	0367LM	35/19
11050	Vaucluse Bend Light	STRUCT DEST	0028LM	06/18
11070	Anconia Point Light	STRUCT DEST	0368LM	35/19
11080	Lakeport Light	STRUCT DEST	0369LM	35/19
11085	Walnut Point Light	STRUCT DEST	0370LM	35/19
11125	Corregidor Light	STRUCT DEST	0080LM	05/16
11130	Sarah Island Light	STRUCT DEST	0371LM	35/19
11170	Stack Island Light	STRUCT DEST	0372LM	35/19
11180	STACK ISLAND LOWER LIGHT	STRUCT DEST	0373LM	35/19
11195	Chinaman Light	STRUCT DEST	0374LM	35/19
11210	Fitler Point Daybeacon	STRUCT DEST	0170LM	28/17
11215	Seitz Light	STRUCT DEST	0448LM	38/19
11220	Cottonwood Bar Pointway Light	STRUCT DEST	0449LM	38/19
11245	Willow Point Light	DAYMK DMGD	0450LM	38/19
11250	Belle Island Corner Daybeacon	STRUCT DEST	0451LM	38/19
11270	Cabin Teele Light	STRUCT DEST	0452LM	38/19
11275	Marshall Point Cut-Off Daybeacon	STRUCT DEST	0453LM	38/19
11280	Joseph Henry Daybeacon	STRUCT DEST	0454LM	38/19
11407	Coggins Light	STRUCT DEST	0296LM	29/16
11415	Reid Bedford Point Light	STRUCT DEST	0463LM	39/19
11425	Diamond Light	STRUCT DEST	0464LM	39/19
11430	Sargent Point Light	LT IMCH/DAYMK DMGD	0465LM	39/19
11440	Cannon Point Light	STRUCT DEST	0294LM	41/17
11455	Buckridge Light	STRUCT DEST	0467LM	39/19
11470	Grand Gulf Island Light	STRUCT DEST	0468LM	39/19
11505	Old Levee Light	LT IMCH/DAYMK DMGD	0470LM	39/19
11520	Ashland Light	LT IMCH/DAYMK DMGD	0471LM	39/19

11530	Hole In The Wall Light	LT IMCH/REDUCED INT	0472LM	39/19
11540	Giles Bend Cut-Off Light	STRUCT DEST	0171LM	28/17
11700	Fort Adams Light	STRUCT DEST	0402LM	36/19
11795	Morganza Crevasse Light	STRUCT DEST	0400LM	36/19
11835	Bayou Sara Bend Light	STRUCT DEST	0399LM	36/19
11860	Port Hudson Light	STRUCT DEST	0581NOLA	36/19
11900	Devils Swamp Light	STRUCT DEST	0397LM	36/19
11940	Ben Burman Light	STRUCT DEST	0549LM	44/19
12677	Island 21 Daybeacon	STRUCT DEST	0503UM	27/19
13165	Lock 5A Light	LT EXT	0172UM	20/20
13230	Island 74 Light	STRUCT DEST/TRUB	0380UM	34/20
13430	Root River Upper Light	STRUCT DEST/HAZ NAV	0172UM	20/20
13510	Perry Ruby Light	STRUCT DEST	0061UM	12/17
13720	Crooked Slough Head Daybeacon	STRUCT DEST/TRUB	0482UM	26/19
13725	Crooked Slough Head Light	STRUCT DEST/TRUB	0482UM	26/19
13915	Clayton Lower Daybeacon	STRUCT DEST/TRUB	0240UM	31/18
13970	Swift Slough Upper Daybeacon	DAYMK DMGD	0108UM	20/22
14010	Cassville Upper Daybeacon	STRUCT DEST	0546UM	29/19
14030	Cassville Lower Light	STRUCT DEST	0546UM	29/19
14055	Milkmans Island Light	LT EXT	0172UM	20/20
14105	Maquoketa Island Light	STRUCT DEST	0460UM	25/19
14230	Nine-Mile Island Light	STRUCT DEST	0410LM	36/17
14260	Stone Slough Light	STRUCT DEST	0454UM	25/19
14275	Fever River Light	STRUCT DEST/TRUB	0485UM	45/18
14295	Pulaski Light	STRUCT DEST	0485UM	45/18
14385	Arnold Towhead Light	STRUCT DEST	0449UM	25/19
14445	Sabula Lower Light	STRUCT DEST	0446UM	25/19
14460	Smith Bay Light	STRUCT DEST	0048UM	13/22
14475	Elk River Light	DAYMK DMGD	0257LM	31/21
15170	Edwards Island Upper Light	STRUCT DEST/TRUB	0403UM	26/16
15785	Sny River Light	STRUCT DEST	0114UM	22/22
16200	Portage Des Sioux Light	LT EXT	0088UM	18/22
16785	Lowry Light	STRUCT DEST	0026UM	10/22
16910	Ste. Genevieve Island Light	STRUCT DEST	0557UM	30/19
17000	Chester Prison Upper Light	STRUCT DEST	0026UM	10/22
18140	Dodds Daybeacon	DAYMK IMCH	0294UM	37/21
18170	Boyer River Daybeacon	DAYMK IMCH	0294UM	37/21
18250	Florence Bend Lower Daybeacon	DAYMK IMCH	0346UM	44/21
19375	Weston Daybeacon	STRUCT DEST	0106UM	18/21
20245	New Frankfort Daybeacon	DAYMK MISSING	0363UM	47/21
20250	Little Missouri Bend Daybeacon	STRUCT DEST	0363UM	47/21
21200	Tavern Rock Daybeacon	STRUCT DEST	0275UM	33/21
23285	Cluster Upper Light	STRUCT DEST	0721OV	34/18
24110	Old Lock No. 17 Lower Daybeacon	STRUCT DEST		39/20
26047	Sunken Barge Lighted Buoy WR	MISSING	0519OV	51/21
26470	Notch Lick Light	STRUCT DEST	0210OV	23/21
27090	Wolf Creek Light	LT EXT	0064OV	05/22
27520	Robert Mann Light	STRUCT DEST	0269OV	21/22
27540	Water Works Light	STRUCT DMGD	0179OV	12/22

27855	Graham Varble Light	STRUCT DEST	0134OV	17/21
27935	Dekoven Light	STRUCT DEST	0294OV	23/22
29241.25	Smith Island Lower Daybeacon	STRUCT DEST	0202LM	26/21
29256.65	Cadney Lower Daybeacon	DAYMK DMGD	0205LM	26/21
29272	Deloges Middle Daybeacon	DAYMK IMCH		36/20
29467	Hog Lake Daybeacon	STRUCT DEST		36/20
29618	Red River Entrance Light	STRUCT DEST		37/20
29665	Dry Cypress Daybeacon	STRUCT DEST		37/20
29690	Bayou Cocodrie Upper Daybeacon	STRUCT DEST		37/20
29695	Bayou Cocodrie Daybeacon	STRUCT DEST		37/20
29710	Grassy Lake Daybeacon	DAYMK MISSING		37/20
29725	Alligator Bayou Daybeacon	STRUCT DEST	0216LM	33/17
29750	Timber Lake Daybeacon	STRUCT DEST		37/20
29755	Naples Daybeacon	STRUCT DEST		37/20
29775	Three Rivers Junction Light	STRUCT DEST		37/20
29780	Barbre Daybeacon	STRUCT DEST		37/20
29785	Torras Daybeacon	STRUCT DEST		37/20
29795	Oak Grove Daybeacon	STRUCT DEST		37/20
29845	Houden Point Daybeacon	STRUCT DEST	0255UM	30/21
31240	Serodino Upper Daybeacon	STRUCT DEST	0350OV	30/22
31275	Stevenson Daybeacon	DAYMK IMCH	0260OV	19/22
31995	Dry Creek Light	STRUCT DEST	0402OV	31/20
32140	Chambers Daybeacon	STRUCT DEST	0178OV	11/13
32170	Diamond Island Lower Daybeacon	STRUCT DEST	0177OV	11/13
32325	Condors Landing Light	STRUCT DEST	0127OV	09/20
32445	Sales Light	TRUB/STRUCT DEST	0269OV	19/14
32460	Reynoldsburg Island Light	STRUCT DEST/TRUB	0290OV	15/18
32480	Higgins Light	STRUCT DEST	0342OV	27/15
32530	Standing Rock Upper Light	STRUCT DEST	0658OV	41/13
32570	Fort Henry Light	STRUCT DEST	0160OV	19/21
32585	Pine Bluff Light	STRUCT DEST	0308OV	19/19
32595	Blood River Light	STRUCT DEST/TRUB	0138OV	17/21
32600	Clyde Light	LT EXT	0581OV	44/15
32605	Newburg Light	STRUCT DEST	0362OV	29/15
32650	West Entrance Canal Light	LT EXT	0994OV	50/18
32665	Grand Rivers Light	LT EXT	0993OV	50/18

DISCREPANCIES (FEDERAL AIDS) CORRECTED

LLNR	Aid Name	Status	Chart No.	BNM Ref.	LNM St	LNM End
------	----------	--------	-----------	----------	--------	---------

None

DISCREPANCIES (PRIVATE AIDS)

LLNR	Aid Name	Status	Chart No.	BNM Ref.	LNM St	LNM End
1685	Oakley Dock Light	LT EXT		0307-14 LM	44/14	
1690	Mobley Dock Light	LT EXT		0454-13 LM	48/13	
2100	Oakley Light	LT EXT		0520LM	42/19	
2337	Island Harbor Marina Light	LT EXT			45/16	
2340	Century Tube Lights (2)	LT EXT			45/16	

2400	Pickett And Davison Lights (2)	LT EXT	0481-13 LM	50/13
3725	Lakewood Marina Lights (4)	LT IMCH	0439-15 OV	34/15
3750	Dupont Dock Lights (2)	OFF STA/LT EXT	0305-15 OV	26/15
3795	Nashville Water Intake Lights (2)	LT EXT		44/11
3805	Holnam Dock Lights (2)	LT EXT		44/11
3815	Kerr-Mcgee Dock Lights (2)	LT EXT		44/11
3820	Cohen Terminal Lights (2)	LT EXT		44/11
3930	Alcoa Chemical Dock Lights (2)	MSLD SIG/LT EXT	0216-10 OV	14/10
3960	Hunter Marine Transport Dock Lights (2)	LT EXT		47/08
3995	Riverview Marina Lights (2)	LT EXT		47/08
4055	Clarksville Boat Club Dock Lights (2)	LT EXT	0533-12 OV	34/12
6170	Quantum Chemical Dock Lights (2)	LT EXT	0436-01 UM	31/01
6650	S. T. Services Terminal Lights (2)	LT EXT		41/14
6695	Continental Grain Company Light	LT EXT		41/14
7225	Cargo Carriers Dock Lights (2)	LT EXT		25/08
7235	Pekin Boat Club Breakwater Light	LT EXT		05/16
7250	Shell Dock Lights (2)	LT EXT	0123-02 UM	16/02
7255	Adm Growmark Mooring Light	LT EXT	0122-02 UM	16/02
7260	Sours Grain Tramway Light	LT EXT	0279-03 UM	21/03
7265	Tomen Dock Light	LT EXT		25/08
7295	Adm Growmark Mooring Lights (3)	LT EXT	0281-03 UM	21/03
7460	Cargill Mooring Lights (2)	LT EXT	0284-03 UM	21/03
7620	Cargill Dock Lights (2)	LT EXT		35/08
7725	Cargill Terminal Lights (2)	LT IMCH	0171-18 UM	26/18
7730	Public Service Co. Dock Lights (6)	LT EXT	0119-18 UM	20/18
7730	Public Service Co. Dock Lights (6)	LT IMCH	0171-18 UM	26/18
7760	Adm Growmark Grain Elevator Lights (2)	LT IMCH	0171-18 UM	26/18
9440	Black Dog Lights (5)	LT EXT		43/16
9965	Huffman Grain Light	STRUCT DEST	0131-16 LM	08/16
10300	Cargill Dock Light	LT EXT	0361-01 LM	34/01
10390	Peavey Lights (2)	LT EXT	0398-02 LM	36/02
10395	Suburban Propane Dock Light	LT EXT	0396-02 LM	36/02
10415	Western Tar Products Dock Light	LT EXT	0394-02 LM	36/02
11943	Bear Industries Barge Dock Lights (4)	LT EXT	0600-17 NO	30/17
11990	Riverside Dock Lights (2)	LT EXT	0695-01 UM	40/01
12080	University Dock Lights (3)	LT EXT	0696-01 UM	40/01
12215	Koch Fuel Dock Lights (2)	LT EXT		35/16
12320	Newport Terminal Lights (2)	LT EXT		35/16
12385	Shiely Dock Lights (2)	LT IMCH		35/16
12712	City of Red Wing Metering Station Special Light	MISSING		42/16
12768	Consolidated Grain and Barge Loading Dock Piling Lights (2)	MISSING		42/16
12930	Alma City Dock Light/Daymarks (3)	MISSING		42/16
13405	G. Heileman Brewery Dock Light	MISSING		42/16
14756	Isle Of Capri Casino Marina Daybeacon	MISSING		03/16
15345	Koch Nitrogen Dock Light	LT EXT		41/14
15415	Riverview Park Dock Light	LT EXT	0531-15 UM	49/15
15425	Hall Towing Light	STRUCT DEST	0280UM	25/20

15822	Hannibal Intake Light	LT EXT	0358-20 UM	32/20
16100	Jersey County Grain Dock Lights (2)	LT EXT		19/16
16205	Piasa Harbor Light	LT EXT	0131-15 UM	22/15
16220	Con-Agra Mooring Lights (2)	LT EXT		21/16
16230	Alton Marina Breakwater Lights (3)	LT EXT	0131-15 UM	22/15
16265	Amoco Dock Light	STRUCT DEST		35/09
16280	Amoco Dock Lights (4)	LT EXT		35/09
16310	Sioux City/New Orleans Terminal Light	STRUCT DEST		35/09
16380	Western Dock Lights (9)	LT IMCH		34/08
16390	Adm-Growmark Dock Lights (4)	LT EXT	0776-01 UM	44/01
16430	Union Electric Coal Dock Lights (2)	LT EXT	0305-08 UM	34/08
16445	Continental Cement Lights (2)	LT EXT	0305-08 UM	34/08
16505	Peavey Company Dock Lights (3)	LT EXT	0305-08 UM	34/08
16530	Cahokia Marine Terminal Lights (2)	LT EXT	0305-08 UM	34/08
16540	Slay Bulk Terminal Lights (2)	LT EXT	0305-08 UM	34/08
16545	Peavey Lights (3)	LT EXT	3305-08 UM	34/08
16550	Eagle Marine Industries Light	LT IMCH	0305-08 UM	34/08
16560	Phillips Pipeline Lights (2)	LT EXT	0305-08 UM	34/08
16565	Growmark Dock Lights (2)	LT EXT	0305-08 UM	34/08
16575	Eagle Marine Dock Lights (2)	LT EXT	0305-08 UM	34/08
16600	J.H. Collier Barge Mooring Lights (2)	LT EXT	0305-08 UM	34/08
16605	Clark Oil Refining Dock Lights (4)	LT EXT	0305-08 UM	34/08
16609	Alcoa Foil Lights (2)	LT EXT	0305-08 UM	34/08
16615	Hci Chemtech Dock Lights (2)	LT EXT	0305-08 UM	34/08
16617	Semmaterials Terminal Lights (2)	LT EXT	0305-08 UM	34/08
16630	American Commercial Dock Lights (2)	LT EXT	0305-08 UM	34/08
16655	Bussen Terminal Light	LT EXT	0305-08 UM	34/08
18700	Bunge Dock Lights (3)	MISSING/LT EXT		18/08
19185	St. Joseph L & P Dock Light	LT IMCH		17/08
19415	Leavenworth Water Intake Lights (2)	LT EXT	0104-07 UM	39/07
19460	Smoot Grain Dock Lights (2)	LT EXT	0385-07 UM	39/07
19505	Board Of Public Utilities Light	LT EXT	0386-07 UM	39/07
19535	Public Utilities Intake Lights (3)	LT EXT		38/08
19660	Continental Grain Dock Lights (4)	LT EXT	0181-08 UM	24/08
19695	Kansas City Power And Light Company Lights (2)	LT EXT	0181-08 UM	24/08
20870	U.E. Callaway Intake Lights (2)	LT EXT	0522-20 UM	52/20
21965	Hill Top Energy Lighted Danger Buoy	MISSING		24/22
22873	Moon Township Municipal Authority Back Channel Outfall Danger Buoy	OFF STA	0108-21 OV	14/21
24005	Bens Run Light	LT EXT		03/20
24580	Ohio Power Coal Dock Light	LT EXT	480-21 OV	44/21
25820	Cargill Barge Loading Facility Light	LT EXT	0552-09 OV	40/09
26290	Boone County Sand And Gravel Lights (2)	LT EXT	0769-00 OV	40/00
26833	Transmontaige Dock Lights (2)	LT EXT	286-21 OV	28/21
26860	Dupont Chemical Lights (2)	LT EXT	0330-18 OV	17/18
27367	Transmontaigne Dock Light	LT EXT		40/21
27590	Transmontaigne Dock Lights (4)	LT EXT		40/21
32550	Paris Landing State Park Lights (2)	Status Unreported	0452-20 OV	38/20
32900	Ergon Dock Lights (2)	LT IMCH		17/13

DISCREPANCIES (PRIVATE AIDS) CORRECTED

LLNR	Aid Name	Status	Chart No.	BNM Ref.	LNM St	LNM End
------	----------	--------	-----------	----------	--------	---------

None**PLATFORM DISCREPANCIES**

Name	Status	Position	BNM Ref.	LNM St	LNM End
------	--------	----------	----------	--------	---------

None**PLATFORM DISCREPANCIES CORRECTED**

Name	Status	Position	BNM Ref.	LNM St	LNM End
------	--------	----------	----------	--------	---------

None**SECTION III - TEMPORARY CHANGES and TEMPORARY CHANGES CORRECTED**

This section contains temporary changes and corrections to Aids to Navigation for this edition. When charted aids are temporarily relocated for dredging, testing, evaluation, or marking an obstruction, a temporary correction shall be listed in Section IV giving the new position.

TEMPORARY CHANGES

LLNR	Aid Name	Status	Chart No.	BNM Ref.	LNM St	LNM End
7015	Blue Creek Point Lower Lighted Buoy	TRUB		0379UM	51/21	
7030	Drolls Point Upper Lighted Buoy	TRUB		0379UM	51/21	
7040	Peoria Heights Lighted Buoy	TRUB		0379UM	51/21	
8540	Blaines Island Light	DISCONTINUED			39/20	
8840	Nine Mile Creek Light	DISCONTINUED			11/18	
10455	Armstrong Bar Light	RELOCATED			23/18	
11275	Marshall Point Cut-Off Daybeacon	TRDBN			49/16	
11280	Joseph Henry Daybeacon	TRDBN			49/16	
29880	Kinnikinnic River Daybeacon	DISCONTINUED			21/20	

TEMPORARY CHANGES CORRECTED

LLNR	Aid Name	Status	Chart No.	BNM Ref.	LNM St	LNM End
------	----------	--------	-----------	----------	--------	---------

None**PLATFORM TEMPORARY CHANGES**

Name	Status	Position	BNM Ref.	LNM St	LNM End
------	--------	----------	----------	--------	---------

None**PLATFORM TEMPORARY CHANGES CORRECTED**

Name	Status	Position	BNM Ref.	LNM St	LNM End
------	--------	----------	----------	--------	---------

None**SECTION V - ADVANCE NOTICES**

This section contains advance notice of approved projects, changes to aids to navigation, or upcoming temporary changes such as dredging, etc. Mariners are advised to use caution while transiting these areas.

SUMMARY OF ADVANCED APPROVED PROJECTS**Approved Project(s)**
None**Project Date****Ref. LNM**

Advance Notice(s)

None

SECTION VI - PROPOSED CHANGES

Periodically, the Coast Guard evaluates its system of aids to navigation to determine whether the conditions for which the aids to navigation were established have changed. When changes occur, the feasibility of improving, relocating, replacing, or discontinuing aids are considered. This section contains notice(s) of non-approved, proposed projects open for comment. SPECIAL NOTE: Mariners are requested to respond in writing to the District office unless otherwise noted (see banner page for address).

PROPOSED WATERWAY PROJECTS OPEN FOR PUBLIC COMMENT**Proposed Project(s)****Closing****Docket No.****Ref. LNM**

None

Proposed Change Notice(s)**MISSOURI RIVER**

The Coast Guard is proposing the following Aids to Navigation Changes:

Change Bellefontaine Light (LLNR-21400) at mile 8.6, Left Descending Bank, in approximate position 38-50-48.942N/090-14-26.442W, showing FI (2)R 5s, to Bellefontaine Daybeacon (LLNR-21400) CNR upstream, TR downstream.

Change Weldon Springs Light (LLNR-21250) at mile 43.1, Left Descending Bank, in approximate position 38-41-35.982N/090-38-54.342W, showing FI (2)R 5s, to Weldon Springs Daybeacon (LLNR-21250) CNR upstream, TR downstream.

Change Parsons Light (LLNR-21205) at mile 50.8, Left Descending Bank, in approximate position 38-37-44.603N/090-45-07.799W, showing FI (2)R 5s, to Parsons Daybeacon (LLNR-21205) CNR upstream, CNR downstream.

Change Hancock Light (LLNR-21155) at mile 59.9, Left Descending Bank, in approximate position 38-33-21.478N/090-52-25.884W, showing FI (2)R 5s, to Hancock Daybeacon (LLNR-21155) CNR upstream, CNR downstream.

Change Berheimere Light (LLNR-21025) at mile 87.6, Left Descending Bank, in approximate position 38-40-49.722N/090-16-25.989W, showing FI (2)R 5s, to Berheimere Daybeacon (LLNR-21025) CNR upstream, CNR downstream.

Change Warren County Light (LLNR-20995) at mile 95, Left Descending Bank, in approximate position 38-42.25.057N/091-23-02.397W, showing FI (2)R 5s, to Warren County Daybeacon (LLNR-20995) CNR upstream, CNR downstream.

Change Hermann Lower Light (LLNR-20985) at mile 97, Left Descending Bank, in approximate position 38-42-43.413N/090-25-22.305W, showing FI (2)R 5s, to Hermann Daybeacon (LLNR-20985) CNR upstream, CNR downstream.

Change McGirks Middle Light (LLNR-20950) at mile 100.7, Left Descending Bank, in approximate position 38-42-00.365N/090-29-25.238W, showing FI (2)R 5s, to McGirks Daybeacon (LLNR-20950) TR upstream, CNR downstream.

Change Osage River Upper Light (LLNR-20775) at mile 130.0, Right Descending Bank, in approximate position 38-35-41.094N/091-56-34.092W, showing FI G 4s, to Osage River Upper Daybeacon (LLNR-20775) SG upstream, CNG downstream.

Change Dry Creek Light (LLNR-20750) at mile 135.1, Left Descending Bank, in approximate position 38-33-59.376N/092-01-35.040W, showing FI (2)R 5s, to Dry Creek Daybeacon (LLNR-20750) CNR upstream, CNR downstream.

Change Rocheport Bend Light (LLNR-20540) at mile 184.1, Right Descending Bank, in approximate position 38-56-56.292N/092-32-11.418W, showing FI G 4s, to Rocheport Daybeacon (LLNR-20540) CNG upstream, CNG downstream.

Change Hurricane Creek Light (LLNR-20340) at mile 225.5, Left Descending Bank, in approximate position 39-12-40.230N/092-51-07.566W, showing FI (2)R 5s, to Hurricane Creek Daybeacon (LLNR-20340) TR upstream, TR downstream.

Change Glasgow Light (LLNR-20310) at mile 227.0, Left Descending Bank, in approximate position 39-14-00.974N/092-50-52.136W, showing FI (2)R 5s, to Glasgow Daybeacon (LLNR-20310) TR upstream, TR downstream.

Change Scarlett Light (LLNR-20160) at mile 262.0, Right Descending Bank, in approximate position 39-20-00.704N/093-12-58.938W, showing FI G 4s, to Scarlett Daybeacon (LLNR-20160) SG upstream, CNG downstream.

Change Sibley Light (LLNR-19820) at mile 336.7, Right Descending Bank, in approximate position 39-10-52.682N/094-11-15.727W, showing FI G 4s, to Sibley Daybeacon (LLNR-19820) CNG upstream, SG downstream.

Change Griffith Light (LLNR-19600) at mile 366.5, Right Descending Bank, in approximate position 39-06-30.814N/094-35-46.140W, showing FI G 4s, to Griffith Daybeacon (LLNR-19600) SG upstream, SG downstream.

Comments to be received by August 2, 2022. Please email comments regarding this proposal to: D08-SMB-District-LocalNoticeFeedback@uscg.mil.

LNM: 23/22

KANAWHA RIVER

The Coast Guard is proposing the following Aids to Navigation Changes:

Discontinue Nine Mile Creek Light (LLNR-8840) at mile 8.1, Left Descending Bank, in approximate position 38-46-47.689N/082-01-01.387W.

Discontinue Maupin Landing Light (LLNR-8815) at mile 14.6, Right Descending Bank, in approximate position 38-42-45.620N/081-56-56.673W.

Discontinue Little Guano Creek Daybeacon (LLNR-8710) at mile 33.6, Right Descending Bank, in approximate position 38-32-29.868N/081-52-27.667W.

Discontinue Stewarts Light (LLNR-8690) at mile 38.1, Left Descending Bank, in approximate position 38-29-09.641N/081-50-01.088W.

Discontinue Wright Light (LLNR-8625) at mile 44.4, Left Descending Bank, in approximate position 38-24-33.153N/081-51-01.815W.

Comments to be received by August 2, 2022. Please email comments regarding this proposal to: D08-SMB-District-LocalNoticeFeedback@uscg.mil.

LNM: 23/22

ALLEGHENY RIVER

The Coast Guard is proposing the following Aid to Navigation Change:

Discontinue Karns Island Light (LLNR-285) at mile 26.7, Left Descending Bank, in approximate position 40-38-32.018N/079-41-12.966W.

Comments to be received by August 2, 2022. Please email comments regarding this proposal to: D08-SMB-District-LocalNoticeFeedback@uscg.mil.

LNM: 23/22

MONONGAHELA RIVER

The Coast Guard is proposing the following Aid to Navigation Change:

Discontinue Kelly Run Light (LLNR-22475) at mile 25.8, Right Descending Bank, in approximate position 40-14-38.373N/079-55-24.718W. Comments to be received by September 13, 2022. Please email comments regarding this proposal to: D08-SMB-District-LocalNoticeFeedback@uscg.mil.

LNM: 29/22

SECTION VII - GENERAL

This section contains information of general concern to the Mariners. Mariners are advised to use caution while transiting these areas.

ALLEGHENY RIVER

MILE 0.6 - BRIDGE MAINTENANCE

Sixth Street Bridge; A containment system is installed below low steel and follows the contour of the bridge. Vertical clearance is reduced approximately 1-foot for the middle, 100 feet of the navigation span. Mariners are advised to transit the bridge with extreme caution.

LNM: 12-22

ARKANSAS RIVER

MILE 401.4 - L/D GUARDWALL DAMAGE

The upstream guardwall, near the miter gate recess of the Chouteau L/D 18, in the vicinity of Mile 401.4, is damaged and the steel armor plate has been removed. The concrete is now fully exposed. Until repairs are made mariners are advised to stay to the guidewall side on the upstream portion. Mariners may check with L/D 17, for the latest information. Mariners may contact Mr. Brad Johnson, Navigation Manager at (918) 550-9026, or Mr. Jake Simpson, Navigation Engineer at (918) 430-4783, for additional information.

LNM: 11-22

MILE 348.0 - MILE 347.6 - CHANNEL CONDITION/USACE SAILING INSTRUCTIONS

Shoaling has been reported between approximate Miles 348.0 and 347.6. The USACE has issued "sailing instructions" for mariners to "favor the green line" in the area. Mariners may contact the USACE Tulsa District, Mr. Robert Steiner, Navigation Operation Manager at (918) 775-4475, ext. 5833 or Mr. Jake Simpson, Navigation Field Engineer at (918) 430-4783, for additional information.

LNM: 24-22

MILE 347.9 - CHANNEL CONDITION

Shoaling has been reported in the vicinity of Mile 347.9, mid-channel. Mariners are urged to exercise caution in the area.

LNM: 30-22

MILE 347.1 - MILE 346.6 - CHANNEL CONDITION/USACE SAILING INSTRUCTIONS

Shoaling has been reported between approximate Miles 347.1 and 346.6. The USACE has issued "sailing instructions" for mariners to "run the centerline" in the area. Mariners may contact the USACE Tulsa District, Mr. Robert Steiner, Navigation Operation Manager at (918) 775-4475, ext. 5833 or Mr. Jake Simpson, Navigation Field Engineer at (918) 430-4783, for additional information.

LNM: 24-22

MILE 256.5 - MILE 256.0 - CHANNEL CONDITION/USACE SAILING INSTRUCTION

Due to shoaling, the USACE advises mariners to exercise caution and favor the longwall in the downstream approach to the Ozark-Jeta Taylor L/D Nr. 12, between approximate Miles 256.5 and 256.0. Mariners may contact the USACE Little Rock District Office, at (501) 324-5096 or via e-mail at ceswl-op-om@usace.army.mil, for additional information.

LNM: 28-22

MILE 231.9 - MILE 231.5 - CHANNEL CONDITION/USACE SAILING INSTRUCTION

Due to shoaling, the USACE advises mariners, both up-bound and down-bound, to "run the green line" between approximate Miles 231.9 and 231.5. Mariners may contact the USACE Little Rock District Office, at (501) 324-5096 or via e-mail at ceswl-op-om@usace.army.mil, for additional information.

LNM: 29-22

MILE 231.0 - CHANNEL CONDITION

Shoaling has been reported in the vicinity of Mile 231.0. Mariners are advised to keep 150 feet off the nun buoy line and transit with caution.

LNM: 29-22

MILE 142.6 - MILE 142.4 - CHANNEL CONDITION/USACE SAILING INSTRUCTION

Due to shoaling, the USACE advises mariners to exercise caution, "run the green line" and no passing while transiting between approximate Miles 142.6 and 142.4. Mariners may contact the USACE Little Rock District Office, at (501) 324-5096 or via e-mail at ceswl-op-om@usace.army.mil, for additional information.

LNM: 28-22

MILE 118.2 - BRIDGE PROTECTION CELL DAMAGE

The upstream left descending pier protection cell at the Clinton Presidential Park Bridge in the vicinity of Mile 118.2, is damaged and leaning into the left descending bridge pier. Mariners are urged to exercise caution in the area. Mariners may contact the USACE Little Rock District Office at (501) 324-5096 or via e-mail at: ceswl-op-om@usace.army.mil, for additional information.

LNM: 48-21

MILE 86.3 - CHANNEL CONDITION/USACE SAILING INSTRUCTION

Shoaling has been reported in the vicinity of Mile 86.3, Colonel Charles D. Maynard L/D Nr. 5. The USACE advises mariners to favor the long wall, in the downstream approach, both up-bound and down-bound. Mariners may contact the USACE Little Rock District Office at (501) 324-5096 or via e-mail at ceswl-op-om@usace.army.mil, for additional information.

LNM: 26-22

MILE 50.2**MILE 10.3 - L/D'S CLOSURES/RESTRICTIONS**

Attached as enclosures to this LNM are USACE Little Rock District Navigation Notices 22-21 and 22-23, regarding L/D closures/restrictions for the Joe Hardin L/D (Nr. 3), in the vicinity of Mile 50.2 and for the Norrell L/D (Nr. 1), in the vicinity of Mile 10.3. Mariners may contact the USACE Little Rock District Office, at (501) 324-5096 or via e-mail at ceswl-op-om@usace.army.mil, for additional information.

LNM: 24-22

MILE 50.0 - MILE 49.5 - CHANNEL CONDITION/USACE SAILING INSTRUCTION

Due to shoaling, the USACE advises mariners to exercise caution and favor the longwall, in the downstream approach to the Joe Hardin L/D Nr. 3, between approximate Miles 50.0 and 49.5. Mariners may contact the USACE Little Rock District Office, at (501) 324-5096 or via e-mail at ceswl-op-om@usace.army.mil, for additional information.

LNM: 28-22

MILE 10.3 - L/D INSTRUCTION

Continuing until further notice, mariners are advised to avoid contact with the downstream landside/long wall stoplog slot cut located downstream of the miter gate recess, at Norrell L/D Nr. 1, in the vicinity of Mile 10.3. All up-bound tows MUST stop along the long wall, downstream of the stoplog cut and transition to the river side/short wall prior to lockage. Vessels are to exercise caution to safely transit by the downstream long wall stoplog slot cut. These locking instructions are to remain in place until further notice. Mariners may contact the USACE Little Rock District Office at (501) 324-5096 or via email at: ceswl-op-om@usace.army.mil, for additional information.

LNM: 30-22

MILE 0.5 - DREDGE OPERATION

Continuing until further notice, the Dredge JADWIN is conducting dredging operations in the vicinity of Mile 0.5, downstream of the Montgomery Point L/D. The Dredge JADWIN will monitor VHF-FM Channel 16 or 82. Mariners are advised to contact the dredge, prior to arrival in the area, to ensure safe navigation. Mariners may contact the USACE Little Rock District Office at (501) 324-5096 or via email at: ceswl-op-om@usace.army.mil, for additional information.

LNM: 30-22

BIG SANDY RIVER**MILE 9.0 - MILE 0.0 - DREDGE OPERATION**

Continuing until approximately August 13, 2022, Amherst Madison, contractor for the USACE, will conduct dredging operations between approximate Miles 9.0 and 0.0. Dredging will begin in the vicinity of the mouth and proceed to other upstream locations ending at Mile 9.0. Disposal operations will take place at an approved site located on the Ohio River, near the RDB, between approximate Miles 321.0 and 322.0. The contractor's floating plant will consist of the M/V MILTON, M/V BUS BROWN, 2 barge mounted cranes, and 6 material barges. The M/V MILTON will be in the vicinity of the dredge site and should be contacted for passing arrangements via VHF-FM Channel 13. The M/V BUS BROWN will be used to transport the material barges between the dredge site and the disposal area and will be monitoring VHF-FM Channel 13. Work will be conducted Monday through Saturday, from 6:00 a.m. until midnight. During non-working hours, the contractors floating plant will be moored at the worksite and lighted accordingly. Mariners are urged to transit the area at their slowest safe speed to minimize their wake and proceed with caution after passing arrangements have been made.

LNM: 24-22

GREEN RIVER**MILE 8.3 - BRIDGE OPERATION**

Louisville and Nashville Railroad Drawbridge; The bridge will be unattended and left in the open-to-navigation position. Mariners will be notified when the bridge is back in operation.

LNM: 20-22

ILLINOIS WATERWAY**MILE 288.7 - MILE 287.3 - BRIDGE REPAIRS**

Joliet Harbor Bridges; Due to ongoing bridge work, mariners are required to provide 1-hour advance notice, when requesting drawspan openings.

LNM: 19-20

MILE 286.0 - L/D REPAIRS

Continuing until 6:00 a.m., August 1, 2022, the USACE will be conducting repairs to the armor wall, upper left descending guidewall at the Brandon L/D, in the vicinity of Mile 286.0. Mariners are urged to exercise caution while transiting. Mariners are asked to contact the L/D at (815) 744-1714, or via VHF-FM Channel 16, for transit instructions.

LNM: 30-22

MILE 286.0 - L/D CLOSURES/RESTRICTIONS

Continuing until August 14, 2022, from 6:00 a.m. until 6:00 p.m., each day, Brandon Road L/D in the vicinity of Mile 286.0, will be closed. From 6:00 p.m. until 6:00 a.m., each day, during the same period, a 70-foot width restriction will be in place. The tow haulage units will be out of operation during this period and helper boats will be needed for pulling cuts. Mariners are requested not to tie up along the guide walls during this period. Mariners may contact Brandon L/D at (815) 744-1714, or via VHF-FM Channel 14, for additional information.

LNM: 18-22

MILE 286.0 - L/D CLOSURE/RESTRICTION

Commencing August 15, 2022 and continuing until September 4, 2022, the Brandon Road L/D, in the vicinity of Mile 286.0, will be closed to all traffic.

MILE 286.0 - L/D CLOSURE/RESTRICTION

Commencing September 5, 2022 and continuing until September 9, 2022, a 70-foot width restriction will be in place. The tow haulage units will be out of operation during this period and helper boats will be needed for pulling cuts. Mariners are requested not to tie up along the guide walls during these periods. Mariners may contact Brandon L/D at (815) 744-1714, or via VHF-FM Channel 14, for additional information.

LNM: 28-22

MILE 230.7 - MILE 230.5 - DREDGE OPERATION

Continuing until further notice, the M/V LaSALLE is conducting dredging operations/strike removal between approximate Miles 230.7 and 230.5, LDB, Starved Rock Lower. Work will be conducted from 6:00 a.m. until 6:00 p.m., each day. The M/V LaSALLE will monitor VHF-FM Channel 14 or 82 and requests 30-minutes advance notice of passage. Mariners are urged to transit the area at their slowest safe speed to minimize their wake and proceed with caution after passing arrangements have been made.

LNM: 28-22

MILE 174.9 - SUBMERGED OBSTRUCTION

A submerged rock pile has been reported in the vicinity of Mile 174.9, RDB, inside the navigation channel, east of Circle Light (LLNR-6980). Mariners are urged to exercise caution in the area.

LNM: 26-22

MILE 158.5 - CHANNEL CONDITION

Shoaling has been reported in the vicinity of Mile 158.5, mid-channel. Mariners are urged to transit the area with caution.

LNM: 25-22

MILE 157.7 - INVASIVE CARP DETERRENCE

Attached as an enclosure to this LNM, is USACE Rock Island District Notice to Navigation Interests 22-200975, regarding the installation and testing of invasive carp deterrence measures.

LNM: 26-22

MILE 151.2 - BRIDGE OPERATION

Pekin Railroad Drawbridge; Continuing until further notice, the bridge will be unattended and left in the open-to-navigation position. The bridge shall initiate the closing sequence for an approaching train by broadcasting the closure on VHF-FM Channel 16, 10-minutes prior to closure and immediately prior to closing. If no mariners respond to the broadcast, the operator of the bridge may begin the closing sequence. For additional information, mariners may contact Chad Toussaint, with Union Pacific Railroad at (979) 665-5541.

LNM: 18-20

MILE 151.0 - CHANNEL CONDITION

Shoaling has been reported in the vicinity of Mile 151.0, near the nun buoy line. Mariners are urged to exercise caution in the area.

LNM: 30-22

MILE 79.0 - MILE 76.0 - DREDGE OPERATION

Continuing until approximately August 4, 2022, Dredge POTTER is performing dredging operations between approximate Miles 79.0 and 76.0, Old LaGrange L/D. Dredging will be performed 24-hours a day, 7-days a week. The Dredge POTTER will monitor VHF-FM Channel 13 or 16 and requests 30-minutes advance notice of passage. Mariners are urged to transit the area at their slowest safe speed to minimize their wake and proceed with caution after passing arrangements have been made.

LNM: 30-22

MILE 76.0 - CHANNEL CONDITION

Shoaling has been reported in the vicinity of Mile 76.0. Mariners are urged to exercise caution in the area.

LNM: 30-22

MILE 38.0 - MILE 36.0 - CHANNEL CONDITION

Shoaling has been reported between approximate Miles 38.0 and 36.0. Mariners are urged to exercise caution in the area.

LNM: 30-22

KANAWHA RIVER**MILE 31.1 - L/D REPAIRS**

Commencing August 19, 2022 and continuing until October 22, 2022, the Winfield L/D in the vicinity of Mile 31.1, will undergo repairs. No L/D closure is anticipated. Mariners are urged to exercise caution in the area.

LNM: 30-22

LOWER MISSISSIPPI RIVER**MILE 932.0 - ROCK PLACEMENT OPERATION/VESSEL SIZE RESTRICTION**

Commencing July 28, 2022 and continuing until August 3, 2022, rock placement operations are being conducted in the vicinity of Mile 932.0. Due to the nature of the work, southbound vessel traffic is restricted to 15 barges or less from 6:00 a.m. until 6:00 p.m., each day. The M/V SHERYL will be onsite during operations and can be contacted via VHF-FM Channel 13, 16 or 72 or at (573) 803-7166, for additional information. Mariners are urged to exercise caution in the area.

LNM: 30-22

MILE 922.0 - DREDGE OPERATION

Continuing until further notice, the Dredge IOWA is conducting dredging operations in the vicinity of Mile 922.0, LDB, Hickman, KY. The Dredge IOWA is monitoring VHF-FM Channel 71. Mariners are urged to exercise caution in the area.

LNM: 30-22

MILE 769.0 - CHANNEL CONDITION

Shoaling has been reported in the vicinity of Mile 769.0. Mariners are reminded that the USACE maintained channel depth and width, may not be available along all buoy lines. Mariners are urged to exercise caution in the area.

LNLM: 27-22

MILE 739.0 - CHANNEL CONDITION

Shoaling has been reported in the vicinity of Mile 739.0, Lucy Woodstock. Mariners are reminded that the USACE maintained channel depth and width, may not be available along all buoy lines. Mariners are urged to exercise caution in the area.

LNLM: 27-22

MILE 714.0 - CHANNEL CONDITION

Shoaling has been reported in the vicinity of Mile 714.0. Mariners are urged to exercise caution in the area.

LNLM: 27-22

MILE 593.0 - MILE 590.0 - RIP-RAP PLACEMENT

Continuing until approximately August 15, 2022, Luhr Crosby Company is conducting rip-rap placement between approximate Miles 593.0 and 590.0, RDB, Montgomery Cutoff. Work will be conducted from 6:30 a.m. until 6:30 p.m., 7-days a week. A fleet of barges, loaded with rock and empty, are staged in the vicinity of Mile 590.0. The M/V BARBARA ANN and M/V BILLY GENE are the contact vessels and will monitor VHF-FM Channel 13, 16 or 72. Mariners are urged to transit the area at their slowest safe speed to minimize their wake and proceed with caution after passing arrangements have been made. Mariners may contact Darwyn Jarrell at (504) 682-0846 or Cody Shields at (618) 791-9042, for up-to-date information.

LNLM: 30-22

MILE 304.0 - L/D RESTRICTIONS

Continuing until approximately July 31, 2022, tows are to enter the lock wall at a DEAD SLOW speed, tows will be restricted to a length no more than 1,100 feet and will line up along the floating guidewall before proceeding into the lock's chamber. Two line-handlers (with life vests) and bumpers are required when approaching and exiting the lock. Vessels must be moored by the bow and stern to the floating timberheads. The Lockmaster, Mr. Anthony T. Lindsly can be reached at (225) 492-3333, for up-to-date information. The point of contact at the USACE New Orleans Office is Russell Beauvais at (225) 492-2169.

LNLM: 11-22

MILE 304.0 - L/D CLOSURE - UPDATE

Commencing August 30, 2022 and continuing until approximately November 13, 2022, the Old River L/D, in the vicinity of Mile 304.0, will be closed for repairs. Mariners may contact the lockmaster, Mr. Anthony Lindsly at (225) 492-3333, for up-to-date information. The point of contact at the USACE New Orleans District is Russell Beauvais at (225) 492-2169.

LNLM: 30-22

MILE 304.0 - L/D CLOSURE - UPDATE

Commencing July 28, 2022 and continuing until approximately August 30, 2022, from 6:00 a.m. until 7:30 p.m., each day, the Old River L/D, in the vicinity of Mile 304.0, will be closed for repairs. Traffic will be allowed to pass, after work hours. Mariners may contact the lock wall at (225) 492-2301, for updated information/current status, or lockmaster, Mr. Anthony Lindsly at (225) 492-3333, for up-to-date information. The point of contact at the USACE New Orleans District is Russell Beauvais at (225) 492-2169 (work) (225) 202-3851 (Cell).

LNLM: 30-22

MILE 224.0 - DREDGE OPERATION

Continuing until further notice, the Dredge HURLEY is conducting dredging operations in the vicinity of Mile 224.0, Redeye Crossing. Work will be conducted 24-hours a day, 7-days a week. The Dredge HURLEY will monitor VHF-FM Channel 16 or 67. Mariners are urged to transit the area at their slowest safe speed to minimize their wake and proceed with caution after passing arrangements have been made. Mariners may contact the USACE New Orleans District, Michelle Kornick at (504) 862-1842, for additional information.

LNLM: 29-22

UPPER MISSISSIPPI RIVER**MILE 805.3 - CHANNEL CONDITION**

Shoaling has been reported in the vicinity of Mile 805.3. Mariners are urged to exercise caution in the area.

LNLM: 30-22

MILE 800.4 - DREDGE OPERATION

Continuing until further notice, the M/V MARGRET D., is conducting dredging operations in the vicinity of Mile 800.4. Work will be conducted from 7:00 a.m. until 7:00 p.m., Monday through Friday. The M/V MARGRET D., will monitor VHF-FM Channel 12 and requests 20-minutes advance notice of passage. Mariners are urged to transit the area at their slowest safe speed to minimize their wake and proceed with caution after passing arrangements have been made.

LNLM: 29-22

MILE 756.0 - DREDGE OPERATION

Continuing until further notice, the M/V ANGELA K., is conducting dredging operations in the vicinity of Mile 756.0. Work will be conducted from 7:00 a.m. until 7:00 p.m., Monday through Friday. The M/V ANGELA K., will monitor VHF-FM Channel 12 or 13, or phone at (651) 890-2256, and requests 30-minutes advance notice of passage. Mariners are urged to exercise caution in the area.

LNLM: 28-22

MILE 728.5 - L/D CLOSURES

L/D Nr. 5A, in the vicinity of Mile 728.5, will be closed on July 26 and 28, 2022, from 7:00 a.m. until 7:00 p.m., each day, for repairs. These closures should allow adequate time to complete work, as long as no significant issues are encountered. Towboat operators are requested NOT to tie up on the guidewalls during these closure periods. Mariners may contact the L/D via VHF-FM Channel 14 or at (651) 290-5071, for additional information.

MILE 728.5 - L/D CLOSURES

LNM: 23-22

MILE 664.5 - DREDGE OPERATION

Continuing until further notice, the Dredge GOETZ is conducting dredge operations/strike removal in the vicinity of Mile 664.5. Work will be conducted 24-hours a day, 7-days a week. The Dredge GOETZ will monitor VHF-FM Channel 13, 16 or 82 and requests 30-minutes advance notice of passage. Mariners are urged to transit the area at their slowest safe speed to minimize their wake and proceed with caution after passing arrangements have been made.

LNM: 30-22

MILE 618.5 - CHANNEL CONDITION

Shoaling has been reported in the vicinity of Mile 618.5. Mariners are urged to exercise caution in the area.

LNM: 27-22

MILE 615.1 - L/D CONSTRUCTION

Continuing until approximately October 1, 2022, from 7:00 a.m. until 7:00 p.m., Monday through Friday, construction operations are being conducted at L/D 10, Upper Auxiliary Chamber, in the vicinity of Mile 615.1. A marine plant and the M/V BARBARA B., will be positioned in the chamber and extending 23-30 feet, past the bullnose, and may extend as much as 100 feet, during times of operation. The M/V BARBARA B., will monitor VHF-FM Channel 13 or 16, for additional information.

LNM: 27-22

MILE 582.6 - MILE 531.0 - CHANNEL CONDITION

Shoaling has been reported between approximate Miles 582.6 and 531.0. An area between approximate Miles 563.0 and 560.0, has been reported as being extremely shallow. Mariners are urged to exercise caution in these areas.

LNM: 27-22

MILE 559.9 - CHANNEL CONDITION

Shoaling has been reported in the vicinity of Mile 559.9, mid-channel. Mariners are urged to exercise caution in the area.

LNM: 30-22

MILE 486.0 - MILE 484.0 - MARINE EVENT

Continuing until October 31, 2022, from 9:00 a.m. until 8:00 p.m., each Saturday, the Lake Davenport Sailing Club will hold marine events between approximate Miles 486.0 and 484.0. These events will consist of approximately 24 sailing vessels participating in open sailing events. Mariners are urged to exercise caution in the area during the event periods.

LNM: 19-22

MILE 482.9 - MILE 482.6 - DREDGE OPERATION

Continuing until further notice, the M/V ROCK ISLAND or the M/V MOLINE is conducting dredge operations/strike removal between approximate Miles 482.9 and 482.6, L/D Nr. 15, Lower. Work will be conducted from 7:00 a.m. until 5:30 p.m., 7-days a week. The M/V ROCK ISLAND or the M/V MOLINE will monitor VHF-FM Channel 13, 14, 16 or 82 and requests 30-minutes advance notice of passage. Mariners are urged to transit the area at their slowest safe speed to minimize their wake and proceed with caution after passing arrangements have been made.

LNM: 26-22

MILE 478.3 - BRIDGE REPAIRS

I-280 Bridge; Due to high water, the safespan is being raised to within 1 foot of low steel approximately 45 feet, each side of the center green light. Mariners are advised to transit the bridge with extreme caution. Mariners may contact Kraemer North America at (608) 393-9743, for additional information.

LNM: 17-22

MILE 336.5 - MILE 336.0 - DREDGE OPERATION

Continuing until further notice, the M/V CLINTON or the M/V DAVENPORT is conducting dredging operations/strike removal between approximate Miles 336.5 and 336.0, LaGrange. Work will be conducted from 7:00 a.m. until 5:30 p.m., 7-days a week. The M/V CLINTON or the M/V DAVENPORT will monitor VHF-FM Channel 13, 14, 16 or 82 and requests 30-minutes advance notice of passage. Mariners are urged to transit the area at their slowest safe speed to minimize their wake and proceed with caution after passing arrangements have been made.

LNM: 30-22

MILE 332.0 - MILE 331.3 - DREDGE OPERATION - UPDATE

The M/V CLINTON or the M/V DAVENPORT has completed dredging operations/strike removal between approximate Miles 332.0 and 331.3, Hogback Island.

LNM: 30-22

MILE 289.5 - CHANNEL CONDITION

Shoaling has been reported in the vicinity of Mile 289.5. Mariners are urged to exercise caution in the area.

LNM: 30-22

MILE 256.0 - MILE 248.0 - CHANNEL CONDITION

Shoaling has been reported between approximate Miles 256.0 and 248.0, mid-channel. Mariners are urged to exercise caution in the area.

LNM: 30-22

MILE 217.5 - CHANNEL CONDITION

The USACE has reported shoaling in the vicinity of Mile 217.5, mid-channel. Mariners are urged to exercise caution in the area.

MILE 217.5 - CHANNEL CONDITION

LNM: 26-22

MILE 186.6 - BRIDGE MAINTENANCE

Jefferson Barracks Dual Bridge; Due to a containment system installed below low steel, vertical clearance has been reduced to 84 feet. Mariners are advised to transit the bridge with caution.

LNM: 17-22

MISSOURI RIVER**MILE 638.5 - MILE 627.4 - STONE PLACEMENT****MILE 626.6 - MILE 624.8 - DREDGE OPERATION**

Continuing until October 8, 2022, stone placement will be conducted between approximate Miles 638.5 and 627.4. Simultaneously, dredging operations will be conducted between approximate Miles 626.6 and 624.8. Work will be conducted during daylight hours, each day, for both operations. The M/V MICHELLE M., will monitor VHF-FM Channel 10 or (920) 579-2642 and requests a 1-hour advance notice of passage. Mariners are urged to transit the area at their slowest safe speed to minimize their wake and proceed with caution, after passing arrangements have been made.

LNM: 18-22

MILE 397.6 - SUBMERGED OBSTRUCTIONS

Submerged obstructions have been reported in the vicinity of Mile 397.6, underneath the Leavenworth Highway Bridge, Alternate Span. Mariners are urged to exercise caution in the area.

LNM: 16-22

MILE 366.1 - DREDGE OPERATION

Continuing until further notice, the M/V CAPTAIN STREIF is conducting dredging operations in the vicinity of Mile 366.1. Work will be conducted during daylight hours, Monday through Friday. The M/V CAPTAIN STREIF will monitor VHF-FM Channel 13, 16 or 17 and requests 30-minutes advance notice of passage. Mariners are urged to transit the area at their slowest safe speed to minimize their wake and proceed with caution after passing arrangements have been made.

LNM: 28-22

MILE 185.0 - BRIDGE MAINTENANCE

Rocheport Highway Bridge; A drill barge will be located channelward of the existing right descending pier and will reduce the horizontal clearance to 470 feet. Mariners are advised to transit the bridge with caution.

LNM: 16-22

MONONGAHELA RIVER**MILE 5.0 - MILE 4.0 - AID TO NAVIGATION**

A nun buoy has been reported submerged between approximate Miles 5.0 and 4.0. Mariners are urged to exercise caution in the area.

LNM: 27-22

OHIO RIVER**MILE 90.3 - BRIDGE MAINTENANCE**

Wheeling Suspension Bridge; Continuing through June 2023, the vertical clearance may be reduced by 2 feet due to maintenance being performed on the bridge. For more information, mariners may contact West Virginia Department of Transportation, Ahmed Mongi, at (304) 553-3941 or Advantage Steel and Construction, Matt Oskin, at (724) 352-4842.

LNM: 11-22

MILE 161.7 - L/D CLOSURES - UPDATE

The scheduled closures of the Willow L/D (auxiliary chamber) have been delayed until further notice.

LNM: 30-22

MILE 179.3 - DREDGE OPERATION - UPDATE

Commencing August 1, 2022 and continuing until August 12, 2022, maintenance dredging will be conducted at a facility in the vicinity of Mile 179.3, RDB. The contractors floating plant will consist of the M/V HARD HAT, a hopper barge, a deck barge and a barge mounted crane. Work will be conducted Monday through Friday, from 7:00 a.m. until 5:00 p.m., each day. During nonworking hours, the contractors floating plant will be moored at the worksite and lighted accordingly. The M/V HARD HAT will monitor VHF-FM Channel 13 or 16. Mariners are urged to exercise caution in the area.

LNM: 30-22

MILE 183.4 - BRIDGE REPAIR

Belpre-Parkersburg Highway Bridge; Rehabilitation of the eastern most pier located outside of the navigation span is ongoing with 2 material barges located next to the pier, to collect removed concrete. The barges will remain in place during non-work hours and be lighted according to regulations. Work on this pier will continue through September 2022.

LNM: 26-22

MILE 302.0 - AIDS TO NAVIGATION

Two nun buoys have been reported not properly marking the channel in the vicinity of Mile 302.0. Mariners are urged to exercise caution in the area.

LNM: 29-22

MILE 596.0 - MILE 597.0 - MARINE EVENT

Continuing until October 19, 2022, from 5:30 p.m. until 9:00 p.m., each Wednesday, the Derby City Sailboat Race will be held between approximate Miles 596.0 and 597.0. Mariners may contact the event sponsor at (502) 592-5149, for additional information. Mariners are urged to exercise

MILE 596.0 - MILE 597.0 - MARINE EVENT

caution in the area, during the event periods.

LNM: 23-22

MILE 608.6 - BRIDGE MAINTENANCE

Sherman Minton Bridge; Cleaning and painting of the bridge will continue from 7:00 a.m. until 6:00 p.m., Monday through Saturday, until further notice. A containment system will hang 4 feet below low steel. Mariners should transit the bridge with caution.

LNM: 29-21

MILE 644.7 - DOCK/FACILITY CONSTRUCTION

Continuing until August 13, 2022, Nucor Steel is constructing a dock for a shore-side facility and a barge terminal, in the vicinity of Mile 644.7, Mead County, Kentucky. The contractor's equipment will consist of shore based and barge mounted cranes installing spud piles and sheet piles. The crane barge will be maneuvered into place using a towboat and will be secured in place with spud piles. Offloading operations will occur during daylight hours. During non-work hours, delivery barges and associated equipment will be secured at approved mooring locations upstream or downstream from the site. Construction will occur during daylight hours, 7-days a week. During non-work hours, equipment will be parked on shore. Marine equipment will monitor VHF-FM Channel 13. Other construction operations will monitor VHF-FM Channel 6, 8, 18 or 72. Mariners are urged to exercise caution in the area.

LNM: 27-22

MILE 720.7 - L/D CLOSURE

Continuing until November 12, 2022, the Cannelton L/D (primary 1,200-foot chamber), in the vicinity of Mile 720.7, will be closed for repair.

LNM: 30-22

MILE 924.0 - MILE 927.0 - CHANNEL CONDITION/AIDS TO NAVIGATION

Shoaling has been reported between approximate Miles 924.0 and 927.0, LDB, Kentucky side. Attached as enclosures to this LNM, are USACE Louisville District Notice to Navigation Interests 2022-016 and 2 associated chartlets of the area. Mariners are urged to exercise caution in the area.

LNM: 25-22

MILE 962.6 - DEMOLITION BLASTING/TRAFFIC RESTRICTIONS/NAVIGATION LANE CHANGE

Attached as enclosures to this LNM, are USACE Louisville District Notice to Navigation Interest 2022-15, regarding demolition blasting, traffic restrictions and navigation lane changes at L/D 53, in the vicinity of Mile 962.6.

LNM: 25-22

MILE 964.6 - L/D CLOSURE - UPDATE

The previously scheduled closure of the Olmsted L/D (land chamber), in the vicinity of Mile 964.6, from July 18, 2022 and continuing until approximately August 1, 2022, has been rescinded.

LNM: 30-22

ST. CROIX RIVER**MILE 6.5 - CHANNEL CONDITION**

Shoaling has been reported in the vicinity of Mile 6.5, at the mouth of the Kinnickinnic River. Buoys in the area may not properly mark the channel or be missing/diving. Debris and snags may be present in the area. Mariners are advised to transit the area with caution and at their slowest safe speed.

LNM: 17-22

TENNESSEE-TOMBIGBEE WATERWAY**MILE 366.0 - DREDGE OPERATION**

Continuing until approximately August 1, 2022, the Inland Dredging Company Dredge AMERICA is conducting dredging operations in the vicinity of Mile 366.0, Aberdeen Lake. Work will be conducted 24-hours a day, 7-days a week. Dredge spoils will be placed in upland disposal area AB-12. The Dredge AMERICA will monitor VHF-FM Channel 13 or 16 and requests advance notice of passage. Mariners are urged to transit the area at their slowest safe speed to minimize their wake and proceed with caution after passing arrangements have been made. Mariners may contact Mr. Roger Wilson, Jr., or Mr. Joshua Oliver, Tennessee-Tombigbee Project Management Office at (662) 245-5500, for additional information.

LNM: 27-22

MILE 296.0 - CHANNEL CONDITION

Critical shoaling has been reported in the vicinity of Mile 296.0, Gainesville Lake. Hydrographic surveys have indicated a shoal crossing the channel in various locations, making it difficult to transit this reach. Virtual buoys are in place and a USACE Floating Plant is enroute to remove this shoal. Work is expected to last 2 weeks. Mariners transiting this reach can contact the floating plant via VHF-FM Channel 16. Mariners are requested to transit this reach at a no wake speed. Attached as enclosures to this LNM, are chartlets depicting the area of shoaling and the placement of the virtual aids to navigation. Mariners may contact Roger Wilson Jr., or Joshua Oliver at the Tennessee-Tombigbee Project Management Office at (662) 245-5500, for additional information.

LNM: 29-22

TENNESSEE RIVER**MILE 164.5 - AID TO NAVIGATION**

A can buoy has been reported missing in the vicinity of Mile 164.5, Eagles Nest Island. Mariners are urged to exercise caution in the area.

LNM: 27-22

MILE 72.5 - TRANSMISSION TOWER REPAIR/DIVE OPERATIONS

Continuing until approximately December 16, 2022, the TVA is conducting transmission tower repairs in the vicinity of Mile 72.5. In conjunction with this operation, divers will be utilized. Work will be conducted from 7:00 a.m. until 6:00 p.m., Monday through Saturday. The floating plant will consist of the M/V RED WAGNER and 2 barges spud down around the towers. The TVA Police will have vessels on station during dive operations.

MILE 72.5 - TRANSMISSION TOWER REPAIR/DIVE OPERATIONS

The M/V RED WAGNER will monitor VHF-FM Channel 13 or 16. Mariners are urged to transit the area at their slowest safe speed to minimize their wake and proceed with caution. Mariners may contact the TVA, for additional information.

LNM: 14-22

SECTION VIII - LIGHT LIST CORRECTIONS

An Asterisk *, indicates the column in which a correction has been made to new information

(1) No.	(2) Name and Location	(3) Mile	(4) Bank	(5) Characteristic	(6) Structure / Dayboard Up Down	(7) Remarks
None						

ENCLOSURES**USACE Little Rock District Navigation Notices 22-21 and 22-23**

L/D's closures/restrictions.

LNM: 24-22

USACE Channel Status Reports - UPDATE

Arkansas River Channel Status Reports.

LNM: 30-22

USACE Rock Island District Notice to Navigation Interests 22-200975

Installation and testing of invasive carp deterrence measures.

LNM: 26-22

U.S. Coast Guard Sector Upper Mississippi River MSIB 08-22

Marine events/fireworks displays on the Upper Mississippi River, Illinois Waterway and Missouri River.

LNM: 27-22

USACE Rock Island District Notice to Navigation Interests MR 22-201120

Input from waterway users regarding placement of USACE Mooring Facilities.

LNM: 30-22

USACE Louisville District Notice to Navigation Interest 2022-15

Demolition blasting, traffic restrictions and navigation lane changes at L/D 53.

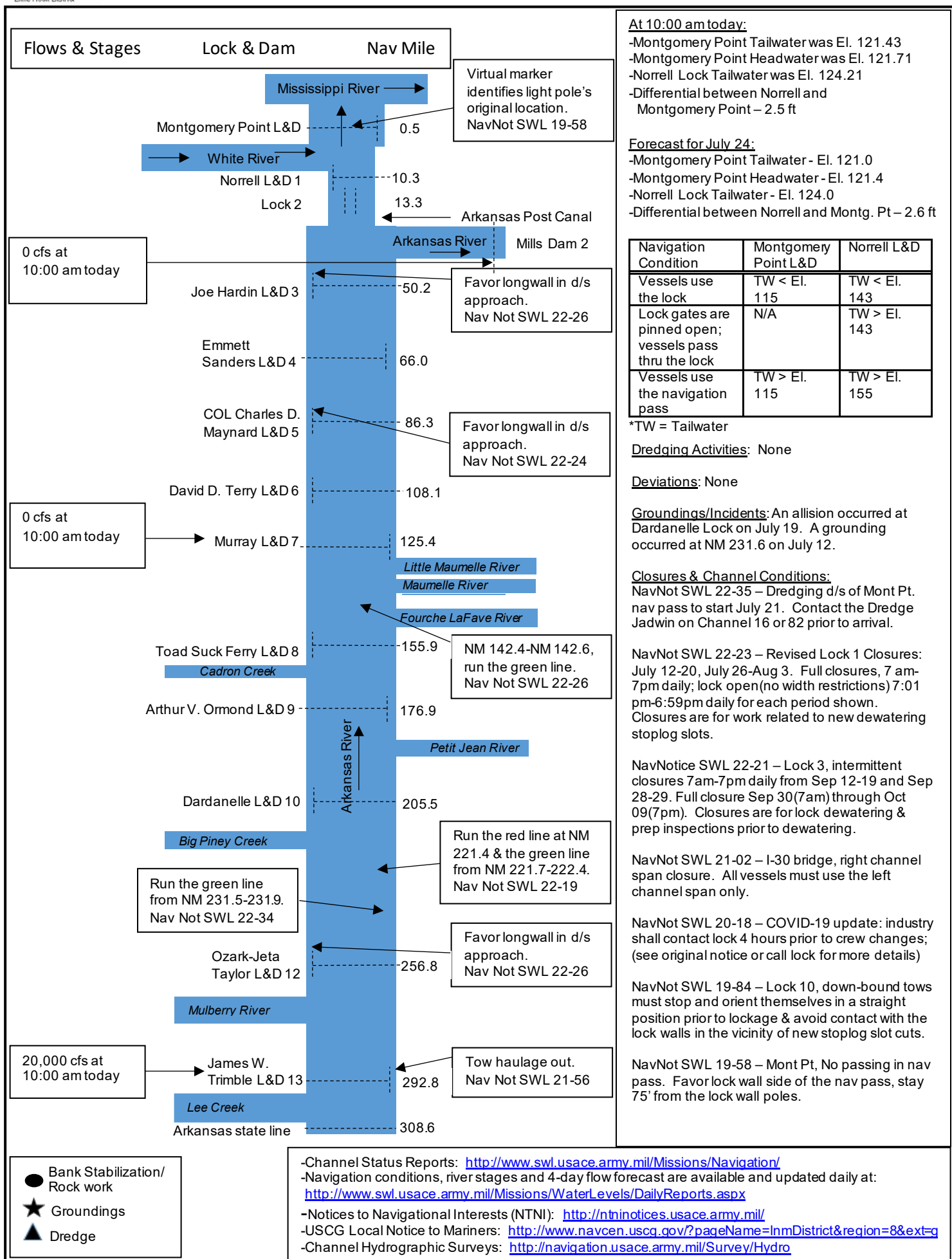
LNM: 25-22

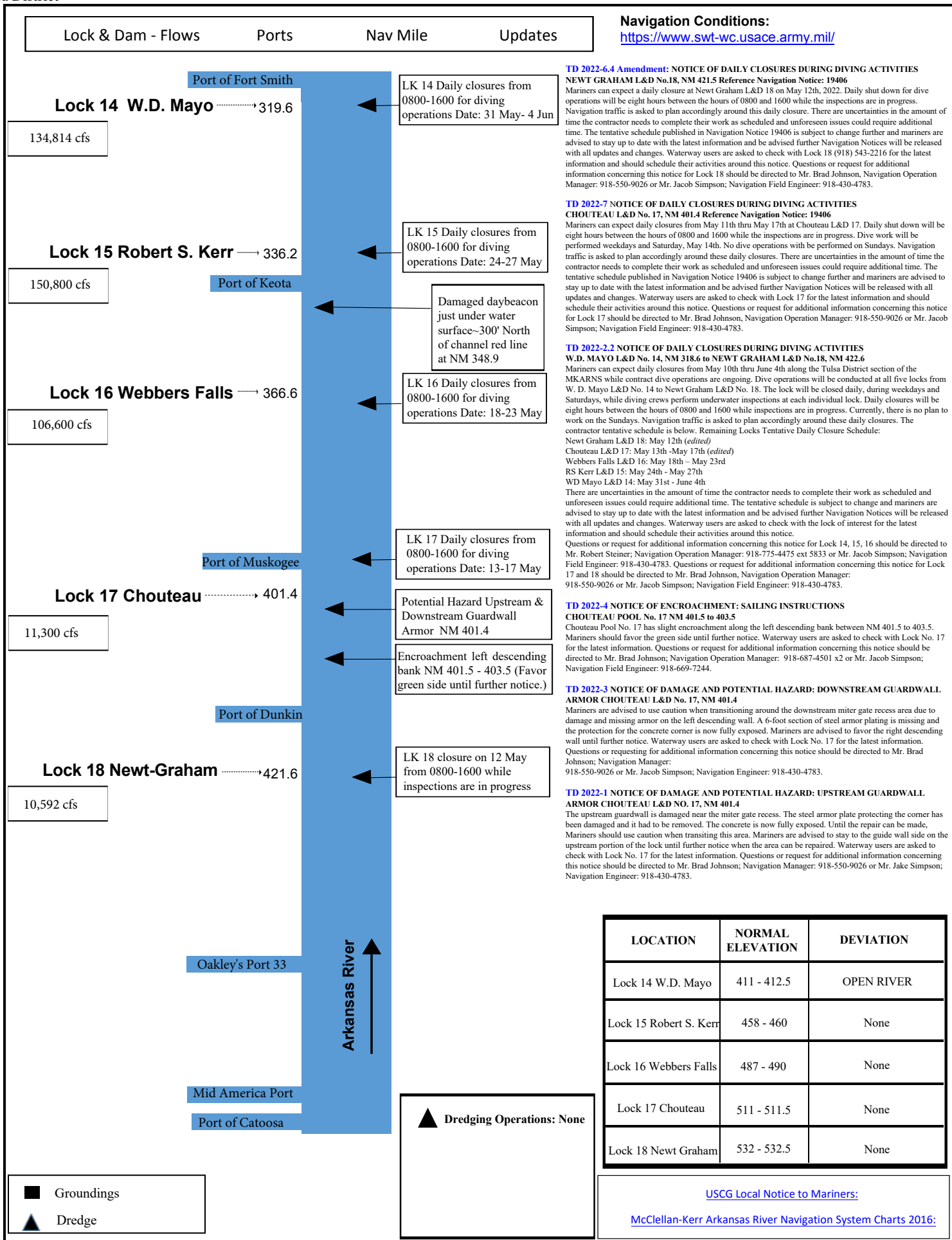
USACE Mobile District NAVBULL 22-46

Critical shoaling Gainesville Lake.

LNM: 29-22

Commander, Eighth Coast Guard District
Hale Boggs Federal Building, Room 1230
500 Poydras Street, New Orleans, LA 70130-3310
Telephone (504) 671-2327
(Business Hours 7:00 a.m. - 3:30 p.m. Monday - Friday)
(Nights, Weekends, Holidays) (504) 589-6225
RADM Timme







U.S. COAST GUARD

Sector Upper Mississippi River

June 29, 2022

Marine Safety Information Bulletin # 08-22



July 2022 Notice of Marine Events and Planned River Closures

This bulletin is used purely for informational purposes to assist the maritime community within the Sector Upper Mississippi River (SUMR) Area of Responsibility. Its intent is to advise relevant parties of marine events that are taking place and their location. If an event is permitted by the Coast Guard, please call the event sponsor for any questions directly pertaining to the event, as a permitted marine event will likely impact the navigable channel. For events without a Coast Guard Permit, it was determined that this event should not impact the navigable channel. Please contact the Western Rivers Command Center at the number below if encountering any emergencies or dangerous activities associated with these events.

The Coast Guard received applications for the following events occurring during the month of July 2022. Each closure will also be broadcast via VHF Channel 16. Locations are in Mile Marker. These events are listed below:

Upper Mississippi River

<u>Date</u>	<u>Event</u>	<u>Permit Issued</u>	<u>Duration</u>	<u>Location</u>	<u>Waterway Closure</u>
02-July-22	River Fest – Water Ski Show	Yes	1700-1730	698.5-697.5	Yes
03-July-22	River Fest – Two Water Shows	Yes	1700-1700	698.5-697.5	Yes
02-July-22	Independence Day Fireworks (land-based)	No	2100-2300	635	No
02-July-22	Lake Davenport Sailing	No	0900-2200	486-484	No
03-July-22	Ski Bellevue	No	1800-2000	557-556	No
03-Jul-22	Bellevue Heritage Days Fireworks	No	2130-2230	UMR 556.7/L & D 12	Yes
03-July-22	Radio Dubuque Airshow & Fireworks	No	1800-2230	581.2-581	Yes
03-July-22	Red, White, & Boom Davenport	No	2100-2130	482.7-482	Yes
04-July-22	River Fest – Fireworks	Yes	2200-2300	698.5-697.5	Yes
04-July-22	4 th of July Fireworks	No	2200-2300	772.8-772.4	Yes
04-July-22	Mississippi Alumination	No	2130-2300	791.2-790.8	Yes
04-July-22	Fair St. Louis Fireworks	No	2100-2230	180-179	Yes
04-July-22	Muscatine 4 th of July Fireworks	No	2030-2230	456-455	Yes
07-July-22	MS River Day Canoe Trip	No	0915-1515	847-840	No
09-July-22	Lake Davenport Sailing	No	0900-2200	486-484	No
15-July-22	MS River Canoe Day Trip	No	0830-1300	847-840	No
16-July-22	Ski Bellevue	No	1600-1800	557-556	No
16-July-22	Lake Davenport Sailing	No	0900-2200	486-484	No
18-July-22	MS River Day Canoe Trip	No	0915-1515	847-840	No
18-July-22	MS River Day Canoe Trip	No	1300-1600	863-855	No
19-July-22	MS River Day Canoe Trip	No	1300-1600	863-855	No
21-July-22	MS River Day Canoe Trip	No	1000-1500	847-840	No
23-July-22	MS River Day Canoe Trip	No	1300-1600	863-855	No
23-July-22	Aquatennial Fireworks	No	2000-2300	854.2-853.2	Yes
23-July-22	Lake Davenport Sailing	No	0900-2200	486-484	No
25-July-22	MS River Day Canoe Trip	No	0900-1300	847-840	No
28-July-22	MS River Day Canoe Trip	No	1000-1500	847-840	No
29-July-22	MS River Day Canoe Trip	No	0900-1300	847-840	No
30-Jul-22	Lake Davenport Sailing	No	0900-2200	486-484	No

Missouri River

<u>Date</u>	<u>Event</u>	<u>Permit Issued</u>	<u>Duration</u>	<u>Location</u>	<u>Waterway Closure</u>
03-July-22	4 th of July Fireworks	No	2100-2200	97.5-97	Yes
04-July-22	Parkville 4 th of July Celebration	No	2130-2215	378-377.5	Yes
04-July-22	Salute to America Fireworks	No	2100-2200	144-143	Yes
04-July-22	St. Charles Riverfest Fireworks	No	2030-2200	28.8-28.2	Yes
12-15-July-22	17 th Annual MO River 340	No	0700-2100	367-29	No
16-July-22	Amelia Earhart Festival Fireworks	No	2130-2230	423.5-422.5	Yes

Illinois River

<u>Date</u>	<u>Event</u>	<u>Permit Issued</u>	<u>Duration</u>	<u>Location</u>	<u>Waterway Closure</u>
02-July-22	Grafton Fireworks	No	2100-2230	.5-1.5	Yes
04-July-22	Red, White, & Boom! Fireworks	No	2030-2230	162.5-162.1	Yes

Other Waterways

<u>Date</u>	<u>Event</u>	<u>Permit Issued</u>	<u>Duration</u>	<u>Location</u>	<u>Waterway Closure</u>
01-July-22	One Source Fireworks Display	No	2145-2230	Lake of the Ozarks MM 42	Yes
03-July-22	Red Oak Resort Fireworks	No	2145-2230	Lake of the Ozarks	Yes
03-July-22	Hudson Booster Day Celebration	No	2200-2230	St. Croix River MM 17.2-16.8	Yes
04-July-22	City of Stillwater Celebration	No	2100-2200	St. Croix River MM 23.4-23	Yes
04-July-22	Tan-Tar-A Resort Fireworks	No	2100-2130	Lake of the Ozarks MM 26.2-25.8	Yes
04-Jul-22	Chase Resort Lodge of the Four Seasons Fireworks	No	2045-2230	Lake of the Ozarks MM 14.2-13.8	Yes

To receive the latest information, monitor marine VHF channels 14 and 16, the Upper Mississippi River Port Directory at: [https://homeport.uscg.mil/port-directory/upper-mississippi-river-\(st-louis\)](https://homeport.uscg.mil/port-directory/upper-mississippi-river-(st-louis)). Questions may be directed to the Western Rivers Command Center at (314) 269-2332 or (314) 269-2463 – these numbers are continuously monitored or the Waterways Management staff at SUMRwaterways@uscg.mil.

Sincerely,



S.R. MOORE
Chief, Waterways Management Division
U.S. Coast Guard
By direction

**NOTICE TO NAVIGATION INTERESTS**

ROCK ISLAND DISTRICT
ATTN: CEMVR-DE
CLOCK TOWER BLDG. - RODMAN
AVE
ROCK ISLAND IL 61299
[HTTP://WWW.MVR.USACE.ARMY.MIL/](http://www.mvr.usace.army.mil/)

DATE: 07/26/2022**POC:** Lee Nelson or Bernie Heroff or
Casey Herschler

NOTICE NUMBER: 201120
LOCAL NUMBER: MR 22-201120
WATERWAY: UPPER MISSISSIPPI
EFFECTIVE: 08/01/2022 00:00 thru
08/31/2022 23:59

UPPER MISSISSIPPI RIVER
MOORING FACILITIES
Lock and Dams 7, 10, 11, 14, 15, 20, and 22

The US Army Corps of Engineers is planning the construction of 8 mooring facilities on the Upper Mississippi River at lock and dams 7, 10, 11, 14, 15, 20, and 22. The Corps is asking for feedback from all pilots transiting these areas on whether these would be considered desirable locations to moor or if the locations are unsuitable and will be an impedance to navigation. Please send feedback to either Lee Nelson at lee@ursi.net, Bernie Heroff at Bernard.Heroff@adm.com, or Casey Herschler at casey.herschler@gmail.com. Review period is 01 August 2022 to 31 August 2022. Please provide feedback no later than 31 August 2022. Features displayed virtually on the Inland Electronic Navigation Charts (IENC) will include the following virtual items: Mooring Facility and Caution Area.

//signed//

Matthew Fitzgerald, Project Engineer



U.S. Army Corps
of Engineers
Little Rock District

NAVIGATION NOTICE Number SWL 22-21

McClellan-Kerr Arkansas River Navigation System

May 25, 2022

In Reply Refer to: CESWL-OP
P. O. Box 867
Little Rock, AR. 72203-0867
PH. 501-324-5739

REMINDER – SCHEDULED LOCK CLOSURES NORRELL LOCK (No. 1) NM 10.3 JOE HARDIN LOCK (No. 3) NM 50.2 MCCLELLAN-KERR ARKANSAS RIVER NAVIGATION SYSTEM

As previously noted in Nav Notice SWL 22-04, closures are scheduled for Norrell Lock (No. 1) NM 10.3 and Joe Hardin Lock (No. 3) NM 50.2 during the dates and times indicated below.

The closures at Lock 1 are for installing temporary cofferboxes, concrete saw-cutting of the lock walls and other work related to the new dewatering stoplog slots near the upstream and downstream miter gates. Tow width restrictions will be in place as indicated below and no lockages will be allowed outside the specified times.

The closures at Lock 3 are for the lock dewatering and preparatory inspections prior to the dewatering.

Mariners are advised to contact the locks prior to arrival, for specific instructions on how to proceed for safe lockage. During this time, the Lock 1 tow haulage system will not be available.

Lock 1

June 1 – June 11: Limited width(70' max) lockages only, 7 a.m. – 7 p.m. daily

June 22 – July 21: Limited width(70' max) lockages only, 7 p.m. – 7 a.m. daily

Aug 01 – Aug 10: Full closure, no lockages from 7 a.m.(Aug 01) – 7 p.m.(Aug 10)

Aug 21 – Sep 19: Limited width(70' max) lockages only, 7 p.m. – 7 a.m. daily

Lock 3

Sep 12 - 19: Intermittent closures, 7 a.m. – 7 p.m. daily

Sep 28 – 29: Intermittent closures, 7 a.m. – 7 p.m. daily

Sep 30 – Oct 09: Full closure, no lockages from 7 a.m.(Sep 30) – 7 p.m.(Oct 09)

Lock 1

Sep 30 – Oct 09: Full closure, no lockages from 7 a.m(Sep 30) – 7 p.m.(Oct 09)

Oct 20 – Nov 18: Limited width(70' max) lockages only, 7 p.m. – 7 a.m. daily

Nov 29 – Dec 23: Limited width(70' max) lockages only, 7 p.m. – 7 a.m. daily

Jan 03 – Jan 31: Limited width(70' max) lockages only, 7 p.m. – 7 a.m. daily

Questions or requests for additional information concerning this notice should be directed to the Little Rock District Office, at (501) 324-5096 or you may email CESWL-OP-OM@usace.army.mil.

Christopher B. Roark
Chief, Operations Division



McClellan-Kerr Arkansas River Navigation System

June 10, 2022

In Reply Refer to: CESWL-OP
P. O. Box 867
Little Rock, AR. 72203-0867
PH. 501-324-5739

Christopher B. Roark
Chief, Operations Division



NOTICE TO NAVIGATION INTERESTS

ROCK ISLAND DISTRICT

DATE: 06/22/2022

NOTICE NUMBER: 200975

ATTN: CEMVR-DE

LOCAL NUMBER: IW 22-200975

CLOCK TOWER BLDG. - RODMAN AVE POC: Collin Moratz

WTRWY/CHNL: ILLINOIS WATERWAY

ROCK ISLAND IL 61299

309-794-5573

LOCK(S): IL 07

[HTTP://WWW.MVR.USACE.ARMY.MIL/](http://WWW.MVR.USACE.ARMY.MIL/)

EFFECTIVE: 08/16/2022 06:00 thru 10/07/2022 17:00

TESTING – INVASIVE CARP DETERRENCE
ILLINOIS WATERWAY
PEORIA LOCK AND DAM, RM 157.7

The U.S. Army Corps of Engineers, Rock Island District (District), and the Engineer Research and Development Center (ERDC) are planning to test invasive carp deterrence technology at the Peoria Lock and Dam on the Illinois River, River Mile 157.7. Work is planned for 16 AUG 2022 through 18 AUG 2022 from 06:00-18:00 hrs. for installation, and from 29 AUG 2022 thru 07 OCT 2022, Mon-Tue and Thu-Fri (07:00-11:00 hrs. & 13:00-17:00 hrs.) for deterrence efficacy and navigation safety testing. Navigation will be closed during installation and while testing is conducted. These timeframes are subject to change based upon river conditions.

****Towboat operators are requested NOT to tie up on the guidewalls during installation and testing.****

Testing includes fish removal efficacy testing and navigation safety testing, both of which would occur on each of 70 total runs over an approximate 40-day period. Test runs consist of driving a loaded six-barge tow, with juvenile invasive carp placed for entrainment in a box-rake junction, over a bubbler array in the downstream lock approach. Runs with and without the bubbler running would occur to provide a control to measure the bubbler effect. Quantitative safety variables of interest include speed, yaw, and lateral movement of the barge resulting from the continuous release of air from the air line. Carp removal testing includes counting remaining fish entrained in the box-rake junction and measuring flow velocities in the junction gap. The study would be conducted mainly during daylight hours when the wicket gates are up (impounding water in the Peoria Pool). The purpose of the test is to evaluate fish removal efficacy and navigation safety when using bubbles to remove small invasive carp from the rake-box junction of a barge tow.

This action involves the temporary installation of an anchored air hose and bubbler array in the downstream lock approach channel (see map, Enclosure 1). The air hose will be attached to a series of anchors and the bubbler array will be anchored by weight of the frame to hold it in place (modeled using a safety factor of seven). It is approximately 210 feet long with a series of nozzles spaced 8 feet apart that will release air to create a column of bubbles along the length of the array. Air will be fed through a hose from a diesel-powered air compressor located on the Peoria Lock and Dam Project grounds. The hose would be routed from the surface around the end of the lower guidewall to avoid interference with navigation. Weights will hold the hose to the bottom between the guidewall and the bubbler array. The air hose and metal frames would be removed following completion of the study, on or before 07 OCT 2022.

//signed//

Jon A. Klingman

Chief, Channel Maintenance Section Operations Division



US Army Corps
of Engineers
Louisville District

Notice to Navigation Interests

Notice No. 2022 – 016

Date: June 21, 2022

<http://www.lrl.usace.army.mil/Missions/CivilWorks/Navigation/Notices.aspx>

In Reply Refer to: CELRL-OPT PO Box 59, Louisville, KY 40201 Telephone: 502-315-6694

LOUISVILLE DISTRICT

OHIO RIVER

ALTERNATE NAVIGATION CHANNEL

RIVER MILES 924-927

Ohio River Miles 924-927: The navigation channel between Ohio River Miles 926 and 927 has shoaling which has resulted in vessel groundings in the past week.

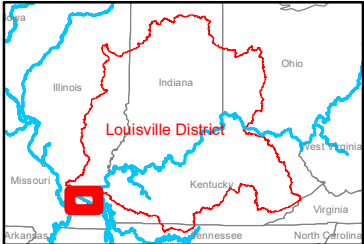
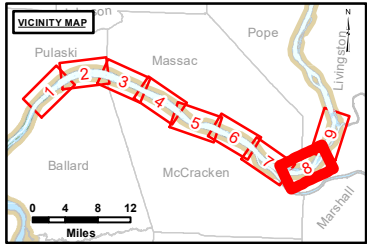
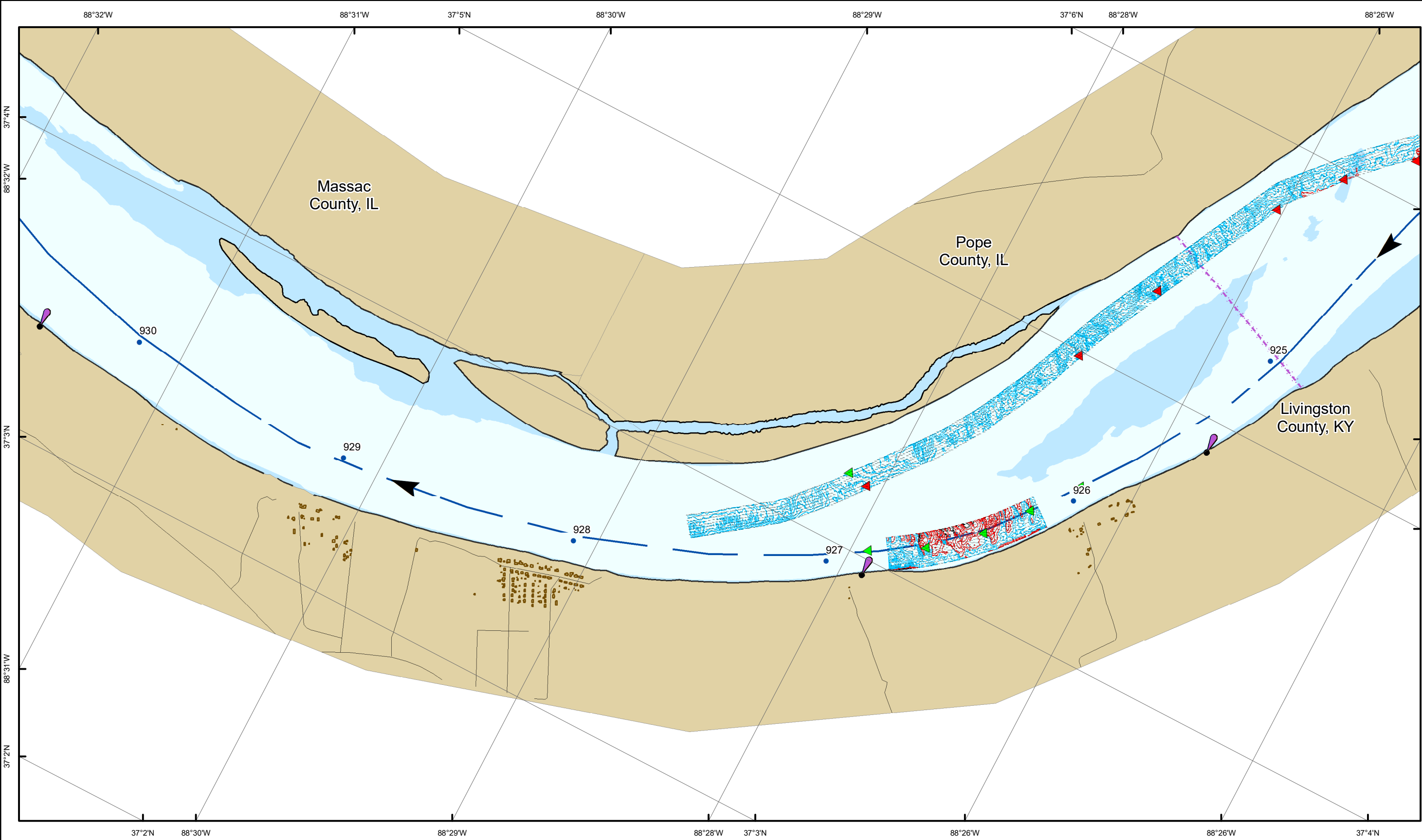
The physical buoys on the main navigation channel have been moved toward the left descending bank, as shown in the attached file titled “Notice 2022-016 OH_LD_OLM_20220621_CS_924_927_SORT.pdf”. This attachment also shows channel depths. Furthermore, this attachment shows channel depths and locations of physical buoys for an alternate navigation channel between Ohio River Miles 924 and 927 along the Illinois side of the river. The depths in this drawing correspond to a Smithland Locks and Dam lower gage of 12.0, and represent conditions found during surveys performed on 21 June 2022.

The alternate navigation channel has also been marked with AIS ATON’s (electronic buoys). The attached file titled “Notice 2022-016 AIS Buoy Mile 924-927_RosePoint.pdf” shows how these electronic buoys appear on RosePoint.

Mariners should make note of conditions and exercise caution when transiting the area.

/s/

Shawn Kenney
Ch. Technical Support Branch



LAYERS

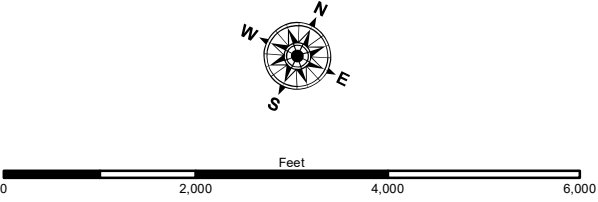
- < 0 (drying height)
- 0 - 9 ft
- 10 - 12 ft
- > 12 ft
- River Mile
- Sailing Line

Navigation Lights

- Green
- Red
- Junction

TGT Points

- Green Buoy
- Red Buoy



NOTES:
Horizontal Coordinate System:
North American Datum of 1983 (NAD83), projected to the
State Plane Coordinate System (SPCS), Kentucky South Zone.
Distance units in U.S. Survey Feet.

Vertical Datum:
Soundings are shown in feet and indicate depths below the
project pool of 295 (Olmsted upper 16), 300 (Paducah 13.7)
and 302 (Smithland Lower 12)

The information depicted on this map represents the results of
a survey conducted on the date indicated and can only be
considered to represent the general condition existing at that time.

The location of navigation aids are based on and provided
by the U.S. Coast Guard.

**US Army Corps
of Engineers
District: CELRL**

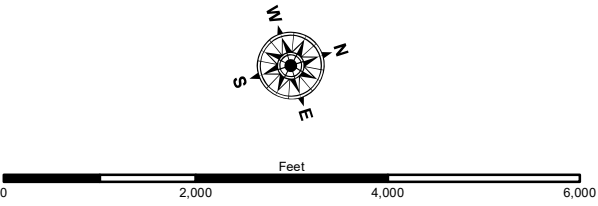
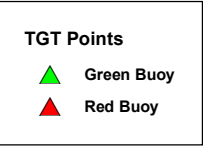
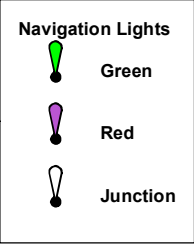
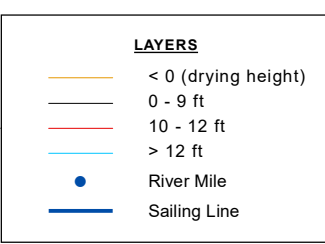
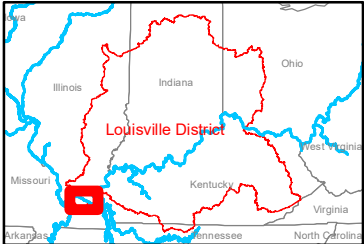
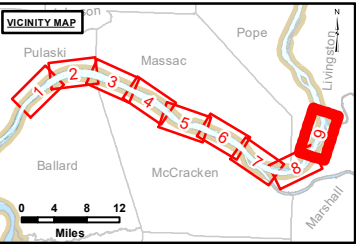
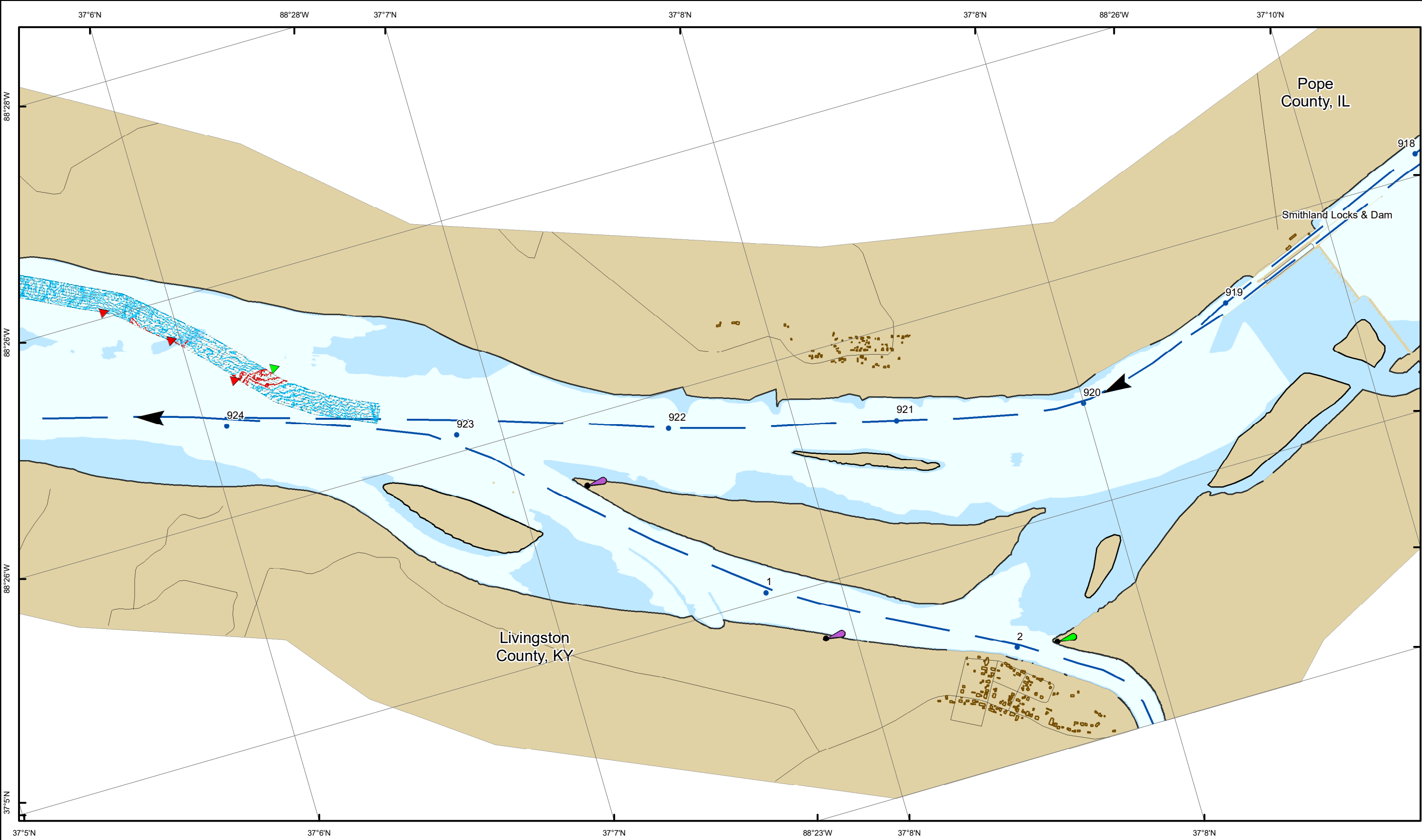
Distribution Liability: The data presented by this map is the result of data collection and processing for a specific US Army Corps of Engineers project. It is not intended for use in any other project. As such, it is only valid for its intended use, current time and location. The user is responsible for the accuracy of the data and any other information used in the project. The user is responsible for the accuracy of the data and any other information used in the project. The user is responsible for the accuracy of the data and any other information used in the project.

U.S. ARMY CORPS OF ENGINEERS LOUISVILLE DISTRICT		
Surveyed By	Reviewed By	Checked By
_____	_____	_____
_____	_____	_____

Survey Information

OLMSTED_POOL_OHIO_RIVER
OH_LD_OLM_20220621_CS_924_927_SORT
21 June 2022

**Pool
Reach
Number
8 of 9**



NOTES:
Horizontal Coordinate System:
North American Datum of 1983 (NAD83), projected to the
State Plane Coordinate System (SPCS), Kentucky South Zone.
Distance units in U.S. Survey Feet.

Vertical Datum:
Soundings are shown in feet and indicate depths below the
project pool of 295 (Olmsted upper 16), 300 (Paducah 13.7)
and 302 (Smithland Lower 12)

The information depicted on this map represents the results of
a survey conducted on the date indicated and can only be
considered to represent the general condition existing at that time.

The location of navigation aids are based on and provided
by the U.S. Coast Guard.

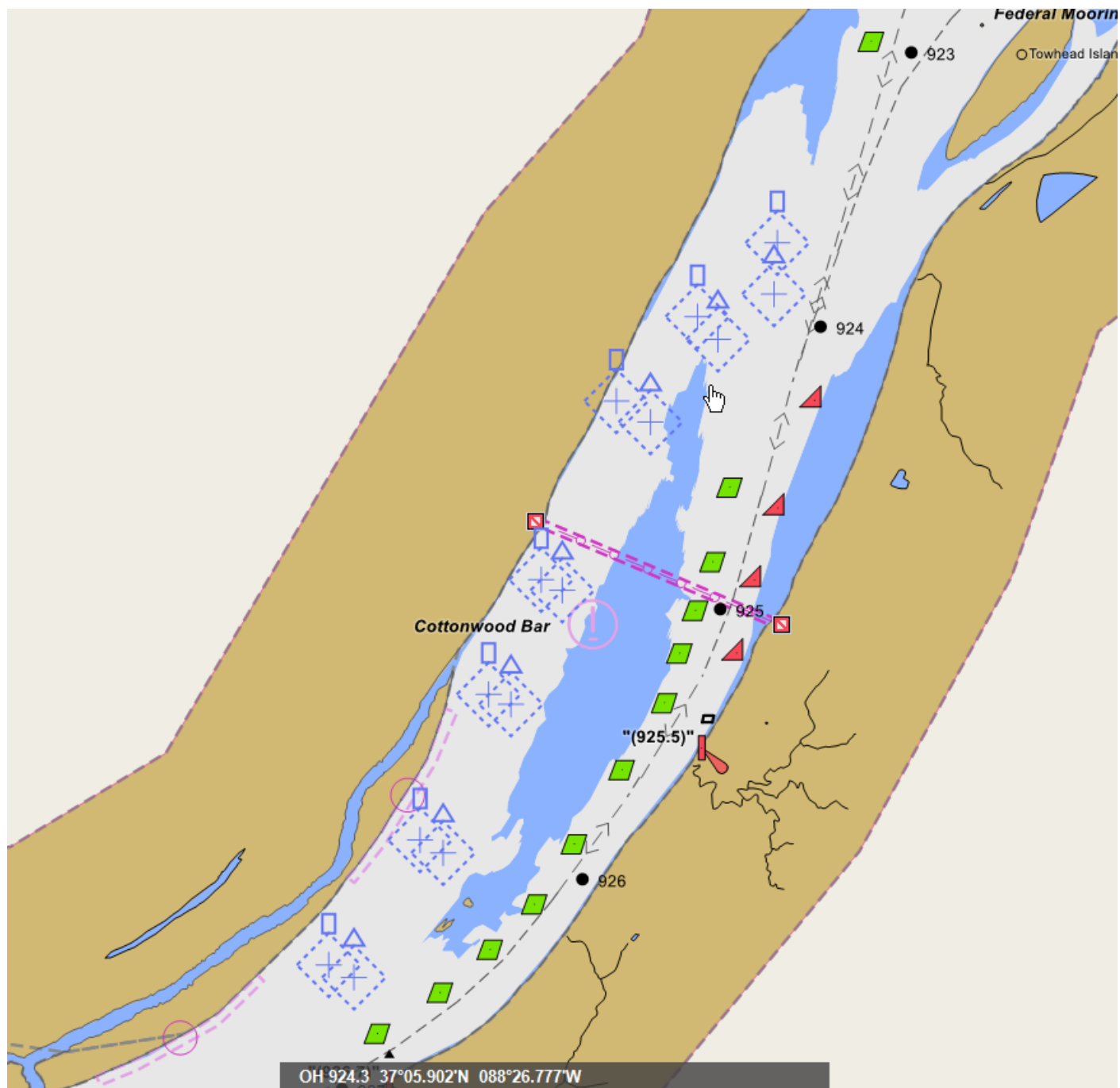


Distribution Liability: The data presented in this map is the result of data collection and processing for a specific US Army Corps of Engineers project. It is not intended for use in any other project. As such, it is only valid for its intended use, current time and location. The user is responsible for the accuracy of the data and any other information used in the project. The user is responsible for the accuracy of the data and any other information used in the project. The user is responsible for the accuracy of the data and any other information used in the project.

U.S. ARMY CORPS OF ENGINEERS LOUISVILLE DISTRICT		
Surveyed By	Plotted By	Checked By
_____	_____	_____
_____	_____	_____

Survey Information
OLMSTED_POOL_OHIO_RIVER
OH_LD_OLM_20220621_CS_924_927_SORT
21 June 2022

Pool Reach Number 9 of 9





**US Army Corps
of Engineers**
Louisville District

Notice to Navigation Interests

Notice No. 2022-015

Date: June 20, 2022

<http://www.lrl.usace.army.mil/Missions/CivilWorks/Navigation/Notices.aspx>

In Reply Refer to: CELRL-OPT PO Box 59, Louisville, KY 40201 Telephone: 502-315-6694

LOUISVILLE DISTRICT

LOCKS AND DAM 53

TRAFFIC RESTRICTIONS AND NAVIGATION LANE CHANGE FOR DEMOLITION BLASTING

OHIO RIVER

The Corps of Engineers' contractor, CJ Mahan, will be working on the demolition of Locks and Dam 53 (Ohio River Mile 962.6) for the entire low water season of 2022. Explosives will be used for the demolition. Blasting will begin on or after 21 June 2022 and is expected to take place during periods when the river stage is below 26 feet on the Olmsted Locks and Dam Headwater gage. A blast may take place up to once every day (Monday – Saturday), conditions permitting. It will be necessary to close the river to traffic around L&D 53 while the contractor is in the process of loading the explosives and detonating the blast. These closures are expected to be 4 hours or less and will typically occur between 1000 and 1400 Central Time. The plan is to conduct the blast at approximately 1200 noon Central Time, after all vessels and personnel have cleared the blast area. A US Coast Guard safety zone will be enforced during loading and blasting activities. The exact details for each day that blasting will occur will be broadcast by the US Coast Guard in a Broadcast Notice to Mariners. Blasting is estimated to end late August 2022.

During this time, vessels will take all direction of the Olmsted Locks and Dam Control Tower.

Northbound vessels will be stopped at Olmsted Locks and Dam (Ohio River Mile 964.6) and southbound vessels at Ohio River Mile 961 upstream of L&D 53 so that there will be no vessels in the vicinity of L&D 53 when the blast is scheduled to occur. CJ Mahan will be operating 1 patrol boat upstream of L&D 53 when wickets are raised at Olmsted L&D and 2 patrol boats when wickets are lowered at Olmsted L&D. See attached drawing for the blasting safety zone. Once the blast has been completed and the all clear issued, the traffic will be released.

In the event that a misfire occurs, and the closure will extend beyond 4 hours, an immediate email notification will be sent out to industry representatives notifying them. A second email notification will be sent as soon as the misfire is cleared and traffic is released.

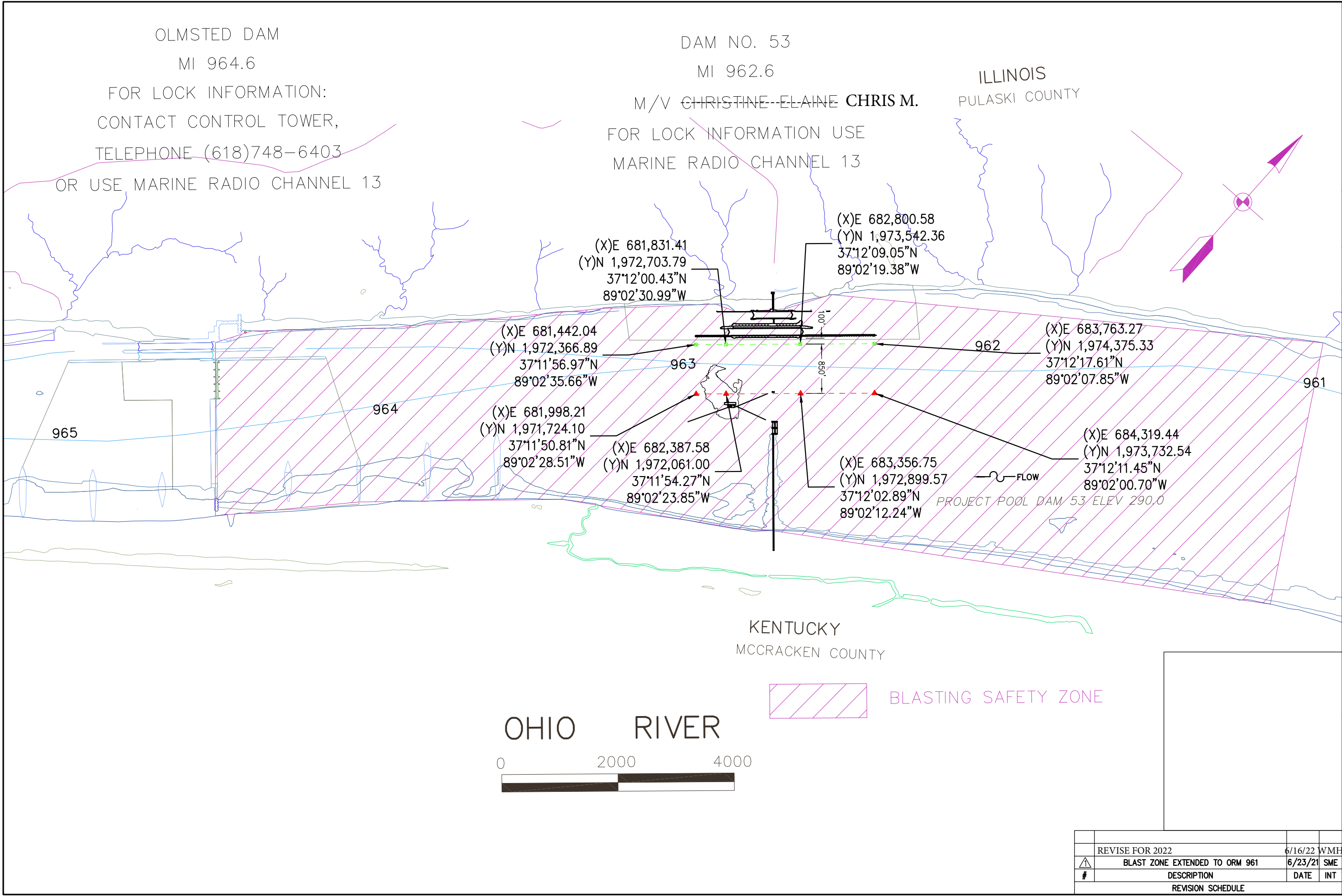
The navigation lane at L&D 53 (Ohio River Mile 962.6) will be approximately 850 feet in the center of the Navigation Pass to facilitate demolition activities as shown in the attached drawing.

All mariners must exercise caution when transiting. The contractor's vessel M/V Chris M. will be working in the area and can be reached on Marine Radio Channel 13.

/s/

Shawn Kenney
Ch. Technical Support Branch

ISSUE DATE: 6/23/2021 Nav Chart_R1.dwg



C.J. Mahan
Construction Company
250 N. Hartford Ave. - Columbus - Ohio - 43222

SCALE
REVIEWED
DATE
DRAWN
SME
DATE
10/20/20

NAVIGATION CHART

LOCKS AND DAM 53 DEMOLITION - PHASE 2

W912QR-20-C-0031

C-20-0010

	REVISE FOR 2022	6/16/22	WME
▲	BLAST ZONE EXTENDED TO ORM 961	6/23/21	SME
#	DESCRIPTION	DATE	INT
REVISION SCHEDULE			

1/1



Notice to Navigation interests



U.S. ARMY CORPS OF ENGINEERS

BUILDING STRONG®

July 18, 2022

TECHNICAL SUPPORT BRANCH

NAVIGATION BULLETIN NO. 22-46

NOTICE TO NAVIGATION INTERESTS:

TENNESSEE-TOMBIGBEE WATERWAY, ALABAMA

CRITICAL SHOAL, MILE 296.0, GAINESVILLE LAKE

Notice is given to mariners of the critical shoal near river mile 296.0 on the Tennessee Tombigbee Waterway. Hydrographic surveys have indicated a shoal crossing the channel in various locations making it difficult to transit the reach. Virtual buoys are in place and USACE Floating Plant is in route to alleviate the shoal. Work is expected to last approximately two weeks. Navigation traffic can contact the Floating Plant via marine radio on channel 16 and is requested to transit this reach with caution at no wake speed.

For further information please contact Roger Wilson, Jr. or Joshua Oliver at the Tennessee-Tombigbee Project Management Office at (662) 245-5500.

Ashley N. Kleinschrodt
Chief, Navigation Section

U.S. ARMY CORPS OF ENGINEERS – MOBILE DISTRICT

P.O.BOX 2288, MOBILE. AL. 36628-0001

<http://sam.usace.army.mil/>

Attn: OP-TN

