



U.S. Department
of Homeland Security
**United States
Coast Guard**

LOCAL NOTICE TO MARINERS

District 8 MRS

Week: 31/22

Mississippi River System

LIGHT LIST VOLUME V
NOTICE NUMBER 31-22
August 3, 2022

LIGHT LIST REFERENCE: COMDTPUB P16502.5, Vol V, 2022 Edition.

CONTENTS: Rivers are listed in alphabetical order and are included only when there is information to report.

Broadcast Notice to Mariners Covered in this Edition

| Originating Unit | Beginning BNM's | Ending BNM's |
|--------------------------------|-----------------|-----------------|
| Sector Upper Mississippi River | 0192 - 22 (UM) | 0200 - 22 (UM) |
| Sector Lower Mississippi River | 0059 - 22 (LM) | 0065 - 22 (LM) |
| Sector Ohio Valley | 0354 - 22 (OV) | 0367 - 22 (OV) |
| OB DWB | 0069 - 22 (DWB) | 0071 - 22 (DWB) |

COAST GUARD DISTRICT 8, WATERWAYS, (504) 671-2327, 7:00 a.m. until 3:30 p.m. (CST)

GENERAL LNM QUESTIONS, COMMENTS, OR SUGGESTIONS MAY BE E-MAILED TO: D8MarineInfo@uscg.mil

COMMENTS REGARDING SECTION VI – PROPOSED CHANGES MAY ALSO BE EMAILED TO: LocalNoticeFeedback@uscg.mil

NIS WATCHSTANDER PHONE (703) 313-5900, 24-HOURS A DAY

INTERNET ADDRESS <https://www.navcen.uscg.gov/>

MISSISSIPPI RIVER SYSTEM LNM VIA INTERNET <https://www.navcen.uscg.gov/>

MISSISSIPPI RIVER SYSTEM LIGHT LIST VIA INTERNET https://www.navcen.uscg.gov/pdf/lightLists/LightList_V5_2022.pdf

ABBREVIATIONS

A through H

ADRIFT - Buoy Adrift
AICW - Atlantic Intracoastal Waterway
Al - Alternating
B - Buoy
BKW - Breakwater
bl - Blast
BNM - Broadcast Notice to Mariner
bu - Blue
C - Canadian
CHAN - Channel
CGD - Coast Guard District
C/O - Cut Off
CONT - Contour
CRK - Creek
CONST - Construction
DAYMK/Daymk - Daymark
DBN/Dbn - Daybeacon
DBD/DAYBD - Dayboard
DEFAC - Defaced
DEST - Destroyed
DISCON - Discontinued
DMGD/DAMGD - Damaged
ec - eclipse
EST - Established Aid
ev - every
EVAL - Evaluation
EXT - Extinguished
F - Fixed
fl - flash
Fl - Flashing
G - Green
GIWW - Gulf Intracoastal Waterway
HAZ - Hazard to Navigation
HBR - Harbor

I through O

I - Interrupted
ICW - Intracoastal Waterway
IMCH - Improper Characteristic
INL - Inlet
INOP - Not Operating
INT - Intensity
ISL - Islet
Iso - Isophase
kHz - Kilohertz
LAT - Latitude
LB - Lighted Buoy
LBB - Lighted Bell Buoy
LHB - Lighted Horn Buoy
LGB - Lighted Gong Buoy
LONG - Longitude
LNM - Local Notice to Mariners
LT - Light
LT CONT - Light Continuous
LTR - Letter
LWB - Lighted Whistle Buoy
LWP - Left Watching Properly
MHz - Megahertz
MISS/MSNG - Missing
Mo - Morse Code
MRASS - Marine Radio Activated Sound Signal
MSLD - Misleading
N/C - Not Charted
NGA - National Geospatial-Intelligence Agency
NO/NUM - Number
NOS - National Ocean Service
NW - Notice Writer
OBSCU - Obscured
OBST - Obstruction
OBSTR - Obstruction

P through Z

PRIV - Private Aid
Q - Quick
R - Red
RACON - Radar Transponder Beacon
Ra ref - Radar reflector
RBN - Radio Beacon
REBUILT - Aid Rebuilt
RECOVERED - Aid Recovered
RED - Red Buoy
REFL - Reflective
RRL - Range Rear Light
RELIGHTED - Aid Relit
RELOC - Relocated
RESET ON STATION - Aid Reset on Station
RFL - Range Front Light
RIV - River
RRASS - Remote Radio Activated Sound Signal
s - seconds
SEC - Section
SHL - Shoaling
si - silent
SIG - Signal
SND - Sound
SPM - Single Point Mooring Buoy
SS - Sound Signal
STA - Station
STRUCT - Structure
St M - Statute Mile
TEMP - Temporary Aid Change
TMK - Topmark
TRLB - Temporarily Replaced by Lighted Buoy
TRLT - Temporarily Replaced by Light
TRUB - Temporarily Replaced by Unlighted Buoy
USACE - Army Corps of Engineers

HOR - Horizontal Clearance
HT - Height

Oc - Occulting
ODAS - Anchored Oceanographic Data Buoy

W - White
Y - Yellow

Additional Abbreviations Specific to this LNM Edition:

RIAC - River Industry Action Committee
MMSI - Mobile Maritime Service Identity
AIS - Automatic Identification System
ATON - Aids To Navigation
COTP - Captain of The Port
TRDBN - Temporary Replaced by Daybeacon
C.F.S. - Cubic Feet per Second
CFR - Code of Federal Regulations
IAW - In Accordance With
h.p. - horse power
MPH - Miles Per Hour
TVA - Tennessee Valley Authority
INC - Incorporated
IENC - Inland Electronic Navigation Chart
WAP - Waterway Action Plan
MSIB - Marine Safety Information Bulletin

SECTION I - SPECIAL NOTICES

This section contains information of special concern to the Mariner.

DEPARTMENT OF HOMELAND SECURITY SUSPICIOUS ACTIVITY

The Department of Homeland Security (DHS) encourages the maritime public to report information concerning suspicious activity to the local Federal Bureau of Investigation Joint Terrorism Task Force (JTTF) Office, http://www.fbi.gov/about-us/investigate/terrorism/terrorism_jtfts, or to other appropriate authorities. The U.S. Coast Guard reminds the maritime industry that they may also report information concerning suspicious activity to the www.AmericasWaterwayWatch.org, the National Response Center (NRC) 1-800-424-8802 or 1-877-24WATCH.

LNM: 02-19

WESTERN RIVERS FLOATING AIDS TO NAVIGATION

The U.S. Coast Guard is responsible for placing and maintaining all aids to navigation. Buoys are set to mark project depths taking into consideration the prevailing river stages and obstructions. Buoy positions on the Inland Electronic Navigation Chart (IENC) are approximate, and subject to change depending on prevailing river stages and obstructions.

Buoys should always be given as wide a berth in passing as possible, consistent with the length and width of the vessel or tow and the width of the bend or crossing.

Buoys should always be used with caution. They may be carried off position by high water, accumulation of drift, ice, or sunk by collision or other causes. In those circumstances buoy marks will remain on the IENC and indicate the last known position of the buoy. Presence of a buoy mark on the IENC does not necessarily mean a buoy will be physically on position. When buoys are missing they will be replaced as soon as possible.

LNM: 16-19

GPS TESTING

At times, throughout our area of responsibility, multiple U.S. Government Agencies conduct GPS testing. These tests vary in duration, affected range from the test site and potential impact to the maritime user as they may affect systems that rely on GPS such as E-911, AIS and DSC. More information is available at the U.S. Coast Guard Navigation Center Website, <https://www.navcen.uscg.gov>. During these periods, GPS users are encouraged to report any GPS outages that they may experience, to the Navigation Information Service (NIS) by calling (703) 313-5900 or by using the NAVCEN Website to submit a GPS problem report.

LNM: 07-19

ARKANSAS RIVER - USACE CHANNEL STATUS REPORTS

Attached as enclosures to this LNM, are USACE Arkansas River Channel Status Reports.

LNM: 30-22

SUNSET OF NOAA PRINTED CHARTS

**** Cancellation of NOAA Paper and Raster Nautical Charts ****

The National Oceanic and Atmospheric Administration (NOAA) is undertaking a multi-year program to end production and maintenance of its suite of over 1,000 traditional paper nautical charts and all associated raster chart products and services, including: Print-on-Demand (POD) paper nautical charts, Full-size chart PDF files, BookletChart™ PDF files, NOAA raster navigational charts (NOAA RNC®), the NOAA RNC tile service, and the online RNC viewer.

Six months notice of the intent to cancel a specific chart is provided in a "Last Edition" notice. The final cancellation of a chart is made in a "Canceled" notice. Both types of notices will appear in LNM Section IV, "Chart Correction". A comprehensive list of all canceled NOAA charts is available at: <http://www.charts.noaa.gov/MCD/Dole.shtml>.

Traditional paper nautical chart production is ending to enable the creation and maintenance of larger scale, more up-to-date, higher quality coverage of NOAA's electronic navigational chart (NOAA ENC®) product. This will significantly enhance the amount of charted detail available to mariners. More information about NOAA's program to sunset traditional paper charts is on the NOAA Coast Survey website at:

<https://nauticalcharts.noaa.gov/charts/farewell-to-traditional-nautical-charts.html>.

An online NOAA Custom Chart application at: <https://devgis.charttools.noaa.gov/pod> is available to create chart images from ENC data, which may then be printed. Notices to Mariners will not be issued for NOAA Custom Charts.

LNM: 10-21

LOWER MISSISSIPPI RIVER - CHANNEL CONDITION/SAFETY ADVISORY - UPDATE

Conditions have lessened, the COTP Lower Mississippi River Safety Advisory between approximate Miles 869.0 and 303.0, has been cancelled.

LNM: 31-22

ILLINOIS WATERWAY - CHANNEL CONDITION/SAFETY ADVISORY - UPDATE

The following area is in the low water watch phase IAW the Western Rivers WAP Annex:

Grafton (Mile 9.9 – Mile 0.0).

Deep draft tows are advised to depart the area. Vessels shall transit this area at their slowest safe speed near fleeting areas to minimize impact due to the narrow channel width. Tow operators are advised to place the heaviest barges in the middle of the tow and identify fleeting areas in the event of a river closure. Mariners are requested to transit the area with caution and contact U.S. Coast Guard Sector Upper Mississippi River via VHF-FM Channel 16, telephone at (314) 269-2332, or email at <mailto:sumrwaterways@uscg.mil>, to report shoaling, hazardous conditions or missing aids to navigation.

LNM: 31-22

MISSOURI RIVER - CHANNEL CONDITION/SAFETY ADVISORY

The following areas are in the low water watch phase IAW the Western Rivers WAP Annex:

Jefferson Reach (Mile 200.0 – Mile 100.0) and

Washington Reach (Mile 100.0 – Mile 0.0).

Deep draft tows are advised to depart the area. All vessels SHALL transit these areas at a slow speed near fleeting areas, to minimize wake impact, due to the narrow channel width. Tow operators are advised to place the heaviest barges in the middle of the tow and identify fleeting areas in the event of a river closure. Mariners are requested to transit these areas with caution and contact U.S. Coast Guard Sector Upper Mississippi River via VHF-FM Channel 16, or at (314) 269-2332, or via e-mail at sumrwaterways@uscg.mil, to report shoaling, hazardous conditions or missing aids to navigation.

LNM: 30-22

UPPER MISSISSIPPI RIVER - AIDS TO NAVIGATION

Multiple can and nun buoys have been reported not properly marking the channel between approximate Miles 631.0 and 379.4. Mariners are urged to exercise caution in the area.

LNM: 24-22

UPPER MISSISSIPPI RIVER - ILLINOIS WATERWAY - MISSOURI RIVER - MARINE EVENTS/FIREWORKS DISPLAYS - UPDATE

Attached as an enclosure to this LNM is U.S. Coast Guard Sector Upper Mississippi River MSIB 09-22, regarding marine events/fireworks displays on the Upper Mississippi River, Illinois Waterway and Missouri River.

LNM: 31-22

LOWER MISSISSIPPI RIVER - SOUTHWEST PASS WEST JETTY - COLREGS UPDATE

The Code of Federal Regulations section number 33 CFR 80.825c, is being updated to reflect a change in a line drawn from position 28-57-42.0N 089-22-18.0W to position 28-51-24.0N 089-24-30.0W; thence to position 28-52-39.0N 089-27-06.0W; thence to the seaward extremity of the Southwest Pass West Jetty located at position 28-54-31.959N 089-26-07.455W.

LNM: 30-22

UPPER MISSISSIPPI RIVER - USACE PROPOSAL TO ESTABLISH MOORING FACILITIES

Attached as an enclosure to this LNM, is USACE Rock Island District Notice to Navigation Interests MR 22-201120, requesting input from waterway users regarding placement of USACE Mooring Facilities. The review period is from August 1, 2022 until August 31, 2022.

LNM: 30-22

SECTION II - DISCREPANCIES

This section lists all reported and corrected discrepancies related to Aids to Navigation in this edition. A discrepancy is a change in the status of an aid to navigation that differs from what is published or charted.

DISCREPANCIES (FEDERAL AIDS)

| LLNR | Aid Name | Status | Chart No. | BNM Ref. | LNM St | LNM End |
|------|--------------------------|-------------|-----------|----------|--------|---------|
| 280 | Karns Island Upper Light | STRUCT DEST | | 0651OV | 31/18 | |
| 990 | Milligan Bend Light | STRUCT DEST | | 0642LM | 51/19 | |
| 1010 | Webber Falls Jetty Light | STRUCT DEST | | 0641LM | 51/19 | |

| | | | | |
|------|-----------------------------|----------------------|--------|-------|
| 1020 | Bluff View Light | STRUCT DEST | 0640LM | 51/19 |
| 1055 | Hisaw Bottom Light | LT EXT | 0196LM | 40/18 |
| 1070 | Brier Creek Light | STRUCT DEST | 0205LM | 31/15 |
| 1077 | Sandtown Bottom Light | STRUCT DEST | 0457LM | 39/19 |
| 1200 | Black Rock Daybeacon | STRUCT DEST | 0379LM | 35/19 |
| 1205 | Gans Light | STRUCT DEST | 0335LM | 33/19 |
| 1213 | Non Lateral Mark 330.4 | STRUCT DEST | 0087LM | 05/16 |
| 1220 | Onion Creek Daybeacon | STRUCT DMGD | 0334LM | 33/19 |
| 1223 | Non Lateral Mark 328.5 | STRUCT DMGD | 0333LM | 33/19 |
| 1225 | Tucker Lake Light | STRUCT DEST | 0332LM | 33/19 |
| 1230 | Mcnabb Bottom Daybeacon | STRUCT DEST | 0332LM | 33/19 |
| 1240 | Deadman Slough Light | STRUCT DEST | 0330LM | 33/19 |
| 1255 | Wilsons Rock Light | STRUCT DMGD | 0380LM | 35/19 |
| 1265 | Peno Point Daybeacon | DAYMK DMGD | 0580LM | 47/19 |
| 1267 | Non Lateral Mark 313.9 | STRUCT DEST | 0089LM | 05/16 |
| 1315 | Garrison Creek Daybeacon | DAYMK MISSING | 0377LM | 35/19 |
| 1360 | Crawford County Daybeacon | STRUCT DEST | 0378LM | 35/19 |
| 1365 | Jeffrey Light | DAYMK MISSING | 0376LM | 35/19 |
| 1390 | Fort Chaffee Light | STRUCT DEST | 0579LM | 47/19 |
| 1395 | Haroldton Light | DAYMK MISSING | 0578LM | 47/19 |
| 1400 | New Haroldton Light | STRUCT DEST | 0574LM | 47/19 |
| 1420 | Gun Club Lake Daybeacon | DAYMK MISSING | 0582LM | 47/19 |
| 1427 | Big Creek Daybeacon | DAYMK MISSING | 0575LM | 47/19 |
| 1430 | Arbuckle Island Light | STRUCT DEST | 0091LM | 05/16 |
| 1435 | Clear Creek Light | DAYMK MISSING | 0584LM | 41/19 |
| 1445 | Crooked Slough Light | STRUCT DEST | 0583LM | 47/19 |
| 1455 | Mulberry River Daybeacon | STRUCT DEST | 0041UM | 11/17 |
| 1510 | Moores Creek Light | LT IMCH/STRUCT DMGD | 0394LM | 44/16 |
| 1515 | Roseville Daybeacon | DAYMK MISSING | 0604LM | 50/19 |
| 1520 | O'Kane Island Light | LT IMCH/STRUCT DMGD | 0393LM | 44/16 |
| 1525 | Alix Bottom Light | STRUCT DEST | 0605LM | 50/19 |
| 1530 | County Line Daybeacon | STRUCT DEST | 0606LM | 50/19 |
| 1532 | Non Lateral Mark 246.3 | DAYMK MISSING | 0607LM | 50/19 |
| 1535 | Kalamazoo Light | DAYMK MISSING | 0608LM | 50/19 |
| 1562 | Non Lateral Mark 236.3 | DAYMK MISSING | 0609LM | 50/19 |
| 1615 | Dublin Daybeacon | STRUCT DEST | 0610LM | 50/19 |
| 1650 | Bunker Hill Upper Daybeacon | STRUCT DEST | 0639LM | 51/19 |
| 1660 | Bunker Hill Lower Daybeacon | STRUCT DEST | 0643LM | 51/19 |
| 1695 | Dardanelle Reach Light | DAYMK DMGD | 0204LM | 31/15 |
| 1697 | Non Lateral Mark 201.4 | STRUCT DEST | 0200LM | 41/18 |
| 1700 | Elberta Light | DAYMK MISSING | 0611LM | 50/19 |
| 1705 | Old Neely Daybeacon | DAYMK MISSING | 0612LM | 50/19 |
| 1708 | Non Lateral Mark 197.9 | STRUCT DEST | 0052LM | 13/17 |
| 1710 | Point Bar Cutoff Light | DAYMK MISSING | 0613LM | 50/19 |
| 1715 | Hola Bend Cutoff Light | DAYMK MISSING | 0614LM | 50/19 |
| 1725 | Reeds Ferry Light | DAYMK MISSING | 0615LM | 50/19 |
| 1733 | Non Lateral Mark 189.8 | DAYMK MISSING | 0616LM | 50/19 |
| 1735 | Sweeden Island Light | LT EXT/DAYMK MISSING | 0617LM | 50/19 |
| 1738 | Non Lateral Mark 188.8 | DAYMK MISSING | 0618LM | 50/19 |

| | | | | |
|------|-----------------------------------|---------------------------|--------|-------|
| 1745 | Wilson Light | STRUCT DEST | 0620LM | 50/19 |
| 1770 | Willow Bend Lower Daybeacon | DAYMK MISSING | 0621LM | 50/19 |
| 1798 | Non Lateral Mark 175.6 | DAYMK MISSING | 0622LM | 50/19 |
| 1800 | Point Remove Creek Light | DAYMK MISSING | 0623LM | 50/19 |
| 1815 | Ellis Island Light | STRUCT DEST | 0630LM | 51/19 |
| 1817 | Non Lateral Mark 171.2 | DAYMK MISSING | 0631LM | 51/19 |
| 1845 | Stane Reach Upper Daybeacon | DAYMK DMGD | 0634LM | 51/19 |
| 1850 | Stane Reach Light | DAYMK DMGD | 0635LM | 51/19 |
| 1890 | Belk Corner Light | DAYMK MISSING/STRUCT DMGD | 0558LM | 45/19 |
| 1903 | Non Lateral Mark 150.9 | DAYMK MISSING | 0560LM | 45/19 |
| 1915 | Bigelow Middle Daybeacon | DAYMK DMGD | 0563LM | 45/19 |
| 1920 | Bigelow Lower Light | DAYMK MISSING | 0538LM | 44/19 |
| 1930 | Tri County Light | STRUCT DEST | 0370LM | 41/16 |
| 1940 | Beaver Dam Creek Daybeacon | STRUCT DMGD | 0636LM | 51/19 |
| 1948 | Non Lateral Mark 138.8 | DAYMK MISSING | 0539LM | 44/19 |
| 1953 | Non Lateral Mark 137.6 | DAYMK MISSING | 0540LM | 44/19 |
| 1960 | Palarm Light | DAYMK MISSING | 0541LM | 44/19 |
| 1975 | Maumelle River Upper Daybeacon | STRUCT DEST | 0565LM | 45/19 |
| 1988 | Non Lateral Mark 130.6 | DAYMK MISSING | 0542LM | 44/19 |
| 2030 | Burns Park Light | STRUCT DEST | 0514LM | 42/19 |
| 2045 | Waterworks Bend Light | DAYMK DMGD | 0515LM | 42/19 |
| 2130 | Willow Bar Light | LT EXT | 0524LM | 42/19 |
| 2143 | Non Lateral Mark 106.5 | DAYMK MISSING | 0637LM | 51/19 |
| 2160 | Estes Place Light | DAYMK IMCH/STRUCT DMGD | 0396LM | 44/16 |
| 2199 | Non Lateral Mark 92.0 | STRUCT DEST | 0398LM | 44/16 |
| 2370 | Ste. Marie Bend Lower Daybeacon | STRUCT DEST | 0407LM | 45/16 |
| 2435 | Richland Bend Middle Daybeacon | STRUCT DEST | 0099LM | 16/18 |
| 2485 | Little Bayou Meto Lower Daybeacon | DAYMK DMGD | 0094LM | 15/18 |
| 2498 | Cummins Bend Daybeacon | STRUCT DEST | 0103LM | 06/16 |
| 2540 | Sample Island Light | STRUCT DEST | 0106LM | 06/16 |
| 2550 | Sample Island Lower Light | STRUCT DEST | 0107LM | 06/16 |
| 2665 | Owens Lake Daybeacon | DAYMK DMGD | 0110LM | 06/16 |
| 2825 | Miller Creek Daybeacon | STRUCT DEST | 0346OV | 18/18 |
| 3195 | Young Creek Daybeacon | DAYMK DMGD | 0293OV | 22/22 |
| 3655 | Cages Bend Light | STRUCT DEST | 0660OV | 38/19 |
| 3965 | Watkins Daybeacon | STRUCT DEST | 0245OV | 19/17 |
| 4250 | Shammels Mound Landing Light | STRUCT DEST | 0010OV | 02/16 |
| 4285 | Saline Creek Light | STRUCT DEST/TRUB | 0221OV | 26/16 |
| 4315 | Pryors Creek Light | STRUCT DEST | 0030OV | 02/20 |
| 4340 | Devils Elbow Light | STRUCT DEST | 0306OV | 16/18 |
| 4365 | Bleidt Landing Light | STRUCT DEST/TRUB | 0137OV | 17/21 |
| 4390 | Crooked Creek Light | STRUCT DEST/TRUB | 0383OV | 36/16 |
| 4455 | Prison Farm Landing Light | STRUCT DEST | 0145OV | 17/21 |
| 4500 | Kuttawa Bar Light | STRUCT DEST | 0243OV | 12/18 |
| 4505 | Money Cliff Light | STRUCT DEST | 0364OV | 19/18 |
| 6985 | Sand Point Lower Light | STRUCT DEST | 0102UM | 20/22 |
| 6990 | Circle Light | STRUCT DMGD | 0102UM | 20/22 |
| 6995 | Spring Bay Daybeacon | STRUCT DEST | 0102um | 20/22 |
| 7035 | Drolls Point Light | STRUCT DEST/TRLB | 0233UM | 23/20 |

| | | | | |
|-------|---------------------------------|---------------------------|--------|-------|
| 7525 | Grand Island Foot Light | STRUCT DEST | 0015UM | 05/22 |
| 7565 | Sugar Creek Light | STRUCT DEST | 0526UM | 51/20 |
| 7585 | Frederick Light | STRUCT DEST | 0539UM | 29/19 |
| 7650 | Briggs Landing Light | LT EXT/STRUCT DMGD | 0890UM | 51/19 |
| 7695 | Moore's Island Light | STRUCT DEST | 0037UM | 12/22 |
| 7705 | Wilson Island Daybeacon | DAYMK DMGD | 0104UM | 18/21 |
| 7850 | Florence Light | LT EXT | 0055UM | 14/22 |
| 8540 | Blaines Island Light | STRUCT DEST | 0320OV | 25/22 |
| 8765 | Midway Light | LT EXT | 0454OV | 41/21 |
| 8840 | Nine Mile Creek Light | STRUCT DEST | 0699OV | 33/18 |
| 8857 | Arbuckle Creek Light | STRUCT DEST/TRDBN | | 39/20 |
| 9150 | Washita Point Light | LT EXT | 0395LM | 33/20 |
| 9185 | Preston Peninsula Light | REDUCED INT | 0420LM | 46/16 |
| 9442 | Black Dog Daybeacon | STRUCT DEST | 0198UM | 26/21 |
| 9456 | Six Mile Cut Lower Daybeacon | STRUCT DEST | 0518UM | 47/18 |
| 9470 | Four Mile Bend Cutoff Daybeacon | STRUCT DEST | 0198UM | 26/21 |
| 9535 | Quaker Oats Light | STRUCT DEST | 0043OV | 06/16 |
| 9565 | Putney Daybeacon | DAYMK DMGD | 0768OV | 52/19 |
| 9590 | Iron Bank Light | LT EXT | 0770OV | 52/19 |
| 9630 | Samuel Light | LT EXT | 0771OV | 52/19 |
| 9660 | Osage Orange Daybeacon | DAYMK DMGD | 0773OV | 52/19 |
| 9663 | Barker Daybeacon | DAYMK MISSING/STRUCT DMGD | 0774OV | 52/19 |
| 9665 | French Point Light | STRUCT DEST | 0775OV | 52/19 |
| 9680 | Island 8 Chute Upper Daybeacon | DAYMK MISSING/STRUCT DMGD | 0787OV | 52/19 |
| 9690 | Milton Bell Light | LT EXT | 0172OV | 22/16 |
| 9695 | Lester Light | STRUCT DEST | 0777OV | 52/19 |
| 9700 | Island 10 Bar Light | LT EXT | 0779OV | 52/19 |
| 9707 | Everest Landing Daybeacon | DAYMK MISSING/STRUCT DMGD | 0780OV | 52/19 |
| 9715 | Groom Towhead Daybeacon | STRUCT DEST | 0781OV | 52/19 |
| 9725 | Morrison Towhead Daybeacon | LT EXT | 0788OV | 52/19 |
| 9770 | Nolan Daybeacon | DAYMK MISSING | 0783OV | 52/19 |
| 9780 | Williams Point Daybeacon | DAYMK DMGD | 0778OV | 52/19 |
| 9790 | Bixby Towhead Light | DAYMK MISSING | 0786OV | 52/19 |
| 9810 | Merriwether Bend Light | LT EXT/DAYMK MISSING | 0791OV | 52/19 |
| 9825 | Carey Upper Daybeacon | STRUCT DEST | 0648LM | 52/19 |
| 9830 | Little Cypress Bend Light | LT EXT/DAYMK DMGD | 0649LM | 52/19 |
| 9845 | Murphy Smith Upper Daybeacon | STRUCT DEST | 0065LM | 14/17 |
| 9860 | Robinson Bayou Light | LT EXT | 0650LM | 52/19 |
| 9905 | Blaker Towhead Light | LT EXT/DAYMK DMGD | 0651LM | 52/19 |
| 9910 | Blaker Towhead Lower Light | LT EXT | 0652LM | 52/19 |
| 9980 | Obion Bar Light | LT EXT/DAYMK MISSING | 0653LM | 52/19 |
| 10185 | Cedar Point Light | REDUCED INT | 0031LM | 18/22 |
| 10195 | Dean Island Light | REDUCED INT | 0327LM | 33/19 |
| 10210 | Brandywine Chute Light | REDUCED INT | 0031LM | 18/22 |
| 10225 | Island 40 Foot Light | STRUCT DEST | 0232LM | 49/18 |
| 10540 | Harbert Point Light | LT EXT | 0256LM | 36/15 |
| 10545 | Stumpy Point Light | STRUCT DEST | 0249LM | 52/18 |
| 10625 | Delta Lower Light | STRUCT DEST | 0118LM | 06/16 |
| 10650 | Miller Point Light | STRUCT DEST | 0171LM | 14/16 |

| | | | | |
|-------|----------------------------------|---------------------|----------|-------|
| 10660 | Old Town Bend Foot Light | STRUCT DEST | 0253LM | 36/15 |
| 10685 | Robson Light | STRUCT DEST | 0116LM | 06/16 |
| 10700 | Sunflower Cut-Off Foot Light | STRUCT DEST | 0115LM | 06/16 |
| 10710 | Ludlow Bar Light | DAYMK DMGD | 0018LM | 04/18 |
| 10715 | Wood Cottage Light | STRUCT DEST | 0114LM | 06/16 |
| 10720 | Knowlton Light | STRUCT DEST | 0113LM | 06/16 |
| 10730 | Mason Landing Daybeacon | STRUCT DEST | 0172LM | 14/16 |
| 10815 | Riverton Middle Bar Light | STRUCT DEST | 0113LM | 21/18 |
| 10885 | Cypress Bend Light | STRUCT DEST | 0032LM | 07/18 |
| 10895 | Eutaw Bar Light | STRUCT DEST | 0365LM | 35/19 |
| 10905 | Mounds Crevasse Lower Light | STRUCT DEST | 0114LM | 21/18 |
| 10910 | Boliver Light | STRUCT DEST | 0069LM | 11/18 |
| 10955 | Miller Bend Light | STRUCT DEST | 0030LM | 06/18 |
| 10965 | La Grange Towhead Light | STRUCT DEST | 0367LM | 35/19 |
| 11050 | Vaucluse Bend Light | STRUCT DEST | 0028LM | 06/18 |
| 11070 | Anconia Point Light | STRUCT DEST | 0368LM | 35/19 |
| 11080 | Lakeport Light | STRUCT DEST | 0369LM | 35/19 |
| 11085 | Walnut Point Light | STRUCT DEST | 0370LM | 35/19 |
| 11125 | Corregidor Light | STRUCT DEST | 0080LM | 05/16 |
| 11130 | Sarah Island Light | STRUCT DEST | 0371LM | 35/19 |
| 11170 | Stack Island Light | STRUCT DEST | 0372LM | 35/19 |
| 11180 | STACK ISLAND LOWER LIGHT | STRUCT DEST | 0373LM | 35/19 |
| 11195 | Chinaman Light | STRUCT DEST | 0374LM | 35/19 |
| 11210 | Fitler Point Daybeacon | STRUCT DEST | 0170LM | 28/17 |
| 11215 | Seitz Light | STRUCT DEST | 0448LM | 38/19 |
| 11220 | Cottonwood Bar Pointway Light | STRUCT DEST | 0449LM | 38/19 |
| 11245 | Willow Point Light | DAYMK DMGD | 0450LM | 38/19 |
| 11250 | Belle Island Corner Daybeacon | STRUCT DEST | 0451LM | 38/19 |
| 11270 | Cabin Teele Light | STRUCT DEST | 0452LM | 38/19 |
| 11275 | Marshall Point Cut-Off Daybeacon | STRUCT DEST | 0453LM | 38/19 |
| 11280 | Joseph Henry Daybeacon | STRUCT DEST | 0454LM | 38/19 |
| 11407 | Coggins Light | STRUCT DEST | 0296LM | 29/16 |
| 11415 | Reid Bedford Point Light | STRUCT DEST | 0463LM | 39/19 |
| 11425 | Diamond Light | STRUCT DEST | 0464LM | 39/19 |
| 11430 | Sargent Point Light | LT IMCH/DAYMK DMGD | 0465LM | 39/19 |
| 11440 | Cannon Point Light | STRUCT DEST | 0294LM | 41/17 |
| 11455 | Buckridge Light | STRUCT DEST | 0467LM | 39/19 |
| 11470 | Grand Gulf Island Light | STRUCT DEST | 0468LM | 39/19 |
| 11505 | Old Levee Light | LT IMCH/DAYMK DMGD | 0470LM | 39/19 |
| 11520 | Ashland Light | LT IMCH/DAYMK DMGD | 0471LM | 39/19 |
| 11530 | Hole In The Wall Light | LT IMCH/REDUCED INT | 0472LM | 39/19 |
| 11540 | Giles Bend Cut-Off Light | STRUCT DEST | 0171LM | 28/17 |
| 11700 | Fort Adams Light | STRUCT DEST | 0402LM | 36/19 |
| 11795 | Morganza Crevasse Light | STRUCT DEST | 0400LM | 36/19 |
| 11835 | Bayou Sara Bend Light | STRUCT DEST | 0399LM | 36/19 |
| 11860 | Port Hudson Light | STRUCT DEST | 0581NOLA | 36/19 |
| 11900 | Devils Swamp Light | STRUCT DEST | 0397LM | 36/19 |
| 11940 | Ben Burman Light | STRUCT DEST | 0549LM | 44/19 |
| 12677 | Island 21 Daybeacon | STRUCT DEST | 0503UM | 27/19 |

| | | | | |
|----------|---------------------------------|---------------------|--------|-------|
| 13165 | Lock 5A Light | LT EXT | 0172UM | 20/20 |
| 13230 | Island 74 Light | STRUCT DEST/TRUB | 0380UM | 34/20 |
| 13430 | Root River Upper Light | STRUCT DEST/HAZ NAV | 0172UM | 20/20 |
| 13510 | Perry Ruby Light | STRUCT DEST | 0061UM | 12/17 |
| 13720 | Crooked Slough Head Daybeacon | STRUCT DEST/TRUB | 0482UM | 26/19 |
| 13725 | Crooked Slough Head Light | STRUCT DEST/TRUB | 0482UM | 26/19 |
| 13915 | Clayton Lower Daybeacon | STRUCT DEST/TRUB | 0240UM | 31/18 |
| 13970 | Swift Slough Upper Daybeacon | DAYMK DMGD | 0108UM | 20/22 |
| 14010 | Cassville Upper Daybeacon | STRUCT DEST | 0546UM | 29/19 |
| 14030 | Cassville Lower Light | STRUCT DEST | 0546UM | 29/19 |
| 14055 | Milkmans Island Light | LT EXT | 0172UM | 20/20 |
| 14105 | Maquoketa Island Light | STRUCT DEST | 0460UM | 25/19 |
| 14230 | Nine-Mile Island Light | STRUCT DEST | 0410LM | 36/17 |
| 14260 | Stone Slough Light | STRUCT DEST | 0454UM | 25/19 |
| 14275 | Fever River Light | STRUCT DEST/TRUB | 0485UM | 45/18 |
| 14295 | Pulaski Light | STRUCT DEST | 0485UM | 45/18 |
| 14385 | Arnold Towhead Light | STRUCT DEST | 0449UM | 25/19 |
| 14445 | Sabula Lower Light | STRUCT DEST | 0446UM | 25/19 |
| 14460 | Smith Bay Light | STRUCT DEST | 0048UM | 13/22 |
| 14475 | Elk River Light | DAYMK DMGD | 0257LM | 31/21 |
| 15170 | Edwards Island Upper Light | STRUCT DEST/TRUB | 0403UM | 26/16 |
| 15785 | Sny River Light | STRUCT DEST | 0114UM | 22/22 |
| 16200 | Portage Des Sioux Light | LT EXT | 0088UM | 18/22 |
| 16785 | Lowry Light | STRUCT DEST | 0026UM | 10/22 |
| 16910 | Ste. Genevieve Island Light | STRUCT DEST | 0557UM | 30/19 |
| 17000 | Chester Prison Upper Light | STRUCT DEST | 0026UM | 10/22 |
| 18140 | Dodds Daybeacon | DAYMK IMCH | 0294UM | 37/21 |
| 18170 | Boyer River Daybeacon | DAYMK IMCH | 0294UM | 37/21 |
| 18250 | Florence Bend Lower Daybeacon | DAYMK IMCH | 0346UM | 44/21 |
| 19375 | Weston Daybeacon | STRUCT DEST | 0106UM | 18/21 |
| 20245 | New Frankfort Daybeacon | DAYMK MISSING | 0363UM | 47/21 |
| 20250 | Little Missouri Bend Daybeacon | STRUCT DEST | 0363UM | 47/21 |
| 21200 | Tavern Rock Daybeacon | STRUCT DEST | 0275UM | 33/21 |
| 23285 | Cluster Upper Light | STRUCT DEST | 0721OV | 34/18 |
| 24110 | Old Lock No. 17 Lower Daybeacon | STRUCT DEST | | 39/20 |
| 26047 | Sunken Barge Lighted Buoy WR | MISSING | 0519OV | 51/21 |
| 26470 | Notch Lick Light | STRUCT DEST | 0210OV | 23/21 |
| 27090 | Wolf Creek Light | LT EXT | 0064OV | 05/22 |
| 27520 | Robert Mann Light | STRUCT DEST | 0269OV | 21/22 |
| 27540 | Water Works Light | STRUCT DMGD | 0179OV | 12/22 |
| 27855 | Graham Varble Light | STRUCT DEST | 0134OV | 17/21 |
| 27935 | Dekoven Light | STRUCT DEST | 0294OV | 23/22 |
| 29241.25 | Smith Island Lower Daybeacon | STRUCT DEST | 0202LM | 26/21 |
| 29256.65 | Cadney Lower Daybeacon | DAYMK DMGD | 0205LM | 26/21 |
| 29272 | Deloges Middle Daybeacon | DAYMK IMCH | | 36/20 |
| 29467 | Hog Lake Daybeacon | STRUCT DEST | | 36/20 |
| 29618 | Red River Entrance Light | STRUCT DEST | | 37/20 |
| 29665 | Dry Cypress Daybeacon | STRUCT DEST | | 37/20 |
| 29690 | Bayou Cocodrie Upper Daybeacon | STRUCT DEST | | 37/20 |

| | | | | |
|-------|--------------------------------|------------------|--------|-------|
| 29695 | Bayou Cocodrie Daybeacon | STRUCT DEST | | 37/20 |
| 29710 | Grassy Lake Daybeacon | DAYMK MISSING | | 37/20 |
| 29725 | Alligator Bayou Daybeacon | STRUCT DEST | 0216LM | 33/17 |
| 29750 | Timber Lake Daybeacon | STRUCT DEST | | 37/20 |
| 29755 | Naples Daybeacon | STRUCT DEST | | 37/20 |
| 29775 | Three Rivers Junction Light | STRUCT DEST | | 37/20 |
| 29780 | Barbre Daybeacon | STRUCT DEST | | 37/20 |
| 29785 | Torras Daybeacon | STRUCT DEST | | 37/20 |
| 29795 | Oak Grove Daybeacon | STRUCT DEST | | 37/20 |
| 29845 | Houden Point Daybeacon | STRUCT DEST | 0255UM | 30/21 |
| 31240 | Serodino Upper Daybeacon | STRUCT DEST | 0350OV | 30/22 |
| 31275 | Stevenson Daybeacon | DAYMK IMCH | 0260OV | 19/22 |
| 31995 | Dry Creek Light | STRUCT DEST | 0402OV | 31/20 |
| 32140 | Chambers Daybeacon | STRUCT DEST | 0178OV | 11/13 |
| 32170 | Diamond Island Lower Daybeacon | STRUCT DEST | 0177OV | 11/13 |
| 32325 | Condors Landing Light | STRUCT DEST | 0127OV | 09/20 |
| 32445 | Sales Light | TRUB/STRUCT DEST | 0269OV | 19/14 |
| 32460 | Reynoldsburg Island Light | STRUCT DEST/TRUB | 0290OV | 15/18 |
| 32480 | Higgins Light | STRUCT DEST | 0342OV | 27/15 |
| 32530 | Standing Rock Upper Light | STRUCT DEST | 0658OV | 41/13 |
| 32570 | Fort Henry Light | STRUCT DEST | 0160OV | 19/21 |
| 32585 | Pine Bluff Light | STRUCT DEST | 0308OV | 19/19 |
| 32595 | Blood River Light | STRUCT DEST/TRUB | 0138OV | 17/21 |
| 32600 | Clyde Light | LT EXT | 0581OV | 44/15 |
| 32605 | Newburg Light | STRUCT DEST | 0362OV | 29/15 |
| 32650 | West Entrance Canal Light | LT EXT | 0994OV | 50/18 |
| 32665 | Grand Rivers Light | LT EXT | 0993OV | 50/18 |

DISCREPANCIES (FEDERAL AIDS) CORRECTED

| LLNR | Aid Name | Status | Chart No. | BNM Ref. | LNM St | LNM End |
|------|----------|--------|-----------|----------|--------|---------|
|------|----------|--------|-----------|----------|--------|---------|

None

DISCREPANCIES (PRIVATE AIDS)

| LLNR | Aid Name | Status | Chart No. | BNM Ref. | LNM St | LNM End |
|------|---|-----------------|-----------|------------|--------|---------|
| 1685 | Oakley Dock Light | LT EXT | | 0307-14 LM | 44/14 | |
| 1690 | Mobley Dock Light | LT EXT | | 0454-13 LM | 48/13 | |
| 2100 | Oakley Light | LT EXT | | 0520LM | 42/19 | |
| 2337 | Island Harbor Marina Light | LT EXT | | | 45/16 | |
| 2340 | Century Tube Lights (2) | LT EXT | | | 45/16 | |
| 2400 | Pickett And Davison Lights (2) | LT EXT | | 0481-13 LM | 50/13 | |
| 3725 | Lakewood Marina Lights (4) | LT IMCH | | 0439-15 OV | 34/15 | |
| 3750 | Dupont Dock Lights (2) | OFF STA/LT EXT | | 0305-15 OV | 26/15 | |
| 3795 | Nashville Water Intake Lights (2) | LT EXT | | | 44/11 | |
| 3805 | Holnam Dock Lights (2) | LT EXT | | | 44/11 | |
| 3815 | Kerr-Mcgee Dock Lights (2) | LT EXT | | | 44/11 | |
| 3820 | Cohen Terminal Lights (2) | LT EXT | | | 44/11 | |
| 3930 | Alcoa Chemical Dock Lights (2) | MSLD SIG/LT EXT | | 0216-10 OV | 14/10 | |
| 3960 | Hunter Marine Transport Dock Lights (2) | LT EXT | | | 47/08 | |

| | | | | |
|-------|---|-------------|------------|-------|
| 3995 | Riverview Marina Lights (2) | LT EXT | | 47/08 |
| 4055 | Clarksville Boat Club Dock Lights (2) | LT EXT | 0533-12 OV | 34/12 |
| 6170 | Quantum Chemical Dock Lights (2) | LT EXT | 0436-01 UM | 31/01 |
| 6650 | S. T. Services Terminal Lights (2) | LT EXT | | 41/14 |
| 6695 | Continental Grain Company Light | LT EXT | | 41/14 |
| 7225 | Cargo Carriers Dock Lights (2) | LT EXT | | 25/08 |
| 7235 | Pekin Boat Club Breakwater Light | LT EXT | | 05/16 |
| 7250 | Shell Dock Lights (2) | LT EXT | 0123-02 UM | 16/02 |
| 7255 | Adm Growmark Mooring Light | LT EXT | 0122-02 UM | 16/02 |
| 7260 | Sours Grain Tramway Light | LT EXT | 0279-03 UM | 21/03 |
| 7265 | Tomen Dock Light | LT EXT | | 25/08 |
| 7295 | Adm Growmark Mooring Lights (3) | LT EXT | 0281-03 UM | 21/03 |
| 7460 | Cargill Mooring Lights (2) | LT EXT | 0284-03 UM | 21/03 |
| 7620 | Cargill Dock Lights (2) | LT EXT | | 35/08 |
| 7725 | Cargill Terminal Lights (2) | LT IMCH | 0171-18 UM | 26/18 |
| 7730 | Public Service Co. Dock Lights (6) | LT EXT | 0119-18 UM | 20/18 |
| 7730 | Public Service Co. Dock Lights (6) | LT IMCH | 0171-18 UM | 26/18 |
| 7760 | Adm Growmark Grain Elevator Lights (2) | LT IMCH | 0171-18 UM | 26/18 |
| 9440 | Black Dog Lights (5) | LT EXT | | 43/16 |
| 9965 | Huffman Grain Light | STRUCT DEST | 0131-16 LM | 08/16 |
| 10300 | Cargill Dock Light | LT EXT | 0361-01 LM | 34/01 |
| 10390 | Peavey Lights (2) | LT EXT | 0398-02 LM | 36/02 |
| 10395 | Suburban Propane Dock Light | LT EXT | 0396-02 LM | 36/02 |
| 10415 | Western Tar Products Dock Light | LT EXT | 0394-02 LM | 36/02 |
| 11943 | Bear Industries Barge Dock Lights (4) | LT EXT | 0600-17 NO | 30/17 |
| 11990 | Riverside Dock Lights (2) | LT EXT | 0695-01 UM | 40/01 |
| 12080 | University Dock Lights (3) | LT EXT | 0696-01 UM | 40/01 |
| 12215 | Koch Fuel Dock Lights (2) | LT EXT | | 35/16 |
| 12320 | Newport Terminal Lights (2) | LT EXT | | 35/16 |
| 12385 | Shiely Dock Lights (2) | LT IMCH | | 35/16 |
| 12712 | City of Red Wing Metering Station Special Light | MISSING | | 42/16 |
| 12768 | Consolidated Grain and Barge Loading Dock Piling Lights (2) | MISSING | | 42/16 |
| 12930 | Alma City Dock Light/Daymarks (3) | MISSING | | 42/16 |
| 13405 | G. Heileman Brewery Dock Light | MISSING | | 42/16 |
| 14756 | Isle Of Capri Casino Marina Daybeacon | MISSING | | 03/16 |
| 15345 | Koch Nitrogen Dock Light | LT EXT | | 41/14 |
| 15415 | Riverview Park Dock Light | LT EXT | 0531-15 UM | 49/15 |
| 15425 | Hall Towing Light | STRUCT DEST | 0280UM | 25/20 |
| 15822 | Hannibal Intake Light | LT EXT | 0358-20 UM | 32/20 |
| 16100 | Jersey County Grain Dock Lights (2) | LT EXT | | 19/16 |
| 16205 | Piasa Harbor Light | LT EXT | 0131-15 UM | 22/15 |
| 16220 | Con-Agra Mooring Lights (2) | LT EXT | | 21/16 |
| 16230 | Alton Marina Breakwater Lights (3) | LT EXT | 0131-15 UM | 22/15 |
| 16265 | Amoco Dock Light | STRUCT DEST | | 35/09 |
| 16280 | Amoco Dock Lights (4) | LT EXT | | 35/09 |
| 16310 | Sioux City/New Orleans Terminal Light | STRUCT DEST | | 35/09 |
| 16380 | Western Dock Lights (9) | LT IMCH | | 34/08 |
| 16390 | Adm-Growmark Dock Lights (4) | LT EXT | 0776-01 UM | 44/01 |

| | | | | |
|-------|--|-------------------|------------|-------|
| 16430 | Union Electric Coal Dock Lights (2) | LT EXT | 0305-08 UM | 34/08 |
| 16445 | Continental Cement Lights (2) | LT EXT | 0305-08 UM | 34/08 |
| 16505 | Peavey Company Dock Lights (3) | LT EXT | 0305-08 UM | 34/08 |
| 16530 | Cahokia Marine Terminal Lights (2) | LT EXT | 0305-08 UM | 34/08 |
| 16540 | Slay Bulk Terminal Lights (2) | LT EXT | 0305-08 UM | 34/08 |
| 16545 | Peavey Lights (3) | LT EXT | 3305-08 UM | 34/08 |
| 16550 | Eagle Marine Industries Light | LT IMCH | 0305-08 UM | 34/08 |
| 16560 | Phillips Pipeline Lights (2) | LT EXT | 0305-08 UM | 34/08 |
| 16565 | Growmark Dock Lights (2) | LT EXT | 0305-08 UM | 34/08 |
| 16575 | Eagle Marine Dock Lights (2) | LT EXT | 0305-08 UM | 34/08 |
| 16600 | J.H. Collier Barge Mooring Lights (2) | LT EXT | 0305-08 UM | 34/08 |
| 16605 | Clark Oil Refining Dock Lights (4) | LT EXT | 0305-08 UM | 34/08 |
| 16609 | Alcoa Foil Lights (2) | LT EXT | 0305-08 UM | 34/08 |
| 16615 | Hci Chemtech Dock Lights (2) | LT EXT | 0305-08 UM | 34/08 |
| 16617 | Semmaterials Terminal Lights (2) | LT EXT | 0305-08 UM | 34/08 |
| 16630 | American Commercial Dock Lights (2) | LT EXT | 0305-08 UM | 34/08 |
| 16655 | Bussen Terminal Light | LT EXT | 0305-08 UM | 34/08 |
| 18700 | Bunge Dock Lights (3) | MISSING/LT EXT | | 18/08 |
| 19185 | St. Joseph L & P Dock Light | LT IMCH | | 17/08 |
| 19415 | Leavenworth Water Intake Lights (2) | LT EXT | 0104-07 UM | 39/07 |
| 19460 | Smoot Grain Dock Lights (2) | LT EXT | 0385-07 UM | 39/07 |
| 19505 | Board Of Public Utilities Light | LT EXT | 0386-07 UM | 39/07 |
| 19535 | Public Utilities Intake Lights (3) | LT EXT | | 38/08 |
| 19660 | Continental Grain Dock Lights (4) | LT EXT | 0181-08 UM | 24/08 |
| 19695 | Kansas City Power And Light Company Lights (2) | LT EXT | 0181-08 UM | 24/08 |
| 20870 | U.E. Callaway Intake Lights (2) | LT EXT | 0522-20 UM | 52/20 |
| 22873 | Moon Township Municipal Authority Back Channel Outfall Danger Buoy | OFF STA | 0108-21 OV | 14/21 |
| 24005 | Bens Run Light | LT EXT | | 03/20 |
| 24580 | Ohio Power Coal Dock Light | LT EXT | 480-21 OV | 44/21 |
| 25820 | Cargill Barge Loading Facility Light | LT EXT | 0552-09 OV | 40/09 |
| 26290 | Boone County Sand And Gravel Lights (2) | LT EXT | 0769-00 OV | 40/00 |
| 26833 | Transmontaige Dock Lights (2) | LT EXT | 286-21 OV | 28/21 |
| 26860 | Dupont Chemical Lights (2) | LT EXT | 0330-18 OV | 17/18 |
| 27367 | Transmontaigne Dock Light | LT EXT | | 40/21 |
| 27590 | Transmontaigne Dock Lights (4) | LT EXT | | 40/21 |
| 32550 | Paris Landing State Park Lights (2) | Status Unreported | 0452-20 OV | 38/20 |
| 32900 | Ergon Dock Lights (2) | LT IMCH | | 17/13 |
| | Alcosan-Mascaro Temporary Lighted Danger Buoy | MISSING | | 24/22 |

DISCREPANCIES (PRIVATE AIDS) CORRECTED

| LLNR | Aid Name | Status | Chart No. | BNM Ref. | LNM St | LNM End |
|-------|-------------------------------------|------------------|-----------|----------|--------|---------|
| 21965 | Hill Top Energy Lighted Danger Buoy | RESET ON STATION | | | 24/22 | 31/22 |

PLATFORM DISCREPANCIES

| Name | Status | Position | BNM Ref. | LNM St | LNM End |
|------|--------|----------|----------|--------|---------|
|------|--------|----------|----------|--------|---------|

None

PLATFORM DISCREPANCIES CORRECTED

| Name | Status | Position | BNM Ref. | LNM St | LNM End |
|------|--------|----------|----------|--------|---------|
|------|--------|----------|----------|--------|---------|

None

SECTION III - TEMPORARY CHANGES and TEMPORARY CHANGES CORRECTED

This section contains temporary changes and corrections to Aids to Navigation for this edition. When charted aids are temporarily relocated for dredging, testing, evaluation, or marking an obstruction, a temporary correction shall be listed in Section IV giving the new position.

TEMPORARY CHANGES

| LLNR | Aid Name | Status | Chart No. | BNM Ref. | LNM St | LNM End |
|-------|-------------------------------------|--------------|-----------|----------|--------|---------|
| 7015 | Blue Creek Point Lower Lighted Buoy | TRUB | | 0379UM | 51/21 | |
| 7030 | Drolls Point Upper Lighted Buoy | TRUB | | 0379UM | 51/21 | |
| 7040 | Peoria Heights Lighted Buoy | TRUB | | 0379UM | 51/21 | |
| 8540 | Blaines Island Light | DISCONTINUED | | | 39/20 | |
| 8840 | Nine Mile Creek Light | DISCONTINUED | | | 11/18 | |
| 10455 | Armstrong Bar Light | RELOCATED | | | 23/18 | |
| 11275 | Marshall Point Cut-Off Daybeacon | TRDBN | | | 49/16 | |
| 11280 | Joseph Henry Daybeacon | TRDBN | | | 49/16 | |
| 29880 | Kinnikinnic River Daybeacon | DISCONTINUED | | | 21/20 | |

TEMPORARY CHANGES CORRECTED

| LLNR | Aid Name | Status | Chart No. | BNM Ref. | LNM St | LNM End |
|------|----------|--------|-----------|----------|--------|---------|
|------|----------|--------|-----------|----------|--------|---------|

None

PLATFORM TEMPORARY CHANGES

| Name | Status | Position | BNM Ref. | LNM St | LNM End |
|------|--------|----------|----------|--------|---------|
|------|--------|----------|----------|--------|---------|

None

PLATFORM TEMPORARY CHANGES CORRECTED

| Name | Status | Position | BNM Ref. | LNM St | LNM End |
|------|--------|----------|----------|--------|---------|
|------|--------|----------|----------|--------|---------|

None

SECTION V - ADVANCE NOTICES

This section contains advance notice of approved projects, changes to aids to navigation, or upcoming temporary changes such as dredging, etc. Mariners are advised to use caution while transiting these areas.

SUMMARY OF ADVANCED APPROVED PROJECTS

| <u>Approved Project(s)</u> | <u>Project Date</u> | <u>Ref. LNM</u> |
|----------------------------|---------------------|-----------------|
| None | | |
| <u>Advance Notice(s)</u> | | |
| None | | |

SECTION VI - PROPOSED CHANGES

Periodically, the Coast Guard evaluates its system of aids to navigation to determine whether the conditions for which the aids to navigation were established have changed. When changes occur, the feasibility of improving, relocating, replacing, or discontinuing aids are considered. This section contains notice(s) of non-approved, proposed projects open for comment. SPECIAL NOTE: Mariners are requested to respond in writing to the District office unless otherwise noted (see banner page for address).

PROPOSED WATERWAY PROJECTS OPEN FOR PUBLIC COMMENT

Proposed Project(s)

Closing

Docket No.

Ref. LNM

None

Proposed Change Notice(s)

MONONGAHELA RIVER

The Coast Guard is proposing the following Aid to Navigation Change:

Discontinue Kelly Run Light (LLNR-22475) at mile 25.8, Right Descending Bank, in approximate position 40-14-38.373N/079-55-24.718W.

Comments to be received by September 13, 2022. Please email comments regarding this proposal to: D08-SMB-District-

LocalNoticeFeedback@uscg.mil.

LNM: 29/22

KANAWHA RIVER

The Coast Guard is proposing the following Aid to Navigation Change:

Discontinue Blaines Island Light (LLNR- 8540) at mile 54.4, Right Descending Bank, in approximate position 38-22-27.670N/081-41-58.042W.

Comments to be received by September 27, 2022. Please email comments regarding this proposal to: D08-SMB-District-

LocalNoticeFeedback@uscg.mil.

LNM: 31/22

SECTION VII - GENERAL

This section contains information of general concern to the Mariners. Mariners are advised to use caution while transiting these areas.

ALLEGHENY RIVER

MILE 0.6 - BRIDGE MAINTENANCE

Sixth Street Bridge; A containment system is installed below low steel and follows the contour of the bridge. Vertical clearance is reduced approximately 1-foot for the middle, 100 feet of the navigation span. Mariners are advised to transit the bridge with extreme caution.

LNM: 12-22

ARKANSAS RIVER

MILE 347.9 - CHANNEL CONDITION

Shoaling has been reported in the vicinity of Mile 347.9, mid-channel. Mariners are urged to exercise caution in the area.

LNM: 30-22

MILE 256.5 - MILE 256.0 - CHANNEL CONDITION/USACE SAILING INSTRUCTION

Due to shoaling, the USACE advises mariners to exercise caution and favor the longwall in the downstream approach to the Ozark-Jeta Taylor L/D Nr. 12, between approximate Miles 256.5 and 256.0. Mariners may contact the USACE Little Rock District Office, at (501) 324-5096 or via e-mail at ceswl-op-om@usace.army.mil, for additional information.

LNM: 28-22

MILE 231.9 - MILE 231.5 - CHANNEL CONDITION/USACE SAILING INSTRUCTION

Due to shoaling, the USACE advises mariners, both up-bound and down-bound, to "run the green line" between approximate Miles 231.9 and 231.5. Mariners may contact the USACE Little Rock District Office, at (501) 324-5096 or via e-mail at ceswl-op-om@usace.army.mil, for additional information.

LNM: 29-22

MILE 231.0 - CHANNEL CONDITION

Shoaling has been reported in the vicinity of Mile 231.0. Mariners are advised to keep 150 feet off the nun buoy line and transit with caution.

LNM: 29-22

MILE 142.6 - MILE 142.4 - CHANNEL CONDITION/USACE SAILING INSTRUCTION

Due to shoaling, the USACE advises mariners to exercise caution, "run the green line" and no passing while transiting between approximate Miles 142.6 and 142.4. Mariners may contact the USACE Little Rock District Office, at (501) 324-5096 or via e-mail at ceswl-op-om@usace.army.mil, for additional information.

LNM: 28-22

MILE 118.2 - BRIDGE PROTECTION CELL DAMAGE

The upstream left descending pier protection cell at the Clinton Presidential Park Bridge in the vicinity of Mile 118.2, is damaged and leaning into the left descending bridge pier. Mariners are urged to exercise caution in the area. Mariners may contact the USACE Little Rock District Office at (501) 324-5096 or via e-mail at: ceswl-op-om@usace.army.mil, for additional information.

LNM: 48-21

MILE 86.3 - CHANNEL CONDITION/USACE SAILING INSTRUCTION

Shoaling has been reported in the vicinity of Mile 86.3, Colonel Charles D. Maynard L/D Nr. 5. The USACE advises mariners to favor the long wall, in the downstream approach, both up-bound and down-bound. Mariners may contact the USACE Little Rock District Office at (501) 324-5096 or via e-mail at ceswl-op-om@usace.army.mil, for additional information.

LNM: 26-22

MILE 50.2

MILE 50.2**MILE 10.3 - L/D'S CLOSURES/RESTRICTIONS**

Attached as enclosures to this LNM are USACE Little Rock District Navigation Notices 22-21 and 22-23, regarding L/D closures/restrictions for the Joe Hardin L/D (Nr. 3), in the vicinity of Mile 50.2 and for the Norrell L/D (Nr. 1), in the vicinity of Mile 10.3. Mariners may contact the USACE Little Rock District Office, at (501) 324-5096 or via e-mail at ceswl-op-om@usace.army.mil, for additional information.

LNM: 24-22

MILE 50.0 - MILE 49.5 - CHANNEL CONDITION/USACE SAILING INSTRUCTION

Due to shoaling, the USACE advises mariners to exercise caution and favor the longwall, in the downstream approach to the Joe Hardin L/D Nr. 3, between approximate Miles 50.0 and 49.5. Mariners may contact the USACE Little Rock District Office, at (501) 324-5096 or via e-mail at ceswl-op-om@usace.army.mil, for additional information.

LNM: 28-22

MILE 10.3 - L/D INSTRUCTION

Continuing until further notice, mariners are advised to avoid contact with the downstream landside/long wall stoplog slot cut located downstream of the miter gate recess, at Norrell L/D Nr. 1, in the vicinity of Mile 10.3. All up-bound tows MUST stop along the long wall, downstream of the stoplog cut and transition to the river side/short wall prior to lockage. Vessels are to exercise caution to safely transit by the downstream long wall stoplog slot cut. These locking instructions are to remain in place until further notice. Mariners may contact the USACE Little Rock District Office at (501) 324-5096 or via email at: ceswl-op-om@usace.army.mil, for additional information.

LNM: 30-22

MILE 0.5 - DREDGE OPERATION - UPDATE

The Dredge JADWIN has completed dredging operations in the vicinity of Mile 0.5, downstream of the Montgomery Point L/D.

LNM: 31-22

BIG SANDY RIVER**MILE 9.0 - MILE 0.0 - DREDGE OPERATION**

Continuing until approximately August 13, 2022, Amherst Madison, contractor for the USACE, will conduct dredging operations between approximate Miles 9.0 and 0.0. Dredging will begin in the vicinity of the mouth and proceed to other upstream locations ending at Mile 9.0. Disposal operations will take place at an approved site located on the Ohio River, near the RDB, between approximate Miles 321.0 and 322.0. The contractor's floating plant will consist of the M/V MILTON, M/V BUS BROWN, 2 barge mounted cranes, and 6 material barges. The M/V MILTON will be in the vicinity of the dredge site and should be contacted for passing arrangements via VHF-FM Channel 13. The M/V BUS BROWN will be used to transport the material barges between the dredge site and the disposal area and will be monitoring VHF-FM Channel 13. Work will be conducted Monday through Saturday, from 6:00 a.m. until midnight. During non-working hours, the contractors floating plant will be moored at the worksite and lighted accordingly. Mariners are urged to transit the area at their slowest safe speed to minimize their wake and proceed with caution after passing arrangements have been made.

LNM: 24-22

GREEN RIVER**MILE 8.3 - BRIDGE OPERATION**

Louisville and Nashville Railroad Drawbridge; The bridge will be unattended and left in the open-to-navigation position. Mariners will be notified when the bridge is back in operation.

LNM: 20-22

ILLINOIS WATERWAY**MILE 288.7 - MILE 287.3 - BRIDGE REPAIRS**

Joliet Harbor Bridges; Due to ongoing bridge work, mariners are required to provide 1-hour advance notice, when requesting drawspan openings.

LNM: 19-20

MILE 286.0 - L/D CLOSURES/RESTRICTIONS

Continuing until August 14, 2022, from 6:00 a.m. until 6:00 p.m., each day, Brandon Road L/D in the vicinity of Mile 286.0, will be closed. From 6:00 p.m. until 6:00 a.m., each day, during the same period, a 70-foot width restriction will be in place. The tow haulage units will be out of operation during this period and helper boats will be needed for pulling cuts. Mariners are requested not to tie up along the guide walls during this period. Mariners may contact Brandon L/D at (815) 744-1714, or via VHF-FM Channel 14, for additional information.

LNM: 18-22

MILE 286.0 - L/D CLOSURE/RESTRICTION

Commencing August 15, 2022 and continuing until September 4, 2022, the Brandon Road L/D, in the vicinity of Mile 286.0, will be closed to all traffic. Commencing September 5, 2022 and continuing until September 9, 2022, a 70-foot width restriction will be in place. The tow haulage units will be out of operation during this period and helper boats will be needed for pulling cuts. Mariners are requested not to tie up along the guide walls during these periods. Mariners may contact Brandon L/D at (815) 744-1714, or via VHF-FM Channel 14, for additional information.

LNM: 28-22

MILE 230.7 - MILE 230.5 - DREDGE OPERATION - UPDATE

The M/V LaSALLE has completed dredging operations/strike removal between approximate Miles 230.7 and 230.5, LDB, Starved Rock Lower.

LNM: 31-22

MILE 174.9 - SUBMERGED OBSTRUCTION

A submerged rock pile has been reported in the vicinity of Mile 174.9, RDB, inside the navigation channel, east of Circle Light (LLNR-6980). Mariners are urged to exercise caution in the area.

LNM: 26-22

MILE 158.5 - CHANNEL CONDITION

MILE 158.5 - CHANNEL CONDITION

Shoaling has been reported in the vicinity of Mile 158.5, mid-channel. Mariners are urged to transit the area with caution.

LNM: 25-22

MILE 157.7 - INVASIVE CARP DETERRENCE

Attached as an enclosure to this LNM, is USACE Rock Island District Notice to Navigation Interests 22-200975, regarding the installation and testing of invasive carp deterrence measures.

LNM: 26-22

MILE 151.2 - BRIDGE OPERATION

Pekin Railroad Drawbridge; Continuing until further notice, the bridge will be unattended and left in the open-to-navigation position. The bridge shall initiate the closing sequence for an approaching train by broadcasting the closure on VHF-FM Channel 16, 10-minutes prior to closure and immediately prior to closing. If no mariners respond to the broadcast, the operator of the bridge may begin the closing sequence. For additional information, mariners may contact Chad Toussaint, with Union Pacific Railroad at (979) 665-5541.

LNM: 18-20

MILE 151.0 - CHANNEL CONDITION

Shoaling has been reported in the vicinity of Mile 151.0, near the nun buoy line. Mariners are urged to exercise caution in the area.

LNM: 30-22

MILE 79.0 - MILE 76.0 - DREDGE OPERATION

Continuing until approximately August 4, 2022, Dredge POTTER is conducting dredging operations between approximate Miles 79.0 and 76.0, Old LaGrange L/D. Work will be conducted 24-hours a day, 7-days a week. The Dredge POTTER will monitor VHF-FM Channel 13 or 16 and requests 30-minutes advance notice of passage. Mariners are urged to transit the area at their slowest safe speed to minimize their wake and proceed with caution after passing arrangements have been made.

LNM: 30-22

MILE 76.0 - CHANNEL CONDITION

Shoaling has been reported in the vicinity of Mile 76.0. Mariners are urged to exercise caution in the area.

LNM: 30-22

MILE 38.0 - MILE 36.0 - CHANNEL CONDITION

Shoaling has been reported between approximate Miles 38.0 and 36.0. Mariners are urged to exercise caution in the area.

LNM: 30-22

KANAWHA RIVER**MILE 31.1 - L/D REPAIRS**

Commencing August 19, 2022 and continuing until October 22, 2022, the Winfield L/D in the vicinity of Mile 31.1, will undergo repairs. No L/D closure is anticipated. Mariners are urged to exercise caution in the area.

LNM: 30-22

LOWER MISSISSIPPI RIVER**MILE 922.0 - DREDGE OPERATION**

Continuing until further notice, the Dredge IOWA is conducting dredging operations in the vicinity of Mile 922.0, LDB, Hickman, KY. The Dredge IOWA is monitoring VHF-FM Channel 71. Mariners are urged to exercise caution in the area.

LNM: 30-22

MILE 740.0 - DREDGE OPERATION

Continuing until approximately August 5, 2022, the Dredge JADWIN is conducting dredging operations in the vicinity of Mile 740.0, Redman Bar. Dredge equipment may intermittently block the navigation channel and rolling channel closures may be required to complete this project. The Dredge JADWIN will monitor VHF-FM Channel 13 or 16 or via phone at (601) 631-5795 and requests 15-minutes advance notice to passage. Mariners are urged to transit the area at their slowest safe speed to minimize their wake and proceed with caution after passing arrangements have been made.

LNM: 31-22

MILE 593.0 - MILE 590.0 - RIP-RAP PLACEMENT

Continuing until approximately August 15, 2022, Luhr Crosby Company is conducting rip-rap placement between approximate Miles 593.0 and 590.0, RDB, Montgomery Cutoff. Work will be conducted from 6:30 a.m. until 6:30 p.m., 7-days a week. A fleet of barges, loaded with rock and empty, are staged in the vicinity of Mile 590.0. The M/V BARBARA ANN and M/V BILLY GENE are the contact vessels and will monitor VHF-FM Channel 13, 16 or 72. Mariners are urged to transit the area at their slowest safe speed to minimize their wake and proceed with caution after passing arrangements have been made. Mariners may contact Darwyn Jarrell at (504) 682-0846 or Cody Shields at (618) 791-9042, for up-to-date information.

LNM: 30-22

MILE 503.0 - MAT SINKING UNIT/VESSEL RESTRICTIONS

Continuing until further notice, a USACE Mat Sinking Unit is operating in the vicinity of Mile 503.0, RDB. Work will be conducted from 6:00 a.m. until 7:00 p.m., each day. During working hours, southbound tows will be restricted to 12 barges, with possible delays to large tows. The M/V HARRISON is on-scene and will monitor VHF-FM Channel 13 or 82. Mariners are requested to transit the area at their slowest safe speed to reduce their wake with no meeting/overtaking in the area. Mariners are to make passing arrangements with the contact pilot onboard the M/V HARRISON.

LNM: 31-22

MILE 344.0 - DREDGE OPERATION

Continuing until approximately August 24, 2022, from 6:00 a.m. until 7:00 p.m., the M/V UNCLE ROBERT and associated barges are conducting

MILE 344.0 - DREDGE OPERATION

dredging operations in the vicinity of Mile 344.0, Railroad Landing. Equipment may intermittently block the channel and rolling channel closures are required. Vessel traffic will be passed at the discretion of the on-scene pilot onboard the M/V UNCLE ROBERT. When the channel is open, mariners are requested to transit the area with no passing/overtaking and at their slowest safe speed to minimize their wake after passing arrangements have been made. The M/V UNCLE ROBERT will monitor VHF-FM Channel 13, 16 or 72 or at (504) 385-4260.

LNM: 31-22

MILE 304.0 - DREDGE OPERATION

Continuing until further notice, the U.S. Government Contract Cutterhead Dredge CAPTAIN FRANK is conducting dredging operations at the Old River L/D, lock forebay, and will work back towards the Old River L/D, in the vicinity of Mile 304. Dredged material will be deposited into deep water in the Mississippi River via a floating pipeline. The Dredge will work 24-hours a day, 7-days a week. Mariners should contact the Dredge via VHF-FM Channel 13 or 16, and the Old River L/D via VHF-FM Channel 14, when approaching the Old River lock forebay area. Mariners are urged to transit at their slowest safe speed to minimize wake and proceed with caution after passing arrangements have been made. Mariners may contact the USACE New Orleans District Office, Russell Beauvais at (225) 492-2169, for additional information.

LNM: 31-22

MILE 304.0 - L/D RESTRICTIONS - UPDATE

Continuing until approximately January 31, 2023, tows are to enter the lock wall at a DEAD SLOW speed, tows will be restricted to a length no more than 1,100 feet and will line up along the floating guideway before proceeding into the lock's chamber. Two line-handlers (with life vests) and bumpers are required when approaching and exiting the lock. Vessels must be moored by the bow and stern to the floating timberheads. The Lockmaster, Mr. Anthony T. Lindsly can be reached at (225) 492-3333, for up-to-date information. The point of contact at the USACE New Orleans Office is Russell Beauvais at (225) 492-2169.

LNM: 31-22

MILE 304.0 - L/D CLOSURE

Commencing August 30, 2022 and continuing until approximately November 13, 2022, the Old River L/D, in the vicinity of Mile 304.0, will be closed for repairs. Mariners may contact the lockmaster, Mr. Anthony Lindsly at (225) 492-3333, for up-to-date information. The point of contact at the USACE New Orleans District is Russell Beauvais at (225) 492-2169.

LNM: 30-22

MILE 304.0 - L/D CLOSURE

Continuing until approximately August 30, 2022, from 6:00 a.m. until 7:30 p.m., each day, the Old River L/D, in the vicinity of Mile 304.0, will be closed for repairs. Traffic will be allowed to pass, after work hours. Mariners may contact the lock wall at (225) 492-2301, for updated information/current status, or lockmaster, Mr. Anthony Lindsly at (225) 492-3333, for up-to-date information. The point of contact at the USACE New Orleans District is Russell Beauvais at (225) 492-2169 (work) (225) 202-3851 (cell).

LNM: 30-22

MILE 230.0 - MILE 228.5 - BRIDGE FENDER SYSTEM REPLACEMENT

Continuing until approximately August 2, 2023, work to replace the bridge fender system on the I-10 Bridge, left descending pier of the center span, in the vicinity of Mile 229.3, is being conducted. Work will be conducted Monday through Saturday, from 6:00 a.m. until 7:00 p.m. Mariners are urged to transit between Mile 230.0 and 228.5, at their slowest safe speed to minimize their wake and proceed with caution. Mariners may contact Ryan Finnie via VHF-FM Channel 21 or at (321) 501-3936, for additional information.

LNM: 31-22

MILE 224.0 - DREDGE OPERATION

Continuing until further notice, the Dredge HURLEY is conducting dredging operations in the vicinity of Mile 224.0, Redeye Crossing. Work will be conducted 24-hours a day, 7-days a week. The Dredge HURLEY will monitor VHF-FM Channel 16 or 67. Mariners are urged to transit the area at their slowest safe speed to minimize their wake and proceed with caution after passing arrangements have been made. Mariners may contact the USACE New Orleans District, Michelle Kornick at (504) 862-1842, for additional information.

LNM: 29-22

UPPER MISSISSIPPI RIVER**MILE 805.3 - CHANNEL CONDITION**

Shoaling has been reported in the vicinity of Mile 805.3. Mariners are urged to exercise caution in the area.

LNM: 30-22

MILE 800.4 - DREDGE OPERATION

Continuing until further notice, the M/V MARGRET D., is conducting dredging operations in the vicinity of Mile 800.4. Work will be conducted from 7:00 a.m. until 7:00 p.m., Monday through Friday. The M/V MARGRET D., will monitor VHF-FM Channel 12 and requests 20-minutes advance notice of passage. Mariners are urged to transit the area at their slowest safe speed to minimize their wake and proceed with caution after passing arrangements have been made.

LNM: 29-22

MILE 754.3 - DREDGE OPERATION

Continuing until further notice, the M/V ANGELA K., is conducting dredging operations in the vicinity of Mile 754.3. Work will be conducted from 7:00 a.m. until 7:00 p.m., Monday through Friday. The M/V ANGELA K., will monitor VHF-FM Channel 12 or 13, or phone at (651) 890-2256, and requests 30-minutes advance notice of passage. Mariners are urged to exercise caution in the area.

LNM: 31-22

MILE 664.5 - DREDGE OPERATION

Continuing until further notice, the Dredge GOETZ is conducting dredge operations/strike removal in the vicinity of Mile 664.5. Work will be conducted 24-hours a day, 7-days a week. The Dredge GOETZ will monitor VHF-FM Channel 13, 16 or 82 and requests 30-minutes advance notice of passage. Mariners are urged to transit the area at their slowest safe speed to minimize their wake and proceed with caution after passing

MILE 664.5 - DREDGE OPERATION

arrangements have been made.

LNM: 30-22

MILE 615.1 - L/D CONSTRUCTION

Continuing until approximately October 1, 2022, from 7:00 a.m. until 7:00 p.m., Monday through Friday, construction operations are being conducted at L/D 10, Upper Auxiliary Chamber, in the vicinity of Mile 615.1. A marine plant and the M/V BARBARA B., will be positioned in the chamber and extending 23-30 feet, past the bullnose, and may extend as much as 100 feet, during times of operation. The M/V BARBARA B., will monitor VHF-FM Channel 13 or 16, for additional information.

LNM: 27-22

MILE 582.6 - MILE 531.0 - CHANNEL CONDITION

Shoaling has been reported between approximate Miles 582.6 and 531.0. An area between approximate Miles 563.0 and 560.0, has been reported as being extremely shallow. Mariners are urged to exercise caution in these areas.

LNM: 27-22

MILE 559.9 - CHANNEL CONDITION

Shoaling has been reported in the vicinity of Mile 559.9, mid-channel. Mariners are urged to exercise caution in the area.

LNM: 30-22

MILE 486.0 - MILE 484.0 - MARINE EVENT

Continuing until October 31, 2022, from 9:00 a.m. until 8:00 p.m., each Saturday, the Lake Davenport Sailing Club will hold marine events between approximate Miles 486.0 and 484.0. These events will consist of approximately 24 sailing vessels participating in open sailing events. Mariners are urged to exercise caution in the area during the event periods.

LNM: 19-22

MILE 482.9 - MILE 482.6 - DREDGE OPERATION - UPDATE

The M/V ROCK ISLAND or the M/V MOLINE has completed dredge operations/strike removal between approximate Miles 482.9 and 482.6, L/D Nr. 15, Lower.

LNM: 31-22

MILE 478.3 - BRIDGE REPAIRS

I-280 Bridge; Due to high water, the safespan is being raised to within 1 foot of low steel approximately 45 feet, each side of the center green light. Mariners are advised to transit the bridge with extreme caution. Mariners may contact Kraemer North America at (608) 393-9743, for additional information.

LNM: 17-22

MILE 424.5 - MILE 424.1 - DREDGE OPERATION

Continuing until further notice, the M/V ROCK ISLAND or the M/V MOLINE is conducting dredging/strike removal operations between approximate Miles 424.5 and 424.1, Huron Chute. Work will be conducted from 7:00 a.m. until 5:30 p.m., 7-days a week. The M/V ROCK ISLAND or the M/V MOLINE will monitor VHF-FM Channel 13, 14, 16 or 82 and requests 30-minutes advance notice of passage. Mariners are urged to transit the area at their slowest safe speed to minimize their wake and proceed with caution after passing arrangements have been made.

LNM: 31-22

MILE 336.5 - MILE 336.0 - DREDGE OPERATION

Continuing until further notice, the M/V CLINTON or the M/V DAVENPORT is conducting dredging operations/strike removal between approximate Miles 336.5 and 336.0, LaGrange. Work will be conducted from 7:00 a.m. until 5:30 p.m., 7-days a week. The M/V CLINTON or the M/V DAVENPORT will monitor VHF-FM Channel 13, 14, 16 or 82 and requests 30-minutes advance notice of passage. Mariners are urged to transit the area at their slowest safe speed to minimize their wake and proceed with caution after passing arrangements have been made.

LNM: 30-22

MILE 289.5 - CHANNEL CONDITION

Shoaling has been reported in the vicinity of Mile 289.5. Mariners are urged to exercise caution in the area.

LNM: 30-22

MILE 256.0 - MILE 248.0 - CHANNEL CONDITION

Shoaling has been reported between approximate Miles 256.0 and 248.0, mid-channel. Mariners are urged to exercise caution in the area.

LNM: 30-22

MILE 168.6 - BRIDGE MAINTENANCE

Jefferson Barracks Dual Bridge; Due to a containment system installed below low steel, vertical clearance has been reduced to 84 feet. Mariners are advised to transit the bridge with caution.

LNM: 17-22

MISSOURI RIVER**MILE 638.5 - MILE 627.4 - STONE PLACEMENT****MILE 626.6 - MILE 624.8 - DREDGE OPERATION**

Continuing until October 8, 2022, stone placement will be conducted between approximate Miles 638.5 and 627.4. Simultaneously, dredging operations will be conducted between approximate Miles 626.6 and 624.8. Work will be conducted during daylight hours, each day, for both operations. The M/V MICHELLE M., will monitor VHF-FM Channel 10 or (920) 579-2642 and requests a 1-hour advance notice of passage. Mariners are urged to transit the area at their slowest safe speed to minimize their wake and proceed with caution, after passing arrangements have been made.

MISSOURI RIVER
MILE 638.5 - MILE 627.4 - STONE PLACEMENT
MILE 626.6 - MILE 624.8 - DREDGE OPERATION

LNM: 18-22

MILE 397.6 - SUBMERGED OBSTRUCTIONS

Submerged obstructions have been reported in the vicinity of Mile 397.6, underneath the Leavenworth Highway Bridge, Alternate Span. Mariners are urged to exercise caution in the area.

LNM: 16-22

MILE 366.1 - DREDGE OPERATION

Continuing until further notice, the M/V CAPTAIN STREIF is conducting dredging operations in the vicinity of Mile 366.1. Work will be conducted during daylight hours, Monday through Friday. The M/V CAPTAIN STREIF will monitor VHF-FM Channel 13, 16 or 17 and requests 30-minutes advance notice of passage. Mariners are urged to transit the area at their slowest safe speed to minimize their wake and proceed with caution after passing arrangements have been made.

LNM: 28-22

MILE 185.0 - BRIDGE MAINTENANCE

Rocheport Highway Bridge; A drill barge will be located channelward of the existing right descending pier and will reduce the horizontal clearance to 470 feet. Mariners are advised to transit the bridge with caution.

LNM: 16-22

OHIO RIVER

MILE 90.3 - BRIDGE MAINTENANCE

Wheeling Suspension Bridge; Continuing through June 2023, the vertical clearance may be reduced by 2 feet due to maintenance being performed on the bridge. For more information, mariners may contact West Virginia Department of Transportation, Ahmed Mongi, at (304) 553-3941 or Advantage Steel and Construction, Matt Oskin, at (724) 352-4842.

LNM: 11-22

MILE 179.3 - DREDGE OPERATION

Continuing until August 12, 2022, maintenance dredging will be conducted at a facility in the vicinity of Mile 179.3, RDB. The contractors floating plant will consist of the M/V HARD HAT, a hopper barge, a deck barge and a barge mounted crane. Work will be conducted Monday through Friday, from 7:00 a.m. until 5:00 p.m., each day. During nonworking hours, the contractors floating plant will be moored at the worksite and lighted accordingly. The M/V HARD HAT will monitor VHF-FM Channel 13 or 16. Mariners are urged to exercise caution in the area.

LNM: 30-22

MILE 183.4 - BRIDGE REPAIR

Belpre-Parkersburg Highway Bridge; Rehabilitation of the eastern most pier located outside of the navigation span is ongoing with 2 material barges located next to the pier, to collect removed concrete. The barges will remain in place during non-work hours and be lighted according to regulations. Work on this pier will continue through September 2022.

LNM: 26-22

MILE 220.5 - MILE 221.5 - FIREWORKS DISPLAY/SAFETY ZONE/RIVER CLOSURE

On August 6, 2022, from 8:15 p.m. until 10:45 p.m., the Ravenswood Ohio River Festival Fireworks Display will be held between approximate Miles 220.5 and 221.5. The COTP Ohio Valley has established a Safety Zone for this event. No vessels will be allowed to transit this area without the approval of the COTP Ohio Valley or a designated representative. Mariners may contact U.S. Coast Guard Sector Ohio Valley via VHF-FM Channel 16.

LNM: 31-22

MILE 220.5 - MILE 221.5 - REGATTA/SPECIAL LOCAL REGULATION/RIVER CLOSURE

On August 6 & 7, 2022, from 8:00 a.m. until 5:00 p.m., both days, the Ravenswood Regatta will be held between approximate Miles 220.5 and 221.5. The COTP Ohio Valley has established a Special Local Regulation for this event. No vessels will be allowed to transit this area during the event periods, without the approval of the COTP Ohio Valley or a designated representative. Mariners may contact U.S. Coast Guard Sector Ohio Valley via VHF-FM Channel 16.

LNM: 31-22

MILE 302.0 - AIDS TO NAVIGATION

Two nun buoys have been reported not properly marking the channel in the vicinity of Mile 302.0. Mariners are urged to exercise caution in the area.

LNM: 29-22

MILE 596.0 - MILE 597.0 - MARINE EVENT

Continuing until October 19, 2022, from 5:30 p.m. until 9:00 p.m., each Wednesday, the Derby City Sailboat Race will be held between approximate Miles 596.0 and 597.0. Mariners may contact the event sponsor at (502) 592-5149, for additional information. Mariners are urged to exercise caution in the area, during the event periods.

LNM: 23-22

MILE 608.6 - BRIDGE MAINTENANCE

Sherman Minton Bridge; Cleaning and painting of the bridge will continue from 7:00 a.m. until 6:00 p.m., Monday through Saturday, until further notice. A containment system will hang 4 feet below low steel. Mariners should transit the bridge with caution.

LNM: 29-21

MILE 644.7 - DOCK/FACILITY CONSTRUCTION

MILE 644.7 - DOCK/FACILITY CONSTRUCTION

Continuing until August 13, 2022, Nucor Steel is constructing a dock for a shore-side facility and a barge terminal, in the vicinity of Mile 644.7, Mead County, Kentucky. The contractor's equipment will consist of shore based and barge mounted cranes installing spud piles and sheet piles. The crane barge will be maneuvered into place using a towboat and will be secured in place with spud piles. Offloading operations will occur during daylight hours. During non-work hours, delivery barges and associated equipment will be secured at approved mooring locations upstream or downstream from the site. Construction will occur during daylight hours, 7-days a week. During non-work hours, equipment will be parked on shore. Marine equipment will monitor VHF-FM Channel 13. Other construction operations will monitor VHF-FM Channel 6, 8, 18 or 72. Mariners are urged to exercise caution in the area.

LNM: 27-22

MILE 720.7 - L/D CLOSURE

Continuing until November 12, 2022, the Cannelton L/D (primary 1,200-foot chamber), in the vicinity of Mile 720.7, will be closed for repair.

LNM: 30-22

MILE 754.0 - MILE 760.0 - MARINE EVENT/ SPECIAL LOCAL REGULATION/RIVER CLOSURE

On August 19-21, 2022, from 8:00 a.m. until 6:00 p.m., each day, the Owensboro Hydrofair will be held between approximate Miles 754.0 and 760.0. The COTP Ohio Valley has issued a Special Local Regulation closing the river for this event. No vessels will be allowed to transit this area without the approval of the COTP Ohio Valley or the on-scene patrol commander. The on-scene patrol commander will monitor VHF-FM Channel 16.

LNM: 31-22

MILE 797.2 - MILE 798.0 - CHANNEL CONDITION

Shoaling has been reported between approximate Miles 797.2 and 798.0, along the nun buoy line. The COTP Ohio Valley advises mariners to avoid meeting or overtaking in this area, to allow transiting vessels to favor the dialing line. Mariners are urged to exercise caution in the area.

LNM: 31-22

MILE 924.0 - MILE 927.0 - CHANNEL CONDITION/AIDS TO NAVIGATION

Shoaling has been reported between approximate Miles 924.0 and 927.0, LDB, Kentucky side. Attached as enclosures to this LNM, are USACE Louisville District Notice to Navigation Interests 2022-016 and 2 associated chartlets of the area. Mariners are urged to exercise caution in the area.

LNM: 25-22

MILE 926.0 - DREDGE OPERATION

Continuing until August 12, 2022, Luhrs Bros., Inc., is conducting dredging operations in the vicinity of Mile 926.0, Cottonwood Bar. Work will be conducted 24-hours a day. During this period, the Dredge BILL HOLMAN will be in the navigation channel. All vessel traffic will use the alternate channel, near the RDB, that was established on June 21, 2022 and depicted on the enclosed chartlets. The contractors floating plant will consist of the Dredge BILL HOLMAN, M/V's LENARD and BUDDY, the ROBERT T., a shop barge, a spill barge and floating pipeline sections. The Dredge BILL HOLMAN, and M/V's LENARD and BUDDY will monitor VHF-FM Channel 13. Mariners are requested to transit the area at their slowest safe speed to minimize their wake and proceed with caution after passing arrangements have been made.

LNM: 31-22

MILE 962.6 - DEMOLITION BLASTING/TRAFFIC RESTRICTIONS/NAVIGATION LANE CHANGE

Attached as enclosures to this LNM, are USACE Louisville District Notice to Navigation Interest 2022-15, regarding demolition blasting, traffic restrictions and navigation lane changes at L/D 53, in the vicinity of Mile 962.6.

LNM: 25-22

MILE 964.6 - CHANNEL CONDITIONS/L/D RESTRICTIONS

The wickets at Olmsted L/D, in the vicinity of Mile 964.6, are being lowered, due to increased river elevations. Navigation traffic will continue to pass through the lock chambers and transition over the navigation pass upon completion. Down-bound tow maximum dimensions are 175 feet by 1,200 feet, including the towboat, with no more than 25 regulation barges and not to exceed 5 wide. No hip barges or other deviation that could degrade normal steerage characteristics are allowed for down-bound tows. Up-bound tow maximum dimensions are 140 feet by 1,600 feet including the towboat, with no more than 28 regulation barges and not to exceed 4 wide. Up-bound tows shall have adequate horsepower to maintain speed. All mariners shall take direction from the Olmsted L/D Control Tower.

LNM: 31-22

MILE 973.2 - DOCK REPAIR

Continuing until approximately October 1, 2022, from 7:00 a.m. until 5:30 p.m., each day, dock repair operations are being conducted in the vicinity of Mile 973.2, RDB. Mariners are urged to transit the area at their slowest safe speed to minimize their wake and proceed with caution. Mariners may contact the M/V JIM BURNS via VHF-FM Channel 16 or 68, for additional information.

LNM: 31-22

TENNESSEE-TOMBIGBEE WATERWAY**MILE 296.0 - CHANNEL CONDITION**

Critical shoaling has been reported in the vicinity of Mile 296.0, Gainesville Lake. Hydrographic surveys have indicated a shoal crossing the channel in various locations, making it difficult to transit this reach. Virtual buoys are in place and a USACE Floating Plant is enroute to remove this shoal. Work is expected to last 2 weeks. Mariners transiting this reach can contact the floating plant via VHF-FM Channel 16. Mariners are requested to transit this reach at a no wake speed. Attached as enclosures to this LNM, are chartlets depicting the area of shoaling and the placement of the virtual aids to navigation. Mariners may contact Roger Wilson Jr., or Joshua Oliver at the Tennessee-Tombigbee Project Management Office at (662) 245-5500, for additional information.

LNM: 29-22

TENNESSEE RIVER**MILE 72.5 - TRANSMISSION TOWER REPAIR/DIVE OPERATIONS**

Continuing until approximately December 16, 2022, the TVA is conducting transmission tower repairs in the vicinity of Mile 72.5. In conjunction with

TENNESSEE RIVER**MILE 72.5 - TRANSMISSION TOWER REPAIR/DIVE OPERATIONS**

this operation, divers will be utilized. Work will be conducted from 7:00 a.m. until 6:00 p.m., Monday through Saturday. The floating plant will consist of the M/V RED WAGNER and 2 barges spud down around the towers. The TVA Police will have vessels on station during dive operations. The M/V RED WAGNER will monitor VHF-FM Channel 13 or 16. Mariners are urged to transit the area at their slowest safe speed to minimize their wake and proceed with caution. Mariners may contact the TVA, for additional information.

LNM: 14-22

SECTION VIII - LIGHT LIST CORRECTIONS

An Asterisk *, indicates the column in which a correction has been made to new information

| (1) No. | (2) Name and Location | (3) Mile | (4) Bank | (5) Characteristic | (6) Structure / Dayboard Up Down | (7) Remarks |
|------------|--------------------------|-------------|-------------|-----------------------|--|----------------|
| None | | | | | | |

ENCLOSURES**USACE Little Rock District Navigation Notices 22-21 and 22-23**

L/D's closures/restrictions.

LNM: 24-22

USACE Channel Status Reports

Arkansas River Channel Status Reports.

LNM: 30-22

USACE Rock Island District Notice to Navigation Interests 22-200975

Installation and testing of invasive carp deterrence measures.

LNM: 26-22

USACE Rock Island District Notice to Navigation Interests MR 22-201120

Input from waterway users regarding placement of USACE Mooring Facilities.

LNM: 30-22

USACE Louisville District Notice to Navigation Interest 2022-15

Demolition blasting, traffic restrictions and navigation lane changes at L/D 53.

LNM: 25-22

USACE Louisville District Notice to Navigation Interests 2022-030

Chartlets depicting alternate channel.

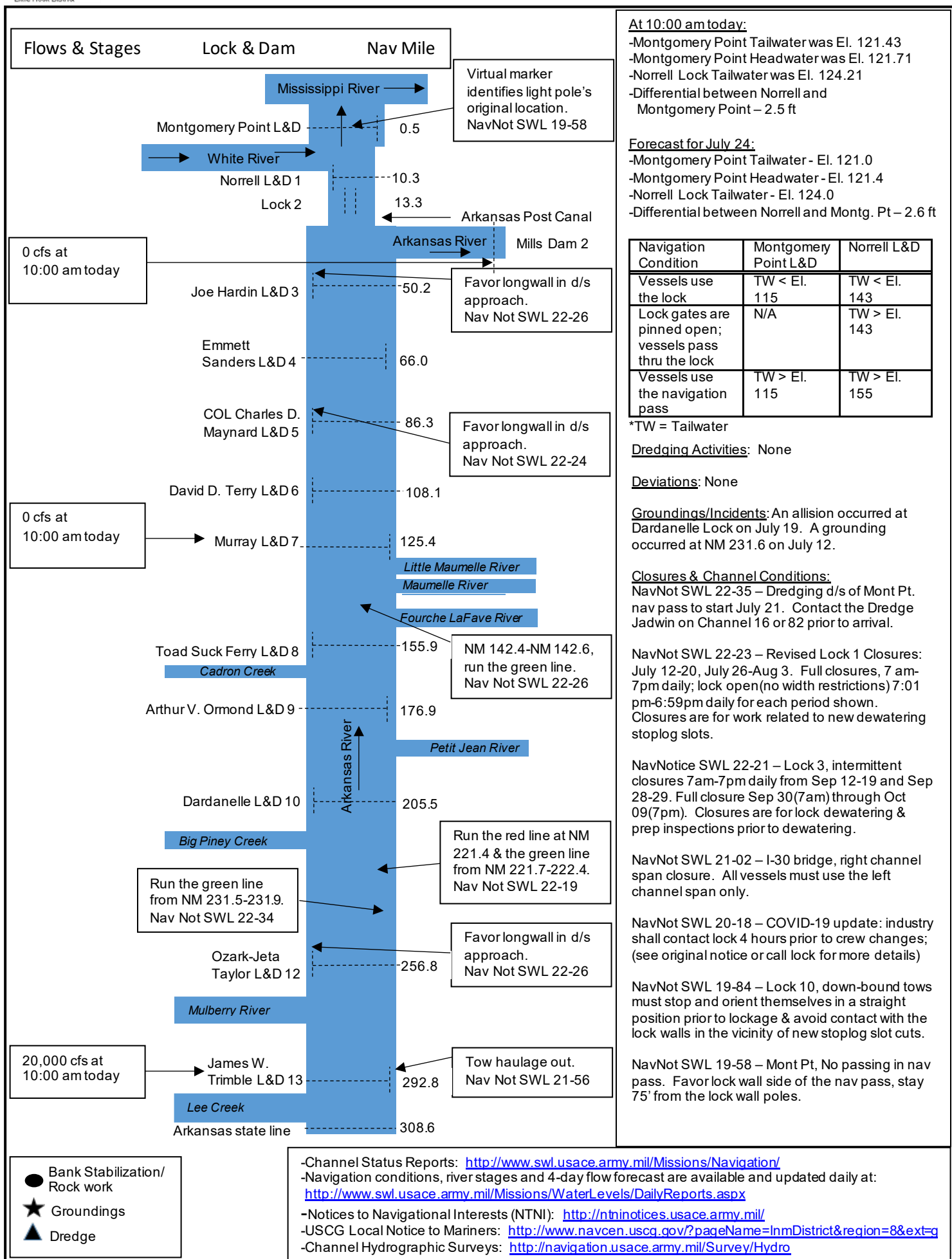
LNM: 31-22

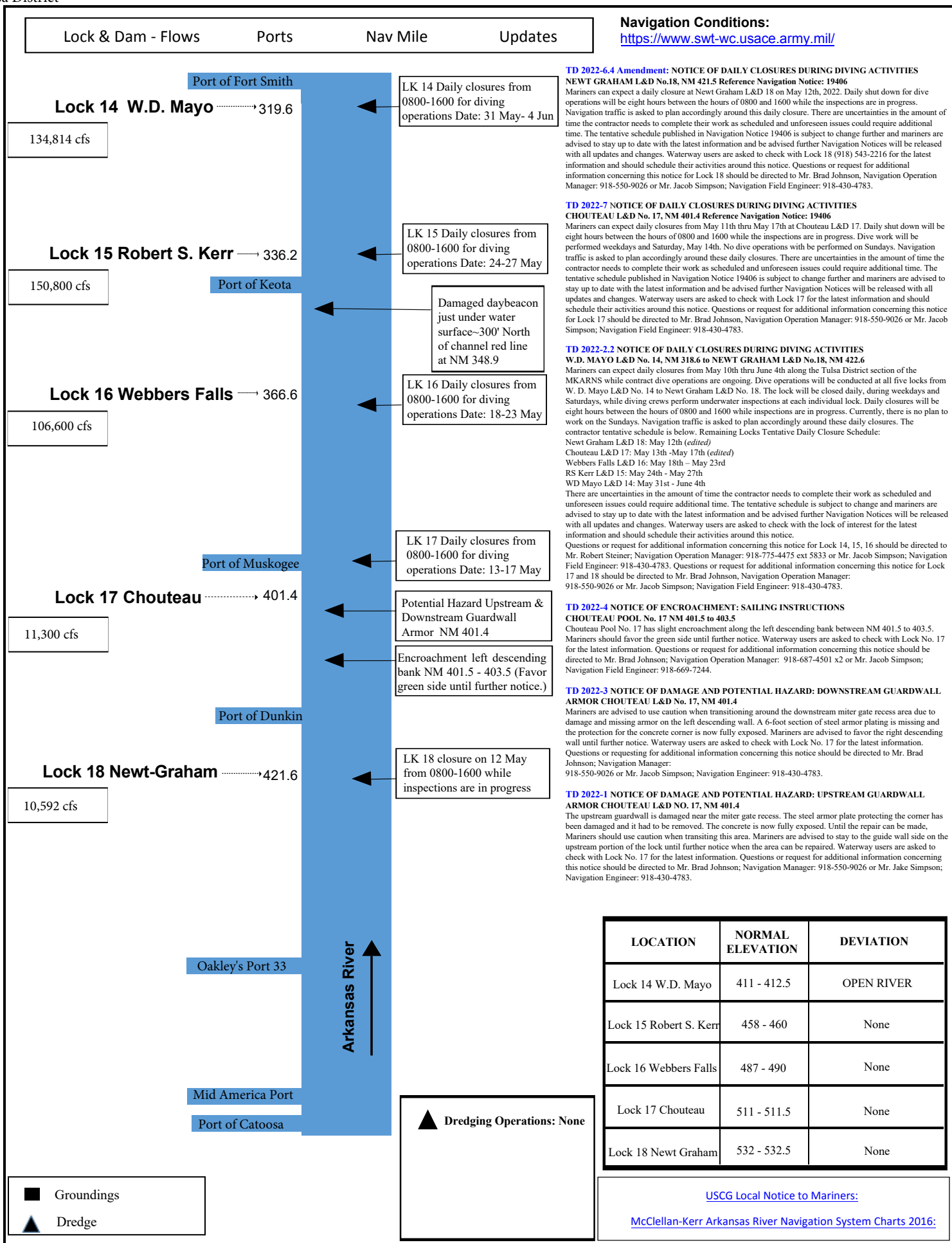
USACE Mobile District NAVBULL 22-46

Critical shoaling Gainesville Lake.

LNM: 29-22

Commander, Eighth Coast Guard District
Hale Boggs Federal Building, Room 1230
500 Poydras Street, New Orleans, LA 70130-3310
Telephone (504) 671-2327
(Business Hours 7:00 a.m. - 3:30 p.m. Monday - Friday)
(Nights, Weekends, Holidays) (504) 589-6225
RADM Timme







U.S. COAST GUARD

Sector Upper Mississippi River



July 28, 2022

Marine Safety Information Bulletin # 09-22

August 2022 Notice of Marine Events and Planned River Closures

This bulletin is used purely for informational purposes to assist the maritime community within the Sector Upper Mississippi River (SUMR) Area of Responsibility. Its intent is to advise relevant parties of marine events that are taking place and their location. If an event is permitted by the Coast Guard, please call the event sponsor for any questions directly pertaining to the event, as a permitted marine event will likely impact the navigable channel. For events without a Coast Guard Permit, it was determined that this event should not impact the navigable channel. Please contact the Western Rivers Command Center at the number below if encountering any emergencies or dangerous activities associated with these events.

The Coast Guard received applications for the following events occurring during the month of August 2022. There are scheduled broadcasts via VHF Channel 16 for each closure. These events are listed below:

| Date | Event | Permit Issued | Duration | Location (Mile Marker) | Waterway Closure |
|-------------------------|----------------------------|---------------|-----------|-------------------------|------------------|
| Illinois River | | | | | |
| N/A | N/A | N/A | N/A | N/A | N/A |
| Missouri River | | | | | |
| 27-Aug-22 | Race for the Rivers | No | 0800-1700 | 28-56 | No |
| Other Waterways | | | | | |
| 26-Aug-22 | Super Cat Fireworks | No | 2100-2130 | Lake of the Ozarks MM 7 | Yes |
| Upper Mississippi River | | | | | |
| 02-Aug-22 | MS River Day Canoe Trip | No | 1400-1700 | 847-840 | No |
| 06-Aug-22 | Ski Bellevue | No | 1600-1800 | South of L&D 12 | No |
| 06-Aug-22 | Lake Davenport Sailing | No | 0900-2000 | 486-484 | No |
| 09-Aug-22 | MS River Day Canoe Trip | No | 1100-1500 | 863-855 | No |
| 10-Aug-22 | MS River Day Canoe Trip | No | 1100-1600 | 847-840 | No |
| 11-Aug-22 | MS River Day Canoe Trip | No | 0830-1330 | 847-840 | No |
| 12-Aug-22 | Tug Fest Fireworks | Yes | 2130-2230 | 497.6-497.2 | Yes |
| 12-Aug-22 | MS River Day Canoe Trip | No | 0900-1500 | 863-855 | No |
| 13-Aug-22 | Tug Fest | Yes | 1130-1500 | 497.6-497.2 | Yes |
| 13-Aug-22 | MS River Day Canoe Trip | No | 1300-1700 | 847-840 | No |
| 13-Aug-22 | Lake Davenport Sailing | No | 0900-2000 | 486-484 | No |
| 16-Aug-22 | MS River Day Canoe Trip | No | 1000-1400 | 847-840 | No |
| 19-Aug-22 | Floatzilla Fishing Tourney | No | 1800-2000 | 482-479 | No |
| 20-Aug-22 | Floatzilla | Yes | 0530-1630 | 491.1-479.8 | Yes |
| 20-Aug-22 | Ski Bellevue | No | 1600-1800 | South of L&D 12 | No |
| 20-Aug-22 | MS River Day Canoe Trip | No | 1000-1400 | 847-840 | No |
| 20-Aug-22 | Lake Davenport Sailing | No | 0900-2000 | 486-484 | No |
| 22-Aug-22 | MS River Day Canoe Trip | No | 1400-2000 | 847-840 | No |
| 25-Aug-22 | MS River Day Canoe Trip | No | 1600-1830 | 863-855 | No |
| 27-Aug-22 | MS River Day Canoe Trip | No | 0900-1300 | 847-840 | No |
| 27-Aug-22 | Red Bull Urban Portage | No | 2200-2230 | 725.7-725.4 | Yes |
| 27-Aug-22 | Lake Davenport Sailing | No | 0900-2000 | 486-484 | No |

To receive the latest information, monitor marine VHF channels 14 and 16, the Upper Mississippi River Port Directory at: [https://homeport.uscg.mil/port-directory/upper-mississippi-river-\(st-louis\)](https://homeport.uscg.mil/port-directory/upper-mississippi-river-(st-louis)). Direct questions to the 24 hour Western Rivers Command Center at (314) 269-2332 or (314) 269-2463 or the Waterways Management staff at SUMRwaterways@uscg.mil

Sincerely,

S.R. MOORE
Chief, Prevention Department
U.S. Coast Guard
By direction



NOTICE TO NAVIGATION INTERESTS

ROCK ISLAND DISTRICT
ATTN: CEMVR-DE
CLOCK TOWER BLDG. - RODMAN
AVE
ROCK ISLAND IL 61299
[HTTP://WWW.MVR.USACE.ARMY.MIL/](http://www.mvr.usace.army.mil/)

DATE: 07/26/2022

POC: Lee Nelson or Bernie Heroff or
Casey Herschler

NOTICE NUMBER: 201120
LOCAL NUMBER: MR 22-201120
WATERWAY: UPPER MISSISSIPPI
EFFECTIVE: 08/01/2022 00:00 thru
08/31/2022 23:59

UPPER MISSISSIPPI RIVER
MOORING FACILITIES
Lock and Dams 7, 10, 11, 14, 15, 20, and 22

The US Army Corps of Engineers is planning the construction of 8 mooring facilities on the Upper Mississippi River at lock and dams 7, 10, 11, 14, 15, 20, and 22. The Corps is asking for feedback from all pilots transiting these areas on whether these would be considered desirable locations to moor or if the locations are unsuitable and will be an impedance to navigation. Please send feedback to either Lee Nelson at lee@ursi.net, Bernie Heroff at Bernard.Heroff@adm.com, or Casey Herschler at casey.herschler@gmail.com. Review period is 01 August 2022 to 31 August 2022. Please provide feedback no later than 31 August 2022. Features displayed virtually on the Inland Electronic Navigation Charts (IENC) will include the following virtual items: Mooring Facility and Caution Area.

//signed//

Matthew Fitzgerald, Project Engineer



U.S. Army Corps
of Engineers
Little Rock District

NAVIGATION NOTICE Number SWL 22-21

McClellan-Kerr Arkansas River Navigation System

May 25, 2022

In Reply Refer to: CESWL-OP
P. O. Box 867
Little Rock, AR. 72203-0867
PH. 501-324-5739

REMINDER – SCHEDULED LOCK CLOSURES NORRELL LOCK (No. 1) NM 10.3 JOE HARDIN LOCK (No. 3) NM 50.2 MCCLELLAN-KERR ARKANSAS RIVER NAVIGATION SYSTEM

As previously noted in Nav Notice SWL 22-04, closures are scheduled for Norrell Lock (No. 1) NM 10.3 and Joe Hardin Lock (No. 3) NM 50.2 during the dates and times indicated below.

The closures at Lock 1 are for installing temporary cofferboxes, concrete saw-cutting of the lock walls and other work related to the new dewatering stoplog slots near the upstream and downstream miter gates. Tow width restrictions will be in place as indicated below and no lockages will be allowed outside the specified times.

The closures at Lock 3 are for the lock dewatering and preparatory inspections prior to the dewatering.

Mariners are advised to contact the locks prior to arrival, for specific instructions on how to proceed for safe lockage. During this time, the Lock 1 tow haulage system will not be available.

Lock 1

June 1 – June 11: Limited width(70' max) lockages only, 7 a.m. – 7 p.m. daily

June 22 – July 21: Limited width(70' max) lockages only, 7 p.m. – 7 a.m. daily

Aug 01 – Aug 10: Full closure, no lockages from 7 a.m.(Aug 01) – 7 p.m.(Aug 10)

Aug 21 – Sep 19: Limited width(70' max) lockages only, 7 p.m. – 7 a.m. daily

Lock 3

Sep 12 - 19: Intermittent closures, 7 a.m. – 7 p.m. daily

Sep 28 – 29: Intermittent closures, 7 a.m. – 7 p.m. daily

Sep 30 – Oct 09: Full closure, no lockages from 7 a.m.(Sep 30) – 7 p.m.(Oct 09)

Lock 1

Sep 30 – Oct 09: Full closure, no lockages from 7 a.m(Sep 30) – 7 p.m.(Oct 09)

Oct 20 – Nov 18: Limited width(70' max) lockages only, 7 p.m. – 7 a.m. daily

Nov 29 – Dec 23: Limited width(70' max) lockages only, 7 p.m. – 7 a.m. daily

Jan 03 – Jan 31: Limited width(70' max) lockages only, 7 p.m. – 7 a.m. daily

Questions or requests for additional information concerning this notice should be directed to the Little Rock District Office, at (501) 324-5096 or you may email CESWL-OP-OM@usace.army.mil.

Christopher B. Roark
Chief, Operations Division



McClellan-Kerr Arkansas River Navigation System

June 10, 2022

In Reply Refer to: CESWL-OP
P. O. Box 867
Little Rock, AR. 72203-0867
PH. 501-324-5739

Christopher B. Roark
Chief, Operations Division



NOTICE TO NAVIGATION INTERESTS

ROCK ISLAND DISTRICT

DATE: 06/22/2022

NOTICE NUMBER: 200975

ATTN: CEMVR-DE

LOCAL NUMBER: IW 22-200975

CLOCK TOWER BLDG. - RODMAN AVE POC: Collin Moratz

WTRWY/CHNL: ILLINOIS WATERWAY

ROCK ISLAND IL 61299

309-794-5573

LOCK(S): IL 07

[HTTP://WWW.MVR.USACE.ARMY.MIL/](http://WWW.MVR.USACE.ARMY.MIL/)

EFFECTIVE: 08/16/2022 06:00 thru 10/07/2022 17:00

TESTING – INVASIVE CARP DETERRENCE
ILLINOIS WATERWAY
PEORIA LOCK AND DAM, RM 157.7

The U.S. Army Corps of Engineers, Rock Island District (District), and the Engineer Research and Development Center (ERDC) are planning to test invasive carp deterrence technology at the Peoria Lock and Dam on the Illinois River, River Mile 157.7. Work is planned for 16 AUG 2022 through 18 AUG 2022 from 06:00-18:00 hrs. for installation, and from 29 AUG 2022 thru 07 OCT 2022, Mon-Tue and Thu-Fri (07:00-11:00 hrs. & 13:00-17:00 hrs.) for deterrence efficacy and navigation safety testing. Navigation will be closed during installation and while testing is conducted. These timeframes are subject to change based upon river conditions.

****Towboat operators are requested NOT to tie up on the guidewalls during installation and testing.****

Testing includes fish removal efficacy testing and navigation safety testing, both of which would occur on each of 70 total runs over an approximate 40-day period. Test runs consist of driving a loaded six-barge tow, with juvenile invasive carp placed for entrainment in a box-rake junction, over a bubbler array in the downstream lock approach. Runs with and without the bubbler running would occur to provide a control to measure the bubbler effect. Quantitative safety variables of interest include speed, yaw, and lateral movement of the barge resulting from the continuous release of air from the air line. Carp removal testing includes counting remaining fish entrained in the box-rake junction and measuring flow velocities in the junction gap. The study would be conducted mainly during daylight hours when the wicket gates are up (impounding water in the Peoria Pool). The purpose of the test is to evaluate fish removal efficacy and navigation safety when using bubbles to remove small invasive carp from the rake-box junction of a barge tow.

This action involves the temporary installation of an anchored air hose and bubbler array in the downstream lock approach channel (see map, Enclosure 1). The air hose will be attached to a series of anchors and the bubbler array will be anchored by weight of the frame to hold it in place (modeled using a safety factor of seven). It is approximately 210 feet long with a series of nozzles spaced 8 feet apart that will release air to create a column of bubbles along the length of the array. Air will be fed through a hose from a diesel-powered air compressor located on the Peoria Lock and Dam Project grounds. The hose would be routed from the surface around the end of the lower guidewall to avoid interference with navigation. Weights will hold the hose to the bottom between the guidewall and the bubbler array. The air hose and metal frames would be removed following completion of the study, on or before 07 OCT 2022.

//signed//

Jon A. Klingman

Chief, Channel Maintenance Section Operations Division



US Army Corps
of Engineers
Louisville District

Notice to Navigation Interests

Notice No. 2022 – 016

Date: June 21, 2022

<http://www.lrl.usace.army.mil/Missions/CivilWorks/Navigation/Notices.aspx>

In Reply Refer to: CELRL-OPT PO Box 59, Louisville, KY 40201 Telephone: 502-315-6694

LOUISVILLE DISTRICT

OHIO RIVER

ALTERNATE NAVIGATION CHANNEL

RIVER MILES 924-927

Ohio River Miles 924-927: The navigation channel between Ohio River Miles 926 and 927 has shoaling which has resulted in vessel groundings in the past week.

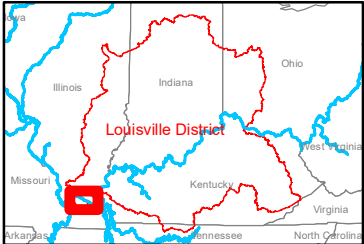
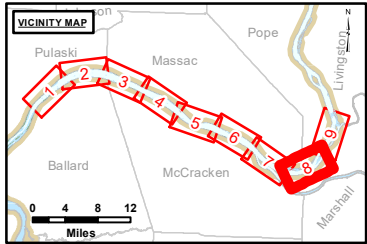
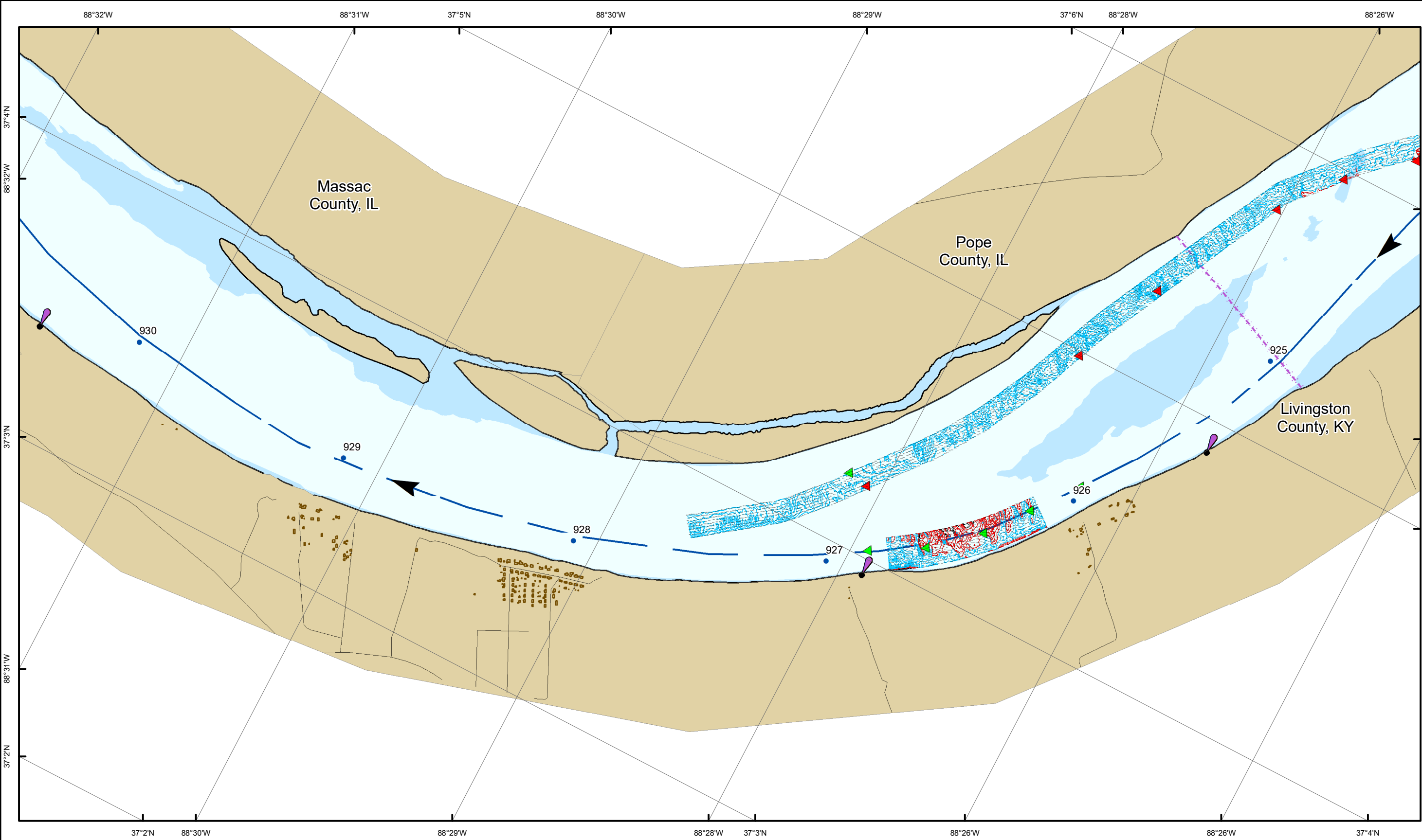
The physical buoys on the main navigation channel have been moved toward the left descending bank, as shown in the attached file titled “Notice 2022-016 OH_LD_OLM_20220621_CS_924_927_SORT.pdf”. This attachment also shows channel depths. Furthermore, this attachment shows channel depths and locations of physical buoys for an alternate navigation channel between Ohio River Miles 924 and 927 along the Illinois side of the river. The depths in this drawing correspond to a Smithland Locks and Dam lower gage of 12.0, and represent conditions found during surveys performed on 21 June 2022.

The alternate navigation channel has also been marked with AIS ATON’s (electronic buoys). The attached file titled “Notice 2022-016 AIS Buoy Mile 924-927_RosePoint.pdf” shows how these electronic buoys appear on RosePoint.

Mariners should make note of conditions and exercise caution when transiting the area.

/s/

Shawn Kenney
Ch. Technical Support Branch



LAYERS

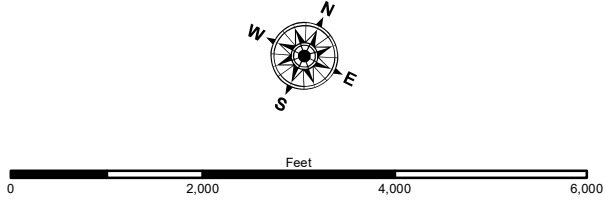
- < 0 (drying height)
- 0 - 9 ft
- 10 - 12 ft
- > 12 ft
- River Mile
- Sailing Line

Navigation Lights

- Green
- Red
- Junction

TGT Points

- Green Buoy
- Red Buoy



NOTES:
Horizontal Coordinate System:
North American Datum of 1983 (NAD83), projected to the State Plane Coordinate System (SPCS), Kentucky South Zone. Distance units in U.S. Survey Feet.

Vertical Datum:
Soundings are shown in feet and indicate depths below the project pool of 295 (Olmsted upper 16), 300 (Paducah 13.7) and 302 (Smithland Lower 12)

The information depicted on this map represents the results of a survey conducted on the date indicated and can only be considered to represent the general condition existing at that time.

The location of navigation aids are based on and provided by the U.S. Coast Guard.

US Army Corps of Engineers
District: CELRL

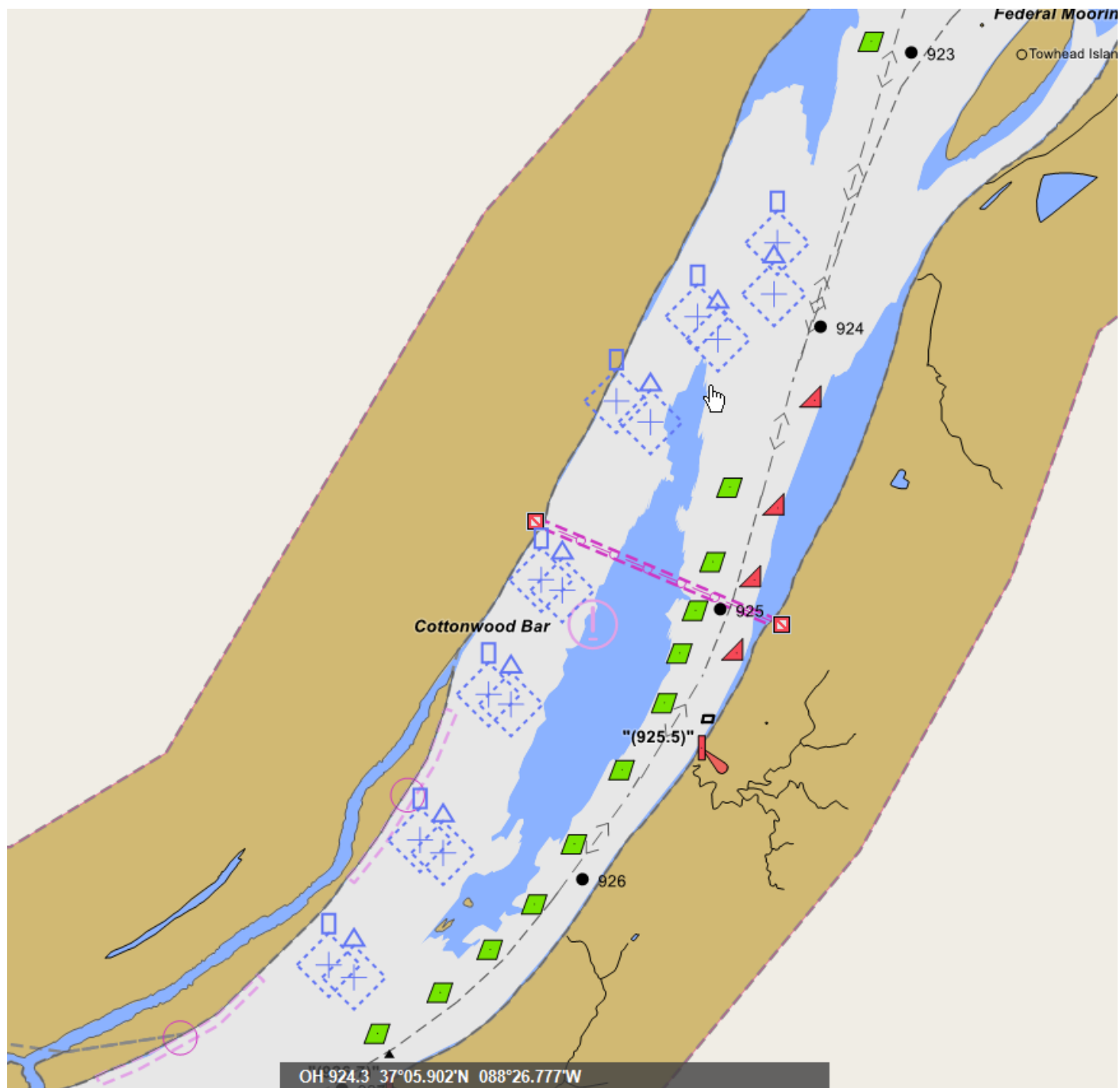
Distribution Liability: The data presented by this map is the result of a survey conducted by the U.S. Army Corps of Engineers. The data is not to be used for any purpose other than that for which it was collected. The data is not to be used for any purpose other than that for which it was collected. The data is not to be used for any purpose other than that for which it was collected. The data is not to be used for any purpose other than that for which it was collected.

| U.S. ARMY CORPS OF ENGINEERS LOUISVILLE DISTRICT | | |
|---|------------|------------|
| Surveyed By | Plotted By | Checked By |
| _____ | _____ | _____ |
| _____ | _____ | _____ |

Survey Information
OLMSTED_POOL_OHIO_RIVER
OH_LD_OLM_20220621_CS_924_927_SORT
21 June 2022

Pool Reach Number 8 of 9







US Army Corps
of Engineers
Louisville District

Notice to Navigation Interests

Notice No. 2022 – 030

Date: August 01, 2022

<http://www.lrl.usace.army.mil/Missions/CivilWorks/Navigation/Notices.aspx>

In Reply Refer to: CELRL-OPT PO Box 59, Louisville, KY 40201 Telephone: 502-315-6694

LOUISVILLE DISTRICT

OHIO RIVER
LOUISVILLE DISTRICT
CHANNEL MAINTENANCE DREDGING
COTTONWOOD BAR, OHIO RIVER MILE 926.0

Notice is given that “Luhrs Bros., Inc” will commence maintenance dredging at Mile 926 (Cottonwood Bar). Dredging operations will be conducted from approximately 01 – 11 August 2022, 24 hours per day, seven days per week. During this period, the Dredge Bill Holman will be in the navigation channel and all traffic will use the alternate channel near the right descending bank that was established on 21 June 2022 (See enclosed chart). Contact the Dredge Bill Holman for passing instruction on marine channel 13. Once contact has been made with the Dredge Bill Holman, proceed at the slowest safe speed.

The contractor’s floating plant will consist of the Dredge Bill Holman, M/V’s LENARD and BUDDY, and the ROBERT T, one shop barge, one spill barge, and floating pipeline sections. The Dredge Bill Holman, M/V’s LENARD and BUDDY will be monitoring marine channel 13.

/s/

Shawn Kenney
Chief, Technical Support Branch



US Army Corps
of Engineers
Louisville District

Notice to Navigation Interests

Notice No. 2022-015

Date: June 20, 2022

<http://www.lrl.usace.army.mil/Missions/CivilWorks/Navigation/Notices.aspx>

In Reply Refer to: CELRL-OPT PO Box 59, Louisville, KY 40201 Telephone: 502-315-6694

LOUISVILLE DISTRICT

LOCKS AND DAM 53

TRAFFIC RESTRICTIONS AND NAVIGATION LANE CHANGE FOR DEMOLITION BLASTING

OHIO RIVER

The Corps of Engineers' contractor, CJ Mahan, will be working on the demolition of Locks and Dam 53 (Ohio River Mile 962.6) for the entire low water season of 2022. Explosives will be used for the demolition. Blasting will begin on or after 21 June 2022 and is expected to take place during periods when the river stage is below 26 feet on the Olmsted Locks and Dam Headwater gage. A blast may take place up to once every day (Monday – Saturday), conditions permitting. It will be necessary to close the river to traffic around L&D 53 while the contractor is in the process of loading the explosives and detonating the blast. These closures are expected to be 4 hours or less and will typically occur between 1000 and 1400 Central Time. The plan is to conduct the blast at approximately 1200 noon Central Time, after all vessels and personnel have cleared the blast area. A US Coast Guard safety zone will be enforced during loading and blasting activities. The exact details for each day that blasting will occur will be broadcast by the US Coast Guard in a Broadcast Notice to Mariners. Blasting is estimated to end late August 2022.

During this time, vessels will take all direction of the Olmsted Locks and Dam Control Tower.

Northbound vessels will be stopped at Olmsted Locks and Dam (Ohio River Mile 964.6) and southbound vessels at Ohio River Mile 961 upstream of L&D 53 so that there will be no vessels in the vicinity of L&D 53 when the blast is scheduled to occur. CJ Mahan will be operating 1 patrol boat upstream of L&D 53 when wickets are raised at Olmsted L&D and 2 patrol boats when wickets are lowered at Olmsted L&D. See attached drawing for the blasting safety zone. Once the blast has been completed and the all clear issued, the traffic will be released.

In the event that a misfire occurs, and the closure will extend beyond 4 hours, an immediate email notification will be sent out to industry representatives notifying them. A second email notification will be sent as soon as the misfire is cleared and traffic is released.

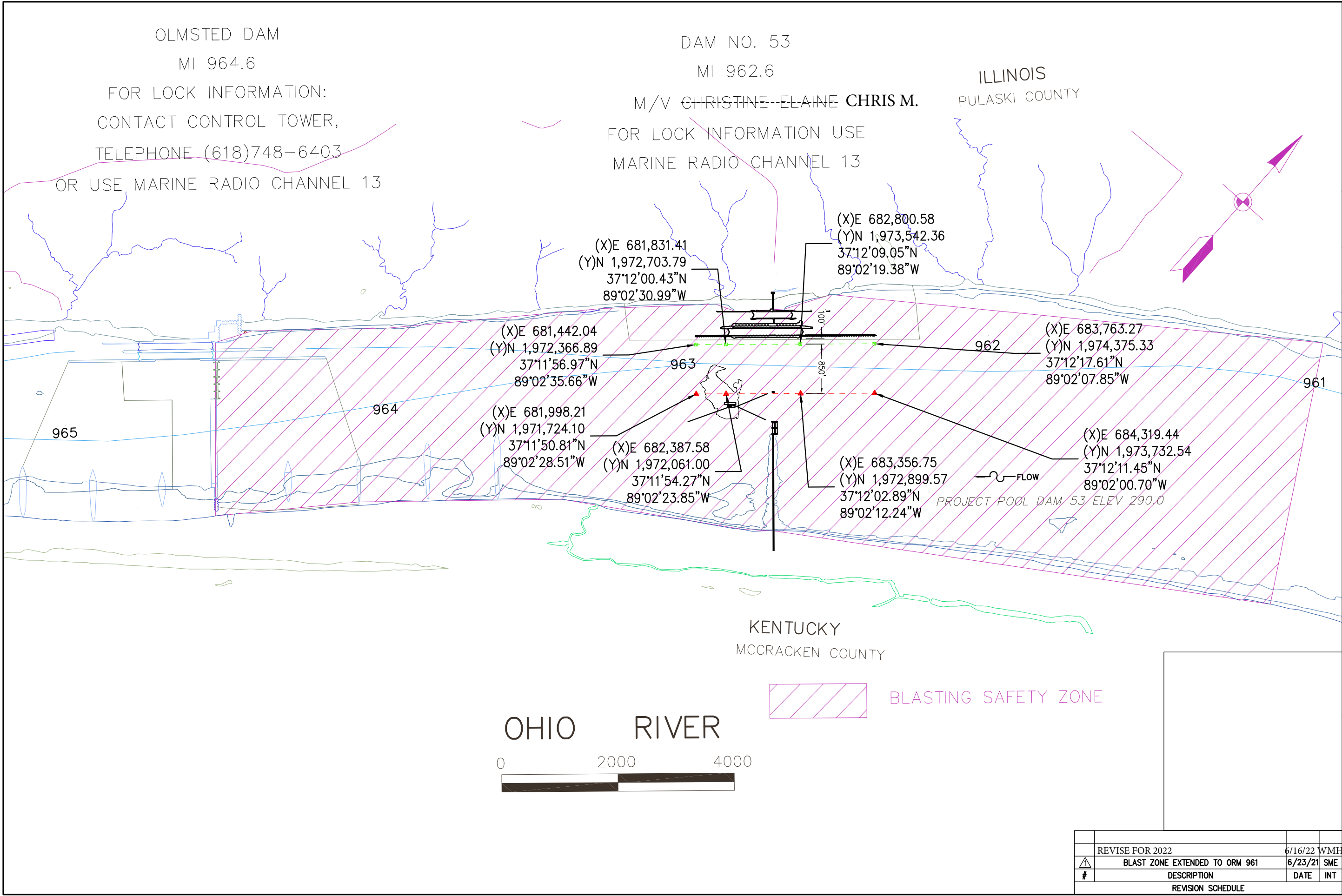
The navigation lane at L&D 53 (Ohio River Mile 962.6) will be approximately 850 feet in the center of the Navigation Pass to facilitate demolition activities as shown in the attached drawing.

All mariners must exercise caution when transiting. The contractor's vessel M/V Chris M. will be working in the area and can be reached on Marine Radio Channel 13.

/s/

Shawn Kenney
Ch. Technical Support Branch

ISSUE DATE: 6/23/2021 Nav Chart_R1.dwg



C.J. Mahan
Construction Company
250 N. Hartford Ave. - Columbus - Ohio - 43222

SCALE

REVIEWED

DATE

DRAWN

SME

DATE

10/20/20

NAVIGATION CHART
LOCKS AND DAM 53 DEMOLITION - PHASE 2

W912QR-20-C-0031

C-20-0010

| | | | |
|-------------------|--------------------------------|---------|-----|
| | REVISE FOR 2022 | 6/16/22 | WME |
| ⚠ | BLAST ZONE EXTENDED TO ORM 961 | 6/23/21 | SME |
| # | DESCRIPTION | DATE | INT |
| REVISION SCHEDULE | | | |

1/1



Notice to Navigation interests



U.S. ARMY CORPS OF ENGINEERS

BUILDING STRONG®

July 18, 2022

TECHNICAL SUPPORT BRANCH

NAVIGATION BULLETIN NO. 22-46

NOTICE TO NAVIGATION INTERESTS:

TENNESSEE-TOMBIGBEE WATERWAY, ALABAMA

CRITICAL SHOAL, MILE 296.0, GAINESVILLE LAKE

Notice is given to mariners of the critical shoal near river mile 296.0 on the Tennessee Tombigbee Waterway. Hydrographic surveys have indicated a shoal crossing the channel in various locations making it difficult to transit the reach. Virtual buoys are in place and USACE Floating Plant is in route to alleviate the shoal. Work is expected to last approximately two weeks. Navigation traffic can contact the Floating Plant via marine radio on channel 16 and is requested to transit this reach with caution at no wake speed.

For further information please contact Roger Wilson, Jr. or Joshua Oliver at the Tennessee-Tombigbee Project Management Office at (662) 245-5500.

Ashley N. Kleinschrodt
Chief, Navigation Section

U.S. ARMY CORPS OF ENGINEERS – MOBILE DISTRICT

P.O.BOX 2288, MOBILE. AL. 36628-0001

<http://sam.usace.army.mil/>

Attn: OP-TN

