



U.S. Department
of Homeland Security
**United States
Coast Guard**

LOCAL NOTICE TO MARINERS

District 8 MRS

Week: 35/23

Mississippi River System

LIGHT LIST VOLUME V
NOTICE NUMBER 35-23
August 30, 2023

LIGHT LIST REFERENCE: COMDTPUB P16502.5, Vol V, 2023 Edition.

CONTENTS: Rivers are listed in alphabetical order and are included only when there is information to report.

Broadcast Notice to Mariners Covered in this Edition

Originating Unit	Beginning BNM's	Ending BNM's
Sector Upper Mississippi River	0222 - 23 (UM)	0234 - 23 (UM)
Sector Lower Mississippi River	0051 - 23 (LM)	0054 - 23 (LM)
Sector Ohio Valley	0345 - 23 (OV)	0361 - 23 (OV)
OB DWB	0087 - 23 (DWB)	0089 - 23 (DWB)

COAST GUARD DISTRICT 8, WATERWAYS, (504) 671-2327, 7:00 a.m. until 3:30 p.m. (CST)

GENERAL LNM QUESTIONS, COMMENTS, OR SUGGESTIONS MAY BE E-MAILED TO: D8MarineInfo@uscg.mil
COMMENTS REGARDING SECTION VI – PROPOSED CHANGES MAY ALSO BE EMAILED TO: LocalNoticeFeedback@uscg.mil
NIS WATCHSTANDER PHONE (703) 313-5900, 24-HOURS A DAY

INTERNET ADDRESS <https://www.navcen.uscg.gov/>

MISSISSIPPI RIVER SYSTEM LNM VIA INTERNET <https://www.navcen.uscg.gov/>

MISSISSIPPI RIVER SYSTEM LIGHT LIST VIA INTERNET https://www.navcen.uscg.gov/pdf/lightLists/LightList_V5_2023.pdf

ABBREVIATIONS

A through H

ADRIFT - Buoy Adrift
AICW - Atlantic Intracoastal Waterway
Al - Alternating
B - Buoy
BKW - Breakwater
bl - Blast
BNM - Broadcast Notice to Mariner
bu - Blue
C - Canadian
CHAN - Channel
CGD - Coast Guard District
C/O - Cut Off
CONT - Contour
CRK - Creek
CONST - Construction
DAYMK/Daymk - Daymark
DBN/Dbn - Daybeacon
DBD/DAYBD - Dayboard
DEFAC - Defaced
DEST - Destroyed
DISCON - Discontinued
DMGD/DAMGD - Damaged
ec - eclipse
EST - Established Aid
ev - every
EVAL - Evaluation
EXT - Extinguished
F - Fixed
fl - flash
Fl - Flashing
G - Green
GIWW - Gulf Intracoastal Waterway
HAZ - Hazard to Navigation
HBR - Harbor
HOR - Horizontal Clearance

I through O

I - Interrupted
ICW - Intracoastal Waterway
IMCH - Improper Characteristic
INL - Inlet
INOP - Not Operating
INT - Intensity
ISL - Islet
Iso - Isophase
kHz - Kilohertz
LAT - Latitude
LB - Lighted Buoy
LBB - Lighted Bell Buoy
LHB - Lighted Horn Buoy
LGB - Lighted Gong Buoy
LONG - Longitude
LNM - Local Notice to Mariners
LT - Light
LT CONT - Light Continuous
LTR - Letter
LWB - Lighted Whistle Buoy
LWP - Left Watching Properly
MHz - Megahertz
MISS/MSNG - Missing
Mo - Morse Code
MRASS - Marine Radio Activated Sound Signal
MSLD - Misleading
N/C - Not Charted
NGA - National Geospatial-Intelligence Agency
NO/NUM - Number
NOS - National Ocean Service
NW - Notice Writer
OBSCU - Obscured
OBST - Obstruction
OBSTR - Obstruction
Oc - Occulting

P through Z

PRIV - Private Aid
Q - Quick
R - Red
RACON - Radar Transponder Beacon
Ra ref - Radar reflector
RBN - Radio Beacon
REBUILT - Aid Rebuilt
RECOVERED - Aid Recovered
RED - Red Buoy
REFL - Reflective
RRL - Range Rear Light
RELIGHTED - Aid Relit
RELOC - Relocated
RESET ON STATION - Aid Reset on Station
RFL - Range Front Light
RIV - River
RRASS - Remote Radio Activated Sound Signal
s - seconds
SEC - Section
SHL - Shoaling
si - silent
SIG - Signal
SND - Sound
SPM - Single Point Mooring Buoy
SS - Sound Signal
STA - Station
STRUCT - Structure
St M - Statute Mile
TEMP - Temporary Aid Change
TMK - Topmark
TRLB - Temporarily Replaced by Lighted Buoy
TRLT - Temporarily Replaced by Light
TRUB - Temporarily Replaced by Unlighted Buoy
USACE - Army Corps of Engineers
W - White

Additional Abbreviations Specific to this LNM Edition:

RIAC - River Industry Action Committee
MMSI - Mobile Maritime Service Identity
AIS - Automatic Identification System
ATON - Aids To Navigation
COTP - Captain of The Port
TRDBN - Temporary Replaced by Daybeacon
C.F.S. - Cubic Feet per Second
CFR - Code of Federal Regulations
IAW - In Accordance With
h.p. - horse power
MPH - Miles Per Hour
TVA - Tennessee Valley Authority
INC - Incorporated
IENC - Inland Electronic Navigation Chart
WAP - Waterway Action Plan
MSIB - Marine Safety Information Bulletin
L/D - Lock and Dam

SECTION I - SPECIAL NOTICES

This section contains information of special concern to the Mariner.

DEPARTMENT OF HOMELAND SECURITY SUSPICIOUS ACTIVITY

The Department of Homeland Security (DHS) encourages the maritime public to report information concerning suspicious activity to the local Federal Bureau of Investigation Joint Terrorism Task Force (JTTF) Office, http://www.fbi.gov/about-us/investigate/terrorism/terrorism_jtfts, or to other appropriate authorities. The U.S. Coast Guard reminds the maritime industry that they may also report information concerning suspicious activity to the www.AmericasWaterwayWatch.org, the National Response Center (NRC) 1-800-424-8802 or 1-877-24WATCH.

LNM: 02-19

WESTERN RIVERS FLOATING AIDS TO NAVIGATION

The U.S. Coast Guard is responsible for placing and maintaining all aids to navigation. Buoys are set to mark project depths taking into consideration the prevailing river stages and obstructions. Buoy positions on the Inland Electronic Navigation Chart (IENC) are approximate, and subject to change depending on prevailing river stages and obstructions.

Buoys should always be given as wide a berth in passing as possible, consistent with the length and width of the vessel or tow and the width of the bend or crossing.

Buoys should always be used with caution. They may be carried off position by high water, accumulation of drift, ice, or sunk by collision or other causes. In those circumstances buoy marks will remain on the IENC and indicate the last known position of the buoy. Presence of a buoy mark on the IENC does not necessarily mean a buoy will be physically on position. When buoys are missing they will be replaced as soon as possible.

LNM: 16-19

GPS TESTING

At times, throughout our area of responsibility, multiple U.S. Government Agencies conduct GPS testing. These tests vary in duration, affected range from the test site and potential impact to the maritime user as they may affect systems that rely on GPS such as E-911, AIS and DSC. More information is available at the U.S. Coast Guard Navigation Center Website, <https://www.navcen.uscg.gov>. During these periods, GPS users are encouraged to report any GPS outages that they may experience, to the Navigation Information Service (NIS) by calling (703) 313-5900 or by using the NAVCEN Website to submit a GPS problem report.

LNM: 07-19

HIGH/LOW WATER FLOW CONDITIONS

During periods of high/low water flow conditions on the Mississippi River System, Captains of the Port, will issue Safety Advisories for their specific areas of responsibility via Broadcast Notice to Mariners. Mariners are encouraged to monitor the Sector Broadcast Notice to Mariners to ensure they are receiving the most up-to-date information.

LNM: 04-23

USACE HUNTINGTON DISTRICT - RESTRICTED AREAS AT NAVIGATION STRUCTURES

Attached as an enclosure to this LNM is a USACE Huntington District Notice to Navigation Interests 23-09, regarding maintenance and repair operations.

LNM: 03-23

ARKANSAS RIVER - USACE CHANNEL STATUS REPORTS

Attached as enclosures to this LNM, are USACE Arkansas River Channel Status Reports.

LNM: 09-23

UPPER MISSISSIPPI RIVER - SEPTEMBER MARINE EVENTS/PLANNED RIVER CLOSURES

Attached as an enclosure to this LNM is U.S. Coast Guard Sector Upper Mississippi MSIB 04-23, September notice of marine events and planned river closures.

LNM: 35-23

OHIO RIVER - SEPTEMBER MARINE EVENTS/PLANNED RIVER CLOSURES

Attached as an enclosure to this LNM is U.S. Coast Guard Sector Ohio Valley notice of marine events and planned river closures for September.

LNM: 35-23

SUNSET OF NOAA PRINTED CHARTS

**** Cancellation of NOAA Paper and Raster Nautical Charts ****

The National Oceanic and Atmospheric Administration (NOAA) is undertaking a multi-year program to end production and maintenance of its suite of over 1,000 traditional paper nautical charts and all associated raster chart products and services, including: Print-on-Demand (POD) paper nautical charts, Full-size chart PDF files, BookletChart™ PDF files, NOAA raster navigational charts (NOAA RNC®), the NOAA RNC tile service, and the online RNC viewer.

Six months notice of the intent to cancel a specific chart is provided in a "Last Edition" notice. The final cancellation of a chart is made in a "Canceled" notice. Both types of notices will appear in LNM Section IV, "Chart Correction". A comprehensive list of all canceled NOAA charts is available at: <http://www.charts.noaa.gov/MCD/Dole.shtml>.

Traditional paper nautical chart production is ending to enable the creation and maintenance of larger scale, more up-to-date, higher quality coverage of NOAA's electronic navigational chart (NOAA ENC®) product. This will significantly enhance the amount of charted detail available to mariners. More information about NOAA's program to sunset traditional paper charts is on the NOAA Coast Survey website at: <https://nauticalcharts.noaa.gov/charts/farewell-to-traditional-nautical-charts.html>.

An online NOAA Custom Chart application at: <https://devgis.charttools.noaa.gov/pod> is available to create chart images from ENC data, which may then be printed. Notices to Mariners will not be issued for NOAA Custom Charts.

LNM: 10-21

LOWER MISSISSIPPI RIVER - CHANNEL CONDITION/SAFETY ADVISORY - UPDATE

The U.S. Coast Guard COTP Lower Mississippi River/Ohio Valley has issued a low water Safety Advisory between approximate Miles 953.0 and 303.0. The USACE maintained depths and widths, may not be attainable on all buoy lines. It is recommended that mariners monitor all gauge readings, for safe navigation. The U.S. Coast Guard COTP Lower Mississippi River with the concurrence of the Lower Mississippi River Committee, recommend the following limits for tows:

Transiting between Miles 953.0 and 869.0.

Drafts no greater than 11.6 feet.

Transiting between Miles 869.0 and 303.0.

Drafts no greater than 10.6 feet.

Barges to be configured no more than 7 wide.

Barges currently in the system, with drafts greater than the advised depths, should be placed as near to the center of the tow as possible.

Mariners are requested to contact U.S. Coast Guard Sector Ohio Valley via VHF-FM Channel 16 or at (502) 779-5425, to report areas of shoaling, hazardous conditions or missing aids to navigation, from Mile 953.0 to 869.0. Mariners are requested to contact U.S. Coast Guard Western Rivers Command Center via VHF-FM Channel 16 or at (866) 777-2784, from Mile 869.0 to Mile 303.0.

LNM: 35-23

LOWER MISSISSIPPI RIVER - CHANNEL CONDITION/SAFETY ADVISORY

The U.S. Coast Guard COTP Lower Mississippi River with the concurrence of the Lower Mississippi River Committee, has placed a tow restriction from Mile 782.0 to Mile 777.0. All southbound tows are restricted to no more than 20 barges, after daylight hours. Mariners are requested to contact U.S. Coast Guard Sector Western Rivers Command Center via VHF-FM Channel 16 or at (866) 777-2784, to report areas of shoaling, hazardous conditions or missing aids to navigation.

LNM: 29-23

UPPER MISSISSIPPI RIVER/ILLINOIS WATERWAY - BARGE/RAIL COLLISION RISK

Attached as an enclosure to this LNM is U.S. Coast Guard Sector Upper Mississippi River MSIB 08-21, regarding barge/rail collision risk on the Upper Mississippi River and Illinois Waterway.

LNM: 15-23

TENNESSEE RIVER/CUMBERLAND RIVER - SEPTEMBER - OCTOBER/MARINE EVENTS/PLANNED RIVER CLOSURES

Attached as an enclosure to this LNM is U.S. Coast Guard Marine Safety Detachment Nashville notice of marine events and planned river closures for September and October.

LNM: 35-23

SECTION II - DISCREPANCIES

This section lists all reported and corrected discrepancies related to Aids to Navigation in this edition. A discrepancy is a change in the status of an aid to navigation that differs from what is published or charted.

DISCREPANCIES (FEDERAL AIDS)

LLNR	Aid Name	Status	Chart No.	BNM Ref.	LNK St	LNK End
280	Karns Island Upper Light	STRUCT DEST		0651OV	31/18	
990	Milligan Bend Light	STRUCT DEST		0642LM	51/19	
1010	Webber Falls Jetty Light	STRUCT DEST		0641LM	51/19	
1020	Bluff View Light	STRUCT DEST		0640LM	51/19	
1055	Hisaw Bottom Light	LT EXT		0196LM	40/18	
1070	Brier Creek Light	STRUCT DEST		0205LM	31/15	
1077	Sandtown Bottom Light	STRUCT DEST		0457LM	39/19	
1200	Black Rock Daybeacon	STRUCT DEST		0379LM	35/19	
1205	Gans Light	STRUCT DEST		0335LM	33/19	
1213	Non Lateral Mark 330.4	STRUCT DEST		0087LM	05/16	
1220	Onion Creek Daybeacon	STRUCT DMGD		0334LM	33/19	
1223	Non Lateral Mark 328.5	STRUCT DMGD		0333LM	33/19	
1225	Tucker Lake Light	STRUCT DEST		0332LM	33/19	
1230	Mcnabb Bottom Daybeacon	STRUCT DEST		0332LM	33/19	
1240	Deadman Slough Light	STRUCT DEST		0330LM	33/19	
1255	Wilsons Rock Light	STRUCT DMGD		0380LM	35/19	
1265	Peno Point Daybeacon	DAYMK DMGD		0580LM	47/19	
1267	Non Lateral Mark 313.9	STRUCT DEST		0089LM	05/16	
1315	Garrison Creek Daybeacon	DAYMK MISSING		0377LM	35/19	
1360	Crawford County Daybeacon	STRUCT DEST		0378LM	35/19	
1365	Jeffrey Light	DAYMK MISSING		0376LM	35/19	
1390	Fort Chaffee Light	STRUCT DEST		0579LM	47/19	
1395	Haroldton Light	DAYMK MISSING		0578LM	47/19	
1400	New Haroldton Light	STRUCT DEST		0574LM	47/19	
1420	Gun Club Lake Daybeacon	DAYMK MISSING		0582LM	47/19	
1427	Big Creek Daybeacon	DAYMK MISSING		0575LM	47/19	
1430	Arbuckle Island Light	STRUCT DEST		0091LM	05/16	
1435	Clear Creek Light	DAYMK MISSING		0584LM	41/19	
1445	Crooked Slough Light	STRUCT DEST		0583LM	47/19	
1455	Mulberry River Daybeacon	STRUCT DEST		0041UM	11/17	
1510	Moores Creek Light	LT IMCH/STRUCT DMGD		0394LM	44/16	
1515	Roseville Daybeacon	DAYMK MISSING		0604LM	50/19	
1520	O'Kane Island Light	LT IMCH/STRUCT DMGD		0393LM	44/16	
1525	Alix Bottom Light	STRUCT DEST		0605LM	50/19	
1530	County Line Daybeacon	STRUCT DEST		0606LM	50/19	
1532	Non Lateral Mark 246.3	DAYMK MISSING		0607LM	50/19	
1535	Kalamazoo Light	DAYMK MISSING		0608LM	50/19	
1562	Non Lateral Mark 236.3	DAYMK MISSING		0609LM	50/19	
1615	Dublin Daybeacon	STRUCT DEST		0610LM	50/19	
1650	Bunker Hill Upper Daybeacon	STRUCT DEST		0639LM	51/19	
1660	Bunker Hill Lower Daybeacon	STRUCT DEST		0643LM	51/19	
1695	Dardanelle Reach Light	DAYMK DMGD		0204LM	31/15	
1697	Non Lateral Mark 201.4	STRUCT DEST		0200LM	41/18	
1700	Elberta Light	DAYMK MISSING		0611LM	50/19	
1705	Old Neely Daybeacon	DAYMK MISSING		0612LM	50/19	
1708	Non Lateral Mark 197.9	STRUCT DEST		0052LM	13/17	
1710	Point Bar Cutoff Light	DAYMK MISSING		0613LM	50/19	

1715	Hola Bend Cutoff Light	DAYMK MISSING	0614LM	50/19
1725	Reeds Ferry Light	DAYMK MISSING	0615LM	50/19
1733	Non Lateral Mark 189.8	DAYMK MISSING	0616LM	50/19
1735	Sweeden Island Light	LT EXT/DAYMK MISSING	0617LM	50/19
1738	Non Lateral Mark 188.8	DAYMK MISSING	0618LM	50/19
1745	Wilson Light	STRUCT DEST	0620LM	50/19
1770	Willow Bend Lower Daybeacon	DAYMK MISSING	0621LM	50/19
1798	Non Lateral Mark 175.6	DAYMK MISSING	0622LM	50/19
1800	Point Remove Creek Light	DAYMK MISSING	0623LM	50/19
1815	Ellis Island Light	STRUCT DEST	0630LM	51/19
1817	Non Lateral Mark 171.2	DAYMK MISSING	0631LM	51/19
1845	Stane Reach Upper Daybeacon	DAYMK DMGD	0634LM	51/19
1850	Stane Reach Light	DAYMK DMGD	0635LM	51/19
1890	Belk Corner Light	DAYMK MISSING/STRUCT DMGD	0558LM	45/19
1903	Non Lateral Mark 150.9	DAYMK MISSING	0560LM	45/19
1915	Bigelow Middle Daybeacon	DAYMK DMGD	0563LM	45/19
1920	Bigelow Lower Light	DAYMK MISSING	0538LM	44/19
1930	Tri County Light	STRUCT DEST	0370LM	41/16
1940	Beaver Dam Creek Daybeacon	STRUCT DMGD	0636LM	51/19
1948	Non Lateral Mark 138.8	DAYMK MISSING	0539LM	44/19
1953	Non Lateral Mark 137.6	DAYMK MISSING	0540LM	44/19
1960	Palarm Light	DAYMK MISSING	0541LM	44/19
1975	Maumelle River Upper Daybeacon	STRUCT DEST	0565LM	45/19
1988	Non Lateral Mark 130.6	DAYMK MISSING	0542LM	44/19
2030	Burns Park Light	STRUCT DEST	0514LM	42/19
2045	Waterworks Bend Light	DAYMK DMGD	0515LM	42/19
2130	Willow Bar Light	LT EXT	0524LM	42/19
2143	Non Lateral Mark 106.5	DAYMK MISSING	0637LM	51/19
2160	Estes Place Light	DAYMK IMCH/STRUCT DMGD	0396LM	44/16
2199	Non Lateral Mark 92.0	STRUCT DEST	0398LM	44/16
2370	Ste. Marie Bend Lower Daybeacon	STRUCT DEST	0407LM	45/16
2435	Richland Bend Middle Daybeacon	STRUCT DEST	0099LM	16/18
2485	Little Bayou Meto Lower Daybeacon	DAYMK DMGD	0094LM	15/18
2498	Cummins Bend Daybeacon	STRUCT DEST	0103LM	06/16
2540	Sample Island Light	STRUCT DEST	0106LM	06/16
2550	Sample Island Lower Light	STRUCT DEST	0107LM	06/16
2665	Owens Lake Daybeacon	DAYMK DMGD	0110LM	06/16
3655	Cages Bend Light	STRUCT DEST	0660OV	38/19
3680	Lindsley Island Lower Light	LT EXT	0193OV	22/23
3965	Watkins Daybeacon	STRUCT DEST	0245OV	19/17
4250	Shammels Mound Landing Light	STRUCT DEST	0010OV	02/16
4285	Saline Creek Light	STRUCT DEST/TRUB	0221OV	26/16
4315	Pryors Creek Light	STRUCT DEST	0030OV	02/20
4340	Devils Elbow Light	STRUCT DEST	0306OV	16/18
4365	Bleidt Landing Light	STRUCT DEST/TRUB	0137OV	17/21
4390	Crooked Creek Light	STRUCT DEST/TRUB	0383OV	36/16
4425	Commerce Landing Light	STRUCT DEST	0520OV	42/22
4455	Prison Farm Landing Light	STRUCT DEST	0145OV	17/21
4500	Kuttawa Bar Light	STRUCT DEST	0243OV	12/18

4505	Money Cliff Light	STRUCT DEST	0364OV	19/18
6810	Halls Landing Daybeacon	STRUCT DMGD	0024MI	07/23
6985	Sand Point Lower Light	STRUCT DEST	0102UM	20/22
6990	Circle Light	STRUCT DMGD	0102UM	20/22
6995	Spring Bay Daybeacon	STRUCT DEST	0102UM	20/22
7035	Drolls Point Light	STRUCT DEST/TRLB	0233UM	23/20
7585	Frederick Light	STRUCT DEST	0539UM	29/19
7650	Briggs Landing Light	LT EXT/STRUCT DMGD	0890UM	51/19
7695	Moores Island Light	STRUCT DEST	0037UM	12/22
7705	Wilson Island Daybeacon	DAYMK DMGD	0104UM	18/21
7850	Florence Light	LT EXT	0055UM	14/22
9150	Washita Point Light	LT EXT	0395LM	33/20
9185	Preston Peninsula Light	REDUCED INT	0420LM	46/16
9437	Black Dog Upper Daybeacon	DAYMK MISSING	0181UM	31/23
9456	Six Mile Cut Lower Daybeacon	DAYMK MISSING	0178UM	31/23
10185	Cedar Point Light	REDUCED INT	0031LM	18/22
10195	Dean Island Light	REDUCED INT	0327LM	33/19
10210	Brandywine Chute Light	REDUCED INT	0031LM	18/22
10225	Island 40 Foot Light	STRUCT DEST	0232LM	49/18
10540	Harbert Point Light	LT EXT	0256LM	36/15
10545	Stumpy Point Light	STRUCT DEST	0249LM	52/18
10625	Delta Lower Light	STRUCT DEST	0118LM	06/16
10650	Miller Point Light	STRUCT DEST	0171LM	14/16
10660	Old Town Bend Foot Light	STRUCT DEST	0253LM	36/15
10685	Robson Light	STRUCT DEST	0116LM	06/16
10700	Sunflower Cut-Off Foot Light	STRUCT DEST	0115LM	06/16
10710	Ludlow Bar Light	DAYMK DMGD	0018LM	04/18
10715	Wood Cottage Light	STRUCT DEST	0114LM	06/16
10720	Knowlton Light	STRUCT DEST	0113LM	06/16
10730	Mason Landing Daybeacon	STRUCT DEST	0172LM	14/16
10815	Riverton Middle Bar Light	STRUCT DEST	0113LM	21/18
10885	Cypress Bend Light	STRUCT DEST	0032LM	07/18
10895	Eutaw Bar Light	STRUCT DEST	0365LM	35/19
10905	Mounds Crevasse Lower Light	STRUCT DEST	0114LM	21/18
10910	Boliver Light	STRUCT DEST	0069LM	11/18
10955	Miller Bend Light	STRUCT DEST	0030LM	06/18
10965	La Grange Towhead Light	STRUCT DEST	0367LM	35/19
11050	Vaucluse Bend Light	STRUCT DEST	0028LM	06/18
11070	Anconia Point Light	STRUCT DEST	0368LM	35/19
11080	Lakeport Light	STRUCT DEST	0369LM	35/19
11085	Walnut Point Light	STRUCT DEST	0370LM	35/19
11125	Corregidor Light	STRUCT DEST	0080LM	05/16
11130	Sarah Island Light	STRUCT DEST	0371LM	35/19
11170	Stack Island Light	STRUCT DEST	0372LM	35/19
11180	STACK ISLAND LOWER LIGHT	STRUCT DEST	0373LM	35/19
11195	Chinaman Light	STRUCT DEST	0374LM	35/19
11210	Fitler Point Daybeacon	STRUCT DEST	0170LM	28/17
11215	Seitz Light	STRUCT DEST	0448LM	38/19
11220	Cottonwood Bar Pointway Light	STRUCT DEST	0449LM	38/19

11245	Willow Point Light	DAYMK DMGD	0450LM	38/19
11250	Belle Island Corner Daybeacon	STRUCT DEST	0451LM	38/19
11270	Cabin Teele Light	STRUCT DEST	0452LM	38/19
11275	Marshall Point Cut-Off Daybeacon	STRUCT DEST	0453LM	38/19
11280	Joseph Henry Daybeacon	STRUCT DEST	0454LM	38/19
11407	Coggins Light	STRUCT DEST	0296LM	29/16
11415	Reid Bedford Point Light	STRUCT DEST	0463LM	39/19
11425	Diamond Light	STRUCT DEST	0464LM	39/19
11430	Sargent Point Light	LT IMCH/DAYMK DMGD	0465LM	39/19
11440	Cannon Point Light	STRUCT DEST	0294LM	41/17
11455	Buckridge Light	STRUCT DEST	0467LM	39/19
11470	Grand Gulf Island Light	STRUCT DEST	0468LM	39/19
11505	Old Levee Light	LT IMCH/DAYMK DMGD	0470LM	39/19
11520	Ashland Light	LT IMCH/DAYMK DMGD	0471LM	39/19
11530	Hole In The Wall Light	LT IMCH/REDUCED INT	0472LM	39/19
11540	Giles Bend Cut-Off Light	STRUCT DEST	0171LM	28/17
11680	Bob Boles Light	STRUCT DEST		18/23
11700	Fort Adams Light	STRUCT DEST	0402LM	36/19
11795	Morganza Crevasse Light	STRUCT DEST	0400LM	36/19
11835	Bayou Sara Bend Light	STRUCT DEST	0399LM	36/19
11860	Port Hudson Light	STRUCT DEST	0581NO	36/19
11940	Ben Burman Light	STRUCT DEST	0549LM	44/19
12175	Minnesota River Mouth Daybeacon	STRUCT DMGD	0180UM	31/23
12185	Goiner Daybeacon	STRUCT DMGD	0177UM	31/23
13165	Lock 5A Light	LT EXT	0172UM	20/20
13230	Island 74 Light	STRUCT DEST/TRUB	0380UM	34/20
13430	Root River Upper Light	STRUCT DEST/HAZ NAV	0172UM	20/20
13510	Perry Ruby Light	STRUCT DEST	0061UM	12/17
13535	Britts Landing Daybeacon	DAYMK DMGD/STRUCT DMGD	0310UM	42/22
13720	Crooked Slough Head Daybeacon	STRUCT DEST/TRUB	0482UM	26/19
13725	Crooked Slough Head Light	STRUCT DEST/TRUB	0482UM	26/19
13765	Island 158 Daybeacon	DAYMK DMGD	0310UM	43/22
13895	Clayton Daybeacon	STRUCT DEST	0310UM	43/22
13915	Clayton Lower Daybeacon	STRUCT DEST/TRUB	0240UM	31/18
14010	Cassville Upper Daybeacon	STRUCT DEST	0546UM	29/19
14030	Cassville Lower Light	STRUCT DEST	0546UM	29/19
14105	Maquoketa Island Light	STRUCT DEST	0460UM	25/19
14230	Nine-Mile Island Light	STRUCT DEST	0410LM	36/17
14260	Stone Slough Light	STRUCT DEST	0454UM	25/19
14275	Fever River Light	STRUCT DEST/TRUB	0485UM	45/18
14295	Pulaski Light	STRUCT DEST	0485UM	45/18
14385	Arnold Towhead Light	STRUCT DEST	0449UM	25/19
14445	Sabula Lower Light	STRUCT DEST	0446UM	25/19
14460	Smith Bay Light	STRUCT DEST	0048UM	13/22
14475	Elk River Light	DAYMK DMGD	0257LM	31/21
14610	Adams Island Light	STRUCT DEST	0074UM	21/23
14980	Hershey Chute Upper Light	STRUCT DEST	0074UM	21/23
15170	Edwards Island Upper Light	STRUCT DEST/TRUB	0403UM	26/16
15240	Benton Island Light	STRUCT DEST	0073UM	21/23

15475	Waggoner PT Lighted Buoy	MISSING	0138UM	26/23
15785	Sny River Light	STRUCT DEST	0114UM	22/22
16065	Elswood Lower Light	STRUCT DEST	0030UM	16/23
16110	Hastings Landing Daybeacon	STRUCT DMGD	0282UM	39/22
16120	Cuivre Island Light	STRUCT DEST	0282UM	39/22
16200	Portage Des Sioux Light	LT EXT	0088UM	18/22
16910	Ste. Genevieve Island Light	STRUCT DEST	0557UM	30/19
17970	Fitzhugh Daybeacon	STRUCT DEST	0055UM	19/23
17975	Lower Blencoe Bend Daybeacon	STRUCT DEST	0055UM	19/23
17985	Wahle Daybeacon	STRUCT DEST	0055UM	19/23
23285	Cluster Upper Light	STRUCT DEST	0721OV	34/18
23330	Brown Island Light	STRUCT DEST		20/23
24110	Old Lock No. 17 Lower Daybeacon	STRUCT DEST		39/20
25355	Sciotoville Light	LT EXT	0095OV	11/23
26047	Sunken Barge Lighted Buoy WR	MISSING	0519OV	51/21
26047	Sunken Barge Lighted Buoy WR	SINKING/LT EXT	0199OV	22/23
26470	Notch Lick Light	STRUCT DEST	0210OV	23/21
27090	Wolf Creek Light	LT EXT	0064OV	05/22
27520	Robert Mann Light	STRUCT DEST	0269OV	21/22
27540	Water Works Light	STRUCT DMGD	0179OV	12/22
27855	Graham Varble Light	STRUCT DEST	0134OV	17/21
27935	Dekoven Light	STRUCT DEST	0294OV	23/22
29231.34	Westdale Middle Daybeacon	STRUCT DEST/TRUB	0121LM	44/22
29241.25	Smith Island Lower Daybeacon	STRUCT DEST	0202LM	26/21
29272	Deloges Middle Daybeacon	DAYMK IMCH		36/20
29467	Hog Lake Daybeacon	STRUCT DEST		36/20
29618	Red River Entrance Light	STRUCT DEST		37/20
29665	Dry Cypress Daybeacon	STRUCT DEST		37/20
29690	Bayou Cocodrie Upper Daybeacon	STRUCT DEST		37/20
29695	Bayou Cocodrie Daybeacon	STRUCT DEST		37/20
29710	Grassy Lake Daybeacon	DAYMK MISSING		37/20
29725	Alligator Bayou Daybeacon	STRUCT DEST	0216LM	33/17
29750	Timber Lake Daybeacon	STRUCT DEST		37/20
29755	Naples Daybeacon	STRUCT DEST		37/20
29775	Three Rivers Junction Light	STRUCT DEST		37/20
29780	Barbre Daybeacon	STRUCT DEST		37/20
29785	Torras Daybeacon	STRUCT DEST		37/20
29795	Oak Grove Daybeacon	STRUCT DEST		37/20
29845	Houden Point Daybeacon	STRUCT DEST	0255UM	30/21
31995	Dry Creek Light	STRUCT DEST	0402OV	31/20
32140	Chambers Daybeacon	STRUCT DEST	0178OV	11/13
32170	Diamond Island Lower Daybeacon	STRUCT DEST	0177OV	11/13
32190	Savannah Bend Upper Daybeacon	STRUCT DEST	0039OV	04/23
32335	Brodies Landing Light	STRUCT DEST	0041OV	04/23
32350	Crooked Creek Light	STRUCT DEST	0042OV	04/23
32445	Sales Light	TRUB/STRUCT DEST	0269OV	19/14
32460	Reynoldsburg Island Light	STRUCT DEST/TRUB	0290OV	15/18
32465	Shirley Light	STRUCT DEST	0040OV	04/23
32480	Higgins Light	STRUCT DEST	0342OV	27/15

32510	Hurricane Creek Light	STRUCT DEST	0043OV	04/23
32530	Standing Rock Upper Light	STRUCT DEST	0658OV	41/13
32570	Fort Henry Light	STRUCT DEST	0160OV	19/21
32595	Blood River Light	STRUCT DEST/TRUB	0138OV	17/21
32600	Clyde Light	LT EXT	0581OV	44/15
32605	Newburg Light	STRUCT DEST	0362OV	29/15
32710	Twenty-One Mile Light	STRUCT DEST	0108OV	13/23
32715	Chottes Creek Light	STRUCT DEST	0107OV	13/23
32750	Haddock Ferry Light	LT EXT/DAYMK MISSING	0106OV	13/23
32765	Big Chain Light	STRUCT DEST	0105OV	13/23
32780	Mud Creek Light	STRUCT DEST	0036OV	04/23
32825	W. L. Berry Light	STRUCT DEST	0110OV	13/23

DISCREPANCIES (FEDERAL AIDS) CORRECTED

LLNR	Aid Name	Status	Chart No.	BNM Ref.	LNM St	LNM End
------	----------	--------	-----------	----------	--------	---------

None

DISCREPANCIES (PRIVATE AIDS)

LLNR	Aid Name	Status	Chart No.	BNM Ref.	LNM St	LNM End
1685	Oakley Dock Light	LT EXT		0307LM	44/14	
1690	Mobley Dock Light	LT EXT		0454LM	48/13	
2013	City of Little Rock No Wake Buoy	OFF STA		0015LM	21/23	
2100	Oakley Light	LT EXT		0520LM	42/19	
2337	Island Harbor Marina Light	LT EXT			45/16	
2340	Century Tube Lights (2)	LT EXT			45/16	
2400	Pickett And Davison Lights (2)	LT EXT		0481LM	50/13	
3725	Lakewood Marina Lights (4)	LT IMCH		0439OV	34/15	
3750	Dupont Dock Lights (2)	OFF STA/LT EXT		0305OV	26/15	
3795	Nashville Water Intake Lights (2)	LT EXT			44/11	
3805	Holnam Dock Lights (2)	LT EXT			44/11	
3815	Kerr-Mcgee Dock Lights (2)	LT EXT			44/11	
3820	Cohen Terminal Lights (2)	LT EXT			44/11	
3930	Alcoa Chemical Dock Lights (2)	MSLD SIG/LT EXT		0216OV	14/10	
3960	Hunter Marine Transport Dock Lights (2)	LT EXT			47/08	
3995	Riverview Marina Lights (2)	LT EXT			47/08	
4055	Clarksville Boat Club Dock Lights (2)	LT EXT		0533OV	34/12	
6170	Quantum Chemical Dock Lights (2)	LT EXT		0436UM	31/01	
6650	S. T. Services Terminal Lights (2)	LT EXT			41/14	
6695	Continental Grain Company Light	LT EXT			41/14	
7225	Cargo Carriers Dock Lights (2)	LT EXT			25/08	
7235	Pekin Boat Club Breakwater Light	LT EXT			05/16	
7250	Shell Dock Lights (2)	LT EXT		0123UM	16/02	
7255	Adm Growmark Mooring Light	LT EXT		0122UM	16/02	
7260	Sours Grain Tramway Light	LT EXT		0279UM	21/03	
7265	Tomen Dock Light	LT EXT			25/08	
7295	Adm Growmark Mooring Lights (3)	LT EXT		0281UM	21/03	
7460	Cargill Mooring Lights (2)	LT EXT		0284UM	21/03	
7620	Cargill Dock Lights (2)	LT EXT			35/08	

7725	Cargill Terminal Lights (2)	LT IMCH	0171UM	26/18
7730	Public Service Co. Dock Lights (6)	LT EXT	0119UM	20/18
7730	Public Service Co. Dock Lights (6)	LT IMCH	0171UM	26/18
7760	Adm Growmark Grain Elevator Lights (2)	LT IMCH	0171UM	26/18
9440	Black Dog Lights (5)	LT EXT	0185-23 UMR	43/16
9475	Pollution Control Station Light	LT EXT	0197-23 UM	31/23
9965	Huffman Grain Light	STRUCT DEST	0131LM	08/16
10300	Cargill Dock Light	LT EXT	0361LM	34/01
10390	Peavey Lights (2)	LT EXT	0398LM	36/02
10395	Suburban Propane Dock Light	LT EXT	0396LM	36/02
10415	Western Tar Products Dock Light	LT EXT	0394LM	36/02
11943	Bear Industries Barge Dock Lights (4)	LT EXT	0600NO	30/17
11990	Riverside Dock Lights (2)	LT EXT	0695UM	40/01
12080	University Dock Lights (3)	LT EXT	0696UM	40/01
12215	Koch Fuel Dock Lights (2)	LT EXT		35/16
12320	Newport Terminal Lights (2)	LT EXT		35/16
12385	Shiely Dock Lights (2)	LT IMCH		35/16
12712	City of Red Wing Metering Station Special Light	MISSING		42/16
12768	Consolidated Grain and Barge Loading Dock Piling Lights (2)	MISSING		42/16
12930	Alma City Dock Light/Daymarks (3)	MISSING		42/16
13405	G. Heileman Brewery Dock Light	MISSING		42/16
14756	Isle Of Capri Casino Marina Daybeacon	MISSING		03/16
15345	Koch Nitrogen Dock Light	LT EXT		41/14
15425	Hall Towing Light	STRUCT DEST	0280UM	25/20
15822	Hannibal Intake Light	LT EXT	0358UM	32/20
16100	Jersey County Grain Dock Lights (2)	LT EXT		19/16
16205	Piasa Harbor Light	LT EXT	0131UM	22/15
16220	Con-Agra Mooring Lights (2)	LT EXT		21/16
16230	Alton Marina Breakwater Lights (3)	LT EXT	0131UM	22/15
16265	Amoco Dock Light	STRUCT DEST		35/09
16280	Amoco Dock Lights (4)	LT EXT		35/09
16310	Sioux City/New Orleans Terminal Light	STRUCT DEST		35/09
16380	Western Dock Lights (9)	LT IMCH		34/08
16390	Adm-Growmark Dock Lights (4)	LT EXT	0776UM	44/01
16430	Union Electric Coal Dock Lights (2)	LT EXT	0305UM	34/08
16445	Continental Cement Lights (2)	LT EXT	0305UM	34/08
16505	Peavey Company Dock Lights (3)	LT EXT	0305UM	34/08
16530	Cahokia Marine Terminal Lights (2)	LT EXT	0305UM	34/08
16540	Slay Bulk Terminal Lights (2)	LT EXT	0305UM	34/08
16545	Peavey Lights (3)	LT EXT	0305UM	34/08
16550	Eagle Marine Industries Light	LT IMCH	0305UM	34/08
16560	Phillips Pipeline Lights (2)	LT EXT	0305UM	34/08
16565	Growmark Dock Lights (2)	LT EXT	0305UM	34/08
16575	Eagle Marine Dock Lights (2)	LT EXT	0305UM	34/08
16600	J.H. Collier Barge Mooring Lights (2)	LT EXT	0305UM	34/08
16605	Clark Oil Refining Dock Lights (4)	LT EXT	0305UM	34/08
16609	Alcoa Foil Lights (2)	LT EXT	0305UM	34/08
16615	Hci Chemtech Dock Lights (2)	LT EXT	0305UM	34/08

16617	Semmaterials Terminal Lights (2)	LT EXT	0305UM	34/08
16630	American Commercial Dock Lights (2)	LT EXT	0305UM	34/08
16655	Bussen Terminal Light	LT EXT	0305UM	34/08
18700	Bunge Dock Lights (3)	MISSING/LT EXT		18/08
19185	St. Joseph L & P Dock Light	LT IMCH		17/08
19415	Leavenworth Water Intake Lights (2)	LT EXT	0104UM	39/07
19460	Smoot Grain Dock Lights (2)	LT EXT	0385UM	39/07
19505	Board Of Public Utilities Light	LT EXT	0386UM	39/07
19535	Public Utilities Intake Lights (3)	LT EXT		38/08
19660	Continental Grain Dock Lights (4)	LT EXT	0181UM	24/08
19695	Kansas City Power And Light Company Lights (2)	LT EXT	0181UM	24/08
20870	U.E. Callaway Intake Lights (2)	LT EXT	0522UM	52/20
22873	Moon Township Municipal Authority Back Channel Outfall Danger Buoy	OFF STA	0108OV	14/21
24005	Bens Run Light	LT EXT		03/20
24580	Ohio Power Coal Dock Light	LT EXT	0480OV	44/21
25820	Cargill Barge Loading Facility Light	LT EXT	0552OV	40/09
26290	Boone County Sand And Gravel Lights (2)	LT EXT	0769OV	40/00
26833	Transmontaige Dock Lights (2)	LT EXT	0286OV	28/21
26860	Dupont Chemical Lights (2)	LT EXT	0330OV	17/18
27590	Transmontaigne Dock Lights (4)	LT EXT		40/21
29997	Cityview at Riverwalk Dock Light	LT EXT	0284OV	28/23
32900	Ergon Dock Lights (2)	LT IMCH		17/13
	Alcosan-Mascaro Temporary Lighted Danger Buoy	MISSING		24/22

DISCREPANCIES (PRIVATE AIDS) CORRECTED

LLNR	Aid Name	Status	Chart No.	BNM Ref.	LNM St	LNM End
------	----------	--------	-----------	----------	--------	---------

None

PLATFORM DISCREPANCIES

Name	Status	Position	BNM Ref.	LNM St	LNM End
------	--------	----------	----------	--------	---------

None

PLATFORM DISCREPANCIES CORRECTED

Name	Status	Position	BNM Ref.	LNM St	LNM End
------	--------	----------	----------	--------	---------

None

SECTION III - TEMPORARY CHANGES and TEMPORARY CHANGES CORRECTED

This section contains temporary changes and corrections to Aids to Navigation for this edition. When charted aids are temporarily relocated for dredging, testing, evaluation, or marking an obstruction, a temporary correction shall be listed in Section IV giving the new position.

TEMPORARY CHANGES

LLNR	Aid Name	Status	Chart No.	BNM Ref.	LNM St	LNM End
7015	Blue Creek Point Lower Lighted Buoy	TRUB		0379UM	51/21	
7030	Drolls Point Upper Lighted Buoy	TRUB		0379UM	51/21	
7040	Peoria Heights Lighted Buoy	TRUB		0379UM	51/21	
10455	Armstrong Bar Light	RELOCATED			23/18	
11275	Marshall Point Cut-Off Daybeacon	TRDBN			49/16	
11280	Joseph Henry Daybeacon	TRDBN			49/16	

TEMPORARY CHANGES CORRECTED

LLNR	Aid Name	Status	Chart No.	BNM Ref.	LNM St	LNM End
------	----------	--------	-----------	----------	--------	---------

None**PLATFORM TEMPORARY CHANGES**

Name	Status	Position	BNM Ref.	LNM St	LNM End
------	--------	----------	----------	--------	---------

None**PLATFORM TEMPORARY CHANGES CORRECTED**

Name	Status	Position	BNM Ref.	LNM St	LNM End
------	--------	----------	----------	--------	---------

None**SECTION V - ADVANCE NOTICES**

This section contains advance notice of approved projects, changes to aids to navigation, or upcoming temporary changes such as dredging, etc. Mariners are advised to use caution while transiting these areas.

SUMMARY OF ADVANCED APPROVED PROJECTS**Approved Project(s)****Project Date****Ref. LNM****None****Advance Notice(s)****UPPER MISSISSIPPI RIVER**

The Coast Guard will be making the following Aid to Navigation Change after August 9, 2023:
Change Stone Slough Light (LLNR-14260) at Mile 563.5, Left Descending Bank, in approximate position 42-21-02.115N/090-26-23.619W, showing FI (2)R 5s, to Stone Slough Daybeacon (LLNR-14260) CNR upstream, CNR downstream.

LNM: 32/23

UPPER MISSISSIPPI RIVER

The Coast Guard will be making the following Aid to Navigation Change after August 9, 2023:
Change Arnold Towhead Light (LLNR-14385) at Mile 543.2, Left Descending Bank, in approximate position 42-09-26.489N/090-12-50.124W, showing FI (2)R 5s, to Arnold Towhead Daybeacon (LLNR-14385) TR upstream, TR downstream on tree.

LNM: 32/23

UPPER MISSISSIPPI RIVER

The Coast Guard will be making the following Aid to Navigation Change after August 9, 2023:
Discontinue Sabula Lower Light (LLNR-14445) at Mile 533.6, Right Descending Bank, in approximate position 42-02-34.260N/090-10-02.383W.

LNM: 32/23

OHIO RIVER

The Coast Guard will be making the following Aid to Navigation Change after October 3, 2023:
Discontinue Cluster Upper Light (LLNR- 23285) at Mile 51.1, Right Descending Bank, in approximate position 40-33-55.001N/080-39-21.266W.

LNM: 32/23

LOWER MISSISSIPPI RIVER

The Coast Guard will be making the following Aid to Navigation Changes after October 3, 2023:
Discontinue Giles Bend Cut-Off Light (LLNR-11540) at Mile 367.7, Left Descending Bank, in approximate position 31-37-04.908N/091-23-48.764W.
Discontinue Natchez Beam Light (LLNR-11550) at Mile 364.8, Left Descending Bank, in approximate position 31-34-33.467N/091-24-04.561W.

LNM: 32/23

LOWER MISSISSIPPI RIVER

The Coast Guard will be making the following Aid to Navigation Changes after October 3, 2023:
Discontinue Cannon Point Light (LLNR-11440) at Mile 418.3, Left Descending Bank, in approximate position 32-07-19.909N/091-03-20.120W.
Discontinue Grand Gulf Island Light (LLNR-11470) at Mile 404.9, Left Descending Bank, in approximate position 31-59-46.907N/091-05-04.546W.

LNM: 32/23

LOWER MISSISSIPPI RIVER

The Coast Guard will be making the following Aid to Navigation Change after October 3, 2023:
Discontinue Hart Light (LLNR-11495) at Mile 389.8, Left Descending Bank, in approximate position 31-51-34.789N/091-14-50.572W.

LOWER MISSISSIPPI RIVER

The Coast Guard will be making the following Aids to Navigation Changes after October 3, 2023:

Discontinue Belle Island Corner Daybeacon (LLNR-11250) at Mile 458.6, Left Descending Bank, in approximate position 32-30-41.486N/091-06-21.974W.

Discontinue Rosehill Light (LLNR-11260) at Mile 454.8, Right Descending Bank, in approximate position 32-27-39.071N/091-06-08.644W.

Discontinue Milliken Bend Daybeacon (LLNR-11265) at Mile 452.6, Right Descending Bank, in approximate position 32-26-25.620N/091-04-18.876W.

Discontinue Joseph Henry Daybeacon (LLNR-11280) at Mile 445.2, Left Descending Bank, in approximate position 32-22-45.044N/090-59-47.378W.

LNM: 32/23

LOWER MISSISSIPPI RIVER

The Coast Guard will be making the following Aids to Navigation Changes after October 3, 2023:

Discontinue Seitz Light (LLNR-11215) at Mile 472.1, Left Descending Bank, in approximate position 32-40-08.162N/091-06-09.338W.

Discontinue Fidler Bend Light (LLNR-11200) at Mile 478.6, Left Descending Bank, in approximate position 32-44-11.310N/091-04-21.500W.

Discontinue Cottonwood Bar Pointway Light (LLNR-11220) at Mile 470.2, Right Descending Bank, in approximate position 32-39-51.980N/091-08-13.870W.

Discontinue Willow Point Light (LLNR-11245) at Mile 461.6, Left Descending Bank, in approximate position 32-33-23.281N/091-05-43.782W.

LNM: 32/23

LOWER MISSISSIPPI RIVER

The Coast Guard will be making the following Aids to Navigation Changes after October 24, 2023:

Discontinue Gold Dust Bar Light (LLNR-10065) at Mile 793.4, Left Descending Bank, in approximate position 35-44-25.300N/089-50-21.400W.

Discontinue Island 30 Lower Daybeacon (LLNR-10100) at Mile 785, Right Descending Bank, in approximate position 35-40-51.700N/089-56-46.400W.

Discontinue Howard Daybeacon (LLNR-10175) at Mile 763.7, Right Descending Bank, in approximate position 35-29-48.228N/090-01-08.796W.

Discontinue Brandywine Chute Upper Daybeacon (LLNR-10205) at Mile 752.7, Left Descending Bank, in approximate position 35-22-13.080N/090-04-31.908W.

Discontinue Sycamore Chute Daybeacon (LLNR-10240) at Mile 740.3, Left Descending Bank, in approximate position 35-12-13.392N/090-03-33.876W.

Discontinue Star Landing Daybeacon (LLNR-10475) at Mile 707.2, Left Descending Bank, in approximate position 34-54-09.972N/090-14-39.552W.

Discontinue Peters Daybeacon (LLNR-10500) at Mile 692.0, Right Descending Bank, in approximate position 34-48-04.032N/090-28-40.908W.

Discontinue Mhoon Bend Daybeacon (LLNR-10515) at Mile 683.4, Left Descending Bank, in approximate position 34-43-29.442N/090-30-55.256W.

LNM: 35/23

ALLEGHENY RIVER

The Coast Guard will be making the following Aid to Navigation Change after October 24, 2023:

Discontinue Karns Island Upper Light (LLNR-280) at Mile 27.4, Right Descending Bank, in approximate position 40-39-09.171N/079-41-32.511W.

LNM: 35/23

OHIO RIVER

The Coast Guard will be making the following Aid to Navigation Change after October 24, 2023:

Discontinue Old Lock No. 17 Lower Daybeacon (LLNR- 24110) at Mile 167.6, Right Descending Bank, in approximate position 39-21-58.421N/081-23-57.062W.

LNM: 35/23

SECTION VI - PROPOSED CHANGES

Periodically, the Coast Guard evaluates its system of aids to navigation to determine whether the conditions for which the aids to navigation were established have changed. When changes occur, the feasibility of improving, relocating, replacing, or discontinuing aids are considered. This section contains notice(s) of non-approved, proposed projects open for comment. SPECIAL NOTE: Mariners are requested to respond in writing to the District office unless otherwise noted (see banner page for address).

PROPOSED WATERWAY PROJECTS OPEN FOR PUBLIC COMMENT

<u>Proposed Project(s)</u>	<u>Closing</u>	<u>Docket No.</u>	<u>Ref. LNM</u>
None			

<u>Proposed Change Notice(s)</u>
None

SECTION VII - GENERAL

This section contains information of general concern to the Mariners. Mariners are advised to use caution while transiting these areas.

ALLEGHENY RIVER**MILE 0.6 - BRIDGE MAINTENANCE**

Sixth Street Bridge; A containment system is installed below low steel and follows the contour of the bridge. Vertical clearance is reduced approximately 1-foot for the middle, 100 feet of the navigation span. A work barge will be located outside of the navigation channel and will not

**ALLEGHENY RIVER
MILE 0.6 - BRIDGE MAINTENANCE**

affect navigation. Mariners are advised to transit the bridge with extreme caution.

LNM: 38-22

MILE 0.5 - BARGE OPERATIONS

Commencing at 9:30 a.m., September 1, 2023, and continuing until 5:00 p.m., September 4, 2023, barge operations will be conducted in the vicinity of Mile 0.5, along the left descending bank. Mariners may contact the U.S. Coast Guard via VHF-FM Channel 16, for additional information. Mariners are urged to transit at their slowest safe speed to minimize wake and proceed with caution.

LNM: 34-23

**ARKANSAS RIVER
MILE 366.6 - L/D CLOSURES**

Commencing at 7:00 a.m., September 11, 2023, and continuing until 5:00 p.m., September 17, 2023, Webbers Falls L/D Nr. 16, in the vicinity of Mile 366.6, will be closed for repairs. As maintenance crews prepare the work site, intermittent delays of four or more hours should be expected several days preceding the above Lock closure. All work is expected to be completed as scheduled. However, unforeseen issues could require additional time. Waterway users are asked to check with L/D 16, for the latest information. Mariners may contact Mr. Robert Steiner, Navigation Operation Manager, at (918) 775-4475 ext. 5833 or Mr. Jacob Simpson, Navigation Field Engineer, at (918) 430-4783, for additional information.

LNM: 35-23

MILE 300.4 - BRIDGE MAINTENANCE

Continuing until further notice, concrete and deck repairs will be conducted on the I-64 Bridge. All vessels are directed to use the main navigation channel. Mariners may contact the I-64 Bridge crew on VHF-FM Channel 13 or 16, for further information.

LNM: 13-23

MILE 299.6 - BRIDGE MAINTENANCE

Continuing until further notice, concrete and deck repairs will be conducted on the I-540 Bridge. All vessels are directed to use the main navigation channel. Mariners may contact the I-540 Bridge crew on VHF-FM Channel 13 or 16, for further information.

LNM: 13-23

MILE 118.2 - BRIDGE PROTECTION CELL DAMAGE

The upstream left descending pier protection cell at the Clinton Presidential Park Bridge in the vicinity of Mile 118.2, is damaged and leaning into the left descending bridge pier. Mariners are urged to exercise caution in the area. Mariners may contact the USACE Little Rock District Office at (501) 324-5096 or via e-mail at: ceswl-op-om@usace.army.mil, for additional information.

LNM: 48-21

**CUMBERLAND RIVER
MILE 207.0 - AID TO NAVIGATION**

A can buoy has been reported off station, in the middle of the channel, in the vicinity of Mile 207.0. Mariners are advised to transit the area with caution.

LNM: 33-23

MILE 190.4 - BRIDGE MAINTENANCE

Louisville and Nashville (CSX) Railroad Drawbridge; Vertical clearance is reduced by 4 feet due to installed containment system. The bridge remains fully operational. Mariners are advised to contact the bridge tender via VHF-FM Channel 16 or the maintenance supervisor, at (989) 717-3192, for additional information.

LNM: 35-22

**GREEN RIVER
MILE 8.3 - BRIDGE OPERATION**

Louisville and Nashville Railroad Drawbridge; Due to construction, the drawbridge will open on demand from 6:00 a.m. to 4:30 p.m., daily. At all other times the drawbridge will be kept in the open-to-navigation position.

LNM: 33-23

**ILLINOIS WATERWAY
MILE 288.7 - MILE 287.3 - BRIDGE REPAIRS**

Joliet Harbor Bridges; Due to ongoing bridge work, mariners are required to provide 1-hour advance notice, when requesting drawspan openings.

LNM: 19-20

MILE 287.3 - BRIDGE MAINTENANCE

McDonough Street Bridge; Due to cleaning and painting of the drawbridge, mariners are requested to provide a one-hour advance notice to the bridge operator for a bridge opening.

LNM: 26-23

MILE 189.1 - BRIDGE MAINTENANCE

Continuing until further notice, bridge maintenance will be conducted on the Lacon Highway Bridge. Vertical clearance may be reduced by 30 feet, due to containment/work platform below the bridge deck. Mariners are urged to exercise caution while transiting under the bridge. Mariners may contact the Lacon Highway Bridge crew via VHF-FM Channel 13 or 16.

LNM: 31-23

MILE 165.5 - SHORESIDE OPERATION

Continuing until further notice, shoreside operations are being conducted along the left descending bank, outside the navigational channel, at Mile

MILE 165.5 - SHORESIDE OPERATION

165.5. Mariners are urged to transit the area with caution.

LNM: 35-23

MILE 151.2 - BRIDGE OPERATION

Pekin Railroad Drawbridge; Continuing until further notice, the bridge will be unattended and left in the open-to-navigation position. The bridge shall initiate the closing sequence for an approaching train by broadcasting the closure on VHF-FM Channel 16, 10-minutes prior to closure and immediately prior to closing. If no mariners respond to the broadcast, the operator of the bridge may begin the closing sequence. For additional information, mariners may contact Joe Ballou, with Union Pacific Railroad, at (708) 990-8513.

LNM: 34-22

MILE 135.5 - MILE 135.2 - DREDGE OPERATION

Continuing until further notice, the M/V SUNNY TON is conducting dredging operations from approximate Mile 135.5 to Mile 135.2, Duck Island. Work will be conducted 24-hours a day, 7-days a week. The M/V SUNNY TON will monitor VHF-FM Channels 7 and 13, and requests 30-minutes advance notice of passage. Mariners are urged to transit the area at their slowest safe speed to minimize their wake and proceed with caution after passing arrangements have been made.

LNM: 35-23

MILE 113.4 - MILE 113.0 - DREDGE OPERATION

Continuing until further notice, M/V CREVE COEUR is conducting dredging operations from Mile 113.4 to Mile 113.0. Work will be conducted from 6:00 a.m. to 6:00 p.m., 7-days a week. The M/V CREVE COEUR will monitor VHF-FM Channel 13, 14, 16 or 82 and requests 30-minutes advance notice of passage. Mariners are urged to transit the area at their slowest safe speed to minimize their wake and proceed with caution after passing arrangements have been made.

LNM: 34-23

KANAWHA RIVER**MILE 67.8 - FIREWORKS DISPLAY**

On September 4, 2023, from 9:00 p.m. until 10:00 p.m., the City of Marmet Labor Day Fireworks Show will be held at Bill Wells Community Park, in the vicinity of Mile 67.8. Mariners may contact the event sponsor at (304) 421-3283, for additional information. U.S. Coast Guard Sector Ohio Valley will monitor VHF-FM Channel 16. Mariners are urged to exercise caution when transiting the area.

LNM: 34-23

MILE 46.5 - MILE 46.0 - FIREWORKS DISPLAY/SAFETY ZONE/RIVER CLOSURE

On September 3, 2023, from 9:00 p.m. until 10:00 p.m., the Nitro City Park Labor Day Celebration fireworks display is being held between approximate Miles 46.5 and Mile 46.0. The U.S. Coast Guard COTP Ohio Valley has established a Safety Zone closing the river for this event. Entry into this zone is prohibited to all vessels unless otherwise authorized by the U.S. Coast Guard or a designated representative. Mariners may contact the event sponsor at (330) 650-1776, for additional information. U.S. Coast Guard Sector Ohio Valley will monitor VHF-FM Channel 16. Mariners may contact U.S. Coast Guard Sector Ohio Valley at (800) 253-7465, for additional information.

LNM: 34-23

LOWER MISSISSIPPI RIVER**MILE 884.0 - MILE 882.0 - PUMP INSTALLATION**

Continuing until further notice, mariners are advised of pump installations being conducted at the New Madrid Power Station intake structures. Mariners are urged to transit at their slowest safe speed to minimize wake from Mile 884.0 to Mile 882.0.

LNM: 31-23

MILE 734.7 - BRIDGE MAINTENANCE

Memphis Highway Bridge; Due to maintenance on the bridge, a containment system is installed and will hang 2 feet below low steel following the contour of the bridge. Mariners are advised to transit the area with caution.

LNM: 17-23

MILE 686.6 - STONE REVETMENT OPERATION

Continuing until August 31, 2023, the M/V KACIE LUHR will be conducting stone revetment operations in the vicinity of Mile 686.6, LDB. Work will be conducted from 7:00 a.m. until 7:00 p.m., daily. Southbound traffic from the Upper Mississippi River shall check in at Mile 690.0. The M/V KACIE LUHR may be contacted via VHF-FM Channels 13 or 72 or by phone, at (573) 803-7931. Mariners are advised to transit with caution and transit at the slowest safe speed once passing arrangements have been made.

LNM: 34-23

MILE 594.7- MILE 594.5 - AID TO NAVIGATION

A can buoy has been reported missing between Miles 594.7 and 594.5. Mariners are advised to transit the area with caution.

LNM: 35-23

MILE 538.0 - CHANNEL CONDITION

Shoaling has been reported in the vicinity of Mile 538.0. Mariners are urged to exercise caution in the area.

LNM: 35-23

UPPER MISSISSIPPI RIVER**MILE 730.7 - MILE 730.5 - DREDGE OPERATION**

Continuing until September 15, 2023, the support vessel M/V WELLS and the Dredge WADE are conducting dredging operations between approximate Miles 730.7 and 730.5, Wilds Bend. Work will be conducted from 6:00 a.m. until 6:00 p.m., Monday through Friday. The support vessel M/V WELLS and the Dredge WADE will monitor VHF-FM Channel 13 or 80 and requests 30-minutes advance notice of passage. Mariners are urged to transit the area at their slowest safe speed and proceed with caution after passing arrangements have been made.

**UPPER MISSISSIPPI RIVER
MILE 730.7 - MILE 730.5 - DREDGE OPERATION**

LNM: 35-23

MILE 687.9 - DREDGE OPERATION

Continuing until further notice, the Dredge GOETZ is conducting dredging operations in the vicinity of Mile 687.9. Operations will be conducted 24-hours a day, 7-days a week. Dredge GOETZ will monitor VHF-FM Channel 13, 15 or 16, and requests 30-minutes advance notice of passage. Mariners are urged to transit the area at their slowest safe speed to minimize their wake and proceed with caution after passing arrangements have been made.

LNM: 35-23

MILE 640.9 - MILE 640.6 - SUBMERGED BUOY

A submerged buoy has been reported at approximate Mile 640.7, LDB. The submerged buoy is reportedly not marked. Mariners are urged to exercise caution when transiting this area. For further information, mariners may contact U.S. Coast Guard Western Rivers Command Center, at (314) 269-2332.

LNM: 28-23

MILE 533.5 - MILE 533.1 - DREDGE OPERATION

Continuing until further notice, the M/V ROCK ISLAND or the M/V MOLINE is conducting dredging operations between approximate Miles 533.5 and 533.1. Work will be conducted from 7:00 a.m. until 5:30 p.m., 7-days a week. The M/V ROCK ISLAND or the M/V MOLINE will monitor VHF-FM Channel 13, 14, 16 or 82 and requests 30-minutes advance notice of passage. Mariners are urged to transit the area at their slowest safe speed to minimize their wake and proceed with caution after passing arrangements have been made.

LNM: 34-23

MILE 461.4 - MILE 460.8 - DREDGE OPERATION

Continuing until further notice, M/V DALE W., is conducting dredging operations from Mile 461.4 to Mile 460.8. Work will be conducted 7-days a week, from 6:00 a.m. until 6:00 p.m. M/V DALE W., will monitor VHF-FM Channel 7 or 13 and requests 30-minutes advance notice of passage. Mariners are urged to transit the area at their slowest safe speed to minimize their wake and proceed with caution after passing arrangements have been made.

LNM: 35-23

MILE 273.0 - MILE 255.0 - CHANNEL CONDITION

Shoaling has been reported between Mile 273.0 and Mile 255.0. Mariners are urged to exercise caution in the area.

LNM: 34-23

MILE 241.4 - LOCK CLOSURE

Continuing until December 29, 2023, L/D Nr. 25 will have 18 intermittent closures for installation of floating mooring bits and placement of concrete in the miter gate recess. Closures of up to 12-hours can be expected during this time. Attached as an enclosure to this LNM, is USACE St. Louis Navigation Bulletin 23-09, regarding temporary delays/closures at L/D Nr. 25, at Mile 241.4

LNM: 33-23

MILE 194.0 - DREDGE OPERATION

Continuing until further notice, the M/V PATHFINDER is conducting dredging operations in the vicinity of Mile 194.0. Work will be conducted from 6:00 a.m. until 6:00 p.m., daily. The M/V PATHFINDER will monitor VHF-FM Channel 13 or 16, and requests 30-minutes advance notice of passage. Mariners are urged to transit the area at their slowest safe speed to minimize their wake and proceed with caution after passing arrangements have been made.

LNM: 33-23

MILE 168.6 - BRIDGE MAINTENANCE

Jefferson Barracks Dual Bridge; Due to a containment system installed below low steel, vertical clearance has been reduced to 84 feet. Mariners are advised to transit the bridge with caution.

LNM: 17-22

MILE 100.5 - DREDGE OPERATION

Continuing until further notice, the Dredge POTTER is conducting dredging operations in the vicinity of Mile 100.5. Work will be conducted 24-hours a day, 7-days a week. The Dredge POTTER will monitor VHF-FM Channel 13, 16 or 82 and requests 30-minutes advance notice of passing. Mariners are urged to transit the area at their slowest safe speed and proceed with caution after passing arrangements have been made.

LNM: 35-23

MILE 43.0 - MILE 41.0 - CHANNEL CONDITION

Shoaling has been reported from Mile 43.0 to Mile 41.0, along the LDB. Mariners are advised to implement a one-way traffic pattern and favor the RDB while transiting the area.

LNM: 32-23

MILE 16.0 - MILE 15.0 - TRAFFIC PATTERN - SUBMERGED BARGE

A barge has been reported sunk in the vicinity of Mile 15.7, RDB, approximately 350 feet off the sail line, on July 20, 2023. The sunken barge is reportedly not marked. Mariners are to implement a one-way traffic pattern from Mile 16.0 to Mile 15.0, favoring the LDB. Mariners are urged to exercise caution in the area.

LNM: 30-23

**MISSOURI RIVER
MILE 319.0 - CHANNEL CONDITION**

**MISSOURI RIVER
MILE 319.0 - CHANNEL CONDITION**

Shoaling has been reported in the vicinity of Mile 319.0. Mariners are urged to exercise caution in the area.

LNM: 35-23

MILE 266.8 - CHANNEL CONDITION

Shoaling has been reported in the vicinity of Mile 266.8. Mariners are urged to exercise caution in the area

LNM: 35-23

MILE 185.0 - BRIDGE DEMOLITION

I-70 Rocheport Bridge; Explosive demolition of the existing I-70 Bridge will occur on the morning of September 10, 2023. The navigation channel will be blocked for approximately 24 hours for the removal of the span. A Safety Zone will be in affect during this evolution.

LNM: 33-23

MILE 108.0 - CHANNEL CONDITION

Shoaling has been reported in the vicinity of Mile 108.0. Mariners are urged to exercise caution in the area.

LNM: 35-23

**MONONGAHELA RIVER
MILE 96.0 - MILE 94.0 - CHANNEL CONDITION**

Shoaling has been reported between Mile 96.0 and Mile 94.0, in the vicinity of Coburn Bend. Mariners are urged to exercise caution in the area.

LNM: 34-23

**OHIO RIVER
MILE 90.4 - MILE 91.5 - MARINE EVENT/SAFETY ZONE/RIVER CLOSURE**

On September 2 and 3, 2023, from 8:00 a.m. until 6:00 p.m., each day, the Wheeling Vintage Raceboat Regatta will be held between approximate Miles 90.4 and 91.5. The U.S. Coast Guard COTP Ohio Valley has established a Safety Zone closing the river for this event. Entry into this zone is prohibited to all vessels unless otherwise authorized by the U.S. Coast Guard or a designated representative. Mariners may contact the U.S. Coast Guard Sector Ohio Valley via VHF-FM Channel 16.

LNM: 34-23

MILE 126.9 - BRIDGE MAINTENANCE

New Martinsville Bridge; Continuing through August 31, 2023, vertical clearance may be reduced due to snooper trucks conducting an inspection of the bridge. A safety boat will be on-scene monitoring VHF-FM Channel 13. Mariners are requested to transit the area at their slowest safe speed to minimize their wake and proceed with caution.

LNM: 35-23

MILE 170.5 - MILE 172.5 - MARINE EVENT/SAFETY ZONE/RIVER CLOSURE

On September 10, 2023, from 1:00 p.m. until 2:00 p.m., the Ohio River Sternwheel Regatta will be held between approximate Miles 170.5 and 172.5. The U.S. Coast Guard COTP Ohio Valley has established a Safety Zone closing the river for this event. Entry into this zone is prohibited to all vessels unless otherwise authorized by the U.S. Coast Guard or a designated representative. U.S. Coast Guard Sector Ohio Valley will monitor VHF-FM Channel 16. Mariners may contact Sector Ohio Valley at (800) 253-7465, for additional information.

LNM: 35-23

MILE 171.5 - MILE 172.5 - FIREWORKS DISPLAY/SAFETY ZONE/RIVER CLOSURE

On September 9, 2023, from 9:30 p.m. until 10:10 p.m., the Ohio River Sternwheel Festival Fireworks Show will be held between approximate Miles 171.5 and 172.5. The U.S. Coast Guard COTP Ohio Valley has established a Safety Zone closing the river for this event. Entry into this zone is prohibited to all vessels unless otherwise authorized by the U.S. Coast Guard or a designated representative. U.S. Coast Guard Sector Ohio Valley will monitor VHF-FM Channel 16. Mariners may contact Sector Ohio Valley at (800) 253-7465, for additional information.

LNM: 35-23

MILE 279.2 - DREDGE OPERATION

Continuing until approximately September 3, 2023, Amherst Madison, a contractor for the USACE will conduct dredging operations at the Robert C. Byrd L/D, in the vicinity of Mile 279.2. The contractor's floating plant will consist of the M/V KEITH A. BLOUNT, M/V BUS BROWN, 2 dump scows and one barge-mounted crane. Work will be conducted from 6:00 a.m. until midnight, 7-days a week. During non-working hours, the contractor's floating plant will be moored at the worksite and lighted accordingly. The contractor's floating plant will monitor VHF-FM Channel 13. Mariners are urged to transit the area at their slowest safe speed to minimize their wake and proceed with caution after passing arrangements have been made.

LNM: 34-23

MILE 281.0 - MILE 284.0 - DIVE OPERATION

Continuing until November 15, 2023, Edge Engineering and Science will perform diving operations to salvage freshwater mussels, between Mile 281.0 and 282.0, LDB. The mussels will be relocated to approximate Mile 284.0, LDB. Work will be conducted from 7:00 a.m. to 7:00 p.m., 7-days a week. The contractor's floating plant will consist of multiple dive boats, 24 feet in length or less. The contractor will monitor VHF-FM Channel 16. Mariners are urged to transit the area at their slowest safe speed to minimize their wake and proceed with caution.

LNM: 32-23

MILE 308.8 - BRIDGE MAINTENANCE

Sixth Street Bridge; Due to cleaning and painting of the bridge, a containment system is installed and will hang 4 feet below low steel and follows the contour of the bridge. Vertical clearance is reduced to 70.4 feet above normal pool. Mariners are advised to transit the bridge with extreme caution.

LNM: 17-23

MILE 317.0 - MILE 317.5 - FIREWORKS DISPLAY/SAFETY ZONE/RIVER CLOSURE

On September 1, 2023, from 8:00 p.m. until 9:00 p.m., the Catlettsburg Labor Day Fireworks Show will be held between approximate Miles 317.0 and 317.5. The U.S. Coast Guard COTP Ohio Valley has established a Safety Zone closing the river for this event. Entry into this zone is prohibited to all vessels unless otherwise authorized by the U.S. Coast Guard, or a designated representative. U.S. Coast Guard Sector Ohio Valley will monitor VHF-FM Channel 16. Mariners may contact U.S. Coast Guard Sector Ohio Valley, at (800) 253-7465, for more information.

LNM: 34-23

MILE 317.2 - MARINE EVENT

On September 2, 2023, from 4:00 p.m. until 5:00 p.m., the Ken-Ducky Derby, a rubber duck race, will be held in the vicinity of Mile 317.2. Mariners may contact the event sponsor, at (606) 465-2470, for additional information. U.S. Coast Guard Sector Ohio Valley will monitor VHF-FM Channel 16. Mariners are urged to exercise caution in the area, during the event period.

LNM: 34-23

MILE 322.5 - MILE 323.0 - FIREWORKS DISPLAY/SAFETY ZONE/RIVER CLOSURE

On September 12, 2023, from 7:30 p.m. until 8:15 p.m., the Appalachian Regional Commission Fireworks display will be held between approximate Miles 322.5 and 323.0. The U.S. Coast Guard COTP Ohio Valley has established a Safety Zone closing the river for this event. Vessels are prohibited from transiting this area during the event period, unless otherwise authorized by the U.S. Coast Guard or designated patrol commander. The patrol commander will monitor VHF-FM Channels 13, 16 and 22. Mariners may contact the Event Manager at (606) 923-4882, for additional information.

LNM: 35-23

MILE 323.5 - MOORING STRUCTURE CONSTRUCTION

Continuing until October 13, 2023, Foertsch Contracting, LLC., will be constructing a mooring structure in the vicinity of Mile 323.5. Work will be conducted from 6:00 a.m. until 6:00 p.m., Monday through Friday. The floating plant will consist of the M/V ELLIE GRACE, one crane barge, crew boats and material barges. The contractor's floating plant will monitor VHF-FM Channels 13 and 16. During non-working hours, the floating plant will be moored at the worksite outside of the channel. Mariners are urged to transit the area at their slowest safe speed to minimize their wake and proceed with caution.

LNM: 34-23

MILE 436.2 - L/D CLOSURE

Continuing until further notice, the Captain Anthony Meldahl L/D auxiliary chamber, in the vicinity of Mile 436.2, will be closed. This closure is due to safety concerns resulting from the condition of the miter gates. During the auxiliary chamber closure, the main chamber will be available for lockage. Mariners are urged to contact the lockmaster via VHF-FM Channel 13, for additional information.

LNM: 35-23

MILE 453.0 - AIDS TO NAVIGATION

A nun buoy has been reported off station in the vicinity of Mile 453.0. Mariners are advised to transit the area with caution.

LNM: 33-23

MILE 464.0 - MILE 473.0 - MARINE EVENT/SPECIAL LOCAL REGULATION/FIREWORKS DISPLAY/SAFETY ZONE/RIVER CLOSURE

Commencing at noon, September 3, 2023, and continuing until 3:00 a.m., September 4, 2023, Riverfest will be held between approximate Miles 464.0 and 473.0, on the Ohio River and between approximate Miles 0.3 and 0.0, on the Licking River. The U.S. Coast Guard COTP Ohio Valley has established a Special Local Regulation for this event. Mariners are not permitted to operate above no wake speeds, without obtaining permission from the U.S. Coast Guard COTP Ohio Valley. If the Ohio River Gauge is at or above 45 feet, this regulation will be extended west to Mile 476.0. The U.S. Coast Guard COTP Ohio Valley has issued a Safety Zone for a fireworks display between Miles 469.2 and 470.5, from 7:00 p.m. until 10:00 p.m., September 3, 2023. No vessels will be allowed to transit this area during the fireworks display. Mariners may contact the event manager at (513) 686-8300, for additional information. U.S. Coast Guard Sector Ohio Valley will monitor VHF-FM Channel 16. Mariners may contact U.S. Coast Guard Sector Ohio Valley, at (800) 253-7465 for more information.

LNM: 35-23

MILE 535.0 - DOLPHIN CONSTRUCTION

Continuing through January 31, 2024, Carlisle and Bray Enterprises will be installing two dolphins and keyway structure, at Mile 535.0. Work will be conducted 7-days a week, from 7:00 a.m. until 5:30 p.m. The contractor's equipment will consist of a barge mounted crane and pile hammers. Mariners are requested to transit the area at their slowest safe speed to minimize their wake and proceed with caution.

LNM: 31-23

MILE 535.5 - AID TO NAVIGATION

A can buoy has been reported off station in the vicinity of Mile 535.5. Mariners are advised to transit the area with caution.

LNM: 33-23

MILE 602.0 - MILE 610.5 - MARINE EVENT/SPECIAL LOCAL REGULATION/RIVER CLOSURE

On September 4, 2023, from 9:00 a.m. until 1:00 p.m., the Mayor's Hike, Bike and Paddle Marine Event will be held between approximate Miles 602.0 and 610.5. The U.S. Coast Guard COTP Ohio Valley has issued a Special Local Regulation, closing the river for this event. Vessels are prohibited from transiting this area unless specifically authorized by the U.S. Coast Guard COTP Ohio Valley or a designated representative. Mariners may contact the event manager, at (502) 424-7149, for additional information.

LNM: 35-23

MILE 610.0 - CONCRETE BULKHEAD CONSTRUCTION

Continuing until November 10, 2023, Goettle will be constructing a concrete bulkhead and a temporary access road at the Duke Energy Gallagher Station, at Mile 610.0. Work will be conducted 7-days a week, from 7:00 a.m. until 5:00 p.m. The equipment will consist of small crafts to facilitate diving operations, and a turbidity curtain in the river near the work area. Mariners are requested to transit the area at their slowest safe speed to minimize their wake and proceed with caution.

LNM: 31-23

MILE 744.5 - RIVER CELL REPLACEMENT

Continuing until September 15, 2023, Richard Goettle Inc., will be replacing existing river cells 31 and 32 at the AEP Rockport Power Plant. Work will be conducted from 7:00 a.m. until 6:00 p.m., Monday through Saturday. The contractor's floating plant will consist of one spud barge, two flat barges and one hopper barge. On-scene vessels will monitor VHF-FM Channels 66 and 67. Mariners are requested to transit the area at their slowest safe speed to minimize their wake and proceed with caution.

LNM: 25-23

MILE 789.0 - MILE 791.3 - FACILITY CONSTRUCTION

Continuing until approximately September 30, 2025, Meuth Construction Supply Inc., is constructing a facility adjacent to the navigation channel between approximate Miles 789.0 and 791.3, RDB. Sixteen tri-tie dolphins will be constructed to anchor barges along the riverbank. Construction for this facility will be performed from a floating plant. The contractor's floating plant will never extend more than 180 feet from the shoreline, at normal pool. The construction contractor will monitor VHF-FM Channel 7, 13 or 16. Mariners are urged to transit the area with caution.

LNM: 39-22

MILE 846.0 - L/D CLOSURE

The Primary (1,200-foot) chamber is scheduled to be closed through October 30, 2023, to allow miter gate repair by the Heavy Capacity Fleet. All traffic will pass through the Auxiliary (600-foot) chamber during the closure.

The Auxiliary (600-foot) chamber will have one 12-hour closure, between September 11, 2023, and September 13, 2023, to support the miter gate leaf installation on the downstream side of the Primary (1,200-foot) chamber. During this closure, all traffic will stop. The Heavy Capacity Fleet will occupy the auxiliary chamber during this time.

The Auxiliary (600-foot) chamber will have three additional closures up to 4-hours, between September 11, 2023, and September 15, 2023, so the Heavy Capacity Fleet can install the anchorage pins without pool fluctuations. During these closures, all traffic will stop. The Heavy Capacity Fleet will not occupy the auxiliary chamber during this time and traffic will resume immediately when the gate leaf is secure.

The Auxiliary (600-foot) chamber is scheduled to close from October 30, 2023, through November 17, 2023, to allow miter gate repairs by the Heavy Capacity Fleet. All traffic will pass through the Primary (1,200-foot) chamber during the closure.

LNM: 33-23

MILE 865.0 - MILE 867.0 - AIDS TO NAVIGATION

Multiple buoys have been reported off station between Miles 865.0 and 867.0. Mariners are urged to exercise caution in the area.

LNM: 35-23

MILE 870.0 - MILE 872.0 - AIDS TO NAVIGATION

Multiple buoys have been reported off station between Miles 870.0 and 872.0. Mariners are urged to exercise caution in the area.

LNM: 35-23

MILE 918.5 - L/D CLOSURE

Commencing September 22, 2023 and continuing until October 21, 2023, the Smithland L/D land chamber, in the vicinity of Mile 918.5, will be closed for the replacement of the land chamber miter gate machinery by the Light Capacity Fleet. The river chamber will be closed from October 22, 2023, through November 20, 2023, for the replacement of the river chamber miter gate machinery by the Light Capacity Fleet.

LNM: 05-23

MILE 932.0 - DREDGE OPERATION

Continuing until September 1, 2023, Luhr Bros. Inc., will conduct dredging operations in the vicinity of Mile 932.0, Livingston Point. The contractor's floating plant will consist of the Dredge BILL HOLMAN, M/V's LENARD, BUDDY, and ROBERT T., a shop barge, a spill barge, and floating pipeline sections. Work will be conducted 24-hours a day, 7-days a week. While dredging, the dredge pipeline may cross the navigation channel, requiring the pipeline to be opened to pass traffic. The Dredge BILL HOLMAN and M/V's LENARD and BUDDY will monitor VHF-FM Channel 13. Mariners are urged to transit the area at their slowest safe speed and proceed with caution after passing arrangements have been made.

LNM: 35-23

MILE 940.0 - CHANNEL CONDITION

Three large snags have been reported in the vicinity of Mile 940.0. Mariners are advised to transit the area with caution and keep a sharp lookout.

LNM: 32-23

MILE 964.6 - L/D CLOSURE

Continuing until September 24, 2023, the Olmsted L/D Land (1,200 foot) Chamber will be closed to navigation for maintenance. During the closure, all traffic will utilize the River (1,200 foot) Chamber. Upon the completion of the Land Chamber work, the River Chamber will be closed intermittently on a 10-day closed, 10-day open schedule. Mariners should exercise caution when transiting the area and take all direction from the Olmsted L/D.

LNM: 31-23

MILE 980.0 - MILE 981.0 - DIVE OPERATION

Continuing until September 1, 2023, diving operations will be conducted for freshwater mussel surveying, between Miles 980.0 and 981.0. Work will be conducted from 7:00 a.m. to 5:00 p.m., daily. The on-scene dive boats will monitor VHF-FM Channel 16. Mariners are urged to transit the area at their slowest safe speed to minimize their wake and proceed with caution after passing arrangements have been made.

LNM: 35-23

ST. CROIX RIVER**MILE 6.0 - CHANNEL CONDITION/AIDS TO NAVIGATION**

Severe shoaling has been reported in the vicinity of Mile 6.0, at the mouth of the Kinnickinnic River. The U.S. Coast Guard is unable to mark a

ST. CROIX RIVER**MILE 6.0 - CHANNEL CONDITION/AIDS TO NAVIGATION**

navigable channel to the federal projects dimensions, and several buoys have been removed that were off station or presenting a misleading signal. Mariners are advised to proceed with caution while transiting through the Kinnickinnic Bar between Miles 6.6 and Mile 6.0 and transit at their slowest safe speed. Mariners may contact U.S. Coast Guard Western River Command Center at (314) 269-2332, for further information.

LNM: 33-23

TENNESSEE RIVER**MILE 586.3 - UNMARKED PIPE**

An object resembling a pipe approximately 15 feet long, has been reported at Mile 586.3, near Tom McQueen Lower Light (LLNR-30400), on July 24, 2023. The object is reportedly not marked. Mariners are urged to use extreme caution when transiting this area.

LNM: 30-23

YAZOO RIVER**MILE 4.0 - MILE 2.0 - DREDGING OPERATION**

Continuing until approximately September 1, 2023, the Dredge DUBUQUE will be conducting dredging operations in the vicinity of Vicksburg New Harbor and Vicksburg Old Harbor, from Mile 4.0 to Mile 2.0. All traffic will be stopped during daylight hours. The Dredge DUBUQUE will be monitoring VHF-FM Channel 13. Mariners are urged to transit the area at their slowest safe speed to minimize wake and proceed with caution after passing arrangements have been made.

LNM: 34-23

SECTION VIII - LIGHT LIST CORRECTIONS

An Asterisk *, indicates the column in which a correction has been made to new information

(1) No.	(2) Name and Location	(3) Mile	(4) Bank	(5) Characteristic	(6) Structure / Dayboard Up Down	(7) Remarks
22475	KELLY RUN LIGHT					Remove from list. 35/23 *

ENCLOSURES**USACE Huntington District - Restricted Areas at Navigation Structures**

USACE Huntington District Notice to Navigation Interests 23-09, regarding maintenance and repair operations.

LNM: 03-23

USACE Channel Status Reports

Arkansas River Channel Status Reports.

LNM: 09-23

OHIO RIVER - MARINE EVENTS

U.S. Coast Guard Sector Ohio Valley notice of marine events and planned river closures for September.

LNM: 35-23

UPPER MISSISSIPPI RIVER/ILLINOIS WATERWAY - BARGE/RAIL COLLISION RISK

Sector Upper Mississippi River MSIB 08-21.

LNM: 15-23

TENNESSEE RIVER/CUMBERLAND RIVER - SEPTEMBER/OCTOBER MARINE EVENTS

U.S. Coast Guard Marine Safety Detachment Nashville notice of marine events and planned river closures for September and October.

LNM: 35-23

UPPER MISSISSIPPI RIVER - L/D Nr. 25 CLOSURES

USACE St. Louis Navigation Bulletin 23-09, regarding temporary delays/closures at L/D Nr. 25

LNM: 33-23

Commander, Eighth Coast Guard District
Hale Boggs Federal Building, Room 1230
500 Poydras Street, New Orleans, LA 70130-3310
Telephone (504) 671-2327
(Business Hours 7:00 a.m. - 3:30 p.m. Monday - Friday)



**US Army Corps
of Engineers®**

HUNTINGTON DISTRICT

DATE: 06/28/2023

NOTICE NUMBER: 201731-3

ATTN: CELRH-DE
502 8TH STREET
HUNTINGTON WV 25701-2070
HTTP://WWW.LRH.USACE.ARMY.MIL/

POC: Kent C.
Browning
(304) 399-5239

LOCAL NUMBER: 23-18
WATERWAY: KANAWHA RIVER
OHIO RIVER

EFFECTIVE: 01/01/2023 07:00 thru 09/30/2023
15:30

REVISION TO NOTICE TO NAVIGATION 23-09

TENTATIVE MAINTENANCE SCHEDULE FOR 2023

HUNTINGTON DISTRICT

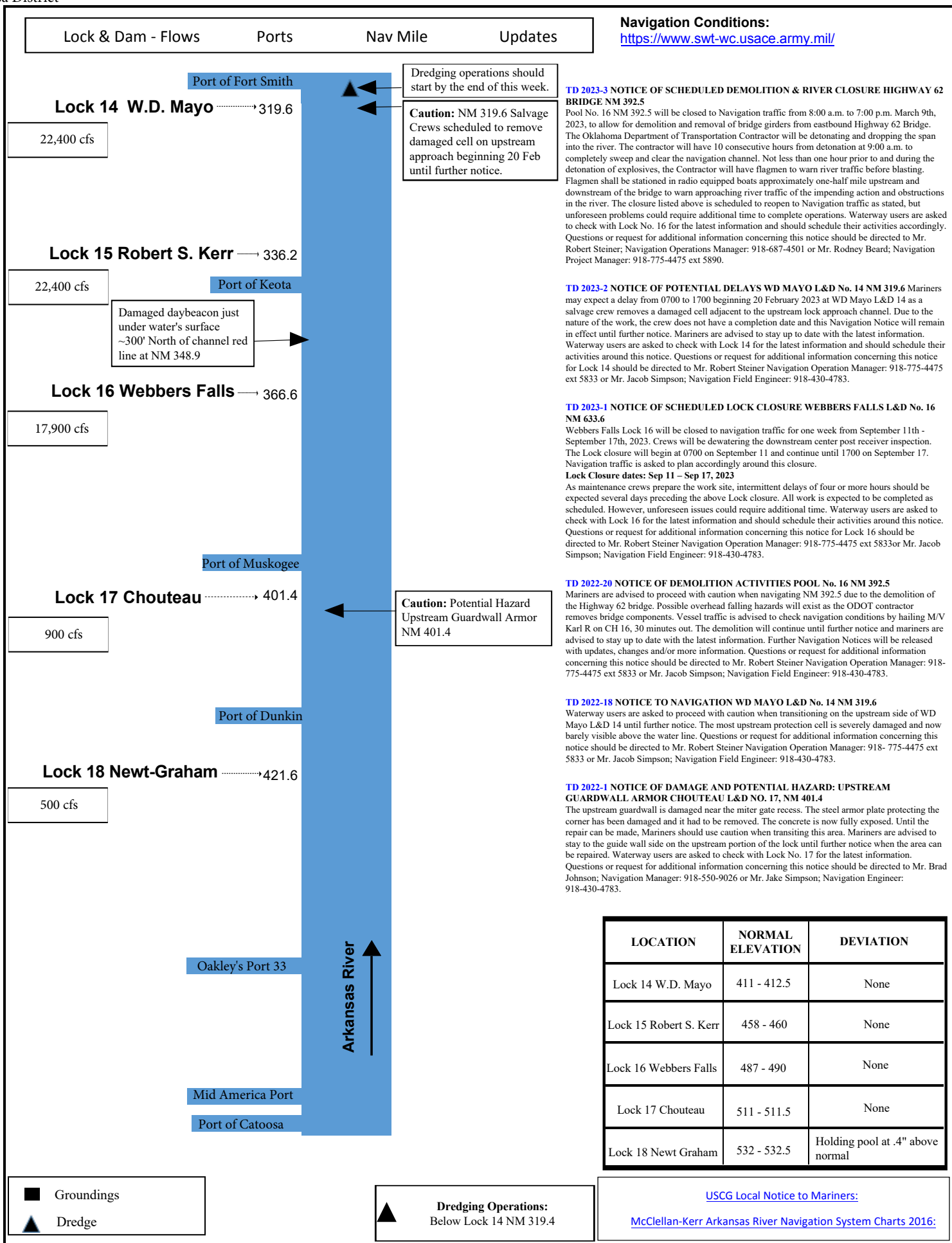
Reference Notice to Navigation Interests 23-09, dated 2 March 2023. The schedule has been adjusted and is shown below. All other pertinent information remains the same.

<u>PROJECT</u>	<u>REPAIRS</u>	<u>DATES</u>	<u>REMARKS</u>
Meldahl L&D	Dewatering for Miter Gate Repairs	06 Mar - 15 Aug	Auxiliary Chamber Closure
Greenup L&D	Filling System Repairs	05 Jul - 15 Aug	Intermittent Primary Chamber Closure
Winfield L&D	Dam Gate Repairs	10 Jul - 29 Sep	No Closures

All interested parties should review the maintenance schedule for impact. Additional notices furnishing specific information and operating requirements for repairs resulting in major delays will be published prior to commencing the work items listed.

//signed//

KENT C. BROWNING
Chief, Technical Support Branch



LOCATION	NORMAL ELEVATION	DEVIATION
Lock 14 W.D. Mayo	411 - 412.5	None
Lock 15 Robert S. Kerr	458 - 460	None
Lock 16 Webbers Falls	487 - 490	None
Lock 17 Chouteau	511 - 511.5	None
Lock 18 Newt Graham	532 - 532.5	Holding pool at .4" above normal



Ohio River – MM
401.3-531.5

September 2023 Marine Event Notification & Planned River Closures

<u>Date</u>	<u>Event</u>	<u>Time</u>	<u>River/ Mile Marker</u>	<u>Waterway Closure (Yes/No)</u>
01SEP	CINCINNATI REDS FRIDAY NIGHT FIREWORK DISPLAY	2100	OHR 470.1-470.4	YES
03-04SEP	RIVERFEST- NO WAKE	NOON 03SEP-0300 04SEP	OHR 464.0-473.0	NO
03SEP	RIVERFEST FIREWORKS	1900- 2200	OHR 469.2-470.5	YES
08SEP	CINCINNATI REDS FRIDAY NIGHT FIREWORK DISPLAY	2100	OHR 470.1-470.4	YES
22SEP	CINCINNATI REDS FRIDAY NIGHT FIREWORK DISPLAY	2100	OHR 470.1-470.4	YES
24SEP	CABAN ON THE RIVER FIREWORKS DISPLAY	2000-2030	OHR 483.8	NO
27SEP	J.M. STUART DEMOLITION	0715-1300	OHR 404-406	YES

For any questions or concerns regarding marine events or scheduled river closures please call Marine Safety Detachment Cincinnati at (513) 921-9033 or email the Waterways Management Staff at msdcincinnati@uscg.mil.



U.S. COAST GUARD

Sector Upper Mississippi River



November 22, 2021

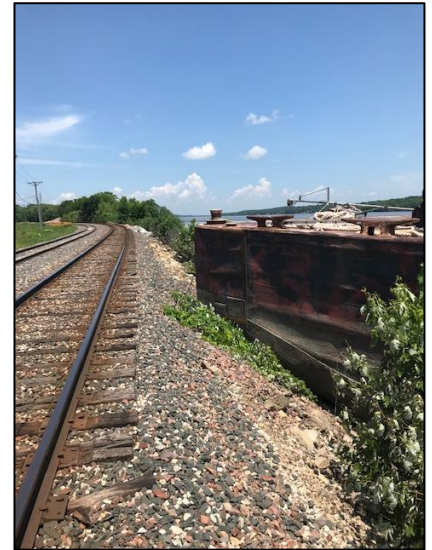
Marine Safety Information Bulletin # 08-21

This bulletin is used purely for informational purposes to assist the maritime community within the Sector Upper Mississippi River Area of Responsibility. Its purpose is to advise relevant parties of emerging information and situations that may impact our Marine Transportation System as well as to facilitate cooperation among the involved parties regarding actions that we may be taking and/or that you may need to employ in the interest of safety/security.

Barge/Rail Collision Risk

This bulletin is in effect from November 22, 2021 until cancelled by the Captain of the Port.

Sector Upper Mississippi River (UMR) received multiple reports of barges encroaching on railroad right of ways (tracks, rail beds) in 2019. This was further documented in Sector UMR MSIB 01-20 and the Waterway Action Plan (WAP). Approximately 45 known areas on the UMR and Illinois River pose a risk for barge/rail collisions due to the close proximity between the rail right of ways and the river bank. Where rails are located near the river's edge, vessels are able to push in to an extent that part of the vessel/tow is in dangerous proximity to the rail. Barge encroachment poses a serious risk to both vessels, trains, crews, the environment, and nearby communities. On November 14, 2021, during normal water conditions, an incident between rail and barge resulted in a train derailment, oil spill, and damage to rail and vessel equipment.



This risk can be mitigated by vessel operators being vigilant when selecting where they push vessels into the river bank during all water conditions. The approximately 45 known areas of concern (see attached consolidated graphic) are marked with caution areas on both printed and electronic versions of the Inland River Electronic Navigation Charts (IENC). These caution areas are accompanied by a warning noting the risk of collision between trains and vessels, and/or rail bed embankment erosion due to the close proximity between the railroad tracks and the waterway.

Sector UMR urges all vessel operators to review the IENC and the WAP for their intended operating areas to identify river bank locations to avoid pushing in at, as well as other potential hazards, as part of their voyage planning procedures prior to operation.

Operators are reminded that Title 33 Code of Federal Regulations (CFR) § 207.300(m)(2)(ii) directly prohibits the mooring of craft directly to railroad tracks or the riverbank in vicinity of railroad tracks. Violation of this regulation can result in enforcement action being taken against the operator's Merchant Mariner Credential as well as a civil penalty against the operating company.

To receive the latest information, mariners should monitor marine VHF channels 14 and 16, and the Sector UMR Port Directory at [https://homeport.uscg.mil/port-directory/upper-mississippi-river-\(st-louis\)](https://homeport.uscg.mil/port-directory/upper-mississippi-river-(st-louis)) for this and other MSIBs and port advisories. Hazardous conditions and marine casualties should immediately be reported to the Western Rivers Command Center via VHF channel 16 or by phone at (314) 269-2332 or (314) 269-2463 – these numbers are continuously monitored 24 hours a day. Questions about this MSIB may be directed to the Waterways Management staff at sumrwaterways@uscg.mil.

Sincerely,

A handwritten signature in blue ink, appearing to read "Richard Scott", with a stylized flourish at the end.

R.M. SCOTT
Captain of the Port
U.S. Coast Guard

IENC Rail Road Cauton Areas



Mile Marker 497.8

IENC Rail Road Cauton Areas Sourced from U.S. Army Engineer District, Rock Island.



■ IENC RR Cauton Areas



September/October 2023 Marine Event Notification & Planned River Closures

<u>Date</u>	<u>Event</u>	<u>Time</u>	<u>River/ Mile Marker</u>	<u>Waterway Closure (Yes/No)</u>
16 Sept	Paddle for Pancreatic Cancer (PanCAN 5K)	1000-1200	Tennessee/453-455	No
17 Sept	Bridges to Bluffs	0900-1300	Tennessee River/648.7-642	No
24 Sept	Ironman Chattanooga	0400-1100	Tennessee/467-464	Yes
30 Sept	Commonwealth Cup Regatta	0800-1600	Tennessee/23-35	No
1 Oct	15 th Annual Dragon Boat Festival	0800-1700	Cumberland/189.7-192.1	Yes
6 Oct	Music City Head	0700-2000	Cumberland/189.5-196	Yes
14 Oct	Shoals Scholar Dollars Dragon Boat Festival	0700-1600	Tennessee/256-255	Yes
28 Oct	Chattajack	0700-1700	Tennessee/462.7-465.5	Yes

For any questions or concerns regarding marine events or scheduled river closures please call Marine Safety Detachment Nashville at (615) 736-5421 or email the staff at msdnashville@uscg.mil.

**US Army Corps
of Engineers®**

ST. LOUIS DISTRICT

ATTN: CEMVS-DE
1222 SPRUCE STREET
ST. LOUIS MO 63103-2833
HTTP://WWW.MVS.USACE.ARMY.MIL/

DATE: 08/10/2023

POC: Danny
Lunsford
573-242-3524

NOTICE NUMBER: 203408

LOCAL NUMBER: 23-09
WATERWAY: UPPER MISSISSIPPI

EFFECTIVE: 08/25/2023 06:00 thru 12/29/2023
18:00

SCHEDULED LOCK CLOSURES - NESP PHASE 1**Lock and Dam 25****Upper Mississippi River mile 241.4**

1. As part of NESP Phase 1, Lock 25 will have 18 intermittent closures for installation of floating mooring bit and placement of concrete in the miter gate recess. Closures of up to 12 hours at time, are scheduled from 25 August 2023 through 29 December 2023.
2. The scheduled closures are subject to change due to weather and or site conditions. All changes will be scheduled through RIAC on a weekly basis.
3. Each closure is scheduled from 0600 to 1800 hours on the following days:
 1. August 25 and 31
 2. September 7, 13, 19, and 25
 3. October 23, and 27
 4. November 2, 8, 14, 20, 30
 5. December 6, 12, 18, 22, and 29
4. All navigation interest should be alert for, and abide by, any special instructions that may be issued by the Lockmaster.

FOR THE DISTRICT ENGINEER:

//signed//

Andrew C. Schimpf, P.E,
Rivers Project Manager