



U.S. Department
of Homeland Security
**United States
Coast Guard**

LOCAL NOTICE TO MARINERS

District 8 MRS

Week: 39/22

Mississippi River System

LIGHT LIST VOLUME V
NOTICE NUMBER 39-22
September 28, 2022

LIGHT LIST REFERENCE: COMDTPUB P16502.5, Vol V, 2022 Edition.

CONTENTS: Rivers are listed in alphabetical order and are included only when there is information to report.

Broadcast Notice to Mariners Covered in this Edition

Originating Unit	Beginning BNM's	Ending BNM's
Sector Upper Mississippi River	0274 - 22 (UM)	0283 - 22 (UM)
Sector Lower Mississippi River	0100 - 22 (LM)	0110 - 22 (LM)
Sector Ohio Valley	0461 - 22 (OV)	0470 - 22 (OV)
OB DWB	0086 - 22 (DWB)	0087 - 22 (DWB)

COAST GUARD DISTRICT 8, WATERWAYS, (504) 671-2327, 7:00 a.m. until 3:30 p.m. (CST)

GENERAL LNM QUESTIONS, COMMENTS, OR SUGGESTIONS MAY BE E-MAILED TO: D8MarineInfo@uscg.mil

COMMENTS REGARDING SECTION VI – PROPOSED CHANGES MAY ALSO BE EMAILED TO: LocalNoticeFeedback@uscg.mil

NIS WATCHSTANDER PHONE (703) 313-5900, 24-HOURS A DAY

INTERNET ADDRESS <https://www.navcen.uscg.gov/>

MISSISSIPPI RIVER SYSTEM LNM VIA INTERNET <https://www.navcen.uscg.gov/>

MISSISSIPPI RIVER SYSTEM LIGHT LIST VIA INTERNET https://www.navcen.uscg.gov/pdf/lightLists/LightList_V5_2022.pdf

ABBREVIATIONS

A through H

ADRIFT - Buoy Adrift
AICW - Atlantic Intracoastal Waterway
Al - Alternating
B - Buoy
BKW - Breakwater
bl - Blast
BNM - Broadcast Notice to Mariner
bu - Blue
C - Canadian
CHAN - Channel
CGD - Coast Guard District
C/O - Cut Off
CONT - Contour
CRK - Creek
CONST - Construction
DAYMK/Daymk - Daymark
DBN/Dbn - Daybeacon
DBD/DAYBD - Dayboard
DEFAC - Defaced
DEST - Destroyed
DISCON - Discontinued
DMGD/DAMGD - Damaged
ec - eclipse
EST - Established Aid
ev - every
EVAL - Evaluation
EXT - Extinguished
F - Fixed
fl - flash
Fl - Flashing
G - Green
GIWW - Gulf Intracoastal Waterway
HAZ - Hazard to Navigation
HBR - Harbor

I through O

I - Interrupted
ICW - Intracoastal Waterway
IMCH - Improper Characteristic
INL - Inlet
INOP - Not Operating
INT - Intensity
ISL - Islet
Iso - Isophase
kHz - Kilohertz
LAT - Latitude
LB - Lighted Buoy
LBB - Lighted Bell Buoy
LHB - Lighted Horn Buoy
LGB - Lighted Gong Buoy
LONG - Longitude
LNM - Local Notice to Mariners
LT - Light
LT CONT - Light Continuous
LTR - Letter
LWB - Lighted Whistle Buoy
LWP - Left Watching Properly
MHz - Megahertz
MISS/MSNG - Missing
Mo - Morse Code
MRASS - Marine Radio Activated Sound Signal
MSLD - Misleading
N/C - Not Charted
NGA - National Geospatial-Intelligence Agency
NO/NUM - Number
NOS - National Ocean Service
NW - Notice Writer
OBSCU - Obscured
OBST - Obstruction
OBSTR - Obstruction

P through Z

PRIV - Private Aid
Q - Quick
R - Red
RACON - Radar Transponder Beacon
Ra ref - Radar reflector
RBN - Radio Beacon
REBUILT - Aid Rebuilt
RECOVERED - Aid Recovered
RED - Red Buoy
REFL - Reflective
RRL - Range Rear Light
RELIGHTED - Aid Relit
RELOC - Relocated
RESET ON STATION - Aid Reset on Station
RFL - Range Front Light
RIV - River
RRASS - Remote Radio Activated Sound Signal
s - seconds
SEC - Section
SHL - Shoaling
si - silent
SIG - Signal
SND - Sound
SPM - Single Point Mooring Buoy
SS - Sound Signal
STA - Station
STRUCT - Structure
St M - Statute Mile
TEMP - Temporary Aid Change
TMK - Topmark
TRLB - Temporarily Replaced by Lighted Buoy
TRLT - Temporarily Replaced by Light
TRUB - Temporarily Replaced by Unlighted Buoy
USACE - Army Corps of Engineers

HOR - Horizontal Clearance
HT - Height

Oc - Occulting
ODAS - Anchored Oceanographic Data Buoy

W - White
Y - Yellow

Additional Abbreviations Specific to this LNM Edition:

RIAC - River Industry Action Committee
MMSI - Mobile Maritime Service Identity
AIS - Automatic Identification System
ATON - Aids To Navigation
COTP - Captain of The Port
TRDBN - Temporary Replaced by Daybeacon
C.F.S. - Cubic Feet per Second
CFR - Code of Federal Regulations
IAW - In Accordance With
h.p. - horse power
MPH - Miles Per Hour
TVA - Tennessee Valley Authority
INC - Incorporated
IENC - Inland Electronic Navigation Chart
WAP - Waterway Action Plan
MSIB - Marine Safety Information Bulletin

SECTION I - SPECIAL NOTICES

This section contains information of special concern to the Mariner.

DEPARTMENT OF HOMELAND SECURITY SUSPICIOUS ACTIVITY

The Department of Homeland Security (DHS) encourages the maritime public to report information concerning suspicious activity to the local Federal Bureau of Investigation Joint Terrorism Task Force (JTTF) Office, http://www.fbi.gov/about-us/investigate/terrorism/terrorism_jtfs, or to other appropriate authorities. The U.S. Coast Guard reminds the maritime industry that they may also report information concerning suspicious activity to the www.AmericasWaterwayWatch.org, the National Response Center (NRC) 1-800-424-8802 or 1-877-24WATCH.

LNM: 02-19

WESTERN RIVERS FLOATING AIDS TO NAVIGATION

The U.S. Coast Guard is responsible for placing and maintaining all aids to navigation. Buoys are set to mark project depths taking into consideration the prevailing river stages and obstructions. Buoy positions on the Inland Electronic Navigation Chart (IENC) are approximate, and subject to change depending on prevailing river stages and obstructions.

Buoys should always be given as wide a berth in passing as possible, consistent with the length and width of the vessel or tow and the width of the bend or crossing.

Buoys should always be used with caution. They may be carried off position by high water, accumulation of drift, ice, or sunk by collision or other causes. In those circumstances buoy marks will remain on the IENC and indicate the last known position of the buoy. Presence of a buoy mark on the IENC does not necessarily mean a buoy will be physically on position. When buoys are missing they will be replaced as soon as possible.

LNM: 16-19

GPS TESTING

At times, throughout our area of responsibility, multiple U.S. Government Agencies conduct GPS testing. These tests vary in duration, affected range from the test site and potential impact to the maritime user as they may affect systems that rely on GPS such as E-911, AIS and DSC. More information is available at the U.S. Coast Guard Navigation Center Website, <https://www.navcen.uscg.gov>. During these periods, GPS users are encouraged to report any GPS outages that they may experience, to the Navigation Information Service (NIS) by calling (703) 313-5900 or by using the NAVCEN Website to submit a GPS problem report.

LNM: 07-19

ARKANSAS RIVER - USACE CHANNEL STATUS REPORTS - UPDATE

Attached as enclosures to this LNM, are USACE Arkansas River Channel Status Reports.

LNM: 39-22

SUNSET OF NOAA PRINTED CHARTS

**** Cancellation of NOAA Paper and Raster Nautical Charts ****

The National Oceanic and Atmospheric Administration (NOAA) is undertaking a multi-year program to end production and maintenance of its suite of over 1,000 traditional paper nautical charts and all associated raster chart products and services, including: Print-on-Demand (POD) paper nautical charts, Full-size chart PDF files, BookletChart™ PDF files, NOAA raster navigational charts (NOAA RNC®), the NOAA RNC tile service, and the online RNC viewer.

Six months notice of the intent to cancel a specific chart is provided in a "Last Edition" notice. The final cancellation of a chart is made in a "Canceled" notice. Both types of notices will appear in LNM Section IV, "Chart Correction". A comprehensive list of all canceled NOAA charts is available at: <http://www.charts.noaa.gov/MCD/Dole.shtml>.

Traditional paper nautical chart production is ending to enable the creation and maintenance of larger scale, more up-to-date, higher quality coverage of NOAA's electronic navigational chart (NOAA ENC®) product. This will significantly enhance the amount of charted detail available to mariners. More information about NOAA's program to sunset traditional paper charts is on the NOAA Coast Survey website at:

<https://nauticalcharts.noaa.gov/charts/farewell-to-traditional-nautical-charts.html>.

An online NOAA Custom Chart application at: <https://devgis.charttools.noaa.gov/pod> is available to create chart images from ENC data, which may then be printed. Notices to Mariners will not be issued for NOAA Custom Charts.

LNM: 10-21

LOWER MISSISSIPPI RIVER - CHANNEL CONDITION/SAFETY ADVISORY - UPDATE

The COTP Lower Mississippi River has issued a low water Safety Advisory between approximate Miles 869.0 and 303.0. The USACE maintained depths and widths, may not be attainable on all buoy lines. It is recommended that mariners monitor all gauge readings, for safe navigation. The COTP Lower Mississippi River with the concurrence of the Lower Mississippi River Committee, recommend the following limits for tows:

Transiting between Miles 869.0 and 537.0.

Drafts no greater than 10 feet, 6 inches and

Barges to be configured no more than 7 wide.

Transiting between Miles 537.0 and 303.0.

Drafts no greater than 11 feet, 6 inches and

Barges to be configured no more than 7 wide.

Barges currently in the system, with drafts greater than the advised depths, should be placed on inboard strings. Mariners are requested to contact U.S. Coast Guard Sector Western Rivers Command Center via VHF-FM Channel 16 or at (866) 777-2784, to report areas of shoaling, hazardous conditions or missing aids to navigation.

LNM: 38-22

UPPER MISSISSIPPI RIVER - ILLINOIS WATERWAY - MISSOURI RIVER - MARINE EVENTS/FIREWORKS DISPLAYS

Attached as an enclosure to this LNM is U.S. Coast Guard Sector Upper Mississippi River MSIB 10-22, regarding marine events/fireworks displays on the Upper Mississippi River, Illinois Waterway and Missouri River.

LNM: 37-22

ARKANSAS RIVER - SCHEDULE OF L/D CLOSURES

Attached as an enclosure to this LNM, is USACE Little Rock District Navigation Notice 22-39, regarding closures of the Norrell L/D Nr. 1 in the vicinity of Mile 10.3, Joe Hardin L/D Nr. 3, in the vicinity of Mile 50.2 and Emmett Sanders L/D Nr. 4, in the vicinity of Mile 66.0.

LNM: 32-22

MOBILE RIVER - WAMS

The U.S. Coast Guard is conducting a Waterways Analysis and Management System (WAMS) study of the Mobile River to the junction of Alabama/Tombigbee Rivers. The study focuses on the areas aids to navigation system, waterborne commerce, marine casualty information, port/harbor resources, emergency response plans, routine and emergency communication capabilities and future development projects. Any interested company or individual wishing to provide comments or participate in a user survey should contact:

U.S. Coast Guard Aids to Navigation Team Mobile,

1500 15th St.

Mobile, Al. 36115.

Attn: BMC Josh McNeill,

(251) 421-0665, email address: Joshua.t.mcneill@uscg.mil.

LNM: 34-22

ARKANSAS RIVER - USACE L/D LOCKAGE/QUEUE MANAGEMENT PLAN

Attached as an enclosure to this LNM, is USACE Little Rock District Navigation Notice 22-47, regarding vessel lockage and queue management at L/D 2, in the vicinity of Mile 13.3, Norrell L/D 1, in the vicinity of Mile 10.3 and Montgomery Point L/D, in the vicinity of Mile 0.5.

LNM: 37-22

SAFETY NOTICE - NAVIGATIONAL RANGE AND SECTOR LIGHTS ON NOAA ELECTRONIC CHARTS

The U.S. Coast Guard has become aware that the Range and Sector Light Characteristic labels are not displayed on Electronic Navigational Charts (ENCs) when used in an Electronic Chart Display and Information System (ECDIS), due to limitations of the S-52 ECDIS, display specification. Mariners may query the ENC data directly within ECDIS or refer to the Light List for complete information on Range and Sector Light Characteristics.

LNM: 39-22

UPPER MISSISSIPPI RIVER - LOWER MISSISSIPPI RIVER - CHANNEL CONDITIONS/SAFETY ADVISORY

The U.S. Coast Guard Marine Safety Unit Paducah, has issued a Safety Advisory for low water conditions between approximate Mile 109.0, on the Upper Mississippi River, near Chester, Il., extending to Mile 869.0, on the Lower Mississippi River, near Tiptonville, Tn. Mariners are advised to exercise extreme caution when transiting this area and shall review current USACE surveys, prior to transiting.

LNM: 39-22

SECTION II - DISCREPANCIES

This section lists all reported and corrected discrepancies related to Aids to Navigation in this edition. A discrepancy is a change in the status of an aid to navigation that differs from what is published or charted.

DISCREPANCIES (FEDERAL AIDS)

LLNR	Aid Name	Status	Chart No.	BNM Ref.	LN M St	LN M End
280	Karns Island Upper Light	STRUCT DEST		0651OV	31/18	
990	Milligan Bend Light	STRUCT DEST		0642LM	51/19	
1010	Webber Falls Jetty Light	STRUCT DEST		0641LM	51/19	
1020	Bluff View Light	STRUCT DEST		0640LM	51/19	
1055	Hisaw Bottom Light	LT EXT		0196LM	40/18	
1070	Brier Creek Light	STRUCT DEST		0205LM	31/15	
1077	Sandtown Bottom Light	STRUCT DEST		0457LM	39/19	
1200	Black Rock Daybeacon	STRUCT DEST		0379LM	35/19	
1205	Gans Light	STRUCT DEST		0335LM	33/19	
1213	Non Lateral Mark 330.4	STRUCT DEST		0087LM	05/16	
1220	Onion Creek Daybeacon	STRUCT DMGD		0334LM	33/19	
1223	Non Lateral Mark 328.5	STRUCT DMGD		0333LM	33/19	
1225	Tucker Lake Light	STRUCT DEST		0332LM	33/19	
1230	Mcnabb Bottom Daybeacon	STRUCT DEST		0332LM	33/19	
1240	Deadman Slough Light	STRUCT DEST		0330LM	33/19	
1255	Wilsons Rock Light	STRUCT DMGD		0380LM	35/19	
1265	Peno Point Daybeacon	DAYMK DMGD		0580LM	47/19	
1267	Non Lateral Mark 313.9	STRUCT DEST		0089LM	05/16	
1315	Garrison Creek Daybeacon	DAYMK MISSING		0377LM	35/19	
1360	Crawford County Daybeacon	STRUCT DEST		0378LM	35/19	
1365	Jeffrey Light	DAYMK MISSING		0376LM	35/19	
1390	Fort Chaffee Light	STRUCT DEST		0579LM	47/19	
1395	Haroldton Light	DAYMK MISSING		0578LM	47/19	
1400	New Haroldton Light	STRUCT DEST		0574LM	47/19	
1420	Gun Club Lake Daybeacon	DAYMK MISSING		0582LM	47/19	
1427	Big Creek Daybeacon	DAYMK MISSING		0575LM	47/19	
1430	Arbuckle Island Light	STRUCT DEST		0091LM	05/16	
1435	Clear Creek Light	DAYMK MISSING		0584LM	41/19	
1445	Crooked Slough Light	STRUCT DEST		0583LM	47/19	
1455	Mulberry River Daybeacon	STRUCT DEST		0041UM	11/17	
1510	Moore's Creek Light	LT IMCH/STRUCT DMGD		0394LM	44/16	
1515	Roseville Daybeacon	DAYMK MISSING		0604LM	50/19	
1520	O'Kane Island Light	LT IMCH/STRUCT DMGD		0393LM	44/16	
1525	Alix Bottom Light	STRUCT DEST		0605LM	50/19	
1530	County Line Daybeacon	STRUCT DEST		0606LM	50/19	
1532	Non Lateral Mark 246.3	DAYMK MISSING		0607LM	50/19	
1535	Kalamazoo Light	DAYMK MISSING		0608LM	50/19	
1562	Non Lateral Mark 236.3	DAYMK MISSING		0609LM	50/19	
1615	Dublin Daybeacon	STRUCT DEST		0610LM	50/19	
1650	Bunker Hill Upper Daybeacon	STRUCT DEST		0639LM	51/19	
1660	Bunker Hill Lower Daybeacon	STRUCT DEST		0643LM	51/19	
1695	Dardanelle Reach Light	DAYMK DMGD		0204LM	31/15	
1697	Non Lateral Mark 201.4	STRUCT DEST		0200LM	41/18	

1700	Elberta Light	DAYMK MISSING	0611LM	50/19
1705	Old Neely Daybeacon	DAYMK MISSING	0612LM	50/19
1708	Non Lateral Mark 197.9	STRUCT DEST	0052LM	13/17
1710	Point Bar Cutoff Light	DAYMK MISSING	0613LM	50/19
1715	Hola Bend Cutoff Light	DAYMK MISSING	0614LM	50/19
1725	Reeds Ferry Light	DAYMK MISSING	0615LM	50/19
1733	Non Lateral Mark 189.8	DAYMK MISSING	0616LM	50/19
1735	Sweeden Island Light	LT EXT/DAYMK MISSING	0617LM	50/19
1738	Non Lateral Mark 188.8	DAYMK MISSING	0618LM	50/19
1745	Wilson Light	STRUCT DEST	0620LM	50/19
1770	Willow Bend Lower Daybeacon	DAYMK MISSING	0621LM	50/19
1798	Non Lateral Mark 175.6	DAYMK MISSING	0622LM	50/19
1800	Point Remove Creek Light	DAYMK MISSING	0623LM	50/19
1815	Ellis Island Light	STRUCT DEST	0630LM	51/19
1817	Non Lateral Mark 171.2	DAYMK MISSING	0631LM	51/19
1845	Stane Reach Upper Daybeacon	DAYMK DMGD	0634LM	51/19
1850	Stane Reach Light	DAYMK DMGD	0635LM	51/19
1890	Belk Corner Light	DAYMK MISSING/STRUCT DMGD	0558LM	45/19
1903	Non Lateral Mark 150.9	DAYMK MISSING	0560LM	45/19
1915	Bigelow Middle Daybeacon	DAYMK DMGD	0563LM	45/19
1920	Bigelow Lower Light	DAYMK MISSING	0538LM	44/19
1930	Tri County Light	STRUCT DEST	0370LM	41/16
1940	Beaver Dam Creek Daybeacon	STRUCT DMGD	0636LM	51/19
1948	Non Lateral Mark 138.8	DAYMK MISSING	0539LM	44/19
1953	Non Lateral Mark 137.6	DAYMK MISSING	0540LM	44/19
1960	Palarm Light	DAYMK MISSING	0541LM	44/19
1975	Maumelle River Upper Daybeacon	STRUCT DEST	0565LM	45/19
1988	Non Lateral Mark 130.6	DAYMK MISSING	0542LM	44/19
2030	Burns Park Light	STRUCT DEST	0514LM	42/19
2045	Waterworks Bend Light	DAYMK DMGD	0515LM	42/19
2130	Willow Bar Light	LT EXT	0524LM	42/19
2143	Non Lateral Mark 106.5	DAYMK MISSING	0637LM	51/19
2160	Estes Place Light	DAYMK IMCH/STRUCT DMGD	0396LM	44/16
2199	Non Lateral Mark 92.0	STRUCT DEST	0398LM	44/16
2370	Ste. Marie Bend Lower Daybeacon	STRUCT DEST	0407LM	45/16
2435	Richland Bend Middle Daybeacon	STRUCT DEST	0099LM	16/18
2485	Little Bayou Meto Lower Daybeacon	DAYMK DMGD	0094LM	15/18
2498	Cummins Bend Daybeacon	STRUCT DEST	0103LM	06/16
2540	Sample Island Light	STRUCT DEST	0106LM	06/16
2550	Sample Island Lower Light	STRUCT DEST	0107LM	06/16
2665	Owens Lake Daybeacon	DAYMK DMGD	0110LM	06/16
2825	Miller Creek Daybeacon	STRUCT DEST	0346OV	18/18
3195	Young Creek Daybeacon	DAYMK DMGD	0293OV	22/22
3655	Cages Bend Light	STRUCT DEST	0660OV	38/19
3965	Watkins Daybeacon	STRUCT DEST	0245OV	19/17
4250	Shammels Mound Landing Light	STRUCT DEST	0010OV	02/16
4285	Saline Creek Light	STRUCT DEST/TRUB	0221OV	26/16
4315	Pryors Creek Light	STRUCT DEST	0030OV	02/20
4340	Devils Elbow Light	STRUCT DEST	0306OV	16/18

4365	Bleidt Landing Light	STRUCT DEST/TRUB	0137OV	17/21
4390	Crooked Creek Light	STRUCT DEST/TRUB	0383OV	36/16
4455	Prison Farm Landing Light	STRUCT DEST	0145OV	17/21
4500	Kuttawa Bar Light	STRUCT DEST	0243OV	12/18
4505	Money Cliff Light	STRUCT DEST	0364OV	19/18
6985	Sand Point Lower Light	STRUCT DEST	0102UM	20/22
6990	Circle Light	STRUCT DMGD	0102UM	20/22
6995	Spring Bay Daybeacon	STRUCT DEST	0102um	20/22
7035	Drolls Point Light	STRUCT DEST/TRLB	0233UM	23/20
7525	Grand Island Foot Light	STRUCT DEST	0015UM	05/22
7565	Sugar Creek Light	STRUCT DEST	0526UM	51/20
7585	Frederick Light	STRUCT DEST	0539UM	29/19
7650	Briggs Landing Light	LT EXT/STRUCT DMGD	0890UM	51/19
7695	Moore's Island Light	STRUCT DEST	0037UM	12/22
7705	Wilson Island Daybeacon	DAYMK DMGD	0104UM	18/21
7850	Florence Light	LT EXT	0055UM	14/22
8540	Blaines Island Light	STRUCT DEST	0320OV	25/22
8765	Midway Light	LT EXT	0454OV	41/21
8840	Nine Mile Creek Light	STRUCT DEST	0699OV	33/18
8857	Arbuckle Creek Light	STRUCT DEST/TRDBN		39/20
9150	Washita Point Light	LT EXT	0395LM	33/20
9185	Preston Peninsula Light	REDUCED INT	0420LM	46/16
9535	Quaker Oats Light	STRUCT DEST	0043OV	06/16
9565	Putney Daybeacon	DAYMK DMGD	0768OV	52/19
9590	Iron Bank Light	LT EXT	0770OV	52/19
9630	Samuel Light	LT EXT	0771OV	52/19
9660	Osage Orange Daybeacon	DAYMK DMGD	0773OV	52/19
9663	Barker Daybeacon	DAYMK MISSING/STRUCT DMGD	0774OV	52/19
9665	French Point Light	STRUCT DEST	0775OV	52/19
9680	Island 8 Chute Upper Daybeacon	DAYMK MISSING/STRUCT DMGD	0787OV	52/19
9690	Milton Bell Light	LT EXT	0172OV	22/16
9695	Lester Light	STRUCT DEST	0777OV	52/19
9700	Island 10 Bar Light	LT EXT	0779OV	52/19
9707	Everest Landing Daybeacon	DAYMK MISSING/STRUCT DMGD	0780OV	52/19
9715	Groom Towhead Daybeacon	STRUCT DEST	0781OV	52/19
9725	Morrison Towhead Daybeacon	LT EXT	0788OV	52/19
9770	Nolan Daybeacon	DAYMK MISSING	0783OV	52/19
9780	Williams Point Daybeacon	DAYMK DMGD	0778OV	52/19
9790	Bixby Towhead Light	DAYMK MISSING	0786OV	52/19
9810	Merriwether Bend Light	LT EXT/DAYMK MISSING	0791OV	52/19
9825	Carey Upper Daybeacon	STRUCT DEST	0648LM	52/19
9830	Little Cypress Bend Light	LT EXT/DAYMK DMGD	0649LM	52/19
9845	Murphy Smith Upper Daybeacon	STRUCT DEST	0065LM	14/17
9860	Robinson Bayou Light	LT EXT	0650LM	52/19
9905	Blaker Towhead Light	LT EXT/DAYMK DMGD	0651LM	52/19
9910	Blaker Towhead Lower Light	LT EXT	0652LM	52/19
9980	Obion Bar Light	LT EXT/DAYMK MISSING	0653LM	52/19
10185	Cedar Point Light	REDUCED INT	0031LM	18/22
10195	Dean Island Light	REDUCED INT	0327LM	33/19

10210	Brandywine Chute Light	REDUCED INT	0031LM	18/22
10225	Island 40 Foot Light	STRUCT DEST	0232LM	49/18
10540	Harbert Point Light	LT EXT	0256LM	36/15
10545	Stumpy Point Light	STRUCT DEST	0249LM	52/18
10625	Delta Lower Light	STRUCT DEST	0118LM	06/16
10650	Miller Point Light	STRUCT DEST	0171LM	14/16
10660	Old Town Bend Foot Light	STRUCT DEST	0253LM	36/15
10685	Robson Light	STRUCT DEST	0116LM	06/16
10700	Sunflower Cut-Off Foot Light	STRUCT DEST	0115LM	06/16
10710	Ludlow Bar Light	DAYMK DMGD	0018LM	04/18
10715	Wood Cottage Light	STRUCT DEST	0114LM	06/16
10720	Knowlton Light	STRUCT DEST	0113LM	06/16
10730	Mason Landing Daybeacon	STRUCT DEST	0172LM	14/16
10815	Riverton Middle Bar Light	STRUCT DEST	0113LM	21/18
10885	Cypress Bend Light	STRUCT DEST	0032LM	07/18
10895	Eutaw Bar Light	STRUCT DEST	0365LM	35/19
10905	Mounds Crevasse Lower Light	STRUCT DEST	0114LM	21/18
10910	Boliver Light	STRUCT DEST	0069LM	11/18
10955	Miller Bend Light	STRUCT DEST	0030LM	06/18
10965	La Grange Towhead Light	STRUCT DEST	0367LM	35/19
11050	Vaucluse Bend Light	STRUCT DEST	0028LM	06/18
11070	Anconia Point Light	STRUCT DEST	0368LM	35/19
11080	Lakeport Light	STRUCT DEST	0369LM	35/19
11085	Walnut Point Light	STRUCT DEST	0370LM	35/19
11125	Corregidor Light	STRUCT DEST	0080LM	05/16
11130	Sarah Island Light	STRUCT DEST	0371LM	35/19
11170	Stack Island Light	STRUCT DEST	0372LM	35/19
11180	STACK ISLAND LOWER LIGHT	STRUCT DEST	0373LM	35/19
11195	Chinaman Light	STRUCT DEST	0374LM	35/19
11210	Fitler Point Daybeacon	STRUCT DEST	0170LM	28/17
11215	Seitz Light	STRUCT DEST	0448LM	38/19
11220	Cottonwood Bar Pointway Light	STRUCT DEST	0449LM	38/19
11245	Willow Point Light	DAYMK DMGD	0450LM	38/19
11250	Belle Island Corner Daybeacon	STRUCT DEST	0451LM	38/19
11270	Cabin Teele Light	STRUCT DEST	0452LM	38/19
11275	Marshall Point Cut-Off Daybeacon	STRUCT DEST	0453LM	38/19
11280	Joseph Henry Daybeacon	STRUCT DEST	0454LM	38/19
11407	Coggins Light	STRUCT DEST	0296LM	29/16
11415	Reid Bedford Point Light	STRUCT DEST	0463LM	39/19
11425	Diamond Light	STRUCT DEST	0464LM	39/19
11430	Sargent Point Light	LT IMCH/DAYMK DMGD	0465LM	39/19
11440	Cannon Point Light	STRUCT DEST	0294LM	41/17
11455	Buckridge Light	STRUCT DEST	0467LM	39/19
11470	Grand Gulf Island Light	STRUCT DEST	0468LM	39/19
11505	Old Levee Light	LT IMCH/DAYMK DMGD	0470LM	39/19
11520	Ashland Light	LT IMCH/DAYMK DMGD	0471LM	39/19
11530	Hole In The Wall Light	LT IMCH/REDUCED INT	0472LM	39/19
11540	Giles Bend Cut-Off Light	STRUCT DEST	0171LM	28/17
11700	Fort Adams Light	STRUCT DEST	0402LM	36/19

11795	Morganza Crevasse Light	STRUCT DEST	0400LM	36/19
11835	Bayou Sara Bend Light	STRUCT DEST	0399LM	36/19
11860	Port Hudson Light	STRUCT DEST	0581NOLA	36/19
11900	Devils Swamp Light	STRUCT DEST	0397LM	36/19
11940	Ben Burman Light	STRUCT DEST	0549LM	44/19
12677	Island 21 Daybeacon	STRUCT DEST	0503UM	27/19
13165	Lock 5A Light	LT EXT	0172UM	20/20
13230	Island 74 Light	STRUCT DEST/TRUB	0380UM	34/20
13430	Root River Upper Light	STRUCT DEST/HAZ NAV	0172UM	20/20
13510	Perry Ruby Light	STRUCT DEST	0061UM	12/17
13720	Crooked Slough Head Daybeacon	STRUCT DEST/TRUB	0482UM	26/19
13725	Crooked Slough Head Light	STRUCT DEST/TRUB	0482UM	26/19
13915	Clayton Lower Daybeacon	STRUCT DEST/TRUB	0240UM	31/18
14010	Cassville Upper Daybeacon	STRUCT DEST	0546UM	29/19
14030	Cassville Lower Light	STRUCT DEST	0546UM	29/19
14055	Milkmans Island Light	LT EXT	0172UM	20/20
14105	Maquoketa Island Light	STRUCT DEST	0460UM	25/19
14230	Nine-Mile Island Light	STRUCT DEST	0410LM	36/17
14260	Stone Slough Light	STRUCT DEST	0454UM	25/19
14275	Fever River Light	STRUCT DEST/TRUB	0485UM	45/18
14295	Pulaski Light	STRUCT DEST	0485UM	45/18
14385	Arnold Towhead Light	STRUCT DEST	0449UM	25/19
14445	Sabula Lower Light	STRUCT DEST	0446UM	25/19
14460	Smith Bay Light	STRUCT DEST	0048UM	13/22
14475	Elk River Light	DAYMK DMGD	0257LM	31/21
15170	Edwards Island Upper Light	STRUCT DEST/TRUB	0403UM	26/16
15535	Des Moines River Lower Daybeacon	STRUCT DEST	0279UM	38/22
15785	Sny River Light	STRUCT DEST	0114UM	22/22
16110	Hastings Landing Daybeacon	STRUCT DMGD	0282UM	39/22
16120	Cuivre Island Light	STRUCT DEST	0282UM	39/22
16200	Portage Des Sioux Light	LT EXT	0088UM	18/22
16785	Lowry Light	STRUCT DEST	0026UM	10/22
16910	Ste. Genevieve Island Light	STRUCT DEST	0557UM	30/19
17000	Chester Prison Upper Light	STRUCT DEST	0026UM	10/22
18140	Dodds Daybeacon	DAYMK IMCH	0294UM	37/21
18170	Boyer River Daybeacon	DAYMK IMCH	0294UM	37/21
18250	Florence Bend Lower Daybeacon	DAYMK IMCH	0346UM	44/21
19375	Weston Daybeacon	STRUCT DEST	0106UM	18/21
23285	Cluster Upper Light	STRUCT DEST	0721OV	34/18
24110	Old Lock No. 17 Lower Daybeacon	STRUCT DEST		39/20
26047	Sunken Barge Lighted Buoy WR	MISSING	0519OV	51/21
26470	Notch Lick Light	STRUCT DEST	0210OV	23/21
27090	Wolf Creek Light	LT EXT	0064OV	05/22
27520	Robert Mann Light	STRUCT DEST	0269OV	21/22
27540	Water Works Light	STRUCT DMGD	0179OV	12/22
27855	Graham Varble Light	STRUCT DEST	0134OV	17/21
27935	Dekoven Light	STRUCT DEST	0294OV	23/22
29241.25	Smith Island Lower Daybeacon	STRUCT DEST	0202LM	26/21
29256.65	Cadney Lower Daybeacon	DAYMK DMGD	0205LM	26/21

29272	Deloges Middle Daybeacon	DAYMK IMCH		36/20
29467	Hog Lake Daybeacon	STRUCT DEST		36/20
29618	Red River Entrance Light	STRUCT DEST		37/20
29665	Dry Cypress Daybeacon	STRUCT DEST		37/20
29690	Bayou Cocodrie Upper Daybeacon	STRUCT DEST		37/20
29695	Bayou Cocodrie Daybeacon	STRUCT DEST		37/20
29710	Grassy Lake Daybeacon	DAYMK MISSING		37/20
29725	Alligator Bayou Daybeacon	STRUCT DEST	0216LM	33/17
29750	Timber Lake Daybeacon	STRUCT DEST		37/20
29755	Naples Daybeacon	STRUCT DEST		37/20
29775	Three Rivers Junction Light	STRUCT DEST		37/20
29780	Barbre Daybeacon	STRUCT DEST		37/20
29785	Torras Daybeacon	STRUCT DEST		37/20
29795	Oak Grove Daybeacon	STRUCT DEST		37/20
29845	Houden Point Daybeacon	STRUCT DEST	0255UM	30/21
30215	Taliaferro Light	LT EXT	0410OV	35/22
31240	Serodino Upper Daybeacon	STRUCT DEST	0350OV	30/22
31275	Stevenson Daybeacon	DAYMK IMCH	0260OV	19/22
31995	Dry Creek Light	STRUCT DEST	0402OV	31/20
32140	Chambers Daybeacon	STRUCT DEST	0178OV	11/13
32170	Diamond Island Lower Daybeacon	STRUCT DEST	0177OV	11/13
32325	Condors Landing Light	STRUCT DEST	0127OV	09/20
32445	Sales Light	TRUB/STRUCT DEST	0269OV	19/14
32460	Reynoldsburg Island Light	STRUCT DEST/TRUB	0290OV	15/18
32480	Higgins Light	STRUCT DEST	0342OV	27/15
32530	Standing Rock Upper Light	STRUCT DEST	0658OV	41/13
32570	Fort Henry Light	STRUCT DEST	0160OV	19/21
32585	Pine Bluff Light	STRUCT DEST	0308OV	19/19
32595	Blood River Light	STRUCT DEST/TRUB	0138OV	17/21
32600	Clyde Light	LT EXT	0581OV	44/15
32605	Newburg Light	STRUCT DEST	0362OV	29/15
32650	West Entrance Canal Light	LT EXT	0994OV	50/18
32665	Grand Rivers Light	LT EXT	0993OV	50/18

DISCREPANCIES (FEDERAL AIDS) CORRECTED

LLNR	Aid Name	Status	Chart No.	BNM Ref.	LNM St	LNM End
------	----------	--------	-----------	----------	--------	---------

None

DISCREPANCIES (PRIVATE AIDS)

LLNR	Aid Name	Status	Chart No.	BNM Ref.	LNM St	LNM End
1685	Oakley Dock Light	LT EXT		0307-14 LM	44/14	
1690	Mobley Dock Light	LT EXT		0454-13 LM	48/13	
2100	Oakley Light	LT EXT		0520LM	42/19	
2337	Island Harbor Marina Light	LT EXT			45/16	
2340	Century Tube Lights (2)	LT EXT			45/16	
2400	Pickett And Davison Lights (2)	LT EXT		0481-13 LM	50/13	
3725	Lakewood Marina Lights (4)	LT IMCH		0439-15 OV	34/15	
3750	Dupont Dock Lights (2)	OFF STA/LT EXT		0305-15 OV	26/15	
3795	Nashville Water Intake Lights (2)	LT EXT			44/11	

3805	Holnam Dock Lights (2)	LT EXT		44/11
3815	Kerr-Mcgee Dock Lights (2)	LT EXT		44/11
3820	Cohen Terminal Lights (2)	LT EXT		44/11
3930	Alcoa Chemical Dock Lights (2)	MSLD SIG/LT EXT	0216-10 OV	14/10
3960	Hunter Marine Transport Dock Lights (2)	LT EXT		47/08
3995	Riverview Marina Lights (2)	LT EXT		47/08
4055	Clarksville Boat Club Dock Lights (2)	LT EXT	0533-12 OV	34/12
6170	Quantum Chemical Dock Lights (2)	LT EXT	0436-01 UM	31/01
6650	S. T. Services Terminal Lights (2)	LT EXT		41/14
6695	Continental Grain Company Light	LT EXT		41/14
7225	Cargo Carriers Dock Lights (2)	LT EXT		25/08
7235	Pekin Boat Club Breakwater Light	LT EXT		05/16
7250	Shell Dock Lights (2)	LT EXT	0123-02 UM	16/02
7255	Adm Growmark Mooring Light	LT EXT	0122-02 UM	16/02
7260	Sours Grain Tramway Light	LT EXT	0279-03 UM	21/03
7265	Tomen Dock Light	LT EXT		25/08
7295	Adm Growmark Mooring Lights (3)	LT EXT	0281-03 UM	21/03
7460	Cargill Mooring Lights (2)	LT EXT	0284-03 UM	21/03
7620	Cargill Dock Lights (2)	LT EXT		35/08
7725	Cargill Terminal Lights (2)	LT IMCH	0171-18 UM	26/18
7730	Public Service Co. Dock Lights (6)	LT EXT	0119-18 UM	20/18
7730	Public Service Co. Dock Lights (6)	LT IMCH	0171-18 UM	26/18
7760	Adm Growmark Grain Elevator Lights (2)	LT IMCH	0171-18 UM	26/18
9440	Black Dog Lights (5)	LT EXT		43/16
9965	Huffman Grain Light	STRUCT DEST	0131-16 LM	08/16
10300	Cargill Dock Light	LT EXT	0361-01 LM	34/01
10390	Peavey Lights (2)	LT EXT	0398-02 LM	36/02
10395	Suburban Propane Dock Light	LT EXT	0396-02 LM	36/02
10415	Western Tar Products Dock Light	LT EXT	0394-02 LM	36/02
11943	Bear Industries Barge Dock Lights (4)	LT EXT	0600-17 NO	30/17
11990	Riverside Dock Lights (2)	LT EXT	0695-01 UM	40/01
12080	University Dock Lights (3)	LT EXT	0696-01 UM	40/01
12215	Koch Fuel Dock Lights (2)	LT EXT		35/16
12320	Newport Terminal Lights (2)	LT EXT		35/16
12385	Shiely Dock Lights (2)	LT IMCH		35/16
12712	City of Red Wing Metering Station Special Light	MISSING		42/16
12768	Consolidated Grain and Barge Loading Dock Piling Lights (2)	MISSING		42/16
12930	Alma City Dock Light/Daymarks (3)	MISSING		42/16
13405	G. Heileman Brewery Dock Light	MISSING		42/16
14756	Isle Of Capri Casino Marina Daybeacon	MISSING		03/16
15345	Koch Nitrogen Dock Light	LT EXT		41/14
15415	Riverview Park Dock Light	LT EXT	0531-15 UM	49/15
15425	Hall Towing Light	STRUCT DEST	0280UM	25/20
15822	Hannibal Intake Light	LT EXT	0358-20 UM	32/20
16100	Jersey County Grain Dock Lights (2)	LT EXT		19/16
16205	Piasa Harbor Light	LT EXT	0131-15 UM	22/15
16220	Con-Agra Mooring Lights (2)	LT EXT		21/16

16230	Alton Marina Breakwater Lights (3)	LT EXT	0131-15 UM	22/15
16265	Amoco Dock Light	STRUCT DEST		35/09
16280	Amoco Dock Lights (4)	LT EXT		35/09
16310	Sioux City/New Orleans Terminal Light	STRUCT DEST		35/09
16380	Western Dock Lights (9)	LT IMCH		34/08
16390	Adm-Growmark Dock Lights (4)	LT EXT	0776-01 UM	44/01
16430	Union Electric Coal Dock Lights (2)	LT EXT	0305-08 UM	34/08
16445	Continental Cement Lights (2)	LT EXT	0305-08 UM	34/08
16505	Peavey Company Dock Lights (3)	LT EXT	0305-08 UM	34/08
16530	Cahokia Marine Terminal Lights (2)	LT EXT	0305-08 UM	34/08
16540	Slay Bulk Terminal Lights (2)	LT EXT	0305-08 UM	34/08
16545	Peavey Lights (3)	LT EXT	3305-08 UM	34/08
16550	Eagle Marine Industries Light	LT IMCH	0305-08 UM	34/08
16560	Phillips Pipeline Lights (2)	LT EXT	0305-08 UM	34/08
16565	Growmark Dock Lights (2)	LT EXT	0305-08 UM	34/08
16575	Eagle Marine Dock Lights (2)	LT EXT	0305-08 UM	34/08
16600	J.H. Collier Barge Mooring Lights (2)	LT EXT	0305-08 UM	34/08
16605	Clark Oil Refining Dock Lights (4)	LT EXT	0305-08 UM	34/08
16609	Alcoa Foil Lights (2)	LT EXT	0305-08 UM	34/08
16615	Hci Chemtech Dock Lights (2)	LT EXT	0305-08 UM	34/08
16617	Semmaterials Terminal Lights (2)	LT EXT	0305-08 UM	34/08
16630	American Commercial Dock Lights (2)	LT EXT	0305-08 UM	34/08
16655	Bussen Terminal Light	LT EXT	0305-08 UM	34/08
18700	Bunge Dock Lights (3)	MISSING/LT EXT		18/08
19185	St. Joseph L & P Dock Light	LT IMCH		17/08
19415	Leavenworth Water Intake Lights (2)	LT EXT	0104-07 UM	39/07
19460	Smoot Grain Dock Lights (2)	LT EXT	0385-07 UM	39/07
19505	Board Of Public Utilities Light	LT EXT	0386-07 UM	39/07
19535	Public Utilities Intake Lights (3)	LT EXT		38/08
19660	Continental Grain Dock Lights (4)	LT EXT	0181-08 UM	24/08
19695	Kansas City Power And Light Company Lights (2)	LT EXT	0181-08 UM	24/08
20870	U.E. Callaway Intake Lights (2)	LT EXT	0522-20 UM	52/20
21965	Hill Top Energy Lighted Danger Buoy	MISSING		34/22
22873	Moon Township Municipal Authority Back Channel Outfall Danger Buoy	OFF STA	0108-21 OV	14/21
24005	Bens Run Light	LT EXT		03/20
24580	Ohio Power Coal Dock Light	LT EXT	480-21 OV	44/21
25820	Cargill Barge Loading Facility Light	LT EXT	0552-09 OV	40/09
26290	Boone County Sand And Gravel Lights (2)	LT EXT	0769-00 OV	40/00
26833	Transmontaigne Dock Lights (2)	LT EXT	286-21 OV	28/21
26860	Dupont Chemical Lights (2)	LT EXT	0330-18 OV	17/18
27367	Transmontaigne Dock Light	LT EXT		40/21
27590	Transmontaigne Dock Lights (4)	LT EXT		40/21
32550	Paris Landing State Park Lights (2)	Status Unreported	0452-20 OV	38/20
32900	Ergon Dock Lights (2)	LT IMCH		17/13
	Alcosan-Mascaro Temporary Lighted Danger Buoy	MISSING		24/22

DISCREPANCIES (PRIVATE AIDS) CORRECTED

LLNR	Aid Name	Status	Chart No.	BNM Ref.	LNM St	LNM End
27622	Transmontaigne Dock Lights (2)	WATCHING PROPERLY			36/22	39/22

PLATFORM DISCREPANCIES

Name	Status	Position	BNM Ref.	LNM St	LNM End
------	--------	----------	----------	--------	---------

None

PLATFORM DISCREPANCIES CORRECTED

Name	Status	Position	BNM Ref.	LNM St	LNM End
------	--------	----------	----------	--------	---------

None

SECTION III - TEMPORARY CHANGES and TEMPORARY CHANGES CORRECTED

This section contains temporary changes and corrections to Aids to Navigation for this edition. When charted aids are temporarily relocated for dredging, testing, evaluation, or marking an obstruction, a temporary correction shall be listed in Section IV giving the new position.

TEMPORARY CHANGES

LLNR	Aid Name	Status	Chart No.	BNM Ref.	LNM St	LNM End
7015	Blue Creek Point Lower Lighted Buoy	TRUB		0379UM	51/21	
7030	Drolls Point Upper Lighted Buoy	TRUB		0379UM	51/21	
7040	Peoria Heights Lighted Buoy	TRUB		0379UM	51/21	
8540	Blaines Island Light	DISCONTINUED			39/20	
8840	Nine Mile Creek Light	DISCONTINUED			11/18	
10455	Armstrong Bar Light	RELOCATED			23/18	
11275	Marshall Point Cut-Off Daybeacon	TRDBN			49/16	
11280	Joseph Henry Daybeacon	TRDBN			49/16	
29880	Kinnikinnic River Daybeacon	DISCONTINUED			21/20	

TEMPORARY CHANGES CORRECTED

LLNR	Aid Name	Status	Chart No.	BNM Ref.	LNM St	LNM End
------	----------	--------	-----------	----------	--------	---------

None

PLATFORM TEMPORARY CHANGES

Name	Status	Position	BNM Ref.	LNM St	LNM End
------	--------	----------	----------	--------	---------

None

PLATFORM TEMPORARY CHANGES CORRECTED

Name	Status	Position	BNM Ref.	LNM St	LNM End
------	--------	----------	----------	--------	---------

None

SECTION V - ADVANCE NOTICES

This section contains advance notice of approved projects, changes to aids to navigation, or upcoming temporary changes such as dredging, etc. Mariners are advised to use caution while transiting these areas.

SUMMARY OF ADVANCED APPROVED PROJECTS

Approved Project(s)

Project Date

Ref. LNM

None

Advance Notice(s)

TENNESSEE RIVER

The Coast Guard will be making the following Aids to Navigation Changes after October 11, 2022:

Discontinue Transmission Tower Light (LLNR-31680) at mile 307.6, Right Descending Bank, in approximate position 34-35-47.300N/086-56-05.263W.

Discontinue Wheeler Point Light (LLNR-31855) at mile 278.2, Left Descending Bank, in approximate position 34-47-13.833N/087-20-51.719W.
Discontinue Lenox Springs Daybeacon (LLNR-31650) at mile 328.2, Left Descending Bank, in approximate position 34-33-02.078N/086-38-19.933W.
Discontinue Leemon Slough Daybeacon (LLNR-31670) at mile 314.0, Left Descending Bank, in approximate position 34-33-10.551N/086-49-48.144W.
Discontinue Indian Creek Daybeacon (LLNR-31660) at mile 322.4, Right Descending Bank, in approximate position 34-35-23.546N/086-42-39.570W.
Discontinue Hobbs Light (LLNR-31635) at mile 334.3, Right Descending Bank, in approximate position 34-33-54.334N/086-33-12.685W.
Discontinue Cotaco Creek Daybeacon (LLNR-31665) at mile 318.5, Left Descending Bank, in approximate position 34-33-06.052N/086-45-26.451W.

LNLM: 33/22

TENNESSEE RIVER

The Coast Guard will be making the following Aids to Navigation Changes after October 11, 2022:

Discontinue Sugarlimb Light (LLNR-30320) at mile 596.1, Right Descending Bank, in approximate position 35-46-06.414N/084-18-38.572W.
Discontinue Rock Quarry Light (LLNR-30330) at mile 595.2, Right Descending Bank, in approximate position 35-45-12.340N/084-18-43.229W.
Discontinue Phillips Light (LLNR-30340) at mile 593.5, Left Descending Bank, in approximate position 35-43-59.044N/084-18-16.841W.
Discontinue Winding Shoals Light (LLNR-30345) at mile 592.8, Left Descending Bank, in approximate position 35-43-41.652N/084-19-06.727W.
Discontinue Bogart Light (LLNR-30415) at mile 583.1, Right Descending Bank, in approximate position 35-46-30.728N/084-23-45.155W.
Discontinue Wilson Light (LLNR-30445) at mile 577.7, Right Descending Bank, in approximate position 35-46-05.249N/084-26-25.983W.
Discontinue Point Rock Light (LLNR-30455) at mile 575.9, Right Descending Bank, in approximate position 35-47-14.188N/084-27-25.093W.
Discontinue Neegard Light (LLNR-30480) at mile 571.0, Right Descending Bank, in approximate position 35-50-04.528N/084-30-24.651W.
Discontinue Turner Bar Light (LLNR-30545) at mile 561.0, Left Descending Bank, in approximate position 35-49-36.261N/084-36-25.585W.
Discontinue Shields Bar Light (LLNR-30550) at mile 558.2, Right Descending Bank, in approximate position 35-47-47.126N/084-37-11.428W.
Discontinue Martin Light (LLNR-30585) at mile 548.2, Right Descending Bank, in approximate position 35-45-37.023N/084-40-49.313W.
Discontinue Lucknow Daybeacon (LLNR-30630) at mile 535.6, Right Descending Bank, in approximate position 35-41-44.226N/084-46-11.428W.

LNLM: 33/22

TENNESSEE RIVER

The Coast Guard will be making the following Aids to Navigation Changes after October 11, 2022:

Discontinue Chickamauga Light (LLNR-30955) at mile 469.9, Right Descending Bank, in approximate position 35-06-12.409N/085-14-51.752W.
Discontinue Deep Ditch Light (LLNR-30985) at mile 467.6, Right Descending Bank, in approximate position 35-05-05.969N/085-16-41.144W.
Discontinue Signal Point Light (LLNR-31100) at mile 453.0, Right Descending Bank, in approximate position 35-06-46.555N/085-22-11.081W.
Discontinue Mongo Chute Daybeacon (LLNR-31125) at mile 449.9, Left Descending Bank, in approximate position 35-06-33.540N/085-24-52.699W.
Discontinue The Pot Light (LLNR-31135) at mile 447.5, Left Descending Bank, in approximate position 35-05-23.700N/085-23-21.435W.
Discontinue McNabb Light (LLNR-31160) at mile 443.7, Right Descending Bank, in approximate position 35-03-28.175N/085-25-35.073W.
Discontinue Grants Light (LLNR-31180) at mile 440.5, Left Descending Bank, in approximate position 35-01-17.933N/085-27-02.069W.

LNLM: 33/22

TENNESSEE RIVER

The Coast Guard will be making the following Aids to Navigation Changes after October 11, 2022:

Discontinue Long Hollow Branch Daybeacon (LLNR-31355) at mile 415.5, Left Descending Bank, in approximate position 34-58-18.966/085-41-39.127W.
Discontinue Widows Creek Daybeacon (LLNR-31375) at mile 407.6, Left Descending Bank, in approximate position 34-52-50.733N/085-44-54.786W.
Discontinue Sublets Daybeacon (LLNR-31440) at mile 391.2, Left Descending Bank, in approximate position 34-41-48.459N/085-55-00.756W.
Discontinue Mccamy Light (LLNR-31490) at mile 373.2, Right Descending Bank, in approximate position 34-31-50.849N/086-08-35.775W.
Discontinue Siebold Branch Light (LLNR-31540) at mile 363.4, Left Descending Bank, in approximate position 34-24-55.162N/086-13-36.876W.
Discontinue Deposit Light (LLNR-31610) at mile 352.6, Right Descending Bank, in approximate position 34-25-43.248N/086-19-58.329W.
Discontinue Honeycomb Light (LLNR-31615) at mile 350.4, Right Descending Bank, in approximate position 34-25-32.560N/086-22-12.280W.

LNLM: 33/22

TENNESSEE RIVER

The Coast Guard will be making the following Aids to Navigation Changes after October 11, 2022:

Discontinue Watts Creek Light (LLNR-30675) at mile 528.5, Left Descending Bank, in approximate position 35-36-03.791N/084-46-30.863W.
Discontinue Lick Daybeacon (LLNR-30715) at mile 515.4, Left Descending Bank, in approximate position 35-30-38.408N/084-51-21.198W.
Discontinue Dougherty Bluff Light (LLNR-30785) at mile 497, Right Descending Bank, in approximate position 35-23-03.850N/085-01-53.700W.
Discontinue Sale Creek Light (LLNR-30810) at mile 495.2, Left Descending Bank, in approximate position 35-21-35.497N/085-02-30.691W.
Discontinue Cliff Bluff Light (LLNR-30815) at mile 492.3, Right Descending Bank, in approximate position 35-19-22.262N/085-03-36.597W.
Discontinue Denny Bluff Light (LLNR-30865) at mile 483.4, Left Descending Bank, in approximate position 35-12-40.783N/085-05-27.109W.
Discontinue Gann Bluff Lower Light (LLNR-30875) at mile 481.3, Right Descending Bank, in approximate position 35-12-02.421N/085-07-24.666W.
Discontinue Gladish Light (LLNR-30905) at mile 474.2, Left Descending Bank, in approximate position 35-07-41.786N/085-11-03.253W.

LNLM: 33/22

TENNESSEE RIVER

The Coast Guard will be making the following Aids to Navigation Changes after October 11, 2022:

Discontinue Wilson Point Light (LLNR-31900) at mile 265.0, Left Descending Bank, in approximate position 34-49-19.884N/087-32-17.744W.
Discontinue Cypress Creek Lower Light (LLNR-31965) at mile 254.2, Right Descending Bank, in approximate position 34-46-27.675N/087-42-33.092W.
Discontinue Seven Mile Island Daybeacon (LLNR-31985) at mile 251.0, Right Descending Bank, in approximate position 34-44-39.473/087-44-46.031W.
Discontinue Paynes Light (LLNR-32075) at mile 222.7, Left Descending Bank, in approximate position 34-54-05.500/088-08-05.151W.
Discontinue Indian Creek Light (LLNR-32085) at mile 219.8, Left Descending Bank, in approximate position 34-56-10.884N/088-09-56.418W.
Discontinue Fraley Light (LLNR-32105) at mile 212.6, Left Descending Bank, in approximate position 35-01-52.866N/088-12-22.520W.
Discontinue Whites Lake Light (LLNR-32110) at mile 209.6, Right Descending Bank, in approximate position 35-04-27.566N/088-12-03.686W.
Discontinue Short Hollow Light (LLNR-32115) at mile 209.0, Right Descending Bank, in approximate position 35-04-37.627N/088-12-38.217W.

LNLM: 33/22

UPPER MISSISSIPPI RIVER

The Coast Guard will be making the following Aids to Navigation Changes after October 11, 2022:

Discontinue Liberty Island Light (LLNR-17090) at mile 99.1, Left Descending Bank, in approximate position 37-48-49.201N/089-41-09.503W.
Discontinue Wagners Daybeacon (LLNR-17100) at mile 97.4, Left Descending Bank, in approximate position 37-47-32.032N/089-39-34.358W.
Discontinue Seventy-Six Towhead Light (LLNR-17135) at mile 91.0, Left Descending Bank, in approximate position 37-43-57.209N/089-37-13.858W.
Discontinue Hines Daybeacon (LLNR-17235) at mile 73.7, Right Descending Bank, in approximate position 37-32-42.871N/089-31-21.306W.
Discontinue Hanging Dog Bluff Light (LLNR-17240) at mile 71.6, Right Descending Bank, in approximate position 37-31-03.878N/089-30-22.356W.
Discontinue Moccasin Springs Light (LLNR-17250) at mile 67.2, Right Descending Bank, in approximate position 37-27-56.020N/089-28-25.237W.
Discontinue Bee Bar Light (LLNR-17265) at mile 65.8, Left Descending Bank, in approximate position 37-26-54.704N/089-26-40.960W.
Discontinue Shepard Point Daybeacon (LLNR-17270) at mile 63.3, Right Descending Bank, in approximate position 37-25-05.009N/089-26-03.581W.
Discontinue Hamburg Daybeacon (LLNR-17275) at mile 61.7, Right Descending Bank, in approximate position 37-23-35.138N/089-25-00.073W.
Discontinue Dusky Bar Daybeacon (LLNR-17285) at mile 60.0, Left Descending Bank, in approximate position 37-22-18.030N/089-25-12.986W.
Discontinue Cape Rock Daybeacon (LLNR-17315) at mile 54.1, Right Descending Bank, in approximate position 37-19-41.124N/089-29-43.282W.
Discontinue Burnham Island Light (LLNR-17470) at mile 39.0, Left Descending Bank, in approximate position 37-09-18.263N/089-25-55.679W.
Discontinue Powers Island Daybeacon (LLNR-17480) at mile 36.0, Right Descending Bank, in approximate position 37-06-57.031N/089-24-25.499W.
Discontinue Brooks Point Light (LLNR-17535) at mile 25.8, Left Descending Bank, in approximate position 37-00-51.466N/089-18-49.136W.
Discontinue Beech Ridge Daybeacon (LLNR-17610) at mile 12.8, Left Descending Bank, in approximate position 37-05-12.901N/089-15-42.113W.
Discontinue Hurricane Daybeacon (LLNR-17620) at mile 10.7, Right Descending Bank, in approximate position 37-03-19.832N/089-14-54.913W.
Discontinue Elk Island Light (LLNR-17625) at mile 8.7, Right Descending Bank, in approximate position 37-01-56.809N/089-14-03.415W.

LNLM: 33/22

OHIO RIVER

The Coast Guard will be making the following Aids to Navigation Changes after October 11, 2022:

Discontinue Cumberland Bar Light (LLNR-28150) at mile 925.5, Left Descending Bank, in approximate position 37-04-53.926N/088-26-47.962W.
Discontinue Brick House Light (LLNR-28155) at mile 926.7, Left Descending Bank, in approximate position 37-03-56.610N/088-27-54.385W.
Discontinue Kinkaid Upper Light (LLNR-28167) at mile 930.4, Left Descending Bank, in approximate position 37-03-22.320N/088-31-32.700W.
Discontinue Kinkaid Landing Light (LLNR-28170) at mile 932.2, Left Descending Bank, in approximate position 37-04-31.177N/088-33-24.732W.
Discontinue Belgrade Light (LLNR-28225) at mile 940.5, Right Descending Bank, in approximate position 37-08-31.836N/088-41-44.189W.
Discontinue Sharps Bar Lower Light (LLNR-28285) at mile 956.5, Right Descending Bank, in approximate position 37-13-48.760N/088-56-24.472W.
Discontinue Future City Light (LLNR-28345) at mile 976.5, Right Descending Bank, in approximate position 37-02-31.744N/089-10-55.769W.

LNLM: 33/22

KANAWHA RIVER

The Coast Guard will be making the following Aids to Navigation Changes after October 11, 2022:

Discontinue Nine Mile Creek Light (LLNR-8840) at mile 8.1, Left Descending Bank, in approximate position 38-46-47.689N/082-01-01.387W.
Discontinue Wright Light (LLNR-8625) at mile 44.4, Left Descending Bank, in approximate position 38-24-33.153N/081-51-01.815W.

LNLM: 33/22

ALLEGHENY RIVER

The Coast Guard will be making the following Aids to Navigation Changes after October 11, 2022:

Discontinue Karns Island Lower Light (LLNR-285) at mile 26.7, Left Descending Bank, in approximate position 40-38-32.018N/079-41-12.966W.

LNLM: 33/22

MISSOURI RIVER

The Coast Guard will be making the following Aids to Navigation Changes after October 11, 2022:

Rename Squaw Bend Daybeacon (LLNR-18950), at mile 490.8, Left Descending Bank, in approximate position 40-00-41.788N/095-18-45.376W to Maiden Bend Daybeacon (LLNR-18950) in approximate position 40-00-41.788N/095-18-45.376W.

LNLM: 33/22

LOWER MISSISSIPPI RIVER

The Coast Guard will be making the following Aids to Navigation Changes after October 11, 2022:

Discontinue Cypress Bend Light (LLNR-10885) at mile 568.8, Right Descending Bank, in approximate position 33-40-04.897N/091-13-46.139W.

LNLM: 33/22

MISSOURI RIVER

The Coast Guard will be making the following Aids to Navigation Changes after October 25, 2022:

Change Bellefontaine Light (LLNR-21400) at mile 8.6, Left Descending Bank, in approximate position 38-50-48.942N/090-14-26.442W, showing FI (2)R 5s, to Bellefontaine Daybeacon (LLNR-21400) CNR upstream, TR downstream.
Change Weldon Springs Light (LLNR-21250) at mile 43.1, Left Descending Bank, in approximate position 38-41-35.982N/090-38-54.342W, showing FI (2)R 5s, to Weldon Springs Daybeacon (LLNR-21250) CNR upstream, TR downstream.
Change Parsons Light (LLNR-21205) at mile 50.8, Left Descending Bank, in approximate position 38-37-44.603N/090-45-07.799W, showing FI (2)R 5s, to Parsons Daybeacon (LLNR-21205) CNR upstream, CNR downstream.
Change Hancock Bottom Light (LLNR-21155) at mile 59.9, Left Descending Bank, in approximate position 38-33-21.478N/090-52-25.884W, showing FI (2)R 5s, to Hancock Bottom Daybeacon (LLNR-21155) CNR upstream, CNR downstream.
Change Bernheimer Light (LLNR-21025) at mile 87.6, Left Descending Bank, in approximate position 38-40-49.722N/090-16-25.989W, showing FI (2)R 5s, to Bernheimer Daybeacon (LLNR-21025) CNR upstream, CNR downstream.
Change Warren County Light (LLNR-20995) at mile 95.0, Left Descending Bank, in approximate position 38-42-25.057N/091-23-02.397W, showing FI (2)R 5s, to Warren County Daybeacon (LLNR-20995) CNR upstream, CNR downstream.
Change Hermann Lower Light (LLNR-20985) at mile 97.0, Left Descending Bank, in approximate position 38-42-43.413N/090-25-22.305W, showing FI (2)R 5s, to Hermann Lower Daybeacon (LLNR-20985) CNR upstream, CNR downstream.
Change Mcgirks Middle Light (LLNR-20950) at mile 100.7, Left Descending Bank, in approximate position 38-42-00.365N/090-29-25.238W, showing FI

(2)R 5s, to McGirks Middle Daybeacon (LLNR-20950) TR upstream, CNR downstream.
 Change Osage River Upper Light (LLNR-20775) at mile 130.0, Right Descending Bank, in approximate position 38-35-41.094N/091-56-34.092W, showing FI G 4s, to Osage River Upper Daybeacon (LLNR-20775) CNG upstream, SG downstream.
 Change Dry Creek Light (LLNR-20750) at mile 135.1, Left Descending Bank, in approximate position 38-33-59.376N/092-01-35.040W, showing FI (2)R 5s, to Dry Creek Daybeacon (LLNR-20750) CNR upstream, CNR downstream.
 Change Rocheport Bend Light (LLNR-20540) at mile 184.1, Right Descending Bank, in approximate position 38-56-56.292N/092-32-11.418W, showing FI G 4s, to Rocheport Bend Daybeacon (LLNR-20540) CNG upstream, CNG downstream.
 Change Hurricane Creek Light (LLNR-20340) at mile 225.5, Left Descending Bank, in approximate position 39-12-40.230N/092-51-07.566W, showing FI (2)R 5s, to Hurricane Creek Daybeacon (LLNR-20340) TR upstream, TR downstream.
 Change Glasgow Light (LLNR-20310) at mile 227.0, Left Descending Bank, in approximate position 39-14-00.974N/092-50-52.136W, showing FI (2)R 5s, to Glasgow Daybeacon (LLNR-20310) TR upstream, TR downstream.
 Change Scarlett Light (LLNR-20160) at mile 262.0, Right Descending Bank, in approximate position 39-20-00.704N/093-12-58.938W, showing FI G 4s, to Scarlett Daybeacon (LLNR-20160) SG upstream, CNG downstream.
 Change Sibley Light (LLNR-19820) at mile 336.7, Right Descending Bank, in approximate position 39-10-52.682N/094-11-15.727W, showing FI G 4s, to Sibley Daybeacon (LLNR-19820) CNG upstream, SG downstream.
 Change Griffith Light (LLNR-19600) at mile 366.5, Right Descending Bank, in approximate position 39-06-30.814N/094-35-46.140W, showing FI G 4s, to Griffith Daybeacon (LLNR-19600) SG upstream, SG downstream.

LNM: 35/22

MONONGAHELA RIVER

The Coast Guard will be making the following Aids to Navigation Change after November 22, 2022:
 Discontinue Kelly Run Light (LLNR-22475) at mile 25.8, Right Descending Bank, in approximate position 40-14-38.373N/079-55-24.718W.

LNM: 39/22

KANAWHA RIVER

The Coast Guard will be making the following Aids to Navigation Change after November 22, 2022:
 Discontinue Blaines Island Light (LLNR- 8540) at mile 54.5, Right Descending Bank, in approximate position 38-22-27.670N/081-41-58.042W.

LNM: 39/22

SECTION VI - PROPOSED CHANGES

Periodically, the Coast Guard evaluates its system of aids to navigation to determine whether the conditions for which the aids to navigation were established have changed. When changes occur, the feasibility of improving, relocating, replacing, or discontinuing aids are considered. This section contains notice(s) of non-approved, proposed projects open for comment. SPECIAL NOTE: Mariners are requested to respond in writing to the District office unless otherwise noted (see banner page for address).

PROPOSED WATERWAY PROJECTS OPEN FOR PUBLIC COMMENT

<u>Proposed Project(s)</u>	<u>Closing</u>	<u>Docket No.</u>	<u>Ref. LNM</u>
None			

Proposed Change Notice(s)

OHIO RIVER

The Coast Guard is proposing the following Aid to Navigation Change:
 Discontinue Lock Seven Upper Daybeacon (LLNR-23125) at mile 36.4, Left Descending Bank, in approximate position 40-37-42.243N/080-27-45.620W.
 Comments to be received by November 1, 2022. Please email comments regarding this proposal to: D08-SMB-District-LocalNoticeFeedback@uscg.mil.

LNM: 37/22

OHIO RIVER

The Coast Guard is proposing the following Aid to Navigation Change:
 Discontinue Browns Island Light (LLNR-23350) at mile 61.0, Right Descending Bank, in approximate position 40-24-31.570N/080-36-22.659W.
 Discontinue Cox Ripple Daybeacon (LLNR-23465) at mile 72.9, Right Descending Bank, in approximate position 40-17-29.937N/080-37-02.346W.
 Comments to be received by November 8, 2022. Please email comments regarding this proposal to: D08-SMB-District-LocalNoticeFeedback@uscg.mil.

LNM: 37/22

OHIO RIVER

The Coast Guard is proposing the following Aid to Navigation Change:
 Discontinue Cochranville Light (LLNR-23960) at mile 139.9, Right Descending Bank, in approximate position 39-32-46.551N/081-01-48.725W.
 Discontinue Shadyside Run Light (LLNR-23920) at mile 129.8, Left Descending Bank, in approximate position 39-39-09.604N/080-50-45.255W.
 Discontinue St. Marys Bend Light (LLNR-24040) at mile 155.4, Left Descending Bank, in approximate position 39-23-04.583N/081-13-01.177W.
 Discontinue Brothers Island Upper Light (LLNR-24050) at mile 158.1, Left Descending Bank, in approximate position 39-22-58.370N/081-15-43.483W.
 Comments to be received by November 8, 2022. Please email comments regarding this proposal to: D08-SMB-District-LocalNoticeFeedback@uscg.mil.

LNM: 37/22

SECTION VII - GENERAL

This section contains information of general concern to the Mariners. Mariners are advised to use caution while transiting these areas.

ALABAMA RIVER

MILE 133.0 - DREDGE OPERATION

Continuing until further notice, Construction Solutions International Inc., is conducting dredging operations of small boat access channels on the William (Bill) Dannelly Reservoir. Work will progress upstream of the Millers Ferry L/D, in the vicinity of Mile 133.0. Due to the equipment required to perform this work, access to the river may be restricted, causing temporary closures of boat ramps along the river, until the work is completed. Work will be conducted during daylight hours only and will be fleeting within the work locations overnight, with barges lighted as appropriate. The dredge will monitor VHF-FM Channel 13 or 16. Traffic is requested to notify the dredge, prior to approaching the area and transit the area at their slowest safe speed to minimize their wake. Mariners may contact Chad Brumelow or Derek Kendrick at the BWT/Alabama-Coosa Project Management Office at (205) 752-3571. For boat ramp closures, contact Jason Haynes at the Millers Ferry Resource Office at (334) 682-4244, ext. 104.

LNM: 34-22

MILE 5.0 - MILE 0.0 - MARINE EVENT

On October 1 and 2, 2022, from 7:00 a.m. until 5:00 p.m., each day, the Head of the Ohio Rowing Event will be held between approximate Miles 5.0 and 0.0. The COTP Pittsburgh has issued a Special Local Regulation closing the river for this event. Vessels will not be allowed to transit this area without the permission of the U.S. Coast Guard.

LNM: 39-22

MILE 0.6 - BRIDGE MAINTENANCE

Sixth Street Bridge; A containment system is installed below low steel and follows the contour of the bridge. Vertical clearance is reduced approximately 1-foot for the middle, 100 feet of the navigation span. A work barge will be located outside of the navigation channel and will not affect navigation. Mariners are advised to transit the bridge with extreme caution.

LNM: 38-22

ARKANSAS RIVER

MILE 431.4 - BRIDGE DEMOLITION/RIVER CLOSURE

Highway 33 Bridge; The river will be closed to traffic, from 8:00 a.m. until 7:00 p.m., October 13, 2022, to allow for the demolition and removal of bridge girders.

LNM: 39-22

MILE 363.1 - BRIDGE PUBLIC NOTICE

S.H. 100/U.S. 64 Bridge; A public notice has been issued for the construction of a replacement bridge across the Arkansas Waterway, Mile 363.1, between Webbers Falls, Muskogee County and Gore, Sequoyah County, Oklahoma. The public notice can be viewed at the following website: [D08rPN906-22_US64Bridge_ArkansasWaterway.pdf](https://www.uscg.gov/US64Bridge_ArkansasWaterway.pdf) (uscg.gov). Comment period ends October 20, 2022.

LNM: 39-22

MILE 292.8 - SUBMERGED OBSTRUCTION/L/D RESTRICTION - UPDATE

The submerged obstruction previously reported downstream at the land wall miter gate, James W. Trimble L/D (Nr. 13), in the vicinity of Mile 292.8, has been removed. The L/D restriction has been lifted.

LNM: 39-22

MILE 179.0 - MILE 178.5 - CHANNEL CONDITION/AID TO NAVIGATION/USACE SAILING INSTRUCTION

Continuing until further notice, the USACE Little Rock District advises up-bound and down-bound tows to "run the green line" and to disregard the nun buoy not properly marking the channel in the vicinity of Mile 178.5. Mariners may contact the USACE Little Rock District Office, at (501) 324-5096 or via e-mail at ceswl-op-om@usace.army.mil, for additional information.

LNM: 38-22

MILE 118.5 - ROAD DECK DEMOLITION

I-30 Bridge; In support of demolition of the road deck, a work barge will be encroaching along the left descending side of the navigation channel. Mariners are advised to contact the onsite work boat M/V RAY PENSURUM, via VHF-FM Channel 13, 16 or 68, to have the barge moved from the channel.

LNM: 39-22

MILE 118.2 - BRIDGE PROTECTION CELL DAMAGE

The upstream left descending pier protection cell at the Clinton Presidential Park Bridge in the vicinity of Mile 118.2, is damaged and leaning into the left descending bridge pier. Mariners are urged to exercise caution in the area. Mariners may contact the USACE Little Rock District Office at (501) 324-5096 or via e-mail at: ceswl-op-om@usace.army.mil, for additional information.

LNM: 48-21

MILE 50.2

MILE 10.3 - L/D'S CLOSURES/RESTRICTIONS

Attached as enclosures to this LNM are USACE Little Rock District Navigation Notice 22-21 and 22-41, regarding L/D closures/restrictions for the Joe Hardin L/D (Nr. 3), in the vicinity of Mile 50.2 and for the Norrell L/D (Nr. 1), in the vicinity of Mile 10.3. Mariners may contact the USACE Little Rock District Office, at (501) 324-5096 or via e-mail at ceswl-op-om@usace.army.mil, for additional information.

LNM: 34-22

MILE 10.3 - L/D INSTRUCTION

Continuing until further notice, mariners are advised to avoid contact with the downstream landside/long wall stoplog slot cut located downstream

MILE 10.3 - L/D INSTRUCTION

of the miter gate recess, at Norrell L/D Nr. 1, in the vicinity of Mile 10.3. All up-bound tows MUST stop along the long wall, downstream of the stoplog cut and transition to the river side/short wall prior to lockage. Vessels are to exercise caution to safely transit by the downstream long wall stoplog slot cut. These locking instructions are to remain in place until further notice. Mariners may contact the USACE Little Rock District Office at (501) 324-5096 or via email at: ceswl-op-om@usace.army.mil, for additional information.

LNM: 30-22

MILE 10.1 - MILE 9.9 - USACE SAILING INSTRUCTION/DRAFT RESTRICTION

Shoaling has been reported in the vicinity of Mile 10.3, Norrell L/D Nr. 1. The USACE Little Rock District has issued sailing instructions advising vessels to "run the centerline of the navigation channel" both up-bound and down-bound. The long range forecast indicated decreasing tailwater elevations. Vessels are advised to draft no more than 7 feet, when transiting the White River Entrance Channel. Mariners may contact the USACE Little Rock District Office at (501) 324-5096 or via email at: ceswl-op-om@usace.army.mil, for additional information.

LNM: 36-22

MILE 0.5 - CHANNEL CONDITION/L/D OPERATION

Due to falling river elevations, the crest gates have been raised at the Montgomery Point L/D, in the vicinity of Mile 0.5, vessels are required to pass through the lock. Lockage times may be greater than normal. The 7-foot draft restriction has been lifted. Mariners may contact the L/D via VHF-FM Channel 16, for additional information. Mariners may also contact the USACE Little Rock District Office at (501) 324-5096 or via email at: ceswl-op-om@usace.army.mil, for additional information.

LNM: 36-22

MILE 0.5 - L/D CLOSURE

Continuing until approximately 5:00 p.m., September 28, 2022, the Montgomery Point L/D, in the vicinity of Mile 0.5, is closed for emergency repairs. Unforeseen circumstances could potentially further delay this closure. The L/D will reopen for traffic as soon as repairs are completed. Mariners may contact the L/D via VHF-FM Channel 16, for additional information. Mariners may also contact the USACE Little Rock District Office at (501) 324-5096 or via email at: ceswl-op-om@usace.army.mil, for additional information.

LNM: 39-22

CUMBERLAND RIVER**MILE 312.0 - MILE 308.0 - AIDS TO NAVIGATION**

Multiple can and nun buoys have been reported not properly marking the channel between approximate Miles 312.0 and 308.0. Mariners are urged to exercise caution in the area.

LNM: 35-22

MILE 190.4 - BRIDGE MAINTENANCE

Louisville and Nashville (CSX) Railroad Drawbridge; Vertical clearance is reduced by 4 feet due to installed containment system. The bridge remains fully operational. Mariners are advised to contact bridge tender via VHF-FM Channel 16 or maintenance supervisor at telephone (989) 717-3192, for additional information.

LNM: 35-22

GREEN RIVER**MILE 8.3 - BRIDGE OPERATION**

Louisville and Nashville Railroad Drawbridge; The bridge will be unattended and left in the open-to-navigation position. Mariners will be notified when the bridge is back in operation.

LNM: 20-22

MILE 8.61 - BRIDGE DEMOLITION/RIVER CLOSURE

U.S. Highway 60 Bridge; Due to demolition of the existing bridge, the navigation channel will be blocked for 24-hours from 7:00 a.m., October 3, 2022, until 7:00 a.m., October 4, 2022.

LNM: 38-22

ILLINOIS WATERWAY**MILE 288.7 - MILE 287.3 - BRIDGE REPAIRS**

Joliet Harbor Bridges; Due to ongoing bridge work, mariners are required to provide 1-hour advance notice, when requesting drawspan openings.

LNM: 19-20

MILE 158.0 - MILE 156.0 - CHANNEL CONDITION

Shoaling has been reported between approximate Miles 158.0 and 156.0, Peoria L/D. Mariners are urged to transit the area with caution.

LNM: 34-22

MILE 157.7 - MILE 157.6 - DREDGE OPERATION

Continuing until further notice, the M/V LaSALLE is conducting mechanical dredging/strike removal between approximate Miles 157.7 and 157.6, Peoria L/D lower. Work will be conducted from 6:00 a.m. until 6:00 p.m., 7-days a week. The M/V LaSALLE will monitor VHF-FM Channel 14 or 82 and requests 30-minutes advance notice of passage. Mariners are urged to transit the area at their slowest safe speed to minimize their wake and proceed with caution after passing arrangements have been made.

LNM: 39-22

MILE 157.7 - INVASIVE CARP DETERRENCE - UPDATE

Testing of invasive carp deterrence measures in the vicinity of Mile 157.7, Peoria L/D, have been completed.

LNM: 39-22

MILE 151.2 - BRIDGE OPERATION

MILE 151.2 - BRIDGE OPERATION

Pekin Railroad Drawbridge; Continuing until further notice, the bridge will be unattended and left in the open-to-navigation position. The bridge shall initiate the closing sequence for an approaching train by broadcasting the closure on VHF-FM Channel 16, 10-minutes prior to closure and immediately prior to closing. If no mariners respond to the broadcast, the operator of the bridge may begin the closing sequence. For additional information, mariners may contact Joe Ballou, with Union Pacific Railroad at (708) 990-8513.

LNM: 34-22

MILE 147.4 - CHANNEL CONDITION

Shoaling has been reported in the vicinity of Mile 147.4, mid-channel. Mariners are urged to exercise caution in the area.

LNM: 37-22

MILE 147.3 - MILE 147.0 - CHANNEL CONDITION

Shoaling has been reported between approximate Miles 147.3 and 147.0, extending approximately 150 feet into the navigation channel from the RDB. Mariners are urged to favor the extreme LDB, and proceed with caution.

LNM: 34-22

MILE 145.0 - CHANNEL CONDITION

Shoaling has been reported in the vicinity of Mile 145.0, 40 feet off the nun buoy line. Mariners are urged to exercise caution in the area.

LNM: 34-22

MILE 76.0 - CHANNEL CONDITION

Shoaling has been reported in the vicinity of Mile 76.0. Mariners are urged to exercise caution in the area.

LNM: 30-22

MILE 67.2 - MILE 64.8 - DREDGE OPERATION

Continuing until further notice, the Dredge GOETZ is conducting dredging operations between approximate Miles 67.2 and 64.8. The Dredge GOETZ will monitor VHF-FM Channel 13, 16 or 82. The dredge utilizes floating pontoon pipeline, anchor lines, small tenders and skiffs, in support of its dredging operations. Mariners are urged to transit the area at their slowest safe speed to minimize their wake and proceed with caution after passing arrangements have been made.

LNM: 39-22

MILE 66.3 - CHANNEL CONDITION

Shoaling has been reported in the vicinity of Mile 66.3. Mariners are urged to exercise caution in the area.

LNM: 34-22

KANAWHA RIVER**MILE 46.25 - STREAM BANK PROTECTION/PILE DRIVING OPERATIONS**

Continuing until approximately October 10, 2022, Amherst Madison will conduct stream bank protection and pile driving operations in the vicinity of Mile 46.25, LDB, at an existing boat ramp. The contractors floating plant will consist of the M/V EARL FRANKLIN, a barge mounted crane and a material barge. Work will be conducted from 7:00 a.m. until 5:00 p.m., Monday through Friday. During non-working hours, the contractors floating plant will be moored at the worksite and lighted accordingly. The M/V EARL FRANKLIN will monitor VHF-FM Channel 13 or 16. Mariners are requested to transit the area at their slowest safe speed to minimize their wake and proceed with caution.

LNM: 37-22

MILE 31.1 - L/D REPAIRS

Continuing until October 22, 2022, the Winfield L/D in the vicinity of Mile 31.1, will undergo repairs. No L/D closure is anticipated. Mariners are urged to exercise caution in the area.

LNM: 30-22

KASKASKIA RIVER**MILE 0.8 - MILE 0.0 - DREDGE OPERATION**

Continuing until approximately September 30, 2022, the Dredge BILL HOLMAN is conducting dredging operations downstream of the Costello L/D, between approximate Miles 0.8 and 0.0. The dredge utilizes floating pontoon pipeline, anchor lines, small tenders and skiffs in support of its dredging operations. For passing arrangements, the Dredge BILL HOLMAN will monitor VHF-FM Channel 13. Tows requesting lockage are encouraged to contact Costello L/D, in advance to schedule their arrivals. Mariners are also advised that the downstream floating guidewall will be removed for dredging operations and should exercise caution when transiting the lock. All navigation interests should be alert for, and abide by, any special instructions that may be issued by the lockmaster. Mariners are urged to exercise caution when transiting the area.

LNM: 38-22

MINNESOTA RIVER**MILE 12.1 - DREDGE OPERATION**

Continuing until further notice, the M/V MARGARET D., is conducting dredging operations in the vicinity of Mile 12.1. Work will be conducted from 7:00 a.m. until 7:00 p.m., Monday through Friday. The M/V MARGARET D., will monitor VHF-FM Channel 12 or 19 and requests a minimum of 30-minutes advance notice of passage. Mariners are urged to transit the area at their slowest safe speed to minimize their wake and proceed with caution after passing arrangements have been made.

LNM: 38-22

LOWER MISSISSIPPI RIVER**MILE 920.7 - SUBMERGED OBSTRUCTION**

A large submerged rock has been reported in the vicinity of Mile 920.7, RDB. Mariners are recommended to transit 115 feet, to the left descending side of the sailing line in the area. The rock is reportedly not marked. Mariners are urged to exercise caution in the area.

LNM: 39-22

MILE 811.0 - CHANNEL CONDITION

Shoaling has been reported in the vicinity of Mile 811.0. The USACE maintained water depth and navigation channel width may not be available along all buoy lines. Mariners are urged to exercise caution in the area.

LNM: 37-22

MILE 791.1 - CHANNEL CONDITION

Shoaling has been reported in the vicinity of Mile 791.1, along the sailing line. Water depths of 12 feet have been reported. The USACE maintained water depth and navigation channel width may not be available along all buoy lines. Mariners are urged to exercise caution in the area.

LNM: 39-22

MILE 783.0 - MILE 774.0 - CHANNEL CONDITION

Shoaling has been reported between approximate Miles 783.0 and 774.0, along the can buoy line. The USACE maintained channel depth and width may not be available along all buoy lines. Mariners are urged to exercise caution in the area.

LNM: 36-22

MILE 739.6 - MILE 736.9 - PROTOTYPE AIDS TO NAVIGATION

Continuing until further notice, the COTP Lower Mississippi River is prototyping new aids to navigation in the vicinity of Memphis, TN., along the RDB, in the vicinity of Miles 739.6, 738.7, 738.4 and 736.9. The aids are described as green can buoys. Mariners are urged to exercise caution in the area.

LNM: 37-22

MILE 739.0 - CHANNEL CONDITION

Shoaling has been reported in the vicinity of Mile 739.0. The navigation channel has been reduced to approximately 600 feet. The USACE maintained depth and width may not be available on all buoy lines. Mariners are urged to exercise caution in the area.

LNM: 36-22

MILE 609.0 - CHANNEL CONDITION/COTP TRANSIT RECOMMENDATION

Due to the narrow channel width in the vicinity of Mile 609.0, the COTP Lower Mississippi River recommends both north and south bound tows transit the area 150 feet to the right of the sailing line. Mariners are urged to exercise caution in the area.

LNM: 38-22

MILE 557.0 - CHANNEL CONDITION

Shoaling has been reported in the vicinity of Mile 557.0, mid-channel, approximately 300 feet off the can buoy line. Water depths in the area have been reported to be 9 feet. Mariners are urged to exercise caution in the area.

LNM: 39-22

MILE 524.5 - CHANNEL CONDITION

Shoaling has been reported in the vicinity of Mile 524.5, RDB. Mariners are urged to exercise caution in the area.

LNM: 37-22

MILE 496.0 - MILE 493.0 - RIP-RAP PLACEMENT

Continuing until approximately October 15, 2022, from 7:00 a.m. until 5:00 p.m., each day, Luhr Crosby Contracting Company is conducting rip-rap placement between approximate Miles 496.0 and 493.0, LDB, Baleshed Dike 1. A spud barge will be working from the bankline out to approximately 800 feet from shore. There will also be a fleet set up along the RDB, in same location. The M/V KACIE LUHR and the M/V BILLY GENE will monitor VHF-FM Channel 13, 16 or 72. Mariners are urged to transit the area at their slowest safe speed to minimize their wake and proceed with caution after passing arrangements have been made. Mariners may contact Darwyn Jarrell at (504) 628-0846, Scott Sheppard at (504) 416-5657 or Austin Spence (601) 590-5015, for additional information.

LNM: 38-22

MILE 395.1 - MILE 394.5 - CHANNEL CONDITION

Shoaling has been reported between approximate Miles 395.1 and 394.5, 400 feet off the LDB. The USACE maintained channel depth and width, may not be available along all buoy lines. Mariners are urged to exercise caution in the area.

LNM: 38-22

MILE 356.0 - CHANNEL CONDITIONS

Shoaling has been reported in the vicinity of Mile 356.0, LDB. It is recommended that mariners NOT transit along the nun buoy line. Mariners are urged to exercise caution in the area.

LNM: 37-22

MILE 304.0 - L/D RESTRICTIONS

Continuing until approximately January 31, 2023, tows are to enter the lock wall at a DEAD SLOW speed, tows will be restricted to a length no more than 1,100 feet and will line up along the floating guidewall before proceeding into the lock's chamber. Two line-handlers (with life vests) and bumpers are required when approaching and exiting the lock. Vessels must be moored by the bow and stern to the floating timberheads. The Lockmaster, Mr. Anthony T. Lindsly can be reached at (225) 492-3333, for up-to-date information. The point of contact at the USACE New Orleans Office is Russell Beauvais at (225) 492-2169.

LNM: 31-22

MILE 304.0 - L/D CLOSURE

Continuing until approximately November 13, 2022, the Old River L/D, in the vicinity of Mile 304.0, will be closed for repairs. Mariners may contact the lockmaster, Mr. Anthony Lindsly at (225) 492-3333, for up-to-date information. The point of contact at the USACE New Orleans District is Russell Beauvais at (225) 492-2169.

LNM: 30-22

MILE 266.5 - SUNK BARGE - UPDATE

A partially submerged barge has been reported in the vicinity of Mile 266.5, LDB, near the edge of the navigation channel. The barge is reportedly not marked. Salvage operations are ongoing. Mariners may contact Christopher Vaden at (901) 538-3738, for additional information. Mariners are urged to exercise caution in the area.

LNM: 39-22

MILE 239.3 - MAT LAYING OPERATION

Continuing until October 3, 2022, during daylight hours, each day, the M/V HARRISON is conducting mat laying operations in the vicinity of Mile 239.3, Allendale. During working hours, southbound traffic is limited to 4-barges wide configuration. Towing vessels are advised to make passing arrangements with the M/V HARRISON via VHF-FM Channel 67 or 82. Mariners are urged to exercise caution in the area.

LNM: 38-22

MILE 230.0 - MILE 228.5 - BRIDGE FENDER SYSTEM REPLACEMENT

Continuing until approximately August 2, 2023, work to replace the bridge fender system on the I-10 Bridge, left descending pier of the center span, in the vicinity of Mile 229.3, is being conducted. Work will be conducted Monday through Saturday, from 6:00 a.m. until 7:00 p.m. Mariners are urged to transit between Mile 230.0 and 228.5, at their slowest safe speed to minimize their wake and proceed with caution. Mariners may contact Ryan Finnie via VHF-FM Channel 21 or at (321) 501-3936, for additional information.

LNM: 31-22

MILE 815.0 - MILE 799.2 - DREDGE OPERATION

Continuing until approximately October 26, 2022, the M/V WADE is conducting mechanical dredging operations between approximate Miles 815.0 and 814.5, lower approach to L/D 2, primarily the left descending side of the channel. Work will be conducted from 7:00 a.m. until 7:00 p.m., Monday through Friday. The floating plant will consist of the M/V WADE, M/V WELLS, M/V FOUNTAIN CITY and various barges. Dredge spoils will be transported by the M/V WELLS or the M/V FOUNTAIN CITY to Corps Island in the vicinity of Mile 799.2. The M/V WADE, M/V WELLS and the M/V FOUNTAIN CITY will monitor VHF-FM Channel 13 or 82 and requests 45-minutes advance notice of passage. Mariners are urged to transit the area at their slowest safe speed to minimize their wake and proceed with caution after passing arrangements have been made.

LNM: 37-22

MILE 724.0 - SHORE-SIDE CONSTRUCTION

Continuing until approximately September 29, 2022, construction operations will be conducted at a shore-side facility in the vicinity of Mile 724.0, RDB. An 80-foot wide marine plant will be moored at the dock for the duration of the project. After hours, the plant will be moored outside the navigation channel, but will be wider than what the southbound traffic is used to. Mariners may contact the M/V JOHN J. MANNING via VHF-FM Channel 13 or 16, for additional information. Mariners are urged to transit the area at their slowest safe speed to minimize their wake and proceed with caution.

LNM: 38-22

MILE 699.8 - BRIDGE REPAIR

La Crosse Railroad Drawbridge; Due to ongoing bridge repairs, mariners are requested to provide 30-minutes advance notice when transiting the bridge. Mariners are requested to contact the M/V JOHN J. MANNING, prior to transiting via VHF-FM Channel 13 or 16.

LNM: 36-22

MILE 644.0 - MILE 642.0 - EXPOSED REVETMENT/TRANSIT RECOMMENDATION

Due to falling river levels, a revetment is reportedly exposed between approximate Mile 644.0 and 642.0, RDB. The COTP Lower Mississippi River recommends vessels transit the area a minimum of 200 feet off the RDB. Mariners are urged to transit the area with caution.

LNM: 38-22

MILE 618.6 - DREDGE OPERATION

Continuing until further notice, the M/V ANGELA K., is conducting dredging operations in the vicinity of Mile 618.6. Work will be conducted from 7:00 a.m. until 7:00 p.m., Monday through Friday. The M/V ANGELA K., will monitor VHF-FM Channel 12 or 13, or phone at (651) 890-2256, and requests 30-minutes advance notice of passage. Mariners are urged to exercise caution in the area.

LNM: 38-22

MILE 615.1 - L/D CONSTRUCTION

Continuing until approximately October 1, 2022, from 7:00 a.m. until 7:00 p.m., Monday through Friday, construction operations are being conducted at L/D 10, Upper Auxiliary Chamber, in the vicinity of Mile 615.1. A marine plant and the M/V BARBARA B., will be positioned in the chamber and extending 23-30 feet, past the bullnose, and may extend as much as 100 feet, during times of operation. The M/V BARBARA B., will monitor VHF-FM Channel 13 or 16, for additional information.

LNM: 27-22

MILE 568.7 - MILE 567.6 - DREDGE OPERATION - UPDATE

Dredging operations between approximate Miles 568.7 and 567.6, Deadmans, has been suspended.

LNM: 39-22

MILE 517.0 - CONSTRUCTION OPERATION

Continuing until approximately October 3, 2022, construction operations are being conducted at a facility in the vicinity of Mile 517.0, RDB. The operation will involve a 95-foot wide marine plant, moored off the dock, for the duration of the project. Work will be conducted from 7:00 a.m. until 5:30 p.m., each day. During non-working hours, the floating plant will be moored outside of the navigation channel, but will be wider than what southbound traffic is used to. Mariners may contact the M/V JAMES BRENNAN via VHF-FM Channel 13 or 16, for additional information. Mariners are urged to transit the area at their slowest safe speed to minimize their wake and proceed with caution.

LNM: 37-22

MILE 482.9 - BRIDGE OPERATION

MILE 482.9 - BRIDGE OPERATION

Rock Island Railroad and Highway Drawbridge; The bridge will be in the closed-to-navigation position from 9:00 a.m. until 10:30 a.m., October 8, 2022, in support of The River Bandits 5k run/walk.

LNM: 39-22

MILE 478.3 - BRIDGE REPAIRS

I-280 Bridge; Pier rehabilitation work will take place from 7:00 a.m. until 6:00 p.m., Monday through Saturday. No impacts to navigation are anticipated as work is on the approach piers.

LNM: 35-22

MILE 424.5 - MILE 424.1 - DREDGE OPERATION - UPDATE

The M/V LAURA K., or the M/V CLEE has completed dredging operations between approximate Miles 424.5 and 424.1, Cherokee.

LNM: 39-22

MILE 168.6 - BRIDGE MAINTENANCE

Jefferson Barracks Dual Bridge; Due to a containment system installed below low steel, vertical clearance has been reduced to 84 feet. Mariners are advised to transit the bridge with caution.

LNM: 17-22

MILE 183.2 - BRIDGE MAINTENANCE

Merchants Railroad Bridge; At times during the day, a work barge will be moored channelward of the left descending or right descending main navigation piers, but not at the same time. The work barge will be removed at night.

LNM: 38-22

MILE 185.5 - NAVIGATION OBSTRUCTIONS

Navigation obstructions, consisting of embedded metals, have been reported protruding from the lock walls, L/D 27, lower I-wall bullnose (main chamber), in the vicinity of Mile 185.5. Tows should exercise caution and stay off the bullnose, to avoid the protruding metal. Mariners should be alert for, and abide by, any special instructions that may be issued by the lockmaster.

LNM: 35-22

MILE 182.6 - CHANNEL CONDITION

Shoaling has been reported in the vicinity of Mile 182.6, mid-channel. Mariners are urged to exercise caution in the area.

LNM: 35-22

MILE 175.0 - CHANNEL CONDITION

Shoaling has been reported in the vicinity of Mile 175.0. The USACE maintained water depth and channel width, may not be available along all buoy lines. Mariners are urged to transit the bridge with caution.

LNM: 37-22

MILE 169.9 - CHANNEL CONDITION

Shoaling has been reported in the vicinity of Mile 169.9, mid-channel. Mariners are urged to exercise caution in the area.

LNM: 37-22

MILE 139.0 - DREDGE OPERATION

Continuing until further notice, the Dredge POTTER is conducting dredging operations in the vicinity of Mile 139.0. Work will be conducted 24-hours a day, 7-days a week. The Dredge POTTER will monitor VHF-FM Channel 13 or 16 and requests 30-minutes advance notice of passing. Mariners are urged to transit the area at their slowest safe speed and proceed with caution after passing arrangements have been made.

LNM: 38-22

MILE 125.8 - MILE 125.6 - CHANNEL CONDITION

Shoaling has been reported between approximate Miles 125.8 and 125.6. The USACE maintained water depth and navigation channel width may not be available along all buoy lines. Mariners are urged to exercise caution in the area.

LNM: 37-22

MILE 116.0 - CHANNEL CONDITION

Shoaling has been reported in the vicinity of Mile 116.0, mid-channel side of the can buoy line, lower end of Fort Gage. Mariners are urged to exercise caution in the area.

LNM: 36-22

MISSOURI RIVER**MILE 638.5 - MILE 627.4 - STONE PLACEMENT****MILE 626.6 - MILE 624.8 - DREDGE OPERATION**

Continuing until October 8, 2022, stone placement will be conducted between approximate Miles 638.5 and 627.4. Simultaneously, dredging operations will be conducted between approximate Miles 626.6 and 624.8. Work will be conducted during daylight hours, each day, for both operations. The M/V MICHELLE M., will monitor VHF-FM Channel 10 or (920) 579-2642 and requests a 1-hour advance notice of passage. Mariners are urged to transit the area at their slowest safe speed to minimize their wake and proceed with caution, after passing arrangements have been made.

LNM: 18-22

MILE 397.6 - SUBMERGED OBSTRUCTIONS

Submerged obstructions have been reported in the vicinity of Mile 397.6, underneath the Leavenworth Highway Bridge, Alternate Span. Mariners are urged to exercise caution in the area.

MILE 397.6 - SUBMERGED OBSTRUCTIONS

LNM: 16-22

MILE 366.0 - CHANNEL CONDITION

Shoaling has been reported in the vicinity of Mile 366.0, mid-channel. Mariners are urged to exercise caution in the area.

LNM: 37-22

MILE 185.0 - BRIDGE MAINTENANCE

Rocheport Highway Bridge; A drill barge will be located channelward of the existing right descending pier and will reduce the horizontal clearance to 470 feet. Mariners are advised to transit the bridge with caution.

LNM: 16-22

MILE 156.8 - SUBMERGED OBSTRUCTION

A submerged obstruction has been reported in the vicinity of Mile 156.8, mid-channel. The obstruction is reportedly not marked. Mariners are urged to exercise caution in the area.

LNM: 32-22

MONONGAHELA RIVER**MILE 0.8 - BRIDGE MAINTENANCE**

Smithfield Bridge; A containment system is installed and will hang approximately 1.5 feet, below low steel, following the contour of the bridge.

LNM: 33-22

OHIO RIVER**MILE 25.4****BEAVER RIVER****MILE 2.0 - MILE 0.0 - MARINE EVENT**

On October 8, 2022, from 12:30 p.m. until 5:30 p.m., a rowing event will be held on the Beaver River, between approximate Miles 2.0 and 0.0. Mariners are urged to exercise caution and transit the area at their slowest safe speed to minimize their wake, during the event period.

LNM: 39-22

MILE 31.7 - L/D CLOSURE

Commencing 6:00 a.m., October 17, 2022 and continuing until 6:00 p.m., December 16, 2022, the Montgomery L/D (primary chamber), in the vicinity of Mile 31.7, will be closed. The auxiliary chamber will be available to pass traffic, during this closure. Vessel pilots are requested to contact the L/D via VHF-FM Channel 13, at the normal arrival points. Mariners are urged to exercise caution in the area.

LNM: 39-22

MILE 75.5 - BRIDGE CLEARANCES

New Wellsburg Bridge; Interim navigational clearances for the bridge are listed as: Horizontal clearance, 814.0 feet and vertical clearance 70.25 feet, above normal pool. These clearances are based on approved plans for the newly-constructed bridge and as-built clearances will be published in January 2023.

LNM: 38-22

MILE 90.3 - BRIDGE MAINTENANCE

Wheeling Suspension Bridge; Continuing through June 2023, the vertical clearance may be reduced by 2 feet due to maintenance being performed on the bridge. For more information, mariners may contact West Virginia Department of Transportation, Ahmed Mongi, at (304) 553-3941 or Advantage Steel and Construction, Matt Oskin, at (724) 352-4842.

LNM: 11-22

MILE 183.4 - BRIDGE REPAIR

Belpre-Parkersburg Highway Bridge; Rehabilitation of the eastern most pier located outside of the navigation span is ongoing with 2 material barges located next to the pier, to collect removed concrete. The barges will remain in place during non-work hours and be lighted according to regulations. Work on this pier will continue through September 2022.

LNM: 26-22

MILE 204.0 - DIVE OPERATION/L/D CLOSURE

Continuing until approximately September 30, 2022, from 7:00 a.m. until 5:00 p.m., each day, the Belleville L/D, main and auxiliary chambers, will be closed for repairs. Mariners are urged to contact the lockmaster via VHF-FM Channel 13, for additional information.

LNM: 32-22

MILE 237.0 - OVERHEAD ELECTRICAL INSTALLATION

Continuing until approximately September 30, 2022, New River Electrical, a contractor for American Electric Power will install an overhead powerline in the vicinity of Mile 237.0. Work will be conducted from 7:00 a.m. until 5:00 p.m., 7-days a week. M/V ROBERT R. McCUNE or the M/V CAPTAIN JEFF IRBY will be utilized to monitor vessel traffic in the area and will monitor VHF-FM Channel 13. A helicopter will be utilized to string cable across the river with line tensioning equipment located along the bank. During non-working hours, the contractors floating plant will be moored at the worksite. Mariners are urged to transit the area at their slowest safe speed to minimize their wake and proceed with caution after passing arrangements have been made.

LNM: 37-22

MILE 305.0 - SUBMERGED OBJECT

A large dark object has been reported submerged mid-channel in the vicinity of Mile 305.0. The object appears to be stationary and may pose a navigation obstruction. The obstruction is reportedly not marked. Mariners are urged to exercise caution in the area.

LNM: 36-22

MILE 594.0 - MILE 598.0 - REGATTA/SPECIAL LOCAL REGULATION/RIVER CLOSURE

On October 8 and 9, 2022, from noon until 5:00 p.m., each day. The Captains Quarters Regatta will be held between approximate Miles 594.0 and 598.0. Louisville, KY. The COTP Ohio Valley has established a Special Local Regulation closing the river to facilitate this event. Vessels are prohibited from transiting the area, during this event. Mariners may contact the event manager at (812) 736-6464, for additional information.

LNM: 38-22

MILE 596.0 - MILE 597.0 - MARINE EVENT

Continuing until October 19, 2022, from 5:30 p.m. until 9:00 p.m., each Wednesday, the Derby City Sailboat Race will be held between approximate Miles 596.0 and 597.0. Mariners may contact the event sponsor at (502) 592-5149, for additional information. Mariners are urged to exercise caution in the area, during the event periods.

LNM: 23-22

MILE 602.5 - MILE 603.5 - STUNT FILMING/SAFETY ZONE/RIVER CLOSURE

Commencing 7:00 p.m., October 24, 2022 and continuing until 1:00 a.m., October 25, 2022, stunt filming will be conducted between approximate Miles 602.5 and 603.5. The COTP Ohio Valley has issued a Safety Zone, closing the river for this event. Vessels are prohibited from transiting this area, during the event period. Mariners may contact the event sponsor at (859) 802-2422, for additional information.

LNM: 38-22

MILE 608.6 - BRIDGE MAINTENANCE

Sherman Minton Bridge; Cleaning and painting of the bridge will continue from 7:00 a.m. until 6:00 p.m., Monday through Saturday, until further notice. A containment system will hang 4 feet below low steel. Mariners should transit the bridge with caution.

LNM: 29-21

MILE 606.8 - BRIDGE REPAIR/REDUCED VERTICAL CLEARANCE

Continuing until October 6, 2022, the roadway access bridge over the McAlpine L/D, in the vicinity of Mile 606.8, is undergoing repairs and has a reduced vertical clearance. Attached as an enclosure to this LNM, is USACE Louisville District Notice to Navigation Interests 2022-031, regarding these repairs and the reduced vertical clearances.

LNM: 32-22

MILE 720.7 - L/D TEMPORARY CLOSURES

Continuing until September 30, 2022, up to three 4-hour closures of the Cannelton L/D (auxiliary 600-foot chamber), in the vicinity of Mile 720.7, may be necessary for upgrades. During these closures, all traffic will be stopped. As soon as the upgrades are completed and gate leaf is secured, traffic will resume.

LNM: 39-22

MILE 720.7 - L/D CLOSURE

Continuing until November 12, 2022, the Cannelton L/D (primary 1,200-foot chamber), in the vicinity of Mile 720.7, will be closed for repair.

LNM: 30-22

MILE 789.0 - MILE 791.3 - FACILITY CONSTRUCTION

Commencing October 4, 2022 and continuing until approximately September 30, 2025, Meuth Construction Supply Inc., is constructing a facility adjacent to the navigation channel between approximate Miles 789.0 and 791.3, RDB. Sixteen tri-tie dolphins will be constructed to anchor barges along the riverbank. Construction for this facility will be performed from a floating plant. The contractors floating plant will never extend more than 180 feet from the shoreline, at normal pool. The construction contractor will monitor VHF-FM Channel 7, 13 or 16. Mariners are urged to transit the area with caution.

LNM: 39-22

MILE 962.6 - DEMOLITION BLASTING/TRAFFIC RESTRICTIONS/NAVIGATION LANE CHANGE

Attached as enclosures to this LNM, are USACE Louisville District Notice to Navigation Interest 2022-15, regarding demolition blasting, traffic restrictions and navigation lane changes at L/D 53, in the vicinity of Mile 962.6.

LNM: 25-22

MILE 972.0 - MILE 973.5 - CHANNEL CONDITION/AIDS TO NAVIGATION

Shoaling has been reported between approximate Miles 972.0 and 973.5. The USACE has marked the area with AIS Electronic Buoys until the physical aids can be reset. Mariners are urged to remain in the navigation channel, marked with electronic buoys. Attached as an enclosure to this LNM, is USACE Louisville District Notice to Navigation Interests 2022-042, depicting the area and the placement of the Electronic AIS. Mariners should practice one-way traffic in this area, while the Cairo Gauge remains below 12.0.

LNM: 39-22

MILE 973.2 - DOCK REPAIR - UPDATE

Continuing until approximately October 12, 2022, from 7:00 a.m. until 5:30 p.m., each day, dock repair operations are being conducted in the vicinity of Mile 973.2, RDB. Mariners are urged to transit the area at their slowest safe speed to minimize their wake and proceed with caution. Mariners may contact the M/V JIM BURNS via VHF-FM Channel 16 or 68, for additional information.

LNM: 39-22

TENNESSEE-TOMBIGBEE WATERWAY**MILE 109.0 - DREDGE OPERATION**

Continuing until approximately October 8, 2022, Inland Dredging Company Dredge AMERICA, is conducting dredging operations in the vicinity of Mile 109.0, Buena Vista Bar. Work will be conducted 24-hours per day, 7-days per week. Dredge spoils will be placed upland, adjacent to the dredge plant. The Dredge AMERICA, will monitor VHF-FM Channel 13 or 16, requests approaching vessels contact the dredge and coordinate with the Coffeeville L/D, to transit the area, prior to arrival. Mariners may contact Chad Brumelow or Derek Kendrick, at the USACE BW&T/AL-Coosa Management Office at (205) 752-3571, for additional information. Mariners are urged to transit the area at their slowest safe speed to minimize wake.

**TENNESSEE-TOMBIGBEE WATERWAY
MILE 109.0 - DREDGE OPERATION**

LNLM: 39-22

**TENNESSEE RIVER
MILE 98.0 - MILE 97.0 - DIVE OPERATION**

Continuing until October 8, 2022, from 6:00 a.m. until 8:00 p.m., each day, dive operations will be conducted between approximate Miles 98.0 and 97.0. The dive platform will be a 25-foot workboat displaying diver down and an alpha flag. The dive platform will monitor VHF-FM Channel 13 or 16, for additional information.

LNLM: 38-22

MILE 72.5 - TRANSMISSION TOWER REPAIR/DIVE OPERATIONS

Continuing until approximately December 16, 2022, the TVA is conducting transmission tower repairs in the vicinity of Mile 72.5. In conjunction with this operation, divers will be utilized. Work will be conducted from 7:00 a.m. until 6:00 p.m., Monday through Saturday. The floating plant will consist of the M/V RED WAGNER and 2 barges spud down around the towers. The TVA Police will have vessels on station during dive operations. The M/V RED WAGNER will monitor VHF-FM Channel 13 or 16. Mariners are urged to transit the area at their slowest safe speed to minimize their wake and proceed with caution. Mariners may contact the TVA, for additional information.

LNLM: 14-22

MILE 44.6 - AIDS TO NAVIGATION

Two can buoys have been reported not properly marking the channel in the vicinity of Mile 44.6, RDB, Turkey Bay. One buoy is beached and another is adrift in the area. Mariners are urged to transit the area with caution.

LNLM: 38-22

**WHITE RIVER
MILE 10.0 - MILE 0.0 - CHANNEL CONDITION**

Shoaling has been reported between approximate Miles 10.0 and 0.0. The USACE maintained channel depth and width may not be available along all buoy lines. Mariners are urged to exercise caution in the area.

LNLM: 36-22

SECTION VIII - LIGHT LIST CORRECTIONS

An Asterisk *, indicates the column in which a correction has been made to new information

(1) No.	(2) Name and Location	(3) Mile	(4) Bank	(5) Characteristic	(6) Structure / Dayboard Up Down	(7) Remarks
------------	--------------------------	-------------	-------------	-----------------------	--	----------------

None

ENCLOSURES

USACE Little Rock District Navigation Notices 22-21 and 22-41

L/D's closures/restrictions.

LNLM: 34-22

USACE Channel Status Reports - UPDATE

Arkansas River Channel Status Reports.

LNLM: 39-22

U.S. Coast Guard Sector Upper Mississippi River MSIB 10-22

Marine events/fireworks displays on the Upper Mississippi River, Illinois Waterway and Missouri River.

LNLM: 37-22

USACE Little Rock District Navigation Notice 22-39

Closures of the Norrell L/D Nr. 1 in the vicinity of Mile 10.3, Joe Hardin L/D Nr. 3, in the vicinity of Mile 50.2 and Emmett Sanders L/D Nr. 4, in the vicinity of Mile 66.0.

LNLM: 32-22

USACE Little Rock District Navigation Notice 22-47

Vessel lockage and queue management, multiple L/D's.

LNLM: 37-22

USACE Louisville District Notice to Navigation Interest 2022-15

Demolition blasting, traffic restrictions and navigation lane changes at L/D 53.

LNLM: 25-22

USACE Louisville District Notice to Navigation Interests 2022-031

Bridge repairs and the reduced vertical clearance.

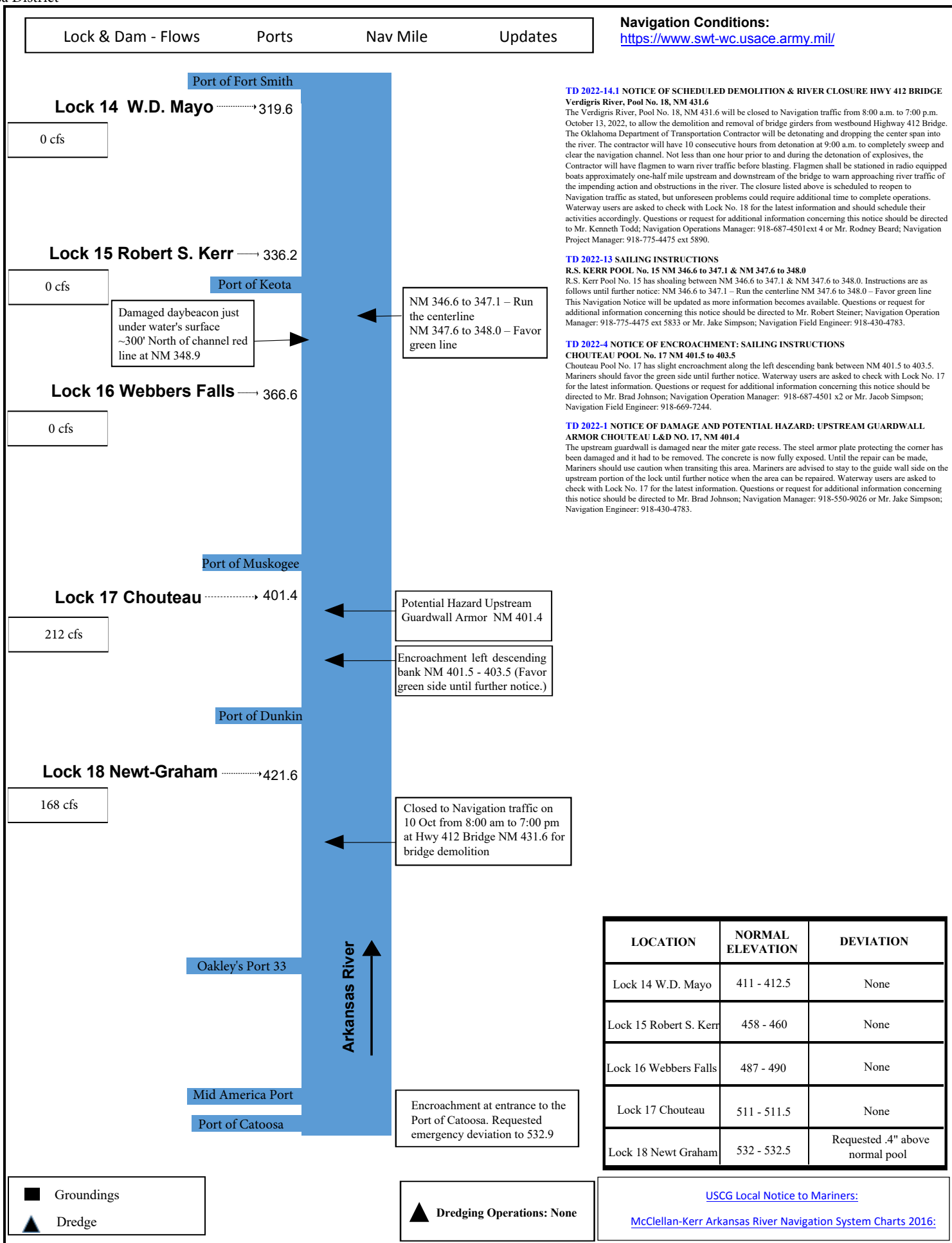
LNM: 32-22

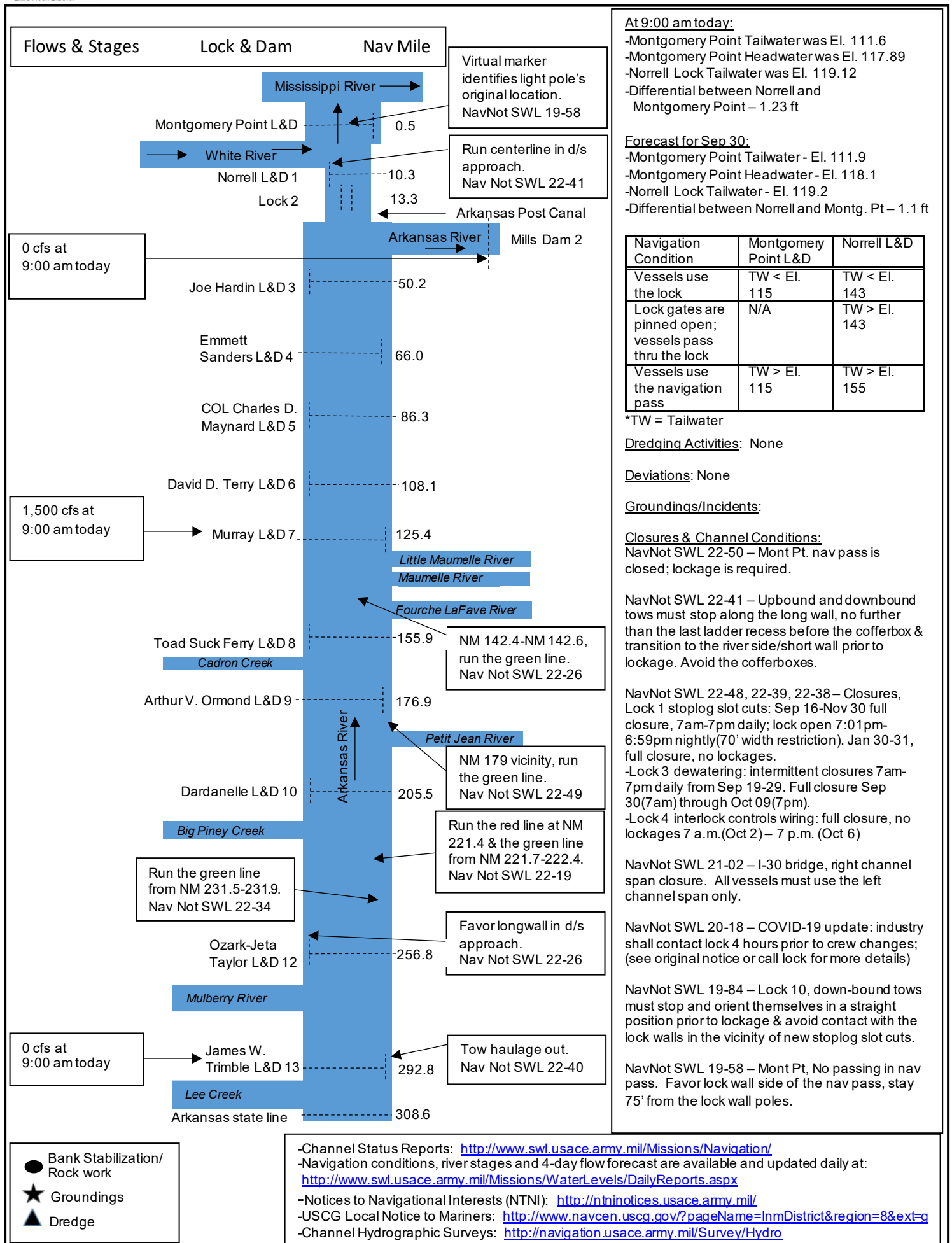
USACE Louisville District Notice to Navigation Interests 2022-042

Chartlets depicting area of shoaling and the placement of the electronic AIS.

LNM: 39-22

Commander, Eighth Coast Guard District
Hale Boggs Federal Building, Room 1230
500 Poydras Street, New Orleans, LA 70130-3310
Telephone (504) 671-2327
(Business Hours 7:00 a.m. - 3:30 p.m. Monday - Friday)
(Nights, Weekends, Holidays) (504) 589-6225
RADM Timme







U.S. COAST GUARD

Sector Upper Mississippi River

September 7, 2022

Marine Safety Information Bulletin # 10-22



September 2022 Notice of Marine Events and Planned River Closures

This bulletin is used purely for informational purposes to assist the maritime community within the Sector Upper Mississippi River (SUMR) Area of Responsibility. Its intent is to advise relevant parties of marine events that are taking place and their location. If an event is permitted by the Coast Guard, please call the event sponsor for any questions directly pertaining to the event, as a permitted marine event will likely impact the navigable channel. For events without a Coast Guard Permit, it was determined that this event should not impact the navigable channel. Please contact the Western Rivers Command Center at the number below if encountering any emergencies or dangerous activities associated with these events.

The Coast Guard received applications for the following events occurring during the month of September 2022. There are scheduled broadcasts via VHF Channel 16 for each closure. These events are listed below:

Date	Event	Permit Issued	Duration	Location (Mile Marker)	Waterway Closure
Illinois River					
N/A	N/A	N/A	N/A	N/A	N/A
Missouri River					
16-Sep-22	Paddle MO-KC	No	0900-1600	429-352	No
17-Sep-22	Paddle MO-KC	No	0900-1600	429-352	No
18-Sep-22	Paddle MO-KC	No	0900-1600	429-352	No
24-Sep-22	Paddle MO-KC	No	0900-1600	29-0	No
25-Sep-22	Paddle MO-KC	No	0900-1600	29-0	No
Upper Mississippi River					
10-Sep-22	Lake Davenport Sailing	No	0900-2000	486-484	No
17-Sep-22	Lake Davenport Sailing	No	0900-2000	486-484	No
17-Sep-22	Great River Race	No	0800-1600	847-844	No
24-Sep-22	MS River Day Canoe Trip	No	1300-1600	852-846	No
24-Sep-22	Lake Davenport Sailing	No	0900-2000	486-484	No
28-Sep-22	MS River Day Canoe Trip	No	1300-1700	847-840	No
28-Sep-22	MS River Day Canoe Trip	No	1400-1700	847-840 (round trip)	No
29-Sep-22	MS River Day Canoe Trip	No	0915-1415	847-840	No
30-Sep-22	MS River Day Canoe Trip	No	0915-1415	847-840	No

To receive the latest information, monitor marine VHF channels 14 and 16, the Upper Mississippi River Port Directory at: [https://homeport.uscg.mil/port-directory/upper-mississippi-river-\(st-louis\)](https://homeport.uscg.mil/port-directory/upper-mississippi-river-(st-louis)). Direct questions to the 24 hour Western Rivers Command Center at (314) 269-2332 or (314) 269-2463 or the Waterways Management staff at SUMRwaterways@uscg.mil

Sincerely,

S.R. MOORE
Chief, Prevention Department
U.S. Coast Guard
By direction



U.S. Army Corps
of Engineers
Little Rock District

NAVIGATION NOTICE Number SWL 22-39

McClellan-Kerr Arkansas River Navigation System

August 9, 2022

In Reply Refer to: CESWL-OP

P. O. Box 867

Little Rock, AR. 72203-0867

PH. 501-324-5096

LOCK CLOSURE UPDATE JOE HARDIN LOCK (No. 3) NM 50.2 MCCLELLAN-KERR ARKANSAS RIVER NAVIGATION SYSTEM

The two intermittent closure periods of Sep 12-19 and Sep 28-29 for Joe Hardin Lock (No. 3) NM 50.2 noted in Nav Notice SWL 22-38 have changed. The new intermittent closure period is Sep 19-29, 7 a.m. – 7 p.m. daily. The closures are for preparatory inspections prior to the dewatering. The dewatering dates, 7 a.m.(Sep 30) – 7 p.m.(Oct 9), have not changed.

Questions or requests for additional information concerning this notice should be directed to the Little Rock District Office, at (501) 324-5096 or you may email CESWL-OP-OM@usace.army.mil.

Christopher B. Roark
Chief, Operations Division



**U.S. Army Corps
of Engineers**
Little Rock District

NAVIGATION NOTICE

Number SWL 22-47

McClellan-Kerr Arkansas River Navigation System

September 8, 2022

In Reply Refer to: CESWL-OP

P. O. Box 867

Little Rock, AR. 72203-0867

PH. 501-324-5739

LOCKAGE QUEUE

LOCK 2 (NM 13.3), NORRELL LOCK (No. 1) NM 10.3

MONTGOMERY POINT LOCK (NM 0.5)

MCCLELLAN-KERR ARKANSAS RIVER NAVIGATION SYSTEM

Lock 1 operators will establish and distribute a lockage/queue management plan daily for Lock 2, Norrell Lock (No.1) and Montgomery Point Lock. This plan will manage condensed traffic during the open hours of operation through Lock 1 (Reference Navigation Notice 22-38).

Mariners will be required to call Lock 1 at 501-324-7341 or by marine radio on Channel 16 to establish their place in the daily queue.

Downbound tows:

The check-in location for all downbound traffic shall be the Pendleton Bridge (NM 22.6). After a downbound vessel has been set in queue, the vessel should wait near the designated waiting location (NM 15-17 or NM 19-20), until instructed to advance to Lock 2. Each afternoon, the next downbound vessel in queue may be locked through Lock 2 where it will be allowed to tie up to the downstream long wall at Lock 2 prepared for its turn at Lock 1.

Upbound tows:

The check-in location for all upbound traffic shall be Victoria Bend (on the Mississippi River). After an upbound vessel has been set in queue, it will be locked through Lock 1 in that order except during emergencies or other extenuating circumstances. Lock 1 operators will instruct upbound tows set in queue to proceed through the navigation pass (or lock through) at Montgomery Point Lock & Dam (MPLD) when space becomes available on the WREC for staging. Waiting locations for upbound vessels that have been instructed to proceed upstream of MPLD will be NM 3, Benzal Bridge (NM 7) or NM 9. Vessels staged at these locations are requested to remain in sequence and to

advance to the next waiting location when the vessel ahead of them departs that location. Each afternoon the next upbound vessel in queue should be secured at NM 9 and prepared to approach Lock 1 when instructed.

Lock 1 operators will e-mail each evening's lockage/queue management plan by 3pm daily. Anyone interested in receiving this daily e-mail should call Lock 1 and provide their email address. Requests may also be sent to the Lock 1 Supervisor, JD Hayes at James.D.Hayes@usace.army.mil.

Lock 1 will contact Lock 2 and MPLD as necessary to maintain order of the vessels to be locked. Helper boats (and changes thereto) must be coordinated with Lock 1 so the queue is not misdirected.

MPLD Phone # 501-324-7340

Lock 1 Phone # 501-324-7341

Lock 2 Phone # 501-324-7349

Questions or requests for additional information concerning this notice should be directed to the Little Rock District Office at (501) 324-5096 or you may email CESWL-OP-OM@usace.army.mil.

Christopher B. Roark
Chief, Operations Division



U.S. Army Corps
of Engineers
Little Rock District

NAVIGATION NOTICE Number SWL 22-21

McClellan-Kerr Arkansas River Navigation System

May 25, 2022

In Reply Refer to: CESWL-OP
P. O. Box 867
Little Rock, AR. 72203-0867
PH. 501-324-5739

REMINDER – SCHEDULED LOCK CLOSURES NORRELL LOCK (No. 1) NM 10.3 JOE HARDIN LOCK (No. 3) NM 50.2 MCCLELLAN-KERR ARKANSAS RIVER NAVIGATION SYSTEM

As previously noted in Nav Notice SWL 22-04, closures are scheduled for Norrell Lock (No. 1) NM 10.3 and Joe Hardin Lock (No. 3) NM 50.2 during the dates and times indicated below.

The closures at Lock 1 are for installing temporary cofferboxes, concrete saw-cutting of the lock walls and other work related to the new dewatering stoplog slots near the upstream and downstream miter gates. Tow width restrictions will be in place as indicated below and no lockages will be allowed outside the specified times.

The closures at Lock 3 are for the lock dewatering and preparatory inspections prior to the dewatering.

Mariners are advised to contact the locks prior to arrival, for specific instructions on how to proceed for safe lockage. During this time, the Lock 1 tow haulage system will not be available.

Lock 1

June 1 – June 11: Limited width(70' max) lockages only, 7 a.m. – 7 p.m. daily

June 22 – July 21: Limited width(70' max) lockages only, 7 p.m. – 7 a.m. daily

Aug 01 – Aug 10: Full closure, no lockages from 7 a.m.(Aug 01) – 7 p.m.(Aug 10)

Aug 21 – Sep 19: Limited width(70' max) lockages only, 7 p.m. – 7 a.m. daily

Lock 3

Sep 12 - 19: Intermittent closures, 7 a.m. – 7 p.m. daily

Sep 28 – 29: Intermittent closures, 7 a.m. – 7 p.m. daily

Sep 30 – Oct 09: Full closure, no lockages from 7 a.m.(Sep 30) – 7 p.m.(Oct 09)

Lock 1

Sep 30 – Oct 09: Full closure, no lockages from 7 a.m(Sep 30) – 7 p.m.(Oct 09)

Oct 20 – Nov 18: Limited width(70' max) lockages only, 7 p.m. – 7 a.m. daily

Nov 29 – Dec 23: Limited width(70' max) lockages only, 7 p.m. – 7 a.m. daily

Jan 03 – Jan 31: Limited width(70' max) lockages only, 7 p.m. – 7 a.m. daily

Questions or requests for additional information concerning this notice should be directed to the Little Rock District Office, at (501) 324-5096 or you may email CESWL-OP-OM@usace.army.mil.

Christopher B. Roark
Chief, Operations Division

NAVIGATION NOTICE Number SWL 22-41



**U.S. Army Corps
of Engineers**
Little Rock District

McClellan-Kerr Arkansas River Navigation System

August 19, 2022

In Reply Refer to: CESWL-OP

P. O. Box 867

Little Rock, AR. 72203-0867

PH. 501-324-5739

SPECIAL LOCKING INSTRUCTIONS-UPDATE NORRELL LOCK (No. 1) NM 10.3 MCCLELLAN-KERR ARKANSAS RIVER NAVIGATION SYSTEM

The landside/long wall coffer boxes are scheduled to be installed downstream and upstream of the miter gate recesses at Norrell Lock (No. 1) NM 10.3, beginning Aug 22. Mariners are advised to avoid contact with the coffer boxes. All up-bound tows must stop along the long wall, no further than the last ladder recess before the downstream coffer box and transition to the river side/short wall prior to lockage. All downbound tows must stop along the long wall, no further than the last ladder recess before the upstream coffer box and transition to the river side/short wall prior to lockage. All vessels are to exercise caution to safely transit by the coffer boxes. These locking instructions replace the locking instructions specified in Nav Notice SWL 22-36 and will remain in place until further notice.

Questions or requests for additional information concerning this notice should be directed to the Little Rock District Office, at (501) 324-5096, or you may email CESWL-OP-OM@usace.army.mil.

Christopher B. Roark
Chief, Operations Division



US Army Corps
of Engineers
Louisville District

Notice to Navigation Interests

Notice No. 2022 - 031

Date: August 4, 2022

<http://www.lrl.usace.army.mil/Missions/CivilWorks/Navigation/Notices.aspx>

In Reply Refer to: CELRL-OPT PO Box 59, Louisville, KY 40201 Telephone: 502-315-6694

LOUISVILLE DISTRICT

MCALPINE LOCKS & DAM

BRIDGE REPAIR – REDUCED VERTICAL CLEARANCE

OHIO RIVER MILE 606.8

McAlpine Locks and Dam (Ohio River mile 606.8): The roadway access bridge over the lock at McAlpine will be getting a repair on the damaged outside girder above the South Chamber. Scaffolding will be hung from the bridge for the repair work to be completed. Clearance above the South Lock will be 15' lower than the published 74.3' from August 8 until October 6, 2022. As shown on the enclosure, the vertical clearance during that time will be 59.3' at project pool stage. Mariners should verify that they can safely navigate under the bridge with this reduced clearance over the South Chamber, and utilize the North Chamber if warranted.

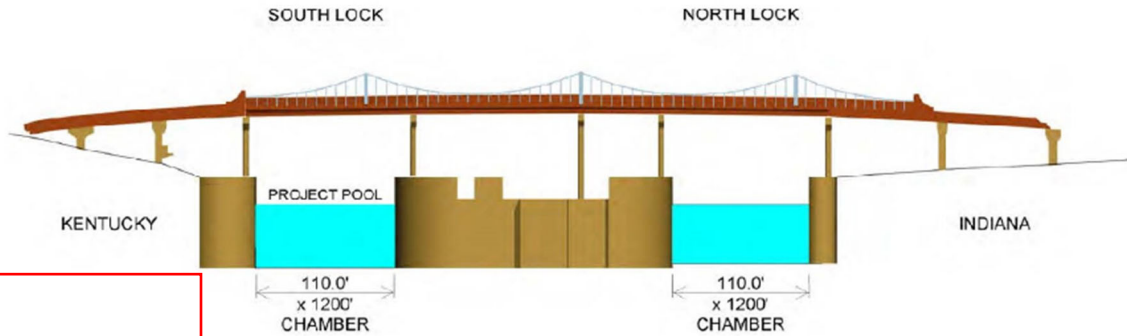
/s/

Shawn Kenney
Chief, Technical Support Branch

PORTLAND SHIPPINGPORT BRIDGE

McAlpine Locks

RIVER MILE 606.8



$$74.3' - 15' = 59.3'$$

DOWNSTREAM VIEW

PROJECT POOL STAGE

DATUM	ELEV.
OHIO RIVER DATUM	420.00
NGVD 29	419.18
NAVD 88	418.70

SOUTH LOCK									
VERTICAL DATUM	OHIO RIVER DATUM (ORD)			NGVD 29			NAVD 88		
LOCATION	LEFT PIER	CENTER	RIGHT PIER	LEFT PIER	CENTER	RIGHT PIER	LEFT PIER	CENTER	RIGHT PIER
ELEVATION OF LOW STEEL	493.5	494.3	495.1	492.7	493.5	494.3	492.2	493.0	493.8
VERT. CLEARANCE AT PROJECT POOL STAGE	73.5	74.3	75.1	73.5	74.3	75.1	73.5	74.3	75.1
NORTH LOCK									
VERTICAL DATUM	OHIO RIVER DATUM (ORD)			NGVD 29			NAVD 88		
LOCATION	LEFT PIER	CENTER	RIGHT PIER	LEFT PIER	CENTER	RIGHT PIER	LEFT PIER	CENTER	RIGHT PIER
ELEVATION OF LOW STEEL	495.0	494.3	493.3	494.2	493.5	492.5	493.7	493.0	492.0
VERT. CLEARANCE AT PROJECT POOL STAGE	75.0	74.3	73.3	75.0	74.3	73.3	75.0	74.3	73.3

NOTE: ALL UNITS ARE IN FEET



**US Army Corps
of Engineers**
Louisville District

Notice to Navigation Interests

Notice No. 2022-015

Date: June 20, 2022

<http://www.lrl.usace.army.mil/Missions/CivilWorks/Navigation/Notices.aspx>

In Reply Refer to: CELRL-OPT PO Box 59, Louisville, KY 40201 Telephone: 502-315-6694

LOUISVILLE DISTRICT

LOCKS AND DAM 53

TRAFFIC RESTRICTIONS AND NAVIGATION LANE CHANGE FOR DEMOLITION BLASTING

OHIO RIVER

The Corps of Engineers' contractor, CJ Mahan, will be working on the demolition of Locks and Dam 53 (Ohio River Mile 962.6) for the entire low water season of 2022. Explosives will be used for the demolition. Blasting will begin on or after 21 June 2022 and is expected to take place during periods when the river stage is below 26 feet on the Olmsted Locks and Dam Headwater gage. A blast may take place up to once every day (Monday – Saturday), conditions permitting. It will be necessary to close the river to traffic around L&D 53 while the contractor is in the process of loading the explosives and detonating the blast. These closures are expected to be 4 hours or less and will typically occur between 1000 and 1400 Central Time. The plan is to conduct the blast at approximately 1200 noon Central Time, after all vessels and personnel have cleared the blast area. A US Coast Guard safety zone will be enforced during loading and blasting activities. The exact details for each day that blasting will occur will be broadcast by the US Coast Guard in a Broadcast Notice to Mariners. Blasting is estimated to end late August 2022.

During this time, vessels will take all direction of the Olmsted Locks and Dam Control Tower.

Northbound vessels will be stopped at Olmsted Locks and Dam (Ohio River Mile 964.6) and southbound vessels at Ohio River Mile 961 upstream of L&D 53 so that there will be no vessels in the vicinity of L&D 53 when the blast is scheduled to occur. CJ Mahan will be operating 1 patrol boat upstream of L&D 53 when wickets are raised at Olmsted L&D and 2 patrol boats when wickets are lowered at Olmsted L&D. See attached drawing for the blasting safety zone. Once the blast has been completed and the all clear issued, the traffic will be released.

In the event that a misfire occurs, and the closure will extend beyond 4 hours, an immediate email notification will be sent out to industry representatives notifying them. A second email notification will be sent as soon as the misfire is cleared and traffic is released.

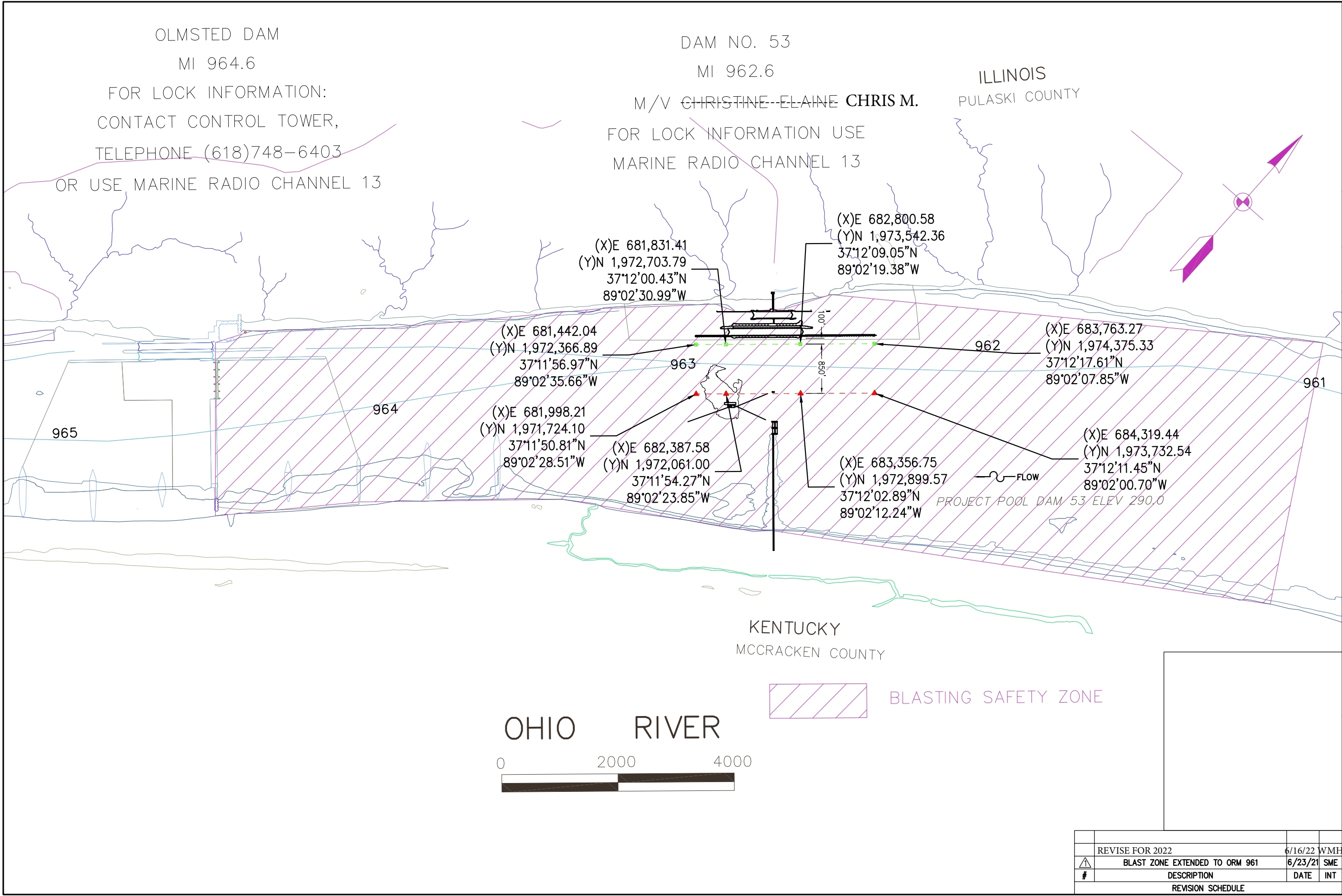
The navigation lane at L&D 53 (Ohio River Mile 962.6) will be approximately 850 feet in the center of the Navigation Pass to facilitate demolition activities as shown in the attached drawing.

All mariners must exercise caution when transiting. The contractor's vessel M/V Chris M. will be working in the area and can be reached on Marine Radio Channel 13.

/s/

Shawn Kenney
Ch. Technical Support Branch

ISSUE DATE: 6/23/2021 Nav Chart_R1.dwg



C.J. Mahan
Construction Company
250 N. Hartford Ave. - Columbus - Ohio - 43222

SCALE

REVIEWED

DATE

DRAWN

SME

DATE

10/20/20

NAVIGATION CHART
LOCKS AND DAM 53 DEMOLITION - PHASE 2

W912QR-20-C-0031

C-20-0010

	REVISE FOR 2022	6/16/22	WME
⚠	BLAST ZONE EXTENDED TO ORM 961	6/23/21	SME
#	DESCRIPTION	DATE	INT
REVISION SCHEDULE			

1/1

