



U.S. Department
of Homeland Security
**United States
Coast Guard**

LOCAL NOTICE TO MARINERS

District 8 MRS

Week: 41/23

Mississippi River System

LIGHT LIST VOLUME V
NOTICE NUMBER 41-23
October 11, 2023

LIGHT LIST REFERENCE: COMDTPUB P16502.5, Vol V, 2023 Edition.

CONTENTS: Rivers are listed in alphabetical order and are included only when there is information to report.

Broadcast Notice to Mariners Covered in this Edition

Originating Unit	Beginning BNM's	Ending BNM's
Sector Upper Mississippi River	0275 - 23 (UM)	0283 - 23 (UM)
Sector Lower Mississippi River	0070 - 23 (LM)	0073 - 23 (LM)
Sector Ohio Valley	0434 - 23 (OV)	0455 - 23 (OV)
OB DWB	0096 - 23 (DWB)	0096 - 23 (DWB)

COAST GUARD DISTRICT 8, WATERWAYS, (504) 671-2327, 7:00 a.m. until 3:30 p.m. (CST)

GENERAL LNM QUESTIONS, COMMENTS, OR SUGGESTIONS MAY BE E-MAILED TO: D8MarineInfo@uscg.mil
COMMENTS REGARDING SECTION VI – PROPOSED CHANGES MAY ALSO BE EMAILED TO: LocalNoticeFeedback@uscg.mil
NIS WATCHSTANDER PHONE (703) 313-5900, 24-HOURS A DAY

INTERNET ADDRESS <https://www.navcen.uscg.gov/>

MISSISSIPPI RIVER SYSTEM LNM VIA INTERNET <https://www.navcen.uscg.gov/>

MISSISSIPPI RIVER SYSTEM LIGHT LIST VIA INTERNET https://www.navcen.uscg.gov/pdf/lightLists/LightList_V5_2023.pdf

ABBREVIATIONS

A through H

ADRIFT - Buoy Adrift
AICW - Atlantic Intracoastal Waterway
Al - Alternating
B - Buoy
BKW - Breakwater
bl - Blast
BNM - Broadcast Notice to Mariner
bu - Blue
C - Canadian
CHAN - Channel
CGD - Coast Guard District
C/O - Cut Off
CONT - Contour
CRK - Creek
CONST - Construction
DAYMK/Daymk - Daymark
DBN/Dbn - Daybeacon
DBD/DAYBD - Dayboard
DEFAC - Defaced
DEST - Destroyed
DISCON - Discontinued
DMGD/DAMGD - Damaged
ec - eclipse
EST - Established Aid
ev - every
EVAL - Evaluation
EXT - Extinguished
F - Fixed
fl - flash
Fl - Flashing
G - Green
GIWW - Gulf Intracoastal Waterway
HAZ - Hazard to Navigation
HBR - Harbor
HOR - Horizontal Clearance

I through O

I - Interrupted
ICW - Intracoastal Waterway
IMCH - Improper Characteristic
INL - Inlet
INOP - Not Operating
INT - Intensity
ISL - Islet
Iso - Isophase
kHz - Kilohertz
LAT - Latitude
LB - Lighted Buoy
LBB - Lighted Bell Buoy
LHB - Lighted Horn Buoy
LGB - Lighted Gong Buoy
LONG - Longitude
LNM - Local Notice to Mariners
LT - Light
LT CONT - Light Continuous
LTR - Letter
LWB - Lighted Whistle Buoy
LWP - Left Watching Properly
MHz - Megahertz
MISS/MSNG - Missing
Mo - Morse Code
MRASS - Marine Radio Activated Sound Signal
MSLD - Misleading
N/C - Not Charted
NGA - National Geospatial-Intelligence Agency
NO/NUM - Number
NOS - National Ocean Service
NW - Notice Writer
OBSCU - Obscured
OBST - Obstruction
OBSTR - Obstruction
Oc - Occulting

P through Z

PRIV - Private Aid
Q - Quick
R - Red
RACON - Radar Transponder Beacon
Ra ref - Radar reflector
RBN - Radio Beacon
REBUILT - Aid Rebuilt
RECOVERED - Aid Recovered
RED - Red Buoy
REFL - Reflective
RRL - Range Rear Light
RELIGHTED - Aid Relit
RELOC - Relocated
RESET ON STATION - Aid Reset on Station
RFL - Range Front Light
RIV - River
RRASS - Remote Radio Activated Sound Signal
s - seconds
SEC - Section
SHL - Shoaling
si - silent
SIG - Signal
SND - Sound
SPM - Single Point Mooring Buoy
SS - Sound Signal
STA - Station
STRUCT - Structure
St M - Statute Mile
TEMP - Temporary Aid Change
TMK - Topmark
TRLB - Temporarily Replaced by Lighted Buoy
TRLT - Temporarily Replaced by Light
TRUB - Temporarily Replaced by Unlighted Buoy
USACE - Army Corps of Engineers
W - White

Additional Abbreviations Specific to this LNM Edition:

RIAC - River Industry Action Committee
MMSI - Mobile Maritime Service Identity
AIS - Automatic Identification System
ATON - Aids To Navigation
COTP - Captain of The Port
TRDBN - Temporary Replaced by Daybeacon
C.F.S. - Cubic Feet per Second
CFR - Code of Federal Regulations
IAW - In Accordance With
H.P. - Horse Power
MPH - Miles Per Hour
TVA - Tennessee Valley Authority
INC - Incorporated
IENC - Inland Electronic Navigation Chart
WAP - Waterway Action Plan
MSIB - Marine Safety Information Bulletin
L/D - Lock and Dam

SECTION I - SPECIAL NOTICES

This section contains information of special concern to the Mariner.

DEPARTMENT OF HOMELAND SECURITY SUSPICIOUS ACTIVITY

The Department of Homeland Security (DHS) encourages the maritime public to report information concerning suspicious activity to the local Federal Bureau of Investigation Joint Terrorism Task Force (JTTF) Office, http://www.fbi.gov/about-us/investigate/terrorism/terrorism_jtfts, or to other appropriate authorities. The U.S. Coast Guard reminds the maritime industry that they may also report information concerning suspicious activity to the www.AmericasWaterwayWatch.org, the National Response Center (NRC) 1-800-424-8802 or 1-877-24WATCH.

LNM: 02-19

WESTERN RIVERS FLOATING AIDS TO NAVIGATION

The U.S. Coast Guard is responsible for placing and maintaining all aids to navigation. Buoys are set to mark project depths taking into consideration the prevailing river stages and obstructions. Buoy positions on the Inland Electronic Navigation Chart (IENC) are approximate, and subject to change depending on prevailing river stages and obstructions.

Buoys should always be given as wide a berth in passing as possible, consistent with the length and width of the vessel or tow and the width of the bend or crossing.

Buoys should always be used with caution. They may be carried off position by high water, accumulation of drift, ice, or sunk by collision or other causes. In those circumstances buoy marks will remain on the IENC and indicate the last known position of the buoy. Presence of a buoy mark on the IENC does not necessarily mean a buoy will be physically on position. When buoys are missing they will be replaced as soon as possible.

LNM: 16-19

GPS TESTING

At times, throughout our area of responsibility, multiple U.S. Government Agencies conduct GPS testing. These tests vary in duration, affected range from the test site and potential impact to the maritime user as they may affect systems that rely on GPS such as E-911, AIS and DSC. More information is available at the U.S. Coast Guard Navigation Center Website, <https://www.navcen.uscg.gov>. During these periods, GPS users are encouraged to report any GPS outages that they may experience, to the Navigation Information Service (NIS) by calling (703) 313-5900 or by using the NAVCEN Website to submit a GPS problem report.

LNM: 07-19

HIGH/LOW WATER FLOW CONDITIONS

During periods of high/low water flow conditions on the Mississippi River System, Captains of the Port, will issue Safety Advisories for their specific areas of responsibility via Broadcast Notice to Mariners. Mariners are encouraged to monitor the Sector Broadcast Notice to Mariners to ensure they are receiving the most up-to-date information.

LNM: 04-23

ARKANSAS RIVER - USACE CHANNEL STATUS REPORTS

Attached as enclosures to this LNM, are USACE Arkansas River Channel Status Reports.

LNM: 09-23

SUNSET OF NOAA PRINTED CHARTS

**** Cancellation of NOAA Paper and Raster Nautical Charts ****

The National Oceanic and Atmospheric Administration (NOAA) is undertaking a multi-year program to end production and maintenance of its suite of over 1,000 traditional paper nautical charts and all associated raster chart products and services, including: Print-on-Demand (POD) paper nautical charts, Full-size chart PDF files, BookletChart™ PDF files, NOAA raster navigational charts (NOAA RNC®), the NOAA RNC tile service, and the online RNC viewer.

Six months notice of the intent to cancel a specific chart is provided in a "Last Edition" notice. The final cancellation of a chart is made in a "Canceled" notice. Both types of notices will appear in LNM Section IV, "Chart Correction". A comprehensive list of all canceled NOAA charts is available at: <http://www.charts.noaa.gov/MCD/Dole.shtml>.

Traditional paper nautical chart production is ending to enable the creation and maintenance of larger scale, more up-to-date, higher quality coverage of NOAA's electronic navigational chart (NOAA ENC®) product. This will significantly enhance the amount of charted detail available to mariners. More information about NOAA's program to sunset traditional paper charts is on the NOAA Coast Survey website at: <https://nauticalcharts.noaa.gov/charts/farewell-to-traditional-nautical-charts.html>.

An online NOAA Custom Chart application at: <https://devgis.charttools.noaa.gov/pod> is available to create chart images from ENC data, which may then be printed. Notices to Mariners will not be issued for NOAA Custom Charts.

LNM: 10-21

LOWER MISSISSIPPI RIVER - CHANNEL CONDITION/SAFETY ADVISORY

The U.S. Coast Guard COTP Ohio Valley has issued a low water Safety Advisory between approximate Miles 953.8 and 869.0. The USACE maintained depths and widths, may not be attainable on all buoy lines. It is recommended that mariners monitor all gauge readings, for safe navigation. The U.S. Coast Guard COTP Lower Mississippi River with the concurrence of the Lower Mississippi River Committee, recommend the following limits for tows:

Transiting southbound between Miles 953.8 and 869.0

Drafts no greater than 9.6 feet.

Barges to be configured no more than 5 wide total, and loaded barges no more than 5 wide.

Transiting northbound between Miles 953.8 and 869.0

Drafts no greater than 9.6 feet.

Barges to be configured no more than 5 wide total, and loaded barges no more than 4 wide.

Barges currently in the system, with drafts greater than the advised depths, should be placed as near to the center of the tow as possible.

Mariners are requested to contact U.S. Coast Guard Sector Ohio Valley via VHF-FM Channel 16 or at (502) 779-5425, to report areas of shoaling, hazardous conditions or missing aids to navigation.

LNM: 38-23

UPPER MISSISSIPPI RIVER - ILLINOIS RIVER - CHANNEL CONDITIONS/SAFETY ADVISORY

Due to extreme low water, U.S. Coast Guard Sector Upper Mississippi River has issued a Safety Advisory for the Upper Mississippi River between Miles 185.4 and 109.9, and on the Illinois River Between Miles 0.0 and 187.0. Attached as an enclosure to this LNM is U.S. Coast Guard Sector Upper Mississippi River MSIB 05-23, extreme low water advisory.

LNM: 38-23

UPPER MISSISSIPPI RIVER/ILLINOIS WATERWAY - BARGE/RAIL COLLISION RISK

Attached as an enclosure to this LNM is U.S. Coast Guard Sector Upper Mississippi River MSIB 08-21, regarding barge/rail collision risk on the Upper Mississippi River and Illinois Waterway.

LNM: 15-23

TENNESSEE RIVER/CUMBERLAND RIVER - SEPTEMBER - OCTOBER/MARINE EVENTS/PLANNED RIVER CLOSURES

Attached as an enclosure to this LNM is U.S. Coast Guard Marine Safety Detachment Nashville notice of marine events and planned river closures for September and October.

LNM: 35-23

SECTION II - DISCREPANCIES

This section lists all reported and corrected discrepancies related to Aids to Navigation in this edition. A discrepancy is a change in the status of an aid to navigation that differs from what is published or charted.

DISCREPANCIES (FEDERAL AIDS)

LLNR	Aid Name	Status	Chart No.	BNM Ref.	LNM St	LNM End
280	Karns Island Upper Light	STRUCT DEST		0651OV	31/18	
990	Milligan Bend Light	STRUCT DEST		0642LM	51/19	
1010	Webber Falls Jetty Light	STRUCT DEST		0641LM	51/19	
1020	Bluff View Light	STRUCT DEST		0640LM	51/19	
1055	Hisaw Bottom Light	LT EXT		0196LM	40/18	
1070	Brier Creek Light	STRUCT DEST		0205LM	31/15	
1077	Sandtown Bottom Light	STRUCT DEST		0457LM	39/19	

1200	Black Rock Daybeacon	STRUCT DEST	0379LM	35/19
1205	Gans Light	STRUCT DEST	0335LM	33/19
1213	Non Lateral Mark 330.4	STRUCT DEST	0087LM	05/16
1220	Onion Creek Daybeacon	STRUCT DMGD	0334LM	33/19
1223	Non Lateral Mark 328.5	STRUCT DMGD	0333LM	33/19
1225	Tucker Lake Light	STRUCT DEST	0332LM	33/19
1230	Mcnabb Bottom Daybeacon	STRUCT DEST	0332LM	33/19
1240	Deadman Slough Light	STRUCT DEST	0330LM	33/19
1255	Wilsons Rock Light	STRUCT DMGD	0380LM	35/19
1265	Peno Point Daybeacon	DAYMK DMGD	0580LM	47/19
1267	Non Lateral Mark 313.9	STRUCT DEST	0089LM	05/16
1315	Garrison Creek Daybeacon	DAYMK MISSING	0377LM	35/19
1360	Crawford County Daybeacon	STRUCT DEST	0378LM	35/19
1365	Jeffrey Light	DAYMK MISSING	0376LM	35/19
1390	Fort Chaffee Light	STRUCT DEST	0579LM	47/19
1395	Haroldton Light	DAYMK MISSING	0578LM	47/19
1400	New Haroldton Light	STRUCT DEST	0574LM	47/19
1420	Gun Club Lake Daybeacon	DAYMK MISSING	0582LM	47/19
1427	Big Creek Daybeacon	DAYMK MISSING	0575LM	47/19
1430	Arbuckle Island Light	STRUCT DEST	0091LM	05/16
1435	Clear Creek Light	DAYMK MISSING	0584LM	41/19
1445	Crooked Slough Light	STRUCT DEST	0583LM	47/19
1455	Mulberry River Daybeacon	STRUCT DEST	0041UM	11/17
1510	Moore's Creek Light	LT IMCH/STRUCT DMGD	0394LM	44/16
1515	Roseville Daybeacon	DAYMK MISSING	0604LM	50/19
1520	O'Kane Island Light	LT IMCH/STRUCT DMGD	0393LM	44/16
1525	Alix Bottom Light	STRUCT DEST	0605LM	50/19
1530	County Line Daybeacon	STRUCT DEST	0606LM	50/19
1532	Non Lateral Mark 246.3	DAYMK MISSING	0607LM	50/19
1535	Kalamazoo Light	DAYMK MISSING	0608LM	50/19
1562	Non Lateral Mark 236.3	DAYMK MISSING	0609LM	50/19
1615	Dublin Daybeacon	STRUCT DEST	0610LM	50/19
1650	Bunker Hill Upper Daybeacon	STRUCT DEST	0639LM	51/19
1660	Bunker Hill Lower Daybeacon	STRUCT DEST	0643LM	51/19
1695	Dardanelle Reach Light	DAYMK DMGD	0204LM	31/15
1697	Non Lateral Mark 201.4	STRUCT DEST	0200LM	41/18
1700	Elberta Light	DAYMK MISSING	0611LM	50/19
1705	Old Neely Daybeacon	DAYMK MISSING	0612LM	50/19
1708	Non Lateral Mark 197.9	STRUCT DEST	0052LM	13/17
1710	Point Bar Cutoff Light	DAYMK MISSING	0613LM	50/19
1715	Hola Bend Cutoff Light	DAYMK MISSING	0614LM	50/19
1725	Reeds Ferry Light	DAYMK MISSING	0615LM	50/19
1733	Non Lateral Mark 189.8	DAYMK MISSING	0616LM	50/19
1735	Sweeden Island Light	LT EXT/DAYMK MISSING	0617LM	50/19
1738	Non Lateral Mark 188.8	DAYMK MISSING	0618LM	50/19
1745	Wilson Light	STRUCT DEST	0620LM	50/19
1770	Willow Bend Lower Daybeacon	DAYMK MISSING	0621LM	50/19
1798	Non Lateral Mark 175.6	DAYMK MISSING	0622LM	50/19
1800	Point Remove Creek Light	DAYMK MISSING	0623LM	50/19

1815	Ellis Island Light	STRUCT DEST	0630LM	51/19
1817	Non Lateral Mark 171.2	DAYMK MISSING	0631LM	51/19
1845	Stane Reach Upper Daybeacon	DAYMK DMGD	0634LM	51/19
1850	Stane Reach Light	DAYMK DMGD	0635LM	51/19
1890	Belk Corner Light	DAYMK MISSING/STRUCT DMGD	0558LM	45/19
1903	Non Lateral Mark 150.9	DAYMK MISSING	0560LM	45/19
1915	Bigelow Middle Daybeacon	DAYMK DMGD	0563LM	45/19
1920	Bigelow Lower Light	DAYMK MISSING	0538LM	44/19
1930	Tri County Light	STRUCT DEST	0370LM	41/16
1940	Beaver Dam Creek Daybeacon	STRUCT DMGD	0636LM	51/19
1948	Non Lateral Mark 138.8	DAYMK MISSING	0539LM	44/19
1953	Non Lateral Mark 137.6	DAYMK MISSING	0540LM	44/19
1960	Palarm Light	DAYMK MISSING	0541LM	44/19
1975	Maumelle River Upper Daybeacon	STRUCT DEST	0565LM	45/19
1988	Non Lateral Mark 130.6	DAYMK MISSING	0542LM	44/19
2030	Burns Park Light	STRUCT DEST	0514LM	42/19
2045	Waterworks Bend Light	DAYMK DMGD	0515LM	42/19
2130	Willow Bar Light	LT EXT	0524LM	42/19
2143	Non Lateral Mark 106.5	DAYMK MISSING	0637LM	51/19
2160	Estes Place Light	DAYMK IMCH/STRUCT DMGD	0396LM	44/16
2199	Non Lateral Mark 92.0	STRUCT DEST	0398LM	44/16
2370	Ste. Marie Bend Lower Daybeacon	STRUCT DEST	0407LM	45/16
2435	Richland Bend Middle Daybeacon	STRUCT DEST	0099LM	16/18
2485	Little Bayou Meto Lower Daybeacon	DAYMK DMGD	0094LM	15/18
2498	Cummins Bend Daybeacon	STRUCT DEST	0103LM	06/16
2540	Sample Island Light	STRUCT DEST	0106LM	06/16
2550	Sample Island Lower Light	STRUCT DEST	0107LM	06/16
2665	Owens Lake Daybeacon	DAYMK DMGD	0110LM	06/16
3655	Cages Bend Light	STRUCT DEST	0660OV	38/19
3680	Lindsley Island Lower Light	LT EXT	0193OV	22/23
3965	Watkins Daybeacon	STRUCT DEST	0245OV	19/17
4250	Shammels Mound Landing Light	STRUCT DEST	0010OV	02/16
4285	Saline Creek Light	STRUCT DEST/TRUB	0221OV	26/16
4315	Pryors Creek Light	STRUCT DEST	0030OV	02/20
4340	Devils Elbow Light	STRUCT DEST	0306OV	16/18
4365	Bleidt Landing Light	STRUCT DEST/TRUB	0137OV	17/21
4390	Crooked Creek Light	STRUCT DEST/TRUB	0383OV	36/16
4425	Commerce Landing Light	STRUCT DEST	0520OV	42/22
4455	Prison Farm Landing Light	STRUCT DEST	0145OV	17/21
4500	Kuttawa Bar Light	STRUCT DEST	0243OV	12/18
4505	Money Cliff Light	STRUCT DEST	0364OV	19/18
6810	Halls Landing Daybeacon	STRUCT DMGD	0024MI	07/23
6885	Lacon Light	STRUCT DEST	0261UM	38/23
6905	Woodyard Creek Light	STRUCT DEST	0260UM	38/23
6930	Spring Branch Light	STRUCT DEST	0262UM	38/23
6985	Sand Point Lower Light	STRUCT DEST	0102UM	20/22
6990	Circle Light	STRUCT DMGD	0102UM	20/22
6995	Spring Bay Daybeacon	STRUCT DEST	0102UM	20/22
7035	Drolls Point Light	STRUCT DEST/TRLB	0233UM	23/20

7585	Frederick Light	STRUCT DEST	0539UM	29/19
7650	Briggs Landing Light	LT EXT/STRUCT DMGD	0890UM	51/19
7695	Moore's Island Light	STRUCT DEST	0037UM	12/22
7705	Wilson Island Daybeacon	DAYMK DMGD	0104UM	18/21
7850	Florence Light	LT EXT	0055UM	14/22
9150	Washita Point Light	LT EXT	0395LM	33/20
9185	Preston Peninsula Light	REDUCED INT	0420LM	46/16
9437	Black Dog Upper Daybeacon	DAYMK MISSING	0181UM	31/23
9456	Six Mile Cut Lower Daybeacon	DAYMK MISSING	0178UM	31/23
10185	Cedar Point Light	REDUCED INT	0031LM	18/22
10195	Dean Island Light	REDUCED INT	0327LM	33/19
10210	Brandywine Chute Light	REDUCED INT	0031LM	18/22
10225	Island 40 Foot Light	STRUCT DEST	0232LM	49/18
10540	Harbert Point Light	LT EXT	0256LM	36/15
10545	Stumpy Point Light	STRUCT DEST	0249LM	52/18
10625	Delta Lower Light	STRUCT DEST	0118LM	06/16
10650	Miller Point Light	STRUCT DEST	0171LM	14/16
10660	Old Town Bend Foot Light	STRUCT DEST	0253LM	36/15
10685	Robson Light	STRUCT DEST	0116LM	06/16
10700	Sunflower Cut-Off Foot Light	STRUCT DEST	0115LM	06/16
10710	Ludlow Bar Light	DAYMK DMGD	0018LM	04/18
10715	Wood Cottage Light	STRUCT DEST	0114LM	06/16
10720	Knowlton Light	STRUCT DEST	0113LM	06/16
10730	Mason Landing Daybeacon	STRUCT DEST	0172LM	14/16
10815	Riverton Middle Bar Light	STRUCT DEST	0113LM	21/18
10885	Cypress Bend Light	STRUCT DEST	0032LM	07/18
10895	Eutaw Bar Light	STRUCT DEST	0365LM	35/19
10905	Mounds Crevasse Lower Light	STRUCT DEST	0114LM	21/18
10910	Boliver Light	STRUCT DEST	0069LM	11/18
10955	Miller Bend Light	STRUCT DEST	0030LM	06/18
10965	La Grange Towhead Light	STRUCT DEST	0367LM	35/19
11050	Vaucluse Bend Light	STRUCT DEST	0028LM	06/18
11070	Anconia Point Light	STRUCT DEST	0368LM	35/19
11080	Lakeport Light	STRUCT DEST	0369LM	35/19
11085	Walnut Point Light	STRUCT DEST	0370LM	35/19
11125	Corregidor Light	STRUCT DEST	0080LM	05/16
11130	Sarah Island Light	STRUCT DEST	0371LM	35/19
11170	Stack Island Light	STRUCT DEST	0372LM	35/19
11180	STACK ISLAND LOWER LIGHT	STRUCT DEST	0373LM	35/19
11195	Chinaman Light	STRUCT DEST	0374LM	35/19
11210	Fitler Point Daybeacon	STRUCT DEST	0170LM	28/17
11215	Seitz Light	STRUCT DEST	0448LM	38/19
11220	Cottonwood Bar Pointway Light	STRUCT DEST	0449LM	38/19
11245	Willow Point Light	DAYMK DMGD	0450LM	38/19
11250	Belle Island Corner Daybeacon	STRUCT DEST	0451LM	38/19
11270	Cabin Teele Light	STRUCT DEST	0452LM	38/19
11275	Marshall Point Cut-Off Daybeacon	STRUCT DEST	0453LM	38/19
11280	Joseph Henry Daybeacon	STRUCT DEST	0454LM	38/19
11407	Coggins Light	STRUCT DEST	0296LM	29/16

11415	Reid Bedford Point Light	STRUCT DEST	0463LM	39/19
11425	Diamond Light	STRUCT DEST	0464LM	39/19
11430	Sargent Point Light	LT IMCH/DAYMK DMGD	0465LM	39/19
11440	Cannon Point Light	STRUCT DEST	0294LM	41/17
11455	Buckridge Light	STRUCT DEST	0467LM	39/19
11470	Grand Gulf Island Light	STRUCT DEST	0468LM	39/19
11505	Old Levee Light	LT IMCH/DAYMK DMGD	0470LM	39/19
11520	Ashland Light	LT IMCH/DAYMK DMGD	0471LM	39/19
11530	Hole In The Wall Light	LT IMCH/REDUCED INT	0472LM	39/19
11540	Giles Bend Cut-Off Light	STRUCT DEST	0171LM	28/17
11680	Bob Boles Light	STRUCT DEST		18/23
11700	Fort Adams Light	STRUCT DEST	0402LM	36/19
11795	Morganza Crevasse Light	STRUCT DEST	0400LM	36/19
11835	Bayou Sara Bend Light	STRUCT DEST	0399LM	36/19
11860	Port Hudson Light	STRUCT DEST	0581NO	36/19
11940	Ben Burman Light	STRUCT DEST	0549LM	44/19
12175	Minnesota River Mouth Daybeacon	STRUCT DMGD	0180UM	31/23
12185	Goiner Daybeacon	STRUCT DMGD	0177UM	31/23
13165	Lock 5A Light	STRUCT DEST/LT EXT	0270UM	39/23
13230	Island 74 Light	STRUCT DEST/TRUB	0380UM	34/20
13370	Island 103 Daybeacon	STRUCT DEST	0274UM	40/23
13430	Root River Upper Light	STRUCT DEST/HAZ NAV	0172UM	20/20
13510	Perry Ruby Light	STRUCT DEST	0061UM	12/17
13535	Britts Landing Daybeacon	DAYMK DMGD/STRUCT DMGD	0310UM	42/22
13720	Crooked Slough Head Daybeacon	STRUCT DEST/TRUB	0482UM	26/19
13725	Crooked Slough Head Light	STRUCT DEST/TRUB	0482UM	26/19
13765	Island 158 Daybeacon	STRUCT DEST	0271UM	39/23
13895	Clayton Daybeacon	STRUCT DEST	0310UM	43/22
13915	Clayton Lower Daybeacon	STRUCT DEST/TRUB	0240UM	31/18
14010	Cassville Upper Daybeacon	STRUCT DEST	0546UM	29/19
14030	Cassville Lower Light	STRUCT DEST	0546UM	29/19
14105	Maquoketa Island Light	STRUCT DEST	0460UM	25/19
14230	Nine-Mile Island Light	STRUCT DEST	0410LM	36/17
14260	Stone Slough Light	STRUCT DEST	0454UM	25/19
14275	Fever River Light	STRUCT DEST/TRUB	0485UM	45/18
14295	Pulaski Light	STRUCT DEST	0485UM	45/18
14385	Arnold Towhead Light	STRUCT DEST	0449UM	25/19
14445	Sabula Lower Light	STRUCT DEST	0446UM	25/19
14460	Smith Bay Light	STRUCT DEST	0048UM	13/22
14475	Elk River Light	DAYMK DMGD	0257LM	31/21
14610	Adams Island Light	STRUCT DEST	0074UM	21/23
14980	Hershey Chute Upper Light	STRUCT DEST	0074UM	21/23
15170	Edwards Island Upper Light	STRUCT DEST/TRUB	0403UM	26/16
15240	Benton Island Light	STRUCT DEST	0073UM	21/23
15475	Waggoner PT Lighted Buoy	MISSING	0138UM	26/23
15785	Sny River Light	STRUCT DEST	0114UM	22/22
16065	Elswood Lower Light	STRUCT DEST	0030UM	16/23
16110	Hastings Landing Daybeacon	STRUCT DMGD	0282UM	39/22
16120	Cuivre Island Light	STRUCT DEST	0282UM	39/22

16200	Portage Des Sioux Light	LT EXT	0088UM	18/22
16910	Ste. Genevieve Island Light	STRUCT DEST	0557UM	30/19
17970	Fitzhugh Daybeacon	STRUCT DEST	0055UM	19/23
17975	Lower Blencoe Bend Daybeacon	STRUCT DEST	0055UM	19/23
17985	Wahle Daybeacon	STRUCT DEST	0055UM	19/23
18010	Little Sioux Reach Daybeacon	STRUCT DEST	0279UM	41/23
18025	Bullard Bend Daybeacon	STRUCT DEST	0279UM	41/23
18040	Peterson Cut-Off Upper Daybeacon	STRUCT DEST	0279UM	41/23
18055	Sandy Point Daybeacon	DAYMK IMCH	0279UM	41/23
18065	Tyson's Bend Daybeacon	DAYMK IMCH	0279UM	41/23
18140	Dodds Daybeacon	DAYMK IMCH	0279um	41/23
18170	Boyer River Daybeacon	STRUCT DEST	0279UM	41/23
18185	Pottawattamie Daybeacon	DAYMK IMCH	0279UM	41/23
18205	Thornton Daybeacon	DAYMK IMCH	0279UM	41/23
18210	Lower Pigeon Creek Bend Daybeacon	DAYMK IMCH	0279UM	41/23
18270	Council Bend Upper Daybeacon	DAYMK IMCH	0279UM	41/23
18320	Omaha Bend Lower Daybeacon	STRUCT DEST	0279UM	41/23
18325	Gibson Bend Daybeacon	DAYMK IMCH	0279UM	41/23
18345	Manawa Daybeacon	DAYMK IMCH	0279UM	41/23
18380	Bellevue Reach Daybeacon	DAYMK IMCH	0279UM	41/23
18385	St Marys Daybeacon	DAYMK IMCH	0279UM	41/23
18390	Bellevue Reach Lower Daybeacon	DAYMK IMCH	0279UM	41/23
18395	St. Marys Lower Daybeacon	DAYMK IMCH	0279UM	41/23
18425	Platte River Lower Daybeacon	STRUCT DEST	0279UM	41/23
18430	North Daybeacon	STRUCT DEST	0279UM	41/23
18435	South Daybeacon	STRUCT DEST	0279UM	41/23
18440	Pollock Daybeacon	STRUCT DEST	0279UM	41/23
18465	Plattsmouth Daybeacon	STRUCT DEST	0279UM	41/23
18470	Tobacco Bend Daybeacon	DAYMK IMCH	0279UM	41/23
18480	Rock Bluff Daybeacon	STRUCT DEST	0279UM	41/23
18485	King Hill Quarry Daybeacon	STRUCT DEST	0279UM	41/23
18490	Calumet Bend Daybeacon	STRUCT DEST	0279UM	41/23
18495	Auldon Bar Daybeacon	STRUCT DEST	0279UM	41/23
18515	Fremont County Daybeacon	DAYMK IMCH	0279UM	41/23
18520	Jones Point Daybeacon	STRUCT DEST	0279UM	41/23
18530	Civil Bend Upper Daybeacon	STRUCT DEST	0279UM	41/23
18580	Nebraska Bend Daybeacon	DAYMK IMCH	0279UM	41/23
19120	Burr Oak Daybeacon	DAYMK IMCH	0279UM	41/23
19125	Dillon Creek Daybeacon	DAYMK IMCH	0279UM	41/23
19130	Bon Ton Daybeacon	DAYMK IMCH	0279UM	41/23
19135	Cut-Off 52 Daybeacon	DAYMK IMCH	0279UM	41/23
19140	Perry Daybeacon	DAYMK IMCH	0279UM	41/23
19145	St. Joseph Daybeacon	DAYMK IMCH	0279UM	41/23
19225	Stoney Daybeacon	DAYMK IMCH	0279UM	41/23
19230	Geary Daybeacon	DAYMK IMCH	0279UM	41/23
19240	Doniphan Upper Daybeacon	DAYMK IMCH	0279UM	41/23
19245	Doniphan Daybeacon	DAYMK IMCH	0279UM	41/23
19250	Rushville Daybeacon	STRUCT DEST	0279UM	41/23

19260	Mud Lake Daybeacon	DAYMK IMCH	0279UM	41/23
19310	Bean Lake Daybeacon	DAYMK IMCH	0279UM	41/23
19320	King Daybeacon	DAYMK IMCH	0279UM	41/23
19325	Oak Mills Daybeacon	DAYMK IMCH	0279UM	41/23
19330	Platte County Daybeacon	DAYMK IMCH	0279UM	41/23
19340	Jackson Daybeacon	STRUCT DEST	0279UM	41/23
19345	Iatan Bend Daybeacon	STRUCT DEST	0279UM	41/23
19365	Kickapoo Daybeacon	DAYMK IMCH	0279UM	41/23
19375	Weston Daybeacon	STRUCT DEST	0279UM	41/23
19385	Bee Creek Daybeacon	STRUCT DEST	0279UM	41/23
19390	Fort Leavenworth Daybeacon	DAYMK IMCH	0279UM	41/23
19400	Duck Lake Daybeacon	DAYMK IMCH	0279UM	41/23
19435	Leavenworth Bend Daybeacon	DAYMK IMCH	0279UM	41/23
19450	Delaware Daybeacon	DAYMK IMCH	0279UM	41/23
19455	Pope Upper Daybeacon	DAYMK IMCH	0279UM	41/23
19470	Pope Daybeacon	DAYMK IMCH	0279UM	41/23
19485	Waldrons Quarry Daybeacon	DAYMK IMCH	0279UM	41/23
19490	Pomeroy Upper Daybeacon	DAYMK IMCH	0279UM	41/23
19520	Burlington Daybeacon	DAYMK IMCH	0279UM	41/23
19525	Big Eddy Creek Daybeacon	DAYMK IMCH	0279UM	41/23
19575	Jersey Creek Daybeacon	DAYMK IMCH	0279UM	41/23
19650	City Dump Daybeacon	DAYMK IMCH	0279UM	41/23
19690	Randolph Bend Daybeacon	DAYMK IMCH	0279UM	41/23
19700	Hawthorn Daybeacon	DAYMK IMCH	0279UM	41/23
19725	Smoke Stack Daybeacon	DAYMK IMCH	0279UM	41/23
19730	Courtney Daybeacon	DAYMK IMCH	0279UM	41/23
19740	Liberty Daybeacon	DAYMK IMCH	0279UM	41/23
19745	Eton Daybeacon	DAYMK IMCH	0279UM	41/23
19790	Clay County Daybeacon	STRUCT DEST	0279UM	41/23
19800	Little Blue Daybeacon	DAYMK IMCH	0279UM	41/23
19810	Jackass Daybeacon	DAYMK IMCH	0279UM	41/23
19815	Jackass Lower Daybeacon	DAYMK IMCH	0279UM	41/23
19895	Sni Bend Lower Daybeacon	DAYMK IMCH	0279UM	41/23
19915	Myrick Daybeacon	DAYMK IMCH	0279UM	41/23
19930	Sunshine Chute Daybeacon	DAYMK IMCH	0279UM	41/23
19950	Crooked River Daybeacon	DAYMK IMCH	0279UM	41/23
19960	Sheep Nose Daybeacon	DAYMK IMCH	0279UM	41/23
19970	Tabo Bend Lower Daybeacon	DAYMK IMCH	0279UM	41/23
19975	Berlin Bend Daybeacon	DAYMK IMCH	0279UM	41/23
19985	Dover Daybeacon	DAYMK IMCH	0279UM	41/23
20010	Hawkins Daybeacon	DAYMK IMCH	0279UM	41/23
20020	Moberly Bend Daybeacon	DAYMK IMCH	0279UM	41/23
20055	Mische Daybeacon	DAYMK IMCH	0279UM	41/23
20060	Bakers Bend Daybeacon	DAYMK IMCH	0279UM	41/23
20070	Cranberry Daybeacon	DAYMK IMCH	0279UM	41/23
20080	Sergeant Floyd Daybeacon	STRUCT DEST	0279UM	41/23
20085	Tamerlane Bend Daybeacon	DAYMK IMCH	0279UM	41/23
20090	Malta Bend Slough Daybeacon	DAYMK IMCH	0279UM	41/23
20165	Harris Daybeacon	DAYMK IMCH	0279UM	41/23

20190	Kinkhorst Daybeacon	STRUCT DEST	0279UM	41/23
20210	Grand River Daybeacon	DAYMK IMCH	0279UM	41/23
20220	Chariton Daybeacon	DAYMK IMCH	0279UM	41/23
20225	Bushwacker Daybeacon	DAYMK IMCH	0279UM	41/23
20245	New Frankfort Daybeacon	STRUCT DEST	0279UM	41/23
20275	Wilhoite Bend Daybeacon	DAYMK IMCH	0279UM	41/23
20285	Cambridge Bend Daybeacon	DAYMK IMCH	0279UM	41/23
20290	Cambridge Bend Lower Daybeacon	STRUCT DEST	0279UM	41/23
20300	Chariton River Daybeacon	DAYMK IMCH	0279UM	41/23
20345	Bluffport Daybeacon	DAYMK IMCH	0279UM	41/23
20350	Boonesboro Daybeacon	DAYMK IMCH	0279UM	41/23
20365	Euphrase Bend Lower Daybeacon	DAYMK IMCH	0279UM	41/23
20370	Fish Creek Daybeacon	DAYMK IMCH	0279UM	41/23
20380	Lisbon Daybeacon	DAYMK IMCH	0279UM	41/23
20400	Howell Daybeacon	DAYMK IMCH	0279UM	41/23
20405	Sights Quarry Daybeacon	DAYMK IMCH	0279UM	41/23
20410	Slaughterhouse Chute Daybeacon	DAYMK IMCH	0279UM	41/23
20415	Slaughterhouse Daybeacon	DAYMK IMCH	0279UM	41/23
20420	Slaughterhouse Lower Daybeacon	DAYMK IMCH	0279UM	41/23
20445	Rocky Point Daybeacon	DAYMK IMCH	0279UM	41/23
20475	Simpson Daybeacon	DAYMK IMCH	0279UM	41/23
20480	Franklin Island Reach Daybeacon	DAYMK IMCH	0279UM	41/23
20500	Wheeler Daybeacon	DAYMK IMCH	0279UM	41/23
20505	Howard County Daybeacon	STRUCT DEST	0279UM	41/23
20510	Diana Bend Daybeacon	DAYMK IMCH	0279UM	41/23
20570	Petite Saline Daybeacon	DAYMK IMCH	0279UM	41/23
20580	Warren Daybeacon	DAYMK IMCH	0279UM	41/23
20595	Plow Boy Daybeacon	DAYMK IMCH	0279UM	41/23
20610	Sandy Hook Bend Daybeacon	DAYMK IMCH	0279UM	41/23
20620	Sandy Hook Lower Daybeacon	DAYMK IMCH	0279UM	41/23
20685	Gray Creek Daybeacon	DAYMK IMCH	0279UM	41/23
20690	Jefferson City Upper Daybeacon	DAYMK IMCH	0279UM	41/23
20715	State Prison Daybeacon	DAYMK IMCH	0279UM	41/23
20725	Moreau River Daybeacon	DAYMK IMCH	0279UM	41/23
20740	Ewing Landing Daybeacon	DAYMK IMCH	0279UM	41/23
20785	Isbell Upper Daybeacon	DAYMK IMCH	0279UM	41/23
20825	Muddy Creek Daybeacon	DAYMK IMCH	0279UM	41/23
20830	St. Aubert Daybeacon	DAYMK IMCH	0279UM	41/23
20840	Auxvasse Daybeacon	DAYMK IMCH	0279UM	41/23
20850	Kishmar Daybeacon	STRUCT DMGD	0279UM	41/23
20865	Chamois Daybeacon	DAYMK IMCH	0279UM	41/23
20885	Big Tavern Daybeacon	DAYMK IMCH	0279UM	41/23
20890	Morrison Daybeacon	DAYMK IMCH	0279UM	41/23
20895	Morrison Lower Daybeacon	DAYMK IMCH	0279UM	41/23
20900	Bluffton Daybeacon	DAYMK IMCH	0279UM	41/23
20995	Warren County Daybeacon	DAYMK IMCH	0279UM	41/23
21005	Berger Daybeacon	STRUCT DEST	0279UM	41/23
21010	Lost Creek Daybeacon	DAYMK IMCH	0279UM	41/23
21015	Bernheimer Upper Daybeacon	DAYMK IMCH	0279UM	41/23

21045	Pinckney Daybeacon	DAYMK IMCH	0279UM	41/23
21050	New Haven Daybeacon	DAYMK IMCH	0279UM	41/23
21070	New Haven Bend Daybeacon	DAYMK IMCH	0279UM	41/23
21075	Sheltons Island Daybeacon	DAYMK IMCH	0279UM	41/23
21230	Howell Island Daybeacon	DAYMK IMCH	0279UM	41/23
21260	Gumbo Daybeacon	DAYMK IMCH	0279UM	41/23
21265	Gumbo Lower Daybeacon	DAYMK IMCH	0279UM	41/23
21345	St. Charles Bend Middle Daybeacon	DAYMK IMCH	0279UM	41/23
21350	Cul De Sac Daybeacon	DAYMK IMCH	0279UM	41/23
21355	La Barge Daybeacon	DAYMK IMCH	0279UM	41/23
21375	Black Walnut Daybeacon	DAYMK IMCH	0279UM	41/23
23285	Cluster Upper Light	STRUCT DEST	0721OV	34/18
24110	Old Lock No. 17 Lower Daybeacon	STRUCT DEST		39/20
25355	Sciotoville Light	LT EXT	0095OV	11/23
26047	Sunken Barge Lighted Buoy WR	MISSING	0519OV	51/21
26047	Sunken Barge Lighted Buoy WR	SINKING/LT EXT	0199OV	22/23
26470	Notch Lick Light	STRUCT DEST	0210OV	23/21
27090	Wolf Creek Light	LT EXT	0064OV	05/22
27520	Robert Mann Light	STRUCT DEST	0269OV	21/22
27540	Water Works Light	STRUCT DMGD	0179OV	12/22
27855	Graham Varble Light	STRUCT DEST	0134OV	17/21
27935	Dekoven Light	STRUCT DEST	0294OV	23/22
29231.34	Westdale Middle Daybeacon	STRUCT DEST/TRUB	0121LM	44/22
29241.25	Smith Island Lower Daybeacon	STRUCT DEST	0202LM	26/21
29272	Deloges Middle Daybeacon	DAYMK IMCH		36/20
29467	Hog Lake Daybeacon	STRUCT DEST		36/20
29618	Red River Entrance Light	STRUCT DEST		37/20
29665	Dry Cypress Daybeacon	STRUCT DEST		37/20
29690	Bayou Cocodrie Upper Daybeacon	STRUCT DEST		37/20
29695	Bayou Cocodrie Daybeacon	STRUCT DEST		37/20
29710	Grassy Lake Daybeacon	DAYMK MISSING		37/20
29725	Alligator Bayou Daybeacon	STRUCT DEST	0216LM	33/17
29750	Timber Lake Daybeacon	STRUCT DEST		37/20
29755	Naples Daybeacon	STRUCT DEST		37/20
29775	Three Rivers Junction Light	STRUCT DEST		37/20
29780	Barbre Daybeacon	STRUCT DEST		37/20
29785	Torras Daybeacon	STRUCT DEST		37/20
29795	Oak Grove Daybeacon	STRUCT DEST		37/20
29845	Houden Point Daybeacon	STRUCT DEST	0255UM	30/21
32140	Chambers Daybeacon	STRUCT DEST	0178OV	11/13
32170	Diamond Island Lower Daybeacon	STRUCT DEST	0177OV	11/13
32190	Savannah Bend Upper Daybeacon	STRUCT DEST	0039OV	04/23
32335	Brodies Landing Light	STRUCT DEST	0041OV	04/23
32350	Crooked Creek Light	STRUCT DEST	0042OV	04/23
32445	Sales Light	TRUB/STRUCT DEST	0269OV	19/14
32460	Reynoldsburg Island Light	STRUCT DEST/TRUB	0290OV	15/18
32465	Shirley Light	STRUCT DEST	0040OV	04/23
32480	Higgins Light	STRUCT DEST	0342OV	27/15
32510	Hurricane Creek Light	STRUCT DEST	0043OV	04/23

32530	Standing Rock Upper Light	STRUCT DEST	0658OV	41/13
32570	Fort Henry Light	STRUCT DEST	0160OV	19/21
32595	Blood River Light	STRUCT DEST/TRUB	0138OV	17/21
32600	Clyde Light	LT EXT	0581OV	44/15
32605	Newburg Light	STRUCT DEST	0362OV	29/15
32710	Twenty-One Mile Light	STRUCT DEST	0108OV	13/23
32715	Chottes Creek Light	STRUCT DEST	0107OV	13/23
32750	Haddock Ferry Light	LT EXT/DAYMK MISSING	0106OV	13/23
32765	Big Chain Light	STRUCT DEST	0105OV	13/23
32780	Mud Creek Light	STRUCT DEST	0036OV	04/23
32825	W. L. Berry Light	STRUCT DEST	0110OV	13/23

DISCREPANCIES (FEDERAL AIDS) CORRECTED

LLNR	Aid Name	Status	Chart No.	BNM Ref.	LNM St	LNM End
------	----------	--------	-----------	----------	--------	---------

None

DISCREPANCIES (PRIVATE AIDS)

LLNR	Aid Name	Status	Chart No.	BNM Ref.	LNM St	LNM End
1685	Oakley Dock Light	LT EXT		0307LM	44/14	
1690	Mobley Dock Light	LT EXT		0454LM	48/13	
2013	City of Little Rock No Wake Buoy	OFF STA		0015LM	21/23	
2100	Oakley Light	LT EXT		0520LM	42/19	
2337	Island Harbor Marina Light	LT EXT			45/16	
2340	Century Tube Lights (2)	LT EXT			45/16	
2400	Pickett And Davison Lights (2)	LT EXT		0481LM	50/13	
3725	Lakewood Marina Lights (4)	LT IMCH		0439OV	34/15	
3750	Dupont Dock Lights (2)	OFF STA/LT EXT		0305OV	26/15	
3795	Nashville Water Intake Lights (2)	LT EXT			44/11	
3805	Holnam Dock Lights (2)	LT EXT			44/11	
3815	Kerr-Mcgee Dock Lights (2)	LT EXT			44/11	
3820	Cohen Terminal Lights (2)	LT EXT			44/11	
3930	Alcoa Chemical Dock Lights (2)	MSLD SIG/LT EXT		0216OV	14/10	
3960	Hunter Marine Transport Dock Lights (2)	LT EXT			47/08	
3995	Riverview Marina Lights (2)	LT EXT			47/08	
4055	Clarksville Boat Club Dock Lights (2)	LT EXT		0533OV	34/12	
6170	Quantum Chemical Dock Lights (2)	LT EXT		0436UM	31/01	
6650	S. T. Services Terminal Lights (2)	LT EXT			41/14	
6695	Continental Grain Company Light	LT EXT			41/14	
7225	Cargo Carriers Dock Lights (2)	LT EXT			25/08	
7235	Pekin Boat Club Breakwater Light	LT EXT			05/16	
7250	Shell Dock Lights (2)	LT EXT		0123UM	16/02	
7255	Adm Growmark Mooring Light	LT EXT		0122UM	16/02	
7260	Sours Grain Tramway Light	LT EXT		0279UM	21/03	
7265	Tomen Dock Light	LT EXT			25/08	
7295	Adm Growmark Mooring Lights (3)	LT EXT		0281UM	21/03	
7460	Cargill Mooring Lights (2)	LT EXT		0284UM	21/03	
7620	Cargill Dock Lights (2)	LT EXT			35/08	
7725	Cargill Terminal Lights (2)	LT IMCH		0171UM	26/18	

7730	Public Service Co. Dock Lights (6)	LT EXT	0119UM	20/18
7730	Public Service Co. Dock Lights (6)	LT IMCH	0171UM	26/18
7760	Adm Growmark Grain Elevator Lights (2)	LT IMCH	0171UM	26/18
9440	Black Dog Lights (5)	LT EXT	0185UM	43/16
9475	Pollution Control Station Light	LT EXT	0197UM	31/23
9965	Huffman Grain Light	STRUCT DEST	0131LM	08/16
10300	Cargill Dock Light	LT EXT	0361LM	34/01
10390	Peavey Lights (2)	LT EXT	0398LM	36/02
10395	Suburban Propane Dock Light	LT EXT	0396LM	36/02
10415	Western Tar Products Dock Light	LT EXT	0394LM	36/02
11943	Bear Industries Barge Dock Lights (4)	LT EXT	0600NO	30/17
11990	Riverside Dock Lights (2)	LT EXT	0695UM	40/01
12080	University Dock Lights (3)	LT EXT	0696UM	40/01
12215	Koch Fuel Dock Lights (2)	LT EXT		35/16
12320	Newport Terminal Lights (2)	LT EXT		35/16
12385	Shiely Dock Lights (2)	LT IMCH		35/16
12712	City of Red Wing Metering Station Special Light	MISSING		42/16
12768	Consolidated Grain and Barge Loading Dock Piling Lights (2)	MISSING		42/16
12930	Alma City Dock Light/Daymarks (3)	MISSING		42/16
13405	G. Heileman Brewery Dock Light	MISSING		42/16
14756	Isle Of Capri Casino Marina Daybeacon	MISSING		03/16
15345	Koch Nitrogen Dock Light	LT EXT		41/14
15425	Hall Towing Light	STRUCT DEST	0280UM	25/20
15822	Hannibal Intake Light	LT EXT	0358UM	32/20
16100	Jersey County Grain Dock Lights (2)	LT EXT		19/16
16205	Piasa Harbor Light	LT EXT	0131UM	22/15
16220	Con-Agra Mooring Lights (2)	LT EXT		21/16
16230	Alton Marina Breakwater Lights (3)	LT EXT	0131UM	22/15
16265	Amoco Dock Light	STRUCT DEST		35/09
16280	Amoco Dock Lights (4)	LT EXT		35/09
16310	Sioux City/New Orleans Terminal Light	STRUCT DEST		35/09
16380	Western Dock Lights (9)	LT IMCH		34/08
16390	Adm-Growmark Dock Lights (4)	LT EXT	0776UM	44/01
16430	Union Electric Coal Dock Lights (2)	LT EXT	0305UM	34/08
16445	Continental Cement Lights (2)	LT EXT	0305UM	34/08
16505	Peavey Company Dock Lights (3)	LT EXT	0305UM	34/08
16530	Cahokia Marine Terminal Lights (2)	LT EXT	0305UM	34/08
16540	Slay Bulk Terminal Lights (2)	LT EXT	0305UM	34/08
16545	Peavey Lights (3)	LT EXT	0305UM	34/08
16550	Eagle Marine Industries Light	LT IMCH	0305UM	34/08
16560	Phillips Pipeline Lights (2)	LT EXT	0305UM	34/08
16565	Growmark Dock Lights (2)	LT EXT	0305UM	34/08
16575	Eagle Marine Dock Lights (2)	LT EXT	0305UM	34/08
16600	J.H. Collier Barge Mooring Lights (2)	LT EXT	0305UM	34/08
16605	Clark Oil Refining Dock Lights (4)	LT EXT	0305UM	34/08
16609	Alcoa Foil Lights (2)	LT EXT	0305UM	34/08
16615	Hci Chemtech Dock Lights (2)	LT EXT	0305UM	34/08
16617	Semmaterials Terminal Lights (2)	LT EXT	0305UM	34/08

16630	American Commercial Dock Lights (2)	LT EXT	0305UM	34/08
16655	Bussen Terminal Light	LT EXT	0305UM	34/08
18700	Bunge Dock Lights (3)	MISSING/LT EXT		18/08
19185	St. Joseph L & P Dock Light	LT IMCH		17/08
19415	Leavenworth Water Intake Lights (2)	LT EXT	0104UM	39/07
19460	Smoot Grain Dock Lights (2)	LT EXT	0385UM	39/07
19505	Board Of Public Utilities Light	LT EXT	0386UM	39/07
19535	Public Utilities Intake Lights (3)	LT EXT		38/08
19660	Continental Grain Dock Lights (4)	LT EXT	0181UM	24/08
19695	Kansas City Power And Light Company Lights (2)	LT EXT	0181UM	24/08
20870	U.E. Callaway Intake Lights (2)	LT EXT	0522UM	52/20
22873	Moon Township Municipal Authority Back Channel Outfall Danger Buoy	OFF STA	0108OV	14/21
24005	Bens Run Light	LT EXT		03/20
24580	Ohio Power Coal Dock Light	LT EXT	0480OV	44/21
25820	Cargill Barge Loading Facility Light	LT EXT	0552OV	40/09
26290	Boone County Sand And Gravel Lights (2)	LT EXT	0769OV	40/00
26833	Transmontaige Dock Lights (2)	LT EXT	0286OV	28/21
26860	Dupont Chemical Lights (2)	LT EXT	0330OV	17/18
27590	Transmontaigne Dock Lights (4)	LT EXT		40/21
29997	Cityview at Riverwalk Dock Light	LT EXT	0284OV	28/23
32900	Ergon Dock Lights (2)	LT IMCH		17/13
	Alcosan-Mascaro Temporary Lighted Danger Buoy	MISSING		24/22

DISCREPANCIES (PRIVATE AIDS) CORRECTED

LLNR	Aid Name	Status	Chart No.	BNM Ref.	LNM St	LNM End
------	----------	--------	-----------	----------	--------	---------

None

PLATFORM DISCREPANCIES

Name	Status	Position	BNM Ref.	LNM St	LNM End
------	--------	----------	----------	--------	---------

None

PLATFORM DISCREPANCIES CORRECTED

Name	Status	Position	BNM Ref.	LNM St	LNM End
------	--------	----------	----------	--------	---------

None

SECTION III - TEMPORARY CHANGES and TEMPORARY CHANGES CORRECTED

This section contains temporary changes and corrections to Aids to Navigation for this edition. When charted aids are temporarily relocated for dredging, testing, evaluation, or marking an obstruction, a temporary correction shall be listed in Section IV giving the new position.

TEMPORARY CHANGES

LLNR	Aid Name	Status	Chart No.	BNM Ref.	LNM St	LNM End
7015	Blue Creek Point Lower Lighted Buoy	TRUB		0379UM	51/21	
7030	Drolls Point Upper Lighted Buoy	TRUB		0379UM	51/21	
7040	Peoria Heights Lighted Buoy	TRUB		0379UM	51/21	
10455	Armstrong Bar Light	RELOCATED			23/18	
11275	Marshall Point Cut-Off Daybeacon	TRDBN			49/16	
11280	Joseph Henry Daybeacon	TRDBN			49/16	

TEMPORARY CHANGES CORRECTED

LLNR	Aid Name	Status	Chart No.	BNM Ref.	LNM St	LNM End
------	----------	--------	-----------	----------	--------	---------

None**PLATFORM TEMPORARY CHANGES**

Name	Status	Position	BNM Ref.	LNM St	LNM End
------	--------	----------	----------	--------	---------

None**PLATFORM TEMPORARY CHANGES CORRECTED**

Name	Status	Position	BNM Ref.	LNM St	LNM End
------	--------	----------	----------	--------	---------

None**SECTION V - ADVANCE NOTICES**

This section contains advance notice of approved projects, changes to aids to navigation, or upcoming temporary changes such as dredging, etc. Mariners are advised to use caution while transiting these areas.

SUMMARY OF ADVANCED APPROVED PROJECTS**Approved Project(s)****Project Date****Ref. LNM****None****Advance Notice(s)****LOWER MISSISSIPPI RIVER**

The Coast Guard will be making the following Aids to Navigation Changes after October 24, 2023:

Discontinue Gold Dust Bar Light (LLNR-10065) at Mile 793.4, Left Descending Bank, in approximate position 35-44-25.300N/089-50-21.400W.

Discontinue Island 30 Lower Daybeacon (LLNR-10100) at Mile 785, Right Descending Bank, in approximate position 35-40-51.700N/089-56-46.400W.

Discontinue Howard Daybeacon (LLNR-10175) at Mile 763.7, Right Descending Bank, in approximate position 35-29-48.228N/090-01-08.796W.

Discontinue Brandywine Chute Upper Daybeacon (LLNR-10205) at Mile 752.7, Left Descending Bank, in approximate position 35-22-13.080N/090-04-31.908W.

Discontinue Sycamore Chute Daybeacon (LLNR-10240) at Mile 740.3, Left Descending Bank, in approximate position 35-12-13.392N/090-03-33.876W.

Discontinue Star Landing Daybeacon (LLNR-10475) at Mile 707.2, Left Descending Bank, in approximate position 34-54-09.972N/090-14-39.552W.

Discontinue Peters Daybeacon (LLNR-10500) at Mile 692.0, Right Descending Bank, in approximate position 34-48-04.032N/090-28-40.908W.

Discontinue Mhoon Bend Daybeacon (LLNR-10515) at Mile 683.4, Left Descending Bank, in approximate position 34-43-29.442N/090-30-55.256W.

LNM: 35/23

ALLEGHENY RIVER

The Coast Guard will be making the following Aid to Navigation Change after October 24, 2023:

Discontinue Karns Island Upper Light (LLNR-280) at Mile 27.4, Right Descending Bank, in approximate position 40-39-09.171N/079-41-32.511W.

LNM: 35/23

OHIO RIVER

The Coast Guard will be making the following Aid to Navigation Change after October 24, 2023:

Discontinue Old Lock No. 17 Lower Daybeacon (LLNR- 24110) at Mile 167.6, Right Descending Bank, in approximate position 39-21-58.421N/081-23-57.062W.

LNM: 35/23

SECTION VI - PROPOSED CHANGES

Periodically, the Coast Guard evaluates its system of aids to navigation to determine whether the conditions for which the aids to navigation were established have changed. When changes occur, the feasibility of improving, relocating, replacing, or discontinuing aids are considered. This section contains notice(s) of non-approved, proposed projects open for comment. SPECIAL NOTE: Mariners are requested to respond in writing to the District office unless otherwise noted (see banner page for address).

PROPOSED WATERWAY PROJECTS OPEN FOR PUBLIC COMMENT**Proposed Project(s)****Closing****Docket No.****Ref. LNM****None**

Proposed Change Notice(s)

None

SECTION VII - GENERAL

This section contains information of general concern to the Mariners. Mariners are advised to use caution while transiting these areas.

ALLEGHENY RIVER**MILE 0.6 - BRIDGE MAINTENANCE**

Sixth Street Bridge; A containment system is installed below low steel and follows the contour of the bridge. Vertical clearance is reduced approximately 1-foot for the middle, 100 feet of the navigation span. A work barge will be located outside of the navigation channel and will not affect navigation. Mariners are advised to transit the bridge with extreme caution.

LNM: 38-22

ARKANSAS RIVER**MILE 300.4 - BRIDGE MAINTENANCE**

Continuing until further notice, concrete and deck repairs will be conducted on the I-64 Bridge. All vessels are directed to use the main navigation channel. Mariners may contact the I-64 Bridge crew on VHF-FM Channel 13 or 16, for further information.

LNM: 13-23

MILE 299.6 - BRIDGE MAINTENANCE

Continuing until further notice, concrete and deck repairs will be conducted on the I-540 Bridge. All vessels are directed to use the main navigation channel. Mariners may contact the I-540 Bridge crew on VHF-FM Channel 13 or 16, for further information.

LNM: 13-23

MILE 118.2 - BRIDGE PROTECTION CELL DAMAGE

The upstream left descending pier protection cell at the Clinton Presidential Park Bridge in the vicinity of Mile 118.2, is damaged and leaning into the left descending bridge pier. Mariners are urged to exercise caution in the area. Mariners may contact the USACE Little Rock District Office at (501) 324-5096 or via e-mail at: ceswl-op-om@usace.army.mil, for additional information.

LNM: 48-21

CUMBERLAND RIVER**MILE 190.4 - BRIDGE MAINTENANCE**

Louisville and Nashville (CSX) Railroad Drawbridge; Vertical clearance is reduced by 4 feet due to installed containment system. The bridge remains fully operational. Mariners are advised to contact the bridge tender via VHF-FM Channel 16 or the maintenance supervisor, at (989) 717-3192, for additional information.

LNM: 35-22

MILE 103.3 - DOCK REPAIRS

Continuing until January 11, 2024, Southern Marine Construction will be conducting dock repairs at Mile 103.3. Work will be conducted daily, during daylight hours. M/V LOIS BIDDER will monitor VHF-FM Channel 13. Mariners are urged to maintain a proper lookout and exercise caution in the area.

LNM: 37-23

MILE 2.8 - BRIDGE DEMOLITION

Lucy Jefferson Lewis Memorial Bridge; Explosive demolition of the existing bridge will occur on the morning of October 20, 2023. The navigation channel will be blocked for approximately 24-hours for the removal of the span, or until the bridge pieces are removed from the channel. A Safety Zone will be in effect during this evolution.

LNM: 40-23

GREEN RIVER**MILE 8.3 - BRIDGE OPERATION**

Louisville and Nashville Railroad Drawbridge; Due to construction, the drawbridge will open on demand from 6:00 a.m. to 4:30 p.m., daily. At all other times the drawbridge will be kept in the open-to-navigation position.

LNM: 33-23

ILLINOIS WATERWAY**MILE 288.7 - MILE 287.3 - BRIDGE REPAIRS**

Joliet Harbor Bridges; Due to ongoing bridge work, mariners are required to provide 1-hour advance notice, when requesting drawspan openings.

LNM: 19-20

MILE 287.3 - BRIDGE MAINTENANCE

McDonough Street Bridge; Due to cleaning and painting of the drawbridge, mariners are requested to provide a one-hour advance notice to the bridge operator for a bridge opening.

LNM: 26-23

MILE 228.4 - MILE 226.6 - DREDGE OPERATION

Continuing until further notice, M/V MADISON or M/V BARRY J., is conducting dredging operations between Miles 228.4 and 226.6, Deer Park Light Reach and Peoria Pool at the Vermillion. Work will be conducted 24-hours a day, 7-days a week. The M/V MADISON or M/V BARRY J., will monitor VHF-FM Channel 13 or 73, and requests 30-minutes advance notice of passage. Mariners are urged to transit the area at their slowest safe speed to minimize their wake and proceed with caution after passing arrangements have been made.

MILE 228.4 - MILE 226.6 - DREDGE OPERATION

LNM: 41-23

MILE 189.1 - BRIDGE MAINTENANCE

Continuing until further notice, bridge maintenance will be conducted on the Lacon Highway Bridge. Vertical clearance may be reduced by 30 feet, due to containment/work platform below the bridge deck. Mariners are urged to exercise caution while transiting under the bridge. Mariners may contact the Lacon Highway Bridge crew via VHF-FM Channel 13 or 16.

LNM: 31-23

MILE 151.2 - BRIDGE OPERATION

Pekin Railroad Drawbridge; Continuing until further notice, the bridge will be unattended and left in the open-to-navigation position. The bridge shall initiate the closing sequence for an approaching train by broadcasting the closure on VHF-FM Channel 16, 10-minutes prior to closure and immediately prior to closing. If no mariners respond to the broadcast, the operator of the bridge may begin the closing sequence. For additional information, mariners may contact Joe Ballou, with Union Pacific Railroad, at (708) 990-8513.

LNM: 34-22

MILE 40.2 - DREDGE OPERATION

Continuing until further notice, the Dredge GOETZ is conducting dredging operations in the vicinity of Mile 40.2. Operations will be conducted 24-hours a day, 7-days a week. Dredge GOETZ will monitor VHF-FM Channel 13, 16 or 82A, and requests 30-minutes advance notice of passage. Mariners are urged to transit the area at their slowest safe speed to minimize their wake and proceed with caution after passing arrangements have been made.

LNM: 41-23

LITTLE TENNESSEE RIVER**MILE 1.0 - AID TO NAVIGATION**

A nun buoy has been reported off station in the vicinity of Mile 1.0. Mariners are urged to exercise caution in the area.

LNM: 41-23

LOWER MISSISSIPPI RIVER**MILE 927.6 - CHANNEL CONDITION**

Shoaling has been reported along the RDB, in the vicinity of Mile 927.6, extending past the green buoy line. Mariners are urged to favor the LDB and exercise caution in the area.

LNM: 37-23

MILE 926.0 - MILE 925.2 - CHANNEL CONDITION

The navigation channel has been reduced to 600 feet between approximate Miles 926.0 and 925.2. The channel has been marked with 5 nun and 3 can buoys. Mariners are urged to transit the area with extreme caution. Make reports of shoaling and any missing or off station buoys to U.S. Coast Guard Sector Ohio Valley via VHF-FM Channel 16.

LNM: 41-23

MILE 925.7 - CHANNEL CONDITION

Shoaling has been reported along the LDB, in the vicinity of Mile 925.7. Mariners are advised to transit the area with caution.

LNM: 41-23

MILE 925.2 - MILE 924.5 - CHANNEL CONDITION

The navigation channel has been reduced to 450 feet between approximate Miles 925.2 and 924.5, and a one-way traffic pattern has been implemented. Mariners are urged to transit the area with extreme caution. Make reports of shoaling and any missing or off station buoys to U.S. Coast Guard Sector Ohio Valley via VHF-FM Channel 16.

LNM: 41-23

MILE 921.0 - MILE 920.0 - CHANNEL CONDITION

A rock shelf has been reported along the nun buoy line, in the vicinity of Mile 920.0. A one-way traffic pattern has been implemented between approximate Miles 921.0 and 920.0. Mariners are advised to transit the area with caution.

LNM: 41-23

MILE 920.0 - AIDS TO NAVIGATION

Multiple buoys have been reported off station in the vicinity of Mile 920.0. Mariners are urged to transit the area with extreme caution and utilize their electronic chart plotter for the correct buoy positions.

LNM: 41-23

MILE 881.2 - PARTIALLY SUBMERGED BARGE

A partially submerged barge has been reported in the vicinity of Mile 881.2, LDB, on September 29, 2023. The partially submerged barge is reportedly not marked. Mariners are urged to transit this area with caution.

LNM: 40-23

MILE 870.0 - MILE 869.0 - CHANNEL CONDITION

The channel has been moved towards the LDB and reduced to 480 feet between Miles 870.0 and 869.0. Mariners are urged to transit the area with caution. Mariners are requested to contact U.S. Coast Guard Sector Ohio Valley via VHF-FM Channel 16, or at (502) 779-5425, to report areas of shoaling, hazardous conditions or missing aids to navigation.

LNM: 38-23

MILE 816.0 - CHANNEL CONDITION

MILE 816.0 - CHANNEL CONDITION

Shoaling has been reported in the vicinity of Mile 816.0. Mariners are urged to exercise caution in the area.

LNM: 41-23

MILE 791.0 - MILE 790.0 - CHANNEL CONDITION

Cross channel shoaling has been reported between approximate Miles 791.0 and 790.0. Mariners are urged to exercise caution in the area.

LNM: 37-23

MILE 750.0 - MILE 740.0 - DREDGE OPERATION

Continuing until further notice, the Dredge HURLEY is conducting dredging operations between approximate Miles 760.0 and 750.0. Work will be conducted 24-hours a day, 7-days a week. Mariners are directed to contact M/V GEORGE C. GRUETT via VHF-FM Channel 13, or at (901) 605-8570, prior to transiting. The Dredge HURLEY will monitor VHF-FM Channel 13 or 16. Mariners are urged to transit the area at their slowest safe speed and proceed with caution after passing arrangements have been made.

LNM: 40-23

MILE 737.8 - MILE 736.0 - CHANNEL CONDITION

Shoaling has been reported between approximate Miles 737.8 and 736.0, along the sailing line. Mariners are urged to exercise caution in the area.

LNM: 37-23

MILE 734.7 - BRIDGE MAINTENANCE

Memphis Highway Bridge; Due to maintenance on the bridge, a containment system is installed and will hang 2 feet below low steel following the contour of the bridge. Mariners are advised to transit the area with caution.

LNM: 17-23

MILE 710.5 - CHANNEL CONDITION

Shoaling has been reported along the LDB, in the vicinity of Mile 710.5. Mariners are urged to exercise caution in the area.

LNM: 37-23

MILE 620.9 - CHANNEL CONDITION

Shoaling has been reported in the vicinity of Mile 620.9, 75 feet off the RDB. Mariners are urged to exercise caution in the area.

LNM: 39-23

MILE 589.0 - CHANNEL CONDITION

Shoaling has been reported in the vicinity of Mile 589.0. Mariners are urged to exercise caution in the area.

LNM: 40-23

MILE 557.5 - CHANNEL CONDITION

Shoaling has been reported in the vicinity of Mile 557.5, 250 feet off the can buoy line. Mariners are urged to exercise caution in the area.

LNM: 39-23

MILE 545.0 - MILE 535.0 - DREDGE OPERATION

Continuing until further notice, the Dredge JADWIN is conducting dredging operations from Mile 545.0 to Mile 535.0. Work will be conducted 24-hours a day, 7-days a week. When dredging, removed material is pumped through a pontoon pipeline, which may be crossing the channel, and is placed outside of the navigation channel. Mariners should be on the lookout for tender boats, barges, small survey boats, and pipeline when transiting the dredge area. Mariners are requested to contact the Dredge JADWIN prior to transiting via VHF-FM Channel 13, or at (601) 618-2157, to make passing arrangements. Mariners are urged transit the area at their slowest safe speed to minimize their wake and proceed with caution after passing arrangements have been made.

LNM: 41-23

MILE 543.0 - MILE 539.0 - DREDGE OPERATION

Continuing until further notice, Dredge WALLACE McGEORGE is conducting dredging operations between approximate Miles 543.0 and 539.0. Work will be conducted 24-hours a day, 7-days a week. The Dredge WALLACE McGEORGE will monitor VHF-FM Channel 16 or 67. Mariners are urged to transit the area at their slowest safe speed to minimize their wake and proceed with caution after passing arrangements have been made.

LNM: 40-23

MILE 525.0 - CHANNEL CONDITION

Shoaling has been reported in the vicinity of Mile 525.0, along the LDB. Mariners are urged to exercise caution in the area.

LNM: 38-23

MILE 518.6 - CHANNEL CONDITION

Shoaling has been reported in the vicinity of Mile 518.6. Mariners are urged to exercise caution in the area.

LNM: 37-23

MILE 487.0 - MILE 484.0 - CHANNEL CONDITION

Shoaling has been reported between approximate Miles 487.0 and 484.0, 250 feet off the can buoy line. Mariners are urged to exercise caution in the area.

LNM: 39-23

MILE 437.2 - MILE 437.0 - CHANNEL CONDITION

Shoaling has been reported along the can buoy line in the vicinity of Mile 437.2. Mariners are urged to exercise caution in the area.

LNM: 37-23

UPPER MISSISSIPPI RIVER
MILE 823.0 - MILE 818.9 - AIDS TO NAVIGATION

Multiple buoys have been reported missing between Miles 823.0 and 818.9. Mariners are urged to exercise caution in the area.

LNM: 41-23

MILE 640.9 - MILE 640.6 - SUBMERGED BUOY

A submerged buoy has been reported at approximate Mile 640.7, LDB. The submerged buoy is reportedly not marked. Mariners are urged to exercise caution when transiting this area. For further information, mariners may contact U.S. Coast Guard Western Rivers Command Center, at (314) 269-2332.

LNM: 28-23

MILE 619.0 - DREDGE OPERATION

Continuing until further notice, the M/V ANGELA K., is conducting dredging operations in the vicinity of Mile 619.0. Work will be conducted from 7:00 a.m. until 7:00 p.m., Monday through Friday. The M/V ANGELA K., will monitor VHF-FM Channel 12 or 13 and requests 30-minutes advance notice of passage. Mariners are urged to transit the area at their slowest safe speed and proceed with caution after passing arrangements have been made.

LNM: 41-23

MILE 481.0 - MILE 480.6 - DREDGE OPERATION

Continuing until further notice, the M/V LAURA K., is conducting dredge operations/strike removal between approximate Miles 481.0 and 480.6. Work will be conducted from 6:00 a.m. until 6:00 p.m., 7-days a week. The M/V LAURA K., will monitor VHF-FM Channel 7 or 13, and requests 30-minutes advance notice of passage. Mariners are urged to transit the area at their slowest safe speed to minimize their wake and proceed with caution after passing arrangements have been made.

LNM: 41-23

MILE 241.4 - LOCK CLOSURE

Continuing until December 29, 2023, L/D Nr. 25 will have 18 intermittent closures for installation of floating mooring bits and placement of concrete in the miter gate recess. Closures of up to 12-hours can be expected during this time. Attached as an enclosure to this LNM, is USACE St. Louis Navigation Bulletin 23-09, regarding temporary delays/closures at L/D Nr. 25, at Mile 241.4

LNM: 33-23

MILE 195.5 - CHANNEL CONDITION

Mid-channel shoaling has been reported in the vicinity of Mile 195.5. Mariners are urged to exercise caution in the area.

LNM: 39-23

MILE 168.6 - BRIDGE MAINTENANCE

Jefferson Barracks Dual Bridge; Due to a containment system installed below low steel, vertical clearance has been reduced to 84 feet. Mariners are advised to transit the bridge with caution.

LNM: 17-22

MILE 158.8 - CHANNEL CONDITION

Mid-channel shoaling has been reported in the vicinity of Mile 158.8. Mariners are urged to exercise caution in the area.

LNM: 39-23

MILE 110.0 - MILE 52.0 - CHANNEL CONDITION

Multiple groundings have been reported in the Chester and Cape Girardeau areas, between approximate Miles 110.0 and 52.0. Mariners are requested to transit the area with caution and contact U.S. Coast Guard Sector Ohio Valley via VHF-FM Channel 16, to report shoaling, hazardous conditions, or missing aids to navigation.

LNM: 38-23

MILE 49.5 - SUBMERGED OBJECT

A submerged object has been reported 150 feet from the LDB, in the vicinity of Mile 49.5. Mariners are urged to use extreme caution when transiting this area.

LNM: 37-23

MILE 11.0 - DREDGE OPERATION

Continuing until October 12, 2023, the Dredge POTTER will be conducting dredging operations at Mile 11.0. Work will be conducted 24-hours a day, 7-days a week. The floating plant will consist of the Dredge POTTER, tender boats, small boats, barges and pipeline. While dredging, dredge spoils will be pumped through a pontoon line or self-floating pipeline, which may be crossing the channel and is placed outside of the navigation channel. The Dredge POTTER will monitor VHF-FM Channel 13 or 16 and requests 30-minutes advance notice of passing. Mariners are urged to transit the area at their slowest safe speed and proceed with caution after passing arrangements have been made.

LNM: 41-23

MONONGAHELA RIVER

MILE 105.0 - MILE 104.0 - SOIL BORING OPERATION

Continuing until October 20, 2023, soil boring operations will be conducted between approximate Miles 105.0 and 104.0. Mariners are urged to transit the area at the slowest safe speed and proceed with caution.

LNM: 40-23

OHIO RIVER

MILE 111.5 - PIPE REPLACEMENT OPERATION

Commencing October 12, 2023, and continuing until January 15, 2024, pipe replacement operations will be conducted along the right descending

OHIO RIVER**MILE 111.5 - PIPE REPLACEMENT OPERATION**

bank, in the vicinity of Mile 111.5. Mariners may contact U.S. Coast Guard Sector Ohio Valley via VHF-FM Channel 16, for additional information. Mariners are requested to transit the area at their slowest safe speed to minimize their wake and proceed with caution.

LNM: 39-23

MILE 238.0 - DREDGE OPERATION

Continuing until approximately October 13, 2023, Amherst Madison, a contractor for the USACE, is conducting dredging operations at Racine L/D, in the vicinity of Mile 238.0. The contractor's floating plant will consist of the M/V KEITH A. BLOUNT, M/V BUS BROWN, 3 material barges and 2 barge-mounted cranes. Work will be conducted from 6:00 a.m. until midnight, 7-days a week. During non-working hours, the contractor's floating plant will be moored at the worksite and lighted accordingly. The contractor's floating plant will monitor VHF-FM Channel 13. Mariners are urged to transit the area at their slowest safe speed to minimize their wake and proceed with caution after passing arrangements have been made.

LNM: 40-23

MILE 281.0 - MILE 284.0 - DIVE OPERATION

Continuing until November 15, 2023, Edge Engineering and Science will perform diving operations to salvage freshwater mussels, between Mile 281.0 and 282.0, LDB. The mussels will be relocated to approximate Mile 284.0, LDB. Work will be conducted from 7:00 a.m. to 7:00 p.m., 7-days a week. The contractor's floating plant will consist of multiple dive boats, 24 feet in length or less. The contractor will monitor VHF-FM Channel 16. Mariners are urged to transit the area at their slowest safe speed to minimize their wake and proceed with caution.

LNM: 32-23

MILE 308.8 - BRIDGE MAINTENANCE

Sixth Street Bridge; Due to cleaning and painting of the bridge, a containment system is installed and will hang 4 feet below low steel and follows the contour of the bridge. Vertical clearance is reduced to 70.4 feet above normal pool. Mariners are advised to transit the bridge with extreme caution.

LNM: 17-23

MILE 323.5 - MOORING STRUCTURE CONSTRUCTION

Continuing until October 13, 2023, Foertsch Contracting, LLC., will be constructing a mooring structure in the vicinity of Mile 323.5. Work will be conducted from 6:00 a.m. until 6:00 p.m., Monday through Friday. The floating plant will consist of the M/V ELLIE GRACE, one crane barge, crew boats and material barges. The contractor's floating plant will monitor VHF-FM Channels 13 and 16. During non-working hours, the floating plant will be moored at the worksite outside of the channel. Mariners are urged to transit the area at their slowest safe speed to minimize their wake and proceed with caution.

LNM: 34-23

MILE 397.5 - OBSTRUCTION

A submerged tree has been reported in the vicinity of Mile 397.5, extending approximately 3 feet above the waterline in the channel. All mariners are advised to keep a sharp lookout and transit the area with caution.

LNM: 40-23

MILE 446.5 - AID TO NAVIGATION

A nun buoy has been reported off station in the vicinity of Mile 446.5. Mariners are urged to transit this area with caution.

LNM: 41-23

MILE 478.0 - DIVE OPERATION

Continuing until October 13, 2023, dive operations are being conducted in the vicinity of Mile 478.0, along the LDB, extending 100 yards toward the navigable channel. Work will be conducted from 7:00 a.m. until 5:00 p.m., daily. Mariners may contact the Allied dive vessel via VHF-FM Channel 13, or at (513) 233-5606. Mariners are urged to transit the area at their slowest safe speed and proceed with caution.

LNM: 38-23

MILE 535.0 - DOLPHIN CONSTRUCTION

Continuing through January 31, 2024, Carlisle and Bray Enterprises will be installing two dolphins and keyway structure, at Mile 535.0. Work will be conducted 7-days a week, from 7:00 a.m. until 5:30 p.m. The contractor's equipment will consist of a barge mounted crane and pile hammers. Mariners are requested to transit the area at their slowest safe speed to minimize their wake and proceed with caution.

LNM: 31-23

MILE 604.4 - BRIDGE MAINTENANCE

LIRC Railroad Bridge; Continuing until October 13, 2023, vertical clearance may be reduced due to snooper trucks conducting an inspection of the bridge. The inspection will be conducted daily from 6:30 a.m. until 6:30 p.m. A safety boat will be on-scene monitoring VHF-FM Channel 16. Mariners are requested to transit the area at their slowest safe speed to minimize their wake and proceed with caution.

LNM: 40-23

MILE 610.0 - CONCRETE BULKHEAD CONSTRUCTION

Continuing until November 10, 2023, Goettle will be constructing a concrete bulkhead and a temporary access road at the Duke Energy Gallagher Station, at Mile 610.0. Work will be conducted 7-days a week, from 7:00 a.m. until 5:00 p.m. The equipment will consist of small crafts to facilitate diving operations, and a turbidity curtain in the river near the work area. Mariners are requested to transit the area at their slowest safe speed to minimize their wake and proceed with caution.

LNM: 31-23

MILE 756.0 - MILE 759.0 - CORE DRILLING OPERATION

Continuing until October 13, 2023, core drilling operations will be conducted on the LDB, between approximate Miles 756.0 and 759.0. Work will be conducted from 7:00 a.m. until 5:00 p.m., daily. Drilling operators will monitor VHF-FM Channel 13. Mariners are advised to transit the area with caution.

MILE 756.0 - MILE 759.0 - CORE DRILLING OPERATION

LNM: 40-23

MILE 789.0 - MILE 791.3 - FACILITY CONSTRUCTION

Continuing until approximately September 30, 2025, Meuth Construction Supply Inc., is constructing a facility adjacent to the navigation channel between approximate Miles 789.0 and 791.3, RDB. Sixteen tri-tie dolphins will be constructed to anchor barges along the riverbank. Construction for this facility will be performed from a floating plant. The contractor's floating plant will never extend more than 180 feet from the shoreline, at normal pool. The construction contractor will monitor VHF-FM Channel 7, 13 or 16. Mariners are urged to transit the area with caution.

LNM: 39-22

MILE 846.0 - JOHN T. MYERS L/D CLOSURE - UPDATE

The Primary (1,200-foot) chamber is scheduled to close from August 21, 2023, through November 6, 2023, to allow miter gate repair by the Heavy Capacity Fleet. All traffic will pass through the Auxiliary (600-foot) chamber during the closure.

The Auxiliary (600-foot) chamber is scheduled to close from November 7, 2023, through November 17, 2023, to allow miter gate repairs by the Heavy Capacity Fleet. All traffic will pass through the Primary (1,200-foot) chamber during the closure.

LNM: 41-23

MILE 849.0 - MILE 850.0 - STONE PLACEMENT/DIKE CONSTRUCTION

Continuing until December 23, 2023, Luhr Bros Inc., will be conducting stone placement for constructing 7 dikes near the confluence of the Wabash and Ohio Rivers, below J.T. Myers L/D, between approximate Miles 849.0 and 850.0. The contractor's floating plant will consist of the M/V SHERYL, a spud barge with an excavator, and up to 8 material barges. Work will be conducted from 7:00 a.m. to 6:00 p.m., 7-days a week. The M/V SHERYL will monitor VHF-FM Channel 13, 16 or 72. Southbound vessels are requested to contact the M/V SHERYL prior to exiting J.T. Myers Locks, and Northbound vessels are requested to contact the M/V SHERYL at Ohio River Mile 852. Mariners are urged to transit the area at their slowest safe speed to minimize their wake and proceed with caution, after passing arrangements have been made.

LNM: 38-23

MILE 918.5 - L/D CLOSURE

The Smithland L/D River Chamber will be closed through November 16, 2023, for the replacement of the River Chamber miter gate machinery by the Light Capacity Fleet.

LNM: 39-23

MILE 964.6 - L/D CLOSURE

The Olmsted L/D River (1,200 foot) Chamber will be closed for three 10-day closures intermittently on a 10-day closed, 10-day open schedule. The scheduled closures are as follows:

October 4, 2023, through October 12, 2023,
October 23, 2023, through November 1, 2023, and
November 13, 2023, through November 22, 2023.

The River Chamber will be closed while a contractor places extensions on 6 floating mooring bitt tracks on the river wall of the River Chamber. Six mooring bitts will be removed during this work period, so the work can be staged for successful completion. The 2 mooring bitts adjacent to the miter gates will remain available on the river wall, and all mooring bitts will remain available on the middle wall. Mooring bitts should be replaced shortly after completion of the second closure. Project staff will make repairs to the miter gate machinery bases and miter gate skin sheet during the three closures. During the intermittent closures, all traffic will utilize the Land (1,200 ft) Chamber. Mariners should exercise caution when transiting the area and take all direction from the Olmsted L/D.

LNM: 39-23

MILE 967.0 - MILE 975.0 - CHANNEL CONDITION/TRANSIT RESTRICTION

Due to reduced channel width and ongoing dredging operations, mariners are to utilize a one-way traffic pattern while transiting from Mile 967.0 to Mile 975.0. Vessels transiting between Miles 972.0 and 975.0, must be able to maintain an upbound speed of 3 knots. Vessels unable to maintain 3 knots will require assistance. Tows are not to meet, pass or overtake and are recommended to favor the center of the sail line. The preferred transit times for the area is daytime for southbound and nighttime for northbound.

LNM: 39-23

RED RIVER**MILE 44.0 - L/D CLOSURE**

Continuing until further notice, Lindy C. Boggs L/D 1 will be closed to assess and repair damage to the lower miter gate. Mariners may contact Lindy C. Boggs L/D 1 via VHF-FM Channels 12 and 16, or at (318) 253-8922, for further information.

LNM: 40-23

ST. CROIX RIVER**MILE 6.0 - CHANNEL CONDITION/AIDS TO NAVIGATION**

Severe shoaling has been reported in the vicinity of Mile 6.0, at the mouth of the Kinnickinnic River. The U.S. Coast Guard is unable to mark a navigable channel to the federal projects dimensions, and several buoys have been removed that were off station or presenting a misleading signal.

Mariners are advised to proceed with caution while transiting through the Kinnickinnic Bar between Miles 6.6 and Mile 6.0 and transit at their slowest safe speed. Mariners may contact U.S. Coast Guard Western River Command Center at (314) 269-2332, for further information.

LNM: 33-23

SECTION VIII - LIGHT LIST CORRECTIONS

An Asterisk *, indicates the column in which a correction has been made to new information

SECTION VIII - LIGHT LIST CORRECTIONS (Continued)

(1) No.	(2) Name and Location	(3) Mile	(4) Bank	(5) Characteristic	(6) Structure / Dayboard Up Down	(7) Remarks
------------	--------------------------	-------------	-------------	-----------------------	--	----------------

None

ENCLOSURES

USACE Channel Status Reports

Arkansas River Channel Status Reports.

LNM: 09-23

UPPER MISSISSIPPI RIVER - ILLIONIOS RIVER - CHANNEL CONDITIONS/SAFETY ADVISORY

U.S. Coast Guard Sector Upper Mississippi River MSIB 05-23, extreme low water advisory.

LNM: 38-23

UPPER MISSISSIPPI RIVER/ILLINOIS WATERWAY - BARGE/RAIL COLLISION RISK

Sector Upper Mississippi River MSIB 08-21.

LNM: 15-23

TENNESSEE RIVER/CUMBERLAND RIVER - SEPTEMBER/OCTOBER MARINE EVENTS

U.S. Coast Guard Marine Safety Detachment Nashville notice of marine events and planned river closures for September and October.

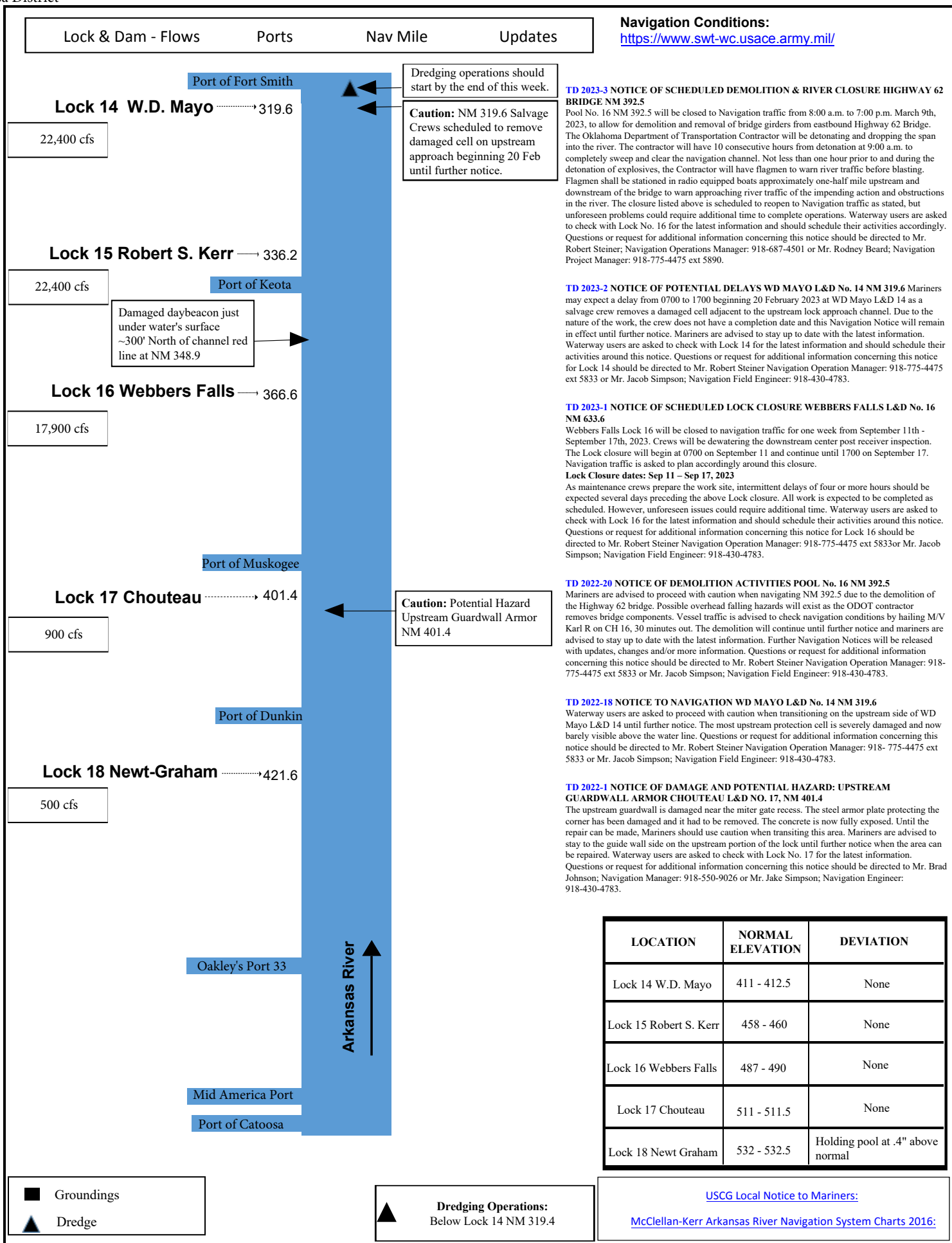
LNM: 35-23

UPPER MISSISSIPPI RIVER - L/D Nr. 25 CLOSURES

USACE St. Louis Navigation Bulletin 23-09, regarding temporary delays/closures at L/D Nr. 25

LNM: 33-23

Commander, Eighth Coast Guard District
Hale Boggs Federal Building, Room 1230
500 Poydras Street, New Orleans, LA 70130-3310
Telephone (504) 671-2327
(Business Hours 7:00 a.m. - 3:30 p.m. Monday - Friday)
(Nights, Weekends, Holidays) (855) 485-3727
RDML Barata





Marine Safety Information Bulletin

U.S. Coast Guard
Sector Upper Mississippi River
1222 Spruce Street Ste. 7.103
St. Louis, MO 63103

MSIB Number: 05-23
Date: September 13, 2023
Contact: LCDR Richard Cherkauer
Phone: (314) 269-2560
E-mail: Richard.G.Cherkauer@uscg.mil

This bulletin is used purely for informational purposes to assist the maritime community within the Sector Upper Mississippi River Area of Responsibility. Its purpose is to advise relevant parties of emerging information and situations that may impact our Marine Transportation System as well as facilitate cooperation among the involved parties regarding actions that we may be taking and/or that you may need to employ in the interest of safety/security.

Extreme Low Water Advisory for Sector Upper Mississippi River

The Captain of the Port Upper Mississippi River has issued a Safety Advisory for all waters of the Upper Mississippi River (UMR) from Mile Marker (MM) 185.4 TO MM 109.9 and the Illinois River (ILR) from MM 0.0 to MM 187 as a result of extreme low water conditions. This safety advisory is needed to protect vessels and mariners from hazards associated with low water, including possible shoaling and decreased channel widths. This safety advisory is effective immediately with the following provisions as listed in the Waterways Action Plan (WAP) Upper Mississippi River and Illinois River Annexes.

During periods of low water as listed in the low water watch phase of the WAP (*please refer to either the UMR WAP or the ILR Annex for Low Watch and Low Action Water Levels for each zone*) it is advised to take the following precautions:

- Advise deep draft vessels to depart any areas of low water with a reminder to transit at a slow speed near fleeting areas to minimize impact.
- Place heavy barges in the middle of a tow and be aware of shifting channels.

During periods of low water as listed in the low water action phase of the WAP it is advised to take the following precautions:

- Be aware of shifting channels, emergency dredging may be required at some locations.
- Consider restrictions on single skin barge movement.
- Be mindful of both barge and tender drafts to ensure a safe transit.

During periods of extreme low water as listed in the WAP it is advised to take the following precautions:

- Be prepared for severe restriction of navigation if conditions warrant.
- Fleeting may continue if conditions warrant.

Proactive risk mitigation strategies should be utilized to safely navigate in low water conditions. Operators should closely monitor river gauge readings while transiting pools and river systems. Owners, operators and port captains preparing barges must be mindful of the drafts, particularly anticipated under keel clearance, to ensure a safe transit.

To receive the latest information, monitor marine VHF channels 14 and 16, the Upper Mississippi River Port Directory at [https://homeport.uscg.mil/port-directory/upper-mississippi-river-\(st-louis\)](https://homeport.uscg.mil/port-directory/upper-mississippi-river-(st-louis)). Hazardous conditions and marine casualty notifications should be made to the Western Rivers Command Center at (314) 269-2332 or (314) 269-2463.

Questions may be directed to the Western Rivers Command Center at (314) 269-2332 or (314) 269-2463 – these numbers are continuously monitored. Or contact the Waterways Management staff at SUMRwaterways@uscg.mil.



R. G. Cherkauer
Lieutenant Commander
U. S. Coast Guard
Chief, Waterways Management Division



U.S. COAST GUARD

Sector Upper Mississippi River



November 22, 2021

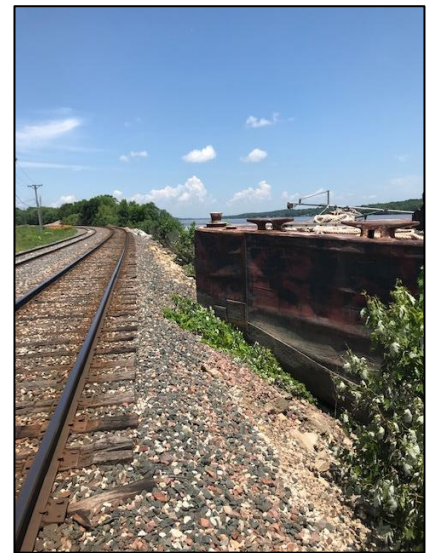
Marine Safety Information Bulletin # 08-21

This bulletin is used purely for informational purposes to assist the maritime community within the Sector Upper Mississippi River Area of Responsibility. Its purpose is to advise relevant parties of emerging information and situations that may impact our Marine Transportation System as well as to facilitate cooperation among the involved parties regarding actions that we may be taking and/or that you may need to employ in the interest of safety/security.

Barge/Rail Collision Risk

This bulletin is in effect from November 22, 2021 until cancelled by the Captain of the Port.

Sector Upper Mississippi River (UMR) received multiple reports of barges encroaching on railroad right of ways (tracks, rail beds) in 2019. This was further documented in Sector UMR MSIB 01-20 and the Waterway Action Plan (WAP). Approximately 45 known areas on the UMR and Illinois River pose a risk for barge/rail collisions due to the close proximity between the rail right of ways and the river bank. Where rails are located near the river's edge, vessels are able to push in to an extent that part of the vessel/tow is in dangerous proximity to the rail. Barge encroachment poses a serious risk to both vessels, trains, crews, the environment, and nearby communities. On November 14, 2021, during normal water conditions, an incident between rail and barge resulted in a train derailment, oil spill, and damage to rail and vessel equipment.



This risk can be mitigated by vessel operators being vigilant when selecting where they push vessels into the river bank during all water conditions. The approximately 45 known areas of concern (see attached consolidated graphic) are marked with caution areas on both printed and electronic versions of the Inland River Electronic Navigation Charts (IENC). These caution areas are accompanied by a warning noting the risk of collision between trains and vessels, and/or rail bed embankment erosion due to the close proximity between the railroad tracks and the waterway.

Sector UMR urges all vessel operators to review the IENC and the WAP for their intended operating areas to identify river bank locations to avoid pushing in at, as well as other potential hazards, as part of their voyage planning procedures prior to operation.

Operators are reminded that Title 33 Code of Federal Regulations (CFR) § 207.300(m)(2)(ii) directly prohibits the mooring of craft directly to railroad tracks or the riverbank in vicinity of railroad tracks. Violation of this regulation can result in enforcement action being taken against the operator's Merchant Mariner Credential as well as a civil penalty against the operating company.

To receive the latest information, mariners should monitor marine VHF channels 14 and 16, and the Sector UMR Port Directory at [https://homeport.uscg.mil/port-directory/upper-mississippi-river-\(st-louis\)](https://homeport.uscg.mil/port-directory/upper-mississippi-river-(st-louis)) for this and other MSIBs and port advisories. Hazardous conditions and marine casualties should immediately be reported to the Western Rivers Command Center via VHF channel 16 or by phone at (314) 269-2332 or (314) 269-2463 – these numbers are continuously monitored 24 hours a day. Questions about this MSIB may be directed to the Waterways Management staff at sumrwaterways@uscg.mil.

Sincerely,

A handwritten signature in blue ink, appearing to read "Richard Scott", with a stylized flourish at the end.

R.M. SCOTT
Captain of the Port
U.S. Coast Guard

IENC Rail Road Cauton Areas



Mile Marker 497.8

IENC Rail Road Cauton Areas Sourced from U.S. Army Engineer District, Rock Island.



 IENC RR Cauton Areas



September/October 2023 Marine Event Notification & Planned River Closures

<u>Date</u>	<u>Event</u>	<u>Time</u>	<u>River/ Mile Marker</u>	<u>Waterway Closure (Yes/No)</u>
23 Sept	15 TH Annual Dragon Boat Festival	0800-1700	Cumberland River/189.7-192.1	Yes
24 Sept	Ironman Chattanooga	0400-1100	Tennessee / 462.7-467.5	Yes
28 Sept	Coast Guard led exercise	0900-1100	Tennessee River/MM274	Yes
6-7 Oct	Music City Head Race	0700-2000(6 th) 0400-2000 (7 th)	Cumberland River MM 190-195	YES
7 Oct	Swim the Suck	0930-1600	Tennessee / 453.3	YES
14 Oct	Shoals Dragon Boat Festival	0700-1600	Tennessee / 255-257	YES
28 Oct	Chattajack	0700-1700	Tennessee / 462.7-465.5	YES
30 Oct- Nov 10th	Tri-State Drilling – Boring Project	0700-1700	Cumberland / 205.5	NO

For any questions or concerns regarding marine events or scheduled river closures please call Marine Safety Detachment Nashville at (615) 736-5421 or email the staff at msdnashville@uscg.mil.

**US Army Corps
of Engineers®**

ST. LOUIS DISTRICT

ATTN: CEMVS-DE
1222 SPRUCE STREET
ST. LOUIS MO 63103-2833
HTTP://WWW.MVS.USACE.ARMY.MIL/

DATE: 08/10/2023

POC: Danny
Lunsford
573-242-3524

NOTICE NUMBER: 203408

LOCAL NUMBER: 23-09
WATERWAY: UPPER MISSISSIPPI

EFFECTIVE: 08/25/2023 06:00 thru 12/29/2023
18:00

SCHEDULED LOCK CLOSURES - NESP PHASE 1**Lock and Dam 25****Upper Mississippi River mile 241.4**

1. As part of NESP Phase 1, Lock 25 will have 18 intermittent closures for installation of floating mooring bit and placement of concrete in the miter gate recess. Closures of up to 12 hours at time, are scheduled from 25 August 2023 through 29 December 2023.
2. The scheduled closures are subject to change due to weather and or site conditions. All changes will be scheduled through RIAC on a weekly basis.
3. Each closure is scheduled from 0600 to 1800 hours on the following days:
 1. August 25 and 31
 2. September 7, 13, 19, and 25
 3. October 23, and 27
 4. November 2, 8, 14, 20, 30
 5. December 6, 12, 18, 22, and 29
4. All navigation interest should be alert for, and abide by, any special instructions that may be issued by the Lockmaster.

FOR THE DISTRICT ENGINEER:

//signed//

Andrew C. Schimpf, P.E,
Rivers Project Manager