



U.S. Department
of Homeland Security
**United States
Coast Guard**

LOCAL NOTICE TO MARINERS

District 8 MRS

Week: 47/22

Mississippi River System

LIGHT LIST VOLUME V
NOTICE NUMBER 47-22
November 23, 2022

LIGHT LIST REFERENCE: COMDTPUB P16502.5, Vol V, 2022 Edition.

CONTENTS: Rivers are listed in alphabetical order and are included only when there is information to report.

Broadcast Notice to Mariners Covered in this Edition

Originating Unit	Beginning BNM's	Ending BNM's
Sector Upper Mississippi River	0327 - 22 (UM)	0333- 22 (UM)
Sector Lower Mississippi River	0125 - 22 (LM)	0130 - 22 (LM)
Sector Ohio Valley	0564- 22 (OV)	0575- 22 (OV)
OB DWB	0110 - 22 (DWB)	0110 - 22 (DWB)

COAST GUARD DISTRICT 8, WATERWAYS, (504) 671-2327, 7:00 a.m. until 3:30 p.m. (CST)

GENERAL LNM QUESTIONS, COMMENTS, OR SUGGESTIONS MAY BE E-MAILED TO: D8MarineInfo@uscg.mil

COMMENTS REGARDING SECTION VI – PROPOSED CHANGES MAY ALSO BE EMAILED TO: LocalNoticeFeedback@uscg.mil

NIS WATCHSTANDER PHONE (703) 313-5900, 24-HOURS A DAY

INTERNET ADDRESS <https://www.navcen.uscg.gov/>

MISSISSIPPI RIVER SYSTEM LNM VIA INTERNET <https://www.navcen.uscg.gov/>

MISSISSIPPI RIVER SYSTEM LIGHT LIST VIA INTERNET https://www.navcen.uscg.gov/pdf/lightLists/LightList_V5_2022.pdf

ABBREVIATIONS

A through H

ADRIFT - Buoy Adrift
AICW - Atlantic Intracoastal Waterway
Al - Alternating
B - Buoy
BKW - Breakwater
bl - Blast
BNM - Broadcast Notice to Mariner
bu - Blue
C - Canadian
CHAN - Channel
CGD - Coast Guard District
C/O - Cut Off
CONT - Contour
CRK - Creek
CONST - Construction
DAYMK/Daymk - Daymark
DBN/Dbn - Daybeacon
DBD/DAYBD - Dayboard
DEFAC - Defaced
DEST - Destroyed
DISCON - Discontinued
DMGD/DAMGD - Damaged
ec - eclipse
EST - Established Aid
ev - every
EVAL - Evaluation
EXT - Extinguished
F - Fixed
fl - flash
Fl - Flashing
G - Green
GIWW - Gulf Intracoastal Waterway
HAZ - Hazard to Navigation
HBR - Harbor

I through O

I - Interrupted
ICW - Intracoastal Waterway
IMCH - Improper Characteristic
INL - Inlet
INOP - Not Operating
INT - Intensity
ISL - Islet
Iso - Isophase
kHz - Kilohertz
LAT - Latitude
LB - Lighted Buoy
LBB - Lighted Bell Buoy
LHB - Lighted Horn Buoy
LGB - Lighted Gong Buoy
LONG - Longitude
LNM - Local Notice to Mariners
LT - Light
LT CONT - Light Continuous
LTR - Letter
LWB - Lighted Whistle Buoy
LWP - Left Watching Properly
MHz - Megahertz
MISS/MSNG - Missing
Mo - Morse Code
MRASS - Marine Radio Activated Sound Signal
MSLD - Misleading
N/C - Not Charted
NGA - National Geospatial-Intelligence Agency
NO/NUM - Number
NOS - National Ocean Service
NW - Notice Writer
OBSCU - Obscured
OBST - Obstruction
OBSTR - Obstruction

P through Z

PRIV - Private Aid
Q - Quick
R - Red
RACON - Radar Transponder Beacon
Ra ref - Radar reflector
RBN - Radio Beacon
REBUILT - Aid Rebuilt
RECOVERED - Aid Recovered
RED - Red Buoy
REFL - Reflective
RRL - Range Rear Light
RELIGHTED - Aid Relit
RELOC - Relocated
RESET ON STATION - Aid Reset on Station
RFL - Range Front Light
RIV - River
RRASS - Remote Radio Activated Sound Signal
s - seconds
SEC - Section
SHL - Shoaling
si - silent
SIG - Signal
SND - Sound
SPM - Single Point Mooring Buoy
SS - Sound Signal
STA - Station
STRUCT - Structure
St M - Statute Mile
TEMP - Temporary Aid Change
TMK - Topmark
TRLB - Temporarily Replaced by Lighted Buoy
TRLT - Temporarily Replaced by Light
TRUB - Temporarily Replaced by Unlighted Buoy
USACE - Army Corps of Engineers

HOR - Horizontal Clearance
HT - Height

Oc - Occulting
ODAS - Anchored Oceanographic Data Buoy

W - White
Y - Yellow

Additional Abbreviations Specific to this LNM Edition:

RIAC - River Industry Action Committee
MMSI - Mobile Maritime Service Identity
AIS - Automatic Identification System
ATON - Aids To Navigation
COTP - Captain of The Port
TRDBN - Temporary Replaced by Daybeacon
C.F.S. - Cubic Feet per Second
CFR - Code of Federal Regulations
IAW - In Accordance With
h.p. - horse power
MPH - Miles Per Hour
TVA - Tennessee Valley Authority
INC - Incorporated
IENC - Inland Electronic Navigation Chart
WAP - Waterway Action Plan
MSIB - Marine Safety Information Bulletin

SECTION I - SPECIAL NOTICES

This section contains information of special concern to the Mariner.

DEPARTMENT OF HOMELAND SECURITY SUSPICIOUS ACTIVITY

The Department of Homeland Security (DHS) encourages the maritime public to report information concerning suspicious activity to the local Federal Bureau of Investigation Joint Terrorism Task Force (JTTF) Office, http://www.fbi.gov/about-us/investigate/terrorism/terrorism_jtfts, or to other appropriate authorities. The U.S. Coast Guard reminds the maritime industry that they may also report information concerning suspicious activity to the www.AmericasWaterwayWatch.org, the National Response Center (NRC) 1-800-424-8802 or 1-877-24WATCH.

LNM: 02-19

WESTERN RIVERS FLOATING AIDS TO NAVIGATION

The U.S. Coast Guard is responsible for placing and maintaining all aids to navigation. Buoys are set to mark project depths taking into consideration the prevailing river stages and obstructions. Buoy positions on the Inland Electronic Navigation Chart (IENC) are approximate, and subject to change depending on prevailing river stages and obstructions.

Buoys should always be given as wide a berth in passing as possible, consistent with the length and width of the vessel or tow and the width of the bend or crossing.

Buoys should always be used with caution. They may be carried off position by high water, accumulation of drift, ice, or sunk by collision or other causes. In those circumstances buoy marks will remain on the IENC and indicate the last known position of the buoy. Presence of a buoy mark on the IENC does not necessarily mean a buoy will be physically on position. When buoys are missing they will be replaced as soon as possible.

LNM: 16-19

GPS TESTING

At times, throughout our area of responsibility, multiple U.S. Government Agencies conduct GPS testing. These tests vary in duration, affected range from the test site and potential impact to the maritime user as they may affect systems that rely on GPS such as E-911, AIS and DSC. More information is available at the U.S. Coast Guard Navigation Center Website, <https://www.navcen.uscg.gov>. During these periods, GPS users are encouraged to report any GPS outages that they may experience, to the Navigation Information Service (NIS) by calling (703) 313-5900 or by using the NAVCEN Website to submit a GPS problem report.

LNM: 07-19

ARKANSAS RIVER - USACE CHANNEL STATUS REPORTS - UPDATE

Attached as enclosures to this LNM, are USACE Arkansas River Channel Status Reports.

LNM: 47-22

SUNSET OF NOAA PRINTED CHARTS

**** Cancellation of NOAA Paper and Raster Nautical Charts ****

The National Oceanic and Atmospheric Administration (NOAA) is undertaking a multi-year program to end production and maintenance of its suite of over 1,000 traditional paper nautical charts and all associated raster chart products and services, including: Print-on-Demand (POD) paper nautical charts, Full-size chart PDF files, BookletChart™ PDF files, NOAA raster navigational charts (NOAA RNC®), the NOAA RNC tile service, and the online RNC viewer.

Six months notice of the intent to cancel a specific chart is provided in a "Last Edition" notice. The final cancellation of a chart is made in a "Canceled" notice. Both types of notices will appear in LNM Section IV, "Chart Correction". A comprehensive list of all canceled NOAA charts is available at: <http://www.charts.noaa.gov/MCD/Dole.shtml>.

Traditional paper nautical chart production is ending to enable the creation and maintenance of larger scale, more up-to-date, higher quality coverage of NOAA's electronic navigational chart (NOAA ENC®) product. This will significantly enhance the amount of charted detail available to mariners. More information about NOAA's program to sunset traditional paper charts is on the NOAA Coast Survey website at:

<https://nauticalcharts.noaa.gov/charts/farewell-to-traditional-nautical-charts.html>.

An online NOAA Custom Chart application at: <https://devgis.charttools.noaa.gov/pod> is available to create chart images from ENC data, which may then be printed. Notices to Mariners will not be issued for NOAA Custom Charts.

LNM: 10-21

LOWER MISSISSIPPI RIVER - CHANNEL CONDITION/SAFETY ADVISORY

The COTP Lower Mississippi River has issued a low water Safety Advisory between approximate Miles 869.0 and 303.0. The USACE maintained depths and widths, may not be attainable on all buoy lines. It is recommended that mariners monitor all gauge readings, for safe navigation.

The COTP Lower Mississippi River with the concurrence of the Lower Mississippi River Committee, recommend the following limits for tows:

Transiting between Miles 869.0 and 303.0.

Drafts no greater than 9 feet and

Barges to be configured no more than 5 wide.

Barges currently in the system, with drafts greater than the advised depths, should be placed as near to the center of the tow as possible.

Mariners are requested to contact U.S. Coast Guard Sector Western Rivers Command Center via VHF-FM Channel 16 or at (866) 777-2784, to report areas of shoaling, hazardous conditions or missing aids to navigation.

LNM: 42-22

UPPER MISSISSIPPI RIVER - CHANNEL CONDITIONS/SAFETY ADVISORY

Low water has been reported between approximate Miles 185.4 and 109.9. It is recommended that all vessels reduce their drafts to 9 feet or less. Mariners are advised of pervasive shoaling and shifting channels in this area. In the event that water levels reach (-) 3.0 feet or lower, all vessels will be required to draft 9 feet or less. Mariners are urged to transit the area with caution and to report areas of shoaling or other hazardous conditions to U.S. Coast Guard Sector Upper Mississippi River via VHF-FM Channel 16 or at (314) 269-2332.

LNM: 43-22

MOBILE RIVER - WAMS

The U.S. Coast Guard is conducting a Waterways Analysis and Management System (WAMS) study of the Mobile River to the junction of Alabama/Tombigbee Rivers. The study focuses on the area aids to navigation system, waterborne commerce, marine casualty information, port/harbor resources, emergency response plans, routine and emergency communication capabilities and future development projects. Any interested company or individual wishing to provide comments or participate in a user survey should contact:

U.S. Coast Guard Aids to Navigation Team Mobile,

1500 15th St. Mobile, AL 36115.

Attn: BMC Josh McNeill, (251) 421-0665,

email address: Joshua.t.mcneill@uscg.mil.

LNM: 46-22

SAFETY NOTICE - NAVIGATIONAL RANGE AND SECTOR LIGHTS ON NOAA ELECTRONIC CHARTS

The U.S. Coast Guard has become aware that the Range and Sector Light Characteristic labels are not displayed on Electronic Navigational Charts (ENCs) when used in an Electronic Chart Display and Information System (ECDIS), due to limitations of the S-52 ECDIS, display specification. Mariners may query the ENC data directly within ECDIS or refer to the Light List for complete information on Range and Sector Light Characteristics.

LNM: 39-22

UPPER MISSISSIPPI RIVER - L/D CLOSURES/RESTRICTIONS - UPDATE

Attached as enclosures to this LNM are USACE Rock Island District Notice to Navigation Interests MR 22-201530, MR 22-501531, MR 22-201532 and 22-201634. regarding L/D Closures and restrictions for several L/D's on the Upper Mississippi River.

LNM: 47-22

SECTION II - DISCREPANCIES

This section lists all reported and corrected discrepancies related to Aids to Navigation in this edition. A discrepancy is a change in the status of an aid to navigation that differs from what is published or charted.

DISCREPANCIES (FEDERAL AIDS)

LLNR	Aid Name	Status	Chart No.	BNM Ref.	LNM St	LNM End
280	Karns Island Upper Light	STRUCT DEST		0651OV	31/18	
990	Milligan Bend Light	STRUCT DEST		0642LM	51/19	
1010	Webber Falls Jetty Light	STRUCT DEST		0641LM	51/19	
1020	Bluff View Light	STRUCT DEST		0640LM	51/19	
1055	Hisaw Bottom Light	LT EXT		0196LM	40/18	
1070	Brier Creek Light	STRUCT DEST		0205LM	31/15	

1077	Sandtown Bottom Light	STRUCT DEST	0457LM	39/19
1200	Black Rock Daybeacon	STRUCT DEST	0379LM	35/19
1205	Gans Light	STRUCT DEST	0335LM	33/19
1213	Non Lateral Mark 330.4	STRUCT DEST	0087LM	05/16
1220	Onion Creek Daybeacon	STRUCT DMGD	0334LM	33/19
1223	Non Lateral Mark 328.5	STRUCT DMGD	0333LM	33/19
1225	Tucker Lake Light	STRUCT DEST	0332LM	33/19
1230	Mcnabb Bottom Daybeacon	STRUCT DEST	0332LM	33/19
1240	Deadman Slough Light	STRUCT DEST	0330LM	33/19
1255	Wilsons Rock Light	STRUCT DMGD	0380LM	35/19
1265	Peno Point Daybeacon	DAYMK DMGD	0580LM	47/19
1267	Non Lateral Mark 313.9	STRUCT DEST	0089LM	05/16
1315	Garrison Creek Daybeacon	DAYMK MISSING	0377LM	35/19
1360	Crawford County Daybeacon	STRUCT DEST	0378LM	35/19
1365	Jeffrey Light	DAYMK MISSING	0376LM	35/19
1390	Fort Chaffee Light	STRUCT DEST	0579LM	47/19
1395	Haroldton Light	DAYMK MISSING	0578LM	47/19
1400	New Haroldton Light	STRUCT DEST	0574LM	47/19
1420	Gun Club Lake Daybeacon	DAYMK MISSING	0582LM	47/19
1427	Big Creek Daybeacon	DAYMK MISSING	0575LM	47/19
1430	Arbuckle Island Light	STRUCT DEST	0091LM	05/16
1435	Clear Creek Light	DAYMK MISSING	0584LM	41/19
1445	Crooked Slough Light	STRUCT DEST	0583LM	47/19
1455	Mulberry River Daybeacon	STRUCT DEST	0041UM	11/17
1510	Moores Creek Light	LT IMCH/STRUCT DMGD	0394LM	44/16
1515	Roseville Daybeacon	DAYMK MISSING	0604LM	50/19
1520	O'Kane Island Light	LT IMCH/STRUCT DMGD	0393LM	44/16
1525	Alix Bottom Light	STRUCT DEST	0605LM	50/19
1530	County Line Daybeacon	STRUCT DEST	0606LM	50/19
1532	Non Lateral Mark 246.3	DAYMK MISSING	0607LM	50/19
1535	Kalamazoo Light	DAYMK MISSING	0608LM	50/19
1562	Non Lateral Mark 236.3	DAYMK MISSING	0609LM	50/19
1615	Dublin Daybeacon	STRUCT DEST	0610LM	50/19
1650	Bunker Hill Upper Daybeacon	STRUCT DEST	0639LM	51/19
1660	Bunker Hill Lower Daybeacon	STRUCT DEST	0643LM	51/19
1695	Dardanelle Reach Light	DAYMK DMGD	0204LM	31/15
1697	Non Lateral Mark 201.4	STRUCT DEST	0200LM	41/18
1700	Elberta Light	DAYMK MISSING	0611LM	50/19
1705	Old Neely Daybeacon	DAYMK MISSING	0612LM	50/19
1708	Non Lateral Mark 197.9	STRUCT DEST	0052LM	13/17
1710	Point Bar Cutoff Light	DAYMK MISSING	0613LM	50/19
1715	Hola Bend Cutoff Light	DAYMK MISSING	0614LM	50/19
1725	Reeds Ferry Light	DAYMK MISSING	0615LM	50/19
1733	Non Lateral Mark 189.8	DAYMK MISSING	0616LM	50/19
1735	Sweeden Island Light	LT EXT/DAYMK MISSING	0617LM	50/19
1738	Non Lateral Mark 188.8	DAYMK MISSING	0618LM	50/19
1745	Wilson Light	STRUCT DEST	0620LM	50/19
1770	Willow Bend Lower Daybeacon	DAYMK MISSING	0621LM	50/19
1798	Non Lateral Mark 175.6	DAYMK MISSING	0622LM	50/19

1800	Point Remove Creek Light	DAYMK MISSING	0623LM	50/19
1815	Ellis Island Light	STRUCT DEST	0630LM	51/19
1817	Non Lateral Mark 171.2	DAYMK MISSING	0631LM	51/19
1845	Stane Reach Upper Daybeacon	DAYMK DMGD	0634LM	51/19
1850	Stane Reach Light	DAYMK DMGD	0635LM	51/19
1890	Belk Corner Light	DAYMK MISSING/STRUCT DMGD	0558LM	45/19
1903	Non Lateral Mark 150.9	DAYMK MISSING	0560LM	45/19
1915	Bigelow Middle Daybeacon	DAYMK DMGD	0563LM	45/19
1920	Bigelow Lower Light	DAYMK MISSING	0538LM	44/19
1930	Tri County Light	STRUCT DEST	0370LM	41/16
1940	Beaver Dam Creek Daybeacon	STRUCT DMGD	0636LM	51/19
1948	Non Lateral Mark 138.8	DAYMK MISSING	0539LM	44/19
1953	Non Lateral Mark 137.6	DAYMK MISSING	0540LM	44/19
1960	Palarm Light	DAYMK MISSING	0541LM	44/19
1975	Maumelle River Upper Daybeacon	STRUCT DEST	0565LM	45/19
1988	Non Lateral Mark 130.6	DAYMK MISSING	0542LM	44/19
2030	Burns Park Light	STRUCT DEST	0514LM	42/19
2045	Waterworks Bend Light	DAYMK DMGD	0515LM	42/19
2130	Willow Bar Light	LT EXT	0524LM	42/19
2143	Non Lateral Mark 106.5	DAYMK MISSING	0637LM	51/19
2160	Estes Place Light	DAYMK IMCH/STRUCT DMGD	0396LM	44/16
2199	Non Lateral Mark 92.0	STRUCT DEST	0398LM	44/16
2370	Ste. Marie Bend Lower Daybeacon	STRUCT DEST	0407LM	45/16
2435	Richland Bend Middle Daybeacon	STRUCT DEST	0099LM	16/18
2485	Little Bayou Meto Lower Daybeacon	DAYMK DMGD	0094LM	15/18
2498	Cummins Bend Daybeacon	STRUCT DEST	0103LM	06/16
2540	Sample Island Light	STRUCT DEST	0106LM	06/16
2550	Sample Island Lower Light	STRUCT DEST	0107LM	06/16
2665	Owens Lake Daybeacon	DAYMK DMGD	0110LM	06/16
2825	Miller Creek Daybeacon	STRUCT DEST	0346OV	18/18
3195	Young Creek Daybeacon	DAYMK DMGD	0293OV	22/22
3655	Cages Bend Light	STRUCT DEST	0660OV	38/19
3965	Watkins Daybeacon	STRUCT DEST	0245OV	19/17
4250	Shammels Mound Landing Light	STRUCT DEST	0010OV	02/16
4285	Saline Creek Light	STRUCT DEST/TRUB	0221OV	26/16
4315	Pryors Creek Light	STRUCT DEST	0030OV	02/20
4340	Devils Elbow Light	STRUCT DEST	0306OV	16/18
4365	Bleidt Landing Light	STRUCT DEST/TRUB	0137OV	17/21
4390	Crooked Creek Light	STRUCT DEST/TRUB	0383OV	36/16
4425	Commerce Landing Light	STRUCT DEST	0520OV	42/22
4455	Prison Farm Landing Light	STRUCT DEST	0145OV	17/21
4500	Kuttawa Bar Light	STRUCT DEST	0243OV	12/18
4505	Money Cliff Light	STRUCT DEST	0364OV	19/18
6985	Sand Point Lower Light	STRUCT DEST	0102UM	20/22
6990	Circle Light	STRUCT DMGD	0102UM	20/22
6995	Spring Bay Daybeacon	STRUCT DEST	0102um	20/22
7035	Drolls Point Light	STRUCT DEST/TRLB	0233UM	23/20
7525	Grand Island Foot Light	STRUCT DEST	0015UM	05/22
7565	Sugar Creek Light	STRUCT DEST	0526UM	51/20

7585	Frederick Light	STRUCT DEST	0539UM	29/19
7650	Briggs Landing Light	LT EXT/STRUCT DMGD	0890UM	51/19
7695	Moore's Island Light	STRUCT DEST	0037UM	12/22
7705	Wilson Island Daybeacon	DAYMK DMGD	0104UM	18/21
7850	Florence Light	LT EXT	0055UM	14/22
8540	Blaines Island Light	STRUCT DEST	0320OV	25/22
8857	Arbuckle Creek Light	STRUCT DEST/TRDBN		39/20
9150	Washita Point Light	LT EXT	0395LM	33/20
9185	Preston Peninsula Light	REDUCED INT	0420LM	46/16
9535	Quaker Oats Light	STRUCT DEST	0043OV	06/16
9565	Putney Daybeacon	DAYMK DMGD	0768OV	52/19
9590	Iron Bank Light	LT EXT	0770OV	52/19
9630	Samuel Light	LT EXT	0771OV	52/19
9660	Osage Orange Daybeacon	DAYMK DMGD	0773OV	52/19
9663	Barker Daybeacon	DAYMK MISSING/STRUCT DMGD	0774OV	52/19
9665	French Point Light	STRUCT DEST	0775OV	52/19
9680	Island 8 Chute Upper Daybeacon	DAYMK MISSING/STRUCT DMGD	0787OV	52/19
9690	Milton Bell Light	LT EXT	0172OV	22/16
9695	Lester Light	STRUCT DEST	0777OV	52/19
9700	Island 10 Bar Light	LT EXT	0779OV	52/19
9707	Everest Landing Daybeacon	DAYMK MISSING/STRUCT DMGD	0780OV	52/19
9715	Groom Towhead Daybeacon	STRUCT DEST	0781OV	52/19
9725	Morrison Towhead Daybeacon	LT EXT	0788OV	52/19
9770	Nolan Daybeacon	DAYMK MISSING	0783OV	52/19
9780	Williams Point Daybeacon	DAYMK DMGD	0778OV	52/19
9790	Bixby Towhead Light	DAYMK MISSING	0786OV	52/19
9810	Merriwether Bend Light	LT EXT/DAYMK MISSING	0791OV	52/19
9825	Carey Upper Daybeacon	STRUCT DEST	0648LM	52/19
9830	Little Cypress Bend Light	LT EXT/DAYMK DMGD	0649LM	52/19
9845	Murphy Smith Upper Daybeacon	STRUCT DEST	0065LM	14/17
9860	Robinson Bayou Light	LT EXT	0650LM	52/19
9905	Blaker Towhead Light	LT EXT/DAYMK DMGD	0651LM	52/19
9910	Blaker Towhead Lower Light	LT EXT	0652LM	52/19
9980	Obion Bar Light	LT EXT/DAYMK MISSING	0653LM	52/19
10185	Cedar Point Light	REDUCED INT	0031LM	18/22
10195	Dean Island Light	REDUCED INT	0327LM	33/19
10210	Brandywine Chute Light	REDUCED INT	0031LM	18/22
10225	Island 40 Foot Light	STRUCT DEST	0232LM	49/18
10540	Harbert Point Light	LT EXT	0256LM	36/15
10545	Stumpy Point Light	STRUCT DEST	0249LM	52/18
10625	Delta Lower Light	STRUCT DEST	0118LM	06/16
10650	Miller Point Light	STRUCT DEST	0171LM	14/16
10660	Old Town Bend Foot Light	STRUCT DEST	0253LM	36/15
10685	Robson Light	STRUCT DEST	0116LM	06/16
10700	Sunflower Cut-Off Foot Light	STRUCT DEST	0115LM	06/16
10710	Ludlow Bar Light	DAYMK DMGD	0018LM	04/18
10715	Wood Cottage Light	STRUCT DEST	0114LM	06/16
10720	Knowlton Light	STRUCT DEST	0113LM	06/16
10730	Mason Landing Daybeacon	STRUCT DEST	0172LM	14/16

10815	Riverton Middle Bar Light	STRUCT DEST	0113LM	21/18
10885	Cypress Bend Light	STRUCT DEST	0032LM	07/18
10895	Eutaw Bar Light	STRUCT DEST	0365LM	35/19
10905	Mounds Crevasse Lower Light	STRUCT DEST	0114LM	21/18
10910	Boliver Light	STRUCT DEST	0069LM	11/18
10955	Miller Bend Light	STRUCT DEST	0030LM	06/18
10965	La Grange Towhead Light	STRUCT DEST	0367LM	35/19
11050	Vaucluse Bend Light	STRUCT DEST	0028LM	06/18
11070	Anconia Point Light	STRUCT DEST	0368LM	35/19
11080	Lakeport Light	STRUCT DEST	0369LM	35/19
11085	Walnut Point Light	STRUCT DEST	0370LM	35/19
11125	Corregidor Light	STRUCT DEST	0080LM	05/16
11130	Sarah Island Light	STRUCT DEST	0371LM	35/19
11170	Stack Island Light	STRUCT DEST	0372LM	35/19
11180	STACK ISLAND LOWER LIGHT	STRUCT DEST	0373LM	35/19
11195	Chinaman Light	STRUCT DEST	0374LM	35/19
11210	Fitler Point Daybeacon	STRUCT DEST	0170LM	28/17
11215	Seitz Light	STRUCT DEST	0448LM	38/19
11220	Cottonwood Bar Pointway Light	STRUCT DEST	0449LM	38/19
11245	Willow Point Light	DAYMK DMGD	0450LM	38/19
11250	Belle Island Corner Daybeacon	STRUCT DEST	0451LM	38/19
11270	Cabin Teele Light	STRUCT DEST	0452LM	38/19
11275	Marshall Point Cut-Off Daybeacon	STRUCT DEST	0453LM	38/19
11280	Joseph Henry Daybeacon	STRUCT DEST	0454LM	38/19
11407	Coggins Light	STRUCT DEST	0296LM	29/16
11415	Reid Bedford Point Light	STRUCT DEST	0463LM	39/19
11425	Diamond Light	STRUCT DEST	0464LM	39/19
11430	Sargent Point Light	LT IMCH/DAYMK DMGD	0465LM	39/19
11440	Cannon Point Light	STRUCT DEST	0294LM	41/17
11455	Buckridge Light	STRUCT DEST	0467LM	39/19
11470	Grand Gulf Island Light	STRUCT DEST	0468LM	39/19
11505	Old Levee Light	LT IMCH/DAYMK DMGD	0470LM	39/19
11520	Ashland Light	LT IMCH/DAYMK DMGD	0471LM	39/19
11530	Hole In The Wall Light	LT IMCH/REDUCED INT	0472LM	39/19
11540	Giles Bend Cut-Off Light	STRUCT DEST	0171LM	28/17
11700	Fort Adams Light	STRUCT DEST	0402LM	36/19
11795	Morganza Crevasse Light	STRUCT DEST	0400LM	36/19
11835	Bayou Sara Bend Light	STRUCT DEST	0399LM	36/19
11860	Port Hudson Light	STRUCT DEST	0581NOLA	36/19
11900	Devils Swamp Light	STRUCT DEST	0397LM	36/19
11940	Ben Burman Light	STRUCT DEST	0549LM	44/19
12677	Island 21 Daybeacon	STRUCT DEST	0503UM	27/19
13165	Lock 5A Light	LT EXT	0172UM	20/20
13230	Island 74 Light	STRUCT DEST/TRUB	0380UM	34/20
13430	Root River Upper Light	STRUCT DEST/HAZ NAV	0172UM	20/20
13510	Perry Ruby Light	STRUCT DEST	0061UM	12/17
13535	Britts Landing Daybeacon	DAYMK DMGD/STRUCT DMGD	0310UM	42/22
13720	Crooked Slough Head Daybeacon	STRUCT DEST/TRUB	0482UM	26/19
13725	Crooked Slough Head Light	STRUCT DEST/TRUB	0482UM	26/19

13765	Island 158 Daybeacon	DAYMK DMGD	0310UM	43/22
13895	Clayton Daybeacon	STRUCT DEST	0310UM	43/22
13915	Clayton Lower Daybeacon	STRUCT DEST/TRUB	0240UM	31/18
14010	Cassville Upper Daybeacon	STRUCT DEST	0546UM	29/19
14030	Cassville Lower Light	STRUCT DEST	0546UM	29/19
14105	Maquoketa Island Light	STRUCT DEST	0460UM	25/19
14230	Nine-Mile Island Light	STRUCT DEST	0410LM	36/17
14260	Stone Slough Light	STRUCT DEST	0454UM	25/19
14275	Fever River Light	STRUCT DEST/TRUB	0485UM	45/18
14295	Pulaski Light	STRUCT DEST	0485UM	45/18
14385	Arnold Towhead Light	STRUCT DEST	0449UM	25/19
14445	Sabula Lower Light	STRUCT DEST	0446UM	25/19
14460	Smith Bay Light	STRUCT DEST	0048UM	13/22
14475	Elk River Light	DAYMK DMGD	0257LM	31/21
15170	Edwards Island Upper Light	STRUCT DEST/TRUB	0403UM	26/16
15535	Des Moines River Lower Daybeacon	STRUCT DEST	0279UM	38/22
15785	Sny River Light	STRUCT DEST	0114UM	22/22
16110	Hastings Landing Daybeacon	STRUCT DMGD	0282UM	39/22
16120	Cuivre Island Light	STRUCT DEST	0282UM	39/22
16200	Portage Des Sioux Light	LT EXT	0088UM	18/22
16785	Lowry Light	STRUCT DEST	0026UM	10/22
16910	Ste. Genevieve Island Light	STRUCT DEST	0557UM	30/19
17000	Chester Prison Upper Light	STRUCT DEST	0026UM	10/22
19375	Weston Daybeacon	STRUCT DEST	0106UM	18/21
23285	Cluster Upper Light	STRUCT DEST	0721OV	34/18
24110	Old Lock No. 17 Lower Daybeacon	STRUCT DEST		39/20
26047	Sunken Barge Lighted Buoy WR	MISSING	0519OV	51/21
26470	Notch Lick Light	STRUCT DEST	0210OV	23/21
27090	Wolf Creek Light	LT EXT	0064OV	05/22
27520	Robert Mann Light	STRUCT DEST	0269OV	21/22
27540	Water Works Light	STRUCT DMGD	0179OV	12/22
27855	Graham Varble Light	STRUCT DEST	0134OV	17/21
27935	Dekoven Light	STRUCT DEST	0294OV	23/22
29231.34	Westdale Middle Daybeacon	STRUCT DEST/TRUB	0121LM	44/22
29241.25	Smith Island Lower Daybeacon	STRUCT DEST	0202LM	26/21
29256.65	Cadney Lower Daybeacon	DAYMK DMGD	0205LM	26/21
29272	Deloges Middle Daybeacon	DAYMK IMCH		36/20
29467	Hog Lake Daybeacon	STRUCT DEST		36/20
29618	Red River Entrance Light	STRUCT DEST		37/20
29665	Dry Cypress Daybeacon	STRUCT DEST		37/20
29690	Bayou Cocodrie Upper Daybeacon	STRUCT DEST		37/20
29695	Bayou Cocodrie Daybeacon	STRUCT DEST		37/20
29710	Grassy Lake Daybeacon	DAYMK MISSING		37/20
29725	Alligator Bayou Daybeacon	STRUCT DEST	0216LM	33/17
29750	Timber Lake Daybeacon	STRUCT DEST		37/20
29755	Naples Daybeacon	STRUCT DEST		37/20
29775	Three Rivers Junction Light	STRUCT DEST		37/20
29780	Barbre Daybeacon	STRUCT DEST		37/20
29785	Torras Daybeacon	STRUCT DEST		37/20

29795	Oak Grove Daybeacon	STRUCT DEST		37/20
29845	Houden Point Daybeacon	STRUCT DEST	0255UM	30/21
30215	Taliaferro Light	LT EXT	0410OV	35/22
31275	Stevenson Daybeacon	DAYMK IMCH	0260OV	19/22
31995	Dry Creek Light	STRUCT DEST	0402OV	31/20
32140	Chambers Daybeacon	STRUCT DEST	0178OV	11/13
32170	Diamond Island Lower Daybeacon	STRUCT DEST	0177OV	11/13
32325	Condors Landing Light	STRUCT DEST	0127OV	09/20
32445	Sales Light	TRUB/STRUCT DEST	0269OV	19/14
32460	Reynoldsburg Island Light	STRUCT DEST/TRUB	0290OV	15/18
32480	Higgins Light	STRUCT DEST	0342OV	27/15
32530	Standing Rock Upper Light	STRUCT DEST	0658OV	41/13
32570	Fort Henry Light	STRUCT DEST	0160OV	19/21
32585	Pine Bluff Light	STRUCT DEST	0308OV	19/19
32595	Blood River Light	STRUCT DEST/TRUB	0138OV	17/21
32600	Clyde Light	LT EXT	0581OV	44/15
32605	Newburg Light	STRUCT DEST	0362OV	29/15
32650	West Entrance Canal Light	LT EXT	0994OV	50/18
32665	Grand Rivers Light	LT EXT	0993OV	50/18

DISCREPANCIES (FEDERAL AIDS) CORRECTED

LLNR	Aid Name	Status	Chart No.	BNM Ref.	LNM St	LNM End
13335	Dresbach Light	WATCHING PROPERLY			43/22	47/22
18140	Dodds Daybeacon	WATCHING PROPERLY			37/21	47/22
18170	Boyer River Daybeacon	WATCHING PROPERLY			37/21	47/22
18250	Florence Bend Lower Daybeacon	WATCHING PROPERLY			44/21	47/22

DISCREPANCIES (PRIVATE AIDS)

LLNR	Aid Name	Status	Chart No.	BNM Ref.	LNM St	LNM End
1685	Oakley Dock Light	LT EXT		0307-14 LM	44/14	
1690	Mobley Dock Light	LT EXT		0454-13 LM	48/13	
2100	Oakley Light	LT EXT		0520LM	42/19	
2337	Island Harbor Marina Light	LT EXT			45/16	
2340	Century Tube Lights (2)	LT EXT			45/16	
2400	Pickett And Davison Lights (2)	LT EXT		0481-13 LM	50/13	
3725	Lakewood Marina Lights (4)	LT IMCH		0439-15 OV	34/15	
3750	Dupont Dock Lights (2)	OFF STA/LT EXT		0305-15 OV	26/15	
3795	Nashville Water Intake Lights (2)	LT EXT			44/11	
3805	Holnam Dock Lights (2)	LT EXT			44/11	
3815	Kerr-Mcgee Dock Lights (2)	LT EXT			44/11	
3820	Cohen Terminal Lights (2)	LT EXT			44/11	
3930	Alcoa Chemical Dock Lights (2)	MSLD SIG/LT EXT		0216-10 OV	14/10	
3960	Hunter Marine Transport Dock Lights (2)	LT EXT			47/08	
3995	Riverview Marina Lights (2)	LT EXT			47/08	
4055	Clarksville Boat Club Dock Lights (2)	LT EXT		0533-12 OV	34/12	
6170	Quantum Chemical Dock Lights (2)	LT EXT		0436-01 UM	31/01	
6650	S. T. Services Terminal Lights (2)	LT EXT			41/14	
6695	Continental Grain Company Light	LT EXT			41/14	

7225	Cargo Carriers Dock Lights (2)	LT EXT		25/08
7235	Pekin Boat Club Breakwater Light	LT EXT		05/16
7250	Shell Dock Lights (2)	LT EXT	0123-02 UM	16/02
7255	Adm Growmark Mooring Light	LT EXT	0122-02 UM	16/02
7260	Sours Grain Tramway Light	LT EXT	0279-03 UM	21/03
7265	Tomen Dock Light	LT EXT		25/08
7295	Adm Growmark Mooring Lights (3)	LT EXT	0281-03 UM	21/03
7460	Cargill Mooring Lights (2)	LT EXT	0284-03 UM	21/03
7620	Cargill Dock Lights (2)	LT EXT		35/08
7725	Cargill Terminal Lights (2)	LT IMCH	0171-18 UM	26/18
7730	Public Service Co. Dock Lights (6)	LT EXT	0119-18 UM	20/18
7730	Public Service Co. Dock Lights (6)	LT IMCH	0171-18 UM	26/18
7760	Adm Growmark Grain Elevator Lights (2)	LT IMCH	0171-18 UM	26/18
9440	Black Dog Lights (5)	LT EXT		43/16
9965	Huffman Grain Light	STRUCT DEST	0131-16 LM	08/16
10300	Cargill Dock Light	LT EXT	0361-01 LM	34/01
10390	Peavey Lights (2)	LT EXT	0398-02 LM	36/02
10395	Suburban Propane Dock Light	LT EXT	0396-02 LM	36/02
10415	Western Tar Products Dock Light	LT EXT	0394-02 LM	36/02
11943	Bear Industries Barge Dock Lights (4)	LT EXT	0600-17 NO	30/17
11990	Riverside Dock Lights (2)	LT EXT	0695-01 UM	40/01
12080	University Dock Lights (3)	LT EXT	0696-01 UM	40/01
12215	Koch Fuel Dock Lights (2)	LT EXT		35/16
12320	Newport Terminal Lights (2)	LT EXT		35/16
12385	Shiely Dock Lights (2)	LT IMCH		35/16
12712	City of Red Wing Metering Station Special Light	MISSING		42/16
12768	Consolidated Grain and Barge Loading Dock Piling Lights (2)	MISSING		42/16
12930	Alma City Dock Light/Daymarks (3)	MISSING		42/16
13405	G. Heileman Brewery Dock Light	MISSING		42/16
14756	Isle Of Capri Casino Marina Daybeacon	MISSING		03/16
15345	Koch Nitrogen Dock Light	LT EXT		41/14
15415	Riverview Park Dock Light	LT EXT	0531-15 UM	49/15
15425	Hall Towing Light	STRUCT DEST	0280UM	25/20
15822	Hannibal Intake Light	LT EXT	0358-20 UM	32/20
16100	Jersey County Grain Dock Lights (2)	LT EXT		19/16
16205	Piasa Harbor Light	LT EXT	0131-15 UM	22/15
16220	Con-Agra Mooring Lights (2)	LT EXT		21/16
16230	Alton Marina Breakwater Lights (3)	LT EXT	0131-15 UM	22/15
16265	Amoco Dock Light	STRUCT DEST		35/09
16280	Amoco Dock Lights (4)	LT EXT		35/09
16310	Sioux City/New Orleans Terminal Light	STRUCT DEST		35/09
16380	Western Dock Lights (9)	LT IMCH		34/08
16390	Adm-Growmark Dock Lights (4)	LT EXT	0776-01 UM	44/01
16430	Union Electric Coal Dock Lights (2)	LT EXT	0305-08 UM	34/08
16445	Continental Cement Lights (2)	LT EXT	0305-08 UM	34/08
16505	Peavey Company Dock Lights (3)	LT EXT	0305-08 UM	34/08
16530	Cahokia Marine Terminal Lights (2)	LT EXT	0305-08 UM	34/08
16540	Slay Bulk Terminal Lights (2)	LT EXT	0305-08 UM	34/08

16545	Peavey Lights (3)	LT EXT	3305-08 UM	34/08
16550	Eagle Marine Industries Light	LT IMCH	0305-08 UM	34/08
16560	Phillips Pipeline Lights (2)	LT EXT	0305-08 UM	34/08
16565	Growmark Dock Lights (2)	LT EXT	0305-08 UM	34/08
16575	Eagle Marine Dock Lights (2)	LT EXT	0305-08 UM	34/08
16600	J.H. Collier Barge Mooring Lights (2)	LT EXT	0305-08 UM	34/08
16605	Clark Oil Refining Dock Lights (4)	LT EXT	0305-08 UM	34/08
16609	Alcoa Foil Lights (2)	LT EXT	0305-08 UM	34/08
16615	Hci Chemtech Dock Lights (2)	LT EXT	0305-08 UM	34/08
16617	Semmaterials Terminal Lights (2)	LT EXT	0305-08 UM	34/08
16630	American Commercial Dock Lights (2)	LT EXT	0305-08 UM	34/08
16655	Bussen Terminal Light	LT EXT	0305-08 UM	34/08
18700	Bunge Dock Lights (3)	MISSING/LT EXT		18/08
19185	St. Joseph L & P Dock Light	LT IMCH		17/08
19415	Leavenworth Water Intake Lights (2)	LT EXT	0104-07 UM	39/07
19460	Smoot Grain Dock Lights (2)	LT EXT	0385-07 UM	39/07
19505	Board Of Public Utilities Light	LT EXT	0386-07 UM	39/07
19535	Public Utilities Intake Lights (3)	LT EXT		38/08
19660	Continental Grain Dock Lights (4)	LT EXT	0181-08 UM	24/08
19695	Kansas City Power And Light Company Lights (2)	LT EXT	0181-08 UM	24/08
20870	U.E. Callaway Intake Lights (2)	LT EXT	0522-20 UM	52/20
21965	Hill Top Energy Lighted Danger Buoy	MISSING		34/22
22873	Moon Township Municipal Authority Back Channel Outfall Danger Buoy	OFF STA	0108-21 OV	14/21
24005	Bens Run Light	LT EXT		03/20
24580	Ohio Power Coal Dock Light	LT EXT	480-21 OV	44/21
25820	Cargill Barge Loading Facility Light	LT EXT	0552-09 OV	40/09
26290	Boone County Sand And Gravel Lights (2)	LT EXT	0769-00 OV	40/00
26833	Transmontaige Dock Lights (2)	LT EXT	286-21 OV	28/21
26860	Dupont Chemical Lights (2)	LT EXT	0330-18 OV	17/18
27590	Transmontaigne Dock Lights (4)	LT EXT		40/21
32550	Paris Landing State Park Lights (2)	Status Unreported	0452-20 OV	38/20
32900	Ergon Dock Lights (2)	LT IMCH		17/13
	Alcosan-Mascaro Temporary Lighted Danger Buoy	MISSING		24/22

DISCREPANCIES (PRIVATE AIDS) CORRECTED

LLNR	Aid Name	Status	Chart No.	BNM Ref.	LNM St	LNM End
------	----------	--------	-----------	----------	--------	---------

None

PLATFORM DISCREPANCIES

Name	Status	Position	BNM Ref.	LNM St	LNM End
------	--------	----------	----------	--------	---------

None

PLATFORM DISCREPANCIES CORRECTED

Name	Status	Position	BNM Ref.	LNM St	LNM End
------	--------	----------	----------	--------	---------

None

SECTION III - TEMPORARY CHANGES and TEMPORARY CHANGES CORRECTED

This section contains temporary changes and corrections to Aids to Navigation for this edition. When charted aids are temporarily

relocated for dredging, testing, evaluation, or marking an obstruction, a temporary correction shall be listed in Section IV giving the new position.

TEMPORARY CHANGES

LLNR	Aid Name	Status	Chart No.	BNM Ref.	LNM St	LNM End
7015	Blue Creek Point Lower Lighted Buoy	TRUB		0379UM	51/21	
7030	Drolls Point Upper Lighted Buoy	TRUB		0379UM	51/21	
7040	Peoria Heights Lighted Buoy	TRUB		0379UM	51/21	
8540	Blaines Island Light	DISCONTINUED			39/20	
10455	Armstrong Bar Light	RELOCATED			23/18	
11275	Marshall Point Cut-Off Daybeacon	TRDBN			49/16	
11280	Joseph Henry Daybeacon	TRDBN			49/16	
29880	Kinnikinnic River Daybeacon	DISCONTINUED			21/20	

TEMPORARY CHANGES CORRECTED

LLNR	Aid Name	Status	Chart No.	BNM Ref.	LNM St	LNM End
------	----------	--------	-----------	----------	--------	---------

None

PLATFORM TEMPORARY CHANGES

Name	Status	Position	BNM Ref.	LNM St	LNM End
------	--------	----------	----------	--------	---------

None

PLATFORM TEMPORARY CHANGES CORRECTED

Name	Status	Position	BNM Ref.	LNM St	LNM End
------	--------	----------	----------	--------	---------

None

SECTION V - ADVANCE NOTICES

This section contains advance notice of approved projects, changes to aids to navigation, or upcoming temporary changes such as dredging, etc. Mariners are advised to use caution while transiting these areas.

SUMMARY OF ADVANCED APPROVED PROJECTS

Approved Project(s)

None

Project Date

Ref. LNM

Advance Notice(s)

None

SECTION VI - PROPOSED CHANGES

Periodically, the Coast Guard evaluates its system of aids to navigation to determine whether the conditions for which the aids to navigation were established have changed. When changes occur, the feasibility of improving, relocating, replacing, or discontinuing aids are considered. This section contains notice(s) of non-approved, proposed projects open for comment. SPECIAL NOTE: Mariners are requested to respond in writing to the District office unless otherwise noted (see banner page for address).

PROPOSED WATERWAY PROJECTS OPEN FOR PUBLIC COMMENT

Proposed Project(s)

None

Closing

Docket No.

Ref. LNM

Proposed Change Notice(s)

UPPER MISSISSIPPI RIVER

The Coast Guard is proposing the following Aid to Navigation Change:

Discontinue Des Moines River Lower Daybeacon (LLNR-15535) at mile 361.3, Right Descending Bank, in approximate position 40-22-44.400N/091-25-24.800W.

Comments to be received by December 13, 2022. Please email comments regarding this proposal to: D08-SMB-District-

LNM: 42/22

OHIO RIVER

The Coast Guard is proposing the following Aid to Navigation Change:

Discontinue Sisters Lower Light (LLNR-23535) at mile 86.4, Right Descending Bank, in approximate position 40-07-11.830N/080-42-33.040W.
Discontinue Bellaire Lower Daybeacon (LLNR-23650) at mile 95.0, Right Descending Bank, in approximate position 40-00-17.599N/080-44-31.987W.

Discontinue Narrow Run Light (LLNR-23730) at mile 106.0, Right Descending Bank, in approximate position 39-54-09.921N/080-48-32.201W.

Discontinue Hog Run Light (LLNR-23745) at mile 109.6, Left Descending Bank, in approximate position 39-51-25.895N/080-47-54.216W.

Discontinue Clines Bar Light (LLNR-23785) at mile 115.6, Left Descending Bank, in approximate position 39-47-08.650N/080-50-16.791W.

Comments to be received by December 20, 2022. Please email comments regarding this proposal to: D08-SMB-District-

LocalNoticeFeedback@uscg.mil.

LNM: 43/22

SECTION VII - GENERAL

This section contains information of general concern to the Mariners. Mariners are advised to use caution while transiting these areas.

ALABAMA RIVER**MILE 133.0 - DREDGE OPERATION**

Continuing until further notice, Construction Solutions International Inc., is conducting dredging operations of small boat access channels on the William (Bill) Dannelly Reservoir. Work will progress upstream of the Millers Ferry L/D, in the vicinity of Mile 133.0. Due to the equipment required to perform this work, access to the river may be restricted, causing temporary closures of boat ramps along the river, until the work is completed. Work will be conducted during daylight hours only and will be fleeting within the work locations overnight, with barges lighted as appropriate. The dredge will monitor VHF-FM Channel 13 or 16. Traffic is requested to notify the dredge, prior to approaching the area and transit the area at their slowest safe speed to minimize their wake. Mariners may contact Chad Brumelow or Derek Kendrick at the BWT/Alabama-Coosa Project Management Office at (205) 752-3571. For boat ramp closures, contact Jason Haynes at the Millers Ferry Resource Office at (334) 682-4244, ext. 104.

LNM: 34-22

ALLEGHENY RIVER**MILE 0.6 - BRIDGE MAINTENANCE**

Sixth Street Bridge; A containment system is installed below low steel and follows the contour of the bridge. Vertical clearance is reduced approximately 1-foot for the middle, 100 feet of the navigation span. A work barge will be located outside of the navigation channel and will not affect navigation. Mariners are advised to transit the bridge with extreme caution.

LNM: 38-22

ARKANSAS RIVER**MILE 400.5 - MILE 400.1 - CHANNEL CONDITION**

Shoaling has been reported between approximate Miles 400.5 and 400.1, LDB, Webbers Falls Pool Nr. 16. The USACE Tulsa District recommends mariners favor the "green line" when transiting this area. Mariners may contact Mr. Robert Steiner, Navigation Operation Manager, at (918) 775-4475, ext. 5833 or Mr. Jake Simpson, Navigation Field Engineer at (918) 430-4783, for additional information.

LNM: 42-22

MILE 222.4 - MILE 221.4 - CHANNEL CONDITION/USACE SAILING INSTRUCTION

Shoaling has been reported between approximate Miles 222.4 and 221.7. The USACE recommends both up-bound and down-bound tows "run the red line" at Mile 221.4 and to "run the green line" from Mile 222.4 to Mile 221.7. The USACE reports that the navigation channel width narrows to approximately 180 feet, within this area, therefore no passing is advised from Mile 222.4 to Mile 221.4. Over the next several weeks, the navigation pool will be drawn down toward lower limits, at times. This action is due to power demands and water conservation measures in the upper reservoirs related to dry conditions. This will potentially create an increase in shoaling hazards within this reach. Mariners are requested to continue to report in-channel bumps or groundings experienced during their transit, to the next lock. Mariners may contact the USACE Little Rock District Office, at (501) 324-5096 or e-mail ceswl-op-om@usace.army.mil, for additional information.

LNM: 41-22

MILE 222.2 - CHANNEL CONDITION

Shoaling has been reported in the vicinity of Mile 222.2, mid-channel. Mariners are urged to exercise caution in the area.

LNM: 43-22

MILE 118.5 - ROAD DECK DEMOLITION

I-30 Bridge; In support of demolition of the road deck, a work barge will be encroaching along the left descending side of the navigation channel. Mariners are advised to contact the onsite work boat M/V RAY PENSURM, via VHF-FM Channel 13, 16 or 68, to have the barge moved from the channel.

LNM: 39-22

MILE 118.2 - BRIDGE PROTECTION CELL DAMAGE

The upstream left descending pier protection cell at the Clinton Presidential Park Bridge in the vicinity of Mile 118.2, is damaged and leaning into the left descending bridge pier. Mariners are urged to exercise caution in the area. Mariners may contact the USACE Little Rock District Office at (501) 324-5096 or via e-mail at: ceswl-op-om@usace.army.mil, for additional information.

LNM: 48-21

MILE 67.4 - BRIDGE REPAIR

Rob Roy Drawbridge; Changing of the brakes (3 each) in the 2 mechanical towers will require the drawbridge to be closed to navigation for 4 days, beginning December 5-8, 2022. This work will also entail machining new shafts to fit the new brake wheels. Once work has started the drawbridge will be unable to open for navigation. The repair crew will work 24-hours a day until, the tower(s) are completed. If only 1 tower could be completed during this timeframe, then the second tower will be done the following week, December 12-15, 2022.

LNM: 47-22

MILE 50.2**MILE 10.3 - L/D'S CLOSURES/RESTRICTIONS**

Attached as enclosures to this LNM are USACE Little Rock District Navigation Notice 22-21 and 22-41, regarding L/D closures/restrictions for the Joe Hardin L/D (Nr. 3), in the vicinity of Mile 50.2 and for the Norrell L/D (Nr. 1), in the vicinity of Mile 10.3. Mariners may contact the USACE Little Rock District Office, at (501) 324-5096 or via e-mail at ceswl-op-om@usace.army.mil, for additional information.

LNM: 34-22

MILE 10.3 - L/D OPERATION

Continuing until 6:59 a.m., November 26, 2022, L/D Nr. 1, in the vicinity of Mile 10.3, will change to 24-hour operations. The current 70-foot, width restriction remains in place. Mariners may contact the USACE Little Rock District Office at (501) 324-5096 or via email at: ceswl-op-om@usace.army.mil, for additional information.

LNM: 47-22

MILE 0.5 - CHANNEL CONDITION/L/D OPERATION

Due to increased river elevations, the crest gate dam at Montgomery Point L/D, in the vicinity of Mile 0.5, is lowered and the navigation pass is open. When tail-water elevation drops below 115, the pass will again be closed.

LNM: 47-22

BIG SANDY RIVER**MILE 8.0 - DREDGE OPERATION**

Continuing until approximately December 9, 2022, Superior Marine Inc., is conducting maintenance dredging at a facility in the vicinity of Mile 8.0, LDB. The contractors floating plant will consist of the M/V R.H. BEAMER, 2 material barges and a barge mounted crane. Work will be conducted from 7:00 a.m. until 7:00 p.m., Monday through Saturday. The M/V R.H. BEAMER will monitor VHF-FM Channel 13 or 18. During non-working hours, the contractors floating plant will be moored at the worksite and lighted accordingly. Mariners are urged to transit the area at their slowest safe speed to minimize their wake and proceed with caution.

LNM: 46-22

CUMBERLAND RIVER**MILE 190.4 - BRIDGE MAINTENANCE**

Louisville and Nashville (CSX) Railroad Drawbridge; Vertical clearance is reduced by 4 feet due to installed containment system. The bridge remains fully operational. Mariners are advised to contact bridge tender via VHF-FM Channel 16 or maintenance supervisor at telephone (989) 717-3192, for additional information.

LNM: 35-22

MILE 52.0 - AID TO NAVIGATION

A can buoy has been reported not properly marking the channel, inside the navigation channel, in the vicinity of Mile 52.0. Mariners are urged to exercise caution in the area.

LNM: 42-22

GREEN RIVER**MILE 8.3 - BRIDGE OPERATION**

Louisville and Nashville Railroad Drawbridge; The bridge will be unattended and left in the open-to-navigation position. Mariners will be notified when the bridge is back in operation.

LNM: 20-22

ILLINOIS WATERWAY**MILE 288.7 - MILE 287.3 - BRIDGE REPAIRS**

Joliet Harbor Bridges; Due to ongoing bridge work, mariners are required to provide 1-hour advance notice, when requesting drawspan openings.

LNM: 19-20

MILE 216.0 - MILE 215.5 - DREDGE OPERATION - UPDATE

The M/V BARRY J., has completed dredging operations between approximate Miles 216.0 and 215.5, RDB, Clark Island.

LNM: 47-22

MILE 151.2 - BRIDGE OPERATION

Pekin Railroad Drawbridge; Continuing until further notice, the bridge will be unattended and left in the open-to-navigation position. The bridge shall initiate the closing sequence for an approaching train by broadcasting the closure on VHF-FM Channel 16, 10-minutes prior to closure and immediately prior to closing. If no mariners respond to the broadcast, the operator of the bridge may begin the closing sequence. For additional information, mariners may contact Joe Ballou, with Union Pacific Railroad at (708) 990-8513.

LNM: 34-22

MILE 144.5 - DREDGE OPERATION - UPDATE

The M/V CREVE COEUR has completed dredging operations/strike removal in the vicinity of Mile 144.5, Copperas Creek Upper.

LNM: 47-22

MILE 21.0 - MILE 19.5 - LINE WORK/SAFETY ZONE/RIVER CLOSURE

MILE 21.0 - MILE 19.5 - LINE WORK/SAFETY ZONE/RIVER CLOSURE

Continuing until further notice, line work is being conducted between approximate Miles 21.0 and 19.5. To facilitate this operation, the COTP Upper Mississippi River has issued a Safety Zone closing the river during working hours. No vessels will be allowed to transit the area during working hours, unless permission is given by the COTP. Working hours will be transmitted via Special Marine Information Broadcasts. If there are days when work is not being conducted, then no Special Marine Information Broadcast will be transmitted. Outside of the line working hours, the waterway will be open. Mariners may contact the U.S. Coast Guard Western Rivers Command Center at (314) 269-2332, for additional information.

LNM: 45-22

LOWER MISSISSIPPI RIVER**MILE 926.0 – MILE 920.0 - CHANNEL CONDITION**

Shoaling has been reported between approximate Miles 926.0 and 920.0, which has led to an increased number of vessel groundings. Mariners are urged to favor the LDB, in the vicinity of Mile 921.0, review the latest USACE survey prior to transiting and exercise extreme caution in the area.

LNM: 42-22

MILE 921.0 - MILE 920.0 - CHANNEL CONDITION/AIDS TO NAVIGATION

The navigation channel between approximate Miles 921.0 and 920.0, Hickman Bend, has been shifted to the left descending side, with a width of approximately 500 feet. Eight nun buoys have been set in the area to mark a rock shelf along the published sail line. Mariners are advised to favor the RDB and exercise caution when transiting. Mariners shall not meet or overtake in this reach and shall immediately report any missing or off station buoys.

LNM: 43-22

MILE 900.0 - MILE 899.0 - CHANNEL CONDITION/AIDS TO NAVIGATION

Shoaling has been reported between approximate Miles 900.0 and 899.0. The channel width has been reduced to approximately 580 feet along the RDB and reportedly marked with 6 can buoys. Mariners are not to meet or pass in this area.

LNM: 44-22

MILE 920.8 - AIDS TO NAVIGATION

Two nun buoys that mark a rocky shoal in the vicinity of Mile 920.8, have been reported missing. Mariners are urged to transit the area with extreme caution, shall not meet or overtake and to favor the RDB, in the area. Mariners may contact U.S. Coast Guard Sector Ohio Valley at (502) 779-5425 or via VHF-FM Channel 16, for additional information.

LNM: 45-22

MILE 886.0 - MILE 885.0 - CHANNEL COMNDITION/AIDS TO NAVIGATION/ONE-WAY TRAFFIC

Shoaling previously reported in the vicinity of Mile 885.2, LDB, has been marked with 3 nun buoys. The navigation channel has been reduced to approximately 588 feet wide. One-way traffic with no meeting or overtaking has been implimented between approximate Miles 886.0 and 885.0. Mariners are urged to exercise caution in the area.

LNM: 42-22

MILE 884.0 - MILE 882.0 - CHANNEL CONTITION/SAFETY ADVISORY

Low water conditions have been reported between approximate Miles 884.0 and 882.0. Mariners are requested to transit this area at their slowest safe speed to minimize their wake and proceed with caution, to safeguard a shore-side facility in the area.

LNM: 40-22

MILE 844.1 - CHANNEL CONDITION

Shoaling has been reported in the vicinity of Mile 844.1, along the RDB. Mariners are urged to exercise caution in the area.

LNM: 43-22

MILE 792.0 - MILE 790.5 - CHANNEL CONDITION/TRANSIT RESTRICTIONS

Low water conditions have been reported between approximate Miles 792.0 and 790.5, Kate Aubrey. Transiting vessels are restricted to one-way traffic, with no meeting, passing or overtaking in the area. Mariners are urged to exercise caution in the area.

LNM: 47-22

MILE 791.0 - CHANNEL CONDITION

Shoaling has been reported in the vicinity of Mile 791.0. Mariners are urged to exercise caution in the area.

LNM: 45-22

MILE 745.0 - MILE 739.0 - DREDGE OPERATION

Continuing until further notice, the USACE Dredge HURLEY is conducting dredging operations between approximate Miles 745.0 and 739.0, Redman Bar. The Dredge HURLEY will monitor VHF-FM Channel 13 or 16. Mariners are urged to transit the area at their slowest safe speed and proceed with caution after passing arrangements have been made.

LNM: 45-22

MILE 681.0 - CHANNEL CONDITION/AID TO NAVIGATION

A cross current has been reported in the vicinity of Mile 681.0, from behind the nun buoy line that may cause finger bars protruding past the nun buoy line into the navigation channel. The lower can buoy, above the trail dike along the RDB, is reportedly not marking the channel, mid-channel, in the area. Mariners are advised to transit the area 150 feet off the nun buoy line.

LNM: 42-22

MILE 524.9 - CHANNEL CONDITION

Shoaling has been reported in the vicinity of Mile 524.9, along the can buoy line. Mariners are urged to exercise caution in the area.

LNM: 44-22

MILE 344.0 - MAT SINKING UNIT

Continuing until further notice, a USACE Mat Sinking Unit is operating in the vicinity of Mile 344.0. Work will be conducted during daylight hours, each day. During working hours, the area is restricted to one-way traffic with possible delays for large tows and mariners are requested to transit the area at their slowest safe speed to minimize their wake, after passing arrangements have been made. The Mat Sinking Unit will monitor VHF-FM Channel 13 or 82.

LNM: 47-22

MILE 336.8 - MAT SINKING UNIT

Continuing until approximately November 30, 2022, a USACE Mat Sinking Unit is operating in the vicinity of Mile 336.8, LDB. Work will be conducted during daylight hours, each day. During working hours, the area is restricted to one-way traffic with possible delays for large tows and mariners are requested to transit the area at their slowest safe speed to minimize their wake, after passing arrangements have been made. The Mat Sinking Unit will monitor VHF-FM Channel 13 or 82.

LNM: 47-22

MILE 330.6 - REVETMENT MAINTENANCE

Continuing until further notice, revetment maintenance is being conducted in the vicinity of Mile 330.6. Work will be conducted from 6:00 a.m. until 6:00 p.m., 7-days a week. The M/V MISS NINA will monitor VHF-FM Channel 13 or 16, for passing arrangements. Mariners are urged to transit the area at their slowest safe speed to minimize their wake and proceed with caution after passing arrangements have been made.

LNM: 47-22

MILE 304.0 - L/D RESTRICTIONS

Continuing until approximately January 31, 2023, tows are to enter the lock wall at a DEAD SLOW speed, tows will be restricted to a length no more than 1,100 feet and will line up along the floating guidewall before proceeding into the lock's chamber. Two line-handlers (with life vests) and bumpers are required when approaching and exiting the lock. Vessels must be moored by the bow and stern to the floating timberheads. The Lockmaster, Mr. Anthony T. Lindsly can be reached at (225) 492-3333, for up-to-date information. The point of contact at the USACE New Orleans Office is Russell Beauvais at (225) 492-2169.

LNM: 31-22

MILE 266.0 - AWASH BARGE

A partially submerged barge has been reported in the vicinity of Mile 266.0, LDB, near the St. Francisville Boat Ramp. Mariners may contact U.S. Coast Guard Marine Safety Unit Baton Rouge at (225) 281-4784, for additional information. Mariners are urged to exercise caution in the area.

LNM: 47-22

MILE 246.6 - AGROUND BARGES/SALVAGE OPERATION/SUBMERGED OBSTRUCTION

Salvage operations to recover aground barges in the vicinity of Mile 246.6, RDB, have been completed. An unmarked submerged obstruction remains in the area, approximately 650 feet from the RDB, with the Baton Rouge Gauge at 4 feet. Mariners are urged to exercise caution in the area. Mariners may contact Jeffery Hopkins at (901) 302-7398, for additional information.

LNM: 46-22

MILE 230.0 - MILE 228.5 - BRIDGE FENDER SYSTEM REPLACEMENT

Continuing until approximately August 2, 2023, work to replace the bridge fender system on the I-10 Bridge, left descending pier of the center span, in the vicinity of Mile 229.3, is being conducted. Work will be conducted Monday through Saturday, from 6:00 a.m. until 7:00 p.m. Mariners are urged to transit between Mile 230.0 and 228.5, at their slowest safe speed to minimize their wake and proceed with caution. Mariners may contact Ryan Finnie via VHF-FM Channel 21 or at (321) 501-3936, for additional information.

LNM: 31-22

MILE 211.5 - SUBMERGED OBSTRUCTION

A submerged obstruction has been reported in the vicinity of Mile 211.5, RDB, near the deep draft channel, above Medora Range. Mariners may contact Vessel Traffic Service Lower Mississippi River via VHF-FM Channel 5, 12 or 67 or at (504) 365-2230, for additional information.

LNM: 46-22

UPPER MISSISSIPPI RIVER**MILE 796.9 - L/D CLOSURE**

Commencing December 5, 2022 and continuing until March 13, 2023, L/D Nr. 3, in the vicinity of Mile 796.9, will be closed for maintenance.

LNM: 43-22

MILE 752.8 - L/D CLOSURE

Commencing December 5, 2022 and continuing until March 13, 2023, L/D Nr. 4, in the vicinity of Mile 752.8, will be closed for maintenance.

LNM: 43-22

MILE 699.8 - BRIDGE REPAIR

La Crosse Railroad Drawbridge; Due to ongoing bridge repairs, mariners are requested to provide 30-minutes advance notice when transiting the bridge. Mariners are requested to contact the M/V JOHN J. MANNING, prior to transiting via VHF-FM Channel 13 or 16.

LNM: 36-22

MILE 693.7 - DREDGE OPERATION

Continuing until further notice, the Dredge BRAND MARIE is conducting dredging operations in the vicinity of Mile 693.7. Work will be conducted from 7:00 a.m. until 7:00 p.m., Monday through Friday. The Dredge BRAND MARIE will monitor VHF-FM Channel 7 and requests 30-minutes advance notice of passage. Mariners are urged to transit the area at their slowest safe speed and proceed with caution after passing arrangements have been made.

LNM: 42-22

MILE 596.4 - MILE 596.0 - DREDGE OPERATION

Continuing until further notice, the M/V LAURA K., is conducting dredge operations/strike removal between approximate Miles 596.4 and 596.0, Finley's Landing. Work will be conducted from 6:00 a.m. until 6:00 p.m., 7-days a week. The M/V LAURA K., will monitor VHF-FM Channel 7 or 13 and requests 30-minutes advance notice of passage. Mariners are urged to transit the area at their slowest safe speed to minimize their wake and proceed with caution after passing arrangements have been made.

LNM: 46-22

MILE 556.7 - L/D CLOSURE

Commencing 7:00 a.m., December 13, 2022 and continuing until noon, March 3, 2023, L/D Nr. 12, in the vicinity of Mile 556.7, will be closed for repairs. During this closure, towboat operators are requested NOT to tie up on the guidewalls. Mariners may contact the lock via VHF-FM Channel 14 or at (563) 872-3314, for assistance.

LNM: 44-22

MILE 522.5 - L/D CLOSURE

Commencing 7:00 a.m., December 14, 2022 and continuing until noon, January 6, 2023, L/D Nr. 13, in the vicinity of Mile 522.5, will be closed for repairs. During this closure, towboat operators are requested NOT to tie up on the guidewalls. Mariners may contact the lock via VHF-FM Channel 14 or at (815) 589-3313, for assistance.

LNM: 44-22

MILE 496.5 - CHANNEL CONDITION

Shoaling has been reported in the vicinity of Mile 496.5. Mariners are urged to exercise caution in the area.

LNM: 45-22

MILE 493.3 - CHANNEL CONDITION

Shoaling has been reported in the vicinity of Mile 493.3, north of L/D Nr. 14. Mariners are urged to exercise caution in the area.

LNM: 40-22

MILE 486.6 - CHANNEL CONDITION

Shoaling has been reported in the vicinity of Mile 486.6. Mariners are urged to exercise caution in the area.

LNM: 40-22

MILE 482.9 - L/D CLOSURE

Commencing 7:00 a.m., January 3, 2023 and continuing until noon, March 3, 2023, L/D Nr. 15, in the vicinity of Mile 482.9, will be closed for repairs. During this closure, towboat operators are requested NOT to tie up on the guidewalls. Mariners may contact the lock via VHF-FM Channel 14 or at (309) 794-5266, for assistance.

LNM: 44-22

MILE 478.3 - BRIDGE REPAIRS

I-280 Bridge; Due to pier repair work, a work barge will be moored channel ward along the right descending pier, daily from 7:00 a.m. until 6:00 p.m. The barge will be moved out of the channel at night. Mariners are encouraged to transit the bridge with caution.

LNM: 40-22

MILE 402.4 - MILE 401.8 - DREDGE OPERATION

Continuing until further notice, the M/V CLINTON or the M/V DAVENPORT is conducting mechanical dredging/strike removal operations between approximate Miles 402.4 and 401.8, Burlington Bluff. Work will be conducted from 7:00 a.m. until 5:30 p.m., 7-days a week. The M/V CLINTON or the M/V DAVENPORT will monitor VHF-FM Channel 13, 14, 16 or 82 and requests 30-minutes advance notice of passage. Mariners are urged to transit the area at their slowest safe speed to minimize their wake and proceed with caution after passing arrangements have been made.

LNM: 45-22

MILE 289.4 - MILE 289.1 - CHANNEL CONDITION

Shoaling has been reported mid-channel, between approximate Miles 289.4 and 289.1. Mariners are urged to exercise caution in the area.

LNM: 43-22

MILE 186.6 - BRIDGE MAINTENANCE

Jefferson Barracks Dual Bridge; Due to a containment system installed below low steel, vertical clearance has been reduced to 84 feet. Mariners are advised to transit the bridge with caution.

LNM: 17-22

MILE 115.0 - DREDGE OPERATION

Continuing until further notice, the Dredge POTTER is conducting dredging operations in the vicinity of Mile 115.0. Work will be conducted 24-hours a day, 7-days a week. The Dredge POTTER will monitor VHF-FM Channel 13, 16 or 82 and requests 30-minutes advance notice of passing. Mariners are urged to transit the area at their slowest safe speed and proceed with caution after passing arrangements have been made.

LNM: 45-22

MILE 108.8 - CHANNEL CONDITION - UPDATE

Shoaling was previously reported in the vicinity of Mile 108.8, along the left descending side of the sail line. The area has been investigated with no evidence of shoaling found.

LNM: 47-22

MILE 57.8 - MILE 55.8 - WEIR DEGRADATION/TRANSIT INSTRUCTIONS

Continuing until further notice, Luhr Brothers, a contractor for the USACE, is conducting weir degradation operations between approximate Miles 57.8 and 55.8, Picayune Weir Field. Work will be conducted from 7:00 a.m. until 5:00 p.m., each day. The contact boat is the M/V JASON LUHR,

MILE 57.8 - MILE 55.8 - WEIR DEGRADATION/TRANSIT INSTRUCTIONS

and will monitor VHF-FM Channel 13, 16 or 72 or at (573) 803-7930. No river closures are scheduled, but minor delays may occur. Transiting tows are requested to contact the M/V JASON LUHR, in advance to make passing arrangements. Southbound tows are requested to make contact with the M/V JASON LUHR, when at Teatable Light (LLNR-17245), Mile 68.7 and northbound tows when at Grays Point, Mile 47.0. Mariners are urged to transit the area at their slowest safe speed and proceed with caution, after passing arrangements have been made.

LNM: 46-22

MILE 7.0 - CHANNEL CONDITION

A shoal has been reported developing in the vicinity of Mile 7.0, along the can buoy line. Mariners are urged to exercise caution in the area.

LNM: 45-22

MISSOURI RIVER**MILE 397.6 - SUBMERGED OBSTRUCTIONS**

Submerged obstructions have been reported in the vicinity of Mile 397.6, underneath the Leavenworth Highway Bridge, Alternate Span. Mariners are urged to exercise caution in the area.

LNM: 16-22

MILE 185.0 - BRIDGE MAINTENANCE

Rocheport Highway Bridge; A drill barge will be located channelward of the existing right descending pier and will reduce the horizontal clearance to 470 feet. Mariners are advised to transit the bridge with caution.

LNM: 16-22

MILE 151.0 - SUBMERGED OBSTRUCTION

A submerged obstruction has been reported in the vicinity of Mile 151.0, near the sailing line. The obstruction is reportedly not marked. Mariners are urged to exercise caution in the area.

LNM: 47-22

MILE 19.3 - CHANNEL CONDITION

Shoaling has been reported in the vicinity of Mile 19.3. Mariners are urged to exercise caution in the area.

LNM: 43-22

MONONGAHELA RIVER**MILE 0.8 - BRIDGE MAINTENANCE**

Smithfield Bridge; A containment system is installed and will hang approximately 1.5 feet, below low steel, following the contour of the bridge.

LNM: 33-22

OHIO RIVER**MMILE 0.3 - MILE 1.5 - DRILLING OPERATION/SAFETY ZONE**

Commencing 6:00 a.m., November 28, 2022 and continuing until 11:59 p.m., December 3, 2022, a drilling operation from a barge, will be conducted between approximate Miles 0.3 and 1.5, RDB. The COTP Pittsburgh has established a Safety Zone limiting passage in the area, to one-way and at a no wake speed, to facilitate this operation. Vessels or persons entering this Safety Zone should make contact with the U.S. Coast Guard at (412) 670-4288 or via VHF-FM Channel 16, for transit instructions.

LNM: 46-22

MILE 31.7 - L/D CLOSURE

Continuing until 6:00 p.m., December 16, 2022, the Montgomery L/D (primary chamber), in the vicinity of Mile 31.7, will be closed. The auxiliary chamber will be available to pass traffic, during this closure. Vessel pilots are requested to contact the L/D via VHF-FM Channel 13, at the normal arrival points. Mariners are urged to exercise caution in the area.

LNM: 39-22

MILE 90.3 - BRIDGE MAINTENANCE

Wheeling Suspension Bridge; Continuing through June 2023, the vertical clearance may be reduced by 2 feet due to maintenance being performed on the bridge. For more information, mariners may contact West Virginia Department of Transportation, Ahmed Mongi, at (304) 553-3941 or Advantage Steel and Construction, Matt Oskin, at (724) 352-4842.

LNM: 11-22

MILE 260.0 - DREDGE OPERATION

Continuing until approximately November 30, 2022, Amherst-Madison Inc., will conduct dredging operations at a facility in the vicinity of Mile 260.0, RDB. Work will be conducted from 6:30 a.m. until 4:30 p.m., Monday through Friday. The contractors floating plant will consist of the M/V FRED R. SHEDD, a hopper barge and a barge mounted crane. During non-working hours, the contractors floating plant will be moored at the worksite and lighted accordingly. The M/V FRED R. SHEDD will monitor VHF-FM Channel 16 or 80. Mariners are urged to transit the area at their slowest safe speed to minimize their wake and proceed with caution.

LNM: 44-22

MILE 531.5 - CHANNEL CONDITION/L/D TRANSIT INSTRUCTION

Shoaling has been reported in the vicinity of Mile 531.5, Markland L/D lower approach. Attached as an enclosure to this LNM, is USACE Louisville District Notice 2022-055, survey drawing of the area, dated November 1, 2022. Tows with a 7-foot draft or greater are advised to use the main (1,200-foot) chamber when the Markland Gauge is at 12.0 feet. Tows utilizing the main chamber, are advised to "stay flat" on the long walls (river side approach wall), while entering and exiting the lower end of the locks, to avoid shoaling in the area. Mariners should make note of conditions, exercise caution when transiting the area and take all directions from the L/D operator.

LNM: 44-22

MILE 608.6 - BRIDGE MAINTENANCE

Sherman Minton Bridge; Cleaning and painting of the bridge will continue from 7:00 a.m. until 6:00 p.m., Monday through Saturday, until further notice. A containment system will hang 4 feet below low steel. Mariners should transit the bridge with caution.

LNM: 29-21

MILE 789.0 - MILE 791.3 - FACILITY CONSTRUCTION

Continuing until approximately September 30, 2025, Meuth Construction Supply Inc., is constructing a facility adjacent to the navigation channel between approximate Miles 789.0 and 791.3, RDB. Sixteen tri-tie dolphins will be constructed to anchor barges along the riverbank. Construction for this facility will be performed from a floating plant. The contractors floating plant will never extend more than 180 feet from the shoreline, at normal pool. The construction contractor will monitor VHF-FM Channel 7, 13 or 16. Mariners are urged to transit the area with caution.

LNM: 39-22

MILE 797.0 - CHANNEL CONDITION

Shoaling has been reported in the vicinity of Mile 797.0. A M/V ran aground in the area with a 9-foot, 6-inch draft, on November 11, 2022. Mariners are urged to exercise caution in the area.

LNM: 46-22

MILE 849.6 - CHANNEL CONDITION

Shoaling has been reported in the vicinity of Mile 849.6. A M/V ran aground in the area with 9-foot draft, on November 11, 2022. Mariners are urged to exercise caution in the area.

LNM: 46-22

MILE 938.9 - DEMOLITION ACTIVITY/NAVIGATION LANE CHANGE

Continuing until further notice, the navigation lane at L/D 52, in the vicinity of Mile 938.9, has shifted from the center of the navigation pass toward the LDB, to facilitate demolition activities. Attached as enclosures to this LNM, are USACE Louisville District Navigation Interests 2022-60 and associated buoy layout drawing. Mariners are urged to exercise caution in the area.

LNM: 46-22

MILE 967.0 - MILE 975.0 - CHANNEL CONDITION

Shoaling has been reported between approximate Miles 967.0 and 975.0. Attached as enclosures to this LNM, are USACE Louisville District Notice to Navigation Interests 2022-049, transit advisory with surveys dated October 12, 2022.

LNM: 42-22

MILE 972.0 - MILE 975.0 - DREDGE OPERATION

Continuing until further notice, Luhrs Bros., Inc., is conducting dredging operations between approximate Miles 972.0 and 975.0. Mariners shall implement one-way traffic scheme and avoid meeting or overtaking in the area. The contractors floating plant will consist of the Dredge BILL HOLMAN and Tender Vessel ALABAMA. The Dredge BILL HOLMAN and Tender Vessel ALABAMA will monitor VHF-FM Channel 13. Mariners are requested to make passing arrangements with both vessels well in advance, due to the extreme low water conditions. Up-bound vessels shall check in at Cairo Point and down-bound vessels shall check in at Olmstead L/D. Mariners are requested to transit the area at their slowest safe speed to minimize their wake and proceed with caution after passing arrangements have been made. Mariners should stay within the channel marked with physical and AIS aids to navigation and are urged to review the latest USACE surveys of the area, prior to transiting. Attached as an enclosure to this LNM, is USACE Louisville District Notice to Navigation Interests 2022-042, depicting the area and the placement of the electronic AIS aids to navigation.

LNM: 44-22

TENNESSEE-TOMBIGBEE WATERWAY**MILE 436.2 - DREDGE OPERATION**

Continuing until approximately November 29, 2022, the Costal Dredging Inc.'s Dredge COASTAL ROSE is conducting dredging operations in the vicinity of Mile 436.2, Divide Cut. Work will be conducted 24-hours a day, 7-days a week. Dredge spoils will be placed in upland disposal area DS-804. The Dredge COASTAL ROSE will monitor VHF-FM Channel 16. Mariners are urged to transit the area at their slowest safe speed to minimize their wake and proceed with caution. Mariners may contact Mr. Roger Wilson, Jr., or Mr. Joshua Brown, Tennessee-Tombigbee Project Management Office at (662) 245-5500, for additional information.

LNM: 46-22

TENNESSEE RIVER**MILE 72.5 - TRANSMISSION TOWER REPAIR/DIVE OPERATIONS**

Continuing until approximately December 16, 2022, the TVA is conducting transmission tower repairs in the vicinity of Mile 72.5. In conjunction with this operation, divers will be utilized. Work will be conducted from 7:00 a.m. until 6:00 p.m., Monday through Saturday. The floating plant will consist of the M/V RED WAGNER and 2 barges spud down around the towers. The TVA Police will have vessels on station during dive operations. The M/V RED WAGNER will monitor VHF-FM Channel 13 or 16. Mariners are urged to transit the area at their slowest safe speed to minimize their wake and proceed with caution. Mariners may contact the TVA, for additional information.

LNM: 14-22

SECTION VIII - LIGHT LIST CORRECTIONS

An Asterisk *, indicates the column in which a correction has been made to new information

(1) No.	(2) Name and Location	(3) Mile	(4) Bank	(5) Characteristic	(6) Structure / Dayboard Up Down	(7) Remarks
------------	--------------------------	-------------	-------------	-----------------------	--	----------------

SECTION VIII - LIGHT LIST CORRECTIONS (Continued)

(1) No.	(2) Name and Location	(3) Mile	(4) Bank	(5) Characteristic	(6) Structure / Dayboard Up Down	(7) Remarks
21172	MISS AUGUSTA UPSTREAM DOCK LIGHT	56.3	Left	Fl W 2.5s	Marks cruise dock.	Private Aid. 47/22
*	*	*	*	*	*	*
21172.01	MISS AUGUSTA DOWNSTREAM DOCK LIGHT	56.3	Left	Fl W 2.5s	Marks cruise dock.	Private Aid. 47/22
*	*	*	*	*	*	*

ENCLOSURES

USACE Little Rock District Navigation Notices 22-21 and 22-41

L/D's closures/restrictions.

LNM: 34-22

USACE Channel Status Reports - UPDATE

Arkansas River Channel Status Reports.

LNM: 47-22

USACE Rock Island District Notice to Navigation Interests MR 22-201530, MR 22-201531 and MR 22-201532

L/D closures/restrictions on the Upper Mississippi River.

LNM: 45-22

USACE Louisville District Notice 2022-055

Survey drawing dated November 1, 2022.

LNM: 44-22

USACE Louisville District Navigation Interests 2022-60

Buoy layout drawing.

LNM: 46-22

USACE Louisville District Notice to Navigation Interests 2022-049

Transit advisory with surveys dated October 12, 2022.

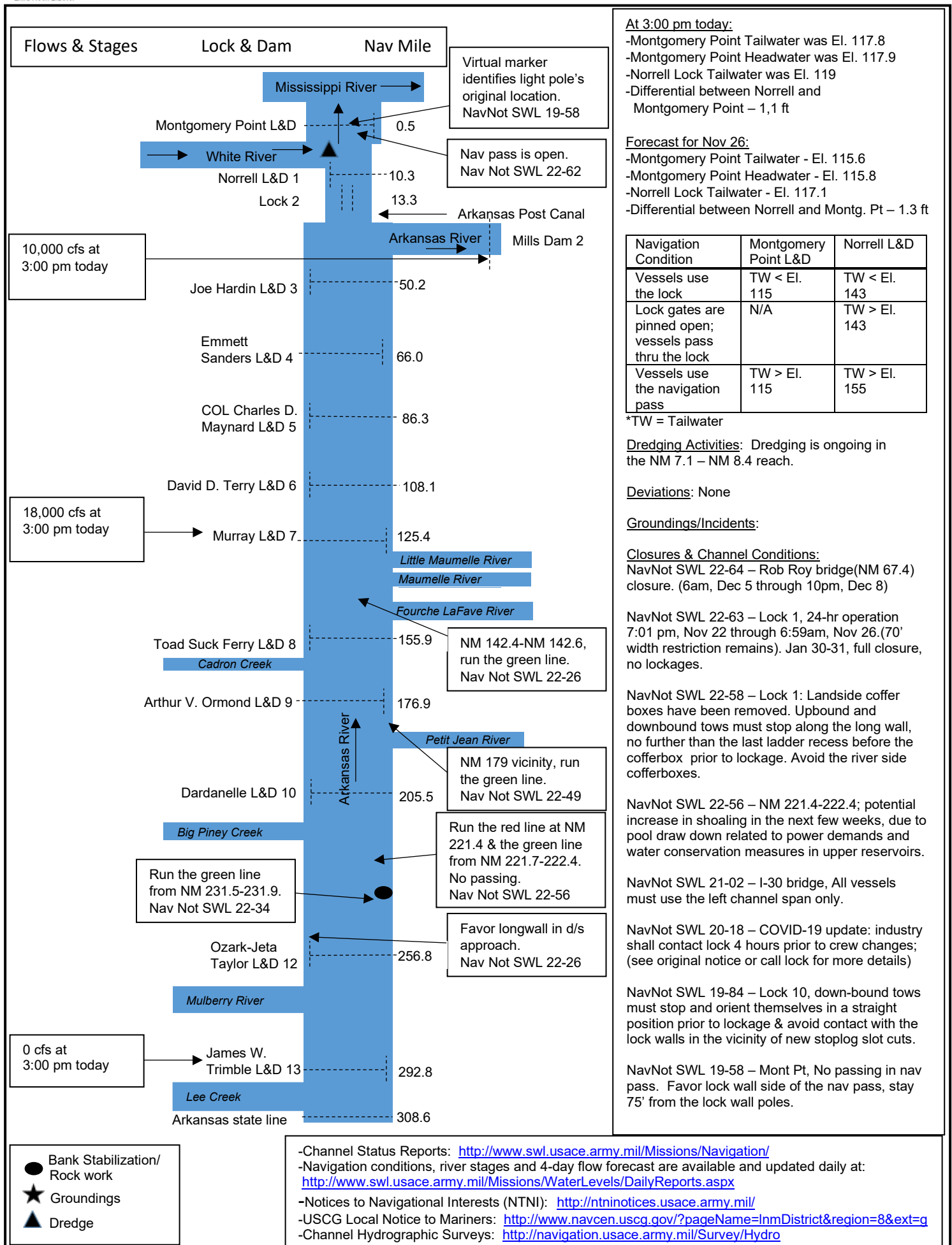
LNM: 42-22

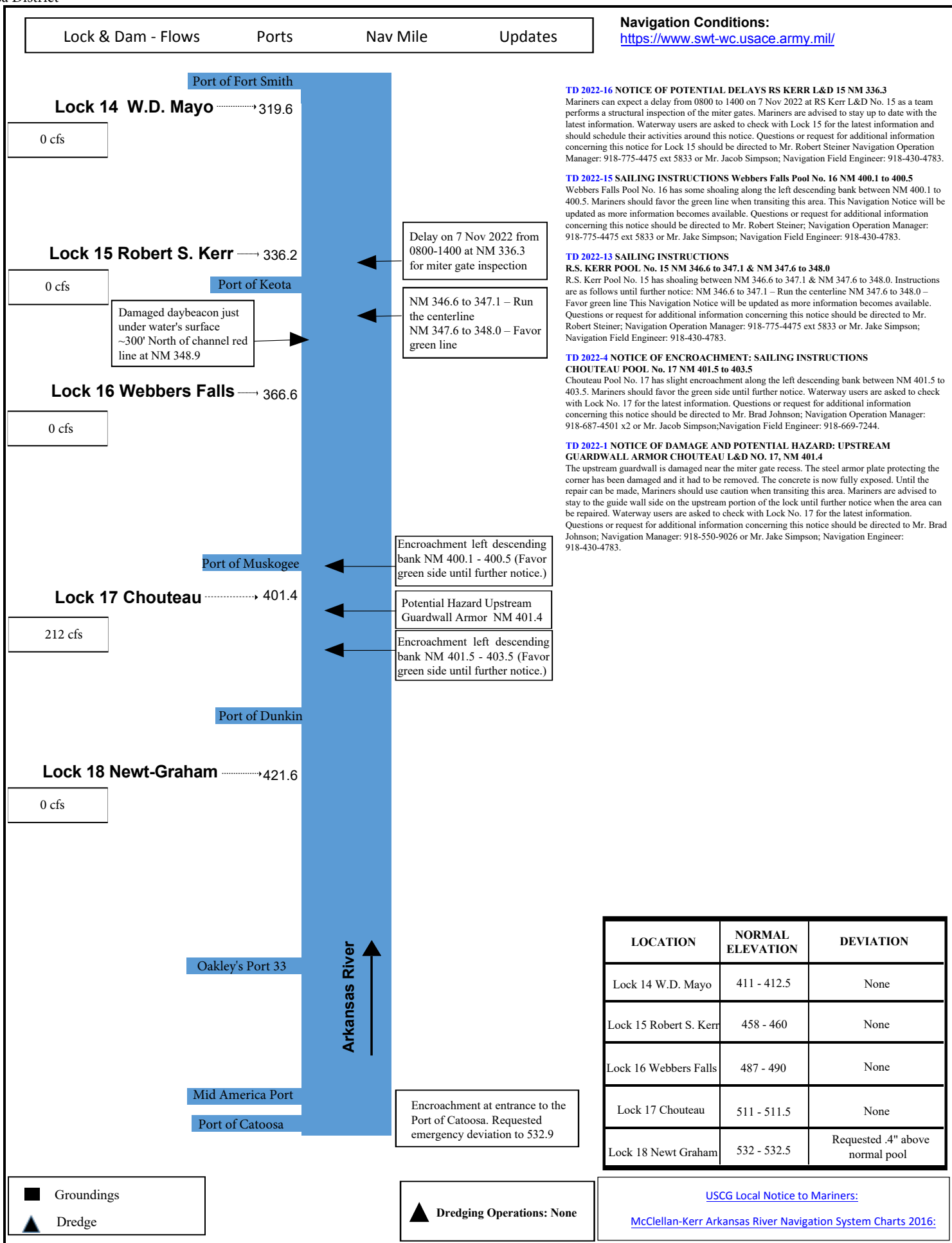
USACE Louisville District Notice to Navigation Interests 2022-042

Placement of the electronic AIS Mile 972.0 - Mile 975.0, Ohio River.

LNM: 44-22

Commander, Eighth Coast Guard District
Hale Boggs Federal Building, Room 1230
500 Poydras Street, New Orleans, LA 70130-3310
Telephone (504) 671-2327
(Business Hours 7:00 a.m. - 3:30 p.m. Monday - Friday)
(Nights, Weekends, Holidays) (504) 589-6225
RADM Timme





NOTICE TO NAVIGATION INTERESTS

ROCK ISLAND DISTRICT
ATTN: CEMVR-DE
CLOCK TOWER BLDG. - RODMAN
AVE
ROCK ISLAND IL 61299
[HTTP://WWW.MVR.USACE.ARMY.MIL/](http://www.mvr.usace.army.mil/)

DATE: 11/04/2022

POC: lock at 217-222-0918 or on
channel 14

NOTICE NUMBER: 201530
LOCAL NUMBER: MR 22-201530
WTRWY/CHNL: UPPER MISSISSIPPI
LOCK(S): MI 21
EFFECTIVE: 12/23/2022 06:00 thru
03/02/2023 13:00

Lock Restrictions and Closure **Lock & Dam No. 21, UMR Mile 324.9**

Lock 21 will be closed to all navigation from 0700 hours on Thursday January 12, 2023 until 1300 hours on Thursday March 2, 2023.

Lock 21 will be under navigation restrictions beginning on December 23, 2022. These restrictions will be in place until the closure of the lock. Navigation traffic **will not** be allowed to lock from 0600 hours to 1700 hours, 7 days a week during the restriction period. Navigation traffic will also be limited to a width restriction of 70 feet wide during this period. Mariners need to be aware of various floating plant in the vicinity of the lock. The Lockmaster MAY grant a lockage during this part of the restriction period, however, a request must occur in enough in advance for proper coordination with the contractor's work schedule which will take precedence.

Navigation traffic **will** be allowed to lock from 1700 to 0600 daily during the restriction period.

The upper and lower guidewalls will not be available for breaking/making tows. Lines will need to be caught on the I-Wall side of the lock unless approved otherwise by the Lockmaster.

The tow haulage units will not be operable during this time, which will prohibit double lockages upstream and downstream utilizing the tow haulage unit equipment. Tows can still transit the lock with a double, as long as they have either a tug assist or industry self-help pulling cuts out of the lock chamber. Tows will have to transit and stage barges at above mile marker 326 northbound or below mile marker 324 southbound to reconfigure tows.

The purpose of the restrictions and closure is to replace land wall concrete, replace the kevel rail, and conduct lock wall joint repairs. All work will be performed by a contractor.

All navigation interest should be alert for, and abide by, any special instructions that may be issued by the Lockmaster. Towboat operators are requested NOT to tie up on the guide walls during these closure periods. Please contact the lock at 217-222-0918 or on channel 14 for assistance.

//signed//

Robert V. Castro, P.E.
Chief, Lock and Dam Section
Mississippi River Project

**US Army Corps
of Engineers®**

ROCK ISLAND DISTRICT

ATTN: CEMVR-DE

CLOCK TOWER BLDG. - RODMAN

AVE

ROCK ISLAND IL 61299

[HTTP://WWW.MVR.USACE.ARMY.MIL/](http://www.mvr.usace.army.mil/)**DATE:** 11/04/2022**POC:** lock at 573-221-0294 or on
channel 14**NOTICE NUMBER:** 201531**LOCAL NUMBER:** MR 22-201531**WTRWY/CHNL:** UPPER MISSISSIPPI**LOCK(S):** MI 22**EFFECTIVE:** 01/03/2023 06:00 thru
03/02/2023 13:00

Lock Restrictions and Closure
Lock & Dam No. 22, UMR Mile 301.2

Lock 22 will be closed to all navigation from 0700 hours on Friday January 13, 2023 until 1300 hours on Thursday March 2, 2023.

Lock 22 will be under a 70 foot wide width restriction beginning at 0600 on January 3, 2023. This restriction will be in place until the closure of the lock. Mariners need to be aware of various floating plant in the vicinity of the lock.

The upper guidewall will not be available for breaking/making tows. Lines will need to be caught on the I-Wall side of the lock unless approved otherwise by the Lockmaster.

The upper tow haulage unit will not be operable during this time, which will prohibit double lockages upstream utilizing the tow haulage unit equipment. Tows can still transit the lock with a double, as long as they have either a tug assist or industry self-help pulling cuts out of the lock chamber. Tows will have to transit and stage barges above the lock northbound or below the lock southbound to reconfigure tows.

The purpose of the restriction and closure is to replace the travelling kevel rail. All work will be performed by a contractor.

All navigation interest should be alert for, and abide by, any special instructions that may be issued by the Lockmaster. Towboat operators are requested NOT to tie up on the guide walls during these closure periods. Please contact the lock at 573-221-0294 or on channel 14 for assistance.

//signed//

Robert V. Castro, P.E.
Chief, Lock and Dam Section
Mississippi River Project

**US Army Corps
of Engineers®**

ROCK ISLAND DISTRICT

ATTN: CEMVR-DE

CLOCK TOWER BLDG. - RODMAN
AVE

ROCK ISLAND IL 61299

[HTTP://WWW.MVR.USACE.ARMY.MIL/](http://www.mvr.usace.army.mil/)**DATE:** 11/04/2022**POC:** lock at 319-524-2631 or on
channel 14**NOTICE NUMBER:** 201532**LOCAL NUMBER:** MR 22-201532**WTRWY/CHNL:** UPPER MISSISSIPPI**LOCK(S):** MI 19**EFFECTIVE:** 12/19/2022 07:00 thru
03/03/2023 12:00

LOCK CLOSURE
Lock No. 19, UMR Mile 364.2

Lock No. 19 will be closed to all navigation at 0700 hours on Monday, December 19, 2022 through 1200 hours on Friday, March 3, 2023. The purpose of the closure is to perform contract work for PLC System upgrades, Valve and Miter Gates Cylinder Replacement, and USACE testing.

Towboat operators are requested NOT to tie up on the guidewalls during this closure period. Please contact the lock at 319-524-2631 or on channel 14 for assistance.

//signed//

Robert V. Castro, P.E.
Chief, Lock and Dam Section
Mississippi River Project

**US Army Corps
of Engineers®**

ROCK ISLAND DISTRICT
ATTN: CEMVR-DE
CLOCK TOWER BLDG. - RODMAN
AVE
ROCK ISLAND IL 61299
[HTTP://WWW.MVR.USACE.ARMY.MIL/](http://WWW.MVR.USACE.ARMY.MIL/)

DATE: 11/22/2022**POC:** Robert V. Castro, P.E. 309-
794-4580

NOTICE NUMBER: 201634
LOCAL NUMBER: MR 22-201634
WATERWAY: UPPER MISSISSIPPI
EFFECTIVE: 12/13/2022 08:00 thru
03/03/2023 16:00

WINTER LOCKAGE HOURS**Lock & Dam No. 11 UMR 583.0 THROUGH Lock & Dam No. 22 UMR 301.2**

Locks 11, 14, 16, 17, 18, and 20 will be staffed to lock traffic between 0800 and 1600, Monday through Friday during the period from 18 December 2022 through 3 March 2023.

Lock 12 will be closed to navigation from 13 December 2022 thru 3 March 2023. Refer to separate Navigation Notice.

Lock 13 will be closed to navigation from 14 December 2022 thru 6 January 2023. Refer to separate Navigation Notice. Lock will be staffed to lock traffic between 0800 and 1600, Monday through Friday after the closure through 3 March 2023.

Lock 15 will be closed to navigation from 3 January 2023 thru 3 March 2023. Refer to separate Navigation Notice. Lock will be staffed to lock traffic between 0800 and 1600, Monday through Friday during the period from 18 December 2022 through 2 January 2023.

Lock 19 will be closed to navigation from 19 December 2022 thru 3 March 2023. Refer to separate Navigation Notice.

Lock 21 will be closed to navigation from 12 January 2023 thru 2 March 2023. Lock restrictions will occur prior to closure. Refer to separate Navigation Notice.

Lock 22 will be closed to navigation from 13 January 2023 thru 2 March 2023. Lock restrictions will occur prior to closure. Refer to separate Navigation Notice.

Tows requiring a lockage outside of these hours must contact the Lockmaster in advance so that lock operators can be called in to operate the lock. Winter conditions will dictate whether or not a lockage can be accomplished, as well as any necessary restrictions.

Operational Aspects

Rake to box ice couplings the entire width of the tow, at break points of the tow, will be required at all locks when ice is present at the lock.

Double tripping and use of industry helper boats during ice conditions will be required if proper couplings are not accomplished prior to arrival at the locks.

Failure to have the tow configured properly may result in loss of lock turn.

Tow configuration to ice couplings shall not be accomplished at the lock or lock approach.

//signed//

Robert V. Castro, P.E.
Chief, Lock and Dam Section
Mississippi River Project



U.S. Army Corps
of Engineers
Little Rock District

NAVIGATION NOTICE Number SWL 22-21

McClellan-Kerr Arkansas River Navigation System

May 25, 2022

In Reply Refer to: CESWL-OP
P. O. Box 867
Little Rock, AR. 72203-0867
PH. 501-324-5739

REMINDER – SCHEDULED LOCK CLOSURES NORRELL LOCK (No. 1) NM 10.3 JOE HARDIN LOCK (No. 3) NM 50.2 MCCLELLAN-KERR ARKANSAS RIVER NAVIGATION SYSTEM

As previously noted in Nav Notice SWL 22-04, closures are scheduled for Norrell Lock (No. 1) NM 10.3 and Joe Hardin Lock (No. 3) NM 50.2 during the dates and times indicated below.

The closures at Lock 1 are for installing temporary cofferboxes, concrete saw-cutting of the lock walls and other work related to the new dewatering stoplog slots near the upstream and downstream miter gates. Tow width restrictions will be in place as indicated below and no lockages will be allowed outside the specified times.

The closures at Lock 3 are for the lock dewatering and preparatory inspections prior to the dewatering.

Mariners are advised to contact the locks prior to arrival, for specific instructions on how to proceed for safe lockage. During this time, the Lock 1 tow haulage system will not be available.

Lock 1

June 1 – June 11: Limited width(70' max) lockages only, 7 a.m. – 7 p.m. daily

June 22 – July 21: Limited width(70' max) lockages only, 7 p.m. – 7 a.m. daily

Aug 01 – Aug 10: Full closure, no lockages from 7 a.m.(Aug 01) – 7 p.m.(Aug 10)

Aug 21 – Sep 19: Limited width(70' max) lockages only, 7 p.m. – 7 a.m. daily

Lock 3

Sep 12 - 19: Intermittent closures, 7 a.m. – 7 p.m. daily

Sep 28 – 29: Intermittent closures, 7 a.m. – 7 p.m. daily

Sep 30 – Oct 09: Full closure, no lockages from 7 a.m.(Sep 30) – 7 p.m.(Oct 09)

Lock 1

Sep 30 – Oct 09: Full closure, no lockages from 7 a.m(Sep 30) – 7 p.m.(Oct 09)

Oct 20 – Nov 18: Limited width(70' max) lockages only, 7 p.m. – 7 a.m. daily

Nov 29 – Dec 23: Limited width(70' max) lockages only, 7 p.m. – 7 a.m. daily

Jan 03 – Jan 31: Limited width(70' max) lockages only, 7 p.m. – 7 a.m. daily

Questions or requests for additional information concerning this notice should be directed to the Little Rock District Office, at (501) 324-5096 or you may email CESWL-OP-OM@usace.army.mil.

Christopher B. Roark
Chief, Operations Division

NAVIGATION NOTICE Number SWL 22-41



**U.S. Army Corps
of Engineers**
Little Rock District

McClellan-Kerr Arkansas River Navigation System

August 19, 2022

In Reply Refer to: CESWL-OP

P. O. Box 867

Little Rock, AR. 72203-0867

PH. 501-324-5739

SPECIAL LOCKING INSTRUCTIONS-UPDATE NORRELL LOCK (No. 1) NM 10.3 MCCLELLAN-KERR ARKANSAS RIVER NAVIGATION SYSTEM

The landside/long wall coffer boxes are scheduled to be installed downstream and upstream of the miter gate recesses at Norrell Lock (No. 1) NM 10.3, beginning Aug 22. Mariners are advised to avoid contact with the coffer boxes. All up-bound tows must stop along the long wall, no further than the last ladder recess before the downstream coffer box and transition to the river side/short wall prior to lockage. All downbound tows must stop along the long wall, no further than the last ladder recess before the upstream coffer box and transition to the river side/short wall prior to lockage. All vessels are to exercise caution to safely transit by the coffer boxes. These locking instructions replace the locking instructions specified in Nav Notice SWL 22-36 and will remain in place until further notice.

Questions or requests for additional information concerning this notice should be directed to the Little Rock District Office, at (501) 324-5096, or you may email CESWL-OP-OM@usace.army.mil.

Christopher B. Roark
Chief, Operations Division





US Army Corps
of Engineers
Louisville District

Notice to Navigation Interests

Notice No. 2022-60

Date: November 14, 2022

<http://www.lrl.usace.army.mil/Missions/CivilWorks/Navigation/Notices.aspx>

In Reply Refer to: CELRL-OPT PO Box 59, Louisville, KY 40201 Telephone: 502-315-6694

LOUISVILLE DISTRICT

OHIO RIVER

LOCKS AND DAM 52, OHIO RIVER MILE 938.9

NAVIGATION LANE CHANGE

Effective 16 November 2022 until further notice, the navigation lane at Locks and Dam 52 (Ohio River Mile 938.9) will be shifted from the center of the Navigation Pass toward the left descending bank to facilitate demolition activities, as shown in the attached buoy layout drawing. The navigation lane will remain approximately 850 feet wide. The lane will be marked with physical buoys.

All mariners must exercise caution when transiting area. The contractor's vessel M/V Tombigbee will be working in the area and can be reached on Marine Radio Channel 13.

/s/

Shawn Kenney
Chief, Technical Support Branch

DAM NO. 52
MI 938.9
M/V TOMBIGBEE
For Lock Information use
Marine Radio Channel 13

MI 938.9

M/V TOMBIGBEE

For Lock Information use

Marine Radio Channel 13

BROOKPORT

GREEN BUOY ON TOP OF
MOORING CELL AT
ELEV. 307.2
11.4

GREEN BUOY ON TOP OF
CELL AT ELEV. 307.0

+941

+940
SAILING LINE

PROJECT POOL DAM 53 ELEV 290.0

PROJECT POOL DAM
ELEV 302.0

CAN-5
(X)E 791,204.55
(Y)N 1,941,573.31 -
37°07'28.30"N
88°39'47.86"W

CAN-6
(X)E 792,949.17
(Y)N 1,940,808.76
37°07'21.27"N
88°39'26.04"W

CAN-10
(X)E 793,688.27
(Y)N 1,940,484.8
37°07'18.30"N
88°39'16.80"W

CAN-11
(X)E 794,563.14
— (Y)N 1,940,101.47
37°07'14.77"N
88°39'05.85"W

Nun-12
(X)E 790,912.76
(Y)N 1,940,718.55
37°07'19.76"N
88°39'51.14"W

Nun-204
(X)E 792,122.98
(Y)N 1,940,188.19
37°07'14.89"N
88°39'36.00"W

Nun-14
(X)E 794,099.71
— (Y)N 1,939,321.93
37°07'06.93"N
88°39'11.28"W

Nun-173
(X)E 794,910.68
(Y)N 1,938,966.54
37°07'03.66"N
88°39'01.13"W

Nun-13
(X)E 793,114.99
(Y)N 1,939,753.4
37°07'10.89"N
88°39'23.59"W

KENTUCKY
MCCRACKEN COUNTY

① I-24 HIGHWAY BRIDGE

КЕ
МССР.



US Army Corps
of Engineers
Louisville District

Notice to Navigation Interests

Notice No. 2022 – 049

Date: October 14, 2022

<http://www.lrl.usace.army.mil/Missions/CivilWorks/Navigation/Notices.aspx>

In Reply Refer to: CELRL-OPT PO Box 59, Louisville, KY 40201 Telephone: 502-315-6694

LOUISVILLE DISTRICT

OHIO RIVER

RIVER MILES 967-975

LOW WATER CONDITIONS

DRAFT ADVISORY

Ohio River Miles 967-975: The navigation channel between Ohio River Miles 967 and 975 is experiencing unusually low water conditions. Mariners must take note of the conditions to determine the allowable draft depth at various gage readings.

The depths of water in this stretch of river, as indicated in a survey performed on October 12, 2022, are shown in the attached file titled “Notice 2022-049, Mile967-975_based on 6 Cairo gage and 8 Olmsted Lower Gage. _Survey Date 12 Oct 2022”. The depths in this drawing correspond to an assumed straight line slope in the river between a Cairo gage of 6.0 and Olmsted Locks and Dam Tailwater gage of 8.0. (Note that these gage levels are different from the customary gages used to generate maps in this stretch of the river; previous maps have used Cairo gage of 7.5 and Olmsted Locks and Dam Tailwater gage of 9.0.)

The table below shows approximate depths of water at the shallowest points in this stretch of river (around mile 968-969) for the corresponding gages listed. This is based on the attached survey results from October 12, 2022. Draft advisory is for 1’ of clearance under the keel. Actual gages and slope in the river may vary, and more refined interpolations for various combinations of variables may be possible, but this table provides an approximation only.

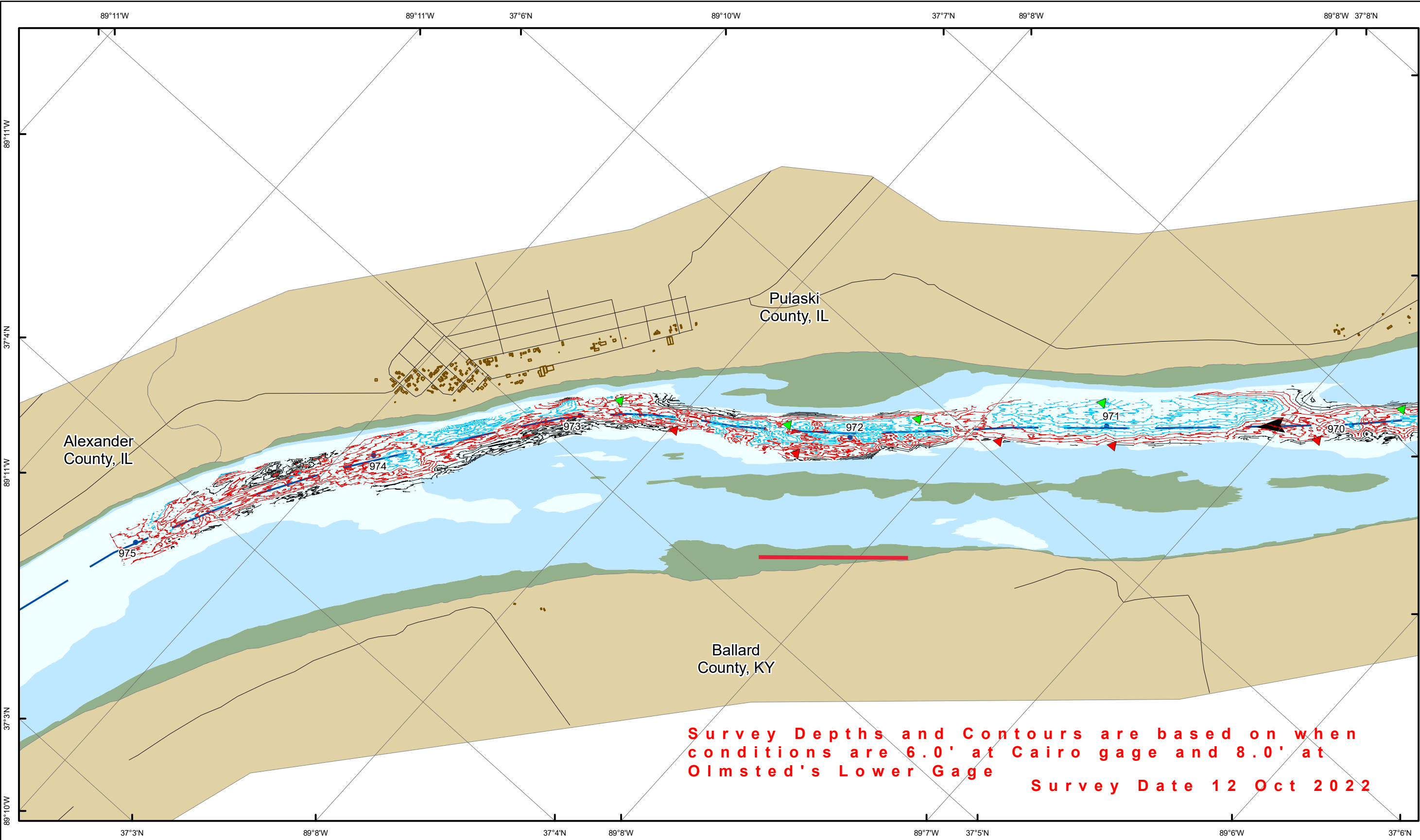
Cairo Gage	Olmsted Tailwater Gage	Depth of Water in stretch between miles 967 and 975	Draft Advisory (1' clearance under keel)
9.0 ft	11.0 ft	11.5 ft	10.5 ft
8.5 ft	10.5 ft	11.0 ft	10.0 ft
8.0 ft	10.0 ft	10.5 ft	9.5 ft
7.5 ft	9.5 ft	10.0 ft	9.0 ft
7.0 ft	9.0 ft	9.5 ft	8.5 ft
6.5 ft	8.5 ft	9.0 ft	8.0 ft
6.0 ft	8.0 ft	8.5 ft	7.5 ft
5.5 ft	7.5 ft	8.0 ft	7.0 ft
5.0 ft	7.0 ft	7.5 ft	6.5 ft
4.5 ft	6.5 ft	7.0 ft	6.0 ft
4.0 ft	6.0 ft	6.5 ft	5.5 ft
3.5 ft	5.5 ft	6.0 ft	5.0 ft
3.0 ft	5.0 ft	5.5 ft	4.5ft
2.5 ft	4.5 ft	5.0 ft	4.0 ft
2.0 ft	4.0 ft	4.5 ft	3.5 ft

Mariners should make note of conditions and exercise caution when transiting the area.

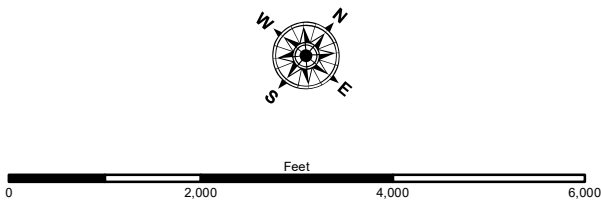
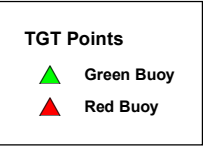
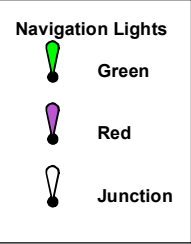
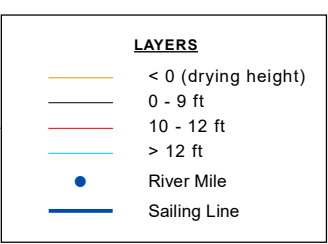
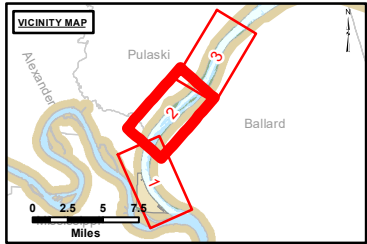
Information updates will be provided as dredging progresses and updated condition surveys become available.

/s/

Shawn Kenney
Chief, Technical Support Branch



Survey Depths and Contours are based on when conditions are 6.0' at Cairo gage and 8.0' at Olmsted's Lower Gage
Survey Date 12 Oct 2022



NOTES:
Horizontal Coordinate System:
North American Datum of 1983 (NAD83), projected to the
State Plane Coordinate System (SPCS), Kentucky South Zone.
Distance units in U.S. Survey Feet.

Vertical Datum:
[REDACTED]
[REDACTED]
[REDACTED]

The information depicted on this map represents the results of a survey conducted on the date indicated and can only be considered to represent the general condition existing at that time.

The location of navigation aids are based on and provided by the U.S. Coast Guard.

US Army Corps of Engineers
District: CELRL

Distribution Liability: The data presented by this map is for informational purposes only and is not to be used for navigation. The user is responsible for the accuracy of the data. The data is not to be used for navigation. The user is responsible for the accuracy of the data. The data is not to be used for navigation. The user is responsible for the accuracy of the data.

Surveyed By	Revised By	Checked By
_____	_____	_____
_____	_____	_____

Survey Information

CAIRO_POOL_OHIO_RIVER
OH_LD_CAI_20221013_OT_967_975_SORT
13 October 2022

Pool Reach Number 2 of 3



