



U.S. Department
of Homeland Security
**United States
Coast Guard**

LOCAL NOTICE TO MARINERS

District: 11

Week: 14/22

CORRESPONDENCE TO:
COMMANDER
DISTRICT ELEVEN (DPW)
COAST GUARD ISLAND BUILDING 50-2
ALAMEDA, CA 94501-5100

REFERENCES: COMDTPUB P16502.6, Light List Volume VI, 2017 Edition, U.S. Chart No.1 12th Edition, and Coast Pilot Volume 7 49th Edition. These publications, along with corrections, are available at: <https://nauticalcharts.noaa.gov/>

BROADCAST NOTICE TO MARINERS - Information concerning aids to navigation and waterway management promulgated through BNM HB-0002-22, SF-0031-22, LA-0022-22, and SD-0015-22 have been incorporated in this notice, or will continue if still significant.

ABBREVIATIONS

A through H

ADRIFT - Buoy Adrift
AICW - Atlantic Intracoastal Waterway
Al - Alternating
B - Buoy
BKW - Breakwater
bl - Blast
BNM - Broadcast Notice to Mariner
bu - Blue
C - Canadian
CHAN - Channel
CGD - Coast Guard District
C/O - Cut Off
CONT - Contour
CRK - Creek
CONST - Construction
DAYMK/Daymk - Daymark
DBN/Dbn - Daybeacon
DBD/DAYBD - Dayboard
DEFAC - Defaced
DEST - Destroyed
DISCON - Discontinued
DMGD/DAMGD - Damaged
ec - eclipse
EST - Established Aid
ev - every
EVAL - Evaluation
EXT - Extinguished
F - Fixed
fl - flash
Fl - Flashing
G - Green
GIWW - Gulf Intracoastal Waterway
HAZ - Hazard to Navigation
HBR - Harbor
HOR - Horizontal Clearance
HT - Height

I through O

I - Interrupted
ICW - Intracoastal Waterway
IMCH - Improper Characteristic
INL - Inlet
INOP - Not Operating
INT - Intensity
ISL - Islet
Iso - Isophase
kHz - Kilohertz
LAT - Latitude
LB - Lighted Buoy
LBB - Lighted Bell Buoy
LHB - Lighted Horn Buoy
LGB - Lighted Gong Buoy
LONG - Longitude
LNM - Local Notice to Mariners
LT - Light
LT CONT - Light Continuous
LTR - Letter
LWB - Lighted Whistle Buoy
LWP - Left Watching Properly
MHz - Megahertz
MISS/MSNG - Missing
Mo - Morse Code
MRASS - Marine Radio Activated Sound Signal
MSLD - Misleading
N/C - Not Charted
NGA - National Geospatial-Intelligence Agency
NO/NUM - Number
NOS - National Ocean Service
NW - Notice Writer
OBSCU - Obscured
OBST - Obstruction
OBSTR - Obstruction
Oc - Occulting
ODAS - Anchored Oceanographic Data Buoy

P through Z

PRIV - Private Aid
Q - Quick
R - Red
RACON - Radar Transponder Beacon
Ra ref - Radar reflector
RBN - Radio Beacon
REBUILT - Aid Rebuilt
RECOVERED - Aid Recovered
RED - Red Buoy
REFL - Reflective
RRL - Range Rear Light
RELIGHTED - Aid Relit
RELOC - Relocated
RESET ON STATION - Aid Reset on Station
RFL - Range Front Light
RIV - River
RRASS - Remote Radio Activated Sound Signal
s - seconds
SEC - Section
SHL - Shoaling
si - silent
SIG - Signal
SND - Sound
SPM - Single Point Mooring Buoy
SS - Sound Signal
STA - Station
STRUCT - Structure
St M - Statute Mile
TEMP - Temporary Aid Change
TMK - Topmark
TRLB - Temporarily Replaced by Lighted Buoy
TRLT - Temporarily Replaced by Light
TRUB - Temporarily Replaced by Unlighted Buoy
USACE - Army Corps of Engineers
W - White
Y - Yellow

Additional Abbreviations Specific to this LNM Edition: None

SECTION I - SPECIAL NOTICES

This section contains information of special concern to the Mariner.

SUBMITTING INFORMATION FOR PUBLICATION IN THE LOCAL NOTICE TO MARINERS

A complete set of guidelines with examples and contact information can be found at <http://www.pacificarea.uscg.mil/Our-Organization/District-11/Prevention-Division/LnmRequest/> or call Waterways Management Branch at 510-437-2929 or e-mail D11-SMB-D11-LNM@uscg.mil. Please provide all Local Notice to Mariners submissions 14 days prior to the start of operations

LNM: 17/21

BRIDGE INFORMATION- PROJECTS, DISCREPANCIES, CORRECTIONS & REGULATORY

For all bridge related issues, including lighting, operation, obstructions, construction, demolition, etc. contact the Eleventh Coast Guard District Bridge Administrator 24 hour cell phone at 510-219-4366. Flotsam may accumulate on and near bridge piers and abutments. Mariners should approach all bridges with caution. A vessel delay at a drawbridge may be reported to the District Bridge Administrator by telephone, or by using the Delay_Report_11-2017.pdf included in the Enclosures section of this Local Notice to Mariners.

BRIDGE INFORMATION-COMMUNICATIONS PROTOCOL-BENICIA/MARTINEZ UPRR BRIDGE- CARQUINEZ STRAIT

All mariners requiring a bridge lift at the Benicia-Martinez Union Pacific Railroad Bridge, mile 7.0, over the Carquinez Strait, California, should follow the protocol in the document entitled "Coordination of Communications for Union Pacific Railroad Lift Operations." Mariners can download a copy of the document by selecting the link BENICIA-MARTINEZ RR BRIDGE under the QUICK LINKS section at <https://www.pacificarea.uscg.mil/vtssf>.

CANCELLATION OF NOAA PAPER AND RASTER NAUTICAL CHARTS

The National Oceanic and Atmospheric Administration (NOAA) is undertaking a multi-year program to end production and maintenance of its suite of over 1,000 traditional paper nautical charts and all associated raster chart products and services, including: Print-on-Demand (POD) paper nautical charts, Full-size chart PDF files, BookletChart™ PDF files, NOAA raster navigational charts (NOAA RNC®), the NOAA RNC tile service, and the online RNC viewer.

Six months notice of the intent to cancel a specific chart is provided in a "Last Edition" notice. The final cancellation of a chart is made in a "Canceled" notice. Both types of notices will appear in LNM Section IV, "Chart Correction." A comprehensive list of all canceled NOAA charts is available at: <http://www.charts.noaa.gov/MCD/Dole.shtml>.

Traditional paper nautical chart production is ending to enable the creation and maintenance of larger scale, more up-to-date, higher quality coverage of NOAA's electronic navigational chart (NOAA ENC®) product. This will significantly enhance the amount of charted detail available to mariners. More information about NOAA's program to sunset traditional paper charts is on the NOAA Coast Survey website at: <https://nauticalcharts.noaa.gov/charts/farewell-to-traditional-nautical-charts.html>

An online NOAA Custom Chart application at: <https://devgis.charttools.noaa.gov/pod> is available to create chart images from ENC data, which may then be printed. Notices to Mariners will not be issued for NOAA Custom Charts.

LNM: 07/21

CAUTION TO BE USED IN RELIANCE UPON AIDS TO NAVIGATION

The aids to navigation depicted on charts comprise a system of fixed and floating aids to navigation with varying degrees of reliability. Prudent mariners will not rely solely on any single aid to navigation, particularly a floating aid to navigation. With respect to buoys, the buoy symbol is used to indicate the approximate position of the buoy body and the sinker which secures the buoy to the seabed. The approximate position is used because of the practical limitations in positioning and maintaining buoys and their sinkers in precise geographical locations. These limitations include, but are not limited to, inherent imprecision in position fixing methods, prevailing atmospheric and sea conditions, slope of and the material making up the seabed, the fact that buoys are moored to sinkers by varying length of chain, and the fact that the buoy body and/or sinker positions are not under continuous surveillance, but are normally checked only during periodic maintenance visits which often occur more than a year apart. Due to the forces of nature, the position of the buoy body can be expected to shift inside and outside the charted symbol. The mariner is also cautioned that buoys may be extinguished or sound signals may not function as the result of natural causes, collisions, or other accidents. For the foregoing reasons, a prudent mariner must not rely completely upon the position or operation of floating aids to navigation, but will also utilize bearings from fixed objects and aids to navigation on shore. Furthermore, a vessel attempting to pass close aboard always risks collision with a yawing buoy or with the obstruction that the buoy marks.

DISTRICT ELEVEN NOTICE OF INQUIRY (DOCKET NUMBER USCG-2021-0345)

The Coast Guard is conducting a Notice of Inquiry in conjunction with the Pacific Coast Port Access Route Study (PAC-PARS) to assess navigational risk factors associated with vessel traffic near Point Mugu, San Francisco Bay, Humboldt Bay, and Morro Bay, CA. Mariners are encouraged to participate in this assessment by submitting comments and related material on or before May 26, 2022. Comments can be submitted by searching for the docket "USCG-2021-0345" at <https://Regulations.gov>, under the document "Vessel Traffic Assessment: Near Point Mugu, San Francisco Bay, Humboldt Bay, and Morro Bay, CA". Questions concerning this assessment should be submitted to the email: PACPARS@USCG.MIL.

LNM: 09/22

HAZARDOUS WEATHER OUTLOOK EXTENDED TO THE EASTERN PACIFIC OCEAN

In coordination with the National Weather Service (NWS) and the National Hurricane Center (NHC), the US Coast Guard is pleased to announce the addition of a new Hazardous Weather Outlook (HWO) service that covers the Eastern Pacific Ocean, including the Pacific Coast of the Continental United States (CONUS). This service is available to all those who could benefit from advanced warning of hazardous weather in both

coastal regions and open waters. As with the currently available Western Atlantic Hazardous Weather Outlook, Seven Day HWO's will be released every Wednesday with additional Situational HWO's issued as conditions require. The service will begin on April 6th of this year, however you can sign up in advance at any time.

In the recent past several maritime tragedies and "near misses" in the coastal waters of the United States have occurred due to hazardous weather, such as the sinking of the SS El Faro in 2015. Based on recommendations by the National Transportation Safety Board (NTSB), in cooperation with the NWS and the United States Coast Guard developing improved methods of delivering Marine Safety Information remain a top priority.

The NWS Ocean Prediction Center (OPC) and the NHC's Tropical and Analysis Forecast Branch (TAFB) will be providing weekly and situational reports to the USCG, who will then be making this information available to the public. Through the free online subscription service, GovDelivery, which currently offers subscribers a wide array of Marine Safety Information such as Broadcast Notice to Mariners (BNMs) and Local Notice to Mariners (LNMs) provided through USCG NAVCEN, users will be able to register to receive Hazardous Weather Outlook reports giving forewarning of major weather events.

For subscribing to Eastern Pacific Hazardous Weather Outlook reports by E-mail:
<https://public.govdelivery.com/accounts/USDHSCG/subscriber/new?topic_id=USDHSCG_506>

For subscribing to Eastern Pacific Hazardous Weather Outlook reports by RSS Feed:
<https://public.govdelivery.com/topics/USDHSCG_506/feed.rss>

LNM: 12/22

NAVIGATION CENTER WEBSITE TRANSITION

The U.S. Coast Guard Navigation Center is going to transition the Navigation Center website to a new, enhanced version in the first quarter of 2022. As part of this transition, URLs will be updated across the site including URLs linked to PDFs. Therefore, once the transition is complete, legacy site URLs will no longer function, including bookmarked URLs and URLs used in automatic downloading of data and/or products. Outdated URLs will automatically redirect to the home page of the site, and from there you will be able to easily navigate to your preferred page.

Below are a few of the "old"/new URL pairs listed for your convenience. Please note that the new URLs will not be active until we launch the new website. Of course, once it is launched, the new URLs will be available for re-bookmarking. As a reminder, these are top level URLs that may contain additional links that you use.

This notice will be updated when the final launch date is determined and another notice will be issued to notify you when the site goes live. Questions/concerns may be directed to the NAVCENWebTEAM@uscg.mil.

Local Notices to Mariners (LNMs)
Current URLs: <https://www.navcen.uscg.gov/?pageName=lnmMain>
Replacement: <https://www.navcen.uscg.gov/local-notices-to-mariners-by-cg-district>

Light Lists Annual Publication
Current URLs: <https://navcen.uscg.gov/?pageName=lightLists>
Replacement: <https://www.navcen.uscg.gov/light-list-annual-publication>

Light List - Weekly
Current URLs: <https://navcen.uscg.gov/?pageName=lightListWeeklyUpdates>
Replacement: <https://www.navcen.uscg.gov/weekly-light-lists>

Light List - Corrections
Current URLs: <https://navcen.uscg.gov/?pageName=lightListCorrections>
Replacement: <https://www.navcen.uscg.gov/light-list-summary-of-corrections>

LNM: 06/22

NORTHERN CALIFORNIA-SAN FRANCISCO-MILE ROCKS LIGHT-REDUCED NOMINAL RANGE

Mile Rocks Light (LLNR 365) will have a temporarily reduced intensity of 5nm until further notice. Mariners are requested to transit the area with caution. For more details or comments contact LT Miranda Brumbaugh at 510-437-2978 or Miranda.E.Brumbaugh@uscg.mil.

Charts: 18007 18010 18020 18022 18640 18645 18649 18680 LNM: 16/19

NORTHERN CALIFORNIA-SAN JOAQUIN RIVER-MARINE CONSTRUCTION

The Department of Water Resources have placed an emergency barrier in the West False River until December, 2022. The barrier is located at 38-03-25N 121-40-08W with a navigable channel created in the middle of the barrier open until 30 March, 2022 and is approximately 0.4 mile east of the confluence with the San Joaquin River, between Jersey and Bradford Islands in Contra Costa County, and is about 4.8 miles northeast of Oakley. Constructing the emergency temporary rock barrier provides a method of controlling saltwater intrusion into the Delta and the barrier was installed in the identical location in 2015.

Mariners are requested to transit the area with caution. For more details or comments contact Jason Bacher at 916-376-9859 or Keith Boulton at 360-580-3708.

SOUTHERN CALIFORNIA-OCEANSIDE HARBOR/DEL MAR BOAT BASIN-WAMS

The U. S. Coast Guard is conducting a Waterways Analysis Management System (WAMS) survey of Oceanside Harbor/Del Mar Boat Basin which will remain open until 05 May, 2022. Anyone interested in participating can do so by using the following link: <https://www.research.net/r/OceansideHarborDelMarWAMS>. This questionnaire seeks to obtain data on the effectiveness of the system of Aids to Navigation in Oceanside Harbor/Del Mar Boat Basin, as well as other waterway safety concerns. The Coast Guard will use this information to ensure that the aids are serving their intended purpose. The Coast Guard also uses the concerns of waterways users to assist with other or future waterway management decisions. Any interested company or individual wishing to provide recommendations on existing or additional aids to navigation in this area are welcome to participate by submitting a user survey. To receive further information, contact Sector San Diego Waterways Management, at MarineEventsSD@uscg.mil.

Chart 18758

LNM: 05/22

SOUTHERN CALIFORNIA-SAN CLEMENTE ISLAND-WAMS

The U. S. Coast Guard is conducting a Waterways Analysis Management System (WAMS) survey of San Clemente Island which will remain open until 05 May, 2022. Anyone interested in participating can do so by using the following link: <https://www.research.net/r/SanClementeIslandWAMS>. This questionnaire seeks to obtain data on the effectiveness of the system of Aids to Navigation in San Clemente Island, as well as other waterway safety concerns. The Coast Guard will use this information to ensure that the aids are serving their intended purpose. The Coast Guard also uses the concerns of waterways users to assist with other or future waterway management decisions. Any interested company or individual wishing to provide recommendations on existing or additional aids to navigation in this area are welcome to participate by submitting a user survey. To receive further information, contact Sector San Diego Waterways Management, at MarineEventsSD@uscg.mil.

Chart 18762

LNM: 05/22

SOUTHERN CALIFORNIA-SAN DIEGO BAY FEDERAL CHANNEL-WAMS

The U. S. Coast Guard is conducting a Waterways Analysis Management System (WAMS) survey of San Diego Bay Federal Channel which will remain open until 05 May, 2022. Anyone interested in participating can do so by using the following link: <https://www.research.net/r/SDBayFederalChannelWAMS>. This questionnaire seeks to obtain data on the effectiveness of the system of Aids to Navigation in San Diego Bay Federal Channel, as well as other waterway safety concerns. The Coast Guard will use this information to ensure that the aids are serving their intended purpose. The Coast Guard also uses the concerns of waterways users to assist with other or future waterway management decisions. Any interested company or individual wishing to provide recommendations on existing or additional aids to navigation in this area are welcome to participate by submitting a user survey. To receive further information, contact Sector San Diego Waterways Management, at MarineEventsSD@uscg.mil.

Chart 18773

LNM: 05/22

SOUTHERN CALIFORNIA-SAN DIEGO BAY-MINIMIZE WAKE

The Navy Port Operations Manager requests that vessels slow to 7 kts when a vessel is moored in restricted area (33 CFR 334.865) located on the northeast side of North Island at 32-42-57N 117-11-22W, between San Diego Channel Lighted Buoy 20 (LLNR 1710) and San Diego Channel Lighted Buoy 22 (LLNR 1830). For more details or comments contact LT Rodriguez at 619-545-3232, Rigoberto.rodriguez3@navy.mil.

Chart 18773

LNM: 10/22

SUBMITTING INFORMATION FOR PUBLICATION IN THE LOCAL NOTICE TO MARINERS

Coast Guard District Eleven Waterways upgrade to E-Mail capabilities. All future requests for article submission in the District Eleven Local Notice to Mariners are requested to be E-Mailed to D11-SMB-SMB-D11-LNM@uscg.mil at least two weeks prior to the operation. For more details or comments please contact District Eleven Waterways Management Branch at 510-437-2929 or e-mail D11-SMB-D11-LNM@uscg.mil. Coast Guard District Eleven requests all Local Notice to Mariners submissions be E-Mailed to our office at least 14 days prior to the start of operations for timely submittal and publication.

LNM: 17/21

SECTION II - DISCREPANCIES

This section lists all reported and corrected discrepancies related to Aids to Navigation in this edition. A discrepancy is a change in the status of an aid to navigation that differs from what is published or charted.

DISCREPANCIES (FEDERAL AIDS)

LLNR	Aid Name	Status	Chart No.	BNM Ref.	LNM St	LNM End
125	Long Beach Light	LT EXT	18751	LA-0148-20	49/20	
235	Point Buchon Lighted Whistle Buoy 16	MISSING	18703	LA-0104-21	28/21	
345	San Francisco South Traffic Lane Lighted Bell Buoy S	MISSING	18645	SF-0042-21	09/21	
365	Mile Rocks Light	REDUCED INT	18649	SF-0251-17	49/17	

2635	Ship Rock Light	LT EXT	18757	LA-0095-21	26/21
2641	Isthmus Cove Harbor Reefs Light	STRUCT DMGD	18757	LA-0018-21	05/21
2670	Santa Catalina Island West End Light	LT EXT	18757	LA-0113-19	34/19
3012	Long Beach Light	LT EXT	18751	LA-0148-20	49/20
3117	Los Angeles Main Channel Lighted Buoy 11	REDUCED INT	18751	LA-0105-21	28/21
3970	Monterey Harbor Light 6	REDUCED INT	18685	SF-0165-21	51/21
3970	Monterey Harbor Light 6	SS INOP	18685	SF-0064-20	27/20
4155	Colorado Reef Lighted Buoy 26	OFF STA	18645	SF-0163-21	51/21
4190	San Francisco Main Ship Channel Lighted Bell Buoy 7	LT EXT	18649	SF-0019-22	08/22
4235	Bonita Channel Lighted Bell Buoy 3	MISSING	18649	SF-0010-22	05/22
4240	Four Fathom Bank Lighted Bell Buoy	OFF STA	18649	SF-0134-21	43/21
4245	Mile Rocks Light	REDUCED INT	18649	SF-0251-17	49/17
4430	Pier B North Buoy	MISSING	18650	SF-0153-21	48/21
4595	Yerba Buena Island Light	LT EXT/SS INOP/TRLT	18650	SF-0143-21	46/21
4680	Oakland Inner Harbor Light 10	MISSING/TRLB	18650	SF-0052-21	02/22
4684	Oakland Inner Harbor Turn Basin Light B	STRUCT DMGD/TRLB	18650	SF-0097-21	29/21
5130	San Francisco Bay South Channel Light 8	DAYMK MISSING	18651	SF-0023-20	08/20
5415	San Francisco Bay North Channel Lighted Bell Buoy 6	LT EXT	18650	SF-0031-22	14/22
6095	Mare Island Strait Light 2	STRUCT DMGD/TRLB	18655	SF-0152-20	49/20
6310	Suisun Bay Channel Buoy 3	OFF STA	18657	SF-0116-21	36/21
6505	Suisun Bay Channel Lighted Buoy 17	OFF STA	18658	SF-0128-21	02/22
6685	San Joaquin River Light 8	LT EXT/TRLB	18656	SF-0109-21	02/22
7210	Sacramento River Deep Water Ship Channel Light 10	MISSING/TRLB	18656	SF-0101-21	32/21
7235	Sacramento River Deep Water Ship Channel Light 15	MISSING/TRLB	18661	SF-0100-20	35/20
7240	Sacramento River Deep Water Ship Channel Light 16	STRUCT DEST/TRLB	18661	SF-0127-18	34/18
7260	Sacramento River Deep Water Ship Channel Light 20	MISSING/TRLB	18661	SF-0108-21	33/21
8085	Noyo River Entrance Lighted Bell Buoy 2	OFF STA	18626	HB-0023-21	44/21

DISCREPANCIES (FEDERAL AIDS) CORRECTED

LLNR	Aid Name	Status	Chart No.	BNM Ref.	LNM St	LNM End
------	----------	--------	-----------	----------	--------	---------

None

DISCREPANCIES (PRIVATE AIDS)

LLNR	Aid Name	Status	Chart No.	BNM Ref.	LNM St	LNM End
11	Pt Loma San Diego Research Buoy	MISSING	18765	SD-0068-21	44/21	
20	Ocean Beach Pier Fog Sound Signal	SS INOP	18765	SD-0002-19	05/19	
158	Scripps Waverider Lighted Research Buoy 092	OFF STA	18746		45/18	
505	Scripps Waverider Lighted Research Buoy 168	LT EXT	18620	HB-0003-22	14/22	
1483	Pt Loma San Diego Research Buoy	MISSING	18765	SD-0068-21	44/21	
1665	Americas Cup Harbor Daybeacon 2	STRUCT DEST	18773	SD-0001-22	02/22	
1720	Navy Lighted Mooring Buoy	LT EXT	18773	SD-0055-21	33/21	
1765	Harbor Island East Basin Channel Buoy 2	OFF STA	18773	SD-0028-19	19/19	
1775	Harbor Island East Basin Channel Buoy 4	MISSING	18773	SD-0039-20	29/20	

1790	Harbor Island East Basin Channel Buoy 10	OFF STA	18773	SD-0044-19	27/19
1900	Glorietta Bay Channel Lighted Buoy 8	LT IMCH	18773	SD-0100-18	50/18
2070	Coronado Cays Channel Daybeacon 3	STRUCT DEST	18773	SD-0098-17	36/17
2288	Scripps Waverider Lighted Research Buoy 220	OFF STA	18765	SD-0041-20	30/20
2289.1	Scripps Waverider Lighted Research Buoy 100	OFF STA	18765		22/20
2289.4	Scripps "CORDC" Lighted Research Buoy	MISSING	18765		22/20
2764.4	Catalina Sea Ranch SE Buoy	MISSING	18746	LA-0001-22	03/22
2871	Long Beach Harbor Brusco Lighted Mooring Buoy	LT EXT	18751	LA-0009-21	03/21
3339.2	REDONDO HARBOR LIGHT	LT EXT	18744	LA-0181-18	52/18
3400	El Segundo NRG Energy Buoy 6ES	SINKING	18744	LA-0153-21	39/21
3420	Hyperion Lighted Gong Buoy 10 ES	LT EXT	18744		16/20
4401	Richardson Bay Daybeacon 8	DAYMK DMGD	18653		15/20
4402	Richardson Bay Daybeacon 9	STRUCT DMGD	18649	SF-0086-18	23/18
4576	South Beach Harbor North Entrance Light 2	LT EXT	18650	SF-0047-21	11/21
4577	South Beach Harbor North Entrance Light 1	LT EXT	18650	SF-0046-21	10/21
4578	South Beach Harbor South Entrance Light 1	LT EXT	18650	SF-0091-20	33/20
4826	Bay Farm Island Light 1	LT EXT	18650	SF-0014-19	05/19
4826.15	Bay Farm Island Light 3	LT EXT	18650	SF-0014-19	04/19
4826.2	Bay Farm Island Light 4	LT EXT	18650	SF-0136-21	44/21
4827.1	Anchorage 9 Lighted Mooring Buoy A	LT EXT	18650	SF-0012-20	04/20
4828.1	Anchorage 9 Lighted Mooring Buoy B	LT EXT	18650	SF-0013-20	04/20
5661	Southampton Shoal Outfall Lighted Buoy 1	LT EXT/RAC INOP	18653	SF-0026-19	07/19
5661	Southampton Shoal Outfall Lighted Buoy 1	MISSING/TRLB	18653	SF-0029-20	18/21
5662	Southampton Shoal Outfall Lighted Buoy 2	LT EXT	18653	SF-0059-21	14/21
5877.2	San Rafael Rock Quarry Mooring Buoy C	MISSING	18653		36/18
6623	New York Slough Koch West Light	LT IMCH			39/18
6624	New York Slough Koch East Light	LT EXT			39/18
6645.5	Delta Diablo Outfall Lighted Buoy	LT EXT		SF-0005-22	02/22
8325	Pacific Gas and Electric Dike Light	LT EXT	18622	HB-0009-21	20/21

DISCREPANCIES (PRIVATE AIDS) CORRECTED

LLNR	Aid Name	Status	Chart No.	BNM Ref.	LNM St	LNM End
------	----------	--------	-----------	----------	--------	---------

None

PLATFORM DISCREPANCIES

Name	Status	Position	BNM Ref.	LNM St	LNM End
------	--------	----------	----------	--------	---------

None

PLATFORM DISCREPANCIES CORRECTED

Name	Status	Position	BNM Ref.	LNM St	LNM End
------	--------	----------	----------	--------	---------

None

SECTION III - TEMPORARY CHANGES and TEMPORARY CHANGES CORRECTED

This section contains temporary changes and corrections to Aids to Navigation for this edition. When charted aids are temporarily relocated for dredging, testing, evaluation, or marking an obstruction, a temporary correction shall be listed in Section IV giving the

new position.

TEMPORARY CHANGES

LLNR	Aid Name	Status	Chart No.	BNM Ref.	LNM St	LNM End
280	Point Sur Light	Reduced Intensity	18686	SF-0105-20	35/20	

TEMPORARY CHANGES CORRECTED

LLNR	Aid Name	Status	Chart No.	BNM Ref.	LNM St	LNM End
------	----------	--------	-----------	----------	--------	---------

None

PLATFORM TEMPORARY CHANGES

Name	Status	Position	BNM Ref.	LNM St	LNM End
------	--------	----------	----------	--------	---------

None

PLATFORM TEMPORARY CHANGES CORRECTED

Name	Status	Position	BNM Ref.	LNM St	LNM End
------	--------	----------	----------	--------	---------

None

SECTION IV - CHART CORRECTIONS

This section contains corrections to federally and privately maintained Aids to Navigation, as well as NOS corrections.

This section contains corrective actions affecting chart(s). Corrections appear numerically by chart number, and pertain to that chart only. It is up to the mariner to decide which chart(s) are to be corrected. The following example explains individual elements of a typical chart correction.

Chart Number	Chart Edition	Edition Date	Last Local Notice to Mariners	Horizontal Datum Reference	Source of Correction	Current Local Notice to Mariners
12327	91st Ed.	19-APR-97	Last LNM: 26/97	NAD 83		27/97
Chart Title: NY-NJ-NEW YORK HARBOR - RARITAN RIVER						
Main Panel 2245 NEW YORK HARBOR						
(Temp) ADD	NATIONAL DOCK CHANNEL BUOY 3				CGD01 at 40-41-09.001N	074-02-48.001W
Corrective Action	Green can	Object of Corrective Action			Position	

(Temp) indicates that the chart correction action is temporary in nature. Courses and bearings are given in degrees clockwise from 000 true. Bearings of light sectors are toward the light from seaward. The nominal range of lights is expressed in nautical miles (NM) unless otherwise noted.

18605 13th Ed. 01-DEC-10 Last LNM: 50/08 NAD 83 14/22

Chart Title: Trinidad Harbor

Main Panel 1805 TRINIDAD HARBOR. Page/Side: N/A

LAST EDITION No new editions of chart 18605 will be published. It will be canceled on 01-Jun-22. Comparable or larger scale Electronic Navigational Chart (ENC) coverage is available. See "Cancellation of NOAA Paper and Raster Nautical Charts" in Section I of this LNM for details. A list of all canceled NOAA charts is at <https://www.charts.noaa.gov/MCD/Dole.shtml>.

NOS --

18626 16th Ed. 01-DEC-11 Last LNM: 05/21 NAD 83 14/22

Chart Title: Elk to Fort Bragg; Fort Bragg and Nayo Anchorage; Elk

Main Panel 1811 ELK TO FORT BRAGG. Page/Side: N/A

LAST EDITION No new editions of chart 18626 will be published. It will be canceled on 01-Jun-22. Comparable or larger scale Electronic Navigational Chart (ENC) coverage is available. See "Cancellation of NOAA Paper and Raster Nautical Charts" in Section I of this LNM for details. A list of all canceled NOAA charts is at <https://www.charts.noaa.gov/MCD/Dole.shtml>.

NOS --

18628 9th Ed. 01-OCT-11 Last LNM: 09/05 NAD 83 14/22

Chart Title: Albion to Caspar

Main Panel 1814 ALBION TO CASPAR. Page/Side: N/A

					NOS		
	LAST EDITION	No new editions of chart 18628 will be published. It will be canceled on 01-Jun-22. Comparable or larger scale Electronic Navigational Chart (ENC) coverage is available. See "Cancellation of NOAA Paper and Raster Nautical Charts" in Section I of this LNM for details. A list of all canceled NOAA charts is at https://www.charts.noaa.gov/MCD/Dole.shtml .				--	--
18647	16th Ed.	01-MAR-09	Last LNM: 03/08	NAD 83		14/22	
	<i>ChartTitle: Drakes Bay</i>						
	Main Panel 1821 DRAKES BAY. Page/Side: N/A						
	LAST EDITION	No new editions of chart 18647 will be published. It will be canceled on 01-Jun-22. Comparable or larger scale Electronic Navigational Chart (ENC) coverage is available. See "Cancellation of NOAA Paper and Raster Nautical Charts" in Section I of this LNM for details. A list of all canceled NOAA charts is at https://www.charts.noaa.gov/MCD/Dole.shtml .				NOS	--
					--	--	
18682	15th Ed.	01-APR-16	Last LNM: 47/05	NAD 83		14/22	
	<i>ChartTitle: Half Moon Bay</i>						
	Main Panel 1867 HALF MOON BAY. Page/Side: A						
	LAST EDITION	No new editions of chart 18682 will be published. It will be canceled on 06-Apr-22. Comparable or larger scale Electronic Navigational Chart (ENC) coverage is available. See "Cancellation of NOAA Paper and Raster Nautical Charts" in Section I of this LNM for details. A list of all canceled NOAA charts is at https://www.charts.noaa.gov/MCD/Dole.shtml .				NOS	--
					--	--	
18686	14th Ed.	01-SEP-14	Last LNM: 46/07	NAD 83		14/22	
	<i>ChartTitle: Pfeiffer Point to Cypress Point</i>						
	Main Panel 1872 PFEIFFER POINT TO CYPRESS POINT. Page/Side: A						
	LAST EDITION	No new editions of chart 18686 will be published. It will be canceled on 01-Jun-22. Comparable or larger scale Electronic Navigational Chart (ENC) coverage is available. See "Cancellation of NOAA Paper and Raster Nautical Charts" in Section I of this LNM for details. A list of all canceled NOAA charts is at https://www.charts.noaa.gov/MCD/Dole.shtml .				NOS	--
					--	--	
18704	13th Ed.	01-MAY-04	Last LNM: 08/19	NAD 83		14/22	
	<i>ChartTitle: San Luis Obispo Bay, Port San Luis</i>						
	Main Panel 1879 SAN LUIS OBISPO BAY PORT SAN LUIS. Page/Side: N/A						
	LAST EDITION	No new editions of chart 18704 will be published. It will be canceled on 01-Jun-22. Comparable or larger scale Electronic Navigational Chart (ENC) coverage is available. See "Cancellation of NOAA Paper and Raster Nautical Charts" in Section I of this LNM for details. A list of all canceled NOAA charts is at https://www.charts.noaa.gov/MCD/Dole.shtml .				NOS	--
					--	--	
18727	12th Ed.	01-JUL-04	Last LNM: 42/18	NAD 83		14/22	
	<i>ChartTitle: San Miguel Passage;Cuyler Harbor</i>						
	Main Panel 1888 SAN MIGUEL PASSAGE. Page/Side: N/A						
	LAST EDITION	No new editions of chart 18727 will be published. It will be canceled on 01-Jun-22. Comparable or larger scale Electronic Navigational Chart (ENC) coverage is available. See "Cancellation of NOAA Paper and Raster Nautical Charts" in Section I of this LNM for details. A list of all canceled NOAA charts is at https://www.charts.noaa.gov/MCD/Dole.shtml .				NOS	--
					--	--	
18748	1st Ed.	01-JUN-07	Last LNM: 51/08	NAD 83		14/22	
	<i>ChartTitle: El Segundo and Approaches</i>						
	Main Panel 1901 EL SEGUNDO AND APPROACHES. Page/Side: N/A						
	LAST EDITION	No new editions of chart 18748 will be published. It will be canceled on 01-Jun-22. Comparable or larger scale Electronic Navigational Chart (ENC) coverage is available. See "Cancellation of NOAA Paper and Raster Nautical Charts" in Section I of this LNM for details. A list of all canceled NOAA charts is at https://www.charts.noaa.gov/MCD/Dole.shtml .				NOS	--
					--	--	
18754	20th Ed.	01-APR-16	Last LNM: 06/12	NAD 83		14/22	
	<i>ChartTitle: Newport Bay</i>						
	Main Panel 1907 NEWPORT BAY. Page/Side: A						
	LAST EDITION	No new editions of chart 18754 will be published. It will be canceled on				NOS	--
					--	--	

06-Apr-22. Comparable or larger scale Electronic Navigational Chart (ENC) coverage is available. See "Cancellation of NOAA Paper and Raster Nautical Charts" in Section I of this LNM for details. A list of all canceled NOAA charts is at <https://www.charts.noaa.gov/MCD/Dole.shtml>.

18755 **10th Ed.** **12-FEB-00** **Last LNM: 06/07** **NAD 83** **14/22**

ChartTitle: San Nicolas Island

Main Panel 1908 SAN NICOLAS ISLAND. Page/Side: N/A

LAST EDITION No new editions of chart 18755 will be published. It will be canceled on 01-Jun-22. Comparable or larger scale Electronic Navigational Chart (ENC) coverage is available. See "Cancellation of NOAA Paper and Raster Nautical Charts" in Section I of this LNM for details. A list of all canceled NOAA charts is at <https://www.charts.noaa.gov/MCD/Dole.shtml>.

NOS
--

18756 **8th Ed.** **01-DEC-03** **Last LNM: 34/08** **NAD 83** **14/22**

ChartTitle: Santa Barbara Island

Main Panel 1909 SANTA BARBARA ISLAND. Page/Side: N/A

LAST EDITION No new editions of chart 18756 will be published. It will be canceled on 01-Jun-22. Comparable or larger scale Electronic Navigational Chart (ENC) coverage is available. See "Cancellation of NOAA Paper and Raster Nautical Charts" in Section I of this LNM for details. A list of all canceled NOAA charts is at <https://www.charts.noaa.gov/MCD/Dole.shtml>.

NOS
--

18762 **16th Ed.** **01-DEC-09** **Last LNM: 20/09** **NAD 83** **14/22**

ChartTitle: San Clemente Island

Main Panel 1913 SAN CLEMENTE ISLAND. Page/Side: N/A

LAST EDITION No new editions of chart 18762 will be published. It will be canceled on 01-Jun-22. Comparable or larger scale Electronic Navigational Chart (ENC) coverage is available. See "Cancellation of NOAA Paper and Raster Nautical Charts" in Section I of this LNM for details. A list of all canceled NOAA charts is at <https://www.charts.noaa.gov/MCD/Dole.shtml>.

NOS
--

18763 **11th Ed.** **01-MAY-12** **Last LNM: 20/09** **NAD 83** **14/22**

ChartTitle: San Clemente Island northern part;Wilson Cove

Main Panel 1914 SAN CLEMENTE ISLAND NORTHERN PART. Page/Side: N/A

LAST EDITION No new editions of chart 18763 will be published. It will be canceled on 01-Jun-22. Comparable or larger scale Electronic Navigational Chart (ENC) coverage is available. See "Cancellation of NOAA Paper and Raster Nautical Charts" in Section I of this LNM for details. A list of all canceled NOAA charts is at <https://www.charts.noaa.gov/MCD/Dole.shtml>.

NOS
--

18764 **10th Ed.** **01-NOV-10** **Last LNM: 16/07** **NAD 83** **14/22**

ChartTitle: San Clemente Island Pyramid Cove and approaches

Main Panel 1916 SAN CLEMENTE ISLAND PYRAMID COVE AND APPROACHES. Page/Side: N/A

LAST EDITION No new editions of chart 18764 will be published. It will be canceled on 01-Jun-22. Comparable or larger scale Electronic Navigational Chart (ENC) coverage is available. See "Cancellation of NOAA Paper and Raster Nautical Charts" in Section I of this LNM for details. A list of all canceled NOAA charts is at <https://www.charts.noaa.gov/MCD/Dole.shtml>.

NOS
--

SECTION V - ADVANCE NOTICES

This section contains advance notice of approved projects, changes to aids to navigation, or upcoming temporary changes such as dredging, etc. Mariners are advised to use caution while transiting these areas.

SUMMARY OF ADVANCED APPROVED PROJECTS

<u>Approved Project(s)</u>	<u>Project Date</u>	<u>Ref. LNM</u>
None		
<u>Advance Notice(s)</u>		
None		

SECTION VI - PROPOSED CHANGES

Periodically, the Coast Guard evaluates its system of aids to navigation to determine whether the conditions for which the aids to navigation were established have changed. When changes occur, the feasibility of improving, relocating, replacing, or discontinuing aids are considered. This section contains notice(s) of non-approved, proposed projects open for comment. SPECIAL NOTE: Mariners are requested to respond in writing to the District office unless otherwise noted (see banner page for address).

PROPOSED WATERWAY PROJECTS OPEN FOR PUBLIC COMMENT

Proposed Project(s)

None

Closing

Docket No.

Ref. LNM

Proposed Change Notice(s)

NORTHERN CALIFORNIA-MOSS LANDING HARBOR ENTRANCE RANGE -INTENSITY DECREASE

The U.S. Coast Guard has temporarily decreased the visual range of Moss Landing Harbor Entrance Range Front Light (LLNR 4005) from 10 nautical miles to 5 nautical miles and Moss Landing Harbor Entrance Range Rear Light (LLNR 4005) from 11 nautical miles to 6 nautical miles. Intensity reported to be disrupting mariners due to brightness. Request public input regarding this change as the Coast Guard proposes to make it permanent. Please direct questions, comments, or concerns to LT Miranda Brumbaugh at 510-437-2978 or Miranda.E.Brumbaugh@uscg.mil.

Chart 18685

LNM: 09/22

SECTION VII - GENERAL

This section contains information of general concern to the Mariners. Mariners are advised to use caution while transiting these areas.

2021 COAST GUARD LIGHT LIST AVAILABILITY

2021 Light Lists are available on the USCG Navigation Center's website at: <http://www.navcen.uscg.gov/?pageName=lightLists>. Coast Guard Light Lists are a means for communicating aids to navigation information to the maritime public. Local Notice to Mariners will continue to advise Light List corrections and NAVCEN will continue to publish a compilation of corrections. Complete versions of the 2021 Light Lists are updated weekly on the NAVCEN website and mariners should download applicable copies and updates as needed at:

<http://www.navcen.uscg.gov/?pageName=lightListWeeklyUpdates>. A summary of weekly 2021 Light List corrections are available at:

<https://www.navcen.uscg.gov/?pageName=lightListCorrections>.

LNM: 03/21

LOWER COLORADO RIVER - PARKER, AZ - MARINE EVENT

The International Water Ski Racing Association will be sponsoring the Sundance International Marathon on Saturday, 30 April, 2022 through Sunday, 1 May, 2022, from 8:00am to 5:00pm each day. The event will consist of approximately 30 vessels with water skiers racing on a course near Havasu Springs Resort. Mariners are advised to exercise due caution while transiting the area. For more details or comments, contact Clark Schulz at 818-439-0592.

LNM: 14/22

NEVADA-ARIZONA-COLORADO RIVER-BRIDGE

NEW LAUGHLIN-BULLHEAD CITY BRIDGE-In-water work continues on construction of the new bridge in position 35-03-17N 114-36-45W. Work will take place Monday through Friday, 0630 to 1430, through 03 Oct 23. A cofferdam will be installed on the Arizona side of the river to facilitate construction of Arizona side piers and abutment. Once completed the cofferdam will be removed and installed on the Nevada side of the river which will facilitate the construction of the Nevada side piers and abutment. When in place the cofferdams will be lighted at night with four red lights, visible at 2,000 yards by approaching vessels (see Cofferdam-Lighting_Laughlin-BH.pdf at the end of this notice). Precast girders will be installed once construction of the respective abutments and piers are complete. Precast girders will be install over the middle of the river at the late stages of construction. Approximately 70 feet of horizontal clearance will be provided in the center of the river during construction. For further information contact the Coast Guard Bridge Office at 510-437-3515.

LNM: 50/21

NORTHERN CALIFORNIA-CARQUINEZ STRAIT-BRIDGE

UPSTREAM AND DOWNSTREAM BENICIA-MARTINEZ HIGHWAY (I-680) BRIDGES-Work is in progress on the replacement-in-kind of all navigation lights, fog horns and RACON of the two bridges. Work will take place Monday through Friday during daylight hours through 15 April 2022. A 21' aluminum boat, the M/V BATES RULES will be tied off of various piers during the work. At no time will the vessel be working in main navigation span of either the upstream or downstream bridge. To ascertain the location of the M/V BATES RULES mariners can hail it on VHF-FM Channel 16 or 9, 13, or 14 or call 510-557-1507. The vessel can be moved for navigational safety if at least 15 minutes notice is given to the M/V BATES RULES. For further information contact the Coast Guard Bridge Office at 510-437-3516.

Chart 18656

LNM: 13/22

NORTHERN CALIFORNIA-CONCORD-SUISUN BAY-MARINE CONSTRUCTION

The Dutra Group is conducting marine construction at the Military Ocean Terminal Concord (MOTCO) during daylight hours until 31 May, 2022. The operation consists of the completion of the Barge Pier Repair and to construct the Small Craft Birthing Facility. The upstream and downstream corners of each barge will be lighted at night with steady burning red lights. A Kelso Barge along with small workboats will be conducting the operations and monitoring VHF-FM Chan. 09, 16 and 68A. Mariners are requested to transit the area with caution. For more details or comments contact Kathleen Nelson at 415-755-0936.

Charts: 18656 18658

LNM: 04/22

NORTHERN CALIFORNIA-CORTE MADERA CREEK-BRIDGE

BON AIR RD BRIDGE REPLACEMENT-Construction of the replacement bridge continues. A temporary work trestle spans the channel and provides 20' of horizontal clearance, pile to pile, and 3' of vertical clearance from mean high water to the lowest hittable portion of the trestle (see

NORTHERN CALIFORNIA-CORTE MADERA CREEK-BRIDGE

BonAirRd_Trestle.pdf at the end of this notice for navigation channel location). Four cofferdams have been placed within the creek to facilitate construction of the replacement bridge piers. Work will be conducted Monday through Saturday from 0700-1800. Mariners are requested to transit the area with caution. For conditions at the construction site, mariners can contact the contractor at 925-953-4610/916-919-2428 or the city at 415-259-7050. For more details or comments contact the Coast Guard Bridge Office at 510-437-3516.

Chart 18649

LNM: 41/18

NORTHERN CALIFORNIA-CORTE MADERA CREEK-BRIDGE

U.S. 101 HIGHWAY BRIDGE-A pedestrian bridge is under construction on the east side of the highway bridge. Work will take place Monday through Friday 0700-1700, and if needed Sunday night to Thursday night 2300-0600 and Friday night through Saturday night 2300-0800 through 30 June, 2022. Temporary platforms have been erected at each bent of the bridge, reducing horizontal clearance of each span by 14 ft and vertical clearance by 9 ft beneath the platforms. The upstream and downstream lower outboard corners of the temporary platform, in the main navigation span, will be lighted at night with fixed red lights (see TempPlatform_CorteMaderaCreek.pdf at the end of this notice for location of lights). No in-water equipment is anticipated at this time. For conditions at the bridge mariners can contact the contractor at 408-605-2892 or Caltrans at 510-867-6033. For further information contact the Coast Guard Bridge Office at 510-437-3516.

Chart 18649

LNM: 06/22

NORTHERN CALIFORNIA-DELTA & RIVERS-AMERICAN RIVER-BRIDGE

DOWNSTREAM CA ROUTE 160 BRIDGE-Caltrans has completed replacement of the rock slope scour protection at each in-water pier. The scour slopes ~25 feet from the pier face into the navigation channel (See CA_RT_160_PierScourProtection.pdf drawing at the end of this notice for details.) Mariners should use the center of the navigation channel when transiting the bridge. For more details or comments contact the Coast Guard Bridge Office at 510-437-3516.

Chart 18662

LNM: 42/20

NORTHERN CALIFORNIA-DELTA & RIVERS-LITTLE POTATO SLOUGH-BRIDGE

LITTLE POTATO SLOUGH (ROUTE 12) BRIDGE – The swing span is secured in the closed-to-navigation position through 1530 on 29 Apr 22 for mechanical and electrical repairs of the bridge. During the work the swing span will not be able to open for the passage of vessels or in the event of an emergency. Vessels that normally require an opening can take an alternate route to reach either side of the bridge. In the closed-to-navigation position the swing span of the bridge provides 35 feet of vertical clearance at Mean High Water. Vessels able to transit the bridge in the closed position can do so at any time during the project. At this time no in-water work is anticipated. For information at the worksite contact 415-716-9567, 415-716-9018, 925-250-2027 or 209-470-8835. For more information contact the Coast Guard Bridge Office at 510-437-3515.

Chart 18661

LNM: 44/21

NORTHERN CALIFORNIA-DELTA & RIVERS-MOKELUMNE RIVER

UPRR BRIDGE- Union Pacific Railroad is proposing to replace a rail bridge in position 38-08-59N 121-16-15W approximately 0.5 miles west of highway 99. In order to facilitate construction, UPRR proposes to build a temporary earthen causeway with ducts that allow water to flow freely through the structure. The structure will completely span the river from MAY through SEP 2024. During the time the temporary earthen causeway is in place vessels will not be able to transit that portion of the river. Once construction is complete the earthen causeway will be removed in its entirety. The Coast Guard is seeking comments from persons that may be impacted by this temporary structure. Please provide comments via email at Carl.T.Hausner@uscg.mil, Comments will be received through 02 May, 2022. For further information contact the Coast Guard Bridge Office at 510-437-3516.

LNM: 12/22

NORTHERN CALIFORNIA-DELTA & RIVERS-MOKELUMNE RIVER-BRIDGE

MILLER'S FERRY BRIDGE-The upriver center dolphin red light is extinguished. Estimated time of repair unknown. For further information contact the Coast Guard Bridge Office at 510-437-3414.

Chart 18661

LNM: 13/22

NORTHERN CALIFORNIA-DELTA & RIVERS-OLD RIVER-BRIDGE

BNSF RAILROAD DRAWBRIDGE - From 9 May through 31 July, 2022, Monday through Friday, 6:00am to 6:30pm, BNSFs' contractor will be replacing the fenders at piers 2 and 3. One 60' X 80' flexi float barge and one 35' X 110' material barge will be spudded down at the piers (See BNSF_OldRiver_Barge_Lighting.pdf in the enclosure section). During work hours the barges will be in the main navigation span of the bridge and can be moved for the safety of navigation with one hour advanced notice to the contractor. After working hours the unmanned barges will be moved behind the wingwall of the pier protection out of the navigation span. Mariners are requested to transit the area with caution. For further information contact the Coast Guard Bridge Office at 510-437-3515.

Chart 18661

LNM: 13/22

NORTHERN CALIFORNIA-DELTA & RIVERS-PETALUMA RIVER-BRIDGE

SMART BLACKPOINT RAILROAD DRAWBRIDGE-The upstream fender system protecting the swing span has been destroyed and does not offer protection for vessels or the bridge. Repairs to the fender system are anticipated to begin on 01 September, 2022. Mariners are urged to use caution while transiting the bridge. For more details or comments contact the Coast Guard Bridge Office at 510-437-3516.

Chart 18654

LNM: 13/22

NORTHERN CALIFORNIA-DELTA & RIVERS-SACRAMENTO RIVER-BRIDGE

TOWER BRIDGE-Until further notice, the lift span of the bridge will open on signal if at least 4-hours notice is given to the drawtender of the Rio Vista Bridge at 707-374-2134. For further information contact the Coast Guard Bridge Office at 510-437-3516.

Chart 18662

LNM: 52/21

NORTHERN CALIFORNIA-DELTA & RIVERS-SACRAMENTO RIVER-BRIDGE

RIO VISTA DRAWBRIDGE-TRAFFIC GATE INSTALLATION-Temporary platforms are installed beneath low steel of the bridge in spans 2 and 8 reducing vertical clearance in those spans by no more than 4 feet. The upriver and downriver temporary platforms and associated support cables are lit at night with steady burning red lights (see RVBridge_PlatformCable_Lighting.pdf enclosure at the end of this notice.) At no time will the lift span of the bridge be impacted. Mariners are urged to use alternate spans of the bridge. For conditions at the bridge, mariners can contact the

NORTHERN CALIFORNIA-DELTA & RIVERS-SACRAMENTO RIVER-BRIDGE

contractor at 925-260-2104 or 925-260-1884. For further information contact the Coast Guard Bridge Office at 510-437-3516.

Chart 18661

LNM: 45/20

NORTHERN CALIFORNIA-DELTA & RIVERS-SACRAMENTO RIVER-BRIDGE

TOWER DRAWBRIDGE- The drawspan will be secured in the closed-to-navigation position from 5:00am to 11:30am on 03 April, 2022 to allow community participation in the Annual Credit Union Sactown race. In the event of an emergency, the drawspan can be opened with one hour advance notice. The bridge provides 30' vertical clearance above mean high water when closed. Vessels that can transit the bridge in the closed position may continue to do so at any time. For more details or comments contact the Coast Guard Project Manager at (510) 437-3515.

Chart 18662

LNM: 10/22

NORTHERN CALIFORNIA-DELTA & RIVERS-SACRAMENTO RIVER-BRIDGE

RIO VISTA BRIDGE-The lift span of the bridge will open on signal if at least 4 hours notice is given to the bridge tender through 5pm on 20 May, 2022. This temporary change will allow Caltrans to install a back-up lift span drive system. To request an opening, contact the bridge tender at 707-374-2134. For further information contact the Coast Guard Bridge Office at 510-437-3516.

Chart 18661

LNM: 11/22

NORTHERN CALIFORNIA-DELTA & RIVERS-SAN JOAQUIN RIVER-BRIDGE

CROWS LANDING ROAD-Replacement of the bridge is ongoing. Work is being conducted Monday through Friday 0600 to 1600 through 01 Aug 23. A temporary bridge, with a removable span, will be installed to facilitate construction. With the span removed, the temporary bridge will provide, at a minimum, 15 feet of horizontal clearance. The span will be removed after normal working hours. Temporary falsework will be installed to facilitate construction. The temporary falsework's navigation span will provide 17 feet of vertical clearance at Ordinary High Water when the temporary bridge's removable span is removed. Upriver and downriver red channel margin lights and green center channel lights will mark the temporary navigation span at night. To view the temporary navigation span and lighting, see the Temporary_Bridge_Falsework_Lighting.pdf enclosure at the end of this notice. Mariners are requested to use extreme caution when transiting the work site. For conditions at the project site mariners can contact the contractor at 916-869-8210 or 559-593-5182. For further information contact the Coast Guard Bridge Office at 510-437-3461.

LNM: 46/21

NORTHERN CALIFORNIA-DELTA & RIVERS-SAN JOAQUIN RIVER-BRIDGE

ANTIOCH BRIDGE-Work is in progress on the replacement-in-kind of all navigation lights, fog horns and RACON of the bridge. Work will take place Monday through Friday during daylight hours through 15 April, 2022. A 21' aluminum boat, the "BATES RULES" will be tied off of various piers during the work. At no time will the vessel be working in main navigation span of the bridge. To ascertain the location of the "BATES RULES" mariners can hail it on the VHF-FM Channel 16 or 9, 13, or 14 or call 510-557-1507. The vessel can be moved for navigational safety if at least 15 minutes notice is given to the "BATES RULES." For further information contact the Coast Guard Bridge Office at 510-437-3516.

Chart 18661

LNM: 13/22

NORTHERN CALIFORNIA-MONTEREY BAY-BUOY DEPLOYMENT

The Monterey Bay Aquarium Research Institute (MBARI) will deploy one research buoy on 18 April, 2022. The buoy will be deployed from 18 April, 2022 through 15 April, 2022. The buoy will be located South of Moss Landing 36-44-38N 121-53-13W in approximately 80m of water. The buoy consists of a bruce style anchor from the seafloor to surface. The surface buoy is a round, yellow, 36 inch syntactic foam. It is marked as scientific equipment and advises not to disturb. The buoy has a white flashing light approximately 2 feet above the water from dusk to dawn. Mariners are advised to use caution when transiting the area. For more details or comments contact MBARI at 831-775-1700, or Brent Jones at 831-775-2064 bjones@mbari.org

Chart 18685

LNM: 14/22

NORTHERN CALIFORNIA-MONTEREY-MONTEREY HARBOR LIGHT 6

The U.S. Coast Guard is seeking data on the importance of the Sound Signal located at Monterey Harbor Light 6, Light List number 3970, in position 36-36-30.542N 121-53-22.947W. Comments concerning this Aid to Navigation can be sent to Sector San Francisco Waterways Safety Office at SFWaterways@uscg.mil.

Chart 18685

LNM: 02/22

NORTHERN CALIFORNIA-MOSS LANDING-WAVEGLIDER DATA COLLECTION

Monterey Bay Aquarium Research Institute (MBARI) is conducting 24 hours per day 7 days a week autonomous, unmanned maritime vehicle operations of two Liquid Robotics, Inc. Wavegliders until 31 December, 2022. Vehicles will be deployed in the vicinity of Moss Landing that will operate continuously between latitudes 35-07-14N and 37-12-00N and will extend shoreward as far West as 122-58-35W. Operations consist of scientific ocean data collection. The Waveglider carries no fuel, lubricants or hydrocarbons. It is wave powered and remotely attended from MBARI, moving at speeds of 1kt, and designed to give way or part if encountered by a vessel. It is approximately 8' x 2' (surfboard size), yellow in color, with a contact plaque and mast extending 3' above the water surface, supporting a flag. Mariners are requested to transit the area with caution. For more details or comments contact MBARI at 831-775-1700, waveglider@listserver.mbari.org or Liquid Robotics 24/7 WGO Operations at 888-574-4574.

Charts: 18680 18685

LNM: 51/21

NORTHERN CALIFORNIA-NEW YORK SLOUGH-MARINE CONSTRUCTION

CS Marine Constructors, Inc. will be conducting pile driving & marine construction operations at the former Gaylord Paper Facility 38-00-58N 121-46-31W located at New York Slough in Antioch, CA during daylight hours until 31 Dec 22. Operations will be conducted with derrick barges DB CARQUINEZ, DB MARE ISLAND and DB STEADFAST along with various flat barges. The barges will be either spudded down or anchored using a four-point mooring system marked with 5ft crown buoys. The buoys will be lighted at night with flashing white strobes. All vessels and equipment will be monitoring VHF-FM CHAN 8, 13 and 14. Mariners are request to transit the area with caution. For more details or comments contact Jeff Thompson at (510)719-1246.

Chart 18661

LNM: 42/21

NORTHERN CALIFORNIA-OAKLAND INNER HARBOR-BRIDGE

FRUITVALE AVE RAILROAD BRIDGE-The lift span of the railroad bridge is kept in the partially opened position providing 80 feet of vertical clearance

NORTHERN CALIFORNIA-OAKLAND INNER HARBOR-BRIDGE

at mean high water. When the lift span of the railroad bridge is in the partially open position and the bascule span of the adjacent highway bridge is in the closed position, the lift span will show two red 180-degree center span lights on the upstream and downstream lower edge of the span. When the bascule span of the highway bridge is in the fully opened position, the lift span of the railroad bridge will show two 360-degree green lights, providing a range for the centerline of the channel between both highway and railroad bridges. For further information contact the Coast Guard Bridge Office at 510-437-3516.

Chart 18649

LNM: 47/21

NORTHERN CALIFORNIA-OFFSHORE HALF MOON BAY-OCEANOGRAPHIC OPERATIONS

Sofar Ocean Technologies will be conducting oceanographic operations until 05 July, 2022, offshore Half Moon Bay at 37-30-00N 122-31-57W. Operations will consist of the testing of oceanographic buoy systems by a 19 foot C-Dory and they will be monitoring VHF-FM Chan. 16. Mariners are requested to transit the area with caution. For more details or comments contact Cameron Dunning at 415-912-6858.

Chart 18682

LNM: 51/21

NORTHERN CALIFORNIA-OFFSHORE MONTEREY BAY-UNDERWATER OPERATIONS

Reef Check Foundation have deployed underwater equipment offshore Monterey Bay, CA within the following coordinates:

36-36-17N 121-52-46W

36-36-18N 121-52-49W

36-36-15N 121-52-50W

36-36-14N 121-52-46W

All equipment will be established until 24 Mar 24. Mariners are requested to transit the area with caution and avoid anchoring within the coordinates listed above. For more details or comments contact Dan Abbot at 510-684-7835.

Chart 18685

LNM: 12/21

NORTHERN CALIFORNIA-OFFSHORE POINT REYES AND DRAKES BAY-MOORING OPERATIONS

University of Washington will be conducting mooring operations offshore Point Reyes and Drakes bay, CA on 12 March 2022 and 7 April 2022 IVO Point Reyes Beach and Drakes Bay. The R/V RACHEL CARSON will be on scene monitoring VHF-FM Chan. 13 and 16. Mariners are requested to transit the area with caution. For more details or comments contact Meegan Corcoran (360) 929-9034.

Charts: 18640 18645

LNM: 10/22

NORTHERN CALIFORNIA-OFFSHORE SAN FRANCISCO-OCEANOGRAPHIC OPERATIONS

Sofar Ocean Technologies will be conducting oceanographic operations until 15 May, 2022. A 19 foot C-Dory will be conducting operations between 37-43-58N 122-33-12W and 37-43-29N 122-32-52W. Operations will consist of the testing of oceanographic buoy systems. The C-Dory will be monitoring VHF-FM Chan. 16. Mariners are requested to transit the area with caution. For more details or comments contact Cameron Dunning at 415-912-6858.

Charts: 18640 18645

LNM: 51/21

NORTHERN CALIFORNIA-OFFSHORE-COMMERCIAL SALMON FISHERIES

Effective March 14, 2022. The Recreational Salmon Fishery from latitude 40°10' N to Point Arena, Ca, is delayed through May 1, 2022. This area is scheduled To Re-Open for recreational fishing On May 1, 2022 at 12:01am.

LNM: 11/22

NORTHERN CALIFORNIA-SACRAMENTO RIVER-REDUCED VERTICAL CLEARANCE

Overhead power cables upstream of Sacramento River at 38-03-54N 121-47-09W have a reported reduced vertical clearance to 119.5'.

LNM: 22/16

NORTHERN CALIFORNIA-SAN FRANCISCO BAY-BRIDGE

GOLDEN GATE BRIDGE-Four 54' temporary under deck platforms; one 750' north of the south tower, one 400', one 1200' and one 2025' south of the north tower have been installed at the bridge. Temporary platforms reduce vertical clearance at the bridge by no more than 14'. The bridge's maintenance travelers are in use during the project and will remain outboard of the furthest north and furthest south temporary platforms. The temporary platforms and maintenance travelers are lighted at night with all-round red lights (see PlatformLighting_GG_Bridge_06Dec21.pdf at the end of this notice). For navigational safety the maintenance travelers can be moved by contacting the Golden Gate Bridge at 415-923-2220. Work is being conducted Monday through Saturday, 0700-1700 and 2100-0500. For conditions at the bridge, mariners can contact the contractor at 415-716-0384. For more details or comments contact the Coast Guard Bridge Office at 510-437-3516.

Chart 18649

LNM: 49/21

NORTHERN CALIFORNIA-SAN FRANCISCO BAY-BRIDGE

RICHMOND-SAN RAFAEL BRIDGE-Gusset repairs on the bridge are in progress. Eight temporary underdeck platforms will be installed beneath the bridge, between piers 34-35 and 47-48 and shall reduce vertical clearance by no more than 10 feet beneath the area of the platforms. During the work the east navigation span will provide 430 feet of horizontal clearance, 215 feet either side of centerline, and the west navigation span will provide 460 feet of horizontal clearance, 230 feet either side of centerline, for navigation. The upstream and downstream lower edges of each temporary platform will be lighted at night with steady burning red lights (see Rich-SR_Bridge_TemporaryPlatform_1.pdf at the end of this notice for location of platform location and lights). Work is being conducted Monday through Friday, 0700 to 1700 through 15 Feb 23. For conditions at the bridge, mariners can contact Caltrans at 510-715-8212. For further information concerning this project please contact the Coast Guard Bridge Office at 510-437-3515.

Chart 18653

LNM: 47/21

NORTHERN CALIFORNIA-SAN FRANCISCO BAY-BRIDGE

SAN MATEO/HAYWARD BRIDGE-Structural repairs to the superstructure of the bridge are complete. Work is continuing on the causeway portion of the bridge, east of pier 38, 0700 to 1530, Monday through Friday, through 15 May 22. Various size barges will be used during the project, the largest being a 100' X 20' flexifloat barge. During the work day, barges will either be spudded down or tied to the bridge piers, no anchors or anchor line will be utilized. After regular working hours the unmanned barge will be left on-site. For the safety of navigation, the barges can be moved with one-hour advance notice. For conditions at the bridge mariners can contact Golden State Bridge, Inc., on VHF-FM Marine Radio Channels 13, 14,

NORTHERN CALIFORNIA-SAN FRANCISCO BAY-BRIDGE

and 16 or by cell phone at 707-246-0725, 925-260-2104, or 925-382-7288. For more details or comments contact the Coast Guard Bridge Office at 510-437-3515.

Chart 18651

LNM: 27/21

NORTHERN CALIFORNIA-SAN FRANCISCO BAY-BRIDGE

WESTERN SPAN SAN FRANCISCO-OAKLAND BAY BRIDGE-Fender repairs will be conducted from 06 April, 2022 through 15 July, 2022, Monday through Friday, during daylight hours at piers B, C, D, and E. The 150' X 54' Crane Barge Kelso will be anchored at various locations during the work (See SFOBBTemporaryBargeLocations.pdf in the enclosure section). The barges will be left on-scene, unmanned, after normal working hours. During the work day the barge can be moved for the safety of navigation with two hours advanced notice. After working hours the barge can be moved for the safety of navigation with six hours advanced notice. Barges, anchors and anchor lines will not impede the D-E shipping channel during work. Mariners are requested to transit the area with caution. For on-site conditions, mariners can contact the contractor at 415-720-3807 or Caltrans at 510-867-4545. For further information contact the Coast Guard Bridge Office at 510-437-3515.

Chart 18649

LNM: 13/22

NORTHERN CALIFORNIA-SAN FRANCISCO BAY-BRIDGE

RICHMOND-SAN RAFAEL BRIDGE-Concrete/steel repairs and cleaning of the bridge are in progress. Work is being conducted Monday through Friday, 0500 to 1700, through 01 May 23. Temporary underdeck platforms have been installed from the western shore to pier 33 and between piers 43-46 reducing vertical clearance in each span by three feet. The upstream and downstream lower edge of each temporary platform is lighted at night with steady burning red lights (see R-SR_Bridge_Temp_Platform_Lighting.pdf at the end of this notice.) Two 160' X 50' barges and one 110' X 32' barge are being used to assist in the installation of the platforms and for the blasting and painting. One barge has been secured to pier 8 and will be left on-scene, overnight, unmanned. The outboard corners of the barge at pier 8 is lighted at night with steady red lights. Barge "37" and barge "32" can be contacted on VHF-FM Ch. 16, 13 and 14. At no time will the work impede the east or west navigation spans or their auxiliary spans. For conditions at the bridge, mariners can contact the contractor at 860-904-8787 or 443-847-6286. For further information concerning this project contact the Coast Guard Bridge Office at 510-437-3515.

Chart 18653

LNM: 16/21

NORTHERN CALIFORNIA-SAN FRANCISCO BAY-BRIDGE

WEST SPAN-SAN FRANCISCO/OAKLAND BAY BRIDGE-Caltrans will be deploying the maintenance travelers of the bridge in span A-B from 6am to 4pm, 05 April, 2022 to 07 April, 2022. Work will move to span B-C on 11 April through 14 April, 2022. When in use, the travelers reduce vertical clearance in the span by 5 feet. For the safety of navigation the traveler can be moved with a 2-hour advance notice by calling Caltrans at 916-926-3920, 510-520-8845 or 510-390-4125. For further information contact the Coast Guard Bridge Office at 510-219-4366.

Chart 18649

LNM: 14/22

NORTHERN CALIFORNIA-SAN FRANCISCO BAY-BRIDGE

RICHMOND/SAN RAFAEL BRIDGE-Caltrans will be conducting dive operations, 0800-1530, Monday through Friday, 02-13 May, 2022 on piers 1-18 and 30-37. The 33' aluminum landing craft dive vessel, "Official Business" will have heavy equipment on their decks. Diver's umbilical hose may be floating at or near the surface, adjacent to the vessels. All approaching vessels should contact the vessel, "Official Business" on VHF-FM CH 16/14/09 or by cell 805-748-6011, approximately 30 minutes before transiting the bridge dive site to ascertain the location of the divers. Extreme caution should be used when passing through the bridge. For further information, mariners can contact the Coast Guard Bridge Office at 510 437-3516.

Chart 18649

LNM: 14/22

NORTHERN CALIFORNIA-SAN FRANCISCO BAY-DETERIORATING CONCRETE PILINGS

Deteriorating concrete pilings above and below the waterline are present in the vicinity of the the south edge of Southampton Shoal Light (LLNR 5480). Mariners are requested to transit the area with caution. For more details or comments contact LT Miranda Brumbaugh at 510-437-2978 or Miranda.E.Brumbaugh@uscg.mil.

Chart 18649

LNM: 23/15

NORTHERN CALIFORNIA-SAN FRANCISCO BAY-OAKLAND INNER HARBOR-SHOALING

Shoaling has been reported on the south side of Oakland Inner Harbor South Channel in the east passage through the Fruitvale Ave. Bridge. Mariners are requested to transit the area with caution and report any observed changes in shoaling conditions to the San Francisco VTS on VHF-FM Chan. 14. For more details or comments contact U.S. Coast Guard Sector San Francisco Waterways Management at 415-399-7443.

Chart 18650

LNM: 16/15

NORTHERN CALIFORNIA-SAN JOAQUIN RIVER-MARINE CONSTRUCTION

Shimmick Construction Company, Inc. (SCCI) is conducting marine construction for the Smith Canal Gate Project in the San Joaquin Deep Water Shipping Channel from 0600 to 1800 Monday through Saturday until 30 Dec 22. Operations will be conducted between the following coordinates:

37-57-31N 121-21-11W

37-57-25N 121-21-08W

Staging Yard

37-57-09N 121-19-55W

Mariners are requested to transit the area with caution. For more details or comments contact Tyler Shell at 510-393-0308.

Charts: 18661 18663

LNM: 28/20

NORTHERN CALIFORNIA-SAN LEANDRO BAY-BRIDGE

BAY FARM ISLAND HIGHWAY BRIDGE-The south side lower slat on the fender system is missing. Mariners are urged to transit the bridge with caution. The bridge owner is in the process of designing a replacement pier protection system. For more details or comments contact the Coast Guard Bridge Office at 510-437-3514.

Chart 18649

LNM: 37/18

NORTHERN CALIFORNIA-SANTA CRUZ HARBOR-SHOALING

There are hazardous and shoaled conditions in the Santa Cruz Harbor Channel Entrance. Mariners transiting the Santa Cruz Harbor should use

NORTHERN CALIFORNIA-SANTA CRUZ HARBOR-SHOALING

caution for hazardous conditions of breaking surf and shoaling in the Santa Cruz Harbor entrance that may occur during all surf and tidal conditions. Mariners are highly advised not to transit the Santa Cruz Harbor Channel unless sea and tide conditions are suitable for your vessel's draft. Mariners may view soundings on the Santa Cruz Harbor at <https://www.santacruzharbor.org/entrance-soundings>. For more details or comments contact the Santa Cruz Harbor at 831-475-6161 or VHF-FM Chan. 9 and 16.

Chart 18685

LNM: 03/21

NORTHERN CALIFORNIA-SUISUN BAY-MONTEZUMA SLOUGH-MARINE CONSTRUCTION

The California Department of Water Resources advises that will be installing flashboards at the Suisun Marsh salinity control structure, located 2.2 nautical miles from the easterly end of Montezuma Slough at 38-05-36N 121-53-07W. Mariners are advised to use the boat lock. The boat lock signal is a standard traffic light and the operator will monitor VHF-FM Chan. 13. Mariners are requested to transit the area with caution. For more details or comments contact Ian Uecker at 916-574-2991.

Chart 18656

LNM: 34/21

SAN DIEGO-OCEANOGRAPHIC SURVEY-OCEAN MONITORING

The City of San Diego Marine Biology Lab is conducting year-round ocean monitoring sampling in the vicinity of the South Bay Ocean Outfall and Point Loma Ocean Outfall. The Ocean Monitoring Program conducts trawl sampling, benthic sampling with a double Van Veen sediment grab, vertical CTD casts and horizontal tows with an undulating underwater vehicle, ROV surveys and multiple moorings are deployed in the region below. Ocean sampling will be conducted in an area bound by the following coordinates:

32-31-54N 117-11-11W

32-32-10N 117-11-57W

32-32-03N 117-12-06W

32-32-33N 117-11-56W

32-40-10N 117-19-22W

32-40-04N 117-19-34W

32-39-37N 117-19-32W

32-39-56N 117-19-39W

32-40-10N 117-16-55W

The M/V OCEANUS and M/V MONITOR III when in the area will monitor VHF-FM Chan. 16. Mariners are requested to transit the area with caution. For more details or comments contact Adriano Feit at 619-758-2377 or 858-882-7055.

Charts: 18765 18772

LNM: 43/21

SOUTHERN CALIFORNIA - SAN DIEGO - SURFACE OPERATIONS

The US Navy will be conducting operations 23 March through 30 June, 2022, between 12:00am – 11:59pm, 5 NM west of Mission Bay and 5 NM north of San Clemente Island. Research operations will be conducted deploying Unmanned Surface Vessels (USVs) from a 42-ft research vessel. Operations consist of scientific ocean data collection. The USV moves at approximately 1 knot and is designed to give way if encountered by a vessel. The USV is a Liquid Robotics wave glider. It is a surfboard size craft 10-ft long, 3-ft wide with only a few inches of freeboard. It has a 3-ft mast with orange flag and fixed all around white light. During these operations the research vessel and USV will be restricted in their ability to maneuver. The research vessel will monitor VHF-FM Chan. 16. Mariners are requested to transit the area with caution and maintain a safe distance of 1000-yds from the vessel and USVs. For more details or comments contact Robert Rocha at 510-366-2000 or Anna Nguyen at 408-469-5041.

Chart 18740

LNM: 09/22

SOUTHERN CALIFORNIA-CERRITOS CHANNEL-BRIDGE

HENRY FORD RAILROAD BRIDGE-The Port of Los Angeles is proposing to conduct work on the bridge's rail tracks. The work will require the lift span of the bridge to be secured in the closed-to-navigation position from 6am to 6pm on 02 May, 04 May, 09 May and 11 May, 2022. The Coast Guard Bridge Office is accepting comments on the proposed temporary operating schedule change at the Henry Ford bridge through April 15, 2022. Please send any comments via email to Carl.T.Hausner@uscg.mil. For further information contact the Coast Guard Bridge Office at 510-437-3516.

Chart 18749

LNM: 14/22

SOUTHERN CALIFORNIA-HUNTINGTON BEACH-MARINE CONSTRUCTION

Anchor QEA will conduct seawall repairs within Westchester bay homeowners association and Seagate lagoons association limits in Huntington Beach, California at 33-43-34N 118-03-40W on 5 April, 2022 until 1 June, 2022. The seawall repair will include use of a work boat, boston whaler, barges and rock scows. Mariners are advised to use caution when transiting the area. For more details or comments contact Marine Vie at 949-334-9637.

Chart 18749

LNM: 14/22

SOUTHERN CALIFORNIA-LOS ANGELES/LONG BEACH HARBOR-BRIDGE

GERALD DESMOND BRIDGE DEMOLITION: Preparation work has begun in anticipation of the lowering of the main span of the bridge. Work is being conducted Monday through Friday, 7am to 5pm. Heavy beams are being installed near the outboard edges of the span over the channel. Mariners should contact the Waterway Traffic Control Spotter at 951-505-6192 or 310-363-9392 before transiting the span to ascertain the location of the work above. For information about on-site conditions, contact the contractor Kiewit at 360-300-4365 or 602-376-5765. For further information contact the Coast Guard Bridge Office at 510-437-3516.

Chart 18749

LNM: 14/22

SOUTHERN CALIFORNIA-MISSION BAY-MARINE EVENT

KOZ events will be sponsoring the Spring Sprint Triathlon in Mission Bay on 1 May, 2022 from 7:00am to 10:00am. The event will involve approximately 1000 participants swimming in waves of 150, 500 and 1000 meter loops near South Shores Boat Launch. Mariners are advised to use due caution when transiting near the event area. For more details or comments, contact Tobias Panek at 858-255-9709.

Chart 18773

LNM: 13/22

SOUTHERN CALIFORNIA-NAVAL BASE SAN DIEGO-DREDGE OPERATIONS

R.E. Staitte Engineering INC will be conducting dredging operations at Naval Base San Diego, Pier 1-3, the approach to Pier 7-8, approach to 10-13, Pier 10 and the mouth of Chollas Creek at 32-41-13N 117-08-01W until 30 May, 2022. Dredged materials will be disposed at LA-5 Ocean Dredge Material Disposal Site (ODMDS) at 32-36-49N 117-20-40W or at the Mole Pier. DB POINT LOMA, DB PALOMAR, DB WILLIAM F, tug CUYAMACA, 04

SOUTHERN CALIFORNIA-NAVAL BASE SAN DIEGO-DREDGE OPERATIONS

scows along with push boats JEANIE R, JOHN DRAKE and the survey boat RES will be conducting operations. All vessels will be monitoring VHF-FM Chan. 16. As identified in the Explosive Safety Submission (ESS) for Site 100 of the Munitions Response Program, the dredging subareas have the potential to contain munitions and explosives of concern (MEC), including discarded military munitions (DMM) and material potentially presenting an explosive hazard (MPPEH). Based on the primary munition with the greatest fragmentation distance (MGFD) - a 5-inch Mk 41 projectile - the above-water exclusion zone is 359', and the underwater exclusion zones are 479' and 2,199', for <=1' below the surface and >1' below the surface, respectively. Please refer to the ESS for further information. Mariners are requested to transit the area with caution. For more details or comments contact Erick Myers at 619-233-0178 or Kelly Harbach at 619-556-1800.

Charts: 18765 18773

LNM: 02/22

SOUTHERN CALIFORNIA-NEWPORT BAY-BRIDGE

BALBOA ISLAND AND 38TH ST BRIDGES-Bridge spall repair and crack sealing is being conducted on the bridges, 0700 to 1530, Monday through Friday, through 15 April, 2022. A 20' and 24' pontoon boat will be in and around the piers of the bridge conducting the work. Mariners are requested to transit the area with caution during working hours. For further information contact the Coast Guard Bridge Office at 510-437-3516.

Chart 18754

LNM: 13/22

SOUTHERN CALIFORNIA-NEWPORT BEACH-MARINE CONSTRUCTION

Associated Pacific Constructors, Inc will conduct marine construction at the dock and seawall in Newport Beach Harbor at 33-36-43N 117-54-32W. Construction will go until 08 April, 2022, during weekdays and daylight hours. TB BALANA will be assisting a crane barge during the operation and monitoring VHF-FM Chan. 10 and 16. Mariners are requested to transit the area with caution. For more details or comments contact Associated Pacific Constructors, INC at 805-772-7472 or 805-234-5055.

Chart 18754

LNM: 04/22

SOUTHERN CALIFORNIA-OCEANSIDE HARBOR-DREDGE OPERATIONS

Manson Construction Co. is conducting dredging operations at Oceanside harbor, Main channel and Entrance channel 33-12-21N 117-24-04W, 24hrs a day, from 11 April, 2022 until 27 May, 2022. DB MORRIS, DB FREYA, Tender PUP, Tender CUB, and Survey Boat RUSTLER will be conducting operations and monitoring VHF-FM Chan. 16 and 67. Materials will be transported through floating, submerged and shore pipeline to the disposal area North Coast Village, Surfrider way, and Oceanside pier. Mariners are requested to transit the area with caution. For more details or comments contact Max Oviedo at 206-619-7729.

Chart 18758

LNM: 12/22

SOUTHERN CALIFORNIA-OFFSHORE SAN DIEGO-HAZARDOUS OPERATIONS

The U.S. Navy will be conducting hazardous operations until 01 January, 2023, in the areas bound by the following coordinates:

First:

- 32-55-00N 118-25-00W
- 32-55-00N 118-15-00W
- 32-40-00N 118-15-00W
- 32-40-00N 118-35-00W
- 32-45-00N 118-35-00W

Second:

- 32-33-00N 118-25-00W
- 32-35-00N 118-16-00W
- 32-35-00N 117-40-00W
- 31-55-00N 117-40-00W
- 31-55-00N 118-25-00W
- 32-33-00N 118-25-00W

Third:

- 32-52-42N 119-11-58W
- 33-08-04N 118-52-05W
- 33-08-04N 118-46-02W
- 33-03-52N 118-41-48W
- 33-02-32N 118-43-33W
- 32-58-53N 118-43-31W
- 32-47-40N 118-32-21W
- 32-36-55N 118-45-00W
- 32-36-55N 118-56-57W

Mariners are requested to transit the area with caution. For more details or comments contact FACSFAC schedules at 619-545-1744.

Charts: 18740 18765 18774

LNM: 04/22

SOUTHERN CALIFORNIA-POINT CONCEPTION-NOAA BUOY DEPLOYMENT

NOAA's Pacific Marine Environmental Laboratory deployed a buoy 11 nautical miles due west of Point Conception, CA. at 34-27-31N 120-41-10W. The buoy named Harvest 22 has a yellow top with gray sides and a flashing amber light every 4 seconds. Mariners are advised to use due caution when transiting this area. For more details or comments contact Cabot Zucker at 425-477-9554.

Chart 18721

LNM: 13/22

SOUTHERN CALIFORNIA-PORT OF LOS ANGELES-LA/LB HARBOR-BRIDGE

VINCENT THOMAS BRIDGE-Painting of the underdeck of the bridge continues. The 180' temporary platform, which reduces vertical clearance by 4', is currently 4' west of the centerline of the bridge. The upstream and downstream corners and every 50' along the upstream and downstream side of the platform is lighted at night with steady burning red lights (see V_Thomas_Platform_Lighting1.pdf at the end of this notice). Work will take place during daylight hours, Monday through Friday. For conditions at the bridge mariners can contact 213-479-4138, 213-479-1144 or 310-261-9552. For more details or comments contact the Coast Guard Bridge Office at 510-437-3516.

Chart 18749

LNM: 46/21

SOUTHERN CALIFORNIA-PORT SAN LUIS-MARINE CONSTRUCTION

SOUTHERN CALIFORNIA-PORT SAN LUIS-MARINE CONSTRUCTION

Connolly-Pacific will conduct marine construction to the Port San Luis breakwater from 6:30am to 6:30pm until 31 December, 2022. DB LONG BEACH will use anchors to position itself along the breakwater. These anchor positions will be marked by round white anchor cans. Tug PATCONA and Tug LARCONA will be assisting DB LONG BEACH. All vessels will be monitoring VHF-FM Chan. 13, 16, and 79a. Mariners are requested to transit the area with caution. For more details or comments contact Tobey Walker at 562-577-0730 or John Riley at 562-577-3602.

Chart 18704

LNM: 04/22

SOUTHERN CALIFORNIA-SAN CLEMENTE ISLAND-SAFETY ZONES

Mariners operating in the vicinity of San Clemente Island are reminded of the restricted waterway access surrounding San Clemente Island (33 CFR 165.1131; 33CFR 165.1141). Since the inception of the regulations, numerous safety zone violations have been processed by Coast Guard Sector San Diego. Safety Zone Incursions put the public at risk and cause costly and unnecessary training delays, as well as range cancellations. Violators of the San Clemente Island Safety and Security Zones are subject to monetary penalties. Criminal penalties may also be issued for repeated Safety and/or Security Zone violations. Failure to comply with the federal regulations could result in civil penalties of up to \$90,901.00.

Furthermore, if a mariner holds a Merchant Mariner Credential, suspension or revocation action may be pursued against the mariner's credential. For more details see MSSB 02-16 SCI Safety Zone.pdf in the enclosure section.

Chart 18762

LNM: 41/16

SOUTHERN CALIFORNIA-SAN DIEGO BAY-BRIDGE

CORONADO BAY BRIDGE MAINTENANCE-Scaffolding installed between piers 11-12, 12-13, and 13-14, reduces vertical clearance by more than 8'. The upstream and downstream lower edges of the scaffolding are lighted at night with red lights. For more details or comments contact the Coast Guard Bridge Office at 510-437-3461.

Charts: 18772 18773

LNM: 13/20

SOUTHERN CALIFORNIA-SAN DIEGO BAY-MARINE CONSTRUCTION

Manson Construction will be conducting demolition and construction at Naval Base San Diego, Pier 6 until 28 Mar 23. Operations will take place at 32-40-35N 117-07-29W. Mariners are urged to transit by the work site and all associated vessels at their slowest safe speed to minimize wake, and proceed with caution after passing arrangements have been made. For more details or comments contact Connor Long at 510-766-6262.

Chart 18773

LNM: 40/21

SOUTHERN CALIFORNIA-SAN DIEGO BAY-MARINE CONSTRUCTION

R.E. Staite Engineering Inc. will conduct marine construction until 20 Jun 22 in San Diego Bay at position 32-41-24N 117-14-04W. Dredge DB PALOMAR, RES 80, RES spud barge, Tug KILEEN, along with assist boats JOHN DRAKE and JEANNIE R will be on scene monitoring VHF-FM Chan. 16. Mariners are requested to transit the area with caution. For more details or comments contact Robbin Pepper at 619-524-8532 or Casey Wilson at 619-233-0178.

Charts: 18772 18773

LNM: 08/21

SOUTHERN CALIFORNIA-SAN DIEGO BAY-MARINE CONSTRUCTION

R.E. Staite Engineering Inc. will conduct marine construction until 31 Jul 22 in San Diego Bay at 32-41-13N 117-08-22W. Dredge DB POINT LOMA, DB PALOMAR, DB WILLIAM F, scows HAROLD M, CLARENCE D, ROB P, MIKE J, along with push boat JENNIE R, JOHN DRAKE, Tug KILLEEN, and Tug CUYAMACA will be conducting operations. All vessels will monitor VHF-FM Chan. 16. Mariners are requested to transit the area with caution. For more details or comments contact Brian Goerres at 619-481-1429 or Erick Myers at 619-233-0178.

Chart 18773

LNM: 33/21

SOUTHERN CALIFORNIA-SAN DIEGO BAY-MARINE EVENT

The Cortez Racing Association (CRA) will sponsor the CRA Year End Regatta on Saturday, April 16, 2022 from 10:00am to 5:00pm. The regatta will consist of 40 sailboats starting near Harbor Island, proceeding to San Diego Bay Channel Lighted Buoy 16 (LLNR 1620), continuing to San Diego Bay Channel Lighted Buoy 28 (LLNR 1980), and finishing back at Harbor Island. Mariners are advised to use due caution when transiting near the event area. For more details or comments contact Dale Greaney at 760-470-1730.

Chart 18773

LNM: 10/22

SOUTHERN CALIFORNIA-SAN DIEGO BAY-MARINE EVENT

The Cortez Racing Association (CRA) will sponsor the CRA Tribute Regatta on 7 May, 2022 from 10:00am to 5:00pm. The regatta will consist of 40 sailboats starting near Harbor Island, proceeding to San Diego Bay Channel Lighted Buoy 16 (LLNR 1620), continuing to San Diego Bay Channel Lighted Buoy 28 (LLNR 1980), and finishing back at Harbor Island. Mariners are requested to transit the area with caution. For more details or comments, contact Dale Greaney at 760-470-1730.

Chart 18773

LNM: 13/22

SOUTHERN CALIFORNIA-SAN DIEGO BAY-ZUNIGA POINT-SUNKEN VESSEL

The Coast Guard has received a report of a partially submerged white/green single mast sailing vessel IVO Breakers Beach at 32-40-57N 117-13-21W. Mariners are requested to transit the area with caution. For more details or comments contact Coast Guard Sector San Diego at 619-278-7031.

Chart 18765

LNM: 10/22

SOUTHERN CALIFORNIA-SAN DIEGO BAY-ZUNIGA POINT-SUNKEN VESSEL

The Coast Guard has received a report of a sunken vessel IVO Zuniga Shoal at 32-40-34N 117-13-06W. The vessel is a 53ft Cabin Cruiser named SOMETHING GOOD. Part of the bow is exposed above the waterline and the vessel is not marked. Mariners are requested to transit the area with caution. For more details or comments contact Coast Guard Sector San Diego at 619-278-7031.

Chart 18773

LNM: 03/22

SOUTHERN CALIFORNIA-SAN DIEGO BAY-ZUNIGA POINT-SUNKEN VESSEL

The Coast Guard has received a report of a sunken vessel IVO Zuniga Jetty at 32-40-09N 117-12-26W. The mast of the vessel is visible above the waterline. Mariners are requested to transit the area with caution. For more details or comments contact Coast Guard Sector San Diego at 619-278-7031.

SOUTHERN CALIFORNIA-SAN DIEGO BAY-ZUNIGA POINT-SUNKEN VESSEL

Chart 18765

LNM: 10/22

SOUTHERN CALIFORNIA-SAN DIEGO BAY-ZUNIGA POINT-SUNKEN VESSEL

The Coast Guard has received a report of a sunken vessel IVO Zuniga Shoal at 32-40-35N 117-12-10W. Mariners are requested to transit the area with caution. For more details or comments, contact Coast Guard Sector San Diego at 619-278-7031.

Chart 18765

LNM: 10/22

SOUTHERN CALIFORNIA-SAN DIEGO RIVER-BRIDGE

WEST MISSION BAY DRIVE BRIDGE-The City of San Diego is replacing the existing bridge. A temporary work trestle, providing a vertical clearance of 8' over Mean Sea Level is in place. Scheduled completion date of the bridge replacement project is November 2022. Mariners are urged to use caution while navigating the replacement bridge work site. For more details or comments contact the Coast Guard Bridge Office at 510-437-3461.

Chart 18765

LNM: 34/19

SOUTHERN CALIFORNIA-SAN DIEGO-MISSION BAY-MARINE EVENT

Fireworks America will be sponsoring the fireworks display at SeaWorld every Friday & Saturday from 1-30 April, 2022 from 7:50pm to 7:55pm. The event will consist of a fireworks shoot from a barge located in Mission Bay south of Fiesta Island. Mariners are advised to use due caution when transiting this area. For more details or comments, contact Julie Andrews at 619-938-8277.

Chart 18773

LNM: 13/22

SOUTHERN CALIFORNIA-SAN LUIS OBISPO BAY-DREDGE OPERATIONS

The Port San Luis Harbor District will be conducting dredge operations in the San Luis Harbor trailer boat basin and mobile hoist pier at 35-10-25N 120-45-15W. The operations will be conducted until 31 August, 2022, weekdays during daylight hours. All dredged materials will be disposed of at West Bluff Beach and Fisherman's Beach. Mariners are requested to transit the area with caution. For more details or comments contact Natalie Teeter at 805-595-5431.

Chart 18704

LNM: 04/22

SOUTHERN CALIFORNIA-SANTA BARBARA HARBOR-DREDGE OPERATIONS

Pacific Dredge Company is conducting dredge operations in Santa Barbara Harbor at 34-24-33N 119-41-01W. Operations will be conducted 24 hrs. a day from 04-30 April, 2022. Dredging will take place within Stearns Wharf, the Jetty, West Beach and Marina 1. DB SANDPIPER and Anchor Boat KATHLEEN will be utilizing a floating pipeline up to 1000 feet long and a high voltage power cable will connect the dredge to shore. All vessels will be monitoring VHF-FM Chan. 06 and 16. Mariners are requested to transit the area with caution and use caution when anchoring in the area. For more details or comments contact Gary Foster at 805-331-2995.

Chart 18725

LNM: 11/22

SOUTHERN CALIFORNIA-SANTA CRUZ ISLAND-RESEARCH OPERATIONS

404 Marine will be conducting Research operations in the vicinity of Santa Cruz Island at 33-53-23N 119-50-22W on 23-24 April, 2022 from 6:00am to 3:00pm. M/V SURVEYOR (WDK 8802) will be deploying and conducting research utilizing a wave driven upwelling pump south of Santa Cruz Island. When deployed the pump will be roughly 10 feet in diameter at the surface with a 100 yard flexible tube sitting directly below the surface structure. Mariners are requested to transit the area with caution and maintain a 1000 yard separation for safe operation of the pump. M/V SURVEYOR will be monitoring VHF channels 16, 14 and 13. For more details or comments contact Jeff Guilliams at 805-901-2671 or 805-980-7774.

Chart 18728

LNM: 14/22

SOUTHERN CALIFORNIA-SILVER STRAND TRAINING COMPLEX -WAVE GLIDER DATA COLLECTION OPERATIONS

The Naval Information Warfare Systems Center (NIWC) Pacific will be conducting surface operations off the coast of Silver Strand Training Complex, CA on 04 April, 2022 to 08April, 2022 within the following positions:

32-39-44N 117-13-10W

32-40-27N 117-11-13W

32-36-20N 117-14-03W

32-36-21N 117-08-42W

NIWC-Pacific will be conducting 24/7 autonomous, unmanned maritime vehicle operations of One Liquid Robotics, Inc. Wave Gliders. Vehicles will be deployed in the vicinity of Silver Strand Training Complex and operate continuously between the positions. Operations consist of scientific ocean and weather data collection. The Wave Glider carries no fuel, lubricants or hydrocarbons. It is wave powered and remotely attended from NIWC-Pacific, moving at speeds of 1kt. It is approximately 6.5' x 2' (surfboard size), Blue in color, with a contact plaque and mast extending 1 meter above the water surface. Mariners are advised to use caution when transiting the area. For more details or comments contact: Jose Miranda Email: Jose.a.miranda6.ctr@us.navy.mil, Phone: 619-341-2144.

Charts: 18765 18772

LNM: 12/22

SOUTHERN CALIFORNIA-SURVEY OPERATIONS

FUGRO USA MARINE INC. will be conducting a Bathymetric Survey from the M/V SKIFF on 31 March, 2022 to 07 April, 2022. During daylight hours, near Santa Clara River Estuary, CA within the following coordinates:

34-13-35N 119-15-48W

34-14-24N 119-16-02W

34-14-13N 119-15-41W

34-14-12N 119-15-34W

34-14-13N 119-14-44W

34-14-01N 119-14-41W

The vessel will have limited maneuverability during operations and mariners are requested to transit the area with caution. For more details or comments contact Cindy Pratt at 805-650-7000.

Chart 18725

LNM: 13/22

SOUTHERN CALIFORNIA-VANDENBERG AFB-HAZARDOUS OPERATIONS

Hazardous operations will be conducted from Vandenberg AFB, CA starting at 4:50am on 15 April, 2022 until 8:14am on 16 April, 2022. Hazardous

SOUTHERN CALIFORNIA-VANDENBERG AFB-HAZARDOUS OPERATIONS

operation areas are bounded by the following coordinates:

- 34-41-00N 120-38-00W
- 34-39-00N 120-40-00W
- 34-28-00N 120-38-00W
- 34-04-00N 120-17-00W
- 34-04-00N 120-05-00W
- 34-19-00N 120-14-00W
- 34-39-00N 120-19-00W
- 32-03-00N 118-53-00W
- 32-01-00N 118-49-00W
- 30-51-00N 117-56-00W
- 30-21-00N 117-39-00W
- 30-08-00N 117-47-00W
- 30-11-00N 118-01-00W
- 30-32-00N 118-18-00W
- 31-54-00N 118-53-00W

Mariners are advised to remain clear of these areas for the duration of operations. For more details or comments contact Vandenberg AFB at 805-606-0002.

Charts: 18700 18720 18740

LNM: 14/22

SECTION VIII - LIGHT LIST CORRECTIONS

An Asterisk *, indicates the column in which a correction has been made to new information

(1) No.	(2) Name and Location	(3) Position	(4) Characteristic	(5) Height	(6) Range	(7) Structure	(8) Remarks
------------	--------------------------	-----------------	-----------------------	---------------	--------------	------------------	----------------

None

PUBLICATION CORRECTIONS

ANNOUNCEMENT – U.S. Coast Pilot® 7 and U.S. Coast Pilot® 10 - NEW EDITIONS – Spring 2020

U.S Coast Pilot 7 will be divided into two editions in the spring 2020 due to its large size. The following are the projected new editions that will be issued on the same date and ready for free download and weekly updates on June 9, 2020, at nauticalcharts.noaa.gov/publications/coast-pilot/index.html.

PUBLICATION–National Oceanic Atmospheric Administration (NOAA) – U.S. Coast Pilot 7, Pacific Coast: California 52nd Edition, 2020

PUBLICATION–National Oceanic Atmospheric Administration (NOAA) – U.S. Coast Pilot 10, Pacific Coast: Oregon, Washington, Hawaii and Pacific Islands 1st Edition, 2020

Only Print-on-Demand bound copies are available for purchase; visit nauticalcharts.noaa.gov/publications/print-agents.html#coast-pilot

For any questions or comments; visit nauticalcharts.noaa.gov/customer-service/assist/

NOAA Office of Coast Survey’s Nautical Publications Branch
April 2020

LNM: 18/20

ENCLOSURES

REPORT OF DELAY AT DRAWBRIDGE

[Delay_Report_11-2017.pdf](#)

Use link above to Report a Delay at a Drawbridge.

LNM: 06/07

NORTHERN CALIFORNIA-DELTA & RIVERS-OLD RIVER-BRIDGE

[BNSF_OldRiver_Barge_Lighting.pdf](#)

See link above.

LNM: 13/22

NORTHERN CALIFORNIA-CORTE MADERA CREEK-BRIDGE

[BonAirRd_Trestle.pdf](#)

See link above for Bon Air Rd Temporary Trestle Navigation Channel.

LNM: 29/18

NORTHERN CALIFORNIA-DELTA & RIVERS-SACRAMENTO RIVER-BRIDGE

[RVBridge_PlatformCable_Lighting.pdf](#)

RIO VISTA DRAWBRIDGE-See enclosure above for temporary platform location and lighting.

LNM: 22/20

NORTHERN CALIFORNIA-SAN FRANCISCO BAY-BRIDGE

[PlatformLighting_GG_Bridge_06Dec21.pdf](#)

GOLDEN GATE BRIDGE-Temporary Platform Location and Lighting revised 06 Dec 21.

LNM: 49/21

NORTHERN CALIFORNIA-DELTA & RIVERS-AMERICAN RIVER-BRIDGE

[CA_RT_160_PierScourProtection.pdf](#)

DOWNSTREAM CA ROUTE 160 BRIDGE-See link above for pier rock slope scour protection details.

LNM: 42/20

NORTHERN CALIFORNIA-SAN FRANCISCO BAY-BRIDGE

[R-SR_Bridge_Temp_Platform_Lighting.pdf](#)

RICHMOND-SAN RAFAEL BRIDGE- See link above for temporary underdeck platform lighting for concrete and steel repairs.

LNM: 48/21

NORTHERN CALIFORNIA-SAN FRANCISCO BAY-BRIDGE

[Rich-SR_Bridge_TemporaryPlatform_1.pdf](#)

RICHMOND/SAN RAFAEL BRIDGE-See link above for temporary platform lighting and location in east and west navigation spans.

LNM: 22/21

NORTHERN CALIFORNIA-CORTE MADERA CREEK-BRIDGE

[TempPlatform_CorteMaderaCreek.pdf](#)

U.S. 101 HIGHWAY BRIDGE-See link above for temporary platform location and lighting.

LNM: 18/21

NORTHERN CALIFORNIA-DELTA & RIVERS-SAN JOAQUIN RIVER-BRIDGE

[Temporary_Bridge_Falsework_Lighting.pdf](#)

CROWS LANDING REPLACEMENT-See link above for temporary falsework, temporary bridge, the temporary navigation channel during construction with navigation lighting plan.

LNM: 35/21

SOUTHERN CALIFORNIA-PORT OF LOS ANGELES-MARINE CONSTRUCTION

[LNTM_Homeport 2022 - Rev 1.pdf](#)

See link above.

LNM: 06/22

NORTHERN CALIFORNIA-SAN FRANCISCO BAY-BRIDGE

[SFOBBTemporaryBargeLocations.pdf](#)

WESTERN SPAN SAN FRANCISCO-OAKLAND BAY BRIDGE-See link above regarding fender repairs.

LNM: 13/22

NEVADA-ARIZONA-COLORADO RIVER-BRIDGE

[Cofferdam-Lighting_Laughlin-BH.pdf](#)

NEW LAUGHLIN-BULLHEAD CITY BRIDGE-See link above for temporary cofferdam lighting and configuration.

LNM: 50/21

EASTERN PACIFIC OCEAN-HAZARDOUS WEATHER OUTLOOK

[Eastern Pacific HWO.pdf](#)

See link above.

LNM: 11/22

SOUTHERN CALIFORNIA-PORTS OF LOS ANGELES/LONG BEACH-LA/LB HARBOR-BRIDGE

[V_Thomas_Platform_Lighting1.pdf](#)

See link above for platform lighting for Vincent Thomas Bridge.

LNM: 28/19

THE LOCAL NOTICE TO MARINERS IS AVAILABLE ON THE WORLD WIDE WEB AT [HTTPS://WWW.NAVCEN.USCG.GOV](https://www.navcen.uscg.gov)

W. J. George, CDR
U.S. Coast Guard
Chief Waterways Management Branch

**U.S. COAST GUARD
REPORT OF DELAY AT DRAWBRIDGE
PER 33 CFR 117.5**

BRIDGE NAME: _____ DATE: _____

MILE : _____ WATERWAY: _____

1. Name/ Type of Vessel: _____ Direction of Travel : _____

2. Vessel Owner (Name): _____

(Address): _____

3. Name of Pilot (if applicable): _____

(Address): _____

4. Time vessel signaled for bridge opening: _____

5. Location of vessel when signal was given: _____

6. Time and location of vessel when delay began: _____

7. Method of signal for bridge opening: () Radio () Sound () Visual.

(If sound or visual signal was used, specify: _____)

8. Time bridge operator acknowledged signal: _____

9. Method of bridge operator acknowledgement: () Radio () Sound () Visual

(If sound or visual signal was used, specify: _____)

10. Did bridge operator acknowledgement indicate the bridge,

() Could be opened immediately?

() Could not be opened immediately?

11. If land traffic crossed the bridge:

Time land traffic started across the bridge _____

Time land traffic stopped crossing the bridge _____

Did land traffic stop on the bridge? _____

Duration land traffic stopped on the bridge _____

12. Time drawbridge opened for navigation _____

13. Additional comments:

I certify the above information is true to the best of my knowledge and understand this statement may be used by the U.S. Coast Guard in levying fines against the bridge owner.

Signature _____

Telephone _____

Mariners may complete and return to:

Commander (dpw)

Fax: (510) 437-5836

Email: Carl.T.Hausner@uscg.mil

Eleventh Coast Guard District

Coast Guard Island, Building 50-2

Alameda, CA 94501-5100

Attn: Bridge Office

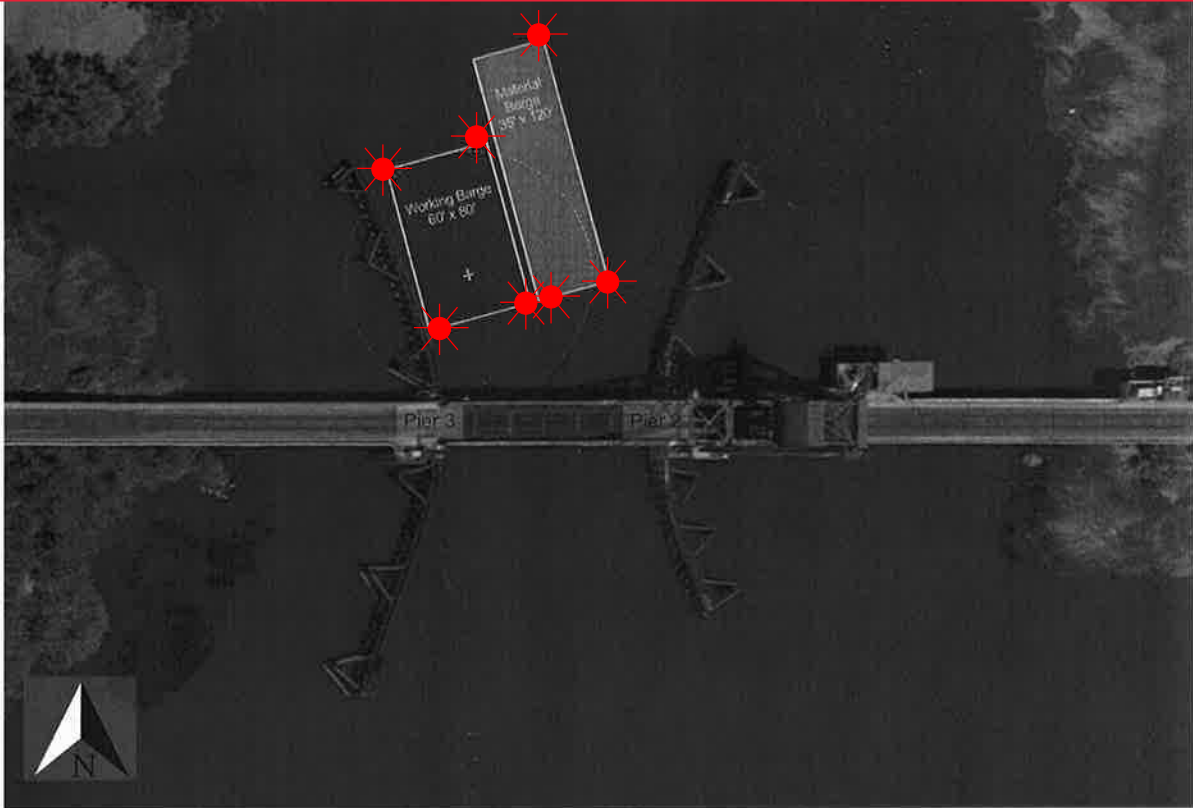
Questions? Please contact: Carl Hausner, Bridge Administrator, Eleventh Coast Guard District

Office: (510) 437-3516

Cell: (510) 219-4366

Mariners are reminded not to require bridge openings for appurtenances nonessential to navigation, per 33 CFR 117.11

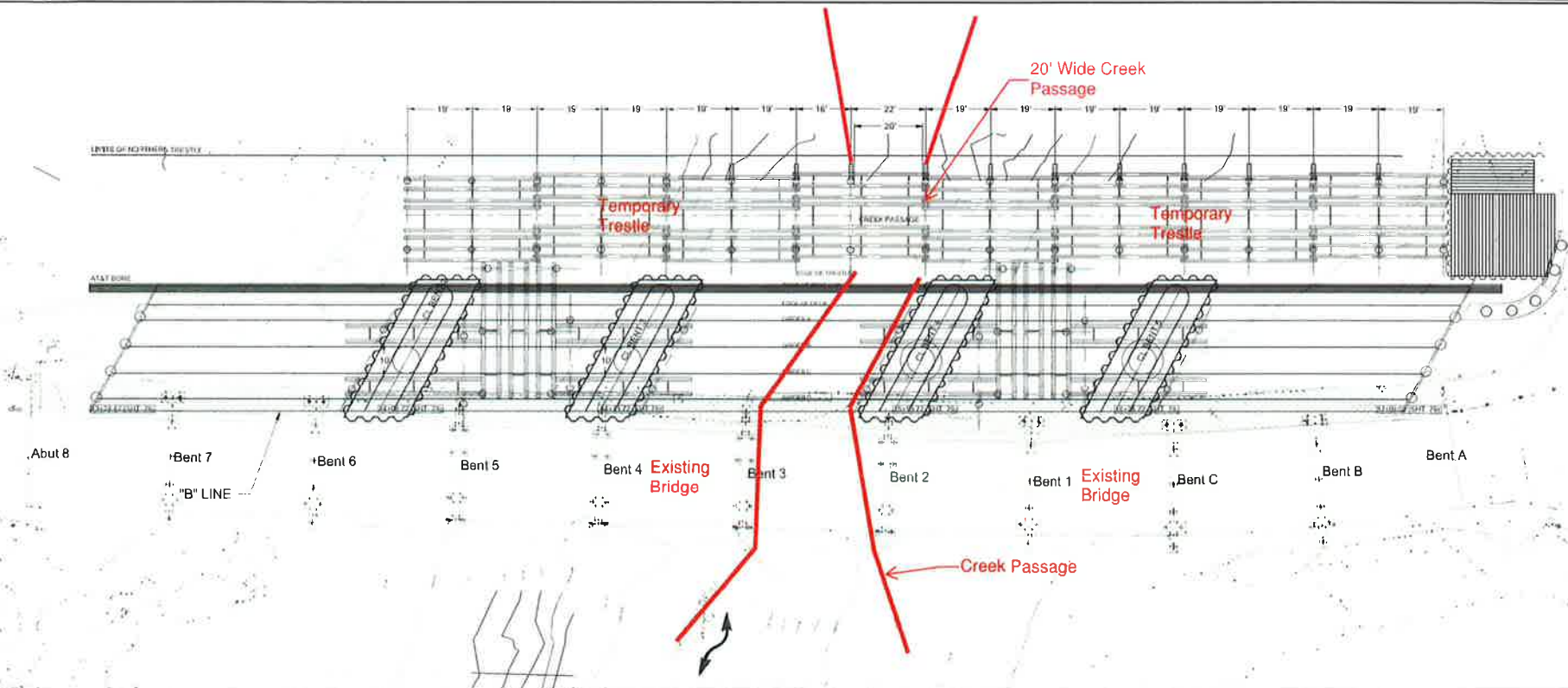
Barge Lighting Diagram
BNSF Rail Bridge, Mile 10.4, Old River



During working hours the barges will be in the main span of the bridge. The barges can be moved for navigational safety upon request with one hour advance notice. After normal working hours the barges will be moored behind the wing-walls of the pier protection system and each corner of each barge will be lighted at night with steady burning red lights.

Enclosure (1)

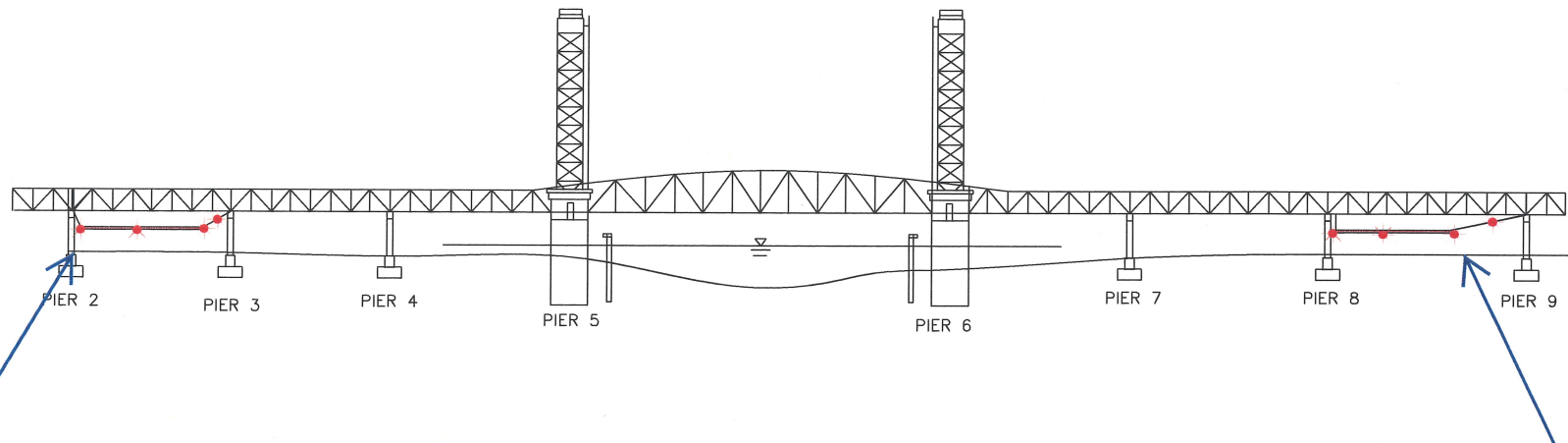
Bon Air Rd Bridge Replacement Project Mile 2.2, Corte Madera Creek



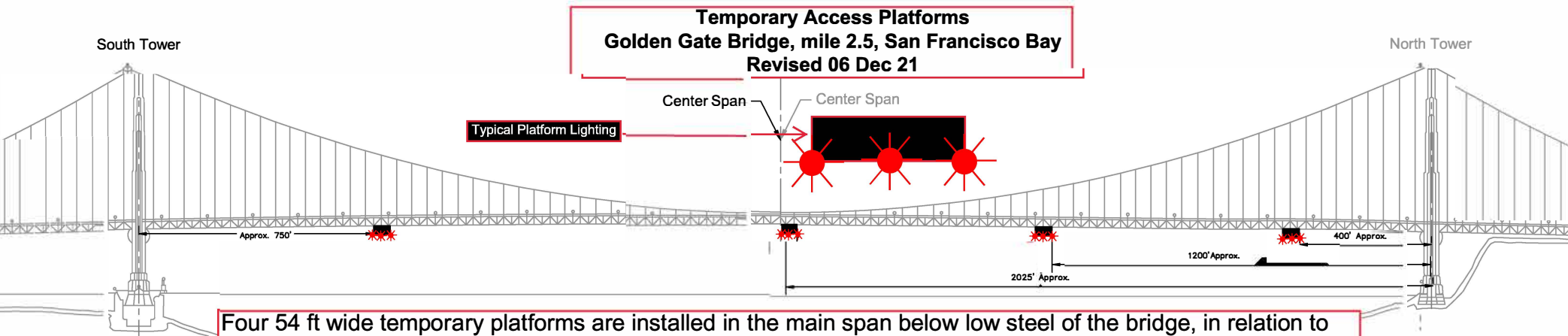
Cofferdams and a temporary trestle will be installed to facilitate construction of the replacement bridge. The temporary trestle will provide a center creek navigation channel with at least 20 feet of horizontal clearance and 3 feet of vertical clearance, from mean high water to the lowest hittable portion of the trestle, for waterway users. Mariners are urged to use extreme caution when transiting the construction site.

Temporary Underdeck Platform Lighting

Rio Vista Bridge Mile 12.8, Sacramento River



Two temporary platforms, and associated support cables, are installed beneath low steel of the bridge in span 2 and 8 and reduces vertical clearance in those spans by no more than 4 feet. The lower 4 corners and midpoint of each platform will be lighted at night with steady burning red lights, visible at 2,000 yards from approaching vessels. The support cable will be lighted with red lights every 50 feet. Mariners are requested to use alternate or main span of the bridge while these temporary platforms are in place.



**Temporary Access Platforms
Golden Gate Bridge, mile 2.5, San Francisco Bay
Revised 06 Dec 21**

Four 54 ft wide temporary platforms are installed in the main span below low steel of the bridge, in relation to centerline of the span; three south of the north tower and one north of the south tower, reducing vertical clearance by no more than 14 feet. The upstream and downstream lower edges of the temporary platforms will be lighted at night with steady burning red lights visible at 2,000 yards by approaching vessels.

Pier Scour Replacement Downstream CA Route 160 Bridge, mile 2.0, American River

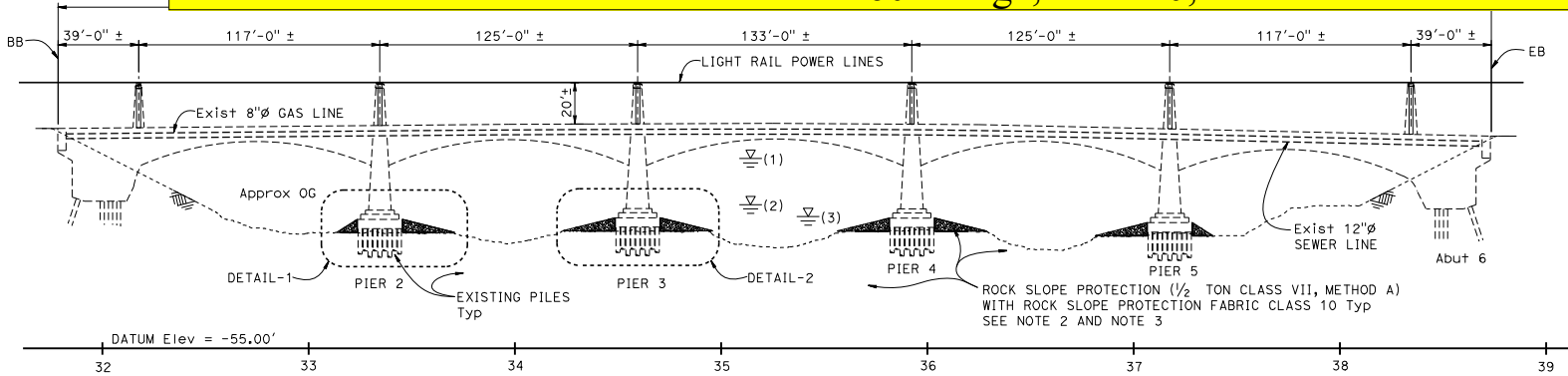
POST MILES	SHEET	TOTAL
TOTAL PROJECT	NO.	SHEETS
4.5/5.7, R44.5	174	175

REGISTERED CIVIL ENGINEER DATE 6-15-19

DAVID A. ROMERO
No. 61240
Exp. 06-30-19
CIVIL
STATE OF CALIFORNIA

PLANS APPROVAL DATE 6-17-19

THE STATE OF CALIFORNIA OR ITS OFFICERS OR AGENTS SHALL NOT BE RESPONSIBLE FOR THE ACCURACY OR COMPLETENESS OF SCANNED COPIES OF THIS PLAN SHEET.



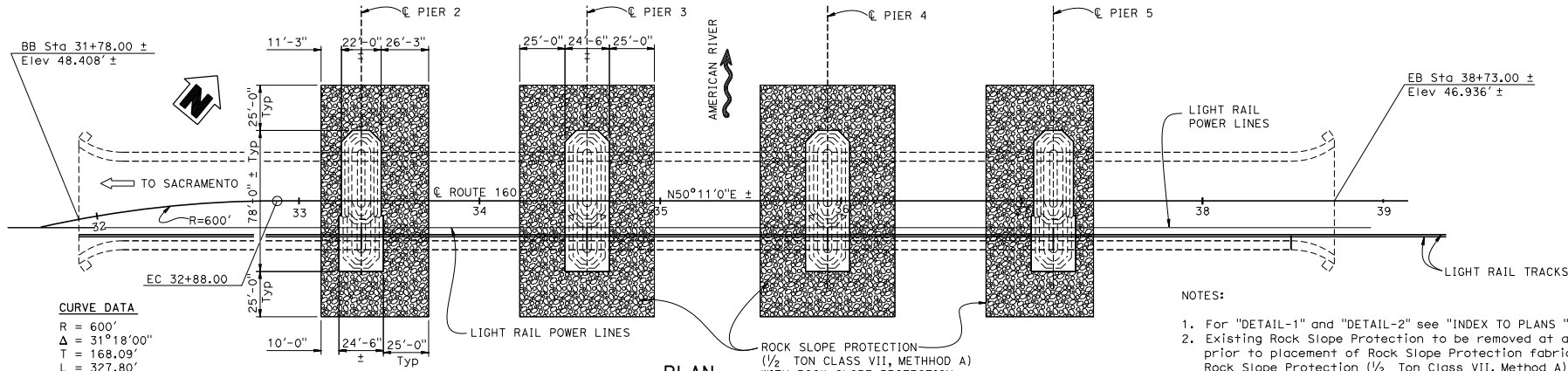
ELEVATION
1" = 30'

- LEGEND:**
- ▽(1) High water mark during A 100 year Storm 37.0' ±
 - ▽(2) High water mark during Construction window July 15th through October 15th = 14.66' ±
 - ▽(3) Low water mark during Construction window July 15th through October 15th = 8.86' ±

- Existing Structure
- ▨ Half Ton Rock Slope Protection (1/2 Ton Class VII, Method A)

QUANTITIES

REMOVE ROCK SLOPE PROTECTION	LUMP	SUM
ROCK SLOPE PROTECTION (1/2 TON, CLASS VII, METHOD A) (CY)	4,000	CY
ROCK SLOPE PROTECTION FABRIC (CLASS 10)	2,468	SQYD



PLAN
1" = 30'

- NOTES:**
- For "DETAIL-1" and "DETAIL-2" see "INDEX TO PLANS" sheet
 - Existing Rock Slope Protection to be removed at all existing Piers prior to placement of Rock Slope Protection fabric Class 10 with, Rock Slope Protection (1/2 Ton Class VII, Method A)
 - For Existing Rock Slope Protecting removal, see "EXISTING ROCK SLOPE PROTECTION REMOVAL" detail on "INDEX TO PLANS" sheet

Mariners should use the center of each navigation channel of the bridge to avoid the rock slope scour protection.

Dist	COUNTY	ROUTE	POST MILES TOTAL PROJECT	SHEET NO.	TOTAL SHEETS
03	Sac	99, 160	4.5/5.7, R44.5	175	175

<i>David Romero</i>	6-15-19
REGISTERED CIVIL ENGINEER	DATE
6-17-19	
PLANS APPROVAL DATE	

DAVID A. ROMERO
No. 61240
Exp. 06-30-19
CIVIL ENGINEER
STATE OF CALIFORNIA

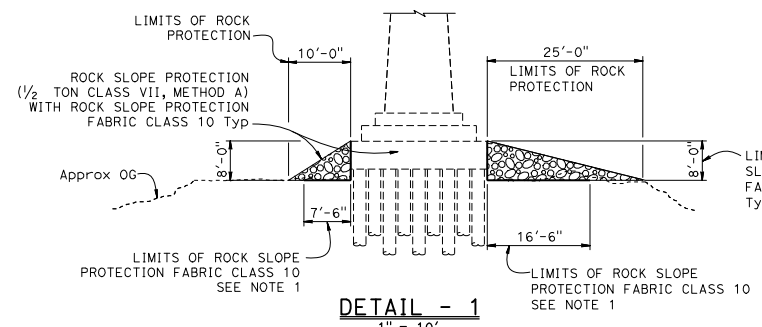
THE STATE OF CALIFORNIA OR ITS OFFICERS OR AGENTS SHALL NOT BE RESPONSIBLE FOR THE ACCURACY OR COMPLETENESS OF SCANNED COPIES OF THIS PLAN SHEET.

INDEX TO PLANS

SHEET NO.	TITLES
1	GENERAL PLAN
2	INDEX TO PLANS

CRITERIA

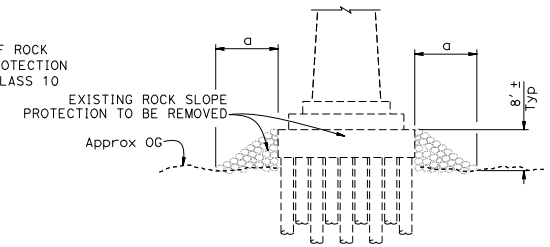
Design Based upon Final Hydraulics Report, Dated Nov 29, 2018



DETAIL - 1
1" = 10'

ROCK SLOPE PROTECTION
(AT PIER 2, PIER 5 OPPOSITE)

- LEGEND:**
- Existing Structure
 - Existing Rock Slope Protection to be removed
 - Rock Slope Protection (1/2 Ton Class VII, Method A)



SECTION A-A
1" = 10'

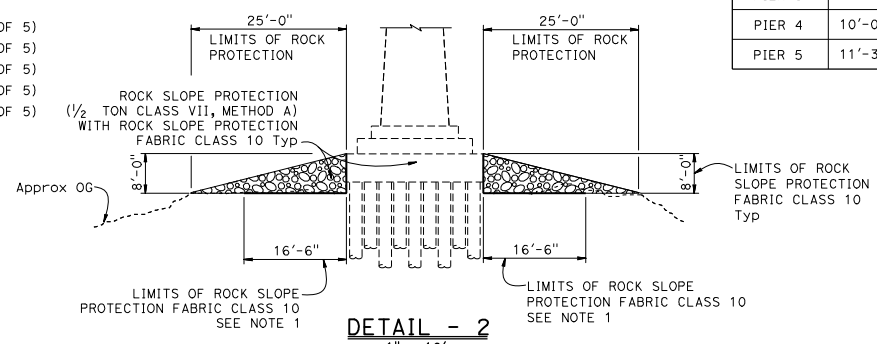
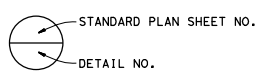
Exist ROCK SLOPE PROTECTION
(TO BE REMOVED AT Exist PIERS)

NOTES:

1. Place Rock Slope Protection Fabric Class 10 to the top of Existing footing
2. For location of "DETAIL-1" and "DETAIL-2" see "GENERAL PLAN" sheet

STANDARD PLANS 2018

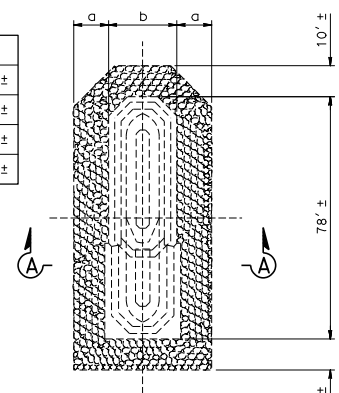
- A3A ABBREVIATIONS (SHEET 1 OF 3)
- A3B ABBREVIATIONS (SHEET 2 OF 3)
- A3C ABBREVIATIONS (SHEET 3 OF 3)
- A10A LEGEND - LINES AND SYMBOLS (SHEET 1 OF 5)
- A10B LEGEND - LINES AND SYMBOLS (SHEET 2 OF 5)
- A10C LEGEND - LINES AND SYMBOLS (SHEET 3 OF 5)
- A10D LEGEND - LINES AND SYMBOLS (SHEET 4 OF 5)
- A10E LEGEND - LINES AND SYMBOLS (SHEET 5 OF 5)
- A10F LEGEND - SOIL (SHEET 1 OF 2)
- A10G LEGEND - SOIL (SHEET 2 OF 2)
- A10H LEGEND - ROCK



DETAIL - 2
1" = 10'

ROCK SLOPE PROTECTION
(AT PIER 3 & 4)

LOCATION	a	b
PIER 2	11'-3"±	22'-0"±
PIER 3	10'-0"±	24'-6"±
PIER 4	10'-0"±	24'-6"±
PIER 5	11'-3"±	22'-0"±



EXISTING ROCK SLOPE PROTECTION REMOVAL
1" = 20'

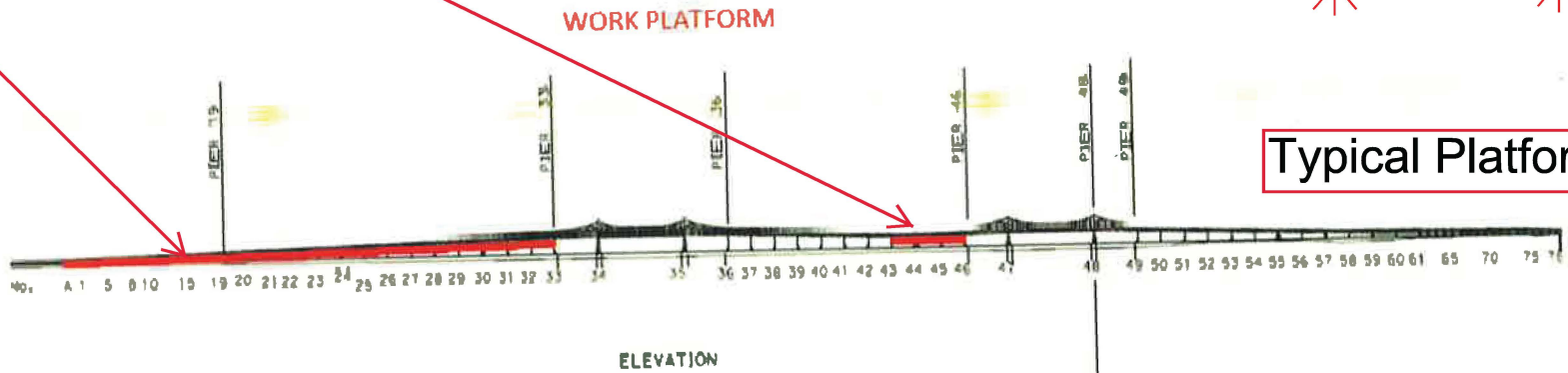
Exist ROCK SLOPE
(TO BE REMOVED AT Exist PIERS)

DESIGN BY: David Romero	CHECKED: Randy Bains	STATE OF CALIFORNIA DEPARTMENT OF TRANSPORTATION	DIVISION OF ENGINEERING SERVICES	BRIDGE No. 24-0001L	SCOUR MITIGATION AMERICAN RIVER BRIDGE INDEX TO PLANS
DETAILS BY: Min Yu	CHECKED: Randy Bains		STRUCTURE DESIGN	POST MILE 44.47	
QUANTITIES BY: David Romero	CHECKED: Randy Bains		DESIGN BRANCH 13		

DATE PLOTTED => 11-OCT-2019	TIME PLOTTED => 11:28	ORIGINAL SCALE IN INCHES FOR REDUCED PLANS 0	UNIT: 3586	DISREGARD PRINTS BEARING EARLIER REVISION DATES	REVISION DATES	SHEET 2	OF 2
FILE => 24-00011-a-1tp.dgn	USERNAME => d148585		PROJECT NUMBER & PHASE: 0313000136,1	CONTRACT No.: 03-3F5404	11/26/19	04/18/19	05/26/19

Painting and Structural Repairs Project
Richmond-San Rafael Bridge
Mile 13.0, San Francisco Bay

Temporary Underdeck Platforms

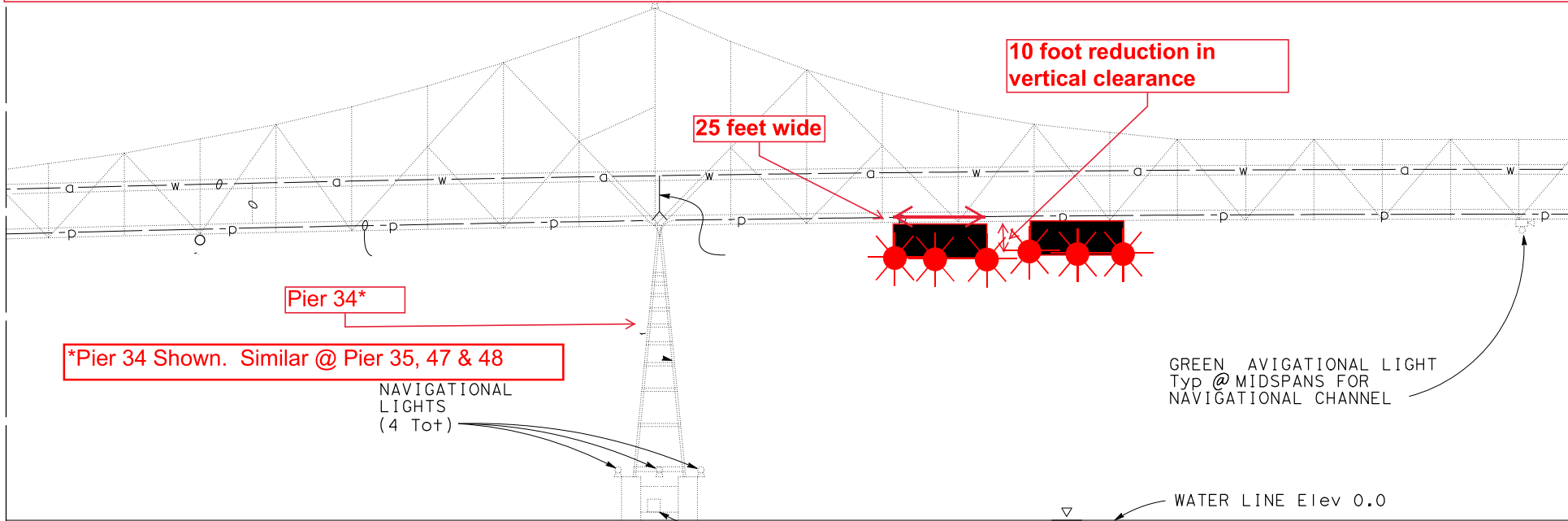


Typical Platform Lighting

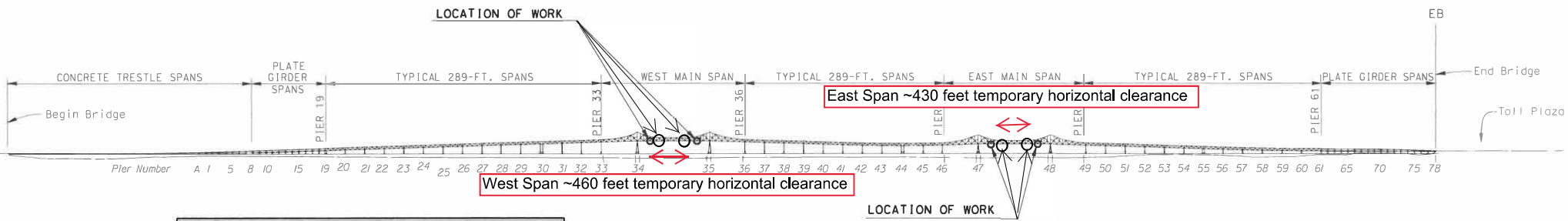
The upstream and downstream lower edges of each temporary platform in each span are lighted at night with steady burning red lights to be seen at 2,000 yards by approaching vessels. Each platform reduces vertical clearance by no more than 3 feet.

Typical Temporary Platform Location and Lighting

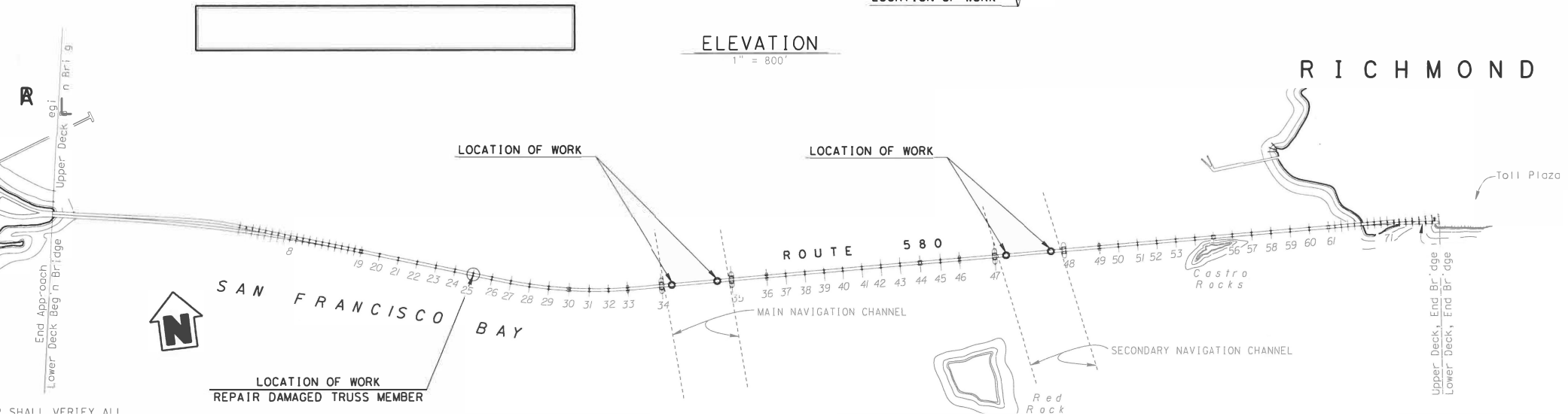
Richmond-San Rafael Bridge, Mile 13.0, San Francisco Bay



Eight temporary platforms have been installed in the East and West navigation spans, between piers 34-35 and 47-48, four in each span. The temporary platforms will reduce vertical clearance by no more than 10 feet beneath the area of the platforms. The east span provides 430 feet of horizontal clearance, 215 feet either side of centerline, and the west span provides 460 feet of horizontal clearance, 230 feet either side of centerline, for navigation. The upstream and downstream lower edges of the temporary platform will be lighted at night with fixed red lights visible at 2,000 yards by approaching vessels.



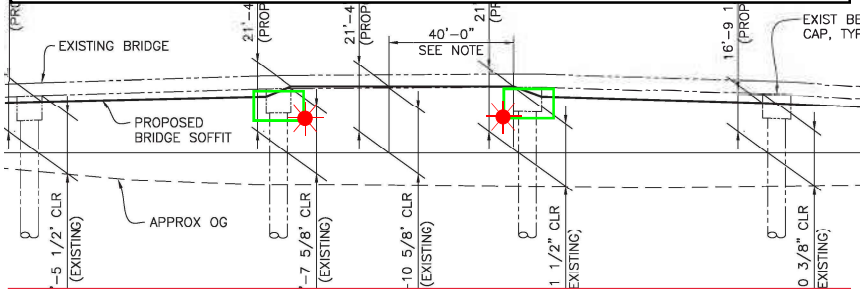
ELEVATION
1" = 800'



Pedestrian Bridge Add-On

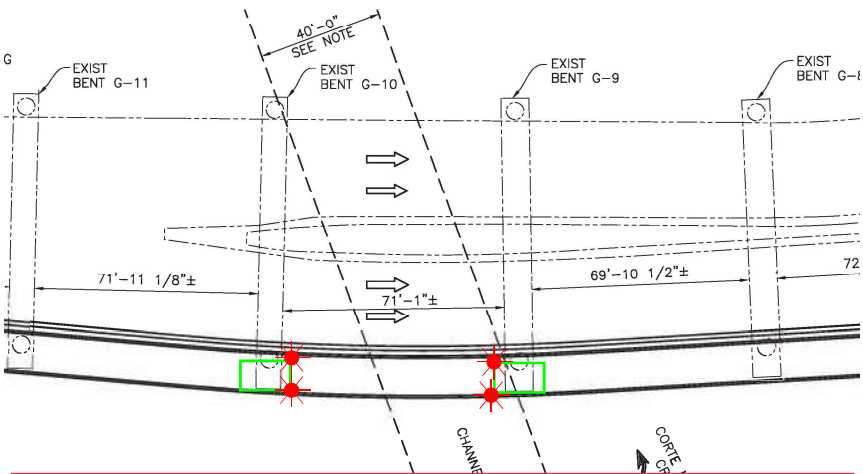
U.S. 101 Bridge, mile 0.6, Corte Madera Creek

Temporary Platform Location & Lighting

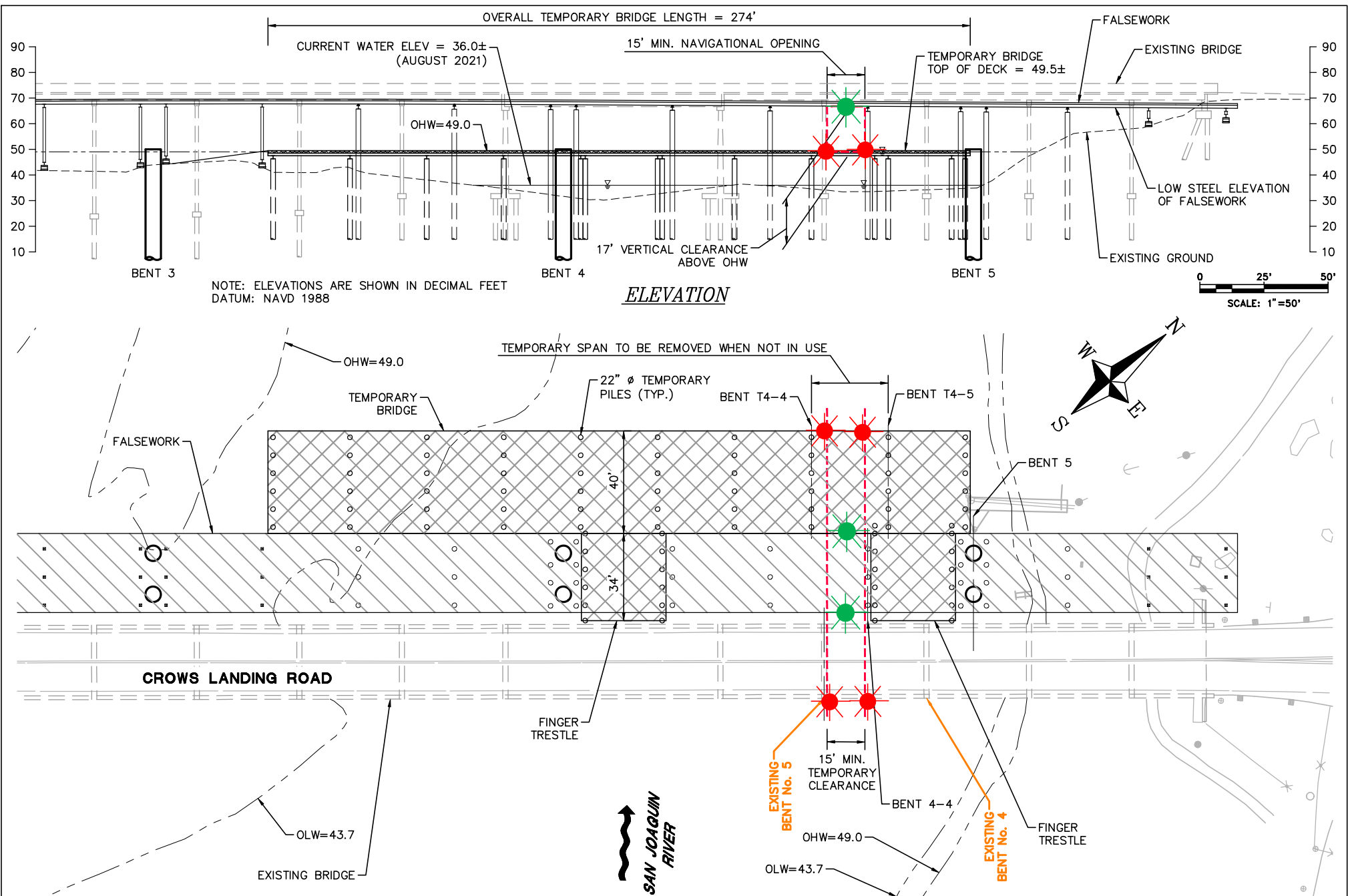


The temporary platforms reduce horizontal clearance in main navigation span of the bridge by ~14 feet and reduce vertical clearance by ~9 feet beneath the platforms.

ELEVATION

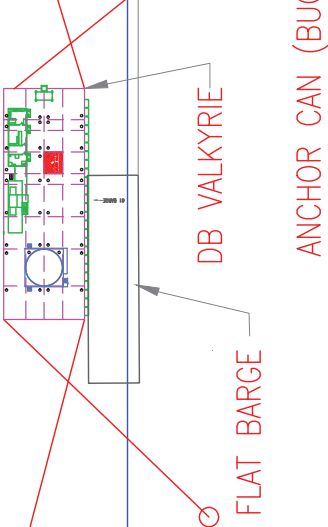
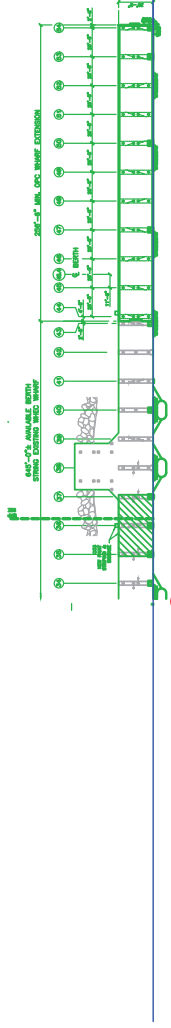


The upstream and downstream lower outboard corners of the temporary platforms in the navigation are lighted at night with fixed red lights, visible at 2,000 yards from approaching vessels.

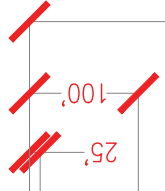


Temporary Navigation Lighting-Crows Landing Bridge Replacement Project - San Joaquin River

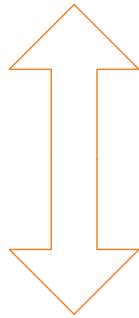
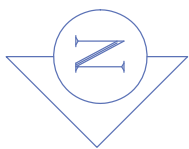
The temporary bridge and existing bridge will be lighted at night with two red lights marking the temporary navigation channel. The temporary falsework will be lighted, upriver and downriver, with green lights marking the center of the temporary navigation channel. During construction the temporary navigation channel will provide a horizontal clearance of 15 feet and a vertical clearance at Ordinary High Water of 17 feet.




MAIN CHANNEL
EAST LIMIT



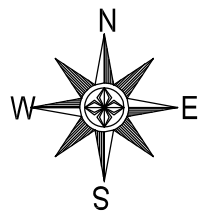
750'
MAIN CHANNEL



FLOATING PLANT TO MOVE
OCCASIONALLY TO COMPLETE
FULL SCOPE OF WORK

	USCG OPC	MAIN CHANNEL LAYOUT		Sheet 1 of 2
	Rev: — Scale: — Dwn: MJ 8/6/2021 Chk: —			

Anchored barge will be located at either pier "B", "C", "D", or "E" during the work. Each corner of the barge will be lighted at night with steady burning red lights.



Size of Barge: 150' X 54'
(Crane Barge Kelso)
Typical Location

Shipping Lane

ANCHOR ZONE E WEST

ANCHOR ZONE E EAST

PIER W6 (E TWR)

Barge will display this lighting configuration when anchored near piers.

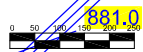
BART TUBE EXCLUSION ZONE

BART TUBE EXCLUSION ZONE

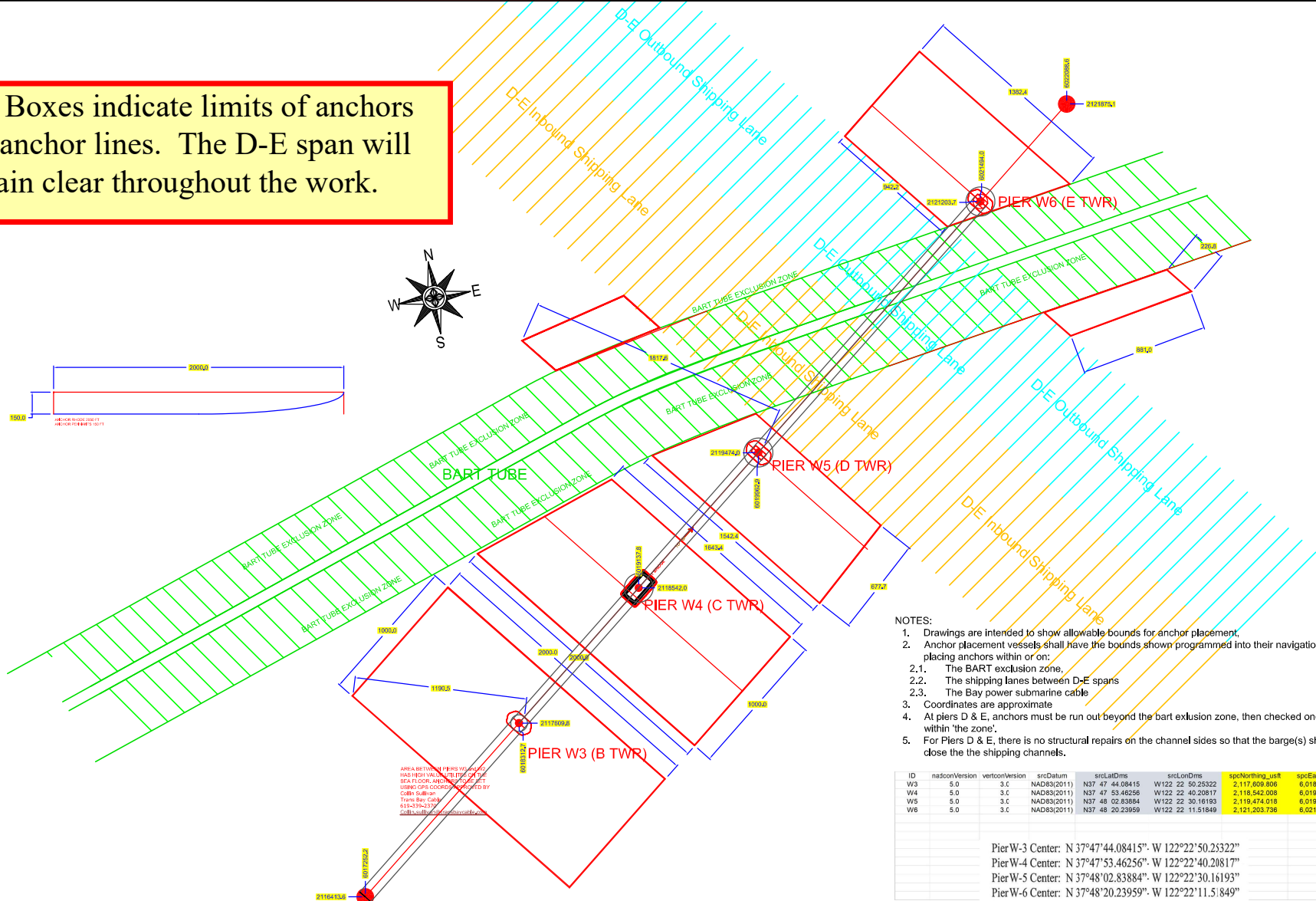
D-E Outbound

D-E Inbound

Shipping Lane



Red Boxes indicate limits of anchors and anchor lines. The D-E span will remain clear throughout the work.



AREA BETWEEN PIERS W4 AND W5 HAS BEEN DESIGNATED AS A SEA FLOOR ANCHORAGE RESTRICTION ZONE (SARZ) BY THE U.S. COAST GUARD. THIS AREA IS SUBJECT TO 33 CFR 165.406. CONTACT THE U.S. COAST GUARD AT 415.730.3377 FOR MORE INFORMATION.

- NOTES:
- Drawings are intended to show allowable bounds for anchor placement.
 - Anchor placement vessels shall have the bounds shown programmed into their navigation systems in order to avoid placing anchors within or on:
 - The BART exclusion zone,
 - The shipping lanes between D-E spans
 - The Bay power submarine cable
 - Coordinates are approximate
 - At piers D & E, anchors must be run out beyond the bart exclusion zone, then checked once set to ensure that they are not within 'the zone'.
 - For Piers D & E, there is no structural repairs on the channel sides so that the barge(s) should never need to moored close the the shipping channels.

ID	nadsOnVersion	vertconVersion	srcDatum	srcLatOrms	srcLonOrms	srcNorthing_usr1	srcEasting_usr1
W3	5.0	3.C	NAD83(2011)	N37 47 44.08415	W122 22 50.25322	2,117,609,808	6,018,512,651
W4	5.0	3.C	NAD83(2011)	N37 47 53.46256	W122 22 30.20817	2,116,542,008	6,019,137,752
W5	5.0	3.C	NAD83(2011)	N37 48 02.83884	W122 22 30.16193	2,119,474,018	6,019,962,888
W6	5.0	3.C	NAD83(2011)	N37 48 20.23959	W122 22 11.51848	2,121,203,736	6,021,493,997

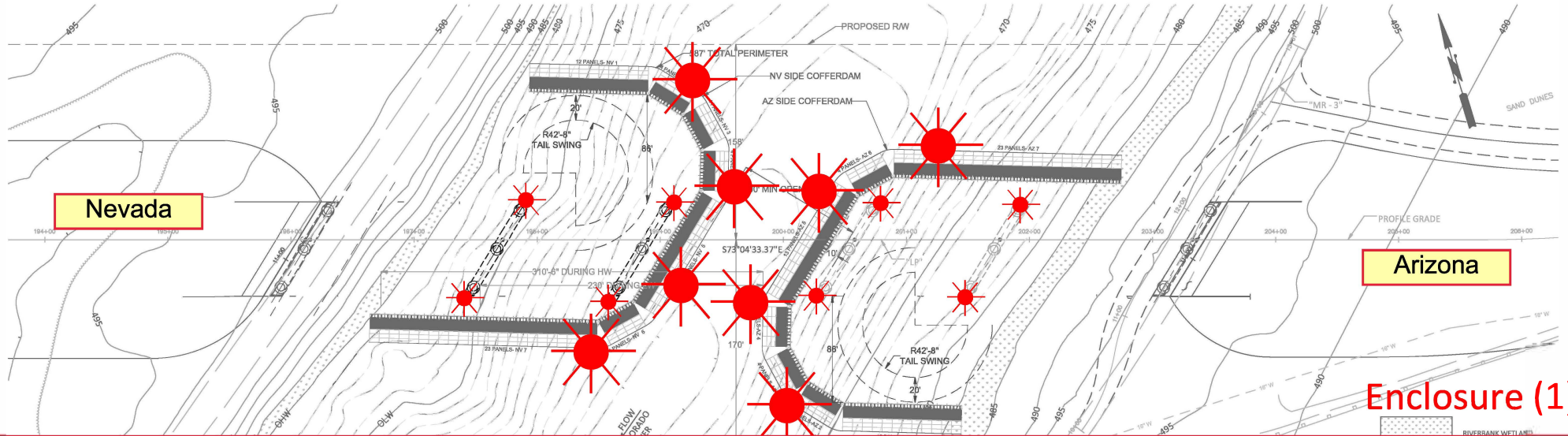
Pier-W-3 Center: N 37°47'44.08415". W 122°22'50.25322"
 Pier-W-4 Center: N 37°47'53.46256". W 122°22'40.20817"
 Pier-W-5 Center: N 37°48'02.83884". W 122°22'30.16193"
 Pier-W-6 Center: N 37°48'20.23959". W 122°22'11.51849"

Fender Repairs

Western Span San Francisco Oakland Bay Bridge, mile 8.9, San Francisco Bay

Temporary Impacts to Navigation Diagram

New Laughlin-Bullhead City Bridge Construction Mile 261.6 over the Colorado River Temporary Cofferdam Lighting



Enclosure (1)

The Arizona (AZ) side cofferdam will be installed during phase one of the project. Once AZ side piers and abutments are completed, the cofferdam will be removed and reinstalled on the Nevada (NV) side. The upriver and down river ends, as well as the channel-ward faces, of the cofferdams will be lit at night with steady burning red lights, visible at 2,000 yards by approaching vessels. At least 70 ft from the channel-ward face of either cofferdam will be available in the center of the river for vessels. After piers are installed, the upriver and downriver ends of each pier will be temporarily lighted with red lights, visible at 2,000 yard by approaching vessels, until permanent lighting can be installed marking the main navigation span.

Hazardous Weather Outlook Extended to the Eastern Pacific Ocean

In coordination with the National Weather Service (NWS) and the National Hurricane Center (NHC), the US Coast Guard is pleased to announce the addition of a new Hazardous Weather Outlook (HWO) service that covers the Eastern Pacific Ocean. This service is available to all those who could benefit from advanced warning of hazardous weather in both coastal regions and open waters. As with the currently available Western Atlantic Hazardous Weather Outlook, Seven Day HWO's will be released every Wednesday with additional Situational HWO's issued as conditions require. The service will begin on April 6th of this year, however you can sign up in advance at any time.

In the recent past several maritime tragedies and "near misses" in the coastal waters of the United States have occurred due to hazardous weather, such as the sinking of the SS El Faro in 2015. Based on recommendations by the National Transportation Safety Board (NTSB), in cooperation with the NWS and the United States Coast Guard Navigation Center (NAVCEN), developing improved methods of delivering Marine Safety Information remain a top priority.

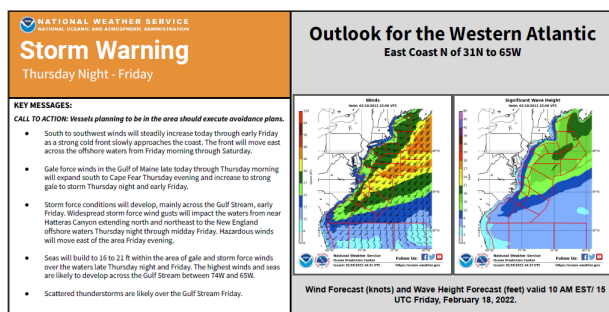
The NWS Ocean Prediction Center (OPC) and the NHC's Tropical and Analysis Forecast Branch (TAFB) will be providing weekly and situational reports to the USCG, who will then be making this information available to the public. Through the free online subscription service, GovDelivery, which currently offers subscribers a wide array of Marine Safety Information such as Broadcast Notice to Mariners (BNMs) and Local Notice to Mariners (LNMs) provided through USCG NAVCEN, users will be able to register to receive Hazardous Weather Outlook reports giving forewarning of major weather events.

For subscribing to Eastern Pacific Hazardous Weather Outlook reports by E-mail:

https://public.govdelivery.com/accounts/USDHSCG/subscriber/new?topic_id=USDHSCG_506

For subscribing to Eastern Pacific Hazardous Weather Outlook reports by RSS Feed:

https://public.govdelivery.com/topics/USDHSCG_506/feed.rss

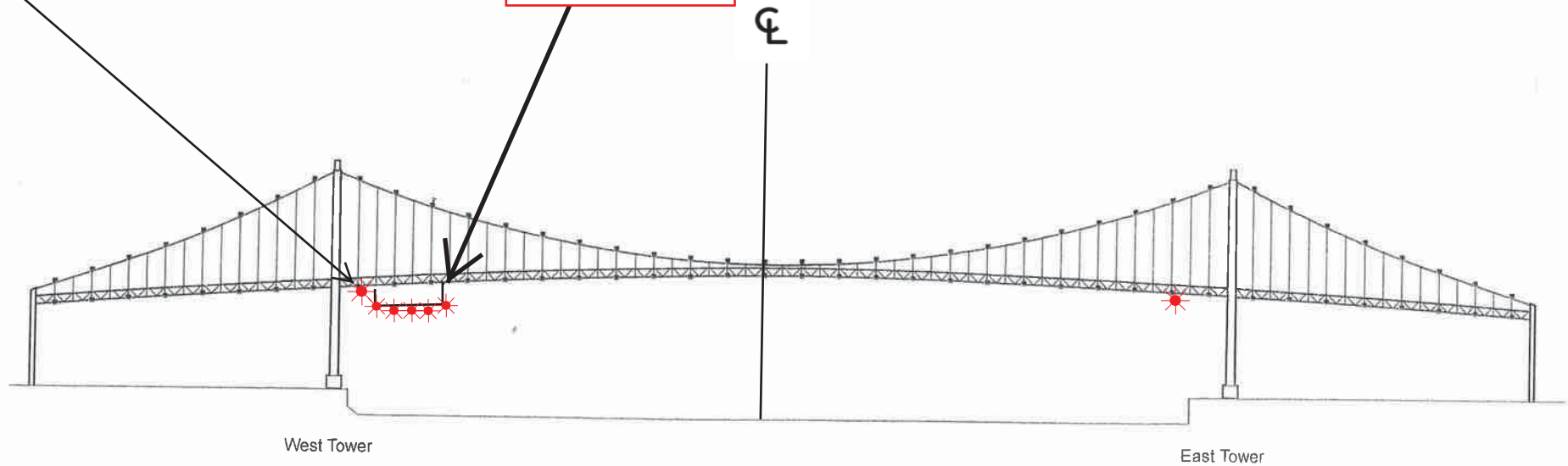


The Hazardous Weather Outlook will be extended to the Eastern Pacific

Vincent Thomas Highway Bridge
Mile 3.0
Los Angeles/Long Beach Harbor
Painting Project

West Channel Margin
Light

Below Low Steel
Platform. 5' 4"
reduction in
vertical clearance



A 180 foot long under deck temporary platform will reduce vertical clearance by 5' 4". Each corner and every 50 feet along the the upstream and downstream side of the platform will lighted at night with steady burning red lights visible at 2000 yards by approaching vessels. In a duration of 1-year the platform will progress from the western channel margin light to 250' west of the centerline of the bridge.