



U.S. Department  
of Homeland Security  
**United States  
Coast Guard**

---

## LOCAL NOTICE TO MARINERS

**District: 11**

**Week: 19/22**

CORRESPONDENCE TO:  
COMMANDER  
DISTRICT ELEVEN (DPW)  
COAST GUARD ISLAND BUILDING 50-2  
ALAMEDA, CA 94501-5100

REFERENCES: COMDTPUB P16502.6, Light List Volume VI, 2017 Edition, U.S. Chart No.1 12th Edition, and Coast Pilot Volume 7 49th Edition. These publications, along with corrections, are available at: <https://nauticalcharts.noaa.gov/>

BROADCAST NOTICE TO MARINERS - Information concerning aids to navigation and waterway management promulgated through BNM HB-0003-22, SF-0043-22, LA-0036-22, and SD-0022-22 have been incorporated in this notice, or will continue if still significant.

---

### SECTION I - SPECIAL NOTICES

This section contains information of special concern to the Mariner.

#### SUBMITTING INFORMATION FOR PUBLICATION IN THE LOCAL NOTICE TO MARINERS

A complete set of guidelines with examples and contact information can be found at <http://www.pacificarea.uscg.mil/Our-Organization/District-11/Prevention-Division/LnmRequest/> or call Waterways Management Branch at 510-437-2929 or e-mail D11-SMB-D11-LNM@uscg.mil. Please provide all Local Notice to Mariners submissions 14 days prior to the start of operations

LNM: 17/21

#### BRIDGE INFORMATION- PROJECTS, DISCREPANCIES, CORRECTIONS & REGULATORY

For all bridge related issues, including lighting, operation, obstructions, construction, demolition, etc. contact the Eleventh Coast Guard District Bridge Administrator 24 hour cell phone at 510-219-4366. Flotsam may accumulate on and near bridge piers and abutments. Mariners should approach all bridges with caution. A vessel delay at a drawbridge may be reported to the District Bridge Administrator by telephone, or by using the Delay\_Report\_11-2017.pdf included in the Enclosures section of this Local Notice to Mariners.

#### BRIDGE INFORMATION-COMMUNICATIONS PROTOCOL-BENICIA/MARTINEZ UPRR BRIDGE- CARQUINEZ STRAIT

All mariners requiring a bridge lift at the Benicia-Martinez Union Pacific Railroad Bridge, mile 7.0, over the Carquinez Strait, California, should follow the protocol in the document entitled "Coordination of Communications for Union Pacific Railroad Lift Operations." Mariners can download a copy of the document by selecting the link BENICIA-MARTINEZ RR BRIDGE under the QUICK LINKS section at <https://www.pacificarea.uscg.mil/vtssf>.

#### CANCELLATION OF NOAA PAPER AND RASTER NAUTICAL CHARTS

The National Oceanic and Atmospheric Administration (NOAA) is undertaking a multi-year program to end production and maintenance of its suite of over 1,000 traditional paper nautical charts and all associated raster chart products and services, including: Print-on-Demand (POD) paper nautical charts, Full-size chart PDF files, BookletChart™ PDF files, NOAA raster navigational charts (NOAA RNC®), the NOAA RNC tile service, and the online RNC viewer.

Six months notice of the intent to cancel a specific chart is provided in a "Last Edition" notice. The final cancellation of a chart is made in a "Canceled" notice. Both types of notices will appear in LNM Section IV, "Chart Correction." A comprehensive list of all canceled NOAA charts is available at: <http://www.charts.noaa.gov/MCD/Dole.shtml>.

Traditional paper nautical chart production is ending to enable the creation and maintenance of larger scale, more up-to-date, higher quality coverage of NOAA's electronic navigational chart (NOAA ENC®) product. This will significantly enhance the amount of charted detail available to mariners. More information about NOAA's program to sunset traditional paper charts is on the NOAA Coast Survey website at: <https://nauticalcharts.noaa.gov/charts/farewell-to-traditional-nautical-charts.html>

An online NOAA Custom Chart application at: <https://devgis.charttools.noaa.gov/pod> is available to create chart images from ENC data, which may then be printed. Notices to Mariners will not be issued for NOAA Custom Charts.

LNM: 07/21

#### CAUTION TO BE USED IN RELIANCE UPON AIDS TO NAVIGATION

The aids to navigation depicted on charts comprise a system of fixed and floating aids to navigation with varying degrees of reliability. Prudent mariners will not rely solely on any single aid to navigation, particularly a floating aid to navigation. With respect to buoys, the buoy symbol is used

to indicate the approximate position of the buoy body and the sinker which secures the buoy to the seabed. The approximate position is used because of the practical limitations in positioning and maintaining buoys and their sinkers in precise geographical locations. These limitations include, but are not limited to, inherent imprecision in position fixing methods, prevailing atmospheric and sea conditions, slope of and the material making up the seabed, the fact that buoys are moored to sinkers by varying length of chain, and the fact that the buoy body and/or sinker positions are not under continuous surveillance, but are normally checked only during periodic maintenance visits which often occur more than a year apart. Due to the forces of nature, the position of the buoy body can be expected to shift inside and outside the charted symbol. The mariner is also cautioned that buoys may be extinguished or sound signals may not function as the result of natural causes, collisions, or other accidents. For the foregoing reasons, a prudent mariner must not rely completely upon the position or operation of floating aids to navigation, but will also utilize bearings from fixed objects and aids to navigation on shore. Furthermore, a vessel attempting to pass close aboard always risks collision with a yawing buoy or with the obstruction that the buoy marks.

#### **DISTRICT ELEVEN NOTICE OF INQUIRY (DOCKET NUMBER USCG-2021-0345)**

The Coast Guard is conducting a Notice of Inquiry in conjunction with the Pacific Coast Port Access Route Study (PAC-PARS) to assess navigational risk factors associated with vessel traffic near Point Mugu, San Francisco Bay, Humboldt Bay, and Morro Bay, CA. Mariners are encouraged to participate in this assessment by submitting comments and related material on or before May 26, 2022. Comments can be submitted by searching for the docket "USCG-2021-0345" at <https://Regulations.gov>, under the document "Vessel Traffic Assessment: Near Point Mugu, San Francisco Bay, Humboldt Bay, and Morro Bay, CA". Questions concerning this assessment should be submitted to the email: [PACPARS@USCG.MIL](mailto:PACPARS@USCG.MIL).

LNM: 09/22

#### **HAZARDOUS WEATHER OUTLOOK EXTENDED TO THE EASTERN PACIFIC OCEAN**

In coordination with the National Weather Service (NWS) and the National Hurricane Center (NHC), the US Coast Guard is pleased to announce the addition of a new Hazardous Weather Outlook (HWO) service that covers the Eastern Pacific Ocean, including the Pacific Coast of the Continental United States (CONUS). This service is available to all those who could benefit from advanced warning of hazardous weather in both coastal regions and open waters. As with the currently available Western Atlantic Hazardous Weather Outlook, Seven Day HWO's will be released every Wednesday with additional Situational HWO's issued as conditions require. The service will begin on April 6th of this year, however you can sign up in advance at any time.

In the recent past several maritime tragedies and "near misses" in the coastal waters of the United States have occurred due to hazardous weather, such as the sinking of the SS El Faro in 2015. Based on recommendations by the National Transportation Safety Board (NTSB), in cooperation with the NWS and the United States Coast Guard developing improved methods of delivering Marine Safety Information remain a top priority.

The NWS Ocean Prediction Center (OPC) and the NHC's Tropical and Analysis Forecast Branch (TAFB) will be providing weekly and situational reports to the USCG, who will then be making this information available to the public. Through the free online subscription service, GovDelivery, which currently offers subscribers a wide array of Marine Safety Information such as Broadcast Notice to Mariners (BNMs) and Local Notice to Mariners (LNMs) provided through USCG NAVCEN, users will be able to register to receive Hazardous Weather Outlook reports giving forewarning of major weather events.

For subscribing to Eastern Pacific Hazardous Weather Outlook reports by E-mail:  
<[https://public.govdelivery.com/accounts/USDHSCG/subscriber/new?topic\\_id=USDHSCG\\_506](https://public.govdelivery.com/accounts/USDHSCG/subscriber/new?topic_id=USDHSCG_506)>

For subscribing to Eastern Pacific Hazardous Weather Outlook reports by RSS Feed:  
<[https://public.govdelivery.com/topics/USDHSCG\\_506/feed.rss](https://public.govdelivery.com/topics/USDHSCG_506/feed.rss)>

LNM: 12/22

#### **NAVIGATION CENTER WEBSITE TRANSITION**

The U.S. Coast Guard Navigation Center is going to transition the Navigation Center website to a new, enhanced version in the first quarter of 2022. As part of this transition, URLs will be updated across the site including URLs linked to PDFs. Therefore, once the transition is complete, legacy site URLs will no longer function, including bookmarked URLs and URLs used in automatic downloading of data and/or products. Outdated URLs will automatically redirect to the home page of the site, and from there you will be able to easily navigate to your preferred page.

Below are a few of the "old"/new URL pairs listed for your convenience. Please note that the new URLs will not be active until we launch the new website. Of course, once it is launched, the new URLs will be available for re-bookmarking. As a reminder, these are top level URLs that may contain additional links that you use.

This notice will be updated when the final launch date is determined and another notice will be issued to notify you when the site goes live. Questions/concerns may be directed to the [NAVCENWebTEAM@uscg.mil](mailto:NAVCENWebTEAM@uscg.mil).

#### **Local Notices to Mariners (LNMs)**

Current URLs: <https://www.navcen.uscg.gov/?pageName=InmMain>

Replacement: <https://www.navcen.uscg.gov/local-notices-to-mariners-by-cg-district>

#### **Light Lists Annual Publication**

Current URLs: <https://navcen.uscg.gov/?pageName=lightLists>

Replacement: <https://www.navcen.uscg.gov/light-list-annual-publication>

Light List - Weekly

Current URLs: <https://navcen.uscg.gov/?pageName=lightListWeeklyUpdates>

Replacement: <https://www.navcen.uscg.gov/weekly-light-lists>

Light List - Corrections

Current URLs: <https://navcen.uscg.gov/?pageName=lightListCorrections>

Replacement: <https://www.navcen.uscg.gov/light-list-summary-of-corrections>

LNM: 06/22

#### NORTHERN CALIFORNIA-SAN FRANCISCO-MILE ROCKS LIGHT-REDUCED NOMINAL RANGE

Mile Rocks Light (LLNR 365) will have a temporarily reduced intensity of 5nm until further notice. Mariners are requested to transit the area with caution. For more details or comments contact LT Miranda Brumbaugh at 510-437-2978 or [Miranda.E.Brumbaugh@uscg.mil](mailto:Miranda.E.Brumbaugh@uscg.mil).

Charts: 18007 18010 18020 18022 18640 18645 18649 18680

LNM: 16/19

#### NORTHERN CALIFORNIA-SAN JOAQUIN RIVER-MARINE CONSTRUCTION

The Department of Water Resources have placed an emergency barrier in the West False River until December, 2022. The barrier is located at 38-03-25N 121-40-08W and is approximately 0.4 mile east of the confluence with the San Joaquin River, between Jersey and Bradford Islands in Contra Costa County, and is about 4.8 miles northeast of Oakley. Constructing the emergency temporary rock barrier provides a method of controlling saltwater intrusion into the Delta and the barrier was installed in the identical location in 2015. Mariners are requested to transit the area with caution. For more details or comments contact Jason Bacher at 916-376-9859 or Keith Boulton at 360-580-3708.

Charts: 18656 18661 18663

LNM: 16/22

#### SOUTHERN CALIFORNIA-SAN DIEGO BAY-MINIMIZE WAKE

The Navy Port Operations Manager requests that vessels slow to 7 kts when a vessel is moored in restricted area (33 CFR 334.865) located on the northeast side of North Island at 32-42-57N 117-11-22W, between San Diego Channel Lighted Buoy 20 (LLNR 1710) and San Diego Channel Lighted Buoy 22 (LLNR 1830). For more details or comments contact LT Rodriguez at 619-545-3232, [Rigoberto.rodriguez3@navy.mil](mailto:Rigoberto.rodriguez3@navy.mil).

Chart 18773

LNM: 10/22

#### SUBMITTING INFORMATION FOR PUBLICATION IN THE LOCAL NOTICE TO MARINERS

Coast Guard District Eleven Waterways upgrade to E-Mail capabilities. All future requests for article submission in the District Eleven Local Notice to Mariners are requested to be E-Mailed to [D11-SMB-SMB-D11-LNM@uscg.mil](mailto:D11-SMB-SMB-D11-LNM@uscg.mil) at least two weeks prior to the operation. For more details or comments please contact District Eleven Waterways Management Branch at 510-437-2929 or e-mail [D11-SMB-D11-LNM@uscg.mil](mailto:D11-SMB-D11-LNM@uscg.mil). Coast Guard District Eleven requests all Local Notice to Mariners submissions be E-Mailed to our office at least 14 days prior to the start of operations for timely submittal and publication.

LNM: 17/21

---

## SECTION II - DISCREPANCIES

This section lists all reported and corrected discrepancies related to Aids to Navigation in this edition. A discrepancy is a change in the status of an aid to navigation that differs from what is published or charted.

---

### DISCREPANCIES (FEDERAL AIDS)

| LLNR        | Aid Name   | Status         | Chart No.    | BNM Ref.          | LNM St       | LNM End |
|-------------|--|----------------|--------------|-------------------|--------------|---------|
| 125         | Long Beach Light                                     | LT EXT         | 18751        | LA-0148-20        | 49/20        |         |
| 345         | San Francisco South Traffic Lane Lighted Bell Buoy S | MISSING        | 18645        | SF-0042-21        | 09/21        |         |
| 360         | San Francisco Approach Lighted Whistle Buoy SF       | RAC INOP       | 18649        | SF-0040-22        | 17/22        |         |
| 365         | Mile Rocks Light                                     | REDUCED INT    | 18649        | SF-0251-17        | 49/17        |         |
| 370         | Point Bonita Light                                   | LT EXT/SS INOP | 18649        | SF-0032-22        | 15/22        |         |
| <b>1495</b> | <b>San Diego Bay Channel Lighted Buoy 5</b>          | <b>LT EXT</b>  | <b>18773</b> | <b>SD-0022-22</b> | <b>19/22</b> |         |
| 2635        | Ship Rock Light                                      | LT EXT         | 18757        | LA-0095-21        | 26/21        |         |
| 2641        | Isthmus Cove Harbor Reefs Light                      | STRUCT DMGD    | 18757        | LA-0018-21        | 05/21        |         |
| 2670        | Santa Catalina Island West End Light                 | LT EXT         | 18757        | LA-0113-19        | 34/19        |         |
| 3012        | Long Beach Light                                     | LT EXT         | 18751        | LA-0148-20        | 49/20        |         |

|      |   |                     |       |            |       |
|------|---|---------------------|-------|------------|-------|
| 3117 | Los Angeles Main Channel Lighted Buoy 11            | REDUCED INT         | 18751 | LA-0105-21 | 28/21 |
| 3132 | Terminal Island Channel Lighted Buoy 1              | STRUCT DMGD         | 18751 | LA-0027-22 | 16/22 |
| 3970 | Monterey Harbor Light 6                             | REDUCED INT         | 18685 | SF-0165-21 | 51/21 |
| 3970 | Monterey Harbor Light 6                             | SS INOP             | 18685 | SF-0064-20 | 27/20 |
| 4155 | Colorado Reef Lighted Buoy 26                       | OFF STA             | 18645 | SF-0163-21 | 51/21 |
| 4190 | San Francisco Main Ship Channel Lighted Bell Buoy 7 | LT EXT              | 18649 | SF-0019-22 | 08/22 |
| 4220 | Point Bonita Light                                  | LT EXT/SS INOP      | 18649 | SF-0032-22 | 15/22 |
| 4245 | Mile Rocks Light                                    | REDUCED INT         | 18649 | SF-0251-17 | 49/17 |
| 4430 | Pier B North Buoy                                   | MISSING             | 18650 | SF-0153-21 | 48/21 |
| 4595 | Yerba Buena Island Light                            | LT EXT/SS INOP/TRLT | 18650 | SF-0143-21 | 46/21 |
| 4680 | Oakland Inner Harbor Light 10                       | MISSING/TRLB        | 18650 | SF-0052-21 | 02/22 |
| 4684 | Oakland Inner Harbor Turn Basin Light B             | STRUCT DMGD/TRLB    | 18650 | SF-0097-21 | 29/21 |
| 4740 | San Leandro Bay Airport Channel Daybeacon 6         | STRUCT DEST         | 18650 | SF-0033-22 | 15/22 |
| 5130 | San Francisco Bay South Channel Light 8             | DAYMK MISSING       | 18651 | SF-0023-20 | 08/20 |
| 6095 | Mare Island Strait Light 2                          | STRUCT DMGD/TRLB    | 18655 | SF-0152-20 | 49/20 |
| 6310 | Suisun Bay Channel Buoy 3                           | OFF STA             | 18657 | SF-0116-21 | 36/21 |
| 6505 | Suisun Bay Channel Lighted Buoy 17                  | OFF STA             | 18658 | SF-0128-21 | 02/22 |
| 6685 | San Joaquin River Light 8                           | LT EXT/TRLB         | 18656 | SF-0109-21 | 02/22 |
| 7210 | Sacramento River Deep Water Ship Channel Light 10   | MISSING/TRLB        | 18656 | SF-0101-21 | 32/21 |
| 7235 | Sacramento River Deep Water Ship Channel Light 15   | MISSING/TRLB        | 18661 | SF-0100-20 | 35/20 |
| 7240 | Sacramento River Deep Water Ship Channel Light 16   | STRUCT DEST/TRLB    | 18661 | SF-0127-18 | 34/18 |
| 7260 | Sacramento River Deep Water Ship Channel Light 20   | MISSING/TRLB        | 18661 | SF-0108-21 | 33/21 |

**DISCREPANCIES (FEDERAL AIDS) CORRECTED**

| LLNR | Aid Name                                    | Status    | Chart No. | BNM Ref.   | LNM St | LNM End |
|------|---|-----------|-----------|------------|--------|---------|
| 3105 | Los Angeles Approach Channel Lighted Buoy 1 | RELIGHTED | 18749     | LA-0035-22 | 19/22  | 19/22   |

**DISCREPANCIES (PRIVATE AIDS)**

| LLNR | Aid Name                                    | Status      | Chart No. | BNM Ref.   | LNM St | LNM End |
|------|---|-------------|-----------|------------|--------|---------|
| 11   | Pt Loma San Diego Research Buoy             | MISSING     | 18765     | SD-0068-21 | 44/21  |         |
| 20   | Ocean Beach Pier Fog Sound Signal           | SS INOP     | 18765     | SD-0002-19 | 05/19  |         |
| 158  | Scripps Waverider Lighted Research Buoy 092 | OFF STA     | 18746     |            | 45/18  |         |
| 505  | Scripps Waverider Lighted Research Buoy 168 | LT EXT      | 18620     | HB-0003-22 | 14/22  |         |
| 1483 | Pt Loma San Diego Research Buoy             | MISSING     | 18765     | SD-0068-21 | 44/21  |         |
| 1665 | Americas Cup Harbor Daybeacon 2             | STRUCT DEST | 18773     | SD-0001-22 | 02/22  |         |
| 1720 | Navy Lighted Mooring Buoy                   | LT EXT      | 18773     | SD-0055-21 | 33/21  |         |
| 1765 | Harbor Island East Basin Channel Buoy 2     | OFF STA     | 18773     | SD-0028-19 | 19/19  |         |
| 1775 | Harbor Island East Basin Channel Buoy 4     | MISSING     | 18773     | SD-0039-20 | 29/20  |         |
| 1790 | Harbor Island East Basin Channel Buoy 10    | OFF STA     | 18773     | SD-0044-19 | 27/19  |         |
| 1900 | Glorietta Bay Channel Lighted Buoy 8        | LT IMCH     | 18773     | SD-0100-18 | 50/18  |         |
| 2070 | Coronado Cays Channel Daybeacon 3           | STRUCT DEST | 18773     | SD-0098-17 | 36/17  |         |
| 2288 | Scripps Waverider Lighted Research Buoy 220 | OFF STA     | 18765     | SD-0041-20 | 30/20  |         |



|         |   |                 |       |            |       |
|---------|---|-----------------|-------|------------|-------|
| 2289.1  | Scripps Waverider Lighted Research Buoy 100   | OFF STA         | 18765 |            | 22/20 |
| 2289.4  | Scripps "CORDC" Lighted Research Buoy         | MISSING         | 18765 |            | 22/20 |
| 2764.4  | Catalina Sea Ranch SE Buoy                    | MISSING         | 18746 | LA-0001-22 | 03/22 |
| 2871    | Long Beach Harbor Brusco Lighted Mooring Buoy | LT EXT          | 18751 | LA-0009-21 | 03/21 |
| 3339.2  | REDONDO HARBOR LIGHT                          | LT EXT          | 18744 | LA-0181-18 | 52/18 |
| 3400    | El Segundo NRG Energy Buoy 6ES                | SINKING         | 18744 | LA-0153-21 | 39/21 |
| 3420    | Hyperion Lighted Gong Buoy 10 ES              | LT EXT          | 18744 |            | 16/20 |
| 4401    | Richardson Bay Daybeacon 8                    | DAYMK DMGD      | 18653 |            | 15/20 |
| 4402    | Richardson Bay Daybeacon 9                    | STRUCT DMGD     | 18649 | SF-0086-18 | 23/18 |
| 4576    | South Beach Harbor North Entrance Light 2     | LT EXT          | 18650 | SF-0047-21 | 11/21 |
| 4577    | South Beach Harbor North Entrance Light 1     | LT EXT          | 18650 | SF-0046-21 | 10/21 |
| 4578    | South Beach Harbor South Entrance Light 1     | LT EXT          | 18650 | SF-0091-20 | 33/20 |
| 4826    | Bay Farm Island Light 1                       | LT EXT          | 18650 | SF-0014-19 | 05/19 |
| 4826.15 | Bay Farm Island Light 3                       | LT EXT          | 18650 | SF-0014-19 | 04/19 |
| 4826.2  | Bay Farm Island Light 4                       | LT EXT          | 18650 | SF-0136-21 | 44/21 |
| 4827.1  | Anchorage 9 Lighted Mooring Buoy A            | LT EXT          | 18650 | SF-0012-20 | 04/20 |
| 4828.1  | Anchorage 9 Lighted Mooring Buoy B            | LT EXT          | 18650 | SF-0013-20 | 04/20 |
| 5661    | Southampton Shoal Outfall Lighted Buoy 1      | LT EXT/RAC INOP | 18653 | SF-0026-19 | 07/19 |
| 5661    | Southampton Shoal Outfall Lighted Buoy 1      | MISSING/TRLB    | 18653 | SF-0029-20 | 18/21 |
| 5662    | Southampton Shoal Outfall Lighted Buoy 2      | LT EXT          | 18653 | SF-0059-21 | 14/21 |
| 5877.2  | San Rafael Rock Quarry Mooring Buoy C         | MISSING         | 18653 |            | 36/18 |
| 6623    | New York Slough Koch West Light               | LT IMCH         |       |            | 39/18 |
| 6624    | New York Slough Koch East Light               | LT EXT          |       |            | 39/18 |
| 6645.5  | Delta Diablo Outfall Lighted Buoy             | LT EXT          |       | SF-0005-22 | 02/22 |
| 8325    | Pacific Gas and Electric Dike Light           | LT EXT          | 18622 | HB-0009-21 | 20/21 |

**DISCREPANCIES (PRIVATE AIDS) CORRECTED**

| LLNR | Aid Name | Status | Chart No. | BNM Ref. | LNM St | LNM End |
|------|----------|--------|-----------|----------|--------|---------|
|------|----------|--------|-----------|----------|--------|---------|

None

**PLATFORM DISCREPANCIES**

| Name | Status | Position | BNM Ref. | LNM St | LNM End |
|------|--------|----------|----------|--------|---------|
|------|--------|----------|----------|--------|---------|

None

**PLATFORM DISCREPANCIES CORRECTED**

| Name | Status | Position | BNM Ref. | LNM St | LNM End |
|------|--------|----------|----------|--------|---------|
|------|--------|----------|----------|--------|---------|

None

**SECTION III - TEMPORARY CHANGES and TEMPORARY CHANGES CORRECTED**

This section contains temporary changes and corrections to Aids to Navigation for this edition. When charted aids are temporarily relocated for dredging, testing, evaluation, or marking an obstruction, a temporary correction shall be listed in Section IV giving the new position.

**TEMPORARY CHANGES**

| LLNR | Aid Name        | Status            | Chart No. | BNM Ref.   | LNM St | LNM End |
|------|-----------------|-------------------|-----------|------------|--------|---------|
| 280  | Point Sur Light | Reduced Intensity | 18686     | SF-0105-20 | 35/20  |         |

|      |                                  |                           |       |            |       |
|------|----------------------------------|---------------------------|-------|------------|-------|
| 3850 | Morro Bay Channel Lighted Buoy 3 | DISCONTINUED FOR DREDGING | 18703 | LA-0034-22 | 19/22 |
| 3855 | Morro Bay Channel Lighted Buoy 4 | DISCONTINUED FOR DREDGING | 18703 | LA-0034-22 | 19/22 |
| 3865 | Morro Bay Channel Lighted Buoy 6 | DISCONTINUED FOR DREDGING | 18703 | LA-0034-22 | 19/22 |
| 3870 | Morro Bay Channel Lighted Buoy 7 | DISCONTINUED FOR DREDGING | 18703 | LA-0034-22 | 19/22 |
| 3875 | Morro Bay Channel Lighted Buoy 8 | DISCONTINUED FOR DREDGING | 18703 | LA-0034-22 | 19/22 |

TEMPORARY CHANGES CORRECTED

| LLNR | Aid Name | Status | Chart No. | BNM Ref. | LNLM St | LNLM End |
|------|----------|--------|-----------|----------|---------|----------|
|------|----------|--------|-----------|----------|---------|----------|

None

PLATFORM TEMPORARY CHANGES

| Name | Status | Position | BNM Ref. | LNLM St | LNLM End |
|------|--------|----------|----------|---------|----------|
|------|--------|----------|----------|---------|----------|

None

PLATFORM TEMPORARY CHANGES CORRECTED

| Name | Status | Position | BNM Ref. | LNLM St | LNLM End |
|------|--------|----------|----------|---------|----------|
|------|--------|----------|----------|---------|----------|

None

## SECTION IV - CHART CORRECTIONS

This section contains corrections to federally and privately maintained Aids to Navigation, as well as NOS corrections.

This section contains corrective actions affecting chart(s). Corrections appear numerically by chart number, and pertain to that chart only. It is up to the mariner to decide which chart(s) are to be corrected. The following example explains individual elements of a typical chart correction.

| Chart Number                                       | Chart Edition                | Edition Date                | Last Local Notice to Mariners | Horizontal Datum Reference | Source of Correction   | Current Local Notice to Mariners |
|--|------------------------------|-----------------------------|-------------------------------|----------------------------|------------------------|----------------------------------|
| 12327  | 91st Ed.                     | 19-APR-97                   | Last LNM: 26/97               | NAD 83                     |                        | 27/97                            |
| Chart Title: NY-NJ-NEW YORK HARBOR - RARITAN RIVER |                              |                             |                               |                            |                        |                                  |
| Main Panel 2245 NEW YORK HARBOR                    |                              |                             |                               |                            |                        |                                  |
| (Temp) ADD   | NATIONAL DOCK CHANNEL BUOY 3 |                             |                               |                            | CGD01 at 40-41-09.001N | 074-02-48.001W                   |
| Corrective Action                                  | Green can                    | Object of Corrective Action |                               |                            | Position               |                                  |

(Temp) indicates that the chart correction action is temporary in nature. Courses and bearings are given in degrees clockwise from 000 true. Bearings of light sectors are toward the light from seaward. The nominal range of lights is expressed in nautical miles (NM) unless otherwise noted.

| 501  | 13th Ed.                                       | 01-JUN-09 | Last LNM: 29/20 | NAD 83                                    | 19/22                            |
|--|--|-----------|-----------------|---|----------------------------------|
| <i>Chart Title: North Pacific Ocean West Coast Of North America Mexican Border To Dixon Entrance</i> |  |           |                 |   |                                  |
| <b>Main Panel 1650 MEXICAN BORDER TO DIXON ENTRANCE. Page/Side: N/A</b>                              |  |           |                 |   |                                  |
| RELOCATE   | NOAA Environmental Buoy 46013 Relocate         |           |                 | CGD11 from 38-15-12.000N to 38-14-05.000N | 123-18-12.000W<br>123-19-01.000W |
| RELOCATE   | NOAA Environmental Lighted Buoy 46027 Relocate |           |                 | CGD11 from 41-51-06.000N to 41-50-24.000N | 124-22-48.000W<br>124-22-54.000W |
| RELOCATE   | NOAA Environmental Lighted Buoy 46006 Relocate |           |                 | CGD11 from 40-45-59.186N to 40-45-52.000N | 137-22-45.995W<br>137-22-37.000W |
| RELOCATE   | NOAA Environmental Lighted Buoy 46025 Relocate |           |                 | CGD11 from 33-45-30.000N to 33-45-19.000N | 119-02-40.000W<br>119-02-42.000W |
| RELOCATE   | NOAA Environmental Lighted Buoy 46042 Relocate |           |                 | CGD11 from 36-47-04.794N to 36-47-05.000N | 122-23-53.894W<br>122-23-46.000W |
| RELOCATE   | NOAA Environmental Lighted Buoy 46054          |           |                 | CGD11 from 34-16-21.000N                  | 120-28-12.000W                   |

Relocate to 34-16-26.000N 120-28-05.000W

530 35th Ed. 01-DEC-15 Last LNM: 38/21 NAD 83 19/22

ChartTitle: North America West Coast San Diego to Aleutian Islands and Hawaiian Islands

Main Panel 2405 SAN DIEGO TO ALEUTIAN ISLANDS AND HAWAIIAN ISLANDS. Page/Side: A

|          |                                       |                    |                |
|----------|---------------------------------------|--------------------|----------------|
| RELOCATE | NOAA Environmental Buoy 46013         | CGD11              |                |
|          | Relocate                              | from 38-15-12.000N | 123-18-12.000W |
|          |                                       | to 38-14-05.000N   | 123-19-01.000W |
| RELOCATE | NOAA Environmental Lighted Buoy 46027 | CGD11              |                |
|          | Relocate                              | from 41-51-06.000N | 124-22-48.000W |
|          |                                       | to 41-50-24.000N   | 124-22-54.000W |
| RELOCATE | NOAA Environmental Lighted Buoy 46025 | CGD11              |                |
|          | Relocate                              | from 33-45-30.000N | 119-02-40.000W |
|          |                                       | to 33-45-19.000N   | 119-02-42.000W |
| RELOCATE | NOAA Environmental Lighted Buoy 46042 | CGD11              |                |
|          | Relocate                              | from 36-47-04.794N | 122-23-53.894W |
|          |                                       | to 36-47-05.000N   | 122-23-46.000W |

18007 33rd Ed. 01-FEB-09 Last LNM: 23/21 NAD 83 19/22

ChartTitle: San Francisco to Cape Flattery

Main Panel 1652 SAN FRANCISCO TO CAPE FLATTERY. Page/Side: N/A

|          |                                       |                    |                |
|----------|---------------------------------------|--------------------|----------------|
| RELOCATE | NOAA Environmental Buoy 46013         | CGD11              |                |
|          | Relocate                              | from 38-15-12.000N | 123-18-12.000W |
|          |                                       | to 38-14-05.000N   | 123-19-01.000W |
| RELOCATE | NOAA Environmental Lighted Buoy 46027 | CGD11              |                |
|          | Relocate                              | from 41-51-06.000N | 124-22-48.000W |
|          |                                       | to 41-50-24.000N   | 124-22-54.000W |

18010 22nd Ed. 01-SEP-12 Last LNM: 29/20 NAD 83 19/22

ChartTitle: Monterey Bay to Coos Bay

Main Panel 1653 MONTEREY BAY TO COOS BAY. Page/Side: N/A

|          |                                       |                    |                |
|----------|---------------------------------------|--------------------|----------------|
| RELOCATE | NOAA Environmental Buoy 46013         | CGD11              |                |
|          | Relocate                              | from 38-15-12.000N | 123-18-12.000W |
|          |                                       | to 38-14-05.000N   | 123-19-01.000W |
| RELOCATE | NOAA Environmental Lighted Buoy 46027 | CGD11              |                |
|          | Relocate                              | from 41-51-06.000N | 124-22-48.000W |
|          |                                       | to 41-50-24.000N   | 124-22-54.000W |
| RELOCATE | NOAA Environmental Lighted Buoy 46042 | CGD11              |                |
|          | Relocate                              | from 36-47-04.794N | 122-23-53.894W |
|          |                                       | to 36-47-05.000N   | 122-23-46.000W |

18020 39th Ed. 01-JAN-12 Last LNM: 10/21 NAD 83 19/22

ChartTitle: San Diego to Cape Mendocino

Main Panel 1654 SAN DIEGO TO CAPE MENDOCINO. Page/Side: N/A

|          |                                       |                    |                |
|----------|---------------------------------------|--------------------|----------------|
| RELOCATE | NOAA Environmental Buoy 46013         | CGD11              |                |
|          | Relocate                              | from 38-15-12.000N | 123-18-12.000W |
|          |                                       | to 38-14-05.000N   | 123-19-01.000W |
| RELOCATE | NOAA Environmental Lighted Buoy 46025 | CGD11              |                |
|          | Relocate                              | from 33-45-30.000N | 119-02-40.000W |
|          |                                       | to 33-45-19.000N   | 119-02-42.000W |
| RELOCATE | NOAA Environmental Lighted Buoy 46042 | CGD11              |                |
|          | Relocate                              | from 36-47-04.794N | 122-23-53.894W |
|          |                                       | to 36-47-05.000N   | 122-23-46.000W |
| RELOCATE | NOAA Environmental Lighted Buoy 46054 | CGD11              |                |
|          | Relocate                              | from 34-16-21.000N | 120-28-12.000W |
|          |                                       | to 34-16-26.000N   | 120-28-05.000W |

18022 36th Ed. 01-JUN-11 Last LNM: 10/21 NAD 83 19/22

ChartTitle: San Diego to San Francisco Bay

Main Panel 1655 SAN DIEGO TO SAN FRANCISCO BAY. Page/Side: N/A

|          |                                       |                    |                |
|----------|---------------------------------------|--------------------|----------------|
| RELOCATE | NOAA Environmental Lighted Buoy 46025 | CGD11              |                |
|          | Relocate                              | from 33-45-30.000N | 119-02-40.000W |
|          |                                       | to 33-45-19.000N   | 119-02-42.000W |
| RELOCATE | NOAA Environmental Lighted Buoy 46042 | CGD11              |                |
|          | Relocate                              | from 36-47-04.794N | 122-23-53.894W |
|          |                                       | to 36-47-05.000N   | 122-23-46.000W |
| RELOCATE | NOAA Environmental Lighted Buoy 46054 | CGD11              |                |
|          | Relocate                              | from 34-16-21.000N | 120-28-12.000W |
|          |                                       | to 34-16-26.000N   | 120-28-05.000W |

18600 15th Ed. 01-MAR-11 Last LNM: 40/17 NAD 83 19/22

ChartTitle: Trinidad Head to Cape Blanco

**Main Panel 1800 TRINIDAD HEAD TO CAPE BLANCO . Page/Side: N/A**

RELOCATE NOAA Environmental Lighted Buoy 46027  
Relocate

CGD11  
from 41-51-06.000N 124-22-48.000W  
to 41-50-24.000N 124-22-54.000W

**18603 17th Ed. 01-MAR-11 Last LNM: 44/08 NAD 83 19/22**

*ChartTitle: St. George Reef and Crescent City Harbor;Crescent City Harbor*

**CHART CA - ST. GEORGE REEF. Page/Side: N/A**

RELOCATE NOAA Environmental Lighted Buoy 46027  
Relocate

CGD11  
from 41-51-06.000N 124-22-48.000W  
to 41-50-24.000N 124-22-54.000W

**18605 13th Ed. 01-DEC-10 Last LNM: 50/08 NAD 83 19/22**

*ChartTitle: Trinidad Harbor*

**Main Panel 1805 TRINIDAD HARBOR. Page/Side: N/A**

LAST EDITION No new editions of chart 18605 will be published. It will be canceled on 01-Jun-22. Comparable or larger scale Electronic Navigational Chart (ENC) coverage is available. See "Cancellation of NOAA Paper and Raster Nautical Charts" in Section I of this LNM for details. A list of all canceled NOAA charts is at <https://www.charts.noaa.gov/MCD/Dole.shtml>.

NOS  
--

**18626 16th Ed. 01-DEC-11 Last LNM: 05/21 NAD 83 19/22**

*ChartTitle: Elk to Fort Bragg;Fort Bragg and Nayo Anchorage;Elk*

**Main Panel 1811 ELK TO FORT BRAGG. Page/Side: N/A**

LAST EDITION No new editions of chart 18626 will be published. It will be canceled on 01-Jun-22. Comparable or larger scale Electronic Navigational Chart (ENC) coverage is available. See "Cancellation of NOAA Paper and Raster Nautical Charts" in Section I of this LNM for details. A list of all canceled NOAA charts is at <https://www.charts.noaa.gov/MCD/Dole.shtml>.

NOS  
--

**18628 9th Ed. 01-OCT-11 Last LNM: 09/05 NAD 83 19/22**

*ChartTitle: Albion to Caspar*

**Main Panel 1814 ALBION TO CASPAR. Page/Side: N/A**

LAST EDITION No new editions of chart 18628 will be published. It will be canceled on 01-Jun-22. Comparable or larger scale Electronic Navigational Chart (ENC) coverage is available. See "Cancellation of NOAA Paper and Raster Nautical Charts" in Section I of this LNM for details. A list of all canceled NOAA charts is at <https://www.charts.noaa.gov/MCD/Dole.shtml>.

NOS  
--

**18640 27th Ed. 01-OCT-15 Last LNM: 33/20 NAD 83 19/22**

*ChartTitle: San Francisco to Point Arena*

**Main Panel 1816 SAN FRANCISCO TO POINT ARENA. Page/Side: A**

RELOCATE NOAA Environmental Buoy 46013  
Relocate

CGD11  
from 38-15-12.000N 123-18-12.000W  
to 38-14-05.000N 123-19-01.000W

**18643 18th Ed. 01-DEC-09 Last LNM: 21/12 NAD 83 19/22**

*ChartTitle: Bodega and Tomales Bays;Bodega Harbor*

**Main Panel 1817 BODEGA AND TOMALES BAYS. Page/Side: N/A**

LAST EDITION No new editions of chart 18643 will be published. It will be canceled on 05-Oct-22. Comparable or larger scale Electronic Navigational Chart (ENC) coverage is available. See "Cancellation of NOAA Paper and Raster Nautical Charts" in Section I of this LNM for details. A list of all canceled NOAA charts is at <https://www.charts.noaa.gov/MCD/Dole.shtml>.

NOS  
--

**18645 28th Ed. 01-MAY-13 Last LNM: 09/21 NAD 83 19/22**

*ChartTitle: Gulf of the Farallones;Southeast Farallon*

**Main Panel 1819 GULF OF THE FARALLONES. Page/Side: N/A**

LAST EDITION No new editions of chart 18645 will be published. It will be canceled on 05-Oct-22. Comparable or larger scale Electronic Navigational Chart (ENC) coverage is available. See "Cancellation of NOAA Paper and Raster Nautical Charts" in Section I of this LNM for details. A list of all canceled NOAA charts is at <https://www.charts.noaa.gov/MCD/Dole.shtml>.

NOS  
--

**18647 16th Ed. 01-MAR-09 Last LNM: 03/08 NAD 83 19/22**

*ChartTitle: Drakes Bay*

**Main Panel 1821 DRAKES BAY. Page/Side: N/A**

LAST EDITION No new editions of chart 18647 will be published. It will be canceled on 01-Jun-22. Comparable or larger scale Electronic Navigational Chart (ENC) coverage is available. See "Cancellation of NOAA Paper and Raster Nautical Charts" in Section I of this LNM for details. A list of all canceled NOAA charts is at <https://www.charts.noaa.gov/MCD/Dole.shtml>.

NOS  
--

**18651 45th Ed. 01-DEC-13 Last LNM: 28/19 NAD 83 19/22**  
*ChartTitle: San Francisco Bay-southern part;Redwood Creek.;Oyster Point*

**Main Panel 1826 SAN FRANCISCO BAY SOUTHERN PART. Page/Side: N/A**

LAST EDITION No new editions of chart 18651 will be published. It will be canceled on 05-Oct-22. Comparable or larger scale Electronic Navigational Chart (ENC) coverage is available. See "Cancellation of NOAA Paper and Raster Nautical Charts" in Section I of this LNM for details. A list of all canceled NOAA charts is at <https://www.charts.noaa.gov/MCD/Dole.shtml>.

NOS  
--

**18657 19th Ed. 01-NOV-05 Last LNM: 30/19 NAD 83 19/22**  
*ChartTitle: Carquinez Strait*

**Main Panel 1850 CARQUINEZ STRAIT. Page/Side: N/A**

LAST EDITION No new editions of chart 18657 will be published. It will be canceled on 05-Oct-22. Comparable or larger scale Electronic Navigational Chart (ENC) coverage is available. See "Cancellation of NOAA Paper and Raster Nautical Charts" in Section I of this LNM for details. A list of all canceled NOAA charts is at <https://www.charts.noaa.gov/MCD/Dole.shtml>.

NOS  
--

**18680 32nd Ed. 01-MAY-13 Last LNM: 33/16 NAD 83 19/22**  
*ChartTitle: Point Sur to San Francisco*

**Main Panel 1866 POINT SUR TO SAN FRANCISCO. Page/Side: N/A**

RELOCATE NOAA Environmental Lighted Buoy 46042 Relocate

CGD11  
from 36-47-04.794N 122-23-53.894W  
to 36-47-05.000N 122-23-46.000W

**18686 14th Ed. 01-SEP-14 Last LNM: 46/07 NAD 83 19/22**  
*ChartTitle: Pfeiffer Point to Cypress Point*

**Main Panel 1872 PFEIFFER POINT TO CYPRESS POINT. Page/Side: A**

LAST EDITION No new editions of chart 18686 will be published. It will be canceled on 01-Jun-22. Comparable or larger scale Electronic Navigational Chart (ENC) coverage is available. See "Cancellation of NOAA Paper and Raster Nautical Charts" in Section I of this LNM for details. A list of all canceled NOAA charts is at <https://www.charts.noaa.gov/MCD/Dole.shtml>.

NOS  
--

**18700 23rd Ed. 01-SEP-13 Last LNM: 31/19 NAD 83 19/22**  
*ChartTitle: Point Conception to Point Sur*

**Main Panel 1876 POINT CONCEPTION TO POINT SUR. Page/Side: N/A**

RELOCATE NOAA Environmental Lighted Buoy 46054 Relocate

CGD11  
from 34-16-21.000N 120-28-12.000W  
to 34-16-26.000N 120-28-05.000W

**18704 13th Ed. 01-MAY-04 Last LNM: 08/19 NAD 83 19/22**  
*ChartTitle: San Luis Obispo Bay, Port San Luis*

**Main Panel 1879 SAN LUIS OBISPO BAY PORT SAN LUIS. Page/Side: N/A**

LAST EDITION No new editions of chart 18704 will be published. It will be canceled on 01-Jun-22. Comparable or larger scale Electronic Navigational Chart (ENC) coverage is available. See "Cancellation of NOAA Paper and Raster Nautical Charts" in Section I of this LNM for details. A list of all canceled NOAA charts is at <https://www.charts.noaa.gov/MCD/Dole.shtml>.

NOS  
--

**18720 35th Ed. 01-APR-20 Last LNM: 28/20 NAD 83 19/22**  
*ChartTitle: Point Dume to Purisima Point*

**Main Panel 1880 POINT DUME TO PURISIMA POINT - -. Page/Side: -**

RELOCATE NOAA Environmental Lighted Buoy 46025 Relocate

CGD11  
from 33-45-30.000N 119-02-40.000W  
to 33-45-19.000N 119-02-42.000W

RELOCATE NOAA Environmental Lighted Buoy 46054 Relocate

CGD11  
from 34-16-21.000N 120-28-12.000W  
to 34-16-26.000N 120-28-05.000W

|  |  |                  |                        |  |                                  |
|--|--|------------------|------------------------|--|----------------------------------|
| <b>18721</b>   | <b>12th Ed.</b>  | <b>01-DEC-09</b> | <b>Last LNM: 28/20</b> | <b>NAD 83</b>  | <b>19/22</b>                     |
| <i>ChartTitle: Santa Cruz Island to Purisima Point</i>                     |  |                  |                        |  |                                  |
| <b>Main Panel 1881 SANTA CRUZ ISLAND TO PURISIMA POINT. Page/Side: N/A</b> |  |                  |                        |  |                                  |
| RELOCATE   | NOAA Environmental Lighted Buoy 46054  |                  |                        | CGD11<br>from 34-16-21.000N<br>to 34-16-26.000N<br>NOS | 120-28-12.000W<br>120-28-05.000W |
|  | Relocate   |                  |                        |  |                                  |
| LAST EDITION   | No new editions of chart 18721 will be published. It will be canceled on 05-Oct-22. Comparable or larger scale Electronic Navigational Chart (ENC) coverage is available. See "Cancellation of NOAA Paper and Raster Nautical Charts" in Section I of this LNM for details. A list of all canceled NOAA charts is at <a href="https://www.charts.noaa.gov/MCD/Dole.shtml">https://www.charts.noaa.gov/MCD/Dole.shtml</a> . |                  |                        |  | --                               |
| <b>18727</b>   | <b>12th Ed.</b>  | <b>01-JUL-04</b> | <b>Last LNM: 42/18</b> | <b>NAD 83</b>  | <b>19/22</b>                     |
| <i>ChartTitle: San Miguel Passage;Cuyler Harbor</i>                        |  |                  |                        |  |                                  |
| <b>Main Panel 1888 SAN MIGUEL PASSAGE. Page/Side: N/A</b>                  |  |                  |                        |  |                                  |
| LAST EDITION   | No new editions of chart 18727 will be published. It will be canceled on 01-Jun-22. Comparable or larger scale Electronic Navigational Chart (ENC) coverage is available. See "Cancellation of NOAA Paper and Raster Nautical Charts" in Section I of this LNM for details. A list of all canceled NOAA charts is at <a href="https://www.charts.noaa.gov/MCD/Dole.shtml">https://www.charts.noaa.gov/MCD/Dole.shtml</a> . |                  |                        |  | --                               |
| <b>18740</b>   | <b>46th Ed.</b>  | <b>01-JUL-20</b> | <b>Last LNM: 10/21</b> | <b>NAD 83</b>  | <b>19/22</b>                     |
| <i>ChartTitle: San Diego to Santa Rosa Island</i>                          |  |                  |                        |  |                                  |
| <b>Main Panel 1893 SAN DIEGO TO SANTA ROSA ISLAND - -. Page/Side: -</b>    |  |                  |                        |  |                                  |
| RELOCATE   | NOAA Environmental Lighted Buoy 46025  |                  |                        | CGD11<br>from 33-45-30.000N<br>to 33-45-19.000N        | 119-02-40.000W<br>119-02-42.000W |
|  | Relocate   |                  |                        |  |                                  |
| <b>18748</b>   | <b>1st Ed.</b>   | <b>01-JUN-07</b> | <b>Last LNM: 51/08</b> | <b>NAD 83</b>  | <b>19/22</b>                     |
| <i>ChartTitle: El Segundo and Approaches</i>                               |  |                  |                        |  |                                  |
| <b>Main Panel 1901 EL SEGUNDO AND APPROACHES. Page/Side: N/A</b>           |  |                  |                        |  |                                  |
| LAST EDITION   | No new editions of chart 18748 will be published. It will be canceled on 01-Jun-22. Comparable or larger scale Electronic Navigational Chart (ENC) coverage is available. See "Cancellation of NOAA Paper and Raster Nautical Charts" in Section I of this LNM for details. A list of all canceled NOAA charts is at <a href="https://www.charts.noaa.gov/MCD/Dole.shtml">https://www.charts.noaa.gov/MCD/Dole.shtml</a> . |                  |                        |  | --                               |
| <b>18755</b>   | <b>10th Ed.</b>  | <b>12-FEB-00</b> | <b>Last LNM: 06/07</b> | <b>NAD 83</b>  | <b>19/22</b>                     |
| <i>ChartTitle: San Nicolas Island</i>                                      |  |                  |                        |  |                                  |
| <b>Main Panel 1908 SAN NICOLAS ISLAND. Page/Side: N/A</b>                  |  |                  |                        |  |                                  |
| LAST EDITION   | No new editions of chart 18755 will be published. It will be canceled on 01-Jun-22. Comparable or larger scale Electronic Navigational Chart (ENC) coverage is available. See "Cancellation of NOAA Paper and Raster Nautical Charts" in Section I of this LNM for details. A list of all canceled NOAA charts is at <a href="https://www.charts.noaa.gov/MCD/Dole.shtml">https://www.charts.noaa.gov/MCD/Dole.shtml</a> . |                  |                        |  | --                               |
| <b>18756</b>   | <b>8th Ed.</b>   | <b>01-DEC-03</b> | <b>Last LNM: 34/08</b> | <b>NAD 83</b>  | <b>19/22</b>                     |
| <i>ChartTitle: Santa Barbara Island</i>                                    |  |                  |                        |  |                                  |
| <b>Main Panel 1909 SANTA BARBARA ISLAND. Page/Side: N/A</b>                |  |                  |                        |  |                                  |
| LAST EDITION   | No new editions of chart 18756 will be published. It will be canceled on 01-Jun-22. Comparable or larger scale Electronic Navigational Chart (ENC) coverage is available. See "Cancellation of NOAA Paper and Raster Nautical Charts" in Section I of this LNM for details. A list of all canceled NOAA charts is at <a href="https://www.charts.noaa.gov/MCD/Dole.shtml">https://www.charts.noaa.gov/MCD/Dole.shtml</a> . |                  |                        |  | --                               |
| <b>18762</b>   | <b>16th Ed.</b>  | <b>01-DEC-09</b> | <b>Last LNM: 20/09</b> | <b>NAD 83</b>  | <b>19/22</b>                     |
| <i>ChartTitle: San Clemente Island</i>                                     |  |                  |                        |  |                                  |
| <b>Main Panel 1913 SAN CLEMENTE ISLAND. Page/Side: N/A</b>                 |  |                  |                        |  |                                  |
| LAST EDITION   | No new editions of chart 18762 will be published. It will be canceled on 01-Jun-22. Comparable or larger scale Electronic Navigational Chart (ENC) coverage is available. See "Cancellation of NOAA Paper and Raster Nautical Charts" in Section I of this LNM for details. A list of all canceled NOAA charts is at <a href="https://www.charts.noaa.gov/MCD/Dole.shtml">https://www.charts.noaa.gov/MCD/Dole.shtml</a> . |                  |                        |  | --                               |
| <b>18763</b>   | <b>11th Ed.</b>  | <b>01-MAY-12</b> | <b>Last LNM: 20/09</b> | <b>NAD 83</b>  | <b>19/22</b>                     |
| <i>ChartTitle: San Clemente Island northern part;Wilson Cove</i>           |  |                  |                        |  |                                  |

**Main Panel 1914 SAN CLEMENTE ISLAND NORTHERN PART. Page/Side: N/A**

LAST EDITION No new editions of chart 18763 will be published. It will be canceled on 01-Jun-22. Comparable or larger scale Electronic Navigational Chart (ENC) coverage is available. See "Cancellation of NOAA Paper and Raster Nautical Charts" in Section I of this LNM for details. A list of all canceled NOAA charts is at <https://www.charts.noaa.gov/MCD/Dole.shtml>. NOS -- --

**18764 10th Ed. 01-NOV-10 Last LNM: 16/07 NAD 83 19/22**  
*ChartTitle: San Clemente Island Pyramid Cove and approaches*

**Main Panel 1916 SAN CLEMENTE ISLAND PYRAMID COVE AND APPROACHES. Page/Side: N/A**

LAST EDITION No new editions of chart 18764 will be published. It will be canceled on 01-Jun-22. Comparable or larger scale Electronic Navigational Chart (ENC) coverage is available. See "Cancellation of NOAA Paper and Raster Nautical Charts" in Section I of this LNM for details. A list of all canceled NOAA charts is at <https://www.charts.noaa.gov/MCD/Dole.shtml>. NOS -- --

**18772 48th Ed. 01-DEC-05 Last LNM: 10/20 NAD 83 19/22**  
*ChartTitle: Approaches to San Diego Bay*

**Main Panel 1919 APPROACHES TO SAN DIEGO BAY. Page/Side: N/A**

DELETE No new editions of chart 18772 will be published. It will be canceled on 05-Oct-22. Comparable or larger scale Electronic Navigational Chart (ENC) coverage is available. See "Cancellation of NOAA Paper and Raster Nautical Charts" in Section I of this LNM for details. A list of all canceled NOAA charts is at <https://www.charts.noaa.gov/MCD/Dole.shtml>. NOS -- --

CHANGE Chart 18772 has been removed from Last Edition status and will remain available as a POD or digital raster chart in the official NOAA chart catalog until further notice. Comparable or larger scale Electronic Navigational Chart (ENC) coverage is available. See "Cancellation of NOAA Paper and Raster Nautical Charts" in Section I of this LNM for details. A list of all canceled NOAA charts is at <https://www.charts.noaa.gov/MCD/Dole.shtml>. NOS

---

---

**SECTION V - ADVANCE NOTICES**

This section contains advance notice of approved projects, changes to aids to navigation, or upcoming temporary changes such as dredging, etc. Mariners are advised to use caution while transiting these areas.

**SUMMARY OF ADVANCED APPROVED PROJECTS**

| <b><u>Approved Project(s)</u></b> | <b><u>Project Date</u></b> | <b><u>Ref. LNM</u></b> |
|-----------------------------------|----------------------------|------------------------|
| None                              |                            |                        |
| <b><u>Advance Notice(s)</u></b>   |                            |                        |
| None                              |                            |                        |

---

---

**SECTION VI - PROPOSED CHANGES**

Periodically, the Coast Guard evaluates its system of aids to navigation to determine whether the conditions for which the aids to navigation were established have changed. When changes occur, the feasibility of improving, relocating, replacing, or discontinuing aids are considered. This section contains notice(s) of non-approved, proposed projects open for comment. SPECIAL NOTE: Mariners are requested to respond in writing to the District office unless otherwise noted (see banner page for address).

**PROPOSED WATERWAY PROJECTS OPEN FOR PUBLIC COMMENT**

| <b><u>Proposed Project(s)</u></b>  | <b><u>Closing</u></b> | <b><u>Docket No.</u></b> | <b><u>Ref. LNM</u></b> |
|--|-----------------------|--------------------------|------------------------|
| None   |                       |                          |                        |
| <b><u>Proposed Change Notice(s)</u></b>  |                       |                          |                        |
| <b>NORTHERN CALIFORNIA-MOSS LANDING HARBOR ENTRANCE RANGE -INTENSITY DECREASE</b>  |                       |                          |                        |
| The U.S. Coast Guard has temporarily decreased the visual range of Moss Landing Harbor Entrance Range Front Light (LLNR 4005) from 10 nautical miles to 5 nautical miles and Moss Landing Harbor Entrance Range Rear Light (LLNR 4005) from 11 nautical miles to 6 nautical miles. Intensity reported to be disrupting mariners due to brightness. Request public input regarding this change as the Coast Guard proposes to make it permanent. Please direct questions, comments, or concerns to LT Miranda Brumbaugh at 510-437-2978 or <a href="mailto:Miranda.E.Brumbaugh@uscg.mil">Miranda.E.Brumbaugh@uscg.mil</a> . |                       |                          |                        |
| Chart 18685  |                       | LNM: 09/22               |                        |

---

## SECTION VII - GENERAL

This section contains information of general concern to the Mariners. Mariners are advised to use caution while transiting these areas.

---

### 2021 COAST GUARD LIGHT LIST AVAILABILITY

2021 Light Lists are available on the USCG Navigation Center's website at: <http://www.navcen.uscg.gov/?pageName=lightLists>. Coast Guard Light Lists are a means for communicating aids to navigation information to the maritime public. Local Notice to Mariners will continue to advise Light List corrections and NAVCEN will continue to publish a compilation of corrections. Complete versions of the 2021 Light Lists are updated weekly on the NAVCEN website and mariners should download applicable copies and updates as needed at: <http://www.navcen.uscg.gov/?pageName=lightListWeeklyUpdates>. A summary of weekly 2021 Light List corrections are available at: <https://www.navcen.uscg.gov/?pageName=lightListCorrections>.

LNM: 03/21

### ARIZONA/NEVADA-COLORADO RIVER-BRIDGE

NEW LAUGHLIN-BULLHEAD CITY BRIDGE-In-water work continues on construction of the new bridge in position 35-03-17N 114-36-45W. Work will take place Monday through Friday, 0630 to 1430, through 03 Oct 23. A cofferdam will be installed on the Arizona side of the river to facilitate construction of Arizona side piers and abutment. Once completed the cofferdam will be removed and installed on the Nevada side of the river which will facilitate the construction of the Nevada side piers and abutment. When in place the cofferdams will be lighted at night with four red lights, visible at 2,000 yards by approaching vessels (see [Cofferdam-Lighting\\_Laughlin-BH.pdf](#) at the end of this notice). Precast girders will be installed once construction of the respective abutments and piers are complete. Precast girders will be install over the middle of the river at the late stages of construction. Approximately 70 feet of horizontal clearance will be provided in the center of the river during construction. For further information contact the Coast Guard Bridge Office at 510-437-3515.

LNM: 50/21

### LOWER COLORADO RIVER - LAKE HAVASU, AZ – MARINE EVENT

Jet Jam Racing Inc. will be sponsoring the the Hydro Turf Jet Jam Racing Series on 3-5 June, 2022 from 6:00am to 6:00pm in Lake Havasu, AZ. The event will consist of approximately 100 personal watercraft racing on a closed course near Crazy Horse Campgrounds. Mariners are advised to exercise due caution while transiting the area. For more details or comments, contact Monte Hughes at 360-349-1341.

LNM: 15/22

### LOWER COLORADO RIVER-LAKE HAVASU, AZ-MARINE EVENT

Arizona Adaptive Water Sports will sponsor a water activities marine event involving 6 participants from 20-21 May, 2022 between 9:00am to 4:00pm near Crazy Horse Campground. Mariners are requested to transit the area with caution. For more comments or details contact Jo Crawford at 602-228-3660.

LNM: 17/22

### LOWER COLORADO RIVER-LAKE HAVASU-AZ-MARINE EVENT

The Full Throttle WaterX RD1 consisting of 100 personal watercraft participating in a closed course race will be held on Lake Havasu in the vicinity of the Havasu Landing Resort from 12:00pm until 5:00pm daily starting Thursday, May 19, 2022 through Sunday, May 22, 2022. Mariners are requested to transit the area with caution. For more details or comments contact Deegan Newton at 562-756-6268.

LNM: 17/22

### LOWER COLORADO RIVER-PARKER, AZ-MARINE EVENT

The International Water Ski Racing Association will be sponsoring the Sundance International Marathon on 04-05 June, 2022 from 8:00am to 5:00pm each day. The event will consist of approximately 30 vessels with water skiers racing on a course near Havasu Springs Resort. Mariners are requested to transit the area with caution. For more information or comments contact Dusty Schulz at 818-439-0592.

LNM: 18/22

### LOWER COLORADO RIVER-PARKER, AZ-MARINE EVENT

The Parker Regional Chamber of Commerce and Tourism will be sponsoring the Parker Tube Float from 7:00am until 6:00pm on 11 June, 2022. The event will involve approximately 4,000 participants floating down a portion of the Colorado River from Buckskin Mountain State Park to La Paz County Park. A Special Local Regulation will be enforced for the event area. Mariners are advised to use due caution when transiting near the event. For more details or comments contact Melissa Newton at 928-669-2174.

LNM: 19/22

### NEVADA-LAUGHLIN-COLORADO RIVER-FIREWORKS DISPLAY

The Avi Resort and Casino will sponsor Fireworks Event on May 29, 2022 from 8:00pm until 9:30pm. The event will consist of a fireworks shoot from the banks of the Colorado River. Vessel traffic will be restricted from Veteran Memorial Bridge to the north end of the Avi Lagoon during show. For more details or comments contact David Smith at 702-420-3928.

LNM: 17/22

### NORTHERN CALIFORNIA – POINT ORIENT-WHARF DEMOLITION

Power Engineering Construction Co. will be performing demolition operations from until 30 November, 2023 in the vicinity of Point Orient, Richmond. Work is being conducted Monday through Thursday 6:00am to 4:00pm in the vicinity of the Point Orient Wharf at 37-57-22N 122-25-43W. Operations will be conducted with derrick barges DB ALAMEDA, DB CHALLENGER, and various flat barges. The barges will be either spudded down or anchored using a four-point mooring system with buoys. All vessels and equipment on site will be monitoring VHF-FM Chan. 67 and 68. Mariners are advised to use caution when transiting the area. For more details or comments contact Bennett Clegg at (415) 559-0089.

Chart 18654

LNM: 16/22

### NORTHERN CALIFORNIA-CARQUINEZ STRAIT-BRIDGE

UPSTREAM AND DOWNSTREAM BENICIA-MARTINEZ HIGHWAY (I-680) BRIDGES-Work is in progress on the replacement-in-kind of all navigation lights, fog horns and RACON of the two bridges. Work will take place Monday through Friday during daylight hours through 15 May, 2022. A 21'



**NORTHERN CALIFORNIA-CARQUINEZ STRAIT-BRIDGE**

aluminum boat, the M/V BATES RULES will be tied off of various piers during the work. At no time will the vessel be working in main navigation span of either the upstream or downstream bridge. To ascertain the location of the M/V BATES RULES mariners can hail it on VHF-FM Channel 16 or 9, 13, or 14 or call 510-557-1507. The vessel can be moved for navigational safety if at least 15 minutes notice is given to the M/V BATES RULES. For further information contact the Coast Guard Bridge Office at 510-437-3516.

Chart 18656

LNM: 16/22

**NORTHERN CALIFORNIA-CONCORD-SUISUN BAY-MARINE CONSTRUCTION**

The Dutra Group is conducting marine construction at the Military Ocean Terminal Concord (MOTCO) during daylight hours until 31 May, 2022. The operation consists of the completion of the Barge Pier Repair and to construct the Small Craft Birthing Facility. The upstream and downstream corners of each barge will be lighted at night with steady burning red lights. A Kelso Barge along with small workboats will be conducting the operations and monitoring VHF-FM Chan. 09, 16 and 68A. Mariners are requested to transit the area with caution. For more details or comments contact Kathleen Nelson at 415-755-0936.

Charts: 18656 18658

LNM: 04/22

**NORTHERN CALIFORNIA-CORTE MADERA CREEK-BRIDGE**

U.S. 101 HIGHWAY BRIDGE-A pedestrian bridge is under construction on the east side of the highway bridge. Work will take place Monday through Friday 0700-1700, and if needed Sunday night to Thursday night 2300-0600 and Friday night through Saturday night 2300-0800 through 30 June, 2022. Temporary platforms have been erected at each bent of the bridge, reducing horizontal clearance of each span by 14 ft and vertical clearance by 9 ft beneath the platforms. The upstream and downstream lower outboard corners of the temporary platform, in the main navigation span, will be lighted at night with fixed red lights (see TempPlatform\_CorteMaderaCreek.pdf at the end of this notice for location of lights). No in-water equipment is anticipated at this time. For conditions at the bridge mariners can contact the contractor at 408-605-2892 or Caltrans at 510-867-6033. For further information contact the Coast Guard Bridge Office at 510-437-3516.

Chart 18649

LNM: 06/22

**NORTHERN CALIFORNIA-DELTA & RIVERS-AMERICAN RIVER-BRIDGE**

DOWNSTREAM CA ROUTE 160 BRIDGE-Caltrans has completed replacement of the rock slope scour protection at each in-water pier. The scour slopes ~25 feet from the pier face into the navigation channel (See CA\_RT\_160\_PierScourProtection.pdf drawing at the end of this notice for details.) Mariners should use the center of the navigation channel when transiting the bridge. For more details or comments contact the Coast Guard Bridge Office at 510-437-3516.

Chart 18662

LNM: 42/20

**NORTHERN CALIFORNIA-DELTA & RIVERS-LITTLE POTATO SLOUGH-BRIDGE**

LITTLE POTATO SLOUGH (ROUTE 12) BRIDGE – The swing span is secured in the closed-to-navigation position through 6:00am on 27 May, 2022 for mechanical and electrical repairs of the bridge. During the work the swing span will not be able to open for the passage of vessels or in the event of an emergency. Vessels that normally require an opening can take an alternate route to reach either side of the bridge. In the closed-to-navigation position the swing span of the bridge provides 35 feet of vertical clearance at Mean High Water. Vessels able to transit the bridge in the closed position can do so at any time during the project. At this time no in-water work is anticipated. For information at the worksite contact 415-716-9567, 415-716-9018, 925-250-2027 or 209-470-8835. For more information contact the Coast Guard Bridge Office at 510-437-3515.

Chart 18661

LNM: 19/22

**NORTHERN CALIFORNIA-DELTA & RIVERS-MOKELUMNE RIVER-BRIDGE**

MOKELUMNE RIVER (CA ROUTE 12) BRIDGE-In order for Caltrans to conduct inspections of the bridge's mechanical and electrical components, the swing span of the bridge will open on signal if at least 4-hours notice is given to the bridge tender from 8am to 4pm on 23, 24, 25 and 26 May, 2022. Please provide comments to the Coast Guard Bridge Office at Carl.T.Hausner@uscg.mil or by telephone at 510-437-3516 by COB on 12 May, 2022.

Chart 18661

LNM: 18/22

**NORTHERN CALIFORNIA-DELTA & RIVERS-OLD RIVER-BRIDGE**

BNSF RAILROAD DRAWBRIDGE-From 01 July through 30 September, 2022, Monday through Friday, 6:00am to 6:30pm, BNSF's contractor will be replacing the fenders at piers 2 and 3. One 60' X 80' flexi float barge and one 35' X 110' material barge will be spudded down at the piers (See BNSF\_OldRiver\_Barge\_Lighting.pdf in the enclosure section). During work hours the barges will be in the main navigation span of the bridge and can be moved for the safety of navigation with one hour advanced notice to the contractor at 209-391-5461. After working hours the unmanned barges will be moved behind the wingwall of the pier protection out of the navigation span. Mariners are requested to transit the area with caution. For conditions at the bridge mariners can contact the contractor at 209-391-5461. For further information contact the Coast Guard Bridge Office at 510-437-3515.

Chart 18661

LNM: 19/22

**NORTHERN CALIFORNIA-DELTA & RIVERS-PETALUMA RIVER-BRIDGE**

SMART BLACKPOINT RAILROAD DRAWBRIDGE-The upstream fender system protecting the swing span has been destroyed and does not offer protection for vessels or the bridge. Repairs to the fender system are anticipated to begin on 01 September, 2022. Mariners are urged to use caution while transiting the bridge. For more details or comments contact the Coast Guard Bridge Office at 510-437-3516.

Chart 18654

LNM: 13/22

**NORTHERN CALIFORNIA-DELTA & RIVERS-SACRAMENTO RIVER-BRIDGE**

RIO VISTA DRAWBRIDGE-TRAFFIC GATE INSTALLATION-Temporary platforms are installed beneath low steel of the bridge in spans 2 and 8 reducing vertical clearance in those spans by no more than 4 feet. The upriver and downriver temporary platforms and associated support cables are lit at night with steady burning red lights (see RVBridge\_PlatformCable\_Lighting.pdf enclosure at the end of this notice.) At no time will the lift span of the bridge be impacted. Mariners are urged to use alternate spans of the bridge. For conditions at the bridge, mariners can contact the contractor at 925-260-2104 or 925-260-1884. For further information contact the Coast Guard Bridge Office at 510-437-3516.

Chart 18661

LNM: 45/20

**NORTHERN CALIFORNIA-DELTA & RIVERS-SACRAMENTO RIVER-BRIDGE**

**NORTHERN CALIFORNIA-DELTA & RIVERS-SACRAMENTO RIVER-BRIDGE**

PIIONEER BRIDGE- The upriver southeast red pier light and the downriver southwest red pier light are extinguished. For further information contact the Coast Guard Bridge Office at 510-437-3514.

Charts: 18661 18662

LNM: 17/22

**NORTHERN CALIFORNIA-DELTA & RIVERS-SACRAMENTO RIVER-BRIDGE**

ELKHORN FERRY BRIDGE- The upriver east side red pier and red axis lights are extinguished. For further information contact the Coast Guard Bridge Office at 510-437-3514.

Chart 18662

LNM: 17/22

**NORTHERN CALIFORNIA-DELTA & RIVERS-SACRAMENTO RIVER-BRIDGE**

RIO VISTA BRIDGE-The lift span of the bridge will open on signal if at least 4 hours notice is given to the bridge tender through 5pm on 20 May, 2022. This temporary change will allow Caltrans to install a back-up lift span drive system. To request an opening, contact the bridge tender at 707-374-2134. For further information contact the Coast Guard Bridge Office at 510-437-3516.

Chart 18661

LNM: 11/22

**NORTHERN CALIFORNIA-DELTA & RIVERS-SACRAMENTO RIVER-BRIDGE**

RIO VISTA DRAWBRIDGE-In order to complete Phase 1 testing of the newly installed back up drive system, the lift span of the bridge need not open for the passage of vessels on the following dates and times:

- 8 pm on 25 May, 2022 to 8 am on 26 May, 2022,
- 8 pm on 26 May, 2022 to 8 am on 27 May, 2022,
- 8 pm on 27 May, 2022 to 8 am on 28 May, 2022.

In the event of an emergency during the above dates and times, the drawspan can open with 1-hour notice. For further information contact the Coast Guard Bridge Office at 510-437-3516.

Chart 18661

LNM: 19/22

**NORTHERN CALIFORNIA-DELTA & RIVERS-SAN JOAQUIN RIVER-BRIDGE**

ANTIOCH BRIDGE-Work is in progress on the replacement-in-kind of all navigation lights, fog horns and RACON of the bridge. Work will take place Monday through Friday during daylight hours through 15 May, 2022. A 21' aluminum boat, the "BATES RULES" will be tied off of various piers during the work. At no time will the vessel be working in main navigation span of the bridge. To ascertain the location of the "BATES RULES" mariners can hail it on VHF-FM Channel 16 or 9, 13, or 14 or call 510-557-1507. The vessel can be moved for navigational safety if at least 15 minutes notice is given to the "BATES RULES." For further information contact the Coast Guard Bridge Office at 510-437-3516.

Chart 18661

LNM: 16/22

**NORTHERN CALIFORNIA-DELTA & RIVERS-SAN JOAQUIN RIVER-BRIDGE**

CROWS LANDING ROAD-Replacement of the bridge is ongoing. Work is being conducted Monday through Friday 0600 to 1600 through 01 Aug 23. A temporary bridge, with a removable span, will be installed to facilitate construction. With the span removed, the temporary bridge will provide, at a minimum, 15 feet of horizontal clearance. The span will be removed after normal working hours. Temporary falsework will be installed to facilitate construction. The temporary falsework's navigation span will provide 17 feet of vertical clearance at Ordinary High Water when the temporary bridge's removable span is removed. Upriver and downriver red channel margin lights and green center channel lights will mark the temporary navigation span at night. To view the temporary navigation span and lighting, see the Temporary\_Bridge\_Falsework\_Lighting.pdf enclosure at the end of this notice. Mariners are requested to use extreme caution when transiting the work site. For conditions at the project site mariners can contact the contractor at 916-869-8210 or 559-593-5182. For further information contact the Coast Guard Bridge Office at 510-437-3461.

LNM: 46/21

**NORTHERN CALIFORNIA-MONTEREY BAY-DIVING OPERATIONS**

Power Engineering Construction Co. will be conducting diving operations until 31 October, 2022. Work is being conducted Monday through Friday 6:00am to 5:00pm in the vicinity of the Monterey Bay Aquarium at 36-37-14N 121-53-58W. The M/V WEBSTER will be on site monitoring VHF-FM Chan. 68. Mariners are advised to use caution when transiting the area. For more details or comments contact Allen Deaver, diving superintendent 510-932-7752.

Chart 18685

LNM: 16/22

**NORTHERN CALIFORNIA-MONTEREY-MONTEREY HARBOR LIGHT 6**

The U.S. Coast Guard is seeking data on the importance of the Sound Signal located at Monterey Harbor Light 6, Light List number 3970, in position 36-36-30.542N 121-53-22.947W. Comments concerning this Aid to Navigation can be sent to Sector San Francisco Waterways Safety Office at SFWaterways@uscg.mil.

Chart 18685

LNM: 02/22

**NORTHERN CALIFORNIA-MOSS LANDING-WAVEGLIDER DATA COLLECTION**

Monterey Bay Aquarium Research Institute (MBARI) is conducting 24 hours per day 7 days a week autonomous, unmanned maritime vehicle operations of two Liquid Robotics, Inc. Wavegliders until 31 December, 2022. Vehicles will be deployed in the vicinity of Moss Landing that will operate continuously between latitudes 35-07-14N and 37-12-00N and will extend shoreward as far West as 122-58-35W. Operations consist of scientific ocean data collection. The Waveglider carries no fuel, lubricants or hydrocarbons. It is wave powered and remotely attended from MBARI, moving at speeds of 1kt, and designed to give way or part if encountered by a vessel. It is approximately 8' x 2' (surfboard size), yellow in color, with a contact plaque and mast extending 3' above the water surface, supporting a flag. Mariners are requested to transit the area with caution. For more details or comments contact MBARI at 831-775-1700, waveglider@listserver.mbari.org or Liquid Robotics 24/7 WGOE Operations at 888-574-4574.

Charts: 18680 18685

LNM: 51/21

**NORTHERN CALIFORNIA-NEW YORK SLOUGH-MARINE CONSTRUCTION**

CS Marine Constructors, Inc. will be conducting pile driving & marine construction operations at the former Gaylord Paper Facility 38-00-58N 121-46-

**NORTHERN CALIFORNIA-NEW YORK SLOUGH-MARINE CONSTRUCTION**

31W located at New York Slough in Antioch, CA during daylight hours until 31 Dec 22. Operations will be conducted with derrick barges DB CARQUINEZ, DB MARE ISLAND and DB STEADFAST along with various flat barges. The barges will be either spudded down or anchored using a four-point mooring system marked with 5ft crown buoys. The buoys will be lighted at night with flashing white strobes. All vessels and equipment will be monitoring VHF-FM CHAN 8, 13 and 14. Mariners are request to transit the area with caution. For more details or comments contact Jeff Thompson at (510)719-1246.

Chart 18661

LNM: 42/21

**NORTHERN CALIFORNIA-OAKLAND INNER HARBOR-BRIDGE**

FRUITVALE AVE RAILROAD BRIDGE-The lift span of the railroad bridge is kept in the partially opened position providing 80 feet of vertical clearance at mean high water. When the lift span of the railroad bridge is in the partially open position and the bascule span of the adjacent highway bridge is in the closed position, the lift span will show two red 180-degree center span lights on the upstream and downstream lower edge of the span. When the bascule span of the highway bridge is in the fully opened position, the lift span of the railroad bridge will show two 360-degree green lights, providing a range for the centerline of the channel between both highway and railroad bridges. For further information contact the Coast Guard Bridge Office at 510-437-3516.

Chart 18649

LNM: 47/21

**NORTHERN CALIFORNIA-OFFSHORE HALF MOON BAY-OCEANOGRAPHIC OPERATIONS**

Sofar Ocean Technologies will be conducting oceanographic operations until 05 July, 2022, offshore Half Moon Bay at 37-30-00N 122-31-57W. Operations will consist of the testing of oceanographic buoy systems by a 19 foot C-Dory and they will be monitoring VHF-FM Chan. 16. Mariners are requested to transit the area with caution. For more details or comments contact Cameron Dunning at 415-912-6858.

LNM: 51/21

**NORTHERN CALIFORNIA-OFFSHORE MONTEREY BAY-UNDERWATER OPERATIONS**

Reef Check Foundation have deployed underwater equipment offshore Monterey Bay, CA within the following coordinates:

36-36-17N 121-52-46W

36-36-18N 121-52-49W

36-36-15N 121-52-50W

36-36-14N 121-52-46W

All equipment will be established until 24 Mar 24. Mariners are requested to transit the area with caution and avoid anchoring within the coordinates listed above. For more details or comments contact Dan Abbot at 510-684-7835.

Chart 18685

LNM: 12/21

**NORTHERN CALIFORNIA-OFFSHORE SAN FRANCISCO-OCEANOGRAPHIC OPERATIONS**

Sofar Ocean Technologies will be conducting oceanographic operations until 15 May, 2022. A 19 foot C-Dory will be conducting operations between 37-43-58N 122-33-12W and 37-43-29N 122-32-52W. Operations will consist of the testing of oceanographic buoy systems. The C-Dory will be monitoring VHF-FM Chan. 16. Mariners are requested to transit the area with caution. For more details or comments contact Cameron Dunning at 415-912-6858.

Charts: 18640 18645

LNM: 51/21

**NORTHERN CALIFORNIA-OFFSHORE-COMMERCIAL SALMON FISHERIES**

Effective March 14, 2022. The Recreational Salmon Fishery from latitude 40°10' N to Point Arena, Ca, is delayed through May 1, 2022. This area is scheduled To Re-Open for recreational fishing On May 1, 2022 at 12:01am.

LNM: 11/22

**NORTHERN CALIFORNIA-OFFSHORE-COMMERCIAL SALMON FISHERIES**

NMFS has taken in season actions in the commercial salmon fishery south of Cape Falcon.

EFFECTIVE MAY 1, 2022, the May-June quota increased from 15,375 Chinook Salmon to 18,000 Chinook Salmon, no more than 6,040 of which may be caught in the area between the U.S./Canada border and the Queets River, and no more than 4,840 of which may be caught in the area between Leadbetter Point and Cape Falcon.

EFFECTIVE MAY 1, 2022, the Chinook Salmon landing and possession limit for the commercial ocean salmon troll fishery in the areas from the U.S./Canada border to Queets River and from Leadbetter Point to Cape Falcon have been modified from 75 Chinook Salmon per vessel per week (Thursday through Wednesday) to 80 Chinook Salmon per vessel per landing week (Thursday through Wednesday)

Charts: 18600 18620 18640

LNM: 17/22

**NORTHERN CALIFORNIA-SACRAMENTO RIVER-REDUCED VERTICAL CLEARANCE**

Overhead power cables upstream of Sacramento River at 38-03-54N 121-47-09W have a reported reduced vertical clearance to 119.5'.

LNM: 22/16

**NORTHERN CALIFORNIA-SAN FRANCISCO - VOLUNTARY VESSEL SPEED REDUCTION**

NOAA, U.S. Coast Guard and the Environmental Protection Agency request that all vessels 300 gross registered tons (GRT) or larger reduce speeds to 10 knots or less when transiting the San Francisco Traffic Separation Scheme (SF TSS) and within Greater Farallones and Cordell Bank National Marine Sanctuaries from May 1 to December 15, 2022 to protect endangered blue, humpback and fin whales; see enclosure NOAA VSR 2022.pdf.

These areas contain populations of endangered blue, humpback, and fin whales that are federally protected under the Federal Endangered Species Act (16 USC 1538 et seq.), the Marine Mammal Protection Act (16 USC 1361 et seq.), and the National Marine Sanctuaries Act (16 USC 1431 et seq).

Please report any collisions with whales or any observed injured or dead whales to the U.S. Coast Guard on VHF Channel 16. NOAA is asking for the public's help in tracking whales. Please report sightings through Whale Alert, a free application available at <http://westcoast.whalealert.org/>.

Charts: 18600 18620 18640 18680

LNM: 18/22

**NORTHERN CALIFORNIA-SAN FRANCISCO BAY-BRIDGE**

**NORTHERN CALIFORNIA-SAN FRANCISCO BAY-BRIDGE**

SAN MATEO/HAYWARD BRIDGE-Structural repairs to the superstructure of the bridge are complete. Work is continuing on the causeway portion of the bridge, east of pier 38, 0700 to 1530, Monday through Friday, through 15 May 22. Various size barges will be used during the project, the largest being a 100' X 20' flexifloat barge. During the work day, barges will either be spudded down or tied to the bridge piers, no anchors or anchor line will be utilized. After regular working hours the unmanned barge will be left on-site. For the safety of navigation, the barges can be moved with one-hour advance notice. For conditions at the bridge mariners can contact Golden State Bridge, Inc., on VHF-FM Marine Radio Channels 13, 14, and 16 or by cell phone at 707-246-0725, 925-260-2104, or 925-382-7288. For more details or comments contact the Coast Guard Bridge Office at 510-437-3515.

Chart 18651

LNM: 27/21

**NORTHERN CALIFORNIA-SAN FRANCISCO BAY-BRIDGE**

WESTERN SPAN SAN FRANCISCO-OAKLAND BAY BRIDGE-Fender repairs are being conducted through 15 July, 2022, Monday through Friday, during daylight hours at piers B, C, D, and E. The 150' X 54' Crane Barge Kelso will be anchored at various locations during the work (See SFOBBTemporaryBargeLocations.pdf in the enclosure section). The barges will be left on-scene, unmanned, after normal working hours. During the work day the barge can be moved for the safety of navigation with two hours advanced notice. After working hours the barge can be moved for the safety of navigation with six hours advanced notice. Barges, anchors and anchor lines will not impede the D-E shipping channel during work. Mariners are requested to transit the area with caution. For on-site conditions, mariners can contact the contractor at 415-720-3807 or Caltrans at 510-867-4545. For further information contact the Coast Guard Bridge Office at 510-437-3515.

Chart 18649

LNM: 15/22

**NORTHERN CALIFORNIA-SAN FRANCISCO BAY-BRIDGE**

GOLDEN GATE BRIDGE-Four 54' temporary under deck platforms; two 175' and 2,075' north of the south tower, and two 225' and 1675' south of the north tower have been installed at the bridge. Temporary platforms reduce vertical clearance at the bridge by no more than 14'. The bridge's maintenance travelers are in use during the project and will remain outboard of the furthest north and furthest south temporary platforms. The temporary platforms and maintenance travelers are lighted at night with all-round red lights (see PlatformLighting\_GG\_Bridge\_26Apr22.pdf at the end of this notice). For navigational safety the maintenance travelers can be moved by contacting the Golden Gate Bridge at 415-923-2220. Work is being conducted Monday through Saturday, 0700-1700 and 2100-0500. For conditions at the bridge, mariners can contact the contractor at 415-716-0384. For more details or comments contact the Coast Guard Bridge Office at 510-437-3516.

Chart 18649

LNM: 17/22

**NORTHERN CALIFORNIA-SAN FRANCISCO BAY-BRIDGE**

RICHMOND/SAN RAFAEL BRIDGE-Caltrans will be conducting dive operations, 8am -3:30pm, Monday through Friday, 02-13 May, 2022 on piers 1-18 and 30-37. The 33' aluminum landing craft dive vessel, "Official Business" will have heavy equipment on their decks. Diver's umbilical hose may be floating at or near the surface, adjacent to the vessels. All approaching vessels should contact the vessel, "Official Business" on VHF-FM CH 16/14/09 or by cell 805-748-6011, approximately 30 minutes before transiting the bridge dive site to ascertain the location of the divers. Extreme caution should be used when passing through the bridge. For further information, mariners can contact the Coast Guard Bridge Office at 510 437-3516.

Chart 18649

LNM: 14/22

**NORTHERN CALIFORNIA-SAN FRANCISCO BAY-BRIDGE**

RICHMOND-SAN RAFAEL BRIDGE-Gusset repairs on the bridge are in progress. Eight temporary underdeck platforms will be installed beneath the bridge, between piers 34-35 and 47-48 and shall reduce vertical clearance by no more than 10 feet beneath the area of the platforms. During the work the east navigation span will provide 430 feet of horizontal clearance, 215 feet either side of centerline, and the west navigation span will provide 460 feet of horizontal clearance, 230 feet either side of centerline, for navigation. The upstream and downstream lower edges of each temporary platform will be lighted at night with steady burning red lights (see Rich-SR\_Bridge\_Temp\_Platform\_Lighting\_1.pdf at the end of this notice for location of platform location and lights). Work is being conducted Monday through Friday, 0700 to 1700 through 15 Feb 23. For conditions at the bridge, mariners can contact Caltrans at 510-715-8212. For further information concerning this project please contact the Coast Guard Bridge Office at 510-437-3515.

Chart 18653

LNM: 47/21

**NORTHERN CALIFORNIA-SAN FRANCISCO BAY-BRIDGE**

RICHMOND-SAN RAFAEL BRIDGE-Concrete/steel repairs and cleaning of the bridge are in progress. Work is being conducted Monday through Friday, 0500 to 1700, through 01 May 23. Temporary underdeck platforms have been installed from the western shore to pier 33 and between piers 43-46 reducing vertical clearance in each span by three feet. The upstream and downstream lower edge of each temporary platform is lighted at night with steady burning red lights (see R-SR\_Bridge\_Temp\_Platform\_Lighting.pdf at the end of this notice.) Two 160' X 50' barges and one 110' X 32' barge are being used to assist in the installation of the platforms and for the blasting and painting. One barge has been secured to pier 8 and will be left on-scene, overnight, unmanned. The outboard corners of the barge at pier 8 is lighted at night with steady red lights. Barge "37" and barge "32" can be contacted on VHF-FM Ch. 16, 13 and 14. At no time will the work impede the east or west navigation spans or their auxiliary spans. For conditions at the bridge, mariners can contact the contractor at 860-904-8787 or 443-847-6286. For further information concerning this project contact the Coast Guard Bridge Office at 510-437-3515.

Chart 18653

LNM: 16/21

**NORTHERN CALIFORNIA-SAN FRANCISCO BAY-BRIDGE**

WEST SPAN-SAN FRANCISCO/OAKLAND BAY BRIDGE-Caltrans will be deploying the maintenance travelers of the bridge in span D-E from 8am to 2pm, 16 May to 16 May, 2022 and from 31 May to 02 June, 2022, if needed. Once inspections are completed in the D-E span, Caltrans will continue inspections in the E-F span. When in use, the travelers reduce vertical clearance in the span by 5 feet. The traveler will remain in the navigation span, overnight, unmanned. The lower four corners of the traveler will be lighted at night with red lights. During the work day, for the safety of navigation, the traveler can be moved with a 2-hour advance notice by calling Caltrans at 916-926-3920, 510-520-8845 or 510-390-4125. For further information contact the Coast Guard Bridge Office at 510-219-4366.

Chart 18649

LNM: 19/22

**NORTHERN CALIFORNIA-SAN FRANCISCO BAY-DETERIORATING CONCRETE PILINGS**

Deteriorating concrete pilings above and below the waterline are present in the vicinity of the the south edge of Southampton Shoal Light (LLNR 5480). Mariners are requested to transit the area with caution. For more details or comments contact LT Miranda Brumbaugh at 510-437-2978 or

**NORTHERN CALIFORNIA-SAN FRANCISCO BAY-DETERIORATING CONCRETE PILINGS**

Miranda.E.Brumbaugh@uscg.mil.

Chart 18649

LNM: 23/15

**NORTHERN CALIFORNIA-SAN FRANCISCO BAY-ISLAIS CREEK-BRIDGE**

ILLINOIS STREET BRIDGE-The upstream and downstream south side red pier lights and bascule span lights are extinguished. Estimated time of repair, unknown. For further information contact the Coast Guard Bridge Office at 510-437-3514.

Chart 18649

LNM: 19/22

**NORTHERN CALIFORNIA-SAN FRANCISCO BAY-OAKLAND INNER HARBOR-SHOALING**

Shoaling has been reported on the south side of Oakland Inner Harbor South Channel in the east passage through the Fruitvale Ave. Bridge. Mariners are requested to transit the area with caution and report any observed changes in shoaling conditions to the San Francisco VTS on VHF-FM Chan. 14. For more details or comments contact U.S. Coast Guard Sector San Francisco Waterways Management at 415-399-7443.

Chart 18650

LNM: 16/15

**NORTHERN CALIFORNIA-SAN JOAQUIN RIVER-MARINE CONSTRUCTION**

California Department of Water Resources will be conducting construction of agricultural barriers until 30 Nov 22 at the following locations:

- Old River near Tracy barrier 37-53-08N 121-28-56W
- Middle River near Tracy Barrier 37-48-36N 121-32-35W
- Grant Line Canal Barrier 37-49-10N 121-26-54W

A small aluminum boat will be on site for day to day operations. For more details or comments contact Bill McLaughlin 916-873-5748.

Chart 18661

LNM: 19/22

**NORTHERN CALIFORNIA-SAN JOAQUIN RIVER-MARINE CONSTRUCTION**

Shimmick Construction Company, Inc. (SCCI) is conducting marine construction for the Smith Canal Gate Project in the San Joaquin Deep Water Shipping Channel from 0600 to 1800 Monday through Saturday until 30 Dec 22. Operations will be conducted between the following coordinates:

- 37-57-31N 121-21-11W
- 37-57-25N 121-21-08W
- Staging Yard
- 37-57-09N 121-19-55W

Mariners are requested to transit the area with caution. For more details or comments contact Tyler Shell at 510-393-0308.

Charts: 18661 18663

LNM: 28/20

**NORTHERN CALIFORNIA-SAN LEANDRO BAY-BRIDGE**

BAY FARM ISLAND HIGHWAY BRIDGE-The south side lower slat on the fender system is missing. Mariners are urged to transit the bridge with caution. The bridge owner is in the process of designing a replacement pier protection system. For more details or comments contact the Coast Guard Bridge Office at 510-437-3514.

Chart 18649

LNM: 37/18

**NORTHERN CALIFORNIA-SANTA CRUZ HARBOR-SHOALING**

There are hazardous and shoaled conditions in the Santa Cruz Harbor Channel Entrance. Mariners transiting the Santa Cruz Harbor should use caution for hazardous conditions of breaking surf and shoaling in the Santa Cruz Harbor entrance that may occur during all surf and tidal conditions. Mariners are highly advised not to transit the Santa Cruz Harbor Channel unless sea and tide conditions are suitable for your vessel's draft. Mariners may view soundings on the Santa Cruz Harbor at <https://www.santacruzharbor.org/entrance-soundings>. For more details or comments contact the Santa Cruz Harbor at 831-475-6161 or VHF-FM Chan. 9 and 16.

Chart 18685

LNM: 03/21

**NORTHERN CALIFORNIA-SUISUN BAY-MONTEZUMA SLOUGH-MARINE CONSTRUCTION**

The California Department of Water Resources advises that will be installing flashboards at the Suisun Marsh salinity control structure, located 2.2 nautical miles from the easterly end of Montezuma Slough at 38-05-36N 121-53-07W. Mariners are advised to use the boat lock. The boat lock signal is a standard traffic light and the operator will monitor VHF-FM Chan. 13. Mariners are requested to transit the area with caution. For more details or comments contact Ian Uecker at 916-574-2991.

Chart 18656

LNM: 34/21

**NORTHERN CALIFORNIA-TRINIDAD-OCEANOGRAPHIC RESEARCH**

Cal Poly Humboldt will be conducting oceanographic research until 13 May, 2022 at 41-03-50N 124-16-00W. R/V CORAL SEA will be monitoring VHF-FM Chan. 16. Mariners are requested to transit the area with caution. For more details or comments contact Tamara Barriquand at 707-599-9395.

Charts: 18007 18600 18605 18620

LNM: 18/22

**PACIFIC OCEAN-SPACECRAFT REENTRY DEBRIS-HAZARD TO NAVIGATION**

Spacecraft reentry operations with the potential for hazardous debris splashdown will occur at 3:49pm on 25 May, 2022, and a backup time of 11:09pm on 26 May, 2022. Hazardous debris areas are bounded by the following coordinates:

Primary:

- POINT 1: 13-42-00N 127-05-00W
- POINT 2: 11-24-00N 123-56-00W
- POINT 3: 05-38-00S 136-30-00W
- POINT 4: 03-22-00S 139-37-00W

Backup:

- POINT 1: 50-34-00N 171-13-00W
- POINT 2: 52-10-00N 171-29-00W
- POINT 3: 52-53-00N 167-02-00W
- POINT 4: 49-43-00N 136-19-00W
- POINT 5: 47-45-00N 137-26-00W

**PACIFIC OCEAN-SPACECRAFT REENTRY DEBRIS-HAZARD TO NAVIGATION**

Mariners are advised to remain clear of these areas for the duration of operations. For more details or questions contact the District 14 Command Center at (808) 535-3333 or JRCCHonolulu@uscg.mil.

LNM: 19/22

**SAN DIEGO-OCEANOGRAPHIC SURVEY-OCEAN MONITORING**

The City of San Diego Marine Biology Lab is conducting year-round ocean monitoring sampling in the vicinity of the South Bay Ocean Outfall and Point Loma Ocean Outfall. The Ocean Monitoring Program conducts trawl sampling, benthic sampling with a double Van Veen sediment grab, vertical CTD casts and horizontal tows with an undulating underwater vehicle, ROV surveys and multiple moorings are deployed in the region below. Ocean sampling will be conducted in an area bound by the following coordinates:

- 32-31-54N 117-11-11W
- 32-32-10N 117-11-57W
- 32-32-03N 117-12-06W
- 32-32-33N 117-11-56W
- 32-40-10N 117-19-22W
- 32-40-04N 117-19-34W
- 32-39-37N 117-19-32W
- 32-39-56N 117-19-39W
- 32-40-10N 117-16-55W

The M/V OCEANUS and M/V MONITOR III when in the area will monitor VHF-FM Chan. 16. Mariners are requested to transit the area with caution. For more details or comments contact Adriano Feit at 619-758-2377 or 858-882-7055.

Charts: 18765 18772

LNM: 43/21

**SOUTHERN CALIFORNIA - SAN DIEGO - SURFACE OPERATIONS**

The US Navy will be conducting operations 23 March through 30 June, 2022, between 12:00am – 11:59pm, 5 NM west of Mission Bay and 5 NM north of San Clemente Island. Research operations will be conducted deploying Unmanned Surface Vessels (USVs) from a 42-ft research vessel. Operations consist of scientific ocean data collection. The USV moves at approximately 1 knot and is designed to give way if encountered by a vessel. The USV is a Liquid Robotics wave glider. It is a surfboard size craft 10-ft long, 3-ft wide with only a few inches of freeboard. It has a 3-ft mast with orange flag and fixed all around white light. During these operations the research vessel and USV will be restricted in their ability to maneuver. The research vessel will monitor VHF-FM Chan. 16. Mariners are requested to transit the area with caution and maintain a safe distance of 1000-yds from the vessel and USVs. For more details or comments contact Robert Rocha at 510-366-2000 or Anna Nguyen at 408-469-5041.

Chart 18740

LNM: 09/22

**SOUTHERN CALIFORNIA-ALAMITOS BAY-BRIDGE**

APPIAN WAY-The west side green center channel light is extinguished. For more information contact the Coast Guard Bridge Office at 510-437-3514.

Chart 18749

LNM: 15/22

**SOUTHERN CALIFORNIA-CERRITOS CHANNEL-BRIDGE**

HENRY FORD RAILROAD BRIDGE-The lift span of the bridge will be secured in the closed-to-navigation position from 6am to 6pm on 31 May, 02 June, 06 June, and 08 June, 2022. For further information contact the Coast Guard Bridge Office at 510-437-3516.

Chart 18749

LNM: 18/22

**SOUTHERN CALIFORNIA-DANA POINT TO POINT ARGUELLO-VOLUNTARY VESSEL SPEED REDUCTION**

NOAA, U.S. Coast Guard and the Environmental Protection Agency request that all vessels 300 gross registered tons (GRT) or larger reduce speeds to 10 knots or less when transiting in the Vessel Speed Reduction from Dana Point to Pt. Arguello from May 1 to December 15, 2022 to protect endangered whales; see enclosure NOAA VSR 2022.pdf. These areas contain populations of endangered blue, humpback, and fin whales that are federally protected under the Federal Endangered Species Act (16 USC 1538 et seq.), the Marine Mammal Protection Act (to protect endangered whales 16 USC 1361 et seq.), and the National Marine Sanctuaries Act (16 USC 1431 et seq.). Vessels already transiting south of the northern Channel Islands are also encouraged to transit outside of the voluntary Extended Area To Be Avoided to reduce the overlap of ships and endangered whales.

Please report any collisions with whales or any observed injured or dead whales to the U.S. Coast Guard on VHF Channel 16. NOAA is asking for the public's help in tracking whales. Please report sightings through Whale Alert, a free application available at <http://westcoast.whalealert.org/>.

Charts: 18720 18740

LNM: 18/22

**SOUTHERN CALIFORNIA-GULF OF SANTA CATALINA-POINT LOMA-OCEANOGRAPHIC OPERATIONS**

The Scripps Institution of Oceanography research vessel ROBERT GORDON SPROUL (Call Sign WSQ-2674) will conduct 24-hour surface to floor oceanographic operations from 17-19 May, 2022 at the following coordinates:

- 17 May, 2022: 32-56-00N 117-19-00W
- 17 May, 2022: 32-42-00N 117-27-00W
- 18-19 May, 2022: 32-40-00N 117-19-50W

During over-the-side operations, R/V ROBERT GORDON SPROUL will be restricted in ability to maneuver. R/V ROBERT GORDON SPROUL will be monitoring VHF-FM chan. 13 and 16. Mariners are requested to transit the area with caution. For more comments or details contact Wes Hill at 858-534-5568.

Charts: 18765 18772

LNM: 19/22

**SOUTHERN CALIFORNIA-HUNTINGTON BEACH-MARINE CONSTRUCTION**

Anchor QEA will conduct seawall repairs within Westchester bay homeowners association and Seagate lagoons association limits in Huntington Beach, California at 33-43-34N 118-03-40W until 1 June, 2022. The seawall repair will include use of a work boat, boston whaler, barges and rock scows. Mariners are advised to use caution when transiting the area. For more details or comments contact Marine Vie at 949-334-9637.

Chart 18749

LNM: 14/22

### **SOUTHERN CALIFORNIA-IMPERIAL BEACH-UNMANNED SURFACE VEHICLE OPERATIONS**

The U.S. Navy will be conducting unmanned surface vehicle operations from 16 – 30 May, 2022 spanning from Imperial Beach, California to northwest Mission Bay, San Diego, California. Operations will be bounded by the following coordinates:

33-15-12N 117-34-01W  
32-55-11N 117-30-56W  
32-16-21N 117-14-48W  
32-52-60N 117-13-09W

The M/V MALLORY and M/V HOLLY will be on scene and monitoring VHF-FM Chan. 16. Mariners are requested to transit the area with caution. For more details or comments contact Randy Williams at 850-814-1404 or Gordon Reese at 850-819-7660.

Charts: 18740 18765 18773

LNM: 19/22

### **SOUTHERN CALIFORNIA-LOS ANGELES HARBOR-DREDGE OPERATIONS**

Manson Construction Co. is conducting dredge operations of the Port of Los Angeles berths 404 and 405 at 33-43-43N 118-15-28W until 20 May, 2022. Operations will be conducted 24hrs a day, Monday through Friday. DB VALHALLA, will be assisted by TB JEFFREY M, Survey boat WAHOO and 03 dump scows. All vessels will be monitoring VHF-FM Chan. 13 and 16. Dredged materials will be disposed of within disposal site LA-2 at 33-37-06N 118-17-24W. Mariners are requested to transit the area with caution. For more details or comments contact Sergio Covarrubias at 562-983-2397.

Chart 18751

LNM: 17/22

### **SOUTHERN CALIFORNIA-LOS ANGELES/LONG BEACH HARBOR-BRIDGE**

VINCENT THOMAS BRIDGE-Painting of the underdeck of the bridge continues. The 180' temporary platform, which reduces vertical clearance by 4', is currently 4' west of the centerline of the bridge. The upstream and downstream corners and every 50' along the upstream and downstream side of the platform is lighted at night with steady burning red lights (see V\_Thomas\_Platform\_Lighting1.pdf at the end of this notice). Work will take place during daylight hours, Monday through Friday. For conditions at the bridge mariners can contact 213-479-4138, 213-479-1144 or 310-261-9552. For more details or comments contact the Coast Guard Bridge Office at 510-437-3516.

Chart 18749

LNM: 46/21

### **SOUTHERN CALIFORNIA-LOS ANGELES/LONG BEACH HARBOR-BRIDGE**

GERALD DESMOND BRIDGE DEMOLITION: Preparation work has begun in anticipation of the lowering of the main span of the bridge. Work is being conducted Monday through Friday, 7am to 5pm. Heavy beams are being installed near the outboard edges of the span over the channel. Mariners should contact the Waterway Traffic Control Spotter at 951-505-6192 or 310-363-9392 before transiting the span to ascertain the location of the work above. For information about on-site conditions, contact the contractor Kiewit at 360-300-4365 or 602-376-5765. For further information contact the Coast Guard Bridge Office at 510-437-3516.

Chart 18749

LNM: 14/22

### **SOUTHERN CALIFORNIA-MARINE EVENT-SAN DIEGO-SAN DIEGO BAY**

The Cortez Racing Association (CRA) will sponsor the CRA Beer Can Series Regatta every Wednesday from 4:00pm to 8:00pm, starting on 18 May, 2022 and re-occurring until 27 July, 2022. The regatta will consist of 125 sailboats participating in a regatta in North San Diego Bay, CA. The regatta will race a course in San Diego Bay, starting and finishing at Harbor Island. Mariners are advised to use due caution when transiting this area. For more details or comments, contact Dale Greaney at 760-470-1730.

LNM: 15/22

### **SOUTHERN CALIFORNIA-MARNIA DEL RAY-SEDIMENT SAMPLING**

Kinnetic Environmental, Inc. will conduct sediment core sampling in the vicinity of the Federal Channel within the entrance channel to Marina Del Rey Harbor from 16-20 May, 2022, between 7:00am until 7:00pm. Operations will be bounded within the following locations:

33-57-52N 118-27-50W  
33-57-55N 118-27-18W  
33-57-32N 118-27-25W  
33-57-31N 118-27-40W

R/V DW HOOD and a skiff will be utilized during operations and will monitor VHF-FM Chan. 16. Mariners are requested to transit the area with caution. For more details or comments contact Ken Kronschnabl at 831-457-3950.

Chart 18744

LNM: 18/22

### **SOUTHERN CALIFORNIA-MORRO BAY-DREDGE OPERATIONS**

The Army Corps of Engineers will be conducting dredging operations in the entrance channel at Morro Bay Harbor until 7 June, 2022, 24 hrs a day, 7 days a week. DB YAQUINA (call sign AEPD) will be monitoring VHF-FM Chan. 13 and 16. The following buoys will be removed until the dredging project is complete.

Morro Bay Channel Lighted Buoy 4 (LLNR 3855)  
Morro Bay Channel Lighted Buoy 4A (LLNR 3856)  
Morro Bay Channel Lighted Buoy 5 (LLNR 3860)  
Morro Bay Channel Lighted Buoy 6 (LLNR 3865)  
Morro Bay Channel Lighted Buoy 7 (LLNR 3870)  
Morro Bay Channel Lighted Buoy 8 (LLNR 3875)

Mariners are requested to transit the area with caution. For more details or comments contact the Corps of Engineers Los Angeles District at 213-452-4026.

Chart 18703

LNM: 17/22

### **SOUTHERN CALIFORNIA-NAVAL BASE SAN DIEGO-DREDGE OPERATIONS**

R.E. Staite Engineering INC will be conducting dredging operations at Naval Base San Diego, Pier 1-3, the approach to Pier 7-8, approach to 10-13, Pier 10 and the mouth of Chollas Creek at 32-41-13N 117-08-01W until 30 May, 2022. Dredged materials will be disposed at LA-5 Ocean Dredge Material Disposal Site (ODMDS) at 32-36-49N 117-20-40W or at the Mole Pier. DB POINT LOMA, DB PALOMAR, DB WILLIAM F, tug CUYAMACA, 04 scows along with push boats JEANIE R, JOHN DRAKE and the survey boat RES will be conducting operations. All vessels will be monitoring VHF-FM Chan. 16. As identified in the Explosive Safety Submission (ESS) for Site 100 of the Munitions Response Program, the dredging subareas have the potential to contain munitions and explosives of concern (MEC), including discarded military munitions (DMM) and material potentially presenting an explosive hazard (MPPEH). Based on the primary munition with the greatest fragmentation distance (MGFD) - a 5-inch Mk 41 projectile - the above-

**SOUTHERN CALIFORNIA-NAVAL BASE SAN DIEGO-DREDGE OPERATIONS**

water exclusion zone is 359', and the underwater exclusion zones are 479' and 2,199', for <=1' below the surface and >1' below the surface, respectively. Please refer to the ESS for further information. Mariners are requested to transit the area with caution. For more details or comments contact Erick Myers at 619-233-0178 or Kelly Harbach at 619-556-1800.

Charts: 18765 18773

LNM: 02/22

**SOUTHERN CALIFORNIA-NEWPORT BAY-BRIDGE**

BALBOA ISLAND AND 38TH ST BRIDGES-Bridge spall repair and crack sealing is being conducted on the bridges, 7am to 3:30pm, Monday through Friday, through 12 May, 2022. A 20' and 24' pontoon boat will be in and around the piers of the bridge conducting the work. Mariners are requested to transit the area with caution during working hours. For further information contact the Coast Guard Bridge Office at 510-437-3516.

LNM: 16/22

**SOUTHERN CALIFORNIA-OCEANSIDE HARBOR-DREDGE OPERATIONS**

Manson Construction Co. is conducting dredging operations at Oceanside harbor, Main channel and Entrance channel 33-12-21N 117-24-04W, 24hrs a day, until 27 May, 2022. DB MORRIS, DB FREYA, Tender PUP, Tender CUB, and Survey Boat RUSTLER will be conducting operations and monitoring VHF-FM Chan. 16 and 67. Materials will be transported through floating, submerged and shore pipeline to the disposal area North Coast Village, Surf rider way, and Oceanside pier. Mariners are requested to transit the area with caution. For more details or comments contact Max Oviedo at 206-619-7729.

Chart 18758

LNM: 12/22

**SOUTHERN CALIFORNIA-OFFSHORE SAN DIEGO-HAZARDOUS OPERATIONS**

The U.S. Navy will be conducting hazardous operations until 01 January, 2023, in the areas bound by the following coordinates:

First:

- 32-55-00N 118-25-00W
- 32-55-00N 118-15-00W
- 32-40-00N 118-15-00W
- 32-40-00N 118-35-00W
- 32-45-00N 118-35-00W

Second:

- 32-33-00N 118-25-00W
- 32-35-00N 118-16-00W
- 32-35-00N 117-40-00W
- 31-55-00N 117-40-00W
- 31-55-00N 118-25-00W
- 32-33-00N 118-25-00W

Third:

- 32-52-42N 119-11-58W
- 33-08-04N 118-52-05W
- 33-08-04N 118-46-02W
- 33-03-52N 118-41-48W
- 33-02-32N 118-43-33W
- 32-58-53N 118-43-31W
- 32-47-40N 118-32-21W
- 32-36-55N 118-45-00W
- 32-36-55N 118-56-57W

Mariners are requested to transit the area with caution. For more details or comments contact FACSFAC schedules at 619-545-1744.

Charts: 18740 18765 18774

LNM: 04/22

**SOUTHERN CALIFORNIA-OFFSHORE SAN DIEGO-HAZARDOUS OPERATIONS**

The U.S. Navy will be conducting hazardous operations from 1:00pm on 16 May, 2022, until 2:00am on 21 May, 2022. Operations will be bounded by the following coordinates:

- 32-34-00N 117-16-00W
- 32-34-00N 117-10-00W
- 32-33-00N 117-16-00W
- 32-33-00N 117-15-00W
- 32-31-00N 117-14-00W
- 32-32-00N 117-10-00W

A Range Support Craft (RSC-1) will be on scene and monitoring VHF-FM Chan. 16. Mariners are requested to stay clear of the area during the operation. For more details or comments contact the RSC-1 at 619-330-6072.

Charts: 18740 18765

LNM: 18/22

**SOUTHERN CALIFORNIA-POINT CONCEPTION-NOAA BUOY DEPLOYMENT**

NOAA's Pacific Marine Environmental Laboratory deployed a buoy 11 nautical miles due west of Point Conception, CA. at 34-27-31N 120-41-10W. The buoy named Harvest 22 has a yellow top with gray sides and a flashing amber light every 4 seconds. Mariners are advised to use due caution when transiting this area. For more details or comments contact Cabot Zucker at 425-477-9554.

Chart 18721

LNM: 13/22

**SOUTHERN CALIFORNIA-PORT OF SAN DIEGO-MARINE CONSTRUCTION**

The Port of San Diego will be conducting marine construction until 01 June, 2022. Construction will consist of the replacement of pump out stations at the following locations:

- Shelter Island Harbor Police Dock: 32-42-32N 117-14-06W
- Shelter Island Transient Dock: 32-43-37N 117-10-33W
- Pepper Park Dock: 32-38-58N 117-06-36W
- Chula Vista Bayfront Dock: 32-37-17N 117-06-10W

Mariners are requested to transit the area with caution. For more details or comments contact Tim Barrett at 319-686-6544.



**SOUTHERN CALIFORNIA-PORT OF SAN DIEGO-MARINE CONSTRUCTION**

Chart 18773

LNM: 17/22

**SOUTHERN CALIFORNIA-PORT SAN LUIS-MARINE CONSTRUCTION**

Connolly-Pacific will conduct marine construction to the Port San Luis breakwater from 6:30am to 6:30pm until 31 December, 2022. DB LONG BEACH will use anchors to position itself along the breakwater. These anchor positions will be marked by round white anchor cans. Tug PATCONA and Tug LARCONA will be assisting DB LONG BEACH. All vessels will be monitoring VHF-FM Chan. 13, 16, and 79a. Mariners are requested to transit the area with caution. For more details or comments contact Tobey Walker at 562-577-0730 or John Riley at 562-577-3602.

Chart 18704

LNM: 04/22

**SOUTHERN CALIFORNIA-RESERVATION POINT-LOS ANGELES-MARINE CONSTRUCTION**

Power Engineering Construction Co. will be performing demolition and pile driving operations from 6 June, 2022 through 22 December, 2022, at 33-43-22N 118-16-06W. Work is being conducted Monday through Friday 7:00am to 4:00pm. Operations will be conducted with derrick barge DB ALAMEDA and a flat material barge. The barge will be spudded down and anchored using a four-point mooring system with buoys. All vessels and equipment on site will be monitoring VHF-FM Chan. 16 and 67. Mariners are requested to transit the area with caution. For more details comments contact Matt Dill at 510-610-4633.

Chart 18751

LNM: 19/22

**SOUTHERN CALIFORNIA-SAN CLEMENTE ISLAND-SAFETY ZONES**

Mariners operating in the vicinity of San Clemente Island are reminded of the restricted waterway access surrounding San Clemente Island (33 CFR 165.1131; 33CFR 165.1141). Since the inception of the regulations, numerous safety zone violations have been processed by Coast Guard Sector San Diego. Safety Zone Incursions put the public at risk and cause costly and unnecessary training delays, as well as range cancellations. Violators of the San Clemente Island Safety and Security Zones are subject to monetary penalties. Criminal penalties may also be issued for repeated Safety and/or Security Zone violations. Failure to comply with the federal regulations could result in civil penalties of up to \$90,901.00. Furthermore, if a mariner holds a Merchant Mariner Credential, suspension or revocation action may be pursued against the mariner's credential. For more details see MSSB 02-16 SCI Safety Zone.pdf in the enclosure section.

Chart 18762

LNM: 41/16

**SOUTHERN CALIFORNIA-SAN DEIGO BAY-MARINE EVENT**

The Cortez Racing Association (CRA) will be sponsoring the CRA/CYC Crown Cup sailboat regatta on 4 June, 2022 from 10:00am to 5:00pm. The regatta will consist of approximately 50 sailboats racing on a course in South San Diego Bay, starting near buoy 30. Mariners are requested to transit the area with caution. For more details or comments, contact Dale Greaney at 760-470-1730.

Chart 18773

LNM: 15/22

**SOUTHERN CALIFORNIA-SAN DIEGO BAY-BRIDGE**

CORONADO BAY BRIDGE MAINTENANCE-Scaffolding installed between piers 11-12, 12-13, and 13-14, reduces vertical clearance by more than 8'. The upstream and downstream lower edges of the scaffolding are lighted at night with red lights. For more details or comments contact the Coast Guard Bridge Office at 510-437-3461.

Charts: 18772 18773

LNM: 13/20

**SOUTHERN CALIFORNIA-SAN DIEGO BAY-BRIDGE**

CORONADO BRIDGE- Caltrans will be conducting dive operations at various piers from 9am-3pm, Monday -Friday, from June 6 through 30, 2022. The Caltrans Work Boat will be at different locations at the bridge each day. Diver's umbilical hose may be floating on the surface adjacent to the vessel with heavy equipment on deck. All mariners are requested to contact the vessel "CALTRANS WORK BOAT" approximately 30 minutes before transiting the bridge via VHF-FM Chan. 16/14/9 or by cellular with the responsible supervisor at 916-206-7604 (June 6-10)(June 20-24) or 916-343-6731 (June 13-17) or 916-947-8055 (June 27-30). All passing vessels are requested to use extreme caution. For further info, mariners can contact the Coast Guard Bridge Office at 510-437-3461.

Chart 18773

LNM: 19/22

**SOUTHERN CALIFORNIA-SAN DIEGO BAY-FIREWORKS**

Fireworks America will sponsor the San Diego Symphony Night Shows 2022 fireworks displays from 9:00pm to 10:00pm on 24-25 June, 3, 8-10 July, 6, 13, 19, 26-27 August, and 10-11 September, 2022. There will be a tug and barge combination located off of South Embarcadero Marina Park at 32-42-11N 117-10-04W. Mariners are advised to avoid the area and use due caution when transiting in the vicinity of the barge. For more details or comments contact Julie Andrews at 619-938-8277.

Chart 18773

LNM: 18/22

**SOUTHERN CALIFORNIA-SAN DIEGO BAY-MARINE CONSTRUCTION**

R.E. Staite Engineering Inc. will conduct marine construction until 20 Jun 22 in San Diego Bay at position 32-41-24N 117-14-04W. Dredge DB PALOMAR, RES 80, RES spud barge, Tug KILEEN, along with assist boats JOHN DRAKE and JEANNIE R will be on scene monitoring VHF-FM Chan. 16. Mariners are requested to transit the area with caution. For more details or comments contact Robbin Pepper at 619-524-8532 or Casey Wilson at 619-233-0178.

Charts: 18772 18773

LNM: 08/21

**SOUTHERN CALIFORNIA-SAN DIEGO BAY-MARINE CONSTRUCTION**

R.E. Staite Engineering Inc. will conduct marine construction until 31 Jul 22 in San Diego Bay at 32-41-13N 117-08-22W. Dredge DB POINT LOMA, DB PALOMAR, DB WILLIAM F, scows HAROLD M, CLARENCE D, ROB P, MIKE J, along with push boat JENNIE R, JOHN DRAKE, Tug KILLEEN, and Tug CUYAMACA will be conducting operations. All vessels will monitor VHF-FM Chan. 16. Mariners are requested to transit the area with caution. For more details or comments contact Brian Goerres at 619-481-1429 or Erick Myers at 619-233-0178.

Chart 18773

LNM: 33/21

**SOUTHERN CALIFORNIA-SAN DIEGO BAY-MARINE EVENT**

Southwestern Yacht Club will sponsor the Yesteryear Regatta on May 7, 2022 from 9:00am to 5:00pm. The regatta will consist of 30 sailboats

**SOUTHERN CALIFORNIA-SAN DIEGO BAY-MARINE EVENT**

starting near Shelter Island, proceeding to San Diego Bay Entrance Buoy 8, continuing through the Coronado Flats, and finishing back at Shelter Island. Mariners are requested to transit the area with caution. For more details or comments contact Angie Bartosik at 858-254-2389.

Chart 18773

LNM: 17/22

**SOUTHERN CALIFORNIA-SAN DIEGO BAY-MARINE EVENT**

The Silver Gate Yacht Club will sponsor the Silver Gate Yacht Club Wheelchair Regatta from 7:00am until 4:00pm on 5 June, 2022. The regatta will consist of 45 motorboats and will start near Shelter Island, proceeding to Ballast Point, then cross the channel to North Island, head to Coronado Bridge and finish back at Shelter Island. Mariners are requested to transit the area with caution. For more details or comments contact Donald Aitken at 760-809-9373.

Chart 18773

LNM: 19/22

**SOUTHERN CALIFORNIA-SAN DIEGO BAY-MARINE EVENT**

KOZ Events is sponsoring a triathlon marine event from 7:00am to 10:00am on 26 June, 2022, that includes a swim consisting of 1000 participants. The swim portion of the triathlon will be held in the Harbor Island Marina basin adjacent to Spanish Landing Park. Mariners are requested to transit the area with caution. For more details or comments contact Tobias Panek at 858-255-9709.

Chart 18773

LNM: 19/22

**SOUTHERN CALIFORNIA-SAN DIEGO BAY-MARINE EVENT**

The San Diego Yacht Club (SDYC) will sponsor the Kettenburg Regatta from 11:00am to 4:00pm on 25 and 26 June, 2022. The regatta will consist of 20-40 sailboats participating in a regatta in San Diego Bay and Coronado Flats. Mariners are requested to transit the area with caution. For more details or comments contact Jeff Johnson at 619-933-9922.

Chart 18773

LNM: 19/22

**SOUTHERN CALIFORNIA-SAN DIEGO BAY-ZUNIGA POINT-SUNKEN VESSEL**

The Coast Guard has received a report of a 40-foot sunken vessel IVO Zuniga Point at approximately 32-40-41N 117-11-35W. Mariners are advised to transit the area with caution. For more details or comments contact Coast Guard Sector San Diego at 619-278-7031.

Chart 18773

LNM: 17/22

**SOUTHERN CALIFORNIA-SAN DIEGO RIVER-BRIDGE**

WEST MISSION BAY DRIVE BRIDGE-The City of San Diego is replacing the existing bridge. A temporary work trestle, providing a vertical clearance of 8' over Mean Sea Level is in place. Scheduled completion date of the bridge replacement project is November 2022. Mariners are urged to use caution while navigating the replacement bridge work site. For more details or comments contact the Coast Guard Bridge Office at 510-437-3461.

Chart 18765

LNM: 34/19

**SOUTHERN CALIFORNIA-SAN DIEGO-MISSION BAY-MARINE EVENT**

The Kai Elua Outrigger Iron Champs Race will occur on 25 June, 2022 in Mission Bay. This outrigger canoe-racing event will begin at 8:00am until 3:00pm. with three separate races. The races will start at Mariner's Point, transit through the jetty, turn at Crystal Pier and return to Mariner's Point. Mariners are requested to transit the area with caution. For more details or comments contact Ms. Noelle Murphy at 619-518-1544.

Charts: 18765 18773

LNM: 19/22

**SOUTHERN CALIFORNIA-SAN LUIS OBISPO BAY-DREDGE OPERATIONS**

The Port San Luis Harbor District will be conducting dredge operations in the San Luis Harbor trailer boat basin and mobile hoist pier at 35-10-25N 120-45-15W. The operations will be conducted until 31 August, 2022, weekdays during daylight hours. All dredged materials will be disposed of at West Bluff Beach and Fisherman's Beach. Mariners are requested to transit the area with caution. For more details or comments contact Natalie Teeter at 805-595-5431.

Chart 18704

LNM: 04/22

**SOUTHERN CALIFORNIA-SANTA BARBARA CHANNEL-OCEANOGRAPHIC OPERATIONS**

The Scripps Institution of Oceanography research vessel ROBERT GORDON SPROUL (Call Sign WSQ-2674) will conduct 24-hour surface to floor oceanographic operations from 12-14 May, 2022, including the recovery and deployment surface drifters in the vicinity of 34-19-00N 120-00-00W and 33-19-00N 119-53-00W. During over-the-side operations, R/V ROBERT GORDON SPROUL will be restricted in ability to maneuver. R/V ROBERT GORDON SPROUL will be monitoring VHF-FM chan. 13 and 16. Mariners are requested to transit the area with caution. For more comments or details contact Wes Hill at 858-534-5568.

Chart 18720

LNM: 18/22

**SOUTHERN CALIFORNIA-VANDENBERG AFB-HAZARDOUS OPERATIONS**

Hazardous operations will be conducted from Vandenberg AFB, CA starting at 2:29pm on 12 May, 2022 until 4:12pm on 16 May, 2022. Hazardous operation areas are bounded by the following coordinates:

Hazard Area 1:

34-40-00N 120-41-00W

34-40-00N 120-21-00W

34-27-00N 120-15-00W

31-50-00N 118-12-00W

31-50-00N 118-18-00W

34-24-00N 120-32-00W

Hazard Area 2:

30-34-00N 117-20-00W

30-34-00N 116-59-00W

30-08-00N 116-36-00W

29-23-00N 116-14-00W

29-17-00N 116-24-00W

29-58-00N 117-07-00W

**SOUTHERN CALIFORNIA-VANDENBERG AFB-HAZARDOUS OPERATIONS**

Mariners are advised to remain clear of these areas for the duration of operations. For more details or comments contact Vandenberg AFB at 805-606-8825.

Charts: 18700 18720 18740

LNM: 19/22

**SECTION VIII - LIGHT LIST CORRECTIONS**

An Asterisk \*, indicates the column in which a correction has been made to new information

| (1)<br>No. | (2)<br>Name and Location | (3)<br>Position | (4)<br>Characteristic | (5)<br>Height | (6)<br>Range | (7)<br>Structure | (8)<br>Remarks |
|------------|--------------------------|-----------------|-----------------------|---------------|--------------|------------------|----------------|
|------------|--------------------------|-----------------|-----------------------|---------------|--------------|------------------|----------------|

**None**

**PUBLICATION CORRECTIONS**

**ANNOUNCEMENT – U.S. Coast Pilot® 7 and U.S. Coast Pilot® 10 - NEW EDITIONS – Spring 2020**

U.S Coast Pilot 7 will be divided into two editions in the spring 2020 due to its large size. The following are the projected new editions that will be issued on the same date and ready for free download and weekly updates on June 9, 2020, at [nauticalcharts.noaa.gov/publications/coast-pilot/index.html](http://nauticalcharts.noaa.gov/publications/coast-pilot/index.html).

PUBLICATION–National Oceanic Atmospheric Administration (NOAA) – U.S. Coast Pilot 7, Pacific Coast: California 52nd Edition, 2020

PUBLICATION–National Oceanic Atmospheric Administration (NOAA) – U.S. Coast Pilot 10, Pacific Coast: Oregon, Washington, Hawaii and Pacific Islands 1st Edition, 2020

Only Print-on-Demand bound copies are available for purchase; visit [nauticalcharts.noaa.gov/publications/print-agents.html#coast-pilot](http://nauticalcharts.noaa.gov/publications/print-agents.html#coast-pilot)

For any questions or comments; visit [nauticalcharts.noaa.gov/customer-service/assist/](http://nauticalcharts.noaa.gov/customer-service/assist/)

NOAA Office of Coast Survey’s Nautical Publications Branch  
April 2020

LNM: 18/20

**ENCLOSURES**

**REPORT OF DELAY AT DRAWBRIDGE**

[Delay\\_Report\\_11-2017.pdf](#)

Use link above to Report a Delay at a Drawbridge.

LNM: 06/07

**NORTHERN CALIFORNIA-DELTA & RIVERS-OLD RIVER-BRIDGE**

[BNSF\\_OldRiver\\_Barge\\_Lighting.pdf](#)

See link above.

LNM: 13/22

**NORTHERN CALIFORNIA-DELTA & RIVERS-SACRAMENTO RIVER-BRIDGE**

[RVBridge\\_PlatformCable\\_Lighting.pdf](#)

RIO VISTA DRAWBRIDGE-See enclosure above for temporary platform location and lighting.

LNM: 22/20

**NORTHERN CALIFORNIA-SAN FRANCISCO BAY-BRIDGE**

[PlatformLighting\\_GG\\_Bridge\\_26Apr22.pdf](#)

GOLDEN GATE BRIDGE-Temporary Platform Location and Lighting revised 26 Apr, 2022.

LNM: 17/22

**NORTHERN CALIFORNIA-DELTA & RIVERS-AMERICAN RIVER-BRIDGE**

[CA\\_RT\\_160\\_PierScourProtection.pdf](#)

DOWNSTREAM CA ROUTE 160 BRIDGE-See link above for pier rock slope scour protection details.

LNM: 42/20

**NORTHERN CALIFORNIA-SAN FRANCISCO BAY-BRIDGE**

[R-SR\\_Bridge\\_Temp\\_Platform\\_Lighting.pdf](#)

RICHMOND-SAN RAFAEL BRIDGE- See link above for temporary underdeck platform lighting for concrete and steel repairs.

LNLM: 48/21

**NORTHERN CALIFORNIA-SAN FRANCISCO BAY-BRIDGE**

[Rich-SR\\_Bridge\\_TemporaryPlatform\\_1.pdf](#)

RICHMOND/SAN RAFAEL BRIDGE-See link above for temporary platform lighting and location in east and west navigation spans.

LNLM: 22/21

**NORTHERN CALIFORNIA-CORTE MADERA CREEK-BRIDGE**

[TempPlatform\\_CorteMaderaCreek.pdf](#)

U.S. 101 HIGHWAY BRIDGE-See link above for temporary platform location and lighting.

LNLM: 18/21

**NORTHERN CALIFORNIA-DELTA & RIVERS-SAN JOAQUIN RIVER-BRIDGE**

[Temporary\\_Bridge\\_Falsework\\_Lighting.pdf](#)

CROWS LANDING REPLACEMENT-See link above for temporary falsework, temporary bridge, the temporary navigation channel during construction with navigation lighting plan.

LNLM: 35/21

**SOUTHERN CALIFORNIA-PORT OF LOS ANGELES-MARINE CONSTRUCTION**

[LNTM\\_Homeport 2022 - Rev 1.pdf](#)

See link above.

LNLM: 06/22

**NORTHERN CALIFORNIA-SAN FRANCISCO BAY-BRIDGE**

[SFOBBTemporaryBargeLocations.pdf](#)

WESTERN SPAN SAN FRANCISCO-OAKLAND BAY BRIDGE-See link above regarding fender repairs.

LNLM: 13/22

**NEVADA-ARIZONA-COLORADO RIVER-BRIDGE**

[Cofferdam-Lighting\\_Laughlin-BH.pdf](#)

NEW LAUGHLIN-BULLHEAD CITY BRIDGE-See link above for temporary cofferdam lighting and configuration.

LNLM: 50/21

**NORTHERN CALIFORNIA-SAN FRANCISCO - VOLUNTARY VESSEL SPEED REDUCTION**

[NOAA VSR 2022.pdf](#)

see link above.

LNLM: 18/22

**SOUTHERN CALIFORNIA-DANA POINT TO POINT ARGUELLO-VOLUNTARY VESSEL SPEED REDUCTION**

[NOAA VSR 2022.pdf](#)

see link above.

LNLM: 18/22

**SOUTHERN CALIFORNIA-PORTS OF LOS ANGELES/LONG BEACH-LA/LB HARBOR-BRIDGE**

[V\\_Thomas\\_Platform\\_Lighting1.pdf](#)

See link above for platform lighting for Vincent Thomas Bridge.

LNLM: 28/19

---

THE LOCAL NOTICE TO MARINERS IS AVAILABLE ON THE WORLD WIDE WEB AT [HTTPS://WWW.NAVCEN.USCG.GOV](https://www.navcen.uscg.gov)

W. J. George, CDR  
U.S. Coast Guard  
Chief Waterways Management Branch



**U.S. COAST GUARD  
REPORT OF DELAY AT DRAWBRIDGE  
PER 33 CFR 117.5**

BRIDGE NAME: \_\_\_\_\_ DATE: \_\_\_\_\_

MILE : \_\_\_\_\_ WATERWAY: \_\_\_\_\_

1. Name/ Type of Vessel: \_\_\_\_\_ Direction of Travel : \_\_\_\_\_

2. Vessel Owner (Name): \_\_\_\_\_

(Address): \_\_\_\_\_

3. Name of Pilot (if applicable): \_\_\_\_\_

(Address): \_\_\_\_\_

4. Time vessel signaled for bridge opening: \_\_\_\_\_

5. Location of vessel when signal was given: \_\_\_\_\_

6. Time and location of vessel when delay began: \_\_\_\_\_

7. Method of signal for bridge opening: ( ) Radio ( ) Sound ( ) Visual.

(If sound or visual signal was used, specify: \_\_\_\_\_)

8. Time bridge operator acknowledged signal: \_\_\_\_\_

9. Method of bridge operator acknowledgement: ( ) Radio ( ) Sound ( ) Visual

(If sound or visual signal was used, specify: \_\_\_\_\_)

10. Did bridge operator acknowledgement indicate the bridge,

( ) Could be opened immediately?

( ) Could not be opened immediately?

11. If land traffic crossed the bridge:

Time land traffic started across the bridge \_\_\_\_\_

Time land traffic stopped crossing the bridge \_\_\_\_\_

Did land traffic stop on the bridge? \_\_\_\_\_

Duration land traffic stopped on the bridge \_\_\_\_\_

12. Time drawbridge opened for navigation \_\_\_\_\_

13. Additional comments:

\_\_\_\_\_  
\_\_\_\_\_  
\_\_\_\_\_

I certify the above information is true to the best of my knowledge and understand this statement may be used by the U.S. Coast Guard in levying fines against the bridge owner.

Signature \_\_\_\_\_

Telephone \_\_\_\_\_

Mariners may complete and return to:

Commander (dpw)

Fax: (510) 437-5836

Email: [Carl.T.Hausner@uscg.mil](mailto:Carl.T.Hausner@uscg.mil)

Eleventh Coast Guard District

Coast Guard Island, Building 50-2

Alameda, CA 94501-5100

Attn: Bridge Office

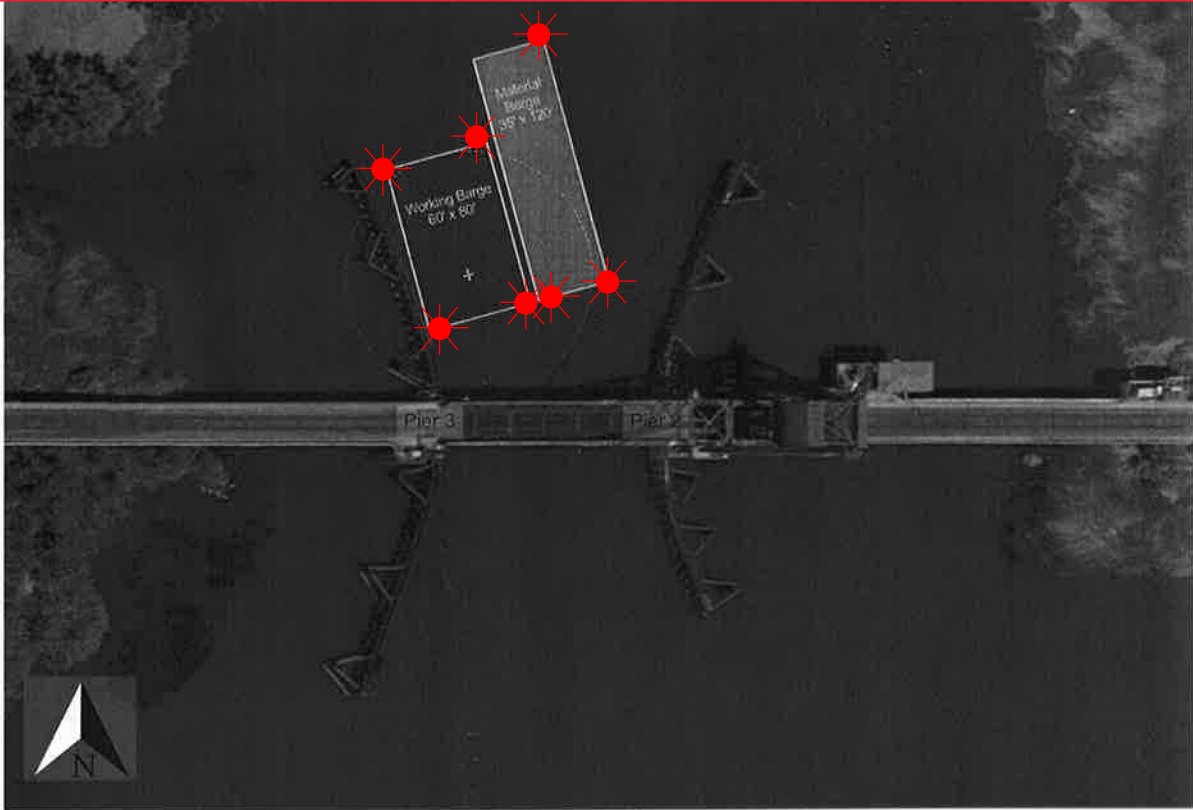
Questions? Please contact: Carl Hausner, Bridge Administrator, Eleventh Coast Guard District

Office: (510) 437-3516

Cell: (510) 219-4366

Mariners are reminded not to require bridge openings for appurtenances nonessential to navigation, per 33 CFR 117.11

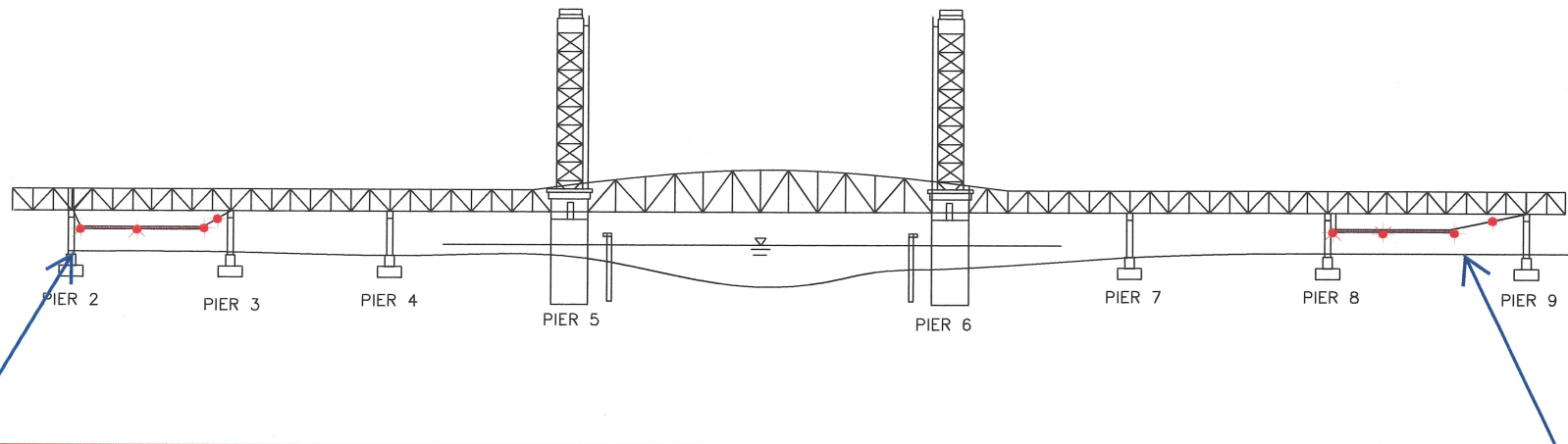
Barge Lighting Diagram  
BNSF Rail Bridge, Mile 10.4, Old River



During working hours the barges will be in the main span of the bridge. The barges can be moved for navigational safety upon request with one hour advance notice. After normal working hours the barges will be moored behind the wing-walls of the pier protection system and each corner of each barge will be lighted at night with steady burning red lights.

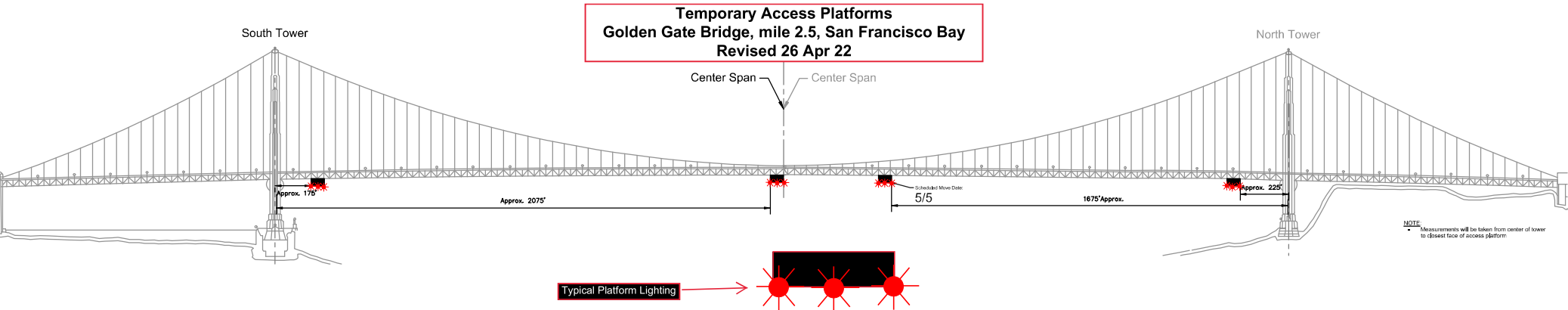
# Temporary Underdeck Platform Lighting

## Rio Vista Bridge Mile 12.8, Sacramento River



Two temporary platforms, and associated support cables, are installed beneath low steel of the bridge in span 2 and 8 and reduces vertical clearance in those spans by no more than 4 feet. The lower 4 corners and midpoint of each platform will be lighted at night with steady burning red lights, visible at 2,000 yards from approaching vessels. The support cable will be lighted with red lights every 50 feet. Mariners are requested to use alternate or main span of the bridge while these temporary platforms are in place.





Four 54 ft wide temporary platforms are installed in the main span below low steel of the bridge, in relation to centerline of the span; two south of the north tower and two north of the south tower, reducing vertical clearance by no more than 14 feet. The upstream and downstream lower edges of the temporary platforms will be lighted at night with steady burning red lights visible at 2,000 yards by approaching vessels.

# Pier Scour Replacement Downstream CA Route 160 Bridge, mile 2.0, American River

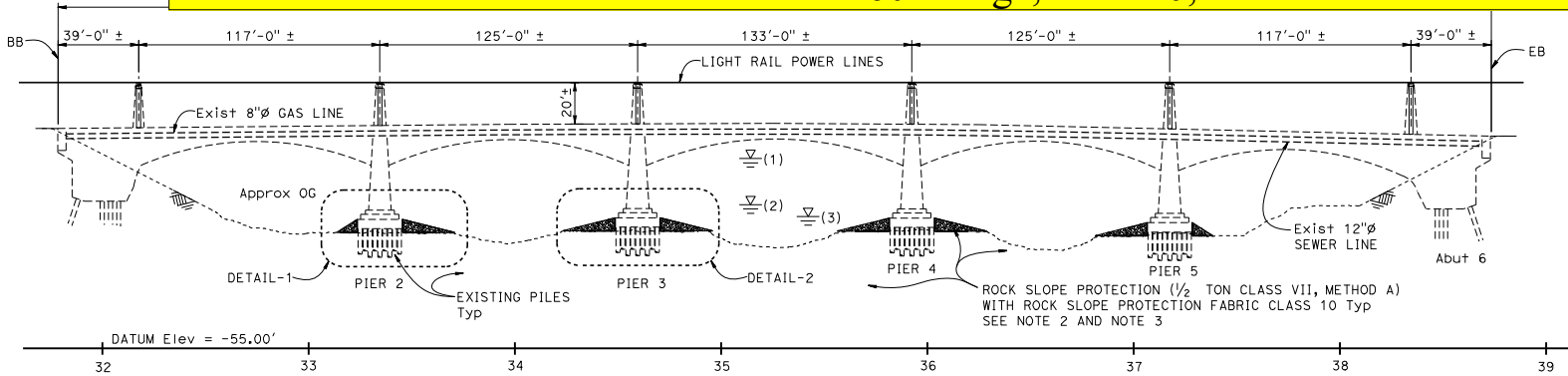
|                |       |        |
|----------------|-------|--------|
| POST MILES     | SHEET | TOTAL  |
| TOTAL PROJECT  | NO.   | SHEETS |
| 4.5/5.7, R44.5 | 174   | 175    |

REGISTERED CIVIL ENGINEER DATE 6-15-19

DAVID A. ROMERO  
No. 61240  
Exp. 06-30-19  
CIVIL  
STATE OF CALIFORNIA

PLANS APPROVAL DATE 6-17-19

THE STATE OF CALIFORNIA OR ITS OFFICERS OR AGENTS SHALL NOT BE RESPONSIBLE FOR THE ACCURACY OR COMPLETENESS OF SCANNED COPIES OF THIS PLAN SHEET.



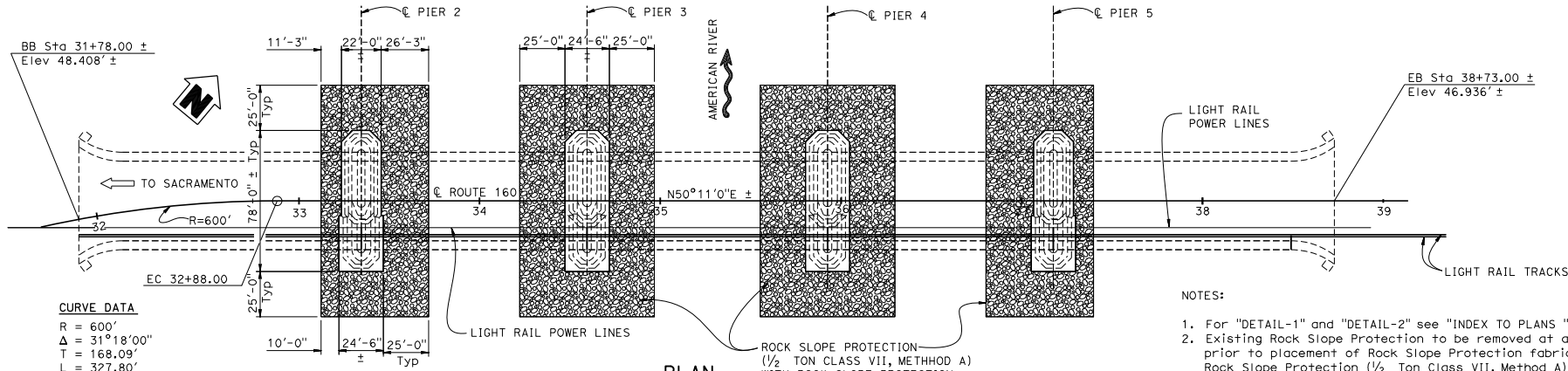
**ELEVATION**  
1" = 30'

- LEGEND:**
- ▽(1) High water mark during A 100 year Storm 37.0' ±
  - ▽(2) High water mark during Construction window July 15th through October 15th = 14.66' ±
  - ▽(3) Low water mark during Construction window July 15th through October 15th = 8.86' ±

- Existing Structure
- ▨ Half Ton Rock Slope Protection (1/2 Ton Class VII, Method A)

**QUANTITIES**

|   |       |      |
|---|-------|------|
| REMOVE ROCK SLOPE PROTECTION                              | LUMP  | SUM  |
| ROCK SLOPE PROTECTION (1/2 TON, CLASS VII, METHOD A) (CY) | 4,000 | CY   |
| ROCK SLOPE PROTECTION FABRIC (CLASS 10)                   | 2,468 | SQYD |



**PLAN**  
1" = 30'

**CURVE DATA**  
R = 600'  
Δ = 31°18'00"  
T = 168.09'  
L = 327.80'

- NOTES:**
- For "DETAIL-1" and "DETAIL-2" see "INDEX TO PLANS" sheet
  - Existing Rock Slope Protection to be removed at all existing Piers prior to placement of Rock Slope Protection fabric Class 10 with, Rock Slope Protection (1/2 Ton Class VII, Method A)
  - For Existing Rock Slope Protecting removal, see "EXISTING ROCK SLOPE PROTECTION REMOVAL" detail on "INDEX TO PLANS" sheet

**Mariners should use the center of each navigation channel of the bridge to avoid the rock slope scour protection.**

|      |        |         |                          |           |              |
|------|--------|---------|--------------------------|-----------|--------------|
| Dist | COUNTY | ROUTE   | POST MILES TOTAL PROJECT | SHEET NO. | TOTAL SHEETS |
| 03   | Sac    | 99, 160 | 4.5/5.7, R44.5           | 175       | 175          |

|                           |         |
|---------------------------|---------|
| <i>David Romero</i>       | 6-15-19 |
| REGISTERED CIVIL ENGINEER | DATE    |
| 6-17-19                   |         |
| PLANS APPROVAL DATE       |         |

|                     |
|---------------------|
| DAVID A. ROMERO     |
| No. 61240           |
| Exp. 06-30-19       |
| CIVIL ENGINEER      |
| STATE OF CALIFORNIA |

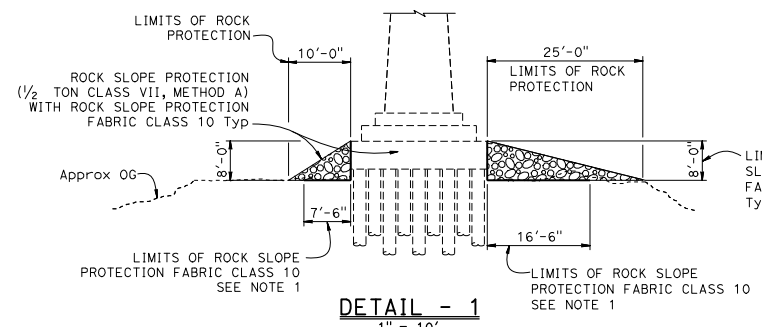
THE STATE OF CALIFORNIA OR ITS OFFICERS OR AGENTS SHALL NOT BE RESPONSIBLE FOR THE ACCURACY OR COMPLETENESS OF SCANNED COPIES OF THIS PLAN SHEET.

**INDEX TO PLANS**

| SHEET NO. | TITLES         |
|-----------|----------------|
| 1         | GENERAL PLAN   |
| 2         | INDEX TO PLANS |

**CRITERIA**

Design Based upon Final Hydraulics Report, Dated Nov 29, 2018



**DETAIL - 1**  
1" = 10'

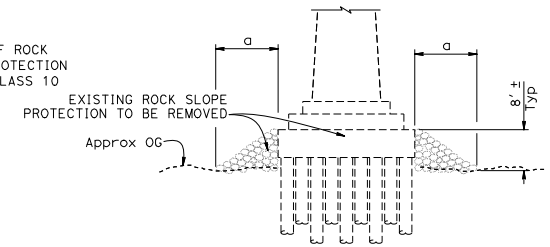
**ROCK SLOPE PROTECTION**  
(AT PIER 2, PIER 5 OPPOSITE)

**NOTES:**

- Place Rock Slope Protection Fabric Class 10 to the top of Existing footing
- For location of "DETAIL-1" and "DETAIL-2" see "GENERAL PLAN" sheet

**LEGEND:**

- Existing Structure
- Existing Rock Slope Protection to be removed
- Rock Slope Protection (1/2 Ton Class VII, Method A)

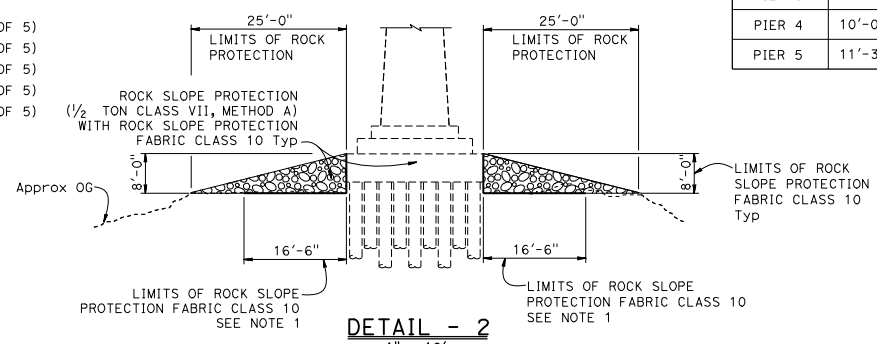
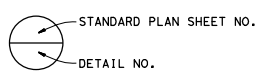


**SECTION A-A**  
1" = 10'

**Exist ROCK SLOPE PROTECTION**  
(TO BE REMOVED AT Exist PIERS)

**STANDARD PLANS 2018**

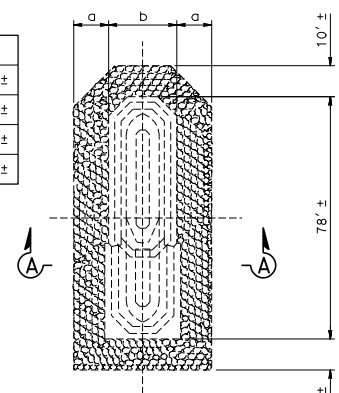
- A3A ABBREVIATIONS (SHEET 1 OF 3)
- A3B ABBREVIATIONS (SHEET 2 OF 3)
- A3C ABBREVIATIONS (SHEET 3 OF 3)
- A10A LEGEND - LINES AND SYMBOLS (SHEET 1 OF 5)
- A10B LEGEND - LINES AND SYMBOLS (SHEET 2 OF 5)
- A10C LEGEND - LINES AND SYMBOLS (SHEET 3 OF 5)
- A10D LEGEND - LINES AND SYMBOLS (SHEET 4 OF 5)
- A10E LEGEND - LINES AND SYMBOLS (SHEET 5 OF 5)
- A10F LEGEND - SOIL (SHEET 1 OF 2)
- A10G LEGEND - SOIL (SHEET 2 OF 2)
- A10H LEGEND - ROCK



**DETAIL - 2**  
1" = 10'

**ROCK SLOPE PROTECTION**  
(AT PIER 3 & 4)

| LOCATION | a       | b       |
|----------|---------|---------|
| PIER 2   | 11'-3"± | 22'-0"± |
| PIER 3   | 10'-0"± | 24'-6"± |
| PIER 4   | 10'-0"± | 24'-6"± |
| PIER 5   | 11'-3"± | 22'-0"± |



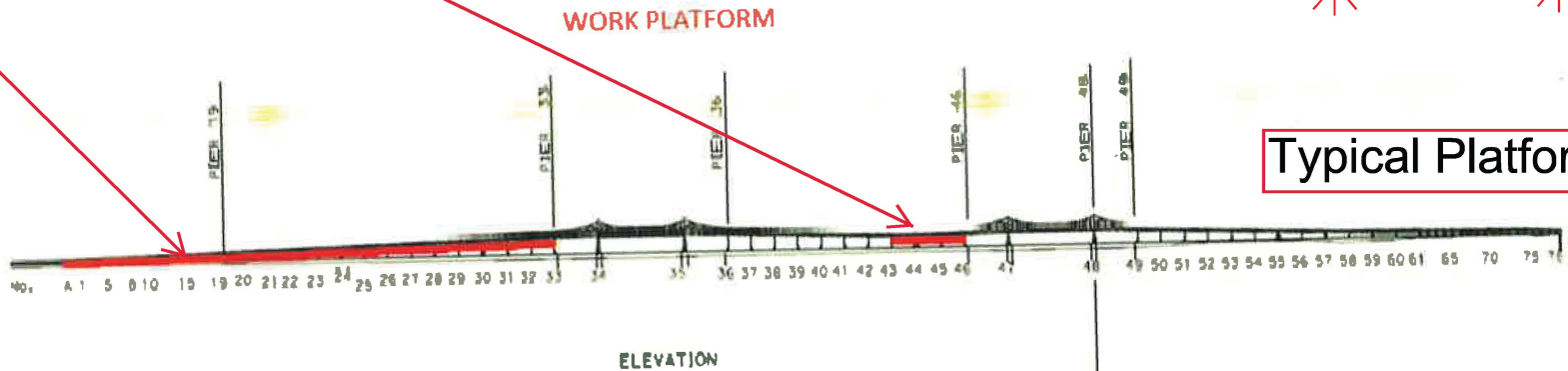
**EXISTING ROCK SLOPE PROTECTION REMOVAL**  
1" = 20'

**Exist ROCK SLOPE**  
(TO BE REMOVED AT Exist PIERS)

|  |                 |                 |                     |   |   |            |          |  |   |            |                                      |                         |   |                |          |          |          |         |      |
|--|-----------------|-----------------|---------------------|---|---|------------|----------|--|---|------------|--------------------------------------|-------------------------|---|----------------|----------|----------|----------|---------|------|
| STRUCTURES DESIGN DETAIL SHEET (ENGLISH) (REVISION 5/8/2018) | DESIGN          | BY David Romero | CHECKED Randy Bains | <b>STATE OF CALIFORNIA</b><br><b>DEPARTMENT OF TRANSPORTATION</b> | <b>DIVISION OF ENGINEERING SERVICES</b><br><b>STRUCTURE DESIGN</b><br><b>DESIGN BRANCH 13</b> | BRIDGE No. | 24-0001L | <b>SCOUR MITIGATION AMERICAN RIVER BRIDGE</b><br><b>INDEX TO PLANS</b> |   |            |                                      |                         |   |                |          |          |          |         |      |
|  | DETAILS         | BY Min Yu       | CHECKED Randy Bains |   |   | POST MILE  | 44.47    |  |   |            |                                      |                         |   |                |          |          |          |         |      |
|  | QUANTITIES      | BY David Romero | CHECKED Randy Bains |   |   |            |          |  |   |            |                                      |                         |   |                |          |          |          |         |      |
|  | DATE PLOTTED => | 11-OCT-2019     | TIME PLOTTED =>     | 11:28   | ORIGINAL SCALE IN INCHES FOR REDUCED PLANS  | 0          | 1        | 2  | 3 | UNIT: 3586 | PROJECT NUMBER & PHASE: 0313000136,1 | CONTRACT No.: 03-3F5404 | DISREGARD PRINTS BEARING EARLIER REVISION DATES | REVISION DATES | 11/26/18 | 04/18/19 | 05/26/19 | SHEET 2 | OF 2 |

Painting and Structural Repairs Project  
Richmond-San Rafael Bridge  
Mile 13.0, San Francisco Bay

Temporary Underdeck Platforms

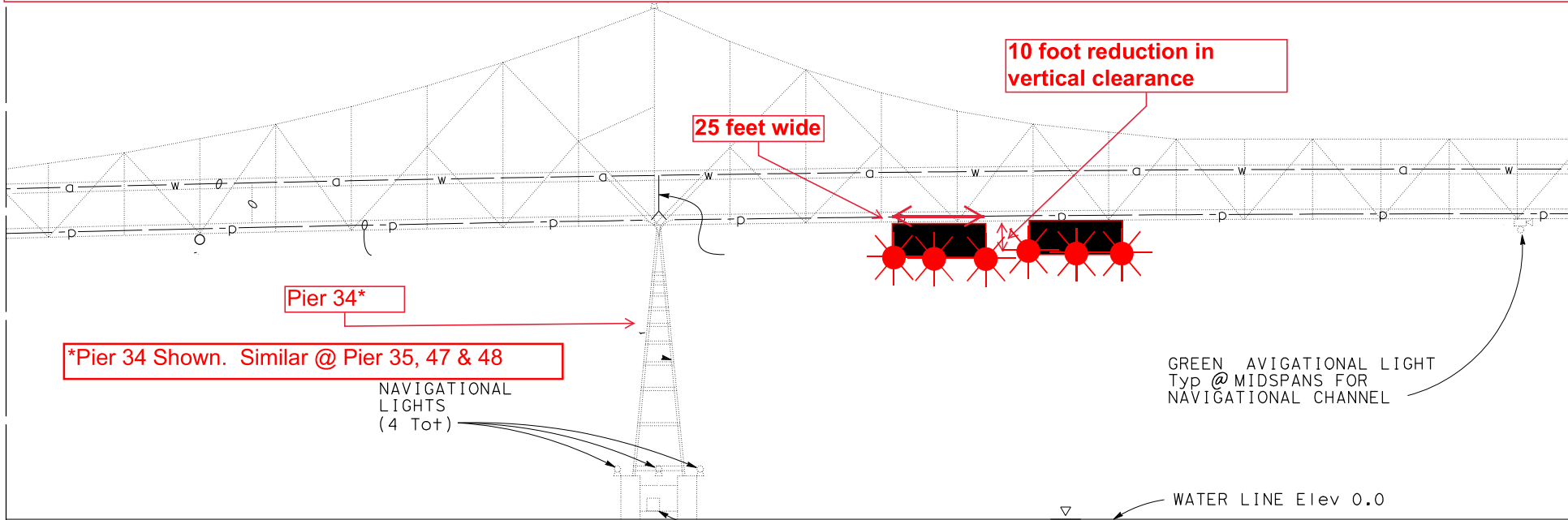


Typical Platform Lighting

The upstream and downstream lower edges of each temporary platform in each span are lighted at night with steady burning red lights to be seen at 2,000 yards by approaching vessels. Each platform reduces vertical clearance by no more than 3 feet.

# Typical Temporary Platform Location and Lighting

## Richmond-San Rafael Bridge, Mile 13.0, San Francisco Bay



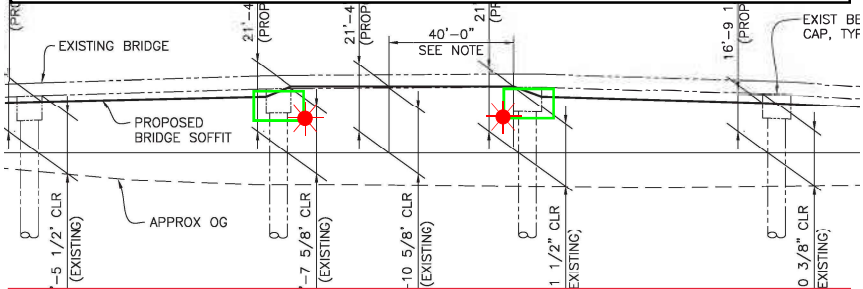
Eight temporary platforms have been installed in the East and West navigation spans, between piers 34-35 and 47-48, four in each span. The temporary platforms will reduce vertical clearance by no more than 10 feet beneath the area of the platforms. The east span provides 430 feet of horizontal clearance, 215 feet either side of centerline, and the west span provides 460 feet of horizontal clearance, 230 feet either side of centerline, for navigation. The upstream and downstream lower edges of the temporary platform will be lighted at night with fixed red lights visible at 2,000 yards by approaching vessels.



# Pedestrian Bridge Add-On

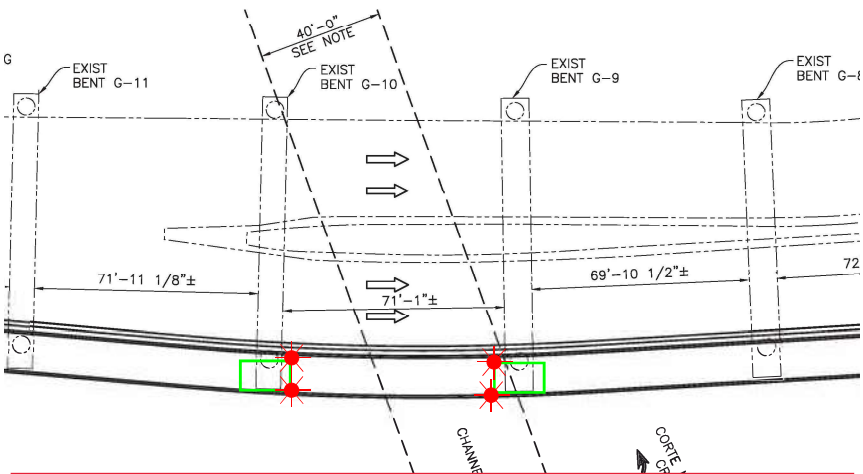
## U.S. 101 Bridge, mile 0.6, Corte Madera Creek

### Temporary Platform Location & Lighting

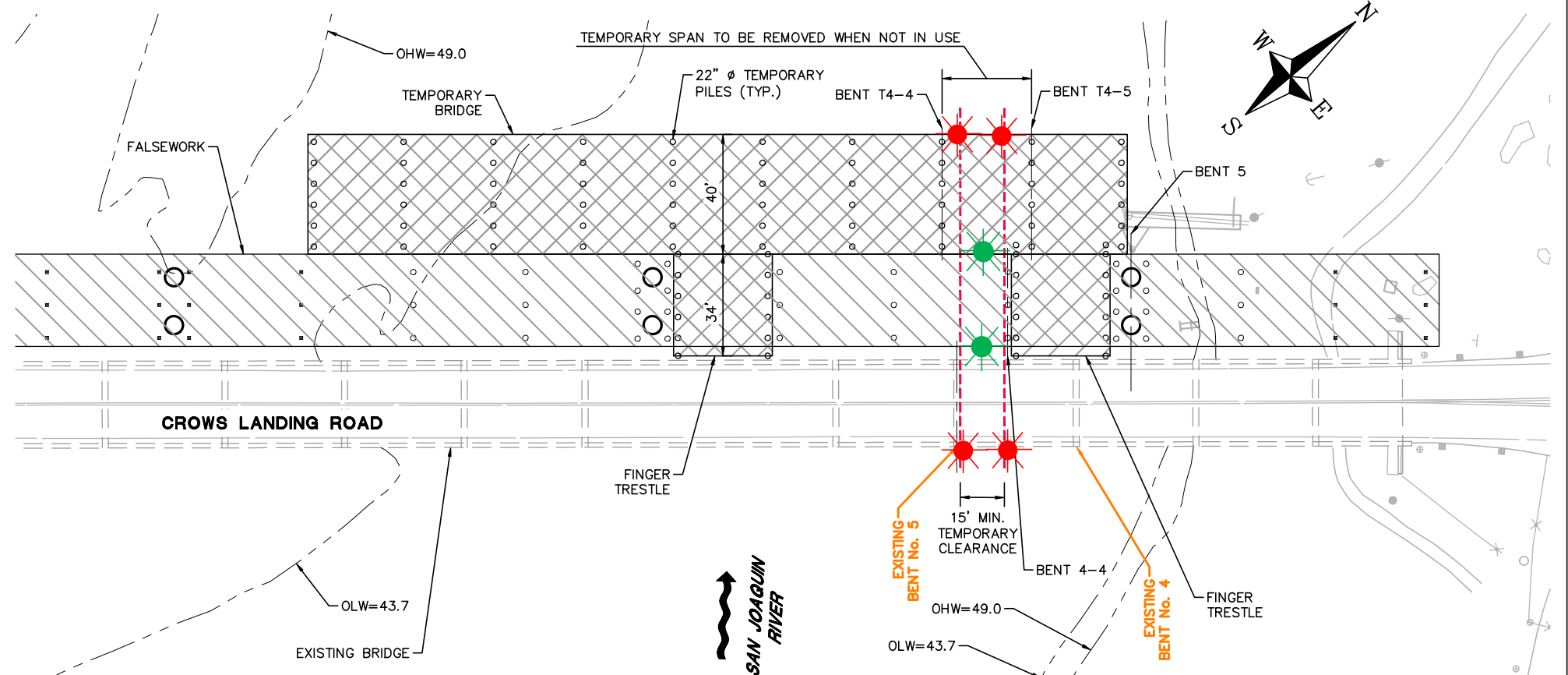
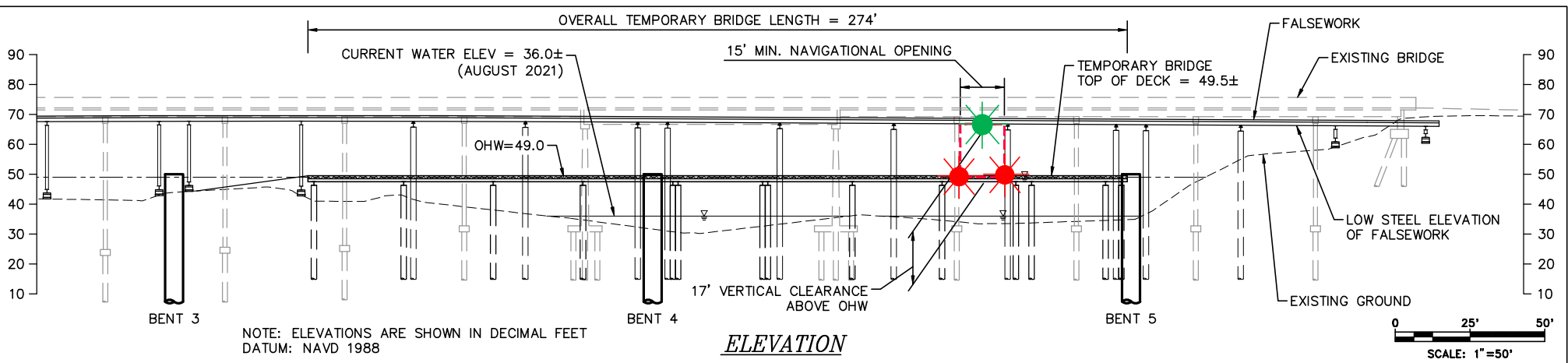


The temporary platforms reduce horizontal clearance in main navigation span of the bridge by ~14 feet and reduce vertical clearance by ~9 feet beneath the platforms.

### ELEVATION



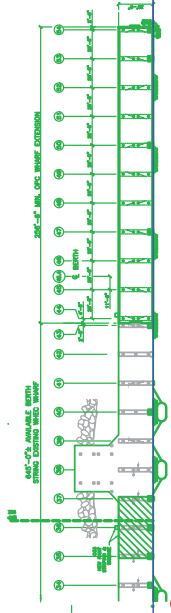
The upstream and downstream lower outboard corners of the temporary platforms in the navigation are lighted at night with fixed red lights, visible at 2,000 yards from approaching vessels.



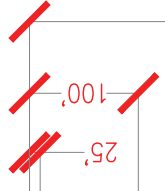
**Temporary Navigation Lighting-Crows Landing Bridge Replacement Project - San Joaquin River**

The temporary bridge and existing bridge will be lighted at night with two red lights marking the temporary navigation channel. The temporary falsework will be lighted, upriver and downriver, with green lights marking the center of the temporary navigation channel. During construction the temporary navigation channel will provide a horizontal clearance of 15 feet and a vertical clearance at Ordinary High Water of 17 feet.





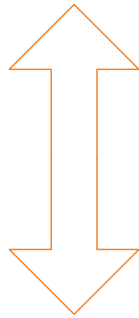
MAIN CHANNEL  
EAST LIMIT



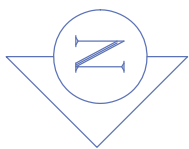
DB VALKYRIE

FLAT BARGE

ANCHOR CAN (BUOY)



FLOATING PLANT TO MOVE  
OCCASIONALLY TO COMPLETE  
FULL SCOPE OF WORK



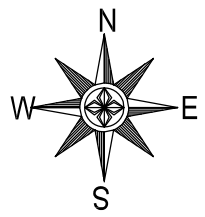
USCG OPC

MAIN CHANNEL LAYOUT

|     |   |       |   |     |             |     |   |       |        |
|-----|---|-------|---|-----|-------------|-----|---|-------|--------|
| Rev | — | Scale | — | Dwn | MJ 8/6/2021 | Chk | — | Sheet | 1 of 2 |
|-----|---|-------|---|-----|-------------|-----|---|-------|--------|



Anchored barge will be located at either pier "B", "C", "D", or "E" during the work. Each corner of the barge will be lighted at night with steady burning red lights.

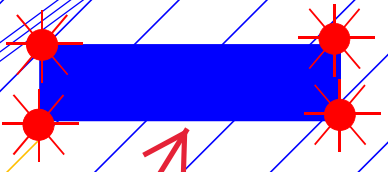


Size of Barge: 150' X 54'  
(Crane Barge Kelso)  
Typical Location

Shipping Lane

ANCHOR ZONE E WEST

ANCHOR ZONE E EAST



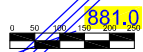
Barge will display this lighting configuration when anchored near piers.

ANCHOR W6 (E TWR)

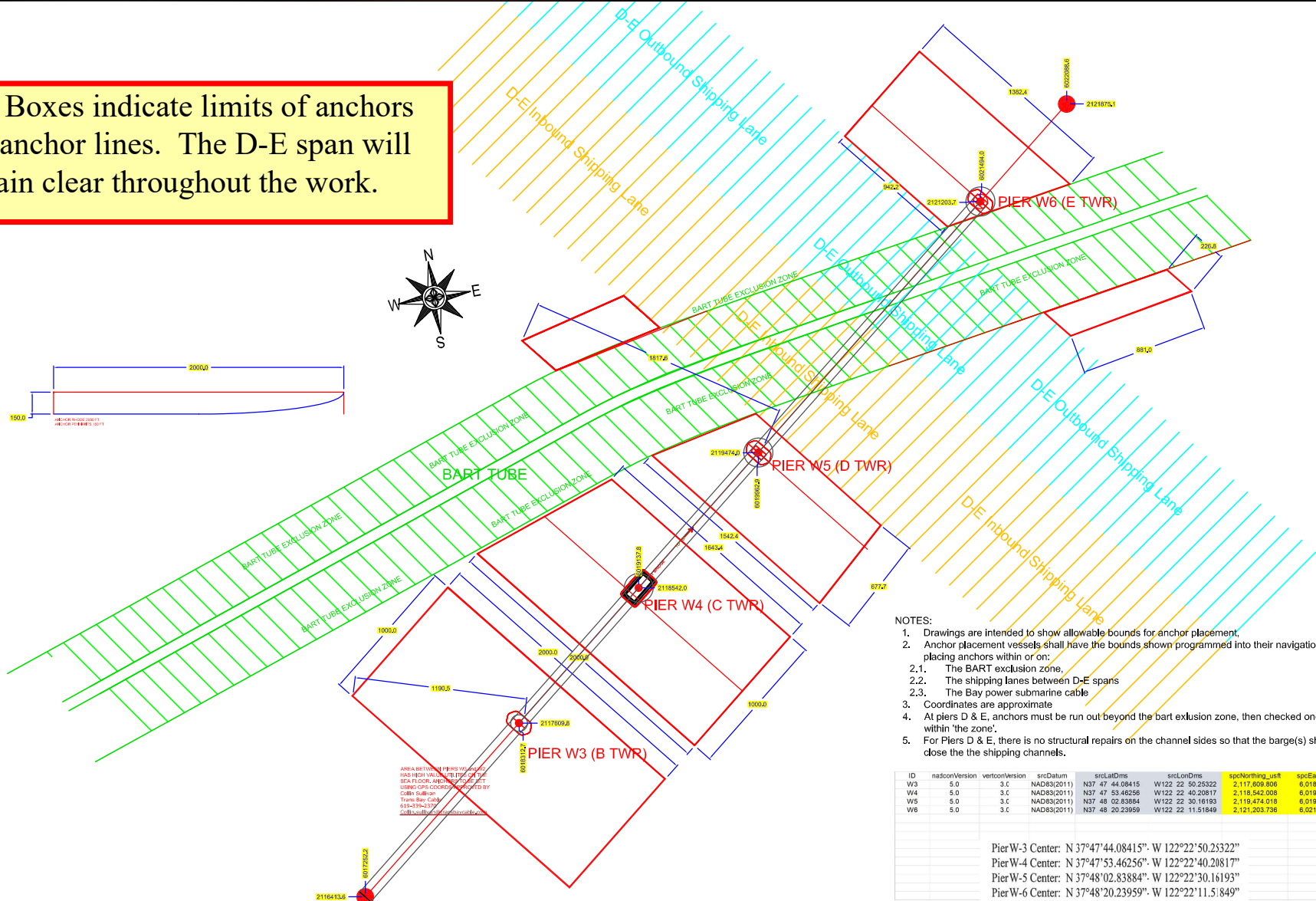
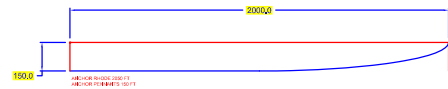
D-E Inbound

D-E Outbound Shipping Lane

BART TUBE EXCLUSION ZONE



Red Boxes indicate limits of anchors and anchor lines. The D-E span will remain clear throughout the work.



AREA BETWEEN PIERS W4 AND W5 HAS BEEN DESIGNATED AS A SEA FLOOR ANCHORAGE RESTRICTION ZONE (SARZ) BY THE CALIFORNIA STATE BOAT INSPECTION DIVISION (CSBID) AND THE U.S. COAST GUARD (USCG). THIS AREA IS SUBJECT TO VARIOUS RESTRICTIONS AND REGULATIONS. CONTACT THE CALIFORNIA STATE BOAT INSPECTION DIVISION (CSBID) AT (415) 774-3333 FOR MORE INFORMATION.

**NOTES:**

1. Drawings are intended to show allowable bounds for anchor placement.
2. Anchor placement vessels shall have the bounds shown programmed into their navigation systems in order to avoid placing anchors within or on:
  - 2.1. The BART exclusion zone,
  - 2.2. The shipping lanes between D-E spans
  - 2.3. The Bay power submarine cable
3. Coordinates are approximate
4. At piers D & E, anchors must be run out beyond the bart exclusion zone, then checked once set to ensure that they are not within 'the zone'.
5. For Piers D & E, there is no structural repairs on the channel sides so that the barge(s) should never need to moored close the the shipping channels.

| ID | nadsOnVersion | vertconVersion | srcDatum    | srcLatOrms      | srcLonOrms       | srcNorthing_usr1 | srcEasting_usr1 |
|----|---------------|----------------|-------------|-----------------|------------------|------------------|-----------------|
| W3 | 5.0           | 3.C            | NAD83(2011) | N37 47 44.08415 | W122 22 50.25322 | 2,117,609,808    | 6,018,512,651   |
| W4 | 5.0           | 3.C            | NAD83(2011) | N37 47 53.46256 | W122 22 40.20817 | 2,116,542,008    | 6,019,137,752   |
| W5 | 5.0           | 3.C            | NAD83(2011) | N37 48 02.83884 | W122 22 30.16193 | 2,119,474,018    | 6,019,962,888   |
| W6 | 5.0           | 3.C            | NAD83(2011) | N37 48 20.23959 | W122 22 11.51848 | 2,121,203,736    | 6,021,493,997   |

Pier-W-3 Center: N 37°47'44.08415". W 122°22'50.25322"  
 Pier-W-4 Center: N 37°47'53.46256". W 122°22'40.20817"  
 Pier-W-5 Center: N 37°48'02.83884". W 122°22'30.16193"  
 Pier-W-6 Center: N 37°48'20.23959". W 122°22'11.51849"

## Fender Repairs

### Western Span San Francisco Oakland Bay Bridge, mile 8.9, San Francisco Bay

### Temporary Impacts to Navigation Diagram





U.S. Department of  
Homeland Security

United States  
Coast Guard



To: All Mariners

April 22, 2022

The National Oceanic and Atmospheric Administration (NOAA) with support from the United States Coast Guard (USCG) and Environmental Protection Agency (EPA) is issuing a voluntary 10-knot Vessel Speed Reduction (VSR) request that goes into effect May 1 off of San Francisco and southern California; please see the attached charts. Large ships travelling 10 knots give whales more time to move to avoid a strike, reduce the lethality of a strike should one occur, generate less harmful ocean noise and have fewer air emissions. Thus, the goals of these voluntary VSR zones are to reduce the risk of fatal ship strikes to endangered blue, fin, and humpback whales, reduce ocean noise and protect public health adjacent to Greater Farallones, Cordell Bank, Monterey Bay, and Channel Islands national marine sanctuaries. These whale species are protected under the Federal Endangered Species Act (16 U.S.C. 1538 et seq.), the Marine Mammal Protection Act (16 U.S.C. 1361 et seq.), and the National Marine Sanctuaries Act (16 U.S.C. 1431 et seq.). Any unauthorized take of whales, even if unintentional, by vessels transiting in U.S. waters violates federal statutes.

**The voluntary VSR request will be in effect May 1 to December 15, 2022 for all VSR zones off California, as shown in the attached charts.** Note the expansion of the VSR zone off San Francisco over prior years is designed to reduce ship strike risk in areas of known whale presence and vessel traffic. The season has been extended to account for the presence of whales later in the year.

NOAA, USCG and EPA request that all vessels 300 gross tons (GT) or larger reduce speeds to 10 knots when transiting within the designated VSR zones. We request your cooperation with the voluntary VSR to protect the health of communities living near these zones, and whales that annually migrate to and through these zones. All transits by vessels 300 GRT or larger are analyzed by NOAA via Automatic Information System (AIS) data provided by USCG to assess the industry's cooperation.

NOAA, USCG and EPA are committed to the long-term protection of nationally significant marine resources and public health by enhancing marine safety and environmental awareness in the maritime community. We encourage vessel crews to report whale sightings through the Whale Alert App (<http://www.whalealert.org>). If you have questions please contact Sean Hastings, (805) 705-1790, [sean.hastings@noaa.gov](mailto:sean.hastings@noaa.gov). NOAA, USCG and EPA commend your commitment to protecting endangered and threatened whales and protecting public health by cooperating with the 10-knot VSR requests and working towards a goal of 100% cooperation in 2022.

Handwritten signature of William J. Douros in blue ink.

William J. Douros, Regional Director  
NOAA Office of National Marine Sanctuaries  
West Coast Region

Handwritten signature of Scott Rumsey in blue ink.

Scott Rumsey, Acting Regional Administrator  
NOAA National Marine Fisheries Service  
West Coast Region

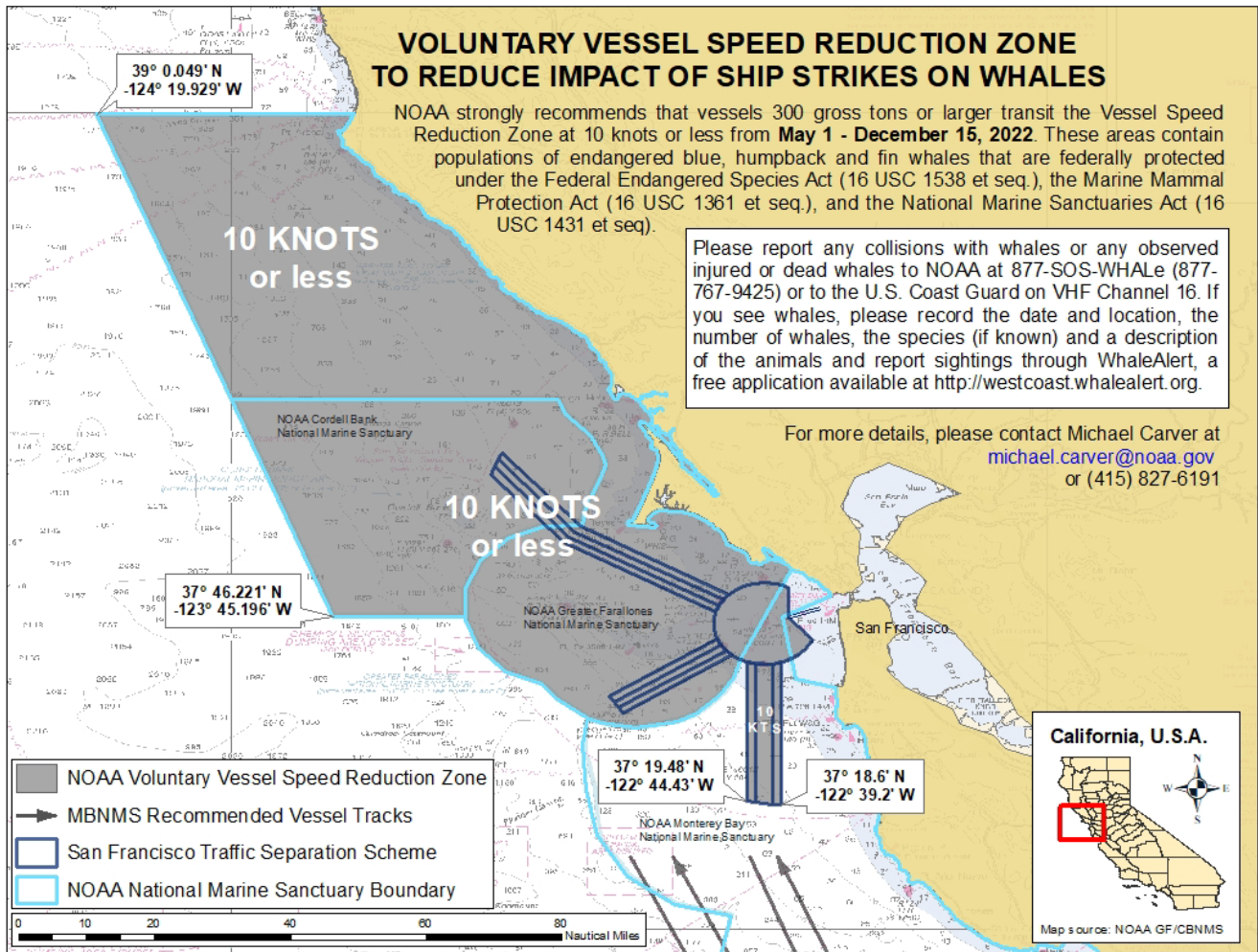
Handwritten signature of Brian K. Penoyer in blue ink.

Brian K. Penoyer, Rear Admiral  
U.S. Coast Guard District Eleven

Handwritten signature of Martha Guzman in blue ink.

Martha Guzman, Regional Administrator  
Environmental Protection Agency Region 9

## 2022 Voluntary Vessel Speed Reduction Zone San Francisco Bay Region

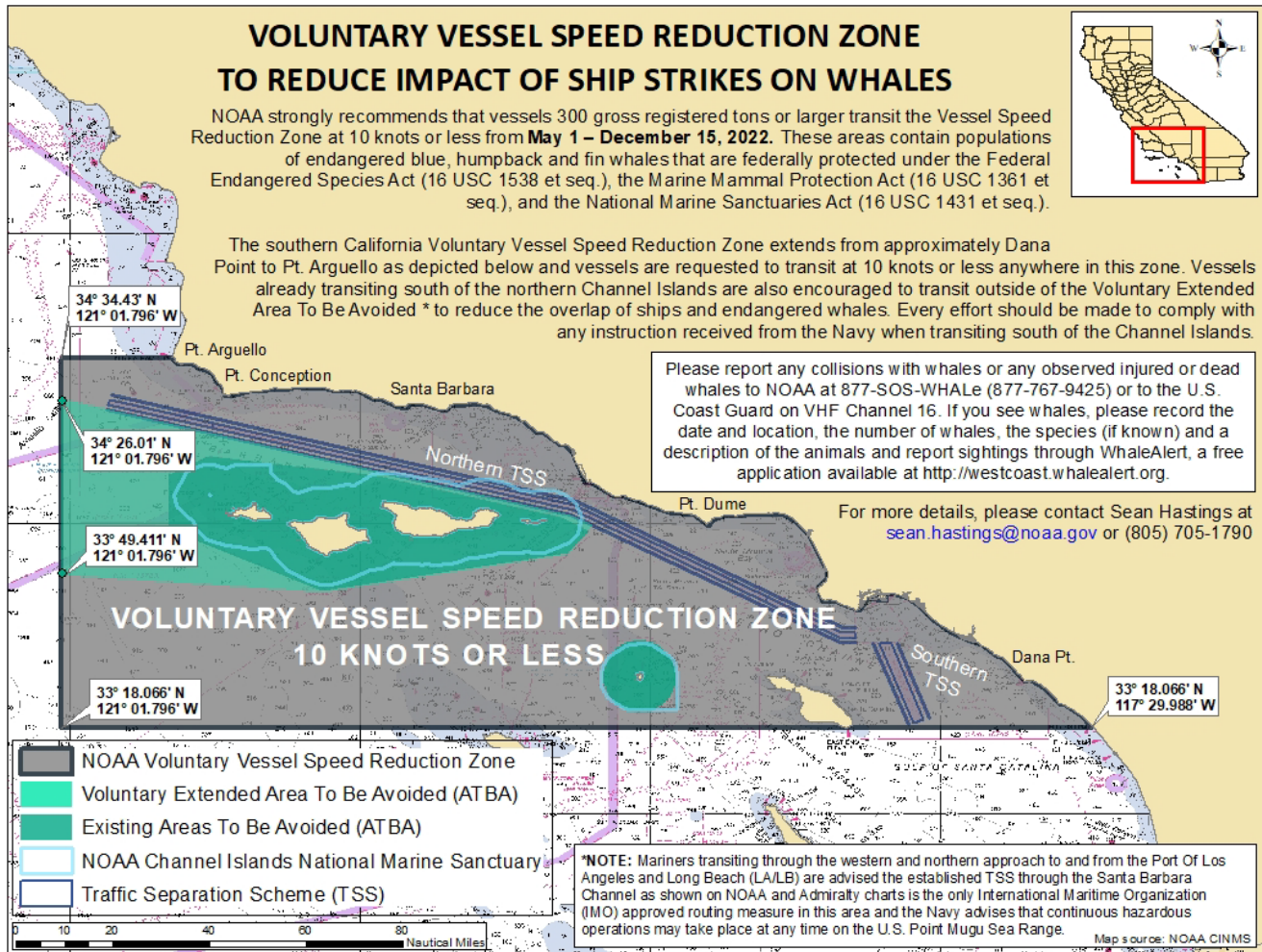


NOAA Chart 18010

*This map is not to be used for navigational purposes*

**13 APRIL 2022**

## 2022 Voluntary Vessel Speed Reduction Zone Southern California



NOAA Chart 18022

Chart not for navigational purposes.

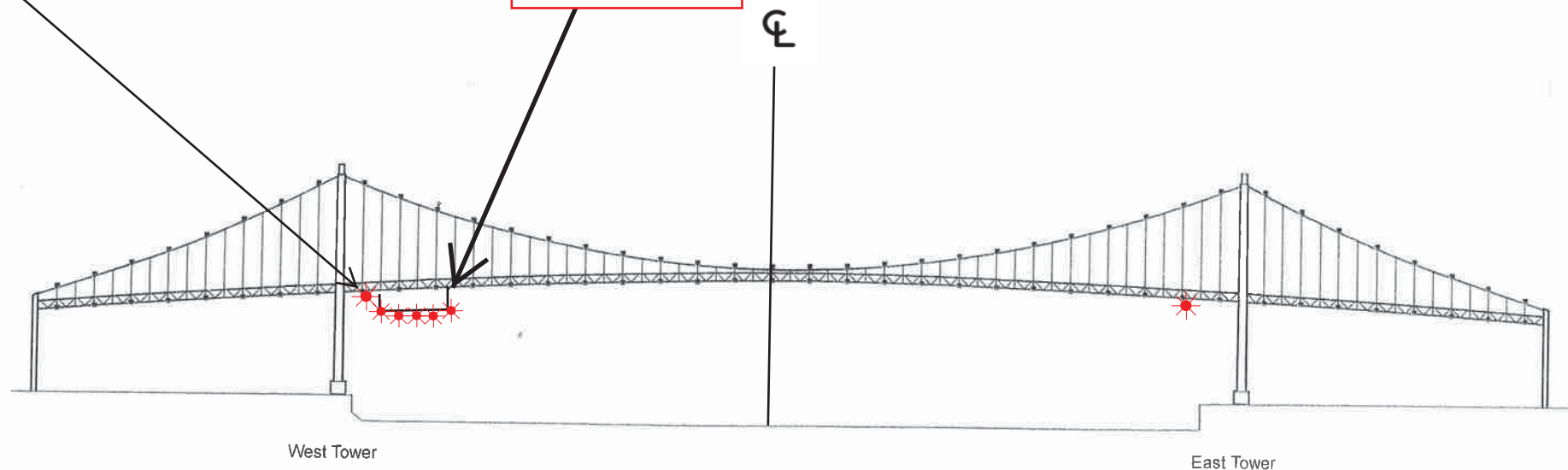
13 APRIL 2022



Vincent Thomas Highway Bridge  
Mile 3.0  
Los Angeles/Long Beach Harbor  
**Painting Project**

West Channel Margin  
Light

Below Low Steel  
Platform. 5' 4"  
reduction in  
vertical clearance



A 180 foot long under deck temporary platform will reduce vertical clearance by 5' 4". Each corner and every 50 feet along the the upstream and downstream side of the platform will lighted at night with steady burning red lights visible at 2000 yards by approaching vessels. In a duration of 1-year the platform will progress from the western channel margin light to 250' west of the centerline of the bridge.