



U.S. Department  
of Homeland Security  
**United States  
Coast Guard**

---

## LOCAL NOTICE TO MARINERS

**District: 11**

**Week: 25/22**

CORRESPONDENCE TO:  
COMMANDER  
DISTRICT ELEVEN (DPW)  
COAST GUARD ISLAND BUILDING 50-2  
ALAMEDA, CA 94501-5100

REFERENCES: COMDTPUB P16502.6, Light List Volume VI, 2017 Edition, U.S. Chart No.1 12th Edition, and Coast Pilot Volume 7 49th Edition. These publications, along with corrections, are available at: <https://nauticalcharts.noaa.gov/>

BROADCAST NOTICE TO MARINERS - Information concerning aids to navigation and waterway management promulgated through BNM HB-0005-22, SF-0050-22, LA-0051-22, and SD-0031-22 have been incorporated in this notice, or will continue if still significant.

---

### SECTION I - SPECIAL NOTICES

This section contains information of special concern to the Mariner.

---

#### SUBMITTING INFORMATION FOR PUBLICATION IN THE LOCAL NOTICE TO MARINERS

A complete set of guidelines with examples and contact information can be found at <http://www.pacificarea.uscg.mil/Our-Organization/District-11/Prevention-Division/LnmRequest/> or call Waterways Management Branch at 510-437-2929 or e-mail D11-SMB-D11-LNM@uscg.mil. Please provide all Local Notice to Mariners submissions 14 days prior to the start of operations

LNM: 17/21

#### BRIDGE INFORMATION- PROJECTS, DISCREPANCIES, CORRECTIONS & REGULATORY

For all bridge related issues, including lighting, operation, obstructions, construction, demolition, etc. contact the Eleventh Coast Guard District Bridge Administrator 24 hour cell phone at 510-219-4366. Flotsam may accumulate on and near bridge piers and abutments. Mariners should approach all bridges with caution. A vessel delay at a drawbridge may be reported to the District Bridge Administrator by telephone, or by using the Delay\_Report\_11-2017.pdf included in the Enclosures section of this Local Notice to Mariners.

#### BRIDGE INFORMATION-COMMUNICATIONS PROTOCOL-BENICIA/MARTINEZ UPRR BRIDGE- CARQUINEZ STRAIT

All mariners requiring a bridge lift at the Benicia-Martinez Union Pacific Railroad Bridge, mile 7.0, over the Carquinez Strait, California, should follow the protocol in the document entitled "Coordination of Communications for Union Pacific Railroad Lift Operations." Mariners can download a copy of the document by selecting the link BENICIA-MARTINEZ RR BRIDGE under the QUICK LINKS section at <https://www.pacificarea.uscg.mil/vtssf>.

#### CANCELLATION OF NOAA PAPER AND RASTER NAUTICAL CHARTS

The National Oceanic and Atmospheric Administration (NOAA) is undertaking a multi-year program to end production and maintenance of its suite of over 1,000 traditional paper nautical charts and all associated raster chart products and services, including: Print-on-Demand (POD) paper nautical charts, Full-size chart PDF files, BookletChart™ PDF files, NOAA raster navigational charts (NOAA RNC®), the NOAA RNC tile service, and the online RNC viewer.

Six months notice of the intent to cancel a specific chart is provided in a "Last Edition" notice. The final cancellation of a chart is made in a "Canceled" notice. Both types of notices will appear in LNM Section IV, "Chart Correction." A comprehensive list of all canceled NOAA charts is available at: <http://www.charts.noaa.gov/MCD/Dole.shtml>.

Traditional paper nautical chart production is ending to enable the creation and maintenance of larger scale, more up-to-date, higher quality coverage of NOAA's electronic navigational chart (NOAA ENC®) product. This will significantly enhance the amount of charted detail available to mariners. More information about NOAA's program to sunset traditional paper charts is on the NOAA Coast Survey website at: <https://nauticalcharts.noaa.gov/charts/farewell-to-traditional-nautical-charts.html>

An online NOAA Custom Chart application at: <https://devgis.charttools.noaa.gov/pod> is available to create chart images from ENC data, which may then be printed. Notices to Mariners will not be issued for NOAA Custom Charts.

LNM: 07/21

#### CAUTION TO BE USED IN RELIANCE UPON AIDS TO NAVIGATION

The aids to navigation depicted on charts comprise a system of fixed and floating aids to navigation with varying degrees of reliability. Prudent mariners will not rely solely on any single aid to navigation, particularly a floating aid to navigation. With respect to buoys, the buoy symbol is used

to indicate the approximate position of the buoy body and the sinker which secures the buoy to the seabed. The approximate position is used because of the practical limitations in positioning and maintaining buoys and their sinkers in precise geographical locations. These limitations include, but are not limited to, inherent imprecision in position fixing methods, prevailing atmospheric and sea conditions, slope of and the material making up the seabed, the fact that buoys are moored to sinkers by varying length of chain, and the fact that the buoy body and/or sinker positions are not under continuous surveillance, but are normally checked only during periodic maintenance visits which often occur more than a year apart. Due to the forces of nature, the position of the buoy body can be expected to shift inside and outside the charted symbol. The mariner is also cautioned that buoys may be extinguished or sound signals may not function as the result of natural causes, collisions, or other accidents. For the foregoing reasons, a prudent mariner must not rely completely upon the position or operation of floating aids to navigation, but will also utilize bearings from fixed objects and aids to navigation on shore. Furthermore, a vessel attempting to pass close aboard always risks collision with a yawing buoy or with the obstruction that the buoy marks.

#### **HAZARDOUS WEATHER OUTLOOK EXTENDED TO THE EASTERN PACIFIC OCEAN**

In coordination with the National Weather Service (NWS) and the National Hurricane Center (NHC), the US Coast Guard is pleased to announce the addition of a new Hazardous Weather Outlook (HWO) service that covers the Eastern Pacific Ocean, including the Pacific Coast of the Continental United States (CONUS). This service is available to all those who could benefit from advanced warning of hazardous weather in both coastal regions and open waters. As with the currently available Western Atlantic Hazardous Weather Outlook, Seven Day HWO's will be released every Wednesday with additional Situational HWO's issued as conditions require. The service will begin on April 6th of this year, however you can sign up in advance at any time.

In the recent past several maritime tragedies and "near misses" in the coastal waters of the United States have occurred due to hazardous weather, such as the sinking of the SS El Faro in 2015. Based on recommendations by the National Transportation Safety Board (NTSB), in cooperation with the NWS and the United States Coast Guard developing improved methods of delivering Marine Safety Information remain a top priority.

The NWS Ocean Prediction Center (OPC) and the NHC's Tropical and Analysis Forecast Branch (TAFB) will be providing weekly and situational reports to the USCG, who will then be making this information available to the public. Through the free online subscription service, GovDelivery, which currently offers subscribers a wide array of Marine Safety Information such as Broadcast Notice to Mariners (BNMs) and Local Notice to Mariners (LNMs) provided through USCG NAVCEN, users will be able to register to receive Hazardous Weather Outlook reports giving forewarning of major weather events.

For subscribing to Eastern Pacific Hazardous Weather Outlook reports by E-mail:  
<[https://public.govdelivery.com/accounts/USDHSCG/subscriber/new?topic\\_id=USDHSCG\\_506](https://public.govdelivery.com/accounts/USDHSCG/subscriber/new?topic_id=USDHSCG_506)>

For subscribing to Eastern Pacific Hazardous Weather Outlook reports by RSS Feed:  
<[https://public.govdelivery.com/topics/USDHSCG\\_506/feed.rss](https://public.govdelivery.com/topics/USDHSCG_506/feed.rss)>

LNLM: 12/22

#### **NAVIGATION CENTER WEBSITE TRANSITION**

The U.S. Coast Guard Navigation Center is going to transition the Navigation Center website to a new, enhanced version in the first quarter of 2022. As part of this transition, URLs will be updated across the site including URLs linked to PDFs. Therefore, once the transition is complete, legacy site URLs will no longer function, including bookmarked URLs and URLs used in automatic downloading of data and/or products. Outdated URLs will automatically redirect to the home page of the site, and from there you will be able to easily navigate to your preferred page.

Below are a few of the "old"/new URL pairs listed for your convenience. Please note that the new URLs will not be active until we launch the new website. Of course, once it is launched, the new URLs will be available for re-bookmarking. As a reminder, these are top level URLs that may contain additional links that you use.

This notice will be updated when the final launch date is determined and another notice will be issued to notify you when the site goes live. Questions/concerns may be directed to the NAVCENWebTEAM@uscg.mil.

Local Notices to Mariners (LNMs)  
Current URLs: <https://www.navcen.uscg.gov/?pageName=lnmMain>  
Replacement: <https://www.navcen.uscg.gov/local-notice-to-mariners-by-cg-district>

Light Lists Annual Publication  
Current URLs: <https://navcen.uscg.gov/?pageName=lightLists>  
Replacement: <https://www.navcen.uscg.gov/light-list-annual-publication>

Light List - Weekly  
Current URLs: <https://navcen.uscg.gov/?pageName=lightListWeeklyUpdates>  
Replacement: <https://www.navcen.uscg.gov/weekly-light-lists>

Light List - Corrections  
Current URLs: <https://navcen.uscg.gov/?pageName=lightListCorrections>  
Replacement: <https://www.navcen.uscg.gov/light-list-summary-of-corrections>

LNM: 06/22

#### **NORTHERN CALIFORNIA-SAN FRANCISCO - VOLUNTARY VESSEL SPEED REDUCTION**

NOAA, U.S. Coast Guard and the Environmental Protection Agency request that all vessels 300 gross registered tons (GRT) or larger reduce speeds to 10 knots or less when transiting the San Francisco Traffic Separation Scheme (SF TSS) and within Greater Farallones and Cordell Bank National Marine Sanctuaries from May 1 to December 15, 2022 to protect endangered blue, humpback and fin whales; see enclosure NOAA VSR 2022.pdf. These areas contain populations of endangered blue, humpback, and fin whales that are federally protected under the Federal Endangered Species Act (16 USC 1538 et seq.), the Marine Mammal Protection Act (16 USC 1361 et seq.), and the National Marine Sanctuaries Act (16 USC 1431 et seq.).

Please report any collisions with whales or any observed injured or dead whales to the U.S. Coast Guard on VHF Channel 16. NOAA is asking for the public's help in tracking whales. Please report sightings through Whale Alert, a free application available at <http://westcoast.whalealert.org/>.

Charts: 18600 18620 18640 18680

LNM: 18/22

#### **NORTHERN CALIFORNIA-SAN FRANCISCO-MARINE SAFETY INFORMATION BULLETIN**

Coast Guard Sector San Francisco is issuing a Marine Safety Information Bulletin (MSIB) 22-01. Sector San Francisco reminds all inspected Small Passenger Vessel operators to remain cognizant of their inspection dates in accordance with applicable regulations. Expired lifesaving and/or firefighting systems and equipment are considered a "hazardous condition" as per 46 CFR § 175.400. It is therefore a requirement to notify Sector San Francisco of any lapses in servicing dates for these appliances and the vessel is required to set up servicing(s) prior to the carriage of passengers. For additional information regarding this bulletin, please contact the U.S. Coast Guard Sector San Francisco Domestic Vessel Inspections Branch at SectorSF.Domestic.Insp@uscg.mil or at 510-207-1495.

LNM: 23/22

#### **NORTHERN CALIFORNIA-SAN FRANCISCO-MILE ROCKS LIGHT-REDUCED NOMINAL RANGE**

Mile Rocks Light (LLNR 365) will have a temporarily reduced intensity of 5nm until further notice. Mariners are requested to transit the area with caution. For more details or comments contact LT Miranda Brumbaugh at 510-437-2978 or [Miranda.E.Brumbaugh@uscg.mil](mailto:Miranda.E.Brumbaugh@uscg.mil).

Charts: 18007 18010 18020 18022 18640 18645 18649 18680

LNM: 16/19

#### **NORTHERN CALIFORNIA-SAN JOAQUIN RIVER-MARINE CONSTRUCTION**

The Department of Water Resources have placed an emergency barrier in the West False River until December, 2022. The barrier is located at 38-03-25N 121-40-08W and is approximately 0.4 mile east of the confluence with the San Joaquin River, between Jersey and Bradford Islands in Contra Costa County, and is about 4.8 miles northeast of Oakley. Constructing the emergency temporary rock barrier provides a method of controlling saltwater intrusion into the Delta and the barrier was installed in the identical location in 2015. Mariners are requested to transit the area with caution. For more details or comments contact Jason Bacher at 916-376-9859 or Keith Boulton at 360-580-3708.

Charts: 18656 18661 18663

LNM: 16/22

#### **SOUTHERN CALIFORNIA-DANA POINT TO POINT ARGUELLO-VOLUNTARY VESSEL SPEED REDUCTION**

NOAA, U.S. Coast Guard and the Environmental Protection Agency request that all vessels 300 gross registered tons (GRT) or larger reduce speeds to 10 knots or less when transiting in the Vessel Speed Reduction from Dana Point to Pt. Arguello from May 1 to December 15, 2022 to protect endangered whales; see enclosure NOAA VSR 2022.pdf. These areas contain populations of endangered blue, humpback, and fin whales that are federally protected under the Federal Endangered Species Act (16 USC 1538 et seq.), the Marine Mammal Protection Act (to protect endangered whales 16 USC 1361 et seq.), and the National Marine Sanctuaries Act (16 USC 1431 et seq.). Vessels already transiting south of the northern Channel Islands are also encouraged to transit outside of the voluntary Extended Area To Be Avoided to reduce the overlap of ships and endangered whales.

Please report any collisions with whales or any observed injured or dead whales to the U.S. Coast Guard on VHF Channel 16. NOAA is asking for the public's help in tracking whales. Please report sightings through Whale Alert, a free application available at <http://westcoast.whalealert.org/>.

Charts: 18720 18740

LNM: 18/22

#### **SOUTHERN CALIFORNIA-SAN DIEGO BAY-MINIMIZE WAKE**

The Navy Port Operations Manager requests that vessels slow to 7 kts when a vessel is moored in restricted area (33 CFR 334.865) located on the northeast side of North Island at 32-42-57N 117-11-22W, between San Diego Channel Lighted Buoy 20 (LLNR 1710) and San Diego Channel Lighted Buoy 22 (LLNR 1830). For more details or comments contact LT Rodriguez at 619-545-3232, [Rigoberto.rodriguez3@navy.mil](mailto:Rigoberto.rodriguez3@navy.mil).

Chart 18773

LNM: 10/22

#### **SUBMITTING INFORMATION FOR PUBLICATION IN THE LOCAL NOTICE TO MARINERS**

Coast Guard District Eleven Waterways upgrade to E-Mail capabilities. All future requests for article submission in the District Eleven Local Notice to Mariners are requested to be E-Mailed to D11-SMB-SMB-D11-LNM@uscg.mil at least two weeks prior to the operation. For more details or comments please contact District Eleven Waterways Management Branch at 510-437-2929 or e-mail D11-SMB-D11-LNM@uscg.mil. Coast Guard District Eleven requests all Local Notice to Mariners submissions be E-Mailed to our office at least 14 days prior to the start of operations for timely submittal and publication.

## SECTION II - DISCREPANCIES

This section lists all reported and corrected discrepancies related to Aids to Navigation in this edition. A discrepancy is a change in the status of an aid to navigation that differs from what is published or charted.

### DISCREPANCIES (FEDERAL AIDS)

LLNR	Aid Name	Status	Chart No.	BNM Ref.	LNM St	LNM End
125	Long Beach Light	LT EXT	18751	LA-0148-20	49/20	
345	San Francisco South Traffic Lane Lighted Bell Buoy S	MISSING	18645	SF-0042-21	09/21	
360	San Francisco Approach Lighted Whistle Buoy SF	RAC INOP	18649	SF-0040-22	17/22	
365	Mile Rocks Light	REDUCED INT	18649	SF-0251-17	49/17	
370	Point Bonita Light	LT EXT/SS INOP	18649	SF-0032-22	15/22	
2605	Santa Catalina Island East End Light	LT EXT	18757	LA-0046-22	23/22	
2635	Ship Rock Light	LT EXT	18757	LA-0095-21	26/21	
2641	Isthmus Cove Harbor Reefs Light	STRUCT DMGD	18757	LA-0018-21	05/21	
2670	Santa Catalina Island West End Light	LT EXT	18757	LA-0113-19	34/19	
3012	Long Beach Light	LT EXT	18751	LA-0148-20	49/20	
3117	Los Angeles Main Channel Lighted Buoy 11	REDUCED INT	18751	LA-0105-21	28/21	
3132	Terminal Island Channel Lighted Buoy 1	STRUCT DMGD	18751	LA-0027-22	16/22	
3970	Monterey Harbor Light 6	REDUCED INT	18685	SF-0165-21	51/21	
3970	Monterey Harbor Light 6	SS INOP	18685	SF-0064-20	27/20	
4155	Colorado Reef Lighted Buoy 26	OFF STA	18645	SF-0163-21	51/21	
4220	Point Bonita Light	LT EXT/SS INOP	18649	SF-0032-22	15/22	
4245	Mile Rocks Light	REDUCED INT	18649	SF-0251-17	49/17	
4430	Pier B North Buoy	MISSING	18650	SF-0153-21	48/21	
4595	Yerba Buena Island Light	LT EXT/SS INOP/TRLT	18650	SF-0143-21	46/21	
4680	Oakland Inner Harbor Light 10	MISSING/TRLB	18650	SF-0052-21	02/22	
4684	Oakland Inner Harbor Turn Basin Light B	STRUCT DMGD/TRLB	18650	SF-0097-21	29/21	
4740	San Leandro Bay Airport Channel Daybeacon 6	STRUCT DEST	18650	SF-0033-22	15/22	
5130	San Francisco Bay South Channel Light 8	DAYMK MISSING	18651	SF-0023-20	08/20	
6095	Mare Island Strait Light 2	STRUCT DMGD/TRLB	18655	SF-0152-20	49/20	
6310	Suisun Bay Channel Buoy 3	OFF STA	18657	SF-0116-21	36/21	
6505	Suisun Bay Channel Lighted Buoy 17	OFF STA	18658	SF-0128-21	02/22	
6685	San Joaquin River Light 8	LT EXT/TRLB	18656	SF-0109-21	02/22	
7210	Sacramento River Deep Water Ship Channel Light 10	MISSING/TRLB	18656	SF-0101-21	32/21	
7235	Sacramento River Deep Water Ship Channel Light 15	MISSING/TRLB	18661	SF-0100-20	35/20	
7240	Sacramento River Deep Water Ship Channel Light 16	STRUCT DEST/TRLB	18661	SF-0127-18	34/18	
7260	Sacramento River Deep Water Ship Channel Light 20	MISSING/TRLB	18661	SF-0108-21	33/21	

### DISCREPANCIES (FEDERAL AIDS) CORRECTED

LLNR	Aid Name	Status	Chart No.	BNM Ref.	LNM St	LNM End
------	----------	--------	-----------	----------	--------	---------



3775	Santa Barbara Harbor Lighted Buoy 7	RELIGHTED	18725	LA-0051-22	25/22	25/22
------	-------------------------------------	-----------	-------	------------	-------	-------

**DISCREPANCIES (PRIVATE AIDS)**

LLNR	Aid Name	Status	Chart No.	BNM Ref.	LNM St	LNM End
20	Ocean Beach Pier Fog Sound Signal	SS INOP	18765	SD-0002-19	05/19	
158	Scripps Waverider Lighted Research Buoy 092	OFF STA	18746		45/18	
505	Scripps Waverider Lighted Research Buoy 168	LT EXT	18620	HB-0003-22	14/22	
1665	Americas Cup Harbor Daybeacon 2	STRUCT DEST	18773	SD-0001-22	02/22	
1720	Navy Lighted Mooring Buoy	LT EXT	18773	SD-0055-21	33/21	
1765	Harbor Island East Basin Channel Buoy 2	OFF STA	18773	SD-0028-19	19/19	
1775	Harbor Island East Basin Channel Buoy 4	MISSING	18773	SD-0039-20	29/20	
1790	Harbor Island East Basin Channel Buoy 10	OFF STA	18773	SD-0044-19	27/19	
1900	Glorietta Bay Channel Lighted Buoy 8	LT IMCH	18773	SD-0100-18	50/18	
2070	Coronado Cays Channel Daybeacon 3	STRUCT DEST	18773	SD-0098-17	36/17	
2288	Scripps Waverider Lighted Research Buoy 220	OFF STA	18765	SD-0041-20	30/20	
2289.1	Scripps Waverider Lighted Research Buoy 100	OFF STA	18765		22/20	
2289.4	Scripps "CORDC" Lighted Research Buoy	MISSING	18765		22/20	
2764.4	Catalina Sea Ranch SE Buoy	MISSING	18746	LA-0001-22	03/22	
2871	Long Beach Harbor Brusco Lighted Mooring Buoy	LT EXT	18751	LA-0009-21	03/21	
3339.2	REDONDO HARBOR LIGHT	LT EXT	18744	LA-0181-18	52/18	
3400	El Segundo NRG Energy Buoy 6ES	SINKING	18744	LA-0153-21	39/21	
3420	Hyperion Lighted Gong Buoy 10 ES	LT EXT	18744		16/20	
4401	Richardson Bay Daybeacon 8	DAYMK DMGD	18653		15/20	
4402	Richardson Bay Daybeacon 9	STRUCT DMGD	18649	SF-0086-18	23/18	
4576	South Beach Harbor North Entrance Light 2	LT EXT	18650	SF-0047-21	11/21	
4577	South Beach Harbor North Entrance Light 1	LT EXT	18650	SF-0046-21	10/21	
4578	South Beach Harbor South Entrance Light 1	LT EXT	18650	SF-0091-20	33/20	
4826	Bay Farm Island Light 1	LT EXT	18650	SF-0014-19	05/19	
4826.15	Bay Farm Island Light 3	LT EXT	18650	SF-0014-19	04/19	
4826.2	Bay Farm Island Light 4	LT EXT	18650	SF-0136-21	44/21	
4827.1	Anchorage 9 Lighted Mooring Buoy A	LT EXT	18650	SF-0012-20	04/20	
4828.1	Anchorage 9 Lighted Mooring Buoy B	LT EXT	18650	SF-0013-20	04/20	
5661	Southampton Shoal Outfall Lighted Buoy 1	LT EXT/RAC INOP	18653	SF-0026-19	07/19	
5661	Southampton Shoal Outfall Lighted Buoy 1	MISSING/TRLB	18653	SF-0029-20	18/21	
5662	Southampton Shoal Outfall Lighted Buoy 2	LT EXT	18653	SF-0059-21	14/21	
5877.2	San Rafael Rock Quarry Mooring Buoy C	MISSING	18653		36/18	
6623	New York Slough Koch West Light	LT IMCH			39/18	
6624	New York Slough Koch East Light	LT EXT			39/18	
6645.5	Delta Diablo Outfall Lighted Buoy	LT EXT		SF-0005-22	02/22	
8325	Pacific Gas and Electric Dike Light	LT EXT	18622	HB-0009-21	20/21	

**DISCREPANCIES (PRIVATE AIDS) CORRECTED**

LLNR	Aid Name	Status	Chart No.	BNM Ref.	LNM St	LNM End
------	----------	--------	-----------	----------	--------	---------

None

PLATFORM DISCREPANCIES

Name	Status	Position	BNM Ref.	LNM St	LNM End
------	--------	----------	----------	--------	---------

None

PLATFORM DISCREPANCIES CORRECTED

Name	Status	Position	BNM Ref.	LNM St	LNM End
------	--------	----------	----------	--------	---------

None

SECTION III - TEMPORARY CHANGES and TEMPORARY CHANGES CORRECTED

This section contains temporary changes and corrections to Aids to Navigation for this edition. When charted aids are temporarily relocated for dredging, testing, evaluation, or marking an obstruction, a temporary correction shall be listed in Section IV giving the new position.

TEMPORARY CHANGES

LLNR	Aid Name	Status	Chart No.	BNM Ref.	LNM St	LNM End
280	Point Sur Light	Reduced Intensity	18680	SF-0105-20	35/20	

TEMPORARY CHANGES CORRECTED

LLNR	Aid Name	Status	Chart No.	BNM Ref.	LNM St	LNM End
------	----------	--------	-----------	----------	--------	---------

None

PLATFORM TEMPORARY CHANGES

Name	Status	Position	BNM Ref.	LNM St	LNM End
------	--------	----------	----------	--------	---------

None

PLATFORM TEMPORARY CHANGES CORRECTED

Name	Status	Position	BNM Ref.	LNM St	LNM End
------	--------	----------	----------	--------	---------

None

SECTION IV - CHART CORRECTIONS

This section contains corrections to federally and privately maintained Aids to Navigation, as well as NOS corrections.

This section contains corrective actions affecting chart(s). Corrections appear numerically by chart number, and pertain to that chart only. It is up to the mariner to decide which chart(s) are to be corrected. The following example explains individual elements of a typical chart correction.

Chart Number	Chart Edition	Edition Date	Last Local Notice to Mariners	Horizontal Datum Reference	Source of Correction	Current Local Notice to Mariners
12327	91st Ed.	19-APR-97	Last LNM: 26/97	NAD 83		27/97
Chart Title: NY-NJ-NEW YORK HARBOR - RARITAN RIVER						
Main Panel 2245 NEW YORK HARBOR						
(Temp)	ADD	NATIONAL DOCK CHANNEL BUOY 3			CGD01	074-02-48.001W
		Green can				
	Corrective Action	Object of Corrective Action			Position	

(Temp) indicates that the chart correction action is temporary in nature. Courses and bearings are given in degrees clockwise from 000 true. Bearings of light sectors are toward the light from seaward. The nominal range of lights is expressed in nautical miles (NM) unless otherwise noted.

**18643**      **18th Ed.**      **01-DEC-09**      **Last LNM: 21/12**      **NAD 83**      **25/22**

Chart Title: Bodega and Tomales Bays; Bodega Harbor

Main Panel 1817 BODEGA AND TOMALES BAYS. Page/Side: N/A

LAST EDITION	No new editions of chart 18643 will be published. It will be canceled on 05-Oct-22. Comparable or larger scale Electronic Navigational Chart (ENC) coverage is available. See "Cancellation of NOAA Paper and Raster Nautical Charts" in Section I of this LNM for details. A list of all canceled	NOS	--	--
--------------	--	-----	----	----

<b>18645</b>	<b>28th Ed.</b>	<b>01-MAY-13</b>	<b>Last LNM: 09/21</b>	<b>NAD 83</b>	<b>25/22</b>
<i>ChartTitle: Gulf of the Farallones;Southeast Farallon</i>					
<b>Main Panel 1819 GULF OF THE FARALLONES. Page/Side: N/A</b>					
LAST EDITION	No new editions of chart 18645 will be published. It will be canceled on 05-Oct-22. Comparable or larger scale Electronic Navigational Chart (ENC) coverage is available. See "Cancellation of NOAA Paper and Raster Nautical Charts" in Section I of this LNM for details. A list of all canceled NOAA charts is at <a href="https://www.charts.noaa.gov/MCD/Dole.shtml">https://www.charts.noaa.gov/MCD/Dole.shtml</a> .				NOS --
<b>18651</b>	<b>45th Ed.</b>	<b>01-DEC-13</b>	<b>Last LNM: 28/19</b>	<b>NAD 83</b>	<b>25/22</b>
<i>ChartTitle: San Francisco Bay-southern part;Redwood Creek.;Oyster Point</i>					
<b>Main Panel 1826 SAN FRANCISCO BAY SOUTHERN PART. Page/Side: N/A</b>					
LAST EDITION	No new editions of chart 18651 will be published. It will be canceled on 05-Oct-22. Comparable or larger scale Electronic Navigational Chart (ENC) coverage is available. See "Cancellation of NOAA Paper and Raster Nautical Charts" in Section I of this LNM for details. A list of all canceled NOAA charts is at <a href="https://www.charts.noaa.gov/MCD/Dole.shtml">https://www.charts.noaa.gov/MCD/Dole.shtml</a> .				NOS --
<b>18657</b>	<b>19th Ed.</b>	<b>01-NOV-05</b>	<b>Last LNM: 30/19</b>	<b>NAD 83</b>	<b>25/22</b>
<i>ChartTitle: Carquinez Strait</i>					
<b>Main Panel 1850 CARQUINEZ STRAIT. Page/Side: N/A</b>					
LAST EDITION	No new editions of chart 18657 will be published. It will be canceled on 05-Oct-22. Comparable or larger scale Electronic Navigational Chart (ENC) coverage is available. See "Cancellation of NOAA Paper and Raster Nautical Charts" in Section I of this LNM for details. A list of all canceled NOAA charts is at <a href="https://www.charts.noaa.gov/MCD/Dole.shtml">https://www.charts.noaa.gov/MCD/Dole.shtml</a> .				NOS --
<b>18721</b>	<b>12th Ed.</b>	<b>01-DEC-09</b>	<b>Last LNM: 28/20</b>	<b>NAD 83</b>	<b>25/22</b>
<i>ChartTitle: Santa Cruz Island to Purisima Point</i>					
<b>Main Panel 1881 SANTA CRUZ ISLAND TO PURISIMA POINT. Page/Side: N/A</b>					
LAST EDITION	No new editions of chart 18721 will be published. It will be canceled on 05-Oct-22. Comparable or larger scale Electronic Navigational Chart (ENC) coverage is available. See "Cancellation of NOAA Paper and Raster Nautical Charts" in Section I of this LNM for details. A list of all canceled NOAA charts is at <a href="https://www.charts.noaa.gov/MCD/Dole.shtml">https://www.charts.noaa.gov/MCD/Dole.shtml</a> .				NOS --

**SECTION V - ADVANCE NOTICES**

This section contains advance notice of approved projects, changes to aids to navigation, or upcoming temporary changes such as dredging, etc. Mariners are advised to use caution while transiting these areas.

**SUMMARY OF ADVANCED APPROVED PROJECTS**

<b><u>Approved Project(s)</u></b>	<b><u>Project Date</u></b>	<b><u>Ref. LNM</u></b>
None		
<b><u>Advance Notice(s)</u></b>		
None		

**SECTION VI - PROPOSED CHANGES**

Periodically, the Coast Guard evaluates its system of aids to navigation to determine whether the conditions for which the aids to navigation were established have changed. When changes occur, the feasibility of improving, relocating, replacing, or discontinuing aids are considered. This section contains notice(s) of non-approved, proposed projects open for comment. SPECIAL NOTE: Mariners are requested to respond in writing to the District office unless otherwise noted (see banner page for address).

**PROPOSED WATERWAY PROJECTS OPEN FOR PUBLIC COMMENT**

<b><u>Proposed Project(s)</u></b>	<b><u>Closing</u></b>	<b><u>Docket No.</u></b>	<b><u>Ref. LNM</u></b>
None			

**Proposed Change Notice(s)****NORTHERN CALIFORNIA-MOSS LANDING HARBOR ENTRANCE RANGE –INTENSITY DECREASE**

The U.S. Coast Guard has temporarily decreased the visual range of Moss Landing Harbor Entrance Range Front Light (LLNR 4005) from 10

nautical miles to 5 nautical miles and Moss Landing Harbor Entrance Range Rear Light (LLNR 4005) from 11 nautical miles to 6 nautical miles. Intensity reported to be disrupting mariners due to brightness. Request public input regarding this change as the Coast Guard proposes to make it permanent. Please direct questions, comments, or concerns to LT Miranda Brumbaugh at 510-437-2978 or [Miranda.E.Brumbaugh@uscg.mil](mailto:Miranda.E.Brumbaugh@uscg.mil).

Chart 18685

LNM: 09/22

#### **SOUTHERN CALIFORNIA-MORRO BAY-SOUND SIGNAL**

The U.S. Coast Guard is planning to install a Mariner Radio Activated Sound Signal (MRASS) device on Morro Bay West Breakwater Light (LLNR 240). This device will allow the mariner to activate the installed sound signal by keying on a VHF-FM radio microphone six times at the designated frequency for the AtoN (83A). Please direct questions, comments, or concerns no later than September, 2022 to LT Miranda Brumbaugh at 510-437-2983 or [Miranda.E.Brumbaugh@uscg.mil](mailto:Miranda.E.Brumbaugh@uscg.mil).

Charts: 18700 18703

LNM: 25/22

---

### **SECTION VII - GENERAL**

This section contains information of general concern to the Mariners. Mariners are advised to use caution while transiting these areas.

---

#### **2021 COAST GUARD LIGHT LIST AVAILABILITY**

2021 Light Lists are available on the USCG Navigation Center's website at: <http://www.navcen.uscg.gov/?pageName=lightLists>. Coast Guard Light Lists are a means for communicating aids to navigation information to the maritime public. Local Notice to Mariners will continue to advise Light List corrections and NAVCEN will continue to publish a compilation of corrections. Complete versions of the 2021 Light Lists are updated weekly on the NAVCEN website and mariners should download applicable copies and updates as needed at:

<http://www.navcen.uscg.gov/?pageName=lightListWeeklyUpdates>. A summary of weekly 2021 Light List corrections are available at: <https://www.navcen.uscg.gov/?pageName=lightListCorrections>.

LNM: 03/21

#### **ARIZONA/NEVADA-COLORADO RIVER-BRIDGE**

NEW LAUGHLIN-BULLHEAD CITY BRIDGE-In-water work continues on construction of the new bridge in position 35-03-17N 114-36-45W. Work will take place Monday through Friday, 0630 to 1430, through 03 Oct 23. A cofferdam has been installed on the Arizona side of the river to facilitate construction of Arizona side piers and abutment. Once completed the cofferdam will be removed and installed on the Nevada side of the river which will facilitate the construction of the Nevada side piers and abutment. When in place the cofferdams will be lighted at night with four red lights, visible at 2,000 yards by approaching vessels (see [Cofferdam-Lighting\\_Laughlin-BH.pdf](#) at the end of this notice). Precast girders will be installed once construction of the respective abutments and piers are complete. Precast girders will be install over the middle of the river at the late stages of construction. Approximately 70 feet of horizontal clearance will be provided in the center of the river during construction. For further information contact the Coast Guard Bridge Office at 510-437-3515.

LNM: 50/21

#### **NORTHERN CALIFORNIA – POINT ORIENT-WHARF DEMOLITION**

Power Engineering Construction Co. will be performing demolition operations from until 30 November, 2023 in the vicinity of Point Orient, Richmond. Work is being conducted Monday through Thursday 6:00am to 4:00pm in the vicinity of the Point Orient Wharf at 37-57-22N 122-25-43W. Operations will be conducted with derrick barges DB ALAMEDA, DB CHALLENGER, and various flat barges. The barges will be either spudded down or anchored using a four-point mooring system with buoys. All vessels and equipment on site will be monitoring VHF-FM Chan. 67 and 68. Mariners are advised to use caution when transiting the area. For more details or comments contact Bennett Clegg at (415) 559-0089.

Chart 18654

LNM: 16/22

#### **NORTHERN CALIFORNIA-BODEGA BAY-SAFETY ZONE**

The Sector San Francisco Captain of the Port (COTP) established a Safety Zone in the Bodega Bay at 38-16-54N 122-59-37W. The Safety Zone is within a 100' radius of the F/V American Challenger, and a 100 yard radius of all salvage vessels, machinery, and personnel. The Safety Zone will remain in effect until 31 July, 2022, unless advertised otherwise. Mariners are not permitted in the Safety Zone without permission of the COTP. For more details or comments contact Sector San Francisco Command Center at (415) 399-3547 or [SectorSanFranciscoCommandCenter@uscg.mil](mailto:SectorSanFranciscoCommandCenter@uscg.mil).

Chart 18643

LNM: 24/22

#### **NORTHERN CALIFORNIA-CARQUINEZ STRAIT-BRIDGE**

UPSTREAM AND DOWNSTREAM BENICIA-MARTINEZ HIGHWAY (I-680) BRIDGES-Work is in progress on the replacement-in-kind of all navigation lights, fog horns and RACON of the two bridges. Work will take place Monday through Friday during daylight hours through 01 July, 2022. A 21' aluminum boat, the M/V BATES RULES will be tied off of various piers during the work. At no time will the vessel be working in main navigation span of either the upstream or downstream bridge. To ascertain the location of the M/V BATES RULES mariners can hail it on VHF-FM Channel 16 or 9, 13, or 14 or call 510-557-1507. The vessel can be moved for navigational safety if at least 15 minutes notice is given to the M/V BATES RULES. For further information contact the Coast Guard Bridge Office at 510-437-3516.

Chart 18656

LNM: 25/22

#### **NORTHERN CALIFORNIA-DELTA & RIVERS-AMERICAN RIVER-BRIDGE**

CAPITAL CITY HWY (Route 51) BRIDGE-Caltrans is conducting rehabilitation of the bridge through 27 June, 2025. Work will be conducted during daylight hours, 7am to 5:30pm, Monday through Friday, and will include the use of barges, work boats, tugboats, turbidity curtains, and access piers. (See [AmRiv\\_SiltCurtain\\_BargeLocation.pdf](#) in the enclosure section.). During the workday, barges can be moved for the safety of navigation with one hour notice to the contractor via VHF-FM CH 16 or by cell at 916-532-8208. Mariners should contact the contractor before transiting the bridge to determine location of turbidity curtains. Barges will be unmanned and moored at their work locations overnight. Each corner of each barge will be lighted at night with steady burning red lights. At least 25 feet of horizontal clearance for navigation will be available at all times. Mariners are requested to transit the area with caution. For further information, contact the Coast Guard Bridge Office at 510-437-3461.

Chart 18662

LNM: 23/22

**NORTHERN CALIFORNIA-DELTA & RIVERS-NAPA RIVER-BRIDGE**

STATE ROUTE 37 BRIDGE-The upriver green center channel light is extinguished. Estimated time of repair unknown. For further information contact the Coast Guard Bridge Office at 510-437-3514.

Chart 18654

LNM: 23/22

**NORTHERN CALIFORNIA-DELTA & RIVERS-OLD RIVER-BRIDGE**

BNSF RAILROAD DRAWBRIDGE-From 01 July through 30 September, 2022, Monday through Friday, 6:00am to 6:30pm, BNSF's contractor will be replacing the fenders at piers 2 and 3. One 60' X 80' flexi float barge and one 35' X 110' material barge will be spudded down at the piers (See BNSF\_OldRiver\_Barge\_Lighting.pdf in the enclosure section). During work hours the barges will be in the main navigation span of the bridge and can be moved for the safety of navigation with one hour advanced notice to the contractor at 209-391-5461. After working hours the unmanned barges will be moved behind the wingwall of the pier protection out of the navigation span. Mariners are requested to transit the area with caution. For conditions at the bridge mariners can contact the contractor at 209-391-5461. For further information contact the Coast Guard Bridge Office at 510-437-3515.

Chart 18661

LNM: 19/22

**NORTHERN CALIFORNIA-DELTA & RIVERS-OLD RIVER-BRIDGE**

ROUTE 4 HIGHWAY BRIDGE- Caltrans is requesting to secure the swing span in the closed-to-navigation position from 29 October, 2022 through 26 April, 2023. This temporary operating schedule change will allow Caltrans to conduct critical mechanical and electrical rehabilitation of the bridge. Vessels that can transit the bridge in the closed-to-navigation position may continue to do so during this proposed project. During this time frame, the drawspan will not be able to open for emergencies.

Interested parties are requested to express their views, in writing, on the proposed temporary operating schedule change by submitting comments no later than 14 July, 2022 to Commander (dpw), Eleventh Coast Guard District, Coast Guard Island, Bldg. 50-2, Alameda, CA 94501-5100; or by e-mail at Chris.G.Cerles@uscg.mil.

Chart 18661

LNM: 24/22

**NORTHERN CALIFORNIA-DELTA & RIVERS-OLD RIVER-BRIDGE**

ROUTE 4 HIGHWAY BRIDGE-The swing span of the bridge is secured in the closed-to-navigation position due to mechanical failure. Estimated time of repair is unknown. For further information contact the Coast Guard Bridge Office at 510-437-3515.

Chart 18661

LNM: 20/22

**NORTHERN CALIFORNIA-DELTA & RIVERS-PETALUMA RIVER-BRIDGE**

SMART BLACKPOINT RAILROAD DRAWBRIDGE-The upstream fender system protecting the swing span has been destroyed and does not offer protection for vessels or the bridge. Repairs to the fender system are anticipated to begin on 01 September, 2022. Mariners are urged to use caution while transiting the bridge. For more details or comments contact the Coast Guard Bridge Office at 510-437-3516.

Chart 18654

LNM: 13/22

**NORTHERN CALIFORNIA-DELTA & RIVERS-SACRAMENTO RIVER-BRIDGE**

RIO VISTA DRAWBRIDGE-TRAFFIC GATE INSTALLATION-Temporary platforms are installed beneath low steel of the bridge in spans 2 and 8 reducing vertical clearance in those spans by no more than 4 feet. The upriver and downriver temporary platforms and associated support cables are lit at night with steady burning red lights (see RVBridge\_PlatformCable\_Lighting.pdf enclosure at the end of this notice.) At no time will the lift span of the bridge be impacted. Mariners are urged to use alternate spans of the bridge. For conditions at the bridge, mariners can contact the contractor at 925-260-2104 or 925-260-1884. For further information contact the Coast Guard Bridge Office at 510-437-3516.

Chart 18661

LNM: 45/20

**NORTHERN CALIFORNIA-DELTA & RIVERS-SACRAMENTO RIVER-BRIDGE**

RIO VISTA DRAWBRIDGE-The lift span will open on signal, Monday through Friday, 6 am to 6 pm, if at least 4-hours' notice is given to the bridge tender through 24 June, 2022. For further information contact the Coast Guard Bridge Office at 510-437-3516.

Chart 18661

LNM: 23/22

**NORTHERN CALIFORNIA-DELTA & RIVERS-SAN JOAQUIN RIVER-BRIDGE**

AVAILABILITY OF PUBLIC NOTICE- All interested parties are notified that the U.S. Coast Guard, as the lead federal agency, announces the availability of a draft Environmental Assessment for public review and comment in accordance with the National Environmental Policy Act of 1969 and Section 106 of the National Historic Preservation Act for the proposed Port of Stockton Rail Bridge Replacement and Rail Improvements Project (the Project), at the Port of Stockton, San Joaquin County, California.

The Project includes replacing the rail bridge over the San Joaquin River and constructing a new lead track.

Public Notice (11-157a), dated June 9, 2022, is being published on the Coast Guard Navigation Website. Interested parties may access the public notice at; Active Public Notices for Bridge Projects for the Eleventh Coast Guard District at web site <https://go.usa.gov/xJ8yw> or the Coast Guard Office of Bridge Programs Projects web site at <https://go.usa.gov/xuGjD> or by calling the Eleventh Coast Guard District Bridge Office at (510) 437-3516, by writing to; Commander (dpw), Eleventh Coast Guard District, Coast Guard Island, Bldg. 50-2, Alameda, CA 94501-5100; by email request at Carl.T.Hausner@uscg.mil; or by facsimile request at (510) 437-5836.

Interested parties are requested to express their views, in writing, on the proposed project's possible environmental impacts, including impacts on minority and/or low income populations. Comments will be received at the Eleventh Coast Guard District, Bridge Office, at the address given in the letterhead through July 11, 2022.

Chart 18661

LNM: 23/22

**NORTHERN CALIFORNIA-DELTA & RIVERS-SAN JOAQUIN RIVER-BRIDGE**

CROWS LANDING ROAD-Replacement of the bridge is ongoing. Work is being conducted Monday through Friday 0600 to 1600 through 01 Aug 23. A temporary bridge, with a removable span, will be installed to facilitate construction. With the span removed, the temporary bridge will provide, at a minimum, 15 feet of horizontal clearance. The span will be removed after normal working hours. Temporary falsework will be installed to facilitate construction. The temporary falsework's navigation span will provide 17 feet of vertical clearance at Ordinary High Water when the temporary

**NORTHERN CALIFORNIA-DELTA & RIVERS-SAN JOAQUIN RIVER-BRIDGE**

bridge's removable span is removed. Upriver and downriver red channel margin lights and green center channel lights will mark the temporary navigation span at night. To view the temporary navigation span and lighting, see the Temporary\_Bridge\_Falsework\_Lighting.pdf enclosure at the end of this notice. Mariners are requested to use extreme caution when transiting the work site. For conditions at the project site mariners can contact the contractor at 916-869-8210 or 559-593-5182. For further information contact the Coast Guard Bridge Office at 510-437-3461.

LNM: 46/21

**NORTHERN CALIFORNIA-HALF MOON BAY-SUNKEN VESSEL**

The Coast Guard received a report of a sunken towing vessel in the Pillar Point Harbor at position 37-29-42N 122-29-35W. The T/V CALEB is 94' long, with approximately 3/4 of the vessel visible above the waterline. The vessel is situated on the western side of the harbor with yellow boom surrounding it. Mariners are advised to exercise due caution while transiting in the area. For more details or comments contact LT William Harris at 415-399-7443 or SFWaterways@uscg.mil.

Chart 18645

LNM: 23/22

**NORTHERN CALIFORNIA-HUMBOLDT BAY-DREDGE OPERATIONS**

Manson Construction Co. will conduct dredge operations in Humboldt Bay, CA until 8 July, 2022, 24 hrs daily. Operations will take place from Humboldt Bay Bar Station 0+00 to the entrance channel at station 165+00. Dredged materials will be disposed of at the Hoods disposal site. D/B BAYPORT and M/V LEAH T will be on scene and monitoring VHF-FM Chan. 13, 16 and 66. Mariners are requested to transit the area with caution. For more details or comments contact Madeline Brisson at 904-832-0144 or Ben Herbay at 904-716-4154.

Chart 18622

LNM: 23/22

**NORTHERN CALIFORNIA-MARE ISLAND DRY DOCK-VALLEJO-DREDGE OPERATIONS**

The Dutra Group will be conducting dredging operations at the Mare Island Dry Dock in Vallejo, CA at 37-48-33N 122-24-26W, 24 hours a day, 7 days a week until 30 June, 2022. All dredged material will be disposed of at Montezuma Wetlands at 38-04-34N 121-50-30W. DB 24, 05 split hull scows, along with tender tug BECKY T or PHYLLIS T will be conducting the dredge operations. All vessels will monitor VHF-FM Chan. 13, 14, and 80. Mariners are requested to transit the area with caution. For more details or comments contact Dennis Salyers at 415-497-5289.

Chart 18655

LNM: 24/22

**NORTHERN CALIFORNIA-MONTEREY BAY-DIVING OPERATIONS**

Power Engineering Construction Co. will be conducting diving operations until 31 October, 2022. Work is being conducted Monday through Friday 6:00am to 5:00pm in the vicinity of the Monterey Bay Aquarium at 36-37-14N 121-53-58W. The M/V WEBSTER will be on site monitoring VHF-FM Chan. 68. Mariners are advised to use caution when transiting the area. For more details or comments contact Allen Deaver, diving superintendent 510-932-7752.

Chart 18685

LNM: 16/22

**NORTHERN CALIFORNIA-MONTEREY-MONTEREY HARBOR LIGHT 6**

The U.S. Coast Guard is seeking data on the importance of the Sound Signal located at Monterey Harbor Light 6, Light List number 3970, in position 36-36-30.542N 121-53-22.947W. Comments concerning this Aid to Navigation can be sent to Sector San Francisco Waterways Safety Office at SFWaterways@uscg.mil.

Chart 18685

LNM: 02/22

**NORTHERN CALIFORNIA-MONTEZUMA SLOUGH-BRIDGE**

GRIZZLY ISLAND ROAD BRIDGE-The west side green center channel light is extinguished. Estimated time of repair unknown. For further information contact the Coast Guard Bridge Office at 510-437-3514.

Chart 18656

LNM: 23/22

**NORTHERN CALIFORNIA-MOSS LANDING-WAVEGLIDER DATA COLLECTION**

Monterey Bay Aquarium Research Institute (MBARI) is conducting 24 hours per day 7 days a week autonomous, unmanned maritime vehicle operations of two Liquid Robotics, Inc. Wavegliders until 31 December, 2022. Vehicles will be deployed in the vicinity of Moss Landing that will operate continuously between latitudes 35-07-14N and 37-12-00N and will extend shoreward as far West as 122-58-35W. Operations consist of scientific ocean data collection. The Waveglider carries no fuel, lubricants or hydrocarbons. It is wave powered and remotely attended from MBARI, moving at speeds of 1kt, and designed to give way or part if encountered by a vessel. It is approximately 8' x 2' (surfboard size), yellow in color, with a contact plaque and mast extending 3' above the water surface, supporting a flag. Mariners are requested to transit the area with caution. For more details or comments contact MBARI at 831-775-1700, waveglider@listserver.mbari.org or Liquid Robotics 24/7 WGOC Operations at 888-574-4574.

Charts: 18680 18685

LNM: 51/21

**NORTHERN CALIFORNIA-NEW YORK SLOUGH-MARINE CONSTRUCTION**

CS Marine Constructors, Inc. will be conducting pile driving & marine construction operations at the former Gaylord Paper Facility 38-00-58N 121-46-31W located at New York Slough in Antioch, CA during daylight hours until 31 Dec 22. Operations will be conducted with derrick barges DB CARQUINEZ, DB MARE ISLAND and DB STEADFAST along with various flat barges. The barges will be either spudded down or anchored using a four-point mooring system marked with 5ft crown buoys. The buoys will be lighted at night with flashing white strobes. All vessels and equipment will be monitoring VHF-FM CHAN 8, 13 and 14. Mariners are request to transit the area with caution. For more details or comments contact Jeff Thompson at (510)719-1246.

Chart 18661

LNM: 42/21

**NORTHERN CALIFORNIA-OAKLAND INNER HARBOR-BRIDGE**

FRUITVALE AVE RAILROAD BRIDGE-The lift span of the railroad bridge is kept in the partially opened position providing 80 feet of vertical clearance at mean high water. When the lift span of the railroad bridge is in the partially open position and the bascule span of the adjacent highway bridge is in the closed position, the lift span will show two red 180-degree center span lights on the upstream and downstream lower edge of the span. When the bascule span of the highway bridge is in the fully opened position, the lift span of the railroad bridge will show two 360-degree green lights, providing a range for the centerline of the channel between both highway and railroad bridges. For further information contact the Coast Guard Bridge Office at 510-437-3516.

**NORTHERN CALIFORNIA-OAKLAND INNER HARBOR-BRIDGE**

Chart 18649

LNM: 47/21

**NORTHERN CALIFORNIA-OCEAN BEACH-GEOPHYSICAL SURVEY**

USGS Pacific Coastal and Marine Geology Science Center (PCMSC) is conducting geophysical surveys in the vicinity of Ocean Beach, CA from 24 June, 2022 until 30 September, 2022 during daylight hours. Operations will be bounded by the following coordinates:

37-46-37N 122-31-48W

37-42-36N 122-31-48W

37-46-37N 122-30-11W

37-42-36N 122-30-11W

A bathymetric survey utilizing two personal watercraft will be used to conduct the operations. Mariners are requested to transit the area with caution. For more details or comments contact Tim Elfers at 831-460-7479.

Charts: 18640 18649

LNM: 24/22

**NORTHERN CALIFORNIA-OFFSHORE HALF MOON BAY-OCEANOGRAPHIC OPERATIONS**

Sofar Ocean Technologies will be conducting oceanographic operations until 05 July, 2022, offshore Half Moon Bay at 37-30-00N 122-31-57W. Operations will consist of the testing of oceanographic buoy systems by a 19 foot C-Dory and they will be monitoring VHF-FM Chan. 16. Mariners are requested to transit the area with caution. For more details or comments contact Cameron Dunning at 415-912-6858.

LNM: 51/21

**NORTHERN CALIFORNIA-OFFSHORE MONTEREY BAY-UNDERWATER OPERATIONS**

Reef Check Foundation have deployed underwater equipment offshore Monterey Bay, CA within the following coordinates:

36-36-17N 121-52-46W

36-36-18N 121-52-49W

36-36-15N 121-52-50W

36-36-14N 121-52-46W

All equipment will be established until 24 Mar 24. Mariners are requested to transit the area with caution and avoid anchoring within the coordinates listed above. For more details or comments contact Dan Abbot at 510-684-7835.

Chart 18685

LNM: 12/21

**NORTHERN CALIFORNIA-OFFSHORE SAN FRANCISCO-OCEANOGRAPHIC OPERATIONS**

Sofar Ocean Technologies will be conducting oceanographic operations until 15 December, 2022, offshore of Ocean Beach, CA. A 19 foot C-Dory will be deploying a buoy at 37-43-58N 122-33-12W and 37-43-29N 122-32-52W. The buoys are yellow in color and FI (Y) 2.5s. The C-Dory will be monitoring VHF-FM Chan. 16. Mariners are requested to transit the area with caution. For more details or comments contact Cameron Dunning at 415-912-6858.

Chart 18645

LNM: 23/22

**NORTHERN CALIFORNIA-OFFSHORE-COMMERCIAL SALMON FISHERIES**

Effective June 10, 2022, at 12:01 am. The Chinook Salmon landing and possession limit for the commercial salmon fishery in the area North of Cape Falcon is 25 Chinook per vessel per landing week (Thursday - Wednesday).

Effective June 15, 2022 at 11:59 pm. The commercial salmon fishery in the area North of Cape Falcon is closed through June 30, 2022.

Charts: 18600 18620 18640

LNM: 24/22

**NORTHERN CALIFORNIA-PORT OF BENICIA-MARINE CONSTRUCTION**

The Dutra Group is conducting marine construction at the Port of Benicia until 15 September, 2022. Operations will consist of emergency dock repairs and will be bounded by the following coordinates:

38-02-45N 122-07-44W

38-02-39N 122-07-38W

38-02-19N 122-08-17W

38-02-26N 122-08-22W

Crane Barge #12 will be in the area and monitoring VHF-FM Chan. 9, 16 and 68A. The upstream and downstream corners of each barge will be lighted at night with steady burning red lights. Mariners are requested to transit the area with caution. For more details or comments contact Scott Brooks at 707-333-5029.

Charts: 18655 18657

LNM: 22/22

**NORTHERN CALIFORNIA-SACRAMENTO RIVER-REDUCED VERTICAL CLEARANCE**

Overhead power cables upstream of Sacramento River at 38-03-54N 121-47-09W have a reported reduced vertical clearance to 119.5'.

LNM: 22/16

**NORTHERN CALIFORNIA-SACRAMENTO RIVER-SUNKEN VESSEL**

The Coast Guard received a report of a sunken house boat in the vicinity of Elkhorn Regional Park in the Sacramento River at position 38-39-13N 121-36-09W. Approximately 1/3 of the vessel is visible above the waterline and it is situated in the middle of the channel. Sacramento County Sheriff's Department plans to remove the vessel by 30 June, 2022. Mariners are advised to exercise due caution while transiting the area. For more details or comments contact LT Miranda Brumbaugh at 510-437-2978 or Miranda.E.Brumbaugh@uscg.mil.

Charts: 18662 18664

LNM: 23/22

**NORTHERN CALIFORNIA-SAN FRANCISCO BAY-BRIDGE**

WESTERN SPAN SAN FRANCISCO-OAKLAND BAY BRIDGE-Fender repairs are being conducted through 15 July, 2022, Monday through Friday, during daylight hours at piers B, C, D, and E. The 150' X 54' Crane Barge Kelso will be anchored at various locations during the work (See SFOBBTemporaryBargeLocations.pdf in the enclosure section). The barges will be left on-scene, unmanned, after normal working hours. During the work day the barge can be moved for the safety of navigation with two hours advanced notice. After working hours the barge can be moved for the safety of navigation with six hours advanced notice. Barges, anchors and anchor lines will not impede the D-E shipping channel during work.

Mariners are requested to transit the area with caution. For on-site conditions, mariners can contact the contractor at 415-720-3807 or Caltrans at

**NORTHERN CALIFORNIA-SAN FRANCISCO BAY-BRIDGE**

510-867-4545. For further information contact the Coast Guard Bridge Office at 510-437-3515.

Chart 18649

LNM: 15/22

**NORTHERN CALIFORNIA-SAN FRANCISCO BAY-BRIDGE**

GOLDEN GATE BRIDGE-Four 54' temporary under deck platforms; two 475' and 2,075' north of the south tower, and two 175' and 675' south of the north tower have been installed at the bridge. Temporary platforms reduce vertical clearance at the bridge by no more than 14'. The bridge's maintenance travelers are in use during the project and will remain outboard of the furthest north and furthest south temporary platforms. The temporary platforms and maintenance travelers are lighted at night with all-round red lights (see PlatformLighting\_GG\_Bridge\_14Jun22.pdf at the end of this notice). For navigational safety the maintenance travelers can be moved by contacting the Golden Gate Bridge at 415-923-2220. Work is being conducted Monday through Saturday, 0700-1700 and 2100-0500. For conditions at the bridge, mariners can contact the contractor at 415-716-0384. For more details or comments contact the Coast Guard Bridge Office at 510-437-3516.

Chart 18649

LNM: 24/22

**NORTHERN CALIFORNIA-SAN FRANCISCO BAY-BRIDGE**

RICHMOND-SAN RAFAEL BRIDGE-Concrete/steel repairs and cleaning of the bridge are in progress. Work is being conducted Monday through Friday, 0500 to 1700, through 01 May 23. Temporary underdeck platforms have been installed from the western shore to pier 33 and between piers 43-46 reducing vertical clearance in each span by three feet. The upstream and downstream lower edge of each temporary platform is lighted at night with steady burning red lights (see R-SR\_Bridge\_Temp\_Platform\_Lighting.pdf at the end of this notice.) Two 160' X 50' barges and one 110' X 32' barge are being used to assist in the installation of the platforms and for the blasting and painting. One barge has been secured to pier 8 and will be left on-scene, overnight, unmanned. The outboard corners of the barge at pier 8 is lighted at night with steady red lights. Barge "37" and barge "32" can be contacted on VHF-FM Ch. 16, 13 and 14. At no time will the work impede the east or west navigation spans or their auxiliary spans. For conditions at the bridge, mariners can contact the contractor at 860-904-8787 or 443-847-6286. For further information concerning this project contact the Coast Guard Bridge Office at 510-437-3515.

Chart 18653

LNM: 16/21

**NORTHERN CALIFORNIA-SAN FRANCISCO BAY-BRIDGE**

SAN MATEO/HAYWARD BRIDGE-Structural repairs to the superstructure of the bridge are complete. Work is continuing on the causeway portion of the bridge, east of pier 38, 0700 to 1530, Monday through Friday, through 11 May, 2023. Various size barges will be used during the project, the largest being a 100' X 20' flexifloat barge. During the work day, barges will either be spudded down or tied to the bridge piers, no anchors or anchor line will be utilized. After regular working hours the unmanned barge will be left on-site. For the safety of navigation, the barges can be moved with one-hour advance notice. For conditions at the bridge mariners can contact Golden State Bridge, Inc., on VHF-FM Marine Radio Channels 13, 14, and 16 or by cell phone at 707-246-0725, 925-260-2104, or 925-382-7288. For more details or comments contact the Coast Guard Bridge Office at 510-437-3515.

Chart 18651

LNM: 20/22

**NORTHERN CALIFORNIA-SAN FRANCISCO BAY-DETERIORATING CONCRETE PILINGS**

Deteriorating concrete pilings above and below the waterline are present in the vicinity of the the south edge of Southampton Shoal Light (LLNR 5480). Mariners are requested to transit the area with caution. For more details or comments contact LT Miranda Brumbaugh at 510-437-2978 or Miranda.E.Brumbaugh@uscg.mil.

Chart 18649

LNM: 23/15

**NORTHERN CALIFORNIA-SAN FRANCISCO BAY-ISLAIS CREEK-BRIDGE**

ILLINOIS STREET BRIDGE-The upstream and downstream south side red pier lights and bascule span lights are extinguished. Estimated time of repair, unknown. For further information contact the Coast Guard Bridge Office at 510-437-3514.

Chart 18649

LNM: 19/22

**NORTHERN CALIFORNIA-SAN FRANCISCO BAY-LOCH LOMOND MARINA-DREDGE OPERATIONS**

Salt River Construction Corporation is conducting dredge operations in Loch Lomond Marina at 37-58-15N 122-29-01W until 30 November, 2022. Dredge barge DB1 and Tug P CAY will be conducting operations and monitoring VHF-FM Chan. 13, 14 and 77. Mariners are requested to transit the area with caution. For more details or comments contact Rick Moseley at 415-435-1024.

Charts: 18649 18650

LNM: 24/22

**NORTHERN CALIFORNIA-SAN FRANCISCO BAY-OAKLAND INNER HARBOR-SHOALING**

Shoaling has been reported on the south side of Oakland Inner Harbor South Channel in the east passage through the Fruitvale Ave. Bridge. Mariners are requested to transit the area with caution and report any observed changes in shoaling conditions to the San Francisco VTS on VHF-FM Chan. 14. For more details or comments contact U.S. Coast Guard Sector San Francisco Waterways Management at 415-399-7443.

Chart 18650

LNM: 16/15

**NORTHERN CALIFORNIA-SAN FRANCISCO-RICHMOND OUTER HARBOR-DREDGE OPERATIONS**

The Corp of Engineers will conduct dredge operations in the Richmond Outer Harbor until 01 July, 2022. Dredge ESSAYONS will be on scene conducting operations and will dispose of dredged material at SF-10 (San Pablo Bay) and SF-11 (Alcatraz). DB ESSAYONS will be monitoring VHF-FM Chan. 13 and 16. Mariners are requested to transit the area with caution. For more details or comments contact the ESSAYONS Master at 503-709-8459 or 503-804-5546.

Charts: 18649 18650 18653 18655

LNM: 23/22

**NORTHERN CALIFORNIA-SAN JOAQUIN RIVER-MARINE CONSTRUCTION**

Shimmick Construction Company, Inc. (SCCI) is conducting marine construction for the Smith Canal Gate Project in the San Joaquin Deep Water Shipping Channel from 0600 to 1800 Monday through Saturday until 30 Dec 22. Operations will be conducted between the following coordinates:  
37-57-31N 121-21-11W  
37-57-25N 121-21-08W  
Staging Yard  
37-57-09N 121-19-55W



**NORTHERN CALIFORNIA-SAN JOAQUIN RIVER-MARINE CONSTRUCTION**

Mariners are requested to transit the area with caution. For more details or comments contact Tyler Shell at 510-393-0308.

Charts: 18661 18663

LNM: 28/20

**NORTHERN CALIFORNIA-SAN JOAQUIN RIVER-MARINE CONSTRUCTION**

California Department of Water Resources will be conducting construction of agricultural barriers until 30 Nov 22 at the following locations:

Old River near Tracy barrier 37-53-08N 121-28-56W

Middle River near Tracy Barrier 37-48-36N 121-32-35W

Grant Line Canal Barrier 37-49-10N 121-26-54W

A small aluminum boat will be on site for day to day operations. For more details or comments contact Bill McLaughlin 916-873-5748.

Chart 18661

LNM: 19/22

**NORTHERN CALIFORNIA-SAN LEANDRO BAY-BRIDGE**

BAY FARM ISLAND HIGHWAY BRIDGE-The south side lower slat on the fender system is missing. Mariners are urged to transit the bridge with caution. The bridge owner is in the process of designing a replacement pier protection system. For more details or comments contact the Coast Guard Bridge Office at 510-437-3514.

Chart 18649

LNM: 37/18

**NORTHERN CALIFORNIA-SAN PABLO BAY-PINOLE SHOAL CHANNEL-SHOALING**

On 17 May, 2022, a United States Army Corps of Engineers Channel Survey was conducted in the Pinole Shoal Channel. Shoaling mounds reduce 35ft projected depth within the channel at 38-03-01N 122-17-59W and 38-03-00N 122-17-16W. Draft restricted vessels should consider these locations during inbound and outbound transits.

Chart 18654

LNM: 23/22

**NORTHERN CALIFORNIA-SAN PABLO BAY-TORMEY-MARINE CONSTRUCTION**

The Dutra Group will be conducting marine construction to the Phillips 66 San Francisco Refinery located West of the Carquinez Bridge until 31 December, 2022, during daylight hours. Construction will be bounded by the following coordinates:

38-03-22N 122-15-52W

38-03-25N 122-15-33W

38-03-06N 122-15-34W

38-03-06N 122-15-39W

Crane barge 1 along with a work boat will be conducting operations and monitoring VHF-FM Chan. 9, 16, and 77. Mariners are requested to transit the area with caution. For more details or comments contact Nicholas Dino at 707-389-0505.

Charts: 18654 18655 18657

LNM: 23/22

**NORTHERN CALIFORNIA-SANTA CRUZ HARBOR-SHOALING**

There are hazardous and shoaled conditions in the Santa Cruz Harbor Channel Entrance. Mariners transiting the Santa Cruz Harbor should use caution for hazardous conditions of breaking surf and shoaling in the Santa Cruz Harbor entrance that may occur during all surf and tidal conditions. Mariners are highly advised not to transit the Santa Cruz Harbor Channel unless sea and tide conditions are suitable for your vessel's draft. Mariners may view soundings on the Santa Cruz Harbor at <https://www.santacruzharbor.org/entrance-soundings>. For more details or comments contact the Santa Cruz Harbor at 831-475-6161 or VHF-FM Chan. 9 and 16.

Chart 18685

LNM: 03/21

**NORTHERN CALIFORNIA-SUISUN BAY-MONTEZUMA SLOUGH-MARINE CONSTRUCTION**

The California Department of Water Resources advises that will be installing flashboards at the Suisun Marsh salinity control structure, located 2.2 nautical miles from the easterly end of Montezuma Slough at 38-05-36N 121-53-07W. Mariners are advised to use the boat lock. The boat lock signal is a standard traffic light and the operator will monitor VHF-FM Chan. 13. Mariners are requested to transit the area with caution. For more details or comments contact Ian Uecker at 916-574-2991.

Chart 18656

LNM: 34/21

**SAN DIEGO-OCEANOGRAPHIC SURVEY-OCEAN MONITORING**

The City of San Diego Marine Biology Lab is conducting year-round ocean monitoring sampling in the vicinity of the South Bay Ocean Outfall and Point Loma Ocean Outfall. The Ocean Monitoring Program conducts trawl sampling, benthic sampling with a double Van Veen sediment grab, vertical CTD casts and horizontal tows with an undulating underwater vehicle, ROV surveys and multiple moorings are deployed in the region below. Ocean sampling will be conducted in an area bound by the following coordinates:

32-31-54N 117-11-11W

32-32-10N 117-11-57W

32-32-03N 117-12-06W

32-32-33N 117-11-56W

32-40-10N 117-19-22W

32-40-04N 117-19-34W

32-39-37N 117-19-32W

32-39-56N 117-19-39W

32-40-10N 117-16-55W

The M/V OCEANUS and M/V MONITOR III when in the area will monitor VHF-FM Chan. 16. Mariners are requested to transit the area with caution. For more details or comments contact Adriano Feit at 619-758-2377 or 858-882-7055.

Charts: 18765 18772

LNM: 43/21

**SOUTHERN CALIFORNIA - SAN DIEGO - SURFACE OPERATIONS**

The U.S. Navy will be conducting operations until 30 June, 2022, between 12:00am – 11:59pm, 5 NM west of Mission Bay and 5 NM north of San Clemente Island. Research operations will be conducted deploying Unmanned Surface Vessels (USVs) from a 42-ft research vessel. Operations consist of scientific ocean data collection. The USV moves at approximately 1 knot and is designed to give way if encountered by a vessel. The USV is a Liquid Robotics wave glider. It is a surfboard size craft 10-ft long, 3-ft wide with only a few inches of freeboard. It has a 3-ft mast with orange flag and fixed all around white light. During these operations the research vessel and USV will be restricted in their ability to maneuver. The research

**SOUTHERN CALIFORNIA - SAN DIEGO - SURFACE OPERATIONS**

vessel will monitor VHF-FM Chan. 16. Mariners are requested to transit the area with caution and maintain a safe distance of 1000-yds from the vessel and USVs. For more details or comments contact Robert Rocha at 510-366-2000 or Anna Nguyen at 408-469-5041.

Chart 18740

LNLM: 09/22

**SOUTHERN CALIFORNIA-ALAMITOS BAY-BRIDGE**

APIAN WAY-The west side green center channel light is extinguished. For more information contact the Coast Guard Bridge Office at 510-437-3514.

Chart 18749

LNLM: 15/22

**SOUTHERN CALIFORNIA-GULF OF SANTA CATALINA-POINT LOMA-OCEANOGRAPHIC OPERATIONS**

The Scripps Institution of Oceanography research vessel ROBERT GORDON SPROUL (Call Sign WSQ-2674) will conduct surface to floor oceanographic operations on 30 June, 2022 at 32-38-00N 117-16-00W and 32-40-00N 117-21-00W. During over-the-side operations, R/V ROBERT GORDON SPROUL will be restricted in ability to maneuver. R/V ROBERT GORDON SPROUL will be monitoring VHF-FM chan. 13 and 16. Mariners are requested to transit the area with caution. For more comments or details contact Wes Hill at 858-534-5568.

Chart 18765

LNLM: 25/22

**SOUTHERN CALIFORNIA-LONG BEACH-ALAMITOS BEACH-BUOY DEPLOYMENT**

The City of Long Beach, CA will be deploying 3 buoys that will attach to an inflatable playground at Alamitos Beach until 30 June, 2022. The area will be between 33-45-45N 118-10-40W and 33-45-45N 118-10-39W. The M/V TORTUGA and KING FISHER will be conducting operations and monitoring VHF-FM Chan. 16 and 68. Mariners are requested to transit the area with caution. For more details or comments contact Marvin Mai at 818-428-7670.

Chart 18751

LNLM: 24/22

**SOUTHERN CALIFORNIA-LOS ANGELES/LONG BEACH HARBOR-BRIDGE**

GERALD DESMOND BRIDGE DEMOLITION- Preparation work is ongoing in anticipation of the lowering of the main span of the bridge. Work is being conducted Monday through Friday, 7am to 5pm. It is anticipated from 6am on 09 July, 2022 through 6am on 11 July, 2022, the span of the replaced bridge will be lowered onto barges and removed from the area. For information about on-site conditions, contact the contractor Kiewit at 360-300-4365 or 602-376-5765. For further information, contact the Coast Guard Bridge Office at 510-437-3516.

Chart 18749

LNLM: 25/22

**SOUTHERN CALIFORNIA-LOS ANGELES/LONG BEACH HARBOR-BRIDGE**

PIER 400 BRIDGE MODIFICATION-Work is anticipate to take place Monday through Friday, 6am to 4pm, through 31 September, 2023. All in-water equipment and temporary structures are anticipated to be contained within the two existing bridges and will not impact marine traffic in the area. For conditions at the work site, contact 714-936-9553 or 510-846-0325. For further information contact the Coast Guard Bridge Office at 510-437-3461.

Chart 18749

LNLM: 24/22

**SOUTHERN CALIFORNIA-LOS ANGELES/LONG BEACH HARBOR-BRIDGE**

VINCENT THOMAS BRIDGE-The 180' temporary paint platform, which reduces vertical clearance by 4', located 4 feet west of centerline, is being dismantled and reinstalled just west of the east towner of the bridge span. Once in place, painting will resume east to west until platform reaches centerline of the bridge. The upstream and downstream corners and every 50' along the upstream and downstream side of the platform is lighted at night with steady burning red lights (see V\_Thomas\_Platform\_Lighting1.pdf at the end of this notice). Work will take place during daylight hours, Monday through Friday. For conditions at the bridge mariners can contact 213-479-4138, 213-479-1144 or 310-261-9552. For more details or comments contact the Coast Guard Bridge Office at 510-437-3516.

Chart 18749

LNLM: 23/22

**SOUTHERN CALIFORNIA-MARINE EVENT-SAN DIEGO-SAN DIEGO BAY**

The Cortez Racing Association (CRA) will sponsor the CRA Beer Can Series Regatta every Wednesday from 4:00pm to 8:00pm, until 27 July, 2022. The regatta will consist of 125 sailboats participating in a regatta in North San Diego Bay, CA. The regatta will race a course in San Diego Bay, starting and finishing at Harbor Island. Mariners are advised to use due caution when transiting this area. For more details or comments, contact Dale Greaney at 760-470-1730.

LNLM: 15/22

**SOUTHERN CALIFORNIA-MARNIA DEL RAY-SEDIMENT SAMPLING**

Kinnetic Environmental, Inc. will conduct sediment core sampling in the vicinity of the Federal Channel within the entrance channel to Marina Del Rey Harbor from 27 June, 2022 until 01 July, 2022, between 7:00am until 7:00pm. Operations will be bounded within the following locations:

33-57-52N 118-27-50W

33-57-55N 118-27-18W

33-57-32N 118-27-25W

33-57-31N 118-27-40W

R/V DW HOOD and a skiff will be utilized during operations and will monitor VHF-FM Chan. 16. Mariners are requested to transit the area with caution. For more details or comments contact Ken Kronschnabl at 831-457-3950.

Chart 18744

LNLM: 24/22

**SOUTHERN CALIFORNIA-MISSION BAY- SAN DIEGO-HAZARDOUS OPERATIONS**

The U.S. Navy will be conducting unmanned vehicle operations and helicopter lasing operations until 12 July, 2022. Operations will be bounded by the following coordinates:

32-40-51N 117-17-17W

32-34-32N 117-09-30W

32-33-02N 117-09-33W

32-33-01N 117-19-46W

32-40-51N 117-19-43W

**SOUTHERN CALIFORNIA-MISSION BAY- SAN DIEGO-HAZARDOUS OPERATIONS**

The following motor vessels will be conducting the operations and will be monitoring VHF-FM Chan. 16: M/V MICHAEL UHL, M/V SURVEYOR, M/V MALLORY, M/V HOLLY, M/V LORI, M/V DAUNTLESS-SEA ARK SA05, M/V DEFENDER-RBS05, M/V DEFENDER-RBS04, M/V DEFIANT. Mariners are requested to transit the area with caution. For more details or comments contact Randy Williams at 850-814-1404 or Gordon Reese at 850-819-7660.

Chart 18765

LNLM: 24/22

**SOUTHERN CALIFORNIA-MISSION BAY-FIREWORKS DISPLAY**

Fireworks America will be sponsoring the SeaWorld Summer Nights 2022 fireworks displays every Friday, Saturday, and Sunday until 28 August, 2022, and from 2-5 September, 2022. The displays will take place between 8:50pm and 9:55pm. There will be a tug and barge combination south of Fiesta Island at 32-46-03N 117-13-11W. Mariners are advised to avoid the area and use due caution when transiting in the vicinity of the display. For more details or comments contact Julie Andrews at 619-938-8277.

Chart 18765

LNLM: 21/22

**SOUTHERN CALIFORNIA-OFFSHORE CALIFORNIA-HAZARDOUS OPERATIONS**

Virgin Orbit will be launching a two stage rocket from offshore Channel Islands, CA, on 29 June, 2022, between 10:00pm until 2:00am, with a backup dates of 30 June and 01 July, 2022. Due to the potential for falling debris the Coast Guard is issuing an advisory encompassing all navigable waters from the surface to the seafloor within the following coordinates:

Northern Area:

32-50-26N 121-27-24W

33-00-46N 121-08-27W

32-30-03N 120-39-50W

32-16-58N 120-15-44W

29-28-01N 117-59-25W

29-14-44N 118-21-01W

31-54-25N 120-49-15W

32-17-37N 120-58-41W

Southern Area:

23-35-23N 114-40-28W

24-17-01N 113-28-48W

22-40-26N 111-55-10W

21-05-18N 111-08-19W

20-15-31N 112-09-40W

21-37-00N 113-41-00W

Advisory of the zone will be advertised via Broadcast Notice to Mariners. Mariners are requested to transit the area with caution. For more details or comments contact Collin Corey at 661-754-4371.

Charts: 18720 18740 18765

LNLM: 22/22

**SOUTHERN CALIFORNIA-OFFSHORE SAN DIEGO-HAZARDOUS OPERATIONS**

The U.S. Navy will be conducting hazardous operations until 01 January, 2023, in the areas bound by the following coordinates:

First:

32-55-00N 118-25-00W

32-55-00N 118-15-00W

32-40-00N 118-15-00W

32-40-00N 118-35-00W

32-45-00N 118-35-00W

Second:

32-33-00N 118-25-00W

32-35-00N 118-16-00W

32-35-00N 117-40-00W

31-55-00N 117-40-00W

31-55-00N 118-25-00W

32-33-00N 118-25-00W

Third:

32-52-42N 119-11-58W

33-08-04N 118-52-05W

33-08-04N 118-46-02W

33-03-52N 118-41-48W

33-02-32N 118-43-33W

32-58-53N 118-43-31W

32-47-40N 118-32-21W

32-36-55N 118-45-00W

32-36-55N 118-56-57W

Mariners are requested to transit the area with caution. For more details or comments contact FACSFAC schedules at 619-545-1744.

Charts: 18740 18765 18774

LNLM: 04/22

**SOUTHERN CALIFORNIA-POINT CONCEPTION-NOAA BUOY DEPLOYMENT**

NOAA's Pacific Marine Environmental Laboratory deployed a buoy 11 nautical miles due west of Point Conception, CA. at 34-27-31N 120-41-10W. The buoy named Harvest 22 has a yellow top with gray sides and a flashing amber light every 4 seconds. Mariners are advised to use due caution when transiting this area. For more details or comments contact Cabot Zucker at 425-477-9554.

Chart 18721

LNLM: 13/22

**SOUTHERN CALIFORNIA-PORT SAN LUIS-MARINE CONSTRUCTION**

Connolly-Pacific will conduct marine construction to the Port San Luis breakwater from 6:30am to 6:30pm until 31 December, 2022. DB LONG BEACH will use anchors to position itself along the breakwater. These anchor positions will be marked by round white anchor cans. Tug PATCONA and Tug

**SOUTHERN CALIFORNIA-PORT SAN LUIS-MARINE CONSTRUCTION**

LARCONA will be assisting DB LONG BEACH. All vessels will be monitoring VHF-FM Chan. 13, 16, and 79a. Mariners are requested to transit the area with caution. For more details or comments contact Tobey Walker at 562-577-0730 or John Riley at 562-577-3602.

Chart 18704

LNM: 04/22

**SOUTHERN CALIFORNIA-PT. LOMA DIVING OPERATIONS-TEMPORARY BUOY DEPLOYMENT**

Scripps Institution of Oceanography will be conducting dive operations and buoy deployment until 30 June, 2022. The buoys will be yellow in color and deployed at the following coordinates:

32-42-32N 117-16-42W

32-42-32N 117-16-27W

32-42-32N 117-15-46W

Vessels involved with the operations will be monitoring VHF-FM Chan. 16. Mariners are requested to transit the area with caution. For more details or comments contact Geno Pawlak at 858-534-2343 or pawlak@ucsd.edu.

Chart 18765

LNM: 20/22

**SOUTHERN CALIFORNIA-RESERVATION POINT-LOS ANGELES-MARINE CONSTRUCTION**

Power Engineering Construction Co. will be performing demolition and pile driving operations until 22 December, 2022, at 33-43-22N 118-16-06W. Work is being conducted Monday through Friday 7:00am to 4:00pm. Operations will be conducted with derrick barge DB ALAMEDA and a flat material barge. The barge will be spudded down and anchored using a four-point mooring system with buoys. All vessels and equipment on site will be monitoring VHF-FM Chan. 16 and 67. Mariners are requested to transit the area with caution. For more details comments contact Matt Dill at 510-610-4633.

Chart 18751

LNM: 19/22

**SOUTHERN CALIFORNIA-SAN DIEGO BAY-BRIDGE**

CORONADO BAY BRIDGE MAINTENANCE-Scaffolding installed between piers 11-12, 12-13, and 13-14, reduces vertical clearance by more than 8'. The upstream and downstream lower edges of the scaffolding are lighted at night with red lights. For more details or comments contact the Coast Guard Bridge Office at 510-437-3461.

Charts: 18772 18773

LNM: 13/20

**SOUTHERN CALIFORNIA-SAN DIEGO BAY-BRIDGE**

CORONADO BRIDGE- Caltrans will be conducting dive operations at various piers from 9am-3pm, Monday -Friday, through 30 June, 2022. The Caltrans Work Boat will be at different locations at the bridge each day. Diver's umbilical hose may be floating on the surface adjacent to the vessel with heavy equipment on deck. All mariners are requested to contact the vessel "CALTRANS WORK BOAT" approximately 30 minutes before transiting the bridge via VHF-FM Chan. 16/14/9 or by cellular with the responsible supervisor at 916-206-7604 (06-10 June)(20-24 June) or 916-343-6731 (13-17 June) or 916-947-8055 (27-30 June). All passing vessels are requested to use extreme caution. For further info, mariners can contact the Coast Guard Bridge Office at 510-437-3461.

Chart 18773

LNM: 23/22

**SOUTHERN CALIFORNIA-SAN DIEGO BAY-FIREWORKS**

Fireworks America will sponsor the San Diego Symphony Night Shows 2022 fireworks displays from 9:00pm to 10:00pm on 24-25 June, 3, 8-10 July, 6, 13, 19, 26-27 August, and 10-11 September, 2022. There will be a tug and barge combination located off of South Embarcadero Marina Park at 32-42-11N 117-10-04W. Mariners are advised to avoid the area and use due caution when transiting in the vicinity of the barge. For more details or comments contact Julie Andrews at 619-938-8277.

Chart 18773

LNM: 18/22

**SOUTHERN CALIFORNIA-SAN DIEGO BAY-FIREWORKS SHOWS-SAFETY ZONES**

The Port of San Diego Big Bay Boom and City of Coronado Fourth of July fireworks displays on 4 July, 2022 from 9:00pm to 9:30pm. The displays will be fired from 4 tug and barge combinations located off Shelter Island, Harbor Island, North Embarcadero, and South Embarcadero, and off of land at Stingray Point near Glorietta Bay, Coronado. 1,000-foot radius safety zones around each of the barges within north San Diego Bay, and an 800-foot radius safety zone in Glorietta Bay will be established for the event. The safety zones will be enforced from 8:00pm to 10:00pm and will be centered at the following locations:

Shelter Island Barge: 32-42-48N 117-13-12W

Harbor Island Barge: 32-43-18N 117-12-00W

North Embarcadero Barge: 32-42-54N 117-10-48W

South Embarcadero Barge: 32-42-06N 117-10-06W

Coronado Municipal Golf Course: 32-40-45N 117-10-01W

All mariners are to avoid the safety zones and use due caution when transiting outside these areas. For more details or comments, contact Sandy Purdon at 619-822-1177 or Julie Andrews at 619-938-8277.

Chart 18773

LNM: 22/22

**SOUTHERN CALIFORNIA-SAN DIEGO BAY-MARINE CONSTRUCTION**

R.E. Staite Engineering Inc. will conduct marine construction at Naval Base Point Loma piers 5000, 5002 and 5003 at 32-41-24N 117-14-04W until 04 August, 2022. Vessels DB PALOMAR, RES 80, JOHN DRAKE, push boats JEANIE R, and tug KILLEEN will conduct operations. All vessels will monitor VHF-FM Chan. 16. Mariners are requested to transit at lowest safe speed to minimize wake and proceed with caution after passing arrangements have been made. For more details or comments contact project manager Erick Myers at 619-233-0178.

Charts: 18772 18773

LNM: 23/22

**SOUTHERN CALIFORNIA-SAN DIEGO BAY-MARINE CONSTRUCTION**

R.E. Staite Engineering Inc. will conduct marine construction until 20 Jun 22 in San Diego Bay at position 32-41-24N 117-14-04W. Dredge DB PALOMAR, RES 80, RES spud barge, Tug KILEEN, along with assist boats JOHN DRAKE and JEANNIE R will be on scene monitoring VHF-FM Chan. 16. Mariners are requested to transit the area with caution. For more details or comments contact Robbin Pepper at 619-524-8532 or Casey Wilson at 619-233-0178.

**SOUTHERN CALIFORNIA-SAN DIEGO BAY-MARINE CONSTRUCTION**

Charts: 18772 18773

LNM: 08/21

**SOUTHERN CALIFORNIA-SAN DIEGO BAY-MARINE CONSTRUCTION**

R.E. Staite Engineering Inc. will conduct marine construction until 31 Jul 22 in San Diego Bay at 32-41-13N 117-08-22W. Dredge DB POINT LOMA, DB PALOMAR, DB WILLIAM F, scows HAROLD M, CLARENCE D, ROB P, MIKE J, along with push boat JENNIE R, JOHN DRAKE, Tug KILLEEN, and Tug CUYAMACA will be conducting operations. All vessels will monitor VHF-FM Chan. 16. Mariners are requested to transit the area with caution. For more details or comments contact Brian Goerres at 619-481-1429 or Erick Myers at 619-233-0178.

Chart 18773

LNM: 33/21

**SOUTHERN CALIFORNIA-SAN DIEGO BAY-MARINE EVENT**

KOZ Events is sponsoring a triathlon marine event from 7:00am to 10:00am on 26 June, 2022, that includes a swim consisting of 1000 participants. The swim portion of the triathlon will be held in the Harbor Island Marina basin adjacent to Spanish Landing Park. Mariners are requested to transit the area with caution. For more details or comments contact Tobias Panek at 858-255-9709.

Chart 18773

LNM: 19/22

**SOUTHERN CALIFORNIA-SAN DIEGO BAY-MARINE EVENT**

The San Diego Yacht Club (SDYC) will sponsor the Kettenburg Regatta from 11:00am to 4:00pm on 25 and 26 June, 2022. The regatta will consist of 20-40 sailboats participating in a regatta in San Diego Bay and Coronado Flats. Mariners are requested to transit the area with caution. For more details or comments contact Jeff Johnson at 619-933-9922.

Chart 18773

LNM: 19/22

**SOUTHERN CALIFORNIA-SAN DIEGO BAY-POINT LOMA-MARINE CONSTRUCTION**

R.E. Staite Engineering Inc. will conduct marine construction on the Ballast Point side of Naval Base Point Loma at 32-41-12N 117-14-11W until 31 July, 2022. Vessels tug CUYAMACA, push boat JEANIE R, a RES barge and a RES material barge will conduct operations. All vessels will monitor VHF-FM Chan. 16. Mariners are requested to transit at lowest safe speed to minimize wake and proceed with caution after passing arrangements have been made. For more details or comments contact project manager Erick Myers at 619-233-0178.

Chart 18773

LNM: 25/22

**SOUTHERN CALIFORNIA-SAN DIEGO BAY-ZUNIGA POINT-SUNKEN VESSEL**

The Coast Guard has received a report of a 40-foot sunken vessel IVO Zuniga Point at approximately 32-40-41N 117-11-35W. Mariners are advised to transit the area with caution. For more details or comments contact Coast Guard Sector San Diego at 619-278-7031.

Chart 18773

LNM: 17/22

**SOUTHERN CALIFORNIA-SAN DIEGO RIVER-BRIDGE**

WEST MISSION BAY DRIVE BRIDGE-The City of San Diego is replacing the existing bridge. A temporary work trestle, providing a vertical clearance of 8' over Mean Sea Level is in place. Scheduled completion date of the bridge replacement project is November 2022. Mariners are urged to use caution while navigating the replacement bridge work site. For more details or comments contact the Coast Guard Bridge Office at 510-437-3461.

Chart 18765

LNM: 34/19

**SOUTHERN CALIFORNIA-SAN DIEGO-MISSION BAY-MARINE EVENT**

The Kai Elua Outrigger Iron Champs Race will occur on 25 June, 2022 in Mission Bay. This outrigger canoe-racing event will begin at 8:00am until 3:00pm. with three separate races. The races will start at Mariner's Point, transit through the jetty, turn at Crystal Pier and return to Mariner's Point. Mariners are requested to transit the area with caution. For more details or comments contact Ms. Noelle Murphy at 619-518-1544.

Charts: 18765 18773

LNM: 19/22

**SOUTHERN CALIFORNIA-SAN DIEGO-SAFETY ZONE**

The U.S. Navy will be performing marine construction at Naval Base Coronado, Naval Amphibious Base, Pier 14 until 12 August, 2022. A 1,900 foot radius safety zone centered at 32-40-44N 117-09-36W will be in effect on 30, June, 2022, 1 July, 2022, and 5-7 July, 2022, from 7:30am to 3:30pm each day during pile installation activities. Swimming and diving will be prohibited in the safety zone during this time. Vessels may transit through the safety zone but are advised to travel at slow speed to minimize wake. For more details or comments contact LT Nicolaas Van Wyngaardt at 619-437-0967.

Chart 18773

LNM: 25/22

**SOUTHERN CALIFORNIA-SAN LUIS OBISPO BAY-DREDGE OPERATIONS**

The Port San Luis Harbor District will be conducting dredge operations in the San Luis Harbor trailer boat basin and mobile hoist pier at 35-10-25N 120-45-15W. The operations will be conducted until 31 August, 2022, weekdays during daylight hours. All dredged materials will be disposed of at West Bluff Beach and Fisherman's Beach. Mariners are requested to transit the area with caution. For more details or comments contact Natalie Teeter at 805-595-5431.

Chart 18704

LNM: 04/22

**SOUTHERN CALIFORNIA-SUMMERLAND-DIVE OPERATIONS**

Marine Project Management Inc. will conduct diving operations until 27 June, 2022 within the Summerland Sanitary District Outfall. The support vessel DANNY C will deploy a dive buoy at 34-25-00N 119-35-50W. Support vessel DANNY C will be monitoring VHF-FM Chan. 16. Mariners are requested to transit the area with caution. For more details or comments contact David Hankins at 805-798-2020.

Chart 18725

LNM: 22/22

---

**SECTION VIII - LIGHT LIST CORRECTIONS**

An Asterisk \*, indicates the column in which a correction has been made to new information

---

## SECTION VIII - LIGHT LIST CORRECTIONS (Continued)

(1) No.	(2) Name and Location	(3) Position	(4) Characteristic	(5) Height	(6) Range	(7) Structure	(8) Remarks
<b>None</b>							

## PUBLICATION CORRECTIONS

**ANNOUNCEMENT – U.S. Coast Pilot® 7 and U.S. Coast Pilot® -NEW EDITIONS-Spring 2022**

PUBLICATION–National Oceanic Atmospheric Administration (NOAA) – U.S. Coast Pilot 7, Pacific Coast: California, 54th Edition, 2022, has been issued and is ready for free download and weekly updates at [www.nauticalcharts.noaa.gov/publications/coast-pilot/index.html](http://www.nauticalcharts.noaa.gov/publications/coast-pilot/index.html). Only Print-on-Demand (POD) bound copies are available for purchase; visit [nauticalcharts.noaa.gov/publications/print-agents.html#coast-pilot](http://nauticalcharts.noaa.gov/publications/print-agents.html#coast-pilot). The 2022 Edition cancels the preceding 2021 Edition, and incorporates all previous corrections.

LNM: 21/22

**ANNOUNCEMENT – U.S. Coast Pilot® 7 and U.S. Coast Pilot® 10 - NEW EDITIONS – Spring 2020**

U.S. Coast Pilot 7 will be divided into two editions in the spring 2020 due to its large size. The following are the projected new editions that will be issued on the same date and ready for free download and weekly updates on June 9, 2020, at [nauticalcharts.noaa.gov/publications/coast-pilot/index.html](http://nauticalcharts.noaa.gov/publications/coast-pilot/index.html).

PUBLICATION–National Oceanic Atmospheric Administration (NOAA) – U.S. Coast Pilot 7, Pacific Coast: California 52nd Edition, 2020

PUBLICATION–National Oceanic Atmospheric Administration (NOAA) – U.S. Coast Pilot 10, Pacific Coast: Oregon, Washington, Hawaii and Pacific Islands 1st Edition, 2020

Only Print-on-Demand bound copies are available for purchase; visit [nauticalcharts.noaa.gov/publications/print-agents.html#coast-pilot](http://nauticalcharts.noaa.gov/publications/print-agents.html#coast-pilot)

For any questions or comments; visit [nauticalcharts.noaa.gov/customer-service/assist/](http://nauticalcharts.noaa.gov/customer-service/assist/)

NOAA Office of Coast Survey's Nautical Publications Branch  
April 2020

LNM: 18/20

## ENCLOSURES

**REPORT OF DELAY AT DRAWBRIDGE**

[Delay\\_Report\\_11-2017.pdf](#)

Use link above to Report a Delay at a Drawbridge.

LNM: 06/07

**NORTHERN CALIFORNIA-DELTA & RIVERS-OLD RIVER-BRIDGE**

[BNSF\\_OldRiver\\_Barge\\_Lighting.pdf](#)

See link above.

LNM: 13/22

**NORTHERN CALIFORNIA-DELTA & RIVERS-AMERICAN RIVER-BRIDGE**

[AmRiv\\_SiltCurtain\\_BargeLocation.pdf](#)

CAPITAL CITY HWY (ROUTE 51) BRIDGE-See link above for barge and silt curtain locations.

LNM: 22/22

**NORTHERN CALIFORNIA-DELTA & RIVERS-SACRAMENTO RIVER-BRIDGE**

[RVBridge\\_PlatformCable\\_Lighting.pdf](#)

RIO VISTA DRAWBRIDGE-See enclosure above for temporary platform location and lighting.

LNM: 22/20

**NORTHERN CALIFORNIA-SAN FRANCISCO BAY-BRIDGE**

[PlatformLighting\\_GG\\_Bridge\\_14Jun22.pdf](#)

GOLDEN GATE BRIDGE-Temporary Platform Location and Lighting revised 14 June, 2022.

LNM: 24/22

**NORTHERN CALIFORNIA-SAN FRANCISCO BAY-BRIDGE**

[R-SR\\_Bridge\\_Temp\\_Platform\\_Lighting.pdf](#)

RICHMOND-SAN RAFAEL BRIDGE- See link above for temporary underdeck platform lighting for concrete and steel repairs.

LNM: 48/21

**NORTHERN CALIFORNIA-SAN FRANCISCO BAY-BRIDGE**

[Rich-SR\\_Bridge\\_TemporaryPlatform\\_1.pdf](#)

RICHMOND/SAN RAFAEL BRIDGE-See link above for temporary platform lighting and location in east and west navigation spans.

LNM: 22/21

**NORTHERN CALIFORNIA-CORTE MADERA CREEK-BRIDGE**

[TempPlatform\\_CorteMaderaCreek.pdf](#)

U.S. 101 HIGHWAY BRIDGE-See link above for temporary platform location and lighting.

LNM: 18/21

**NORTHERN CALIFORNIA-DELTA & RIVERS-SAN JOAQUIN RIVER-BRIDGE**

[Temporary\\_Bridge\\_Falsework\\_Lighting.pdf](#)

CROWS LANDING REPLACEMENT-See link above for temporary falsework, temporary bridge, the temporary navigation channel during construction with navigation lighting plan.

LNM: 35/21

**NORTHERN CALIFORNIA-SAN FRANCISCO BAY-BRIDGE**

[SFOBBTemporaryBargeLocations.pdf](#)

WESTERN SPAN SAN FRANCISCO-OAKLAND BAY BRIDGE-See link above regarding fender repairs.

LNM: 13/22

**NEVADA-ARIZONA-COLORADO RIVER-BRIDGE**

[Cofferdam-Lighting\\_Laughlin-BH.pdf](#)

NEW LAUGHLIN-BULLHEAD CITY BRIDGE-See link above for temporary cofferdam lighting and configuration.

LNM: 50/21

**NORTHERN CALIFORNIA-SAN FRANCISCO-MARINE SAFETY INFORMATION BULLETIN**

[SAN FRANCISCO-MSIB 22-01.pdf](#)

see link above.

LNM: 23/22

**NORTHERN CALIFORNIA-SAN FRANCISCO - VOLUNTARY VESSEL SPEED REDUCTION**

[NOAA VSR 2022.pdf](#)

see link above.

LNM: 18/22

**SOUTHERN CALIFORNIA-DANA POINT TO POINT ARGUELLO-VOLUNTARY VESSEL SPEED REDUCTION**

[NOAA VSR 2022.pdf](#)

see link above.

LNM: 18/22

**SOUTHERN CALIFORNIA-PORTS OF LOS ANGELES/LONG BEACH-LA/LB HARBOR-BRIDGE**

[V\\_Thomas\\_Platform\\_Lighting1.pdf](#)

See link above for platform lighting for Vincent Thomas Bridge.

LNM: 28/19

---

THE LOCAL NOTICE TO MARINERS IS AVAILABLE ON THE WORLD WIDE WEB AT [HTTPS://WWW.NAVCEN.USCG.GOV](https://www.navcen.uscg.gov)

W. J. George, CDR  
U.S. Coast Guard  
Chief Waterways Management Branch





**U.S. COAST GUARD  
REPORT OF DELAY AT DRAWBRIDGE  
PER 33 CFR 117.5**

BRIDGE NAME: \_\_\_\_\_ DATE: \_\_\_\_\_

MILE : \_\_\_\_\_ WATERWAY: \_\_\_\_\_

1. Name/ Type of Vessel: \_\_\_\_\_ Direction of Travel : \_\_\_\_\_

2. Vessel Owner (Name): \_\_\_\_\_

(Address): \_\_\_\_\_

3. Name of Pilot (if applicable): \_\_\_\_\_

(Address): \_\_\_\_\_

4. Time vessel signaled for bridge opening: \_\_\_\_\_

5. Location of vessel when signal was given: \_\_\_\_\_

6. Time and location of vessel when delay began: \_\_\_\_\_

7. Method of signal for bridge opening: ( ) Radio ( ) Sound ( ) Visual.

(If sound or visual signal was used, specify: \_\_\_\_\_)

8. Time bridge operator acknowledged signal: \_\_\_\_\_

9. Method of bridge operator acknowledgement: ( ) Radio ( ) Sound ( ) Visual

(If sound or visual signal was used, specify: \_\_\_\_\_)

10. Did bridge operator acknowledgement indicate the bridge,

( ) Could be opened immediately?

( ) Could not be opened immediately?

11. If land traffic crossed the bridge:

Time land traffic started across the bridge \_\_\_\_\_

Time land traffic stopped crossing the bridge \_\_\_\_\_

Did land traffic stop on the bridge? \_\_\_\_\_

Duration land traffic stopped on the bridge \_\_\_\_\_

12. Time drawbridge opened for navigation \_\_\_\_\_

13. Additional comments:

\_\_\_\_\_  
\_\_\_\_\_  
\_\_\_\_\_

I certify the above information is true to the best of my knowledge and understand this statement may be used by the U.S. Coast Guard in levying fines against the bridge owner.

Signature \_\_\_\_\_

Telephone \_\_\_\_\_

Mariners may complete and return to:

Commander (dpw)  
Eleventh Coast Guard District  
Coast Guard Island, Building 50-2  
Alameda, CA 94501-5100  
Attn: Bridge Office

Fax: (510) 437-5836

Email: [Carl.T.Hausner@uscg.mil](mailto:Carl.T.Hausner@uscg.mil)

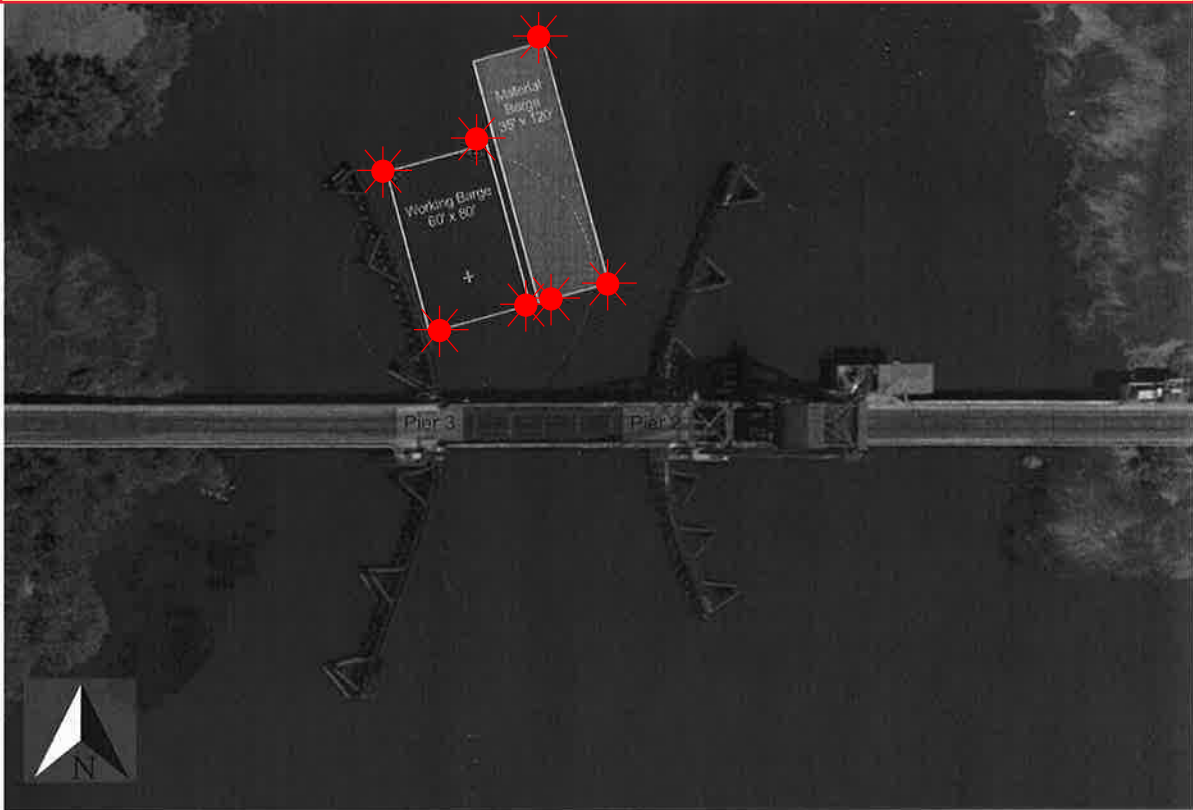
Questions? Please contact: Carl Hausner, Bridge Administrator, Eleventh Coast Guard District

Office: (510) 437-3516

Cell: (510) 219-4366

Mariners are reminded not to require bridge openings for appurtenances nonessential to navigation, per 33 CFR 117.11

**Barge Lighting Diagram**  
**BNSF Rail Bridge, Mile 10.4, Old River**

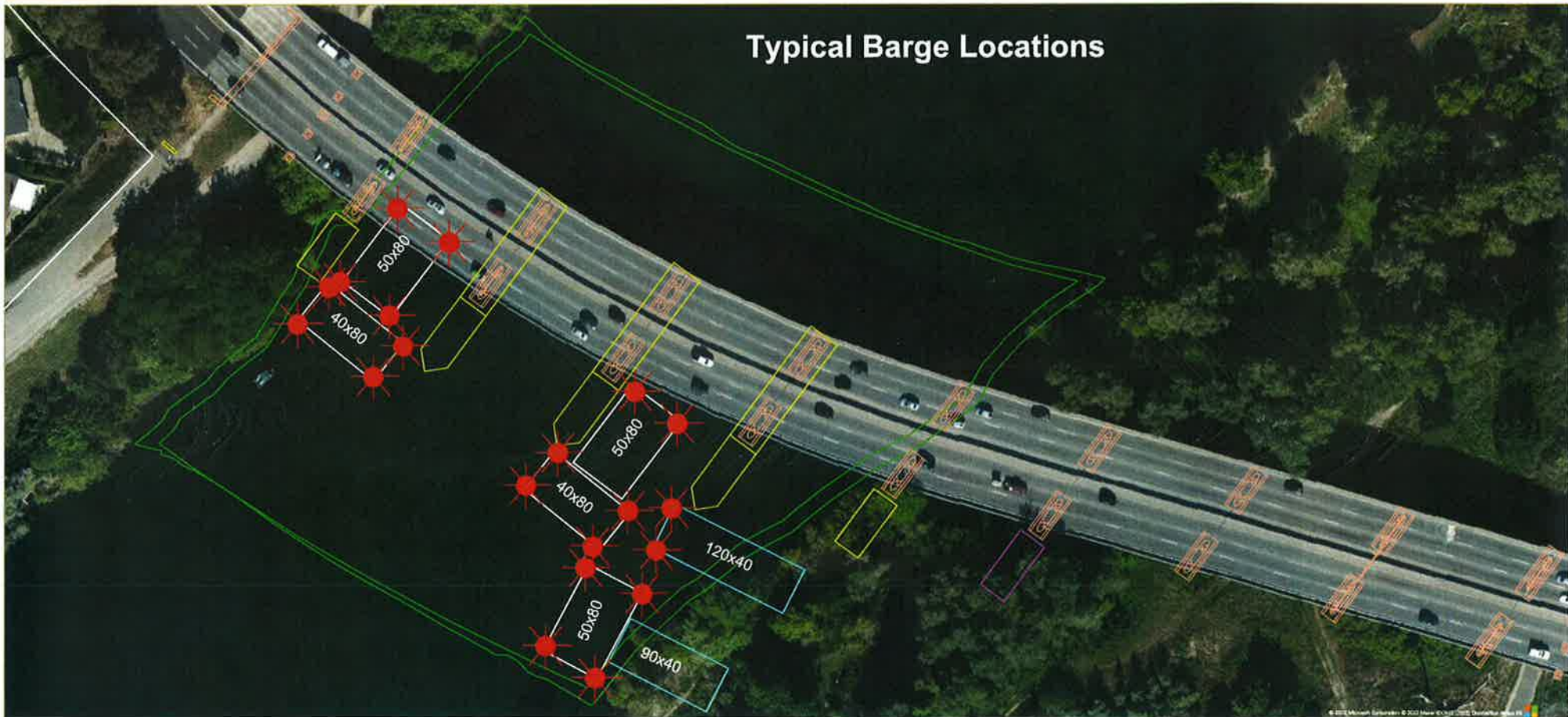


During working hours the barges will be in the main span of the bridge. The barges can be moved for navigational safety upon request with one hour advance notice. After normal working hours the barges will be moored behind the wing-walls of the pier protection system and each corner of each barge will be lighted at night with steady burning red lights.

**Enclosure (1)**

# Rehabilitation and Modification Project Capital City (CA Route 51) Bridge, Mile 4.0, American River

## Typical Barge Location and Typical Barge Lighting



Each corner of each barge is lighted at night with steady burning all-round red light, visible at 2,000 by approaching vessels. All vessels transiting the project area should use extreme caution. Turbidity curtains will be placed at different locations during the project. The next four diagrams show the proposed location of the curtains.





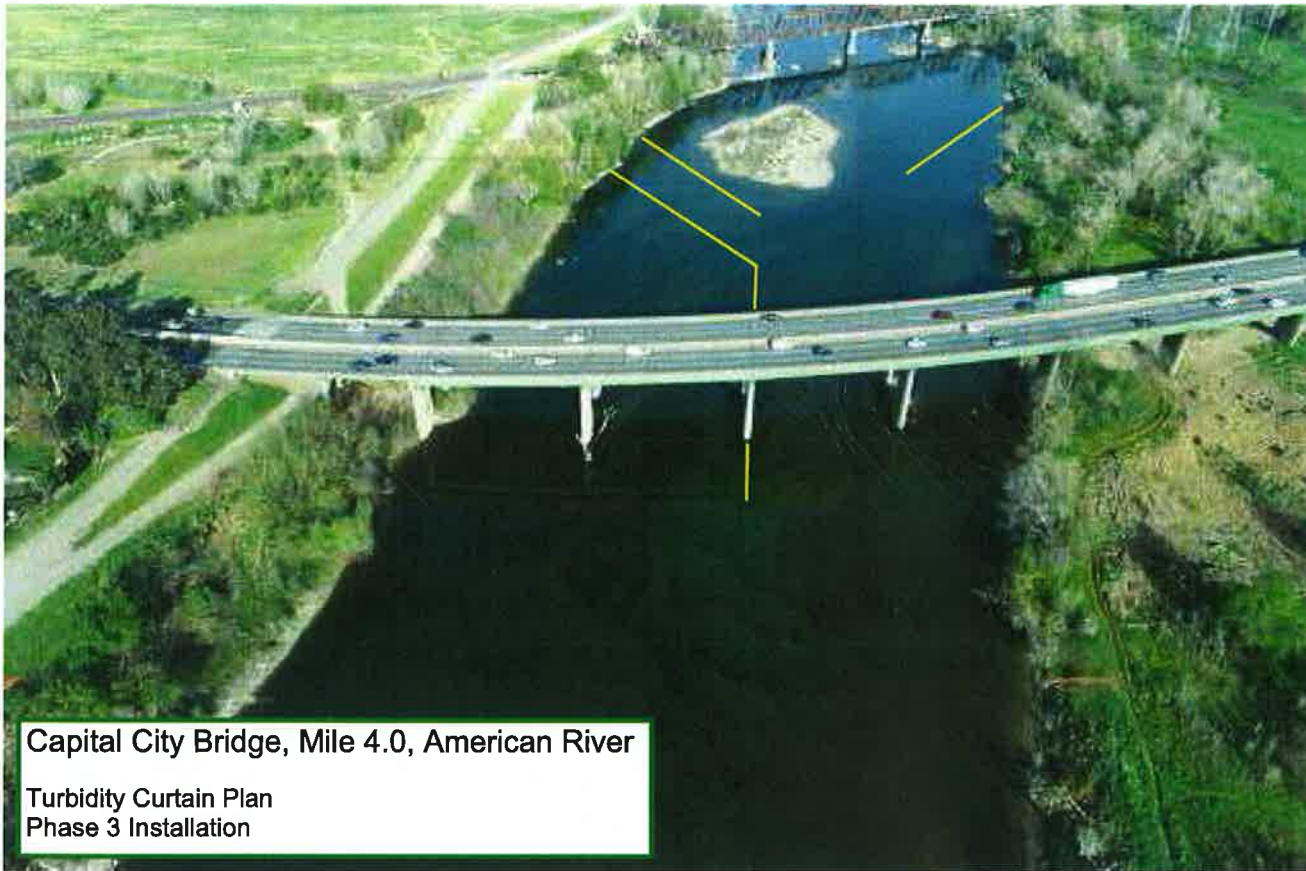
Capital City Bridge, Mile 4.0, American River

Turbidity Curtain Plan  
Phase 1 Installation



Capital City Bridge, Mile 4.0, American River

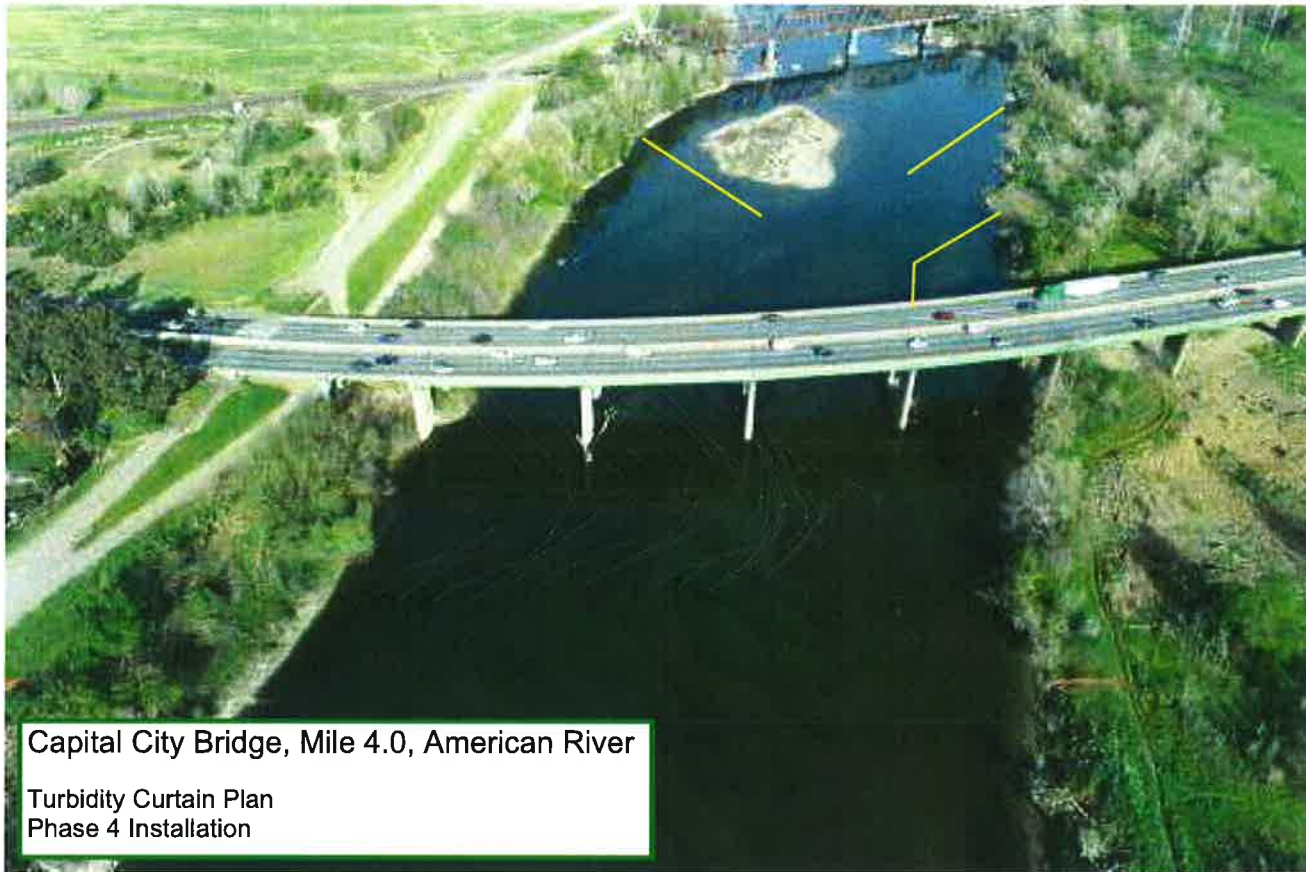
Turbidity Curtain Plan  
Phase 2 Installation



Capital City Bridge, Mile 4.0, American River

Turbidity Curtain Plan  
Phase 3 Installation

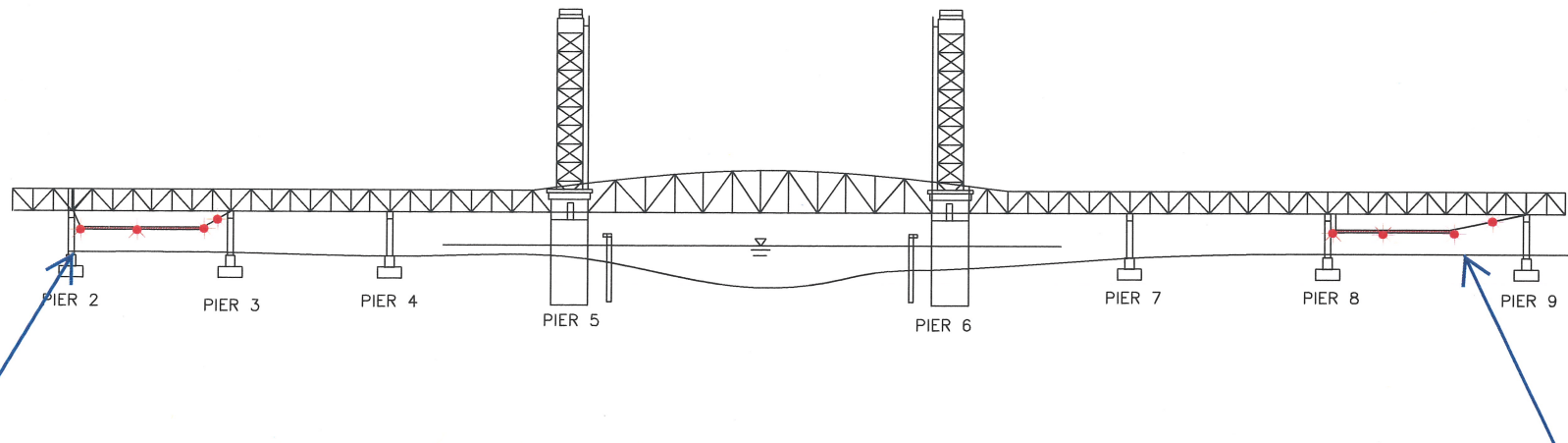




Capital City Bridge, Mile 4.0, American River  
Turbidity Curtain Plan  
Phase 4 Installation

# Temporary Underdeck Platform Lighting

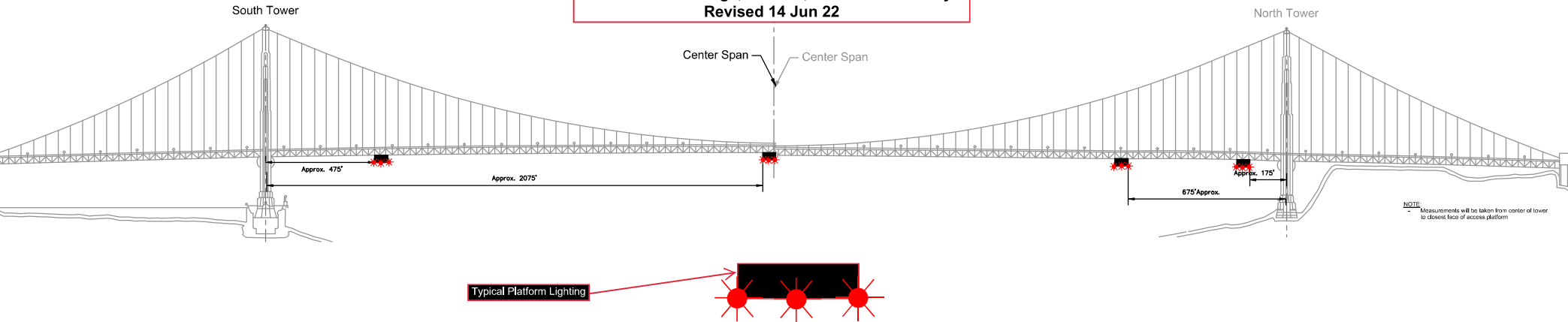
## Rio Vista Bridge Mile 12.8, Sacramento River



Two temporary platforms, and associated support cables, are installed beneath low steel of the bridge in span 2 and 8 and reduces vertical clearance in those spans by no more than 4 feet. The lower 4 corners and midpoint of each platform will be lighted at night with steady burning red lights, visible at 2,000 yards from approaching vessels. The support cable will be lighted with red lights every 50 feet. Mariners are requested to use alternate or main span of the bridge while these temporary platforms are in place.



**Temporary Access Platforms**  
**Golden Gate Bridge, mile 2.5, San Francisco Bay**  
**Revised 14 Jun 22**

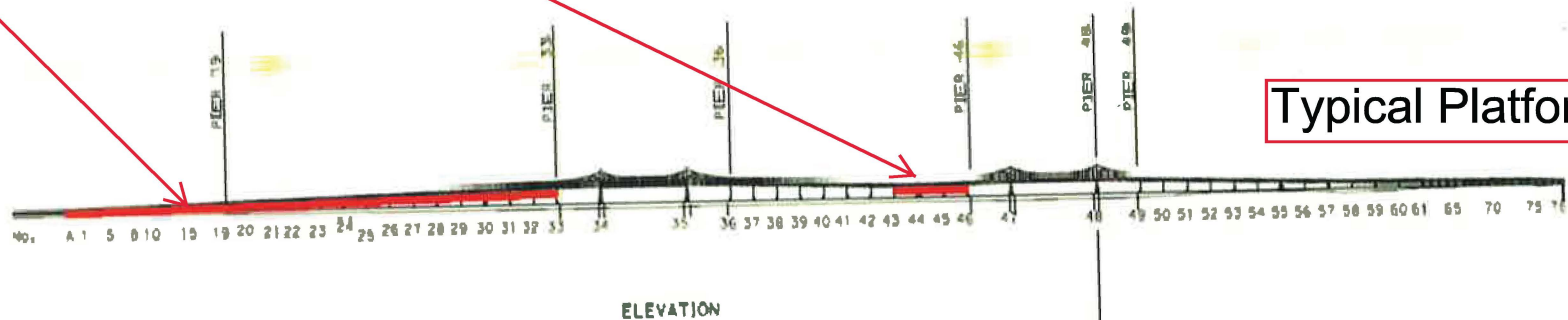


Four 54 ft wide temporary platforms are installed in the main span below low steel of the bridge, in relation to centerline of the span; two south of the north tower and two north of the south tower, reducing vertical clearance by no more than 14 feet. The upstream and downstream lower edges of the temporary platforms will be lighted at night with steady burning red lights visible at 2,000 yards by approaching vessels.

Painting and Structural Repairs Project  
Richmond-San Rafael Bridge  
Mile 13.0, San Francisco Bay

Temporary Underdeck Platforms

WORK PLATFORM

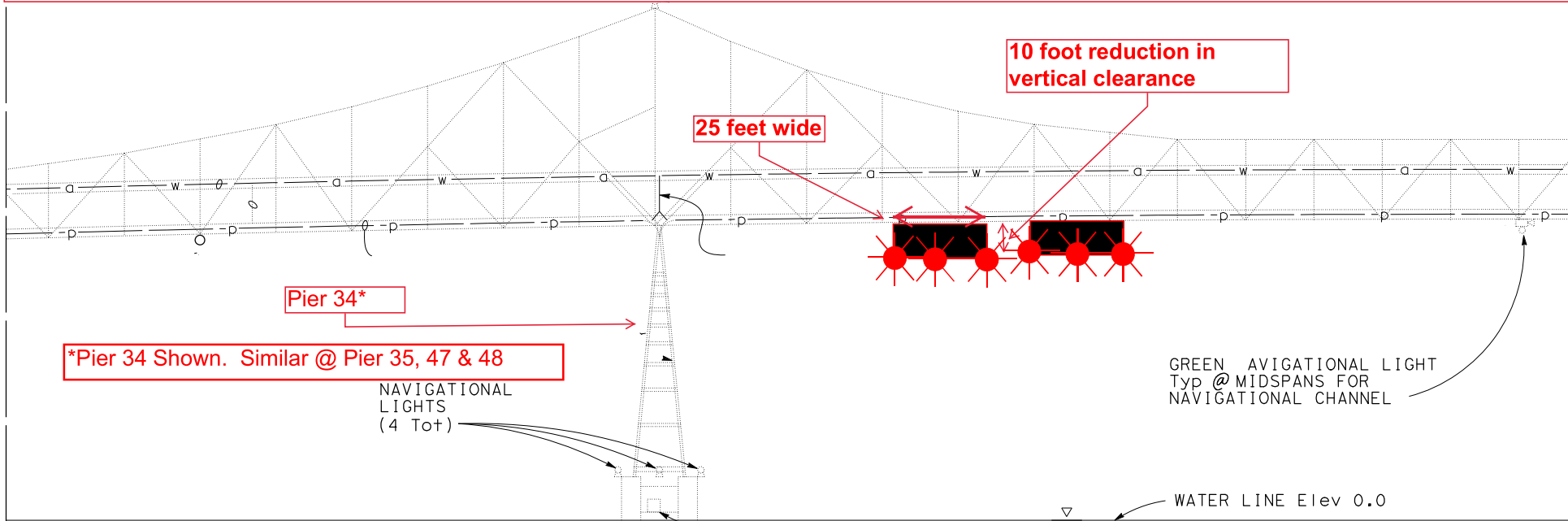


Typical Platform Lighting

The upstream and downstream lower edges of each temporary platform in each span are lighted at night with steady burning red lights to be seen at 2,000 yards by approaching vessels. Each platform reduces vertical clearance by no more than 3 feet.

# Typical Temporary Platform Location and Lighting

## Richmond-San Rafael Bridge, Mile 13.0, San Francisco Bay

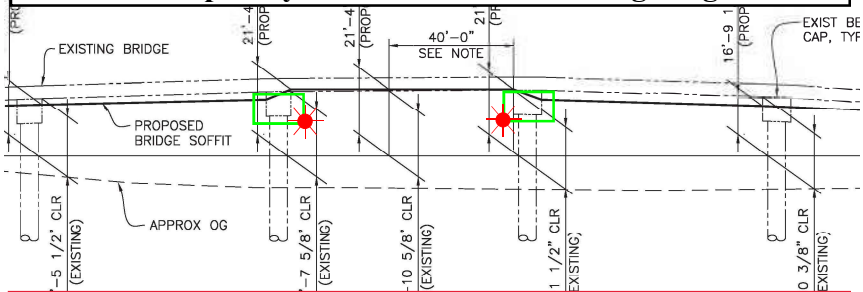


Eight temporary platforms have been installed in the East and West navigation spans, between piers 34-35 and 47-48, four in each span. The temporary platforms will reduce vertical clearance by no more than 10 feet beneath the area of the platforms. The east span provides 430 feet of horizontal clearance, 215 feet either side of centerline, and the west span provides 460 feet of horizontal clearance, 230 feet either side of centerline, for navigation. The upstream and downstream lower edges of the temporary platform will be lighted at night with fixed red lights visible at 2,000 yards by approaching vessels.



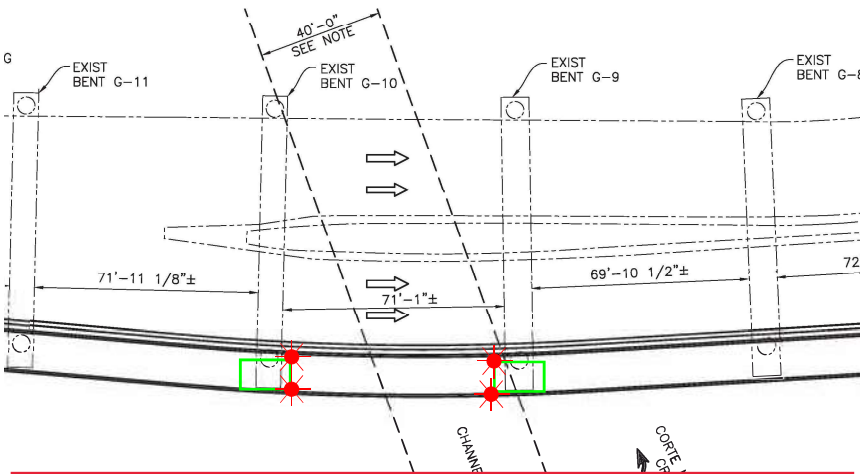
Pedestrian Bridge Add-On  
U.S. 101 Bridge, mile 0.6, Corte Madera Creek

**Temporary Platform Location & Lighting**

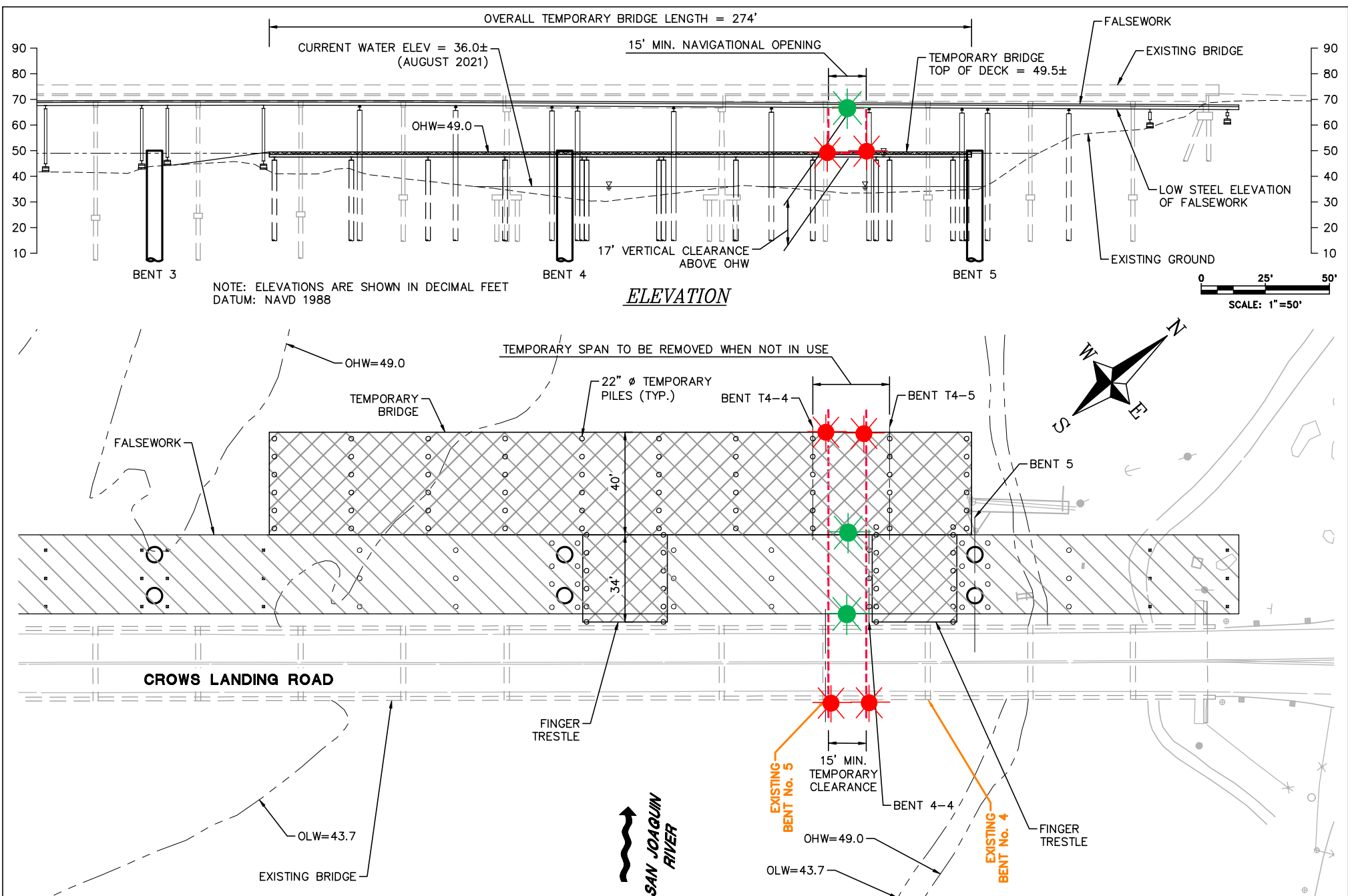


The temporary platforms reduce horizontal clearance in main navigation span of the bridge by ~14 feet and reduce vertical clearance by ~9 feet beneath the platforms.

**ELEVATION**

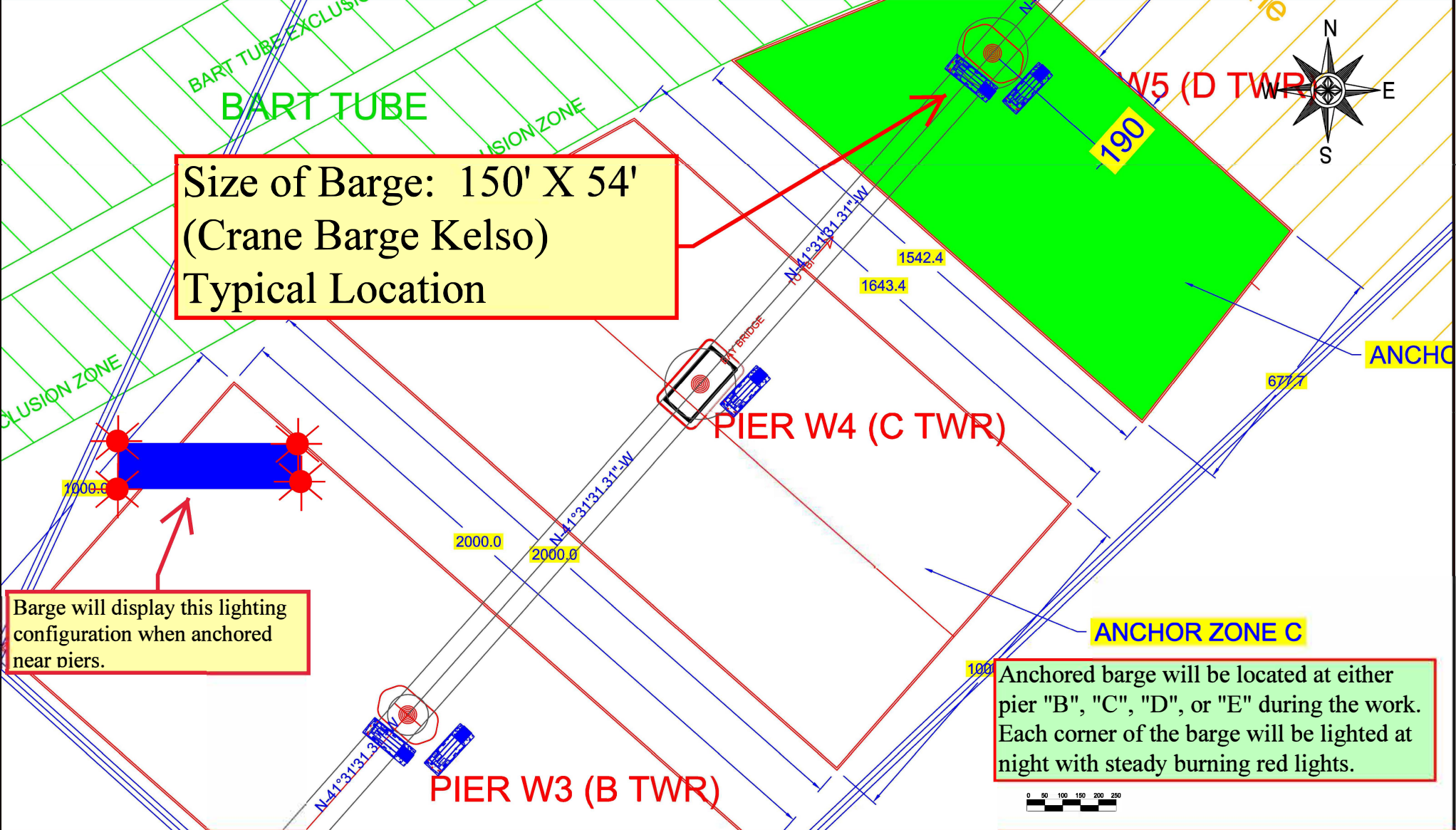


The upstream and downstream lower outboard corners of the temporary platforms in the navigation are lighted at night with fixed red lights, visible at 2,000 yards from approaching vessels.



### **Temporary Navigation Lighting-Crows Landing Bridge Replacement Project - San Joaquin River**

The temporary bridge and existing bridge will be lighted at night with two red lights marking the temporary navigation channel. The temporary falsework will be lighted, upriver and downriver, with green lights marking the center of the temporary navigation channel. During construction the temporary navigation channel will provide a horizontal clearance of 15 feet and a vertical clearance at Ordinary High Water of 17 feet.



### **Fender Repairs**

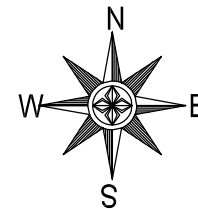
**Western Span San Francisco Oakland Bay Bridge, mile 8.9, San Francisco Bay**  
**Temporary Impacts to Navigation Diagram**



Anchored barge will be located at either pier "B", "C", "D", or "E" during the work. Each corner of the barge will be lighted at night with steady burning red lights.

Shipping Lane

ANCHOR ZONE E WEST



Size of Barge: 150' X 54'  
(Crane Barge Kelso)  
Typical Location

ANCHOR ZONE E EAST

PIER W6 (E TWR)

Barge will display this lighting configuration when anchored near piers.

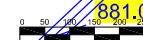
BART TUBE EXCLUSION ZONE

D-E Outbound

D-E Inbound

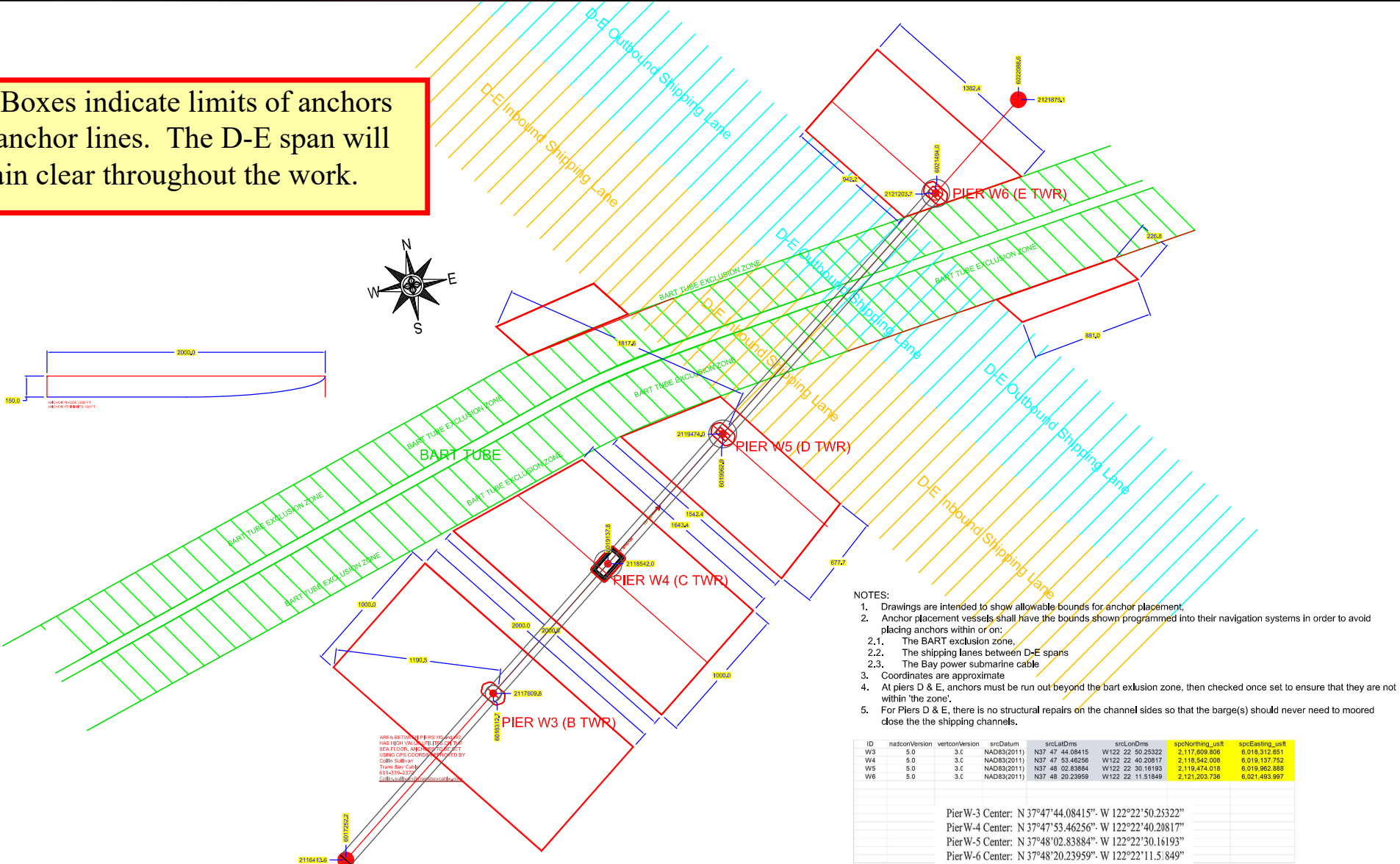
Shipping Lane

BART TUBE EXCLUSION ZONE



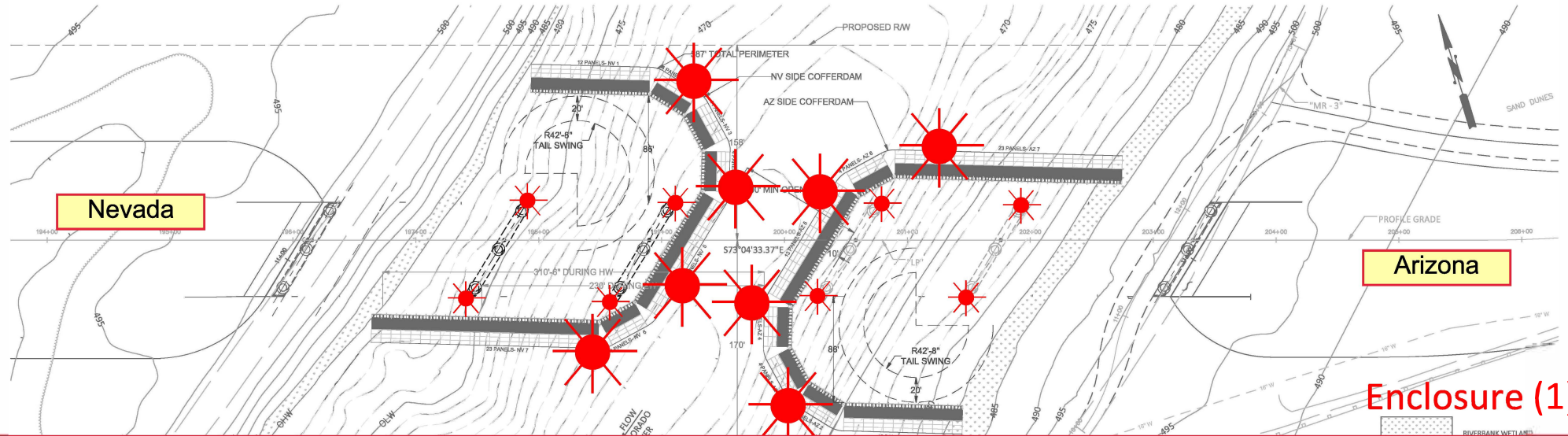


Red Boxes indicate limits of anchors and anchor lines. The D-E span will remain clear throughout the work.



**Fender Repairs**  
**Western Span San Francisco Oakland Bay Bridge, mile 8.9, San Francisco Bay**  
**Temporary Impacts to Navigation Diagram**

# New Laughlin-Bullhead City Bridge Construction Mile 261.6 over the Colorado River Temporary Cofferdam Lighting



The Arizona (AZ) side cofferdam will be installed during phase one of the project. Once AZ side piers and abutments are completed, the cofferdam will be removed and reinstalled on the Nevada (NV) side. The upriver and down river ends, as well as the channel-ward faces, of the cofferdams will be lit at night with steady burning red lights, visible at 2,000 yards by approaching vessels. At least 70 ft from the channel-ward face of either cofferdam will be available in the center of the river for vessels. After piers are installed, the upriver and downriver ends of each pier will be temporarily lighted with red lights, visible at 2,000 yard by approaching vessels, until permanent lighting can be installed marking the main navigation span.

**MARINE SAFETY/SECURITY**  
**INFORMATION BULLETIN (MSIB) 22-01**



May 23, 2022

U.S. Coast Guard Sector San Francisco  
Department of Homeland Security



**Lifesaving and Firefighting Systems/Equipment Servicing Requirements**

U.S. Coast Guard Sector San Francisco discovered a recent trend while inspecting Small Passenger Vessels (SPV) subject to Title 46 Code of Federal Regulations (CFR) Subchapter T with regards to fire extinguishing and lifesaving installation servicing requirements. This bulletin serves as a reminder for mariners to remain vigilant as to the ready availability of their emergency equipment and to maintain awareness that complying with all relevant servicing requirements is a condition of maintaining an adequate Certificate of Inspection.

Any installed inflatable buoyant apparatus (IBA) is required to undergo annual servicing at a USCG approved servicing facility no later than the month and year affixed on its servicing sticker (46 CFR § 185.730(a)). Additionally, all lifesaving equipment must be "in good working order and ready for immediate use before the vessel leaves port and at all times while underway" (46 CFR 185.700(a)).

Fixed fire extinguishing systems, including carbon dioxide, halon, or pre-engineered systems (i.e. Fireboy, Sea-Fire, etc.), and all portable fire extinguishers are required to be inspected and serviced by a certified inspection facility. In addition to the servicing tag affixed to the equipment after successful inspection, operators shall obtain a servicing report for all fixed fire extinguishing systems. Any deficiencies discovered during a servicing shall be documented within the servicing report and corrected accordingly. Additionally, all fixed fire extinguishing systems are required to be tested for system operations (i.e., engine shutdowns, alarms, time delays, etc.) by the servicing company (46 CFR § Table 176.810(b)). These reports shall be kept onboard.

**Expired lifesaving and/or firefighting systems and equipment are considered a "hazardous condition" as per 46 CFR § 175.400. It is therefore a requirement to notify my office of any lapses in servicing dates for these appliances and the vessel is required to set up servicing(s) prior to the carriage of passengers. The consequence of a certificated vessel failing to maintain servicing requirements for firefighting and lifesaving appliances will result in an operational control, with the potential for additional enforcement.**

In summary, Sector San Francisco requires that all inspected Small Passenger Vessel operators remain cognizant of their inspection dates in accordance with applicable regulations. For additional information regarding this bulletin, please contact the U.S. Coast Guard Sector San Francisco Domestic Vessel Inspections Branch at [SectorSF.Domestic.Insp@uscg.mil](mailto:SectorSF.Domestic.Insp@uscg.mil) or at (510) 207-1495.

Sincerely,

TAYLOR Q. LAM  
Captain, U.S. Coast Guard  
Captain of the Port of San Francisco & Northern California  
U.S. Coast Guard Sector San Francisco

U.S. Department of  
Homeland Security

United States  
Coast Guard



To: All Mariners

April 22, 2022

The National Oceanic and Atmospheric Administration (NOAA) with support from the United States Coast Guard (USCG) and Environmental Protection Agency (EPA) is issuing a voluntary 10-knot Vessel Speed Reduction (VSR) request that goes into effect May 1 off of San Francisco and southern California; please see the attached charts. Large ships travelling 10 knots give whales more time to move to avoid a strike, reduce the lethality of a strike should one occur, generate less harmful ocean noise and have fewer air emissions. Thus, the goals of these voluntary VSR zones are to reduce the risk of fatal ship strikes to endangered blue, fin, and humpback whales, reduce ocean noise and protect public health adjacent to Greater Farallones, Cordell Bank, Monterey Bay, and Channel Islands national marine sanctuaries. These whale species are protected under the Federal Endangered Species Act (16 U.S.C. 1538 et seq.), the Marine Mammal Protection Act (16 U.S.C. 1361 et seq.), and the National Marine Sanctuaries Act (16 U.S.C. 1431 et seq.). Any unauthorized take of whales, even if unintentional, by vessels transiting in U.S. waters violates federal statutes.

**The voluntary VSR request will be in effect May 1 to December 15, 2022 for all VSR zones off California, as shown in the attached charts.** Note the expansion of the VSR zone off San Francisco over prior years is designed to reduce ship strike risk in areas of known whale presence and vessel traffic. The season has been extended to account for the presence of whales later in the year.

NOAA, USCG and EPA request that all vessels 300 gross tons (GT) or larger reduce speeds to 10 knots when transiting within the designated VSR zones. We request your cooperation with the voluntary VSR to protect the health of communities living near these zones, and whales that annually migrate to and through these zones. All transits by vessels 300 GRT or larger are analyzed by NOAA via Automatic Information System (AIS) data provided by USCG to assess the industry's cooperation.

NOAA, USCG and EPA are committed to the long-term protection of nationally significant marine resources and public health by enhancing marine safety and environmental awareness in the maritime community. We encourage vessel crews to report whale sightings through the Whale Alert App (<http://www.whalealert.org>). If you have questions please contact Sean Hastings, (805) 705-1790, [sean.hastings@noaa.gov](mailto:sean.hastings@noaa.gov). NOAA, USCG and EPA commend your commitment to protecting endangered and threatened whales and protecting public health by cooperating with the 10-knot VSR requests and working towards a goal of 100% cooperation in 2022.

William J. Douros, Regional Director  
NOAA Office of National Marine Sanctuaries  
West Coast Region

Scott Rumsey, Acting Regional Administrator  
NOAA National Marine Fisheries Service  
West Coast Region

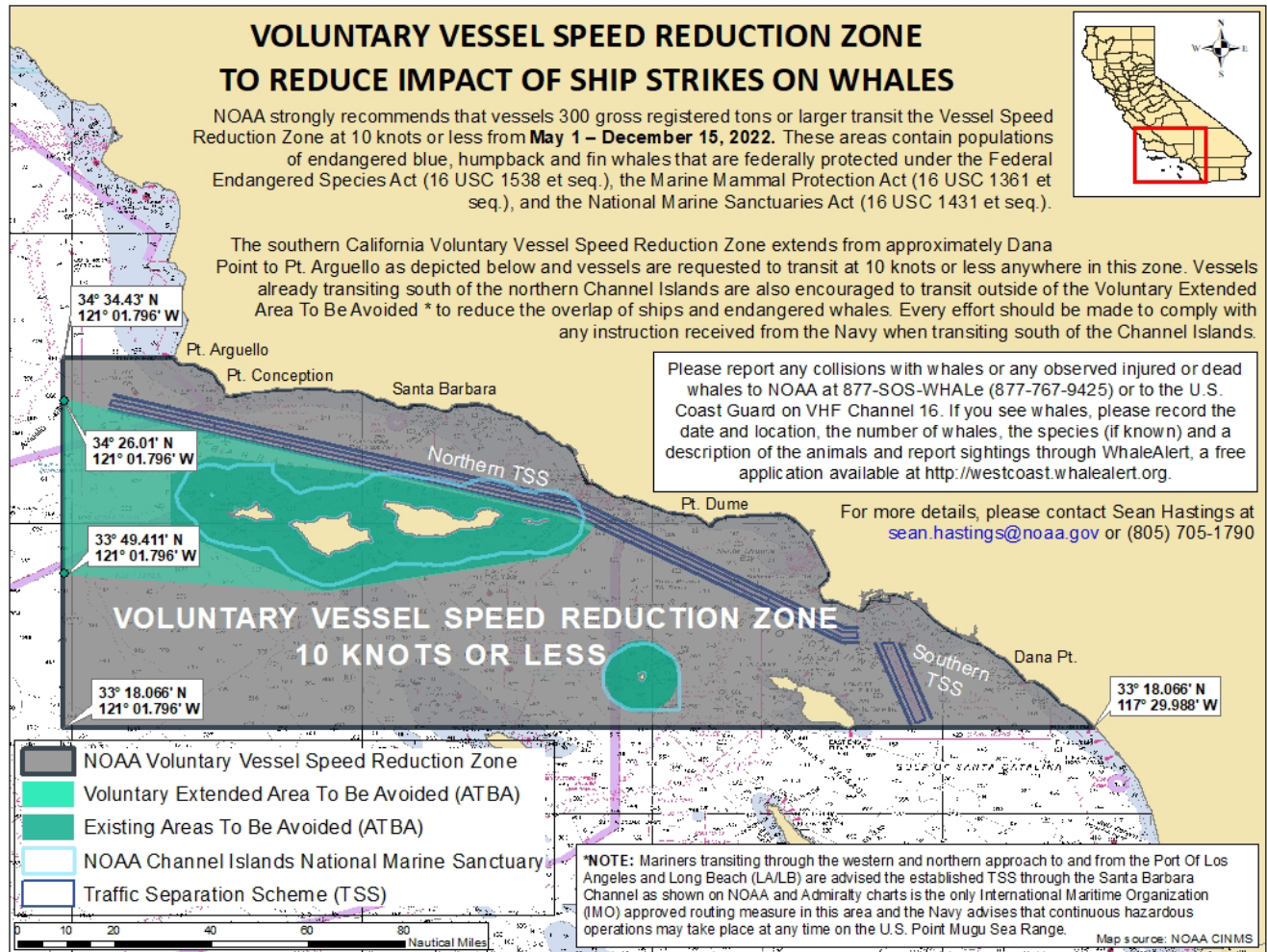
Brian K. Penoyer, Rear Admiral  
U.S. Coast Guard District Eleven

Martha Guzman, Regional Administrator  
Environmental Protection Agency Region 9





## 2022 Voluntary Vessel Speed Reduction Zone Southern California

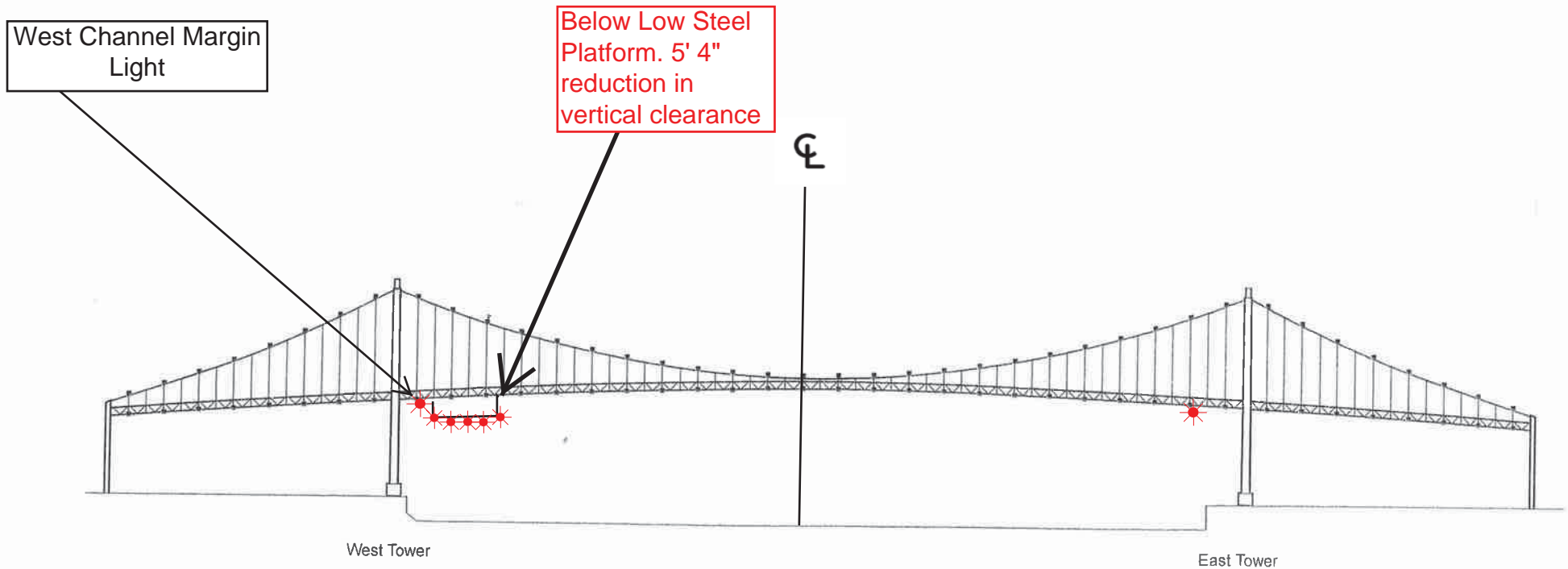


NOAA Chart 18022

Chart not for navigational purposes.

13 APRIL 2022

Vincent Thomas Highway Bridge  
Mile 3.0  
Los Angeles/Long Beach Harbor  
**Painting Project**



A 180 foot long under deck temporary platform will reduce vertical clearance by 5' 4". Each corner and every 50 feet along the the upstream and downstream side of the platform will lighted at night with steady burning red lights visible at 2000 yards by approaching vessels. In a duration of 1-year the platform will progress from the western channel margin light to 250' west of the centerline of the bridge.