



U.S. Department
of Homeland Security
**United States
Coast Guard**

LOCAL NOTICE TO MARINERS

District: 11

Week: 33/22

CORRESPONDENCE TO:
COMMANDER
DISTRICT ELEVEN (DPW)
COAST GUARD ISLAND BUILDING 50-2
ALAMEDA, CA 94501-5100

REFERENCES: COMDTPUB P16502.6, Light List Volume VI, 2017 Edition, U.S. Chart No.1 12th Edition, and Coast Pilot Volume 7 49th Edition. These publications, along with corrections, are available at: <https://nauticalcharts.noaa.gov/>

BROADCAST NOTICE TO MARINERS - Information concerning aids to navigation and waterway management promulgated through BNM HB-0007-22, SF-0069-22, LA-0076-22, and SD-0061-22 have been incorporated in this notice, or will continue if still significant.

SECTION I - SPECIAL NOTICES

This section contains information of special concern to the Mariner.

SUBMITTING INFORMATION FOR PUBLICATION IN THE LOCAL NOTICE TO MARINERS

A complete set of guidelines with examples and contact information can be found at <http://www.pacificarea.uscg.mil/Our-Organization/District-11/Prevention-Division/LnmRequest/> or call Waterways Management Branch at 510-437-2929 or e-mail D11-SMB-D11-LNM@uscg.mil. Please provide all Local Notice to Mariners submissions 14 days prior to the start of operations

LNM: 17/21

BRIDGE INFORMATION- PROJECTS, DISCREPANCIES, CORRECTIONS & REGULATORY

For all bridge related issues, including lighting, operation, obstructions, construction, demolition, etc. contact the Eleventh Coast Guard District Bridge Administrator 24 hour cell phone at 510-219-4366. Flotsam may accumulate on and near bridge piers and abutments. Mariners should approach all bridges with caution. A vessel delay at a drawbridge may be reported to the District Bridge Administrator by telephone, or by using the Delay_Report_11-2017.pdf included in the Enclosures section of this Local Notice to Mariners.

BRIDGE INFORMATION-COMMUNICATIONS PROTOCOL-BENICIA/MARTINEZ UPRR BRIDGE- CARQUINEZ STRAIT

All mariners requiring a bridge lift at the Benicia-Martinez Union Pacific Railroad Bridge, mile 7.0, over the Carquinez Strait, California, should follow the protocol in the document entitled "Coordination of Communications for Union Pacific Railroad Lift Operations." Mariners can download a copy of the document by selecting the link BENICIA-MARTINEZ RR BRIDGE under the QUICK LINKS section at <https://www.pacificarea.uscg.mil/vtssf>.

CANCELLATION OF NOAA PAPER AND RASTER NAUTICAL CHARTS

The National Oceanic and Atmospheric Administration (NOAA) is undertaking a multi-year program to end production and maintenance of its suite of over 1,000 traditional paper nautical charts and all associated raster chart products and services, including: Print-on-Demand (POD) paper nautical charts, Full-size chart PDF files, BookletChart™ PDF files, NOAA raster navigational charts (NOAA RNC®), the NOAA RNC tile service, and the online RNC viewer.

Six months notice of the intent to cancel a specific chart is provided in a "Last Edition" notice. The final cancellation of a chart is made in a "Canceled" notice. Both types of notices will appear in LNM Section IV, "Chart Correction." A comprehensive list of all canceled NOAA charts is available at: <http://www.charts.noaa.gov/MCD/Dole.shtml>.

Traditional paper nautical chart production is ending to enable the creation and maintenance of larger scale, more up-to-date, higher quality coverage of NOAA's electronic navigational chart (NOAA ENC®) product. This will significantly enhance the amount of charted detail available to mariners. More information about NOAA's program to sunset traditional paper charts is on the NOAA Coast Survey website at: <https://nauticalcharts.noaa.gov/charts/farewell-to-traditional-nautical-charts.html>

An online NOAA Custom Chart application at: <https://devgis.charttools.noaa.gov/pod> is available to create chart images from ENC data, which may then be printed. Notices to Mariners will not be issued for NOAA Custom Charts.

LNM: 07/21

CAUTION TO BE USED IN RELIANCE UPON AIDS TO NAVIGATION

The aids to navigation depicted on charts comprise a system of fixed and floating aids to navigation with varying degrees of reliability. Prudent mariners will not rely solely on any single aid to navigation, particularly a floating aid to navigation. With respect to buoys, the buoy symbol is used

to indicate the approximate position of the buoy body and the sinker which secures the buoy to the seabed. The approximate position is used because of the practical limitations in positioning and maintaining buoys and their sinkers in precise geographical locations. These limitations include, but are not limited to, inherent imprecision in position fixing methods, prevailing atmospheric and sea conditions, slope of and the material making up the seabed, the fact that buoys are moored to sinkers by varying length of chain, and the fact that the buoy body and/or sinker positions are not under continuous surveillance, but are normally checked only during periodic maintenance visits which often occur more than a year apart. Due to the forces of nature, the position of the buoy body can be expected to shift inside and outside the charted symbol. The mariner is also cautioned that buoys may be extinguished or sound signals may not function as the result of natural causes, collisions, or other accidents. For the foregoing reasons, a prudent mariner must not rely completely upon the position or operation of floating aids to navigation, but will also utilize bearings from fixed objects and aids to navigation on shore. Furthermore, a vessel attempting to pass close aboard always risks collision with a yawing buoy or with the obstruction that the buoy marks.

HAZARDOUS WEATHER OUTLOOK EXTENDED TO THE EASTERN PACIFIC OCEAN

In coordination with the National Weather Service (NWS) and the National Hurricane Center (NHC), the US Coast Guard is pleased to announce the addition of a new Hazardous Weather Outlook (HWO) service that covers the Eastern Pacific Ocean, including the Pacific Coast of the Continental United States (CONUS). This service is available to all those who could benefit from advanced warning of hazardous weather in both coastal regions and open waters. As with the currently available Western Atlantic Hazardous Weather Outlook, Seven Day HWO's will be released every Wednesday with additional Situational HWO's issued as conditions require. The service will begin on April 6th of this year, however you can sign up in advance at any time.

In the recent past several maritime tragedies and "near misses" in the coastal waters of the United States have occurred due to hazardous weather, such as the sinking of the SS El Faro in 2015. Based on recommendations by the National Transportation Safety Board (NTSB), in cooperation with the NWS and the United States Coast Guard developing improved methods of delivering Marine Safety Information remain a top priority.

The NWS Ocean Prediction Center (OPC) and the NHC's Tropical and Analysis Forecast Branch (TAFB) will be providing weekly and situational reports to the USCG, who will then be making this information available to the public. Through the free online subscription service, GovDelivery, which currently offers subscribers a wide array of Marine Safety Information such as Broadcast Notice to Mariners (BNMs) and Local Notice to Mariners (LNMs) provided through USCG NAVCEN, users will be able to register to receive Hazardous Weather Outlook reports giving forewarning of major weather events.

For subscribing to Eastern Pacific Hazardous Weather Outlook reports by E-mail:
<https://public.govdelivery.com/accounts/USDHSCG/subscriber/new?topic_id=USDHSCG_506>

For subscribing to Eastern Pacific Hazardous Weather Outlook reports by RSS Feed:
<https://public.govdelivery.com/topics/USDHSCG_506/feed.rss>

LMN: 12/22

NAVIGATION CENTER WEBSITE TRANSITION

The U.S. Coast Guard Navigation Center is going to transition the Navigation Center website to a new, enhanced version in the first quarter of 2022. As part of this transition, URLs will be updated across the site including URLs linked to PDFs. Therefore, once the transition is complete, legacy site URLs will no longer function, including bookmarked URLs and URLs used in automatic downloading of data and/or products. Outdated URLs will automatically redirect to the home page of the site, and from there you will be able to easily navigate to your preferred page.

Below are a few of the "old"/new URL pairs listed for your convenience. Please note that the new URLs will not be active until we launch the new website. Of course, once it is launched, the new URLs will be available for re-bookmarking. As a reminder, these are top level URLs that may contain additional links that you use.

This notice will be updated when the final launch date is determined and another notice will be issued to notify you when the site goes live. Questions/concerns may be directed to the NAVCENWebTEAM@uscg.mil.

Local Notices to Mariners (LNMs)
Current URLs: <https://www.navcen.uscg.gov/?pageName=lnmMain>
Replacement: <https://www.navcen.uscg.gov/local-notices-to-mariners-by-cg-district>

Light Lists Annual Publication
Current URLs: <https://navcen.uscg.gov/?pageName=lightLists>
Replacement: <https://www.navcen.uscg.gov/light-list-annual-publication>

Light List - Weekly
Current URLs: <https://navcen.uscg.gov/?pageName=lightListWeeklyUpdates>
Replacement: <https://www.navcen.uscg.gov/weekly-light-lists>

Light List - Corrections
Current URLs: <https://navcen.uscg.gov/?pageName=lightListCorrections>
Replacement: <https://www.navcen.uscg.gov/light-list-summary-of-corrections>

LNLM: 06/22

NORTHERN CALIFORNIA-OFFSHORE-COMMERCIAL SALMON FISHERIES

NMFS has taken in season actions in the commercial salmon fishery south of Cape Falcon. Effective July 1, 2022, retention of Halibut caught incidental to the commercial salmon fishery (U.S./Canada Border to U.S./Mexico Border) is extended past June 30, 2022, on dates that the commercial salmon fishery is open with the same landing and possession limits set preseason.

Effective July 21, 2022. The commercial salmon fishery north of Cape Falcon Landing and possession limit is 30 Chinook per vessel per landing week (Thursday - Wednesday).

Effective July 22, 2022. The recreational Salmon fishery from Queets River to Leadbetter Point (Westport Subarea), Friday and Saturday, two Salmon per day, Chinook retention prohibited. Sunday-Thursday, two Salmon per day, only one of which may be a Chinook.

Charts: 18600 18620 18640 18680 18700 18720 18740 LNLM: 29/22

NORTHERN CALIFORNIA-SAN FRANCISCO - VOLUNTARY VESSEL SPEED REDUCTION

NOAA, U.S. Coast Guard and the Environmental Protection Agency request that all vessels 300 gross registered tons (GRT) or larger reduce speeds to 10 knots or less when transiting the San Francisco Traffic Separation Scheme (SF TSS) and within Greater Farallones and Cordell Bank National Marine Sanctuaries from May 1 to December 15, 2022 to protect endangered blue, humpback and fin whales; see enclosure NOAA VSR 2022.pdf. These areas contain populations of endangered blue, humpback, and fin whales that are federally protected under the Federal Endangered Species Act (16 USC 1538 et seq.), the Marine Mammal Protection Act (16 USC 1361 et seq.), and the National Marine Sanctuaries Act (16 USC 1431 et seq.).

Please report any collisions with whales or any observed injured or dead whales to the U.S. Coast Guard on VHF Channel 16. NOAA is asking for the public's help in tracking whales. Please report sightings through Whale Alert, a free application available at <http://westcoast.whalealert.org/>.

Charts: 18600 18620 18640 18680 LNLM: 18/22

NORTHERN CALIFORNIA-SAN FRANCISCO-MILE ROCKS LIGHT-REDUCED NOMINAL RANGE

Mile Rocks Light (LLNR 365) will have a temporarily reduced intensity of 5nm until further notice. Mariners are requested to transit the area with caution. For more details or comments contact LT Miranda Brumbaugh at 510-437-2978 or Miranda.E.Brumbaugh@uscg.mil.

Charts: 18007 18010 18020 18022 18640 18645 18649 18680 LNLM: 16/19

NORTHERN CALIFORNIA-SAN JOAQUIN RIVER-MARINE CONSTRUCTION

The Department of Water Resources have placed an emergency barrier in the West False River until December, 2022. The barrier is located at 38-03-25N 121-40-08W and is approximately 0.4 mile east of the confluence with the San Joaquin River, between Jersey and Bradford Islands in Contra Costa County, and is about 4.8 miles northeast of Oakley. Constructing the emergency temporary rock barrier provides a method of controlling saltwater intrusion into the Delta and the barrier was installed in the identical location in 2015. Mariners are requested to transit the area with caution. For more details or comments contact Jason Bacher at 916-376-9859 or Keith Boulton at 360-580-3708.

Charts: 18656 18661 18663 LNLM: 16/22

SOUTHERN CALIFORNIA-DANA POINT TO POINT ARGUELLO-VOLUNTARY VESSEL SPEED REDUCTION

NOAA, U.S. Coast Guard and the Environmental Protection Agency request that all vessels 300 gross registered tons (GRT) or larger reduce speeds to 10 knots or less when transiting in the Vessel Speed Reduction from Dana Point to Pt. Arguello from May 1 to December 15, 2022 to protect endangered whales; see enclosure NOAA VSR 2022.pdf. These areas contain populations of endangered blue, humpback, and fin whales that are federally protected under the Federal Endangered Species Act (16 USC 1538 et seq.), the Marine Mammal Protection Act (to protect endangered whales 16 USC 1361 et seq.), and the National Marine Sanctuaries Act (16 USC 1431 et seq.). Vessels already transiting south of the northern Channel Islands are also encouraged to transit outside of the voluntary Extended Area To Be Avoided to reduce the overlap of ships and endangered whales.

Please report any collisions with whales or any observed injured or dead whales to the U.S. Coast Guard on VHF Channel 16. NOAA is asking for the public's help in tracking whales. Please report sightings through Whale Alert, a free application available at <http://westcoast.whalealert.org/>.

Charts: 18720 18740 LNLM: 18/22

SOUTHERN CALIFORNIA-SAN DIEGO BAY-MINIMIZE WAKE

The Navy Port Operations Manager requests that vessels slow to 7 kts when a vessel is moored in restricted area (33 CFR 334.865) located on the northeast side of North Island at 32-42-57N 117-11-22W, between San Diego Channel Lighted Buoy 20 (LLNR 1710) and San Diego Channel Lighted Buoy 22 (LLNR 1830). For more details or comments contact LT Rodriguez at 619-545-3232, Rigoberto.rodriguez3@navy.mil.

Chart 18773 LNLM: 10/22

SUBMITTING INFORMATION FOR PUBLICATION IN THE LOCAL NOTICE TO MARINERS

Coast Guard District Eleven Waterways upgrade to E-Mail capabilities. All future requests for article submission in the District Eleven Local Notice to Mariners are requested to be E-Mailed to D11-SMB-SMB-D11-LNM@uscg.mil at least two weeks prior to the operation. For more details or

comments please contact District Eleven Waterways Management Branch at 510-437-2929 or e-mail D11-SMB-D11-LNM@uscg.mil. Coast Guard District Eleven requests all Local Notice to Mariners submissions be E-Mailed to our office at least 14 days prior to the start of operations for timely submittal and publication.

LNM: 17/21

SECTION II - DISCREPANCIES

This section lists all reported and corrected discrepancies related to Aids to Navigation in this edition. A discrepancy is a change in the status of an aid to navigation that differs from what is published or charted.

DISCREPANCIES (FEDERAL AIDS)

LLNR	Aid Name	Status	Chart No.	BNM Ref.	LNM St	LNM End
125	Long Beach Light	LT EXT	18751	LA-0148-20	49/20	
345	San Francisco South Traffic Lane Lighted Bell Buoy S	MISSING	18645	SF-0042-21	09/21	
360	San Francisco Approach Lighted Whistle Buoy SF	RAC INOP	18649	SF-0040-22	17/22	
365	Mile Rocks Light	REDUCED INT	18649	SF-0251-17	49/17	
2635	Ship Rock Light	LT EXT	18757	LA-0095-21	26/21	
2641	Isthmus Cove Harbor Reefs Light	STRUCT DMGD	18757	LA-0018-21	05/21	
2670	Santa Catalina Island West End Light	LT EXT	18757	LA-0113-19	34/19	
2810	Anaheim Bay Channel Buoy 7	OFF STA	18749	LA-0062-22	30/22	
3012	Long Beach Light	LT EXT	18751	LA-0148-20	49/20	
3117	Los Angeles Main Channel Lighted Buoy 11	REDUCED INT	18751	LA-0105-21	28/21	
3132	Terminal Island Channel Lighted Buoy 1	STRUCT DMGD	18751	LA-0027-22	16/22	
3970	Monterey Harbor Light 6	REDUCED INT	18685	SF-0165-21	51/21	
3970	Monterey Harbor Light 6	SS INOP	18685	SF-0064-20	27/20	
3990	Moss Landing Harbor Entrance Lighted Bell Buoy MLA	LT EXT	18685	SF-0059-22	29/22	
4155	Colorado Reef Lighted Buoy 26	OFF STA	18645	SF-0163-21	51/21	
4245	Mile Rocks Light	REDUCED INT	18649	SF-0251-17	49/17	
4350	Raccoon Strait Lighted Buoy 4	OFF STA	18653	SF-0069-22	33/22	
4430	Pier B North Buoy	MISSING	18650	SF-0153-21	48/21	
4595	Yerba Buena Island Light	LT EXT/SS INOP/TRLT	18650	SF-0143-21	46/21	
4680	Oakland Inner Harbor Light 10	MISSING/TRLB	18650	SF-0052-21	02/22	
4684	Oakland Inner Harbor Turn Basin Light B	STRUCT DMGD/TRLB	18650	SF-0097-21	29/21	
4740	San Leandro Bay Airport Channel Daybeacon 6	STRUCT DEST/TRUB	18650	SF-0033-22	15/22	
5415	San Francisco Bay North Channel Lighted Bell Buoy 6	LT EXT	18650	SF-0068-22	33/22	
6095	Mare Island Strait Light 2	STRUCT DMGD/TRLB	18655	SF-0152-20	49/20	
6310	Suisun Bay Channel Buoy 3	OFF STA	18657	SF-0116-21	36/21	
6433	Point Edith Crossing Range Front Light	STRUCT DEST/TRLB	18658	SF-0067-22	32/22	
6505	Suisun Bay Channel Lighted Buoy 17	OFF STA	18658	SF-0128-21	02/22	
6685	San Joaquin River Light 8	LT EXT/TRLB	18656	SF-0109-21	02/22	
6855	San Joaquin River Light 46	STRUCT DEST/TRLB	18661	SF-0057-22	28/22	
7210	Sacramento River Deep Water Ship Channel Light 10	MISSING/TRLB	18656	SF-0101-21	32/21	
7235	Sacramento River Deep Water Ship Channel Light 15	MISSING/TRLB	18661	SF-0100-20	35/20	
7240	Sacramento River Deep Water Ship Channel Light 16	STRUCT DEST/TRLB	18661	SF-0127-18	34/18	

7260	Sacramento River Deep Water Ship Channel Light 20	MISSING/TRLB	18661	SF-0108-21	33/21
7445	Sacramento River Deep Water Ship Channel Light 56	LT EXT	18662	SF-0063-22	31/22

DISCREPANCIES (FEDERAL AIDS) CORRECTED

LLNR	Aid Name	Status	Chart No.	BNM Ref.	LNM St	LNM End
2470	Newport Bay Channel Lighted Buoy 11	WATCHING PROPERLY		LA-0076-22	33/22	33/22
3785	Santa Barbara Harbor Lighted Buoy 11	WATCHING PROPERLY	18725	LA-0068-22	32/22	33/22
4595	Yerba Buena Island Light	WATCHING PROPERLY	18650	SF-0141-21	46/21	33/22
7460	Sacramento River Deep Water Ship Channel Range A Front Light 59	WATCHING PROPERLY	18662	SF-0066-22	32/22	33/22

DISCREPANCIES (PRIVATE AIDS)

LLNR	Aid Name	Status	Chart No.	BNM Ref.	LNM St	LNM End
20	Ocean Beach Pier Fog Sound Signal	SS INOP	18765	SD-0002-19	05/19	
158	Scripps Waverider Lighted Research Buoy 092	OFF STA	18746		45/18	
505	Scripps Waverider Lighted Research Buoy 168	LT EXT	18620	HB-0003-22	14/22	
1665	Americas Cup Harbor Daybeacon 2	STRUCT DEST	18773	SD-0001-22	02/22	
1720	Navy Lighted Mooring Buoy	LT EXT	18773	SD-0055-21	33/21	
1765	Harbor Island East Basin Channel Buoy 2	OFF STA	18773	SD-0028-19	19/19	
1775	Harbor Island East Basin Channel Buoy 4	MISSING	18773	SD-0039-20	29/20	
1790	Harbor Island East Basin Channel Buoy 10	OFF STA	18773	SD-0044-19	27/19	
1900	Glorietta Bay Channel Lighted Buoy 8	LT IMCH	18773	SD-0100-18	50/18	
2070	Coronado Cays Channel Daybeacon 3	STRUCT DEST	18773	SD-0098-17	36/17	
2090	Coronado Cays Channel Light 7	STRUCT DEST/TRUB	18773	SD-0046-22	31/22	
2288	Scripps Waverider Lighted Research Buoy 220	OFF STA	18765	SD-0041-20	30/20	
2289.1	Scripps Waverider Lighted Research Buoy 100	OFF STA	18765		22/20	
2289.4	Scripps "CORDC" Lighted Research Buoy	MISSING	18765		22/20	
2764.4	Catalina Sea Ranch SE Buoy	MISSING	18746	LA-0001-22	03/22	
2871	Long Beach Harbor Brusco Lighted Mooring Buoy	LT EXT	18751	LA-0009-21	03/21	
3339.2	REDONDO HARBOR LIGHT	LT EXT	18744	LA-0181-18	52/18	
3400	El Segundo NRG Energy Buoy 6ES	SINKING	18744	LA-0153-21	39/21	
3420	Hyperion Lighted Gong Buoy 10 ES	LT EXT	18744		16/20	
4401	Richardson Bay Daybeacon 8	DAYMK DMGD	18653		15/20	
4402	Richardson Bay Daybeacon 9	STRUCT DMGD	18649	SF-0086-18	23/18	
4576	South Beach Harbor North Entrance Light 2	LT EXT	18650	SF-0047-21	11/21	
4577	South Beach Harbor North Entrance Light 1	LT EXT	18650	SF-0046-21	10/21	
4578	South Beach Harbor South Entrance Light 1	LT EXT	18650	SF-0091-20	33/20	
4826	Bay Farm Island Light 1	LT EXT	18650	SF-0014-19	05/19	
4826.15	Bay Farm Island Light 3	LT EXT	18650	SF-0014-19	04/19	
4826.2	Bay Farm Island Light 4	LT EXT	18650	SF-0136-21	44/21	
4827.1	Anchorage 9 Lighted Mooring Buoy A	LT EXT	18650	SF-0012-20	04/20	
4828.1	Anchorage 9 Lighted Mooring Buoy B	LT EXT	18650	SF-0013-20	04/20	
5661	Southampton Shoal Outfall Lighted Buoy 1	LT EXT/RAC INOP	18653	SF-0026-19	07/19	

5661	Southampton Shoal Outfall Lighted Buoy 1	MISSING/TRLB	18653	SF-0029-20	18/21
5662	Southampton Shoal Outfall Lighted Buoy 2	LT EXT	18653	SF-0059-21	14/21
5877.2	San Rafael Rock Quarry Mooring Buoy C	MISSING	18653		36/18
6623	New York Slough Koch West Light	LT IMCH			39/18
6624	New York Slough Koch East Light	LT EXT			39/18
6645.5	Delta Diablo Outfall Lighted Buoy	LT EXT		SF-0005-22	02/22
8325	Pacific Gas and Electric Dike Light	LT EXT	18622	HB-0009-21	20/21

DISCREPANCIES (PRIVATE AIDS) CORRECTED

LLNR	Aid Name	Status	Chart No.	BNM Ref.	LNM St	LNM End
------	----------	--------	-----------	----------	--------	---------

None

PLATFORM DISCREPANCIES

Name	Status	Position	BNM Ref.	LNM St	LNM End
------	--------	----------	----------	--------	---------

None

PLATFORM DISCREPANCIES CORRECTED

Name	Status	Position	BNM Ref.	LNM St	LNM End
------	--------	----------	----------	--------	---------

None

SECTION III - TEMPORARY CHANGES and TEMPORARY CHANGES CORRECTED

This section contains temporary changes and corrections to Aids to Navigation for this edition. When charted aids are temporarily relocated for dredging, testing, evaluation, or marking an obstruction, a temporary correction shall be listed in Section IV giving the new position.

TEMPORARY CHANGES

LLNR	Aid Name	Status	Chart No.	BNM Ref.	LNM St	LNM End
280	Point Sur Light	Reduced Intensity	18680	SF-0105-20	35/20	
2810	Anaheim Bay Channel Buoy 7	RELOCATED	18749		29/22	33/22

TEMPORARY CHANGES CORRECTED

LLNR	Aid Name	Status	Chart No.	BNM Ref.	LNM St	LNM End
------	----------	--------	-----------	----------	--------	---------

None

PLATFORM TEMPORARY CHANGES

Name	Status	Position	BNM Ref.	LNM St	LNM End
------	--------	----------	----------	--------	---------

None

PLATFORM TEMPORARY CHANGES CORRECTED

Name	Status	Position	BNM Ref.	LNM St	LNM End
------	--------	----------	----------	--------	---------

None

SECTION IV - CHART CORRECTIONS

This section contains corrections to federally and privately maintained Aids to Navigation, as well as NOS corrections.

This section contains corrective actions affecting chart(s). Corrections appear numerically by chart number, and pertain to that chart only. It is up to the mariner to decide which chart(s) are to be corrected. The following example explains individual elements of a typical chart correction.

Chart Number	Chart Edition	Edition Date	Last Local Notice to Mariners	Horizontal Datum Reference	Source of Correction	Current Local Notice to Mariners
12327	91st Ed.	19-APR-97	Last LNM: 26/97	NAD 83		27/97
Chart Title: NY-NJ-NEW YORK HARBOR - RARITAN RIVER						
Main Panel 2245 NEW YORK HARBOR						
(Temp) ADD	NATIONAL DOCK CHANNEL BUOY 3				CGD01 at 40-41-09.001N	074-02-48.001W
Corrective Action	Green can Object of Corrective Action				Position	

(Temp) indicates that the chart correction action is temporary in nature. Courses and bearings are given in degrees clockwise from 000 true. Bearings of light sectors are toward the light from seaward. The nominal range of lights is expressed in nautical miles (NM) unless otherwise noted.

50	9th Ed.	01-DEC-15	Last LNM: 31/22	NAD 83		33/22
<i>Chart Title: North Pacific Ocean (eastern part) Bering Sea Continuation</i>						
Main Panel 2400 NORTH PACIFIC OCEAN EASTERN PART. Page/Side: A						
RELOCATE	NOAA Environmental Lighted Buoy 46069				CGD11 from 33-40-44.259N	120-12-47.530W
	RELOCATE				to 33-40-44.259N	120-12-47.530W
501	13th Ed.	01-JUN-09	Last LNM: 31/22	NAD 83		33/22
<i>Chart Title: North Pacific Ocean West Coast Of North America Mexican Border To Dixon Entrance</i>						
Main Panel 1650 MEXICAN BORDER TO DIXON ENTRANCE. Page/Side: N/A						
RELOCATE	NOAA Environmental Lighted Buoy 46011				CGD11 from 34-57-22.441N	121-01-07.501W
	Relocate				to 34-57-24.242N	121-00-50.955W
RELOCATE	NOAA Environmental Lighted Buoy 46011				CGD11 from 34-57-24.242N	121-00-50.955W
	RELOCATE				to 34-57-24.242N	121-00-50.955W
RELOCATE	NOAA Environmental Lighted Buoy 46053				CGD11 from 34-14-32.707N	119-50-25.996W
	RELOCATE				to 34-14-32.707N	119-50-25.996W
RELOCATE	NOAA Environmental Lighted Buoy 46069				CGD11 from 33-40-44.259N	120-12-47.530W
	RELOCATE				to 33-40-44.259N	120-12-47.530W
530	35th Ed.	01-DEC-15	Last LNM: 31/22	NAD 83		33/22
<i>Chart Title: North America West Coast San Diego to Aleutian Islands and Hawaiian Islands</i>						
Main Panel 2405 SAN DIEGO TO ALEUTIAN ISLANDS AND HAWAIIAN ISLANDS. Page/Side: A						
RELOCATE	NOAA Environmental Lighted Buoy 46011				CGD11 from 34-57-22.441N	121-01-07.501W
	Relocate				to 34-57-24.242N	121-00-50.955W
RELOCATE	NOAA Environmental Lighted Buoy 46011				CGD11 from 34-57-24.242N	121-00-50.955W
	RELOCATE				to 34-57-24.242N	121-00-50.955W
RELOCATE	NOAA Environmental Lighted Buoy 46069				CGD11 from 33-40-44.259N	120-12-47.530W
	RELOCATE				to 33-40-44.259N	120-12-47.530W
18020	39th Ed.	01-JAN-12	Last LNM: 10/21	NAD 83		33/22
<i>Chart Title: San Diego to Cape Mendocino</i>						
Main Panel 1654 SAN DIEGO TO CAPE MENDOCINO. Page/Side: N/A						
RELOCATE	NOAA Environmental Lighted Buoy 46011				CGD11 from 34-57-22.441N	121-01-07.501W
	Relocate				to 34-57-24.242N	121-00-50.955W
RELOCATE	NOAA Environmental Lighted Buoy 46011				CGD11 from 34-57-24.242N	121-00-50.955W
	RELOCATE				to 34-57-24.242N	121-00-50.955W
RELOCATE	NOAA Environmental Lighted Buoy 46053				CGD11 from 34-14-32.707N	119-50-25.996W
	RELOCATE				to 34-14-32.707N	119-50-25.996W
RELOCATE	NOAA Environmental Lighted Buoy 46069				CGD11 from 33-40-44.259N	120-12-47.530W
	RELOCATE				to 33-40-44.259N	120-12-47.530W
18022	36th Ed.	01-JUN-11	Last LNM: 10/21	NAD 83		33/22

ChartTitle: San Diego to San Francisco Bay

Main Panel 1655 SAN DIEGO TO SAN FRANCISCO BAY. Page/Side: N/A

RELOCATE	NOAA Environmental Lighted Buoy 46011 Relocate	CGD11 from 34-57-22.441N to 34-57-24.242N	121-01-07.501W 121-00-50.955W
RELOCATE	NOAA Environmental Lighted Buoy 46011 RELOCATE	CGD11 from 34-57-24.242N to 34-57-24.242N	121-00-50.955W 121-00-50.955W
RELOCATE	NOAA Environmental Lighted Buoy 46053 RELOCATE	CGD11 from 34-14-32.707N to 34-14-32.707N	119-50-25.996W 119-50-25.996W
RELOCATE	NOAA Environmental Lighted Buoy 46069 RELOCATE	CGD11 from 33-40-44.259N to 33-40-44.259N	120-12-47.530W 120-12-47.530W

18643 18th Ed. 01-DEC-09 Last LNM: 21/12 NAD 83 33/22

ChartTitle: Bodega and Tomales Bays;Bodega Harbor

Main Panel 1817 BODEGA AND TOMALES BAYS. Page/Side: N/A

LAST EDITION	No new editions of chart 18643 will be published. It will be canceled on 05-Oct-22. Comparable or larger scale Electronic Navigational Chart (ENC) coverage is available. See "Cancellation of NOAA Paper and Raster Nautical Charts" in Section I of this LNM for details. A list of all canceled NOAA charts is at https://www.charts.noaa.gov/MCD/Dole.shtml .	NOS --	--
--------------	--	-----------	----

18645 28th Ed. 01-MAY-13 Last LNM: 09/21 NAD 83 33/22

ChartTitle: Gulf of the Farallones;Southeast Farallon

Main Panel 1819 GULF OF THE FARALLONES. Page/Side: N/A

LAST EDITION	No new editions of chart 18645 will be published. It will be canceled on 05-Oct-22. Comparable or larger scale Electronic Navigational Chart (ENC) coverage is available. See "Cancellation of NOAA Paper and Raster Nautical Charts" in Section I of this LNM for details. A list of all canceled NOAA charts is at https://www.charts.noaa.gov/MCD/Dole.shtml .	NOS --	--
--------------	--	-----------	----

18651 45th Ed. 01-DEC-13 Last LNM: 28/19 NAD 83 33/22

ChartTitle: San Francisco Bay-southern part;Redwood Creek.;Oyster Point

Main Panel 1826 SAN FRANCISCO BAY SOUTHERN PART. Page/Side: N/A

LAST EDITION	No new editions of chart 18651 will be published. It will be canceled on 05-Oct-22. Comparable or larger scale Electronic Navigational Chart (ENC) coverage is available. See "Cancellation of NOAA Paper and Raster Nautical Charts" in Section I of this LNM for details. A list of all canceled NOAA charts is at https://www.charts.noaa.gov/MCD/Dole.shtml .	NOS --	--
--------------	--	-----------	----

18657 19th Ed. 01-NOV-05 Last LNM: 30/19 NAD 83 33/22

ChartTitle: Carquinez Strait

Main Panel 1850 CARQUINEZ STRAIT. Page/Side: N/A

LAST EDITION	No new editions of chart 18657 will be published. It will be canceled on 05-Oct-22. Comparable or larger scale Electronic Navigational Chart (ENC) coverage is available. See "Cancellation of NOAA Paper and Raster Nautical Charts" in Section I of this LNM for details. A list of all canceled NOAA charts is at https://www.charts.noaa.gov/MCD/Dole.shtml .	NOS --	--
--------------	--	-----------	----

18680 32nd Ed. 01-MAY-13 Last LNM: 33/16 NAD 83 33/22

ChartTitle: Point Sur to San Francisco

Main Panel 1866 POINT SUR TO SAN FRANCISCO. Page/Side: N/A

RELOCATE	NOAA Environmental Lighted Buoy 46114 Relocate	CGD11 from 36-42-00.000N to 36-41-07.656N	122-20-33.000W 122-19-49.548W
----------	---	---	----------------------------------

18700 23rd Ed. 01-SEP-13 Last LNM: 31/19 NAD 83 33/22

ChartTitle: Point Conception to Point Sur

Main Panel 1876 POINT CONCEPTION TO POINT SUR. Page/Side: N/A

RELOCATE	NOAA Environmental Lighted Buoy 46011 Relocate	CGD11 from 34-57-22.441N to 34-57-24.242N	121-01-07.501W 121-00-50.955W
RELOCATE	NOAA Environmental Lighted Buoy 46011 RELOCATE	CGD11 from 34-57-24.242N to 34-57-24.242N	121-00-50.955W 121-00-50.955W

18720 35th Ed. 01-APR-20 Last LNM: 28/20 NAD 83 33/22
 ChartTitle: Point Dume to Purisma Point
 Main Panel 1880 POINT DUME TO PURISIMA POINT --. Page/Side: -
 RELOCATE NOAA Environmental Lighted Buoy 46053 CGD11 from 34-14-32.707N 119-50-25.996W
 RELOCATE RELOCATE to 34-14-32.707N 119-50-25.996W
 RELOCATE NOAA Environmental Lighted Buoy 46069 CGD11 from 33-40-44.259N 120-12-47.530W
 RELOCATE RELOCATE to 33-40-44.259N 120-12-47.530W

18721 12th Ed. 01-DEC-09 Last LNM: 28/20 NAD 83 33/22
 ChartTitle: Santa Cruz Island to Purisima Point
 Main Panel 1881 SANTA CRUZ ISLAND TO PURISIMA POINT. Page/Side: N/A
 RELOCATE NOAA Environmental Lighted Buoy 46053 CGD11 from 34-14-32.707N 119-50-25.996W
 RELOCATE RELOCATE to 34-14-32.707N 119-50-25.996W
 LAST EDITION No new editions of chart 18721 will be published. It will be canceled on NOS --
 05-Oct-22. Comparable or larger scale Electronic Navigational Chart --
 (ENC) coverage is available. See "Cancellation of NOAA Paper and Raster
 Nautical Charts" in Section I of this LNM for details. A list of all canceled
 NOAA charts is at <https://www.charts.noaa.gov/MCD/Dole.shtml>.

18725 31st Ed. 01-OCT-20 Last LNM: 30/20 NAD 83 33/22
 ChartTitle: Port Hueneme to Santa Barbara;Santa Barbara;Channel Islands Harbor and Port Hueneme;Ventura
 Inset 1885 SANTA BARBARA --. Page/Side: -
 RELOCATE Santa Barbara Harbor Lighted Buoy 11 CGD11 from 34-24-29.884N 119-41-16.000W
 RELOCATE RELOCATE to 34-24-29.884N 119-41-16.000W

SECTION V - ADVANCE NOTICES

This section contains advance notice of approved projects, changes to aids to navigation, or upcoming temporary changes such as dredging, etc. Mariners are advised to use caution while transiting these areas.

SUMMARY OF ADVANCED APPROVED PROJECTS

<u>Approved Project(s)</u>	<u>Project Date</u>	<u>Ref. LNM</u>
None		
<u>Advance Notice(s)</u>		
None		

SECTION VI - PROPOSED CHANGES

Periodically, the Coast Guard evaluates its system of aids to navigation to determine whether the conditions for which the aids to navigation were established have changed. When changes occur, the feasibility of improving, relocating, replacing, or discontinuing aids are considered. This section contains notice(s) of non-approved, proposed projects open for comment. SPECIAL NOTE: Mariners are requested to respond in writing to the District office unless otherwise noted (see banner page for address).

PROPOSED WATERWAY PROJECTS OPEN FOR PUBLIC COMMENT

<u>Proposed Project(s)</u>	<u>Closing</u>	<u>Docket No.</u>	<u>Ref. LNM</u>
None			

Proposed Change Notice(s)

NORTHERN CALIFORNIA-MONTEREY-MONTEREY HARBOR LIGHT 6

The U.S. Coast Guard is proposing to permanently discontinue the sound signal on Monterey Harbor Light 6 (LLNR 3970). The current aid is in the approximate position: 36-36-30N 121-53-22W. Direct any questions comments or feedback no later than 07 October, 2022 to LT Miranda Brumbaugh at 510-437-2983 or Miranda.E.Brumbaugh@uscg.mil.

Charts: 18680 18685 LNM: 28/22

NORTHERN CALIFORNIA-MOSS LANDING HARBOR ENTRANCE RANGE -INTENSITY DECREASE

The U.S. Coast Guard has temporarily decreased the visual range of Moss Landing Harbor Entrance Range Front Light (LLNR 4005) from 10 nautical miles to 5 nautical miles and Moss Landing Harbor Entrance Range Rear Light (LLNR 4005) from 11 nautical miles to 6 nautical miles. Intensity reported to be disrupting mariners due to brightness. Request public input regarding this change as the Coast Guard proposes to make it permanent. Please direct questions, comments, or concerns to LT Miranda Brumbaugh at 510-437-2978 or Miranda.E.Brumbaugh@uscg.mil.

Chart 18685 LNM: 09/22

SOUTHERN CALIFORNIA-MORRO BAY-SOUND SIGNAL

The U.S. Coast Guard is planning to install a Mariner Radio Activated Sound Signal (MRASS) device on Morro Bay West Breakwater Light (LLNR 240). This device will allow the mariner to activate the installed sound signal by keying on a VHF-FM radio microphone six times at the designated

frequency for the AtoN (83A). Please direct questions, comments, or concerns no later than September, 2022 to LT Miranda Brumbaugh at 510-437-2983 or Miranda.E.Brumbaugh@uscg.mil.

Charts: 18700 18703

LNM: 25/22

SECTION VII - GENERAL

This section contains information of general concern to the Mariners. Mariners are advised to use caution while transiting these areas.

2021 COAST GUARD LIGHT LIST AVAILABILITY

2021 Light Lists are available on the USCG Navigation Center's website at: <http://www.navcen.uscg.gov/?pageName=lightLists>. Coast Guard Light Lists are a means for communicating aids to navigation information to the maritime public. Local Notice to Mariners will continue to advise Light List corrections and NAVCEN will continue to publish a compilation of corrections. Complete versions of the 2021 Light Lists are updated weekly on the NAVCEN website and mariners should download applicable copies and updates as needed at: <http://www.navcen.uscg.gov/?pageName=lightListWeeklyUpdates>. A summary of weekly 2021 Light List corrections are available at: <https://www.navcen.uscg.gov/?pageName=lightListCorrections>.

LNM: 03/21

ARIZONA/NEVADA-COLORADO RIVER-BRIDGE

NEW LAUGHLIN-BULLHEAD CITY BRIDGE-In-water work continues on construction of the new bridge in position 35-03-17N 114-36-45W. Work will take place Monday through Friday, 0630 to 1430, through 03 Oct 23. A cofferdam has been installed on the Arizona side of the river to facilitate construction of Arizona side piers and abutment. Once completed the cofferdam will be removed and installed on the Nevada side of the river which will facilitate the construction of the Nevada side piers and abutment. When in place the cofferdams will be lighted at night with four red lights, visible at 2,000 yards by approaching vessels (see [Cofferdam-Lighting_Laughlin-BH.pdf](#) at the end of this notice). Precast girders will be installed once construction of the respective abutments and piers are complete. Precast girders will be install over the middle of the river at the late stages of construction. Approximately 70 feet of horizontal clearance will be provided in the center of the river during construction. For further information contact the Coast Guard Bridge Office at 510-437-3515.

LNM: 50/21

LOWER COLORADO RIVER-LAKE HAVASU-MARINE EVENT

Seebold Sports Inc. will be sponsoring the Lake Havasu Classic Outboard Championship on 14-16 October, 2022 from 6:00am to 8:00pm each day. The event will involve approximately 60 vessels racing on a closed course in Thompson Bay. Mariners are advised to exercise caution when transiting near the event area. For more details or comments contact Tim Seebold at 573-216-1817.

LNM: 33/22

LOWER COLORADO RIVER-LAKE HAVASU-MARINE EVENT

The Campbell Boat Owners Association will be sponsoring the Campbell Boat Owners 50th Annual Regatta on 24 September, 2022 from 6:00am to 5:00pm. The event will involve approximately 60 vessels meeting in Thompson Bay and proceeding north to London Bridge Beach. Mariners are requested to transit the area with caution. For further details or comments contact Bob Steele at 805-415-1858.

LNM: 33/22

LOWER COLORADO RIVER-LAKE HAVASU-MARINE EVENT

Prop and Wheel will be sponsoring the marine event Halletts in Havasu on 14 October, 2022 from 7:00am to 2:00pm. The event will involve approximately 25 vessels on a course starting south of the main island and proceeding north to Pirates Cove. Mariners are requested to transit the area with caution. For details or comments contact Michael Grimes at 818-321-5765.

LNM: 33/22

LOWER COLORADO RIVER-LAKE HAVASU-MARINE EVENT

The Freestyle Personal Watercraft (PWC) Association will be sponsoring the Fall Round – U.S. Freestyle Championship event on 14-16 October, 2022 from 8:00am to 7:00pm. The event will involve PWCs racing on a closed course in the Bridgewater Channel, south of London Bridge. Mariners are advised to exercise caution when transiting near the event area. For more details or comments contact Vaclav Zacek at 928-412-2976.

LNM: 33/22

LOWER COLORADO RIVER-PARKER, AZ-MARINE EVENT

Personal Watercraft Racing LLC will be sponsoring the Full Throttle WaterX personal watercraft (PWC) race on 09-11 September, 2022 from 10:00am until 5:00pm each day in Lake Havasu, AZ. The event will consist of approximately 80 participants racing PWCs on a closed course near Havasu Landing Resort and Casino. Mariners are requested to transit the area with caution. For more details or comments contact Deegan Newton at 562-756-6268.

LNM: 32/22

NORTHERN CALIFORNIA – POINT ORIENT-WHARF DEMOLITION

Power Engineering Construction Co. will be performing demolition operations from until 30 November, 2023 in the vicinity of Point Orient, Richmond. Work is being conducted Monday through Thursday 6:00am to 4:00pm in the vicinity of the Point Orient Wharf at 37-57-22N 122-25-43W. Operations will be conducted with derrick barges DB ALAMEDA, DB CHALLENGER, and various flat barges. The barges will be either spudded down or anchored using a four-point mooring system with buoys. All vessels and equipment on site will be monitoring VHF-FM Chan. 67 and 68. Mariners are advised to use caution when transiting the area. For more details or comments contact Bennett Clegg at (415) 559-0089.

Chart 18654

LNM: 16/22

NORTHERN CALIFORNIA – STANISLAUS RIVER – HORIZONTAL DIRECTIONAL DRILLING CONSTRUCTION OPERATIONS

City of Oakdale will be conducting horizontal directional drilling operations below the Stanislaus River through 30 September 2022. Construction equipment will be staged on land above the adjacent shoreline, with drilling crossing approximately 35 to 40 feet below the riverbed. The operations

NORTHERN CALIFORNIA – STANISLAUS RIVER – HORIZONTAL DIRECTIONAL DRILLING CONSTRUCTION OPERATIONS

will occur at 37-46-17N 120-51-50W in the City of Oakdale. Mariners are requested to transit the area with caution. For more details or comments contact Cody Bridgewater at 209-505-4050 or Jennifer Pratt at 209-556-7938.

Chart 18022

LNM: 28/22

NORTHERN CALIFORNIA-DELTA & RIVERS-AMERICAN RIVER-BRIDGE

CAPITAL CITY HWY (Route 51) BRIDGE-Caltrans is conducting rehabilitation of the bridge through 27 June, 2025. Work will be conducted during daylight hours, 7am to 5:30pm, Monday through Friday, and will include the use of barges, work boats, tugboats, turbidity curtains, and access piers. (See AmRiv_SiltCurtain_BargeLocation.pdf in the enclosure section.). During the workday, barges can be moved for the safety of navigation with one hour notice to the contractor via VHF-FM CH 16 or by cell at 916-532-8208. Mariners should contact the contractor before transiting the bridge to determine location of turbidity curtains. Barges will be unmanned and moored at their work locations overnight. Each corner of each barge will be lighted at night with steady burning red lights. At least 25 feet of horizontal clearance for navigation will be available at all times. Mariners are requested to transit the area with caution. For further information, contact the Coast Guard Bridge Office at 510-437-3461.

Chart 18662

LNM: 23/22

NORTHERN CALIFORNIA-DELTA & RIVERS-OLD RIVER-BRIDGE

BNSF RAILROAD BRIDGE- BNSFs' contractor is replacing the fenders at piers 2 and 3. Work will take place Monday through Friday, 6am to 6:30pm, through 30 September, 2022. One 60' X 80' flexi float barge and one 35' X 110' material barge will be spudded down at the piers (See BNSF_OldRiver_Barge_Lighting.pdf in the enclosure section). During work hours the barges will be in the main navigation span of the bridge and can be moved for the safety of navigation with one hour advanced notice to the contractor at 209-391-5461. After working hours the unmanned barges will be moved behind the wingwall of the pier protection out of the navigation span. Mariners are requested to transit the area with caution. For conditions at the bridge mariners can contact the contractor at 209-391-5461. For further information contact the Coast Guard Bridge Office at 510-437-3515.

Chart 18661

LNM: 31/22

NORTHERN CALIFORNIA-DELTA & RIVERS-PETALUMA RIVER-BRIDGE

SMART BLACKPOINT RAILROAD DRAWBRIDGE-The upstream fender system protecting the swing span has been destroyed and does not offer protection for vessels or the bridge. Repairs to the fender system are anticipated to begin on 01 September, 2022. Mariners are urged to use caution while transiting the bridge. For more details or comments contact the Coast Guard Bridge Office at 510-437-3516.

Chart 18654

LNM: 13/22

NORTHERN CALIFORNIA-DELTA & RIVERS-SACRAMENTO RIVER-BRIDGE

REPLACEMENT BUTTE CITY BRIDGE-Caltrans' contractor has begun installing the temporary trestle for the construction of the replacement bridge. The temporary navigation span during construction will be just west of the existing bridge's pivot pier, 435 feet west of new bridge abutment, and is lighting at night with a green center channel light on the upriver and downriver portion of the trestle. Red lights will mark low steel of the remaining spans of the trestle (see ButteConstructionLighting.pdf enclosure at the end of this notice). The temporary navigation span will provide at least 33 feet of horizontal clearance and 15 feet of vertical clearance from ordinary high water to low steel of the temporary trestle. For further information contact the Coast Guard Bridge Office at 510-437-3516.

LNM: 29/22

NORTHERN CALIFORNIA-DELTA & RIVERS-SACRAMENTO RIVER-BRIDGE

RIO VISTA DRAWBRIDGE-From 6 a.m. to 5 p.m., 17 August through 19 August, 2022, the lift span of the bridge shall open on signal if at least 4-hours notice is given to the drawtender. For further information contact the Coast Guard Bridge Office at 510-437-3516.

Chart 18661

LNM: 32/22

NORTHERN CALIFORNIA-DELTA & RIVERS-SACRAMENTO RIVER-BRIDGE

RIO VISTA DRAWBRIDGE-TRAFFIC GATE INSTALLATION-Temporary platforms are installed beneath low steel of the bridge in spans 2 and 8 reducing vertical clearance in those spans by no more than 4 feet. The upriver and downriver temporary platforms and associated support cables are lit at night with steady burning red lights (see RVBridge_PlatformCable_Lighting.pdf enclosure at the end of this notice.) At no time will the lift span of the bridge be impacted. Mariners are urged to use alternate spans of the bridge. For conditions at the bridge, mariners can contact the contractor at 925-260-2104 or 925-260-1884. For further information contact the Coast Guard Bridge Office at 510-437-3516.

Chart 18661

LNM: 45/20

NORTHERN CALIFORNIA-DELTA & RIVERS-SACRAMENTO RIVER-BRIDGE

TOWER DRAWBRIDGE- The drawspan will be secured in the closed-to-navigation position from 12 noon to 12 midnight on 11 September, 2022, to allow community participation in the Farm to Fork Festival. The bridge provides 30' vertical clearance above mean high water when closed. Vessels that can transit the bridge in the closed position may continue to do so at any time. For more details or comments, contact the Coast Guard Bridge Office at 510-437-3461.

Chart 18662

LNM: 32/22

NORTHERN CALIFORNIA-DELTA & RIVERS-SAN JOAQUIN RIVER-BRIDGE

CROWS LANDING ROAD BRIDGE-Replacement of the bridge is ongoing. Work is being conducted Monday through Friday 0600 to 1600 through 01 Aug 23. A temporary bridge, with a removable span, will be installed to facilitate construction. With the span removed, the temporary bridge will provide, at a minimum, 15 feet of horizontal clearance. The span will be removed after normal working hours. Temporary falsework will be installed to facilitate construction. The temporary falsework's navigation span will provide 17 feet of vertical clearance at Ordinary High Water when the temporary bridge's removable span is removed. Upriver and downriver red channel margin lights and green center channel lights will mark the temporary navigation span at night. To view the temporary navigation span and lighting, see the Temporary_Bridge_Falsework_Lighting.pdf enclosure at the end of this notice. Mariners are requested to use extreme caution when transiting the work site. For conditions at the project site mariners can contact the contractor at 916-869-8210 or 559-593-5182. For further information contact the Coast Guard Bridge Office at 510-437-3461.

LNM: 46/21

NORTHERN CALIFORNIA-HALF MOON BAY-SUNKEN VESSEL

NORTHERN CALIFORNIA-HALF MOON BAY-SUNKEN VESSEL

The Coast Guard received a report of a sunken towing vessel in the Pillar Point Harbor at position 37-29-42N 122-29-35W. The T/V CALEB is 94' long, with approximately 3/4 of the vessel visible above the waterline. The vessel is situated on the western side of the harbor with yellow boom surrounding it. Mariners are advised to exercise due caution while transiting in the area. For more details or comments contact LT William Harris at 415-399-7443 or SFWaterways@uscg.mil.

Chart 18645

LNM: 23/22

NORTHERN CALIFORNIA-HUMBOLDT COUNTY-EUREKA-HAZARDOUS OPERATIONS

Theory Marine Services will be conducting pipe removal, and cable laying during the daylight hours until 28 Aug, 2022 at 40-48-00N 124-12-00W, offshore of Eureka/Arcata CA. Operations will be assisted by divers and M/V JAB. Mariners are requested to maintain 300m from the operations. For any questions contact Brian Bergfalk at 916-871-0650

Chart 18620

LNM: 29/22

NORTHERN CALIFORNIA-MONTEREY BAY-BUOY DEPLOYMENT

Sofar Ocean Technologies will be deploying a buoy in Monterey Bay National Marine Sanctuary at 37-30-00N 122-31-57W. The buoy will be deployed until 06 January, 2023, will be yellow in color and have the flash characteristics of FI Y 2.5s. A 19 foot C-Dory will be monitoring VHF-FM Chan. 16. Mariners are requested to transit the area with caution. For more details or comments contact Ciara Dorsay at 941-961-8543.

Charts: 18680 18685

LNM: 27/22

NORTHERN CALIFORNIA-MONTEREY BAY-DIVING OPERATIONS

Power Engineering Construction Co. will be conducting diving operations until 31 October, 2022. Work is being conducted Monday through Friday 6:00am to 5:00pm in the vicinity of the Monterey Bay Aquarium at 36-37-14N 121-53-58W. The M/V WEBSTER will be on site monitoring VHF-FM Chan. 68. Mariners are advised to use caution when transiting the area. For more details or comments contact Allen Deaver, diving superintendent 510-932-7752.

Chart 18685

LNM: 16/22

NORTHERN CALIFORNIA-MONTEREY BAY-SUBSURFACE MOORING DEPLOYMENT

The Monterey Bay Aquarium Research Institute (MBARI) will deploy 02 subsurface oceanographic instrument moorings in Monterey, CA until 15 November, 2022 at 36-48-25N 122-06-11W and 36-47-38N 122-06-25W. Each mooring will have a subsurface float 33 feet above the seafloor. Mariners are requested to transit the area with caution. For more details or comments contact John Ryan at 831-775-1978.

Chart 18685

LNM: 32/22

NORTHERN CALIFORNIA-MONTEREY-BUOY DEPLOYMENT

The Navy Post Graduate School, Oceanography department and the University of Miami has deployed buoys until 31 October, 2022 at the following coordinates:

- 36-56-54N 122-04-44W
- 36-56-57N 122-04-57W
- 36-56-40N 122-04-57W
- 36-56-51N 122-02-36W
- 36-56-39N 122-02-37W
- 36-57-22N 122-01-12W
- 36-57-17N 122-00-54W
- 36-56-20N 122-00-37W
- 36-57-02N 122-00-32W
- 36-57-26N 122-00-36W
- 36-56-15N 122-04-56W
- 36-55-55N 122-02-09W
- 36-55-23N 122-00-23W
- 36-55-20N 122-00-26W
- 36-54-37N 121-57-54W
- 36-49-25N 121-55-03W
- 36-48-46N 121-49-35W
- 36-51-21N 122-02-44W

During the deploying and recovery of the buoys a research vessel will be monitoring VHF-FM Chan. 16. Mariners are requested to transit the area with caution. For more details or comments, contact Jamie MacMahan at 831-588-8727.

Chart 18685

LNM: 27/22

NORTHERN CALIFORNIA-MONTEZUMA-MARINE CONSTRUCTION

The Dutra Group is conducting marine construction at the Montezuma Slough salinity structure in Montezuma, CA, during daylight hours from 22-31 August, 2022. Towing and maneuvering of barges will be conducted 24 hours daily. Operations will be conducted within the following coordinates:

- 38-05-25N 121-53-07W
- 38-05-26N 121-53-02W
- 38-05-42N 121-53-15W
- 38-05-39N 121-53-20W

Crane Barge MORTY, a material barge, work boat, and a skiff will be in the area and all vessels will be monitoring VHF-FM Chan. 09, 16 and 80. Mariners are requested to transit the area with caution. For more details or comments contact Jason Tse at 415-300-5336.

Chart 18656

LNM: 33/22

NORTHERN CALIFORNIA-MOSS LANDING-WAVEGLIDER DATA COLLECTION

Monterey Bay Aquarium Research Institute (MBARI) is conducting 24 hours per day 7 days a week autonomous, unmanned maritime vehicle operations of two Liquid Robotics, Inc. Wavegliders until 31 December, 2022. Vehicles will be deployed in the vicinity of Moss Landing that will operate continuously between latitudes 35-07-14N and 37-12-00N and will extend shoreward as far West as 122-58-35W. Operations consist of scientific ocean data collection. The Waveglider carries no fuel, lubricants or hydrocarbons. It is wave powered and remotely attended from MBARI, moving at speeds of 1kt, and designed to give way or part if encountered by a vessel. It is approximately 8' x 2' (surfboard size), yellow in color, with

NORTHERN CALIFORNIA-MOSS LANDING-WAVEGLIDER DATA COLLECTION

a contact plaque and mast extending 3' above the water surface, supporting a flag. Mariners are requested to transit the area with caution. For more details or comments contact MBARI at 831-775-1700, waveglider@listserver.mbari.org or Liquid Robotics 24/7 WGOE Operations at 888-574-4574.

Charts: 18680 18685

LMN: 51/21

NORTHERN CALIFORNIA-NAPA RIVER-LIGHT OBSTRUCTION

There are 02 identified obstructions located in the Napa River. A fallen tree that extends into the channel is at 38-10-12N 122-9-36W. Additionally, there is a collection of debris stuck in the mud directly in front of light 30 (LLNR 6207). Mariners are requested to transit the area with caution and consider these obstructions during inbound and outbound transits.

Chart 18654

LMN: 30/22

NORTHERN CALIFORNIA-NEW YORK SLOUGH-MARINE CONSTRUCTION

CS Marine Constructors, Inc. will be conducting pile driving & marine construction operations at the former Gaylord Paper Facility 38-00-58N 121-46-31W located at New York Slough in Antioch, CA during daylight hours until 31 Dec 22. Operations will be conducted with derrick barges DB CARQUINEZ, DB MARE ISLAND and DB STEADFAST along with various flat barges. The barges will be either spudded down or anchored using a four-point mooring system marked with 5ft crown buoys. The buoys will be lighted at night with flashing white strobes. All vessels and equipment will be monitoring VHF-FM CHAN 8, 13 and 14. Mariners are request to transit the area with caution. For more details or comments contact Jeff Thompson at (510)719-1246.

Chart 18661

LMN: 42/21

NORTHERN CALIFORNIA-OAKLAND HARBOR-CONSTRUCTION

Manson Construction Co. is conducting dredge operations in the Oakland inner and outer channels at 122-21-44W 37-48-04N to 122-18-49W 37-49-13N and 122-21-44W 37-48-04N to 122-16-55W 37-47-36N until 31 Dec, 2022. Operations will be conducted 24hrs a day, 7 days a week. Dredge NJORD will be assisted by barges ROCKPORT, GULFPORT, SEAPORT, EASTPORT, FREEPORT, NORTHPORT, T/B's PETER M, JEFFERY M, WESTAR, and survey boat WAHOO. All vessels will be monitoring VHF-FM Chan. 13 and 16. Dredged materials will be disposed of within disposal site SF-11 and upland site at Cullinan Ranch. Mariners are requested to transit the area with caution. For more details or comments contact Eric McMann at 510-232-6319.

Chart 18680

LMN: 30/22

NORTHERN CALIFORNIA-OAKLAND HARBOR-DREDGE OPERATIONS

The Dutra Group will be conducting dredge operations from 22 August, 2022 until 30 November, 2022 at the Port of Oakland, 24 hours a day, 7 days a week at Berths 22-26, 30, 32-35, 37, 55-59 and 60-63. Clamshell dredge DB 24, tow tug Killeen, along with tug PHYLIS T or BECKY T will be monitoring VHF-FM Chan. 13, 14, and 80. All dredged materials will be disposed of at SF-DODS or Montezuma sites. Mariners are requested to transit the area with caution. For more details or comments contact Dennis Salyers at 415-497-5289.

Charts: 18649 18650

LMN: 32/22

NORTHERN CALIFORNIA-OAKLAND INNER HARBOR-BRIDGE

FRUITVALE AVE RAILROAD BRIDGE-The lift span of the railroad bridge is kept in the partially opened position providing 80 feet of vertical clearance at mean high water. When the lift span of the railroad bridge is in the partially open position and the bascule span of the adjacent highway bridge is in the closed position, the lift span will show two red 180-degree center span lights on the upstream and downstream lower edge of the span. When the bascule span of the highway bridge is in the fully opened position, the lift span of the railroad bridge will show two 360-degree green lights, providing a range for the centerline of the channel between both highway and railroad bridges. For further information contact the Coast Guard Bridge Office at 510-437-3516.

Chart 18649

LMN: 47/21

NORTHERN CALIFORNIA-OCEAN BEACH-GEOPHYSICAL SURVEY

USGS Pacific Coastal and Marine Geology Science Center (PCMSC) is conducting geophysical surveys in the vicinity of Ocean Beach, CA until 30 September, 2022 during daylight hours. Operations will be bounded by the following coordinates:

- 37-46-37N 122-31-48W
- 37-42-36N 122-31-48W
- 37-46-37N 122-30-11W
- 37-42-36N 122-30-11W

A bathymetric survey utilizing two personal watercraft will be used to conduct the operations. Mariners are requested to transit the area with caution. For more details or comments contact Tim Elfers at 831-460-7479.

Charts: 18640 18649

LMN: 24/22

NORTHERN CALIFORNIA-OFFSHORE MONTEREY BAY-UNDERWATER OPERATIONS

Reef Check Foundation have deployed underwater equipment offshore Monterey Bay, CA within the following coordinates:

- 36-36-17N 121-52-46W
- 36-36-18N 121-52-49W
- 36-36-15N 121-52-50W
- 36-36-14N 121-52-46W

All equipment will be established until 24 Mar 24. Mariners are requested to transit the area with caution and avoid anchoring within the coordinates listed above. For more details or comments contact Dan Abbot at 510-684-7835.

Chart 18685

LMN: 12/21

NORTHERN CALIFORNIA-OFFSHORE SAN FRANCISCO-OCEANOGRAPHIC OPERATIONS

Sofar Ocean Technologies will be conducting oceanographic operations until 15 December, 2022, offshore of Ocean Beach, CA. A 19 foot C-Dory will be deploying a buoy at 37-43-58N 122-33-12W and 37-43-29N 122-32-52W. The buoys are yellow in color and Fl (Y) 2.5s. The C-Dory will be monitoring VHF-FM Chan. 16. Mariners are requested to transit the area with caution. For more details or comments contact Cameron Dunning at 415-912-6858.

Chart 18645

LMN: 23/22

NORTHERN CALIFORNIA-OFFSHORE-COMMERCIAL SALMON FISHERIES

NMFS has taken inseason actions in the commercial salmon fishery North of Cape Falcon. The August quota for the commercial salmon fishery from Humbug Mountain to the Oregon/California border (Oregon kmz) is increased from 250 Chinook salmon to 658 Chinook salmon due to impact-neutral rollover of unutilized July quota. Effective August 5, 2022, the Chinook salmon landing and possession limit for the commercial salmon troll fishery in the area North of Cape Falcon, regardless of subarea, is 40 Chinook per vessel per week (Thursday-Wednesday).

Charts: 18600 18620 18640

LNM: 32/22

NORTHERN CALIFORNIA-PEYTONIA SLOUGH-SUISUN CITY-SUNKEN VESSEL

The Coast Guard received a report of a sunken vessel in the vicinity of Peytonia Slough State Marine Park in the Peytonia Slough at 38-13-35N 122-02-17W. The vessel is not visible above the waterline, it is situated in the middle of the channel, and has been marked with a red buoy. Mariners are advised to exercise due caution while transiting the area. For more details or comments contact LT Miranda Brumbaugh at 510-437-2978 or Miranda.E.Brumbaugh@uscg.mil.

Chart 18656

LNM: 27/22

NORTHERN CALIFORNIA-PORT OF BENICIA-MARINE CONSTRUCTION

The Dutra Group is conducting marine construction at the Port of Benicia until 15 September, 2022. Operations will consist of emergency dock repairs and will be bounded by the following coordinates:

- 38-02-45N 122-07-44W
- 38-02-39N 122-07-38W
- 38-02-19N 122-08-17W
- 38-02-26N 122-08-22W

Crane Barge #12 will be in the area and monitoring VHF-FM Chan. 9, 16 and 68A. The upstream and downstream corners of each barge will be lighted at night with steady burning red lights. Mariners are requested to transit the area with caution. For more details or comments contact Scott Brooks at 707-333-5029.

Charts: 18655 18657

LNM: 22/22

NORTHERN CALIFORNIA-PORT OF STOCKTON-MARINE CONSTRUCTION

Shimmick Construction Company, Inc. (SCCI) is conducting marine construction for the Smith Canal Gate Project in the San Joaquin Deep Water Shipping Channel in the port of Stockton until 30 November, 2022. A total of 12 vessels will be involved during the construction. All vessels will be monitoring VHF-FM Chan. 14. Mariners are requested to transit the area with caution. For more details or comments contact Grant Rose at 559-706-8159.

Charts: 18661 18662

LNM: 26/22

NORTHERN CALIFORNIA-RICHMOND-DREDGE OPERATIONS

Pacific Dredge Company is conducting dredge operations at Richmond Inner Harbor Channels CA between 37-54-20N 122-23-56W and 37-54-47N 122-21-46W, 24 hours a day, 7 days a week until 10 September, 2022. D/B PDC 180, D/B NJORD, Tugs KATHERINE, JEFFERY M, PETER M, Harbor boat S BASS, along with 03 scows, will be conducting the dredge operations and will be monitoring VHF-FM Chan. 6 and 16. All dredged material will be disposed at SF-DODS. Mariners are requested to transit the area with caution. For more details or comments contact Matt MacArthur at 951-541-6941.

Chart 18653

LNM: 26/22

NORTHERN CALIFORNIA-SACRAMENTO DEEP WATER SHIPPING CHANNEL-DREDGE OPERATIONS

The Dutra Group will be conducting dredge operations until 22 October, 2022, 24 hours a day, 7 days a week at the Federal Channel Reaches 1-11:

- 1: 38-04-24N 121-46-23W
- 2: 38-05-06N 121-45-03W
- 3: 38-05-34N 121-44-12W
- 4: 38-06-03N 121-43-30W
- 5: 38-06-39N 121-42-42W
- 6: 38-09-42N 121-40-53W
- 7: 38-14-07N 121-40-24W
- 8: 38-22-51N 121-37-35W
- 9: 38-25-00N 121-36-36W
- 10: 38-26-11N 121-36-03W
- 11: 38-28-16N 121-35-04W

Tow tug KILLEEN along with tender tug BECKY T will be monitoring VHF-FM Chan. 13, 14, and 80. All dredged materials will be disposed of at the Montezuma Wetlands. Mariners are requested to transit the area with caution. For more details or comments contact Dennis Salyers at 415-497-5289.

Charts: 18656 18661 18662

LNM: 32/22

NORTHERN CALIFORNIA-SACRAMENTO RIVER DEEP WATER SHIP CHANNEL-UNDERWATER OPERATIONS

Longitude 123, Inc. is conducting underwater operations, including commercial diving, in the Sacramento River Deep Water Ship Channel near Sacramento, CA until 20 Aug 2022 at 38-30-20N 121-35-08W. A sectional barge with a crane will be moored using spuds and two backup anchors. The anchors will be marked by orange plastic crown buoys. All vessels will monitor VHF-FM Chan. 16. All Mariners are requested to transit the area with caution and all vessels approaching the moored work vessels must receive radio permission from the diving supervisor on the derrick barge before passing within 500 feet of the barge. For more details or comments contact Scot Anderson at (805) 796-1235.

Chart 18662

LNM: 29/22

NORTHERN CALIFORNIA-SACRAMENTO RIVER-REDUCED VERTICAL CLEARANCE

Overhead power cables upstream of Sacramento River at 38-03-54N 121-47-09W have a reported reduced vertical clearance to 119.5'.

LNM: 22/16

NORTHERN CALIFORNIA-SACRAMENTO RIVER-RIO VISTA-MARINE CONSTRUCTION

Vortex Marine Construction, INC will be conducting marine construction on the Caltrans Real McCoy Ferry fender system at 38-11-12N 121-39-43W

NORTHERN CALIFORNIA-SACRAMENTO RIVER-RIO VISTA-MARINE CONSTRUCTION

and 38-11-12N 121-39-34W, weekdays until 31 August, 2022. D/B VANTAGE will be conducting operations and monitoring VHF-FM Chan. 67. Mariners are requested to transit the area with caution. For more details or comments contact Gary Pene at 408-210-7272 or Frank Anckaer at 925-529-5393.

Chart 18661

LNM: 32/22

NORTHERN CALIFORNIA-SAN FRANCISCO BAY-BRIDGE

SAN MATEO/HAYWARD BRIDGE-Structural repairs to the superstructure of the bridge are complete. Work is continuing on the causeway portion of the bridge, east of pier 38, 0700 to 1530, Monday through Friday, through 11 May, 2023. Various size barges will be used during the project, the largest being a 100' X 20' flexifloat barge. During the work day, barges will either be spudded down or tied to the bridge piers, no anchors or anchor line will be utilized. After regular working hours the unmanned barge will be left on-site. For the safety of navigation, the barges can be moved with one-hour advance notice. For conditions at the bridge mariners can contact Golden State Bridge, Inc., on VHF-FM Marine Radio Channels 13, 14, and 16 or by cell phone at 707-246-0725, 925-260-2104, or 925-382-7288. For more details or comments contact the Coast Guard Bridge Office at 510-437-3515.

Chart 18651

LNM: 20/22

NORTHERN CALIFORNIA-SAN FRANCISCO BAY-BRIDGE

RICHMOND-SAN RAFAEL BRIDGE-Concrete/steel repairs and cleaning of the bridge are in progress. Work is being conducted Monday through Friday, 0500 to 1700, through 01 May 23. Temporary underdeck platforms have been installed from the western shore to pier 33 and between piers 43-46 reducing vertical clearance in each span by three feet. The upstream and downstream lower edge of each temporary platform is lighted at night with steady burning red lights (see R-SR_Bridge_Temp_Platform_Lighting.pdf at the end of this notice.) Two 160' X 50' barges and one 110' X 32' barge are being used to assist in the installation of the platforms and for the blasting and painting. One barge has been secured to pier 8 and will be left on-scene, overnight, unmanned. The outboard corners of the barge at pier 8 is lighted at night with steady red lights. Barge "37" and barge "32" can be contacted on VHF-FM Ch. 16, 13 and 14. At no time will the work impede the east or west navigation spans or their auxiliary spans. For conditions at the bridge, mariners can contact the contractor at 860-904-8787 or 443-847-6286. For further information concerning this project contact the Coast Guard Bridge Office at 510-437-3515.

Chart 18653

LNM: 16/21

NORTHERN CALIFORNIA-SAN FRANCISCO BAY-BRIDGE

GOLDEN GATE BRIDGE-Four 54' temporary under deck platforms; two 475' and 2,075' north of the south tower, and two 175' and 675' south of the north tower have been installed at the bridge. Temporary platforms reduce vertical clearance at the bridge by no more than 14'. The bridge's maintenance travelers are in use during the project and will remain outboard of the furthest north and furthest south temporary platforms. The temporary platforms and maintenance travelers are lighted at night with all-round red lights (see PlatformLighting_GG_Bridge_14Jun22.pdf at the end of this notice). For navigational safety the maintenance travelers can be moved by contacting the Golden Gate Bridge at 415-923-2220. Work is being conducted Monday through Saturday, 0700-1700 and 2100-0500. For conditions at the bridge, mariners can contact the contractor at 415-716-0384. For more details or comments contact the Coast Guard Bridge Office at 510-437-3516.

Chart 18649

LNM: 24/22

NORTHERN CALIFORNIA-SAN FRANCISCO BAY-BRIDGE

WESTERN SPAN SAN FRANCISCO-OAKLAND BAY BRIDGE-Fender repairs are being conducted through 31 October, 2022, Monday through Friday, during daylight hours at piers B, C, D, and E. The 150' X 54' Crane Barge Kelso will be anchored at various locations during the work (See SFOBBTemporaryBargeLocations.pdf in the enclosure section). The barges will be left on-scene, unmanned, after normal working hours. During the work day the barge can be moved for the safety of navigation with two hours advanced notice. After working hours the barge can be moved for the safety of navigation with six hours advanced notice. Barges, anchors and anchor lines will not impede the D-E shipping channel during work. Mariners are requested to transit the area with caution. For on-site conditions, mariners can contact the contractor at 415-720-3807 or Caltrans at 510-867-4545. For further information contact the Coast Guard Bridge Office at 510-437-3515.

Chart 18649

LNM: 15/22

NORTHERN CALIFORNIA-SAN FRANCISCO BAY-DETERIORATING CONCRETE PILINGS

Deteriorating concrete pilings above and below the waterline are present in the vicinity of the the south edge of Southampton Shoal Light (LLNR 5480). Mariners are requested to transit the area with caution. For more details or comments contact LT Miranda Brumbaugh at 510-437-2978 or Miranda.E.Brumbaugh@uscg.mil.

Chart 18649

LNM: 23/15

NORTHERN CALIFORNIA-SAN FRANCISCO BAY-DREDGE OPERATIONS

The Dutra Group will be conducting dredging operations at the San Rafael Rock Quarry Dock at 37-59-15N 122-26-50W, 24 hrs a day, 7 days a week until 30 November, 2022. 03 split hull scows, tow tug SARAH REED, BECKY T, PHYLLIS T, will be monitoring VHF-FM Chan. 13, 16, and 80. All dredged material will be disposed of at the San Rafael Rock Quarry. Mariners are requested to transit the area with caution. For more details or comments contact Dennis Salyers at 415-497-5289.

Chart 18650

LNM: 31/22

NORTHERN CALIFORNIA-SAN FRANCISCO BAY-LOCH LOMOND MARINA-DREDGE OPERATIONS

Salt River Construction Corporation is conducting dredge operations in Loch Lomond Marina at 37-58-15N 122-29-01W until 30 November, 2022. Dredge barge DB1 and Tug P CAY will be conducting operations and monitoring VHF-FM Chan. 13, 14 and 77. Mariners are requested to transit the area with caution. For more details or comments contact Rick Moseley at 415-435-1024.

Charts: 18649 18650

LNM: 24/22

NORTHERN CALIFORNIA-SAN FRANCISCO BAY-OAKLAND INNER HARBOR-SHOALING

Shoaling has been reported on the south side of Oakland Inner Harbor South Channel in the east passage through the Fruitvale Ave. Bridge. Mariners are requested to transit the area with caution and report any observed changes in shoaling conditions to the San Francisco VTS on VHF-FM Chan. 14. For more details or comments contact U.S. Coast Guard Sector San Francisco Waterways Management at 415-399-7443.

Chart 18650

LNM: 16/15

NORTHERN CALIFORNIA-SAN JOAQUIN RIVER-LATHROP-MARINE CONSTRUCTION

The city of Lathrop, CA will be conducting marine construction until 15 October, 2022 at 37-47-42N 121-18-26W. A temporary sheet pile coffer dam will be constructed to assist with bank protection. Mariners are requested to transit the area with caution. For more details or comments contact Ken Reed at 209-712-3136 or kreed@ci.lathrop.ca.us.

Charts: 18661 18663

LNM: 26/22

NORTHERN CALIFORNIA-SAN JOAQUIN RIVER-MARINE CONSTRUCTION

Shimmick Construction Company, Inc. (SCCI) is conducting marine construction for the Smith Canal Gate Project in the San Joaquin Deep Water Shipping Channel from 0600 to 1800 Monday through Saturday until 30 Dec 22. Operations will be conducted between the following coordinates:

37-57-31N 121-21-11W

37-57-25N 121-21-08W

Staging Yard

37-57-09N 121-19-55W

Mariners are requested to transit the area with caution. For more details or comments contact Tyler Shell at 510-393-0308.

Charts: 18661 18663

LNM: 28/20

NORTHERN CALIFORNIA-SAN JOAQUIN RIVER-MARINE CONSTRUCTION

California Department of Water Resources will be conducting construction of agricultural barriers until 30 Nov 22 at the following locations:

Old River near Tracy barrier 37-53-08N 121-28-56W

Middle River near Tracy Barrier 37-48-36N 121-32-35W

Grant Line Canal Barrier 37-49-10N 121-26-54W

A small aluminum boat will be on site for day to day operations. For more details or comments contact Bill McLaughlin 916-873-5748.

Chart 18661

LNM: 19/22

NORTHERN CALIFORNIA-SAN LEANDRO BAY-BRIDGE

BAY FARM ISLAND HIGHWAY AND PEDESTRIAN BRIDGES-The pier protection system at the bridges have deteriorated and may not offer adequate protection for the bridges as well as vessels transiting the bridge. Mariners are urged to transit both bridges with caution. The bridge owner is in the process of designing a replacement pier protection system. For more details or comments contact the Coast Guard Bridge Office at 510-437-3514.

Chart 18649

LNM: 31/22

NORTHERN CALIFORNIA-SAN PABLO BAY-TORMEY-MARINE CONSTRUCTION

The Dutra Group will be conducting marine construction to the Phillips 66 San Francisco Refinery located West of the Carquinez Bridge until 31 December, 2022, during daylight hours. Construction will be bounded by the following coordinates:

38-03-22N 122-15-52W

38-03-25N 122-15-33W

38-03-06N 122-15-34W

38-03-06N 122-15-39W

Crane barge 1 along with a work boat will be conducting operations and monitoring VHF-FM Chan. 9, 16, and 77. Mariners are requested to transit the area with caution. For more details or comments contact Nicholas Dino at 707-389-0505.

Charts: 18654 18655 18657

LNM: 23/22

NORTHERN CALIFORNIA-SANTA CRUZ HARBOR-SHOALING

There are hazardous and shoaled conditions in the Santa Cruz Harbor Channel Entrance. Mariners transiting the Santa Cruz Harbor should use caution for hazardous conditions of breaking surf and shoaling in the Santa Cruz Harbor entrance that may occur during all surf and tidal conditions. Mariners are highly advised not to transit the Santa Cruz Harbor Channel unless sea and tide conditions are suitable for your vessel's draft. Mariners may view soundings on the Santa Cruz Harbor at <https://www.santacruzharbor.org/entrance-soundings>. For more details or comments contact the Santa Cruz Harbor at 831-475-6161 or VHF-FM Chan. 9 and 16.

Chart 18685

LNM: 03/21

NORTHERN CALIFORNIA-SUISUN BAY-DREDGE OPERATIONS

The Dutra Group will be conducting dredging operations until 15 October, 2022 in the Suisun Bay Channel between 38-02-25N 122-06-58W and 38-03-46N 121-01-37W along with dredging in New York Slough between 38-02-46N 000-53-49W and 38-01-32N 121-49-31W. DB 24 and/or DB BEAVER, tug SARAH REED, tug BECKY T and/or PHYLLIS T along with 05 split hull scows will conduct operations. All vessels will be monitoring VHF-FM Chan. 13, 14, and 80. Mariners are requested to transit the area with caution. For more details or comments contact Dennis Salyers at 415-497-5289.

Chart 18656

LNM: 32/22

NORTHERN CALIFORNIA-SUISUN BAY-MONTEZUMA SLOUGH-MARINE CONSTRUCTION

The California Department of Water Resources advises that will be installing flashboards at the Suisun Marsh salinity control structure, located 2.2 nautical miles from the easterly end of Montezuma Slough at 38-05-36N 121-53-07W. Mariners are advised to use the boat lock. The boat lock signal is a standard traffic light and the operator will monitor VHF-FM Chan. 13. Mariners are requested to transit the area with caution. For more details or comments contact Ian Uecker at 916-574-2991.

Chart 18656

LNM: 34/21

OFFSHORE NORTHERN CALIFORNIA-WASHINGTON COAST TO SAN FRANCISCO-SURVEY OPERATIONS

SAILDRONE, INC. is conducting oceanographic survey operations and will operate two Unmanned Surface Vehicles called Saildrone for fish and krill population surveys until 15 October, 2022. The operations will be conducted along the western seaboard from Cape Flattery, WA to San Francisco, CA. The saildrone is 23 feet long, 16 feet tall, painted orange with an all-round white light and marked SAILDRONE. Mariners are requested to transit the area with caution. For more details or comments contact Saildrone mission control at 510-722-6070.

Charts: 18600 18620 18640

LNM: 26/22

SAN DIEGO-OCEANOGRAPHIC SURVEY-OCEAN MONITORING

SAN DIEGO-OCEANOGRAPHIC SURVEY-OCEAN MONITORING

The City of San Diego Marine Biology Lab is conducting year-round ocean monitoring sampling in the vicinity of the South Bay Ocean Outfall and Point Loma Ocean Outfall. The Ocean Monitoring Program conducts trawl sampling, benthic sampling with a double Van Veen sediment grab, vertical CTD casts and horizontal tows with an undulating underwater vehicle, ROV surveys and multiple moorings are deployed in the region below. Ocean sampling will be conducted in an area bound by the following coordinates:

32-31-54N 117-11-11W
32-32-10N 117-11-57W
32-32-03N 117-12-06W
32-32-33N 117-11-56W
32-40-10N 117-19-22W
32-40-04N 117-19-34W
32-39-37N 117-19-32W
32-39-56N 117-19-39W
32-40-10N 117-16-55W

The M/V OCEANUS and M/V MONITOR III when in the area will monitor VHF-FM Chan. 16. Mariners are requested to transit the area with caution. For more details or comments contact Adriano Feit at 619-758-2377 or 858-882-7055.

Charts: 18765 18772

LNM: 43/21

SOUTHERN CALIFORNIA - SANTA CRUZ - WAVERIDER BUOY

A Waverider buoy has been deployed at 36-56-04N 122-02-02W near Santa Cruz, CA. The buoy will be used for wave measurements to aid the Coastal Data Information Program. For questions, contact Ross Timmerman at 619-818-8387.

Chart 18685

LNM: 33/22

SOUTHERN CALIFORNIA- ANAHEIM BAY- TEMPORARY BUOYS

The U.S. Coast Guard has established temporary Buoys in Anaheim Bay at the following locations.

Temp Buoy #9- FI G 4s
Position: 33-43-927N 118-05-981W
Temp Buoy #10 Q R
Position: 33-43-963N 118-05-818
Temp Buoy #11 FL G 4s
Position: 33-44-077N 118-05-862W
Temp Buoy #13 FI G 4s
Position: 33-44-211N 118-05-799W

For more details or comments contact LT Miranda Brumbaugh at 510-437-2978 or Miranda.E.Brumbaugh@uscg.mil.

Charts: 18746 18749

LNM: 29/22

SOUTHERN CALIFORNIA- SAN DIEGO-MISSION BAY- MARINE EVENT

Thunderboats Unlimited, Inc will be sponsoring the San Diego Bayfair on 16-18 September, 2022 from 6:00am to 6:00pm each day. The event will involve approximately 200 participants racing powerboats in Mission Bay on a series of courses in Fiesta Bay. A special local regulation will be enforced for this event, encompassing the navigable waters of Mission Bay to include Fiesta Island, the east side of Vacation Isle, and Crown Point Shores. Mariners will be prohibited from transiting through the special local regulation area during the event. For more details or comments contact Mr. Bob Davies at 619-572-6274.

Charts: 18765 18772 18773

LNM: 32/22

SOUTHERN CALIFORNIA-LOS ANGELES/LONG BEACH HARBOR-BRIDGE

VINCENT THOMAS BRIDGE-The 180' temporary platform has been relocated just west of the east tower and reduces vertical clearance of the bridge by 5.5 feet and painting of the bridge has resumed and will migrate west. The upstream and downstream corners and every 50' along the upstream and downstream side of the platform is lighted at night with steady burning red lights (see V_Thomas_Platform_Lighting1.pdf at the end of this notice). Work will take place during daylight hours, Monday through Friday. For conditions at the bridge mariners can contact 213-479-4138, 213-479-1144 or 310-261-9552. For more details or comments contact the Coast Guard Bridge Office at 510-437-3516.

Chart 18749

LNM: 30/22

SOUTHERN CALIFORNIA-LOS ANGELES/LONG BEACH HARBOR-BRIDGE

PIER 400 BRIDGE MODIFICATION- Construction is taking place Monday through Friday, 6am to 4pm, through 31 September, 2023. All in-water equipment and temporary structures will occur within the two existing bridges, and will not impact marine traffic in the area. For conditions at the work site, contact 714-536-9553 or 510-846-0325. For further information contact the Coast Guard Bridge Office at 510-437-3461.

Chart 18749

LNM: 26/22

SOUTHERN CALIFORNIA-LOS ANGELES/LONG BEACH HARBOR-BRIDGE

GERALD DESMOND BRIDGE DEMOLITION-The main span of the bridge has been removed from the 300 foot back channel. Work continues in removing the cantilever arms that are still over the waterway but not over the 300 foot channel. Mariners are requested to use the center of the 300 foot channel when transiting the work site. The replacement bridge is named the "LONG BEACH INTERNATIONAL GATEWAY BRIDGE". The Long Beach International Gateway Bridge provides 204 feet of vertical clearance at mean high water. The air gap sensor is installed and operational. Real time vertical clearance can be found at <https://go.usa.gov/xSgKb>. For information about on-site conditions, contact the contractor Kiewit at 360-300-4365 or 602-376-5765. For further information contact the Coast Guard Bridge Office at 510-437-3516.

Chart 18749

LNM: 28/22

SOUTHERN CALIFORNIA-MISSION BAY-FIREWORKS DISPLAY

Fireworks America will be sponsoring the SeaWorld Summer Nights 2022 fireworks displays every Friday, Saturday, and Sunday until 28 August, 2022, and from 2-5 September, 2022. The displays will take place between 8:50pm and 9:55pm. There will be a tug and barge combination south of Fiesta Island at 32-46-03N 117-13-11W. Mariners are advised to avoid the area and use due caution when transiting in the vicinity of the display. For more details or comments contact Julie Andrews at 619-938-8277.

Chart 18765

LNM: 21/22

SOUTHERN CALIFORNIA-MISSION BAY-FIREWORKS DISPLAY

Fireworks America will be sponsoring the SeaWorld Summer Nights 2022 fireworks displays every night until 14, Aug, 2022, every Friday, Saturday, and Sunday from 19 – 28 August, 2022, and from 2-5 September, 2022. The displays will take place between 8:50pm and 9:55pm. There will be a tug and barge combination south of Fiesta Island at 32-46-03N 117-13-11W. Mariners are advised to avoid the area and use due caution when transiting in the vicinity of the display. For more details or comments contact Julie Andrews at 619-938-8277.

LNM: 28/22

SOUTHERN CALIFORNIA-MISSION BAY-UNMANNED VEHICLE AND HELICOPTER OPERATIONS

The U.S. Navy will be conducting unmanned surface vehicle operations until 29 Aug, 2022 spanning from Imperial Beach, California to northwest Mission Bay, San Diego, California. Operations will be bounded by the following coordinates:

- 32-14-52N 117-24-59W
- 32-35-53N 117-24-53W
- 32-34-54N 117-23-09W
- 32-34-12N 117-20-09W
- 32-34-12N 117-09-46W
- 32-37-02N 117-09-49W
- 32-41-51N 117-20-10W

The M/V MALLORY, HOLLY, MICHAEL UHL, SURVEYOR, LORI, DAUNTLESS, DEFENDER, and DEFIANT will be on scene and monitoring VHF-FM Chan. 16. Mariners are requested to transit the area with caution. For more details or comments contact Randy Williams at 850-814-1404 or Gordon Reese at 850-819-7660.

LNM: 29/22

Chart 18765

SOUTHERN CALIFORNIA-NAVAL BASE POINT LOMA-MARINE CONSTRUCTION-DREDGE OPERATIONS

R.E. Staite Engineering Inc. will conduct marine construction and dredging operations at Naval Base Point Loma behind the 151 Fuel Pier at 32-41-59N 117-14-13W from 01 October, 2022 until 31 March, 2023. Vessels DB PALOMAR, DB POINT LOMA, DB WILLIAM F, push boat JENIE R, crew boat JOHN DRAKE along with tugs KILLEEN, CUYAMACA and 04 scows will conduct operations. All vessels will monitor VHF-FM Chan. 16. All dredged materials will be disposed of at LA-5. Mariners are requested to transit the area with caution. For more details or comments contact Erick Myers at 619-233-0178.

LNM: 32/22

Chart 18773

SOUTHERN CALIFORNIA-NEWPORT HARBOR-DIVE OPERATIONS

Merkel & Associates will be conducting dive operations in the entrance channel of Newport Harbor at 33-35-29N 117-52-48W until 31 August, 2022. The survey vessel OK1 will deploy dive buoys parallel to the edge of the channel with assistance from a 28 foot pontoon vessel. All buoys will be deployed and recovered daily. All vessels will be monitoring VHF-FM Chan. 16. Mariners are requested to transit the area with caution. For more details or comments contact Keith Merkel at 858-560-5465.

LNM: 28/22

Chart 18746

SOUTHERN CALIFORNIA-OCEANSIDE-MARINE EVENT

The Pao Pao 9-Man Outrigger Canoe Race will be taking place on 27 August, 2022 from 8:30am to 4:00pm. The event will involve approximately 80 canoes racing in waves of 40 on a 20 mile course in and offshore of Oceanside Harbor at 33-09-13N 117-29-07W. Mariners are requested to transit the area with caution. For more details or comments contact Jill Prichard at 760-960-6460.

LNM: 32/22

Chart 18774

SOUTHERN CALIFORNIA-OFFSHORE SAN DIEGO-HAZARDOUS OPERATIONS

The U.S. Navy will be conducting hazardous operations until 01 January, 2023, in the areas bound by the following coordinates:

First:

- 32-55-00N 118-25-00W
- 32-55-00N 118-15-00W
- 32-40-00N 118-15-00W
- 32-40-00N 118-35-00W
- 32-45-00N 118-35-00W

Second:

- 32-33-00N 118-25-00W
- 32-35-00N 118-16-00W
- 32-35-00N 117-40-00W
- 31-55-00N 117-40-00W
- 31-55-00N 118-25-00W
- 32-33-00N 118-25-00W

Third:

- 32-52-42N 119-11-58W
- 33-08-04N 118-52-05W
- 33-08-04N 118-46-02W
- 33-03-52N 118-41-48W
- 33-02-32N 118-43-33W
- 32-58-53N 118-43-31W
- 32-47-40N 118-32-21W
- 32-36-55N 118-45-00W
- 32-36-55N 118-56-57W

Mariners are requested to transit the area with caution. For more details or comments contact FACSFAC schedules at 619-545-1744.

LNM: 04/22

Charts: 18740 18765 18774

SOUTHERN CALIFORNIA-POINT CONCEPTION-NOAA BUOY DEPLOYMENT

NOAA's Pacific Marine Environmental Laboratory deployed a buoy 11 nautical miles due west of Point Conception, CA. at 34-27-31N 120-41-10W. The buoy named Harvest 22 has a yellow top with gray sides and a flashing amber light every 4 seconds. Mariners are advised to use due caution

SOUTHERN CALIFORNIA-POINT CONCEPTION-NOAA BUOY DEPLOYMENT

when transiting this area. For more details or comments contact Cabot Zucker at 425-477-9554.

Chart 18721

LNM: 13/22

SOUTHERN CALIFORNIA-POINT CONCEPTION-OCEANOGRAPHIC OPERATIONS

The CalCOFI Program will conduct oceanographic operations 300-400nm offshore between Del Mar to Point Conception until 29 August, 2022, 8:00am to 4:00pm daily. Mariners are requested to transit the area with caution. For more details or comments contact Kelsey Vogel at kdvogel@ucsd.edu.

Charts: 18720 18740 18741

LNM: 27/22

SOUTHERN CALIFORNIA-PORT OF LONG BEACH-MARINE CONSTRUCTION

Connolly-Pacific will conduct marine construction to the ramp at Pier G in the Port of Long Beach from 8:30am to 6:30pm until 28 February, 2022. DB LOS ANGELES and tug DURANGO will be conducting construction. DB LOS ANGELES will use anchor buoys to be positioned near the ramp. All vessels will be monitoring VHF-FM Chan 13, 16 and 80A. Mariners are requested to transit the area with caution. For more details or comments contact Justin Chin Wong at 562-437-2831.

Chart 18751

LNM: 28/22

SOUTHERN CALIFORNIA-PORT SAN LUIS-MARINE CONSTRUCTION

Connolly-Pacific will conduct marine construction to the Port San Luis breakwater from 6:30am to 6:30pm until 31 December, 2022. DB LONG BEACH will use anchors to position itself along the breakwater. These anchor positions will be marked by round white anchor cans. Tug PATCONA and Tug LARCONA will be assisting DB LONG BEACH. All vessels will be monitoring VHF-FM Chan. 13, 16, and 79a. Mariners are requested to transit the area with caution. For more details or comments contact Tobey Walker at 562-577-0730 or John Riley at 562-577-3602.

LNM: 04/22

SOUTHERN CALIFORNIA-RESERVATION POINT-LOS ANGELES-MARINE CONSTRUCTION

Power Engineering Construction Co. will be performing demolition and pile driving operations until 22 December, 2022, at 33-43-22N 118-16-06W. Work is being conducted Monday through Friday 7:00am to 4:00pm. Operations will be conducted with derrick barge DB ALAMEDA and a flat material barge. The barge will be spudded down and anchored using a four-point mooring system with buoys. All vessels and equipment on site will be monitoring VHF-FM Chan. 16 and 67. Mariners are requested to transit the area with caution. For more details comments contact Matt Dill at 510-610-4633.

Chart 18751

LNM: 19/22

SOUTHERN CALIFORNIA-SAN CLEMENTE ISLAND-UNDERWATER OPERATIONS

The U.S. Navy will be conducting underwater operations off the coast of San Clemente Island, in the vicinity of Pyramid Cove at 32-48-55N 118-22-56W from 22-26 August, 2022. Mariners are reminded to visit scisland.org for information regarding current safety and security zones in effect at San Clemente Island, and to avoid the exercise area. For more details or comments contact LCDR Brandon Moody at 619-767-6824 x19731.

Charts: 18720 18740

LNM: 31/22

SOUTHERN CALIFORNIA-SAN DIEGO BAY-BRIDGE

CORONADO BAY BRIDGE MAINTENANCE-Scaffolding installed between piers 11-12, 12-13, and 13-14, reduces vertical clearance by more than 8'. The upstream and downstream lower edges of the scaffolding are lighted at night with red lights. For more details or comments contact the Coast Guard Bridge Office at 510-437-3461.

Charts: 18772 18773

LNM: 13/20

SOUTHERN CALIFORNIA-SAN DIEGO BAY-FIREWORKS

Fireworks America will sponsor the San Diego Symphony Night Shows 2022 fireworks displays from 9:00pm to 10:00pm on 10-11 September, 2022. There will be a tug and barge combination located off of South Embarcadero Marina Park at 32-42-11N 117-10-04W. Mariners are advised to avoid the area and use due caution when transiting in the vicinity of the barge. For more details or comments contact Julie Andrews at 619-938-8277.

Chart 18773

LNM: 31/22

SOUTHERN CALIFORNIA-SAN DIEGO BAY-FIREWORKS DISPLAY

Fireworks America will sponsor the San Diego Symphony Night Shows 2022 fireworks displays from 9:00pm to 10:00pm on 13 & 28 September 2022. There will be a tug and barge combination located off of South Embarcadero Marina Park at 32-42-11N 117-10-04W. Mariners are advised to avoid the area and use due caution when transiting in the vicinity of the barge. For more details or comments contact Julie Andrews at 619-938-8277.

LNM: 28/22

SOUTHERN CALIFORNIA-SAN DIEGO BAY-MARINE CONSTRUCTION

R.E. Staite Engineering Inc. will conduct marine construction at Naval Base Point Loma at 32-41-33N 117-14-22W from 16 September, 2022 until 31 March, 2023. Vessels DB PALOMAR, DB POINT LOMA, RES 180, crew boat JOHN DRAKE, along with tug CUYAMACA will conduct operations. All vessels will be monitoring VHF-FM Chan. 16. Mariners are requested to transit the area with caution. For more details or comments contact Erick Myers at 619-233-0178.

Chart 18773

LNM: 32/22

SOUTHERN CALIFORNIA-SAN DIEGO BAY-MARINE CONSTRUCTION

R.E. Staite Engineering Inc. will conduct marine construction at Naval Base Point Loma piers 5000 at 32-41-16N 117-14-17W from 16 September, 2022 until 31 March, 2023. Vessels DB PALOMAR, DB POINT LOMA, DB WILLIAM F, push boat JEANIE R, crew boat JOHN DRAKE along with tugs KILLEEN, CUYAMACA and 04 scows will conduct operations. All vessels will monitor VHF-FM Chan. 16. Mariners are requested to transit the area with caution. For more details or comments contact Erick Myers at 619-233-0178.

Chart 18773

LNM: 32/22

SOUTHERN CALIFORNIA-SAN DIEGO BAY-MARINE CONSTRUCTION

SOUTHERN CALIFORNIA-SAN DIEGO BAY-MARINE CONSTRUCTION

R.E. Staitte Engineering Inc. will conduct marine construction at Naval Base Point Loma piers 5000, 5002 and 5003 at 32-41-24N 117-14-04W until 25 November, 2022. Vessels DB PALOMAR, RES 80, JOHN DRAKE, push boats JEANIE R, and tug KILLEEN will conduct operations. All vessels will monitor VHF-FM Chan. 16. Mariners are requested to transit at lowest safe speed to minimize wake and proceed with caution after passing arrangements have been made. For more details or comments contact project manager Erick Myers at 619-233-0178.

Charts: 18772 18773

LNM: 31/22

SOUTHERN CALIFORNIA-SAN DIEGO BAY-MARINE EVENT

The Cortez Racing Association (CRA) will sponsor the CRA Sharp Hospice Care Regatta on 27 August, 2022 from 10:00am to 5:00pm. The regatta will consist of 70 sailboats starting in North San Diego Bay and sailing courses to Glorietta Bay. Mariners are requested to transit the area with caution. For more details or comments contact Dale Greaney at 760-470-1730.

Chart 18773

LNM: 32/22

SOUTHERN CALIFORNIA-SAN DIEGO BAY-MARINE EVENT

KOZ events will be sponsoring the San Diego Triathlon Classic in San Diego Bay on 10 September, 2022 from 7:00am to 10:00am. The event will involve approximately 1000 participants swimming in waves of 80 on a closed course by Liberty Station Park. Mariners are requested to transit the area with caution. For more details or comments contact Tobias Panek at 858-255-9709.

Chart 18773

LNM: 32/22

SOUTHERN CALIFORNIA-SAN DIEGO BAY-MARINE EVENT

The Honor Foundation will be sponsoring the Swim for Special Operations Forces (SOF) event on 17 September, 2022 from 8:00am to 11:00am at 32-42-27N 117-10-37W. This event will consist of approximately 70 participants swimming on a course starting in Glorietta Bay on Coronado Island, proceeding to Tidelands Park, moving north along the shoreline to Bayview Park, then crossing the channel to the USS MIDWAY. A special local regulation will be in effect encompassing all navigable waters around the swim course from 7:30am until 11:30am. Mariners will be prohibited from transiting through the special local regulation area during this period. For more details or comments contact Jason Goyanko at 571-428-5354.

Chart 18773

LNM: 32/22

SOUTHERN CALIFORNIA-SAN DIEGO BAY-POINT LOMA-MARINE CONSTRUCTION

R.E. Staitte Engineering Inc. will conduct marine construction on the Ballast Point side of Naval Base Point Loma at 32-41-12N 117-14-11W until 15 August, 2022. Vessels tug CUYAMACA, push boat JEANIE R, a RES barge and a RES material barge will conduct operations. All vessels will monitor VHF-FM Chan. 16. Mariners are requested to transit at lowest safe speed to minimize wake and proceed with caution after passing arrangements have been made. For more details or comments contact project manager Erick Myers at 619-233-0178.

Chart 18773

LNM: 31/22

SOUTHERN CALIFORNIA-SAN DIEGO RIVER-BRIDGE

WEST MISSION BAY DRIVE BRIDGE-The City of San Diego is replacing the existing bridge. A temporary work trestle, providing a vertical clearance of 8' over Mean Sea Level is in place. Scheduled completion date of the bridge replacement project is November 2022. Mariners are urged to use caution while navigating the replacement bridge work site. For more details or comments contact the Coast Guard Bridge Office at 510-437-3461.

Chart 18765

LNM: 34/19

SOUTHERN CALIFORNIA-SAN DIEGO-MARINE EVENT

Thunderboats Unlimited, Inc. will sponsor the San Diego Bayfair racing event in Mission Bay, CA from 6:00am to 6:00pm on 16-18 September, 2022. 100 powerboats will participate in this event. A special local regulation has been established encompassing the navigable waters of Mission Bay to include Fiesta Island, Crown Point, and Ski Beach. There will be perimeter boats around the closed area that can answer your questions during the closure times or you can hail "Course Control" on VHF-FM Chan. 66 during closure times. Mariners will be prohibited from transiting through the special local regulation during this event. For more details or comments contact Mr. Bob Davies at 858-578-7454.

Charts: 18765 18772 18773

LNM: 30/22

SOUTHERN CALIFORNIA-SAN DIEGO-MILITARY OPERATIONS

The U.S. Navy will be conducting Unmanned Surface Vessels (USVs) operations until 19 August, 2022, between 12:00am to 11:59pm, 5 NM west of Mission Bay to 5 NM east of San Clemente Island. Research operations will be conducted deploying Unmanned Surface Vessels (USVs) from a 42-ft research vessel. Operations consist of scientific ocean data collection. The USV moves at approximately 1 knot and is designed to give way if encountered by a vessel. The USV is a Liquid Robotics wave glider and it is a surfboard size craft 10-ft long, 3-ft wide with only a few inches of freeboard. It has a 3-ft mast with orange flag and fixed all around white light. During these operations the research vessel and USV will be restricted in their ability to maneuver. The research vessel will monitor VHF-FM Chan. 16. Mariners are requested to transit the area with caution and maintain a safe distance of 1000-yds from the vessel and USVs. For more details or comments contact Robert Rocha at 510-366-2000 or Anna Nguyen at 408-469-5041.

Chart 18740

LNM: 31/22

SOUTHERN CALIFORNIA-SAN LUIS OBISPO BAY-DREDGE OPERATIONS

The Port San Luis Harbor District will be conducting dredge operations in the San Luis Harbor trailer boat basin and mobile hoist pier at 35-10-25N 120-45-15W. The operations will be conducted until 31 August, 2022, weekdays during daylight hours. All dredged materials will be disposed of at West Bluff Beach and Fisherman's Beach. Mariners are requested to transit the area with caution. For more details or comments contact Natalie Teeter at 805-595-5431.

LNM: 04/22

SOUTHERN CALIFORNIA-VANDENBERG AFB-HAZARDOUS OPERATIONS

Hazardous operations will be conducted from Vandenberg AFB, CA starting at 11:31pm on 15 August, 2022 until 7:25pm on 16 August, 2022. Hazardous operation areas are bounded by the following coordinates:

- Hazard Area 1:
- 34-56-00N 121-24-00W
- 34-56-00N 120-38-00W
- 34-51-00N 120-36-00W

SOUTHERN CALIFORNIA-VANDENBERG AFB-HAZARDOUS OPERATIONS

34-49-00N 120-42-00W
34-44-00N 121-24-00W
Hazard Area 2:
34-14-00N 124-45-00W
34-35-00N 124-50-00W
34-55-00N 122-05-00W
34-34-00N 122-01-00W

Mariners are advised to remain clear of these areas for the duration of operations. For more details or comments contact Vandenberg AFB at 805-606-8825.

Charts: 18700 18720 18740

LNM: 32/22

SECTION VIII - LIGHT LIST CORRECTIONS

An Asterisk *, indicates the column in which a correction has been made to new information

(1) No.	(2) Name and Location	(3) Position	(4) Characteristic	(5) Height	(6) Range	(7) Structure	(8) Remarks	
215	<i>NOAA Environmental Lighted Buoy 46011</i>	34-56-13.000N 121-00-00.000W	Fl (4)Y 20s		4	Yellow disc-shaped buoy.	Aid maintained by National Oceanic and Atmospheric Administration.	33/22
		*						
3785	<i>Santa Barbara Harbor Lighted Buoy 11</i>	34-24-29.884N 119-41-16.000W	Q G		3	Green.	Buoy may be frequently relocated due to changing conditions.	33/22
		*						

PUBLICATION CORRECTIONS

ANNOUNCEMENT – U.S. Coast Pilot® 7 and U.S. Coast Pilot® -NEW EDITIONS-Spring 2022

PUBLICATION–National Oceanic Atmospheric Administration (NOAA) – U.S. Coast Pilot 7, Pacific Coast: California, 54th Edition, 2022, has been issued and is ready for free download and weekly updates at www.nauticalcharts.noaa.gov/publications/coast-pilot/index.html.

Only Print-on-Demand (POD) bound copies are available for purchase; visit nauticalcharts.noaa.gov/publications/print-agents.html#coast-pilot. The 2022 Edition cancels the preceding 2021 Edition, and incorporates all previous corrections.

LNM: 21/22

ANNOUNCEMENT – U.S. Coast Pilot® 7 and U.S. Coast Pilot® 10 - NEW EDITIONS – Spring 2020

U.S Coast Pilot 7 will be divided into two editions in the spring 2020 due to its large size. The following are the projected new editions that will be issued on the same date and ready for free download and weekly updates on June 9, 2020, at nauticalcharts.noaa.gov/publications/coast-pilot/index.html.

PUBLICATION–National Oceanic Atmospheric Administration (NOAA) – U.S. Coast Pilot 7, Pacific Coast: California 52nd Edition, 2020

PUBLICATION–National Oceanic Atmospheric Administration (NOAA) – U.S. Coast Pilot 10, Pacific Coast: Oregon, Washington, Hawaii and Pacific Islands 1st Edition, 2020

Only Print-on-Demand bound copies are available for purchase; visit nauticalcharts.noaa.gov/publications/print-agents.html#coast-pilot

For any questions or comments; visit nauticalcharts.noaa.gov/customer-service/assist/

NOAA Office of Coast Survey’s Nautical Publications Branch
April 2020

LNM: 18/20

ENCLOSURES

REPORT OF DELAY AT DRAWBRIDGE

[Delay_Report_11-2017.pdf](#)

Use link above to Report a Delay at a Drawbridge.

LNM: 06/07

SOUTHERN CALIFORNIA-PORTS OF LOS ANGELES/LONG BEACH-LA/LB HARBOR-BRIDGE

[V_Thomas_Platform_Lighting1.pdf](#)

See link above for platform lighting for Vincent Thomas Bridge.

LNM: 28/19

NORTHERN CALIFORNIA-DELTA & RIVERS-AMERICAN RIVER-BRIDGE

[AmRiv_SiltCurtain_BargeLocation.pdf](#)

CAPITAL CITY HWY (ROUTE 51) BRIDGE-See link above for barge and silt curtain locations.

LNM: 22/22

NORTHERN CALIFORNIA-DELTA & RIVERS-SACRAMENTO RIVER-BRIDGE

[RVBridge_PlatformCable_Lighting.pdf](#)

RIO VISTA DRAWBRIDGE-See enclosure above for temporary platform location and lighting.

LNM: 22/20

NORTHERN CALIFORNIA-SAN FRANCISCO BAY-BRIDGE

[PlatformLighting_GG_Bridge_14Jun22.pdf](#)

GOLDEN GATE BRIDGE-Temporary Platform Location and Lighting revised 14 June, 2022.

LNM: 24/22

NORTHERN CALIFORNIA-SAN FRANCISCO BAY-BRIDGE

[R-SR_Bridge_Temp_Platform_Lighting.pdf](#)

RICHMOND-SAN RAFAEL BRIDGE- See link above for temporary underdeck platform lighting for concrete and steel repairs.

LNM: 48/21

NORTHERN CALIFORNIA-DELTA & RIVERS-OLD RIVER-BRIDGE

[BNSF_OldRiver_Barge_Lighting.pdf](#)

See link above.

LNM: 13/22

NORTHERN CALIFORNIA-DELTA & RIVERS-SAN JOAQUIN RIVER-BRIDGE

[Temporary_Bridge_Falsework_Lighting.pdf](#)

CROWS LANDING REPLACEMENT-See link above for temporary falsework, temporary bridge, the temporary navigation channel during construction with navigation lighting plan.

LNM: 35/21

NORTHERN CALIFORNIA-SAN FRANCISCO BAY-BRIDGE

[SFOBBTemporaryBargeLocations.pdf](#)

WESTERN SPAN SAN FRANCISCO-OAKLAND BAY BRIDGE-See link above regarding fender repairs.

LNM: 13/22

NEVADA-ARIZONA-COLORADO RIVER-BRIDGE

[Cofferdam-Lighting_Laughlin-BH.pdf](#)

NEW LAUGHLIN-BULLHEAD CITY BRIDGE-See link above for temporary cofferdam lighting and configuration.

LNM: 50/21

NORTHERN CALIFORNIA-SAN FRANCISCO - VOLUNTARY VESSEL SPEED REDUCTION

[NOAA VSR 2022.pdf](#)

see link above.

LNM: 18/22

SOUTHERN CALIFORNIA-DANA POINT TO POINT ARGUELLO-VOLUNTARY VESSEL SPEED REDUCTION

[NOAA VSR 2022.pdf](#)

see link above.

LNM: 18/22

NORTHERN CALIFORNIA-DELTA & RIVERS-SACRAMENTO RIVER-BRIDGE

[ButteConstructionLightng.pdf](#)

THE LOCAL NOTICE TO MARINERS IS AVAILABLE ON THE WORLD WIDE WEB AT [HTTPS://WWW.NAVCEN.USCG.GOV](https://www.navcen.uscg.gov)

W. J. George, CDR
U.S. Coast Guard
Chief Waterways Management Branch

**U.S. COAST GUARD
REPORT OF DELAY AT DRAWBRIDGE
PER 33 CFR 117.5**

BRIDGE NAME: _____ DATE: _____

MILE : _____ WATERWAY: _____

1. Name/ Type of Vessel: _____ Direction of Travel : _____

2. Vessel Owner (Name): _____

(Address): _____

3. Name of Pilot (if applicable): _____

(Address): _____

4. Time vessel signaled for bridge opening: _____

5. Location of vessel when signal was given: _____

6. Time and location of vessel when delay began: _____

7. Method of signal for bridge opening: () Radio () Sound () Visual.

(If sound or visual signal was used, specify: _____)

8. Time bridge operator acknowledged signal: _____

9. Method of bridge operator acknowledgement: () Radio () Sound () Visual

(If sound or visual signal was used, specify: _____)

10. Did bridge operator acknowledgement indicate the bridge,

() Could be opened immediately?

() Could not be opened immediately?

11. If land traffic crossed the bridge:

Time land traffic started across the bridge _____

Time land traffic stopped crossing the bridge _____

Did land traffic stop on the bridge? _____

Duration land traffic stopped on the bridge _____

12. Time drawbridge opened for navigation _____

13. Additional comments:

I certify the above information is true to the best of my knowledge and understand this statement may be used by the U.S. Coast Guard in levying fines against the bridge owner.

Signature _____

Telephone _____

Mariners may complete and return to:

Commander (dpw)

Fax: (510) 437-5836

Email: Carl.T.Hausner@uscg.mil

Eleventh Coast Guard District

Coast Guard Island, Building 50-2

Alameda, CA 94501-5100

Attn: Bridge Office

Questions? Please contact: Carl Hausner, Bridge Administrator, Eleventh Coast Guard District

Office: (510) 437-3516

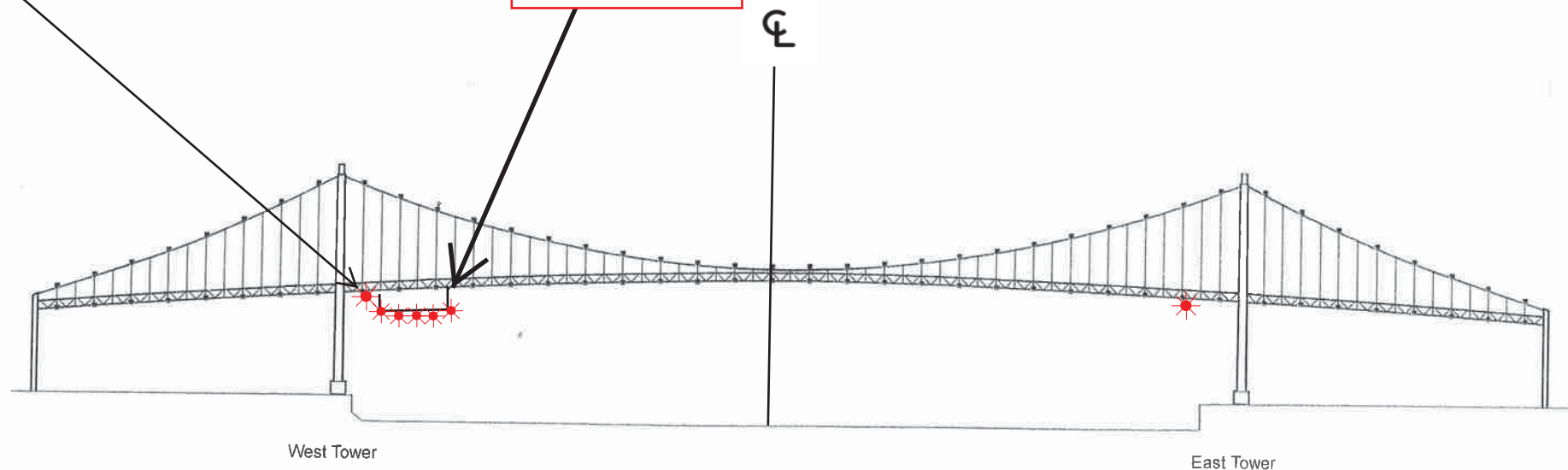
Cell: (510) 219-4366

Mariners are reminded not to require bridge openings for appurtenances nonessential to navigation, per 33 CFR 117.11

Vincent Thomas Highway Bridge
Mile 3.0
Los Angeles/Long Beach Harbor
Painting Project

West Channel Margin
Light

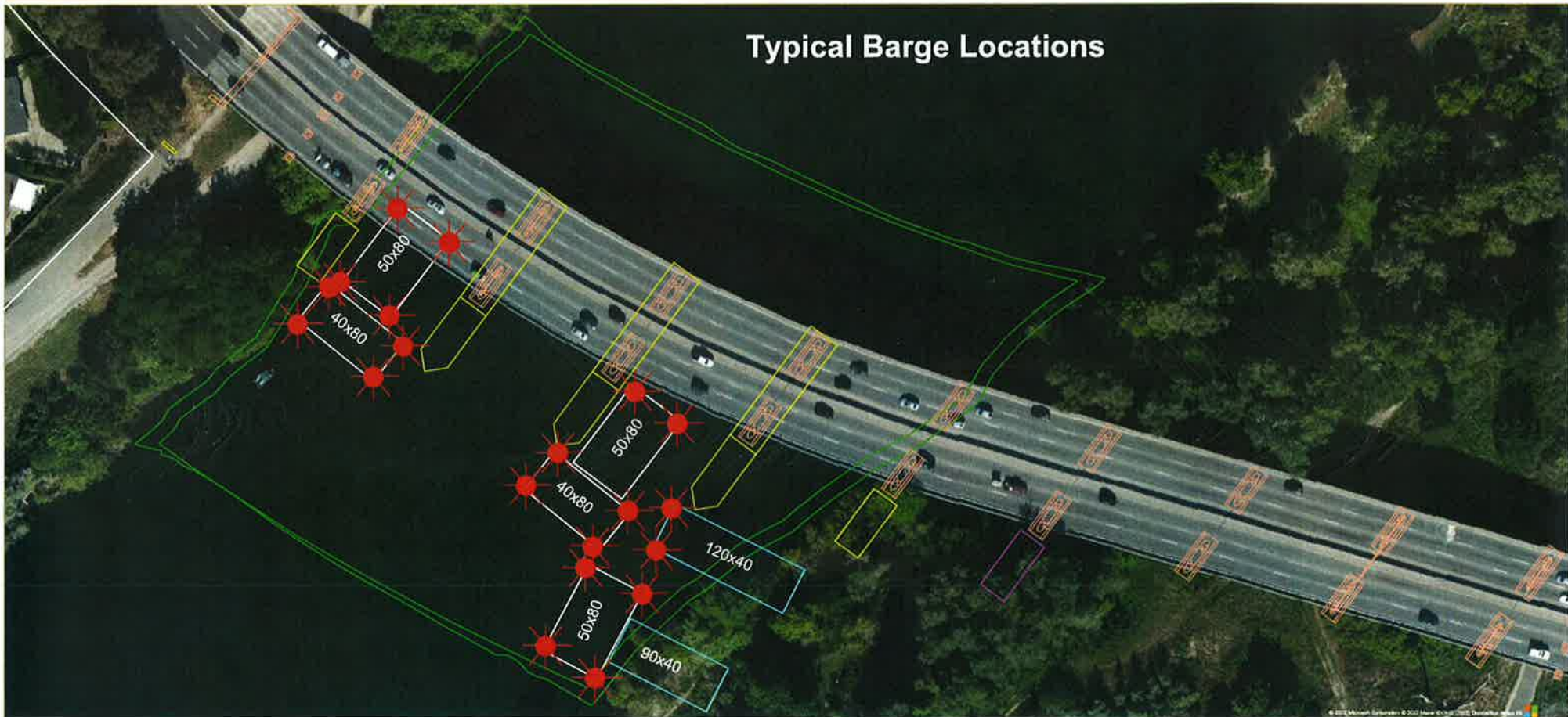
Below Low Steel
Platform. 5' 4"
reduction in
vertical clearance



A 180 foot long under deck temporary platform will reduce vertical clearance by 5' 4". Each corner and every 50 feet along the the upstream and downstream side of the platform will lighted at night with steady burning red lights visible at 2000 yards by approaching vessels. In a duration of 1-year the platform will progress from the western channel margin light to 250' west of the centerline of the bridge.

Rehabilitation and Modification Project Capital City (CA Route 51) Bridge, Mile 4.0, American River

Typical Barge Location and Typical Barge Lighting



Each corner of each barge is lighted at night with steady burning all-round red light, visible at 2,000 by approaching vessels. All vessels transiting the project area should use extreme caution. Turbidity curtains will be placed at different locations during the project. The next four diagrams show the proposed location of the curtains.



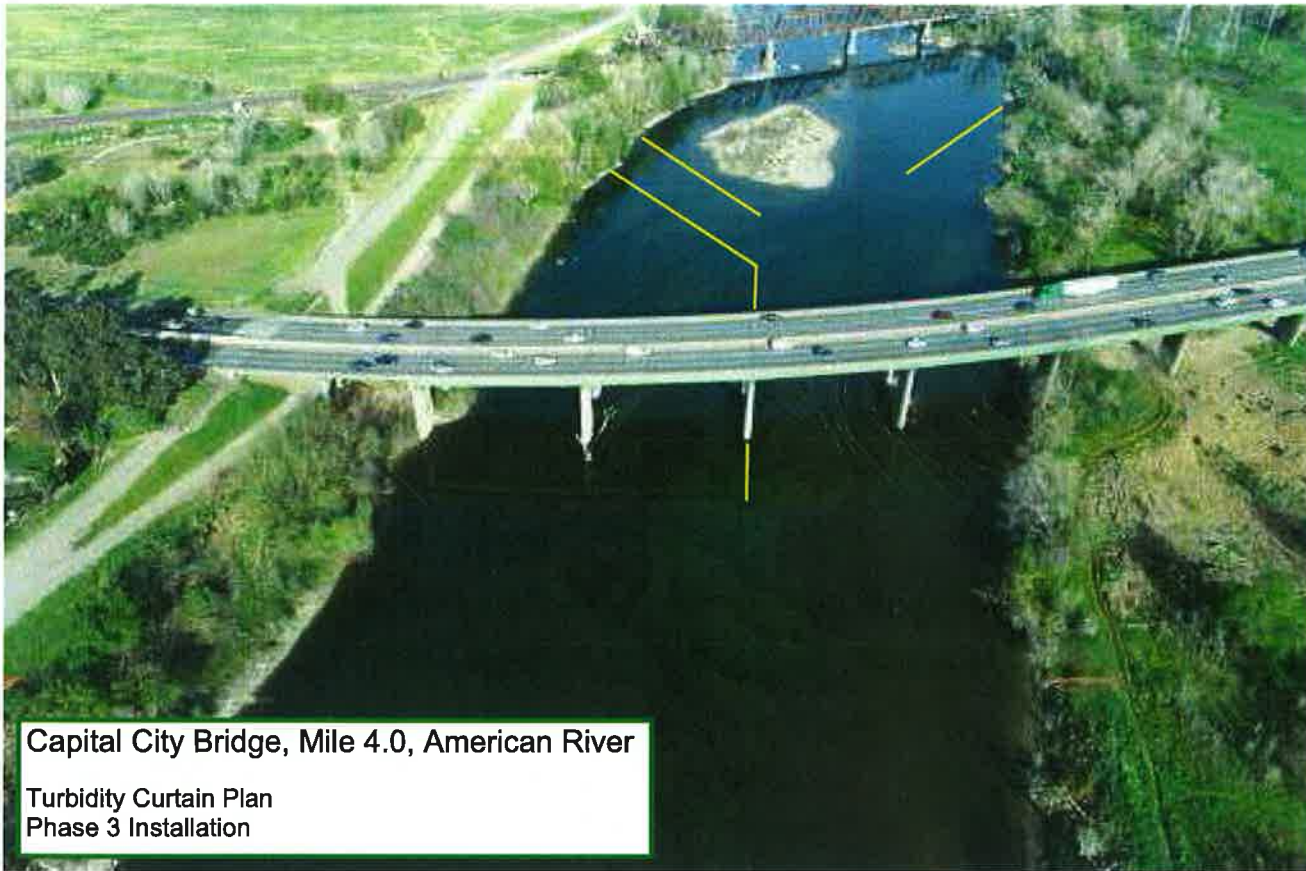
Capital City Bridge, Mile 4.0, American River

Turbidity Curtain Plan
Phase 1 Installation



Capital City Bridge, Mile 4.0, American River

Turbidity Curtain Plan
Phase 2 Installation



Capital City Bridge, Mile 4.0, American River

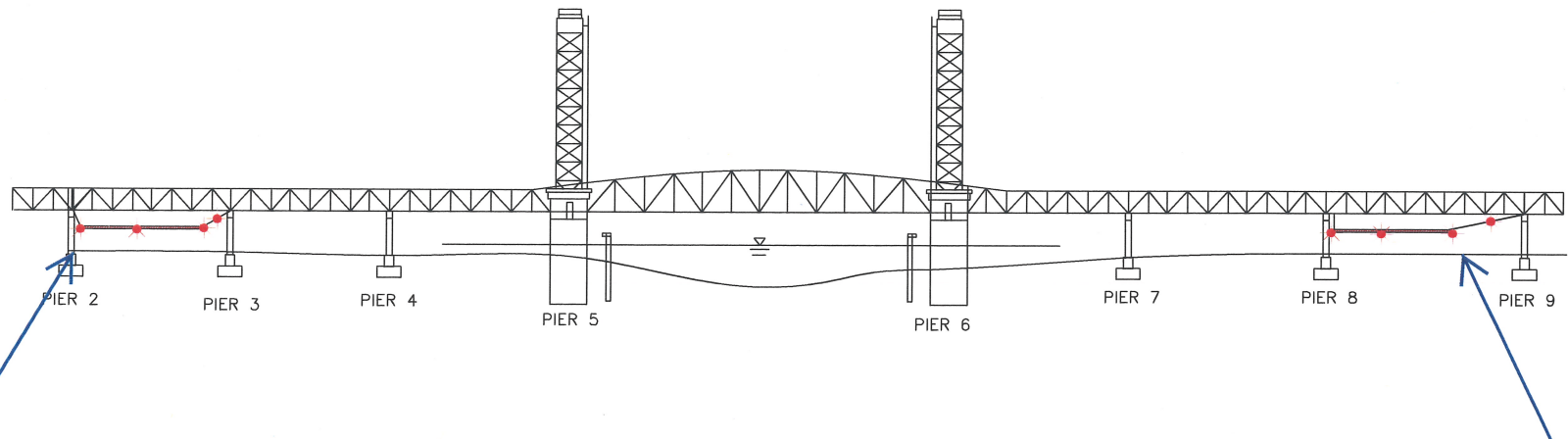
Turbidity Curtain Plan
Phase 3 Installation



Capital City Bridge, Mile 4.0, American River
Turbidity Curtain Plan
Phase 4 Installation

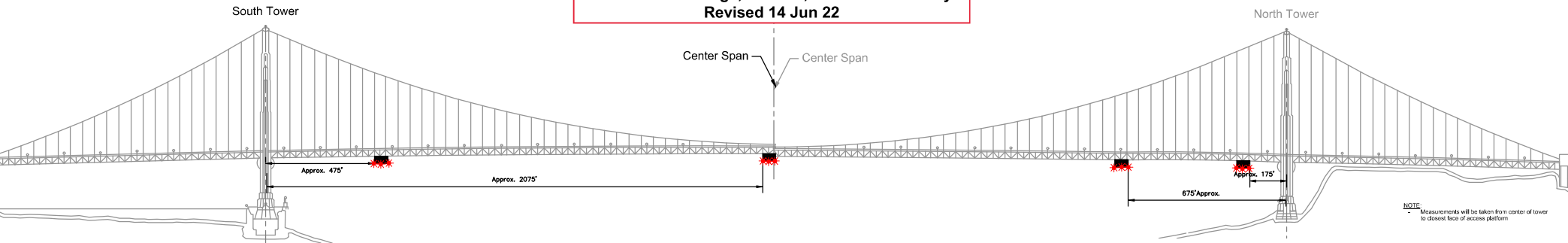
Temporary Underdeck Platform Lighting

Rio Vista Bridge Mile 12.8, Sacramento River



Two temporary platforms, and associated support cables, are installed beneath low steel of the bridge in span 2 and 8 and reduces vertical clearance in those spans by no more than 4 feet. The lower 4 corners and midpoint of each platform will be lighted at night with steady burning red lights, visible at 2,000 yards from approaching vessels. The support cable will be lighted with red lights every 50 feet. Mariners are requested to use alternate or main span of the bridge while these temporary platforms are in place.

Temporary Access Platforms
Golden Gate Bridge, mile 2.5, San Francisco Bay
Revised 14 Jun 22



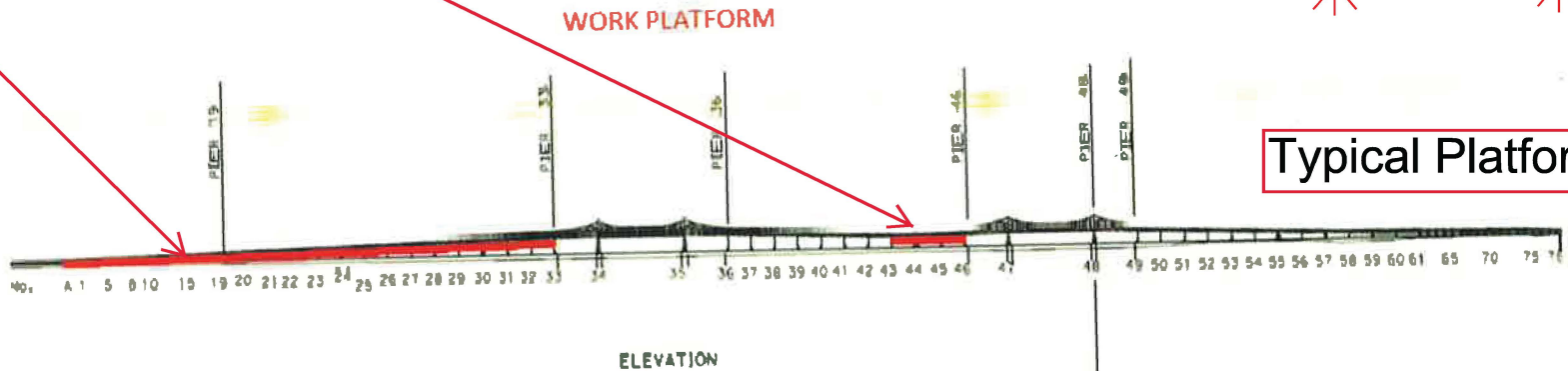
Typical Platform Lighting



Four 54 ft wide temporary platforms are installed in the main span below low steel of the bridge, in relation to centerline of the span; two south of the north tower and two north of the south tower, reducing vertical clearance by no more than 14 feet. The upstream and downstream lower edges of the temporary platforms will be lighted at night with steady burning red lights visible at 2,000 yards by approaching vessels.

Painting and Structural Repairs Project
Richmond-San Rafael Bridge
Mile 13.0, San Francisco Bay

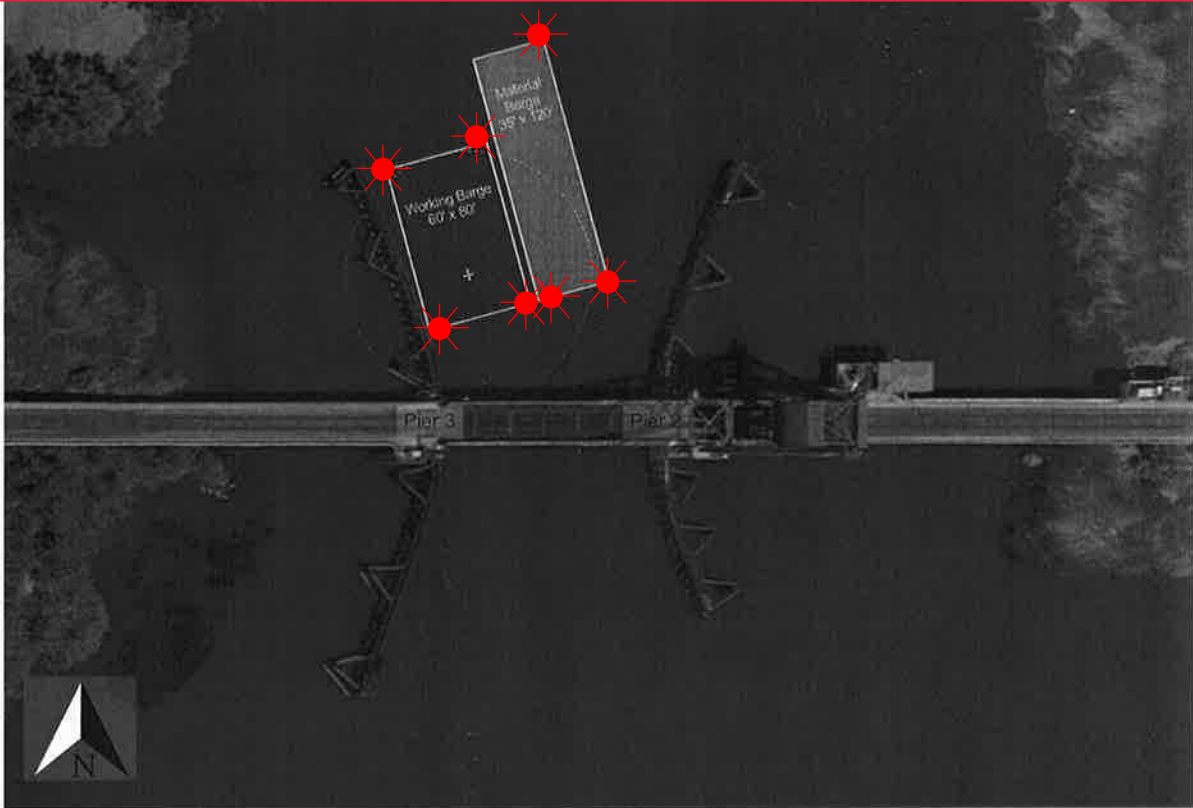
Temporary Underdeck Platforms



Typical Platform Lighting

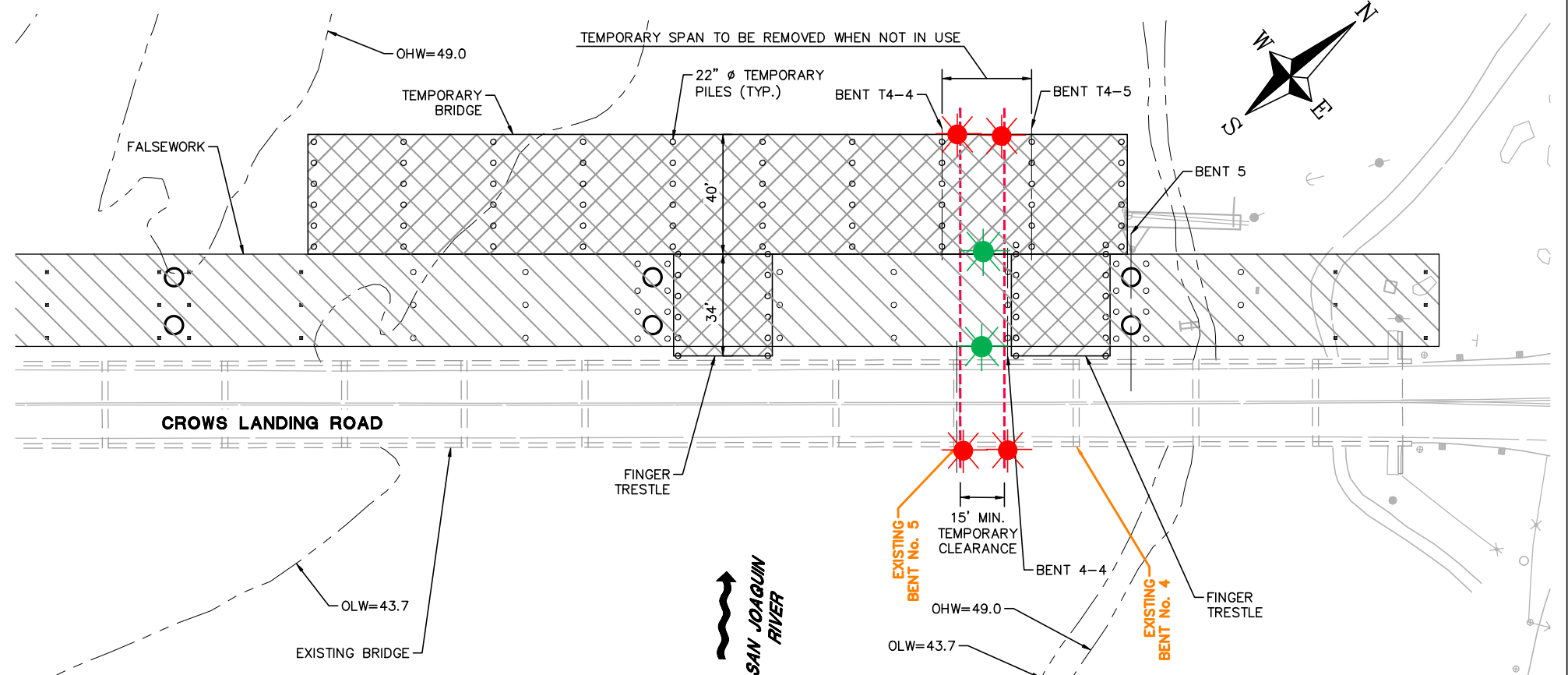
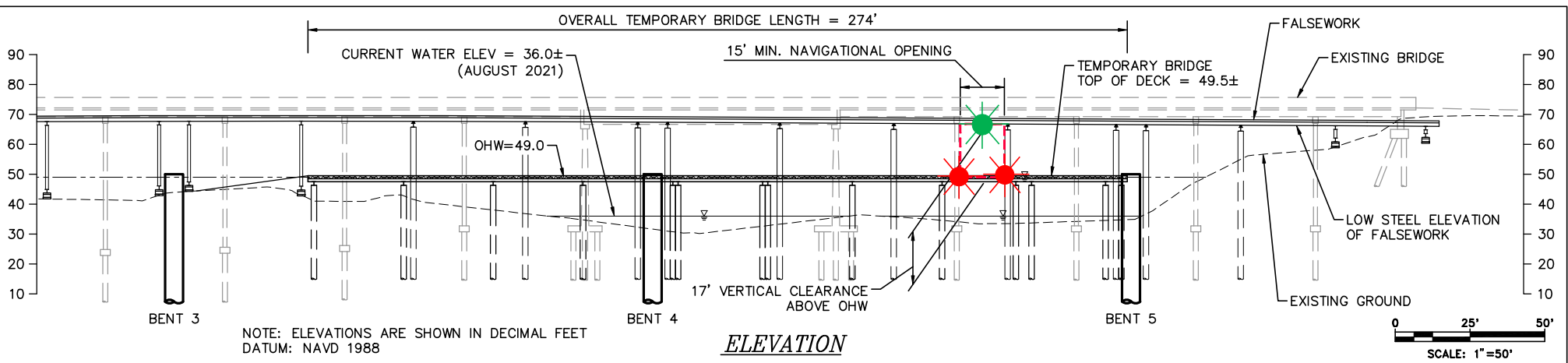
The upstream and downstream lower edges of each temporary platform in each span are lighted at night with steady burning red lights to be seen at 2,000 yards by approaching vessels. Each platform reduces vertical clearance by no more than 3 feet.

Barge Lighting Diagram
BNSF Rail Bridge, Mile 10.4, Old River



During working hours the barges will be in the main span of the bridge. The barges can be moved for navigational safety upon request with one hour advance notice. After normal working hours the barges will be moored behind the wing-walls of the pier protection system and each corner of each barge will be lighted at night with steady burning red lights.

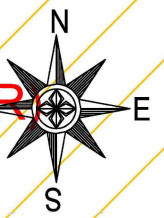
Enclosure (1)



Temporary Navigation Lighting-Crows Landing Bridge Replacement Project - San Joaquin River

The temporary bridge and existing bridge will be lighted at night with two red lights marking the temporary navigation channel. The temporary falsework will be lighted, upriver and downriver, with green lights marking the center of the temporary navigation channel. During construction the temporary navigation channel will provide a horizontal clearance of 15 feet and a vertical clearance at Ordinary High Water of 17 feet.

Size of Barge: 150' X 54'
(Crane Barge Kelso)
Typical Location

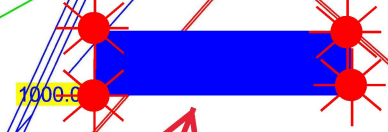


PIER W4 (C TWR)

ANCHOR ZONE C

Anchored barge will be located at either pier "B", "C", "D", or "E" during the work. Each corner of the barge will be lighted at night with steady burning red lights.

Barge will display this lighting configuration when anchored near piers.

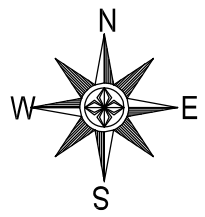


PIER W3 (B TWR)



Fender Repairs
Western Span San Francisco Oakland Bay Bridge, mile 8.9, San Francisco Bay
Temporary Impacts to Navigation Diagram

Anchored barge will be located at either pier "B", "C", "D", or "E" during the work. Each corner of the barge will be lighted at night with steady burning red lights.



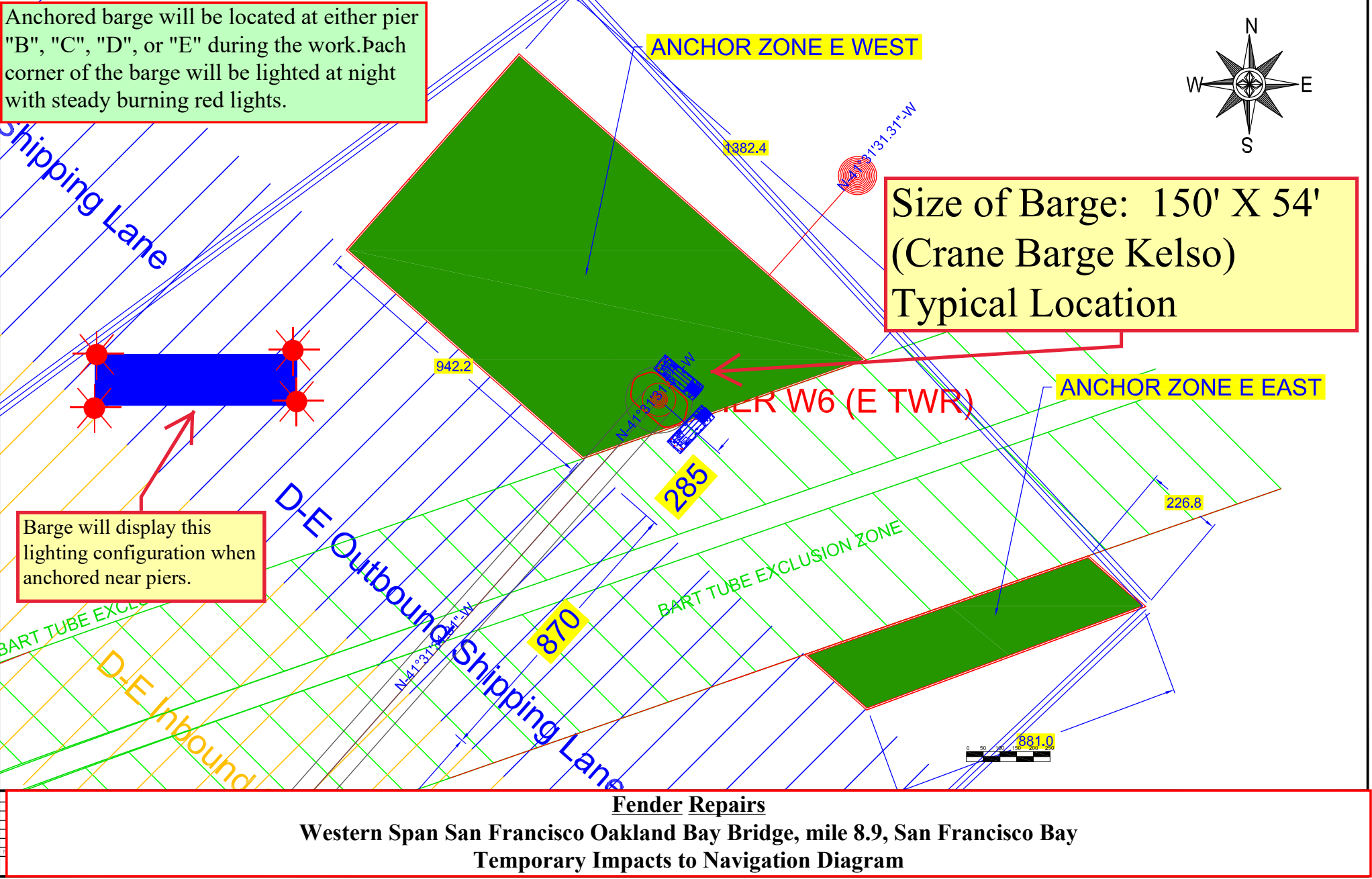
ANCHOR ZONE E WEST

Size of Barge: 150' X 54'
(Crane Barge Kelso)
Typical Location

ANCHOR ZONE E EAST

PIER W6 (E TWR)

Barge will display this lighting configuration when anchored near piers.

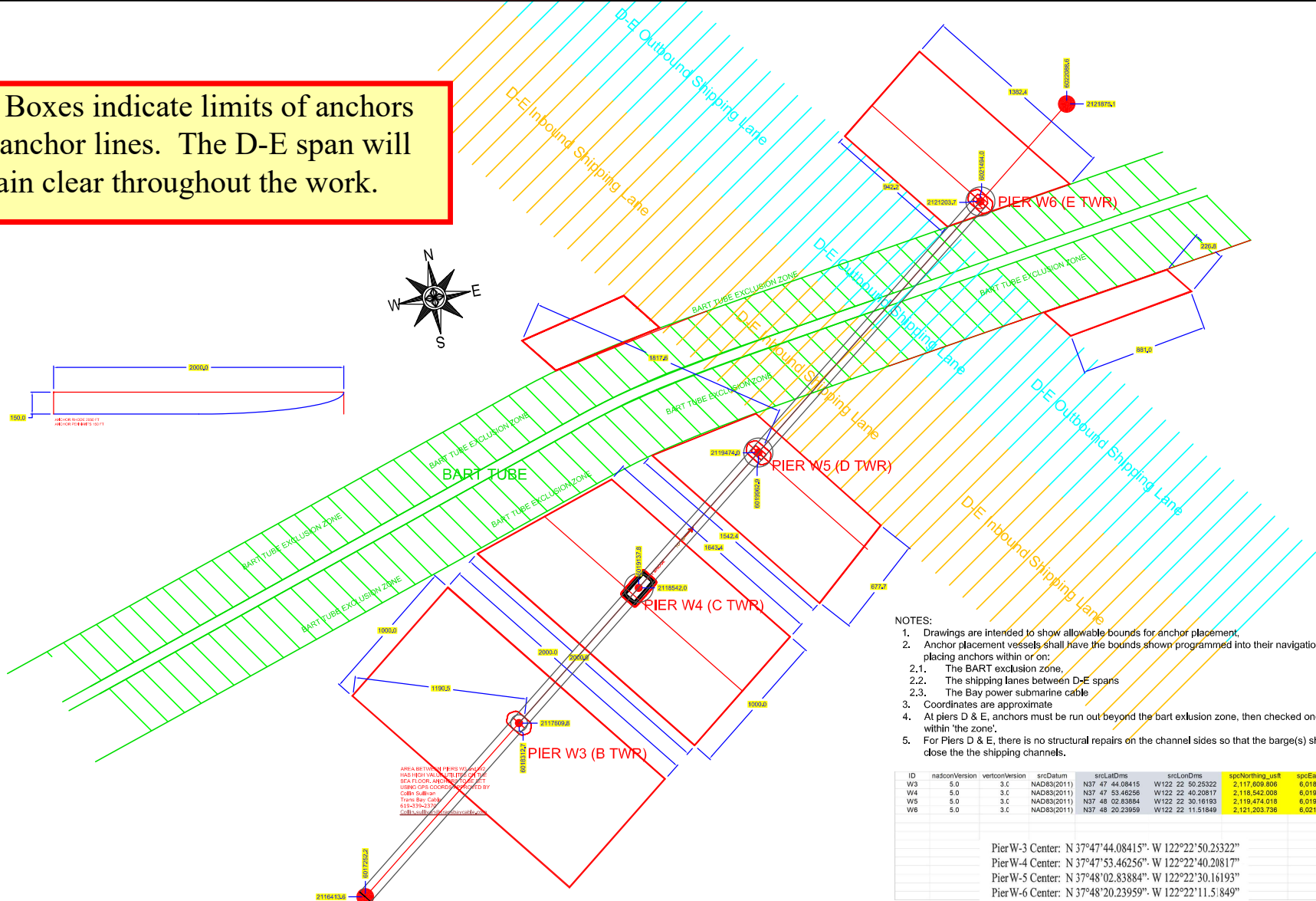
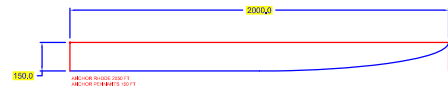


Fender Repairs

Western Span San Francisco Oakland Bay Bridge, mile 8.9, San Francisco Bay

Temporary Impacts to Navigation Diagram

Red Boxes indicate limits of anchors and anchor lines. The D-E span will remain clear throughout the work.



AREA BETWEEN PIERS W4 AND W5 HAS BEEN DESIGNATED AS A SEA FLOOR ANCHORAGE RESTRICTION ZONE (SARZ) AND IS CONTROLLED BY COLTS SULLIVAN
 Trans Bay Cable
 425x10x327
 COLTSULLIVAN@TRANSBAYCABLE.COM

NOTES:

1. Drawings are intended to show allowable bounds for anchor placement.
2. Anchor placement vessels shall have the bounds shown programmed into their navigation systems in order to avoid placing anchors within or on:
 - 2.1. The BART exclusion zone,
 - 2.2. The shipping lanes between D-E spans
 - 2.3. The Bay power submarine cable
3. Coordinates are approximate
4. At piers D & E, anchors must be run out beyond the bart exclusion zone, then checked once set to ensure that they are not within 'the zone'.
5. For Piers D & E, there is no structural repairs on the channel sides so that the barge(s) should never need to moored close the the shipping channels.

ID	nadsouVersion	vertconVersion	srcDatum	srcLatOrms	srcLonOrms	srcNorthing_usr1	srcEasting_usr1
W3	5.0	3.C	NAD83(2011)	N37 47 44.08415	W122 22 50.25322	2,117,609,808	6,018,512,651
W4	5.0	3.C	NAD83(2011)	N37 47 53.46256	W122 22 30.20817	2,116,542,008	6,019,137,752
W5	5.0	3.C	NAD83(2011)	N37 48 02.83884	W122 22 30.16193	2,119,474,018	6,019,962,888
W6	5.0	3.C	NAD83(2011)	N37 48 20.23959	W122 22 11.51948	2,121,203,736	6,021,493,997

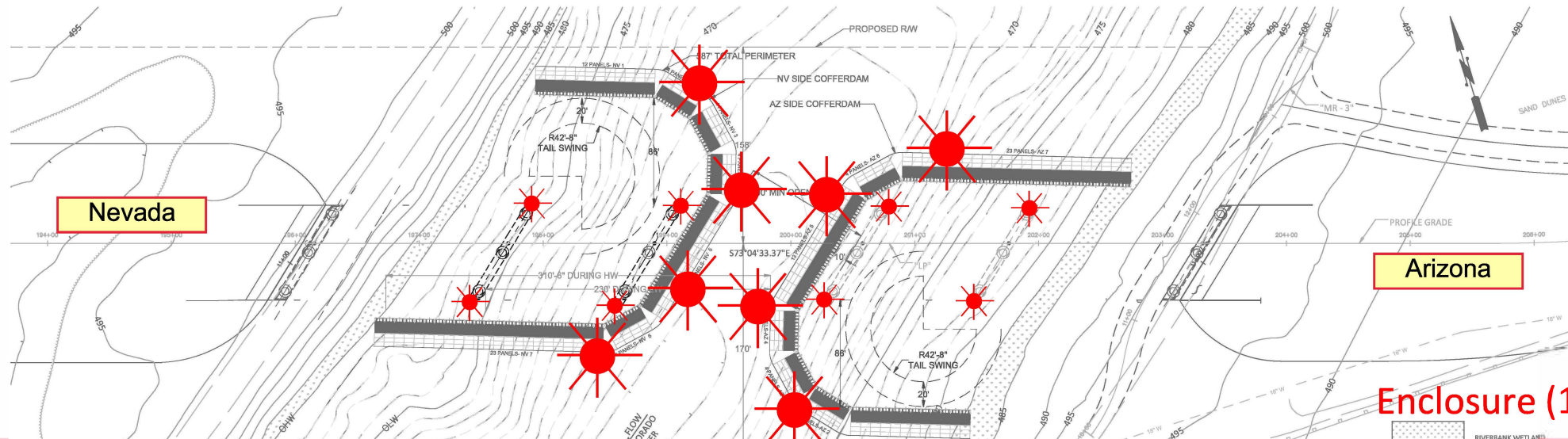
Pier-W-3 Center: N 37°47'44.08415". W 122°22'50.25322"
 Pier-W-4 Center: N 37°47'53.46256". W 122°22'40.20817"
 Pier-W-5 Center: N 37°48'02.83884". W 122°22'30.16193"
 Pier-W-6 Center: N 37°48'20.23959". W 122°22'11.51849"

Fender Repairs

Western Span San Francisco Oakland Bay Bridge, mile 8.9, San Francisco Bay

Temporary Impacts to Navigation Diagram

New Laughlin-Bullhead City Bridge Construction Mile 261.6 over the Colorado River Temporary Cofferdam Lighting



The Arizona (AZ) side cofferdam will be installed during phase one of the project. Once AZ side piers and abutments are completed, the cofferdam will be removed and reinstalled on the Nevada (NV) side. The upriver and down river ends, as well as the channel-ward faces, of the cofferdams will be lit at night with steady burning red lights, visible at 2,000 yards by approaching vessels. At least 70 ft from the channel-ward face of either cofferdam will be available in the center of the river for vessels. After piers are installed, the upriver and downriver ends of each pier will be temporarily lighted with red lights, visible at 2,000 yard by approaching vessels, until permanent lighting can be installed marking the main navigation span.

U.S. Department of
Homeland Security

United States
Coast Guard



To: All Mariners

April 22, 2022

The National Oceanic and Atmospheric Administration (NOAA) with support from the United States Coast Guard (USCG) and Environmental Protection Agency (EPA) is issuing a voluntary 10-knot Vessel Speed Reduction (VSR) request that goes into effect May 1 off of San Francisco and southern California; please see the attached charts. Large ships travelling 10 knots give whales more time to move to avoid a strike, reduce the lethality of a strike should one occur, generate less harmful ocean noise and have fewer air emissions. Thus, the goals of these voluntary VSR zones are to reduce the risk of fatal ship strikes to endangered blue, fin, and humpback whales, reduce ocean noise and protect public health adjacent to Greater Farallones, Cordell Bank, Monterey Bay, and Channel Islands national marine sanctuaries. These whale species are protected under the Federal Endangered Species Act (16 U.S.C. 1538 et seq.), the Marine Mammal Protection Act (16 U.S.C. 1361 et seq.), and the National Marine Sanctuaries Act (16 U.S.C. 1431 et seq.). Any unauthorized take of whales, even if unintentional, by vessels transiting in U.S. waters violates federal statutes.

The voluntary VSR request will be in effect May 1 to December 15, 2022 for all VSR zones off California, as shown in the attached charts. Note the expansion of the VSR zone off San Francisco over prior years is designed to reduce ship strike risk in areas of known whale presence and vessel traffic. The season has been extended to account for the presence of whales later in the year.

NOAA, USCG and EPA request that all vessels 300 gross tons (GT) or larger reduce speeds to 10 knots when transiting within the designated VSR zones. We request your cooperation with the voluntary VSR to protect the health of communities living near these zones, and whales that annually migrate to and through these zones. All transits by vessels 300 GRT or larger are analyzed by NOAA via Automatic Information System (AIS) data provided by USCG to assess the industry's cooperation.

NOAA, USCG and EPA are committed to the long-term protection of nationally significant marine resources and public health by enhancing marine safety and environmental awareness in the maritime community. We encourage vessel crews to report whale sightings through the Whale Alert App (<http://www.whalealert.org>). If you have questions please contact Sean Hastings, (805) 705-1790, sean.hastings@noaa.gov. NOAA, USCG and EPA commend your commitment to protecting endangered and threatened whales and protecting public health by cooperating with the 10-knot VSR requests and working towards a goal of 100% cooperation in 2022.

Handwritten signature of William J. Douros in blue ink.

William J. Douros, Regional Director
NOAA Office of National Marine Sanctuaries
West Coast Region

Handwritten signature of Scott Rumsey in blue ink.

Scott Rumsey, Acting Regional Administrator
NOAA National Marine Fisheries Service
West Coast Region

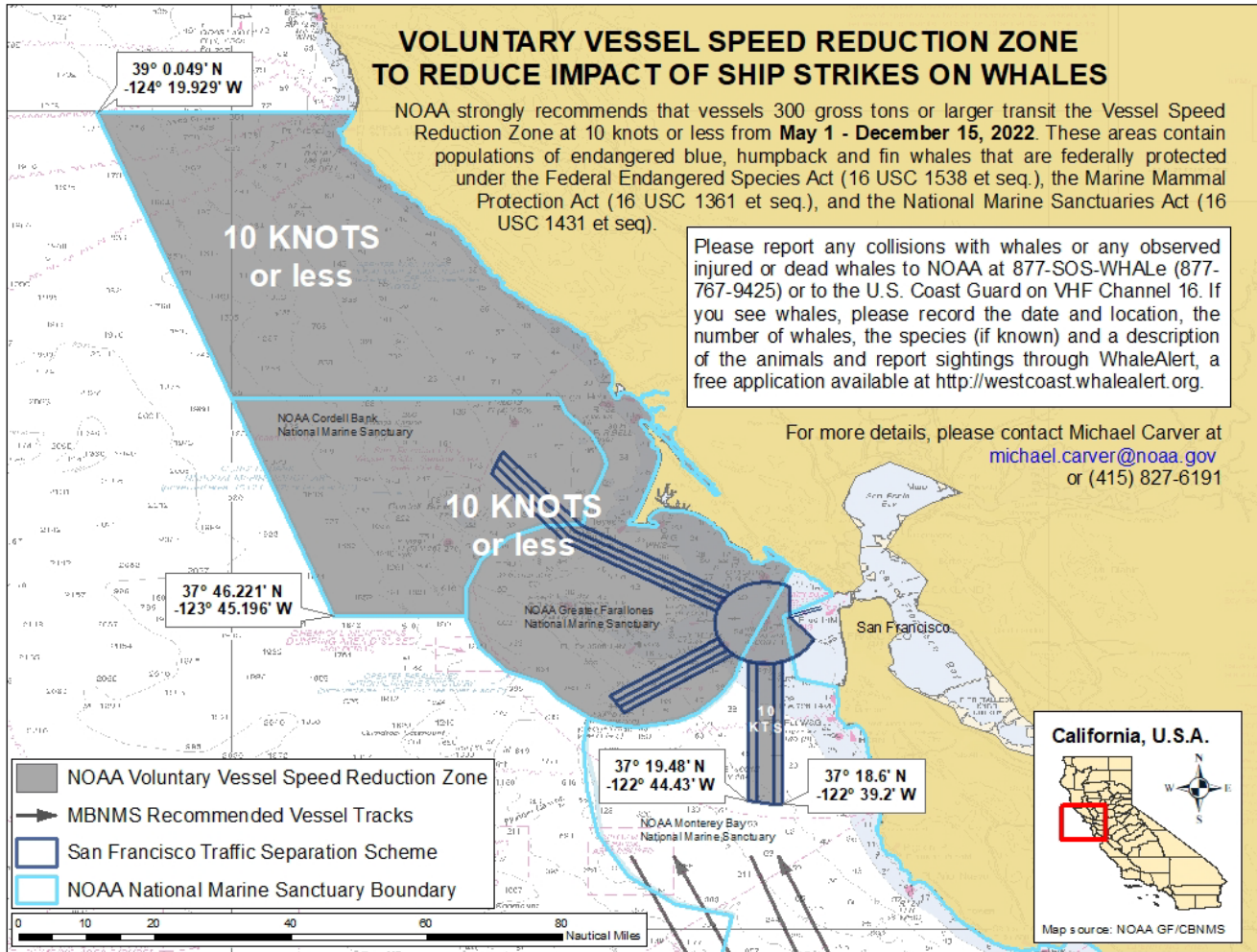
Handwritten signature of Brian K. Penoyer in blue ink.

Brian K. Penoyer, Rear Admiral
U.S. Coast Guard District Eleven

Handwritten signature of Martha Guzman in blue ink.

Martha Guzman, Regional Administrator
Environmental Protection Agency Region 9

2022 Voluntary Vessel Speed Reduction Zone San Francisco Bay Region

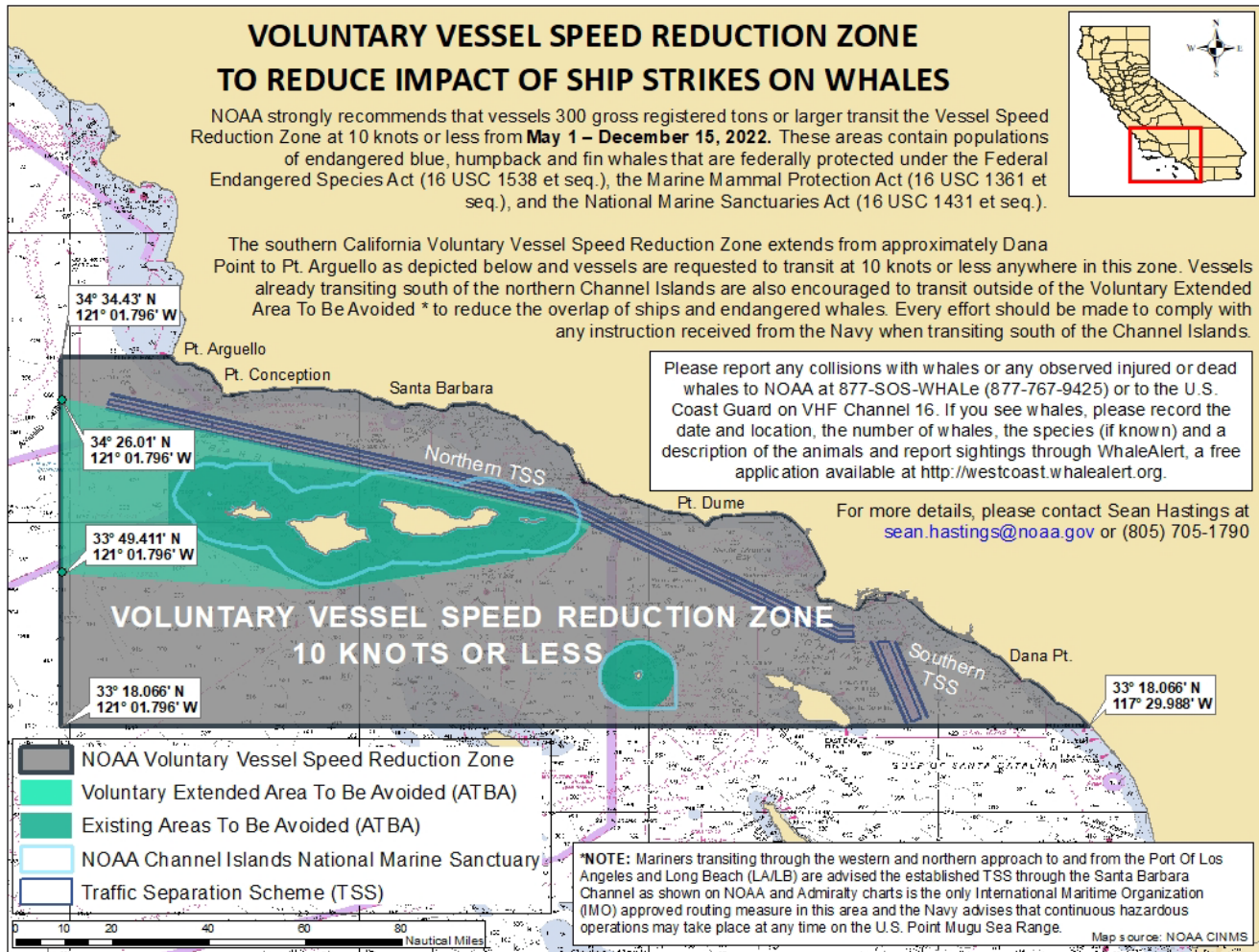


NOAA Chart 18010

This map is not to be used for navigational purposes

13 APRIL 2022

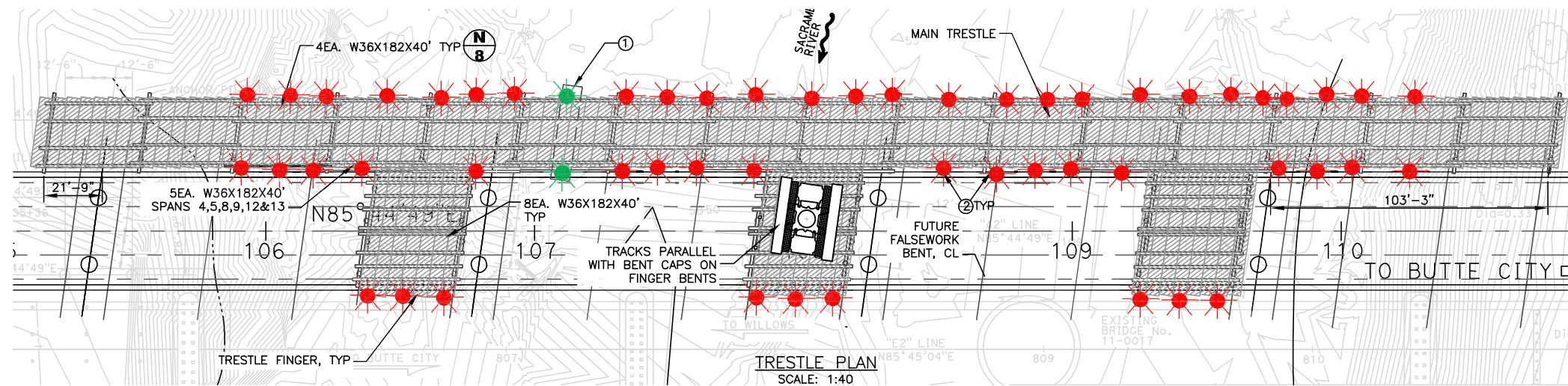
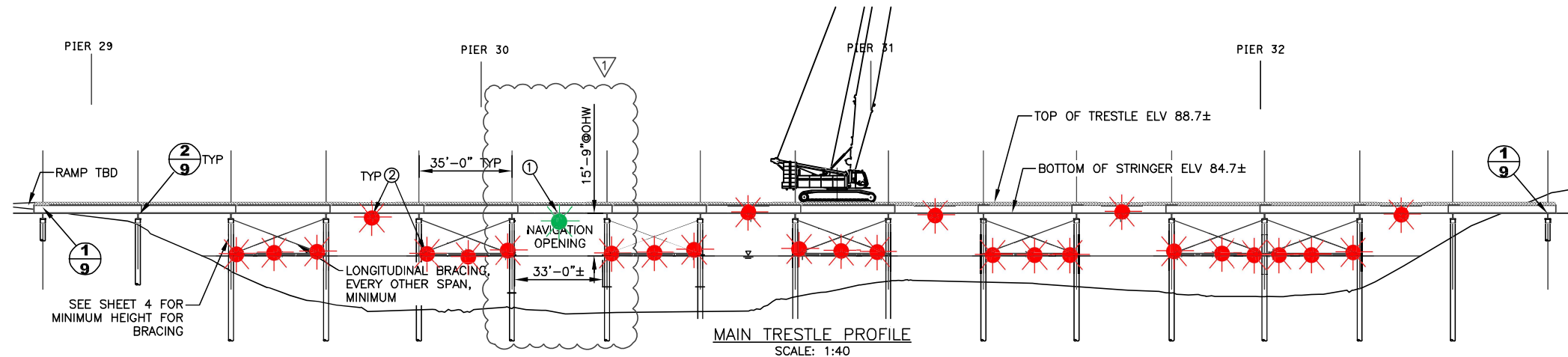
2022 Voluntary Vessel Speed Reduction Zone Southern California



NOAA Chart 18022

Chart not for navigational purposes.

13 APRIL 2022



- NOTES:
- ① 360 DEGREE ALL-ROUND GREEN LIGHT, SEEN AT 2000 YARDS BY APPROACHING VESSELS AT NAV. OPENING.
 - ② 360 DEGREE ALL-ROUND RED LIGHT, SEEN AT 2000 YARDS BY APPROACHING VESSELS ON ALL SPANS EXCEPT NAV. OPENING. PLACE NEAR WATER ON HORZ. BRACING WHERE APPLICABLE

Temporary Trestle Lighting
Butte City Bridge Replacement Project
Mile 169.7, Sacramento River

The upriver and downriver low edges of the temporary trestle is lighted at night with steady burning red lights. The recommended navigation span during the replacement bridge project has a green center channel light on the upriver and downriver portion of the temporary trestle.