



U.S. Department  
of Homeland Security  
**United States  
Coast Guard**

---

## LOCAL NOTICE TO MARINERS

**District: 11**

**Week: 45/22**

CORRESPONDENCE TO:  
COMMANDER  
DISTRICT ELEVEN (DPW)  
COAST GUARD ISLAND BUILDING 50-2  
ALAMEDA, CA 94501-5100

REFERENCES: COMDTPUB P16502.6, Light List Volume VI, 2017 Edition, U.S. Chart No.1 12th Edition, and Coast Pilot Volume 7 49th Edition. These publications, along with corrections, are available at: <https://nauticalcharts.noaa.gov/>

BROADCAST NOTICE TO MARINERS - Information concerning aids to navigation and waterway management promulgated through BNM HB-0011-22, SF-0107-22, LA-0098-22, and SD-0084-22 have been incorporated in this notice, or will continue if still significant.

---

### SECTION I - SPECIAL NOTICES

This section contains information of special concern to the Mariner.

---

#### SUBMITTING INFORMATION FOR PUBLICATION IN THE LOCAL NOTICE TO MARINERS

A complete set of guidelines with examples and contact information can be found at <http://www.pacificarea.uscg.mil/Our-Organization/District-11/Prevention-Division/LnmRequest/> or call Waterways Management Branch at 510-437-2929 or e-mail D11-SMB-D11-LNM@uscg.mil. Please provide all Local Notice to Mariners submissions 14 days prior to the start of operations

LNM: 17/21

#### BRIDGE INFORMATION- PROJECTS, DISCREPANCIES, CORRECTIONS & REGULATORY

For all bridge related issues, including lighting, operation, obstructions, construction, demolition, etc. contact the Eleventh Coast Guard District Bridge Administrator 24 hour cell phone at 510-219-4366. Flotsam may accumulate on and near bridge piers and abutments. Mariners should approach all bridges with caution. A vessel delay at a drawbridge may be reported to the District Bridge Administrator by telephone, or by using the Delay\_Report\_11-2017.pdf included in the Enclosures section of this Local Notice to Mariners.

#### \*\*\*\* Cancellation of NOAA Paper and Raster Nautical Charts \*\*\*\*

The National Oceanic and Atmospheric Administration (NOAA) is undertaking a multi-year program to end production and maintenance of its suite of over 1,000 traditional paper nautical charts and all associated raster chart products and services, including: Print-on-Demand (POD) paper nautical charts, Full-size chart PDF files, BookletChart™ PDF files, NOAA raster navigational charts (NOAA RNC®), the NOAA RNC tile service, and the online RNC viewer.

Six months notice of the intent to cancel a specific chart is provided in a "Last Edition" notice. The final cancellation of a chart is made in a "Canceled" notice. Both types of notices will appear in LNM Section IV, "Chart Correction." A comprehensive list of all canceled NOAA charts is available at: <http://www.charts.noaa.gov/MCD/Dole.shtml>.

Traditional paper nautical chart production is ending to enable the creation and maintenance of larger scale, more up-to-date, higher quality coverage of NOAA's electronic navigational chart (NOAA ENC®) product. This will significantly enhance the amount of charted detail available to mariners. More information about NOAA's program to sunset traditional paper charts is on the NOAA Coast Survey website at: <https://www.nauticalcharts.noaa.gov/farewell-to-traditional-nautical-charts.html>

An online NOAA Custom Chart application at: <https://devgis.charttools.noaa.gov/pod> is available to create chart images from ENC data, which may then be printed. Notices to Mariners will not be issued for NOAA Custom Charts.

LNM: 35/22

#### BRIDGE INFORMATION-COMMUNICATIONS PROTOCOL-BENICIA/MARTINEZ UPRR BRIDGE- CARQUINEZ STRAIT

All mariners requiring a bridge lift at the Benicia-Martinez Union Pacific Railroad Bridge, mile 7.0, over the Carquinez Strait, California, should follow the protocol in the document entitled "Coordination of Communications for Union Pacific Railroad Lift Operations." Mariners can download a copy of the document by selecting the link BENICIA-MARTINEZ RR BRIDGE under the QUICK LINKS section at <https://www.pacificarea.uscg.mil/vtssf>.

#### CAUTION TO BE USED IN RELIANCE UPON AIDS TO NAVIGATION

The aids to navigation depicted on charts comprise a system of fixed and floating aids to navigation with varying degrees of reliability. Prudent mariners will not rely solely on any single aid to navigation, particularly a floating aid to navigation. With respect to buoys, the buoy symbol is used

to indicate the approximate position of the buoy body and the sinker which secures the buoy to the seabed. The approximate position is used because of the practical limitations in positioning and maintaining buoys and their sinkers in precise geographical locations. These limitations include, but are not limited to, inherent imprecision in position fixing methods, prevailing atmospheric and sea conditions, slope of and the material making up the seabed, the fact that buoys are moored to sinkers by varying length of chain, and the fact that the buoy body and/or sinker positions are not under continuous surveillance, but are normally checked only during periodic maintenance visits which often occur more than a year apart. Due to the forces of nature, the position of the buoy body can be expected to shift inside and outside the charted symbol. The mariner is also cautioned that buoys may be extinguished or sound signals may not function as the result of natural causes, collisions, or other accidents. For the foregoing reasons, a prudent mariner must not rely completely upon the position or operation of floating aids to navigation, but will also utilize bearings from fixed objects and aids to navigation on shore. Furthermore, a vessel attempting to pass close aboard always risks collision with a yawing buoy or with the obstruction that the buoy marks.

#### **HAZARDOUS WEATHER OUTLOOK EXTENDED TO THE EASTERN PACIFIC OCEAN**

In coordination with the National Weather Service (NWS) and the National Hurricane Center (NHC), the US Coast Guard is pleased to announce the addition of a new Hazardous Weather Outlook (HWO) service that covers the Eastern Pacific Ocean, including the Pacific Coast of the Continental United States (CONUS). This service is available to all those who could benefit from advanced warning of hazardous weather in both coastal regions and open waters. As with the currently available Western Atlantic Hazardous Weather Outlook, Seven Day HWO's will be released every Wednesday with additional Situational HWO's issued as conditions require. The service will begin on April 6th of this year, however you can sign up in advance at any time.

In the recent past several maritime tragedies and "near misses" in the coastal waters of the United States have occurred due to hazardous weather, such as the sinking of the SS El Faro in 2015. Based on recommendations by the National Transportation Safety Board (NTSB), in cooperation with the NWS and the United States Coast Guard developing improved methods of delivering Marine Safety Information remain a top priority.

The NWS Ocean Prediction Center (OPC) and the NHC's Tropical and Analysis Forecast Branch (TAFB) will be providing weekly and situational reports to the USCG, who will then be making this information available to the public. Through the free online subscription service, GovDelivery, which currently offers subscribers a wide array of Marine Safety Information such as Broadcast Notice to Mariners (BNMs) and Local Notice to Mariners (LNMs) provided through USCG NAVCEN, users will be able to register to receive Hazardous Weather Outlook reports giving forewarning of major weather events.

For subscribing to Eastern Pacific Hazardous Weather Outlook reports by E-mail:  
<[https://public.govdelivery.com/accounts/USDHSCG/subscriber/new?topic\\_id=USDHSCG\\_506](https://public.govdelivery.com/accounts/USDHSCG/subscriber/new?topic_id=USDHSCG_506)>

For subscribing to Eastern Pacific Hazardous Weather Outlook reports by RSS Feed:  
<[https://public.govdelivery.com/topics/USDHSCG\\_506/feed.rss](https://public.govdelivery.com/topics/USDHSCG_506/feed.rss)>

LNLM: 12/22

#### **NAVIGATION CENTER WEBSITE TRANSITION**

The U.S. Coast Guard Navigation Center is going to transition the Navigation Center website to a new, enhanced version in the first quarter of 2022. As part of this transition, URLs will be updated across the site including URLs linked to PDFs. Therefore, once the transition is complete, legacy site URLs will no longer function, including bookmarked URLs and URLs used in automatic downloading of data and/or products. Outdated URLs will automatically redirect to the home page of the site, and from there you will be able to easily navigate to your preferred page.

Below are a few of the "old"/new URL pairs listed for your convenience. Please note that the new URLs will not be active until we launch the new website. Of course, once it is launched, the new URLs will be available for re-bookmarking. As a reminder, these are top level URLs that may contain additional links that you use.

This notice will be updated when the final launch date is determined and another notice will be issued to notify you when the site goes live. Questions/concerns may be directed to the NAVCENWebTEAM@uscg.mil.

Local Notices to Mariners (LNMs)  
Current URLs: <https://www.navcen.uscg.gov/?pageName=lnmMain>  
Replacement: <https://www.navcen.uscg.gov/local-notice-to-mariners-by-cg-district>

Light Lists Annual Publication  
Current URLs: <https://navcen.uscg.gov/?pageName=lightLists>  
Replacement: <https://www.navcen.uscg.gov/light-list-annual-publication>

Light List - Weekly  
Current URLs: <https://navcen.uscg.gov/?pageName=lightListWeeklyUpdates>  
Replacement: <https://www.navcen.uscg.gov/weekly-light-lists>

Light List - Corrections  
Current URLs: <https://navcen.uscg.gov/?pageName=lightListCorrections>  
Replacement: <https://www.navcen.uscg.gov/light-list-summary-of-corrections>

LNM: 06/22

#### **NORTHERN CALIFORNIA-RICHMOND HARBOR ENTRANCE CHANNEL-HAZARD TO NAVIGATION**

The Coast Guard has received a report of an unmarked barge mooring in the Richmond Harbor Entrance Channel at 37-54-06N 122-23-56W. Mariners are requested to transit the area with caution. For more details or comments contact U.S. Coast Guard Sector Waterways at 415-399-7442.

Charts: 18649 18653

LNM: 41/22

#### **NORTHERN CALIFORNIA-SAN FRANCISCO - VOLUNTARY VESSEL SPEED REDUCTION**

NOAA, U.S. Coast Guard and the Environmental Protection Agency request that all vessels 300 gross registered tons (GRT) or larger reduce speeds to 10 knots or less when transiting the San Francisco Traffic Separation Scheme (SF TSS) and within Greater Farallones and Cordell Bank National Marine Sanctuaries from May 1 to December 15, 2022 to protect endangered blue, humpback and fin whales; see enclosure NOAA VSR 2022.pdf. These areas contain populations of endangered blue, humpback, and fin whales that are federally protected under the Federal Endangered Species Act (16 USC 1538 et seq.), the Marine Mammal Protection Act (16 USC 1361 et seq.), and the National Marine Sanctuaries Act (16 USC 1431 et seq.).

Please report any collisions with whales or any observed injured or dead whales to the U.S. Coast Guard on VHF Channel 16. NOAA is asking for the public's help in tracking whales. Please report sightings through Whale Alert, a free application available at <http://westcoast.whalealert.org/>.

Charts: 18600 18620 18640 18680

LNM: 18/22

#### **NORTHERN CALIFORNIA-SAN FRANCISCO BAY-SEASONAL ESTABLISHMENT**

The following Aids to Navigation sound signal has been seasonally established in accordance with Light List Volume VI, 2022.

San Pablo Bay Channel Light 15 (LLNR 5940)

San Bruno Shoal Channel Light 1 (LLNR 4945)

San Bruno Shoal Channel Light 5 (LLNR 4965)

For more details or comments contact Sector San Francisco at 415-399-7436.

Charts: 18649 18654 18655

LNM: 43/22

#### **NORTHERN CALIFORNIA-SAN FRANCISCO-MILE ROCKS LIGHT-REDUCED NOMINAL RANGE**

Mile Rocks Light (LLNR 365) will have a temporarily reduced intensity of 5nm until further notice. Mariners are requested to transit the area with caution. For more details or comments contact LT Miranda Brumbaugh at 510-437-2978 or [Miranda.E.Brumbaugh@uscg.mil](mailto:Miranda.E.Brumbaugh@uscg.mil).

Charts: 18007 18010 18020 18022 18640 18649 18680

LNM: 16/19

#### **NORTHERN CALIFORNIA-SAN JOAQUIN RIVER-MARINE CONSTRUCTION**

The Department of Water Resources have placed an emergency barrier in the West False River until December, 2022. The barrier is located at 38-03-25N 121-40-08W and is approximately 0.4 mile east of the confluence with the San Joaquin River, between Jersey and Bradford Islands in Contra Costa County, and is about 4.8 miles northeast of Oakley. Constructing the emergency temporary rock barrier provides a method of controlling saltwater intrusion into the Delta and the barrier was installed in the identical location in 2015. Mariners are requested to transit the area with caution. For more details or comments contact Jason Bacher at 916-376-9859 or Keith Boulton at 360-580-3708.

Charts: 18656 18661 18663

LNM: 16/22

#### **SAFETY NOTICE - NAVIGATIONAL RANGE AND SECTOR LIGHTS ON ELECTRONIC CHARTS**

"The U.S. Coast Guard has become aware that the Range and Sector Light Characteristic labels are not displayed on Electronic Navigational Charts (ENCs) when used in an Electronic Chart Display and Information System (ECDIS) due to limitations of the S-52 ECDIS display specification. Mariners may query the ENC data directly within ECDIS or refer to the Light List for complete information on Range and Sector Light Characteristics."

LNM: 39/22

#### **SOUTHERN CALIFORNIA-DANA POINT TO POINT ARGUELLO-VOLUNTARY VESSEL SPEED REDUCTION**

NOAA, U.S. Coast Guard and the Environmental Protection Agency request that all vessels 300 gross registered tons (GRT) or larger reduce speeds to 10 knots or less when transiting in the Vessel Speed Reduction from Dana Point to Pt. Arguello from May 1 to December 15, 2022 to protect endangered whales; see enclosure NOAA VSR 2022.pdf. These areas contain populations of endangered blue, humpback, and fin whales that are federally protected under the Federal Endangered Species Act (16 USC 1538 et seq.), the Marine Mammal Protection Act (to protect endangered whales 16 USC 1361 et seq.), and the National Marine Sanctuaries Act (16 USC 1431 et seq.). Vessels already transiting south of the northern Channel Islands are also encouraged to transit outside of the voluntary Extended Area To Be Avoided to reduce the overlap of ships and endangered whales.

Please report any collisions with whales or any observed injured or dead whales to the U.S. Coast Guard on VHF Channel 16. NOAA is asking for the public's help in tracking whales. Please report sightings through Whale Alert, a free application available at <http://westcoast.whalealert.org/>.

Charts: 18720 18740

LNM: 18/22

### SOUTHERN CALIFORNIA-SAN DIEGO BAY-MINIMIZE WAKE

The Navy Port Operations Manager requests that vessels slow to 7 kts when a vessel is moored in restricted area (33 CFR 334.865) located on the northeast side of North Island at 32-42-57N 117-11-22W, between San Diego Channel Lighted Buoy 20 (LLNR 1710) and San Diego Channel Lighted Buoy 22 (LLNR 1830). For more details or comments contact LT Rodriguez at 619-545-3232, Rigoberto.rodriguez3@navy.mil.

Chart 18773

LNM: 10/22

### SUBMITTING INFORMATION FOR PUBLICATION IN THE LOCAL NOTICE TO MARINERS

Coast Guard District Eleven Waterways upgrade to E-Mail capabilities. All future requests for article submission in the District Eleven Local Notice to Mariners are requested to be E-Mailed to D11-SMB-SMB-D11-LNM@uscg.mil at least two weeks prior to the operation. For more details or comments please contact District Eleven Waterways Management Branch at 510-437-2929 or e-mail D11-SMB-D11-LNM@uscg.mil. Coast Guard District Eleven requests all Local Notice to Mariners submissions be E-Mailed to our office at least 14 days prior to the start of operations for timely submittal and publication.

LNM: 17/21

---

## SECTION II - DISCREPANCIES

This section lists all reported and corrected discrepancies related to Aids to Navigation in this edition. A discrepancy is a change in the status of an aid to navigation that differs from what is published or charted.

---

### DISCREPANCIES (FEDERAL AIDS)

LLNR	Aid Name	Status	Chart No.	BNM Ref.	LNM St	LNM End
10	San Diego Bay Approach Lighted Whistle Buoy SD	RAC INOP	18772	SD-0070-22	38/22	
125	Long Beach Light	LT EXT	18751	LA-0148-20	49/20	
345	San Francisco South Traffic Lane Lighted Bell Buoy S	MISSING	18640	SF-0042-21	09/21	
360	San Francisco Approach Lighted Whistle Buoy SF	RAC INOP	18649	SF-0040-22	17/22	
365	Mile Rocks Light	LT EXT	18649	SF-0099-22	44/22	
1485	San Diego Bay Approach Lighted Whistle Buoy SD	RAC INOP	18772	SD-0070-22	38/22	
1493	San Diego Bay Approach Lighted Bell Buoy 4	LT IMCH	18772	SD-0074-22	41/22	
2295	Oceanside Breakwater Light 1	REDUCED INT	18758	SD-0080-22	44/22	
2635	Ship Rock Light	LT EXT	18757	LA-0095-21	26/21	
2641	Isthmus Cove Harbor Reefs Light	STRUCT DMGD	18757	LA-0018-21	05/21	
2670	Santa Catalina Island West End Light	LT EXT	18757	LA-0113-19	34/19	
2810	Anaheim Bay Channel Buoy 7	OFF STA	18749	LA-0062-22	30/22	
3012	Long Beach Light	LT EXT	18751	LA-0148-20	49/20	
3117	Los Angeles Main Channel Lighted Buoy 11	REDUCED INT	18751	LA-0105-21	28/21	
3132	Terminal Island Channel Lighted Buoy 1	STRUCT DMGD	18751	LA-0027-22	16/22	
3625	Port Hueneme Channel Lighted Buoy 6	SINKING	18725	LA-0091-22	39/22	
3970	Monterey Harbor Light 6	REDUCED INT	18685	SF-0165-21	51/21	
3970	Monterey Harbor Light 6	SS INOP	18685	SF-0064-20	27/20	
4025	Moss Landing Harbor Entrance Light 2	SS INOP	18685	SF-0088-22	40/22	
4155	Colorado Reef Lighted Buoy 26	OFF STA	18640	SF-0163-21	51/21	
4175	San Francisco Main Ship Channel Lighted Buoy 4	LT EXT	18649	SF-0087-22	40/22	
4245	Mile Rocks Light	LT EXT	18649	SF-0099-22	44/22	
4600	Yerba Buena Island Wharf Light	LT EXT	18650	SF-0107-22	44/22	
4625	Oakland Outer Harbor Range A Rear Light	LT EXT	18650	SF-0092-22	42/22	
4680	Oakland Inner Harbor Light 10	MISSING/TRLB	18650	SF-0052-21	02/22	
4684	Oakland Inner Harbor Turn Basin Light B	STRUCT DMGD/TRLB	18650	SF-0097-21	29/21	



4740	San Leandro Bay Airport Channel Daybeacon 6	STRUCT DEST/TRUB	18650	SF-0033-22	15/22
4830	San Leandro Marina Channel Light 1	SS INOP		SF-0093-22	42/22
5430	Berkeley Marina Channel Light 2	LT EXT	18650	SF-0086-22	40/22
5725	Richmond Harbor Channel Light 9	MISSING/TRLB	18649	SF-0098-22	43/22
5820	San Francisco Bay North Channel Lighted Bell Buoy 18	LT EXT	18649	SF-0101-22	44/22
6095	Mare Island Strait Light 2	STRUCT DMGD/TRLB	18655	SF-0152-20	49/20
<b>6201</b>	<b>Napa River Light 18</b>	<b>LT EXT</b>	<b>18654</b>	<b>SF-0106-22</b>	<b>45/22</b>
6310	Suisun Bay Channel Buoy 3	OFF STA	18656	SF-0116-21	36/21
6433	Point Edith Crossing Range Front Light	STRUCT DEST/TRLB	18658	SF-0067-22	32/22
6505	Suisun Bay Channel Lighted Buoy 17	OFF STA	18658	SF-0128-21	02/22
6685	San Joaquin River Light 8	LT EXT/TRLB	18656	SF-0109-21	02/22
6705	San Joaquin River Light 10	LT EXT	18661	SF-0104-22	44/22
6855	San Joaquin River Light 46	STRUCT DEST/TRLB	18661	SF-0057-22	28/22
7210	Sacramento River Deep Water Ship Channel Light 10	MISSING/TRLB	18656	SF-0101-21	32/21
7210	Sacramento River Deep Water Ship Channel Light 10	SINKING	18656	SF-0105-22	44/22
7235	Sacramento River Deep Water Ship Channel Light 15	MISSING/TRLB	18661	SF-0100-20	35/20
7240	Sacramento River Deep Water Ship Channel Light 16	STRUCT DEST/TRLB	18661	SF-0127-18	34/18
7260	Sacramento River Deep Water Ship Channel Light 20	MISSING/TRLB	18661	SF-0108-21	33/21
7790	Bodega Harbor Channel Range AB Rear Light	REDUCED INT		SF-0077-22	37/22
8485	Lake Tahoe Lighted Danger Buoy Q	OFF STA		SF-0102-22	44/22

#### DISCREPANCIES (FEDERAL AIDS) CORRECTED

LLNR	Aid Name	Status	Chart No.	BNM Ref.	LNM St	LNM End
------	----------	--------	-----------	----------	--------	---------

None

#### DISCREPANCIES (PRIVATE AIDS)

LLNR	Aid Name	Status	Chart No.	BNM Ref.	LNM St	LNM End
20	Ocean Beach Pier Fog Sound Signal	SS INOP	18765	SD-0002-19	05/19	
158	Scripps Waverider Lighted Research Buoy 092	OFF STA	18746		45/18	
505	Scripps Waverider Lighted Research Buoy 168	LT EXT	18620	HB-0003-22	14/22	
1665	Americas Cup Harbor Daybeacon 2	STRUCT DEST/TRUB	18773	SD-0001-22	02/22	
2070	Coronado Cays Channel Daybeacon 3	STRUCT DEST	18773	SD-0098-17	36/17	
2090	Coronado Cays Channel Light 7	STRUCT DEST/TRUB	18773	SD-0046-22	31/22	
2288	Scripps Waverider Lighted Research Buoy 220	OFF STA	18765	SD-0041-20	30/20	
2289.1	Scripps Waverider Lighted Research Buoy 100	OFF STA	18765		22/20	
2289.4	Scripps "CORDC" Lighted Research Buoy	MISSING	18765		22/20	
2764.4	Catalina Sea Ranch SE Buoy	MISSING	18746	LA-0001-22	03/22	
2871	Long Beach Harbor Brusco Lighted Mooring Buoy	LT EXT	18751	LA-0009-21	03/21	
3339.2	REDONDO HARBOR LIGHT	LT EXT	18744	LA-0181-18	52/18	
3400	El Segundo NRG Energy Buoy 6ES	SINKING	18744	LA-0153-21	39/21	
3420	Hyperion Lighted Gong Buoy 10 ES	LT EXT	18744		16/20	
4401	Richardson Bay Daybeacon 8	DAYMK DMGD	18653		15/20	
4402	Richardson Bay Daybeacon 9	STRUCT DMGD	18649	SF-0086-18	23/18	

4576	South Beach Harbor North Entrance Light 2	LT EXT	18650	SF-0047-21	11/21
4577	South Beach Harbor North Entrance Light 1	LT EXT	18650	SF-0046-21	10/21
4578	South Beach Harbor South Entrance Light 1	LT EXT	18650	SF-0091-20	33/20
4826	Bay Farm Island Light 1	LT EXT	18650	SF-0014-19	05/19
4826.15	Bay Farm Island Light 3	LT EXT	18650	SF-0014-19	04/19
4826.2	Bay Farm Island Light 4	LT EXT	18650	SF-0136-21	44/21
4827.1	Anchorage 9 Lighted Mooring Buoy A	LT EXT	18650	SF-0012-20	04/20
4828.1	Anchorage 9 Lighted Mooring Buoy B	LT EXT	18650	SF-0013-20	04/20
5629	Richmond-San Rafael Bridge Racon T	RAC INOP	18653	SF-0084-22	40/22
5661	Southampton Shoal Outfall Lighted Buoy 1	LT EXT/RAC INOP	18653	SF-0026-19	07/19
5661	Southampton Shoal Outfall Lighted Buoy 1	MISSING/TRLB	18653	SF-0029-20	18/21
5662	Southampton Shoal Outfall Lighted Buoy 2	LT EXT	18653	SF-0059-21	14/21
5877.2	San Rafael Rock Quarry Mooring Buoy C	MISSING	18653		36/18
6623	New York Slough Koch West Light	LT IMCH			39/18
6624	New York Slough Koch East Light	LT EXT			39/18
6645.5	Delta Diablo Outfall Lighted Buoy	LT EXT		SF-0005-22	02/22
8325	Pacific Gas and Electric Dike Light	LT EXT	18622	HB-0009-21	20/21
8591.1	Lake Tahoe NASA-JPL Lighted Research Buoy TB2	Status Unreported			37/22

#### DISCREPANCIES (PRIVATE AIDS) CORRECTED

LLNR	Aid Name	Status	Chart No.	BNM Ref.	LNM St	LNM End
------	----------	--------	-----------	----------	--------	---------

None

#### PLATFORM DISCREPANCIES

Name	Status	Position	BNM Ref.	LNM St	LNM End
------	--------	----------	----------	--------	---------

None

#### PLATFORM DISCREPANCIES CORRECTED

Name	Status	Position	BNM Ref.	LNM St	LNM End
------	--------	----------	----------	--------	---------

None

### SECTION III - TEMPORARY CHANGES and TEMPORARY CHANGES CORRECTED

This section contains temporary changes and corrections to Aids to Navigation for this edition. When charted aids are temporarily relocated for dredging, testing, evaluation, or marking an obstruction, a temporary correction shall be listed in Section IV giving the new position.

#### TEMPORARY CHANGES

LLNR	Aid Name	Status	Chart No.	BNM Ref.	LNM St	LNM End
280	Point Sur Light	Reduced Intensity	18680	SF-0105-20	35/20	

#### TEMPORARY CHANGES CORRECTED

LLNR	Aid Name	Status	Chart No.	BNM Ref.	LNM St	LNM End
------	----------	--------	-----------	----------	--------	---------

None

#### PLATFORM TEMPORARY CHANGES

Name	Status	Position	BNM Ref.	LNM St	LNM End
------	--------	----------	----------	--------	---------

None

PLATFORM TEMPORARY CHANGES CORRECTED

Name	Status	Position	BNM Ref.	LNМ St	LNМ End
None					

SECTION IV - CHART CORRECTIONS

This section contains corrections to federally and privately maintained Aids to Navigation, as well as NOS corrections.  
 This section contains corrective actions affecting chart(s). Corrections appear numerically by chart number, and pertain to that chart only.  
 It is up to the mariner to decide which chart(s) are to be corrected. The following example explains individual elements of a typical chart correction.

Chart Number	Chart Edition	Edition Date	Last Local Notice to Mariners	Horizontal Datum Reference	Source of Correction	Current Local Notice to Mariners
12327	91st Ed.	19-APR-97	Last LNM: 26/97	NAD 83		27/97
Chart Title: NY-NJ-NEW YORK HARBOR - RARITAN RIVER						
Main Panel 2245 NEW YORK HARBOR					CGD01	
(Temp)	ADD	NATIONAL DOCK CHANNEL BUOY 3			at 40-41-09.001N	074-02-48.001W
		Green can				
Corrective Action		Object of Corrective Action			Position	

(Temp) indicates that the chart correction action is temporary in nature. Courses and bearings are given in degrees clockwise from 000 true. Bearings of light sectors are toward the light from seaward. The nominal range of lights is expressed in nautical miles (NM) unless otherwise noted.

<b>18649</b>	<b>68th Ed.</b>	<b>01-JUN-13</b>	<b>Last LNM: 16/20</b>	<b>NAD 83</b>		<b>45/22</b>
ChartTitle: Entrance to San Francisco Bay						
Main Panel 1823 SAN FRANCISCO ENTRANCE. Page/Side: N/A						
CHANGE		Lift Bridge Label; FRUITVALE AVE RR LIFT BRIDGE HOR CL 200 FT VERT CL 13 FT DOWN VERT CL 80 FT PARTIALLY OPEN, POSITION AT ALL TIMES VERT CL 135 FT UP, WHEN REQUESTED (NOS NW-31326)			NOS 37-48-11.940N	122-14-16.570W
ADD		Regulated Area Buoy 1 White Fl W 4s			CGD11 at 37-48-42.430N	122-21-35.000W
ADD		Regulated Area Buoy 2 White Can Fl W 2.5s			CGD11 at 37-48-27.000N	122-21-35.000W
ADD		Security Zone A PT 1 OF 3; Chart No. 1: N1.2 (NOS NW-31327)			NOS 37-48-48.250N	122-21-35.000W
ADD		Security Zone A PT 2 OF 3; Chart No. 1: N1.2 (NOS NW-31327)			NOS 37-48-27.000N	122-21-35.000W
ADD		Security Zone A PT 3 OF 3; Chart No. 1: N1.2 (NOS NW-31327)			NOS 37-48-27.000N	122-21-42.450W
ADD		Security Zone Label; SECURITY ZONE 165.1189 (see note A) (NOS NW-31327)			NOS 37-48-36.707N	122-21-22.331W

18650	58th Ed.	01-JAN-17	Last LNM: 09/21	NAD 83		45/22
ChartTitle: San Francisco Bay Candlestick Point to Angel Island						
CHART CA - SAN FRANCISCO BAY - CANDLESTICK POINT TO ANGEL ISLAND. Page/Side: N/A						
ADD	Regulated Area Buoy 1			CGD11		
	White			at 37-48-42.430N		122-21-35.000W
	Fl W 4s					
ADD	Regulated Area Buoy 2			CGD11		
	White Can			at 37-48-27.000N		122-21-35.000W
	Fl W 2.5s					
Extension 1825 CONTINUATION TO SAN LEANDRO BAY. Page/Side: A						
CHANGE	Lift Bridge Label; R R LIFT BRIDGE HOR CL 200 FT VERT CL 13 FT DOWN			NOS		
	VERT CL 80 FT PARTIALLY OPEN, POSITION AT ALL TIMES VERT CL 135			37-46-05.803N		122-14-04.674W
	FT UP, WHEN REQUESTED (NOS NW-31326)					
Main Panel 1824 SAN FRANCISCO BAY CANDLESTICK POINT TO ANGEL ISLAND. Page/Side: A						
ADD	Security Zone B PT 1 OF 3; Chart No. 1: N1.2 (NOS NW-31327)			NOS		
				37-48-48.250N		122-21-35.000W
				NOS		

ADD	Security Zone B PT 2 OF 3; Chart No. 1: N1.2 (NOS NW-31327)	37-48-27.000N	122-21-35.000W
ADD	Security Zone B PT 3 OF 3; Chart No. 1: N1.2 (NOS NW-31327)	NOS 37-48-27.000N	122-21-42.450W
ADD	Security Zone Label; SECURITY ZONE 165.1189 (see note A) (NOS NW-31327)	NOS 37-48-36.707N	122-21-22.331W

18751      48th Ed.      01-JUL-16      Last LNM: 21/09      NAD 83      45/22

Chart Title: Los Angeles and Long Beach Harbors

Main Panel 1904 LOS ANGELES AND LONG BEACH HARBORS. Page/Side: A

ADD	Obstruction in Feet; 29 Obstr	Chart No. 1: K41 (NOS NW-31328)	NOS 33-44-41.523N	118-13-25.329W
-----	-------------------------------	---------------------------------	----------------------	----------------

## SECTION V - ADVANCE NOTICES

This section contains advance notice of approved projects, changes to aids to navigation, or upcoming temporary changes such as dredging, etc. Mariners are advised to use caution while transiting these areas.

### SUMMARY OF ADVANCED APPROVED PROJECTS

#### Approved Project(s)

None

#### Project Date

#### Ref. LNM

#### Advance Notice(s)

##### NORTHERN CALIFORNIA-HUMBOLDT BAY AREA-WAMS

The U. S. Coast Guard is conducting a Waterways Analysis Management System (WAMS) study of Crescent City Harbor, Trinidad, Noyo River, Albion River, and the surrounding waterways. The WAMS Survey will be active until 10 December, 2022 and can be found by using the following link: <https://www.research.net/r/SectorHumboldtBay>. This questionnaire survey seeks to obtain data on the effectiveness of the system of Aids to Navigation, as well as other waterway safety concerns. Coast Guard will use this information to ensure that the aids are serving their intended purpose and meeting the needs to provide safe navigation corridors in the specified areas. The Coast Guard also uses the information from all waterways users to assist with maritime transportation system management. This survey includes multiple waterway areas, please choose the one most applicable to you and assist the Coast Guard in reviewing current trends, activities, and needs of the waterway. For further information or questions, please contact Sector Humboldt Bay Waterways Dayton Trubee at [Dayton.O.Trubee@uscg.mil](mailto:Dayton.O.Trubee@uscg.mil).

Chart 18620

LNM: 44/22

## SECTION VI - PROPOSED CHANGES

Periodically, the Coast Guard evaluates its system of aids to navigation to determine whether the conditions for which the aids to navigation were established have changed. When changes occur, the feasibility of improving, relocating, replacing, or discontinuing aids are considered. This section contains notice(s) of non-approved, proposed projects open for comment. SPECIAL NOTE: Mariners are requested to respond in writing to the District office unless otherwise noted (see banner page for address).

### PROPOSED WATERWAY PROJECTS OPEN FOR PUBLIC COMMENT

#### Proposed Project(s)

None

#### Closing

#### Docket No.

#### Ref. LNM

#### Proposed Change Notice(s)

##### NORTHERN CALIFORNIA-MONTEREY-MONTEREY HARBOR LIGHT 6

The U.S. Coast Guard is proposing to permanently discontinue the sound signal on Monterey Harbor Light 6 (LLNR 3970). The current aid is in the approximate position: 36-36-30N 121-53-22W. Direct any questions comments or feedback no later than 07 October, 2022 to LT Miranda Brumbaugh at 510-437-2983 or [Miranda.E.Brumbaugh@uscg.mil](mailto:Miranda.E.Brumbaugh@uscg.mil).

Charts: 18680 18685

LNM: 28/22

## SECTION VII - GENERAL

This section contains information of general concern to the Mariners. Mariners are advised to use caution while transiting these areas.

### 2021 COAST GUARD LIGHT LIST AVAILABILITY

2021 Light Lists are available on the USCG Navigation Center's website at: <http://www.navcen.uscg.gov/?pageName=lightLists>. Coast Guard Light Lists are a means for communicating aids to navigation information to the maritime public. Local Notice to Mariners will continue to advise Light List corrections and NAVCEN will continue to publish a compilation of corrections. Complete versions of the 2021 Light Lists are updated weekly on the NAVCEN website and mariners should download applicable copies and updates as needed at:

<http://www.navcen.uscg.gov/?pageName=lightListWeeklyUpdates>. A summary of weekly 2021 Light List corrections are available at: <https://www.navcen.uscg.gov/?pageName=lightListCorrections>.

LNM: 03/21

### ARIZONA/NEVADA-COLORADO RIVER-BRIDGE

NEW LAUGHLIN-BULLHEAD CITY BRIDGE-In-water work continues on construction of the new bridge in position 35-03-17N 114-36-45W. Work will

#### **ARIZONA/NEVADA-COLORADO RIVER-BRIDGE**

take place Monday through Friday, 0630 to 1430, until 03 Oct 23. A cofferdam has been installed on the Arizona side of the river to facilitate construction of Arizona side piers and abutment. Once completed the cofferdam will be removed and installed on the Nevada side of the river which will facilitate the construction of the Nevada side piers and abutment. When in place the cofferdams will be lighted at night with four red lights, visible at 2,000 yards by approaching vessels (see Cofferdam-Lighting\_Laughlin-BH.pdf at the end of this notice). Precast girders will be installed once construction of the respective abutments and piers are complete. Precast girders will be install over the middle of the river at the late stages of construction. Approximately 70 feet of horizontal clearance will be provided in the center of the river during construction. For further information contact the Coast Guard Bridge Office at 510-437-3515.

LNM: 50/21

#### **LOWER COLORADO RIVER - MARINE EVENT - LAKE HAVASU, AZ**

Light Up the Lake Events will sponsor the 2022 Lake Havasu Holiday Boat Parade of Lights on December 3rd, 2022 from 5 p.m. through 9 p.m.. The parade involving approximately 100 boats will start in Thompson Bay at position 34-27-36N 114-20-31W, proceed north through the Bridgewater Channel, circles in front of the Windsor State Beach, head south through the Bridgewater Channel, and finishes back in Thompson Bay. Mariners are advised to exercise caution when transiting this area and that entry to the Bridgewater Channel will be on a case-by-case basis. For comments or details, contact J. J. Gibbs at 928-486-7063.

LNM: 45/22

#### **LOWER COLORADO RIVER-LAKE HAVASU CITY-MARINE EVENT**

Havasu Triathlon will sponsor the Havasu Triathlon on 6 November, 2022 from 8:00am to 9:00am. The event will consist of 300 swimmers participating in the swim race portion of a triathlon. The race will be towards London Bridge out and back through the canal from the south end of Lake Havasu State Park Beach. A portion of Lake Havasu canal west of the London Bridge will be closed to recreational traffic. Mariners are requested to transit the area with caution. For more details or comments contact Kenny Krell at 810-965-5460.

LNM: 43/22

#### **LOWER COLORADO RIVER-PARKER, AZ-MARINE EVENT**

The Southern California Speedboat Club will be sponsoring the SCSC 76th Annual Thanksgiving Regatta on November 25 - 27, 2022 from 7 AM to 6 PM each day. The event will involve approximately 80 powerboats participating in a closed course race in the vicinity of the La Paz County Beach Park. Mariners are advised to transit the area with caution. For more details or comments contact Ross Wallach at 310-318-4012.

LNM: 45/22

#### **NEVADA – LAKE MEAD ANCHORAGE - NSRA**

The U. S. Coast Guard is conducting a Navigational Safety Risk Assessment (NSRA) survey of Lake Mead Anchorage which will remain open until 31 December 22. Anyone interested in participating can do so by using the following link:  
<https://www.research.net/r/LakeMeadAnchorage>

This questionnaire seeks to obtain data on the navigational safety of Lake Mead Anchorage, as well as other waterway safety concerns. The Coast Guard will use this information to ensure that the aids are serving their intended purpose. The Coast Guard also uses the concerns of waterways users to assist with other or future waterway management decisions. Any interested company or individual wishing to provide recommendations on existing or additional aids to navigation in this area are welcome to participate by submitting a user survey. To receive further information, contact Sector San Diego Waterways, LTJG Kim at [shera.s.kim@uscg.mil](mailto:shera.s.kim@uscg.mil).

LNM: 41/22

#### **NEVADA – LAKE MOJAVE ANCHORAGE - NSRA**

The U. S. Coast Guard is conducting a Navigational Safety Risk Assessment (NSRA) survey of Lake Mojave Anchorage which will remain open until 31 December 22. Anyone interested in participating can do so by using the following link:

<https://www.research.net/r/LakeMojaveAnchorage>

This questionnaire seeks to obtain data on the navigational safety of Lake Mojave Anchorage, as well as other waterway safety concerns. The Coast Guard will use this information to ensure that the aids are serving their intended purpose. The Coast Guard also uses the concerns of waterways users to assist with other or future waterway management decisions. Any interested company or individual wishing to provide recommendations on existing or additional aids to navigation in this area are welcome to participate by submitting a user survey. To receive further information, contact Sector San Diego Waterways, LTJG Kim at [shera.s.kim@uscg.mil](mailto:shera.s.kim@uscg.mil).

LNM: 41/22

#### **NORTHERN CALIFORNIA – POINT ORIENT-WHARF DEMOLITION**

Power Engineering Construction Co. will be performing demolition operations until 30 November, 2023 in the vicinity of Point Orient, Richmond. Work is being conducted Monday through Thursday 6:00am to 4:00pm in the vicinity of the Point Orient Wharf at 37-57-22N 122-25-43W. Operations will be conducted with derrick barges DB ALAMEDA, DB CHALLENGER, and various flat barges. The barges will be either spudded down or anchored using a four-point mooring system with buoys. All vessels and equipment on site will be monitoring VHF-FM Chan. 67 and 68. Mariners are advised to use caution when transiting the area. For more details or comments contact Bennett Clegg at (415) 559-0089.

Chart 18654

LNM: 16/22

#### **NORTHERN CALIFORNIA-ALAMEDA TO PIONEER SEAMOUNT AREA-SEA TRIALS**

SAILDRONE, INC. is conducting prolonged sea trials including overnight testing and will operate up to five Unmanned Surface Vehicles called Saildrone for bathymetric surveys until 23 December 2022, in the Pioneer Seamount area. The saildrone is 75 feet long, 45 feet tall, painted orange and marked SAILDRONE. The Saildrone will broadcast AIS and travel at a speed of 7 knots. Mariners are requested to transit the area with caution and maintain a 500 meters separation from the Saildrone. For more details or comments contact Saildrone mission control at 510-722-6070.

LNM: 45/22

#### **NORTHERN CALIFORNIA-BENICIA-VALERO REFINERY DOCK-DREDGE OPERATIONS**

The Dutra Group will be conducting dredging operations at the Valero Refinery Dock at 38-02-31N 122-07-54W, 24 hrs a day from 24 October, 2022 until 15 November, 2022. DB 24 or DB BEAVER, tug LIBERTY, tug BECKY T along with a fleet of 04 dump scows will be conducting operations. All vessels will be monitoring VHF-FM Chan. 13, 14 and 80. All dredged materials will be disposed of at the Montezuma Wetlands. Mariners are

**NORTHERN CALIFORNIA-BENICIA-VALERO REFINERY DOCK-DREDGE OPERATIONS**

requested to transit the area with caution. For more details or comments contact Dennis Salyers at 415-497-5289.

Chart 18656

LNM: 42/22

**NORTHERN CALIFORNIA-CHEVERON LONG WHARF-RICHMOND-DREDGE OPERATIONS**

The Dutra Group will be conducting dredging operations at the Chevron Long Wharf in Richmond, CA at 37-55-18N 122-24-40W, in berths 1-5, 7A, bargeway B-1 and B-2, 24 hours a day, 7 days a week until 30 November, 2022. All dredged material will be disposed of at Montezuma Wetland, SF-10 and SF-11. DB 24, 05 split hull scows, a tow tug, along with BECKY T or PHYLLIS T will be conducting the operations. All vessels will be monitoring VHF-FM Chan. 13, 14, and 80A. Mariners are requested to transit the area with caution. For more details or comments contact Dennis Salyers at 415-497-5289.

Charts: 18649 18654

LNM: 40/22

**NORTHERN CALIFORNIA-DELTA & RIVERS-AMERICAN RIVER-BRIDGE**

CAPITAL CITY HWY (Route 51) BRIDGE-Caltrans is conducting rehabilitation of the bridge until 27 June, 2025. Work will be conducted during daylight hours, 7am to 5:30pm, Monday through Friday, and will include the use of barges, work boats, tugboats, turbidity curtains, and access piers. (See AmRiv\_SiltCurtain\_BargeLocation.pdf in the enclosure section.). During the workday, barges can be moved for the safety of navigation with one hour notice to the contractor via VHF-FM CH 16 or by cell at 916-532-8208. Mariners should contact the contractor before transiting the bridge to determine location of turbidity curtains. Barges will be unmanned and moored at their work locations overnight. Each corner of each barge will be lighted at night with steady burning red lights. At least 25 feet of horizontal clearance for navigation will be available at all times. Mariners are requested to transit the area with caution. For further information, contact the Coast Guard Bridge Office at 510-437-3461.

Chart 18662

LNM: 23/22

**NORTHERN CALIFORNIA-DELTA & RIVERS-OLD RIVER-BRIDGE**

CA ROUTE 4 BRIDGE- Critical bridge rehabilitation is taking place 7am to 3:30pm Monday through Friday. The drawspan is secured in the closed-to-navigation position from 27 Oct, 2022 until 23 Apr, 2023. The swing span WILL NOT open for the passage of vessels. A 40'x80' work barge will be employed and tied to one of the bridge piers during this time. Mariners can transit through the construction site at the western most span, between the west bank and Pier 2, or other spans not being occupied by the work barge. For navigational safety, during normal work hours the barge can be moved with 4 hours advance notice by contacting the contractor. At other times, the barge can be moved with 24hrs advance notice. Each corner of the moored barge will be lighted at night with steady burning red lights (See OldRiver\_Barge\_Lighting\_Plan.pdf in the enclosure section). In the closed position, the bridge provides 12' vertical clearance above mean high water. Vessels able to transit the bridge while closed can continue to do so at any time. For conditions at the work site, mariners can contact the contractor at 209-513-7309 or 415-375-5549; or Caltrans at 209-470-8835 or 209-465-0935. For further information, contact the Coast Guard Bridge Office at 510-437-3461.

Chart 18661

LNM: 44/22

**NORTHERN CALIFORNIA-DELTA & RIVERS-OLD RIVER-BRIDGE**

BNSF RAILROAD BRIDGE- BNSFs' contractor is replacing the fenders at piers 2 and 3. Work will take place Monday through Friday, 6am to 6:30pm, until 31 December, 2022. One 60' X 80' flexi float barge and one 35' X 110' material barge will be spudded down at the piers (See BNSF\_OldRiver\_Barge\_Lighting.pdf in the enclosure section). During work hours the barges will be in the main navigation span of the bridge and can be moved for the safety of navigation with one hour advanced notice to the contractor at 209-391-5461. After working hours the unmanned barges will be moved behind the wingwall of the pier protection out of the navigation span. Mariners are requested to transit the area with caution. For conditions at the bridge mariners can contact the contractor at 209-391-5461. For further information contact the Coast Guard Bridge Office at 510-437-3515.

Chart 18661

LNM: 40/22

**NORTHERN CALIFORNIA-DELTA & RIVERS-SACRAMENTO RIVER-BRIDGE**

REPLACEMENT BUTTE CITY BRIDGE-Construction has started on the project to replace the existing bridge. Work will take place Monday through Friday during daylight hours until 30 September, 2024. Installation of a temporary trestle has begun. Once trestle is in place, falsework will be installed. A temporary navigation span during construction will be just west of the existing bridge's pivot pier, 435 feet west of new bridge abutment, and is lighting at night with a green center channel light on the upriver and downriver portion of the trestle. Red lights will mark low steel of the remaining spans of the trestle. A buoy line will be installed, pending Coast Guard approval, to guide vessels through the bridge construction area (see ButteConstructionLighting-BuoyLine.pdf enclosure at the end of this notice). The temporary navigation span will provide at least 32 feet of horizontal clearance and 14 feet of vertical clearance from ordinary high water to low steel of the temporary trestle. For on-scene conditions contact Golden State Bridge, Inc, at 415-720-6577 or 925-260-0403 or Caltrans at 530-941-8272 or 530-682-3931. For further information contact the Coast Guard Bridge Office at 510-437-3461.

LNM: 42/22

**NORTHERN CALIFORNIA-DELTA & RIVERS-SACRAMENTO RIVER-BRIDGE**

RIO VISTA BRIDGE- Caltrans continues major rehabilitation work on the bridge. With the newly installed backup drive system in place, Caltrans can now replace the existing electro-mechanical system (main system) with a new system. In order to safely accomplish this work, from 6 a.m. on November 14, 2022 until 6 p.m. on March 3, 2023, the lift span of the bridge will open on signal if at least a 4-hour notification is given to the drawtender. Any comments concerning this proposed temporary schedule change will be received by the Coast Guard at D11-SG-M-DPW-Bridges@uscg.mil until November 7, 2022. For further information contact the Coast Guard Bridge Office at 510-437-3516.

Chart 18661

LNM: 43/22

**NORTHERN CALIFORNIA-DELTA & RIVERS-SAN JOAQUIN RIVER-BRIDGE**

CROWS LANDING ROAD BRIDGE-Replacement of the bridge is ongoing. Work is being conducted Monday through Friday 0600 to 1600 until 01 Sep 23. A temporary bridge, with a removable span, will be installed to facilitate construction. With the span removed, the temporary bridge will provide, at a minimum, 15 feet of horizontal clearance. The span will be removed after normal working hours. Temporary falsework will be installed to facilitate construction. The temporary falsework's navigation span will provide 16 feet of vertical clearance at Ordinary High Water when the temporary bridge's removable span is removed. Upriver and downriver red channel margin lights and green center channel lights will mark the temporary navigation span at night. To view the temporary navigation span and lighting, see the TemporaryBridge\_FalseworkLighting.pdf enclosure at the end of this notice. Mariners are requested to use extreme caution when transiting the work site. For conditions at the project site mariners can contact the contractor at 916-869-8210 or 559-593-5182. For further information contact the Coast Guard Bridge Office at 510-437-3461.

**NORTHERN CALIFORNIA-DELTA & RIVERS-SAN JOAQUIN RIVER-BRIDGE**

LNM: 36/22

**NORTHERN CALIFORNIA-GOLF OF THE FARALLONES -BUOY DEPLOYMENT**

Sofar Ocean Technologies will be deploying a buoy in Gulf of the Farallones at 37-45-00N 122-50-18W until 28 February, 2023. A 19 foot C-Dory (CF3571SX) will deploy a yellow buoy FI Y 2.5s to test an oceanographic buoy system. The C-Dory will be monitoring VHF-FM Chan. 16. Mariners are requested to transit the area with caution. For more details or comments contact Colin Brower at 206-972-7830.

Chart 18640

LNM: 35/22

**NORTHERN CALIFORNIA-HALF MOON BAY-SUNKEN VESSEL**

The Coast Guard received a report of a sunken towing vessel in the Pillar Point Harbor at position 37-29-42N 122-29-35W. The T/V CALEB is 94' long, with approximately 3/4 of the vessel visible above the waterline. The vessel is situated on the western side of the harbor with yellow boom surrounding it. Mariners are advised to exercise due caution while transiting in the area. For more details or comments contact LT William Harris at 415-399-7443 or SFWaterways@uscg.mil.

LNM: 23/22

**NORTHERN CALIFORNIA-HUMBOLDT BAY-SEASONAL AID DISCONTINUANCE**

Humboldt Bay Lighted Bell Buoy 2 (LLNR 8135) has been temporarily discontinued for the 2022-2023 winter season until May 2023. The buoy is scheduled for re-establishment and will be back on-station May 2023. A Synthetic AIS for the aid position is active and will be available year-round for this aid position. For more details or comments contact LCDR Paul Garcia at 510-437-2982 or Paul.A.Garcia2@uscg.mil.

Charts: 18620 18622

LNM: 40/22

**NORTHERN CALIFORNIA-LARKSPUR TERMINAL-DREDGE OPERATIONS**

Manson Construction Co. will conduct dredging operations of the Larkspur terminal berth and channel until 30 November, 2022 between 37-56-41N 122-30-29W and 37-55-32N 122-27-44W. DB JJORD, DB VALHALLA, DB HORTON, tug PETER M, tug JEFFERY M, tug WESTAR and seven scows will be conducting operations 24 hrs daily. All dredged materials will be disposed of at SF-10. All vessels will be monitoring VHF-FM Chan. 13 and 16. Mariners are requested to transit the area with caution. For more details or comments contact Egli Nicole at 562-400-3309.

Chart 18654

LNM: 40/22

**NORTHERN CALIFORNIA-MALLARD SLOUGH-DREDGE OPERATIONS**

The Dutra Group will be conducting dredge operations at the Mallard Slough Intake Channel in Bay Point, CA at 38-02-38N 121-55-47W, 12 hours a day, 7 days a week from 27 October, 2022 until 30 November, 2022. Tug TERRI L. BRUSCO and tug BECKY T will monitor VHF-FM Chan. 13, 14 and 80. All Dredged material will be disposed of at SF-9. Mariners are requested to transit the area with caution. For more details or comments contact Dennis Salyers at 415-497-5289.

Chart 18658

LNM: 42/22

**NORTHERN CALIFORNIA-MARE ISLAND-DREDGE OPERATIONS**

Manson Construction Co. will conduct dredge operations in the vicinity of the Wichels Causeway from 15 October, 2022 until 15 January, 2023. Manson 75 Barge will be pumping dredged materials inland at 38-07-15N 122-16-54W and Derrick Barge EINAR at 38-06-33N 122-16-33W. Operations will be conducted 24 hrs daily. Mariners are requested to transit the area with caution. For more details or comments contact Egli Nicole at 562-400-3309.

Chart 18655

LNM: 40/22

**NORTHERN CALIFORNIA-MARE ISLAND-SECURITY ZONE**

The Sector San Francisco Captain of the Port (COTP) has established a temporary security zone in the navigable waters near Mare Island Dry Dock, approximately 100 yards from any part of the berthing piers in the Mare Island Strait, Vallejo, CA. Vessels are prohibited from transiting through the security zone, without express permission from the Captain of the Port. More information is available at [regulations.gov](https://www.regulations.gov), go to <https://www.regulations.gov>, type USCG-2022-0904 in the search box and click "Search."

Chart 18655

LNM: 44/22

**NORTHERN CALIFORNIA-MIDDLE RIVER, OLD RIVER, GRANT LINE CANAL-MARINE CONSTRUCTION**

The Department of Water Resources will remove three temporary agricultural barriers of the South Delta in the following positions:

Middle River Barrier 37-53-08N 121-28-56W

Old River Tracy Barrier 37-48-37N 121-32-34W

Grant Line Canal 37-49-11N 121-26-54

All in-water work will be completed by 23 November, 2023. Mariners are requested to transit the area with caution. For more details or comments contact Karen Tolentino at 916-820-7683 or [karen.tolento@water.ca.gov](mailto:karen.tolento@water.ca.gov).

Chart 18661

LNM: 44/22

**NORTHERN CALIFORNIA-MONTEREY BAY-BUOY DEPLOYMENT**

Sofar Ocean Technologies will be deploying a buoy in Monterey Bay National Marine Sanctuary at 37-30-00N 122-31-57W. The buoy will be deployed until 06 January, 2023, will be yellow in color and have the flash characteristics of FI Y 2.5s. A 19 foot C-Dory will be monitoring VHF-FM Chan. 16. Mariners are requested to transit the area with caution. For more details or comments contact Ciara Dorsay at 941-961-8543.

Charts: 18680 18685

LNM: 27/22

**NORTHERN CALIFORNIA-MONTEREY BAY-SUBSURFACE MOORING DEPLOYMENT**

The Monterey Bay Aquarium Research Institute (MBARI) will deploy 02 subsurface oceanographic instrument moorings in Monterey, CA until 15 November, 2022 at 36-48-25N 122-06-11W and 36-47-38N 122-06-25W. Each mooring will have a subsurface float 33 feet above the seafloor. Mariners are requested to transit the area with caution. For more details or comments contact John Ryan at 831-775-1978.

Chart 18685

LNM: 32/22

**NORTHERN CALIFORNIA-MONTEREY BAY-WATER QUALITY BUOY DEPLOYMENT**

Kinnetic Environmental in conjunction with Central Coast Long-term Environmental Assessment Network (CCLEAN) will deploy two water-quality

**NORTHERN CALIFORNIA-MONTEREY BAY-WATER QUALITY BUOY DEPLOYMENT**

samplers in Monterey Bay, CA at 36-53-20N 121-55-30W and 36-42-40N 121-54-40W until 15 November, 2022. The samplers are 3' below the surface and are marked by 4' white buoys, two horizontal orange stripes, with a warning label, and Fl Y 4s light characteristic. Mariners are requested to transit the area with caution. For more details or comments contact Greg Cotton at 831-239-6192.

Chart 18685

LNLM: 37/22

**NORTHERN CALIFORNIA-MOSS LANDING-WAVEGLIDER DATA COLLECTION**

Monterey Bay Aquarium Research Institute (MBARI) is conducting 24 hours per day 7 days a week autonomous, unmanned maritime vehicle operations of two Liquid Robotics, Inc. Wavegliders until 31 December, 2022. Vehicles will be deployed in the vicinity of Moss Landing that will operate continuously between latitudes 35-07-14N and 37-12-00N and will extend shoreward as far West as 122-58-35W. Operations consist of scientific ocean data collection. The Waveglider carries no fuel, lubricants or hydrocarbons. It is wave powered and remotely attended from MBARI, moving at speeds of 1kt, and designed to give way or part if encountered by a vessel. It is approximately 8' x 2' (surfboard size), yellow in color, with a contact plaque and mast extending 3' above the water surface, supporting a flag. Mariners are requested to transit the area with caution. For more details or comments contact MBARI at 831-775-1700, waveglider@listserv.mbari.org or Liquid Robotics 24/7 WGOC Operations at 888-574-4574.

Charts: 18680 18685

LNLM: 51/21

**NORTHERN CALIFORNIA-NAPA RIVER-DREDGE OPERATIONS**

Pacific Dredge Company is conducting dredge operations in the Napa River between 38-15-30N 122-17-03W and 38-17-52N 122-16-59W until 30 November, 2022. Dredge HORTON, harbor boat CADET, two dump Scows, and a hopper barge SEABEE will be conducting operations. All vessels will be monitoring VHF-FM Chan. 6 and 16. Dredged materials will be disposed of at the COOMBS disposal site. Mariners are requested to transit the area with caution. For more details or comments contact Matt MacArthur at 951-541-6941.

Chart 18654

LNLM: 38/22

**NORTHERN CALIFORNIA-NAPA RIVER-LIGHT OBSTRUCTION**

A large tree obstruction is stuck in the mud directly in front of Napa River Light 30 (LLNR 6207). Mariners are requested to transit the area with caution and consider this obstruction during inbound and outbound transits.

Chart 18654

LNLM: 40/22

**NORTHERN CALIFORNIA-NEW YORK SLOUGH-MARINE CONSTRUCTION**

CS Marine Constructors, Inc. will be conducting pile driving & marine construction operations at the former Gaylord Paper Facility 38-00-58N 121-46-31W located at New York Slough in Antioch, CA during daylight hours until 31 Dec 22. Operations will be conducted with derrick barges DB CARQUINEZ, DB MARE ISLAND and DB STEADFAST along with various flat barges. The barges will be either spudded down or anchored using a four-point mooring system marked with 5ft crown buoys. The buoys will be lighted at night with flashing white strobes. All vessels and equipment will be monitoring VHF-FM CHAN 8, 13 and 14. Mariners are request to transit the area with caution. For more details or comments contact Jeff Thompson at (510)719-1246.

Chart 18661

LNLM: 42/21

**NORTHERN CALIFORNIA-OAKLAND HARBOR-CONSTRUCTION**

Manson Construction Co. is conducting dredge operations in the Oakland inner and outer channels at 122-21-44W 37-48-04N to 122-18-49W 37-49-13N and 122-21-44W 37-48-04N to 122-16-55W 37-47-36N until 31 Dec, 2022. Operations will be conducted 24hrs a day, 7 days a week. Dredge NJORD will be assisted by barges ROCKPORT, GULFPORT, SEAPORT, EASTPORT, FREEPORT, NORTHPORT, T/B's PETER M, JEFFERY M, WESTAR, and survey boat WAHOO. All vessels will be monitoring VHF-FM Chan. 13 and 16. Dredged materials will be disposed of within disposal site SF-11 and upland site at Cullinan Ranch. Mariners are requested to transit the area with caution. For more details or comments contact Eric McMann at 510-232-6319.

Chart 18680

LNLM: 30/22

**NORTHERN CALIFORNIA-OAKLAND HARBOR-DREDGE OPERATIONS**

The Dutra Group will be conducting dredge operations until 30 November, 2022 at the Port of Oakland, 24 hours a day, 7 days a week at Berths 22-26, 30, 32-35, 37, 55-59 and 60-63. Clamshell dredge DB 24, tow tug Killeen, along with tug PHYLIS T or BECKY T will be monitoring VHF-FM Chan. 13, 14, and 80. All dredged materials will be disposed of at SF-DODS or Montezuma sites. Mariners are requested to transit the area with caution. For more details or comments contact Dennis Salyers at 415-497-5289.

Charts: 18649 18650

LNLM: 32/22

**NORTHERN CALIFORNIA-OAKLAND INNER HARBOR-BRIDGE**

FRUITVALE AVE RAILROAD BRIDGE-The lift span of the railroad bridge is kept in the partially opened position providing 80 feet of vertical clearance at mean high water. When the lift span of the railroad bridge is in the partially open position and the bascule span of the adjacent highway bridge is in the closed position, the lift span will show two red 180-degree center span lights on the upstream and downstream lower edge of the span. When the bascule span of the highway bridge is in the fully opened position, the lift span of the railroad bridge will show two 360-degree green lights, providing a range for the centerline of the channel between both highway and railroad bridges. The rail bridge will open fully, on signal, if at least a 2-hour notification is given to the drawtender at the highway bridge. For further information contact the Coast Guard Bridge Office at 510-437-3516.

Chart 18649

LNLM: 40/22

**NORTHERN CALIFORNIA-OAKLAND-DREDGE OPERATIONS**

The Dutra Group will be conducting dredging operations at the Schnitzer Steel Dock in Oakland, CA at 37-47-37N 122-17-32W, until 31 December, 2022, 24 hours a day, 7 days a week. DB 24, tow tug HEIDI BRUSCO and tender tug BECKY T will be monitoring VHF-FM Chan. 13, 14 and 80A. All dredged materials will be disposed of at SF-DODS. Mariners are requested to transit the area with caution. For more details or comments contact Dennis Salyers at 415-497-5289.

Chart 18653

LNLM: 35/22

**NORTHERN CALIFORNIA-OFFSHORE CAPE MENDOCINO-OFFSHORE PT ARENA-SURVEY OPERATIONS**

SAILDRONE, INC. is conducting oceanographic survey operations and will operate an Unmanned Surface Vehicles called Saildrone from 1 November,



**NORTHERN CALIFORNIA-OFFSHORE CAPE MENDOCINO-OFFSHORE PT ARENA-SURVEY OPERATIONS**

2022 until 15 January, 2023. The operations will be conducted 120 to 180nm offshore Cape Mendocino, extending south 150nm off Pt Arena and bounded by the following coordinates:

NW 40-12-40N 128-42-50W  
NE 40-14-50N 127-54-10W  
SW 40-13-30N 127-51-20W  
SE 38-56-50N 126-21-40W

The saildrone is 72 feet long, 45 feet tall, painted orange with a tri-color light on top and marked SAILDRONE SURVEYOR. Mariners are requested to transit the area with caution. For more details or comments contact Saildrone mission control at 510-722-6070.

Charts: 18600 18620

LNM: 44/22

**NORTHERN CALIFORNIA-OFFSHORE CAPETOWN, CA-SURVEY OPERATIONS**

Fugro Marine will be conducting underwater cable surveys offshore Capetown, CA from 25 October, 2022 until 3 December, 2022. Surveys will start at 40-43-44N 128-47-19W and end at 40-47-19N 124-57-01W. All operations will be conducted within the following coordinates:

40-51-28N 128-50-49W  
40-23-31N 128-50-49W  
40-51-28N 124-51-39W  
40-23-31N 124-51-39W

M/V FUGRO SUPPORTER (call sign JZKY) will be monitoring VHF-FM Chan. 12. Mariners are requested to transit the area with caution. For more details or comments contact Bastian Wichand at b.wichand@fugro.com.

Chart 18620

LNM: 43/22

**NORTHERN CALIFORNIA-OFFSHORE MONTEREY BAY-UNDERWATER OPERATIONS**

Reef Check Foundation have deployed underwater equipment offshore Monterey Bay, CA within the following coordinates:

36-36-17N 121-52-46W  
36-36-18N 121-52-49W  
36-36-15N 121-52-50W  
36-36-14N 121-52-46W

All equipment will be established until 24 Mar 24. Mariners are requested to transit the area with caution and avoid anchoring within the coordinates listed above. For more details or comments contact Dan Abbot at 510-684-7835.

Chart 18685

LNM: 12/21

**NORTHERN CALIFORNIA-OFFSHORE SAN FRANCISCO-OCEANOGRAPHIC OPERATIONS**

Sofar Ocean Technologies will be conducting oceanographic operations until 15 December, 2022, offshore of Ocean Beach, CA. A 19 foot C-Dory will be deploying a buoy at 37-43-58N 122-33-12W and 37-43-29N 122-32-52W. The buoys are yellow in color and Fl (Y) 2.5s. The C-Dory will be monitoring VHF-FM Chan. 16. Mariners are requested to transit the area with caution. For more details or comments contact Cameron Dunning at 415-912-6858.

LNM: 23/22

**NORTHERN CALIFORNIA-PEYTONIA SLOUGH-SUISUN CITY-SUNKEN VESSEL**

The Coast Guard received a report of a sunken vessel in the vicinity of Peytonia Slough State Marine Park in the Peytonia Slough at 38-13-35N 122-02-17W. The vessel is not visible above the waterline, it is situated in the middle of the channel, and has been marked with a red buoy. Mariners are advised to exercise due caution while transiting the area. For more details or comments contact LT Miranda Brumbaugh at 510-437-2978 or Miranda.E.Brumbaugh@uscg.mil.

Chart 18656

LNM: 27/22

**NORTHERN CALIFORNIA-PORT OF STOCKTON-MARINE CONSTRUCTION**

Shimmick Construction Company, Inc. (SCCI) is conducting marine construction for the Smith Canal Gate Project in the San Joaquin Deep Water Shipping Channel in the port of Stockton until 30 November, 2022. A total of 12 vessels will be involved during the construction. All vessels will be monitoring VHF-FM Chan. 14. Mariners are requested to transit the area with caution. For more details or comments contact Grant Rose at 559-706-8159.

Charts: 18661 18662

LNM: 26/22

**NORTHERN CALIFORNIA-SACRAMENTO RIVER-DREDGE OPERATIONS**

The Dutra Group will be conducting dredging operations in the Sacramento River from Mile 14.60L to 17.34L until 31 December, 2022. The work will be along the south side of the Sacramento River bordering Brannan Island between River Mile 14.60 and 17.34, between the Sacramento River and Cache Slough River mouth to Ramos CFN in Isleton, CA. Crane Barge 1 will be monitoring VHF-FM Chan. 9, 16 and 68A or can be reached at 707-333-5029. Mariners are requested to transit the area with caution. For more details or comments contact William Ng at 707-231-6862.

Charts: 18661 18664

LNM: 35/22

**NORTHERN CALIFORNIA-SACRAMENTO RIVER-REDUCED VERTICAL CLEARANCE**

Overhead power cables upstream of Sacramento River at 38-03-54N 121-47-09W have a reported reduced vertical clearance to 119.5'.

LNM: 22/16

**NORTHERN CALIFORNIA-SACRAMENTO RIVER-RIO VISTA- DIRECTIONAL DRILLING CONSTRUCTION OPERATIONS**

ARB Inc. will be conducting horizontal directional drilling operations below the Sacramento River near the city of Rio Vista between 38-08-53N 121-41-37W and 38-08-49N 121-40-51W until 31 December, 2022. Operations will be conducted from 7:00am to 7:30pm, Monday through Saturday. Construction equipment will be staged on land above the adjacent shorelines. Mariners are requested to transit the area with caution. For more details or comments contact Kelvin Qiu at 925-404-3723.

Chart 18661

LNM: 36/22

**NORTHERN CALIFORNIA-SACRAMENTO RIVER-SAN JOAQUIN RIVER-GEOTECHNICAL DRILL TESTING**

Gregg Drilling and Testing will be conducting Overwater Geotechnical Investigations on the Sacramento River at 38-23-43N 121-30-44W, the San

**NORTHERN CALIFORNIA-SACRAMENTO RIVER-SAN JOAQUIN RIVER-GEOTECHNICAL DRILL TESTING**

Joaquin River to Mokelumne River between 38-12-48N 121-29-43W and 37-54-20N 121-29-57W. R/V QUIN DELTA will be conducting the operations and monitoring VHF-FM Chan. 13, 14 and 16. Mariners are requested to transit the area with caution. For more details or comments contact Captain Tim O'Donnell at 949-254-5190 or at BEARatSEA@gmail.com.

Charts: 18010 18661 18680

LNM: 36/22

**NORTHERN CALIFORNIA-SACRAMENTO RIVER-SUNKEN VESSEL**

The Coast Guard received a report of a sunken vessel in the Sacramento River in approximate position 38-36-21N 121-31-12W. The vessel is approximately 16 feet long, and sits in 16 – 20 feet of water. Mariners are advised to exercise due caution while transiting in the area. For more details or comments contact USCG Sector San Francisco Waterways at 415-399-7443 or SFWaterways@uscg.mil.

Chart 18664

LNM: 36/22

**NORTHERN CALIFORNIA-SAN FRANCISCO BAY WATERWAYS-WAMS**

The U. S. Coast Guard is conducting a Waterways Analysis Management System (WAMS) study of San Francisco Bay and the surrounding waterways. The WAMS Survey will be active until 20 November, 2022 and can be found by using the following link: <https://www.research.net/r/SectorSanFranciscoWAMS>. This questionnaire survey seeks to obtain data on the effectiveness of the system of Aids to Navigation, as well as other waterway safety concerns. Coast Guard will use this information to ensure that the aids are serving their intended purpose and meeting the needs to provide safe navigation corridors in the San Francisco Bay. The Coast Guard also uses the information from all waterways users to assist with maritime transportation system management. This survey included multiple waterway areas in the San Francisco Bay, please choose the one most applicable to your area and assist the Coast Guard in reviewing current trends, activities, and needs of the waterway. For further information or questions, please contact Sector San Francisco Waterways Department, BOSN Henderson, SFWaterways@uscg.mil.

Charts: 18649 18654 18656 18661

LNM: 41/22

**NORTHERN CALIFORNIA-SAN FRANCISCO BAY-BRIDGE**

RICHMOND-SAN RAFAEL BRIDGE-Concrete/steel repairs and cleaning of the bridge are in progress. Work is being conducted Monday through Friday, 0500 to 1700, until 01 May 23. Temporary underdeck platforms have been installed from the western shore to pier 33 and between piers 43-46 reducing vertical clearance in each span by three feet. The upstream and downstream lower edge of each temporary platform is lighted at night with steady burning red lights (see R-SR\_Bridge\_Temp\_Platform\_Lighting.pdf at the end of this notice.) Two 160' X 50' barges and one 110' X 32' barge are being used to assist in the installation of the platforms and for the blasting and painting. One barge has been secured to pier 8 and will be left on-scene, overnight, unmanned. The outboard corners of the barge at pier 8 is lighted at night with steady red lights. Barge "37" and barge "32" can be contacted on VHF-FM Ch. 16, 13 and 14. At no time will the work impede the east or west navigation spans or their auxiliary spans. For conditions at the bridge, mariners can contact the contractor at 860-904-8787 or 443-847-6286. For further information concerning this project contact the Coast Guard Bridge Office at 510-437-3515.

Chart 18653

LNM: 16/21

**NORTHERN CALIFORNIA-SAN FRANCISCO BAY-BRIDGE**

SAN MATEO/HAYWARD BRIDGE-Structural repairs to the superstructure of the bridge are complete. Work is continuing on the causeway portion of the bridge, east of pier 38, 0700 to 1530, Monday through Friday, until 11 May, 2023. Various size barges will be used during the project, the largest being a 100' X 20' flexifloat barge. During the work day, barges will either be spudded down or tied to the bridge piers, no anchors or anchor line will be utilized. After regular working hours the unmanned barge will be left on-site. For the safety of navigation, the barges can be moved with one-hour advance notice. For conditions at the bridge mariners can contact Golden State Bridge, Inc., on VHF-FM Marine Radio Channels 13, 14, and 16 or by cell phone at 707-246-0725, 925-260-2104, or 925-382-7288. For more details or comments contact the Coast Guard Bridge Office at 510-437-3515.

LNM: 20/22

**NORTHERN CALIFORNIA-SAN FRANCISCO BAY-BRIDGE**

GOLDEN GATE BRIDGE-Four 54' temporary under deck platforms; two 475' and 2,075' north of the south tower, and two 175' and 675' south of the north tower have been installed at the bridge. Temporary platforms reduce vertical clearance at the bridge by no more than 14'. The bridge's maintenance travelers are in use during the project and will remain outboard of the furthest north and furthest south temporary platforms. The temporary platforms and maintenance travelers are lighted at night with all-round red lights (see PlatformLighting\_GG\_Bridge\_14Jun22.pdf at the end of this notice). For navigational safety the maintenance travelers can be moved by contacting the Golden Gate Bridge at 415-923-2220. Work is being conducted Monday through Saturday, 0700-1700 and 2100-0500. For conditions at the bridge, mariners can contact the contractor at 415-716-0384. For more details or comments contact the Coast Guard Bridge Office at 510-437-3516.

Chart 18649

LNM: 24/22

**NORTHERN CALIFORNIA-SAN FRANCISCO BAY-BRIDGE**

WESTERN SPAN SAN FRANCISCO-OAKLAND BAY BRIDGE-Fender repairs are being conducted at piers B, C, D, and E, Monday through Friday, during daylight hours until 25 November, 2022. The 150' X 54' Crane Barge Kelso will be anchored at various locations during the work (See SFOBBTemporaryBargeLocations.pdf in the enclosure section). The barges will be left on-scene, unmanned, after normal working hours. During the work day the barge can be moved for the safety of navigation with two hours advanced notice. After working hours the barge can be moved for the safety of navigation with six hours advanced notice. Barges, anchors and anchor lines will not impede the D-E shipping channel during work. Mariners are requested to transit the area with caution. For on-site conditions, mariners can contact the contractor at 415-720-3807 or Caltrans at 510-867-4545. For further information contact the Coast Guard Bridge Office at 510-437-3515.

Chart 18649

LNM: 41/22

**NORTHERN CALIFORNIA-SAN FRANCISCO BAY-DETERIORATING CONCRETE PILINGS**

Deteriorating concrete pilings above and below the waterline are present in the vicinity of the the south edge of Southampton Shoal Light (LLNR 5480). Mariners are requested to transit the area with caution. For more details or comments contact LT Miranda Brumbaugh at 510-437-2978 or Miranda.E.Brumbaugh@uscg.mil.

Chart 18649

LNM: 23/15

**NORTHERN CALIFORNIA-SAN FRANCISCO BAY-DREDGE OPERATIONS**

The Dutra Group will be conducting dredging operations at the San Rafael Rock Quarry Dock at 37-59-15N 122-26-50W, 24 hrs a day, 7 days a

**NORTHERN CALIFORNIA-SAN FRANCISCO BAY-DREDGE OPERATIONS**

week until 30 November, 2022. 03 split hull scows, tow tug SARAH REED, BECKY T, PHYLLIS T, will be monitoring VHF-FM Chan. 13, 16, and 80. All dredged material will be disposed of at the San Rafael Rock Quarry. Mariners are requested to transit the area with caution. For more details or comments contact Dennis Salyers at 415-497-5289.

Chart 18650

LNLM: 31/22

**NORTHERN CALIFORNIA-SAN FRANCISCO BAY-HAZARD TO NAVIGATION**

There is a potential hazard to navigation in the San Francisco Bay located at 37-54-06N 122-23-56W. The obstruction is an unmarked barge mooring platform. Mariners are requested to transit the area with caution. For more details or comments contact Sector San Francisco Waterways at 415-399-7442.

Chart 18653

LNLM: 42/22

**NORTHERN CALIFORNIA-SAN FRANCISCO BAY-LOCH LOMOND MARINA-DREDGE OPERATIONS**

Salt River Construction Corporation is conducting dredge operations in Loch Lomond Marina at 37-58-15N 122-29-01W until 30 November, 2022. Dredge barge DB1 and Tug P CAY will be conducting operations and monitoring VHF-FM Chan. 13, 14 and 77. Mariners are requested to transit the area with caution. For more details or comments contact Rick Moseley at 415-435-1024.

Charts: 18649 18650

LNLM: 24/22

**NORTHERN CALIFORNIA-SAN FRANCISCO BAY-OAKLAND INNER HARBOR-SHOALING**

Shoaling has been reported on the south side of Oakland Inner Harbor South Channel in the east passage through the Fruitvale Ave. Bridge. Mariners are requested to transit the area with caution and report any observed changes in shoaling conditions to the San Francisco VTS on VHF-FM Chan. 14. For more details or comments contact U.S. Coast Guard Sector San Francisco Waterways Management at 415-399-7443.

Chart 18650

LNLM: 16/15

**NORTHERN CALIFORNIA-SAN FRANCISCO BAY-SURVEY OPERATIONS**

SAILDRONE, INC. is conducting oceanographic survey operations and will operate an Unmanned Surface Vehicles called Saildrone until 23 December, 2022. The operations will be conducted 0.8 nm South of General Anchorage 9 in San Francisco Bay and bounded by the following coordinates:

Area 1:

37-26-20N 122-59-50W

37-26-20N 122-56-50W

37-22-20N 122-52-50W

37-22-20N 122-59-50W

Area 2:

37-25-20N 123-19-50W

37-25-20N 123-01-50W

37-15-20N 123-01-50W

37-15-20N 123-19-50W

The saildrone is 30 feet long, 18 feet tall, painted orange with a tri-color light on top and marked SAILDRONE. Mariners are requested to transit the area with caution. For more details or comments contact Saildrone mission control at 510-722-6070.

Chart 18649

LNLM: 38/22

**NORTHERN CALIFORNIA-SAN JOAQUIN RIVER-BRIDGE**

ANTIOCH BRIDGE- Cramer Fish Sciences will conduct maintenance of fish monitoring receivers at various piers of the bridge from 8:30am-3pm on 11 November, 2022, utilizing a 20' aluminum workboat R/V PHANTOM. R/V PHANTOM will be monitoring VHF-FM Chan. 22 and cell phone 818-205-6481. Mariners are requested to exercise caution when transiting through the work site. For more information, contact Coast Guard Bridge Office at 510-437-3461.

Chart 18661

LNLM: 45/22

**NORTHERN CALIFORNIA-SAN JOAQUIN RIVER-MARINE CONSTRUCTION**

Shimmick Construction Company, Inc. (SCCI) is conducting marine construction for the Smith Canal Gate Project in the San Joaquin Deep Water Shipping Channel from 0600 to 1800 Monday through Saturday until 30 Dec 22. Operations will be conducted between the following coordinates:

37-57-31N 121-21-11W

37-57-25N 121-21-08W

Staging Yard

37-57-09N 121-19-55W

Mariners are requested to transit the area with caution. For more details or comments contact Tyler Shell at 510-393-0308.

Charts: 18661 18663

LNLM: 28/20

**NORTHERN CALIFORNIA-SAN JOAQUIN RIVER-MARINE CONSTRUCTION**

California Department of Water Resources will be conducting construction of agricultural barriers until 30 Nov 22 at the following locations:

Old River near Tracy barrier 37-53-08N 121-28-56W

Middle River near Tracy Barrier 37-48-36N 121-32-35W

Grant Line Canal Barrier 37-49-10N 121-26-54W

A small aluminum boat will be on site for day to day operations. For more details or comments contact Bill McLaughlin 916-873-5748.

Chart 18661

LNLM: 19/22

**NORTHERN CALIFORNIA-SAN LEANDRO BAY-BRIDGE**

BAY FARM ISLAND HIGHWAY AND PEDESTRIAN BRIDGES-The pier protection system at the bridges have deteriorated and may not offer adequate protection for the bridges as well as vessels transiting the bridge. Mariners are urged to transit both bridges with caution. The bridge owner is in the process of designing a replacement pier protection system. For more details or comments contact the Coast Guard Bridge Office at 510-437-3514.

Chart 18649

LNLM: 31/22

**NORTHERN CALIFORNIA-SAN LORENZO RIVER-BRIDGE**

LAUREL STREET BRIDGE- A new water conveyance pipeline is being installed. To conduct the work, a bucket truck on the bridge deck will be utilized to suspend a mobile platform from the side of the bridge, vertical clearance will be temporarily reduced by 6-feet. Work is being conducted Monday through Friday, 7 am to 4:30pm, until 12 November, 2022. There will be no in-water work or equipment used during this project. Mariners are urged to use caution while transiting the bridge. For further information contact the Coast Guard Bridge Office at 510-437-3515.

Chart 18685

LNM: 40/22

**NORTHERN CALIFORNIA-SAN PABLO BAY-TORMEY-MARINE CONSTRUCTION**

The Dutra Group will be conducting marine construction to the Phillips 66 San Francisco Refinery located West of the Carquinez Bridge until December, 2023, during daylight hours. Construction will be bounded by the following coordinates:

38-03-22N 122-15-52W

38-03-25N 122-15-33W

38-03-06N 122-15-34W

38-03-06N 122-15-39W

Crane barge 1 along with a work boat will be conducting operations and monitoring VHF-FM Chan. 9, 16, and 77. Mariners are requested to transit the area with caution. For more details or comments contact Nicholas Dino at 707-389-0505.

Charts: 18654 18655

LNM: 23/22

**NORTHERN CALIFORNIA-SANTA CRUZ HARBOR-SHOALING**

There are hazardous and shoaled conditions in the Santa Cruz Harbor Channel Entrance. Mariners transiting the Santa Cruz Harbor should use caution for hazardous conditions of breaking surf and shoaling in the Santa Cruz Harbor entrance that may occur during all surf and tidal conditions. Mariners are highly advised not to transit the Santa Cruz Harbor Channel unless sea and tide conditions are suitable for your vessel's draft. Mariners may view soundings on the Santa Cruz Harbor at <https://www.santacruzharbor.org/entrance-soundings>. For more details or comments contact the Santa Cruz Harbor at 831-475-6161 or VHF-FM Chan. 9 and 16.

Chart 18685

LNM: 03/21

**NORTHERN CALIFORNIA-SANTA CRUZ-DREDGE OPERATIONS**

The Santa Cruz Port District is conducting dredging operations in the harbor entrance from 15 November, 2022 until 30 April, 2023. A submerged dredging equipment may be in vicinity of the entrance. All mariners entering the Santa Cruz Harbor are requested to contact the dredge TWIN LAKES on VHF-FM Chan. 8 during working hours of 7:00am to 4:00pm Monday through Friday to obtain safe passage information. For information after hours please contact the Santa Cruz Harbor Patrol at 831-475-6161 or 831-471-1131. Mariners are requested to transit the area with caution. For more details or comments contact Blake Anderson at 831-475-6161.

Chart 18685

LNM: 45/22

**NORTHERN CALIFORNIA-STEAMBOAT SLOUGH-SUNKEN VESSEL**

The Coast Guard received a report of a sunken vessel in the Steamboat Slough at position 38-14-46N 121° 36-09W. The pontoon vessel is approximately 30' long, with approximately 1/4 of the vessel visible above the waterline. The vessel is situated on the western side of the slough with a line securing it to the bank. Mariners are advised to exercise due caution while transiting in the area. For more details or comments contact USCG Sector San Francisco Waterways at 415-399-7443 or [SFWaterways@uscg.mil](mailto:SFWaterways@uscg.mil).

Chart 18661

LNM: 36/22

**NORTHERN CALIFORNIA-STOCKTON DEEP WATER SHIP CHANNEL-DREDGE OPERATIONS**

Ross Island Sand & Gravel Co. is conducting dredge operations in the Stockton Deep Water Ship Channel 24 hours a day, 7 days a week until 15 November, 2022. Dredge 8 will be dredging in the navigation channel in the vicinity of False River starting at 38-02-27N 121-42-04W to Twitchell Island at 38-05-42N 121-40-09W. A Submerged dredge pipe will come ashore 38-04-08N 121-40-29W. Dredge 8 will be monitoring VHF-FM Chan. 13, 16 and 79. Mariners are requested to transit the area with caution. For more details or comments contact Rod Oliva at 503-349-7436.

Chart 18663

LNM: 43/22

**NORTHERN CALIFORNIA-STOCKTON DEEP WATER SHIP CHANNEL-DREDGE OPERATIONS**

Ross Island Sand & Gravel Co. is conducting dredge operations in the Stockton Deep Water Ship Channel 24 hours a day, 7 days a week until 24 November, 2022. Dredge 8 will be dredging in the navigation channel in the vicinity of Brannan Island starting at 38-06-15N 121-36-34W to Venice Island at 38-03-08N 121-30-32W. A Submerged dredge pipe will come ashore 38-03-47N 121-33-41W. Dredge 8 will be monitoring VHF-FM Chan. 13, 16 and 79. Mariners are requested to transit the area with caution. For more details or comments contact Rod Oliva at 503-349-7436.

LNM: 45/22

**NORTHERN CALIFORNIA-SUISUN BAY-CORDELIA SLOUGH-BRIDGE**

UNION PACIFIC DRAWBRIDGE -AVAILABILITY OF PRELIMINARY PUBLIC NOTICE- The United States Coast Guard is soliciting public comments on a proposal by the Union Pacific Railroad Company (UPRR) to convert an existing swing (movable) bridge to a fixed bridge. The reason for this proposal is due to the swing span not having opened for vessels since before 2009. A Coast Guard Bridge Permit application has not yet been submitted but would be required for this project.

WATERWAY AND LOCATION: Cordelia Slough, mile 1.5, at Cygnus, Solano County, California. 38.152534, -122.089593

Preliminary Public Notice (11-159), dated November 1, 2022, contains a detailed description of the proposed project including maps and bridge drawings with navigational clearances. Interested parties may access Active Public Notices for Bridge Projects for the Eleventh Coast Guard District at the following website: <https://go.usa.gov/xJ8yw>. The public notice may also be obtained by calling the Eleventh Coast Guard District Bridge Office at (510) 437-3415; by writing to Commander (dpw), Eleventh Coast Guard District, Coast Guard Island, Bldg 50-2, Alameda, CA 94501-5100; by email request at [D11-SG-M-DPW-Bridges@uscg.mil](mailto:D11-SG-M-DPW-Bridges@uscg.mil) or by facsimile request at (510) 437-5836.

Interested parties are requested to express their views, in writing, on the proposed bridge project. Comments will be received for the record at the address to given in Preliminary Public Notice (11-159) through December 1, 2022.

Chart 18656

LNM: 44/22

**NORTHERN CALIFORNIA-SUISUN BAY-MONTEZUMA SLOUGH-MARINE CONSTRUCTION**

**NORTHERN CALIFORNIA-SUISUN BAY-MONTEZUMA SLOUGH-MARINE CONSTRUCTION**

The California Department of Water Resources advises that will be installing flashboards at the Suisun Marsh salinity control structure, located 2.2 nautical miles from the easterly end of Montezuma Slough at 38-05-36N 121-53-07W. Mariners are advised to use the boat lock. The boat lock signal is a standard traffic light and the operator will monitor VHF-FM Chan. 13. Mariners are requested to transit the area with caution. For more details or comments contact Ian Uecker at 916-574-2991.

Chart 18656

LNLM: 34/21

**NORTHERN CALIFORNIA-TIBURON-DREDGE OPERATIONS**

Salt River Construction Corporation is conducting dredge operations in the Paradise Cay Yacht Harbor in Tiburon, CA, from 7 October, 2022 until 30 November, 2022 at 37-54-57N 122-28-29W. DB1, DB2, tug P CAY will be monitoring VHF-FM Chan. 13, 14, and 77. Mariners are requested to transit the area with caution. For more details or comments contact Rick Moseley at 415-435-1024.

Chart 18653

LNLM: 40/22

**SAN DIEGO-OCEANOGRAPHIC SURVEY-OCEAN MONITORING**

The City of San Diego Marine Biology Lab is conducting year-round ocean monitoring sampling in the vicinity of the South Bay Ocean Outfall and Point Loma Ocean Outfall. The Ocean Monitoring Program conducts trawl sampling, benthic sampling with a double Van Veen sediment grab, vertical CTD casts and horizontal tows with an undulating underwater vehicle, ROV surveys and multiple moorings are deployed in the region below. Ocean sampling will be conducted in an area bound by the following coordinates:

32-31-54N 117-11-11W

32-32-10N 117-11-57W

32-32-03N 117-12-06W

32-32-33N 117-11-56W

32-40-10N 117-19-22W

32-40-04N 117-19-34W

32-39-37N 117-19-32W

32-39-56N 117-19-39W

32-40-10N 117-16-55W

The M/V OCEANUS and M/V MONITOR III when in the area will monitor VHF-FM Chan. 16. Mariners are requested to transit the area with caution. For more details or comments contact Adriano Feit at 619-758-2377 or 858-882-7055.

Charts: 18765 18772

LNLM: 43/21

**SOUTHERN CALIFORNIA - GROVER BEACH - GEOPHYSICAL SURVEY**

FUGRO USA MARINE INC. will be conducting a Bathymetric Survey from the M/V PELAGOS from 21 Sep to 07 Oct, 2022. The survey will be conducted during daylight hours near Grover Beach, CA within the following coordinates:

35-07-26N 120-38-11W

35-07-05N 120-38-04W

35-06-57N 120-39-36W

35-05-15N 120-41-42W

35-4-59N 120-14-23W

35-06-38N 120-39-20W

The vessel will have limited maneuverability during operations and mariners are requested to transit the area with caution. For more details or comments contact Cindy Pratt at 805-650-7000.

Chart 18700

LNLM: 36/22

**SOUTHERN CALIFORNIA - MISSION BAY ANCHORAGE - NSRA**

The U. S. Coast Guard is conducting a Navigational Safety Risk Assessment (NSRA) survey of Mission Bay Anchorage which will remain open until 31 December 22. Anyone interested in participating can do so by using the following link:

<https://www.research.net/r/MissionBayAnchorage>

This questionnaire seeks to obtain data on the navigational safety of Mission Bay Anchorage, as well as other waterway safety concerns. The Coast Guard will use this information to ensure that the aids are serving their intended purpose. The Coast Guard also uses the concerns of waterways users to assist with other or future waterway management decisions. Any interested company or individual wishing to provide recommendations on existing or additional aids to navigation in this area are welcome to participate by submitting a user survey. To receive further information, contact Sector San Diego Waterways, LTJG Kim at shera.s.kim@uscg.mil.

LNLM: 41/22

**SOUTHERN CALIFORNIA - SAN DIEGO HARBOR ANCHORAGE - NSRA**

The U. S. Coast Guard is conducting a Navigational Safety Risk Assessment (NSRA) survey of San Diego Harbor Anchorage which will remain open until 31 December 22. Anyone interested in participating can do so by using the following link:

<https://www.research.net/r/SDHarborAnchorageGrounds>

This questionnaire seeks to obtain data on the navigational safety of San Diego Harbor Anchorage, as well as other waterway safety concerns. The Coast Guard will use this information to ensure that the aids are serving their intended purpose. The Coast Guard also uses the concerns of waterways users to assist with other or future waterway management decisions. Any interested company or individual wishing to provide recommendations on existing or additional aids to navigation in this area are welcome to participate by submitting a user survey. To receive further information, contact Sector San Diego Waterways, LTJG Kim at shera.s.kim@uscg.mil.

LNLM: 41/22

**SOUTHERN CALIFORNIA - SANTA CRUZ - WAVERIDER BUOY**

A Waverider buoy has been deployed at 36-56-04N 122-02-02W near Santa Cruz, CA. The buoy will be used for wave measurements to aid the Coastal Data Information Program. For questions, contact Ross Timmerman at 619-818-8387.

Chart 18685

LNLM: 33/22

#### **SOUTHERN CALIFORNIA – SAN DIEGO HARBOR SPECIAL ANCHORAGE - NSRA**

The U. S. Coast Guard is conducting a Navigational Safety Risk Assessment (NSRA) survey of San Diego Harbor Special Anchorage which will remain open until 31 December 22. Anyone interested in participating can do so by using the following link:

<https://www.research.net/r/SDHarborSpecialAnchorageArea>

This questionnaire seeks to obtain data on the navigational safety of San Diego Harbor Special Anchorage, as well as other waterway safety concerns. The Coast Guard will use this information to ensure that the aids are serving their intended purpose. The Coast Guard also uses the concerns of waterways users to assist with other or future waterway management decisions. Any interested company or individual wishing to provide recommendations on existing or additional aids to navigation in this area are welcome to participate by submitting a user survey. To receive further information, contact Sector San Diego Waterways, LTJG Kim at [shera.s.kim@uscg.mil](mailto:shera.s.kim@uscg.mil).

LNM: 41/22

#### **SOUTHERN CALIFORNIA- ANAHEIM BAY- TEMPORARY BUOYS**

The U.S. Coast Guard has established temporary Buoy in Anaheim Bay at the following locations.

Temp Buoy #9- FI G 4s

Position: 33-43-927N 118-05-981W

Temp Buoy #10 Q R

Position: 33-43-963N 118-05-818

Temp Buoy #11 FL G 4s

Position: 33-44-077N 118-05-862W

Temp Buoy #13 FI G 4s

Position: 33-44-211N 118-05-799W

For more details or comments contact LT Miranda Brumbaugh at 510-437-2978 or [Miranda.E.Brumbaugh@uscg.mil](mailto:Miranda.E.Brumbaugh@uscg.mil).

Charts: 18746 18749

LNM: 29/22

#### **SOUTHERN CALIFORNIA-CABLE ROUTE SURVEY-GROVER BEACH**

FUGRO USA MARINE INC. will be conducting a cable route survey from 15 November 2022 until 26 December 2022. M/V FUGRO SUPPORTER will conduct survey operations during daylight hours offshore of Grover Beach, CA within the following coordinates:

35-04-05N 120-23-41W

35-03-31N 120-24-22W

34-17-21N 121-12-04W

The vessel will have limited maneuverability during operations. Mariners are requested to transit the area with caution. For more details or comments contact Bastian Wichand at +49 172-433-9093.

Chart 18700

LNM: 41/22

#### **SOUTHERN CALIFORNIA-CATALINA ISLAND-BUOY DEPLOYMENT**

Marine BioEnergy INC. has deployed a yellow research buoy near Catalina Island, CA with the characteristics of FI Y 4s at 33-28-21N 118-29-33W. Mariners are requested to transit the area with caution. For more details or comments contact Cindy Wilcox at 818-952-6018.

Chart 18740

LNM: 38-22

#### **SOUTHERN CALIFORNIA-CHANNEL ISLANDS-DREDGE OPERATIONS**

Manson Construction Co. is conducting dredging operations of the Channel Islands Harbor Entrance at 34-09-21N 119-13-46W, 24 hrs a day, 7 days a week from 01 October, 2022, until 31 January, 2023. DB MORRIS, DB FREYA, Tender PUP, Tender CUB, and Survey Boat RUSTLER will be conducting operations and monitoring VHF-FM Chan. 16 and 67. Materials will be transported through floating, submerged and shore pipeline to the disposal area. Mariners are requested to transit the area with caution. For more details or comments contact DB HR MORRIS at 562-762-5449.

Chart 18725

LNM: 35/22

#### **SOUTHERN CALIFORNIA-GROVER BEACH-PISMO BEACH-MARINE CONSTRUCTION**

RTI Solutions, INC. will be conducting marine construction offshore Grover Beach at 35-07-05N 120-38-46W until 30 November, 2022. M/V JAB will be installing two steel conduits at under the ocean floor. M/V JAB will be at anchor during daylight hours. Mariners are requested to transit the area with caution. For more details or comments contact Brayton Pointer at 805-746-4242.

Chart 18700

LNM: 36/22

#### **SOUTHERN CALIFORNIA-HUNTINGTON BEACH-DIVE OPERATIONS**

Aqueos Corporation will be conducting offshore 24 hrs a day dive operations from 14 October, 2022 until 14 December, 2022. Operations will be conducted along the following coordinates:

33-38-45N 118-06-55W

33-39-05N 118-06-52W

33-39-06N 118-06-24W

33-38-47N 118-06-24W

A tug boat will be using a temporary mooring at 33-39-16N 118-06-57W. D/B SALTA VERDE (call sign WDF 9705) will be monitoring VHF-FM Chan. 16 and can be reached at 805-570-2642. Mariners are requested to transit the area with caution. For more details or comments contact project manager Jason Smith at 805-205-3156.

Chart 18749

LNM: 40/22

#### **SOUTHERN CALIFORNIA-LOS ANGELES-PILE INSTALLATION**

Manson Construction Co. will conduct pile installation in the vicinity of the Los Angeles main channel from 28 November, 2022 until 19 December, 2022 at 33-43-59N, 118-16-22W. D/B NORSEMAN and T/B ELMER Barge will be assisting and monitoring VHF-FM Channels 16 and 67. Operations will be conducted 24 hrs daily. Mariners are requested to transit the area with caution. For more details or comments contact Cesar Canales at 562-833-3896.

Chart 18751

LNM: 45/22

#### **SOUTHERN CALIFORNIA-LOS ANGELES/LONG BEACH HARBOR-BRIDGE**

**SOUTHERN CALIFORNIA-LOS ANGELES/LONG BEACH HARBOR-BRIDGE**

PIER 400 BRIDGE MODIFICATION- Construction is taking place Monday through Friday, 6am to 4pm, until 31 September, 2023. All in-water equipment and temporary structures will occur within the two existing bridges, and will not impact marine traffic in the area. For conditions at the work site, contact 714-536-9553 or 510-846-0325. For further information contact the Coast Guard Bridge Office at 510-437-3461.

Chart 18749

LNLM: 26/22

**SOUTHERN CALIFORNIA-LOS ANGELES/LONG BEACH HARBOR-BRIDGE**

VINCENT THOMAS BRIDGE-The 180' temporary platform has been relocated just west of the east tower and reduces vertical clearance of the bridge by 5.5 feet and painting of the bridge has resumed and will migrate west. The upstream and downstream corners and every 50' along the upstream and downstream side of the platform is lighted at night with steady burning red lights (see V\_Thomas\_Platform\_Lighting1.pdf at the end of this notice). Work will take place during daylight hours, Monday through Friday. For conditions at the bridge mariners can contact 213-479-4138, 213-479-1144 or 310-261-9552. For more details or comments contact the Coast Guard Bridge Office at 510-437-3516.

Chart 18749

LNLM: 30/22

**SOUTHERN CALIFORNIA-MARINE EVENT-SAN DIEGO-SAN DIEGO BAY**

The annual San Diego Bay Parade of Lights consists of 80 power, sail, and hand powered boats, participating in a boat parade from 5 p.m. to 9 p.m. on December 11th and 18th, 2022. The parade route will start near the west side of Shelter Island at position 32-42-24N 117-13-56W, proceed past Embarcadero to the Coronado Bay Bridge, cross the main shipping channel and finish in the vicinity of the U.S. Navy Carrier Basin. There is a Coast Guard Special Local Regulation being enforced for the event. Mariners are advised to avoid this area and use due caution when transiting outside this area. For more details or comments, contact Bill Edwards at 619-708-5047.

LNLM: 45/22

**SOUTHERN CALIFORNIA-MISSION BAY-MARINE EVENT**

The San Diego Rowing Club will be sponsoring the San Diego Fall Classic rowing race on November 13, 2022 from 5:00am to 12:00pm. The race will consist of approximately 100 participants on a course in Mission Bay, to include the South Pacific Passage, Mission Bay Channel, and Fisherman's Channel. Mariners are advised to use caution when transiting in the vicinity of the event. For more details or comments contact Chris Callaghan at 858-352-8380.

Chart 18765

LNLM: 43/22

**SOUTHERN CALIFORNIA-MORRO BAY BREAKWATER LIGHT-SOUND SIGNAL CHANGE**

Morro Bay Breakwater Light (LLNR 240) sound signal has been replaced with a Mariner Radio Activated Sound Signal (MRASS). The sound signal can be activated by keying the microphone 6 times within 10 seconds on VHF-FM Chan. 83A and will sound 1 blast every 30 seconds for 15 minutes.

Charts: 18700 18703

LNLM: 42/22

**SOUTHERN CALIFORNIA-NAVAL BASE POINT LOMA-DREDGE OPERATIONS**

R.E. Staite Engineering Inc. will be conducting dredging at Naval Base Point Loma, centered at 32-41-16N 117-14-17W, until 31 March, 2023. Vessels DB POINT LOMA, DB WILLIAM F and DB PALOMAR will be performing dredging operations with scows HAROLD M, CLARENCE D, ROB P and MIKE J, along with push boat JEANIE R, crew boat JOHN DRAKE and RES survey boat in conjunction with tugs KILLEEN and CUYAMACA. All equipment will be monitoring VHF-FM Chan. 16. Mariners are reminded to observe all established Security Zones, and are urged to transit at their slowest safe speed to minimize wake and proceed with caution after passing arrangements have been made. For more details or comments contact project manager Erick Myers at 619-233-0178 or Christopher Ramos at 619-221-7236.

Chart 18773

LNLM: 40/22

**SOUTHERN CALIFORNIA-NAVAL BASE POINT LOMA-MARINE CONSTRUCTION-DREDGE OPERATIONS**

R.E. Staite Engineering Inc. will conduct marine construction and dredging operations at Naval Base Point Loma behind the 151 Fuel Pier at 32-41-59N 117-14-13W from 01 October, 2022 until 31 March, 2023. Vessels DB PALOMAR, DB POINT LOMA, DB WILLIAM F, push boat JENIE R, crew boat JOHN DRAKE along with tugs KILLEEN, CUYAMACA and 04 scows will conduct operations. All vessels will monitor VHF-FM Chan. 16. All dredged materials will be disposed of at LA-5. Mariners are requested to transit the area with caution. For more details or comments contact Erick Myers at 619-233-0178.

Chart 18773

LNLM: 41/22

**SOUTHERN CALIFORNIA-OFFSHORE SAN DIEGO-HAZARDOUS OPERATIONS**

The U.S. Navy will be conducting hazardous operations until 01 January, 2023, in the areas bound by the following coordinates:

First:

32-55-00N 118-25-00W

32-55-00N 118-15-00W

32-40-00N 118-15-00W

32-40-00N 118-35-00W

32-45-00N 118-35-00W

Second:

32-33-00N 118-25-00W

32-35-00N 118-16-00W

32-35-00N 117-40-00W

31-55-00N 117-40-00W

31-55-00N 118-25-00W

32-33-00N 118-25-00W

Third:

32-52-42N 119-11-58W

33-08-04N 118-52-05W

33-08-04N 118-46-02W

33-03-52N 118-41-48W

33-02-32N 118-43-33W

32-58-53N 118-43-31W

32-47-40N 118-32-21W

**SOUTHERN CALIFORNIA-OFFSHORE SAN DIEGO-HAZARDOUS OPERATIONS**

32-36-55N 118-45-00W

32-36-55N 118-56-57W

Mariners are requested to transit the area with caution. For more details or comments contact FACSAC schedules at 619-545-1744.

Charts: 18740 18765 18774

LNM: 04/22

**SOUTHERN CALIFORNIA-OFFSHORE SAN NICOLAS ISLAND-GEOPHYSICAL SURVEY**

FUGRO USA MARINE INC. will be conducting a Geophysical and Bathymetric Survey from 3 November, 2022 until 18 November, 2022. M/V PELAGOS will conduct survey operations during daylight hours offshore of the San Nicolas Island, CA within the following coordinates:

33-14-42N 119-26-53W

33-14-56N 119-26-35W

33-14-42N 119-26-12W

33-14-32N 119-26-01W

33-14-18N 119-26-27W

The vessel will have limited maneuverability during operations. M/V PELAGOS will be monitoring VHF-FM Chan. 16. Mariners are requested to transit the area with caution. For more details or comments contact Cindy Pratt at 805-289-3807.

Chart 18740

LNM: 43/22

**SOUTHERN CALIFORNIA-OXNARD-ROCK REVETMENT REPAIR**

Larison Contracting will be conducting repair and replacement of rock revetment in Oxnard CA at 34-10-03 N 119-13-31 W until 12 June, 2023.

Operation will be monitoring VHF-FM Chan. 16. Mariners are requested to transit at a safe speed to minimize wake and proceed with caution after making passing arrangements. For more information, contact Michael Tripp at 562-427-1900.

Chart 18725

LNM: 45/22

**SOUTHERN CALIFORNIA-POINT CONCEPTION-DEL MAR-OCEANOGRAPHIC OPERATIONS**

The CalCOFI Program will conduct oceanographic operations 300-400nm offshore between Del Mar to Point Conception from 5-20 November, 2022, 8:00am to 4:00pm daily. R/V SALLY RIDE will be monitoring VHF-FM Chan. 13 and 16 or can be reached at 858-344-9841. Mariners are requested to transit the area with caution. For more details or comments contact Kelsey Vogel at kdvogel@ucsd.edu.

Charts: 18700 18720 18740

LNM: 40/22

**SOUTHERN CALIFORNIA-POINT CONCEPTION-NOAA BUOY DEPLOYMENT**

NOAA's Pacific Marine Environmental Laboratory deployed a buoy 11 nautical miles due west of Point Conception, CA. at 34-27-31N 120-41-10W.

The buoy named Harvest 22 has a yellow top with gray sides and a flashing amber light every 4 seconds. Mariners are advised to use due caution when transiting this area. For more details or comments contact Cabot Zucker at 425-477-9554.

LNM: 13/22

**SOUTHERN CALIFORNIA-PORT OF LONG BEACH-MARINE CONSTRUCTION**

Connolly-Pacific will conduct marine construction to the ramp at Pier G in the Port of Long Beach from 8:30am to 6:30pm until 28 February, 2022.

DB LOS ANGELES and tug DURANGO will be conducting construction. DB LOS ANGELES will use anchor buoys to be positioned near the ramp. All vessels will be monitoring VHF-FM Chan 13, 16 and 80A. Mariners are requested to transit the area with caution. For more details or comments contact Justin Chin Wong at 562-437-2831.

Chart 18751

LNM: 28/22

**SOUTHERN CALIFORNIA-PORT OF LONG BEACH-MARINE CONSTRUCTION**

Dutra Construction Company will be conducting marine construction and dredging operations of Wharf H at the Port of Long Beach from 01

November, 2022 until 01 June, 2023. Barge WILLIAM F will be monitoring VHF-FM Chan. 16 and 82. Mariners are requested to transit the area with caution. For more details or comments contact Andrew Hunt at 415-847-6640.

Charts: 18749 18751

LNM: 41/22

**SOUTHERN CALIFORNIA-PORT SAN LUIS-MARINE CONSTRUCTION**

Connolly-Pacific will conduct marine construction to the Port San Luis breakwater from 6:30am to 6:30pm until 31 December, 2022. DB LONG BEACH

will use anchors to position itself along the breakwater. These anchor positions will be marked by round white anchor cans. Tug PATCONA and Tug LARCONA will be assisting DB LONG BEACH. All vessels will be monitoring VHF-FM Chan. 13, 16, and 79a. Mariners are requested to transit the area with caution. For more details or comments contact Tobey Walker at 562-577-0730 or John Riley at 562-577-3602.

LNM: 04/22

**SOUTHERN CALIFORNIA-RESERVATION POINT-LOS ANGELES-MARINE CONSTRUCTION**

Power Engineering Construction Co. will be performing demolition and pile driving operations until 22 December, 2022, at 33-43-22N 118-16-06W.

Work is being conducted Monday through Friday 7:00am to 4:00pm. Operations will be conducted with derrick barge DB ALAMEDA and a flat material barge. The barge will be spudded down and anchored using a four-point mooring system with buoys. All vessels and equipment on site will be monitoring VHF-FM Chan. 16 and 67. Mariners are requested to transit the area with caution. For more details comments contact Matt Dill at 510-610-4633.

Chart 18751

LNM: 19/22

**SOUTHERN CALIFORNIA-SAN CLEMENTE-UNMANNED VESSEL OPERATIONS**

The U.S. Navy will be conducting unmanned surface vessel operations with US/V SEA HUNTER and M/V REBEKAH C from 06:00PM 06 December to 07:00PM 07 December 2022, 50NM to 100NM WSW of San Clemente Island. Operations will be bounded by the following coordinates:

Area 1:

32-25-00N 120-00-00W

32-25-00N 121-30-00W

31-50-00N 121-30-00W

31-50-00N 120-00-00W



## **SOUTHERN CALIFORNIA-SAN CLEMENTE-UNMANNED VESSEL OPERATIONS**

Area 2

33-04-00N 119-45-00W

32-48-00N 120-14-00W

32-14-00N 119-45-00W

32-30-00N 119-17-00W

M/V REBEKAH C will be overseeing operations and monitoring VHF-FM Chan. 16. Mariners are requested to transit the area with caution. For more details or comments contact Macklin Blackadar at 360-388-1666.

Charts: 18022 18740

LNLM: 45/22

## **SOUTHERN CALIFORNIA-SAN DIEGO BAY-BRIDGE**

CORONADO BAY BRIDGE MAINTENANCE-Scaffolding installed between piers 11-12, 12-13, and 13-14, reduces vertical clearance by more than 8'. The upstream and downstream lower edges of the scaffolding are lighted at night with red lights. For more details or comments contact the Coast Guard Bridge Office at 510-437-3461.

Charts: 18772 18773

LNLM: 13/20

## **SOUTHERN CALIFORNIA-SAN DIEGO BAY-MARINE CONSTRUCTION**

R.E. Staite Engineering Inc. will conduct marine construction at Naval Base Point Loma piers 5000, 5002 and 5003 at 32-41-24N 117-14-04W until 25 November, 2022. Vessels DB PALOMAR, RES 80, JOHN DRAKE, push boats JEANIE R, and tug KILLEEN will conduct operations. All vessels will monitor VHF-FM Chan. 16. Mariners are requested to transit at lowest safe speed to minimize wake and proceed with caution after passing arrangements have been made. For more details or comments contact project manager Erick Myers at 619-233-0178.

Charts: 18772 18773

LNLM: 31/22

## **SOUTHERN CALIFORNIA-SAN DIEGO BAY-MARINE CONSTRUCTION**

R.E. Staite Engineering Inc. will conduct marine construction at Naval Base Point Loma piers 5000 at 32-41-16N 117-14-17W from 16 September, 2022 until 31 March, 2023. Vessels DB PALOMAR, DB POINT LOMA, DB WILLIAM F, push boat JEANIE R, crew boat JOHN DRAKE along with tugs KILLEEN, CUYAMACA and 04 scows will conduct operations. All vessels will monitor VHF-FM Chan. 16. Mariners are requested to transit the area with caution. For more details or comments contact Erick Myers at 619-233-0178 or Christopher Ramos at 619-221-7236.

Chart 18773

LNLM: 41/22

## **SOUTHERN CALIFORNIA-SAN DIEGO BAY-MARINE CONSTRUCTION**

R.E. Staite Engineering Inc. will conduct marine construction at Naval Base Point Loma at 32-41-33N 117-14-22W from 16 September, 2022 until 31 March, 2023. Vessels DB PALOMAR, DB POINT LOMA, RES 180, crew boat JOHN DRAKE, along with tug CUYAMACA will conduct operations. All vessels will be monitoring VHF-FM Chan. 16. Mariners are requested to transit the area with caution. For more details or comments contact Erick Myers at 619-233-0178.

Chart 18773

LNLM: 32/22

## **SOUTHERN CALIFORNIA-SAN DIEGO BAY-MARINE EVENT**

The Cortez Racing Association (CRA) will sponsor the CRA Fall Regatta on 12 November, 2022 from 10:00am until 5:00pm. The regatta will consist of 40 sailboats starting near Harbor Island, proceeding to San Diego Bay Channel Lighted Buoy 16 (LLNR 1620), continuing to San Diego Bay Channel Lighted Buoy 28 (LLNR 1980), and finishing back at Harbor Island. Mariners are requested to transit the area with caution. For more details or comments contact Dale Greaney at 760-470-1730.

Chart 18773

LNLM: 39/22

## **SOUTHERN CALIFORNIA-SAN DIEGO BAY-MARINE EVENT**

The San Diego Fleet Week Association will be sponsoring the Veterans Day Boat Parade on November 11, 2022 from 12:00pm to 2:30pm in San Diego Bay. The parade will consist of approximately 90 pleasure craft of various sizes, starting at the southern end of Shelter Island, proceeding northeast along the shoreline past Harbor Island, then southeast to the Tenth Avenue Marine Terminal, crossing the federal channel just before the Coronado Bridge, and then proceeding north to the Coronado Ferry Terminal. A special local regulation will be enforced for this event, encompassing all navigable waters around the parade location. For more details or comments, contact Lawrence Blumberg at 619-665-8807.

Charts: 18765 18773

LNLM: 43/22

## **SOUTHERN CALIFORNIA-SAN DIEGO RIVER-BRIDGE**

WEST MISSION BAY DRIVE BRIDGE-The City of San Diego is replacing the existing bridge. A temporary work trestle, providing a vertical clearance of 8' over Mean Sea Level is in place. Scheduled completion date of the bridge replacement project is March 2023. Mariners are urged to use caution while navigating the replacement bridge work site. For more details or comments contact the Coast Guard Bridge Office at 510-437-3461.

Chart 18765

LNLM: 44/22

## **SOUTHERN CALIFORNIA-SAN DIEGO-MILITARY OPERATIONS**

The US Navy will be conducting operations on 16 November, 2022, between 12:00am until 11:59pm, 5nm west of Point Loma. Research operations will be conducted by deploying Unmanned Surface Vessels (USVs) from the 110ft research vessel MERLIN. The research vessel MERLIN will monitor VHF-FM Chan. 16. Mariners are requested to transit the area with caution. For more details or comments contact Bobby Rocha at 510-366-2000.

Chart 18740

LNLM: 45/22

## **SOUTHERN CALIFORNIA-SAN DIEGO-MILITARY OPERATIONS**

The US Navy will be conducting unmanned undersea vehicle (UUV) operations in San Diego Bay from 28 November, 2022 until 2 December, 2022. UUVs and US Navy small boats will operate between the San Diego ship channel and the North Island shoreline from San Diego Bay Channel Lighted Buoy 16 (LLNR 1620) to San Diego Bay Channel Lighted Buoy 18 (LLNR 1645). A fixed yellow surface buoy with flashing white light will be temporarily installed approximately 30 yards off the North Island T-shaped pier at 32-42-32N 117-13-10W. US Navy small boats will monitor VHF-FM Chan. 16. Mariners are requested to transit the area with caution and maintain a safe distance from the US Navy small boats. For more details or comments contact Mark Gillcrist at 619-203-1348.

**SOUTHERN CALIFORNIA-SAN DIEGO-MILITARY OPERATIONS**

Chart 18773

LNM: 45/22

**SOUTHERN CALIFORNIA-SAN NICHOLAS ISLAND-ATMOSPHERIC BUOY DEPLOYMENT**

Naval Air Systems Command has deployed an atmospheric sampling buoy 1.5 miles Northeast of San Nicolas Island at 33-18-00N 119-30-55W. The yellow buoy FI Y 3s, is 6 feet above the waterline and 2 feet in diameter. Mariners are requested to transit the area with caution. For more details or comments contact Kyle Edwards at 805-989-0672.

Chart 18720

LNM: 39/22

**SOUTHERN CALIFORNIA-VANDENBERG AFB-HAZARDOUS OPERATIONS**

Hazardous operations will be conducted from Vandenberg AFB, CA starting at 12:55am on 10 November, 2022 until 2:34am on 12 November, 2022. Hazardous operation areas are bounded by the following coordinates:

34-27-00N 120-20-00W

34-16-00N 120-40-00W

34-43-00N 120-21-00W

34-43-00N 120-39-00W

Mariners are advised to remain clear of these areas for the duration of operations. For more details or comments contact Vandenberg AFB at 805-606-8825.

Charts: 18700 18720 18740

LNM: 44/22

**SOUTHERN CALIFORNIA-VANDENBERG AFB-HAZARDOUS OPERATIONS**

Hazardous operations will be conducted from Vandenberg AFB, CA starting at 06:42pm on 17 November, 2022 until 10:14pm on 20 November, 2022. Hazardous operation areas are bounded by the following coordinates:

34-40-00N 120-40-00W

34-40-00N 120-17-00W

34-27-00N 120-17-00W

34-08-00N 120-05-00W

32-40-00N 119-25-00W

32-40-00N 119-31-00W

33-18-00N 119-52-00W

33-55-00N 120-17-00W

34-22-00N 120-34-00W

34-33-00N 120-38-00W

Mariners are advised to remain clear of these areas for the duration of operations. For more details or comments contact Vandenberg AFB at 805-606-8825.

Charts: 18700 18720 18740

LNM: 45/22

**SOUTHERN CALIFORNIA-PT. DUME TO PURISMA POINT-US NAVY UNDERWATER OPERATIONS**

M/V Independence is conducting underwater operations off the coast of California within 3 nautical miles of position 33-40-00 N, 119-00-00 W from 14 November to 18 November 2022. Mariners are advised to use caution when transiting the area due to submerged gear. The M/V Independence will be monitoring VHF FM channels 16 and 13 during these operations and has requested that mariners avoid transiting within 2 nautical miles. For more information contact Steve Canale at 360-434-8624.

Chart 18720

LNM: 45/22

**UTAH - LAKE POWELL ANCHORAGE - NSRA**

The U. S. Coast Guard is conducting a Navigational Safety Risk Assessment (NSRA) survey of Lake Powell Anchorage which will remain open until 31 December 22. Anyone interested in participating can do so by using the following link:

<https://www.research.net/r/LakePowellAnchorage>

This questionnaire seeks to obtain data on the navigational safety of Lake Powell Anchorage, as well as other waterway safety concerns. The Coast Guard will use this information to ensure that the aids are serving their intended purpose. The Coast Guard also uses the concerns of waterways users to assist with other or future waterway management decisions. Any interested company or individual wishing to provide recommendations on existing or additional aids to navigation in this area are welcome to participate by submitting a user survey. To receive further information, contact Sector San Diego Waterways, LTJG Kim at [shera.s.kim@uscg.mil](mailto:shera.s.kim@uscg.mil).

LNM: 41/22

**SECTION VIII - LIGHT LIST CORRECTIONS**

An Asterisk \*, indicates the column in which a correction has been made to new information

(1) No.	(2) Name and Location	(3) Position	(4) Characteristic	(5) Height	(6) Range	(7) Structure	(8) Remarks
240 3835	MORRO BAY WEST BREAKWATER LIGHT	35-21-46.296N 120-52-11.417W	Fl W 4s	36	9	White column.	Light obscured from 176° to 207°. HORN: (MRASS)1 blast ev 30s (3s bl). The sound signal can be activated by keying VHF- FM Ch.83A 6 times within 10 seconds.

\*

## SECTION VIII - LIGHT LIST CORRECTIONS (Continued)

(1) No.	(2) Name and Location	(3) Position	(4) Characteristic	(5) Height	(6) Range	(7) Structure	(8) Remarks
3835 240	MORRO BAY WEST BREAKWATER LIGHT	35-21-46.296N 120-52-11.417W	Fl W 4s	36	9	White column.	Light obscured from 176° to 207°. HORN: (MRASS) 1 blast ev 30s (3s bl). The sound signal can be activated by keying VHF-FM Ch.83A 6 times within 10 seconds.
4601	<i>Regulated Area Buoy 1</i>	37-48-42.430N 122-21-35.000W	Fl W 4s		3		Fl W 4s
*	*	*	*	*	*	*	*
4602	<i>Regulated Area Buoy 2</i>	37-48-27.000N 122-21-35.000W	Fl W 2.5s		3		Fl W 2.5s
*	*	*	*	*	*	*	*

## PUBLICATION CORRECTIONS

**ANNOUNCEMENT – U.S. Coast Pilot® 7 and U.S. Coast Pilot® -NEW EDITIONS-Spring 2022**

PUBLICATION–National Oceanic Atmospheric Administration (NOAA) – U.S. Coast Pilot 7, Pacific Coast: California, 54th Edition, 2022, has been issued and is ready for free download and weekly updates at [www.nauticalcharts.noaa.gov/publications/coast-pilot/index.html](http://www.nauticalcharts.noaa.gov/publications/coast-pilot/index.html).

Only Print-on-Demand (POD) bound copies are available for purchase; visit [nauticalcharts.noaa.gov/publications/print-agents.html#coast-pilot](http://nauticalcharts.noaa.gov/publications/print-agents.html#coast-pilot). The 2022 Edition cancels the preceding 2021 Edition, and incorporates all previous corrections.

LNM: 21/22

**ANNOUNCEMENT – U.S. Coast Pilot® 7 and U.S. Coast Pilot® 10 - NEW EDITIONS – Spring 2020**

U.S. Coast Pilot 7 will be divided into two editions in the spring 2020 due to its large size. The following are the projected new editions that will be issued on the same date and ready for free download and weekly updates on June 9, 2020, at [nauticalcharts.noaa.gov/publications/coast-pilot/index.html](http://nauticalcharts.noaa.gov/publications/coast-pilot/index.html).

PUBLICATION–National Oceanic Atmospheric Administration (NOAA) – U.S. Coast Pilot 7, Pacific Coast: California 52nd Edition, 2020

PUBLICATION–National Oceanic Atmospheric Administration (NOAA) – U.S. Coast Pilot 10, Pacific Coast: Oregon, Washington, Hawaii and Pacific Islands 1st Edition, 2020

Only Print-on-Demand bound copies are available for purchase; visit [nauticalcharts.noaa.gov/publications/print-agents.html#coast-pilot](http://nauticalcharts.noaa.gov/publications/print-agents.html#coast-pilot)

For any questions or comments; visit [nauticalcharts.noaa.gov/customer-service/assist/](http://nauticalcharts.noaa.gov/customer-service/assist/)

NOAA Office of Coast Survey's Nautical Publications Branch  
April 2020

LNM: 18/20

## ENCLOSURES

**REPORT OF DELAY AT DRAWBRIDGE**

[Delay\\_Report\\_11-2017.pdf](#)

Use link above to Report a Delay at a Drawbridge.

LNM: 06/07

**SOUTHERN CALIFORNIA-PORTS OF LOS ANGELES/LONG BEACH-LA/LB HARBOR-BRIDGE**

[V\\_Thomas\\_Platform\\_Lighting1.pdf](#)

See link above for platform lighting for Vincent Thomas Bridge.

LNM: 28/19

**NORTHERN CALIFORNIA-DELTA & RIVERS-AMERICAN RIVER-BRIDGE**

[AmRiv\\_SiltCurtain\\_BargeLocation.pdf](#)

CAPITAL CITY HWY (ROUTE 51) BRIDGE-See link above for barge and silt curtain locations.

LNLM: 22/22

#### NORTHERN CALIFORNIA-DELTA & RIVERS-SACRAMENTO RIVER-BRIDGE

[RVBridge\\_PlatformCable\\_Lighting.pdf](#)

RIO VISTA DRAWBRIDGE-See enclosure above for temporary platform location and lighting.

LNLM: 22/20

#### NORTHERN CALIFORNIA-SAN FRANCISCO BAY-BRIDGE

[PlatformLighting\\_GG\\_Bridge\\_14Jun22.pdf](#)

GOLDEN GATE BRIDGE-Temporary Platform Location and Lighting revised 14 June, 2022.

LNLM: 24/22

#### NORTHERN CALIFORNIA-SAN FRANCISCO BAY-BRIDGE

[R-SR\\_Bridge\\_Temp\\_Platform\\_Lighting.pdf](#)

RICHMOND-SAN RAFAEL BRIDGE- See link above for temporary underdeck platform lighting for concrete and steel repairs.

LNLM: 48/21

#### NORTHERN CALIFORNIA-DELTA & RIVERS-OLD RIVER-BRIDGE

[OldRiver\\_Barge\\_Lighting\\_Plan.pdf](#)

CA ROUTE 4 BRIDGE-See link above for typical barge lighting and location during rehabilitation project.

LNLM: 44/22

#### NORTHERN CALIFORNIA-DELTA & RIVERS-SAN JOAQUIN RIVER-BRIDGE

[TemporaryBridge\\_FalseworkLighting.pdf](#)

CROWS LANDING REPLACEMENT-See link above for temporary falsework, temporary bridge, the temporary navigation channel during construction with navigation lighting plan.

LNLM: 36/22

#### NORTHERN CALIFORNIA-SAN FRANCISCO BAY-BRIDGE

[SFOBBTemporaryBargeLocations.pdf](#)

WESTERN SPAN SAN FRANCISCO-OAKLAND BAY BRIDGE-See link above regarding fender repairs.

LNLM: 13/22

#### NEVADA-ARIZONA-COLORADO RIVER-BRIDGE

[Cofferdam-Lighting\\_Laughlin-BH.pdf](#)

NEW LAUGHLIN-BULLHEAD CITY BRIDGE-See link above for temporary cofferdam lighting and configuration.

LNLM: 50/21

#### NORTHERN CALIFORNIA-SAN FRANCISCO - VOLUNTARY VESSEL SPEED REDUCTION

[NOAA VSR 2022.pdf](#)

see link above.

LNLM: 18/22

#### SOUTHERN CALIFORNIA-DANA POINT TO POINT ARGUELLO-VOLUNTARY VESSEL SPEED REDUCTION

[NOAA VSR 2022.pdf](#)

see link above.

LNLM: 18/22

#### NORTHERN CALIFORNIA-DELTA & RIVERS-OLD RIVER-BRIDGE

[BNSF\\_OldRiver\\_Barge\\_Lighting.pdf](#)

See link above.

LNLM: 13/22

#### NORTHERN CALIFORNIA-DELTA & RIVERS-SACRAMENTO RIVER-BRIDGE

[ButteConstructionLighting-BuoyLine.pdf](#)

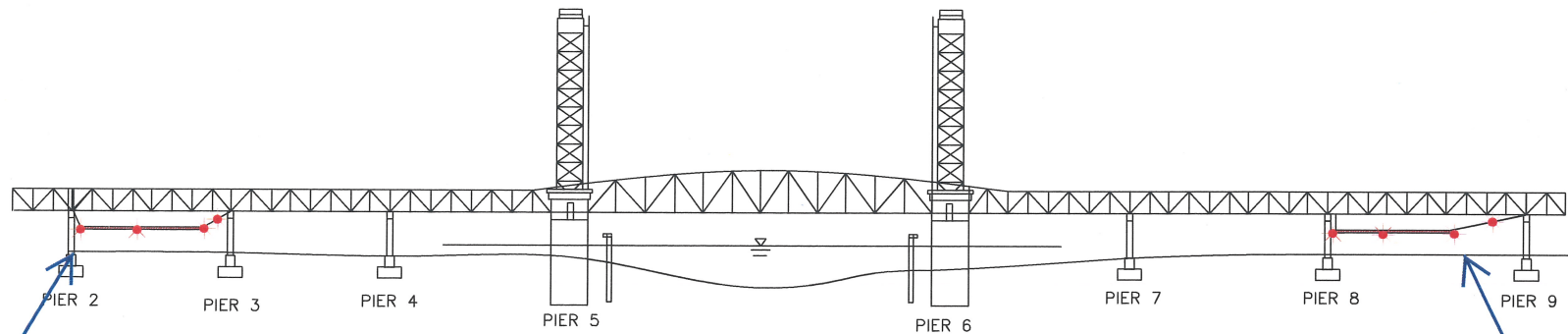
REPLACEMENT BUTTE CITY BRIDGE-See link above for temporary construction trestle and lighting and proposed buoy line..

THE LOCAL NOTICE TO MARINERS IS AVAILABLE ON THE WORLD WIDE WEB AT [HTTPS://WWW.NAVCEN.USCG.GOV](https://www.navcen.uscg.gov)

P. A. Garcia, LCDR  
U.S. Coast Guard  
Acting Chief Waterways Management Branch

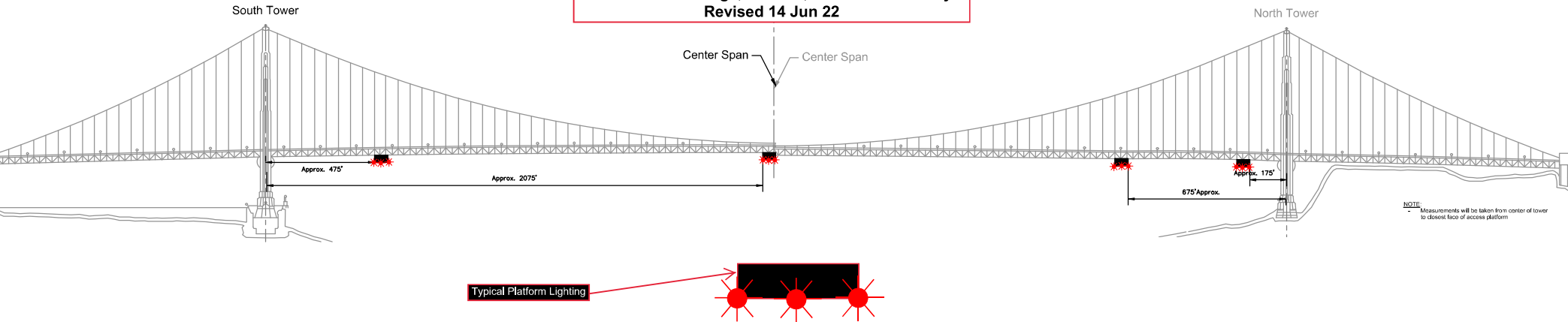
# Temporary Underdeck Platform Lighting

## Rio Vista Bridge Mile 12.8, Sacramento River



Two temporary platforms, and associated support cables, are installed beneath low steel of the bridge in span 2 and 8 and reduces vertical clearance in those spans by no more than 4 feet. The lower 4 corners and midpoint of each platform will be lighted at night with steady burning red lights, visible at 2,000 yards from approaching vessels. The support cable will be lighted with red lights every 50 feet. Mariners are requested to use alternate or main span of the bridge while these temporary platforms are in place.

**Temporary Access Platforms**  
**Golden Gate Bridge, mile 2.5, San Francisco Bay**  
**Revised 14 Jun 22**

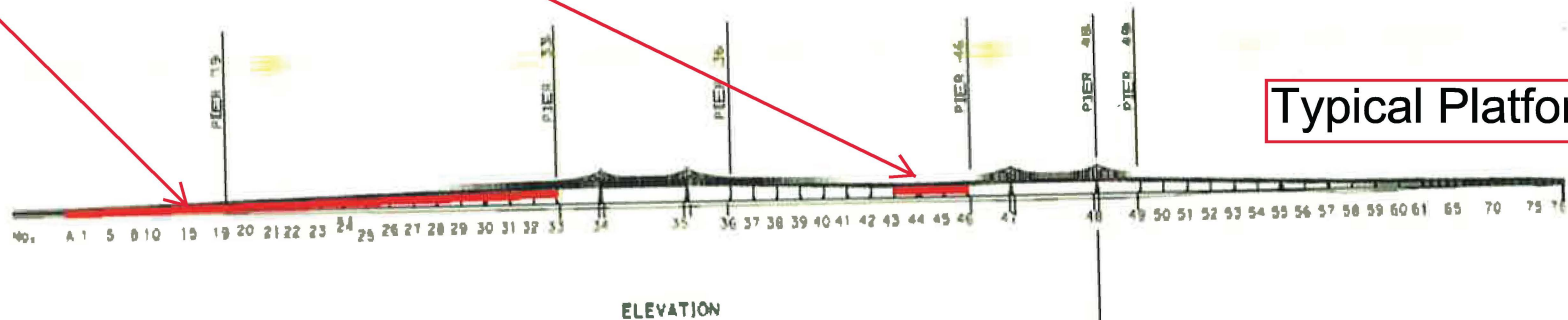


Four 54 ft wide temporary platforms are installed in the main span below low steel of the bridge, in relation to centerline of the span; two south of the north tower and two north of the south tower, reducing vertical clearance by no more than 14 feet. The upstream and downstream lower edges of the temporary platforms will be lighted at night with steady burning red lights visible at 2,000 yards by approaching vessels.

Painting and Structural Repairs Project  
Richmond-San Rafael Bridge  
Mile 13.0, San Francisco Bay

Temporary Underdeck Platforms

WORK PLATFORM



Typical Platform Lighting

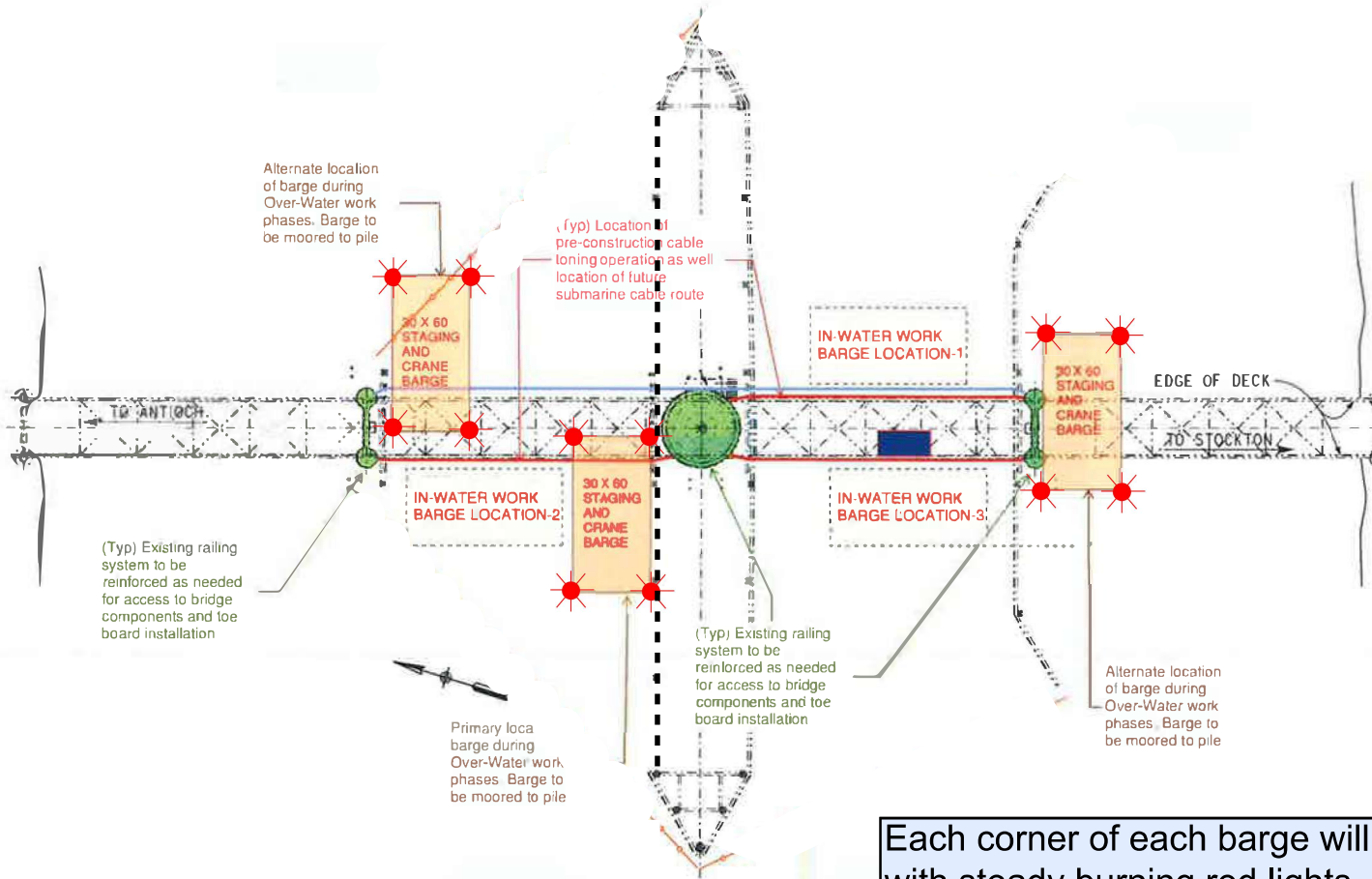
The upstream and downstream lower edges of each temporary platform in each span are lighted at night with steady burning red lights to be seen at 2,000 yards by approaching vessels. Each platform reduces vertical clearance by no more than 3 feet.



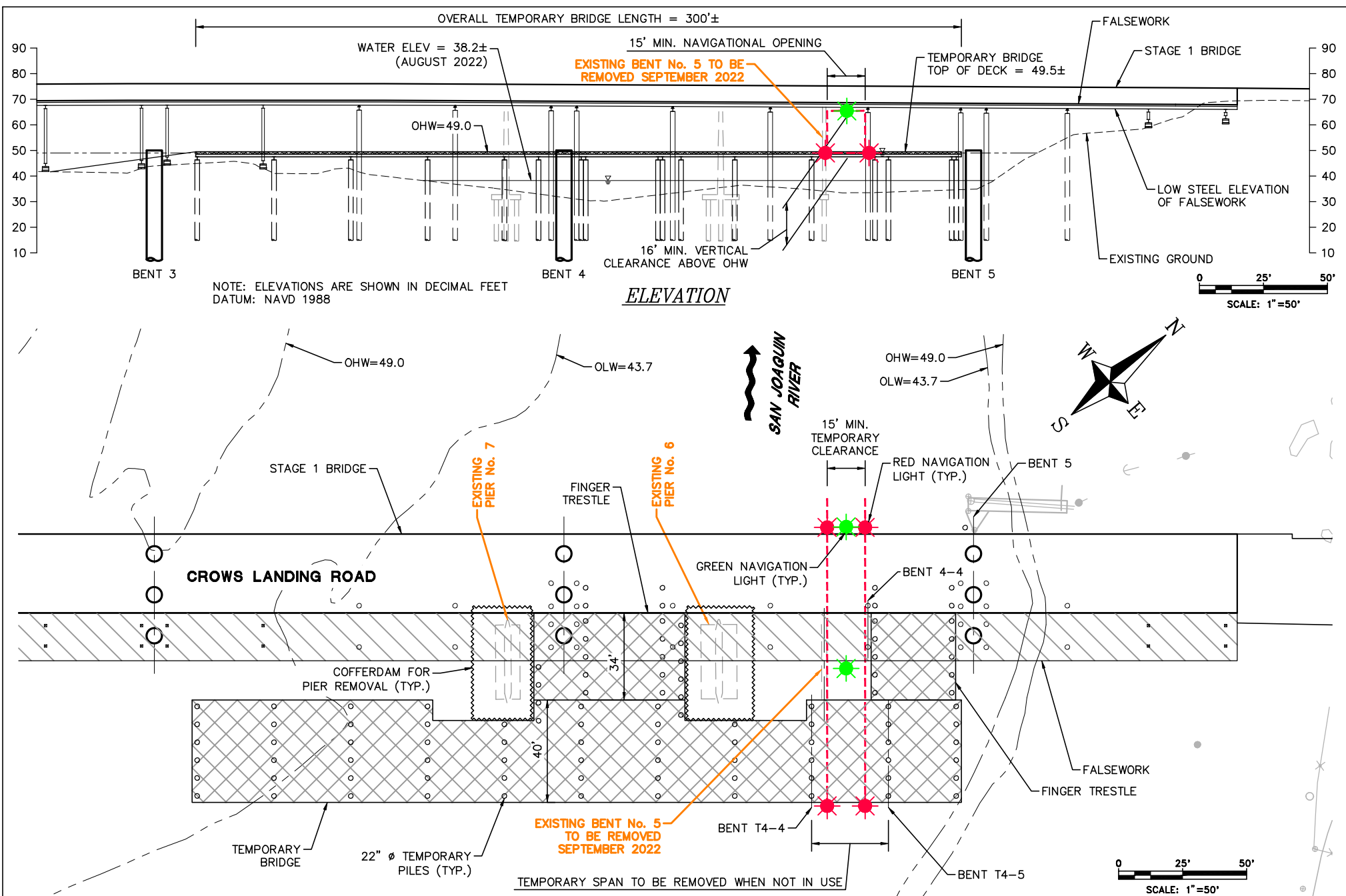
# Barge Lighting Plan

## Highway 4 Drawbridge

### Mile 14.8, Old River



Each corner of each barge will be lighted at night with steady burning red lights, visible at 2,000 yards from approaching vessels.



### Temporary Navigation Lighting-Crows Landing Bridge Replacement Project - San Joaquin River

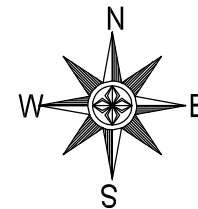
The temporary bridge, the replacement bridge and existing bridge will be lighted at night with two red lights marking the temporary navigation channel. The temporary falsework will be lighted, upriver and downriver, with green lights marking the center of the temporary navigation channel. During construction the temporary navigation channel will provide a horizontal clearance of 15 feet and a vertical clearance at Ordinary High Water of 16 feet.



Anchored barge will be located at either pier "B", "C", "D", or "E" during the work. Each corner of the barge will be lighted at night with steady burning red lights.

Shipping Lane

ANCHOR ZONE E WEST



Size of Barge: 150' X 54'  
(Crane Barge Kelso)  
Typical Location

ANCHOR ZONE E EAST

PIER W6 (E TWR)

Barge will display this lighting configuration when anchored near piers.

BART TUBE EXCLUSION ZONE

D-E Outbound Shipping Lane

D-E Inbound Shipping Lane

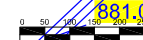
BART TUBE EXCLUSION ZONE

870

285

226.8

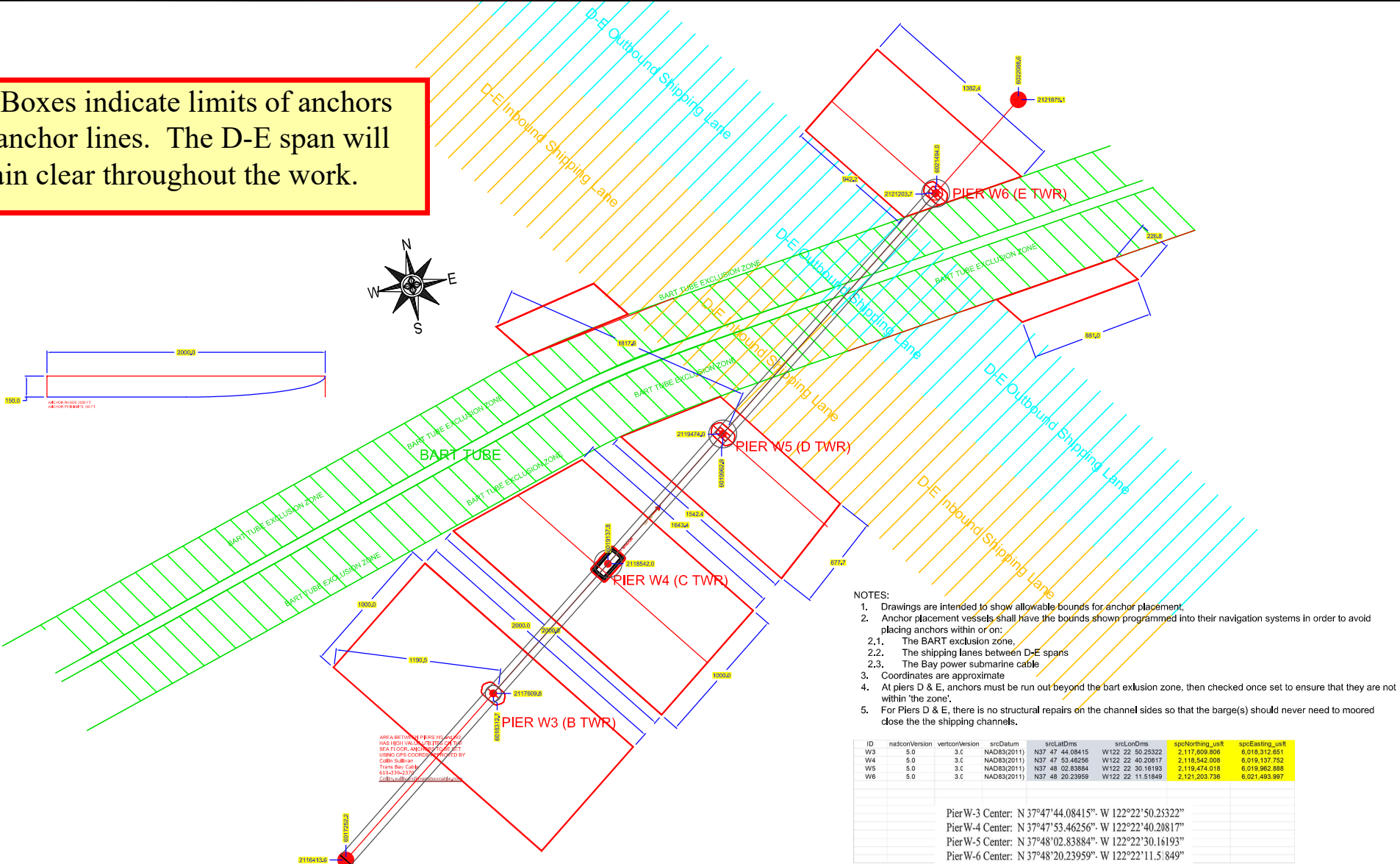
881.0



### Fender Repairs

Western Span San Francisco Oakland Bay Bridge, mile 8.9, San Francisco Bay  
Temporary Impacts to Navigation Diagram

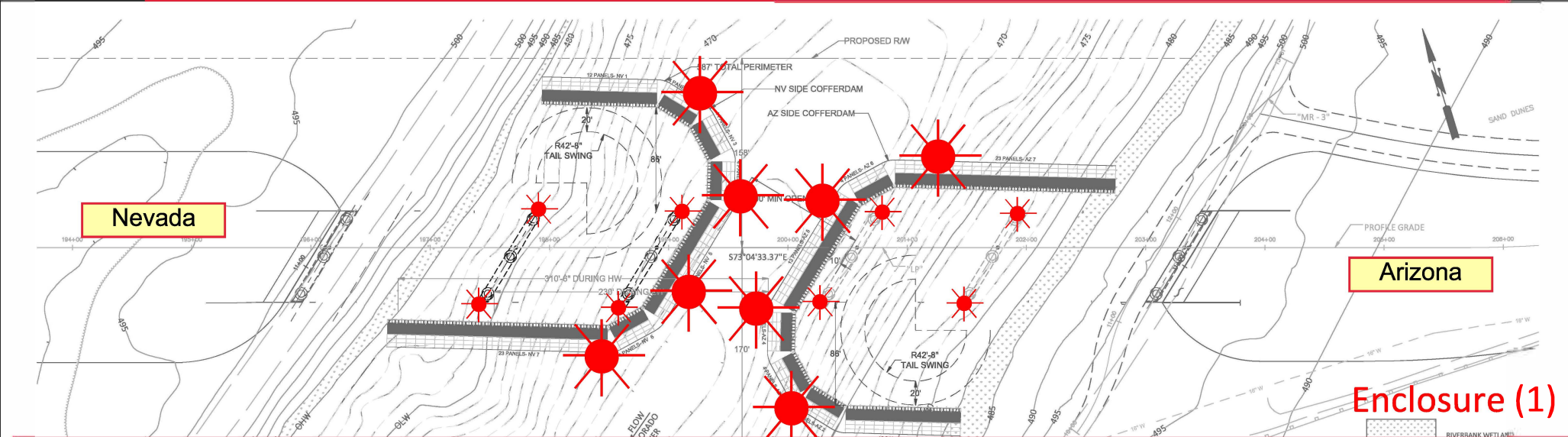
Red Boxes indicate limits of anchors and anchor lines. The D-E span will remain clear throughout the work.



**Fender Repairs**  
**Western Span San Francisco Oakland Bay Bridge, mile 8.9, San Francisco Bay**  
**Temporary Impacts to Navigation Diagram**



New Laughlin-Bullhead City Bridge Construction  
Mile 261.6 over the Colorado River  
Temporary Cofferdam Lighting



The Arizona (AZ) side cofferdam will be installed during phase one of the project. Once AZ side piers and abutments are completed, the cofferdam will be removed and reinstalled on the Nevada (NV) side. The upriver and down river ends, as well as the channel-ward faces, of the cofferdams will be lit at night with steady burning red lights, visible at 2,000 yards by approaching vessels. At least 70 ft from the channel-ward face of either cofferdam will be available in the center of the river for vessels. After piers are installed, the upriver and downriver ends of each pier will be temporarily lighted with red lights, visible at 2,000 yard by approaching vessels, until permanent lighting can be installed marking the main navigation span.

U.S. Department of  
Homeland Security

United States  
Coast Guard



To: All Mariners

April 22, 2022

The National Oceanic and Atmospheric Administration (NOAA) with support from the United States Coast Guard (USCG) and Environmental Protection Agency (EPA) is issuing a voluntary 10-knot Vessel Speed Reduction (VSR) request that goes into effect May 1 off of San Francisco and southern California; please see the attached charts. Large ships travelling 10 knots give whales more time to move to avoid a strike, reduce the lethality of a strike should one occur, generate less harmful ocean noise and have fewer air emissions. Thus, the goals of these voluntary VSR zones are to reduce the risk of fatal ship strikes to endangered blue, fin, and humpback whales, reduce ocean noise and protect public health adjacent to Greater Farallones, Cordell Bank, Monterey Bay, and Channel Islands national marine sanctuaries. These whale species are protected under the Federal Endangered Species Act (16 U.S.C. 1538 et seq.), the Marine Mammal Protection Act (16 U.S.C. 1361 et seq.), and the National Marine Sanctuaries Act (16 U.S.C. 1431 et seq.). Any unauthorized take of whales, even if unintentional, by vessels transiting in U.S. waters violates federal statutes.

**The voluntary VSR request will be in effect May 1 to December 15, 2022 for all VSR zones off California, as shown in the attached charts.** Note the expansion of the VSR zone off San Francisco over prior years is designed to reduce ship strike risk in areas of known whale presence and vessel traffic. The season has been extended to account for the presence of whales later in the year.

NOAA, USCG and EPA request that all vessels 300 gross tons (GT) or larger reduce speeds to 10 knots when transiting within the designated VSR zones. We request your cooperation with the voluntary VSR to protect the health of communities living near these zones, and whales that annually migrate to and through these zones. All transits by vessels 300 GRT or larger are analyzed by NOAA via Automatic Information System (AIS) data provided by USCG to assess the industry's cooperation.

NOAA, USCG and EPA are committed to the long-term protection of nationally significant marine resources and public health by enhancing marine safety and environmental awareness in the maritime community. We encourage vessel crews to report whale sightings through the Whale Alert App (<http://www.whalealert.org>). If you have questions please contact Sean Hastings, (805) 705-1790, [sean.hastings@noaa.gov](mailto:sean.hastings@noaa.gov). NOAA, USCG and EPA commend your commitment to protecting endangered and threatened whales and protecting public health by cooperating with the 10-knot VSR requests and working towards a goal of 100% cooperation in 2022.

William J. Douros, Regional Director  
NOAA Office of National Marine Sanctuaries  
West Coast Region

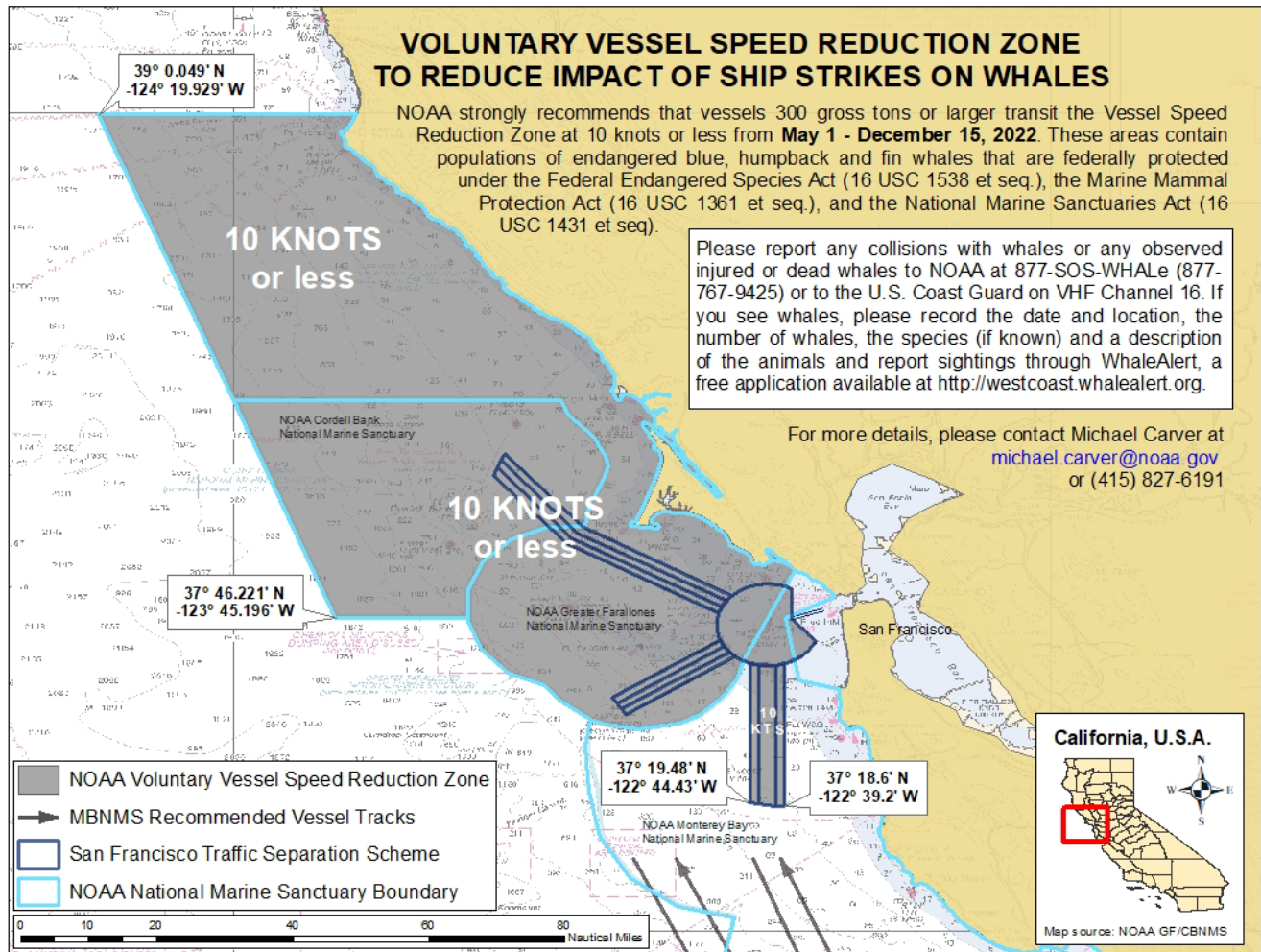
Scott Rumsey, Acting Regional Administrator  
NOAA National Marine Fisheries Service  
West Coast Region

Brian K. Penoyer, Rear Admiral  
U.S. Coast Guard District Eleven

Martha Guzman, Regional Administrator  
Environmental Protection Agency Region 9

## 2022 Voluntary Vessel Speed Reduction Zone

### San Francisco Bay Region



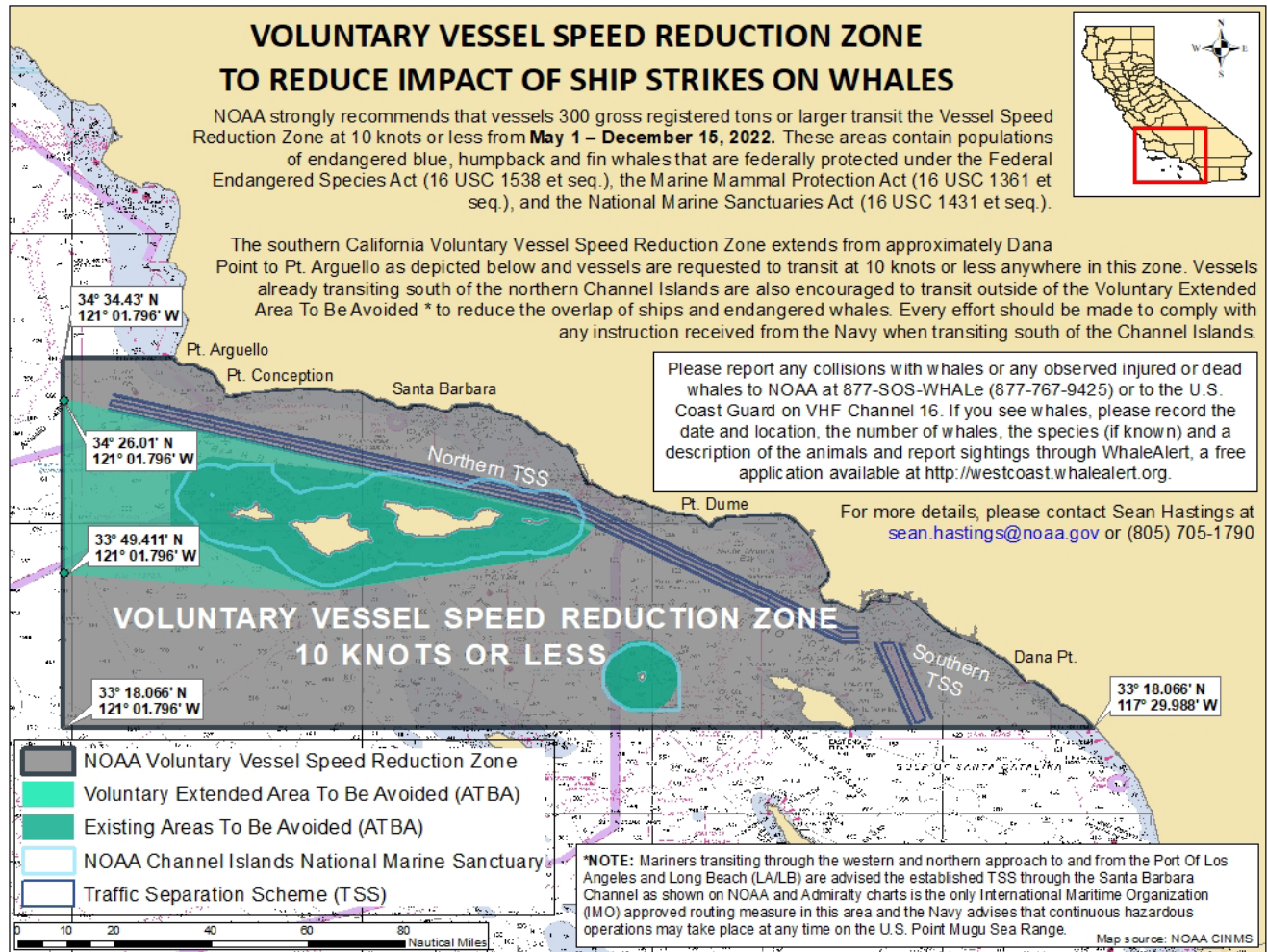
NOAA Chart 18010

This map is not to be used for navigational purposes

13 APRIL 2022



## 2022 Voluntary Vessel Speed Reduction Zone Southern California

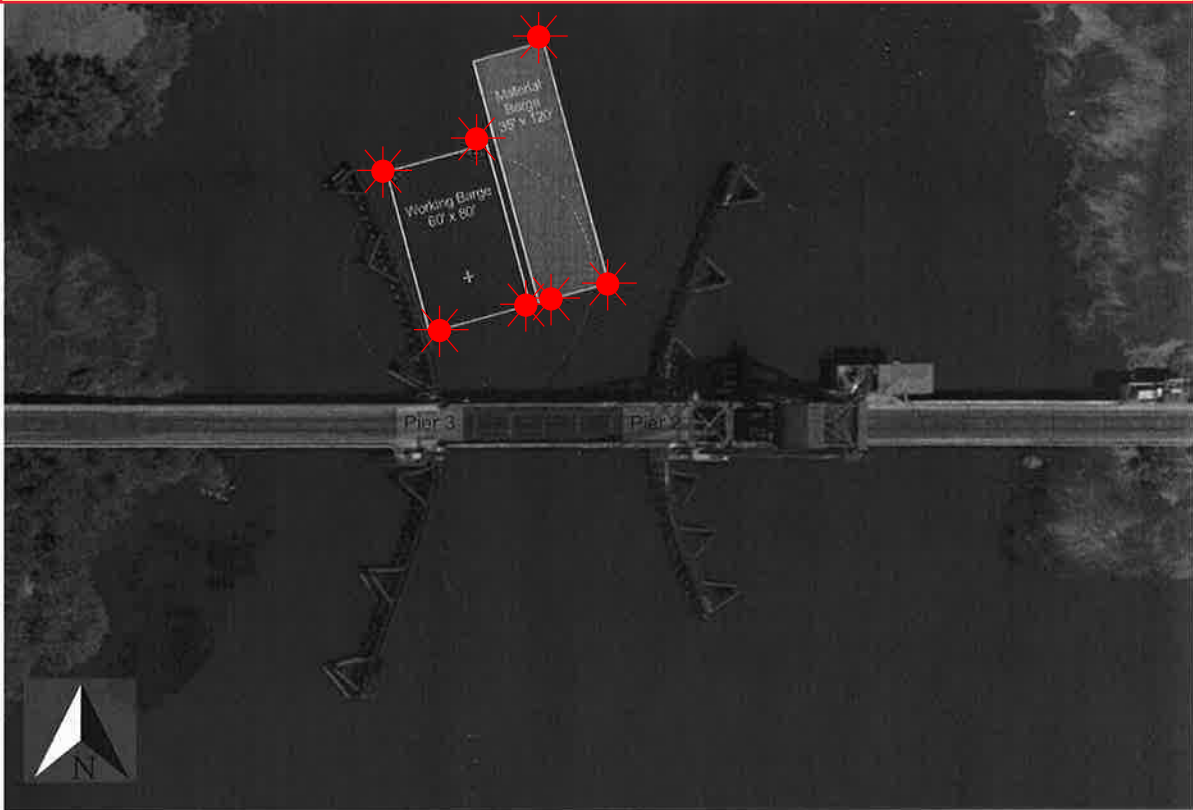


NOAA Chart 18022

Chart not for navigational purposes.

13 APRIL 2022

**Barge Lighting Diagram**  
**BNSF Rail Bridge, Mile 10.4, Old River**

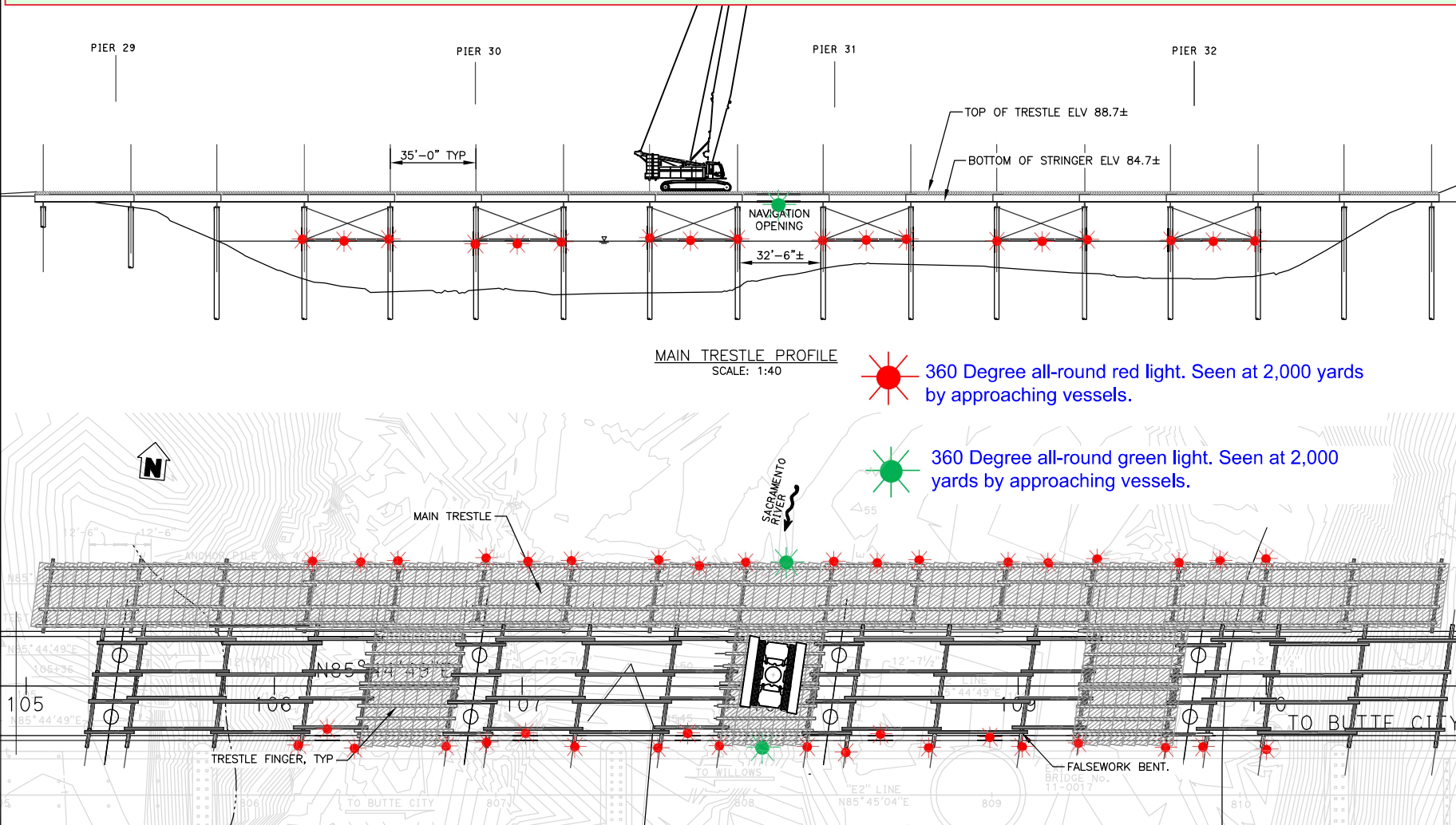


During working hours the barges will be in the main span of the bridge. The barges can be moved for navigational safety upon request with one hour advance notice. After normal working hours the barges will be moored behind the wing-walls of the pier protection system and each corner of each barge will be lighted at night with steady burning red lights.

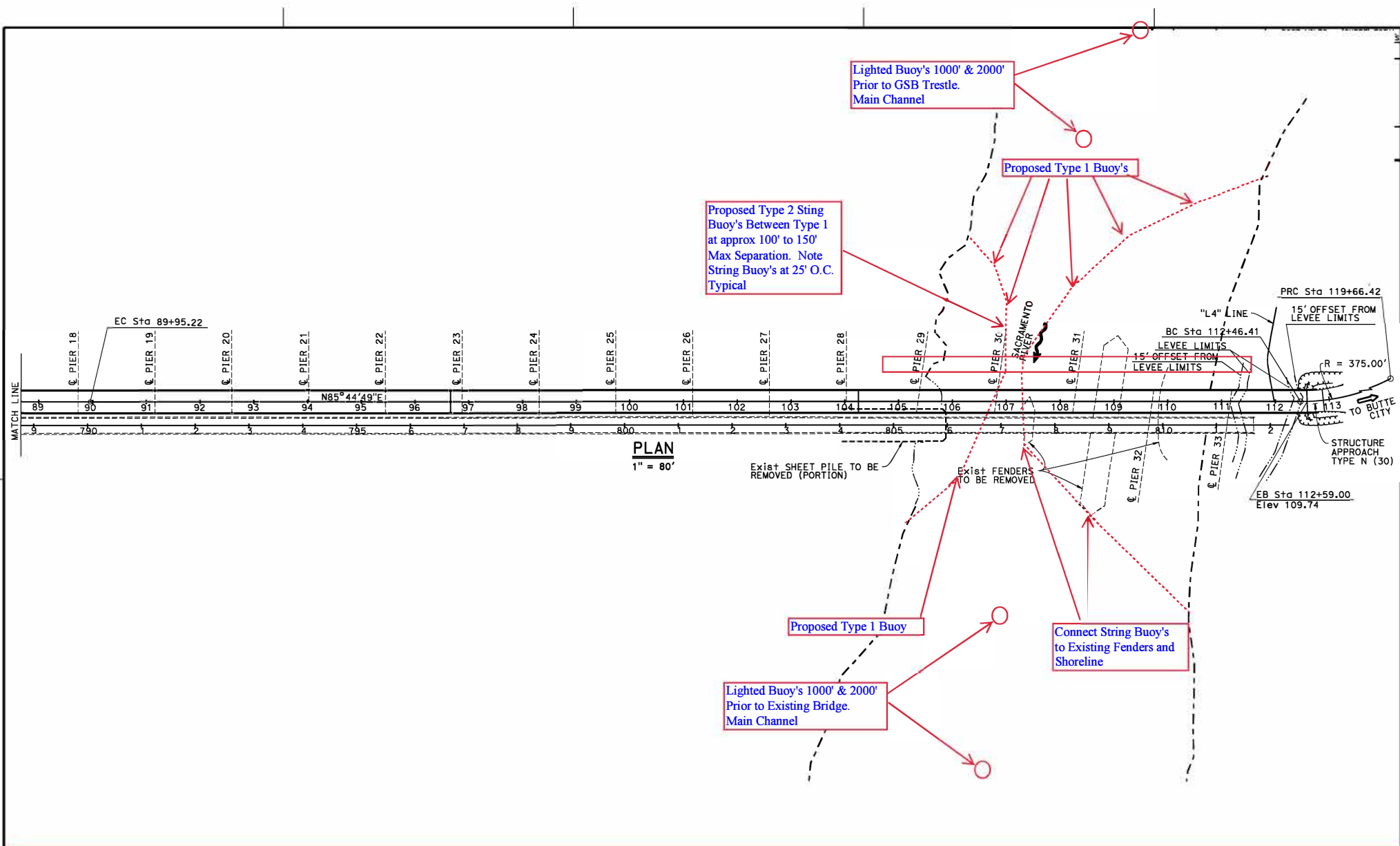
**Enclosure (1)**

# Butte City Bridge Replacement Project

## Sacramento River



The upriver and downriver ends of the trestle piles and crossbeams are lighted at night with steady burning red lights. The upriver and downriver low steel of the temporary navigation span, in the center of the river, is lighted at night with steady burning green lights, which identifies the center of the temporary navigation span.



**Butte City Bridge Replacement Project, mile 169.7, Sacramento River  
Proposed Buoy Line During Construction**



**U.S. COAST GUARD  
REPORT OF DELAY AT DRAWBRIDGE  
PER 33 CFR 117.5**

BRIDGE NAME: \_\_\_\_\_ DATE: \_\_\_\_\_

MILE : \_\_\_\_\_ WATERWAY: \_\_\_\_\_

1. Name/ Type of Vessel: \_\_\_\_\_ Direction of Travel : \_\_\_\_\_

2. Vessel Owner (Name): \_\_\_\_\_

(Address): \_\_\_\_\_

3. Name of Pilot (if applicable): \_\_\_\_\_

(Address): \_\_\_\_\_

4. Time vessel signaled for bridge opening: \_\_\_\_\_

5. Location of vessel when signal was given: \_\_\_\_\_

6. Time and location of vessel when delay began: \_\_\_\_\_

7. Method of signal for bridge opening: ( ) Radio ( ) Sound ( ) Visual.

(If sound or visual signal was used, specify: \_\_\_\_\_)

8. Time bridge operator acknowledged signal: \_\_\_\_\_

9. Method of bridge operator acknowledgement: ( ) Radio ( ) Sound ( ) Visual

(If sound or visual signal was used, specify: \_\_\_\_\_)

10. Did bridge operator acknowledgement indicate the bridge,

( ) Could be opened immediately?

( ) Could not be opened immediately?

11. If land traffic crossed the bridge:

Time land traffic started across the bridge \_\_\_\_\_

Time land traffic stopped crossing the bridge \_\_\_\_\_

Did land traffic stop on the bridge? \_\_\_\_\_

Duration land traffic stopped on the bridge \_\_\_\_\_

12. Time drawbridge opened for navigation \_\_\_\_\_

13. Additional comments:

\_\_\_\_\_  
\_\_\_\_\_  
\_\_\_\_\_

I certify the above information is true to the best of my knowledge and understand this statement may be used by the U.S. Coast Guard in levying fines against the bridge owner.

Signature \_\_\_\_\_

Telephone \_\_\_\_\_

Mariners may complete and return to:

Commander (dpw)  
Eleventh Coast Guard District  
Coast Guard Island, Building 50-2  
Alameda, CA 94501-5100  
Attn: Bridge Office

Fax: (510) 437-5836

Email: [Carl.T.Hausner@uscg.mil](mailto:Carl.T.Hausner@uscg.mil)

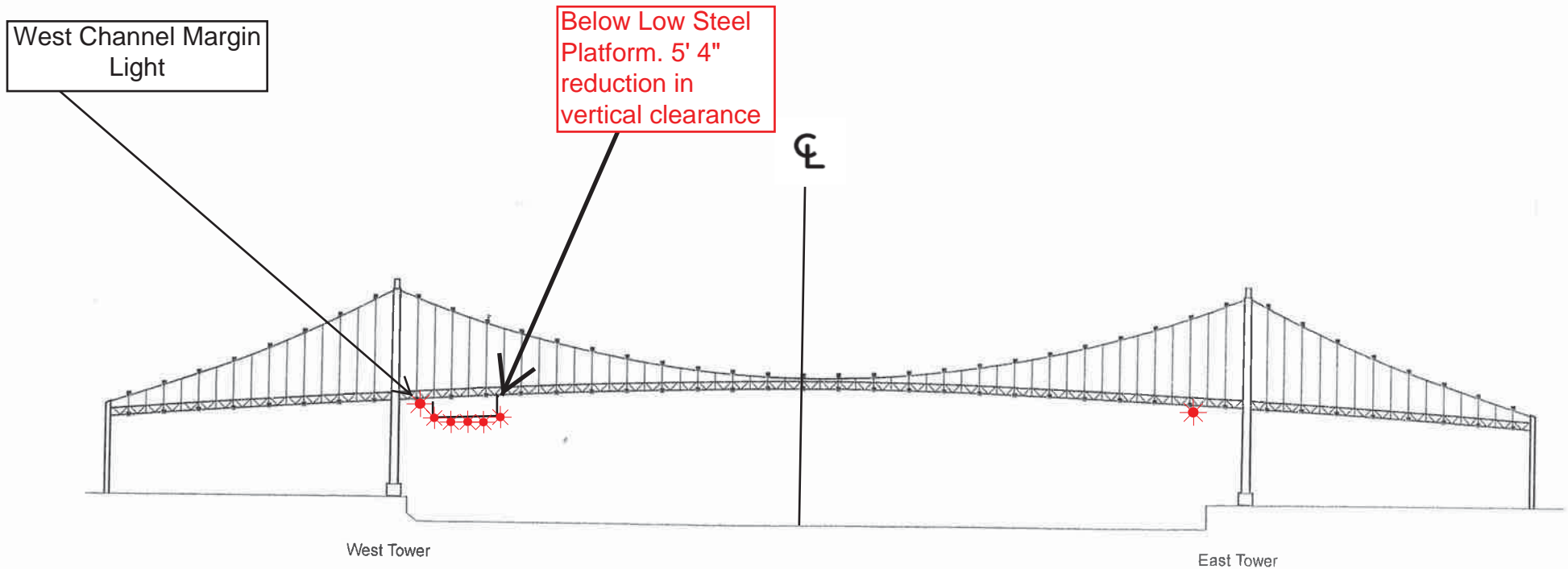
Questions? Please contact: Carl Hausner, Bridge Administrator, Eleventh Coast Guard District

Office: (510) 437-3516

Cell: (510) 219-4366

Mariners are reminded not to require bridge openings for appurtenances nonessential to navigation, per 33 CFR 117.11

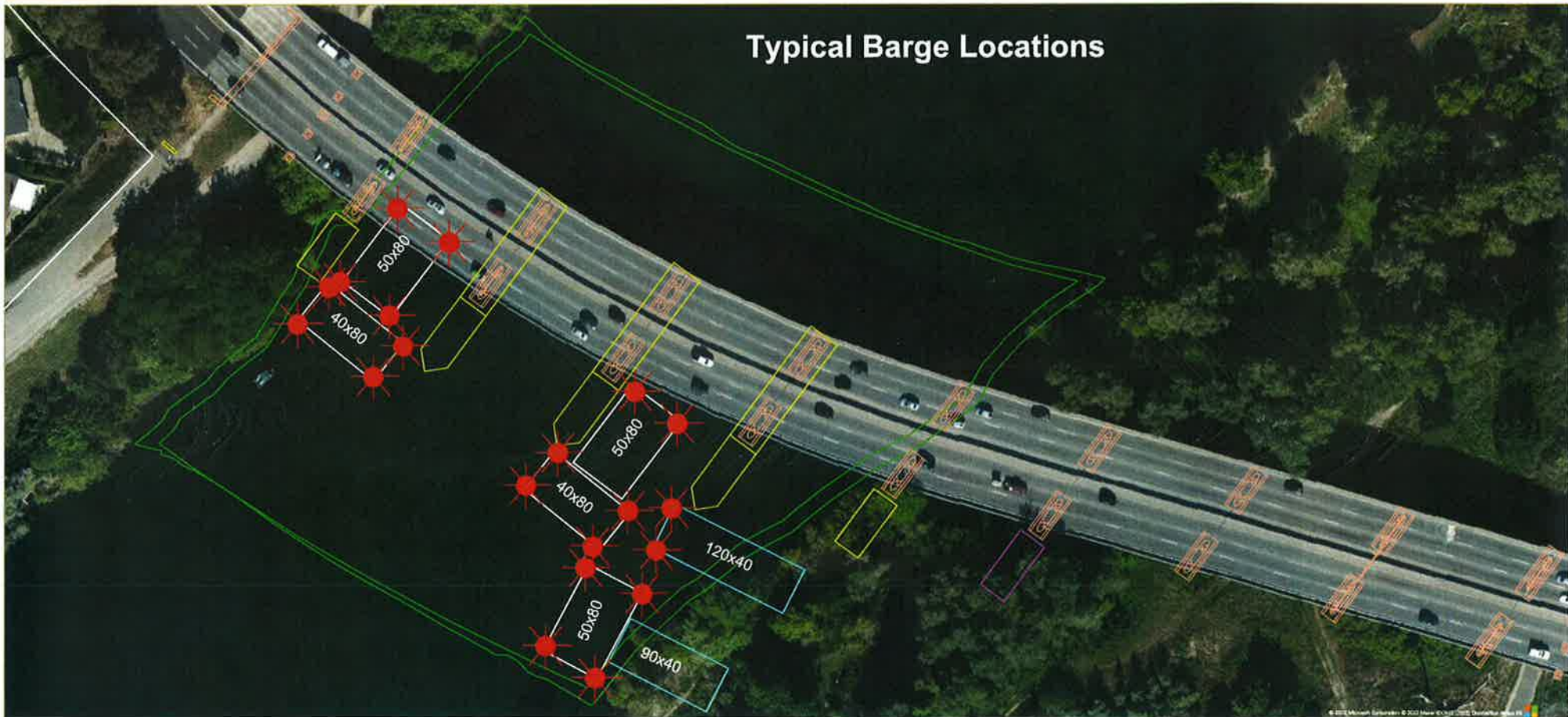
Vincent Thomas Highway Bridge  
Mile 3.0  
Los Angeles/Long Beach Harbor  
**Painting Project**



A 180 foot long under deck temporary platform will reduce vertical clearance by 5' 4". Each corner and every 50 feet along the the upstream and downstream side of the platform will lighted at night with steady burning red lights visible at 2000 yards by approaching vessels. In a duration of 1-year the platform will progress from the western channel margin light to 250' west of the centerline of the bridge.

Rehabilitation and Modification Project  
Capital City (CA Route 51) Bridge, Mile 4.0, American River

Typical Barge Location and Typical Barge Lighting



Each corner of each barge is lighted at night with steady burning all-round red light, visible at 2,000 by approaching vessels. All vessels transiting the project area should use extreme caution. Turbidity curtains will be placed at different locations during the project. The next four diagrams show the proposed location of the curtains.





Capital City Bridge, Mile 4.0, American River

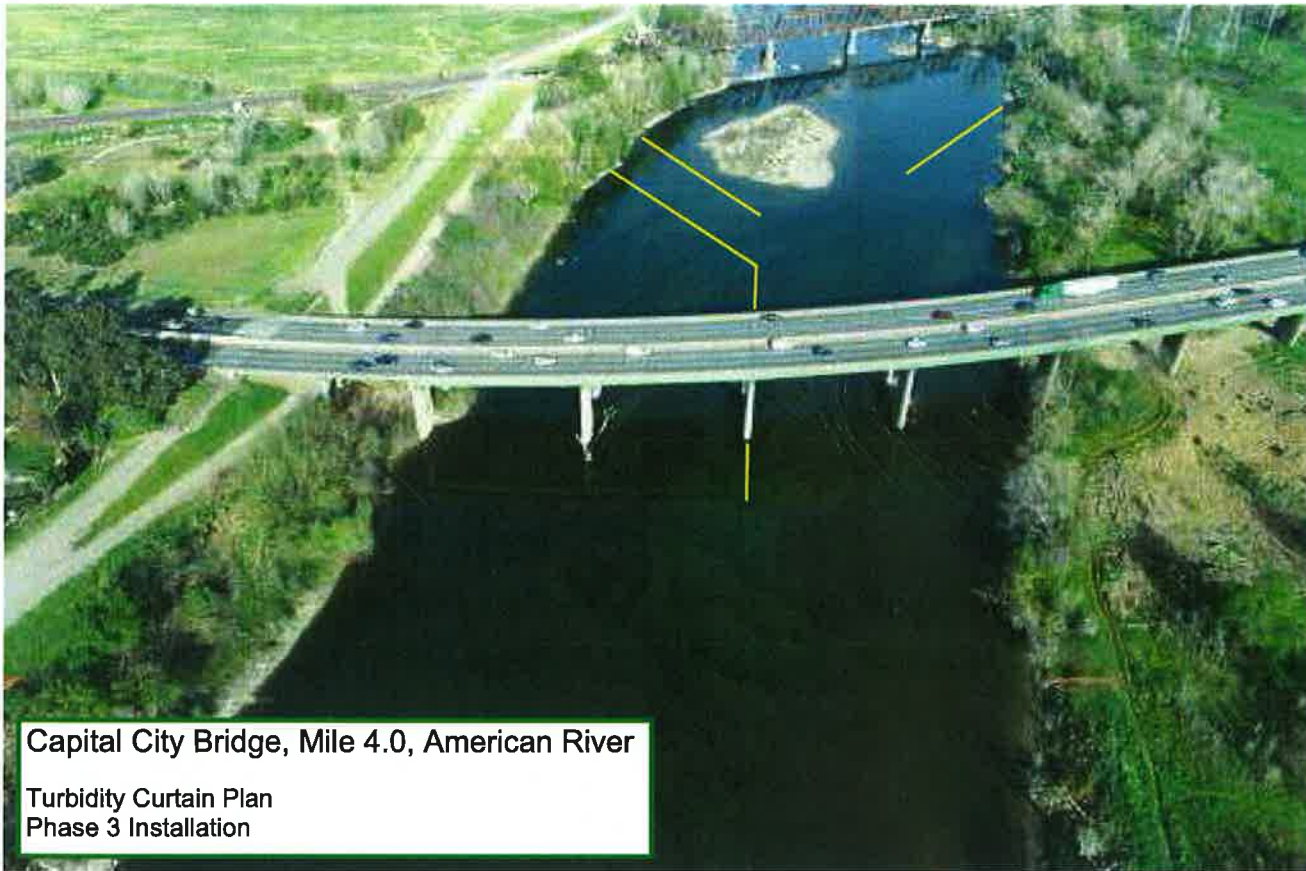
Turbidity Curtain Plan  
Phase 1 Installation





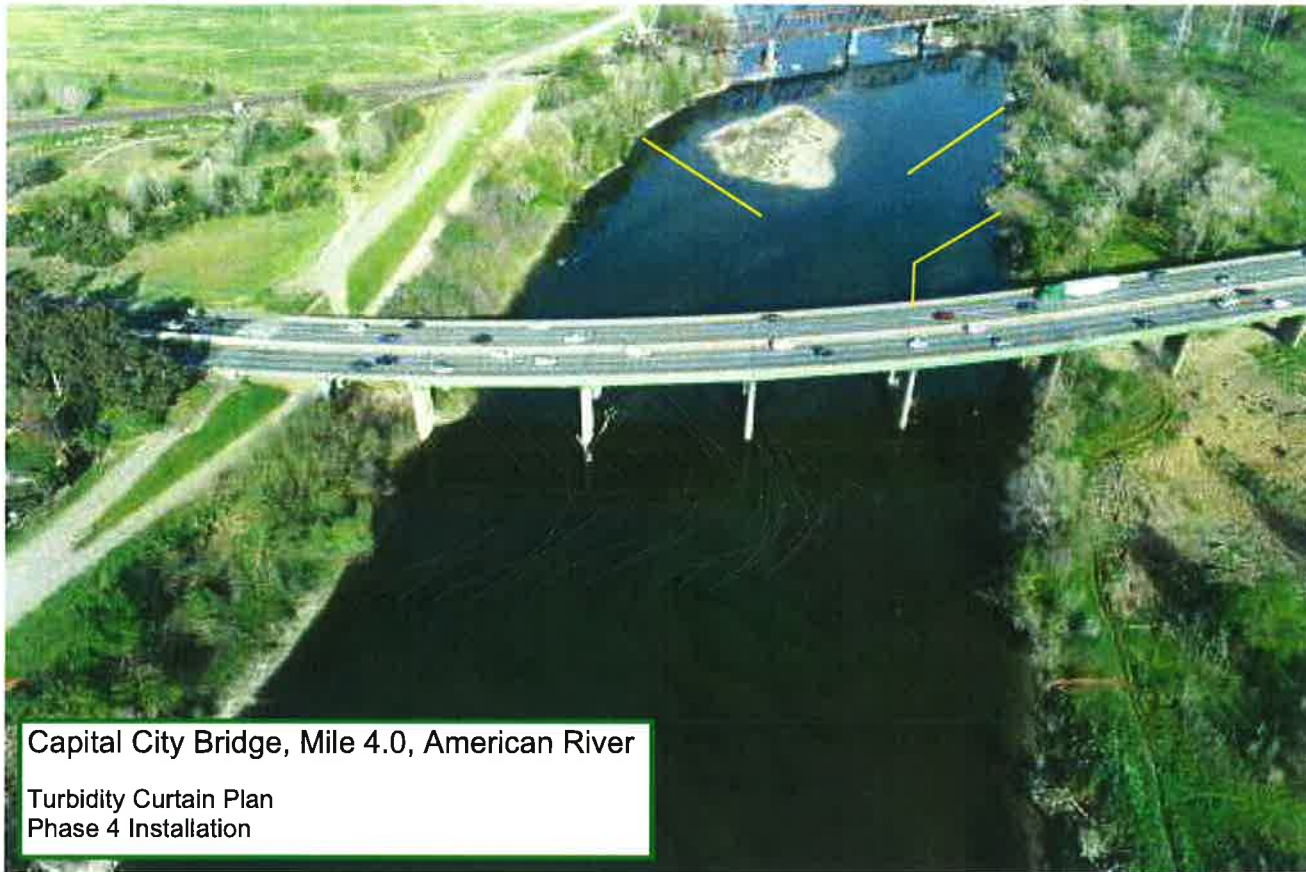
Capital City Bridge, Mile 4.0, American River

Turbidity Curtain Plan  
Phase 2 Installation



Capital City Bridge, Mile 4.0, American River

Turbidity Curtain Plan  
Phase 3 Installation



Capital City Bridge, Mile 4.0, American River

Turbidity Curtain Plan  
Phase 4 Installation