



U.S. Department
of Homeland Security
**United States
Coast Guard**

LOCAL NOTICE TO MARINERS

District: 11

Week: 50/22

CORRESPONDENCE TO:
COMMANDER
DISTRICT ELEVEN (DPW)
COAST GUARD ISLAND BUILDING 50-2
ALAMEDA, CA 94501-5100

REFERENCES: COMDTPUB P16502.6, Light List Volume VI, 2017 Edition, U.S. Chart No.1 12th Edition, and Coast Pilot Volume 7 49th Edition. These publications, along with corrections, are available at: <https://nauticalcharts.noaa.gov/>

BROADCAST NOTICE TO MARINERS - Information concerning aids to navigation and waterway management promulgated through BNM HB-0012-22, SF-0124-22, LA-0106-22, and SD-0091-22 have been incorporated in this notice, or will continue if still significant.

SECTION I - SPECIAL NOTICES

This section contains information of special concern to the Mariner.

SUBMITTING INFORMATION FOR PUBLICATION IN THE LOCAL NOTICE TO MARINERS

A complete set of guidelines with examples and contact information can be found at <http://www.pacificarea.uscg.mil/Our-Organization/District-11/Prevention-Division/LnmRequest/> or call Waterways Management Branch at 510-437-2929 or e-mail D11-SMB-D11-LNM@uscg.mil. Please provide all Local Notice to Mariners submissions 14 days prior to the start of operations

LNM: 17/21

BRIDGE INFORMATION- PROJECTS, DISCREPANCIES, CORRECTIONS & REGULATORY

For all bridge related issues, including lighting, operation, obstructions, construction, demolition, etc. contact the Eleventh Coast Guard District Bridge Administrator 24 hour cell phone at 510-219-4366. Flotsam may accumulate on and near bridge piers and abutments. Mariners should approach all bridges with caution. A vessel delay at a drawbridge may be reported to the District Bridge Administrator by telephone, or by using the Delay_Report_11-2017.pdf included in the Enclosures section of this Local Notice to Mariners.

**** Cancellation of NOAA Paper and Raster Nautical Charts ****

The National Oceanic and Atmospheric Administration (NOAA) is undertaking a multi-year program to end production and maintenance of its suite of over 1,000 traditional paper nautical charts and all associated raster chart products and services, including: Print-on-Demand (POD) paper nautical charts, Full-size chart PDF files, BookletChart™ PDF files, NOAA raster navigational charts (NOAA RNC®), the NOAA RNC tile service, and the online RNC viewer.

Six months notice of the intent to cancel a specific chart is provided in a "Last Edition" notice. The final cancellation of a chart is made in a "Canceled" notice. Both types of notices will appear in LNM Section IV, "Chart Correction." A comprehensive list of all canceled NOAA charts is available at: <http://www.charts.noaa.gov/MCD/Dole.shtml>.

Traditional paper nautical chart production is ending to enable the creation and maintenance of larger scale, more up-to-date, higher quality coverage of NOAA's electronic navigational chart (NOAA ENC®) product. This will significantly enhance the amount of charted detail available to mariners. More information about NOAA's program to sunset traditional paper charts is on the NOAA Coast Survey website at: <https://www.nauticalcharts.noaa.gov/farewell-to-traditional-nautical-charts.html>

An online NOAA Custom Chart application at: <https://devgis.charttools.noaa.gov/pod> is available to create chart images from ENC data, which may then be printed. Notices to Mariners will not be issued for NOAA Custom Charts.

LNM: 35/22

BRIDGE INFORMATION-COMMUNICATIONS PROTOCOL-BENICIA/MARTINEZ UPRR BRIDGE- CARQUINEZ STRAIT

All mariners requiring a bridge lift at the Benicia-Martinez Union Pacific Railroad Bridge, mile 7.0, over the Carquinez Strait, California, should follow the protocol in the document entitled "Coordination of Communications for Union Pacific Railroad Lift Operations." Mariners can download a copy of the document by selecting the link BENICIA-MARTINEZ RR BRIDGE under the QUICK LINKS section at <https://www.pacificarea.uscg.mil/vtssf>.

CAUTION TO BE USED IN RELIANCE UPON AIDS TO NAVIGATION

The aids to navigation depicted on charts comprise a system of fixed and floating aids to navigation with varying degrees of reliability. Prudent mariners will not rely solely on any single aid to navigation, particularly a floating aid to navigation. With respect to buoys, the buoy symbol is used

to indicate the approximate position of the buoy body and the sinker which secures the buoy to the seabed. The approximate position is used because of the practical limitations in positioning and maintaining buoys and their sinkers in precise geographical locations. These limitations include, but are not limited to, inherent imprecision in position fixing methods, prevailing atmospheric and sea conditions, slope of and the material making up the seabed, the fact that buoys are moored to sinkers by varying length of chain, and the fact that the buoy body and/or sinker positions are not under continuous surveillance, but are normally checked only during periodic maintenance visits which often occur more than a year apart. Due to the forces of nature, the position of the buoy body can be expected to shift inside and outside the charted symbol. The mariner is also cautioned that buoys may be extinguished or sound signals may not function as the result of natural causes, collisions, or other accidents. For the foregoing reasons, a prudent mariner must not rely completely upon the position or operation of floating aids to navigation, but will also utilize bearings from fixed objects and aids to navigation on shore. Furthermore, a vessel attempting to pass close aboard always risks collision with a yawing buoy or with the obstruction that the buoy marks.

NAVIGATION CENTER WEBSITE TRANSITION

The U.S. Coast Guard Navigation Center is going to transition the Navigation Center website to a new, enhanced version in the first quarter of 2022. As part of this transition, URLs will be updated across the site including URLs linked to PDFs. Therefore, once the transition is complete, legacy site URLs will no longer function, including bookmarked URLs and URLs used in automatic downloading of data and/or products. Outdated URLs will automatically redirect to the home page of the site, and from there you will be able to easily navigate to your preferred page.

Below are a few of the "old"/new URL pairs listed for your convenience. Please note that the new URLs will not be active until we launch the new website. Of course, once it is launched, the new URLs will be available for re-bookmarking. As a reminder, these are top level URLs that may contain additional links that you use.

This notice will be updated when the final launch date is determined and another notice will be issued to notify you when the site goes live. Questions/concerns may be directed to the NAVCENWebTEAM@uscg.mil.

Local Notices to Mariners (LNMs)

Current URLs: <https://www.navcen.uscg.gov/?pageName=lnmMain>

Replacement: <https://www.navcen.uscg.gov/local-notices-to-mariners-by-cg-district>

Light Lists Annual Publication

Current URLs: <https://navcen.uscg.gov/?pageName=lightLists>

Replacement: <https://www.navcen.uscg.gov/light-list-annual-publication>

Light List - Weekly

Current URLs: <https://navcen.uscg.gov/?pageName=lightListWeeklyUpdates>

Replacement: <https://www.navcen.uscg.gov/weekly-light-lists>

Light List - Corrections

Current URLs: <https://navcen.uscg.gov/?pageName=lightListCorrections>

Replacement: <https://www.navcen.uscg.gov/light-list-summary-of-corrections>

LNM: 06/22

NORTHERN CALIFORNIA-RICHMOND HARBOR ENTRANCE CHANNEL-HAZARD TO NAVIGATION

The Coast Guard has received a report of an unmarked barge mooring in the Richmond Harbor Entrance Channel at 37-54-06N 122-23-56W. Mariners are requested to transit the area with caution. For more details or comments contact U.S. Coast Guard Sector Waterways at 415-399-7442.

Charts: 18649 18653

LNM: 41/22

NORTHERN CALIFORNIA-SAN FRANCISCO - VOLUNTARY VESSEL SPEED REDUCTION

NOAA, U.S. Coast Guard and the Environmental Protection Agency request that all vessels 300 gross registered tons (GRT) or larger reduce speeds to 10 knots or less when transiting the San Francisco Traffic Separation Scheme (SF TSS) and within Greater Farallones and Cordell Bank National Marine Sanctuaries from May 1 to December 15, 2022 to protect endangered blue, humpback and fin whales; see enclosure NOAA VSR 2022.pdf. These areas contain populations of endangered blue, humpback, and fin whales that are federally protected under the Federal Endangered Species Act (16 USC 1538 et seq.), the Marine Mammal Protection Act (16 USC 1361 et seq.), and the National Marine Sanctuaries Act (16 USC 1431 et seq.).

Please report any collisions with whales or any observed injured or dead whales to the U.S. Coast Guard on VHF Channel 16. NOAA is asking for the public's help in tracking whales. Please report sightings through Whale Alert, a free application available at <http://westcoast.whalealert.org/>.

Charts: 18600 18620 18640 18680

LNM: 18/22

NORTHERN CALIFORNIA-SAN FRANCISCO BAY-SEASONAL DISESTABLISHMENT

The following Aids to Navigation sound signal had been seasonally established in accordance with Light List Volume VI, 2022.

East Brothers Light (LLNR 5865)

For more details or comments contact Sector San Francisco at 415-399-7436.

Charts: 18649 18654 18655

LNLM: 50/22

NORTHERN CALIFORNIA-SAN FRANCISCO BAY-SEASONAL ESTABLISHMENT

The following Aids to Navigation sound signal has been seasonally established in accordance with Light List Volume VI, 2022.

San Pablo Bay Channel Light 15 (LLNR 5940)

San Bruno Shoal Channel Light 1 (LLNR 4945)

San Bruno Shoal Channel Light 5 (LLNR 4965)

For more details or comments contact Sector San Francisco at 415-399-7436.

Charts: 18649 18654 18655

LNLM: 43/22

NORTHERN CALIFORNIA-SAN FRANCISCO-MILE ROCKS LIGHT-REDUCED NOMINAL RANGE

Mile Rocks Light (LLNR 365) will have a temporarily reduced intensity of 5nm until further notice. Mariners are requested to transit the area with caution. For more details or comments contact LT Miranda Brumbaugh at 510-437-2978 or Miranda.E.Brumbaugh@uscg.mil.

Charts: 18007 18010 18020 18022 18640 18649 18680

LNLM: 16/19

NORTHERN CALIFORNIA-SANTA CRUZ HARBOR-SEASONAL BUOY DISESTABLISHMENT

The following buoys have been seasonally disestablished in accordance with Light List Volume VI, 2022.

Santa Cruz Harbor buoy 1 (LLNR 4090)

Santa Cruz Harbor Lighted Buoy 2 (LLNR 4095)

Santa Cruz Harbor Buoy 3 (LLNR 4100)

Santa Cruz Harbor Buoy 4 (LLNR 4105)

For more details or comments contact Sector San Francisco at 415-399-7436.

Chart 18685

LNLM: 46/22

SAFETY NOTICE - NAVIGATIONAL RANGE AND SECTOR LIGHTS ON ELECTRONIC CHARTS

"The U.S. Coast Guard has become aware that the Range and Sector Light Characteristic labels are not displayed on Electronic Navigational Charts (ENCs) when used in an Electronic Chart Display and Information System (ECDIS) due to limitations of the S-52 ECDIS display specification. Mariners may query the ENC data directly within ECDIS or refer to the Light List for complete information on Range and Sector Light Characteristics."

LNLM: 39/22

SOUTHERN CALIFORNIA-DANA POINT TO POINT ARGUELLO-VOLUNTARY VESSEL SPEED REDUCTION

NOAA, U.S. Coast Guard and the Environmental Protection Agency request that all vessels 300 gross registered tons (GRT) or larger reduce speeds to 10 knots or less when transiting in the Vessel Speed Reduction from Dana Point to Pt. Arguello from May 1 to December 15, 2022 to protect endangered whales; see enclosure NOAA VSR 2022.pdf. These areas contain populations of endangered blue, humpback, and fin whales that are federally protected under the Federal Endangered Species Act (16 USC 1538 et seq.), the Marine Mammal Protection Act (to protect endangered whales 16 USC 1361 et seq.), and the National Marine Sanctuaries Act (16 USC 1431 et seq.). Vessels already transiting south of the northern Channel Islands are also encouraged to transit outside of the voluntary Extended Area To Be Avoided to reduce the overlap of ships and endangered whales.

Please report any collisions with whales or any observed injured or dead whales to the U.S. Coast Guard on VHF Channel 16. NOAA is asking for the public's help in tracking whales. Please report sightings through Whale Alert, a free application available at <http://westcoast.whalealert.org/>.

Charts: 18720 18740

LNLM: 18/22

SOUTHERN CALIFORNIA-SAN DIEGO BAY-MINIMIZE WAKE

The Navy Port Operations Manager requests that vessels slow to 7 kts when a vessel is moored in restricted area (33 CFR 334.865) located on the northeast side of North Island at 32-42-57N 117-11-22W, between San Diego Channel Lighted Buoy 20 (LLNR 1710) and San Diego Channel Lighted Buoy 22 (LLNR 1830). For more details or comments contact LT Rodriguez at 619-545-3232, Rigoberto.rodriguez3@navy.mil.

Chart 18773

LNLM: 10/22

SUBMITTING INFORMATION FOR PUBLICATION IN THE LOCAL NOTICE TO MARINERS

Coast Guard District Eleven Waterways upgrade to E-Mail capabilities. All future requests for article submission in the District Eleven Local Notice to Mariners are requested to be E-Mailed to D11-SMB-SMB-D11-LNM@uscg.mil at least two weeks prior to the operation. For more details or comments please contact District Eleven Waterways Management Branch at 510-437-2929 or e-mail D11-SMB-D11-LNM@uscg.mil. Coast Guard District Eleven requests all Local Notice to Mariners submissions be E-Mailed to our office at least 14 days prior to the start of operations for timely submittal and publication.

LNLM: 17/21

SECTION II - DISCREPANCIES

This section lists all reported and corrected discrepancies related to Aids to Navigation in this edition. A discrepancy is a change in the status of an aid to navigation that differs from what is published or charted.

DISCREPANCIES (FEDERAL AIDS)

| LLNR | Aid Name | Status | Chart No. | BNM Ref. | LNM St | LNM End |
|-------------|--|------------------|--------------|-------------------|--------------|---------|
| 10 | San Diego Bay Approach Lighted Whistle Buoy SD | RAC INOP | 18772 | SD-0070-22 | 38/22 | |
| 125 | Long Beach Light | LT EXT | 18751 | LA-0148-20 | 49/20 | |
| 345 | San Francisco South Traffic Lane Lighted Bell Buoy S | MISSING | 18640 | SF-0042-21 | 09/21 | |
| 360 | San Francisco Approach Lighted Whistle Buoy SF | RAC INOP | 18649 | SF-0040-22 | 17/22 | |
| 365 | Mile Rocks Light | LT EXT | 18649 | SF-0099-22 | 44/22 | |
| 1485 | San Diego Bay Approach Lighted Whistle Buoy SD | RAC INOP | 18772 | SD-0070-22 | 38/22 | |
| 1493 | San Diego Bay Approach Lighted Bell Buoy 4 | LT IMCH | 18772 | SD-0074-22 | 41/22 | |
| 2295 | Oceanside Breakwater Light 1 | REDUCED INT | 18758 | SD-0080-22 | 44/22 | |
| 2635 | Ship Rock Light | LT EXT | 18757 | LA-0095-21 | 26/21 | |
| 2641 | Isthmus Cove Harbor Reefs Light | STRUCT DMGD | 18757 | LA-0018-21 | 05/21 | |
| 2670 | Santa Catalina Island West End Light | LT EXT | 18757 | LA-0113-19 | 34/19 | |
| 2810 | Anaheim Bay Channel Buoy 7 | OFF STA | 18749 | LA-0062-22 | 30/22 | |
| 3012 | Long Beach Light | LT EXT | 18751 | LA-0148-20 | 49/20 | |
| 3117 | Los Angeles Main Channel Lighted Buoy 11 | REDUCED INT | 18751 | LA-0105-21 | 28/21 | |
| 3132 | Terminal Island Channel Lighted Buoy 1 | STRUCT DMGD | 18751 | LA-0027-22 | 16/22 | |
| 3625 | Port Hueneme Channel Lighted Buoy 6 | SINKING | 18725 | LA-0091-22 | 39/22 | |
| 3970 | Monterey Harbor Light 6 | REDUCED INT | 18685 | SF-0121-22 | 49/22 | |
| 3970 | Monterey Harbor Light 6 | REDUCED INT | 18685 | SF-0165-21 | 51/21 | |
| 3970 | Monterey Harbor Light 6 | SS INOP | 18685 | SF-0064-20 | 27/20 | |
| 4155 | Colorado Reef Lighted Buoy 26 | OFF STA | 18640 | SF-0163-21 | 51/21 | |
| 4175 | San Francisco Main Ship Channel Lighted Buoy 4 | LT EXT | 18649 | SF-0087-22 | 40/22 | |
| 4245 | Mile Rocks Light | LT EXT | 18649 | SF-0099-22 | 44/22 | |
| 4600 | Yerba Buena Island Wharf Light | LT EXT | 18650 | SF-0107-22 | 44/22 | |
| 4625 | Oakland Outer Harbor Range A Rear Light | LT EXT | 18650 | SF-0092-22 | 42/22 | |
| 4680 | Oakland Inner Harbor Light 10 | MISSING/TRLB | 18650 | SF-0052-21 | 02/22 | |
| 4684 | Oakland Inner Harbor Turn Basin Light B | STRUCT DMGD/TRLB | 18650 | SF-0097-21 | 29/21 | |
| 4710 | Brooklyn Basin North Channel Light 10 | LT EXT | 18650 | SF-0123-22 | 50/22 | |
| 4740 | San Leandro Bay Airport Channel Daybeacon 6 | STRUCT DEST/TRUB | 18650 | SF-0033-22 | 15/22 | |
| 4830 | San Leandro Marina Channel Light 1 | SS INOP | | SF-0093-22 | 42/22 | |
| 5430 | Berkeley Marina Channel Light 2 | LT EXT | 18650 | SF-0086-22 | 40/22 | |
| 5480 | Southampton Shoal Light | SS INOP | 18653 | SF-0120-22 | 49/22 | |
| 5725 | Richmond Harbor Channel Light 9 | MISSING/TRLB | 18649 | SF-0098-22 | 43/22 | |
| 5820 | San Francisco Bay North Channel Lighted Bell Buoy 18 | LT EXT | 18649 | SF-0101-22 | 44/22 | |
| 6095 | Mare Island Strait Light 2 | STRUCT DMGD/TRLB | 18655 | SF-0152-20 | 49/20 | |
| 6310 | Suisun Bay Channel Buoy 3 | OFF STA | 18656 | SF-0116-21 | 36/21 | |
| 6433 | Point Edith Crossing Range Front Light | STRUCT DEST/TRLB | 18658 | SF-0067-22 | 32/22 | |
| 6505 | Suisun Bay Channel Lighted Buoy 17 | OFF STA | 18658 | SF-0128-21 | 02/22 | |
| 6685 | San Joaquin River Light 8 | LT EXT/TRLB | 18656 | SF-0109-21 | 02/22 | |

| | | | | | |
|------|---|------------------|-------|------------|-------|
| 6855 | San Joaquin River Light 46 | STRUCT DEST/TRLB | 18661 | SF-0057-22 | 28/22 |
| 7210 | Sacramento River Deep Water Ship Channel Light 10 | MISSING/TRLB | 18656 | SF-0101-21 | 32/21 |
| 7210 | Sacramento River Deep Water Ship Channel Light 10 | SINKING | 18656 | SF-0105-22 | 44/22 |
| 7235 | Sacramento River Deep Water Ship Channel Light 15 | MISSING/TRLB | 18661 | SF-0100-20 | 35/20 |
| 7240 | Sacramento River Deep Water Ship Channel Light 16 | STRUCT DEST/TRLB | 18661 | SF-0127-18 | 34/18 |
| 7260 | Sacramento River Deep Water Ship Channel Light 20 | MISSING/TRLB | 18661 | SF-0108-21 | 33/21 |
| 8485 | Lake Tahoe Lighted Danger Buoy Q | OFF STA | | SF-0102-22 | 44/22 |

DISCREPANCIES (FEDERAL AIDS) CORRECTED

| LLNR | Aid Name | Status | Chart No. | BNM Ref. | LNM St | LNM End |
|------|--|-------------------|-----------|------------|--------|---------|
| 3325 | Redondo Harbor Entrance Lighted Bell Buoy RB | WATCHING PROPERLY | 18744 | LA-0105-22 | 49/22 | 50/22 |
| 8165 | Humboldt Bay Entrance Range Front Light | WATCHING PROPERLY | 18622 | HB-0012-22 | 49/22 | 50/22 |

DISCREPANCIES (PRIVATE AIDS)

| LLNR | Aid Name | Status | Chart No. | BNM Ref. | LNM St | LNM End |
|---------|---|------------------|-----------|------------|--------|---------|
| 20 | Ocean Beach Pier Fog Sound Signal | SS INOP | 18765 | SD-0002-19 | 05/19 | |
| 158 | Scripps Waverider Lighted Research Buoy 092 | OFF STA | 18746 | | 45/18 | |
| 505 | Scripps Waverider Lighted Research Buoy 168 | LT EXT | 18620 | HB-0003-22 | 14/22 | |
| 1665 | Americas Cup Harbor Daybeacon 2 | STRUCT DEST/TRUB | 18773 | SD-0001-22 | 02/22 | |
| 2056 | Sweetwater Channel Light 6 | STRUCT DEST | 18773 | SD-0087-22 | 47/22 | |
| 2070 | Coronado Cays Channel Daybeacon 3 | STRUCT DEST | 18773 | SD-0098-17 | 36/17 | |
| 2090 | Coronado Cays Channel Light 7 | STRUCT DEST/TRUB | 18773 | SD-0046-22 | 31/22 | |
| 2288 | Scripps Waverider Lighted Research Buoy 220 | OFF STA | 18765 | SD-0041-20 | 30/20 | |
| 2289.1 | Scripps Waverider Lighted Research Buoy 100 | OFF STA | 18765 | | 22/20 | |
| 2289.4 | Scripps "CORDC" Lighted Research Buoy | MISSING | 18765 | | 22/20 | |
| 2764.4 | Catalina Sea Ranch SE Buoy | MISSING | 18746 | LA-0001-22 | 03/22 | |
| 2871 | Long Beach Harbor Brusco Lighted Mooring Buoy | LT EXT | 18751 | LA-0009-21 | 03/21 | |
| 3339.2 | REDONDO HARBOR LIGHT | LT EXT | 18744 | LA-0181-18 | 52/18 | |
| 3400 | El Segundo NRG Energy Buoy 6ES | SINKING | 18744 | LA-0153-21 | 39/21 | |
| 3420 | Hyperion Lighted Gong Buoy 10 ES | LT EXT | 18744 | | 16/20 | |
| 4401 | Richardson Bay Daybeacon 8 | DAYMK DMGD | 18653 | | 15/20 | |
| 4402 | Richardson Bay Daybeacon 9 | STRUCT DMGD | 18649 | SF-0086-18 | 23/18 | |
| 4576 | South Beach Harbor North Entrance Light 2 | LT EXT | 18650 | SF-0047-21 | 11/21 | |
| 4577 | South Beach Harbor North Entrance Light 1 | LT EXT | 18650 | SF-0046-21 | 10/21 | |
| 4578 | South Beach Harbor South Entrance Light 1 | LT EXT | 18650 | SF-0091-20 | 33/20 | |
| 4826 | Bay Farm Island Light 1 | LT EXT | 18650 | SF-0014-19 | 05/19 | |
| 4826.15 | Bay Farm Island Light 3 | LT EXT | 18650 | SF-0014-19 | 04/19 | |
| 4826.2 | Bay Farm Island Light 4 | LT EXT | 18650 | SF-0136-21 | 44/21 | |
| 4827.1 | Anchorage 9 Lighted Mooring Buoy A | LT EXT | 18650 | SF-0012-20 | 04/20 | |
| 4828.1 | Anchorage 9 Lighted Mooring Buoy B | LT EXT | 18650 | SF-0013-20 | 04/20 | |
| 5661 | Southampton Shoal Outfall Lighted Buoy 1 | LT EXT/RAC INOP | 18653 | SF-0026-19 | 07/19 | |
| 5661 | Southampton Shoal Outfall Lighted Buoy 1 | MISSING/TRLB | 18653 | SF-0029-20 | 18/21 | |

| | | | | | |
|--------|---|-------------------|-------|------------|-------|
| 5662 | Southampton Shoal Outfall Lighted Buoy 2 | LT EXT | 18653 | SF-0059-21 | 14/21 |
| 5877.2 | San Rafael Rock Quarry Mooring Buoy C | MISSING | 18653 | | 36/18 |
| 6623 | New York Slough Koch West Light | LT IMCH | | | 39/18 |
| 6624 | New York Slough Koch East Light | LT EXT | | | 39/18 |
| 6645.5 | Delta Diablo Outfall Lighted Buoy | LT EXT | | SF-0005-22 | 02/22 |
| 8325 | Pacific Gas and Electric Dike Light | LT EXT | 18622 | HB-0009-21 | 20/21 |
| 8591.1 | Lake Tahoe NASA-JPL Lighted Research Buoy TB2 | Status Unreported | | | 37/22 |

DISCREPANCIES (PRIVATE AIDS) CORRECTED

| LLNR | Aid Name | Status | Chart No. | BNM Ref. | LNM St | LNM End |
|------|----------|--------|-----------|----------|--------|---------|
|------|----------|--------|-----------|----------|--------|---------|

None

PLATFORM DISCREPANCIES

| Name | Status | Position | BNM Ref. | LNM St | LNM End |
|------|--------|----------|----------|--------|---------|
|------|--------|----------|----------|--------|---------|

None

PLATFORM DISCREPANCIES CORRECTED

| Name | Status | Position | BNM Ref. | LNM St | LNM End |
|------|--------|----------|----------|--------|---------|
|------|--------|----------|----------|--------|---------|

None

SECTION III - TEMPORARY CHANGES and TEMPORARY CHANGES CORRECTED

This section contains temporary changes and corrections to Aids to Navigation for this edition. When charted aids are temporarily relocated for dredging, testing, evaluation, or marking an obstruction, a temporary correction shall be listed in Section IV giving the new position.

TEMPORARY CHANGES

| LLNR | Aid Name | Status | Chart No. | BNM Ref. | LNM St | LNM End |
|------|-----------------|-------------------|-----------|------------|--------|---------|
| 280 | Point Sur Light | Reduced Intensity | 18680 | SF-0105-20 | 35/20 | |

TEMPORARY CHANGES CORRECTED

| LLNR | Aid Name | Status | Chart No. | BNM Ref. | LNM St | LNM End |
|------|----------|--------|-----------|----------|--------|---------|
|------|----------|--------|-----------|----------|--------|---------|

None

PLATFORM TEMPORARY CHANGES

| Name | Status | Position | BNM Ref. | LNM St | LNM End |
|------|--------|----------|----------|--------|---------|
|------|--------|----------|----------|--------|---------|

None

PLATFORM TEMPORARY CHANGES CORRECTED

| Name | Status | Position | BNM Ref. | LNM St | LNM End |
|------|--------|----------|----------|--------|---------|
|------|--------|----------|----------|--------|---------|

None

SECTION IV - CHART CORRECTIONS

This section contains corrections to federally and privately maintained Aids to Navigation, as well as NOS corrections.

This section contains corrective actions affecting chart(s). Corrections appear numerically by chart number, and pertain to that chart only. It is up to the mariner to decide which chart(s) are to be corrected. The following example explains individual elements of a typical chart correction.

| Chart Number | Chart Edition | Edition Date | Last Local Notice to Mariners | Horizontal Datum Reference | Source of Correction | Current Local Notice to Mariners |
|--|------------------------------|-----------------------------|-------------------------------|----------------------------|----------------------|----------------------------------|
| 12327 | 91st Ed. | 19-APR-97 | Last LNM: 26/97 | NAD 83 | | 27/97 |
| Chart Title: NY-NJ-NEW YORK HARBOR - RARITAN RIVER | | | | | | |
| Main Panel 2245 NEW YORK HARBOR | | | | | CGD01 | |
| (Temp) ADD | NATIONAL DOCK CHANNEL BUOY 3 | | | | at 40-41-09.001N | 074-02-48.001W |
| | Green can | | | | | |
| Corrective Action | | Object of Corrective Action | | | Position | |

(Temp) indicates that the chart correction action is temporary in nature. Courses and bearings are given in degrees clockwise from 000 true.

Bearings of light sectors are toward the light from seaward. The nominal range of lights is expressed in nautical miles (NM) unless otherwise noted.

18622 **56th Ed.** **01-APR-16** **Last LNM: 05/21** **NAD 83** **50/22**

Chart Title: **Humboldt Bay**

Main Panel 1809 HUMBOLDT BAY. Page/Side: A

| | | | |
|----------|---|---|----------------------------------|
| RELOCATE | Humboldt Bay Lighted Bell Buoy 8 Relocate | CGD11 from 40-45-08.665N to 40-45-08.016N | 124-13-30.281W 124-13-31.110W |
| ADD | Humboldt Bay Kelp Farm Danger Buoy 1 Fl Y 4s | at 40-48-37.440N | 124-11-12.470W |
| ADD | Humboldt Bay Kelp Farm Danger Buoy 2 Fl Y 4s | at 40-48-38.700N | 124-11-11.650W |
| ADD | Humboldt Bay Kelp Farm Danger Buoy 3 Fl Y 4s | at 40-48-36.400N | 124-11-10.460W |
| ADD | Humboldt Bay Kelp Farm Danger Buoy 4 Fl Y 4s | at 40-48-37.790N | 124-11-09.620W |

SECTION V - ADVANCE NOTICES

This section contains advance notice of approved projects, changes to aids to navigation, or upcoming temporary changes such as dredging, etc. Mariners are advised to use caution while transiting these areas.

SUMMARY OF ADVANCED APPROVED PROJECTS

Approved Project(s)
None

Project Date **Ref. LNM**

Advance Notice(s)

NORTHERN CALIFORNIA-HUMBOLDT BAY AREA-WAMS

The U. S. Coast Guard is conducting a Waterways Analysis Management System (WAMS) study of Crescent City Harbor, Trinidad, Noyo River, Albion River, and the surrounding waterways. The WAMS Survey will be active until 20 December, 2022 and can be found by using the following link: <https://www.research.net/r/SectorHumboldtBay>. This questionnaire survey seeks to obtain data on the effectiveness of the system of Aids to Navigation, as well as other waterway safety concerns. Coast Guard will use this information to ensure that the aids are serving their intended purpose and meeting the needs to provide safe navigation corridors in the specified areas. The Coast Guard also uses the information from all waterways users to assist with maritime transportation system management. This survey includes multiple waterway areas, please choose the one most applicable to you and assist the Coast Guard in reviewing current trends, activities, and needs of the waterway. For further information or questions, please contact Sector Humboldt Bay Waterways Dayton Trubee at Dayton.O.Trubee@uscg.mil.

Chart 18620

LNM: 48/22

SECTION VI - PROPOSED CHANGES

Periodically, the Coast Guard evaluates its system of aids to navigation to determine whether the conditions for which the aids to navigation were established have changed. When changes occur, the feasibility of improving, relocating, replacing, or discontinuing aids are considered. This section contains notice(s) of non-approved, proposed projects open for comment. SPECIAL NOTE: Mariners are requested to respond in writing to the District office unless otherwise noted (see banner page for address).

PROPOSED WATERWAY PROJECTS OPEN FOR PUBLIC COMMENT

Proposed Project(s)

None

Closing

Docket No.

Ref. LNM

Proposed Change Notice(s)

NORTHERN CALIFORNIA-MONTEREY-MONTEREY HARBOR LIGHT 6

The U.S. Coast Guard is proposing to permanently discontinue the sound signal on Monterey Harbor Light 6 (LLNR 3970). The current aid is in the approximate position: 36-36-30N 121-53-22W. Direct any questions comments or feedback no later than 07 October, 2022 to LT Miranda Brumbaugh at 510-437-2983 or Miranda.E.Brumbaugh@uscg.mil.

Charts: 18680 18685

LNM: 28/22

SECTION VII - GENERAL

This section contains information of general concern to the Mariners. Mariners are advised to use caution while transiting these areas.

2021 COAST GUARD LIGHT LIST AVAILABILITY

2021 Light Lists are available on the USCG Navigation Center's website at: <http://www.navcen.uscg.gov/?pageName=lightLists>. Coast Guard Light Lists are a means for communicating aids to navigation information to the maritime public. Local Notice to Mariners will continue to advise Light List corrections and NAVCEN will continue to publish a compilation of corrections. Complete versions of the 2021 Light Lists are updated weekly on the NAVCEN website and mariners should download applicable copies and updates as needed at: <http://www.navcen.uscg.gov/?pageName=lightListWeeklyUpdates>. A summary of weekly 2021 Light List corrections are available at: <https://www.navcen.uscg.gov/?pageName=lightListCorrections>.

LNM: 03/21

ARIZONA/NEVADA-COLORADO RIVER-BRIDGE

NEW LAUGHLIN-BULLHEAD CITY BRIDGE-In-water work continues on construction of the new bridge in position 35-03-17N 114-36-45W. Work is being conducted Monday through Friday, 0630 to 1430, until 03 Oct 23. The access pad on the Arizona side has been reduced exposing piers of the new bridge. The installation of an access pad and silt curtain has begun on the Nevada side of the river. The Arizona side exposed piers and upriver and downriver access pad and the Nevada side silt curtain anchors will be lighted at night with steady burning red lights (see RockAccessPad_Lighting.pdf at the end of this notice). Approximately 117 feet of horizontal clearance will be provided in the center of the river during construction. Precast girders will be installed later in the project once construction of the respective abutments and piers are complete. For on-site conditions contact 702-455-6030 or 702-817-7088, or 702-286-0137. For further information contact the Coast Guard Bridge Office at 510-437-3515.

LNM: 50/22

LOWER COLORADO RIVER-BULLHEAD CITY, AZ-MARINE EVENT-

The Bullhead Area Chamber of Commerce and Laughlin Chamber of Commerce will be sponsoring the Christmas on the Colorado marine event on 17 December, 2022 from 5:30pm until 7:30pm. The event will involve approximately 50 vessels parading on a looped course, starting at a staging area near Bullhead City Community Park, proceeding north to a turnaround near the Colorado River Heritage Greenway Park, then returning to the staging area to conclude the parade. Mariners are requested to transit the area with caution. For more details or comments contact Bo Hellams at 760-305-3355.

LNM: 48/22

NEVADA - LAKE MEAD ANCHORAGE - NSRA

The U. S. Coast Guard is conducting a Navigational Safety Risk Assessment (NSRA) survey of Lake Mead Anchorage which will remain open until 31 December 22. Anyone interested in participating can do so by using the following link: <https://www.research.net/r/LakeMeadAnchorage>

This questionnaire seeks to obtain data on the navigational safety of Lake Mead Anchorage, as well as other waterway safety concerns. The Coast Guard will use this information to ensure that the aids are serving their intended purpose. The Coast Guard also uses the concerns of waterways users to assist with other or future waterway management decisions. Any interested company or individual wishing to provide recommendations on existing or additional aids to navigation in this area are welcome to participate by submitting a user survey. To receive further information, contact Sector San Diego Waterways, LTJG Kim at shera.s.kim@uscg.mil.

LNM: 41/22

NEVADA - LAKE MOJAVE ANCHORAGE - NSRA

The U. S. Coast Guard is conducting a Navigational Safety Risk Assessment (NSRA) survey of Lake Mojave Anchorage which will remain open until 31 December 22. Anyone interested in participating can do so by using the following link: <https://www.research.net/r/LakeMojaveAnchorage>

This questionnaire seeks to obtain data on the navigational safety of Lake Mojave Anchorage, as well as other waterway safety concerns. The Coast Guard will use this information to ensure that the aids are serving their intended purpose. The Coast Guard also uses the concerns of waterways users to assist with other or future waterway management decisions. Any interested company or individual wishing to provide recommendations on existing or additional aids to navigation in this area are welcome to participate by submitting a user survey. To receive further information, contact Sector San Diego Waterways, LTJG Kim at shera.s.kim@uscg.mil.

LNM: 41/22

NORTHERN CALIFORNIA-ALAMEDA TO PIONEER SEAMOUNT AREA-SEA TRIALS

SAILDRONE, INC. is conducting offshore oceanographic research survey testing and will operate up to five Unmanned Surface Vehicles called SAILDRONE VOYAGER until 23 December 2022, in the Pioneer Seamount area. The operations will be conducted within the following coordinates:

NORTHERN CALIFORNIA-ALAMEDA TO PIONEER SEAMOUNT AREA-SEA TRIALS

Survey Site 1:

37-26-20N 122-59-50W

37-26-20N 122-52-50W

37-22-20N 122-52-50W

37-22-20N 122-59-50W

Survey Site 2:

37-25-20N 123-19-50W

37-25-20N 123-01-50W

37-15-20N 123-01-50W

37-15-20N 123-19-50W

The saildrone is 30 feet long, 18 feet tall, painted orange and marked SAILDRONE. The Saildrone will broadcast AIS and travel at a speed of 7 knots. Mariners are requested to transit the area with caution and maintain a 500 meters separation from the Saildrone. For more details or comments contact Saildrone mission control at 510-722-6070.

Charts: 18640 18680

LNM: 46/22

NORTHERN CALIFORNIA-ALCATRAZ ISLAND-MARINE CONSTRUCTION

Manson Construction Co. will be conducting marine construction to the wharf at Alcatraz Island at 37-49-36N 122-25-15W. Construction will begin on 20 January, 2023 and be completed on 15 October, 2025. During construction DB HAGAR will be utilizing divers during low tide. Tug WESTAR will be assisting DB HAGAR and monitoring VHF-FM Chan. 13 and 16. Mariners are requested to transit the area with caution. For more details or comments contact Matt Lehmann at 510-529-1583.

Chart 18653

LNM: 50/22

NORTHERN CALIFORNIA-DELTA & RIVERS-AMERICAN RIVER-BRIDGE

CAPITAL CITY HWY (Route 51) BRIDGE-Caltrans is conducting rehabilitation of the bridge until 27 June, 2025. Work will be conducted during daylight hours, 7am to 5:30pm, Monday through Friday, and will include the use of barges, work boats, tugboats, turbidity curtains, and access piers. (See AmRiv_SiltCurtain_BargeLocation.pdf in the enclosure section.). During the workday, barges can be moved for the safety of navigation with one hour notice to the contractor via VHF-FM CH 16 or by cell at 916-532-8208. Mariners should contact the contractor before transiting the bridge to determine location of turbidity curtains. Barges will be unmanned and moored at their work locations overnight. Each corner of each barge will be lighted at night with steady burning red lights. At least 25 feet of horizontal clearance for navigation will be available at all times. Mariners are requested to transit the area with caution. For further information, contact the Coast Guard Bridge Office at 510-437-3461.

Chart 18662

LNM: 23/22

NORTHERN CALIFORNIA-DELTA & RIVERS-MOKELUMNE RIVER-BRIDGE

MOKELUMNE RIVER BRIDGE (HWY 12)-Caltrans will be conducting rehabilitation of the bridge, Monday through Friday, 7 am to 5 pm, 15 December, 2022 until 21 March, 2023. Dive operations will only be conducted one day on 15 December, 2022 to locate the swing span submarine power cable. Floating equipment utilized during the entire project will include a 40' x 80' spudded crane barge, a 28' x 40' supply barge, a 20' push boat, and a 16' skiff boat. The barges will be anchored in either navigational channel next to the bridge during the work day and will be left on-scene unmanned overnight. Each corner of each barge will be lighted at night. (See MokeRiverBridge_RehabBargeLights.pdf for typical location and lighting diagram.) Lighted buoys will be deployed to direct mariners to the side of the bridge where no work is being conducted. For navigational safety and to request an opening of the swing span during the project, the bridge will open on signal and the barges moved Monday through Friday 7 am to 5 pm, if at least 4-hours notice is given to the bridge owner and at all other times the bridge will open on signal and the barges moved if at least 10-hours notice is given to the bridge owner. For on-scene conditions, mariners can contact the contractor at 510-774-1204 or 925-658-2672. For further information, contact the Coast Guard Bridge Office at 510-437-3461.

Chart 18661

LNM: 48/22

NORTHERN CALIFORNIA-DELTA & RIVERS-NAPA RIVER-BRIDGE

HWY 37 (VALLEJO) BRIDGE-The upstream green center channel light is extinguished. For further information contact the Coast Guard Bridge Office at 510-437-3514.

Chart 18654

LNM: 49/22

NORTHERN CALIFORNIA-DELTA & RIVERS-OLD RIVER-BRIDGE

BNSF RAILROAD BRIDGE- BNSFs' contractor is replacing the fenders at piers 2 and 3. Work will take place Monday through Friday, 6am to 6:30pm, until 31 December, 2022. One 60' X 80' flexi float barge and one 35' X 110' material barge will be spudded down at the piers (See BNSF_OldRiver_Barge_Lighting.pdf in the enclosure section). During work hours the barges will be in the main navigation span of the bridge and can be moved for the safety of navigation with one hour advanced notice to the contractor at 206-391-5461. After working hours the unmanned barges will be moved behind the wingwall of the pier protection out of the navigation span. Mariners are requested to transit the area with caution. For conditions at the bridge mariners can contact the contractor at 206-391-5461. For further information contact the Coast Guard Bridge Office at 510-437-3515.

Chart 18661

LNM: 47/22

NORTHERN CALIFORNIA-DELTA & RIVERS-OLD RIVER-BRIDGE

CA ROUTE 4 BRIDGE- Critical bridge rehabilitation is taking place 7am to 3:30pm Monday through Friday. The drawspan is secured in the closed-to-navigation position from 27 Oct, 2022 until 23 Apr, 2023. The swing span WILL NOT open for the passage of vessels. A 40'x80' work barge will be employed and tied to one of the bridge piers during this time. Mariners can transit through the construction site at the western most span, between the west bank and Pier 2, or other spans not being occupied by the work barge. For navigational safety, during normal work hours the barge can be moved with 4 hours advance notice by contacting the contractor. At other times, the barge can be moved with 24hrs advance notice. Each corner of the moored barge will be lighted at night with steady burning red lights (See OldRiver_Barge_Lighting_Plan.pdf in the enclosure section). In the closed position, the bridge provides 12' vertical clearance above mean high water. Vessels able to transit the bridge while closed can continue to do so at any time. For conditions at the work site, mariners can contact the contractor at 209-513-7309 or 415-375-5549; or Caltrans at 209-470-8835 or 209-465-0935. For further information, contact the Coast Guard Bridge Office at 510-437-3461.

Chart 18661

LNM: 44/22

NORTHERN CALIFORNIA-DELTA & RIVERS-SACRAMENTO RIVER-BRIDGE

NORTHERN CALIFORNIA-DELTA & RIVERS-SACRAMENTO RIVER-BRIDGE

RIO VISTA BRIDGE-The upriver and downriver green center channel lights on the lift span are not operational. The red center channel lights show at all times, even when the span is in the fully open-to-navigation position. The bridgetender will be able to inform any vessel requesting an opening when the lift span is fully open. Estimated time of repair is unknown. For further information contact the Coast Guard Bridge Office at 510-437-3516.

Chart 18661

LNM: 49/22

NORTHERN CALIFORNIA-DELTA & RIVERS-SACRAMENTO RIVER-BRIDGE

RIO VISTA BRIDGE-Caltrans continues major rehabilitation work on the bridge. Therefore, from 6 a.m. on 14 November 22 until 6 p.m. on 03 March 23, the lift span of the bridge will open on signal if at least a 4-hour notification is given to the drawtender, except from 7 pm to 7 am, the following day, 09, 10, 11, 12 and 13 January 2023, the lift span of the bridge will be secured in the closed-to-navigation position for sheave trunnion and bearing inspections. For further information contact the Coast Guard Bridge Office at 510-437-3516.

Chart 18661

LNM: 49/22

NORTHERN CALIFORNIA-DELTA & RIVERS-SACRAMENTO RIVER-BRIDGE

REPLACEMENT BUTTE CITY BRIDGE-Construction has started on the project to replace the existing bridge. Work will take place Monday through Friday during daylight hours until 30 September, 2024. Installation of a temporary trestle has begun. Once trestle is in place, falsework will be installed. A temporary navigation span during construction will be just west of the existing bridge's pivot pier, 435 feet west of new bridge abutment, and is lighting at night with a green center channel light on the upriver and downriver portion of the trestle. Red lights will mark low steel of the remaining spans of the trestle. A buoy line will be installed, pending Coast Guard approval, to guide vessels through the bridge construction area (see ButteConstructionLighting-BuoyLine.pdf enclosure at the end of this notice). The temporary navigation span will provide at least 32 feet of horizontal clearance and 14 feet of vertical clearance from ordinary high water to low steel of the temporary trestle. For on-scene conditions contact Golden State Bridge, Inc, at 415-720-6577 or 925-260-0403 or Caltrans at 530-941-8272 or 530-682-3931. For further information contact the Coast Guard Bridge Office at 510-437-3461.

LNM: 42/22

NORTHERN CALIFORNIA-DELTA & RIVERS-SAN JOAQUIN RIVER-BRIDGE

CROWS LANDING ROAD BRIDGE-Replacement of the bridge is ongoing. Work is being conducted Monday through Friday 0600 to 1600 until 01 Sep 23. A temporary bridge, with a removable span, will be installed to facilitate construction. With the span removed, the temporary bridge will provide, at a minimum, 15 feet of horizontal clearance. The span will be removed after normal working hours. Temporary falsework will be installed to facilitate construction. The temporary falsework's navigation span will provide 16 feet of vertical clearance at Ordinary High Water when the temporary bridge's removable span is removed. Upriver and downriver red channel margin lights and green center channel lights will mark the temporary navigation span at night. To view the temporary navigation span and lighting, see the TemporaryBridge_FalseworkLighting.pdf enclosure at the end of this notice. Mariners are requested to use extreme caution when transiting the work site. For conditions at the project site mariners can contact the contractor at 916-869-8210 or 559-593-5182. For further information contact the Coast Guard Bridge Office at 510-437-3461.

LNM: 36/22

NORTHERN CALIFORNIA-GOLF OF THE FARALLONES -BUOY DEPLOYMENT

Sofar Ocean Technologies will be deploying a buoy in Gulf of the Farallones at 37-45-00N 122-50-18W until 28 February, 2023. A 19 foot C-Dory (CF3571SX) will deploy a yellow buoy FI Y 2.5s to test an oceanographic buoy system. The C-Dory will be monitoring VHF-FM Chan. 16. Mariners are requested to transit the area with caution. For more details or comments contact Colin Brower at 206-972-7830.

Chart 18640

LNM: 35/22

NORTHERN CALIFORNIA-HALF MOON BAY-SUNKEN VESSEL

The Coast Guard received a report of a sunken towing vessel in the Pillar Point Harbor at position 37-29-42N 122-29-35W. The T/V CALEB is 94' long, with approximately 3/4 of the vessel visible above the waterline. The vessel is situated on the western side of the harbor with yellow boom surrounding it. Mariners are advised to exercise due caution while transiting in the area. For more details or comments contact LT William Harris at 415-399-7443 or SFWaterways@uscg.mil.

LNM: 23/22

NORTHERN CALIFORNIA-HUMBOLDT BAY-SEASONAL AID DISCONTINUANCE

Humboldt Bay Lighted Bell Buoy 2 (LLNR 8135) has been temporarily discontinued for the 2022-2023 winter season until May 2023. The buoy is scheduled for re-establishment and will be back on-station May 2023. A Synthetic AIS for the aid position is active and will be available year-round for this aid position. For more details or comments contact LCDR Paul Garcia at 510-437-2982 or Paul.A.Garcia2@uscg.mil.

Charts: 18620 18622

LNM: 40/22

NORTHERN CALIFORNIA-LARKSPUR TERMINAL-DREDGE OPERATIONS

Manson Construction Co. will conduct dredging operations of the Larkspur terminal berth and channel until 30 December, 2022 between 37-56-41N 122-30-29W and 37-55-32N 122-27-44W. DB JJORD, DB VALHALLA, DB HORTON, tug PETER M, tug JEFFERY M, tug WESTAR and seven scows will be conducting operations 24 hrs daily. All dredged materials will be disposed of at SF-10. All vessels will be monitoring VHF-FM Chan. 13 and 16. Mariners are requested to transit the area with caution. For more details or comments contact Egli Nicole at 562-400-3309.

Chart 18654

LNM: 48/22

NORTHERN CALIFORNIA-MARE ISLAND-DREDGE OPERATIONS

Manson Construction Co. will conduct dredge operations in the vicinity of the Wichels Causeway from 15 October, 2022 until 01 March, 2023. Manson 75 Barge will be pumping dredged materials inland at 38-07-15N 122-16-54W and Derrick Barge EINAR at 38-06-33N 122-16-33W. Operations will be conducted 24 hrs daily. Mariners are requested to transit the area with caution. For more details or comments contact Egli Nicole at 562-400-3309.

Chart 18655

LNM: 40/22

NORTHERN CALIFORNIA-MARE ISLAND-SECURITY ZONE

The Sector San Francisco Captain of the Port (COTP) has established a temporary security zone in the navigable waters near Mare Island Dry Dock,

NORTHERN CALIFORNIA-MARE ISLAND-SECURITY ZONE

approximately 100 yards from any part of the berthing piers in the Mare Island Strait, Vallejo, CA. Vessels are prohibited from transiting through the security zone, without express permission from the Captain of the Port. More information is available at [regulations.gov](https://www.regulations.gov), go to <https://www.regulations.gov>, type USCG-2022-0904 in the search box and click "Search."

Chart 18655

LNM: 44/22

NORTHERN CALIFORNIA-MOKELUMME RIVER-ANDRUS ISLAND-SUNKEN VESSEL

The Coast Guard received a report of a sunken partially burned houseboat in the vicinity of Rancho Harbor Marina at position 38-06-30N 121-34-34W. The houseboat is approx. 30 ft long, with none of the vessel visible above the waterline. Mariners are advised to exercise due caution while transiting in the area. For more details or comments contact LT William Harris at 415-399-7443 or SFWaterways@uscg.mil.

Chart 18661

LNM: 50/22

NORTHERN CALIFORNIA-MONTEREY BAY-BUOY DEPLOYMENT

Sofar Ocean Technologies will be deploying a buoy in Monterey Bay National Marine Sanctuary at 37-30-00N 122-31-57W. The buoy will be deployed until 06 January, 2023, will be yellow in color and have the flash characteristics of FI Y 2.5s. A 19 foot C-Dory will be monitoring VHF-FM Chan. 16. Mariners are requested to transit the area with caution. For more details or comments contact Ciara Dorsay at 941-961-8543.

Charts: 18680 18685

LNM: 27/22

NORTHERN CALIFORNIA-MOSS LANDING-WAVEGLIDER DATA COLLECTION

Monterey Bay Aquarium Research Institute (MBARI) is conducting 24 hours per day 7 days a week autonomous, unmanned maritime vehicle operations of two Liquid Robotics, Inc. Wavegliders until 31 December, 2022. Vehicles will be deployed in the vicinity of Moss Landing that will operate continuously between latitudes 35-07-14N and 37-12-00N and will extend shoreward as far West as 122-58-35W. Operations consist of scientific ocean data collection. The Waveglider carries no fuel, lubricants or hydrocarbons. It is wave powered and remotely attended from MBARI, moving at speeds of 1kt, and designed to give way or part if encountered by a vessel. It is approximately 8' x 2' (surfboard size), yellow in color, with a contact plaque and mast extending 3' above the water surface, supporting a flag. Mariners are requested to transit the area with caution. For more details or comments contact MBARI at 831-775-1700, waveglider@listserver.mbari.org or Liquid Robotics 24/7 WGOE Operations at 888-574-4574.

Charts: 18680 18685

LNM: 51/21

NORTHERN CALIFORNIA-NAPA RIVER-LIGHT OBSTRUCTION

A large tree obstruction is stuck in the mud directly in front of Napa River Light 30 (LLNR 6207). Mariners are requested to transit the area with caution and consider this obstruction during inbound and outbound transits.

Chart 18654

LNM: 40/22

NORTHERN CALIFORNIA-NEW YORK SLOUGH-MARINE CONSTRUCTION

CS Marine Constructors, Inc. will be conducting pile driving & marine construction operations at the former Gaylord Paper Facility 38-00-58N 121-46-31W located at New York Slough in Antioch, CA during daylight hours until 31 Dec 22. Operations will be conducted with derrick barges DB CARQUINEZ, DB MARE ISLAND and DB STEADFAST along with various flat barges. The barges will be either spudded down or anchored using a four-point mooring system marked with 5ft crown buoys. The buoys will be lighted at night with flashing white strobes. All vessels and equipment will be monitoring VHF-FM CHAN 8, 13 and 14. Mariners are request to transit the area with caution. For more details or comments contact Jeff Thompson at (510)719-1246.

Chart 18661

LNM: 42/21

NORTHERN CALIFORNIA-OAKLAND HARBOR-CONSTRUCTION

Manson Construction Co. is conducting dredge operations in the Oakland inner and outer channels at 122-21-44W 37-48-04N to 122-18-49W 37-49-13N and 122-21-44W 37-48-04N to 122-16-55W 37-47-36N until 31 Dec, 2022. Operations will be conducted 24hrs a day, 7 days a week. Dredge NJORD will be assisted by barges ROCKPORT, GULFPORT, SEAPORT, EASTPORT, FREEPORT, NORTHPORT, T/B's PETER M, JEFFERY M, WESTAR, and survey boat WAHOO. All vessels will be monitoring VHF-FM Chan. 13 and 16. Dredged materials will be disposed of within disposal site SF-11 and upland site at Cullinan Ranch. Mariners are requested to transit the area with caution. For more details or comments contact Eric McMann at 510-232-6319.

Chart 18680

LNM: 30/22

NORTHERN CALIFORNIA-OAKLAND INNER HARBOR-BRIDGE

FRUITVALE AVE RAILROAD BRIDGE-The lift span of the railroad bridge is kept in the partially opened position providing 80 feet of vertical clearance at mean high water. When the lift span of the railroad bridge is in the partially open position and the bascule span of the adjacent highway bridge is in the closed position, the lift span will show two red 180-degree center span lights on the upstream and downstream lower edge of the span. When the bascule span of the highway bridge is in the fully opened position, the lift span of the railroad bridge will show two 360-degree green lights, providing a range for the centerline of the channel between both highway and railroad bridges. The rail bridge will open fully, on signal, if at least a 2-hour notification is given to the drawtender at the highway bridge. For further information contact the Coast Guard Bridge Office at 510-437-3516.

Chart 18649

LNM: 40/22

NORTHERN CALIFORNIA-OAKLAND-DREDGE OPERATIONS

The Dutra Group will be conducting dredging operations at the Schnitzer Steel Dock in Oakland, CA at 37-47-37N 122-17-32W, until 31 December, 2022, 24 hours a day, 7 days a week. DB 24, tow tug HEIDI BRUSCO and tender tug BECKY T will be monitoring VHF-FM Chan. 13, 14 and 80A. All dredged materials will be disposed of at SF-DODS. Mariners are requested to transit the area with caution. For more details or comments contact Dennis Salyers at 415-497-5289.

Chart 18653

LNM: 35/22

NORTHERN CALIFORNIA-OFFSHORE CAPE MENDOCINO-OFFSHORE PT ARENA-SURVEY OPERATIONS

SAILDRONE, INC. is conducting oceanographic survey operations and will operate an Unmanned Surface Vehicles called Saildrone from 1 November, 2022 until 15 January, 2023. The operations will be conducted 120 to 180nm offshore Cape Mendocino, extending south 150nm off Pt Arena and bounded by the following coordinates:

NORTHERN CALIFORNIA-OFFSHORE CAPE MENDOCINO-OFFSHORE PT ARENA-SURVEY OPERATIONS

NW 40-12-40N 128-42-50W

NE 40-14-50N 127-54-10W

SW 40-13-30N 127-51-20W

SE 38-56-50N 126-21-40W

The saildrone is 72 feet long, 45 feet tall, painted orange with a tri-color light on top and marked SAILDRONE SURVEYOR. Mariners are requested to transit the area with caution. For more details or comments contact Saildrone mission control at 510-722-6070.

Charts: 18600 18620

LNM: 44/22

NORTHERN CALIFORNIA-OFFSHORE MONTEREY BAY-UNDERWATER OPERATIONS

Reef Check Foundation have deployed underwater equipment offshore Monterey Bay, CA within the following coordinates:

36-36-17N 121-52-46W

36-36-18N 121-52-49W

36-36-15N 121-52-50W

36-36-14N 121-52-46W

All equipment will be established until 24 Mar 24. Mariners are requested to transit the area with caution and avoid anchoring within the coordinates listed above. For more details or comments contact Dan Abbot at 510-684-7835.

Chart 18685

LNM: 12/21

NORTHERN CALIFORNIA-OFFSHORE SAN FRANCISCO-OCEANOGRAPHIC OPERATIONS

Sofar Ocean Technologies will be conducting oceanographic operations until 15 December, 2022, offshore of Ocean Beach, CA. A 19 foot C-Dory will be deploying a buoy at 37-43-58N 122-33-12W and 37-43-29N 122-32-52W. The buoys are yellow in color and Fl (Y) 2.5s. The C-Dory will be monitoring VHF-FM Chan. 16. Mariners are requested to transit the area with caution. For more details or comments contact Cameron Dunning at 415-912-6858.

LNM: 23/22

NORTHERN CALIFORNIA-PEYTONIA SLOUGH-SUISUN CITY-SUNKEN VESSEL

The Coast Guard received a report of a sunken vessel in the vicinity of Peytonia Slough State Marine Park in the Peytonia Slough at 38-13-35N 122-02-17W. The vessel is not visible above the waterline, it is situated in the middle of the channel, and has been marked with a red buoy. Mariners are advised to exercise due caution while transiting the area. For more details or comments contact LT Miranda Brumbaugh at 510-437-2978 or Miranda.E.Brumbaugh@uscg.mil.

Chart 18656

LNM: 27/22

NORTHERN CALIFORNIA-RICHMOND INNER HARBOR-DREDGE OPERATIONS

Pacific Dredge & Construction along with Manson Construction Company will be conducting maintenance dredging operations in the Richmond Inner Harbor from 10 December, 2022 until 30 January, 2022 between 37-54-53N 122-24-46W and 37-54-19N 122-23-56W. Dredge Plant NJORD, tug KATHERINE, tug JEFFREY M, tug PETER M, harbor boat S BASS and three scows will be conducting operations 24hrs a day, 7 days a week. All vessels will be monitoring VHF-FM Chan. 6 and 16. All dredged materials will be disposed of at the Cullinan Ranch Upland Disposal Site. Mariners are requested to transit the area with caution. For more details or comments contact Matt MacArthur at 951-541-6941 or Jorge Tomas at 949-274-5078.

Chart 18653

LNM: 49/22

NORTHERN CALIFORNIA-SACRAMENTO RIVER-DREDGE OPERATIONS

The Dutra Group will be conducting dredging operations in the Sacramento River from Mile 14.60L to 17.34L until 31 December, 2022. The work will be along the south side of the Sacramento River bordering Brannan Island between River Mile 14.60 and 17.34, between the Sacramento River and Cache Slough River mouth to Ramos CFN in Isleton, CA. Crane Barge 1 will be monitoring VHF-FM Chan. 9, 16 and 68A or can be reached at 707-333-5029. Mariners are requested to transit the area with caution. For more details or comments contact William Ng at 707-231-6862.

Charts: 18661 18664

LNM: 35/22

NORTHERN CALIFORNIA-SACRAMENTO RIVER-RANDALL ISLAND-OVERTURNED VESSEL

The Coast Guard received a report of a partially overturned pleasure craft in the vicinity of Randall Island at position 38-20-34.8N 121-33-37.2W. The vessel is approx. 20ft long, with approx. 50 percent of the vessel visible above the waterline. Mariners are advised to exercise due caution while transiting in the area. For more details or comments contact LT William Harris at 415-399-7443 or SFWaterways@uscg.mil.

Chart 18662

LNM: 50/22

NORTHERN CALIFORNIA-SACRAMENTO RIVER-REDUCED VERTICAL CLEARANCE

Overhead power cables upstream of Sacramento River at 38-03-54N 121-47-09W have a reported reduced vertical clearance to 119.5'.

LNM: 22/16

NORTHERN CALIFORNIA-SACRAMENTO RIVER-RIO VISTA- DIRECTIONAL DRILLING CONSTRUCTION OPERATIONS

ARB Inc. will be conducting horizontal directional drilling operations below the Sacramento River near the city of Rio Vista between 38-08-53N 121-41-37W and 38-08-49N 121-40-51W until 31 December, 2022. Operations will be conducted from 7:00am to 7:30pm, Monday through Saturday. Construction equipment will be staged on land above the adjacent shorelines. Mariners are requested to transit the area with caution. For more details or comments contact Kelvin Qiu at 925-404-3723.

Chart 18661

LNM: 36/22

NORTHERN CALIFORNIA-SACRAMENTO RIVER-SAN JOAQUIN RIVER-GEOTECHNICAL DRILL TESTING

Gregg Drilling and Testing will be conducting Overwater Geotechnical Investigations on the Sacramento River at 38-23-43N 121-30-44W, the San Joaquin River to Mokelumne River between 38-12-48N 121-29-43W and 37-54-20N 121-29-57W. R/V QUIN DELTA will be conducting the operations and monitoring VHF-FM Chan. 13, 14 and 16. Mariners are requested to transit the area with caution. For more details or comments contact Captain Tim O'Donnell at 949-254-5190 or at BEARatSEA@gmail.com.

Charts: 18010 18661 18680

LNM: 36/22

NORTHERN CALIFORNIA-SACRAMENTO RIVER-SUNKEN VESSEL

The Coast Guard received a report of a sunken vessel in the Sacramento River in approximate position 38-36-21N 121-31-12W. The vessel is approximately 16 feet long, and sits in 16 – 20 feet of water. Mariners are advised to exercise due caution while transiting in the area. For more details or comments contact USCG Sector San Francisco Waterways at 415-399-7443 or SFWaterways@uscg.mil.

Chart 18664

LNM: 36/22

NORTHERN CALIFORNIA-SAN FRANCISCO BAY-BRIDGE

GOLDEN GATE BRIDGE-Four 54' temporary under deck platforms; two 475' and 2,075' north of the south tower, and two 175' and 675' south of the north tower have been installed at the bridge. Temporary platforms reduce vertical clearance at the bridge by no more than 14'. The bridge's maintenance travelers are in use during the project and will remain outboard of the furthest north and furthest south temporary platforms. The temporary platforms and maintenance travelers are lighted at night with all-round red lights (see PlatformLighting_GG_Bridge_14Jun22.pdf at the end of this notice). For navigational safety the maintenance travelers can be moved by contacting the Golden Gate Bridge at 415-923-2220. Work is being conducted Monday through Saturday, 0700-1700 and 2100-0500. For conditions at the bridge, mariners can contact the contractor at 415-716-0384. For more details or comments contact the Coast Guard Bridge Office at 510-437-3516.

Chart 18649

LNM: 24/22

NORTHERN CALIFORNIA-SAN FRANCISCO BAY-BRIDGE

SAN MATEO-HAYWARD BRIDGE-Structural repairs to the superstructure of the bridge are complete. Work is continuing on the causeway portion of the bridge, east of pier 38, 0700 to 1530, Monday through Friday, until 11 May, 2023. Various size barges will be used during the project, the largest being a 100' X 20' flexifloat barge. During the work day, barges will either be spudded down or tied to the bridge piers, no anchors or anchor line will be utilized. After regular working hours the unmanned barge will be left on-site. For the safety of navigation, the barges can be moved with one-hour advance notice. For conditions at the bridge mariners can contact Golden State Bridge, Inc., on VHF-FM Marine Radio Channels 13, 14, and 16 or by cell phone at 707-246-0725, 925-260-2104, or 925-382-7288. For more details or comments contact the Coast Guard Bridge Office at 510-437-3515.

LNM: 20/22

NORTHERN CALIFORNIA-SAN FRANCISCO BAY-BRIDGE

RICHMOND-SAN RAFAEL BRIDGE-Concrete/steel repairs and cleaning of the bridge are in progress. Work is being conducted Monday through Friday, 0500 to 1700, until 01 May 23. Temporary underdeck platforms have been installed from the western shore to pier 33 and between piers 43-46 reducing vertical clearance in each span by three feet. The upstream and downstream lower edge of each temporary platform is lighted at night with steady burning red lights (see R-SR_Bridge_Temp_Platform_Lighting.pdf at the end of this notice.) Two 160' X 50' barges and one 110' X 32' barge are being used to assist in the installation of the platforms and for the blasting and painting. One barge has been secured to pier 8 and will be left on-scene, overnight, unmanned. The outboard corners of the barge at pier 8 is lighted at night with steady red lights. Barge "37" and barge "32" can be contacted on VHF-FM Ch. 16, 13 and 14. At no time will the work impede the east or west navigation spans or their auxiliary spans. For conditions at the bridge, mariners can contact the contractor at 860-904-8787 or 443-847-6286. For further information concerning this project contact the Coast Guard Bridge Office at 510-437-3515.

Chart 18653

LNM: 16/21

NORTHERN CALIFORNIA-SAN FRANCISCO BAY-BRIDGE

SAN MATEO-HAYWARD BRIDGE – Caltrans' contractor will begin painting of the steel towers beginning 5 December, 2022. Work will be conducted Monday through Friday, 7am to 12am until June 2024. Temporary worker platforms will be installed around the base of piers 2 to 11 and 28-37, reducing horizontal clearance in each of those spans by 6 feet. Temporary underdeck work platforms will be installed in spans 12-18 and 21-27, reducing the vertical clearance by three feet. Tarpaulins will be used as containment around all pier columns. An Andersen under-bridge below-deck worker access vehicle will be used during the installation of the temporary containment and temporary platforms. At no time will in-water work be conducted in the main navigation span between piers 19-20, and mariners should this span at all times during this project. For conditions at the bridge, mariners can contact the contractor at 407-489-5386, 303-579-1383, or 910-279-3365. For further information contact the Coast Guard Bridge Office at 510-437-3515.

LNM: 46/22

NORTHERN CALIFORNIA-SAN FRANCISCO BAY-DETERIORATING CONCRETE PILINGS

Deteriorating concrete pilings above and below the waterline are present in the vicinity of the the south edge of Southampton Shoal Light (LLNR 5480). Mariners are requested to transit the area with caution. For more details or comments contact LT Miranda Brumbaugh at 510-437-2978 or Miranda.E.Brumbaugh@uscg.mil.

Chart 18649

LNM: 23/15

NORTHERN CALIFORNIA-SAN FRANCISCO BAY-HAZARD TO NAVIGATION

There is a potential hazard to navigation in the San Francisco Bay located at 37-54-06N 122-23-56W. The obstruction is an unmarked barge mooring platform. Mariners are requested to transit the area with caution. For more details or comments contact Sector San Francisco Waterways at 415-399-7442.

Chart 18653

LNM: 42/22

NORTHERN CALIFORNIA-SAN FRANCISCO BAY-OAKLAND INNER HARBOR-SHOALING

Shoaling has been reported on the south side of Oakland Inner Harbor South Channel in the east passage through the Fruitvale Ave. Bridge. Mariners are requested to transit the area with caution and report any observed changes in shoaling conditions to the San Francisco VTS on VHF-FM Chan. 14. For more details or comments contact U.S. Coast Guard Sector San Francisco Waterways Management at 415-399-7443.

Chart 18650

LNM: 16/15

NORTHERN CALIFORNIA-SAN FRANCISCO BAY-SURVEY OPERATIONS

SAILDRONE, INC. is conducting oceanographic survey operations and will operate an Unmanned Surface Vehicles called Saildrone until 23 December, 2022. The operations will be conducted 0.8 nm South of General Anchorage 9 in San Francisco Bay and bounded by the following coordinates:

Area 1:

37-26-20N 122-59-50W

37-26-20N 122-56-50W

NORTHERN CALIFORNIA-SAN FRANCISCO BAY-SURVEY OPERATIONS

37-22-20N 122-52-50W

37-22-20N 122-59-50W

Area 2:

37-25-20N 123-19-50W

37-25-20N 123-01-50W

37-15-20N 123-01-50W

37-15-20N 123-19-50W

The saildrone is 30 feet long, 18 feet tall, painted orange with a tri-color light on top and marked SAILDRONE. Mariners are requested to transit the area with caution. For more details or comments contact Saildrone mission control at 510-722-6070.

Chart 18649

LNM: 38/22

NORTHERN CALIFORNIA-SAN JOAQUIN RIVER-MARINE CONSTRUCTION

Shimmick Construction Company, Inc. (SCCI) is conducting marine construction for the Smith Canal Gate Project in the San Joaquin Deep Water Shipping Channel from 0600 to 1800 Monday through Saturday until 30 Dec 22. Operations will be conducted between the following coordinates:

37-57-31N 121-21-11W

37-57-25N 121-21-08W

Staging Yard

37-57-09N 121-19-55W

Mariners are requested to transit the area with caution. For more details or comments contact Tyler Shell at 510-393-0308.

Charts: 18661 18663

LNM: 28/20

NORTHERN CALIFORNIA-SAN LEANDRO BAY-BRIDGE

BAY FARM ISLAND HIGHWAY AND PEDESTRIAN BRIDGES-The pier protection system at the bridges have deteriorated and may not offer adequate protection for the bridges as well as vessels transiting the bridge. Mariners are urged to transit both bridges with caution. The bridge owner is in the process of designing a replacement pier protection system. For more details or comments contact the Coast Guard Bridge Office at 510-437-3514.

Chart 18649

LNM: 31/22

NORTHERN CALIFORNIA-SAN LORENZO RIVER-BRIDGE

LAUREL STREET BRIDGE- A new water conveyance pipeline is being installed. To conduct the work, a bucket truck on the bridge deck will be utilized to suspend a mobile platform from the side of the bridge, vertical clearance will be temporarily reduced by 6-feet. Work is being conducted Monday through Friday, 7 am to 4:30pm, until 09 January, 2023. There will be no in-water work or equipment used during this project. Mariners are urged to use caution while transiting the bridge. For further information contact the Coast Guard Bridge Office at 510-437-3515.

Chart 18685

LNM: 47/22

NORTHERN CALIFORNIA-SAN PABLO BAY-TORMEY-MARINE CONSTRUCTION

The Dutra Group will be conducting marine construction to the Phillips 66 San Francisco Refinery located West of the Carquinez Bridge until 01 December, 2023, during daylight hours. Construction will be bounded by the following coordinates:

38-03-22N 122-15-52W

38-03-25N 122-15-33W

38-03-06N 122-15-34W

38-03-06N 122-15-39W

Crane barge 1 along with a work boat will be conducting operations and monitoring VHF-FM Chan. 9, 16, and 77. Mariners are requested to transit the area with caution. For more details or comments contact Nicholas Dino at 707-389-0505.

Charts: 18654 18655

LNM: 23/22

NORTHERN CALIFORNIA-SANTA CRUZ HARBOR-SHOALING

There are hazardous and shoaled conditions in the Santa Cruz Harbor Channel Entrance. Mariners transiting the Santa Cruz Harbor should use caution for hazardous conditions of breaking surf and shoaling in the Santa Cruz Harbor entrance that may occur during all surf and tidal conditions. Mariners are highly advised not to transit the Santa Cruz Harbor Channel unless sea and tide conditions are suitable for your vessel's draft. Mariners may view soundings on the Santa Cruz Harbor at <https://www.santacruzharbor.org/entrance-soundings>. For more details or comments contact the Santa Cruz Harbor at 831-475-6161 or VHF-FM Chan. 9 and 16.

Chart 18685

LNM: 03/21

NORTHERN CALIFORNIA-SANTA CRUZ-DREDGE OPERATIONS

The Santa Cruz Port District is conducting dredging operations in the harbor entrance from 15 November, 2022 until 30 April, 2023. A submerged dredging equipment may be in vicinity of the entrance. All mariners entering the Santa Cruz Harbor are requested to contact the dredge TWIN LAKES on VHF-FM Chan. 8 during working hours of 7:00am to 4:00pm Monday through Friday to obtain safe passage information. For information after hours please contact the Santa Cruz Harbor Patrol at 831-475-6161 or 831-471-1131. Mariners are requested to transit the area with caution. For more details or comments contact Blake Anderson at 831-475-6161.

Chart 18685

LNM: 45/22

NORTHERN CALIFORNIA-STOCKTON DEEP WATER SHIP CHANNEL-DREDGE OPERATIONS

Ross Island Sand & Gravel Co. is conducting dredge operations in the Stockton Deep Water Ship Channel 24 hours a day, 7 days a week from 28 November, 2022 until 20 December, 2022. Dredge 8 will be dredging in the navigation channel in the vicinity of Roberts Island, river mile 35 at 37-59-29N 121-24-27W and finishing at river mile 39-96 at 37-57-06N 121-20-02W. A Submerged dredge pipe will come ashore at 37-58-19N 121-22-35W. Dredge 8 will be monitoring VHF-FM Chan. 13, 16 and 79. Mariners are requested to transit the area with caution. For more details or comments contact Rod Oliva at 503-349-7436.

Chart 18663

LNM: 48/22

NORTHERN CALIFORNIA-SUISUN BAY-MONTEZUMA SLOUGH-MARINE CONSTRUCTION

The California Department of Water Resources advises that will be installing flashboards at the Suisun Marsh salinity control structure, located 2.2 nautical miles from the easterly end of Montezuma Slough at 38-05-36N 121-53-07W. Mariners are advised to use the boat lock. The boat lock

NORTHERN CALIFORNIA-SUISUN BAY-MONTEZUMA SLOUGH-MARINE CONSTRUCTION

signal is a standard traffic light and the operator will monitor VHF-FM Chan. 13. Mariners are requested to transit the area with caution. For more details or comments contact Ian Uecker at 916-574-2991.

Chart 18656

LNM: 34/21

SAN DIEGO-OCEANOGRAPHIC SURVEY-OCEAN MONITORING

The City of San Diego Marine Biology Lab is conducting year-round ocean monitoring sampling in the vicinity of the South Bay Ocean Outfall and Point Loma Ocean Outfall. The Ocean Monitoring Program conducts trawl sampling, benthic sampling with a double Van Veen sediment grab, vertical CTD casts and horizontal tows with an undulating underwater vehicle, ROV surveys and multiple moorings are deployed in the region below. Ocean sampling will be conducted in an area bound by the following coordinates:

32-31-54N 117-11-11W

32-32-10N 117-11-57W

32-32-03N 117-12-06W

32-32-33N 117-11-56W

32-40-10N 117-19-22W

32-40-04N 117-19-34W

32-39-37N 117-19-32W

32-39-56N 117-19-39W

32-40-10N 117-16-55W

The M/V OCEANUS and M/V MONITOR III when in the area will monitor VHF-FM Chan. 16. Mariners are requested to transit the area with caution. For more details or comments contact Adriano Feit at 619-758-2377 or 858-882-7055.

Charts: 18765 18772

LNM: 43/21

SOUTHERN CALIFORNIA-GULF OF SANTA CATALINA-OCEANOGRAPHIC OPERATIONS

The Scripps Institution of Oceanography R/V SALLY RIDE (Call Sign WSAF) will be conducting 24-hour surface to seafloor oceanographic operations from 13 December, 2022 until 15 December, 2022. Operations will be conducted at the following coordinates:

33-57-30N 117-53-00W

32-53-30N 117-53-30W

32-53-30N 117-59-00W

33-57-30N 117-59-00W

32-38-00N 117-57-00W

32-38-00N 118-12-00W

32-30-00N 118-12-00W

The R/V SALLY RIDE will be monitoring VHF-FM Chan. 13 and 16. During operations, the research vessel will be restricted in its ability to maneuver. Mariners are requested to transit the area with caution. For more details or comments contact Wes Hill at 858-534-5568.

Charts: 18740 18757

LNM: 49/22

SOUTHERN CALIFORNIA - MISSION BAY ANCHORAGE - NSRA

The U. S. Coast Guard is conducting a Navigational Safety Risk Assessment (NSRA) survey of Mission Bay Anchorage which will remain open until 31 December 22. Anyone interested in participating can do so by using the following link:

<https://www.research.net/r/MissionBayAnchorage>

This questionnaire seeks to obtain data on the navigational safety of Mission Bay Anchorage, as well as other waterway safety concerns. The Coast Guard will use this information to ensure that the aids are serving their intended purpose. The Coast Guard also uses the concerns of waterways users to assist with other or future waterway management decisions. Any interested company or individual wishing to provide recommendations on existing or additional aids to navigation in this area are welcome to participate by submitting a user survey. To receive further information, contact Sector San Diego Waterways, LTJG Kim at shera.s.kim@uscg.mil.

LNM: 41/22

SOUTHERN CALIFORNIA - SAN DIEGO HARBOR ANCHORAGE - NSRA

The U. S. Coast Guard is conducting a Navigational Safety Risk Assessment (NSRA) survey of San Diego Harbor Anchorage which will remain open until 31 December 22. Anyone interested in participating can do so by using the following link:

<https://www.research.net/r/SDHarborAnchorageGrounds>

This questionnaire seeks to obtain data on the navigational safety of San Diego Harbor Anchorage, as well as other waterway safety concerns. The Coast Guard will use this information to ensure that the aids are serving their intended purpose. The Coast Guard also uses the concerns of waterways users to assist with other or future waterway management decisions. Any interested company or individual wishing to provide recommendations on existing or additional aids to navigation in this area are welcome to participate by submitting a user survey. To receive further information, contact Sector San Diego Waterways, LTJG Kim at shera.s.kim@uscg.mil.

LNM: 41/22

SOUTHERN CALIFORNIA - SANTA CRUZ - WAVERIDER BUOY

A Waverider buoy has been deployed at 36-56-04N 122-02-02W near Santa Cruz, CA. The buoy will be used for wave measurements to aid the Coastal Data Information Program. For questions, contact Ross Timmerman at 619-818-8387.

Chart 18685

LNM: 33/22

SOUTHERN CALIFORNIA - SAN DIEGO HARBOR SPECIAL ANCHORAGE - NSRA

The U. S. Coast Guard is conducting a Navigational Safety Risk Assessment (NSRA) survey of San Diego Harbor Special Anchorage which will remain open until 31 December 22. Anyone interested in participating can do so by using the following link:

<https://www.research.net/r/SDHarborSpecialAnchorageArea>

This questionnaire seeks to obtain data on the navigational safety of San Diego Harbor Special Anchorage, as well as other waterway safety concerns. The Coast Guard will use this information to ensure that the aids are serving their intended purpose. The Coast Guard also uses the concerns of waterways users to assist with other or future waterway management decisions. Any interested company or individual wishing to provide recommendations on existing or additional aids to navigation in this area are welcome to participate by submitting a user survey. To receive further information, contact Sector San Diego Waterways, LTJG Kim at shera.s.kim@uscg.mil.

LNM: 41/22

SOUTHERN CALIFORNIA- ANAHEIM BAY- TEMPORARY BUOYS

The U.S. Coast Guard has established temporary Buoys in Anaheim Bay at the following locations.

Temp Buoy #9- Fl G 4s

Position: 33-43-927N 118-05-981W

Temp Buoy #10 Q R

Position: 33-43-963N 118-05-818

Temp Buoy #11 Fl G 4s

Position: 33-44-077N 118-05-862W

Temp Buoy #13 Fl G 4s

Position: 33-44-211N 118-05-799W

For more details or comments contact LT Miranda Brumbaugh at 510-437-2978 or Miranda.E.Brumbaugh@uscg.mil.

Charts: 18746 18749

LNM: 29/22

SOUTHERN CALIFORNIA-CABLE ROUTE SURVEY-GROVER BEACH

FUGRO USA MARINE INC. will be conducting a cable route survey from 15 November 2022 until 26 December 2022. M/V FUGRO SUPPORTER will conduct survey operations during daylight hours offshore of Grover Beach, CA within the following coordinates:

35-04-05N 120-23-41W

35-03-31N 120-24-22W

34-17-21N 121-12-04W

The vessel will have limited maneuverability during operations. Mariners are requested to transit the area with caution. For more details or comments contact Bastian Wichand at +49 172-433-9093.

Chart 18700

LNM: 41/22

SOUTHERN CALIFORNIA-CATALINA ISLAND-BUOY DEPLOYMENT

Marine BioEnergy INC. will deploy a yellow research buoy on 29 November, 2022 near Catalina Island, CA with the characteristics of Fl Y 4s at 33-28-21N 118-29-33W. The buoy will be deployed until 29 May, 2023. Mariners are requested to transit the area with caution. For more details or comments contact Cindy Wilcox at 818-952-6018.

Chart 18740

LNM: 47/22

SOUTHERN CALIFORNIA-CHANNEL ISLANDS-DREDGE OPERATIONS

Manson Construction Co. is conducting dredging operations of the Channel Islands Harbor Entrance at 34-09-21N 119-13-46W, 24 hrs a day, 7 days a week from 01 October, 2022, until 31 January, 2023. DB MORRIS, DB FREYA, Tender PUP, Tender CUB, and Survey Boat RUSTLER will be conducting operations and monitoring VHF-FM Chan. 16 and 67. Materials will be transported through floating, submerged and shore pipeline to the disposal area. Mariners are requested to transit the area with caution. For more details or comments contact DB HR MORRIS at 562-762-5449.

Chart 18725

LNM: 35/22

SOUTHERN CALIFORNIA-LOS ANGELES-PILE INSTALLATION

Manson Construction Co. will conduct pile installation in the vicinity of the Los Angeles main channel from 28 November, 2022 until 19 December, 2022 at 33-43-59N, 118-16-22W. D/B NORSEMAN and T/B ELMER Barge will be assisting and monitoring VHF-FM Channels 16 and 67. Operations will be conducted 24 hrs daily. Mariners are requested to transit the area with caution. For more details or comments contact Cesar Canales at 562-833-3896.

Chart 18751

LNM: 45/22

SOUTHERN CALIFORNIA-LONG BEACH HARBOR-MARINE CONSTRUCTION

Rincon Consultants Inc. will be conducting marine construction within the Long Beach Harbor at Junipero Beach at 33-45-42N 118-09-51W from 28 November, 2022 until 31 May 2023. A small craft will be on scene constructing a cofferdam during daylight hours. The vessel will be monitoring VHF-FM Chan. 16. Mariners are requested to transit the area with caution. For more details or comments contact Eric Schaad at 559-514-1837.

Chart 18751

LNM: 46/22

SOUTHERN CALIFORNIA-LOS ANGELES/LONG BEACH HARBOR-BRIDGE

VINCENT THOMAS BRIDGE-The 180' temporary platform has been relocated just west of the east tower and reduces vertical clearance of the bridge by 5.5 feet and painting of the bridge has resumed and will migrate west. The upstream and downstream corners and every 50' along the upstream and downstream side of the platform is lighted at night with steady burning red lights (see V_Thomas_Platform_Lighting1.pdf at the end of this notice). Work will take place during daylight hours, Monday through Friday. For conditions at the bridge mariners can contact 213-479-4138, 213-479-1144 or 310-261-9552. For more details or comments contact the Coast Guard Bridge Office at 510-437-3516.

Chart 18749

LNM: 30/22

SOUTHERN CALIFORNIA-LOS ANGELES/LONG BEACH HARBOR-BRIDGE

PIER 400 BRIDGE MODIFICATION- Construction is taking place Monday through Friday, 6am to 4pm, until 31 September, 2023. All in-water equipment and temporary structures will occur within the two existing bridges, and will not impact marine traffic in the area. For conditions at the work site, contact 714-536-9553 or 510-846-0325. For further information contact the Coast Guard Bridge Office at 510-437-3461.

Chart 18749

LNM: 26/22

SOUTHERN CALIFORNIA-MARINE EVENT-SAN DIEGO-SAN DIEGO BAY

The annual San Diego Bay Parade of Lights consists of 80 power, sail, and hand powered boats, participating in a boat parade from 5 p.m. to 9 p.m. on December 11th and 18th, 2022. The parade route will start near the west side of Shelter Island at position 32-42-24N 117-13-56W, proceed past Embarcadero to the Coronado Bay Bridge, cross the main shipping channel and finish in the vicinity of the U.S. Navy Carrier Basin. There is a Coast Guard Special Local Regulation being enforced for the event. Mariners are advised to avoid this area and use due caution when transiting outside this area. For more details or comments, contact Bill Edwards at 619-708-5047.

LNM: 45/22

SOUTHERN CALIFORNIA-MORRO BAY BREAKWATER LIGHT-SOUND SIGNAL CHANGE

Morro Bay Breakwater Light (LLNR 240) sound signal has been replaced with a Mariner Radio Activated Sound Signal (MRASS). The sound signal can be activated by keying the microphone 6 times within 10 seconds on VHF-FM Chan. 83A and will sound 1 blast every 30 seconds for 15 minutes.

Charts: 18700 18703

LNM: 42/22

SOUTHERN CALIFORNIA-NAVAL BASE POINT LOMA-DREDGE OPERATIONS

R.E. Staite Engineering Inc. will be conducting dredging at Naval Base Point Loma, centered at 32-41-16N 117-14-17W, until 31 March, 2023. Vessels DB POINT LOMA, DB WILLIAM F and DB PALOMAR will be performing dredging operations with scows HAROLD M, CLARENCE D, ROB P and MIKE J, along with push boat JEANIE R, crew boat JOHN DRAKE and RES survey boat in conjunction with tugs KILLEEN and CUYAMACA. All equipment will be monitoring VHF-FM Chan. 16. Mariners are reminded to observe all established Security Zones, and are urged to transit at their slowest safe speed to minimize wake and proceed with caution after passing arrangements have been made. For more details or comments contact project manager Erick Myers at 619-233-0178 or Christopher Ramos at 619-221-7236.

Chart 18773

LNM: 40/22

SOUTHERN CALIFORNIA-NAVAL BASE POINT LOMA-MARINE CONSTRUCTION-DREDGE OPERATIONS

R.E. Staite Engineering Inc. will conduct marine construction and dredging operations at Naval Base Point Loma behind the 151 Fuel Pier at 32-41-59N 117-14-13W from 01 October, 2022 until 31 March, 2023. Vessels DB PALOMAR, DB POINT LOMA, DB WILLIAM F, push boat JENIE R, crew boat JOHN DRAKE along with tugs KILLEEN, CUYAMACA and 04 scows will conduct operations. All vessels will monitor VHF-FM Chan. 16. All dredged materials will be disposed of at LA-5. Mariners are requested to transit the area with caution. For more details or comments contact Erick Myers at 619-233-0178.

Chart 18773

LNM: 41/22

SOUTHERN CALIFORNIA-OFFSHORE HUNTINGTON BEACH-DIVE OPERATIONS

Aqueos Corporation will be conducting offshore 24 hrs a day dive operations from 13 December, 2022 until 13 January, 2023. Operations will be conducted at two sites between the following coordinates:

Site 1:

33-40-20N 118-01-45W and 33-40-15N 118-01-50W

Site 2:

33-40-18N 118-01-47W and 33-40-11N 118-01-53W

The M/V DANNY C (call sign WBE 8593) will be using temporary moorings at 33-40-23N 118-01-58W and 33-40-21N 118-02-01W. M/V DANNY C will be monitoring VHF-FM Chan. 16 and can be reached at 805-895-9005. Mariners are requested to transit the area with caution. For more details or comments contact project manager Jason Smith at 805-205-3156.

Chart 18746

LNM: 48/22

SOUTHERN CALIFORNIA-OFFSHORE LOS ANGELES-OCEANOGRAPHIC OPERATIONS

The Scripps Institution of Oceanography research vessel SALLY RIDE (Call Sign WSAF) will conduct 24-hour oceanographic surface to seafloor operations from 21 December, 2022 until 27 December, 2022 at the following positions:

33-42-00N 125-36-00W

33-42-00N 123-57-00W

33-42-00N 122-17-00W

33-42-00N 120-37-00W

33-42-00N 118-58-00W

Exact timing and duration of each station is dependent on operational needs and weather conditions. During over-the-side operations, vessel will be restricted in ability to maneuver. R/V SALLY RIDE will monitor VHF-FM Chan. 13 and 16. Mariners are requested to transit the area with caution. For more details or comments contact Wes Hill at 858 534-5568.

Charts: 18720 18740

LNM: 50/22

SOUTHERN CALIFORNIA-OFFSHORE SAN DIEGO-HAZARDOUS OPERATIONS

The U.S. Navy will be conducting hazardous operations until 01 January, 2023, in the areas bound by the following coordinates:

First:

32-55-00N 118-25-00W

32-55-00N 118-15-00W

32-40-00N 118-15-00W

32-40-00N 118-35-00W

32-45-00N 118-35-00W

Second:

32-33-00N 118-25-00W

32-35-00N 118-16-00W

32-35-00N 117-40-00W

31-55-00N 117-40-00W

31-55-00N 118-25-00W

32-33-00N 118-25-00W

Third:

32-52-42N 119-11-58W

33-08-04N 118-52-05W

33-08-04N 118-46-02W

33-03-52N 118-41-48W

33-02-32N 118-43-33W

32-58-53N 118-43-31W

32-47-40N 118-32-21W

32-36-55N 118-45-00W

32-36-55N 118-56-57W

SOUTHERN CALIFORNIA-OFFSHORE SAN DIEGO-HAZARDOUS OPERATIONS

Mariners are requested to transit the area with caution. For more details or comments contact FACSAC schedules at 619-545-1744.

Charts: 18740 18765 18774

LNM: 04/22

SOUTHERN CALIFORNIA-OXNARD-ROCK REVETMENT REPAIR

Larison Contracting will be conducting repair and replacement of rock revetment in Oxnard CA at 34-10-03 N 119-13-31 W until 12 June, 2023. Operation will be monitoring VHF-FM Chan. 16. Mariners are requested to transit at a safe speed to minimize wake and proceed with caution after making passing arrangements. For more information, contact Michael Tripp at 562-427-1900.

Chart 18725

LNM: 45/22

SOUTHERN CALIFORNIA-POINT CONCEPTION-NOAA BUOY DEPLOYMENT

NOAA's Pacific Marine Environmental Laboratory deployed a buoy 11 nautical miles due west of Point Conception, CA. at 34-27-31N 120-41-10W. The buoy named Harvest 22 has a yellow top with gray sides and a flashing amber light every 4 seconds. Mariners are advised to use due caution when transiting this area. For more details or comments contact Cabot Zucker at 425-477-9554.

LNM: 13/22

SOUTHERN CALIFORNIA-PORT OF LONG BEACH-MARINE CONSTRUCTION

Dutra Construction Company will be conducting marine construction and dredging operations of Wharf H at the Port of Long Beach from 01 November, 2022 until 01 June, 2023. Barge WILLIAM F will be monitoring VHF-FM Chan. 16 and 82. Mariners are requested to transit the area with caution. For more details or comments contact Andrew Hunt at 415-847-6640.

Charts: 18749 18751

LNM: 41/22

SOUTHERN CALIFORNIA-PORT OF LONG BEACH-MARINE CONSTRUCTION

Connolly-Pacific will conduct marine construction to the ramp at Pier G in the Port of Long Beach from 8:30am to 6:30pm until 28 February, 2022. DB LOS ANGELES and tug DURANGO will be conducting construction. DB LOS ANGELES will use anchor buoys to be positioned near the ramp. All vessels will be monitoring VHF-FM Chan 13, 16 and 80A. Mariners are requested to transit the area with caution. For more details or comments contact Justin Chin Wong at 562-437-2831.

Chart 18751

LNM: 28/22

SOUTHERN CALIFORNIA-PORT SAN LUIS-MARINE CONSTRUCTION

Connolly-Pacific will conduct marine construction to the Port San Luis breakwater from 6:30am to 6:30pm until 31 December, 2022. DB LONG BEACH will use anchors to position itself along the breakwater. These anchor positions will be marked by round white anchor cans. Tug PATCONA and Tug LARCONA will be assisting DB LONG BEACH. All vessels will be monitoring VHF-FM Chan. 13, 16, and 79a. Mariners are requested to transit the area with caution. For more details or comments contact Tobey Walker at 562-577-0730 or John Riley at 562-577-3602.

LNM: 04/22

SOUTHERN CALIFORNIA-RESERVATION POINT-LOS ANGELES-MARINE CONSTRUCTION

Power Engineering Construction Co. will be performing demolition and pile driving operations until 22 December, 2022, at 33-43-22N 118-16-06W. Work is being conducted Monday through Friday 7:00am to 4:00pm. Operations will be conducted with derrick barge DB ALAMEDA and a flat material barge. The barge will be spudded down and anchored using a four-point mooring system with buoys. All vessels and equipment on site will be monitoring VHF-FM Chan. 16 and 67. Mariners are requested to transit the area with caution. For more details comments contact Matt Dill at 510-610-4633.

Chart 18751

LNM: 19/22

SOUTHERN CALIFORNIA-SAN DIEGO BAY-BRIDGE

CORONADO BAY BRIDGE MAINTENANCE-Scaffolding installed between piers 11-12, 12-13, and 13-14, reduces vertical clearance by more than 8'. The upstream and downstream lower edges of the scaffolding are lighted at night with red lights. For more details or comments contact the Coast Guard Bridge Office at 510-437-3461.

Charts: 18772 18773

LNM: 13/20

SOUTHERN CALIFORNIA-SAN DIEGO BAY-DIVE OPERATIONS

Merkel & Associates will be conducting dive operations in San Diego, CA between the Coronado ferry landing and the Embarcadero from 14 December, 2022 until 16 December, 2022. The survey will be conducted on two pipelines which will be located between the following coordinates:

Pipeline number 1:

32-42-02N 117-10-26W and 32-42-30N 117-10-17W

Pipeline number 2:

32-41-57N 117-10-10W and 32-42-22N 117-10-07W

The Survey vessel OK1 (call sign CF3862UC) and a support vessel (call sign CF9883pc) will be monitoring VHF-FM Chan. 16. Mariners are requested to transit the area with caution. For more details or comments contact Keith Merkel at 858-560-5465.

Chart 18773

LNM: 47/22

SOUTHERN CALIFORNIA-SAN DIEGO BAY-MARINE CONSTRUCTION

R.E. Staite Engineering Inc. will conduct marine construction at Naval Base Point Loma at 32-41-33N 117-14-22W from 16 September, 2022 until 31 March, 2023. Vessels DB PALOMAR, DB POINT LOMA, RES 180, crew boat JOHN DRAKE, along with tug CUYAMACA will conduct operations. All vessels will be monitoring VHF-FM Chan. 16. Mariners are requested to transit the area with caution. For more details or comments contact Erick Myers at 619-233-0178.

Chart 18773

LNM: 32/22

SOUTHERN CALIFORNIA-SAN DIEGO BAY-MARINE CONSTRUCTION

R.E. Staite Engineering Inc. will conduct marine construction at Naval Base Point Loma piers 5000 at 32-41-16N 117-14-17W from 16 September, 2022 until 31 March, 2023. Vessels DB PALOMAR, DB POINT LOMA, DB WILLIAM F, push boat JEANIE R, crew boat JOHN DRAKE along with tugs KILLEEN, CUYAMACA and 04 scows will conduct operations. All vessels will monitor VHF-FM Chan. 16. Mariners are requested to transit the area with caution. For more details or comments contact Erick Myers at 619-233-0178 or Christopher Ramos at 619-221-7236.

SOUTHERN CALIFORNIA-SAN DIEGO BAY-MARINE CONSTRUCTION

Chart 18773

LNM: 41/22

SOUTHERN CALIFORNIA-SAN DIEGO RIVER-BRIDGE

WEST MISSION BAY DRIVE BRIDGE-The City of San Diego is replacing the existing bridge. A temporary work trestle, providing a vertical clearance of 8' over Mean Sea Level is in place. Scheduled completion date of the bridge replacement project is March 2023. Mariners are urged to use caution while navigating the replacement bridge work site. For more details or comments contact the Coast Guard Bridge Office at 510-437-3461.

Chart 18765

LNM: 44/22

SOUTHERN CALIFORNIA-SAN DIEGO-DREDGE OPERATIONS

R.E. Staite Engineering Inc. will be conducting dredging operations of Scripps Institute of Oceanography MARFAC located in San Diego, CA, at 32-42-19N 117-14-05W from 1 December, 2022 until 31 January, 2023. Vessels DB POINT LOMA, DB WILLIAM F and DB PALOMAR will be performing dredging operations with scows HAROLD M, CLARENCE D, ROB P and MIKE J, along with push boat JEANIE R, crew boat JOHN DRAKE and RES survey boat in conjunction with tugs KILLEEN and CUYAMACA. All equipment will VHF-FM Chan. 16. Mariners are requested to transit the area with caution. For more details or comments contact Erick Myers at 619-233-0178.

Chart 18773

LNM: 46/22

SOUTHERN CALIFORNIA-SAN NICHOLAS ISLAND-ATMOSPHERIC BUOY DEPLOYMENT

Naval Air Systems Command has deployed an atmospheric sampling buoy 1.5 miles Northeast of San Nicolas Island at 33-18-00N 119-30-55W. The yellow buoy Fl Y 3s, is 6 feet above the waterline and 2 feet in diameter. Mariners are requested to transit the area with caution. For more details or comments contact Kyle Edwards at 805-989-0672.

Chart 18720

LNM: 39/22

SOUTHERN CALIFORNIA-TWO HARBORS-CATALINA ISLAND-BUOY DEPLOYMENT

Marine BioEnergy INC. will be conducting biomass research from 17 November, 2022 until 15 May, 2023 at 33-28-12N 118-29-33W. The R/V SEA SCOUT will be deploying a yellow buoy with a light characteristic of Fl Y 4s to study the growth of kelp in the area. Mariners are requested to transit the area with caution. For more details or comments contact Cindy Wilcox at 818-952-6018.

Charts: 18746 18757

LNM: 46/22

UTAH – LAKE POWELL ANCHORAGE - NSRA

The U. S. Coast Guard is conducting a Navigational Safety Risk Assessment (NSRA) survey of Lake Powell Anchorage which will remain open until 31 December 22. Anyone interested in participating can do so by using the following link:

<https://www.research.net/r/LakePowellAnchorage>

This questionnaire seeks to obtain data on the navigational safety of Lake Powell Anchorage, as well as other waterway safety concerns. The Coast Guard will use this information to ensure that the aids are serving their intended purpose. The Coast Guard also uses the concerns of waterways users to assist with other or future waterway management decisions. Any interested company or individual wishing to provide recommendations on existing or additional aids to navigation in this area are welcome to participate by submitting a user survey. To receive further information, contact Sector San Diego Waterways, LTJG Kim at shera.s.kim@uscg.mil.

LNM: 41/22

SECTION VIII - LIGHT LIST CORRECTIONS

An Asterisk *, indicates the column in which a correction has been made to new information

| (1) No. | (2) Name and Location | (3) Position | (4) Characteristic | (5) Height | (6) Range | (7) Structure | (8) Remarks |
|------------|---|---------------------------------|-----------------------|---------------|--------------|---|-------------------------|
| 8251.1 | <i>Humboldt Bay Kelp Farm Danger Buoy 1</i> | 40-48-37.440N 124-11-12.470W | Fl Y 4s | | | Regulatory Buoy, White w/ Orange Diamond. | Private Aid. 50/22 |
| * | * | * | * | * | * | * | * |
| 8251.2 | <i>Humboldt Bay Kelp Farm Danger Buoy 2</i> | 40-48-38.700N 124-11-11.650W | Fl Y 4s | | | Regulatory Buoy, White w/ Orange Diamond. | Private Aid. 50/22 |
| * | * | * | * | * | * | * | * |
| 8251.3 | <i>Humboldt Bay Kelp Farm Danger Buoy 3</i> | 40-48-36.400N 124-11-10.460W | Fl Y 4s | | | Regulatory Buoy, White w/ Orange Diamond. | Private Aid. 50/22 |
| * | * | * | * | * | * | * | * |
| 8251.4 | <i>Humboldt Bay Kelp Farm Danger Buoy 4</i> | | | | | | Remove from list. 50/22 |
| 8251.4 | <i>Humboldt Bay Kelp Farm Danger Buoy 4</i> | 40-48-37.790N 124-11-09.620W | Fl Y 4s | | | Regulatory Buoy, White w/ Orange Diamond. | Private Aid. 50/22 |
| * | * | * | * | * | * | * | * |

PUBLICATION CORRECTIONS

ANNOUNCEMENT – U.S. Coast Pilot® 7 and U.S. Coast Pilot® -NEW EDITIONS-Spring 2022

PUBLICATION–National Oceanic Atmospheric Administration (NOAA) – U.S. Coast Pilot 7, Pacific Coast: California, 54th Edition, 2022, has been issued and is ready for free download and weekly updates at www.nauticalcharts.noaa.gov/publications/coast-pilot/index.html.

Only Print-on-Demand (POD) bound copies are available for purchase; visit nauticalcharts.noaa.gov/publications/print-agents.html#coast-pilot. The 2022 Edition cancels the preceding 2021 Edition, and incorporates all previous corrections.

LNM: 21/22

ANNOUNCEMENT – U.S. Coast Pilot® 7 and U.S. Coast Pilot® 10 - NEW EDITIONS – Spring 2020

U.S. Coast Pilot 7 will be divided into two editions in the spring 2020 due to its large size. The following are the projected new editions that will be issued on the same date and ready for free download and weekly updates on June 9, 2020, at nauticalcharts.noaa.gov/publications/coast-pilot/index.html.

PUBLICATION–National Oceanic Atmospheric Administration (NOAA) – U.S. Coast Pilot 7, Pacific Coast: California 52nd Edition, 2020

PUBLICATION–National Oceanic Atmospheric Administration (NOAA) – U.S. Coast Pilot 10, Pacific Coast: Oregon, Washington, Hawaii and Pacific Islands 1st Edition, 2020

Only Print-on-Demand bound copies are available for purchase; visit nauticalcharts.noaa.gov/publications/print-agents.html#coast-pilot

For any questions or comments; visit nauticalcharts.noaa.gov/customer-service/assist/

NOAA Office of Coast Survey's Nautical Publications Branch
April 2020

LNM: 18/20

ENCLOSURES

REPORT OF DELAY AT DRAWBRIDGE

[Delay_Report_11-2017.pdf](#)

Use link above to Report a Delay at a Drawbridge.

LNM: 06/07

SOUTHERN CALIFORNIA-PORTS OF LOS ANGELES/LONG BEACH-LA/LB HARBOR-BRIDGE

[V_Thomas_Platform_Lighting1.pdf](#)

See link above for platform lighting for Vincent Thomas Bridge.

LNM: 28/19

NORTHERN CALIFORNIA-DELTA & RIVERS-AMERICAN RIVER-BRIDGE

[AmRiv_SiltCurtain_BargeLocation.pdf](#)

CAPITAL CITY HWY (ROUTE 51) BRIDGE-See link above for barge and silt curtain locations.

LNM: 22/22

NORTHERN CALIFORNIA-DELTA & RIVERS-SACRAMENTO RIVER-BRIDGE

[RVBridge_PlatformCable_Lighting.pdf](#)

RIO VISTA DRAWBRIDGE-See enclosure above for temporary platform location and lighting.

LNM: 22/20

NORTHERN CALIFORNIA-SAN FRANCISCO BAY-BRIDGE

[PlatformLighting_GG_Bridge_14Jun22.pdf](#)

GOLDEN GATE BRIDGE-Temporary Platform Location and Lighting revised 14 June, 2022.

LNM: 24/22

NORTHERN CALIFORNIA-SAN FRANCISCO BAY-BRIDGE

[R-SR_Bridge_Temp_Platform_Lighting.pdf](#)

RICHMOND-SAN RAFAEL BRIDGE- See link above for temporary underdeck platform lighting for concrete and steel repairs.

LNM: 48/21

NORTHERN CALIFORNIA-DELTA & RIVERS-MOKELUMNE RIVER-BRIDGE

[MokeRiverBridge_RehabBargeLights.pdf](#)

MOKELUMNE RIVER BRIDGE (HWY 12)-See link above for typical barge and buoy lighting and location during rehabilitation project.

LNM: 48/22

NORTHERN CALIFORNIA-DELTA & RIVERS-SAN JOAQUIN RIVER-BRIDGE

[TemporaryBridge_FalseworkLighting.pdf](#)

CROWS LANDING REPLACEMENT-See link above for temporary falsework, temporary bridge, the temporary navigation channel during construction with navigation lighting plan.

LNM: 36/22

NEVADA-ARIZONA-COLORADO RIVER-BRIDGE

[RockAccessPad_Lighting.pdf](#)

NEW LAUGHLIN-BULLHEAD CITY BRIDGE-See link above for temporary rock access pad, pier and silt curtain anchor lighting and configuration.

LNM: 50/22

NORTHERN CALIFORNIA-SAN FRANCISCO - VOLUNTARY VESSEL SPEED REDUCTION

[NOAA VSR 2022.pdf](#)

see link above.

LNM: 18/22

SOUTHERN CALIFORNIA-DANA POINT TO POINT ARGUELLO-VOLUNTARY VESSEL SPEED REDUCTION

[NOAA VSR 2022.pdf](#)

see link above.

LNM: 18/22

NORTHERN CALIFORNIA-DELTA & RIVERS-OLD RIVER-BRIDGE

[BNSF_OldRiver_Barge_Lighting.pdf](#)

See link above.

LNM: 13/22

NORTHERN CALIFORNIA-DELTA & RIVERS-OLD RIVER-BRIDGE

[OldRiver_Barge_Lighting_Plan.pdf](#)

CA ROUTE 4 BRIDGE-See link above for typical barge lighting and location during rehabilitation project.

LNM: 44/22

NORTHERN CALIFORNIA-DELTA & RIVERS-SACRAMENTO RIVER-BRIDGE

[ButteConstructionLighting-BuoyLine.pdf](#)

REPLACEMENT BUTTE CITY BRIDGE-See link above for temporary construction trestle and lighting and proposed buoy line..

LNM: 36/22

THE LOCAL NOTICE TO MARINERS IS AVAILABLE ON THE WORLD WIDE WEB AT [HTTPS://WWW.NAVCEN.USCG.GOV](https://www.navcen.uscg.gov)

P. A. Garcia, LCDR
U.S. Coast Guard
Acting Chief Waterways Management Branch

**U.S. COAST GUARD
REPORT OF DELAY AT DRAWBRIDGE
PER 33 CFR 117.5**

BRIDGE NAME: _____ DATE: _____

MILE : _____ WATERWAY: _____

1. Name/ Type of Vessel: _____ Direction of Travel : _____

2. Vessel Owner (Name): _____

(Address): _____

3. Name of Pilot (if applicable): _____

(Address): _____

4. Time vessel signaled for bridge opening: _____

5. Location of vessel when signal was given: _____

6. Time and location of vessel when delay began: _____

7. Method of signal for bridge opening: () Radio () Sound () Visual.

(If sound or visual signal was used, specify: _____)

8. Time bridge operator acknowledged signal: _____

9. Method of bridge operator acknowledgement: () Radio () Sound () Visual

(If sound or visual signal was used, specify: _____)

10. Did bridge operator acknowledgement indicate the bridge,

() Could be opened immediately?

() Could not be opened immediately?

11. If land traffic crossed the bridge:

Time land traffic started across the bridge _____

Time land traffic stopped crossing the bridge _____

Did land traffic stop on the bridge? _____

Duration land traffic stopped on the bridge _____

12. Time drawbridge opened for navigation _____

13. Additional comments:

I certify the above information is true to the best of my knowledge and understand this statement may be used by the U.S. Coast Guard in levying fines against the bridge owner.

Signature _____

Telephone _____

Mariners may complete and return to:

Commander (dpw)
Eleventh Coast Guard District
Coast Guard Island, Building 50-2
Alameda, CA 94501-5100
Attn: Bridge Office

Fax: (510) 437-5836

Email: Carl.T.Hausner@uscg.mil

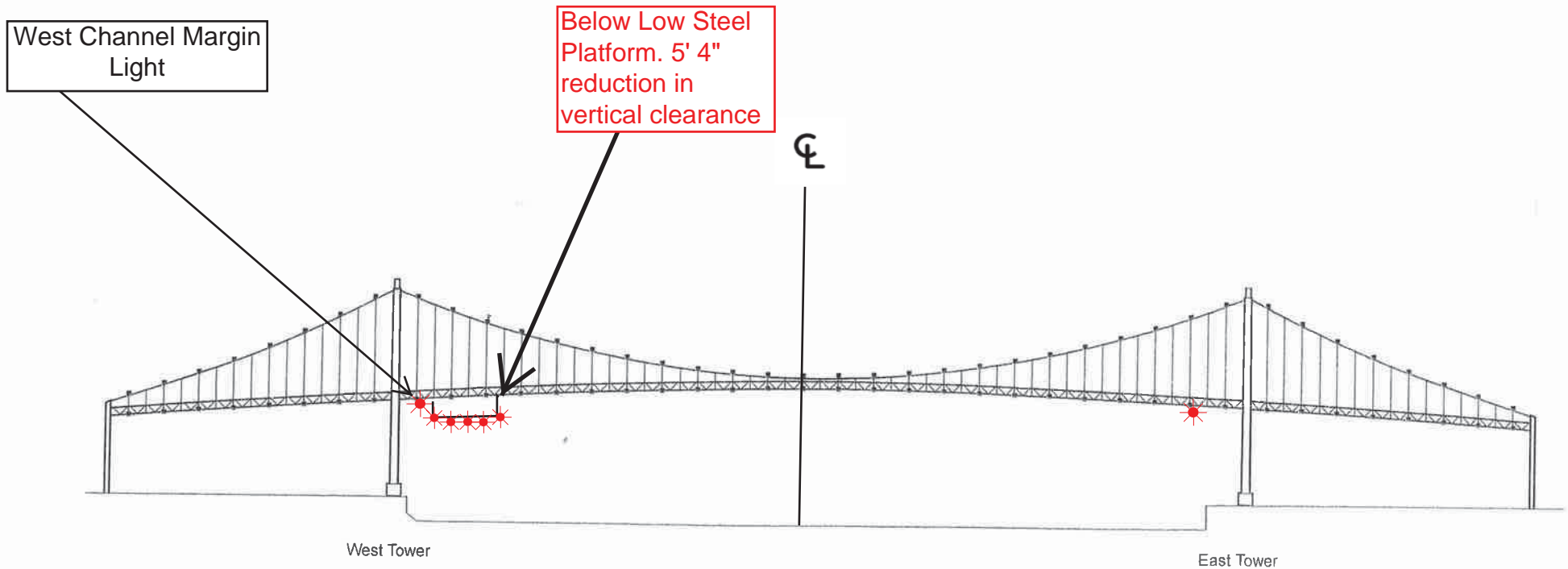
Questions? Please contact: Carl Hausner, Bridge Administrator, Eleventh Coast Guard District

Office: (510) 437-3516

Cell: (510) 219-4366

Mariners are reminded not to require bridge openings for appurtenances nonessential to navigation, per 33 CFR 117.11

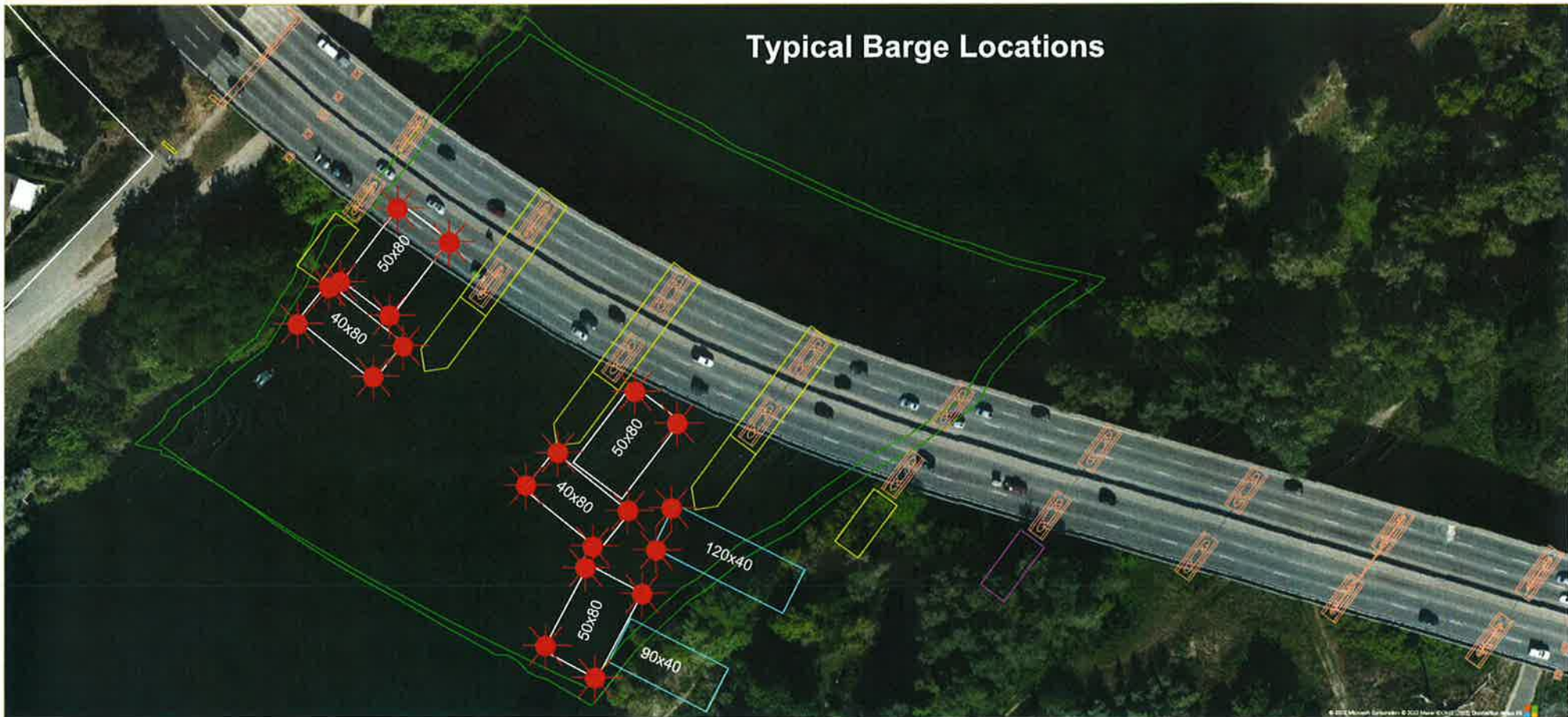
Vincent Thomas Highway Bridge
Mile 3.0
Los Angeles/Long Beach Harbor
Painting Project



A 180 foot long under deck temporary platform will reduce vertical clearance by 5' 4". Each corner and every 50 feet along the the upstream and downstream side of the platform will lighted at night with steady burning red lights visible at 2000 yards by approaching vessels. In a duration of 1-year the platform will progress from the western channel margin light to 250' west of the centerline of the bridge.

Rehabilitation and Modification Project
Capital City (CA Route 51) Bridge, Mile 4.0, American River

Typical Barge Location and Typical Barge Lighting



Each corner of each barge is lighted at night with steady burning all-round red light, visible at 2,000 by approaching vessels. All vessels transiting the project area should use extreme caution. Turbidity curtains will be placed at different locations during the project. The next four diagrams show the proposed location of the curtains.



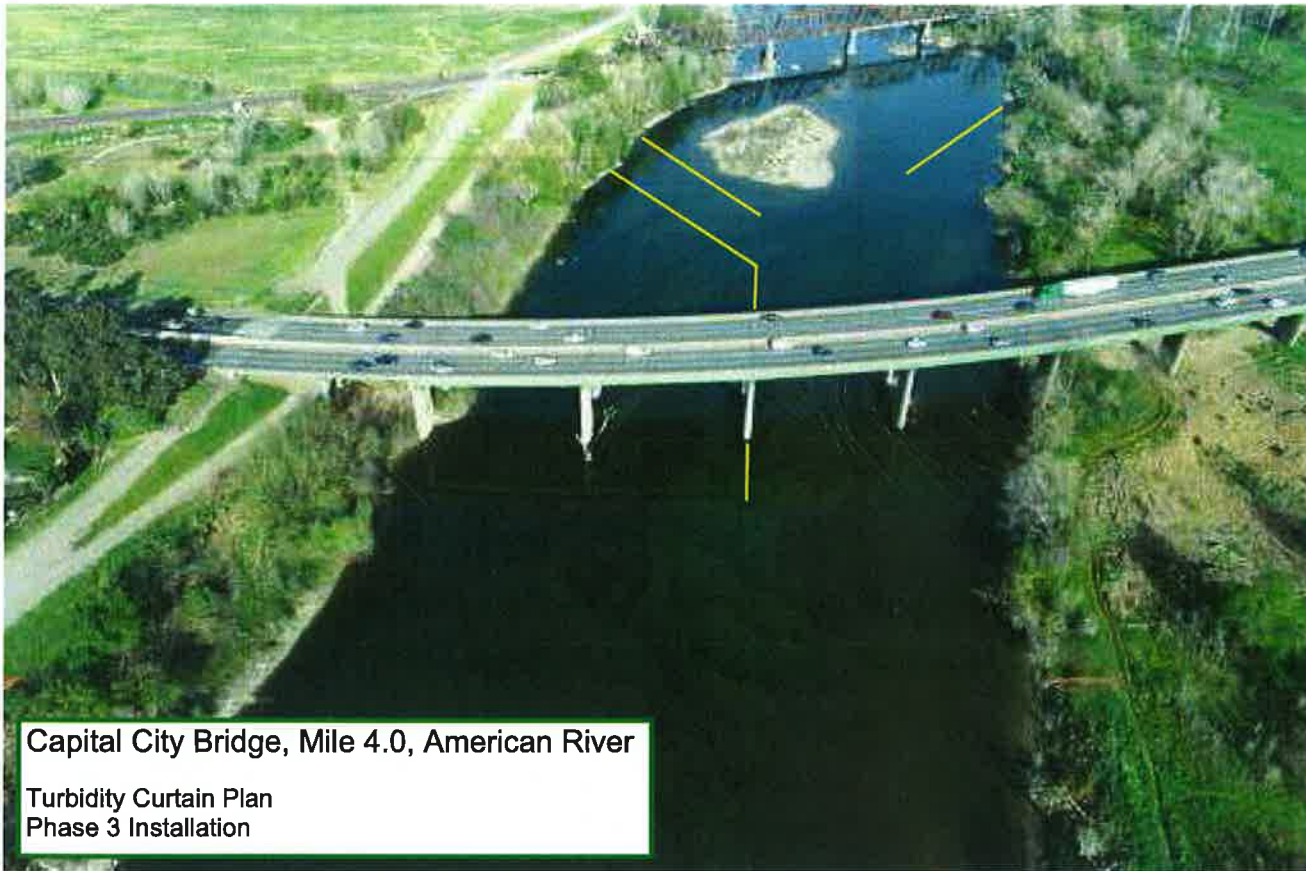
Capital City Bridge, Mile 4.0, American River

Turbidity Curtain Plan
Phase 1 Installation



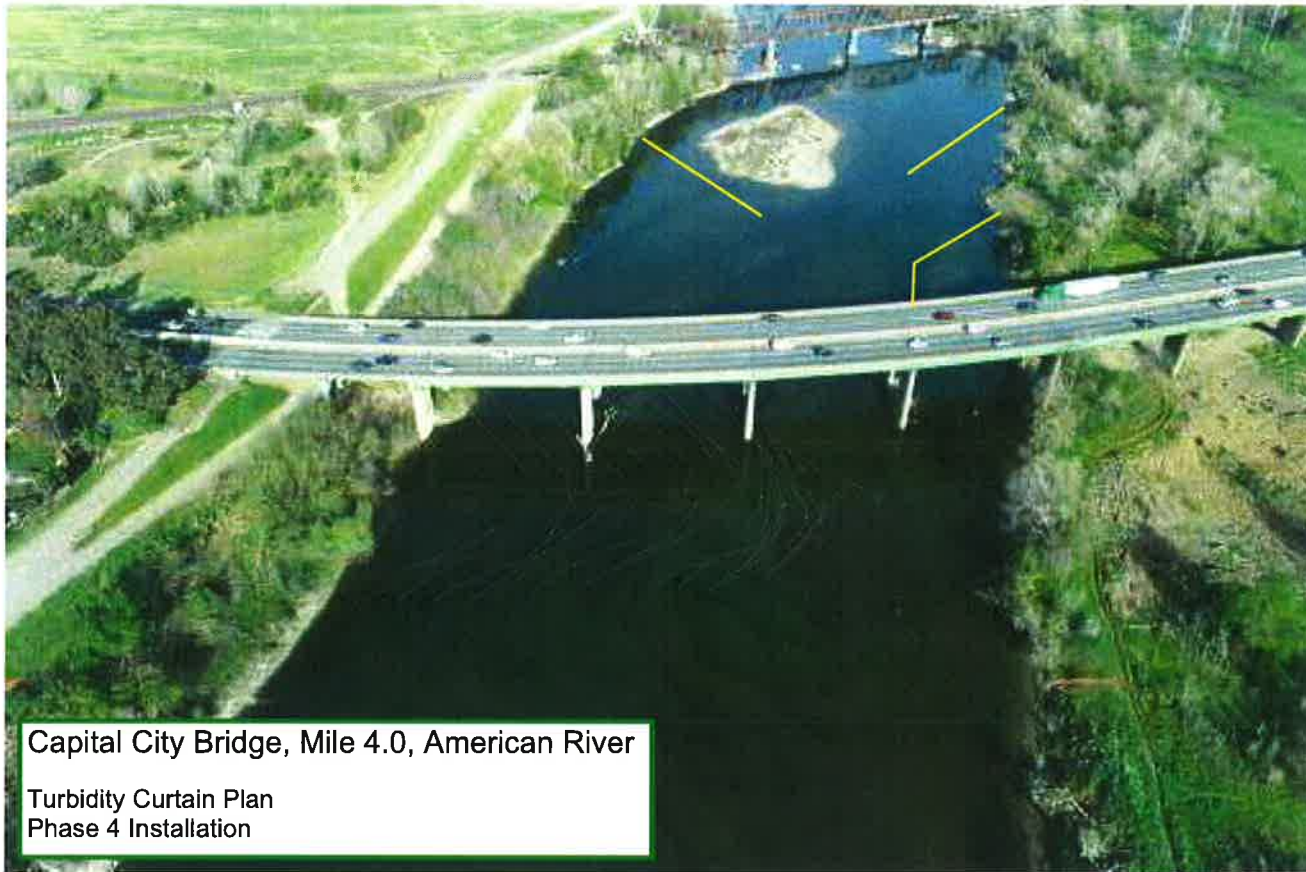
Capital City Bridge, Mile 4.0, American River

Turbidity Curtain Plan
Phase 2 Installation



Capital City Bridge, Mile 4.0, American River

Turbidity Curtain Plan
Phase 3 Installation

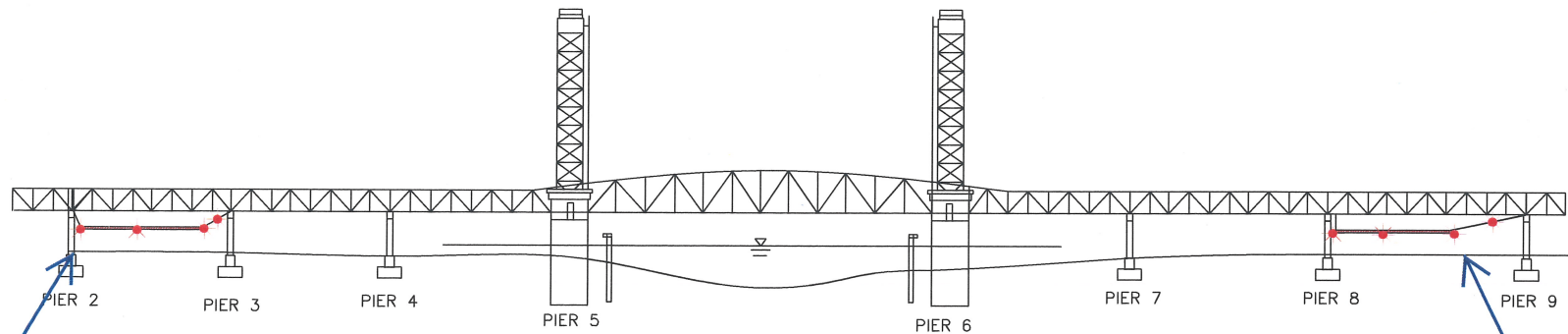


Capital City Bridge, Mile 4.0, American River

Turbidity Curtain Plan
Phase 4 Installation

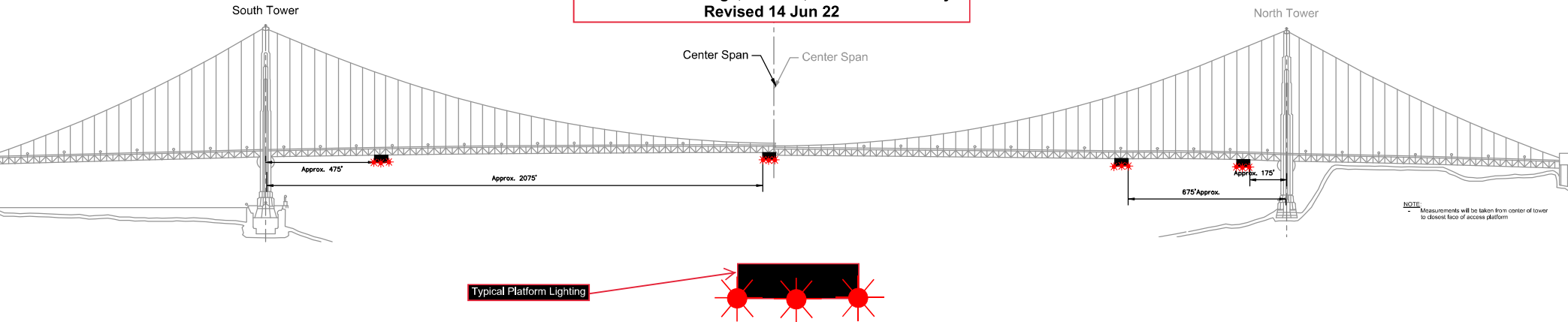
Temporary Underdeck Platform Lighting

Rio Vista Bridge Mile 12.8, Sacramento River



Two temporary platforms, and associated support cables, are installed beneath low steel of the bridge in span 2 and 8 and reduces vertical clearance in those spans by no more than 4 feet. The lower 4 corners and midpoint of each platform will be lighted at night with steady burning red lights, visible at 2,000 yards from approaching vessels. The support cable will be lighted with red lights every 50 feet. Mariners are requested to use alternate or main span of the bridge while these temporary platforms are in place.

Temporary Access Platforms
Golden Gate Bridge, mile 2.5, San Francisco Bay
Revised 14 Jun 22

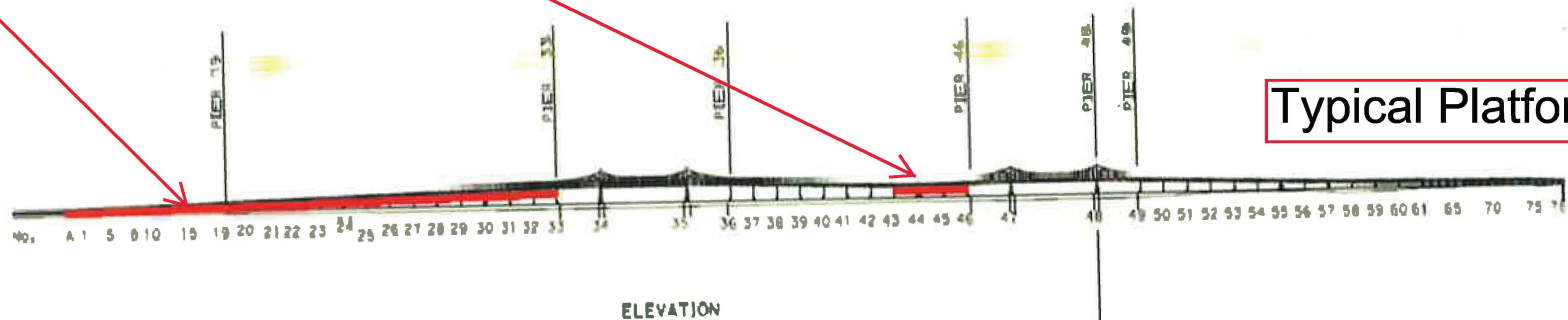


Four 54 ft wide temporary platforms are installed in the main span below low steel of the bridge, in relation to centerline of the span; two south of the north tower and two north of the south tower, reducing vertical clearance by no more than 14 feet. The upstream and downstream lower edges of the temporary platforms will be lighted at night with steady burning red lights visible at 2,000 yards by approaching vessels.

Painting and Structural Repairs Project
Richmond-San Rafael Bridge
Mile 13.0, San Francisco Bay

Temporary Underdeck Platforms

WORK PLATFORM

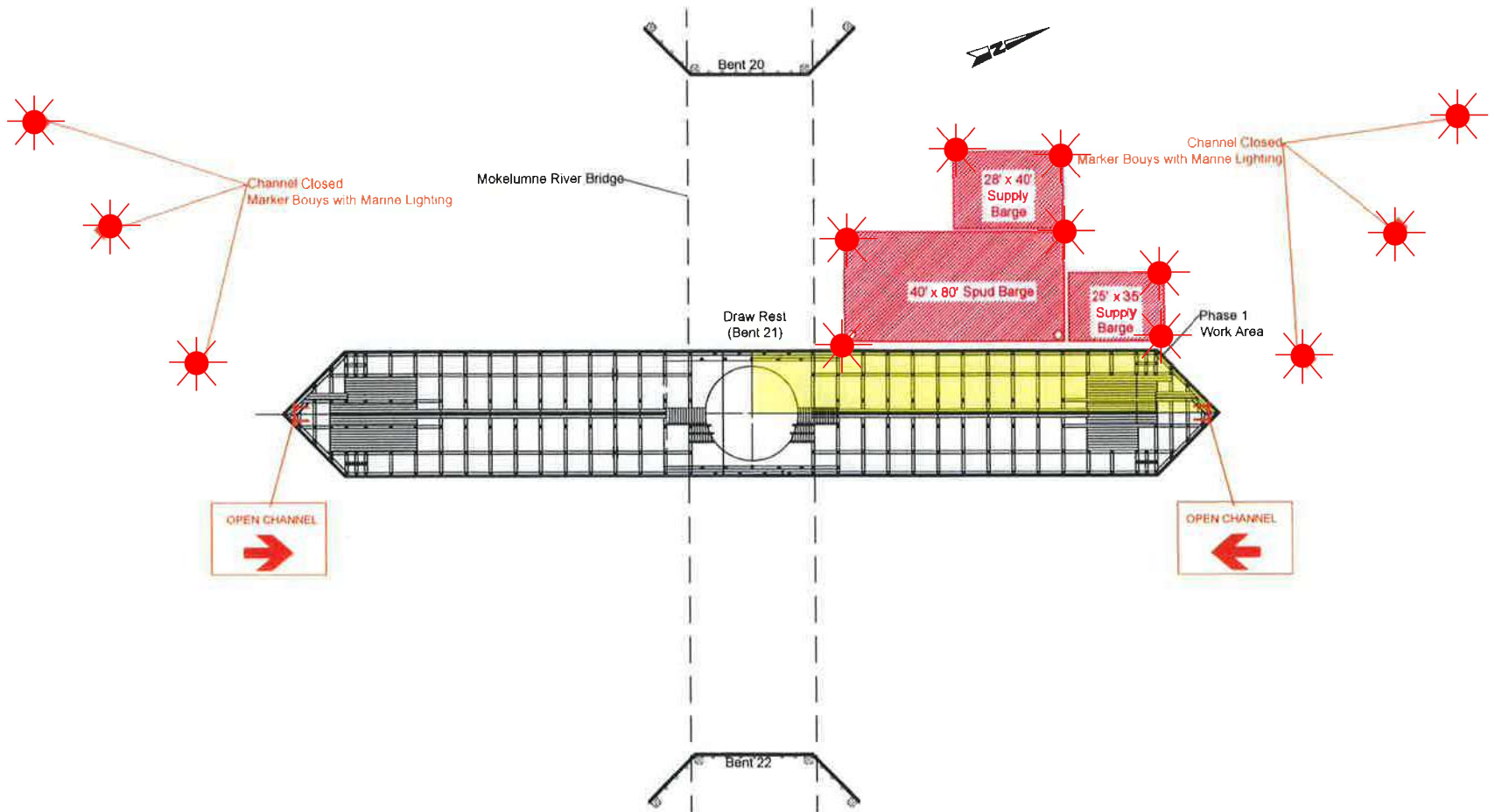


Typical Platform Lighting

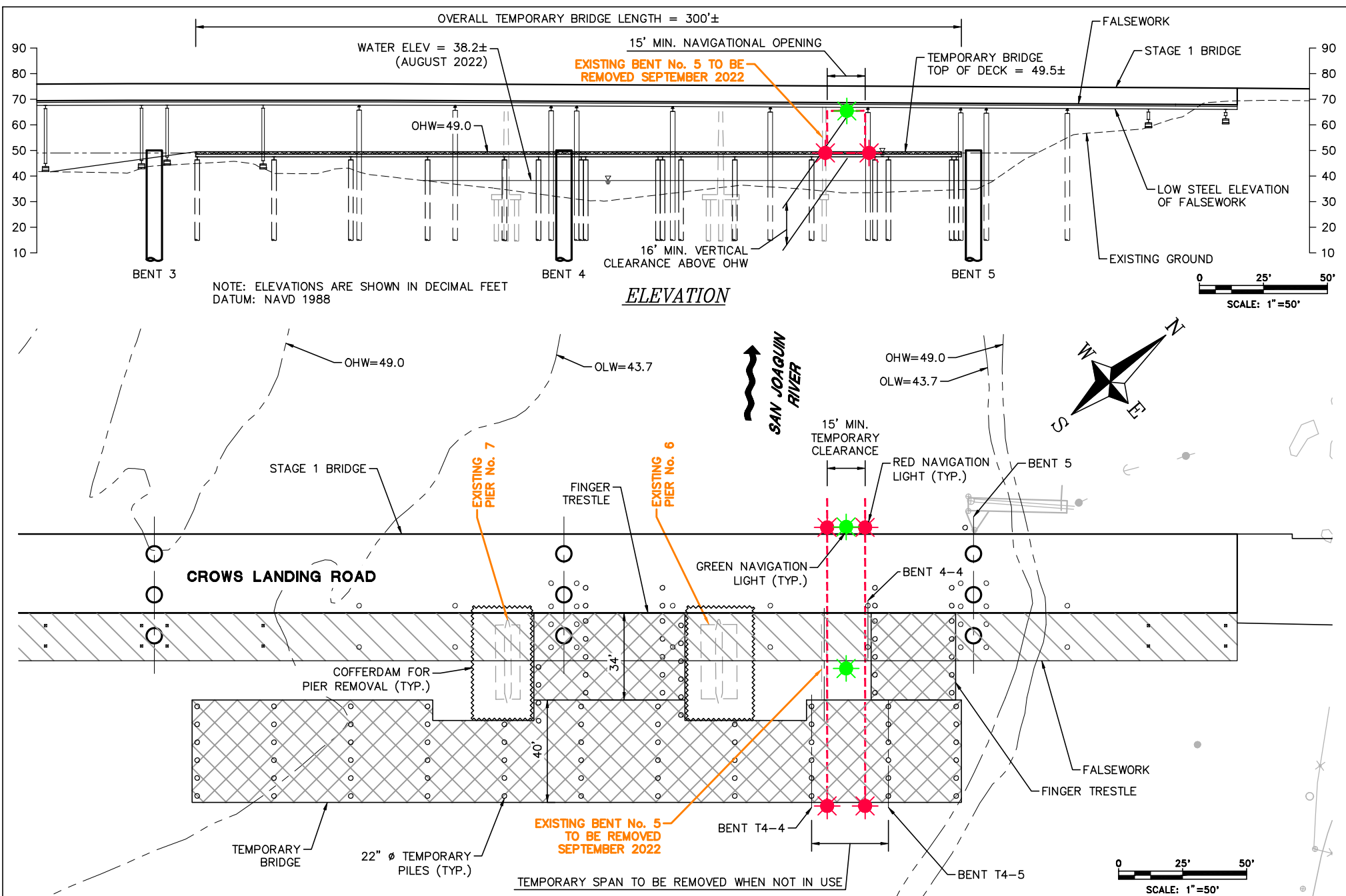
The upstream and downstream lower edges of each temporary platform in each span are lighted at night with steady burning red lights to be seen at 2,000 yards by approaching vessels. Each platform reduces vertical clearance by no more than 3 feet.

Rehabilitation CA Route 12 Bridge, Mile 3.0, Mokelumne River

Typical Barge Lighting Diagram



Each corner of each barge is lighted with fixed red lights visible at 2,000 yards by approaching vessels. The barge configuration and bouy locations will change areas throughout the project.

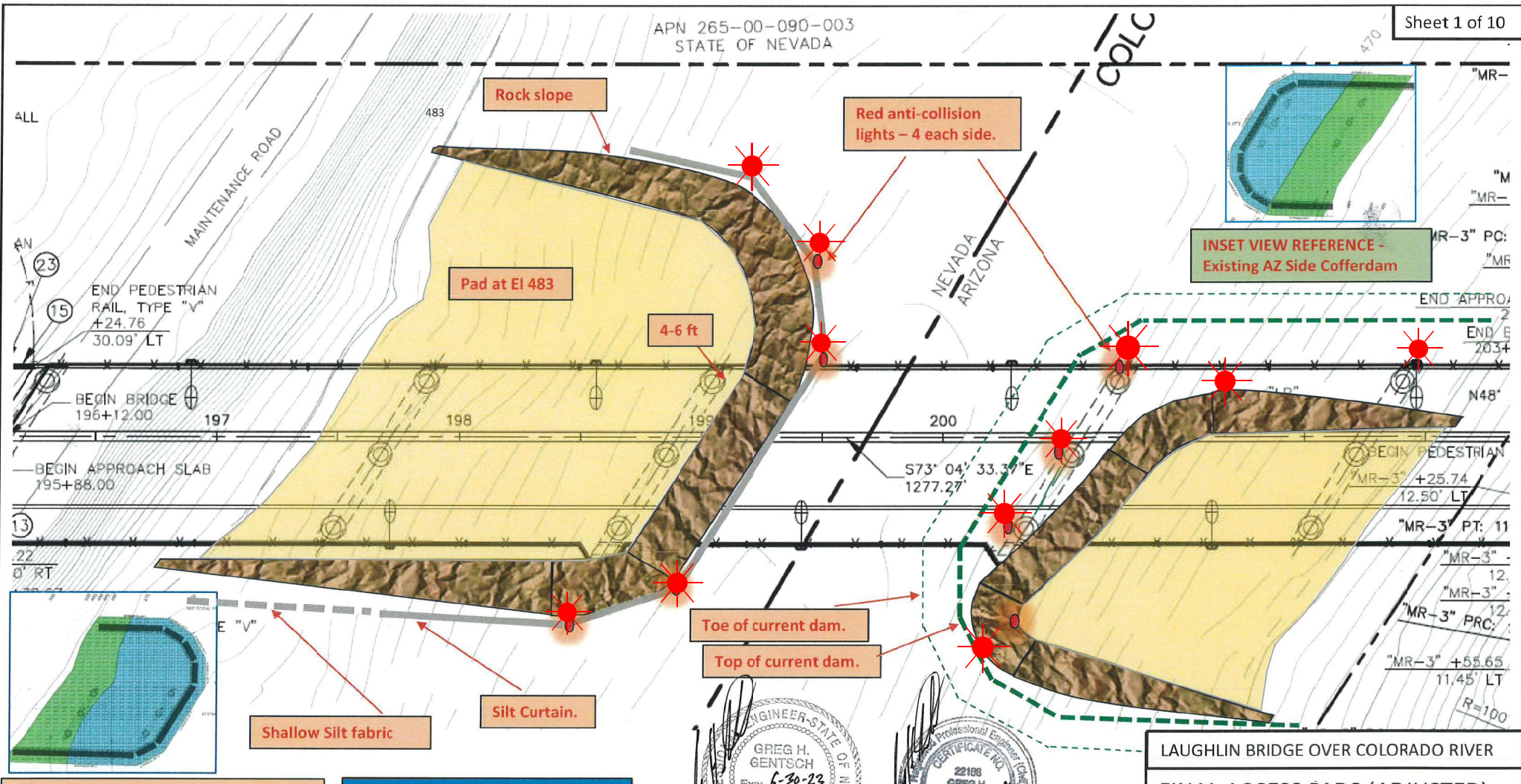


Temporary Navigation Lighting-Crows Landing Bridge Replacement Project - San Joaquin River

The temporary bridge, the replacement bridge and existing bridge will be lighted at night with two red lights marking the temporary navigation channel. The temporary falsework will be lighted, upriver and downriver, with green lights marking the center of the temporary navigation channel. During construction the temporary navigation channel will provide a horizontal clearance of 15 feet and a vertical clearance at Ordinary High Water of 16 feet.

New Laughlin-Bullhead City Bridge Construction
Mile 261.6 over the Colorado River
Temporary Rock Access Pad and Pier Lighting

Sheet 1 of 10



Once installed, the Nevada side silt curtain will be lit at night with steady burning red lights, visible at 2,000 yards by approaching vessels. The Arizona side exposed bridge piers and upstream and downstream ends of the rock access pad will be lit at night with steady burning red lights, visible at 2,000 yards by approaching vessels. There will be approximately 117 feet of horizontal clearance from the face of the silt curtain to the face of the Arizona side pier, in the center of the river.

U.S. Department of
Homeland Security

United States
Coast Guard



To: All Mariners

April 22, 2022

The National Oceanic and Atmospheric Administration (NOAA) with support from the United States Coast Guard (USCG) and Environmental Protection Agency (EPA) is issuing a voluntary 10-knot Vessel Speed Reduction (VSR) request that goes into effect May 1 off of San Francisco and southern California; please see the attached charts. Large ships travelling 10 knots give whales more time to move to avoid a strike, reduce the lethality of a strike should one occur, generate less harmful ocean noise and have fewer air emissions. Thus, the goals of these voluntary VSR zones are to reduce the risk of fatal ship strikes to endangered blue, fin, and humpback whales, reduce ocean noise and protect public health adjacent to Greater Farallones, Cordell Bank, Monterey Bay, and Channel Islands national marine sanctuaries. These whale species are protected under the Federal Endangered Species Act (16 U.S.C. 1538 et seq.), the Marine Mammal Protection Act (16 U.S.C. 1361 et seq.), and the National Marine Sanctuaries Act (16 U.S.C. 1431 et seq.). Any unauthorized take of whales, even if unintentional, by vessels transiting in U.S. waters violates federal statutes.

The voluntary VSR request will be in effect May 1 to December 15, 2022 for all VSR zones off California, as shown in the attached charts. Note the expansion of the VSR zone off San Francisco over prior years is designed to reduce ship strike risk in areas of known whale presence and vessel traffic. The season has been extended to account for the presence of whales later in the year.

NOAA, USCG and EPA request that all vessels 300 gross tons (GT) or larger reduce speeds to 10 knots when transiting within the designated VSR zones. We request your cooperation with the voluntary VSR to protect the health of communities living near these zones, and whales that annually migrate to and through these zones. All transits by vessels 300 GRT or larger are analyzed by NOAA via Automatic Information System (AIS) data provided by USCG to assess the industry's cooperation.

NOAA, USCG and EPA are committed to the long-term protection of nationally significant marine resources and public health by enhancing marine safety and environmental awareness in the maritime community. We encourage vessel crews to report whale sightings through the Whale Alert App (<http://www.whalealert.org>). If you have questions please contact Sean Hastings, (805) 705-1790, sean.hastings@noaa.gov. NOAA, USCG and EPA commend your commitment to protecting endangered and threatened whales and protecting public health by cooperating with the 10-knot VSR requests and working towards a goal of 100% cooperation in 2022.

William J. Douros, Regional Director
NOAA Office of National Marine Sanctuaries
West Coast Region

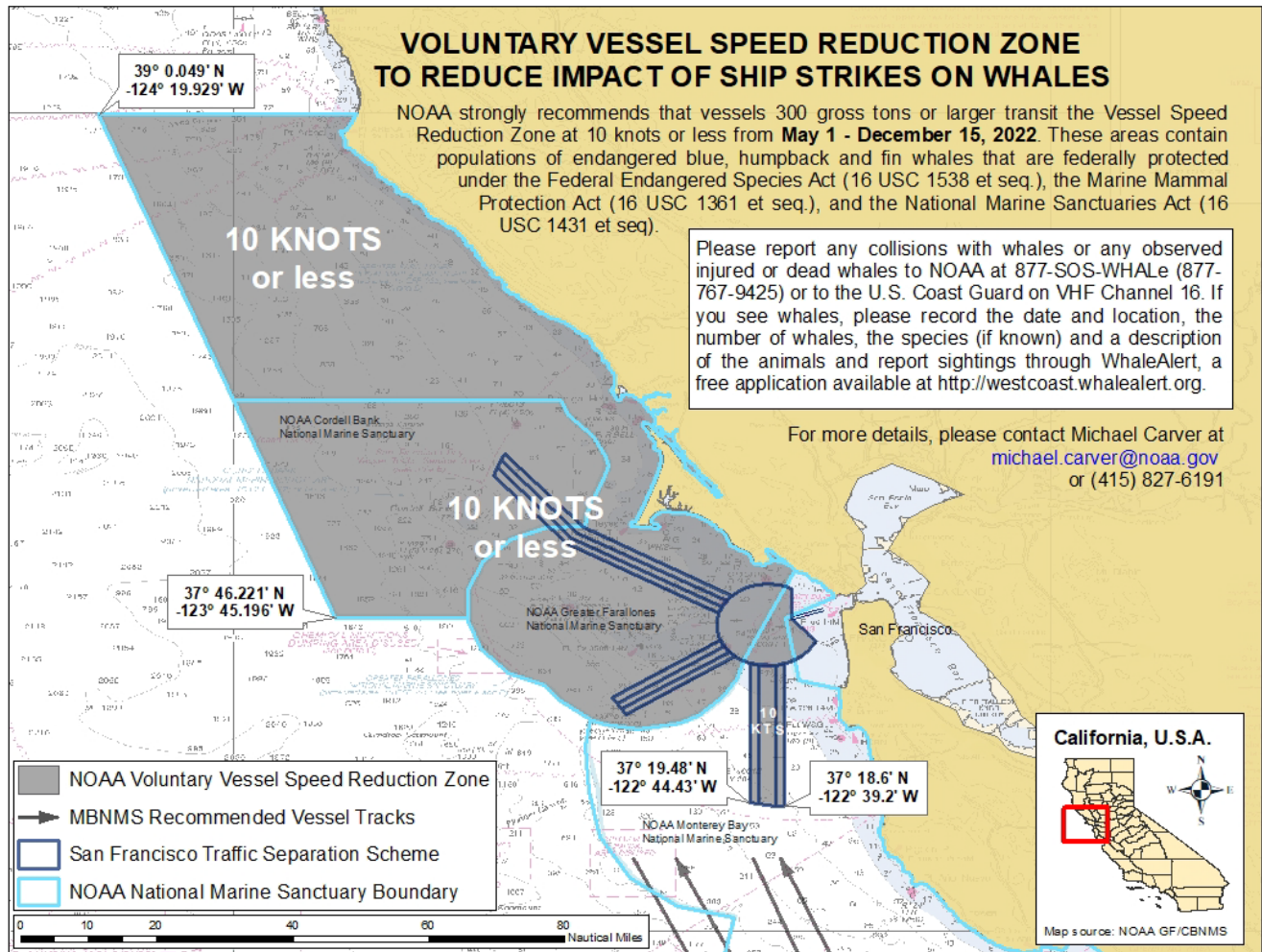
Scott Rumsey, Acting Regional Administrator
NOAA National Marine Fisheries Service
West Coast Region

Brian K. Penoyer, Rear Admiral
U.S. Coast Guard District Eleven

Martha Guzman, Regional Administrator
Environmental Protection Agency Region 9

2022 Voluntary Vessel Speed Reduction Zone

San Francisco Bay Region

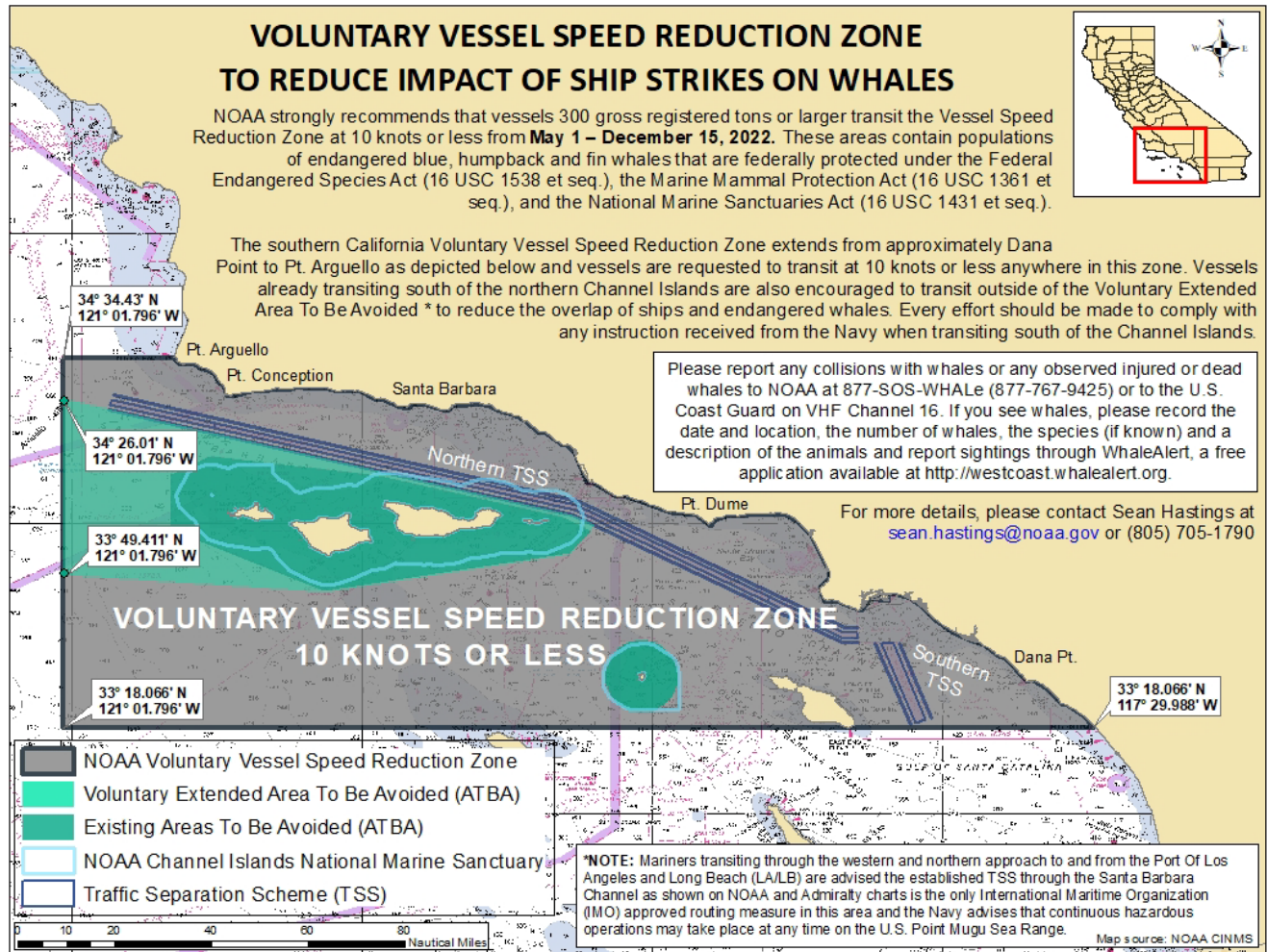


NOAA Chart 18010

This map is not to be used for navigational purposes

13 APRIL 2022

2022 Voluntary Vessel Speed Reduction Zone Southern California

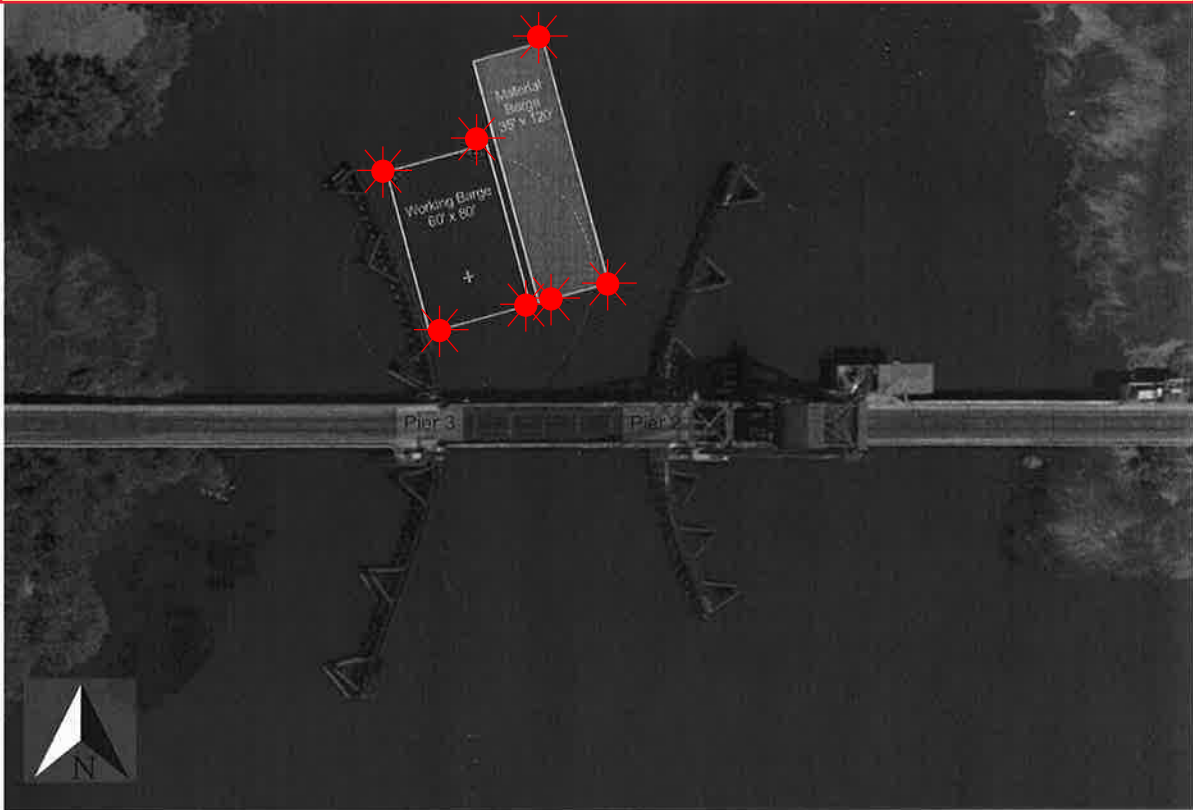


NOAA Chart 18022

Chart not for navigational purposes.

13 APRIL 2022

Barge Lighting Diagram
BNSF Rail Bridge, Mile 10.4, Old River



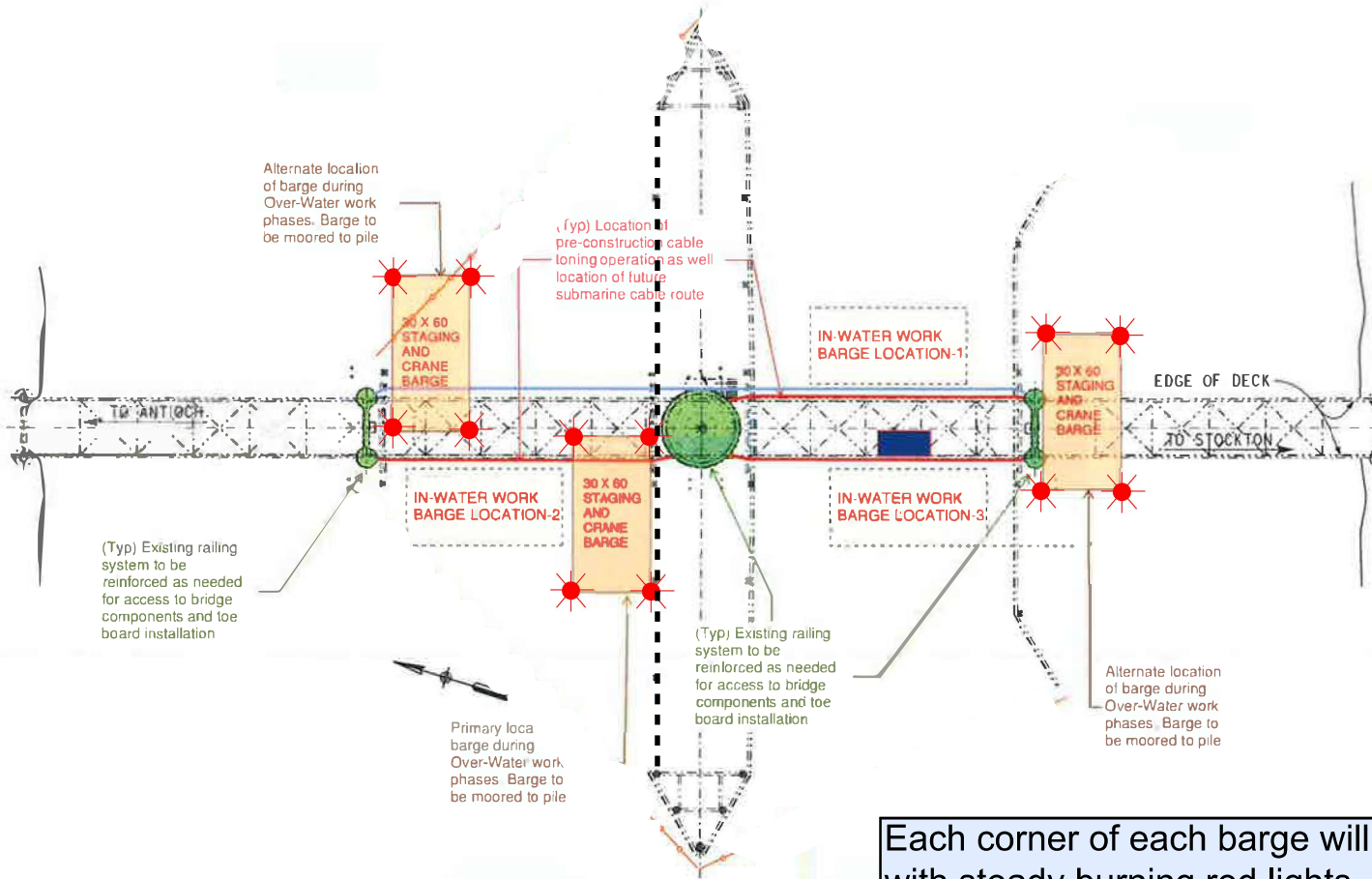
During working hours the barges will be in the main span of the bridge. The barges can be moved for navigational safety upon request with one hour advance notice. After normal working hours the barges will be moored behind the wing-walls of the pier protection system and each corner of each barge will be lighted at night with steady burning red lights.

Enclosure (1)

Barge Lighting Plan

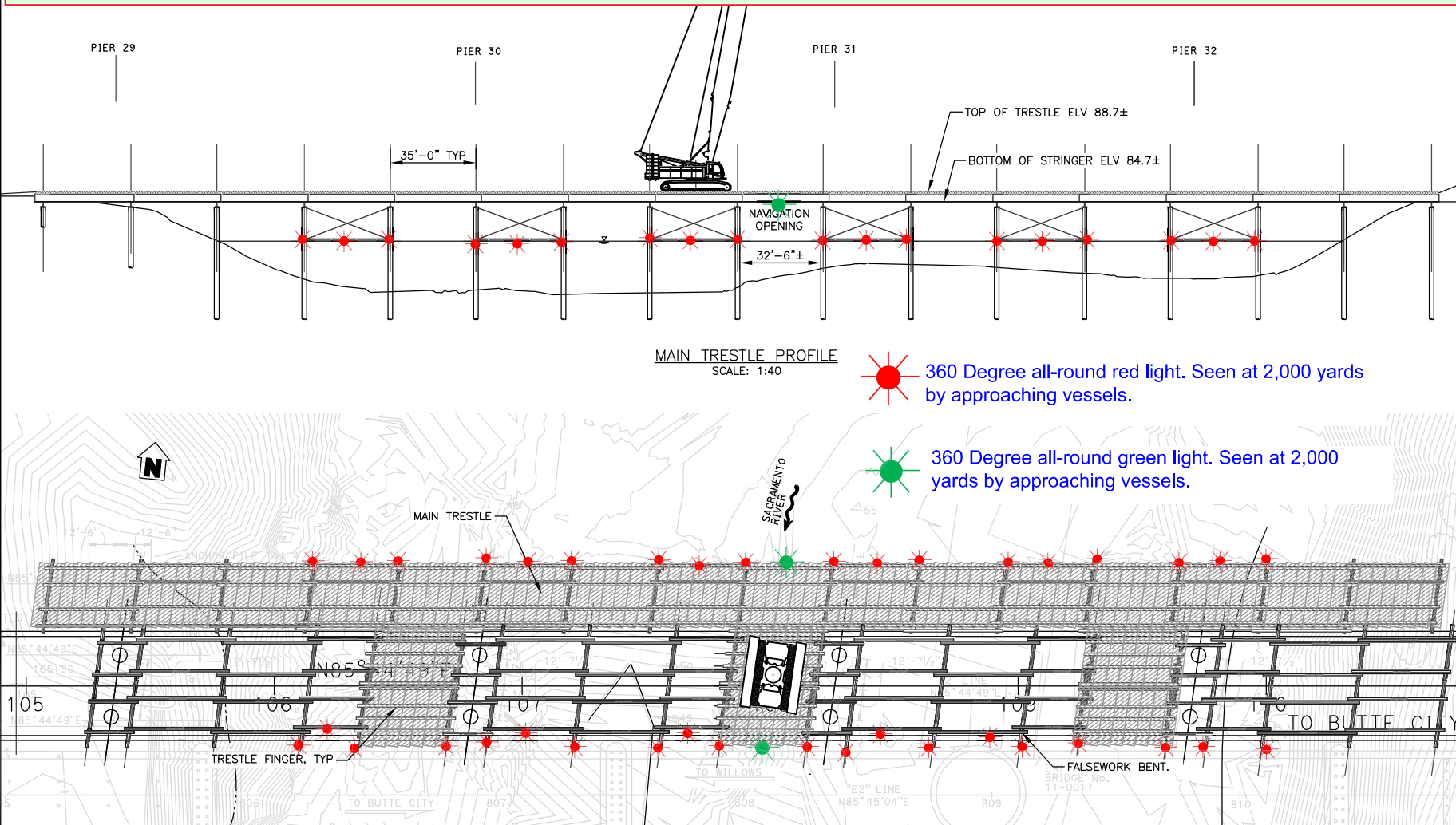
Highway 4 Drawbridge

Mile 14.8, Old River

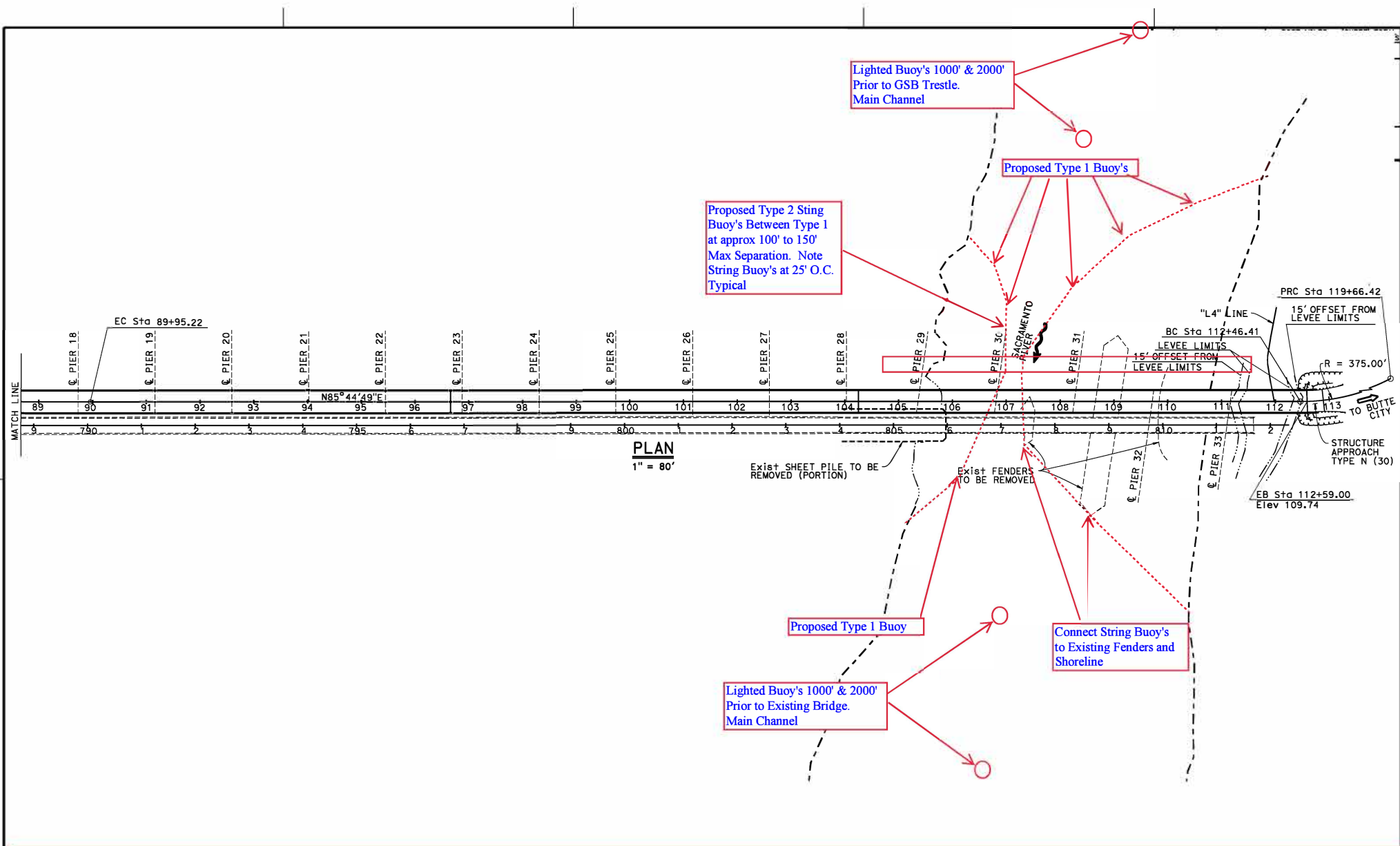


Each corner of each barge will be lighted at night with steady burning red lights, visible at 2,000 yards from approaching vessels.

Butte City Bridge Replacement Project Sacramento River



The upriver and downriver ends of the trestle piles and crossbeams are lighted at night with steady burning red lights. The upriver and downriver low steel of the temporary navigation span, in the center of the river, is lighted at night with steady burning green lights, which identifies the center of the temporary navigation span.



**Butte City Bridge Replacement Project, mile 169.7, Sacramento River
Proposed Buoy Line During Construction**