



U.S. Department  
of Homeland Security  
**United States  
Coast Guard**

## LOCAL NOTICE TO MARINERS

**District: 13**

**Week: 18/22**

ISSUED BY: COMMANDER, THIRTEENTH COAST GUARD DISTRICT (dpw)  
915 Second Avenue, 35th Floor, Rm 3510, Seattle, Washington 98174-1067  
Telephone: (206) 220-7280  
Email: D13-SMB-D13-LNM@uscg.mil  
<https://www.pacificarea.uscg.mil/Our-Organization/District-13/District-Staff/-dpw/>  
<https://www.navcen.uscg.gov/?pageName=lnmDistrict&region=13>

COMDTPUB P16502.6, Light List Volume VI, 2022 Edition, and Coast Pilot Volume 10, 2021 Edition.  
Light List Volume VI, 2022 Edition is available at [https://www.navcen.uscg.gov/pdf/lightLists/LightList\\_V6\\_2022.pdf](https://www.navcen.uscg.gov/pdf/lightLists/LightList_V6_2022.pdf)  
Coast Pilots, along with corrections, are available at: [www.nauticalcharts.noaa.gov/publications/coast-pilot/index.html](http://www.nauticalcharts.noaa.gov/publications/coast-pilot/index.html). Print on Demand (POD) copies are available for purchase at: [www.nauticalcharts.noaa.gov/publications/print-agents.html#coast-pilot](http://www.nauticalcharts.noaa.gov/publications/print-agents.html#coast-pilot).

### UNITED STATES COAST GUARD NAVIGATION INFORMATION SERVICE (NIS)

The United States Coast Guard Navigation Information Service (NIS), operated by the USCG Navigation Center, is staffed 24 hours a day, 7 days a week. The NIS provides information on the current operational status, effective policies, and general information for GPS and DGPS. The NIS also disseminates Safety Broadcasts / Broadcast Notice to Mariners (BNM), Local Notice to Mariners (LNM), and the latest Notice Advisory to Navstar Users (NANU). LNMs and other navigation notices can be obtained via e-mail subscription through the USCG Navigation Center website:

<https://www.navcen.uscg.gov/?pageName=feeds>

In addition, the NIS investigates all reports of degradation or loss of GPS service. Mariners are encouraged to report all degradation of radio navigation services to the NIS via any of the following: Phone: (703) 313-5900 or Email: [webmaster@navcen.uscg.mil](mailto:webmaster@navcen.uscg.mil), or on the World Wide Web:

<https://www.navcen.uscg.gov/?pageName=gpsUserInput>

### BROADCAST NOTICE TO MARINERS

Urgent marine navigational and weather information is broadcast over VHF channel 22A (157.1 MHz). Broadcasts are first announced over the distress, safety and calling channel 16 before they are made. All ships in U.S. waters over 20 meters in length are required to monitor VHF channel 16, and must have radios capable of tuning to the VHF simplex channel 22A. Additionally, District 13 BNMs are now available online on a test basis. To view or download District 13 BNMs visit <https://www.navcen.uscg.gov/bnm/messages/DistrictSearchV1.php?d=13&i=3>

This section contains a range of all the significant Broadcast Notice to Mariners (BNM's) on the date of this edition.

Originating Unit  
CGD THIRTEEN

Beginning BNM  
D13-0292-22

Ending BNM  
D13-0313-22

## ABBREVIATIONS

### A through H

ADRIFT - Buoy Adrift  
AICW - Atlantic Intracoastal Waterway  
AI - Alternating  
B - Buoy  
BKW - Breakwater  
bl - Blast  
BNM - Broadcast Notice to Mariner  
bu - Blue  
C - Canadian  
CHAN - Channel  
CGD - Coast Guard District  
C/O - Cut Off  
CONT - Contour  
CRK - Creek  
CONST - Construction  
DAYMK/Daymk - Daymark  
DBN/Dbn - Daybeacon  
DBD/DAYBD - Dayboard  
DEFAC - Defaced  
DEST - Destroyed  
DISCON - Discontinued  
DMGD/DAMGD - Damaged  
ec - eclipse  
EST - Established Aid

### I through O

I - Interrupted  
ICW - Intracoastal Waterway  
IMCH - Improper Characteristic  
INL - Inlet  
INOP - Not Operating  
INT - Intensity  
ISL - Islet  
Iso - Isophase  
kHz - Kilohertz  
LAT - Latitude  
LB - Lighted Buoy  
LBB - Lighted Bell Buoy  
LHB - Lighted Horn Buoy  
LGB - Lighted Gong Buoy  
LONG - Longitude  
LNM - Local Notice to Mariners  
LT - Light  
LT CONT - Light Continuous  
LTR - Letter  
LWB - Lighted Whistle Buoy  
LWP - Left Watching Properly  
MHz - Megahertz  
MISS/MSNG - Missing  
Mo - Morse Code

### P through Z

PRIV - Private Aid  
Q - Quick  
R - Red  
RACON - Radar Transponder Beacon  
Ra ref - Radar reflector  
RBN - Radio Beacon  
REBUILT - Aid Rebuilt  
RECOVERED - Aid Recovered  
RED - Red Buoy  
REFL - Reflective  
RRL - Range Rear Light  
RELIGHTED - Aid Relit  
RELOC - Relocated  
RESET ON STATION - Aid Reset on Station  
RFL - Range Front Light  
RIV - River  
RRASS - Remote Radio Activated Sound Signal  
s - seconds  
SEC - Section  
SHL - Shoaling  
si - silent  
SIG - Signal  
SND - Sound  
SPM - Single Point Mooring Buoy

ev - every  
EVAL - Evaluation  
EXT - Extinguished  
F - Fixed  
fl - flash  
Fl - Flashing  
G - Green  
GIWW - Gulf Intracoastal Waterway  
HAZ - Hazard to Navigation  
HBR - Harbor  
HOR - Horizontal Clearance  
HT - Height

MRASS - Marine Radio Activated Sound Signal  
MSLD - Misleading  
N/C - Not Charted  
NGA - National Geospatial-Intelligence Agency  
NO/NUM - Number  
NOS - National Ocean Service  
NW - Notice Writer  
OBSCU - Obscured  
OBST - Obstruction  
OBSTR - Obstruction  
Oc - Occulting  
ODAS - Anchored Oceanographic Data Buoy

SS - Sound Signal  
STA - Station  
STRUCT - Structure  
St M - Statute Mile  
TEMP - Temporary Aid Change  
TMK - Topmark  
TRLB - Temporarily Replaced by Lighted Buoy  
TRLT - Temporarily Replaced by Light  
TRUB - Temporarily Replaced by Unlighted Buoy  
USACE - Army Corps of Engineers  
W - White  
Y - Yellow

**Additional Abbreviations Specific to this LNM Edition:**

AtoN - Aids to Navigation  
COTP - Captain of the Port  
CPA - Closest Point of Approach  
LLNR - Light List Number

NAVCEN - U.S. Coast Guard Navigation Center  
NM - Nautical Miles  
ODOT - Oregon Department of Transportation  
RM - River Mile Marker

S-AIS - Synthetic AIS  
V-AIS - Virtual AIS  
VTS - Vessel Traffic Service  
WSDOT - Washington State Department of Transportation

---

---

**SECTION I - SPECIAL NOTICES**

This section contains information of special concern to the Mariner.

---

**WASHINGTON – PUGET SOUND – SEATTLE TO BREMERON – DUWAMISH WATERWAY – Spokane Street Bridge deviation**

The Coast Guard intends to approve a temporary deviation for the Spokane Street Bridge (LLNR 16870.1) across the Duwamish Waterway, mile 0.3, in Seattle, WA, from 03 Jun – 27 Aug 2022. This deviation will support multiple events to make repairs and upgrades for the subject bridge. Mariners expect a construction crew to be present at any time beginning 30 May 22, but from 13 Jun 22 to 19 Aug 22 personnel will only be on site from 2300 to 0700. The work will begin with assembling scaffolding, and followed by installing scaffolding with the use of a barge and UBIT truck. A 60 ft wide X 200 ft long crane barge will be used during the first two weeks of June lifting scaffolding up to the bridge and during the last two weeks of August to remove the scaffolding. A second service barge will be on site but outside of the channel. Two service tugs will be on site as well. The tugs and barges can be hailed using VHF channel 13. 82 of the 250 feet of horizontal clearance will be reduced while installing and removing scaffolding on the east and west side. After the platform has been installed, a total of 24 feet (11 ft west side and 13 ft east side) of horizontal clearance will be reduced. Scaffolding will be lighted with amber flashing lights. The vertical clearance will be reduced from 44 feet to 27 feet on the sides of the Spokane Street Bridge. The center vertical clearance will not be reduced during this deviation period. Vertical and horizontal clearances are referenced to mean high-water elevation. The horizontal and vertical clearances will only be impacted while the bridge is in the closed-to-navigation position. Mariners transiting the construction area are advised to not put out any wake, and fall hazards will be present. The Coast Guard will be approving a safety zone for the Duwamish Waterway in the vicinity of the Spokane Street Bridge. Vessels able to pass through the subject bridge in the closed-to-navigation position may do so at any time. No alternate route is available on the Duwamish Waterway.

The following are the deviation dates and times:

- 2300 on 03 Jun 22 – 0700 on 04 Jun 22 (cannot open for emergency response);
- 2300 on 10 Jun 22 – 0700 on 11 Jun 22 (cannot open for emergency response);
- 2300 on 13 Jun 22 – 0700 on 19 Aug 22 (two hour minimum notice for bridge opening, 20 minute notice for emergency response);
- 2300 on 19 Aug 22 – 0700 on 20 Aug 22 (cannot open for emergency response);
- 2300 on 26 Aug 22 – 0700 on 27 Aug 22 (cannot open for emergency response);

If any mariner cannot support the dates and times for this temporary bridge deviation, please submit comments to d13-smb-d13-bridges@uscg.mil by 18 May 22.

Chart 18450

LNM: 18/22

**WASHINGTON – HOOD CANAL – DABOB BAY – Submersible Vehicle testing**

The US Navy will be conducting submersible vehicle and free-floating scientific instrument testing in the Dabob Bay military operating area and extending south into Hood Canal as far as the Hamma Hamma River from 16 – 28 May 2022. Operations will be conducted 24 hours a day, 7 days a week. Operations will involve semisubmersible and submersible vehicles and scientific instrument buoys tended by M/V Seahorse, M/V Jack Robertson and small naval craft with a flashing red light. The craft will monitor VHF-FM channels 12 and 16. The call sign for the small craft will be "Range security craft". M/V Seahorse is a large powered barge with a crane and the M/V Jack Robertson is a 50ft white vessel. Two lighted surface buoys will be free floating in vicinity of the testing craft. The buoys will have a white flashing light. All craft transiting the area are requested to exercise caution and maintain a sharp lookout for possible semi-submerged vehicles. Questions should be directed to the Pacific Northwest Range Management and Ops Division, Range Control Branch, at (360) 396-2313.

Charts: 18441 18448 18458

LNM: 18/22

**WASHINGTON – LAKE WASHINGTON SHIP CANAL – UNION BAY REACH – Windermere Cup**

The Coast Guard will enforce special local regulations in support of the 2022 Windermere Cup in the Montlake and Union Bay Reach between Portage Bay and Webster Point. This regulated area will be enforced from 0800 to 1200 on 07 May 2022, unless canceled sooner by the Captain of the Port (COTP). Under the provisions of 33 CFR 100.1311, entry into, transiting through, mooring or anchoring within the specified area is prohibited unless authorized by the COTP or his Designated Representative. In addition, the regulation requires all vessels to obtain permission for entry during the enforcement period by contacting the on-scene patrol commander on VHF Channel 13 or 16, or the Sector Puget Sound Joint Harbor Operations Center at (206) 217-6001. All mariners will be able to identify participating vessels as those flying the Coast Guard Ensign.

**OREGON – WASHINGTON – IDAHO – US Coast Guard Navigation Center website transition**

The US Coast Guard Navigation Center (NAVCEN) is going to transition their website to a new, enhanced version early in 2022. As part of this transition, URLs will be updated across the site including URLs linked to PDFs. Therefore, once the transition is complete, legacy site URLs will no longer function, including bookmarked URLs and URLs used in automatic downloading of data and/or products. Outdated URLs will automatically redirect to the home page of the site, and from there you will be able to easily navigate to your preferred page. This notice will be updated when the final launch date is determined and another notice will be issued to notify you when the site goes live. Questions or concerns may be directed to the NAVCEN using this email address: NAVCENWebTEAM@uscg.mil.

Below are a few of the "old"/ new URL pairs listed for your convenience. Please note that the new URLs will not be active until we launch the new website. Of course, once it is launched, the new URLs will be available for re-bookmarking. As a reminder, these are top level URLs that may contain additional links that you use:

Local Notices to Mariners (LNMs)

Current URLs: <https://www.navcen.uscg.gov/?pageName=InmMain>

Replacement: <https://www.navcen.uscg.gov/local-notice-to-mariners-by-cg-district>

Light Lists Annual Publication

Current URLs: <https://navcen.uscg.gov/?pageName=lightLists>

Replacement: <https://www.navcen.uscg.gov/light-list-annual-publication>

Light List - Weekly

Current URLs: <https://navcen.uscg.gov/?pageName=lightListWeeklyUpdates>

Replacement: <https://www.navcen.uscg.gov/weekly-light-lists>

Light List - Corrections

Current URLs: <https://navcen.uscg.gov/?pageName=lightListCorrections>

Replacement: <https://www.navcen.uscg.gov/light-list-summary-of-corrections>

LNM: 17/22

**COLUMBIA RIVER – VANCOUVER TO BONNEVILLE – Washougal Upper and Reed Island Federal Channel change**

Due to shoaling extending north into Gary Island Channel and south into the Reed Island Channel to the south of Reed Island, USACE is proposing to change the alignment of the Columbia River Federal Navigation Channel between RM 123 to RM 128 to improve navigational safety by realigning the channel toward the north, or Washington, side near RM 124 and toward the south, or Oregon, side near RM 126. A graphical depiction of the proposed change is included in this LNM as Enclosure (4). The proposed channel realignment is consistent with the proposed changes to the aids to navigation. Mariners are encouraged to share comments on the proposed federal channel realignment. Please direct your comments to USACE Project Manager Jessica Stokke by 01 Jun 22 at (503) 808-4352 or Jessica.B.Stokke@usace.army.mil.

Chart 18531

LNM: 17/22

**WASHINGTON – COWLITZ RIVER – Bridge notice**

Utility work will be performed on State Route 411 Castle Rock Bridge located in Castle Rock, WA, across the Cowlitz River at river mile 17.4. Cable replacement will take place from 01 Jun - 01 Aug 22, Monday through Friday between 0700 – 1700 daily. The cable replacement will be performed using an under-bridge inspection truck (UBIT) that occupies a portion of the roadway on the subject bridge. The UBIT will be the give way vessel, but mariners are advised to use caution while transiting the area and not transit directly underneath the UBIT. The SR-411 Bridge has a vertical clearance of 8.6 feet at high tide. The UBIT requires 5 to 10 feet of vertical clearance under the bridge at high tide, therefore mariners should expect no clearance in the vicinity of the UBIT. The subject bridge provides 28 feet of vertical clearance at low tide. The UBIT can lower the vertical clearance to 18 feet at low tide. The UBIT will be equipped with a flashing amber light. For additional information, contact Mark Guz at (360) 518-4464 or mark.guz@lumen.com.

LNM: 17/22

**WASHINGTON – LAKE WASHINGTON SHIP CANAL – LAKE WASHINGTON – Outfall pipe**

Mariners should be aware of a new, permanent outfall pipe that has been installed at The Boeing Company's Renton manufacturing facility at the southern end of Lake Washington. The terminus of the outfall extends approximately 52 feet into the lake at the northeast corner of the Boeing property at an approximate position of 47-30-12.0 N and 122-12-25.2 W. The water depth from the top of the outfall varies from 7.5 to 9.2 feet below low lake level. For additional information about this outfall and its location, contact Mark Clement (425) 229-4279 or email at mark.d.clement@boeing.com.

Chart 18447

LNM: 17/22

**WASHINGTON – EVERETT HARBOR – SNOHOMISH RIVER – Bridge Inspection**

WSDOT will be inspecting the SR 529 Bridges (LLNR 18591.2 south bound, and LLNR 18591.3 north bound) across the Snohomish River at river mile 3.7 near Everett, WA. The inspections will take place between 0800 – 1500 daily on 18 – 22 Jul 22, and 25 – 28 Jul 22. The bridges will be inspected using an under-bridge inspection truck (UBIT) that occupies a portion of the roadway and extends a boom under the bridge. There is no fixed impact to navigational clearance from this operation (~10 ft. reduction to clearance while bucket is under the bridge, however the UBIT will promptly give way to tall marine vessels). Mariners are advised to use caution while transiting the area. The UBIT bucket will have a flashing amber light on the bottom and a safety lookout will be on the bridge. Bridge openings will not be impacted. For additional information, contact Alan Kuper, P.E. at (360) 701-0556 or kupera@wsdot.wa.gov.

Chart 18444

LNM: 17/22

**WASHINGTON – EVERETT HARBOR – STEAMBOAT SLOUGH – Bridge Inspection**

WSDOT will be inspecting the SR 529 Bridges (LLNR 18594.9 south bound, and LLNR 18594.11 north bound) across Steamboat Slough at river mile 1.1 and 1.2 near Marysville, WA. The inspections will take place between 0800 – 1500 daily on 18 – 22 Jul 22, and 25 – 28 Jul 22. The bridges will be inspected using an under-bridge inspection truck (UBIT) that occupies a portion of the roadway and extends a boom under the bridge. There is no fixed impact to navigational clearance from this operation (~10 ft. reduction to clearance while bucket is under the bridge, however the UBIT will promptly give way to tall marine vessels). Mariners are advised to use caution while transiting the area. The UBIT bucket will have a flashing amber light on the bottom and a safety lookout will be on the bridge. Bridge openings will not be impacted. For additional information, contact Alan Kuper, P.E. at (360) 701-0556 or kuper@wsdot.wa.gov.

Chart 18444

LNM: 17/22

**COLUMBIA RIVER – PACIFIC OCEAN TO HARRINGTON POINT – HARRINGTON POINT – WOODY ISLAND CHANNEL – Current measuring buoy**

NOAA has deployed a yellow, oceanographic data collection buoy to measure currents in Woody Island Channel about 1500 yards SE of Harrington Point Channel LB 54 (LLNR 10190), in approximate position 46-14-15.288 N, 123-41-09.528 W. The buoy has a yellow light with a group flashing (5) every 20 seconds characteristic. The buoy will be deployed until the end of Sep 2022. For more information, contact Drew Maczko, at (206) 526-6918 or email at drew.maczko@noaa.gov.

Chart 18521

LNM: 16/22

**COLUMBIA RIVER – PACIFIC OCEAN TO HARRINGTON POINT – NORTH CHANNEL – Current measuring buoy**

NOAA has deployed a yellow, oceanographic data collection buoy to measure currents in the Columbia River North Channel between Grays Point Light 13 (LLNR) and Portuguese Point Daybeacon 14A near the entrance to Grays Bay, in approximate position 46-16-26.076 N, 123-45-24.480 W. The buoy has a yellow light with a group flashing (5) every 20 seconds characteristic. The buoy will be deployed until the end of Sep 2022. For more information, contact Drew Maczko, at (206) 526-6918 or email at drew.maczko@noaa.gov.

Chart 18521

LNM: 16/22

**WASHINGTON – PUGET SOUND – SEATTLE TO BREMERTON – DUWAMISH WATERWAY – Bridge emergency deviation (Revised from LNM 11/22)**

The Coast Guard has approved an emergency temporary deviation from the operating regulations of the 1st Ave South Highway Bridge (LLNR 16887), AKA SR-99 Bridge, across the Duwamish Waterway, mile 2.5, Seattle, WA. The subject bridge sustained damage from a roadway accident, and the draw span is limited to opening when sustained winds are less than 10 knots. The bridge operator may exercise good judgement to delay or not open the draw for a reasonable time only when sustained winds exceed 10 knots. The bridge operator may delay the opening of the draw for a reasonable time while waiting for sustained winds to be less than 10 knots, but shall inform mariners for the reason of delayed openings. Mariners shall contact the bridge operator prior to entering the Duwamish Waterway to request an opening, if the bridge cannot open due to wind velocity, the bridge operator shall record the vessel(s) name and contact them every thirty minutes with a draw status. The reasonable delay to open due to damages applies to all vessels requesting an opening including vessels of 5000 gross tons and over, a vessel towing a vessel of 5000 gross tons and over, and a vessel proceeding to pick up for towing a vessel of 5000 gross tons and over. During this closure, the draw of the subject bridge may also delay opening the draw to marine vessels engaged in emergency operations. Repairs to the bridge are taking longer than anticipated as some necessary parts are being fabricated. Once delivered WSDOT will complete the repairs.

Chart 18450

LNM: 16/22

**IDAHO – GPS testing**

US Strategic Command will conduct GPS testing in Idaho with a center point of the test near Twin Falls at position 42-42-48.3 N, 115-34-50.0 W with a radius of 136 NM during the following time periods (in MST):

- 2200 on 25 Apr – 0100 on 26 Apr
- 2200 on 26 Apr – 0100 on 27 Apr
- 2200 on 27 Apr – 0100 on 28 Apr
- 2200 on 28 Apr – 0100 on 29 Apr

- 2200 on 02 May – 0100 on 03 May
- 2200 on 03 May – 0100 on 04 May
- 2200 on 04 May – 0100 on 05 May
- 2200 on 05 May – 0100 on 06 May

- 2200 on 09 May – 0400 on 10 May
- 2200 on 10 May – 0400 on 11 May

The GPS navigation signal may be unreliable due to testing on GPS frequencies used by shipboard navigation and handheld systems. Systems that rely on GPS, such as e-911, AIS and DSC, may be affected. The testing frequency will be GPS L1/L2. For additional information, contact the Coast Guard Navigation Center at (703) 313-5900 or at <https://www.navcen.uscg.gov/?pageName=dgpsSiteInfo&currentOutages>.

LNM: 16/22

**OREGON – WASHINGTON – IDAHO – Farewell to traditional nautical charts**

NOAA is in the process of "sunsetting" or ending the production of traditional paper charts. However, even prior to traditional chart production ending, users may notice differences between paper charts and ENC's. There are two broad categories of data that are applied onto NOAA ENC's and paper / raster nautical charts – "Critical Corrections" and "Routine" data. Critical Corrections may be newly discovered shoals or other dangers to navigation, as well as changes in the positions or characteristics of aids to navigation (buoys, beacons, and lights). These are typically

changes that are published by the Coast Guard in the weekly LNM. Critical corrections are applied to ENC's first, then applied to paper and raster nautical charts. These changes generally appear on both product types (raster and ENC) within a week of each other. However, new Routine source data are now ONLY applied to NOAA ENC's and not to traditional paper and raster nautical charts. Routine data includes the results of ordinary hydrographic and shoreline surveys, which could be extensive. Any specific dangers revealed during routine surveys are extracted from the data and classified as Critical Corrections to be applied to all products. For more information visit NOAA's website: <https://nauticalcharts.noaa.gov/charts/farewell-to-traditional-nautical-charts.html>

LNM: 15/22

**OREGON – WASHINGTON – COLUMBIA RIVER TO STRAIT OF JUAN DE FUCA – Pacific Northwest Offshore Sailboat Race**

The Corinthian Yacht Club is holding the annual Pacific NW Offshore Sailing Race starting from Columbia River Entrance Lighted Whistle Buoy 2 (LLNR 9910) at the mouth of the Columbia River to the Strait of Juan De Fuca, then eastward finishing in Port Angeles, WA. 22 Sailboats are expected for this 193 NM event that will start at 1000 on 12 May and may run until 15 May 2022. For more information, contact Craig Garrison at (503) 799-8178 or email at [cwgarr@gmail.com](mailto:cwgarr@gmail.com).

Charts: 18465 18480 18500

LNM: 15/22

**OREGON – PORT OF PORTLAND – WILLAMETTE RIVER – Bridge Notice**

The Coast Guard has approved two temporary deviations from the normal operating schedule that governs the Steel Railroad-Highway Bridge (LLNR 14955.3) across the Willamette River, RM 12.1. The Steel Bridge need not open the upper lift to marine traffic for the dates and times listed below. These deviations supports Rose Festival Parade events. The lower lift span of the Steel Bridge operates in accordance with 33 CFR 117.5 (open on single). When the lower lift is in the closed-to-navigation position, the bridge provides 26 feet of vertical clearance above Columbia River Datum 0.0; and in the open-to-navigation position with the upper lift in the closed-to-navigation position, the vertical clearance is 71 feet above Columbia River Datum 0.0. The Steel Bridge will be able to open the lower deck, and the upper deck if required, for emergencies. This part of the Willamette River does not have an immediate alternate route for vessels to pass. Vessels able to pass through the Steel Bridge with the lower deck in the closed or open-to-navigation position, or the upper deck in the closed-to-navigation position may do so at any time. The normal operating schedule for the Steel Bridge upper lift is in accordance with 33 CFR § 117.897(c)(3)(ii).

Scheduled events / times of approved deviations:

- Rose Festival Starlight Parade from 1900 – 2330 on 04 Jun 2022;
- Rose Festival Grand Floral Parade from 0700 – 1300 on 11 Jun 2022.

For more information on the closures of the Steel Bridge contact Keith Wagner at [kcwagner@UP.COM](mailto:kcwagner@UP.COM).

Chart 18526

LNM: 15/22

**SNAKE RIVER – LAKE BRYAN – Little Goose Lock upstream hazard**

To avoid a hazard upstream of the Little Goose navigation lock at Snake River mile 70.3, vessels are cautioned to ensure two feet distance is maintained between the transiting vessel and the landside upstream guide wall. A hazard to loaded commercial barge traffic has been identified attached to the guide wall at an approximate depth of 11 feet at minimum forebay pool elevation, directly across from the upstream end of the floating guide wall. Project personnel have marked the location with an orange painted "X" on the landside lock approach wall and an orange "candlestick" hazard marker atop the wall at the location of the hazard. A strobe light will also be installed at the location for identification of the hazard area at night. Additionally, to facilitate safe navigation, the Little Goose forebay will be maintained at one foot above minimum operating pool until further notice. These restrictions will remain in place until the hazard can be removed and permanent repairs completed. That work is tentatively scheduled to be completed by March 2023. For additional information on this work contact the NWW Operations Division at (509) 527-7364.

Chart 18547

LNM: 15/22

**WASHINGTON – LAKE WASHINGTON SHIP CANAL – UNION BAY REACH - Montlake Bridge notice**

The Coast Guard has approved a temporary deviation from the operating schedule that governs the Montlake Street Bridge (LLNR 18240) across the Lake Washington Ship Canal, mile 5.2, at Seattle, WA. This deviation is necessary to accommodate two University of Washington graduation ceremonies. The draw of the Montlake Bridge need not open for marine vessels from 1030 to 1430 and from 1630 to 1830 on 11 Jun and 12 Jun 2022. The Montlake Bridge in the closed-to-navigation position provides 30 feet of vertical clearance throughout the navigation channel, and 46 feet of vertical clearance throughout the center 60 feet of the bridge; vertical clearance references to the Mean Water Level of Lake Washington. Vessels able to pass through the bridge in the closed-to-navigation position may do so at any time. The bridge will be able to open for emergencies, and there is no immediate alternate route for vessels to pass. The normal operating schedule for the Montlake Bridge operates in accordance with 33 CFR § 117.1051(e). For more information on these bridge closures contact Colleen Kelly at [kellyc@wsdot.wa.gov](mailto:kellyc@wsdot.wa.gov).

Chart 18447

LNM: 15/22

**WASHINGTON – STRAIT OF JUAN DE FUCA TO STRAIT OF GEORGIA – SWINOMISH CHANNEL SOUTH ENTRANCE – Shoaling  
(Revised from LNM 14/22)**

Significant shoaling exists in Swinomish Channel, especially the South Entrance between South Entrance Buoy 5 (LLNR 18802) and South Entrance Daybeacon 12 (LLNR 18812). The project depth of Swinomish Channel is 12 feet, however, the controlling depth of Swinomish Channel is 4.1 feet based upon the latest available hydrographic data. This controlling depth of 4.1 feet is reflected on NOAA ENC products. Raster products do not reflect this sounding information, as they are no longer being updated with most routine corrections. Mariners should consult ENC cells for the most up-to-date information. Mariners should transit the Swinomish Channel waterway with caution, especially at low tidal conditions.

Chart 18427

LNM: 15/22

**WASHINGTON – GPS testing**

US Strategic Command has proposed GPS testing encompassing the majority of Washington. The center point of the test will be near Selah, WA, at position 46-41-13.7 N, 120-10-21.8 W with a radius of 141 NM. The GPS navigation signal may be unreliable due to testing on GPS frequencies used by shipboard navigation and handheld systems. Systems that rely on GPS, such as e-911, AIS and DSC, may be affected. The testing frequency will be GPS L1/L2.

The testing periods will be:

1701 on 27 May 22 until 1659 on 01 Jun 22

1701 on 16 Jun 22 until 1659 on 21 Jun 22

For additional information or to express concerns, contact the Coast Guard Navigation Center at (703) 313-5900 or at <https://www.navcen.uscg.gov/?pageName=dgpsSiteInfo&currentOutages>.

LNM: 15/22

#### **OREGON – IDAHO – GPS testing**

US Strategic Command has proposed GPS testing encompassing NE Oregon, SW Idaho, Northern Nevada and NW Utah. The center point of the test will be near Twin Lakes, ID, at position 43-33-27.2 N, 115-35-54.9 W with a radius of 247 NM. The GPS navigation signal may be unreliable due to testing on GPS frequencies used by shipboard navigation and handheld systems. Systems that rely on GPS, such as e-911, AIS and DSC, may be affected. The testing frequency will be GPS L1/L2. The testing period will be 1000 – 1600 daily (MST) from 19 – 24 May 2022. For additional information or to express concerns, contact the Coast Guard Navigation Center at (703) 313-5900 or at <https://www.navcen.uscg.gov/?pageName=dgpsSiteInfo&currentOutages>.

LNM: 15/22

#### **OREGON – PORT OF PORTLAND – NORTH PORTLAND HARBOR – Bridge Public Notice**

The Commander, Thirteenth Coast Guard District has received a request for a Preliminary Navigation Clearance Determination (PNCD) from the Interstate Bridge Replacement Program (IBR), for the Oregon Slough Interstate 5 Highway Bridge (LLNR 11297) over North Portland Harbor, aka Oregon Slough, in Portland, OR.

A PNCD is a first step in the U.S. Coast Guard bridge permitting process. At the request of the Coast Guard the IBR team has prepared a navigation impact report (NIR) for the proposed new Oregon Slough Interstate 5 Highway Bridge. This Public Notice (PN) is soliciting for comments exclusively related to navigation. Maritime transportation system stakeholders (vessels and facilities) are highly encouraged to carefully review this notice and provide comments with regard to the proposed bridge's ability to meet the needs of navigation to include mariner requirements for horizontal navigation requirements. Based off an analysis of the NIR and Public Comments the Coast Guard will prepare a PNCD. Public Notice 03-22 is available at <https://www.navcen.uscg.gov/D13BN>. Comments will be received for the record at the office of: Commander (dpw), Thirteenth Coast Guard District, 915 2nd Ave, Rm 3510, Seattle, WA or via email at D13-SMB-D13-BRIDGES@uscg.mil. Comments should be sent to arrive on or before 06 May 2022.

Chart 18526

LNM: 14/22

#### **COLUMBIA RIVER – VANCOUVER TO BONNEVILLE – WASHOUGAL – Marine construction**

Northbank Civil and Marine will be conducting a marine construction project near the Port of Camas – Washougal from 16 Apr – 31 May 2022 near RM 115 in approximate position 45-34-38.19 N, 122-22-58.42 W. A derrick barge and other material barges will be on scene to construct a new dock, and work hours are anticipated to be Monday – Saturday, 0700 – 1700 daily. Mariners can contact the dredge by hailing "Northbank" on VHF-FM channels 67 or 69. Mariners are asked to reduce wake when passing near the barges. For more information on this project contact Kainan Bedenlos at (503) 209-2424 or email [kainanb@northbankcm.com](mailto:kainanb@northbankcm.com)

Chart 18531

LNM: 14/22

#### **COLUMBIA RIVER – PASCO TO RICHLAND – LAKE WALLULA – Research buoy deployment**

USACE has deployed a temporary research data collection buoy in the Columbia River at RM 329.2 in approximate position 46-13-24 N 119-06-59 W. This location is between the Pasco-Kennewick Highway Bridge (LLNR 13052.5) and the US-395 Blue Highway Bridge (LLNR 13057), close to the northern (Pasco) shore. The buoy is yellow, round in shape, approximately 6 ft tall and 4 ft wide, with a yellow light flashing every four seconds (Fl 4s). The buoy will be in place until 30 Sep 2022. For more information, contact Wayne Jousma at (509) 527-7447 or email [wayne.r.jousma@usace.army.mil](mailto:wayne.r.jousma@usace.army.mil)

Chart 18543

LNM: 14/22

#### **OREGON – WILLAMETTE RIVER – EUGENE – Bridge Notice**

The City of Eugene, OR, has contracted DOWL for bridge rehabilitation on the Coburg Road Ferry Street Bridge. Rehabilitation plans include bridge deck overlays, cleaning and surface preparation for spot painting, cleaning and protection of bearings, replacement of expansion joints, epoxy injection of concrete cracks. The repair period will be 04 Apr – 31 Oct 2022, Monday through Friday up to 24 hours per day. Containment will be installed and the vertical clearance will be reduced from 27 feet to 22 feet at ordinary high water. The subject bridge crosses the Willamette River at RM 182.2 in location 44-03-28.4 N, 123-05-02.4 W. Mariners transiting under the Coburg Road Ferry Street Bridge should be aware of potential fall hazards. For more information on this project contact Mike Hawkins at (541) 954-9483 or [mhawkins@dowl.com](mailto:mhawkins@dowl.com).

LNM: 14/22

#### **WASHINGTON – LAKE WASHINGTON SHIP CANAL – UNION BAY REACH - Bridge deviation**

The Coast Guard has approved a temporary bridge deviation from the operating schedule of the Montlake Street Bridge (LLNR 18240). This deviation will facilitate roadway deck repair on the Montlake Bridge across the Lake Washington Ship Canal at mile 5.2 in Seattle, WA. The subject bridge is authorized to operate in single leaf mode/half opening (as opposed to double leaf mode). Vessels needing a bridge opening will be provided a single leaf opening from 2300 on 22 Apr until 0500 on 25 Apr 22. The repairs are dependent on weather conditions, and if the

roadway repairs cannot be completed from 22-25 Apr, the backup dates are listed below. The subject bridge with both bascule leaves open provides a horizontal navigation clearance of 129 feet and an unlimited vertical clearance. During single leaf openings, the horizontal navigation clearance will be reduced to 64.5 feet. The Montlake Bridge in the closed-to-navigation position provides 30 feet of vertical clearance throughout the navigation channel, and 46 feet of vertical clearance throughout the center 60 feet of the bridge. During a single leaf opening, the closed half of the span will provide 30 feet of vertical clearance on the sides and 46 feet of vertical clearance in the center 30 feet of the span. These bridge clearances are referenced to the Mean Water Level of Lake Washington. Vessels able to pass through the Montlake Bridge in the closed-to-navigation position may do so at any time, but do not loiter due to fall hazards. The bridge will not be able to provide a full opening for emergencies, and there is no alternate route for vessels to pass. Vessels requiring a double leaf/full opening to navigate through the subject bridge must contact the bridge operator at least 24 hours in advance at (206-720-3048) or via VHF Radio Channel 13. The Montlake Bridge shall operate in accordance with 33 CFR 117.1051(e) at all other times. For more information regarding this event contact Ryan Boyle at BoyleRy@wsdot.wa.gov.

All three time periods are listed below:

Date	Day	Hour	Position	Notes
22 – 25 Apr 22	Fri – Mon	2300 – 0500	Single Leaf	Double Leaf opening with at least 24 HR advance notice
20 – 23 May 22	Fri – Mon	2300 – 0500	Single Leaf	Double Leaf opening with at least 24 HR advance notice (back-up)
03 – 06 Jun 22	Fri – Mon	2300 – 0500	Single Leaf	Double Leaf opening with at least 24 HR advance notice (back-up)
Chart 18447				LNM: 14/22

## SECTION II - DISCREPANCIES

This section lists all reported and corrected discrepancies related to Aids to Navigation in this edition. A discrepancy is a change in the status of an aid to navigation that differs from what is published or charted.

### DISCREPANCIES (FEDERAL AIDS)

LLNR	Aid Name	Status	Chart No.	BNM Ref.	LNM St	LNM End
733	NOAA Environmental Lighted Buoy 46041	MISSING	18500	0174-22	08/22	
756	Strait of Juan De Fuca Traffic Separation Lane Lighted Buoy JA	MISSING	18485	0828-20	47/20	
765.4	DART Tsunami Warning Lighted Buoy 46404	ADRIFT	18007	0254-22	14/22	
765.5	NOAA Environmental Lighted Buoy 46005	LT EXT	18007	0197-20	08/20	
10215	Miller Sands Dike Light 5	DAYMK IMCH	18521	0022-22	02/22	
10475	Westport Dike Light 58	LT EXT/STRUCT DMGD	18523	0190-22	09/22	
11430	Fisher Quarry Channel Range Front Light	LT IMCH	18531	0289-22	17/22	
12980	Lake Wallula West Channel Junction Light W	STRUCT DEST/TRLB	18542	0208-20	09/20	
14420	Baker Bay West Channel Entrance Jetty Light 2	LT IMCH/STRUCT DMGD	18521	0633-21	38/21	
14835	Sauvie Island Junction Light	STRUCT DEST/TRLB	18524	0930-21	51/21	
16090	Quillayute River Sector Light	LT EXT/STRUCT DMGD	18480	0848-21	47/21	
16095	Quillayute River Entrance Light 3	LT EXT/STRUCT DMGD	18480	0853-21	48/21	
16136	Strait of Juan De Fuca Traffic Separation Lane Lighted Buoy JA	MISSING	18485	0828-20	47/20	
17360	Nisqually Flats Light 3	STRUCT DEST/TRLB	18448	0404-21	24/21	
18710	Oak Harbor Light 11	STRUCT DEST/TRLB	18428	0652-21	39/21	

### DISCREPANCIES (FEDERAL AIDS) CORRECTED

LLNR	Aid Name	Status	Chart No.	BNM Ref.	LNM St	LNM End
765.2	DART Tsunami Warning Lighted Buoy 46407	WATCHING PROPERLY	18007	0313-22	13/22	18/22
16071.25	Hoquiam River Obstruction Buoy	RESET ON STATION	18502	0297-22	08/20	18/22
16223	Race Rocks East Cautionary Lighted Buoy VG (C)	RESET ON STATION	18465	0308-22	49/21	18/22

### DISCREPANCIES (PRIVATE AIDS)

LLNR	Aid Name	Status	Chart No.	BNM Ref.	LNM St	LNM End
10928	Sandy Island Anchorage Lighted Buoy "S"	LT EXT	18524	0225-22	12/22	
11207	Lower Vancouver Anchorage Lighted Buoy V	LT EXT	18525	0147-22	06/22	
11247	Hayden Island Water Monitoring Lighted Buoy A	MISSING	18526	0413-21	25/21	
16115	University of Washington LaPush Research Lighted Buoy	MISSING	18480	0150-22	07/22	
17044	Des Moines Marina Lighted Buoy 1	MISSING/LT EXT	18474	0762-21	44/21	

#### DISCREPANCIES (PRIVATE AIDS) CORRECTED

LLNR	Aid Name	Status	Chart No.	BNM Ref.	LNM St	LNM End
------	----------	--------	-----------	----------	--------	---------

None

#### PLATFORM DISCREPANCIES

Name	Status	Position	BNM Ref.	LNM St	LNM End
------	--------	----------	----------	--------	---------

None

#### PLATFORM DISCREPANCIES CORRECTED

Name	Status	Position	BNM Ref.	LNM St	LNM End
------	--------	----------	----------	--------	---------

None

### SECTION III - TEMPORARY CHANGES and TEMPORARY CHANGES CORRECTED

This section contains temporary changes and corrections to Aids to Navigation for this edition. When charted aids are temporarily relocated for dredging, testing, evaluation, or marking an obstruction, a temporary correction shall be listed in Section IV giving the new position.

#### TEMPORARY CHANGES

LLNR	Aid Name	Status	Chart No.	BNM Ref.	LNM St	LNM End
9285	Winchester Bay Harbor Entrance Daybeacon 1	TRUB	18584	0353-21	21/21	
12980	Lake Wallula West Channel Junction Light W	TRLB	18542	0214-20	10/20	
14835	Sauvie Island Junction Light	TRLB	18524	0936-21	51/21	
15595	Grays Harbor Channel Lighted Whistle Buoy 11	RELOCATED FOR DREDGING	18502	0267-22	16/22	
17360	Nisqually Flats Light 3	TRLB	18448	0409-21	24/21	
18050	Orchard Rocks Fish Pen Lights (3)	DISCONTINUED	18449	0894-21	50/21	
18710	Oak Harbor Light 11	TRLB	18428	0287-22	17/22	

#### TEMPORARY CHANGES CORRECTED

LLNR	Aid Name	Status	Chart No.	BNM Ref.	LNM St	LNM End
16071.25	Hoquiam River Obstruction Buoy	Reestablished	18502	0297-22	32/21	18/22

#### PLATFORM TEMPORARY CHANGES

Name	Status	Position	BNM Ref.	LNM St	LNM End
------	--------	----------	----------	--------	---------

None

#### PLATFORM TEMPORARY CHANGES CORRECTED

Name	Status	Position	BNM Ref.	LNM St	LNM End
------	--------	----------	----------	--------	---------

None



## SECTION IV - CHART CORRECTIONS

This section contains corrections to federally and privately maintained Aids to Navigation, as well as NOS corrections.

This section contains corrective actions affecting chart(s). Corrections appear numerically by chart number, and pertain to that chart only. It is up to the mariner to decide which chart(s) are to be corrected. The following example explains individual elements of a typical chart correction.

Chart Number	Chart Edition	Edition Date	Last Local Notice to Mariners	Horizontal Datum Reference	Source of Correction	Current Local Notice to Mariners
12327	91st Ed.	19-APR-97	Last LNM: 26/97	NAD 83		27/97
Chart Title: NY-NJ-NEW YORK HARBOR - RARITAN RIVER						
Main Panel 2245 NEW YORK HARBOR						
(Temp) ADD	NATIONAL DOCK CHANNEL BUOY 3				CGD01	074-02-48.001W
	Green can				at 40-41-09.001N	
Corrective Action	Object of Corrective Action				Position	

(Temp) indicates that the chart correction action is temporary in nature. Courses and bearings are given in degrees clockwise from 000 true. Bearings of light sectors are toward the light from seaward. The nominal range of lights is expressed in nautical miles (NM) unless otherwise noted.

<b>501</b>	<b>13th Ed.</b>	<b>01-JUN-09</b>	<b>Last LNM: 29/20</b>	<b>NAD 83</b>		<b>18/22</b>
<i>Chart Title: North Pacific Ocean West Coast Of North America Mexican Border To Dixon Entrance</i>						
<b>Main Panel 1650 MEXICAN BORDER TO DIXON ENTRANCE. Page/Side: N/A</b>						
RELOCATE	NOAA Environmental Lighted Buoy 46002				CGD13 from 42-36-09.678N to 42-39-43.000N	130-30-23.648W 130-30-25.000W
<b>530</b>	<b>35th Ed.</b>	<b>01-DEC-15</b>	<b>Last LNM: 38/21</b>	<b>NAD 83</b>		<b>18/22</b>
<i>Chart Title: North America West Coast San Diego to Aleutian Islands and Hawaiian Islands</i>						
<b>Main Panel 2405 SAN DIEGO TO ALEUTIAN ISLANDS AND HAWAIIAN ISLANDS. Page/Side: A</b>						
RELOCATE	NOAA Environmental Lighted Buoy 46002				CGD13 from 42-36-09.678N to 42-39-43.000N	130-30-23.648W 130-30-25.000W
<b>18007</b>	<b>33rd Ed.</b>	<b>01-FEB-09</b>	<b>Last LNM: 23/21</b>	<b>NAD 83</b>		<b>18/22</b>
<i>Chart Title: San Francisco to Cape Flattery</i>						
<b>Main Panel 1652 SAN FRANCISCO TO CAPE FLATTERY. Page/Side: N/A</b>						
RELOCATE	NOAA Environmental Lighted Buoy 46002				CGD13 from 42-36-09.678N to 42-39-43.000N	130-30-23.648W 130-30-25.000W
<b>18429</b>	<b>11th Ed.</b>	<b>01-MAY-14</b>	<b>Last LNM: 39/17</b>	<b>NAD 83</b>		<b>18/22</b>
<i>Chart Title: Rosario Strait-southern part</i>						
<b>Main Panel 1682 ROSARIO STRAIT SOUTH PART. Page/Side: N/A</b>						
LAST EDITION	No new editions of chart 18429 will be published. It will be canceled on 05-Oct-22. Comparable or larger scale Electronic Navigational Chart (ENC) coverage is available. See "Cancellation of NOAA Paper and Raster Nautical Charts" in Section I of this LNM for details. A list of all canceled NOAA charts is at <a href="https://www.charts.noaa.gov/MCD/Dole.shtml">https://www.charts.noaa.gov/MCD/Dole.shtml</a> .				NOS --	--
<b>18430</b>	<b>9th Ed.</b>	<b>01-JUL-10</b>	<b>Last LNM: 39/17</b>	<b>NAD 83</b>		<b>18/22</b>
<i>Chart Title: Rosario Strait-northern part</i>						
<b>Main Panel 1683 ROSARIO STRAIT NORTH PART. Page/Side: N/A</b>						
LAST EDITION	No new editions of chart 18430 will be published. It will be canceled on 05-Oct-22. Comparable or larger scale Electronic Navigational Chart (ENC) coverage is available. See "Cancellation of NOAA Paper and Raster Nautical Charts" in Section I of this LNM for details. A list of all canceled NOAA charts is at <a href="https://www.charts.noaa.gov/MCD/Dole.shtml">https://www.charts.noaa.gov/MCD/Dole.shtml</a> .				NOS --	--
<b>18432</b>	<b>7th Ed.</b>	<b>01-SEP-13</b>	<b>Last LNM: 44/13</b>	<b>NAD 83</b>		<b>18/22</b>
<i>Chart Title: Boundary Pass</i>						
<b>Main Panel 1685 BOUNDARY PASS. Page/Side: N/A</b>						
LAST EDITION	No new editions of chart 18432 will be published. It will be canceled on 05-Oct-22. Comparable or larger scale Electronic Navigational Chart (ENC) coverage is available. See "Cancellation of NOAA Paper and Raster Nautical Charts" in Section I of this LNM for details. A list of all canceled NOAA charts is at <a href="https://www.charts.noaa.gov/MCD/Dole.shtml">https://www.charts.noaa.gov/MCD/Dole.shtml</a> .				NOS --	--

<b>18433</b>	<b>6th Ed.</b>	<b>01-APR-05</b>	<b>Last LNM: 42/17</b>	<b>NAD 83</b>	<b>18/22</b>	
<i>ChartTitle: Haro-Strait-Middle Bank to Stuart Island</i>						
<b>Main Panel 1686 HARO STRAIT MIDDLE BANK TO STUART ISLAND. Page/Side: N/A</b>						
LAST EDITION	No new editions of chart 18433 will be published. It will be canceled on 05-Oct-22. Comparable or larger scale Electronic Navigational Chart (ENC) coverage is available. See "Cancellation of NOAA Paper and Raster Nautical Charts" in Section I of this LNM for details. A list of all canceled NOAA charts is at <a href="https://www.charts.noaa.gov/MCD/Dole.shtml">https://www.charts.noaa.gov/MCD/Dole.shtml</a> .				NOS --	--
<b>18434</b>	<b>7th Ed.</b>	<b>01-APR-08</b>	<b>Last LNM: 40/17</b>	<b>NAD 83</b>	<b>18/22</b>	
<i>ChartTitle: San Juan Channel</i>						
<b>Main Panel 1941 SAN JUAN CHANNEL. Page/Side: N/A</b>						
LAST EDITION	No new editions of chart 18434 will be published. It will be canceled on 05-Oct-22. Comparable or larger scale Electronic Navigational Chart (ENC) coverage is available. See "Cancellation of NOAA Paper and Raster Nautical Charts" in Section I of this LNM for details. A list of all canceled NOAA charts is at <a href="https://www.charts.noaa.gov/MCD/Dole.shtml">https://www.charts.noaa.gov/MCD/Dole.shtml</a> .				NOS --	--
<b>18440</b>	<b>31st Ed.</b>	<b>01-APR-17</b>	<b>Last LNM: 42/19</b>	<b>NAD 83</b>	<b>18/22</b>	
<i>ChartTitle: Puget Sound</i>						
<b>Main Panel 1688 PUGET SOUND - -. Page/Side: -</b>						
CHANGE	Puget Sound Traffic Separation Lane V-AIS SB Symbol to V-AIS: Special Purpose Mark, Chart No. 1: S18.6				CGD13 at 48-06-47.031N	122-39-40.492W
<b>18441</b>	<b>49th Ed.</b>	<b>01-APR-20</b>	<b>Last LNM: 48/17</b>	<b>NAD 83</b>	<b>18/22</b>	
<i>ChartTitle: Puget Sound-northern part</i>						
<b>Main Panel 1689 PUGET SOUND - NORTHERN PART - -. Page/Side: -</b>						
CHANGE	Puget Sound Traffic Separation Lane V-AIS SB Symbol to V-AIS: Special Purpose Mark, Chart No. 1: S18.6				CGD13 at 48-06-47.031N	122-39-40.492W
ADD	North Skagit Bay Research Lighted Buoy Y BY Priv Fl Y 4s				CGD13 at 48-24-45.292N	122-34-26.026W
<b>18448</b>	<b>36th Ed.</b>	<b>01-DEC-15</b>	<b>Last LNM: 51/21</b>	<b>NAD 83</b>	<b>18/22</b>	
<i>ChartTitle: Puget Sound-southern part</i>						
<b>CHART WA - PUGET SOUND - SOUTHERN PART. Page/Side: N/A</b>						
ADD	Oakland Bay Lighted Mooring Buoy W/b By Priv Fl W 4s				CGD13 at 47-13-18.181N	123-04-26.105W
<b>18457</b>	<b>10th Ed.</b>	<b>01-JAN-06</b>	<b>Last LNM: 23/17</b>	<b>NAD 83</b>	<b>18/22</b>	
<i>ChartTitle: Puget Sound-Hammersley Inlet to Shelton</i>						
<b>Main Panel 1718 PUGET SOUND HAMMERSLEY INLET TO SHELTON. Page/Side: N/A</b>						
LAST EDITION	No new editions of chart 18457 will be published. It will be canceled on 01-Jun-22. Comparable or larger scale Electronic Navigational Chart (ENC) coverage is available. See "Cancellation of NOAA Paper and Raster Nautical Charts" in Section I of this LNM for details. A list of all canceled NOAA charts is at <a href="https://www.charts.noaa.gov/MCD/Dole.shtml">https://www.charts.noaa.gov/MCD/Dole.shtml</a> .				NOS --	--
<b>18464</b>	<b>25th Ed.</b>	<b>01-JUL-06</b>	<b>Last LNM: 51/21</b>	<b>NAD 83</b>	<b>18/22</b>	
<i>ChartTitle: Port Townsend</i>						
<b>Main Panel 1722 PORT TOWNSEND. Page/Side: N/A</b>						
CHANGE	Puget Sound Traffic Separation Lane V-AIS SB Symbol to V-AIS: Special Purpose Mark, Chart No. 1: S18.6				CGD13 at 48-06-47.031N	122-39-40.492W
<b>18471</b>	<b>11th Ed.</b>	<b>01-DEC-07</b>	<b>Last LNM: 51/21</b>	<b>NAD 83</b>	<b>18/22</b>	
<i>ChartTitle: Approaches to Admiralty Inlet Dungeness to Oak Bay</i>						
<b>Main Panel 1724 APPROACHES TO ADMIRALTY INLET - DUNGENESS TO OAK BAY. Page/Side: N/A</b>						
CHANGE	Puget Sound Traffic Separation Lane V-AIS SB Symbol to V-AIS: Special Purpose Mark, Chart No. 1: S18.6				CGD13 at 48-06-47.031N	122-39-40.492W
<b>18474</b>	<b>11th Ed.</b>	<b>01-DEC-15</b>	<b>Last LNM: 49/18</b>	<b>NAD 83</b>	<b>18/22</b>	

ChartTitle: Puget Sound-Shilshole Bay to Commencement Bay

Main Panel 1679 PUGET SOUND SHILSHOLE BAY TO COMMENCEMENT BAY. Page/Side: A

DELETE	Burton Fairway Buoy 1	CGD13 47-23-43.140N	122-27-38.880W
DELETE	Burton Fairway Buoy 2	CGD13 47-23-43.920N	122-27-41.220W
DELETE	Burton Fairway Buoy 3	CGD13 47-23-40.740N	122-27-41.100W
DELETE	Burton Fairway Buoy 4	CGD13 47-23-41.700N	122-27-42.720W
DELETE	Burton Fairway Buoy 5	CGD13 47-23-38.460N	122-27-43.020W
DELETE	Burton Fairway Buoy 7	CGD13 47-23-35.520N	122-27-46.020W
DELETE	Burton Regulatory Buoy	CGD13 47-23-46.620N	122-27-36.780W

18477 6th Ed. 01-SEP-18 Last LNM: 09/17 NAD 83 18/22

ChartTitle: Puget Sound-Entrance to Hood Canal

Main Panel 1938 PUGET SOUND ENTRANCE TO HOOD CANAL - -. Page/Side: -

LAST EDITION No new editions of chart 18477 will be published. It will be canceled on 05-Oct-22. Comparable or larger scale Electronic Navigational Chart (ENC) coverage is available. See "Cancellation of NOAA Paper and Raster Nautical Charts" in Section I of this LNM for details. A list of all canceled NOAA charts is at <https://www.charts.noaa.gov/MCD/Dole.shtml>.

NOS --

18502 88th Ed. 01-FEB-17 Last LNM: 23/21 NAD 83 18/22

ChartTitle: Grays Harbor;Westhaven Cove

Main Panel 1731 GRAYS HARBOR. Page/Side: A

RELOCATE Hoquiam River Obstruction Buoy

CGD13  
from 46-58-41.049N  
to 46-58-40.752N

123-52-56.669W  
123-52-55.861W

18504 66th Ed. 01-JUL-06 Last LNM: 29/17 NAD 83 18/22

ChartTitle: Willapa Bay;Toke Pt.

CHART WA - WILLAPA BAY. Page/Side: N/A

DELETE Willapa Bay Entrance Buoy D at:

DELETE Willapa Bay Entrance Lighted Buoy C at:

CGD13  
46-43-36.011N  
CGD13  
46-44-03.280N

124-04-02.219W  
124-06-03.390W

Main Panel 1734 WILLAPA BAY. Page/Side: N/A

LAST EDITION No new editions of chart 18504 will be published. It will be canceled on 05-Oct-22. Comparable or larger scale Electronic Navigational Chart (ENC) coverage is available. See "Cancellation of NOAA Paper and Raster Nautical Charts" in Section I of this LNM for details. A list of all canceled NOAA charts is at <https://www.charts.noaa.gov/MCD/Dole.shtml>.

NOS --

18556 26th Ed. 01-JUN-12 Last LNM: 18/14 NAD 83 18/22

ChartTitle: Nehalem River

Main Panel 1787 NEHALEM RIVER. Page/Side: N/A

LAST EDITION No new editions of chart 18556 will be published. It will be canceled on 01-Jun-22. Comparable or larger scale Electronic Navigational Chart (ENC) coverage is available. See "Cancellation of NOAA Paper and Raster Nautical Charts" in Section I of this LNM for details. A list of all canceled NOAA charts is at <https://www.charts.noaa.gov/MCD/Dole.shtml>.

NOS --

18589 16th Ed. 01-OCT-07 Last LNM: 38/17 NAD 83 18/22

ChartTitle: Port Orford to Cape Blanco;Port Orford

Main Panel 1798 PORT ORFORD TO CAPE BLANCO. Page/Side: N/A

LAST EDITION No new editions of chart 18589 will be published. It will be canceled on 01-Jun-22. Comparable or larger scale Electronic Navigational Chart (ENC) coverage is available. See "Cancellation of NOAA Paper and Raster Nautical Charts" in Section I of this LNM for details. A list of all canceled NOAA charts is at <https://www.charts.noaa.gov/MCD/Dole.shtml>.

NOS --

SECTION V - ADVANCE NOTICES

**SUMMARY OF ADVANCED APPROVED PROJECTS**

**Approved Project(s)**  
None

**Project Date**

**Ref. LNM**

**Advance Notice(s)**

**COLUMBIA RIVER - WILLAPA BAY - GRAYS HARBOR – PUGET SOUND – Replacement of incandescent Lights with LED lanterns**

The U.S. Coast Guard is replacing the following incandescent lantern with LED lanterns at sites on the Columbia River, Willapa Bay, Grays Harbor, Bellingham Channel and Eagle Harbor. These current incandescent lanterns have a single or dual beam of high intensity, with an all-around light of reduced intensity. The change to a LED lantern will remove the high intensity beams, but significantly increase the intensity of the all-around light. The sites are:

Svensen Island Light 12 (LLNR 14775) the high intensity beam will be removed and the intensity of the light will be increased.  
Willapa River Light 39 (LLNR 15340) the high intensity beams will be removed and the intensity of the light will be increased.  
South Willapa Bay Light 7 (LLNR 15410) the high intensity beam will be removed and the intensity of the light will be increased.  
Eagle Harbor Light 4 (LLNR 18010) the high intensity beam will be removed and the intensity of the light will be increased.  
Bellingham Channel Light 5 (LLNR 19175) the high intensity beams will be removed and the intensity of the light will be increased.

Long Island Junction Light (LLNR 15435) the high intensity beam has been removed and the intensity of the light has been increased.  
Aberdeen Harbor Light 3 (LLNR 15900) the high intensity beam has been removed and the intensity of the light has been increased.  
Johns River Entrance Light 8 (LLNR 15955) the high intensity beams have been removed and the intensity of the light has been increased.

The change in light characteristics will be advertised by a Broadcast Notice to Mariners and Light List corrections in the Local Notice to Mariners. Mariners are encouraged to share comments on the performance and operation of these lights as aids to navigation. All comments should be sent to the email address D13-PF-LNM@uscg.mil. Any discrepancy for these or other Aids to Navigation should continue to be reported to US Coast Guard Sector Columbia River and US Coast Guard Sector Puget Sound.

Charts: 18421 18441 18502 18504 18523

LNM: 18/22

**WASHINGTON – WILLAPA BAY - Disestablishment of Willapa Bay Lighted Buoy “C” and Buoy “D” (Revised from LNM 16/22)**

The U.S. Coast Guard has permanently disestablished Willapa Bay Entrance Lighted Buoy “C” (LLNR 15186) and Willapa Bay Entrance Buoy “D” (LLNR 15167) as the constantly shifting bar at the entrance to Willapa Bay prevents these buoys from marking the navigable channel, and surf conditions make the placement, retrieval and servicing of these buoys hazardous. There are currently no plans by the US Army Corps of Engineers to dredge or maintain the entrance channel into Willapa Bay. Virtual AIS (V-AIS) signals will be established in place of these buoys. The projected approximate locations are:

Willapa Bay V-AIS “A”, a special purpose AIS marking good water at 46-44-18.4 124-06-21.9W  
Willapa Bay V-AIS “B”, a special purpose AIS marking good water at 46-43-34.4N 124-03-52.7W

Mariners are encouraged to share comments on the performance and operation of aids to navigation All comments should be sent to the email address of D13-SMB-D13-LNM@uscg.mil. Any discrepancy for Aids to Navigation should continue to be reported to US Coast Guard Sector Columbia River.

Chart 18504

LNM: 18/22

**WASHINGTON – STRAIT OF JUAN DE FUCA TO STRAIT OF GEORGIA AND PUGET SOUND – Removal of RACONs on aids to navigation**

The U.S. Coast Guard will be removing the RACONs from selected aids to navigation in the Strait of Juan de Fuca, Rosario Strait and Puget Sound due to the consistent failure of the signals and that they are no longer considered necessary for safe navigation of the waterways. While there is no specific timeline for the removal of this equipment, it will be coordinated with servicing and discrepancy responses. The removal of the RACONs will be announced by Broadcast Notice to Mariners and published in the Local Notice to Mariners as Chart and Light List corrections. These aids to navigation are:

Hein Bank Lighted Buoy 1 (LLNR 16362)  
Rosario Strait Traffic Separation Lane Lighted Buoy “RA” (LLNR 16370)  
Puget Sound Traffic Separation Lane Lighted Buoy “SA” (LLNR 16405)  
Puget Sound Traffic Separation Lane Lighted Buoy “SF” (LLNR 16745)  
Puget Sound Traffic Separation Lane Lighted Buoy “SG” (LLNR 16815)  
Rosario Strait Traffic Separation Lane Lighted Buoy “C” (LLNR 19520)  
Rosario Strait Traffic Separation Lane Lighted Buoy “CA” (LLNR 19535)

Mariners are requested to respond in writing to the Coast Guard District office with any comments on this change at D13-SMB-D13-LNM@uscg.mil. Any discrepancy for these or other Aids to Navigation should continue to be reported to US Coast Guard Sector Puget Sound.

Charts: 18400 18421 18441 18465

LNM: 36/21

**WASHINGTON – PUGET SOUND –STRAIT OF JUAN DE FUCA TO STRAIT OF GEORGIA - Removal of ball topmarks from Isolated Danger Buoys**

The U.S. Coast Guard will be removing the two black ball topmarks from the Isolated Danger Buoys listed below. This action is due to recurring damage of the topmarks from weather events, and the debris has interfered with the visibility of the light signal.

Tolivia Shoal Isolated Danger Lighted Bell Buoy DTS (LLNR 17265)  
Blakely Island Shoal Isolated Danger Lighted Buoy DS (LLNR 19430)

Reid Rock Lighted Isolated Danger Buoy DR (LLNR 19630)

Boundary Pass Shoal Isolated Danger Lighted Bell Buoy DR (LLNR 19815) the topmarks have been removed

Mariners are encouraged to share comments on the performance and operation of these lights as aids to navigation. All comments should be sent to the email address D13-SMB-D13-LNM@uscg.mil. Any discrepancy for these or other Aids to Navigation should continue to be reported to US Coast Guard Sector Puget Sound.

Charts: 18421 18448

LNM: 16/22

### SECTION VI - PROPOSED CHANGES

Periodically, the Coast Guard evaluates its system of aids to navigation to determine whether the conditions for which the aids to navigation were established have changed. When changes occur, the feasibility of improving, relocating, replacing, or discontinuing aids are considered. This section contains notice(s) of non-approved, proposed projects open for comment. SPECIAL NOTE: Mariners are requested to respond in writing to the District office unless otherwise noted (see banner page for address).

#### PROPOSED WATERWAY PROJECTS OPEN FOR PUBLIC COMMENT

<u>Proposed Project(s)</u>	<u>Closing</u>	<u>Docket No.</u>	<u>Ref. LNM</u>
<b>None</b>			

#### Proposed Change Notice(s)

##### **WASHINGTON – STRAIT OF JUAN DE FUCA TO STRAIT OF GEORGIA – SAN JUAN CHANNEL – Change to the light sectors at Fisherman Bay Sector Light**

The U.S. Coast Guard is proposing to change the arc of visibility for the white and red sectors at Fisherman Bay Sector Light (LLNR 19560) to facilitate the installation of LED lighting equipment and increase the reliability of the light signal. The current white light sector would be reduced from 74 degrees to 18 degrees and the intensities of the white and red sectors would be increased to promote increased visibility. The white 18 degree sector would remain orientated to the northwest.

Mariners are encouraged to share comments on this proposed change and the performance and operation of these lights as aids to navigation. All comments should be sent to the email address D13-SMB-D13-LNM@uscg.mil. Any discrepancy for Aids to Navigation should continue to be reported to US Coast Guard Sector Puget Sound.

Chart 18434

LNM: 12/22

### SECTION VII - GENERAL

This section contains information of general concern to the Mariners. Mariners are advised to use caution while transiting these areas.

#### **SUMMARY OF BRIDGE LIGHTING DISCREPANCIES AND CORRECTIONS**

The summary of Bridge Lighting Discrepancies and Corrections is listed as Enclosure (1) of this Local Notice to Mariners.

LNM: 18/22

#### **SUMMARY OF DREDGING OPERATIONS**

The summary of Dredging Operations is listed as Enclosure (2) of this Local Notice to Mariners.

LNM: 18/22

#### **SUMMARY OF MARINE EVENTS**

The summary of Marine Events is listed as Enclosure (3) of this Local Notice to Mariners.

LNM: 18/22

#### **OREGON – APPROACHES TO YAQUINA AND DEPOE BAY – Bridge construction notice (Revised from LNM 06/21)**

ODOT is conducting cathodic protection upgrades and bridge concrete repairs to the Yaquina Bay Highway 101 Bridge (LLNR 9627) in Newport, OR, at Yaquina Bay mile 0.7. A low-level access walkway system has been constructed across the 4 concrete arch spans from the south bank heading north. While erected, the vertical navigation clearance will be reduced to a minimum of 16 feet at MHHW. The low level walkway system spans from the south bank to the North approx. 880 feet. This system will be functional until approximately the summer of 2024. The main navigational channel will not be impeded by the project as that section is made of steel. Mariners are requested not to loiter under the construction area due to fall hazards. For more information, contact Dan Lutze, the project superintendent, at (503) 519-5408.

The project is taking actions to prevent conflicts with birds. ODOT has contracted with the US Department of Agriculture's Animal and Plant Health Inspection Service (APHIS) to perform bird-hazing activities with an aim to prevent nesting in certain sections of the bridge until scaffolding and containment can be installed. Hazing activities may include noise cannons, laser lights, and pyrotechnics. The activities may happen at any time of day, however, the noise cannons will primarily be used for the few hours surrounding sunset each evening. These efforts will have no effect on marine navigation. Hazing activities are expected to begin at the end of March and continue well into June. For more information on the APHIS activities, contact Steven Schultz at (541) 757-4158 or Steven.Schultz@ODOT.Oregon.gov.

Chart 18561

LNM: 12/22

#### **OREGON – PORT OF PORTLAND - WILLAMETTE RIVER – Bridge notice**

The Coast Guard has approved a temporary operating rule change that governs the Morrison Highway Bridge (LLNR 14955.5) across the Willamette River, mile 12.8 at Portland, OR. The Morrison Bridge operates in accordance with 33 CFR 117.897(c)(3)(iv). This temporary rule temporarily suspends the current regulatory cite regarding the Morrison Bridge, and adds a temporary paragraph 33 CFR § 117.897(c)(3)(vi) which amends the

**OREGON – PORT OF PORTLAND - WILLAMETTE RIVER – Bridge notice**

operating schedule of the Morrison Bridge. The rule change authorizes the subject bridge to open half of the draw span on signal when at least a two-hour notice has been given, or four-hour notice if a tug assist is needed from 1900 on 01 Apr 2022 through 1900 on 31 May 2023. Mariners may contact the Hawthorne Bridge operator via telephone at (503) 988-3452 or VHF radio channel 13 for an opening of the Morrison Bridge. Half of the draw will be maintained in the closed-to-navigation position to allow for preservation and painting maintenance. The rule change allows the Morrison Bridge to alternate operation of the east or west leaf span during the temporary rule period. The west span will be operational at the beginning of project and the east span will be in the closed-to-navigation position. The horizontal clearance with a full opening is 185 feet, therefore, in single leaf operations, the temporary rule change reduces the horizontal clearance to approximately 90 feet. The dates to switch operational spans will be determined later and published in the Local Notice to Mariners. This rule reasonably accommodates waterway users while reducing Multnomah County's burden to safely clear work crews for bridge openings. When the operational span is in the closed-to-navigation position, the vertical clearance is 69 feet in center and 48 feet on the side. The vertical clearance of the operational span is unlimited when in the open-to-navigation position. This regulation approval allows a containment system under the bridge that reduces the non-opening half of the bridge's vertical clearance by 5 feet from 69 feet center to 64 feet, and from 48 feet on the sides to 43 feet. All draw clearances are above the Columbia River Datum 0.0. Vessels able to pass through the bridge in the closed-to-navigation position may do so at any time. In accordance with 33 CFR 117.35(e), the bridge must return to its regular operating schedule immediately at the end of the designated time-period. For additional information on this event, contact Matt Studer at matt.d.studer@multco.us.

Chart 18526

LNM: 09/22

**COLUMBIA RIVER – BONNEVILLE TO THE DALLES – Bridge notice**

ODOT is conducting a bridge deck replacement project on the SR 197 Highway Bridge (LLNR 12133) at Columbia RM 191.6 near The Dalles, OR and Dallesport WA. A work access and containment platform will be suspended beneath the bridge starting in mid-August and will be in place continuously until 27 May 2022. While in place, the vertical navigation clearance will be reduced by approximately 3 feet to a minimum clearance of 97 feet Columbia River datum OHW. If a vessel needs the full 100 feet of vertical clearance for passage through the subject bridge, contact the ODOT Resident Engineer with no less than 12 hours of notice. For more information, or to make a request, contact ODOT Resident Engineer Brad DeHart at (541) 296-2800 or bradley.k.dehart@odot.state.or.us.

Chart 18532

LNM: 31/21

**WASHINGTON – GRAYS HARBOR – WISHKAH RIVER – Bridge inspection**

Washington State Department of Transportation will be inspecting the US-12, Heron Street Highway Bridge (LLNR 16072.2) that spans the Wishkah River near Aberdeen, WA. The inspection will take place between 0900 and 1200 on 12 May 2022. The bridge will be inspected using an under-bridge inspection truck (UBIT) that occupies a portion of the roadway and extends a boom under the bridge. There is no fixed impact to navigational clearance from this operation (~10 ft. reduction to clearance while bucket is under the bridge, however UBIT will promptly give way to tall marine vessels). Mariners are advised to use caution while transiting the area. UBIT bucket will have a flashing orange light on the bottom and a safety lookout will be on the bridge. Bridge openings will occur as usual. For additional information, contact Alan Kuper, P.E. at (360) 701-0556 or kupera@wsdot.wa.gov.

Chart 18502

LNM: 09/22

**WASHINGTON – PUGET SOUND – HOOD CANAL – Bridge Notice**

WSDOT will be inspecting the Hood Canal Highway Bridge (LLNR 17769) that spans Hood Canal near Port Gamble, WA. The inspection will take place between 0900 and 1500 on 09 – 10 May 2022. The bridge will be inspected using an under-bridge inspection truck (UBIT) that occupies a portion of the roadway and extends a boom under the bridge. There is no fixed impact to navigational clearance from this operation (~10 ft. reduction to clearance while bucket is under the bridge, however the UBIT will promptly give way to tall marine vessels). Mariners are advised to use caution while transiting the area. UBIT bucket will have a flashing amber light on the bottom and a safety lookout will be on the bridge. Bridge openings will occur as usual. For additional information, contact Alan Kuper, P.E. at (360) 701-0556 or email kupera@wsdot.wa.gov.

Chart 18441

LNM: 08/22

**WASHINGTON – LAKE WASHINGTON SHIP CANAL – UNION BAY REACH - Bridge deviation**

The Coast Guard has issued a temporary deviation to the operating schedule that governs the University Street Bridge (LLNR 18235), mile 4.3, and the Montlake Street Bridge (LLNR 18240), mile 5.2, both crossing the Lake Washington Ship Canal at Seattle, Washington. This deviation supports the Beat-the-Bridge running event. The draws of both the University Street Bridge and the Montlake Street Bridge need not open to mariners from 0800 – 0930 on 14 May 2022. The University Bridge in the closed-to-navigation position provides 30 feet of vertical clearance at the sides, and 45 feet of vertical clearance at the center. The Montlake Bridge in the closed-to-navigation position provides 30 feet of vertical clearance at the sides and 46 feet of vertical clearance throughout the center 60 feet of the bridge. Vertical clearance references are to the Mean Water Level of Lake Washington. Vessels able to pass through the bridges in the closed-to-navigation position may do so at any time. The bridges will be able to open for emergencies, and there is no alternate route for vessels to pass. In accordance with 33 CFR 117.35(e), the subject bridges must return to their regular operating schedule immediately at the end of the designated time-period. For more information on these events, contact Colleen Kelly for the Montlake Bridge at (425) 739-3700 or Kit Loo for the University Bridge at (206) 684-3669.

Chart 18447

LNM: 13/22

**WASHINGTON – LAKE WASHINGTON SHIP CANAL – LAKE WASHINGTON – Interstate 90 Highway Bridge Anchor Cable Replacement**

WSDOT will be replacing anchor cables linking the I-90 Highway Bridge (west channel) (LLNR 18389) in Lake Washington. The project will take place within a 1000ft wide strip on both the north and south sides of the I-90 floating bridge from 17 Mar to 30 Sep 2022. Work will be carried out during 24 hour shifts typically starting Monday morning at 0600 and finishing Friday at 1800, with some occasional weekend hours. A derrick crane, DB Alameda, will be used to winch up existing anchor cables and pay out new anchor cables. DB Alameda will be maneuvered by the tug Capt Cae, and multiple flat deck barges and working skiffs will be maneuvering within the work zone. All vessels may be contacted on VHF-FM Channel 16. Deep-water divers will be deployed to disconnect the old cable and reconnect the new cable at the lakebed and shallow water divers will be deployed to assist with cable handling near to and under the floating pontoons. All barges will be lighted on the outermost corners of the individual barge. An orange buoy will mark the anchor noting the location and used for retrieval. Some locations on the SW corner of the work zone will require anchors attached to a pendant line for extra length and feature 2 buoys, one for the anchor and another for the pendant line. Mooring of vessels to the bridge will have line travels slightly above and below the water between the derrick crane and the bridge. Mariners transiting through the area shall not produce a wake or approach the barges within 500 feet. No boat traffic is permitted between the barge and the bridge at any time during the course of the project. For additional information, contact Andrew Schaal (0600-1800) at Andrew.Schaal@kiewit.com and (541) 969-0559; or Evan Spading (1800-0600) at Evan.spading@kiewit.com and (808) 342-3561.

Chart 18447

LNM: 10/22

**WASHINGTON – LAKE WASHINGTON – SAMMAMISH RIVER – West Sammamish River Bridge Notice (Revised from LNM 13/20)**

Construction on the West Sammamish River Bridge at Sammamish River mile 0.5 near Kenmore, Washington is ongoing and will continue through October 2023. The western bridge will be removed and a new bridge constructed. Mariners may transit through the construction zone, but are advised that temporary work piers will be constructed on the west side of the bridge, and will reduce the horizontal span to 40 feet of clearance. Containment will be installed under the bridge reducing the vertical clearance from 11.5 feet to 10.5 feet measured at OHW. Working hours will normally be from 0600 to 1800 six days per week, however, during the in water work window of 01 Jul to 31 Aug, operations will be 24 hours per day. If construction falls behind schedule, the work hours may shift to 24 hours/seven days per week. For more information regarding construction, contact Jake Brockmoller at (253) 888-2514, or Mick Cannon at (253) 377-1041.

Chart 18447

LNM: 05/21

**OREGON – SNAKE RIVER – Bridge notice**

ODOT will be repairing the bridge that spans the Snake River in Ontario OR at river mile 372. The operations will occur seven days a week, daylight hours only, from 01 Apr to 31 Oct 2022. The bridge will be repaired using an under-bridge inspection truck (UBIT) or snooper crane that occupies approximately 10 feet of the vertical span of the bridge, work containment platforms that occupies approximately 6 feet of vertical span of the bridges, and a barge that will occupy one of the nine existing bridge spans. Mariners are advised to use caution while transiting the area. For additional information contact ODOT District 14 Project Manager, Petr Lovasik at (541) 823-4021 or (541) 709-6889 (cellular) or Petr.Lovasik@odot.state.or.us.

LNM: 06/22

**IDAHO – LAKE COEUR D'ALENE – LAKE PEND OREILLE – BNSF Railroad Bridge construction update**

BNSF Railway Company (BNSF) is continuing construction on the new BNSF Railroad Bridge 3.9 (LLNR 20087) located over Lake Pend Oreille (LPO) Mile 2.7, located approximately at 48-16-20 N, 116-32-39 W, in Sandpoint, ID from the start of LPO winter draw-down levels as of 01 Oct 2021 through the start of LPO summer fill-up beginning 01 May 2022. This notice reflects updates to the next project phase work activities required due to the seasonal fluctuation of LPO water levels. Work barges will be staged along the work corridor with support from upland staging areas, primarily from the south shore of LPO, near East Algoma along the BNSF right-of-way (ROW). Hours of construction activities will generally be 0730 to 1600, Monday to Saturday. An Ames-owned tugboat, Audrey B, will position barges and provide other on-water support within the BNSF 200' ROW west of the existing BNSF Bridge 3.9. The Audrey B can be hailed on VHF-FM channels 13 and 16. One of the two published navigation channels at the existing BNSF Bridge 3.9 spans 67 and 68 and half of the existing spans 2 and 3; 14 through 17; 27 through 30; 40 through 43; 53 through 56; 84; and 95 through 97 will remain unobstructed during all work activities. Vertical clearance of the existing bridge will be unchanged. The temporary work trestles and work barges will have navigation lights and work zone buoys in accordance with the Navigation Rules (COLREGS-Inland). Enclosure (4) of LNM 02/22 displayed the project vicinity, locations of high and low-water work areas, for this phase of the work activities. Changes to the work locations and activities will be updated by a subsequent LNM in the Spring of 2022. During all phases and locations, the noted navigational buoy-safety lighting for the work areas will be in place. The point of contact for the bridge contractor, Ames Construction, Inc. is Mike Pamperin at (612) 741-6535; MikePamperin@amesco.com. For additional information contact the BNSF Project Manager, Ryan Kopera at (913) 284-3467; Ryan.Kopera@BNSF.com.

Chart 18554

LNM: 51/21

**COLUMBIA AND SNAKE RIVERS – Winter seasonal recreational vessel lockage**

The USACE Portland and Walla Walla Districts will implement the winter seasonal lockage schedule, beginning in September until 15 May 2022, for the passage of recreational craft through the Columbia and Snake River navigation locks. The Portland District will begin the winter lockage schedule on 30 Sep, while the Walla Walla District will commence the winter schedule on 18 Sep. Winter lockage will be made during daylight hours only, on request at each lock – vessels should contact the lock operator via VHF-FM channel 14 or telephone, and should make their request at least 30 minutes in advance.

Lock Name	Location	Phone Number	Radio Call Sign
<b>Portland District:</b>			
Bonneville Lock	Columbia River Mile 145.5	(541) 374-8323	WUJ 33
The Dalles Lock	Columbia River Mile 191.5	(541) 506-8211	WUJ 34
John Day Lock	Columbia River Mile 215.6	(541) 298-9712	WUJ 35
<b>Walla Walla District:</b>			
McNary Lock	Columbia River Mile 292	(541) 922-2231	WUJ 41
Ice Harbor Lock	Snake River Mile 9.7	(509) 543-3253 x231	WUJ 42
Lower Monumental Lock	Snake River Mile 41.6	(509) 282-7231	WUJ 43
Little Goose Lock	Snake River Mile 70.3	(509) 399-2233 x231	WUJ 44
Lower Granite Lock	Snake River Mile 107.5	(509) 843-1493 x231	WUJ 45

Commercial vessels continue to have lockage precedence over recreational vessels. At the discretion of the lock operator, recreational vessels may be allowed to lock through with commercial vessels. The Portland District requests that recreational vessels contact the lock at least 30 minutes prior to arrival using VHF-FM channel 14 or via telephone. All vessel owner/operators lock through at their own risk. All persons in the vessel must be wearing a personal flotation device (PFD) during lockage. Follow the directions of the lock operator when using locks or operating in the vicinity of the locks. The lock operator has final authority on the suitability of a craft for lockage. Please refer to USACE Safe Lockage Policy for Recreational Craft on the Columbia and Snake Rivers, published separately, for safety requirements. For safety and additional information on Portland District navigation lock operations and schedules visit <http://www.nwp.usace.army.mil/Missions/Navigation.aspx> and for Walla Walla District lock operations visit <http://www.nww.usace.army.mil/Missions/Navigation.aspx> or call the USACE Walla Walla Operations Division at (509) 527-7112.

Charts: 18532 18533 18535 18536 18537 18539 18541 18545 18546 18547

LNM: 35/21

**OREGON – CAPE BLANCO TO YAQUINA HEAD – Scientific equipment installation**

Oregon State University (OSU) has installed four, 1-mile long, 10-inch diameter, steel conduits under the seafloor running out from Driftwood Beach State Recreation Site near Seal Rock, Oregon, as part of the construction of the PacWave South Wave Energy Test Site. In mid-2023, subsea cables will be installed in the conduits to carry power and data from the test site to shore. Until the cables are installed, the seaward end of the conduits may protrude up to 3 feet vertically and 10 feet horizontally from the seafloor depending on sand movement. Once the cables are installed, the final placement of the conduits will be below the seafloor. The conduit punch outs are located approximately 1500 yards offshore from Driftwood Beach, which is between Seal Rocks and Waldport.

Until the subsea cables are installed, mariners are requested to avoid anchoring or setting fishing gear in a 1,000 x 1,500-foot Conduit Punch Out Area around the conduit exit locations due to risk of snagging on any exposed conduit. The location of the Conduit Punch Out Area was shown in the graphic attached as Enclosure (4) to LNM 52/21. If crab pots, or other equipment, becomes snagged in this area, mariners are asked to

**OREGON – CAPE BLANCO TO YAQUINA HEAD – Scientific equipment installation**

contact OSU prior to attempting to recover the snagged items. For more information contact Brett Hembrough at (541) 737-9023 and brett.hembrough@oregonstate.edu, or Dan Hellin at (541) 745-8337 and dan.hellin@oregonstate.edu.

Chart 18580

LNM: 49/21

**OREGON – TILLAMOOK BAY – Tillamook entrance north jetty repair work**

J.E. McAmis, Inc will commence a Tillamook North Jetty Repair project for the Portland District of USACE on 28 Feb 2022. Equipment will be operating atop the jetty near Bar View Jetty State Park and the Coast Guard observation tower, on the north side of the entrance. The project is expected to continue through July 2022, and operating hours will be weekdays, daylight only.

Chart 18558

LNM: 07/22

**COLUMBIA RIVER – PACIFIC OCEAN TO HARRINGTON POINT - Mouth of the Columbia River Jetty System Major Rehabilitation Project**

Scheduled repairs of the South Jetty have commenced and are planned to continue through 2024. The 2022 seasonal operations have commenced on and a material off load facility has been constructed at the east end of the park; along the Columbia River, near Trestle Bay. The offload mooring barge will be in place starting on 19 Apr 2022. The offload facility has an aerial clearance of approximately 60 ft above the water line. When there is a barge being unloaded a crane will be utilized, the aerial clearance is about 140 ft. The ends of the spuds are painted white for visibility. For questions or additional information please call or email Sherri Brenner at (503) 550-6743 or email Sheri@jemcamis.com, or the project superintendent, Aaron Anderson at (503) 791-2161 or email AAnderson@jemcamis.com.

The jetties at the Columbia River Entrance have suffered severe deterioration and may no longer be correctly represented upon the nautical charts of the area. Mariners should use caution when transiting in the vicinity of the jetties and the river entrance. Repairs of the North jetty were completed in 2019. More information may be found at the USACE Portland District web site: <http://www.nwp.usace.army.mil/jetties/>

Chart 18521

LNM: 13/22

**COLUMBIA RIVER SYSTEM AND WASHINGTON - Testing of prototype plastic buoys**

The U.S. Coast Guard is testing various prototype plastic buoys to observe their station keeping ability and visual and radar detection capabilities. Buoys are being placed at the following locations for evaluation:

On the Columbia, Snake and Willamette Rivers:

- Columbia River Entrance Lighted Buoy 3 (LLNR 9911)
- Desdemona Sands Lighted Buoy 22 (LLNR 9990), set on 1/13/2022
- Hood River Lighted Buoy 36 (LLNR 11932), set on 12/14/2021
- Bonneville Pool Lighted Buoy 69 (LLNR 12130)
- Lake Celilo Buoy 45 (LLNR 12360), set on 9/28/2021
- Lake Wallula Lighted Buoy 2 (LLNR 12815), set on 10/04/2021
- Snake River Buoy 14 (LLNR 13195), set on 9/30/2021
- Snake River Buoy 18 (LLNR 13210)
- Elk Rock Buoy 10 (LLNR 15005), reset on 1/06/2022
- Elk Rock Buoy 12 (LLNR 15010)

In Grays Harbor and Admiralty Inlet Washington:

- Point Chehalis Lighted Buoy 4 (LLNR 15990)
- Point Wilson Lighted Buoy 6 (LLNR 16470), set on 12/16/2021

While the buoys performance is being studied, the US Coast Guard is soliciting comments from the maritime community transiting this waterway. Mariners are requested to respond in writing to the Coast Guard District office with any comments on this change at D13-SMB-D13-LNM@uscg.mil. Any discrepancy for these or other Aids to Navigation should continue to be reported to US Coast Guard Sector Columbia River and US Coast Guard Sector Puget Sound.

Charts: 18502 18533 18545

LNM: 03/22

**COLUMBIA RIVER – VANCOUVER TO BONNEVILLE – Shoaling protruding into Reed Island Reach**

Due to shoaling extending south into the Reed Island Reach Channel south of Reed Island, the US Coast Guard has relocated Reed Island Reach Lighted Buoy 61 (LLNR 11580) to approximate position 45-32-46.318N 122-18-02.052W. This position is near the center of the channel. Vessels transiting Reed Island Reach should navigate on the southern edge of the channel between longitudes 122-17-30.0W and 122-18-25.0W (RM 125+40 to 126+40) and proceed with caution.

Chart 18531

LNM: 30/21

**OREGON – WILLAMETTE RIVER – WALNUT EDDY TO NEWBERG – Marine construction exposed piles**

Harbor Offshore, Inc. has completed the first phase of a construction project which included pile driving operations in the vicinity of the Raw Water Pump Station on the Willamette River near Wilsonville, OR. There are a total of six 14x89 H-Pile installed in an East-West Row that remain above waterline in approximate position 45-17-36.96 N, 122-46-57.96 W. All vessel traffic should be aware of these pilings when navigating in this area. The piles are planned to remain in their current configuration exposed above the waterline until June 2022. For additional information, please contact Lauren Collins at (707) 389-0678 or lcollins@harboroffshoreinc.com.

LNM: 49/21

**WASHINGTON – STRAIT OF GEORGIA AND STRAIT OF JUAN DE FUCA – PUGET SOUND – Bottom Trawl survey**

From 25 Apr through 20 May 2022, the Washington Department of Fish and Wildlife (WDFW) Marine Fish Science (MFS) Unit will conduct their annual bottom trawl survey to assess marine fish living in the waters of Puget Sound, including the Strait of Juan de Fuca, Strait of Georgia, San Juan Archipelago, Hood Canal, Central Sound, and South Sound regions. The vessel chartered by WDFW for the survey is the F/V Chasina, a 58-foot seiner/trawler (call sign WYQ-6987), with red hull and red and white superstructure, which will carry WDFW RESEARCH placards posted on both sides of the upper deck. For more information on WDFW's MFS unit and the bottomfish programs, visit <https://wdfw.wa.gov/species-habitats/species/bottomfish>. For more information on the bottom trawl survey contact Jennifer Blaine at (425) 379-2313 (office) or (425) 231-9476 (cell) or email at Jennifer.Blaine@dfw.wa.gov.

Charts:



**WASHINGTON – STRAIT OF GEORGIA AND STRAIT OF JUAN DE FUCA – PUGET SOUND – Bottom Trawl survey**

18400 18421 18440 18441 18448

LNM: 11/22

**WASHINGTON – APPROACHES TO ADMIRALTY INLET – Sequim Bay scientific sensor deployment**

The Pacific Northwest National Laboratory (PNNL) will be deploying and retrieving submerged scientific equipment in the entrance channel to Sequim Bay, Washington for 4 weeks between 11 Apr and 30 Jun 2022. The submerged scientific equipment will be located at approximate position 48-04-53 N, 123-02-30 W. There will be no surface marker buoys on the equipment, but the equipment extends approximately 10 feet above the seafloor, leaving at least 9 feet of water over the equipment at all times. The research vessels DESDEMONA or STRAIT SCIENCE may be on scene during the deployment and retrieval. The vessels may be hailed on VHF-FM channel 16. For additional information, contact PNNL Marine Sciences Laboratory, John Vavrinec, at (360) 681-3665 or email john.vavrinec@pnnl.gov.

Chart 18471

LNM: 11/22

**WASHINGTON – APPROACHES TO ADMIRALTY INLET – Sequim Bay autonomous surface vessel deployment**

The Pacific Northwest National Laboratory (PNNL) will be operating an autonomous surface vessel in Sequim Bay, Washington in Vicinity of 48-04-29 N, 123-01-26 W, for 16 weeks from 11 Apr – 30 Jun 2022. The 10-foot long catamaran operates on the surface but may be towing submerged sensors. Mariners are asked to keep a distance of 100 feet away from the vessel. The vessel will be clearly marked with the word "Research" and the Department of Energy logo on both sides, and will display navigation lights for a powered vessel of its size. The vessel will carry AIS and broadcast its position under the name Jonesy with an MMSI number of 369914068. The research vessels DESDEMONA or STRAIT SCIENCE may be on scene during some operations and may be hailed on VHF-FM channel 16. For additional information, contact PNNL Marine Sciences Laboratory, Rob Cavagnaro, at (260) 528-3372 or email asvjonesy@pnnl.gov.

Chart 18471

LNM: 13/22

**WASHINGTON – PUGET SOUND – APPLE COVE TO KEYPORT – Submersible Vehicle testing**

The Naval Undersea Warfare Center (NUWC) at Keyport, WA will be continuing operations in the vicinity of NUWC between University Point, the Brownsville Marina and Keyport through 23 Dec 2022. Operations will normally be conducted Monday through Friday during daylight hours. Operations will involve semisubmersible and submersible vehicles escorted by a small naval craft with a flashing red light. The small craft will monitor VHF-FM channels 12 and 16. The call sign for the small craft will be "Keyport Range Control". All craft transiting the area are requested to exercise caution and maintain a sharp lookout for possible semi-submerged vehicles while the range is in operation. Questions can be directed to Keyport Range Control on VHF-FM channels 12 and 16 or by contacting the Pacific Northwest Range Management and Ops Division, Range Control Branch, at (360) 396-2313.

Chart 18446

LNM: 02/22

**WASHINGTON – PUGET SOUND – ELLIOTT BAY - Colman Dock construction**

Washington State Ferries is conducting demolition and construction operations at the Colman Docks, scheduled to be completed in the summer of 2022. Operations will be conducted from 0700 to 1700, Monday through Friday. Mariners should be aware of marine construction equipment moored around the Colman Dock and regular tows up and down the Duwamish River in support of the operation. Equipment may obstruct small sections of the waterway adjacent to Colman Dock. Water quality monitoring will be taking place during construction operations. Please direct any inquiries to WSF Communications at (206) 402-8070 or email wsfcomms@wsdot.wa.gov.

Chart 18450

LNM: 27/17

**WASHINGTON – PUGET SOUND – ELLIOT BAY – DUWAMISH WATERWAY – Terminal 5 pier construction**

Orion Marine will be continuing the marine construction activities associated with the Terminal 5 Berth Modernization Project for the Port of Seattle on the Duwamish River west waterway. Phase 2 of the project includes pile installation and new pier construction for and will run through Aug 2023.

Work will typically take place from 0700 to 1700, Monday thru Friday. The DB Rainier and DB St. Helens, will each have a material barge moored alongside and will always remain on site. Each floating plant will have all corners marked with steady burn white lights. The DBs will run on anchors at times so mariners are requested to keep at least a 200-foot distance. The crane and tugs will monitor VHF-FM channel 13. For additional information please contact Jesse Galligan at (253) 552-1140 or email at jgalligan@orionmarinegroup.com.

Chart 18450

LNM: 02/22

**WASHINGTON – PUGET SOUND – HOOD CANAL – Pier construction**

Manson Construction will be conducting pier demolition and construction activities in Hood Canal on Navy Base Kitsap Bangor from 17 July 2020 through Jun 2022. The project will consist of demolition of existing pier, pile driving and construction of a 500' pier extension. Operations will Monday through Friday 0600 – 1630. There will be a derrick on site and a pile driver barge with multiple barges and a work skiff. Bangor Control Tower will be using VHF-FM channel 88A. Mariners are requested to reduce speed and minimize wake in the area for the safety of the personnel and equipment. For more information contact the US Navy POC Dennis Wiechmann at (360) 315-4084 email dennis.e.wiechmann@navy.mil or the Manson Construction superintendent Brian Dorning at (206) 718-8626.

Chart 18458

LNM: 28/20

**WASHINGTON – PUGET SOUND – HOOD CANAL – Naval Test and Evaluation Barge operations (Revised from LNM 09/22)**

The Naval Surface Warfare Center Detachment Puget Sound, located at SUBASE Bangor, will be working with Western Towboat to operate the Research, Development, Test and Evaluation Barge M241 in the waters of Hood Canal. The operations are scheduled from sunrise until sunset, Monday through Friday, from 06 Mar – 06 May 2022, in the waters from east of Brown Point at 47-44-35 N, 122-44-17 W, to south of Oak Head at 47-40-19 N, 122-47-58 W, where a marker buoy will be placed in water greater than 25 fathoms in depth and greater than 100 yards from shore, and short gaps in the schedule are expected to occur to allow for correction of technical issues. The operations will consist of low speed straight-line courses parallel to the shoreline with some stationary periods to perform deck operations. A 28-foot tracking vessel will accompany the barge and occasionally be underway to participate in operations. Questions can be directed to any operating support craft/personnel on marine VHF Channel 16, 88A or the Naval Surface Warfare Center waterfront POCs Mark Moss (360) 396-2948 or Steve Polillo (360) 315-0333.

Chart 18458

LNM: 10/22

**OREGON – WASHINGTON – IDAHO – NOAA's planned cancellation of Paper and Raster charts (Revised from LNM 09/21)**

The National Oceanic and Atmospheric Administration (NOAA) is undertaking a multi-year program to end production and maintenance of its suite of over 1,000 traditional paper nautical charts and all associated raster chart products and services, including: Print-on-Demand (POD) paper nautical charts, Full-size chart PDF files, BookletChart™ PDF files, NOAA raster navigational charts (NOAA RNC®), the NOAA RNC tile service, and the online RNC viewer.

**OREGON – WASHINGTON – IDAHO – NOAA’s planned cancellation of Paper and Raster charts (Revised from LNM 09/21)**

Six months prior to cancellation, a notice of the intent to cancel a specific chart will be provided via a "Last Edition" notice. The final cancellation of a chart will be made via a "Canceled" notice. Both types of notices will appear in LNM Section IV, "Chart Correction." A comprehensive list of all cancelled NOAA charts is available at: <http://www.charts.noaa.gov/MCD/Dole.shtml>.

Traditional paper nautical chart production is ending to enable the creation and maintenance of larger scale, more up-to-date, higher quality coverage of NOAA’s electronic navigational chart (NOAA ENC®) product. This will significantly enhance the amount of charted detail available to mariners. More information about NOAA’s program to sunset traditional paper charts is on the NOAA Coast Survey website at: <https://nauticalcharts.noaa.gov/charts/farewell-to-traditional-nautical-charts.html>. An online NOAA Custom Chart application at: <https://devgis.charttools.noaa.gov/pod> is available to create chart images from ENC data, which may then be printed. Notices to Mariners will not be issued for NOAA Custom Charts.

LNM: 10/21

**SECTION VIII - LIGHT LIST CORRECTIONS**

An Asterisk \*, indicates the column in which a correction has been made to new information

(1) No.	(2) Name and Location	(3) Position	(4) Characteristic	(5) Height	(6) Range	(7) Structure	(8) Remarks	
765.1	<i>NOAA Environmental Lighted Buoy 46002</i>	42-39-43.000N 130-30-25.000W	Fl (4)Y 20s			Yellow boat-shaped hull.	Aid maintained by National Oceanic and Atmospheric Administration.	18/22
		*						
15186	<i>Willapa Bay Entrance Lighted Buoy C</i>						Remove from list.	18/22
							*	
15187	Willapa Bay Entrance Buoy D						Remove from list.	18/22
							*	
15842	<i>Grays Harbor North Channel Lighted Buoy 54</i>	46-57-32.702N 123-50-12.104W	Fl R 2.5s		4	Red.		18/22
					*			
15900	ABERDEEN HARBOR LIGHT 3	46-58-37.629N 123-47-39.609W	Fl G 4s	20	4	SG on multi-pile structure.		18/22
							*	
15955	JOHNS RIVER ENTRANCE LIGHT 8	46-55-22.176N 124-00-34.627W	Fl R 4s	15	4	TR on pile.		18/22
							*	
16071.25	Hoquiam River Obstruction Buoy  Marks submerged obstruction.	46-58-40.752N 123-52-55.861W				White can with orange bands.		18/22
		*						
17097.1	Burton Regulatory Buoy						Remove from list.	18/22
							*	
17097.2	Burton Fairway Buoy 1						Remove from list.	18/22
							*	
17097.3	Burton Fairway Buoy 2						Remove from list.	18/22
							*	
17097.4	Burton Fairway Buoy 3						Remove from list.	18/22
							*	
17097.5	Burton Fairway Buoy 4						Remove from list.	18/22
							*	
17097.6	Burton Fairway Buoy 5						Remove from list.	18/22
							*	
17097.7	Burton Fairway Buoy 7						Remove from list.	18/22
							*	

## SECTION VIII - LIGHT LIST CORRECTIONS (Continued)

(1) No.	(2) Name and Location	(3) Position	(4) Characteristic	(5) Height	(6) Range	(7) Structure	(8) Remarks
18445	<i>Oakland Bay Lighted Mooring Buoy</i>	47-13-18.181N 123-04-26.105W	Fl W 4s			White buoy with blue band.	Private Aid. 18/22
*	*	*	*	*	*	*	*
18889	<i>North Skagit Bay Research Lighted Buoy</i>	48-24-45.292N 122-34-26.026W	Fl Y 4s			Yellow buoy.	Private Aid. 18/22
*	*	*	*	*	*	*	*

---



---

**ENCLOSURES**


---

**Enclosure 1**

OREGON - WASHINGTON - IDAHO - MONTANA - Summary of Bridge Lighting Discrepancies and Corrections

LNM: 18/22

**Enclosure 2**

OREGON - WASHINGTON - COLUMBIA RIVER - Summary of Dredging Operations

LNM: 18/22

**Enclosure 3**

OREGON - WASHINGTON - COLUMBIA RIVER - Summary of Marine Events

LNM: 18/22

**Enclosure 4**

COLUMBIA RIVER – VANCOUVER TO BONNEVILLE – Washougal Upper and Reed Island Federal Channel change

LNM: 17/22

---



---

If you have any questions, comments, or need additional information concerning this or other LNMs (e.g. additions, deletions, corrections) contact the address or phone number on the front page.

CDR Brendan J. Harris  
Chief, Waterways Management Branch  
Thirteenth Coast Guard District

# BRIDGE DISCREPANCIES AND CORRECTIONS

Enclosure (1)

BRIDGE DISCREPANCIES						
Waterway	Light List	Bridge Name	Location	Status	Date Reported	BNM
<b>OREGON COAST</b>						
None						
<b>COLUMBIA RIVER</b>						
None						
<b>SNAKE RIVER</b>						
None						
<b>WILLAMETTE RIVER</b>						
None						
<b>WASHINGTON COAST</b>						
None						
<b>PUGET SOUND</b>						
	16887	1st Ave South Highway Twin Bridge	Seattle, WA	Damaged; cannot open when winds exceed 10kts Mariners call bridge operator prior to transit	2/17/2022	0163-22
	18398	I-90 Highway Bridge (east channel)	Seattle, WA	Green center light extinguished	12/13/2021	0909-21
<b>IDAHO</b>						
None						
BRIDGE CORRECTIONS						
Waterway	Light List	Bridge Name	Location	Status	Date Reported	BNM
<b>OREGON COAST</b>						
None						
<b>COLUMBIA RIVER</b>						
None						
<b>SNAKE RIVER</b>						
None						
<b>WILLAMETTE RIVER</b>						
None						
<b>WASHINGTON COAST</b>						
None						
<b>PUGET SOUND</b>						
None						
<b>IDAHO</b>						
None						

**Dredging operations are scheduled or in progress at the following locations:**

<b>Start Date</b>	<b>End Date</b>	<b>Times</b>	<b>Location</b>	<b>Dredge Vessel</b>	<b>Assist Vessel</b>	<b>Channel monitored</b>	<b>Disposal Area</b>	<b>LNМ</b>
6-May-22	31-May-22	24 Hrs / 7 Days	Grays Harbor; Entrance, Bar, Point Chehalis Range	M/V Essayons	None	VHF-FM 13 &16	Pt Chehalis South Beach Half Moon Bay	18/22

**Mariners are advised that the start and ending dates for dredging activities may vary due to unforeseen on-site conditions, such as gill net fishing, weather and other factors.**

**USACE dredges request mariners transit at their slowest safe speed to minimize wake when in the vicinity of a dredge and proceed with caution after making passing arrangements. Vessel(s) and/or equipment may encroach into the channel.**

# MARINE EVENTS

Enclosure (3)

SECTOR COLUMBIA RIVER MARINE EVENTS			
EVENT DATE	TIME	EVENT NAME	EVENT LOCATION
5-May-22	1800-2130	OCSA Sailboat Race -Spring Evening Series	Columbia River between I-5 and I-205 Bridges, Portland, OR
7-May-22	1030-1430	Opening Day Columbia River Yachting Association	Columbia River between I-5 and I-205 Bridges, Portland, OR
8-May-22	1630-2100	OCSA Sailboat Race -R20 "1972 Disco Party" BC Race	Columbia River between I-5 and I-205 Bridges, Portland, OR
9-May-22	1615-2100	OCSA Sailboat Race -ISC Monday Night Racing Series	Columbia River between I-5 and I-205 Bridges, Portland, OR
10-May-22	1800-2130	OCSA Sailboat Race -Spring Evening Series	Columbia River between I-5 and I-205 Bridges, Portland, OR
12-May-22	1630-2100	OCSA Sailboat Race -CYC Pacific NW Offshore	Pacific Ocean, Buoy 2, heading North toward Puget Sound
12-May-22	1800-2130	OCSA Sailboat Race -Spring Evening Series	Columbia River between I-5 and I-205 Bridges, Portland, OR
15-May-22	1630-2100	OCSA Sailboat Race -RCYC "Fly Your Bags" BC Race	Columbia River between I-5 and I-205 Bridges, Portland, OR
16-May-22	1615-2100	OCSA Sailboat Race -ISC Monday Night Racing Series	Columbia River between I-5 and I-205 Bridges, Portland, OR
17-May-22	1800-2130	OCSA Sailboat Race -Spring Evening Series	Columbia River between I-5 and I-205 Bridges, Portland, OR
18-May-22	0630- 1530	Columbia River Splash 2022	Columbia river mile 111 Near West End of Lemon Island, Portland, OR
19-May-22	0530-1830	Vancouver USA H1 Unlimited Exhibition	Columbia River between I-5 bridge and Vancouver Marine Park
19-May-22	1800-2130	OCSA Sailboat Race -Spring Evening Series	Columbia River between I-5 and I-205 Bridges, Portland, OR
20-May-22	0530-1830	Vancouver USA H1 Unlimited Exhibition	Columbia River between I-5 bridge and Vancouver Marine Park
21-May-22	0800-2000	2022 World Jet Boat Race	Rogue River
22-May-22	0800-2000	2022 World Jet Boat Race	Rogue River
22-May-22	1230-1630	OCSA Sailboat Race -OWSA "Tropical Dreams" BC Race	Columbia River between I-5 and I-205 Bridges, Portland, OR
23-May-22	1615-2100	OCSA Sailboat Race -ISC Monday Night Racing Series	Columbia River between I-5 and I-205 Bridges, Portland, OR
24-May-22	1800-2130	OCSA Sailboat Race -Spring Evening Series	Columbia River between I-5 and I-205 Bridges, Portland, OR
26-May-22	1800-2130	OCSA Sailboat Race -Spring Evening Series	Columbia River between I-5 and I-205 Bridges, Portland, OR
27-May-22	2130-2300	Portland Rose Festival Fireworks	Portland, OR
27-May-22	1200-1730	Boatnik 2022	Rogue River at Grants Pass, OR
28-May-22	1200-1730	Boatnik 2022	Rogue River at Grants Pass, OR
29-May-22	1200-1730	Boatnik 2022	Rogue River at Grants Pass, OR
30-May-22	1200-1730	Boatnik 2022	Rogue River at Grants Pass, OR

# MARINE EVENTS

Enclosure (3)

30-May-22	1615-2100	OCSA Sailboat Race -ISC Monday Night Racing Series	Columbia River between I-5 and I-205 Bridges, Portland, OR
31-May-22	1800-2130	OCSA Sailboat Race -SYSCO Summer Evening Series	Columbia River between I-5 and I-205 Bridges, Portland, OR
2-Jun-22	1800-2130	OCSA Sailboat Race -SYSCO Summer Evening Series	Columbia River between I-5 and I-205 Bridges, Portland, OR
3-Jun-22	0630-1730	Tri City Water Follies Spring Testing	Columbia River, Kennewick, WA
5-Jun-22	1230-1630	OCSA Sailboat Race -PYC Rose Festival Regatta	Columbia River between I-5 and I-205 Bridges, Portland, OR
6-Jun-22	1615-2100	OCSA Sailboat Race -ISC Monday Night Racing Series	Columbia River between I-5 and I-205 Bridges, Portland, OR
7-Jun-22	1800-2130	OCSA Sailboat Race -SYSCO Summer Evening Series	Columbia River between I-5 and I-205 Bridges, Portland, OR
9-Jun-22	1800-2130	OCSA Sailboat Race -SYSCO Summer Evening Series	Columbia River between I-5 and I-205 Bridges, Portland, OR
11-Jun-22	0700-1800	Portland Rose Festival	Willamette River between Marquam and Hawthorne Bridges in Portland, OR
12-Jun-22	0700-1800	Portland Rose Festival	Willamette River between Marquam and Hawthorne Bridges in Portland, OR
12-Jun-22	1230-1630	OCSA Sailboat Race -Single Handed BC Race	Columbia River between I-5 and I-205 Bridges, Portland, OR
13-Jun-22	1615-2100	OCSA Sailboat Race -ISC Monday Night Racing Series	Columbia River between I-5 and I-205 Bridges, Portland, OR
14-Jun-22	1800-2130	OCSA Sailboat Race -SYSCO Summer Evening Series	Columbia River between I-5 and I-205 Bridges, Portland, OR
16-Jun-22	1800-2130	OCSA Sailboat Race -SYSCO Summer Evening Series	Columbia River between I-5 and I-205 Bridges, Portland, OR
18-Jun-22	1330-2130	OCSA Sailboat Race -RCYC Medium Distance Race	Columbia River between Buoy 14 east to Ackerman Island and back, Portland, OR
20-Jun-22	1615-2100	OCSA Sailboat Race -ISC Monday Night Racing Series	Columbia River between I-5 and I-205 Bridges, Portland, OR
21-Jun-22	1000-1700	Columbia Gorge Racing Association RS Aero World Championship	Columbia River Between Cascade Locks, OR and Stevenson, WA
21-Jun-22	1800-2130	OCSA Sailboat Race -SYSCO Summer Evening Series	Columbia River between I-5 and I-205 Bridges, Portland, OR
22-Jun-22	1000-1700	Columbia Gorge Racing Association RS Aero World Championship	Columbia River Between Cascade Locks, OR and Stevenson, WA
23-Jun-22	1800-2130	OCSA Sailboat Race -SYSCO Summer Evening Series	Columbia River between I-5 and I-205 Bridges, Portland, OR
23-Jun-22	1000-1700	Columbia Gorge Racing Association RS Aero World Championship	Columbia River Between Cascade Locks, OR and Stevenson, WA
24-Jun-22	1000-1700	Columbia Gorge Racing Association RS Aero World Championship	Columbia River Between Cascade Locks, OR and Stevenson, WA
24-Jun-22	0730-1930	Richland Regatta	Columbia River, Kennewick, WA
25-Jun-22	2100-2300	Umatilla Landing Day	Umatilla, OR

# MARINE EVENTS

Enclosure (3)

25-Jun-22	1000-1700	Columbia Gorge Racing Association RS Aero World Championship	Columbia River Between Cascade Locks, OR and Stevenson, WA
25-Jun-22	0730-1930	Richland Regatta	Columbia River, Kennewick, WA
25-Jun-22	1030-1330	Save Salmon	Willamette River, Portland, OR
25-Jun-22	0630-1930	2022 Rooster Rock Outrigger Canoe Race	Columbia River, Corbett, OR
26-Jun-22	1700-2130	OCSA Sailboat Race -SYSCO Grow the Sport BC Race	Columbia River between I-5 and I-205 Bridges, Portland, OR
26-Jun-22	1000-1700	Columbia Gorge Racing Association RS Aero World Championship	Columbia River Between Cascade Locks, OR and Stevenson, WA
26-Jun-22	0730-1100	Portland Sharkfest Swim	Willametter River from Portland Fire and Rescue Station 21 to Duckworth dock
26-Jun-22	0730-1930	Richland Regatta	Columbia River, Kennewick, WA
27-Jun-22	1830-2130	OCSA Sailboat Race -OWSA Womens Regatta	Columbia River between I-5 and I-205 Bridges, Portland, OR
27-Jun-22	1615-2100	OCSA Sailboat Race -ISC Monday Night Racing Series	Columbia River between I-5 and I-205 Bridges, Portland, OR
27-Jun-22	1000-1700	Columbia Gorge Racing Association RS Aero World Championship	Columbia River Between Cascade Locks, OR and Stevenson, WA
28-Jun-22	1800-2130	OCSA Sailboat Race -SYSCO Summer Evening Series	Columbia River between I-5 and I-205 Bridges, Portland, OR
28-Jun-22	1000-1700	Columbia Gorge Racing Association RS Aero World Championship	Columbia River Between Cascade Locks, OR and Stevenson, WA
29-Jun-22	1000-1700	Columbia Gorge Racing Association RS Aero World Championship	Columbia River Between Cascade Locks, OR and Stevenson, WA
30-Jun-22	1800-2130	OCSA Sailboat Race -SYSCO Summer Evening Series	Columbia River between I-5 and I-205 Bridges, Portland, OR
30-Jun-22	1000-1700	Columbia Gorge Racing Association RS Aero World Championship	Columbia River Between Cascade Locks, OR and Stevenson, WA
1-Jul-22	1000-1700	Columbia Gorge Racing Association RS Aero World Championship	Columbia River Between Cascade Locks, OR and Stevenson, WA
2-Jul-22	2130-2300	Yachats 4th of July	Yachats, OR
2-Jul-22	2100-2330	Independence Day Fireworks at the Port	Ilwaco WA
3-Jul-22	2100-2330	Mill Casino Independence Day Celebration	North Bend,OR
3-Jul-22	2100-2330	Waldport Fireworks	Bayshore Split over Alsea Bay, Waldport
4-Jul-22	2130-2300	St. Helens 4th of July	St. Helens OR
4-Jul-22	2130-2230	Fireworks over the Bay	Coos Bay, OR
4-Jul-22	2100-2330	Lincoln City 4th of July	Lincoln City, OR
4-Jul-22	2000-2300	Brookings, OR July 4th Fireworks	Brookings, OR
4-Jul-22	2130-2300	Florence Independence day Celebration	Port of Siuslaw Harbor Street, Florence OR
4-Jul-22	2130-2300	Astoria Warrenton 4th of July fireworks	Astoria Warrenton
4-Jul-22	2100-2330	Bandon 4th of July	Bandon, OR
4-Jul-22	2130-2300	Fort Dalles Fourth	Dalles, OR
4-Jul-22	2100-2330	July 4th party at the port of Gold Beach	Gold Beach, OR
4-Jul-22	2130-2300	Newport 4th of July	Newport, OR



# MARINE EVENTS

Enclosure (3)

4-Jul-22	2130-2300	Kennewick fireworks	Kennewick, WA
4-Jul-22	2100-2330	Washugal 4th of July	Washugal, WA
4-Jul-22	2130-2300	Port Orford 4th of July	Port Orford, OR
4-Jul-22	2000-2230	Cascade Locks 4th of July	Port of Cascade Locks, OR
4-Jul-22	2100-2330	Waterfront Blues Festival	Barge on Willameter River between Hawthorne and Marquam bridges, Portland, OR
4-Jul-22	2100-2330	Waverly Country Club 4th of July	Willamette River, Portland, OR
5-Jul-22	1800-2130	OCSA Sailboat Race -SYSCO Summer Evening Series	Columbia River between I-5 and I-205 Bridges, Portland, OR
7-Jul-22	1800-2130	OCSA Sailboat Race -SYSCO Summer Evening Series	Columbia River between I-5 and I-205 Bridges, Portland, OR
8-Jul-22	0700-1800	Kiteboard 4 Cancer	Columbia River, Hood River, OR
9-Jul-22	2130-2300	RaINIER Days/ Days in the Park	Raineir WA
9-Jul-22	1030-1730	Gorge Outrigger Canoe Race	Columbia River between Stevenson, WA and Bingen, WA
9-Jul-22	0700-1800	Kiteboard 4 Cancer	Columbia River, Hood River, OR
9-Jul-22	1030-1830	The Big Float	Willamette River, Downtown Portland, OR
10-Jul-22	0700-1800	Kiteboard 4 Cancer	Columbia River, Hood River, OR
10-Jul-22	0700-1630	Portland Bridge Swim	Portland, OR
10-Jul-22	1130-1730	Gorge Downwind Champs	Columbia River, Home Valley, WA to Hood River, OR
10-Jul-22	1230-1630	OCSA Sailboat Race -PYC Summer Regatta	Columbia River between I-5 and I-205 Bridges, Portland, OR
11-Jul-22	1130-1730	Gorge Downwind Champs	Columbia River, Home Valley, WA to Hood River, OR
11-Jul-22	1615-2100	OCSA Sailboat Race -ISC Monday Night Racing Series	Columbia River between I-5 and I-205 Bridges, Portland, OR
12-Jul-22	1130-1730	Gorge Downwind Champs	Columbia River, Home Valley, WA to Hood River, OR
12-Jul-22	1800-2130	OCSA Sailboat Race -SYSCO Twilight Series	Columbia River between I-5 and I-205 Bridges, Portland, OR
13-Jul-22	1130-1730	Gorge Downwind Champs	Columbia River, Home Valley, WA to Hood River, OR
14-Jul-22	1130-1730	Gorge Downwind Champs	Columbia River, Home Valley, WA to Hood River, OR
14-Jul-22	1800-2130	OCSA Sailboat Race -SYSCO Twilight Series	Columbia River between I-5 and I-205 Bridges, Portland, OR
15-Jul-22	1130-1730	Gorge Downwind Champs	Columbia River, Home Valley, WA to Hood River, OR
16-Jul-22	2000-0000	Cathlamet Bald Eagle Days	Birnie Creek in Cathlamet,WA
16-Jul-22	1130-1730	Gorge Downwind Champs	Columbia River, Home Valley, WA to Hood River, OR
16-Jul-22	1230-1630	OCSA Sailboat Race -SYSCO Match Race	Columbia River between I-5 and I-205 Bridges, Portland, OR

# MARINE EVENTS

Enclosure (3)

17-Jul-22	1630-2130	OCSA Sailboat Race -PYC Family Night BC Race	Columbia River between I-5 and I-205 Bridges, Portland, OR
17-Jul-22	0730-1730	Clearwater River Rush Jet Boat Race	Clearwater River, Orofino to Kamiah, ID
18-Jul-22	0730-1730	Clearwater River Rush Jet Boat Race	Clearwater River, Orofino, ID to Kamiah, ID
18-Jul-22	1615-2100	OCSA Sailboat Race -ISC Monday Night Racing Series	Columbia River between I-5 and I-205 Bridges, Portland, OR
19-Jul-22	0730-1730	Clearwater River Rush Jet Boat Race	Clearwater River, Orofino, ID to Kamiah, ID
19-Jul-22	0830-1730	Columbia Gorge Racing Association US Optimist National Championship	Columbia River Between Cascade Locks, OR and Stevenson, WA
19-Jul-22	1800-2130	OCSA Sailboat Race -SYSCO Twilight Series	Columbia River between I-5 and I-205 Bridges, Portland, OR
20-Jul-22	0830-1730	Columbia Gorge Racing Association US Optimist National Championship	Columbia River Between Cascade Locks, OR and Stevenson, WA
21-Jul-22	1800-2130	OCSA Sailboat Race -SYSCO Twilight Series	Columbia River between I-5 and I-205 Bridges, Portland, OR
21-Jul-22	0830-1730	Columbia Gorge Racing Association US Optimist National Championship	Columbia River Between Cascade Locks, OR and Stevenson, WA
22-Jul-22	0830-1730	Columbia Gorge Racing Association US Optimist National Championship	Columbia River Between Cascade Locks, OR and Stevenson, WA
23-Jul-22	0830-1730	Columbia Gorge Racing Association US Optimist National Championship	Columbia River Between Cascade Locks, OR and Stevenson, WA
24-Jul-22	1630-2130	OCSA Sailboat Race -RCYC Pirates Beer Can Race	Columbia River between I-5 and I-205 Bridges, Portland, OR
24-Jul-22	0830-1730	Columbia Gorge Racing Association US Optimist National Championship	Columbia River Between Cascade Locks, OR and Stevenson, WA
25-Jul-22	1615-2100	OCSA Sailboat Race -ISC Monday Night Racing Series	Columbia River between I-5 and I-205 Bridges, Portland, OR
26-Jul-22	1800-2130	OCSA Sailboat Race -SYSCO Soaker	Columbia River between I-5 and I-205 Bridges, Portland, OR
26-Jul-22	1800-2130	OCSA Sailboat Race -SYSCO Twilight Series	Columbia River between I-5 and I-205 Bridges, Portland, OR
27-Jul-22	1300-1630	OCSA Sailboat Race -Ranger 20 Nationals	Columbia River between I-5 and I-205 Bridges, Portland, OR
28-Jul-22	1300-1630	OCSA Sailboat Race -Ranger 20 Nationals	Columbia River between I-5 and I-205 Bridges, Portland, OR
28-Jul-22	1800-2130	OCSA Sailboat Race -SYSCO Twilight Series	Columbia River between I-5 and I-205 Bridges, Portland, OR
29-Jul-22	0530-1830	Tri City Water Follies Columbia Cup	Columbia River, Kennewick, WA
29-Jul-22	1300-1630	OCSA Sailboat Race -Ranger 20 Nationals	Columbia River between I-5 and I-205 Bridges, Portland, OR
30-Jul-22	0530-1830	Tri City Water Follies Columbia Cup	Columbia River, Kennewick, WA
30-Jul-22	1300-1630	OCSA Sailboat Race -Ranger 20 Nationals	Columbia River between I-5 and I-205 Bridges, Portland, OR
31-Jul-22	0530-1830	Tri City Water Follies Columbia Cup	Columbia River, Kennewick, WA

# MARINE EVENTS

Enclosure (3)

31-Jul-22	1300-1630	OCSA Sailboat Race -Ranger 20 Nationals	Columbia River between I-5 and I-205 Bridges, Portland, OR
1-Aug-22	1615-2100	OCSA Sailboat Race -ISC Monday Night Racing Series	Columbia River between I-5 and I-205 Bridges, Portland, OR
2-Aug-22	1800-2130	OCSA Sailboat Race -SYSCO Twilight Series	Columbia River between I-5 and I-205 Bridges, Portland, OR
4-Aug-22	1800-2130	OCSA Sailboat Race -SYSCO Twilight Series	Columbia River between I-5 and I-205 Bridges, Portland, OR
6-Aug-22	1330-1630	OCSA Sailboat Race -SYSCO Dual Bridge Duel & CC Cup	Columbia River between I-5 and I-205 Bridges, Portland, OR
6-Aug-22	1000-1700	Smoke on the Water Hobie Cat Regatta	Columbia River, Skamokawa, WA
6-Aug-22	0730-1630	Paddle for Life	Lake River, Ridgefield, WA
6-Aug-22	1000-1700	Double Damned 2022	Columbia River between Cascade Locks and The Dalles
7-Aug-22	1000-1700	Smoke on the Water Hobie Cat Regatta	Columbia River, Skamokawa, WA
8-Aug-22	1615-2100	OCSA Sailboat Race -ISC Monday Night Racing Series	Columbia River between I-5 and I-205 Bridges, Portland, OR
9-Aug-22	1800-2130	OCSA Sailboat Race -SYSCO Twilight Series	Columbia River between I-5 and I-205 Bridges, Portland, OR
11-Aug-22	1800-2130	OCSA Sailboat Race -SYSCO Twilight Series	Columbia River between I-5 and I-205 Bridges, Portland, OR
13-Aug-22	1030-1330	Swim the Snake	Snake River, within Lake Bryon near Lyons Ferry State Park, WA
13-Aug-22	1045-1600	OCSA Sailboat Race -SYSCO St. Helens Race & Cruise	Columbia River between I-5 and I-205 Bridges, Portland, OR
14-Aug-22	1045-1600	OCSA Sailboat Race -SYSCO St. Helens Race & Cruise	Columbia River between I-5 and I-205 Bridges, Portland, OR
15-Aug-22	1615-2100	OCSA Sailboat Race -ISC Monday Night Racing Series	Columbia River between I-5 and I-205 Bridges, Portland, OR
16-Aug-22	1800-2130	OCSA Sailboat Race -SYSCO Twilight Series	Columbia River between I-5 and I-205 Bridges, Portland, OR
18-Aug-22	1800-2130	OCSA Sailboat Race -SYSCO Twilight Series	Columbia River between I-5 and I-205 Bridges, Portland, OR
20-Aug-22	1630-2100	OCSA Sailboat Race -CYC Sport Your Colors BC Race	Columbia River between I-5 and I-205 Bridges, Portland, OR
22-Aug-22	1615-2100	OCSA Sailboat Race -ISC Monday Night Racing Series	Columbia River between I-5 and I-205 Bridges, Portland, OR
23-Aug-22	1800-2130	OCSA Sailboat Race -SYSCO Twilight Series	Columbia River between I-5 and I-205 Bridges, Portland, OR
25-Aug-22	1800-2130	OCSA Sailboat Race -SYSCO Twilight Series	Columbia River between I-5 and I-205 Bridges, Portland, OR
28-Aug-22	1630-2100	OCSA Sailboat Race -Cal 20 Mardi Gras BC Race	Columbia River between I-5 and I-205 Bridges, Portland, OR
29-Aug-22	1615-2100	OCSA Sailboat Race -ISC Monday Night Racing Series	Columbia River between I-5 and I-205 Bridges, Portland, OR
30-Aug-22	1800-2130	OCSA Sailboat Race -SYSCO Twilight Series	Columbia River between I-5 and I-205 Bridges, Portland, OR

# MARINE EVENTS

Enclosure (3)

1-Sep-22	1800-2130	OCSA Sailboat Race -SYSCO Twilight Series	Columbia River between I-5 and I-205 Bridges, Portland, OR
5-Sep-22	1615-2100	OCSA Sailboat Race -ISC Monday Night Racing Series	Columbia River between I-5 and I-205 Bridges, Portland, OR
10-Sep-22	1130-2100	OCSA Sailboat Race -RCYC Long Distance Race	Columbia River between Martin Slough, Woodland, WA and Willamette River, Portland Or
11-Sep-22	0900-2100	OCSA Sailboat Race -RCYC Long Distance Race	Columbia River between Martin Slough, Woodland, WA and Willamette River, Portland Or
12-Sep-22	1615-2100	OCSA Sailboat Race -ISC Monday Night Racing Series	Columbia River between I-5 and I-205 Bridges, Portland, OR
17-Sep-22	8:00- 1800	LOCR Willamette River Regatta	Lake Oswego, OR
17-Sep-22	1230-1630	OCSA Sailboat Race -SYSCO One-Design Races	Columbia River between I-5 and I-205 Bridges, Portland, OR
18-Sep-22	8:00- 1800	LOCR Willamette River Regatta	Lake Oswego, OR
18-Sep-22	1230-1630	OCSA Sailboat Race -CYC Sailing on Sunday Series	Columbia River between I-5 and I-205 Bridges, Portland, OR
19-Sep-22	1615-2100	OCSA Sailboat Race -ISC Monday Night Racing Series	Columbia River between I-5 and I-205 Bridges, Portland, OR
24-Sep-22	1530-2100	OCSA Sailboat Race -OWSA Out of the World BC Race	Columbia River between I-5 and I-205 Bridges, Portland, OR
25-Sep-22	1230-1630	OCSA Sailboat Race -CYC Sailing on Sunday Series	Columbia River between I-5 and I-205 Bridges, Portland, OR
26-Sep-22	1615-2100	OCSA Sailboat Race -ISC Monday Night Racing Series	Columbia River between I-5 and I-205 Bridges, Portland, OR

## SECTOR PUGET SOUND MARINE EVENTS

EVENT DATE	TIME	EVENT NAME	EVENT LOCATION
4-May-22	1900-2130	Windseekers Series 2022	Commencement Bay, Dalco Passage
4-May-22	1800-2030	Wednesday Race Series	Port Townsend Bay
4-May-22	1700-2100	CYC Seattle Wednesday night evening series	Lake Washington
4-May-22	1700-2100	CYC Sound Wednesday Sound Evening Series	West, North and South of Shilshole Marina
5-May-22	1800-2100	TTPYC Thursday Night Sailboat Race Series	Vashon Island from Three Tree Point south to Des Moines Marina and Redondo
5-May-22	1730-1930	Sequim Bay Duck Dodge Race	Sequim Bay, WA
5-May-22	1700-2100	CYC Sound Thursday Evening Series	West, North and South of Shilshole Marina
6-May-22	1800-2030	Friday Sailing Series	Port Townsend Bay
6-May-22	1800-2000	POYC Spring Fridays	Sinclair Inlet
6-May-22	1945-2030	Twilight Sprints	Union bay and Montlake Cut.
7-May-22	1230-1430	Port Townsend Yacht Club Marine Parade	Port Townsend Bay
7-May-22	0900-1530	SYC Opening Day of Boating Parade	Portage Bay to Webster Point

# MARINE EVENTS

Enclosure (3)

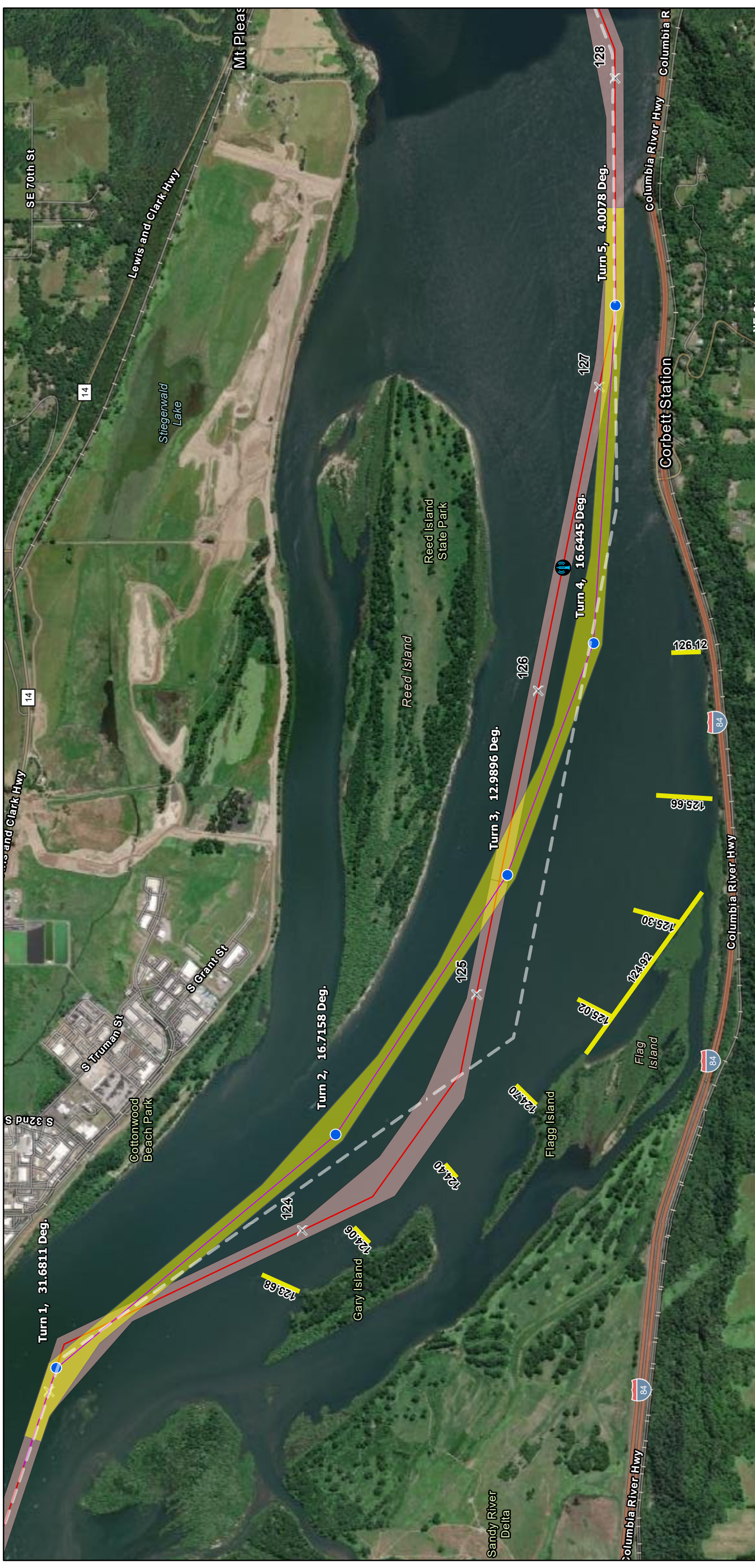
7-May-22	0800-1200	Windermere Cup/Opening Day Regatta	Union bay and Montlake Cut.
7-May-22	1300-1500	Boating Season Opening Day Parade	Bellingham Bay
7-May-22	1030-2000	Race to the Straights	Shilshole Bay to Port Townsend
8-May-22	1400 - 1500	SJIYC Opening Day Parade	Friday Harbor
8-May-22	1100-1800	Mark Mayer Opening Day Race	Lake Washington (N. of SR 520 Bridge)
8-May-22	1030-2000	Race to the Straights	Shilshole Bay to Port Townsend
9-May-22	1700-2030	Ballard Cup Series 1	Shilshole Bay
10-May-22	1800-2200	Duck Dodge Lake Union	Lake Union
10-May-22	1700-2100	CYC Seattle Lake Tuesday Evening Series	Lake Washington
11-May-22	1900-2130	Windseekers Series 2022	Commencement Bay, Dalco Passage
11-May-22	1800-2030	Wednesday Race Series	Port Townsend Bay
11-May-22	1700-2100	CYC Seattle Wednesday night evening series	Lake Washington
11-May-22	1700-2100	CYC Sound Wednesday Sound Evening Series	West, North and South of Shilshole Marina
12-May-22	1000	Pacific Northwest Offshore	Ilwaco, WA to Port Angeles - Offshore
12-May-22	1800-2100	TTPYC Thursday Night Sailboat Race Series	Vashon Island from Three Tree Point south to Des Moines Marina and Redondo
12-May-22	1730-1930	Sequim Bay Duck Dodge Race	Sequim Bay, WA
12-May-22	1700-2100	CYC Sound Thursday Evening Series	West, North and South of Shilshole Marina
13-May-22	all day	Pacific Northwest Offshore	Ilwaco, WA to Port Angeles - Offshore
13-May-22	1800-2000	POYC Spring Fridays	Sinclair Inlet
14-May-22	1000-1800	Milltown Sailing Assn - Mid-Distance Series Sailboat Race	Port Gardner, Possession Sound, Saratoga Passage
14-May-22	all day	Pacific Northwest Offshore	Ilwaco, WA to Port Angeles - Offshore
14-May-22	0900-1600	Windermere Regatta	Northeast of Guemes Island, near Jack Island
14-May-22	1000-1600	Protection Island Race	Port Townsend Bay
14-May-22	1100-1900	POYC Invitational	Sinclair Inlet
14-May-22	1000 - TBD	Protection Island Race 2	Port Townsend Bay/ Protection Islands
14-May-22	1100-1800	Vashon Island Race (Tri-Island #2)	Shilshole Bay to south Vashon Island and back
14-May-22	1000-1700	Star Districts Regatta	North of Shilshole Bay
15-May-22	1000 end	Pacific Northwest Offshore	Ilwaco, WA to Port Angeles - Offshore
15-May-22	0900-1600	Windermere Regatta	Northeast of Guemes Island, near Jack Island
15-May-22	1200-1600	Lido14 Sunday Funday Series	Commencement Bay from Tye Marina to Blair Waterway to Browns Point. Quartermaster Harbor
15-May-22	1100-1800	Vashon Island Race (Tri-Island #2)	Shilshole Bay to south Vashon Island and back
15-May-22	1000-1700	Star Districts Regatta	North of Shilshole Bay
16-May-22	1700-2030	Ballard Cup Series 1	Shilshole Bay
17-May-22	1800-2200	Duck Dodge Lake Union	Lake Union
17-May-22	1700-2100	CYC Seattle Lake Tuesday Evening Series	Lake Washington

# MARINE EVENTS

Enclosure (3)

18-May-22	1900-2130	Windseekers Series 2022	Commencement Bay, Dalco Passage
18-May-22	1800-2030	Wednesday Race Series	Port Townsend Bay
18-May-22	1700-2000	Lido14 Fun on Fridays	Commencement Bay, Tye Marina to Blair Waterway to Browns Point.
18-May-22	1700-2100	CYC Seattle Wednesday night evening series	Lake Washington
18-May-22	1700-2100	CYC Sound Wednesday Sound Evening Series	West, North and South of Shilshole Marina
19-May-22	1800-2100	TTPYC Thursday Night Sailboat Race Series	Vashon Island from Three Tree Point south to Des Moines Marina and Redondo
19-May-22	1730-1930	Sequim Bay Duck Dodge Race	Sequim Bay, WA
19-May-22	1700-2100	CYC Sound Thursday Evening Series	West, North and South of Shilshole Marina
20-May-22	1800-2030	Friday Sailing Series	Port Townsend Bay
20-May-22	1800-2000	POYC Spring Fridays	Sinclair Inlet
20-May-22	2145-2230	Viking Fest Fireworks	Liberty Bay, WA
21-May-22	1000-1800	Taking Care of Business Regatta	Brownsville, Agate Pass, Burke Bay
21-May-22	1000-1300	Sound Rowers' Commencement Bay Race	Lobster Shop Park (Ruston waterfront) to Puyallup River buoy and back
21-May-22	1000-1700	Lipton cup 6-meter regatta	North of Shilshole Bay
22-May-22	1200-1600	Lido14 Sunday Funday Series	Commencement Bay from Tye Marina to Blair Waterway to Browns Point
22-May-22	1000-1700	Lipton cup 6-meter regatta	North of Shilshole Bay
23-May-22	1830-2000	Ballard Cup Series II	Shilshole Bay
24-May-22	1800-2200	Duck Dodge Lake Union	Lake Union
24-May-22	1700-2100	CYC Seattle Lake Tuesday Evening Series	Lake Washington
25-May-22	1800-2030	Wednesday Race Series	Port Townsend Bay
25-May-22	1700-2100	CYC Seattle Wednesday night evening series	Lake Washington
25-May-22	1700-2100	CYC Sound Wednesday Sound Evening Series	West, North and South of Shilshole Marina
26-May-22	1730-1930	Sequim Bay Duck Dodge Race	Sequim Bay, WA
26-May-22	1700-2100	CYC Sound Thursday Evening Series	West, North and South of Shilshole Marina
27-May-22	1800-2030	Friday Sailing Series	Port Townsend Bay
28-May-22	0900-2359	Swiftsure International Yacht Race	Strait of Juan de Fuca
29-May-22	1200-1800	Ski to Sea	Bellingham Bay
29-May-22	all day	Swiftsure International Yacht Race	Strait of Juan de Fuca
30-May-22	0000-0600	Swiftsure International Yacht Race	Strait of Juan de Fuca
31-May-22	1800-2200	Duck Dodge Lake Union	Lake Union
31-May-22	1700-2100	CYC Seattle Lake Tuesday Evening Series	Lake Washington

# Federal Navigation Channel Proposed Realignment - Reed Island Reach



4/22/2022, 11:18:29 AM

Buoy 61

Proposed Channel Realignment Turns

Proposed Federal Channel Realignment - 29 March 2022

Proposed Federal Channel Area, 29 March 2022

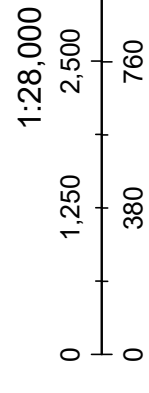
River Miles, USACE

Piledikes

Federal Navigation Channel Centerline

Federal Navigation Channel

State Boundary



Earthstar Geographics, County of Clark, WA, Oregon Metro, State of Oregon GEO, WA State Parks GIS, Esri Canada, Esri, HERE, Garmin, SafeGraph, GoTechnologies, Inc, METI/NASA, USGS, Bureau of Land Management, EPA, NPS, US Census Bureau, USDA

U. S. Army Corps of Engineers,  
Portland District CENWP-ENC-TG



**US Army Corps  
of Engineers**  
Portland District