



U.S. Department
of Homeland Security
**United States
Coast Guard**

LOCAL NOTICE TO MARINERS

District: 13

Week: 21/22

ISSUED BY: COMMANDER, THIRTEENTH COAST GUARD DISTRICT (dpw)
915 Second Avenue, 35th Floor, Rm 3510, Seattle, Washington 98174-1067
Telephone: (206) 220-7280
Email: D13-SMB-D13-LNM@uscg.mil
<https://www.pacificarea.uscg.mil/Our-Organization/District-13/District-Staff/-dpw/>
<https://www.navcen.uscg.gov/?pageName=lnmDistrict®ion=13>

COMDTPUB P16502.6, Light List Volume VI, 2022 Edition, and Coast Pilot Volume 10, 2021 Edition.
Light List Volume VI, 2022 Edition is available at https://www.navcen.uscg.gov/pdf/lightLists/LightList_V6_2022.pdf
Coast Pilots, along with corrections, are available at: www.nauticalcharts.noaa.gov/publications/coast-pilot/index.html. Print on Demand (POD) copies are available for purchase at: www.nauticalcharts.noaa.gov/publications/print-agents.html#coast-pilot.

UNITED STATES COAST GUARD NAVIGATION INFORMATION SERVICE (NIS)

The United States Coast Guard Navigation Information Service (NIS), operated by the USCG Navigation Center, is staffed 24 hours a day, 7 days a week. The NIS provides information on the current operational status, effective policies, and general information for GPS and DGPS. The NIS also disseminates Safety Broadcasts / Broadcast Notice to Mariners (BNM), Local Notice to Mariners (LNM), and the latest Notice Advisory to Navstar Users (NANU). LNMs and other navigation notices can be obtained via e-mail subscription through the USCG Navigation Center website:

<https://www.navcen.uscg.gov/?pageName=feeds>

In addition, the NIS investigates all reports of degradation or loss of GPS service. Mariners are encouraged to report all degradation of radio navigation services to the NIS via any of the following: Phone: (703) 313-5900 or Email: webmaster@navcen.uscg.mil, or on the World Wide Web: <https://www.navcen.uscg.gov/?pageName=gpsUserInput>

BROADCAST NOTICE TO MARINERS

Urgent marine navigational and weather information is broadcast over VHF channel 22A (157.1 MHz). Broadcasts are first announced over the distress, safety and calling channel 16 before they are made. All ships in U.S. waters over 20 meters in length are required to monitor VHF channel 16, and must have radios capable of tuning to the VHF simplex channel 22A. Additionally, District 13 BNMs are now available online on a test basis. To view or download District 13 BNMs visit <https://www.navcen.uscg.gov/bnm/messages/DistrictSearchV1.php?d=13&i=3>

This section contains a range of all the significant Broadcast Notice to Mariners (BNM's) on the date of this edition.

Originating Unit
CGD THIRTEEN

Beginning BNM
D13-0357-22

Ending BNM
D13-0379-22

ABBREVIATIONS

A through H

ADRIFT - Buoy Adrift
AICW - Atlantic Intracoastal Waterway
AI - Alternating
B - Buoy
BKW - Breakwater
bl - Blast
BNM - Broadcast Notice to Mariner
bu - Blue
C - Canadian
CHAN - Channel
CGD - Coast Guard District
C/O - Cut Off
CONT - Contour
CRK - Creek
CONST - Construction
DAYMK/Daymk - Daymark
DBN/Dbn - Daybeacon
DBD/DAYBD - Dayboard
DEFAC - Defaced
DEST - Destroyed
DISCON - Discontinued
DMGD/DAMGD - Damaged
ec - eclipse
EST - Established Aid

I through O

I - Interrupted
ICW - Intracoastal Waterway
IMCH - Improper Characteristic
INL - Inlet
INOP - Not Operating
INT - Intensity
ISL - Islet
Iso - Isophase
kHz - Kilohertz
LAT - Latitude
LB - Lighted Buoy
LBB - Lighted Bell Buoy
LHB - Lighted Horn Buoy
LGB - Lighted Gong Buoy
LONG - Longitude
LNM - Local Notice to Mariners
LT - Light
LT CONT - Light Continuous
LTR - Letter
LWB - Lighted Whistle Buoy
LWP - Left Watching Properly
MHz - Megahertz
MISS/MSNG - Missing
Mo - Morse Code

P through Z

PRIV - Private Aid
Q - Quick
R - Red
RACON - Radar Transponder Beacon
Ra ref - Radar reflector
RBN - Radio Beacon
REBUILT - Aid Rebuilt
RECOVERED - Aid Recovered
RED - Red Buoy
REFL - Reflective
RRL - Range Rear Light
RELIGHTED - Aid Relit
RELOC - Relocated
RESET ON STATION - Aid Reset on Station
RFL - Range Front Light
RIV - River
RRASS - Remote Radio Activated Sound Signal
s - seconds
SEC - Section
SHL - Shoaling
si - silent
SIG - Signal
SND - Sound
SPM - Single Point Mooring Buoy

ev - every
EVAL - Evaluation
EXT - Extinguished
F - Fixed
fl - flash
Fl - Flashing
G - Green
GIWW - Gulf Intracoastal Waterway
HAZ - Hazard to Navigation
HBR - Harbor
HOR - Horizontal Clearance
HT - Height

MRASS - Marine Radio Activated Sound Signal
MSLD - Misleading
N/C - Not Charted
NGA - National Geospatial-Intelligence Agency
NO/NUM - Number
NOS - National Ocean Service
NW - Notice Writer
OBSCU - Obscured
OBST - Obstruction
OBSTR - Obstruction
Oc - Occulting
ODAS - Anchored Oceanographic Data Buoy

SS - Sound Signal
STA - Station
STRUCT - Structure
St M - Statute Mile
TEMP - Temporary Aid Change
TMK - Topmark
TRLB - Temporarily Replaced by Lighted Buoy
TRLT - Temporarily Replaced by Light
TRUB - Temporarily Replaced by Unlighted Buoy
USACE - Army Corps of Engineers
W - White
Y - Yellow

Additional Abbreviations Specific to this LNM Edition:

AtoN - Aids to Navigation
COTP - Captain of the Port
CPA - Closest Point of Approach
LLNR - Light List Number

NAVCEN - U.S. Coast Guard Navigation Center
NM - Nautical Miles
ODOT - Oregon Department of Transportation
RM - River Mile Marker

S-AIS - Synthetic AIS
V-AIS - Virtual AIS
VTS - Vessel Traffic Service
WSDOT - Washington State Department of Transportation

SECTION I - SPECIAL NOTICES

This section contains information of special concern to the Mariner.

PACIFIC OCEAN – Hazard to Navigation – Spacecraft Reentry Debris – 25 & 27 MAY 2022

Spacecraft reentry operations with the potential for hazardous debris splashdown will occur starting at 2209 UTC until 2309 UTC on 25 May 22, and if needed from 0527 UTC until 0629 UTC on 27 May 22. Hazardous debris splashdown areas are bounded by the following coordinates:

Primary reentry trajectory coordinates from 2209 UTC until 2309 UTC on 25 May 22:

POINT 1: 13-42-00 N / 127-05-00 W
POINT 2: 11-24-00 N / 123-56-00 W
POINT 3: 05-38-00 S / 136-30-00 W
POINT 4: 03-22-00 S / 139-37-00 W

Alternate reentry trajectory coordinates from 0527 UTC until 0629 UTC on 27 May 22:

POINT 1: 50-34-00 N / 171-13-00 W
POINT 2: 52-10-00 N / 171-29-00 W
POINT 3: 52-53-00 N / 167-02-00 W
POINT 4: 49-43-00 N / 136-19-00 W
POINT 5: 47-45-00 N / 137-26-00 W

Mariners are advised to remain clear of these areas for the duration of operations. For more details or questions contact Matt Dulski at (310) 413-6501, email Matthew.B.Dulski@nasa.gov, or José Kalil at (281) 989-8972, email Jose.G.Kalil@nasa.gov.

Mariners can also contact the nearest Coast Guard Command Center with any concerns:
District 14 Command Center in Honolulu at (808) 535-3333 or JRCCHonolulu@uscg.mil.
District 13 Command Center in Seattle at (206) 220-7001 or JRCCSeattle@uscg.mil.
District 17 Command Center in Juneau at (907) 463-2000 or JRCCJuneau@uscg.mil

LNM: 21/22

OREGON – PORT OF PORTLAND – WILLAMETTE RIVER – Bank stabilization work

Anderson Construction will conduct bank restoration work on the Willamette River from 15 Jun to 31 Oct 2022. The work site is on the western shore of the Willamette River south of the Ross Island Highway Bridge (LLNR 14959.7) near RM 14.4 in approximate location 45-29-41 N, 122-40-06 W. A turbidity curtain will be installed via barge on 15 Jun and then demobilized at the end of the project. Once the turbidity curtain is installed, all work will be done shoreside of the turbidity curtain. For more information, contact the Project Engineer David Knudsen at (503) 702-6969 or email at dknudsen@andersen-const.com

Chart 18526

LNM: 21/22

OREGON – WILLAMETTE RIVER – PORTLAND TO WALNUT EDDY – Bridge construction notice (Revised from LNM 20/22)

Kiewit Construction will begin a seismic upgrade construction project on the I-205 Highway Bridge (LLNR 15078) AKA, Abernethy Bridge across the Willamette River at RM 25.6, from 20 Jun 22 to 01 Oct 25. The construction activity will take place across the entire river at the bridge. Construction personnel will be working 24 hours a day Monday through Saturday. Bridge construction work will include the installation of multiple temporary work platforms across sections of the river. All river traffic will be restricted to a temporary navigational channel with horizontal clearance of 150 feet wide and vertical clearance of 51.8 feet high at ordinary high water (OHW), or 76.0 feet high at Columbia River Datum (CRD). The temporary navigation channel will be marked with floating buoys with flashing lights to match buoy type (red nun and green can navigational buoys and white can informational buoys, each with matching color lights flashing at 4-second intervals). Crews will be using floating cranes and barges, attended by tugs throughout the site. All vessels will monitor VHF channels 13 and 16. Barges will be marked on each corner with a white light flashing at 6-second intervals. Each corner of the multiple trestles will also be marked at each corner with a white light flashing at 6-second intervals. Signage on the trestles will communicate the safe distance from the work zone. For an overview of the work site and navigation channel, see Enclosure (5) of this LNM. For more information contact Kiewit Construction, Ritch Schubert, at (503) 710-2277 or email ritsch.schubert@kiewit.com.

LNM: 21/22

WASHINGTON – STRAIT OF JUAN DE FUCA – Port of Vancouver Canada 2022 Voluntary Lateral Displacement

As of 01 Jun 22, the Enhancing Cetacean Habitat and Observation (ECHO) Program voluntary inshore lateral displacement is in effect for all tugs transiting the Canadian inshore area of the Strait of Juan de Fuca. If it is safe and operationally feasible to do so, tugs are requested to move south of the known killer whale feeding area and navigate either through the outbound shipping lane or the inshore lateral displacement zone, while maintaining a buffer distance of 1,000 meters from the traffic separation scheme (TSS). The inshore lateral displacement zone is 1,500 meters wide and occurs in the area between 123-52-21.192 W, 48-18-37.332 N and 124-31-33.378 W, 48-28-53.316 N, covering a distance of approximately 28 NM. The ECHO Program voluntary lateral displacement initiative aims to reduce underwater noise in known southern resident killer whale feeding areas along the northern edge of the Strait of Juan de Fuca. This initiative will remain in effect 24 hours a day through 31 Oct 22. For more detailed information related to lateral displacement and the ECHO program, visit the following web address: <https://www.portvancouver.com/environmental-protection-at-the-port-of-vancouver/maintaining-healthy-ecosystems-throughout-our-jurisdiction/echo-program/projects/lateral-displacement/>

Chart 18460

LNM: 21/22

WASHINGTON – STRAIT OF JUAN DE FUCA – SWIFTSURE BANK – ECHO Program 2022 Voluntary Vessel Slowdown trial at Swiftsure Bank

Effective 01 Jun 2022, the Enhancing Cetacean Habitat and Observation (ECHO) Program voluntary vessel slowdown trial in the vicinity of Swiftsure Bank is in effect for all inbound and outbound commercial and government vessels. If it is safe and operationally feasible to do so, commercial and government vessels are requested to not exceed the following speeds through the water:

11 knots – Bulklers, tankers, general cargo vessels, and government vessels; and,

14.5 knots – Vehicle carriers, cruise ships, and container vessels.

The voluntary vessel slowdown trial takes place in the inbound and outbound lanes of the vessel traffic separation scheme between the start or end of the traffic separation scheme on the western or southern side, and the 124-40-00 W longitudinal line (radio call in point 1) on the eastern side. Speed transition zones are in place about 5 nautical miles prior to entering the slowdown area.

The ECHO Program voluntary slowdown trial in Swiftsure Bank aims to reduce underwater noise in known southern resident killer whale feeding areas. This initiative will remain in effect 24 hours per day until 2359 PDT on 31 Oct 22. The voluntary slowdowns at Swiftsure Bank and in Haro Strait and Boundary Pass are led by the Vancouver Fraser Port Authority's ECHO (Enhancing Cetacean Habitat and Observation) program, in cooperation with government agencies, Indigenous communities, industry partners and environmental groups. For more detailed information related to this slowdown trial and the ECHO program, refer to the following internet web address:

<https://www.portvancouver.com/environmental-protection-at-the-port-of-vancouver/maintaining-healthy-ecosystems-throughout-our-jurisdiction/echo-program/projects/swiftsure-bank-slowdown/>

Chart 18460

LNM: 21/22

WASHINGTON – STRAIT OF JUAN DE FUCA TO STRAIT OF GEORGIA – CAP SANTE WATERWAY AND PADILLA BAY – Diving operations

Natural Resources Consultants and Northwest Straits Foundation will conduct WDFW-approved surface supplied air dive operations to remove derelict crab pots from the Anacortes, Guemes Island, and Padilla Bay areas from 23 May to 15 Jul 2022. Dive operations will take place from 0800-1600 daily from the 30 foot F/V Cadence, loaded with surface supplied air divers and full complement of surface supplied air diving equipment. The southern portion of the operation consists of the waters offshore of Anacortes from Cap Sante Marina to Hat Island, including the northern section of the Swinomish Channel entrance. The northern section includes the northern region of Padilla Bay, from Saddlebag Island to William Point. F/V Cadence will monitor VHF-FM Channel 16. Mariners operating in this area are requested to remain at least 100 yards from vessel during dive operations. For more information, contact the project POCs Kyle Antonelis at (206) 355-9358, kantonelis@nrccorp.com, or Joan Drinkwin at (360) 820-3323, jdrinkwin@nrccorp.com.

Charts: 18421 18424 18427

LNM: 21/22

WASHINGTON – STRAIT OF JUAN DE FUCA TO STRAIT OF GEORGIA – BOUNDARY PASS – Oceanographic research

The University of Washington will be conducting oceanographic research in the vicinity of Sandy Point, Waldron Island, WA, between 20 Jun – 04 Jul 22. Operations will include deployment of a temporary surface mooring in location 48-41-40.860 N, 123-05-04.782 W. The work will be conducted off the R/V Jack Robertson, which will monitor VHF-FM channels 13, 14 and 16. The mooring will be installed during extended operational periods, limited to no more than 5 days, and will consist of a small, yellow, lighted surface float (1m diameter or less). The surface float will have a FL Y 4s light and yellow reflective tape. Mariners are requested to keep a safe distance when in the vicinity of the research vessel and scientific assets in the area. For more information contact University of Washington POCs Alex Fisher at (443) 477-7447 or afisher1@uw.edu, or Jim Thomson at (206) 999-6908 or jthomson@apl.washington.edu.

Chart 18421

LNM: 21/22

WASHINGTON – LAKE WASHINGTON SHIP CANAL – UNION BAY REACH - Montlake Bridge notice (Revised from LNM 15/22)

The Coast Guard has approved a change to the temporary deviation from the operating schedule that governs the Montlake Bridge (LLNR 18240) across the Lake Washington Ship Canal, mile 5.2, at Seattle, WA. This deviation is necessary to accommodate two University of Washington graduation ceremonies. The draw of the Montlake Bridge previously was authorized to not open for marine vessels from 1030 to 1430 and from 1630 to 1830 on 11 Jun and 12 Jun 2022. This approval change authorizes the draw of the subject bridge to not open for marine vessels for the following dates and times:

11 Jun 2022: 1030 – 1430; 1630 – 1830;

12 Jun 2022: 1130 – 1530; 1730 – 1930.

The Montlake Bridge in the closed-to-navigation position provides 30 feet of vertical clearance throughout the navigation channel, and 46 feet of vertical clearance throughout the center 60 feet of the bridge; vertical clearance references to the Mean Water Level of Lake Washington.

Vessels able to pass through the bridge in the closed-to-navigation position may do so at any time. The bridge will be able to open for

emergencies, and there is no immediate alternate route for vessels to pass. The normal operating schedule for the Montlake Bridge operates in accordance with 33 CFR § 117.1051(e). For more information on these bridge closures contact Colleen Kelly at kellyc@wsdot.wa.gov.

Chart 18447

LNM: 20/22

OREGON – PORT OF PORTLAND – WILLAMETTE RIVER – Swan Island Basin geotechnical drilling

Gregg Drilling and Testing will be conducting Overwater Geotechnical Investigations from 09 May thru 15 Jun 2022 from 0700 – 1900 daily in the Swan Island Basin in approximate locations 45-34-03 N, 122-43-45 W and 45-33-44 N, 122-42-28 W. The R/V Quin Delta will be conducting the drill operations and monitoring channels VHF-FM channels 16 and 13. Mariners are advised to use caution when transiting the area. For further information, comments or details contact Captain Tim O'Donnell at (949) 254-5190 or e-mail at BEARatSEA@gmail.com.

Chart 18526

LNM: 19/22

WASHINGTON – PUGET SOUND – HOOD CANAL – Naval Test and Evaluation Barge operations (Revised from LNM 10/22)

The Naval Surface Warfare Center Detachment Puget Sound, located at SUBASE Bangor, will be working with Western Towboat to operate the Research, Development, Test and Evaluation Barge M241 in the waters of Hood Canal. The operations have been extended from the original schedule and are now planned from sunrise until sunset, Monday through Friday until 27 Jun 2022, in the waters from east of Brown Point at 47-44-35 N, 122-44-17 W, to south of Oak Head at 47-40-19 N, 122-47-58 W, where a marker buoy will be placed in water greater than 25 fathoms in depth and greater than 100 yards from shore, and short gaps in the schedule are expected to occur to allow for correction of technical issues. The operations will consist of low speed straight-line courses parallel to the shoreline with some stationary periods to perform deck operations. A 28-foot tracking vessel will accompany the barge and occasionally be underway to participate in operations. Questions can be directed to any operating support craft/personnel on marine VHF-FM Channels 16 or 88A or the Naval Surface Warfare Center waterfront POCs Mark Moss (360) 396-2948 or Steve Polillo (360) 315-0333.

Chart 18458

LNM: 19/22

WASHINGTON – PUGET SOUND – SEATTLE TO BREMERTON – DUWAMISH WATERWAY – Bridge emergency deviation (Revised from LNM 16/22)

The Coast Guard has approved an emergency temporary deviation from the operating regulations of the 1st Ave South Highway Bridge (LLNR 16887), AKA SR-99 Bridge, across the Duwamish Waterway, mile 2.5, Seattle, WA. Repairs to the bridge are taking longer than anticipated as some necessary parts are being fabricated, and the Coast Guard has extended the emergency deviation until 26 Aug 2022. If repairs are completed sooner, the deviation will be cancelled. The subject bridge sustained damage from a roadway accident, and the draw span is limited to opening when sustained winds are less than 10 knots. The bridge operator may exercise good judgement to delay or not open the draw for a reasonable time only when sustained winds exceed 10 knots. The bridge operator may delay the opening of the draw for a reasonable time while waiting for sustained winds to be less than 10 knots, but shall inform mariners for the reason of delayed openings. Mariners shall contact the bridge operator prior to entering the Duwamish Waterway to request an opening, if the bridge cannot open due to wind velocity, the bridge operator shall record the vessel(s) name and contact them every thirty minutes with a draw status. The reasonable delay to open due to damages applies to all vessels requesting an opening including vessels of 5000 gross tons and over, a vessel towing a vessel of 5000 gross tons and over, and a vessel proceeding to pick up for towing a vessel of 5000 gross tons and over. During this closure, the draw of the subject bridge may also delay opening the draw to marine vessels engaged in emergency operations.

Chart 18450

LNM: 19/22

WASHINGTON – HOOD CANAL – DABOB BAY – Submersible Vehicle testing

The US Navy will be conducting submersible vehicle and free-floating scientific instrument testing in the Dabob Bay military operating area and extending south into Hood Canal as far as the Hamma Hamma River from 16 – 28 May 2022. Operations will be conducted 24 hours a day, 7 days a week. Operations will involve semisubmersible and submersible vehicles and scientific instrument buoys tended by M/V Seahorse, M/V Jack Robertson and small naval craft with a flashing red light. The craft will monitor VHF-FM channels 12 and 16. The call sign for the small craft will be "Range security craft". M/V Seahorse is a large powered barge with a crane and the M/V Jack Robertson is a 50ft white vessel. Two lighted surface buoys will be free floating in vicinity of the testing craft. The buoys will have a white flashing light. All craft transiting the area are requested to exercise caution and maintain a sharp lookout for possible semi-submerged vehicles. Questions should be directed to the Pacific Northwest Range Management and Ops Division, Range Control Branch, at (360) 396-2313.

Charts: 18441 18448 18458

LNM: 18/22

COLUMBIA RIVER – VANCOUVER TO BONNEVILLE – Washougal Upper and Reed Island Federal Channel change

Due to shoaling extending north into Gary Island Channel and south into the Reed Island Channel to the south of Reed Island, USACE is proposing to change the alignment of the Columbia River Federal Navigation Channel between RM 123 to RM 128 to improve navigational safety by realigning the channel toward the north, or Washington, side near RM 124 and toward the south, or Oregon, side near RM 126. A graphical depiction of the proposed change is included in this LNM as Enclosure (4). The proposed channel realignment is consistent with the proposed changes to the aids to navigation. Mariners are encouraged to share comments on the proposed federal channel realignment. Please direct your comments to USACE Project Manager Jessica Stokke by 01 Jun 22 at (503) 808-4352 or Jessica.B.Stokke@usace.army.mil.

Chart 18531

LNM: 17/22

SECTION II - DISCREPANCIES

This section lists all reported and corrected discrepancies related to Aids to Navigation in this edition. A discrepancy is a change in the status of an aid to navigation that differs from what is published or charted.

DISCREPANCIES (FEDERAL AIDS)

LLNR	Aid Name	Status	Chart No.	BNM Ref.	LNM St	LNM End
733	NOAA Environmental Lighted Buoy 46041	MISSING	18500	0174-22	08/22	
756	Strait of Juan De Fuca Traffic Separation Lane Lighted Buoy JA	MISSING	18485	0828-20	47/20	
765.5	NOAA Environmental Lighted Buoy 46005	LT EXT	18007	0197-20	08/20	
9501	Siuslaw River Channel Buoy 11	OFF STA	18583	0339-22	20/22	
10215	Miller Sands Dike Light 5	DAYMK IMCH	18521	0022-22	02/22	
10475	Westport Dike Light 58	LT EXT/STRUCT DMGD	18523	0190-22	09/22	
11430	Fisher Quarry Channel Range Front Light	LT IMCH	18531	0289-22	17/22	
11465	Government Island Range Front Light	REDUCED INT	18531	0325-22	19/22	
11490	Lady Island Range Front Light	REDUCED INT	18531	0324-22	19/22	
11870	Wind Mountain Upper Range Front Light 26	LT EXT	18532	0355-22	20/22	
12980	Lake Wallula West Channel Junction Light W	STRUCT DEST/TRLB	18542	0208-20	09/20	
14420	Baker Bay West Channel Entrance Jetty Light 2	LT IMCH/STRUCT DMGD	18521	0633-21	38/21	
14835	Sauvie Island Junction Light	STRUCT DEST/TRLB	18524	0930-21	51/21	
16090	Quillayute River Sector Light	LT EXT/STRUCT DMGD	18480	0848-21	47/21	
16095	Quillayute River Entrance Light 3	LT EXT/STRUCT DMGD	18480	0853-21	48/21	
16136	Strait of Juan De Fuca Traffic Separation Lane Lighted Buoy JA	MISSING	18485	0828-20	47/20	
16405	Puget Sound Traffic Separation Lane Lighted Buoy SA	REDUCED INT	18471	0367-22	21/22	
17360	Nisqually Flats Light 3	STRUCT DEST/TRLB	18448	0404-21	24/21	
18710	Oak Harbor Light 11	STRUCT DEST/TRLB	18428	0652-21	39/21	

DISCREPANCIES (FEDERAL AIDS) CORRECTED

LLNR	Aid Name	Status	Chart No.	BNM Ref.	LNM St	LNM End
8794	Coos Bay Channel Lighted Buoy 6A	RELIGHTED	18587	0365-22	20/22	21/22
8865	Empire Range B Front Light	WATCHING PROPERLY	18587	0368-22	20/22	21/22
11510	Lady Island Upper Range Front Light	WATCHING PROPERLY	18531	0361-22	20/22	21/22
12765	McNary Range Front Light	RELIGHTED	18539	None	21/22	21/22
16405	Puget Sound Traffic Separation Lane Lighted Buoy SA	RESET ON STATION	18471	0367-22	20/22	21/22
19395	Belle Rock Sector Light	RELIGHTED	18429	None	21/22	21/22

DISCREPANCIES (PRIVATE AIDS)

LLNR	Aid Name	Status	Chart No.	BNM Ref.	LNM St	LNM End
718	Scripps Institute Wave Recorder Lighted Buoy 46211/036	MISSING	18502	0321-22	19/22	
10928	Sandy Island Anchorage Lighted Buoy "S"	LT EXT	18524	0225-22	12/22	
11207	Lower Vancouver Anchorage Lighted Buoy V	LT EXT	18525	0147-22	06/22	
11247	Hayden Island Water Monitoring Lighted Buoy A	MISSING	18526	0413-21	25/21	
15533	Scripps Institute Wave Recorder Lighted Buoy 46211/036	MISSING	18502	0321-22	19/22	
17044	Des Moines Marina Lighted Buoy 1	MISSING/LT EXT	18474	0762-21	44/21	

DISCREPANCIES (PRIVATE AIDS) CORRECTED

LLNR	Aid Name	Status	Chart No.	BNM Ref.	LNM St	LNM End
16115	University of Washington LaPush Research Lighted Buoy	RESET ON STATION	18480	0357-22	07/22	21/22

PLATFORM DISCREPANCIES

Name	Status	Position	BNM Ref.	LNM St	LNM End
------	--------	----------	----------	--------	---------

None**PLATFORM DISCREPANCIES CORRECTED**

Name	Status	Position	BNM Ref.	LNM St	LNM End
------	--------	----------	----------	--------	---------

None**SECTION III - TEMPORARY CHANGES and TEMPORARY CHANGES CORRECTED**

This section contains temporary changes and corrections to Aids to Navigation for this edition. When charted aids are temporarily relocated for dredging, testing, evaluation, or marking an obstruction, a temporary correction shall be listed in Section IV giving the new position.

TEMPORARY CHANGES

LLNR	Aid Name	Status	Chart No.	BNM Ref.	LNM St	LNM End
9285	Winchester Bay Harbor Entrance Daybeacon 1	TRUB	18584	0353-21	21/21	
12980	Lake Wallula West Channel Junction Light W	TRLB	18542	0214-20	10/20	
14835	Sauvie Island Junction Light	TRLB	18524	0936-21	51/21	
15595	Grays Harbor Channel Lighted Whistle Buoy 11	RELOCATED FOR DREDGING	18502	0267-22	16/22	
17360	Nisqually Flats Light 3	TRLB	18448	0409-21	24/21	
18050	Orchard Rocks Fish Pen Lights (3)	DISCONTINUED	18449	0894-21	50/21	
18710	Oak Harbor Light 11	TRLB	18428	0287-22	17/22	

TEMPORARY CHANGES CORRECTED

LLNR	Aid Name	Status	Chart No.	BNM Ref.	LNM St	LNM End
------	----------	--------	-----------	----------	--------	---------

None**PLATFORM TEMPORARY CHANGES**

Name	Status	Position	BNM Ref.	LNM St	LNM End
------	--------	----------	----------	--------	---------

None**PLATFORM TEMPORARY CHANGES CORRECTED**

Name	Status	Position	BNM Ref.	LNM St	LNM End
------	--------	----------	----------	--------	---------

None

SECTION IV - CHART CORRECTIONS

This section contains corrections to federally and privately maintained Aids to Navigation, as well as NOS corrections.

This section contains corrective actions affecting chart(s). Corrections appear numerically by chart number, and pertain to that chart only. It is up to the mariner to decide which chart(s) are to be corrected. The following example explains individual elements of a typical chart correction.

Chart Number	Chart Edition	Edition Date	Last Local Notice to Mariners	Horizontal Datum Reference	Source of Correction	Current Local Notice to Mariners
12327	91st Ed.	19-APR-97	Last LNM: 26/97	NAD 83		27/97
Chart Title: NY-NJ-NEW YORK HARBOR - RARITAN RIVER						
Main Panel 2245 NEW YORK HARBOR						
(Temp) ADD	NATIONAL DOCK CHANNEL BUOY 3				CGD01	074-02-48.001W
	Green can	Object of Corrective Action		Position		
Corrective Action						

(Temp) indicates that the chart correction action is temporary in nature. Courses and bearings are given in degrees clockwise from 000 true. Bearings of light sectors are toward the light from seaward. The nominal range of lights is expressed in nautical miles (NM) unless otherwise noted.

Chart Number	Chart Edition	Edition Date	Last LNM	Horizontal Datum Reference	Source of Correction	Current Local Notice to Mariners
18400	51st Ed.	01-AUG-19	Last LNM: 04/19	NAD 83		21/22
Chart Title: Strait of Georgia and Strait of Juan de Fuca						
Main Panel 1656 STRAIT OF GEORGIA AND STRAIT OF JUAN DE FUCA -- Page/Side: -						
CHANGE	Puget Sound Traffic Separation Lane Lighted Buoy SA				CGD13	122-49-47.686W
	Delete RACON (- -)				at 48-11-27.362N	

Chart Number	Chart Edition	Edition Date	Last LNM	Horizontal Datum Reference	Source of Correction	Current Local Notice to Mariners
18429	11th Ed.	01-MAY-14	Last LNM: 39/17	NAD 83		21/22
Chart Title: Rosario Strait-southern part						
Main Panel 1682 ROSARIO STRAIT SOUTH PART. Page/Side: N/A						
LAST EDITION	No new editions of chart 18429 will be published. It will be canceled on 05-Oct-22. Comparable or larger scale Electronic Navigational Chart (ENC) coverage is available. See "Cancellation of NOAA Paper and Raster Nautical Charts" in Section I of this LNM for details. A list of all canceled NOAA charts is at https://www.charts.noaa.gov/MCD/Dole.shtml .				NOS	--

Chart Number	Chart Edition	Edition Date	Last LNM	Horizontal Datum Reference	Source of Correction	Current Local Notice to Mariners
18430	9th Ed.	01-JUL-10	Last LNM: 39/17	NAD 83		21/22
Chart Title: Rosario Strait-northern part						
Main Panel 1683 ROSARIO STRAIT NORTH PART. Page/Side: N/A						
LAST EDITION	No new editions of chart 18430 will be published. It will be canceled on 05-Oct-22. Comparable or larger scale Electronic Navigational Chart (ENC) coverage is available. See "Cancellation of NOAA Paper and Raster Nautical Charts" in Section I of this LNM for details. A list of all canceled NOAA charts is at https://www.charts.noaa.gov/MCD/Dole.shtml .				NOS	--

Chart Number	Chart Edition	Edition Date	Last LNM	Horizontal Datum Reference	Source of Correction	Current Local Notice to Mariners
18432	7th Ed.	01-SEP-13	Last LNM: 44/13	NAD 83		21/22
Chart Title: Boundary Pass						
Main Panel 1685 BOUNDARY PASS. Page/Side: N/A						
LAST EDITION	No new editions of chart 18432 will be published. It will be canceled on 05-Oct-22. Comparable or larger scale Electronic Navigational Chart (ENC) coverage is available. See "Cancellation of NOAA Paper and Raster Nautical Charts" in Section I of this LNM for details. A list of all canceled NOAA charts is at https://www.charts.noaa.gov/MCD/Dole.shtml .				NOS	--

Chart Number	Chart Edition	Edition Date	Last LNM	Horizontal Datum Reference	Source of Correction	Current Local Notice to Mariners
18433	6th Ed.	01-APR-05	Last LNM: 42/17	NAD 83		21/22
Chart Title: Haro-Strait-Middle Bank to Stuart Island						
Main Panel 1686 HARO STRAIT MIDDLE BANK TO STUART ISLAND. Page/Side: N/A						
LAST EDITION	No new editions of chart 18433 will be published. It will be canceled on 05-Oct-22. Comparable or larger scale Electronic Navigational Chart (ENC) coverage is available. See "Cancellation of NOAA Paper and Raster Nautical Charts" in Section I of this LNM for details. A list of all canceled NOAA charts is at https://www.charts.noaa.gov/MCD/Dole.shtml .				NOS	--

Chart Number	Chart Edition	Edition Date	Last LNM	Horizontal Datum Reference	Source of Correction	Current Local Notice to Mariners
18434	7th Ed.	01-APR-08	Last LNM: 40/17	NAD 83		21/22
Chart Title: San Juan Channel						
Main Panel 1941 SAN JUAN CHANNEL. Page/Side: N/A						
LAST EDITION	No new editions of chart 18434 will be published. It will be canceled on				NOS	--

05-Oct-22. Comparable or larger scale Electronic Navigational Chart (ENC) coverage is available. See "Cancellation of NOAA Paper and Raster Nautical Charts" in Section I of this LNM for details. A list of all canceled NOAA charts is at <https://www.charts.noaa.gov/MCD/Dole.shtml>.

18440	31st Ed.	01-APR-17	Last LNM: 42/19	NAD 83	21/22
<i>ChartTitle: Puget Sound</i>					
Main Panel 1688 PUGET SOUND - -. Page/Side: -					
CHANGE	Puget Sound Traffic Separation Lane Lighted Buoy SA Delete RACON (- -).			CGD13 at 48-11-27.362N	122-49-47.686W
18441	49th Ed.	01-APR-20	Last LNM: 48/17	NAD 83	21/22
<i>ChartTitle: Puget Sound-northern part</i>					
Main Panel 1689 PUGET SOUND - NORTHERN PART - -. Page/Side: -					
CHANGE	Puget Sound Traffic Separation Lane Lighted Buoy SA Delete RACON (- -).			CGD13 at 48-11-27.362N	122-49-47.686W
18457	10th Ed.	01-JAN-06	Last LNM: 23/17	NAD 83	21/22
<i>ChartTitle: Puget Sound-Hammersley Inlet to Shelton</i>					
Main Panel 1718 PUGET SOUND HAMMERSLEY INLET TO SHELTON. Page/Side: N/A					
LAST EDITION	No new editions of chart 18457 will be published. It will be canceled on 01-Jun-22. Comparable or larger scale Electronic Navigational Chart (ENC) coverage is available. See "Cancellation of NOAA Paper and Raster Nautical Charts" in Section I of this LNM for details. A list of all canceled NOAA charts is at https://www.charts.noaa.gov/MCD/Dole.shtml .			NOS --	--
18465	39th Ed.	01-OCT-11	Last LNM: 14/17	NAD 83	21/22
<i>ChartTitle: Strait of Juan de Fuca-eastern part</i>					
Main Panel 1723 STRAIT OF JUAN DE FUCA EASTERN PART. Page/Side: N/A					
CHANGE	Puget Sound Traffic Separation Lane Lighted Buoy SA Delete RACON (- -).			CGD13 at 48-11-27.362N	122-49-47.686W
18471	11th Ed.	01-DEC-07	Last LNM: 51/21	NAD 83	21/22
<i>ChartTitle: Approaches to Admiralty Inlet Dungeness to Oak Bay</i>					
Main Panel 1724 APPROACHES TO ADMIRALTY INLET - DUNGENESS TO OAK BAY. Page/Side: N/A					
CHANGE	Puget Sound Traffic Separation Lane Lighted Buoy SA Delete RACON (- -).			CGD13 at 48-11-27.362N	122-49-47.686W
18477	6th Ed.	01-SEP-18	Last LNM: 09/17	NAD 83	21/22
<i>ChartTitle: Puget Sound-Entrance to Hood Canal</i>					
Main Panel 1938 PUGET SOUND ENTRANCE TO HOOD CANAL - -. Page/Side: -					
LAST EDITION	No new editions of chart 18477 will be published. It will be canceled on 05-Oct-22. Comparable or larger scale Electronic Navigational Chart (ENC) coverage is available. See "Cancellation of NOAA Paper and Raster Nautical Charts" in Section I of this LNM for details. A list of all canceled NOAA charts is at https://www.charts.noaa.gov/MCD/Dole.shtml .			NOS --	--
18504	66th Ed.	01-JUL-06	Last LNM: 29/17	NAD 83	21/22
<i>ChartTitle: Willapa Bay;Toke Pt.</i>					
Main Panel 1734 WILLAPA BAY. Page/Side: N/A					
LAST EDITION	No new editions of chart 18504 will be published. It will be canceled on 05-Oct-22. Comparable or larger scale Electronic Navigational Chart (ENC) coverage is available. See "Cancellation of NOAA Paper and Raster Nautical Charts" in Section I of this LNM for details. A list of all canceled NOAA charts is at https://www.charts.noaa.gov/MCD/Dole.shtml .			NOS --	--
18556	26th Ed.	01-JUN-12	Last LNM: 18/14	NAD 83	21/22
<i>ChartTitle: Nehalem River</i>					
Main Panel 1787 NEHALEM RIVER. Page/Side: N/A					
LAST EDITION	No new editions of chart 18556 will be published. It will be canceled on 01-Jun-22. Comparable or larger scale Electronic Navigational Chart (ENC) coverage is available. See "Cancellation of NOAA Paper and Raster			NOS --	--

Nautical Charts" in Section I of this LNM for details. A list of all canceled NOAA charts is at <https://www.charts.noaa.gov/MCD/Dole.shtml>.

18589 16th Ed. 01-OCT-07 Last LNM: 38/17 NAD 83 21/22
ChartTitle: Port Orford to Cape Blanco;Port Orford

Main Panel 1798 PORT ORFORD TO CAPE BLANCO. Page/Side: N/A

LAST EDITION No new editions of chart 18589 will be published. It will be canceled on 01-Jun-22. Comparable or larger scale Electronic Navigational Chart (ENC) coverage is available. See "Cancellation of NOAA Paper and Raster Nautical Charts" in Section I of this LNM for details. A list of all canceled NOAA charts is at <https://www.charts.noaa.gov/MCD/Dole.shtml>. NOS -- --

SECTION V - ADVANCE NOTICES

This section contains advance notice of approved projects, changes to aids to navigation, or upcoming temporary changes such as dredging, etc. Mariners are advised to use caution while transiting these areas.

SUMMARY OF ADVANCED APPROVED PROJECTS

Approved Project(s)
None

Project Date **Ref. LNM**

Advance Notice(s)

COLUMBIA RIVER - WILLAPA BAY - GRAYS HARBOR – PUGET SOUND – Replacement of incandescent Lights with LED lanterns

The U.S. Coast Guard is replacing the following incandescent lantern with LED lanterns at sites on the Columbia River, Willapa Bay, Grays Harbor, Bellingham Channel and Eagle Harbor. These current incandescent lanterns have a single or dual beam of high intensity, with an all-around light of reduced intensity. The change to a LED lantern will remove the high intensity beams, but significantly increase the intensity of the all-around light. The sites are:

Svensen Island Light 12 (LLNR 14775) the high intensity beam will be removed and the intensity of the light will be increased.
South Willapa Bay Light 7 (LLNR 15410) the high intensity beam will be removed and the intensity of the light will be increased.
Eagle Harbor Light 4 (LLNR 18010) the high intensity beam will be removed and the intensity of the light will be increased.
Bellingham Channel Light 5 (LLNR 19175) the high intensity beams will be removed and the intensity of the light will be increased.

The change in light characteristics will be advertised by a Broadcast Notice to Mariners and Light List corrections in the Local Notice to Mariners. Mariners are encouraged to share comments on the performance and operation of these lights as aids to navigation. All comments should be sent to the email address D13-SMB-D13-LNM@uscg.mil. Any discrepancy for these or other Aids to Navigation should continue to be reported to US Coast Guard Sector Columbia River and US Coast Guard Sector Puget Sound.

Charts: 18421 18441 18502 18504 18523 LNM: 19/22

WASHINGTON – WILLAPA BAY - Disestablishment of Willapa Bay Lighted Buoy "C" and Buoy "D" (Revised from LNM 16/22)

The U.S. Coast Guard has permanently disestablished Willapa Bay Entrance Lighted Buoy "C" (LLNR 15186) and Willapa Bay Entrance Buoy "D" (LLNR 15167) as the constantly shifting bar at the entrance to Willapa Bay prevents these buoys from marking the navigable channel, and surf conditions make the placement, retrieval and servicing of these buoys hazardous. There are currently no plans by the US Army Corps of Engineers to dredge or maintain the entrance channel into Willapa Bay. Virtual AIS (V-AIS) signals will be established in place of these buoys. The projected approximate locations are:

Willapa Bay V-AIS "A", a special purpose AIS marking good water at 46-44-18.4N 124-06-21.9W
Willapa Bay V-AIS "B", a special purpose AIS marking good water at 46-43-34.4N 124-03-52.7W

Mariners are encouraged to share comments on the performance and operation of aids to navigation All comments should be sent to the email address of D13-SMB-D13-LNM@uscg.mil. Any discrepancy for Aids to Navigation should continue to be reported to US Coast Guard Sector Columbia River.

Chart 18504 LNM: 18/22

WASHINGTON – STRAIT OF JUAN DE FUCA TO STRAIT OF GEORGIA AND PUGET SOUND – Removal of RACONs on aids to navigation

The U.S. Coast Guard will be removing the RACONs from selected aids to navigation in the Strait of Juan de Fuca, Rosario Strait and Puget Sound due to the consistent failure of the signals and that they are no longer considered necessary for safe navigation of the waterways. While there is no specific timeline for the removal of this equipment, it will be coordinated with servicing and discrepancy responses. The removal of the RACONs will be announced by Broadcast Notice to Mariners and published in the Local Notice to Mariners as Chart and Light List corrections. These aids to navigation are:

Hein Bank Lighted Buoy 1 (LLNR 16362)
Rosario Strait Traffic Separation Lane Lighted Buoy "RA" (LLNR 16370)
Puget Sound Traffic Separation Lane Lighted Buoy "SA" (LLNR 16405)
Puget Sound Traffic Separation Lane Lighted Buoy "SF" (LLNR 16745)
Puget Sound Traffic Separation Lane Lighted Buoy "SG" (LLNR 16815)
Rosario Strait Traffic Separation Lane Lighted Buoy "C" (LLNR 19520)
Rosario Strait Traffic Separation Lane Lighted Buoy "CA" (LLNR 19535)

Puget Sound Traffic Separation Lane Lighted Buoy "SA" (LLNR 16405), the RACON has been permanently discontinued

Mariners are requested to respond in writing to the Coast Guard District office with any comments on this change at D13-SMB-D13-LNM@uscg.mil. Any discrepancy for these or other Aids to Navigation should continue to be reported to US Coast Guard Sector Puget Sound.

Charts: 18400 18421 18441 18465

LNM: 36/21

WASHINGTON – PUGET SOUND –STRAIT OF JUAN DE FUCA TO STRAIT OF GEORGIA - Removal of ball topmarks from Isolated Danger Buoys

The U.S. Coast Guard will be removing the two black ball topmarks from the Isolated Danger Buoys listed below. This action is due to recurring damage of the topmarks from weather events, and the debris has interfered with the visibility of the light signal.

Tolivia Shoal Isolated Danger Lighted Bell Buoy DTS (LLNR 17265)
Blakely Island Shoal Isolated Danger Lighted Buoy DS (LLNR 19430)
Reid Rock Lighted Isolated Danger Buoy DR (LLNR 19630)

Mariners are encouraged to share comments on the performance and operation of these lights as aids to navigation. All comments should be sent to the email address D13-SMB-D13-LNM@uscg.mil. Any discrepancy for these or other Aids to Navigation should continue to be reported to US Coast Guard Sector Puget Sound.

Charts: 18421 18448

LNM: 16/22

SECTION VI - PROPOSED CHANGES

Periodically, the Coast Guard evaluates its system of aids to navigation to determine whether the conditions for which the aids to navigation were established have changed. When changes occur, the feasibility of improving, relocating, replacing, or discontinuing aids are considered. This section contains notice(s) of non-approved, proposed projects open for comment. SPECIAL NOTE: Mariners are requested to respond in writing to the District office unless otherwise noted (see banner page for address).

PROPOSED WATERWAY PROJECTS OPEN FOR PUBLIC COMMENT

Proposed Project(s)

Closing

Docket No.

Ref. LNM

None

Proposed Change Notice(s)

None

SECTION VII - GENERAL

This section contains information of general concern to the Mariners. Mariners are advised to use caution while transiting these areas.

SUMMARY OF BRIDGE LIGHTING DISCREPANCIES AND CORRECTIONS

The summary of Bridge Lighting Discrepancies and Corrections is listed as Enclosure (1) of this Local Notice to Mariners.

LNM: 21/22

SUMMARY OF DREDGING OPERATIONS

The summary of Dredging Operations is listed as Enclosure (2) of this Local Notice to Mariners.

LNM: 21/22

SUMMARY OF MARINE EVENTS

The summary of Marine Events is listed as Enclosure (3) of this Local Notice to Mariners.

LNM: 21/22

OREGON – APPROACHES TO YAQUINA AND DEPOE BAY – Bridge construction notice (Revised from LNM 06/21)

ODOT is conducting cathodic protection upgrades and bridge concrete repairs to the Yaquina Bay Highway 101 Bridge (LLNR 9627) in Newport, OR, at Yaquina Bay mile 0.7. A low-level access walkway system has been constructed across the 4 concrete arch spans from the south bank heading north. While erected, the vertical navigation clearance will be reduced to a minimum of 16 feet at MHHW. The low level walkway system spans from the south bank to the North approx. 880 feet. This system will be functional until approximately the summer of 2024. The main navigational channel will not be impeded by the project as that section is made of steel. Mariners are requested not to loiter under the construction area due to fall hazards. For more information, contact Dan Lutze, the project superintendent, at (503) 519-5408.

The project is taking actions to prevent conflicts with birds. ODOT has contracted with the US Department of Agriculture’s Animal and Plant Health Inspection Service (APHIS) to perform bird-hazing activities with an aim to prevent nesting in certain sections of the bridge until scaffolding and containment can be installed. Hazing activities may include noise cannons, laser lights, and pyrotechnics. The activities may happen at any time of day, however, the noise cannons will primarily be used for the few hours surrounding sunset each evening. These efforts will have no effect on marine navigation. Hazing activities are expected to begin at the end of March and continue well into June. For more information on the APHIS activities, contact Steven Schultz at (541) 757-4158 or Steven.Schultz@ODOT.Oregon.gov.

Chart 18561

LNM: 12/22

OREGON – PORT OF PORTLAND – WILLAMETTE RIVER – Bridge Notice

The Coast Guard has approved two temporary deviations from the normal operating schedule that governs the Steel Railroad-Highway Bridge (LLNR 14955.3) across the Willamette River, RM 12.1. The Steel Bridge need not open the upper lift to marine traffic for the dates and times listed below. These deviations supports Rose Festival Parade events. The lower lift span of the Steel Bridge operates in accordance with 33 CFR 117.5

OREGON – PORT OF PORTLAND – WILLAMETTE RIVER – Bridge Notice

(open on single). When the lower lift is in the closed-to-navigation position, the bridge provides 26 feet of vertical clearance above Columbia River Datum 0.0; and in the open-to-navigation position with the upper lift in the closed-to-navigation position, the vertical clearance is 71 feet above Columbia River Datum 0.0. The Steel Bridge will be able to open the lower deck, and the upper deck if required, for emergencies. This part of the Willamette River does not have an immediate alternate route for vessels to pass. Vessels able to pass through the Steel Bridge with the lower deck in the closed or open-to-navigation position, or the upper deck in the closed-to-navigation position may do so at any time. The normal operating schedule for the Steel Bridge upper lift is in accordance with 33 CFR § 117.897(c)(3)(ii).

Scheduled events / times of approved deviations:

- Rose Festival Starlight Parade from 1900 – 2330 on 04 Jun 2022;
- Rose Festival Grand Floral Parade from 0700 – 1300 on 11 Jun 2022.

For more information on the closures of the Steel Bridge contact Keith Wagner at kwagner@UP.COM.

Chart 18526

LNM: 15/22

OREGON – PORT OF PORTLAND - WILLAMETTE RIVER – Bridge notice

The Coast Guard has approved a temporary operating rule change that governs the Morrison Highway Bridge (LLNR 14955.5) across the Willamette River, mile 12.8 at Portland, OR. The Morrison Bridge operates in accordance with 33 CFR 117.897(c)(3)(iv). This temporary rule temporarily suspends the current regulatory cite regarding the Morrison Bridge, and adds a temporary paragraph 33 CFR § 117.897(c)(3)(vi) which amends the operating schedule of the Morrison Bridge. The rule change authorizes the subject bridge to open half of the draw span on signal when at least a two-hour notice has been given, or four-hour notice if a tug assist is needed from 1900 on 01 Apr 2022 through 1900 on 31 May 2023. Mariners may contact the Hawthorne Bridge operator via telephone at (503) 988-3452 or VHF radio channel 13 for an opening of the Morrison Bridge. Half of the draw will be maintained in the closed-to-navigation position to allow for preservation and painting maintenance. The rule change allows the Morrison Bridge to alternate operation of the east or west leaf span during the temporary rule period. The west span will be operational at the beginning of project and the east span will be in the closed-to-navigation position. The horizontal clearance with a full opening is 185 feet, therefore, in single leaf operations, the temporary rule change reduces the horizontal clearance to approximately 90 feet. The dates to switch operational spans will be determined later and published in the Local Notice to Mariners. This rule reasonably accommodates waterway users while reducing Multnomah County's burden to safely clear work crews for bridge openings. When the operational span is in the closed-to-navigation position, the vertical clearance is 69 feet in center and 48 feet on the side. The vertical clearance of the operational span is unlimited when in the open-to-navigation position. This regulation approval allows a containment system under the bridge that reduces the non-opening half of the bridge's vertical clearance by 5 feet from 69 feet center to 64 feet, and from 48 feet on the sides to 43 feet. All draw clearances are above the Columbia River Datum 0.0. Vessels able to pass through the bridge in the closed-to-navigation position may do so at any time. In accordance with 33 CFR 117.35(e), the bridge must return to its regular operating schedule immediately at the end of the designated time-period. For additional information on this event, contact Matt Studer at matt.d.studer@multco.us.

Chart 18526

LNM: 09/22

COLUMBIA RIVER – BONNEVILLE TO THE DALLES – Bridge notice

ODOT is conducting a bridge deck replacement project on the SR 197 Highway Bridge (LLNR 12133) at Columbia RM 191.6 near The Dalles, OR and Dallesport WA. A work access and containment platform will be suspended beneath the bridge starting in mid-August and will be in place continuously until 27 May 2022. While in place, the vertical navigation clearance will be reduced by approximately 3 feet to a minimum clearance of 97 feet Columbia River datum OHW. If a vessel needs the full 100 feet of vertical clearance for passage through the subject bridge, contact the ODOT Resident Engineer with no less than 12 hours of notice. For more information, or to make a request, contact ODOT Resident Engineer Brad DeHart at (541) 296-2800 or bradley.k.dehart@odot.state.or.us.

Chart 18532

LNM: 31/21

OREGON – SNAKE RIVER – Bridge notice

ODOT will be repairing the bridge that spans the Snake River in Ontario OR at river mile 372. The operations will occur seven days a week, daylight hours only, from 01 Apr to 31 Oct 2022. The bridge will be repaired using an under-bridge inspection truck (UBIT) or snooper crane that occupies approximately 10 feet of the vertical span of the bridge, work containment platforms that occupies approximately 6 feet of vertical span of the bridges, and a barge that will occupy one of the nine existing bridge spans. Mariners are advised to use caution while transiting the area. For additional information contact ODOT District 14 Project Manager, Petr Lovasik at (541) 823-4021 or (541) 709-6889 (cellular) or Petr.Lovasik@odot.state.or.us.

LNM: 06/22

OREGON – WILLAMETTE RIVER – EUGENE – Bridge Notice

The City of Eugene, OR, has contracted DOWL for bridge rehabilitation on the Coburg Road Ferry Street Bridge. Rehabilitation plans include bridge deck overlays, cleaning and surface preparation for spot painting, cleaning and protection of bearings, replacement of expansion joints, epoxy injection of concrete cracks. The repair period will be 04 Apr – 31 Oct 2022, Monday through Friday up to 24 hours per day. Containment will be installed and the vertical clearance will be reduced from 27 feet to 22 feet at ordinary high water. The subject bridge crosses the Willamette River at RM 182.2 in location 44-03-28.4 N, 123-05-02.4 W. Mariners transiting under the Coburg Road Ferry Street Bridge should be aware of potential fall hazards. For more information on this project contact Mike Hawkins at (541) 954-9483 or mhawkins@dowl.com.

LNM: 14/22

WASHINGTON – COWLITZ RIVER – Bridge notice

Utility work will be performed on State Route 411 Castle Rock Bridge located in Castle Rock, WA, across the Cowlitz River at river mile 17.4. Cable replacement will take place from 01 Jun - 01 Aug 22, Monday through Friday between 0700 – 1700 daily. The cable replacement will be performed using an under-bridge inspection truck (UBIT) that occupies a portion of the roadway on the subject bridge. The UBIT will be the give way vessel, but mariners are advised to use caution while transiting the area and not transit directly underneath the UBIT. The SR-411 Bridge has a vertical clearance of 8.6 feet at high tide. The UBIT requires 5 to 10 feet of vertical clearance under the bridge at high tide, therefore mariners should expect no clearance in the vicinity of the UBIT. The subject bridge provides 28 feet of vertical clearance at low tide. The UBIT can lower the vertical clearance to 18 feet at low tide. The UBIT will be equipped with a flashing amber light. For additional information, contact Mark Guz at (360) 518-4464 or mark.guz@lumen.com.

LNM: 17/22

WASHINGTON – LAKE WASHINGTON SHIP CANAL – UNION BAY REACH - Bridge deviation

The Coast Guard has approved a temporary bridge deviation from the operating schedule of the Montlake Street Bridge (LLNR 18240). This deviation will facilitate roadway deck repair on the Montlake Bridge across the Lake Washington Ship Canal at mile 5.2 in Seattle, WA. The subject

WASHINGTON – LAKE WASHINGTON SHIP CANAL – UNION BAY REACH - Bridge deviation

bridge is authorized to operate in single leaf mode/half opening (as opposed to double leaf mode). Vessels needing a bridge opening will be provided a single leaf opening from 2300 on 22 Apr until 0500 on 25 Apr 22. The repairs are dependent on weather conditions, and if the roadway repairs cannot be completed from 22-25 Apr, the backup dates are listed below. The subject bridge with both bascule leaves open provides a horizontal navigation clearance of 129 feet and an unlimited vertical clearance. During single leaf openings, the horizontal navigation clearance will be reduced to 64.5 feet. The Montlake Bridge in the closed-to-navigation position provides 30 feet of vertical clearance throughout the navigation channel, and 46 feet of vertical clearance throughout the center 60 feet of the bridge. During a single leaf opening, the closed half of the span will provide 30 feet of vertical clearance on the sides and 46 feet of vertical clearance in the center 30 feet of the span. These bridge clearances are referenced to the Mean Water Level of Lake Washington. Vessels able to pass through the Montlake Bridge in the closed-to-navigation position may do so at any time, but do not loiter due to fall hazards. The bridge will not be able to provide a full opening for emergencies, and there is no alternate route for vessels to pass. Vessels requiring a double leaf/full opening to navigate through the subject bridge must contact the bridge operator at least 24 hours in advance at (206-720-3048) or via VHF Radio Channel 13. The Montlake Bridge shall operate in accordance with 33 CFR 117.1051(e) at all other times. For more information regarding this event contact Ryan Boyle at BoyleRy@wsdot.wa.gov. All three time periods are listed below:

Date	Day	Hour	Position	Notes
22 – 25 Apr 22	Fri – Mon	2300 – 0500	Single Leaf	Double Leaf opening with at least 24 HR advance notice
20 – 23 May 22	Fri – Mon	2300 – 0500	Single Leaf	Double Leaf opening with at least 24 HR advance notice (back-up)
03 – 06 Jun 22	Fri – Mon	2300 – 0500	Single Leaf	Double Leaf opening with at least 24 HR advance notice (back-up)

Chart 18447

LNM: 14/22

WASHINGTON – LAKE WASHINGTON SHIP CANAL – LAKE WASHINGTON – Interstate 90 Highway Bridge Anchor Cable Replacement

WSDOT will be replacing anchor cables linking the I-90 Highway Bridge (west channel) (LLNR 18389) in Lake Washington. The project will take place within a 1000ft wide strip on both the north and south sides of the I-90 floating bridge from 17 Mar to 30 Sep 2022. Work will be carried out during 24 hour shifts typically starting Monday morning at 0600 and finishing Friday at 1800, with some occasional weekend hours. A derrick crane, DB Alameda, will be used to winch up existing anchor cables and pay out new anchor cables. DB Alameda will maneuvered by the tug Capt Cae, and multiple flat deck barges and working skiffs will be maneuvering within the work zone. All vessels may be contacted on VHF-FM Channel 16. Deep-water divers will be deployed to disconnect the old cable and reconnect the new cable at the lakebed and shallow water divers will be deployed to assist with cable handling near to and under the floating pontoons. All barges will be lighted on the outermost corners of the individual barge. An orange buoy will mark the anchor noting the location and used for retrieval. Some locations on the SW corner of the work zone will require anchors attached to a pendant line for extra length and feature 2 buoys, one for the anchor and another for the pendant line. Mooring of vessels to the bridge will have line travels slightly above and below the water between the derrick crane and the bridge. Mariners transiting through the area shall not produce a wake or approach the barges within 500 feet. No boat traffic is permitted between the barge and the bridge at any time during the course of the project. For additional information, contact Andrew Schaal (0600-1800) at Andrew.Schaal@kiewit.com and (541) 969-0559; or Evan Spading (1800-0600) at Evan.spading@kiewit.com and (808) 342-3561.

Chart 18447

LNM: 10/22

WASHINGTON – LAKE WASHINGTON – SAMMAMISH RIVER – West Sammamish River Bridge Notice (Revised from LNM 13/20)

Construction on the West Sammamish River Bridge at Sammamish River mile 0.5 near Kenmore, Washington is ongoing and will continue through October 2023. The western bridge will be removed and a new bridge constructed. Mariners may transit through the construction zone, but are advised that temporary work piers will be constructed on the west side of the bridge, and will reduce the horizontal span to 40 feet of clearance. Containment will be installed under the bridge reducing the vertical clearance from 11.5 feet to 10.5 feet measured at OHW. Working hours will normally be from 0600 to 1800 six days per week, however, during the in water work window of 01 Jul to 31 Aug, operations will be 24 hours per day. If construction falls behind schedule, the work hours may shift to 24 hours/seven days per week. For more information regarding construction, contact Jake Brockmoller at (253) 888-2514, or Mick Cannon at (253) 377-1041.

Chart 18447

LNM: 05/21

WASHINGTON – EVERETT HARBOR – SNOHOMISH RIVER – Bridge Inspection

WSDOT will be inspecting the SR 529 Bridges (LLNR 18591.2 south bound, and LLNR 18591.3 north bound) across the Snohomish River at river mile 3.7 near Everett, WA. The inspections will take place between 0800 – 1500 daily on 18 – 22 Jul 22, and 25 – 28 Jul 22. The bridges will be inspected using an under-bridge inspection truck (UBIT) that occupies a portion of the roadway and extends a boom under the bridge. There is no fixed impact to navigational clearance from this operation (~10 ft. reduction to clearance while bucket is under the bridge, however the UBIT will promptly give way to tall marine vessels). Mariners are advised to use caution while transiting the area. The UBIT bucket will have a flashing amber light on the bottom and a safety lookout will be on the bridge. Bridge openings will not be impacted. For additional information, contact Alan Kuper, P.E. at (360) 701-0556 or kupera@wsdot.wa.gov.

Chart 18444

LNM: 17/22

WASHINGTON – EVERETT HARBOR – STEAMBOAT SLOUGH – Bridge Inspection

WSDOT will be inspecting the SR 529 Bridges (LLNR 18594.9 south bound, and LLNR 18594.11 north bound) across Steamboat Slough at river mile 1.1 and 1.2 near Marysville, WA. The inspections will take place between 0800 – 1500 daily on 18 – 22 Jul 22, and 25 – 28 Jul 22. The bridges will be inspected using an under-bridge inspection truck (UBIT) that occupies a portion of the roadway and extends a boom under the bridge. There is no fixed impact to navigational clearance from this operation (~10 ft. reduction to clearance while bucket is under the bridge, however the UBIT will promptly give way to tall marine vessels). Mariners are advised to use caution while transiting the area. The UBIT bucket will have a flashing amber light on the bottom and a safety lookout will be on the bridge. Bridge openings will not be impacted. For additional information, contact Alan Kuper, P.E. at (360) 701-0556 or kupera@wsdot.wa.gov.

Chart 18444

LNM: 17/22

SNAKE RIVER – LAKE BRYAN – Little Goose Lock upstream hazard

To avoid a hazard upstream of the Little Goose navigation lock at Snake River mile 70.3, vessels are cautioned to ensure two feet distance is maintained between the transiting vessel and the landside upstream guide wall. A hazard to loaded commercial barge traffic has been identified attached to the guide wall at an approximate depth of 11 feet at minimum forebay pool elevation, directly across from the upstream end of the floating guide wall. Project personnel have marked the location with an orange painted "X" on the landside lock approach wall and an orange "candlestick" hazard marker atop the wall at the location of the hazard. A strobe light will also be installed at the location for identification of the hazard area at night. Additionally, to facilitate safe navigation, the Little Goose forebay will be maintained at one foot above minimum operating pool until further notice. These restrictions will remain in place until the hazard can be removed and permanent repairs completed. That work is

SNAKE RIVER – LAKE BRYAN – Little Goose Lock upstream hazard

tentatively scheduled to be completed by March 2023. For additional information on this work contact the NWW Operations Division at (509) 527-7364.

Chart 18547

LNM: 15/22

OREGON – CAPE BLANCO TO YAQUINA HEAD – Scientific equipment installation

Oregon State University (OSU) has installed four, 1-mile long, 10-inch diameter, steel conduits under the seafloor running out from Driftwood Beach State Recreation Site near Seal Rock, Oregon, as part of the construction of the PacWave South Wave Energy Test Site. In mid-2023, subsea cables will be installed in the conduits to carry power and data from the test site to shore. Until the cables are installed, the seaward end of the conduits may protrude up to 3 feet vertically and 10 feet horizontally from the seafloor depending on sand movement. Once the cables are installed, the final placement of the conduits will be below the seafloor. The conduit punch outs are located approximately 1500 yards offshore from Driftwood Beach, which is between Seal Rocks and Waldport.

Until the subsea cables are installed, mariners are requested to avoid anchoring or setting fishing gear in a 1,000 x 1,500-foot Conduit Punch Out Area around the conduit exit locations due to risk of snagging on any exposed conduit. The location of the Conduit Punch Out Area was shown in the graphic attached as Enclosure (4) to LNM 52/21. If crab pots, or other equipment, becomes snagged in this area, mariners are asked to contact OSU prior to attempting to recover the snagged items. For more information contact Brett Hembrough at (541) 737-9023 and brett.hembrough@oregonstate.edu, or Dan Hellin at (541) 745-8337 and dan.hellin@oregonstate.edu.

Chart 18580

LNM: 49/21

OREGON – TILLAMOOK BAY – Tillamook entrance north jetty repair work

J.E. McAmis, Inc will commence a Tillamook North Jetty Repair project for the Portland District of USACE on 28 Feb 2022. Equipment will be operating atop the jetty near Bar View Jetty State Park and the Coast Guard observation tower, on the north side of the entrance. The project is expected to continue through July 2022, and operating hours will be weekdays, daylight only.

Chart 18558

LNM: 07/22

COLUMBIA RIVER – PACIFIC OCEAN TO HARRINGTON POINT - Mouth of the Columbia River Jetty System Major Rehabilitation Project

Scheduled repairs of the South Jetty have commenced and are planned to continue through 2024. The 2022 seasonal operations have commenced on and a material off load facility has been constructed at the east end of the park; along the Columbia River, near Trestle Bay. The offload mooring barge will be in place starting on 19 Apr 2022. The offload facility has an aerial clearance of approximately 60 ft above the water line. When there is a barge being unloaded a crane will be utilized, the aerial clearance is about 140 ft. The ends of the spuds are painted white for visibility. For questions or additional information please call or email Sherri Brenner at (503) 550-6743 or email Sheri@jemcamis.com, or the project superintendent, Aaron Anderson at (503) 791-2161 or email AAnderson@jemcamis.com.

The jetties at the Columbia River Entrance have suffered severe deterioration and may no longer be correctly represented upon the nautical charts of the area. Mariners should use caution when transiting in the vicinity of the jetties and the river entrance. Repairs of the North jetty were completed in 2019. More information may be found at the USACE Portland District web site: <http://www.nwp.usace.army.mil/jetties/>

Chart 18521

LNM: 13/22

COLUMBIA RIVER SYSTEM AND WASHINGTON - Testing of prototype plastic buoys

The U.S. Coast Guard is testing various prototype plastic buoys to observe their station keeping ability and visual and radar detection capabilities. Buoys are being placed at the following locations for evaluation:

On the Columbia, Snake and Willamette Rivers:

- Columbia River Entrance Lighted Buoy 3 (LLNR 9911)
- Desdemona Sands Lighted Buoy 22 (LLNR 9990), set on 1/13/2022
- Hood River Lighted Buoy 36 (LLNR 11932), set on 12/14/2021
- Bonneville Pool Lighted Buoy 69 (LLNR 12130), set on 5/10/2022
- Lake Celilo Buoy 45 (LLNR 12360), set on 9/28/2022
- Lake Wallula Lighted Buoy 2 (LLNR 12815), set on 10/04/2021
- Snake River Buoy 14 (LLNR 13195), set on 9/30/2021
- Snake River Buoy 18 (LLNR 13210)
- Elk Rock Buoy 10 (LLNR 15005), reset on 1/06/2022
- Elk Rock Buoy 12 (LLNR 15010)

In Grays Harbor and Admiralty Inlet Washington:

- Point Chehalis Lighted Buoy 4 (LLNR 15990), set on 5/24/2022
- Point Wilson Lighted Buoy 6 (LLNR 16470), set on 12/16/2021

While the buoys performance is being studied, the US Coast Guard is soliciting comments from the maritime community transiting this waterway. Mariners are requested to respond in writing to the Coast Guard District office with any comments on this change at D13-SMB-D13-LNM@uscg.mil. Any discrepancy for these or other Aids to Navigation should continue to be reported to US Coast Guard Sector Columbia River and US Coast Guard Sector Puget Sound.

Charts: 18502 18533 18545

LNM: 21/22

COLUMBIA RIVER – PACIFIC OCEAN TO HARRINGTON POINT – HARRINGTON POINT – WOODY ISLAND CHANNEL – Current measuring buoy

NOAA has deployed a yellow, oceanographic data collection buoy to measure currents in Woody Island Channel about 1500 yards SE of Harrington Point Channel LB 54 (LLNR 10190), in approximate position 46-14-15.288 N, 123-41-09.528 W. The buoy has a yellow light with a group flashing (5) every 20 seconds characteristic. The buoy will be deployed until the end of Sep 2022. For more information, contact Drew Maczko, at (206) 526-6918 or email at drew.maczko@noaa.gov.

Chart 18521

LNM: 16/22

COLUMBIA RIVER – PACIFIC OCEAN TO HARRINGTON POINT – NORTH CHANNEL – Current measuring buoy

COLUMBIA RIVER – PACIFIC OCEAN TO HARRINGTON POINT – NORTH CHANNEL – Current measuring buoy

NOAA has deployed a yellow, oceanographic data collection buoy to measure currents in the Columbia River North Channel between Grays Point Light 13 (LLNR) and Portuguese Point Daybeacon 14A near the entrance to Grays Bay, in approximate position 46-16-26.076 N, 123-45-24.480 W. The buoy has a yellow light with a group flashing (5) every 20 seconds characteristic. The buoy will be deployed until the end of Sep 2022. For more information, contact Drew Maczko, at (206) 526-6918 or email at drew.maczko@noaa.gov.

Chart 18521

LNM: 16/22

COLUMBIA RIVER – VANCOUVER TO BONNEVILLE – WASHOUGAL – Marine construction

Northbank Civil and Marine will be conducting a marine construction project near the Port of Camas – Washougal from 16 Apr – 31 May 2022 near RM 115 in approximate position 45-34-38.19 N, 122-22-58.42 W. A derrick barge and other material barges will be on scene to construct a new dock, and work hours are anticipated to be Monday – Saturday, 0700 – 1700 daily. Mariners can contact the dredge by hailing “Northbank” on VHF-FM channels 67 or 69. Mariners are asked to reduce wake when passing near the barges. For more information on this project contact Kainan Bedenlos at (503) 209-2424 or email kainanb@northbankcm.com

Chart 18531

LNM: 14/22

COLUMBIA RIVER – VANCOUVER TO BONNEVILLE – Shoaling protruding into Reed Island Reach

Due to shoaling extending south into the Reed Island Reach Channel south of Reed Island, the US Coast Guard has relocated Reed Island Reach Lighted Buoy 61 (LLNR 11580) to approximate position 45-32-46.318N 122-18-02.052W. This position is near the center of the channel. Vessels transiting Reed Island Reach should navigate on the southern edge of the channel between longitudes 122-17-30.0W and 122-18-25.0W (RM 125+40 to 126+40) and proceed with caution.

Chart 18531

LNM: 30/21

COLUMBIA RIVER – PASCO TO RICHLAND – LAKE WALLULA – Research buoy deployment

USACE has deployed a temporary research data collection buoy in the Columbia River at RM 329.2 in approximate position 46-13-24 N 119-06-59 W. This location is between the Pasco-Kennewick Highway Bridge (LLNR 13052.5) and the US-395 Blue Highway Bridge (LLNR 13057), close to the northern (Pasco) shore. The buoy is yellow, round in shape, approximately 6 ft tall and 4 ft wide, with a yellow light flashing every four seconds (Fl 4s). The buoy will be in place until 30 Sep 2022. For more information, contact Wayne Jousma at (509) 527-7447 or email wayne.r.jousma@usace.army.mil

Chart 18543

LNM: 14/22

OREGON – WILLAMETTE RIVER – WALNUT EDDY TO NEWBERG – Marine construction exposed piles

Harbor Offshore, Inc. has completed the first phase of a construction project which included pile driving operations in the vicinity of the Raw Water Pump Station on the Willamette River near Wilsonville, OR. There are a total of six 14x89 H-Pile installed in an East-West Row that remain above waterline in approximate position 45-17-36.96 N, 122-46-57.96 W. All vessel traffic should be aware of these pilings when navigating in this area. The piles are planned to remain in their current configuration exposed above the waterline until June 2022. For additional information, please contact Lauren Collins at (707) 389-0678 or lcollins@harboroffshoreinc.com.

LNM: 49/21

WASHINGTON – APPROACHES TO ADMIRALTY INLET – Sequim Bay scientific sensor deployment

The Pacific Northwest National Laboratory (PNNL) will be deploying and retrieving submerged scientific equipment in the entrance channel to Sequim Bay, Washington for 4 weeks between 11 Apr and 30 Jun 2022. The submerged scientific equipment will be located at approximate position 48-04-53 N, 123-02-30 W. There will be no surface marker buoys on the equipment, but the equipment extends approximately 10 feet above the seafloor, leaving at least 9 feet of water over the equipment at all times. The research vessels DESDEMONA or STRAIT SCIENCE may be on scene during the deployment and retrieval. The vessels may be hailed on VHF-FM channel 16. For additional information, contact PNNL Marine Sciences Laboratory, John Vavrinec, at (360) 681-3665 or email john.vavrinec@pnnl.gov.

Chart 18471

LNM: 11/22

WASHINGTON – APPROACHES TO ADMIRALTY INLET – Sequim Bay autonomous surface vessel deployment

The Pacific Northwest National Laboratory (PNNL) will be operating an autonomous surface vessel in Sequim Bay, Washington in Vicinity of 48-04-29 N, 123-01-26 W, for 16 weeks from 11 Apr – 30 Jun 2022. The 10-foot long catamaran operates on the surface but may be towing submerged sensors. Mariners are asked to keep a distance of 100 feet away from the vessel. The vessel will be clearly marked with the word “Research” and the Department of Energy logo on both sides, and will display navigation lights for a powered vessel of its size. The vessel will carry AIS and broadcast its position under the name Jonesy with an MMSI number of 369914068. The research vessels DESDEMONA or STRAIT SCIENCE may be on scene during some operations and may be hailed on VHF-FM channel 16. For additional information, contact PNNL Marine Sciences Laboratory, Rob Cavagnaro, at (260) 528-3372 or email asvjonesy@pnnl.gov.

Chart 18471

LNM: 13/22

WASHINGTON – PUGET SOUND – APPLE COVE TO KEYPORT – Submersible Vehicle testing

The Naval Undersea Warfare Center (NUWC) at Keyport, WA will be continuing operations in the vicinity of NUWC between University Point, the Brownsville Marina and Keyport through 23 Dec 2022. Operations will normally be conducted Monday through Friday during daylight hours. Operations will involve semisubmersible and submersible vehicles escorted by a small naval craft with a flashing red light. The small craft will monitor VHF-FM channels 12 and 16. The call sign for the small craft will be “Keyport Range Control”. All craft transiting the area are requested to exercise caution and maintain a sharp lookout for possible semi-submerged vehicles while the range is in operation. Questions can be directed to Keyport Range Control on VHF-FM channels 12 and 16 or by contacting the Pacific Northwest Range Management and Ops Division, Range Control Branch, at (360) 396-2313.

Chart 18446

LNM: 02/22

WASHINGTON – PUGET SOUND – ELLIOTT BAY - Colman Dock construction

Washington State Ferries is conducting demolition and construction operations at the Colman Docks, scheduled to be completed in the summer of 2022. Operations will be conducted from 0700 to 1700, Monday through Friday. Mariners should be aware of marine construction equipment moored around the Colman Dock and regular tows up and down the Duwamish River in support of the operation. Equipment may obstruct small sections of the waterway adjacent to Colman Dock. Water quality monitoring will be taking place during construction operations. Please direct any inquiries to WSF Communications at (206) 402-8070 or email wsfcomms@wsdot.wa.gov.

Chart 18450

WASHINGTON – PUGET SOUND – ELLIOTT BAY - Colman Dock construction

LNM: 27/17

WASHINGTON – PUGET SOUND – ELLIOTT BAY – DUWAMISH WATERWAY – Terminal 5 pier construction

Orion Marine will be continuing the marine construction activities associated with the Terminal 5 Berth Modernization Project for the Port of Seattle on the Duwamish River west waterway. Phase 2 of the project includes pile installation and new pier construction for and will run through Aug 2023. Work will typically take place from 0700 to 1700, Monday thru Friday. The DB Rainier and DB St. Helens, will each have a material barge moored alongside and will always remain on site. Each floating plant will have all corners marked with steady burn white lights. The DBs will run on anchors at times so mariners are requested to keep at least a 200-foot distance. The crane and tugs will monitor VHF-FM channel 13. For additional information please contact Jesse Galligan at (253) 552-1140 or email at jgalligan@orionmarinegroup.com.

Chart 18450

LNM: 02/22

WASHINGTON – LAKE WASHINGTON SHIP CANAL – LAKE WASHINGTON – Outfall pipe

Mariners should be aware of a new, permanent outfall pipe that has been installed at The Boeing Company's Renton manufacturing facility at the southern end of Lake Washington. The terminus of the outfall extends approximately 52 feet into the lake at the northeast corner of the Boeing property at an approximate position of 47-30-12.0 N and 122-12-25.2 W. The water depth from the top of the outfall varies from 7.5 to 9.2 feet below low lake level. For additional information about this outfall and its location, contact Mark Clement (425) 229-4279 or email at mark.d.clement@boeing.com.

Chart 18447

LNM: 17/22

**WASHINGTON – STRAIT OF JUAN DE FUCA TO STRAIT OF GEORGIA – SWINOMISH CHANNEL SOUTH ENTRANCE – Shoaling
(Revised from LNM 14/22)**

Significant shoaling exists in Swinomish Channel, especially the South Entrance between South Entrance Buoy 5 (LLNR 18802) and South Entrance Daybeacon 12 (LLNR 18812). The project depth of Swinomish Channel is 12 feet, however, the controlling depth of Swinomish Channel is 4.1 feet based upon the latest available hydrographic data. This controlling depth of 4.1 feet is reflected on NOAA ENC products. Raster products do not reflect this sounding information, as they are no longer being updated with most routine corrections. Mariners should consult ENC cells for the most up-to-date information. Mariners should transit the Swinomish Channel waterway with caution, especially at low tidal conditions.

Chart 18427

LNM: 15/22

WASHINGTON – GPS testing

US Strategic Command has proposed GPS testing encompassing the majority of Washington. The center point of the test will be near Selah, WA, at position 46-41-13.7 N, 120-10-21.8 W with a radius of 141 NM. The GPS navigation signal may be unreliable due to testing on GPS frequencies used by shipboard navigation and handheld systems. Systems that rely on GPS, such as e-911, AIS and DSC, may be affected. The testing frequency will be GPS L1/L2.

The testing periods will be:

1701 on 27 May 22 until 1659 on 01 Jun 22

1701 on 16 Jun 22 until 1659 on 21 Jun 22

For additional information or to express concerns, contact the Coast Guard Navigation Center at (703) 313-5900 or at <https://www.navcen.uscg.gov/?pageName=dgpsSiteInfo¤tOutages>.

LNM: 15/22

OREGON – WASHINGTON – IDAHO – NOAA's planned cancellation of Paper and Raster charts (Revised from LNM 09/21)

The National Oceanic and Atmospheric Administration (NOAA) is undertaking a multi-year program to end production and maintenance of its suite of over 1,000 traditional paper nautical charts and all associated raster chart products and services, including: Print-on-Demand (POD) paper nautical charts, Full-size chart PDF files, BookletChart™ PDF files, NOAA raster navigational charts (NOAA RNC®), the NOAA RNC tile service, and the online RNC viewer.

Six months prior to cancellation, a notice of the intent to cancel a specific chart will be provided via a "Last Edition" notice. The final cancellation of a chart will be made via a "Canceled" notice. Both types of notices will appear in LNM Section IV, "Chart Correction." A comprehensive list of all cancelled NOAA charts is available at: <http://www.charts.noaa.gov/MCD/Dole.shtml>.

Traditional paper nautical chart production is ending to enable the creation and maintenance of larger scale, more up-to-date, higher quality coverage of NOAA's electronic navigational chart (NOAA ENC®) product. This will significantly enhance the amount of charted detail available to mariners. More information about NOAA's program to sunset traditional paper charts is on the NOAA Coast Survey website at: <https://nauticalcharts.noaa.gov/charts/farewell-to-traditional-nautical-charts.html>. An online NOAA Custom Chart application at: <https://devgis.charttools.noaa.gov/pod> is available to create chart images from ENC data, which may then be printed. Notices to Mariners will not be issued for NOAA Custom Charts.

LNM: 10/21

OREGON – WASHINGTON – IDAHO – Farewell to traditional nautical charts

NOAA is in the process of "sunseting" or ending the production of traditional paper charts. However, even prior to traditional chart production ending, users may notice differences between paper charts and ENCs. There are two broad categories of data that are applied onto NOAA ENCs and paper / raster nautical charts – "Critical Corrections" and "Routine" data. Critical Corrections may be newly discovered shoals or other dangers to navigation, as well as changes in the positions or characteristics of aids to navigation (buoys, beacons, and lights). These are typically changes that are published by the Coast Guard in the weekly LNM. Critical corrections are applied to ENCs first, then applied to paper and raster nautical charts. These changes generally appear on both product types (raster and ENC) within a week of each other. However, new Routine source data are now ONLY applied to NOAA ENCs and not to traditional paper and raster nautical charts. Routine data includes the results of ordinary hydrographic and shoreline surveys, which could be extensive. Any specific dangers revealed during routine surveys are extracted from the data and classified as Critical Corrections to be applied to all products. For more information visit NOAA's website: <https://nauticalcharts.noaa.gov/charts/farewell-to-traditional-nautical-charts.html>

LNM: 15/22

SECTION VIII - LIGHT LIST CORRECTIONS

An Asterisk *, indicates the column in which a correction has been made to new information

(1) No.	(2) Name and Location	(3) Position	(4) Characteristic	(5) Height	(6) Range	(7) Structure	(8) Remarks
687	<i>CMOP Seaside Research Lighted Buoy</i>	46-02-06.000N 124-14-36.000W	Fl Y 4s			Yellow foam buoy.	Maintained from Apr 1 to Oct 1. Private Aid. 21/22
693	* <i>CMOP Cape Disappointment Research Lighted Buoy</i>	46-10-24.000N 124-07-36.000W	Fl Y 4s			* Yellow foam buoy.	Maintained from Apr 1 to Oct 1. Private Aid. 21/22
10252	* <i>CMOP Elliot Point Research Lighted Buoy</i>	46-15-33.600N 123-36-30.000W	Fl Y 4s			* Yellow foam buoy.	Private Aid. 21/22
14560	* SKIPANON WATERWAY RANGE FRONT LIGHT	46-10-00.531N 123-54-55.884W	Q R	23		KRB on skeleton tower.	Visible 1.5° each side of rangeline. 21/22
16405	<i>Puget Sound Traffic Separation Lane Lighted Buoy SA</i>	48-11-27.362N 122-49-47.686W	Fl Y 2.5s		5	Yellow.	* AIS: MMSI 993692051 (21). 21/22

*

ENCLOSURES

Enclosure 1

OREGON - WASHINGTON - IDAHO - MONTANA - Summary of Bridge Lighting Discrepancies and Corrections

LNM: 21/22

Enclosure 2

OREGON - WASHINGTON - COLUMBIA RIVER - Summary of Dredging Operations

LNM: 21/22

Enclosure 3

OREGON - WASHINGTON - COLUMBIA RIVER - Summary of Marine Events

LNM: 21/22

Enclosure 4

COLUMBIA RIVER – VANCOUVER TO BONNEVILLE – Washougal Upper and Reed Island Federal Channel change

LNM: 17/22

Enclosure 5

OREGON – WILLAMETTE RIVER – PORTLAND TO WALNUT EDDY – Abernethy Bridge navigational diagram

LNM: 21/22

If you have any questions, comments, or need additional information concerning this or other LNMs (e.g. additions, deletions, corrections) contact the address or phone number on the front page.

CDR Brendan J. Harris
Chief, Waterways Management Branch
Thirteenth Coast Guard District

BRIDGE DISCREPANCIES AND CORRECTIONS

Enclosure (1)

BRIDGE DISCREPANCIES						
Waterway	Light List	Bridge Name	Location	Status	Date Reported	BNM
OREGON COAST						
None						
COLUMBIA RIVER						
None						
SNAKE RIVER						
	13617	Sargent Railroad Bridge		Extinguished	5/23/2022	0372-22
WILLAMETTE RIVER						
None						
WASHINGTON COAST						
None						
PUGET SOUND						
	16887	1st Ave South Highway Twin Bridge	Seattle, WA	Damaged; cannot open when winds exceed 10kts Mariners call bridge operator prior to transit	2/17/2022	0163-22
	18398	I-90 Highway Bridge (east channel)	Seattle, WA	Green center light extinguished	12/13/2021	0909-21
IDAHO						
None						
BRIDGE CORRECTIONS						
Waterway	Light List	Bridge Name	Location	Status	Date Reported	BNM
OREGON COAST						
None						
COLUMBIA RIVER						
None						
SNAKE RIVER						
None						
WILLAMETTE RIVER						
None						
WASHINGTON COAST						
None						
PUGET SOUND						
None						
IDAHO						
None						

Dredging operations are scheduled or in progress at the following locations:

Start Date	End Date	Times	Location	Dredge Vessel	Assist Vessel	Channel monitored	Disposal Area	LNM
1-Jun-22	11-Jun-22	24 Hrs / 7 Days	Rogue River; Entrance Channel (RM 00-35 to 00+00)	Patriot, Snohomish	Lummi Island Cassie Lind Regulator	VHF-FM 13 &16	ODS	20/22
12-Jun-22	30-Jun-22	24 Hrs / 7 Days	Rogue River; Entrance Channel (RM 00+00 to 00+10)	Patriot, Snohomish	Lummi Island Cassie Lind Regulator	VHF-FM 13 &16	ODS	20/22
1-Jul-22	23-Jul-22	24 Hrs / 7 Days	Rogue River; Boat Basin Access Channel (RM 00+03+17 to 00+21+00)	Patriot, Snohomish	Lummi Island Cassie Lind Regulator	VHF-FM 13 &16	ODS	20/22
24-Jul-22	24-Aug-22	24 Hrs / 7 Days	Rogue River; Gravel Bar (RM 00+00 to 16+37)	Patriot, Snohomish	Lummi Island Cassie Lind Regulator	VHF-FM 13 &16	ODS	20/22
6-May-22	31-May-22	24 Hrs / 7 Days	Grays Harbor; Entrance, Bar, Point Chehalis Range	M/V Essayons	None	VHF-FM 13 &16	Pt Chehalis South Beach Half Moon Bay	18/22

Mariners are advised that the start and ending dates for dredging activities may vary due to unforeseen on-site conditions, such as gill net fishing, weather and other factors.

USACE dredges request mariners transit at their slowest safe speed to minimize wake when in the vicinity of a dredge and proceed with caution after making passing arrangements. Vessel(s) and/or equipment may encroach into the channel.

MARINE EVENTS

Enclosure (3)

SECTOR COLUMBIA RIVER MARINE EVENTS			
EVENT DATE	TIME	EVENT NAME	EVENT LOCATION
26-May-22	1800-2130	OCSA Sailboat Race -Spring Evening Series	Columbia River between I-5 and I-205 Bridges, Portland, OR
27-May-22	2130-2300	Portland Rose Festival Fireworks	Portland, OR
27-May-22	1200-1730	Boatnik 2022	Rogue River at Grants Pass, OR
28-May-22	1200-1730	Boatnik 2022	Rogue River at Grants Pass, OR
29-May-22	1200-1730	Boatnik 2022	Rogue River at Grants Pass, OR
30-May-22	1200-1730	Boatnik 2022	Rogue River at Grants Pass, OR
30-May-22	1615-2100	OCSA Sailboat Race -ISC Monday Night Racing Series	Columbia River between I-5 and I-205 Bridges, Portland, OR
31-May-22	1800-2130	OCSA Sailboat Race -SYSCO Summer Evening Series	Columbia River between I-5 and I-205 Bridges, Portland, OR
2-Jun-22	1800-2130	OCSA Sailboat Race -SYSCO Summer Evening Series	Columbia River between I-5 and I-205 Bridges, Portland, OR
3-Jun-22	0630-1730	Tri City Water Follies Spring Testing	Columbia River, Kennewick, WA
4-Jun-22	0900-1200	Ridgefield Big Paddle	Lake River, Ridgefield, WA
5-Jun-22	1230-1630	OCSA Sailboat Race -PYC Rose Festival Regatta	Columbia River between I-5 and I-205 Bridges, Portland, OR
6-Jun-22	1615-2100	OCSA Sailboat Race -ISC Monday Night Racing Series	Columbia River between I-5 and I-205 Bridges, Portland, OR
7-Jun-22	1800-2130	OCSA Sailboat Race -SYSCO Summer Evening Series	Columbia River between I-5 and I-205 Bridges, Portland, OR
9-Jun-22	1800-2130	OCSA Sailboat Race -SYSCO Summer Evening Series	Columbia River between I-5 and I-205 Bridges, Portland, OR
11-Jun-22	0700-1800	Portland Rose Festival	Willamette River between Marquam and Hawthorne Bridges in Portland, OR
12-Jun-22	0700-1800	Portland Rose Festival	Willamette River between Marquam and Hawthorne Bridges in Portland, OR
12-Jun-22	1230-1630	OCSA Sailboat Race -Single Handed BC Race	Columbia River between I-5 and I-205 Bridges, Portland, OR
13-Jun-22	1615-2100	OCSA Sailboat Race -ISC Monday Night Racing Series	Columbia River between I-5 and I-205 Bridges, Portland, OR
14-Jun-22	1800-2130	OCSA Sailboat Race -SYSCO Summer Evening Series	Columbia River between I-5 and I-205 Bridges, Portland, OR
16-Jun-22	1800-2130	OCSA Sailboat Race -SYSCO Summer Evening Series	Columbia River between I-5 and I-205 Bridges, Portland, OR
18-Jun-22	1330-2130	OCSA Sailboat Race -RCYC Medium Distance Race	Columbia River between Buoy 14 east to Ackerman Island and back, Portland, OR
20-Jun-22	1615-2100	OCSA Sailboat Race -ISC Monday Night Racing Series	Columbia River between I-5 and I-205 Bridges, Portland, OR
21-Jun-22	1000-1700	Columbia Gorge Racing Association RS Aero World Championship	Columbia River Between Cascade Locks, OR and Stevenson, WA
21-Jun-22	1800-2130	OCSA Sailboat Race -SYSCO Summer Evening Series	Columbia River between I-5 and I-205 Bridges, Portland, OR

MARINE EVENTS

Enclosure (3)

22-Jun-22	1000-1700	Columbia Gorge Racing Association RS Aero World Championship	Columbia River Between Cascade Locks, OR and Stevenson, WA
23-Jun-22	1800-2130	OCSA Sailboat Race -SYSCO Summer Evening Series	Columbia River between I-5 and I-205 Bridges, Portland, OR
23-Jun-22	1000-1700	Columbia Gorge Racing Association RS Aero World Championship	Columbia River Between Cascade Locks, OR and Stevenson, WA
24-Jun-22	1000-1700	Columbia Gorge Racing Association RS Aero World Championship	Columbia River Between Cascade Locks, OR and Stevenson, WA
24-Jun-22	0730-1930	Richland Regatta	Columbia River, Kennewick, WA
25-Jun-22	2100-2300	Umatilla Landing Day Fireworks	Umatilla, OR
25-Jun-22	1000-1700	Columbia Gorge Racing Association RS Aero World Championship	Columbia River Between Cascade Locks, OR and Stevenson, WA
25-Jun-22	0730-1930	Richland Regatta	Columbia River, Kennewick, WA
25-Jun-22	1030-1330	Save Salmon	Willamette River, Portland, OR
25-Jun-22	0630-1930	2022 Rooster Rock Outrigger Canoe Race	Columbia River, Corbett, OR
26-Jun-22	1700-2130	OCSA Sailboat Race -SYSCO Grow the Sport BC Race	Columbia River between I-5 and I-205 Bridges, Portland, OR
26-Jun-22	1000-1700	Columbia Gorge Racing Association RS Aero World Championship	Columbia River Between Cascade Locks, OR and Stevenson, WA
26-Jun-22	0730-1930	Richland Regatta	Columbia River, Kennewick, WA
27-Jun-22	1830-2130	OCSA Sailboat Race -OWSA Womens Regatta	Columbia River between I-5 and I-205 Bridges, Portland, OR
27-Jun-22	1615-2100	OCSA Sailboat Race -ISC Monday Night Racing Series	Columbia River between I-5 and I-205 Bridges, Portland, OR
27-Jun-22	1000-1700	Columbia Gorge Racing Association RS Aero World Championship	Columbia River Between Cascade Locks, OR and Stevenson, WA
28-Jun-22	1800-2130	OCSA Sailboat Race -SYSCO Summer Evening Series	Columbia River between I-5 and I-205 Bridges, Portland, OR
28-Jun-22	1000-1700	Columbia Gorge Racing Association RS Aero World Championship	Columbia River Between Cascade Locks, OR and Stevenson, WA
29-Jun-22	1000-1700	Columbia Gorge Racing Association RS Aero World Championship	Columbia River Between Cascade Locks, OR and Stevenson, WA
30-Jun-22	1800-2130	OCSA Sailboat Race -SYSCO Summer Evening Series	Columbia River between I-5 and I-205 Bridges, Portland, OR
30-Jun-22	1000-1700	Columbia Gorge Racing Association RS Aero World Championship	Columbia River Between Cascade Locks, OR and Stevenson, WA
1-Jul-22	1000-1700	Columbia Gorge Racing Association RS Aero World Championship	Columbia River Between Cascade Locks, OR and Stevenson, WA
2-Jul-22	2130-2300	Yachats 4th of July	Yachats, OR
2-Jul-22	2100-2330	Independence Day Fireworks at the Port	Ilwaco WA
3-Jul-22	2100-2330	Mill Casino Independence Day Celebration	North Bend, OR
3-Jul-22	2100-2330	Waldport Fireworks	Bayshore Split over Alsea Bay , Waldport, OR
4-Jul-22	2130-2300	St. Helens 4th of July	St. Helens OR
4-Jul-22	2130-2230	Fireworks over the Bay	Coos Bay, OR
4-Jul-22	2100-2330	Lincoln City 4th of July	Lincoln City, OR
4-Jul-22	2000-2300	Brookings, OR July 4th Fireworks	Brookings, OR

MARINE EVENTS

Enclosure (3)

4-Jul-22	2130-2300	Florence Independence day Celebration	Port of Siuslaw end Harbor Street Florence OR 97439
4-Jul-22	2130-2300	Astoria Warrenton 4th of July fireworks	Astoria Warrenton
4-Jul-22	2100-2330	Bandon 4th of July	Bandon, OR
4-Jul-22	2130-2300	Fort Dalles Fourth	Dalles, OR
4-Jul-22	2100-2330	July 4th party at the port of Gold Beach	Gold Beach, OR
4-Jul-22	2130-2300	Newport 4th of July	Newport, OR
4-Jul-22	2130-2300	Kennewick fireworks	Kennewick, WA
4-Jul-22	2100-2330	Washugal 4th of July	Washugal, WA
4-Jul-22	2130-2300	Port Orford 4th of July	Port Orford, OR
4-Jul-22	2000-2230	Cascade Locks 4th of July	Port of Cascade Locks, OR
4-Jul-22	0900-2130	Oaks Park 4th of July	Willamette River, Portland, OR
4-Jul-22	2100-2330	Waterfront Blues Festival	Barge on Willameter River between Hawthorne and Marquam bridges, Portland, OR
4-Jul-22	2100-2330	Waverly Country Club 4th of July	Willamette River, Portland, OR
4-Jul-22	2100-2130	Clatskanie Heritage Days	Clatskanie River, Clatskanie, OR
4-Jul-22	2200-2300	Westport Fireworks	Pacific Ocean, Westport, Wa
5-Jul-22	1800-2130	OCSA Sailboat Race -SYSCO Summer Evening Series	Columbia River between I-5 and I-205 Bridges, Portland, OR
7-Jul-22	1800-2130	OCSA Sailboat Race -SYSCO Summer Evening Series	Columbia River between I-5 and I-205 Bridges, Portland, OR
8-Jul-22	0700-1800	Kiteboard 4 Cancer	Columbia River, Hood River, OR
9-Jul-22	2130-2300	RaINIER Days/ Days in the Park	Raineir WA
9-Jul-22	1030-1730	Gorge Outrigger Canoe Race	Columbia River between Stevenson, WA and Bingen, WA
9-Jul-22	0700-1800	Kiteboard 4 Cancer	Columbia River, Hood River, OR
10-Jul-22	1030-1830	The Big Float	Willamette River, Downtown Portland, OR
10-Jul-22	0700-1800	Kiteboard 4 Cancer	Columbia River, Hood River, OR
10-Jul-22	0700-1630	Portland Bridge Swim	Portland, OR
10-Jul-22	1130-1730	Gorge Downwind Champs	Columbia River, Home Valley, WA to Hood River, OR
10-Jul-22	1230-1630	OCSA Sailboat Race -PYC Summer Regatta	Columbia River between I-5 and I-205 Bridges, Portland, OR
11-Jul-22	1130-1730	Gorge Downwind Champs	Columbia River, Home Valley, WA to Hood River, OR
11-Jul-22	1615-2100	OCSA Sailboat Race -ISC Monday Night Racing Series	Columbia River between I-5 and I-205 Bridges, Portland, OR
12-Jul-22	1130-1730	Gorge Downwind Champs	Columbia River, Home Valley, WA to Hood River, OR
12-Jul-22	1800-2130	OCSA Sailboat Race -SYSCO Twilight Series	Columbia River between I-5 and I-205 Bridges, Portland, OR
13-Jul-22	1130-1730	Gorge Downwind Champs	Columbia River, Home Valley, WA to Hood River, OR
14-Jul-22	1130-1730	Gorge Downwind Champs	Columbia River, Home Valley, WA to Hood River, OR

MARINE EVENTS

Enclosure (3)

14-Jul-22	1800-2130	OCSA Sailboat Race -SYSCO Twilight Series	Columbia River between I-5 and I-205 Bridges, Portland, OR
15-Jul-22	1130-1730	Gorge Downwind Champs	Columbia River, Home Valley, WA to Hood River, OR
16-Jul-22	2000-0000	Cathlamet Bald Eagle Days	Birnie Creek in Cathlamet, WA
16-Jul-22	1130-1730	Gorge Downwind Champs	Columbia River, Home Valley, WA to Hood River, OR
16-Jul-22	1230-1630	OCSA Sailboat Race -SYSCO Match Race	Columbia River between I-5 and I-205 Bridges, Portland, OR
17-Jul-22	1630-2130	OCSA Sailboat Race -PYC Family Night BC Race	Columbia River between I-5 and I-205 Bridges, Portland, OR
17-Jul-22	0730-1730	Clearwater River Rush Jet Boat Race	Clearwater River, Orofino, ID to Kamiah, ID
18-Jul-22	0730-1730	Clearwater River Rush Jet Boat Race	Clearwater River, Orofino, ID to Kamiah, ID
18-Jul-22	1615-2100	OCSA Sailboat Race -ISC Monday Night Racing Series	Columbia River between I-5 and I-205 Bridges, Portland, OR
19-Jul-22	0730-1730	Clearwater River Rush Jet Boat Race	Clearwater River, Orofino, ID to Kamiah, ID
19-Jul-22	0830-1730	Columbia Gorge Racing Association US Optimist National Championship	Columbia River Between Cascade Locks, OR and Stevenson, WA
19-Jul-22	1800-2130	OCSA Sailboat Race -SYSCO Twilight Series	Columbia River between I-5 and I-205 Bridges, Portland, OR
20-Jul-22	0830-1730	Columbia Gorge Racing Association US Optimist National Championship	Columbia River Between Cascade Locks, OR and Stevenson, WA
21-Jul-22	1800-2130	OCSA Sailboat Race -SYSCO Twilight Series	Columbia River between I-5 and I-205 Bridges, Portland, OR
21-Jul-22	0830-1730	Columbia Gorge Racing Association US Optimist National Championship	Columbia River Between Cascade Locks, OR and Stevenson, WA
22-Jul-22	0830-1730	Columbia Gorge Racing Association US Optimist National Championship	Columbia River Between Cascade Locks, OR and Stevenson, WA
23-Jul-22	0830-1730	Columbia Gorge Racing Association US Optimist National Championship	Columbia River Between Cascade Locks, OR and Stevenson, WA
23-Jul-22	1000-1030	Garibaldi Days Fireworks	Tillamook Bay, Garibaldi, OR
24-Jul-22	1630-2130	OCSA Sailboat Race -RCYC Pirates Beer Can Race	Columbia River between I-5 and I-205 Bridges, Portland, OR
24-Jul-22	0830-1730	Columbia Gorge Racing Association US Optimist National Championship	Columbia River Between Cascade Locks, OR and Stevenson, WA
25-Jul-22	1615-2100	OCSA Sailboat Race -ISC Monday Night Racing Series	Columbia River between I-5 and I-205 Bridges, Portland, OR
26-Jul-22	1800-2130	OCSA Sailboat Race -SYSCO Soaker	Columbia River between I-5 and I-205 Bridges, Portland, OR
26-Jul-22	1800-2130	OCSA Sailboat Race -SYSCO Twilight Series	Columbia River between I-5 and I-205 Bridges, Portland, OR
27-Jul-22	1300-1630	OCSA Sailboat Race -Ranger 20 Nationals	Columbia River between I-5 and I-205 Bridges, Portland, OR

MARINE EVENTS

Enclosure (3)

28-Jul-22	1300-1630	OCSA Sailboat Race -Ranger 20 Nationals	Columbia River between I-5 and I-205 Bridges, Portland, OR
28-Jul-22	1800-2130	OCSA Sailboat Race -SYSCO Twilight Series	Columbia River between I-5 and I-205 Bridges, Portland, OR
29-Jul-22	0530-1830	Tri City Water Follies Columbia Cup	Columbia River, Kennewick, WA
29-Jul-22	1300-1630	OCSA Sailboat Race -Ranger 20 Nationals	Columbia River between I-5 and I-205 Bridges, Portland, OR
30-Jul-22	0530-1830	Tri City Water Follies Columbia Cup	Columbia River, Kennewick, WA
30-Jul-22	1300-1630	OCSA Sailboat Race -Ranger 20 Nationals	Columbia River between I-5 and I-205 Bridges, Portland, OR
31-Jul-22	0530-1830	Tri City Water Follies Columbia Cup	Columbia River, Kennewick, WA
31-Jul-22	1300-1630	OCSA Sailboat Race -Ranger 20 Nationals	Columbia River between I-5 and I-205 Bridges, Portland, OR
1-Aug-22	1615-2100	OCSA Sailboat Race -ISC Monday Night Racing Series	Columbia River between I-5 and I-205 Bridges, Portland, OR
2-Aug-22	1800-2130	OCSA Sailboat Race -SYSCO Twilight Series	Columbia River between I-5 and I-205 Bridges, Portland, OR
4-Aug-22	1800-2130	OCSA Sailboat Race -SYSCO Twilight Series	Columbia River between I-5 and I-205 Bridges, Portland, OR
6-Aug-22	1330-1630	OCSA Sailboat Race -SYSCO Dual Bridge Duel & CC Cup	Columbia River between I-5 and I-205 Bridges, Portland, OR
6-Aug-22	1000-1700	Smoke on the Water Hobie Cat Regatta	Columbia River, Skamokawa, WA
6-Aug-22	0730-1630	Paddle for Life	Lake River, Ridgefield, WA
6-Aug-22	1000-1700	Double Damned 2022	Columbia River between Cascade Locks and The Dalles
7-Aug-22	1000-1700	Smoke on the Water Hobie Cat Regatta	Columbia River, Skamokawa, WA
8-Aug-22	1615-2100	OCSA Sailboat Race -ISC Monday Night Racing Series	Columbia River between I-5 and I-205 Bridges, Portland, OR
9-Aug-22	1800-2130	OCSA Sailboat Race -SYSCO Twilight Series	Columbia River between I-5 and I-205 Bridges, Portland, OR
11-Aug-22	1800-2130	OCSA Sailboat Race -SYSCO Twilight Series	Columbia River between I-5 and I-205 Bridges, Portland, OR
13-Aug-22	1030-1330	Swim the Snake	Snake River, within Lake Bryon near Lyons Ferry State Park, WA
13-Aug-22	1045-1600	OCSA Sailboat Race -SYSCO St. Helens Race & Cruise	Columbia River between I-5 and I-205 Bridges, Portland, OR
14-Aug-22	1045-1600	OCSA Sailboat Race -SYSCO St. Helens Race & Cruise	Columbia River between I-5 and I-205 Bridges, Portland, OR
15-Aug-22	1615-2100	OCSA Sailboat Race -ISC Monday Night Racing Series	Columbia River between I-5 and I-205 Bridges, Portland, OR
16-Aug-22	1800-2130	OCSA Sailboat Race -SYSCO Twilight Series	Columbia River between I-5 and I-205 Bridges, Portland, OR
18-Aug-22	1800-2130	OCSA Sailboat Race -SYSCO Twilight Series	Columbia River between I-5 and I-205 Bridges, Portland, OR
20-Aug-22	1630-2100	OCSA Sailboat Race -CYC Sport Your Colors BC Race	Columbia River between I-5 and I-205 Bridges, Portland, OR

MARINE EVENTS

Enclosure (3)

22-Aug-22	1615-2100	OCSA Sailboat Race -ISC Monday Night Racing Series	Columbia River between I-5 and I-205 Bridges, Portland, OR
23-Aug-22	1800-2130	OCSA Sailboat Race -SYSCO Twilight Series	Columbia River between I-5 and I-205 Bridges, Portland, OR
25-Aug-22	1800-2130	OCSA Sailboat Race -SYSCO Twilight Series	Columbia River between I-5 and I-205 Bridges, Portland, OR
28-Aug-22	1630-2100	OCSA Sailboat Race -Cal 20 Mardi Gras BC Race	Columbia River between I-5 and I-205 Bridges, Portland, OR
29-Aug-22	1615-2100	OCSA Sailboat Race -ISC Monday Night Racing Series	Columbia River between I-5 and I-205 Bridges, Portland, OR
30-Aug-22	1800-2130	OCSA Sailboat Race -SYSCO Twilight Series	Columbia River between I-5 and I-205 Bridges, Portland, OR
1-Sep-22	1800-2130	OCSA Sailboat Race -SYSCO Twilight Series	Columbia River between I-5 and I-205 Bridges, Portland, OR
5-Sep-22	1615-2100	OCSA Sailboat Race -ISC Monday Night Racing Series	Columbia River between I-5 and I-205 Bridges, Portland, OR
10-Sep-22	1130-2100	OCSA Sailboat Race -RCYC Long Distance Race	Columbia River between Martin Slough, Woodland, WA and Willamette River, Portland Or
11-Sep-22	0900-2100	OCSA Sailboat Race -RCYC Long Distance Race	Columbia River between Martin Slough, Woodland, WA and Willamette River, Portland Or
12-Sep-22	1615-2100	OCSA Sailboat Race -ISC Monday Night Racing Series	Columbia River between I-5 and I-205 Bridges, Portland, OR
17-Sep-22	8:00- 1800	LOCR Willamette River Regatta	Lake Oswego, OR
17-Sep-22	1230-1630	OCSA Sailboat Race -SYSCO One-Design Races	Columbia River between I-5 and I-205 Bridges, Portland, OR
18-Sep-22	8:00- 1800	LOCR Willamette River Regatta	Lake Oswego, OR
18-Sep-22	1230-1630	OCSA Sailboat Race -CYC Sailing on Sunday Series	Columbia River between I-5 and I-205 Bridges, Portland, OR
19-Sep-22	1615-2100	OCSA Sailboat Race -ISC Monday Night Racing Series	Columbia River between I-5 and I-205 Bridges, Portland, OR
24-Sep-22	1530-2100	OCSA Sailboat Race -OWSA Out of the World BC Race	Columbia River between I-5 and I-205 Bridges, Portland, OR
25-Sep-22	1230-1630	OCSA Sailboat Race -CYC Sailing on Sunday Series	Columbia River between I-5 and I-205 Bridges, Portland, OR
26-Sep-22	1615-2100	OCSA Sailboat Race -ISC Monday Night Racing Series	Columbia River between I-5 and I-205 Bridges, Portland, OR

SECTOR PUGET SOUND MARINE EVENTS

EVENT DATE	TIME	EVENT NAME	EVENT LOCATION
25-May-22	1800-2030	Wednesday Race Series	Port Townsend Bay
25-May-22	1700-2100	CYC Seattle Wednesday night evening series	Lake Washington
25-May-22	1700-2100	CYC Sound Wednesday Sound Evening Series	IVO of Shilshole Marina

MARINE EVENTS

Enclosure (3)

26-May-22	1730-1930	Sequim Bay Duck Dodge Race	Sequim Bay, WA
26-May-22	1700-2100	CYC Sound Thursday Evening Series	IVO of Shilshole Marina
27-May-22	1800-2030	Friday Sailing Series	Port Townsend Bay
28-May-22	0900-2359	Swiftsure International Yacht Race	Strait of Juan de Fuca
29-May-22	1200-1800	Ski to Sea	Bellingham Bay
29-May-22	all day	Swiftsure International Yacht Race	Strait of Juan de Fuca
30-May-22	0000-0600	Swiftsure International Yacht Race	Strait of Juan de Fuca
31-May-22	1800-2200	Duck Dodge Lake Union	Lake Union
31-May-22	1700-2100	CYC Seattle Lake Tuesday Evening Series	Lake Washington
1-Jun-22	1900-2130	Windseekers Series 2022	Commencement Bay, Dalco Passage
1-Jun-22	1800-2030	Wednesday Race Series	Port Townsend Bay
1-Jun-22	1700-2100	CYC Seattle Wednesday night evening series	Lake Washington
1-Jun-22	1700-2100	CYC Sound Wednesday Sound Evening Series	West, North and South of Shilshole Marina
2-Jun-22	1800-2100	TTPYC Thursday Night Sailboat Race Series	Vashon Island from Three Tree Point south to Des Moines marina and Redondo
2-Jun-22	1730-1930	Sequim Bay Duck Dodge Race	Sequim Bay, WA
2-Jun-22	1700-2100	CYC Sound Thursday Evening Series	West, North and South of Shilshole Marina
3-Jun-22	1800-2100	Milltown Sailing Assn - Log Dodge Series Sailboat Race	Port Gardner, Possession Sound, Snohomish River entrance
3-Jun-22	1800-2000	Spring Friday Night Series	Sinclair Inlet
3-Jun-22	1900-2130	Take Your Time Friday's Race Series	Shilshole Bay
4-Jun-22	1000-1800	Milltown Sailing Assn - Mid-Distance Series Sailboat Race	Port Gardner, Possession Sound, Saratoga Passage
4-Jun-22	1015-1330	Squaxin Island	Squaxin Island/ Olympia
4-Jun-22	1200-1800	Classic Mariner's Regatta	Port Townsend Bay
4-Jun-22	0900-1800	Blake Island Race (Tri-Island #3)	Shilshole Bay to Blake Island and back
4-Jun-22	0700-2100	Poker Run	Sinclair Inlet
4-Jun-22	1000-1800	SBYC Saturday Race Series	Sequim Bay, WA
4-Jun-22	1000-1600	BYC Blake Island Race	Rich Pass
5-Jun-22	1000-1400	Classic Mariner's Regatta	Port Townsend Bay
5-Jun-22	1200-1600	Lido14 Sunday Funday Series	Commencement Bay from Tyee Marina to Blair Waterway to Browns Point. Quartermaster Harbor
6-Jun-22	1830-2000	Ballard Cup Series II	Shilshole Bay
7-Jun-22	1800-2200	Duck Dodge Lake Union	Lake Union
7-Jun-22	1700-2100	CYC Seattle Lake Tuesday Evening Series	Lake Washington
8-Jun-22	1900-2130	Windseekers Series 2022	Commencement Bay, Dalco Passage
8-Jun-22	1800-2030	Wednesday Race Series	Port Townsend Bay
8-Jun-22	1700-2100	CYC Seattle Wednesday night evening series	Lake Washington
8-Jun-22	1700-2100	CYC Sound Wednesday Sound Evening Series	West, North and South of Shilshole Marina

MARINE EVENTS

Enclosure (3)

9-Jun-22	1800-2100	TTPYC Thursday Night Sailboat Race Series	Vashon Island from Three Tree Point south to Des Moines marina and Redondo
9-Jun-22	1730-1930	Sequim Bay Duck Dodge Race	Sequim Bay, WA
9-Jun-22	1700-2100	CYC Sound Thursday Evening Series	West, North and South of Shilshole Marina
10-Jun-22	1800-2100	Milltown Sailing Assn - Log Dodge Series Sailboat Race	Port Gardner, Possession Sound, Snohomish River entrance
10-Jun-22	1900-nxt day	Seventy48	Thea Foss Waterway to Point Hudson
10-Jun-22	1800-2030	Friday Sailing Series	Port Townsend Bay
10-Jun-22	1800-2000	Spring Friday Night Series	Sinclair Inlet
10-Jun-22	1700-2000	Lido14 Fun on Fridays	Commencement Bay, Tye Marina to Blair Waterway to Browns Point.
10-Jun-22	1900-2130	Take Your Time Friday's Race Series	Shilshole Bay
11-Jun-22	all day	Seventy48	Thea Foss Waterway to Point Hudson
11-Jun-22	1300-1500	Elliot Bay Marina	Elliot Bay
11-Jun-22	0900-2200	TYC Summer Vashon Sailboat Race	Circumnavigate Vashon Island
11-Jun-22	1330-1600	Whidbey Adventure Swim	Saratoga Passage
12-Jun-22	prev day-1900	Seventy48	Thea Foss Waterway to Point Hudson
12-Jun-22	1200-1600	Lido14 Sunday Funday Series	Commencement Bay from Tye Marina to Blair Waterway to Browns Point. Quartermaster Harbor
13-Jun-22	0500-nxt day	Race To Alaska	Port Townsend, WA to Victoria, BC
13-Jun-22	1830-2000	Ballard Cup Series II	Shilshole Bay
14-Jun-22	prev day-1700	Race To Alaska	Port Townsend, WA to Victoria, BC
14-Jun-22	1800-2200	Duck Dodge Lake Union	Lake Union
14-Jun-22	1700-2100	CYC Seattle Lake Tuesday Evening Series	Lake Washington
15-Jun-22	1900-2130	Windseekers Series 2022	Commencement Bay, Dalco Passage
15-Jun-22	1800-2030	Wednesday Race Series	Port Townsend Bay
15-Jun-22	1700-2100	CYC Seattle Wednesday night evening series	Lake Washington
15-Jun-22	1700-2100	CYC Sound Wednesday Sound Evening Series	West, North and South of Shilshole Marina
16-Jun-22	1900-2030	Elliot Bay Marina	Elliot Bay
16-Jun-22	1800-2100	TTPYC Thursday Night Sailboat Race Series	Vashon Island from Three Tree Point south to Des Moines marina and Redondo
16-Jun-22	1730-1930	Sequim Bay Duck Dodge Race	Sequim Bay, WA
16-Jun-22	1700-2100	CYC Sound Thursday Evening Series	West, North and South of Shilshole Marina
17-Jun-22	1800-2100	Milltown Sailing Assn - Log Dodge Series Sailboat Race	Port Gardner, Possession Sound, Snohomish River entrance
17-Jun-22	1800-2000	Spring Friday Night Series	Sinclair Inlet

MARINE EVENTS

Enclosure (3)

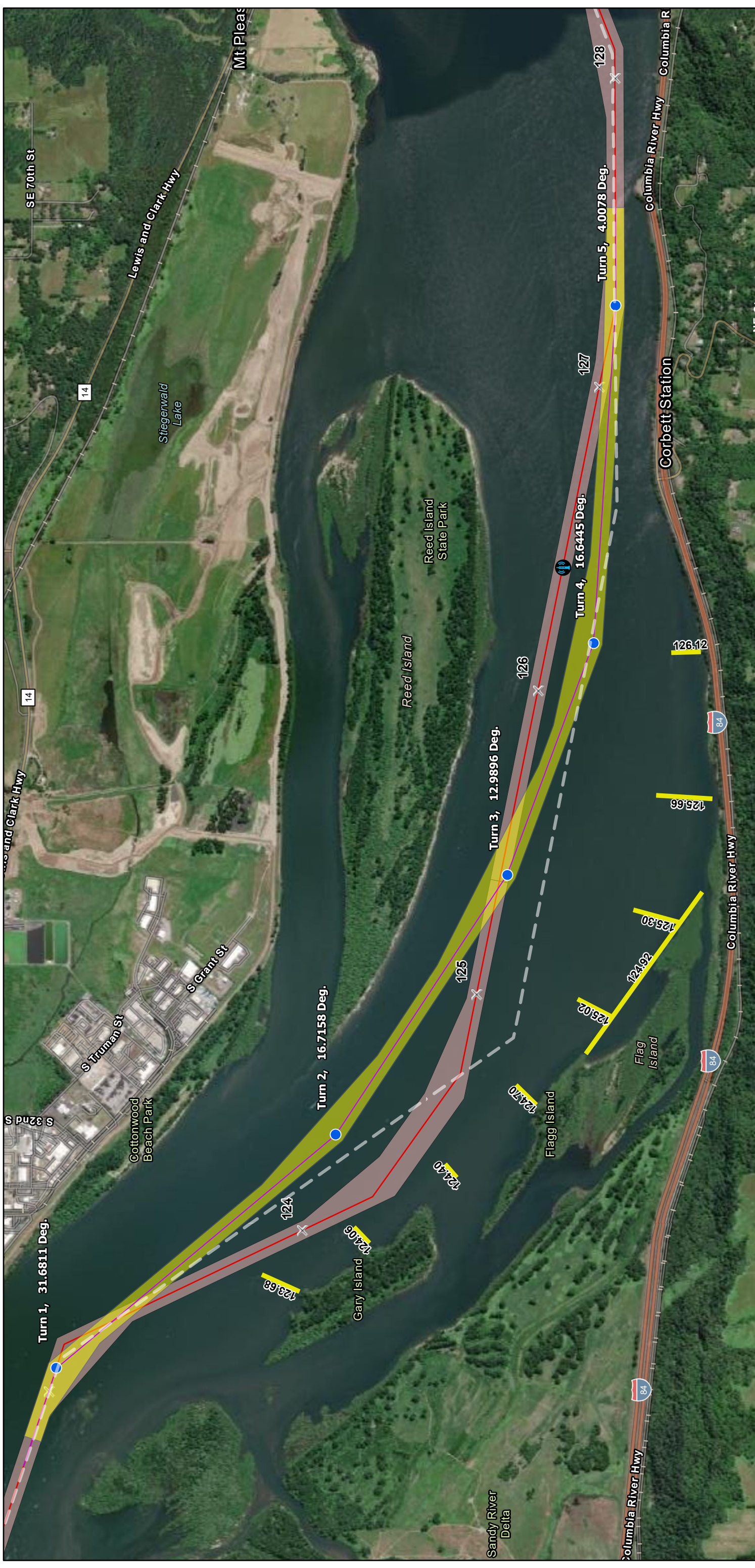
17-Jun-22	1700-2000	Lido14 Fun on Fridays	Commencement Bay, Tye Marina to Blair Waterway to Browns Point.
17-Jun-22	1900-2130	Take Your Time Friday's Race Series	Shilshole Bay
18-Jun-22	1200-1530	Three Hour Tour Series 1	Commencement Bay, Dalco Passage
18-Jun-22	1000-1800	WSSA #7 – Brownsville Race	Brownsville, Agate Pass, Burke Bay
18-Jun-22	1000-1800	Watmough Bay Race	Port Townsend Bay to SE Lopez Island
18-Jun-22	1000-1400	Sound Rowers' Rat Island Regatta	Fort Worden State Park around Rat Island and back
18-Jun-22	0730-1900	Round Orcas	Circumnavigates Orcas Island
18-Jun-22	1000-1800	SBYC Saturday Race Series	Sequim Bay, WA
19-Jun-22	1000-1800	Watmough Bay Race	Port Townsend Bay to SE Lopez Island
20-Jun-22	all day	WA360	Port Townsend Bay to Budd Inlet to Bellingham to Point Roberts back to Port Townsend Bay
20-Jun-22	1000-1700	Race Week Pacific Northwest	IVO Guemes, Vendovi, Eliza, Lummi, and Sinclair Islands
21-Jun-22	all day	WA360	Port Townsend Bay to Budd Inlet to Bellingham to Point Roberts back to Port Townsend Bay
21-Jun-22	1000-1700	Race Week Pacific Northwest	IVO Guemes, Vendovi, Eliza, Lummi, and Sinclair Islands
21-Jun-22	1800-2200	Duck Dodge Lake Union	Lake Union
21-Jun-22	1700-2100	CYC Seattle Lake Tuesday Evening Series	Lake Washington
22-Jun-22	1900-2130	Windseekers Series 2022	Commencement Bay, Dalco Passage
22-Jun-22	1800-2030	Wednesday Race Series	Port Townsend Bay
22-Jun-22	1000-1700	Race Week Pacific Northwest	IVO Guemes, Vendovi, Eliza, Lummi, and Sinclair Islands
22-Jun-22	1700-2100	CYC Seattle Wednesday night evening series	Lake Washington
22-Jun-22	1700-2100	CYC Sound Wednesday Sound Evening Series	West, North and South of Shilshole Marina
23-Jun-22	1900-2030	Elliot Bay Marina	Elliot Bay
23-Jun-22	1800-2100	TTPYC Thursday Night Sailboat Race Series	Vashon Island from Three Tree Point south to Des Moines marina and Redondo
23-Jun-22	1000-1700	Race Week Pacific Northwest	IVO Guemes, Vendovi, Eliza, Lummi, and Sinclair Islands
23-Jun-22	1730-1930	Sequim Bay Duck Dodge Race	Sequim Bay, WA
23-Jun-22	1700-2100	CYC Sound Thursday Evening Series	West, North and South of Shilshole Marina
24-Jun-22	1800-2100	Milltown Sailing Assn - Log Dodge Series Sailboat Race	Port Gardner, Possession Sound, Snohomish River entrance
24-Jun-22	1800-2030	Friday Sailing Series	Port Townsend Bay
24-Jun-22	1800-2000	Spring Friday Night Series	Sinclair Inlet
24-Jun-22	1000-1700	Race Week Pacific Northwest	IVO Guemes, Vendovi, Eliza, Lummi, and Sinclair Islands
24-Jun-22	1900-2130	Take Your Time Friday's Race Series	Shilshole Bay

MARINE EVENTS

Enclosure (3)

25-Jun-22	1100-1900	Captain Raynaud International Schooner Race	Commencement Bay to Alki Point
25-Jun-22	2210-2230	Manette Bridge Fireworks AKA Bremerton Bridge Blast	Manette Bridge /Bremerton, WA
25-Jun-22	1100-1800	Cruise and Snooze A and B	Shilshole Bay to Pt Madison
26-Jun-22	1100-1900	Captain Raynaud International Schooner Race	Blakely Rock Light to Foulweather Bluff
26-Jun-22	1200-1600	Lido14 Sunday Funday Series	Commencement Bay from Tye Marina to Blair Waterway to Browns Point. Quartermaster Harbor
26-Jun-22	0600-1000	IRONMAN Coeur d'Alene	Lake Coeur d'Alene
26-Jun-22	1100-1800	Cruise and Snooze A and B	Pt Madison to Shilshole Bay
27-Jun-22	1100-1900	Captain Raynaud International Schooner Race	Klas Rock to Point Wilson
27-Jun-22	1830-2000	Ballard Cup Series II	Shilshole Bay
27-Jun-22	2200-2215	Vazquez Wedding Fireworks	South Hood Canal
28-Jun-22	1800-2200	Duck Dodge Lake Union	Lake Union
28-Jun-22	1700-2100	CYC Seattle Lake Tuesday Evening Series	Lake Washington
29-Jun-22	1900-2130	Windseekers Series 2022	Commencement Bay, Dalco Passage
29-Jun-22	1800-2030	Wednesday Race Series	Port Townsend Bay
29-Jun-22	1700-2100	CYC Seattle Wednesday night evening series	Lake Washington
29-Jun-22	1700-2100	CYC Sound Wednesday Sound Evening Series	West, North and South of Shilshole Marina
30-Jun-22	1900-2030	Elliot Bay Marina	Elliot Bay
30-Jun-22	1800-2100	TTPYC Thursday Night Sailboat Race Series	Vashon Island from Three Tree Point south to Des Moines marina and Redondo
30-Jun-22	1730-1930	Sequim Bay Duck Dodge Race	Sequim Bay, WA
30-Jun-22	1700-2100	CYC Sound Thursday Evening Series	West, North and South of Shilshole Marina

Federal Navigation Channel Proposed Realignment - Reed Island Reach



4/22/2022, 11:18:29 AM

Buoy 61

Proposed Channel Realignment Turns

Proposed Federal Channel Realignment - 29 March 2022

Proposed Federal Channel Area, 29 March 2022

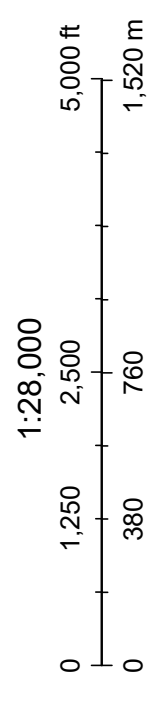
River Miles, USACE

Piledikes

Federal Navigation Channel Centerline

Federal Navigation Channel

State Boundary



Earthstar Geographics, County of Clark, WA, Oregon Metro, State of Oregon GEO, WA State Parks GIS, Esri Canada, Esri, HERE, Garmin, SafeGraph, GoTechnologies, Inc, METI/NASA, USGS, Bureau of Land Management, EPA, NPS, US Census Bureau, USDA

U. S. Army Corps of Engineers,
Portland District CENWP-ENC-TG



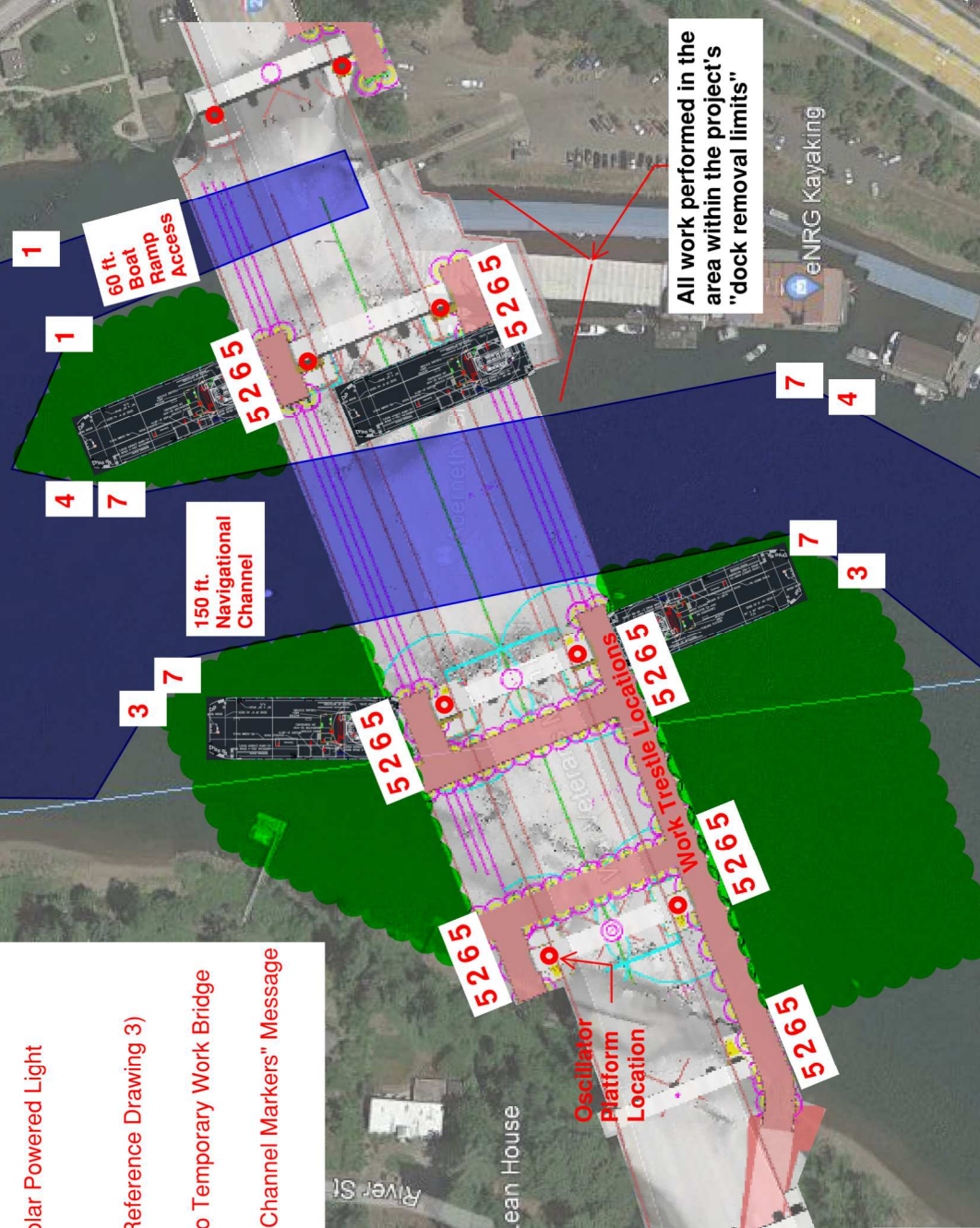
**US Army Corps
of Engineers**
Portland District

Best Western Plus R
59E
205



Willamette River

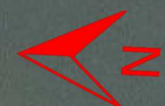
- 1** - 12" Dia. Regulatory Buoy w/ "Slow No Wake, All Boats Pass Between Channel Markers, Boat Ramp Access" Message w/ White Solar Powered Light (See Reference Drawing 2)
- 2** - "Slow No Wake Within 200 Feet" 8'x4' Sign Attached to Temporary Work Bridge
- 3** - Red Channel Marker Buoy w/ Red Solar Powered Light (Ref. Dwg 1)
- 4** - Green Channel Marker Buoy w/ Green Solar Powered Light (Ref. Dwg 1)
- 5** - "Keep Out" 12" Dia. Hanging Buoy (See Reference Drawing 3)
- 6** - "Keep Out" 8'x4' Warning Sign Attached to Temporary Work Bridge
- 7** - "Slow No Wake, All Boats Pass Between Channel Markers" Message (See Reference Drawing 2)




All work performed in the area within the project's "dock removal limits"

ENRG Kayaking

Willamette River



 = Derrick Barge Work Area

Tugs available on site to move barges to clear navigational channel during working hours. Barges will be moored clear of the navigational channel when unattended.