



U.S. Department
of Homeland Security
**United States
Coast Guard**

LOCAL NOTICE TO MARINERS

District: 14

Week: 02/22

January 12, 2022
ISSUED BY:
Commander (dpw)
Fourteenth Coast Guard District
300 Ala Moana Boulevard Room 9-220
Honolulu, HI 96850-4982
Telephone: (808) 535-3409
Email: D14-DG-PJ-dpw@uscg.mil
Website: <https://www.navcen.uscg.gov/>

Note:

Unless otherwise indicated, missing and destroyed structures are presumed to be in the immediate vicinity, possibly beneath the surface. Any life threatening or hazardous conditions including off station, missing, or inoperative aids to navigation should reported immediately to U.S. Coast Guard Sector Honolulu at (808) 842-2600 and U.S. Coast Guard Sector Guam at (671) 355-4822. Mariners should proceed with caution.

References:

Light List, Volume VI, Pacific Coast and Pacific Islands, 2021 Edition (COMDTPUB P16502.6).
U.S. Coast Pilot 10, Pacific Coast : Oregon, Washington, Hawaii, Pacific Islands 2021 (2nd Edition). Coast Pilots, along with corrections, are available at: <http://www.nauticalcharts.noaa.gov>

Navigation information having been of immediate concern to the mariner, and promulgated by the following broadcasts, have been incorporated in this notice when still significant:

COMCOGARD SECTOR HONOLULU HI BNMs: 002-22 - 008-22
COMCOGARD SECTOR GUAM BNMs: 006-22 - 016-22

ABBREVIATIONS

A through H

ADRIFT - Buoy Adrift
AICW - Atlantic Intracoastal Waterway
Al - Alternating
B - Buoy
BKW - Breakwater
bl - Blast
BNM - Broadcast Notice to Mariner
bu - Blue
C - Canadian
CHAN - Channel
CGD - Coast Guard District
C/O - Cut Off
CONT - Contour
CRK - Creek
CONST - Construction
DAYMK/Daymk - Daymark
DBN/Dbn - Daybeacon
DBD/DAYBD - Dayboard
DEFAC - Defaced
DEST - Destroyed
DISCON - Discontinued
DMGD/DAMGD - Damaged
ec - eclipse
EST - Established Aid
ev - every
EVAL - Evaluation
EXT - Extinguished
F - Fixed
fl - flash
FI - Flashing
G - Green
GIWW - Gulf Intracoastal Waterway
HAZ - Hazard to Navigation

I through O

I - Interrupted
ICW - Intracoastal Waterway
IMCH - Improper Characteristic
INL - Inlet
INOP - Not Operating
INT - Intensity
ISL - Islet
Iso - Isophase
kHz - Kilohertz
LAT - Latitude
LB - Lighted Buoy
LBB - Lighted Bell Buoy
LHB - Lighted Horn Buoy
LGB - Lighted Gong Buoy
LONG - Longitude
LNM - Local Notice to Mariners
LT - Light
LT CONT - Light Continuous
LTR - Letter
LWB - Lighted Whistle Buoy
LWP - Left Watching Properly
MHz - Megahertz
MISS/MSNG - Missing
Mo - Morse Code
MRASS - Marine Radio Activated Sound Signal
MSLD - Misleading
N/C - Not Charted
NGA - National Geospatial-Intelligence Agency
NO/NUM - Number
NOS - National Ocean Service
NW - Notice Writer
OBSCU - Obscured
OBST - Obstruction

P through Z

PRIV - Private Aid
Q - Quick
R - Red
RACON - Radar Transponder Beacon
Ra ref - Radar reflector
RBN - Radio Beacon
REBUILT - Aid Rebuilt
RECOVERED - Aid Recovered
RED - Red Buoy
REFL - Reflective
RRL - Range Rear Light
RELIGHTED - Aid Relit
RELOC - Relocated
RESET ON STATION - Aid Reset on Station
RFL - Range Front Light
RIV - River
RRASS - Remote Radio Activated Sound Signal
s - seconds
SEC - Section
SHL - Shoaling
si - silent
SIG - Signal
SND - Sound
SPM - Single Point Mooring Buoy
SS - Sound Signal
STA - Station
STRUCT - Structure
St M - Statute Mile
TEMP - Temporary Aid Change
TMK - Topmark
TRLB - Temporarily Replaced by Lighted Buoy
TRLT - Temporarily Replaced by Light
TRUB - Temporarily Replaced by Unlighted Buoy

HBR - Harbor
HOR - Horizontal Clearance
HT - Height

OBSTR - Obstruction
Oc - Occulting
ODAS - Anchored Oceanographic Data Buoy

USACE - Army Corps of Engineers
W - White
Y - Yellow

Additional Abbreviations Specific to this LNM Edition:

MSLD SIG - Misleading Signal

SECTION I - SPECIAL NOTICES

This section contains information of special concern to the Mariner.

****** Cancellation of NOAA Paper and Raster Nautical Charts ******

The National Oceanic and Atmospheric Administration (NOAA) is undertaking a multi-year program to end production and maintenance of its suite of over 1,000 traditional paper nautical charts and all associated raster chart products and services, including: Print-on-Demand (POD) paper nautical charts, Full-size chart PDF files, BookletChart™ PDF files, NOAA raster navigational charts (NOAA RNC®), the NOAA RNC tile service, and the online RNC viewer.

Six months notice of the intent to cancel a specific chart is provided in a "Last Edition" notice. The final cancellation of a chart is made in a "Canceled" notice. Both types of notices will appear in LNM Section IV, "Chart Correction." A comprehensive list of all canceled NOAA charts is available at: <http://www.charts.noaa.gov/MCD/Dole.shtml>.

Traditional paper nautical chart production is ending to enable the creation and maintenance of larger scale, more up-to-date, higher quality coverage of NOAA's electronic navigational chart (NOAA ENC®) product. This will significantly enhance the amount of charted detail available to mariners. More information about NOAA's program to sunset traditional paper charts is on the NOAA Coast Survey website at: <https://nauticalcharts.noaa.gov/charts/farewell-to-traditional-nautical-charts.html>

An online NOAA Custom Chart application at: <https://devgis.charttools.noaa.gov/pod> is available to create chart images from ENC data, which may then be printed. Notices to Mariners will not be issued for NOAA Custom Charts.

PACIFIC OCEAN - HAZARD TO NAVIGATION - MARINE DEBRIS (07/12)

With the increase in ocean debris sightings along the coastlines of the Pacific Ocean, mariners are reminded to submit debris sighting reports to the National Oceanic and Atmospheric Administration (NOAA) Marine Debris Program at DisasterDebris@noaa.gov, and the University of Hawaii oceanographic research center at marinedebris@soest.hawaii.edu. For inshore sightings, please use the State of Hawaii <https://dlnr.hawaii.gov/dobor/reportmarinedebrishawaii/>.

HI ISLANDS - HAWAII - HILO HARBOR - AIS TEMPORARY DEACTIVATION (07/19)

All mariners be advised the Coast Guard has temporarily deactivated AIS broadcasting for the following aids to navigation in the Hilo, HI area:

28035 Hilo Harbor Entrance Lighted Buoy 1 AIS: MMSI 993699986
28040 Hilo Harbor Breakwater Light AIS: MMSI 993699987
28055 Hilo Harbor Lighted Buoy 3 AIS: MMSI 993699985
28070 Hilo Harbor Lighted Buoy 4 AIS: MMSI 993699984

HI ISLANDS - HAWAII - LAHAINA SMALL BOAT HARBOR (12/21)

Healy Tibbitts Builders, Inc. will be conducting in-water operations for construction of the harbor ferry pier. Steel pipe piles and beams, forming a temporary work platform "trestle" will be installed parallel to the existing Ferry Pier alignment and will remain in place through Fall of 2022. A floating silt curtain will be installed around the work for containing turbidity.

If you have any questions, please contact Project Manager Kenta Okada, keokada@healytibbitts.com, or at (808) 728-4447.

HI ISLANDS - HAWAII - ISAAC HALE PARK (02/19)

The waterway leading to Pohoiki Bay boat ramp at Isaac Hale Park is un-navigable due to shoaling and sand accumulation. The light and day boards have been temporarily removed from Pohoiki Bay Breakwater Light 2 (LLNR 28135).

HI ISLANDS - MAUI - LANHAINA BOAT BASIN FERRY CONST (40/21)

Due to ongoing construction project in Lahaina Harbor, the following Aids to Navigation may be partially obscured at various times: Lahaina Light (LLNR 28460), Lahaina Boat Basin Range Front Light (LLNR 28470) and Lahaina Boat Basin Range Rear Light (LLNR 28475). Mariners are advised to transit the area with caution.

HI ISLANDS - OAHU - HONOLULU HARBOR - AIS ACTIVATION (07/21)

All mariners be advised the Coast Guard has temporarily activated AIS broadcasting for the following aids to navigation in the Honolulu Harbor area:

29200 Honolulu Harbor Channel Buoy 3: MMSI 993692240

29205 Honolulu Harbor Channel Buoy 4: MMSI 993692241

For any concerns contact Sector Honolulu at (808) 884-2600.

HI ISLANDS - OAHU - SHOALING (25/17)

There has been a report of increased shoaling in Maunalua Bay, between Maunalua Bay Daybeacon 1A (LLNR 28935) and Maunalua Bay Daybeacon 2 (LLNR 28940) when transiting to and from Hawaii Kai. The depth of the water is being estimated around 2-3 feet at low tide. All vessels are requested to remain vigilant regarding water depth when operating in and out of this channel.

HI ISLANDS - OAHU - HONOLULU HARBOR DREDGE (03/21)

Honolulu Harbor Maintenance Dredging Project at Honolulu Harbor will commence on or about February 8th 2021. For the dredging related operations, the following vessels will either be moored or working within Honolulu Harbor or the entrance channel to Honolulu Harbor:

- Crane Barge WEEKS 544 (160' x 65')
- Dumps Scow DUTRA KS10 (246' x 45')
- Dump Scow MCamis Sand Island (175' x 45')
- Dump Scow WEEKS 260 (197' x 45')
- Pacific Tug John Brix (136' x 35')
- Tug Carolyn (59' x 22')
- Workboat Roberta G (46' x 16')
- Miscellaneous picket boats and work skiffs.

Dredging operations will be undertaken seven (7) days per week, the Dump Scow Dutra KS10 will be towed by the tug John Brix (or substitute tug) up to two (2) times per day from Honolulu Harbor to the South O'ahu Offshore Dredge Material Disposal Site (ODMS). The MCamis Scow Sand Island will be round trip towed by the tug John Brix (or substitute tug) one (1) time per day from Honolulu Harbor to Kalaeloa Harbor. The call sign for the Tug John Brix is WY 4853. VHF Channel 16 will be monitored. Mariners are requested to use extreme caution while transiting the work area.

Any questions or need more information, please contact Project Manager Cristian Caicedo at (808) 630-0179.

See enclosure 2.

HI ISLANDS - OAHU - HONOLULU HARBOR PIER 19-20 REPAIRS (30/21)

Mariners are advised that the Hawaiian Dredging Construction Company is performing substructure and waterline repairs at piers 19-20 in Honolulu Harbor.

Project duration is from July, 2021 to May, 2022 with work being performed Monday through Friday from 0630 Local Time to 1500 Local Time (Concrete Pour Days may end at 1700 Local Time).

Substructure and Waterline Repairs are to include:

- 1) Demo Work to Concrete Under and on Face of the Pier.
- 2) Prepping and Placing Formwork Under and on Face of the Pier.
- 3) Prepping and Placing Rebar for Repairs (including welding work).
- 4) Concrete Pours.
- 5) Installing a new waterline and removing existing waterline.

Mariners are requested to transit the area with caution and keep a sharp lookout for dive operations.

See Enclosure 3

If there are any questions please contact the Project Manager: Toby Inouye at (808) 478-7008.

HI ISLANDS - OAHU - DIVE OPERATIONS (39/20)

Par Hawaii, Inc. Will be conducting dive operations for their maintenance project activities at its Single Point Mooring (SPM) subsea 30" crude pipeline extending offshore from Barbers Point near the south-west corner of Oahu. This maintenance project is scheduled to commence, weather permitting, on September 29, 2020 and conclude around February, 2022 as weather permits. Actual work will occur nearshore in

approximately 34 ft. of water depth offshore of Barbers Point and at the SPM buoy and entire length of pipelines.

The following vessels will be onsite at various times during the work:

- Dive support/Work boat "Huki Pau" (74'x21')
- 10-Meter Ambar RHIB (32'x10.3')
- 8-Meter Ambar RHIB (26'x9.4')
- Tugboat "Noke" (65'x24')
- Tugboat "Na'ina" (94'x26')

Mariners are requested to transit the area with caution, keep a sharp lookout for dive operations, and monitor channel 16.

HI ISLANDS - MAUI - NAVAL EXERCISES (51/21)

North Maui Hawaii, this is an advisory notice to mariners to notify all concerned about upcoming naval exercises. The Naval Undersea Warfare Center, in support of its mission, will be conducting in-water exercises and technical demonstrations of surface and underwater vehicles during January, 2022 in the vicinity of North Maui Bay (21-00'N / 156-21'W). Exercises will be conducted during January 18-20, 2022, there may be additional events following the exercise for the following 2-3 days.

Commercial and civilian craft are requested to operate with caution and maintain a reasonable standoff from Navy operations to ensure safety and security concerns are met. Surface and airborne assets will be on station to assist in public safety.

For any concerns contact Dave Saluto via satellite phone at 808-684-8653, 808-434-3499, or 808-434-3504

MARIANA ISLANDS - GUAM - NAVTEX STATION (41/19)

NAVTEX Station (518KHz) is Inoperable. The 518KHz NAVTEX station is inoperable with no estimated time of repair. NAVTEX broadcasts are available on 4209.5KHz Mariners.

SECTION II - DISCREPANCIES

This section lists all reported and corrected discrepancies related to Aids to Navigation in this edition. A discrepancy is a change in the status of an aid to navigation that differs from what is published or charted.

DISCREPANCIES (FEDERAL AIDS)

LLNR	Aid Name	Status	Chart No.	BNM Ref.	LNM St	LNM End
28065	Hilo Harbor Range Rear Light	LT EXT	19324	229-21	47/21	
28180	Kailua Bay Entrance Directional Light	STRUCT DEST/HAZ NAV	19331	239-21	49/21	
28275	Kawaihae Harbor Entrance Lighted Buoy 1	SINKING	19330	SCC Hono 225-2:	47/21	
28350	Kahului Harbor Entrance Breakwater Light 3	LT EXT	19342	002-22	02/22	
28520	Pohakuloa Point Light	LT EXT	19347	SCC Hono 213-2:	45/21	
29240	Kalihi Channel Entrance Lighted Buoy 1	LT EXT	19367	251-21	52/21	
29960	Midway Channel Entrance Buoy 2	MISSING	19482		04/21	
30485	Kwajalein Harbor Channel Buoy 7	MISSING	81715		20/20	
30490	Kwajalein Harbor Channel Buoy 9	SINKING	81715	hydropac 007-21	36/21	
30665	Agana Small Boat Basin Approach Range Front Light	DAYMK IMCH	81048	guam 423-21	42/21	
30745	Cabras Island Channel Light 4	LT EXT	81054	008-22	02/22	
30855	Tanapag Harbor Approach Lighted Buoy T	TMK MISSING	81076	544-19	40/20	
30865	Managaha Island Light	LT EXT	81076	494-21	49/21	

DISCREPANCIES (FEDERAL AIDS) CORRECTED

LLNR	Aid Name	Status	Chart No.	BNM Ref.	LNM St	LNM End
------	----------	--------	-----------	----------	--------	---------

None

DISCREPANCIES (PRIVATE AIDS)

LLNR	Aid Name	Status	Chart No.	BNM Ref.	LN M St	LN M End
28007	FAD Site HK - Hakalau, Hawaii	MISSING	19320	109-21	27/21	
28007.03	FAD Site E - Leleivi, Hawaii	MISSING	19320		49/21	
28007.05	FAD Site D - Kumakahi, Hawaii	MISSING	19320	070-21	17/21	
28007.07	FAD Site KH - Kehena, Hawaii	MISSING	19320	110-21	27/21	
28007.19	FAD Site UU - Auau Point, Hawaii	LT EXT	19320	093-21	23/21	
28007.22	FAD Site WH1	MISSING	19320	021-18	18/15	
28007.25	FAD Site F - Kailua Kona, Hawaii	MISSING	19327	111-21	27/21	
28007.29	FAD Site XX - Puako, Hawaii	MISSING	19327	143-21	32/21	
28007.35	FAD Site Q - Pauwela Point, Maui	MISSING	19340	112-21	27/21	
28007.4	FAD SITE MTBC 1	MISSING		148-19	44/19	
28008.09	FAD Site JJ - Kamohio, Kahoolawe	MISSING	19347	031-21	46/21	
28008.19	FAD Site CC - Kaena Point, Lanai	MISSING	19351	113-21	27/21	
28008.21	FAD Site N - Cape Halawa, Molokai	MISSING	19340	179-20	28/20	
28008.27	FAD Site U - Kaneohe, Oahu	MISSING	19004	072-21	17/21	
28008.31	FAD Site T - Makapuu, Oahu	MISSING	19339	307-20	50/20	
28009.01	FAD Site R - Makaha, Oahu	MISSING	19004	073-21	17/21	
28009.03	FAD Site V - Makua, Oahu	MISSING	19357	030-21	07/21	
28009.07	FAD Site II - Haleiwa, Oahu	MISSING	19004	242-20	37/20	
28009.13	FAD Site BB - Moloaa, Kauai	MISSING	19381	122-20	19/20	
28009.15	FAD Site DK - Anahola, Kauai	ADRIFT	19004	188-20	19/20	
28009.17	FAD Site WK - Wailua, Kauai	MISSING	19381	122-20	19/20	
28009.19	FAD Site Z - Kipukai, Kauai	MISSING	19381	122-20	19/20	
28009.21	FAD Site CK - Makahuena Point, Kauai	MISSING	19381		49/21	
28009.23	FAD Site PP - Koloa, Kauai	MISSING	19381	114-21	27/21	
28009.27	FAD Site KK - Waimea, Kauai	MISSING	19381	115-21	27/21	
28095	Reeds Bay Rock Daybeacon B	MISSING	19324	218-18	40/18	
28230	Puako Small Boat Harbor Buoy 2	MISSING	19330		10/20	
28235	Puako Small Boat Harbor Buoy 3	MISSING	19330		10/20	
28240	Puako Small Boat Harbor Buoy 4	MISSING	19330		10/20	
28245	Puako Small Boat Harbor Buoy 5	MISSING	19330		10/20	
28250	Puako Small Boat Harbor Buoy 6	MISSING	19330		10/20	
28255	Puako Small Boat Harbor Buoy 7	MISSING	19330		10/20	
28260	Puako Small Boat Harbor Buoy 8	MISSING	19330		10/20	
28265	Puako Small Boat Harbor Buoy 9	MISSING	19330		10/20	
28381.1	Kahului Boat Ramp Buoy 1	MISSING		187-20	30/20	
28381.2	Kahului Boat Ramp Buoy 2	MISSING		187-20	30/20	
28381.3	Kahului Boat Ramp Buoy 3	MISSING		187-20	30/20	
28381.4	Kahului Boat Ramp Buoy 4	MISSING		187-20	30/20	
28381.5	Kahului Boat Ramp Buoy 5	MISSING		187-20	30/20	
28381.6	Kahului Boat Ramp Buoy 6	MISSING		187-20	30/20	
28381.8	Kahului Boat Ramp Buoy 8	MISSING		187-20	30/20	
28381.9	Kahului Boat Ramp Buoy 9	MISSING	19342	187-20	30/20	
28427	Maalaea Basin Channel Lighted Buoy 1	ADRIFT	19350	158-18	22/18	
28480	Lahaina Boat Basin Lighted Buoy 3	MISSING	19348	177-18	28/18	
28500	Lahaina Boat Basin Lighted Buoy 7	MISSING	19348	238-18	46/18	

28507.5	Mala Channel Light 5	LT EXT	19348	283-20	45/20
28507.6	Mala Channel Light 6	LT EXT	19348	284-20	45/20
28524	PacIOOS Wave Lighted Buoy Lanai	MISSING	19347	141-21	31/21
28630	Kaunakakai Small Boat Harbor Buoy 1	SINKING	19353	223-21	46/21
28673	PacIOOS Wave Lighted Buoy Kaneohe West	MISSING	19359	074-21	17/21
28674.04	WETS 4	MISSING	19359	010-18	02/18
28674.05	WETS 5	MISSING	19359	011-18	02/18
28885	Mokapu Point Research Lighted Buoy North	MISSING	19357	077-18	09/18
28886	Mokapu Point Research Lighted Buoy South	MISSING	19357	078-18	09/18
28890	PacIOOS Wave Lighted Buoy Mokapu	MISSING	19357	126-21	29/21
28895	Makai Channel Daybeacon 3	DAYMK MISSING	19358	038-19	11/19
28900	Makai Channel Daybeacon 4	MISSING	19358	038-19	11/19
28935	Maunaloa Bay Daybeacon 1A	STRUCT DEST/HAZ NAV/DAYMK MISSING	19358		46/19
29110	Ala Wai Boat Harbor Channel Buoy 3	OFF STA	19369		40/21
29115	Ala Wai Boat Harbor Channel Buoy 4	SINKING	19369		33/21
29125	Ala Wai Boat Harbor Channel Daybeacon 6	DAYMK DMGD	19369	174-18	27/18
29135	Ala Wai Boat Harbor Channel Daybeacon 8	DAYMK DMGD	19369	175-18	27/18
29315	Keehi Lagoon Barge Turning Channel Range Front	REDUCED INT	19367	312-20	52/20
29325	Keehi Lagoon Barge Turning Basin Buoy 2	OFF STA	19367	085-12	16/12
29600	Barbers Point Anchorage Area Bravo Tank Terminal Lighted Buoy A	LT EXT	19362	001-22	01/22
29656	West Beach Marina Light 2	LT EXT	19362	266-17	40/17
29900	Kikiaola Boat Harbor Range Front Light	LT EXT	19386	089-21	22/21
29901	Kikiaola Boat Harbor Range Rear Light	LT EXT	19386	088-21	22/21
29902	Kikiaola Boat Harbor Light 1	LT EXT		087-21	22/21
29903	Kikiaola Boat Harbor Light 2	LT EXT		169-18	25/18
30603	FAD Site "Cocos" - Guam	LT EXT	81048	014-19	03/19
30612	FAD Site "FACPI 2" - Guam	MISSING	81048	082-19	09/19
30624	FAD Site "Number 2" - Guam	OFF STA	81048	146-14	12/14
30631	FAD Site "Number 3"	MISSING		083-19	09/19
30634	FAD Site "Number 4"	MISSING		011-19	03/19
30637.1	FAD Site GF1	MISSING	81048	041-18	03/18
30640	FAD Site "Number 5"	LT EXT		607-18	47/18
30650	PacIOOS Wave Lighted Buoy Ritidian	MISSING	81048		26/21
30787	Drydock Point West Entrance Daybeacon 1	DAYMK MISSING	81054	707-17	44/17
30807.5	X-Ray Wharf Lighted Buoy 2	LT EXT	81054	261-21	27/21
30811.3	Agat Small Boat Harbor Light 3	LT EXT	81048	178-19	18/19
30811.9	Agat Small Boat Harbor Daybeacon 9	DAYMK IMCH		092-18	07/18
30815	Mamaon Channel Lighted Buoy 1	OFF STA	81048	718-17	45/17
30820	Mamaon Channel Lighted Buoy 2	OFF STA	81048	506-18	39/18
30851.2	FAD Site DD - Rota	MISSING	81063	303-19	30/19
30853	PacIOOS Wave Lighted Buoy Tanapag	MISSING	81067	275-21	28/21

DISCREPANCIES (PRIVATE AIDS) CORRECTED

LLNR	Aid Name	Status	Chart No.	BNM Ref.	LNM St	LNM End
------	----------	--------	-----------	----------	--------	---------

None

PLATFORM DISCREPANCIES

Name	Status	Position	BNM Ref.	LNM St	LNM End
------	--------	----------	----------	--------	---------

None

PLATFORM DISCREPANCIES CORRECTED

Name	Status	Position	BNM Ref.	LNM St	LNM End
------	--------	----------	----------	--------	---------

None

SECTION III - TEMPORARY CHANGES and TEMPORARY CHANGES CORRECTED

This section contains temporary changes and corrections to Aids to Navigation for this edition. When charted aids are temporarily relocated for dredging, testing, evaluation, or marking an obstruction, a temporary correction shall be listed in Section IV giving the new position.

TEMPORARY CHANGES

LLNR	Aid Name	Status	Chart No.	BNM Ref.	LNM St	LNM End
29180	Honolulu Harbor Channel Lighted Buoy 1	RELOCATED FOR DREDGING	19367	253-20	38/20	
29195	Honolulu Harbor Channel Lighted Buoy 2	RELOCATED FOR DREDGING	19367	253-20	38/20	
29200	Honolulu Harbor Channel Buoy 3	DISCONTINUED FOR DREDGING	19367		07/21	
29205	Honolulu Harbor Channel Buoy 4	DISCONTINUED FOR DREDGING	19367		07/21	
29210	Honolulu Harbor Channel Lighted Buoy 5	RELOCATED FOR DREDGING	19367	253-20	38/20	
29230	Honolulu Harbor Buoy 10	DISCONTINUED FOR DREDGING	19367	061-21	15/21	
30660	Ritidian Point Light	RELOCATED	81048		43/21	

TEMPORARY CHANGES CORRECTED

LLNR	Aid Name	Status	Chart No.	BNM Ref.	LNM St	LNM End
------	----------	--------	-----------	----------	--------	---------

None

PLATFORM TEMPORARY CHANGES

Name	Status	Position	BNM Ref.	LNM St	LNM End
------	--------	----------	----------	--------	---------

None

PLATFORM TEMPORARY CHANGES CORRECTED

Name	Status	Position	BNM Ref.	LNM St	LNM End
------	--------	----------	----------	--------	---------

None

SECTION IV - CHART CORRECTIONS

This section contains corrections to federally and privately maintained Aids to Navigation, as well as NOS corrections.

This section contains corrective actions affecting chart(s). Corrections appear numerically by chart number, and pertain to that chart only. It is up to the mariner to decide which chart(s) are to be corrected. The following example explains individual elements of a typical chart correction.

Chart Number	Chart Edition	Edition Date	Last Local Notice to Mariners	Horizontal Datum Reference	Source of Correction	Current Local Notice to Mariners
12327	91st Ed.	19-APR-97	Last LNM: 26/97	NAD 83		27/97
Chart Title: NY-NJ-NEW YORK HARBOR - RARITAN RIVER						
Main Panel 2245 NEW YORK HARBOR						
(Temp) ADD	NATIONAL DOCK CHANNEL BUOY 3				CGD01	at 40-41-09.001N 074-02-48.001W
Corrective Action	Green can	Object of Corrective Action			Position	

(Temp) indicates that the chart correction action is temporary in nature. Courses and bearings are given in degrees clockwise from 000 true. Bearings of light sectors are toward the light from seaward. The nominal range of lights is expressed in nautical miles (NM) unless otherwise noted.

510 **2nd Ed.** **22-MAR-86** **Last LNM: 18/11** **UNKNOWN** **02/22**

Chart Title: **EASTERN PORTION OF JAPAN (OMEGA)**

CHART EASTERN PORTION OF JAPAN (OMEGA). Page/Side: N/A

(Temp) RELOCATE	Ritidian Point Light	CGD14	
	TEMPORARILY RELOCATED FOR CONSTRUCTION OF NEW AID.	from 13-39-00.504N	144-51-42.678E
		to 13-39-00.395N	144-51-42.475E

19016 **12th Ed.** **01-APR-08** **Last LNM: 24/11** **ASTRO (Multi)** **02/22**

Chart Title: **Niihau to French Frigate Shoals; Necker Island; Nihoa**

Main Panel 2767 NIIHAU TO FRENCH FRIGATE SHOALS. Page/Side: N/A

LAST EDITION	No new editions of chart 19016 will be published. It will be canceled on 04-May-22. Comparable or larger scale Electronic Navigational Chart (ENC) coverage is available. See "Cancellation of NOAA Paper and Raster Nautical Charts" in Section I of this LNM for details. A list of all canceled NOAA charts is at https://www.charts.noaa.gov/MCD/Dole.shtml .	NOS	--
--------------	--	-----	----

19019 **11th Ed.** **01-APR-08** **Last LNM: 19/03** **ASTRO (Multi)** **02/22**

Chart Title: **French Frigate Shoals to Laysan Island**

Main Panel 2770 FRENCH FRIGATE SHOALS TO LAYSAN ISLAND. Page/Side: N/A

LAST EDITION	No new editions of chart 19019 will be published. It will be canceled on 04-May-22. Comparable or larger scale Electronic Navigational Chart (ENC) coverage is available. See "Cancellation of NOAA Paper and Raster Nautical Charts" in Section I of this LNM for details. A list of all canceled NOAA charts is at https://www.charts.noaa.gov/MCD/Dole.shtml .	NOS	--
--------------	--	-----	----

19022 **12th Ed.** **01-APR-08** **Last LNM:** **ASTRO (Multi)** **02/22**

Chart Title: **Laysan Island to Kure Atoll**

Main Panel 2771 LAYSAN ISLAND TO KURE ATOLL. Page/Side: N/A

LAST EDITION	No new editions of chart 19022 will be published. It will be canceled on 04-May-22. Comparable or larger scale Electronic Navigational Chart (ENC) coverage is available. See "Cancellation of NOAA Paper and Raster Nautical Charts" in Section I of this LNM for details. A list of all canceled NOAA charts is at https://www.charts.noaa.gov/MCD/Dole.shtml .	NOS	--
--------------	--	-----	----

19322 **8th Ed.** **01-DEC-03** **Last LNM: 50/03** **WGS 84** **02/22**

Chart Title: **Harbors and Landings on the Northeast and Southeast Coasts of Hawai'i; Punalu'u Harbor; Honu'apo Bay; Honokaa Landing; Kukuihaele Landing**

Unrelated 2773 HARBORS AND LANDINGS ON THE NORTHEAST AND SOUTHEAST COASTS OF HAWAII - KUKUIHAELE LANDING. Page/Side: N/A

LAST EDITION	No new editions of chart 19322 will be published. It will be canceled on 04-May-22. Comparable or larger scale Electronic Navigational Chart (ENC) coverage is available. See "Cancellation of NOAA Paper and Raster Nautical Charts" in Section I of this LNM for details. A list of all canceled NOAA charts is at https://www.charts.noaa.gov/MCD/Dole.shtml .	NOS	--
--------------	--	-----	----

19326 **7th Ed.** **01-JUL-14** **Last LNM:** **WGS 84** **02/22**

Chart Title: **Pa'auhau Landing Island Of Hawai'i**

Main Panel 2778 PAAUHAU LANDING ISLAND OF HAWAII. Page/Side: A

					NOS	
	LAST EDITION	No new editions of chart 19326 will be published. It will be canceled on 04-May-22. Comparable or larger scale Electronic Navigational Chart (ENC) coverage is available. See "Cancellation of NOAA Paper and Raster Nautical Charts" in Section I of this LNM for details. A list of all canceled NOAA charts is at https://www.charts.noaa.gov/MCD/Dole.shtml .			--	--
19329	8th Ed.	01-NOV-03	Last LNM: 47/03	WGS 84		02/22
	<i>ChartTitle: Māhukona Harbor and approaches Island Of Hawai'i</i>					
	Main Panel 2782 MAHUKONA HARBOR AND APPROACHES ISLAND OF HAWAII. Page/Side: N/A					
					NOS	
	LAST EDITION	No new editions of chart 19329 will be published. It will be canceled on 04-May-22. Comparable or larger scale Electronic Navigational Chart (ENC) coverage is available. See "Cancellation of NOAA Paper and Raster Nautical Charts" in Section I of this LNM for details. A list of all canceled NOAA charts is at https://www.charts.noaa.gov/MCD/Dole.shtml .			--	--
19331	8th Ed.	01-JUN-14	Last LNM: 26/14	WGS 84		02/22
	<i>ChartTitle: Kailua Bay Island Of Hawai'i</i>					
	Main Panel 2784 KAILUA BAY ISLAND OF HAWAII. Page/Side: A					
					NOS	
	LAST EDITION	No new editions of chart 19331 will be published. It will be canceled on 04-May-22. Comparable or larger scale Electronic Navigational Chart (ENC) coverage is available. See "Cancellation of NOAA Paper and Raster Nautical Charts" in Section I of this LNM for details. A list of all canceled NOAA charts is at https://www.charts.noaa.gov/MCD/Dole.shtml .			--	--
19332	9th Ed.	01-FEB-16	Last LNM:	WGS 84		02/22
	<i>ChartTitle: Kealakekua Bay to Hōnaunau Bay</i>					
	Main Panel 2785 KEALAKEKUA BAY TO HONAUNAU BAY. Page/Side: A					
					NOS	
	LAST EDITION	No new editions of chart 19332 will be published. It will be canceled on 04-May-22. Comparable or larger scale Electronic Navigational Chart (ENC) coverage is available. See "Cancellation of NOAA Paper and Raster Nautical Charts" in Section I of this LNM for details. A list of all canceled NOAA charts is at https://www.charts.noaa.gov/MCD/Dole.shtml .			--	--
19341	9th Ed.	10-NOV-01	Last LNM:	WGS 84		02/22
	<i>ChartTitle: Hāna Bay Island of Maui</i>					
	Main Panel 2787 HANA BAY ISLAND OF MAUI. Page/Side: N/A					
					NOS	
	LAST EDITION	No new editions of chart 19341 will be published. It will be canceled on 04-May-22. Comparable or larger scale Electronic Navigational Chart (ENC) coverage is available. See "Cancellation of NOAA Paper and Raster Nautical Charts" in Section I of this LNM for details. A list of all canceled NOAA charts is at https://www.charts.noaa.gov/MCD/Dole.shtml .			--	--
19350	11th Ed.	17-MAR-01	Last LNM: 33/12	WGS 84		02/22
	<i>ChartTitle: Island of Maui Ma`alaea Bay</i>					
	Main Panel 2793 ISLAND OF MAUI MAALAEA BAY. Page/Side: N/A					
					NOS	
	LAST EDITION	No new editions of chart 19350 will be published. It will be canceled on 04-May-22. Comparable or larger scale Electronic Navigational Chart (ENC) coverage is available. See "Cancellation of NOAA Paper and Raster Nautical Charts" in Section I of this LNM for details. A list of all canceled NOAA charts is at https://www.charts.noaa.gov/MCD/Dole.shtml .			--	--
19361	9th Ed.	01-MAR-10	Last LNM: 33/12	WGS 84		02/22
	<i>ChartTitle: Port Wa'ianae Island of O'ahu</i>					
	Main Panel 2804 PORT WAIANAE ISLAND OF OAHU. Page/Side: N/A					
					NOS	
	LAST EDITION	No new editions of chart 19361 will be published. It will be canceled on 04-May-22. Comparable or larger scale Electronic Navigational Chart (ENC) coverage is available. See "Cancellation of NOAA Paper and Raster Nautical Charts" in Section I of this LNM for details. A list of all canceled NOAA charts is at https://www.charts.noaa.gov/MCD/Dole.shtml .			--	--
19384	9th Ed.	01-JUN-14	Last LNM:	WGS 84		02/22
	<i>ChartTitle: Hanamaulu Bay Island of Kaua'i</i>					
	Main Panel 2813 HANAMAULU BAY ISLAND OF KAUAI. Page/Side: A					
					NOS	
	LAST EDITION	No new editions of chart 19384 will be published. It will be canceled on			--	--

04-May-22. Comparable or larger scale Electronic Navigational Chart (ENC) coverage is available. See "Cancellation of NOAA Paper and Raster Nautical Charts" in Section I of this LNM for details. A list of all canceled NOAA charts is at <https://www.charts.noaa.gov/MCD/Dole.shtml>.

19385	8th Ed.	01-OCT-03	Last LNM: 17/12	WGS 84	02/22
<i>ChartTitle: North Coast of Kaua'i Hä`ena Point to Kepuhi Point</i>					
Main Panel 2814 HAENA POINT TO KEPUHI POINT. Page/Side: N/A					
LAST EDITION	No new editions of chart 19385 will be published. It will be canceled on 04-May-22. Comparable or larger scale Electronic Navigational Chart (ENC) coverage is available. See "Cancellation of NOAA Paper and Raster Nautical Charts" in Section I of this LNM for details. A list of all canceled NOAA charts is at https://www.charts.noaa.gov/MCD/Dole.shtml .	NOS	--	--	
19401	9th Ed.	01-MAY-07	Last LNM: 05/03	WGS 84	02/22
<i>ChartTitle: French Frigate Shoals</i>					
Main Panel 2816 FRENCH FRIGATE SHOALS. Page/Side: N/A					
LAST EDITION	No new editions of chart 19401 will be published. It will be canceled on 04-May-22. Comparable or larger scale Electronic Navigational Chart (ENC) coverage is available. See "Cancellation of NOAA Paper and Raster Nautical Charts" in Section I of this LNM for details. A list of all canceled NOAA charts is at https://www.charts.noaa.gov/MCD/Dole.shtml .	NOS	--	--	
19402	7th Ed.	01-APR-07	Last LNM: 04/03	WGS 84	02/22
<i>ChartTitle: French Frigate Shoals Anchorage</i>					
Main Panel 2817 FRENCH FRIGATE SHOALS ANCHORAGE. Page/Side: N/A					
LAST EDITION	No new editions of chart 19402 will be published. It will be canceled on 04-May-22. Comparable or larger scale Electronic Navigational Chart (ENC) coverage is available. See "Cancellation of NOAA Paper and Raster Nautical Charts" in Section I of this LNM for details. A list of all canceled NOAA charts is at https://www.charts.noaa.gov/MCD/Dole.shtml .	NOS	--	--	
19421	8th Ed.	01-MAY-07	Last LNM: 03/03	WGS 84	02/22
<i>ChartTitle: Gardner Pinnacles and approaches; Gardner Pinnacles</i>					
Main Panel 2818 GARDNER PINNACLES AND APPROACHES. Page/Side: N/A					
LAST EDITION	No new editions of chart 19421 will be published. It will be canceled on 04-May-22. Comparable or larger scale Electronic Navigational Chart (ENC) coverage is available. See "Cancellation of NOAA Paper and Raster Nautical Charts" in Section I of this LNM for details. A list of all canceled NOAA charts is at https://www.charts.noaa.gov/MCD/Dole.shtml .	NOS	--	--	
19441	8th Ed.	01-MAY-07	Last LNM: 19/03	WGS 84	02/22
<i>ChartTitle: Maro Reef</i>					
Main Panel 2820 MARO REEF. Page/Side: N/A					
LAST EDITION	No new editions of chart 19441 will be published. It will be canceled on 04-May-22. Comparable or larger scale Electronic Navigational Chart (ENC) coverage is available. See "Cancellation of NOAA Paper and Raster Nautical Charts" in Section I of this LNM for details. A list of all canceled NOAA charts is at https://www.charts.noaa.gov/MCD/Dole.shtml .	NOS	--	--	
19442	6th Ed.	01-APR-07	Last LNM: 13/03	WGS 84	02/22
<i>ChartTitle: Lisianski and Laysan Island; West Coast of Laysan Island</i>					
Main Panel 2821 LISIANSKI ISLAND. Page/Side: N/A					
LAST EDITION	No new editions of chart 19442 will be published. It will be canceled on 04-May-22. Comparable or larger scale Electronic Navigational Chart (ENC) coverage is available. See "Cancellation of NOAA Paper and Raster Nautical Charts" in Section I of this LNM for details. A list of all canceled NOAA charts is at https://www.charts.noaa.gov/MCD/Dole.shtml .	NOS	--	--	
19461	7th Ed.	01-DEC-02	Last LNM: 08/05	WGS 84	02/22
<i>ChartTitle: Pearl and Hermes Atoll</i>					
Main Panel 2824 PEARL AND HERMES ATOLL. Page/Side: N/A					
LAST EDITION	No new editions of chart 19461 will be published. It will be canceled on 04-May-22. Comparable or larger scale Electronic Navigational Chart	NOS	--	--	

(ENC) coverage is available. See "Cancellation of NOAA Paper and Raster Nautical Charts" in Section I of this LNM for details. A list of all canceled NOAA charts is at <https://www.charts.noaa.gov/MCD/Dole.shtml>.

19483	6th Ed.	01-JAN-03	Last LNM: 08/05	WGS 84	02/22
<i>ChartTitle: Hawai'i Kure Atoll</i>					
Main Panel 2827 KURE ATOLL. Page/Side: N/A					
LAST EDITION No new editions of chart 19483 will be published. It will be canceled on 04-May-22. Comparable or larger scale Electronic Navigational Chart (ENC) coverage is available. See "Cancellation of NOAA Paper and Raster Nautical Charts" in Section I of this LNM for details. A list of all canceled NOAA charts is at https://www.charts.noaa.gov/MCD/Dole.shtml .					
					NOS
					--
81004	5th Ed.	01-AUG-08	Last LNM: 17/12	WGS 84	02/22
<i>ChartTitle: Commonwealth of the Northern Mariana Islands</i>					
Main Panel 2904 MARIANA ISLANDS. Page/Side: N/A					
(Temp)	RELOCATE	Ritidian Point Light TEMPORARILY RELOCATED FOR CONSTRUCTION OF NEW AID.			CGD14 from 13-39-00.504N to 13-39-00.395N
					144-51-42.678E 144-51-42.475E
81023	4th Ed.	19-JAN-85	Last LNM: 49/89	UNKNOWN	02/22
<i>ChartTitle: Nomoi Islands to Faraulep Island</i>					
CHART Nomoi Islands to Faraulep Island. Page/Side: N/A					
(Temp)	RELOCATE	Ritidian Point Light TEMPORARILY RELOCATED FOR CONSTRUCTION OF NEW AID.			CGD14 from 13-39-00.504N to 13-39-00.395N
					144-51-42.678E 144-51-42.475E
81025	2nd Ed.	27-JAN-79	Last LNM: 45/88	UNKNOWN	02/22
<i>ChartTitle: COMNAV MARIANAS - SURFACE/AIR - OPAREA</i>					
CHART COMNAV MARIANAS - SURFACE/AIR - OPAREA. Page/Side: N/A					
(Temp)	RELOCATE	Ritidian Point Light TEMPORARILY RELOCATED FOR CONSTRUCTION OF NEW AID.			CGD14 from 13-39-00.504N to 13-39-00.395N
					144-51-42.678E 144-51-42.475E
81048	10th Ed.	01-FEB-06	Last LNM: 50/13	WGS 84	02/22
<i>ChartTitle: Marianas Island of Guam Territory of Guam;Cocos Lagoon</i>					
CHART MARIANA ISLANDS - ISLAND OF GUAM - TERRITORY OF GUAM. Page/Side: N/A					
(Temp)	RELOCATE	Ritidian Point Light TEMPORARILY RELOCATED FOR CONSTRUCTION OF NEW AID.			CGD14 from 13-39-00.504N to 13-39-00.395N
					144-51-42.678E 144-51-42.475E
81063	6th Ed.	01-MAR-06	Last LNM: 33/12	WGS 84	02/22
<i>ChartTitle: Commonwealth of the Northern Mariana Islands Rota</i>					
Main Panel 2850 MARIANA ISLANDS ROTA. Page/Side: N/A					
LAST EDITION No new editions of chart 81063 will be published. It will be canceled on 04-May-22. Comparable or larger scale Electronic Navigational Chart (ENC) coverage is available. See "Cancellation of NOAA Paper and Raster Nautical Charts" in Section I of this LNM for details. A list of all canceled NOAA charts is at https://www.charts.noaa.gov/MCD/Dole.shtml .					
					NOS
					--
81086	8th Ed.	01-MAY-14	Last LNM:	WGS 84	02/22
<i>ChartTitle: Plans in the Mariana Islands; Faraloon de Pajaros; Sarigan Island; Farallon de Medinilla; Ascuncion Island; Agrihan; Agrihan Anchorage; Alamagan Island; Guguan; Anatahan</i>					
Unrelated 2873 PLANS IN MARIANA ISL FARALLON DE PAJAROS. Page/Side: N/A					
LAST EDITION No new editions of chart 81086 will be published. It will be canceled on 04-May-22. Comparable or larger scale Electronic Navigational Chart (ENC) coverage is available. See "Cancellation of NOAA Paper and Raster Nautical Charts" in Section I of this LNM for details. A list of all canceled NOAA charts is at https://www.charts.noaa.gov/MCD/Dole.shtml .					
					NOS
					--
81092	5th Ed.	01-DEC-07	Last LNM: 52/07	PAGAN ISLAND LD	02/22
<i>ChartTitle: Commonwealth of the Northern Mariana Islands</i>					
Unrelated 2882 PAGAN ISLAND. Page/Side: N/A					
LAST EDITION No new editions of chart 81092 will be published. It will be canceled on 04-May-22. Comparable or larger scale Electronic Navigational Chart (ENC) coverage is available. See "Cancellation of NOAA Paper and Raster					
					NOS
					--

Nautical Charts" in Section I of this LNM for details. A list of all canceled NOAA charts is at <https://www.charts.noaa.gov/MCD/Dole.shtml>.

83116 **5th Ed.** **01-SEP-06** **Last LNM: 41/06** **NAD 83** **02/22**
ChartTitle: Islands in the Pacific Ocean-Jarvis, Bake and Howland Islands
Unrelated 2833 HOWLAND ISLAND. Page/Side: N/A

LAST EDITION No new editions of chart 83116 will be published. It will be canceled on 04-May-22. Comparable or larger scale Electronic Navigational Chart (ENC) coverage is available. See "Cancellation of NOAA Paper and Raster Nautical Charts" in Section I of this LNM for details. A list of all canceled NOAA charts is at <https://www.charts.noaa.gov/MCD/Dole.shtml>.
 NOS --

83153 **2nd Ed.** **01-DEC-08** **Last LNM: 09/05** **WGS 84** **02/22**
ChartTitle: United States Possesion Kingman Reef
Main Panel 2836 KINGMAN REEF. Page/Side: N/A

LAST EDITION No new editions of chart 83153 will be published. It will be canceled on 04-May-22. Comparable or larger scale Electronic Navigational Chart (ENC) coverage is available. See "Cancellation of NOAA Paper and Raster Nautical Charts" in Section I of this LNM for details. A list of all canceled NOAA charts is at <https://www.charts.noaa.gov/MCD/Dole.shtml>.
 NOS --

83157 **6th Ed.** **01-MAY-06** **Last LNM: 06/09** **PALMYRA ATOLL AD 44** **02/22**
ChartTitle: Palmyra Atoll;Approaches to Palmyra Atoll
Main Panel 2837 PALMYRA ATOLL. Page/Side: N/A

LAST EDITION No new editions of chart 83157 will be published. It will be canceled on 04-May-22. Comparable or larger scale Electronic Navigational Chart (ENC) coverage is available. See "Cancellation of NOAA Paper and Raster Nautical Charts" in Section I of this LNM for details. A list of all canceled NOAA charts is at <https://www.charts.noaa.gov/MCD/Dole.shtml>.
 NOS --

OIL RIG MOVEMENT

Drill Rigs/Vessels Removed

<u>Latitude</u>	<u>Longitude</u>	<u>Block</u>	<u>Rigs/Vessel</u>	<u>Chart</u>	<u>Type</u>	<u>Status</u>
None						

Drill Rigs/Vessels Established

<u>Latitude</u>	<u>Longitude</u>	<u>Block</u>	<u>Rigs/Vessel</u>	<u>Chart</u>	<u>Type</u>	<u>Status</u>
None						

SECTION V - ADVANCE NOTICES

This section contains advance notice of approved projects, changes to aids to navigation, or upcoming temporary changes such as dredging, etc. Mariners are advised to use caution while transiting these areas.

SUMMARY OF ADVANCED APPROVED PROJECTS

<u>Approved Project(s)</u>	<u>Project Date</u>	<u>Ref. LNM</u>
None		

Advance Notice(s)

HI ISLANDS - OAHU - MAKAPUU POINT LIGHT (45/21)

Due to unreliable commercial power at Makapuu Point Light (LLNR 28925), the Coast Guard will convert the power supply to solar and battery power. Please contact Fourteenth Coast Guard District, at (808) 535-3409, or via email at D14-DG-PJdpw@uscg.mil, for questions or concerns.

HI ISLAND - OAHU - MIDWAY CHANNEL ENTRANCE BUOY 2 (43/21)

Midway Channel Entrance Buoy 2 (LLNR 29960) will be changed from an unlighted 2NFR to a lighted 8x26 LR. When completed, the change will be advertised in a future Local Notice to Mariners. Please contact Fourteenth Coast Guard District, at (808) 535-3409, or via email at D14-DG-PJ-dpw@uscg.mil, for questions or concerns.

SECTION VI - PROPOSED CHANGES

Periodically, the Coast Guard evaluates its system of aids to navigation to determine whether the conditions for which the aids to navigation were established have changed. When changes occur, the feasibility of improving, relocating, replacing, or discontinuing aids are considered. This section contains notice(s) of non-approved, proposed projects open for comment. SPECIAL NOTE: Mariners are requested to respond in writing to the District office unless otherwise noted (see banner page for address).

PROPOSED WATERWAY PROJECTS OPEN FOR PUBLIC COMMENT

<u>Proposed Project(s)</u>	<u>Closing</u>	<u>Docket No.</u>	<u>Ref. LNM</u>
None			

Proposed Change Notice(s)

HI ISLANDS - HAWAII - POHOIKI BAY BREAKWATER LIGHT 2 (43/21)

The Coast Guard is proposing discontinuing Pohoiki Bay Breakwater Light 2 (LLNR 28135) due to shoaling and sand accumulation which has made the waterway leading to Pohoiki Bay boat ramp at Isaac Hale Park un-navigable. The Coast Guard welcomes public comment on the proposal to discontinue. Please contact Fourteenth Coast Guard District, at (808) 535-3409, or via email at D14-DG-PJ-dpw@uscg.mil, to comment.

SECTION VII - GENERAL

This section contains information of general concern to the Mariners. Mariners are advised to use caution while transiting these areas.

PRIVATE AIDS TO NAVIGATION (01/08)

The term private aids to navigation (ATON) includes all marine aids to navigation operated in the navigable waters of the United States other than those operated by the Federal Government. Private ATON includes lighted structures and day beacons, lighted and unlighted buoys, RACONs and fog signals. Almost half of the aids to navigation established in the Fourteenth District are operated and maintained by private interests. These interests include private citizens, marina and yacht clubs, municipal and state governments, construction and dredging companies, research and non-profit organizations, beachfront associations, and large industrial concerns.

No person, public body or instrumentality not under the control of the Commandant, exclusive of the Armed Forces, shall establish and maintain, discontinue, change or transfer ownership of any aid to maritime navigation, without first obtaining permission to do so from the Commandant and the Army Corps of Engineers.

Owners contemplating establishing such buoys should review CFR 33 Part 66 and contact the appropriate authority, usually the Army Corps of Engineers, to determine what additional requirements may exist. Additionally, private aids on navigable waters regulated by the federal government require either a Coast Guard permit or Coast Guard letter of no objection. The application for a letter of no objection or for a permit, form CG-2554, can be obtained by emailing the Private ATON Manager at the email given below.

The Private ATON Manager provides applicants assistance in processing their paperwork. Federal regulations governing aids to navigation, copies of permits previously issued to the applicant, illustrations of standard markings, and lists of commercial ATON manufacturers are available. Questions and requests should be directed to:

Commander (dpw)
Fourteenth Coast Guard District
300 Ala Moana Boulevard, 9-220
Honolulu, HI 96850-4982
Attn: Private ATON Manager
Tel: (808) 535-3408 / 3409
Email: D14-DG-PJ-dpw@uscg.mil

U.S. Army Corps of Engineers
Honolulu District
Building 230
Ft. Shafter, HI 96858-5440
Attn: CEPOH-EC-R
Phone: (808)-835-4004

Mariners are reminded that they have a responsibility to report discrepant private aids to the nearest Coast Guard unit. The failure of a mariner to report a discrepant aid to navigation may result in casualties to others. All aids to navigation in the Fourteenth District, both private and federally maintained, are user monitored. When owners receive discrepancy reports from the Coast Guard, they are obligated to take immediate action to correct the discrepancy. Owners are reminded of their responsibility for the proper operation and maintenance of their private aids to navigation. All classes of private aids to navigation shall be maintained in proper operating condition. They are subject to inspection by the Coast Guard at any time and without prior notice. The Coast Guard issues broadcast notice to mariners for reported discrepancies that remain in effect until the discrepancy is corrected or is published in the Local Notice to Mariners.

FISH AGGREGATING DEVICE (FAD) BUOY INFORMATION AND DISCREPANCIES (28/21)

The State of Hawaii has placed Fish Aggregating Devices (FADs) in the waters surrounding the main Hawaiian Islands. These buoys attract schools of tuna and other important pelagic fishes, such as dolphinfish (Mahimahi), wahoo (Ono) and billfish. FADs allow fishermen to easily locate and catch these species. The buoys are anchored using approximately 2.5 miles of mooring line which creates a very large swing circle. Mariners are advised that these buoys may maneuver anywhere from three to five miles from their charted positions.

FISH AGGREGATING DEVICE (FAD) BUOY INFORMATION AND DISCREPANCIES (28/21)

Mariners requesting up to date information concerning Hawaiian Island's FAD Buoys, or reports of discrepancies, may either visit the Hawaii FAD web site at <http://www.himb.hawaii.edu/fads>, contact Mr. Warren Cortez at (808) 956-0684, or send written correspondence to:

Mr. Warren Cortez
Fish Aggregating Devices Program
965 N. Nimitz Hwy
Honolulu, HI 96817

Mariners requesting up to date information concerning Guam's FAD Buoys, or reports of discrepancies, may either visit the Guam FAD web site at www.dawr.guam.gov, contact Mr. Brent Tibbatts at Brent.Tibbatts@gmail.com 671.735.3955/56, or send written correspondence to:

Mr. Brent Tibbatts
Guam Department of Agriculture
Division of Aquatics and Wildlife Resources
163 Dairy Road
Mangilao, Guam 96913

NAVIGATION INTERNET SITES (33/05)

Chart Corrections: <http://nauticalcharts.noaa.gov/mcd/updates/index.htm>
Light List Corrections: <https://www.navcen.uscg.gov/index.php?pageName=lightLists>
Coast Pilot Corrections: <http://nauticalcharts.noaa.gov/nsd/cpdownload.htm>
NOAA Weather Buoy Sites: <http://www.ndbc.noaa.gov/Maps/rmd.shtml>
Hawaii Weather: <http://www.prh.noaa.gov/pr/hnl/>
Online Chart Viewer: <http://www.nauticalcharts.noaa.gov/mcd/OnLineViewer>

(For NOAA Print-on-Demand (POD) charts only)

NOAA and Coast Survey, in partnership with OceanGrafix, LLC, offer mariners official nautical charts that are continuously updated by NOAA cartographers up to the latest Notice to Mariners and to all Critical Safety Information known to the Coast Survey in advance of its publication in a Notice. From NOAA digital files, OceanGrafix prints corrected charts, to order, for sale to mariners through the OceanGrafix retail network. Produced and distributed by authority of NOAA, these charts meet all U.S. Coast Guard chart carriage requirements, including the requirements for updating (Titles 33 & 46 CFR). New Editions are available 2-8 weeks before their release as a traditional NOAA chart.

These new charts feature operational information for the commercial mariner, and education and safety information for the recreational boater. They have brighter colors and a higher contrast for better readability in various light conditions. They come either laminated or on water resistant paper.

POD charts are available through a POD chart agents at <http://OceanGrafix.com/>, 1-877-56CHART, or contact NOAA at <http://nauticalcharts.noaa.gov/pod/Pod.htm>. For questions contact NOAA at help@nauticalcharts.gov.

HI ISLANDS - U.S. DEPARTMENT OF HOMELAND SECURITY - DIVER SAFETY ADVISORY (25/09)

This advisory is issued to increase the safety of all open water and waterway users throughout the Hawaiian Islands and is issued in conjunction with the Department of Land and natural Resources (DLNR) pilot program focusing on diver safety.

Over the years there have been an increased number of reports of near misses between divers and waterborne crafts in Oahu, Maui and Hawaii. In most cases, these near misses have happened in near coastal waters and often when conditions were choppy.

The following suggested measures can help avoid near misses:
Become familiar with your transit route and destination area before heading out.
Remain vigilant of your surroundings and post extra lookouts in choppy waters and inclement weather.
Stay clear of federal Aids to Navigation and commercial delineated channels.
Use all appropriate sound and visual signals.
Postpone trips until the weather and sea conditions improve.

All open water and waterway users are also highly encouraged to visit the Coast Guard Sector Honolulu Homeport website for Safety and Security Zone information for the Hawaiian Islands at: <http://homeport.uscg.mil/> under the Honolulu Port Directory tab and Safety and Security section.

The most updated charts for the Hawaiian Islands can be found on the National Oceanic and Atmospheric Administration (NOAA) website: <http://www.prh.noaa.gov/pr/hnl/> or <http://www.nauticalcharts.noaa.gov/mcd/OnLineViewer.html>.

Any and all life threatening or hazardous conditions including off station or missing buoys should be reported immediately to the U.S. Coast Guard at (808) 842-2600.

PACIFIC OCEAN - NATIONAL WILDLIFE REFUGE - RESTRICTED FOR ENTRY (22/11)

The U.S. Department of the Interior, Fish and Wildlife Service, National Wildlife Refuge System, Pacific Reefs National Wildlife Refuge Complex manages ten National Wildlife Refuges within the Fourteenth Coast Guard District. Eight of these Refuges, described below, consist of waters and submerged and emergent lands. The remaining two Refuges, the Marianas Arc of Fire and the Mariana Trench National Wildlife Refuges, consist only of submerged lands.

The waters and submerged and emergent lands of National Wildlife Refuges are subject to the regulations governing the National Wildlife Refuge System found in Parts 25-32 of Title 50, Code of Federal Regulations. Therefore, except as provided by international law, these areas are closed to all forms of entry, other than innocent passage, unless specifically authorized by a Special Use Permit issued by the U.S. Fish and Wildlife Service. Should you have any questions, please contact the Pacific Reefs National Wildlife Refuge Complex by emailing the Project Leader at

PACIFIC OCEAN - NATIONAL WILDLIFE REFUGE - RESTRICTED FOR ENTRY (22/11)

Pacific_Reefs@fws.gov or by calling 808-792-9560.

Baker Island National Wildlife Refuge. This Refuge includes all of Baker Island approximately at Latitude 0-11-45 North and Longitude 176-28-45 West, together with its territorial waters extending outward 12 nautical miles (13.8 mi; 22.2 km) from the mean low water line of the island.

Howland Island National Wildlife Refuge. This Refuge includes all of Howland Island approximately at Latitude 0-48-30 North and Longitude 176-37 West, together with its territorial waters extending outward 12 nautical miles (13.8 mi; 22.2 km) from the mean low water line of the island.

Jarvis Island National Wildlife Refuge. This Refuge includes all of Jarvis Island approximately at Latitude 0-22-20 South and Longitude 160-00 West, together with its territorial waters extending outward 12 nautical miles (13.8 mi; 22.2 km) from the mean low water line of the island.

Johnston Atoll National Wildlife Refuge. This Refuge includes all of Johnston Atoll approximately at Latitude 16-44 North and Longitude 169-31 West, together with its territorial waters extending outward 12 nautical miles (13.8 mi; 22.2 km) from the mean low water line of the atoll. However, portions of the emergent land at Johnston Atoll are currently under the administrative jurisdiction of the Department of the Air Force, which controls all access to areas under its administrative jurisdiction.

Kingman Reef National Wildlife Refuge. This Refuge includes all of Kingman Reef approximately at Latitude 6-24-30 North and Longitude 162-23-30 West, together with its territorial waters extending outward 12 nautical miles (13.8 mi; 22.2 km) from the mean low water line of the reef.

Palmyra Atoll National Wildlife Refuge. This Refuge includes all of Palmyra Atoll approximately at Latitude 05-53 North and Longitude 162-05 West, together with its territorial waters extending outward 12 nautical miles (13.8 mi; 22.2 km) from the mean low water line of the atoll. However, portions of the emergent land at Palmyra Atoll are currently owned and managed as a nature preserve by The Nature Conservancy, which controls all access to areas under its ownership.

PACIFIC OCEAN - NATIONAL WILDLIFE REFUGE - RESTRICTED FOR ENTRY CONTINUED (22/11)

Rose Atoll National Wildlife Refuge. This Refuge includes all of Rose Atoll approximately at Latitude 14-32-45 South and Longitude 168-9-24 West, the seaward extent being the extreme low water line outside the perimeter reef except at the entrance channel where the boundary is a line extended between the extreme low water lines on each side of the entrance channel.

Wake Atoll National Wildlife Refuge. This Refuge includes all of Wake Atoll approximately at Latitude 19-18 North and Longitude 166-38 East, together with its territorial waters extending outward 12 nautical miles (13.8 mi; 22.2 km) from the mean low water line of the atoll. However, in accordance with Presidential Proclamation No. 8336, the emergent land at Wake Atoll is currently under the management of the Department of the Air Force, which controls all access to areas under its management.

HI ISLANDS - KAHO'OLAWE ISLAND RESERVE COMMISSION - NOTICE OF OPEN WATERS SCHEDULE (05/21)

Notice to Trollers: The dates below mark the Open Waters Trolling Schedule for January 2021 through December 2021. Should you have any questions, please contact the Ocean Resources Program at the Kaho'olawe Island Reserve Commission (KIRC) by emailing the Ocean Resources Specialist at dtokishi@kirc.hawaii.gov or by calling 808-243-5022. This information is also posted on the KIRC website at <http://kahoolawe.hawaii.gov>.

12:01 a.m Saturdays to 11:59 p.m. Sundays as follows:

- January 23 -24; 30 - 31
- February 20 -21; 27 - 28
- March 13 -14; 20 - 21
- April 10 -11; 24 - 25
- May 08 -09; 22 - 23
- June 05 -06; 19 - 20
- July 10 -11; 24 - 25
- August 15 -15; 28 - 29
- September 11 -12; 25 - 26
- October 09 -10; 23 - 24
- November 06 -07; 13 - 14
- December 04 -05; 18 - 19

The Kaho'olawe Island Reserve (defined as the submerged lands and waters within two nautical miles of the island) is divided into two zones; Zones A and B. These zones are defined as:

Zone A: Includes the island of Kaho'olawe and all the submerged lands and waters between the shoreline of Kaho'olawe and the 30-fathom isobath surrounding Kaho'olawe (HAR 13-261). Unauthorized entry into Zone A is prohibited at all times except in case of emergency.
Zone B: All waters and submerged lands between the 30-fathom isobath surrounding Kaho'olawe and two nautical miles from the shoreline of the island. Unauthorized entry into Zone B is prohibited at all times except for trolling as authorized by KIRC on the days stipulated by the Open Waters Schedule as listed above or in case of emergency. Trollers must remain underway, making way at all times while in Zone B. All lures or live bait must remain on the water surface. All other fishing, ocean recreation, and any other activities are strictly prohibited. All vessels fishing in the Kaho'olawe Island Reserve during the open trolling weekends are required by state law (H.A.R. 13-261) to register and submit catch reports to the KIRC. KIRC will be implementing its new registration and catch report system beginning January 2007. For more information on how to register and where to submit your catch reports, call 808-243-5889.

Warning: Kaho'olawe and its surrounding submerged lands and waters contain unknown quantities of unexploded ordnance that are hazardous to public health and safety.

Authority: (H.R.S. §6K, H.A.R. §13-261).

HI ISLANDS - OAHU - KANEOHE BAY - MILITARY OPERATIONS (09/09)

Military amphibious and search and rescue operations may be underway at any time, day or night, within Kaneohe Bay in the vicinity of 21-26-

HI ISLANDS - OAHU - KANEOHE BAY - MILITARY OPERATIONS (09/09)

06.83N/157-46-11.00W and 21-26-45.00N/157-46-55.00W (approximately .5 NM south of Mokapu Peninsula). Support surface craft will be equipped with appropriate day/night signals and markings and can be reached on VHF-Ch 82. In the interest of safety, it is requested that all vessels that use Sonar contact Water Front Operations on VHF-Ch 82A or by phone at (808) 257-2941 to avoid injury to divers that may be in the area.

HI ISLANDS - SOUTH COAST OAHU - HAZARDOUS OPERATIONS - HOT AREAS (50/07)

FACSFAC Pearl Harbor established Special Operating Areas Four (SOA-4) as a permanent "HOT AREA" named "KAPU" on April 15, 1995. FACSFAC effective hours are 0700W to 2300W (Monday - Saturday from 1700Z - 0900Z) Monday - Friday, and on weekend's 0800W - 1600W (Weekends from 1800Z - 0200Z) or by request. Activities include intermittent naval gunnery exercises and airborne ordnance drops. "KAPU" is also designated as the emergency jettison area for aircraft with hung stores, etc. Hot area "KAPU" is bounded by the following coordinates 20-46N/158-16W, 20-42 N/158-04W, 20-13N/158-36W and 20-04N/158-11W. Scheduling authority is FACSFAC Pearl Harbor call-sign "HULA DANCER". "HULA DANCER" can be reached on primary 266.4/127.0 MHz, or secondary 336.8/132.4 MHZ or telephone (808) 472-7333/7337 and may authorize transits through these areas on a case by-case basis.

HI ISLANDS - OAHU - KANEOHE BAY - ULUPAU CRATER WEAPONS DANGER ZONE - HAZARDOUS OPERATIONS (02/22)

Hazardous operations will be conducted on Monday, January 10, 2022 0800-2300W and Tuesday, January 11 0600-2300W. All vessels/watercraft operating within the Mokapu Peninsula near the Ulupau Crater located on Marine Corps Base Hawaii shall vacate the danger zone at the best speed and by the most direct route. Danger zone will include areas from 21°30'59.66"N /157°44'05.97"W to 21°29'16.58"N /157°40'30.19"W to 21°25'01.79"N/157°40'33.70"W to 21°27'11.84"N/157°43'53.83"W, forming a triangular figure.

The following are hazardous operations to mariners for January 12, 2022 through January 18, 2022:

Zone 1 (NE Range)
Jan 12 0600 - 2300
Jan 13 N/A
Jan 14 0700 - 1600
Jan 15 N/A
Jan 16 N/A
Jan 17 N/A
Jan 18 0800 - 2300

Zone 2 (E Range)
Jan 12 0600 - 2300
Jan 13 N/A
Jan 14 N/A
Jan 15 N/A
Jan 16 N/A
Jan 17 N/A
Jan 18 0800 - 1700

See enclosure 1

HI ISLANDS - OAHU - KEAHI POINT - HAZARDOUS OPERATIONS (02/22)

The Puuloa Danger Zone is located in ocean waters as described by the below coordinates and is closed at all times to surface craft, swimmers, and divers, with the exception of authorized personnel.

Additional information may be obtained by contacting Daniel Geltmacher at daniel.geltmacher@usmc.mil.

The Danger Zone is bounded by the following coordinates:

21-18-21N / 157-59-14W
21-18-11N / 158-00-17W
21-17-11N / 158-00-06W
21-17-22N / 157-59-03W

The following are hazardous operations to mariners for January 12, 2022 through January 18, 2022:

Jan 12 0700 - 1500
Jan 13 0700 - 1500
Jan 14 N/A
Jan 15 N/A
Jan 16 N/A
Jan 17 N/A
Jan 18 0800 - 1500

HI ISLANDS - KAUAI - BARKING SANDS - PACIFIC MISSILE RANGE FACILITY HI AREA - HAZARDOUS OPERATIONS (02/22)

Intermittent missile firing operations are conducted by the Pacific Missile Range Facility (PMRF), Barking Sands, Kauai, in the Whiskey 188 (W-188) operating area. Operations are conducted periodically throughout each week in an area bound by the following coordinates:

22:00N/159:51W, 22:00N/160:00W, 22:04N/160:06W, 21:59.5N/160:21W, 22:05N/161:35W, 22:45N/161:25W, 22:56N/161:49W,

HI ISLANDS - KAUAI - BARKING SANDS - PACIFIC MISSILE RANGE FACILITY HI AREA - HAZARDOUS OPERATIONS (02/22)
23:34N/161:18.6W, 23:57N/160:41W, 25:41N/161:36W, 26:00N/159:58W, 25:47N/158:15W, 23:54N/158:15W, 22:20N/159:09W,
22:21N/159:30W, 22:13N/159:42W, 22:00N/159:51W

Intermittent high power radar operations are conducted by PMRF at the following position: 22:03N/159:47W

Request all mariners remain at least one mile off the coastline between Kokole Point and Nohili Point.

Vessels may be requested to alter course due to firing operations and are requested to contact "Pacific Missile Range Facility" on HF 2182 KHz or VHF-Ch 16 prior to entering the above boundaries. If unable to contact the PMRF prior to entering or while in the warning area, relay messages through U.S. Coast Guard Honolulu. Vessels inbound and outbound for Hawaiian ports will create the least interference to firing operations as well as enhance vessel's safety by passing South of the Islands of Kauai and Niihau during the specified times. Federal law provides for civil penalties of \$40,000 and/or criminal penalties of 6 years in prison for each violation of the PMRF safety zone during the schedule of designated activity (33CFR 165.1406).

The following are hazardous operations to mariners for January 12, 2022 through January 19, 2022:

- 12 JAN 0730-1730 KAULAKAHI CHANNEL AND NOHILI POINT TO 100 NM WEST THROUGH NORTHEAST.
- 13 JAN 0730-1730 KAULAKAHI CHANNEL AND NOHILI POINT TO 100 NM WEST THROUGH NORTHEAST.
- 14 JAN 0630-1730 KAULAKAHI CHANNEL AND NOHILI POINT TO 60 NM WEST THROUGH NORTH.
- 15 JAN NO HAZARDOUS OPERATIONS SCHEDULED.
- 16 JAN NO HAZARDOUS OPERATIONS SCHEDULED.
- 17 JAN NO HAZARDOUS OPERATIONS SCHEDULED.
- 18 JAN 0830-1700 KAULAKAHI CHANNEL AND NOHILI POINT TO 25 NM WEST THROUGH NORTH.
- 19 JAN 0630-1830 KAULAKAHI CHANNEL AND NOHILI POINT TO 60 NM WEST THROUGH NORTHEAST.

MARINE EVENTS

This section contains information of general concern to the mariner. All event forms must be received no later than noon on Tuesday a week prior to the event. Mariners are advised to use caution while transiting these areas:

HI ISLANDS - OAHU - Kaneohe Bay Flare Training (02/22)

Kaneohe Yacht Club will be conducting flare training in the middle of Kaneohe Bay on January 15, 2022 from 1000 - 1100. Vessels and spectators are advised to maintain a safe distance from the launch site.

SECTION VIII - LIGHT LIST CORRECTIONS

An Asterisk *, indicates the column in which a correction has been made to new information

(1) No.	(2) Name and Location	(3) Position	(4) Characteristic	(5) Height	(6) Range	(7) Structure	(8) Remarks
None							

PUBLICATION CORRECTIONS

None

ENCLOSURES

HI ISLANDS - OAHU - KANEOHE BAY HAZARDOUS OPERATIONS (18/07)

ULUPAU CRATER WEAPONS DANGER ZONE

HI ISLANDS - OAHU - HONOLULU HARBOR DREDGE (03/21)

Honolulu Harbor Maintenance Dredging Project at Honolulu Harbor.

HI ISLANDS - OAHU - HONOLULU HARBOR PIER 19-20 REPAIRS (30/21)

Substructure and waterline repairs at piers 19-20 in Honolulu Harbor.

M. Sibley
Rear Admiral, U.S. Coast Guard
Commander, Fourteenth Coast Guard District

Danger Zone - Hawaii-Ulupau Crater Weapons Training (Kaneohe Bay)

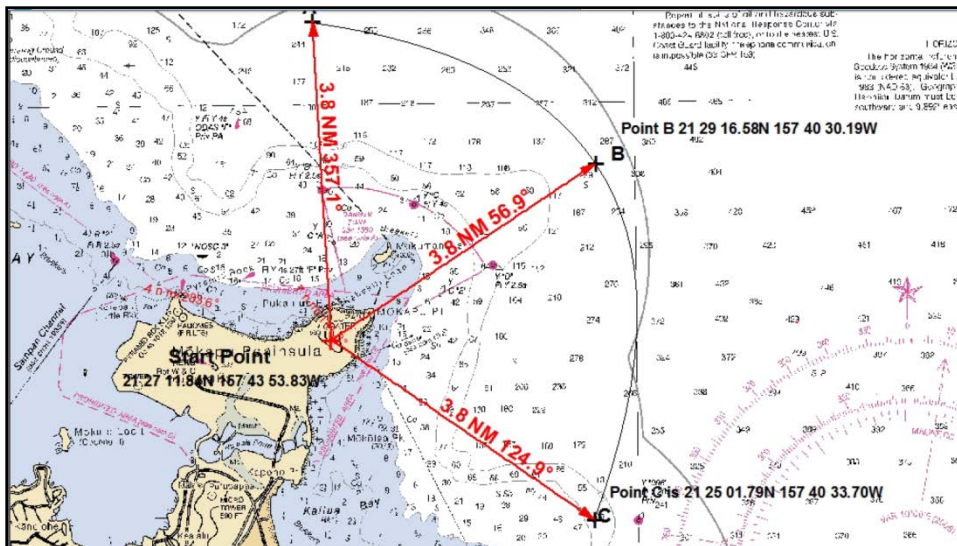
Mariners are reminded that the Marine Corps Base Hawaii (MCBH) conducts intermittent weapons firing at the Ulupau Crater Weapons Training Range between 6 a.m. and 11 p.m. throughout the week & weekends. Caution transiting the waters off of Mokapu Peninsula is imperative at all times, including the 500 yard prohibited area surrounding MCBH. Periods of live firing will be indicated on shore at Ulupau crater either by two large red triangular warning pennants during the day or flashing red warning beacons at night. When these signals are present, the danger zone is not considered safe for boaters. Information on weapons firing schedules may be obtained by calling the MCBH Range Manager at 808-257-8816/17.

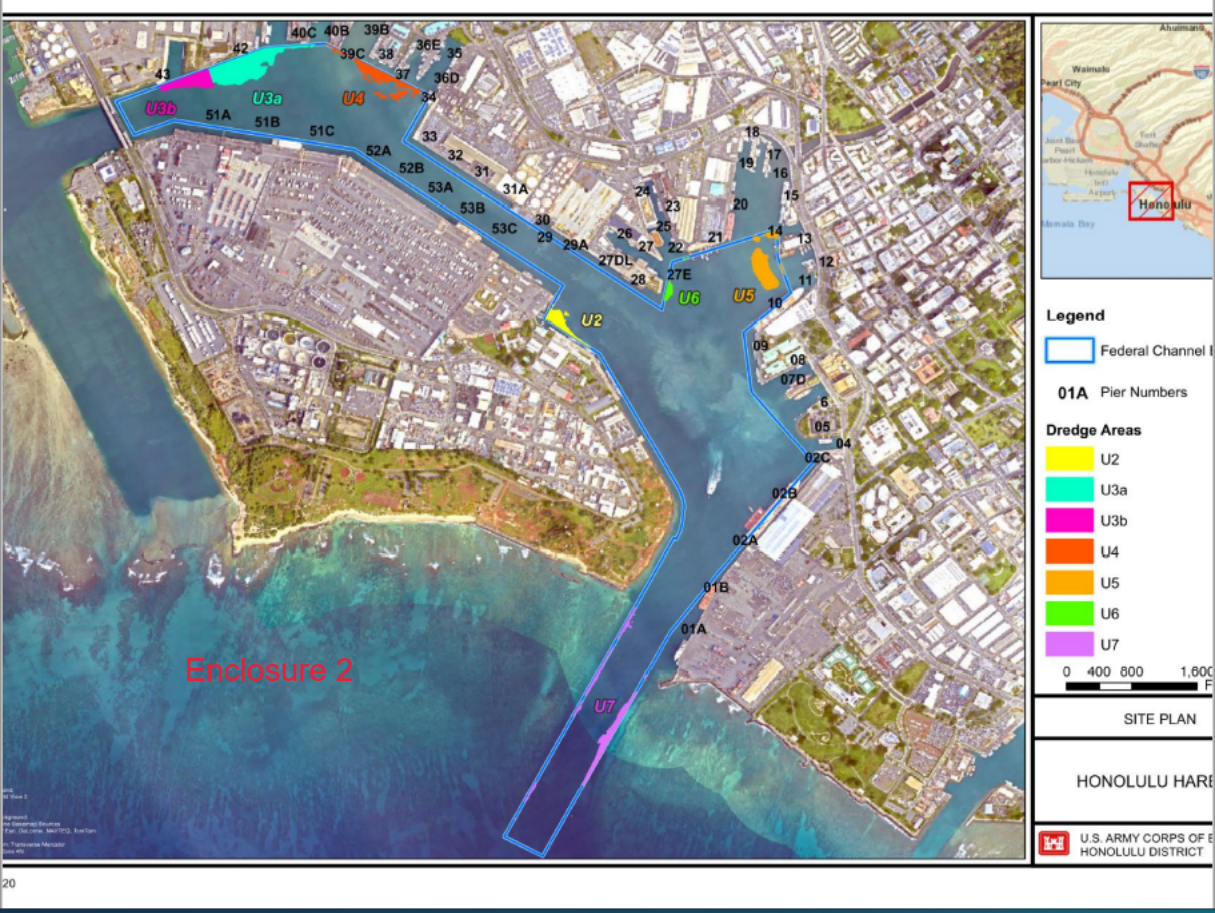
The 33 CFR 334.1380 Army Corp of Engineers established Danger Zone includes the area within a pie-shaped sector extending seaward a distance of 3.8 nautical miles between radial lines bearing 357.1° true and 124.9° true, respectively, from a starting point on Mokapu Peninsula at $21^{\circ}27'11.84''$ N, $157^{\circ}43'53.83''$ W. The danger zone is bounded by a landward starting point and three seaward points forming an arc with a 3.8 nautical-mile radius at its center (Point B) with a radial line bearing 56.9° true. The three seaward points have the following coordinates:

Point A: Latitude $21^{\circ}30'59.66''$ N, Longitude $157^{\circ}44'05.97''$ W

Point B: Latitude $21^{\circ}29'16.58''$ N, Longitude $157^{\circ}40'30.19''$ W

Point C: Latitude $21^{\circ}25'01.79''$ N, Longitude $157^{\circ}40'33.70''$ W







Enclosure 3

Google