



U.S. Department  
of Homeland Security  
**United States  
Coast Guard**

## LOCAL NOTICE TO MARINERS

**District: 14**

**Week: 04/22**

January 26, 2022  
ISSUED BY:  
Commander (dpw)  
Fourteenth Coast Guard District  
300 Ala Moana Boulevard Room 9-220  
Honolulu, HI 96850-4982  
Telephone: (808) 535-3409  
Email: D14-DG-PJ-dpw@uscg.mil  
Website: <https://www.navcen.uscg.gov/>

**Note:**

Unless otherwise indicated, missing and destroyed structures are presumed to be in the immediate vicinity, possibly beneath the surface. Any life threatening or hazardous conditions including off station, missing, or inoperative aids to navigation should be reported immediately to U.S. Coast Guard Sector Honolulu at (808) 842-2600 and U.S. Coast Guard Sector Guam at (671) 355-4822. Mariners should proceed with caution.

**References:**

Light List, Volume VI, Pacific Coast and Pacific Islands, 2022 Edition (COMDTPUB P16502.6).  
U.S. Coast Pilot 10, Pacific Coast : Oregon, Washington, Hawaii, Pacific Islands 2021 (2nd Edition). Coast Pilots, along with corrections, are available at: <http://www.nauticalcharts.noaa.gov>

Navigation information having been of immediate concern to the mariner, and promulgated by the following broadcasts, have been incorporated in this notice when still significant:

COMCOGARD SECTOR HONOLULU HI BNMs: 011-22 to 021-22  
COMCOGARD SECTOR GUAM BNMs: 028-22 to 037-22

### ABBREVIATIONS

**A through H**

ADRIFT - Buoy Adrift  
AICW - Atlantic Intracoastal Waterway  
Al - Alternating  
B - Buoy  
BKW - Breakwater  
bl - Blast  
BNM - Broadcast Notice to Mariner  
bu - Blue  
C - Canadian  
CHAN - Channel  
CGD - Coast Guard District  
C/O - Cut Off  
CONT - Contour  
CRK - Creek  
CONST - Construction  
DAYMK/Daymk - Daymark  
DBN/Dbn - Daybeacon  
DBD/DAYBD - Dayboard  
DEFAC - Defaced  
DEST - Destroyed  
DISCON - Discontinued  
DMGD/DAMGD - Damaged  
ec - eclipse  
EST - Established Aid  
ev - every  
EVAL - Evaluation  
EXT - Extinguished  
F - Fixed  
fl - flash  
Fl - Flashing  
G - Green  
GIWW - Gulf Intracoastal Waterway  
HAZ - Hazard to Navigation

**I through O**

I - Interrupted  
ICW - Intracoastal Waterway  
IMCH - Improper Characteristic  
INL - Inlet  
INOP - Not Operating  
INT - Intensity  
ISL - Islet  
Iso - Isophase  
kHz - Kilohertz  
LAT - Latitude  
LB - Lighted Buoy  
LBB - Lighted Bell Buoy  
LHB - Lighted Horn Buoy  
LGB - Lighted Gong Buoy  
LONG - Longitude  
LNM - Local Notice to Mariners  
LT - Light  
LT CONT - Light Continuous  
LTR - Letter  
LWB - Lighted Whistle Buoy  
LWP - Left Watching Properly  
MHz - Megahertz  
MISS/MSNG - Missing  
Mo - Morse Code  
MRASS - Marine Radio Activated Sound Signal  
MSLD - Misleading  
N/C - Not Charted  
NGA - National Geospatial-Intelligence Agency  
NO/NUM - Number  
NOS - National Ocean Service  
NW - Notice Writer  
OBSCU - Obscured  
OBST - Obstruction

**P through Z**

PRIV - Private Aid  
Q - Quick  
R - Red  
RACON - Radar Transponder Beacon  
Ra ref - Radar reflector  
RBN - Radio Beacon  
REBUILT - Aid Rebuilt  
RECOVERED - Aid Recovered  
RED - Red Buoy  
REFL - Reflective  
RRL - Range Rear Light  
RELIGHTED - Aid Relit  
RELOC - Relocated  
RESET ON STATION - Aid Reset on Station  
RFL - Range Front Light  
RIV - River  
RRASS - Remote Radio Activated Sound Signal  
s - seconds  
SEC - Section  
SHL - Shoaling  
si - silent  
SIG - Signal  
SND - Sound  
SPM - Single Point Mooring Buoy  
SS - Sound Signal  
STA - Station  
STRUCT - Structure  
St M - Statute Mile  
TEMP - Temporary Aid Change  
TMK - Topmark  
TRLB - Temporarily Replaced by Lighted Buoy  
TRLT - Temporarily Replaced by Light  
TRUB - Temporarily Replaced by Unlighted Buoy

HBR - Harbor  
HOR - Horizontal Clearance  
HT - Height

OBSTR - Obstruction  
Oc - Occulting  
ODAS - Anchored Oceanographic Data Buoy

USACE - Army Corps of Engineers  
W - White  
Y - Yellow

#### **Additional Abbreviations Specific to this LNM Edition:**

MSLD SIG - Misleading Signal

---

### **SECTION I - SPECIAL NOTICES**

This section contains information of special concern to the Mariner.

---

#### **\*\*\*\* Cancellation of NOAA Paper and Raster Nautical Charts \*\*\*\***

The National Oceanic and Atmospheric Administration (NOAA) is undertaking a multi-year program to end production and maintenance of its suite of over 1,000 traditional paper nautical charts and all associated raster chart products and services, including: Print-on-Demand (POD) paper nautical charts, Full-size chart PDF files, BookletChart™ PDF files, NOAA raster navigational charts (NOAA RNC®), the NOAA RNC tile service, and the online RNC viewer.

Six months notice of the intent to cancel a specific chart is provided in a "Last Edition" notice. The final cancellation of a chart is made in a "Canceled" notice. Both types of notices will appear in LNM Section IV, "Chart Correction." A comprehensive list of all canceled NOAA charts is available at: <http://www.charts.noaa.gov/MCD/Dole.shtml>.

Traditional paper nautical chart production is ending to enable the creation and maintenance of larger scale, more up-to-date, higher quality coverage of NOAA's electronic navigational chart (NOAA ENC®) product. This will significantly enhance the amount of charted detail available to mariners. More information about NOAA's program to sunset traditional paper charts is on the NOAA Coast Survey website at: <https://nauticalcharts.noaa.gov/charts/farewell-to-traditional-nautical-charts.html>

An online NOAA Custom Chart application at: <https://devgis.charttools.noaa.gov/pod> is available to create chart images from ENC data, which may then be printed. Notices to Mariners will not be issued for NOAA Custom Charts.

#### **PACIFIC OCEAN - HAZARD TO NAVIGATION - MARINE DEBRIS (07/12)**

With the increase in ocean debris sightings along the coastlines of the Pacific Ocean, mariners are reminded to submit debris sighting reports to the National Oceanic and Atmospheric Administration (NOAA) Marine Debris Program at [DisasterDebris@noaa.gov](mailto:DisasterDebris@noaa.gov), and the University of Hawaii oceanographic research center at [marinedebris@soest.hawaii.edu](mailto:marinedebris@soest.hawaii.edu). For inshore sightings, please use the State of Hawaii <https://dlnr.hawaii.gov/dobor/reportmarinedebrishawaii/>.

#### **HI ISLANDS - HAWAII - HILO HARBOR - AIS TEMPORARY DEACTIVATION (07/19)**

All mariners be advised the Coast Guard has temporarily deactivated AIS broadcasting for the following aids to navigation in the Hilo, HI area:

28035 Hilo Harbor Entrance Lighted Buoy 1 AIS: MMSI 993699986  
28040 Hilo Harbor Breakwater Light AIS: MMSI 993699987  
28055 Hilo Harbor Lighted Buoy 3 AIS: MMSI 993699985  
28070 Hilo Harbor Lighted Buoy 4 AIS: MMSI 993699984

#### **HI ISLANDS - HAWAII - LAHAINA SMALL BOAT HARBOR (12/21)**

Healy Tibbitts Builders, Inc. will be conducting in-water operations for construction of the harbor ferry pier. Steel pipe piles and beams, forming a temporary work platform "trestle" will be installed parallel to the existing Ferry Pier alignment and will remain in place through Fall of 2022. A floating silt curtain will be installed around the work for containing turbidity.

If you have any questions, please contact Project Manager Kenta Okada, [keokada@healytibbitts.com](mailto:keokada@healytibbitts.com), or at (808) 728-4447.

#### **HI ISLANDS - HAWAII - ISAAC HALE PARK (02/19)**

The waterway leading to Pohoiki Bay boat ramp at Isaac Hale Park is un-navigable due to shoaling and sand accumulation. The light and day boards have been temporarily removed from Pohoiki Bay Breakwater Light 2 (LLNR 28135).

#### **HI ISLANDS - MAUI - Lahaina Boat Basin Ferry Const - 1 (40/21)**

Due to ongoing construction project in Lahaina Harbor, the following Aids to Navigation may be partially obscured at various times: Lahaina Light (LLNR 28460), Lahaina Boat Basin Range Front Light (LLNR 28470) and Lahaina Boat Basin Range Rear Light (LLNR 28475). Mariners are advised to transit the area with caution.

#### **HI ISLANDS - MAUI - Lahaina Boat Basin Ferry Const - 2 (04/22)**

Due to ongoing construction project in Lahaina Harbor, the following Aids to Navigation will be temporarily discontinued from 25 January 2022 through 25 February 2022: Lahaina Boat Basin Range Front Light (LLNR 28470) and Lahaina Boat Basin Range Rear Light (LLNR 28475). Mariners are advised to transit the area with caution.

LNM: 020-22

**HI ISLANDS - OAHU - HONOLULU HARBOR - AIS ACTIVATION (07/21)**

All mariners be advised the Coast Guard has temporarily activated AIS broadcasting for the following aids to navigation in the Honolulu Harbor area:

29200 Honolulu Harbor Channel Buoy 3: MMSI 993692240

29205 Honolulu Harbor Channel Buoy 4: MMSI 993692241

For any concerns contact Sector Honolulu at (808) 884-2600.

**HI ISLANDS - OAHU - SHOALING (25/17)**

There has been a report of increased shoaling in Maunalua Bay, between Maunalua Bay Daybeacon 1A (LLNR 28935) and Maunalua Bay Daybeacon 2 (LLNR 28940) when transiting to and from Hawaii Kai. The depth of the water is being estimated around 2-3 feet at low tide. All vessels are requested to remain vigilant regarding water depth when operating in and out of this channel.

**HI ISLANDS - OAHU - HONOLULU HARBOR DREDGE (03/21)**

Honolulu Harbor Maintenance Dredging Project at Honolulu Harbor will commence on or about February 8th 2021. For the dredging related operations, the following vessels will either be moored or working within Honolulu Harbor or the entrance channel to Honolulu Harbor:

- Crane Barge WEEKS 544 (160' x 65').
- Dumps Scow DUTRA KS10 (246' x 45')
- Dump Scow MCamis Sand Island (175' x 45')
- Dump Scow WEEKS 260 (197' x 45')
- Pacific Tug John Brix (136' x 35')
- Tug Carolyn (59' x 22')
- Workboat Roberta G (46' x 16')
- Miscellaneous picket boats and work skiffs.

Dredging operations will be undertaken seven (7) days per week, the Dump Scow Dutra KS10 will be towed by the tug John Brix (or substitute tug) up to two (2) times per day from Honolulu Harbor to the South O'ahu Offshore Dredge Material Disposal Site (ODMS). The MCamis Scow Sand Island will be round trip towed by the tug John Brix (or substitute tug) one (1) time per day from Honolulu Harbor to Kalaeloa Harbor. The call sign for the Tug John Brix is WY 4853. VHF Channel 16 will be monitored. Mariners are requested to use extreme caution while transiting the work area.

Any questions or need more information, please contact Project Manager Cristian Caicedo at (808) 630-0179.

See enclosure 2.

**HI ISLANDS - OAHU - HONOLULU HARBOR PIER 19-20 REPAIRS (30/21)**

Mariners are advised that the Hawaiian Dredging Construction Company is performing substructure and waterline repairs at piers 19-20 in Honolulu Harbor.

Project duration is from July, 2021 to May, 2022 with work being performed Monday through Friday from 0630 Local Time to 1500 Local Time (Concrete Pour Days may end at 1700 Local Time).

Substructure and Waterline Repairs are to include:

- 1) Demo Work to Concrete Under and on Face of the Pier.
- 2) Prepping and Placing Formwork Under and on Face of the Pier.
- 3) Prepping and Placing Rebar for Repairs (including welding work).
- 4) Concrete Pours.
- 5) Installing a new waterline and removing existing waterline.

Mariners are requested to transit the area with caution and keep a sharp lookout for dive operations.

See Enclosure 3

If there are any questions please contact the Project Manager: Toby Inouye at (808) 478-7008.

#### **HI ISLANDS - OAHU - DIVE OPERATIONS (39/20)**

Par Hawaii, Inc. Will be conducting dive operations for their maintenance project activities at its Single Point Mooring (SPM) subsea 30" crude pipeline extending offshore from Barbers Point near the south-west corner of Oahu. This maintenance project is scheduled to commence, weather permitting, on September 29, 2020 and conclude around February, 2022 as weather permits. Actual work will occur nearshore in approximately 34 ft. of water depth offshore of Barbers Point and at the SPM buoy and entire length of pipelines.

The following vessels will be onsite at various times during the work:

- Dive support/Work boat "Huki Pau" (74'x21')
- 10-Meter Ambar RHIB (32'x10.3')
- 8-Meter Ambar RHIB (26'x9.4')
- Tugboat "Noke" (65'x24')
- Tugboat "Na'ina" (94'x26')

Mariners are requested to transit the area with caution, keep a sharp lookout for dive operations, and monitor channel 16.

#### **HI ISLANDS - MAUI - NAVAL EXERCISES (51/21)**

North Maui Hawaii, this is an advisory notice to mariners to notify all concerned about upcoming naval exercises. The Naval Undersea Warfare Center, in support of its mission, will be conducting in-water exercises and technical demonstrations of surface and underwater vehicles during January, 2022 in the vicinity of North Maui Bay (21-00'N / 156-21'W). Exercises will be conducted during January 18-20, 2022, there may be additional events following the exercise for the following 2-3 days.

Commercial and civilian craft are requested to operate with caution and maintain a reasonable standoff from Navy operations to ensure safety and security concerns are met. Surface and airborne assets will be on station to assist in public safety.

For any concerns contact Dave Saluto via satellite phone at 808-684-8653, 808-434-3499, or 808-434-3504

#### **HI ISLANDS - OAHU - Haz Ops (04/22)**

Hazardous operations will be conducted on January 26, 27, 28, 2022 100 NM North of Oahu from 1900W - 2200W in an area bound by the following coordinates:

23-00N / 157-09W  
22-36N / 157-00W  
22-11N / 157-00W  
21-50N / 157-17W  
21-59N / 157-30W  
23-00N / 157-30W

Return to origin

In the interest of safety, all vessels not involved in the above event are requested to remain clear of this area.

LNM: 012/013/014-22

#### **HI ISLANDS - OAHU - Haz Ops (04/22)**

Hazardous operations will be conducted February 04, 2022 150 NM South of Oahu from 1250W - 1500W in an area bound by the following coordinates:

20-41N/158-04W  
18-49N/158-26W  
19-06N/159-16W  
20-45N/158-16W

RETURN TO ORIGIN

20-41N/158-03W  
20-41N/157-46W  
18-52N/157-17W  
18-51N/158-26W

RETURN TO ORIGIN

20-42N/157-46W  
20-43N/157-41W  
20-42N/157-25W  
19-41N/156-35W  
19-08N/156-35W  
18-52N/157-17W

Return to origin

In the interest of safety, all vessels not involved in the above event are requested to remain clear of this area.

LNM: SCC Hono 021-22

**MARIANA ISLANDS - Open Ocean - Military Haz Ops (04/22)**

Military units will be conducting live weapons training in the following coordinates:

12-50N / 145-10E  
11-25N / 147-00E  
10-30N / 147-00E  
10-30N / 145-20E  
12-50N / 145-00E

All mariners are advised to remain clear from the training areas in all direction on the following dates and times:

252300Z JAN 2022 to 260030Z JAN 2022 (0900 to 1030 CHST 26JAN2022)  
260330Z to 260500Z JAN 2022 (1330 to 1500 CHST 26JAN2022)  
270330Z to 270500Z JAN 2022 (1330 to 1500 CHST 27JAN2022)  
272300Z JAN 2022 to 280030Z JAN 2022 (0900 to 1030 CHST 28JAN2022)

All vessels are advised to remain clear of this area.

LNM: SCC GUAM 033-22

**MARIANA ISLANDS - Open Ocean - Military Haz Ops (04/22)**

Military units will be conducting live weapons training in the Farallon De Medinilla on the following dates:

262300Z to 270700Z JAN 2022 ( 0900 to 1730 CHST 27JAN2022)

All mariners are advised to remain 12NM radius around Farallon De Medinilla in position:

16-01.06N / 146-03.35E.

All vessels are advised to remain clear of this area.

LNM: SCC GUAM 035-22

**MARIANA ISLANDS - GUAM - NAVTEX STATION (41/19)**

NAVTEX Station (518KHz) is Inoperable. The 518KHz NAVTEX station is inoperable with no estimated time of repair. NAVTEX broadcasts are available on 4209.5KHz Mariners.

---

## SECTION II - DISCREPANCIES

This section lists all reported and corrected discrepancies related to Aids to Navigation in this edition. A discrepancy is a change in the status of an aid to navigation that differs from what is published or charted.

---

### DISCREPANCIES (FEDERAL AIDS)

LLNR	Aid Name	Status	Chart No.	BNM Ref.	LNM St	LNM End
28065	Hilo Harbor Range Rear Light	LT EXT	19324	229-21	47/21	

28180	Kailua Bay Entrance Directional Light	STRUCT DEST/HAZ NAV	19331	239-21	49/21
28275	Kawaihae Harbor Entrance Lighted Buoy 1	SINKING	19330	SCC Hono 225-2:	47/21
28520	Pohakuloa Point Light	LT EXT	19347	SCC Hono 213-2:	45/21
<b>29435</b>	<b>Pearl Harbor Light 15</b>	<b>LT EXT</b>	<b>19366</b>		<b>04/22</b>
<b>29460</b>	<b>Pearl Harbor Light 20</b>	<b>LT EXT</b>	<b>19366</b>		<b>04/22</b>
29960	Midway Channel Entrance Buoy 2	MISSING	19482		04/21
30485	Kwajalein Harbor Channel Buoy 7	MISSING	81715		20/20
30490	Kwajalein Harbor Channel Buoy 9	SINKING	81715	hydropac 007-21	36/21
30665	Agana Small Boat Basin Approach Range Front Light	DAYMK IMCH	81048	guam 423-21	42/21
30855	Tanapag Harbor Approach Lighted Buoy T	TMK MISSING	81076	544-19	40/20
30865	Managaha Island Light	LT EXT	81076	494-21	49/21

#### DISCREPANCIES (FEDERAL AIDS) CORRECTED

LLNR	Aid Name	Status	Chart No.	BNM Ref.	LNM St	LNM End
30745	Cabras Island Channel Light 4	WATCHING PROPERLY	81054		02/22	04/22

#### DISCREPANCIES (PRIVATE AIDS)

LLNR	Aid Name	Status	Chart No.	BNM Ref.	LNM St	LNM End
28007	FAD Site HK - Hakalau, Hawaii	MISSING	19320	109-21	27/21	
28007.03	FAD Site E - Leleiwi, Hawaii	MISSING	19320		49/21	
28007.05	FAD Site D - Kumakahi, Hawaii	MISSING	19320	070-21	17/21	
28007.07	FAD Site KH - Kehena, Hawaii	MISSING	19320	110-21	27/21	
28007.19	FAD Site UU - Auau Point, Hawaii	LT EXT	19320	093-21	23/21	
28007.22	FAD Site WH1	MISSING	19320	021-18	18/15	
28007.25	FAD Site F - Kailua Kona, Hawaii	MISSING	19327	111-21	27/21	
28007.29	FAD Site XX - Puako, Hawaii	MISSING	19327	143-21	32/21	
28007.35	FAD Site Q - Pauwela Point, Maui	MISSING	19340	112-21	27/21	
28007.4	FAD SITE MTBC 1	MISSING		148-19	44/19	
<b>28008.05</b>	<b>FAD Site GG - Nakaohu Point, Maui</b>	<b>MISSING</b>	<b>19320</b>		<b>04/22</b>	
28008.09	FAD Site JJ - Kamohio, Kahoolawe	MISSING	19347	031-21	46/21	
28008.19	FAD Site CC - Kaena Point, Lanai	MISSING	19351	113-21	27/21	
28008.21	FAD Site N - Cape Halawa, Molokai	MISSING	19340	179-20	28/20	
28008.27	FAD Site U - Kaneohe, Oahu	MISSING	19004	072-21	17/21	
28008.31	FAD Site T - Makapuu, Oahu	MISSING	19339	307-20	50/20	
28009.01	FAD Site R - Makaha, Oahu	MISSING	19004	073-21	17/21	
28009.03	FAD Site V - Makua, Oahu	MISSING	19357	030-21	07/21	
28009.07	FAD Site II - Haleiwa, Oahu	MISSING	19004	242-20	37/20	
28009.13	FAD Site BB - Moloaa, Kauai	MISSING	19381	122-20	19/20	
28009.15	FAD Site DK - Anahola, Kauai	ADRIFT	19004	188-20	19/20	
28009.17	FAD Site WK - Wailua, Kauai	MISSING	19381	122-20	19/20	
28009.19	FAD Site Z - Kipukai, Kauai	MISSING	19381	122-20	19/20	
28009.21	FAD Site CK - Makahuena Point, Kauai	MISSING	19381		49/21	
28009.23	FAD Site PP - Koloa, Kauai	MISSING	19381	114-21	27/21	
28009.27	FAD Site KK - Waimea, Kauai	MISSING	19381	115-21	27/21	
28095	Reeds Bay Rock Daybeacon B	MISSING	19324	218-18	40/18	
28230	Puako Small Boat Harbor Buoy 2	MISSING	19330		10/20	
28235	Puako Small Boat Harbor Buoy 3	MISSING	19330		10/20	

28240	Puako Small Boat Harbor Buoy 4	MISSING	19330	10/20
28245	Puako Small Boat Harbor Buoy 5	MISSING	19330	10/20
28250	Puako Small Boat Harbor Buoy 6	MISSING	19330	10/20
28255	Puako Small Boat Harbor Buoy 7	MISSING	19330	10/20
28260	Puako Small Boat Harbor Buoy 8	MISSING	19330	10/20
28265	Puako Small Boat Harbor Buoy 9	MISSING	19330	10/20
28381.1	Kahului Boat Ramp Buoy 1	MISSING	187-20	30/20
28381.2	Kahului Boat Ramp Buoy 2	MISSING	187-20	30/20
28381.3	Kahului Boat Ramp Buoy 3	MISSING	187-20	30/20
28381.4	Kahului Boat Ramp Buoy 4	MISSING	187-20	30/20
28381.5	Kahului Boat Ramp Buoy 5	MISSING	187-20	30/20
28381.6	Kahului Boat Ramp Buoy 6	MISSING	187-20	30/20
28381.8	Kahului Boat Ramp Buoy 8	MISSING	187-20	30/20
28381.9	Kahului Boat Ramp Buoy 9	MISSING	19342 187-20	30/20
28427	Maalaea Basin Channel Lighted Buoy 1	ADRIFT	19350 158-18	22/18
28480	Lahaina Boat Basin Lighted Buoy 3	MISSING	19348 177-18	28/18
28500	Lahaina Boat Basin Lighted Buoy 7	MISSING	19348 238-18	46/18
28507.5	Mala Channel Light 5	LT EXT	19348 283-20	45/20
28507.6	Mala Channel Light 6	LT EXT	19348 284-20	45/20
28524	PacIOOS Wave Lighted Buoy Lanai	MISSING	19347 141-21	31/21
28630	Kaunakakai Small Boat Harbor Buoy 1	SINKING	19353 223-21	46/21
28673	PacIOOS Wave Lighted Buoy Kaneohe West	MISSING	19359 074-21	17/21
28674.04	WETS 4	MISSING	19359 010-18	02/18
28674.05	WETS 5	MISSING	19359 011-18	02/18
28885	Mokapu Point Research Lighted Buoy North	MISSING	19357 077-18	09/18
28886	Mokapu Point Research Lighted Buoy South	MISSING	19357 078-18	09/18
28890	PacIOOS Wave Lighted Buoy Mokapu	MISSING	19357 126-21	29/21
28895	Makai Channel Daybeacon 3	DAYMK MISSING	19358 038-19	11/19
28900	Makai Channel Daybeacon 4	MISSING	19358 038-19	11/19
28935	Maunaloa Bay Daybeacon 1A	STRUCT DEST/HAZ NAV/DAYMK MISSING	19358	46/19
29105	Ala Wai Boat Harbor Channel Range Rear Light	LT EXT	19369 010-22	03/22
29110	Ala Wai Boat Harbor Channel Buoy 3	OFF STA	19369	40/21
29115	Ala Wai Boat Harbor Channel Buoy 4	SINKING	19369	33/21
29125	Ala Wai Boat Harbor Channel Daybeacon 6	DAYMK DMGD	19369 174-18	27/18
29135	Ala Wai Boat Harbor Channel Daybeacon 8	DAYMK DMGD	19369 175-18	27/18
29315	Keehi Lagoon Barge Turning Channel Range Front	REDUCED INT	19367 312-20	52/20
29325	Keehi Lagoon Barge Turning Basin Buoy 2	OFF STA	19367 085-12	16/12
29600	Barbers Point Anchorage Area Bravo Tank Terminal Lighted Buoy A	LT EXT	19362 001-22	01/22
29656	West Beach Marina Light 2	LT EXT	19362 266-17	40/17
29900	Kikiaola Boat Harbor Range Front Light	LT EXT	19386 089-21	22/21
29901	Kikiaola Boat Harbor Range Rear Light	LT EXT	19386 088-21	22/21
29902	Kikiaola Boat Harbor Light 1	LT EXT	087-21	22/21
29903	Kikiaola Boat Harbor Light 2	LT EXT	169-18	25/18
30603	FAD Site "Cocos" - Guam	LT EXT	81048 014-19	03/19
30612	FAD Site "FACPI 2" - Guam	MISSING	81048 082-19	09/19

30624	FAD Site "Number 2" - Guam	OFF STA	81048	146-14	12/14
30631	FAD Site "Number 3"	MISSING		083-19	09/19
30634	FAD Site "Number 4"	MISSING		011-19	03/19
30637.1	FAD Site GF1	MISSING	81048	041-18	03/18
30640	FAD Site "Number 5"	LT EXT		607-18	47/18
30650	PacIOOS Wave Lighted Buoy Ritidian	MISSING	81048		26/21
30787	Drydock Point West Entrance Daybeacon 1	DAYMK MISSING	81054	707-17	44/17
30807.5	X-Ray Wharf Lighted Buoy 2	LT EXT	81054	261-21	27/21
30811.3	Agat Small Boat Harbor Light 3	LT EXT	81048	178-19	18/19
30811.9	Agat Small Boat Harbor Daybeacon 9	DAYMK IMCH		092-18	07/18
30815	Mamaon Channel Lighted Buoy 1	OFF STA	81048	718-17	45/17
30820	Mamaon Channel Lighted Buoy 2	OFF STA	81048	506-18	39/18
30851.2	FAD Site DD - Rota	MISSING	81063	303-19	30/19
30853	PacIOOS Wave Lighted Buoy Tanapag	MISSING	81067	275-21	28/21

#### DISCREPANCIES (PRIVATE AIDS) CORRECTED

LLNR	Aid Name	Status	Chart No.	BNM Ref.	LNM St	LNM End
------	----------	--------	-----------	----------	--------	---------

None

#### PLATFORM DISCREPANCIES

Name	Status	Position	BNM Ref.	LNM St	LNM End
------	--------	----------	----------	--------	---------

None

#### PLATFORM DISCREPANCIES CORRECTED

Name	Status	Position	BNM Ref.	LNM St	LNM End
------	--------	----------	----------	--------	---------

None

### SECTION III - TEMPORARY CHANGES and TEMPORARY CHANGES CORRECTED

This section contains temporary changes and corrections to Aids to Navigation for this edition. When charted aids are temporarily relocated for dredging, testing, evaluation, or marking an obstruction, a temporary correction shall be listed in Section IV giving the new position.

#### TEMPORARY CHANGES

LLNR	Aid Name	Status	Chart No.	BNM Ref.	LNM St	LNM End
28470	Lahaina Boat Basin Range Front Light	Other	19348	020-22	04/22	09/22
28475	Lahaina Boat Basin Range Rear Light	Other	19348	020-22	04/22	09/22
29180	Honolulu Harbor Channel Lighted Buoy 1	RELOCATED FOR DREDGING	19367	253-20	38/20	
29195	Honolulu Harbor Channel Lighted Buoy 2	RELOCATED FOR DREDGING	19367	253-20	38/20	
29200	Honolulu Harbor Channel Buoy 3	DISCONTINUED FOR DREDGING	19367		07/21	
29205	Honolulu Harbor Channel Buoy 4	DISCONTINUED FOR DREDGING	19367		07/21	
29210	Honolulu Harbor Channel Lighted Buoy 5	RELOCATED FOR DREDGING	19367	253-20	38/20	
29230	Honolulu Harbor Buoy 10	DISCONTINUED FOR DREDGING	19367	061-21	15/21	
30660	Ritidian Point Light	RELOCATED	81048		43/21	

#### TEMPORARY CHANGES CORRECTED

LLNR	Aid Name	Status	Chart No.	BNM Ref.	LNM St	LNM End
------	----------	--------	-----------	----------	--------	---------

None

## PLATFORM TEMPORARY CHANGES

Name	Status	Position	BNM Ref.	LNM St	LNM End
None					

## PLATFORM TEMPORARY CHANGES CORRECTED

Name	Status	Position	BNM Ref.	LNM St	LNM End
None					

## SECTION IV - CHART CORRECTIONS

This section contains corrections to federally and privately maintained Aids to Navigation, as well as NOS corrections. This section contains corrective actions affecting chart(s). Corrections appear numerically by chart number, and pertain to that chart only. It is up to the mariner to decide which chart(s) are to be corrected. The following example explains individual elements of a typical chart correction.

Chart Number	Chart Edition	Edition Date	Last Local Notice to Mariners	Horizontal Datum Reference	Source of Correction	Current Local Notice to Mariners
12327	91st Ed.	19-APR-97	Last LNM: 26/97	NAD 83		27/97
Chart Title: NY-NJ-NEW YORK HARBOR - RARITAN RIVER						
Main Panel 2245 NEW YORK HARBOR						
(Temp)	ADD	NATIONAL DOCK CHANNEL BUOY 3			CGD01 at 40-41-09.001N	074-02-48.001W
	Corrective Action	Green can	Object of Corrective Action		Position	

(Temp) indicates that the chart correction action is temporary in nature. Courses and bearings are given in degrees clockwise from 000 true. Bearings of light sectors are toward the light from seaward. The nominal range of lights is expressed in nautical miles (NM) unless otherwise noted.

<b>510</b>	<b>2nd Ed.</b>	<b>22-MAR-86</b>	<b>Last LNM: 18/11</b>	<b>UNKNOWN</b>		<b>04/22</b>
Chart Title: <b>EASTERN PORTION OF JAPAN (OMEGA)</b>						
<b>CHART EASTERN PORTION OF JAPAN (OMEGA). Page/Side: N/A</b>						
(Temp)	RELOCATE	Ritidian Point Light	TEMPORARILY RELOCATED FOR CONSTRUCTION OF NEW AID.		CGD14 from 13-39-00.504N to 13-39-00.395N	144-51-42.678E 144-51-42.475E
<b>19016</b>	<b>12th Ed.</b>	<b>01-APR-08</b>	<b>Last LNM: 24/11</b>	<b>ASTRO (Multi)</b>		<b>04/22</b>
Chart Title: <b>Ni'ihau to French Frigate Shoals; Necker Island; Nihoa</b>						
<b>Main Panel 2767 NIIHAU TO FRENCH FRIGATE SHOALS. Page/Side: N/A</b>						
LAST EDITION No new editions of chart 19016 will be published. It will be canceled on 04-May-22. Comparable or larger scale Electronic Navigational Chart (ENC) coverage is available. See "Cancellation of NOAA Paper and Raster Nautical Charts" in Section I of this LNM for details. A list of all canceled NOAA charts is at <a href="https://www.charts.noaa.gov/MCD/Dole.shtml">https://www.charts.noaa.gov/MCD/Dole.shtml</a> .					NOS	--
<b>19019</b>	<b>11th Ed.</b>	<b>01-APR-08</b>	<b>Last LNM: 19/03</b>	<b>ASTRO (Multi)</b>		<b>04/22</b>
Chart Title: <b>French Frigate Shoals to Laysan Island</b>						
<b>Main Panel 2770 FRENCH FRIGATE SHOALS TO LAYSAN ISLAND. Page/Side: N/A</b>						
LAST EDITION No new editions of chart 19019 will be published. It will be canceled on 04-May-22. Comparable or larger scale Electronic Navigational Chart (ENC) coverage is available. See "Cancellation of NOAA Paper and Raster Nautical Charts" in Section I of this LNM for details. A list of all canceled NOAA charts is at <a href="https://www.charts.noaa.gov/MCD/Dole.shtml">https://www.charts.noaa.gov/MCD/Dole.shtml</a> .					NOS	--
<b>19022</b>	<b>12th Ed.</b>	<b>01-APR-08</b>	<b>Last LNM:</b>	<b>ASTRO (Multi)</b>		<b>04/22</b>
Chart Title: <b>Laysan Island to Kure Atoll</b>						
<b>Main Panel 2771 LAYSAN ISLAND TO KURE ATOLL. Page/Side: N/A</b>						
LAST EDITION No new editions of chart 19022 will be published. It will be canceled on 04-May-22. Comparable or larger scale Electronic Navigational Chart (ENC) coverage is available. See "Cancellation of NOAA Paper and Raster Nautical Charts" in Section I of this LNM for details. A list of all canceled NOAA charts is at <a href="https://www.charts.noaa.gov/MCD/Dole.shtml">https://www.charts.noaa.gov/MCD/Dole.shtml</a> .					NOS	--
<b>19322</b>	<b>8th Ed.</b>	<b>01-DEC-03</b>	<b>Last LNM: 50/03</b>	<b>WGS 84</b>		<b>04/22</b>

ChartTitle: Harbors and Landings on the Northeast and Southeast Coasts of Hawai'i;Punalu'u Harbor;Honu'apo Bay;Honokaa Landing;Kukuihaele Landing

Unrelated 2773 HARBORS AND LANDINGS ON THE NORTHEAST AND SOUTHEAST COASTS OF HAWAII - KUKUIHAELE LANDING. Page/Side: N/A

LAST EDITION No new editions of chart 19322 will be published. It will be canceled on 04-May-22. Comparable or larger scale Electronic Navigational Chart (ENC) coverage is available. See "Cancellation of NOAA Paper and Raster Nautical Charts" in Section I of this LNM for details. A list of all canceled NOAA charts is at <https://www.charts.noaa.gov/MCD/Dole.shtml>. NOS -- --

19326 7th Ed. 01-JUL-14 Last LNM: WGS 84 04/22

ChartTitle: Pa'auhau Landing Island Of Hawai'i

Main Panel 2778 PAUHAU LANDING ISLAND OF HAWAII. Page/Side: A

LAST EDITION No new editions of chart 19326 will be published. It will be canceled on 04-May-22. Comparable or larger scale Electronic Navigational Chart (ENC) coverage is available. See "Cancellation of NOAA Paper and Raster Nautical Charts" in Section I of this LNM for details. A list of all canceled NOAA charts is at <https://www.charts.noaa.gov/MCD/Dole.shtml>. NOS -- --

19327 11th Ed. 01-JUN-05 Last LNM: 31/14 WGS 84 04/22

ChartTitle: West Coast of Hawai'i Cook Point to Upolu Point;Keauhou Bay;Honokohau Harbor

CHART HI - WEST COAST OF HAWAII - COOK PT. TO UPOLU PT.. Page/Side: N/A

RELOCATE Honokohau Harbor Approach Lighted Buoy 1 CGD14 from 19-40-05.912N 156-01-52.181W to 19-40-06.437N 156-01-49.826W

19329 8th Ed. 01-NOV-03 Last LNM: 47/03 WGS 84 04/22

ChartTitle: Mähukena Harbor and approaches Island Of Hawai'i

Main Panel 2782 MAHUKONA HARBOR AND APPROACHES ISLAND OF HAWAII. Page/Side: N/A

LAST EDITION No new editions of chart 19329 will be published. It will be canceled on 04-May-22. Comparable or larger scale Electronic Navigational Chart (ENC) coverage is available. See "Cancellation of NOAA Paper and Raster Nautical Charts" in Section I of this LNM for details. A list of all canceled NOAA charts is at <https://www.charts.noaa.gov/MCD/Dole.shtml>. NOS -- --

19331 8th Ed. 01-JUN-14 Last LNM: 26/14 WGS 84 04/22

ChartTitle: Kailua Bay Island Of Hawai'i

Main Panel 2784 KAILUA BAY ISLAND OF HAWAII. Page/Side: A

LAST EDITION No new editions of chart 19331 will be published. It will be canceled on 04-May-22. Comparable or larger scale Electronic Navigational Chart (ENC) coverage is available. See "Cancellation of NOAA Paper and Raster Nautical Charts" in Section I of this LNM for details. A list of all canceled NOAA charts is at <https://www.charts.noaa.gov/MCD/Dole.shtml>. NOS -- --

19332 9th Ed. 01-FEB-16 Last LNM: WGS 84 04/22

ChartTitle: Kealakekua Bay to Hönaunau Bay

Main Panel 2785 KEALAKEKUA BAY TO HONAUNAU BAY. Page/Side: A

LAST EDITION No new editions of chart 19332 will be published. It will be canceled on 04-May-22. Comparable or larger scale Electronic Navigational Chart (ENC) coverage is available. See "Cancellation of NOAA Paper and Raster Nautical Charts" in Section I of this LNM for details. A list of all canceled NOAA charts is at <https://www.charts.noaa.gov/MCD/Dole.shtml>. NOS -- --

19341 9th Ed. 10-NOV-01 Last LNM: WGS 84 04/22

ChartTitle: Häna Bay Island of Maui

Main Panel 2787 HANA BAY ISLAND OF MAUI. Page/Side: N/A

LAST EDITION No new editions of chart 19341 will be published. It will be canceled on 04-May-22. Comparable or larger scale Electronic Navigational Chart (ENC) coverage is available. See "Cancellation of NOAA Paper and Raster Nautical Charts" in Section I of this LNM for details. A list of all canceled NOAA charts is at <https://www.charts.noaa.gov/MCD/Dole.shtml>. NOS -- --

19350 11th Ed. 17-MAR-01 Last LNM: 33/12 WGS 84 04/22

ChartTitle: Island of Maui Ma'alaea Bay

Main Panel 2793 ISLAND OF MAUI MAALAEA BAY. Page/Side: N/A

NOS

LAST EDITION No new editions of chart 19350 will be published. It will be canceled on 04-May-22. Comparable or larger scale Electronic Navigational Chart (ENC) coverage is available. See "Cancellation of NOAA Paper and Raster Nautical Charts" in Section I of this LNM for details. A list of all canceled NOAA charts is at <https://www.charts.noaa.gov/MCD/Dole.shtml>. -- --

**19361** **9th Ed.** **01-MAR-10** **Last LNM: 33/12** **WGS 84** **04/22**  
*ChartTitle: Port Wa'ianae Island of O'ahu*

**Main Panel 2804 PORT WAIANAE ISLAND OF OAHU. Page/Side: N/A**

LAST EDITION No new editions of chart 19361 will be published. It will be canceled on 04-May-22. Comparable or larger scale Electronic Navigational Chart (ENC) coverage is available. See "Cancellation of NOAA Paper and Raster Nautical Charts" in Section I of this LNM for details. A list of all canceled NOAA charts is at <https://www.charts.noaa.gov/MCD/Dole.shtml>. NOS --

**19367** **41st Ed.** **01-MAY-14** **Last LNM: 33/21** **WGS 84** **04/22**  
*ChartTitle: Island of O'ahu Honolulu Harbor*

**CHART HI - OAHU - HONOLULU HARBOR. Page/Side: N/A**

(Temp)	DELETE	Honolulu Harbor Buoy 10 TEMPORARILY DELETED (DISCONTINUED) FOR DREDGING	CGD14 at 21-18-32.862N	157-51-55.939W
(Temp)	DELETE	Honolulu Harbor Channel Buoy 3 TEMPORARILY DELETED (DISCONTINUED) FOR DREDGING	CGD14 at 21-17-42.345N	157-52-19.912W
(Temp)	DELETE	Honolulu Harbor Channel Buoy 4 TEMPORARILY DELETED (DISCONTINUED) FOR DREDGING	CGD14 at 21-17-39.616N	157-52-15.241W

**19384** **9th Ed.** **01-JUN-14** **Last LNM:** **WGS 84** **04/22**  
*ChartTitle: Hanamaulu Bay Island of Kaua'i*

**Main Panel 2813 HANAMAULU BAY ISLAND OF KAUAI. Page/Side: A**

LAST EDITION No new editions of chart 19384 will be published. It will be canceled on 04-May-22. Comparable or larger scale Electronic Navigational Chart (ENC) coverage is available. See "Cancellation of NOAA Paper and Raster Nautical Charts" in Section I of this LNM for details. A list of all canceled NOAA charts is at <https://www.charts.noaa.gov/MCD/Dole.shtml>. NOS --

**19385** **8th Ed.** **01-OCT-03** **Last LNM: 17/12** **WGS 84** **04/22**  
*ChartTitle: North Coast of Kaua'i Hä'ena Point to Kepuhi Point*

**Main Panel 2814 HAENA POINT TO KEPUHI POINT. Page/Side: N/A**

LAST EDITION No new editions of chart 19385 will be published. It will be canceled on 04-May-22. Comparable or larger scale Electronic Navigational Chart (ENC) coverage is available. See "Cancellation of NOAA Paper and Raster Nautical Charts" in Section I of this LNM for details. A list of all canceled NOAA charts is at <https://www.charts.noaa.gov/MCD/Dole.shtml>. NOS --

**19401** **9th Ed.** **01-MAY-07** **Last LNM: 05/03** **WGS 84** **04/22**  
*ChartTitle: French Frigate Shoals*

**Main Panel 2816 FRENCH FRIGATE SHOALS. Page/Side: N/A**

LAST EDITION No new editions of chart 19401 will be published. It will be canceled on 04-May-22. Comparable or larger scale Electronic Navigational Chart (ENC) coverage is available. See "Cancellation of NOAA Paper and Raster Nautical Charts" in Section I of this LNM for details. A list of all canceled NOAA charts is at <https://www.charts.noaa.gov/MCD/Dole.shtml>. NOS --

**19402** **7th Ed.** **01-APR-07** **Last LNM: 04/03** **WGS 84** **04/22**  
*ChartTitle: French Frigate Shoals Anchorage*

**Main Panel 2817 FRENCH FRIGATE SHOALS ANCHORAGE. Page/Side: N/A**

LAST EDITION No new editions of chart 19402 will be published. It will be canceled on 04-May-22. Comparable or larger scale Electronic Navigational Chart (ENC) coverage is available. See "Cancellation of NOAA Paper and Raster Nautical Charts" in Section I of this LNM for details. A list of all canceled NOAA charts is at <https://www.charts.noaa.gov/MCD/Dole.shtml>. NOS --

**19421** **8th Ed.** **01-MAY-07** **Last LNM: 03/03** **WGS 84** **04/22**  
*ChartTitle: Gardner Pinnacles and approaches; Gardner Pinnacles*

**Main Panel 2818 GARDNER PINNACLES AND APPROACHES. Page/Side: N/A**

LAST EDITION No new editions of chart 19421 will be published. It will be canceled on 04-May-22. Comparable or larger scale Electronic Navigational Chart (ENC) coverage is available. See "Cancellation of NOAA Paper and Raster Nautical Charts" in Section I of this LNM for details. A list of all canceled NOAA charts is at <https://www.charts.noaa.gov/MCD/Dole.shtml>.

NOS

--

--

**19441 8th Ed. 01-MAY-07 Last LNM: 19/03 WGS 84**

**04/22***ChartTitle: Maro Reef***Main Panel 2820 MARO REEF. Page/Side: N/A**

LAST EDITION No new editions of chart 19441 will be published. It will be canceled on 04-May-22. Comparable or larger scale Electronic Navigational Chart (ENC) coverage is available. See "Cancellation of NOAA Paper and Raster Nautical Charts" in Section I of this LNM for details. A list of all canceled NOAA charts is at <https://www.charts.noaa.gov/MCD/Dole.shtml>.

NOS

--

--

**19442 6th Ed. 01-APR-07 Last LNM: 13/03 WGS 84**

**04/22***ChartTitle: Lisianski and Laysan Island;West Coast of Laysan Island***Main Panel 2821 LISIANSKI ISLAND. Page/Side: N/A**

LAST EDITION No new editions of chart 19442 will be published. It will be canceled on 04-May-22. Comparable or larger scale Electronic Navigational Chart (ENC) coverage is available. See "Cancellation of NOAA Paper and Raster Nautical Charts" in Section I of this LNM for details. A list of all canceled NOAA charts is at <https://www.charts.noaa.gov/MCD/Dole.shtml>.

NOS

--

--

**19461 7th Ed. 01-DEC-02 Last LNM: 08/05 WGS 84**

**04/22***ChartTitle: Pearl and Hermes Atoll***Main Panel 2824 PEARL AND HERMES ATOLL. Page/Side: N/A**

LAST EDITION No new editions of chart 19461 will be published. It will be canceled on 04-May-22. Comparable or larger scale Electronic Navigational Chart (ENC) coverage is available. See "Cancellation of NOAA Paper and Raster Nautical Charts" in Section I of this LNM for details. A list of all canceled NOAA charts is at <https://www.charts.noaa.gov/MCD/Dole.shtml>.

NOS

--

--

**19483 6th Ed. 01-JAN-03 Last LNM: 08/05 WGS 84**

**04/22***ChartTitle: Hawai'i Kure Atoll***Main Panel 2827 KURE ATOLL. Page/Side: N/A**

LAST EDITION No new editions of chart 19483 will be published. It will be canceled on 04-May-22. Comparable or larger scale Electronic Navigational Chart (ENC) coverage is available. See "Cancellation of NOAA Paper and Raster Nautical Charts" in Section I of this LNM for details. A list of all canceled NOAA charts is at <https://www.charts.noaa.gov/MCD/Dole.shtml>.

NOS

--

--

**81004 5th Ed. 01-AUG-08 Last LNM: 17/12 WGS 84**

**04/22***ChartTitle: Commonwealth of the Northern Mariana Islands***Main Panel 2904 MARIANA ISLANDS. Page/Side: N/A**

(Temp) RELOCATE Ritidian Point Light  
TEMPORARILY RELOCATED FOR CONSTRUCTION OF NEW AID.

CGD14

from 13-39-00.504N  
to 13-39-00.395N

144-51-42.678E  
144-51-42.475E

**81023 4th Ed. 19-JAN-85 Last LNM: 49/89 UNKNOWN**

**04/22***ChartTitle: Nomoi Islands to Faraulep Island***CHART Nomoi Islands to Faraulep Island. Page/Side: N/A**

(Temp) RELOCATE Ritidian Point Light  
TEMPORARILY RELOCATED FOR CONSTRUCTION OF NEW AID.

CGD14

from 13-39-00.504N  
to 13-39-00.395N

144-51-42.678E  
144-51-42.475E

**81025 2nd Ed. 27-JAN-79 Last LNM: 45/88 UNKNOWN**

**04/22***ChartTitle: COMNAV MARIANAS - SURFACE/AIR - OPAREA***CHART COMNAV MARIANAS - SURFACE/AIR - OPAREA. Page/Side: N/A**

(Temp) RELOCATE Ritidian Point Light  
TEMPORARILY RELOCATED FOR CONSTRUCTION OF NEW AID.

CGD14

from 13-39-00.504N  
to 13-39-00.395N

144-51-42.678E  
144-51-42.475E

**81048 10th Ed. 01-FEB-06 Last LNM: 50/13 WGS 84**

**04/22***ChartTitle: Marianas Island of Guam Territory of Guam;Cocos Lagoon*

**CHART MARIANA ISLANDS - ISLAND OF GUAM - TERRITORY OF GUAM. Page/Side: N/A**

(Temp)	RELOCATE	Ritidian Point Light	CGD14	
		TEMPORARILY RELOCATED FOR CONSTRUCTION OF NEW AID.	from 13-39-00.504N	144-51-42.678E
			to 13-39-00.395N	144-51-42.475E

<b>81063</b>	<b>6th Ed.</b>	<b>01-MAR-06</b>	<b>Last LNM: 33/12</b>	<b>WGS 84</b>	<b>04/22</b>
--------------	----------------	------------------	------------------------	---------------	--------------

*ChartTitle: Commonwealth of the Northern Mariana Islands Rota*

**Main Panel 2850 MARIANA ISLANDS ROTA. Page/Side: N/A**

LAST EDITION	No new editions of chart 81063 will be published. It will be canceled on 04-May-22. Comparable or larger scale Electronic Navigational Chart (ENC) coverage is available. See "Cancellation of NOAA Paper and Raster Nautical Charts" in Section I of this LNM for details. A list of all canceled NOAA charts is at <a href="https://www.charts.noaa.gov/MCD/Dole.shtml">https://www.charts.noaa.gov/MCD/Dole.shtml</a> .	NOS	--
--------------	--	-----	----

<b>81086</b>	<b>8th Ed.</b>	<b>01-MAY-14</b>	<b>Last LNM:</b>	<b>WGS 84</b>	<b>04/22</b>
--------------	----------------	------------------	------------------	---------------	--------------

*ChartTitle: Plans in the Mariana Islands; Faraloon de Pajaros; Sarigan Island; Farallon de Medinilla; Ascuncion Island; Agrihan; Agrihan Anchorage; Alamagan Island; Guguan; Anatahan*

**Unrelated 2873 PLANS IN MARIANA ISL FARALLON DE PAJAROS. Page/Side: N/A**

LAST EDITION	No new editions of chart 81086 will be published. It will be canceled on 04-May-22. Comparable or larger scale Electronic Navigational Chart (ENC) coverage is available. See "Cancellation of NOAA Paper and Raster Nautical Charts" in Section I of this LNM for details. A list of all canceled NOAA charts is at <a href="https://www.charts.noaa.gov/MCD/Dole.shtml">https://www.charts.noaa.gov/MCD/Dole.shtml</a> .	NOS	--
--------------	--	-----	----

<b>81092</b>	<b>5th Ed.</b>	<b>01-DEC-07</b>	<b>Last LNM: 52/07</b>	<b>PAGAN ISLAND LD</b>	<b>04/22</b>
--------------	----------------	------------------	------------------------	------------------------	--------------

*ChartTitle: Commonwealth of the Northern Mariana Islands*

**Unrelated 2882 PAGAN ISLAND. Page/Side: N/A**

LAST EDITION	No new editions of chart 81092 will be published. It will be canceled on 04-May-22. Comparable or larger scale Electronic Navigational Chart (ENC) coverage is available. See "Cancellation of NOAA Paper and Raster Nautical Charts" in Section I of this LNM for details. A list of all canceled NOAA charts is at <a href="https://www.charts.noaa.gov/MCD/Dole.shtml">https://www.charts.noaa.gov/MCD/Dole.shtml</a> .	NOS	--
--------------	--	-----	----

<b>83116</b>	<b>5th Ed.</b>	<b>01-SEP-06</b>	<b>Last LNM: 41/06</b>	<b>NAD 83</b>	<b>04/22</b>
--------------	----------------	------------------	------------------------	---------------	--------------

*ChartTitle: Islands in the Pacific Ocean-Jarvis, Bake and Howland Islands*

**Unrelated 2833 HOWLAND ISLAND. Page/Side: N/A**

LAST EDITION	No new editions of chart 83116 will be published. It will be canceled on 04-May-22. Comparable or larger scale Electronic Navigational Chart (ENC) coverage is available. See "Cancellation of NOAA Paper and Raster Nautical Charts" in Section I of this LNM for details. A list of all canceled NOAA charts is at <a href="https://www.charts.noaa.gov/MCD/Dole.shtml">https://www.charts.noaa.gov/MCD/Dole.shtml</a> .	NOS	--
--------------	--	-----	----

<b>83153</b>	<b>2nd Ed.</b>	<b>01-DEC-08</b>	<b>Last LNM: 09/05</b>	<b>WGS 84</b>	<b>04/22</b>
--------------	----------------	------------------	------------------------	---------------	--------------

*ChartTitle: United States Possesion Kingman Reef*

**Main Panel 2836 KINGMAN REEF. Page/Side: N/A**

LAST EDITION	No new editions of chart 83153 will be published. It will be canceled on 04-May-22. Comparable or larger scale Electronic Navigational Chart (ENC) coverage is available. See "Cancellation of NOAA Paper and Raster Nautical Charts" in Section I of this LNM for details. A list of all canceled NOAA charts is at <a href="https://www.charts.noaa.gov/MCD/Dole.shtml">https://www.charts.noaa.gov/MCD/Dole.shtml</a> .	NOS	--
--------------	--	-----	----

<b>83157</b>	<b>6th Ed.</b>	<b>01-MAY-06</b>	<b>Last LNM: 06/09</b>	<b>PALMYRA ATOLL AD 44</b>	<b>04/22</b>
--------------	----------------	------------------	------------------------	----------------------------	--------------

*ChartTitle: Palmyra Atoll;Approaches to Palmyra Atoll*

**Main Panel 2837 PALMYRA ATOLL. Page/Side: N/A**

LAST EDITION	No new editions of chart 83157 will be published. It will be canceled on 04-May-22. Comparable or larger scale Electronic Navigational Chart (ENC) coverage is available. See "Cancellation of NOAA Paper and Raster Nautical Charts" in Section I of this LNM for details. A list of all canceled NOAA charts is at <a href="https://www.charts.noaa.gov/MCD/Dole.shtml">https://www.charts.noaa.gov/MCD/Dole.shtml</a> .	NOS	--
--------------	--	-----	----

---

## OIL RIG MOVEMENT

---

### Drill Rigs/Vessels Removed

Latitude	Longitude	Block	Rigs/Vessel	Chart	Type	Status
----------	-----------	-------	-------------	-------	------	--------

None

#### Drill Rigs/Vessels Established

<u>Latitude</u>	<u>Longitude</u>	<u>Block</u>	<u>Rigs/Vessel</u>	<u>Chart</u>	<u>Type</u>	<u>Status</u>
None						

### SECTION V - ADVANCE NOTICES

This section contains advance notice of approved projects, changes to aids to navigation, or upcoming temporary changes such as dredging, etc. Mariners are advised to use caution while transiting these areas.

#### SUMMARY OF ADVANCED APPROVED PROJECTS

##### Approved Project(s)

None

Project Date

Ref. LNM

##### Advance Notice(s)

###### HI ISLANDS - OAHU - MAKAPUU POINT LIGHT (45/21)

Due to unreliable commercial power at Makapuu Point Light (LLNR 28925), the Coast Guard will convert the power supply to solar and battery power. Please contact Fourteenth Coast Guard District, at (808) 535-3409, or via email at D14-DG-PJdpw@uscg.mil, for questions or concerns.

###### HI ISLAND - OAHU - MIDWAY CHANNEL ENTRANCE BUOY 2 (43/21)

Midway Channel Entrance Buoy 2 (LLNR 29960) will be changed from an unlighted 2NFR to a lighted 8x26 LR. When completed, the change will be advertised in a future Local Notice to Mariners. Please contact Fourteenth Coast Guard District, at (808) 535-3409, or via email at D14-DG-PJ-dpw@uscg.mil, for questions or concerns.

### SECTION VI - PROPOSED CHANGES

Periodically, the Coast Guard evaluates its system of aids to navigation to determine whether the conditions for which the aids to navigation were established have changed. When changes occur, the feasibility of improving, relocating, replacing, or discontinuing aids are considered. This section contains notice(s) of non-approved, proposed projects open for comment. SPECIAL NOTE: Mariners are requested to respond in writing to the District office unless otherwise noted (see banner page for address).

#### PROPOSED WATERWAY PROJECTS OPEN FOR PUBLIC COMMENT

##### Proposed Project(s)

None

Closing

Docket No.

Ref. LNM

##### Proposed Change Notice(s)

###### HI ISLANDS - HAWAII - POHOIKI BAY BREAKWATER LIGHT 2 (43/21)

The Coast Guard is proposing discontinuing Pohoiki Bay Breakwater Light 2 (LLNR 28135) due to shoaling and sand accumulation which has made the waterway leading to Pohoiki Bay boat ramp at Isaac Hale Park un-navigable. The Coast Guard welcomes public comment on the proposal to discontinue. Please contact Fourteenth Coast Guard District, at (808) 535-3409, or via email at D14-DG-PJ-dpw@uscg.mil, to comment.

### SECTION VII - GENERAL

This section contains information of general concern to the Mariners. Mariners are advised to use caution while transiting these areas.

#### PRIVATE AIDS TO NAVIGATION (01/08)

The term private aids to navigation (ATON) includes all marine aids to navigation operated in the navigable waters of the United States other than those operated by the Federal Government. Private ATON includes lighted structures and day beacons, lighted and unlighted buoys, RACONS and fog signals. Almost half of the aids to navigation established in the Fourteenth District are operated and maintained by private interests. These interests include private citizens, marina and yacht clubs, municipal and state governments, construction and dredging companies, research and non-profit organizations, beachfront associations, and large industrial concerns.

No person, public body or instrumentality not under the control of the Commandant, exclusive of the Armed Forces, shall establish and maintain, discontinue, change or transfer ownership of any aid to maritime navigation, without first obtaining permission to do so from the Commandant and the Army Corps of Engineers.

Owners contemplating establishing such buoys should review CFR 33 Part 66 and contact the appropriate authority, usually the Army Corps of Engineers, to determine what additional requirements may exist. Additionally, private aids on navigable waters regulated by the federal government require either a Coast Guard permit or Coast Guard letter of no objection. The application for a letter of no objection or for a permit, form CG-2554, can be obtained by emailing the Private ATON Manager at the email given below.

The Private ATON Manager provides applicants assistance in processing their paperwork. Federal regulations governing aids to navigation, copies

#### **PRIVATE AIDS TO NAVIGATION (01/08)**

of permits previously issued to the applicant, illustrations of standard markings, and lists of commercial ATON manufacturers are available. Questions and requests should be directed to:

Commander (dpw)  
Fourteenth Coast Guard District  
300 Ala Moana Boulevard, 9-220  
Honolulu, HI 96850-4982  
Attn: Private ATON Manager  
Tel: (808) 535-3408 / 3409  
Email: D14-DG-PJ-dpw@uscg.mil

U.S. Army Corps of Engineers  
Honolulu District  
Building 230  
Ft. Shafter, HI 96858-5440  
Attn: CEPOH-EC-R  
Phone: (808)-835-4004

Mariners are reminded that they have a responsibility to report discrepant private aids to the nearest Coast Guard unit. The failure of a mariner to report a discrepant aid to navigation may result in casualties to others. All aids to navigation in the Fourteenth District, both private and federally maintained, are user monitored. When owners receive discrepancy reports from the Coast Guard, they are obligated to take immediate action to correct the discrepancy. Owners are reminded of their responsibility for the proper operation and maintenance of their private aids to navigation. All classes of private aids to navigation shall be maintained in proper operating condition. They are subject to inspection by the Coast Guard at any time and without prior notice. The Coast Guard issues broadcast notice to mariners for reported discrepancies that remain in effect until the discrepancy is corrected or is published in the Local Notice to Mariners.

#### **FISH AGGREGATING DEVICE (FAD) BUOY INFORMATION AND DISCREPANCIES (28/21)**

The State of Hawaii has placed Fish Aggregating Devices (FADs) in the waters surrounding the main Hawaiian Islands. These buoys attract schools of tuna and other important pelagic fishes, such as dolphinfish (Mahimahi), wahoo (Ono) and billfish. FADs allow fishermen to easily locate and catch these species. The buoys are anchored using approximately 2.5 miles of mooring line which creates a very large swing circle. Mariners are advised that these buoys may maneuver anywhere from three to five miles from their charted positions.

Mariners requesting up to date information concerning Hawaiian Island's FAD Buoys, or reports of discrepancies, may either visit the Hawaii FAD web site at <http://www.himb.hawaii.edu/fads>, contact Mr. Warren Cortez at (808) 956-0684, or send written correspondence to:

Mr. Warren Cortez  
Fish Aggregating Devices Program  
965 N. Nimitz Hwy  
Honolulu, HI 96817

Mariners requesting up to date information concerning Guam's FAD Buoys, or reports of discrepancies, may either visit the Guam FAD web site at [www.dawr.guam.gov](http://www.dawr.guam.gov), contact Mr. Brent Tibbatts at [Brent.Tibbatts@gmail.com](mailto:Brent.Tibbatts@gmail.com) 671.735.3955/56, or send written correspondence to:

Mr. Brent Tibbatts  
Guam Department of Agriculture  
Division of Aquatics and Wildlife Resources  
163 Dairy Road  
Mangilao, Guam 96913

#### **NAVIGATION INTERNET SITES (33/05)**

Chart Corrections: <http://nauticalcharts.noaa.gov/mcd/updates/index.htm>  
Light List Corrections: <https://www.navcen.uscg.gov/index.php?pageName=lightLists>  
Coast Pilot Corrections: <http://nauticalcharts.noaa.gov/nsd/cpdownload.htm>  
NOAA Weather Buoy Sites: <http://www.ndbc.noaa.gov/Maps/rmd.shtml>  
Hawaii Weather: <http://www.prh.noaa.gov/pr/hnl/>  
Online Chart Viewer: <http://www.nauticalcharts.noaa.gov/mcd/OnLineViewer>

(For NOAA Print-on-Demand (POD) charts only)

NOAA and Coast Survey, in partnership with OceanGrafix, LLC, offer mariners official nautical charts that are continuously updated by NOAA cartographers up to the latest Notice to Mariners and to all Critical Safety Information known to the Coast Survey in advance of its publication in a Notice. From NOAA digital files, OceanGrafix prints corrected charts, to order, for sale to mariners through the OceanGrafix retail network. Produced and distributed by authority of NOAA, these charts meet all U.S. Coast Guard chart carriage requirements, including the requirements for updating (Titles 33 & 46 CFR). New Editions are available 2-8 weeks before their release as a traditional NOAA chart.

These new charts feature operational information for the commercial mariner, and education and safety information for the recreational boater. They have brighter colors and a higher contrast for better readability in various light conditions. They come either laminated or on water resistant paper.

POD charts are available through a POD chart agents at <http://OceanGrafix.com/>, 1-877-56CHART, or contact NOAA at <http://nauticalcharts.noaa.gov/pod/Pod.htm>. For questions contact NOAA at [help@nauticalcharts.gov](mailto:help@nauticalcharts.gov).

#### **HI ISLANDS - U.S. DEPARTMENT OF HOMELAND SECURITY - DIVER SAFETY ADVISORY (25/09)**

#### **HI ISLANDS - U.S. DEPARTMENT OF HOMELAND SECURITY - DIVER SAFETY ADVISORY (25/09)**

This advisory is issued to increase the safety of all open water and waterway users throughout the Hawaiian Islands and is issued in conjunction with the Department of Land and Natural Resources (DLNR) pilot program focusing on diver safety.

Over the years there have been an increased number of reports of near misses between divers and waterborne crafts in Oahu, Maui and Hawaii. In most cases, these near misses have happened in near coastal waters and often when conditions were choppy.

The following suggested measures can help avoid near misses:

Become familiar with your transit route and destination area before heading out.

Remain vigilant of your surroundings and post extra lookouts in choppy waters and inclement weather.

Stay clear of federal Aids to Navigation and commercial delineated channels.

Use all appropriate sound and visual signals.

Postpone trips until the weather and sea conditions improve.

All open water and waterway users are also highly encouraged to visit the Coast Guard Sector Honolulu Homeport website for Safety and Security Zone information for the Hawaiian Islands at: <http://homeport.uscg.mil/> under the Honolulu Port Directory tab and Safety and Security section.

The most updated charts for the Hawaiian Islands can be found on the National Oceanic and Atmospheric Administration (NOAA) website: <http://www.prh.noaa.gov/pr/hnl> or <http://www.nauticalcharts.noaa.gov/mcd/OnLineViewer.html>.

Any and all life threatening or hazardous conditions including off station or missing buoys should be reported immediately to the U.S. Coast Guard at (808) 842-2600.

#### **PACIFIC OCEAN - NATIONAL WILDLIFE REFUGE - RESTRICTED FOR ENTRY (22/11)**

The U.S. Department of the Interior, Fish and Wildlife Service, National Wildlife Refuge System, Pacific Reefs National Wildlife Refuge Complex manages ten National Wildlife Refuges within the Fourteenth Coast Guard District. Eight of these Refuges, described below, consist of waters and submerged and emergent lands. The remaining two Refuges, the Marianas Arc of Fire and the Mariana Trench National Wildlife Refuges, consist only of submerged lands.

The waters and submerged and emergent lands of National Wildlife Refuges are subject to the regulations governing the National Wildlife Refuge System found in Parts 25-32 of Title 50, Code of Federal Regulations. Therefore, except as provided by international law, these areas are closed to all forms of entry, other than innocent passage, unless specifically authorized by a Special Use Permit issued by the U.S. Fish and Wildlife Service. Should you have any questions, please contact the Pacific Reefs National Wildlife Refuge Complex by emailing the Project Leader at [Pacific\\_Reefs@fws.gov](mailto:Pacific_Reefs@fws.gov) or by calling 808-792-9560.

**Baker Island National Wildlife Refuge.** This Refuge includes all of Baker Island approximately at Latitude 0-11-45 North and Longitude 176-28-45 West, together with its territorial waters extending outward 12 nautical miles (13.8 mi; 22.2 km) from the mean low water line of the island.

**Howland Island National Wildlife Refuge.** This Refuge includes all of Howland Island approximately at Latitude 0-48-30 North and Longitude 176-37 West, together with its territorial waters extending outward 12 nautical miles (13.8 mi; 22.2 km) from the mean low water line of the island.

**Jarvis Island National Wildlife Refuge.** This Refuge includes all of Jarvis Island approximately at Latitude 0-22-20 South and Longitude 160-00 West, together with its territorial waters extending outward 12 nautical miles (13.8 mi; 22.2 km) from the mean low water line of the island.

**Johnston Atoll National Wildlife Refuge.** This Refuge includes all of Johnston Atoll approximately at Latitude 16-44 North and Longitude 169-31 West, together with its territorial waters extending outward 12 nautical miles (13.8 mi; 22.2 km) from the mean low water line of the atoll. However, portions of the emergent land at Johnston Atoll are currently under the administrative jurisdiction of the Department of the Air Force, which controls all access to areas under its administrative jurisdiction.

**Kingman Reef National Wildlife Refuge.** This Refuge includes all of Kingman Reef approximately at Latitude 6-24-30 North and Longitude 162-23-30 West, together with its territorial waters extending outward 12 nautical miles (13.8 mi; 22.2 km) from the mean low water line of the reef.

**Palmyra Atoll National Wildlife Refuge.** This Refuge includes all of Palmyra Atoll approximately at Latitude 05-53 North and Longitude 162-05 West, together with its territorial waters extending outward 12 nautical miles (13.8 mi; 22.2 km) from the mean low water line of the atoll. However, portions of the emergent land at Palmyra Atoll are currently owned and managed as a nature preserve by The Nature Conservancy, which controls all access to areas under its ownership.

#### **PACIFIC OCEAN - NATIONAL WILDLIFE REFUGE - RESTRICTED FOR ENTRY CONTINUED (22/11)**

**Rose Atoll National Wildlife Refuge.** This Refuge includes all of Rose Atoll approximately at Latitude 14-32-45 South and Longitude 168-9-24 West, the seaward extent being the extreme low water line outside the perimeter reef except at the entrance channel where the boundary is a line extended between the extreme low water lines on each side of the entrance channel.

**Wake Atoll National Wildlife Refuge.** This Refuge includes all of Wake Atoll approximately at Latitude 19-18 North and Longitude 166-38 East, together with its territorial waters extending outward 12 nautical miles (13.8 mi; 22.2 km) from the mean low water line of the atoll. However, in accordance with Presidential Proclamation No. 8336, the emergent land at Wake Atoll is currently under the management of the Department of the Air Force, which controls all access to areas under its management.

#### **HI ISLANDS - KAHOLAWE ISLAND RESERVE COMMISSION - NOTICE OF OPEN WATERS SCHEDULE (05/21)**

Notice to Trollers: The dates below mark the Open Waters Trolling Schedule for January 2021 through December 2021. Should you have any questions, please contact the Ocean Resources Program at the Kaho'olawe Island Reserve Commission (KIRC) by emailing the Ocean Resources Specialist at [dtokishi@kirc.hawaii.gov](mailto:dtokishi@kirc.hawaii.gov) or by calling 808-243-5022. This information is also posted on the KIRC website at <http://kahoolawe.hawaii.gov>.

## HI ISLANDS - KAHOLAWE ISLAND RESERVE COMMISSION - NOTICE OF OPEN WATERS SCHEDULE (05/21)

12:01 a.m Saturdays to 11:59 p.m. Sundays as follows:

January 23 –24; 30 – 31  
February 20 –21; 27 – 28  
March 13 –14; 20 – 21  
April 10 –11; 24 – 25  
May 08 –09; 22 – 23  
June 05 –06; 19 – 20  
July 10 –11; 24 – 25  
August 15 –15; 28 – 29  
September 11 –12; 25 – 26  
October 09 –10; 23 – 24  
November 06 –07; 13 – 14  
December 04 –05; 18 – 19

The Kaho'olawe Island Reserve (defined as the submerged lands and waters within two nautical miles of the island) is divided into two zones; Zones A and B. These zones are defined as:

Zone A: Includes the island of Kaho'olawe and all the submerged lands and waters between the shoreline of Kaho'olawe and the 30-fathom isobath surrounding Kaho'olawe (HAR 13-261). Unauthorized entry into Zone A is prohibited at all times except in case of emergency.

Zone B: All waters and submerged lands between the 30-fathom isobath surrounding Kaho'olawe and two nautical miles from the shoreline of the island. Unauthorized entry into Zone B is prohibited at all times except for trolling as authorized by KIRC on the days stipulated by the Open Waters Schedule as listed above or in case of emergency. Trollers must remain underway, making way at all times while in Zone B. All lures or live bait must remain on the water surface. All other fishing, ocean recreation, and any other activities are strictly prohibited. All vessels fishing in the Kaho'olawe Island Reserve during the open trolling weekends are required by state law (H.A.R. 13-261) to register and submit catch reports to the KIRC. KIRC will be implementing its new registration and catch report system beginning January 2007. For more information on how to register and where to submit your catch reports, call 808-243-5889.

Warning: Kaho'olawe and its surrounding submerged lands and waters contain unknown quantities of unexploded ordnance that are hazardous to public health and safety.

Authority: (H.R.S. §6K, H.A.R. §13-261).

## HI ISLANDS - OAHU - KANEOHE BAY - MILITARY OPERATIONS (09/09)

Military amphibious and search and rescue operations may be underway at any time, day or night, within Kaneohe Bay in the vicinity of 21-26-06.83N/157-46-11.00W and 21-26-45.00N/157-46-55.00W (approximately .5 NM south of Mokapu Peninsula). Support surface craft will be equipped with appropriate day/night signals and markings and can be reached on VHF-Ch 82. In the interest of safety, it is requested that all vessels that use Sonar contact Water Front Operations on VHF-Ch 82A or by phone at (808) 257-2941 to avoid injury to divers that may be in the area.

## HI ISLANDS - SOUTH COAST OAHU - HAZARDOUS OPERATIONS - HOT AREAS (50/07)

FACSFAC Pearl Harbor established Special Operating Areas Four (SOA-4) as a permanent "HOT AREA" named "KAPU" on April 15, 1995. FACSFAC effective hours are 0700W to 2300W (Monday - Saturday from 1700Z - 0900Z) Monday - Friday, and on weekend's 0800W - 1600W (Weekends from 1800Z - 0200Z) or by request. Activities include intermittent naval gunnery exercises and airborne ordnance drops. "KAPU" is also designated as the emergency jettison area for aircraft with hung stores, etc. Hot area "KAPU" is bounded by the following coordinates 20-46N/158-16W, 20-42N/158-04W, 20-13N/158-36W and 20-04N/158-11W. Scheduling authority is FACSFAC Pearl Harbor call-sign "HULA DANCER". "HULA DANCER" can be reached on primary 266.4/127.0 MHz, or secondary 336.8/132.4 MHz or telephone (808) 472-7333/7337 and may authorize transits through these areas on a case by-case basis.

## HI ISLANDS - OAHU - KANEOHE BAY - ULUPAU CRATER WEAPONS DANGER ZONE - HAZARDOUS OPERATIONS (04/22)

Hazardous operations will be conducted for the following dates and times. All vessels/watercraft operating within the Mokapu Peninsula near the Ulupau Crater located on Marine Corps Base Hawaii shall vacate the danger zone at the best speed and by the most direct route. Danger zone will include areas from 21°30'59.66"N /157°44'05.97"W to 21°29'16.58"N /157°40'30.19"W to 21°25'01.79"N/157°40'33.70"W to 21°27'11.84"N/157°43'53.83"W, forming a triangular figure.

The following are hazardous operations to mariners for January 26, 2022 through February 01, 2022:

Zone 1 (NE Range)  
Jan 26 0900 - 1300  
Jan 27 N/A  
Jan 28 0800 - 1700  
Jan 29 N/A  
Jan 30 N/A  
Jan 31 0600 - 1800  
Feb 01 0600 - 1800

Zone 2 (E Range)  
Jan 26 0800 - 1700  
Jan 27 N/A  
Jan 28 0800 - 1700  
Jan 29 N/A  
Jan 30 N/A  
Jan 31 0600 - 1800  
Feb 01 0600 - 1800

**HI ISLANDS - OAHU - KANEOHE BAY - ULUPAU CRATER WEAPONS DANGER ZONE - HAZARDOUS OPERATIONS (04/22)**

See enclosure 1

**HI ISLANDS - OAHU - KEAHI POINT - HAZARDOUS OPERATIONS (04/22)**

The Puuloa Danger Zone is located in ocean waters as described by the below coordinates and is closed at all times to surface craft, swimmers, and divers, with the exception of authorized personnel.

Additional information may be obtained by contacting Daniel Geltmacher at daniel.geltmacher@usmc.mil.

The Danger Zone is bounded by the following coordinates:

21-18-21N / 157-59-14W  
21-18-11N / 158-00-17W  
21-17-11N / 158-00-06W  
21-17-22N / 157-59-03W

The following are hazardous operations to mariners for January 26, 2022 through February 01, 2022:

Jan 26 0700 - 1700  
Jan 27 0700 - 1700  
Jan 28 0700 - 1700  
Jan 29 0700 - 1700  
Jan 30 0700 - 1700  
Jan 31 0700 - 1700  
Feb 01 0700 - 1700

**HI ISLANDS - KAUAI - BARKING SANDS - PACIFIC MISSILE RANGE FACILITY HI AREA - HAZARDOUS OPERATIONS (04/22)**

Intermittent missile firing operations are conducted by the Pacific Missile Range Facility (PMRF), Barking Sands, Kauai, in the Whiskey 188 (W-188) operating area. Operations are conducted periodically throughout each week in an area bound by the following coordinates:

22:00N/159:51W, 22:00N/160:00W, 22:04N/160:06W, 21:59.5N/160:21W, 22:05N/161:35W, 22:45N/161:25W, 22:56N/161:49W,  
23:34N/161:18.6W, 23:57N/160:41W, 25:41N/161:36W, 26:00N/159:58W, 25:47N/158:15W, 23:54N/158:15W, 22:20N/159:09W,  
22:21N/159:30W, 22:13N/159:42W, 22:00N/159:51W

Intermittent high power radar operations are conducted by PMRF at the following position: 22:03N/159:47W

Request all mariners remain at least one mile off the coastline between Kokole Point and Nohili Point.

Vessels may be requested to alter course due to firing operations and are requested to contact "Pacific Missile Range Facility" on HF 2182 KHz or VHF-Ch 16 prior to entering the above boundaries. If unable to contact the PMRF prior to entering or while in the warning area, relay messages through U.S. Coast Guard Honolulu. Vessels inbound and outbound for Hawaiian ports will create the least interference to firing operations as well as enhance vessel's safety by passing South of the Islands of Kauai and Niihau during the specified times. Federal law provides for civil penalties of \$40,000 and/or criminal penalties of 6 years in prison for each violation of the PMRF safety zone during the schedule of designated activity (33CFR 165.1406).

The following are hazardous operations to mariners for January 26, 2022 through February 02, 2022:

26 JAN NO HAZARDOUS OPERATIONS SCHEDULED.  
27 JAN NO HAZARDOUS OPERATIONS SCHEDULED.  
28 JAN 0830 -1700 KAULAKAHI CHANNEL AND NOHILI POINT TO 25 NM WEST THROUGH NORTH.  
29 JAN NO HAZARDOUS OPERATIONS SCHEDULED.  
30 JAN NO HAZARDOUS OPERATIONS SCHEDULED.  
31 JAN 0630 -1730 KAULAKAHI CHANNEL AND NOHILI POINT TO 60 NM WEST THROUGH NORTH.  
01 FEB 1100 -1700 KAULAKAHI CHANNEL AND NOHILI POINT TO 25 NM WEST THROUGH NORTH.  
02 FEB 0830 -1700 KAULAKAHI CHANNEL AND NOHILI POINT TO 25 NM WEST THROUGH NORTH.

**MARINE EVENTS**

This section contains information of general concern to the mariner. All event forms must be received no later than noon on Tuesday a week prior to the event. Mariners are advised to use caution while transiting these areas:

---

---

**SECTION VIII - LIGHT LIST CORRECTIONS**

An Asterisk \*, indicates the column in which a correction has been made to new information

(1) No.	(2) Name and Location	(3) Position	(4) Characteristic	(5) Height	(6) Range	(7) Structure	(8) Remarks
------------	--------------------------	-----------------	-----------------------	---------------	--------------	------------------	----------------

## SECTION VIII - LIGHT LIST CORRECTIONS (Continued)

(1) No.	(2) Name and Location	(3) Position	(4) Characteristic	(5) Height	(6) Range	(7) Structure	(8) Remarks
28190	<i>Honokohau Harbor Approach Lighted Buoy 1</i>	19-40-06.437N 156-01-49.826W	Fl G 2.5s		3	Green.	04/22

\*

---



---

**PUBLICATION CORRECTIONS**


---

**None**

---



---

**ENCLOSURES**


---

**HI ISLANDS - OAHU - KANEOHE BAY HAZARDOUS OPERATIONS (18/07)**

ULUPAU CRATER WEAPONS DANGER ZONE

**HI ISLANDS - OAHU - HONOLULU HARBOR DREDGE (03/21)**

Honolulu Harbor Maintenance Dredging Project at Honolulu Harbor.

**HI ISLANDS - OAHU - HONOLULU HARBOR PIER 19-20 REPAIRS (30/21)**

Substructure and waterline repairs at piers 19-20 in Honolulu Harbor.

---



---

M. Sibley  
Rear Admiral, U.S. Coast Guard  
Commander, Fourteenth Coast Guard District

## Danger Zone - Hawaii-Ulupau Crater Weapons Training (Kaneohe Bay)

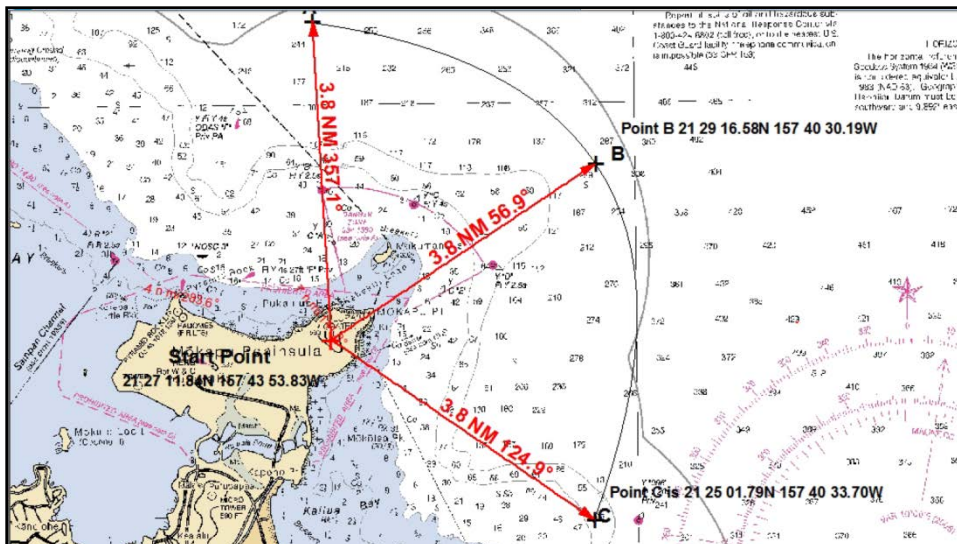
Mariners are reminded that the Marine Corps Base Hawaii (MCBH) conducts intermittent weapons firing at the Ulupau Crater Weapons Training Range between 6 a.m. and 11 p.m. throughout the week & weekends. Caution transiting the waters off of Mokapu Peninsula is imperative at all times, including the 500 yard prohibited area surrounding MCBH. Periods of live firing will be indicated on shore at Ulupau crater either by two large red triangular warning pennants during the day or flashing red warning beacons at night. When these signals are present, the danger zone is not considered safe for boaters. Information on weapons firing schedules may be obtained by calling the MCBH Range Manager at 808-257-8816/17.

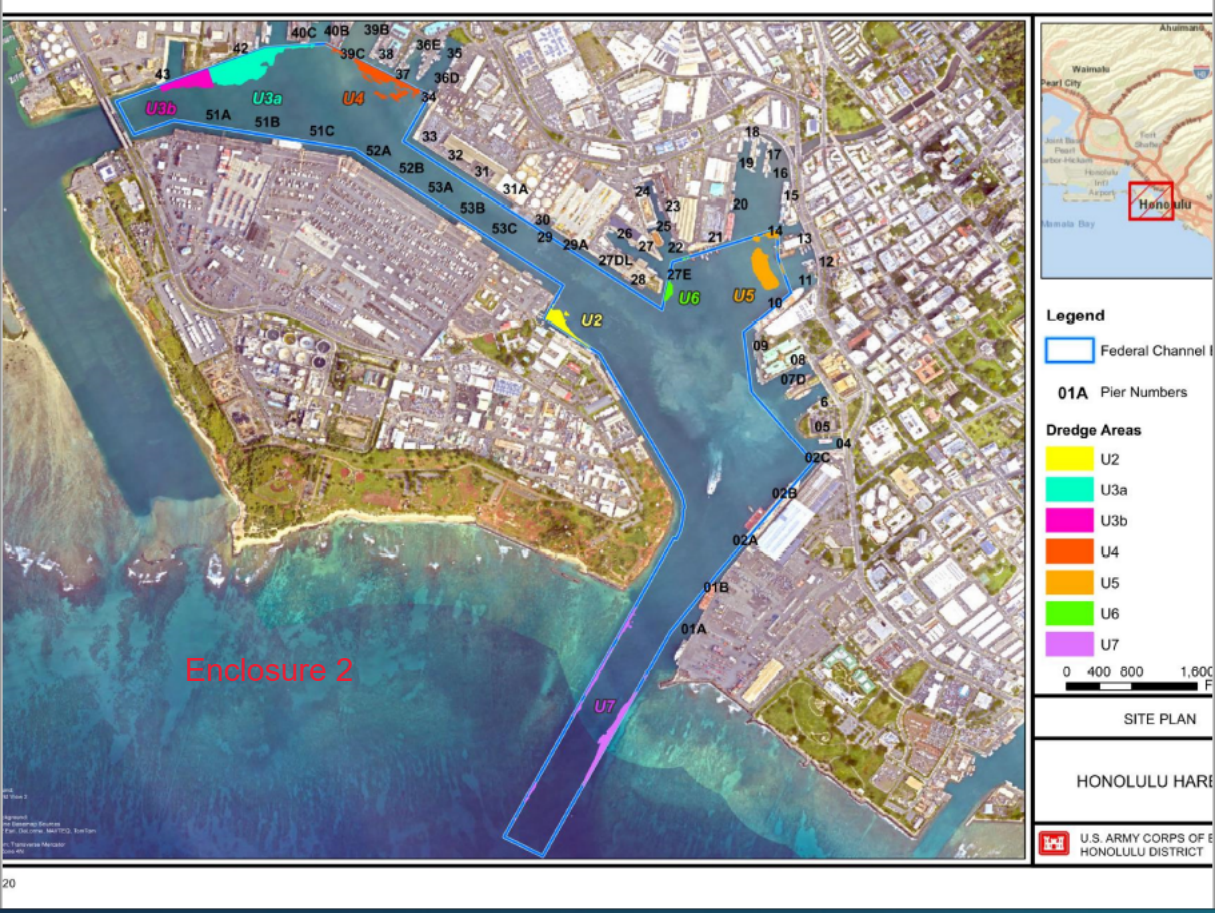
The 33 CFR 334.1380 Army Corp of Engineers established Danger Zone includes the area within a pie-shaped sector extending seaward a distance of 3.8 nautical miles between radial lines bearing  $357.1^{\circ}$  true and  $124.9^{\circ}$  true, respectively, from a starting point on Mokapu Peninsula at  $21^{\circ}27'11.84''$  N,  $157^{\circ}43'53.83''$  W. The danger zone is bounded by a landward starting point and three seaward points forming an arc with a 3.8 nautical-mile radius at its center (Point B) with a radial line bearing  $56.9^{\circ}$  true. The three seaward points have the following coordinates:

Point A: Latitude  $21^{\circ}30'59.66''$  N, Longitude  $157^{\circ}44'05.97''$  W

Point B: Latitude  $21^{\circ}29'16.58''$  N, Longitude  $157^{\circ}40'30.19''$  W

Point C: Latitude  $21^{\circ}25'01.79''$  N, Longitude  $157^{\circ}40'33.70''$  W







Enclosure 3

Google