



U.S. Department
of Homeland Security
**United States
Coast Guard**

LOCAL NOTICE TO MARINERS

District: 14

Week: 05/23

February 01, 2023
ISSUED BY:
Commander (dpw)
Fourteenth Coast Guard District
300 Ala Moana Boulevard, Room 9-220
Honolulu, HI 96850-4982
Telephone: (808) 535-3409
Email: D14-DG-PJ-dpw@uscg.mil
Website: <https://www.navcen.uscg.gov/>

Note:

Unless otherwise indicated, missing and destroyed structures are presumed to be in the immediate vicinity, possibly beneath the surface. Any life threatening or hazardous conditions including off station, missing, or inoperative aids to navigation should reported immediately to U.S. Coast Guard Sector Honolulu at (808) 842-2600 and U.S. Coast Guard Sector Forces Micronesia/Sector Guam at (671) 355-4822. Mariners should proceed with caution.

References:

Light List, Volume VI, Pacific Coast and Pacific Islands, 2022 Edition (COMDTPUB P16502.6).

U.S. Coast Pilot 10, Pacific Coast : Oregon, Washington, Hawaii, Pacific Islands 2022 (3rd Edition). Coast Pilots, along with corrections, are available at: <http://www.nauticalcharts.noaa.gov>

Navigation information having been of immediate concern to the mariner, and promulgated by the following broadcasts, have been incorporated in this notice when still significant:

COMCOGARD SECTOR HONOLULU HI BNMs: 010-23 to 013-23
COMCOGARD SECTOR FORCES MICRONESIA/SECTOR GUAM BNMs: 023-23 to 034-23

ABBREVIATIONS

A through H

ADRIFT - Buoy Adrift
AICW - Atlantic Intracoastal Waterway
AI - Alternating
B - Buoy
BKW - Breakwater
bl - Blast
BNM - Broadcast Notice to Mariner
bu - Blue
C - Canadian
CHAN - Channel
CGD - Coast Guard District
C/O - Cut Off
CONT - Contour
CRK - Creek
CONST - Construction
DAYMK/Daymk - Daymark
DBN/Dbn - Daybeacon
DBD/DAYBD - Dayboard
DEFAC - Defaced
DEST - Destroyed
DISCON - Discontinued
DMGD/DAMGD - Damaged
ec - eclipse
EST - Established Aid
ev - every
EVAL - Evaluation
EXT - Extinguished
F - Fixed
fl - flash
Fl - Flashing
G - Green
GIWW - Gulf Intracoastal Waterway

I through O

I - Interrupted
ICW - Intracoastal Waterway
IMCH - Improper Characteristic
INL - Inlet
INOP - Not Operating
INT - Intensity
ISL - Islet
Iso - Isophase
kHz - Kilohertz
LAT - Latitude
LB - Lighted Buoy
LBB - Lighted Bell Buoy
LHB - Lighted Horn Buoy
LGB - Lighted Gong Buoy
LONG - Longitude
LNM - Local Notice to Mariners
LT - Light
LT CONT - Light Continuous
LTR - Letter
LWB - Lighted Whistle Buoy
LWP - Left Watching Properly
MHz - Megahertz
MISS/MSNG - Missing
Mo - Morse Code
MRASS - Marine Radio Activated Sound Signal
MSLD - Misleading
N/C - Not Charted
NGA - National Geospatial-Intelligence Agency
NO/NUM - Number
NOS - National Ocean Service
NW - Notice Writer
OBSCU - Obscured

P through Z

PRIV - Private Aid
Q - Quick
R - Red
RACON - Radar Transponder Beacon
Ra ref - Radar reflector
RBN - Radio Beacon
REBUILT - Aid Rebuilt
RECOVERED - Aid Recovered
RED - Red Buoy
REFL - Reflective
RRL - Range Rear Light
RELIGHTED - Aid Relit
RELOC - Relocated
RESET ON STATION - Aid Reset on Station
RFL - Range Front Light
RIV - River
RRASS - Remote Radio Activated Sound Signal
s - seconds
SEC - Section
SHL - Shoaling
si - silent
SIG - Signal
SND - Sound
SPM - Single Point Mooring Buoy
SS - Sound Signal
STA - Station
STRUCT - Structure
St M - Statute Mile
TEMP - Temporary Aid Change
TMK - Topmark
TRLB - Temporarily Replaced by Lighted Buoy
TRLT - Temporarily Replaced by Light

HAZ - Hazard to Navigation
HBR - Harbor
HOR - Horizontal Clearance
HT - Height

OBST - Obstruction
OBSTR - Obstruction
Oc - Occulting
ODAS - Anchored Oceanographic Data Buoy

TRUB - Temporarily Replaced by Unlighted Buoy
USACE - Army Corps of Engineers
W - White
Y - Yellow

Additional Abbreviations Specific to this LNM Edition:

MSLD SIG - Misleading Signal

SECTION I - SPECIAL NOTICES

This section contains information of special concern to the Mariner.

***** CANCELLATION OF NOAA PAPER AND RASTER NAUTICAL CHARTS *****

The National Oceanic and Atmospheric Administration (NOAA) is undertaking a multi-year program to end production and maintenance of its suite of over 1,000 traditional paper nautical charts and all associated raster chart products and services, including: Print-on-Demand (POD) paper nautical charts, Full-size chart PDF files, BookletChart™ PDF files, NOAA raster navigational charts (NOAA RNC®), the NOAA RNC tile service, and the online RNC viewer.

Six months notice of the intent to cancel a specific chart is provided in a "Last Edition" notice. The final cancellation of a chart is made in a "Canceled" notice. Both types of notices will appear in LNM Section IV, "Chart Correction." A comprehensive list of all canceled NOAA charts is available at: <http://www.charts.noaa.gov/MCD/Dole.shtml>.

Traditional paper nautical chart production is ending to enable the creation and maintenance of larger scale, more up-to-date, higher quality coverage of NOAA's electronic navigational chart (NOAA ENC®) product. This will significantly enhance the amount of charted detail available to mariners. More information about NOAA's program to sunset traditional paper charts is on the NOAA Coast Survey website at: <https://nauticalcharts.noaa.gov/charts/farewell-to-traditional-nautical-charts.html>

An online NOAA Custom Chart application at: <https://devgis.charttools.noaa.gov/pod> is available to create chart images from ENC data, which may then be printed. Notices to Mariners will not be issued for NOAA Custom Charts.

SAFETY NOTICE - NAVIGATIONAL RANGE AND SECTOR LIGHTS ON ELECTRONIC CHARTS (39/22)

The U.S. Coast Guard has become aware that the Range and Sector Light Characteristic labels are not displayed on Electronic Navigational Charts (ENCs) when used in an Electronic Chart Display and Information System (ECDIS) due to limitations of the S-52 ECDIS display specification. Mariners may query the ENC data directly within ECDIS or refer to the Light List for complete information on Range and Sector Light Characteristics.

PACIFIC OCEAN - HAZARD TO NAVIGATION - MARINE DEBRIS (07/12)

With the increase in ocean debris sightings along the coastlines of the Pacific Ocean, mariners are reminded to submit debris sighting reports to the National Oceanic and Atmospheric Administration (NOAA) Marine Debris Program at DisasterDebris@noaa.gov, and the University of Hawaii oceanographic research center at marinedebris@soest.hawaii.edu. For inshore sightings, please use the State of Hawaii <https://dlnr.hawaii.gov/dobor/reportmarinedebrishawaii/>.

HI ISLANDS - HAWAII - HILO HARBOR - AIS TEMPORARY DEACTIVATION (07/19)

All mariners be advised the Coast Guard has temporarily deactivated AIS broadcasting for the following aids to navigation in the Hilo, HI area:

28035 Hilo Harbor Entrance Lighted Buoy 1 AIS: MMSI 993699986
28040 Hilo Harbor Breakwater Light AIS: MMSI 993699987
28055 Hilo Harbor Lighted Buoy 3 AIS: MMSI 993699985
28070 Hilo Harbor Lighted Buoy 4 AIS: MMSI 993699984

HI ISLANDS - HAWAII - ISAAC HALE PARK (02/19)

The waterway leading to Pohoiki Bay boat ramp at Isaac Hale Park is un-navigable due to shoaling and sand accumulation. The light and day boards have been temporarily removed from Pohoiki Bay Breakwater Light 2 (LLNR 28135).

HI ISLANDS - HAWAII - UNMANNED OPERATIONS (27/22)

Liquid Robotics (www.liquid-robotics.com) will conduct continuous autonomous, unmanned maritime vehicle operations for several weeks at a time throughout December 2023 in vicinity of Kawaihae Bay, Hawaii within the following coordinates:

19-55-50N/ 155-54-12W
19-58-10N/ 155-51-08W
20-00-10N/ 155-50-29W

20-07-19N/ 156-09-32W
20-27-34N/ 155-52-30W
20-10-02N/ 156-43-04W

Operations consist of scientific ocean data collection. Wave Glider carries no fuel, lubricants, or hydrocarbons, is wave powered, remotely attended from our Wave Glider Operations Center (WGOC), moving at speeds of typically 1kt, and designed to give way or part if encountered by a vessel. It is surfboard size, copper in color, with a contact plaque and mast extending 1 meter above the surface supporting a flag, topped with a solid white light. Mariners are urged to transit the area with caution. For up-to-date information, mariners can contact Liquid Robotics Operations Center at +1 408 636 4205, or by email at support@liquid-robotics.com.

HI ISLANDS - MAUI - MAALAEA SMALL BOAT HARBOR PIER REPAIRS (23/22)

Maalaea Small Boat Harbor South Mole Finger Pier Repair Project will commence on or about June, 2022 and will continue until on, or about January, 2023. The project consists of the removal of 17 wooden finger piers and the construction/installment of 17 aluminum finger piers. Mariners are requested to use extreme caution while transiting the work area. Any questions or need more information, please contact Project Manager Doug Fraser at (808) 479-8509

HI ISLANDS - MAUI - MALA WHARF SHOALING (32/22)

There has been a report of increased shoaling around Mala Wharf. At low tide, the Mala Wharf Boat Ramp also becomes dangerously shallow with waters less than 03 feet. All mariners are requested to use caution while loading and unloading at Mala Wharf Boat Ramp and when transiting the channel. POC: DLNR DOBOR, Maui District (808) 243-5824

HI ISLANDS - MAUI - LAHAINA HARBOR SHOALING (34/22)

There have been numerous reports of shoaling around Lahaina Harbor. All mariners are requested to transit the area with caution and report any observed changes in shoaling conditions to DLNR DOBOR at (808) 243-5824 and Marine Safety Team Maui at MSTMaui@uscg.mil

HI ISLANDS - OAHU - MAUNALUA BAY SHOALING (05/22)

There has been a report of increased shoaling in Maunalua Bay, between Maunalua Bay Daybeacon 1A (LLNR 28935) and Maunalua Bay Daybeacon 2 (LLNR 28940) when transiting to and from Hawaii Kai. At low tide, the Maunalua Bay Boat Ramp also becomes dangerously shallow. All mariners are requested to use caution while loading and unloading at Maunalua Bay Boat Ramp and when transiting the channel. POC: DLNR DOBAR at (808) 832-3520

HI ISLANDS - OAHU - HONOLULU HARBOR - AIS ACTIVATION (07/21)

All mariners be advised the Coast Guard has temporarily activated AIS broadcasting for the following aids to navigation in the Honolulu Harbor area:

29200 Honolulu Harbor Channel Buoy 3: MMSI 993692240
29205 Honolulu Harbor Channel Buoy 4: MMSI 993692241

For any concerns contact Sector Honolulu at (808) 884-2600.

HI ISLANDS - OAHU - HAZ OPS (05/23)

Hazardous operations will be conducted on February 02, 2023, 100 NM NE of OAHU from 1500W - 2200W in an area bound by the following coordinates:

23-18N/157-20W
22-46N/157-30W
21-39N/158-25W
21-59N/158-53W
22-20N/159-09W
23-54N/158-15W
RETURN TO ORIGIN
22-46N/157-30W
21-59N/157-30W
22-01N/157-56W
21-45N/157-52W
21-47N/158-00W
21-44N/158-03N
21-37N/158-09W

21-36N/158-18W
21-40N/158-25W
RETURN TO ORIGIN

In the interest of safety, all vessels not involved in the above event are requested to remain clear of this area.

LNM: SCC Hono 013-22

CENTRAL PACIFIC BASIN - KINGMAN REEF - CABLE LAYING (03/23)

Mertech Marine plans to conduct submarine cable operations in the US economic zone situated in the South Pacific sea executed by Mertech Marine's cable recovery vessels M/V Aniek. As part of Mertech Marine's planned recovery operation of the ASH North submarine cable communication system there are 1 recovery sections situated within the US/Kingman economic zone. Please note that no recovery operations are taking place inside the Marine National Monument area of Kingman reef. The cable recovery plan has been circulated to the global subsea telecommunication cable industry through the International Cable Protection Committee ("ICPC"). Earliest time of submarine cable operations inside the US exclusive economic zone are planned for February 20th AGW WP. For operational contact with our submarine cable recovery vessel "Aniek" the Captain copied in, will be happy to inform you on vessel positions and planned work on a daily basis when needed.

Vessel details:

- Mv Aniek
- o IMO No.: 7727073
- o Call Sign: V2ZR3
- o Email: bridge.aniek@wind.nl
- o Captain: R. Reinders

In the interest of safety, all vessels not involved in the above event are requested to remain clear of this area.

MARIANA ISLANDS - GUAM - NAVTEX STATION (41/19)

NAVTEX Station (518KHz) is Inoperable. The 518KHz NAVTEX station is inoperable with no estimated time of repair. NAVTEX broadcasts are available on 4209.5KHz Mariners.

MARIANA ISLANDS - GUAM - DIVING OPERATIONS (05/23)

Precon Marine, Inc. (PMI), PMI will be mobilizing Vessels and Material Barge(s) just in the vicinity of Naval Base GUAM to conduct Installation of a Underwater Electro-Magnetic Measurement System. Marker Buoys will be in place during the duration of the project in the area of coordinates below.

The proposed PMI project will consist of:

1. Dredging
13°26'43.48"N 144°39'57.06"E
2. Array Sensor Installation
13°26'43.48"N 144°39'57.06"E
3. Underwater conduit runs (Surrounding Areas)
13°26'43.48"N 144°39'57.06"E
To
13°26'51.39"N 144°40'13.36"E

The proposed project will start on March 1, 2023 and lasting approximately 18 Weeks. A crane mounted barge and a material barge will be staged inside the channel to conduct scope of work during the hours of 7am to 7pm. Commercial Divers will post Alpha Dive flag during all diving operations. The channel will remain open and operational. All Staged equipment shall have approved Navigational warning devices following Coast Guard rules and regulations. If activities need to be extended past July 6th, 2023, an additional Notice shall be submitted. If you should have any questions or concerns, please do not hesitate to contact us. POC: Christopher Berry (757) 431 - 7222

SECTION II - DISCREPANCIES

This section lists all reported and corrected discrepancies related to Aids to Navigation in this edition. A discrepancy is a change in the status of an aid to navigation that differs from what is published or charted.

DISCREPANCIES (FEDERAL AIDS)

| LLNR | Aid Name | Status | Chart No. | BNM Ref. | LNM St | LNM End |
|-------|----------------------|--------|-----------|----------------|--------|---------|
| 28025 | Pepeekeo Point Light | LT EXT | 19320 | SCC Hono 008-2 | 04/23 | |

| | | | | | |
|--------------|--|----------------|--------------|----------------------------|-------|
| 28165 | Keauhou Bay Entrance Directional Light | LT EXT | 19327 | Sec Hono 006-23 | 04/23 |
| 28520 | Pohakuloa Point Light | LT EXT | 19347 | SCC Hono 213-2: | 45/21 |
| 29770 | Nawiliwili Harbor Breakwater Light | DAYMK MISSING | 19383 | SCC Hono 094-2: | 38/22 |
| 29850 | Makahuena Point Light | LT IMCH | 19381 | SCC Hono 012- 05/23 | |
| 30185 | Breakers Point Light | LT EXT | 83484 | SCC Hono 011- 05/23 | |
| 30390 | Kwajalein-Bigej Channel Buoy 1 | OFF STA | 81715 | SCC MIC 328-22 | 33/22 |
| 30875 | Tanapag Harbor Range Front Light | DAYMK MISSING | 81076 | SCC MIC 0015-2: | 03/23 |

DISCREPANCIES (FEDERAL AIDS) CORRECTED

| LLNR | Aid Name | Status | Chart No. | BNM Ref. | LNM St | LNM End |
|------|----------|--------|-----------|----------|--------|---------|
|------|----------|--------|-----------|----------|--------|---------|

None

DISCREPANCIES (PRIVATE AIDS)

| LLNR | Aid Name | Status | Chart No. | BNM Ref. | LNM St | LNM End |
|----------|--|---------|-----------|-----------------|--------|---------|
| 28007 | FAD Site HK - Hakalau, Hawaii | MISSING | 19320 | SCC Hono109-21 | 27/21 | |
| 28007.03 | FAD Site E - Leleiwai, Hawaii | MISSING | 19320 | SCC Hono | 49/21 | |
| 28007.05 | FAD Site D - Kumakahi, Hawaii | MISSING | 19320 | SCC Hono 070-2: | 17/21 | |
| 28007.07 | FAD Site KH - Kehena, Hawaii | MISSING | 19320 | SCC Hono 110-2: | 27/21 | |
| 28007.19 | FAD Site UU - Auau Point, Hawaii | LT EXT | 19320 | SCC Hono 093-2: | 23/21 | |
| 28007.22 | FAD Site WH1 | MISSING | 19320 | SCC Hono 021-1: | 18/15 | |
| 28007.23 | FAD Site V V - Kahaluu, Hawaii | LT EXT | 19004 | SCC Hono 036-2: | 08/22 | |
| 28007.25 | FAD Site F - Kailua Kona, Hawaii | MISSING | 19327 | SCC Hono 111-2: | 27/21 | |
| 28007.29 | FAD Site XX - Puako, Hawaii | MISSING | 19327 | SCC Hono 143-2: | 32/21 | |
| 28007.31 | FAD Site ZZ - Mahukona, Hawaii | MISSING | 19327 | SCC HONO 137-2: | 48/22 | |
| 28007.35 | FAD Site Q - Pauwela Point, Maui | MISSING | 19340 | SCC Hono 082-2: | 34/22 | |
| 28007.37 | FAD Site HO - Hoolawa Point, Maui | ADRIFT | 19340 | SCC Hono 002-2: | 02/23 | |
| 28007.42 | FAD SITE MTBC 2 | MISSING | 19004 | SCC Hono 030-2: | 06/22 | |
| 28007.43 | PacIOOS Wave Lighted Buoy Pauwela | MISSING | 19342 | SCC HONO 126-2: | 45/22 | |
| 28008 | FAD Site FF - Pukaulua Point, Maui | MISSING | 19004 | SCC Hono 037-2: | 08/22 | |
| 28008.01 | FAD Site M - Hana Bay, Maui | MISSING | 19320 | SCC HONO 139-2: | 49/22 | |
| 28008.07 | FAD Site HS - Halona Point - Kahoolawe | MISSING | 19320 | SCC Hono 104-2: | 41/22 | |
| 28008.09 | FAD Site JJ - Kamohio, Kahoolawe | MISSING | 19347 | SCC Hono 031-2: | 46/21 | |
| 28008.11 | FAD Site SO - Kahoolawe | MISSING | 19347 | SCC Hono 041-2: | 10/22 | |
| 28008.17 | FAD Site MC - Palaoa, Lanai | MISSING | 19339 | SCC Hono 105-2: | 41/22 | |
| 28008.19 | FAD Site CC - Kaena Point, Lanai | OFF STA | 19351 | SCC Hono 119-2: | 44/22 | |
| 28008.23 | FAD Site X - Kahuku Point, Oahu | MISSING | 19340 | Sec Hono 050-22 | 14/22 | |
| 28008.25 | FAD site LL Hauula - Oahu | MISSING | 19357 | SCC HONO 140-2: | 49/22 | |
| 28008.29 | FAD Site MM - Mokapu Point, Oahu | MISSING | 19339 | SCC HONO 141-2: | 49/22 | |
| 28008.33 | FAD Site P - Penguin Bank, Oahu | MISSING | 19339 | SCC HONO 142-2: | 49/22 | |
| 28008.35 | FAD Site HH - Pearl Harbor, Oahu | MISSING | 19340 | SCC HONO 143-2: | 49/22 | |
| 28009.11 | FAD Site EK - Hanalei, Kauai | MISSING | 19381 | SCC Hono 106-2: | 41/22 | |
| 28009.19 | FAD Site Z - Kipukai, Kauai | OFF STA | 19381 | SCC Hono 069-2: | 21/22 | |
| 28009.25 | FAD Site AA - Port Allen, Kauai | MISSING | 19381 | SCC Hono 038-2: | 08/22 | |
| 28009.27 | FAD Site KK - Waimea, Kauai | MISSING | 19381 | SCC Hono 115-2: | 27/21 | |
| 28230 | Puako Small Boat Harbor Buoy 2 | MISSING | 19330 | SCC Hono | 10/20 | |
| 28235 | Puako Small Boat Harbor Buoy 3 | MISSING | 19330 | SCC Hono | 10/20 | |
| 28240 | Puako Small Boat Harbor Buoy 4 | MISSING | 19330 | SCC Hono | 10/20 | |
| 28245 | Puako Small Boat Harbor Buoy 5 | MISSING | 19330 | SCC Hono | 10/20 | |

| | | | | | |
|----------|---|------------------------|-------|-----------------|-------|
| 28250 | Puako Small Boat Harbor Buoy 6 | MISSING | 19330 | SCC Hono | 10/20 |
| 28255 | Puako Small Boat Harbor Buoy 7 | MISSING | 19330 | SCC Hono | 10/20 |
| 28260 | Puako Small Boat Harbor Buoy 8 | MISSING | 19330 | SCC Hono | 10/20 |
| 28265 | Puako Small Boat Harbor Buoy 9 | MISSING | 19330 | SCC Hono | 10/20 |
| 28381.1 | Kahului Boat Ramp Buoy 1 | MISSING | 19342 | SCC Hono 187-2f | 30/20 |
| 28381.2 | Kahului Boat Ramp Buoy 2 | MISSING | 19342 | SCC Hono 187-2f | 30/20 |
| 28381.3 | Kahului Boat Ramp Buoy 3 | MISSING | 19342 | SCC Hono 187-2f | 30/20 |
| 28381.4 | Kahului Boat Ramp Buoy 4 | MISSING | 19342 | SCC Hono 187-2f | 30/20 |
| 28381.5 | Kahului Boat Ramp Buoy 5 | MISSING | 19342 | SCC Hono 187-2f | 30/20 |
| 28381.6 | Kahului Boat Ramp Buoy 6 | MISSING | 19342 | SCC Hono 187-2f | 30/20 |
| 28381.8 | Kahului Boat Ramp Buoy 8 | MISSING | 19342 | SCC Hono 187-2f | 30/20 |
| 28381.9 | Kahului Boat Ramp Buoy 9 | MISSING | 19342 | SCC Hono 187-2f | 30/20 |
| 28395 | Hana Bay Daybeacon | DAYMK DMGD/STRUCT DMGD | 19348 | SCC Hono 061-2f | 18/22 |
| 28427 | Maalaea Basin Channel Lighted Buoy 1 | ADRIFT | 19348 | SCC Hono 158-1f | 22/18 |
| 28480 | Lahaina Boat Basin Lighted Buoy 3 | MISSING | 19348 | SCC Hono 177-1f | 28/18 |
| 28500 | Lahaina Boat Basin Lighted Buoy 7 | MISSING | 19348 | SCC Hono 238-1f | 46/18 |
| 28507.5 | Mala Channel Light 5 | LT EXT | 19348 | SCC Hono 283-2f | 45/20 |
| 28507.6 | Mala Channel Light 6 | LT EXT | 19348 | SCC Hono 284-2f | 45/20 |
| 28630 | Kaunakakai Small Boat Harbor Buoy 1 | SINKING | 19353 | SCC Hono 223-2f | 46/21 |
| 28674.04 | WETS 4 | MISSING | 19359 | SCC Hono 010-1f | 02/18 |
| 28674.05 | WETS 5 | MISSING | 19359 | SCC Hono 011-1f | 02/18 |
| 28895 | Makai Channel Daybeacon 3 | DAYMK MISSING | 19358 | SCC Hono 038-1f | 11/19 |
| 28900 | Makai Channel Daybeacon 4 | MISSING | 19358 | SCC Hono 038-1f | 11/19 |
| 29010 | Maunaloa Bay Daybeacon 16 | HAZ NAV/DAYMK DMGD | 19358 | SCC Hono | 07/22 |
| 29110 | Ala Wai Boat Harbor Channel Buoy 3 | OFF STA | 19369 | SCC Hono | 40/21 |
| 29115 | Ala Wai Boat Harbor Channel Buoy 4 | OFF STA | 19369 | SCC Hono 079-2f | 29/22 |
| 29125 | Ala Wai Boat Harbor Channel Daybeacon 6 | DAYMK DMGD | 19369 | SCC Hono 174-1f | 27/18 |
| 29135 | Ala Wai Boat Harbor Channel Daybeacon 8 | DAYMK DMGD | 19369 | SCC Hono 175-1f | 27/18 |
| 29315 | Keehi Lagoon Barge Turning Channel Range Front | REDUCED INT | 19367 | SCC Hono 312-2f | 52/20 |
| 29325 | Keehi Lagoon Barge Turning Basin Buoy 2 | OFF STA | 19367 | SCC Hono 085-1f | 16/12 |
| 29600 | Barbers Point Anchorage Area Bravo Tank Terminal Lighted Buoy A | LT EXT | 19362 | SCC Hono 001-2f | 01/22 |
| 29656 | West Beach Marina Light 2 | LT EXT | 19362 | SCC Hono 266-1f | 40/17 |
| 29734.6 | HOT site surface mooring buoy | OFF STA | 19013 | SCC Hono | 29/22 |
| 30603 | FAD Site "Cocos" - Guam | LT EXT | 81048 | SCC MICR 014-1f | 03/19 |
| 30612 | FAD Site "FACPI 2" - Guam | MISSING | 81048 | SCC MICR 082-1f | 09/19 |
| 30624 | FAD Site "Number 2" - Guam | OFF STA | 81048 | SCC MICR 146-1f | 12/14 |
| 30631 | FAD Site "Number 3" | MISSING | 81048 | SCC MICR 083-1f | 09/19 |
| 30634 | FAD Site "Number 4" | MISSING | 81048 | SCC MICR 011-1f | 03/19 |
| 30637.1 | FAD Site GF1 | MISSING | 81048 | SCC MICR 041-1f | 03/18 |
| 30640 | FAD Site "Number 5" | LT EXT | 81048 | SCC MICR 607-1f | 47/18 |
| 30787 | Drydock Point West Entrance Daybeacon 1 | DAYMK MISSING | 81054 | SCC MICR 707-1f | 44/17 |
| 30811.3 | Agat Small Boat Harbor Light 3 | LT EXT | 81048 | SCC MICR 178-1f | 18/19 |
| 30811.9 | Agat Small Boat Harbor Daybeacon 9 | DAYMK IMCH | 81048 | SCC MICR 092-1f | 07/18 |
| 30815 | Mamaon Channel Lighted Buoy 1 | OFF STA | 81048 | SCC MICR 718-1f | 45/17 |
| 30820 | Mamaon Channel Lighted Buoy 2 | OFF STA | 81048 | SCC MICR 506-1f | 39/18 |
| 30851.1 | FAD Site EE - Rota | MISSING | 81004 | SCC MICR 195-2f | 20/22 |
| 30851.2 | FAD Site DD - Rota | MISSING | 81004 | SCC MICR 303-1f | 30/19 |

| | | | | |
|----------|-----------------------------|---------|-------|-----------------------|
| 30852.17 | FAD Site GG - Saipan | MISSING | 81067 | SCC MICR 197-2: 20/22 |
| 30852.22 | Fad Site LL - Saipan | MISSING | 81067 | SCC MICR 196-2: 20/22 |
| 30913 | Smiling Cove Lighted Buoy 1 | MISSING | 81076 | SCC MICR 284-2: 29/22 |

DISCREPANCIES (PRIVATE AIDS) CORRECTED

| LLNR | Aid Name | Status | Chart No. | BNM Ref. | LNM St | LNM End |
|------|----------|--------|-----------|----------|--------|---------|
|------|----------|--------|-----------|----------|--------|---------|

None

PLATFORM DISCREPANCIES

| Name | Status | Position | BNM Ref. | LNM St | LNM End |
|------|--------|----------|----------|--------|---------|
|------|--------|----------|----------|--------|---------|

None

PLATFORM DISCREPANCIES CORRECTED

| Name | Status | Position | BNM Ref. | LNM St | LNM End |
|------|--------|----------|----------|--------|---------|
|------|--------|----------|----------|--------|---------|

None

SECTION III - TEMPORARY CHANGES and TEMPORARY CHANGES CORRECTED

This section contains temporary changes and corrections to Aids to Navigation for this edition. When charted aids are temporarily relocated for dredging, testing, evaluation, or marking an obstruction, a temporary correction shall be listed in Section IV giving the new position.

TEMPORARY CHANGES

| LLNR | Aid Name | Status | Chart No. | BNM Ref. | LNM St | LNM End |
|-------|---------------------------|-----------|-----------|----------|--------|---------|
| 28935 | Maunalua Bay Daybeacon 1A | TRUB | 19358 | | 47/22 | |
| 30660 | Ritidian Point Light | RELOCATED | 81048 | | 43/21 | |

TEMPORARY CHANGES CORRECTED

| LLNR | Aid Name | Status | Chart No. | BNM Ref. | LNM St | LNM End |
|------|----------|--------|-----------|----------|--------|---------|
|------|----------|--------|-----------|----------|--------|---------|

None

PLATFORM TEMPORARY CHANGES

| Name | Status | Position | BNM Ref. | LNM St | LNM End |
|------|--------|----------|----------|--------|---------|
|------|--------|----------|----------|--------|---------|

None

PLATFORM TEMPORARY CHANGES CORRECTED

| Name | Status | Position | BNM Ref. | LNM St | LNM End |
|------|--------|----------|----------|--------|---------|
|------|--------|----------|----------|--------|---------|

None

SECTION IV - CHART CORRECTIONS

This section contains corrections to federally and privately maintained Aids to Navigation, as well as NOS corrections.

This section contains corrective actions affecting chart(s). Corrections appear numerically by chart number, and pertain to that chart only. It is up to the mariner to decide which chart(s) are to be corrected. The following example explains individual elements of a typical chart correction.

| Chart Number | Chart Edition | Edition Date | Last Local Notice to Mariners | Horizontal Datum Reference | Source of Correction | Current Local Notice to Mariners |
|--|------------------------------|-----------------------------|-------------------------------|----------------------------|----------------------|----------------------------------|
| 12327 | 91st Ed. | 19-APR-97 | Last LNM: 26/97 | NAD 83 | | 27/97 |
| Chart Title: NY-NJ-NEW YORK HARBOR - RARITAN RIVER | | | | | | |
| Main Panel 2245 NEW YORK HARBOR | | | | | | |
| (Temp) ADD | NATIONAL DOCK CHANNEL BUOY 3 | | | | CGD01 | 074-02-48.001W |
| | Green can | | | | at 40-41-09.001N | |
| Corrective Action | | Object of Corrective Action | | | Position | |

(Temp) indicates that the chart correction action is temporary in nature. Courses and bearings are given in degrees clockwise from 000 true. Bearings of light sectors are toward the light from seaward. The nominal range of lights is expressed in nautical miles (NM) unless otherwise noted.

| | | | | | | |
|---|--|------------------|------------------------|----------------|--------------------|----------------|
| 510 | 2nd Ed. | 22-MAR-86 | Last LNM: 18/11 | UNKNOWN | | 05/23 |
| Chart Title: EASTERN PORTION OF JAPAN (OMEGA) | | | | | | |
| CHART EASTERN PORTION OF JAPAN (OMEGA). Page/Side: N/A | | | | | | |
| (Temp) RELOCATE | Ritidian Point Light | | | | CGD14 | |
| | TEMPORARILY RELOCATED FOR CONSTRUCTION OF NEW AID. | | | | from 13-39-00.504N | 144-51-42.678E |
| | | | | | to 13-39-00.395N | 144-51-42.475E |
| 19340 | 27th Ed. | 01-MAR-08 | Last LNM: 04/15 | WGS 84 | | 05/23 |
| Chart Title: Hawai'i to O'ahu | | | | | | |
| Main Panel 2786 HAWAII TO OAHU. Page/Side: N/A | | | | | | |
| ADD | Fugro Marine Research LB 1 | | | | at 21-25-15.360N | 157-21-19.560W |
| | Yellow FL (5) Y 20s | | | | | |
| | Fl Y 20s | | | | | |
| 81004 | 5th Ed. | 01-AUG-08 | Last LNM: 17/12 | WGS 84 | | 05/23 |
| Chart Title: Commonwealth of the Northern Mariana Islands | | | | | | |
| Main Panel 2904 MARIANA ISLANDS. Page/Side: N/A | | | | | | |
| (Temp) RELOCATE | Ritidian Point Light | | | | CGD14 | |
| | TEMPORARILY RELOCATED FOR CONSTRUCTION OF NEW AID. | | | | from 13-39-00.504N | 144-51-42.678E |
| | | | | | to 13-39-00.395N | 144-51-42.475E |
| 81023 | 4th Ed. | 19-JAN-85 | Last LNM: 49/89 | UNKNOWN | | 05/23 |
| Chart Title: Nomoi Islands to Faraulep Island | | | | | | |
| CHART Nomoi Islands to Faraulep Island. Page/Side: N/A | | | | | | |
| (Temp) RELOCATE | Ritidian Point Light | | | | CGD14 | |
| | TEMPORARILY RELOCATED FOR CONSTRUCTION OF NEW AID. | | | | from 13-39-00.504N | 144-51-42.678E |
| | | | | | to 13-39-00.395N | 144-51-42.475E |
| 81025 | 2nd Ed. | 27-JAN-79 | Last LNM: 45/88 | UNKNOWN | | 05/23 |
| Chart Title: COMNAV MARIANAS - SURFACE/AIR - OPAREA | | | | | | |
| CHART COMNAV MARIANAS - SURFACE/AIR - OPAREA. Page/Side: N/A | | | | | | |
| (Temp) RELOCATE | Ritidian Point Light | | | | CGD14 | |
| | TEMPORARILY RELOCATED FOR CONSTRUCTION OF NEW AID. | | | | from 13-39-00.504N | 144-51-42.678E |
| | | | | | to 13-39-00.395N | 144-51-42.475E |
| 81048 | 10th Ed. | 01-FEB-06 | Last LNM: 50/13 | WGS 84 | | 05/23 |
| Chart Title: Marianas Island of Guam Territory of Guam; Cocos Lagoon | | | | | | |
| CHART MARIANA ISLANDS - ISLAND OF GUAM - TERRITORY OF GUAM. Page/Side: N/A | | | | | | |
| (Temp) RELOCATE | Ritidian Point Light | | | | CGD14 | |
| | TEMPORARILY RELOCATED FOR CONSTRUCTION OF NEW AID. | | | | from 13-39-00.504N | 144-51-42.678E |
| | | | | | to 13-39-00.395N | 144-51-42.475E |

OIL RIG MOVEMENT

| Drill Rigs/Vessels Removed | | | | | | |
|--------------------------------|-----------|-------|-------------|-------|------|--------|
| Latitude | Longitude | Block | Rigs/Vessel | Chart | Type | Status |
| None | | | | | | |
| Drill Rigs/Vessels Established | | | | | | |

Latitude Longitude Block Rigs/Vessel Chart Type Status
None

SECTION V - ADVANCE NOTICES

This section contains advance notice of approved projects, changes to aids to navigation, or upcoming temporary changes such as dredging, etc. Mariners are advised to use caution while transiting these areas.

SUMMARY OF ADVANCED APPROVED PROJECTS

| <u>Approved Project(s)</u> | <u>Project Date</u> | <u>Ref. LNM</u> |
|----------------------------|---------------------|-----------------|
| None | | |

Advance Notice(s)

HI ISLANDS - OAHU - MAKAPUU POINT LIGHT (45/21)

Due to unreliable commercial power at Makapuu Point Light (LLNR 28925), the Coast Guard will convert the power supply to solar and battery power. Please contact Fourteenth Coast Guard District, at (808) 535-3409, or via email at D14-DG-PJdpw@uscg.mil, for questions or concerns.

HI ISLANDS - HAWAII - POHOIKI BAY BREAKWATER LIGHT 2 (43/21)

The Coast Guard is proposing discontinuing Pohoiki Bay Breakwater Light 2 (LLNR 28135) due to shoaling and sand accumulation which has made the waterway leading to Pohoiki Bay boat ramp at Isaac Hale Park un-navigable. The Coast Guard welcomes public comment on the proposal to discontinue. Please contact Fourteenth Coast Guard District, at (808) 535-3409, or via email at D14-DG-PJ-dpw@uscg.mil, to comment.

SECTION VI - PROPOSED CHANGES

Periodically, the Coast Guard evaluates its system of aids to navigation to determine whether the conditions for which the aids to navigation were established have changed. When changes occur, the feasibility of improving, relocating, replacing, or discontinuing aids are considered. This section contains notice(s) of non-approved, proposed projects open for comment. SPECIAL NOTE: Mariners are requested to respond in writing to the District office unless otherwise noted (see banner page for address).

PROPOSED WATERWAY PROJECTS OPEN FOR PUBLIC COMMENT

| <u>Proposed Project(s)</u> | <u>Closing</u> | <u>Docket No.</u> | <u>Ref. LNM</u> |
|----------------------------|----------------|-------------------|-----------------|
| None | | | |

Proposed Change Notice(s)

None

SECTION VII - GENERAL

This section contains information of general concern to the Mariners. Mariners are advised to use caution while transiting these areas.

PRIVATE AIDS TO NAVIGATION (01/08)

The term private aids to navigation (ATON) includes all marine aids to navigation operated in the navigable waters of the United States other than those operated by the Federal Government. Private ATON includes lighted structures and day beacons, lighted and unlighted buoys, RACONS and fog signals. Almost half of the aids to navigation established in the Fourteenth District are operated and maintained by private interests. These interests include private citizens, marina and yacht clubs, municipal and state governments, construction and dredging companies, research and non-profit organizations, beachfront associations, and large industrial concerns.

No person, public body or instrumentality not under the control of the Commandant, exclusive of the Armed Forces, shall establish and maintain, discontinue, change or transfer ownership of any aid to maritime navigation, without first obtaining permission to do so from the Commandant and the Army Corps of Engineers.

Owners contemplating establishing such buoys should review CFR 33 Part 66 and contact the appropriate authority, usually the Army Corps of Engineers, to determine what additional requirements may exist. Additionally, private aids on navigable waters regulated by the federal government require either a Coast Guard permit or Coast Guard letter of no objection. The application for a letter of no objection or for a permit, form CG-2554, can be obtained by emailing the Private ATON Manager at the email given below.

The Private ATON Manager provides applicants assistance in processing their paperwork. Federal regulations governing aids to navigation, copies of permits previously issued to the applicant, illustrations of standard markings, and lists of commercial ATON manufacturers are available. Questions and requests should be directed to:

Commander (dpw)
Fourteenth Coast Guard District
300 Ala Moana Boulevard, 9-220

PRIVATE AIDS TO NAVIGATION (01/08)

Honolulu, HI 96850-4982
Attn: Private ATON Manager
Tel: (808) 535-3409 / 3408
Email: D14-DG-PJ-dpw@uscg.mil

U.S. Army Corps of Engineers
Honolulu District
Building 230
Ft. Shafter, HI 96858-5440
Attn: CEPOH-EC-R
Phone: (808)-835-4004

Mariners are reminded that they have a responsibility to report discrepant private aids to the nearest Coast Guard unit. The failure of a mariner to report a discrepant aid to navigation may result in casualties to others. All aids to navigation in the Fourteenth District, both private and federally maintained, are user monitored. When owners receive discrepancy reports from the Coast Guard, they are obligated to take immediate action to correct the discrepancy. Owners are reminded of their responsibility for the proper operation and maintenance of their private aids to navigation. All classes of private aids to navigation shall be maintained in proper operating condition. They are subject to inspection by the Coast Guard at any time and without prior notice. The Coast Guard issues broadcast notice to mariners for reported discrepancies that remain in effect until the discrepancy is corrected or is published in the Local Notice to Mariners.

FISH AGGREGATING DEVICE (FAD) BUOY INFORMATION AND DISCREPANCIES (28/21)

The State of Hawaii has placed Fish Aggregating Devices (FADs) in the waters surrounding the main Hawaiian Islands. These buoys attract schools of tuna and other important pelagic fishes, such as dolphinfish (Mahimahi), wahoo (Ono) and billfish. FADs allow fishermen to easily locate and catch these species. The buoys are anchored using approximately 2.5 miles of mooring line which creates a very large swing circle. Mariners are advised that these buoys may maneuver anywhere from three to five miles from their charted positions.

Mariners requesting up to date information concerning Hawaiian Island's FAD Buoys, or reports of discrepancies, may either visit the Hawaii FAD web site at <http://www.himb.hawaii.edu/fads>, contact Mr. Warren Cortez at (808) 956-0684, or send written correspondence to:
Mr. Warren Cortez
Fish Aggregating Devices Program
965 N. Nimitz Hwy
Honolulu, HI 96817

Mariners requesting up to date information concerning Guam's FAD Buoys, or reports of discrepancies, may either visit the Guam FAD web site at www.dawr.guam.gov, contact Mr. Brent Tibbatts at Brent.Tibbatts@gmail.com 671.735.3955/56, or send written correspondence to:
Mr. Brent Tibbatts
Guam Department of Agriculture
Division of Aquatics and Wildlife Resources
163 Dairy Road
Mangilao, Guam 96913

NAVIGATION INTERNET SITES (33/05)

Chart Corrections: <http://nauticalcharts.noaa.gov/mcd/updates/index.htm>
Light List Corrections: <https://www.navcen.uscg.gov/index.php?pageName=lightLists>
Coast Pilot Corrections: <http://nauticalcharts.noaa.gov/nsd/cpdownload.htm>
NOAA Weather Buoy Sites: <http://www.ndbc.noaa.gov/Maps/rmd.shtml>
Hawaii Weather: <http://www.prh.noaa.gov/pr/hnl/>
Online Chart Viewer: <http://www.nauticalcharts.noaa.gov/mcd/OnLineViewer>

(For NOAA Print-on-Demand (POD) charts only)

NOAA and Coast Survey, in partnership with OceanGrafix, LLC, offer mariners official nautical charts that are continuously updated by NOAA cartographers up to the latest Notice to Mariners and to all Critical Safety Information known to the Coast Survey in advance of its publication in a Notice. From NOAA digital files, OceanGrafix prints corrected charts, to order, for sale to mariners through the OceanGrafix retail network. Produced and distributed by authority of NOAA, these charts meet all U.S. Coast Guard chart carriage requirements, including the requirements for updating (Titles 33 & 46 CFR). New Editions are available 2-8 weeks before their release as a traditional NOAA chart.

These new charts feature operational information for the commercial mariner, and education and safety information for the recreational boater. They have brighter colors and a higher contrast for better readability in various light conditions. They come either laminated or on water resistant paper.

POD charts are available through a POD chart agents at <http://OceanGrafix.com/>, 1-877-56CHART, or contact NOAA at <http://nauticalcharts.noaa.gov/pod/Pod.htm>. For questions contact NOAA at help@nauticalcharts.gov.

HI ISLANDS - U.S. DEPARTMENT OF HOMELAND SECURITY - DIVER SAFETY ADVISORY (25/09)

This advisory is issued to increase the safety of all open water and waterway users throughout the Hawaiian Islands and is issued in conjunction with the Department of Land and natural Resources (DLNR) pilot program focusing on diver safety.

Over the years there have been an increased number of reports of near misses between divers and waterborne crafts in Oahu, Maui and Hawaii. In most cases, these near misses have happened in near coastal waters and often when conditions were choppy.

HI ISLANDS - U.S. DEPARTMENT OF HOMELAND SECURITY - DIVER SAFETY ADVISORY (25/09)

The following suggested measures can help avoid near misses:
Become familiar with your transit route and destination area before heading out.
Remain vigilant of your surroundings and post extra lookouts in choppy waters and inclement weather.
Stay clear of federal Aids to Navigation and commercial delineated channels.
Use all appropriate sound and visual signals.
Postpone trips until the weather and sea conditions improve.

All open water and waterway users are also highly encouraged to visit the Coast Guard Sector Honolulu Homeport website for Safety and Security Zone information for the Hawaiian Islands at: <http://homeport.uscg.mil/> under the Honolulu Port Directory tab and Safety and Security section.

The most updated charts for the Hawaiian Islands can be found on the National Oceanic and Atmospheric Administration (NOAA) website: <http://www.prh.noaa.gov/pr/hnl> or <http://www.nauticalcharts.noaa.gov/mcd/OnLineViewer.html>.

Any and all life threatening or hazardous conditions including off station or missing buoys should be reported immediately to the U.S. Coast Guard at (808) 842-2600.

PACIFIC OCEAN - NATIONAL WILDLIFE REFUGE - RESTRICTED FOR ENTRY (22/11)

The U.S. Department of the Interior, Fish and Wildlife Service, National Wildlife Refuge System, Pacific Reefs National Wildlife Refuge Complex manages ten National Wildlife Refuges within the Fourteenth Coast Guard District. Eight of these Refuges, described below, consist of waters and submerged and emergent lands. The remaining two Refuges, the Marianas Arc of Fire and the Mariana Trench National Wildlife Refuges, consist only of submerged lands.

The waters and submerged and emergent lands of National Wildlife Refuges are subject to the regulations governing the National Wildlife Refuge System found in Parts 25-32 of Title 50, Code of Federal Regulations. Therefore, except as provided by international law, these areas are closed to all forms of entry, other than innocent passage, unless specifically authorized by a Special Use Permit issued by the U.S. Fish and Wildlife Service. Should you have any questions, please contact the Pacific Reefs National Wildlife Refuge Complex by emailing the Project Leader at Pacific_Reefs@fws.gov or by calling 808-792-9560.

Baker Island National Wildlife Refuge. This Refuge includes all of Baker Island approximately at Latitude 0-11-45 North and Longitude 176-28-45 West, together with its territorial waters extending outward 12 nautical miles (13.8 mi; 22.2 km) from the mean low water line of the island.

Howland Island National Wildlife Refuge. This Refuge includes all of Howland Island approximately at Latitude 0-48-30 North and Longitude 176-37 West, together with its territorial waters extending outward 12 nautical miles (13.8 mi; 22.2 km) from the mean low water line of the island.

Jarvis Island National Wildlife Refuge. This Refuge includes all of Jarvis Island approximately at Latitude 0-22-20 South and Longitude 160-00 West, together with its territorial waters extending outward 12 nautical miles (13.8 mi; 22.2 km) from the mean low water line of the island.

Johnston Atoll National Wildlife Refuge. This Refuge includes all of Johnston Atoll approximately at Latitude 16-44 North and Longitude 169-31 West, together with its territorial waters extending outward 12 nautical miles (13.8 mi; 22.2 km) from the mean low water line of the atoll. However, portions of the emergent land at Johnston Atoll are currently under the administrative jurisdiction of the Department of the Air Force, which controls all access to areas under its administrative jurisdiction.

Kingman Reef National Wildlife Refuge. This Refuge includes all of Kingman Reef approximately at Latitude 6-24-30 North and Longitude 162-23-30 West, together with its territorial waters extending outward 12 nautical miles (13.8 mi; 22.2 km) from the mean low water line of the reef.

Palmyra Atoll National Wildlife Refuge. This Refuge includes all of Palmyra Atoll approximately at Latitude 05-53 North and Longitude 162-05 West, together with its territorial waters extending outward 12 nautical miles (13.8 mi; 22.2 km) from the mean low water line of the atoll. However, portions of the emergent land at Palmyra Atoll are currently owned and managed as a nature preserve by The Nature Conservancy, which controls all access to areas under its ownership.

PACIFIC OCEAN - NATIONAL WILDLIFE REFUGE - RESTRICTED FOR ENTRY CONTINUED (22/11)

Rose Atoll National Wildlife Refuge. This Refuge includes all of Rose Atoll approximately at Latitude 14-32-45 South and Longitude 168-9-24 West, the seaward extent being the extreme low water line outside the perimeter reef except at the entrance channel where the boundary is a line extended between the extreme low water lines on each side of the entrance channel.

Wake Atoll National Wildlife Refuge. This Refuge includes all of Wake Atoll approximately at Latitude 19-18 North and Longitude 166-38 East, together with its territorial waters extending outward 12 nautical miles (13.8 mi; 22.2 km) from the mean low water line of the atoll. However, in accordance with Presidential Proclamation No. 8336, the emergent land at Wake Atoll is currently under the management of the Department of the Air Force, which controls all access to areas under its management.

HI ISLANDS - KAHO'OLAWE ISLAND RESERVE COMMISSION - NOTICE OF OPEN WATERS SCHEDULE (52/22)

Notice to Trollers: The dates below mark the Permitted Trolling Schedule in Zone B for January -- December 2023. Hawaii Administrative Rules (H.A.R.) 13-261 requires that all vessels must register with the Kaho'olawe Island Reserve Commission (KIRC) before entering the Reserve to troll during designated Permitted Trolling dates. To register please contact Dean Tokishi at dean.tokishi@hawaii.gov 808-243-5022, visit Kahoolawe.hawaii.gov or pick up registration packet at the Division of Boating and Recreation.

12:01 a.m Saturdays to 11:59 p.m. Sundays as follows:

January 21 – 22 ; 28 – 29
February 11 – 12 ; 25 – 26
March 11 – 12 ; 18 – 19
April 15 – 16 ; 29 – 30

HI ISLANDS - KAHO'OLAWA ISLAND RESERVE COMMISSION - NOTICE OF OPEN WATERS SCHEDULE (52/22)

May 13 – 14 ; 20 – 21
June 03 – 04 ; 17 – 18
July 08 – 09 ; 29 – 30
August 12 – 13 ; 26 – 27
September 09 – 10 ; 23 – 24
October 07 – 08 ; 21 – 22
November 04 – 05 ; 18 – 19
December 02 – 03 ; 16 – 17

The Kaho'olawe Island Reserve (defined as the submerged lands and waters within two nautical miles of the island) is divided into two zones; Zones A and B. These zones are defined as:

Zone A: Includes the island of Kaho'olawe and all the submerged lands and waters between the shoreline of Kaho'olawe and the 30-fathom (180 ft.) depth which surrounds Kaho'olawe (HAR 13-261). Unauthorized entry into Zone A is prohibited at all times except in case of emergency.
Zone B: All waters and submerged lands between the 30-fathom (180 ft.) depth surrounding Kaho'olawe and two nautical miles from the shoreline of the island. Unauthorized entry into Zone B is prohibited at all times except for trolling as authorized by KIRC on the days stipulated by the Permitted Trolling Schedule as listed above or in case of emergency. Trollers must remain underway, making way at all times while in Zone B. ALL OTHER FISHING, OCEAN RECREATION, AND ANY OTHER ACTIVITIES ARE STRICTLY PROHIBITED.

WARNING! Kaho'olawe and its surrounding submerged lands and waters contain unknown quantities of unexploded ordnance which are hazardous to public health and safety.
(Authority: (H.R.S. §6K, H.A.R. §13-261)

See enclosure 2

HI ISLANDS - OAHU - KANEOHE BAY - MILITARY OPERATIONS (09/09)

Military amphibious and search and rescue operations may be underway at any time, day or night, within Kaneohe Bay in the vicinity of 21-26-06.83N/157-46-11.00W and 21-26-45.00N/157-46-55.00W (approximately .5 NM south of Mokapu Peninsula). Support surface craft will be equipped with appropriate day/night signals and markings and can be reached on VHF-Ch 82. In the interest of safety, it is requested that all vessels that use Sonar contact Water Front Operations on VHF-Ch 82A or by phone at (808) 257-2941 to avoid injury to divers that may be in the area.

HI ISLANDS - OAHU - KANEOHE BAY - PYRAMID ROCK - HAZARDOUS OPERATIONS (05/23)

The Pyramid Rock Danger Zone is located in ocean waters as described by the below coordinates and is closed at all times to surface craft, swimmers, and divers, with the exception of authorized personnel. Mark B.J. Edmonson at mark.bj.edmonson@usmc.mil.

The Danger Zone is bounded by the following coordinates:

21-27.97'N / 157-45.78'W
21-29.88'N / 157-44.78'W
21-29.38'N / 157-43.68'W
21-27.47'N / 157-44.68'W

The following are hazardous operations to mariners for February 01, 2023 through February 07, 2023:

Feb 01 1800 - 2200 Pyramid Rock
Feb 02 1800 - 2200 Pyramid Rock
Feb 03 N/A
Feb 04 N/A
Feb 05 N/A
Feb 06 N/A
Feb 07 N/A

See enclosure 1

HI ISLANDS - OAHU - KANEOHE BAY - ULUPAU CRATER WEAPONS DANGER ZONE - HAZARDOUS OPERATIONS (05/23)

All vessels/watercraft operating within the Mokapu Peninsula near the Ulupau Crater located on Marine Corps Base Hawaii shall vacate the danger zone at the best speed and by the most direct route.

Danger zone will include areas from (Zone 1 NE) 21°30'59.66"N /157°44'05.97"W to 21°29'16.58"N /157°40'30.19"W to (Zone 2 SE) 21°25'01.79"N/157°40'33.70"W to 21°27'11.84"N/157°43'53.83"W, forming a triangular figure.

The following are hazardous operations to mariners for February 01, 2023 through February 07, 2023:

Zone 1 (NE Range)
Feb 01 0600 - 1800
Feb 02 0600 - 1800
Feb 03 0900 - 1700
Feb 04 N/A
Feb 05 N/A
Feb 06 N/A
Feb 07 0900 - 1300

HI ISLANDS - OAHU - KANEOHE BAY - ULUPAU CRATER WEAPONS DANGER ZONE - HAZARDOUS OPERATIONS (05/23)

Zone 2 (SE Range)
Feb 01 0600 - 1800
Feb 02 N/A
Feb 03 0600 - 1700
Feb 04 N/A
Feb 05 N/A
Feb 06 N/A
Feb 07 0900 - 1300

See enclosure 1

HI ISLANDS - OAHU - WAIMANALO HAZ OPS (05/23)

The Waimanalo Bay Danger Zone is located in ocean waters as described by the below coordinates and is closed at all times to surface craft, swimmers, and divers, with the exception of authorized personnel. Mark B.J. Edmonson at mark.bj.edmonson@usmc.mil.

The Danger Zone is bounded by the following coordinates:

21-21'11"N / 157-42'16"W
21-21'10"N / 157-42'24"W
21-21'50"N / 157-42'34"W
21-21'49"N / 157-42'28"W

The following are hazardous operations to mariners for February 01, 2023 through February 07, 2023:

Feb 01 0800 - 2359
Feb 02 0600 - 1200
Feb 03 N/A
Feb 04 N/A
Feb 05 N/A
Feb 06 N/A
Feb 07 N/A

See enclosure 1

HI ISLANDS - OAHU - KEAHI POINT - HAZARDOUS OPERATIONS (05/23)

The Puuloa Danger Zone is located in ocean waters as described by the below coordinates and is closed at all times to surface craft, swimmers, and divers, with the exception of authorized personnel. Mark B.J. Edmonson at mark.bj.edmonson@usmc.mil.

The Danger Zone is bounded by the following coordinates:

21-18-21N / 157-59-14W
21-18-11N / 158-00-17W
21-17-11N / 158-00-06W
21-17-22N / 157-59-03W

The following are hazardous operations to mariners for February 01, 2023 through February 07, 2023:

Feb 01 0700 - 2130
Feb 02 0700 - 1700
Feb 03 0700 - 1700
Feb 04 N/A
Feb 05 N/A
Feb 06 0700 - 1600
Feb 07 0800 - 1600

See enclosure 1

HI ISLANDS - SOUTH COAST OAHU - HAZARDOUS OPERATIONS - HOT AREAS (50/07)

FACSFAC Pearl Harbor established Special Operating Areas Four (SOA-4) as a permanent "HOT AREA" named "KAPU" on April 15, 1995. FACSFAC effective hours are 0700W to 2300W (Monday - Saturday from 1700Z - 0900Z) Monday - Friday, and on weekend's 0800W - 1600W (Weekends from 1800Z - 0200Z) or by request. Activities include intermittent naval gunnery exercises and airborne ordnance drops. "KAPU" is also designated as the emergency jettison area for aircraft with hung stores, etc. Hot area "KAPU" is bounded by the following coordinates 20-46N/158-16W, 20-42 N/158-04W, 20-13N/158-36W and 20-04N/158-11W. Scheduling authority is FACSFAC Pearl Harbor call-sign "HULA DANCER". "HULA DANCER" can be reached on primary 266.4/127.0 MHz, or secondary 336.8/132.4 MHZ or telephone (808) 472-7333/7337 and may authorize transits through these areas on a case by-case basis.

HI ISLANDS - KAUAI - BARKING SANDS - PACIFIC MISSILE RANGE FACILITY HI AREA - HAZARDOUS OPERATIONS (05/23)

Intermittent missile firing operations are conducted by the Pacific Missile Range Facility (PMRF), Barking Sands, Kauai, in the Whiskey 188 (W-188) operating area. Operations are conducted periodically throughout each week in an area bound by the following coordinates:

HI ISLANDS - KAUAI - BARKING SANDS - PACIFIC MISSILE RANGE FACILITY HI AREA - HAZARDOUS OPERATIONS (05/23)

22:00N/159:51W, 22:00N/160:00W, 22:04N/160:06W, 21:59.5N/160:21W, 22:05N/161:35W, 22:45N/161:25W, 22:56N/161:49W, 23:34N/161:18.6W, 23:57N/160:41W, 25:41N/161:36W, 26:00N/159:58W, 25:47N/158:15W, 23:54N/158:15W, 22:20N/159:09W, 22:21N/159:30W, 22:13N/159:42W, 22:00N/159:51W

Intermittent high power radar operations are conducted by PMRF at the following position: 22:03N/159:47W

Request all mariners remain at least one mile off the coastline between Kokole Point and Nohili Point.

Vessels may be requested to alter course due to firing operations and are requested to contact "Pacific Missile Range Facility" on HF 2182 KHz or VHF-Ch 16 prior to entering the above boundaries. If unable to contact the PMRF prior to entering or while in the warning area, relay messages through U.S. Coast Guard Honolulu. Vessels inbound and outbound for Hawaiian ports will create the least interference to firing operations as well as enhance vessel's safety by passing South of the Islands of Kauai and Niihau during the specified times. Federal law provides for civil penalties of \$40,000 and/or criminal penalties of 6 years in prison for each violation of the PMRF safety zone during the schedule of designated activity (33CFR 165.1406).

The following are hazardous operations to mariners for February 01, 2023 through February 08, 2023:

- 01 FEB 0930 - 1730 Kaulakahi Channel and Nohili Point to 80 NM West through NorthWest.
- 02 FEB NO HAZARDOUS OPERATIONS SCHEDULED.
- 03 FEB NO HAZARDOUS OPERATIONS SCHEDULED.
- 04 FEB NO HAZARDOUS OPERATIONS SCHEDULED.
- 05 FEB NO HAZARDOUS OPERATIONS SCHEDULED.
- 06 FEB 1030 - 1700 Kaulakahi Channel and Nohili Point to 110 NM West through NorthEast.
- 07 FEB NO HAZARDOUS OPERATIONS SCHEDULED.
- 08 FEB 0530 - 2400 Kaulakahi Channel and Nohili Point to 60 NM West through North.

MARINE EVENTS

This section contains information of general concern to the mariner. All event forms must be received no later than noon on Tuesday a week prior to the event. Mariners are advised to use caution while transiting these areas:

HI ISLANDS - OAHU - FIREWORKS (02/23)

Hawaii Explosives and Pyrotechnics, Inc. will be conducting a land fireworks display neighboring Duke Kahanamoku Beach on Fridays from 2115 - 2230 January 06, 2023 to December 29, 2023. Please require all vessels to observe the safety/fallout zone radius from the firing site. Vessels and spectators are advised to maintain a distance of at least 210 feet radius from the launch site.

Contact (808) 968-0600 for further information.

See Enclosure 5

SECTION VIII - LIGHT LIST CORRECTIONS

An Asterisk *, indicates the column in which a correction has been made to new information

| (1) No. | (2) Name and Location | (3) Position | (4) Characteristic | (5) Height | (6) Range | (7) Structure | (8) Remarks |
|------------|--------------------------------------|---------------------------------|-----------------------|---------------|--------------|------------------|-----------------------------|
| 28927 | <i>Fugro Marine Research</i> LB 1 | 21-25-15.360N 157-21-19.560W | FI Y 20s | | | yellow | Private Aid Private Aid. |
| | research buoy | | | | | | 05/23 |

*

PUBLICATION CORRECTIONS

None

ENCLOSURES

ENCLOSURE (1)

HI ISLANDS - OAHU - KANEHOE BAY HAZARDOUS OPERATIONS (18/07)

ENCLOSURE (2)

HI ISLANDS - KAHOLAWE ISLAND RESERVE COMMISSION - NOTICE OF OPEN WATERS SCHEDULE (52/22) see attachment doc

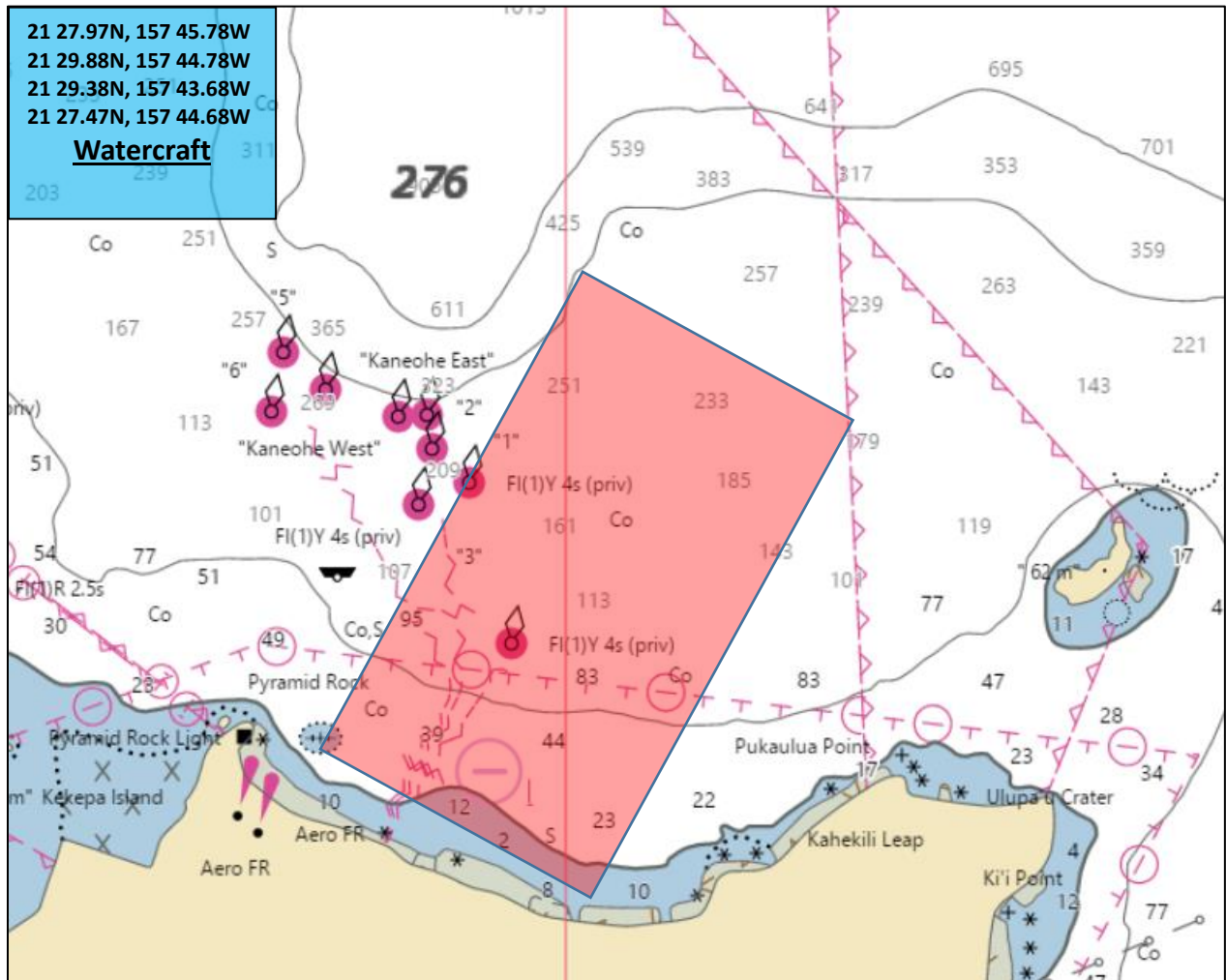
ENCLOSURE (5)

HI ISLANDS - OAHU - HONOLULU FIREWORKS

M. Day
Rear Admiral, U.S. Coast Guard
Commander, Fourteenth Coast Guard District

CFR WATERWAY BULLETIN
MCB HAWAII MOKU MANU, EWA BEACH, AND WAIMANALO
BAY DANGER ZONE
Pyramid Rock

Mariners are reminded that the Marine Corps Base Hawaii (MCBH) conducts intermittent weapons firing at the Ulupau Crater Weapons Training Range between 6 a.m. and 11 p.m. throughout the week & weekends. Caution transiting the waters off of Pyramid Rock is imperative at all times, including the 500 yard prohibited area surrounding MCBH. Periods of live firing will be indicated on shore at Ulupau crater either by two large red triangular warning pennants during the day or flashing red warning beacons at night. When these signals are present, the danger zone is not considered safe for boaters. Information on weapons firing schedules may be obtained by calling the MCBH Range Manager at 808-257-8816/17.

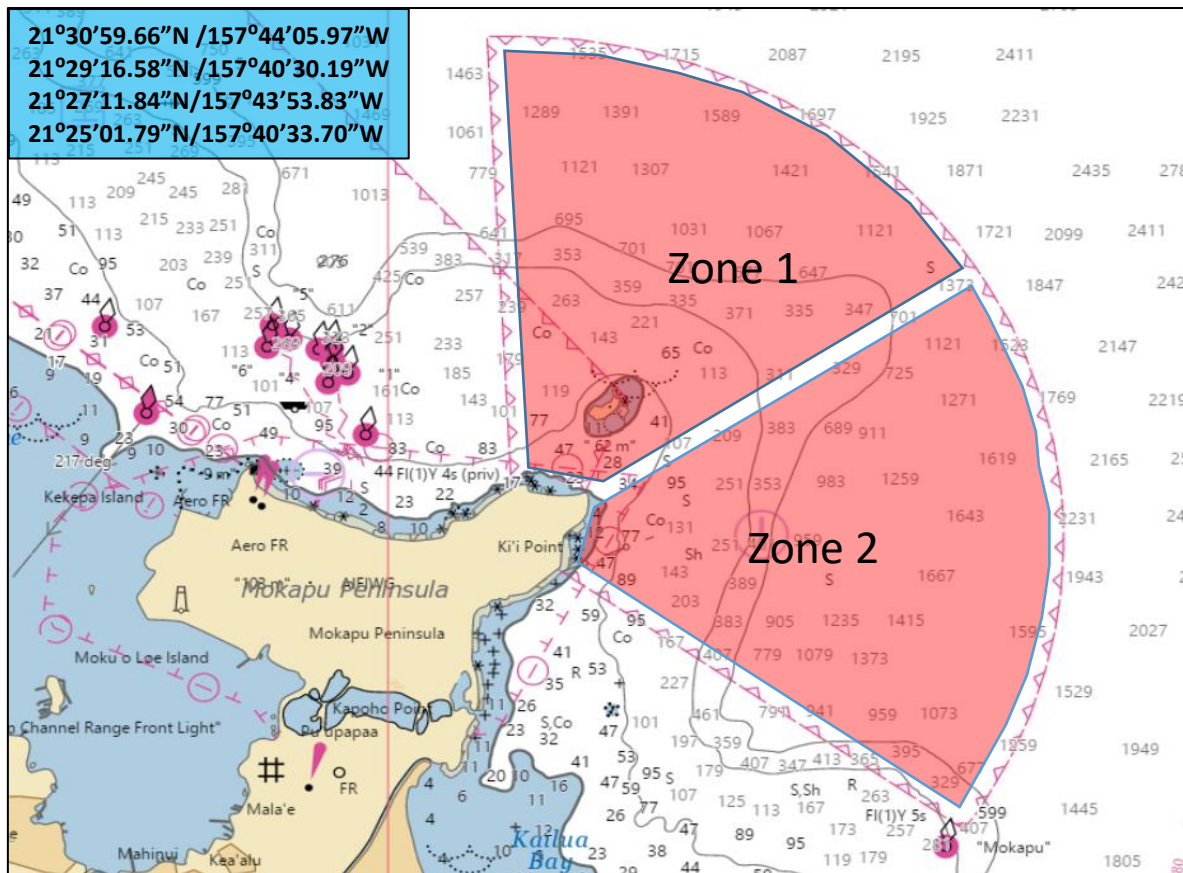


Enclosure 1

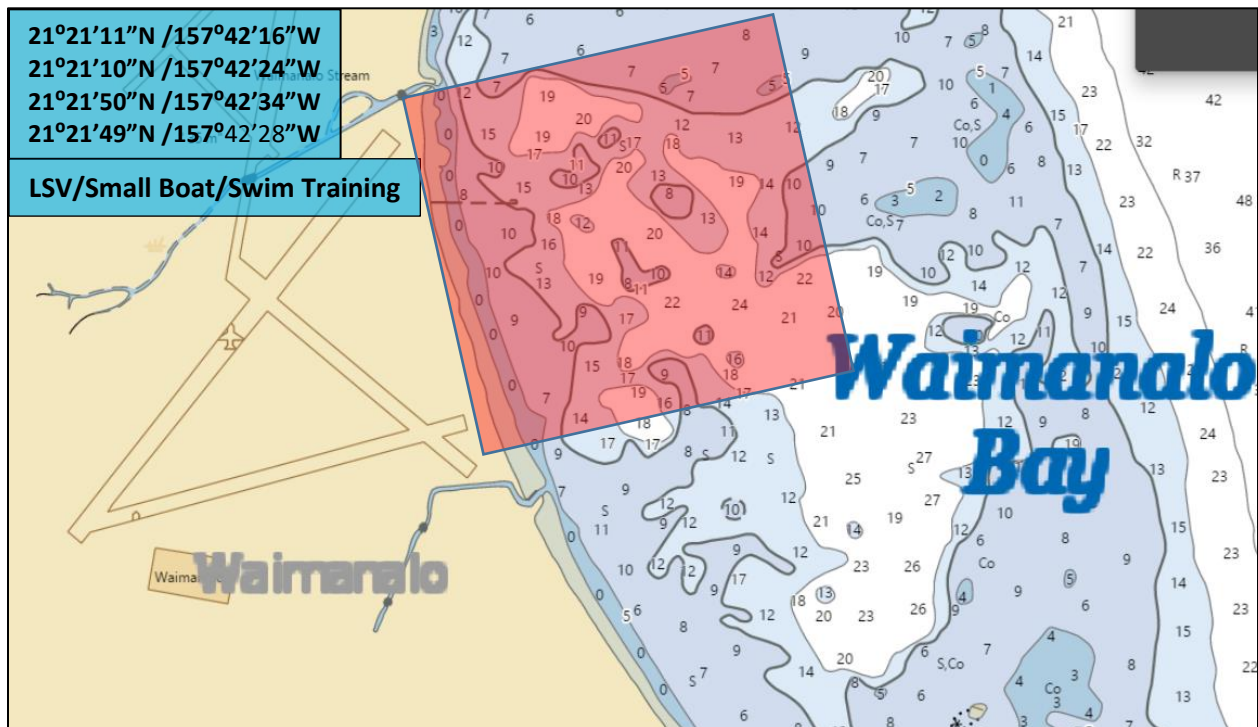
Danger Zone - Hawaii-Ulupau Crater Weapons Training (Kaneohe Bay)

Mariners are reminded that the Marine Corps Base Hawaii (MCBH) conducts intermittent weapons firing at the Ulupau Crater Weapons Training Range between 6 a.m. and 11 p.m. throughout the week & weekends. Caution transiting the waters off of Mokapu Peninsula is imperative at all times, including the 500 yard prohibited area surrounding MCBH. Periods of live firing will be indicated on shore at Ulupau crater either by two large red triangular warning pennants during the day or flashing red warning beacons at night. When these signals are present, the danger zone is not considered safe for boaters. Information on weapons firing schedules may be obtained by calling the MCBH Range Manager at 808-257-8816/17.

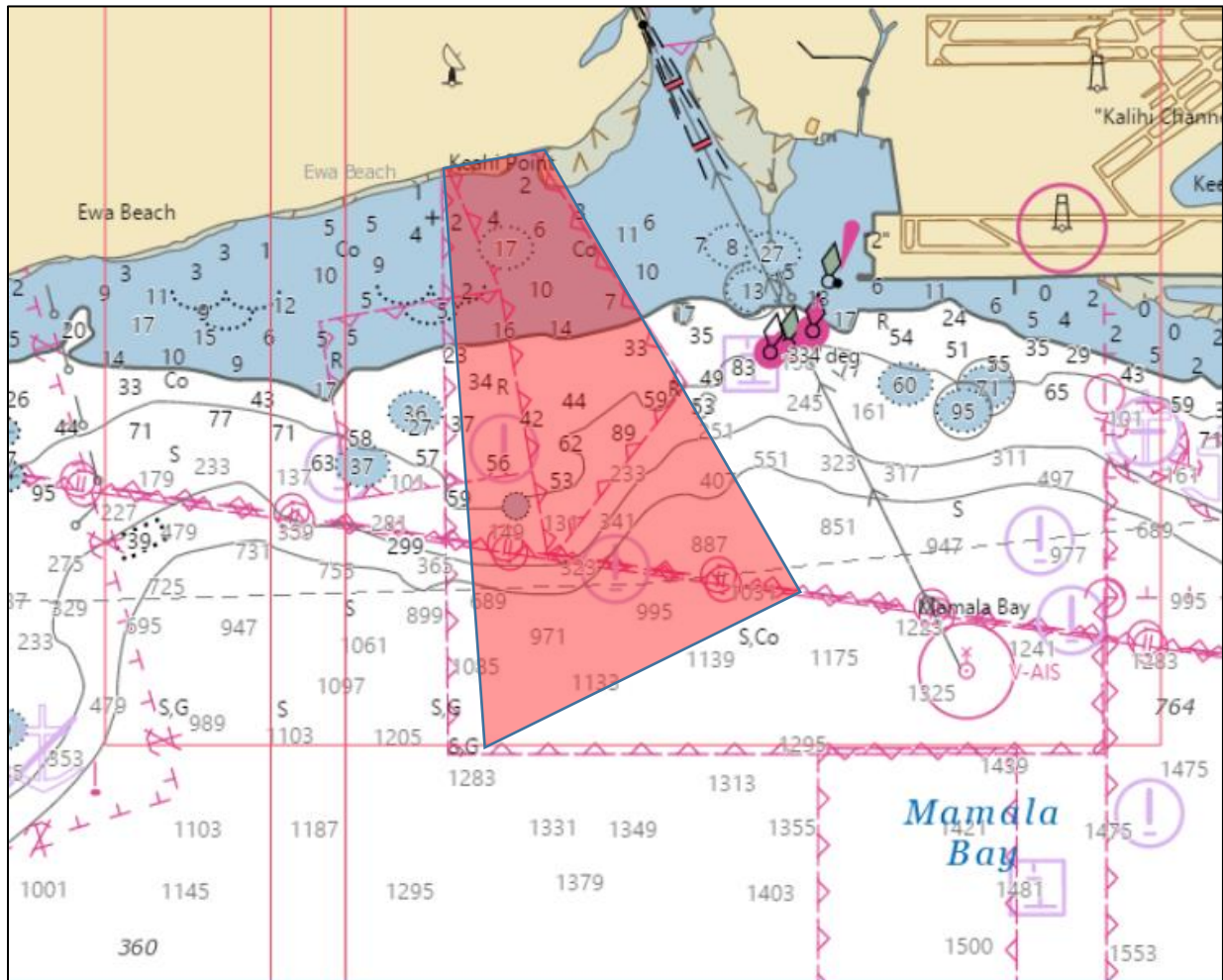
The 33 CFR 334.1380 Army Corp of Engineers established Danger Zone includes the area within a pie-shaped sector extending seaward a distance of 3.8 nautical miles between radial lines bearing 357.1° true and 124.9° true, respectively, from a starting point on Mokapu Peninsula at $21^{\circ}27'11.84''$ N, $157^{\circ}43'53.83''$ W. W



CFR WATERWAY BULLETIN
MCB HAWAII MOKU MANU, EWA BEACH, AND WAIMANALO
BAY DANGER ZONE
Waimanalo Bay



CFR WATERWAY BULLETIN
MCB HAWAII MOKU MANU, EWA BEACH, AND WAIMANALO
BAY DANGER ZONE
Ewa Beach





COMMISSION MEMBERS

JOSHUA KAAKUA, Ed.D
Chairperson
CARMEN HULU LINDSEY
Vice-Chair

SUZANNE CASE
'ĀNELA EVANS
SAUMALU MATAAFA
BENTON KEALII PANG, Ph.D
MICHELLE PESCAIA

Michael K. Nāho'opi'i
Executive Director

KŪKULU KE EA A KANALOA
KAHO'OLAWE ISLAND RESERVE COMMISSION

811 Kolu Street, Suite 201, Wailuku, HI 96793
Telephone (808) 243-5020 Fax (808) 243-5885
Website: <http://kahoolawe.hawaii.gov>

Notice of Permitted Trolling Schedule:

January-December 2023
Kaho'olawe Island Reserve
Zone B (> 30 fathoms)

Notice to Trollers: The dates below mark the Permitted Trolling Schedule in Zone B for January -- December 2023. **Hawaii Administrative Rules (H.A.R) 13-261 requires that all vessels must register with the Kahoolawe Island Reserve Commission (KIRC) before entering the Reserve to troll during designated Permitted Trolling dates. To register please contact Dean Tokishi at dean.tokishi@hawaii.gov 808-243-5022, visit Kahoolawe.hawaii.gov or pick up registration packet at the Division of Boating and Recreation.**

12:01 a.m Saturdays to 11:59 p.m Sundays as follows:

| | | | |
|----------|-----------------|-----------|-----------------|
| January | 21 –22; 28 – 29 | July | 08 –09; 29 – 30 |
| February | 11 –12; 25 – 26 | August | 12 –13; 26 – 27 |
| March | 11 –12; 18 – 19 | September | 09 –10; 23 – 24 |
| April | 15 –16; 29 – 30 | October | 07 –08; 21 – 22 |
| May | 13 –14; 20 – 21 | November | 04 –05; 18 – 19 |
| June | 03 –04; 17 – 18 | December | 02 –03; 16 – 17 |

The Kaho'olawe Island Reserve (defined as the submerged lands and waters within two nautical miles of the island) is divided into two zones; Zones A and B. These zones are defined as:

Zone A: Includes the island of Kaho'olawe and all the submerged lands and waters between the shoreline of Kaho'olawe and the 30-fathom (180 ft.) depth which surrounds Kaho'olawe (HAR 13-261). **Unauthorized entry into Zone A is prohibited at all times except in case of emergency.**

Zone B: All waters and submerged lands between the 30-fathom (180 ft.) depth surrounding Kaho'olawe and two nautical miles from the shoreline of the island. Unauthorized entry into Zone B is prohibited at all times except for trolling as authorized by KIRC on the days stipulated by the Permitted Trolling Schedule as listed above or in case of emergency. Trollers must remain underway, making way at all times while in Zone B. **ALL OTHER FISHING, OCEAN RECREATION, AND ANY OTHER ACTIVITIES ARE STRICTLY PROHIBITED.**

WARNING! Kaho'olawe and its surrounding submerged lands and waters contain unknown quantities of unexploded ordnance which are hazardous to public health and safety.

(Authority: (H.R.S. §6K, H.A.R. §13-261))

Exclosure 5
6/23/2022



Safety/Fallout Zone

Closed 30 minutes prior to firing until
"All Clear" is called by Operator - usually,
30 minutes after completion of 4 minute display.

Work Zone
Closed 4:00 p.m. to 9:00 p.m.

Firing Site



293 ft HHV Great Lawn

© 2019 Google

Google Earth

lat 21.281549° lon -157.839041° elev 5 ft eye alt 1394 ft