



U.S. Department  
of Homeland Security  
**United States  
Coast Guard**

## LOCAL NOTICE TO MARINERS

**District: 14**

**Week: 15/23**

April 12, 2023  
ISSUED BY:  
Commander (dpw)  
Fourteenth Coast Guard District  
300 Ala Moana Boulevard, Room 9-220  
Honolulu, HI 96850-4982  
Telephone: (808) 535-3409  
Email: D14-DG-PJ-dpw@uscg.mil  
Website: <https://www.navcen.uscg.gov/>

**Note:**

Unless otherwise indicated, missing and destroyed structures are presumed to be in the immediate vicinity, possibly beneath the surface. Any life threatening or hazardous conditions including off station, missing, or inoperative aids to navigation should be reported immediately to U.S. Coast Guard Sector Honolulu at (808) 842-2600 and U.S. Coast Guard Sector Forces Micronesia/Sector Guam at (671) 355-4822. Mariners should proceed with caution.

**References:**

Light List, Volume VI, Pacific Coast and Pacific Islands, 2023 Edition (COMDTPUB P16502.6).

U.S. Coast Pilot 10, Pacific Coast : Oregon, Washington, Hawaii, Pacific Islands 2022 (3rd Edition). Coast Pilots, along with corrections, are available at: <http://www.nauticalcharts.noaa.gov>

Navigation information having been of immediate concern to the mariner, and promulgated by the following broadcasts, have been incorporated in this notice when still significant:

COMCOGARD SECTOR HONOLULU HI BNMs: 0047-23 to 0056-23  
COMCOGARD SECTOR FORCES MICRONESIA/SECTOR GUAM BNMs: 0130-23 to 0137-23

### ABBREVIATIONS

#### A through H

ADRIFT - Buoy Adrift  
AICW - Atlantic Intracoastal Waterway  
AI - Alternating  
B - Buoy  
BKW - Breakwater  
bl - Blast  
BNM - Broadcast Notice to Mariner  
bu - Blue  
C - Canadian  
CHAN - Channel  
CGD - Coast Guard District  
C/O - Cut Off  
CONT - Contour  
CRK - Creek  
CONST - Construction  
DAYMK/Daymk - Daymark  
DBN/Dbn - Daybeacon  
DBD/DAYBD - Dayboard  
DEFAC - Defaced  
DEST - Destroyed  
DISCON - Discontinued  
DMGD/DAMGD - Damaged  
ec - eclipse  
EST - Established Aid  
ev - every  
EVAL - Evaluation  
EXT - Extinguished  
F - Fixed  
fl - flash  
Fl - Flashing  
G - Green  
GIWW - Gulf Intracoastal Waterway

#### I through O

I - Interrupted  
ICW - Intracoastal Waterway  
IMCH - Improper Characteristic  
INL - Inlet  
INOP - Not Operating  
INT - Intensity  
ISL - Islet  
Iso - Isophase  
kHz - Kilohertz  
LAT - Latitude  
LB - Lighted Buoy  
LBB - Lighted Bell Buoy  
LHB - Lighted Horn Buoy  
LGB - Lighted Gong Buoy  
LONG - Longitude  
LNM - Local Notice to Mariners  
LT - Light  
LT CONT - Light Continuous  
LTR - Letter  
LWB - Lighted Whistle Buoy  
LWP - Left Watching Properly  
MHz - Megahertz  
MISS/MSNG - Missing  
Mo - Morse Code  
MRASS - Marine Radio Activated Sound Signal  
MSLD - Misleading  
N/C - Not Charted  
NGA - National Geospatial-Intelligence Agency  
NO/NUM - Number  
NOS - National Ocean Service  
NW - Notice Writer  
OBSCU - Obscured

#### P through Z

PRIV - Private Aid  
Q - Quick  
R - Red  
RACON - Radar Transponder Beacon  
Ra ref - Radar reflector  
RBN - Radio Beacon  
REBUILT - Aid Rebuilt  
RECOVERED - Aid Recovered  
RED - Red Buoy  
REFL - Reflective  
RRL - Range Rear Light  
RELIGHTED - Aid Relit  
RELOC - Relocated  
RESET ON STATION - Aid Reset on Station  
RFL - Range Front Light  
RIV - River  
RRASS - Remote Radio Activated Sound Signal  
s - seconds  
SEC - Section  
SHL - Shoaling  
si - silent  
SIG - Signal  
SND - Sound  
SPM - Single Point Mooring Buoy  
SS - Sound Signal  
STA - Station  
STRUCT - Structure  
St M - Statute Mile  
TEMP - Temporary Aid Change  
TMK - Topmark  
TRLB - Temporarily Replaced by Lighted Buoy  
TRLT - Temporarily Replaced by Light

HAZ - Hazard to Navigation  
HBR - Harbor  
HOR - Horizontal Clearance  
HT - Height

OBST - Obstruction  
OBSTR - Obstruction  
Oc - Occulting  
ODAS - Anchored Oceanographic Data Buoy

TRUB - Temporarily Replaced by Unlighted Buoy  
USACE - Army Corps of Engineers  
W - White  
Y - Yellow

**Additional Abbreviations Specific to this LNM Edition:**

MSLD SIG - Misleading Signal

---

## SECTION I - SPECIAL NOTICES

This section contains information of special concern to the Mariner.

---

**\*\*\* CANCELLATION OF NOAA PAPER AND RASTER NAUTICAL CHARTS \*\*\***

The National Oceanic and Atmospheric Administration (NOAA) is undertaking a multi-year program to end production and maintenance of its suite of over 1,000 traditional paper nautical charts and all associated raster chart products and services, including: Print-on-Demand (POD) paper nautical charts, Full-size chart PDF files, BookletChart™ PDF files, NOAA raster navigational charts (NOAA RNC®), the NOAA RNC tile service, and the online RNC viewer.

Six months notice of the intent to cancel a specific chart is provided in a "Last Edition" notice. The final cancellation of a chart is made in a "Canceled" notice. Both types of notices will appear in LNM Section IV, "Chart Correction." A comprehensive list of all canceled NOAA charts is available at: <http://www.charts.noaa.gov/MCD/Dole.shtml>.

Traditional paper nautical chart production is ending to enable the creation and maintenance of larger scale, more up-to-date, higher quality coverage of NOAA's electronic navigational chart (NOAA ENC®) product. This will significantly enhance the amount of charted detail available to mariners. More information about NOAA's program to sunset traditional paper charts is on the NOAA Coast Survey website at: <https://nauticalcharts.noaa.gov/charts/farewell-to-traditional-nautical-charts.html>

An online NOAA Custom Chart application at: <https://devgis.charttools.noaa.gov/pod> is available to create chart images from ENC data, which may then be printed. Notices to Mariners will not be issued for NOAA Custom Charts.

**SAFETY NOTICE - NAVIGATIONAL RANGE AND SECTOR LIGHTS ON ELECTRONIC CHARTS (39/22)**

The U.S. Coast Guard has become aware that the Range and Sector Light Characteristic labels are not displayed on Electronic Navigational Charts (ENCs) when used in an Electronic Chart Display and Information System (ECDIS) due to limitations of the S-52 ECDIS display specification. Mariners may query the ENC data directly within ECDIS or refer to the Light List for complete information on Range and Sector Light Characteristics.

**PACIFIC OCEAN - HAZARD TO NAVIGATION - MARINE DEBRIS (07/12)**

With the increase in ocean debris sightings along the coastlines of the Pacific Ocean, mariners are reminded to submit debris sighting reports to the National Oceanic and Atmospheric Administration (NOAA) Marine Debris Program at [DisasterDebris@noaa.gov](mailto:DisasterDebris@noaa.gov), and the University of Hawaii oceanographic research center at [marinedebris@soest.hawaii.edu](mailto:marinedebris@soest.hawaii.edu). For inshore sightings, please use the State of Hawaii <https://dlnr.hawaii.gov/dobor/reportmarinedebris-hawaii/>.

**HI ISLANDS - ALL ISLANDS - SAILDRONE OPS (07/23)**

SAILDRONE, INC. will operate three Unmanned Surface Vehicles called Saildrones in collaboration with the University of Hawai'i, to systematically and synoptically survey ocean chemistry in Hawaiian coastal waters around each Hawaiian Island to understand the variability in carbon, oxygen, nutrients, and phytoplankton concentrations both in general and between islands. Saildrones are wind powered Unmanned Surface Vehicles that carry important oceanographic research instrumentation and are controlled from shore through satellite communications. Color: Orange, Length: 23 ft, Wide: 2 ft, Height: 16 ft above water line, Light: All-around White light. POC: (510) 722-6070, [missioncontrol@saildrone.com](mailto:missioncontrol@saildrone.com).

Overall map with a variety of water quality data: <http://www.pacioos.hawaii.edu/voyager/> or (Zoomed into Hawai'i: [bit.ly/3xLvFvv](http://bit.ly/3xLvFvv))

For more information on ocean chemistry work in the area : <https://www.pacioos.hawaii.edu/projects/acid/>

Vessels are requested to transit the area with caution, and remain greater than 500 meters away from the research equipment.

See Enclosure 3

**HI ISLANDS - HAWAII - HILO HARBOR - AIS TEMPORARY DEACTIVATION (07/19)**

All mariners be advised the Coast Guard has temporarily deactivated AIS broadcasting for the following aids to navigation in the Hilo, HI area:

28035 Hilo Harbor Entrance Lighted Buoy 1 AIS: MMSI 993699986

28040 Hilo Harbor Breakwater Light AIS: MMSI 993699987  
28055 Hilo Harbor Lighted Buoy 3 AIS: MMSI 993699985  
28070 Hilo Harbor Lighted Buoy 4 AIS: MMSI 993699984

#### **HI ISLANDS - HAWAII - ISAAC HALE PARK (02/19)**

The waterway leading to Pohoiki Bay boat ramp at Isaac Hale Park is un-navigable due to shoaling and sand accumulation. The light and day boards have been temporarily removed from Pohoiki Bay Breakwater Light 2 (LLNR 28135).

#### **HI ISLANDS - HAWAII - UNMANNED OPERATIONS (27/22)**

Liquid Robotics ([www.liquid-robotics.com](http://www.liquid-robotics.com)) will conduct continuous autonomous, unmanned maritime vehicle operations for several weeks at a time through December 2023 in vicinity of Kawaihae Bay, Hawaii within the following coordinates:

19-55-50N/ 155-54-12W  
19-58-10N/ 155-51-08W  
20-00-10N/ 155-50-29W  
20-07-19N/ 156-09-32W  
20-27-34N/ 155-52-30W  
20-10-02N/ 156-43-04W

Operations consist of scientific ocean data collection. Wave Glider carries no fuel, lubricants, or hydrocarbons, is wave powered, remotely attended from the Wave Glider Operations Center (WGOC), moving at speeds of typically 1kt, and designed to give way or part if encountered by a vessel. It is surfboard size, copper in color, with a contact plaque and mast extending 1 meter above the surface supporting a flag, topped with a solid white light. Mariners are urged to transit the area with caution. For up-to-date information, mariners can contact Liquid Robotics Operations Center at +1 408 636 4205, or by email at [support@liquid-robotics.com](mailto:support@liquid-robotics.com).

#### **HI ISLANDS - MAUI - MALA WHARF SHOALING (32/22)**

There has been a report of increased shoaling around Mala Wharf. At low tide, the Mala Wharf Boat Ramp also becomes dangerously shallow with waters less than 03 feet. All mariners are requested to use caution while loading and unloading at Mala Wharf Boat Ramp and when transiting the channel. POC: DLNR DOBOR, Maui District (808) 243-5824

#### **HI ISLANDS - MAUI - LAHAINA HARBOR SHOALING (34/22)**

There have been numerous reports of shoaling around Lahaina Harbor. All mariners are requested to transit the area with caution and report any observed changes in shoaling conditions to DLNR DOBOR at (808) 243-5824 and Marine Safety Team Maui at [MSTMaui@uscg.mil](mailto:MSTMaui@uscg.mil)

#### **HI ISLANDS - OAHU - KANEOHE BAY FLARE TRAINING**

Kaneohe Yacht Club will be conducting flare training in the middle of Kaneohe Bay on April 15, 2023 from 12:30 - 13:30. Vessels and spectators are advised to maintain a safe distance from the launch site. POC: Kim Ickler (808) 753-1431

#### **HI ISLANDS - OAHU - HONOLULU HARBOR PIER 41 SHOALING (14/23)**

There has been a report of uncharted submerged rocks protruding from the bottom around Honolulu Harbor Pier 41 in vicinity of the following position: 21°19.161'N 157°52.956'W. At low tide, the submerged rocks could be a hazard to navigation. All mariners are requested to use caution while transiting the area around Pier 41.

#### **HI ISLANDS - OAHU - MAUNALUA BAY SHOALING (05/22)**

There has been a report of increased shoaling in Maunalua Bay, between Maunalua Bay Daybeacon 1A (LLNR 28935) and Maunalua Bay Daybeacon 2 (LLNR 28940) when transiting to and from Hawaii Kai. At low tide, the Maunalua Bay Boat Ramp also becomes dangerously shallow. All mariners are requested to use caution while loading and unloading at Maunalua Bay Boat Ramp and when transiting the channel. POC: DLNR DOBOR at (808) 832-3520

#### **HI ISLANDS - OAHU - HONOLULU HARBOR - AIS ACTIVATION (07/21)**

All mariners be advised the Coast Guard has temporarily activated AIS broadcasting for the following aids to navigation in the Honolulu Harbor area:

29200 Honolulu Harbor Channel Buoy 3: MMSI 993692240  
29205 Honolulu Harbor Channel Buoy 4: MMSI 993692241

For any concerns contact Sector Honolulu at (808) 884-2600.

#### **HI ISLANDS - OAHU - HAZARDOUS OPERATIONS (14/23)**

Mariners operating offshore in waters north and west of Hawaii are advised of hazardous operations and the potential for falling debris due to space operations. Mariners are advised to avoid the below bounded area and operate in a heightened state of awareness from 1300Z to 1900Z on April 17, 2023:

22° 09' 0.00" N 167° 02' 0.00" W  
19° 50' 0.00" N 174° 26' 0.00" W  
18° 19' 0.00" N 178° 52' 0.00" W  
15° 00' 0.00" N 173° 24' 0.00" E  
11° 44' 0.00" N 167° 39' 0.00" E  
11° 18' 0.00" N 167° 54' 0.00" E  
13° 44' 0.00" N 174° 11' 0.00" E  
16° 08' 0.00" N 179° 30' 0.00" W  
18° 10' 0.00" N 173° 45' 0.00" W  
20° 13' 0.00" N 167° 33' 0.00" W  
21° 52' 0.00" N 162° 27' 0.00" W  
22° 26' 0.00" N 160° 32' 0.00" W  
23° 04' 0.00" N 157° 57' 0.00" W  
23° 36' 0.00" N 155° 42' 0.00" W  
24° 05' 0.00" N 154° 01' 0.00" W  
24° 24' 0.00" N 153° 16' 0.00" W  
24° 43' 0.00" N 152° 44' 0.00" W  
24° 49' 0.00" N 152° 48' 0.00" W  
24° 41' 0.00" N 154° 58' 0.00" W  
24° 08' 0.00" N 158° 18' 0.00" W  
23° 21' 0.00" N 162° 33' 0.00" W

Alternate timeframes for operations, if required, are 1300Z to 1900Z on April 18, 2023 through April 21, 2023.

Enclosure 6 (graphic of hazard areas):

#### **HI ISLANDS - OAHU - HAZARDOUS OPERATIONS (14/23)**

Mariners are advised that the below bounded area will be temporarily dangerous to navigation due to hazardous space operations from 1100Z to 1900Z on April 17, 2023:

23° 50' 0.00" N 157° 47' 0.00" W  
23° 26' 0.00" N 157° 41' 0.00" W  
23° 35' 0.00" N 156° 55' 0.00" W  
23° 59' 0.00" N 157° 01' 0.00" W

Alternate timeframes for operations, if required, are 1100Z to 1900Z on April 18, 2023 through April 21, 2023. This area is the most likely landing area for spacecraft and debris. Vessels should avoid the area due to hazardous operations, falling debris, and potential firearms use. Vessels may be requested to alter course due to hazardous operations and are requested to contact "range control" via VHF-FM Channel 16 or via phone at 956-604-1037 prior to entering the area. If unable to contact range control prior to entering or while in the area, relay messages through U.S. Coast Guard Honolulu. Updated information on operations and associated hazards will be available on VHF-FM Channel 22A.

Enclosure 6 (graphic of hazard areas):

#### **HI ISLANDS - OAHU - HAZARDOUS OPERATIONS (15/23)**

Hazardous operations will be conducted on April 12, 2023, 38 NM S of OAHU from 1000W - 2359W in an area bound by the following coordinates:

20-41N/158-04W  
18-49N/158-26W  
19-06N/159-16W  
20-45N/158-16W  
RETURN TO ORIGIN  
20-41N/158-03W  
20-41N/157-46W  
18-52N/157-17W  
18-51N/158-26W

RETURN TO ORIGIN  
20-42N/157-46W  
20-43N/157-41W  
20-42N/157-25W  
19-41N/156-35W  
19-08N/156-35W  
18-52N/157-17W  
RETURN TO ORIGIN

In the interest of safety, all vessels not involved in the above event are requested to remain clear of this area.

LNM: SCC Hono 051-23

**HI ISLANDS - OAHU - HAZARDOUS OPERATIONS (15/23)**

Hazardous operations will be conducted on April 12, 2023, from 1300W - 2359W in an area bound by the following coordinates and will extend out to 05NM radius:  
21-39N / 160-32W

In the interest of safety, all vessels not involved in the above event are requested to remain clear of this area.

LNM: SCC Hono 056-23

**HI ISLANDS - OAHU - HAZARDOUS OPERATIONS (15/23)**

Hazardous operations will be conducted on April 13, 2023, 38 NM S of OAHU from 0600W - 2359W in an area bound by the following coordinates:

20-41N/158-04W  
18-49N/158-26W  
19-06N/159-16W  
RETURN TO ORIGIN  
20-41N/158-03W  
20-41N/157-46W  
18-52N/157-17W  
18-51N/158-26W  
RETURN TO ORIGIN  
20-42N/157-46W  
20-43N/157-41W  
20-42N/157-25W  
19-41N/156-35W  
19-08N/156-35W  
18-52N/157-17W  
RETURN TO ORIGIN

In the interest of safety, all vessels not involved in the above event are requested to remain clear of this area.

LNM: SCC Hono 052-23

**HI ISLANDS - OAHU - HAZARDOUS OPERATIONS (15/23)**

Hazardous operations will be conducted on April 13, 2023 from 0600W - 2359W, April 14, 2023 from 1200W - 2359W, and April 15, 2023 from 1100W - 2359W, 38 NM S of OAHU in an area bound by the following coordinates:

20-41N/158-04W  
18-49N/158-26W  
19-06N/159-16W  
20-45N/158-16W  
RETURN TO ORIGIN  
20-41N/158-03W  
20-41N/157-46W  
18-52N/157-17W  
18-51N/158-26W  
RETURN TO ORIGIN  
20-42N/157-46W  
20-43N/157-41W  
20-42N/157-25W  
19-41N/156-35W  
19-08N/156-35W

18-52N/157-17W  
RETURN TO ORIGIN

In the interest of safety, all vessels not involved in the above event are requested to remain clear of this area.

LNM: SCC Hono 055-23

**CENTRAL PACIFIC BASIN - KINGMAN REEF - CABLE LAYING (03/23)**

Mertech Marine plans to conduct submarine cable operations in the US economic zone situated in the South Pacific sea executed by Mertech Marine's cable recovery vessels M/V Aniek. As part of Mertech Marine's planned recovery operation of the ASH North submarine cable communication system there are 1 recovery sections situated within the US/Kingman economic zone. Please note that no recovery operations are taking place inside the Marine National Monument area of Kingman reef. The cable recovery plan has been circulated to the global subsea telecommunication cable industry through the International Cable Protection Committee ("ICPC"). Earliest time of submarine cable operations inside the US exclusive economic zone are planned for February 20th AGW WP. For operational contact with our submarine cable recovery vessel "Aniek" the Captain copied in, will be happy to inform you on vessel positions and planned work on a daily basis when needed.

Vessel details:

- Mv Aniek
- o IMO No.: 7727073
- o Call Sign: V2ZR3
- o Email: bridge.aniek@wind.nl
- o Captain: R. Reinders

Cable Operations are set from March 11, 2023 through April 18, 2023. CABLESHIP ANIEK will be in the following area of 05 miles of trackline joining, requesting a 02 mile berth:

01-24.00N 165-53.00W,  
01-50.00N 165-43.00W,  
02-05.00N 165-42.00W,  
02-58.00N 165-31.00W,  
04-58.00N 164-49.00W,  
05-25.00N 164-43.00W,  
05-35.00N 164-36.00W,  
06-02.00N 164-30.00W,  
07-37.00N 163-57.00W,  
08-01.00N 163-47.00W,  
08-10.00N 163-49.00W,  
08-15.00N 163-45.00W,  
08-28.00N 163-20.00W,  
09-25.00N 162-36.00W,  
09-50.00N 162-34.00W,  
10-04.00N 162-27.00W,  
10-15.00N 162-16.00W,  
10-36.00N 162-07.00W,  
12-26.00N 161-33.00W,  
13-07.00N 161-16.00W.  
15-35.00N 160-24.00W.

In the interest of safety, all vessels not involved in the above event are requested to remain clear of this area.

**MARIANA ISLANDS - GUAM - NAVTEX STATION (41/19)**

NAVTEX Station (518KHz) is Inoperable. The 518KHz NAVTEX station is inoperable with no estimated time of repair. NAVTEX broadcasts are available on 4209.5KHz Mariners.

**MARIANA ISLANDS - GUAM - DIVING OPERATIONS (05/23)**

Precon Marine, Inc. (PMI), PMI will be mobilizing Vessels and Material Barge(s) just in the vicinity of Naval Base GUAM to conduct Installation of a Underwater Electro-Magnetic Measurement System. Marker Buoys will be in place during the duration of the project in the area of coordinates below.

The proposed PMI project will consist of:

1. Dredging  
13°26'43.48"N 144°39'57.06"E
2. Array Sensor Installation  
13°26'43.48"N 144°39'57.06"E

3. Underwater conduit runs (Surrounding Areas)  
 13°26'43.48"N 144°39'57.06"E  
 To  
 13°26'51.39"N 144°40'13.36"E

The proposed project will start on March 1, 2023 and lasting approximately 18 Weeks. A crane mounted barge and a material barge will be staged inside the channel to conduct scope of work during the hours of 7am to 7pm. Commercial Divers will post Alpha Dive flag during all diving operations. The channel will remain open and operational. All Staged equipment shall have approved Navigational warning devices following Coast Guard rules and regulations. If activities need to be extended past July 6th, 2023, an additional Notice shall be submitted. If you should have any questions or concerns, please do not hesitate to contact us. POC: Christopher Berry (757) 431 - 7222

#### MARIANA ISLANDS - GUAM - DIVING OPERATIONS (11/23)

Precon Marine, Inc. (PMI), PMI will be mobilizing Vessels and Dive Barge just in the vicinity of Duncas Beach, GUAM 3700' offshore to conduct Diving Operations to support Hawaiian Dredge company operations. Marker Buoys will be in place during the duration of the project in the area of coordinates below.

The proposed PMI project will consist of:

1. Diving (Commercial)  
 13°29'38.63"N 144°45'55.36"E

The proposed project will start on March 20, 2023 and lasting approximately 3 Weeks. A 30' x 120' barge will be staged at the coordinates 24/7 during the duration of the project.. Commercial Divers will post Alpha Dive flag during all diving operations. The area will remain open and operational. All Staged equipment shall have approved Navigational warning devices following Coast Guard rules and regulations. If activities need to be extended past April 7th 2023, an additional Notice shall be submitted. If you should have any questions or concerns, please do not hesitate to contact us. POC: Christopher Berry (757) 431 - 7222

## SECTION II - DISCREPANCIES

This section lists all reported and corrected discrepancies related to Aids to Navigation in this edition. A discrepancy is a change in the status of an aid to navigation that differs from what is published or charted.

### DISCREPANCIES (FEDERAL AIDS)

LLNR	Aid Name	Status	Chart No.	BNM Ref.	LNM St	LNM End
28110	Hilo Harbor Buoy 10	OFF STA	19324	SCC Hono 043-2:	12/23	
28520	Pohakuloa Point Light	LT EXT	19347	SCC Hono 213-2:	45/21	
28610	Kaunakakai Harbor Range Rear Light	LT EXT	19353	SCC Hono 046-2:	14/23	
28775	Kaneohe Bay Channel Light 22	DAYMK DMGD	19359	SCC Hono 044-2:	13/23	
29770	Nawiliwili Harbor Breakwater Light	DAYMK MISSING	19383	SCC Hono 094-2:	38/22	
29850	Makahuena Point Light	LT IMCH	19381	SCC Hono 012-2:	05/23	
30185	Breakers Point Light	LT EXT	83484	SCC Hono 011-2:	05/23	
30390	Kwajalein-Bigej Channel Buoy 1	OFF STA	81715	SCC Guam 328-2	33/22	
30745	Cabras Island Channel Light 4	LT EXT	81054	SCC Guam 087-2	10/23	
30855	Tanapag Harbor Approach Lighted Buoy T	MISSING	81076	SCC Guam 068-2	09/23	

### DISCREPANCIES (FEDERAL AIDS) CORRECTED

LLNR	Aid Name	Status	Chart No.	BNM Ref.	LNM St	LNM End
------	----------	--------	-----------	----------	--------	---------

None

### DISCREPANCIES (PRIVATE AIDS)

LLNR	Aid Name	Status	Chart No.	BNM Ref.	LNM St	LNM End
28007	FAD Site HK - Hakalau, Hawaii	MISSING	19320	SCC Hono109-21	27/21	

28007.01	FAD Site G - Pepeekeo, Hawaii	MISSING	19320	SCC Hono 034-2:	11/23
28007.03	FAD Site E - Lelelwi, Hawaii	MISSING	19320	SCC Hono	49/21
28007.05	FAD Site D - Kumakahi, Hawaii	MISSING	19320	SCC Hono 070-2:	17/21
28007.07	FAD Site KH - Kehena, Hawaii	MISSING	19320	SCC Hono 110-2:	27/21
28007.19	FAD Site UU - Auau Point, Hawaii	LT EXT	19320	SCC Hono 093-2:	23/21
28007.22	FAD Site WH1	MISSING	19320	SCC Hono 021-1:	18/15
28007.23	FAD Site V V - Kahaluu, Hawaii	LT EXT	19004	SCC Hono 036-2:	08/22
28007.25	FAD Site F - Kailua Kona, Hawaii	MISSING	19327	SCC Hono 111-2:	27/21
28007.29	FAD Site XX - Puako, Hawaii	MISSING	19327	SCC Hono 143-2:	32/21
28007.31	FAD Site ZZ - Mahukona, Hawaii	MISSING	19327	SCC Hono 137-2:	48/22
28007.35	FAD Site Q - Pauwela Point, Maui	MISSING	19340	SCC Hono 082-2:	34/22
28007.37	FAD Site HO - Hoolawa Point, Maui	MISSING	19340	SCC Hono 002-2:	02/23
28007.4	FAD SITE MTBC 1	MISSING		Hono 0038-23	11/23
28007.42	FAD SITE MTBC 2	MISSING	19004	SCC Hono 030-2:	06/22
28007.43	PacIOOS Wave Lighted Buoy Pauwela	MISSING	19342	SCC Hono 126-2:	45/22
28008	FAD Site FF - Pukaulua Point, Maui	MISSING	19004	SCC Hono 037-2:	08/22
28008.01	FAD Site M - Hana Bay, Maui	MISSING	19320	SCC Hono 139-2:	49/22
28008.07	FAD Site HS - Halona Point - Kahoolawe	MISSING	19320	SCC Hono 104-2:	41/22
28008.09	FAD Site JJ - Kamohio, Kahoolawe	MISSING	19347	SCC Hono 031-2:	46/21
28008.11	FAD Site SO - Kahoolawe	MISSING	19347	SCC Hono 041-2:	10/22
28008.17	FAD Site MC - Palaoa, Lanai	MISSING	19339	SCC Hono 105-2:	41/22
28008.19	FAD Site CC - Kaena Point, Lanai	OFF STA	19351	SCC Hono 119-2:	44/22
28008.21	FAD Site N - Cape Halawa, Molokai	MISSING	19340	Hono 0039-23	11/23
28008.23	FAD Site X - Kahuku Point, Oahu	MISSING	19340	Sec Hono 050-22	14/22
28008.25	FAD site LL Hauula - Oahu	MISSING	19357	SCC Hono 140-2:	49/22
28008.29	FAD Site MM - Mokapu Point, Oahu	MISSING	19339	SCC Hono 141-2:	49/22
28008.33	FAD Site P - Penguin Bank, Oahu	MISSING	19339	SCC Hono 142-2:	49/22
28008.35	FAD Site HH - Pearl Harbor, Oahu	MISSING	19340	SCC Hono 143-2:	49/22
28009.05	FAD Site CO - Kaena Point, Oahu	MISSING	19380	SCC Hono 035-2:	11/23
28009.11	FAD Site EK - Hanalei, Kauai	MISSING	19381	SCC Hono 106-2:	41/22
28009.19	FAD Site Z - Kipukai, Kauai	OFF STA	19381	SCC Hono 069-2:	21/22
28009.25	FAD Site AA - Port Allen, Kauai	MISSING	19381	SCC Hono 038-2:	08/22
28009.27	FAD Site KK - Waimea, Kauai	MISSING	19381	SCC Hono 115-2:	27/21
28053	PacIOOS Wave Lighted Buoy Hilo	MISSING	19320	SCC Hono 022-2:	07/23
28381.1	Kahului Boat Ramp Buoy 1	MISSING	19342	SCC Hono 187-2:	30/20
28381.2	Kahului Boat Ramp Buoy 2	MISSING	19342	SCC Hono 187-2:	30/20
28381.3	Kahului Boat Ramp Buoy 3	MISSING	19342	SCC Hono 187-2:	30/20
28381.4	Kahului Boat Ramp Buoy 4	MISSING	19342	SCC Hono 187-2:	30/20
28381.5	Kahului Boat Ramp Buoy 5	MISSING	19342	SCC Hono 187-2:	30/20
28381.6	Kahului Boat Ramp Buoy 6	MISSING	19342	SCC Hono 187-2:	30/20
28381.8	Kahului Boat Ramp Buoy 8	MISSING	19342	SCC Hono 187-2:	30/20
28381.9	Kahului Boat Ramp Buoy 9	MISSING	19342	SCC Hono 187-2:	30/20
28395	Hana Bay Daybeacon	DAYMK DMGD/STRUCT DMGD	19348	SCC Hono 061-2:	18/22
28427	Maalaea Basin Channel Lighted Buoy 1	ADRIFT	19348	SCC Hono 158-1:	22/18
28427	Maalaea Basin Channel Lighted Buoy 1	LT EXT	19348	SCC Hono 018-2:	06/23
28430	Maalaea Basin Channel Lighted Buoy 2	LT EXT		SCC Hono 017-2:	06/23
28480	Lahaina Boat Basin Lighted Buoy 3	MISSING	19348	SCC Hono 177-1:	28/18
28500	Lahaina Boat Basin Lighted Buoy 7	MISSING	19348	SCC Hono 238-1:	46/18
28507.5	Mala Channel Light 5	LT EXT	19348	SCC Hono 283-2:	45/20



28507.6	Mala Channel Light 6	LT EXT	19348	SCC Hono 284-2	45/20
28630	Kaunakakai Small Boat Harbor Buoy 1	SINKING	19353	SCC Hono 223-2	46/21
28672	PacIOOS Wave Lighted Buoy Kaneohe East	MISSING	19359	SCC Hono 023-2	07/23
28674.04	WETS 4	MISSING	19359	SCC Hono 010-1	02/18
28674.05	WETS 5	MISSING	19359	SCC Hono 011-1	02/18
28895	Makai Channel Daybeacon 3	DAYMK MISSING	19358	SCC Hono 038-1	11/19
28900	Makai Channel Daybeacon 4	MISSING	19358	SCC Hono 038-1	11/19
29010	Maunaloa Bay Daybeacon 16	HAZ NAV/DAYMK DMGD	19358	SCC Hono	07/22
29110	Ala Wai Boat Harbor Channel Buoy 3	OFF STA	19369	SCC Hono	40/21
29115	Ala Wai Boat Harbor Channel Buoy 4	OFF STA	19369	SCC Hono 079-2	29/22
29125	Ala Wai Boat Harbor Channel Daybeacon 6	DAYMK DMGD	19369	SCC Hono 174-1	27/18
29135	Ala Wai Boat Harbor Channel Daybeacon 8	DAYMK DMGD	19369	SCC Hono 175-1	27/18
29315	Keehi Lagoon Barge Turning Channel Range Front	REDUCED INT	19367	SCC Hono 312-2	52/20
29325	Keehi Lagoon Barge Turning Basin Buoy 2	OFF STA	19367	SCC Hono 085-1	16/12
29600	Barbers Point Anchorage Area Bravo Tank Terminal Lighted Buoy A	LT EXT	19362	SCC Hono 001-2	01/22
29656	West Beach Marina Light 2	LT EXT	19362	SCC Hono 266-1	40/17
29734.6	HOT site surface mooring buoy	OFF STA	19013	SCC Hono	29/22
30603	FAD Site "Cocos" - Guam	LT EXT	81048	SCC Guam 014-1	03/19
30612	FAD Site "FACPI 2" - Guam	MISSING	81048	SCC Guam 082-1	09/19
30624	FAD Site "Number 2" - Guam	OFF STA	81048	SCC Guam 146-1	12/14
30631	FAD Site "Number 3"	MISSING	81048	SCC Guam 083-1	09/19
30634	FAD Site "Number 4"	MISSING	81048	SCC Guam 011-1	03/19
30637.1	FAD Site GF1	MISSING	81048	SCC Guam 041-1	03/18
30640	FAD Site "Number 5"	LT EXT	81048	SCC Guam 607-1	47/18
30787	Drydock Point West Entrance Daybeacon 1	DAYMK MISSING	81054	SCC Guam 707-1	44/17
30811.3	Agat Small Boat Harbor Light 3	LT EXT	81048	SCC Guam 178-1	18/19
30811.9	Agat Small Boat Harbor Daybeacon 9	DAYMK IMCH	81048	SCC Guam 092-1	07/18
30815	Mamaon Channel Lighted Buoy 1	OFF STA	81048	SCC Guam 718-1	45/17
30820	Mamaon Channel Lighted Buoy 2	OFF STA	81048	SCC Guam 506-1	39/18
30851.1	FAD Site EE - Rota	MISSING	81004	SCC Guam 195-2	20/22
30851.2	FAD Site DD - Rota	MISSING	81004	SCC Guam 303-1	30/19
30851.3	FAD Site DE - Rota	MISSING	81004	SCC Guam 084-2	10/23
30852.19	FAD Site II - Saipan	MISSING	81067	SCC Guam 083-2	10/23
30852.22	Fad Site LL - Saipan	MISSING	81067	SCC Guam 196-2	20/22
30853	PacIOOS Wave Lighted Buoy Tanapag	MISSING	81067	SCC Guam 054-2	07/23
30913	Smiling Cove Lighted Buoy 1	MISSING	81076	SCC Guam 284-2	29/22

#### DISCREPANCIES (PRIVATE AIDS) CORRECTED

LLNR	Aid Name	Status	Chart No.	BNM Ref.	LNM St	LNM End
------	----------	--------	-----------	----------	--------	---------

None

#### PLATFORM DISCREPANCIES

Name	Status	Position	BNM Ref.	LNM St	LNM End
------	--------	----------	----------	--------	---------

None

#### PLATFORM DISCREPANCIES CORRECTED

Name	Status	Position	BNM Ref.	LNM St	LNM End
None					

### SECTION III - TEMPORARY CHANGES and TEMPORARY CHANGES CORRECTED

This section contains temporary changes and corrections to Aids to Navigation for this edition. When charted aids are temporarily relocated for dredging, testing, evaluation, or marking an obstruction, a temporary correction shall be listed in Section IV giving the new position.

#### TEMPORARY CHANGES

LLNR	Aid Name	Status	Chart No.	BNM Ref.	LNM St	LNM End
28935	Maunalua Bay Daybeacon 1A	TRUB	19358		47/22	
30660	Ritidian Point Light	RELOCATED	81048		43/21	

#### TEMPORARY CHANGES CORRECTED

LLNR	Aid Name	Status	Chart No.	BNM Ref.	LNM St	LNM End
------	----------	--------	-----------	----------	--------	---------

None

#### PLATFORM TEMPORARY CHANGES

Name	Status	Position	BNM Ref.	LNM St	LNM End
------	--------	----------	----------	--------	---------

None

#### PLATFORM TEMPORARY CHANGES CORRECTED

Name	Status	Position	BNM Ref.	LNM St	LNM End
------	--------	----------	----------	--------	---------

None

### SECTION IV - CHART CORRECTIONS

This section contains corrections to federally and privately maintained Aids to Navigation, as well as NOS corrections.

This section contains corrective actions affecting chart(s). Corrections appear numerically by chart number, and pertain to that chart only. It is up to the mariner to decide which chart(s) are to be corrected. The following example explains individual elements of a typical chart correction.

Chart Number	Chart Edition	Edition Date	Last Local Notice to Mariners	Horizontal Datum Reference	Source of Correction	Current Local Notice to Mariners
12327	91st Ed.	19-APR-97	Last LNM: 26/97	NAD 83		27/97
Chart Title: NY-NJ-NEW YORK HARBOR - RARITAN RIVER						
Main Panel 2245 NEW YORK HARBOR						
(Temp) ADD		NATIONAL DOCK CHANNEL BUOY 3			CGD01 at 40-41-09.001N	074-02-48.001W
	Green can					
Corrective Action		Object of Corrective Action			Position	

(Temp) indicates that the chart correction action is temporary in nature. Courses and bearings are given in degrees clockwise from 000 true. Bearings of light sectors are toward the light from seaward. The nominal range of lights is expressed in nautical miles (NM) unless otherwise noted.

<b>510</b>	<b>2nd Ed.</b>	<b>22-MAR-86</b>	<b>Last LNM: 18/11</b>	<b>UNKNOWN</b>		<b>15/23</b>
Chart Title: <b>EASTERN PORTION OF JAPAN (OMEGA)</b>						
<b>CHART EASTERN PORTION OF JAPAN (OMEGA). Page/Side: N/A</b>						
(Temp) RELOCATE	Ritidian Point Light		TEMPORARILY RELOCATED FOR CONSTRUCTION OF NEW AID.		CGD14 from 13-39-00.504N to 13-39-00.395N	144-51-42.678E 144-51-42.475E
<b>19324</b>	<b>23rd Ed.</b>	<b>01-JUL-14</b>	<b>Last LNM: 33/12</b>	<b>WGS 84</b>		<b>15/23</b>
Chart Title: <b>Island Of Hawai'i Hilo Bay</b>						
<b>Main Panel 2777 HILO BAY. Page/Side: A</b>						
ADD	Lower Left of Chart: This is the Last Edition of this chart. It will be canceled on 04-Oct-23.				NOS --	--
LAST EDITION	No new editions of chart 19324 will be published. It will be canceled on				NOS --	--

04-Oct-23. Comparable or larger scale Electronic Navigational Chart (ENC) coverage is available. See "Cancellation of NOAA Paper and Raster Nautical Charts" in Section I of this LNM for details. A list of all canceled NOAA charts is at <https://www.charts.noaa.gov/MCD/Dole.shtml>.

**19327**      **11th Ed.**      **01-JUN-05**      **Last LNM: 31/14**      **WGS 84**      **15/23**

*ChartTitle:* **West Coast of Hawai'i Cook Point to Upolu Point;Keauhou Bay;Honokohau Harbor**

**Main Panel 2779 WEST COAST OF HAWAII COOK PT. TO UPOLU PT.. Page/Side: N/A**

ADD      Lower Left of Chart: This is the Last Edition of this chart. It will be canceled on 04-Oct-23.      NOS  
--

LAST EDITION      No new editions of chart 19327 will be published. It will be canceled on 04-Oct-23. Comparable or larger scale Electronic Navigational Chart (ENC) coverage is available. See "Cancellation of NOAA Paper and Raster Nautical Charts" in Section I of this LNM for details. A list of all canceled NOAA charts is at <https://www.charts.noaa.gov/MCD/Dole.shtml>.      NOS  
--

**19330**      **11th Ed.**      **01-SEP-06**      **Last LNM: 34/14**      **WGS 84**      **15/23**

*ChartTitle:* **Kawaihae Bay-Island of Hawaii**

**Main Panel 2783 KAWAIHAE BAY ISLAND OF HAWAII. Page/Side: N/A**

ADD      Lower Left of Chart: This is the Last Edition of this chart. It will be canceled on 04-Oct-23.      NOS  
--

LAST EDITION      No new editions of chart 19330 will be published. It will be canceled on 04-Oct-23. Comparable or larger scale Electronic Navigational Chart (ENC) coverage is available. See "Cancellation of NOAA Paper and Raster Nautical Charts" in Section I of this LNM for details. A list of all canceled NOAA charts is at <https://www.charts.noaa.gov/MCD/Dole.shtml>.      NOS  
--

**19342**      **11th Ed.**      **01-FEB-10**      **Last LNM: 50/13**      **WGS 84**      **15/23**

*ChartTitle:* **Kahului Harbor and approaches;Kahului Harbor**

**Main Panel 2788 KAHULUI HBR AND APPROACHES ISL OF MAUI. Page/Side: N/A**

ADD      Lower Left of Chart: This is the Last Edition of this chart. It will be canceled on 04-Oct-23.      NOS  
--

LAST EDITION      No new editions of chart 19342 will be published. It will be canceled on 04-Oct-23. Comparable or larger scale Electronic Navigational Chart (ENC) coverage is available. See "Cancellation of NOAA Paper and Raster Nautical Charts" in Section I of this LNM for details. A list of all canceled NOAA charts is at <https://www.charts.noaa.gov/MCD/Dole.shtml>.      NOS  
--

**19347**      **19th Ed.**      **01-JUN-14**      **Last LNM: 04/15**      **WGS 84**      **15/23**

*ChartTitle:* **Channels between Molokai, Maui, Lāna'i and Kaho'olawe;Manele Bay**

**Main Panel 2790 CHANNELS BETWEEN MOLOKAI. Page/Side: A**

ADD      Lower Left of Chart: This is the Last Edition of this chart. It will be canceled on 04-Oct-23.      NOS  
--

LAST EDITION      No new editions of chart 19347 will be published. It will be canceled on 04-Oct-23. Comparable or larger scale Electronic Navigational Chart (ENC) coverage is available. See "Cancellation of NOAA Paper and Raster Nautical Charts" in Section I of this LNM for details. A list of all canceled NOAA charts is at <https://www.charts.noaa.gov/MCD/Dole.shtml>.      NOS  
--

**19348**      **8th Ed.**      **01-DEC-03**      **Last LNM: 33/12**      **WGS 84**      **15/23**

*ChartTitle:* **Approaches to Lahaina, Island of Maui**

**Main Panel 2792 APPROACHES TO LAHAINA ISLAND OF MAUI. Page/Side: N/A**

ADD      Lower Left of Chart: This is the Last Edition of this chart. It will be canceled on 04-Oct-23.      NOS  
--

LAST EDITION      No new editions of chart 19348 will be published. It will be canceled on 04-Oct-23. Comparable or larger scale Electronic Navigational Chart (ENC) coverage is available. See "Cancellation of NOAA Paper and Raster Nautical Charts" in Section I of this LNM for details. A list of all canceled NOAA charts is at <https://www.charts.noaa.gov/MCD/Dole.shtml>.      NOS  
--

**19351**      **11th Ed.**      **01-SEP-11**      **Last LNM: 31/14**      **WGS 84**      **15/23**

*ChartTitle:* **Channels between O'ahu, Moloka'i and Lāna'i;Kaunalapa'u Harbor**

**Main Panel 2794 CHANNELS BETWEEN OAHU MOLOKAI & LANAI. Page/Side: N/A**

ADD	Lower Left of Chart: This is the Last Edition of this chart. It will be canceled on 04-Oct-23.	NOS --	--
LAST EDITION	No new editions of chart 19351 will be published. It will be canceled on 04-Oct-23. Comparable or larger scale Electronic Navigational Chart (ENC) coverage is available. See "Cancellation of NOAA Paper and Raster Nautical Charts" in Section I of this LNM for details. A list of all canceled NOAA charts is at <a href="https://www.charts.noaa.gov/MCD/Dole.shtml">https://www.charts.noaa.gov/MCD/Dole.shtml</a> .	NOS --	--

**19353 13th Ed. 01-MAR-10 Last LNM: 33/12 WGS 84 15/23**

*ChartTitle: Harbors of Moloka'i Kaunakakai Harbor;Pükoo Harbor;Kamalö Harbor;Kolo Harbor;Lono Harbor*

**Unrelated 2796 KAUNAKAKAI HARBOR. Page/Side: N/A**

ADD	Lower Left of Chart: This is the Last Edition of this chart. It will be canceled on 04-Oct-23.	NOS --	--
LAST EDITION	No new editions of chart 19353 will be published. It will be canceled on 04-Oct-23. Comparable or larger scale Electronic Navigational Chart (ENC) coverage is available. See "Cancellation of NOAA Paper and Raster Nautical Charts" in Section I of this LNM for details. A list of all canceled NOAA charts is at <a href="https://www.charts.noaa.gov/MCD/Dole.shtml">https://www.charts.noaa.gov/MCD/Dole.shtml</a> .	NOS --	--

**19381 9th Ed. 01-DEC-08 Last LNM: 37/12 WGS 84 15/23**

*ChartTitle: Island of Kaua'i*

**Main Panel 2810 ISLAND OF KAUAI. Page/Side: N/A**

ADD	Lower Left of Chart: This is the Last Edition of this chart. It will be canceled on 04-Oct-23.	NOS --	--
LAST EDITION	No new editions of chart 19381 will be published. It will be canceled on 04-Oct-23. Comparable or larger scale Electronic Navigational Chart (ENC) coverage is available. See "Cancellation of NOAA Paper and Raster Nautical Charts" in Section I of this LNM for details. A list of all canceled NOAA charts is at <a href="https://www.charts.noaa.gov/MCD/Dole.shtml">https://www.charts.noaa.gov/MCD/Dole.shtml</a> .	NOS --	--

**19382 16th Ed. 01-MAR-10 Last LNM: 17/12 WGS 84 15/23**

*ChartTitle: Port Allen Island of Kaua'i*

**Main Panel 2811 PORT ALLEN ISLAND OF KAUAI. Page/Side: N/A**

ADD	Lower Left of Chart: This is the Last Edition of this chart. It will be canceled on 04-Oct-23.	NOS --	--
LAST EDITION	No new editions of chart 19382 will be published. It will be canceled on 04-Oct-23. Comparable or larger scale Electronic Navigational Chart (ENC) coverage is available. See "Cancellation of NOAA Paper and Raster Nautical Charts" in Section I of this LNM for details. A list of all canceled NOAA charts is at <a href="https://www.charts.noaa.gov/MCD/Dole.shtml">https://www.charts.noaa.gov/MCD/Dole.shtml</a> .	NOS --	--

**19383 18th Ed. 01-OCT-10 Last LNM: 09/13 WGS 84 15/23**

*ChartTitle: Kaua'i Nawiliwili Bay*

**Main Panel 2812 NAWILIWILI BAY. Page/Side: N/A**

ADD	Lower Left of Chart: This is the Last Edition of this chart. It will be canceled on 04-Oct-23.	NOS --	--
LAST EDITION	No new editions of chart 19383 will be published. It will be canceled on 04-Oct-23. Comparable or larger scale Electronic Navigational Chart (ENC) coverage is available. See "Cancellation of NOAA Paper and Raster Nautical Charts" in Section I of this LNM for details. A list of all canceled NOAA charts is at <a href="https://www.charts.noaa.gov/MCD/Dole.shtml">https://www.charts.noaa.gov/MCD/Dole.shtml</a> .	NOS --	--

**19386 12th Ed. 01-FEB-13 Last LNM: 17/12 WGS 84 15/23**

*ChartTitle: Kaua'i Approaches to Waimea Bay*

**Main Panel 2815 APPROACHES TO WAIMEA BAY. Page/Side: N/A**

ADD	Lower Left of Chart: This is the Last Edition of this chart. It will be canceled on 04-Oct-23.	NOS --	--
LAST EDITION	No new editions of chart 19386 will be published. It will be canceled on 04-Oct-23. Comparable or larger scale Electronic Navigational Chart (ENC) coverage is available. See "Cancellation of NOAA Paper and Raster	NOS --	--

Nautical Charts" in Section I of this LNM for details. A list of all canceled NOAA charts is at <https://www.charts.noaa.gov/MCD/Dole.shtml>.

<b>81004</b>	<b>5th Ed.</b>	<b>01-AUG-08</b>	<b>Last LNM: 17/12</b>	<b>WGS 84</b>	<b>15/23</b>
<i>ChartTitle: Commonwealth of the Northern Mariana Islands</i>					
<b>Main Panel 2904 MARIANA ISLANDS. Page/Side: N/A</b>					
(Temp)	RELOCATE	Ritidian Point Light			CGD14
		TEMPORARILY RELOCATED FOR CONSTRUCTION OF NEW AID.			from 13-39-00.504N
					to 13-39-00.395N
					144-51-42.678E
					144-51-42.475E
<b>81023</b>	<b>4th Ed.</b>	<b>19-JAN-85</b>	<b>Last LNM: 49/89</b>	<b>UNKNOWN</b>	<b>15/23</b>
<i>ChartTitle: Nomoi Islands to Faraulep Island</i>					
<b>CHART Nomoi Islands to Faraulep Island. Page/Side: N/A</b>					
(Temp)	RELOCATE	Ritidian Point Light			CGD14
		TEMPORARILY RELOCATED FOR CONSTRUCTION OF NEW AID.			from 13-39-00.504N
					to 13-39-00.395N
					144-51-42.678E
					144-51-42.475E
<b>81025</b>	<b>2nd Ed.</b>	<b>27-JAN-79</b>	<b>Last LNM: 45/88</b>	<b>UNKNOWN</b>	<b>15/23</b>
<i>ChartTitle: COMNAV MARIANAS - SURFACE/AIR - OPAREA</i>					
<b>CHART COMNAV MARIANAS - SURFACE/AIR - OPAREA. Page/Side: N/A</b>					
(Temp)	RELOCATE	Ritidian Point Light			CGD14
		TEMPORARILY RELOCATED FOR CONSTRUCTION OF NEW AID.			from 13-39-00.504N
					to 13-39-00.395N
					144-51-42.678E
					144-51-42.475E
<b>81048</b>	<b>10th Ed.</b>	<b>01-FEB-06</b>	<b>Last LNM: 50/13</b>	<b>WGS 84</b>	<b>15/23</b>
<i>ChartTitle: Marianas Island of Guam Territory of Guam;Cocos Lagoon</i>					
<b>CHART MARIANA ISLANDS - ISLAND OF GUAM - TERRITORY OF GUAM. Page/Side: N/A</b>					
(Temp)	RELOCATE	Ritidian Point Light			CGD14
		TEMPORARILY RELOCATED FOR CONSTRUCTION OF NEW AID.			from 13-39-00.504N
					to 13-39-00.395N
					144-51-42.678E
					144-51-42.475E
<b>83484</b>	<b>12th Ed.</b>	<b>01-APR-10</b>	<b>Last LNM:</b>	<b>WGS 84</b>	<b>15/23</b>
<i>ChartTitle: U.S. Possessions in Samoa Islands Manua Islands;Pago Pago Harbor;Tutuila Island;Rose Atoll;Swains Island</i>					
<b>Unrelated 2843 SAMOA ISLANDS PAGO PAGO HARBOR. Page/Side: N/A</b>					
ADD	Lower Left of Chart: This is the Last Edition of this chart. It will be canceled on 04-Oct-23.			NOS	--
LAST EDITION	No new editions of chart 83484 will be published. It will be canceled on 04-Oct-23. Comparable or larger scale Electronic Navigational Chart (ENC) coverage is available. See "Cancellation of NOAA Paper and Raster Nautical Charts" in Section I of this LNM for details. A list of all canceled NOAA charts is at <a href="https://www.charts.noaa.gov/MCD/Dole.shtml">https://www.charts.noaa.gov/MCD/Dole.shtml</a> .			NOS	--
<b>83637</b>	<b>5th Ed.</b>	<b>01-JUL-14</b>	<b>Last LNM: 27/14</b>	<b>NAD 83</b>	<b>15/23</b>
<i>ChartTitle: Johnston Atoll;Johnston Island Harbor</i>					
<b>Main Panel 2846 JOHNSTON ATOLL. Page/Side: A</b>					
ADD	Lower Left of Chart: This is the Last Edition of this chart. It will be canceled on 04-Oct-23.			NOS	--
LAST EDITION	No new editions of chart 83637 will be published. It will be canceled on 04-Oct-23. Comparable or larger scale Electronic Navigational Chart (ENC) coverage is available. See "Cancellation of NOAA Paper and Raster Nautical Charts" in Section I of this LNM for details. A list of all canceled NOAA charts is at <a href="https://www.charts.noaa.gov/MCD/Dole.shtml">https://www.charts.noaa.gov/MCD/Dole.shtml</a> .			NOS	--

## OIL RIG MOVEMENT

Drill Rigs/Vessels Removed						
<u>Latitude</u>	<u>Longitude</u>	<u>Block</u>	<u>Rigs/Vessel</u>	<u>Chart</u>	<u>Type</u>	<u>Status</u>
<b>None</b>						
Drill Rigs/Vessels Established						
<u>Latitude</u>	<u>Longitude</u>	<u>Block</u>	<u>Rigs/Vessel</u>	<u>Chart</u>	<u>Type</u>	<u>Status</u>
<b>None</b>						

---

## SECTION V - ADVANCE NOTICES

This section contains advance notice of approved projects, changes to aids to navigation, or upcoming temporary changes such as dredging, etc. Mariners are advised to use caution while transiting these areas.

---

### SUMMARY OF ADVANCED APPROVED PROJECTS

**Approved Project(s)**  
None

**Project Date**

**Ref. LNM**

**Advance Notice(s)**

#### **HI ISLANDS - OAHU - MAKAPUU POINT LIGHT (45/21)**

Due to unreliable commercial power at Makapuu Point Light (LLNR 28925), the Coast Guard will convert the power supply to solar and battery power. Please contact Fourteenth Coast Guard District, at (808) 535-3409, or via email at D14-DG-PJdpw@uscg.mil, for questions or concerns.

#### **HI ISLANDS - HAWAII - POHOIKI BAY BREAKWATER LIGHT 2 (43/21)**

The Coast Guard is proposing discontinuing Pohoiki Bay Breakwater Light 2 (LLNR 28135) due to shoaling and sand accumulation which has made the waterway leading to Pohoiki Bay boat ramp at Isaac Hale Park un-navigable. The Coast Guard welcomes public comment on the proposal to discontinue. Please contact Fourteenth Coast Guard District, at (808) 535-3409, or via email at D14-DG-PJ-dpw@uscg.mil, to comment.

---

## SECTION VI - PROPOSED CHANGES

Periodically, the Coast Guard evaluates its system of aids to navigation to determine whether the conditions for which the aids to navigation were established have changed. When changes occur, the feasibility of improving, relocating, replacing, or discontinuing aids are considered. This section contains notice(s) of non-approved, proposed projects open for comment. SPECIAL NOTE: Mariners are requested to respond in writing to the District office unless otherwise noted (see banner page for address).

---

### PROPOSED WATERWAY PROJECTS OPEN FOR PUBLIC COMMENT

**Proposed Project(s)**  
None

**Closing**

**Docket No.**

**Ref. LNM**

**Proposed Change Notice(s)**  
None

---

## SECTION VII - GENERAL

This section contains information of general concern to the Mariners. Mariners are advised to use caution while transiting these areas.

---

#### **PRIVATE AIDS TO NAVIGATION (01/08)**

The term private aids to navigation (ATON) includes all marine aids to navigation operated in the navigable waters of the United States other than those operated by the Federal Government. Private ATON includes lighted structures and day beacons, lighted and unlighted buoys, RACONs and fog signals. Almost half of the aids to navigation established in the Fourteenth District are operated and maintained by private interests. These interests include private citizens, marina and yacht clubs, municipal and state governments, construction and dredging companies, research and non-profit organizations, beachfront associations, and large industrial concerns.

No person, public body or instrumentality not under the control of the Commandant, exclusive of the Armed Forces, shall establish and maintain, discontinue, change or transfer ownership of any aid to maritime navigation, without first obtaining permission to do so from the Commandant and the Army Corps of Engineers.

Owners contemplating establishing such buoys should review CFR 33 Part 66 and contact the appropriate authority, usually the Army Corps of Engineers, to determine what additional requirements may exist. Additionally, private aids on navigable waters regulated by the federal government require either a Coast Guard permit or Coast Guard letter of no objection. The application for a letter of no objection or for a permit, form CG-2554, can be obtained by emailing the Private ATON Manager at the email given below.

The Private ATON Manager provides applicants assistance in processing their paperwork. Federal regulations governing aids to navigation, copies of permits previously issued to the applicant, illustrations of standard markings, and lists of commercial ATON manufacturers are available. Questions and requests should be directed to:

Commander (dpw)  
Fourteenth Coast Guard District  
300 Ala Moana Boulevard, 9-220  
Honolulu, HI 96850-4982  
Attn: Private ATON Manager  
Tel: (808) 535-3409 / 3408  
Email: D14-DG-PJ-dpw@uscg.mil

U.S. Army Corps of Engineers  
Honolulu District  
Building 230

**PRIVATE AIDS TO NAVIGATION (01/08)**

Ft. Shafter, HI 96858-5440  
Attn: CEPOH-EC-R  
Phone: (808)-835-4004

Mariners are reminded that they have a responsibility to report discrepant private aids to the nearest Coast Guard unit. The failure of a mariner to report a discrepant aid to navigation may result in casualties to others. All aids to navigation in the Fourteenth District, both private and federally maintained, are user monitored. When owners receive discrepancy reports from the Coast Guard, they are obligated to take immediate action to correct the discrepancy. Owners are reminded of their responsibility for the proper operation and maintenance of their private aids to navigation. All classes of private aids to navigation shall be maintained in proper operating condition. They are subject to inspection by the Coast Guard at any time and without prior notice. The Coast Guard issues broadcast notice to mariners for reported discrepancies that remain in effect until the discrepancy is corrected or is published in the Local Notice to Mariners.

**FISH AGGREGATING DEVICE (FAD) BUOY INFORMATION AND DISCREPANCIES (28/21)**

The State of Hawaii has placed Fish Aggregating Devices (FADs) in the waters surrounding the main Hawaiian Islands. These buoys attract schools of tuna and other important pelagic fishes, such as dolphinfish (Mahimahi), wahoo (Ono) and billfish. FADs allow fishermen to easily locate and catch these species. The buoys are anchored using approximately 2.5 miles of mooring line which creates a very large swing circle. Mariners are advised that these buoys may maneuver anywhere from three to five miles from their charted positions.

Mariners requesting up to date information concerning Hawaiian Island's FAD Buoys, or reports of discrepancies, may either visit the Hawaii FAD web site at <http://www.himb.hawaii.edu/fads>, contact Mr. Warren Cortez at (808) 956-0684, or send written correspondence to:

Mr. Warren Cortez  
Fish Aggregating Devices Program  
965 N. Nimitz Hwy  
Honolulu, HI 96817

Mariners requesting up to date information concerning Guam's FAD Buoys, or reports of discrepancies, may either visit the Guam FAD web site at [www.dawr.guam.gov](http://www.dawr.guam.gov), contact Mr. Brent Tibbatts at [Brent.Tibbatts@gmail.com](mailto:Brent.Tibbatts@gmail.com) 671.735.3955/56, or send written correspondence to:

Mr. Brent Tibbatts  
Guam Department of Agriculture  
Division of Aquatics and Wildlife Resources  
163 Dairy Road  
Mangilao, Guam 96913

**NAVIGATION INTERNET SITES (33/05)**

Chart Corrections: <http://nauticalcharts.noaa.gov/mcd/updates/index.htm>  
Light List Corrections: <https://www.navcen.uscg.gov/index.php?pageName=lightLists>  
Coast Pilot Corrections: <http://nauticalcharts.noaa.gov/nsd/cpdownload.htm>  
NOAA Weather Buoy Sites: <http://www.ndbc.noaa.gov/Maps/rmd.shtml>  
Hawaii Weather: <http://www.prh.noaa.gov/pr/hnl/>  
Online Chart Viewer: <http://www.nauticalcharts.noaa.gov/mcd/OnLineViewer>

(For NOAA Print-on-Demand (POD) charts only)

NOAA and Coast Survey, in partnership with OceanGrafix, LLC, offer mariners official nautical charts that are continuously updated by NOAA cartographers up to the latest Notice to Mariners and to all Critical Safety Information known to the Coast Survey in advance of its publication in a Notice. From NOAA digital files, OceanGrafix prints corrected charts, to order, for sale to mariners through the Oceangrafix retail network. Produced and distributed by authority of NOAA, these charts meet all U.S. Coast Guard chart carriage requirements, including the requirements for updating (Titles 33 & 46 CFR). New Editions are available 2-8 weeks before their release as a traditional NOAA chart.

These new charts feature operational information for the commercial mariner, and education and safety information for the recreational boater. They have brighter colors and a higher contrast for better readability in various light conditions. They come either laminated or on water resistant paper.

POD charts are available through a POD chart agents at <http://OceanGrafix.com/>, 1-877-56CHART, or contact NOAA at <http://nauticalcharts.noaa.gov/pod/Pod.htm>. For questions contact NOAA at [help@nauticalcharts.gov](mailto:help@nauticalcharts.gov).

**HI ISLANDS - U.S. DEPARTMENT OF HOMELAND SECURITY - DIVER SAFETY ADVISORY (25/09)**

This advisory is issued to increase the safety of all open water and waterway users throughout the Hawaiian Islands and is issued in conjunction with the Department of Land and natural Resources (DLNR) pilot program focusing on diver safety.

Over the years there have been an increased number of reports of near misses between divers and waterborne crafts in Oahu, Maui and Hawaii. In most cases, these near misses have happened in near coastal waters and often when conditions were choppy.

The following suggested measures can help avoid near misses:  
Become familiar with your transit route and destination area before heading out.  
Remain vigilant of your surroundings and post extra lookouts in choppy waters and inclement weather.  
Stay clear of federal Aids to Navigation and commercial delineated channels.  
Use all appropriate sound and visual signals.  
Postpone trips until the weather and sea conditions improve.

All open water and waterway users are also highly encouraged to visit the Coast Guard Sector Honolulu Homeport website for Safety and Security

## **HI ISLANDS - U.S. DEPARTMENT OF HOMELAND SECURITY - DIVER SAFETY ADVISORY (25/09)**

Zone information for the Hawaiian Islands at: <http://homeport.uscg.mil/> under the Honolulu Port Directory tab and Safety and Security section.

The most updated charts for the Hawaiian Islands can be found on the National Oceanic and Atmospheric Administration (NOAA) website: <http://www.prh.noaa.gov/pr/hnl> or <http://www.nauticalcharts.noaa.gov/mcd/OnLineViewer.html>.

Any and all life threatening or hazardous conditions including off station or missing buoys should be reported immediately to the U.S. Coast Guard at (808) 842-2600.

## **PACIFIC OCEAN - NATIONAL WILDLIFE REFUGE - RESTRICTED FOR ENTRY (22/11)**

The U.S. Department of the Interior, Fish and Wildlife Service, National Wildlife Refuge System, Pacific Reefs National Wildlife Refuge Complex manages ten National Wildlife Refuges within the Fourteenth Coast Guard District. Eight of these Refuges, described below, consist of waters and submerged and emergent lands. The remaining two Refuges, the Marianas Arc of Fire and the Mariana Trench National Wildlife Refuges, consist only of submerged lands.

The waters and submerged and emergent lands of National Wildlife Refuges are subject to the regulations governing the National Wildlife Refuge System found in Parts 25-32 of Title 50, Code of Federal Regulations. Therefore, except as provided by international law, these areas are closed to all forms of entry, other than innocent passage, unless specifically authorized by a Special Use Permit issued by the U.S. Fish and Wildlife Service. Should you have any questions, please contact the Pacific Reefs National Wildlife Refuge Complex by emailing the Project Leader at [Pacific\\_Reefs@fws.gov](mailto:Pacific_Reefs@fws.gov) or by calling 808-792-9560.

**Baker Island National Wildlife Refuge.** This Refuge includes all of Baker Island approximately at Latitude 0-11-45 North and Longitude 176-28-45 West, together with its territorial waters extending outward 12 nautical miles (13.8 mi; 22.2 km) from the mean low water line of the island.

**Howland Island National Wildlife Refuge.** This Refuge includes all of Howland Island approximately at Latitude 0-48-30 North and Longitude 176-37 West, together with its territorial waters extending outward 12 nautical miles (13.8 mi; 22.2 km) from the mean low water line of the island.

**Jarvis Island National Wildlife Refuge.** This Refuge includes all of Jarvis Island approximately at Latitude 0-22-20 South and Longitude 160-00 West, together with its territorial waters extending outward 12 nautical miles (13.8 mi; 22.2 km) from the mean low water line of the island.

**Johnston Atoll National Wildlife Refuge.** This Refuge includes all of Johnston Atoll approximately at Latitude 16-44 North and Longitude 169-31 West, together with its territorial waters extending outward 12 nautical miles (13.8 mi; 22.2 km) from the mean low water line of the atoll. However, portions of the emergent land at Johnston Atoll are currently under the administrative jurisdiction of the Department of the Air Force, which controls all access to areas under its administrative jurisdiction.

**Kingman Reef National Wildlife Refuge.** This Refuge includes all of Kingman Reef approximately at Latitude 6-24-30 North and Longitude 162-23-30 West, together with its territorial waters extending outward 12 nautical miles (13.8 mi; 22.2 km) from the mean low water line of the reef.

**Palmyra Atoll National Wildlife Refuge.** This Refuge includes all of Palmyra Atoll approximately at Latitude 05-53 North and Longitude 162-05 West, together with its territorial waters extending outward 12 nautical miles (13.8 mi; 22.2 km) from the mean low water line of the atoll. However, portions of the emergent land at Palmyra Atoll are currently owned and managed as a nature preserve by The Nature Conservancy, which controls all access to areas under its ownership.

## **PACIFIC OCEAN - NATIONAL WILDLIFE REFUGE - RESTRICTED FOR ENTRY CONTINUED (22/11)**

**Rose Atoll National Wildlife Refuge.** This Refuge includes all of Rose Atoll approximately at Latitude 14-32-45 South and Longitude 168-9-24 West, the seaward extent being the extreme low water line outside the perimeter reef except at the entrance channel where the boundary is a line extended between the extreme low water lines on each side of the entrance channel.

**Wake Atoll National Wildlife Refuge.** This Refuge includes all of Wake Atoll approximately at Latitude 19-18 North and Longitude 166-38 East, together with its territorial waters extending outward 12 nautical miles (13.8 mi; 22.2 km) from the mean low water line of the atoll. However, in accordance with Presidential Proclamation No. 8336, the emergent land at Wake Atoll is currently under the management of the Department of the Air Force, which controls all access to areas under its management.

## **HI ISLANDS - KAHO'OLAWA ISLAND RESERVE COMMISSION - NOTICE OF OPEN WATERS SCHEDULE (52/22)**

Notice to Trollers: The dates below mark the Permitted Trolling Schedule in Zone B for January -- December 2023. Hawaii Administrative Rules (H.A.R.) 13-261 requires that all vessels must register with the Kaho'olawe Island Reserve Commission (KIRC) before entering the Reserve to troll during designated Permitted Trolling dates. To register please contact Dean Tokishi at [dean.tokishi@hawaii.gov](mailto:dean.tokishi@hawaii.gov) 808-243-5022, visit [Kahoolawe.hawaii.gov](http://Kahoolawe.hawaii.gov) or pick up registration packet at the Division of Boating and Recreation.

12:01 a.m Saturdays to 11:59 p.m. Sundays as follows:

January 21 – 22 ; 28 – 29  
February 11 – 12 ; 25 – 26  
March 11 – 12 ; 18 – 19  
April 15 – 16 ; 29 – 30  
May 13 – 14 ; 20 – 21  
June 03 – 04 ; 17 – 18  
July 08 – 09 ; 29 – 30  
August 12 – 13 ; 26 – 27  
September 09 – 10 ; 23 – 24  
October 07 – 08 ; 21 – 22  
November 04 – 05 ; 18 – 19  
December 02 – 03 ; 16 – 17



#### HI ISLANDS - KAHOLAWE ISLAND RESERVE COMMISSION - NOTICE OF OPEN WATERS SCHEDULE (52/22)

The Kaho'olawe Island Reserve (defined as the submerged lands and waters within two nautical miles of the island) is divided into two zones; Zones A and B. These zones are defined as:

Zone A: Includes the island of Kaho'olawe and all the submerged lands and waters between the shoreline of Kaho'olawe and the 30-fathom (180 ft.) depth which surrounds Kaho'olawe (HAR 13-261). Unauthorized entry into Zone A is prohibited at all times except in case of emergency.  
Zone B: All waters and submerged lands between the 30-fathom (180 ft.) depth surrounding Kaho'olawe and two nautical miles from the shoreline of the island. Unauthorized entry into Zone B is prohibited at all times except for trolling as authorized by KIRC on the days stipulated by the Permitted Trolling Schedule as listed above or in case of emergency. Trollers must remain underway, making way at all times while in Zone B. ALL OTHER FISHING, OCEAN RECREATION, AND ANY OTHER ACTIVITIES ARE STRICTLY PROHIBITED.

WARNING! Kaho'olawe and its surrounding submerged lands and waters contain unknown quantities of unexploded ordnance which are hazardous to public health and safety.

(Authority: (H.R.S. §6K, H.A.R. §13-261)

See enclosure 2

#### HI ISLANDS - OAHU - KANEOHE BAY - MILITARY OPERATIONS (09/09)

Military amphibious and search and rescue operations may be underway at any time, day or night, within Kaneohe Bay in the vicinity of 21-26-06.83N/157-46-11.00W and 21-26-45.00N/157-46-55.00W (approximately .5 NM south of Mokapu Peninsula). Support surface craft will be equipped with appropriate day/night signals and markings and can be reached on VHF-Ch 82. In the interest of safety, it is requested that all vessels that use Sonar contact Water Front Operations on VHF-Ch 82A or by phone at (808) 257-2941 to avoid injury to divers that may be in the area.

#### HI ISLANDS - OAHU - KANEOHE BAY - PYRAMID ROCK - HAZARDOUS OPERATIONS (15/23)

The Pyramid Rock / Fort Hase / Kaneohe Bay Danger Zone is located in ocean waters as described by the below coordinates and is closed at all times to surface craft, swimmers, and divers, with the exception of authorized personnel. Mark B.J. Edmonson at mark.bj.edmonson@usmc.mil.

The Danger Zone is bounded by the following coordinates:

21-27.97°N / 157-45.78°W  
21-29.88°N / 157-44.78°W  
21-29.38°N / 157-43.68°W  
21-27.47°N / 157-44.68°W

The following are hazardous operations to mariners for April 12, 2023 through April 18, 2023:

Apr 12 N/A  
Apr 13 N/A  
Apr 14 N/A  
Apr 15 N/A  
Apr 16 N/A  
Apr 17 N/A  
Apr 18 1700 - 2200 (DZ kBay)

See enclosure 1

#### HI ISLANDS - OAHU - KANEOHE BAY - ULUPAU CRATER WEAPONS DANGER ZONE - HAZARDOUS OPERATIONS (15/23)

All vessels/watercraft operating within the Mokapu Peninsula near the Ulupau Crater located on Marine Corps Base Hawaii shall vacate the danger zone at the best speed and by the most direct route.

Danger zone will include areas from (Zone 1 NE) 21°30'59.66"N /157°44'05.97"W to 21°29'16.58"N /157°40'30.19"W to (Zone 2 SE) 21°25'01.79"N/157°40'33.70"W to 21°27'11.84"N/157°43'53.83"W, forming a triangular figure.

The following are hazardous operations to mariners for April 12, 2023 through April 18, 2023:

Zone 1 (NE Range)  
Apr 12 N/A  
Apr 13 0900 - 1300  
Apr 14 1230 - 1600  
Apr 15 N/A  
Apr 16 N/A  
Apr 17 0600 - 2300  
Apr 18 0600 - 2300

Zone 2 (SE Range)  
Apr 12 N/A  
Apr 13 N/A  
Apr 14 N/A  
Apr 15 N/A  
Apr 16 N/A  
Apr 17 0600 - 2300  
Apr 18 0600 - 2300

**HI ISLANDS - OAHU - KANEOHE BAY - ULUPAU CRATER WEAPONS DANGER ZONE - HAZARDOUS OPERATIONS (15/23)**

See enclosure 1

**HI ISLANDS - OAHU - WAIMANALO BAY - HAZARDOUS OPERATIONS (15/23)**

The Waimanalo Bay Danger Zone is located in ocean waters as described by the below coordinates and is closed at all times to surface craft, swimmers, and divers, with the exception of authorized personnel. Mark B.J. Edmonson at mark.bj.edmonson@usmc.mil.

The Danger Zone is bounded by the following coordinates:

21-21'11"N / 157-42'16"W  
21-21'10"N / 157-42'24"W  
21-21'50"N / 157-42'34"W  
21-21'49"N / 157-42'28"W

The following are hazardous operations to mariners for April 12, 2023 through April 18, 2023:

Apr 12 N/A  
Apr 13 N/A  
Apr 14 N/A  
Apr 15 N/A  
Apr 16 N/A  
Apr 17 1400 - 2359  
Apr 18 0000 - 2359

See enclosure 1

**HI ISLANDS - OAHU - EWA BEACH - HAZARDOUS OPERATIONS (15/23)**

The Puuloa Danger Zone is located in ocean waters as described by the below coordinates and is closed at all times to surface craft, swimmers, and divers, with the exception of authorized personnel. Mark B.J. Edmonson at mark.bj.edmonson@usmc.mil.

The Danger Zone is bounded by the following coordinates:

21-18-21N / 157-59-14W  
21-18-11N / 158-00-17W  
21-17-11N / 158-00-06W  
21-17-22N / 157-59-03W

The following are hazardous operations to mariners for April 12, 2023 through April 18, 2023:

Apr 12 0600 - 1700  
Apr 13 0600 - 1700  
Apr 14 N/A  
Apr 15 N/A  
Apr 16 N/A  
Apr 17 0700 - 1600  
Apr 18 0700 - 1700

See enclosure 1

**HI ISLANDS - SOUTH COAST OAHU - HAZARDOUS OPERATIONS - HOT AREAS (50/07)**

FACSFAC Pearl Harbor established Special Operating Areas Four (SOA-4) as a permanent "HOT AREA" named "KAPU" on April 15, 1995. FACSFAC effective hours are 0700W to 2300W (Monday - Saturday from 1700Z - 0900Z) Monday - Friday, and on weekend's 0800W - 1600W (Weekends from 1800Z - 0200Z) or by request. Activities include intermittent naval gunnery exercises and airborne ordnance drops. "KAPU" is also designated as the emergency jettison area for aircraft with hung stores, etc. Hot area "KAPU" is bounded by the following coordinates 20-46N/158-16W, 20-42 N/158-04W, 20-13N/158-36W and 20-04N/158-11W. Scheduling authority is FACSFAC Pearl Harbor call-sign "HULA DANCER". "HULA DANCER" can be reached on primary 266.4/127.0 MHz, or secondary 336.8/132.4 MHz or telephone (808) 472-7333/7337 and may authorize transits through these areas on a case by-case basis.

**HI ISLANDS - KAUAI - BARKING SANDS - PACIFIC MISSILE RANGE FACILITY HI AREA - HAZARDOUS OPERATIONS (15/23)**

Intermittent missile firing operations are conducted by the Pacific Missile Range Facility (PMRF), Barking Sands, Kauai, in the Whiskey 188 (W-188) operating area. Operations are conducted periodically throughout each week in an area bound by the following coordinates:

22:00N/159:51W, 22:00N/160:00W, 22:04N/160:06W, 21:59.5N/160:21W, 22:05N/161:35W, 22:45N/161:25W, 22:56N/161:49W, 23:34N/161:18.6W, 23:57N/160:41W, 25:41N/161:36W, 26:00N/159:58W, 25:47N/158:15W, 23:54N/158:15W, 22:20N/159:09W, 22:21N/159:30W, 22:13N/159:42W, 22:00N/159:51W

Intermittent high power radar operations are conducted by PMRF at the following position: 22:03N/159:47W

Request all mariners remain at least one mile off the coastline between Kokole Point and Nohili Point.

Vessels may be requested to alter course due to firing operations and are requested to contact "Pacific Missile Range Facility" on HF 2182 KHz or

**HI ISLANDS - KAUAI - BARKING SANDS - PACIFIC MISSILE RANGE FACILITY HI AREA - HAZARDOUS OPERATIONS (15/23)**

VHF-Ch 16 prior to entering the above boundaries. If unable to contact the PMRF prior to entering or while in the warning area, relay messages through U.S. Coast Guard Honolulu. Vessels inbound and outbound for Hawaiian ports will create the least interference to firing operations as well as enhance vessel's safety by passing South of the Islands of Kauai and Niihau during the specified times. Federal law provides for civil penalties of \$40,000 and/or criminal penalties of 6 years in prison for each violation of the PMRF safety zone during the schedule of designated activity (33CFR 165.1406).

The following are hazardous operations to mariners for April 12, 2023 through April 19, 2023:

12 APR 0700-1700 KAULAKAHI CHANNEL AND NOHILI POINT TO 15 NM SOUTH THROUGH NORTH.  
13 APR 0700-1700 KAULAKAHI CHANNEL AND NOHILI POINT TO 15 NM SOUTH THROUGH NORTH.  
14 APR NO HAZARDOUS OPERATIONS SCHEDULED.  
15 APR NO HAZARDOUS OPERATIONS SCHEDULED.  
16 APR NO HAZARDOUS OPERATIONS SCHEDULED.  
17 APR NO HAZARDOUS OPERATIONS SCHEDULED.  
18 APR 0630-1700 KAULAKAHI CHANNEL AND NOHILI POINT TO 40 NM WEST THROUGH NORTH.  
19 APR 0630-1700 KAULAKAHI CHANNEL AND NOHILI POINT TO 60 NM WEST THROUGH NORTH.

**MARINE EVENTS**

This section contains information of general concern to the mariner. All event forms must be received no later than noon on Tuesday a week prior to the event. Mariners are advised to use caution while transiting these areas:

**HI ISLANDS - OAHU - FIREWORKS (02/23)**

Hawaii Explosives and Pyrotechnics, Inc. will be conducting a land fireworks display neighboring Duke Kahanamoku Beach on Fridays from 2115 - 2230 January 06, 2023 to December 29, 2023. Please require all vessels to observe the safety/fallout zone radius from the firing site. Vessels and spectators are advised to maintain a distance of at least 210 feet radius from the launch site.

Contact (808) 968-0600 for further information.

See Enclosure 5

---

---

**SECTION VIII - LIGHT LIST CORRECTIONS**

An Asterisk \*, indicates the column in which a correction has been made to new information

(1) No.	(2) Name and Location	(3) Position	(4) Characteristic	(5) Height	(6) Range	(7) Structure	(8) Remarks
None							

---

---

**PUBLICATION CORRECTIONS**

None

---

---

**ENCLOSURES****HI ISLANDS - OAHU - HAZARDOUS OPERATIONS OBJECTS (14/23)**

See Enclosure 6

**ENCLOSURE (1)**

HI ISLANDS - OAHU - KANEHOE BAY HAZARDOUS OPERATIONS (18/07)

**ENCLOSURE (2)**

HI ISLANDS - KAHOLAWE ISLAND RESERVE COMMISSION - NOTICE OF OPEN WATERS SCHEDULE (52/22) see attachment doc

**ENCLOSURE (3)**

HI ISLANDS - ALL ISLANDS - SAILDRONE OPS

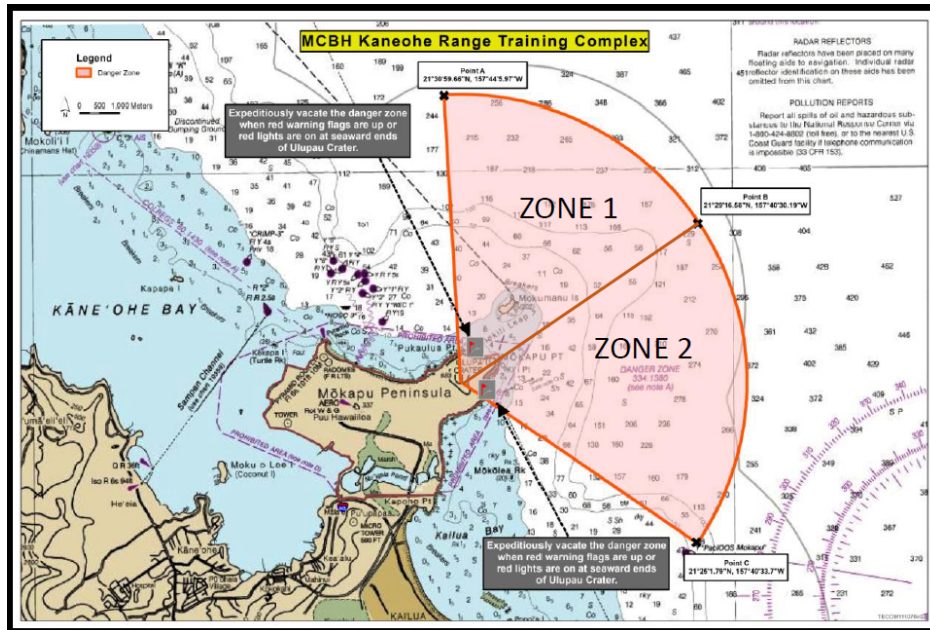
**ENCLOSURE (5)**

HI ISLANDS - OAHU - HONOLULU FIREWORKS

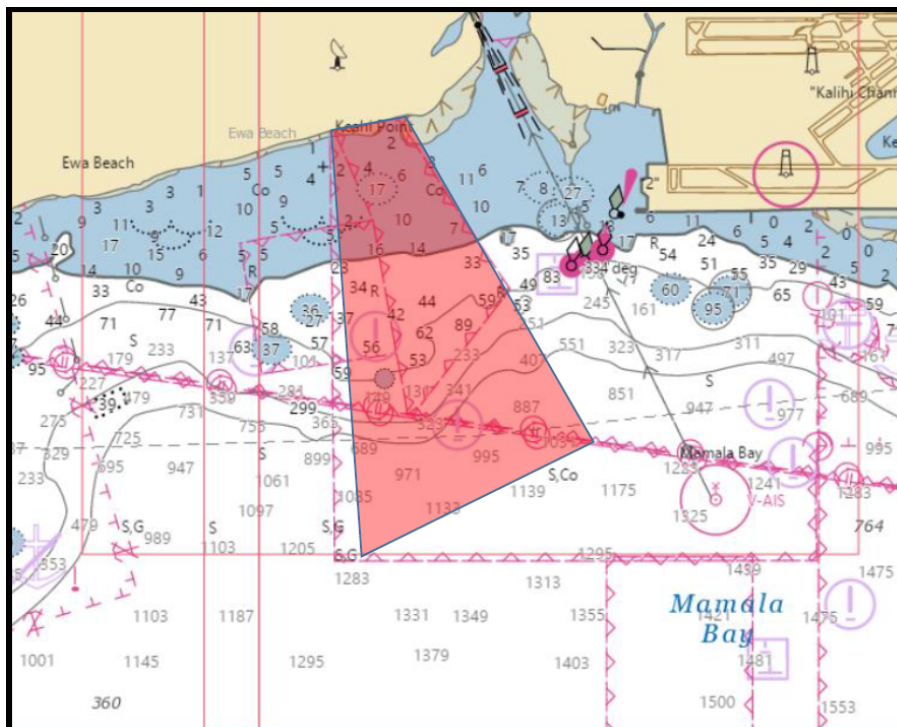
---

M. Day  
Rear Admiral, U.S. Coast Guard  
Commander, Fourteenth Coast Guard District

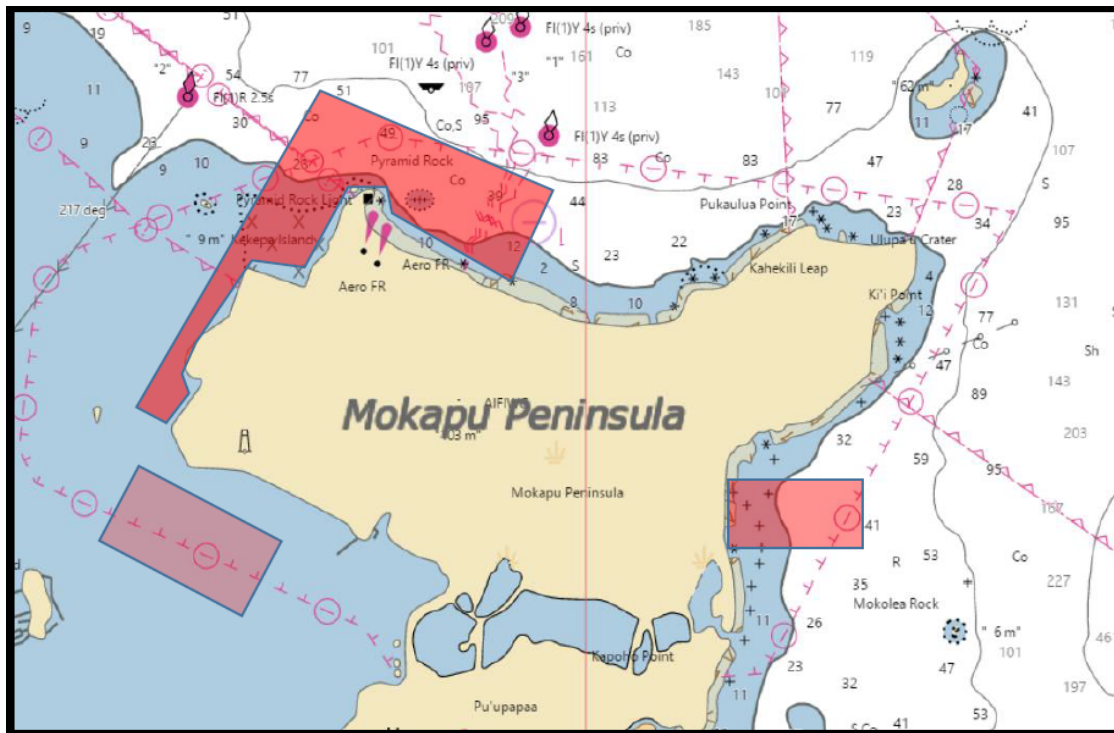
## Mokapu Point



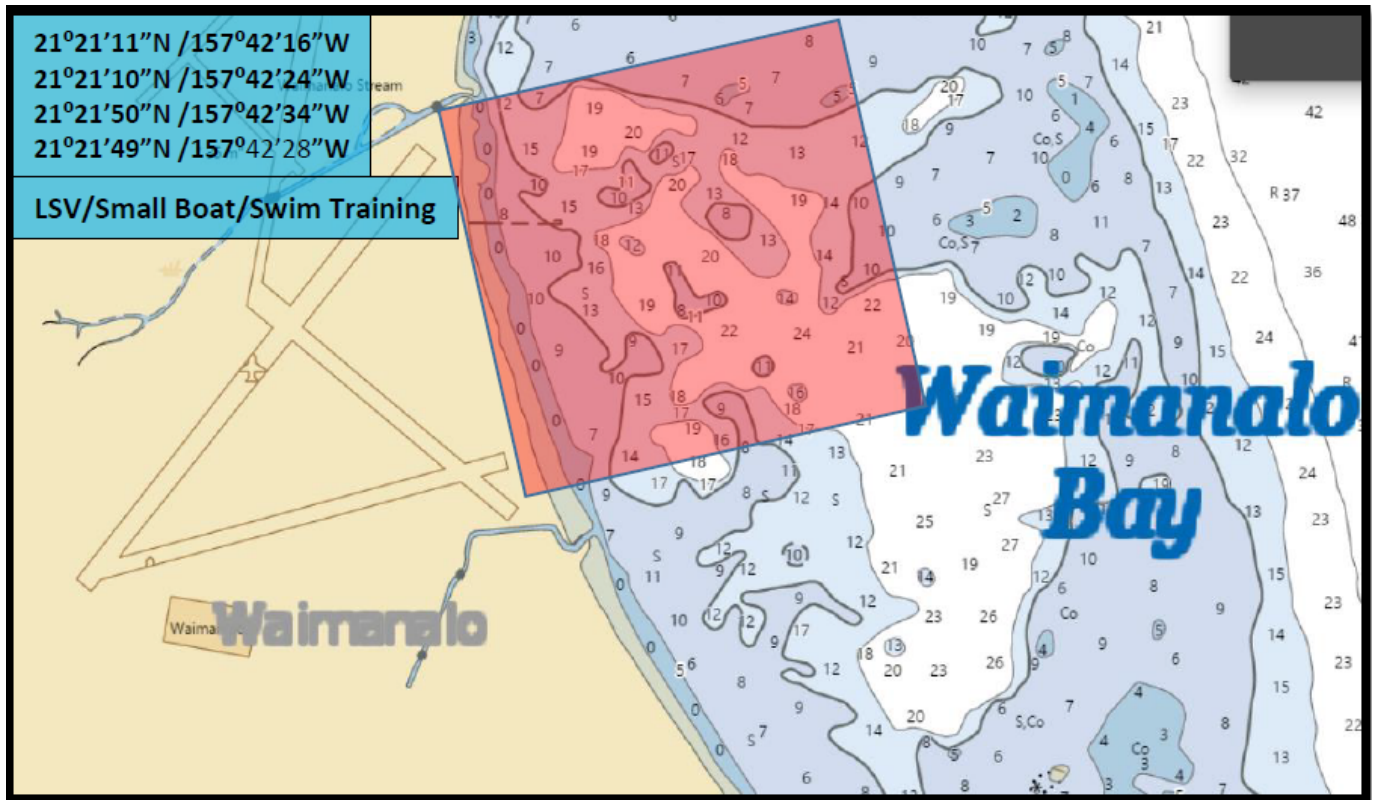
## Ewa Beach



## Pyramid Rock/Fort Hase/Kaneohe Bay



## Waimanalo Bay







COMMISSION MEMBERS

JOSHUA KAKUA, Ed.D  
Chairperson  
CARMEN HULU LINDSEY  
Vice-Chair

SUZANNE CASE  
'ĀNELA EVANS  
SAUMALU MATAAFA  
BENTON KEALII PANG, Ph.D  
MICHELLE PESCAIA

Michael K. Nāho'opi'i  
Executive Director

KŪKULU KE EA A KANALOA  
**KAHO'OLawe ISLAND RESERVE COMMISSION**

811 Kolu Street, Suite 201, Wailuku, HI 96793  
Telephone (808) 243-5020 Fax (808) 243-5885  
Website: <http://kahoolawe.hawaii.gov>

**Notice of Permitted Trolling Schedule:**

*January-December 2023*  
*Kaho'olawe Island Reserve*  
**Zone B ( > 30 fathoms)**

Notice to Trollers: The dates below mark the Permitted Trolling Schedule in Zone B for January -- December 2023. **Hawaii Administrative Rules (H.A.R) 13-261 requires that all vessels must register with the Kaho'olawe Island Reserve Commission (KIRC) before entering the Reserve to troll during designated Permitted Trolling dates. To register please contact Dean Tokishi at [dean.tokishi@hawaii.gov](mailto:dean.tokishi@hawaii.gov) 808-243-5022, visit [Kahoolawe.hawaii.gov](http://Kahoolawe.hawaii.gov) or pick up registration packet at the Division of Boating and Recreation.**

**12:01 a.m Saturdays to 11:59 p.m Sundays as follows:**

January	21 -22; 28 - 29	July	08 -09; 29 - 30
February	11 -12; 25 - 26	August	12 -13; 26 - 27
March	11 -12; 18 - 19	September	09 -10; 23 - 24
April	15 -16; 29 - 30	October	07 -08; 21 - 22
May	13 -14; 20 - 21	November	04 -05; 18 - 19
June	03 -04; 17 - 18	December	02 -03; 16 - 17

*The Kaho'olawe Island Reserve (defined as the submerged lands and waters within two nautical miles of the island) is divided into two zones; Zones A and B. These zones are defined as:*

**Zone A:** Includes the island of Kaho'olawe and all the submerged lands and waters between the shoreline of Kaho'olawe and the 30-fathom (180 ft.) depth which surrounds Kaho'olawe (HAR 13-261). **Unauthorized entry into Zone A is prohibited at all times except in case of emergency.**

**Zone B:** All waters and submerged lands between the 30-fathom (180 ft.) depth surrounding Kaho'olawe and two nautical miles from the shoreline of the island. Unauthorized entry into Zone B is prohibited at all times except for trolling as authorized by KIRC on the days stipulated by the Permitted Trolling Schedule as listed above or in case of emergency. Trollers must remain underway, making way at all times while in Zone B. **ALL OTHER FISHING, OCEAN RECREATION, AND ANY OTHER ACTIVITIES ARE STRICTLY PROHIBITED.**

**WARNING! Kaho'olawe and its surrounding submerged lands and waters contain unknown quantities of unexploded ordnance which are hazardous to public health and safety.**

(Authority: (H.R.S. §6K, H.A.R. §13-261))



## RESEARCH EQUIPMENT IN WATER

Islands of Hawai'i  
March 1<sup>st</sup> to Sept 1<sup>st</sup>, 2023

SAILDRONE, INC. will operate three Unmanned Surface Vehicles called Saildrones, to systematically and synoptically survey ocean chemistry in Hawaiian coastal waters around each Hawaiian Island to understand the variability in carbon, oxygen, nutrients, and phytoplankton concentrations both in general and between islands.

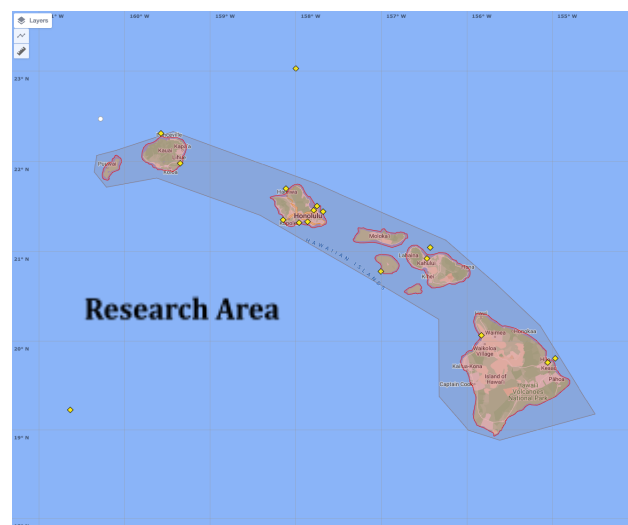
Overall map with a variety of water quality data: <http://www.pacioos.hawaii.edu/voyager/> or  
(Zoomed into Hawai'i: [bit.ly/3xLvFvv](http://bit.ly/3xLvFvv))

For more information on ocean chemistry work in the area : <https://www.pacioos.hawaii.edu/projects/acid/>

**VESSELS ARE REQUESTED TO TRANSIT THE AREA WITH CAUTION, AND REMAIN  
GREATER THAN 500 METERS AWAY FROM THE RESEARCH EQUIPMENT.**

Saildrones are wind powered Unmanned Surface Vehicles that carry important oceanographic and fisheries acoustics research instrumentation and are controlled from shore through satellite communications.

- **Color: Orange**
- **Light: white all-round light**
- **Radar Reflector: Yes**
- **Notation: "Saildrone"**
- **Length: 23 ft & Width: 2 ft**
- **Height: 16 ft above water line**
- **Draft: 6 ft, Avg. speed: 3 kts**
- **GPS / AIS / Cameras: Yes**



### RESEARCH CONTACTS

Dr. Christopher Sabine  
Department of Oceanography  
University of Hawai'i at Mā  
noa  
[csabine@hawaii.edu](mailto:csabine@hawaii.edu)

PhD Student Amy Markel  
Department of Oceanography  
University of Hawai'i at Mānoa  
[amarkel@hawaii.edu](mailto:amarkel@hawaii.edu)

**SAILDRONE MISSION CONTROL**

(510) 722-6070

Enclosure 3



Exclosure 5  
6/23/2022

**Safety/Fallout Zone**

Closed 30 minutes prior to firing until  
"All Clear" is called by Operator - usually,  
30 minutes after completion of 4 minute display.

**Work Zone**

Closed 4:00 p.m. to 9:00 p.m.

**Firing Site**

293 ft

HHV Great Lawn

© 2019 Google

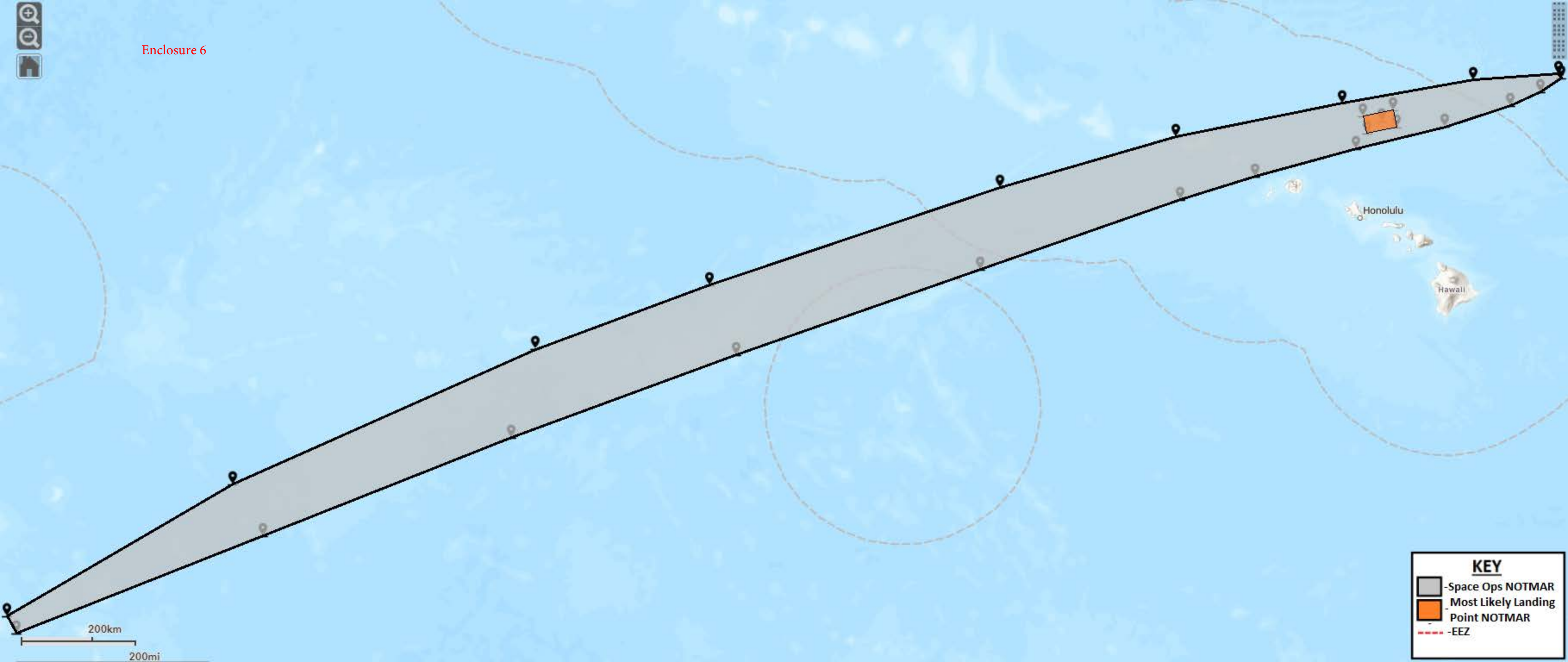
Google Earth

lat 21.281549° lon -157.839041° elev 5 ft eye alt 1394 ft

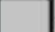






Enclosure 6



**KEY**

-  -Space Ops NOTMAR
-  -Most Likely Landing Point NOTMAR
-  -EEZ