



U.S. Department
of Homeland Security
**United States
Coast Guard**

LOCAL NOTICE TO MARINERS

District: 14

Week: 31/23

August 02, 2023
ISSUED BY:
Commander (dpw)
Fourteenth Coast Guard District
300 Ala Moana Boulevard, Room 9-220
Honolulu, HI 96850-4982
Telephone: (808) 535-3409
Email: D14-DG-PJ-dpw@uscg.mil
Website: <https://www.navcen.uscg.gov/>

Note:

Unless otherwise indicated, missing and destroyed structures are presumed to be in the immediate vicinity, possibly beneath the surface. Any life threatening or hazardous conditions including off station, missing, or inoperative aids to navigation should be reported immediately to U.S. Coast Guard Sector Honolulu at (808) 842-2600 and U.S. Coast Guard Sector Forces Micronesia/Sector Guam at (671) 355-4822. Mariners should proceed with caution.

References:

Light List, Volume VI, Pacific Coast and Pacific Islands, 2023 Edition (COMDTPUB P16502.6).
U.S. Coast Pilot 10, Pacific Coast : Oregon, Washington, Hawaii, Pacific Islands 2023 (4th Edition). Coast Pilots, along with corrections, are ready for free download and weekly updates at www.nauticalcharts.noaa.gov/publications/coast-pilot/index.html.

Only Print-on-Demand (POD) bound copies are available for purchase; visit nauticalcharts.noaa.gov/publications/print-agents.html#coast-pilot.

Navigation information having been of immediate concern to the mariner, and promulgated by the following broadcasts, have been incorporated in this notice when still significant:

COMCOGARD SECTOR HONOLULU HI BNMs: 138-23 to 140-23
COMCOGARD SECTOR FORCES MICRONESIA/SECTOR GUAM BNMs: 289-23 to 294-23

ABBREVIATIONS

A through H

ADRIFT - Buoy Adrift
AICW - Atlantic Intracoastal Waterway
Al - Alternating
B - Buoy
BKW - Breakwater
bl - Blast
BNM - Broadcast Notice to Mariner
bu - Blue
C - Canadian
CHAN - Channel
CGD - Coast Guard District
C/O - Cut Off
CONT - Contour
CRK - Creek
CONST - Construction
DAYMK/Daymk - Daymark
DBN/Dbn - Daybeacon
DBD/DAYBD - Dayboard
DEFAC - Defaced
DEST - Destroyed
DISCON - Discontinued
DMGD/DAMGD - Damaged
ec - eclipse
EST - Established Aid
ev - every
EVAL - Evaluation
EXT - Extinguished
F - Fixed
fl - flash

I through O

I - Interrupted
ICW - Intracoastal Waterway
IMCH - Improper Characteristic
INL - Inlet
INOP - Not Operating
INT - Intensity
ISL - Islet
Iso - Isophase
kHz - Kilohertz
LAT - Latitude
LB - Lighted Buoy
LBB - Lighted Bell Buoy
LHB - Lighted Horn Buoy
LGB - Lighted Gong Buoy
LONG - Longitude
LNM - Local Notice to Mariners
LT - Light
LT CONT - Light Continuous
LTR - Letter
LWB - Lighted Whistle Buoy
LWP - Left Watching Properly
MHz - Megahertz
MISS/MSNG - Missing
Mo - Morse Code
MRASS - Marine Radio Activated Sound Signal
MSLD - Misleading
N/C - Not Charted
NGA - National Geospatial-Intelligence Agency
NO/NUM - Number

P through Z

PRIV - Private Aid
Q - Quick
R - Red
RACON - Radar Transponder Beacon
Ra ref - Radar reflector
RBN - Radio Beacon
REBUILT - Aid Rebuilt
RECOVERED - Aid Recovered
RED - Red Buoy
REFL - Reflective
RRL - Range Rear Light
RELIGHTED - Aid Relit
RELOC - Relocated
RESET ON STATION - Aid Reset on Station
RFL - Range Front Light
RIV - River
RRASS - Remote Radio Activated Sound Signal
s - seconds
SEC - Section
SHL - Shoaling
si - silent
SIG - Signal
SND - Sound
SPM - Single Point Mooring Buoy
SS - Sound Signal
STA - Station
STRUCT - Structure
St M - Statute Mile
TEMP - Temporary Aid Change

FI - Flashing
G - Green
GIWW - Gulf Intracoastal Waterway
HAZ - Hazard to Navigation
HBR - Harbor
HOR - Horizontal Clearance
HT - Height

NOS - National Ocean Service
NW - Notice Writer
OBSCU - Obscured
OBST - Obstruction
OBSTR - Obstruction
Oc - Occulting
ODAS - Anchored Oceanographic Data Buoy

TMK - Topmark
TRLB - Temporarily Replaced by Lighted Buoy
TRLT - Temporarily Replaced by Light
TRUB - Temporarily Replaced by Unlighted Buoy
USACE - Army Corps of Engineers
W - White
Y - Yellow

Additional Abbreviations Specific to this LNM Edition:

MSLD SIG - Misleading Signal

SECTION I - SPECIAL NOTICES

This section contains information of special concern to the Mariner.

***** CANCELLATION OF NOAA PAPER AND RASTER NAUTICAL CHARTS *****

The National Oceanic and Atmospheric Administration (NOAA) is undertaking a multi-year program to end production and maintenance of its suite of over 1,000 traditional paper nautical charts and all associated raster chart products and services, including: Print-on-Demand (POD) paper nautical charts, Full-size chart PDF files, BookletChart™ PDF files, NOAA raster navigational charts (NOAA RNC®), the NOAA RNC tile service, and the online RNC viewer.

Six months notice of the intent to cancel a specific chart is provided in a "Last Edition" notice. The final cancellation of a chart is made in a "Canceled" notice. Both types of notices will appear in LNM Section IV, "Chart Correction." A comprehensive list of all canceled NOAA charts is available at: <http://www.charts.noaa.gov/MCD/Dole.shtml>.

Traditional paper nautical chart production is ending to enable the creation and maintenance of larger scale, more up-to-date, higher quality coverage of NOAA's electronic navigational chart (NOAA ENC®) product. This will significantly enhance the amount of charted detail available to mariners. More information about NOAA's program to sunset traditional paper charts is on the NOAA Coast Survey website at: <https://nauticalcharts.noaa.gov/charts/farewell-to-traditional-nautical-charts.html>

An online NOAA Custom Chart application at: <https://devgis.charttools.noaa.gov/pod> is available to create chart images from ENC data, which may then be printed. Notices to Mariners will not be issued for NOAA Custom Charts.

SAFETY NOTICE - NAVIGATIONAL RANGE AND SECTOR LIGHTS ON ELECTRONIC CHARTS (39/22)

The U.S. Coast Guard has become aware that the Range and Sector Light Characteristic labels are not displayed on Electronic Navigational Charts (ENCs) when used in an Electronic Chart Display and Information System (ECDIS) due to limitations of the S-52 ECDIS display specification. Mariners may query the ENC data directly within ECDIS or refer to the Light List for complete information on Range and Sector Light Characteristics.

PACIFIC OCEAN - HAZARD TO NAVIGATION - MARINE DEBRIS (07/12)

With the increase in ocean debris sightings along the coastlines of the Pacific Ocean, mariners are reminded to submit debris sighting reports to the National Oceanic and Atmospheric Administration (NOAA) Marine Debris Program at DisasterDebris@noaa.gov, and the University of Hawaii oceanographic research center at marinedebris@soest.hawaii.edu. For inshore sightings, please use the State of Hawaii <https://dlnr.hawaii.gov/dobor/reportmarinedebrishawaii/>.

HI ISLANDS - ALL ISLANDS - SAILDRONE OPERATIONS (07/23)

SAILDRONE, INC. will operate three Unmanned Surface Vehicles called Saildrones in collaboration with the University of Hawai'i, to systematically and synoptically survey ocean chemistry in Hawaiian coastal waters around each Hawaiian Island to understand the variability in carbon, oxygen, nutrients, and phytoplankton concentrations both in general and between islands. Saildrones are wind powered Unmanned Surface Vehicles that carry important oceanographic research instrumentation and are controlled from shore through satellite communications. Color: Orange, Length: 23 ft, Wide: 2 ft, Height: 16 ft above water line, Light: All-around White light. POC: (510) 722-6070, missioncontrol@saildrone.com. EST time of completion: Sept 01, 2023.

Overall map with a variety of water quality data: <http://www.pacioos.hawaii.edu/voyager/> or (Zoomed into Hawai'i: bit.ly/3xLvFvv)

For more information on ocean chemistry work in the area : <https://www.pacioos.hawaii.edu/projects/acid/>

Vessels are requested to transit the area with caution, and remain greater than 500 meters away from the research equipment.

See Enclosure 3

HI ISLANDS - HAWAII - HILO HARBOR - AIS TEMPORARY DEACTIVATION (07/19)

All mariners be advised the Coast Guard has temporarily deactivated AIS broadcasting for the following aids to navigation in the Hilo, HI area:

28035 Hilo Harbor Entrance Lighted Buoy 1 AIS: MMSI 993699986

28040 Hilo Harbor Breakwater Light AIS: MMSI 993699987

28055 Hilo Harbor Lighted Buoy 3 AIS: MMSI 993699985

28070 Hilo Harbor Lighted Buoy 4 AIS: MMSI 993699984

HI ISLANDS - HAWAII - ISAAC HALE PARK (02/19)

The waterway leading to Pohoiki Bay boat ramp at Isaac Hale Park is un-navigable due to shoaling and sand accumulation. The light and day boards have been temporarily removed from Pohoiki Bay Breakwater Light 2 (LLNR 28135).

HI ISLANDS - HAWAII - UNMANNED OPERATIONS (27/22)

Liquid Robotics (www.liquid-robotics.com) will conduct continuous autonomous, unmanned maritime vehicle operations for several weeks at a time through December 2023 in vicinity of Kawaihae Bay, Hawaii within the following coordinates:

19-55-50N/ 155-54-12W

19-58-10N/ 155-51-08W

20-00-10N/ 155-50-29W

20-07-19N/ 156-09-32W

20-27-34N/ 155-52-30W

20-10-02N/ 156-43-04W

Operations consist of scientific ocean data collection. Wave Glider carries no fuel, lubricants, or hydrocarbons, is wave powered, remotely attended from the Wave Glider Operations Center (WGOC), moving at speeds of typically 1kt, and designed to give way or part if encountered by a vessel. It is surfboard size, copper in color, with a contact plaque and mast extending 1 meter above the surface supporting a flag, topped with a solid white light. Mariners are urged to transit the area with caution. For up-to-date information, mariners can contact Liquid Robotics Operations Center at +1 408 636 4205, or by email at support@liquid-robotics.com.

HI ISLANDS - MAUI - MALA WHARF SHOALING (32/22)

There has been a report of increased shoaling around Mala Wharf. At low tide, the Mala Wharf Boat Ramp also becomes dangerously shallow with waters less than 03 feet. All mariners are requested to use caution while loading and unloading at Mala Wharf Boat Ramp and when transiting the channel. POC: DLNR DOBOR, Maui District (808) 243-5824

HI ISLANDS - MAUI - LAHAINA HARBOR SHOALING (34/22)

There have been numerous reports of shoaling around Lahaina Harbor. All mariners are requested to transit the area with caution and report any observed changes in shoaling conditions to DLNR DOBOR at (808) 243-5824 and Marine Safety Team Maui at MSTMaui@uscg.mil

HI ISLANDS - OAHU - MAUNALUA BAY SHOALING (05/22)

There has been a report of increased shoaling in Maunalua Bay, between Maunalua Bay Daybeacon 1A (LLNR 28935) and Maunalua Bay Daybeacon 2 (LLNR 28940) when transiting to and from Hawaii Kai. At mean low tide, the Maunalua Bay Boat Ramp also becomes dangerously shallow. All mariners are requested to use caution while loading and unloading at Maunalua Bay Boat Ramp and when transiting the channel.

POC: DLNR DOBOR at (808) 587-1966 / (808) 832-3520 or website listing : <https://dlnr.hawaii.gov/dobor/contact/>

HI ISLANDS - OAHU - HONOLULU HARBOR - AIS ACTIVATION (07/21)

All mariners be advised the Coast Guard has temporarily activated AIS broadcasting for the following aids to navigation in the Honolulu Harbor area:

29200 Honolulu Harbor Channel Buoy 3: MMSI 993692240

29205 Honolulu Harbor Channel Buoy 4: MMSI 993692241

For any concerns contact Sector Honolulu at (808) 884-2600.

HI ISLANDS - OAHU - HAZARDOUS OPERATIONS (31/23)

Hazardous operations will be conducted on August 02, 2023, North and South of OAHU from 2000W - 2200W in an area bound by the following coordinates:

20-41N / 158-04W
 18-49N / 158-26W
 19-06N / 159-16W
 20-45N / 158-16W
 RETURN TO ORIGIN
 23-18N / 157-30W
 22-46N / 157-30W
 21-39N / 158-25W
 21-59N / 158-53W
 22-20N / 159-09W
 23-54N / 158-15W
 RETURN TO ORIGIN
 22-46N/157-30W
 21-59N/157-30W
 22-01N/157-56W
 21-45N/157-52W
 21-47N/158-00W
 21-44N/158-03W
 21-37N/158-09W
 21-36N/158-18W
 21-40N/158-25W
 RETURN TO ORIGIN

In the interest of safety, all vessels not involved in the above event are requested to remain clear of this area.

LNM: SCC Hono 138-23

MARIANA ISLANDS - GUAM - HAZARDOUS OPERATIONS (31/23)

Hazardous operations will be conducted from July 31, 2023 to August 02, 2023, from 2300Z - 1355Z in an area bound by the following coordinates:

Area 1: 13-26N / 145-08E

Area 2: 13-42N / 144-36E

All mariners are advised to remain 3NM away from this area in all direction.

LNM: SCC Guam 289-23

SECTION II - DISCREPANCIES

This section lists all reported and corrected discrepancies related to Aids to Navigation in this edition. A discrepancy is a change in the status of an aid to navigation that differs from what is published or charted.

DISCREPANCIES (FEDERAL AIDS)

LLNR	Aid Name	Status	Chart No.	BNM Ref.	LNM St	LNM End
28200	Honokohau Harbor Entrance Channel Light 3	LT EXT	19327	SCC Hono 112-2:	27/23	
28390	Kauiki Head Light	LT IMCH	19320	SCC Hono 089-2:	20/23	
28510	Hawea Point Light	DAYMK MISSING	19347		20/23	
28520	Pohakuloa Point Light	LT EXT	19347	SCC Hono 213-2:	45/21	
28700	Kaneohe Bay Channel Daybeacon 5	DAYMK IMCH	19359	SCC Hono 140-	31/23	
28775	Kaneohe Bay Channel Light 22	DAYMK DMGD	19359	SCC Hono 044-2:	13/23	
28780	Kaneohe Bay Channel Daybeacon 23	DAYMK MISSING	19359	SCC Hono 139-	31/23	
29770	Nawiliwili Harbor Breakwater Light	DAYMK MISSING	19383	SCC Hono 094-2:	38/22	
29770	Nawiliwili Harbor Breakwater Light	LT EXT	19383	SCC Hono 095-2:	21/23	
29865	Puolo Point Light	LT EXT	19382	SCC Hono 066-2:	17/23	
30185	Breakers Point Light	LT EXT	83484	SCC Hono 011-2:	05/23	
30390	Kwajalein-Bigej Channel Buoy 1	OFF STA	81715	SCC Guam 328-2	33/22	

30430	Kwajalein Lagoon Junction Lighted Buoy V	MISSING	81715	SCC Guam 282-2 30/23
30685	Orote Point Light	DAYMK IMCH	81054	SCC Guam 205-2 22/23
30745	Cabras Island Channel Light 4	REDUCED INT	81054	SCC Guam 087-2 10/23
30751	Piti Channel Entrance Light 1	STRUCT DEST/HAZ NAV	81054	SCC Guam 195-2 22/23
30752	Piti Channel Entrance Light 2	STRUCT DEST	81054	SCC Guam 212-2 22/23
30811	Agat Harbor Entrance Lighted Buoy AG	BUOY DMGD	81048	SCC Guam 202-2 22/23
30855	Tanapag Harbor Approach Lighted Buoy T	MISSING	81076	SCC Guam 068-2 09/23
30919	Ushi Point Light	LT EXT	81067	24/23

DISCREPANCIES (FEDERAL AIDS) CORRECTED

LLNR	Aid Name	Status	Chart No.	BNM Ref.	LNM St	LNM End
------	----------	--------	-----------	----------	--------	---------

None

DISCREPANCIES (PRIVATE AIDS)

LLNR	Aid Name	Status	Chart No.	BNM Ref.	LNM St	LNM End
28007	FAD Site HK - Hakalau, Hawaii	MISSING	19320	SCC Hono109-21	27/21	
28007.01	FAD Site G - Pepeekeo, Hawaii	MISSING	19320	SCC Hono 034-2:	11/23	
28007.09	FAD Site SS - Apua Point, Hawaii	MISSING	19004	SCC Hono 081-2:	19/23	
28007.13	FAD Site A - South Point, Hawaii	MISSING	19320	SCC Hono 082-2:	19/23	
28007.17	FAD Site B - Milolii, Hawaii	MISSING	19004	SCC Hono 083-2:	19/23	
28007.22	FAD Site WH1	MISSING	19320	SCC Hono 021-1:	18/15	
28007.35	FAD Site Q - Pauwela Point, Maui	MISSING	19340	SCC Hono 082-2:	34/22	
28007.37	FAD Site HO - Hoolawa Point, Maui	MISSING	19340	SCC Hono 002-2:	02/23	
28007.42	FAD SITE MTBC 2	MISSING	19004	SCC Hono 030-2:	06/22	
28007.43	PacIOOS Wave Lighted Buoy Pauwela	MISSING	19342	SCC Hono 126-2:	45/22	
28008	FAD Site FF - Pukaulua Point, Maui	MISSING	19004	SCC Hono 037-2:	08/22	
28008.19	FAD Site CC - Kaena Point, Lanai	OFF STA	19351	SCC Hono 119-2:	44/22	
28008.21	FAD Site N - Cape Halawa, Molokai	MISSING	19340	Hono 0039-23	11/23	
28008.23	FAD Site X - Kahuku Point, Oahu	MISSING	19340	Sec Hono 050-22	14/22	
28008.33	FAD Site P - Penguin Bank, Oahu	MISSING	19339	SCC Hono 142-2:	49/22	
28008.35	FAD Site HH - Pearl Harbor, Oahu	MISSING	19340	SCC Hono 143-2:	49/22	
28009	FAD Site S - Pokai Bay, Oahu	MISSING	19357	SCC Hono 084-2:	19/23	
28009.05	FAD Site CO - Kaena Point, Oahu	MISSING	19380	SCC Hono 035-2:	11/23	
28009.11	FAD Site EK - Hanalei, Kauai	MISSING	19381	SCC Hono 106-2:	41/22	
28009.19	FAD Site Z - Kipukai, Kauai	OFF STA	19381	SCC Hono 069-2:	21/22	
28009.23	FAD Site PP - Koloa, Kauai	OFF STA	19381	SCC Hono 067-2:	17/23	
28009.25	FAD Site AA - Port Allen, Kauai	MISSING	19381	SCC Hono 038-2:	08/22	
28009.27	FAD Site KK - Waimea, Kauai	MISSING	19381	SCC Hono 115-2:	27/21	
28053	PacIOOS Wave Lighted Buoy Hilo	MISSING	19320	SCC Hono 022-2:	07/23	
28271	Kawaihae LT Draft Harbor Buoy 2	MISSING	19330	SCC Hono 129-2:	29/23	
28381.1	Kahului Boat Ramp Buoy 1	MISSING	19342	SCC Hono 187-2:	30/20	
28381.2	Kahului Boat Ramp Buoy 2	MISSING	19342	SCC Hono 187-2:	30/20	
28381.3	Kahului Boat Ramp Buoy 3	MISSING	19342	SCC Hono 187-2:	30/20	
28381.4	Kahului Boat Ramp Buoy 4	MISSING	19342	SCC Hono 187-2:	30/20	
28381.5	Kahului Boat Ramp Buoy 5	MISSING	19342	SCC Hono 187-2:	30/20	
28381.6	Kahului Boat Ramp Buoy 6	MISSING	19342	SCC Hono 187-2:	30/20	
28381.8	Kahului Boat Ramp Buoy 8	MISSING	19342	SCC Hono 187-2:	30/20	
28381.9	Kahului Boat Ramp Buoy 9	MISSING	19342	SCC Hono 187-2:	30/20	

28395	Hana Bay Daybeacon	DAYMK DMGD/STRUCT DMGD	19348	SCC Hono 061-2: 18/22
28427	Maalaea Basin Channel Lighted Buoy 1	ADRIFT	19348	SCC Hono 158-1: 22/18
28427	Maalaea Basin Channel Lighted Buoy 1	LT EXT	19348	SCC Hono 018-2: 06/23
28430	Maalaea Basin Channel Lighted Buoy 2	LT EXT		SCC Hono 017-2: 06/23
28480	Lahaina Boat Basin Lighted Buoy 3	MISSING	19348	SCC Hono 177-1: 28/18
28500	Lahaina Boat Basin Lighted Buoy 7	MISSING	19348	SCC Hono 238-1: 46/18
28507.5	Mala Channel Light 5	LT EXT	19348	SCC Hono 283-2: 45/20
28507.6	Mala Channel Light 6	LT EXT	19348	SCC Hono 284-2: 45/20
28630	Kaunakakai Small Boat Harbor Buoy 1	SINKING	19353	SCC Hono 223-2: 46/21
28672	PacIOOS Wave Lighted Buoy Kaneohe East	MISSING	19359	SCC Hono 023-2: 07/23
28674.04	WETS 4	MISSING	19359	SCC Hono 010-1: 02/18
28674.05	WETS 5	MISSING	19359	SCC Hono 011-1: 02/18
28895	Makai Channel Daybeacon 3	DAYMK MISSING	19358	SCC Hono 038-1: 11/19
28900	Makai Channel Daybeacon 4	MISSING	19358	SCC Hono 038-1: 11/19
29010	Maunaloa Bay Daybeacon 16	HAZ NAV/DAYMK DMGD	19358	SCC Hono 07/22
29110	Ala Wai Boat Harbor Channel Buoy 3	OFF STA	19369	SCC Hono 40/21
29115	Ala Wai Boat Harbor Channel Buoy 4	OFF STA	19369	SCC Hono 079-2: 29/22
29125	Ala Wai Boat Harbor Channel Daybeacon 6	DAYMK DMGD	19369	SCC Hono 174-1: 27/18
29135	Ala Wai Boat Harbor Channel Daybeacon 8	DAYMK DMGD	19369	SCC Hono 175-1: 27/18
29315	Keehi Lagoon Barge Turning Channel Range Front	REDUCED INT	19367	SCC Hono 312-2: 52/20
29325	Keehi Lagoon Barge Turning Basin Buoy 2	OFF STA	19367	SCC Hono 085-1: 16/12
29600	Barbers Point Anchorage Area Bravo Tank Terminal Lighted Buoy A	LT EXT	19362	SCC Hono 001-2: 01/22
29656	West Beach Marina Light 2	LT EXT	19362	SCC Hono 266-1: 40/17
29734.5	PacIOOS Wave Lighted Buoy Waimea	MISSING	19357	SCC Hono 104-2: 24/23
29734.6	HOT site surface mooring buoy	OFF STA	19013	SCC Hono 29/22
30603	FAD Site "Cocos" - Guam	LT EXT	81048	SCC Guam 014-1 03/19
30612	FAD Site "FACPI 2" - Guam	MISSING	81048	SCC Guam 082-1 09/19
30624	FAD Site "Number 2" - Guam	OFF STA	81048	SCC Guam 146-1 12/14
30631	FAD Site "Number 3"	MISSING	81048	SCC Guam 083-1 09/19
30634	FAD Site "Number 4"	MISSING	81048	SCC Guam 011-1 03/19
30637.1	FAD Site GF1	MISSING	81048	SCC Guam 041-1 03/18
30640	FAD Site "Number 5"	LT EXT	81048	SCC Guam 607-1 47/18
30650	PacIOOS Wave Lighted Buoy Ritidian	MISSING	81048	SCC Guam 197-2 22/23
30787	Drydock Point West Entrance Daybeacon 1	DAYMK MISSING	81054	SCC Guam 707-1 44/17
30811.3	Agat Small Boat Harbor Light 3	LT EXT	81048	SCC Guam 178-1 18/19
30811.9	Agat Small Boat Harbor Daybeacon 9	DAYMK IMCH	81048	SCC Guam 092-1 07/18
30815	Mamaon Channel Lighted Buoy 1	OFF STA	81048	SCC Guam 718-1 45/17
30820	Mamaon Channel Lighted Buoy 2	OFF STA	81048	SCC Guam 506-1 39/18
30851.1	FAD Site EE - Rota	MISSING	81004	SCC Guam 195-2 20/22
30851.2	FAD Site DD - Rota	MISSING	81004	SCC Guam 303-1 30/19
30851.3	FAD Site DE - Rota	MISSING	81004	SCC Guam 084-2 10/23
30852.19	FAD Site II - Saipan	MISSING	81067	SCC Guam 083-2 10/23
30852.22	Fad Site LL - Saipan	MISSING	81067	SCC Guam 196-2 20/22
30853	PacIOOS Wave Lighted Buoy Tanapag	MISSING	81067	SCC Guam 054-2 07/23
30913	Smiling Cove Lighted Buoy 1	MISSING	81076	SCC Guam 284-2 29/22

DISCREPANCIES (PRIVATE AIDS) CORRECTED

LLNR	Aid Name	Status	Chart No.	BNM Ref.	LNM St	LNM End
------	----------	--------	-----------	----------	--------	---------

None

PLATFORM DISCREPANCIES

Name	Status	Position	BNM Ref.	LNM St	LNM End
------	--------	----------	----------	--------	---------

None

PLATFORM DISCREPANCIES CORRECTED

Name	Status	Position	BNM Ref.	LNM St	LNM End
------	--------	----------	----------	--------	---------

None

SECTION III - TEMPORARY CHANGES and TEMPORARY CHANGES CORRECTED

This section contains temporary changes and corrections to Aids to Navigation for this edition. When charted aids are temporarily relocated for dredging, testing, evaluation, or marking an obstruction, a temporary correction shall be listed in Section IV giving the new position.

TEMPORARY CHANGES

LLNR	Aid Name	Status	Chart No.	BNM Ref.	LNM St	LNM End
28935	Maunalua Bay Daybeacon 1A	TRUB	19358		47/22	
30740	Cabras Island Channel Junction Lighted Buoy A	TRLB	81054		25/23	
30751	Piti Channel Entrance Light 1	TRUB	81054	SCC Guam 273-23	28/23	

TEMPORARY CHANGES CORRECTED

LLNR	Aid Name	Status	Chart No.	BNM Ref.	LNM St	LNM End
------	----------	--------	-----------	----------	--------	---------

None

PLATFORM TEMPORARY CHANGES

Name	Status	Position	BNM Ref.	LNM St	LNM End
------	--------	----------	----------	--------	---------

None

PLATFORM TEMPORARY CHANGES CORRECTED

Name	Status	Position	BNM Ref.	LNM St	LNM End
------	--------	----------	----------	--------	---------

None

SECTION IV - CHART CORRECTIONS

This section contains corrections to federally and privately maintained Aids to Navigation, as well as NOS corrections. This section contains corrective actions affecting chart(s). Corrections appear numerically by chart number, and pertain to that chart only. It is up to the mariner to decide which chart(s) are to be corrected. The following example explains individual elements of a typical chart correction.

Chart Number	Chart Edition	Edition Date	Last Local Notice to Mariners	Horizontal Datum Reference	Source of Correction	Current Local Notice to Mariners
12327	91st Ed.	19-APR-97	Last LNM: 26/97	NAD 83		27/97
Chart Title: NY-NJ-NEW YORK HARBOR - RARITAN RIVER						
Main Panel 2245 NEW YORK HARBOR						
(Temp)	ADD	NATIONAL DOCK CHANNEL BUOY 3			CGD01	074-02-48.001W
		Green can			at 40-41-09.001N	
	Corrective Action	Object of Corrective Action			Position	

(Temp) indicates that the chart correction action is temporary in nature. Courses and bearings are given in degrees clockwise from 000 true. Bearings of light sectors are toward the light from seaward. The nominal range of lights is expressed in nautical miles (NM) unless otherwise noted.

19324	23rd Ed.	01-JUL-14	Last LNM: 33/12	WGS 84	31/23
<i>ChartTitle: Island Of Hawai'i Hilo Bay</i>					
Main Panel 2777 HILO BAY. Page/Side: A					
LAST EDITION	No new editions of chart 19324 will be published. It will be canceled on 04-Oct-23. Comparable or larger scale Electronic Navigational Chart (ENC) coverage is available. See "Cancellation of NOAA Paper and Raster Nautical Charts" in Section I of this LNM for details. A list of all canceled NOAA charts is at https://www.charts.noaa.gov/MCD/Dole.shtml .				--
				NOS	--
19327	11th Ed.	01-JUN-05	Last LNM: 31/14	WGS 84	31/23
<i>ChartTitle: West Coast of Hawai'i Cook Point to Upolu Point;Keauhou Bay;Honokohau Harbor</i>					
Main Panel 2779 WEST COAST OF HAWAII COOK PT. TO UPOLU PT.. Page/Side: N/A					
LAST EDITION	No new editions of chart 19327 will be published. It will be canceled on 04-Oct-23. Comparable or larger scale Electronic Navigational Chart (ENC) coverage is available. See "Cancellation of NOAA Paper and Raster Nautical Charts" in Section I of this LNM for details. A list of all canceled NOAA charts is at https://www.charts.noaa.gov/MCD/Dole.shtml .				--
				NOS	--
19330	11th Ed.	01-SEP-06	Last LNM: 34/14	WGS 84	31/23
<i>ChartTitle: Kawaihae Bay-Island of Hawaii</i>					
Main Panel 2783 KAWAIHAE BAY ISLAND OF HAWAII. Page/Side: N/A					
LAST EDITION	No new editions of chart 19330 will be published. It will be canceled on 04-Oct-23. Comparable or larger scale Electronic Navigational Chart (ENC) coverage is available. See "Cancellation of NOAA Paper and Raster Nautical Charts" in Section I of this LNM for details. A list of all canceled NOAA charts is at https://www.charts.noaa.gov/MCD/Dole.shtml .				--
				NOS	--
19342	11th Ed.	01-FEB-10	Last LNM: 50/13	WGS 84	31/23
<i>ChartTitle: Kahului Harbor and approaches;Kahului Harbor</i>					
Main Panel 2788 KAHULUI HBR AND APPROACHES ISL OF MAUI. Page/Side: N/A					
LAST EDITION	No new editions of chart 19342 will be published. It will be canceled on 04-Oct-23. Comparable or larger scale Electronic Navigational Chart (ENC) coverage is available. See "Cancellation of NOAA Paper and Raster Nautical Charts" in Section I of this LNM for details. A list of all canceled NOAA charts is at https://www.charts.noaa.gov/MCD/Dole.shtml .				--
				NOS	--
19347	19th Ed.	01-JUN-14	Last LNM: 04/15	WGS 84	31/23
<i>ChartTitle: Channels between Molokai, Maui, Lāna'i and Kaho'olawe;Manele Bay</i>					
Main Panel 2790 CHANNELS BETWEEN MOLOKAI. Page/Side: A					
LAST EDITION	No new editions of chart 19347 will be published. It will be canceled on 04-Oct-23. Comparable or larger scale Electronic Navigational Chart (ENC) coverage is available. See "Cancellation of NOAA Paper and Raster Nautical Charts" in Section I of this LNM for details. A list of all canceled NOAA charts is at https://www.charts.noaa.gov/MCD/Dole.shtml .				--
				NOS	--
19348	8th Ed.	01-DEC-03	Last LNM: 33/12	WGS 84	31/23
<i>ChartTitle: Approaches to Lahaina, Island of Maui</i>					
Main Panel 2792 APPROACHES TO LAHAINA ISLAND OF MAUI. Page/Side: N/A					
LAST EDITION	No new editions of chart 19348 will be published. It will be canceled on 04-Oct-23. Comparable or larger scale Electronic Navigational Chart (ENC) coverage is available. See "Cancellation of NOAA Paper and Raster Nautical Charts" in Section I of this LNM for details. A list of all canceled NOAA charts is at https://www.charts.noaa.gov/MCD/Dole.shtml .				--
				NOS	--
19351	11th Ed.	01-SEP-11	Last LNM: 31/14	WGS 84	31/23
<i>ChartTitle: Channels between O'ahu, Moloka'i and Lāna'i;Kaunalapa'u Harbor</i>					
Main Panel 2794 CHANNELS BETWEEN OAHU MOLOKAI & LANAI. Page/Side: N/A					
LAST EDITION	No new editions of chart 19351 will be published. It will be canceled on 04-Oct-23. Comparable or larger scale Electronic Navigational Chart (ENC) coverage is available. See "Cancellation of NOAA Paper and Raster Nautical Charts" in Section I of this LNM for details. A list of all canceled NOAA charts is at https://www.charts.noaa.gov/MCD/Dole.shtml .				--
				NOS	--
19353	13th Ed.	01-MAR-10	Last LNM: 33/12	WGS 84	31/23
<i>ChartTitle: Harbors of Moloka'i Kaunakakai Harbor;Pūkoo Harbor;Kamalō Harbor;Kolo Harbor;Lono Harbor</i>					

Unrelated 2796 KAUNAKAKAI HARBOR. Page/Side: N/A

LAST EDITION	No new editions of chart 19353 will be published. It will be canceled on 04-Oct-23. Comparable or larger scale Electronic Navigational Chart (ENC) coverage is available. See "Cancellation of NOAA Paper and Raster Nautical Charts" in Section I of this LNM for details. A list of all canceled NOAA charts is at https://www.charts.noaa.gov/MCD/Dole.shtml .	NOS --	--
--------------	--	-----------	----

19381	9th Ed.	01-DEC-08	Last LNM: 37/12	WGS 84	31/23
--------------	----------------	------------------	------------------------	---------------	--------------

*ChartTitle: Island of Kaua'i***Main Panel 2810 ISLAND OF KAUAI. Page/Side: N/A**

LAST EDITION	No new editions of chart 19381 will be published. It will be canceled on 04-Oct-23. Comparable or larger scale Electronic Navigational Chart (ENC) coverage is available. See "Cancellation of NOAA Paper and Raster Nautical Charts" in Section I of this LNM for details. A list of all canceled NOAA charts is at https://www.charts.noaa.gov/MCD/Dole.shtml .	NOS --	--
--------------	--	-----------	----

19382	16th Ed.	01-MAR-10	Last LNM: 17/12	WGS 84	31/23
--------------	-----------------	------------------	------------------------	---------------	--------------

*ChartTitle: Port Allen Island of Kaua'i***Main Panel 2811 PORT ALLEN ISLAND OF KAUAI. Page/Side: N/A**

LAST EDITION	No new editions of chart 19382 will be published. It will be canceled on 04-Oct-23. Comparable or larger scale Electronic Navigational Chart (ENC) coverage is available. See "Cancellation of NOAA Paper and Raster Nautical Charts" in Section I of this LNM for details. A list of all canceled NOAA charts is at https://www.charts.noaa.gov/MCD/Dole.shtml .	NOS --	--
--------------	--	-----------	----

19383	18th Ed.	01-OCT-10	Last LNM: 09/13	WGS 84	31/23
--------------	-----------------	------------------	------------------------	---------------	--------------

*ChartTitle: Kaua'i Nawiliwili Bay***Main Panel 2812 NAWILIWILI BAY. Page/Side: N/A**

LAST EDITION	No new editions of chart 19383 will be published. It will be canceled on 04-Oct-23. Comparable or larger scale Electronic Navigational Chart (ENC) coverage is available. See "Cancellation of NOAA Paper and Raster Nautical Charts" in Section I of this LNM for details. A list of all canceled NOAA charts is at https://www.charts.noaa.gov/MCD/Dole.shtml .	NOS --	--
--------------	--	-----------	----

19386	12th Ed.	01-FEB-13	Last LNM: 17/12	WGS 84	31/23
--------------	-----------------	------------------	------------------------	---------------	--------------

*ChartTitle: Kaua'i Approaches to Waimea Bay***Main Panel 2815 APPROACHES TO WAIMEA BAY. Page/Side: N/A**

LAST EDITION	No new editions of chart 19386 will be published. It will be canceled on 04-Oct-23. Comparable or larger scale Electronic Navigational Chart (ENC) coverage is available. See "Cancellation of NOAA Paper and Raster Nautical Charts" in Section I of this LNM for details. A list of all canceled NOAA charts is at https://www.charts.noaa.gov/MCD/Dole.shtml .	NOS --	--
--------------	--	-----------	----

83484	12th Ed.	01-APR-10	Last LNM:	WGS 84	31/23
--------------	-----------------	------------------	------------------	---------------	--------------

*ChartTitle: U.S. Possessions in Samoa Islands Manua Islands;Pago Pago Harbor;Tutuila Island;Rose Atoll;Swains Island***Unrelated 2843 SAMOA ISLANDS PAGO PAGO HARBOR. Page/Side: N/A**

LAST EDITION	No new editions of chart 83484 will be published. It will be canceled on 04-Oct-23. Comparable or larger scale Electronic Navigational Chart (ENC) coverage is available. See "Cancellation of NOAA Paper and Raster Nautical Charts" in Section I of this LNM for details. A list of all canceled NOAA charts is at https://www.charts.noaa.gov/MCD/Dole.shtml .	NOS --	--
--------------	--	-----------	----

83637	5th Ed.	01-JUL-14	Last LNM: 27/14	NAD 83	31/23
--------------	----------------	------------------	------------------------	---------------	--------------

*ChartTitle: Johnston Atoll;Johnston Island Harbor***Main Panel 2846 JOHNSTON ATOLL. Page/Side: A**

LAST EDITION	No new editions of chart 83637 will be published. It will be canceled on 04-Oct-23. Comparable or larger scale Electronic Navigational Chart (ENC) coverage is available. See "Cancellation of NOAA Paper and Raster Nautical Charts" in Section I of this LNM for details. A list of all canceled NOAA charts is at https://www.charts.noaa.gov/MCD/Dole.shtml .	NOS --	--
--------------	--	-----------	----

OIL RIG MOVEMENT**Drill Rigs/Vessels Removed**

<u>Latitude</u>	<u>Longitude</u>	<u>Block</u>	<u>Rigs/Vessel</u>	<u>Chart</u>	<u>Type</u>	<u>Status</u>
None						

Drill Rigs/Vessels Established

<u>Latitude</u>	<u>Longitude</u>	<u>Block</u>	<u>Rigs/Vessel</u>	<u>Chart</u>	<u>Type</u>	<u>Status</u>
None						

SECTION V - ADVANCE NOTICES

This section contains advance notice of approved projects, changes to aids to navigation, or upcoming temporary changes such as dredging, etc. Mariners are advised to use caution while transiting these areas.

SUMMARY OF ADVANCED APPROVED PROJECTS

<u>Approved Project(s)</u>	<u>Project Date</u>	<u>Ref. LNM</u>
None		

Advance Notice(s)

HI ISLANDS - HAWAII - POHOIKI BAY BREAKWATER LIGHT 2 (43/21)

The Coast Guard is proposing discontinuing Pohoiki Bay Breakwater Light 2 (LLNR 28135) due to shoaling and sand accumulation which has made the waterway leading to Pohoiki Bay boat ramp at Isaac Hale Park un-navigable. The Coast Guard welcomes public comment on the proposal to discontinue. Please contact Fourteenth Coast Guard District, at (808) 535-3409, or via email at D14-DG-PJ-dpw@uscg.mil, to comment.

SECTION VI - PROPOSED CHANGES

Periodically, the Coast Guard evaluates its system of aids to navigation to determine whether the conditions for which the aids to navigation were established have changed. When changes occur, the feasibility of improving, relocating, replacing, or discontinuing aids are considered. This section contains notice(s) of non-approved, proposed projects open for comment. SPECIAL NOTE: Mariners are requested to respond in writing to the District office unless otherwise noted (see banner page for address).

PROPOSED WATERWAY PROJECTS OPEN FOR PUBLIC COMMENT

<u>Proposed Project(s)</u>	<u>Closing</u>	<u>Docket No.</u>	<u>Ref. LNM</u>
None			

Proposed Change Notice(s)

None

SECTION VII - GENERAL

This section contains information of general concern to the Mariners. Mariners are advised to use caution while transiting these areas.

PRIVATE AIDS TO NAVIGATION (01/08)

The term private aids to navigation (ATON) includes all marine aids to navigation operated in the navigable waters of the United States other than those operated by the Federal Government. Private ATON includes lighted structures and day beacons, lighted and unlighted buoys, RACONS and fog signals. Almost half of the aids to navigation established in the Fourteenth District are operated and maintained by private interests. These interests include private citizens, marina and yacht clubs, municipal and state governments, construction and dredging companies, research and non-profit organizations, beachfront associations, and large industrial concerns.

No person, public body or instrumentality not under the control of the Commandant, exclusive of the Armed Forces, shall establish and maintain, discontinue, change or transfer ownership of any aid to maritime navigation, without first obtaining permission to do so from the Commandant and the Army Corps of Engineers.

Owners contemplating establishing such buoys should review CFR 33 Part 66 and contact the appropriate authority, usually the Army Corps of Engineers, to determine what additional requirements may exist. Additionally, private aids on navigable waters regulated by the federal government require either a Coast Guard permit or Coast Guard letter of no objection. The application for a letter of no objection or for a permit, form CG-2554, can be obtained by emailing the Private ATON Manager at the email given below.

The Private ATON Manager provides applicants assistance in processing their paperwork. Federal regulations governing aids to navigation, copies of permits previously issued to the applicant, illustrations of standard markings, and lists of commercial ATON manufacturers are available. Questions and requests should be directed to:

Commander (dpw)
Fourteenth Coast Guard District
300 Ala Moana Boulevard, 9-220
Honolulu, HI 96850-4982
Attn: Private ATON Manager
Tel: (808) 535-3409 / 3408

PRIVATE AIDS TO NAVIGATION (01/08)

Email: D14-DG-PJ-dpw@uscg.mil

U.S. Army Corps of Engineers
Honolulu District
Building 230
Ft. Shafter, HI 96858-5440
Attn: CEPOH-EC-R
Phone: (808)-835-4004

Mariners are reminded that they have a responsibility to report discrepant private aids to the nearest Coast Guard unit. The failure of a mariner to report a discrepant aid to navigation may result in casualties to others. All aids to navigation in the Fourteenth District, both private and federally maintained, are user monitored. When owners receive discrepancy reports from the Coast Guard, they are obligated to take immediate action to correct the discrepancy. Owners are reminded of their responsibility for the proper operation and maintenance of their private aids to navigation. All classes of private aids to navigation shall be maintained in proper operating condition. They are subject to inspection by the Coast Guard at any time and without prior notice. The Coast Guard issues broadcast notice to mariners for reported discrepancies that remain in effect until the discrepancy is corrected or is published in the Local Notice to Mariners.

FISH AGGREGATING DEVICE (FAD) BUOY INFORMATION AND DISCREPANCIES (28/21)

The State of Hawaii has placed Fish Aggregating Devices (FADs) in the waters surrounding the main Hawaiian Islands. These buoys attract schools of tuna and other important pelagic fishes, such as dolphinfish (Mahimahi), wahoo (Ono) and billfish. FADs allow fishermen to easily locate and catch these species. The buoys are anchored using approximately 2.5 miles of mooring line which creates a very large swing circle. Mariners are advised that these buoys may maneuver anywhere from three to five miles from their charted positions.

Mariners requesting up to date information concerning Hawaiian Island's FAD Buoys, or reports of discrepancies, may either visit the Hawaii FAD web site at <http://www.himb.hawaii.edu/fads>, contact Mr. Warren Cortez at (808) 956-0684, or send written correspondence to:

Mr. Warren Cortez
Fish Aggregating Devices Program
965 N. Nimitz Hwy
Honolulu, HI 96817

Mariners requesting up to date information concerning Guam's FAD Buoys, or reports of discrepancies, may either visit the Guam FAD web site at www.dawr.guam.gov, contact Mr. Brent Tibbatts at Brent.Tibbatts@gmail.com 671.735.3955/56, or send written correspondence to:

Mr. Brent Tibbatts
Guam Department of Agriculture
Division of Aquatics and Wildlife Resources
163 Dairy Road
Mangilao, Guam 96913

NAVIGATION INTERNET SITES (33/05)

Chart Corrections: <http://nauticalcharts.noaa.gov/mcd/updates/index.htm>
Light List Corrections: <https://www.navcen.uscg.gov/index.php?pageName=lightLists>
Coast Pilot Corrections: <http://nauticalcharts.noaa.gov/nsd/cpdownload.htm>
NOAA Weather Buoy Sites: <http://www.ndbc.noaa.gov/Maps/rmd.shtml>
Hawaii Weather: <http://www.prh.noaa.gov/pr/hnl/>
Online Chart Viewer: <http://www.nauticalcharts.noaa.gov/mcd/OnLineViewer>

(For NOAA Print-on-Demand (POD) charts only)

NOAA and Coast Survey, in partnership with OceanGrafix, LLC, offer mariners official nautical charts that are continuously updated by NOAA cartographers up to the latest Notice to Mariners and to all Critical Safety Information known to the Coast Survey in advance of its publication in a Notice. From NOAA digital files, OceanGrafix prints corrected charts, to order, for sale to mariners through the OceanGrafix retail network. Produced and distributed by authority of NOAA, these charts meet all U.S. Coast Guard chart carriage requirements, including the requirements for updating (Titles 33 & 46 CFR). New Editions are available 2-8 weeks before their release as a traditional NOAA chart.

These new charts feature operational information for the commercial mariner, and education and safety information for the recreational boater. They have brighter colors and a higher contrast for better readability in various light conditions. They come either laminated or on water resistant paper.

POD charts are available through a POD chart agents at <http://OceanGrafix.com/>, 1-877-56CHART, or contact NOAA at <http://nauticalcharts.noaa.gov/pod/Pod.htm>. For questions contact NOAA at help@nauticalcharts.gov.

HI ISLANDS - U.S. DEPARTMENT OF HOMELAND SECURITY - DIVER SAFETY ADVISORY (25/09)

This advisory is issued to increase the safety of all open water and waterway users throughout the Hawaiian Islands and is issued in conjunction with the Department of Land and Natural Resources (DLNR) pilot program focusing on diver safety.

Over the years there have been an increased number of reports of near misses between divers and waterborne crafts in Oahu, Maui and Hawaii. In most cases, these near misses have happened in near coastal waters and often when conditions were choppy.

The following suggested measures can help avoid near misses:

Become familiar with your transit route and destination area before heading out.

Remain vigilant of your surroundings and post extra lookouts in choppy waters and inclement weather.

HI ISLANDS - U.S. DEPARTMENT OF HOMELAND SECURITY - DIVER SAFETY ADVISORY (25/09)

Stay clear of federal Aids to Navigation and commercial delineated channels.
Use all appropriate sound and visual signals.
Postpone trips until the weather and sea conditions improve.

All open water and waterway users are also highly encouraged to visit the Coast Guard Sector Honolulu Homeport website for Safety and Security Zone information for the Hawaiian Islands at: <http://homeport.uscg.mil/> under the Honolulu Port Directory tab and Safety and Security section.

The most updated charts for the Hawaiian Islands can be found on the National Oceanic and Atmospheric Administration (NOAA) website: <http://www.prh.noaa.gov/pr/hnl> or <http://www.nauticalcharts.noaa.gov/mcd/OnLineViewer.html>.

Any and all life threatening or hazardous conditions including off station or missing buoys should be reported immediately to the U.S. Coast Guard at (808) 842-2600.

PACIFIC OCEAN - NATIONAL WILDLIFE REFUGE - RESTRICTED FOR ENTRY (22/11)

The U.S. Department of the Interior, Fish and Wildlife Service, National Wildlife Refuge System, Pacific Reefs National Wildlife Refuge Complex manages ten National Wildlife Refuges within the Fourteenth Coast Guard District. Eight of these Refuges, described below, consist of waters and submerged and emergent lands. The remaining two Refuges, the Marianas Arc of Fire and the Mariana Trench National Wildlife Refuges, consist only of submerged lands.

The waters and submerged and emergent lands of National Wildlife Refuges are subject to the regulations governing the National Wildlife Refuge System found in Parts 25-32 of Title 50, Code of Federal Regulations. Therefore, except as provided by international law, these areas are closed to all forms of entry, other than innocent passage, unless specifically authorized by a Special Use Permit issued by the U.S. Fish and Wildlife Service. Should you have any questions, please contact the Pacific Reefs National Wildlife Refuge Complex by emailing the Project Leader at Pacific_Reefs@fws.gov or by calling 808-792-9560.

Baker Island National Wildlife Refuge. This Refuge includes all of Baker Island approximately at Latitude 0-11-45 North and Longitude 176-28-45 West, together with its territorial waters extending outward 12 nautical miles (13.8 mi; 22.2 km) from the mean low water line of the island.

Howland Island National Wildlife Refuge. This Refuge includes all of Howland Island approximately at Latitude 0-48-30 North and Longitude 176-37 West, together with its territorial waters extending outward 12 nautical miles (13.8 mi; 22.2 km) from the mean low water line of the island.

Jarvis Island National Wildlife Refuge. This Refuge includes all of Jarvis Island approximately at Latitude 0-22-20 South and Longitude 160-00 West, together with its territorial waters extending outward 12 nautical miles (13.8 mi; 22.2 km) from the mean low water line of the island.

Johnston Atoll National Wildlife Refuge. This Refuge includes all of Johnston Atoll approximately at Latitude 16-44 North and Longitude 169-31 West, together with its territorial waters extending outward 12 nautical miles (13.8 mi; 22.2 km) from the mean low water line of the atoll. However, portions of the emergent land at Johnston Atoll are currently under the administrative jurisdiction of the Department of the Air Force, which controls all access to areas under its administrative jurisdiction.

Kingman Reef National Wildlife Refuge. This Refuge includes all of Kingman Reef approximately at Latitude 6-24-30 North and Longitude 162-23-30 West, together with its territorial waters extending outward 12 nautical miles (13.8 mi; 22.2 km) from the mean low water line of the reef.

Palmyra Atoll National Wildlife Refuge. This Refuge includes all of Palmyra Atoll approximately at Latitude 05-53 North and Longitude 162-05 West, together with its territorial waters extending outward 12 nautical miles (13.8 mi; 22.2 km) from the mean low water line of the atoll. However, portions of the emergent land at Palmyra Atoll are currently owned and managed as a nature preserve by The Nature Conservancy, which controls all access to areas under its ownership.

PACIFIC OCEAN - NATIONAL WILDLIFE REFUGE - RESTRICTED FOR ENTRY CONTINUED (22/11)

Rose Atoll National Wildlife Refuge. This Refuge includes all of Rose Atoll approximately at Latitude 14-32-45 South and Longitude 168-9-24 West, the seaward extent being the extreme low water line outside the perimeter reef except at the entrance channel where the boundary is a line extended between the extreme low water lines on each side of the entrance channel.

Wake Atoll National Wildlife Refuge. This Refuge includes all of Wake Atoll approximately at Latitude 19-18 North and Longitude 166-38 East, together with its territorial waters extending outward 12 nautical miles (13.8 mi; 22.2 km) from the mean low water line of the atoll. However, in accordance with Presidential Proclamation No. 8336, the emergent land at Wake Atoll is currently under the management of the Department of the Air Force, which controls all access to areas under its management.

HI ISLANDS - KAHO'OLAWA ISLAND RESERVE COMMISSION - NOTICE OF OPEN WATERS SCHEDULE (52/22)

Notice to Trollers: The dates below mark the Permitted Trolling Schedule in Zone B for January -- December 2023. Hawaii Administrative Rules (H.A.R.) 13-261 requires that all vessels must register with the Kaho'olawe Island Reserve Commission (KIRC) before entering the Reserve to troll during designated Permitted Trolling dates. To register please contact Dean Tokishi at dean.tokishi@hawaii.gov 808-243-5022, visit Kahoolawe.hawaii.gov or pick up registration packet at the Division of Boating and Recreation.

12:01 a.m Saturdays to 11:59 p.m. Sundays as follows:

January 21 – 22 ; 28 – 29
February 11 – 12 ; 25 – 26
March 11 – 12 ; 18 – 19
April 15 – 16 ; 29 – 30
May 13 – 14 ; 20 – 21
June 03 – 04 ; 17 – 18
July 08 – 09 ; 29 – 30

HI ISLANDS - KAHOLAWE ISLAND RESERVE COMMISSION - NOTICE OF OPEN WATERS SCHEDULE (52/22)

August 12 – 13 ; 26 – 27
September 09 – 10 ; 23 – 24
October 07 – 08 ; 21 – 22
November 04 – 05 ; 18 – 19
December 02 – 03 ; 16 – 17

The Kaho'olawe Island Reserve (defined as the submerged lands and waters within two nautical miles of the island) is divided into two zones; Zones A and B. These zones are defined as:

Zone A: Includes the island of Kaho'olawe and all the submerged lands and waters between the shoreline of Kaho'olawe and the 30-fathom (180 ft.) depth which surrounds Kaho'olawe (HAR 13-261). Unauthorized entry into Zone A is prohibited at all times except in case of emergency.
Zone B: All waters and submerged lands between the 30-fathom (180 ft.) depth surrounding Kaho'olawe and two nautical miles from the shoreline of the island. Unauthorized entry into Zone B is prohibited at all times except for trolling as authorized by KIRC on the days stipulated by the Permitted Trolling Schedule as listed above or in case of emergency. Trollers must remain underway, making way at all times while in Zone B. ALL OTHER FISHING, OCEAN RECREATION, AND ANY OTHER ACTIVITIES ARE STRICTLY PROHIBITED.

WARNING! Kaho'olawe and its surrounding submerged lands and waters contain unknown quantities of unexploded ordnance which are hazardous to public health and safety.
(Authority: (H.R.S. §6K, H.A.R. §13-261)

See enclosure 2

HI ISLANDS - OAHU - KANEOHE BAY - MILITARY OPERATIONS (09/09)

Military amphibious and search and rescue operations may be underway at any time, day or night, within Kaneohe Bay in the vicinity of 21-26-06.83N/157-46-11.00W and 21-26-45.00N/157-46-55.00W (approximately .5 NM south of Mokapu Peninsula). Support surface craft will be equipped with appropriate day/night signals and markings and can be reached on VHF-Ch 82. In the interest of safety, it is requested that all vessels that use Sonar contact Water Front Operations on VHF-Ch 82A or by phone at (808) 257-2941 to avoid injury to divers that may be in the area.

HI ISLANDS - OAHU - KANEOHE BAY - PYRAMID ROCK - HAZARDOUS OPERATIONS (31/23)

The Pyramid Rock / Fort Hase / Kaneohe Bay Danger Zone is located in ocean waters as described by the below coordinates and is closed at all times to surface craft, swimmers, and divers, with the exception of authorized personnel. Mark B.J. Edmonson at mark.bj.edmonson@usmc.mil.

The Danger Zone is bounded by the following coordinates:

21-27.97°N / 157-45.78°W
21-29.88°N / 157-44.78°W
21-29.38°N / 157-43.68°W
21-27.47°N / 157-44.68°W

The following are hazardous operations to mariners for August 02, 2023 through August 08, 2023:

02 Aug N/A
03 Aug N/A
04 Aug N/A
05 Aug N/A
06 Aug N/A
07 Aug N/A
08 Aug 1630 - 2130 KBay

See enclosure 1

HI ISLANDS - OAHU - KANEOHE BAY - ULUPAU CRATER WEAPONS DANGER ZONE - HAZARDOUS OPERATIONS (31/23)

All vessels/watercraft operating within the Mokapu Peninsula near the Ulupau Crater located on Marine Corps Base Hawaii shall vacate the danger zone at the best speed and by the most direct route.

Danger zone will include areas from (Zone 1 NE) 21°30'59.66"N / 157°44'05.97"W to 21°29'16.58"N / 157°40'30.19"W to (Zone 2 SE) 21°25'01.79"N / 157°40'33.70"W to 21°27'11.84"N / 157°43'53.83"W, forming a triangular figure.

The following are hazardous operations to mariners for August 02, 2023 through August 08, 2023

Zone 1 (NE Range)
02 Aug 0600 - 2300
03 Aug 0600 - 2300
04 Aug 0600 - 2300
05 Aug N/A
06 Aug N/A
07 Aug 0600 - 1730
08 Aug 0600 - 2300

Zone 2 (SE Range)
02 Aug 0600 - 2300
03 Aug 0600 - 2300

HI ISLANDS - OAHU - KANEOHE BAY - ULUPAU CRATER WEAPONS DANGER ZONE - HAZARDOUS OPERATIONS (31/23)

04 Aug 0600 - 2300
05 Aug N/A
06 Aug N/A
07 Aug 0600 - 1730
08 Aug 0600 - 2300

See enclosure 1

HI ISLANDS - OAHU - WAIMANALO BAY - HAZARDOUS OPERATIONS (31/23)

The Waimanalo Bay Danger Zone is located in ocean waters as described by the below coordinates and is closed at all times to surface craft, swimmers, and divers, with the exception of authorized personnel. Mark B.J. Edmonson at mark.bj.edmonson@usmc.mil.

The Danger Zone is bounded by the following coordinates:

21-21'11"N / 157-42'16"W
21-21'10"N / 157-42'24"W
21-21'50"N / 157-42'34"W
21-21'49"N / 157-42'28"W

The following are hazardous operations to mariners for August 02, 2023 through August 8, 2023:

02 Aug 0900 - 2359
03 Aug 0900 - 2359
04 Aug N/A
05 Aug N/A
06 Aug N/A
07 Aug N/A
08 Aug N/A

See enclosure 1

HI ISLANDS - OAHU - EWA BEACH - HAZARDOUS OPERATIONS (31/23)

The Puuloa Danger Zone is located in ocean waters as described by the below coordinates and is closed at all times to surface craft, swimmers, and divers, with the exception of authorized personnel. Mark B.J. Edmonson at mark.bj.edmonson@usmc.mil.

The Danger Zone is bounded by the following coordinates:

21-18-21N / 157-59-14W
21-18-11N / 158-00-17W
21-17-11N / 158-00-06W
21-17-22N / 157-59-03W

The following are hazardous operations to mariners for August 02, 2023 through August 08, 2023:

02 Aug 0700 - 1700
03 Aug 0700 - 1700
04 Aug 0700 - 1600
05 Aug N/A
06 Aug N/A
07 Aug 0700 - 1700
08 Aug 0700 - 1700

See enclosure 1

HI ISLANDS - SOUTH COAST OAHU - HAZARDOUS OPERATIONS - HOT AREAS (50/07)

FACSFAC Pearl Harbor established Special Operating Areas Four (SOA-4) as a permanent "HOT AREA" named "KAPU" on April 15, 1995. FACSFAC effective hours are 0700W to 2300W (Monday - Saturday from 1700Z - 0900Z) Monday - Friday, and on weekend's 0800W - 1600W (Weekends from 1800Z - 0200Z) or by request. Activities include intermittent naval gunnery exercises and airborne ordnance drops. "KAPU" is also designated as the emergency jettison area for aircraft with hung stores, etc. Hot area "KAPU" is bounded by the following coordinates 20-46N/158-16W, 20-42 N/158-04W, 20-13N/158-36W and 20-04N/158-11W. Scheduling authority is FACSFAC Pearl Harbor call-sign "HULA DANCER". "HULA DANCER" can be reached on primary 266.4/127.0 MHz, or secondary 336.8/132.4 MHZ or telephone (808) 472-7333/7337 and may authorize transits through these areas on a case by-case basis.

HI ISLANDS - KAUAI - BARKING SANDS - PACIFIC MISSILE RANGE FACILITY HI AREA - HAZARDOUS OPERATIONS (31/23)

Intermittent missile firing operations are conducted by the Pacific Missile Range Facility (PMRF), Barking Sands, Kauai, in the Whiskey 188 (W-188) operating area. Operations are conducted periodically throughout each week in an area bound by the following coordinates:

22:00N/159:51W, 22:00N/160:00W, 22:04N/160:06W, 21:59.5N/160:21W, 22:05N/161:35W, 22:45N/161:25W, 22:56N/161:49W,
23:34N/161:18.6W, 23:57N/160:41W, 25:41N/161:36W, 26:00N/159:58W, 25:47N/158:15W, 23:54N/158:15W, 22:20N/159:09W,
22:21N/159:30W, 22:13N/159:42W, 22:00N/159:51W

HI ISLANDS - KAUAI - BARKING SANDS - PACIFIC MISSILE RANGE FACILITY HI AREA - HAZARDOUS OPERATIONS (31/23)

Intermittent high power radar operations are conducted by PMRF at the following position: 22:03N/159:47W

Request all mariners remain at least one mile off the coastline between Kokole Point and Nohili Point.

Vessels may be requested to alter course due to firing operations and are requested to contact "Pacific Missile Range Facility" on VHF-Ch 16 prior to entering the above boundaries. If unable to contact the PMRF prior to entering or while in the warning area, relay messages through U.S. Coast Guard Honolulu. Vessels inbound and outbound for Hawaiian ports will create the least interference to firing operations as well as enhance vessel's safety by passing South of the Islands of Kauai and Niihau during the specified times. Federal law provides for civil penalties of \$40,000 and/or criminal penalties of 6 years in prison for each violation of the PMRF safety zone during the schedule of designated activity (33CFR 165.1406).

The following are hazardous operations to mariners for August 02, 2023 through August 09, 2023:

02 AUG NO HAZARDOUS OPERATIONS SCHEDULED.
03 AUG NO HAZARDOUS OPERATIONS SCHEDULED.
04 AUG NO HAZARDOUS OPERATIONS SCHEDULED.
05 AUG NO HAZARDOUS OPERATIONS SCHEDULED.
06 AUG NO HAZARDOUS OPERATIONS SCHEDULED.
07 AUG 0730 - 1600 KAULAKAHI CHANNEL AND NOHILI POINT TO 60 NM WEST THROUGH NORTH.
08 AUG 0430 - 2359 KAULAKAHI CHANNEL AND NOHILI POINT TO 60 NM WEST THROUGH NORTH.
09 AUG 0001 - 2359 KAULAKAHI CHANNEL AND NOHILI POINT TO 60 NM WEST THROUGH NORTH.

MARINE EVENTS

This section contains information of general concern to the mariner. All event forms must be received no later than noon on Tuesday a week prior to the event. Mariners are advised to use caution while transiting these areas:

HI ISLANDS - OAHU - FIREWORKS (22/23)

Hawaii Explosives and Pyrotechnics, Inc. will be conducting a land fireworks display neighboring Duke Kahanamoku Beach on Fridays from 1915 - 2030 June 01, 2023 to December 29, 2023. Please require all vessels to observe the safety/fallout zone radius from the firing site. Vessels and spectators are advised to maintain a distance of at least 210 feet radius from the launch site.

Contact (808) 968-0600 for further information.

See Enclosure 5

SECTION VIII - LIGHT LIST CORRECTIONS

An Asterisk *, indicates the column in which a correction has been made to new information

(1) No.	(2) Name and Location	(3) Position	(4) Characteristic	(5) Height	(6) Range	(7) Structure	(8) Remarks
None							

PUBLICATION CORRECTIONS

None

ENCLOSURES**ENCLOSURE (1)**

HI ISLANDS - OAHU - KANEOHE BAY HAZARDOUS OPERATIONS (18/07)

ENCLOSURE (2)

HI ISLANDS - KAHOLAWE ISLAND RESERVE COMMISSION - NOTICE OF OPEN WATERS SCHEDULE (52/22) see attachment doc

ENCLOSURE (3)

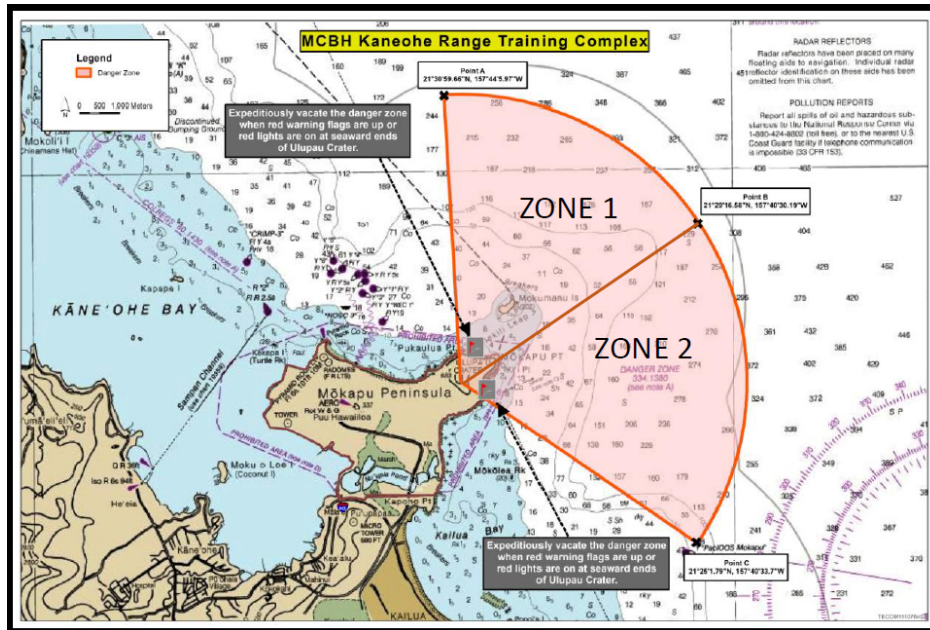
HI ISLANDS - ALL ISLANDS - SAILDRONE OPS

ENCLOSURE (5)

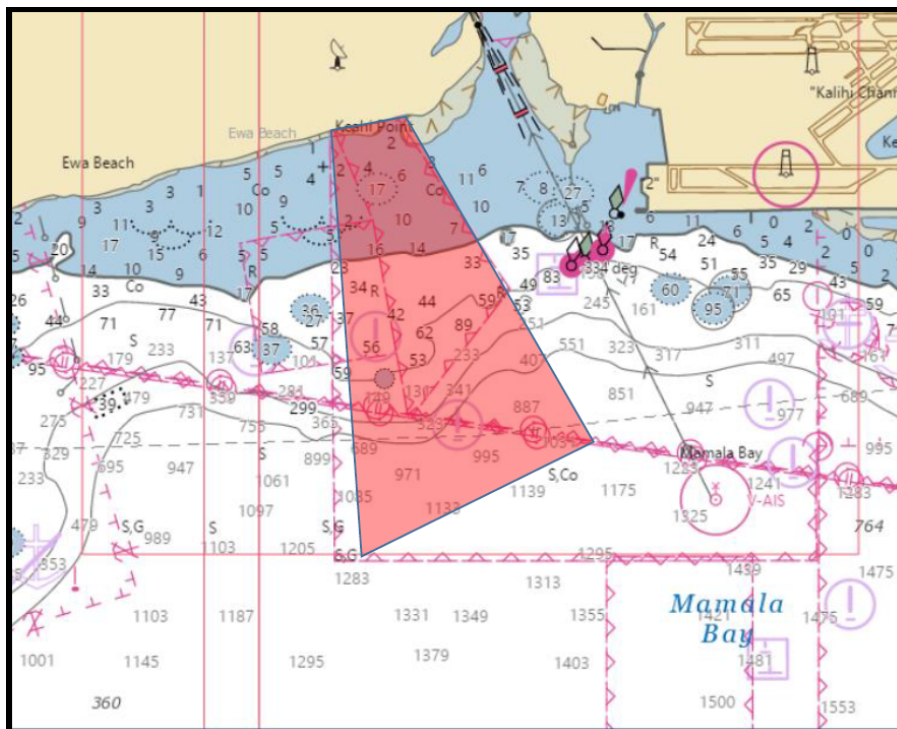
HI ISLANDS - OAHU - HONOLULU FIREWORKS

M. Day
Rear Admiral, U.S. Coast Guard
Commander, Fourteenth Coast Guard District

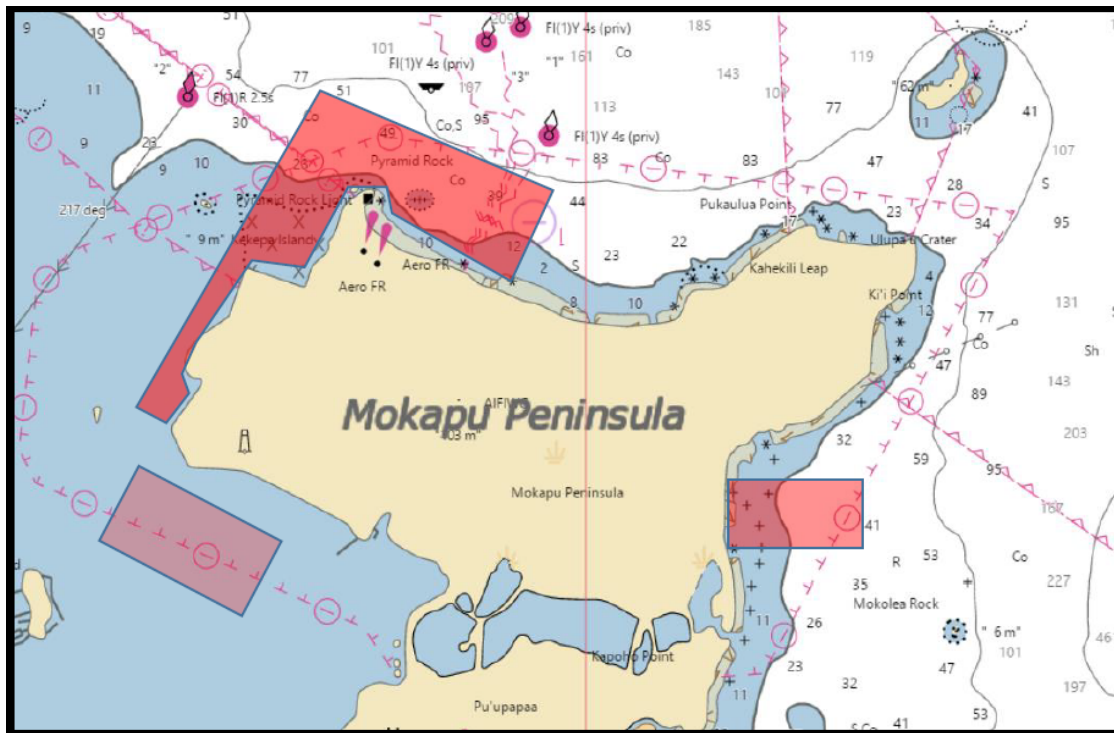
Mokapu Point



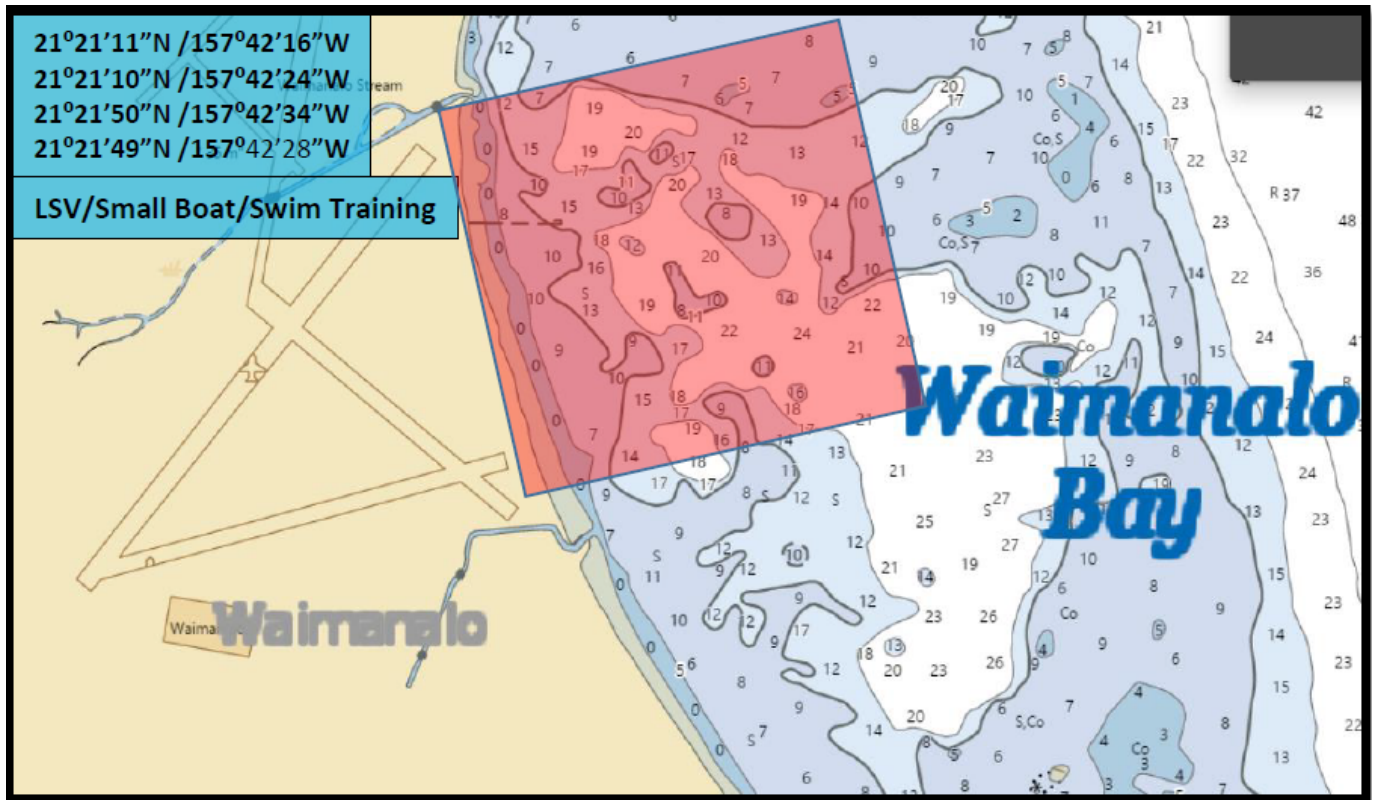
Ewa Beach



Pyramid Rock/Fort Hase/Kaneohe Bay



Waimanalo Bay





COMMISSION MEMBERS

JOSHUA KAKUA, Ed.D
Chairperson
CARMEN HULU LINDSEY
Vice-Chair

SUZANNE CASE
'ĀNELA EVANS
SAUMALU MATAAFA
BENTON KEALII PANG, Ph.D
MICHELLE PESCAIA

Michael K. Nāho'opi'i
Executive Director

KŪKULU KE EA A KANALOA
KAHO'OLawe ISLAND RESERVE COMMISSION

811 Kolu Street, Suite 201, Wailuku, HI 96793
Telephone (808) 243-5020 Fax (808) 243-5885
Website: <http://kahoolawe.hawaii.gov>

Notice of Permitted Trolling Schedule:

January-December 2023
Kaho'olawe Island Reserve
Zone B (> 30 fathoms)

Notice to Trollers: The dates below mark the Permitted Trolling Schedule in Zone B for January -- December 2023. **Hawaii Administrative Rules (H.A.R) 13-261 requires that all vessels must register with the Kaho'olawe Island Reserve Commission (KIRC) before entering the Reserve to troll during designated Permitted Trolling dates. To register please contact Dean Tokishi at dean.tokishi@hawaii.gov 808-243-5022, visit Kahoolawe.hawaii.gov or pick up registration packet at the Division of Boating and Recreation.**

12:01 a.m Saturdays to 11:59 p.m Sundays as follows:

January	21 -22; 28 - 29	July	08 -09; 29 - 30
February	11 -12; 25 - 26	August	12 -13; 26 - 27
March	11 -12; 18 - 19	September	09 -10; 23 - 24
April	15 -16; 29 - 30	October	07 -08; 21 - 22
May	13 -14; 20 - 21	November	04 -05; 18 - 19
June	03 -04; 17 - 18	December	02 -03; 16 - 17

The Kaho'olawe Island Reserve (defined as the submerged lands and waters within two nautical miles of the island) is divided into two zones; Zones A and B. These zones are defined as:

Zone A: Includes the island of Kaho'olawe and all the submerged lands and waters between the shoreline of Kaho'olawe and the 30-fathom (180 ft.) depth which surrounds Kaho'olawe (HAR 13-261). **Unauthorized entry into Zone A is prohibited at all times except in case of emergency.**

Zone B: All waters and submerged lands between the 30-fathom (180 ft.) depth surrounding Kaho'olawe and two nautical miles from the shoreline of the island. Unauthorized entry into Zone B is prohibited at all times except for trolling as authorized by KIRC on the days stipulated by the Permitted Trolling Schedule as listed above or in case of emergency. Trollers must remain underway, making way at all times while in Zone B. **ALL OTHER FISHING, OCEAN RECREATION, AND ANY OTHER ACTIVITIES ARE STRICTLY PROHIBITED.**

WARNING! Kaho'olawe and its surrounding submerged lands and waters contain unknown quantities of unexploded ordnance which are hazardous to public health and safety.

(Authority: (H.R.S. §6K, H.A.R. §13-261))



RESEARCH EQUIPMENT IN WATER

Islands of Hawai'i
March 1st to Sept 1st, 2023

SAILDRONE, INC. will operate three Unmanned Surface Vehicles called Saildrones, to systematically and synoptically survey ocean chemistry in Hawaiian coastal waters around each Hawaiian Island to understand the variability in carbon, oxygen, nutrients, and phytoplankton concentrations both in general and between islands.

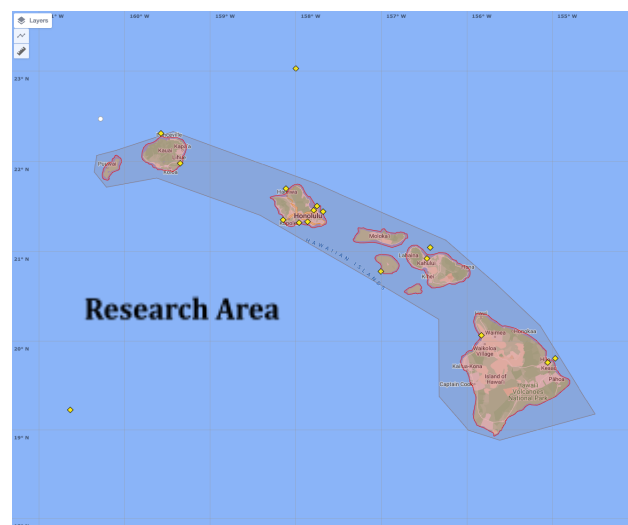
Overall map with a variety of water quality data: <http://www.pacioos.hawaii.edu/voyager/> or
(Zoomed into Hawai'i: bit.ly/3xLvFvv)

For more information on ocean chemistry work in the area : <https://www.pacioos.hawaii.edu/projects/acid/>

**VESSELS ARE REQUESTED TO TRANSIT THE AREA WITH CAUTION, AND REMAIN
GREATER THAN 500 METERS AWAY FROM THE RESEARCH EQUIPMENT.**

Saildrones are wind powered Unmanned Surface Vehicles that carry important oceanographic and fisheries acoustics research instrumentation and are controlled from shore through satellite communications.

- **Color: Orange**
- **Light: white all-round light**
- **Radar Reflector: Yes**
- **Notation: "Saildrone"**
- **Length: 23 ft & Width: 2 ft**
- **Height: 16 ft above water line**
- **Draft: 6 ft, Avg. speed: 3 kts**
- **GPS / AIS / Cameras: Yes**



RESEARCH CONTACTS

Dr. Christopher Sabine
Department of Oceanography
University of Hawai'i at Mā
noa
csabine@hawaii.edu

PhD Student Amy Markel
Department of Oceanography
University of Hawai'i at Mānoa
amarkel@hawaii.edu

SAILDRONE MISSION CONTROL

(510) 722-6070

Enclosure 3

Hawaii Explosives & Pyrotechnics, Inc.

P.O. Box 1244
Keaau, HI 96749-1244
hepinc@hipyro.com



May 25, 2023

Commander 14th Coast Guard District (OAN)
PJKK Federal Building, Room 9-236
300 Ala Moana Blvd.
Honolulu, HI 96850-4982

Dear Commander:

Hawaii Explosives & Pyrotechnics, Inc. is requesting a "Notice to Mariners" for a land fireworks display neighboring Duke Kahanamoku Beach. Please require all vessels to observe the safety zone radius from the firing site. Display specifics are as follows:

2023					
May				26	
June	2	9	16	23	30
July	7	14	21	28	
August	4	11	18	25	
September	1	8	15	22	29
October	6	13	20	27	
November	3	10	17	24	
December	1	8	15	22	29

Event: Friday Night Fireworks @ Hilton Hawaiian Village
Firing Site: Duke Kahanamoku Beach
Firing Times: 7:45 p.m. (May thru September) 8:00 p.m. (October thru December)
Firing Windows: 7:15 p.m. to 8:15 p.m. 7:30 p.m. to 8:30 p.m.

Safety Zone: 210' radius of firing site
Length of Display: 4 minutes

Should you have any questions or need any further information, please feel free to contact our office on the Big Island at 808-968-0600. Thank you for your assistance with this matter.

Sincerely,


Melanie Hart-Taille
Administrative Assistant

Safety/Fallout Zone

Closed 30 minutes prior to firing until
"All Clear" is called by Operator - usually,
30 minutes after completion of 4 minute display.

Hau Tree Bar

Work Zone
Closed 4:00 p.m. to 9:00 p.m.

Firing Site

293 ft

HHV Great Lawn

© 2019 Google

Google Earth

lat 21.281549° lon -157.839041° elev 5 ft eye alt 1394 ft