



U.S. Department  
of Homeland Security  
**United States  
Coast Guard**

---

## LOCAL NOTICE TO MARINERS

**District: 17**

**Week: 39/22**

-Navigation Information Service (NIS)-  
Watchstander, 24 hours a day at (703) 313-5900  
~Navcen Internet Address~  
<https://www.navcen.uscg.gov>  
-Local Notice to Mariners-  
<https://www.navcen.uscg.gov/-pageName=lnmMain>

Issued by: Commander (DPW) Telephone: (907) 463-2269 (0800-1600)  
Seventeenth Coast Guard District After Hours: (907) 463-2000 (1600-0800)  
PO Box 25517, Juneau, AK 99802-5517

Questions, comments, or additional information on this Local Notice to Mariners should be sent to the address above or by E-mail to: SMB-D17Juneau-LNM@uscg.mil. You can get the U.S. Coast Guard 17th District Local Notice to Mariners via the Internet directly from the U.S. Coast Guard Navigation Center web site at <https://www.navcen.uscg.gov/-pageName=lnmDistrict&region=17>.

REFERENCES: Light List, Vol. VI, Pacific Coast and Pacific Islands (COMDTPUB P16502.6).  
U.S. Coast Pilot 8, Pacific Coast Alaska: Dixon Entrance to Cape Spencer, 44th Edition.  
U.S. Coast Pilot 9, Pacific and Arctic Coasts Alaska: Cape Spencer to Beaufort Sea, 39th Edition.

### BROADCAST NOTICE TO MARINERS

Navigation information previously promulgated by CG Sector Juneau Broadcast Notice to Mariners through J126-22 and CG Sector Anchorage Broadcast Notice to Mariners through A106-22 that are still in effect are included in this notice.

Chart Corrections  
<https://nauticalcharts.noaa.gov/charts/chart-updates.html>

Dates of Latest Editions, Nautical Charts, and Miscellaneous Maps  
<https://nauticalcharts.noaa.gov/charts/list-of-latest-editions.html>

Light List/ Summary of Corrections  
<https://www.navcen.uscg.gov/-pageName=lightListCorrections>

NOAA Chart Viewer (Posting of all up to date NOAA charts for viewing on Internet browser to be used for ready reference or planning)  
<https://nauticalcharts.noaa.gov/>

NOAA Booklet Charts  
<https://nauticalcharts.noaa.gov/charts/noaa-raster-charts.html#booklet-charts>

Coast Pilots, along with corrections, are available at:  
<https://nauticalcharts.noaa.gov/publications/coast-pilot/index.html>

NOAA Weather Buoy Sites  
<http://www.ndbc.noaa.gov/>

Tides online  
<https://tidesandcurrents.noaa.gov/>

Tides, Currents, PORTS  
<https://tidesandcurrents.noaa.gov/noaacurrents/Stations-g=693>

Weather  
<http://www.nws.noaa.gov/om/marine/alaska.htm>

Vessel Traffic System Prince William Sound (VTSPWS) Users Manual  
<https://homeportr.uscg.mil/Lists/Content/DispForm.aspx-ID=2205&Source=https:>

---

### ABBREVIATIONS

#### A through H

ADRIFT - Buoy Adrift  
AICW - Atlantic Intracoastal Waterway

#### I through O

I - Interrupted  
ICW - Intracoastal Waterway

#### P through Z

PRIV - Private Aid  
Q - Quick

AI - Alternating  
 B - Buoy  
 BKW - Breakwater  
 bl - Blast  
 BNM - Broadcast Notice to Mariner  
 bu - Blue  
 C - Canadian  
 CHAN - Channel  
 CGD - Coast Guard District  
 C/O - Cut Off  
 CONT - Contour  
 CRK - Creek  
 CONST - Construction  
 DAYMK/Daymk - Daymark  
 DBN/Dbn - Daybeacon  
 DBD/DAYBD - Dayboard  
 DEFAC - Defaced  
 DEST - Destroyed  
 DISCON - Discontinued  
 DMGD/DAMGD - Damaged  
 ec - eclipse  
 EST - Established Aid  
 ev - every  
 EVAL - Evaluation  
 EXT - Extinguished  
 F - Fixed  
 fl - flash  
 Fl - Flashing  
 G - Green  
 GIWW - Gulf Intracoastal Waterway  
 HAZ - Hazard to Navigation  
 HBR - Harbor  
 HOR - Horizontal Clearance  
 HT - Height

IMCH - Improper Characteristic  
 INL - Inlet  
 INOP - Not Operating  
 INT - Intensity  
 ISL - Islet  
 Iso - Isophase  
 kHz - Kilohertz  
 LAT - Latitude  
 LB - Lighted Buoy  
 LBB - Lighted Bell Buoy  
 LHB - Lighted Horn Buoy  
 LGB - Lighted Gong Buoy  
 LONG - Longitude  
 LNM - Local Notice to Mariners  
 LT - Light  
 LT CONT - Light Continuous  
 LTR - Letter  
 LWB - Lighted Whistle Buoy  
 LWP - Left Watching Properly  
 MHz - Megahertz  
 MISS/MSNG - Missing  
 Mo - Morse Code  
 MRASS - Marine Radio Activated Sound Signal  
 MSLD - Misleading  
 N/C - Not Charted  
 NGA - National Geospatial-Intelligence Agency  
 NO/NUM - Number  
 NOS - National Ocean Service  
 NW - Notice Writer  
 OBSCU - Obscured  
 OBST - Obstruction  
 OBSTR - Obstruction  
 Oc - Occulting  
 ODAS - Anchored Oceanographic Data Buoy

R - Red  
 RACON - Radar Transponder Beacon  
 Ra ref - Radar reflector  
 RBN - Radio Beacon  
 REBUILT - Aid Rebuilt  
 RECOVERED - Aid Recovered  
 RED - Red Buoy  
 REFL - Reflective  
 RRL - Range Rear Light  
 RELIGHTED - Aid Relit  
 RELOC - Relocated  
 RESET ON STATION - Aid Reset on Station  
 RFL - Range Front Light  
 RIV - River  
 RRASS - Remote Radio Activated Sound Signal  
 s - seconds  
 SEC - Section  
 SHL - Shoaling  
 si - silent  
 SIG - Signal  
 SND - Sound  
 SPM - Single Point Mooring Buoy  
 SS - Sound Signal  
 STA - Station  
 STRUCT - Structure  
 St M - Statute Mile  
 TEMP - Temporary Aid Change  
 TMK - Topmark  
 TRLB - Temporarily Replaced by Lighted Buoy  
 TRLT - Temporarily Replaced by Light  
 TRUB - Temporarily Replaced by Unlighted Buoy  
 USACE - Army Corps of Engineers  
 W - White  
 Y - Yellow

**Additional Abbreviations Specific to this LNM Edition: None**

## SECTION I - SPECIAL NOTICES

This section contains information of special concern to the Mariner.

### 340 ALASKA

The Coast Guard's VHF-FM Remote Fixed Facility (RFF) reception capabilities on the following site is degraded and calls on VHF-FM Channel 16 may not be received by the responsible Coast Guard Sector Communication Center within the stated coverage area:

CAPE GULL – Northwest Afognak Island, Cape Douglas, and Shelikof Strait to Cape Uyak.

MIDDLE CAPE – Southwestern Kodiak and the Southwestern portion of Shelikof Strait from Cape Igvak to Cape Kuliak.

CAPE FANSHAW – Southern Stephens Passage and Frederick Sound.

GRAVINA – Clarence Strait, Western Behm Canal, and Nichols Passage.

If unable to reach the Coast Guard on VHF-FM Channel 16, mariners that are equipped with capable radios can contact the Coast Guard through Communications Detachment Kodiak via high frequency (HF) 4125Khz. Mariners can also contact the Coast Guard via cellular or satellite phone by calling JRCC Juneau at 907-463-2000, Sector Juneau Command Center at (907) 463-2980 or Sector Anchorage Command Center at (907) 428-4100. Mariners are reminded that Western and Northern Alaskan have no VHF-FM coverage. Contact in areas without VHF/FM coverage to the Coast Guard is via Communications Detachment Kodiak on HF or JRCC Juneau by phone. Mariners are requested to relay any unanswered calls for assistance to the Coast Guard.

LNM: 39/22

### 341 \*\*\*\*\*CANCELLATION OF NOAA PAPER AND RASTER NAUTICAL CHARTS\*\*\*\*\*

The National Oceanic and Atmospheric Administration (NOAA) is undertaking a multi-year program to end production and maintenance of its suite of over 1,000 traditional paper nautical charts and all associated raster chart products and services, including: Print-on-Demand (POD) paper nautical charts, Full-size chart PDF files, BookletChart™ PDF files, NOAA raster navigational charts (NOAA RNC®), the NOAA RNC tile service, and the online RNC viewer.

Six months notice of the intent to cancel a specific chart is provided in a "Last Edition" notice. The final cancellation of a chart is made in a "Canceled" notice. Both types of notices will appear in LNM Section IV, "Chart Correction." A comprehensive list of all canceled NOAA charts is available at: <http://www.charts.noaa.gov/MCD/Dole.shtml>.

Traditional paper nautical chart production is ending to enable the creation and maintenance of larger scale, more up-to-date, higher quality coverage of NOAA's electronic navigational chart (NOAA ENC®) product. This will significantly enhance the amount of charted detail available to mariners. More information about NOAA's program to sunset traditional paper charts is on the NOAA Coast Survey website at:

<https://www.nauticalcharts.noaa.gov/charts/farwell-to-traditional-nautical-charts.html>.

An online NOAA Custom Chart application at: <https://devgis.charttools.noaa.gov/pod> is available to create chart images from ENC data, which may then be printed. Notices to Mariners will not be issued for NOAA Custom Charts.

LNM: 09/21

342 **SAFETY NOTICE - NAVIGATIONAL RANGE AND SECTOR LIGHTS ON ELECTRONIC CHARTS**

The U.S. Coast Guard has become aware that the Range and Sector Light Characteristic labels are not displayed on Electronic Navigational Charts (ENCs) when used in an Electronic Chart Display and Information System (ECDIS) due to limitations of the S-52 ECDIS display specification. Mariners may query the ENC data directly within ECDIS or refer to the Light List for complete information on Range and Sector Light Characteristics.

LNM: 39/22

343 **ALASKA – SOUTHWESTERN – BERING SEA, ALEUTIAN ISLANDS, PACIFIC OCEAN**

SAILDRONE, INC. is conducting bathymetric research surveys along the western Aleutian Island coastline in the Bering Sea, Aleutian Basin, and northern Pacific Ocean from August 1st and continuing through October 15th, 2022. The survey will be conducted by one Uncrewed Surface Vehicle (USVs), called "SAILDRONE SURVEYOR", which is 22 meters in length, 14 meters tall, orange in color with a tricolor, running lights, stern light and marked "SAILDRONE SURVEYOR". The saildrone will be repeatedly deployed from Dutch Harbor, ALASKA between August 8th to October 15th 2022 to conduct survey routes throughout the western Aleutian Island chain, returning to Dutch Harbor periodically every three (3) weeks. SAILDRONE SURVEYOR is a primarily wind powered Uncrewed Surface Vehicle also equipped with an inboard engine, and will have limited maneuverability during survey operations. At the conclusion of survey operations SAILDRONE SURVEYOR will depart the area and return to San Francisco, CA. Mariners are requested to transit areas with caution and to remain greater than 500 meters away from the research equipment. An enclosure to this LNM provides additional information including a photo of the Saildrone and a chartlet indicating approximate areas of operation. Questions/concerns should be directed to Saildrone Mission Control at 510-722-6070 or by email to [missioncontrol@saildrone.com](mailto:missioncontrol@saildrone.com).

LNM: 39/22

346 **ALASKA – SOUTHCENTRAL – COOK INLET – PORT OF ANCHORAGE**

The PCT Danger Range has been established as a Private Aid TO Navigation (PATON) on the Southeastern end of the Petroleum and Cement Terminal at the Port of Alaska located in Anchorage, Alaska. The PCT Danger Range marks a line of position that the PCT Terminal recommends vessels approaching the Terminal do not cross as they are making their approach from, or departing to, the Southeast. The PCT Danger Range consists of two structures with range boards (KRW) and lights (FL Y) that indicate a LOP of 065.8° as you are facing the range. The structures are located in the following positions:

LLNR 26445 - PCT Danger RFL – 61°13'59.2965"N, 149°53'46.0397"W – On dolphin.

LLNR 26446 - PCT Danger RRL – 61°14'01.5097"N, 149°53'35.8204"W – On light pole.

Chart and Light List corrections will be issued in a subsequent LNM. Questions/concerns should be directed to Todd Buck with the Coast Guard District 17 Waterways Management Office at (907) 463-2269 or by email to [todd.r.buck@uscg.mil](mailto:todd.r.buck@uscg.mil).

LNM: 38/22

349 **ALASKA – SOUTHCENTRAL – KODIAK/GULF OF ALASKA**

HAZARDOUS OPERATIONS: Rocket launch P137 (Replan) is scheduled from the Pacific Spaceport Complex located at Narrow Cape, Kodiak Island, Alaska, 2200-0130 UTC which is 1400-1730 Alaska Time on October 10th, 2022. If the launch does not occur on October 10th, 2022, then it will be rescheduled for the following day during the same time window. This process will be continued through October 17th, 2022 (local). If the launch does not occur by the end of the time window on October 10th, 2022 (local), then it will be completely rescheduled and the new test dates/times will be advertised. Exclusion Area consists of a polygon defined by lines connecting the following points:

POINT	LATITUDE	LONGITUDE
Point A:	57°15.806'N	152°30.838'W
Point B:	57°28.459'N	152°31.795'W
Point C:	57°29.265'N	152°11.957'W
Point D:	56°40.696'N	152°03.287'W
Point E:	55°10.160'N	151°51.796'W
Point F:	53°39.607'N	151°41.136'W
Point G:	52°09.039'N	151°31.208'W
Point H:	51°45.816'N	151°30.037'W
Point I:	51°44.545'N	151°59.959'W
Point J:	52°16.191'N	152°11.000'W
Point K:	53°56.068'N	152°17.071'W
Point L:	55°35.941'N	152°23.658'W

Mariners are advised to remain clear of these areas during the duration of operations. Chartlets indicating the exclusion zone are included as an enclosure to this LNM. Questions/concerns should be directed to the PSCA Operations Director, Shannon Edwards at (907) 771-8036, or cell (509) 713-4368 or by email to [shannon.edwards@akaerospace.com](mailto:shannon.edwards@akaerospace.com) or the PSCA Ground Safety Officer, Paul Pena, at (907) 743-3525, or cell (907) 942-4485 or by email to [ppena.ctr@akaerospace.com](mailto:ppena.ctr@akaerospace.com).

LNM: 37/22

352 **ALASKA – SOUTHEAST – TONGASS NARROWS**

A construction project involving pile driving is being conducted in the vicinity of the Ketchikan International Airport and will be completed by April 1st, 2023. Two anchors marked by white buoys with flashing white lights are being used to moor the pile driving barge and extend up to 500 feet into the channel. The anchors are located in positions 55°21.236'N, 131°42.125'W and 55°21.187'N, 131°42.126'W. Mariners are requested to

transit the area with caution. Questions/concerns should be directed to Matt Huston at 206-507-6602 or by email to matth@pacificpile.com.  
LNM: 37/22

360 **ALASKA – SOUTHEAST – NECKER ISLANDS – HOT SPRINGS BAY**

A 32' Sailboat has been reported sunk in Hot Springs Bay in approximate position 56°50.252'N, 135°23.574'W in approximately 84 feet of water. The sailboat has an estimated mast height of up to 50'. Mariners are requested to transit the area with caution. Questions/concerns should be directed to Todd Buck with the Coast Guard District 17 Waterways Management Office at (907) 463-2269 or by email to todd.r.buck@uscg.mil.  
LNM: 36/22

372 **ALASKA – SOUTHEAST – DUNCAN CANAL – BUTTERWORTH ISLAND**

OBSTRUCTION TO NAVIGATION: A 94 foot tug has been reported sunk in the vicinity of Butterworth Island in approximate position 56°32.586'N, 133°03.855'W. Vessels transiting in the vicinity are requested to remain clear of the reported wreck. Questions/concerns should be directed to the Coast Guard Sector Juneau Command Center at 907-463-2980 or on VHF/FM channel 16.  
LNM: 34/22

385 **ALASKA – SOUTHCENTRAL - ALEUTIAN PENINSULA**

A subsurface cable will be installed between Mill Bay, Kodiak Island, approximately 58°00'N, 152°05'W, and Dutch Harbor, Unalaska Island, approximately 54°00'N, 166°20'W. The cable laying operations will be conducted 24 hours a day, 7 days a week, from July 18th through October 15th, 2022, subject to weather and sea state, by the M/V IT INTREPID and the M/V IT INTEGRITY. The M/V IT INTREPID is 380 feet in length, blue with a white superstructure. The M/V IT INTEGRITY is 236 feet in length, blue hull with a white superstructure. Both vessels will be monitoring VHF/FM channel 16. Mariners are requested to maintain a 1,000 meter CPA when cable laying operations are being conducted. Additional information including a chartlet and photos of the vessels is included in an enclosure to this LNM. Questions/concerns should be directed to Alaska Maritime Agencies at 907-562-8808 or by email to ancops@alaskamaritime.com.  
LNM: 30/22

396 **ALASKA – SOUTHCENTRAL – COOK INLET NAVIGATION CHANNEL**

The U.S. Army Corps of Engineers (USACE), Alaska District conducted a project condition survey for Cook Inlet Navigation Channel on May 13th, 2022 in which the following controlling depths in feet (FT) mean lower low water (MLLW) were recorded:  
Left Outside Quarter 61°12'30.93"N, 150°03'53.57"W, -41.1 FT MLLW  
Left Inside Quarter 61°11'42.60"N, 150°06'46.85"W, -42.7 FT MLLW  
Right Inside Quarter 61°11'41.18"N, 150°06'44.88"W, -44.0 FT MLLW  
Right Outside Quarter 61°11'59.68"N, 150°05'15.80"W, -43.2 FT MLLW  
A chartlet of the controlling depths as well as survey data are available on the U.S. Army Corps of Engineers (USACE) Navigation Portal website at: <http://navigation.usace.army.mil/Survey/Hydro>. The Cook Inlet Navigation Channel was dredged during the summer of 2014 to a project depth of -38 FT MLLW. At this time, no maintenance dredging is scheduled for this channel during 2022. The next project condition survey for this channel is tentatively scheduled for October 2022. BE ADVISED: The information depicted on maps, charts, drawings, navigation notices, etc., for the subject project, represents the results of a survey conducted on the date(s) indicated and can only be considered to represent the general condition existing at that time. The survey data was collected under a USACE contract for the purpose of characterizing the condition of the navigation channel, and the area for placement of dredged material for future channel maintenance operations. As such, the information is only valid for its intended use. This information can be used to supplement existing published navigation charts. The user is responsible for the results of any application of the survey data for other than its intended purpose and should consider the contents, timeframe of data collection, and accuracy specifications for survey data collection/processing. Additionally, bathymetry in Cook Inlet is subject to drastic and continuing change. Prudent mariners should not rely solely upon this information. Questions/concerns should be directed to Jeremy Allen, Operations Project Manager at 907-753-2753 or by email to jeremy.m.allen@usace.army.mil.  
LNM: 25/22

398 **ALASKA – SOUTHWESTERN – BERING SEA – KUSKOKWIM RIVER**

The following navigational aids have been relocated:  
LLNR 27844 KUSKOKWIM RIVER BUOY 12, Relocated to 59-57-18.378N 162-19-23.651  
LLNR 27844.5 KUSKOKWIM RIVER BUOY 15, Relocated to 59-58-39.086N 162-24-02.216W  
LLNR 27844.7 KUSKOKWIM RIVER BUOY 16, Relocated to 60-00-52.239N 162-26-22.711W  
LLNR 27845.2 KUSKOKWIM RIVER BUOY 18, Relocated to 60-03-59.635N 162-28-59.282W  
LLNR 27845.7 KUSKOKWIM RIVER BUOY 20, Relocated to 60-06-36.701N 162-28-25.104W  
LLNR 27846.2 KUSKOKWIM RIVER BUOY 22, Relocated to 60-09-15.386N 162-24-30.342W  
LLNR 27846.5 KUSKOKWIM RIVER BUOY 23, Relocated to 60-11-26.138N 162-21-12.820W  
LLNR 27847 KUSKOKWIM RIVER BUOY 25, Relocated to 60-13-22.253N 162-20-43.274W  
LLNR 27847.5 KUSKOKWIM RIVER BUOY 27, Relocated to 60-14-56.426N 162-23-23.656W  
LLNR 27847.7 KUSKOKWIM RIVER BUOY 28, Relocated to 60-16-33.849N 162-27-29.991W  
LLNR 27848 KUSKOKWIM RIVER BUOY 29, Relocated to 60-17-11.047N 162-29-12.737W  
LLNR 27848.2 KUSKOKWIM RIVER BUOY 30, Relocated to 60-18-58.850N 162-30-41.426W  
LLNR 27484.7 KUSKOKWIM RIVER BUOY 32, Relocated to 60-20-13.346N 162-30-35.670W  
LLNR 27489.2 KUSKOKWIM RIVER BUOY 34, Relocated to 60-20-53.018N 162-29-33.210W  
LLNR 27849.7 KUSKOKWIM RIVER BUOY 36, Relocated to 60-21-15.735N 162-27-59.543W  
LLNR 27850.5 KUSKOKWIM RIVER BUOY 39, Relocated to 60-21-28.905N 162-20-54.684W

LLNR 27851.2 KUSKOKWIM RIVER BUOY 42, Relocated to 60-23-40.224N 162-21-31.857W  
LLNR 27852 KUSKOKWIM RIVER BUOY 45, Relocated to 60-25-31.231N 162-21-50.513W  
LLNR 27853 KUSKOKWIM RIVER BUOY 49, Relocated to 60-28-25.992N 162-17-24.609W  
LLNR 27853.2 KUSKOKWIM RIVER BUOY 50, Relocated to 60-30-37.368N 162-18-04.015W  
LLNR 27854.5 KUSKOKWIM RIVER BUOY 55, Relocated to 60-31-52.149N 162-16-49.344W  
LLNR 27855 KUSKOKWIM RIVER BUOY 57, Relocated to 60-33-01.410N 162-14-47.906W  
Chart/Light List corrections will be issued once the verification process has been completed. Questions/concerns should be directed to Todd Buck with the Coast Guard District 17 Waterways Management Office at (907) 463-2269 or by email to [todd.r.buck@uscg.mil](mailto:todd.r.buck@uscg.mil).

LNM: 24/22

409 **ALASKA – SOUTHEAST – GASTINEAU CHANNEL – MENDENHALL BAR**

The Mendenhall Bar Channel buoys have been commissioned for the 2022 season. This includes Mendenhall Bar Channel B 7A (LLNR 23733) through Mendenhall Bar Channel B 13A (LLNR 23735.8). Due to shifting shoals many of the buoys have been relocated. The updated positions for the relocated buoys will be published in a subsequent LNM and the Light List will be updated. Mariners are advised to transit the area with extreme caution. Questions/concerns should be directed to Todd Buck with the Coast Guard District 17 Waterways Management Office at (907) 463-2269 or by email to [todd.r.buck@uscg.mil](mailto:todd.r.buck@uscg.mil).

LNM: 20/22

411 **ALASKA – SOUTHWESTERN – ALEUTIAN ISLANDS**

Six former in-water ranges within Naval Defensive Sea Area Kiska Island have been identified as potentially containing munitions and explosives of concern (MEC). The boundaries of the six former in-water ranges are identified as black, dotted lines on the NOAA Navigational Charts with text as follows: "Unexploded ordnance (reported 2013, see note)." Mariners are cautioned against anchoring, dredging or trawling within these areas. Mariners should follow the 3Rs – Recognize, Retreat, and Report (<https://www.denix.osd.mil/uxo/home/>). Recognize possible munitions such as mines, torpedoes, depth charges, artillery shells, bombs, and missiles. Mariners should avoid military and former military ranges and disposal areas, and explosive hazard areas identified on Navigational Charts. Retreat by staying as far away as possible, not bringing munitions onboard or into port, minimizing disturbance (i.e., not touching or bumping munitions), and safely jettison, if possible. Report immediately to the U.S. Coast Guard District 17 Command Center at 907-463-2000 if encountering possible munitions and provide vessel position, activity being conducted (anchoring, fishing, dredging), description of munition item, and action taken (i.e., munition stowed or jettisoned). For additional information: Call U.S. Army Technical Center for Explosives Safety at 918-420-8919 or see the US Army's UXO Safety Education website: <https://www.denix.osd.mil/mmrp/index.html>. Also see the Navy's website for specific documents related to the Aleutian Islands: [https://www.navfac.navy.mil/navfac\\_worldwide/pacific/fecs/northwest/about\\_us/northwest\\_documents.html](https://www.navfac.navy.mil/navfac_worldwide/pacific/fecs/northwest/about_us/northwest_documents.html)

LNM: 20/22

433 **ALASKA – SOUTHEAST – KATLIAN BAY**

Blasting will be conducted for construction of the Katlian Bay road from Starrigavan Bay to Katlian Bay through December 1, 2022. Blasting will begin in approximate position 57°08'09"N, 135°22'12"W and end in approximate position 57°09'43"N, 135°17'18"W, with a danger radius of 1000'. Blasting may take place during daylight hours 7 days per week. Blasting will be preceded by a series of long audible signals 5 minutes prior to blasting, a series of short audible signals 1 minute prior to blasting, and one long audible signal when the blast is complete. Mariners are advised to avoid transiting within the danger radius when blasting is taking place. Blasting personnel will maintain lookouts for watercraft within the danger radius before the blast is initiated. Questions/concerns should be directed to Joe Williams at 907-747-3838 or by email at [jwilliams@keex.net](mailto:jwilliams@keex.net).

LNM: 13/22

461 **ALASKA**

The U.S. Coast Guard Navigation Center is going to transition the Navigation Center website to a new, enhanced version in the first quarter of 2022. As part of this transition, URLs will be updated across the site including URLs linked to PDFs. Therefore, once the transition is complete, legacy site URLs will no longer function, including bookmarked URLs and URLs used in automatic downloading of data and/or products. Outdated URLs will automatically redirect to the home page of the site, and from there you will be able to easily navigate to your preferred page.

Below are a few of the "old"/new URL pairs listed for your convenience. Please note that the new URLs will not be active until we launch the new website. Of course, once it is launched, the new URLs will be available for re-bookmarking. As a reminder, these are top level URLs that may contain additional links that you use.

This notice will be updated when the final launch date is determined and another notice will be issued to notify you when the site goes live. Questions/concerns may be directed to the [NAVcenWebTEAM@uscg.mil](mailto:NAVcenWebTEAM@uscg.mil).

Local Notices to Mariners (LNMs)

Current URLs: <https://www.navcen.uscg.gov/?pageName=lnmMain>

Replacement: <https://www.navcen.uscg.gov/local-notices-to-mariners-by-cg-district>

Light Lists Annual Publication

Current URLs: <https://navcen.uscg.gov/?pageName=lightLists>

Replacement: <https://www.navcen.uscg.gov/light-list-annual-publication>

Light List - Weekly

Current URLs: <https://navcen.uscg.gov/?pageName=lightListWeeklyUpdates>  
Replacement: <https://www.navcen.uscg.gov/weekly-light-lists>

Light List - Corrections  
Current URLs: <https://navcen.uscg.gov/?pageName=lightListCorrections>  
Replacement: <https://www.navcen.uscg.gov/light-list-summary-of-corrections>

LNM: 06/22

478 **ALASKA – U.S. COAST GUARD MEDIUM FREQUENCY (MF) AND HIGH FREQUENCY (HF) DISTRESS WATCHKEEPING**

Mariners are advised that calls to the U.S. Coast Guard on the international radiotelephone distress frequency 2182 kHz or the Digital Selective Calling (DSC) frequency 2187.5 kHz may not be heard or may be severely degraded. Instead of using 2182 kHz for distress calls, mariners may use high frequency (HF) radiotelephone or DSC in the 4, 6, 8, and 12 MHz distress or calling bands. On February 7th, 2022, the U.S. Coast Guard will discontinue monitoring high frequency (HF) voice for all existing regions with the exception of Kodiak, Alaska, and Guam. All existing regions will also continue monitoring high frequency (HF) DSC in the 4, 6, 8, and 12 MHz distress or calling bands. Mariners may also use cellular, satellite or other methods of communications to speak directly to the nearest Coast Guard Command Center. Additional information concerning U.S. Coast Guard HF watchkeeping is posted on the U.S. Coast Guard's Navigation Center website (<https://www.navcen.uscg.gov/?pageName=cgcommsCall>). The three U.S. Coast Guard Command Centers (CC) located in Alaska are: CG Sector Juneau CC, 907-463-2980; CG Sector Anchorage CC, 907-428-4100; CG District 17 CC, 907-463-2000. Questions/concerns should be directed to Todd Buck with the Coast Guard District 17 Waterways Management Office at (907) 463-2269 or by email to [todd.r.buck@uscg.mil](mailto:todd.r.buck@uscg.mil).

LNM: 50/21

514 **ALASKA – SOUTHCENTRAL – KODIAK ISLAND**

A Waverider buoy approximately 29 nautical miles southeast of the City of Kodiak, Alaska in position 57° 28.8' N, 151° 42.0' W, has been decommissioned. The mooring remains on site and is marked with a cluster of unlit white floats. The mooring will be removed as operations permit. Questions/concerns should be directed to Todd Buck with the Coast Guard District 17 Waterways Management Office at (907) 463-2269 or by email to [todd.r.buck@uscg.mil](mailto:todd.r.buck@uscg.mil).

LNM: 40/21

520 **ALASKA – SOUTHEAST – BEHM CANAL – MOSER BAY**

The Moser Bay Coast Guard Mooring Buoy (LLNR 22329) is missing and may be submerged and attached/entangled with a sunken vessel in the vicinity of its charted position. Mariners should transit the area with extreme caution because it may be suspended subsurface at an unknown depth. Questions/concerns should be directed to Todd Buck with the Coast Guard District 17 Waterways Management Office at (907) 463-2269 or by email to [todd.r.buck@uscg.mil](mailto:todd.r.buck@uscg.mil).

LNM: 38/21

522 **ALASKA – SOUTHEAST – KLAG BAY**

Klag Bay Entrance DBN 1 (LLNR 25335) has been rebuilt in position 57°36'42.318"N, 136°06'08.130"W and is watching properly. Chart and Light List corrections will be issued once the verification process has been completed. Questions/concerns should be directed to Todd Buck with the Coast Guard District 17 Waterways Management Office at (907) 463-2269 or by email to [todd.r.buck@uscg.mil](mailto:todd.r.buck@uscg.mil).

LNM: 37/21

529 **ALASKA**

The outbreak of respiratory illness caused by the COVID-19 virus may affect mariners and maritime commerce transiting to or near Alaska. Additional interim guidance for ships on managing suspected coronavirus disease concerns is available at <https://www.cdc.gov/quarantine/maritime/recommendations-for-ships.html>. Additional maritime specific information can be obtained through Coast Guard Marine Safety Information Bulletins which can be found at <https://www.dco.uscg.mil/Featured-Content/Mariners/Marine-Safety-Information-Bulletins-MSIB/>. Mariners with questions/concerns while transiting to or near Alaska should contact the Coast Guard Sector Anchorage Command Center at (907) 428-4100 or the Coast Guard Sector Juneau Command Center at (907) 463-2980.

LNM: 34/21

551 **ALASKA – WESTERN – YUKON RIVER**

OBSTRUCTION TO NAVIGATION: A 6' by 6' by 15' metal tower is partially submerged in the Yukon River in position 62°35.55'N, 164°54.48'W. Mariners are requested to transit the area with caution and make sighting reports to the Coast Guard Sector Anchorage Command Center at (907) 428-4100 with any updated positions.

LNM: 28/21

554 **ALASKA – SOUTHCENTRAL – PRINCE WILLIAM SOUND – BARRY ARM**

The State of Alaska issued an updated press release on July 9th, 2021, indicating that a potential landslide caused tsunami may occur in Barry Arm in Northwestern Prince William Sound. It is uncertain if and when this might occur, but if it occurs localized wave heights could be very hazardous. The geologic makeup of the area is similar to Alaskan locations where two previous landslides caused tsunamis occurred, in Lituya Bay (1958) and Icy Bay (2015), both causing extremely large but localized tsunamis. Mariners should maintain vigilance when in the vicinity of Barry Arm or nearby waters and be prepared to depart the area if any unusual geologic activity is observed. Studies are being conducted and the situation is being monitored to allow for a better understanding of the potential results of a slide. Additional information is available at the following website: <https://dgg.s.alaska.gov/hazards/barry-arm-landslide.html>

LNM: 28/21

557 **ALASKA – BRISTOL BAY – NORTHEAST KVICHAK BAY – NAKNEK RIVER**

A potential obstruction to navigation exists in the Naknek River in position: 58°42.772'N, 157°02.045'W. A large metal ramp has been reported to be visible during low tide and completely submerged during high tide. All mariners should utilize caution and avoid transiting in close proximity to the object. Questions/concerns should be directed to Sector Anchorage Command Center at (907) 428-4100.

LNM: 27/21

573 **ALASKA – ALEUTIAN ISLANDS – UNALASKA – CAPTAIN'S BAY**

Bailey Ledge LT (LLNR 27505) in Captain's Bay has been temporarily replaced with an unlit red buoy in position 53°51.603'N, 166°33.103'W. Mariners are requested to transit the area with caution. Questions/concerns should be directed to Todd Buck with the Coast Guard District 17 Waterways Management Office at (907) 463-2269 or by email to todd.r.buck@uscg.mil.

LNM: 23/21

628 **ALASKA – COOK INLET**

The BAKER OIL PLATFORM warning lights (LLNR 26361) in position 60°49'45.390"N, 151°29'00.010"W and the DILLION OIL PLATFORM warning lights (LLNR 26361.5) in position 60°44'07.340"N, 151°30'42.610"W are experiencing intermittent outages. Mariners are requested to transit the area with caution. Questions/concerns should be directed to Sector Anchorage Waterways Management at anchorage.waterways@uscg.mil or (907) 428-4189.

LNM: 08/21

661 **ALASKA**

The Coast Guard will be using AIS Broadcasts to relay some marine information, primarily ATON Discrepancies, VHF/FM Hi-site outages, active subsistence whaling, Gunnery and Pyrotechnics Exercises, and similar Notices directly relating to safe navigation. The Coast Guard's access to AIS transmitters is limited so not all areas might be covered at any given time and the locations of the active transmitters will be determined by the priority of the messages being broadcast from them. All information broadcast by AIS will also be published by the more conventional methods of BNM and LNM. Feedback is desired and should be directed to Todd Buck with the Coast Guard District 17 Waterways Management Office at (907) 463-2269 or by email to todd.r.buck@uscg.mil.

LNM: 43/20

782 **ALASKA – SOUTHEAST – DIXON ENTRANCE**

Tree Point LT (LLNR 21840) has been relocated to a new steel structure approximately 100 yards Southeast of the existing lighthouse structure. The approximate position for the new light is 54°48'10"N, 130°56'04"W. Questions/concerns should be directed to Todd Buck with the Coast Guard District 17 Waterways Management Office at (907) 463-2269 or by email to todd.r.buck@uscg.mil.

LNM: 11/20

836 **ALASKA – SOUTHEAST – TONGASS NARROWS**

OBSTRUCTION TO NAVIGATION: A 24' Bayliner has sunk in 22 feet of water in approximate position 55°20.79'N, 131°40.36'W, approximately 50 yards offshore from Bar Harbor. The vessel is marked by an orange float. Mariners are requested to use caution when transiting the area. Questions/concerns should be directed to the Coast Guard Sector Juneau Command Center at (907) 463-2980 or on VHF/FM channel 16.

LNM: 48/19

918 **ALASKA – GULF OF ALASKA**

NOAA DLB 46085 (LLNR 984.15) has been replaced with a 3-meter buoy and relocated to 55°53'18.000"N, 142°50'48.000"W. Chart and Light List corrections have been issued. The previous 6-meter buoy was not recovered and remains in position 55°52'05.000"N, 142°33'31.000"W. Mariners are requested to transit the area with caution until the previous buoy is recovered. Questions/concerns should be directed to Todd Buck with the Coast Guard District 17 Waterways Management Office at (907) 463-2269 or by email to todd.r.buck@uscg.mil.

LNM: 33/19

930 **ALASKA – SOUTHCENTRAL – SHELIKOF STRAIT – KINAK BAY**

An uncharted rock has been reported in Kinak Bay in position 58°03.8'N, 154°25.3'W at a depth of approximately 3 fathoms. Mariners are advised to transit the area with extreme caution. Questions/concerns should be directed to Todd Buck with the Coast Guard District 17 Waterways Management Office at (907) 463-2269 or by email to todd.r.buck@uscg.mil.

LNM: 28/19

937 **ALASKA – SOUTHCENTRAL – PRINCE WILLIAM SOUND – UNAKWIK INLET**

An uncharted and dangerous rock has been reported in Unakwik Inlet in approximate position 61°08.045'N, 147°32.665'W. Mariners should transit the area with caution. Questions/concerns should be directed to Todd Buck with the Coast Guard District 17 Waterways Management Office at (907) 463-2269 or by email to todd.r.buck@uscg.mil.

LNM: 25/19

939 **ALASKA – SOUTHEAST – WRANGELL NARROWS**

OBSTRUCTION TO NAVIGATION: The P/C HEATHER ANN has sunk in Wrangell Narrows on the East side of the channel approximately 330 yards South of Wrangell Narrows Channel LT 16 (LLNR 22955). The most recent reported position was 56°37.25'N, 132°57.64'W. The P/C HEATHER ANN is a 52' wood vessel and may be awash and barely visible at higher tides, exposed at lower tides, or relocated by the extreme current in the area. The vessel was marked with a single orange float. Mariners are requested to transit the area with extreme caution and report any

changes in position to the Coast Guard Sector Juneau on VHF/FM channel 16 or by phone to (907) 463-2980.

LNM: 25/19

946 **ALASKA – SOUTHEAST – FRESHWATER BAY**

An uncharted rock shoal has been reported in Cedar Cove centered in approximate position 57°52.405'N, 135°03.694'W with an approximate 75 foot radius. The rocks were approximately 1 foot below a 0' tide. The location of the reported shoal has a charted depth of 12 fathoms. Questions/concerns should be directed to Todd Buck with the Coast Guard District 17 Waterways Management Office at (907) 463-2269 or by email to todd.r.buck@uscg.mil.

LNM: 24/19

964 **ALASKA – SOUTHEAST – FARRAGUT BAY – FRANCIS ANCHORAGE**

Uncharted shoaling was observed in Francis Anchorage on February 14th, 2019 in position 57°08.95'N, 133°10.03'W. The charted depth for this location is 15 fathoms and the observed depths rapidly shallowed from 120 feet and ranged from 8 to 10 feet. The navigational charts for Francis Anchorage are based on pre-1900 Partial Bottom Coverage Surveys and in 1976 'shoaling to bare' was reported further into the anchorage. Mariners should transit this area with extreme caution and be aware of areas that may not be adequately charted. Questions/concerns should be directed to Todd Buck with the Coast Guard District 17 Waterways Management Office at (907) 463-2269 or by email to todd.r.buck@uscg.mil.

LNM: 08/19

970 **ALASKA – SOUTHCENTRAL – PRINCE WILLIAM SOUND – ESTHER ISLAND**

OBSTRUCTION TO NAVIGATION: The 32' F/V SONG II has been reported sunk in position 60°47.76'N, 148°03.31'W. Mariners are requested to transit the area with caution and report any sightings to the Coast Guard Sector Anchorage Command Center at (907) 428-4100 or on VHF/FM channel 16.

LNM: 34/18

971 **ALASKA - CENTRAL – BETHEL**

OBSTRUCTION: The barge SHANKS ARK has been reported sunken and abandoned in Steamboat Slough on the Kuskokwim River, approximate position 60°47'15"N, 161°41'52"W. A portion of the vessel remains visible above the level of high-tide, but the majority of the vessel remains below the waterline. The vessel is marked by an all-round white light and one ball dayshape when Steamboat Slough is ice free but the markers are removed during freeze up as no hazards exists. The Coast Guard has actively monitored the proper marking of the vessel by the vessel's owner and operator since September 10, 2016. Coast Guard pollution investigators confirmed the vessel does not pose a substantial pollution threat to the environment. Mariners are requested to transit the area with caution and report any discrepancies with the vessel's marking to the Coast Guard. Questions/concerns should be directed to LT David Parker, Sector Anchorage Waterways Management, at (907) 428-4189.

LNM: 11/17

972 **ALASKA – ALEUTIAN ISLANDS – AKUTAN ISLAND – AKUTAN HARBOR**

UNKNOWN MARINE ANOMALY: An unknown marine anomaly was discovered during underwater survey operations in Akutan Harbor in position 54°07.70889'N, 165°46.38298'W on the sea floor at a depth of 138 feet. This anomaly has not been positively identified. Mariners are requested to transit the area with caution. Questions/concerns should be directed to LT David Parker with the Coast Guard Sector Anchorage Waterways Management Branch at (907) 428-4189 or by email to david.n.parker@uscg.mil.

LNM: 03/18

974 **ALASKA – SOUTHWESTERN – ALEUTIAN PENINSULA – BECHEVIN BAY**

Shoaling has been reported at the bar along the Northern entrance to Bechevin Bay by a vessel with a draft of 10 feet that reported briefly grounding in seas running 6-8 feet. Mariners should take into account their vessel's draft, charted depth of water, tides and sea state when determining an appropriate under-keel clearance for a safe transit of this waterway. Mariners are requested to report any future groundings or significant variations from charted depth to the Coast Guard Sector Anchorage Command Center at (907) 428-4100 or on VHF/FM channel 16.

LNM: 17/18

977 **ALASKA – SOUTHEAST – ICY STRAIT – NORTH INIAN PASSAGE**

The currents in North Inian Passage and Glacier Bay have been observed at up to 3 knots above the NOAA published current predictions. Mariners should exercise caution when transiting the area. Questions/concerns should be directed to LT Bart Buesseler at (907) 271-3327 or by email to bart.o.buesseler@noaa.gov.

LNM: 36/17

983 **ALASKA – SOUTHEAST**

The U.S. Coast Guard has VHF Digital Selective Calling (DSC) capability with limited coverage in Southeast Alaska. The initial coverage areas are Ketchikan, Juneau and Yakutat. Mariners are reminded to ensure that they have properly connected their GPS units to their DSC equipped marine VHF radios and registered for their Maritime Mobile Service Identity (MMSI) to utilize the DSC distress function. Additional information is available through the Alaska Outdoors Forum at [http://forums.outdoorsdirectory.com/showthread.php/142083-Digital-Selective-Calling-\(DSC\)](http://forums.outdoorsdirectory.com/showthread.php/142083-Digital-Selective-Calling-(DSC)) or by contacting Mike Folkerts with the Coast Guard District 17 Boating Safety Office at (907) 463-2297 or by email to Michael.r.folkerts@uscg.mil.

LNM: 15/15

**ALASKA – SOUTHCENTRAL**



984 The U.S. Coast Guard has VHF Digital Selective Calling (DSC) capability with limited coverage in Southcentral Alaska. The initial coverage areas are Upper Cook Inlet, Kodiak and Valdez Arm. Mariners are reminded to ensure that they have properly connected their GPS units to their DSC equipped marine VHF radios and registered for their Maritime Mobile Service Identity (MMSI) to utilize the DSC distress function. Additional information is available through the Alaska Outdoors Forum at [http://forums.outdoorsdirectory.com/showthread.php/142083-Digital-Selective-Calling-\(DSC\)](http://forums.outdoorsdirectory.com/showthread.php/142083-Digital-Selective-Calling-(DSC)) or by contacting Mike Folkerts with the Coast Guard District 17 Boating Safety Office at (907) 463-2297 or by email to Michael.r.folkerts@uscg.mil.

LNM: 15/15

988 **ALASKA – ALEUTIAN ISLANDS – ADAK – SWEEPER COVE**

The East side of the Pier 5 Dock located in Sweeper Cove is closed to moorage without prior approval from the Adak Harbormaster due to loose and missing pilings. Questions/concerns should be directed to Jim Fleming at (907) 277-7527 or the Port of Adak office at (907) 592-0185. The Adak harbormaster can also be contacted on VHF/FM channel 16.

LNM: 20/13

990 **ALASKA – SUBSURFACE AND SURFACE BUOYS**

Locations of all subsurface and surface oceanographic moorings that have been reported to the U.S. Coast Guard District 17 Waterways Branch are included in an enclosure to the Local Notice to Mariners. The name, type, location, depth, water depth, and a Point of Contact for all data buoys, surface and subsurface, shall be reported as quickly as is practical if they are placed within the navigable waters (within 200 nm) of the United States. Data buoys placed in the Arctic region but outside of 200 nm of the United States may be reported and will be included in this compilation (for informational purposes only). This notification process is for inclusion in the Local Notice to Mariners to provide navigational information to mariners and does not supersede any permission or permitting requirements. Any notifications, corrections, additions, deletions, or comments for the Alaska region (Coast Guard District 17) or the Arctic region should submitted via e-mail to D17-PF-D17-LNM@uscg.mil or to Todd Buck, USCG D17(dpw), at (907) 463-2269 or by email to todd.r.buck@uscg.mil. This compilation is as current as the Local Notice to Mariners (LNM) as included in an enclosure. The referenced LNM may have additional information and indicates the last time an entry was updated.

LNM: 38/11

---



---

## SECTION II - DISCREPANCIES

This section lists all reported and corrected discrepancies related to Aids to Navigation in this edition. A discrepancy is a change in the status of an aid to navigation that differs from what is published or charted.

---

### DISCREPANCIES (FEDERAL AIDS)

LLNR	Aid Name	Status	Chart No.	BNM Ref.	LNM St	LNM End
984	NOAA Data Lighted Buoy 46001	ADRIFT	16013		50/21	
1150	Seal Rocks Light	DAYMK MISSING	16682		44/21	
1260	Cape Greig Light	LT EXT/DAYMK DMGD	16338	A100-21	37/21	
1285	Cape Mohican Light	LT EXT	16530	A076-22	33/22	
1345	Cape Rodney Light	DAYMK DMGD	16200	A096-22	38/22	
1350	Point Spencer Light	DAYMK DMGD	16204	A098-22	38/22	
1360	Shishmaref Light	DAYMK DMGD	16005	A099-22	38/22	
21840	Tree Point Light	REDUCED INT	17434	J082-22	26/22	
21850	Cape Chacon Light	DAYMK DMGD	17420	J095-22	31/22	
22105	Scrub Island Light 7	STRUCT DEST	17435	J093-22	30/22	
22300	Guard Island Light	REDUCED INT	17428	J096-22	31/22	
22329	Moser Bay Coast Guard Lighted Mooring Buoy	MISSING	17423	J104-21	38/21	
22435	Meyers Chuck Buoy 3	MISSING	17423	J114-22	37/22	
<b>22470</b>	<b>Lincoln Rock West Light</b>	<b>DAYMK DMGD</b>	<b>17382</b>	<b>J123-22</b>	<b>39/22</b>	
<b>22480</b>	<b>Key Reef Light</b>	<b>DAYMK DMGD</b>	<b>17382</b>	<b>J124-22</b>	<b>39/22</b>	
22490	Nesbitt Reef Light	LT EXT	17383	J104-22	34/22	
22670	Blake Channel Light 1	STRUCT DEST/LT EXT	17385	J124-20	48/20	
22863	Wrangell Narrows Daybeacon 4	STRUCT DEST	17375	J113-21	41/21	
22880	Wrangell Narrows Tow Channel Buoy 3TC	OFF STA	17375	J102-21	38/21	
22916	Wrangell Narrows Daybeacon 10A	STRUCT DEST	17375	J128-21	47/21	

23210	Wrangell Narrows North Entrance Lighted Bell Buoy WN	REDUCED INT	17375	J086-21	35/21
23260	Cape Fanshaw Light	STRUCT DEST	17365	J081-22	26/22
23305.1	Keku Strait Entrance Light	STRUCT DEST	17368	J069-19	38/19
23305.7	Keku Strait Daybeacon 10	MISSING	17368	J148-13	32/13
23305.9	Keku Strait Daybeacon 13	STRUCT DEST	17368	J103-15	23/15
23306.7	Keku Strait Daybeacon 25	STRUCT DEST	17368	J071-20	28/20
23307	Keku Strait Daybeacon 30	STRUCT DEST	17368	J075-20	29/20
23307.05	Keku Strait Daybeacon 31	STRUCT DEST	17372	J072-20	28/20
23307.7	Keku Strait Daybeacon 39	STRUCT DEST	17368	J074-21	26/21
23350	Portage Pass Light 10	LT EXT	17368	J041-22	12/22
23355	Portage Pass Daybeacon 11	STRUCT DEST	17368	J077-18	26/18
23370	West Rock Light	LT EXT	17378	J127-21	47/21
23510	Point Ellis Light	LT EXT	17376	J028-21	08/21
23515	Washington Bay Light	DAYMK DMGD	17370	J078-22	26/22
23632	Holkham Bay Buoy 2	OFF STA	17311	J094-22	31/22
23690	Lawson Creek Bar Light 3	DAYMK MISSING	17315	J056-22	17/22
23800	Gibby Rock Light 2	DAYMK DMGD	17315	J026-22	08/22
23885	Chilkoot Inlet East Light	DAYMK DMGD	17317	J066-22	21/22
24260	Elfin Cove Daybeacon 5	STRUCT DEST	17302	J017-18	36/19
24675	Cape Lynch Light	LT EXT	17404	J024-22	07/22
24790	Dry Pass Daybeacon 3	STRUCT DEST	17387	J072-18	23/18
24900	Elovoi Island Rock Daybeacon 1	DAYMK MISSING/STRUCT DMGD	17326	J0117-21	42/21
24948	Indian River Flats Lighted Buoy 2	LT EXT	17327	J032-20	09/20
25060	Big Gavanski Island Light 3	LT EXT	17324	J103-22	34/22
25355	Dippy Island Rock Daybeacon 3	STRUCT DEST	17321	J112-22	35/22
25460	Kokenhenic Bar Channel Light K	STRUCT DEST	16013	A083-22	35/22
25535	Johnstone Point Light	LT IMCH	16709	A073-22	31/22
25982	NOAA Data Lighted Buoy 46076	OFF STA	16700	A060-20	23/20
26080	Chugach Passage Lighted Buoy 3	OFF STA	16646	A081-21	29/21
26095	Perl Rock Light	DAYMK DMGD	16606	A051-22	27/22
26315	Kasilof Entrance Channel Buoy 2	MISSING	16662	A088-22	37/22
26410	Fire Island Range Front Light	LT EXT	16665	A072-22	31/22
26415	Fire Island Range Rear Light	LT EXT	16665	A072-22	31/22
26475	Entrance Point Shoal Lighted Buoy 5	LT EXT	16594	A069-22	31/22
26900	Geese Channel Buoy 3	SINKING	16590	A141-21	48/21
26910	Aiaktalik Island Light 5	DAYMK DMGD	16590	A133-20	49/20
26925	Lazy Bay Light 2	DAYMK DMGD	16591	A132-20	49/20
27000	Northeast Arm Light 1	STRUCT DEST	16594	A143-21	50/21
27025	Dry Spruce Island Rock Light 7	LT EXT	16594	A008-22	06/22
27061	Chignik Boat Harbor Entrance Light 1	LT EXT		A061-22	29/22
27110	Humboldt Harbor Breakwater Light 3	LT EXT		A082-21	29/21
27145	Arch Point Light 2	DAYMK DMGD	16540	A077-21	29/21
27155	Goloi Sandspit Light 3	STRUCT DMGD	16540	A110-21	39/21
27250	Bechevin Bay Entrance Buoy BB	MISSING	16520	A130-21	43/21
27290	Bechevin Bay Buoy 8	OFF STA		A062-22	29/22
27300	Chunak Point Daybeacon 2	STRUCT DEST	16520	A093-20	33/20
27345	St. Catherine Cove Daybeacon 4	STRUCT DEST	16520	A094-20	33/20
27440	Akutan Point Light 2	DAYMK DMGD	16531	A059-22	29/22

27505	Bailey Ledge Light	LT EXT/STRUCT DMGD	16529	A122-20	43/20
27542	Sweeper Cove Range Front Light	NIGHT LT BURNING DAY		A049-22	25/22
27872	Okwegwa Pass Light OP	LT EXT	16240	A074-22	32/22
27920	Unalakleet River South Spit Light	DAYMK DMGD	16200	A097-22	38/22
27975	Point Spencer Light	DAYMK DMGD	16204	A098-22	38/22

**DISCREPANCIES (FEDERAL AIDS) CORRECTED**

LLNR	Aid Name	Status	Chart No.	BNM Ref.	LNM St	LNM End
26680	St. Paul Harbor Entrance Light	WATCHING PROPERLY	16596	A104-22	38/22	40/22
27962	Nome Harbor Entrance Light 2	WATCHING PROPERLY	16206	A106-22	38/22	40/22
27963	Nome Harbor Entrance Light 1	WATCHING PROPERLY	16206	A105-22	36/22	40/22

**DISCREPANCIES (PRIVATE AIDS)**

LLNR	Aid Name	Status	Chart No.	BNM Ref.	LNM St	LNM End
22201	Bar Harbor Breakwater East Light	STRUCT DEST	17430	J202-15	47/15	
22202	Bar Harbor Breakwater Middle Light	STRUCT DEST	17430	J203-15	47/15	
22203	Bar Harbor Breakwater West Light	STRUCT DEST	17430	J204-15	47/15	
23908	Port Chilkoot Mooring Dolphin Lights (2)	LT EXT	17317	J175-14	38/14	
25822	Port Valdez Servs Dock Lights (2)	OFF STA	16707	A067-19	24/19	
25893	Whittier Passenger Dock Lights (2)	LT EXT	16706	A031-10	20/10	
26010	Seward Marine Dock Light	LT EXT	16682		20/22	

**DISCREPANCIES (PRIVATE AIDS) CORRECTED**

LLNR	Aid Name	Status	Chart No.	BNM Ref.	LNM St	LNM End
------	----------	--------	-----------	----------	--------	---------

None

**PLATFORM DISCREPANCIES**

Name	Status	Position	BNM Ref.	LNM St	LNM End
------	--------	----------	----------	--------	---------

None

**PLATFORM DISCREPANCIES CORRECTED**

Name	Status	Position	BNM Ref.	LNM St	LNM End
------	--------	----------	----------	--------	---------

None

**SECTION III - TEMPORARY CHANGES and TEMPORARY CHANGES CORRECTED**

This section contains temporary changes and corrections to Aids to Navigation for this edition. When charted aids are temporarily relocated for dredging, testing, evaluation, or marking an obstruction, a temporary correction shall be listed in Section IV giving the new position.

**TEMPORARY CHANGES**

LLNR	Aid Name	Status	Chart No.	BNM Ref.	LNM St	LNM End
23355	Portage Pass Daybeacon 11	TRUB	17368	J093-18	30/18	
23790	Horse Shoal Light 1	DISCONTINUED	17315	J102-19	51/19	
24957	Mitchell Rock Daybeacon	DISCONTINUED	17327	J022-17	04/17	
25025.5	Japonski Island Daybeacon 2	DISCONTINUED	17327	J196-16	49/16	
25647	NOAA Data Lighted Buoy 46081	DISCONTINUED	16705	A126-19	46/19	
25805	Port Valdez Coast Guard Mooring Buoy	DISCONTINUED	16707	A095-18	33/18	

**TEMPORARY CHANGES CORRECTED**

LLNR	Aid Name	Status	Chart No.	BNM Ref.	LNM St	LNM End
------	----------	--------	-----------	----------	--------	---------

None

PLATFORM TEMPORARY CHANGES

Name	Status	Position	BNM Ref.	LNM St	LNM End
------	--------	----------	----------	--------	---------

None

PLATFORM TEMPORARY CHANGES CORRECTED

Name	Status	Position	BNM Ref.	LNM St	LNM End
------	--------	----------	----------	--------	---------

None

SECTION IV - CHART CORRECTIONS

This section contains corrections to federally and privately maintained Aids to Navigation, as well as NOS corrections. This section contains corrective actions affecting chart(s). Corrections appear numerically by chart number, and pertain to that chart only. It is up to the mariner to decide which chart(s) are to be corrected. The following example explains individual elements of a typical chart correction.

Chart Number	Chart Edition	Edition Date	Last Local Notice to Mariners	Horizontal Datum Reference	Source of Correction	Current Local Notice to Mariners
12327	91st Ed.	19-APR-97	Last LNM: 26/97	NAD 83		27/97
Chart Title: NY-NJ-NEW YORK HARBOR - RARITAN RIVER						
Main Panel 2245 NEW YORK HARBOR						
(Temp) ADD	NATIONAL DOCK CHANNEL BUOY 3				CGD01 at 40-41-09.001N	074-02-48.001W
Corrective Action	Green can	Object of Corrective Action			Position	

(Temp) indicates that the chart correction action is temporary in nature. Courses and bearings are given in degrees clockwise from 000 true. Bearings of light sectors are toward the light from seaward. The nominal range of lights is expressed in nautical miles (NM) unless otherwise noted.

**16145** 1st Ed. 01-JUL-14 Last LNM: 27/14 NAD 83 39/22

Chart Title: Alaska - West Coast. Delong Mountain Terminal

Main Panel 2581 ALASKA - WEST COAST. DELONG MOUNTAIN TERMINAL. Page/Side: A NOS

LAST EDITION No new editions of chart 16145 will be published. It will be canceled on 30-Nov-22. Comparable or larger scale Electronic Navigational Chart (ENC) coverage is available. See "Cancellation of NOAA Paper and Raster Nautical Charts" in Section I of this LNM for details. A list of all canceled NOAA charts is at <https://www.charts.noaa.gov/MCD/Dole.shtml>.

**16161** 1st Ed. 01-APR-12 Last LNM: 19/12 NAD 83 39/22

Chart Title: Kotzebue Harbor and Approaches

Main Panel 2573 KOTZEBUE HARBOR AND APPROACHES. Page/Side: N/A NOS

LAST EDITION No new editions of chart 16161 will be published. It will be canceled on 30-Nov-22. Comparable or larger scale Electronic Navigational Chart (ENC) coverage is available. See "Cancellation of NOAA Paper and Raster Nautical Charts" in Section I of this LNM for details. A list of all canceled NOAA charts is at <https://www.charts.noaa.gov/MCD/Dole.shtml>.

**16190** 2nd Ed. 01-DEC-18 Last LNM: 43/15 NAD 83 39/22

Chart Title: Bering Strait North; Little Diomedede Island

Main Panel 2350 BERING STRAIT NORTH - -. Page/Side: - NOS

LAST EDITION No new editions of chart 16190 will be published. It will be canceled on 30-Nov-22. Comparable or larger scale Electronic Navigational Chart (ENC) coverage is available. See "Cancellation of NOAA Paper and Raster Nautical Charts" in Section I of this LNM for details. A list of all canceled NOAA charts is at <https://www.charts.noaa.gov/MCD/Dole.shtml>.

**16304** 3rd Ed. 01-APR-13 Last LNM: 38/21 NAD 83 39/22

Chart Title: Kuskokwim Bay to Bethel

Main Panel 2934 KUSKOKWIM RIVER KUSKOKWIM BAY TO BETHEL. Page/Side: N/A NOS

LAST EDITION	No new editions of chart 16304 will be published. It will be canceled on 30-Nov-22. Comparable or larger scale Electronic Navigational Chart (ENC) coverage is available. See "Cancellation of NOAA Paper and Raster Nautical Charts" in Section I of this LNM for details. A list of all canceled NOAA charts is at <a href="https://www.charts.noaa.gov/MCD/Dole.shtml">https://www.charts.noaa.gov/MCD/Dole.shtml</a> .	--	--
<b>16305</b>	<b>11th Ed. 01-DEC-14 Last LNM: 52/14 NAD 83</b>		<b>39/22</b>
<i>ChartTitle: Bristol Bay-Cape Newenham and Hagemeister Strait</i>			
<b>Main Panel 2858 CAPE NEWENHAM AND HAGEMEISTER STRAIT. Page/Side: A</b>			
LAST EDITION	No new editions of chart 16305 will be published. It will be canceled on 30-Nov-22. Comparable or larger scale Electronic Navigational Chart (ENC) coverage is available. See "Cancellation of NOAA Paper and Raster Nautical Charts" in Section I of this LNM for details. A list of all canceled NOAA charts is at <a href="https://www.charts.noaa.gov/MCD/Dole.shtml">https://www.charts.noaa.gov/MCD/Dole.shtml</a> .	NOS	--
<b>16315</b>	<b>11th Ed. 01-MAR-15 Last LNM: 12/15 NAD 83</b>		<b>39/22</b>
<i>ChartTitle: Bristol Bay-Togiak Bay and Walrus Islands</i>			
<b>Main Panel 2859 TOGIK BAY AND WALRUS ISLANDS. Page/Side: A</b>			
LAST EDITION	No new editions of chart 16315 will be published. It will be canceled on 30-Nov-22. Comparable or larger scale Electronic Navigational Chart (ENC) coverage is available. See "Cancellation of NOAA Paper and Raster Nautical Charts" in Section I of this LNM for details. A list of all canceled NOAA charts is at <a href="https://www.charts.noaa.gov/MCD/Dole.shtml">https://www.charts.noaa.gov/MCD/Dole.shtml</a> .	NOS	--
<b>16338</b>	<b>5th Ed. 01-MAR-15 Last LNM: 12/15 NAD 83</b>		<b>39/22</b>
<i>ChartTitle: Bristol Bay-Ugashik Bay to Egegik Bay</i>			
<b>Main Panel 2860 BRISTOL BAY UGASHIK BAY TO EGEGIK BAY. Page/Side: A</b>			
LAST EDITION	No new editions of chart 16338 will be published. It will be canceled on 30-Nov-22. Comparable or larger scale Electronic Navigational Chart (ENC) coverage is available. See "Cancellation of NOAA Paper and Raster Nautical Charts" in Section I of this LNM for details. A list of all canceled NOAA charts is at <a href="https://www.charts.noaa.gov/MCD/Dole.shtml">https://www.charts.noaa.gov/MCD/Dole.shtml</a> .	NOS	--
<b>16570</b>	<b>12th Ed. 01-FEB-15 Last LNM: 09/15 NAD 83</b>		<b>39/22</b>
<i>ChartTitle: Portage and Wide Bays, Alaska Pen.</i>			
<b>Main Panel 2545 PORTAGE AND WIDE BAYS. Page/Side: A</b>			
LAST EDITION	No new editions of chart 16570 will be published. It will be canceled on 30-Nov-22. Comparable or larger scale Electronic Navigational Chart (ENC) coverage is available. See "Cancellation of NOAA Paper and Raster Nautical Charts" in Section I of this LNM for details. A list of all canceled NOAA charts is at <a href="https://www.charts.noaa.gov/MCD/Dole.shtml">https://www.charts.noaa.gov/MCD/Dole.shtml</a> .	NOS	--
<b>16575</b>	<b>3rd Ed. 01-APR-15 Last LNM: 15/15 NAD 83</b>		<b>39/22</b>
<i>ChartTitle: Dakavak Bay to Cape Unalishagvak;Alinchak Bay</i>			
<b>Main Panel 2867 DAKAVAK BAY TO CAPE UNALISHAGVAK. Page/Side: A</b>			
LAST EDITION	No new editions of chart 16575 will be published. It will be canceled on 30-Nov-22. Comparable or larger scale Electronic Navigational Chart (ENC) coverage is available. See "Cancellation of NOAA Paper and Raster Nautical Charts" in Section I of this LNM for details. A list of all canceled NOAA charts is at <a href="https://www.charts.noaa.gov/MCD/Dole.shtml">https://www.charts.noaa.gov/MCD/Dole.shtml</a> .	NOS	--
<b>16576</b>	<b>5th Ed. 01-APR-15 Last LNM: 32/19 NAD 83</b>		<b>39/22</b>
<i>ChartTitle: Shelikof Strait-Cape Nukshak to Dakavak Bay</i>			
<b>Main Panel 2871 CAPE NUKSHAK TO DAKAVAK BAY. Page/Side: A</b>			
LAST EDITION	No new editions of chart 16576 will be published. It will be canceled on 30-Nov-22. Comparable or larger scale Electronic Navigational Chart (ENC) coverage is available. See "Cancellation of NOAA Paper and Raster Nautical Charts" in Section I of this LNM for details. A list of all canceled NOAA charts is at <a href="https://www.charts.noaa.gov/MCD/Dole.shtml">https://www.charts.noaa.gov/MCD/Dole.shtml</a> .	NOS	--
<b>16587</b>	<b>3rd Ed. 01-AUG-14 Last LNM: 09/20 NAD 83</b>		<b>39/22</b>
<i>ChartTitle: Semidi Islands and Vicinity</i>			
<b>Main Panel 2541 SEMIDI ISLANDS AND VICINITY. Page/Side: A</b>			
LAST EDITION	No new editions of chart 16587 will be published. It will be canceled on	NOS	--

30-Nov-22. Comparable or larger scale Electronic Navigational Chart (ENC) coverage is available. See "Cancellation of NOAA Paper and Raster Nautical Charts" in Section I of this LNM for details. A list of all canceled NOAA charts is at <https://www.charts.noaa.gov/MCD/Dole.shtml>.

<b>16590</b>	<b>12th Ed.</b>	<b>01-SEP-14</b>	<b>Last LNM: 07/20</b>	<b>NAD 83</b>	<b>39/22</b>
<i>ChartTitle: Kodiak Island Sitkinak Strait and Alitak Bay</i>					
<b>Main Panel 2548 SITKINAK STRAIT AND ALITAK BAY. Page/Side: A</b>					
LAST EDITION	No new editions of chart 16590 will be published. It will be canceled on 30-Nov-22. Comparable or larger scale Electronic Navigational Chart (ENC) coverage is available. See "Cancellation of NOAA Paper and Raster Nautical Charts" in Section I of this LNM for details. A list of all canceled NOAA charts is at <a href="https://www.charts.noaa.gov/MCD/Dole.shtml">https://www.charts.noaa.gov/MCD/Dole.shtml</a> .			NOS --	--
<b>16591</b>	<b>10th Ed.</b>	<b>01-JUL-14</b>	<b>Last LNM: 30/17</b>	<b>NAD 83</b>	<b>39/22</b>
<i>ChartTitle: Alitak Bay-Cape Alitak to Moser Bay</i>					
<b>Main Panel 2549 PART OF ALITAK BAY CAPE ALITAK TO MOSER BAY. Page/Side: A</b>					
LAST EDITION	No new editions of chart 16591 will be published. It will be canceled on 30-Nov-22. Comparable or larger scale Electronic Navigational Chart (ENC) coverage is available. See "Cancellation of NOAA Paper and Raster Nautical Charts" in Section I of this LNM for details. A list of all canceled NOAA charts is at <a href="https://www.charts.noaa.gov/MCD/Dole.shtml">https://www.charts.noaa.gov/MCD/Dole.shtml</a> .			NOS --	--
<b>16592</b>	<b>11th Ed.</b>	<b>01-JUL-14</b>	<b>Last LNM: 18/17</b>	<b>NAD 83</b>	<b>39/22</b>
<i>ChartTitle: Kodiak Island Gull Point to Kaguyak Bay;Sitkalidak Passage</i>					
<b>Main Panel 2550 GULL POINT TO KAGUYAK BAY. Page/Side: A</b>					
LAST EDITION	No new editions of chart 16592 will be published. It will be canceled on 30-Nov-22. Comparable or larger scale Electronic Navigational Chart (ENC) coverage is available. See "Cancellation of NOAA Paper and Raster Nautical Charts" in Section I of this LNM for details. A list of all canceled NOAA charts is at <a href="https://www.charts.noaa.gov/MCD/Dole.shtml">https://www.charts.noaa.gov/MCD/Dole.shtml</a> .			NOS --	--
<b>16597</b>	<b>10th Ed.</b>	<b>01-APR-15</b>	<b>Last LNM: 32/19</b>	<b>NAD 83</b>	<b>39/22</b>
<i>ChartTitle: Uganik and Uyak Bays</i>					
<b>Main Panel 2559 UGANIK AND UYAK BAYS. Page/Side: A</b>					
LAST EDITION	No new editions of chart 16597 will be published. It will be canceled on 30-Nov-22. Comparable or larger scale Electronic Navigational Chart (ENC) coverage is available. See "Cancellation of NOAA Paper and Raster Nautical Charts" in Section I of this LNM for details. A list of all canceled NOAA charts is at <a href="https://www.charts.noaa.gov/MCD/Dole.shtml">https://www.charts.noaa.gov/MCD/Dole.shtml</a> .			NOS --	--
<b>16598</b>	<b>11th Ed.</b>	<b>01-APR-15</b>	<b>Last LNM: 04/17</b>	<b>NAD 83</b>	<b>39/22</b>
<i>ChartTitle: Cape Ikolik to Cape Kuliuk</i>					
<b>Main Panel 2560 CAPE IKOLIK TO CAPE KULIUUK. Page/Side: A</b>					
LAST EDITION	No new editions of chart 16598 will be published. It will be canceled on 30-Nov-22. Comparable or larger scale Electronic Navigational Chart (ENC) coverage is available. See "Cancellation of NOAA Paper and Raster Nautical Charts" in Section I of this LNM for details. A list of all canceled NOAA charts is at <a href="https://www.charts.noaa.gov/MCD/Dole.shtml">https://www.charts.noaa.gov/MCD/Dole.shtml</a> .			NOS --	--
<b>16599</b>	<b>8th Ed.</b>	<b>01-FEB-15</b>	<b>Last LNM: 04/17</b>	<b>NAD 83</b>	<b>39/22</b>
<i>ChartTitle: Bays and Anchorages, Kodiak Island Karluk Anchorage;Larsen Bay;Uyak Anchorage</i>					
<b>Main Panel 2561 KODIAK ISL BAYS AND ANCHORAGES LARSEN BAY. Page/Side: A</b>					
LAST EDITION	No new editions of chart 16599 will be published. It will be canceled on 30-Nov-22. Comparable or larger scale Electronic Navigational Chart (ENC) coverage is available. See "Cancellation of NOAA Paper and Raster Nautical Charts" in Section I of this LNM for details. A list of all canceled NOAA charts is at <a href="https://www.charts.noaa.gov/MCD/Dole.shtml">https://www.charts.noaa.gov/MCD/Dole.shtml</a> .			NOS --	--
<b>16603</b>	<b>9th Ed.</b>	<b>01-MAR-15</b>	<b>Last LNM: 11/15</b>	<b>NAD 83</b>	<b>39/22</b>
<i>ChartTitle: Kukak Bay, Alaska Peninsula</i>					
<b>Main Panel 2565 KUKAK BAY. Page/Side: A</b>					
LAST EDITION	No new editions of chart 16603 will be published. It will be canceled on 30-Nov-22. Comparable or larger scale Electronic Navigational Chart			NOS --	--

(ENC) coverage is available. See "Cancellation of NOAA Paper and Raster Nautical Charts" in Section I of this LNM for details. A list of all canceled NOAA charts is at <https://www.charts.noaa.gov/MCD/Dole.shtml>.

<b>16604</b>	<b>12th Ed.</b>	<b>01-JUL-14</b>	<b>Last LNM: 41/21</b>	<b>NAD 83</b>	<b>39/22</b>
<i>ChartTitle: Shuyak and Afagnak Islands and adjacent waters</i>					
<b>Main Panel 2566 SHUYAK &amp; AFOGNAK ISL &amp; ADJACENT WATERS. Page/Side: A</b>					
LAST EDITION No new editions of chart 16604 will be published. It will be canceled on 30-Nov-22. Comparable or larger scale Electronic Navigational Chart (ENC) coverage is available. See "Cancellation of NOAA Paper and Raster Nautical Charts" in Section I of this LNM for details. A list of all canceled NOAA charts is at <a href="https://www.charts.noaa.gov/MCD/Dole.shtml">https://www.charts.noaa.gov/MCD/Dole.shtml</a> .					
				NOS	--
<b>16605</b>	<b>10th Ed.</b>	<b>01-JUN-14</b>	<b>Last LNM: 23/14</b>	<b>NAD 83</b>	<b>39/22</b>
<i>ChartTitle: Shuyak Strait and Bluefox Bay</i>					
<b>Main Panel 2567 SHUYAK STRAIT AND BLUEFOX BAY. Page/Side: A</b>					
LAST EDITION No new editions of chart 16605 will be published. It will be canceled on 30-Nov-22. Comparable or larger scale Electronic Navigational Chart (ENC) coverage is available. See "Cancellation of NOAA Paper and Raster Nautical Charts" in Section I of this LNM for details. A list of all canceled NOAA charts is at <a href="https://www.charts.noaa.gov/MCD/Dole.shtml">https://www.charts.noaa.gov/MCD/Dole.shtml</a> .					
				NOS	--
<b>16606</b>	<b>12th Ed.</b>	<b>01-FEB-15</b>	<b>Last LNM: 16/15</b>	<b>NAD 83</b>	<b>39/22</b>
<i>ChartTitle: Barren Islands</i>					
<b>Main Panel 2568 BARREN ISLANDS . Page/Side: A</b>					
LAST EDITION No new editions of chart 16606 will be published. It will be canceled on 30-Nov-22. Comparable or larger scale Electronic Navigational Chart (ENC) coverage is available. See "Cancellation of NOAA Paper and Raster Nautical Charts" in Section I of this LNM for details. A list of all canceled NOAA charts is at <a href="https://www.charts.noaa.gov/MCD/Dole.shtml">https://www.charts.noaa.gov/MCD/Dole.shtml</a> .					
				NOS	--
<b>16608</b>	<b>5th Ed.</b>	<b>01-MAR-15</b>	<b>Last LNM: 13/15</b>	<b>NAD 83</b>	<b>39/22</b>
<i>ChartTitle: Shelikof Strait-Cape Douglas to Cape Nukshak</i>					
<b>Main Panel 2569 CAPE DOUGLAS TO CAPE NUKSHAK. Page/Side: A</b>					
LAST EDITION No new editions of chart 16608 will be published. It will be canceled on 30-Nov-22. Comparable or larger scale Electronic Navigational Chart (ENC) coverage is available. See "Cancellation of NOAA Paper and Raster Nautical Charts" in Section I of this LNM for details. A list of all canceled NOAA charts is at <a href="https://www.charts.noaa.gov/MCD/Dole.shtml">https://www.charts.noaa.gov/MCD/Dole.shtml</a> .					
				NOS	--
<b>16648</b>	<b>6th Ed.</b>	<b>01-APR-15</b>	<b>Last LNM: 17/15</b>	<b>NAD 83</b>	<b>39/22</b>
<i>ChartTitle: Kamishak Bay;Iliamna Bay</i>					
<b>Main Panel 2577 KAMISHAK BAY COOK INLET. Page/Side: A</b>					
LAST EDITION No new editions of chart 16648 will be published. It will be canceled on 30-Nov-22. Comparable or larger scale Electronic Navigational Chart (ENC) coverage is available. See "Cancellation of NOAA Paper and Raster Nautical Charts" in Section I of this LNM for details. A list of all canceled NOAA charts is at <a href="https://www.charts.noaa.gov/MCD/Dole.shtml">https://www.charts.noaa.gov/MCD/Dole.shtml</a> .					
				NOS	--
<b>16681</b>	<b>11th Ed.</b>	<b>01-APR-15</b>	<b>Last LNM: 16/15</b>	<b>NAD 83</b>	<b>39/22</b>
<i>ChartTitle: Seal Rocks to Gore Point</i>					
<b>Main Panel 2593 SEAL ROCKS TO GORE POINT. Page/Side: A</b>					
LAST EDITION No new editions of chart 16681 will be published. It will be canceled on 30-Nov-22. Comparable or larger scale Electronic Navigational Chart (ENC) coverage is available. See "Cancellation of NOAA Paper and Raster Nautical Charts" in Section I of this LNM for details. A list of all canceled NOAA charts is at <a href="https://www.charts.noaa.gov/MCD/Dole.shtml">https://www.charts.noaa.gov/MCD/Dole.shtml</a> .					
				NOS	--
<b>16683</b>	<b>12th Ed.</b>	<b>01-JAN-11</b>	<b>Last LNM: 39/17</b>	<b>NAD 83</b>	<b>39/22</b>
<i>ChartTitle: Point Elrington to Cape Resurrection</i>					
<b>Main Panel 2596 POINT ELRINGTON TO CAPE RESURRECTION. Page/Side: N/A</b>					
LAST EDITION No new editions of chart 16683 will be published. It will be canceled on 30-Nov-22. Comparable or larger scale Electronic Navigational Chart (ENC) coverage is available. See "Cancellation of NOAA Paper and Raster					
				NOS	--

Nautical Charts" in Section I of this LNM for details. A list of all canceled NOAA charts is at <https://www.charts.noaa.gov/MCD/Dole.shtml>.

<b>16701</b>	<b>23rd Ed.</b>	<b>01-APR-15</b>	<b>Last LNM: 43/15</b>	<b>NAD 83</b>	<b>39/22</b>
<i>ChartTitle: Prince William Sound-western entrance</i>					
<b>Main Panel 2598 PRINCE WILLIAM SOUND WESTERN ENTRANCE. Page/Side: A</b>					
LAST EDITION	No new editions of chart 16701 will be published. It will be canceled on 30-Nov-22. Comparable or larger scale Electronic Navigational Chart (ENC) coverage is available. See "Cancellation of NOAA Paper and Raster Nautical Charts" in Section I of this LNM for details. A list of all canceled NOAA charts is at <a href="https://www.charts.noaa.gov/MCD/Dole.shtml">https://www.charts.noaa.gov/MCD/Dole.shtml</a> .				NOS --
<b>16702</b>	<b>14th Ed.</b>	<b>01-OCT-09</b>	<b>Last LNM: 43/15</b>	<b>NAD 83</b>	<b>39/22</b>
<i>ChartTitle: Latouche Passage to Whale Bay</i>					
<b>Main Panel 2599 LATOUCHE PASSAGE TO WHALE BAY. Page/Side: N/A</b>					
LAST EDITION	No new editions of chart 16702 will be published. It will be canceled on 30-Nov-22. Comparable or larger scale Electronic Navigational Chart (ENC) coverage is available. See "Cancellation of NOAA Paper and Raster Nautical Charts" in Section I of this LNM for details. A list of all canceled NOAA charts is at <a href="https://www.charts.noaa.gov/MCD/Dole.shtml">https://www.charts.noaa.gov/MCD/Dole.shtml</a> .				NOS --
<b>16704</b>	<b>14th Ed.</b>	<b>01-FEB-15</b>	<b>Last LNM: 09/15</b>	<b>NAD 83</b>	<b>39/22</b>
<i>ChartTitle: Drier Bay, Prince William Sound</i>					
<b>Main Panel 2600 DRIER BAY. Page/Side: A</b>					
LAST EDITION	No new editions of chart 16704 will be published. It will be canceled on 30-Nov-22. Comparable or larger scale Electronic Navigational Chart (ENC) coverage is available. See "Cancellation of NOAA Paper and Raster Nautical Charts" in Section I of this LNM for details. A list of all canceled NOAA charts is at <a href="https://www.charts.noaa.gov/MCD/Dole.shtml">https://www.charts.noaa.gov/MCD/Dole.shtml</a> .				NOS --
<b>16706</b>	<b>11th Ed.</b>	<b>01-MAR-15</b>	<b>Last LNM: 11/15</b>	<b>NAD 83</b>	<b>39/22</b>
<i>ChartTitle: Passage Canal incl. Port of Whittier;Port of Whittier</i>					
<b>Main Panel 2602 PASSAGE CANAL INCLUDING PORT OF WHITTIER. Page/Side: A</b>					
LAST EDITION	No new editions of chart 16706 will be published. It will be canceled on 30-Nov-22. Comparable or larger scale Electronic Navigational Chart (ENC) coverage is available. See "Cancellation of NOAA Paper and Raster Nautical Charts" in Section I of this LNM for details. A list of all canceled NOAA charts is at <a href="https://www.charts.noaa.gov/MCD/Dole.shtml">https://www.charts.noaa.gov/MCD/Dole.shtml</a> .				NOS --
<b>16711</b>	<b>3rd Ed.</b>	<b>01-MAR-15</b>	<b>Last LNM: 11/15</b>	<b>NAD 83</b>	<b>39/22</b>
<i>ChartTitle: Port Wells, including College Fiord and Harriman Fiord</i>					
<b>Main Panel 2977 PORT WELLS COLLEGE FIORD. Page/Side: A</b>					
LAST EDITION	No new editions of chart 16711 will be published. It will be canceled on 30-Nov-22. Comparable or larger scale Electronic Navigational Chart (ENC) coverage is available. See "Cancellation of NOAA Paper and Raster Nautical Charts" in Section I of this LNM for details. A list of all canceled NOAA charts is at <a href="https://www.charts.noaa.gov/MCD/Dole.shtml">https://www.charts.noaa.gov/MCD/Dole.shtml</a> .				NOS --
<b>16713</b>	<b>4th Ed.</b>	<b>01-JUL-10</b>	<b>Last LNM: 24/14</b>	<b>NAD 83</b>	<b>39/22</b>
<i>ChartTitle: Naked Island to Columbia Bay</i>					
<b>Main Panel 2961 NAKED ISLAND TO COLUMBIA BAY. Page/Side: N/A</b>					
LAST EDITION	No new editions of chart 16713 will be published. It will be canceled on 30-Nov-22. Comparable or larger scale Electronic Navigational Chart (ENC) coverage is available. See "Cancellation of NOAA Paper and Raster Nautical Charts" in Section I of this LNM for details. A list of all canceled NOAA charts is at <a href="https://www.charts.noaa.gov/MCD/Dole.shtml">https://www.charts.noaa.gov/MCD/Dole.shtml</a> .				NOS --
<b>16723</b>	<b>16th Ed.</b>	<b>01-SEP-14</b>	<b>Last LNM: 43/20</b>	<b>NAD 83</b>	<b>39/22</b>
<i>ChartTitle: Controller Bay</i>					
<b>Main Panel 2611 CONTROLLER BAY. Page/Side: A</b>					
LAST EDITION	No new editions of chart 16723 will be published. It will be canceled on 30-Nov-22. Comparable or larger scale Electronic Navigational Chart (ENC) coverage is available. See "Cancellation of NOAA Paper and Raster Nautical Charts" in Section I of this LNM for details. A list of all canceled NOAA charts is at <a href="https://www.charts.noaa.gov/MCD/Dole.shtml">https://www.charts.noaa.gov/MCD/Dole.shtml</a> .				NOS --



<b>16741</b>	<b>12th Ed.</b>	<b>01-SEP-12</b>	<b>Last LNM: 38/12</b>	<b>NAD 83</b>	<b>39/22</b>
<i>ChartTitle: Icy Bay</i>					
<b>Main Panel 2612 ICY BAY. Page/Side: N/A</b>					
LAST EDITION No new editions of chart 16741 will be published. It will be canceled on 30-Nov-22. Comparable or larger scale Electronic Navigational Chart (ENC) coverage is available. See "Cancellation of NOAA Paper and Raster Nautical Charts" in Section I of this LNM for details. A list of all canceled NOAA charts is at <a href="https://www.charts.noaa.gov/MCD/Dole.shtml">https://www.charts.noaa.gov/MCD/Dole.shtml</a> .					
				NOS	--
<b>16761</b>	<b>17th Ed.</b>	<b>01-APR-15</b>	<b>Last LNM: 17/15</b>	<b>NAD 83</b>	<b>39/22</b>
<i>ChartTitle: Yakutat Bay;Yakutat Harbor</i>					
<b>Main Panel 2614 YAKUTAT BAY. Page/Side: A</b>					
LAST EDITION No new editions of chart 16761 will be published. It will be canceled on 30-Nov-22. Comparable or larger scale Electronic Navigational Chart (ENC) coverage is available. See "Cancellation of NOAA Paper and Raster Nautical Charts" in Section I of this LNM for details. A list of all canceled NOAA charts is at <a href="https://www.charts.noaa.gov/MCD/Dole.shtml">https://www.charts.noaa.gov/MCD/Dole.shtml</a> .					
				NOS	--
<b>16762</b>	<b>10th Ed.</b>	<b>01-JUN-14</b>	<b>Last LNM: 23/14</b>	<b>NAD 83</b>	<b>39/22</b>
<i>ChartTitle: Lituya Bay;Lituya Bay Entrance</i>					
<b>Main Panel 2616 LITUYA BAY. Page/Side: A</b>					
LAST EDITION No new editions of chart 16762 will be published. It will be canceled on 01-Feb-23. Comparable or larger scale Electronic Navigational Chart (ENC) coverage is available. See "Cancellation of NOAA Paper and Raster Nautical Charts" in Section I of this LNM for details. A list of all canceled NOAA charts is at <a href="https://www.charts.noaa.gov/MCD/Dole.shtml">https://www.charts.noaa.gov/MCD/Dole.shtml</a> .					
				NOS	--
<b>17301</b>	<b>9th Ed.</b>	<b>01-NOV-14</b>	<b>Last LNM: 53/19</b>	<b>NAD 83</b>	<b>39/22</b>
<i>ChartTitle: Cape Spencer to Icy Point</i>					
<b>Main Panel 2620 CAPE SPENCER TO ICY POINT. Page/Side: A</b>					
LAST EDITION No new editions of chart 17301 will be published. It will be canceled on 01-Feb-23. Comparable or larger scale Electronic Navigational Chart (ENC) coverage is available. See "Cancellation of NOAA Paper and Raster Nautical Charts" in Section I of this LNM for details. A list of all canceled NOAA charts is at <a href="https://www.charts.noaa.gov/MCD/Dole.shtml">https://www.charts.noaa.gov/MCD/Dole.shtml</a> .					
				NOS	--
<b>17302</b>	<b>19th Ed.</b>	<b>01-MAY-15</b>	<b>Last LNM: 40/20</b>	<b>NAD 83</b>	<b>39/22</b>
<i>ChartTitle: Icy Strait and Cross Sound;Inian Cove;Elfin Cove</i>					
<b>Main Panel 2621 ICY STRAIT AND CROSS SOUND. Page/Side: A</b>					
LAST EDITION No new editions of chart 17302 will be published. It will be canceled on 01-Feb-23. Comparable or larger scale Electronic Navigational Chart (ENC) coverage is available. See "Cancellation of NOAA Paper and Raster Nautical Charts" in Section I of this LNM for details. A list of all canceled NOAA charts is at <a href="https://www.charts.noaa.gov/MCD/Dole.shtml">https://www.charts.noaa.gov/MCD/Dole.shtml</a> .					
				NOS	--
<b>17303</b>	<b>11th Ed.</b>	<b>01-MAY-14</b>	<b>Last LNM: 30/16</b>	<b>NAD 83</b>	<b>39/22</b>
<i>ChartTitle: Yakobi Island and Lisianski Inlet;Pelican Harbor</i>					
<b>Main Panel 2624 YAKOBI ISLAND AND LISIANSKI INLET. Page/Side: N/A</b>					
LAST EDITION No new editions of chart 17303 will be published. It will be canceled on 01-Feb-23. Comparable or larger scale Electronic Navigational Chart (ENC) coverage is available. See "Cancellation of NOAA Paper and Raster Nautical Charts" in Section I of this LNM for details. A list of all canceled NOAA charts is at <a href="https://www.charts.noaa.gov/MCD/Dole.shtml">https://www.charts.noaa.gov/MCD/Dole.shtml</a> .					
				NOS	--
<b>17311</b>	<b>2nd Ed.</b>	<b>01-FEB-12</b>	<b>Last LNM: 39/19</b>	<b>NAD 83</b>	<b>39/22</b>
<i>ChartTitle: Holkham Bay And Tracy Arm - Stephens Passage</i>					
<b>Main Panel 2940 HOLKHAM BAY AND TRACY ARM - STEPHENS PASSAGE. Page/Side: N/A</b>					
LAST EDITION No new editions of chart 17311 will be published. It will be canceled on 01-Feb-23. Comparable or larger scale Electronic Navigational Chart (ENC) coverage is available. See "Cancellation of NOAA Paper and Raster Nautical Charts" in Section I of this LNM for details. A list of all canceled NOAA charts is at <a href="https://www.charts.noaa.gov/MCD/Dole.shtml">https://www.charts.noaa.gov/MCD/Dole.shtml</a> .					
				NOS	--

<b>17312</b>	<b>3rd Ed.</b>	<b>01-OCT-12</b>	<b>Last LNM: 24/20</b>	<b>NAD 83</b>	<b>39/22</b>
<i>ChartTitle: Hawk Inlet, Chatham Strait</i>					
<b>Main Panel 2986 HAWK INLET, CHATHAM STRAIT. Page/Side: N/A</b>					
LAST EDITION	No new editions of chart 17312 will be published. It will be canceled on 01-Feb-23. Comparable or larger scale Electronic Navigational Chart (ENC) coverage is available. See "Cancellation of NOAA Paper and Raster Nautical Charts" in Section I of this LNM for details. A list of all canceled NOAA charts is at <a href="https://www.charts.noaa.gov/MCD/Dole.shtml">https://www.charts.noaa.gov/MCD/Dole.shtml</a> .			NOS	--
<b>17313</b>	<b>9th Ed.</b>	<b>01-MAY-09</b>	<b>Last LNM: 26/09</b>	<b>NAD 83</b>	<b>39/22</b>
<i>ChartTitle: Port Snettisham</i>					
<b>Main Panel 2627 PORT SNETTISHAM. Page/Side: N/A</b>					
LAST EDITION	No new editions of chart 17313 will be published. It will be canceled on 01-Feb-23. Comparable or larger scale Electronic Navigational Chart (ENC) coverage is available. See "Cancellation of NOAA Paper and Raster Nautical Charts" in Section I of this LNM for details. A list of all canceled NOAA charts is at <a href="https://www.charts.noaa.gov/MCD/Dole.shtml">https://www.charts.noaa.gov/MCD/Dole.shtml</a> .			NOS	--
<b>17314</b>	<b>13th Ed.</b>	<b>01-NOV-14</b>	<b>Last LNM: 46/14</b>	<b>NAD 83</b>	<b>39/22</b>
<i>ChartTitle: Slocum and Limestone Inlets and Taku Harbor</i>					
<b>Main Panel 2628 SLOCUM AND LIMESTONE INLETS AND TAKU HARBOR. Page/Side: A</b>					
LAST EDITION	No new editions of chart 17314 will be published. It will be canceled on 01-Feb-23. Comparable or larger scale Electronic Navigational Chart (ENC) coverage is available. See "Cancellation of NOAA Paper and Raster Nautical Charts" in Section I of this LNM for details. A list of all canceled NOAA charts is at <a href="https://www.charts.noaa.gov/MCD/Dole.shtml">https://www.charts.noaa.gov/MCD/Dole.shtml</a> .			NOS	--
<b>17317</b>	<b>21st Ed.</b>	<b>01-MAY-15</b>	<b>Last LNM: 22/20</b>	<b>NAD 83</b>	<b>39/22</b>
<i>ChartTitle: Lynn Canal-Point Sherman to Skagway;Lutak Inlet;Skagway and Nahku Bay;Portage Cove, Chilkoot Inlet</i>					
<b>Main Panel 2634 LYNN CANAL POINT SHERMAN TO SKAGWAY. Page/Side: A</b>					
LAST EDITION	No new editions of chart 17317 will be published. It will be canceled on 01-Feb-23. Comparable or larger scale Electronic Navigational Chart (ENC) coverage is available. See "Cancellation of NOAA Paper and Raster Nautical Charts" in Section I of this LNM for details. A list of all canceled NOAA charts is at <a href="https://www.charts.noaa.gov/MCD/Dole.shtml">https://www.charts.noaa.gov/MCD/Dole.shtml</a> .			NOS	--
<b>17318</b>	<b>8th Ed.</b>	<b>01-NOV-12</b>	<b>Last LNM: 29/21</b>	<b>NAD 83</b>	<b>39/22</b>
<i>ChartTitle: Glacier Bay;Bartlett Cove</i>					
<b>Main Panel 2638 GLACIER BAY. Page/Side: N/A</b>					
LAST EDITION	No new editions of chart 17318 will be published. It will be canceled on 01-Feb-23. Comparable or larger scale Electronic Navigational Chart (ENC) coverage is available. See "Cancellation of NOAA Paper and Raster Nautical Charts" in Section I of this LNM for details. A list of all canceled NOAA charts is at <a href="https://www.charts.noaa.gov/MCD/Dole.shtml">https://www.charts.noaa.gov/MCD/Dole.shtml</a> .			NOS	--
<b>17321</b>	<b>10th Ed.</b>	<b>01-MAY-14</b>	<b>Last LNM: 30/16</b>	<b>NAD 83</b>	<b>39/22</b>
<i>ChartTitle: Cape Edward to Lisianski Strait, Chichagof Island</i>					
<b>Main Panel 2645 CAPE EDWARD TO LISIANSKI STRAIT. Page/Side: N/A</b>					
LAST EDITION	No new editions of chart 17321 will be published. It will be canceled on 01-Feb-23. Comparable or larger scale Electronic Navigational Chart (ENC) coverage is available. See "Cancellation of NOAA Paper and Raster Nautical Charts" in Section I of this LNM for details. A list of all canceled NOAA charts is at <a href="https://www.charts.noaa.gov/MCD/Dole.shtml">https://www.charts.noaa.gov/MCD/Dole.shtml</a> .			NOS	--
<b>17322</b>	<b>11th Ed.</b>	<b>01-MAY-14</b>	<b>Last LNM: 12/16</b>	<b>NAD 83</b>	<b>39/22</b>
<i>ChartTitle: Khaz Bay, Chichagof Island Elbow Passage</i>					
<b>Main Panel 2646 WEST COAST OF CHICHAGOF ISLAND KHAZ BAY. Page/Side: N/A</b>					
LAST EDITION	No new editions of chart 17322 will be published. It will be canceled on 01-Feb-23. Comparable or larger scale Electronic Navigational Chart (ENC) coverage is available. See "Cancellation of NOAA Paper and Raster Nautical Charts" in Section I of this LNM for details. A list of all canceled NOAA charts is at <a href="https://www.charts.noaa.gov/MCD/Dole.shtml">https://www.charts.noaa.gov/MCD/Dole.shtml</a> .			NOS	--
<b>17325</b>	<b>10th Ed.</b>	<b>01-MAR-15</b>	<b>Last LNM: 12/15</b>	<b>NAD 83</b>	<b>39/22</b>
<i>ChartTitle: South and West Coasts of Kruzof Island</i>					

**Main Panel 2653 SOUTH AND WEST COASTS OF KRUZOF ISLAND. Page/Side: A**

LAST EDITION No new editions of chart 17325 will be published. It will be canceled on 01-Feb-23. Comparable or larger scale Electronic Navigational Chart (ENC) coverage is available. See "Cancellation of NOAA Paper and Raster Nautical Charts" in Section I of this LNM for details. A list of all canceled NOAA charts is at <https://www.charts.noaa.gov/MCD/Dole.shtml>. NOS -- --

**17328 8th Ed. 01-NOV-11 Last LNM: 22/11 NAD 83 39/22**  
*ChartTitle: Snipe Bay to Crawfish Inlet,Baranof I.*

**Main Panel 2659 BARANOF ISLAND SNIPE BAY TO CRAWFISH INLET. Page/Side: N/A**

LAST EDITION No new editions of chart 17328 will be published. It will be canceled on 01-Feb-23. Comparable or larger scale Electronic Navigational Chart (ENC) coverage is available. See "Cancellation of NOAA Paper and Raster Nautical Charts" in Section I of this LNM for details. A list of all canceled NOAA charts is at <https://www.charts.noaa.gov/MCD/Dole.shtml>. NOS -- --

**17330 10th Ed. 01-MAR-15 Last LNM: 10/15 NAD 83 39/22**  
*ChartTitle: West Coast of Baranof Island Cape Ommaney to Byron Bay*

**Main Panel 2661 CAPE OMMANEY TO BYRON BAY. Page/Side: A**

LAST EDITION No new editions of chart 17330 will be published. It will be canceled on 01-Feb-23. Comparable or larger scale Electronic Navigational Chart (ENC) coverage is available. See "Cancellation of NOAA Paper and Raster Nautical Charts" in Section I of this LNM for details. A list of all canceled NOAA charts is at <https://www.charts.noaa.gov/MCD/Dole.shtml>. NOS -- --

**17331 9th Ed. 01-MAR-13 Last LNM: 16/15 NAD 83 39/22**  
*ChartTitle: Chatham Strait Ports Alexander, Conclusion, and Armstrong*

**Main Panel 2663 PORTS ALEXANDER CONCLUSION AND ARMSTRONG. Page/Side: N/A**

LAST EDITION No new editions of chart 17331 will be published. It will be canceled on 01-Feb-23. Comparable or larger scale Electronic Navigational Chart (ENC) coverage is available. See "Cancellation of NOAA Paper and Raster Nautical Charts" in Section I of this LNM for details. A list of all canceled NOAA charts is at <https://www.charts.noaa.gov/MCD/Dole.shtml>. NOS -- --

**17333 10th Ed. 01-MAR-13 Last LNM: 17/13 NAD 83 39/22**  
*ChartTitle: Ports Herbert, Walter, Lucy and Armstrong*

**Main Panel 2664 PORTS HERBERT WALTER LUCY AND ARMSTRONG. Page/Side: N/A**

LAST EDITION No new editions of chart 17333 will be published. It will be canceled on 01-Feb-23. Comparable or larger scale Electronic Navigational Chart (ENC) coverage is available. See "Cancellation of NOAA Paper and Raster Nautical Charts" in Section I of this LNM for details. A list of all canceled NOAA charts is at <https://www.charts.noaa.gov/MCD/Dole.shtml>. NOS -- --

**17335 9th Ed. 01-MAR-13 Last LNM: 17/13 NAD 83 39/22**  
*ChartTitle: Patterson Bay and Deep Cove*

**Main Panel 2665 PATTERSON BAY AND DEEP COVE. Page/Side: N/A**

LAST EDITION No new editions of chart 17335 will be published. It will be canceled on 01-Feb-23. Comparable or larger scale Electronic Navigational Chart (ENC) coverage is available. See "Cancellation of NOAA Paper and Raster Nautical Charts" in Section I of this LNM for details. A list of all canceled NOAA charts is at <https://www.charts.noaa.gov/MCD/Dole.shtml>. NOS -- --

**17336 10th Ed. 01-JAN-13 Last LNM: 10/13 NAD 83 39/22**  
*ChartTitle: Harbors in Chatham Strait and vicinity Gut Bay, Chatham Strait;Hoggatt Bay, Chatham Strait;Red Bluff Bay, Chatham Strait;Herring Bay and Chapin Bay, Frederick Sound;Surprise Hbr, and Murder Cove, Frederick Sound*

**Unrelated 2666 HARBORS IN CHATHAM STRAIT AND VICINITY. Page/Side: N/A**

LAST EDITION No new editions of chart 17336 will be published. It will be canceled on 01-Feb-23. Comparable or larger scale Electronic Navigational Chart (ENC) coverage is available. See "Cancellation of NOAA Paper and Raster Nautical Charts" in Section I of this LNM for details. A list of all canceled NOAA charts is at <https://www.charts.noaa.gov/MCD/Dole.shtml>. NOS -- --

**17337 10th Ed. 01-MAR-12 Last LNM: 11/12 NAD 83 39/22**  
*ChartTitle: Harbors in Chatham Strait Kelp Bay;Warm Spring Bay;Takatz and Kasnyku Bays*

**Unrelated 2671 WARM SPRING BAY CHATHAM STRAIT. Page/Side: N/A**

					NOS	
	LAST EDITION	No new editions of chart 17337 will be published. It will be canceled on 01-Feb-23. Comparable or larger scale Electronic Navigational Chart (ENC) coverage is available. See "Cancellation of NOAA Paper and Raster Nautical Charts" in Section I of this LNM for details. A list of all canceled NOAA charts is at <a href="https://www.charts.noaa.gov/MCD/Dole.shtml">https://www.charts.noaa.gov/MCD/Dole.shtml</a> .			--	--
<b>17338</b>	<b>15th Ed.</b>	<b>01-MAR-12</b>	<b>Last LNM: 11/12</b>	<b>NAD 83</b>		<b>39/22</b>
	<i>ChartTitle: Peril Str.-Hoonah Snd. to Chatham Str.</i>					
	<b>Main Panel 2675 PERIL STRAIT HOONAH SND-CHATHAM STRAIT. Page/Side: N/A</b>					
	LAST EDITION	No new editions of chart 17338 will be published. It will be canceled on 01-Feb-23. Comparable or larger scale Electronic Navigational Chart (ENC) coverage is available. See "Cancellation of NOAA Paper and Raster Nautical Charts" in Section I of this LNM for details. A list of all canceled NOAA charts is at <a href="https://www.charts.noaa.gov/MCD/Dole.shtml">https://www.charts.noaa.gov/MCD/Dole.shtml</a> .			NOS	--
					--	--
<b>17339</b>	<b>13th Ed.</b>	<b>01-APR-12</b>	<b>Last LNM: 38/19</b>	<b>NAD 83</b>		<b>39/22</b>
	<i>ChartTitle: Hood Bay and Kootznahoo Inlet</i>					
	<b>Main Panel 2676 HOOD BAY AND KOOTZNAHOO INLET. Page/Side: N/A</b>					
	LAST EDITION	No new editions of chart 17339 will be published. It will be canceled on 01-Feb-23. Comparable or larger scale Electronic Navigational Chart (ENC) coverage is available. See "Cancellation of NOAA Paper and Raster Nautical Charts" in Section I of this LNM for details. A list of all canceled NOAA charts is at <a href="https://www.charts.noaa.gov/MCD/Dole.shtml">https://www.charts.noaa.gov/MCD/Dole.shtml</a> .			NOS	--
					--	--
<b>17341</b>	<b>10th Ed.</b>	<b>01-APR-12</b>	<b>Last LNM: 24/12</b>	<b>NAD 83</b>		<b>39/22</b>
	<i>ChartTitle: Whitewater Bay and Chaik Bay, Chatham Strait</i>					
	<b>Main Panel 2678 WHITEWATER BAY AND CHAIK BAY. Page/Side: N/A</b>					
	LAST EDITION	No new editions of chart 17341 will be published. It will be canceled on 01-Feb-23. Comparable or larger scale Electronic Navigational Chart (ENC) coverage is available. See "Cancellation of NOAA Paper and Raster Nautical Charts" in Section I of this LNM for details. A list of all canceled NOAA charts is at <a href="https://www.charts.noaa.gov/MCD/Dole.shtml">https://www.charts.noaa.gov/MCD/Dole.shtml</a> .			NOS	--
					--	--
<b>17362</b>	<b>11th Ed.</b>	<b>01-NOV-14</b>	<b>Last LNM: 46/14</b>	<b>NAD 83</b>		<b>39/22</b>
	<i>ChartTitle: Gambier Bay, Stephens Passage</i>					
	<b>Main Panel 2681 GAMBIER BAY. Page/Side: A</b>					
	LAST EDITION	No new editions of chart 17362 will be published. It will be canceled on 01-Feb-23. Comparable or larger scale Electronic Navigational Chart (ENC) coverage is available. See "Cancellation of NOAA Paper and Raster Nautical Charts" in Section I of this LNM for details. A list of all canceled NOAA charts is at <a href="https://www.charts.noaa.gov/MCD/Dole.shtml">https://www.charts.noaa.gov/MCD/Dole.shtml</a> .			NOS	--
					--	--
<b>17363</b>	<b>14th Ed.</b>	<b>01-MAY-14</b>	<b>Last LNM: 09/22</b>	<b>NAD 83</b>		<b>39/22</b>
	<i>ChartTitle: Pybus Bay, Frederick Sound;Hobart and Windham Bays, Stephens P.</i>					
	<b>Unrelated 2682 PYBUS BAY FREDERICK SOUND. Page/Side: N/A</b>					
	LAST EDITION	No new editions of chart 17363 will be published. It will be canceled on 01-Feb-23. Comparable or larger scale Electronic Navigational Chart (ENC) coverage is available. See "Cancellation of NOAA Paper and Raster Nautical Charts" in Section I of this LNM for details. A list of all canceled NOAA charts is at <a href="https://www.charts.noaa.gov/MCD/Dole.shtml">https://www.charts.noaa.gov/MCD/Dole.shtml</a> .			NOS	--
					--	--
<b>17365</b>	<b>13th Ed.</b>	<b>01-JUN-14</b>	<b>Last LNM: 25/14</b>	<b>NAD 83</b>		<b>39/22</b>
	<i>ChartTitle: Woewodski and Eliza Hbrs.;Fanshaw Bay and Cleveland Passage</i>					
	<b>Unrelated 2684 WOEWODSKI AND ELIZA HARBORS. Page/Side: A</b>					
	LAST EDITION	No new editions of chart 17365 will be published. It will be canceled on 01-Feb-23. Comparable or larger scale Electronic Navigational Chart (ENC) coverage is available. See "Cancellation of NOAA Paper and Raster Nautical Charts" in Section I of this LNM for details. A list of all canceled NOAA charts is at <a href="https://www.charts.noaa.gov/MCD/Dole.shtml">https://www.charts.noaa.gov/MCD/Dole.shtml</a> .			NOS	--
					--	--
<b>17367</b>	<b>12th Ed.</b>	<b>01-AUG-14</b>	<b>Last LNM: 32/14</b>	<b>NAD 83</b>		<b>39/22</b>
	<i>ChartTitle: Thomas, Farragut, and Portage Bays, Frederick Sound</i>					
	<b>Main Panel 2686 THOMAS FARRAGUT AND PORTAGE BAYS. Page/Side: A</b>					
	LAST EDITION	No new editions of chart 17367 will be published. It will be canceled on			NOS	--
					--	--

01-Mar-23. Comparable or larger scale Electronic Navigational Chart (ENC) coverage is available. See "Cancellation of NOAA Paper and Raster Nautical Charts" in Section I of this LNM for details. A list of all canceled NOAA charts is at <https://www.charts.noaa.gov/MCD/Dole.shtml>.

<b>17368</b>	<b>8th Ed.</b>	<b>01-SEP-14</b>	<b>Last LNM: 09/22</b>	<b>NAD 83</b>	<b>39/22</b>
<i>ChartTitle: Keku Strait-northern part, including Saginaw and Security Bays and Port Camden;Kake Inset</i>					
<b>Main Panel 2687 KEKU STRAIT NORTHERN PART. Page/Side: A</b>					
LAST EDITION No new editions of chart 17368 will be published. It will be canceled on 01-Mar-23. Comparable or larger scale Electronic Navigational Chart (ENC) coverage is available. See "Cancellation of NOAA Paper and Raster Nautical Charts" in Section I of this LNM for details. A list of all canceled NOAA charts is at <a href="https://www.charts.noaa.gov/MCD/Dole.shtml">https://www.charts.noaa.gov/MCD/Dole.shtml</a> .					NOS --
<b>17370</b>	<b>12th Ed.</b>	<b>01-APR-15</b>	<b>Last LNM: 15/15</b>	<b>NAD 83</b>	<b>39/22</b>
<i>ChartTitle: Bay of Pillars and Rowan Bay, Chatham Strait;Washington Bay, Chatham Strait</i>					
<b>Main Panel 2692 BAY OF PILLARS ROWAN AND WASHINGTON BAYS. Page/Side: A</b>					
LAST EDITION No new editions of chart 17370 will be published. It will be canceled on 01-Mar-23. Comparable or larger scale Electronic Navigational Chart (ENC) coverage is available. See "Cancellation of NOAA Paper and Raster Nautical Charts" in Section I of this LNM for details. A list of all canceled NOAA charts is at <a href="https://www.charts.noaa.gov/MCD/Dole.shtml">https://www.charts.noaa.gov/MCD/Dole.shtml</a> .					NOS --
<b>17372</b>	<b>12th Ed.</b>	<b>01-DEC-11</b>	<b>Last LNM: 50/09</b>	<b>NAD 83</b>	<b>39/22</b>
<i>ChartTitle: Keku Strait-Monte Carlo Island to Entrance Island;The Summit;Devils Elbow</i>					
<b>Main Panel 2694 CONTINUATION OF KEKU STRAIT. Page/Side: N/A</b>					
LAST EDITION No new editions of chart 17372 will be published. It will be canceled on 01-Mar-23. Comparable or larger scale Electronic Navigational Chart (ENC) coverage is available. See "Cancellation of NOAA Paper and Raster Nautical Charts" in Section I of this LNM for details. A list of all canceled NOAA charts is at <a href="https://www.charts.noaa.gov/MCD/Dole.shtml">https://www.charts.noaa.gov/MCD/Dole.shtml</a> .					NOS --
<b>17375</b>	<b>22nd Ed.</b>	<b>01-DEC-09</b>	<b>Last LNM: 31/22</b>	<b>NAD 83</b>	<b>39/22</b>
<i>ChartTitle: Wrangell Narrows;Petersburg Harbor</i>					
<b>Main Panel 2698 CONTINUATION OF WRANGELL NARROWS. Page/Side: N/A</b>					
LAST EDITION No new editions of chart 17375 will be published. It will be canceled on 01-Mar-23. Comparable or larger scale Electronic Navigational Chart (ENC) coverage is available. See "Cancellation of NOAA Paper and Raster Nautical Charts" in Section I of this LNM for details. A list of all canceled NOAA charts is at <a href="https://www.charts.noaa.gov/MCD/Dole.shtml">https://www.charts.noaa.gov/MCD/Dole.shtml</a> .					NOS --
<b>17376</b>	<b>9th Ed.</b>	<b>01-OCT-12</b>	<b>Last LNM: 43/12</b>	<b>NAD 83</b>	<b>39/22</b>
<i>ChartTitle: Tebenkof Bay and Port Malmesbury</i>					
<b>Main Panel 2701 TEBENKOF BAY AND PORT MALMESBURY. Page/Side: N/A</b>					
LAST EDITION No new editions of chart 17376 will be published. It will be canceled on 01-Mar-23. Comparable or larger scale Electronic Navigational Chart (ENC) coverage is available. See "Cancellation of NOAA Paper and Raster Nautical Charts" in Section I of this LNM for details. A list of all canceled NOAA charts is at <a href="https://www.charts.noaa.gov/MCD/Dole.shtml">https://www.charts.noaa.gov/MCD/Dole.shtml</a> .					NOS --
<b>17377</b>	<b>2nd Ed.</b>	<b>01-MAY-14</b>	<b>Last LNM: 18/14</b>	<b>NAD 83</b>	<b>39/22</b>
<i>ChartTitle: Le Conte Bay</i>					
<b>Main Panel 2936 ALASKA FREDERICK SOUND AND LECONTE BAY. Page/Side: 1</b>					
LAST EDITION No new editions of chart 17377 will be published. It will be canceled on 01-Mar-23. Comparable or larger scale Electronic Navigational Chart (ENC) coverage is available. See "Cancellation of NOAA Paper and Raster Nautical Charts" in Section I of this LNM for details. A list of all canceled NOAA charts is at <a href="https://www.charts.noaa.gov/MCD/Dole.shtml">https://www.charts.noaa.gov/MCD/Dole.shtml</a> .					NOS --
<b>17378</b>	<b>15th Ed.</b>	<b>01-MAY-14</b>	<b>Last LNM: 19/14</b>	<b>NAD 83</b>	<b>39/22</b>
<i>ChartTitle: Port Protection, Prince of Wales Island</i>					
<b>Main Panel 2702 PRINCE OF WALES ISLAND PORT PROTECTION. Page/Side: N/A</b>					
LAST EDITION No new editions of chart 17378 will be published. It will be canceled on 01-Mar-23. Comparable or larger scale Electronic Navigational Chart					NOS --

(ENC) coverage is available. See "Cancellation of NOAA Paper and Raster Nautical Charts" in Section I of this LNM for details. A list of all canceled NOAA charts is at <https://www.charts.noaa.gov/MCD/Dole.shtml>.

<b>17379</b>	<b>2nd Ed.</b>	<b>01-MAY-14</b>	<b>Last LNM: 17/14</b>	<b>NAD 83</b>	<b>39/22</b>
<i>ChartTitle: Shakan Bay And Strait, Alaska</i>					
<b>Main Panel 2999 SHAKEN BAY AND STRAIT; ALASKA. Page/Side: N/A</b>					
LAST EDITION No new editions of chart 17379 will be published. It will be canceled on 01-Mar-23. Comparable or larger scale Electronic Navigational Chart (ENC) coverage is available. See "Cancellation of NOAA Paper and Raster Nautical Charts" in Section I of this LNM for details. A list of all canceled NOAA charts is at <a href="https://www.charts.noaa.gov/MCD/Dole.shtml">https://www.charts.noaa.gov/MCD/Dole.shtml</a> .					
				NOS	--
<b>17381</b>	<b>11th Ed.</b>	<b>01-MAR-15</b>	<b>Last LNM: 10/15</b>	<b>NAD 83</b>	<b>39/22</b>
<i>ChartTitle: Red Bay, Prince of Wales Island</i>					
<b>Main Panel 2703 RED BAY PRINCE OF WALES ISLAND. Page/Side: A</b>					
LAST EDITION No new editions of chart 17381 will be published. It will be canceled on 01-Mar-23. Comparable or larger scale Electronic Navigational Chart (ENC) coverage is available. See "Cancellation of NOAA Paper and Raster Nautical Charts" in Section I of this LNM for details. A list of all canceled NOAA charts is at <a href="https://www.charts.noaa.gov/MCD/Dole.shtml">https://www.charts.noaa.gov/MCD/Dole.shtml</a> .					
				NOS	--
<b>17383</b>	<b>4th Ed.</b>	<b>01-MAR-15</b>	<b>Last LNM: 21/16</b>	<b>NAD 83</b>	<b>39/22</b>
<i>ChartTitle: Snow Passage, Alaska</i>					
<b>Main Panel 2962 SNOW PASSAGE; ALASKA. Page/Side: A</b>					
LAST EDITION No new editions of chart 17383 will be published. It will be canceled on 01-Mar-23. Comparable or larger scale Electronic Navigational Chart (ENC) coverage is available. See "Cancellation of NOAA Paper and Raster Nautical Charts" in Section I of this LNM for details. A list of all canceled NOAA charts is at <a href="https://www.charts.noaa.gov/MCD/Dole.shtml">https://www.charts.noaa.gov/MCD/Dole.shtml</a> .					
				NOS	--
<b>17386</b>	<b>5th Ed.</b>	<b>01-SEP-12</b>	<b>Last LNM: 36/19</b>	<b>NAD 83</b>	<b>39/22</b>
<i>ChartTitle: Sumner Strait-Southern part</i>					
<b>Main Panel 2711 SUMNER STRAIT SOUTHERN PART. Page/Side: N/A</b>					
LAST EDITION No new editions of chart 17386 will be published. It will be canceled on 01-Mar-23. Comparable or larger scale Electronic Navigational Chart (ENC) coverage is available. See "Cancellation of NOAA Paper and Raster Nautical Charts" in Section I of this LNM for details. A list of all canceled NOAA charts is at <a href="https://www.charts.noaa.gov/MCD/Dole.shtml">https://www.charts.noaa.gov/MCD/Dole.shtml</a> .					
				NOS	--
<b>17387</b>	<b>14th Ed.</b>	<b>01-JUN-14</b>	<b>Last LNM: 23/14</b>	<b>NAD 83</b>	<b>39/22</b>
<i>ChartTitle: Shakan and Shipley Bays and Part of El Capitan Passage;El Capitan Pasage, Dry Pass to Shakan Strait</i>					
<b>Main Panel 2713 SHAKAN AND SHIPLEY BAYS AND PART OF EL CAPITAN PASSAGE. Page/Side: A</b>					
LAST EDITION No new editions of chart 17387 will be published. It will be canceled on 01-Mar-23. Comparable or larger scale Electronic Navigational Chart (ENC) coverage is available. See "Cancellation of NOAA Paper and Raster Nautical Charts" in Section I of this LNM for details. A list of all canceled NOAA charts is at <a href="https://www.charts.noaa.gov/MCD/Dole.shtml">https://www.charts.noaa.gov/MCD/Dole.shtml</a> .					
				NOS	--
<b>17401</b>	<b>13th Ed.</b>	<b>01-MAR-15</b>	<b>Last LNM: 12/15</b>	<b>NAD 83</b>	<b>39/22</b>
<i>ChartTitle: Lake Bay and approaches, Clarence Str.</i>					
<b>Main Panel 2716 LAKE BAY AND APPROACHES CLARENCE STRAIT. Page/Side: A</b>					
LAST EDITION No new editions of chart 17401 will be published. It will be canceled on 01-Mar-23. Comparable or larger scale Electronic Navigational Chart (ENC) coverage is available. See "Cancellation of NOAA Paper and Raster Nautical Charts" in Section I of this LNM for details. A list of all canceled NOAA charts is at <a href="https://www.charts.noaa.gov/MCD/Dole.shtml">https://www.charts.noaa.gov/MCD/Dole.shtml</a> .					
				NOS	--
<b>17402</b>	<b>12th Ed.</b>	<b>01-DEC-10</b>	<b>Last LNM: 36/19</b>	<b>NAD 83</b>	<b>39/22</b>
<i>ChartTitle: Southern Entrances to Sumner Strait</i>					
<b>Main Panel 2717 SOUTHERN ENTRANCES TO SUMNER STRAIT. Page/Side: N/A</b>					
LAST EDITION No new editions of chart 17402 will be published. It will be canceled on 01-Mar-23. Comparable or larger scale Electronic Navigational Chart (ENC) coverage is available. See "Cancellation of NOAA Paper and Raster					
				NOS	--

Nautical Charts" in Section I of this LNM for details. A list of all canceled NOAA charts is at <https://www.charts.noaa.gov/MCD/Dole.shtml>.

<b>17403</b>	<b>15th Ed.</b>	<b>01-MAY-14</b>	<b>Last LNM: 17/14</b>	<b>NAD 83</b>	<b>39/22</b>
<i>ChartTitle: Davidson Inlet and Sea Otter Sound;Edna Bay</i>					
<b>Main Panel 2718 DAVIDSON INLET AND SEA OTTER SOUND. Page/Side: N/A</b>					
LAST EDITION No new editions of chart 17403 will be published. It will be canceled on 01-Mar-23. Comparable or larger scale Electronic Navigational Chart (ENC) coverage is available. See "Cancellation of NOAA Paper and Raster Nautical Charts" in Section I of this LNM for details. A list of all canceled NOAA charts is at <a href="https://www.charts.noaa.gov/MCD/Dole.shtml">https://www.charts.noaa.gov/MCD/Dole.shtml</a> .					
NOS --					
<b>17404</b>	<b>15th Ed.</b>	<b>01-OCT-13</b>	<b>Last LNM: 19/16</b>	<b>NAD 83</b>	<b>39/22</b>
<i>ChartTitle: San Christoval Channel to Cape Lynch</i>					
<b>Main Panel 2720 SAN CHRISTOVAL CHANNEL TO CAPE LYNCH. Page/Side: N/A</b>					
LAST EDITION No new editions of chart 17404 will be published. It will be canceled on 01-Mar-23. Comparable or larger scale Electronic Navigational Chart (ENC) coverage is available. See "Cancellation of NOAA Paper and Raster Nautical Charts" in Section I of this LNM for details. A list of all canceled NOAA charts is at <a href="https://www.charts.noaa.gov/MCD/Dole.shtml">https://www.charts.noaa.gov/MCD/Dole.shtml</a> .					
NOS --					
<b>17405</b>	<b>17th Ed.</b>	<b>01-OCT-13</b>	<b>Last LNM: 46/19</b>	<b>NAD 83</b>	<b>39/22</b>
<i>ChartTitle: Ulloa Channel to San Christoval Channel;North Entrance, Big Salt Lake;Shelter Cove, Craig</i>					
<b>Main Panel 2721 ULLOA CHANNEL TO SAN CHRISTOVAL CHANNEL. Page/Side: N/A</b>					
LAST EDITION No new editions of chart 17405 will be published. It will be canceled on 01-Mar-23. Comparable or larger scale Electronic Navigational Chart (ENC) coverage is available. See "Cancellation of NOAA Paper and Raster Nautical Charts" in Section I of this LNM for details. A list of all canceled NOAA charts is at <a href="https://www.charts.noaa.gov/MCD/Dole.shtml">https://www.charts.noaa.gov/MCD/Dole.shtml</a> .					
NOS --					
<b>17406</b>	<b>8th Ed.</b>	<b>01-OCT-13</b>	<b>Last LNM: 45/13</b>	<b>NAD 83</b>	<b>39/22</b>
<i>ChartTitle: Baker, Noyes, and Luluslands and adjacent waters</i>					
<b>Main Panel 2725 BAKER NOYES AND LULU ISLANDS AND ADJACENT WATERS. Page/Side: N/A</b>					
LAST EDITION No new editions of chart 17406 will be published. It will be canceled on 01-Mar-23. Comparable or larger scale Electronic Navigational Chart (ENC) coverage is available. See "Cancellation of NOAA Paper and Raster Nautical Charts" in Section I of this LNM for details. A list of all canceled NOAA charts is at <a href="https://www.charts.noaa.gov/MCD/Dole.shtml">https://www.charts.noaa.gov/MCD/Dole.shtml</a> .					
NOS --					
<b>17407</b>	<b>16th Ed.</b>	<b>01-DEC-14</b>	<b>Last LNM: 44/16</b>	<b>NAD 83</b>	<b>39/22</b>
<i>ChartTitle: Northern part of Tlevak Strait and Uloa Channel</i>					
<b>Main Panel 2726 NORTHERN PART OF TLEVAK STRAIT AND ULLOA CHANNEL. Page/Side: A</b>					
LAST EDITION No new editions of chart 17407 will be published. It will be canceled on 01-Mar-23. Comparable or larger scale Electronic Navigational Chart (ENC) coverage is available. See "Cancellation of NOAA Paper and Raster Nautical Charts" in Section I of this LNM for details. A list of all canceled NOAA charts is at <a href="https://www.charts.noaa.gov/MCD/Dole.shtml">https://www.charts.noaa.gov/MCD/Dole.shtml</a> .					
NOS --					
<b>17422</b>	<b>10th Ed.</b>	<b>01-MAR-15</b>	<b>Last LNM: 32/18</b>	<b>NAD 83</b>	<b>39/22</b>
<i>ChartTitle: Behm Canal-western part;Yes Bay</i>					
<b>Main Panel 2730 WESTERN PART OF BEHM CANAL. Page/Side: A</b>					
LAST EDITION No new editions of chart 17422 will be published. It will be canceled on 01-Mar-23. Comparable or larger scale Electronic Navigational Chart (ENC) coverage is available. See "Cancellation of NOAA Paper and Raster Nautical Charts" in Section I of this LNM for details. A list of all canceled NOAA charts is at <a href="https://www.charts.noaa.gov/MCD/Dole.shtml">https://www.charts.noaa.gov/MCD/Dole.shtml</a> .					
NOS --					
<b>17423</b>	<b>15th Ed.</b>	<b>01-SEP-13</b>	<b>Last LNM: 19/14</b>	<b>NAD 83</b>	<b>39/22</b>
<i>ChartTitle: Harbor Charts-Clarence Strait and Behm Canal Dewey Anchorage, Etolin Island;Ratz Harbor, Prince of Wales Island;Naha Bay, Revillagigedo Island;Tolstoi and Thorne Bays, Prince of Wales Is.;Union Bay, Cleveland Peninsula</i>					
<b>Unrelated 2732 RATZ HARBOR PRINCE OF WALES ISLAND. Page/Side: N/A</b>					
LAST EDITION No new editions of chart 17423 will be published. It will be canceled on 01-Mar-23. Comparable or larger scale Electronic Navigational Chart (ENC) coverage is available. See "Cancellation of NOAA Paper and Raster					
NOS --					

Nautical Charts" in Section I of this LNM for details. A list of all canceled NOAA charts is at <https://www.charts.noaa.gov/MCD/Dole.shtml>.

<b>17424</b>	<b>9th Ed.</b>	<b>01-OCT-09</b>	<b>Last LNM: 17/14</b>	<b>NAD 83</b>	<b>39/22</b>
<i>ChartTitle: Behm Canal-eastern part</i>					
<b>Main Panel 2737 EASTERN PART OF BEHM CANAL. Page/Side: N/A</b>					
LAST EDITION No new editions of chart 17424 will be published. It will be canceled on 01-Mar-23. Comparable or larger scale Electronic Navigational Chart (ENC) coverage is available. See "Cancellation of NOAA Paper and Raster Nautical Charts" in Section I of this LNM for details. A list of all canceled NOAA charts is at <a href="https://www.charts.noaa.gov/MCD/Dole.shtml">https://www.charts.noaa.gov/MCD/Dole.shtml</a> .					
NOS --					
<b>17425</b>	<b>7th Ed.</b>	<b>01-MAY-15</b>	<b>Last LNM: 21/15</b>	<b>NAD 83</b>	<b>39/22</b>
<i>ChartTitle: Portland Canal-North of Hattie Island</i>					
<b>Main Panel 2738 PORTLAND CANAL NORTH OF HATTIE ISLAND. Page/Side: A</b>					
LAST EDITION No new editions of chart 17425 will be published. It will be canceled on 01-Mar-23. Comparable or larger scale Electronic Navigational Chart (ENC) coverage is available. See "Cancellation of NOAA Paper and Raster Nautical Charts" in Section I of this LNM for details. A list of all canceled NOAA charts is at <a href="https://www.charts.noaa.gov/MCD/Dole.shtml">https://www.charts.noaa.gov/MCD/Dole.shtml</a> .					
NOS --					
<b>17426</b>	<b>16th Ed.</b>	<b>01-JUN-14</b>	<b>Last LNM: 23/16</b>	<b>NAD 83</b>	<b>39/22</b>
<i>ChartTitle: Kasaan Bay, Clarence Strait;Hollis Anchorage, eastern part;Lyman Anchorage</i>					
<b>Main Panel 2739 KASAAN BAY PRINCE OF WALES ISLAND. Page/Side: A</b>					
LAST EDITION No new editions of chart 17426 will be published. It will be canceled on 01-Mar-23. Comparable or larger scale Electronic Navigational Chart (ENC) coverage is available. See "Cancellation of NOAA Paper and Raster Nautical Charts" in Section I of this LNM for details. A list of all canceled NOAA charts is at <a href="https://www.charts.noaa.gov/MCD/Dole.shtml">https://www.charts.noaa.gov/MCD/Dole.shtml</a> .					
NOS --					
<b>17427</b>	<b>8th Ed.</b>	<b>01-MAY-15</b>	<b>Last LNM: 07/22</b>	<b>NAD 83</b>	<b>39/22</b>
<i>ChartTitle: Portland Canal - Dixon Entrance to Hattie I.</i>					
<b>Main Panel 2742 PORTLAND CANAL DIXON ENTRANCE TO HATTIE ISLAND. Page/Side: A</b>					
LAST EDITION No new editions of chart 17427 will be published. It will be canceled on 01-Mar-23. Comparable or larger scale Electronic Navigational Chart (ENC) coverage is available. See "Cancellation of NOAA Paper and Raster Nautical Charts" in Section I of this LNM for details. A list of all canceled NOAA charts is at <a href="https://www.charts.noaa.gov/MCD/Dole.shtml">https://www.charts.noaa.gov/MCD/Dole.shtml</a> .					
NOS --					
<b>17431</b>	<b>12th Ed.</b>	<b>01-DEC-14</b>	<b>Last LNM: 34/20</b>	<b>NAD 83</b>	<b>39/22</b>
<i>ChartTitle: N. end of Cordova Bay and Hetta Inlet</i>					
<b>Main Panel 2749 NORTH END OF CORDOVA BAY AND HETTA INLET. Page/Side: A</b>					
LAST EDITION No new editions of chart 17431 will be published. It will be canceled on 01-Mar-23. Comparable or larger scale Electronic Navigational Chart (ENC) coverage is available. See "Cancellation of NOAA Paper and Raster Nautical Charts" in Section I of this LNM for details. A list of all canceled NOAA charts is at <a href="https://www.charts.noaa.gov/MCD/Dole.shtml">https://www.charts.noaa.gov/MCD/Dole.shtml</a> .					
NOS --					
<b>17432</b>	<b>8th Ed.</b>	<b>01-MAR-15</b>	<b>Last LNM: 06/18</b>	<b>NAD 83</b>	<b>39/22</b>
<i>ChartTitle: Clarence Strait and Moira Sound</i>					
<b>Main Panel 2751 CLARENCE STRAIT AND MOIRA SOUND. Page/Side: A</b>					
LAST EDITION No new editions of chart 17432 will be published. It will be canceled on 01-Mar-23. Comparable or larger scale Electronic Navigational Chart (ENC) coverage is available. See "Cancellation of NOAA Paper and Raster Nautical Charts" in Section I of this LNM for details. A list of all canceled NOAA charts is at <a href="https://www.charts.noaa.gov/MCD/Dole.shtml">https://www.charts.noaa.gov/MCD/Dole.shtml</a> .					
NOS --					
<b>17435</b>	<b>17th Ed.</b>	<b>01-MAY-14</b>	<b>Last LNM: 15/17</b>	<b>NAD 83</b>	<b>39/22</b>
<i>ChartTitle: Harbors in Clarence Strait Port Chester, Annette Island;Tamgas Harbor, Annette Island;Metlakatla Harbor</i>					
<b>Main Panel 2849 PORT CHESTER. Page/Side: N/A</b>					
LAST EDITION No new editions of chart 17435 will be published. It will be canceled on 01-Mar-23. Comparable or larger scale Electronic Navigational Chart (ENC) coverage is available. See "Cancellation of NOAA Paper and Raster Nautical Charts" in Section I of this LNM for details. A list of all canceled NOAA charts is at <a href="https://www.charts.noaa.gov/MCD/Dole.shtml">https://www.charts.noaa.gov/MCD/Dole.shtml</a> .					
NOS --					



**17436**      **10th Ed.**      **01-JUN-14**      **Last LNM: 32/18**      **NAD 83**      **39/22**  
*Chart Title: Clarence Strait, Cholmondeley Sound and Skowl Arm*  
**Main Panel 2758 CHOLMONDELEY SOUND & SKOWL ARM. Page/Side: A**

LAST EDITION    No new editions of chart 17436 will be published. It will be canceled on 01-Mar-23. Comparable or larger scale Electronic Navigational Chart (ENC) coverage is available. See "Cancellation of NOAA Paper and Raster Nautical Charts" in Section I of this LNM for details. A list of all canceled NOAA charts is at <https://www.charts.noaa.gov/MCD/Dole.shtml>.

NOS  
--      --

**17437**      **11th Ed.**      **01-AUG-17**      **Last LNM: 07/22**      **NAD 83**      **39/22**  
*Chart Title: Portland Inlet to Nakat Bay*  
**Main Panel 2761 PORTLAND INLET TO NAKAT BAY - -. Page/Side: -**

LAST EDITION    No new editions of chart 17437 will be published. It will be canceled on 01-Mar-23. Comparable or larger scale Electronic Navigational Chart (ENC) coverage is available. See "Cancellation of NOAA Paper and Raster Nautical Charts" in Section I of this LNM for details. A list of all canceled NOAA charts is at <https://www.charts.noaa.gov/MCD/Dole.shtml>.

NOS  
--      --

---



---

**OIL RIG MOVEMENT**

---

**Drill Rigs/Vessels Removed**

<u>Latitude</u>	<u>Longitude</u>	<u>Block</u>	<u>Rigs/Vessel</u>	<u>Chart</u>	<u>Type</u>	<u>Status</u>
<b>None</b>						

**Drill Rigs/Vessels Established**

<u>Latitude</u>	<u>Longitude</u>	<u>Block</u>	<u>Rigs/Vessel</u>	<u>Chart</u>	<u>Type</u>	<u>Status</u>
<b>None</b>						

---



---

**SECTION V - ADVANCE NOTICES**

This section contains advance notice of approved projects, changes to aids to navigation, or upcoming temporary changes such as dredging, etc. Mariners are advised to use caution while transiting these areas.

**SUMMARY OF ADVANCED APPROVED PROJECTS**

<b><u>Approved Project(s)</u></b>	<b><u>Project Date</u></b>	<b><u>Ref. LNM</u></b>
<b>None</b>		

**Advance Notice(s)**

**690      ALASKA – SOUTHEAST – SITKA**

The Coast Guard intends to rename and upgrade Japonski Island Buoy 2 (LLNR 25025.51) to Japonski Island Lighted Buoy 2 (LLNR 25025.51) with a red flash every 4 seconds (R 4s). Questions/concerns should be directed to Todd Buck with the Coast Guard District 17 Waterways Management Office at (907) 463-2269 or by email to [todd.r.buck@uscg.mil](mailto:todd.r.buck@uscg.mil).

LNM: 38/20

---



---

**SECTION VI - PROPOSED CHANGES**

Periodically, the Coast Guard evaluates its system of aids to navigation to determine whether the conditions for which the aids to navigation were established have changed. When changes occur, the feasibility of improving, relocating, replacing, or discontinuing aids are considered. This section contains notice(s) of non-approved, proposed projects open for comment. SPECIAL NOTE: Mariners are requested to respond in writing to the District office unless otherwise noted (see banner page for address).

**PROPOSED WATERWAY PROJECTS OPEN FOR PUBLIC COMMENT**

<b><u>Proposed Project(s)</u></b>	<b><u>Closing</u></b>	<b><u>Docket No.</u></b>	<b><u>Ref. LNM</u></b>
<b>None</b>			

**Proposed Change Notice(s)**

**ALASKA – WESTERN – NORTON SOUND – GOLOVIN BAY**

The Coast Guard is proposing adding navigational aids within Golovin Bay. These aids may include Lights, Daybeacons, or buoys. Mariners are requested to provide recommendations on locations that would facilitate safe navigation within Golovin Bay. Questions/concerns should be directed to Todd Buck with the Coast Guard District 17 Waterways Management Office at (907) 463-2269 or by email to [todd.r.buck@uscg.mil](mailto:todd.r.buck@uscg.mil).

---



---

## SECTION VII - GENERAL

This section contains information of general concern to the Mariners. Mariners are advised to use caution while transiting these areas.

---

### 430 ALASKA – SOUTHCENTRAL – PORT OF ANCHORAGE

The U.S. Army Corp of Engineers has contracted with Manson Construction Co. to conduct dredging operations in the Port of Anchorage and Cook Inlet Navigation Channel in approximate position 61°14.5'N, 149°53.3'W from April 1st through November 1st, 2022. Dredged material will be disposed of in approximate position 61°14.3'N, 149°56.5'W. Dredging will be conducted by the Dredge WESTPORT and the GLADYS M. Both vessels will be monitoring VHF/FM Channels 8, 13, 16, and 66. A temporary mooring buoy has been established in position 61°13.216'N, 149°56.175'W for the duration of the project. Questions/concerns should be directed to the project manager, Jeremy Cook, at 904-557-4356.

LNM: 14/22

### 441 ALASKA – COOK INLET – HOMER HARBOR and COAST GUARD BERTH

Alaska Marine Excavation, LLC. will be conducting dredging operations in the Homer Harbor Entrance and USCG Hickory berth starting April 15 2022 thru May 1st 2022 and resuming on September 1st 2022 thru October 11th, 2022. Dredging operations will continue 24 hours a day. The dredge COMMANDER is a 58' cutter head suction dredge, red and yellow in color, with a partially submerged pipeline. The pipeline will be marked where it exits the harbor on the beach and the pipeline's anchors will be marked by buoys. The dredge COMMANDER and tug Growler will be working on VHF/FM channel 79 and monitoring VHF/FM channels 13 and 16. Questions/concerns can also be directed to Brok Shafer with Alaska Marine Excavation, LLC at (907) 399-4549 or by email to brok@akmx.com.

LNM: 12/22

---



---

## SECTION VIII - LIGHT LIST CORRECTIONS

An Asterisk \*, indicates the column in which a correction has been made to new information

(1) No.	(2) Name and Location	(3) Position	(4) Characteristic	(5) Height	(6) Range	(7) Structure	(8) Remarks
------------	--------------------------	-----------------	-----------------------	---------------	--------------	------------------	----------------

**None**

---



---



---

## PUBLICATION CORRECTIONS

**None**

---



---



---

## ENCLOSURES

### ALASKA – SOUTHCENTRAL – KODIAK/GULF OF ALASKA

[3722 P137 Rocket Launch.pdf](#)

Rocket launch P137 from the Pacific Spaceport Complex

LNM: 37/22

### ALASKA – SOUTHWESTERN – BERING SEA, ALEUTIAN ISLANDS, PACIFIC OCEAN

[3922 Saildrone.pdf](#)

Saildrone survey of the Aleutian Basin.

LNM: 39/22

### ALASKA – SOUTHCENTRAL/ALEUTIAN PENINSULA

[3022 Undersea Cable.pdf](#)

A subsurface cable installation between Kodiak Island and Dutch Harbor.

LNM: 30/22

### ALASKA

[3722 Subsurface Buoys.pdf](#)

Compilation of Subsurface and Surface oceanography moorings properly reported to U.S. Coast Guard District 17.

LNM: 37/22

---

Michael D. Newell  
Waterways Management Branch  
Seventeenth Coast Guard District  
OPERATIONAL EXCELLENCE THROUGH LEADERSHIP, TEAMWORK, AND INNOVATION.

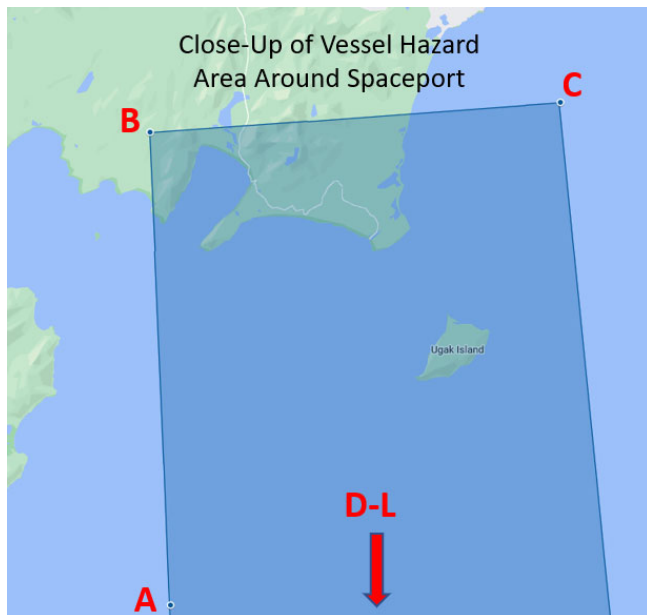


Pacific Spaceport Complex Alaska (PSCA) will be conducting a launch designated P137 (Replan) from Launch Pad LP-3C at Narrow Cape, Kodiak, Alaska, with a launch azimuth of 176°. Daily launch operations are scheduled between 2200-0130 UTC October 10<sup>th</sup> through October 18<sup>th</sup>. In local time 1400-1730 AKDT October 10<sup>th</sup> through October 17<sup>th</sup>, 2022 (local). Mariners are requested to remain clear of the Hazard Areas during the scheduled launch operations. Questions/concerns should be directed to the PSCA Operations Director, Shannon Edwards at (907) 771-8036, or cell (509) 713-4368 or by email to [shannon.edwards@akaerospace.com](mailto:shannon.edwards@akaerospace.com) or the PSCA Ground Safety Officer, Paul Pena, at (907) 743-3525, or cell (907) 942-4485 or by email to [ppena.ctr@akaerospace.com](mailto:ppena.ctr@akaerospace.com).

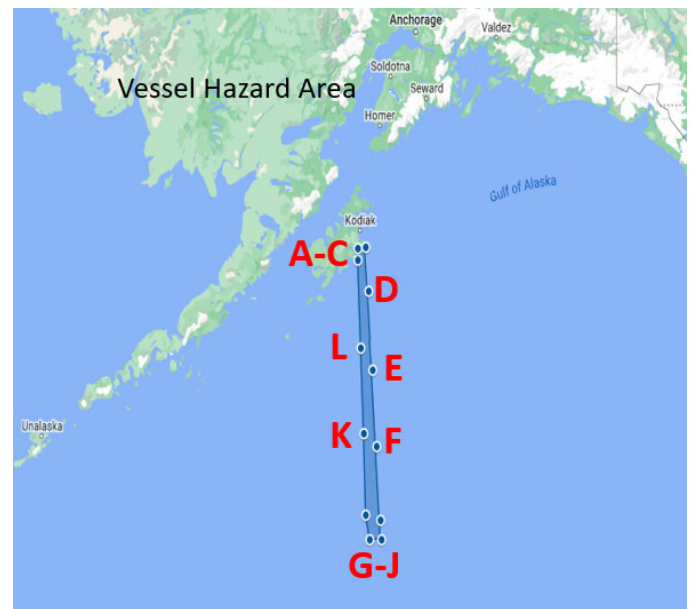
**Total Hazard Area (Degrees Decimal Minutes):**

- Point A: 57°15.806'N, 152°30.838'W
- Point B: 57°28.459'N, 152°31.795'W
- Point C: 57°29.265'N, 152°11.957'W
- Point D: 56°40.696'N, 152°03.287'W
- Point E: 55°10.160'N, 151°51.796'W
- Point F: 53°39.607'N, 151°41.136'W
- Point G: 52°09.039'N, 151°31.208'W
- Point H: 51°45.816'N, 151°30.037'W
- Point I: 51°44.545'N, 151°59.959'W
- Point J: 52°16.191'N, 152°11.000'W
- Point K: 53°56.068'N, 152°17.071'W
- Point L: 55°35.941'N, 152°23.658'W

**Graphical depiction of Up-Range Hazard Area:**



**Graphical depiction of NOTMAR Hazard Area:**





## RESEARCH EQUIPMENT IN WATER

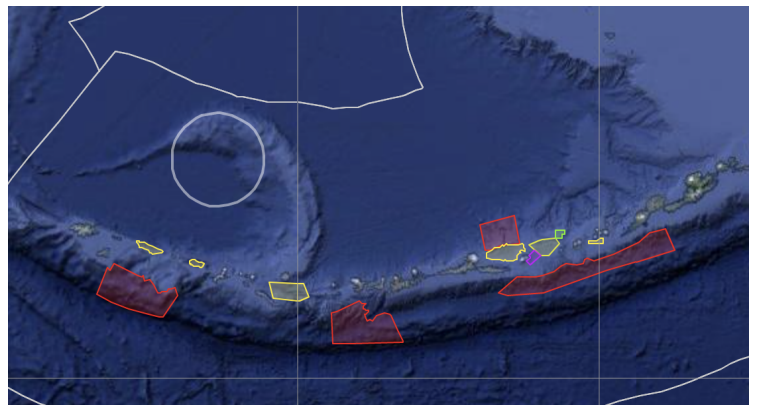
**Bering Sea, Aleutian Basin, and northern Pacific Ocean, Alaska  
August 1st to October 15th, 2022**

SAILDRONE, INC. will operate one Uncrewed Surface Vehicle called “SAILDRONE SURVEYOR”, for bathymetric research along the western Aleutian Island coastline in the Bering Sea, Aleutian Basin, and northern Pacific Ocean. SAILDRONE SURVEYOR will be based out of Dutch Harbor, Alaska returning to Dutch Harbor periodically every three (3) weeks. At the conclusion of the survey the vehicle will depart the area and return to San Francisco, CA.

**VESSELS ARE REQUESTED TO TRANSIT THE AREA WITH CAUTION, AND REMAIN  
GREATER THAN 500 METERS AWAY FROM THE RESEARCH EQUIPMENT.**

Saildrone Surveyor is a primarily wind powered Uncrewed Surface Vehicle also equipped with an inboard engine. Surveyor carries oceanographic and fisheries acoustics research instrumentation and is controlled from shore through satellite communications.

- **AIS: “SAILDRONE SURVEYOR”**
- **MMSI: 338179262**
- **Color: Orange**
- **Lights: Tricolor, Running lights/stern light**
- **Radar Reflecting: Yes**
- **Length: 22 m**
- **Width: 1.8 m**
- **Height: 14 m**
- **Draft: 3.6 m**
- **Average speed: 7 knots**



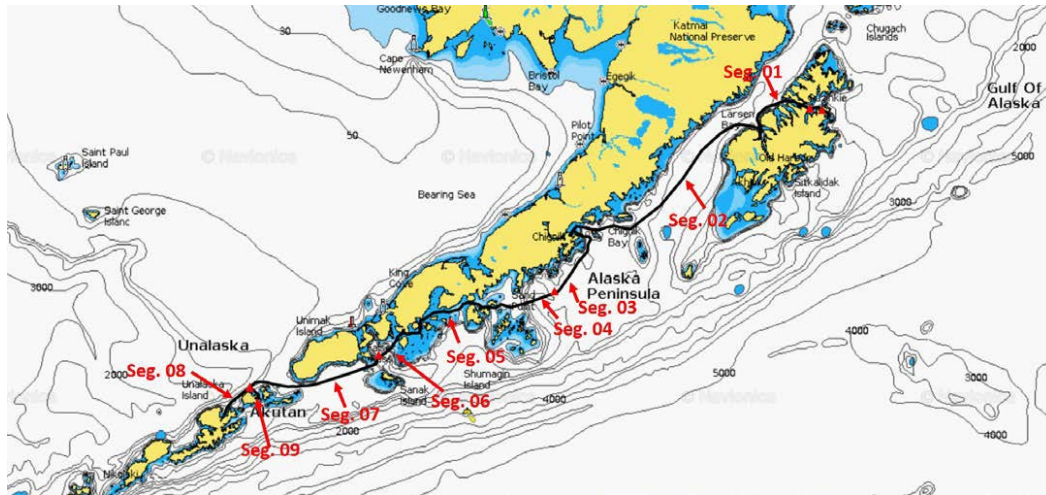
**SAILDRONE MISSION CONTROL**

(510) 722-6070

[missioncontrol@saildrone.com](mailto:missioncontrol@saildrone.com)

# Undersea Cable Installation

A subsurface cable will be installed between Mill Bay, Kodiak Island, approximately 58°00'N, 152°05'W, and Dutch Harbor, Unalaska Island, approximately 54°00'N, 166°20'W. The cable laying operations will be conducted 24 hours a day, 7 days a week, from July 18<sup>th</sup> through October 15<sup>th</sup>, 2022, subject to weather and sea state, by the M/V IT INTREPID and the M/V IT INTEGRITY . The M/V IT INTREPID is 380 feet in length, blue with a white superstructure. The M/V IT INTEGRITY is 236 feet in length, blue hull with a white superstructure. Both vessels will be monitoring VHF/FM channel 16. Mariners are requested to maintain a 1,000 meter CPA when cable laying operations are being conducted. Questions/concerns should be directed to Alaska Maritime Agencies at 907-562-8808 or by email to [ancops@alaskamaritime.com](mailto:ancops@alaskamaritime.com).



Chartlet of approximate cable route



M/V IT INTREPID



M/V IT INTEGRITY

This is the current compilation of all subsurface and surface oceanographic moorings that have been reported to the U.S. Coast Guard District 17 Waterways Branch. The name, type, location, depth, water depth, and a Point of Contact for all data buoys, surface and subsurface, shall be reported as quickly as is practical if they are placed within the navigable waters (within 200 nm) of the United States. Data buoys placed in the Arctic region but outside of 200 nm of the United States may be reported and will be included in this compilation (for informational purposes only). This notification process is for inclusion in the Local Notice to Mariners to provide navigational information to mariners and does not supersede any permission or permitting requirements. Any notifications, corrections, additions, deletions, or comments for the Alaska region (Coast Guard District 17) or the Arctic region should be submitted via e-mail to [smb-d17juneau-lnm@uscg.mil](mailto:smb-d17juneau-lnm@uscg.mil) or to Todd Buck, USCG D17(dpw), at 907-463-2269 or by email to [todd.r.buck@uscg.mil](mailto:todd.r.buck@uscg.mil). This compilation is as current as the Local Notice to Mariners (LNM) included in as an enclosure. The referenced LNM may have additional information and indicates the last time an entry was updated.

#### ALASKA – ARCTIC OCEAN

TYPE/NAME:	POSITION:	WATER DEPTH:	TOP FLOAT DEPTH:	Ref. LNM:	POC:
N/A	72°27.655'N, 157°23.774'W	780 feet	731 feet	39/10	Ethan Roth <a href="mailto:ehroth@ucsd.edu">ehroth@ucsd.edu</a>
N/A	72°47.939'N, 158°23.941'W	1,066 feet	1,017 feet	39/10	Ethan Roth <a href="mailto:ehroth@ucsd.edu">ehroth@ucsd.edu</a>
N/A	72°07.275'N, 160°29.698'W	131 feet	115 feet	35/12	Thomas Weingartner 907-474-7993
N/A	72°09.747'N, 159°07.349'W	167 feet	85 feet	35/12	Thomas Weingartner 907-474-7993
N/A	72°10.875'N, 159°33.117'W	184 feet	95 feet	35/12	Thomas Weingartner 907-474-7993
N/A	72°41.745'N, 164°31.935'W	N/A	151 feet	35/12	N/A
N/A	72°31.517'N, 164°05.944'W	N/A	164 feet	35/12	N/A
N/A	72°16.850'N, 163°32.034'W	N/A	131 feet	35/12	N/A
HARP C2	72°48.154'N, 158°25.384'W	1,062 feet	979 feet	48/15	Josh Jones 858-822-1836
HARP D	72°36.925'N, 158°42.177'W	323 feet	237 feet	48/15	Josh Jones 858-822-1836
AIM16-1	75°06.003'N, 168°00.004'W	535 feet	142 feet	44/16	Dr. Humfrey Melling 250-363-6552
20CKP9A	72°28.210'N, 156°33.510'W	3,199 feet	1,280 feet	38/20	David Strausz 206-526-4510
NAP-20t	74°31.370'N, 161°55.880'W	5,528 feet	141 feet	42/20	Motoyo ITOH +81-46-867-9488
AMOS-VLF-1	77°29.600'N, 140°10.800'W	12,264 feet	230 feet	35/22	Craig Lee, <a href="mailto:craiglee@uw.edu">craiglee@uw.edu</a>
AMOS-C	76°24.800'N, 142°28.200'W	12,326 feet	131 feet	35/22	Craig Lee, <a href="mailto:craiglee@uw.edu">craiglee@uw.edu</a>
AMOS-NW	76°08.800'N, 145°17.000'W	12,441 feet	328 feet	35/22	Craig Lee, <a href="mailto:craiglee@uw.edu">craiglee@uw.edu</a>
AMOS-NE	75°46.400'N, 141°30.800'W	12,251 feet	328 feet	35/22	Craig Lee, <a href="mailto:craiglee@uw.edu">craiglee@uw.edu</a>
AMOS-B	75°30.000'N, 144°08.400'W	12,379 feet	328 feet	35/22	Craig Lee, <a href="mailto:craiglee@uw.edu">craiglee@uw.edu</a>
AMOS-SE	74°52.500'N, 143°05.200'W	12,241 feet	328 feet	35/22	Craig Lee, <a href="mailto:craiglee@uw.edu">craiglee@uw.edu</a>
AMOS-SW	75°13.000'N, 146°40.600'W	12,464 feet	328 feet	35/22	Craig Lee, <a href="mailto:craiglee@uw.edu">craiglee@uw.edu</a>
AMOS-A	74°35.300'N, 145°32.700'W	12,339 feet	131 feet	35/22	Craig Lee, <a href="mailto:craiglee@uw.edu">craiglee@uw.edu</a>

#### CANADA – BEAUFORT SEA

TYPE/NAME:	POSITION:	WATER DEPTH:	TOP FLOAT DEPTH:	Ref. LNM:	POC:
ACW16-30	68°59.173'N, 105°53.030'W	242 feet	231 feet	44/16	Dr. Humfrey Melling 250-363-6552
CB12	70°33.770'N, 127°41.710'W	125 feet	116 feet	44/16	Dr. Humfrey Melling 250-363-6552
IBO16-1a	70°20.031'N, 133°44.369'W	180 feet	171 feet	44/16	Dr. Humfrey Melling 250-363-6552
IBO16-1b	70°20.035'N, 133°44.452'W	180 feet	171 feet	44/16	Dr. Humfrey Melling 250-363-6552
IBO16-2	70°59.359'N, 133°44.636'W	365 feet	146 feet	44/16	Dr. Humfrey Melling 250-363-6552
IBO16-9a	70°03.534'N, 133°42.918'W	116 feet	106 feet	44/16	Dr. Humfrey Melling 250-363-6552
IBO16-9b	70°03.501'N, 133°42.937'W	116 feet	106 feet	44/16	Dr. Humfrey Melling 250-363-6552
SIC16-11	69°46.483'N, 137°02.757'W	117 feet	107 feet	44/16	Dr. Humfrey Melling 250-363-6552
HI16	69°39.284'N, 138°55.279'W	134 feet	125 feet	44/16	Dr. Humfrey Melling 250-363-6552

#### ALASKA – BEAUFORT SEA

TYPE/NAME:	POSITION:	WATER DEPTH:	TOP FLOAT DEPTH:	Ref. LNM:	POC:
N/A	71°35.980'N, 161°30.3221'W	151 feet	111 feet	48/14	David Leech 907-224-4319
AON-BS3	71°23.659'N, 152°03.046'W	482 feet	115 feet	49/14	Dr. Robert Pickart 508-289-2858
UPE120	71°12.338'N, 148°48.018'W	400 feet	374 feet	49/17	Steve Okkonen 907-283-3234
WAVE SS-1	70°29'16.8864"N, 147°30'00.3528"W	UNK	Surface	29/18	Jeremy Kasper 907-371-6510
ODAS-1	70°24.889'N, 147°39.206'W	26 feet	24 feet	30/19	Carmen Lawrence 902-405-3336
ODAS-2	70°16.663'N, 147°35.493'W	19 feet	17 feet	30/19	Carmen Lawrence 902-405-3336
BCE-19	71°40.368'N, 154°59.923'W	344 feet	131 feet	42/19	Motoyo ITOH +81-46-867-9488
BCC-19	71°44.049'N, 155°09.624'W	951 feet	131 feet	42/19	Motoyo ITOH +81-46-867-9488
BCW-19	71°47.766'N, 155°20.777'W	554 feet	131 feet	42/19	Motoyo ITOH +81-46-867-9488
AL20-AU-BF2	71°45.220'N, 154°28.070'W	335 feet	308 feet	38/20	Catherine Berchok 206-526-6331
Prudhoe	70°50.085'N, 146°23.564'W	207 feet	191 feet	03/22	Steve Okkonen 907-283-3234

#### ALASKA – CHUKCHI SEA

TYPE/NAME:	POSITION:	WATER DEPTH:	TOP FLOAT DEPTH:	Ref. LNM:	POC:
Unnamed	71°14.459'N, 164°18.067'W	138 feet	Surface	28/15	Noah Lawrence 206-526-6209
2015MARU_2	71°29.792'N, 163°11.449'W	144 feet	140 feet	40/15	Catherine Berchok 206-526-6331
CEM1-19	71°35.971'N, 161°30.419'W	154 feet	108 feet	35/19	Peter Shipton 907-224-4319
CEM2-19	71°35.979'N, 161°31.648'W	154 feet	108 feet	35/19	Peter Shipton 907-224-4319
19CKP-5A	71°12.212'N, 158°00.722'W	157 feet	131 feet	35/19	David Strausz 206-525-4510
19CKP-4A	71°02.591'N, 160°29.706'W	171 feet	138 feet	35/19	David Strausz 206-525-4510

**ALASKA – CHUKCHI SEA (Continued)**

TYPE/NAME:	POSITION:	WATER DEPTH:	TOP FLOAT DEPTH:	Ref. LNM:	POC:
19CKP-3A	71°49.486'N, 166°03.560'W	151 feet	125 feet	35/19	David Strausz 206-525-4510
AL19-AU-IC3	71°49.728'N, 166°03.993'W	151 feet	121 feet	35/19	Catherine Berchok 206-526-6331
20CKP-12A	67°54.820'N, 168°11.830'W	195 feet	161 feet	38/20	David Strausz 206-526-4510
20CKITAER-12A	67°54.290'N, 168°11.510'W	196 feet	115 feet	38/20	David Strausz 206-526-4510
20CK-1A	70°00.000'N, 163°00.000'W	125 feet	112 feet	38/20	David Strausz 206-526-4510
20CKP-2A	71°13.180'N, 164.14.830'W	146 feet	128 feet	38/20	David Strausz 206-526-4510
AL20-AU-CL1	69°18.880'N, 167°36.650'W	167 feet	141 feet	38/20	Catherine Berchok 206-526-6331
AL20-AU-IC1	70°50.160'N, 163°07.100'W	148 feet	121 feet	38/20	Catherine Berchok 206-526-6331
AL21-AU-PH1	67°54.507'N, 168°11.926'W	171 feet	138 feet	49/21	Catherine Berchok 206-526-6331
AL21-AU-WT1	71°02.470'N, 160°30.330'W	164 feet	135 feet	49/21	Catherine Berchok 206-526-6331
AL21-AU-IC2	71°12.882'N, 164°14.911'W	144 feet	115 feet	49/21	Catherine Berchok 206-526-6331
W. Barrow Canyon	71°37.868'N, 157°19.576'W	230 feet	214 feet	03/22	Steve Okkonen 907-283-3234
WhoopDeeDo	71°25.327'N, 152°44.103'W	269 feet	253 feet	03/22	Steve Okkonen 907-283-3234

**ALASKA – KOTZEBUE SOUND**

TYPE/NAME:	POSITION:	WATER DEPTH:	TOP FLOAT DEPTH:	Ref. LNM:	POC:
OTZ-N	67°6.791'N, 163°46.328'W	37 feet	27 feet	48/14	Dr. Manuel Castellote 206-526-6866
OTZ-M	67°5.148'N, 163°48.282'W	58 feet	48 feet	48/14	Dr. Manuel Castellote 206-526-6866
OTZ-S	67°3.365'N, 163°48.699'W	60 feet	50 feet	48/14	Dr. Manuel Castellote 206-526-6866
OTZ-Ch	66°14.346'N, 166°51.926'W	51 feet	41 feet	48/14	Dr. Manuel Castellote 206-526-6866

**ALASKA – BERING STRAIT**

TYPE/NAME:	POSITION:	WATER DEPTH:	TOP FLOAT DEPTH:	Ref. LNM:	POC:
AOOS-AXYS	65°00.700'N, 169°27.23'W	-----	Surface	30/15	Darcy Dugan 907-644-6718
NB-17t	65°03.884'N, 169°38.045'W	171 feet	89 feet	29/17	Makoto Sampei +81-138-40-8844
BS-17t	66°16.075'N, 168°54.098'W	187 feet	105 feet	29/17	Makoto Sampei +81-138-40-8844
A2-21	65°46.850'N, 168°34.090'W	187 feet	49 feet	29/21	Rebecca Woodgate 206-221-3268
A3-21	66°19.640'N, 168°56.990'W	194 feet	23 feet	29/21	Rebecca Woodgate 206-221-3268
A4-21	65°44.740'N, 168°15.770'W	164 feet	49 feet	29/21	Rebecca Woodgate 206-221-3268

**ALASKA – NORTON SOUND**

TYPE/NAME:	POSITION:	WATER DEPTH:	TOP FLOAT DEPTH:	Ref. LNM:	POC:
Station-241	64°28.365'N, 165°28.525'W	66 feet	Surface	36/20	James Behrens 858-534-3032

**ALASKA – BERING SEA**

TYPE/NAME:	POSITION:	WATER DEPTH:	TOP FLOAT DEPTH:	Ref. LNM:	POC:
GPS Tide Buoy	58°28.015'N, 162°04.779'W	126 feet	Surface	25/19	NOAAS FAIRWEATHER 401-378-4022
AL19-AU-BS6	53°37.775'N, 167°23.945'W	312 feet	282 feet	28/19	Catherine Berchok 206-526-6331
19BS-8A	62°12.000'N, 174°40.770'W	243 feet	177 feet	40/19	Geoff Lebon 206-526-6884
19BSP-8A	61°11.760'N, 174°40.470'W	243 feet	30 feet	40/19	Geoff Lebon 206-526-6884
PUF-18	56°15.340'N, 168°17.361'W	506 feet	505feet	43/21	Thomas Vanpelt 907-242-7725
PUF-19	58°24.700'N, 167°36.900'W	167 feet	166 feet	43/21	Thomas Vanpelt 907-242-7725
AL21-AU-NM1	64°51.248'N, 168°27.938'W	144 feet	115 feet	49/21	Catherine Berchok 206-526-6331
22BSP-2A	56°51.818'N, 164°03.693'W	230 feet	203 feet	20/22	David Strausz 206-526-4510
AL22-AU-PC01	56°07.760'N, 168°18.767'W	531 feet	505 feet	25/22	Stephanie Grassia 206-526-4539
AL22-AU-UM01	53°37.870'N, 167°24.272'W	328 feet	302 feet	25/22	Stephanie Grassia 206-526-4539
AL22-AU-BS10	56°09.702'N, 166°34.707'W	387 feet	328 feet	25/22	Stephanie Grassia 206-526-4539
AL22-AU-BS11	61°04.742'N, 170°16.562'W	135 feet	108 feet	25/22	Stephanie Grassia 206-526-4539
22SH-1A	56°51.041'N, 158°59.784'W	233 feet	200 feet	36/22	David Strausz 206-526-4510
22BS-2C	56°52.456'N, 164°03.954'W	240 feet	33 feet	36/22	David Strausz 206-526-4510
22KUITAEFPR-4A	57°53.958'N, 165°42.148'W	200 feet	Surface	36/22	David Strausz 206-526-4510
22BSITAEFPR-14A	64°00.002'N, 167°54.718'W	121 feet	Surface	37/22	David Strausz 206-526-4510
22BSITAEFRP-14A	64°00.188'N, 167°54.701'W	121 feet	121 feet	37/22	David Strausz 206-526-4510
22BSP-14A	63°59.977'N, 167°55.523'W	130 feet	89 feet	37/22	David Strausz 206-526-4510
22BS-4A	57°52.291'N, 168°53.262'W	241 feet	33 feet	37/22	David Strausz 206-526-4510
22BSP-4A	57°52.071'N, 168°53.379'W	241 feet	200 feet	37/22	David Strausz 206-526-4510
22BS-5A	59°54.747'W, 171°43.379'W	240 feet	46 feet	37/22	David Strausz 206-526-4510
22BSP-5A	59°43.525'N, 171°43.440'W	239 feet	197 feet	37/22	David Strausz 206-526-4510
22BS-8A	62°11.896'N, 174°39.756'W	251 feet	59 feet	37/22	David Strausz 206-526-4510
22BSITAER-8A	62°12.107'N, 174°39.664'W	250 feet	66 feet	37/22	David Strausz 206-526-4510

**ALASKA – GULF OF ALASKA – SANAK TROUGH (NORTH OF SANAK ISLAND)**

TYPE/NAME:	POSITION:	WATER DEPTH:	TOP FLOAT DEPTH:	Ref. LNM:	POC:
TRBM-1	54°42.606'N, 162°37.872'W	407 feet	405 feet	48/16	Chris Wilson 206-526-6435
TRBM-2	54°37.151'N, 162°35.695'W	489 feet	487 feet	48/16	Chris Wilson 206-526-6435

**ALASKA – SOUTHWESTERN – UNIMAK PASS**

TYPE/NAME:	POSITION:	WATER DEPTH:	TOP FLOAT DEPTH:	Ref. LNM:	POC:
21UPP-1A	54°20.000'N, 164°01.830'W	338 feet	322 feet	26/21	David Strausz 206-526-4510



**ALASKA – SOUTHWESTERN – UNIMAK PASS (Continued)**

TYPE/NAME:	POSITION:	WATER DEPTH:	TOP FLOAT DEPTH:	Ref. LNM:	POC:
AL22-AU-UN01	54°26.150'N, 165°16.310'W	528 feet	502 feet	25/22	Stephanie Grassia 206-526-4539

**ALASKA – COOK INLET – KAMISHAK BAY**

TYPE/NAME:	POSITION:	WATER DEPTH:	TOP FLOAT DEPTH:	Ref. LNM:	POC:
ADCP-A	59°16'34.5168"N, 154°07'03.6837"W	16 feet	13 feet	03/18	Jason Crockett 907-315-6513
ADCP-B	59°15'24.7255"N, 154°02'45.7066"W	43 feet	39 feet	03/18	Jason Crockett 907-315-6513

**ALASKA – GULF OF ALASKA – KODIAK ISLAND – CHINIAK BAY**

TYPE/NAME:	POSITION:	WATER DEPTH:	TOP FLOAT DEPTH:	Ref. LNM:	POC:
22CB-1A	57°43.300'N, 152°17.052'W	633 feet	584 feet	36/22	David Strausz 206-526-4510

**ALASKA – GULF OF ALASKA**

TYPE/NAME:	POSITION:	WATER DEPTH:	TOP FLOAT DEPTH:	Ref. LNM:	POC:
UAF GAK4M	59°24.231'N, 149°00.731'W	656 feet	328 feet	45/16	Dr. Andrew McDonnell 907-474-7529
WAVE YB-1	59°27'22.248"N, 139°45'02.088"W	UNK	Surface	29/17	Jeremy Kasper 907-371-6510
WAVE YB-2	59°26'58.7349"N, 139°47'46.3194"W	UNK	Surface	29/17	Jeremy Kasper 907-371-6510
GEO1-2019	59°00.850'N, 148°41.410'W	722 feet	Surface	29/19	Seth Danielson 907-474-7834
GEO2-2019	59°00.917'N, 148°41.604'W	722 feet	72 feet	29/19	Seth Danielson 907-474-7834
GEO3-2019	59°00.988'N, 148°41.797'W	722 feet	Surface	29/19	Seth Danielson 907-474-7834
GA20-AU-BT01	57°01.790'N, 152°59.620'W	269 feet	243 feet	40/20	Catherine Berchok 206-526-6331
AOOS-204	59°35.850'N, 151°49.746'W	111 feet	Surface	32/21	James Behrens 858-534-3032

**ALASKA – GULF OF ALASKA – RESURRECTION BAY**

TYPE/NAME:	POSITION:	WATER DEPTH:	TOP FLOAT DEPTH:	Ref. LNM:	POC:
GAKOA	59°54'39.55"N, 149°20'57.47"W	171 feet	Surface	13/19	Natalie Monacci 907-474-7956
GAK1	59°51'11.952"N, 149°30'03.96"W	869 feet	66 feet	13/19	Peter Shipton 907-224-4319

**ALASKA – PRINCE WILLIAM SOUND**

TYPE/NAME:	POSITION:	WATER DEPTH:	TOP FLOAT DEPTH:	Ref. LNM:	POC:
PST1	60°39.100'N, 146°16.682'W	154 feet	138 feet	18/09	Mary Anne Bishop 907-424-5800 x228
PST2	60°39.338'N, 146° 17.353'W	226 feet	210 feet	18/09	Mary Anne Bishop 907-424-5800 x228
PST3	60° 39.568'N, 146° 18.040'W	390 feet	374 feet	18/09	Mary Anne Bishop 907-424-5800 x228
PST4	60° 39.798'N, 146° 18.726'W	427 feet	410 feet	18/09	Mary Anne Bishop 907-424-5800 x228
PST5	60° 40.028'N, 146°19.413'W	420 feet	404 feet	18/09	Mary Anne Bishop 907-424-5800 x228
PST6	60°40.257'N, 146°20.100'W	410 feet	394 feet	18/09	Mary Anne Bishop 907-424-5800 x228
PST7	60°40.487'N, 146°20.786'W	295 feet	279 feet	18/09	Mary Anne Bishop 907-424-5800 x228
PST8	60°40.717'N, 146°21.473'W	233 feet	217 feet	18/09	Mary Anne Bishop 907-424-5800 x228
PST9	60°40.947'N, 146°22.160'W	194 feet	177 feet	18/09	Mary Anne Bishop 907-424-5800 x228
PST10	60°41.176'N, 146°22.846'W	141 feet	125 feet	18/09	Mary Anne Bishop 907-424-5800 x228
LHRT1	60°22.6596'N, 147°51.147'W	225 feet	209 feet	11/14	Mary Anne Bishop 907-424-5800 x228
LHRT2	60°22.6482'N, 147°50.7522'W	364 feet	348 feet	11/14	Mary Anne Bishop 907-424-5800 x228
LHRT3	60°22.668'N, 147°50.5116'W	382 feet	366 feet	11/14	Mary Anne Bishop 907-424-5800 x228
WTRT1	60°44.253'N, 147°59.5596'W	504 feet	488 feet	11/14	Mary Anne Bishop 907-424-5800 x228
WTRT2	60°44.0994'N, 147°59.086'W	504 feet	488 feet	11/14	Mary Anne Bishop 907-424-5800 x228
WTRT3	60°43.938'N, 147°59.448'W	316 feet	300 feet	11/14	Mary Anne Bishop 907-424-5800 x228
PWSSC-15	60°36.791'N, 147°11.996'W	722 feet	197 feet (Surfacing 2X per day)	15/16	R. W. Campbell 907-424-5800 x241
H01	60°20.550'N, 146°43.824'W	98 feet	66 feet	09/17	Mary Anne Bishop 907-424-5800 x228
HA	60°20.274'N, 146°43.248'W	591 feet	532 feet	09/17	Mary Anne Bishop 907-424-5800 x228
H02	60°20.400'N, 146°44.520'W	879 feet	791 feet	09/17	Mary Anne Bishop 907-424-5800 x228
HB	60°20.094'N, 146°43.974'W	830 feet	747 feet	09/17	Mary Anne Bishop 907-424-5800 x228
H03	60°20.250'N, 146°45.246'W	886 feet	797 feet	09/17	Mary Anne Bishop 907-424-5800 x228
H04	60°20.112'N, 146°45.966'W	886 feet	797 feet	09/17	Mary Anne Bishop 907-424-5800 x228
H05	60°19.968'N, 146°46.710'W	886 feet	797 feet	09/17	Mary Anne Bishop 907-424-5800 x228
H06	60°19.812'N, 146°47.418'W	896 feet	806 feet	09/17	Mary Anne Bishop 907-424-5800 x228
H07	60°19.668'N, 146°48.138'W	909 feet	818 feet	09/17	Mary Anne Bishop 907-424-5800 x228
H08	60°19.470'N, 146°48.954'W	935 feet	842 feet	09/17	Mary Anne Bishop 907-424-5800 x228
H09	60°19.320'N, 146°49.782'W	1007 feet	906 feet	09/17	Mary Anne Bishop 907-424-5800 x228
H10	60°19.188'N, 146°50.508'W	1060 feet	954 feet	09/17	Mary Anne Bishop 907-424-5800 x228
H11	60°19.008'N, 146°51.228'W	1135 feet	1022 feet	09/17	Mary Anne Bishop 907-424-5800 x228
H12	60°18.888'N, 146°51.930'W	1194 feet	1075 feet	09/17	Mary Anne Bishop 907-424-5800 x228
H13	60°18.738'N, 146°52.656'W	909 feet	818 feet	09/17	Mary Anne Bishop 907-424-5800 x228
H14	60°18.588'N, 146°53.340'W	522 feet	470 feet	09/17	Mary Anne Bishop 907-424-5800 x228
H15	60°18.468'N, 146°53.994'W	276 feet	244 feet	09/17	Mary Anne Bishop 907-424-5800 x228
HC	60°18.120'N, 146°53.568'W	449 feet	404 feet	09/17	Mary Anne Bishop 907-424-5800 x228
H16	60°18.540'N, 146°54.552'W	85 feet	53 feet	09/17	Mary Anne Bishop 907-424-5800 x228
HD	60°17.982'N, 146°54.336'W	151 feet	119 feet	09/17	Mary Anne Bishop 907-424-5800 x228
M01	59°55.482'N, 147°48.630'W	295 feet	263 feet	09/17	Mary Anne Bishop 907-424-5800 x228
MA	59°55.146'N, 147°49.092'W	220 feet	188 feet	09/17	Mary Anne Bishop 907-424-5800 x228
M02	59°55.848'N, 147°49.074'W	446 feet	401 feet	09/17	Mary Anne Bishop 907-424-5800 x228
MB	59°55.512'N, 147°49.512'W	420 feet	378 feet	09/17	Mary Anne Bishop 907-424-5800 x228

## ALASKA – PRINCE WILLIAM SOUND (Continued)

TYPE/NAME:	POSITION:	WATER DEPTH:	TOP FLOAT DEPTH:	Ref. LNM:	POC:
M03	59°56.178'N, 147°49.518'W	509 feet	458 feet	09/17	Mary Anne Bishop 907-424-5800 x228
M04	59°56.556'N, 147°49.956'W	577 feet	519 feet	09/17	Mary Anne Bishop 907-424-5800 x228
M05	59°56.886'N, 147°50.382'W	640 feet	576 feet	09/17	Mary Anne Bishop 907-424-5800 x228
M06	59°57.222'N, 147°50.826'W	705 feet	635 feet	09/17	Mary Anne Bishop 907-424-5800 x228
M07	59°57.546'N, 147°51.234'W	741 feet	667 feet	09/17	Mary Anne Bishop 907-424-5800 x228
M08	59°57.864'N, 147°51.636'W	768 feet	691 feet	09/17	Mary Anne Bishop 907-424-5800 x228
M09	59°58.152'N, 147°52.008'W	784 feet	706 feet	09/17	Mary Anne Bishop 907-424-5800 x228
M10	59°58.536'N, 147°52.458'W	778 feet	700 feet	09/17	Mary Anne Bishop 907-424-5800 x228
MC	59°58.182'N, 147°52.872'W	745 feet	671 feet	09/17	Mary Anne Bishop 907-424-5800 x228
M11	59°58.842'N, 147°52.866'W	472 feet	425 feet	09/17	Mary Anne Bishop 907-424-5800 x228
MD	59°58.518'N, 147°53.352'W	614 feet	553 feet	09/17	Mary Anne Bishop 907-424-5800 x228
LP01	59°58.854'N, 148°01.920'W	112 feet	80 feet	09/17	Mary Anne Bishop 907-424-5800 x228
LPA	59°58.488'N, 148°02.286'W	98 feet	66 feet	09/17	Mary Anne Bishop 907-424-5800 x228
EP04	59°59.700'N, 148°06.072'W	276 feet	244 feet	09/17	Mary Anne Bishop 907-424-5800 x228
EPB	59°59.364'N, 148°06.492'W	246 feet	214 feet	09/17	Mary Anne Bishop 907-424-5800 x228
POWP05	60°02.778'N, 148°07.470'W	312 feet	280 feet	09/17	Mary Anne Bishop 907-424-5800 x228
LPB	59°58.758'N, 148°02.676'W	289 feet	257 feet	09/17	Mary Anne Bishop 907-424-5800 x228
EP03	59°59.472'N, 148°05.802'W	240 feet	208 feet	09/17	Mary Anne Bishop 907-424-5800 x228
EPA	59°59.064'N, 148°05.952'W	331 feet	299 feet	09/17	Mary Anne Bishop 907-424-5800 x228
PWA	60°02.394'N, 148°07.698'W	289 feet	257 feet	09/17	Mary Anne Bishop 907-424-5800 x228
LP02	59°59.082'N, 148°02.208'W	148 feet	116 feet	09/17	Mary Anne Bishop 907-424-5800 x228
POWP06	60°02.796'N, 148°07.902'W	177 feet	145 feet	09/17	Mary Anne Bishop 907-424-5800 x228
PWB	60°02.418'N, 148°08.208'W	266 feet	234 feet	09/17	Mary Anne Bishop 907-424-5800 x228
BP07	60°06.906'N, 148°14.118'W	174 feet	142 feet	09/17	Mary Anne Bishop 907-424-5800 x228
BPA	60°07.128'N, 148°13.458'W	167 feet	135 feet	09/17	Mary Anne Bishop 907-424-5800 x228
Grav-1	60°41.370'N, 146°23.956'W	16 feet	Surface	16/17	Mary Anne Bishop 907-424-5800 x228
Grav-2	60°41.454'N, 146°23.496'W	75 feet	55 feet	16/17	Mary Anne Bishop 907-424-5800 x228
Grav-3	60°40.925'N, 146°23.018'W	146 feet	126 feet	16/17	Mary Anne Bishop 907-424-5800 x228
Grav-4	60°40.696'N, 146°22.561'W	195 feet	176 feet	16/17	Mary Anne Bishop 907-424-5800 x228
Grav-5	60°41.257'N, 146°24.580'W	7 feet	Surface	16/17	Mary Anne Bishop 907-424-5800 x228
Grav-6	60°41.033'N, 146°24.109'W	53 feet	34 feet	16/17	Mary Anne Bishop 907-424-5800 x228
Grav-7	60°40.811'N, 146°23.633'W	128 feet	108 feet	16/17	Mary Anne Bishop 907-424-5800 x228
Grav-8	60°40.580'N, 146°23.148'W	158 feet	138 feet	16/17	Mary Anne Bishop 907-424-5800 x228
Grav-9	60°40.362'N, 146°22.692'W	212 feet	192 feet	16/17	Mary Anne Bishop 907-424-5800 x228
Grav-10	60°40.970'N, 146°23.557'W	106 feet	86 feet	16/17	Mary Anne Bishop 907-424-5800 x228
Grav-RT1	60°41.053'N, 146°24.004'W	59 feet	40 feet	16/17	Mary Anne Bishop 907-424-5800 x228
Grav-RT2	60°41.071'N, 146°23.896'W	72 feet	53 feet	16/17	Mary Anne Bishop 907-424-5800 x228
Grav-RT3	60°41.090'N, 146°23.765'W	74 feet	55 feet	16/17	Mary Anne Bishop 907-424-5800 x228
RH1	60°36.987'N, 146°37.412'W	213 feet	203 feet	28/18	Mary Anne Bishop 907-424-5800 x228
RH2	60°38.175'N, 146°29.837'W	223 feet	223 feet	28/18	Mary Anne Bishop 907-424-5800 x228
NMS1	60°18.476'N, 147°40.044'W	131 feet	131 feet	28/18	Mary Anne Bishop 907-424-5800 x228
NMS2	60°18.280'N, 147°25.330'W	154 feet	154 feet	28/18	Mary Anne Bishop 907-424-5800 x228
NMS3	60°22.657'N, 147°08.341'W	118 feet	118 feet	28/18	Mary Anne Bishop 907-424-5800 x228
GISL1	60°51.782'N, 147°13.369'W	164 feet	154 feet	28/18	Mary Anne Bishop 907-424-5800 x228
MR1	59°58.586'N, 147°53.254'W	607 feet	597 feet	28/18	Mary Anne Bishop 907-424-5800 x228
MR2	59°58.655'N, 147°53.160'W	581 feet	571 feet	28/18	Mary Anne Bishop 907-424-5800 x228
MR3	59°58.738'N, 147°53.030'W	564 feet	554 feet	28/18	Mary Anne Bishop 907-424-5800 x228
HRT1	60°18.058'N, 146°54.282'W	112 feet	102 feet	28/18	Mary Anne Bishop 907-424-5800 x228
HRT2	60°18.135'N, 146°54.227'W	121 feet	111 feet	28/18	Mary Anne Bishop 907-424-5800 x228
HRT3	60°18.226'N, 146°54.145'W	151 feet	141 feet	28/18	Mary Anne Bishop 907-424-5800 x228
KIP1	60°18.121'N, 148°00.944'W	344 feet	324 feet	39/18	Mary Anne Bishop 907-424-5800 x228
KIP2	60°18.050'N, 147°55.640'W	344 feet	324 feet	39/18	Mary Anne Bishop 907-424-5800 x228
CP1	60°32.465'N, 146°08.652'W	106 feet	81 feet	39/18	Mary Anne Bishop 907-424-5800 x228
CP2	60°32.733'N, 146°06.749'W	151 feet	126 feet	39/18	Mary Anne Bishop 907-424-5800 x228
CEDAR1	60°33.568'N, 146°01.978'W	110 feet	85 feet	39/18	Mary Anne Bishop 907-424-5800 x228
JP1	60°29.366'N, 146°35.524'W	74 feet	71 feet	10/20	Mary Anne Bishop 907-424-5800 x228
PF1	60°48.720'N, 146°34.464'W	131 feet	128 feet	10/20	Mary Anne Bishop 907-424-5800 x228

## ALASKA – GULF OF ALASKA – YAKUTAT

TYPE/NAME:	POSITION:	WATER DEPTH:	TOP FLOAT DEPTH:	Ref. LNM:	POC:
Wave Buoy-1	59°270402'N, 139°44.982'W	Unknown	Surface	41/19	Jeremy Kasper 907-371-6510
Wave Buoy-2	59°25.998'N, 139°48.366'W	Unknown	Surface	41/19	Jeremy Kasper 907-371-6510

## ALASKA – SOUTHEAST

TYPE/NAME:	POSITION:	WATER DEPTH:	TOP FLOAT DEPTH:	Ref. LNM:	POC:
Icy Strait	58° 14.6112'N, 136° 7.28972'W	614 feet	594 feet	35/09	Dave Carlile 907-465-4216
Icy Strait	58° 14.5037'N, 136° 7.27185'W	541 feet	521 feet	35/09	Dave Carlile 907-465-4216
Icy Strait	58° 14.3962'N, 136° 7.25398'W	522 feet	502 feet	35/09	Dave Carlile 907-465-4216
Icy Strait	58° 14.2887'N, 136° 7.23611'W	358 feet	338 feet	35/09	Dave Carlile 907-465-4216
Icy Strait	58° 14.1812'N, 136° 7.21824'W	266 feet	246 feet	35/09	Dave Carlile 907-465-4216
Chatham Strait	56° 9.6115'N, 134° 33.78278'W	1814 feet	1795 feet	35/09	Dave Carlile 907-465-4216
Chatham Strait	56° 9.6209'N, 134° 33.97584'W	1820 feet	1800 feet	35/09	Dave Carlile 907-465-4216
Chatham Strait	56° 9.6303'N, 134° 34.1689'W	1811 feet	1791 feet	35/09	Dave Carlile 907-465-4216

**ALASKA – SOUTHEAST (Continued)**

TYPE/NAME:	POSITION:	WATER DEPTH:	TOP FLOAT DEPTH:	Ref. LNM:	POC:
Chatham Strait	56° 9.6397'N, 134° 34.36195'W	1811 feet	1791 feet	35/09	Dave Carlile 907-465-4216
Chatham Strait	56° 9.6491'N, 134° 34.55501'W	1798 feet	1778 feet	35/09	Dave Carlile 907-465-4216
Chatham Strait	56° 8.6362'N, 134° 25.56783'W	1916 feet	417 feet	35/09	Dave Carlile 907-465-4216
Chatham Strait	56° 8.655'N, 134° 25.95379'W	1930 feet	1910 feet	35/09	Dave Carlile 907-465-4216
Chatham Strait	56° 8.6644'N, 134° 26.14676'W	1932 feet	1912 feet	35/09	Dave Carlile 907-465-4216
Chatham Strait	56° 8.6738'N, 134° 26.3397'W	1936 feet	1916 feet	35/09	Dave Carlile 907-465-4216
Chatham Strait	56° 8.6832'N, 134° 26.53272'W	1932 feet	1912 feet	35/09	Dave Carlile 907-465-4216
Chatham Strait	56° 8.6926'N, 134° 26.7257'W	1932 feet	1912 feet	35/09	Dave Carlile 907-465-4216
Frederick Sound	57° 3.34'N, 134° 15.64'W	1180 feet	928 feet	35/09	Dave Carlile 907-465-4216
Frederick Sound	57° 3.1874'N, 134° 15.35938'W	1155 feet	1135 feet	35/09	Dave Carlile 907-465-4216
Frederick Sound	57° 3.1111'N, 134° 15.21907'W	1155 feet	1135 feet	35/09	Dave Carlile 907-465-4216
Frederick Sound	57° 3.0348'N, 134° 15.07877'W	1155 feet	1135 feet	35/09	Dave Carlile 907-465-4216
Frederick Sound	57° 2.9584'N, 134° 14.93847'W	1158 feet	1138 feet	35/09	Dave Carlile 907-465-4216
Ommaney	56° 5.1769'N, 134° 46.8910'W	1191 feet	1171 feet	33/10	Dave Carlile 907-465-4216
Ommaney	56° 5.0755'N, 134° 46.8249'W	1200 feet	1180 feet	33/10	Dave Carlile 907-465-4216
Ommaney	56° 4.9741'N, 134° 46.7587' W	1200 feet	1180 feet	33/10	Dave Carlile 907-465-4216
Ommaney	55° 59.6327' N, 134° 57.3717' W	1214 feet	1194 feet	33/10	Dave Carlile 907-465-4216
Ommaney	55° 59.5313'N, 134° 57.3057'W	1191 feet	1171 feet	33/10	Dave Carlile 907-465-4216
Ommaney	55° 59.4298'N, 134° 57.2397'W	1191 feet	1171 feet	33/10	Dave Carlile 907-465-4216
Ommaney	55° 59.3284'N, 134° 57.1737'W	1220 feet	1200 feet	33/10	Dave Carlile 907-465-4216
Frederick Sound	57° 2.8821'N, 134° 14.79818'W	1158 feet	1138 feet	35/09	Dave Carlile 907-465-4216
Ommaney	56° 5.4812' N, 134° 47.0895' W	1181 feet	912 feet	33/10	Dave Carlile 907-465-4216
Ommaney	56° 5.3798'N, 134° 47.0233'W	1191 feet	1171 feet	33/10	Dave Carlile 907-465-4216
Ommaney	56° 5.2783'N, 134° 46.9572'W	1191 feet	1171 feet	33/10	Dave Carlile 907-465-4216
Ommaney	55° 59.2270'N, 134° 57.1077'W	1220 feet	1200 feet	33/10	Dave Carlile 907-465-4216
Ommaney	55° 59.1256'N, 134° 57.0417' W	1220 feet	1200 feet	33/10	Dave Carlile 907-465-4216
20CSP-4A	58°07.363'N, 136°35.604'W	1,099 feet	1,060 feet	06/20	David Strausz 206-526-4510

**ALASKA – NORTH PACIFIC OCEAN**

TYPE/NAME:	POSITION:	WATER DEPTH:	TOP FLOAT DEPTH:	Ref. LNM:	POC:
HARP-CB	58°40.409'N, 148°00.546'W	2,877 feet	2,779 feet	49/14	Josh Jones 858-822-1836
HARP-PT	56°14.635'N, 142°45.431'W	3,238 feet	3,140 feet	49/14	Josh Jones 858-822-1836
MFM-A	49°58.60'N, 144°14.77'W	13,540 feet	49 feet	24/15	Gabriella Chavez 858-822-4938
MFM-B	50°19.82'N, 144°23.90'W	13,599 feet	49 feet	24/15	Gabriella Chavez 858-822-4938
GHPM-1	50°04.79'N, 144°48.18'W	13, 842 feet	483 feet	24/15	Gabriella Chavez 858-822-4938