



U.S. Department
of Homeland Security
**United States
Coast Guard**

LOCAL NOTICE TO MARINERS

District: 17

Week: 50/22

-Navigation Information Service (NIS)-
Watchstander, 24 hours a day at (703) 313-5900
~Navcen Internet Address~
<https://www.navcen.uscg.gov>
-Local Notice to Mariners-
<https://www.navcen.uscg.gov/-pageName=lnmMain>

Issued by: Commander (DPW) Telephone: (907) 463-2269 (0800-1600)
Seventeenth Coast Guard District After Hours: (907) 463-2000 (1600-0800)
PO Box 25517, Juneau, AK 99802-5517

Questions, comments, or additional information on this Local Notice to Mariners should be sent to the address above or by E-mail to: SMB-D17Juneau-LNM@uscg.mil. You can get the U.S. Coast Guard 17th District Local Notice to Mariners via the Internet directly from the U.S. Coast Guard Navigation Center web site at <https://www.navcen.uscg.gov/-pageName=lnmDistrict®ion=17>.

REFERENCES: Light List, Vol. VI, Pacific Coast and Pacific Islands (COMDTPUB P16502.6).
U.S. Coast Pilot 8, Pacific Coast Alaska: Dixon Entrance to Cape Spencer, 44th Edition.
U.S. Coast Pilot 9, Pacific and Arctic Coasts Alaska: Cape Spencer to Beaufort Sea, 39th Edition.

BROADCAST NOTICE TO MARINERS

Navigation information previously promulgated by CG Sector Juneau Broadcast Notice to Mariners through J172-22 and CG Sector Anchorage Broadcast Notice to Mariners through A133-22 that are still in effect are included in this notice.

Chart Corrections
<https://nauticalcharts.noaa.gov/charts/chart-updates.html>

Dates of Latest Editions, Nautical Charts, and Miscellaneous Maps
<https://nauticalcharts.noaa.gov/charts/list-of-latest-editions.html>

Light List/ Summary of Corrections
<https://www.navcen.uscg.gov/-pageName=lightListCorrections>

NOAA Chart Viewer (Posting of all up to date NOAA charts for viewing on Internet browser to be used for ready reference or planning)
<https://nauticalcharts.noaa.gov/>

NOAA Booklet Charts
<https://nauticalcharts.noaa.gov/charts/noaa-raster-charts.html#booklet-charts>

Coast Pilots, along with corrections, are available at:
<https://nauticalcharts.noaa.gov/publications/coast-pilot/index.html>

NOAA Weather Buoy Sites
<http://www.ndbc.noaa.gov/>

Tides online
<https://tidesandcurrents.noaa.gov/>

Tides, Currents, PORTS
<https://tidesandcurrents.noaa.gov/noaacurrents/Stations-g=693>

Weather
<http://www.nws.noaa.gov/om/marine/alaska.htm>

Vessel Traffic System Prince William Sound (VTSPWS) Users Manual
<https://homeporttr.uscg.mil/Lists/Content/DispForm.aspx-ID=2205&Source=https:>

ABBREVIATIONS

A through H

ADRIFT - Buoy Adrift
AICW - Atlantic Intracoastal Waterway

I through O

I - Interrupted
ICW - Intracoastal Waterway

P through Z

PRIV - Private Aid
Q - Quick

AI - Alternating
B - Buoy
BKW - Breakwater
bl - Blast
BNM - Broadcast Notice to Mariner
bu - Blue
C - Canadian
CHAN - Channel
CGD - Coast Guard District
C/O - Cut Off
CONT - Contour
CRK - Creek
CONST - Construction
DAYMK/Daymk - Daymark
DBN/Dbn - Daybeacon
DBD/DAYBD - Dayboard
DEFAC - Defaced
DEST - Destroyed
DISCON - Discontinued
DMGD/DAMGD - Damaged
ec - eclipse
EST - Established Aid
ev - every
EVAL - Evaluation
EXT - Extinguished
F - Fixed
fl - flash
Fl - Flashing
G - Green
GIWW - Gulf Intracoastal Waterway
HAZ - Hazard to Navigation
HBR - Harbor
HOR - Horizontal Clearance
HT - Height

IMCH - Improper Characteristic
INL - Inlet
INOP - Not Operating
INT - Intensity
ISL - Islet
Iso - Isophase
kHz - Kilohertz
LAT - Latitude
LB - Lighted Buoy
LBB - Lighted Bell Buoy
LHB - Lighted Horn Buoy
LGB - Lighted Gong Buoy
LONG - Longitude
LNM - Local Notice to Mariners
LT - Light
LT CONT - Light Continuous
LTR - Letter
LWB - Lighted Whistle Buoy
LWP - Left Watching Properly
MHz - Megahertz
MISS/MSNG - Missing
Mo - Morse Code
MRASS - Marine Radio Activated Sound Signal
MSLD - Misleading
N/C - Not Charted
NGA - National Geospatial-Intelligence Agency
NO/NUM - Number
NOS - National Ocean Service
NW - Notice Writer
OBSCU - Obscured
OBST - Obstruction
OBSTR - Obstruction
Oc - Occulting
ODAS - Anchored Oceanographic Data Buoy

R - Red
RACON - Radar Transponder Beacon
Ra ref - Radar reflector
RBN - Radio Beacon
REBUILT - Aid Rebuilt
RECOVERED - Aid Recovered
RED - Red Buoy
REFL - Reflective
RRL - Range Rear Light
RELIGHTED - Aid Relit
RELOC - Relocated
RESET ON STATION - Aid Reset on Station
RFL - Range Front Light
RIV - River
RRASS - Remote Radio Activated Sound Signal
s - seconds
SEC - Section
SHL - Shoaling
si - silent
SIG - Signal
SND - Sound
SPM - Single Point Mooring Buoy
SS - Sound Signal
STA - Station
STRUCT - Structure
St M - Statute Mile
TEMP - Temporary Aid Change
TMK - Topmark
TRLB - Temporarily Replaced by Lighted Buoy
TRLT - Temporarily Replaced by Light
TRUB - Temporarily Replaced by Unlighted Buoy
USACE - Army Corps of Engineers
W - White
Y - Yellow

Additional Abbreviations Specific to this LNM Edition: None

SECTION I - SPECIAL NOTICES

This section contains information of special concern to the Mariner.

296

ALASKA

The Coast Guard's VHF-FM Remote Fixed Facility (RFF) reception capabilities on the following site is degraded and calls on VHF-FM Channel 16 may not be received by the responsible Coast Guard Sector Communication Center within the stated coverage area:

CAPE GULL – Northwest Afognak Island, Cape Douglas, and Shelikof Strait to Cape Uyak.

MIDDLE CAPE – Southwestern Kodiak and the Southwestern portion of Shelikof Strait from Cape Igvak to Cape Kuliak.

CAPE FANSHAW – Southern Stephens Passage and Frederick Sound.

If unable to reach the Coast Guard on VHF-FM Channel 16, mariners that are equipped with capable radios can contact the Coast Guard through Communications Detachment Kodiak via high frequency (HF) 4125Khz. Mariners can also contact the Coast Guard via cellular or satellite phone by calling JRCC Juneau at 907-463-2000, Sector Juneau Command Center at (907) 463-2980 or Sector Anchorage Command Center at (907) 428-4100. Mariners are reminded that Western and Northern Alaskan have no VHF-FM coverage. Contact in areas without VHF/FM coverage to the Coast Guard is via Communications Detachment Kodiak on HF or JRCC Juneau by phone. Mariners are requested to relay any unanswered calls for assistance to the Coast Guard.

LNM: 50/22

297

ALASKA – SOUTHCENTRAL – KODIAK ISLAND

HAZARDOUS OPERATIONS: A rocket launch designated "P-139A" from the Pacific Spaceport complex located at Narrow Cape, Kodiak Island, Alaska, is scheduled for 092200-100130 UTC which is 1300-1630 Alaska time on January 9th, 2023. If the launch does not occur on January 9th then the launch will be rescheduled on the next day during the same time. This may continue through January 13th, 2023. If the launch does not occur by January 13th, 2023 then it will be postponed until January 30th, 2023, during the same time windows through February 1st, 2023. If the launch does not occur by February 1st, 2023, then it will be cancelled. Additional details including the coordinates of the hazardous areas and spaceport contact information can be found in an enclosure to this LNM. Mariners are requested to remain clear of the hazardous areas during the time windows of this launch. Questions/concerns should be directed to Shannon Edwards at 907-743-3633 or by email to shannon.edwards@akaerospace.com.

LNM: 50/22

299

ALASKA – SOUTHWESTERN – ALEUTIAN PENINSULA

GCI has installed a cable from Unalaska, AK to Kodiak, AK with stops in Akutan, King Cove, Sand Point, Chignik Bay and Larson Bay. An enclosure

to this LNM includes a chartlet indicates the approximate route as well as the 'as-built' route of the cable from Unalaska to King cove. Additional information and alternative position formats can be obtained from GCI by contacting Bruce Rein at 907-868-5633 or by email to brein@gci.com.

LNM: 49/22

300 **ALASKA – SOUTHEAST – TENAKEE INLET**

Tenakee Inlet Entrance LT 1 (LLNR 24065) is destroyed and has been temporarily decommissioned and Tenakee Inlet Entrance LB 1 (LLNR 24065.1) has been established in position 57°46'19.284"N, 134°55'36.987"W. Tenakee Inlet Entrance LB 1 is a green can buoy with a green light flashing every 4 seconds. Questions/concerns should be directed to Todd Buck with the Coast Guard District 17 Waterways Management Office at (907) 463-2269 or by email to todd.r.buck@uscg.mil.

LNM: 49/22

302 **ALASKA – SOUTHCENTRAL – COOK INLET**

The Captain of the Port (COPT), Western Alaska, through consultation with the Southwest Alaska Pilots Association (SWAPA) and members of the Cook Inlet Harbor Safety Committee have developed Operating Guidelines for Ice Conditions in Cook Inlet. Currently, both the LOWER and UPPER Cook Inlet Operating Guidelines for Ice Conditions have been implemented. The Guidelines as well as additional information are available through the following website: <https://homeport.uscg.mil/Lists/Content/DispForm.aspx?ID=78987&Source=/Lists/Content/DispForm.aspx?ID=78987> Additional information can also be obtained from an enclosure to this LNM. Questions/concerns should be directed to the Coast Guard Sector Anchorage Command Center at 907-428-4100 or by email to sector.anchorage@uscg.mil.

LNM: 49/22

303 **ALASKA – SOUTHWESTERN – UNALASKA BAY – DUTCH HARBOR**

The M/V CABLE INNOVATOR will be conducting cable recovery/repair/laying operations near Ulakta Point in Unalaska Bay in the vicinity of position 53°56.200'N, 166°29.266'W. The cable operations are expected to begin around December 6th, 2022, and last for 7-9 days, but may be delayed by weather. The M/V CABLE INNOVATOR will be monitoring VHF/FM channel 13 and 16 and will be restricted in her ability to maneuver when conducting cable operations. Mariners are requested to remain clear and contact M/V CABLE INNOVATOR to discuss passing arrangements if transiting nearby. Questions/concerns should be directed to Kevin King at 206-652-4411 or by email to kevin.king@wilhemsen.com.

LNM: 49/22

320 **ALASKA – SOUTHEAST – SHELTER ISLAND**

There is a 53' partially sunken fishing vessel on the west side of Shelter Island in position 58°25.498'N, 134°53.205'W. Mariners are advised to transit the area with caution.

LNM: 43/22

323 **ALASKA – SOUTHEAST – FRESHWATER INLET – PAVLOF HARBOR**

The F/V BAILEY BAY has sunk in position 57°50.985'N, 135°01.725'W in approximately 30 feet of water. The F/V BAILEY BAY is a 33' fiberglass fishing vessel and there may be fishing gear or debris attached to or in the vicinity of the vessel. Mariners are advised to transit the area with caution.

LNM: 43/22

325 **ALASKA – SOUTHEAST – ICY STRAIT – ICY PASSAGE**

A kelp farm has been established in Icy Passage along the North shore of Pleasant Island in approximate position 58°21'30"N, 135°32'32"W. The kelp farm is marked with two private lighted buoys. Aquatic Plant Farm LB A (LLNR 24177) is a yellow buoy with a FI 4 second light and is located in position 58°21'16.980"N, 135°32'32.700"W. Aquatic Plant Farm LB B (LLNR 24278) is a yellow buoy with a FI 6 second light and is located in position 58°21'47.580"N, 135°32'32.500"W. Chart and Light List corrections will be published in a subsequent LNM. Questions/concerns should be directed to Brian Delay at 907-321-1952 or by email to rainydawnfarms@gmail.com.

LNM: 42/22

338 **ALASKA – SOUTHCENTRAL – PRINCE WILLIAM SOUND – BARRY ARM**

The State of Alaska is issuing routine updates on the Barry Arm Landslide Tsunami risk. This threat is located in Barry Arm, Northwestern Prince William Sound, and has the potential to create a tsunami when it falls into the water. It is uncertain if and when this might occur, but if it occurs localized wave heights will be very hazardous in Barry Arm and Harriman Fjord. Port Wells and Passage Canal will also see inundation and strong, unusual currents for hours following this event. The geologic makeup of the area is similar to Alaskan locations where two previous landslides caused tsunamis occurred, in Lituya Bay (1958) and Icy Bay (2015), both causing extremely large but localized tsunamis. Mariners should maintain vigilance when in the vicinity of Barry Arm or nearby waters and be prepared to depart the area if any unusual geologic activity is observed. Studies are being conducted and the situation is being monitored to allow for a better understanding of the potential results of a slide. Additional information is available at the following website: <https://dggs.alaska.gov/hazards/barry-arm-landslide.html>.

LNM: 40/22

341 ******CANCELLATION OF NOAA PAPER AND RASTER NAUTICAL CHARTS******

The National Oceanic and Atmospheric Administration (NOAA) is undertaking a multi-year program to end production and maintenance of its suite of over 1,000 traditional paper nautical charts and all associated raster chart products and services, including: Print-on-Demand (POD) paper nautical charts, Full-size chart PDF files, BookletChartTM PDF files, NOAA raster navigational charts (NOAA RNC®), the NOAA RNC tile service, and the online RNC viewer.

Six months notice of the intent to cancel a specific chart is provided in a "Last Edition" notice. The final cancellation of a chart is made in a "Canceled" notice. Both types of notices will appear in LNM Section IV, "Chart Correction." A comprehensive list of all canceled NOAA charts is

available at: <http://www.charts.noaa.gov/MCD/Dole.shtml>.

Traditional paper nautical chart production is ending to enable the creation and maintenance of larger scale, more up-to-date, higher quality coverage of NOAA's electronic navigational chart (NOAA ENC®) product. This will significantly enhance the amount of charted detail available to mariners. More information about NOAA's program to sunset traditional paper charts is on the NOAA Coast Survey website at:

<https://www.nauticalcharts.noaa.gov/charts/farwell-to-traditional-nautical-charts.html>.

An online NOAA Custom Chart application at: <https://devgis.charttools.noaa.gov/pod> is available to create chart images from ENC data, which may then be printed. Notices to Mariners will not be issued for NOAA Custom Charts.

LNM: 09/21

342

SAFETY NOTICE - NAVIGATIONAL RANGE AND SECTOR LIGHTS ON ELECTRONIC CHARTS

The U.S. Coast Guard has become aware that the Range and Sector Light Characteristic labels are not displayed on Electronic Navigational Charts (ENCs) when used in an Electronic Chart Display and Information System (ECDIS) due to limitations of the S-52 ECDIS display specification. Mariners may query the ENC data directly within ECDIS or refer to the Light List for complete information on Range and Sector Light Characteristics.

LNM: 39/22

346

ALASKA – SOUTHCENTRAL – COOK INLET – PORT OF ANCHORAGE

The PCT Danger Range has been established as a Private Aid TO Navigation (PATON) on the Southeastern end of the Petroleum and Cement Terminal at the Port of Alaska located in Anchorage, Alaska. The PCT Danger Range marks a line of position that the PCT Terminal recommends vessels approaching the Terminal do not cross as they are making their approach from, or departing to, the Southeast. The PCT Danger Range consists of two structures with range boards (KRW) and lights (FL Y) that indicate a LOP of 065.8° as you are facing the range. The structures are located in the following positions:

LLNR 26445 - PCT Danger RFL – 61°13'59.2965"N, 149°53'46.0397"W – On dolphin.

LLNR 26446 - PCT Danger RRL – 61°14'01.5097"N, 149°53'35.8204"W – On light pole.

Chart and Light List corrections will be issued in a subsequent LNM. Questions/concerns should be directed to Todd Buck with the Coast Guard District 17 Waterways Management Office at (907) 463-2269 or by email to todd.r.buck@uscg.mil.

LNM: 38/22

352

ALASKA – SOUTHEAST – TONGASS NARROWS

A construction project involving pile driving is being conducted in the vicinity of the Ketchikan International Airport and will be completed by April 1st, 2023. Two anchors marked by white buoys with flashing white lights are being used to moor the pile driving barge and extend up to 500 feet into the channel. The anchors are located in positions 55°21.236'N, 131°42.125'W and 55°21.187'N, 131°42.126'W. Mariners are requested to transit the area with caution. Questions/concerns should be directed to Matt Huston at 206-507-6602 or by email to matth@pacificpile.com.

LNM: 37/22

360

ALASKA – SOUTHEAST – NECKER ISLANDS – HOT SPRINGS BAY

A 32' Sailboat has been reported sunk in Hot Springs Bay in approximate position 56°50.252'N, 135°23.574'W in approximately 84 feet of water. The sailboat has an estimated mast height of up to 50'. Mariners are requested to transit the area with caution. Questions/concerns should be directed to Todd Buck with the Coast Guard District 17 Waterways Management Office at (907) 463-2269 or by email to todd.r.buck@uscg.mil.

LNM: 36/22

372

ALASKA – SOUTHEAST – DUNCAN CANAL – BUTTERWORTH ISLAND

OBSTRUCTION TO NAVIGATION: A 94 foot tug has been reported sunk in the vicinity of Butterworth Island in approximate position 56°32.586'N, 133°03.855'W. Vessels transiting in the vicinity are requested to remain clear of the reported wreck. Questions/concerns should be directed to the Coast Guard Sector Juneau Command Center at 907-463-2980 or on VHF/FM channel 16.

LNM: 34/22

396

ALASKA – SOUTHCENTRAL – COOK INLET NAVIGATION CHANNEL

The U.S. Army Corps of Engineers (USACE), Alaska District conducted a project condition survey for Cook Inlet Navigation Channel on May 13th, 2022 in which the following controlling depths in feet (FT) mean lower low water (MLLW) were recorded:

Left Outside Quarter 61°12'30.93"N, 150°03'53.57"W, -41.1 FT MLLW

Left Inside Quarter 61°11'42.60"N, 150°06'46.85"W, -42.7 FT MLLW

Right Inside Quarter 61°11'41.18"N, 150°06'44.88"W, -44.0 FT MLLW

Right Outside Quarter 61°11'59.68"N, 150°05'15.80"W, -43.2 FT MLLW

A chartlet of the controlling depths as well as survey data are available on the U.S. Army Corps of Engineers (USACE) Navigation Portal website at: <http://navigation.usace.army.mil/Survey/Hydro>. The Cook Inlet Navigation Channel was dredged during the summer of 2014 to a project depth of -38 FT MLLW. At this time, no maintenance dredging is scheduled for this channel during 2022. The next project condition survey for this channel is tentatively scheduled for October 2022. BE ADVISED: The information depicted on maps, charts, drawings, navigation notices, etc., for the subject project, represents the results of a survey conducted on the date(s) indicated and can only be considered to represent the general condition existing at that time. The survey data was collected under a USACE contract for the purpose of characterizing the condition of the navigation channel, and the area for placement of dredged material for future channel maintenance operations. As such, the information is only valid for its intended use. This information can be used to supplement existing published navigation charts. The user is responsible for the results of any application of the survey data for other than its intended purpose and should consider the contents, timeframe of data collection, and accuracy specifications for survey data collection/processing. Additionally, bathymetry in Cook Inlet is subject to drastic and continuing change. Prudent mariners should not rely solely

upon this information. Questions/concerns should be directed to Jeremy Allen, Operations Project Manager at 907-753-2753 or by email to jeremy.m.allen@usace.army.mil.

LNM: 25/22

411 **ALASKA – SOUTHWESTERN – ALEUTIAN ISLANDS**

Six former in-water ranges within Naval Defensive Sea Area Kiska Island have been identified as potentially containing munitions and explosives of concern (MEC). The boundaries of the six former in-water ranges are identified as black, dotted lines on the NOAA Navigational Charts with text as follows: "Unexploded ordnance (reported 2013, see note)." Mariners are cautioned against anchoring, dredging or trawling within these areas. Mariners should follow the 3Rs – Recognize, Retreat, and Report (<https://www.denix.osd.mil/uxo/home/>). Recognize possible munitions such as mines, torpedoes, depth charges, artillery shells, bombs, and missiles. Mariners should avoid military and former military ranges and disposal areas, and explosive hazard areas identified on Navigational Charts. Retreat by staying as far away as possible, not bringing munitions onboard or into port, minimizing disturbance (i.e., not touching or bumping munitions), and safely jettison, if possible. Report immediately to the U.S. Coast Guard District 17 Command Center at 907-463-2000 if encountering possible munitions and provide vessel position, activity being conducted (anchoring, fishing, dredging), description of munition item, and action taken (i.e., munition stowed or jettisoned). For additional information: Call U.S. Army Technical Center for Explosives Safety at 918-420-8919 or see the US Army's UXO Safety Education website: <https://www.denix.osd.mil/mmrp/index.html>. Also see the Navy's website for specific documents related to the Aleutian Islands: https://www.navfac.navy.mil/navfac_worldwide/pacific/fecs/northwest/about_us/northwest_documents.html

LNM: 20/22

461 **ALASKA**

The U.S. Coast Guard Navigation Center is going to transition the Navigation Center website to a new, enhanced version in the first quarter of 2022. As part of this transition, URLs will be updated across the site including URLs linked to PDFs. Therefore, once the transition is complete, legacy site URLs will no longer function, including bookmarked URLs and URLs used in automatic downloading of data and/or products. Outdated URLs will automatically redirect to the home page of the site, and from there you will be able to easily navigate to your preferred page.

Below are a few of the "old"/new URL pairs listed for your convenience. Please note that the new URLs will not be active until we launch the new website. Of course, once it is launched, the new URLs will be available for re-bookmarking. As a reminder, these are top level URLs that may contain additional links that you use.

This notice will be updated when the final launch date is determined and another notice will be issued to notify you when the site goes live. Questions/concerns may be directed to the NAVcenWebTEAM@uscg.mil.

Local Notices to Mariners (LNMs)

Current URLs: <https://www.navcen.uscg.gov/?pageName=lnmMain>

Replacement: <https://www.navcen.uscg.gov/local-notice-to-mariners-by-cg-district>

Light Lists Annual Publication

Current URLs: <https://navcen.uscg.gov/?pageName=lightLists>

Replacement: <https://www.navcen.uscg.gov/light-list-annual-publication>

Light List - Weekly

Current URLs: <https://navcen.uscg.gov/?pageName=lightListWeeklyUpdates>

Replacement: <https://www.navcen.uscg.gov/weekly-light-lists>

Light List - Corrections

Current URLs: <https://navcen.uscg.gov/?pageName=lightListCorrections>

Replacement: <https://www.navcen.uscg.gov/light-list-summary-of-corrections>

LNM: 06/22

478 **ALASKA – U.S. COAST GUARD MEDIUM FREQUENCY (MF) AND HIGH FREQUENCY (HF) DISTRESS WATCHKEEPING**

Mariners are advised that calls to the U.S. Coast Guard on the international radiotelephone distress frequency 2182 kHz or the Digital Selective Calling (DSC) frequency 2187.5 kHz may not be heard or may be severely degraded. Instead of using 2182 kHz for distress calls, mariners may use high frequency (HF) radiotelephone or DSC in the 4, 6, 8, and 12 MHz distress or calling bands. On February 7th, 2022, the U.S. Coast Guard will discontinue monitoring high frequency (HF) voice for all existing regions with the exception of Kodiak, Alaska, and Guam. All existing regions will also continue monitoring high frequency (HF) DSC in the 4, 6, 8, and 12 MHz distress or calling bands. Mariners may also use cellular, satellite or other methods of communications to speak directly to the nearest Coast Guard Command Center. Additional information concerning U.S. Coast Guard HF watchkeeping is posted on the U.S. Coast Guard's Navigation Center website (<https://www.navcen.uscg.gov/?pageName=cgcommsCall>). The three U.S. Coast Guard Command Centers (CC) located in Alaska are: CG Sector Juneau CC, 907-463-2980; CG Sector Anchorage CC, 907-428-4100; CG District 17 CC, 907-463-2000. Questions/concerns should be directed to Todd Buck with the Coast Guard District 17 Waterways Management Office at (907) 463-2269 or by email to todd.r.buck@uscg.mil.

LNM: 50/21

514 **ALASKA – SOUTHCENTRAL – KODIAK ISLAND**

A Waverider buoy approximately 29 nautical miles southeast of the City of Kodiak, Alaska in position 57° 28.8' N, 151° 42.0' W, has been decommissioned. The mooring remains on site and is marked with a cluster of unlit white floats. The mooring will be removed as operations

permit. Questions/concerns should be directed to Todd Buck with the Coast Guard District 17 Waterways Management Office at (907) 463-2269 or by email to todd.r.buck@uscg.mil.

LNM: 40/21

520 **ALASKA – SOUTHEAST – BEHM CANAL – MOSER BAY**

The Moser Bay Coast Guard Mooring Buoy (LLNR 22329) is missing and may be submerged and attached/entangled with a sunken vessel in the vicinity of its charted position. Mariners should transit the area with extreme caution because it may be suspended subsurface at an unknown depth. Questions/concerns should be directed to Todd Buck with the Coast Guard District 17 Waterways Management Office at (907) 463-2269 or by email to todd.r.buck@uscg.mil.

LNM: 38/21

522 **ALASKA – SOUTHEAST – KLAG BAY**

Klag Bay Entrance DBN 1 (LLNR 25335) has been rebuilt in position 57°36'42.318"N, 136°06'08.130"W and is watching properly. Chart and Light List corrections will be issued once the verification process has been completed. Questions/concerns should be directed to Todd Buck with the Coast Guard District 17 Waterways Management Office at (907) 463-2269 or by email to todd.r.buck@uscg.mil.

LNM: 37/21

529 **ALASKA**

The outbreak of respiratory illness caused by the COVID-19 virus may affect mariners and maritime commerce transiting to or near Alaska. Additional interim guidance for ships on managing suspected coronavirus disease concerns is available at <https://www.cdc.gov/quarantine/maritime/recommendations-for-ships.html>. Additional maritime specific information can be obtained through Coast Guard Marine Safety Information Bulletins which can be found at <https://www.dco.uscg.mil/Featured-Content/Mariners/Marine-Safety-Information-Bulletins-MSIB/>. Mariners with questions/concerns while transiting to or near Alaska should contact the Coast Guard Sector Anchorage Command Center at (907) 428-4100 or the Coast Guard Sector Juneau Command Center at (907) 463-2980.

LNM: 34/21

551 **ALASKA – WESTERN – YUKON RIVER**

OBSTRUCTION TO NAVIGATION: A 6' by 6' by 15' metal tower is partially submerged in the Yukon River in position 62°35.55'N, 164°54.48'W. Mariners are requested to transit the area with caution and make sighting reports to the Coast Guard Sector Anchorage Command Center at (907) 428-4100 with any updated positions.

LNM: 28/21

557 **ALASKA – BRISTOL BAY – NORTHEAST KVICHAK BAY – NAKNEK RIVER**

A potential obstruction to navigation exists in the Naknek River in position: 58°42.772'N, 157°02.045'W. A large metal ramp has been reported to be visible during low tide and completely submerged during high tide. All mariners should utilize caution and avoid transiting in close proximity to the object. Questions/concerns should be directed to Sector Anchorage Command Center at (907) 428-4100.

LNM: 27/21

573 **ALASKA – ALEUTIAN ISLANDS – UNALASKA – CAPTAIN'S BAY**

Bailey Ledge LT (LLNR 27505) in Captain's Bay has been temporarily replaced with an unlit red buoy in position 53°51.603'N, 166°33.103'W. Mariners are requested to transit the area with caution. Questions/concerns should be directed to Todd Buck with the Coast Guard District 17 Waterways Management Office at (907) 463-2269 or by email to todd.r.buck@uscg.mil.

LNM: 23/21

628 **ALASKA – COOK INLET**

The BAKER OIL PLATFORM warning lights (LLNR 26361) in position 60°49'45.390"N, 151°29'00.010"W and the DILLION OIL PLATFORM warning lights (LLNR 26361.5) in position 60°44'07.340"N, 151°30'42.610"W are experiencing intermittent outages. Mariners are requested to transit the area with caution. Questions/concerns should be directed to Sector Anchorage Waterways Management at anchorage.waterways@uscg.mil or (907) 428-4189.

LNM: 08/21

661 **ALASKA**

The Coast Guard will be using AIS Broadcasts to relay some marine information, primarily ATON Discrepancies, VHF/FM Hi-site outages, active subsistence whaling, Gunnery and Pyrotechnics Exercises, and similar Notices directly relating to safe navigation. The Coast Guard's access to AIS transmitters is limited so not all areas might be covered at any given time and the locations of the active transmitters will be determined by the priority of the messages being broadcast from them. All information broadcast by AIS will also be published by the more conventional methods of BNM and LNM. Feedback is desired and should be directed to Todd Buck with the Coast Guard District 17 Waterways Management Office at (907) 463-2269 or by email to todd.r.buck@uscg.mil.

LNM: 43/20

782 **ALASKA – SOUTHEAST – DIXON ENTRANCE**

Tree Point LT (LLNR 21840) has been relocated to a new steel structure approximately 100 yards Southeast of the existing lighthouse structure. The approximate position for the new light is 54°48'10"N, 130°56'04"W. Questions/concerns should be directed to Todd Buck with the Coast Guard District 17 Waterways Management Office at (907) 463-2269 or by email to todd.r.buck@uscg.mil.

LNM: 11/20

836 **ALASKA – SOUTHEAST – TONGASS NARROWS**

OBSTRUCTION TO NAVIGATION: A 24' Bayliner has sunk in 22 feet of water in approximate position 55°20.79'N, 131°40.36'W, approximately 50 yards offshore from Bar Harbor. The vessel is marked by an orange float. Mariners are requested to use caution when transiting the area. Questions/concerns should be directed to the Coast Guard Sector Juneau Command Center at (907) 463-2980 or on VHF/FM channel 16.

LNM: 48/19

918 **ALASKA – GULF OF ALASKA**

NOAA DLB 46085 (LLNR 984.15) has been replaced with a 3-meter buoy and relocated to 55°53'18.000"N, 142°50'48.000"W. Chart and Light List corrections have been issued. The previous 6-meter buoy was not recovered and remains in position 55°52'05.000"N, 142°33'31.000"W. Mariners are requested to transit the area with caution until the previous buoy is recovered. Questions/concerns should be directed to Todd Buck with the Coast Guard District 17 Waterways Management Office at (907) 463-2269 or by email to todd.r.buck@uscg.mil.

LNM: 33/19

930 **ALASKA – SOUTHCENTRAL – SHELIKOF STRAIT – KINAK BAY**

An uncharted rock has been reported in Kinak Bay in position 58°03.8'N, 154°25.3'W at a depth of approximately 3 fathoms. Mariners are advised to transit the area with extreme caution. Questions/concerns should be directed to Todd Buck with the Coast Guard District 17 Waterways Management Office at (907) 463-2269 or by email to todd.r.buck@uscg.mil.

LNM: 28/19

937 **ALASKA – SOUTHCENTRAL – PRINCE WILLIAM SOUND – UNAKWIK INLET**

An uncharted and dangerous rock has been reported in Unakwik Inlet in approximate position 61°08.045'N, 147°32.665'W. Mariners should transit the area with caution. Questions/concerns should be directed to Todd Buck with the Coast Guard District 17 Waterways Management Office at (907) 463-2269 or by email to todd.r.buck@uscg.mil.

LNM: 25/19

939 **ALASKA – SOUTHEAST – WRANGELL NARROWS**

OBSTRUCTION TO NAVIGATION: The P/C HEATHER ANN has sunk in Wrangell Narrows on the East side of the channel approximately 330 yards South of Wrangell Narrows Channel LT 16 (LLNR 22955). The most recent reported position was 56°37.25'N, 132°57.64'W. The P/C HEATHER ANN is a 52' wood vessel and may be awash and barely visible at higher tides, exposed at lower tides, or relocated by the extreme current in the area. The vessel was marked with a single orange float. Mariners are requested to transit the area with extreme caution and report any changes in position to the Coast Guard Sector Juneau on VHF/FM channel 16 or by phone to (907) 463-2980.

LNM: 25/19

946 **ALASKA – SOUTHEAST – FRESHWATER BAY**

An uncharted rock shoal has been reported in Cedar Cove centered in approximate position 57°52.405'N, 135°03.694'W with an approximate 75 foot radius. The rocks were approximately 1 foot below a 0' tide. The location of the reported shoal has a charted depth of 12 fathoms. Questions/concerns should be directed to Todd Buck with the Coast Guard District 17 Waterways Management Office at (907) 463-2269 or by email to todd.r.buck@uscg.mil.

LNM: 24/19

964 **ALASKA – SOUTHEAST – FARRAGUT BAY – FRANCIS ANCHORAGE**

Uncharted shoaling was observed in Francis Anchorage on February 14th, 2019 in position 57°08.95'N, 133°10.03'W. The charted depth for this location is 15 fathoms and the observed depths rapidly shallowed from 120 feet and ranged from 8 to 10 feet. The navigational charts for Francis Anchorage are based on pre-1900 Partial Bottom Coverage Surveys and in 1976 'shoaling to bare' was reported further into the anchorage. Mariners should transit this area with extreme caution and be aware of areas that may not be adequately charted. Questions/concerns should be directed to Todd Buck with the Coast Guard District 17 Waterways Management Office at (907) 463-2269 or by email to todd.r.buck@uscg.mil.

LNM: 08/19

970 **ALASKA – SOUTHCENTRAL – PRINCE WILLIAM SOUND – ESTHER ISLAND**

OBSTRUCTION TO NAVIGATION: The 32' F/V SONG II has been reported sunk in position 60°47.76'N, 148°03.31'W. Mariners are requested to transit the area with caution and report any sightings to the Coast Guard Sector Anchorage Command Center at (907) 428-4100 or on VHF/FM channel 16.

LNM: 34/18

971 **ALASKA - CENTRAL – BETHEL**

OBSTRUCTION: The barge SHANKS ARK has been reported sunken and abandoned in Steamboat Slough on the Kuskokwim River, approximate position 60°47'15"N, 161°41'52"W. A portion of the vessel remains visible above the level of high-tide, but the majority of the vessel remains below the waterline. The vessel is marked by an all-round white light and one ball dayshape when Steamboat Slough is ice free but the markers are removed during freeze up as no hazards exists. The Coast Guard has actively monitored the proper marking of the vessel by the vessel's owner and operator since September 10, 2016. Coast Guard pollution investigators confirmed the vessel does not pose a substantial pollution threat to the environment. Mariners are requested to transit the area with caution and report any discrepancies with the vessel's marking to the Coast Guard. Questions/concerns should be directed to LT David Parker, Sector Anchorage Waterways Management, at (907) 428-4189.

LNM: 11/17

972 **ALASKA – ALEUTIAN ISLANDS – AKUTAN ISLAND – AKUTAN HARBOR**

UNKNOWN MARINE ANOMALY: An unknown marine anomaly was discovered during underwater survey operations in Akutan Harbor in position 54°07.70889N, 165°46.38298W on the sea floor at a depth of 138 feet. This anomaly has not been positively identified. Mariners are requested to transit the area with caution. Questions/concerns should be directed to LT David Parker with the Coast Guard Sector Anchorage Waterways Management Branch at (907) 428-4189 or by email to david.n.parker@uscg.mil.

LNM: 03/18

974 **ALASKA – SOUTHWESTERN – ALEUTIAN PENINSULA – BECHEVIN BAY**

Shoaling has been reported at the bar along the Northern entrance to Bechevin Bay by a vessel with a draft of 10 feet that reported briefly grounding in seas running 6-8 feet. Mariners should take into account their vessel's draft, charted depth of water, tides and sea state when determining an appropriate under-keel clearance for a safe transit of this waterway. Mariners are requested to report any future groundings or significant variations from charted depth to the Coast Guard Sector Anchorage Command Center at (907) 428-4100 or on VHF/FM channel 16.

LNM: 17/18

977 **ALASKA – SOUTHEAST – ICY STRAIT – NORTH INIAN PASSAGE**

The currents in North Inian Passage and Glacier Bay have been observed at up to 3 knots above the NOAA published current predictions. Mariners should exercise caution when transiting the area. Questions/concerns should be directed to LT Bart Buesseler at (907) 271-3327 or by email to bart.o.buesseler@noaa.gov.

LNM: 36/17

983 **ALASKA – SOUTHEAST**

The U.S. Coast Guard has VHF Digital Selective Calling (DSC) capability with limited coverage in Southeast Alaska. The initial coverage areas are Ketchikan, Juneau and Yakutat. Mariners are reminded to ensure that they have properly connected their GPS units to their DSC equipped marine VHF radios and registered for their Maritime Mobile Service Identity (MMSI) to utilize the DSC distress function. Additional information is available through the Alaska Outdoors Forum at [http://forums.outdoorsdirectory.com/showthread.php/142083-Digital-Selective-Calling-\(DSC\)](http://forums.outdoorsdirectory.com/showthread.php/142083-Digital-Selective-Calling-(DSC)) or by contacting Mike Folkerts with the Coast Guard District 17 Boating Safety Office at (907) 463-2297 or by email to Michael.r.folkerts@uscg.mil.

LNM: 15/15

984 **ALASKA – SOUTHCENTRAL**

The U.S. Coast Guard has VHF Digital Selective Calling (DSC) capability with limited coverage in Southcentral Alaska. The initial coverage areas are Upper Cook Inlet, Kodiak and Valdez Arm. Mariners are reminded to ensure that they have properly connected their GPS units to their DSC equipped marine VHF radios and registered for their Maritime Mobile Service Identity (MMSI) to utilize the DSC distress function. Additional information is available through the Alaska Outdoors Forum at [http://forums.outdoorsdirectory.com/showthread.php/142083-Digital-Selective-Calling-\(DSC\)](http://forums.outdoorsdirectory.com/showthread.php/142083-Digital-Selective-Calling-(DSC)) or by contacting Mike Folkerts with the Coast Guard District 17 Boating Safety Office at (907) 463-2297 or by email to Michael.r.folkerts@uscg.mil.

LNM: 15/15

988 **ALASKA – ALEUTIAN ISLANDS – ADAK – SWEEPER COVE**

The East side of the Pier 5 Dock located in Sweeper Cove is closed to moorage without prior approval from the Adak Harbormaster due to loose and missing pilings. Questions/concerns should be directed to Jim Fleming at (907) 277-7527 or the Port of Adak office at (907) 592-0185. The Adak harbormaster can also be contacted on VHF/FM channel 16.

LNM: 20/13

990 **ALASKA – SUBSURFACE AND SURFACE BUOYS**

Locations of all subsurface and surface oceanographic moorings that have been reported to the U.S. Coast Guard District 17 Waterways Branch are included in an enclosure to the Local Notice to Mariners. The name, type, location, depth, water depth, and a Point of Contact for all data buoys, surface and subsurface, shall be reported as quickly as is practical if they are placed within the navigable waters (within 200 nm) of the United States. Data buoys placed in the Arctic region but outside of 200 nm of the United States may be reported and will be included in this compilation (for informational purposes only). This notification process is for inclusion in the Local Notice to Mariners to provide navigational information to mariners and does not supersede any permission or permitting requirements. Any notifications, corrections, additions, deletions, or comments for the Alaska region (Coast Guard District 17) or the Arctic region should be submitted via e-mail to D17-PF-D17-LNM@uscg.mil or to Todd Buck, USCG D17(dpw), at (907) 463-2269 or by email to todd.r.buck@uscg.mil. This compilation is as current as the Local Notice to Mariners (LNM) as included in an enclosure. The referenced LNM may have additional information and indicates the last time an entry was updated.

LNM: 38/11

SECTION II - DISCREPANCIES

This section lists all reported and corrected discrepancies related to Aids to Navigation in this edition. A discrepancy is a change in the status of an aid to navigation that differs from what is published or charted.

DISCREPANCIES (FEDERAL AIDS)

LLNR	Aid Name	Status	Chart No.	BNM Ref.	LNM St	LNM End
984	NOAA Data Lighted Buoy 46001	ADRIFT	16013		50/21	
1090	Yakutat Bay Entrance Lighted Whistle Buoy 2	LT EXT	16760	J127-22	40/22	
1150	Seal Rocks Light	DAYMK MISSING	16682		44/21	
1260	Cape Greig Light	LT EXT/DAYMK DMGD	16011	A100-21	37/21	
1285	Cape Mohican Light	LT EXT	16530	A076-22	33/22	
1300	Kwiguk Pass Entrance Light	DAYMK DMGD	16240	A107-22	40/22	
1345	Cape Rodney Light	DAYMK DMGD	16200	A096-22	38/22	
1350	Point Spencer Light	DAYMK DMGD	16204	A098-22	38/22	
1360	Shishmaref Light	DAYMK DMGD	16005	A099-22	38/22	
21840	Tree Point Light	LT EXT	17434	J146-22	45/22	
21850	Cape Chacon Light	DAYMK DMGD	17420	J095-22	31/22	
21935	Slate Islands Light	DAYMK DMGD	17434	J132-22	42/22	
22040	Nichols Passage East Channel Daybeacon 2	STRUCT DEST	17435	J130-22	41/22	
22270	Refuge Cove Daybeacon 3	STRUCT DEST	17428	J143-22	43/22	
22300	Guard Island Light	REDUCED INT	17428	J096-22	31/22	
22329	Moser Bay Coast Guard Lighted Mooring Buoy	MISSING	17423	J104-21	38/21	
22435	Meyers Chuck Buoy 3	MISSING	17423	J114-22	37/22	
22470	Lincoln Rock West Light	DAYMK DMGD	17382	J123-22	39/22	
22480	Key Reef Light	DAYMK DMGD	17382	J124-22	39/22	
22490	Nesbitt Reef Light	LT EXT	17383	J104-22	34/22	
22670	Blake Channel Light 1	STRUCT DEST/LT EXT	17385	J124-20	48/20	
22863	Wrangell Narrows Daybeacon 4	STRUCT DEST	17375	J113-21	41/21	
22880	Wrangell Narrows Tow Channel Buoy 3TC	OFF STA	17375	J102-21	38/21	
22916	Wrangell Narrows Daybeacon 10A	STRUCT DEST	17375	J128-21	47/21	
23210	Wrangell Narrows North Entrance Lighted Bell Buoy WN	REDUCED INT	17375	J086-21	35/21	
23260	Cape Fanshaw Light	STRUCT DEST	17365	J081-22	26/22	
23305.1	Keku Strait Entrance Light	STRUCT DEST	17368	J069-19	38/19	
23305.7	Keku Strait Daybeacon 10	MISSING	17368	J148-13	32/13	
23305.9	Keku Strait Daybeacon 13	STRUCT DEST	17368	J103-15	23/15	
23306.7	Keku Strait Daybeacon 25	STRUCT DEST	17368	J071-20	28/20	
23307	Keku Strait Daybeacon 30	STRUCT DEST	17368	J075-20	29/20	
23307.05	Keku Strait Daybeacon 31	STRUCT DEST	17372	J072-20	28/20	
23307.7	Keku Strait Daybeacon 39	STRUCT DEST	17368	J074-21	26/21	
23350	Portage Pass Light 10	LT EXT	17368	J041-22	12/22	
23355	Portage Pass Daybeacon 11	STRUCT DEST	17368	J077-18	26/18	
23510	Point Ellis Light	LT EXT	17376	J028-21	08/21	
23632	Holkham Bay Buoy 2	OFF STA	17311	J094-22	31/22	
23800	Gibby Rock Light 2	DAYMK DMGD	17315	J026-22	08/22	
23945	Favorite Reef Light 2	STRUCT DEST	17316	J157-22	47/22	
24260	Elfin Cove Daybeacon 5	STRUCT DEST	17302	J017-18	36/19	
24675	Cape Lynch Light	LT EXT	17404	J024-22	07/22	

24790	Dry Pass Daybeacon 3	STRUCT DEST	17387	J072-18	23/18
24900	Elovoi Island Rock Daybeacon 1	DAYMK MISSING/STRUCT DMGD	17326	J0117-21	42/21
24948	Indian River Flats Lighted Buoy 2	LT EXT	17327	J032-20	09/20
25060	Big Gavanski Island Light 3	LT EXT	17324	J103-22	34/22
25355	Dippy Island Rock Daybeacon 3	STRUCT DEST	17321	J112-22	35/22
25420	Yakutat Bay Entrance Lighted Whistle Buoy 2	LT EXT	16760	J127-22	40/22
25460	Kokenhenic Bar Channel Light K	STRUCT DEST	16013	A083-22	35/22
25550	Hanks Island Rock Light 5	STRUCT DMGD	16708	A119-22	43/22
25982	NOAA Data Lighted Buoy 46076	OFF STA	16700	A060-20	23/20
25995	Caines Head Light	LT EXT	16682	A127-22	46/22
26095	Perl Rock Light	DAYMK DMGD	16645	A051-22	27/22
26410	Fire Island Range Front Light	LT EXT	16665	A072-22	31/22
26415	Fire Island Range Rear Light	LT EXT	16665	A072-22	31/22
26475	Entrance Point Shoal Lighted Buoy 5	LT EXT	16594	A069-22	31/22
26910	Aiaktalik Island Light 5	DAYMK DMGD	16580	A133-20	49/20
26925	Lazy Bay Light 2	DAYMK DMGD	16580	A132-20	49/20
27000	Northeast Arm Light 1	STRUCT DEST	16594	A143-21	50/21
27025	Dry Spruce Island Rock Light 7	LT EXT	16594	A008-22	06/22
27145	Arch Point Light 2	DAYMK DMGD	16540	A077-21	29/21
27155	Goloi Sandspit Light 3	STRUCT DMGD	16540	A110-21	39/21
27250	Bechevin Bay Entrance Buoy BB	MISSING	16520	A130-21	43/21
27290	Bechevin Bay Buoy 8	OFF STA		A062-22	29/22
27300	Chunak Point Daybeacon 2	STRUCT DEST	16520	A093-20	33/20
27345	St. Catherine Cove Daybeacon 4	STRUCT DEST	16520	A094-20	33/20
27505	Bailey Ledge Light	LT EXT/STRUCT DMGD	16529	A122-20	43/20
27827	St. George Harbor Entrance Light 1	STRUCT DEST		A118-22	42/22
27865	Kwiguk Pass Entrance Light	DAYMK DMGD	16240	A107-22	40/22
27920	Unalakleet River South Spit Light	DAYMK DMGD	16200	A097-22	38/22
27975	Point Spencer Light	DAYMK DMGD	16204	A098-22	38/22

DISCREPANCIES (FEDERAL AIDS) CORRECTED

LLNR	Aid Name	Status	Chart No.	BNM Ref.	LNM St	LNM End
26055	McArthur Pass Light	WATCHING PROPERLY	16680	A132-22	46/22	50/22
26080	Chugach Passage Lighted Buoy 3	WATCHING PROPERLY	16646	A133-22	29/21	50/22

DISCREPANCIES (PRIVATE AIDS)

LLNR	Aid Name	Status	Chart No.	BNM Ref.	LNM St	LNM End
22201	Bar Harbor Breakwater East Light	STRUCT DEST	17430	J202-15	47/15	
22202	Bar Harbor Breakwater Middle Light	STRUCT DEST	17430	J203-15	47/15	
22203	Bar Harbor Breakwater West Light	STRUCT DEST	17430	J204-15	47/15	
23908	Port Chilkoot Mooring Dolphin Lights (2)	LT EXT	17317	J175-14	38/14	
25822	Port Valdez Servs Dock Lights (2)	OFF STA	16707	A067-19	24/19	
25893	Whittier Passenger Dock Lights (2)	LT EXT		A031-10	20/10	
26010	Seward Marine Dock Light	LT EXT	16682		20/22	

DISCREPANCIES (PRIVATE AIDS) CORRECTED

LLNR	Aid Name	Status	Chart No.	BNM Ref.	LNM St	LNM End
------	----------	--------	-----------	----------	--------	---------

None

PLATFORM DISCREPANCIES

Name	Status	Position	BNM Ref.	LNM St	LNM End
------	--------	----------	----------	--------	---------

None

PLATFORM DISCREPANCIES CORRECTED

Name	Status	Position	BNM Ref.	LNM St	LNM End
------	--------	----------	----------	--------	---------

None

SECTION III - TEMPORARY CHANGES and TEMPORARY CHANGES CORRECTED

This section contains temporary changes and corrections to Aids to Navigation for this edition. When charted aids are temporarily relocated for dredging, testing, evaluation, or marking an obstruction, a temporary correction shall be listed in Section IV giving the new position.

TEMPORARY CHANGES

LLNR	Aid Name	Status	Chart No.	BNM Ref.	LNM St	LNM End
23355	Portage Pass Daybeacon 11	TRUB	17368	J093-18	30/18	
23790	Horse Shoal Light 1	DISCONTINUED	17315	J102-19	51/19	
24065	Tenakee Inlet Entrance Light 1	DISCONTINUED	17300	J172-22	50/22	
24957	Mitchell Rock Daybeacon	DISCONTINUED	17327	J022-17	04/17	
25025.5	Japonski Island Daybeacon 2	DISCONTINUED	17327	J196-16	49/16	
25647	NOAA Data Lighted Buoy 46081	DISCONTINUED	16705	A126-19	46/19	
25805	Port Valdez Coast Guard Mooring Buoy	DISCONTINUED	16707	A095-18	33/18	

TEMPORARY CHANGES CORRECTED

LLNR	Aid Name	Status	Chart No.	BNM Ref.	LNM St	LNM End
------	----------	--------	-----------	----------	--------	---------

None

PLATFORM TEMPORARY CHANGES

Name	Status	Position	BNM Ref.	LNM St	LNM End
------	--------	----------	----------	--------	---------

None

PLATFORM TEMPORARY CHANGES CORRECTED

Name	Status	Position	BNM Ref.	LNM St	LNM End
------	--------	----------	----------	--------	---------

None

SECTION IV - CHART CORRECTIONS

This section contains corrections to federally and privately maintained Aids to Navigation, as well as NOS corrections. This section contains corrective actions affecting chart(s). Corrections appear numerically by chart number, and pertain to that chart only. It is up to the mariner to decide which chart(s) are to be corrected. The following example explains individual elements of a typical chart correction.

Chart Number	Chart Edition	Edition Date	Last Local Notice to Mariners	Horizontal Datum Reference	Source of Correction	Current Local Notice to Mariners
12327	91st Ed.	19-APR-97	Last LNM: 26/97	NAD 83		27/97
Chart Title: NY-NJ-NEW YORK HARBOR - RARITAN RIVER						
Main Panel 2245 NEW YORK HARBOR						
(Temp)	ADD	NATIONAL DOCK CHANNEL BUOY 3			CGD01	074-02-48.001W
		Green can			at 40-41-09.001N	
Corrective Action		Object of Corrective Action			Position	

(Temp) indicates that the chart correction action is temporary in nature. Courses and bearings are given in degrees clockwise from 000 true. Bearings of light sectors are toward the light from seaward. The nominal range of lights is expressed in nautical miles (NM) unless otherwise noted.

16322	9th Ed.	01-MAY-14	Last LNM: 21/14	NAD 83	50/22
<i>ChartTitle: Bristol Bay-Nushagak B and approaches</i>					
Main Panel 2459 BRISTOL BAY NUSHAGAK BAY AND APPROACHES. Page/Side: N/A					
				NOS	
LAST EDITION	No new editions of chart 16322 will be published. It will be canceled on 31-May-23. Comparable or larger scale Electronic Navigational Chart (ENC) coverage is available. See "Cancellation of NOAA Paper and Raster Nautical Charts" in Section I of this LNM for details. A list of all canceled NOAA charts is at https://www.charts.noaa.gov/MCD/Dole.shtml .				--
16323	10th Ed.	01-APR-15	Last LNM: 14/15	NAD 83	50/22
<i>ChartTitle: Bristol Bay-Kvichak Bay and approaches</i>					
Main Panel 2461 BRISTOL BAY KVICHAK BAY AND APPROACHES. Page/Side: A					
				NOS	
LAST EDITION	No new editions of chart 16323 will be published. It will be canceled on 31-May-23. Comparable or larger scale Electronic Navigational Chart (ENC) coverage is available. See "Cancellation of NOAA Paper and Raster Nautical Charts" in Section I of this LNM for details. A list of all canceled NOAA charts is at https://www.charts.noaa.gov/MCD/Dole.shtml .				--
16705	21st Ed.	01-APR-15	Last LNM: 32/20	NAD 83	50/22
<i>ChartTitle: Prince William Sound-western part</i>					
Main Panel 2601 PRINCE WILLIAM SOUND WESTERN PART. Page/Side: A					
				NOS	
LAST EDITION	No new editions of chart 16705 will be published. It will be canceled on 31-May-23. Comparable or larger scale Electronic Navigational Chart (ENC) coverage is available. See "Cancellation of NOAA Paper and Raster Nautical Charts" in Section I of this LNM for details. A list of all canceled NOAA charts is at https://www.charts.noaa.gov/MCD/Dole.shtml .				--
16712	2nd Ed.	01-MAR-15	Last LNM: 12/15	NAD 83	50/22
<i>ChartTitle: Unakwik Inlet to Esther Passage and College Fiord</i>					
Main Panel 2960 UNAKWIK INLET TO ESTHER PASSAGE AND COLLEGE FIORD. Page/Side: A					
				NOS	
LAST EDITION	No new editions of chart 16712 will be published. It will be canceled on 31-May-23. Comparable or larger scale Electronic Navigational Chart (ENC) coverage is available. See "Cancellation of NOAA Paper and Raster Nautical Charts" in Section I of this LNM for details. A list of all canceled NOAA charts is at https://www.charts.noaa.gov/MCD/Dole.shtml .				--
16762	10th Ed.	01-JUN-14	Last LNM: 23/14	NAD 83	50/22
<i>ChartTitle: Lituya Bay;Lituya Bay Entrance</i>					
Main Panel 2616 LITUYA BAY. Page/Side: A					
				NOS	
LAST EDITION	No new editions of chart 16762 will be published. It will be canceled on 01-Feb-23. Comparable or larger scale Electronic Navigational Chart (ENC) coverage is available. See "Cancellation of NOAA Paper and Raster Nautical Charts" in Section I of this LNM for details. A list of all canceled NOAA charts is at https://www.charts.noaa.gov/MCD/Dole.shtml .				--
17301	9th Ed.	01-NOV-14	Last LNM: 53/19	NAD 83	50/22
<i>ChartTitle: Cape Spencer to Icy Point</i>					
Main Panel 2620 CAPE SPENCER TO ICY POINT. Page/Side: A					
				NOS	
LAST EDITION	No new editions of chart 17301 will be published. It will be canceled on 01-Feb-23. Comparable or larger scale Electronic Navigational Chart (ENC) coverage is available. See "Cancellation of NOAA Paper and Raster Nautical Charts" in Section I of this LNM for details. A list of all canceled NOAA charts is at https://www.charts.noaa.gov/MCD/Dole.shtml .				--
17302	19th Ed.	01-MAY-15	Last LNM: 40/20	NAD 83	50/22
<i>ChartTitle: Icy Strait and Cross Sound;Inian Cove;Elfin Cove</i>					
Main Panel 2621 ICY STRAIT AND CROSS SOUND. Page/Side: A					
				NOS	
LAST EDITION	No new editions of chart 17302 will be published. It will be canceled on 01-Feb-23. Comparable or larger scale Electronic Navigational Chart (ENC) coverage is available. See "Cancellation of NOAA Paper and Raster Nautical Charts" in Section I of this LNM for details. A list of all canceled NOAA charts is at https://www.charts.noaa.gov/MCD/Dole.shtml .				--
17303	11th Ed.	01-MAY-14	Last LNM: 30/16	NAD 83	50/22
<i>ChartTitle: Yakobi Island and Lisianski Inlet;Pelican Harbor</i>					

Main Panel 2624 YAKOBI ISLAND AND LISIANSKI INLET. Page/Side: N/A

LAST EDITION No new editions of chart 17303 will be published. It will be canceled on 01-Feb-23. Comparable or larger scale Electronic Navigational Chart (ENC) coverage is available. See "Cancellation of NOAA Paper and Raster Nautical Charts" in Section I of this LNM for details. A list of all canceled NOAA charts is at <https://www.charts.noaa.gov/MCD/Dole.shtml>.

NOS
--

17311 2nd Ed. 01-FEB-12 Last LNM: 39/19 NAD 83 50/22

ChartTitle: Holkham Bay And Tracy Arm - Stephens Passage

Main Panel 2940 HOLKHAM BAY AND TRACY ARM - STEPHENS PASSAGE. Page/Side: N/A

LAST EDITION No new editions of chart 17311 will be published. It will be canceled on 01-Feb-23. Comparable or larger scale Electronic Navigational Chart (ENC) coverage is available. See "Cancellation of NOAA Paper and Raster Nautical Charts" in Section I of this LNM for details. A list of all canceled NOAA charts is at <https://www.charts.noaa.gov/MCD/Dole.shtml>.

NOS
--

17312 3rd Ed. 01-OCT-12 Last LNM: 24/20 NAD 83 50/22

ChartTitle: Hawk Inlet, Chatham Strait

Main Panel 2986 HAWK INLET, CHATHAM STRAIT. Page/Side: N/A

LAST EDITION No new editions of chart 17312 will be published. It will be canceled on 01-Feb-23. Comparable or larger scale Electronic Navigational Chart (ENC) coverage is available. See "Cancellation of NOAA Paper and Raster Nautical Charts" in Section I of this LNM for details. A list of all canceled NOAA charts is at <https://www.charts.noaa.gov/MCD/Dole.shtml>.

NOS
--

17313 9th Ed. 01-MAY-09 Last LNM: 26/09 NAD 83 50/22

ChartTitle: Port Snettisham

Main Panel 2627 PORT SNETTISHAM. Page/Side: N/A

LAST EDITION No new editions of chart 17313 will be published. It will be canceled on 01-Feb-23. Comparable or larger scale Electronic Navigational Chart (ENC) coverage is available. See "Cancellation of NOAA Paper and Raster Nautical Charts" in Section I of this LNM for details. A list of all canceled NOAA charts is at <https://www.charts.noaa.gov/MCD/Dole.shtml>.

NOS
--

17314 13th Ed. 01-NOV-14 Last LNM: 46/14 NAD 83 50/22

ChartTitle: Slocum and Limestone Inlets and Taku Harbor

Main Panel 2628 SLOCUM AND LIMESTONE INLETS AND TAKU HARBOR. Page/Side: A

LAST EDITION No new editions of chart 17314 will be published. It will be canceled on 01-Feb-23. Comparable or larger scale Electronic Navigational Chart (ENC) coverage is available. See "Cancellation of NOAA Paper and Raster Nautical Charts" in Section I of this LNM for details. A list of all canceled NOAA charts is at <https://www.charts.noaa.gov/MCD/Dole.shtml>.

NOS
--

17317 21st Ed. 01-MAY-15 Last LNM: 22/20 NAD 83 50/22

ChartTitle: Lynn Canal-Point Sherman to Skagway;Lutak Inlet;Skagway and Nahku Bay;Portage Cove, Chilkoot Inlet

Main Panel 2634 LYNN CANAL POINT SHERMAN TO SKAGWAY. Page/Side: A

LAST EDITION No new editions of chart 17317 will be published. It will be canceled on 01-Feb-23. Comparable or larger scale Electronic Navigational Chart (ENC) coverage is available. See "Cancellation of NOAA Paper and Raster Nautical Charts" in Section I of this LNM for details. A list of all canceled NOAA charts is at <https://www.charts.noaa.gov/MCD/Dole.shtml>.

NOS
--

17318 8th Ed. 01-NOV-12 Last LNM: 29/21 NAD 83 50/22

ChartTitle: Glacier Bay;Bartlett Cove

Main Panel 2638 GLACIER BAY. Page/Side: N/A

LAST EDITION No new editions of chart 17318 will be published. It will be canceled on 01-Feb-23. Comparable or larger scale Electronic Navigational Chart (ENC) coverage is available. See "Cancellation of NOAA Paper and Raster Nautical Charts" in Section I of this LNM for details. A list of all canceled NOAA charts is at <https://www.charts.noaa.gov/MCD/Dole.shtml>.

NOS
--

17321 10th Ed. 01-MAY-14 Last LNM: 30/16 NAD 83 50/22

ChartTitle: Cape Edward to Lisianski Strait, Chichagof Island

Main Panel 2645 CAPE EDWARD TO LISIANSKI STRAIT. Page/Side: N/A

NOS

17322	11th Ed.	01-MAY-14	Last LNM: 12/16	NAD 83	50/22
<i>ChartTitle: Khaz Bay, Chichagof Island Elbow Passage</i>					
Main Panel 2646 WEST COAST OF CHICHAGOF ISLAND KHAZ BAY. Page/Side: N/A					
				NOS	
LAST EDITION	No new editions of chart 17322 will be published. It will be canceled on 01-Feb-23. Comparable or larger scale Electronic Navigational Chart (ENC) coverage is available. See "Cancellation of NOAA Paper and Raster Nautical Charts" in Section I of this LNM for details. A list of all canceled NOAA charts is at https://www.charts.noaa.gov/MCD/Dole.shtml .				--
17325	10th Ed.	01-MAR-15	Last LNM: 12/15	NAD 83	50/22
<i>ChartTitle: South and West Coasts of Kruzof Island</i>					
Main Panel 2653 SOUTH AND WEST COASTS OF KRUZOF ISLAND. Page/Side: A					
				NOS	
LAST EDITION	No new editions of chart 17325 will be published. It will be canceled on 01-Feb-23. Comparable or larger scale Electronic Navigational Chart (ENC) coverage is available. See "Cancellation of NOAA Paper and Raster Nautical Charts" in Section I of this LNM for details. A list of all canceled NOAA charts is at https://www.charts.noaa.gov/MCD/Dole.shtml .				--
17328	8th Ed.	01-NOV-11	Last LNM: 22/11	NAD 83	50/22
<i>ChartTitle: Snipe Bay to Crawfish Inlet, Baranof I.</i>					
Main Panel 2659 BARANOF ISLAND SNIPE BAY TO CRAWFISH INLET. Page/Side: N/A					
				NOS	
LAST EDITION	No new editions of chart 17328 will be published. It will be canceled on 01-Feb-23. Comparable or larger scale Electronic Navigational Chart (ENC) coverage is available. See "Cancellation of NOAA Paper and Raster Nautical Charts" in Section I of this LNM for details. A list of all canceled NOAA charts is at https://www.charts.noaa.gov/MCD/Dole.shtml .				--
17330	10th Ed.	01-MAR-15	Last LNM: 10/15	NAD 83	50/22
<i>ChartTitle: West Coast of Baranof Island Cape Ommaney to Byron Bay</i>					
Main Panel 2661 CAPE OMMANEY TO BYRON BAY. Page/Side: A					
				NOS	
LAST EDITION	No new editions of chart 17330 will be published. It will be canceled on 01-Feb-23. Comparable or larger scale Electronic Navigational Chart (ENC) coverage is available. See "Cancellation of NOAA Paper and Raster Nautical Charts" in Section I of this LNM for details. A list of all canceled NOAA charts is at https://www.charts.noaa.gov/MCD/Dole.shtml .				--
17331	9th Ed.	01-MAR-13	Last LNM: 16/15	NAD 83	50/22
<i>ChartTitle: Chatham Strait Ports Alexander, Conclusion, and Armstrong</i>					
Main Panel 2663 PORTS ALEXANDER CONCLUSION AND ARMSTRONG. Page/Side: N/A					
				NOS	
LAST EDITION	No new editions of chart 17331 will be published. It will be canceled on 01-Feb-23. Comparable or larger scale Electronic Navigational Chart (ENC) coverage is available. See "Cancellation of NOAA Paper and Raster Nautical Charts" in Section I of this LNM for details. A list of all canceled NOAA charts is at https://www.charts.noaa.gov/MCD/Dole.shtml .				--
17333	10th Ed.	01-MAR-13	Last LNM: 17/13	NAD 83	50/22
<i>ChartTitle: Ports Herbert, Walter, Lucy and Armstrong</i>					
Main Panel 2664 PORTS HERBERT WALTER LUCY AND ARMSTRONG. Page/Side: N/A					
				NOS	
LAST EDITION	No new editions of chart 17333 will be published. It will be canceled on 01-Feb-23. Comparable or larger scale Electronic Navigational Chart (ENC) coverage is available. See "Cancellation of NOAA Paper and Raster Nautical Charts" in Section I of this LNM for details. A list of all canceled NOAA charts is at https://www.charts.noaa.gov/MCD/Dole.shtml .				--
17335	9th Ed.	01-MAR-13	Last LNM: 17/13	NAD 83	50/22
<i>ChartTitle: Patterson Bay and Deep Cove</i>					
Main Panel 2665 PATTERSON BAY AND DEEP COVE. Page/Side: N/A					
				NOS	
LAST EDITION	No new editions of chart 17335 will be published. It will be canceled on				--

01-Feb-23. Comparable or larger scale Electronic Navigational Chart (ENC) coverage is available. See "Cancellation of NOAA Paper and Raster Nautical Charts" in Section I of this LNM for details. A list of all canceled NOAA charts is at <https://www.charts.noaa.gov/MCD/Dole.shtml>.

17336	10th Ed.	01-JAN-13	Last LNM: 10/13	NAD 83	50/22
<i>ChartTitle:</i> Harbors in Chatham Strait and vicinity Gut Bay, Chatham Strait;Hoggatt Bay, Chatham Strait;Red Bluff Bay, Chatham Strait;Herring Bay and Chapin Bay, Frederick Sound;Surprise Hbr, and Murder Cove, Frederick Sound					
Unrelated 2666 HARBORS IN CHATHAM STRAIT AND VICINITY. Page/Side: N/A					
LAST EDITION				NOS	
No new editions of chart 17336 will be published. It will be canceled on 01-Feb-23. Comparable or larger scale Electronic Navigational Chart (ENC) coverage is available. See "Cancellation of NOAA Paper and Raster Nautical Charts" in Section I of this LNM for details. A list of all canceled NOAA charts is at https://www.charts.noaa.gov/MCD/Dole.shtml .				--	--
17337	10th Ed.	01-MAR-12	Last LNM: 11/12	NAD 83	50/22
<i>ChartTitle:</i> Harbors in Chatham Strait Kelp Bay;Warm Spring Bay;Takatz and Kasnyku Bays					
Unrelated 2671 WARM SPRING BAY CHATHAM STRAIT. Page/Side: N/A					
LAST EDITION				NOS	
No new editions of chart 17337 will be published. It will be canceled on 01-Feb-23. Comparable or larger scale Electronic Navigational Chart (ENC) coverage is available. See "Cancellation of NOAA Paper and Raster Nautical Charts" in Section I of this LNM for details. A list of all canceled NOAA charts is at https://www.charts.noaa.gov/MCD/Dole.shtml .				--	--
17338	15th Ed.	01-MAR-12	Last LNM: 11/12	NAD 83	50/22
<i>ChartTitle:</i> Peril Str.-Hoonah Snd. to Chatham Str.					
Main Panel 2675 PERIL STRAIT HOONAH SND-CHATHAM STRAIT. Page/Side: N/A					
LAST EDITION				NOS	
No new editions of chart 17338 will be published. It will be canceled on 01-Feb-23. Comparable or larger scale Electronic Navigational Chart (ENC) coverage is available. See "Cancellation of NOAA Paper and Raster Nautical Charts" in Section I of this LNM for details. A list of all canceled NOAA charts is at https://www.charts.noaa.gov/MCD/Dole.shtml .				--	--
17339	13th Ed.	01-APR-12	Last LNM: 38/19	NAD 83	50/22
<i>ChartTitle:</i> Hood Bay and Kootznahoo Inlet					
Main Panel 2676 HOOD BAY AND KOOTZNAHOO INLET. Page/Side: N/A					
LAST EDITION				NOS	
No new editions of chart 17339 will be published. It will be canceled on 01-Feb-23. Comparable or larger scale Electronic Navigational Chart (ENC) coverage is available. See "Cancellation of NOAA Paper and Raster Nautical Charts" in Section I of this LNM for details. A list of all canceled NOAA charts is at https://www.charts.noaa.gov/MCD/Dole.shtml .				--	--
17341	10th Ed.	01-APR-12	Last LNM: 24/12	NAD 83	50/22
<i>ChartTitle:</i> Whitewater Bay and Chaik Bay, Chatham Strait					
Main Panel 2678 WHITEWATER BAY AND CHAIK BAY. Page/Side: N/A					
LAST EDITION				NOS	
No new editions of chart 17341 will be published. It will be canceled on 01-Feb-23. Comparable or larger scale Electronic Navigational Chart (ENC) coverage is available. See "Cancellation of NOAA Paper and Raster Nautical Charts" in Section I of this LNM for details. A list of all canceled NOAA charts is at https://www.charts.noaa.gov/MCD/Dole.shtml .				--	--
17362	11th Ed.	01-NOV-14	Last LNM: 46/14	NAD 83	50/22
<i>ChartTitle:</i> Gambier Bay, Stephens Passage					
Main Panel 2681 GAMBIER BAY. Page/Side: A					
LAST EDITION				NOS	
No new editions of chart 17362 will be published. It will be canceled on 01-Feb-23. Comparable or larger scale Electronic Navigational Chart (ENC) coverage is available. See "Cancellation of NOAA Paper and Raster Nautical Charts" in Section I of this LNM for details. A list of all canceled NOAA charts is at https://www.charts.noaa.gov/MCD/Dole.shtml .				--	--
17363	14th Ed.	01-MAY-14	Last LNM: 09/22	NAD 83	50/22
<i>ChartTitle:</i> Pybus Bay, Frederick Sound;Hobart and Windham Bays, Stephens P.					
Unrelated 2682 PYBUS BAY FREDERICK SOUND. Page/Side: N/A					
LAST EDITION				NOS	
No new editions of chart 17363 will be published. It will be canceled on				--	--

01-Feb-23. Comparable or larger scale Electronic Navigational Chart (ENC) coverage is available. See "Cancellation of NOAA Paper and Raster Nautical Charts" in Section I of this LNM for details. A list of all canceled NOAA charts is at <https://www.charts.noaa.gov/MCD/Dole.shtml>.

17365	13th Ed.	01-JUN-14	Last LNM: 25/14	NAD 83	50/22
<i>ChartTitle: Woewodski and Eliza Hbrs.; Fanshaw Bay and Cleveland Passage</i>					
Unrelated 2684 WOEWODSKI AND ELIZA HARBORS. Page/Side: A					
				NOS	
LAST EDITION No new editions of chart 17365 will be published. It will be canceled on 01-Feb-23. Comparable or larger scale Electronic Navigational Chart (ENC) coverage is available. See "Cancellation of NOAA Paper and Raster Nautical Charts" in Section I of this LNM for details. A list of all canceled NOAA charts is at https://www.charts.noaa.gov/MCD/Dole.shtml .				--	--
17367	12th Ed.	01-AUG-14	Last LNM: 32/14	NAD 83	50/22
<i>ChartTitle: Thomas, Farragut, and Portage Bays, Frederick Sound</i>					
Main Panel 2686 THOMAS FARRAGUT AND PORTAGE BAYS. Page/Side: A					
				NOS	
LAST EDITION No new editions of chart 17367 will be published. It will be canceled on 01-Mar-23. Comparable or larger scale Electronic Navigational Chart (ENC) coverage is available. See "Cancellation of NOAA Paper and Raster Nautical Charts" in Section I of this LNM for details. A list of all canceled NOAA charts is at https://www.charts.noaa.gov/MCD/Dole.shtml .				--	--
17368	8th Ed.	01-SEP-14	Last LNM: 09/22	NAD 83	50/22
<i>ChartTitle: Keku Strait-northern part, including Saginaw and Security Bays and Port Camden; Kake Inset</i>					
Main Panel 2687 KEKU STRAIT NORTHERN PART. Page/Side: A					
				NOS	
LAST EDITION No new editions of chart 17368 will be published. It will be canceled on 01-Mar-23. Comparable or larger scale Electronic Navigational Chart (ENC) coverage is available. See "Cancellation of NOAA Paper and Raster Nautical Charts" in Section I of this LNM for details. A list of all canceled NOAA charts is at https://www.charts.noaa.gov/MCD/Dole.shtml .				--	--
17370	12th Ed.	01-APR-15	Last LNM: 15/15	NAD 83	50/22
<i>ChartTitle: Bay of Pillars and Rowan Bay, Chatham Strait; Washington Bay, Chatham Strait</i>					
Main Panel 2692 BAY OF PILLARS ROWAN AND WASHINGTON BAYS. Page/Side: A					
				NOS	
LAST EDITION No new editions of chart 17370 will be published. It will be canceled on 01-Mar-23. Comparable or larger scale Electronic Navigational Chart (ENC) coverage is available. See "Cancellation of NOAA Paper and Raster Nautical Charts" in Section I of this LNM for details. A list of all canceled NOAA charts is at https://www.charts.noaa.gov/MCD/Dole.shtml .				--	--
17372	12th Ed.	01-DEC-11	Last LNM: 50/09	NAD 83	50/22
<i>ChartTitle: Keku Strait-Monte Carlo Island to Entrance Island; The Summit; Devils Elbow</i>					
Main Panel 2694 CONTINUATION OF KEKU STRAIT. Page/Side: N/A					
				NOS	
LAST EDITION No new editions of chart 17372 will be published. It will be canceled on 01-Mar-23. Comparable or larger scale Electronic Navigational Chart (ENC) coverage is available. See "Cancellation of NOAA Paper and Raster Nautical Charts" in Section I of this LNM for details. A list of all canceled NOAA charts is at https://www.charts.noaa.gov/MCD/Dole.shtml .				--	--
17375	22nd Ed.	01-DEC-09	Last LNM: 31/22	NAD 83	50/22
<i>ChartTitle: Wrangell Narrows; Petersburg Harbor</i>					
Main Panel 2698 CONTINUATION OF WRANGELL NARROWS. Page/Side: N/A					
				NOS	
LAST EDITION No new editions of chart 17375 will be published. It will be canceled on 01-Mar-23. Comparable or larger scale Electronic Navigational Chart (ENC) coverage is available. See "Cancellation of NOAA Paper and Raster Nautical Charts" in Section I of this LNM for details. A list of all canceled NOAA charts is at https://www.charts.noaa.gov/MCD/Dole.shtml .				--	--
17376	9th Ed.	01-OCT-12	Last LNM: 43/12	NAD 83	50/22
<i>ChartTitle: Tebenkof Bay and Port Malmesbury</i>					
Main Panel 2701 TEBENKOF BAY AND PORT MALMESBURY. Page/Side: N/A					
				NOS	
LAST EDITION No new editions of chart 17376 will be published. It will be canceled on 01-Mar-23. Comparable or larger scale Electronic Navigational Chart				--	--

(ENC) coverage is available. See "Cancellation of NOAA Paper and Raster Nautical Charts" in Section I of this LNM for details. A list of all canceled NOAA charts is at <https://www.charts.noaa.gov/MCD/Dole.shtml>.

17377	2nd Ed.	01-MAY-14	Last LNM: 18/14	NAD 83	50/22
<i>ChartTitle: Le Conte Bay</i>					
Main Panel 2936 ALASKA FREDERICK SOUND AND LECONTE BAY. Page/Side: 1					
LAST EDITION				NOS	--
No new editions of chart 17377 will be published. It will be canceled on 01-Mar-23. Comparable or larger scale Electronic Navigational Chart (ENC) coverage is available. See "Cancellation of NOAA Paper and Raster Nautical Charts" in Section I of this LNM for details. A list of all canceled NOAA charts is at https://www.charts.noaa.gov/MCD/Dole.shtml .				--	--
17378	15th Ed.	01-MAY-14	Last LNM: 19/14	NAD 83	50/22
<i>ChartTitle: Port Protection, Prince of Wales Island</i>					
Main Panel 2702 PRINCE OF WALES ISLAND PORT PROTECTION. Page/Side: N/A					
LAST EDITION				NOS	--
No new editions of chart 17378 will be published. It will be canceled on 01-Mar-23. Comparable or larger scale Electronic Navigational Chart (ENC) coverage is available. See "Cancellation of NOAA Paper and Raster Nautical Charts" in Section I of this LNM for details. A list of all canceled NOAA charts is at https://www.charts.noaa.gov/MCD/Dole.shtml .				--	--
17379	2nd Ed.	01-MAY-14	Last LNM: 17/14	NAD 83	50/22
<i>ChartTitle: Shakan Bay And Strait, Alaska</i>					
Main Panel 2999 SHAKEN BAY AND STRAIT; ALASKA. Page/Side: N/A					
LAST EDITION				NOS	--
No new editions of chart 17379 will be published. It will be canceled on 01-Mar-23. Comparable or larger scale Electronic Navigational Chart (ENC) coverage is available. See "Cancellation of NOAA Paper and Raster Nautical Charts" in Section I of this LNM for details. A list of all canceled NOAA charts is at https://www.charts.noaa.gov/MCD/Dole.shtml .				--	--
17381	11th Ed.	01-MAR-15	Last LNM: 10/15	NAD 83	50/22
<i>ChartTitle: Red Bay, Prince of Wales Island</i>					
Main Panel 2703 RED BAY PRINCE OF WALES ISLAND. Page/Side: A					
LAST EDITION				NOS	--
No new editions of chart 17381 will be published. It will be canceled on 01-Mar-23. Comparable or larger scale Electronic Navigational Chart (ENC) coverage is available. See "Cancellation of NOAA Paper and Raster Nautical Charts" in Section I of this LNM for details. A list of all canceled NOAA charts is at https://www.charts.noaa.gov/MCD/Dole.shtml .				--	--
17383	4th Ed.	01-MAR-15	Last LNM: 21/16	NAD 83	50/22
<i>ChartTitle: Snow Passage, Alaska</i>					
Main Panel 2962 SNOW PASSAGE; ALASKA. Page/Side: A					
LAST EDITION				NOS	--
No new editions of chart 17383 will be published. It will be canceled on 01-Mar-23. Comparable or larger scale Electronic Navigational Chart (ENC) coverage is available. See "Cancellation of NOAA Paper and Raster Nautical Charts" in Section I of this LNM for details. A list of all canceled NOAA charts is at https://www.charts.noaa.gov/MCD/Dole.shtml .				--	--
17386	5th Ed.	01-SEP-12	Last LNM: 36/19	NAD 83	50/22
<i>ChartTitle: Sumner Strait-Southern part</i>					
Main Panel 2711 SUMNER STRAIT SOUTHERN PART. Page/Side: N/A					
LAST EDITION				NOS	--
No new editions of chart 17386 will be published. It will be canceled on 01-Mar-23. Comparable or larger scale Electronic Navigational Chart (ENC) coverage is available. See "Cancellation of NOAA Paper and Raster Nautical Charts" in Section I of this LNM for details. A list of all canceled NOAA charts is at https://www.charts.noaa.gov/MCD/Dole.shtml .				--	--
17387	14th Ed.	01-JUN-14	Last LNM: 23/14	NAD 83	50/22
<i>ChartTitle: Shakan and Shipley Bays and Part of El Capitan Passage;El Capitan Pasage, Dry Pass to Shakan Strait</i>					
Main Panel 2713 SHAKAN AND SHIPLEY BAYS AND PART OF EL CAPITAN PASSAGE. Page/Side: A					
LAST EDITION				NOS	--
No new editions of chart 17387 will be published. It will be canceled on 01-Mar-23. Comparable or larger scale Electronic Navigational Chart (ENC) coverage is available. See "Cancellation of NOAA Paper and Raster				--	--

Nautical Charts" in Section I of this LNM for details. A list of all canceled NOAA charts is at <https://www.charts.noaa.gov/MCD/Dole.shtml>.

17401	13th Ed.	01-MAR-15	Last LNM: 12/15	NAD 83	50/22
<i>ChartTitle: Lake Bay and approaches, Clarence Str.</i>					
Main Panel 2716 LAKE BAY AND APPROACHES CLARENCE STRAIT. Page/Side: A					
LAST EDITION				NOS	
No new editions of chart 17401 will be published. It will be canceled on 01-Mar-23. Comparable or larger scale Electronic Navigational Chart (ENC) coverage is available. See "Cancellation of NOAA Paper and Raster Nautical Charts" in Section I of this LNM for details. A list of all canceled NOAA charts is at https://www.charts.noaa.gov/MCD/Dole.shtml .				--	--
17402	12th Ed.	01-DEC-10	Last LNM: 36/19	NAD 83	50/22
<i>ChartTitle: Southern Entrances to Sumner Strait</i>					
Main Panel 2717 SOUTHERN ENTRANCES TO SUMNER STRAIT. Page/Side: N/A					
LAST EDITION				NOS	
No new editions of chart 17402 will be published. It will be canceled on 01-Mar-23. Comparable or larger scale Electronic Navigational Chart (ENC) coverage is available. See "Cancellation of NOAA Paper and Raster Nautical Charts" in Section I of this LNM for details. A list of all canceled NOAA charts is at https://www.charts.noaa.gov/MCD/Dole.shtml .				--	--
17403	15th Ed.	01-MAY-14	Last LNM: 17/14	NAD 83	50/22
<i>ChartTitle: Davidson Inlet and Sea Otter Sound;Edna Bay</i>					
Main Panel 2718 DAVIDSON INLET AND SEA OTTER SOUND. Page/Side: N/A					
LAST EDITION				NOS	
No new editions of chart 17403 will be published. It will be canceled on 01-Mar-23. Comparable or larger scale Electronic Navigational Chart (ENC) coverage is available. See "Cancellation of NOAA Paper and Raster Nautical Charts" in Section I of this LNM for details. A list of all canceled NOAA charts is at https://www.charts.noaa.gov/MCD/Dole.shtml .				--	--
17404	15th Ed.	01-OCT-13	Last LNM: 19/16	NAD 83	50/22
<i>ChartTitle: San Christoval Channel to Cape Lynch</i>					
Main Panel 2720 SAN CHRISTOVAL CHANNEL TO CAPE LYNCH. Page/Side: N/A					
LAST EDITION				NOS	
No new editions of chart 17404 will be published. It will be canceled on 01-Mar-23. Comparable or larger scale Electronic Navigational Chart (ENC) coverage is available. See "Cancellation of NOAA Paper and Raster Nautical Charts" in Section I of this LNM for details. A list of all canceled NOAA charts is at https://www.charts.noaa.gov/MCD/Dole.shtml .				--	--
17405	17th Ed.	01-OCT-13	Last LNM: 46/19	NAD 83	50/22
<i>ChartTitle: Ulloa Channel to San Christoval Channel;North Entrance, Big Salt Lake;Shelter Cove, Craig</i>					
Main Panel 2721 ULLOA CHANNEL TO SAN CHRISTOVAL CHANNEL. Page/Side: N/A					
LAST EDITION				NOS	
No new editions of chart 17405 will be published. It will be canceled on 01-Mar-23. Comparable or larger scale Electronic Navigational Chart (ENC) coverage is available. See "Cancellation of NOAA Paper and Raster Nautical Charts" in Section I of this LNM for details. A list of all canceled NOAA charts is at https://www.charts.noaa.gov/MCD/Dole.shtml .				--	--
17406	8th Ed.	01-OCT-13	Last LNM: 45/13	NAD 83	50/22
<i>ChartTitle: Baker, Noyes, and Lulu Islands and adjacent waters</i>					
Main Panel 2725 BAKER NOYES AND LULU ISLANDS AND ADJACENT WATERS. Page/Side: N/A					
LAST EDITION				NOS	
No new editions of chart 17406 will be published. It will be canceled on 01-Mar-23. Comparable or larger scale Electronic Navigational Chart (ENC) coverage is available. See "Cancellation of NOAA Paper and Raster Nautical Charts" in Section I of this LNM for details. A list of all canceled NOAA charts is at https://www.charts.noaa.gov/MCD/Dole.shtml .				--	--
17407	16th Ed.	01-DEC-14	Last LNM: 44/16	NAD 83	50/22
<i>ChartTitle: Northern part of Tlevak Strait and Uloa Channel</i>					
Main Panel 2726 NORTHERN PART OF TLEVAK STRAIT AND ULLOA CHANNEL. Page/Side: A					
LAST EDITION				NOS	
No new editions of chart 17407 will be published. It will be canceled on 01-Mar-23. Comparable or larger scale Electronic Navigational Chart (ENC) coverage is available. See "Cancellation of NOAA Paper and Raster Nautical Charts" in Section I of this LNM for details. A list of all canceled NOAA charts is at https://www.charts.noaa.gov/MCD/Dole.shtml .				--	--

17408	9th Ed.	01-DEC-14	Last LNM: 15/18	NAD 83	50/22
<i>ChartTitle: Central Dall Island and vicinity</i>					
Main Panel 2727 CENTRAL DALL ISLAND AND VICINITY. Page/Side: A					
LAST EDITION	No new editions of chart 17408 will be published. It will be canceled on 31-May-23. Comparable or larger scale Electronic Navigational Chart (ENC) coverage is available. See "Cancellation of NOAA Paper and Raster Nautical Charts" in Section I of this LNM for details. A list of all canceled NOAA charts is at https://www.charts.noaa.gov/MCD/Dole.shtml .				NOS --
17422	10th Ed.	01-MAR-15	Last LNM: 32/18	NAD 83	50/22
<i>ChartTitle: Behm Canal-western part;Yes Bay</i>					
Main Panel 2730 WESTERN PART OF BEHM CANAL. Page/Side: A					
LAST EDITION	No new editions of chart 17422 will be published. It will be canceled on 01-Mar-23. Comparable or larger scale Electronic Navigational Chart (ENC) coverage is available. See "Cancellation of NOAA Paper and Raster Nautical Charts" in Section I of this LNM for details. A list of all canceled NOAA charts is at https://www.charts.noaa.gov/MCD/Dole.shtml .				NOS --
17423	15th Ed.	01-SEP-13	Last LNM: 19/14	NAD 83	50/22
<i>ChartTitle: Harbor Charts-Clarence Strait and Behm Canal Dewey Anchorage, Etolin Island;Ratz Harbor, Prince of Wales Island;Naha Bay, Revillagigedo Island;Tolstoi and Thorne Bays, Prince of Wales Is.;Union Bay, Cleveland Peninsula</i>					
Unrelated 2732 RATZ HARBOR PRINCE OF WALES ISLAND. Page/Side: N/A					
LAST EDITION	No new editions of chart 17423 will be published. It will be canceled on 01-Mar-23. Comparable or larger scale Electronic Navigational Chart (ENC) coverage is available. See "Cancellation of NOAA Paper and Raster Nautical Charts" in Section I of this LNM for details. A list of all canceled NOAA charts is at https://www.charts.noaa.gov/MCD/Dole.shtml .				NOS --
17424	9th Ed.	01-OCT-09	Last LNM: 17/14	NAD 83	50/22
<i>ChartTitle: Behm Canal-eastern part</i>					
Main Panel 2737 EASTERN PART OF BEHM CANAL. Page/Side: N/A					
LAST EDITION	No new editions of chart 17424 will be published. It will be canceled on 01-Mar-23. Comparable or larger scale Electronic Navigational Chart (ENC) coverage is available. See "Cancellation of NOAA Paper and Raster Nautical Charts" in Section I of this LNM for details. A list of all canceled NOAA charts is at https://www.charts.noaa.gov/MCD/Dole.shtml .				NOS --
17425	7th Ed.	01-MAY-15	Last LNM: 21/15	NAD 83	50/22
<i>ChartTitle: Portland Canal-North of Hattie Island</i>					
Main Panel 2738 PORTLAND CANAL NORTH OF HATTIE ISLAND. Page/Side: A					
LAST EDITION	No new editions of chart 17425 will be published. It will be canceled on 01-Mar-23. Comparable or larger scale Electronic Navigational Chart (ENC) coverage is available. See "Cancellation of NOAA Paper and Raster Nautical Charts" in Section I of this LNM for details. A list of all canceled NOAA charts is at https://www.charts.noaa.gov/MCD/Dole.shtml .				NOS --
17426	16th Ed.	01-JUN-14	Last LNM: 23/16	NAD 83	50/22
<i>ChartTitle: Kasaan Bay, Clarence Strait;Hollis Anchorage, eastern part;Lyman Anchorage</i>					
Main Panel 2739 KASAAN BAY PRINCE OF WALES ISLAND. Page/Side: A					
LAST EDITION	No new editions of chart 17426 will be published. It will be canceled on 01-Mar-23. Comparable or larger scale Electronic Navigational Chart (ENC) coverage is available. See "Cancellation of NOAA Paper and Raster Nautical Charts" in Section I of this LNM for details. A list of all canceled NOAA charts is at https://www.charts.noaa.gov/MCD/Dole.shtml .				NOS --
17427	8th Ed.	01-MAY-15	Last LNM: 07/22	NAD 83	50/22
<i>ChartTitle: Portland Canal - Dixon Entrance to Hattie I.</i>					
Main Panel 2742 PORTLAND CANAL DIXON ENTRANCE TO HATTIE ISLAND. Page/Side: A					
LAST EDITION	No new editions of chart 17427 will be published. It will be canceled on 01-Mar-23. Comparable or larger scale Electronic Navigational Chart (ENC) coverage is available. See "Cancellation of NOAA Paper and Raster Nautical Charts" in Section I of this LNM for details. A list of all canceled				NOS --

17431	12th Ed.	01-DEC-14	Last LNM: 34/20	NAD 83	50/22
<i>ChartTitle: N. end of Cordova Bay and Hetta Inlet</i>					
Main Panel 2749 NORTH END OF CORDOVA BAY AND HETTA INLET. Page/Side: A					
LAST EDITION				NOS	
No new editions of chart 17431 will be published. It will be canceled on 01-Mar-23. Comparable or larger scale Electronic Navigational Chart (ENC) coverage is available. See "Cancellation of NOAA Paper and Raster Nautical Charts" in Section I of this LNM for details. A list of all canceled NOAA charts is at https://www.charts.noaa.gov/MCD/Dole.shtml .				--	--
17432	8th Ed.	01-MAR-15	Last LNM: 06/18	NAD 83	50/22
<i>ChartTitle: Clarence Strait and Moira Sound</i>					
Main Panel 2751 CLARENCE STRAIT AND MOIRA SOUND. Page/Side: A					
LAST EDITION				NOS	
No new editions of chart 17432 will be published. It will be canceled on 01-Mar-23. Comparable or larger scale Electronic Navigational Chart (ENC) coverage is available. See "Cancellation of NOAA Paper and Raster Nautical Charts" in Section I of this LNM for details. A list of all canceled NOAA charts is at https://www.charts.noaa.gov/MCD/Dole.shtml .				--	--
17435	17th Ed.	01-MAY-14	Last LNM: 48/22	NAD 83	50/22
<i>ChartTitle: Harbors in Clarence Strait Port Chester, Annette Island;Tamgas Harbor, Annette Island;Metlakatla Harbor</i>					
Main Panel 2849 PORT CHESTER. Page/Side: N/A					
LAST EDITION				NOS	
No new editions of chart 17435 will be published. It will be canceled on 01-Mar-23. Comparable or larger scale Electronic Navigational Chart (ENC) coverage is available. See "Cancellation of NOAA Paper and Raster Nautical Charts" in Section I of this LNM for details. A list of all canceled NOAA charts is at https://www.charts.noaa.gov/MCD/Dole.shtml .				--	--
17436	10th Ed.	01-JUN-14	Last LNM: 32/18	NAD 83	50/22
<i>ChartTitle: Clarence Strait, Cholmondeley Sound and Skowl Arm</i>					
Main Panel 2758 CHOLMONDELEY SOUND & SKOWL ARM. Page/Side: A					
LAST EDITION				NOS	
No new editions of chart 17436 will be published. It will be canceled on 01-Mar-23. Comparable or larger scale Electronic Navigational Chart (ENC) coverage is available. See "Cancellation of NOAA Paper and Raster Nautical Charts" in Section I of this LNM for details. A list of all canceled NOAA charts is at https://www.charts.noaa.gov/MCD/Dole.shtml .				--	--
17437	11th Ed.	01-AUG-17	Last LNM: 07/22	NAD 83	50/22
<i>ChartTitle: Portland Inlet to Nakat Bay</i>					
Main Panel 2761 PORTLAND INLET TO NAKAT BAY - -. Page/Side: -					
LAST EDITION				NOS	
No new editions of chart 17437 will be published. It will be canceled on 01-Mar-23. Comparable or larger scale Electronic Navigational Chart (ENC) coverage is available. See "Cancellation of NOAA Paper and Raster Nautical Charts" in Section I of this LNM for details. A list of all canceled NOAA charts is at https://www.charts.noaa.gov/MCD/Dole.shtml .				--	--

OIL RIG MOVEMENT

Drill Rigs/Vessels Removed

<u>Latitude</u>	<u>Longitude</u>	<u>Block</u>	<u>Rigs/Vessel</u>	<u>Chart</u>	<u>Type</u>	<u>Status</u>
None						

Drill Rigs/Vessels Established

<u>Latitude</u>	<u>Longitude</u>	<u>Block</u>	<u>Rigs/Vessel</u>	<u>Chart</u>	<u>Type</u>	<u>Status</u>
None						

SECTION V - ADVANCE NOTICES

This section contains advance notice of approved projects, changes to aids to navigation, or upcoming temporary changes such as dredging, etc. Mariners are advised to use caution while transiting these areas.

SUMMARY OF ADVANCED APPROVED PROJECTS

Approved Project(s)
None

Project Date

Ref. LNM

Advance Notice(s)

690

ALASKA – SOUTHEAST – SITKA

The Coast Guard intends to rename and upgrade Japonski Island Buoy 2 (LLNR 25025.51) to Japonski Island Lighted Buoy 2 (LLNR 25025.51) with a red flash every 4 seconds (R 4s). Questions/concerns should be directed to Todd Buck with the Coast Guard District 17 Waterways Management Office at (907) 463-2269 or by email to todd.r.buck@uscg.mil.

LNM: 38/20

SECTION VI - PROPOSED CHANGES

Periodically, the Coast Guard evaluates its system of aids to navigation to determine whether the conditions for which the aids to navigation were established have changed. When changes occur, the feasibility of improving, relocating, replacing, or discontinuing aids are considered. This section contains notice(s) of non-approved, proposed projects open for comment. SPECIAL NOTE: Mariners are requested to respond in writing to the District office unless otherwise noted (see banner page for address).

PROPOSED WATERWAY PROJECTS OPEN FOR PUBLIC COMMENT

Proposed Project(s)

Closing

Docket No.

Ref. LNM

None

Proposed Change Notice(s)

ALASKA – WESTERN – NORTON SOUND – GOLOVIN BAY

The Coast Guard is proposing adding navigational aids within Golovin Bay. These aids may include Lights, Daybeacons, or buoys. Mariners are requested to provide recommendations on locations that would facilitate safe navigation within Golovin Bay. Questions/concerns should be directed to Todd Buck with the Coast Guard District 17 Waterways Management Office at (907) 463-2269 or by email to todd.r.buck@uscg.mil.

LNM: 26/18

SECTION VII - GENERAL

This section contains information of general concern to the Mariners. Mariners are advised to use caution while transiting these areas.

None

SECTION VIII - LIGHT LIST CORRECTIONS

An Asterisk *, indicates the column in which a correction has been made to new information

(1) No.	(2) Name and Location	(3) Position	(4) Characteristic	(5) Height	(6) Range	(7) Structure	(8) Remarks
------------	--------------------------	-----------------	-----------------------	---------------	--------------	------------------	----------------

None

PUBLICATION CORRECTIONS

None

ENCLOSURES

ALASKA – SOUTHCENTRAL – KODIAK ISLAND

[5022 P139A Launch.pdf](#)

A rocket launch designated "P-139A".

LNM: 50/22

ALASKA – SOUTHCENTRAL – COOK INLET

[4922 Uper Cook Inlet Ice.pdf](#)

Operating Guidelines for Ice Conditions in Cook Inlet

LNM: 49/22

ALASKA

[5022 AMSEA.pdf](#)

AMSEA Maritime Training

LNM: 50/22

ALASKA

[4922 Subsurface Buoys.pdf](#)

Compilation of Subsurface and Surface oceanography moorings properly reported to U.S. Coast Guard District 17.

LNM: 49/22

ALASKA – SOUTHWESTERN – ALEUTIAN PENINSULA

[4922 Undersea Cable.pdf](#)

Undersea GCI cable.

LNM: 49/22

Michael D. Newell
Waterways Management Branch
Seventeenth Coast Guard District
OPERATIONAL EXCELLENCE THROUGH LEADERSHIP, TEAMWORK, AND INNOVATION.

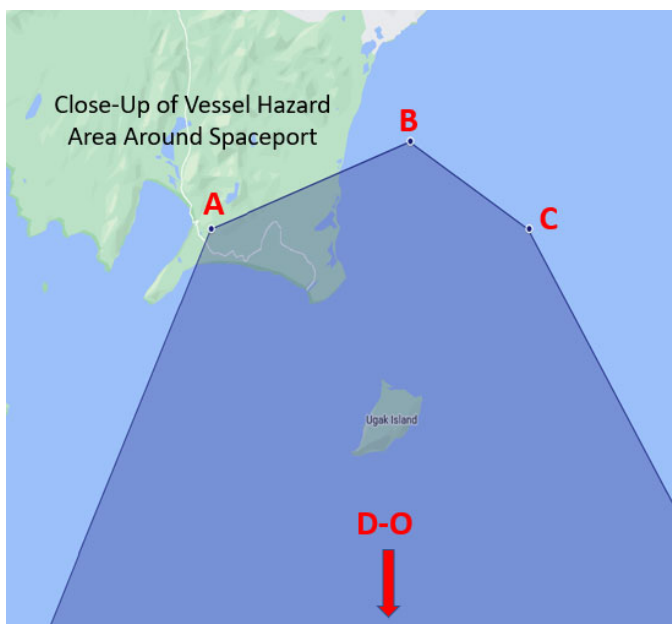


Pacific Spaceport Complex Alaska (PSCA) will be conducting a launch designated P139 from Launch Pad LP-3C at Narrow Cape, Kodiak, Alaska, with a launch azimuth of 176°. Daily launch operations are scheduled between 2200-0130 UTC January 9th – January 14th & January 30th – February 2nd, 2023 (UTC). In local time 1300-1630 AKST January 9th – January 13th & January 30th – February 1st, 2023 (local). Mariners are requested to remain clear of the Hazard Areas during the scheduled launch operations. Questions/concerns should be directed to the PSCA Operations Director, Shannon Edwards at (907) 743-3633, or by email to shannon.edwards@akaerospace.com or the PSCA Ground Safety Officer, Paul Pena, at (907) 743-3525, or by email to ppena.ctr@akaerospace.com.

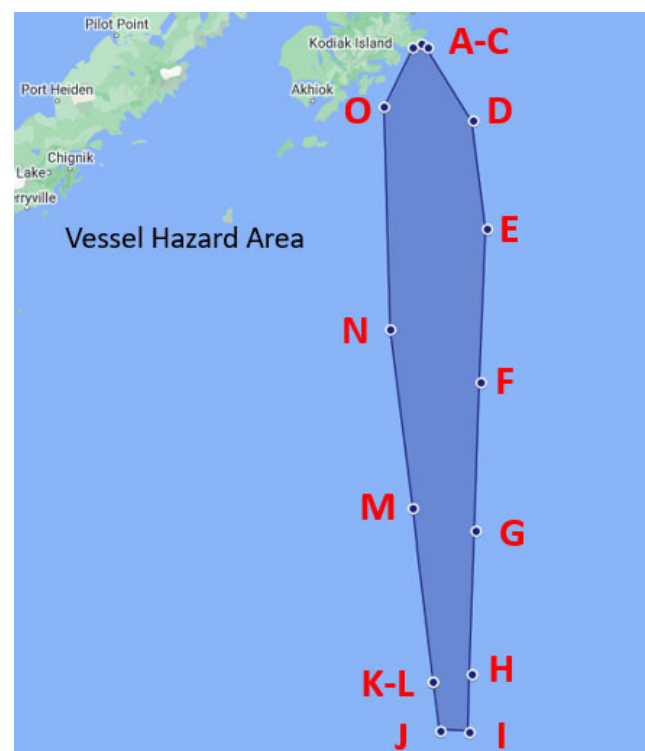
Total Hazard Area (Degrees Decimal Minutes):

Point A:	57°27.5868'N	152°26.16'W
Point B:	57°29.4816'N	152°16.44'W
Point C:	57°27.4308'N	152°10.5'W
Point D:	56°45.1476'N	151°22.92'W
Point E:	55°42.9672'N	151°08.4'W
Point F:	54°10.1784'N	151°14.1'W
Point G:	52°37.3842'N	151°19.38'W
Point H:	51°4.5864'N	151°24.3'W
Point I:	50°26.3724'N	151°26.16'W
Point J:	50°27.1284'N	151°57.54'W
Point K:	50°59.8608'N	152°04.98'W
Point L:	50°59.8764'N	152°04.98'W
Point M:	52°51.1062'N	152°26.1'W
Point N:	54°42.2658'N	152°49.14'W
Point O:	56°53.5608'N	152°56.58'W

Graphical depiction of Up-Range Hazard Area:



Graphical depiction of NOTMAR Hazard Area:





16710
December 6, 2022

**CAPTAIN OF THE PORT, WESTERN ALASKA
NAVIGATION SAFETY ADVISORY**

Dear Mariner:

Cold temperatures are causing a significant buildup of ice in the upper Cook Inlet that poses extreme danger to vessels. To assist mariners, we are implementing the **Operating Guidelines for Ice Conditions for Upper Cook Inlet, effective December 6, 2022**. These guidelines were updated and signed on October 25, 2022.

All vessels scheduled to arrive in areas north of Homer, AK in Cook Inlet must submit a voyage plan no less than 24 hours prior to arrival at the Kachemak Bay Pilot Station. We have posted a voyage plan template and the Guidelines referenced above to the Sector Anchorage Homeport webpage.

Sector Anchorage Homeport webpage:

[https://homeport.uscg.mil/port-directory/western-alaska-\(anchorage\)](https://homeport.uscg.mil/port-directory/western-alaska-(anchorage))

While use of the voyage plan template is not mandatory, your voyage plan must include all information listed in the template. Voyage plans must be e-mailed to Sector.Anchorage@uscg.mil. Based on information in your voyage plan, we will determine if the vessel needs an exam prior to entry into Cook Inlet and will notify the submitter if an exam is required. Vessel agents can coordinate with Marine Safety Detachment Homer at (907) 235-3292 to schedule an exam.

The National Weather Service's Cook Inlet Sea Ice analysis:

<https://www.weather.gov/afc/ice>

Please direct questions regarding this advisory, or the Guidelines referenced above, to the Sector Anchorage Waterways Management Division at (907) 428-4100.

Sincerely,

A handwritten signature in blue ink that reads "L. M. Lusk".

L. M. LUSK

Captain, U. S. Coast Guard
Captain of the Port, Western Alaska

Copy: Commander, Seventeenth Coast Guard District (dp)



Alaska Marine Safety Education Association

2924 Halibut Point Road, Sitka, Alaska 99835-9668
phone 907-747-3287 / fax 907-747-3259 / www.amsea.org

For Immediate Release

Date Issued: December 12, 2022

Kill Date: December 23, 2022

AMSEA Workshops of Interest to Mariners in District 17

The Alaska Marine Safety Education Association is offering a number of classes in U.S. Coast Guard District 17 that may be of interest to mariners. Many of these workshops are offered at a reduced cost to commercial fishermen, thanks to support from the U.S. Coast Guard, the National Institute for Occupational Safety and Health, the Alaska Department of Commerce, Community and Economic Development, and AMSEA members.

Register online at www.amsea.org or call (907) 747-3287.

Fishing Vessel Drill Conductor Workshops

These workshops give participants hands-on training with emergency equipment that should be onboard any commercial fishing vessel, such as PFDs, life rafts, immersion suits, EPIRBs, fire extinguishers. Participants practice emergency procedures like man overboard, abandon ship, firefighting and flooding control.

The workshops are US Coast Guard-accepted and meet the training requirements for commercial fishermen operating on documented vessels beyond the federal boundary line. They are open to all mariners and are recommended for captains and crew serving on any commercial vessel.

START DATE	END DATE	LOCATION	STATE
1/4/23	1/5/23	Kodiak	AK
1/23/23	1/23/23	Sitka	AK

Mariner's First Aid & CPR

AMSEA's First Aid & CPR workshop is designed to meet the unique needs of commercial fishermen and other mariners. Attendees receive a U.S. Coast Guard accepted two-year certificate issued by the American Safety & Health Institute. The cost for the workshop is \$125.00 including local sales tax. The topics covered include:

- CPR & automatic external defibrillators (AED)
- Treatment of choking

AMSEA is a 501(c)(3) non-profit educational institute. Support Organizations: Alaska Native Tribal Health Consortium / National Institute for Occupational Safety & Health / Southeast Alaska Regional Health Consortium / State of Alaska Chronic Disease Prevention & Health Promotion / State of Alaska Office of Boating Safety / University of Alaska Sea Grant, Marine Advisory Program / U.S. Coast Guard 17th District

- Medical emergencies
- Trauma
- Environmental hazards
- Patient assessment
- Medical communications
- Drowning & hypothermia
- Common fishing injuries

Start Date	End Date	Location	State
1/25/2022	1/25/2022	Sitka	AK

This is the current compilation of all subsurface and surface oceanographic moorings that have been reported to the U.S. Coast Guard District 17 Waterways Branch. The name, type, location, depth, water depth, and a Point of Contact for all data buoys, surface and subsurface, shall be reported as quickly as is practical if they are placed within the navigable waters (within 200 nm) of the United States. Data buoys placed in the Arctic region but outside of 200 nm of the United States may be reported and will be included in this compilation (for informational purposes only). This notification process is for inclusion in the Local Notice to Mariners to provide navigational information to mariners and does not supersede any permission or permitting requirements. Any notifications, corrections, additions, deletions, or comments for the Alaska region (Coast Guard District 17) or the Arctic region should be submitted via e-mail to smb-d17juneau-lnm@uscg.mil or to Todd Buck, USCG D17(dpw), at 907-463-2269 or by email to todd.r.buck@uscg.mil. This compilation is as current as the Local Notice to Mariners (LNM) included in as an enclosure. The referenced LNM may have additional information and indicates the last time an entry was updated.

ALASKA – ARCTIC OCEAN

TYPE/NAME:	POSITION:	WATER DEPTH:	TOP FLOAT DEPTH:	Ref. LNM:	POC:
N/A	72°27.655'N, 157°23.774'W	780 feet	731 feet	39/10	Ethan Roth ehroth@ucsd.edu
N/A	72° 47.939'N, 158°23.941'W	1,066 feet	1,017 feet	39/10	Ethan Roth ehroth@ucsd.edu
N/A	72°07.275'N, 160°29.698'W	131 feet	115 feet	35/12	Thomas Weingartner 907-474-7993
N/A	72°09.747'N, 159°07.349'W	167 feet	85 feet	35/12	Thomas Weingartner 907-474-7993
N/A	72°10.875'N, 159°33.117'W	184 feet	95 feet	35/12	Thomas Weingartner 907-474-7993
N/A	72°41.745'N, 164°31.935'W	N/A	151 feet	35/12	N/A
N/A	72°31.517'N, 164°05.944'W	N/A	164 feet	35/12	N/A
N/A	72°16.850'N, 163°32.034'W	N/A	131 feet	35/12	N/A
HARP C2	72° 48.154'N, 158°25.384'W	1,062 feet	979 feet	48/15	Josh Jones 858-822-1836
HARP D	72° 36.925'N, 158°42.177'W	323 feet	237 feet	48/15	Josh Jones 858-822-1836
AIM16-1	75°06.003'N, 168°00.004'W	535 feet	142 feet	44/16	Dr. Humfrey Melling 250-363-6552
20CKP9A	72°28.210'N, 156°33.510'W	3,199 feet	1,280 feet	38/20	David Strausz 206-526-4510
NAP-20t	74°31.370'N, 161°55.880'W	5,528 feet	141 feet	42/20	Motoyo ITOH +81-46-867-9488
AMOS-VLF-1	77°29.600'N, 140°10.800'W	12,264 feet	230 feet	35/22	Craig Lee, craiglee@uw.edu
AMOS-C	76°24.800'N, 142°28.200'W	12,326 feet	131 feet	35/22	Craig Lee, craiglee@uw.edu
AMOS-NW	76°08.800'N, 145°17.000'W	12,441 feet	328 feet	35/22	Craig Lee, craiglee@uw.edu
AMOS-NE	75°46.400'N, 141°30.800'W	12,251 feet	328 feet	35/22	Craig Lee, craiglee@uw.edu
AMOS-B	75°30.000'N, 144°08.400'W	12,379 feet	328 feet	35/22	Craig Lee, craiglee@uw.edu
AMOS-SE	74°52.500'N, 143°05.200'W	12,241 feet	328 feet	35/22	Craig Lee, craiglee@uw.edu
AMOS-SW	75°13.000'N, 146°40.600'W	12,464 feet	328 feet	35/22	Craig Lee, craiglee@uw.edu
AMOS-A	74°35.300'N, 145°32.700'W	12,339 feet	131 feet	35/22	Craig Lee, craiglee@uw.edu

CANADA – BEAUFORT SEA

TYPE/NAME:	POSITION:	WATER DEPTH:	TOP FLOAT DEPTH:	Ref. LNM:	POC:
ACW16-30	68°59.173'N, 105°53.030'W	242 feet	231 feet	44/16	Dr. Humfrey Melling 250-363-6552
CB12	70°33.770'N, 127°41.710'W	125 feet	116 feet	44/16	Dr. Humfrey Melling 250-363-6552
IBO16-1a	70°20.031'N, 133°44.369'W	180 feet	171 feet	44/16	Dr. Humfrey Melling 250-363-6552
IBO16-1b	70°20.035'N, 133°44.452'W	180 feet	171 feet	44/16	Dr. Humfrey Melling 250-363-6552
IBO16-2	70°59.359'N, 133°44.636'W	365 feet	146 feet	44/16	Dr. Humfrey Melling 250-363-6552
IBO16-9a	70°03.534'N, 133°42.918'W	116 feet	106 feet	44/16	Dr. Humfrey Melling 250-363-6552
IBO16-9b	70°03.501'N, 133°42.937'W	116 feet	106 feet	44/16	Dr. Humfrey Melling 250-363-6552
SIC16-11	69°46.483'N, 137°02.757'W	117 feet	107 feet	44/16	Dr. Humfrey Melling 250-363-6552
HI16	69°39.284'N, 138°55.279'W	134 feet	125 feet	44/16	Dr. Humfrey Melling 250-363-6552

ALASKA – BEAUFORT SEA

TYPE/NAME:	POSITION:	WATER DEPTH:	TOP FLOAT DEPTH:	Ref. LNM:	POC:
N/A	71°35.980'N, 161°30.3221'W	151 feet	111 feet	48/14	David Leech 907-224-4319
AON-BS3	71°23.659'N, 152°03.046'W	482 feet	115 feet	49/14	Dr. Robert Pickart 508-289-2858
UPE120	71°12.338'N, 148°48.018'W	400 feet	374 feet	49/17	Steve Okkonen 907-283-3234
WAVE SS-1	70°29'16.8864"N, 147°30'00.3528"W	UNK	Surface	29/18	Jeremy Kasper 907-371-6510
ODAS-1	70°24.889'N, 147°39.206'W	26 feet	24 feet	30/19	Carmen Lawrence 902-405-3336
ODAS-2	70°16.663'N, 147°35.493'W	19 feet	17 feet	30/19	Carmen Lawrence 902-405-3336
BCE-19	71°40.368'N, 154°59.923'W	344 feet	131 feet	42/19	Motoyo ITOH +81-46-867-9488
BCC-19	71°44.049'N, 155°09.624'W	951 feet	131 feet	42/19	Motoyo ITOH +81-46-867-9488
BCW-19	71°47.766'N, 155°20.777'W	554 feet	131 feet	42/19	Motoyo ITOH +81-46-867-9488
AL20-AU-BF2	71°45.220'N, 154°28.070'W	335 feet	308 feet	38/20	Catherine Berchok 206-526-6331
Prudhoe	70°50.085'N, 146°23.564'W	207 feet	191 feet	03/22	Steve Okkonen 907-283-3234

ALASKA – CHUKCHI SEA

TYPE/NAME:	POSITION:	WATER DEPTH:	TOP FLOAT DEPTH:	Ref. LNM:	POC:
Unnamed	71°14.459'N, 164°18.067'W	138 feet	Surface	28/15	Noah Lawrence 206-526-6209
2015MARU_2	71°29.792'N, 163°11.449'W	144 feet	140 feet	40/15	Catherine Berchok 206-526-6331
CEM1-19	71°35.971'N, 161°30.419'W	154 feet	108 feet	35/19	Peter Shipton 907-224-4319
CEM2-19	71°35.979'N, 161°31.648'W	154 feet	108 feet	35/19	Peter Shipton 907-224-4319
AL19-AU-IC3	71°49.728'N, 166°03.993'W	151 feet	121 feet	35/19	Catherine Berchok 206-526-6331
20CKITAER-12A	67°54.290'N, 168°11.510'W	196 feet	115 feet	38/20	David Strausz 206-526-4510

ALASKA – CHUKCHI SEA (Continued)

TYPE/NAME:	POSITION:	WATER DEPTH:	TOP FLOAT DEPTH:	Ref. LNM:	POC:
AL20-AU-CL1	69°18.880'N, 167°36.650'W	167 feet	141 feet	38/20	Catherine Berchok 206-526-6331
AL20-AU-IC1	70°50.160'N, 163°07.100'W	148 feet	121 feet	38/20	Catherine Berchok 206-526-6331
AL21-AU-PH1	67°54.507'N, 168°11.926'W	171 feet	138 feet	49/21	Catherine Berchok 206-526-6331
AL21-AU-WT1	71°02.470'N, 160°30.330'W	164 feet	135 feet	49/21	Catherine Berchok 206-526-6331
AL21-AU-IC2	71°12.882'N, 164°14.911'W	144 feet	115 feet	49/21	Catherine Berchok 206-526-6331
W. Barrow Canyon	71°37.868'N, 157°19.576'W	230 feet	214 feet	03/22	Steve Okkonen 907-283-3234
WhoopDeeDo	71°25.327'N, 152°44.103'W	269 feet	253 feet	03/22	Steve Okkonen 907-283-3234
22CKP-1A	70°50.163'N, 163°07.765'W	144 feet	115 feet	48/22	David Strausz 206-526-4510
22CKP-2A	71°12.940'N, 164°15.394'W	144 feet	118 feet	48/22	David Strausz 206-526-4510
22CKP-3A	71°49.694'N, 166°03.979'W	148 feet	121 feet	48/22	David Strausz 206-526-4510
22CKP-5A	71°15.566'N, 157°59.943'W	161 feet	144 feet	48/22	David Strausz 206-526-4510
22CKP-12A	67°54.621'N, 168°11.056'W	190 feet	161 feet	48/22	David Strausz 206-526-4510

ALASKA – KOTZEBUE SOUND

TYPE/NAME:	POSITION:	WATER DEPTH:	TOP FLOAT DEPTH:	Ref. LNM:	POC:
OTZ-N	67°6.791'N, 163°46.328'W	37 feet	27 feet	48/14	Dr. Manuel Castellote 206-526-6866
OTZ-M	67°5.148'N, 163°48.282'W	58 feet	48 feet	48/14	Dr. Manuel Castellote 206-526-6866
OTZ-S	67°3.365'N, 163°48.699'W	60 feet	50 feet	48/14	Dr. Manuel Castellote 206-526-6866
OTZ-Ch	66°14.346'N, 166°51.926'W	51 feet	41 feet	48/14	Dr. Manuel Castellote 206-526-6866

ALASKA – BERING STRAIT

TYPE/NAME:	POSITION:	WATER DEPTH:	TOP FLOAT DEPTH:	Ref. LNM:	POC:
AOOS-AXYS	65°00.700'N, 169°27.23'W	-----	Surface	30/15	Darcy Dugan 907-644-6718
NB-17t	65°03.884'N, 169°38.045'W	171 feet	89 feet	29/17	Makoto Sampei +81-138-40-8844
BS-17t	66°16.075'N, 168°54.098'W	187 feet	105 feet	29/17	Makoto Sampei +81-138-40-8844
A2-21	65°46.850'N, 168°34.090'W	187 feet	49 feet	29/21	Rebecca Woodgate 206-221-3268
A3-21	66°19.640'N, 168°56.990'W	194 feet	23 feet	29/21	Rebecca Woodgate 206-221-3268
A4-21	65°44.740'N, 168°15.770'W	164 feet	49 feet	29/21	Rebecca Woodgate 206-221-3268

ALASKA – NORTON SOUND

TYPE/NAME:	POSITION:	WATER DEPTH:	TOP FLOAT DEPTH:	Ref. LNM:	POC:
Station-241	64°28.365'N, 165°28.525'W	66 feet	Surface	36/20	James Behrens 858-534-3032

ALASKA – BERING SEA

TYPE/NAME:	POSITION:	WATER DEPTH:	TOP FLOAT DEPTH:	Ref. LNM:	POC:
GPS Tide Buoy	58°28.015'N, 162°04.779'W	126 feet	Surface	25/19	NOAAS FAIRWEATHER 401-378-4022
AL19-AU-BS6	53°37.775'N, 167°23.945'W	312 feet	282 feet	28/19	Catherine Berchok 206-526-6331
PUF-18	56°15.340'N, 168°17.361'W	506 feet	505feet	43/21	Thomas Vanpelt 907-242-7725
PUF-19	58°24.700'N, 167°36.900'W	167 feet	166 feet	43/21	Thomas Vanpelt 907-242-7725
AL21-AU-NM1	64°51.248'N, 168°27.938'W	144 feet	115 feet	49/21	Catherine Berchok 206-526-6331
22BSP-2A	56°51.818'N, 164°03.693'W	230 feet	203 feet	20/22	David Strausz 206-526-4510
AL22-AU-PC01	56°07.760'N, 168°18.767'W	531 feet	505 feet	25/22	Stephanie Grassia 206-526-4539
AL22-AU-UM01	53°37.870'N, 167°24.272'W	328 feet	302 feet	25/22	Stephanie Grassia 206-526-4539
AL22-AU-BS10	56°09.702'N, 166°34.707'W	387 feet	328 feet	25/22	Stephanie Grassia 206-526-4539
AL22-AU-BS11	61°04.742'N, 170°16.562'W	135 feet	108 feet	25/22	Stephanie Grassia 206-526-4539
22SH-1A	56°51.041'N, 158°59.784'W	233 feet	200 feet	36/22	David Strausz 206-526-4510
22BS-2C	56°52.456'N, 164°03.954'W	240 feet	33 feet	36/22	David Strausz 206-526-4510
22KUITAEFPR-4A	57°53.958'N, 165°42.148'W	200 feet	Surface	36/22	David Strausz 206-526-4510
22BSITAEFPR-14A	64°00.002'N, 167°54.718'W	121 feet	Surface	37/22	David Strausz 206-526-4510
22BSITAEFPR-14A	64°00.188'N, 167°54.701'W	121 feet	121 feet	37/22	David Strausz 206-526-4510
22BSP-14A	63°59.977'N, 167°55.523'W	Unreported	89 feet	37/22	David Strausz 206-526-4510
22BS-4A	57°52.291'N, 168°53.262'W	241 feet	33 feet	37/22	David Strausz 206-526-4510
22BSP-4A	57°52.071'N, 168°53.379'W	241 feet	200 feet	37/22	David Strausz 206-526-4510
22BS-5A	59°54.747'W, 171°43.379'W	240 feet	46 feet	37/22	David Strausz 206-526-4510
22BSP-5A	59°43.525'N, 171°43.440'W	239 feet	197 feet	37/22	David Strausz 206-526-4510
22BS-8A	62°11.896'N, 174°39.756'W	251 feet	59 feet	37/22	David Strausz 206-526-4510
22BSITAER-8A	62°12.107'N, 174°39.664'W	250 feet	66 feet	37/22	David Strausz 206-526-4510
22UPP-2A	54°18.340'N, 164°45.140'W	256 feet	240 feet	48/22	David Strausz 206-526-4510

ALASKA – SOUTHWESTERN – UNIMAK PASS

TYPE/NAME:	POSITION:	WATER DEPTH:	TOP FLOAT DEPTH:	Ref. LNM:	POC:
21UPP-1A	54°20.000'N, 164°01.830'W	338 feet	322 feet	26/21	David Strausz 206-526-4510
AL22-AU-UN01	54°26.150'N, 165°16.310'W	528 feet	502 feet	25/22	Stephanie Grassia 206-526-4539

ALASKA – GULF OF ALASKA – SANAK TROUGH (NORTH OF SANAK ISLAND)

TYPE/NAME:	POSITION:	WATER DEPTH:	TOP FLOAT DEPTH:	Ref. LNM:	POC:
TRBM-1	54°42.606'N, 162°37.872'W	407 feet	405 feet	48/16	Chris Wilson 206-526-6435
TRBM-2	54°37.151'N, 162°35.695'W	489 feet	487 feet	48/16	Chris Wilson 206-526-6435

ALASKA – GULF OF ALASKA – ALEUTIAN PENINSULA

TYPE/NAME:	POSITION:	WATER DEPTH:	TOP FLOAT DEPTH:	Ref. LNM:	POC:
GA22-AU-SU01	56°36.014'N, 157°00.006'W	456 feet	430 feet	40/22	Catherine Berchok 206-526-6331

ALASKA – GULF OF ALASKA – KODIAK ISLAND

TYPE/NAME:	POSITION:	WATER DEPTH:	TOP FLOAT DEPTH:	Ref. LNM:	POC:
22CB-1A	57°43.300'N, 152°17.052'W	633 feet	584 feet	36/22	David Strausz 206-526-4510
GA22-AU-BT01	57°01.803'N, 152°59.597'W	254 feet	227 feet	40/22	Catherine Berchok 206-526-6331

ALASKA – GULF OF ALASKA – STEVENSON ENTRANCE

TYPE/NAME:	POSITION:	WATER DEPTH:	TOP FLOAT DEPTH:	Ref. LNM:	POC:
GA22-AU-SE01	58°42.514'N, 152°12.525'W	430 feet	404 feet	40/22	Catherine Berchok 206-526-6331

ALASKA – COOK INLET – KAMISHAK BAY

TYPE/NAME:	POSITION:	WATER DEPTH:	TOP FLOAT DEPTH:	Ref. LNM:	POC:
ADCP-A	59°16'34.5168"N, 154°07'03.6837"W	16 feet	13 feet	03/18	Jason Crockett 907-315-6513
ADCP-B	59°15'24.7255"N, 154°02'45.7066"W	43 feet	39 feet	03/18	Jason Crockett 907-315-6513

ALASKA – GULF OF ALASKA

TYPE/NAME:	POSITION:	WATER DEPTH:	TOP FLOAT DEPTH:	Ref. LNM:	POC:
UAF GAK4M	59°24.231'N, 149°00.731'W	656 feet	328 feet	45/16	Dr. Andrew McDonnell 907-474-7529
WAVE YB-1	59°27'22.248"N, 139°45'02.088"W	UNK	Surface	29/17	Jeremy Kasper 907-371-6510
WAVE YB-2	59°26'58.7349"N, 139°47'46.3194"W	UNK	Surface	29/17	Jeremy Kasper 907-371-6510
GEO1-2019	59°00.850'N, 148°41.410'W	722 feet	Surface	29/19	Seth Danielson 907-474-7834
GEO2-2019	59°00.917'N, 148°41.604'W	722 feet	72 feet	29/19	Seth Danielson 907-474-7834
GEO3-2019	59°00.988'N, 148°41.797'W	722 feet	Surface	29/19	Seth Danielson 907-474-7834
GA20-AU-BT01	57°01.790'N, 152°59.620'W	269 feet	243 feet	40/20	Catherine Berchok 206-526-6331
AOOS-204	59°35.850'N, 151°49.746'W	111 feet	Surface	32/21	James Behrens 858-534-3032

ALASKA – GULF OF ALASKA – RESURRECTION BAY

TYPE/NAME:	POSITION:	WATER DEPTH:	TOP FLOAT DEPTH:	Ref. LNM:	POC:
GAKOA	59°54'39.55"N, 149°20'57.47"W	171 feet	Surface	13/19	Natalie Monacci 907-474-7956
GAK1	59°51'11.952"N, 149°30'03.96"W	869 feet	66 feet	13/19	Peter Shipton 907-224-4319

ALASKA – PRINCE WILLIAM SOUND

TYPE/NAME:	POSITION:	WATER DEPTH:	TOP FLOAT DEPTH:	Ref. LNM:	POC:
PST1	60°39.100'N, 146°16.682'W	154 feet	138 feet	18/09	Mary Anne Bishop 907-424-5800 x228
PST2	60°39.338'N, 146° 17.353'W	226 feet	210 feet	18/09	Mary Anne Bishop 907-424-5800 x228
PST3	60° 39.568'N, 146° 18.040'W	390 feet	374 feet	18/09	Mary Anne Bishop 907-424-5800 x228
PST4	60° 39.798'N, 146° 18.726'W	427 feet	410 feet	18/09	Mary Anne Bishop 907-424-5800 x228
PST5	60° 40.028'N, 146°19.413'W	420 feet	404 feet	18/09	Mary Anne Bishop 907-424-5800 x228
PST6	60°40.257'N, 146°20.100'W	410 feet	394 feet	18/09	Mary Anne Bishop 907-424-5800 x228
PST7	60°40.487'N, 146°20.786'W	295 feet	279 feet	18/09	Mary Anne Bishop 907-424-5800 x228
PST8	60°40.717'N, 146°21.473'W	233 feet	217 feet	18/09	Mary Anne Bishop 907-424-5800 x228
PST9	60°40.947'N, 146°22.160'W	194 feet	177 feet	18/09	Mary Anne Bishop 907-424-5800 x228
PST10	60°41.176'N, 146°22.846'W	141 feet	125 feet	18/09	Mary Anne Bishop 907-424-5800 x228
LHRT1	60°22.6596'N, 147°51.147'W	225 feet	209 feet	11/14	Mary Anne Bishop 907-424-5800 x228
LHRT2	60°22.6482'N, 147°50.7522'W	364 feet	348 feet	11/14	Mary Anne Bishop 907-424-5800 x228
LHRT3	60°22.668'N, 147°50.5116'W	382 feet	366 feet	11/14	Mary Anne Bishop 907-424-5800 x228
WTRT1	60°44.253'N, 147°59.5596'W	504 feet	488 feet	11/14	Mary Anne Bishop 907-424-5800 x228
WTRT2	60°44.0994'N, 147°59.086'W	504 feet	488 feet	11/14	Mary Anne Bishop 907-424-5800 x228
WTRT3	60°43.938'N, 147°59.448'W	316 feet	300 feet	11/14	Mary Anne Bishop 907-424-5800 x228
PWSSC-15	60°36.791'N, 147°11.996'W	722 feet	197 feet (Surfacing 2X per day)	15/16	R. W. Campbell 907-424-5800 x241
H01	60°20.550'N, 146°43.824'W	98 feet	66 feet	09/17	Mary Anne Bishop 907-424-5800 x228
HA	60°20.274'N, 146°43.248'W	591 feet	532 feet	09/17	Mary Anne Bishop 907-424-5800 x228
H02	60°20.400'N, 146°44.520'W	879 feet	791 feet	09/17	Mary Anne Bishop 907-424-5800 x228
HB	60°20.094'N, 146°43.974'W	830 feet	747 feet	09/17	Mary Anne Bishop 907-424-5800 x228
H03	60°20.250'N, 146°45.246'W	886 feet	797 feet	09/17	Mary Anne Bishop 907-424-5800 x228
H04	60°20.112'N, 146°45.966'W	886 feet	797 feet	09/17	Mary Anne Bishop 907-424-5800 x228
H05	60°19.968'N, 146°46.710'W	886 feet	797 feet	09/17	Mary Anne Bishop 907-424-5800 x228
H06	60°19.812'N, 146°47.418'W	896 feet	806 feet	09/17	Mary Anne Bishop 907-424-5800 x228
H07	60°19.668'N, 146°48.138'W	909 feet	818 feet	09/17	Mary Anne Bishop 907-424-5800 x228
H08	60°19.470'N, 146°48.954'W	935 feet	842 feet	09/17	Mary Anne Bishop 907-424-5800 x228
H09	60°19.320'N, 146°49.782'W	1007 feet	906 feet	09/17	Mary Anne Bishop 907-424-5800 x228
H10	60°19.188'N, 146°50.508'W	1060 feet	954 feet	09/17	Mary Anne Bishop 907-424-5800 x228
H13	60°18.738'N, 146°52.656'W	909 feet	818 feet	09/17	Mary Anne Bishop 907-424-5800 x228
H14	60°18.588'N, 146°53.340'W	522 feet	470 feet	09/17	Mary Anne Bishop 907-424-5800 x228
H15	60°18.468'N, 146°53.994'W	276 feet	244 feet	09/17	Mary Anne Bishop 907-424-5800 x228
HC	60°18.120'N, 146°53.568'W	449 feet	404 feet	09/17	Mary Anne Bishop 907-424-5800 x228
H11	60°19.008'N, 146°51.228'W	1135 feet	1022 feet	09/17	Mary Anne Bishop 907-424-5800 x228

ALASKA – PRINCE WILLIAM SOUND (Continued)

TYPE/NAME:	POSITION:	WATER DEPTH:	TOP FLOAT DEPTH:	Ref. LNM:	POC:
H12	60°18.888'N, 146°51.930'W	1194 feet	1075 feet	09/17	Mary Anne Bishop 907-424-5800 x228
H16	60°18.540'N, 146°54.552'W	85 feet	53 feet	09/17	Mary Anne Bishop 907-424-5800 x228
HD	60°17.982'N, 146°54.336'W	151 feet	119 feet	09/17	Mary Anne Bishop 907-424-5800 x228
M01	59°55.482'N, 147°48.630'W	295 feet	263 feet	09/17	Mary Anne Bishop 907-424-5800 x228
MA	59°55.146'N, 147°49.092'W	220 feet	188 feet	09/17	Mary Anne Bishop 907-424-5800 x228
M02	59°55.848'N, 147°49.074'W	446 feet	401 feet	09/17	Mary Anne Bishop 907-424-5800 x228
MB	59°55.512'N, 147°49.512'W	420 feet	378 feet	09/17	Mary Anne Bishop 907-424-5800 x228
M03	59°56.178'N, 147°49.518'W	509 feet	458 feet	09/17	Mary Anne Bishop 907-424-5800 x228
M04	59°56.556'N, 147°49.956'W	577 feet	519 feet	09/17	Mary Anne Bishop 907-424-5800 x228
M05	59°56.886'N, 147°50.382'W	640 feet	576 feet	09/17	Mary Anne Bishop 907-424-5800 x228
M06	59°57.222'N, 147°50.826'W	705 feet	635 feet	09/17	Mary Anne Bishop 907-424-5800 x228
M07	59°57.546'N, 147°51.234'W	741 feet	667 feet	09/17	Mary Anne Bishop 907-424-5800 x228
M08	59°57.864'N, 147°51.636'W	768 feet	691 feet	09/17	Mary Anne Bishop 907-424-5800 x228
M09	59°58.152'N, 147°52.008'W	784 feet	706 feet	09/17	Mary Anne Bishop 907-424-5800 x228
M10	59°58.536'N, 147°52.458'W	778 feet	700 feet	09/17	Mary Anne Bishop 907-424-5800 x228
MC	59°58.182'N, 147°52.872'W	745 feet	671 feet	09/17	Mary Anne Bishop 907-424-5800 x228
M11	59°58.842'N, 147°52.866'W	472 feet	425 feet	09/17	Mary Anne Bishop 907-424-5800 x228
MD	59°58.518'N, 147°53.352'W	614 feet	553 feet	09/17	Mary Anne Bishop 907-424-5800 x228
LP01	59°58.854'N, 148°01.920'W	112 feet	80 feet	09/17	Mary Anne Bishop 907-424-5800 x228
LPA	59°58.488'N, 148°02.286'W	98 feet	66 feet	09/17	Mary Anne Bishop 907-424-5800 x228
EP04	59°59.700'N, 148°06.072'W	276 feet	244 feet	09/17	Mary Anne Bishop 907-424-5800 x228
EPB	59°59.364'N, 148°06.492'W	246 feet	214 feet	09/17	Mary Anne Bishop 907-424-5800 x228
POWP05	60°02.778'N, 148°07.470'W	312 feet	280 feet	09/17	Mary Anne Bishop 907-424-5800 x228
LPB	59°58.758'N, 148°02.676'W	289 feet	257 feet	09/17	Mary Anne Bishop 907-424-5800 x228
EP03	59°59.472'N, 148°05.802'W	240 feet	208 feet	09/17	Mary Anne Bishop 907-424-5800 x228
EPA	59°59.064'N, 148°05.952'W	331 feet	299 feet	09/17	Mary Anne Bishop 907-424-5800 x228
PWA	60°02.394'N, 148°07.698'W	289 feet	257 feet	09/17	Mary Anne Bishop 907-424-5800 x228
LP02	59°59.082'N, 148°02.208'W	148 feet	116 feet	09/17	Mary Anne Bishop 907-424-5800 x228
POWP06	60°02.796'N, 148°07.902'W	177 feet	145 feet	09/17	Mary Anne Bishop 907-424-5800 x228
PWB	60°02.418'N, 148°08.208'W	266 feet	234 feet	09/17	Mary Anne Bishop 907-424-5800 x228
BP07	60°06.906'N, 148°14.118'W	174 feet	142 feet	09/17	Mary Anne Bishop 907-424-5800 x228
BPA	60°07.128'N, 148°13.458'W	167 feet	135 feet	09/17	Mary Anne Bishop 907-424-5800 x228
Grav-1	60°41.370'N, 146°23.956'W	16 feet	Surface	16/17	Mary Anne Bishop 907-424-5800 x228
Grav-2	60°41.454'N, 146°23.496'W	75 feet	55 feet	16/17	Mary Anne Bishop 907-424-5800 x228
Grav-3	60°40.925'N, 146°23.018'W	146 feet	126 feet	16/17	Mary Anne Bishop 907-424-5800 x228
Grav-4	60°40.696'N, 146°22.561'W	195 feet	176 feet	16/17	Mary Anne Bishop 907-424-5800 x228
Grav-5	60°41.257'N, 146°24.580'W	7 feet	Surface	16/17	Mary Anne Bishop 907-424-5800 x228
Grav-6	60°41.033'N, 146°24.109'W	53 feet	34 feet	16/17	Mary Anne Bishop 907-424-5800 x228
Grav-7	60°40.811'N, 146°23.633'W	128 feet	108 feet	16/17	Mary Anne Bishop 907-424-5800 x228
Grav-8	60°40.580'N, 146°23.148'W	158 feet	138 feet	16/17	Mary Anne Bishop 907-424-5800 x228
Grav-9	60°40.362'N, 146°22.692'W	212 feet	192 feet	16/17	Mary Anne Bishop 907-424-5800 x228
Grav-10	60°40.970'N, 146°23.557'W	106 feet	86 feet	16/17	Mary Anne Bishop 907-424-5800 x228
Grav-RT1	60°41.053'N, 146°24.004'W	59 feet	40 feet	16/17	Mary Anne Bishop 907-424-5800 x228
Grav-RT2	60°41.071'N, 146°23.896'W	72 feet	53 feet	16/17	Mary Anne Bishop 907-424-5800 x228
Grav-RT3	60°41.090'N, 146°23.765'W	74 feet	55 feet	16/17	Mary Anne Bishop 907-424-5800 x228
RH1	60°36.987'N, 146°37.412'W	213 feet	203 feet	28/18	Mary Anne Bishop 907-424-5800 x228
RH2	60°38.175'N, 146°29.837'W	223 feet	223 feet	28/18	Mary Anne Bishop 907-424-5800 x228
NMS1	60°18.476'N, 147°40.044'W	131 feet	131 feet	28/18	Mary Anne Bishop 907-424-5800 x228
NMS2	60°18.280'N, 147°25.330'W	154 feet	154 feet	28/18	Mary Anne Bishop 907-424-5800 x228
NMS3	60°22.657'N, 147°08.341'W	118 feet	118 feet	28/18	Mary Anne Bishop 907-424-5800 x228
GISL1	60°51.782'N, 147°13.369'W	164 feet	154 feet	28/18	Mary Anne Bishop 907-424-5800 x228
MR1	59°58.586'N, 147°53.254'W	607 feet	597 feet	28/18	Mary Anne Bishop 907-424-5800 x228
MR2	59°58.655'N, 147°53.160'W	581 feet	571 feet	28/18	Mary Anne Bishop 907-424-5800 x228
MR3	59°58.738'N, 147°53.030'W	564 feet	554 feet	28/18	Mary Anne Bishop 907-424-5800 x228
HRT1	60°18.058'N, 146°54.282'W	112 feet	102 feet	28/18	Mary Anne Bishop 907-424-5800 x228
HRT2	60°18.135'N, 146°54.227'W	121 feet	111 feet	28/18	Mary Anne Bishop 907-424-5800 x228
HRT3	60°18.226'N, 146°54.145'W	151 feet	141 feet	28/18	Mary Anne Bishop 907-424-5800 x228
KIP1	60°18.121'N, 148°00.944'W	344 feet	324 feet	39/18	Mary Anne Bishop 907-424-5800 x228
KIP2	60°18.050'N, 147°55.640'W	344 feet	324 feet	39/18	Mary Anne Bishop 907-424-5800 x228
CP1	60°32.465'N, 146°08.652'W	106 feet	81 feet	39/18	Mary Anne Bishop 907-424-5800 x228
CP2	60°32.733'N, 146°06.749'W	151 feet	126 feet	39/18	Mary Anne Bishop 907-424-5800 x228
CEDAR1	60°33.568'N, 146°01.978'W	110 feet	85 feet	39/18	Mary Anne Bishop 907-424-5800 x228
JP1	60°29.366'N, 146°35.524'W	74 feet	71 feet	10/20	Mary Anne Bishop 907-424-5800 x228
PF1	60°48.720'N, 146°34.464'W	131 feet	128 feet	10/20	Mary Anne Bishop 907-424-5800 x228

ALASKA – GULF OF ALASKA – YAKUTAT

TYPE/NAME:	POSITION:	WATER DEPTH:	TOP FLOAT DEPTH:	Ref. LNM:	POC:
Wave Buoy-1	59°27.0402'N, 139°44.982'W	Unknown	Surface	41/19	Jeremy Kasper 907-371-6510
Wave Buoy-2	59°25.998'N, 139°48.366'W	Unknown	Surface	41/19	Jeremy Kasper 907-371-6510

ALASKA – SOUTHEAST

TYPE/NAME:	POSITION:	WATER DEPTH:	TOP FLOAT DEPTH:	Ref. LNM:	POC:
Icy Strait	58° 14.6112'N, 136° 7.28972'W	614 feet	594 feet	35/09	Dave Carlile 907-465-4216

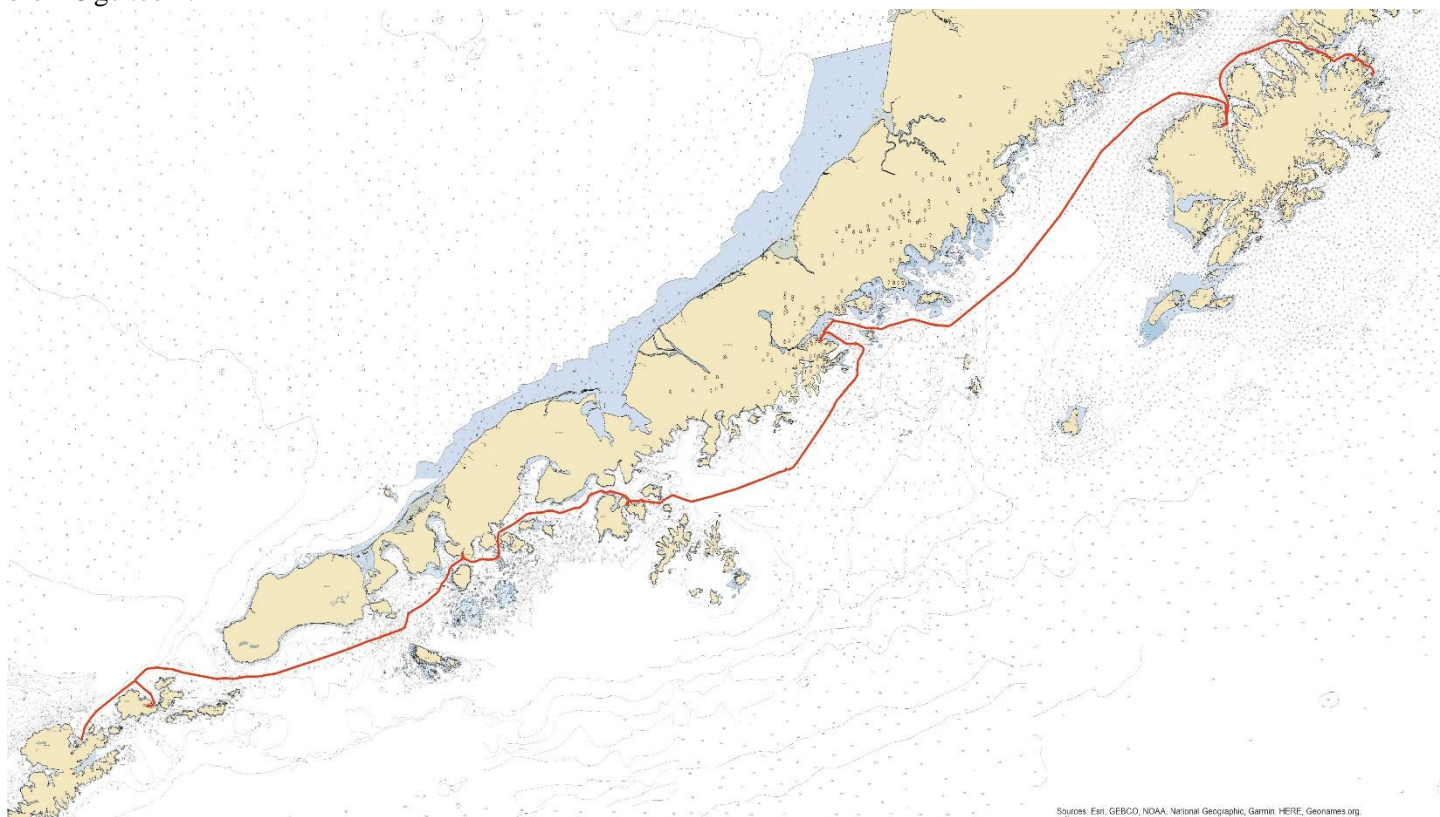
ALASKA – SOUTHEAST (Continued)

TYPE/NAME:	POSITION:	WATER DEPTH:	TOP FLOAT DEPTH:	Ref. LNM:	POC:
Icy Strait	58° 14.5037'N, 136° 7.27185'W	541 feet	521 feet	35/09	Dave Carlile 907-465-4216
Icy Strait	58° 14.3962'N, 136° 7.25398'W	522 feet	502 feet	35/09	Dave Carlile 907-465-4216
Icy Strait	58° 14.2887'N, 136° 7.23611'W	358 feet	338 feet	35/09	Dave Carlile 907-465-4216
Icy Strait	58° 14.1812'N, 136° 7.21824'W	266 feet	246 feet	35/09	Dave Carlile 907-465-4216
Chatham Strait	56° 9.6115'N, 134° 33.78278'W	1814 feet	1795 feet	35/09	Dave Carlile 907-465-4216
Chatham Strait	56° 9.6209'N, 134° 33.97584'W	1820 feet	1800 feet	35/09	Dave Carlile 907-465-4216
Chatham Strait	56° 9.6303'N, 134° 34.1689'W	1811 feet	1791 feet	35/09	Dave Carlile 907-465-4216
Chatham Strait	56° 9.6397'N, 134° 34.36195'W	1811 feet	1791 feet	35/09	Dave Carlile 907-465-4216
Chatham Strait	56° 9.6491'N, 134° 34.55501'W	1798 feet	1778 feet	35/09	Dave Carlile 907-465-4216
Chatham Strait	56° 8.6362'N, 134° 25.56783'W	1916 feet	417 feet	35/09	Dave Carlile 907-465-4216
Chatham Strait	56° 8.655'N, 134° 25.95379'W	1930 feet	1910 feet	35/09	Dave Carlile 907-465-4216
Chatham Strait	56° 8.6644'N, 134° 26.14676'W	1932 feet	1912 feet	35/09	Dave Carlile 907-465-4216
Chatham Strait	56° 8.6738'N, 134° 26.3397'W	1936 feet	1916 feet	35/09	Dave Carlile 907-465-4216
Chatham Strait	56° 8.6832'N, 134° 26.53272'W	1932 feet	1912 feet	35/09	Dave Carlile 907-465-4216
Chatham Strait	56° 8.6926'N, 134° 26.7257'W	1932 feet	1912 feet	35/09	Dave Carlile 907-465-4216
Frederick Sound	57° 3.34'N, 134° 15.64'W	1180 feet	928 feet	35/09	Dave Carlile 907-465-4216
Frederick Sound	57° 3.1874'N, 134° 15.35938'W	1155 feet	1135 feet	35/09	Dave Carlile 907-465-4216
Frederick Sound	57° 3.1111'N, 134° 15.21907'W	1155 feet	1135 feet	35/09	Dave Carlile 907-465-4216
Frederick Sound	57° 3.0348'N, 134° 15.07877'W	1155 feet	1135 feet	35/09	Dave Carlile 907-465-4216
Frederick Sound	57° 2.9584'N, 134° 14.93847'W	1158 feet	1138 feet	35/09	Dave Carlile 907-465-4216
Ommaney	56° 5.1769'N, 134° 46.8910'W	1191 feet	1171 feet	33/10	Dave Carlile 907-465-4216
Ommaney	56° 5.0755'N, 134° 46.8249'W	1200 feet	1180 feet	33/10	Dave Carlile 907-465-4216
Ommaney	56° 4.9741'N, 134° 46.7587' W	1200 feet	1180 feet	33/10	Dave Carlile 907-465-4216
Ommaney	55° 59.6327' N, 134° 57.3717' W	1214 feet	1194 feet	33/10	Dave Carlile 907-465-4216
Ommaney	55° 59.5313'N, 134° 57.3057'W	1191 feet	1171 feet	33/10	Dave Carlile 907-465-4216
Ommaney	55° 59.4298'N, 134° 57.2397'W	1191 feet	1171 feet	33/10	Dave Carlile 907-465-4216
Ommaney	55° 59.3284'N, 134° 57.1737'W	1220 feet	1200 feet	33/10	Dave Carlile 907-465-4216
Frederick Sound	57° 2.8821'N, 134° 14.79818'W	1158 feet	1138 feet	35/09	Dave Carlile 907-465-4216
Ommaney	56° 5.4812' N, 134° 47.0895' W	1181 feet	912 feet	33/10	Dave Carlile 907-465-4216
Ommaney	56° 5.3798'N, 134° 47.0233'W	1191 feet	1171 feet	33/10	Dave Carlile 907-465-4216
Ommaney	56° 5.2783'N, 134° 46.9572'W	1191 feet	1171 feet	33/10	Dave Carlile 907-465-4216
Ommaney	55° 59.2270'N, 134° 57.1077'W	1220 feet	1200 feet	33/10	Dave Carlile 907-465-4216
Ommaney	55° 59.1256'N, 134° 57.0417' W	1220 feet	1200 feet	33/10	Dave Carlile 907-465-4216
20CSP-4A	58°07.363'N, 136°35.604'W	1,099 feet	1,060 feet	06/20	David Strausz 206-526-4510

ALASKA – NORTH PACIFIC OCEAN

TYPE/NAME:	POSITION:	WATER DEPTH:	TOP FLOAT DEPTH:	Ref. LNM:	POC:
HARP-CB	58°40.409'N, 148°00.546'W	2,877 feet	2,779 feet	49/14	Josh Jones 858-822-1836
HARP-PT	56°14.635'N, 142°45.431'W	3,238 feet	3,140 feet	49/14	Josh Jones 858-822-1836
MFM-A	49°58.60'N, 144°14.77'W	13,540 feet	49 feet	24/15	Gabriella Chavez 858-822-4938
MFM-B	50°19.82'N, 144°23.90'W	13,599 feet	49 feet	24/15	Gabriella Chavez 858-822-4938
GHPM-1	50°04.79'N, 144°48.18'W	13, 842 feet	483 feet	24/15	Gabriella Chavez 858-822-4938

GCI has installed a cable from Unalaska, AK to Kodiak, AK with stops in Akutan, King Cove, Sand Point, Chignik Bay and Larson Bay. The approximate route is indicated on the included chart. The 'as-built' route of the cable from Unalaska to King cove has been included as latitude/longitude points in WGS 84 datum. Additional information and alternative position formats can be obtained from GCI by contacting Bruce Rein at 907-868-5633 or by email to brein@gci.com.



Sources: Esri, GEBCO, NOAA, National Geographic, Garmin, HERE, Geonames.org

53°54.9310'N, 166°30.1760W; 53° 54.9010'N, 166°30.1590W; 53° 54.9030'N, 166°30.1300W;
 53° 54.9525'N, 166°29.9168W; 53° 55.0257'N, 166°29.7243W; 53° 55.1388'N, 166°29.6034W;
 53° 55.2731'N, 166°29.5730W; 53° 55.4081'N, 166°29.5787W; 53° 55.5424'N, 166°29.5517W;
 53° 56.5660'N, 166°29.1111W; 53° 56.8537'N, 166°28.9847W; 53° 56.9516'N, 166°28.9347W;
 53° 57.0803'N, 166°28.8556W; 53° 57.4279'N, 166°28.6356W; 53° 57.4664'N, 166°28.6127W;
 53° 57.5607'N, 166°28.5767W; 53° 59.0010'N, 166°28.0960W; 53° 59.0206'N, 166°28.0853W;
 53° 59.9040'N, 166°27.4942W; 53° 59.9738'N, 166°27.4414W; 54° 01.2078'N, 166°26.0957W;
 54° 01.2665'N, 166°26.0292W; 54° 01.3420'N, 166°25.9299W; 54° 02.1017'N, 166°24.9112W;
 54° 02.2322'N, 166°24.7457W; 54° 02.2323'N, 166°24.7455W; 54° 03.6173'N, 166°23.0689W;
 54° 03.7128'N, 166°22.9441W; 54° 04.5047'N, 166°21.6951W; 54° 04.5660'N, 166°21.5963W;
 54° 04.6714'N, 166°21.4326W; 54° 04.7064'N, 166°21.3783W; 54° 05.0840'N, 166°20.7719W;
 54° 06.0937'N, 166°18.9758W; 54° 06.2020'N, 166°18.7790W; 54° 06.2249'N, 166°18.7340W;
 54° 06.2573'N, 166°18.6669W; 54° 06.6894'N, 166°17.7165W; 54° 08.4109'N, 166°13.8748W;
 54° 08.4938'N, 166°13.6930W; 54° 10.4249'N, 166°09.3930W; 54° 10.8868'N, 166°08.3496W;
 54° 13.6060'N, 166°02.3836W; 54° 14.4518'N, 166°00.3737W; 54° 14.5254'N, 166°00.1938W;
 54° 14.6097'N, 165°59.9915W; 54° 14.6671'N, 165°59.8587W; 54° 16.0158'N, 165°56.8592W;
 54° 16.3922'N, 165°55.8173W; 54° 16.4097'N, 165°55.7586W; 54° 16.4233'N, 165°55.7033W;
 54° 16.5922'N, 165°54.9550W; 54° 16.6816'N, 165°54.5799W; 54° 16.7448'N, 165°54.4002W;
 54° 17.2124'N, 165°54.2614W; 54° 17.2312'N, 165°54.2523W; 54° 17.3360'N, 165°54.1913W;
 54° 17.3522'N, 165°54.1793W; 54° 17.4537'N, 165°54.0848W; 54° 17.4656'N, 165°54.0719W;
 54° 17.5558'N, 165°53.9499W; 54° 17.5863'N, 165°53.9022W; 54° 20.6509'N, 165°48.1768W;
 54° 20.7735'N, 165°47.9429W; 54° 20.9260'N, 165°47.6093W; 54° 21.0283'N, 165°47.3038W;
 54° 21.1316'N, 165°46.9761W; 54° 21.1997'N, 165°46.7342W; 54° 21.2689'N, 165°46.4012W;
 54° 21.3086'N, 165°46.1359W; 54° 21.3353'N, 165°45.8877W; 54° 21.3668'N, 165°45.5417W;
 54° 21.5009'N, 165°43.2491W; 54° 21.5476'N, 165°42.3229W; 54° 21.6330'N, 165°40.8635W;

54° 21.6380'N, 165°40.6049W; 54° 21.6387'N, 165°40.2699W; 54° 21.5896'N, 165°38.6721W;
54° 21.5571'N, 165°38.1200W; 54° 21.4232'N, 165°36.6508W; 54° 21.3702'N, 165°35.9062W;
54° 21.1583'N, 165°31.6306W; 54° 21.1160'N, 165°30.6697W; 54° 21.0693'N, 165°30.0892W;
54° 21.0338'N, 165°29.7775W; 54° 20.9881'N, 165°29.4707W; 54° 20.9272'N, 165°29.0860W;
54° 19.9803'N, 165°23.9653W; 54° 19.9160'N, 165°23.5631W; 54° 19.8667'N, 165°23.1882W;
54° 18.5336'N, 165°10.5839W; 54° 18.5118'N, 165°10.4109W; 54° 17.7769'N, 165°03.4542W;
54° 17.7350'N, 165°03.1210W; 54° 17.5254'N, 165°01.0647W; 54° 17.5184'N, 165°00.9737W;
54° 17.5074'N, 165°00.2374W; 54° 17.5096'N, 165°00.1345W; 54° 17.5273'N, 164°59.7773W;
54° 17.8114'N, 164°55.3820W; 54° 17.7949'N, 164°54.3638W; 54° 17.5354'N, 164°50.0027W;
54° 17.5359'N, 164°49.5123W; 54° 17.8510'N, 164°46.4481W; 54° 17.9062'N, 164°45.9668W;
54° 17.9480'N, 164°45.5298W; 54° 18.0351'N, 164°44.7446W; 54° 18.0489'N, 164°44.5942W;
54° 18.2694'N, 164°42.4465W; 54° 18.3264'N, 164°41.6694W; 54° 18.3920'N, 164°40.5913W;
54° 18.3887'N, 164°40.0852W; 54° 18.3941'N, 164°39.1063W; 54° 18.3856'N, 164°38.5735W;
54° 18.4226'N, 164°38.0781W; 54° 18.4004'N, 164°37.6891W; 54° 18.3958'N, 164°37.0939W;
54° 18.4033'N, 164°34.3170W; 54° 18.4014'N, 164°34.2294W; 54° 18.4030'N, 164°33.5631W;
54° 19.5447'N, 164°21.8097W; 54° 19.5525'N, 164°21.7562W; 54° 24.8931'N, 163°52.7275W;
54° 26.2774'N, 163°45.5242W; 54° 26.3008'N, 163°45.3125W; 54° 26.3970'N, 163°44.9001W;
54° 28.1725'N, 163°35.6481W; 54° 30.1184'N, 163°26.6608W; 54° 30.1350'N, 163°26.5709W;
54° 30.1622'N, 163°26.4227W; 54° 30.2400'N, 163°26.1236W; 54° 30.9836'N, 163°23.0647W;
54° 31.0074'N, 163°22.9407W; 54° 32.3858'N, 163°15.3073W; 54° 32.9706'N, 163°12.4426W;
54° 33.0775'N, 163°11.9705W; 54° 33.1560'N, 163°11.6142W; 54° 33.2077'N, 163°11.3458W;
54° 33.2598'N, 163°11.0388W; 54° 33.6200'N, 163°09.0289W; 54° 33.7461'N, 163°08.3664W;
54° 33.8422'N, 163°07.8968W; 54° 33.9028'N, 163°07.6144W; 54° 33.9117'N, 163°07.5752W;
54° 33.9617'N, 163°07.3709W; 54° 33.9722'N, 163°07.3386W; 54° 34.0074'N, 163°07.2331W;
54° 34.1251'N, 163°06.8990W; 54° 34.1580'N, 163°06.7632W; 54° 34.2129'N, 163°06.5503W;
54° 34.2278'N, 163°06.4906W; 54° 34.2337'N, 163°06.4652W; 54° 34.2816'N, 163°06.2119W;
54° 34.3054'N, 163°06.0915W; 54° 34.3841'N, 163°05.6786W; 54° 34.4381'N, 163°05.3898W;
54° 34.4406'N, 163°05.3781W; 54° 34.4435'N, 163°05.3612W; 54° 34.4692'N, 163°05.2244W;
54° 34.4801'N, 163°05.1707W; 54° 34.4832'N, 163°05.1540W; 54° 34.4879'N, 163°05.1301W;
54° 34.4896'N, 163°05.1209W; 54° 34.5149'N, 163°04.9868W; 54° 34.5172'N, 163°04.9758W;
54° 34.5487'N, 163°04.8106W; 54° 34.5508'N, 163°04.8001W; 54° 34.5580'N, 163°04.7617W;
54° 34.5817'N, 163°04.6392W; 54° 34.6514'N, 163°04.2669W; 54° 35.1935'N, 163°01.4391W;
54° 35.2142'N, 163°01.3479W; 54° 35.5178'N, 163°00.1282W; 54° 35.5307'N, 163°00.0786W;
54° 35.5691'N, 162°59.9140W; 54° 35.5808'N, 162°59.8623W; 54° 35.6007'N, 162°59.7460W;
54° 35.6213'N, 162°59.6063W; 54° 35.6348'N, 162°59.3797W; 54° 35.6413'N, 162°59.2993W;
54° 35.6557'N, 162°59.1827W; 54° 35.6640'N, 162°59.1336W; 54° 35.6709'N, 162°59.0890W;
54° 35.6770'N, 162°59.0570W; 54° 35.6880'N, 162°59.0095W; 54° 35.6961'N, 162°58.9773W;
54° 35.7117'N, 162°58.9164W; 54° 35.7269'N, 162°58.8586W; 54° 35.7467'N, 162°58.7939W;
54° 35.7763'N, 162°58.6998W; 54° 35.7857'N, 162°58.6724W; 54° 36.3104'N, 162°57.4672W;
54° 36.3568'N, 162°57.3689W; 54° 36.3773'N, 162°57.3358W; 54° 36.4633'N, 162°57.2401W;
54° 36.5186'N, 162°57.1859W; 54° 36.6091'N, 162°57.0940W; 54° 36.7698'N, 162°56.9259W;
54° 36.8081'N, 162°56.8876W; 54° 36.8438'N, 162°56.8626W; 54° 36.9863'N, 162°56.8159W;
54° 37.2409'N, 162°56.7403W; 54° 37.3648'N, 162°56.6783W; 54° 37.5866'N, 162°56.5077W;
54° 38.2396'N, 162°56.0294W; 54° 38.3497'N, 162°55.9682W; 54° 38.4030'N, 162°55.9502W;
54° 38.5059'N, 162°55.9202W; 54° 38.6397'N, 162°55.9006W; 54° 38.8523'N, 162°55.8776W;
54° 38.9837'N, 162°55.8540W; 54° 39.2738'N, 162°55.6502W; 54° 39.3994'N, 162°55.5879W;
54° 40.1783'N, 162°55.2524W; 54° 40.2075'N, 162°55.2430W; 54° 40.2372'N, 162°55.2348W;
54° 40.2967'N, 162°55.2207W; 54° 40.4038'N, 162°55.2018W; 54° 40.4699'N, 162°55.1744W;
54° 41.4194'N, 162°54.7142W; 54° 41.5351'N, 162°54.5763W; 54° 41.6178'N, 162°54.0127W;
54° 41.6342'N, 162°53.9372W; 54° 41.6633'N, 162°53.8257W; 54° 41.7093'N, 162°53.7093W;
54° 41.7385'N, 162°53.6555W; 54° 41.7815'N, 162°53.5737W; 54° 41.8441'N, 162°53.4756W;
54° 41.9016'N, 162°53.3365W; 54° 42.0600'N, 162°52.9396W; 54° 42.1826'N, 162°52.6463W;

54° 42.2836'N, 162°52.3971W; 54° 42.3774'N, 162°52.1820W; 54° 42.4563'N, 162°51.9849W;
54° 42.5846'N, 162°51.5159W; 54° 43.5426'N, 162°48.4077W; 54° 44.3314'N, 162°45.9035W;
54° 44.4166'N, 162°45.6249W; 54° 46.0519'N, 162°41.8898W; 54° 46.2339'N, 162°41.4801W;
54° 46.8509'N, 162°40.2348W; 54° 47.3924'N, 162°39.1701W; 54° 48.2655'N, 162°37.3750W;
54° 49.1588'N, 162°35.4690W; 54° 49.2890'N, 162°35.2530W; 54° 49.5074'N, 162°34.9330W;
54° 49.7750'N, 162°34.6398W; 54° 49.8881'N, 162°34.5423W; 54° 50.0144'N, 162°34.4585W;
54° 50.4632'N, 162°34.1259W; 54° 50.5098'N, 162°34.0888W; 54° 51.2887'N, 162°33.4876W;
54° 51.5043'N, 162°33.3288W; 54° 51.7915'N, 162°33.1060W; 54° 51.9739'N, 162°32.9547W;
54° 52.2487'N, 162°32.6714W; 54° 52.3167'N, 162°32.5873W; 54° 52.4370'N, 162°32.4185W;
54° 52.6583'N, 162°32.0761W; 54° 53.3525'N, 162°30.8510W; 54° 53.4088'N, 162°30.7712W;
54° 53.4974'N, 162°30.6361W; 54° 53.6283'N, 162°30.4498W; 54° 53.6869'N, 162°30.3736W;
54° 53.8014'N, 162°30.2389W; 54° 53.9203'N, 162°30.1136W; 54° 54.0872'N, 162°29.9212W;
54° 54.8134'N, 162°29.3536W; 54° 55.1766'N, 162°29.0863W; 54° 55.3299'N, 162°28.9492W;
54° 55.5047'N, 162°28.8192W; 54° 55.7127'N, 162°28.6558W; 54° 55.8764'N, 162°28.5395W;
54° 56.2454'N, 162°28.2840W; 54° 56.4376'N, 162°28.1555W; 54° 56.5308'N, 162°28.0894W;
54° 56.5895'N, 162°28.0552W; 54° 56.8691'N, 162°27.9556W; 54° 56.9685'N, 162°27.9179W;
54° 57.0796'N, 162°27.8833W; 54° 57.2564'N, 162°27.7556W; 54° 57.3286'N, 162°27.6864W;
54° 57.4589'N, 162°27.5562W; 54° 57.6588'N, 162°27.3625W; 54° 57.9209'N, 162°27.0900W;
54° 58.1983'N, 162°26.8123W; 54° 58.3072'N, 162°26.7005W; 54° 58.4217'N, 162°26.5616W;
54° 58.5465'N, 162°26.3569W; 54° 58.6182'N, 162°26.2215W; 54° 58.7048'N, 162°26.0436W;
54° 58.9126'N, 162°25.4663W; 54° 59.1199'N, 162°24.8727W; 54° 59.3164'N, 162°24.3178W;
54° 59.3241'N, 162°24.2964W; 54° 59.3422'N, 162°24.2508W; 55° 00.0447'N, 162°22.6618W;
55° 00.0830'N, 162°22.5689W; 55° 00.1078'N, 162°22.4980W; 55° 00.4833'N, 162°21.1415W;
55° 00.5223'N, 162°21.0040W; 55° 00.5394'N, 162°20.9640W; 55° 00.5545'N, 162°20.9267W;
55° 00.6724'N, 162°20.7334W; 55° 00.7148'N, 162°20.6503W; 55° 00.7409'N, 162°20.5824W;
55° 00.8123'N, 162°20.3018W; 55° 00.8499'N, 162°20.1594W; 55° 00.8686'N, 162°20.0941W;
55° 00.8929'N, 162°20.0157W; 55° 00.9214'N, 162°19.9474W; 55° 00.9432'N, 162°19.9049W;
55° 01.0047'N, 162°19.7822W; 55° 01.0350'N, 162°19.7286W; 55° 01.0756'N, 162°19.6880W;
55° 01.1505'N, 162°19.6376W; 55° 01.1853'N, 162°19.6183W; 55° 01.2731'N, 162°19.6024W;
55° 01.3105'N, 162°19.5869W; 55° 01.3546'N, 162°19.5596W; 55° 01.4307'N, 162°19.4928W;
55° 01.4674'N, 162°19.4485W; 55° 01.5541'N, 162°19.2648W; 55° 01.5836'N, 162°19.2135W;
55° 01.6158'N, 162°19.1817W; 55° 01.6583'N, 162°19.1543W; 55° 01.7008'N, 162°19.1237W;
55° 01.7306'N, 162°19.1124W; 55° 01.8927'N, 162°19.1279W; 55° 02.6617'N, 162°19.1682W;
55° 02.6954'N, 162°19.1692W; 55° 02.7524'N, 162°19.1626W; 55° 03.0499'N, 162°19.1168W;
55° 03.2168'N, 162°19.0941W; 55° 03.2539'N, 162°19.0807W; 55° 03.2701'N, 162°19.0665W;
55° 03.3055'N, 162°19.0262W; 55° 03.3242'N, 162°19.0099W; 55° 03.3567'N, 162°18.9848W;
55° 03.3740'N, 162°18.9707W; 55° 03.3974'N, 162°18.9576W; 55° 03.4147'N, 162°18.9541W;
55° 03.4496'N, 162°18.9545W; 55° 03.4557'N, 162°18.9528W; 55° 03.4603'N, 162°18.9496W;
55° 03.4890'N, 162°18.8960W; 55° 03.5350'N, 162°18.8410W; 55° 03.5440'N, 162°18.8240W;